

Dear Prof. Bahn

Thank-you very much for the attentive handling of our manuscript. Following the last round of reviews, we have focussed the revision on improving accessibility and placing this study into the context of broader perspective (namely, the impact of Si-rich crop residues removal in food production).

In detail we have revised the abstract, introduction and the conclusion to improve the accessibility for a broader audience and have placed our conclusions and its broader implications more prominently in the abstract.

Furthermore, we have re-read the manuscript and supplement to carefully check its scientific content. The chemical formula of sodium silicate trihydrate ( $\text{Na}_2\text{O}_7\text{Si}_3 \cdot 3\text{H}_2\text{O}$ ) which was stated false in the supplement has been corrected.

We hope that this revision makes this MS suitable for publication.

Best regards,

Daniel A. Frick on behalf of all co-authors.

# Silicon uptake and isotope fractionation dynamics by crop species

Daniel A. Frick<sup>1</sup>, Rainer Remus<sup>2</sup>, Michael Sommer<sup>2,3</sup>, Jürgen Augustin<sup>2</sup>, Danuta Kaczorek<sup>2</sup>, Friedhelm von Blanckenburg<sup>1,4</sup>

<sup>1</sup>GFZ German Research Centre for Geosciences, Potsdam, 14473, Germany.

5 <sup>2</sup>Leibniz Centre for Agricultural Landscape Research (ZALF), Müncheberg, 15374, Germany.

<sup>3</sup>Institute of Environmental Science and Geography, University of Potsdam, Potsdam, 14476, Germany

<sup>4</sup>Institute of Geological Science, Freie Universität Berlin, Berlin, 12249, Germany.

Correspondence to: Daniel A. Frick (dfrick@gfz-potsdam.de)

**Abstract.** That silicon is an important element in global biogeochemical cycles is widely recognized. Recently, its relevance  
10 for global crop production has gained increasing attention in light of possible deficits in plant-available Si in soil. Silicon is  
beneficial for plant growth and is taken up in considerable amounts by crops like rice or wheat. However, plants differ in the  
way they take up silicic acid from soil solution, with some species. ~~Correspondingly species encompass varieties that~~ rejecting  
silicic acid while others ~~to species that~~ actively incorporate it. Yet because the processes governing Si uptake and regulation  
are not fully understood these classifications are subject to intense debate. To ~~forge gain~~ a new perspective on the processes  
15 involved, we investigated the dependence of silicon stable isotope fractionation on silicon uptake strategy, transpiration, water  
use, and Si transfer efficiency. Crop plants with rejective (tomato, *Solanum lycopersicum* and mustard, *Sinapis alba*) and active  
(spring wheat, *Triticum aestivum*) Si uptake were hydroponically grown for 6 weeks. Using inductively coupled plasma mass  
spectrometry, the silicon amounts concentration and ~~the~~ isotopic composition of the nutrient solution, the roots, and the shoots  
were determined. We found that ~~Wheat revealed the highest Si transfer efficiency from root to shoot followed by tomato and~~  
20 ~~mustard-measured Si uptakes does not correlate with the amount of transpired water and is thus distinct from Si incorporation~~  
expected for unspecific passive uptake. ~~are~~ We interpret this lack of correlation to indicate a highly selective Si uptake  
mechanism. All three species preferentially incorporated light <sup>28</sup>Si, with a fractionation factor  $1000 \cdot \ln(\alpha)$  of -0.33 ‰ (tomato),  
-0.55 ‰ (mustard) and -0.43 ‰ (wheat) between growth medium and bulk plant. Thus e ~~Even though the rates of active and~~  
passive Si root uptake differ, the physico-chemical processes governing Si uptake and stable isotope fractionation do not. We  
25 ~~assume-suggest~~ that isotope fractionation during root uptake is governed by a diffusion process. In contrast, the transport of  
silicic acid from the roots to the shoots depends on the amount of silicon previously precipitated in the roots and the presence  
of active transporters in the root endodermis, facilitating Si transport into the shoots. Plants with ~~a~~ significant biogenic silica  
precipitation in roots (mustard, and wheat), preferentially transport silicon ~~enriched-depleted in~~ <sup>30</sup>Si-<sup>28</sup>Si into their shoots, ~~whereas the transport in tomato is dominated by a diffusion process~~ ifn the absence of precipitation of biogenic silica is not  
30 precipitated in the roots, theSi transport is dominated by a diffusion process and hence ~~preferentially transports~~ light silicon  
<sup>28</sup>Si is preferentially transported into the tomato shoots. This fingerprinting of the processes that transfer biogenic silica

between the roots and shoots using ratios of the stable Si isotopes has the potential to track Si availability and recycling thereof in soils and to provide a more efficient use of plant-available Si in agricultural production.

## 1 Introduction

35 Silicon (Si) is the second-most abundant element in the Earth's crust and occurs in a wide variety of silicate minerals. Weathering of these minerals mobilises Si and represents the starting point of Si biogeochemical cycling in terrestrial ecosystems – ~~an sometimes often~~ complex web of Si transfers and transformations. One crucial but poorly understood aspect of terrestrial Si biogeochemistry is biological cycling (Carey and Fulweiler, 2012; Derry et al., 2005; Sommer et al., 2006, 2013). Si has well documented biological roles (Cooke et al., 2016; Frew et al., 2018; Katz, 2019), and ~~Si~~ may be recycled  
40 multiple times through higher plants before being lost from an ecosystem. Today, agricultural land use exerts an increasing influence on the Si cycle, and in the future widespread deficits in plant-available Si in soils might develop (Carey and Fulweiler, 2016). Such shortages would endanger future food production. Strategies for addressing this potential problem requires, among other things, a better knowledge of Si uptake dynamics. Thus, approaches are needed that identify the processes governing Si uptake and regulation thereof. Here we propose and validating geochemical tools to trace plant Si uptake, ~~will to~~ improve our  
45 ability to address questions not only on weathering, ecosystem nutrition strategies, and geo-pedo-biosphere interactions but also plant physiological processes.

Despite having a disputed biochemical role, Si is considered beneficial for plant growth, including crops: Si increases abiotic stress mediation (aluminium and heavy metal toxicity, salinity), biotic stress resistance (defence against herbivores), and  
50 improves the plants' structural stability (Cooke et al., 2016; Coskun et al., 2019b; Epstein, 1994, 1999, 2001; Exley and Guerriero, 2019; Frew et al., 2018; Katz, 2019; Ma, 2004; Richmond and Sussman, 2003). Higher plant species form a continuous spectrum in the extent to which Si is incorporated. According to the amount of Si taken up they are grouped into three categories: active, passive and rejective (Marschner and Marschner, 2012). Crop plants with an active incorporation mechanism (e.g. rice, and wheat) take up Si with a higher silicon / water ratio than that in the soil solution, thus enriching Si  
55 relative to transpired water. Passive uptake plants (most dicotyledons) neither enrich nor deplete the Si relative to the transpired water. Rejective Si uptake plants (e.g. tomato, mustard, and soybean) actively discriminate against Si during uptake (Epstein, 1999; Hodson et al., 2005; Ma et al., 2001; Takahashi et al., 1990). However, the term “active uptake” is still widely debated. In particular whether the classification as active or passive is justified, as well as the evidence for involvement of an active, metabolically controlled process in some plant species is subject to an intense discussion (Coskun et al., 2019a; Exley, 2015;  
60 Exley et al., 2020).

Progress in this debate depends on identifying the transporters and mechanism that regulates Si uptake. In this regard Genome genome sequencing has disclosed the transporters responsible for Si uptake ~~transporter and mechanism that regulates Si uptake~~

(Ma & Yamaji, 2006; Ma *et al.*, 2006, 2007; Mitani *et al.*, 2009, see also Ma & Yamaji, 2015; YAN *et al.*, 2018 for an overview). In rice, a cooperative system of Si-permeable channels at the root epidermis (called Lsi1, Low Silicon 1 transporter, a thermodynamically passive transporter from the family of aquaporin-like proteins) incorporates Si, whereas a metabolically active efflux transporter (Lsi2, a putative anion-channel transporter) loads Si into the xylem (Broadley *et al.*, 2012). However, these observations are predictive in nature in terms of their implications, and only recently have empirical studies demonstrated the simultaneous operation of passive and active uptake mechanisms (Sun *et al.*, 2016b; YAN *et al.*, 2018). Yet other researchers have suggested that the low permeability of Lsi1 does not permit the transfer of silicic acid at all (Exley *et al.*, 2020). Thus, how these different Si transporter and passive Si pathways and the resulting magnitude of Si uptake affect the mobility of silicic acid within plants is still not fully known.

Conventional approaches employed in the study of uptake, translocation, and accumulation of Si in living organisms include either radioactive tracers (e.g.  $^{31}\text{Si}$ ,  $^{32}\text{Si}$ ) or homologue elements (e.g. Germanium and the radionuclide  $^{68}\text{Ge}$ ). Both techniques impose limitations on growth experiments, either due to safety concerns arising from radioactivity or due to physiological differences between the homologue element Ge and Si (Exley *et al.*, 2020; Takahashi *et al.*, 1990). As a homologue element, Ge is taken up in the same form as Si,  $\text{Ge}(\text{OH})_4^0$ . In the absence of Si, plants seem to incorporate  $\text{Ge}(\text{OH})_4$  at a higher rate than in its presence (Takahashi *et al.*, 1990). Several studies have shown that plants fractionate Si relative to Ge, resulting in a lowered Ge/Si ratio in the phytoliths formed (Blecker *et al.*, 2007; Cornelis *et al.*, 2010; Derry *et al.*, 2005; Opfergelt *et al.*, 2010). There is also evidence that Ge interacts differently with organic molecules than Si (Pokrovski and Schott, 1998; Sparks *et al.*, 2011; Wiche *et al.*, 2018). In some cases, Ge also appears to be toxic to organisms (Marron *et al.*, 2016). Thus, Ge or Ge/Si ratios are problematic tracers of plant Si uptake and translocation processes.

Si stable isotope ratios provide a powerful alternative approach. When combined with measurements of plant physiological properties, they allow exploration of Si cycling in organisms. Each physico-chemical transport process (e.g. absorption, uptake, diffusion, and precipitation) may be accompanied by a shift in an element's stable isotope ratios - so-called mass-dependent isotope fractionation (Poitrasson, 2017). This isotope fractionation either entails an equilibrium isotope effect, where the isotopes are partitioned between compounds according to bond strength, or a kinetic isotope effect, where the isotope fractionation depends on the relative rate constants of reactions involving the different isotopologues. For stable Si isotope fractionation in aqueous media, both equilibrium effects (He *et al.*, 2016; Stamm *et al.*, 2019) and kinetic effects (Geilert *et al.*, 2014; Oelze *et al.*, 2015; Poitrasson, 2017; Roerdink *et al.*, 2015) have been observed. In plant growth studies Si isotope ratio measurements, when combined with establishing the Si mass balance, isotope fractionation factors, and plant physiological properties allows the exploration of Si pathways in higher plants.

Previous studies on stable Si fractionation in higher plants focused on accumulator plants, namely rice (Ding *et al.*, 2008a; Köster *et al.*, 2009; Sun *et al.*, 2008, 2016b, 2016a), banana (Delvigne *et al.*, 2009; Opfergelt *et al.*, 2006, 2010), bamboo (Ding

et al., 2008b) and cucumber (Sun et al., 2016b) and most of these studies show the preferential incorporation of lighter Si isotopes. Importantly, in most of these studies, Si concentrations in the growth media were held constant by frequently replenishing the nutrient solution. This imparts the disadvantage that the dynamics (temporal evolution) of the Si isotope fractionation during uptake cannot be derived from the isotope shift recorded by the nutrient solution over the course of the experiment, nor does the provision of constant Si amounts allow additional constraints to be placed on Si uptake mechanisms employed by plants.

In this study we elucidated the mechanisms of Si uptake using crop species that differ significantly in their Si uptake capacity, the presence of specific Si transporters and their transpiration rate. To do so, we combined the measurement of physiological plant performance ratios with observations of the shifts in the Si isotope ratios due to mass dependent isotope fractionation. Three crops - tomato, mustard, and wheat - were grown in a hydroponic system under the same environmental conditions, with nutrients being supplied only once, during the onset of the experiment, allowing direct quantification of the dynamics of isotopic fractionation from the temporal evolution of the nutrient solutions' isotopic composition. With the combination of the physiological plant performance ratios and isotope chemical parameters we developed new insights to the mechanisms underlying the different Si uptake and translocation strategies.

## 2 Materials and methods

### 2.1 Nutrient solution

The nutrient solution was prepared from technical grade salts following the recipe after Schilling *et al.*, 1982; and Mühling & Sattelmacher, 1995. Silicon was added in the form of sodium silicate trihydrate ( $\text{Na}_2\text{O}_7\text{Si}_3 \cdot 3\text{H}_2\text{O}$ ) to an initial Si starting concentration of  $49.5 \mu\text{g} \cdot \text{g}^{-1}$  (1.76 mM). Detail composition can be found in supplementary methods S1. Ultrapure water (resistivity  $18.2 \text{ M}\Omega \cdot \text{cm}$ ) was used to prepare the nutrient solutions and to weekly restock water transpired by the plants.

### 2.2 Plant species

Three species were chosen based on their silicon uptake characteristics, the ability to grow in hydroponic environments, and previous knowledge about their Si transporter. Tomato (*Solanum lycopersicum* cultivar MICRO TOM) and mustard (*Sinapis alba*) are both rejective of Si, while spring wheat (*Triticum aestivum* cultivar SW KADRILJ) actively takes up Si (Hodson et al., 2005; Takahashi et al., 1990). The two Si excluder species differ in the presence of the NOD26-like-intrinsic proteins (orthologues of Lsi1, homologous gene sequence of low-silicon rice 1) which are associated with the transport of Si. In the family of Brassicaceae (mustard) these are absent (Sonah et al., 2017), whereas for tomato the Lsi1 homologue seems to be present but inactive (Deshmukh et al., 2016, 2015). Conversely, the alleged active Si efflux transporter (Lsi2-like) are present in the family of Brassicaceae (Sonah et al., 2017), but not in tomato (Sun et al., 2020). An ongoing controversy surrounds the significance of the Lsi1 homologue in tomato. Whereas Deshmukh et al., 2015 used Si uptake studies to infer the transporter

to be non-functional, Sun et al., 2020 observed the contrary using Ge as homologue element. Sun and co-workers concluded  
130 that the low Si uptake is caused by the lack of a functional Si efflux transporter Lsi2 at the root endodermis.

### 2.3 Plant germination and growth conditions

Plant seeds were germinated in Petri dishes with half-strength nutrient solution used for the later growth experiment that contained no added sodium silicate trihydrate. After cotyledons formed, seedlings were transferred into a foam disk and grown for a further two weeks in the same half-strength nutrient solution. Four plants each were then transferred into one experimental  
135 container that was filled with fresh nutrient solution including sodium silicate trihydrate, and each species was replicated in three containers. Plants were germinated and grown in a growth chamber under controlled climate conditions. Each week the pots were weighed without the lid and the plants, and the mass of transpired water was replenished with ultrapure water ( $18.2 \text{ M}\Omega\cdot\text{cm}$ ). The weight difference to the previous week is considered to quantify the mass of water transpired by the plants. The pots were closed with a fixed and completely sealed lid, and thus evaporation is considered to be very small and, in any case,  
140 identical between the plant species and triplicates. The temperature in the growth chamber during the day and night was maintained at  $18^\circ\text{C}$  for 14 h and at  $15^\circ\text{C}$  for 10 h, respectively, and the daylight intensity at the top of the container was adjusted to  $350 \mu\text{E}\cdot\text{m}^{-2}\cdot\text{s}^{-1}$ ) at the start of the experiment. The relative humidity was maintained at approximately 65 %. Details of the plant germination and growth conditions are provided in supplementary methods S2.

### 2.4 Sampling

145 The nutrient solutions were sampled at the start of the experiment and then every seven days until harvesting. For sampling, 40 mL were taken after replenishing water loss via transpiration loss and mixing of the solution. All sampled nutrient solutions were stored until analysis in precleaned PP vials in darkness at  $4^\circ\text{C}$ . The 280 mL sample taken over the course of 6 weeks corresponds to 3.5 % of the initial nutrient solution. After 6 weeks the plants were harvested, and shoots (stem and leaves) were separated from the roots. The roots were immersed multiple times in ultrapure water to remove potential extracellular Si  
150 deposits and attached nutrients. The plant parts were dried at  $104^\circ\text{C}$  to constant weight.

### 2.5 Determination of concentrations and isotope ratios

The chemical compositions of the growth solution and the digested plant samples (see section 2.5.2 for the digestion procedure) were measured using an axial inductively coupled plasma optical emission spectroscopy (ICP-OES, Varian 720-ES, instrument settings are reported in Table S1). Samples and standard were analysed following a procedure by Schuessler *et al.*, 2016.  
155 Briefly, the samples and standards were doped with an excess of  $\text{CsNO}_3$  ( $1 \text{ mg g}^{-1}$ ) to reduce matrix effects in the ICP source that are likely to be caused from the high nitrogen content of the samples and quantified applying an external calibration. The relative analytical uncertainties are estimated to be below 10% and agreed with the nominal concentration of the starting solutions.

### 2.5.1 Nutrient solution purification

160 The high nutrient content and the organic acids in the nutrient solution potentially impair the chromatographic purification of Si. Thus the nutrient solution was digested following the “Sample preparation of water samples” by Steinhöfel et al., 2017 without employing an additional step for the removal of dissolved organic carbon. Briefly, based on the concentration measured, an aliquot of each nutrient solution containing approximately 1000 µg Si was dried down in silver crucibles on a hotplate at 80-95 °C. The crucibles were then filled with 400 mg NaOH (Merck pellets, p.a. grade, previously checked for low Si blank levels) and ultrapure water to the initial fill level and dried down. This step ensured that Si attached to the crucible walls was also immersed in NaOH. A blank containing ultrapure water and NaOH was processed in parallel to the samples to check for contamination of Si and other elements introduced in the procedure.

### 2.5.2 Plant samples digestion

The oven-dried samples were homogenised by milling the plant parts in a tungsten carbide planetary ball mill (Pulversiette 7, 170 Fritsch). 50-800 mg of plant material, depending on the Si concentration determined in an exploratory subset of the samples, was weighed into Ag crucibles and combusted overnight (2h at 200 °C, 4h at 600 °C, then cooled to room temperature) in a furnace (LVT 5/11/P330, Nabertherm). A blank (empty crucible) was processed together with the samples. After cooling 400 mg NaOH (TraceSELECT, Sigma-Aldrich, checked for low Si blank levels) was added.

### 2.5.3 Fusion and chromatography

175 The crucibles containing the sample (nutrient solution or plant material) and NaOH were placed in a furnace at 750 °C for 15 min to perform the fusion. The fusion cake was dissolved in ultrapure water (for 24h, followed by 30 min ultrasonic bath), the solution was decanted into precleaned PP flask. The remains of the fusion cake were fully dissolved in 0.03 M HCl (for 3h), and both solutions were combined and the pH was adjusted to 1.5. The Si concentration was determined by ICP-OES and approximately 60 µg Si (present in the form of silicic acid) was chromatographically separated using cation exchange resin 180 (following a procedure outlined by Georg *et al.*, 2006; Zambardi & Poitrasson, 2011; Schuessler & von Blanckenburg, 2014). The Si yield of the fusion procedure and the column chemistry was determined in a 1:10-fold dilution by ICP-OES. Si blanks of the fusion and column separation procedure were in general below 1 µg Si, equivalent to less than 1 % of the total Si processed. See Methods S3 for more details.

### 2.5.4 Silicon isotope ratio measurements

185 The purified solutions were acidified to 0.1 M HCl and diluted to a concentration of 0.6 µg·g<sup>-1</sup>. Sample and standard were both doped with 0.6 µg·g<sup>-1</sup> Mg and the <sup>25</sup>Mg/<sup>24</sup>Mg ratio used as a monitor of mass bias drift and to ensure stable measurement conditions during the analysis (Oelze et al., 2016). The solutions were introduced using an ESI ApexHF desolvator and a PFA nebuliser (measured uptake 140 µL min<sup>-1</sup>) into the MC-ICP-MS (Neptune, equipped with the Neptune Plus Jet Interface,

Thermo Fisher Scientific; instrument settings are given in Table S1). Measurements were made in dynamic mode (magnet  
 190 jump) alternating between Si and Mg isotopes, each for 30 cycles with 4 s integration time. ERM-CD281 and BHVO-2 were  
 analysed together with the nutrient and plant samples to ensure complete fusion, dissolution, and chromatographic separation.  
 ERM-CD281 resulted in  $\delta^{30}\text{Si} = -0.34 \pm 0.20 \text{ ‰}$ , 2s, n=13 and BHVO-2 in  $\delta^{30}\text{Si} = -0.29 \pm 0.09 \text{ ‰}$ , 2s, n=40, in line with  
 literature values (Jochum et al., 2005 for BHVO-2 and Delvigne et al., 2019 for ERM-CD281). The results of reference  
 materials are reported in the supplementary information in Table S2, and the results of growth solutions and plants in Table  
 195 S3 and Table S4. All  $\delta^{29/28}\text{Si}$  and  $\delta^{30/28}\text{Si}$  are reported in delta notation relative to NBS28 (NIST SRM8546) unless stated  
 otherwise (Coplen et al., 2002; Poitrasson, 2017). An isotopic difference between two compartments is expressed as  $\Delta^{30}\text{Si}$ ,  
 calculated following Eq. (1):

$$\Delta^{30}\text{Si}_{a-b} = \delta^{30}\text{Si}_a - \delta^{30}\text{Si}_b \quad (1)$$

where  $\delta^{30}\text{Si}_a$  is the Si isotopic composition of the compartment a and  $\delta^{30}\text{Si}_b$  the composition of compartment b. The silicon  
 200 isotopic composition of a bulk plant is calculated from the mass weighted Si isotopic composition of separate plant parts and  
 expressed as  $\delta^{30}\text{Si}_{\text{plant}}$ :

$$\delta^{30}\text{Si}_{\text{plant}} = \frac{\delta^{30}\text{Si}_{\text{root}} \cdot M_{\text{root}} + \delta^{30}\text{Si}_{\text{shoot}} \cdot M_{\text{shoot}}}{M_{\text{root}} + M_{\text{shoot}}} \quad (2)$$

where the subscripts plant, root and shoot refer to the bulk plant, and roots and shoots, respectively, and M is the mass of  
 silicon incorporated into the roots or shoots of the plant.

## 205 **2.6 Plant performance ratios, elemental and isotopic budgets**

### **2.6.1 Plant performance ratios**

We define the plant transpiration as the amount of water taken up by the plants via the roots. Transpiration was measured  
 weekly by weighing the remaining growth solution with the lids and plants removed. The difference in mass from the previous  
 week is considered to be the mass of water transpired by the plants. The gravimetrically determined transpiration does not  
 210 account for the amount of water present in the plants at harvest nor any possible guttation (Joachimsmeier et al., 2012). At the  
 end of the experiment, the following plant performance ratios were calculated:

1. Water use efficiency: total dried phytomass (g) divided by the amount of transpired water (L), calculated separately  
 for each pot.
2. Si uptake efficiency: total Si mass (mg) in plants divided by the amount of transpired water (L), calculated separately  
 215 for each pot.
3. Si transfer efficiency: Si mass (mg) in plant shoots divided by the amount of transpired water (L), calculated separately  
 for each pot.



We also calculated an “expected Si uptake” defined to represent exactly the mass of Si contained in the water utilised. This value was calculated from on the amount of transpired water and the nutrient solution Si concentration determined in the week prior:

$$Expected\ Si\ Uptake = \sum_{Week=1}^{Week=6} [Si]_{week\ i-1} \cdot m_{transpired\ water, week\ i} \quad (3)$$

where  $[Si]_{week\ i-1}$  is the Si concentration in the nutrient solution the week prior, and  $m_{transpired\ water, week\ i}$  the mass of water transpired during past week. The plant Si uptake characteristics can be classified based on the ratio between the measured (based on the biomass and the Si concentration measured therein) and the expected Si uptake. A ratio of greater than 1 indicates an active uptake mechanism, a ratio much smaller than 1 a rejective strategy, and a ratio of 1 indicates passive uptake.

### 2.6.2 Element budgets

The digested plant samples and nutrient solutions were analysed prior to the column purification by ICP-OES, and the concentrations of major elements (Ca, Fe, K, Mg, P, S and Si) and the retrieval was determined using Eq. (4):

$$Retrieval^X = \frac{M_{Solution, end}^X + M_{Plants}^X}{M_{Solution, start}^X} \text{ in } [\%] \quad (4)$$

where  $M_{solution, end}$  is the mass of the element X in the solution at the end of the experiments,  $M_{plants}$  is the mass of the element X in the plants, and  $M_{Solution, start}$  the mass of the element X in the solution at the beginning of the experiment.

### 2.6.2 Silicon isotope budget

A simple test of whether incomplete recovery of Si or analytical artefacts in the Si isotope composition measurements are affecting the results is offered by an isotope budget. The concept is that the summed Si isotope composition of the remaining growth solution at the end of the experiment and the Si taken up by plants should be identical to the Si isotope composition of the initial growth solution. The Si total isotope composition at harvest is estimated using Eq. (5):

$$\delta_{Total} = \frac{M_{solution}^{Si} \delta^{30}Si_{solution} + M_{plants}^{Si} \delta^{30}Si_{plants}}{M_{solution}^{Si} + M_{plants}^{Si}} \quad (5)$$

where  $M_{solution}^{Si}$  and  $M_{plants}^{Si}$  are the Si amounts in the remaining nutrient solution and the plant parts at harvest, respectively, and  $\delta^{30}Si_{solution}$  and  $\delta^{30}Si_{plants}$  the Si isotope composition of the remaining nutrient solution and plants parts at the end of the experiment, respectively.

### 2.7 SEM-EDX analysis of mustard root phytoliths

To explore the form of silica in mustard roots, phytoliths were extracted and visualised using SEM-EDX. One gram of dried mustard roots was taken for analysis. Removal of organic matter was conducted by igniting the samples in a muffle furnace at 500°C for 5h. The residue was subjected to additional oxidation using 30% H<sub>2</sub>O<sub>2</sub> for 0.5h. Ca oxalates were dissolved by 80°C in HCl (10Vol.%) for 10 min. The residue was washed with water, and dried at 105°C. SEM-EDX analysis was performed with a ZEISS EVO MA10 (HV, LV, LaB6 cathode) equipped with a Bruker QUANTAX EDS system including a liquid

nitrogen free XFlash R 5010 Detector (energy resolution of 123 eV for MNKa at 100,000cps). The SEM operated at 20keV, with an average working distance of 10.5 mm. Software: Esprit 2.1.1., incl Qmap.

### 3 Results

#### 250 3.1 Plant dry mass and transpiration

Substantial differences are apparent in the growth rate between and within all three plant species. During the six-week period mustard formed the greatest amount of dry biomass, with an average of 7 g per plant (range: 0.7 - 16.6 g). Spring wheat produced on average 4 g (range: 1.9 - 5.6 g), and tomato produced the lowest amount of biomass per plant with an average of 3 g (range: 0.2 – 8.7 g, see Table 1 and Table S4 for the individual results). No dependence of replicated growth experiments  
255 on pot placement or proximity to the venting system was apparent. The amount of water transpired by the plants during the growth period is correlated with the biomass formed ( $r_{\text{Spearman Rank}} = 0.95$ , p-value <0.001). In contrast, no differences between plant species were observed in terms of the shoot-root ratios ( $5.4 - 6.5 \text{ g} \cdot \text{g}^{-1}$ , Table 2).

#### 3.2 Dynamics of water, Si and other nutritive elements uptake

The three plant species revealed quite different transpiration dynamics during the 6 weeks of plant growth. After a lag phase  
260 of two weeks, differences in transpiration between mustard and the other two species became apparent. Figure 1a shows the cumulative transpiration for the three replicate growth experiments and species (see ~~also~~ Table S6 for the individual transpired water amounts). Mustard showed the highest, wheat intermediate and tomatoes the lowest cumulative transpiration. The water use efficiency (see 2.6.1) of tomato was significantly higher ( $3.8 \text{ g} \cdot \text{L}^{-1}$ ) than that of the other two plant species ( $2.4 - 2.6 \text{ g} \cdot \text{L}^{-1}$ , Table 2).

265 Based on the temporal evolution of Si concentrations in the nutrient solutions (Figure 1b) spring wheat exhibited the highest total Si uptake, mustard an intermediate amount, and tomato the lowest total Si uptake and the Si contents of bulk plants reflect this sequence (Table 1): spring wheat as an Si accumulator took up the most Si (448 mg), followed by mustard (150 mg). Tomato took up the least amount (95 mg). Considering only roots, the highest Si concentrations and Si amounts were found  
270 in mustard, while spring wheat and tomato were significantly lower. In contrast, considering only plant shoots, the highest Si mass were found in wheat while Si concentrations in mustard and tomato were similar, but more than an order of magnitude lower (Table 1). Spring wheat also showed a much higher Si uptake efficiency than the other two plant species, which resemble each other (Table 2 and Figure 1). The same trend holds for the Si mass ratio between roots and shoots (Table 2). Moreover, wheat shows a much higher efficiency of Si transport into the shoot per mass of transpired water than the other two plant  
275 species. In contrast to the Si uptake efficiency, the Si mass ratio between root and shoot for mustard was lower than for tomato (Table 2). For the calculation of Si uptake rates, we assume there is no back diffusion or efflux of Si out of the plant roots.

Such a process has not been reported in the literature and would be driven against the concentration difference between the root and the nutrient solution Si concentration and against the water flow direction (Raven, 2001).

280 The expected Si uptake (see ~~ch.~~2.6.1 and Eq. 3 for a definition) traces the passive uptake of Si contained in the water utilised by the plants. The dynamics throughout the experiment is shown in Figure 1c (closed symbols) together with the ratio of measured and expected Si uptake (open symbols) at the end of the experiment. The measured and expected Si uptake ratios for all three species deviate significantly from 1 (see Table 2). The means of the measured and expected Si uptake for mustard ( $57.2^a \pm 1.3$  mg vs  $457.9^b \pm 16.4$  mg), wheat ( $337.0^b \pm 67.9$  mg vs  $177.3^a \pm 40.7$  mg) and tomato ( $15.5^a \pm 4.9$  mg vs  $141.1^b \pm$   
285  $27.0$  mg) are significantly different (denoted <sup>a/b</sup>, based on t-test at 5% significance level.). This indicates that Si uptake or transport in the three plant species investigated under the given environmental conditions differs from unspecific passive uptake or unspecific passive transport within the plants.

After 6 weeks of growth, some nutrients were fully consumed, and the first mustard plants showed signs of deficiency in the  
290 form of chlorosis in young and old leaves. Mustard, forming the largest biomass, had also the largest demand for Ca (mean  $\sim 644$  mg per container), Mg ( $\sim 140$  mg), P ( $\sim 205$  mg) and S ( $\sim 209$  mg). Fig. S1 in the supplement shows the temporal evolution of the other nutrient concentrations ~~for the three plant species.~~

### 3.3 Element and Si isotope budgets

The biomass amounts, concentrations, and isotope compositions used to calculate element and Si isotope budgets are reported  
295 in ~~the supporting information~~ Table S4. The element retrievals are shown in Table 3. All three ~~plant~~ species showed less than complete retrieval, with variable deficits between elements. For Si the retrieval amounted to between 83% (mustard) and 90% (wheat). For the other nutrients (Ca, Fe, K, Mg, P and S, see Table 3) the retrievals were between 70% and 110%. Sulphur in mustard was an exception, with a retrieval of only 50%, which we attribute to the loss of volatile S species during drying and charring, leading to the low retrieval (Blanck et al., 1938). The results for the Si isotope budget are shown in Table 4. Within  
300 uncertainty, there is no significant difference between the isotopic composition of the starting solution and the weighted average isotopic composition of the different compartments at the end of the experiment. Thus, we conclude that all significant pathways that fractionate Si isotopes are accounted for.

### 3.4 Dynamics of isotope fractionation between the nutrient solution and plants

The average initial  $\delta^{30}\text{Si}$  composition of the nutrient solution is  $-0.21 \pm 0.07$  ‰ (2 s, relative to NBS28; individual results are  
305 reported in Table S3). The temporal evolution of the nutrient solution and the individual Si isotopic composition of the roots, shoots and the entire plants are shown in Figure 2 (reported as  $\Delta^{30}\text{Si}$  relative to the nutrient solution). All three plant species preferentially incorporated the lighter silicon isotope ( $^{28}\text{Si}$ ), leaving the nutrient solution enriched in heavier silicon ( $^{30}\text{Si}$ ). After an initial lag phase for all three species, in which the nutrient solutions' Si isotope composition does not vary, its isotopic

composition becomes increasingly enriched in  $^{30}\text{Si}$ . Tomato and mustard, as rejective Si taxa, took up only about 10% of the Si predicted by water transpiration rates over the course of the experiment (Fig. 1; Table 2), such that the enrichment of the nutrient solution in  $^{30}\text{Si}$  was relatively small ( $^{\text{Tomato}}\Delta^{30}\text{Si}_{\text{Solution:End-Start}}=+0.13\text{‰}$ ,  $^{\text{Mustard}}\Delta^{30}\text{Si}_{\text{Solution:End-Start}}=+0.19\text{‰}$ , calculated using Eq. (1)). As an Si accumulator, wheat incorporated almost all available Si within six weeks. The remaining Si is strongly enriched in  $^{30}\text{Si}$  ( $^{\text{Wheat}}\Delta^{30}\text{Si}_{\text{Solution:End-Start}}=+0.83\text{‰}$ ). In week six one growth solution was so strongly depleted in Si that Si isotope ratios could not be determined.

315

Tomato plants incorporate light Si, where the bulk plant Si isotope composition, expressed as  $^{\text{Tomato}}\Delta^{30}\text{Si}_{\text{plants}}$  averaged  $-0.27 \pm 0.06\text{‰}$  ( $^{\text{Species}}\Delta^{30}\text{Si}_{\text{parts}}$  are relative to the nutrient solution at the beginning, calculated using Eq. (2), and uncertainties are 95% CI). The Si present in the roots is isotopically indistinguishable from the nutrient solution ( $^{\text{Tomato}}\Delta^{30}\text{Si}_{\text{roots}} = 0.01 \pm 0.16\text{‰}$ ), whereas the tomato shoots contain lighter Si ( $^{\text{Tomato}}\Delta^{30}\text{Si}_{\text{shoots}} = -0.36 \pm 0.12\text{‰}$ ). In contrast, mustard roots are lighter in their Si isotope composition ( $^{\text{Mustard}}\Delta^{30}\text{Si}_{\text{roots}} = -0.77 \pm 0.15\text{‰}$ ) than the above-ground parts ( $^{\text{Mustard}}\Delta^{30}\text{Si}_{\text{shoots}} = -0.05 \pm 0.11\text{‰}$ ). Nevertheless, mustard plants incorporated overall light Si ( $^{\text{Mustard}}\Delta^{30}\text{Si}_{\text{plants}} = -0.45 \pm 0.09\text{‰}$ ). Since wheat consumed almost all available Si no significant fractionation between the plant and solution was observable ( $^{\text{Wheat}}\Delta^{30}\text{Si}_{\text{plants}} = -0.07 \pm 0.26\text{‰}$ ). Most of the Si was deposited in the shoots, with an isotopic composition close to the composition of the starting solution ( $^{\text{Wheat}}\Delta^{30}\text{Si}_{\text{shoots}} = -0.06 \pm 0.26\text{‰}$ ). The roots, however, preferentially stored light Si ( $^{\text{Wheat}}\Delta^{30}\text{Si}_{\text{roots}} = -1.04 \pm 0.34\text{‰}$ ), similar to the mustard roots.

325

Our experimental setup allows us to determine the Si isotope fractionation factors into bulk plants directly from the temporal evolution of the Si isotope composition of the nutrient solution. This approach differs from previous studies of Si isotope fractionation by plants, in which the Si pool in the nutrient solution was frequently replenished (Ding et al., 2008a; Sun et al., 2008, 2016b). Evaluating the temporal evolution of wheat nutrient solution (Figure 3) and assuming no back-diffusion, a Rayleigh like fractionation can be fitted using Eq. (6) (Mariotti et al., 1981):

330

$$\frac{R}{R_0} = f_{\text{solution}}^{\alpha-1} \quad (6)$$

where  $f_{\text{solution}}$  is the fraction of Si in the remaining solution,  $R_0$  the initial  $^{30}\text{Si}/^{28}\text{Si}$  isotope ratio,  $R$  the  $^{30}\text{Si}/^{28}\text{Si}$  isotope ratio of the product, and  $\alpha$  the fractionation factor. A best fit to the data, minimising the root-mean-square-deviation, results in  $\alpha_{\text{Plant-solution}}$  for tomato of 0.99970 ( $1000 \cdot \ln(\alpha) = -0.33\text{‰}$ ), for mustard an  $\alpha_{\text{Plant-solution}}$  of 0.99945 ( $1000 \cdot \ln(\alpha) = -0.55\text{‰}$ ), and for wheat an  $\alpha_{\text{Plant-solution}}$  of 0.99957 ( $1000 \cdot \ln(\alpha) = -0.43\text{‰}$ ), respectively (Figure 3). We use a Monte Carlo approach to estimate uncertainty on  $\alpha_{\text{Plant-solution}}$ , by calculating  $\alpha_{\text{Plant-solution}}$  on 500 permutations of the dataset in which values for  $\delta^{30}\text{Si}$  and Si concentration were randomly drawn from a normal distribution with means and standard deviations provided by the measurement (Table 5). Within uncertainty, there is no significant difference in the bulk fractionation factor between active and rejective uptake species. The best fit through all results, across the three plant species from this study, results in a fractionation factor  $1000 \cdot \ln(\alpha)$  of  $-0.41 \pm 0.09\text{‰}$  (1 s) at an initial Si concentration of  $49.5\text{ }\mu\text{g}\cdot\text{g}^{-1}$  (ca. 1.76 mM).

340

If we assume the uptake of Si to be governed by diffusion through cell membranes and Si permeable transporters (Ma et al., 2006, 2007; Ma and Yamaji, 2015; Mitani et al., 2009; Zangi and Filella, 2012) and the diffusion of Si is non-quantitative, the lighter isotopes will be enriched in the target compartment (Sun et al., 2008; Weiss et al., 2004). To a first approximation, the difference between the diffusion coefficient of isotopologues  $^{28}\text{Si}(\text{OH})_4$  and  $^{30}\text{Si}(\text{OH})_4$  sets the theoretical upper limit of observable isotopic fractionation in a system dominated by diffusion. The diffusion coefficient ratio approximated by Eq. (7) corresponds to the fractionation factor in an idealised system consisting of pure water and silicic acid only (Mills and Harris, 1976; Richter et al., 2006).

$$\frac{D_{^{28}\text{Si}(\text{OH})_4}}{D_{^{30}\text{Si}(\text{OH})_4}} = \sqrt{\frac{\left(\frac{m_{^{30}\text{Si}(\text{OH})_4} \times m_{\text{H}_2\text{O}}}{m_{^{30}\text{Si}(\text{OH})_4} + m_{\text{H}_2\text{O}}}\right)}{\left(\frac{m_{^{28}\text{Si}(\text{OH})_4} \times m_{\text{H}_2\text{O}}}{m_{^{28}\text{Si}(\text{OH})_4} + m_{\text{H}_2\text{O}}}\right)}} \quad (7)$$

where D is the diffusion coefficient of a given Si molecule, and  $m_{\text{H}_2\text{O}}$ ,  $m_{^{28}\text{Si}(\text{OH})_4}$ ,  $m_{^{30}\text{Si}(\text{OH})_4}$  are the molecular masses of the solvent (assuming pure water),  $^{28}\text{Si}(\text{OH})_4$  and  $^{30}\text{Si}(\text{OH})_4$ , respectively. For  $^{28}\text{Si}(\text{OH})_4$  and  $^{30}\text{Si}(\text{OH})_4$  in pure water this results in a ratio of 0.99839 ( $1000 \cdot \ln(\alpha) = -1.61 \text{ ‰}$ ). The observed  $\alpha_{\text{plant}}$  is about four times smaller with  $1000 \cdot \ln(\alpha)$  of -0.33 to -0.55‰. The theoretical diffusion coefficient exceeding the measured coefficient has been observed in other systems (e.g. O’Leary, 1984).

### 3.5 SEM-EDX analysis of mustard root phytoliths

Phytolith extraction revealed that considerable amounts of Si in the mustard roots are stored as phytoliths. The phytoliths observed were of elongated shape and consisted mainly of  $\text{SiO}_2$  with some minor fraction carbon (~16 %), potassium (~4 %) and iron (~1 %) (see Fig. S2). The mechanisms of precipitation of the silicic acid in the mustard root remains unclear. The finding offers however an explanation for the isotopic difference between mustard, wheat, and tomato roots, since precipitation favours the incorporation of light  $^{28}\text{Si}$ . Here we have shown that Si in mustard roots is precipitated as biogenic silica in the roots, a process shown observed previously for in wheat roots too (Hodson and Sangster, 1989), whereas tomato does not form root phytoliths. Precipitation favours the incorporation of light  $^{28}\text{Si}$ , whereas tomato does not form root phytoliths.

## 4 Discussion

### 4.1 Reliability of the combined element and isotope ratio approach

In contrast to previous studies, we added a finite nutrient amount to growth solutions and replenished only the transpired water. The combination of plant physiological ratios (water use efficiency, element budgets and biomass production) with stable isotope ratio measurements allows us to explore the temporal evolution of Si uptake and translocation. Several aspects of our data attest to the reliability of our approach and results. Concerning Si uptake dynamics, Si recovery rates of >80% (see Table 3) corroborate the reliability of our results. The same is observed for the isotope budgets. There is no significant difference

370 between the isotopic composition of the starting solution and the weighted average of the isotopic compositions of the different compartments at the end (see Table 4). This implies all significant pathways that fractionate Si isotopes have been accounted for. The Si retrieval rate between 83 and 90% is likely not caused by a single systematic analytical uncertainty or unaccounted sink of Si, but rather a combination of container wall absorption (up to 0.1%), root washing procedure (up to 1%), the weekly sampling (up to 3.5%) and analytical uncertainties (up to 10%). As the initial concentration of Si at the onset of the experiment 375 (49.5 µg/g) was slightly above the solubility limits of amorphous silica at 15-18 °C (44.2 – 47.1 µg/g), a fraction of the silicon could also have been lost to polymerisation and precipitation. Guttation (Joachimsmeier et al., 2012; Yamaji et al., 2008) and litter fall were not observed during the experiment. Even if guttation were present, no Si would be lost since under the experimental conditions the fluid would evaporate leaving ~~amorphous~~-silica on the shoots. Thus, silicic acid excreted by guttation is counted towards the Si amounts in the shoots.

#### 380 4.2 Si uptake strategies

The ratio between measured Si uptake and the expected Si amount that would have entered the plant in a purely passive uptake mechanism (see 2.6.1, plant performance ratios), shows that wheat accumulates Si and mustard and tomato both reject Si (Figure 1 and Table 2). The accumulation of Si in wheat can be explained by the cooperation of an influx transporter (Lsi1-like) into the roots and the presumed presence of an efflux transporter (Lsi2-like) from the roots into the xylem. As closely 385 related cereals have such transporters, we expect them to be present in wheat too (Ma and Yamaji, 2015). In rice, mutants with either defective Lsi1 or Lsi2 transporter lead to significantly lower Si accumulation (Köster et al., 2009). The direct comparison between both mutants revealed that Lsi1 carries a larger share of Si incorporation, thus a defective Lsi2 can partially be compensated (Köster et al., 2009). Our results show clear evidence that active, metabolism-driven processes or mechanisms must have been involved for wheat. The 2-fold excess of the expected amount of Si taken up cannot be explained by a passive 390 mechanisms (e.g. Exley, 2015).

Our experiments show a striking similarity in Si uptake characteristics between mustard and tomato. Considering the differences in ontogenesis between the plant species, this may be a fortuitous coincidence. In particular, the relatively low temperatures may have inhibited the growth of the more thermophilic tomato, while the conditions were closer to optimal for 395 mustard and summer wheat. Tomatoes have the genetic capacity to accumulate Si, since an orthologue of Lsi1 is present in the genes. An insertion in the amino acid sequence however, lead to a loss of the Si uptake functionality (Deshmukh et al., 2016, 2015), and thus tomato like mustard, rejects Si.

With our experimental approach we also detect significant differences between the crop species in Si transfer from the root to 400 the shoot (Table 2). Wheat, which probably has a metabolically active efflux transporter (Lsi2-like) at the root-xylem interface, has the highest Si transfer efficiency per water mass ( $49.3 \pm 8.4$  mg shoot Si·L<sup>-1</sup>). The transfer efficiency for tomato is significantly higher than mustard ( $3.5 \pm 0.4$ , and  $2.4 \pm 0.3$  mg shoot Si·L<sup>-1</sup>, respectively), which is not readily explainable by

differences in root Si efflux pathways since tomato does not contain the active efflux transporter orthologue Lsi2 while mustard does (Ma & Yamaji, 2015; Sonah *et al.*, 2017). The remarkably high Si concentration and amounts in mustard roots, and thus the lower Si transfer efficiency of mustard can be explained by phytolith formation (see Fig. S2). A similar immobilization of silica in roots has already been observed in wheat (Hodson and Sangster, 1989) and other grasses (Paolicchi *et al.*, 2019). Other possible reasons for this phenomenon will be discussed based on the results on Si isotope fractionation.

#### 4.3 Dynamics of Si isotope fractionation during uptake

The plant performance parameters disclose two distinctly different Si uptake mechanisms: an active strategy in wheat, and a rejective strategy in tomato and mustard. Despite these different Si uptake mechanisms, we find preferential uptake of light Si isotopes observed in all three species with the average  $1000 \cdot \ln(\alpha)$  of  $-0.41 \pm 0.09$  ‰ (1 s). We can only speculate on the reasons for the plants preferring  $^{28}\text{Si}$  over  $^{30}\text{Si}$ . Si is taken up (actively facilitated) through Si permeable channels (orthologues of Lsi1 in rice, maize and barley) and passively with the water flow. Nowhere along these pathways does a change in the coordination sphere of silicic acid occur (Ma *et al.*, 2006, 2007; Mitani *et al.*, 2009) which could lead to the preferential incorporation of the heavy Si isotope in the fraction taken up. Thus we speculate that both pathways favour the light isotopologue because of its greater diffusion coefficient (Sun *et al.*, 2008; Weiss *et al.*, 2004), a process for which a predicted maximum isotope fractionation of  $-1.6$  ‰ (based on Eq. (7)) is expected. While the processes of active and rejective Si uptake differ in the amounts of Si (per time, and root mass) taken up into the plants, we speculate that the physico-chemical processes governing Si uptake, which induce the stable isotope fractionation, are identical at a given initial concentration in the nutrient solution.

Our new Si fractionation factors (tomato  $-0.33$  ‰, and mustard  $-0.55$  ‰) are the first to be reported for non-Si accumulator plants and together with wheat ( $-0.43$  ‰) are similar to those measured in other Si accumulator species. These include rice:  $-0.30$  ‰ (Sun *et al.*, 2008),  $-1.02 \pm 0.33$  ‰\* (\* indicates results recalculated from  $^{29}/^{28}\text{Si}$  to  $^{30}/^{28}\text{Si}$ , Ding *et al.*, 2005) and  $-0.79 \pm 0.07$  (Sun *et al.*, 2016a); banana:  $-0.77 \pm 0.21$  ‰\* (Opfergelt *et al.*, 2006) and  $-0.68$  ‰\* (Delvigne *et al.*, 2009); and corn and wheat:  $-1.00 \pm 0.31$  ‰\* (Ziegler *et al.*, 2005). The only positive fractionations for Si isotopes reported are by Y. Sun and co-workers (Sun *et al.*, 2016b) for rice ( $+0.38$  and  $-0.32$  ‰) and cucumber ( $+0.27$  and  $+0.20$  ‰). Previous experiments with the same rice species by L. Sun *et al.* however yielded a fractionation factor of  $-0.30$  ‰ (Sun *et al.*, 2008). The authors speculate that an active uptake mechanism preferentially incorporates heavy Si isotopes – a hypothesis that is not supported by our results, or that the different fractionation factors “could also be also be affected by the silicon isotopic composition fluctuations in different batches of nutrient solutions caused by the frequent replacement” (Sun *et al.*, 2016b). Excluding these positive fractionation factors ~~For all negative bulk plant Si isotope fractionation factors the T~~the range found ( $-0.32$  to  $-1.02$  ‰) ~~for all published negative bulk plant Si isotope fractionation factors ( $-0.32$  to  $-1.02$  ‰) is larger than that found-determined~~ in our study ( $-0.33$  to  $-0.55$  ‰). These differences can arise from differences in species, chosen experimental conditions such as concentration of nutrient solution or a temperature in the experiments ~~that were hydroponic throughout.~~

#### 435 4.4 Silicon fractionation between the roots and shoots

The presence or absence of the efflux (Lsi2-like metabolically active) transporter allows to explore its influence on isotope fractionation in the root and during further transport. (1) If Lsi2 has a similar functionality as Lsi1, a preference for the light  $^{28}\text{Si}$  as caused by diffusion should emerge which would be indistinguishable from the passive diffusion in the absence of Lsi2. (2) Alternatively, the presence of Lsi2 could also induce equilibrium isotope fractionation during a change in the speciation of silicic acid, causing the preferential transport of either  $^{28}\text{Si}$  or  $^{30}\text{Si}$ . (3) The third possibility are indirect effects in the roots such as precipitation of silicic acid in the roots which enrich the remaining silicic acid which is transported into the shoots in heavy  $^{30}\text{Si}$ .

The three crop species show large differences in their root Si isotopic composition. Mustard and spring wheat preferentially store light  $^{28}\text{Si}$  in their roots ( $^{\text{Mustard}}\Delta^{30}\text{Si}_{\text{roots}} -0.77 \pm 0.15 \text{ ‰}$ ,  $^{\text{Wheat}}\Delta^{30}\text{Si}_{\text{roots}} -1.04 \pm 0.34 \text{ ‰}$ , relative to the nutrient solution) whereas tomato does not show a preference for either the lighter or heavier silicon isotopes ( $^{\text{Tomato}}\Delta^{30}\text{Si}_{\text{roots}} -0.01 \pm 0.16 \text{ ‰}$ ). The further transport of Si from the roots into the xylem seems not be driven by a diffusion process through Lsi2. Thus, hypothesis (1), that Lsi2 has a similar functionality as Lsi1 and transports Si in a diffusive process, is not likely. For mustard and wheat orthologues of Lsi2 have been shown to be involved in the Si transport (Deshmukh et al., 2016; Sonah et al., 2017). The current understanding of the molecular functionality of Lsi2, however, does provides not enough-sufficient evidence for an equilibrium process where a-preferential transport of  $^{30}\text{Si}$  over  $^{28}\text{Si}$  into the xylem would be expected (hypothesis 2).

The isotopic difference between the Si in the shoots and in the roots ( $^{30}\Delta_{\text{Root-Shoot}}$ ) for mustard and wheat amounts to -0.72 and -0.98 ‰, respectively, and can be explained by Si precipitation in the roots. Indeed, we observed mustard root phytoliths; see (Fig. S2). Mineral deposition in wheat roots has also been observed by Hodson & Sangster, (1989), supporting hypothesis (3). Precipitation of biogenic silica in the root would enrich the residual mobile silicon pool in heavy  $^{30}\text{Si}$ , which is then transported into the shoots. Köster *et al.*, 2009, showed that rice mutants with a defective Lsi2 lead to an additional (compared to non-mutants) preferential transport of heavy  $^{30}\text{Si}$  into the straw. This could be explained by an oversaturation in the roots due to the missing efflux transporter (Lsi2), leading to additional biogenic silica precipitation in the roots. The positive  $^{30}\Delta_{\text{Root-Shoot}}$  of +0.37 ‰ for tomato, where Lsi2 is absent, indicate that the pool of Si in the roots was depleted in  $^{28}\text{Si}$  by a preferential diffusion process of the lighter isotope.

Within the shoots, Si is not homogenously distributed. Several researchers have observed an enrichment of  $^{30}\text{Si}$  along the transpiration stream (Ding et al., 2005; Hodson et al., 2008; Sun et al., 2016b), compatible with a Rayleigh-like fractionation within the shoots. A possible explanation for this observation is the formation of phytoliths. Early in the transpiration stream, the kinetically controlled condensation of silicic acid leads to the preferential incorporation of  $^{28}\text{Si}$  into phytoliths (e.g. Frick



*et al.*, 2019), whereas the remaining silicic acid in the fluid is enriched in  $^{30}\text{Si}$  and further transported along the transpiration stream.

## 5 Conclusion

470 The amount of Si uptake into crop plants and the distribution of Si within them is species-specific, and the relative contributions from different uptake strategies are in operation in variable relative proportions varies. For all three species analysed here, the measured uptake deviates from that expected if Si was simply taken up passively with transpired water. Instead, the 2-fold excess in uptake observed for wheat suggests involvement of an active, metabolism-driven mechanism.

475 ~~However, r~~Regardless of ~~the~~ uptake strategy (active ~~and or~~ rejective) all three crop species studied preferentially incorporate light silicon ( $^{28}\text{Si}$ ) with a fractionation factor  $1000 \cdot \ln(\alpha)$  for tomato ( $-0.33\text{‰}$ ), ~~for~~ mustard ( $-0.55\text{‰}$ ) and ~~for~~ wheat ( $-0.43\text{‰}$ ) ~~which being are~~ indistinguishable within uncertainty. This similarity indicates that the physico-chemical processes governing Si uptake, whether active or passive, or with Lsi1-like transporters present or absent, are identical. The incorporation and fractionation of stable Si isotopes ~~ratios~~ at the root epidermis is likely governed by the preferential diffusion of the lighter  
480 homologue of silicic acid. In contrast, at the root endodermis, for species with the Lsi2-like transporter (wheat and mustard), the further transport of silicic acid from the roots into the xylem and shoots is not controlled by the preferential diffusion of light  $^{28}\text{Si}$ . Rather the  ~~$^{28}\text{Si}$ -enriched~~ precipitation of  $^{28}\text{Si}$ -enriched biogenic silica in the roots governs the isotope composition of remaining Si transported into and deposited within the shoots ~~that is thus enriched in  $^{30}\text{Si}$~~ . For plant species ~~in which no that do not precipitate~~ biogenic silica ~~is precipitated~~ in the roots, ~~the Si is transported in an isotopically unmodified form~~. Any  
485 further transport is thus governed by ~~a~~ diffusion, in which  $^{28}\text{Si}$  is preferentially transported into the shoots.

The results presented here improve our understanding of Si uptake dynamics. By future integration of these stable isotope-based methods with biochemical and molecular genetic methods, a more comprehensive model of Si uptake and regulation in plant species could be obtained. For a full description mechanistic understanding of the isotope fractionation during transport  
490 of silicic acid and precipitation of biogenic silica, requires knowing the bio-molecular processes involved in the dehydration of silicic acid and its conversion into amorphous silica are required (He et al., 2015; Leng et al., 2009). To this end, isotope-spiking during plant growth and ripening may prove valuable, both in elucidating the fluxes of silicic acid between different pools and sources, and in fingerprinting the biochemical processes involved via their associated stable isotope fractionation.  
Towards this task an additional facet of the toolbox of isotope geochemistry is well-poised: employing isotope-spiking during  
495 plant growth and ripening. Such experiments will provide insights into the mobility and pathways of the different pools and sources of silicic acid, while the associated simultaneous stable isotope fractionation can be attributed to the biochemical processes involved.

The merits of such advanced understanding of Si biochemistry are potentially large. The continuous removal of Si-rich crop residues from croplands with increasing agricultural activity may eventually result in Si deficits in soils (Carey and Fulweiler, 2016). Such shortages have the potential to reduce crop yields, and thus global food security (Cooke et al., 2016; Epstein, 1999). Developing the ability to track Si availability in soils and its recycling from plants may help in tackling this upcoming problem and developing strategies for more efficient use of plant-available Si in agricultural production.

## **Author Contribution**

All authors designed the study, D. A. F. and R. R. have grown the plants, D. A. F. has analysed the samples and evaluated the data, prepared the figures. D. K. has prepared and imaged the phytoliths. All authors have contributed to the discussion, interpretation and writing of this manuscript.

## **Competing interests**

The authors declare that they have no conflict of interest.

## **Acknowledgments**

D.A.F. thanks the Swiss National Science Foundation for an Early Postdoc Mobility fellowship (P2EZP2\_168836), the GFZ German Research Centre for Geosciences, Helmholtz Laboratory for the Geochemistry of the Earth Surface (HELGES) and the Leibniz Centre for Agricultural Landscape Research for providing excellent (laboratory) infrastructure. The authors would like to thank Christian Buhtz for taking care of the plants during the hydroponic experiments, and C. Delvigne, M. Hodson and an anonymous reviewer for their reviews and improvements during the discussion phase on Biogeosciences. D.A.F. would like to thank Josefine Buhk and Jutta Schlegel for their support in HELGES.

## **Data availability**

All data used in this study are available in the supplementary, containing the tables S1– S6.

## **References**

- Blanck, E., Melville, R. and Sachse, J.: Zur Bestimmung des Gesamtschwefelgehaltes in der Pflanzensubstanz, Bodenkd. und Pflanzenernährung, 6(1–2), 56–64, doi:10.1002/jpln.19380060106, 1938.
- Blecker, S. W., King, S. L., Derry, L. A., Chadwick, O. A., Ippolito, J. A. and Kelly, E. F.: The ratio of germanium to silicon in plant phytoliths: Quantification of biological discrimination under controlled experimental conditions, Biogeochemistry,

- 86(2), 189–199, doi:10.1007/s10533-007-9154-7, 2007.
- 525 Broadley, M., Brown, P., Cakmak, I., Ma, J. F., Rengel, Z. and Zhao, F.: Beneficial Elements, in Marschner's Mineral Nutrition of Higher Plants, pp. 249–269, Elsevier., 2012.
- Carey, J. C. and Fulweiler, R. W.: The Terrestrial Silica Pump, *PLoS One*, 7(12), doi:10.1371/journal.pone.0052932, 2012.
- Carey, J. C. and Fulweiler, R. W.: Human appropriation of biogenic silicon – the increasing role of agriculture, *Funct. Ecol.*, 30(8), 1331–1339, doi:10.1111/1365-2435.12544, 2016.
- 530 Cooke, J., DeGabriel, J. L. and Hartley, S. E.: The functional ecology of plant silicon: geoscience to genes, *Funct. Ecol.*, 30(8), 1270–1276, doi:10.1111/1365-2435.12711, 2016.
- Coplen, T. B., Hoppo, J. a, Böhlke, J. K., Peiser, H. S., Rieder, S. E., Krouse, H. R., Rosman, K. J. R., Ding, T., Vocke, R. D. J., Révész, K. M., Lamberty, A., Taylor, P. and Bièvre, P. De: Compilation of minimum and maximum isotope ratios of selected elements in naturally occurring terrestrial materials and reagents, U.S. Geol. Surv. Water-Resources Investig. Rep.
- 535 01-4222, 45–50 [online] Available from: <http://pubs.usgs.gov/wri/wri014222/>, 2002.
- Cornelis, J.-T. T., Delvaux, B., Cardinal, D., André, L., Ranger, J. and Opfergelt, S.: Tracing mechanisms controlling the release of dissolved silicon in forest soil solutions using Si isotopes and Ge/Si ratios, *Geochim. Cosmochim. Acta*, 74(14), 3913–3924, doi:10.1016/j.gca.2010.04.056, 2010.
- Coskun, D., Deshmukh, R., Sonah, H., Menzies, J. G., Reynolds, O., Ma, J. F., Kronzucker, H. J. and Bélanger, R. R.: In
- 540 defence of the selective transport and role of silicon in plants, *New Phytol.*, (2018), 2018–2020, doi:10.1111/nph.15764, 2019a.
- Coskun, D., Deshmukh, R., Sonah, H., Menzies, J. G., Reynolds, O., Ma, J. F., Kronzucker, H. J. and Bélanger, R. R.: The controversies of silicon's role in plant biology, *New Phytol.*, *nph.15764*, doi:10.1111/nph.15343, 2019b.
- Delvigne, C., Opfergelt, S., Cardinal, D., Delvaux, B. and André, L.: Distinct silicon and germanium pathways in the soil-plant system: Evidence from banana and horsetail, *J. Geophys. Res. Biogeosciences*, 114(G2), n/a-n/a,
- 545 doi:10.1029/2008JG000899, 2009.
- Delvigne, C., Guihou, A., Schuessler, J. A., Savage, P., Fischer, S., Hatton, E., Hendry, K. R., Bayon, G., Ponzevera, E. and Georg, B.: An inter-comparison exercise of the Si isotope composition of soils and plant reference materials, , 21, 18488, 2019.
- Derry, L. A., Kurtz, A. C., Ziegler, K. and Chadwick, O. A.: Biological control of terrestrial silica cycling and export fluxes to watersheds., *Nature*, 433(7027), 728–731, doi:10.1038/nature03299, 2005.
- 550 Deshmukh, R., Bélanger, R. R. and Hartley, S.: Molecular evolution of aquaporins and silicon influx in plants, *Funct. Ecol.*, 30(8), 1277–1285, doi:10.1111/1365-2435.12570, 2016.
- Deshmukh, R. K., Vivancos, J., Ramakrishnan, G., Guérin, V., Carpentier, G., Sonah, H., Labbé, C., Isenring, P., Belzile, F. J. and Bélanger, R. R.: A precise spacing between the NPA domains of aquaporins is essential for silicon permeability in plants, *Plant J.*, 83(3), 489–500, doi:10.1111/tpj.12904, 2015.
- 555 Ding, T. P., Ma, G. R., Shui, M. X., Wan, D. F. and Li, R. H.: Silicon isotope study on rice plants from the Zhejiang province, China, *Chem. Geol.*, 218(1-2 SPEC. ISS.), 41–50, doi:10.1016/j.chemgeo.2005.01.018, 2005.
- Ding, T. P., Tian, S. H., Sun, L., Wu, L. H., Zhou, J. X. and Chen, Z. Y.: Silicon isotope fractionation between rice plants and

- nutrient solution and its significance to the study of the silicon cycle, *Geochim. Cosmochim. Acta*, 72(23), 5600–5615, doi:10.1016/j.gca.2008.09.006, 2008a.
- 560 Ding, T. P., Zhou, J. X., Wan, D. F., Chen, Z. Y., Wang, C. Y. and Zhang, F.: Silicon isotope fractionation in bamboo and its significance to the biogeochemical cycle of silicon, *Geochim. Cosmochim. Acta*, 72(5), 1381–1395, doi:10.1016/j.gca.2008.01.008, 2008b.
- Epstein, E.: The anomaly of silicon in plant biology., *Proc. Natl. Acad. Sci. U. S. A.*, 91(1), 11–17, doi:10.1073/pnas.91.1.11, 1994.
- 565 Epstein, E.: Silicon, *Annu. Rev. Plant Physiol. Plant Mol. Biol.*, (50), 641–664, 1999.
- Epstein, E.: Chapter 1 Silicon in plants: Facts vs. concepts, in *Studies in Plant Science*, vol. 8, pp. 1–15., 2001.
- Exley, C.: A possible mechanism of biological silicification in plants, *Front. Plant Sci.*, 6(October), 1–7, doi:10.3389/fpls.2015.00853, 2015.
- Exley, C. and Guerriero, G.: A reappraisal of biological silicification in plants?, *New Phytol.*, nph.15764, 570 doi:10.1111/nph.15752, 2019.
- Exley, C., Guerriero, G. and Lopez, X.: How is silicic acid transported in plants?, *Silicon*, doi:10.1007/s12633-019-00360-w, 2020.
- Frew, A., Weston, L. A., Reynolds, O. L. and Gurr, G. M.: The role of silicon in plant biology: A paradigm shift in research approach, *Ann. Bot.*, 121(7), 1265–1273, doi:10.1093/aob/mcy009, 2018.
- 575 Frick, D. A., Schuessler, J. A., Sommer, M. and Blanckenburg, F.: Laser Ablation In Situ Silicon Stable Isotope Analysis of Phytoliths, *Geostand. Geoanalytical Res.*, 43(1), 77–91, doi:10.1111/ggr.12243, 2019.
- Geilert, S., Vroon, P. Z., Roerdink, D. L., Van Cappellen, P. and van Bergen, M. J.: Silicon isotope fractionation during abiotic silica precipitation at low temperatures: Inferences from flow-through experiments, *Geochim. Cosmochim. Acta*, 142(1), 95–114, doi:10.1016/j.gca.2014.07.003, 2014.
- 580 Georg, R. B., Reynolds, B. C., Frank, M. and Halliday, A. N.: New sample preparation techniques for the determination of Si isotopic compositions using MC-ICPMS, *Chem. Geol.*, 235(1–2), 95–104, doi:10.1016/j.chemgeo.2006.06.006, 2006.
- He, C., Ma, J. and Wang, L.: A hemicellulose-bound form of silicon with potential to improve the mechanical properties and regeneration of the cell wall of rice, *New Phytol.*, 206(3), 1051–1062, doi:10.1111/nph.13282, 2015.
- He, H. tao, Zhang, S., Zhu, C. and Liu, Y.: Equilibrium and kinetic Si isotope fractionation factors and their implications for 585 Si isotope distributions in the Earth’s surface environments, *Acta Geochim.*, 35(1), 15–24, doi:10.1007/s11631-015-0079-x, 2016.
- Hodson, M. J. and Sangster, A. G.: Subcellular localization of mineral deposits in the roots of wheat (*Triticum aestivum* L.), *Protoplasma*, 151(1), 19–32, doi:10.1007/BF01403298, 1989.
- Hodson, M. J., White, P. J., Mead, A. and Broadley, M. R.: Phylogenetic variation in the silicon composition of plants, *Ann. 590 Bot.*, 96(6), 1027–1046, doi:10.1093/aob/mci255, 2005.
- Hodson, M. J., Parker, A. G., Leng, M. J. and Sloane, H. J.: Silicon, oxygen and carbon isotope composition of wheat (*Triticum*

- aestivum L.) phytoliths: implications for palaeoecology and archaeology, *J. Quat. Sci.*, 23(4), 331–339, doi:10.1002/jqs.1176, 2008.
- Joachimsmeier, I., Pistorius, J., Heimbach, U., Schenke, D., Kirchner, W. and Zwerger, P.: Frequency and intensity of guttation events in different crops in Germany, in 11th International Symposium of the ICP-BR Bee Protection Group, Wageningen (The Netherlands), November 2–4, 2011, vol. 437, pp. 87–90., 2012.
- Jochum, K. P., Nohl, U., Herwig, K., Lammel, E., Stoll, B. and Hofmann, A. W.: GeoReM: A New Geochemical Database for Reference Materials and Isotopic Standards, *Geostand. Geoanalytical Res.*, 29(3), 333–338, doi:10.1111/j.1751-908X.2005.tb00904.x, 2005.
- Katz, O.: Silicon content is a plant functional trait: implications in a changing world, *Flora Morphol. Distrib. Funct. Ecol. Plants*, 254(January 2018), 88–94, doi:10.1016/j.flora.2018.08.007, 2019.
- Köster, J. R., Bol, R., Leng, M. J., Parker, A. G., Sloane, H. J. and Ma, J. F.: Effects of active silicon uptake by rice on <sup>29</sup>Si fractionation in various plant parts, *Rapid Commun. Mass Spectrom.*, 23(16), 2398–2402, doi:10.1002/rcm.3971, 2009.
- Leng, M. J., Swann, G. E. A., Hodson, M. J., Tyler, J. J., Patwardhan, S. V. and Sloane, H. J.: The Potential use of Silicon Isotope Composition of Biogenic Silica as a Proxy for Environmental Change, *Silicon*, 1(2), 65–77, doi:10.1007/s12633-009-9014-2, 2009.
- Ma, J. F.: Role of silicon in enhancing the resistance of plants to biotic and abiotic stresses, *Soil Sci. Plant Nutr.*, 50(1), 11–18, doi:10.1080/00380768.2004.10408447, 2004.
- Ma, J. F. and Yamaji, N.: Silicon uptake and accumulation in higher plants, *Trends Plant Sci.*, 11(8), 392–397, doi:10.1016/j.tplants.2006.06.007, 2006.
- Ma, J. F. and Yamaji, N.: A cooperative system of silicon transport in plants, *Trends Plant Sci.*, 20(7), 435–442, doi:10.1016/j.tplants.2015.04.007, 2015.
- Ma, J. F., Miyake, Y. and Takahashi, E.: Chapter 2 Silicon as a beneficial element for crop plants, in *Studies in Plant Science*, vol. 8, pp. 17–39., 2001.
- Ma, J. F., Tamai, K., Yamaji, N., Mitani, N., Konishi, S., Katsuhara, M., Ishiguro, M., Murata, Y. and Yano, M.: A silicon transporter in rice, *Nature*, 440(7084), 688–691, doi:10.1038/nature04590, 2006.
- Ma, J. F., Yamaji, N., Mitani, N., Tamai, K., Konishi, S., Fujiwara, T., Katsuhara, M. and Yano, M.: An efflux transporter of silicon in rice, *Nature*, 448(7150), 209–212, doi:10.1038/nature05964, 2007.
- Mariotti, A., Germon, J. C., Hubert, P., Kaiser, P., Letolle, R., Tardieux, A. and Tardieux, P.: Experimental determination of nitrogen kinetic isotope fractionation: Some principles; illustration for the denitrification and nitrification processes, *Plant Soil*, 62(3), 413–430, doi:10.1007/BF02374138, 1981.
- Marron, A. O., Chappell, H., Ratcliffe, S. and Goldstein, R. E.: A model for the effects of germanium on silica biomineralization in choanoflagellates, *J. R. Soc. Interface*, 13(122), doi:10.1098/rsif.2016.0485, 2016.
- Marschner, H. and Marschner, P.: Marschner’s mineral nutrition of higher plants, Academic Press. [online] Available from: <https://www.sciencedirect.com/science/book/9780123849052> (Accessed 5 April 2018), 2012.

- Mills, R. and Harris, K. R.: The effect of isotopic substitution on diffusion in liquids, *Chem. Soc. Rev.*, 5, 215, doi:10.1039/cs9760500215, 1976.
- Mitani, N., Chiba, Y., Yamaji, N. and Ma, J. F.: Identification and Characterization of Maize and Barley Lsi2-Like Silicon Efflux Transporters Reveals a Distinct Silicon Uptake System from That in Rice, *Plant Cell*, 21(7), 2133–2142, doi:10.1105/tpc.109.067884, 2009.
- Mühling, K. H. and Sattelmacher, B.: Apoplastic Ion Concentration of Intact Leaves of Field Bean (*Vicia faba*) as Influenced by Ammonium and Nitrate Nutrition, *J. Plant Physiol.*, 147(1), 81–86, doi:10.1016/S0176-1617(11)81417-3, 1995.
- O’Leary, M. H.: Measurement of the isotope fractionation associated with diffusion of carbon dioxide in aqueous solution, *J. Phys. Chem.*, 88(4), 823–825, doi:10.1021/j150648a041, 1984.
- Oelze, M., von Blanckenburg, F., Bouchez, J., Hoellen, D. and Dietzel, M.: The effect of Al on Si isotope fractionation investigated by silica precipitation experiments, *Chem. Geol.*, 397, 94–105, doi:10.1016/j.chemgeo.2015.01.002, 2015.
- Oelze, M., Schuessler, J. A. and von Blanckenburg, F.: Mass bias stabilization by Mg doping for Si stable isotope analysis by MC-ICP-MS, *J. Anal. At. Spectrom.*, 31(10), 2094–2100, doi:10.1039/C6JA00218H, 2016.
- Opfergelt, S., Cardinal, D., Henriot, C., Draye, X., André, L. and Delvaux, B.: Silicon Isotopic Fractionation by Banana (*Musa* spp.) Grown in a Continuous Nutrient Flow Device, *Plant Soil*, 285(1–2), 333–345, doi:10.1007/s11104-006-9019-1, 2006.
- Opfergelt, S., Cardinal, D., André, L., Delvigne, C., Bremond, L. and Delvaux, B.: Variations of  $\delta^{30}\text{Si}$  and Ge/Si with weathering and biogenic input in tropical basaltic ash soils under monoculture, *Geochim. Cosmochim. Acta*, 74(1), 225–240, doi:10.1016/j.gca.2009.09.025, 2010.
- Paolicchi, M., Benvenuto, M. L., Honaine, M. F. and Osterrieth, M.: Root silicification of grasses and crops from the Pampean region and its relevance to silica and silicophytolith content of soils, *Plant Soil*, doi:10.1007/s11104-019-04287-4, 2019.
- Poitrasson, F.: Silicon Isotope Geochemistry, *Rev. Mineral. Geochemistry*, 82, 289–344, doi:10.2138/rmg.2017.82.8, 2017.
- Pokrovski, G. S. and Schott, J.: Experimental study of the complexation of silicon and germanium with aqueous organic species: Implications for germanium and silicon transport and Ge/Si ratio in natural waters, *Geochim. Cosmochim. Acta*, 62(21–22), 3413–3428, 1998.
- Raven, J. A.: Chapter 3 Silicon transport at the cell and tissue level, in *Studies in Plant Science*, vol. 8, pp. 41–55., 2001.
- Richmond, K. E. and Sussman, M.: Got silicon? The non-essential beneficial plant nutrient, *Curr. Opin. Plant Biol.*, 6(3), 268–272, doi:10.1016/S1369-5266(03)00041-4, 2003.
- Richter, F. M., Mendybaev, R. A., Christensen, J. N., Hutcheon, I. D., Williams, R. W., Sturchio, N. C. and Beloso, A. D.: Kinetic isotopic fractionation during diffusion of ionic species in water, *Geochim. Cosmochim. Acta*, 70(2), 277–289, doi:10.1016/j.gca.2005.09.016, 2006.
- Roerdink, D. L., van den Boorn, S. H. J. M., Geilert, S., Vroon, P. Z. and van Bergen, M. J.: Experimental constraints on kinetic and equilibrium silicon isotope fractionation during the formation of non-biogenic chert deposits, *Chem. Geol.*, 402, 40–51, doi:10.1016/j.chemgeo.2015.02.038, 2015.
- Schilling, G., Ansorge, H., Borchmann, W., Markgraf, G. and Peschke, H.: *Pflanzenernährung und Düngung*, VEB Deutscher

660 Landwirtschaftsverlag., 1982.

Schuessler, J. A. and von Blanckenburg, F.: Testing the limits of micro-scale analyses of Si stable isotopes by femtosecond laser ablation multicollector inductively coupled plasma mass spectrometry with application to rock weathering, *Spectrochim. Acta Part B At. Spectrosc.*, 98, 1–18, doi:10.1016/j.sab.2014.05.002, 2014.

Schuessler, J. A., Kämpf, H., Koch, U. and Alawi, M.: Earthquake impact on iron isotope signatures recorded in mineral spring  
665 water, *J. Geophys. Res. Solid Earth*, 121(12), 8548–8568, doi:10.1002/2016JB013408, 2016.

Sommer, M., Kaczorek, D., Kuzyakov, Y. and Breuer, J.: Silicon pools and fluxes in soils and landscapes—a review, *J. Plant Nutr. Soil Sci.*, 169(3), 310–329, doi:10.1002/jpln.200521981, 2006.

Sommer, M., Jochheim, H., Höhn, A., Breuer, J., Zagorski, Z., Busse, J., Barkusky, D., Meier, K., Puppe, D., Wanner, M. and  
Kaczorek, D.: Si cycling in a forest biogeosystem - the importance of transient state biogenic Si pools, *Biogeosciences*, 10(7),  
670 4991–5007, doi:10.5194/bg-10-4991-2013, 2013.

Sonah, H., Deshmukh, R. K., Labbé, C. and Bélanger, R. R.: Analysis of aquaporins in Brassicaceae species reveals high-level  
of conservation and dynamic role against biotic and abiotic stress in canola, *Sci. Rep.*, 7(1), 1–17, doi:10.1038/s41598-017-  
02877-9, 2017.

Sparks, J. P., Chandra, S., Derry, L. A., Parthasarathy, M. V., Daugherty, C. S. and Griffin, R.: Subcellular localization of  
675 silicon and germanium in grass root and leaf tissues by SIMS: Evidence for differential and active transport, *Biogeochemistry*,  
104(1–3), 237–249, doi:10.1007/s10533-010-9498-2, 2011.

Stamm, F. M., Zambardi, T., Chmieleff, J., Schott, J., von Blanckenburg, F. and Oelkers, E. H.: The experimental determination  
of equilibrium Si isotope fractionation factors among  $\text{H}_4\text{SiO}_4$ ,  $\text{H}_3\text{SiO}_4^-$  and amorphous silica ( $\text{SiO}_2 \cdot 0.32 \text{H}_2\text{O}$ ) at 25 and  
75 °C using the three-isotope method, *Geochim. Cosmochim. Acta*, 255, 49–68, doi:10.1016/j.gca.2019.03.035, 2019.

Steinhoefel, G., Breuer, J., von Blanckenburg, F., Horn, I. and Sommer, M.: The dynamics of Si cycling during weathering in  
680 two small catchments in the Black Forest (Germany) traced by Si isotopes, *Chem. Geol.*, 466(January), 389–402,  
doi:10.1016/j.chemgeo.2017.06.026, 2017.

Sun, H., Duan, Y., Mitani-Ueno, N., Che, J., Jia, J., Liu, J., Guo, J., Ma, J. F. and Gong, H.: Tomato roots have a functional  
silicon influx transporter but not a functional silicon efflux transporter, *Plant Cell Environ.*, 43(3), 732–744,  
685 doi:10.1111/pce.13679, 2020.

Sun, L., Wu, L. H., Ding, T. P. and Tian, S. H.: Silicon isotope fractionation in rice plants, an experimental study on rice  
growth under hydroponic conditions, *Plant Soil*, 304(1–2), 291–300, doi:10.1007/s11104-008-9552-1, 2008.

Sun, Y., Wu, L. and Li, X.: Experimental Determination of Silicon Isotope Fractionation in Rice, edited by H. Gerós, *PLoS  
One*, 11(12), e0168970, doi:10.1371/journal.pone.0168970, 2016a.

690 Sun, Y., Wu, L., Li, X., Sun, L., Gao, J. and Ding, T.: Silicon Isotope Fractionation in Rice and Cucumber Plants over a Life  
Cycle: Laboratory Studies at Different External Silicon Concentrations, *J. Geophys. Res. Biogeosciences*, 2829–2841,  
doi:10.1002/2016JG003443, 2016b.

Takahashi, E., Ma, J. F. and Miyake, Y.: The possibility of silicon as an essential element for higher plants, *Comments Agric.*

Food Chem., 2(2), 99–102, 1990.

- 695 Weiss, D. J., Mason, T. F. D., Zhao, F. J., Kirk, G. J. D., Coles, B. J. and Horstwood, M. S. A.: Isotopic discrimination of zinc  
in higher plants, *New Phytol.*, 165(3), 703–710, doi:10.1111/j.1469-8137.2004.01307.x, 2004.
- Wiche, O., Székely, B., Moschner, C. and Heilmeyer, H.: Germanium in the soil-plant system—a review, *Environ. Sci. Pollut.*  
*Res.*, 25(32), 31938–31956, doi:10.1007/s11356-018-3172-y, 2018.
- Yamaji, N., Mitatni, N. and Ma, J. F.: A Transporter Regulating Silicon Distribution in Rice Shoots, *Plant Cell*, 20(5), 1381–  
700 1389, doi:10.1105/tpc.108.059311, 2008.
- YAN, G., Nikolic, M., YE, M., XIAO, Z. and LIANG, Y.: Silicon acquisition and accumulation in plant and its significance  
for agriculture, *J. Integr. Agric.*, 17(10), 2138–2150, doi:10.1016/S2095-3119(18)62037-4, 2018.
- Zambardi, T. and Poitrasson, F.: Precise Determination of Silicon Isotopes in Silicate Rock Reference Materials by MC-ICP-  
MS, *Geostand. Geoanalytical Res.*, 35(1), 89–99, doi:10.1111/j.1751-908X.2010.00067.x, 2011.
- 705 Zangi, R. and Filella, M.: Transport routes of metalloids into and out of the cell: A review of the current knowledge, *Chem.*  
*Biol. Interact.*, 197(1), 47–57, doi:10.1016/j.cbi.2012.02.001, 2012.
- Ziegler, K., Chadwick, O. A., Brzezinski, M. A. and Kelly, E. F.: Natural variations of  $\delta^{30}\text{Si}$  ratios during progressive basalt  
weathering, Hawaiian Islands, *Geochim. Cosmochim. Acta*, 69(19), 4597–4610, doi:10.1016/j.gca.2005.05.008, 2005.

710



Figures

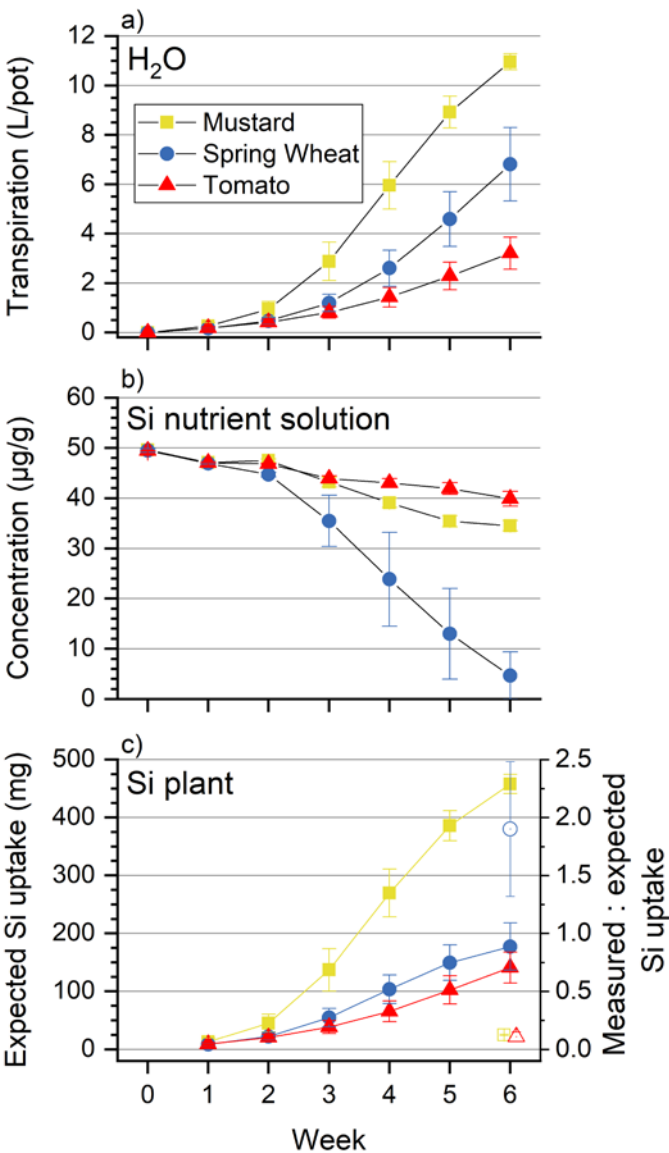
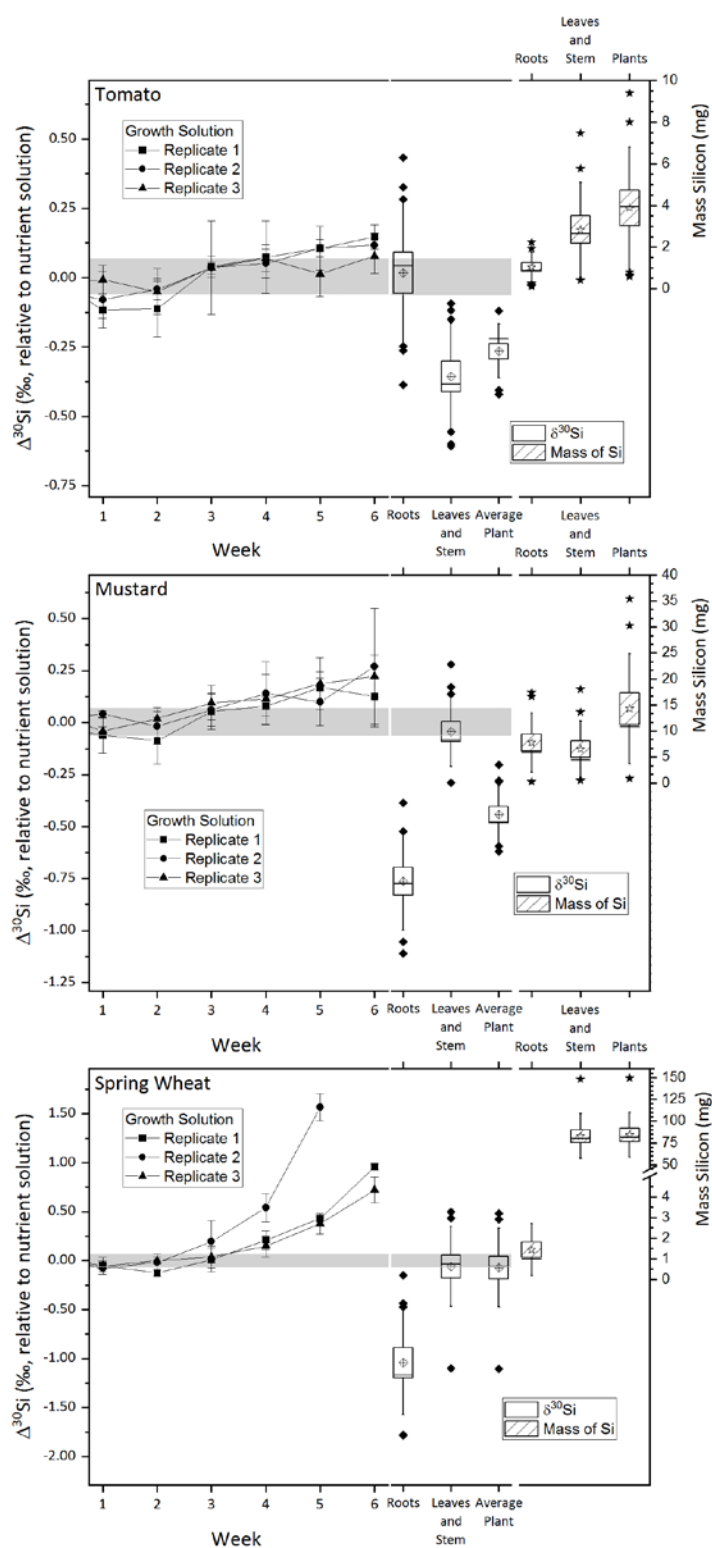


Figure 1: Cumulative transpiration (panel a), Si concentration in the nutrient solution (in µg/g, panel b) and the expected Si uptake through transpiration of tomato, mustard and spring wheat during 6 weeks (panel c). Shown is the mean ± standard deviation from 3 pots with 4 plants each. In panel c) a ratio of measured and expected Si uptake (open symbols) of greater than 1 indicates an active uptake mechanism, a ratio much smaller than 1 a rejective strategy.



**Figure 2: Silicon isotope composition (left) and mass of silicon taken up (right) during the growth of tomato, mustard, and wheat.** The left y-axis shows the  $\delta^{30}\text{Si}$  in ‰ relative to the nutrient solution, the right y-axis the mass of silicon incorporated by the plants in mg incorporated. The line connects  $\delta^{30}\text{Si}$  from the weekly sampled nutrient solution (week 1 to 6). The box plots denote  $\delta^{30}\text{Si}$  (left) and plant organ Mg mass (right), per species 12 roots and 12 leaves and stem samples were analysed, plant averages were weighted by organ mass (calculated using Eq. (2)). Uncertainty bars are based on 2 standard uncertainties, grey area denotes the silicon isotopic composition of the starting solution  $\pm$  two standard deviations. All box sizes denote one standard uncertainty, whisker indicate one standard deviation, horizontal line in the box shows the median, empty diamond/stars in the box indicate the mean and filled diamonds/stars show outliers, outside of one standard deviation.

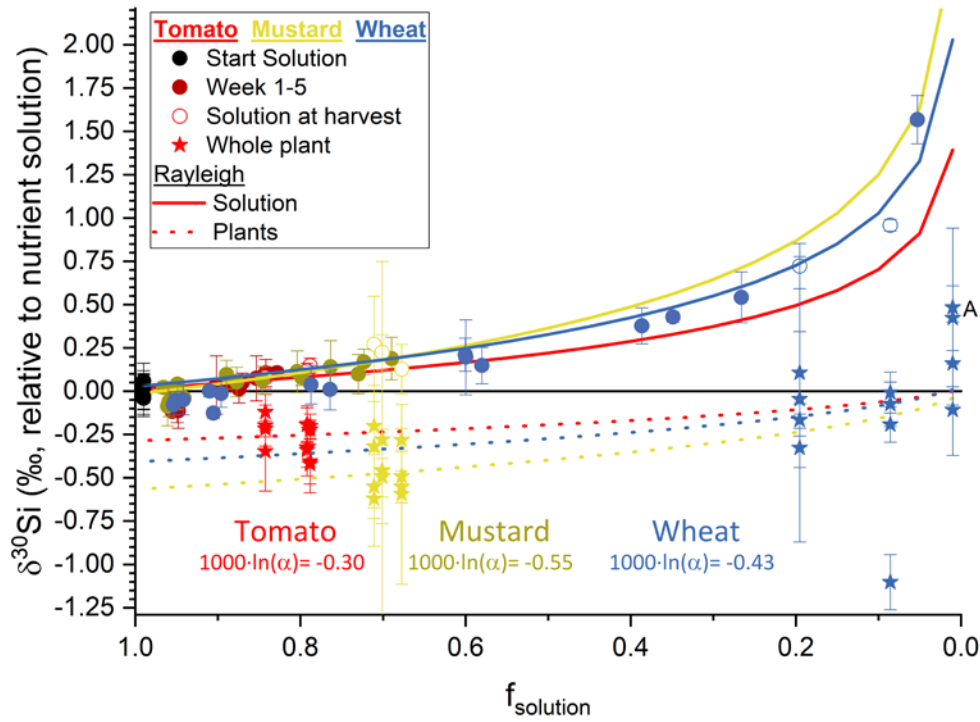


Figure 3: The silicon isotope composition (expressed in  $\delta^{30}\text{Si}$  ‰ relative to nutrient solution) versus the amount of silicon taken up by the plants (expressed as dimensionless  $f_{\text{solution}}$ ) (circles represents the nutrient solution, tomato in red, mustard in yellow and wheat in blue, starting solutions in black). Red, yellow and blue solid lines represent the best fit through a Rayleigh-like fractionation for the remaining solution, the dotted line the accumulated silicon isotope composition in the plants derived thereof. Stars are the mass-weighted average isotopic composition of the individual plants at the respective  $f_{\text{solution}}$  of the container at harvest. Plant samples denoted with A have no corresponding solution value, since the concentration of silicon was below the amount required for an isotope ratio determination. Uncertainty bars are based on two standard deviations.

Tables

Parameter		Plant species		
		Mustard	Wheat	Tomato
Dry matter [g pot <sup>-1</sup> ]	Root	3.9 ± 1.1	2.6 ± 0.6	1.7 ± 0.2
	Shoot	25.0 ± 4.2	13.7 ± 2.0	10.3 ± 1.5
	Total plant	29.0 ± 5.2	16.3 ± 2.5	12.0 ± 1.7
Plant Si content [mg Si g <sup>-1</sup> dry matter]	Root	8.6 ± 4.3	2.5 ± 2.8	3.5 ± 1.8
	Shoot	1.0 ± 0.3	24.2 ± 6.3	1.4 ± 0.7
	Total plant	2.0 ± 0.4	20.9 ± 4.0	1.3 ± 0.2
Plant Si uptake [mg Si pot <sup>-1</sup> ]	Root	31.1 ± 4.8	5.8 ± 3.1	4.1 ± 1.3
	Shoot	26.1 ± 3.8	331.3 ± 70.1	11.4 ± 3.6
	Total plant	57.2 ± 1.3	337.0 ± 67.9	15.5 ± 4.9
Transpiration [L pot <sup>-1</sup> ]	Pot	11.0 ± 0.3	6.8 ± 1.5	3.2 ± 0.6

**Table 1: Dry matter, plant Si content, plant Si uptake and water transpiration of mustard, wheat and tomato after 6 weeks (hydroponic culture; mean ± standard deviation based on 3 pots with 4 plants each).**

Quotient	Plant species		
	Mustard	Wheat	Tomato
Dry mass ratio [g shoot g <sup>-1</sup> root]	6.5 ± 0.7	5.4 ± 0.9	5.9 ± 0.2
Si mass ratio [mg Si in shoot mg <sup>-1</sup> Si in root]	0.9 ± 0.2	72.7 ± 47.8	2.7 ± 0.2
Water use efficiency [g L <sup>-1</sup> ]	2.6 ± 0.5	2.4 ± 0.2	3.8 ± 0.3
Si uptake efficiency [mg plant Si L <sup>-1</sup> ]	5.2 ± 0.3	50.3 ± 8.8	4.8 ± 0.6
Si transfer efficiency [mg shoot Si L <sup>-1</sup> ]	2.4 ± 0.3	49.3 ± 8.4	3.5 ± 0.4
Uptake classification (measured / expected Si uptake)	0.12±0.01	1.9±0.6	0.11±0.04

**Table 2: Ecophysiological performance ratios for mustard, wheat and tomato (means ± standard deviation based on 3 pots with 4 plants each). The uptake classification is based on the ratio of measured and expected Si uptake. A ratio of greater than 1 indicates an active uptake mechanism, a ratio much smaller than 1 a rejective strategy and a ratio of 1 is passive uptake.**

	[mg]	Mustard			Wheat			Tomato		
		Pot 1	Pot 4	Pot 7	Pot 2	Pot 5	Pot 8	Pot 3	Pot 6	Pot 9
<b>Si</b>	m <sub>Start</sub>	418	421	399	425	416	411	418	415	414
	m <sub>End</sub>	283	299	280	36	2	80	329	329	349
	m <sub>Plants</sub>	58	56	58	299	415	297	20	15	11
	Retrieval	82%	84%	85%	79%	100%	92%	84%	83%	87%
<b>Ca</b>	m <sub>Start</sub>	544	543	524	548	542	541	549	542	543
	m <sub>End</sub>	3	0	0	382	376	423	139	182	264
	m <sub>Plants</sub>	393	394	352	108	119	87	304	241	222
	Retrieval	73%	73%	67%	89%	91%	94%	81%	78%	90%
<b>Fe</b>	m <sub>Start</sub>	39	39	38	39	40	39	39	39	39
	m <sub>End</sub>	26	29	28	27	25	28	24	24	28
	m <sub>Plants</sub>	4	4	3	6	4	3	5	5	2
	Retrieval	76%	85%	82%	85%	73%	80%	73%	75%	78%
<b>K</b>	m <sub>Start</sub>	1787	1813	1742	1817	1801	1801	1803	1809	1801
	m <sub>End</sub>	657	424	174	539	505	787	941	1044	1213
	m <sub>Plants</sub>	1085	1218	1500	1556	1449	979	872	727	673
	Retrieval	98%	91%	96%	115%	109%	98%	101%	98%	105%
<b>Mg</b>	m <sub>Start</sub>	121	121	116	122	120	119	122	121	120
	m <sub>End</sub>	7	1	0	63	59	67	35	41	55
	m <sub>Plants</sub>	82	95	73	30	26	27	52	55	33
	Retrieval	74%	79%	63%	76%	70%	80%	72%	79%	74%
<b>P</b>	m <sub>Start</sub>	173	176	171	177	175	176	176	177	177
	m <sub>End</sub>	5	2	1	0	0	11	5	20	52
	m <sub>Plants</sub>	121	134	115	137	142	144	117	123	82
	Retrieval	73%	77%	68%	77%	81%	88%	69%	81%	76%
<b>S</b>	m <sub>Start</sub>	180	183	174	182	182	182	183	182	182
	m <sub>End</sub>	4	3	6	97	101	119	81	89	113
	m <sub>Plants</sub>	95	88	73	61	57	33	60	55	38
	Retrieval	55%	50%	45%	87%	87%	84%	77%	79%	83%

**Table 3: Major element budget for mustard, tomato and wheat. m<sub>Plants</sub> is calculated based on the concentration of the element in the plant digest and the dry mass, the m<sub>Start</sub> m<sub>End</sub> are the element masses in mg based on the amount of nutrient solution and the element concentration at the start and the end of the experiment. Retrieval is the ratio between m<sub>Start</sub> and the sum of m<sub>Plants</sub> and m<sub>End</sub>. The initial amount of the elements in the seeds, taken up during germination and the amount of element discharged in the wash water are not considered.**

	$\delta^{30}\text{Si}$	2 s	$\delta^{30}\text{Si}$	2 s	$\delta^{30}\text{Si}$	2 s
<b>Mustard</b>						
	Pot 1		Pot 4		Pot 7	
<b>Start</b>	-0.23	0.12	-0.19	0.06	-0.15	0.06
<b>End</b>	-0.20	0.30	-0.04	0.38	-0.09	0.26
<b>Wheat</b>						
	Pot 2		Pot 5		Pot 9	
<b>Start</b>	-0.18	0.03	-0.18	0.13	-0.24	0.07
<b>End</b>	-0.39	0.30	0.05	0.23	-0.12	0.27
<b>Tomato</b>						
	Pot 3		Pot 6		Pot 9	
<b>Start</b>	-0.20	0.08	-0.25	0.10	-0.23	0.02
<b>End</b>	-0.09	0.19	-0.11	0.31	-0.14	0.31

**Table 4:** Silicon isotope budget (calculated using Eq. (5)) for mustard, wheat and tomato at the start of the experiment (based on the isotopic composition of the nutrient solution) and the end (based on the plants and nutrient solution isotopic composition).

<b>best fit</b>	<b>Mustard</b>	<b>Tomato</b>	<b>Wheat</b>	<b>All data</b>
<b>1000·ln(<math>\alpha</math>) [‰]</b>	-0.55 ± 0.40	-0.33 ± 0.32	-0.43 ± 0.09	-0.43 ± 0.09

745 **Table 5:**  $^{30}\text{Si}/^{28}\text{Si}$  isotope fractionation factor  $1000\cdot\ln(\alpha)$  numerically approximated by reducing root-mean-square-deviation (‘best fit’) using Eq. (6) and uncertainties (1 s) from Monte Carlo method with n=500 seeded individual data sets.

# **Supplement to: Silicon uptake and isotope fractionation dynamics by crop species**

Daniel A. Frick<sup>1</sup>, Rainer Remus<sup>2</sup>, Michael Sommer<sup>2,3</sup>, Jürgen Augustin<sup>2</sup>, Danuta Kaczorek<sup>2</sup>, Friedhelm von Blanckenburg<sup>1,4</sup>

<sup>1</sup>GFZ German Research Centre for Geosciences, Potsdam, 14473, Germany.

<sup>2</sup>Leibniz Centre for Agricultural Landscape Research (ZALF), Müncheberg, 15374, Germany.

<sup>3</sup>Institute of Environmental Science and Geography, University of Potsdam, Potsdam, 14476, Germany

<sup>4</sup>Institute of Geological Science, Freie Universität Berlin, Berlin, 12249, Germany.

*Correspondence to:* Daniel A. Frick ([dfrick@gfz-potsdam.de](mailto:dfrick@gfz-potsdam.de))

Figures

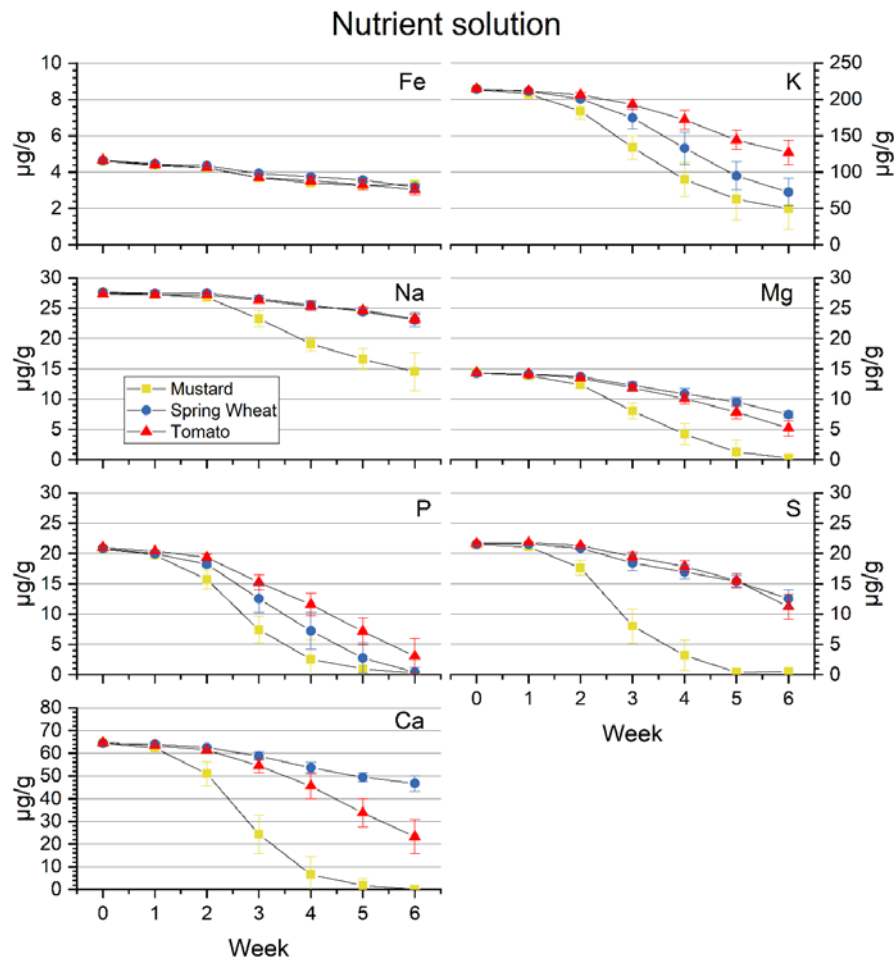
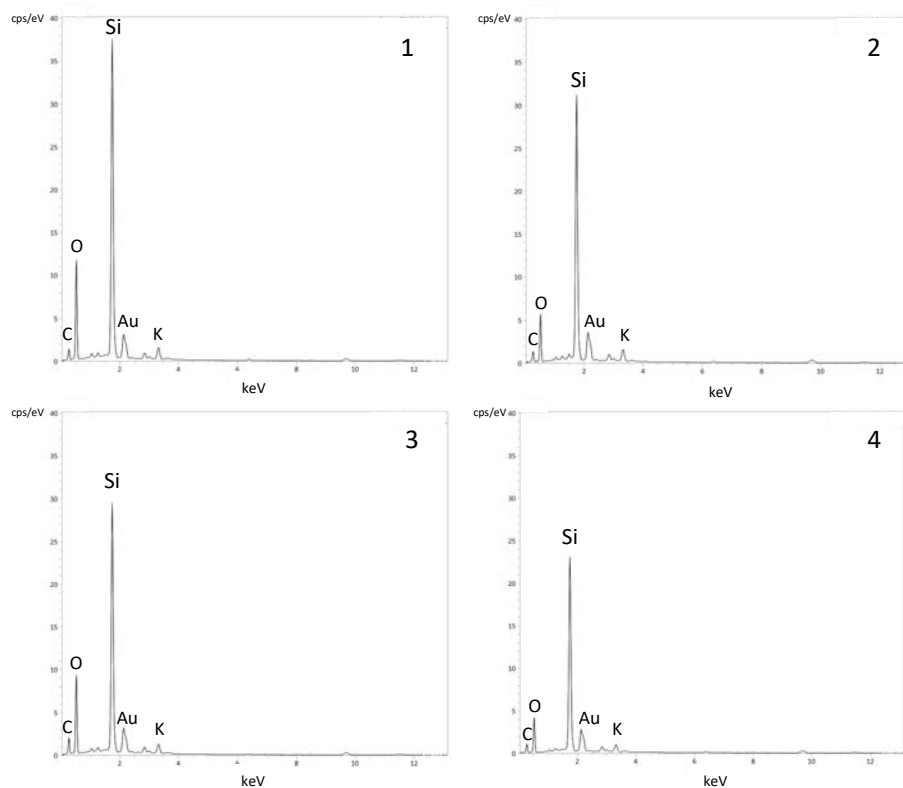
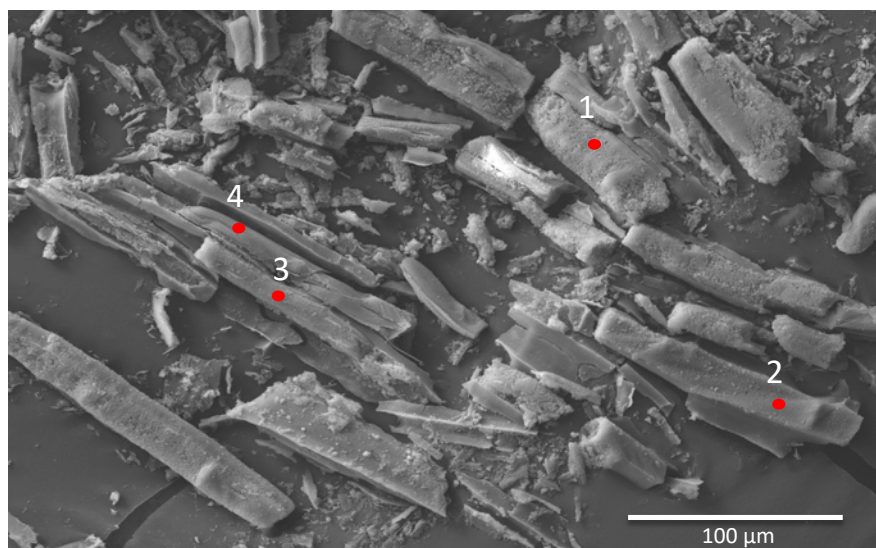


Figure S 1: Temporal evolution of nutrient concentrations during the hydroponic growth of the different plant species. Concentration (Fe, K, Mg, Ca, P, S, Na in  $\mu\text{g}\cdot\text{g}^{-1}$ ) are based on the mean of the three replicated containers, uncertainty shown is 1 standard deviation of those replicated containers.





**Figure S 2: Representative SEM-EDX micrograph of Si precipitates (phytoliths) in mustard roots extracted from dried root samples. See SEM-EDX analysis of mustard root phytoliths for detailed extraction and measurement methods.**

## Tables

	Concentration measurements	Si isotope ratio measurements
Instrument	Varian 720ES ICP-OES	ThermoFisher Neptune Plus
Spraychamber	cyclonic, glass	APEX
Nebuliser	concentric, glass	concentric, PFA
Sample uptake rate	ca. 2 ml/min (pumped:15 rpm)	160 µL/min
Cones	standard cone	N-sampler / H-skimmer
Plasma RF power	1.0 kW	1200 W
Ar cool gas	15 L/min	15 L/min
Ar aux gas	1.5 L/min	0.8 L/min
Ar nebuliser pressure /flow rate <sup>a</sup>	280 -320 kPa	1.0 L/min
Analysis integration time	10 s	4 s
Integration replicates per analysis	3	30
Rinse time between samples	60 s (pumped at 50 rpm), 0.3 M HNO <sub>3</sub>	160 s, 0.1 M HCl
Analytes (wavelengths in nm for ICP-OES or isotopes for MC-ICP-MS)	Ca 422.673, Fe 238.204, K 769.897, Mg 280.270, Na 588.995, Si 288.158, S 181.972, P 213.618	<sup>24</sup> Mg, <sup>25</sup> Mg, <sup>26</sup> Mg <sup>28</sup> Si, <sup>29</sup> Si, <sup>30</sup> Si medium mass resolution mode: Δm/m (5%/95% intensity limits): >5000
<sup>a</sup> Optimised during each analytical session		

**Table S1: Instrument settings for concentration and silicon isotope ratio measurements.**

ERM-CD281				BHVO-2			
$\delta^{29}\text{Si}/^{28}\text{Si}$	2 s	$\delta^{30}\text{Si}/^{28}\text{Si}$	2 s	$\delta^{29}\text{Si}/^{28}\text{Si}$	2 s	$\delta^{30}\text{Si}/^{28}\text{Si}$	2 s
-0.12	0.04	-0.25	0.05	-0.14	0.06	-0.26	0.07
-0.18	0.05	-0.33	0.06	-0.13	0.04	-0.24	0.07
-0.16	0.04	-0.26	0.05	-0.18	0.04	-0.30	0.06
-0.19	0.05	-0.24	0.07	-0.18	0.04	-0.32	0.06
-0.15	0.05	-0.27	0.05	-0.22	0.05	-0.35	0.07
-0.19	0.05	-0.28	0.07	-0.15	0.05	-0.29	0.06
-0.15	0.06	-0.18	0.07	-0.27	0.14	-0.40	0.15
-0.25	0.04	-0.45	0.05	-0.07	0.08	-0.25	0.09
-0.26	0.04	-0.47	0.05	-0.17	0.05	-0.24	0.07
-0.28	0.04	-0.44	0.07	-0.11	0.05	-0.27	0.07
-0.27	0.05	-0.46	0.07	-0.16	0.05	-0.26	0.07
-0.31	0.04	-0.42	0.07	-0.11	0.08	-0.23	0.09
-0.25	0.04	-0.38	0.07	-0.14	0.06	-0.27	0.10
				-0.14	0.04	-0.30	0.06
				-0.17	0.04	-0.29	0.06
				-0.17	0.04	-0.29	0.06
				-0.18	0.05	-0.32	0.07
				-0.14	0.05	-0.22	0.07
				-0.19	0.04	-0.35	0.06
				-0.18	0.05	-0.31	0.07
				-0.15	0.05	-0.29	0.06
				-0.13	0.05	-0.29	0.06
				-0.16	0.06	-0.26	0.07
				-0.22	0.05	-0.32	0.07
				-0.21	0.05	-0.21	0.07
				-0.16	0.04	-0.29	0.05
				-0.16	0.04	-0.33	0.05
				-0.20	0.04	-0.31	0.06
				-0.13	0.06	-0.25	0.09
				-0.16	0.05	-0.35	0.06
				-0.17	0.04	-0.24	0.07
				-0.18	0.05	-0.32	0.07
				-0.18	0.05	-0.30	0.07
				-0.17	0.05	-0.36	0.07
				-0.13	0.04	-0.25	0.05
				-0.12	0.04	-0.29	0.04
				-0.15	0.06	-0.29	0.06
				-0.09	0.04	-0.26	0.07
				-0.16	0.04	-0.27	0.05
				-0.15	0.04	-0.23	0.06

Table S2: Individually repeated analysis of BHVO-2 and ERM-CD281 for their silicon isotope composition.

		<b>Ca</b>	<b>Fe</b>	<b>K</b>	<b>Mg</b>	<b>P</b>	<b>S</b>	<b>Si</b>	<b>δ<sup>30</sup>Si</b>	<b>2 SD</b>
		<b>μg/g</b>	<b>μg/g</b>	<b>μg/g</b>	<b>μg/g</b>	<b>μg/g</b>	<b>μg/g</b>	<b>μg/g</b>	<b>‰</b>	
<b>Mustard</b>	<b>Pot 1</b>	64.2	4.6	210.8	14.3	20.4	21.2	49.3	-0.23	0.12
	<b>Pot 4</b>	64.3	4.6	214.8	14.3	20.9	21.6	49.8	-0.19	0.06
	<b>Pot 7</b>	65.0	4.7	216.1	14.4	21.2	21.6	49.5	-0.15	0.06
<b>Spring Wheat</b>	<b>Pot 2</b>	64.3	4.6	213.2	14.3	20.7	21.3	49.9	-0.18	0.03
	<b>Pot 5</b>	64.5	4.7	214.0	14.3	20.8	21.6	49.4	-0.18	0.13
	<b>Pot 8</b>	64.8	4.6	215.5	14.2	21.0	21.7	49.2	-0.24	0.07
<b>Tomato</b>	<b>Pot 3</b>	64.9	4.7	213.3	14.4	20.9	21.7	49.4	-0.20	0.08
	<b>Pot 6</b>	64.5	4.7	215.4	14.4	21.1	21.6	49.5	-0.25	0.10
	<b>Pot 9</b>	64.7	4.7	214.7	14.2	21.1	21.7	49.4	-0.23	0.02
<b>Average</b>									-0.21	0.07

**Table S 3: Starting composition (major element concentration (in μg g<sup>-1</sup>) and silicon isotopic composition) of the nutrient solutions for the individual pots.**

The Table S4 is on the following pages.

**Table S4: Dry weight, major element concentration (in mg·g<sup>-1</sup>) and Si isotope composition (in ‰) of the plants separated into shoot and root.**

The Table S5 is on the following pages.

**Table S5: Composition (major element concentration (in μg g<sup>-1</sup>) and silicon isotopic composition) of the weekly sampled nutrient solutions for the individual pots. See Table S3 for the starting composition (week 0).**

			dry mass	Ca	Fe	K	Mg	P	S	Si	$\delta^{30}\text{Si}$			$\delta^{30}\text{Si}$		
Mustard		Plant ID	[g]	mg/g	mg/g	mg/g	mg/g	mg/g	mg/g	mg/g	‰ NBS28	2 s / *95 % CI		‰ nutrient solution	2 s / *95 % CI	
Pot 1	Roots	19-5-1R-S1	0.96	3.9	1.0	23.3	2.6	5.9	4.0	13.2	-0.83	0.17		-0.62	0.17	
		19-5-1R-S2	1.48	2.2	0.5	29.6	1.9	4.6	3.3	11.2	-1.15	0.05		-0.94	0.05	
		19-5-1R-S3	0.58	2.3	0.5	27.7	1.2	4.5	3.3	11.3	-0.92	0.05		-0.72	0.05	
		19-5-1R-S4	0.05	4.2	0.9	15.2	0.9	3.2	2.2	5.0	-0.73	0.12		-0.53	0.12	
	Shoot	19-5-1S-S1	4.12	13.5	0.10	51.4	3.7	4.3	4.6	0.90	-0.27	0.08		-0.06	0.08	
		19-5-1S-S2	12.12	18.7	0.07	46.0	3.7	5.1	3.7	1.12	-0.38	0.04		-0.18	0.04	
		19-5-1S-S3	4.43	20.5	0.06	44.9	3.0	5.0	3.6	0.90	-0.50	0.08		-0.29	0.08	
		19-5-1S-S4	0.63	18.4	0.15	53.1	3.0	8.1	7.4	0.89	-0.38	0.08		-0.17	0.08	
Pot 4	Roots	19-5-4R-S1	0.71	3.3	0.67	15.2	1.8	3.2	3.7	7.23	-0.59	0.04		-0.39	0.04	
		19-5-4R-S2	0.62	2.7	0.37	15.5	1.6	4.4	2.8	4.75	-1.26	0.08		-1.06	0.08	
		19-5-4R-S3	0.61	2.6	0.40	17.8	1.8	4.1	1.6	9.00	-1.32	0.07		-1.11	0.07	
		19-5-4R-S4	1.58	2.1	0.38	18.1	1.6	4.1	2.1	8.19	-0.82	0.04		-0.62	0.04	
	Shoot	19-5-4S-S1	5.84	34.1	0.10	50.9	5.1	4.0	4.4	1.68	-0.32	0.11		-0.11	0.11	
		19-5-4S-S2	3.08	12.4	0.12	47.1	3.7	5.7	4.2	0.95	-0.25	0.18		-0.05	0.18	
		19-5-4S-S3	4.83	11.0	0.08	44.4	3.3	4.9	2.2	1.11	-0.33	0.05		-0.12	0.05	
		19-5-4S-S4	10.54	9.0	0.08	47.5	3.0	5.3	2.8	1.04	-0.18	0.08		0.02	0.08	
Pot 7	Roots	19-5-7R-S1	1.98	1.6	0.21	18.5	1.6	3.7	2.3	3.08	-1.19	0.07		-0.99	0.07	
		19-5-7R-S2	0.22	2.7	0.89	24.1	1.2	3.1	3.5	17.95	-0.74	0.07		-0.54	0.07	
		19-5-7R-S3	0.80	2.0	0.16	21.2	0.9	3.1	3.4	3.85	-1.05	0.10		-0.84	0.10	
		19-5-7R-S4	2.15	1.4	0.19	24.8	1.1	3.2	2.8	8.07	-1.07	0.09		-0.86	0.09	
	Shoot	19-5-7S-S1	8.90	6.9	0.08	37.7	2.0	3.1	1.6	0.53	-0.07	0.09		0.13	0.09	
		19-5-7S-S2	0.93	4.6	0.06	44.2	1.9	2.5	1.7	0.52	-0.04	0.10		0.17	0.10	
		19-5-7S-S3	5.30	17.8	0.06	48.4	2.5	4.7	3.2	0.77	-0.38	0.09		-0.18	0.09	
		19-5-7S-S4	14.40	12.7	0.06	52.4	2.3	3.0	1.8	1.25	0.07	0.06		0.28	0.06	
Average	Roots		0.98	2.59	0.51	20.90	1.52	3.92	2.92	8.57	-0.97	0.15 *		-0.77	0.15 *	
	Shoot		6.26	14.96	0.08	47.34	3.10	4.63	3.44	0.97	-0.25	0.11 *		-0.05	0.11 *	
Sum	Plants		86.88													
* Uncertantiy based on 95 % CI																

**Table S4: Dry weight, major element concentration (in  $\text{mg}\cdot\text{g}^{-1}$ ) and Si isotope composition (in ‰) of the plants separated into shoot and root.**

			dry mass	Ca	Fe	K	Mg	P	S	Si	$\delta^{30}\text{Si}$			$\delta^{30}\text{Si}$		
Spring Wheat		Plant ID	[g]	mg/g	mg/g	mg/g	mg/g	mg/g	mg/g	mg/g	‰ NBS28	2 s / *95 % CI		‰ nutrient solution	2 s / *95 % CI	
Pot 2	Roots	19-5-2R-W1	0.8	4.6	0.46	62.9	1.1	5.2	1.9	1.31	-0.68	0.14		-0.48	0.14	
		19-5-2R-W2	0.9	3.8	0.37	52.3	1.2	4.2	1.9	1.30	-0.64	0.05		-0.44	0.05	
		19-5-2R-W3	1.0	3.5	0.38	60.2	0.9	5.5	1.9	1.80	-1.42	0.08		-1.21	0.08	
		19-5-2R-W4	0.7	3.9	0.32	56.8	0.9	4.9	1.8	1.29	-0.89	0.12		-0.68	0.12	
	Shoot	19-5-2S-W1	3.7	6.7	0.31	95.1	1.7	7.6	3.6	22.18	-0.21	0.09		-0.01	0.09	
		19-5-2S-W2	3.5	7.4	0.23	56.9	2.0	7.6	2.6	18.59	-0.28	0.10		-0.07	0.10	
		19-5-2S-W3	4.2	4.7	0.30	105.2	1.8	8.0	4.0	15.36	-1.31	0.16		-1.10	0.16	
		19-5-2S-W4	3.5	7.0	0.46	105.6	1.6	9.1	4.3	23.42	-0.40	0.05		-0.19	0.05	
Pot 5	Roots	19-5-5R-W1	0.51	4.9	1.11	54.4	1.9	5.4	1.4	1.10	-1.45	0.13		-1.25	0.13	
		19-5-5R-W2	0.63	5.1	0.71	61.3	1.4	4.6	1.7	1.59	-1.99	0.12		-1.79	0.12	
		19-5-5R-W3	0.47	5.6	0.72	62.6	1.4	4.4	1.6	1.58	-1.64	0.03		-1.44	0.03	
		19-5-5R-W4	0.76	4.0	0.73	62.1	1.3	4.2	1.9	1.31	-1.60	0.06		-1.39	0.06	
	Shoot	19-5-5S-W1	3.31	7.0	0.13	66.2	2.0	8.9	3.0	23.69	0.22	0.03		0.43	0.03	
		19-5-5S-W2	3.58	9.0	0.11	107.2	0.3	9.8	4.4	41.44	0.29	0.09		0.50	0.09	
		19-5-5S-W3	3.14	7.0	0.18	81.8	2.1	8.3	3.2	26.64	-0.04	0.05		0.17	0.05	
		19-5-5S-W4	4.83	6.3	0.13	92.5	1.7	8.5	3.5	21.05	-0.31	0.08		-0.10	0.08	
Pot 8	Roots	19-5-8R-W1	0.62	3.9	0.47	63.1	1.6	8.5	1.5	2.10	-1.00	0.09		-0.79	0.09	
		19-5-8R-W2	0.28	4.3	0.68	57.6	1.7	7.7	1.2	1.30	-1.34	0.13		-1.14	0.13	
		19-5-8R-W3	0.46	2.7	0.50	56.3	1.9	7.7	1.7	11.18	-0.36	0.02		-0.15	0.02	
		19-5-8R-W4	0.74	2.2	0.29	55.5	1.5	8.3	2.0	3.29	-1.99	0.06		-1.78	0.06	
	Shoot	19-5-8S-W1	3.42	7.3	0.15	68.0	1.6	10.1	2.8	23.25	-0.09	0.06		0.12	0.06	
		19-5-8S-W2	1.60	8.1	0.20	79.8	2.8	11.6	2.7	26.05	-0.53	0.10		-0.32	0.10	
		19-5-8S-W3	2.87	6.4	0.13	78.5	2.2	11.2	2.2	24.93	-0.38	0.10		-0.17	0.10	
		19-5-8S-W4	3.47	7.0	0.14	78.2	2.3	11.9	2.8	27.33	-0.21	0.04		-0.01	0.04	
Average	Roots		0.65	3.99	0.57	58.39	1.43	5.94	1.71	2.53	-1.25	0.34 *		-1.04	0.34 *	
	Shoot		3.43	7.02	0.20	83.62	1.85	9.54	3.22	24.70	-0.27	0.26 *		-0.06	0.26 *	
Sum	Plants		48.92													
* Uncertantiy based on 95 % CI																

**Table S4: Dry weight, major element concentration (in  $\text{mg}\cdot\text{g}^{-1}$ ) and Si isotope composition (in ‰) of the plants separated into shoot and root.**



			Ca	Fe	K	Mg	P	S	Si	δ30Si	
			μg/g	μg/g	μg/g	μg/g	μg/g	μg/g	μg/g	‰ NBS28	2 s
Week 1	Mustard	Pot 1	63.3	4.4	210.5	14.0	20.2	21.4	47.3	-0.27	0.09
		Pot 4	62.0	4.4	206.2	13.9	19.7	21.3	47.3	-0.17	0.02
		Pot 7	61.7	4.4	205.2	13.8	19.4	20.6	46.6	-0.25	0.02
	Spring Wheat	Pot 2	63.7	4.4	210.3	14.0	20.0	21.3	47.0	-0.26	0.09
		Pot 5	63.9	4.5	209.1	14.2	19.6	21.5	47.1	-0.29	0.06
		Pot 8	64.6	4.5	214.1	14.3	20.4	21.9	46.8	-0.27	0.05
	Tomato	Pot 3	63.8	4.4	211.5	14.2	20.2	21.8	47.2	-0.33	0.03
		Pot 6	62.8	4.4	209.5	14.1	20.4	21.8	47.0	-0.29	0.10
		Pot 9	63.8	4.5	213.6	14.0	20.6	21.8	47.0	-0.22	0.05
Week 2	Mustard	Pot 1	54.2	4.2	188.8	12.8	16.6	18.3	47.4	-0.30	0.11
		Pot 4	44.8	4.2	171.5	11.6	13.9	16.2	47.3	-0.23	0.09
		Pot 7	54.1	4.3	192.0	12.8	16.6	18.4	47.9	-0.19	0.03
	Spring Wheat	Pot 2	62.8	4.3	200.6	13.8	18.3	20.7	45.2	-0.34	0.03
		Pot 5	62.8	4.4	198.2	13.6	17.7	20.9	44.3	-0.22	0.08
		Pot 8	62.3	4.4	203.3	13.8	18.7	21.0	44.8	-0.21	0.03
	Tomato	Pot 3	60.2	4.2	202.7	13.3	18.8	21.3	46.8	-0.32	0.10
		Pot 6	62.1	4.3	208.6	13.5	19.5	21.5	47.0	-0.25	0.04
		Pot 9	62.1	4.3	208.0	13.7	19.8	21.3	46.8	-0.26	0.08
Week 3	Mustard	Pot 1	32.7	3.7	151.5	9.3	9.9	11.1	43.3	-0.16	0.09
		Pot 4	15.8	3.7	119.4	6.8	5.8	5.4	42.2	-0.15	0.08
		Pot 7	24.5	3.7	130.4	8.1	6.5	7.6	44.1	-0.11	0.08
	Spring Wheat	Pot 2	59.0	3.9	178.1	12.4	13.2	18.5	38.1	-0.20	0.12
		Pot 5	56.8	3.8	158.3	11.5	10.0	17.2	29.6	-0.01	0.22
		Pot 8	60.4	4.0	187.5	12.8	14.5	19.8	38.7	-0.17	0.11
	Tomato	Pot 3	51.4	3.6	185.8	11.2	13.9	18.7	43.5	-0.17	0.04
		Pot 6	55.0	3.6	194.1	12.0	15.5	19.6	43.8	-0.17	0.02
		Pot 9	57.2	3.9	199.1	12.4	16.3	20.1	44.5	-0.17	0.17
Week 4	Mustard	Pot 1	15.7	3.4	116.0	6.2	6.2	5.2	39.4	-0.13	0.05
		Pot 4	1.7	3.4	83.9	3.1	1.1	4.0	38.1	-0.07	0.15
		Pot 7	2.3	3.4	70.3	3.4	0.4	0.4	39.8	-0.10	0.12
	Spring Wheat	Pot 2	54.2	3.8	138.6	11.2	8.3	17.1	30.0	0.00	0.10
		Pot 5	51.2	3.6	108.6	9.9	3.8	15.8	13.1	0.33	0.15
		Pot 8	55.7	3.9	151.9	11.5	9.6	18.0	28.5	-0.06	0.11
	Tomato	Pot 3	39.7	3.4	157.3	9.1	9.6	16.9	42.2	-0.14	0.13
		Pot 6	46.3	3.4	175.5	10.3	12.0	18.1	43.0	-0.16	0.05
		Pot 9	50.6	3.8	183.2	10.8	13.2	18.7	43.9	-0.14	0.05
Week 5	Mustard	Pot 1	5.4	3.3	92.2	3.6	2.7	0.3	35.7	-0.04	0.07
		Pot 4	0.1	3.5	61.3	0.3	0.2	0.3	36.4	-0.11	0.11
		Pot 7	0.0	3.1	35.0	0.1	0.0	0.5	34.2	-0.02	0.12
	Spring Wheat	Pot 2	49.3	3.6	93.2	9.6	3.0	15.3	17.4	0.22	0.03
		Pot 5	47.5	3.4	76.1	8.8	0.2	14.5	2.6	1.36	0.14
		Pot 8	51.7	3.7	115.1	10.3	5.2	16.4	19.0	0.17	0.10
	Tomato	Pot 3	27.5	3.1	130.2	6.8	4.9	14.3	40.9	-0.10	0.03
		Pot 6	34.1	3.2	147.1	7.9	7.4	15.7	41.7	-0.10	0.08
		Pot 9	39.8	3.6	155.6	9.0	9.3	16.6	43.2	-0.20	0.08
Week 6	Mustard	Pot 1	0.4	3.1	77.6	0.8	0.5	0.4	33.4	-0.08	0.14
		Pot 4	0.0	3.4	50.3	0.1	0.2	0.4	35.4	0.06	0.28
		Pot 7	0.0	3.5	21.6	0.0	0.1	0.8	34.7	0.01	0.10
	Spring Wheat	Pot 2	44.9	3.2	63.2	7.4	0.0	11.4	4.3	0.75	0.03
		Pot 5	44.7	3.0	60.0	7.0	0.0	12.1	0.2	0.00	0.00
		Pot 8	50.6	3.4	94.2	8.1	1.3	14.2	9.6	0.51	0.13
	Tomato	Pot 3	16.5	2.9	111.3	4.1	0.6	9.5	38.9	-0.06	0.04
		Pot 6	21.7	2.9	124.3	4.9	2.4	10.6	39.2	-0.09	0.04
		Pot 9	31.5	3.4	144.6	6.6	6.2	13.5	41.6	-0.13	0.06

Table S5: Composition (major element concentration (in  $\mu\text{g g}^{-1}$ ) and silicon isotopic composition) of the weekly sampled nutrient solutions for the individual pots. See Table S3 for the starting composition (week 0).



Difference between and		Week 1	Week 2	Week 3	Week 4	Week 5	Week 6
		Week 0	Week 1	Week 2	Week 3	Week 4	Week 5
		[g]	[g]	[g]	[g]	[g]	[g]
Mustard	Pot 1	407.5	671.2	1842.2	2707.5	2863.3	2277.8
	Pot 4	239	929.9	2469.8	3397.6	2627.5	1673.4
	Pot 7	137.8	449.4	1500.7	3119.5	3413.4	2152.7
Spring Wheat	Pot 2	231.1	374.7	791.1	1416	2083.7	2471.3
	Pot 5	147.6	331.3	914.9	1816.3	2306.7	2422.1
	Pot 8	133.5	189	474.7	996.6	1576.9	1756.8
Tomato	Pot 3	206.7	316.2	526.6	772.6	998.9	951.6
	Pot 6	224.1	233.2	352.6	625.2	913	1005.8
	Pot 9	127.1	164.6	292.4	444.6	672.3	800.2

**Table S 6: Weekly transpiration (in g), determined by weighing the pots without the plants. The transpired water was replenished weekly with ultrapure water.**

## Methods

### Method S1 Preparation of the nutrient solution

The nutrient solution was prepared from technical graded salts and dissolved in 10 L of ultrapure water. Macro nutrients 1.23 g  $\text{MgSO}_4 \cdot 7\text{H}_2\text{O}$ , 3.54 g  $\text{Ca}(\text{NO}_3)_2 \cdot 4\text{H}_2\text{O}$ , 0.33 g Ferric sodium EDTA, 3.6 g  $\text{KNO}_3$ , 1.1 g  $\text{KCl}$  and 0.82 g  $\text{KH}_2\text{PO}_4$ . Micro nutrients: 0.55 mg  $\text{Al}_2(\text{SO}_4)_3$ , 0.28 mg  $\text{KJ}$ , 0.28 mg  $\text{KBr}$ , 0.55 mg  $\text{TiO}_2$ , 0.28 mg  $\text{SnCl}_2 \cdot 2\text{H}_2\text{O}$ , 0.28 mg  $\text{LiCl}$ , 0.39 mg  $\text{MnCl}_2 \cdot 4\text{H}_2\text{O}$ , 6.1 mg  $\text{H}_3\text{BO}_3$ , 0.55 mg  $\text{ZnSO}_4$ , 0.55 mg  $\text{CuSO}_4 \cdot 5\text{H}_2\text{O}$ , 0.55 mg  $\text{NiSO}_4 \cdot 6\text{H}_2\text{O}$ , 0.55 mg  $\text{Co}(\text{NO}_3)_2 \cdot 6\text{H}_2\text{O}$ , 0.05 mg  $\text{As}_2\text{O}_3$ , 0.28 mg  $\text{BaCl}_2$ , 0.05 mg  $\text{Bi}(\text{NO}_3)_3$ , 0.05 mg  $\text{Rb}_2\text{SO}_4$ , 0.28 mg  $\text{K}_2\text{CrO}_4$ , 0.05 mg  $\text{KF}$ , 0.05 mg  $\text{PbCl}_2$ , 0.05 mg  $\text{HgCl}_2$ , 0.28 mg  $\text{MoO}_3$ , 0.05 mg  $\text{H}_2\text{SeO}_4$ , 0.28 mg  $\text{SrSO}_4$ , 0.05 mg  $\text{H}_2\text{WO}_4$ , 0.05 mg  $\text{VCl}_2$ ). Silicon: 2.03 g  $\text{Na}_2\text{O}_7\text{Si}_3 \cdot 3\text{H}_2\text{O}$ . pH was adjusted to 6.0 using  $\text{HNO}_3$  (PA grade).

### Method S2 Plant germination and growth conditions

Plant seeds were germinated in Petri dishes containing a nutrient solution of half the concentration than the solution used for growth experiments (Methods S1) and in the absence of [sodium silicate trihydrate \( \$\text{Na}\_2\text{O}\_7\text{Si}\_3 \cdot 3\text{H}\_2\text{O}\$ \)](#)  $\text{NaSiO}_4$ . After cotyledons germinated, seeds and roots were clamped in a foam disk (3 cm high with a diameter of 2.5 cm) and each seedling (foam disk) transferred to a PP vial (50 mL centrifuge tube) filled with half-concentrated nutrient solution without [sodium silicate trihydrate](#)  $\text{NaSiO}_4$ . Two weeks later, the foam disks including young plants were transferred to the experimental containers, four plants per container, 3 replicated container per species. These containers were opaque plastic containers 25.5 cm high, 20.5 cm deep and 20.5 cm wide (with a wall thickness of 0.5 cm). In order to reduce evaporation and to prevent algae growth in the nutrient solution, the containers were closed with opaque lids which had holes for the plants (foam disks). Germination and plant cultivation were performed in a growth chamber under controlled conditions. The temperature in the growth chamber during the day and night was maintained at 18 °C for 14 h and at 15 °C for 10 h, respectively, and the daylight

intensity at the top of the container was adjusted to  $350 \mu\text{E m}^{-2} \text{s}^{-1}$ ) at the start of the experiment. The relative humidity was maintained at approximately 65 %. For comparability, the cultivation conditions for the three species were the same, knowingly they are not equally suited for all species. The relatively low temperatures may have inhibited the growth of the more thermophilic tomato, while the conditions for mustard and summer wheat were close to their optimum. To supply the roots with oxygen, perforated PVC tubes were used to inject (approx. 6 L) room air into the nutrient solution twice a day for two hours each. The transpired water was replenished weekly with ultrapure water.

### **Method S3 Dried plant and nutrient residue digestion and chromatographic purification of Si**

The crucibles containing the sample (dried down nutrient solution or charred plant material with approximately 400 mg NaOH) were placed in a high temperature furnace at  $750^\circ\text{C}$  for 15 min. After cooling down the crucibles were cleaned externally with ultrapure water and placed in precleaned 50mL PP centrifuge tubes and covered with ultrapure water for 24 h. Thereafter, the crucibles were placed in an ultra-sonic bath for 30 min to facilitate the dissolution of the fusion cake. This solution #1 was decanted and collected in precleaned PP flask. The silver crucibles were then stored for ~3 h in a 0.03 M HCl solution and this solution #2 was combined with solution #1 in the PP flask. Using concentrated HCl the pH was adjusted to 1.5. If the concentration was expected to be above  $60 \mu\text{g g}^{-1}$  additional 0.03 M HCl solution was added. 1:10-fold dilution was analysed by ICP-OES to determining the Si content. Approximately  $60 \mu\text{g}$  Si from are loaded onto precleaned and preconditioned columns using a cation exchange resin (1.5 mL, DOWEX 50WX8, Sigma-Aldrich) and eluted using 5 mL ultrapure water. The cation exchange resin is then regenerated using HCl and  $\text{HNO}_3$ . The Si yield of the fusion procedure and the column chemistry was determined in a 1:10-fold dilution by ICP-OES.