

Geodiversity and biodiversity on a volcanic island: The role of scattered phonolites for plant diversity and **reproductive fitness performance**

David Kienle^{1,A}, Anna Walentowitz^{1,A,B}, Leyla Sungur^{1,A}, Alessandro Chiarucci², Severin D. H. Irl³, Anke Jentsch^{4,5}, Ole R. Vetaas⁶, Richard Field⁷ and Carl Beierkuhnlein^{1,5,8}

¹Biogeography, University of Bayreuth, Bayreuth, 95440, Germany

²BIOME Lab, Department of Biological, Geological and Environmental Sciences, Alma Mater Studiorum, University of Bologna, Bologna, 40126, Italy

³Biogeography and Biodiversity Lab, Institute of Physical Geography, Goethe-University Frankfurt, Frankfurt, 60438, Germany

⁴Disturbance Ecology, University of Bayreuth, Bayreuth, 95440, Germany

⁵Bayreuth Center of Ecology and Environmental Research BayCEER, University of Bayreuth, Bayreuth, 95440, Germany

⁶Department of Geography, University of Bergen, Bergen, 5020, Norway

⁷School of Geography, University of Nottingham, Nottingham, NG7 2RD, United Kingdom

⁸Geographical Institute Bayreuth, GIB, University of Bayreuth, Bayreuth, 95440, Germany

^AThese authors contributed equally to this study.

^BCorrespondence to: Anna Walentowitz (anna.walentowitz@uni-bayreuth.de)

Abstract. Oceanic islands are cradles of endemism, contributing substantially to global biodiversity.- A similarity in magmatic origin translates into high global comparability of substrates of volcanic islands on the oceanic crust with, however, slightly chemically or physically differentiated petrography in some places.~~In some places, the petrography of magmatic rocks is differentiated chemically or physically.~~ Phonolites are examples of rare localities with intermediate chemical traits characteristics between felsic and mafic and with diverse textures. They contribute to habitat heterogeneity and offer specific growth conditions in a significantly different matrix of basaltic substrates. The explicit contribution of geodiversity to island biodiversity has been little studied, despite accumulating growing evidence of its importance on continents.- On the island of La Palma, Canary Islands, isolated phonolitic rocks are conspicuous by their light colour and specific shape. Although these outcrops only cover small areas, their unique form and composition increase within-island geodiversity. To investigate how this affects biodiversity on La Palma, we sampled all vascular plant species in 120 plots on four sets of paired sites, comparing to test if plant diversity and performance is enhanced on phonolitic compared towith basaltic rocks,~~to test whether phonolitic rocks increase overall plant species richness and promote the reproductive fitness of plants.~~ We recorded species number and abundance, individual plant height, and diameter as proxies for aboveground resource allocation and tested for differences in vegetation cover and species composition between the bedrock types. We found higher species richness and abundance on phonolites than neighbouring basaltic substrates, and individuals of the same species were larger (in height and diameter) on phonolites compared to neighbouring basalt. An endemic woody species with two distinct varieties even appears almost

35 exclusively on the small surfaces of phonolitic rock. Despite extremely limited spatial extent, phonolitic rocks can play an
important role for plant biodiversity on islands.

1 Introduction

Biodiversity is known to depend mainly on abiotic drivers, such as climate and topography (Field et al., 2009). However, the
importance and explicit impacts of geodiversity on biodiversity have long been ~~under-researched-insufficiently researched and~~
40 ~~partly ignored.~~ Only recently, the ~~y~~ ~~topic~~ have started to receive more attention (e.g., Gray, 2004; Lawler et al., 2015; Bailey
et al., 2017; Alahuhta, 2020; Barajas-Barbosa et al., 2020). Geodiversity is in many respects an abiotic equivalent to
biodiversity (Gray, 2011) and represents the variability of ~~geological elements (i.e., composition)~~ ~~chemical components~~, surface
structure, edaphic and hydrological features (Gray, 2004; Bailey et al., 2017). This variability contributes to habitat diversity
and thus affects biodiversity patterns via the ~~availability-provisioning~~ of ecological niches (Liu et al., 2013; Gillespie &
45 Roderick, 2014; Bailey et al., 2017). Geological elements provide unique or distinctive habitats for plants and insects, deliver
initial growth conditions for vegetation or fungi formation, and are part of nutrient cycling and soil-atmosphere interactions
(Tukiainen et al., 2016).

Biodiversity is distributed unevenly throughout the world (Gaston, 2000), ~~and to which~~ oceanic islands ~~provide-contribute~~
50 ~~disproportionately~~ much ~~of it~~ due to their high endemic richness (Kier et al., 2009). Substrates that differ in geochemistry and
petrography are likely to be relevant for biodiversity on oceanic islands, where most rocks commonly share similar volcanic
genesis, resulting in only slight differences in the parent material. Distinct substrates with limited extent, such as individual
rock types, may function as a second isolating abiotic filter for populations in addition to the spatial isolation of oceanic islands
that are known to be of outstanding importance for speciation at the global scale (Kier et al. 2009). Specific rock habitats,
55 particularly rocks that exhibit petrographic and geochemical substrates such as e.g. serpentinites, are known to be rich in
habitat-specific endemics (e.g., Harrison et al., 2006; Kazakou et al., 2010). ~~Th~~ ~~ese~~ species evolved specific adaptations to the
unique nutrient contents and soil conditions and the presence of heavy metals that cannot be tolerated by other plant species
(Harrison & Rajakaruna, 2011). This phenomenon is ~~also known as well from on~~ ~~continental areas~~, where substrates such as
serpentinite and gypsum outcrops host specialised floras and contribute to broad-scale diversity (see, e.g., Chiarucci et al.,
60 1998; Pausas et al. 2003). ~~It~~ ~~This~~ ~~underlines the relevance of understanding the importance of geodiversity for insular~~
~~biodiversity, which is particularly vulnerable to extinction due to (Paulay, 1994) Highly~~ ~~highly~~ restricted ranges and small
population sizes of insular endemic species (Paulay, 1994). ~~make island biotas particularly vulnerable to extinction (Paulay,~~
~~1994) and underline the relevance of understanding the importance of geodiversity for insular biodiversity.~~

65 Phonolites are rocks that occur at volcanic intraplate settings in insular and continental contexts worldwide (Garcia et al., 1986;
Ackerman et al., 2015; Hagos et al., 2017). They exist in a variety of ~~forms~~ ~~geologic outcrops formed in the context of~~ ~~by~~

volcanic activity. Such outcrops mainly exist on continents, where they are often linked to faults and tectonic activity. Major components of these extrusive igneous rocks (formed from lava with low silica content) are alkaline feldspars together with foid minerals, nepheline, and pyroxene (Ackerman et al., 2015; Abratis et al., 2015) or their conversion products. ~~Distinctive to phonolites is their fine to medium grain size.~~

On the island of La Palma (Canary Islands, Spain), several phonolitic rock outcrops are embedded into a ~~basaltic matrix of basaltic origin~~ (Middlemost, 1972). The dominant rock type found on La Palma is olivine and augite-titanaugite porphyric basalt, resulting from rapidly rising magma from the upper mantle (Middlemost, 1970). In contrast, there were times when a sizeable magmatic chamber below the island enabled differentiation of magma ~~and the~~ removal of silica, ~~and thus yielding~~ ultramafic, trachytic, and phonolitic rocks (Middlemost, 1970). Phonolite trachytes (showing the exhalation of gases during eruptions) occur on various volcanic islands such as La Palma and St. Helena. On La Palma their distribution is focused on the southern (young) part of the island. The major chemistry of phonolites on La Palma is comparable to that of “average phonolites”, as described by Nockolds (1954). ~~The current volcanic activity and lava flow deriving from the Cumbre Vieja volcano (Pankhurst et al., ESA 2021) are a demonstration of how phonolitic rocks became isolated by younger lava solidifying around the peaks of phonolitic rock. This event illustrates that the isolation of the investigated Roque Teneguía phonolitic habitats (e.g., Roque Teneguía) is far from being a singularity but rather a process that is highly likely to have happened repeatedly on oceanic islands in general.~~

Volcanic activity with the production of tephra and lava flows is a noticeably young phenomenon in the southern part of La Palma, with eruptions as recent as ~~now (Pankhurst et al. 2021) 1971. All recorded eruptions in this part took place in historic times.~~ Thus, the remnant phonolitic rocks are the tips of a former land surface that are today embedded in a basaltic matrix of noticeably immature age (Garantje et al., 1998). In consequence, weathering processes on phonolites were active on longer time scales compared to ~~other~~ the surrounding rocks. In addition to petrography, differences in weathering ~~between the rock types~~ and resulting nutrient availability ~~also~~ refer to different time scales of exposure. ~~A h~~Higher nutrient availability enables higher plant abundances and larger plant size. Porder et al. (2004) found comparable conditions at a catena of different rock ages in the Hawaiian Islands.

Compared to basaltic lava outcrops, phonolites differ in their chemical composition and, additionally, in colour, texture, density, weathering, and formation fracturing (von Fragstein et al., 1988). ~~We observed t~~Tafoni-weathering (Formoso et al., 1989) ~~can be observed~~ on ~~some~~ phonolitic surfaces, indicating temperature and moisture gradients between the surface and the solid body of rocks (Brandmeier et al., 2011) ~~combined that appear in combination~~ with wind exposure. Circulating leachate reaches the rock's surface and evaporates, exposing its dissolved mineral content and enabling the development of secondary mineral assemblages (Spürgin et al., 2019). ~~These that~~ can contribute to plant nutrient supply, ~~which is also why (Faccini et al., 2015, showed the effectiveness of~~ ground phonolite rock powder ~~can be used~~ as ~~an effective~~ fertilizer (Faccini et al., 2015).

For phonolites, increased release of nutrients can be mediated by bioweathering actions and plants receiving this fertilizer showed higher productivity and increased accumulation of the macronutrient potassium ~~and of non-essential silicate~~ in plants could be detected when applying phonolite rock powder (Tavares et al., 2018; Nogueira et al., 2021). Phonolites and the related larger-grained nepheline syenites contain significantly larger amounts of the essential nutrient potassium (see A16 for a literature overview). Even if quantitatively small, such processes are of particular importance at nutrient-poor sites. In contrast, the young basalts in the southern part of La Palma are barely weathered (Carracedo et al., ~~1999~~2004), appearing rough and friable with sharp spikes. We expect these petrographic and geochemical differences of parent material to affect vegetation cover and species occurrences.

Geologic outcrops, such as phonolites, increase microenvironmental heterogeneity, enhancing species richness at a landscape scale (Hjort et al., 2015). Increased speciation rates on isolated outcrops of scarce rocks are thought to lead to a higher percentage of endemic species than the surrounding matrix (Ricketts, 2001). Geodiversity may thus promote both species richness and endemism. However, relatively little is known about the extent to which phonolites promote species diversity in general and particularly endemism. To approach this topic theoretically,

Phonolitic outcrops ~~are~~ could be considered as small habitat islands within a basaltic matrix (Fig. 1b). The established 'species-area relationship' (SAR) and the 'species-isolation relationship' (SIR) (MacArthur & Wilson, 1967; Rosenzweig, 1995; Giladi et al., 2014) predict a smaller number of species on these small and isolated phonolitic rocks in comparison with basaltic rock outcrops in their surroundings. (From the beginning (MacArthur & Wilson, 1967), such concepts were not only meant for real islands but instead took 'islands' as examples for isolated habitats (or habitat islands) within a terrestrial landscape matrix.) However, the expected higher availability of nutrients would give such habitats more favourable conditions for plant growth. Besides, it is by no means certain that the phonolitic rocks were permanently separated from each other in southern La Palma's geological evolution. Possibly, a historically much larger phonolitic rock is today largely buried by basaltic eruptions (Garantje et al., 1998). Thus, a few phonolite outcrops may serve as refugia for remnant populations (Eriksson, 1996) of species specialised to phonolitic rocks.

We aim to ~~address this knowledge gap by~~ investigating plant species richness and abundance on phonolites compared to surrounding basaltic lavas. To this end, we investigated the occurrences and traits of plant species in a comparative study matching basaltic and phonolitic rock formations on the island of La Palma.

La Palma hosts 1549 vascular plant species that are endemic to the archipelago and 479 single island endemics (hereafter SIEs) (Beierkuhnlein et al. 2021). The ~~hyper~~-endemic plant species *Cheirolophus junonianus*; (Svent.) Holub, comprising its var. *junonianus* and var. *isoplexiphyllus*; (Svent.) G.Kunkel (Vitaes et al., 2014a; 2014b. Beierkuhnlein et al. 2021), occurs within a range of only 3500 m², solely on La Palma (Bañares et al., 2004). Within this small range, individuals of this species occur

135 only on a few outcrops, which are almost exclusively phonolitic rocks with a chemical composition different from most of the
surrounding substrates. Therefore, the species is very restricted in its range size to just a few small locations (Muer et al., 2016;
Atlantis, 2021) and appears to be restricted to phonolites (Fig. 1a). [This example species evokes the question if phonolites are
of special importance for endemic species in the Canary Islands.](#)



140 **Figure 1: The endemic *Cheirolophus junonianus* (a, bottom-left) and further plant species on a phonolite rock (© Severin Irl). Aerial
image of rocks of phonolites isolated in a basaltic matrix in southern La Palma (b, © Google Earth 2020).**

145 **Geologic outcrops, such as phonolites, increase microenvironmental heterogeneity, enhancing species richness at a landscape
scale (Hjort et al., 2015). Increased speciation rates on isolated outcrops of scarce rocks are thought to lead to a higher
percentage of endemic species than the surrounding matrix (Ricketts, 2001). Geodiversity may thus promote both species
richness and endemism. However, relatively little is known about the extent to which phonolites promote species diversity in
general and particularly endemism. We aim to address this knowledge gap by investigating plant species richness and
abundance on phonolites compared to surrounding basaltic lavas.**

150 **Phonolitic outcrops act as small habitat islands within a basaltic matrix (Fig. 1b). The established ‘species-area relationship’
(SAR) and the ‘species isolation relationship’ (SIR) (MacArthur & Wilson, 1967; Rosenzweig, 1995; Giladi et al., 2014)
predict a smaller number of species on these small and isolated phonolitic rocks in comparison with basaltic rock outcrops in
their surroundings. (From the beginning (MacArthur & Wilson, 1967), such concepts were not only meant for real islands but
instead took ‘islands’ as examples for isolated habitats (or habitat islands) within a terrestrial landscape matrix.) However, the
155 expected higher availability of nutrients would give such habitats more favourable conditions for plant growth. Besides, it is
by no means certain that the phonolitic rocks were permanently separated from each other in southern La Palma’s geological
evolution. Possibly, a historically much larger phonolitic rock is today largely buried by basaltic eruptions (Garantje et al.,
1998). Thus, a few phonolite outcrops may serve as refugia for remnant populations (Eriksson, 1996) of species specialised to
160 phonolitic rocks.**

We investigated the occurrences and traits of plant species in a comparative study matching basaltic and phonolitic rock formations on La Palma of comparable size, shape and extent to test the following hypotheses:

165 i. Species diversity: We expect plant species richness on phonolitic rocks to be higher than on basaltic rocks because phonolites offer more favourable plant growth conditions.

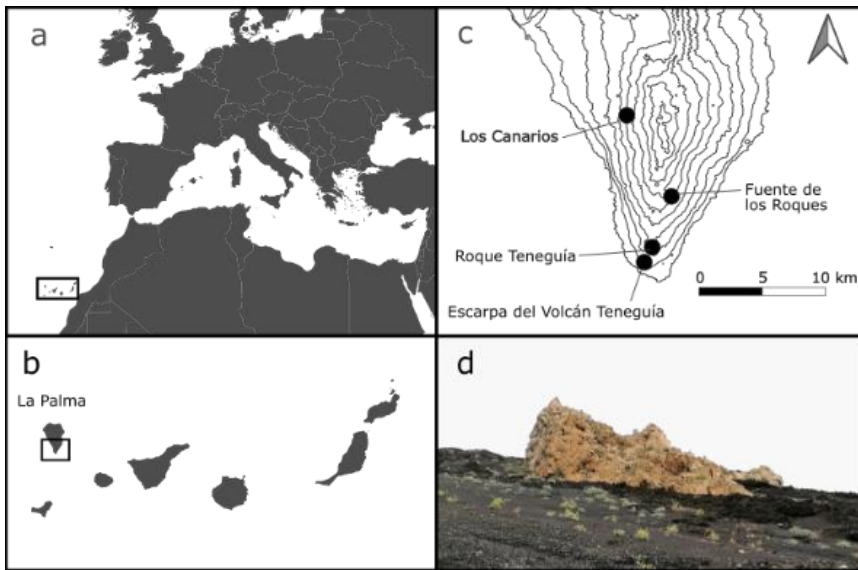
170 ii. ~~Species reproductive fitness~~Plant performance: Plant species populations on phonolites show a larger abundance of individuals that are taller and have greater canopy diameter than neighbouring basalts due to their advantages in resource availability and porosity. ~~We used plant performance. Plant height and canopy diameter were used as proxies for aboveground resource allocation and ultimately~~ as a surrogate for plant fitness.

175 iii. Island endemism: We expect phonolitic rocks to host more endemic plant species than basaltic rocks because of their high degree of spatial isolation, in combination with the older age of the phonolitic bedrock than the basaltic matrix.

2 Methods

2.1 Study site and data sampling

180 We sampled four phonolitic and four adjacent basaltic rocks in the southern part of La Palma in spring 2018 (Walentowitz et al., submitted2021; Fig. 2). Locations were identified in the field based on Middlemost (1972). The sampled phonolitic rocks represented most of the overall extent of this habitat on the island, covering a large gradient of microclimate, aspect (~~northernness and easternness~~), and inclination. ~~Unfortunately, local climate data are not available for the individual plots, nor for the sites. Interpolated modelmodelled climate data (Karger et al., 2017) show only small variations in temperature and precipitation values for our study sites (Appendix A27).~~ We chose comparable neighbouring pairs of phonolite and basalt consisting of one cohesive rock formation each. Outcrop pairs were chosen to match the size and microclimatic conditions 185 (aspect, slope). For each selected phonolitic and basaltic rock, we recorded plant species composition and abiotic parameters within 15 plots of 2 m x 2 m that were randomly selected within the range of accessibility on ~~the~~ phonolite and basalt. This resulted in a total of 120 plots sampled across the four pairs of phonolitic and basaltic rocks (60 plots on phonolite and 60 plots on basalt ~~in total~~).



190 **Figure 2:** Location of the Canary Islands (a) and La Palma (b). Southern La Palma with our 4 study sites and contour lines at 200
 195 m intervals (c). Phonolite rock on Southern La Palma downwards slopes of the “Roque Teneguía”, located in a basaltic matrix (d,
 © Anna Walentowitz).

Within each plot, we recorded coordinates, aspect (~~northness and eastness~~), and slope inclination. Then, we estimated rock
 195 surface rugosity using thread transects spanning the two plot diagonals: we measured the transect length along the 3D-rock
 surface (Walentowitz et al. 2021). Larger values of rugosity indicate higher levels of microtopography (cracks, hollows, uneven
 slope), while low values indicate smooth, even surfaces.

All vascular plant species within each plot, including ferns, were identified following the taxonomy of Beierkuhnlein et al.
 200 (2021) that use “Plants of the World online” (POWO, 2019) as a taxonomic backbone. The biogeographic status of each species
 (single-island endemic, multi-island endemic, non-endemic native and introduced) is based on Muer et al. (2016) (see extensive
 plant list in Appendix A44). The number of individuals per species and plot was counted.

-Plant height (length from base of the stem to the tip) and canopy diameter (widest part of the plant parallel to the ground) of
 205 all single individuals found were measured as traits. Height, diameter, and species abundances were measured for all vascular
 plant species. As plant communities were dominated by perennial species, we can expect to ensure that vegetational differences

evolved through long-term processes and did not reflect the short-term variability of environmental conditions ~~for this plant community dominated by perennial species~~. We are aware that ~~there is a serious debate on the trade-off between different functional traits and their effect on plant fitness/growth responses~~. However, we assume that height and diameter are good proxies for different components such as survival and reproduction that contribute to plant fitness (Laughlin et al., 2020). We furthermore know that numbers of flowers and seeds might be more accurate to measure ~~reproductive fitness when and~~ monitoring plants over the course of an entire reproductive cycle, but we chose plant height and width as proxies as these can be measured ~~within a short time frame at the same time~~.

Lichen cover, which is abundant on the basalt, was estimated as the percent cover of each plot. Moss cover was negligible in all the plots.

2.2 Statistical analysis

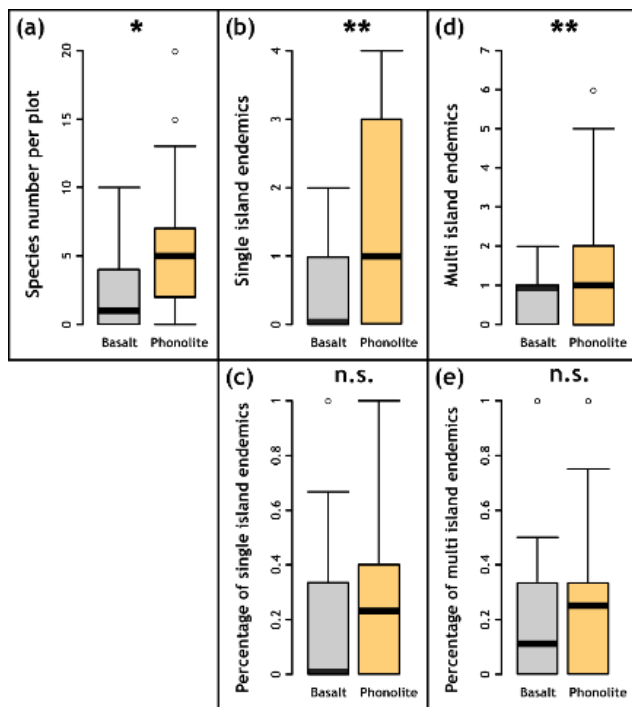
Differences in total plant species number and the number of single and multi-island endemics were analysed using Pearson's Chi-squared tests. Percentages of abundance, plant height, diameter, and SIE percentage between plots on phonolites and basalt were analysed using Mann–Whitney U tests. We conducted detrended correspondence analysis (DCA) to investigate the multidimensional aspects of vegetation composition and identify potential fundamental ~~underlying~~ drivers (Appendix A53). ~~Afterwards, we applied a posthoc permutation test (10,000 repetitions) between the environmental variables (substrate, inclination, aspect and relief) and the DCA ordination axes (Appendix A64)~~. We tested for differences in aspect, inclination, rock surface rugosity and lichen cover between phonolite and basalt using Mann–Whitney U tests.

3 Results

We recorded 68 species of vascular plants (pteridophytes and spermatophytes) overall. Of these species, nine were Single Island Endemics (SIE) restricted to the island of La Palma, 16 were Multi Island Endemics (MIE) co-occurring also on other islands in the archipelago, 39 were non-endemic natives, and 4 were non-natives. The SIE *Cheirolophus junonianus* was only found on phonolite, and most individuals of var. *junonianus* occurred on one isolated outcrop (Roque Teneguía) and individuals of var. *isoplexiphyllus* on another one (Escarpa del Volcán Teneguía, Fig. 2c).

We found higher plant species richness on phonolitic rocks. While 22 species were encountered on both phonolite and basalt, only eleven species were restricted to basalt, but 34 were recorded only on phonolite (Appendix A34). Endemism groupings showed similar patterns (SIEs – phonolite: 9, basalt: 5; MIEs – phonolite: 15, basalt: 6). Besides the total number of plant species per rock type, we also found higher species richness on phonolite at the plot scale ($p = 0.0164$, Fig. 3 a), and higher diversity of SIEs ($p = 0.00151$, Fig. 3 b) and MIEs ($p = 0.00727$, Fig. 3 d). The percentage of SIEs ($p = 0.1928$, Fig. 3 c) and

MIEs ($p = 0.05346$, Fig 3 e) relative to total species number did not differ significantly at this scale between phonolitic and basaltic rocks.



240 Figure 3: Perennial species per 2 x 2 m plot for basaltic ($n = 60$) and phonolite substrates ($n = 60$). a) The number of species per phonolite plot is significantly larger than for basaltic plots. b) Phonolites have significantly more single island endemics (SIE) and (d) multi-island endemics. However, the numbers of endemic species relative to the total number of species do not differ significantly between substrates (c, e). All analyses were conducted with Pearson's Chi-squared test (a, b, c) and the Mann-Whitney U test (c, e).

245 On phonolitic rocks, we did not find higher total plant abundance ($p = 0.169$, Fig. 4 a). Moreover, there was no significant difference in abundance when only considering the 23 species found in plots on both substrates ($p = 0.179$, Fig. 4 b).

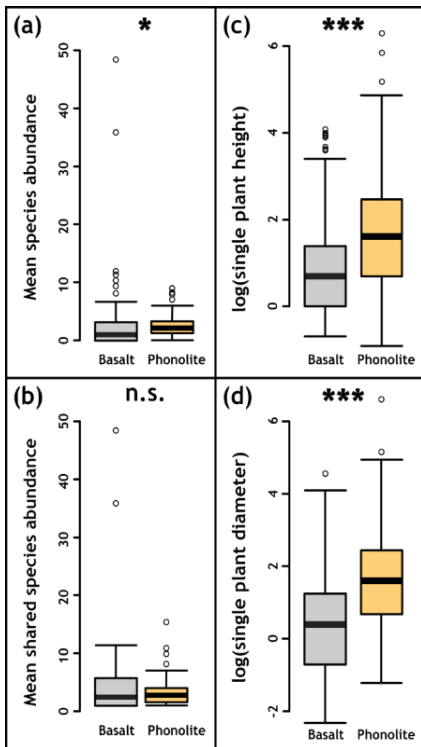


Figure 4: a) Mean abundance differs significantly between basaltic (n = 60) and phonolite substrates (n = 60), but b) considering only shared species on both substrates resulted in no significant difference between basalt (n = 39) and phonolite (n = 51). c, d) Plant height and diameter (both log₁₀-transformed) are significantly larger on phonolite plots (n = 1560) than on basaltic plots (n = 1173). Plot size: 2 x 2 m. All analyses were conducted with the Mann–Whitney U test.

250

For plant species recorded on both rock types, individuals were on average taller and had wider canopies (Fig. 4c-d) on phonolitic than on basaltic rocks (Fig. 4c-d).

255

Plant cover only (excluding lichens) was also significantly higher ($p < 0.0001$, Appendix A42a) on phonolites than on basalt. Lichen cover did not show a significant difference ($p = 0.548$, Appendix A42b).

260 The ordination did not show any difference in the species composition, indicating no aspects of beta-diversity at all (Appendix
A53 & A64). Topographic characteristics of basalt and phonolite plots showed no differences in surface rugosity, aspect
(northernness, easternness), or differences in slope inclination (Appendix A754).

4 Discussion

265 ~~Phonolites host distinct vegetation compared to equivalent areas of neighbouring basaltic rocks.~~ The vegetation on phonolitic
rocks ~~differs compared to equivalent neighbouring basaltic rocks by~~ is characterized by exhibiting higher species richness and
higher reproductive fitness of plant individuals and higher total plant cover. Higher numbers of single- and multi-island
endemism on phonolites also reflect augmented total species numbers on this rock type.

270 Phonolite rocks on La Palma and other oceanic islands are arranged as habitat islands in a basaltic matrix (Fig. 1b). On La
Palma, the total area of phonolite outcrops is tiny compared ~~with to~~ the area of the basaltic matrix. Thus, encountering more
species on phonolites than on basalt aligns with our hypotheses but ~~defines~~ the area effect on species richness, which predicts
species number to be lower in the phonolite habitat. ~~Differences in species numbers might be accounted to lower-than-expected
species growing on basalt or on higher-than-expected species numbers on phonolites. This makes the greater number on
phonolite even more remarkable. However, o~~ Our findings are congruent with studies, which did not find a species-area
relationship or relationships with a less steep slope on habitat islands (Matthews et al., 2016; Deák et al., 2018). Reasons might
275 be unrealised niches due to unsaturated evolutionary dynamics in this young and isolated system. Environmental filters (Liu
et al., 2020) enhancing growth conditions on phonolite outcrops may also exist, consistent with our findings that ~~the~~ plants are
larger on phonolites. ~~Characteristics of rocks include, amongst others, texture, appearance, colour (potentially translating into
differing rock surface temperature), fracture, streak and; hardness and more. Several FollowingConsequently,~~ mutually non-
exclusive drivers may explain the ~~observed~~ phenomenon: 1) chemistry 2) age and 3) phonolite-specific surface texture and
280 colour (as a proxy for rock surface temperature). 2) colour temperature, 3) chemistry, and 4) age.

285 1) We observed deeper fractures in phonolitic rocks than in other volcanites on La Palma Island. Besides, phonolitic rocks
show a much smoother surface roughness than their surrounding matrix. Basaltic rocks seem to possess a more dynamic relief,
mainly attributed to their origin in congealed lava flows, typically found on oceanic islands. When testing rock surface rugosity,
there were no significant differences between phonolitic and basaltic rocks. Hence, we argue that surface texture does not play
a role for higher plant growth response, richness and abundance observed on phonolites.

290 2) Most phonolitic rocks in a basaltic matrix are visually brighter than basalt. We expected that phonolites hold a higher albedo
than surrounding rocks and therefore expected them to have a reduced surface temperature compared to volcanic outcrops with
darker colouring, such as basalt. However, in an experiment with differently coloured bricks Hall et al. (2005) showed that the

albedo of white surfaces only leads to significantly lower temperature of the material when the surface temperature falls below air temperature. With monthly temperatures between 17 and 25° C within large areas of oceanic islands (Harter et al., 2015), no major temperature differences between basalt and phonolite surfaces can be expected. We therefore consider that this effect has no major impact on plants' habitat suitability.

295

31) ~~Grain size and~~ the rather porphyric arrangement of phonolites imply ameliorating plant growing conditions on this rock type. The chemical composition of phonolites has been described as nutrient-rich as it has traditionally been ground up and used as an inorganic fertilizer (von Wilpert & Lukes, 1998; Ramos et al., 2006; Schoen et al., 2016). Phonolites consist of the potassium-rich nepheline, which dissolves much faster than other potassium sources (Manning, 2010~~09~~). This may explain increased plant growth on phonolites. Weathering processes may act as driving forces for the establishment and germination of plants as they increase plant-available nutrients on these outcrops. Since ground phonolitic rock fertilizer is used to provide crops and trees with potassium (von Wilpert & Lukes, 1998; Schoen et al., 2016), plants growing on phonolites might profit from this rock characteristic. Basaltic rock powder has also been used as fertilizer in rare cases but according to Manning (2010) this is mainly due to geologically unclear assignments (potassium-rich trachyte is often assigned to basalt). ~~Other studies state that nutrient availability on basalt can be part of a feedback cycle where weathering releases essential nutrients that are key for plants to survive but the occurrence of plants on basalt can also lead to higher availability of macronutrients (Ca, Magnesium, K), micronutrients (Fe), and non-essentials like Si and Na (Hinsinger et al., 2001).but according to Manning (2009) this is mainly due to geologically unclear assignments (potassium-rich trachyte is often assigned to basalt). Furthermore, he points out that~~ Although basalt and phonolite have both been reported to enhance nutrient conditions for plants, basalt was ~~reportetreported~~ is to be another a potential but smaller source of potassium than phonolite (Manning 2010). Additionally, phonolite rocks in Southern La Palma are several hundred years older than the surrounding basalt (Carracedo et al. 1999) and have thus been exposed to weathering for longer timescales.

300

305

310

315

320

42) The age of geological formations influences plant diversity and species composition (Whittaker et al., 2008; Hulshof & Spasojevic, 2020). As noted in previous studies (Carracedo et al., ~~19992004~~), the Cumbre Vieja rift on La Palma has evolved throughout several eruptions and therefore contains lava formations from different ages as well as slightly different mineralogical compositions. The current volcanic activity and lava flows at the Cumbre Vieja are a live example of this geological process (Pankhurst et al. 2021). The known phonolite rocks on La Palma are located in the geologically young southern part of the island. Consequently, we can assume that they are all in a stage of high ecological opportunities resulting in unsaturated niches (Whittaker et al. 2008). An interplay between erosion-driven uncovering of lava-covered phonolite rocks and new lava flows may strongly influence the vegetation on those rocks. We observed partly buried phonolites on which the survival of plants or seedlings during volcanic events was improbable (Garantje et al., 1998). Carracedo et al. (~~19992004~~) showed that the last phonolite formation occurred in 1585, while there have been basaltic outbreaks until ~~1977~~ now (Pankhurst

325 [et al. 2021](#)). Thus, age differences between phonolitic and basaltic outcrops might influence plant composition and
performance. ~~A geological map provided by Carracedo et al. (2001) shows that most phonolitic rocks surrounded by lava flows
are much older than 1585. The younger age of basaltic rocks might have the consequence that evolutionary time-scales were
too short, niches remain empty, and basaltic outcrops host less species compared phonolites. In any case, the age of the
substrate is significantly influencing the species numbers and plant performance. In addition, species composition might also~~
330 ~~be influenced by age differences of underlying rock material as 19 species including *Cheirolophus junonianus* with its var.
junonianus and var. *isoplexiphyllus* can solely be encountered on phonolitic rocks (Muer et al., 2016). Interestingly, overall
vegetation on phonolites cannot be considered to be distinct from basalt and these phonolite-specific species do not majorly
drive vegetation patterns on this rock type. However, it is well known that habitat diversity on islands leads to higher species
richness (Hortal et al., 2009). Phonolites offer an additional habitat for plants to grow on and hereby contribute to plant species
richness on La Palma (Irl et al., 2015).~~

335 ~~3) Besides petro-chemical characteristics and rock age, the surface structure and colour of phonolites might be suspected to
drive plant patterns on such rocks. We observed deeper fractures in phonolitic rocks than in other volcanites on La Palma.
Besides, phonolitic rocks show in the field a much smoother surface roughness than their surrounding matrix. Basaltic rocks
seem to possess a more dynamic relief, mainly attributed to their origin in congealed lava flows, typically found on oceanic
islands. Nevertheless, when testing rock surface rugosity, there were no significant differences between phonolitic and basaltic
rocks. Hence, we argue that surface characteristics do not play a role for higher plant growth response, richness and abundance
observed on phonolites. Besides fractures, another visual observation was that phonolites are of lighter colour than their
surrounding basaltic matrix. We expected that phonolites hold a higher albedo than surrounding rocks and therefore expected
340 them to have a reduced surface temperature compared to volcanic outcrops with darker colouring, such as basalt. However, in
an experiment with differently coloured bricks Hall et al. (2005) showed that the albedo of white surfaces only leads to
significantly lower temperature of the material when the surface temperature falls below air temperature. With monthly
temperatures between 17 and 25° C within large areas of oceanic islands (Harter et al., 2015), no major temperature differences
between basalt and phonolite surfaces can be expected. We therefore consider that this effect has no major impact on plants'
345 habitat suitability.~~

350 ~~While rock chemistry and age seem to increase species numbers on phonolites, these rock characteristics do not lead to higher
percentages of endemic plants or a compositional distinct vegetation. The differential geology itself results in a specialized
flora of those habitat islands (Krueckerberg, 1991). Even though the hyper-endemic *Cheirolophus junonianus* with its two
varieties var. *junonianus* and var. *isoplexiphyllus* is confined to phonolites, the percentage of single island endemics on
phonolites was not significantly higher, refuting our expectations, though the numbers of endemic species were significantly
355 higher. Lessons learned from other outcrops (Krueckerberg, 1991) cannot be applied to phonolitic rocks on La Palma, and the
functioning of phonolites as islands of speciation within a sea of basalt does not seem to apply. However, aAs most individuals~~

of the typical variety of *Cheirolophus junonianus* occur on one isolated outcrop and individuals of var. *isoplexiphyllus* on another one (personal observation), ~~it could be supposed~~~~suspected~~ ~~that~~ a very local allopatric speciation by adaptive radiation or an ongoing genetic drift could be the underlying cause (Vitales et al., 2014a; 2014b). ~~Thus, the differential geology of phonolites itself does not results in a specialized flora of habitat islands, contrary to e.g., Kruckerberg (1991), and populations of *Cheirolophus junonianus* have to~~ ~~must~~ be seen in another context. ~~However,~~ ~~e~~ ~~C~~ ~~onsidering the geologic history of the islands South (Garantje et al., 1998) it is a more~~ ~~One~~ possible explanation ~~for~~ ~~that~~ this singularity presumes ~~that~~ *Cheirolophus junonianus* belongs to a relict population of plants that were once widely distributed on phonolitic rock before these were covered mainly ~~by~~ ~~in~~ ~~a~~ ~~basaltic~~ ~~matrix~~. ~~Consequently, lessons learned from other outcrops (Kruckerberg, 1991) cannot be adapted to the phonolitic rocks on La Palma, and the functioning of phonolites as islands of speciation within a matrix of basalt does not seem to apply.~~ ~~However, considering *Cheirolophus junonianus* to be a remnant plant population on phonolites raises, on the one hand, the question if the species might increase community resilience and ecosystems stability, including nutrient cycling, as hypothesized by Eriksson (2000) for remnant populations in general. On the other hand, possible extinction debts might lead to the disappearance of the species in the future and only the continuous monitoring of these populations can help to answer these questions. Species composition might be influenced by age differences of underlying rock material as 19 species inclusive like *Cheirolophus junonianus* and its var. *junonianus* and var. *isoplexiphyllus* can solely be encountered on phonolitic rocks (Muer et al., 2016). ~~However,~~ ~~It~~ is well known that habitat diversity on islands leads to higher species richness (Hortal et al., 2009). Phonolites offer an added habitat for plants to grow on and contribute to plant species richness and endemism on La Palma (Irl et al., 2015).~~

Formatiert: Schriftart: Kursiv

Formatiert: Schriftart: Kursiv

Formatiert: Schriftart: Nicht Kursiv

When looking at the role of geologic promotion of biodiversity, there are several studies addressing serpentinite rocks and serpentine soils. On those rocks and soils, ~~considerable amounts of toxic heavy metals~~; low amounts of essential nutrients (N, K, and P), and a low calcium-to-magnesium ratio relate to high rates of endemism and a specialized flora (Chiarucci, 2003; Harrison et al., 2006). These serpentinite-tolerating species are restricted to a harsh environment by dominant competitors in a less harsh matrix. On phonolitic rocks, more favourable growing conditions resulting in higher plant richness and abundances seem to prevail. Compared to serpentinite rock studies, the surrounding matrix is built up by the potentially harsher basaltic rocks resulting in lower plant growth response.

The geological history of basaltic rocks depends on a series of different volcanic eruptions, assuming a more considerable chemical variability, whereas phonolites seem to build upon one or just a few volcanic events (Carracedo et al., ~~1999~~~~2004~~). The long chronology of volcanic eruptions on the Canary Islands and their ancestors reveals a high likeliness that most of the eruptions resulted in basaltic, only a few in phonolitic formations. Plants growing on basalt experienced larger environmental gradients since basalt is omnipresent on the islands. Contrasting, plants growing only on phonolites did not experience larger environmental gradients. ~~In accordance, we observed plants on basaltic rocks to be more generalist than plants on phonolitic rocks.~~

We are not aware of other studies conducted in locations where phonolites can be encountered that explore their potential role as exceptional plant habitat islands, even though phonolites can be found all over the world (Garcia et al., 1986; Ackerman et al., 2015; Hagos et al., 2017). Therefore, further investigation is needed to ~~figure out~~ investigate whether the patterns encountered on La Palma may also be found on comparable phonolitic rocks in other areas of the world. Their benefits for biodiversity found in this study need to be recognized and valued. Especially for isolated areas such as islands, phonolites can contribute to small-scale biodiversity hotspots and our findings suggest that they should be conserved.

5 Conclusion

Phonolites provide unique habitat conditions for plants on oceanic islands ~~and exhibit distinct vegetation~~ compared with surrounding areas. Higher species numbers and abundances as well as higher plant ~~growth responses~~ performance underline the importance of these rocks for the vegetation on ~~these oceanic~~ islands ~~which are globally dispersed~~ spread all over the world. Despite the small total area covered by phonolites they play a significant role in enhancing plant biodiversity on the island of La Palma. Our results suggest that exceptional rock outcrops like phonolites contribute to a better understanding of the ~~distribution-formation of~~ and plant diversity drivers on volcanic islands ~~such as La Palma, through exceptional rock outcrops like phonolites~~. As oceanic islands have always been formed through volcanic activity on the oceanic crusts, the combination of basaltic and phonolitic rocks is highly likely a regular pattern in Earth history.

Appendix

A1: References of selected chemical components of basaltic and phonolitic substrates. B) indicates basaltic substrats or treatments, P) phonolitic and N) nepheline svenite (phonolite equivalent with larger grain size) ones.

Study	System/ study	Ca	Mg	K	Mn	P	Fe
Roqueto do Reis (2021; thesis)	Substrate used in experiments	B) 8.54% P) 1.76% CaO	B) 4.74% P) 0.32% MgO	B) 1.25% P) 8.05% K ₂ O	B) 0.21% P) 0.25% MnO	B) 0.42% P) 0.07% P ₂ O ₅	B) 14.82% P) 3.87% Fe ₂ O ₃
Garcia et al. (1986)	Field work (Kaula Isl.)	P) 1.74% CaO	P) 1.93% MgO	P) 4.48% K ₂ O	P) 0.31% MnO	P) 0.64% P ₂ O ₅	P) 3.33% Fe ₂ O ₃ ; P) 1.74% FeO
Hagos et al. (2017)	Field work (Axum)	P) 1.12% CaO	P) 0.05% MgO	P) 4.94% K ₂ O	P) 0.30% MnO	P) 0.04% P ₂ O ₅	P) 5.47% Fe ₂ O ₃

Formatiert: Schriftart: 9 Pt.

Formatierte Tabelle

Manning (2010)	Review	B) 9.47% N) 2.31% CaO	B) 6.73% N) 0.77% MgO	B) 1.10% N) 5.58% K ₂ O	B) 0.20% N) 0.15% MnO	B) 0.35% N) 0.13% P ₂ O ₅	B) 3.79% N) 2.25% Fe ₂ O ₃ B) 7.13% N) 2.05% FeO
----------------	--------	-----------------------------	-----------------------------	--	-----------------------------	---	---

Formatiert: Spanisch (Spanien)

A2: Interpolated data from Climate models for our research sites bases on the Chelsea Climate Data (Karger et al., 2017).

Site	Annual mean temperature [C °]	Annual precipitation [mm]
Los Canarios	16.7	651
Fuente de los Roques	18.2	536
Roque Teneguía	16.5	633
Ecarpa del Volcán Teneguía	18.8	517

Formatiert: Schriftart: 9 Pt.

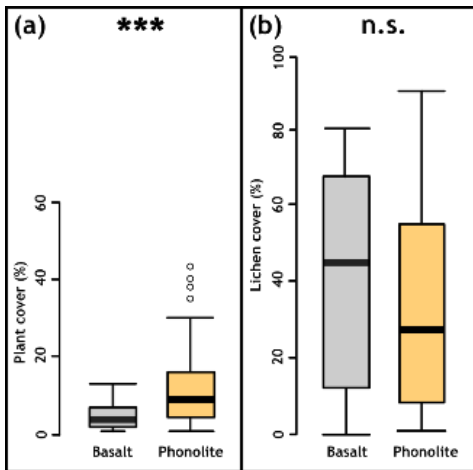
Formatierte Tabelle

415 **A3: Complete list of all study species encountered on phonolites (P) and basalt (B) including their status as single island endemic (SIE), multi-island endemic (MIE), native (nat.), and introduced (intr.). The taxonomy follows the standards of "Plants of the World online" (POWO 2019) updated and adapted to the FloCan Checklist (Beierkuhnlein et al., 2021).**

Species	Family	Rock type	Status	woody	perennial
<i>Aeonium arboreum</i> ssp. <i>holochrysum</i> (H.Y.Liu) Bañares	Crassulaceae	B/P	MIE	1	1
<i>Aeonium davidbramwellii</i> H.Y.Liu	Crassulaceae	B/P	SIE	1	1
<i>Aeonium diplocyclum</i> (Webb ex Bolle) T.H.M.Mes	Crassulaceae	B	MIE	1	1
<i>Aichryson bollei</i> Webb ex Bolle	Crassulaceae	P	SIE	0	1
<i>Aira caryophylla</i> L.	Poaceae	B/P	nat.	0	0
<i>Allium canariense</i> (Regel) N.Friesen & P.Schönfelder	Amaryllidaceae	P	MIE	0	1
<i>Anogramma leptophylla</i> (L.) Link	Pteridaceae	B	nat.	0	0
<i>Anthoxanthum odoratum</i> L.	Poaceae	P	nat.	0	1
<i>Arabidopsis thaliana</i> (L.) Heynh.	Brassicaceae	B/P	nat.	0	0
<i>Arenaria leptocladus</i> (Rchb.) Guss.	Caryophyllaceae	B/P	nat.	0	0
<i>Argyranthemum haouarytheum</i> Humphries & Bramwell	Asteraceae	P	SIE	1	1
<i>Astydamia latifolia</i> (L.f.) Baill.	Apiaceae	P	nat.	1	1
<i>Bituminaria bituminosa</i> (L.) C.H.Stirt.	Fabaceae	P	nat.	1	1
<i>Brassica oleracea</i> L.	Brassicaceae	B	intr.	0	1
<i>Bystropogon origanifolius</i> var. <i>palmensis</i>	Lamiaceae	B/P	SIE	1	1
<i>Cardamine hirsuta</i> L.	Brassicaceae	B	nat.	0	0
<i>Cheirolophus junonianus</i> (Svent.) Holub	Asteraceae	P	SIE	1	1
<i>Cosentinia vellea</i> ssp. <i>bivalens</i> (Reichstein) Rivas Mart. & Salvo	Pteridaceae	B/P	nat.	0	1
<i>Crassula campestris</i> (Eckl. & Zeyh.) Endl.	Crassulaceae	B	intr.	0	0

<i>Davallia canariensis</i> (L.) Sm.	Davalliaceae	B/P	nat.	0	1
<i>Echium brevirame</i> Sprague & Hutch	Boraginaceae	B/P	SIE	1	1
<i>Erica arborea</i> L.	Ericaceae	P	nat.	1	1
<i>Erigeron bonariensis</i> L.	Asteraceae	P	nat.	0	0
<i>Erodium botrys</i> (Cav.) Bertol.	Geraniaceae	P	nat.	0	0
<i>Festuca muralis</i> Kunth	Poaceae	B	nat.	0	0
<i>Filago germanica</i> (L.) Huds.	Asteraceae	B	nat.	0	0
<i>Galium aparine</i> L.	Rubiaceae	B/P	nat.	0	0
<i>Geranium molle</i> L.	Geraniaceae	P	nat.	0	0
<i>Geranium purpureum</i> Vill.	Geraniaceae	P	nat.	0	0
<i>Hemionitis gluckuk</i> Christenh.	Pteridaceae	P	nat.	0	1
<i>Hemionitis guanchica</i> (Bolle) Christenh.	Pteridaceae	B/P	nat.	0	1
<i>Holcus lanatus</i> L.	Poaceae	P	nat.	0	1
<i>Hyparrhenia hirta</i> (L.) Stapf	Poaceae	B/P	nat.	0	1
<i>Kleinia neriifolia</i> Haw.	Asteraceae	P	MIE	1	1
<i>Lavandula canariensis</i> Mill.	Lamiaceae	P	MIE	1	1
<i>Lobularia canariensis</i> (DC.) L.Borgen	Brassicaceae	P	MIE	1	1
<i>Medicago truncatula</i> Gaertn.	Fabaceae	P	nat.	0	0
<i>Mercurialis canariensis</i> Obbard & S.A.Harris	Euphorbiaceae	P	MIE	0	0
<i>Micromeria herpyllomorpha</i> Webb & Berthel.	Lamiaceae	B/P	SIE	1	1
<i>Monanthes muralis</i> (Webb ex Bolle) Hook.f.	Crassulaceae	B/P	MIE	0	1
<i>Ononis serrata</i> Forssk.	Fabaceae	P	nat.	0	0
<i>Opuntia ficus-indica</i> (L.) Mill.	Cactaceae	P	intr.	1	1
<i>Parietaria debilis</i> G.Forst.	Urticaceae	P	nat.	0	0
<i>Paronychia canariensis</i> (L.f.) Link	Caryophyllaceae	P	MIE	1	1
<i>Periploca laevigata</i> Aiton	Apocynaceae	P	nat.	1	1
<i>Phagnalon purpurascens</i> Sch.Bip.	Asteraceae	P	nat.	1	1
<i>Pinus canariensis</i> C.Sm. ex DC.	Pinaceae	P	MIE	1	1
<i>Polycarpaea aristata</i> (Aiton) C.Sm. ex DC.	Caryophyllaceae	B/P	MIE	0	1
<i>Polycarpaea tenuis</i> Webb ex Christ	Caryophyllaceae	P	MIE	0/1	1
<i>Polypodium macaronasicum</i> A.E.Bobrov	Polypodiaceae	B/P	nat.	0	1
<i>Pteridium aquilinum</i> (L.) Kuhn	Pteridaceae	P	nat.	0	1
<i>Pterocephalus porphyranthus</i> Svent.	Caprifoliaceae	P	SIE	1	1
<i>Rubia fruticosa</i> Aiton	Rubiaceae	P	nat.	1	1
<i>Rumex bucephalophorus</i> ssp. <i>canariensis</i> (Steinh.) Rchb.f.	Polygonaceae	B	nat.	1	1
<i>Rumex lunaria</i> L.	Polygonaceae	B/P	MIE	1	1
<i>Schizogyne sericea</i> (L.f.) DC.	Asteraceae	B/P	nat.	1	1

<i>Sideritis barbellata</i> Mend.-Heuer	Lamiaceae	B/P	SIE	1	1
<i>Solanum villosum</i> Mill.	Solanaceae	P	nat.	0	1
<i>Sonchus hierrensis</i> (Pit.) Boulos	Asteraceae	P	MIE	1	1
<i>Sonchus oleraceus</i> L.	Asteraceae	B/P	nat.	0	0
<i>Stachys arvensis</i> (L.) L.	Lamiaceae	B/P	nat.	0	0
<i>Todaroa aurea</i> (Aiton) Parl.	Apiaceae	P	MIE	0	1
<i>Tolpis laciniata</i> Webb	Asteraceae	B/P	MIE	0	1
<i>Trifolium arvense</i> L.	Fabaceae	B	nat.	0	0
<i>Tuberaria guttata</i> (L.) Fourr.	Cistaceae	B	nat.	0	1
<i>Umbilicus gaditanus</i> Boiss.	Crassulaceae	B/P	nat.	0	1
<i>Valeriana dentata</i> (L.) All.	Valerianaceae	P	intr.	0	0
<i>Wahlenbergia lobelioides</i> (L.f.) Link ssp. <i>lobelioides</i>	Campanulaceae	B	nat.	0	0



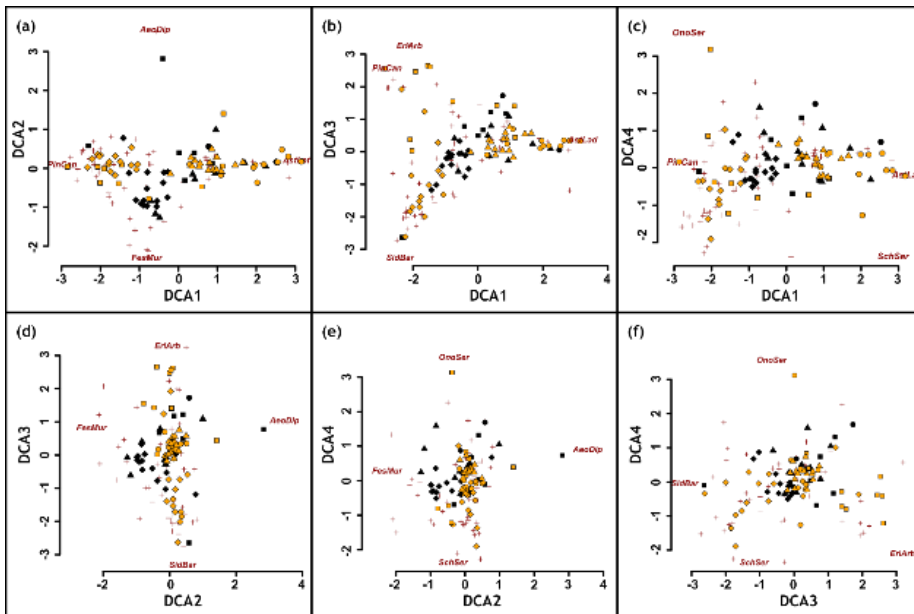
A42: Vegetation cover on basaltic and phonolite plots. (a) Plant cover showed ~~the same result~~ significant ($p < 0.001$, Mann-Whitney U test) and; (b) Lichen cover showed no significant difference between the substrates ($p > 0.05$, Mann-Whitney U test).

Formatiert: Schriftart: 9 Pt.

Formatiert: Schriftart: 9 Pt.

Formatiert: Schriftart: 9 Pt.

Formatiert: Schriftart: 9 Pt.



A53: Detrended Correspondence Analyses (DCA) shows no clear difference between phonolite and basaltic rock vegetations. Yellow dots show phonolite plots, black dots basalt plots, dark red a subset of species centroids. Species names chosen based on most extreme values along the gradients.

A64: A posthoc permutation test (10,000 repetitions) between the DCA ordination axes and the environmental variables (substrate, inclination, aspect and relief) showed no significant differences between phonolite and basalt. Obviously, the variation shown in the DCA does not depend on the substrate (but there is a relationship between northerness and the fourth dimension DCA4).

	<u>DCA1&DCA2</u>	<u>DCA1&DCA3</u>	<u>DCA1&DCA4</u>	<u>DCA2&DCA3</u>	<u>DCA2&DCA4</u>	<u>DCA3&DCA4</u>
<u>Substrate</u>	<u>p = 0.623</u>	<u>p = 0.503</u>	<u>p = 0.768</u>	<u>p = 0.289</u>	<u>p = 0.959</u>	<u>p = 0.439</u>
<u>Inclination</u>	<u>p = 0.490</u>	<u>p = 0.946</u>	<u>p = 0.315</u>	<u>p = 0.523</u>	<u>p = 0.108</u>	<u>p = 0.365</u>
<u>Northerness</u>	<u>p = 0.914</u>	<u>p = 0.526</u>	<u>p = 0.032</u>	<u>p = 0.875</u>	<u>p = 0.933</u>	<u>p = 0.921</u>
<u>Easternness</u>	<u>p = 0.293</u>	<u>p = 0.564</u>	<u>p = 0.310</u>	<u>p = 0.429</u>	<u>p = 0.213</u>	<u>p = 0.426</u>
<u>Rugosity</u>	<u>p = 0.212</u>	<u>p = 0.387</u>	<u>p = 0.324</u>	<u>p = 0.875</u>	<u>p = 0.933</u>	<u>p = 0.921</u>

A754: Environmental plot characteristics. Inclination on phonolites was (despite efforts to sample similar environments) significantly higher than on basalt. Components of exposition (northerness and easternness) and rugosity showed no significant differences (unpaired Whitney test).

	Rugosity (m)	Northernness	Easternness	Inclination (°)
Mean Basalt	3.557	0.01407	0.04970	43.0
Mean Phonolite	3.643	-0.09062	0.04303	53.8
p-Value	0.7781	0.6525	0.8827	0.0277

Code availability

Only standard tests and plotting commands in R were used for data analysis. The code is available on request from the corresponding author.

445 **Data availability**

Any data supporting the findings of this study are available within the supplementary materials of this article and were taken from Walentowitz et al. ([2021 submitted](#)).

Authors contributions

450 C.B., S.D.H.I., D.K., L.S. and A.J.W. developed the research idea, D.K., L.S. and A.J.W. conducted the field work, analysed the data and led the writing process. All authors developed the methods, discussed the results and contributed to the manuscript.

Competing interests

The authors declare that they have no conflict of interest.

Acknowledgements

455 We would like to kindly thank the technical staff of the Biogeography Department of the University of Bayreuth for supporting this study and being of immense help in the implementation of field work. The Caldera de Taburiente National Park Directorate and especially Felix Medina from the Consejería de Medio Ambiente, Cabildo de La Palma, are being thanked for permitting investigations in protected areas on La Palma and for their expertise on the local flora. This project has received funding from the European Union's Horizon 2020 research and innovation programme ECOPotential under grant agreement No 641762. The work on this study is additionally supported by the pilot mySpace in the Horizon 2020 project e-shape under
460 grant agreement No 820852.

References

- Abratis, M., Viereck, L., Pfänder, J. A. and Hentschel, R.: Geochemical composition, petrography and $^{40}\text{Ar}/^{39}\text{Ar}$ age of the Heldburg phonolite: implications on magma mixing and mingling, *Int. J. Earth. Sci.*, 104, 2033-2055, <https://doi.org/10.1007/s00531-015-1207-x>, 2015.
- 465 Ackerman, L., Ulrych, J., Randa, Z., Erban, V., Hegner, E., Magna, T., Balogh, K., Frána, J., Milos, L. and Novák, J. K.: Geochemical characteristics and petrogenesis of phonolites and trachytic rocks from the České Středohoří Volcanic Complex, the Ohře Rift, Bohemian Massif, *Elsevier Lithos*, 224-225, 256-271, <https://doi.org/10.1016/j.lithos.2015.03.014>, 2015.
- Alahuhta, J., Toivanen, M. and Hjort, J. Geodiversity–biodiversity relationship needs more empirical evidence, *Nat Ecol Evol*, 4, 2-3, <https://doi.org/10.1038/s41559-019-1051-7>, 2020.
- 470 Atlantis 2021 Biodiversity Data Bank of the Canary Islands, Gobierno de las Canarias, 2021.
- Bailey, J. J., Boyd, D. S., Hjort, J., Lavers, C. P. and Field, R.: Modelling native and alien vascular plant species richness: at which scales is geodiversity most relevant? *Glob. Ecol. Biogeogr.*, 26, 763-776, <https://doi.org/10.1111/geb.12574>, 2017.
- Bañares, A., Blanca, G., Güemes, J., Moreno, J. C. and Ortiz, S. (eds): Atlas y libro rojo de la flora vascular amenazada de España. Ministerio de Medio Ambiente, Madrid, 2004.
- 475 Barajas-Barbosa, M. P., Weigelt, P., Booregaard M. K., Keppel G. and Kreft H.: Environmental heterogeneity dynamics drive plant diversity on oceanic islands, *J. Biogeogr.*, 47, 2248-2260, <https://doi.org/10.1111/jbi.13925>, 2020.
- <https://doi.org/10.1111/jbi.13925>, 2020.
- <https://doi.org/10.1111/jbi.13925>, 2020.
- Beierkuhnlein, C., Walentowitz, A. and Welss, W.: FloCan – A revised checklist for the flora of the Canary Islands, *Diversity*, 13, 480, <https://doi.org/10.3390/d13100480>, 2021.
- 480 Brandmeier, M., Kuhlemann, J., Krumrei, I., Kappler, A. and Kubik, P. W.: New challenges for tafoni research. A new approach to understand processes and weathering rates, *Earth Surf. Proc. Land.*, 36, 839-852, <https://doi.org/10.1002/esp.2112>, 2011.
- Carracedo, J. C., Day, S. J., Guillou H. and Gravestock P.: Later stages of volcanic evolution of La Palma, Canary Islands: Rift evolution, giant landslides, and the genesis of the Caldera de Taburiente, *GSA Bulletin*, 111, 755-768, [https://doi.org/10.1130/0016-7606\(1999\)111<0755:LSOVEO>2.3.CO;2](https://doi.org/10.1130/0016-7606(1999)111<0755:LSOVEO>2.3.CO;2), 1999.
- 485 Chiarucci, A., Robinson, B. H., Bonini, I., Petit, D., Brooks, R. R. and De Dominicis, V.: Vegetation of tuscan ultramafic soils in relation to edaphic and physical factors, *Folia Geobot.*, 33, 113–131, <https://doi.org/10.1007/BF02913340>, 1998.
- Chiarucci, A.: Vegetation ecology and conservation on Tuscan ultramafic soils. *The Botanical Review*, 69, 252–268, [https://doi.org/10.1663/0006-8101\(2003\)069\[0252:VEACOT\]2.0.CO;2](https://doi.org/10.1663/0006-8101(2003)069[0252:VEACOT]2.0.CO;2), 2003.
- 490 Deák, B., Valkó, O., Török, P., Kelemen, A., Bede, A., Csathó, A. I. and Tóthmérész, B.: Landscape and habitat filters jointly drive richness and abundance of specialist plants in terrestrial habitat islands. *Landscape Ecol.*, 33, 1117-1132, <https://doi.org/10.1007/s10980-018-0660-x>, 2018.
- Eriksson, O.: Regional dynamics of plants: a review of evidence for remnant, source-sink and metapopulations. *Oikos*, 77, 248-258, [doi:10.2307/3546063](https://doi.org/10.2307/3546063), 1996.

Formatiert: Englisch (Vereinigtes Königreich)

Kommentiert [BC1]: ? 00 , early view?

Formatiert: Englisch (Vereinigtes Königreich)

Formatiert: Englisch (Vereinigtes Königreich)

Formatiert: Englisch (Vereinigtes Königreich)

Formatiert: Abstand Vor: 6 Pt., Zeilenabstand: Mehrere 1,25 ze

- 495 [Eriksson, O.: Functional rRoles of rRemnant pPlant pPopulations in cCommunities and eEcosystems. *Global Ecology and Biogeography*, 9, 443-449, <https://doi.org/10.1046/j.1365-2699.2000.00215.x>, 2000.](https://doi.org/10.1046/j.1365-2699.2000.00215.x)
- Faccini, B., Di Giuseppe, D., Malferrari, D., Coltorti, M., Abbondanzi, F., Campisi, T., Laurora, A. and Passaglia, E.: Ammonium-exchanged zeolite preparation for agricultural uses: from laboratory tests to large-scale application in ZeoLIFE project prototype, *Periodico di Mineralogia*, 84, <http://dx.doi.org/10.2451/2015PM0015>, 2015.
- 500 Field, R., Hawkins, B. A., Cornell, H. V., Currie, D. J., Diniz-Filho, J. A. F., Guégan, J. F., Kaufman, D. M., Kerr, J. T., Mittelbach, G. G., Oberdorff, T., O'Brian, E. M. and Turner, J. R. G.: Spatial species-richness gradients across scales: a meta-analysis. *J. Biogeogr.*, 36, 132-147, <https://doi.org/10.1111/j.1365-2699.2008.01963.x>, 2009.
- Formoso, M. L. L., Retzmann, K. and Valetton, I.: Fractionation of rare earth elements in weathering profiles on phonolites in the area of Lages, Santa Catarina, Brazil, *Geochimica Brasiliensis*, 3, 51-61, 1989.
- 505 Garnatje, T., Susanna, A. and Messegueur, R.: Isozyme studies in the genus *Cheirolophus* (*Asteraceae: Cardueae-Centaureinae*) in the Iberian Peninsula, North Africa and the Canary Islands. *Pl. Syst. Evol.*, 213, 57-70, <https://doi.org/10.1007/BF00988908>, 1998.
- Garcia, M., Fre, F. and Grooms, D.: Petrology of volcanic rocks from Kaula Island, Hawaii, *Contrib. Mineral. Petr.*, 94, 461-471, <https://doi.org/10.1007/BF00376339>, 1986.
- 510 Gaston, K. J.: Global patterns in biodiversity, *Nature*, 405, 220-227, <https://doi.org/10.1038/35012228>, 2000.
- Giladi, I., May, F., Ristow, M., Jeltsch, F. and Ziv, Y.: Scale-dependent species–area and species–isolation relationships: a review and a test study from a fragmented semi-arid agro-ecosystem. *J. Biogeogr.*, 41: 1055-1069, <https://doi.org/10.1111/jbi.12299>, 2014.
- Gillespie, R. G. and Roderick, G. K.: Geology and climate drive diversification, *Nature*, 509, 297-298, <https://doi.org/10.1038/509297a>, 2014.
- 515 Gray, M.: *Geodiversity. Valuing and Conserving Abiotic Nature*, John Wiley & Sons Ltd, Chichester, 2004.
- Gray, M.: Comment. Other nature: geodiversity and geosystem services, *Environ. Conserv.*, 38, 271-274, <https://doi.org/10.1017/S0376892911000117>, 2011.
- Hagos, M., Koeberl, C. and Jourdan, F.: Geochemistry and geochronology of phonolitic and trachytic source rocks of the Axum obelisks and other stone artifacts Axum, Ethiopia, *Geoheritage*, 9, 479-494, <https://doi.org/10.1007/s12371-016-0199-7>, 2017.
- 520 Hall, K., Lindgren, B. S. and Jackson, R.: Rock albedo and monitoring of thermal conditions in respect of weathering: some expected and some unexpected results, *Earth Surf. Proc. Land.*, 30, 801-811, <https://doi.org/10.1002/esp.1189>, 2005.
- Harrison, S., Safford, H. D., Grace, J. B., Viers, J. H., and Davies, K. F.: Regional and local species richness in an insular environment: serpentine plants in California, *Ecol. Monogr.*, 76, 41-56, <https://doi.org/10.1890/05-0910>, 2006.
- 525 Harrison, S. P. and Rajakaruna, N.: *Serpentine: The Evolution and Ecology of a Model System*. University of California Press, Berkeley, 2011.

530 Harter, D. E. V., Irl, S. D., Seo, B., Steinbauer, M. J., Gillespie, R., Triantis, K. A., Fernández-Palacios, J.-M. and Beierkuhnlein, C.: Impacts of global climate change on the floras of oceanic islands—Projections, implications and current knowledge. *Perspect. Plant Ecol. Evol. Syst.*, 17, 160-183, <https://doi.org/10.1016/j.ppees.2015.01.003>, 2015.

[Hinsinger, P., Fernandes Barros, O. N., Benedetti, M. F., Noack, Y., Callot, G.: Plant-induced weathering of a basaltic rock: experimental evidence. *Geochimica et Cosmochimica Acta*, 65, 137-152, \[https://doi.org/10.1016/S0016-7037\\(00\\)00524-X\]\(https://doi.org/10.1016/S0016-7037\(00\)00524-X\), 2001.](#)

Formatiert: Englisch (Vereinigtes Königreich)

Formatiert: Englisch (Vereinigtes Königreich)

535 Hjort, J., Gordon, J. E., Gray, M. and Hunter, M. L.: Why geodiversity matters in valuing nature's stage. *Conserv. Biol.*, 29, 630-639, <https://doi.org/10.1111/cobi.12510>, 2015.

Hortal, J., Triantis K.A., Meiri, S., Thébault, E. and Sfenthourakis, S.: Island species richness increases with habitat diversity. *Am. Nat.*, 174, 207-217, <https://doi.org/10.1086/645085>, 2009.

Hulshof, C. M. and Spasojevic, M.J.: The edaphic control of plant diversity. *Global Ecol. Biogeogr.*, 29, 1634-1650, <https://doi.org/10.1111/geb.13151>, 2020.

540 [Irl, S. D. H., Harter, D. E. V., Steinbauer, M. J., Gallego Puyol, D., Fernández-Palacios, J. M., Jentsch, A., and Beierkuhnlein, C. \(2015\): Climate vs. topography—spatial patterns of plant species diversity and endemism on a high-elevation island. *J. Ecol.*, 103, 6, 1621-1633, 2015.](#)

Formatiert: Deutsch (Deutschland)

Formatiert: Englisch (Vereinigtes Königreich)

545 [Karger, D., N., Conrad, O., Böhner, J., Kawohl, T., Kreft, H., Soria-Auza, R., W., Zimmermann, N., E., Linder, P., Kessler, M.: Climatology at high resolution for the Earth land surface areas, *Scientific Data*, 4, 170122, <https://doi.org/10.1038/sdata.2017.122>, 2017.](#)

Formatiert: Englisch (Vereinigtes Königreich)

Formatiert: Englisch (Vereinigtes Königreich)

Formatiert: Englisch (Vereinigtes Königreich)

Formatiert: Englisch (Vereinigtes Königreich)

Kazakou, E., Adamidis, G. C., Baker, A. J., Reeves, R. D., Godino, M., and Dimitrakopoulos, P. G.: Species adaptation in serpentine soils in Lesbos Island (Greece): metal hyperaccumulation and tolerance, *Plant Soil*, 332, 369-385, <https://doi.org/10.1007/s11104-010-0302-9>, 2010.

550 Kier, G., Kreft, H., Lee, T. M., Jetz, W., Ibsch, P. L., Nowicki, C., Mutke, J. and Barthlott, W.: A global assessment of endemism and species richness across island and mainland regions, *PNAS*, 106, 9322-9327, <https://doi.org/10.1073/pnas.0810306106>, 2009.

Kruckerberg, A. R.: An essay: Geodaphics and island biogeography for vascular plants, *Aliso*, 13, 225-238, 1991.

555 Lawler, J. J., Ackerly, D. D., Albano, C. M., Anderson, M. G., Dobrowski, S. Z., Gill, J. L., Heller, N. E., Pressey, R. L., Sanderson, E. W., and Weiss, S. B.: The theory behind, and the challenges of, conserving nature's stage in a time of rapid change, *Conserv Biol.*, 29, 618-629, <https://doi.org/10.1111/cobi.12505>, 2015.

[Laughlin, D. C., Gremer, J. R., Adler, P. B., Mitchell, R. M., and Moore M., M.: The net effect of functional traits on fitness. *TREE*, <https://doi.org/10.1016/j.tree.2020.07.010>, 2020.](#)

560 Liu, J., Möller, M., Gao, L., Poudel, R. C. and Li, D.: Geological and ecological factors drive cryptic speciation of yews in a biodiversity hotspot, *New Phytol.*, 199, 1093-1108, <https://doi.org/10.1111/nph.12336>, 2013.

Liu, J., Matthews, T. J., Zhong, L., Liu, J., Wu, D. and Yu, M.: Environmental filtering underpins the island species-area relationship in a subtropical anthropogenic archipelago. *J. Ecol.*, 108, 424-432, <https://doi.org/10.1111/1365-2745.13272>, 2020.

565 MacArthur, R. H. and Wilson, E. O.: *The Theory of Island Biogeography*. Monographs in Population Biology no. 1. Princeton University Press, Princeton, NJ, 1967.

Manning, D. A. C.: Mineral sources of potassium for plant nutrition. A review, *Agron. Sustain. Dev.*, 30, 281-294, <https://doi.org/10.1051/agro/2009023>, 201009.

Matthews, T. J., Guilhaumon, F., Triantes, K. A., Borregaard, M. K. and Whittaker, R. J.: On the form of species-area relationships in habitat islands and true islands, *Global Ecol. Biogeogr.*, 25, 847-858, <https://doi.org/10.1111/geb.12269>, 2016.

570 Middlemost, E. A. K.: San Miguel de La Palma - A volcanic island in section, *Bull Volcanol*, 34, 216-239. <https://doi.org/10.1007/BF02597787>, 1970.

Middlemost, E. A. K.: Evolution of La Palma, Canary Archipelago, *Contr. Mineral. and Petrol.*, 36, 33-48, <https://doi.org/10.1007/BF00372833>, 1972.

575 Muer, T., Sauerbier, H. and Cabrera Calixto, F.: *Die Farn- und Blütenpflanzen der Kanarischen Inseln*, Margraf Publishers, Weikersheim, 2016.

Nockolds, S. R.: Average chemical composition of some igneous rocks, *Bull. Geol. Soc. Am.*, 65, 1007-1032, 1954.

[Nogueira, T. A. R., Miranda, B. G., Jalal, A., Lessa, L. G. F., Filho, M. C. M. T., Marcante, N. C., Abreu-Junior, C. H., Jani, A. D., Capra, G. F., Moreira, A., Martins, É. d. S.: Nepheline syenite and phonolite as alternative potassium sources for maize. *Agronomy*, 11, 1385. <https://doi.org/10.3390/agronomy11071385>, 2021.](#)

580 [Pankhurst, M. J., Scarrow, J. H., Barbee, O. A., Hickey, J., Coldwell, B. C., Rollinson, G., Rodriguez-Losada, J. A., Martín-Lorenzo, A., Rodríguez, F., Hernández, W., Hernández, P. A. and Pérez, N. M.: Petrology of the opening eruptive phase of the 2021 Cumbre Vieja eruption, La Palma, Canary Islands, <https://doi.org/10.21203/rs.3.rs-963593/v1>, Preprint, 2021.](#)

Paulay, M.: Biodiversity on oceanic islands: Its origin and extinction, *Am. Zool.*, 34, 134-144, <https://www.jstor.org/stable/3883824>, 1994.

585 Pausas, J. G., Carreras, J., Ferré, A., Font, X.: Coarse-scale plant species richness in relation to environmental heterogeneity. *J. Veg. Sci*, 14, 661-668, <https://doi.org/10.1111/j.1654-1103.2003.tb02198.x>, 2003.

Porder, S., Paytan, A. and Vitousek, P.M.: Erosion and landscape development affect plant nutrient status in the Hawaiian Islands, *Oecologia*, 142, 440-449, <https://doi.org/10.1007/s00442-004-1743-8>, 20045.

590 POWO: Plants of the World Online. Facilitated by the Royal Botanic Gardens, Kew, 2019: <http://www.plantsoftheworldonline.org/>, last access 06 January 2021.

Ramos, L. A., Nolla, A., Korndörfer, G.H., Pereira, H.S. and Camargo, M.S.: Reatividade de corretivos da acidez e condicionadores de solo em colunas de lixiviação, *Rev. Bras. Cienc. Solo.*, 30, 849-57, 2006.

Ricketts, T. H.: The matrix matters: Effective isolation in fragmented landscapes, *Am. Nat.*, 158, 87-99, <https://doi.org/10.1086/320863>, 2001.

Formatiert: Hyperlink

595 Rosenzweig, M.: Species diversity in space and time. Cambridge: Cambridge University Press, <https://doi.org/10.1017/CBO9780511623387>, 1995.

[Roqueto de Reis, B.: Rock powders in the soil-plant system: mineralogy and microbiome response. Master Thesis, University of São Paulo, 2021.](#)

600 Schoen, C., Aumond, J. J. and Stuermer, S. L.: Efficiency of the on-Farm mycorrhizal inoculant and phonolite rock on growth and nutrition of *Schinus terebinthifolius* and *Eucalyptus saligna*, *Rev. Bras. Cien. Solo.*, 40, 1-14, <http://dx.doi.org/10.1590/18069657rbc20150440>, 2016.

Spürgin, S., Weisenberger, T. B., and Marković, M.: Zeolite-group minerals in phonolite-hosted deposits of the Kaiserstuhl Volcanic Complex, Germany, *American Mineralogist*, 104.5, 659-670, <https://doi.org/10.2138/am-2019-6831>, 2019.

605 [Tavares, L. F., de Carvalho, A. M. X., Camargo, L. G. B., de Fátima Pereira, S. G., Cardoso, I. M.: Nutrients release from powder phonolite mediated by bioweathering actions. *Int. J. Recycl. Org. Waste. Agricult.*, 7, 89–98, <https://doi.org/10.1007/s40093-018-0194-x>, 2018.](#)

Tukiainen, H., Bailey J. J., Field, R., Kangas, K. and Hjort, J.: Combining geodiversity with climate and topography to account for threatened species richness, *Conserv. Biol.*, 31, 364-375, <https://doi.org/10.1111/cobi.12799>, 2016.

610 Vitales, D., Garnatje, T., Pellicer, J., Vallès, J., Santos-Guerra, A. and Sanmartín, I.: The explosive radiation of *Cheirolophus* (Asteraceae, Cardueae) in Macaronesia, *BMC Evol. Biol.*, 14, 1-15, <https://doi.org/10.1186/1471-2148-14-118>, 2014a.

Vitales, D., García-Fernández, A., Pellicer, J., Vallès, J., Santos-Guerra, A., Cowan, R.S., Fay, M.F., Hidalgo, O. and Garnatje, T.: Key processes for *Cheirolophus* (Asteraceae) diversification on oceanic islands inferred from AFLP Data, *Plos ONE*, 9, e113207, <https://doi.org/10.1371/journal.pone.0113207>, 2014b.

615 von Fragstein, P., Pertl, W. and Vogtmann, H.: Artificial weathering of silicate rock powders, *Z. Pflanz. Bodenkunde*, 151, 141-146, <https://doi.org/10.1002/jpln.19881510214>, 1988.

von Wilpert, K. and Lukes, M.: Ecochemical effects of phonolite rock powder, dolomite and potassium sulfate in a spruce stand on an acidified glacial loam, *Nutr. Cycl. Agroecosys.*, 65, 115-27, <https://doi.org/10.1023/A:1022103325310>, 1998.

Walentowitz, A., Kienle, D., Sungur, L. and Beierkuhnlein, C.: Vegetation plot and trait data from phonolitic and basaltic rocks on La Palma (Canary Islands, Spain), 37, <https://doi.org/10.1016/j.dib.2021.107229>, 2021. ~~[submitted]~~.

620 Whittaker R. J. and Fernández-Palacios, J.-M.: *Island Biogeography: Ecology, Evolution, and Conservation*, 2nd ed., Oxford University Press, Oxford, 2007.

Formatiert: Englisch (Vereinigtes Königreich)

Formatiert: Englisch (Vereinigtes Königreich)

Formatiert: Englisch (Vereinigtes Königreich)

Formatiert: Englisch (Vereinigtes Königreich)

Formatiert: Englisch (Vereinigtes Königreich)

Formatiert: Englisch (Vereinigtes Königreich)

Formatiert: Englisch (Vereinigtes Königreich)