

Grazing enhances carbon cycling, but reduces methane emission during peak growing season in the Siberian Pleistocene Park tundra site

Wolfgang Fischer¹, Christoph K. Thomas^{1,2}, Nikita Zimov³, and Mathias Göckede⁴

¹Micrometeorology Group, University of Bayreuth, Bayreuth, Germany

²Bayreuth Center of Ecology and Environmental Research, BayCEER, Bayreuth, Germany

³North-East Science Station, Pacific Institute for Geography, Far-Eastern Branch of Russian Academy of Science, Chersky, Republic of Sakha (Yakutia), Russia

⁴Department of Biogeochemical Signals, Max Planck Institute for Biogeochemistry, Jena, Germany

Correspondence: Mathias Göckede (mgoeck@bgc-jena.mpg.de)

Abstract.

Large herbivore grazing has been shown to substantially alter tundra soil and vegetation properties as well as carbon fluxes, yet observational evidence to quantify the impact of herbivore introduction into Arctic permafrost ecosystems remains sparse. In this study we investigated growing season CO_2 and CH_4 fluxes with flux chambers on a former wet tussock tundra inside Pleistocene Park, a landscape experiment in Northeast Siberia with a 22 year history of grazing. Reference data for an undisturbed system were collected on a nearby ungrazed tussock tundra. Linked to a reduction in soil moisture, topsoil temperatures at the grazed site reacted one order of magnitude faster to changes in air temperatures compared to the ungrazed site and were significantly higher, while the difference strongly decreased with depth. Overall, both GPP (gross primary productivity, i.e. CO_2 uptake by photosynthesis) and R_{eco} (ecosystem respiration, i.e. CO_2 release from the ecosystem) were significantly higher at the grazed site with notable variations across plots at each site. The increases in CO_2 component fluxes largely compensated each other, leaving NEE (net ecosystem exchange) similar across grazed and ungrazed sites for the observation period. Soil moisture and CH_4 fluxes at the grazed site decreased over the observation period, while in contrast the constantly water-logged soils at the ungrazed site kept CH_4 fluxes at significantly higher levels. Our results indicate that grazing of large herbivores may promote topsoil warming and drying, this way effectively accelerating CO_2 turnover while decreasing methane emissions in the summer months of peak ecosystem activity. Since we lack quantitative information on the pre-treatment status of the grazed ecosystem, however, these findings need to be considered qualitative trends for the peak growing season, while absolute differences between treatments are subject to elevated uncertainty. Moreover, our experiment did not include autumn and winter fluxes, and thus no inferences can be made for the annual NEE and CH_4 budgets at tundra ecosystems.

1 Introduction

In the context of global climate change, surface air temperatures in polar regions have been shown to rise about twice as fast as the global mean in the past (Overland et al., 2015). Since this trend is expected to continue in the future, Northern

hemisphere permafrost ecosystems are at an exceptional risk for degradation. The Arctic permafrost region stores about 50% of the belowground organic carbon stocks on Earth (Hugelius et al., 2014), with an estimated pool of organic C between 1307 Gt and 1672 Gt (Hugelius et al., 2014; Tarnocai et al., 2009). Based on several independent approaches, it is estimated that 130 to 160 Gt C could be released by 2100 under a high warming scenario (i.e., Representative Concentration Pathway scenario 8.5, Schuur et al., 2015), so even a partial release of this currently deep-frozen material would constitute a substantial positive feedback with ongoing warming trends.

Warming of the active layer facilitates the enhanced decomposition of soil organic carbon, leading to higher rates of ecosystem respiration (R_{eco}) that contribute to higher CO_2 emissions (Natali et al., 2015; Schädel et al., 2016; Schuur et al., 2009). Moreover, warming-induced permafrost thaw may make organic matter that was previously perennially frozen vulnerable to mineralization (Natali et al., 2014, 2015; Harden et al., 2012; Schuur et al., 2009). At the same time, warmer and longer growing seasons hold the potential to change vegetation species composition (e.g. from graminoid/moss- to shrub-dominated, Myers-Smith et al., 2011; Hollister et al., 2015; Mekonnen et al., 2021) and increase living plant biomass, leading to an increase in gross primary productivity (GPP) (Epstein et al., 2012). Deeper thaw depths may also open up nutrient reservoirs (Chapin III et al., 2005; Salmon et al., 2016; Hollister et al., 2015), this way promoting vegetation growth and carbon uptake. Interactions with various other influencing factors, for example changes in snow cover (Grogan, 2012) or soil moisture (Oberbauer et al., 2007; Natali et al., 2015; Kwon et al., 2016), further complicate an assessment of the net effect of these changes.

Large herbivores (i.e. reindeer, muskoxen, horses, bison, etc.) are an additional forcing which may substantially alter the characteristics of high-latitude landscapes, but their potential influence is rarely considered in studies predicting the future state of Arctic permafrost ecosystems. Herbivores can trigger distinct shifts in vegetation communities, e.g. from shrub or moss-dominated ecosystems to graminoid tundra dominated by dense grass tillers (Manseau et al., 1996; Olofsson, 2006; Ylänne et al., 2018; Kitti et al., 2009; Falk et al., 2015; Raillard and Svoboda, 2000; Gornall et al., 2009). Grazing has been shown to promote certain *Carex* species that produce a high belowground biomass (Tolvanen and Henry, 2000), allowing to reliably compensate growth after being grazed off (Raillard and Svoboda, 1999; Kitti et al., 2009). Shifts in vegetation composition are usually associated with an increase in albedo (Te Beest et al., 2016; Chapin III et al., 2005; Cohen et al., 2013). Regarding belowground ecosystem properties, previous studies reported an increased annual amplitude in soil temperatures (higher in summer, lower in winter), and significant shifts in soil moisture and texture (Olofsson et al., 2004; Te Beest et al., 2016; Zimov et al., 1995, 2012; Beer et al., 2020; Olofsson et al., 2001), which in combination with snow trampling in winter (Beer et al., 2020) tend to reduce annual permafrost temperatures. Finally, herbivore grazing can cause an increase in nutrient availability, and acceleration in nutrient cycling (Olofsson et al., 2004, 2001; Raillard and Svoboda, 1999, 2000). The combinations of these changes leads to strong and variable alterations in carbon cycle processes (higher R_{eco} , higher/lower GPP , higher/lower NEE) (Falk et al., 2015; Metcalfe and Olofsson, 2015; Väisänen et al., 2014; Cahoon et al., 2012; Ylänne et al., 2018; Ylänne and Stark, 2019), with net effects highly dependent on site-specific characteristics.

Most existing studies focusing on grazing effects were conducted in Scandinavian upland tundra, while other Arctic domains, and particularly wet tundra ecosystems (e.g., Falk et al., 2015; Raillard and Svoboda, 2000; Kitti et al., 2009), remain sparsely examined to date. A long-term, landscape-scale experiment called "Pleistocene Park", established in northeastern Siberia in

1996, provides an opportunity to address this research gap. While initially designed to reestablish a "mammoth steppe" ecosystem which dominated this region in the Pleistocene (Zimov et al., 2012), the experiment also allows to study the impact of large herds of herbivores as an agent to stabilize permafrost ecosystems against degradation linked to Arctic warming. Some of the underlying hypotheses related to the Pleistocene Park project are that herbivore grazing a) increases carbon sequestration by simultaneously increasing productivity and root formation during the growing season, b) increases the surface albedo by decreasing shrub and tree cover, and c) decreases CH_4 emissions by decreasing soil moisture through condensing soils and increased evapotranspiration by a more active vegetation.

While all the grazing effects listed above hold the potential to reduce future positive feedbacks between alterations of the permafrost carbon cycling and the changing climate, so far only limited observational evidence was presented allowing for evaluating the management effects inside Pleistocene Park. The main objective of the presented study is therefore to provide new insights into the effects of herbivore grazing on carbon cycle processes and ecosystem characteristics within the park. For this purpose, we compare growing season carbon fluxes from flux chamber measurements along with soil parameters and radiation balance components across an intensively grazed area within Pleistocene Park and a nearby undisturbed site.

2 Materials and Methods

2.1 Site Description

The study area is located in the Kolyma Lowlands region in northeastern Siberia (68.51°N, 161.50°E), close to the town of Chersky, Sakha Republic, Russia, which is situated around 100 km south of the Arctic Ocean. The weather patterns frequently switch between maritime air masses from the North and continental air masses from the Southeast, with the former dominating the wintertime conditions, and the latter in the summer. The mean daily air temperature can remain at or below -40°C for several days during December to February, while daily means of more than 20°C can be reached around the peak of summer. The mean annual temperature (averaged for 1960-2009) is approximately -11.0°C. The total amount of annual precipitation (averaged for 1950-1999) is between 200 and 215mm, with 80 to 110mm falling as rain (Göckede et al., 2017). Snow-melt leads to an annual flooding event in the Kolyma River and its tributaries, usually inundating large parts of the study area between mid to late May and late June (Kwon et al., 2016).

In the context of this study, we compared carbon fluxes and ecosystem characteristics between two measurement sites in the Chersky region. Both sites are wetland ecosystems situated within the Kolyma lowlands region that are water-logged for the largest part of the growing season, affected by the flooding regime of the Kolyma River. Our undisturbed reference ecosystem is a tussock tundra site situated about 15 km south of Chersky on the floodplain of the Kolyma River. Due to the very low natural abundance of grazing herbivores in the region, the influence of grazing disturbance on this dataset can be considered negligible. Situated about 15km further south at the margins of the floodplain, the Pleistocene Park site, hosting a variety of herbivores (sheep, yaks, cows, horses, bison, muskoxen, reindeer), was used to study the effects of grazing on permafrost ecosystems.

The Pleistocene Park area (<https://pleistocenepark.ru>) was established in 1996 on 144 km^2 of permafrost territory mainly consisting of ecotonal upland forest-tundra, wet lowland tundra, and small lakes and rivers. About 2000 hectares have been

90 fenced in to concentrate animals on the core domain of the park, accordingly grazing disturbance has influences these sections for about 25 years. Inside the lowland section on a former wet tussock tundra ecosystem, we selected one of the longest and most intensively grazed areas as our grazing study site hereafter labeled as "GR", with data being collected at three plots (GR-1 to GR-3) placed within a radius of approximately six meters. This site, which similar to the reference site gets flooded every year in spring during snow-melt, is a moist-wet meadow almost without shrubs, also featuring decaying tussocks. The
95 vegetation at this site primarily consists of grasses and sedges, including *Calamagrostis langsdorfii*, *Carex appendiculata*, and *Eriophorum spec.* (Euskirchen et al., 2017). Before the introduction of grazing herbivores, this site used to be dominated by tussocks and saturated with water during the whole year (Sergey Zimov, pers. comm.). It therefore represents lands disturbed by grazing representative for the lowland wet tussock tundra dominating large parts of the Kolyma Lowlands region.

The reference site, hereafter labeled as ungrazed site "UGR", is located outside the Pleistocene Park domain on a wet-
100 tussock tundra floodplain along the Ambolikha river, a small tributary of the Kolyma river. Here, a long-term monitoring site was installed to investigate drainage effects on wet tundra ecosystems (Kwon et al., 2016; Kittler et al., 2016; Göckede et al., 2019). The reference site for our study is the non-drained control area of this experiment. The dominant vegetation species are tussock-forming *Carex appendiculata* and *C. lugens*, and *Eriophorum angustifolium*, with *Betula nana* and *Salix spec.* growing on elevated areas with a lower water table. An organic peat layer (15–20 cm deep) has accumulated on top of alluvial material
105 soils (silty clay) (Kwon et al., 2017). In the context of this study, we assume this site to reflect the status that the grazed site would have if herbivores had not been introduced there, since both sites showed a similar ecosystem structure in the early 1990s (Sergey Zimov, pers. comm.). Observations were collected at two plots (UGR-1, UGR-2) to capture some variability concerning vegetation structure and soil properties. Based on results of a previous study evaluating small-scale flux variability across a transect of ten quasi-randomly selected locations (Kwon et al., 2016), flux rates and environmental conditions within
110 these two plots were shown to be close to the average at this site. In terms of spatial flux variability, UGR-1 (Control-0 site in Kwon et al., 2016) featured a relatively high productivity, while UGR-2 (Control-2) showed comparatively reduced flux rates.

2.2 Measuring Radiation and Soil Parameters

Soil temperatures at 5cm, 15cm, 25cm and 35cm depth were recorded at 1Hz during the time when flux measurements were conducted (Th3-s Soil Temperature Profile Probe, UMS GmbH Munich, Germany). While the two UGR sites were equipped
115 with one probe each, a single probe was used for the three GR sites due to their proximity. To create a gapless dataset for the full experiment period, $T_{S,25cm}$ and $T_{S,35cm}$ were interpolated linearly (GR sites) or modeled based on a moving average of T_{air} (UGR sites). $T_{S,5cm}$ and $T_{S,15cm}$ have been modeled based on air temperature, and in the case of $T_{S,5cm}$ incoming shortwave radiation and corresponding $T_{S,35cm}$ were used additionally in the course of stepwise linear regressions to improve the prediction.

120 For soil moisture (SM) measurements, combined for all three GR-sites we installed a set of three TDR probes (time-domain reflectometry; models CS 640, 630, and 605, Campbell Scientific, Logan, UT, USA) at depths of 7.5cm, 15cm and 30cm close to the soil temperature sensor, and recorded at 1Hz intervals. At the UGR site, due to the water-logged conditions, soil moisture was permanently saturated, and no measurements were used within the context of this study. SM values at GR were flagged

using plausibility limits, and systematic offsets corrected. Since also the soil moisture data were only collected during times of
125 flux measurements, values were subsequently linearly interpolated to create continuous time series. For both soil temperature
and soil moisture sensors, the surface height between tussocks was used as the reference (zero centimeters).

Thaw depths were measured with a metal pole that was stuck into the ground, right next to the chamber plot, to avoid
disturbance, until it hit the frozen surface of the permafrost. The measured thaw depth was defined as the distance between this
point and the ground surface, which included the organic layer on top, while loose material was softly pressed down until more
130 or less stable ground was touched.

Radiation budget components for the GR sites in Pleistocene Park were measured using a net radiometer (model a CNR1,
Campbell Sci., Logan, UT, USA) installed at 4 m height on a pole approximately 15 m away from the flux sampling sites. At
the UGR sites located at the Ambolikha site, a net radiometer (model CNR4, Campbell Sci., Logan, UT, USA) permanently
installed on a 5 m tall flux tower located approximately 50 m away from the sampling sites provided radiation observations.

135 Measurements were stored as 10 minute averaged intervals. Albedo was derived by dividing the average upwelling shortwave
radiation by the average downwelling component for each single day. Then, these daily averages were averaged over the
observation period. While photosynthetically active radiation (PAR) was measured directly at the UGR site, at GR it was
converted from incoming shortwave radiation data using a single conversion factor provided as a function within the R-package
'LakeMetabolizer' (Winslow et al., 2016) following an approach described by e.g. Britton and Dodd (1976). Calculations with
140 this statistical package, as also for the other R-packages listed below, were conducted using R Version 4.1.1 (R Core Team,
2021).

2.3 Measuring Fluxes using Chambers

Directly prior to measurements at GR, wooden fences were constructed to protect the sites from grazing animals during
chamber operation. At both GR and UGR sites, walking boards were placed around the setup to prevent damaging plants
145 and minimize influences on measurements by disturbing the soil. Our flux chamber approach closely followed Kwon et al.
(2016, 2017), and is therefore only briefly outlined in the following paragraphs.

Carbon dioxide, CO_2 , and methane, CH_4 , fluxes were determined with a non-steady-state flow-through method using an
Ultra-Portable Greenhouse Gas Analyzer (UGGA, Los Gatos Research, USA) for in-situ measurements of gas concentrations
at 1 Hz. 60cm*60cm PVC collars, which have a socket at the top for the chamber, were installed in the ground at each plot
150 to prevent leaking of air during chamber measurements. The cubic chamber hoods with 60 cm side length, made of 4 mm
thick plexiglass, were placed on these collars to capture gases exchanged with the surface. They featured an opening valve
on the top to avoid pressure effects when the chamber is placed onto the collars. Inside the chamber, three electric fans were
installed to ensure well-mixed conditions. Air was pumped from the chamber to the gas analyzer through three tubes installed
at different heights inside the chamber hood. Sensors for air temperature (T_{air}), relative air humidity (rH), air pressure (P_{air}),
155 and photosynthetically active radiation (PAR) were attached to one side of the chamber. For measurements, the chamber was
oriented in a way to minimize shading the vegetation with the instruments.

Each flux measurement was conducted for a period of about two minutes. This period was chosen in order to minimize disturbance effects such as e.g. temperature increases or moisture saturation within the chamber (e.g., Kutzbach et al., 2007), while at the same time collecting enough information for the derivation of a stable flux rate. After completing one measurement, the chamber was lifted and tilted for ventilation until ambient CO_2 concentrations were reached. Ecosystem respiration (R_{eco}) was determined by covering the hood with a white polyethylene tarp that completely blocked incoming radiation. For each plot, one measurement iteration consisted of three NEE measurements and two R_{eco} measurements.

Table 1. Number of light (NEE) and dark (R_{eco}) measurements for each chamber site and total number of measurement days that passed the quality screening. The lower data coverage of UGR-2 reflects the distribution of raw data collected, and is not related to data quality screening.

	UGR-1	UGR-2	GR-1	GR-2	GR-3
light	77	40	77	71	68
dark	45	27	46	42	41
days	4	4	9	9	9

On each sampling day at GR, we rotated between chamber locations, with about one full hour needed to complete the five individual measurements at each of the three plots. Since the two plots at UGR were located further apart, we conducted several individual measurements at one location before switching to the other to minimize time needed for relocating instrumentation. On each day, only one of the study sites (UGR vs. GR) was sampled.

2.4 Calculation and Interpolation of Carbon Fluxes

Each chamber measurement resulted in a 1 Hz time series of CO_2 and CH_4 concentrations. After excluding the equilibration period of at least 20 seconds, periods with a minimum length of 40 seconds and a linear concentration change in greenhouse gases were identified based on the changepoint detection algorithm provided by the R-package of the same name (Killick et al., 2016). Subsequently, using the R-package 'boot' (Canty and Ripley, 2021) we generated 1000 combinations of start and end times within this period, and calculated an ensemble of stationarities (slopes) using a bootstrapping approach. The final slope used for flux computations was identified as the frequency distribution's median. Implausible or disturbed signals were manually flagged, and excluded from further analysis. Such cases included for example unstable signals without a distinctly discernible, steady slope, which are not clearly interpretable, or signals obviously disturbed by leakage. The total quantity of measurements is shown in Tab.1.

The median slope (\hat{a}) of greenhouse gas concentrations change over time were transformed to a flux using the following formula:

$$Flux = \hat{a} \frac{V_{ch} p_{air}}{A_{ch} RT_{air}} \quad (1)$$

180 V_{ch} and A_{ch} are the volume and surface area of the chamber, respectively. R is the ideal gas constant (8.3144J/molkg), T_{air} and p_{air} are the mean air temperature (K) and pressure (Pa) inside the chosen interval. Fluxes are derived in units of $[\mu\text{molC} - \text{CO}_2\text{m}^{-2}\text{s}^{-1}]$ and $[\mu\text{molC} - \text{CH}_4\text{m}^{-2}\text{s}^{-1}]$, respectively.

While fluxes of R_{eco} and NEE could be calculated based on dark and light chamber measurements, respectively, the photosynthetic uptake portion of the flux (GPP) was calculated as the difference between measured NEE and the mean of measured R_{eco} for one measurement. The standard error (RMSE) of each flux measurement was calculated using all bootstrapped slopes, distinguishing between R_{eco} and NEE measurements. The slope error for GPP was taken as the summed errors of R_{eco} and NEE measurements. Error values are given in Table B1 in the Appendix.

To analyze the implications of the grazing disturbance on net CO_2 and CH_4 exchange across the sites, the time series of flux estimates for each plot was interpolated across the entire measurement period of 17 days at a resolution of 10 minutes. Both R_{eco} and CH_4 fluxes were interpolated using empirical plot-specific linear models linking flux rates to environmental parameters (T_S , T_{air} , and SM). Parameters minimizing the fit uncertainty were not uniform across plots even at one site (see Appendix B for an exact description of this approach, including the derivation of formulas, and chapter 4.2. for evaluation). The following formulas were derived to interpolate R_{eco} and CH_4 fluxes:

$$R_{eco}(GR - 1, GR - 2) = \exp(a_0 T_{Soil,5cm} + b_0) + a_1 SM_{7.5cm} + b_1 \quad (2)$$

195

$$R_{eco}(GR - 3, UGR - 1, UGR - 2) = \exp(a_0 T_{air} + b_0) \quad (3)$$

$$F_{CH_4}(UGR) = \exp(a_0 T_{Soil,15cm} + b_0) \quad (4)$$

$$200 \quad F_{CH_4}(GR) = a_0 T_{Soil,25cm} + b_0 + a_1 SM_{15cm} + b_1 \quad (5)$$

In each formula, a_0 is the slope of the first applied model, a_1 for the second. b_0 and b_1 are corresponding intercepts. Total errors for all fluxes were derived considering the standard error from the final model compared to observed values (linear regression), further considering the standard error from the bootstrapping approach used to transfer measured concentration slopes into fluxes and the standard error from modeled T_S (for R_{eco} and CH_4 fluxes). A detailed error calculation is shown in Appendix B3.

GPP was modelled as a function of PAR, using a rectangular hyperbolic function (Runkle et al., 2013).

$$GPP = -\frac{P_{max} \alpha PAR}{P_{max} + \alpha PAR} \quad (6)$$

210 The fit parameters α and P_{max} represent, respectively, the initial canopy quantum efficiency (the initial slope of the GPP-PAR

curve at $PAR=0$) and the maximum canopy photosynthetic potential, which is the hypothetical maximum of GPP at infinite PAR. Both α and P_{max} are assumed to have positive values, necessitating the negative sign on the equation's right-hand side to allow GPP to fit the NEE sign convention. Hereby, positive fluxes imply carbon losses from the ecosystem into the atmosphere. This model contains the explicit assumption that GPP is insensitive to light stress or temperature effects (Runkle et al., 2013).
215 For each site, α and P_{max} were determined by fitting PAR against the *GPP*-Fluxes from chamber measurements and applying a non-linear-least-squares (nls) optimization. Implausible PAR values from chamber measurements were replaced by PAR derived from the net radiometer measurements. With these parameters, a continuous *GPP* time series could be modeled for the entire observation period.

2.5 Statistics

220 To visualize and compare carbon fluxes between plots and study sites, daily means for *GPP*, *R_{eco}*, *NEE* and *CH₄*-fluxes were calculated. Prior to post-hoc pairwise t-tests and a correction of p-values with Holm's method (Holm, 1979), a repeated measures ANOVA was conducted using the package "ez" in R (Lawrence, 2016), hereby the approach is based on Bakeman (2005) and Glover and Dixon (2004). In this way, we can provide evidence that the measurements were independent between days, and can correct the results of the pairwise comparisons for multiplicity problems. Statistics and further explanations are
225 given in Appendix B3. This approach was used to analyze fluxes, soil temperatures and radiation (i.e. upwelling and downwelling shortwave radiation) measurements.

3 Results

3.1 Environmental conditions and ecosystem characteristics

230 3.1.1 Albedo and energy fluxes

Linked to the differences in vegetation community structure described in Section 2, the average daily albedo was slightly higher at GR, with an average value of 0.217 ± 0.008 , compared to the UGR (0.192 ± 0.006). Hereby, the difference between SW_d between sites was insignificant ($p = 0,23$), while the difference between SW_u was significant ($p < 0.0001$). This enhanced reflectivity of the surface increased the upwards directed shortwave radiation by an average of $6.3 \pm 3.8 W m^{-2}$ over the course
235 of the observation period (mean SW_u GR: $48.6 \pm 13.9 W m^{-2}$; UGR: $42.3 \pm 13.0 W m^{-2}$), in effect reducing the net radiative energy available to the grazed ecosystem.

3.1.2 Soil moisture

Soil hydrologic conditions were distinctly different between grazed and ungrazed sites. At the beginning of the observation period, both sites were primarily water-logged since the water levels from the preceding spring flooding had not fully receded.
240 From this starting point, we observed deviating temporal dynamics in drying between both ecosystems during the peak of the

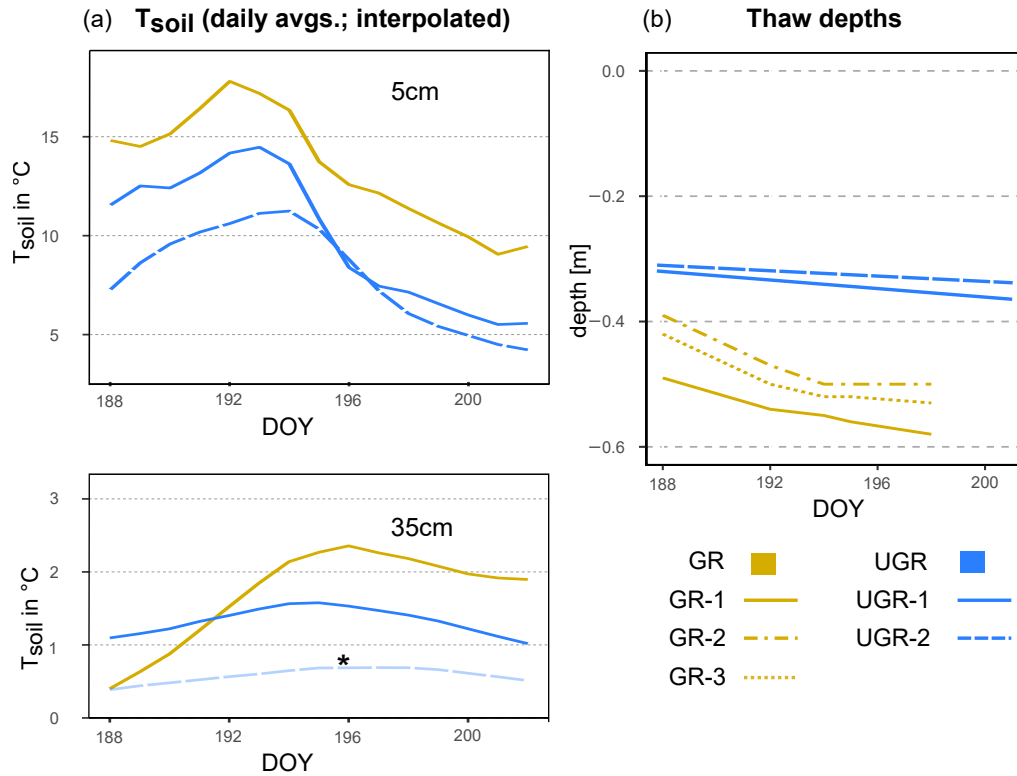


Figure 1. (a) Soil temperature (T_{soil}) at GR, UGR-1 and UGR-2 in 5 cm and 35 cm depth. The interpolation model of T_{soil} in 35 cm at UGR-2 (*) is not based on a significant fit, but follows the expected course closely, and is therefore included here for overview. (b) Evolution of thaw depths at all plots.

growing season. Water levels declined only marginally, or not at all, within the ungrazed reference area, with water levels remaining above ground. Soil moisture at the grazed ecosystem (GR), on the other hand, gradually decreased across all measured depths over the period of observation, especially in the topsoil ($SM_{7.5cm}$: 63.1% - 49.9%; SM_{15cm} : 64.3% - 54.2%; SM_{30cm} : 60.7% - 56.7%, changes from the first to the last measurement day, respectively).

245 3.1.3 Air and soil temperatures

A change in the general weather pattern around mid July 2019 split our observation period roughly into a warm and sunny first half, and a cool and cloudy second half. Regarding the mean air temperatures, during the first period (July 07 - 15), daily average T_{air} ranged between 14.3 - 26.9°C, while conditions during the second period (July 16 - 22) were much cooler (6.9 - 10.9°C). Mean air temperatures at the grazed site were observed to be about 1°C warmer compared to the ungrazed site, with
 250 similar daily minima, while daily maxima were distinctly higher at GR.

The trends in soil temperatures matched those described for air temperature: while T_{soil} across the observed vertical profile were rising during the first part of the observation period, in the second half they declined (see also Fig. 1). We found topsoil temperatures in 5 cm depth at the grazed site (GR: max 19.6°C, min 9.0°C) to be significantly higher ($p < 0.0001$) compared to the ungrazed reference (UGR-1: max 15.4°C, min 5.6°C; UGR-2: max 11.6°C, min: 4.3°C) during the whole observation
255 period. Fitting interpolation equations to the observational data also revealed that the time lag of T_{soil} reacting to T_{air} was one order of magnitude shorter at GR - moving averages of air temperatures explaining T_{soil} in 5 cm showed best fits when integrated over the last 4.3h at GR, while reaching back 40.7h at UGR-1 and even 86.7h at UGR-2.

In the deeper soil layers (15 cm, 25 cm, 35 cm), the temperatures at the UGR-2 site were consistently lower than observed at all other sites (GR, UGR-1). Comparing observations from GR and UGR-1, during the first week sites showed similar average
260 soil temperatures, while during the second week soils became warmer for the drier grazed site. Notably, T_{soil} in 35 cm and 25 cm at GR were lower compared to UGR-1 during the first measurement days, but due to a steeper warming rate at the grazed site this changed after 5 days into the observations.

3.1.4 Thaw depths

Measured thaw depths were greater at all GR sites compared to all UGR sites throughout the observation period: while the
265 values within the ungrazed reference area varied between 31 - 36 cm over time and across sites, that range was 39 - 58 cm at the grazed site. Importantly, also the temporal dynamics as well as the variability across sites differed strongly between these two study areas. At UGR, the average increase in thaw depths was 0.25 cm per day during the observation period. Even though both observation plots were situated about 50 m apart, conditions were fairly uniform between them, and thaw depths did not differ by more than 2 cm. In contrast, the GR sites showed a higher average thaw depth increase (0.91 cm per day). Differences
270 in measurements between plots reached up to 11 cm, even though sites were only separated by about 3 m, and vegetation and soil conditions seemed similar.

3.2 Carbon Fluxes

All interpolation models described in Section 2.4 yielded a significant linear regression fit between observed and calculated values (for details, see Tab. 2).

275 3.2.1 CO_2 fluxes

As reflected in the strong enhancement in both component fluxes of NEE , i.e. GPP and R_{eco} , the carbon turnover rates in the grazed ecosystem were increased as a response to the warmer and drier conditions in the top soil layers (see Fig. A1). Regarding photosynthetic uptake of CO_2 , the average GPP was significantly higher at GR compared to UGR ($p < 0.0001$, see Fig.2). While all three GR plots show higher GPP compared to the UGR sites, the difference in average GPP between the
280 sites is dominated by differences between the greater fluxes at plot GR-2 and lower fluxes at UGR-2, while differences between GR-1, GR-3 and UGR-1 were significant (at least with the pairwise t-tests used), but rather small to negligible.

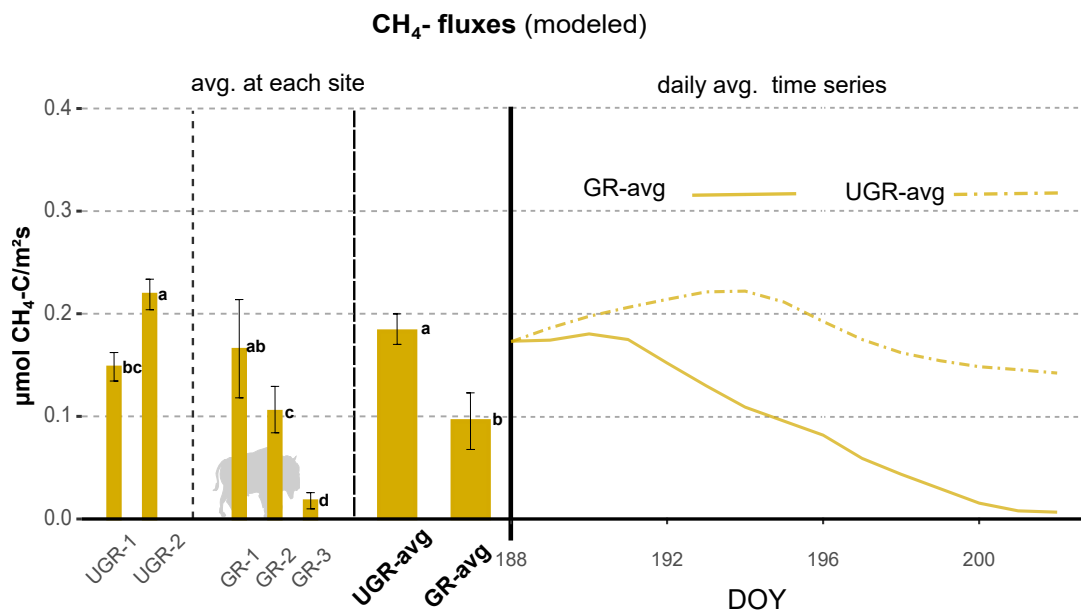
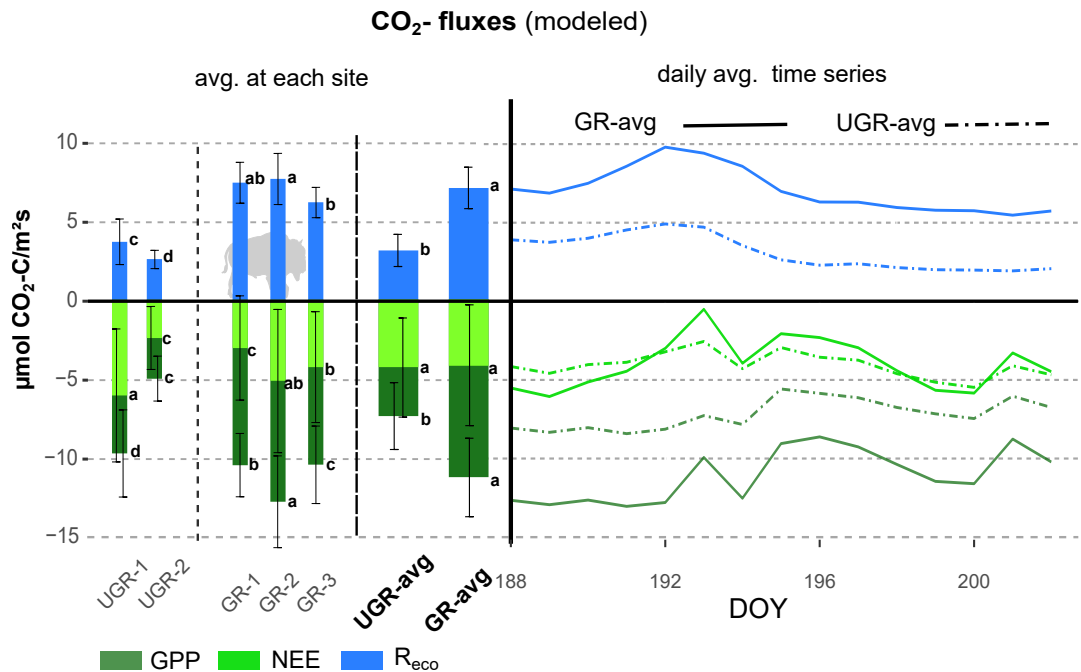


Figure 2. Overview on C-fluxes at all chamber plots from July 7th to July 21st. Differing letters indicate significant differences between plots ($p < 0.01$, please see also Table B3 for details). Overall (site average), *NEE* did not differ significantly between GR and UGR, while *GPP* and *R_{eco}* were significantly larger at GR. Daily average *CH₄* emissions at grazed plots strongly decrease over time, leading to a substantial net reduction in methane emissions at the GR plots, compared to the UGR reference.

Across the entire measurement period, ecosystem respiration R_{eco} was distinctly higher at GR compared to UGR. In this case, site differences were more consistent, i.e. differences in flux rates between plots for each site were minor. Greater T_{soil} and decreasing SM were identified as the main controls for the higher R_{eco} at the GR sites, except for GR-3 where R_{eco} did not increase in response to drying. Possible reasons for that are discussed in chapter 4.2.

For NEE , the observed differences in both GPP and R_{eco} canceled out, resulting in no significant changes in NEE as a function of grazing disturbance. Temporal dynamics in NEE largely matched across sites, including a decrease in net uptake rates during the first and warmer week of the observation period, and an increased uptake during the subsequent, cooler days. GR-2 was found to be the strongest carbon sink in the first period, while NEE at UGR-1 was largest during the second. Overall, all sites were consistent sinks for atmospheric CO_2 during the observation period.

3.2.2 CH_4 fluxes

We observed strong variations in CH_4 fluxes between the plots at GR and UGR sites. While flux rates at both sites were similarly large in the beginning of the experiment, average CH_4 fluxes at GR plots started to decline within the first week of observation, in close correlation with decreasing soil moisture. In contrast, the high water table at UGR facilitated high CH_4 fluxes throughout the observation period, while changes in time were mostly connected to changes in soil temperatures.

At both sites, the variability in CH_4 fluxes across plots for each site was larger compared to the CO_2 fluxes. Particularly for GR, flux estimates even between closely co-located plots changed from virtually zero to rates similar to those found at the ungrazed site. Fluxes at GR-3 were smallest throughout the observation period. During the first days of the experiment, characterized by high soil moisture, CH_4 emissions at GR-1 and UGR-2 were largest, while in the second period, when soils at GR dried, they were largest at UGR-2 and UGR-1.

Table 2. R^2 and p -values for linear regressions between final modeled fluxes and measured fluxes at ungrazed (UGR) and grazed (GR) sites.

Plot	GPP	R_{eco}	NEE	CH_4
UGR-1	0.82****	0.90****	0.84****	0.84****
UGR-2	0.11*	0.88****	0.49****	0.93****
GR-1	0.87****	0.86****	0.76****	0.84****
GR-2	0.73****	0.44****	0.61****	0.93****
GR-3	0.81****	0.85****	0.80****	0.88****

****, ***, **, *, *n.s.* indicate $p < 0.0001$, $p < 0.001$, $p < 0.01$, $p < 0.05$, $p > 0.05$ (non significant), respectively.

Table 3. Mean daily C-fluxes for each chamber site (total SE in brackets). Values in $\mu\text{molC} * \text{m}^{-2} * \text{s}^{-1}$

Plot	<i>GPP</i>	<i>R_{eco}</i>	<i>NEE</i>	<i>CH₄</i>
UGR-1	-9.55(±2.80)	3.67(±1.46)	-5.88(±4.26)	0.15(±0.014)
UGR-2	-4.82(±1.44)	2.58(±0.58)	-2.24(±2.02)	0.22(±0.015)
UGR-avg	-7.19(±2.12)	3.13(±1.02)	-4.06(±3.14)	0.18(±0.015)
GR-1	-10.30(±2.03)	7.42(±1.31)	-2.88(±3.34)	0.17(±0.049)
GR-2	-12.60(±2.94)	7.66(±1.64)	-4.95(±4.58)	0.10(±0.023)
GR-3	-10.26(±2.48)	6.17(±0.97)	-4.08(±3.55)	0.02(±0.008)
GR-avg	-11.06(±2.48)	7.09(±1.31)	-3.97(±3.82)	0.10(±0.028)

4 Discussion

4.1 Assessing the Quality of Flux Chamber Measurements

The application of flux chambers may lead to biases in the ecosystem fluxes themselves (Kutzbach et al., 2007). Installing collars in the ground before starting the experiment, while necessary to prevent leaking of air, can disturb the soil and plant roots. At Pleistocene Park, we had to cut a shallow slit in the ground to be able to tightly fit in collars. In a long term study assessing both chamber and eddy-covariance fluxes conducted in the Alaskan tundra, disturbing roots and soil during chamber setup was shown to have a depressing effect on both *R_{eco}* and, to a stronger extent, *GPP*. The chamber fluxes only caught up with the eddy-covariance fluxes a few years after installing the chambers, most likely linked to a regeneration of belowground structures after the initial disturbance (Celis et al., 2017). In case of our study, the collars at UGR had already been installed six years before the start of the experiment, and accordingly the disturbance effect should be negligible. In contrast, installation artifacts are likely at GR, where collars were only installed days before starting the 2019 measurement campaign, potentially leading to underestimated fluxes, mainly considering *GPP*. The observed enhancement in both *GPP* and *R_{eco}* following drainage may therefore be a conservative finding. A net effect on the derived shifts in *NEE* is also possible, since *GPP* and *R_{eco}* can be affected in different ways, but a quantification of the potential bias cannot be done without a longer-term observational dataset.

Another important aspect concerning representativeness of chamber-based carbon flux measurements is small-scale heterogeneity in the ecosystem, which may exist even within plots that are seemingly homogeneous. This heterogeneity is observable at sub-meter scales, and can be a result of disturbances by soil fauna, pockets of fine root proliferation, moisture gradients, freeze-thaw dynamics, spatial structures in vegetation distribution such as e.g. introduced by tussock-forming plants, or remnants of decaying organic matter (Davidson et al., 2002). In the Arctic tundra, this small-scale heterogeneity is common (Aalto et al., 2013; Zona et al., 2011), and is e.g. reflected by variations in soil temperature, soil moisture and thaw depths. To account for it in flux uncertainties, more than one chamber is needed to adequately assess the mean and variance of surface-atmosphere

exchange fluxes (Davidson et al., 2002). At UGR, spatial variability of carbon fluxes and environmental conditions was analyzed in detail along a transect of ten flux chamber plots in a previous study (Kwon et al., 2016), including a description of
325 vegetation community structure and hydrologic status at each plot. Based on these findings, we selected two positions for the presented study (IDs 2-0, 2-2) which best represent the vegetation composition of a water-logged tussock tundra that dominated the grazed site before the Pleistocene Park experiment was started in the 1990s. At GR, the relatively low number of plots available for this study, combined with the lack of previous studies within the area, implies that a larger scale representativeness of this part of the dataset cannot be validated. In combination with the short temporal coverage, the GR dataset should
330 therefore be regarded as a snapshot in both space and time, demonstrating that there is the potential for significant changes in carbon cycle processes following grazing disturbance in permafrost wetlands, while not necessarily providing representative flux quantification for a larger domain. As a guideline to evaluate the captured variability across plots, coefficients of variance (CV) can be computed. CVs of R_{eco} measurements in seemingly homogeneous ecosystems typically range around 30%, while reaching higher values for CH_4 fluxes, which tend to be more location-specific (Davidson et al., 2002). For our study, CV for
335 R_{eco} at GR was 11%, but reached 20% at UGR. For CH_4 , CVs were 77% and 32%, respectively. The characteristics found in our dataset are therefore generally in line with findings presented by Davidson et al. (2002), with the low CVs in R_{eco} potentially linked to the relatively low number of plots observed. However, one has to keep in mind that the GR sites feature more plots than UGR, and also a higher number of observations, both of which may influence a comparison of derived CVs.

4.2 Environmental parameters controlling carbon fluxes: Implications for interpolation

340 Generally, R_{eco} in wet tundra and peatlands is enhanced by warmer temperatures due to increased microbial activity (Ueyama et al., 2014; Aurela et al., 2007; Kwon et al., 2016), and it may also increase due to drying, with increased potential for aerobic respiration (Lafleur, 2009; Kittler et al., 2017; Kwon et al., 2016). Identifying and comparing the controls for R_{eco} resulted in different equations across the GR and UGR sites, linked to the fact that their vegetation and soil structures differed, as described in detail below.

345 The GR site is a flat meadow with dense grass tillers, some decaying tussocks, and relatively dry and warm soils. At UGR, soils are water-logged, interspersed with tussocks raised above the water level, and the relatively cool, wet soils are covered by a thick organic layer. These differences justify the use of different sets of controls to explain temporal variability in R_{eco} . At UGR, we used only T_{air} as a driver for interpolating R_{eco} , since the water table was constantly above ground, and accordingly fluctuations in soil moisture were ruled out. At GR, we used T_{soil} in 5cm and SM in 7.5cm instead to explain variability
350 in R_{eco} . Our choice is in line with other studies correlating T_{soil} and SM with R_{eco} (Huemmrich et al., 2010). Hereby it is important to remind, that we had only one set of instruments to measure T_{soil} and SM at GR. However, thaw depths and CH_4 -fluxes (an indicator for wet/anaerobic conditions (Kwon et al., 2016)) at the grazed plots varied strongly at this small scale. Therefore, we concluded that the measured soil conditions are not fully representative across the three sub-plots. For that reason, at GR-3 also T_{air} was used to interpolate R_{eco} , since the coefficient of determination was much higher compared to
355 T_{soil} . No statistical relationship between R_{eco} and SM could be found for this plot.

Also CH_4 fluxes varied strongly between GR plots, being highest at GR-1 and lowest at GR-3. Principally, high T_{soil} and water saturated conditions promote a high CH_4 release (Kwon et al., 2016). We observed an almost continuous cooling trend from warm to cold across the whole observation period. At the same time, also soil moisture continuously decreased. Therefore, high SM were always accompanied by high T_{soil} and low SM by low T_{soil} . This made it difficult to disentangle their effects on CH_4 fluxes.

4.3 Chamber fluxes in Arctic tundra ecosystems

Estimates of carbon fluxes obtained by chamber measurements in this study cover a similar range compared to recent reference studies related to grazing in the arctic tundra (see Tab. 4). Still, when directly comparing the results between studies, one has to keep in mind inter- and intra-annual variability in environmental conditions, and therefore also in carbon fluxes, which are highly pronounced in tundra ecosystems (López-Blanco et al., 2017; Falk et al., 2015). Differences in experimental approaches how to assess and display the fluxes further aggravate the comparison of fluxes across studies. Furthermore, many studies cover longer timescales compared to this study.

Values presented by Kwon et al. (2016), obtained during flux chamber campaigns from the period 2013-2015 at the Ambo-likha site that served as the UGR reference within the context of the presented study, largely agree with our findings. A wet *Carex* meadow (grazed by geese) in a subarctic coastal tundra showed very similar values compared to values at UGR (Kelsey et al., 2016). Most of the other studies displayed in Tab.3 were conducted in the high arctic, therefore flux magnitudes are expected to be lower compared to our study (Cassidy et al., 2016; Falk et al., 2015; Curasi et al., 2016). Falk et al. (2015) observed similar patterns concerning the amplification of both GPP and R_{eco} as a response to grazing compared to our study for a wet tundra ecosystem. However, we are not aware of studies examining carbon fluxes on a similar type of a grazed ecosystem, compared to Pleistocene park, in corresponding climatic conditions.

4.4 Grazing Impacts on Vegetation and Albedo at Pleistocene Park

Grazing by large herbivores had a number of obvious impacts on the vegetation in Pleistocene Park. However, one issue that complicates the attribution of the herbivore influence on the vegetation is the year-long human disturbance by the park operations, such as e.g. operation of vehicles, or feeding animals in winter. While this influence is mostly restricted to selected areas and transects across the park, and no major direct impact was apparent for the study plots used within the context of this study, one cannot completely disentangle the impacts of man-made and grazing disturbances. Another issue that needs to be considered when interpreting the presented intercomparison of GR and UGR sites are potential differences in site characteristics that were already present before grazing management in the Pleistocene Park areas started. Lacking pre-treatment flux datasets for both sites, the only reference that is available is the similar appearance of both GR and UGR sites in photographs from the early 2000s, i.e. a time when ecosystem transformation due to grazing was still in an initial stage. Accordingly, while the differences in aboveground ecosystem characteristics described below can clearly be attributed to grazing pressure over the past two decades, the highlighted differences in carbon fluxes may at least partially have been present in the pre-treatment state.

Table 4. Comparison of mean growing season fluxes (chamber measurements) in recent studies. Values in [$\mu\text{molCm}^{-2}\text{s}^{-1}$]. (*) indicates sites in the same area as UGR in this study.

Year	<i>GPP</i>	<i>R_{eco}</i>	<i>NEE</i>	ecotype	Reference
2019	-11.06(±2.48)	7.09(±1.31)	-3.97(±0.59)	wet tussock tundra (GR, grazed)	this study
2019	-7.19(±2.12)	3.13(±1.02)	-4.06(±3.14)	wet tussock tundra (UGR, ungrazed)	this study
2014	-7.32 (±0.11)	3.15(±0.15)	-4.15 (±0.17)	wet tussock tundra(draind*)	Kwon et al. (2016)
2014	-5.98 (±0.03)	3.84(±0.20)	-2.14 (±0.17)	wet tussock tundra(control*)	Kwon et al. (2016)
2016	-7.17 (±0.33)	5.54(±?)	-1.63 (±0.33)	grazed wet <i>Carex</i> meadow	Kelsey et al. (2016)
2016	-4.26 (±0.61)	2.69(±0.26)	-1.60 (±0.56)	high arctic tundra	Curasi et al. (2016)
2012	-4.67 (±0.32)	1.91(±0.1)	-2.73 (±0.26)	arctic mire, grazed	Falk et al. (2015)
2012	-4.28 (±0.34)	1.67(±0.076)	-2.53 (±0.26)	arctic mire gr. enclosure	Falk et al. (2015)
2013	-3.91 (±0.21)	2.43(±0.1)	-1.47 (±0.15)	arctic mire, grazed	Falk et al. (2015)
2013	-3.07 (±0.21)	2.29(±0.11)	-0.78 (±0.16)	arctic mire, gr. enclosure	Falk et al. (2015)
2015	-1.47 (±0.26)	1.14(±0.15)	-0.33 (±0.15)	ungrazed high arctic tundra	Cassidy et al. (2016)

While unlikely to affect the qualitative tendencies of higher carbon turnover, and reduced methane emissions, this potential systematic bias clearly needs to be considered when evaluating and interpreting the flux numbers.

390 Around our chamber site at GR, almost all sedge-tussocks were in a state of decay, or had disappeared nearly completely. In place of them or between their remnants, many single plant tillers (mainly *Carex spec.* and *Calamagrostis langsdorfii*) grew. These apparent changes in soil and vegetation properties in Pleistocene park are in accordance with previously reported observations documenting grazing impacts. For example, the transformation from tussocks to grass mats by grazing, accompanied by a strong increase in belowground biomass, was already observed for montane biomes (Hofstede and Rossenaar, 1995; Pucheta
395 et al., 2004). Some sedges found in Arctic environments, such as *Carex aquatilis*, were shown to benefit from muskox-grazing, since they feature strong root production and the ability to produce dense grass tillers, and therefore more easily recover from grazing (Raillard and Svoboda, 1999; Kitti et al., 2009). This ability gives them an advantage over other species (Tolvanen and Henry, 2000), leading to a more turf-like vegetation structure that gradually replaces the original plant community.

Fertilization of tundra ecosystems through available nutrients from urine and faeces also influences vegetation communities
400 under grazing pressure (Raillard and Svoboda, 1999, 2000). Accelerated urea-nutrient uptake by living plants has been reported for upland tundra (Barthelemy et al., 2018), where graminoids were more efficient in using these resources compared to shrubs. At ungrazed sites such as UGR, the aboveground parts of the plant die off, wither and accumulate on the topsoil, where they rot slowly, leading to a thick organic layer (Kwon et al., 2016). In comparison, at grazed sites such as GR, the plant shoots were regularly removed by the animals resulting in reduced litter accumulation. Linked to the same effect, valleys in the Canadian
405 Arctic which are regularly grazed by muskoxen give the impression of a productive meadow, while ungrazed sites in the same region appear overgrown, and rather nutrient starved (Raillard and Svoboda, 2000). Similar effects were observed by Falk et al.

(2015), where excluding muskoxen from an Arctic mire decreased the amount of plant tillers and increased litter and moss cover. In both upland and lowland tundra ecosystems, herbivores, mostly reindeer or muskoxen, have been shown to reduce moss cover, and decrease shrub cover by trampling and browsing, promoting the expansion of graminoids (Kitti et al., 2009; 410 Manseau et al., 1996; Olofsson, 2006; Ylänne et al., 2018; Falk et al., 2015). Landscapes covered by graminoids usually have a higher albedo compared to shrub covered ones (Te Beest et al., 2016; Chapin III et al., 2005). Accordingly, herbivore grazing can systematically increase the surface reflectivity, and therefore reduce ecosystem energy input. This observation agrees with our results, which show a significantly higher albedo at GR compared to UGR. Within Pleistocene Park, we are confident that in more shrubby, heavily browsed upland tundra and taiga areas, the increase of albedo following the grazing impact is even 415 more pronounced due to the expansion of graminoids. Since the grazing history of about 22 years at Pleistocene park is still relatively short, the ecosystem is most probably still in a transition state. We therefore expect further changes in vegetation community structure over the coming decades, given a persistent grazing pressure, i.e. a further condensing of the grass mat and accordingly increased tiller formation and living belowground biomass. Denser grass cover is likely to further enhance the albedo, and also will more effectively shade the soil surface. On the long term, both effects should therefore contribute to alter 420 the energy budget, potentially leading to a cooling of shallow soil layers (see also below).

4.5 Grazing impacts on soil properties

We found overall T_{soil} , especially in the topsoil, to be higher at the grazed sites, as well as temperature gradients to be steeper, and thaw depths to be greater. At the same time, GR was relatively dry compared to UGR, where the water table was above ground throughout our observation period. Ultimately, $T_{S,5cm}$ at GR reacted one order of magnitude faster to changes in T_{air} 425 compared to UGR-1 and UGR-2. Overall, we suggest two dominating processes how grazing pressure transformed the soil at GR: Compacting the soil by trampling the organic peat layer (plus related effects on vegetation) and the reduction of soil moisture. A long-term drainage experiment conducted at UGR demonstrated that the topsoil peat layer can strongly influence the soil thermal regime within tundra ecosystems (Göckede et al., 2019). When drying out the organic layer, it warms up faster, but poorly conducts the heat to deeper soil layers (Kwon et al., 2016). When this peat layer is trampled by herbivores, as 430 observed at GR, the soil thermal regime may be significantly modified, with effects on both thermal conductivity and diffusivity.

A reduction of soil moisture, which was observed at GR, generally leads to a decrease of thermal conductivity and heat capacity in organic soils (Ochsner et al., 2001; Kwon et al., 2016). Since the warming of the soil was overall stronger at GR, the effects of lower water content on reducing the soil heat capacity along with the higher conductivity caused by topsoil compaction may have taken over as the dominant control. Accordingly, higher temperatures and temperature fluctuations are 435 likely, since less energy is needed to warm up the soil and increase thaw depths. In previous studies, trampling and grazing in the tundra was already shown to lead to the diminishing of the organic litter/moss layer on the topsoil, the decrease of shading by shrubs, and consequently causes higher soil temperatures and more compact soils (Ylänne et al., 2018; Olofsson et al., 2001, 2004; Te Beest et al., 2016; Falk et al., 2015). The important role of soil moisture conditions is also highlighted in the results by Windirsch et al. (2021), who investigated places with different grazing pressure within the same thermokarst basin in 440 Pleistocene Park where our GR sites were located. The drier locations showed a deeper thaw depth in their study, even though

the grazing pressure at these sites was actually lower. In accordance with Windirsch et al. (2021), we therefore conclude that both grazing pressure and soil moisture differences hold the potential to substantially influence the soil properties, and their co-existing influence needs to be tested in further experiments.

The lower soil moisture observed at GR can be linked to an increase in evapotranspiration. The transpiration rate correlates with an observed stronger photosynthetic activity (i.e. *GPP*), due to the adjustment of stomatal conductance to match the biochemical potential for photosynthesis (Farquhar and Sharkey, 1982; Field et al., 1992). Additionally, evaporation increases due to the decrease of litter as a result of grazing (Larson and Whitman, 1942; Dyksterhuis and Schmutz, 1947). Accordingly, a decline in soil moisture is reported for tundra ecosystems under grazing influence (Ylänne et al., 2018), and also for other grazed biomes (Vandendorj et al., 2017; Yan et al., 2018; Larson and Whitman, 1942; Dyksterhuis and Schmutz, 1947), where soil structural (i.e. compaction) and subsequent hydrological changes have been reported. In summary, our results for the grazed site within Pleistocene Park, which show drier soils and a higher *GPP* compared to UGR, agree with previous findings, emphasizing that grazing can exert strong changes to the thermal and hydrological regimes.

4.6 Grazing influence on carbon fluxes

Our findings confirm that grazing in tundra ecosystems can lead to higher T_{soil} and lower soil moisture, which is usually related to an increase in R_{eco} (Ylänne and Stark, 2019; Väisänen et al., 2014; Metcalfe and Olofsson, 2015; Cahoon et al., 2012). This increase in R_{eco} was similar in experiments studying warming and drainage effects on tundra ecosystems exclusively (Christensen et al., 2000; Huemmrich et al., 2010; McEwing et al., 2015; Oechel et al., 1998; Zona et al., 2011; Natali et al., 2015). In addition to triggering these biogeophysical shifts in soil properties, grazing was also shown to lead to faster nutrient cycling in both upland and lowland tundra ecosystems (Ylänne et al., 2018; Olofsson et al., 2001, 2004; Stark et al., 2007; Barthelemy et al., 2018; Raillard and Svoboda, 2000). Higher nutrient availability (Olofsson et al., 2001; Ylänne and Stark, 2019; Raillard and Svoboda, 2000), along with soil thermal and hydrological changes, might therefore be an explanation for high *GPP* fluxes observed in our Pleistocene Park study plots. As discussed earlier, these increases may even be more pronounced after full recovery from the disturbance inflicted by installing the chamber collars.

Accordingly, despite the reported increases in *GPP*, our experiments did not yield an enhancement in net carbon uptake by grazing, i.e. a more negative *NEE*, during the growing season. In contrast, in other wet Arctic graminoid communities (Falk et al., 2015), *NEE* was greatly enhanced by grazing. In upland tundra ecosystems, however, net uptake was often lower at grazed compared to ungrazed or only lightly grazed sites. Main explanations for these shifts were either a simultaneous increase in R_{eco} at grazed sites (Ylänne and Stark, 2019; Väisänen et al., 2014; Metcalfe and Olofsson, 2015; Cahoon et al., 2012) balancing *GPP* gains, or a decrease in *GPP* linked to a decrease in plant biomass and leaf area index (Metcalfe and Olofsson, 2015; Cahoon et al., 2012) following grazing. However, at the same time grazed upland tundra exhibits stable or even increased below-ground carbon storage (Ylänne et al., 2018), indicating that decreased R_{eco} in the non-growing season possibly (over-)compensates the decreased *NEE* in the growing season. It can be speculated that the reported differences in ecosystem properties between grazed and not grazed areas have further implications for carbon fluxes in the non growing season that have not yet been studied in detail.

475 GR is an ecosystem in transition from a tussock tundra topped by a thick organic layer to a grassland with dense tillers. At the same time, the mean water table during the growing season has been lowered. These shifts may lead to a change in which soil horizon carbon is primarily accumulated, with stronger accumulation in deeper soil layers, as observed by Hofstede and Rossenaar (1995) and Pucheta et al. (2004). The decay of the remnants of tussocks, as well as the decomposition of large carbon pools in the now drier organic topsoil, may contribute to the observed high ecosystem respiration rates. These fluxes, 480 however, hold the potential to decrease in the future, leading to decreasing rates of R_{eco} and therefore increased NEE .

In contrast to the current situation in most circum-Arctic ecosystems, Pleistocene Park exhibits a high diversity of herbivores that are absent from the landscape elsewhere. Previous studies indicated that herbivore diversity leads to a more balanced use of food plants (Chang et al., 2018, 2020; Larter and Nagy, 2001; Sitters et al., 2020; Cromsigt et al., 2018) and correlates with increased carbon uptake and soil carbon storage (Chang et al., 2018, 2020; Sitters et al., 2020). While such shifts yet 485 have to be shown for permafrost ecosystems, first observations in Pleistocene Park hint at positive long-term effects of big herbivore introduction on carbon sequestration. These insights, and also questions emerging from ongoing studies, call for future research concerning the influence of big herbivores on the carbon balance of permafrost ecosystems, with a focus on long-term, year-round monitoring.

5 Conclusions

490 In this study, we investigated the impact of long-term grazing disturbance on a previously wet tussock tundra ecosystem underlain by permafrost in the Siberian Arctic using flux-chamber observations over 2.5 weeks during the growing season in summer 2019. Over the past 22 years, introduction of large herds of herbivores in the context of the so-called Pleistocene Park experiment has altered vegetation and soil properties within the affected area, this way initiating an ongoing transformation from a water-logged, overgrown tussock tundra towards a drier ecosystem featuring more turf-like vegetation. We compared 495 the managed ecosystem inside Pleistocene Park to a nearby undisturbed reference site, focusing our study on differences in soil thermal and hydrological properties, and how these influenced the exchange fluxes of carbon between ecosystem and atmosphere.

We measured a significantly lower albedo at the grazed site compared to the undisturbed reference, which can be mostly explained by a lower abundance of shrubs. Soil compaction as a result of trampling, in combination with higher evapotranspi- 500 ration losses, led to a decrease in soil moisture. Linked to the associated reduction in soil heat capacity, topsoil temperatures in the park were higher and reacted one order of magnitude faster to changes of air temperatures compared to the undisturbed tundra. Due to warmer and drier conditions in the soil, both GPP and R_{eco} during July were significantly higher at the grazed site in the park compared to a undisturbed wet tussock tundra, while no substantial differences in NEE were found. CH_4 emissions, following the shift in hydrological properties, were distinctly lower in the park, but also highly variable between 505 plots.

With respect to the hypotheses postulated for the net impact of grazing disturbance within the Pleistocene Park, our findings agree with the assumed acceleration of carbon turnover, a reduction in albedo linked to shifts in vegetation communities, and

a reduction in methane emissions; however, due to the short observation period, our results cannot be regarded as proofs for this concept, and more experiments are required to evaluate spatial and temporal representativeness. The effect of grazing on nutrient availability, and associated responses of the vegetation community, remain open questions that must be quantitatively assessed at Pleistocene park. Furthermore, it is essential that carbon fluxes will be investigated over longer timescales, with year-round data coverage. Especially fluxes during autumn and early winter, which account for a significant part of the annual carbon budget, need to be included to enable a more comprehensive assessment of the net effects of grazing management on carbon sequestration in the Arctic tundra. Accordingly, future experiments are planned to address these research topics.

515 *Code and data availability.* The observational data used within the context of this study has been published on the Open Research Data Repository EDMONT operated by the Max Planck Society (<https://edmond.mpg.de>). The dataset archived there is openly accessible through <https://dx.doi.org/10.17617/3.91>. The code used to process the data is available from the author upon request.

Appendix A: Location of study sites

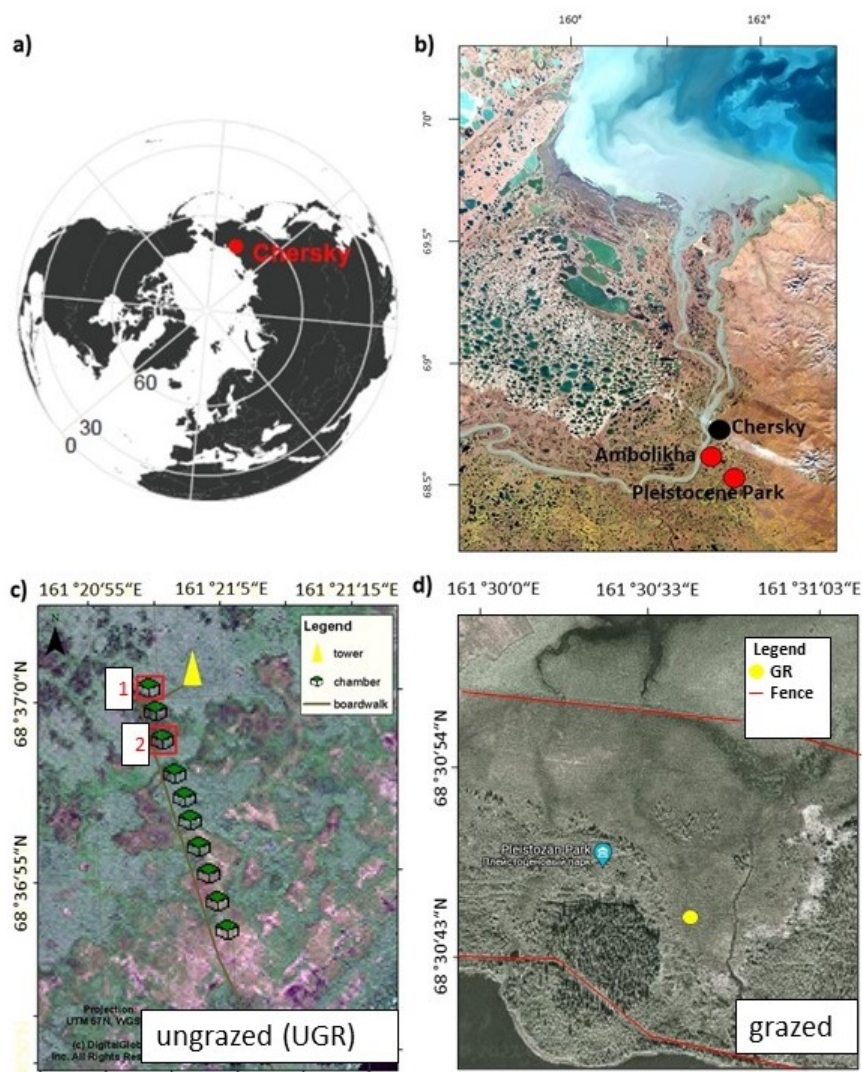


Figure A1. Location of study sites. a) Circum-polar map showing the location of the study site near Chersky in Northeast Siberia. b) Landsat composite image of the study region close to Chersky. c) Aerial photograph of the Ambolikhka site, the location of the meteorological tower/eddy covariance system and chamber plots are indicated. Plots number "1" (UGR-1) and "2" (UGR-2), which are used in this study, are framed in red boxes. d) Location of the GR observation sites inside Pleistocene Park. The area between the fences (red) is the core area with highest grazing pressure.

Appendix B: Derivation of Models for the Interpolation of C-fluxes

520 B1 Modeling R_{eco}

Investigating the environmental drivers and their evolution in correlation with R_{eco} measurements revealed that there is no uniform set of drivers across observation sites yielding optimum regression fits. Regarding input data, for sites UGR-1 and UGR-2 soil temperatures measured individually at each plot were used, while a single time series was used for all three GR-sites. This setup was chosen since the two UGR-sites are spaced 50 meters apart, while all three GR-sites were placed within
525 a radius of approximately six meters.

For GR-1 and GR-2, in contrast to all other sites, changes in SM apparently exerted a strong influence on R_{eco} (see Fig. B1). However, not in all SM -ranges both high and low T_{soil} or T_{air} were measured. Therefore, for each site we first selected R_{eco} fluxes for a moisture interval that shows a wide spectrum of soil temperatures ($SM_{7.5cm}$ at GR-1: 54% - 61%; at GR-2: 57.5% - 62%). Next, an exponential regression (T_{soil} in 5 cm $\sim R_{eco}$) was fit to the data within this interval (blue dots, left graphs,
530 Fig. B1). The resulting formula was applied to the T_{soil} in 5 cm of the whole SM range, which yielded a simulated set of values for R_{eco} if soil moisture did not change. This set of values was subtracted from the original flux values, and residuals were utilized for a second, linear regression (residuals $\sim SM_{7.5cm}$, central graphs, Fig. B1) to account for the influence of variable soil moisture on fluxes. Huemmrich et al. (2010) observed a similar correlation between soil water regime, soil temperature and soil moisture as proposed here, substantiating the approach. For R_{eco} estimates at GR-3, UGR-1 and UGR-2, fits were
535 optimal when utilizing air temperatures in combination with an exponential regression, while no significant correlation could be found when trying to explain residuals with SM , thaw depth or other variables (Fig. B2).

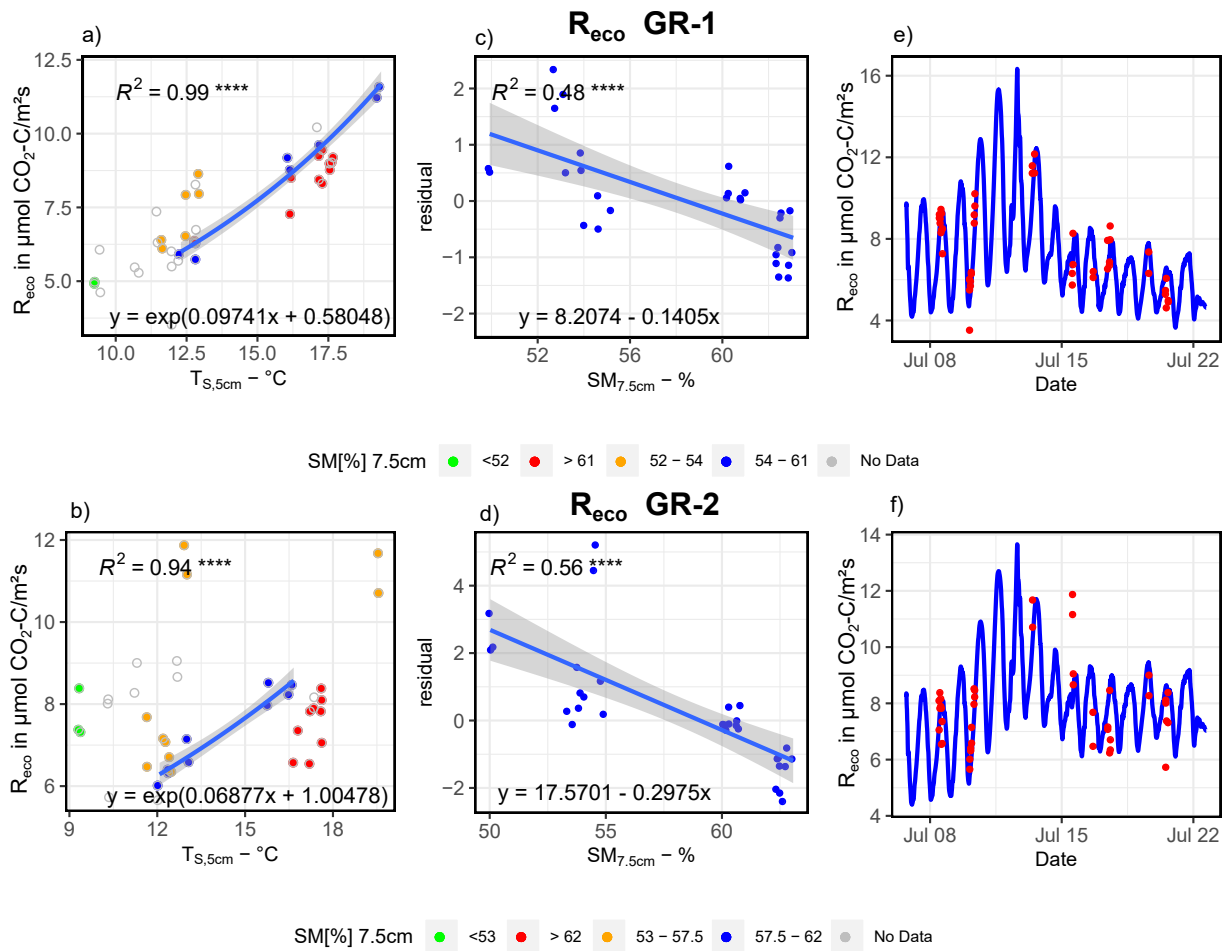


Figure B1. Depiction of the relationship between $T_{S,5cm}$ and SM and R_{eco} for GR-1 (a, c and e) and GR-2 (b, d and f). Interpolation models are formed by the equations of depicted regression curves. The graphs on the right(e,f) show modeled vs. measured fluxes, respectively.

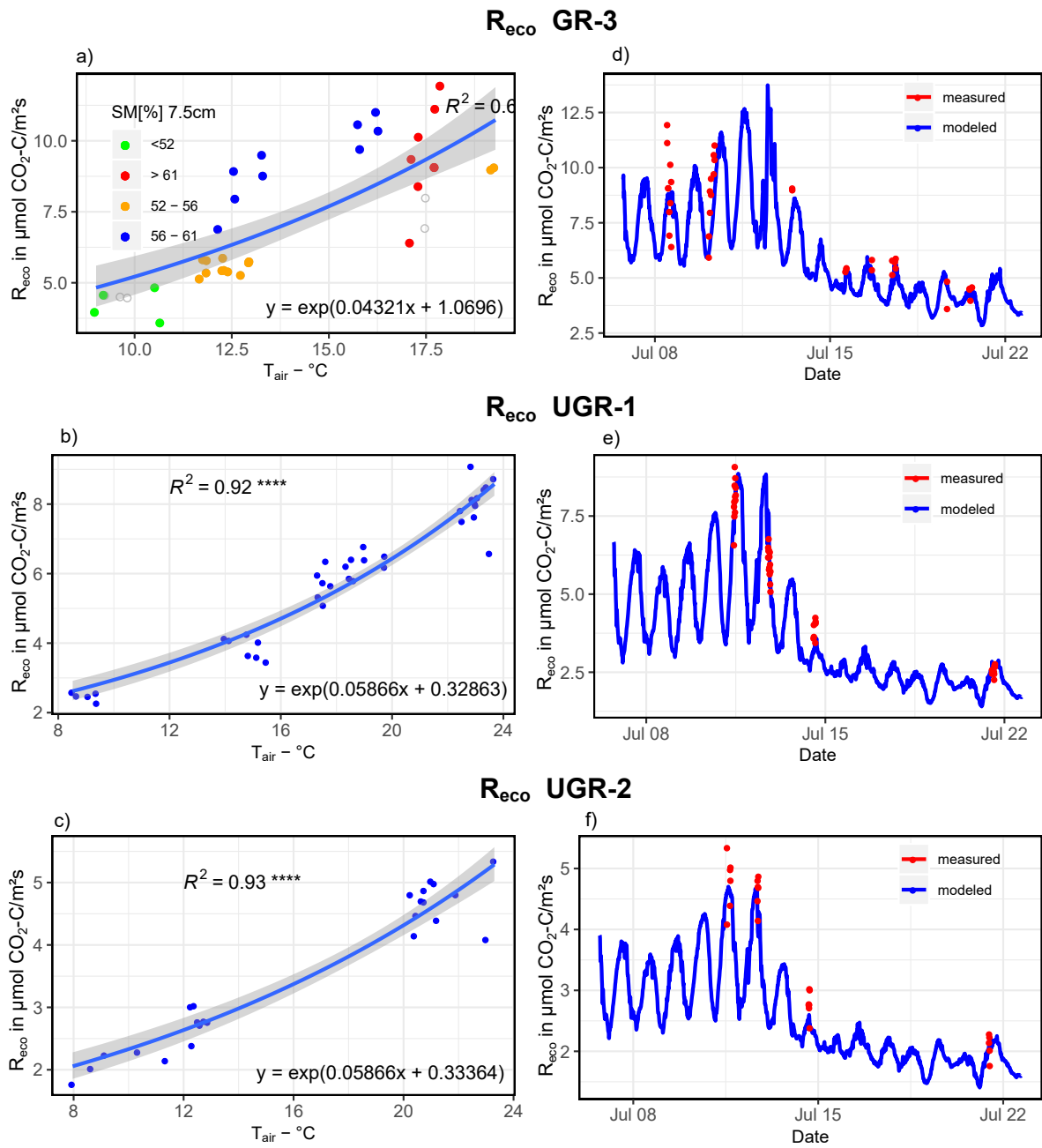


Figure B2. Depiction of the relationship between T_{air} and R_{eco} for GR-3 (a), UGR-1(b) and UGR-2 (c). Interpolation models are formed by the equation of the depicted regression curve. The graphs on the right (d,e,f) show modeled vs. measured fluxes, respectively.

B2 Modeling CH_4 Fluxes

540 CH_4 fluxes showed a strong correlation to both T_S (all sites) and SM at all depths (GR-1, GR-2, GR-3). However, there was a strong co-linearity between T_S and SM . Therefore, to reach the best possible fit for interpolating CH_4 fluxes, at GR, while accounting for both drivers, data was split up in two moisture groups ($SM_{15cm} > 60\%$ and $SM_{15cm} < 60\%$) to apply a pseudo-stepwise regression. Then, for each plot, a linear regression between CH_4 fluxes of the lower moisture group and $T_{S,25cm}$ was computed (Fig. B4 b, e, h). Second, the resulting linear equation was applied to the complete dataset for each plot integrating both moisture groups. The residuals between these calculated values and the measured values were fitted against SM_{15cm} , applying another linear regression, resulting in a second linear equation. These two resulting equations were used to interpolate CH_4 fluxes for each plot. Since soil moisture did not change at UGR-1 and UGR-2, the linear regression between CH_4 fluxes and $T_{S,15cm}$ yielded the linear equations used to model fluxes at these sites (Fig. B3).

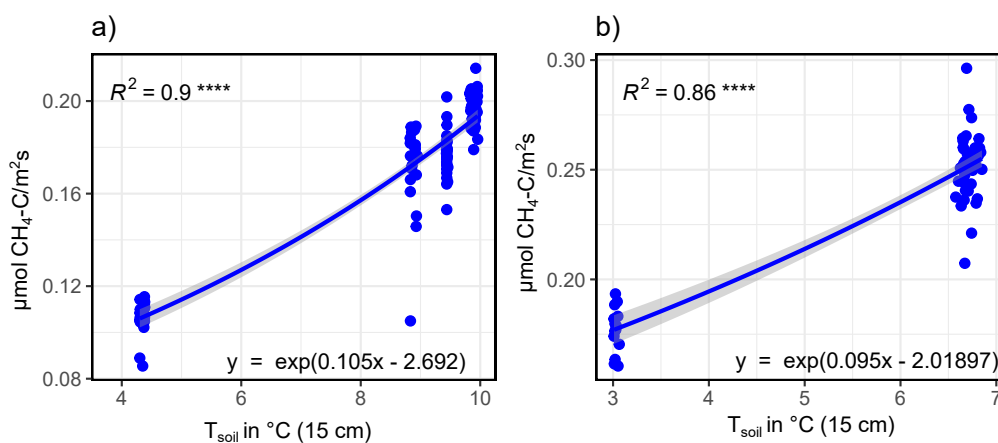


Figure B3. Exponential regressions between CH_4 fluxes and $T_{S,15cm}$ for UGR-1 (a) and UGR-2 (b).

550

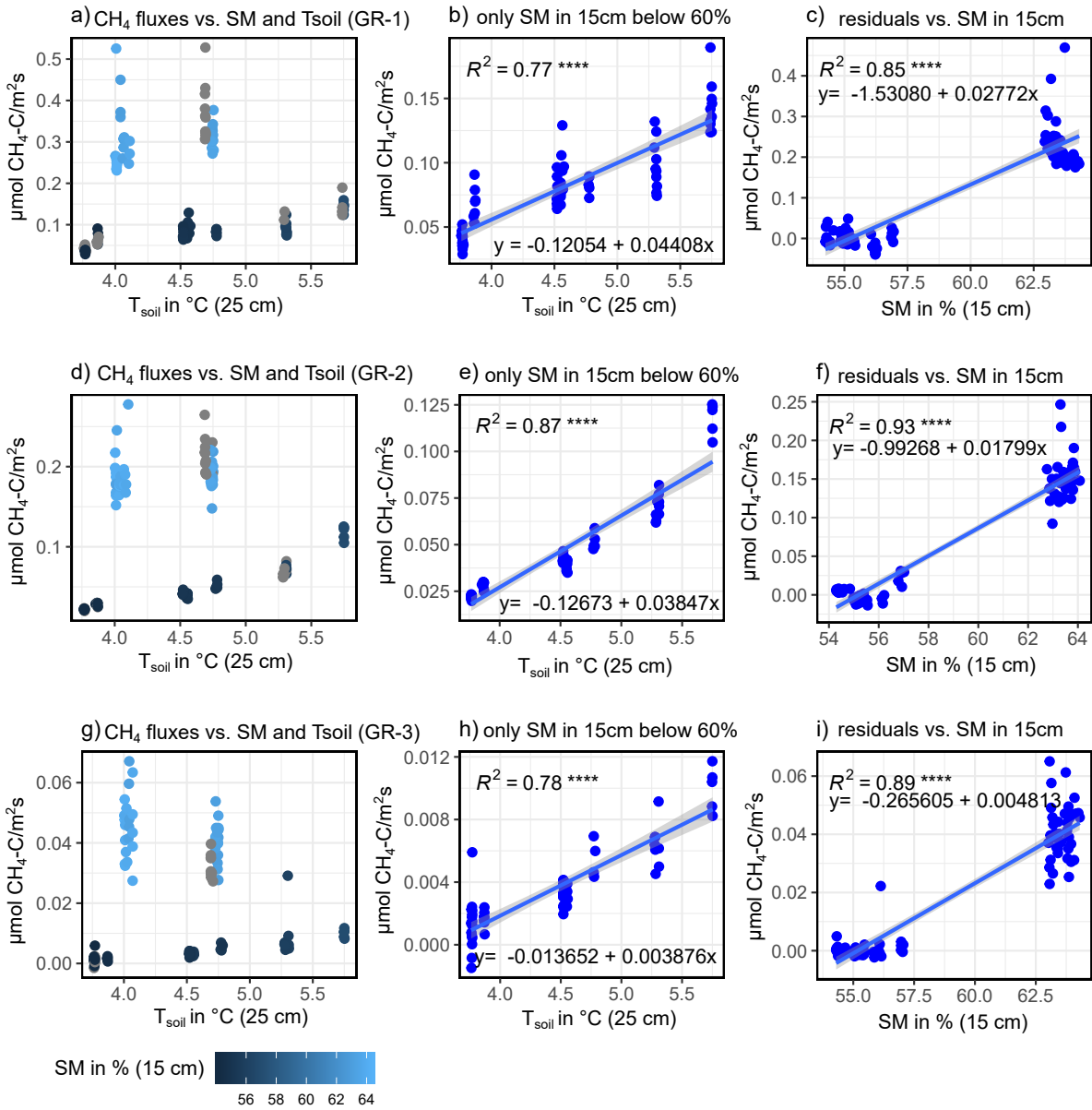


Figure B4. Depiction of influencing drivers of CH_4 -fluxes (GR-1: a, b, c, GR-2: d, e, f, GR-3: g, h, i) and the following derivation of formulas for the interpolation process, showing how magnitude of fluxes is higher for high soil moisture (a, d, g), and how $SM_{15\text{cm}}$ and $T_{S,25\text{cm}}$ jointly explain CH_4 fluxes.

B3 Comparison of daily means of fluxes, Soil Temperatures, Radiation and Albedo

Table B1. Statistics of repeated measures ANOVA applied on the daily means of modeled fluxes, radiation measurements and T_{soil} in 5cm at all sites over the whole observation period. (DOY = "Day of Year"; SWd = "downwelling shortwave radiation", SWu = "upwelling shortwave radiation"; DFn = Degrees of Freedom in the numerator, DFd = Degrees of Freedom in the denominator, SSn = Sum of Squares in the numerator, SSd = Sum of Squares in the denominator; ges = generalized eta-squared.)

Flux	Effect	DFn	DFd	SSn	SSd	F	p	ges
R_{eco}	DOY	14	56	112.59	33.46	13.46	<0.0001	0.77
GPP	DOY	14	56	132.64	16.60	31.95	<0.0001	0.89
NEE	DOY	14	56	108.87	46.11	9.44	<0.0001	0.70
CH₄	DOY	14	56	0.16	0.10	6.47	<0.0001	0.62
T_{soil} in 5cm	DOY	14	28	348.91	18.12	38.50	<0.0001	0.95
SWd	DOY	14	14	109439	1423.57	76.88	<0.0001	0.99
SWu	DOY	14	14	4978.72	101.64	48.99	<0.0001	0.98

As stated in the methods section, a repeated measures ANOVA was conducted to make sure measurements are independent in between days (effect = DOY, see Tab. B1). Statistics for all compared daily means are shown in Table B1. Tables B2 to B4 display corrected p-values of pairwise t-tests used to compare fluxes, soil temperatures and radiation between sites and/or plots. We used Holm's Method for the post correction of p-values, since Bonferroni's method (or also Tukey's test instead of t-tests), which is by definition more conservative, resulted in p-values of 1 for some occasions, which might hint to possible type II errors. However, the significance level was set to 0.01 for a more conservative interpretation of the results.

Table B2. Corrected p-values (insignificant values marked bold) of pairwise t-tests applied on daily means of T_{soil} in 5 cm, SWu ("upwelling shortwave radiation") and SWd ("downwelling shortwave radiation").

T_{soil} in 5cm	GR	UGR-1
UGR-1	<0.0001	-
UGR-2	<0.0001	0.00014
Radiation	SWd (UGR)	SWu (UGR)
SWd (GR)	0.23	-
SWu (GR)	-	< 0.0001

Table B3. Corrected p-values (insignificant values - above 0.01 - marked bold) of pairwise t-tests applied on daily means of modeled fluxes at all sites over the whole observation period. UGR-avg and GR-avg were compared separately.

<i>R_{eco}</i>	GR-1	GR-2	GR-3	UGR-1	UGR-avg
GR-2	0.38	-	-	-	-
GR-3	0.0006	0.01125	-	-	-
UGR-1	< 0.0001	< 0.0001	< 0.0001	-	-
UGR-2	< 0.0001	< 0.0001	< 0.0001	0.00057	-
GR-avg	-	-	-	-	< 0.0001
GPP	GR-1	GR-2	GR-3	UGR-1	UGR-avg
GR-2	< 0.0001	-	-	-	-
GR-3	0.0051	< 0.0001	-	-	-
UGR-1	< 0.0001	< 0.0001	< 0.0001	-	-
UGR-2	< 0.0001	< 0.0001	< 0.0001	< 0.0001	-
GR-avg	-	-	-	-	< 0.0001
NEE	GR-1	GR-2	GR-3	UGR-1	UGR-avg
GR-2	< 0.0001	-	-	-	-
GR-3	0.00098	0.18787	-	-	-
UGR-1	< 0.0001	0.11569	< 0.0001	-	-
UGR-2	0.18787	0.00031	< 0.0001	< 0.0001	-
GR-avg	-	-	-	-	0.73
CH₄	GR-1	GR-2	GR-3	UGR-1	UGR-avg
GR-2	0.0001	-	-	-	-
GR-3	0.0001	0.00011	-	-	-
UGR-1	0.45655	0.01667	< 0.0001	-	-
UGR-2	0.08469	< 0.0001	< 0.0001	< 0.0001	-
GR-avg	-	-	-	-	< 0.0001

B4 Error Calculation

560 For the final modeled fluxes, which provide the basis to calculate daily average fluxes, a series of error sources was identified (see Table B4). First, a bootstrapping approach to obtain a median slope of CO_2 and CH_4 concentration changes (see also methods section) allows to generate an error range for observed flux rates. The standard error of the calculated slopes was transformed into a flux by the same formula applied to the median slope, averaged over all measurements, and is called

Table B4. Error range of C-fluxes, with values given in [$\mu\text{molCm}^{-2}\text{s}^{-1}$]. Err_{abs} describes the final cumulative error that is also used in the results section.

	UGR-1	UGR-2	GR-1	GR-2	GR-3
R_{eco}					
Err_{slope}	0.16	0.13	0.15	0.13	0.13
Err_{mod}	0.89	0.45	0.65	1.16	0.84
Err_{T_S}	-	-	0.51	0.35	-
Err_{abs}	1.46	0.58	1.31	1.64	0.97
GPP					
Err_{slope}	0.30	0.24	0.26	0.27	0.33
Err_{mod}	2.50	1.20	1.77	2.67	2.15
Err_{abs}	2.80	1.44	2.03	2.94	2.48
NEE					
$Err_{abs}(R_{eco})$	1.46	0.58	1.31	1.64	0.97
$Err_{abs}(GPP)$	2.80	1.44	2.03	2.94	2.48
Err_{comp}	4.26	2.02	3.34	4.58	3.55
CH_4					
Err_{slope}	0.0022	0.0033	0.0039	0.0026	0.00090
Err_{mod}	0.011	0.012	0.045	0.020	0.007
$Err_{T_{S,15cm}}$	0.0013	0.0014	-	-	-
Err_{abs}	0.014	0.016	0.049	0.027	0.008

Err_{slope} . For GPP , Err_{slope} is composed by both the Err_{slope} of NEE measurements and R_{eco} measurements, since these two direct flux measurements needed to be combined for GPP . Second, modeling the chamber fluxes in order to have a continuous time series results in deviations from the modeled vs. the measured fluxes. Here, a linear regression (modeled vs. measured) was applied to evaluate the model quality, and to obtain a standard error. Third, to model and interpolate R_{eco} (at GR-1 and GR-2) and CH_4 fluxes (at UGR-1 and UGR-2), interpolated soil temperatures were used. Therefore, the RMSE of these models was considered by adding it to the T_S - term in the interpolation formula for $R_{eco}(T_{S,5cm})$ and CH_4 fluxes ($T_{S,15cm}; T_{S,25cm}$). In a last step, the initial flux was subtracted from this "enhanced" flux, and the result was defined as the T_S -error (Err_{T_S}). All these errors are summarized by Err_{abs} and are depicted in Tab. A1. NEE errors are summed up Err_{abs} from R_{eco} and GPP .

Author contributions. MG was responsible for study conception. WF, MG and CT contributed to development of the methodology. NZ provided logistics at the study site, and has a overall prominent role in designing permafrost studies within Pleistocene Park. WF conducted the field work, with support by MG and NZ. Formal data analysis and interpretation was carried out by WF under supervision of MG and
575 CT. WF led the drafting of the manuscript with contributions from MG. All authors contributed to refining the manuscript.

Competing interests. The authors declare that they have no conflict of interest.

Acknowledgements. This work was supported through funding by the European Commission (INTAROS project, H2020-BG-09-2016, Grant Agreement No. 727890, Nunataryuk project, H2020-BG-11-2016/17, Grant Agreement No. 773421), and the German Ministry of Education and Research (KoPf project, Grant No. 03F0764D). Further funding was provided by the Max Planck Institute for Biogeochemistry (MPI-
580 BGC) in Jena, Germany. The authors appreciate the technical support of Olaf Kolle and Martin Hertel from the Field Experiments and Instrumentation service group at MPI-BGC, and also the contribution of staff members of the Northeast Scientific Station in Chersky for facilitating the field experiments.

References

- Aalto, J., Le Roux, P. C., and Luoto, M.: Vegetation mediates soil temperature and moisture in arctic-alpine environments, *Arctic, Antarctic, and Alpine Research*, 45, 429–439, <https://doi.org/10.1657/1938-4246-45.4.429>, 2013.
- 585 Aurela, M., Riutta, T., Laurila, T., Tuovinen, J. P., Vesala, T., Tuittila, E. S., Rinne, J., Haapanala, S., and Laine, J.: CO₂ exchange of a sedge fen in southern Finland - The impact of a drought period, *Tellus, Series B: Chemical and Physical Meteorology*, 59, 826–837, <https://doi.org/10.1111/j.1600-0889.2007.00309.x>, 2007.
- Bakeman, R.: Recommended effect size statistics for repeated measures designs, *Behavior research methods*, 37, 379–384, 2005.
- 590 Barthelemy, H., Stark, S., Michelsen, A., and Olofsson, J.: Urine is an important nitrogen source for plants irrespective of vegetation composition in an Arctic tundra: Insights from a 15N-enriched urea tracer experiment, *Journal of Ecology*, 106, 367–378, <https://doi.org/10.1111/1365-2745.12820>, 2018.
- Beer, C., Zimov, N., Olofsson, J., Porada, P., and Zimov, S.: Protection of Permafrost Soils from Thawing by Increasing Herbivore Density, *Scientific Reports*, 10, 1–10, <https://doi.org/10.1038/s41598-020-60938-y>, 2020.
- 595 Britton, C. M. and Dodd, J. D.: Relationships of Photosynthetically Active Radiation, *Agricultural Meteorology*, 17, 1–7, [https://doi.org/https://doi.org/10.1016/0002-1571\(76\)90080-7](https://doi.org/https://doi.org/10.1016/0002-1571(76)90080-7), 1976.
- Cahoon, S. M., Sullivan, P. F., Post, E., and Welker, J. M.: Large herbivores limit CO₂ uptake and suppress carbon cycle responses to warming in West Greenland, *Global Change Biology*, 18, 469–479, <https://doi.org/10.1111/j.1365-2486.2011.02528.x>, 2012.
- Canty, A. and Ripley, B. D.: boot: Bootstrap R (S-Plus) Functions, r package version 1.3-28, 2021.
- 600 Cassidy, A. E., Christen, A., and Henry, G. H.: The effect of a permafrost disturbance on growing-season carbon-dioxide fluxes in a high Arctic tundra ecosystem, *Biogeosciences*, 13, 2291–2303, <https://doi.org/10.5194/bg-13-2291-2016>, 2016.
- Celis, G., Mauritz, M., Bracho, R., Salmon, V. G., Webb, E. E., Hutchings, J., Natali, S. M., Schädel, C., Crummer, K. G., and Schuur, E. A.: Tundra is a consistent source of CO₂ at a site with progressive permafrost thaw during 6 years of chamber and eddy covariance measurements, *Journal of Geophysical Research: Biogeosciences*, 122, 1471–1485, <https://doi.org/10.1002/2016JG003671>, 2017.
- 605 Chang, Q., Wang, L., Ding, S., Xu, T., Li, Z., Song, X., Zhao, X., Wang, D., and Pan, D.: Grazer effects on soil carbon storage vary by herbivore assemblage in a semi-arid grassland, *Journal of Applied Ecology*, 55, 2517–2526, <https://doi.org/10.1111/1365-2664.13166>, 2018.
- Chang, Q., Xu, T., Ding, S., Wang, L., Liu, J., Wang, D., Wang, Y., Li, Z., Zhao, X., Song, X., and Pan, D.: Herbivore Assemblage as an Important Factor Modulating Grazing Effects on Ecosystem Carbon Fluxes in a Meadow Steppe in Northeast China, *Journal of Geophysical Research: Biogeosciences*, 125, 1–12, <https://doi.org/10.1029/2020JG005652>, 2020.
- Chapin III, F. S., Sturm, M., Serreze, M. C., McFadden, J. P., Key, J. R., Lloyd, A. H., McGuire, A. D., Rupp, T. S., Lynch, A. H., Schimel, J. P., Beringer, J., Chapman, W. L., Epstein, H. E., Euskirchen, E. S., Hinzman, L. D., Jia, G., Ping, C. L., Tape, K. D., Thompson, C. D., Walker, D. A., and Welker, J. M.: Role of land-surface changes in arctic summer warming, *Science*, 310, 657–660, <https://doi.org/10.1126/science.1117368>, 2005.
- 615 Christensen, T. R., Friberg, T., Sommerkorn, M., Kaplan, J., Illeris, L., Soegaard, H., Nordstroem, C., and Jonasson, S.: Trace gas exchange in a high-Arctic valley: 1. Variations in CO₂ and CH₄ Flux between tundra vegetation types, *Global Biogeochemical Cycles*, 14, 701–713, <https://doi.org/10.1029/1999GB001134>, 2000.

- Cohen, J., Pulliainen, J., Ménard, C. B., Johansen, B., Oksanen, L., Luojus, K., and Ikonen, J.: Effect of reindeer grazing on snowmelt, albedo and energy balance based on satellite data analyses, *Remote Sensing of Environment*, 135, 107–117, <https://doi.org/10.1016/j.rse.2013.03.029>, 2013.
- 620 Cromsigt, J. P., Kemp, Y. J., Rodriguez, E., and Kivit, H.: Rewilding Europe's large grazer community: how functionally diverse are the diets of European bison, cattle, and horses?, *Restoration Ecology*, 26, 891–899, <https://doi.org/10.1111/rec.12661>, 2018.
- Curasi, S. R., Loranty, M. M., and Natali, S. M.: Water track distribution and effects on carbon dioxide flux in an eastern Siberian upland tundra landscape, *Environmental Research Letters*, 11, <https://doi.org/10.1088/1748-9326/11/4/045002>, 2016.
- 625 Davidson, E. A., Savage, K., Verchot, L. V., and Navarro, R.: Minimizing artifacts and biases in chamber-based measurements of soil respiration, *Agricultural and Forest Meteorology*, 113, 21–37, 2002.
- Dyksterhuis, E. J. and Schmutz, E. M.: Natural Mulches or "Litter" of Grasslands: With Kinds and Amounts on a Southern Prairie, *Ecology*, 28, 163–179, <https://doi.org/10.2307/1930949>, 1947.
- Epstein, H. E., Reynolds, M. K., Walker, D. A., Bhatt, U. S., Tucker, C. J., and Pinzon, J. E.: Dynamics of aboveground phytomass of the circumpolar Arctic tundra during the past three decades, *Environmental Research Letters*, 7, <https://doi.org/10.1088/1748-9326/7/1/015506>, 2012.
- 630 Euskirchen, E. S., Edgar, C. W., Sydonia Bret-Harte, M., Kade, A., Zimov, N., and Zimov, S.: Interannual and Seasonal Patterns of Carbon Dioxide, Water, and Energy Fluxes From Ecotonal and Thermokarst-Impacted Ecosystems on Carbon-Rich Permafrost Soils in North-eastern Siberia, *Journal of Geophysical Research: Biogeosciences*, 122, 2651–2668, <https://doi.org/10.1002/2017JG004070>, 2017.
- 635 Falk, J. M., Schmidt, N. M., Christensen, T. R., and Ström, L.: Large herbivore grazing affects the vegetation structure and greenhouse gas balance in a high arctic mire, *Environmental Research Letters*, 10, <https://doi.org/10.1088/1748-9326/10/4/045001>, 2015.
- Farquhar, G. D. and Sharkey, T. D.: Stomatal conductance and photosynthesis, *Annual review of plant physiology*, 33, 317–345, 1982.
- Field, C. B., Chapin III, F. S., Matson, P. A., and Mooney, H. A.: Responses of terrestrial ecosystems to the changing atmosphere: a resource-based approach, *Annual Review of Ecology and Systematics*, 23, 201–235, 1992.
- 640 Glover, S. and Dixon, P.: Likelihood ratios: A simple and flexible statistic for empirical psychologists, *Psychonomic Bulletin & Review*, 11, 791–806, 2004.
- Göckede, M., Kittler, F., Jung Kwon, M., Burjack, I., Heimann, M., Kolle, O., Zimov, N., and Zimov, S.: Shifted energy fluxes, increased Bowen ratios, and reduced thaw depths linked with drainage-induced changes in permafrost ecosystem structure, *Cryosphere*, 11, 2975–2996, <https://doi.org/10.5194/tc-11-2975-2017>, 2017.
- 645 Göckede, M., Kwon, M. J., Kittler, F., Heimann, M., Zimov, N., and Zimov, S.: Negative feedback processes following drainage slow down permafrost degradation, *Global change biology*, 25, 3254–3266, 2019.
- Gornall, J. L., Woodin, S. J., Jónsdóttir, I. S., and van der Wal, R.: Herbivore impacts to the moss layer determine tundra ecosystem response to grazing and warming, *Oecologia*, 161, 747–758, <https://doi.org/10.1007/s00442-009-1427-5>, 2009.
- Grogan, P.: Cold season respiration across a low arctic landscape: The influence of vegetation type, snow depth, and interannual climatic variation, *Arctic, Antarctic, and Alpine Research*, 44, 446–456, <https://doi.org/10.1657/1938-4246-44.4.446>, 2012.
- 650 Harden, J. W., Koven, C. D., Ping, C. L., Hugelius, G., David McGuire, A., Camill, P., Jorgenson, T., Kuhry, P., Michaelson, G. J., O'Donnell, J. A., Schuur, E. A., Tarnocai, C., Johnson, K., and Grosse, G.: Field information links permafrost carbon to physical vulnerabilities of thawing, *Geophysical Research Letters*, 39, 1–6, <https://doi.org/10.1029/2012GL051958>, 2012.
- Hofstede, R. G. and Rossenaar, A. J.: Biomass of grazed, burned, and undisturbed Paramo Grasslands, Colombia. II. Root mass and above-ground:belowground ratio, *Arctic and Alpine Research*, 27, 13–18, <https://doi.org/10.2307/1552063>, 1995.
- 655

- Hollister, R. D., May, J. L., Kremers, K. S., Tweedie, C. E., Oberbauer, S. F., Liebig, J. A., Botting, T. F., Barrett, R. T., and Gregory, J. L.: Warming experiments elucidate the drivers of observed directional changes in tundra vegetation, *Ecology and Evolution*, 5, 1881–1895, <https://doi.org/10.1002/ece3.1499>, 2015.
- Holm, S.: A simple sequentially rejective multiple test procedure, *Scandinavian journal of statistics*, pp. 65–70, 1979.
- 660 Huemmrich, K. F., Kinoshita, G., Gamon, J. A., Houston, S., Kwon, H., and Oechel, W. C.: Tundra carbon balance under varying temperature and moisture regimes, *Journal of Geophysical Research: Biogeosciences*, 115(G4), <https://doi.org/10.1029/2009jg001237>, 2010.
- Hugelius, G., Strauss, J., Zubrzycki, S., Harden, J. W., Schuur, E. A., Ping, C. L., Schirrmeyer, L., Grosse, G., Michaelson, G. J., Koven, C. D., O'Donnell, J. A., Elberling, B., Mishra, U., Camill, P., Yu, Z., Palmtag, J., and Kuhry, P.: Estimated stocks of circumpolar permafrost carbon with quantified uncertainty ranges and identified data gaps, *Biogeosciences*, 11, 6573–6593, [https://doi.org/10.5194/bg-11-6573-](https://doi.org/10.5194/bg-11-6573-2014)
665 2014, 2014.
- Kelsey, K. C., Leffler, A. J., Beard, K. H., Schmutz, J. A., Choi, R. T., and Welker, J. M.: Interactions among vegetation, climate, and herbivory control greenhouse gas fluxes in a subarctic coastal wetland, *Journal of Geophysical Research: Biogeosciences*, 121, 2960–2975, <https://doi.org/10.1002/2016JG003546>, 2016.
- Killick, R., Haynes, K., and Eckley, I.: Changepoint: an R package for changepoint analysis. R package version 2.2. 2, 2016.
- 670 Kittl, H., Forbes, B. C., and Oksanen, J.: Long- and short-term effects of reindeer grazing on tundra wetland vegetation, *Polar Biology*, 32, 253–261, <https://doi.org/10.1007/s00300-008-0526-9>, 2009.
- Kittler, F., Burjack, I., Corradi, C. A., Heimann, M., Kolle, O., Merbold, L., Zimov, N., Zimov, S., and Göckede, M.: Impacts of a decadal drainage disturbance on surface–atmosphere fluxes of carbon dioxide in a permafrost ecosystem, *Biogeosciences*, 13, 5315–5332, 2016.
- Kittler, F., Heimann, M., Kolle, O., Zimov, N., Zimov, S., and Göckede, M.: Long-Term Drainage Reduces CO₂ Uptake and CH₄ Emissions
675 in a Siberian Permafrost Ecosystem, *Global Biogeochemical Cycles*, 31, 1704–1717, <https://doi.org/10.1002/2017GB005774>, 2017.
- Kutzbach, L., Schneider, J., Sachs, T., Giebels, M., Nykänen, H., Shurpali, N. J., Martikainen, P. J., Alm, J., and Wilmking, M.: CO₂ flux determination by closed-chamber methods can be seriously biased by inappropriate application of linear regression, *Biogeosciences*, 4, 1005–1025, <https://doi.org/10.5194/bg-4-1005-2007>, 2007.
- Kwon, M. J., Heimann, M., Kolle, O., Luus, K. A., Schuur, E. A., Zimov, N., Zimov, S. A., and Göckede, M.: Long-term drainage reduces
680 CO₂ uptake and increases CO₂ emission on a Siberian floodplain due to shifts in vegetation community and soil thermal characteristics, *Biogeosciences*, 13, 4219–4235, <https://doi.org/10.5194/bg-13-4219-2016>, 2016.
- Kwon, M. J., Beulig, F., Ilie, I., Wildner, M., Küsel, K., Merbold, L., Mahecha, M. D., Zimov, N., Zimov, S. A., Heimann, M., Schuur, E. A., Kostka, J. E., Kolle, O., Hilke, I., and Göckede, M.: Plants, microorganisms, and soil temperatures contribute to a decrease in methane fluxes on a drained Arctic floodplain, *Global Change Biology*, 23, 2396–2412, <https://doi.org/10.1111/gcb.13558>, 2017.
- 685 Lafleur, P. M.: Connecting atmosphere and wetland: Trace gas exchange, *Geography Compass*, 3, 560–585, <https://doi.org/10.1111/j.1749-8198.2008.00212.x>, 2009.
- Larson, F. and Whitman, W.: A Comparison of Used and Unused Grassland Mesas in the Badlands of South Dakota, *Ecology*, 23, 438–445, 1942.
- Larter, N. C. and Nagy, J. A.: Variation between Snow Conditions at Peary Caribou and Muskox Feeding Sites and Elsewhere
690 in Foraging Habitats on Banks Island in the Canadian High Arctic, *Arctic, Antarctic, and Alpine Research*, 33, 123–130, <https://doi.org/10.1080/15230430.2001.12003414>, 2001.
- Lawrence, M. A.: ez: Easy Analysis and Visualization of Factorial Experiments, <https://CRAN.R-project.org/package=ez>, r package version 4.4-0, 2016.

- López-Blanco, E., Lund, M., Williams, M., Tamstorf, M. P., Westergaard-Nielsen, A., Exbrayat, J. F., Hansen, B. U., and Christensen, T. R.: Exchange of CO₂ in Arctic tundra: Impacts of meteorological variations and biological disturbance, *Biogeosciences*, 14, 4467–4483, <https://doi.org/10.5194/bg-14-4467-2017>, 2017.
- Manseau, M., Huot, J., and Crete, M.: Effects of Summer Grazing by Caribou on Composition and Productivity of Vegetation: Community and Landscape Level, *The Journal of Ecology*, 84, 503, <https://doi.org/10.2307/2261473>, 1996.
- McEwing, K. R., Fisher, J. P., and Zona, D.: Environmental and vegetation controls on the spatial variability of CH₄ emission from wet-sedge and tussock tundra ecosystems in the Arctic, *Plant and Soil*, 388, 37–52, <https://doi.org/10.1007/s11104-014-2377-1>, 2015.
- Mekonnen, Z. A., Riley, W. J., Berner, L. T., Bouskill, N. J., Torn, M. S., Iwahana, G., Breen, A. L., Myers-Smith, I. H., Criado, M. G., Liu, Y., et al.: Arctic tundra shrubification: a review of mechanisms and impacts on ecosystem carbon balance, *Environmental Research Letters*, 16, 053001, 2021.
- Metcalf, D. B. and Olofsson, J.: Distinct impacts of different mammalian herbivore assemblages on arctic tundra CO₂ exchange during the peak of the growing season, *Oikos*, 124, 1632–1638, <https://doi.org/10.1111/oik.02085>, 2015.
- Myers-Smith, I. H., Forbes, B. C., Wilkening, M., Hallinger, M., Lantz, T., Blok, D., Tape, K. D., Macias-Fauria, M., Sass-Klaassen, U., Lévesque, E., Boudreau, S., Ropars, P., Hermanutz, L., Trant, A., Collier, L. S., Weijers, S., Rozema, J., Rayback, S. A., Schmidt, N. M., Schaeppman-Strub, G., Wipf, S., Rixen, C., Ménard, C. B., Venn, S., Goetz, S., Andreu-Hayles, L., Elmendorf, S., Ravolainen, V., Welker, J., Grogan, P., Epstein, H. E., and Hik, D. S.: Shrub expansion in tundra ecosystems: Dynamics, impacts and research priorities, *Environmental Research Letters*, 6, <https://doi.org/10.1088/1748-9326/6/4/045509>, 2011.
- Natali, S. M., Schuur, E. A., Webb, E. E., Pries, C. E., and Crummer, K. G.: Permafrost degradation stimulates carbon loss from experimentally warmed tundra, *Ecology*, 95, 602–608, <https://doi.org/10.1890/13-0602.1>, 2014.
- Natali, S. M., Schuur, E. A., Mauritz, M., Schade, J. D., Celis, G., Crummer, K. G., Johnston, C., Krapek, J., Pegoraro, E., Salmon, V. G., and Webb, E. E.: Permafrost thaw and soil moisture driving CO₂ and CH₄ release from upland tundra, *Journal of Geophysical Research: Biogeosciences*, 120, 525–537, <https://doi.org/10.1002/2014JG002872>, 2015.
- Oberbauer, S. F., Tweedie, C. E., Welker, J. M., Fahnestock, J. T., Henry, G. H., Webber, P. J., Hollister, R. D., Walker, M. D., Kuchy, A., Elmore, E., and Starr, G.: Tundra CO₂ fluxes in response to experimental warming across latitudinal and moisture gradients, *Ecological Monographs*, 77, 221–238, <https://doi.org/10.1890/06-0649>, 2007.
- Ochsner, T. E., Horton, R., and Ren, T.: A New Perspective on Soil Thermal Properties, *Soil Science Society of America Journal*, 65, 1641–1647, <https://doi.org/10.2136/sssaj2001.1641>, 2001.
- Oechel, W. C., Vourlitis, G. L., Hastings, S. J., Ault, R. P., and Bryant, P.: The effects of water table manipulation and elevated temperature on the net CO₂ flux of wet sedge tundra ecosystems, *Global Change Biology*, 4, 77–90, <https://doi.org/10.1046/j.1365-2486.1998.00110.x>, 1998.
- Olofsson, J.: Short- and long-term effects of changes in reindeer grazing pressure on tundra heath vegetation, *Journal of Ecology*, 94, 431–440, <https://doi.org/10.1111/j.1365-2745.2006.01100.x>, 2006.
- Olofsson, J., Kitti, H., Rautiainen, P., Stark, S., and Oksanen, L.: Effects of summer grazing by reindeer on composition of vegetation, productivity and nitrogen cycling, *Ecography*, 24, 13–24, <https://doi.org/10.1034/j.1600-0587.2001.240103.x>, 2001.
- Olofsson, J., Stark, S., and Oksanen, L.: Reindeer influence on ecosystem processes in the tundra, *Oikos*, 105, 386–396, <https://doi.org/10.1111/j.0030-1299.2004.13048.x>, 2004.
- Overland, J., Francis, J. A., Hall, R., Hanna, E., Kim, S.-J., and Vihma, T.: The melting Arctic and midlatitude weather patterns: Are they connected?, *Journal of Climate*, 28, 7917–7932, 2015.

- Pucheta, E., Bonamici, I., Cabido, M., and Díaz, S.: Below-ground biomass and productivity of a grazed site and a neighbouring ungrazed enclosure in a grassland in central Argentina, *Austral Ecology*, 29, 201–208, <https://doi.org/10.1111/j.1442-9993.2004.01337.x>, 2004.
- R Core Team: R: A Language and Environment for Statistical Computing, version 4.1.1, R Foundation for Statistical Computing, Vienna, Austria, <https://www.R-project.org/>, 2021.
- 735 Raillard, M. and Svoboda, J.: High Grazing Impact, Selectivity, and Local Density of Muskoxen in Central Ellesmere Island, Canadian High Arctic, *Arctic, Antarctic, and Alpine Research*, 32, 278–285, <https://doi.org/10.1080/15230430.2000.12003365>, 2000.
- Raillard, M. C. and Svoboda, J.: Exact Growth and Increased Nitrogen Compensation by the Arctic Sedge *Carex aquatilis* var. *stans* after Simulated Grazing, *Arctic, Antarctic, and Alpine Research*, 31, 21–26, <https://doi.org/10.1080/15230430.1999.12003277>, 1999.
- 740 Runkle, B. R., Sachs, T., Wille, C., Pfeiffer, E. M., and Kutzbach, L.: Bulk partitioning the growing season net ecosystem exchange of CO₂ in Siberian tundra reveals the seasonality of its carbon sequestration strength, *Biogeosciences*, 10, 1337–1349, <https://doi.org/10.5194/bg-10-1337-2013>, 2013.
- Salmon, V. G., Soucy, P., Mauritz, M., Celis, G., Natali, S. M., Mack, M. C., and Schuur, E. A.: Nitrogen availability increases in a tundra ecosystem during five years of experimental permafrost thaw, *Global Change Biology*, 22, 1927–1941, <https://doi.org/10.1111/gcb.13204>, 2016.
- 745 Schädel, C., Bader, M. K., Schuur, E. A., Biasi, C., Bracho, R., Capek, P., De Baets, S., Diáková, K., Ernakovich, J., Estop-Aragones, C., Graham, D. E., Hartley, I. P., Iversen, C. M., Kane, E., Knoblauch, C., Lupascu, M., Martikainen, P. J., Natali, S. M., Norby, R. J., O'Donnell, J. A., Chowdhury, T. R., Šantrucková, H., Shaver, G., Sloan, V. L., Treat, C. C., Turetsky, M. R., Waldro, M. P., and Wickland, K. P.: Potential carbon emissions dominated by carbon dioxide from thawed permafrost soils, *Nature Climate Change*, 6, 950–953, <https://doi.org/10.1038/nclimate3054>, 2016.
- 750 Schuur, E. A., Vogel, J. G., Crummer, K. G., Lee, H., Sickman, J. O., and Osterkamp, T. E.: The effect of permafrost thaw on old carbon release and net carbon exchange from tundra, *Nature*, 459, 556–559, <https://doi.org/10.1038/nature08031>, 2009.
- Schuur, E. A., McGuire, A. D., Schädel, C., Grosse, G., Harden, J. W., Hayes, D. J., Hugelius, G., Koven, C. D., Kuhry, P., Lawrence, D. M., Natali, S. M., Olefeldt, D., Romanovsky, V. E., Schaefer, K., Turetsky, M. R., Treat, C. C., and Vonk, J. E.: Climate change and the permafrost carbon feedback, *Nature*, 520, 171–179, <https://doi.org/10.1038/nature14338>, 2015.
- 755 Sitters, J., Kimuyu, D. M., Young, T. P., Claeys, P., and Olde Venterink, H.: Negative effects of cattle on soil carbon and nutrient pools reversed by megaherbivores, *Nature Sustainability*, 3, 360–366, <https://doi.org/10.1038/s41893-020-0490-0>, 2020.
- Stark, S., Julkunen-Tiitto, R., and Kumpula, J.: Ecological role of reindeer summer browsing in the mountain birch (*Betula pubescens* ssp. *czerepanovii*) forests: Effects on plant defense, litter decomposition, and soil nutrient cycling, *Oecologia*, 151, 486–498, <https://doi.org/10.1007/s00442-006-0593-y>, 2007.
- 760 Tarnocai, C., Canadell, J. G., Schuur, E. A. G., Kuhry, P., Mazhitova, G., and Zimov, S.: Soil organic carbon pools in the northern circumpolar permafrost region, *Global biogeochemical cycles*, 23, GB2023, 2009.
- Te Beest, M., Sitters, J., Ménard, C. B., and Olofsson, J.: Reindeer grazing increases summer albedo by reducing shrub abundance in Arctic tundra, *Environmental Research Letters*, 11, 125013, <https://doi.org/10.1088/1748-9326/aa5128>, 2016.
- 765 Tolvanen, A. and Henry, G. H. R.: Population Structure of Three Dominant Sedges under Muskox Herbivory in the High Arctic, *Arctic, Antarctic, and Alpine Research*, 32, 449–455, <https://doi.org/10.1080/15230430.2000.12003389>, 2000.
- Ueyama, M., Iwata, H., and Harazono, Y.: Autumn warming reduces the CO₂ sink of a black spruce forest in interior Alaska based on a nine-year eddy covariance measurement, *Global Change Biology*, 20, 1161–1173, <https://doi.org/10.1111/gcb.12434>, 2014.

- Väisänen, M., Yläanne, H., Kaarlejärvi, E., Sjögersten, S., Olofsson, J., Crout, N., and Stark, S.: Consequences of warming on tundra carbon balance determined by reindeer grazing history, *Nature Climate Change*, 4, 384–388, <https://doi.org/10.1038/nclimate2147>, 2014.
- 770 Vandendorj, S., Eldridge, D. J., Travers, S. K., Val, J., and Oliver, I.: Microsite and grazing intensity drive infiltration in a semiarid woodland, *Ecohydrology*, 10, <https://doi.org/10.1002/eco.1831>, 2017.
- Windirsch, T., Grosse, G., Ulrich, M., Forbes, B. C., Göckede, M., Wolter, J., Macias-Fauria, M., Olofsson, J., Zimov, N., and Strauss, J.: Large Herbivores Affecting Permafrost – Impacts of Grazing on Permafrost Soil Carbon Storage in Northeastern Siberia, *Biogeosciences Discussions*, 2021, 1–24, <https://doi.org/10.5194/bg-2021-227>, 2021.
- 775 Winslow, L. A., Zwart, J. A., Batt, R. D., Dugan, H. A., Woolway, R. I., Corman, J. R., Hanson, P. C., and Read, J. S.: LakeMetabolizer: an R package for estimating lake metabolism from free-water oxygen using diverse statistical models, *Inland Waters*, 6, 622–636, 2016.
- Yan, Y., Yan, R., Chen, J., Xin, X., Eldridge, D. J., Shao, C., Wang, X., Lv, S., Jin, D., Chen, J., Guo, Z., Chen, B., and Xu, L.: Grazing modulates soil temperature and moisture in a Eurasian steppe, *Agricultural and Forest Meteorology*, 262, 157–165, <https://doi.org/10.1016/j.agrformet.2018.07.011>, 2018.
- 780 Yläanne, H. and Stark, S.: Distinguishing Rapid and Slow C Cycling Feedbacks to Grazing in Sub-arctic Tundra, *Ecosystems*, 22, 1145–1159, <https://doi.org/10.1007/s10021-018-0329-y>, 2019.
- Yläanne, H., Olofsson, J., Oksanen, L., and Stark, S.: Consequences of grazer-induced vegetation transitions on ecosystem carbon storage in the tundra, *Functional Ecology*, 32, 1091–1102, <https://doi.org/10.1111/1365-2435.13029>, 2018.
- 785 Zimov, S. A., Chuprynin, V. I., Oreshko, A. P., Chapin III, F. S., Reynolds, J. F., and Chapin, M. C.: Steppe-Tundra Transition: A herbivore-driven Biome shift at the end of the pleistocene, *American Naturalist*, 146, 765–794, <http://www.jstor.org/stable/2462990>, 1995.
- Zimov, S. A., Zimov, N. S., Tikhonov, A. N., and Chapin III, F. S.: Mammoth steppe: A high-productivity phenomenon, *Quaternary Science Reviews*, 57, 26–45, <https://doi.org/10.1016/j.quascirev.2012.10.005>, 2012.
- Zona, D., Lipson, D. A., Zulueta, R. C., Oberbauer, S. F., and Oechel, W. C.: Microtopographic controls on ecosystem functioning in the Arctic Coastal Plain, *Journal of Geophysical Research: Biogeosciences*, 116, 1–12, <https://doi.org/10.1029/2009JG001241>, 2011.
- 790