

Dimethylated sulfur compounds in the Peruvian upwelling system

Yanan Zhao¹, Dennis Booge¹, Christa A. Marandino¹, Cathleen Schlundt¹, Astrid Bracher^{2,3}, Elliot L. Atlas⁴, Jonathan Williams^{5,6} and Hermann W. Bange¹

¹GEOMAR Helmholtz Centre for Ocean Research Kiel, Kiel, Germany

5 ²Phytooptics Group, Physical Oceanography of Polar Seas, Climate Sciences, Alfred Wegener Institute, Helmholtz Centre for Polar and Marine Research, Bremerhaven, Germany

³Department of Physics and Electrical Engineering, Institute of Environmental Physics, University of Bremen, Bremen, Germany

⁴Rosenstiel School of Marine and Atmospheric Science, University of Miami, Miami, Florida, USA

10 ⁵Atmospheric Chemistry and Multiphase Chemistry Departments, Max Planck Institute for Chemistry, 55128 Mainz, Germany

⁶Energy, Environment and Water Research Centre, The Cyprus Institute, 1645 Nicosia, Cyprus

Correspondence to: Y. Zhao (yzhao@geomar.de)

Abstract. Our understanding of the biogeochemical cycling of the climate-relevant trace gas dimethyl sulfide (DMS) in the
15 Peruvian upwelling system is still limited. Here we present oceanic and atmospheric DMS measurements which were made during two shipborne cruises in December 2012 (M91) and October 2015 (SO243) in the Peruvian upwelling region. Dimethylsulfoniopropionate (DMSP) and dimethyl sulfoxide (DMSO) were also measured during M91. DMS concentrations were 1.9 ± 0.9 nmol L⁻¹ and 2.5 ± 1.9 nmol L⁻¹ in surface waters in October 2015 and December 2012, respectively. Nutrient availability appeared to be the main driver of the observed variability in the surface DMS distributions in the coastal areas.
20 DMS, DMSP and DMSO showed maxima in the surface layer and no elevated concentrations associated with the oxygen minimum zone off Peru were measured. The possible role of DMS, DMSP and DMSO as radical scavengers (stimulated by nitrogen limitation) is supported by their negative correlations with N:P (sum of nitrate and nitrite: dissolved phosphate) ratios. Large variations in atmospheric DMS mole fractions were measured during M91 (144.6 ± 95.0 ppt) and SO243 (91.4 ± 55.8 ppt); however, the atmospheric mole fractions were generally low, and the sea-to-air flux was primarily driven by seawater
25 DMS. The Peruvian upwelling region was identified as a source of atmospheric DMS in December 2012 and October 2015, however, in comparison to the previous measurements in the adjacent regions, the Peru upwelling was a moderate of DMS emissions at either time (M91: 5.9 ± 5.3 $\mu\text{mol m}^{-2} \text{d}^{-1}$; SO243: 3.8 ± 2.7 $\mu\text{mol m}^{-2} \text{d}^{-1}$).

1 Introduction

The trace gas dimethyl sulfide (DMS) is mainly produced in the marine environment and serves as one of the most abundant
30 biogenic atmospheric sulfur sources, transferring approximately 28.1 Tg sulfur from the oceans into the atmosphere annually as estimated by Lana et al. (Lana et al., 2011). DMS can be oxidised to form sulfate aerosols in the atmosphere which, in turn,

play an important role in regulating Earth's climate via altering cloud properties and modulating cloud albedo (Stefels et al., 2007). However, the global significance of this DMS-climate link is still under debate (Quinn and Bates, 2011).

35 Oceanic DMS is mainly produced from its precursor dimethylsulfoniopropionate (DMSP) which is synthesised in phytoplankton cells and then released into the seawater by senescence, virus attacks, and grazing (Stefels et al., 2007). Cellular DMSP concentrations vary in different phytoplankton groups: dinoflagellates and prymnesiophytes are major DMSP producers, whereas diatoms produce less DMSP (Keller, 1989). DMSP can be degraded to methanethiol via demethylation (Howard et al., 2006) or to DMS and acrylate via lyase-mediated cleavage (Curson et al., 2011). The conversion of DMSP to DMS (i.e., cleavage pathway) is only of minor importance for DMSP loss, as up to 75 % of DMSP is metabolised by marine
40 bacterioplankton through the demethylation pathway (Moran et al., 2012).

The formation and consumption processes of dimethyl sulfoxide (DMSO) remain less clear, but DMSO is known to be a photochemical and biological oxidation product of DMS (Hatton et al., 2012). Some studies showed that it could be directly synthesised in marine phytoplankton cells (Simó et al., 1998; Lee et al., 1999). A recent study suggested that dissimilation of dissolved DMSO (DMSO_d) to carbon dioxide can be a significant loss pathway in coastal waters (Dixon et al., 2020). Both
45 DMSP and DMSO exert similar intracellular functions (e.g., cryoprotection and antioxidation) in phytoplankton cells (Simó et al., 1998; Sunda et al., 2002) and can support bacterial carbon and sulfur demand (Simó et al., 2002; Dixon et al., 2020).

Biologically productive regions of the ocean can be a significant source of DMS to the atmosphere (Lana et al., 2011). The eastern tropical South Pacific Ocean (ETSP) features one of the four major Eastern Boundary Upwelling Ecosystems (EBUS): year-round coastal upwelling off Peru and northern Chile is driven by offshore Ekman transport resulting from alongshore
50 trade winds, which leads to abundant nutrients in surface waters and enhanced biological production (Chavez and Messié, 2009). The Peru upwelling system is significantly influenced by El Niño-Southern Oscillation (ENSO) events at decadal scales (Espinoza-Morriberón et al., 2017). ENSO is a natural climate event that affects the oceanic and atmospheric conditions worldwide and occurs in intervals between two and ten years (Santoso et al., 2017; Timmermann et al., 2018). ENSO is divided into three phases: El Niño (the warm phase), La Niña (the cold phase), and the neutral phase. El Niño/La Niña events are
55 characterised by warming/cooling of sea surface temperature (SST) in the equatorial Pacific Ocean and result in the deepening/shoaling of thermocline off Peru (Dewitte et al., 2012). During El Niño, the thermocline is pushed away from the surface layer (i.e., reduced coastal upwelling), resulting in limited nutrient supply and leading to a decline in primary production in the ecosystem (Barber and Chavez, 1983). Although upwelling of cold and nutrient-rich waters can be observed along the coast of Peru year-round (Tarazona and Arntz, 2001), surface chlorophyll concentration peaks in austral summer and
60 decreases in austral winter, which is out of phase with the upwelling intensity (Chavez and Messié, 2009). This paradoxical seasonal cycle may arise from both light limitation and dilution due to the deepening of the mixed layer in winter (Echevin et al., 2008).

The Peru upwelling system has been reported to be a source of biogenic halocarbons (e.g., bromoform and methyl iodide) both in surface seawater and atmosphere (Hepach et al., 2016); however, the measurements of biogenic sulfur compounds (DMS,

65 DMSP and DMSO) are relatively sparse in this area (Andreae, 1985; Riseman and DiTullio, 2004; Yang et al., 2011). As a
result, abiotic and biotic factors affecting DMS/P/O cycling and distributions are not fully understood. We measured DMS
concentrations in the water column in the Peru upwelling region as well as atmospheric DMS mole fractions during two
research campaigns in December 2012 (M91) and October 2015 (SO243). In addition to DMS, particulate and dissolved DMSP
and DMSO concentrations were measured during M91. This study is intended to focus on (i) deciphering the distributions of
70 DMS, DMSP, and DMSO in the Peru upwelling, (ii) identifying their main drivers and (iii) quantifying the DMS emissions to
the atmosphere in order to re-assess the role of DMS emissions from the Peru upwelling region.

2 Material and Methods

2.1 Sampling sites

The cruise M91 (Fig. 1a) was conducted on board the R/V Meteor between 1 and 26 December 2012. The cruise started from
75 the northernmost location at 5 °S and moved to the southernmost position at 16.2 °S with several transects perpendicular to
the coastline of Peru. Underway samples were taken from a continuously operating pump in the ship's hydrographic shaft (at
~ 7 m water depth), and profiles were made between 3 and 2000 m water depth from a 24 × 12 L Niskin bottle rosette equipped
with a probe for conductivity, temperature, and water depth (CTD). An overview of the methods used for determining
oceanographic parameters such as oxygen and nutrients can be found in Czeschel et al. (2015). The cruise SO243 (Fig. 1b)
80 took place on board the R/V Sonne between 5 and 22 October 2015, from Guayaquil, Ecuador to Antofagasta, Chile, with
perpendicular transects to the shelf between ~ 9–16 °S (Fig. 1b). Underway samples were taken from a continuously operating
pump in the ship's hydrographic shaft (at ~ 5 m water depth), and profile samples were made between 5 and 150 m from 24
× 10 L Niskin bottle rosette equipped with a CTD. Measurements of oceanographic parameters such as oxygen and nutrients
are described in Stramma et al. (2016). Generally, both cruises alternated between offshore and onshore transects (Fig. 1) in
85 the Peru upwelling region (4–16 °S). Therefore, the sampling stations of M91 and SO243 can be categorised into offshore and
coastal stations according to their respective depths: stations shallower than 300 m are defined as coastal stations and those
deeper than 1000 m are defined as offshore stations. In addition to underway samples, seawater column-integrated (1–10 m)
samples from the CTD casts are defined as surface samples for M91.

The Ocean Niño index (ONI; http://origin.cpc.ncep.noaa.gov/products/analysis_monitoring/ensostuff/ONI_v5.php), which
90 quantifies the progress and strength of El Niño, suggests that M91 (ONI < 0.5 °C from August 2012 to March 2013) took place
in a neutral phase while SO243 occurred during a strong El Niño event (ONI ≥ 0.5 °C from November 2014 to May 2016)
(Santoso et al., 2017). However, the El Niño during SO243 was still developing with an ONI of 2.2 °C for Aug–Oct 2015.

2.2 Sulfur compounds measurements

Sulfur compounds (DMS/P/O) on M91 were analysed by purge and trap coupled to a gas chromatograph-flame photometric detector (GC-FPD) as described in Zindler et al. (2012, 2013). Briefly, DMS samples were analysed immediately after sampling and filtering (GF/F; Whatman; 0.7 μm) during the cruise, while DMSP and DMSO samples were analysed after returning to the lab. Dissolved DMSP (DMSP_d) samples were measured after adding sodium hydroxide (NaOH; Carl Roth) to the DMS samples, and total DMSP (DMSP_t) was measured from the unfiltered alkaline samples. Particulate DMSP (DMSP_p) concentrations were calculated by subtracting measured DMS and DMSP_d concentrations from measured DMSP_t concentrations. Dissolved DMSO (DMSO_d) and total DMSO (DMSO_t) samples were measured from the same samples of DMSP_d and DMSP_t measurements by adding cobalt-dosed sodium borohydride (NaBH₄; Sigma-Aldrich) after DMSP measurements. Particulate DMSO (DMSO_p) concentrations were calculated by subtracting measured DMSO_d concentrations from measured DMSO_t concentrations. The mean precision of all sulfur compound measurements using GC-FPD was $\pm 18\%$. Seawater DMS on SO243 was measured using a purge and trap system attached to a gas chromatograph-mass spectrometer (GC-MS), as described in Zavarsky et al. (2018). The mean precision of the DMS measurements using GC-MS was $\pm 11\%$. Dissolved DMS data measured simultaneously using GC-FPD and GC-MS at the GEOMAR time-series stations Boknis Eck (BE; www.bokniseck.de) are used to quality control the comparison of the M91 and SO243 datasets. The BE measurements are performed at 6 different depths on a monthly schedule and an assessment of a year-long dataset shows good agreement (Fig. S1). The BE relationship was used to adjust the dissolved DMS data from M91, which resulted in an increased uncertainty of $\pm 30.6\%$. DMS atmospheric mole fractions during both cruises were measured from whole air samples collected in 2.3 L electropolished stainless steel canisters. Sample analysis was performed on a multi-channel GC/MS/FID/ECD system (Agilent 7890 GC, 5973 MS), which used a Markes Unity system for sample concentration (Andrews et al., 2016). Samples were collected approximately every 3 hours (in parallel with seawater DMS samples). In addition, measurements of DMS atmospheric mole fraction (parts per trillion) during M91 were performed using a commercial proton-transfer-reaction time-of-flight mass spectrometer (PTR-ToF-MS) from Ionicon Analytik GmbH (Innsbruck, Austria). The PTR-ToF-MS was operated under standard conditions, pressure 2.2 mb, E/N 137, and mass resolution of between 3700-4000. The PTR-ToF-MS was calibrated at the beginning, during, and at the end of the cruise. The DMS was measured at mass 63.026 and calibrated to a gravimetrically prepared pressurized standard (Apel Riemer Environ. Inc, USA). The mean precision of the atmospheric DMS measurements using PTR-ToF-MS was $\pm 18\%$. The comparison between atmospheric DMS data using two methods during M91 shows a good correlation, but not 1:1 agreement, with PTR-ToF-MS measurements exhibiting higher concentrations (Fig. S1). For more details about this comparison, please see the supplemental material. It is not possible to determine which dataset is more accurate. In this study, we used the atmospheric DMS PTR-ToF-MS data which were adjusted to the discrete canister samples because of the higher temporal resolution of the continuous PTR-ToF-MS measurements, which resulted in an increased uncertainty of $\pm 24\%$.

2.3 Calculation of sea-to-air fluxes

Sea-to-air fluxes, F ($\mu\text{mol m}^{-2} \text{ day}^{-1}$), of DMS were calculated according to Eq. (1):

$$F = k_w(C_w - x'P/H), \quad (1)$$

30 where C_w and x' are the dissolved DMS surface concentrations and the DMS atmospheric dry mole fractions, respectively. P is the ambient pressure (set to 1 atm) and H is Henry's law solubility coefficient (Dacey et al., 1984), k_w is the gas transfer velocity calculated with the in-situ wind speed (U) of the shipboard observations and a Schmidt number (Sc) normalised to 600 (which was chosen to allow a direct comparison to the Lana et al. (2011) climatology), according to Nightingale et al. (2000); thus k_w was calculated according to Eq. (2):

$$35 \quad k_w = (0.222U^2 + 0.33U) (Sc/600)^{-0.5}, \quad (2)$$

where Sc was calculated using SST according to Saltzman et al. (1993) and the wind speed measurements were corrected to a height of 10 m above the sea level following the method of Hsu et al. (1994).

2.4 Phytoplankton pigments and Chlorophyll *a* concentration of major groups

Phytoplankton pigment samples were generally taken in parallel with DMS samples in depths between ~ 3 –200 m during both
 40 cruises. The process for measuring phytoplankton pigments and further converting them into phytoplankton groups are identical for the cruises M91 and SO243. Pigment samples were filtered through Whatman GF/F filters at the stations where DMS was sampled and then stored at -80 °C until analysis. Pigment concentrations, as described in Booge et al. (2018), were determined using high-pressure liquid chromatography (HPLC) according to the method of Barlow et al. (1997), which was adjusted to our temperature-controlled instruments as detailed in Taylor et al. (2011). Pigments, as listed in Table 2 of Taylor
 45 et al. (2011), were quality controlled according to Aiken et al. (2009), and were published in Hepach et al. (2016) and Bracher (2019). Phytoplankton composition was derived, as in Booge et al. (2018) already for SO243 also for M91 data: Using the diagnostic pigment analysis developed by Vidussi et al. (2001) and subsequently refined by Uitz et al. (2006), seven marker (diagnostic) pigments as proxies for specific phytoplankton groups (diatoms, dinoflagellates, haptophytes, chrysophytes, cryptophytes, cyanobacteria (excluding prochlorophytes), and chlorophytes) are used to relate their weighted sum of
 50 concentrations to the sum of monovinyl-Chl *a*. By applying then the specific weights determined by Uitz et al. (2006) the specific Chl *a* for each group is determined. The Chl *a* of prochlorophytes was directly derived from the divinyl-Chl *a* (the marker pigment for this group). The eight identified phytoplankton groups are assumed to represent the entire phytoplankton community and the sum of their Chl *a* represents the total Chl *a*.

3 Results and Discussion

55 3.1 Cruise settings

M91 took place in the coastal, wind-driven Peruvian upwelling system with southeasterly winds at $6.6 \pm 2.1 \text{ m s}^{-1}$. The mean \pm std (min–max) SST and sea surface salinity (SSS) during M91 were 18.9 ± 2.1 ($15.0\text{--}22.4$) $^{\circ}\text{C}$ and 35.1 ± 0.1 ($34.9\text{--}35.3$), respectively. Generally, SSTs below $18.0 \text{ }^{\circ}\text{C}$ were measured at the coastal stations (Fig. 2a), where upwelled water was found. The mean Chlorophyll *a* (Chl *a*) concentration was 2.5 ± 2.3 ($0.3\text{--}7.9$) $\mu\text{g L}^{-1}$, displaying a decreasing trend in the offshore direction (Fig. 2a). Diatoms were the most dominant algae group and were observed at all stations in surface waters with the mean relative abundance of 41 %, followed by haptophytes (24 %) and chlorophytes (10 %) in the phytoplankton community (Hepach et al., 2016). The N:P ratio, defined as the ratio of the sum of nitrate (NO_3^-) and nitrite (NO_2^-) to dissolved phosphate (PO_4^{3-}) for both cruises, is a good indicator of nutritional status: the constant 12.6, which is the empirically determined N:P ratio of organic matter produced in these waters, is used as the threshold for nitrogen repletion/limitation (Codispoti and Packard, 1980). N:P ratios ranged between 0.1 and 13.9 during M91, with a general decreasing trend southward and nitrogen-deficient conditions at coastal stations near Callao (F1–F4; Fig. 2a), which may suggest different phytoplankton bloom stages (e.g., a fully developed bloom at station F1 and F2 as indicated by higher Chl *a* and lower N:P values).

SO243 started with a section passing the Equator at around $85.5 \text{ }^{\circ}\text{W}$ with a mean (\pm std) SST and SSS of $25.2 \pm 1.5 \text{ }^{\circ}\text{C}$ and 34.2 ± 0.7 as well as low Chl *a* values $0.4 \pm 0.2 \mu\text{g L}^{-1}$ (Fig. 2b). Afterwards, SST, SSS, and Chl *a* values between stations 5 and 18 were 18.8 ± 1.6 ($15.6\text{--}20.5$) $^{\circ}\text{C}$, 35.2 ± 0.1 ($35\text{--}35.4$), and 2.5 ± 2.1 ($0.5\text{--}7.2$; Fig. 2b) $\mu\text{g L}^{-1}$, respectively, with constant southeasterly winds of $8.2 \pm 2.5 \text{ m s}^{-1}$, comparable to those measured during M91. The phytoplankton composition during SO243 is similar to M91, with the most abundant phytoplankton groups being diatoms (45 %), haptophytes (24 %), and chlorophytes (18 %) (Booge et al., 2018). N:P ratios were generally between 8–13 in the Peru upwelling region during SO243, indicating non/slightly limiting nitrogen conditions (Fig. 2b). Although the cruise SO243 took place during the strong El Niño event in 2015/2016, typical El Niño signals of warmer, saline, and oxygen-depleted upwelled waters were only apparent at the shelf stations at $\sim 9 \text{ }^{\circ}\text{S}$ off Peru. The El Niño signals were still weak at ~ 12 , 14 , and $16 \text{ }^{\circ}\text{S}$ transects as regularly cold and nutrient-rich upwelled waters were still present at the easternmost stations of these transects (Stramma et al., 2016). Overall, this indicates that at the time of our measurements in October 2015, the El Niño signal was not fully developed.

80 3.2 Seawater DMSP and DMSO

During M91, the mean concentrations of DMSP_p , DMSP_d , DMSO_p , and DMSO_d in surface waters were 85.0 ± 68.9 ($10.3\text{--}288.9$) nmol L^{-1} , 16.8 ± 16.5 ($0.8\text{--}61.9$) nmol L^{-1} , 40.1 ± 45.4 ($2.8\text{--}167.9$) nmol L^{-1} and 14.0 ± 9.5 ($1.3\text{--}28.9$) nmol L^{-1} , with DMSP_p and DMSO_p displaying a decreasing trend in an offshore direction along the F transect parallel to Callao (Fig. 3, a–d). Vertical profiles at station F4 exhibited typical patterns of these sulfur compounds and Chl *a* during M91 (Supporting

85 Information; Fig. S2): higher concentrations were measured in surface waters than those in bottom waters, with no enhanced signals in the oxygen minimum zone (OMZ).

The significant correlation between DMSP_p and DMSO_p ($\text{DMSO}_p = 0.62 * \text{DMSP}_p - 0.91$, $r^2 = 0.8$; see also Table 1) in this study is in good agreement with a correlation reported previously ($[\text{DMSO}_p] = 0.73 \times [\text{DMSP}_p] - 0.66$, $r^2 = 0.9$) off the Peruvian coast in September 2000 (Riseman and DiTullio, 2004). The strong correlation and remarkable similarity of the ratio
90 between the two particulate sulfur compounds from these two studies spanning a decade interval may indicate that they share a similar biogenic source and/or have related physiological functions in phytoplankton cells (Stefels et al., 2007). However, the concentrations of DMSP_p (1–45.7 nmol L^{-1}) and DMSO_p (0.1–30.8 nmol L^{-1}) reported by Riseman & DiTullio (2004) are generally lower than those measured in our study. Considering phytoplankton community composition (dominated by diatoms) and biomass (represented by Chl *a*) are comparable between the two studies, and no significant relationship was observed
95 between individual phytoplankton groups and DMSP(O)_p during M91 (Table 1), phytoplankton does not seem to be the main driver for the difference of DMSP(O)_p between the two studies. In contrast, nutrient availability (indicated by N:P ratios) might be the reason. Sunda *et al.* (2007) reported a substantial increase in intracellular DMSP concentrations in coastal diatoms under nitrogen limitation, which is assumed to be in response to oxidative stress within phytoplankton cells. Recently, Theseira et al. (2020) observed the accumulation of DMSP in diatoms (*Thalassiosira weissflogii*), which can reduce intracellular reactive
00 oxygen species. N:P ratios were generally low (< 10) during M91 while they were > 10 ($\text{NO}_x > 17 \mu\text{mol L}^{-1}$, $\text{PO}_4^{3-} > 1.2 \mu\text{mol L}^{-1}$) in September 2000 (Riseman and DiTullio, 2004). Therefore, higher DMSP_p and DMSO_p concentrations during M91 were potentially up-regulated in response to increased oxidative stress induced by nutrient limitation, and this is in line with negative correlations between N:P ratios and DMSP(O)_p (Table 1). Moreover, negative correlations (Table 1) between β -carotene (a known antioxidant) and DMSP(O)_p concentrations in both studies further support this speculation. Additionally, Riseman & DiTullio (2004) reported enhanced concentrations of DMSP(O)_p under low-iron conditions, which exemplifies that either
05 macro-, micronutrients or co-limitation conditions might elevate DMSP(O)_p concentrations against oxidative stress. In contrast to our observations, Zindler et al. (2012) reported a general decreasing trend of DMSP_i concentrations with decreasing N:P ratios (1–12) in the Mauritanian upwelling region, which was dominated by diatoms. This may be because the response to nitrogen limitation differs among specific algae groups. For instance, Gaul (2004) reported decreasing DMSP
10 production rates with decreasing nitrogen concentration among nine strains within the groups of dinoflagellates, diatoms, prymnesiophytes and cryptophytes. Therefore, despite the fact that diatoms were the dominant algae group off Peru and off Mauritania, variability at the species or genus level might result in different responses under nitrogen limitation (Keller and Korjeff-Bellows, 1996; Keller et al., 1999a, b).

3.3 Seawater DMS

15 Surface DMS concentrations were variable during M91, with a mean concentration of 2.5 ± 1.9 (0.2–8.2) nmol L^{-1} (Fig. 3e). Elevated concentrations were observed at the major upwelling centres (e.g., Chimbote and Callao), with the highest value

measured north of Chimbote. The cross-shelf section starting from Callao during M91 displayed decreasing trends of DMS towards an offshore direction. DMS concentrations of 1.9 ± 0.9 ($0.5\text{--}4.5$) nmol L^{-1} (Fig. 3f) in surface waters during SO243 could be grouped into three sections: the equatorial section (Guayaquil–station 5), the Peruvian upwelling section (stations 6–18) and the Chilean waters section, with mean concentrations of 2.4 ± 0.8 nmol L^{-1} , 1.2 ± 0.8 nmol L^{-1} and 2.1 ± 0.7 nmol L^{-1} , respectively. DMS values were generally low in the Peru upwelling section, regardless of coastal or offshore areas. Similar to DMSP and DMSO, vertical profiles of DMS for both cruises presented decreasing trends with increasing depths (Fig. S2) and again, no elevated concentrations were measured associated with OMZ in the water column, which is in agreement with Andreae (1985).

Except for the positive correlation between DMS and DMSO_a during M91 (Table 1), which serves as a hint that DMS photodegradation was an important source of DMSO_a in surface waters (Xu et al., 2021), DMS was significantly correlated only with N:P ratios for both cruises (Table 1). Nutrient availability is essential to plankton (phytoplankton and bacterioplankton) communities and therefore, N:P ratios, as well as fixed nitrogen deficit (Ndef), were used as indirect indicators to investigate the nutrient status on the coastal DMS distributions for both cruises. Ndef was calculated using the following equation (Graco et al., 2017):

$$\text{Ndef} = 12.6 \times [\text{PO}_4^{3-}] - [\text{NO}_3^-] - [\text{NO}_2^-], \quad (3)$$

where the constant 12.6 is adopted from Codispoti and Packard (1980), and positive Ndef indicates nitrogen-depleted conditions. Generally, both N:P ratios and Ndef significantly correlated with coastal DMS values in the surface waters (Fig. 4). Enhanced DMS concentrations associated with nitrogen limitation could be linked to an increase in the activity of the DMSP lyase enzyme, probably in response to increased oxidative stress (Sunda et al., 2007). This might also explain the discrepancy in coastal DMS values between the two cruises: higher DMS values from M91 might be up-regulated in a more nitrogen-limited environment, as compared to SO243. Our observation of nutrient availability and DMS concentrations are in line with other field studies (Leck et al., 1990; Zindler et al., 2012).

3.4 Seawater DMS comparison

DMS is heavily undersampled in the ETSP, especially for the coastal areas (defined as bathymetry < 300 m in this study), with only one other published DMS data set from June–July 1982 (Andreae, 1985). Coastal DMS concentration reported by Andreae (1985) was 6.5 ± 6.2 ($1\text{--}43.9$) nmol L^{-1} (Fig. 3e) which is much higher compared to the measurements reported here. However, Andreae (1985) reported comparable mean Chl *a* values (dominated by diatoms) and intermediate N:P ratios (9–11). Therefore, phytoplankton biomass or nitrogen limitation would not explain the extremely high DMS concentrations measured by Andreae (1985). One possible reason could be the seasonality of the upwelling strength, as upwelling is strongest in austral winter (Echevin et al., 2008) and more intense upwelling might be favourable to the biogenic production of DMS. This is in line with the highest DMS concentrations measured at the southern upwelling centres between Chimbote and Callao (> 40 nmol L^{-1}), where the most intense upwelling occurred (Andreae, 1985). A comparison with DMS data from other EBUS and the Arabian

Sea illustrates that DMS concentrations off Peru (up to 44 nmol L^{-1}) are higher than those measured off northwest Africa (Mauritania and Morocco) (Belviso et al., 2003; Franklin et al., 2009; Zindler et al., 2012), Benguela (Andreae et al., 1994), California (Herr et al., 2019) and the west Arabian Sea (Oman) (Hatton et al., 1999). Only DMS concentrations reported from the east Arabian Sea (Shenoy and Kumar, 2007) are comparable or much higher during non-upwelling or upwelling conditions, respectively (Fig. 5b). However, compared to global coastal DMS distributions, DMS concentrations in the Peru upwelling are in the average range (see Table 2 in Zhao et al., 2021), especially in October and December.

To examine our data in a broader context, DMS data from the global Surface Seawater DMS database (PMEL; <http://saga.pmel.noaa.gov/dms>) and DMS monthly climatology from Lana et al. (2011) have been extracted. Generally, DMS concentrations reported in our study are comparable to those from the PMEL database (Fig. 3f) (Hind et al., 2011) and the Lana climatology (background in Fig. 3e and 3f) in open ocean ETSP, which is close to those published in the equatorial Pacific (Bates and Quinn, 1997). Only DMS concentration data in October–November 2007 (triangles in Fig. 3f) are slightly lower in adjacent waters, which were more likely to be affected by advective processing from the coastal environments, especially considering that the PMEL 2007 cruise took place in a La Niña event indicated by ONI ($\text{ONI} < -0.5$ between July 2007 and July 2008), which likely triggers stronger westward propagation (Hu et al., 2014). Indeed, we measured lower DMS concentrations in the coastal region off Peru during SO243. In addition, to investigate the effects of ENSO events (represented by the ONI) on surface DMS concentrations in the ETSP, more DMS datasets are included, which covers the last four decades (Turner et al., 1996; Hatton et al., 1998; Huebert et al., 2004). The result indicates that no relationship is found between ONI and surface DMS concentrations in the ETSP (Fig. 5a), which is in agreement with the finding of a previous study in the equatorial Pacific Ocean (Bates and Quinn, 1997).

3.5 DMS fluxes

To our knowledge, this is the first report of atmospheric DMS distributions above the coastal Peruvian upwelling. We used the Hybrid Single-Particle Lagrangian Integrated Trajectory (HYSPPLIT; <http://www.arl.noaa.gov/HYSPLIT.php>) model to calculate air mass backward trajectories (24 h; starting height: 50 m) based on the DMS sampling sites for both cruises. The trajectories convey that the air masses encountered on both cruises were from the ocean for more than 24 h (Fig. 6a and 6b) and 48 h (figures not shown) prior to sampling and thus, the air masses sampled during the two campaigns most likely had not been affected by terrestrial DMS sources, which have been reported in South America and other terrestrial regions (see e.g., Crutzen et al., 2000; Meinardi, 2003; Chan et al., 2006; Jardine et al., 2015).

DMS mole fractions ranged from below the detection limit (~ 25 ppt) to 571.3 (mean: 144.6 ± 95.0) ppt during M91 (Fig. 7a), with the highest value measured around Pisco. Generally, DMS mole fractions did not follow the pattern of dissolved DMS in surface seawater during M91; however, they were affected by the wind speeds, which could affect the sea-to-air exchange process. This was supported by the positive correlation between atmospheric DMS mole fractions and wind speeds ($r = 0.39$, $p < 0.01$, $n = 44$). DMS mole fractions varied between 11.6 and 253.3 (mean: 91.4 ± 55.8) ppt during SO243 (Fig. 7b), with

the same distribution as dissolved DMS in the surface layer ($r = 0.43$, $p < 0.01$, $n = 96$). Generally, atmospheric DMS mole fractions measured in the open ocean ETSP (~ 100 ppt) during SO243 were within the same magnitude as those measured by Huebert et al. (2004) (~ 150 ppt) between 7.5°N – 7.5°S over the equatorial Pacific Ocean. However, atmospheric DMS mole fractions measured over the coastal Peru upwelling were lower (~ 65 ppt) compared to those measured in similar regions during M91 (~ 200 ppt), which might be a result of the different seawater DMS concentrations between the two cruises (Fig. 7). Overall, the mean atmospheric DMS mole fractions measured during M91 and SO243 were comparable and they fell within the range between 61–340 ppt previously reported over the South Pacific Ocean (Marandino et al., 2009; Lee et al., 2010). DMS fluxes ranged from 0.4 to 28.2 (mean: 5.9 ± 5.3) $\mu\text{mol m}^{-2} \text{d}^{-1}$ during M91 (Fig. 7a), with the highest value at station J1. Although a few coastal sampling sites where low wind speeds were associated with high seawater DMS concentrations (e.g., Callao), DMS fluxes generally showed a similar distribution as the seawater DMS distribution ($r = 0.68$, $p < 0.01$, $n = 44$) during M91. DMS fluxes during SO243 ranged between 0.3 and 30.5 (mean: 7.4 ± 5.4) $\mu\text{mol m}^{-2} \text{d}^{-1}$ (Fig. 7b), with the peak DMS flux around the equator. DMS fluxes were mainly driven by seawater DMS concentrations ($r = 0.68$, $p < 0.01$, $n = 93$) and exhibited similar distributions: 10 ± 5.8 $\mu\text{mol m}^{-2} \text{d}^{-1}$ in the equatorial section, 3.8 ± 2.7 $\mu\text{mol m}^{-2} \text{d}^{-1}$ in the Peru upwelling section and 6.5 ± 3.7 $\mu\text{mol m}^{-2} \text{d}^{-1}$ in the Chilean waters section. Overall, mean DMS fluxes obtained from M91 (5.9 ± 5.3 $\mu\text{mol m}^{-2} \text{d}^{-1}$) and SO243 (3.8 ± 2.7 $\mu\text{mol m}^{-2} \text{d}^{-1}$) over the coastal Peru upwelling are generally comparable to 5.5 $\mu\text{mol m}^{-2} \text{d}^{-1}$ reported from Marandino et al. (2009) and 7.2 $\mu\text{mol m}^{-2} \text{d}^{-1}$ from Omori et al. (2017) in the Southern Pacific Ocean, and slightly higher/comparable to those reported from Yang et al. (2011) in northern coastal Chile (~ 0 – 4 $\mu\text{mol m}^{-2} \text{d}^{-1}$). In addition, the difference of DMS flux calculation with and without considering the atmospheric DMS mixing ratios indicates DMS fluxes (calculated only by seawater DMS) were not greatly overestimated ($< 10\%$) in the Peru upwelling region.

00 4. Summary

As one of the world's most productive oceanic regions, the upwelling region off Peru is of great interest for studying biogenic trace gas production and its emissions to the atmosphere. We present here, for the first time, simultaneously measured DMS/P/O seawater concentrations and DMS atmospheric mole fractions from the Peruvian upwelling region during two cruises in December 2012 and October 2015. Large variations were determined in seawater DMS concentrations off Peru upwelling. Anticorrelations were found between nutrient availability (represented by the N:P ratios) and sulphur compounds, which may reinforce their potential roles as antioxidants in response to oxidative stress. We found a significant relationship between DMS concentrations and nitrogen availability related indicators in the coastal region, pointing to the importance of the interaction between environmental parameters and DMS distributions in the Peruvian upwelling, where diatoms dominate the algal assemblages. DMS fluxes, computed with seawater and atmospheric DMS measurements, indicated that the coastal region off Peru upwelling was a moderate source of DMS to the atmosphere in both December 2012 and October 2015. Further attention should be given to the improvement of the understanding of DMS cycling as well as its underlying production and

consumption processes (e.g., regular monitoring) since our study reveals highly variable season/interannual DMS concentrations in the Peru upwelling system.

- 15 *Data availability.* DMS data for the M91 and SO243 cruises have been submitted to the NOAA PMEL database (<http://saga.pmel.noaa.gov/dms>). Phytoplankton pigment data for M91 and SO243 are available at PANGAEA at <https://doi.pangaea.de/10.1594/PANGAEA.864786> and <https://doi.pangaea.de/10.1594/PANGAEA.898920>, respectively. For further data, please contact the corresponding author (yzhao@geomar.de).
- 20 *Author contributions.* YZ, DB, CAM, CS and HWB designed the study. DB, CAM, CS, AAB and HWB participated in the fieldwork. Seawater sulfur compound measurements and data processing were done by DB, CS and YZ. Atmospheric DMS data processing was done by ELA and JW. Pigment data processing was done by AAB. YZ conducted further data analysis and wrote the article with contributions from all co-authors.
- 25 *Competing interests.* The authors declare that they have no conflict of interest.

Acknowledgements. We thank the captain and crew of the R/V Meteor during cruise M91 and R/V Sonne during cruise SO243, as well as the co-chief scientist Damian Grundle (SO243). We would like to thank Patrick Veres and Bettina Derstroff for the atmospheric DMS measurements during M91 as well as Luisa Hannig, Jens Radde, Helge Wieck, and Verena Ihnenfeld for measuring the samples of dissolved DMS/P/O from M91. We would like to thank Kerstin Nachtigall for nutrient measurements (M91), Sonja Wiegmann for HPLC pigment analysis (M91, SO243) and Martina Lohmann for nutrient measurements (SO243). We also thank Dr. Philip Froelich for providing data from the cruise the R/V Robert Conrad in 1982. The authors gratefully acknowledge NASA for providing the MODIS-Aqua satellite data as well as NOAA Air Resources Laboratory (ARL) for the provision of the HYSPLIT model used in this publication. The cruise M91 was part of the German research projects SOPRAN II (grant no. FKZ 03F0611A) and III (grant no. FKZ 03F0662A) funded by the Bundesministerium für Bildung und Forschung (BMBF). The cruise SO243 was financed by the BMBF through grant 03G0243A. Astrid Bracher's contribution was supported by the Helmholtz Infrastructure Initiative FRAM. Elliot Atlas acknowledges support from the NASA Upper Atmosphere Research Program Grants NNX13AH20G and NNX17AE43G. Yanan Zhao is grateful to the China Scholarship Council (CSC) for providing financial support (File No. 201606330066).

40 **References**

Aiken, J., Pradhan, Y., Barlow, R., Lavender, S., Poulton, A., Holligan, P., and Hardman-Mountford, N.: Phytoplankton pigments and functional types in the Atlantic Ocean: A decadal assessment, 1995–2005, *Deep Sea Res. Part II Top. Stud. Oceanogr.*, 56, 899–917, <https://doi.org/10.1016/j.dsr2.2008.09.017>, 2009.

- 45 Andreae, M. O.: Dimethylsulfide in the water column and the sediment porewaters of the Peru upwelling area, *Limnol. Oceanogr.*, 30, 1208–1218, <https://doi.org/10.4319/lo.1985.30.6.1208>, 1985.
- Andreae, T. W., Andreae, M. O., and Schebeske, G.: Biogenic sulfur emissions and aerosols over the tropical South Atlantic: 1. Dimethylsulfide in sea water and in the atmospheric boundary layer, *J. Geophys. Res.*, 99, 22819–22829, <https://doi.org/10.1029/94JD01837>, 1994.
- 50 Andrews, S. J., Carpenter, L. J., Apel, E. C., Atlas, E., Donets, V., Hopkins, J. R., Hornbrook, R. S., Lewis, A. C., Lidster, R. T., Lueb, R., Miniacian, J., Navarro, M., Punjabi, S., Riemer, D., and Schauffler, S.: A comparison of very short lived halocarbon (VSLS) and DMS aircraft measurements in the tropical west Pacific from CAST, ATTREX and CONTRAST, *Atmos. Meas. Tech.*, 9, 5213–5225, <https://doi.org/10/gcc4bt>, 2016.
- Barber, R. T. and Chavez, F. P.: Biological Consequences of El Niño, *Science*, 222, 1203–1210, <https://doi.org/10.1126/science.222.4629.1203>, 1983.
- 55 Barlow, R., Cummings, D., and Gibb, S.: Improved resolution of mono- and divinyl chlorophylls a and b and zeaxanthin and lutein in phytoplankton extracts using reverse phase C-8 HPLC, *Mar. Ecol. Prog. Ser.*, 161, 303–307, <https://doi.org/10.3354/meps161303>, 1997.
- Bates, T. S. and Quinn, P. K.: Dimethylsulfide (DMS) in the equatorial Pacific Ocean (1982 to 1996): Evidence of a climate feedback?, *Geophys. Res. Lett.*, 24, 861–864, <https://doi.org/10.1029/97GL00784>, 1997.
- 60 Belviso, S., Sciandra, A., and Copin-Montégut, C.: Mesoscale features of surface water DMSP and DMS concentrations in the Atlantic Ocean off Morocco and in the Mediterranean Sea, *Deep Sea Res. Part I Oceanogr. Res. Pap.*, 50, 543–555, [https://doi.org/10.1016/S0967-0637\(03\)00032-3](https://doi.org/10.1016/S0967-0637(03)00032-3), 2003.
- Booge, D., Schlundt, C., Bracher, A., Endres, S., Zäncker, B., and Marandino, C. A.: Marine isoprene production and consumption in the mixed layer of the surface ocean – a field study over two oceanic regions, *Biogeosciences*, 15, 649–667, <https://doi.org/10.5194/bg-15-649-2018>, 2018.
- 65 Bracher, Astrid: Phytoplankton pigment concentrations during RV Sonne cruise SO243., supplement to: Booge, Dennis; Schlundt, Michael; Bracher, Astrid; Endres, Sonja; Zäncker, Birthe; Marandino, Christa A (2018): Marine isoprene production and consumption in the mixed layer of the surface ocean - a field study over two oceanic regions. *Biogeosciences*, 15(2), 649-667, <https://doi.org/10.1594/PANGAEA.898920>, 2019.
- 70 Chan, C., Tang, J., Li, Y., and Chan, L.: Mixing ratios and sources of halocarbons in urban, semi-urban and rural sites of the Pearl River Delta, South China, *Atmos. Environ.*, 40, 7331–7345, <https://doi.org/10.1016/j.atmosenv.2006.06.041>, 2006.
- Chavez, F. P. and Messié, M.: A comparison of Eastern Boundary Upwelling Ecosystems, *Prog. Oceanogr.*, 83, 80–96, <https://doi.org/10.1016/j.pocean.2009.07.032>, 2009.
- 75 Codispoti, L. A. and Packard, T. T.: Denitrification rates in the eastern tropical South Pacific, *J. Mar. Res.*, 38, 453–477, 1980.
- Crutzen, P. J., Williams, J., Pöschl, U., Hoor, P., Fischer, H., Warneke, C., Holzinger, R., Hansel, A., Lindinger, W., Scheeren, B., and Lelieveld, J.: High spatial and temporal resolution measurements of primary organics and their oxidation products over the tropical forests of Surinam, *Atmos. Environ.*, 34, 1161–1165, [https://doi.org/10.1016/S1352-2310\(99\)00482-3](https://doi.org/10.1016/S1352-2310(99)00482-3), 2000.
- 80 Curson, A. R. J., Todd, J. D., Sullivan, M. J., and Johnston, A. W. B.: Catabolism of dimethylsulphoniopropionate: microorganisms, enzymes and genes, *Nat. Rev. Microbiol.*, 9, 849–859, <https://doi.org/10.1038/nrmicro2653>, 2011.

- Czeschel, R., Stramma, L., Weller, R. A., and Fischer, T.: Circulation, eddies, oxygen, and nutrient changes in the eastern tropical South Pacific Ocean, *Ocean Sci.*, 11, 455–470, <https://doi.org/10/f7gz47>, 2015.
- 85 Dacey, J. W. H., Wakeham, S. G., and Howes, B. L.: Henry’s law constants for dimethylsulfide in freshwater and seawater, *Geophys. Res. Lett.*, 11, 991–994, <https://doi.org/10/cjrjfk>, 1984.
- Dewitte, B., Vazquez-Cuervo, J., Goubanova, K., Illig, S., Takahashi, K., Cambon, G., Purca, S., Correa, D., Gutierrez, D., Sifeddine, A., and Ortlieb, L.: Change in El Niño flavours over 1958–2008: Implications for the long-term trend of the upwelling off Peru, *Deep Sea Res. Part II Top. Stud. Oceanogr.*, 77–80, 143–156, <https://doi.org/10/ghrbgm>, 2012.
- 90 Dixon, J. L., Hopkins, F. E., Stephens, J. A., and Schäfer, H.: Seasonal Changes in Microbial Dissolved Organic Sulfur Transformations in Coastal Waters, *Microorganisms*, 8, 337, <https://doi.org/10.3390/microorganisms8030337>, 2020.
- Echevin, V., Aumont, O., Ledesma, J., and Flores, G.: The seasonal cycle of surface chlorophyll in the Peruvian upwelling system: A modelling study, *Prog. Oceanogr.*, 79, 167–176, <https://doi.org/10.1016/j.pocean.2008.10.026>, 2008.
- 95 Espinoza-Morriberón, D., Echevin, V., Colas, F., Tam, J., Ledesma, J., Vásquez, L., and Graco, M.: Impacts of El Niño events on the Peruvian upwelling system productivity, *J. Geophys. Res. Oceans*, 122, 5423–5444, <https://doi.org/10.1002/2016JC012439>, 2017.
- Franklin, D. J., Poulton, A. J., Steinke, M., Young, J., Peeken, I., and Malin, G.: Dimethylsulphide, DMSP-lyase activity and microplankton community structure inside and outside of the Mauritanian upwelling, *Prog. Oceanogr.*, 83, 134–142, <https://doi.org/10.1016/j.pocean.2009.07.011>, 2009.
- 00 Gaul, W.: Untersuchungen zur Produktion und zum mikrobiellen Umsatz von β -Dimethylsulphoniopropionat, Kiel, (http://eldiss.uni-kiel.de/macau/receive/dissertation_diss_00001320), 88 pp., 2004.
- Graco, M. I., Purca, S., Dewitte, B., Castro, C. G., Morón, O., Ledesma, J., Flores, G., and Gutiérrez, D.: The OMZ and nutrient features as a signature of interannual and low-frequency variability in the Peruvian upwelling system, *Biogeosciences*, 14, 4601–4617, <https://doi.org/10.5194/bg-14-4601-2017>, 2017.
- 05 Hatton, A. D., Turner, S. M., Malin, G., and Liss, P. S.: Dimethylsulphoxide and other biogenic sulphur compounds in the Galapagos Plume, *Deep Sea Res. Part II Top. Stud. Oceanogr.*, 45, 1043–1053, [https://doi.org/10.1016/S0967-0645\(98\)00017-4](https://doi.org/10.1016/S0967-0645(98)00017-4), 1998.
- Hatton, A. D., Malin, G., and Liss, P. S.: Distribution of biogenic sulphur compounds during and just after the southwest monsoon in the Arabian Sea, *Deep Sea Res. Part II Top. Stud. Oceanogr.*, 46, 617–632, [https://doi.org/10.1016/S0967-0645\(98\)00120-9](https://doi.org/10.1016/S0967-0645(98)00120-9), 1999.
- 10 Hatton, A. D., Shenoy, D. M., Hart, M. C., Mogg, A., and Green, D. H.: Metabolism of DMSP, DMS and DMSO by the cultivable bacterial community associated with the DMSP-producing dinoflagellate *Scrippsiella trochoidea*, *Biogeochemistry*, 110, 131–146, <https://doi.org/10.1007/s10533-012-9702-7>, 2012.
- 15 Hepach, H., Quack, B., Tegtmeier, S., Engel, A., Bracher, A., Fuhlbrügge, S., Galgani, L., Atlas, E. L., Lampel, J., Frieß, U., and Krüger, K.: Biogenic halocarbons from the Peruvian upwelling region as tropospheric halogen source, *Atmos. Chem. Phys.*, 16, 12219–12237, <https://doi.org/10.5194/acp-16-12219-2016>, 2016.
- Hepach, Helmke, Quack, Birgit, Tegtmeier, Susann, Engel, Anja, Bracher, Astrid, Fuhlbrügge, Steffen, Galgani, Luisa, Atlas, Elliot L, Lampel, Johannes, Frieß, Udo, and Krüger, Kirstin: Pigment measured on water bottle samples during METEOR cruise M91, <https://doi.org/10.1594/PANGAEA.864786>, 2016.

- 20 Herr, A. E., Kiene, R. P., Dacey, J. W. H., and Tortell, P. D.: Patterns and drivers of dimethylsulfide concentration in the northeast subarctic Pacific across multiple spatial and temporal scales, *Biogeosciences*, 16, 1729–1754, <https://doi.org/10.5194/bg-16-1729-2019>, 2019.
- Hind, A. J., Rauschenberg, C. D., Johnson, J. E., Yang, M., and Matrai, P. A.: The use of algorithms to predict surface seawater dimethyl sulphide concentrations in the SE Pacific, a region of steep gradients in primary productivity, biomass and mixed layer depth, *Biogeosciences*, 8, 1–16, <https://doi.org/10.5194/bg-8-1-2011>, 2011.
- 25 Howard, E. C., Henriksen, J. R., Buchan, A., Reisch, C. R., Burgmann, H., Welsh, R., Ye, W., Gonzalez, J. M., Mace, K., Joye, S. B., Kiene, R. P., Whitman, W. B., and Moran, M. A.: Bacterial Taxa That Limit Sulfur Flux from the Ocean, *Science*, 314, 649–652, <https://doi.org/10.1126/science.1130657>, 2006.
- Hsu, S. A., Meindl, E. A., and Gilhousen, D. B.: Determining the Power-Law Wind-Profile Exponent under Near-Neutral Stability Conditions at Sea, *J. Appl. Meteorol. Climatol.*, 33, 757–765, [https://doi.org/10.1175/1520-0450\(1994\)033<0757:DTPLWP>2.0.CO;2](https://doi.org/10.1175/1520-0450(1994)033<0757:DTPLWP>2.0.CO;2), 1994.
- 30 Hu, Z.-Z., Kumar, A., Xue, Y., and Jha, B.: Why were some La Niñas followed by another La Niña?, *Clim. Dyn.*, 42, 1029–1042, <https://doi.org/10/f5q83x>, 2014.
- Huebert, B. J., Blomquist, B. W., Hare, J. E., Fairall, C. W., Johnson, J. E., and Bates, T. S.: Measurement of the sea-air DMS flux and transfer velocity using eddy correlation, *Geophys. Res. Lett.*, 31, <https://doi.org/10.1029/2004GL021567>, 2004.
- 35 Jardine, K., Yañez-Serrano, A. M., Williams, J., Kunert, N., Jardine, A., Taylor, T., Abrell, L., Artaxo, P., Guenther, A., Hewitt, C. N., House, E., Florentino, A. P., Manzi, A., Higuchi, N., Kesselmeier, J., Behrendt, T., Veres, P. R., Derstroff, B., Fuentes, J. D., Martin, S. T., and Andreae, M. O.: Dimethyl sulfide in the Amazon rain forest: DMS in the Amazon, *Global Biogeochem. Cy.*, 29, 19–32, <https://doi.org/10.1002/2014GB004969>, 2015.
- 40 Keller, M. D.: Dimethyl sulfide production and marine phytoplankton: the importance of species composition and cell size, *Biol. Oceanogr.*, 375–382, 1989.
- Keller, M. D. and Korjef-Bellows, W.: Physiological aspects of the production of dimethylsulfoniopropionate (DMSP) by marine phytoplankton. In: Kiene, R.P., Visscher, P.T., Keller, M.D., Kirst, G.O. (Eds.). *Biological and Environmental Chemistry of DMSP and Related Sulfonium Compounds*, Plenum Press, New York, 131–142 pp., 1996.
- 45 Keller, M. D., Kiene, R. P., Matrai, P. A., and Bellows, W. K.: Production of glycine betaine and dimethylsulfoniopropionate in marine phytoplankton. I. Batch cultures, *Mar. Biol.*, 135, 237–248, <https://doi.org/10.1007/s002270050621>, 1999a.
- Keller, M. D., Kiene, R. P., Matrai, P. A., and Bellows, W. K.: Production of glycine betaine and dimethylsulfoniopropionate in marine phytoplankton. II. N-limited chemostat cultures, *Mar. Biol.*, 135, 249–257, <https://doi.org/10.1007/s002270050622>, 1999b.
- 50 Lana, A., Bell, T. G., Simó, R., Vallina, S. M., Ballabrera-Poy, J., Kettle, A. J., Dachs, J., Bopp, L., Saltzman, E. S., Stefels, J., Johnson, J. E., and Liss, P. S.: An updated climatology of surface dimethylsulfide concentrations and emission fluxes in the global ocean, *Global Biogeochem. Cy.*, 25, <https://doi.org/10/dbqjrm>, 2011.
- 55 Leck, C., Larsson, U., Bågander, L. E., Johansson, S., and Hajdu, S.: Dimethyl sulfide in the Baltic Sea: Annual variability in relation to biological activity, *J. Geophys. Res. Oceans.*, 95, 3353, <https://doi.org/10.1029/JC095iC03p03353>, 1990.

- Lee, G., Park, J., Jang, Y., Lee, M., Kim, K.-R., Oh, J.-R., Kim, D., Yi, H.-I., and Kim, T.-Y.: Vertical variability of seawater DMS in the South Pacific Ocean and its implication for atmospheric and surface seawater DMS, *Chemosphere*, 78, 1063–1070, <https://doi.org/10/dnxr6p>, 2010.
- 60 Lee, P. A., de Mora, S. J., and Levasseur, M.: A review of dimethylsulfoxide in aquatic environments, *Atmos.-Ocean*, 37, 439–456, <https://doi.org/10.1080/07055900.1999.9649635>, 1999.
- Marandino, C. A., De Bruyn, W. J., Miller, S. D., and Saltzman, E. S.: Open ocean DMS air/sea fluxes over the eastern South Pacific Ocean, *Atmos. Chem. Phys.*, 9, 345–356, <https://doi.org/10.5194/acp-9-345-2009>, 2009.
- Meinardi, S.: Dimethyl disulfide (DMDS) and dimethyl sulfide (DMS) emissions from biomass burning in Australia, *Geophys. Res. Lett.*, 30, 1454, <https://doi.org/10.1029/2003GL016967>, 2003.
- 65 Moran, M. A., Reisch, C. R., Kiene, R. P., and Whitman, W. B.: Genomic Insights into Bacterial DMSP Transformations, *Annu. Rev. Mar. Sci.*, 4, 523–542, <https://doi.org/10/df3vfp>, 2012.
- Nightingale, P. D., Malin, G., Law, C. S., Watson, A. J., Liss, P. S., Liddicoat, M. I., Boutin, J., and Upstill-Goddard, R. C.: In situ evaluation of air-sea gas exchange parameterizations using novel conservative and volatile tracers, *Global Biogeochem. Cy.*, 14, 373–387, <https://doi.org/10.1029/1999gb900091>, 2000.
- 70 Omori, Y., Tanimoto, H., Inomata, S., Ikeda, K., Iwata, T., Kameyama, S., Uematsu, M., Gamo, T., Ogawa, H., and Furuya, K.: Sea-to-air flux of dimethyl sulfide in the South and North Pacific Ocean as measured by proton transfer reaction-mass spectrometry coupled with the gradient flux technique: DMS Flux Measured by PTR-MS/GF Technique, *J. Geophys. Res. Atmos.*, 122, 7216–7231, <https://doi.org/10.1002/2017JD026527>, 2017.
- 75 Quinn, P. K. and Bates, T. S.: The case against climate regulation via oceanic phytoplankton sulphur emissions, *Nature*, 480, 51–56, <https://doi.org/10.1038/nature10580>, 2011.
- Riseman, S. F. and DiTullio, G. R.: Particulate dimethylsulfoniopropionate and dimethylsulfoxide in relation to iron availability and algal community structure in the Peru Upwelling System, *Can. J. Fish. Aquat. Sci.*, 61, 17, <https://doi.org/10.1139/f04-052>, 2004.
- 80 Saltzman, E. S., King, D. B., Holmen, K., and Leck, C.: Experimental determination of the diffusion coefficient of dimethylsulfide in water, *J. Geophys. Res. Oceans*, 98, 16481, <https://doi.org/10.1029/93JC01858>, 1993.
- Santoso, A., Mcphaden, M. J., and Cai, W.: The Defining Characteristics of ENSO Extremes and the Strong 2015/2016 El Niño: ENSO Extremes, *Rev. Geophys.*, 55, 1079–1129, <https://doi.org/10.1002/2017RG000560>, 2017.
- Shenoy, D. M. and Kumar, M. D.: Variability in abundance and fluxes of dimethyl sulphide in the Indian Ocean, *Biogeochemistry*, 83, 277–292, <https://doi.org/10.1007/s10533-007-9092-4>, 2007.
- 85 Simó, R., Hatton, A., Malin, G., and Liss, P.: Particulate dimethyl sulphoxide in seawater: production by microplankton, *Mar. Ecol. Prog. Ser.*, 167, 291–296, <https://doi.org/10.3354/meps167291>, 1998.
- Simó, R., Archer, S. D., Pedrós-Alió, C., Gilpin, L., and Stelfox-Widdicombe, C. E.: Coupled dynamics of dimethylsulfoniopropionate and dimethylsulfide cycling and the microbial food web in surface waters of the North Atlantic, *Limnol. Oceanogr.*, 47, 53–61, <https://doi.org/10.4319/lo.2002.47.1.0053>, 2002.
- 90 Stefels, J., Steinke, M., Turner, S., Malin, G., and Belviso, S.: Environmental constraints on the production and removal of the climatically active gas dimethylsulphide (DMS) and implications for ecosystem modelling, *Biogeochemistry*, 83, 245–275, <https://doi.org/10.1007/s10533-007-9091-5>, 2007.

- Stramma, L., Fischer, T., Grundle, D., Krahnmann, G., Bange, H. W., and Marandino, C.: Observed El Niño conditions in the eastern tropical Pacific in October 2015, *Ocean Sci.*, 12, 861–873, <https://doi.org/10.5194/os-12-861-2016>, 2016.
- 95 Sunda, W., Kieber, D. J., Kiene, R. P., and Huntsman, S.: An antioxidant function for DMSP and DMS in marine algae, *Nature*, 418, 317–320, <https://doi.org/10.1038/nature00851>, 2002.
- Sunda, W., Hardison, R., Kiene, R. P., Bucciarelli, E., and Harada, H.: The effect of nitrogen limitation on cellular DMSP and DMS release in marine phytoplankton: climate feedback implications, *Aquat. Sci.*, 69, 341–351, <https://doi.org/10.1007/s00027-007-0887-0>, 2007.
- 00 Tarazona, J. and Arntz, W.: The Peruvian Coastal Upwelling System, in: *Coastal Marine Ecosystems of Latin America*, vol. 144, edited by: Seeliger, U. and Kjerfve, B., Springer Berlin Heidelberg, Berlin, Heidelberg, 229–244, https://doi.org/10.1007/978-3-662-04482-7_17, 2001.
- Taylor, B. B., Torrecilla, E., Bernhardt, A., Taylor, M. H., Peeken, I., Röttgers, R., Piera, J., and Bracher, A.: Bio-optical provinces in the eastern Atlantic Ocean and their biogeographical relevance, *Biogeosciences*, 8, 3609–3629, <https://doi.org/10.5194/bg-8-3609-2011>, 2011.
- 05 Theseira, A. M., Nielsen, D. A., and Petrou, K.: Uptake of dimethylsulphoniopropionate (DMSP) reduces free reactive oxygen species (ROS) during late exponential growth in the diatom *Thalassiosira weissflogii* grown under three salinities, *Mar. Biol.*, 167, 127, <https://doi.org/10/gjnpr7>, 2020.
- Timmermann, A., An, S.-I., Kug, J.-S., Jin, F.-F., Cai, W., Capotondi, A., Cobb, K. M., Lengaigne, M., McPhaden, M. J., Stuecker, M. F., Stein, K., Wittenberg, A. T., Yun, K.-S., Bayr, T., Chen, H.-C., Chikamoto, Y., Dewitte, B., Dommenges, D., Grothe, P., Guilyardi, E., Ham, Y.-G., Hayashi, M., Ineson, S., Kang, D., Kim, S., Kim, W., Lee, J.-Y., Li, T., Luo, J.-J., McGregor, S., Planton, Y., Power, S., Rashid, H., Ren, H.-L., Santoso, A., Takahashi, K., Todd, A., Wang, G., Wang, G., Xie, R., Yang, W.-H., Yeh, S.-W., Yoon, J., Zeller, E., and Zhang, X.: El Niño–Southern Oscillation complexity, *Nature*, 559, 535–545, <https://doi.org/10.1038/s41586-018-0252-6>, 2018.
- 10 Turner, S. M., Nightingale, P. D., Spokes, L. J., Liddicoat, M. I., and Liss, P. S.: Increased dimethyl sulphide concentrations in sea water from in situ iron enrichment, *Nature*, 383, 513–517, <https://doi.org/10.1038/383513a0>, 1996.
- Uitz, J., Claustre, H., Morel, A., and Hooker, S. B.: Vertical distribution of phytoplankton communities in open ocean: An assessment based on surface chlorophyll, *J. Geophys. Res. Oceans*, 111, C08005, <https://doi.org/10.1029/2005JC003207>, 2006.
- 20 Vidussi, F., Claustre, H., Manca, B. B., Luchetta, A., and Marty, J.-C.: Phytoplankton pigment distribution in relation to upper thermocline circulation in the eastern Mediterranean Sea during winter, *J. Geophys. Res. Oceans*, 106, 19939–19956, <https://doi.org/10.1029/1999jc000308>, 2001.
- Xu, F., Yan, S., Zhang, H., Wu, Y., Ma, Q., Song, Y., Zhuang, G., and Yang, G.: Occurrence and cycle of dimethyl sulfide in the western Pacific Ocean, *Limnol Oceanogr.*, 110, 11797, <https://doi.org/10.1002/lno.11797>, 2021.
- 25 Yang, M., Huebert, B. J., Blomquist, B. W., Howell, S. G., Shank, L. M., McNaughton, C. S., Clarke, A. D., Hawkins, L. N., Russell, L. M., Covert, D. S., Coffman, D. J., Bates, T. S., Quinn, P. K., Zagorac, N., Bandy, A. R., de Szoek, S. P., Zuidema, P. D., Tucker, S. C., Brewer, W. A., Benedict, K. B., and Collett, J. L.: Atmospheric sulfur cycling in the southeastern Pacific – longitudinal distribution, vertical profile, and diel variability observed during VOCALS-REX, *Atmos. Chem. Phys.*, 11, 5079–5097, <https://doi.org/10.5194/acp-11-5079-2011>, 2011.
- 30 Zavarisky, A., Goddijn-Murphy, L., Steinhoff, T., and Marandino, C. A.: Bubble-Mediated Gas Transfer and Gas Transfer Suppression of DMS and CO₂, *J. Geophys. Res. Atmos.*, 123, 6624–6647, <https://doi.org/10.1029/2017JD028071>, 2018.

Zhao, Y., Schlundt, C., Booge, D., and Bange, H. W.: A decade of dimethyl sulfide (DMS), dimethylsulfoniopropionate (DMSP) and dimethyl sulfoxide (DMSO) measurements in the southwestern Baltic Sea, *Biogeosciences*, 18, 2161–2179, <https://doi.org/10/gjjqwk>, 2021.

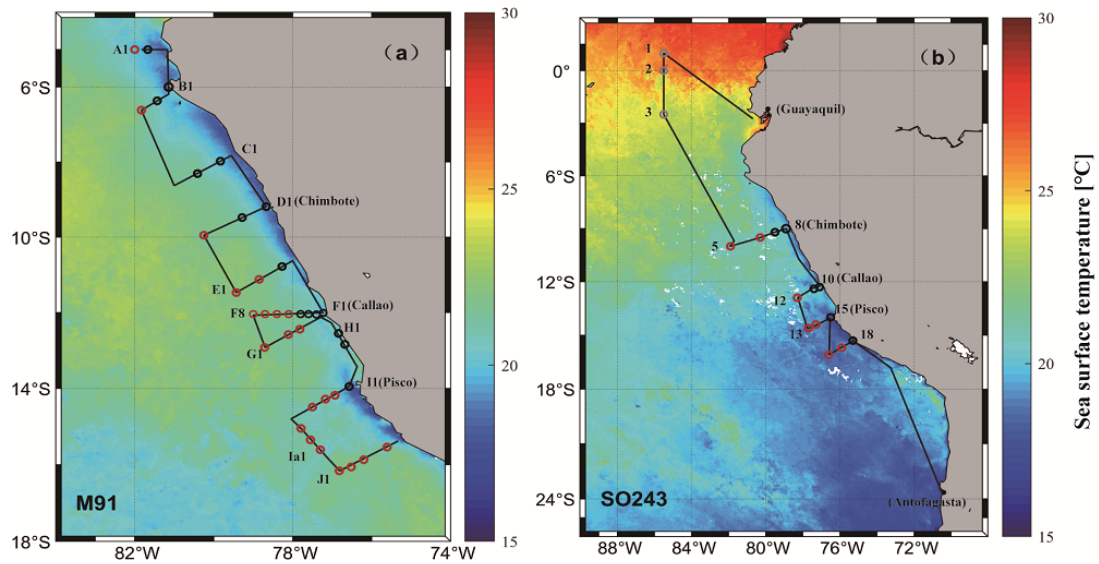
35 Zindler, C., Peeken, I., Marandino, C. A., and Bange, H. W.: Environmental control on the variability of DMS and DMSP in the Mauritanian upwelling region, *Biogeosciences*, 9, 1041–1051, <https://doi.org/10.5194/bg-9-1041-2012>, 2012.

Zindler, C., Bracher, A., Marandino, C. A., Taylor, B., Torrecilla, E., Kock, A., and Bange, H. W.: Sulphur compounds, methane, and phytoplankton: interactions along a north–south transit in the western Pacific Ocean, *Biogeosciences*, 10, 3297–3311, <https://doi.org/10.5194/bg-10-3297-2013>, 2013.

40

45

50



55 **Figure 1:** Cruise tracks of M91 (a) and SO243 (b) plotted on top of monthly mean SST detected by the Moderate Resolution Imaging Spectroradiometer (MODIS) instrument on board the Aqua satellite. Red circles indicate offshore stations, and black circles indicate coastal stations in both panels. Grey circles in panel b indicate equatorial stations. Note that no CTD cast was performed at stations 4 and 9 during cruise SO243.

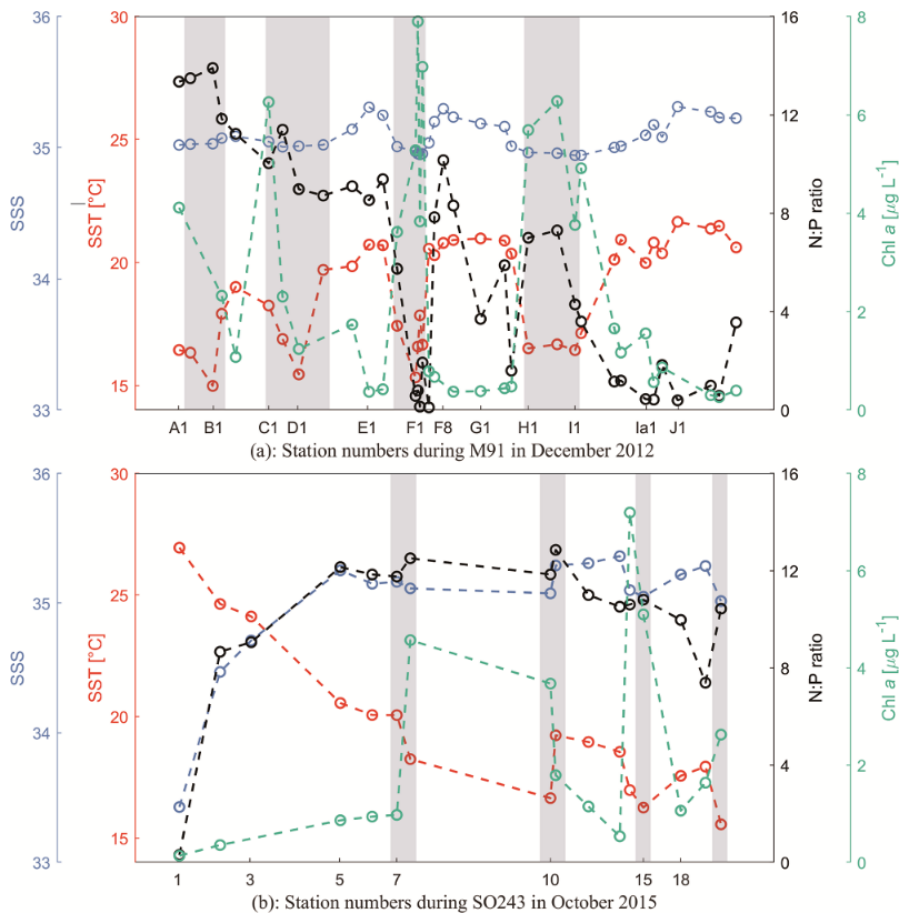
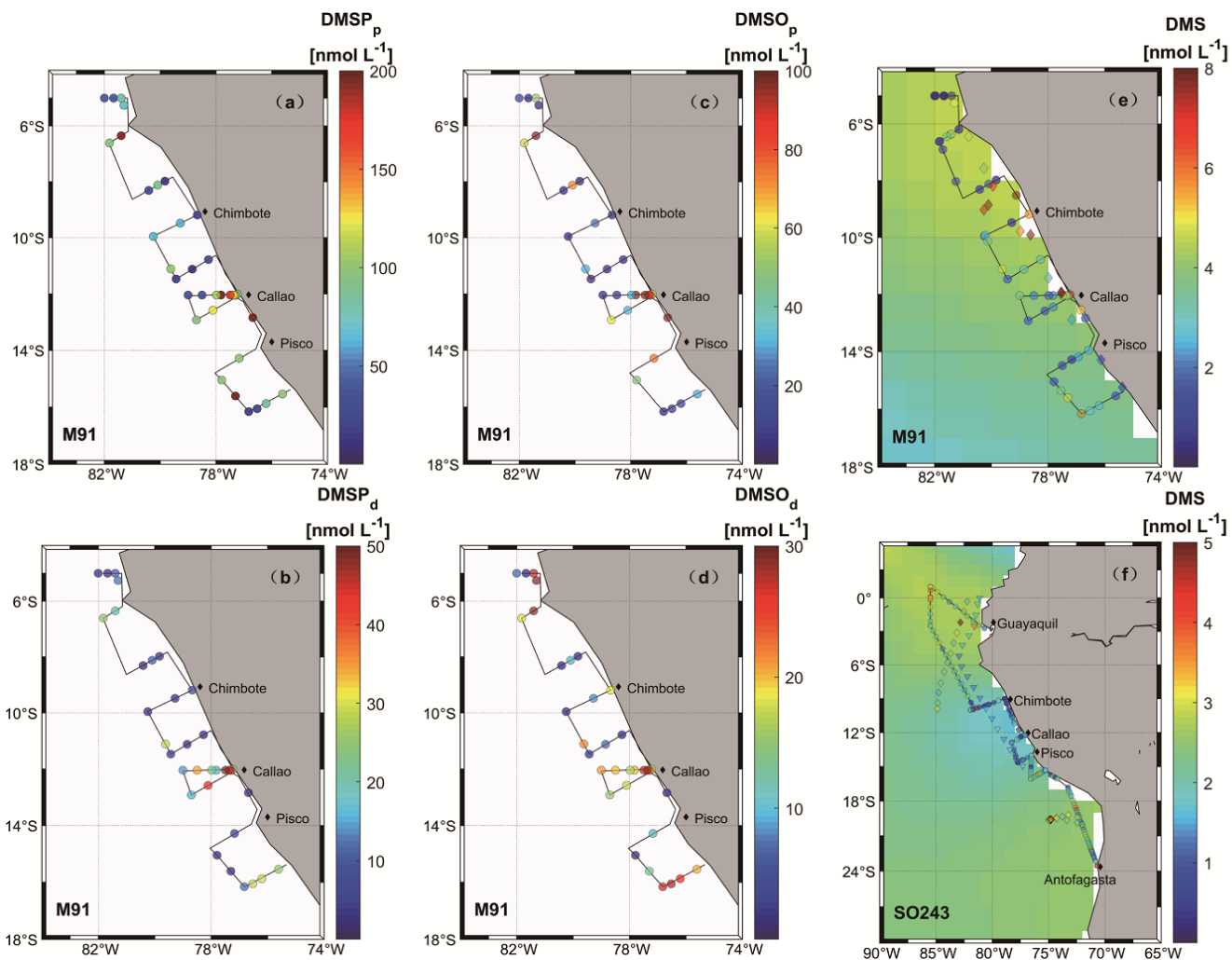


Figure 2. Sea surface temperature (SST; red), Sea surface salinity (SSS; blue), N:P ratio (black; N stands for the sum of dissolved nitrate and nitrite, and P stands for phosphate) and Chl a (green) at each station during M91 (a) and SO243 (b). Grey rectangles indicate coastal CTD stations. All values from both cruises are integrated between 1–10 m.



65 **Figure 3.** Surface seawater measurements of sulfur compounds are shown in panels a–f (circles) for DMSP_p (M91), DMSP_d (M91), DMSO_p (M91), DMSO_d (M91), DMS (M91) and DMS (SO243), respectively. Monthly (December and October) surface DMS concentrations from the Lana et al. (2011) climatology are colour-coded in the background in e and f, respectively. Diamonds in panel e, as well as diamonds and triangles in panel f, are recorded DMS concentrations in adjacent waters retrieved from the PMEL database for June–July 1982 (Andreae, 1985), October–November 2007 (unpublished DMS data) and October–November 2008 (Hind et al., 2011), respectively. Note that to ensure readability of the plots, the scale in panel e is capped at 8 nmol L^{-1} with a few values exceeding the upper threshold, and DMS data retrieved from the PMEL database were averaged every ten samples.

70

75

Table 1. Spearman's rank coefficients of correlations of all sulfur compounds surface data with selected abiotic and biological parameters. Bold numbers indicate correlations that are significant ($p < 0.05$) with a sample size of 27 for M91, 36 (environmental and biological parameters) and 13 (nutrients) for SO243 between 9–16 °S. β -caro represents β -carotene, diat represents diatoms, hapto represents haptophytes, and chloro represents chlorophytes. NA represents not available.

| M91 | SST | SSS | N:P | Chl <i>a</i> | β -caro | Diat | Hapto | Chloro | DMSO _d | DMSO _p | DMSP _d | DMSP _p |
|-------------------|-------|--------------|--------------|--------------|---------------|-------|-------|--------|-------------------|-------------------|-------------------|-------------------|
| DMS | 0.05 | -0.08 | -0.51 | 0.11 | 0.12 | 0.29 | -0.20 | 0.37 | 0.68 | 0.28 | 0.34 | 0.09 |
| DMSP _p | -0.15 | -0.43 | -0.40 | 0.28 | 0.39 | 0.25 | -0.14 | -0.18 | 0.56 | 0.92 | 0.71 | |
| DMSP _d | 0.25 | -0.05 | -0.46 | -0.13 | -0.01 | 0 | -0.08 | -0.01 | 0.90 | 0.50 | | |
| DMSO _p | -0.11 | -0.49 | -0.63 | 0.39 | 0.46 | 0.35 | 0.10 | -0.17 | 0.31 | | | |
| DMSO _d | 0.36 | 0.14 | -0.52 | -0.23 | -0.14 | -0.07 | 0.04 | 0.03 | | | | |
| SO243 | | | | | | | | | | | | |
| DMS | -0.07 | -0.09 | -0.61 | 0.01 | NA | 0.21 | -0.03 | -0.26 | | | | |

80

85

90

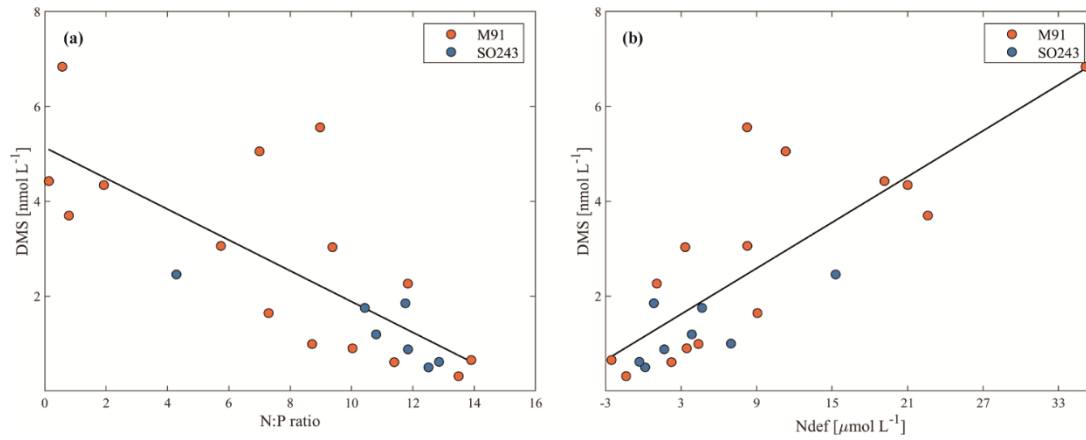


Figure 4. (a): N:P ratio vs. surface DMS concentrations in the coastal Peruvian upwelling ($y = -0.32x + 5.14$, $r^2 = 0.58$, $p = 3.61 \times 10^{-5}$, $n = 22$). (b): Ndef vs. surface DMS concentrations in the coastal Peruvian upwelling ($y = 0.16x + 1.14$, $r^2 = 0.67$, $p = 3.62 \times 10^{-6}$, $n = 22$).

95

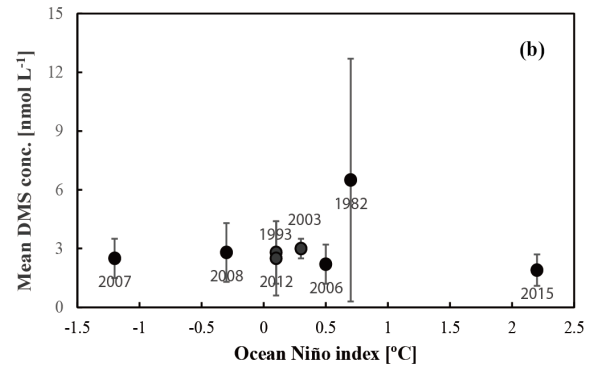
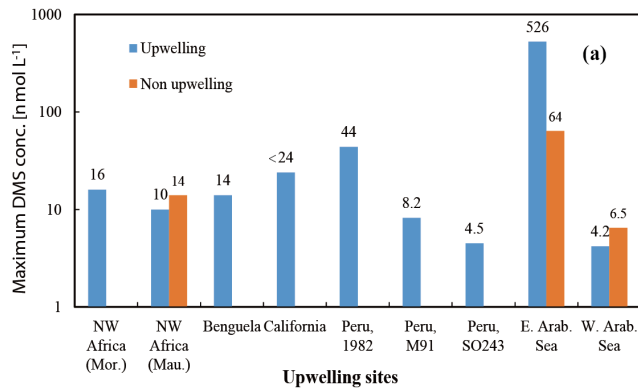
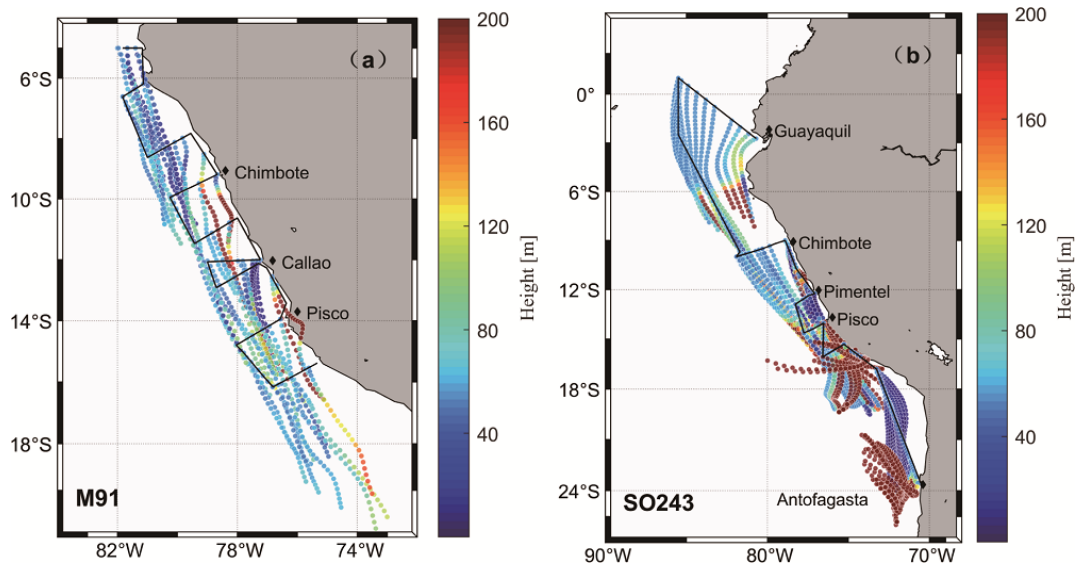


Figure 5. (a): Maximum DMS concentrations measured in various upwelling regions worldwide. Mor. stands for Morocco and Mau. stands for Mauritania. (b): Mean and standard deviation of DMS concentrations for each cruise in the ETSP. Note that the value from 2003 only includes the data east of 95°W .

00



05 **Figure 6.** Air mass backward trajectories of cruise M91(a) and SO243 (b), with colorbar indicating the height above sea level. Note that both scales are capped at 200 m to ensure readability of the plots, despite that some values exceed the upper threshold.

10

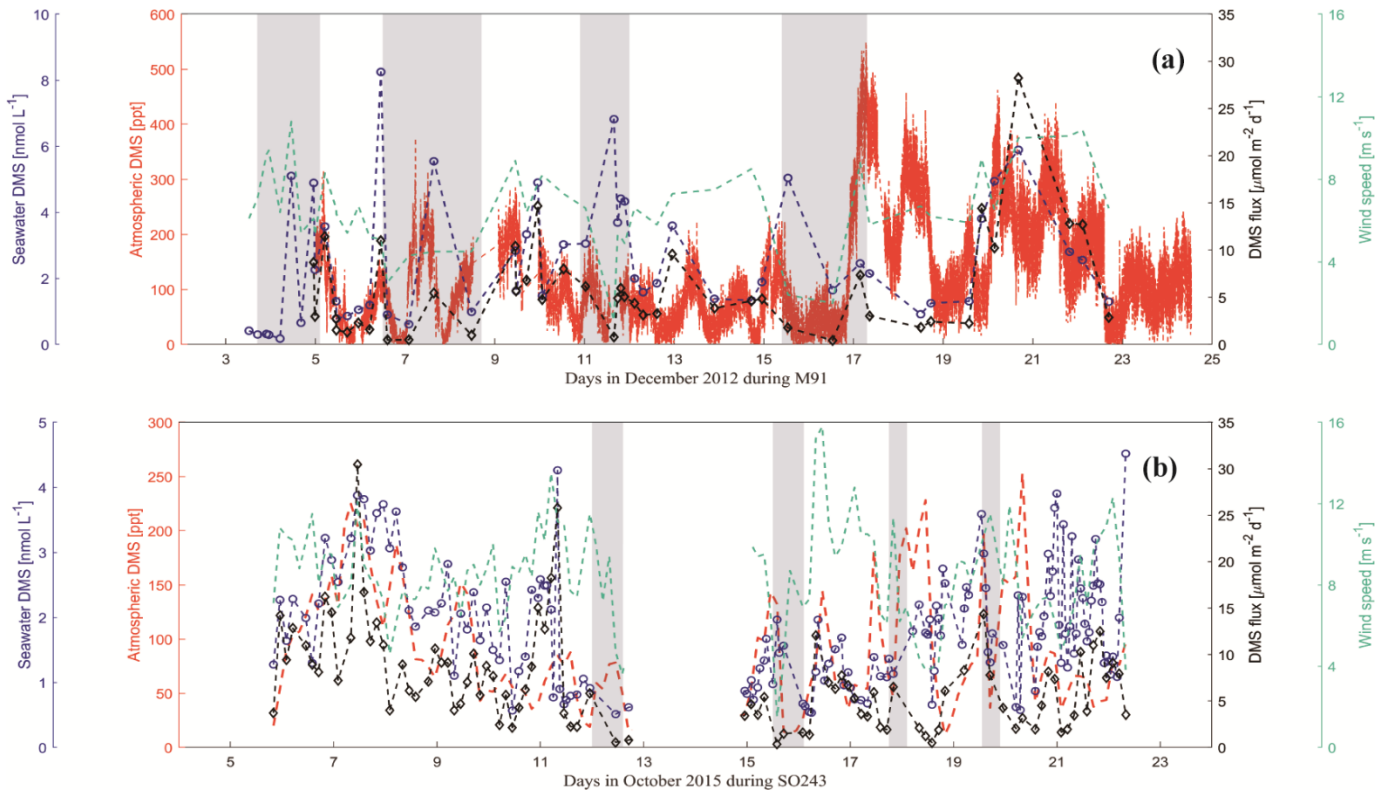


Figure 7. Atmospheric DMS mole fractions (red dash line), surface seawater DMS concentrations (blue circles) and DMS fluxes (black diamonds) and wind speeds (green dash line) during the cruise M91 (a) and SO243 (b). Grey rectangles (a and b) indicate coastal CTD stations for both cruises. Note that DMS mole fractions during M91 were averaged for 10 min to calculate fluxes.

15