

# Growth rate rather than temperature affects the B/Ca ratio in the calcareous red alga *Lithothamnion corallioides*

Giulia Piazza<sup>1</sup>, Valentina A. Bracchi<sup>1</sup>, Antonio Langone<sup>2</sup>, Agostino N. Meroni<sup>3</sup>, Daniela Basso<sup>1</sup>

<sup>1</sup> Department of Earth and Environmental Sciences, University of Milano-Bicocca, Piazza della Scienza 4, 20126 Milano, Italy

5 <sup>2</sup> CNR – Institute of Geosciences and Earth Resources, Via Ferrata 1, 27100 Pavia, Italy

<sup>3</sup> Department of Civil and Environmental Engineering, Politecnico of Milan, Piazza Leonardo da Vinci 32, 20133 Milano, Italy

Correspondence to: Giulia Piazza (g.piazza15@campus.unimib.it)

**Abstract.** The B/Ca ratio in calcareous marine species is informative of past seawater CO<sub>3</sub><sup>2-</sup> concentrations, but scarce data exist on B/Ca in coralline algae. Recent studies suggest influences of temperature and growth rates on B/Ca, the effect of which could be critical for the reconstructions of surface ocean pH and atmospheric pCO<sub>2</sub>. In this paper, we present the first LA-ICP-MS analyses of Mg, Sr, Li and B in the coralline alga *Lithothamnion corallioides* collected from different geographic settings and depths across the Mediterranean Sea and in the Atlantic Ocean. We produced the first data on temperature proxies (Mg, Li and Sr/Ca) and B/Ca in a coralline algal species grown in different Basins (the Mediterranean Sea and the Atlantic Ocean), from across the photic zone depths (12 m, 40 m, 45 m, and 66 m depth). We tested the B/Ca correlation with temperature proxies and growth rates, in order to evaluate their possible effect on B incorporation. Our results showed a growth rate influence on B/Ca, especially in the deepest sample (Pontian Isl., Italy; 66 m) and in the shallowest sample (Morlaix, Atlantic coast of France; 12 m), where the growth rates were respectively 0.11 mm/yr and 0.13 mm/yr and the B/Ca was respectively 462.8 ± 49.2 μmol/mol and 726.9 ± 102.8 μmol/mol. A positive correlation between B/Ca and the temperature proxies was found only in Morlaix, where the seasonal temperature variation (ΔT) was the highest (8.9 °C). This evidence suggests that growth rates, triggered by the different ΔT and light availability across depth, affect the B incorporation in *L. corallioides*.

## 1 Introduction

Warming and acidification are major anthropogenic perturbations of present-day oceans (Alverson et al., 2001; Feely et al., 2009; Le Quéré et al., 2009; Hansen et al., 2010; Hönlisch et al., 2012; Ciais et al., 2013). Ocean acidification reduces the saturation state of calcite and aragonite, lowering the dissolution threshold of biominerals and threatening habitat-forming species of critical ecological importance such as coralline red algae and corals (Morse et al., 2006; Hoegh-Guldberg et al., 2007; Andersson et al., 2008, 2011; Basso, 2012; Ragazzola et al., 2012; Ries et al., 2016). Coralline algae, which precipitate high Mg-calcite (>8-12 mol% MgCO<sub>3</sub>) (Morse et al., 2006), are particularly suitable as proxy archives for paleoclimate reconstruction because of their worldwide distribution and their longevity by indeterminate growth, with no ontogenetic trend (Halfar et al., 2008). That is, the growth trend of coralline algae does not slow down asymptotically with age, as in bivalves,

thus preserving the resolution of the geochemical signals in the later stages of growth (Adey, 1965; Frantz et al., 2005; Halfar et al., 2008). Moreover, coralline algae thin sections under optical microscopy reveal bands that reflect the growth pattern (Cabiocch, 1966; Basso, 1995a, b; Foster, 2001), similarly to tree rings (Ragazzola et al., 2016) that can be targeted for high-resolution geochemical analyses. Seasonal growth bands, indeed, consist of the perithallial alternation of dark and light bands that together constitute the annual growth patterns (Freiwald and Henrich, 1994; Basso, 1995a, b; Kamenos et al., 2009). Dark bands correspond to slow-growing cells produced in the cold season, which are shorter, thick-walled and with lower Mg contents; while light bands are fast-growing cells produced in the warm season, which are longer, less calcified and with higher Mg concentrations (Kamenos et al., 2009; Ragazzola et al., 2016).

Trace element variations in marine calcareous species inform the reconstruction of changes in the environmental parameters, which characterized the seawater during their growth (Hetzinger et al., 2011). Boron is incorporated into the mineral lattice of calcareous marine species during calcite precipitation. In the ocean, B occurs in two molecular species: boric acid  $B(OH)_3$  and borate ion  $B(OH)_4^-$  (Dickson, 1990), which are related by the following acid-base equilibrium reaction:



that shows the dependence of the two species concentration on pH. In typical surface seawater conditions, the equilibrium constant of the reaction  $K_B$  is  $10^{-8.6}$  which is equal to a  $pK_B$  of 8.6 (Dickson, 1990), very similar to seawater pH ( $\sim 8$ ) (Zeebe and Wolf-Gladrow, 2001). Hence, the reaction described in Eq. (1) is at equilibrium. As the pH lowers, based on Eq. (1), the  $[H^+]$  in seawater increases together with the  $[B(OH)_3]$ , while the  $[B(OH)_4^-]$  decreases. Boron has two stable isotopes: the heavier  $^{11}B$  (80.1% of the total abundance) and the lighter  $^{10}B$  (19.9%) with an enrichment factor  $\epsilon^{11}B$  ( $\delta^{11}B(OH)_3 - \delta^{11}B(OH)_4^-$ ) equal to  $1.0272 \pm 0.0006$  (Klochko et al., 2006). The current seawater isotopic composition  $\delta^{11}B_{sw}$  is 39.61‰ (Foster et al., 2010). The isotopic composition of  $B(OH)_3$  and  $B(OH)_4^-$  changes with pH, being both enriched in  $\delta^{11}B$  with increasing pH (Dickson, 1990). The first analyses of the isotopic signal of marine carbonates evidenced a strong similarity with the isotopic composition of  $B(OH)_4^-$  in solution, suggesting that borate would preferentially be incorporated into marine carbonates (Vengosh et al., 1991; Hemming and Hanson, 1992). Therefore, the  $\delta^{11}B$  of marine carbonates should increase with pH according to the  $\delta^{11}B$  of  $B(OH)_4^-$ . The  $\delta^{11}B$  of borate is closely related to  $pCO_2$ , seawater  $[CO_3^{2-}]$ , pH and  $[B(OH)_4^-]$ , which in turn are mainly controlled by the balance between the total alkalinity (TA) and the dissolved inorganic carbon (DIC) (Zeebe and Wolf-Gladrow, 2001; Dickson et al., 2007). Recent magic angle spinning nuclear magnetic resonance (MAS NMR) techniques, though, revealed that 30-48% of  $B(OH)_3$  is incorporated in corals, foraminifera, and calcareous red algae (Klochko et al., 2009; Rollion-Bard et al., 2011; Cusack et al., 2015). The amount of incorporated boric acid seems to be unrelated to the boron species concentrations in seawater (Cusack et al., 2015) or pH (Mavromatis et al., 2015) and could be the consequence of a coordination change during biomineralization (Klochko et al., 2009; Mavromatis et al., 2015). The above-described theoretical overview frames the role of the B content and its isotopic signature ( $\delta^{11}B$ ) in calcareous marine species, as recorders of information about the seawater carbonate system. The  $\delta^{11}B$  is used to reconstruct past seawater pH (Hönisch and Hemming, 2005; Foster, 2008; Douville et al., 2010; Paris et al., 2010; Rae et al., 2011). The boron-to-calcium ratio (B/Ca) proved to be informative about past seawater  $CO_3^{2-}$  concentrations in different empirical studies on benthic foraminifera (Yu

65 and Elderfield, 2007; Yu et al., 2007; Rae et al., 2011) and in synthetic aragonite (Holcomb et al., 2016). Most of the literature  
on boron studies is focused on its isotopic composition (Hemming and Hönisch, 2007; Klochko et al., 2009; Henehan et al.,  
2013; Fietzke et al., 2015; Cornwall et al., 2017; Ragazzola et al., 2020), whereas less attention has been given to B/Ca records,  
especially in coralline algae. Recent studies suggest that B/Ca is function of seawater pH, as well as of other environmental  
70 atmospheric  $p\text{CO}_2$  (Wara et al., 2003; Allen et al., 2012; Kaczmarek et al., 2016).

To achieve the best reliability of geochemical proxies for climate reconstructions, a growing interest has arisen on multiple  
approaches, by considering multi-proxies for a single environmental factor (D'Olivo et al., 2018; Cuny-Guirrec et al., 2019;  
Zinke et al., 2019). Moreover, it is important to recognize the influence of multiple factors on a single proxy (Kaczmarek et  
al., 2016; Donald et al., 2017). Actually, the effects of temperature and growth rate on B incorporation have been recently  
75 investigated through experiments on both synthetic and biogenic carbonates (Wara et al., 2003; Yu et al., 2007; Gabitov et al.,  
2014; Mavromatis et al., 2015; Uchikawa et al., 2015; Kaczmarek et al., 2016; Donald et al., 2017). In particular, culture  
experiment on the coralline alga *Neogoniolithon* sp. (Donald et al., 2017) showed a positive correlation of B/Ca with growth  
rate, and a negative correlation with Sr/Ca, which was proposed by the authors as proxy of DIC. Moreover, a culture experiment  
on the high latitude species *Clathromorphum compactum* (Kjellman) Foslie 1898 revealed non-significant temperature  
80 influences on B/Ca and a significant inverse relationship with growth rate (Anagnostou et al., 2019). The factors which  
influence the B incorporation in calcareous red algae are therefore still debated. Nevertheless, no studies have been conducted  
so far on the correlation between temperature proxies (Mg, Sr, Li /Ca) and B/Ca. The Mg/Ca ratio is extensively used as a  
temperature proxy in calcifying species (Barker et al., 2005), including coralline algae (Halfar et al., 2008; Kamenos et al.,  
2008; Fietzke et al., 2015; Ragazzola et al., 2020), since the substitution of  $\text{Mg}^{2+}$  with  $\text{Ca}^{2+}$  ions in the calcite lattice is an  
85 endothermic reaction. Accordingly, Mg incorporation increases with temperature (Moberly, 1968; Berner, 1975; Ries, 2006;  
Caragnano et al., 2017). Sr/Ca and Li/Ca ratios in calcareous red algae have also been investigated as climate proxies, showing  
significant positive correlations with temperature in different species, e.g. *Lithothamnion* spp. (Kamenos et al., 2008; Hetzinger  
et al., 2011; Caragnano et al., 2014; Darrenougue et al., 2014). The Mg/Li ratio showed a strong correlation with seawater  
temperature in cultured *Clathromorphum compactum* (Anagnostou et al., 2019), and in empirical studies on high-Mg calcites,  
90 including coralline algae (Stewart et al. 2020). Conversely, the Mg/Li calibration did not reveal improvements in the Mg/Ca  
or Li/Ca proxies in *Lithophyllum* spp. (Caragnano et al., 2014, 2017).

Laser ablation inductively coupled plasma mass spectrometry (LA-ICP-MS) allows high-resolution analysis of a broad range  
of trace elements in solid-state samples. This technique has been widely used in biogenic carbonates to extract records of  
seawater temperature, salinity, and water chemistry (Schöne et al., 2005; Corrège, 2006; Hetzinger et al., 2009, 2011; Fietzke  
95 et al., 2015; Ragazzola et al., 2020). The non-geniculate coralline alga *Lithothamnion corallioides* (P. Crouan & H. Crouan)  
P. Crouan & H. Crouan 1867 is widely distributed in the Mediterranean Sea and in the north-eastern Atlantic Ocean, from  
Scotland to Canary Islands (Irvine and Chamberlain, 1999; Wilson et al., 2004; Carro et al., 2014), usually constituting maerl  
beds (Potin et al., 1990; Foster, 2001; Martin et al., 2006; Savini et al., 2012; Basso et al., 2017). It forms rhodoliths as

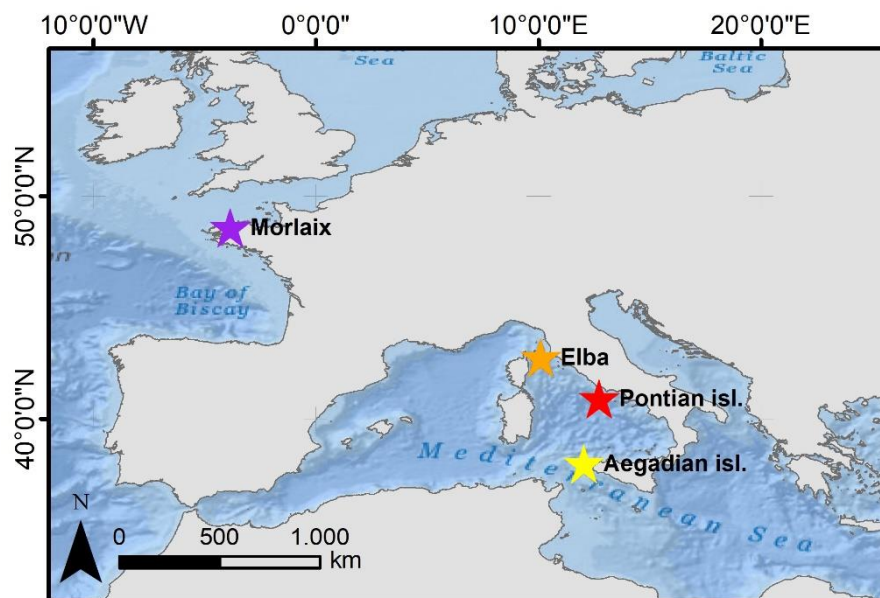
unattached branches (Basso et al., 2016) with obvious banding in longitudinal sections (Basso, 1995b). These characteristics  
100 combine to make this species a suitable model for the measurement of geochemical proxies, comparing different environmental  
settings.

In this paper, we provide the first LA-ICP-MS data of temperature proxies (Mg/Ca, Sr/Ca, Li/Ca) and B/Ca in the coralline  
alga *L. corallioides* collected from different geographic settings and depths across the Mediterranean Sea and in the Atlantic  
Ocean. We test the influence of temperature and growth rate on the B/Ca ratio, which could be crucial in assessing the reliability  
105 of B/Ca as a proxy of the seawater carbonate system.

## 2 Materials and methods

### 2.1 Sampling sites and collection of *Lithothamnion corallioides*

Samples of the coralline alga *L. corallioides* were collected in the Western Mediterranean Sea and in the Atlantic Ocean (Fig.  
1). In the Mediterranean Sea, the samples collected in Pontian Islands (Italy) at 66 m depth were gathered by grab during the  
110 cruises of the R/V Minerva Uno, in the framework of the Marine Strategy Campaigns 2017 (Table 1). The last two  
Mediterranean samples were collected by one of the authors (DB) by SCUBA diving during local surveys at 45 m off the  
coasts of Pomonte (Elba Island, Italy) (Basso and Brusoni, 2004) and at 40 m depth in the Aegadian Islands (Marettimo, Italy).  
The Atlantic sample was collected by grab at 12 m depth in Morlaix Bay (Brittany, France) (Table 1).



115 **Figure 1:** Map showing the distribution of sampling sites where *Lithothamnion corallioides* samples were collected: Morlaix Bay (48°34'42"N, 3°49'36"W); Aegadian Islands (37°97'36"N, 12°14'12"E); Elba (42°44'56.4"N, 10°07'08.4"E) and Pontian Islands (40°54'N, 12°45'E). Service layer credits: Source Esri, GEBCO, NOAA, National Geographic, Garmin, geonames.org and other contributors.

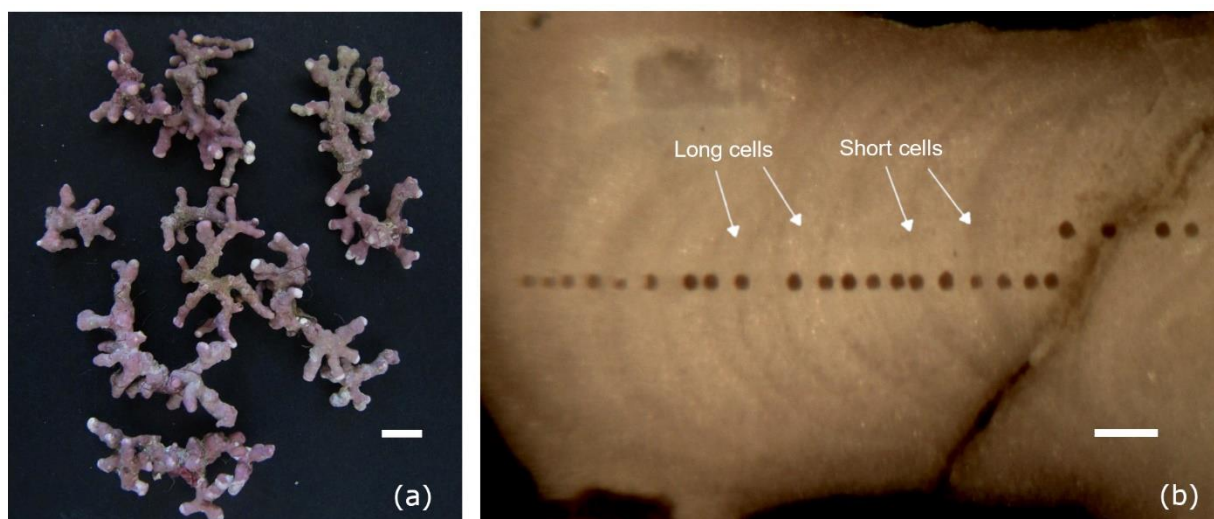
The identification of the algal samples was achieved by morphological analyses of epithallial and perithallial cells using a  
120 Field Emission Gun Scanning Electron Microscope (SEM-FEG) Geomini 500 Zeiss. Samples were prepared for SEM  
according to Basso (1995a). Morphological identification was based on Adey and McKibbin (1970) and Irvine and  
Chamberlain (1994). Other information about maerl species distribution in Morlaix was provided by Carro et al. (2014) and  
Melbourne et al. (2017). *L. corallioides* was selected as the target species because of its presence in both Mediterranean and  
Atlantic waters. The Atlantic sample (Morlaix) was used as voucher specimen for the subsequent identification of the  
125 Mediterranean samples, since *Phymatolithon* spp. and *L. corallioides* are the only components of the Morlaix maerl (Carro et  
al., 2014; Melbourne et al., 2017). Hence, once its inclusion under the genus *Phymatolithon* was excluded, the Morlaix sample  
identified as *L. corallioides* was used as a reference for the most reliable identification of the other Mediterranean samples.

## 2.2 Sample preparation

The selected algal branches were embedded in Epo-Fix resin, which was stirred for 2 minutes with a hardener (13% w/w);  
130 they were then left to dry at room temperature for 24 hours. Afterwards, the treated branches were cut by an IsoMet diamond  
wafering blade 15HC along the direction of growth. In the laboratory of the Institute of Geosciences and Earth Resources  
(IGG) of the National Research Council (CNR) in Pavia (Italy), the sections were polished with a MetaServ Grinder-Polisher  
(400 RPM) using a diamond paste solution, finally cleaned ultrasonically in distilled water for 10 minutes and dried at 30°C  
for 24 hours.

## 135 2.3 Trace elements analyses and environmental data

LA-ICP-MS analyses were carried out at the IGG-CNR laboratory of Pavia (Italy), on one algal branch per sampling site. <sup>43</sup>Ca,  
<sup>7</sup>Li, <sup>25</sup>Mg, <sup>88</sup>Sr and <sup>11</sup>B contents were measured using an Agilent ICP-QQQ 8900 quadrupole ICP-MS coupled to an Excimer  
laser ablation system (193 nm wavelength). Element/Ca ratios were calculated for these isotopes, as well as Mg/Li ratio.  
Measurements were performed with laser energy densities of 4 J/cm<sup>2</sup> and helium as carrier gas.  
140 The laser transects crossed the algal growth direction with a spot size of 50 µm, targeting each growth band change which  
marked the transition between the cells usually produced in the warm season and those usually produced in the cold season,  
hereinafter referred to as long and short cells (Fig. 2, S1). NIST 612 was used as an external standard (e.g. Fietzke et al., 2010;  
Jochum et al., 2012), whereas Ca was adopted as an internal standard. Accuracy and precision were higher than 4% and 8%  
respectively. Each analysis was carried out in MS/MS mode for 3 minutes by acquiring 60 seconds of background before and  
145 after the sampling period by the laser on the polished surface. The first part of the signal was not used for the integration to  
avoid surface contamination. The Glitter software (v. 4.4.4) was used for data reduction.



**Figure 2: (a) Thalli of *Lithothamnion corallioides* collected in Morlaix (scale bar = 5 mm). (b) Longitudinal section through the *L. corallioides* branch sampled in Morlaix showing the LA-ICP-MS transects targeting each growth bands (scale bar = 200  $\mu$ m).**

150 In the absence of in-situ environmental data, the seawater temperature has been extracted by 11 years of monthly reanalysis spanning 1980-2017 from ORAS5 (Ocean ReAnalysis System 5), at 0.25-degree horizontal resolution (Zuo et al., 2019). The time interval of extraction (11 years) approximately covered the period of algal growth crossed by the laser transects. Minimum, maximum, and mean values, as reported in Table 1, refer to the temperature at sampling depth and have been measured on the entire time interval of extraction. The amplitude of seawater temperature variation ( $\Delta T$ ) represents the

155 temperature fluctuations during the algal growth and has been measured as the difference between the maximum and minimum temperature registered over 11 years. All the elements were plotted against the average seawater temperature values of the coldest and warmest months in Morlaix Bay. Missing element ratios were calculated as the means of known values.

Carbon system parameters for each site have also been estimated. Even if they were not available in the same time interval of temperature data, the seasonal variations occurring in the extracted period have allowed the characterization of the sampling

160 sites. Monthly mean seawater pH has been derived by the CMEMS (E.U. Copernicus Marine Service Information) global biogeochemical hindcast spanning 1993-2018, at 0.25-degree horizontal resolution. Monthly means of DIC in 2019 and 2020 have been extracted by CMEMS biogeochemical analysis and forecasts for the Mediterranean Sea, at 0.042-degree horizontal resolution (Salon et al., 2019; Bolzon et al., 2020). In the Atlantic site, monthly means of DIC in 2019 and 2020 were derived from CMEMS IBI biogeochemical forecasts, at 0.028-degree horizontal resolution. The pH and DIC data showed consistent

165 variations among sites, despite being derived from different biogeochemical models. Minimum, maximum, and mean values of DIC, as reported in Table 1, refer to sampling depth and have been measured on the entire time interval of extraction.

## 2.4 Growth rate estimation

170 Growth rates were estimated under light microscope by measuring the length of the LA-ICP-MS transect and dividing it by the number of annual growth bands. The obtained values, expressed in linear extension over year (mm/yr), were cross-referenced with Mg/Ca results in order to check for the correspondence of Mg peaks with growth bands. This step was helpful in highlighting faint bands and to achieve a more reliable estimate of the algal growth. Intermediate Mg/Ca values, indeed, would probably correspond to middle seasons. Short cells were referred to slow-growing cells in dark bands, usually produced in the cold season; long cells corresponded to fast-growing cells in light bands, usually produced in the warm season (Kamenos et al., 2009; Ragazzola et al., 2016).

## 175 2.5 Statistical analysis

Statistics were performed on both the dataset with all the spot analyses and the dataset with the records from long and short cells separately. For each spot, a distinction between long and short cells was made by image analyses meant to distinguish the dark growth bands from the light ones and comparing the results with those obtained by the Mg/Ca ratio measurement. Data from faint bands had been excluded from the dataset. The Spearman's correlation was tested to provide the statistical comparisons between Mg/Ca, Li/Ca, Sr/Ca and B/Ca records from the LA-ICP-MS analyses in *L. corallioides*. The Kruskal-Wallis test followed by the Dunn's test for comparisons and the One-way ANOVA followed by the Tukey's test for post-hoc analysis were used to compare the geochemical signals among sampling sites and to evidence the differences between group medians and means. All statistical analyses were run in R 3.6.3 software.

## 3 Results

### 185 3.1 Environmental data

The temperature data obtained by ORAS5 reanalysis revealed a lower amplitude of the seasonal temperature change in the Mediterranean samples with respect to the Atlantic site, as shown by the standard deviation and  $\Delta T$  values in Table 1. This difference is explained in terms of the different sampling depths, with the seasonal variations decreasing with increasing depth. Temperature variations in Morlaix Bay (Atlantic Ocean) were higher, registering overall a mean seawater temperature of 12.4 °C (Table 1). Among Mediterranean samples, mean seawater temperatures were highest in the Aegadian Isl., followed by the Elba and the Pontian Isl. (Table 1). Aegadian Isl. also registered the highest temperature variations among the Mediterranean sites (Table 1). Moderate temperature variations characterized the site in Elba, which registered the lowest monthly mean temperature among Mediterranean sites (Table 1). At the Pontian Isl., consistently with the fact that it is the deepest sampling site at 66 m depth, the lowest seawater temperature variations were found (Table 1).

195 The pH estimates at the Mediterranean sites were all similarly high ~8.13 and less variable than the Atlantic site (8.06). The mean pH had slightly higher values in Pontian Isl. and Elba, than Aegadian Isl. (Table 1). Similarly, DIC was higher in the Mediterranean sites and decreased in Morlaix, as this is largely dictating the pH (Table 1).

200 **Table 1: Environmental data in each sampling site. The minimum and maximum monthly means of temperature are indicated, as well as the highest temperature variation ( $\Delta T$ ), the mean and the standard deviation of the time series. Data from monthly means extracted by 11 years of ORAS5 reanalysis. pH and DIC in each sampling site are also indicated. The minimum, maximum, mean, and standard deviation values have been measured on the time interval 2019-2020. Carbonate system parameters have been extracted from monthly means biogeochemical data provided by CMEMS.**

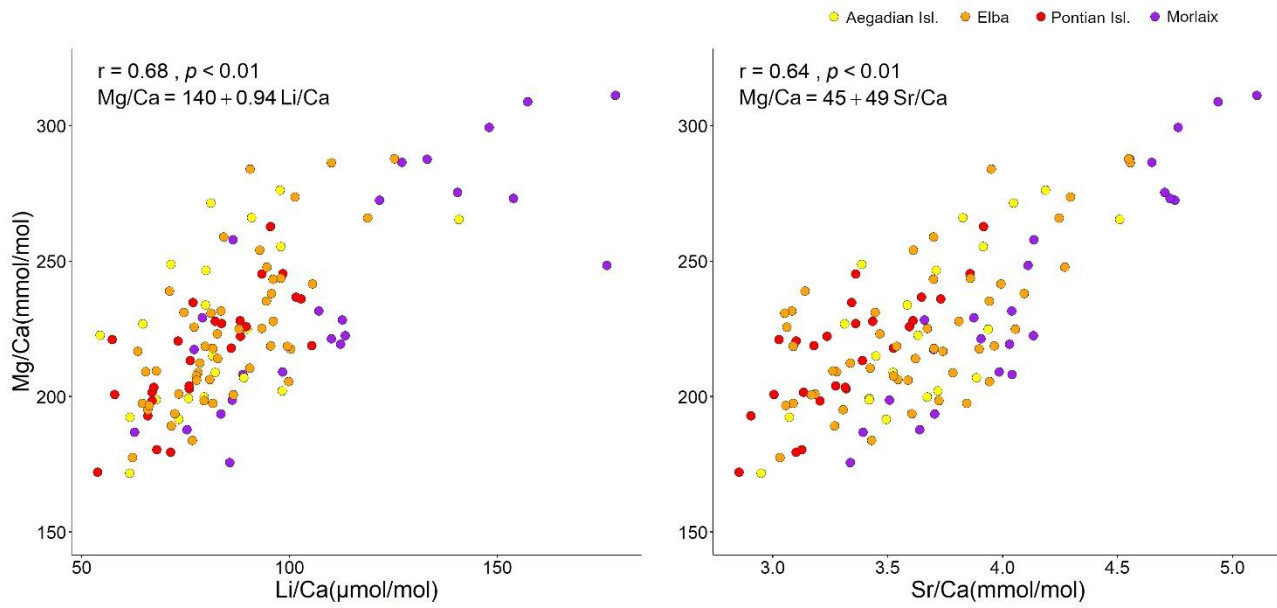
Sampling site	Depth (m)	Collection date	Temperature ( $^{\circ}\text{C}$ )					pH		DIC ( $\mu\text{mol/kg}$ )		Growth rates (mm/yr)
			min	max	$\Delta T$	mean	st. dev.	mean	st. dev.	mean	st. dev.	
Aegadian Isl.	40	25/08/1993	13.7	19.0	5.3	16.1	1.4	8.11	0.02	2292.94	8.11	0.13
Elba	45	01/12/1990	12.9	17.5	4.6	15.0	1.2	8.13	0.02	2320.48	6.48	0.14
Pontian Isl.	66	14/07/2017	13.3	16.7	3.4	14.9	0.6	8.13	0.01	2318.50	3.90	0.10
Morlaix	12	02/05/1991	8.3	17.2	8.9	12.4	2.5	8.06	0.04	2165.59	9.62	0.13

### 3.2 Mg/Ca, Li/Ca, Sr/Ca and Mg/Li

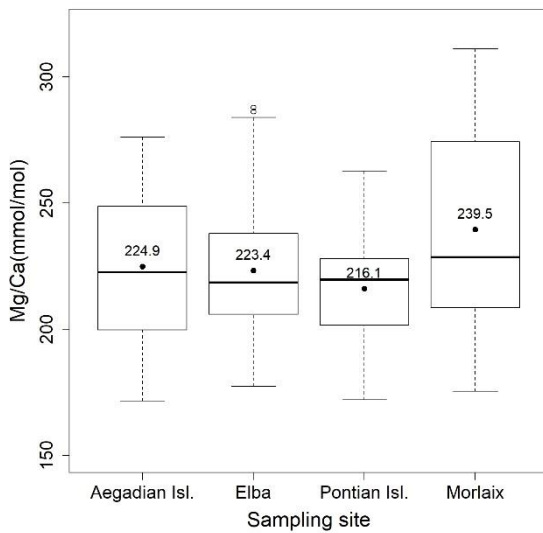
205 Both Li/Ca and Sr/Ca records had positive correlations with Mg/Ca in our samples of *L. corallioides* (Fig. 3). The overall mean Mg/Ca was  $225.3 \pm 30.4$  mmol/mol, registering the minimum value in the sample from Aegadian Isl. (171.7 mmol/mol) and the maximum value in Morlaix (311.2 mmol/mol) (Fig. 4; Table 2). The Kruskal-Wallis test did not show significant differences in Mg/Ca among samples (Table A1; Fig. 4). Among Mediterranean sites, the algal sample coming from Aegadian Isl. had the highest Mg/Ca mean value, followed by Elba and Pontian Isl., which had the lowest Mg/Ca mean value of all sampling sites (Fig. 4). The highest mean Mg/Ca was registered in the sample from Morlaix bay, which also showed a large dispersion of data above the median Mg/Ca value (Fig. 4).

210





**Figure 3: Correlation plots of Mg/Ca with Li/Ca and Sr/Ca. For each analyses the Spearman's coefficient  $r$ , the  $p$ -value and the line equation are given.**



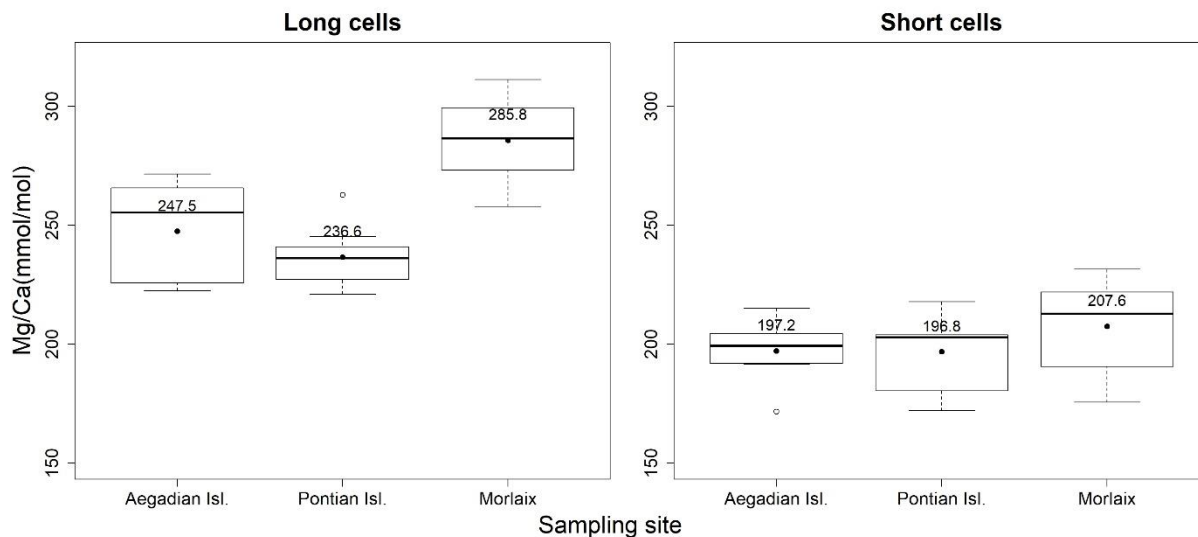
**215 Figure 4: Box plot of the statistical tests performed to evaluate the differences of Mg/Ca in *L. corallioides* collected in different sampling sites. The horizontal black lines indicate the median values. The black filled circles and the numbers inside the plot indicate the mean values.**

Long cells had high Mg/Ca values; conversely, short cells corresponded to areas with low Mg/Ca ratio.

The ANOVA test followed by the Tukey's test for multiple comparisons evidenced a significant variability of algal Mg/Ca among 3 sites in long cells (Table A2; Fig. 5). In the long cells of *L. corallioides* collected from Aegadian Isl. and Pontian Isl.,

220

the Mg/Ca data showed quite similar distribution (Table A2; Fig. 5). The Mg/Ca of the alga from Pontian Isl. was the lowest (Fig. 5). In Morlaix a higher Mg/Ca mean value was registered, significantly different compared to Aegadian and Pontian Isl. (Table A2; Fig. 5). In short cells, the differences in Mg/Ca among samples were not statistically significant (Table A1). The magnesium incorporation was slightly higher in Morlaix and very similar between Aegadian and Pontian Isl. samples (Fig. 5).



225

**Figure 5: Box plots of the statistical tests performed to evaluate the differences of Mg/Ca in the long and short cells of *L. corallioides* collected in different sampling sites. The horizontal black lines indicate the median values. The black filled circles and the numbers inside the plot indicate the mean values.**

Mg/Li values in long and short cells fell in the range found by Anagnostou et al. (2019) for cultured *Clathromorphum compactum* (Fig. 8). When plotted against the extracted seawater temperature in Morlaix (Fig. 9), Mg/Li results did not reflect the seasonal oscillations in temperature.

230

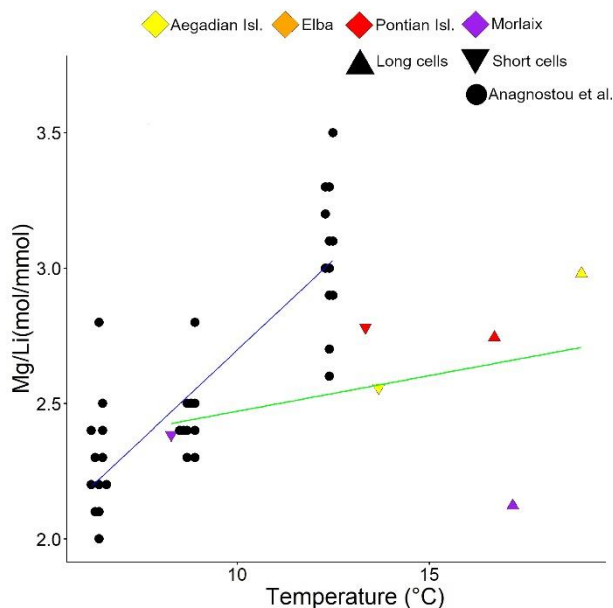


Figure 6: Correlation plot between Mg/Li and seawater temperature. Data are shown for cultured *C. compactum* (Anagnostou et al., 2019) and *L. corallioides* (this paper). *L. corallioides* results are shown separately in long and short cells, per sampling site.

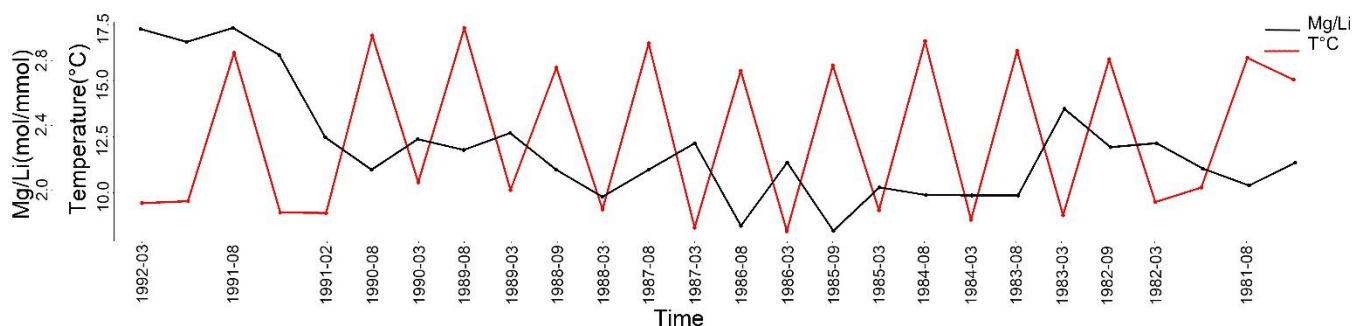


Figure 7: Mg/Li ratio of *L. corallioides* collected in Morlaix Bay. Note the lack of cyclic variations in Mg/Li results. In the timeline, the coldest and the warmest months have been reported. Mg/Li in the missing bands have been calculated as the means of the values measured in warm and cold periods. Monthly means of seawater temperature have been extracted by ORAS5 reanalysis.

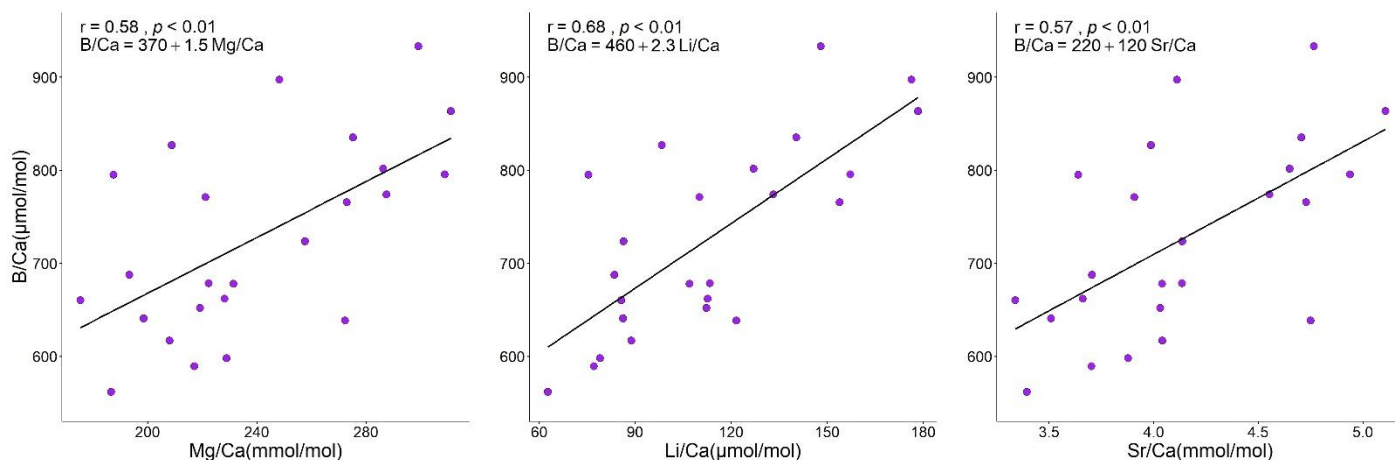
### 3.3 B/Ca

240 The B/Ca ratio in the sample collected from Morlaix showed a moderate positive correlation with all the examined temperature proxies (Mg/Ca, Li/Ca, Sr/Ca), with a more defined trend when plotted against Li/Ca ( $r=0.68$ ) and slightly less defined against Mg/Ca ( $r=0.58$ ) and Sr/Ca ( $r=0.57$ ) (Fig. 8). On the contrary, the Spearman's analyses did not evidence significant correlations between B/Ca and the temperature signals in the algae collected elsewhere ( $p>0.05$ ).

245 Overall, the B/Ca ratio in *L. corallioides* was  $661.9 \pm 138.9 \mu\text{mol/mol}$ , registering the minimum value in the long cells of the sample from Pontian Isl. ( $356.0 \mu\text{mol/mol}$ ) and the maximum value in Elba ( $954.1 \mu\text{mol/mol}$ ) (Fig. 9; Table 2).

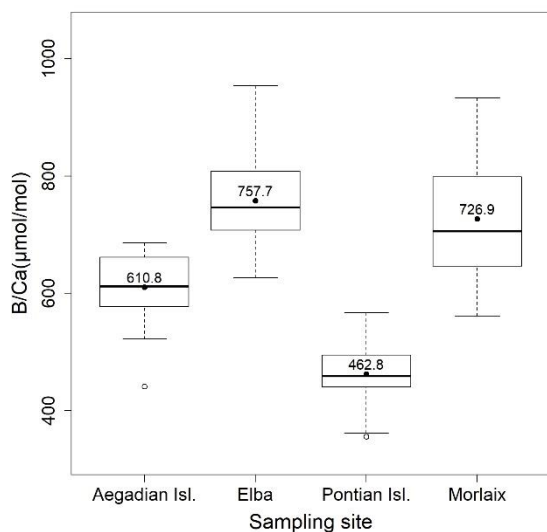
The Kruskal-Wallis coefficient showed a highly significant difference in the B/Ca value among sites, particularly in the *L. corallioides* from the Pontian Isl., which had the lowest boron incorporation (Table A3; Fig. 9). The algae collected in Aegadian Isl. had still significantly lower B/Ca compared to those collected in Elba and Morlaix (Table A3; Fig. 9). The highest B/Ca mean value was registered in Elba, with medians comparable to Morlaix (Table A3; Fig. 9).

250



**Figure 8: Correlation plots of B/Ca with Mg/Ca, Li/Ca and Sr/Ca in *L. corallioides* collected in Morlaix bay. For each analyses the Spearman's coefficient  $r$ , the  $p$ -value and the line equation are given.**

255

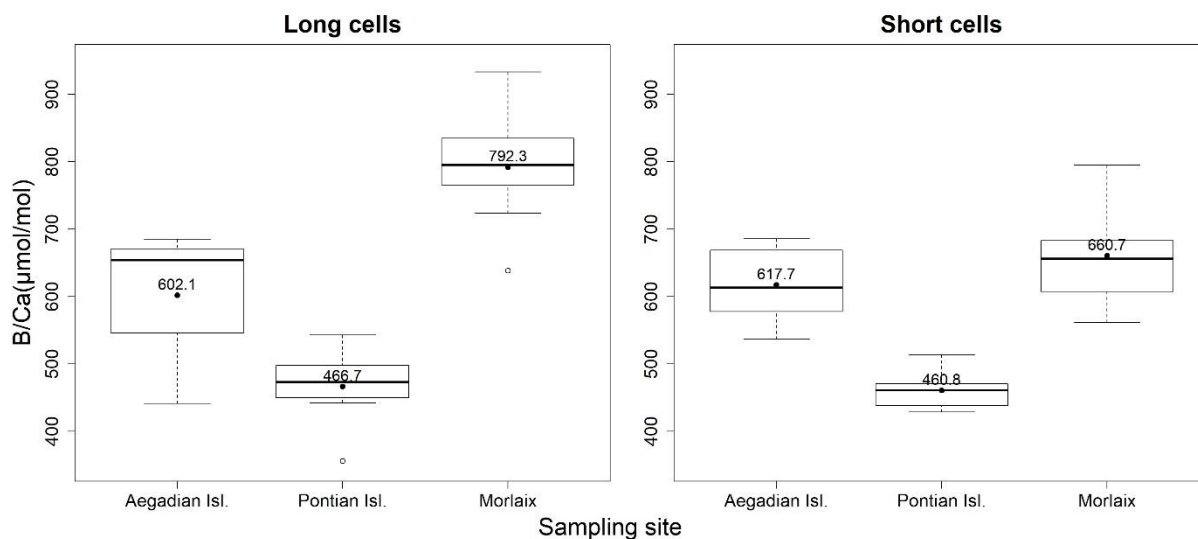


**Figure 9: Box plot of the statistical tests performed to evaluate the differences of B/Ca in *L. corallioides* collected in different sampling sites. The horizontal black lines indicate the median values. The black filled circles and the numbers inside the plot indicate the mean values.**

The ANOVA test followed by the Tukey's test for multiple comparisons by site, for long (Table A4) and short cells (Table A5) separately, showed lower values in the Mediterranean sites and higher values in the Atlantic site (Fig. 10).

The algal cells from Pontian Isl. had the lowest mean B/Ca in both seasons, being significantly different from both the samples from Morlaix and Aegadian Isl. (Table A4, A5; Fig. 10). Morlaix had the highest mean B/Ca in both long and short cells (Table A4, A5; Fig. 10). *L. corallioides* from Aegadian Isl. had intermediate B/Ca mean value in long cells, differing significantly from both the Morlaix and Pontian Isl. samples (Table A4; Fig. 10). In short cells, the sample from Aegadian Isl. slightly differed from the one in Morlaix (Table A5; Fig. 10).

Interestingly, the long cells of all samples had higher median B/Ca values compared to short cells (Fig. 10), although only in Morlaix, the differences between B/Ca measured in long and short cells were statistically significant ( $\chi^2=8.4899$ ,  $p<0.01$ ).



**Figure 10: Box plots of the statistical tests performed to evaluate the differences of B/Ca in the long and short cells of *L. corallioides* collected in different sampling sites. The horizontal black lines indicate the median values. The black filled circles and the numbers inside the plot indicate the mean values.**

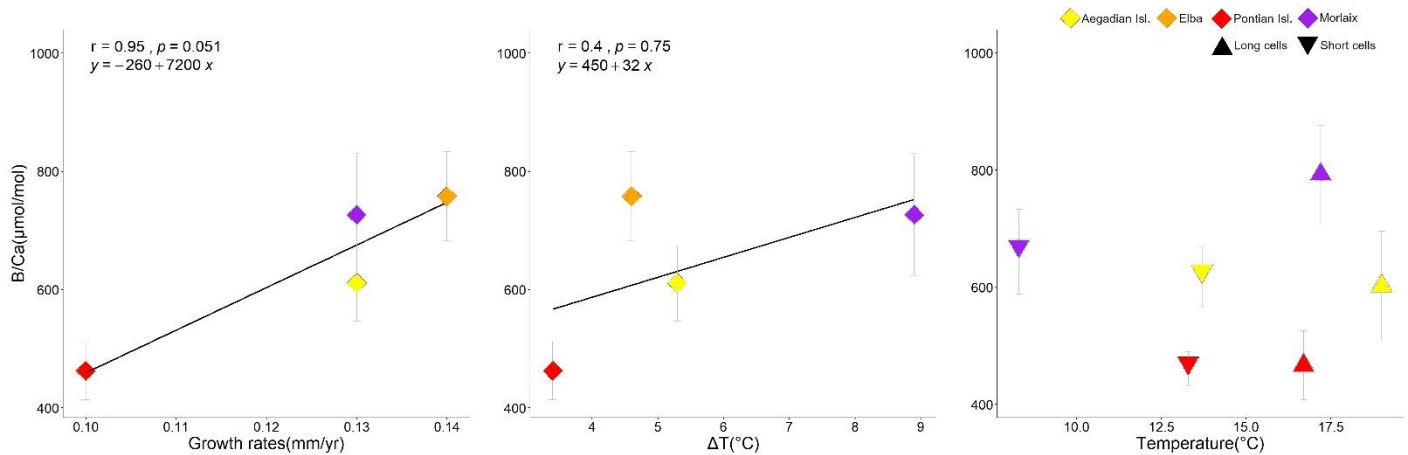
**Table 2: Element/Ca ratio measurements in *L. corallioides*.**

Sampling site	B/Ca ( $\mu\text{mol/mol}$ )		Mg/Ca ( $\text{mmol/mol}$ )		Li/Ca ( $\mu\text{mol/mol}$ )		Sr/Ca ( $\text{mmol/mol}$ )		Mg/Li ( $\text{mol/mmol}$ )	
	mean	st. dev.	mean	st. dev.	mean	st. dev.	mean	st. dev.	mean	st. dev.
Aegadian Isl.	610.8	63.9	224.9	30.3	81.9	18.4	3.7	0.4	2.8	0.5
Elba	757.7	75.5	223.4	26.4	85.2	14.3	3.6	0.4	2.7	0.3
Pontian Isl.	462.8	49.2	216.1	21.9	79.6	14.6	3.3	0.3	2.8	0.4
Morlaix	726.9	102.8	239.5	41.2	113.1	32.9	4.1	0.5	2.2	0.4
total	<b>661.9</b>	<b>138.9</b>	<b>225.3</b>	<b>30.4</b>	<b>89.0</b>	<b>23.3</b>	<b>3.7</b>	<b>0.5</b>	<b>2.6</b>	<b>0.4</b>

### 3.4 Growth rates

In the sample from Aegadian Isl., the LA-ICP-MS transect was 1.31 mm long and 10 years of growth have been detected by coupling microscopical imaging and Mg/Ca peaks, resulting in 0.13 mm/yr of growth rate. In the Elba sample the laser transect was 1,15 mm long, crossing 8 years of growth, with a resulting growth rate of 0.14 mm/yr. The Pontian Isl. sample had 1.08 mm of transect including 11 years of growth, hence a growth rate of 0.10 mm/yr. Finally, the transect from Morlaix sample was 1.38 mm long, counting 11 years and resulting in 0.13 mm/yr of growth rate.

Growth rates did not show any linear relationship with Mg, Li and Sr/Ca, but they were positively correlated with the samples mean B/Ca values (Fig. 11).



280

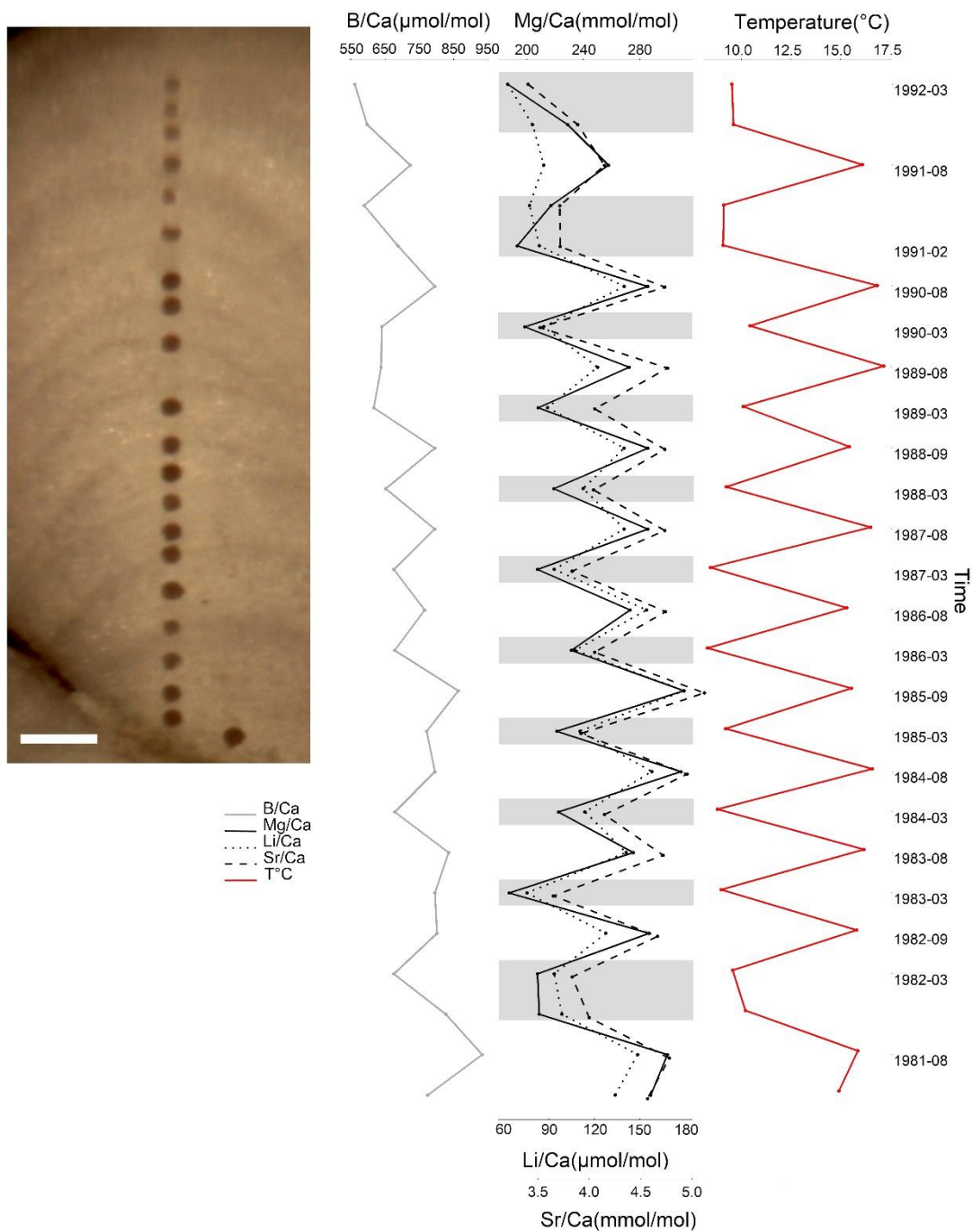
**Figure 11: Correlation plots of growth rates and seawater temperature with B/Ca in *L. corallioides* samples analysed in this study. Spearman's coefficient  $r$ , the  $p$ -value and the line equation are given. Temperature variations ( $\Delta T$ ) correspond to the differences between the maximum and minimum temperature registered over 11 years of monthly reanalysis (ORAS5). The B/Ca means measured in long and short cells correspond respectively to the maximum and minimum temperature.**

### 285 4 Discussion

In general, temperature variations affect many physiological processes involved in the biomineralization, and the rate of calcification, along with the preservation state of mineral structures, influences the content of trace elements in carbonates (Lorens, 1981; Rimstidt et al., 1998; Gussone et al., 2005; Noireaux et al., 2015; Kaczmarek et al., 2016). Trace elements concentrations recorded from the four *L. corallioides* branches analysed in this study were consistent with previously published values for other calcareous red algae (Chave, 1954; Hemming and Hanson, 1992; Hetzinger et al., 2011; Darrenougue et al., 2014). Particularly, the range of Mg/Ca ratios resulted in this study extended from 172 to 311 mmol/mol, comparable to previous studies on rhodoliths of *Lithothamnion glaciale* Kjellman 1883 grown at 6-15 °C (148-326 mmol/mol) (Kamenos et al., 2008). The B/Ca ratios in *L. corallioides* from our results range from 356 to 954 μmol/mol, wider than the range measured by solution ICP-MS on bulk samples of *Neogoniolithon* sp. (352-670 μmol/mol) (Donald et al., 2017) and *C. compactum* (320-295 430 μmol/mol) (Anagnostou et al., 2019), both cultured with controlled  $p\text{CO}_2$  and a pH ranging from 7.2 to 8.2. The high

resolution given by laser ablation should be more effective in measuring the heterogeneity of B/Ca across the thallus, thus explaining the wider range of our data. In order to provide high-resolution geochemical data on long and short cells separately, we considered only the results from the spots where the light/dark bands resulting from the image analyses corresponded to obvious Mg/Ca peaks. Hence, laser spots lying on faint bands and with intermediate Mg/Ca peaks were discarded, as probably belonging to middle seasons. Thanks to this expedient, we also avoided artefacts due to the Mg/Ca heterogeneity across the algal thallus (Fietzke et al., 2015; Nash and Adey, 2017a, b). In the sample from Elba the growth bands were not clearly visible, preventing the analyses of trace elements in long and short cells separately (Fig. S1). The Mg/Ca results evidenced a strong relationship with the seawater temperatures extracted from ORAS5 (Table 1; Fig. 12), as expected. *L. corallioides* from Aegadian Isl. had slightly higher Mg/Ca values, followed by Elba and Pontian Isl. (Fig. 4). This was consistent with local temperature values in the Mediterranean (Table 1), since Pontian Isl. registered the lowest mean value and the lowest  $\Delta T$ , while Aegadian Isl. showed the highest mean temperature and  $\Delta T$ . On the contrary, the sample from Morlaix, collected at 12 m depth, showed high Mg/Ca values in both long and short cells (Table A2; Fig. 5). The monthly mean temperatures had the highest variations during the year ( $\Delta T$  in Table 1), due to the shallow depth (12 m). Temperature correlates to seasons, influencing primary production, respiration, and calcification in *L. corallioides* (Payri, 2000; Martin et al., 2006) as well as other calcareous red algae (Roberts et al., 2002). The high seasonality that characterized the sample from Morlaix, represented by the high  $\Delta T$  (Table 1), was probably responsible for the highest variation of Mg/Ca values and undoubtedly accounted for most of the differences with Mediterranean samples. For the first time, we confirmed here the reliability of the temperature proxies Li/Ca and Sr/Ca on a wild-grown coralline alga collected at different depths and locations. Li/Ca and Sr/Ca records were positively correlated with Mg/Ca in *L. corallioides* (Fig. 3), which, in turn, showed a strong relationship with seawater temperature. Moreover, both Li and Sr/Ca showed periodical oscillations in correspondence to long and short cells, related to seasonal temperature variations (Fig. 12). Therefore, Li/Ca and Sr/Ca could be regarded as temperature proxy in *L. corallioides*, as for Mg/Ca. The coupling of the Mg/Ca ratio with Li/Ca and Sr/Ca represents a multi-proxy approach that minimize the possible species effect and can be considered a useful tool to gather information about past temperature for paleoclimate reconstructions (Halfar et al., 2011; Caragnano et al., 2014; Williams et al., 2014; Fowell et al., 2016; Cuny-Guirriec et al., 2019).

The B/Ca ratio in coralline algae has been rarely measured and it is not clear how the environmental factors control its incorporation. The carbonate system primarily drives the changes in B incorporation (Hemming and Hanson, 1992; Yu and Elderfield, 2007). In benthic foraminifera, B/Ca increases with  $[\text{CO}_3^{2-}]$  (Yu and Elderfield, 2007), whereas there is no consensus on the effect of  $[\text{CO}_3^{2-}]$  on Mg/Ca and Sr/Ca (Rosenthal et al., 2006; Dueñas-Bohórquez et al., 2011). Experiments with inorganic calcite showed a positive correlation between B/Ca and [DIC] (Uchikawa et al., 2015). Nevertheless, in culture experiments of the coralline algae *Neogoniolithon* sp. (Donald et al., 2017) and corals (Gagnon et al., 2021), [DIC] had a negative effect on B/Ca. The occurrence of low DIC concentrations in Morlaix (Table 1), compared to the Mediterranean sites, could therefore contribute to the high B/Ca. Nevertheless, based on the extracted pH and DIC data, significantly higher values of B/Ca should be expected in the sample from Pontian Isl., similarly to the other Mediterranean sites (Table 1).



330

**Figure 12: Elements ratio of *L. corallioides* collected in Morlaix Bay (scale bar = 200 µm). Mg, Li and Sr/Ca show cyclic variations the same as the local seawater temperature. In the timeline, the coldest and the warmest months have been reported, which correspond to dark and light bands of growth. Elements/Ca in the missing bands have been calculated as the means of the values measured in warm or cold periods. Monthly means of temperature have been extracted by ORAS5 reanalysis.**



335 The estimated growth rate of *L. corallioides* was  $0.13 \pm 0.02$  mm/yr and it was supposed to decrease with increasing depth as  
a direct consequence of a lower light availability (Halfar et al., 2011); indeed, the growth rate of the sample from Pontian Isl.  
was the lowest (0.10 mm/yr). As already suggested by previous studies on both synthetic and biogenic calcite, B incorporation  
is likely affected by growth rate (Gabitov et al., 2014; Mavromatis et al., 2015; Noireaux et al. 2015; Uchikawa et al., 2015;  
Kaczmarek et al., 2016). Indeed, in the cultured calcareous red alga *Neogoniolithon* sp. the B/Ca increases with increasing  
340 growth rate (Donald et al., 2017). In Pontian Isl., the slow growth rate could have contributed to the low B/Ca values. The  
mean annual growth rate of the shallowest sample (Morlaix) was equal to the one in Aegadian Isl., at 40 m depth (0.13 mm/yr).  
In Morlaix, the alga probably significantly slowed down the growth in cold months, when the monthly mean seawater  
temperature was the lowest of all the sampling sites (Table 1). Nevertheless, its growth rate likely speeded up in the warm  
season due to the abundant light availability at shallow depth and the warming of seawater (Table 1), contributing to the  
345 significantly higher B/Ca values in long cells (Fig. 10). According to this interpretation, the effect of the growth rate on B/Ca  
might be significant across depth and geographical regions (Fig. 11). In Morlaix, B/Ca showed higher values in comparison  
with Aegadian Isl. and Pontian Isl., and a positive correlation with temperature proxies (Mg/Ca, Li/Ca and Sr/Ca; Fig. 8). A  
positive correlation between B/Ca and Mg/Ca was already observed in planktonic foraminifera (Wara et al., 2003; Yu et al.,  
2007). In the sample from the Pontian Isl., the seasonal  $\Delta T$ , Mg/Ca and B/Ca values were the lowest among sites. In particular,  
350 B/Ca was significantly low (Fig. 9), differing more from the other samples than the results on Mg/Ca (Fig. 4). This suggests  
that in this sample the B incorporation should be influenced by factors other than those affecting Mg. In general, the poor  
correlation with seawater temperature (Fig. 11), and most of all the lack of distinct seasonal oscillations in B/Ca across the  
algal thallus (Fig. 12), excludes the suitability of B/Ca as a temperature proxy and suggests a closer relationship with growth  
rate rather than temperature.

355 Knowing the biogeochemistry and the variation of the environmental parameters of seawater is crucial for a more  
comprehensive picture of the reliability of geochemical proxies, like the ones we investigated in this paper (Mg, Li, Sr/Ca and  
B/Ca). Boron incorporation in marine carbonates is still debated, rising questions about the boron isotopic fractionation, the  
mechanisms of boron incorporation into marine carbonates, the so-called “vital effects” (i.e. the metabolic activities that can  
bias the isotopic signal), and the seawater isotopic composition. Moreover, the paucity of B/Ca measurements from coralline  
360 algae and, most of all, the complete absence of these data on specimens grown in nature makes it difficult to compare our B/Ca  
data with the literature. This evidence takes stock of the significance of our results and emphasizes the importance of collecting  
more representative B/Ca data in coralline algae. Further studies on *L. corallioides* and other calcareous red algae should be  
carried out to clarify the environmental factors influencing the B/Ca in these organisms, and to ensure the reliability of this  
proxy for paleoclimate reconstructions.

## 365 5 Conclusion

This paper presents the first measures of trace elements (Mg, Sr, Li and B) from the coralline alga *L. corallioides* collected across the Mediterranean Sea and in the Atlantic Ocean, at different oceanographic settings and depths (12 m, 40 m, 45 m, and 66 m depth). LA-ICP-MS records of Mg/Ca, Sr/Ca and Li/Ca have shown a similar trend, primarily controlled by seawater temperatures in the algal habitat. In order to evaluate the control exerted by temperature over B incorporation, we also tested the correlation between B/Ca with Mg/Ca, Li/Ca and Sr/Ca. This led us to provide the first B/Ca data on wild grown coralline algae from across the photic zone depths in different Basins. The correlation between B/Ca and Mg/Ca in *L. corallioides* was statistically significant only in the shallow Atlantic waters of Morlaix, where seasonality, hence the seasonal temperature variations, during the algal growth was the strongest among sites. Accordingly, B incorporation differences between long and short cells of *L. corallioides* strongly depend on seasonality, being statistically significant just in Morlaix. Nevertheless, in contrast to Mg, Li and Sr/Ca, B/Ca oscillations across the algal growth showed a poor relationship with seasonal variations in seawater temperature. We found high B/Ca values in the Atlantic sample, where pH and DIC were the lowest. Carbon data did not explain the low B concentration in the Pontian Isl. sample (66 m depth), though, where pH and DIC were similar to the other Mediterranean sites. The estimation of growth rate, that was low in the Pontian Isl. sample (0.11 mm/yr) and got higher in the other Mediterranean samples and in Morlaix (~0.13 mm/yr), led us to conclude that B/Ca relates to growth rate rather than seawater temperature. B incorporation is therefore subject to the specific algal growth patterns and rates, whose knowledge is essential in order to assess the reliability of B/Ca in tracing seawater carbon variations.

## Appendix A

**Table A1: (a) Statistically non-significant results of tests performed to evaluate (a) the differences of Mg/Ca in *L. corallioides* and (b) the differences of Mg/Ca in the short cells of *L. corallioides* collected in different sampling sites. Test significance at  $\alpha = 0.05$ .**

(a) Kruskal-Wallis test (Mg/Ca)			
	Df	$\chi^2$	P
SITE	3	3.799	0.284

(b) One-way ANOVA test (Mg/Ca)					
Short cells					
	Df	Sum sq.	Mean sq.	F value	Pr(>F)
SITE	2	788.1	394.0	1.4647	0.2496
Residuals	26	6994.5	269.0		
Shapiro-Wilk normality test				P=0.6442	
Bartlett's K-squared				P=0.5856	

385

**Table A2: Results of statistical tests performed to evaluate the differences of Mg/Ca in the long cells of *L. corallioides* collected in different sampling sites. Statistically significant p-values are given in bold. ANOVA test significance at  $\alpha = 0.05$ ; Tukey's test significant at  $p \leq \alpha$ .**

<b>One-way ANOVA test (Mg/Ca)</b>					
Long cells					
	Df	Sum sq.	Mean sq.	F value	Pr(>F)
SITE	2	10897.7	5448.9	16.413	<b>0.0001</b>
Residuals	20	6639.8	332.0		
Shapiro-Wilk normality test				P=0.1440	
Bartlett's K-squared				P=0.5826	
<b>Tukey's test</b>					
Multiple comparisons of means					
SITE	Mean difference	95% confidence interval		P. adjusted	
	SITE	lower bound	upper bound		
Morlaix-Aegadian Isl.	38.32918	15.09816	61.56019	<b>0.00130</b>	
Pontian Isl.-Aegadian Isl.	-10.84361	-35.48382	13.79661	0.51716	
Pontian Isl.-Morlaix	-49.17278	-72.40380	-25.94177	<b>0.00009</b>	

390

**Table A3: Results of statistical tests performed to evaluate the differences of B/Ca in *L. corallioides* collected in different sampling sites. Statistically significant p-values are given in bold. Kruskal-Wallis test significance at  $\alpha = 0.05$ ; Dunn's test significant at  $p \leq \alpha/2$ .**

<b>Kruskal-Wallis test (B/Ca)</b>			
	Df	$\chi^2$	P
SITE	3	79.816	<b>&lt;2.2e-16</b>
<b>Dunn's test</b>			
Comparisons by SITE (Bonferroni)			
Z	Aegadian Isl.	Elba	Morlaix
P. adjusted			
Elba	-4.64580 <b>0.00000</b>		
Morlaix	-3.07755 <b>0.00630</b>	1.17249 0.72300	
Pontian Isl.	2.80564 <b>0.01510</b>	8.38673 <b>0.00000</b>	6.15663 <b>0.00000</b>

395

**Table A4: Results of statistical tests performed to evaluate the differences of B/Ca in the long cells of *L. corallioides* collected in different sampling sites. Statistically significant p-values are given in bold. ANOVA test significance at  $\alpha = 0.05$ ; Tukey's test significant at  $p \leq \alpha$ .**

<b>One-way ANOVA test (B/Ca)</b>					
Long cells					
	Df	Sum sq.	Mean sq.	F value	Pr(>F)
SITE	2	428364	214182	33.066	<b>0.0000</b>
Residuals	20	129546	6477		
Shapiro-Wilk normality test				P=0.5527	
Bartlett's K-squared				P=0.5470	
<b>Tukey's test</b>					
Multiple comparisons of means					
SITE	Mean difference	95% confidence interval		P. adjusted	
	SITE	lower bound	upper bound		
Morlaix-Aegadian Isl.	190.11730	87.50374	292.73094	<b>0.00040</b>	
Pontian Isl.-Aegadian Isl.	-135.42490	-244.26303	-26.58672	<b>0.01342</b>	
Pontian Isl.-Morlaix	-325.54220	-428.15581	-222.92862	<b>0.00000</b>	

400

**Table A5: Results of statistical tests performed to evaluate the differences of B/Ca in the short cells of *L. corallioides* collected in different sampling sites. Statistically significant p-values are given in bold. ANOVA test significance at  $\alpha = 0.05$ ; Tukey's test significant at  $p \leq \alpha$ .**

<b>One-way ANOVA test (B/Ca)</b>					
Short cells					
	Df	Sum sq.	Mean sq.	F value	Pr(>F)
SITE	2	216232	108116	35.360	<b>0.0000</b>
Residuals	26	79497	3058		
Shapiro-Wilk normality test				P=0.1699	
Bartlett's K-squared				P=0.0576	
<b>Tukey's test</b>					
Multiple comparisons of means					
SITE	Mean difference	95% confidence interval		P. adjusted	
	SITE	lower bound	upper bound		
Morlaix-Aegadian Isl.	43.09640	-19.61932	105.81212	0.22146	
Pontian Isl.-Aegadian Isl.	-156.90170	-223.66771	-90.13574	<b>0.00001</b>	
Pontian Isl.-Morlaix	-199.99810	-260.58727	-139.40898	<b>0.00000</b>	

## **Data availability**

405 Data resulting from this study have been submitted to the open access PANGAEA repository.

Environmental data were provided by E.U. Copernicus Marine Service Information.

DIC data in the Mediterranean:

[https://resources.marine.copernicus.eu/?option=com\\_csw&view=details&product\\_id=MEDSEA\\_ANALYSIS\\_FORECAST\\_BIO\\_006\\_014](https://resources.marine.copernicus.eu/?option=com_csw&view=details&product_id=MEDSEA_ANALYSIS_FORECAST_BIO_006_014)

410 DIC data in the Atlantic Ocean:

[https://resources.marine.copernicus.eu/?option=com\\_csw&view=details&product\\_id=IBI\\_ANALYSISFORECAST\\_BGC\\_005\\_004](https://resources.marine.copernicus.eu/?option=com_csw&view=details&product_id=IBI_ANALYSISFORECAST_BGC_005_004)

pH data:

[https://resources.marine.copernicus.eu/?option=com\\_csw&view=details&product\\_id=GLOBAL\\_REANALYSIS\\_BIO\\_001\\_029](https://resources.marine.copernicus.eu/?option=com_csw&view=details&product_id=GLOBAL_REANALYSIS_BIO_001_029)

415 029

Temperature data: <https://icdc.cen.uni-hamburg.de/daten/reanalysis-ocean/easy-init-ocean/ecmwf-oras5.html>

## **Author contributions**

DB, VB, and GP conceptualized the research question and study design. AL, DB, and VB conducted the experimental work; AM and GP the environmental data extraction. GP performed the data analysis and prepared the draft of the paper. All authors  
420 contributed to the editing and reviewing of the paper.

## **Competing interests**

The authors declare that they have no conflict of interest.

## **Acknowledgements**

This paper is a contribution to the Project MIUR-Dipartimenti di Eccellenza 2018-2022 DISAT-UNIMIB.

425 The Pontian Isl. sample has been collected in the framework of "Convenzione MATTM-CNR per i Programmi di Monitoraggio per la Direttiva sulla Strategia Marina (MSFD, Art. 11, Dir. 2008/56/CE)". Captain, crew and scientific staff of RV Minerva Uno cruise STRATEGIA MARINA LIGURE-TIRRENO are acknowledged for their efficient and skilful cooperation at sea. Financial support for GP was provided by Italian MIUR as a PhD fellowship.

## References

- 430 Adey, W. H.: The genus *Clathromorphum* (Corallinaceae) in the Gulf of Maine, *Hydrobiologia*, 26, 539–573, doi:10.1007/BF00045545, 1965.
- Adey, W. H., and McKibbin, D.: Studies on the maerl species *Phymatolithon calcareum* (Pallas) nov. comb. and *Lithothamnion coralloides* Crouan in the Ria de Vigo, *Botanica marina*, 13, 100–106, doi:10.1515/botm.1970.13.2.100, 1970.
- Allen, K. A., Hönisch, B., Eggins, S. M., and Rosenthal, Y.: Environmental controls on B/Ca in calcite tests of the tropical  
435 planktic foraminifer species *Globigerinoides ruber* and *Globigerinoides sacculifer*, *Earth. Planet. Sci. Lett.*, 351–352, 270–280, <https://doi.org/10.1016/j.epsl.2012.07.004>, 2012.
- Alverson, K., Bradley, R., Briffa, K., Cole, J., Hughes, M., Larocque, I., Pedersen, T., Thompson, L., and Tudhope, S.: A global paleoclimate observing system, *Science*, 293, 47–48, doi:10.1126/science.293.5527.47c, 2001.
- Anagnostou, E., Williams, B., Westfield, I., Foster, G. L., and Ries, J. B.: Calibration of the pH- $\delta^{11}\text{B}$  and temperature-Mg/Li  
440 proxies in the long-lived high-latitude crustose coralline red alga *Clathromorphum compactum* via controlled laboratory experiments, *Geochim. Cosmochim. Acta*, 254, 142–155, doi:10.1016/j.gca.2019.03.015, 2019.
- Andersson, A. J., Mackenzie, F. T., and Bates, N. R.: Life on the margin: implications on Mgcalcite, high latitude and cool-water marine calcifiers, *Mar. Ecol. Prog. Ser.*, 373, 265–273, doi:10.3354/meps07639, 2008.
- Andersson, A. J. and Mackenzie, F. T.: Technical comment on Kroeker et al. (2010) Meta-analysis reveals negative yet variable  
445 effects of ocean acidification on marine organisms, *Ecol. Lett.*, 13, 1419–1434, doi:10.1111/j.1461-0248.2011.01646.x, 2011.
- Barker, S., Cacho, I., Benway, H. and Tachikawa, K.: Planktonic foraminiferal Mg/Ca as a proxy for past oceanic temperatures: a methodological overview and data compilation for the Last Glacial Maximum, *Quat. Sci. Rev.*, 24, 821–834, doi:10.1016/j.quascirev.2004.07.016, 2005.
- Basso, D.: Study of living calcareous algae by a paleontological approach: the non-geniculate Corallinaceae (Rhodophyta) of  
450 the soft bottoms of the Tyrrhenian Sea (western Mediterranean). The genera *Phymatolithon* Foslie and *Mesophyllum* Lemoine, *Riv. Ital. Paleontol. S.*, 100, 575–596, doi:10.13130/2039-4942/8602, 1995a.
- Basso, D.: Living calcareous algae by a paleontological approach: the genus *Lithothamnion* Heydrich nom. cons. from the soft bottoms of the Tyrrhenian Sea (Mediterranean), *Riv. Ital. Paleontol. S.*, 101, 349–366, doi:10.13130/2039-4942/8592, 1995b.
- Basso, D.: Carbonate production by calcareous red algae and global change, *Geodiversitas*, 34 (1), 13–33,  
455 doi:10.5252/g2012n1a2, 2012.
- Basso, D., Babbini, L., Kaleb, S., Bracchi, V.A. and Falace, A.: Monitoring deep Mediterranean rhodolith beds, *Aquat. Conserv.*, 26, 549–561, doi:10.1002/aqc.2586, 2016.
- Basso, D., Babbini, L., Ramos-Esplá, A.A. and Salomidi, M.: Mediterranean rhodolith beds, in: *Rhodolith/maerl beds: A global perspective*, edited by: Riosmena-Rodríguez, R., Wendy Nelson, W. and Aguirre, J., Springer, Cambridge, 281–298,  
460 doi:10.1007/978-3-319-29315-8\_11, 2017.

- Basso, D. and Brusoni, F.: The molluscan assemblage of a transitional environment: the Mediterranean maerl from off the Elba Island (Tuscan Archipelago, Tyrrhenian Sea), *Boll. Malacol.*, 40 (1–4), 37–45, 2004.
- Berner, R. A.: The role of magnesium in the crystal growth of calcite and aragonite from sea water, *Geochim. Cosmochim. Acta*, 39, 489–504, doi:10.1016/0016-7037(75)90102-7, 1975.
- 465 Bolzon, G., Cossarini, G., Lazzari, P., Salon, S., Teruzzi, A., Feudale, L., Di Biagio, V., and Solidoro, C.: Mediterranean Sea Biogeochemical Analysis and Forecast (CMEMS MED-Biogeochemistry 2018-Present), Copernicus Monitoring Environment Marine Service (CMEMS) [data set], doi:10.25423/CMCC/MEDSEA\_ANALYSIS\_FORECAST\_BIO\_006\_014\_MEDBFM3, 2020.
- Cabioch, J.: Contribution à l'étude morphologique, anatomique et systématique de deux Mélobésiées: *Lithothamnium*  
 470 *calcareum* (Pallas) Areschoug et *Lithothamnium corallioides* Crouan, *Bot. Mar.*, 9, 33–53, 1966.
- Caragnano, A., Basso, D., Jacob, D. E., Storz, D., Rodondi, G., Benzoni, F. and Dutrieux, E.: Coralline red alga *Lithophyllum kotschyianum* f. affine as proxy of climate variability in the Yemen coast, Gulf of Aden (NW Indian Ocean), *Geochim. Cosmochim. Acta*, 124, 1–17, doi:10.1016/j.gca.2013.09.021, 2014.
- Caragnano, A., Basso, D., Storz, D., Jacob, D. E., Ragazzola, F., Benzoni, F. and Dutrieux, E.: Elemental variability in the  
 475 coralline alga *Lithophyllum yemenense* as an archive of past climate in the Gulf of Aden (NW Indian Ocean), *J. Phycol.*, 53, 381–395, doi:10.1111/jpy.12509, 2017.
- Carro, B., Lopez, L., Peña, V., Bárbara, I. and Barreiro, R.: DNA barcoding allows the accurate assessment of European maerl diversity: a proof-of-concept study, *Phytotaxa*, 190, 176–189, doi:10.11646/phytotaxa.190.1.12, 2014.
- Chave, K.E.: Aspects of the biogeochemistry of magnesium 1. Calcareous marine organisms, *J. Geol.*, 62 (3), 266–283., 1954.
- 480 Ciais, P., Sabine, C., Bala, G., Bopp, L., Brovkin, V., Canadell, J., Chhabra, A., DeFries, R., Galloway, J., Heimann, M., Jones, C., Le Quéré, C., Myneni, R.B., Piao, S. and Thornton, P.: Carbon and Other Biogeochemical Cycles, in: *Climate Change 2013: The Physical Science Basis, Contribution of Working Group I to the Fifth Assessment Report of the Intergovernmental Panel on Climate Change*, edited by: Stocker, T. F., Qin, D., Plattner, G.-K., Tignor, M., Allen, S. K., Boschung, J., Nauels, A., Xia, Y., Bex, V., and Midgley, P. M., Cambridge University Press, Cambridge, 465–570, 2013.
- 485 Cornwall, C. E., Comeau, S. and McCulloch, M. T.: Coralline algae elevate pH at the site of calcification under ocean acidification, *Glob. Change Biol.*, 23 (10), 1–12, doi:10.1111/gcb.13673, 2017.
- Corrège, T.: Sea surface temperature and salinity reconstruction from coral geochemical tracers, *Palaeogeogr., Palaeoclimatol., Palaeoecol.*, 232, 408–428, doi:10.1016/j.palaeo.2005.10.014, 2006.
- Cuny-Guirriec, K., Douville, E., Reynaud, S., Allemand, D., Bordier, L., Canesi, M., Mazzoli, C., Taviani, M., Canese, S.,  
 490 McCulloch, M., Trotter, J., Rico-Esenaro, S. D., Sanchez-Cabeza, J.-A., Ruiz-Fernández, A. C., Carricart-Ganivet, J. P., Scott, P. M., Sadekov, A. and Montagna, P.: Coral Li/Mg thermometry: Caveats and constraints, *Chem. Geol.*, 523, 162–178, doi:10.1016/j.chemgeo.2019.03.038, 2019.
- Cusack, M., Kamenos, N. A., Rollion-Bard, C. and Tricot, G.: Red coralline algae assessed as marine pH proxies using <sup>11</sup>B MAS NMR, *Sci. Rep.*, 5, 8175, doi:10.1038/srep08175, 2015.

- 495 Darrenougue, N., De Deckker, P., Eggins, S. and Payri, C.: Sea-surface temperature reconstruction from trace elements variations of tropical coralline red algae, *Quat. Sci. Rev.*, 93, 34–46, doi:10.1016/j.quascirev.2014.03.005, 2014.
- Dickson, A.G.: Thermodynamics of the dissociation of boric acid in synthetic seawater from 273.15 to 318.15 K, *Deep-Sea Res.*, 37, 755–766, doi:10.1016/0198-0149(90)90004-F, 1990.
- Dickson, A.G., Sabine, C.L. and Christian, J.R.: Guide to Best Practices for Ocean CO<sub>2</sub> measurements, in: PICES Special  
500 Publication 3, North Pacific Marine Science Organization (PICES), Sidney, 2007.
- D’Olivo, J. P., Sinclair, D. J., Rankenburg, K. and McCulloch, M. T.: A universal multi-trace element calibration for reconstructing sea surface temperatures from long-lived *Porites* corals: removing ‘vital-effects’, *Geochim. Cosmochim. Acta* 239, 109–135, doi:10.1016/j.gca.2018.07.035, 2018.
- Donald, H. K., Ries, J. B., Stewart, J. A., Fowell, S. E. and Foster, G. L.: Boron isotope sensitivity to seawater pH change in  
505 a species of *Neogoniolithon* coralline red alga, *Geochim. Cosmochim. Acta*, 217, 240–253, doi:10.1016/j.gca.2017.08.021, 2017.
- Douville, É., Paterne, M., Cabioch, G., Louvat, P., Gaillardet, J., Juillet-Leclerc, A. and Ayliffe, L.: Abrupt sea surface pH change at the end of the Younger Dryas in the central sub-equatorial Pacific inferred from boron isotope abundance in corals (*Porites*), *Biogeosciences*, 7(8), 2445–2459, doi:10.5194/bg-7-2445-2010, 2010.
- 510 Dueñas-Bohórquez, A., Raitzsch, M., Nooijer, L. J. and Reichart, G.-J.: Independent impacts of calcium and carbonate ion concentration on Mg and Sr incorporation in cultured benthic foraminifera, *Mar. Micropaleontol.*, 81 (3–4), 122–130, doi:10.1016/j.marmicro.2011.08.002, 2011.
- Feely, R. A., Doney, S. C. and Cooley, S. R.: Ocean acidification: present conditions and future changes in a high-CO<sub>2</sub> World, *Oceanography*, 22(4), 36–47, doi:10.5670/oceanog.2009.95, 2009.
- 515 Fietzke, J., Heinemann, A., Taubner, I., Böhm, F., Erez, J., Eisenhauer, A.: Boron isotope ratio determination in carbonates via LA-MC-ICP-MS using soda-lime glass standards as reference material, *J. Anal. At. Spectrom.*, 12, doi:10.1039/C0JA00036A, 2010.
- Fietzke, J., Ragazzola, F., Halfar, J., Dietze, H., Foster, L. C., Hansteen, T. H., Eisenhauer, A. and Steneck, R. S.: Century-scale trends and seasonality in pH and temperature for shallow zones of the Bering Sea, *Proc. Natl. Acad. Sci.*, 112, 2960–  
520 2965, doi:10.1073/pnas.1419216112, 2015.
- Foster, G. L.: Seawater pH, pCO<sub>2</sub> and [CO<sub>3</sub><sup>2-</sup>] variations in the Caribbean Sea over the last 130 kyr: a boron isotope and B/Ca study of planktic foraminifera, *Earth and Planet. Sci. Lett.*, 271, 254–266, doi:10.1016/j.epsl.2008.04.015, 2008.
- Foster, G. L., Pogge von Strandmann, P. A. E. and Rae, J. W. B.: Boron and magnesium isotopic composition of seawater, *Geochem. Geophys.*, 11 (8), Q08015, doi:10.1029/2010GC003201, 2010.
- 525 Foster, M.S.: Rhodoliths: between rocks and soft places, *J. Phycology*, 37, 659–667, doi:10.1046/j.1529-8817.2001.00195.x, 2001.



- Fowell, S.E., Sandford, K., Stewart, J.A., Castillo, K.D., Ries, J.B. and Foster, G.L.: Intrareef variations in Li/Mg and Sr/Ca sea surface temperature proxies in the Caribbean reef-building coral *Siderastrea sidereal*, *Paleoceanography*, 31, 1315–1329, doi:10.1002/2016PA002968, 2016.
- 530 Frantz, B.R., Foster, M.S. and Riosmena-Rodríguez, R.: *Clathromorphum nereostratum* (Corallinales, Rhodophyta): The oldest alga?, *J. Phycology*, 41, 770–773, doi:10.1111/j.1529-8817.2005.00107.x, 2005.
- Freiwald, A. and Henrich, R.: Reefal coralline algal build-ups within the Arctic Circle: morphology and sedimentary dynamics under extreme environmental seasonality, *Sedimentology*, 41, 963–984, doi:10.1111/j.1365-3091.1994.tb01435.x, 1994.
- Gabitov, R. I., Rollion-Bard, C., Tripathi, A. and Sadekov, A.: In situ study of boron partitioning between calcite and fluid at  
535 different crystal growth rates, *Geochim. Cosmochim. Acta*, 137, 81–92, doi:10.1016/j.gca.2014.04.014, 2014.
- Gagnon, A. C., Gothmann, A. M., Branson, O., Rae, J. W. B. and Stewart, J. A.: Controls on boron isotopes in a cold-water coral and the cost of resilience to ocean acidification, *Earth Planet. Sci. Lett.*, 554, 116662, doi:10.1016/j.epsl.2020.116662, 2021.
- Gussone, N., Böhm, F., Eisenhauer, A., Dietzel, M., Heuser, A., Teichert, B. M. A., Reitner, J., Wörheide, G. and Dullo, W.-  
540 C.: Calcium isotope fractionation in calcite and aragonite, *Geochim. Cosmochim. Acta*, 69, 4485–4494, doi:10.1016/j.gca.2005.06.003, 2005.
- Halfar, J., Steneck, R. S., Joachimski, M., Kronz, A. and Wanamaker, A. D. Jr.: Coralline red algae as high-resolution climate recorders, *Geology*, 36, 463–466, doi:10.1130/G24635A.1, 2008.
- Halfar, J., Williams, B., Hetzinger, S., Steneck, R.S., Lebednik, P., Winsborough, C., Omar, A., Chan, P. and Wanamaker,  
545 A.D.: 225 years of Bering Sea climate and ecosystem dynamics revealed by coralline algal growth-increment widths, *Geology*, 39 (6), 579–582, doi:10.1130/g31996.1, 2011.
- Hall-Spencer, J.M., Kelly, J. and Maggs, C.A.: Background document for maërl beds, in: OSPAR Commission Biodiversity Series, OSPAR Commission, London, 2010.
- Hansen, J., Ruedy, R., Sato, M. and Lo, K.: Global surface temperature change, *Rev. Geophys.*, 48, RG4004,  
550 doi:10.1029/2010RG000345, 2010.
- Hemming, N. G. and Hanson, G. N.: Boron isotopic composition and concentration in modern marine carbonates, *Geochim. Cosmochim. Acta*, 56 (1), 537–543, doi:10.1016/0016-7037(92)90151-8, 1992.
- Hemming, N. G. and Hönisch, B.: Boron isotopes in marine carbonate sediments and the pH of the ocean, in: *Proxies in Late Cenozoic Paleoclimatology*, edited by: Hillaire-Marcel, C. and de Vernal, A., Elsevier, 717–734, 2007.
- 555 Henehan, M. J., Rae, J. W. B., Foster, G. L., Erez, J., Prentice, K. C., Kucera, M., Bostock, H. C., Martinez-Boti, M. A., Milton, J. A., Wilson, P. A., Marshall, B. J. and Elliott, T.: Calibration of the boron isotope proxy in the planktonic foraminifera *Globigerinoides ruber* for use in palaeo-CO<sub>2</sub> reconstruction, *Earth Planet. Sci. Lett.*, 364, 111–122, doi:10.1016/j.epsl.2012.12.029, 2013.

- Henehan, M.J., Foster, G.L., Rae, J.W.B., Prentice, K.C., Erez, J., Bostock, H.C., Marshall, B.J. and Wilson, P.A.: Evaluating the utility of B/Ca ratios in planktic foraminifera as a proxy for the carbonate system: a case study of *Globigerinoides ruber*: investigating controls on *G. ruber* B/Ca, *Geochem. Geophys.*, 16, 1052–1069, doi:10.1002/2014GC005514, 2015.
- Hetzinger, S., Halfar, J., Kronz, A., Steneck, R., Adey, W. H., Philipp, A. L. and Schöne, B.: High-resolution Mg/Ca ratios in a coralline red alga as a proxy for Bering Sea temperature variations from 1902-1967, *Palaeo*, 24, 406–412, doi:10.2110/palo.2008.p08-116r, 2009.
- Hetzinger, S., Halfar, J., Zack, T., Gamboa, G., Jacob, D.E., Kunz, B.E., Kronz, A., Adey, W., Lebednik, P.A. and Steneck, R.S.: High-resolution analysis of trace elements in crustose coralline algae from the North Atlantic and North Pacific by laser ablation ICP-MS, *Palaeogeogr. Palaeoclimatol. Palaeoecol.*, 302 (1-2), 81–94, doi:10.1016/j.palaeo.2010.06.004, 2011.
- Hoegh-Guldberg, O., Mumby, P. J., Hooten, A. J., Steneck, R. S., Greenfield, P., Gomez, E., Harvell, C. D., Sale, P. F., Edwards, A. J., Caldeira, K., Knowlton, N., Eakin, C. M., Iglesias-Prieto, R., Muthiga, N., Bradbury, R. H., Dubi, A. and Hatziolos, M. E.: Coral reefs under rapid climate change and ocean acidification, *Science*, 318 (5857), 1737–1742, doi:10.1126/science.1152509, 2007.
- Holcomb, M., DeCarlo, T. M., Gaetani, G. A., and McCulloch, M.: Factors affecting B/Ca ratios in synthetic aragonite, *Chem. Geol.*, 437, 67–76, doi:10.1016/j.chemgeo.2016.05.007, 2016.
- Hönisch, B. and Hemming, N. G.: Surface ocean pH response to variations in pCO<sub>2</sub> through two full glacial cycles, *Earth Planet. Sci. Lett.*, 236, 305–314, doi:10.1016/j.epsl.2005.04.027, 2005.
- Hönisch, B., Ridgwell, A., Schmidt, D. N., Thomas, E., Gibbs, S. J., Sluijs, A., Zeebe, R., Kump, L., Martindale, R. C., Greene, S. E. et al.: The geological record of ocean acidification, *Science*, 335 (6072), 1058–1063, doi:10.1126/science.1208277, 2012.
- Irvine, L. M. and Chamberlain, Y. M. (Eds.): Volume 1 Rhodophyta Part 2B. Corallinales, Hildenbrandiales, Natural History Museum, London, 1994.
- Jochum, K. P., Scholz, D., Stoll, B., Weis, U., Wilson, S. A., Yang, Q., Schwalb, A., Börner, N., Jacob, D. E., Andreae, M. O.: Accurate trace element analysis of speleothems and biogenic calcium carbonates by LA-ICP-MS, *Chem. Geol.*, 318-319, 31-44, doi:10.1016/j.chemgeo.2012.05.009, 2012.
- Kaczmarek, K., Nehrke, G., Misra, S., Bijma, J. and Elderfield, H.: Investigating the effects of growth rate and temperature on the B/Ca ratio and  $\delta^{11}\text{B}$  during inorganic calcite formation, *Chem. Geol.*, 421, 81–92, doi:10.1016/j.chemgeo.2015.12.002, 2016.
- Kamenos, N. A., Cusack, M. and Moore, P. G.: Coralline algae are global paleothermometers with bi-weekly resolution, *Geochim. Cosmochim. Acta*, 72, 771–779, doi:10.1016/j.gca.2007.11.019, 2008.
- Kamenos, N. A., Cusack, M., Huthwelker, T., Lagarde, P. and Scheibling, R. E.: Mg-lattice associations in red coralline algae, *Geochim. Cosmochim. Acta*, 73, 1901–1907, doi:10.1016/j.gca.2009.01.010, 2009.
- Keul, N., Langer, G., Thoms, S., de Nooijer, L. J., Reichart, G. J. and Bijma, J.: Exploring foraminiferal Sr/Ca as a new carbonate system proxy, *Geochim. Cosmochim. Acta*, 202, 374–386, doi:10.1016/j.gca.2016.11.022, 2017.

- Klochko, K., Kaufman, A. J., Yao, W., Byrne, R. H. and Tossell, J. A.: Experimental measurement of boron isotope fractionation in seawater, *Earth Planet. Sci. Lett.*, 248, 276–285, doi:10.1016/j.epsl.2006.05.034, 2006.
- Klochko, K., Cody, G. D., Tossell, J. A., Dera, P. and Kaufman, A. J.: Re-evaluating boron speciation in biogenic calcite and aragonite using  $^{11}\text{B}$  MAS NMR, *Geochim. Cosmochim. Acta*, 73, 1890–1900, doi:10.1016/j.gca.2009.01.002, 2009.
- 595 Le Quéré, C., Raupach, M. R., Canadell, J. G., Marland, G., et al.: Trends in the sources and sinks of carbon dioxide, *Nat. Geosci.*, 2, 831–836, doi:10.1038/ngeo689, 2009.
- Lorens, R. B.: Sr, Cd, Mn and Co distribution coefficients in calcite as a function of calcite precipitation rate, *Geochim. Cosmochim. Acta*, 45, 553–561, doi:10.1016/0016-7037(81)90188-5, 1981.
- 600 Martin, S., Castets, M.-D. and Clavier, J.: Primary production, respiration and calcification of the temperate free-living coralline alga *Lithothamnion corallioides*, *Aquat. Bot.*, 85, 121–128, doi:10.1016/j.aquabot.2006.02.005, 2006.
- Mavromatis, V., Montouillout, V., Noireaux, J., Gaillardet, J. and Schott, J.: Characterization of boron incorporation and speciation in calcite and aragonite from co-precipitation experiments under controlled pH, temperature and precipitation rate, *Geochim. Cosmochim. Acta*, 150, 299–313, doi:10.1016/j.gca.2014.10.024, 2015.
- 605 Melbourne, L.A., Hernández-Kantún, J., Russell, S. and Brodie, J.: There is more to maerl than meets the eye: DNA barcoding reveals a new species in Britain, *Lithothamnion erinaceum* sp. nov. (Hapalidiales, Rhodophyta), *Eur. J. Phycol.*, 52(2), 166–178, doi:10.1080/09670262.2016.1269953, 2017.
- Moberly, R.: Composition of magnesian calcites of algae and pelecypods by electron microprobe analysis, *Sedimentology*, 11: 61–82, doi:10.1111/j.1365-3091.1968.tb00841.x, 1968.
- 610 Morse, J. W., Andersson, A. J. and Mackenzie, F. T.: Initial responses of carbonate-rich shelf sediments to rising atmospheric  $\text{pCO}_2$  and “ocean acidification”: role of high Mg-calcites, *Geochim. Cosmochim. Acta*, 70, 5814–5830, doi:10.1016/j.gca.2006.08.017, 2006.
- Nash, M. C. and Adey, W.: Anatomical structure overrides temperature controls on magnesium uptake – calcification in the Arctic/subarctic coralline algae *Leptophytum laeve* and *Kvaleya epilaeve* (Rhodophyta; Corallinales), *Biogeosciences*, 180, 1–
- 615 40, doi:10.5194/bg-15-781-2018, 2017a.
- Nash, M. C. and Adey, W.: Multiple phases of Mg-calcite in crustose coralline algae suggest caution for temperature proxy and ocean acidification assessment: lessons from the ultrastructure and biomineralization in *Phymatolithon* (Rhodophyta, Corallinales), *J. Phycol.*, 53, 970–984, doi:10.1111/jpy.12559, 2017b.
- Noireaux, J., Mavromatis, V., Gaillardet, J., Schott, J., Montouillout, V., Louvat, P., Rollion-Bard, C. and Neuville, D. R.:
- 620 Crystallographic control on the boron isotope paleo-pH proxy, *Earth Planet. Sci. Lett.*, 430, 398–407, doi:10.1016/j.epsl.2015.07.063, 2015.
- Paris, G., Bartolini, A., Donnadiou, Y., Beaumont, V. and Gaillardet, J.: Investigating boron isotopes in a middle Jurassic micritic sequence: primary vs. diagenetic signal, *Chem. Geol.*, 275, 117–126, doi:10.1016/j.chemgeo.2010.03.013, 2010.
- Payri, C. E.: Production primaire et calcification des algues benthiques en milieu corallien, *Oceanis*, 26, 427–463, 2000.

- 625 Potin, P., Floc'h, J.-Y., Augris, C. and Cabioch, J.: Annual growth rate of the calcareous red algae *Lithothamnion corallioides* (Corallinales, Rhodophyta) in the Bay of Brest, France, *Hydrobiologia*, 204–205, 263–267, 1990.
- Rae, J. B. R., Foster, G. L., Schmidt, D. N. and Elliott, T.: Boron isotopes and B/Ca in benthic foraminifera: proxies for the deep ocean carbonate system, *Earth Planet. Sci. Lett.*, 302, 403–413, doi:10.1016/j.epsl.2010.12.034, 2011.
- Ragazzola, F., Foster, L. C., Form, A., Anderson, P. S. L., Hansteen, T. H. and Fietzke, J.: Ocean acidification weakens the structural integrity of coralline algae, *Glob. Change Biol.*, 18, 2804–2812, doi:10.1111/j.1365-2486.2012.02756.x, 2012.
- 630 Ragazzola, F., Foster, L. C., Jones, C. J., Scott, T. B., Fietzke, J., Kilburn, M. R. and Schmidt, D. N.: Impact of high CO<sub>2</sub> on the geochemistry of the coralline algae *Lithothamnion glaciale*, *Sci. Rep.*, 6, 20572, doi:10.1038/srep20572, 2016.
- Ragazzola, F., Caragnano, A., Basso, D., Schmidt, D. N. and Fietzke, J.: Establishing temperate crustose Early Holocene coralline algae as archived for paleoenvironmental reconstructions of the shallow water habitats of the Mediterranean Sea, *Paleontology*, 63, 155–170, doi:10.1111/pala.12447, 2020.
- 635 Ries, J. B.: Mg fractionation in crustose coralline algae: geochemical, biological and sedimentological implications of secular variation in Mg/Ca ratio of seawater, *Geochim. Cosmochim. Acta*, 70, 891–900, doi:10.1016/j.gca.2005.10.025, 2006.
- Ries, J. B., Ghazaleh, M. N., Connolly, B., Westfield, I. and Castillo, K. D.: Impacts of seawater saturation state ( $\Omega_A = 0.4$ –4.6) and temperature (10, 25 °C) on the dissolution kinetics of whole-shell biogenic carbonates, *Geochim. Cosmochim. Acta*, 640 192, 318–337, doi:10.1016/j.gca.2016.07.001, 2016.
- Rimstidt, J.D., Balog, A. and Webb, J.: Distribution of trace elements between carbonate minerals and aqueous solutions, *Geochim. Cosmochim. Acta*, 62 (11), 1851–1863, doi:10.1016/S0016-7037(98)00125-2, 1998.
- Roberts, R. D., Kühl, M., Glud, R. N. and Rysgaard, S.: Primary production of crustose coralline algae in a high Arctic Fjord, *J. Phycol.*, 38 (2), 273–283, doi:10.1046/j.1529-8817.2002.01104.x, 2002.
- 645 Rollion-Bard, C., Blamart, D., Trebosc, J., Tricot, G., Mussi, A. and Cuif, J.-P.: Boron isotopes as pH proxy: A new look at boron speciation in deep-sea corals using <sup>11</sup>B MAS NMR and EELS, *Geochim. Cosmochim. Acta*, 75, 1003–1012, doi:10.1016/j.gca.2010.11.023, 2011.
- Rosenthal, Y., Lear, C. H., Oppo, D. W. and Braddock, K. L.: Temperature and carbonate ion effects on Mg/Ca and Sr/Ca ratios in benthic foraminifera: Aragonitic species *Hoegludina elegans*, *Paleoceanography*, 21, PA 1007, 650 doi:10.1029/2005PA001158, 2006.
- Salon, S., Cossarini, G., Bolzon, G., Feudale, L., Lazzari, P., Teruzzi, A., Solidoro, C. and Crise, A.: Novel metrics based on Biogeochemical Argo data to improve the model uncertainty evaluation of the CMEMS Mediterranean marine ecosystem forecasts, *Ocean Sci.*, 15, 997–1022, <https://doi.org/10.5194/os-15-997-2019>, 2019.
- Savini, A., Basso, D., Bracchi, V. A., Corselli, C. and Pennetta, M.: Maerl-bed mapping and carbonate quantification on submerged terraces offshore the Cilento peninsula (Tyrrhenian Sea, Italy), *Geodiversitas*, 34 (1), 77–98, 655 doi:10.5252/g2012n1a5, 2012.

- Schöne, B.R., Fiebig, J., Pfeiffer, M., Gleß, R., Hickson, J., L. A. Johnson, A., Dreyer, W. and Oschmann, W.: Climate records from a bivalved Methuselah (*Arctica islandica*, Mollusca; Iceland), *Palaeogeogr., Palaeoclimatol., Palaeoecol.*, 228, 130–148, doi:10.1016/j.palaeo.2005.03.049, 2005.
- 660 Uchikawa, J., Penman, D. E., Zachos, J. C. and Zeebe, R. E.: Experimental evidence for kinetic effects on B/Ca in synthetic calcite: Implications for potential  $B(OH)_4^-$  and  $B(OH)_3$  incorporation, *Geochim. Cosmochim. Acta*, 150, 171–191, doi:10.1016/j.gca.2014.11.022, 2015.
- Vengosh, A., Kolodny, Y., Starinsky, A., Chivas, A.R. and McCulloch, M.T.: Coprecipitation and isotopic fractionation of boron in modern biogenic carbonates, *Geochim. Cosmochim. Acta*, 55, 2901–2910, doi:10.1016/0016-7037(91)90455-E, 665 1991.
- Wara, M. W., Delaney, M. L., Bullen, T. D. and Ravelo, A. C.: Possible roles of pH, temperature, and partial dissolution in determining boron concentration and isotopic composition in planktonic foraminifera, *Paleoceanography*, 18 (4), 1100, doi:10.1029/2002PA000797, 2003.
- Williams, B., Halfar, J., Delong, K. L., Hetzinger, S., Steneck, R. S. and Jacob, D. E.: Multi-specimen and multi-site calibration of Aleutian coralline algal Mg/Ca to sea surface temperature, *Geochim. Cosmochim. Acta*, 139, 190–204, 670 doi:10.1016/j.gca.2014.04.006, 2014.
- Wilson, S., Blake, C., Berges, J. A. and Maggs, C. A.: Environmental tolerances of free-living coralline algae (maerl): implications for European marine conservation, *Biol. Conserv.*, 120, 279–289, doi:10.1016/j.biocon.2004.03.001, 2004.
- Yu, J. M. and Elderfield, H.: Benthic foraminiferal B/Ca ratios reflect deep water carbonate saturation state, *Earth Planet. Sci. Lett.*, 258, 73–86, doi:10.1016/j.epsl.2007.03.025, 2007. 675
- Yu, J. M., Elderfield, H. and Hönisch, B.: B/Ca in planktonic foraminifera as a proxy for surface water pH, *Paleoceanography*, 22, 2202, doi:10.1029/2006PA001347, 2007.
- Yu, J., Day, J., Greaves, M. and Elderfield, H.: Determination of multiple element/calcium ratios in foraminiferal calcite by quadrupole ICP-MS, *Geochem. Geophys.*, 6, Q08P01, doi:10.1029/2005GC000964, 2015.
- 680 Zeebe, R. E. and Wolf-Gladrow, D. (Eds.): *CO<sub>2</sub> in seawater: equilibrium, kinetics, isotopes*, Elsevier Oceanography Book Series, 65, Amsterdam, 2001.
- Zinke, J., D’Olivo, J. P., Gey, C. J., McCulloch, M. T., Bruggemann, J. H., Lough, J. M. and Guillaume, M. M. M.: Multi-trace-element sea surface temperature coral re-construction for the southern Mozambique Channel reveals teleconnections with the tropical Atlantic, *Biogeosciences*, 16, 695–712, doi:10.5194/bg-16-695-2019, 2019.
- 685 Zuo, H., Balmaseda, M. A., Tietsche, S., Mogensen, K. and Mayer, M.: The ECMWF operational ensemble reanalysis–analysis system for ocean and sea ice: a description of the system and assessment, *Ocean Sci.*, 15, 779–808, doi:10.5194/os-15-779-2019, 2019.