

# Thirty-eight years of CO<sub>2</sub> fertilization have outpaced growing aridity to drive greening of Australian woody ecosystems

Sami W. Rifai<sup>1,2,\*</sup>, Martin G. De Kauwe<sup>1,2,3,4</sup>, Anna M. Ukkola<sup>1,5</sup>, Lucas A. Cernusak<sup>6</sup>, Patrick Meir<sup>7,8</sup>, Belinda E. Medlyn<sup>9</sup>, and Andy J. Pitman<sup>1,2</sup>

<sup>1</sup>ARC Centre of Excellence for Climate Extremes, University of New South Wales, Sydney, NSW 2052, Australia

<sup>2</sup>Climate Change Research Centre, University of New South Wales, Sydney, NSW 2052, Australia

<sup>3</sup>Evolution & Ecology Research Centre, University of New South Wales, Sydney, NSW 2052, Australia

<sup>4</sup>School of Biological Sciences, University of Bristol, Bristol, BS8 1TQ, United Kingdom

<sup>5</sup>Research School of Earth Sciences, Australian National University, Canberra, ACT 0200, Australia

<sup>6</sup>College of Science and Engineering, James Cook University, Cairns, QLD 4188, Australia

<sup>7</sup>Research School of Biology, The Australian National University, Acton, ACT 2601, Australia

<sup>8</sup>School of Geosciences, University of Edinburgh, Edinburgh EH89XP, UK

<sup>9</sup>Hawkesbury Institute for the Environment, Western Sydney University, Penrith, NSW 2753, Australia

**Correspondence:** Sami W. Rifai (s.rifai@unsw.edu.au)

**Abstract.** Climate change is projected to increase the imbalance between the supply (precipitation) and atmospheric demand for water (i.e. increased potential evapotranspiration), stressing plants in water-limited environments. Plants may be able to offset increasing aridity because rising CO<sub>2</sub> increases water-use-efficiency. CO<sub>2</sub> fertilization has also been cited as one of the drivers of the widespread ‘greening’ phenomenon. However, attributing the size of this CO<sub>2</sub> fertilization effect is complicated, due in part to a lack of long-term vegetation monitoring and interannual to decadal-scale climate variability. In this study we asked the question, how much has CO<sub>2</sub> contributed towards greening? We focused our analysis on a broad aridity gradient spanning eastern Australia’s woody ecosystems. Next we analysed 38-years of satellite remote sensing estimates of vegetation greenness (normalized difference vegetation index, NDVI) to examine the role of CO<sub>2</sub> in ameliorating climate change impacts. Multiple statistical techniques were applied to separate the CO<sub>2</sub>-attributable effects on greening from the changes in water supply and atmospheric aridity. Widespread vegetation greening occurred despite a warming climate, increases in vapor pressure deficit, and repeated record-breaking droughts and heatwaves. Between 1982-2019 we found that NDVI increased (median 11.3%) across 90.5% of the woody regions. After masking disturbance effects (e.g. fire), we statistically estimated an 11.7% increase in NDVI attributable to CO<sub>2</sub>, broadly consistent with a hypothesized theoretical expectation of an 8.6% increase in water-use-efficiency due to rising CO<sub>2</sub>. In contrast to reports of a weakening CO<sub>2</sub> fertilization effect, we found no consistent temporal change in the CO<sub>2</sub> effect. We conclude rising CO<sub>2</sub> has mitigated the effects of increasing aridity, repeated record-breaking droughts, and record-breaking heat waves in eastern Australia. However, we were unable to determine whether trees or grasses were the primary beneficiary of the CO<sub>2</sub> induced change in water-use-efficiency, which has implications for projecting future ecosystem resilience. A more complete understanding of how CO<sub>2</sub> induced changes in water-use-efficiency affect trees and non-tree vegetation is needed.

## 20 1 Introduction

Australia is the world's driest inhabited continent. Predicting how climate change will affect ecosystem resilience and alter Australia's terrestrial hydrological cycle is of paramount importance. Australia's woody ecosystems are mostly concentrated in the east, where there are large gradients of precipitation (P) (300 - 2000+ mm yr<sup>-1</sup>) and potential evapotranspiration (PET) (800-2100 mm yr<sup>-1</sup>). Most eastern Australian woodlands occupy water-limited regions where annual PET far exceeds P (Fig. A1), and tree species have evolved to cope with water-limited conditions (Peters et al., 2021) and high interannual rainfall variability. However, the climate is warming: eight of Australia's ten warmest years on record have occurred since 2005 (CSIRO and Bureau of Meteorology, 2020) and Australia's climate has warmed by ~1.5°C since records began in 1910. The warming has likely increased atmospheric demand for water (e.g. PET or vapor pressure deficit, VPD). In most woody ecosystems, the ratio of water supply (i.e. P) to water demand (i.e. PET) has declined in recent decades (Figs. 1,2a). Eastern Australia has also been impacted by several multi-year droughts, episodic deluges of rainfall (King et al., 2020), and an increasing frequency of severe heatwaves (Perkins et al., 2012) in the last few decades. Precipitation changes have been spatially variable over eastern Australia, where northern Queensland grew wetter and southeast Australia grew drier (Fig. 2a). In the last two decades, southeast Australia experienced the two worst droughts in the observational record (2001-2009; van Dijk et al. (2013) and 2017-2019; (Bureau of Meteorology, 2019). Yet between these two droughts, Eastern Australia experienced record breaking rainfall in 2011 associated with a strong La Niña event. This caused marked vegetation 'greening' (e.g. increased foliar cover), even in the arid interior (Bastos et al., 2013; Poulter et al., 2014; Ahlstrom et al., 2015). However, this greening contributed to record-breaking fires in the following year (Harris et al., 2018).

Theory suggests that plant physiological responses to atmospheric carbon dioxide (CO<sub>2</sub>) may mitigate some of the negative effects of an aridifying climate. However, the magnitude of plant responses to increased atmospheric CO<sub>2</sub> has been challenging to establish in field experiments (Jiang et al., 2020b), from observations (Walker et al., 2020, Frankenberg et al. (2021b), Zhu et al. (2021)), or to separate from other drivers (e.g. climate variability, disturbances, and changes in land management; Zhu et al. (2016)). Studies have used data from the Advanced Very High Resolution Radiometer (AVHRR) satellites to show positive trends in the normalized difference vegetation index (NDVI) over Australia (Donohue et al., 2009). The greening trend is caused by increased leaf area, which has likely resulted from increased atmospheric CO<sub>2</sub> concentrations (Donohue et al., 2009; Ukkola et al., 2016). The evidence for increases in leaf area from rising CO<sub>2</sub> have also been supported by observations of reduced runoff in Australia's drainage basins (Trancoso et al., 2017; Ukkola et al., 2016).

Yet disentangling the CO<sub>2</sub> fertilization effect from other drivers of climate variability and global change has been particularly challenging for satellite based analyses. It is challenging to attribute causes of greening because of co-occurring changes in climate, land-use, and disturbance are confounded with the effect of CO<sub>2</sub> fertilization. Furthermore, the time series of even the longest systematically collected optical vegetation index records from a single sensor is 20 years (e.g. MODIS Terra). Analysis of trends extending beyond 20 years requires merging satellite records across sensors and platforms. But this requires care to address changes in radiometric and spatial resolution of the sensor, as well as drift in the solar zenith angle (Ji and Brown, 2017; Frankenberg et al., 2021a) and the time of retrieval. Thus different analytical methodologies have produced

disagreements over where greening has occurred (Cortés et al., 2021). One often-used method to provide additional constraint  
55 on greening trends has been to compare remote sensing derived trends with modeled changes in leaf area index (LAI) from  
ensembles of dynamic global models (Zhu et al., 2016; Wang et al., 2020). However these model attribution approaches rely on  
a set of key assumptions. None of the models can accurately predict LAI changes in response to rising CO<sub>2</sub> (De Kauwe et al.,  
2014; Medlyn et al., 2016). Vegetation models have been shown to diverge in their simulation of LAI over Australia (Medlyn  
et al., 2016; Teckentrup et al., 2021; Zhu et al., 2016), and have bioclimatic rules for determining phenology which may not  
60 be appropriate for the highly variable Australian climate and the evergreen Eucalyptus forests (Teckentrup et al., 2021). These  
model simulations are typically compared with modeled LAI products derived from the red and near infrared wavelengths of  
multispectral satellite sensors, of which each product carries specific algorithmic assumptions about canopy-light interception  
which are conditional upon estimated land cover types. In comparison, NDVI carries no ecosystem specific assumption, and is  
an effective proxy of leaf area in ecosystems with low-to-moderate canopy cover (Carlson and Ripley, 1997), a characteristic  
65 of eastern Australian woody ecosystems (Specht, 1972; Yang et al., 2018).

Here we ask, how much can greening trends be explained by rising CO<sub>2</sub>? Using eastern Australia as a model system, we  
used a multi satellite derived NDVI record encompassing 38 years with multiple statistical techniques to isolate the influence  
of CO<sub>2</sub> from simultaneous effects of meteorological change and disturbance. Next we contrasted CO<sub>2</sub> effects with theoretical  
predictions based on water-use-efficiency (WUE) theory for plants and the observed rise in CO<sub>2</sub>. Finally, we examined whether  
70 recent NDVI greening trends have co-occurred with changes in tree or grass cover over the last two decades.

## 2 Methods

### 2.1 Study area

The study region encompasses the dominant woody ecosystems of eastern Australia (Fig. A1b). We used the National Vege-  
tation Information System 5.1 land cover dataset (Australian Department of Agriculture, Water and the Environment (2020);  
75 Table A1) to select locations designated as “Acacia Forests and Woodlands”, “Acacia Open Woodlands”, “Callitris Forests and  
Woodlands”, “Casuarina Forests and Woodlands”, “Eucalypt Low Open Forests”, “Eucalypt Open Forests”, “Eucalypt Open  
Woodlands”, “Eucalypt Tall Open Forests”, “Eucalypt Woodlands”, “Low Closed Forests and Tall Closed Shrublands”, “Mallee  
Open Woodlands and Sparse Mallee Shrublands”, “Mallee Woodlands and Shrublands”, “Melaleuca Forests and Woodlands”,  
“Other Forests and Woodlands”, “Other Open Woodlands”, “Rainforests and Vine Thickets”, and “Tropical Eucalypt Wood-  
80 lands/Grasslands”.

### 2.2 Climate and remote sensing datasets

We used the atmospheric CO<sub>2</sub> record from the deseasonalized Mauna Loa record (<https://www.esrl.noaa.gov/gmd/ccgg/trends/data.html>), and extracted climate data (Table A1) from the Australian Bureau of Meteorology’s Australian Water Availabil-  
ity Project (AWAP; Jones et al. (2009)). AWAP is a gridded climate product interpolated to 0.05° from a large network of

85 meteorological stations distributed across Australia. Vapor pressure deficit was calculated using daily estimates of maximum  
temperature and vapor pressure at 15:00 hours. PET was calculated from shortwave radiation and mean air temperature using  
the Priestley-Taylor method (Davis et al., 2017). The Priestley-Taylor method has been shown to be appropriate for estimating  
large-scale PET (Raupach, 2000) and is more suited for use in long-term analysis where CO<sub>2</sub> increased than other common  
90 a fixed stomatal resistance that is incompatible with plant physiology theory (Medlyn et al., 2001). AWAP measurements of  
shortwave radiation only extend back to 1990, so we extended the PET record to 1982 by calibrating the ERA5-Land PET  
record (1980-2019) to the AWAP PET record (1990-2019) by linear regression for each grid-cell, and then gap-filled the years  
1982-1989 with the calibrated ERA5 PET. PET from the Climate Research Unit record (Harris et al., 2014) was highly cor-  
related with both the recalibrated ERA5 PET ( $r = 0.91$ ; 1982-1989) and the original AWAP PET ( $r = 0.97$ ; 1990-2019). Next,  
95 we calculated a 30-year climatology of the meteorological variables using the period of 1982-2011 to be close to current stan-  
dards (World Meteorological Organization, 2017). We used this climatology to define the mean annual P:PET (the moisture  
index;  $MI_{MA}$ ), and as the reference to calculate a 12-month running anomaly of annual P:PET ( $MI_{anom}$ ). Zonal statistics for  
each meteorological variable were calculated using simplified Köppen climate zones, derived from the Australian Bureau of  
Meteorology (Fig. 2b, Table A1).

100 We used surface reflectance from two satellite products to generate the NDVI record: National Oceanic and Atmospheric Ad-  
ministration's Climate Data Record v5 Advanced Very High Radiometric Resolution (AVHRR) Surface Reflectance (NOAA-  
CDR) record and the National Space and Aeronautical Administration's MCD43A4 Nadir Bidirectional Reflectance Distri-  
bution Function Adjusted Reflectance (MODIS-MCD43) (Table A1; Schaaf & Wang, 2015). NDVI data was extracted from  
1982-2019 at 0.05° resolution from the NOAA-CDR AVHRR version 5 product (Vermote and NOAA CDR Program, 2018).  
105 The surface reflectance record of AVHRR extends through 2019, but the quality of the record starts to degrade in 2017 because  
of an increase in the solar zenith angle (Ji and Brown, 2017), causing a sensor-produced decline in NDVI during 2017-2019.  
For this reason we only use AVHRR surface reflectance data between 1982-2016. We composited monthly mean AVHRR  
NDVI ( $NDVI_{AVHRR}$ ) estimates using only daily pixel retrievals with no detected cloud cover (Quality Assurance band, bit  
1). Monthly  $NDVI_{AVHRR}$  estimates aggregated from less than three daily retrievals were removed. They were also removed  
110 when the coefficient of variation of daily retrievals for a given month was greater than 25%. We also removed  $NDVI_{AVHRR}$   
monthly estimates where  $NDVI_{AVHRR}$ , solar zenith angle, or time of acquisition deviated beyond 3.5 standard deviations from  
the monthly mean, calculated from a climatology spanning 1982-2016.

We used the MODIS-MCD43 surface reflectance at 500 m resolution to derive NDVI for 2001-2019 ( $NDVI_{MODIS}$ ). Monthly  
mean estimates of the surface reflectance were produced by compositing pixels flagged as "ideal-quality" (Quality Assurance,  
115 bits 0-1). We also masked disturbances to have greater confidence in our attribution of the targeted drivers of  $NDVI_{MODIS}$   
change (climate & CO<sub>2</sub>). The Global Forest Change product v1.7 (Hansen et al., 2013) was used to mask pixels from 2001  
onwards that had experienced forest loss due to deforestation or severe stand clearing disturbance. We masked pixel locations  
that experienced bushfires from the year 2001 onwards. Specifically, these pixels were masked for the year of burning and  
the following three years using the 500 m resolution MODIS-MCD64 monthly burned-area product (Giglio et al., 2018). We



120 terminated the  $NDVI_{MODIS}$  time series in August of 2019, prior to the widespread bushfires of late 2019/2020. Both  $NDVI_{AVHRR}$  and  $NDVI_{MODIS}$  datasets were processed using Google Earth Engine (Gorelick et al., 2017), and exported at 5 km spatial resolution, which best approximated the native resolution of the NOAA-CDR AVHRR and AWAP products. Further post-processing used the ‘stars’ (Pebesma, 2020) and ‘data.table’ (Dowle and Srinivasan, 2019) R packages (see code availability section).

125 We merged the processed 1982-2016  $NDVI_{AVHRR}$  with the 2001-2019  $NDVI_{MODIS}$  by recalibrating the  $NDVI_{AVHRR}$  with a generalized additive model (GAM). Specifically, we used one million observations from the overlapping 2001-2016 portion of both records to fit a GAM using the ‘mgcv’ R package (Wood, 2017) to model  $NDVI_{MODIS}$  from AVHRR derived covariates as:

$$NDVI_{MODIS} = s(NDVI_{AVHRR}) + s(month) + s(SZA) + s(TOD) + s(x, y) \quad (1)$$

130 where ‘s’ represents a penalized smoothing function using a thin-plate regression spline,  $SZA$  is the solar zenith angle,  $NDVI_{AVHRR}$  is the uncalibrated NDVI from AVHRR,  $TOD$  is time of day of retrieval, and  $x$  and  $y$  represent longitude and latitude, respectively. The fit GAM was then used to generate the recalibrated AVHRR NDVI. The merged NDVI dataset was created by joining the 1982-2000 recalibrated AVHRR NDVI with the 2001-2019  $NDVI_{MODIS}$ . We further reduced monthly temporal variability of NDVI by calculating a three month rolling mean of NDVI which we used for subsequent statistical  
135 model fitting.

### 2.3 Estimating NDVI and climate trends

We estimated the relative increase in NDVI between 1982-2019 with respect to time (equation 2) for each grid cell with an iteratively weighted least squares robust linear model via the ‘rlm’ function in R’s MASS package (Venables and Ripley, 2002) as follows.

$$140 \quad NDVI = \beta_0 + \beta_1 year + \beta_2 sensor \quad (2)$$

Here  $\beta_0$  represents the estimated NDVI in 1982, the year term starts at 1982, and the sensor term is a binary covariate that accounts for residual offset differences between the recalibrated AVHRR NDVI, and the  $NDVI_{MODIS}$ . The relative temporal trends for climate variables and the MODIS vegetation continuous fractions were fit for each grid cell location using the Theil-Sen estimator, a form of robust pairwise regression, with the ‘zyp’ R package (Bronaugh and Consortium, 2019). The temporal  
145 covariate was recentered to start with the first hydrological year (where the year starts one month earlier in December) of the data so that the intercept term represents the mean at the start of the time series. The relative rate of change for each variable was reconstructed by calculating

$$100 * \left[ \frac{\beta_1 (year_{end} - year_{start})}{\beta_0} \right] \quad (3)$$

where  $\beta_0$  and  $\beta_1$  are the intercept and trend derived from Theil-Sen regression.

## 150 2.4 Estimating contribution of CO<sub>2</sub> and climate toward NDVI trends

We fit six forms of statistical models to the merged NDVI observations in order to to quantify the impact of changes in CO<sub>2</sub> and meteorological variables on NDVI. Figure 1 shows the relationship between NDVI and multi-annual mean of P:PET was nonlinear and followed a monotonic saturating sigmoidal relationship. GAMs can characterize a nonlinear response without specifying a functional form, yet the underlying spline parameters are not easily interpreted as the parameters of a fixed nonlinear function. Therefore we fit models with a set of fixed nonlinear functional forms using nonlinear least squares (nlsmultstart package; Padfield and Matheson (2020) in R v4.01) and compared models fit using all pixel-locations. The nonlinear functional forms included the Weibull function (equation 4; Fig. 5), the logistic function (equation 5; Fig. A5), and the Richards growth function (equation 6; Fig. A6). We focused on the Weibull models because they showed equivalent goodness of fit with fewer parameters than the Richards function models. Next we added a linear modifier to the Weibull function using the covariates of CO<sub>2</sub> ( $umol\ umol^{-1}$ ;  $C_a$ ) and the ratio of the anomaly of P:PET ( $MI_{anom}$ ) to the mean annual P:PET ( $MI_{MA}$ ) as follows:

$$NDVI = V_a - V_d[\exp(-\exp(c_{ln})(MI_{MA})^q)] + \eta \quad (4)$$

$$\eta = \beta_1 \frac{MI_{anom}}{MI_{MA}} + \beta_2 C_a MI_{MA} + \beta_3 C_a \frac{MI_{anom}}{MI_{MA}} + sensor$$

Here the sensor term is a binary covariate indicating the AVHRR or MODIS platform. Model-fitted parameters  $V_a$  and  $V_d$  correspond to the asymptote, and the asymptote's difference from the minimum NDVI, while  $c_{ln}$  is the logarithm of the rate constant, and  $q$  is the power to which  $MI_{MA}$  is raised. The model was fit by individual season with one million observations per model fit. Corresponding goodness-of fit metrics ( $R^2$  and root mean square error) were calculated by season (Fig. 5) with one million randomly sampled observations.

We tested alternative nonlinear functional forms to characterize the effect of CO<sub>2</sub> upon NDVI. A logistic model was fit across space for each hydrological year as

$$NDVI = \frac{V_A}{(1 + \exp((m - MI_{12mo})/s))} \quad (5)$$

where  $NDVI$  is the hydrological year mean value of NDVI for a grid cell location,  $m$  is the midpoint,  $s$  is a scale parameter, and  $V_A$  is the asymptote (plotted in Fig. A5). We also used a modified Richards growth function to characterize the CO<sub>2</sub> effect upon seasonal NDVI (Fig. A6) as

$$NDVI = (V_A + \beta_1 C_a + \beta_2 MI_{f.anom}) \frac{(1 + \exp(m + \beta_3 C_a + \beta_4 MI_{f.anom} - MI_{MA}))}{(s + \beta_5 C_a + \beta_6 MI_{f.anom})^{(-\exp(-(q + \beta_7 C_a + \beta_8 F)))}} \quad (6)$$

$$MI_{f.anom} = \frac{MI_{anom}}{MI_{MA}}$$

Here the  $\beta$  terms act to linearly modify the core nonlinear parameters ( $V_A, m, s, q$ ) with the effects of CO<sub>2</sub> and  $MI_{f.anom}$ . Each seasonal model component was fit across space with one million random samples from the total merged NDVI record (approx 14.3 million observations).

To ensure consistent interpretation of the nonlinear response across P:PET, we also fit linear models explaining NDVI with  
 180 CO<sub>2</sub> and  $MI_{anom}$  by season in  $MI_{MA}$  bin-widths of 0.2 (equation 7; Fig. A4). Separate linear models were fit for increments  
 of 0.15 of  $MI_{MA}$  for each season using the merged 1982-2019 NDVI record. NDVI was modeled as

$$NDVI = \beta_0 + \beta_1 C_a + \beta_2 MI_{anom} + \beta_3 Veg.Class + \beta_4 sensor \quad (7)$$

where  $Veg.Class$  is the NVIS 5.1 vegetation class, and  $sensor$  is a binary variable used to account for residual differences  
 between the recalibrated AVHRR NDVI and NDVI<sub>MODIS</sub> records. To aid the comparison of model effects, we centered and  
 185 standardized the continuous model covariates before regression. The standardized CO<sub>2</sub> and P:PET<sub>anom</sub> effects ( $\beta$ ) are presented  
 in Fig. A4.

Next, to produce spatially varying estimates of the CO<sub>2</sub> effect, we fit robust multiple linear regression models to the time  
 series of NDVI for each of the 39,463 pixel locations. The CO<sub>2</sub> effect for each grid cell location was simultaneously estimated  
 with the linear effects of the anomalies (anom) of P, PET, VPD, and MI as fractions of their mean annual values (MA) as  
 190 follows:

$$NDVI = \beta_0 + \beta_1 C_a + \beta_2 \frac{P_{anom}}{P_{MA}} + \beta_3 \frac{PET_{anom}}{PET_{MA}} + \beta_4 \frac{VPD_{anom}}{VPD_{MA}} + \beta_5 sensor \quad (8)$$

Finally we produced a GAM to estimate the CO<sub>2</sub> effect in addition to the nonlinear interactions between CO<sub>2</sub>, mean annual  
 climate, and climate anomalies. Here instead of predetermined nonlinear functional forms, the GAM used penalized smoothing  
 functions ( $s$ ) to estimate the potentially nonlinear effect of the covariates. The GAM was fit across all pixel locations and  
 195 estimated the CO<sub>2</sub> effect and the effects of the anomalies and mean annual values of VPD, P, and PET and sensor epoch as  
 follows.

$$NDVI = s(MI_{MA}, C_a) + s(VPD_{anom}, VPD_{MA}) + s(P_{anom}, P_{MA}) + s(PET_{anom}, PET_{MA}) + sensor \quad (9)$$

## 2.5 A simplified theoretical water use efficiency model

We compared the statistically attributed CO<sub>2</sub> amplification of NDVI with the expectation from a simple theoretical model of  
 200 WUE. Following Donohue et al. (2013), WUE ( $W$ ) is defined as:

$$W_{leaf} = \frac{A_{leaf}}{E_{leaf}} = \frac{C_a}{1.6D}(1 - \chi) \quad (10)$$

where  $A$  is leaf level carbon assimilation ( $umol m^2 s^{-1}$ ),  $E$  is leaf level transpiration ( $mol m^2 s^{-1}$ ),  $C_a$  is atmospheric CO<sub>2</sub>  
 ( $umol umol^{-1}$ ),  $C_i$  is intercellular CO<sub>2</sub> ( $umol umol^{-1}$ ),  $\chi$  is  $\frac{C_i}{C_a}$ , and  $D$  is atmospheric vapor pressure deficit ( $mol mol^{-1}$ ).  
 The relative rate of change in  $W$  with respect to a change in  $C_a$  can be calculated as:

$$205 \quad \frac{dW_{leaf}}{W_{leaf}} = \frac{dA_{leaf}}{A_{leaf}} - \frac{dE_{leaf}}{E_{leaf}} = \frac{dC_a}{C_a} - \frac{dD}{D} + \frac{d(1 - \chi)}{(1 - \chi)} \quad (11)$$

If temperature increases without a corresponding increase in humidity,  $D$  increases which also causes transpiration to rise and thus reduces  $W$ . However,  $W$  is predicted to increase with  $\text{CO}_2$  which may offset increases in  $D$ . Experiments suggest that  $\chi$  does not change with  $C_a$  but is sensitive to  $D$  (Wong et al., 1985; Drake et al., 1997) and can be estimated as being proportional to the square root of  $D$  (Medlyn et al., 2011). By substituting

$$210 \quad (1 - \chi) \approx \sqrt{D}$$

into equation (11) we can estimate the theoretical combined effect of  $C_a$  and  $D$  upon  $W_{leaf}$  as:

$$\frac{dW_{leaf}}{W_{leaf}} = \frac{dA_{leaf}}{A_{leaf}} - \frac{dE_{leaf}}{E_{leaf}} = \frac{dC_a}{C_a} - \frac{1}{2} \frac{dD}{D} \quad (12)$$

Transpiration per unit ground area is strongly controlled by water supply in warm, water limited environments with relatively low leaf area such as eastern Australia (Specht, 1972) therefore we approximate canopy transpiration ( $E_{canopy}$ ) as:

$$215 \quad E_{canopy} = E_{leaf} L \quad (13)$$

where  $L$  is leaf area. The change in  $E_{canopy}$  can then be defined as:

$$\frac{dE_{canopy}}{E_{canopy}} \approx \frac{dE_{leaf}}{E_{leaf}} + \frac{dL}{L} \quad (14)$$

If we assume there is no overall change in precipitation then we can assume change in  $E_{canopy}$  is tightly coupled to the water supply, therefore we have:

$$220 \quad -\frac{dE_{leaf}}{E_{leaf}} \approx \frac{dL}{L} \quad (15)$$

We note that the assumption of constant precipitation is obviously unrealistic, most notably because two major droughts occurred during the observation period. However, over much longer periods (i.e. 1910-2018) precipitation in eastern Australia has been relatively stationary (Ukkola et al., 2019).

NDVI is linearly related to foliar cover ( $F$ ) until  $\text{LAI} \approx 3 \text{ (m}^2 \text{ m}^{-2}\text{)}$  (Carlson and Ripley, 1997), which is the predominantly  
225 the case when  $\text{P:PET} < 1$ . Most woody ecosystems in eastern Australia are strongly water limited with  $\text{LAI} \leq 1 \text{ (m}^2 \text{ m}^{-2}\text{)}$ , where NDVI is approximately proportional with the fraction of foliar cover:

$$\frac{dL}{L} \approx \frac{dF}{F} \approx \frac{d\text{NDVI}}{\text{NDVI}} \quad (16)$$

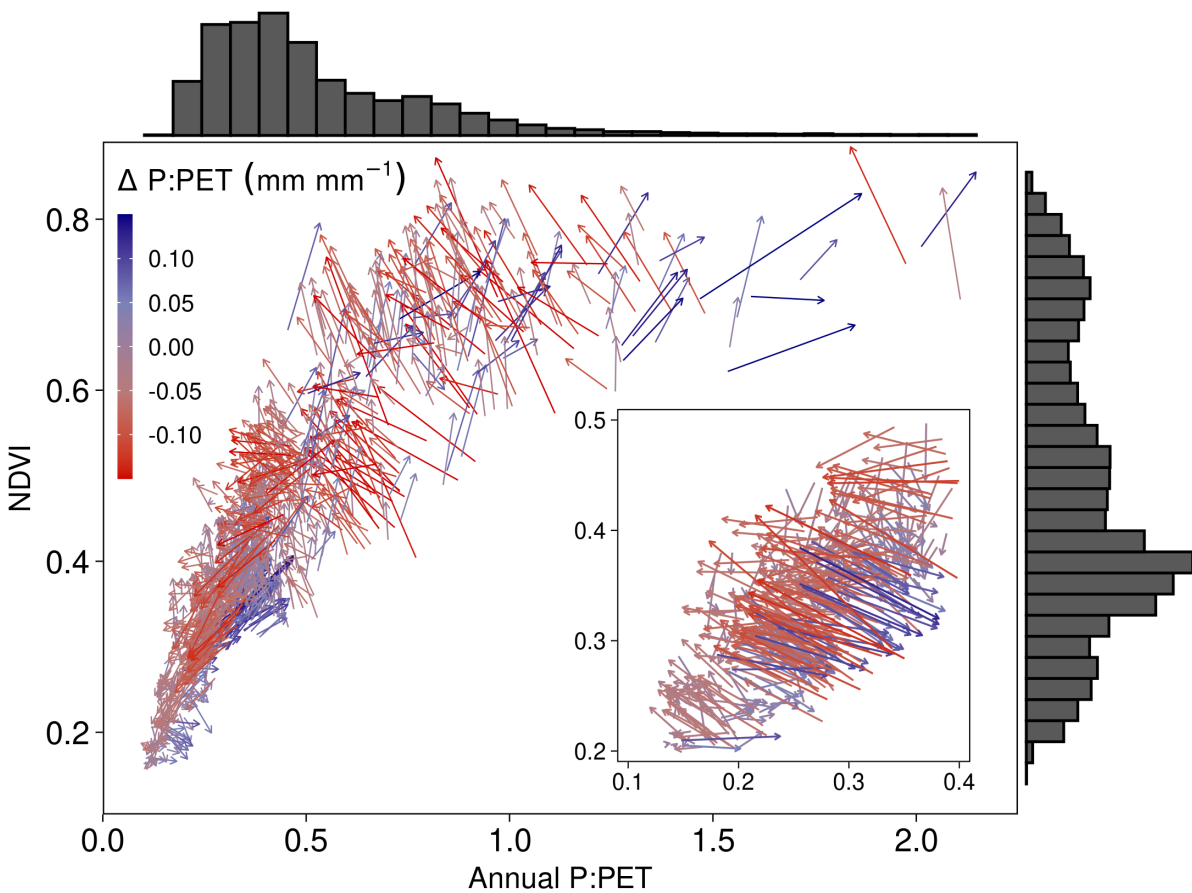
Then substituting equation (15) into equation (12) gives:

$$\frac{dW_{leaf}}{W_{leaf}} \approx \frac{dA_{leaf}}{A_{leaf}} + \frac{dF}{F} \approx \frac{dC_a}{C_a} - \frac{1}{2} \frac{dD}{D} \quad (17)$$

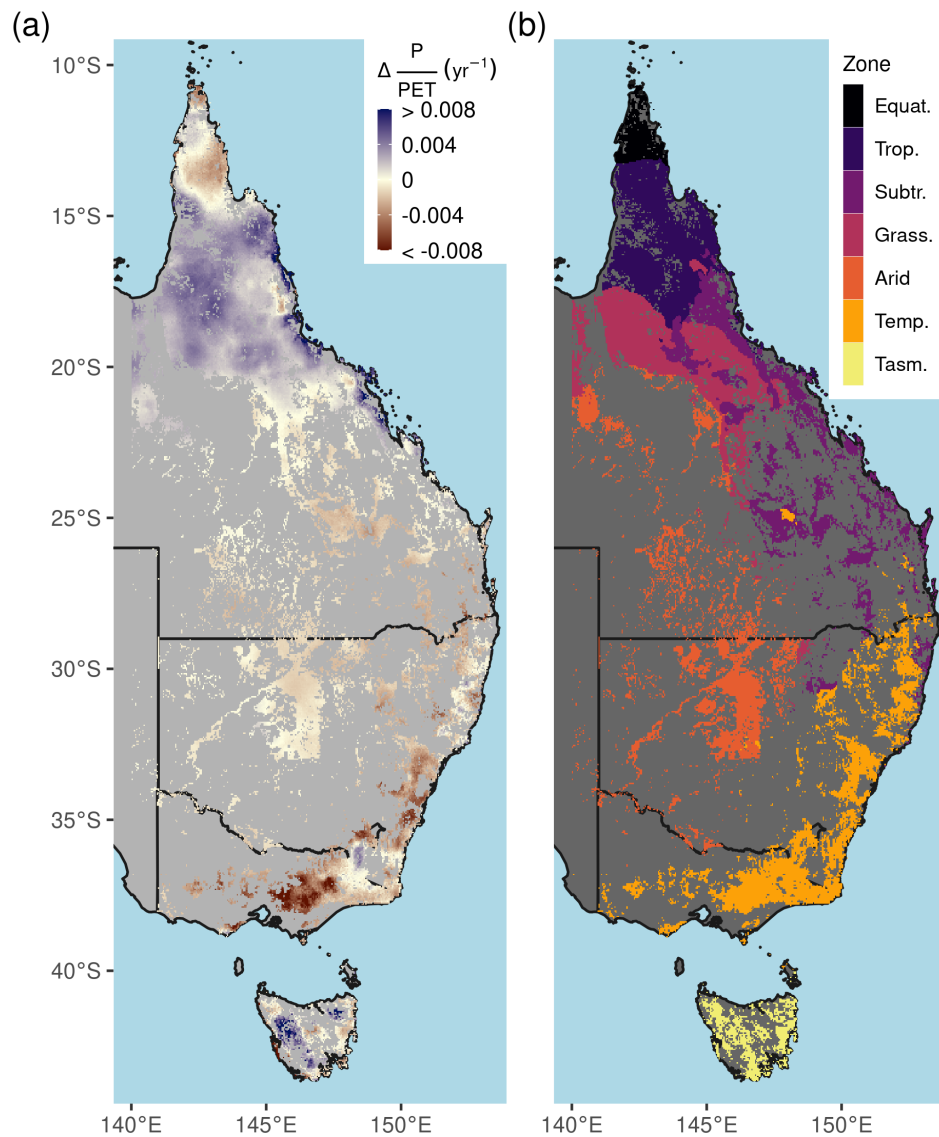
230 If we assume that the benefit towards  $W_{leaf}$  from rising  $C_a$  is split evenly between the relative changes in  $A_{leaf}$  and  $F$ , we can predict the change towards NDVI to be

$$\frac{d\text{NDVI}}{\text{NDVI}} \approx \frac{1}{2} \left[ \frac{dC_a}{C_a} - \frac{dD}{2D} \right] \quad (18)$$

We compared the WUE theoretical model with the robust linear models fit for each pixel location (equation 8), and the GAM (equation 9) fit across the study region. The WUE theoretical model assumes no change in P, but does account for changes in VPD. Therefore in using the statistical models to compare with the WUE predictions, we generated counterfactual predictions from the statistical models with no precipitation anomaly but with the observed increases in CO<sub>2</sub> and VPD. One weakness with the application of this WUE theoretical model is the uncertainty regarding the assumed allocation of the  $W_{leaf}$  benefit towards either  $A_{leaf}$  or  $F$  (e.g. LAI; see above). Donohue et al. (2017) proposed a similar model to eq (18), the Partitioning of Equilibrium Transpiration and Assimilation (PETA) hypothesis where the relative allocation to leaf area is predicted to decline with increasing resource availability (which could be inferred from growing season LAI). We calculated the expectation from the PETA hypothesis as another point of comparison with the CO<sub>2</sub> attributable effect on NDVI.



**Figure 1.** Individual grid cell temporal 38-year trajectories of the normalized difference vegetation index (NDVI) and the ratio of annual precipitation (P) to potential evapotranspiration (PET). A vector field plot showing the direction of change in mean annual NDVI and P:PET between 1982-1986 and 2015-2019 for 1000 randomly sampled grid-cell locations (color indicates direction of change in P:PET as indicated by legend). An inset shows a magnification of the samples from the 0.1-0.4 P:PET range. The distributions of mean P:PET ( $mm\ mm^{-1}$ ) and NDVI for the period of 1982-1986 are shown as histograms above and to the right of the main panel. Note that the majority of arrows shift towards higher aridity (lower P:PET) and higher NDVI.



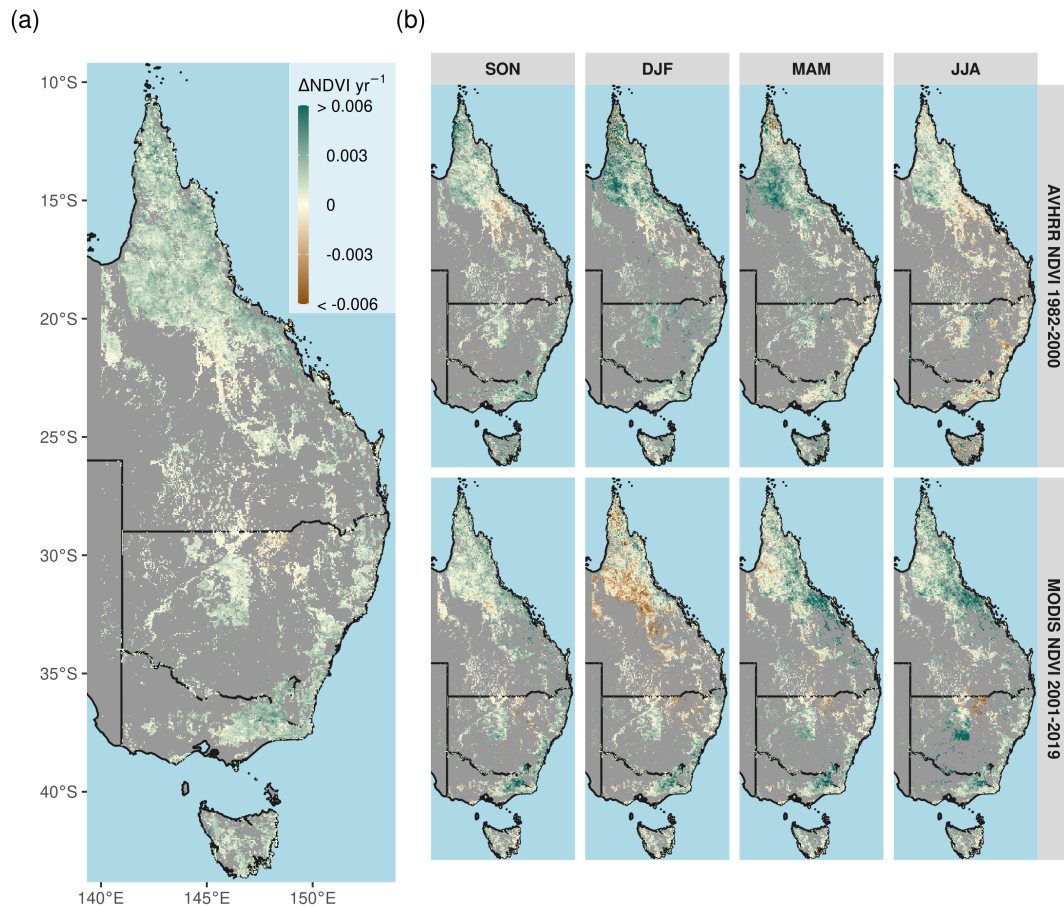
**Figure 2.** Long-term aridity change and climate zones. (a) The linear trend of annual P:PET (the moisture index) between 1982-2019, (b) Simplified Köppen climate zones. Climate zone abbreviations correspond to Equatorial (Equat.), Tropical (Trop.), Subtropical (Subtr.), Grassland (Grass.), Temperate (Temp.), and Temperate Tasmania (Tasm.).

### 3 Results

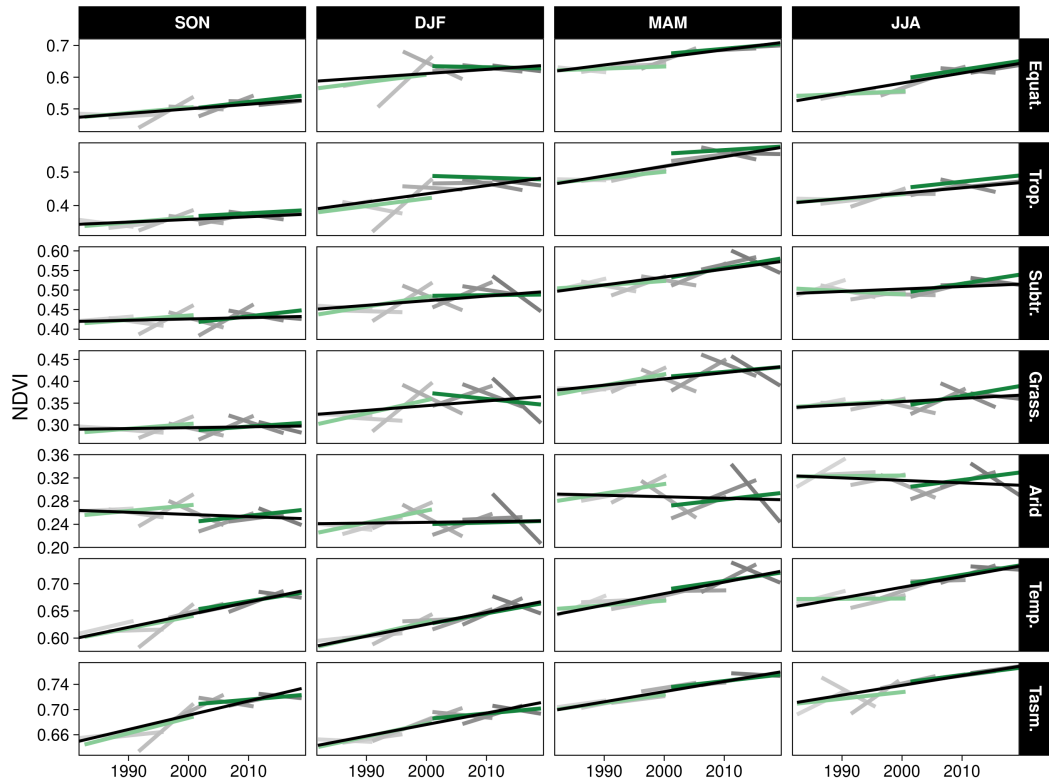
#### 3.1 Long-term Greening in a changing climate

Parts of northern Queensland grew wetter, but aridity (as measured by reduced P:PET; the moisture index, MI) in over 52%  
245 of eastern Australian woody ecosystems since 1982 (Figs. 1,2a). Aridity decreased over northern Queensland encompassing  
the entirety of Equatorial and Tropical regions, and most of the Grassland and Subtropical regions, driven by large wet-season  
increases in precipitation (Fig. A2a). Widespread increases in PET were evident from September-February (Fig. A2b). At  
the same time as these changes in climate were occurring, over 92% of these regions experienced overall greening (Fig.  
3a), including regions where P:PET declined (Figs. 1,2b,A3). The relative increases in NDVI were comparable between the  
250 earlier AVHRR epoch (1982-2000) and the later MODIS epoch (2001-2019) at 5.7% (CI=[-2.9%, +20.3%]) and 5.1% (CI=[-  
6.4%, +20.1%]), respectively. However, the spatial patterns of greening/browning differed between epochs (Fig. 3b), and most  
regions also showed high decadal-scale variability of greening/browning trends (Fig. 4). The overall greening trends between  
the AVHRR 1982-2000 epoch and the MODIS 2001-2019 epoch generally agree across regions and seasons. However linear  
NDVI trends fit over shorter intervals of 10 years are much less consistent (Fig. 4), exemplifying the importance of estimating  
255 trends over long enough periods to average over decadal-scale variability. Long term browning only occurred in the Arid region  
(Fig. 3,4). Nevertheless, by examining NDVI trends over nearly forty years, we were able to separate regional decadal-scale  
variability from the overall, broad greening trend across eastern Australia (Figs. 3,4,A3).





**Figure 3.** Overall long-term NDVI change and change shown by satellite epoch and season. (a) The annual rate of NDVI change from the merged satellite record spanning 1982-2019. The seasonal AVHRR NDVI between 1982-2000 (b-top) and MODIS NDVI between 2001-2019 (b-bottom). Non woody ecosystem regions are masked in gray. A notable browning trend is evident at the interface of the Grassland and Arid regions during DJF of the MODIS time period. Note: Season abbreviations correspond to September-October (SON), December-February (DJF), March-May (MAM), and July-August (JJA).

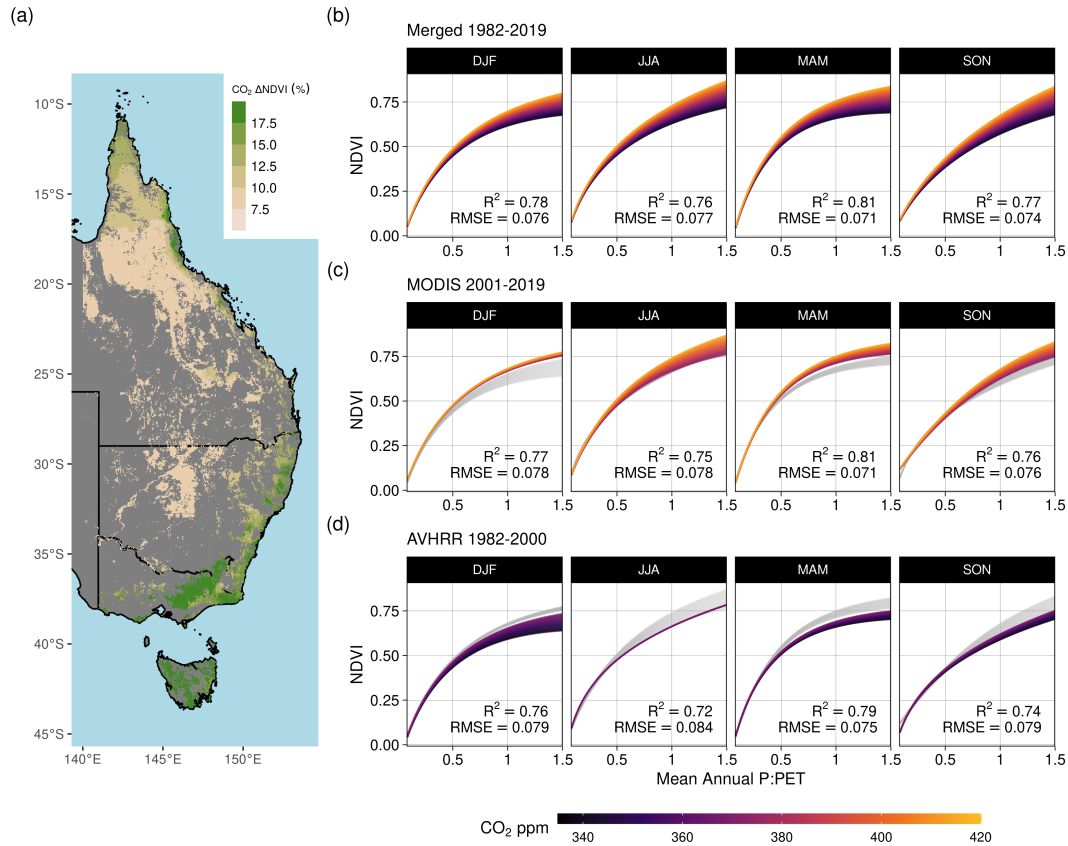


**Figure 4.** Variability of linear trends over varying time periods by season and climate zone. The (black) line represents the overall 1982-2019 trend, the (light green) line represents the calibrated AVHRR 1982-2000, and the (green) line represents the MODIS 2001-2019. Gray colors indicate linear trends from overlapping 10 year time intervals. The boundaries of the climate zones are shown in Figure 2b. Note: Climate zone abbreviations correspond to Equatorial (Equat.), Tropical (Trop.), Subtropical (Subtr.), Grassland (Grass.), Temperate (Temp.), and Temperate Tasmania (Tasm.). Season abbreviations correspond to September-October (SON), December-February (DJF), March-May (MAM), and July-August (JJA).

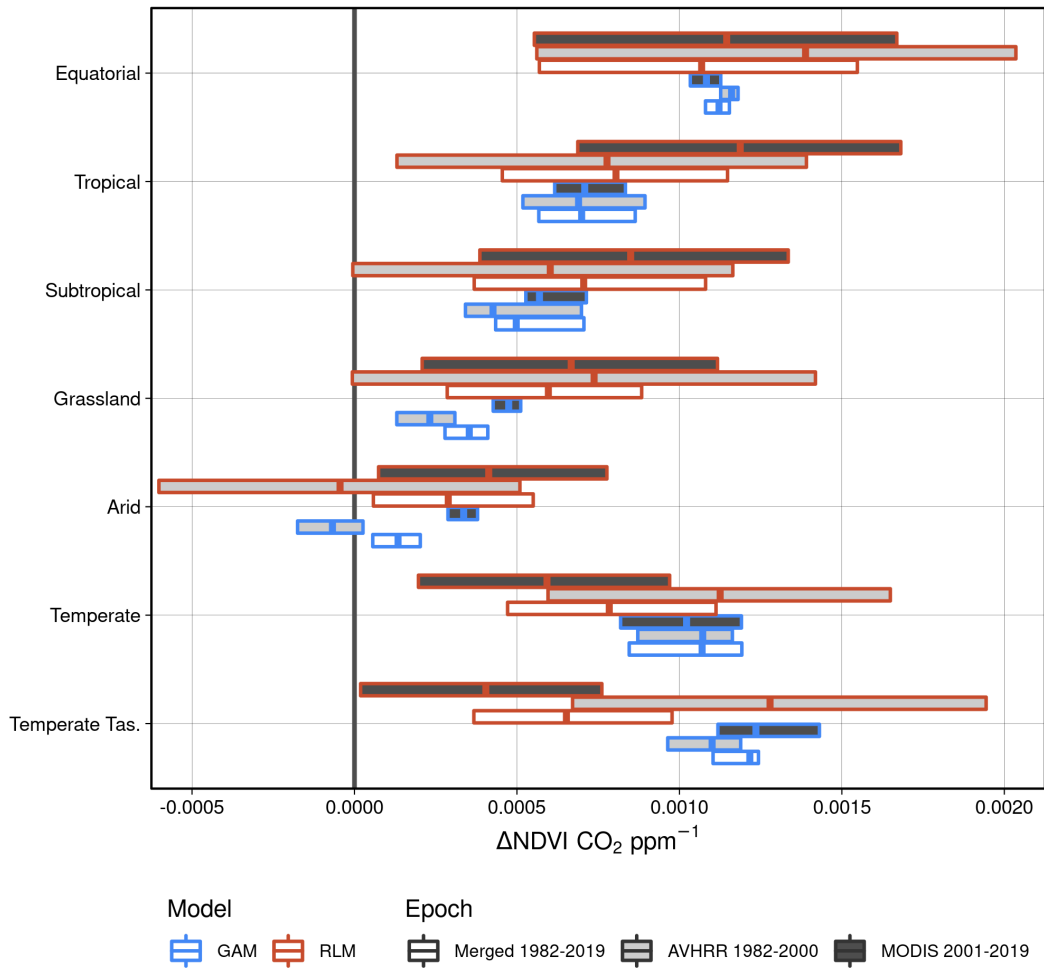
### 3.2 Empirical attribution of the CO<sub>2</sub> effect

We found consistently positive NDVI responses to CO<sub>2</sub> across the moisture gradient of P:PET for all seasons, with the greatest increases located in regions of higher P:PET (>0.5) (Fig. 5). The nonlinear Weibull models showed a larger CO<sub>2</sub> attributable effect on NDVI in regions of higher P:PET (Fig. 5), but the effect size of the NDVI response to CO<sub>2</sub> was largely consistent across model forms (Figs. A4-7). The CO<sub>2</sub>-attributable increase in NDVI between 1982-2019 ranged from approximately 5% in the Arid interior regions to >20% in the wettest Tropical and Temperate regions (Fig. 5a). This was consistent with linear model forms when fit for individual grid cell locations (equation 8; Fig. 6), as well as by comparing the CO<sub>2</sub> effect size across 16 linear models fit for grid cell locations grouped into bins spanning 0.1 increments of P:PET (equation 7; Fig. A4). The GAM fit across grid cell locations also indicated a larger CO<sub>2</sub> effect in regions with higher P:PET (Figs. 6,7b). Quantile regression with generalized additive models showed a pronounced response to CO<sub>2</sub> across the distribution of pixels with both low and high NDVI (10 - 97.5 percentiles) across the full aridity gradient of P:PET (Fig. A7).

A recent study found the global CO<sub>2</sub> fertilization effect was halved between the 1980s and 2000s (Wang et al., 2020). In contrast to the estimates over eastern Australia from Wang et al. (2020), we found no consistent evidence of a decline in the effect of CO<sub>2</sub> on NDVI through time. Neither the GAM estimates nor the robust linear model estimates of the CO<sub>2</sub> effect showed any consistent evidence of a weakening CO<sub>2</sub> effect between 1982-2000 and 2001-2019 (Fig. 6). The central 25-75% percentiles of the distribution of robust linear model effect sizes overlapped in all regions between epochs. The central 25-75% of the GAM estimated distributions also overlapped, with the exception of the Grassland and Arid regions where the CO<sub>2</sub> effect was larger during 2001-2019. Consistent with the finding of a greater CO<sub>2</sub> effect in wetter regions (Fig. 5), the robust linear models and the GAM estimated the CO<sub>2</sub> effect to be greatest in the Equatorial and Tropical regions, and lowest in the Arid region (Fig. 6).



**Figure 5.** Effect of increasing CO<sub>2</sub> on seasonal NDVI across P:PET. Predictions of seasonal NDVI as a function of mean annual P:PET fit using a standard Weibull function (methods - eq 2), modified with linear effects of CO<sub>2</sub>, the running 12-month anomaly of P:PET, and the satellite sensor. The CO<sub>2</sub> concentration gradient represents the atmospheric CO<sub>2</sub> change between 1982-2019. Panel (a) maps the total predicted contribution of CO<sub>2</sub> towards the relative increase of NDVI between 1982-2019 assuming no anomaly of P:PET. Panel (b) shows the merged sensor response between 1982-2019 across the gradient of mean annual P:PET, (c) shows the model response when fit using just MODIS MCD43 data between 2001-2019, and (d) shows the response when the model was fit with the recalibrated AVHRR data between 1982-2000. The AVHRR and MODIS satellite epoch NDVI predictions are plotted in gray for panels (b) and (c), respectively.



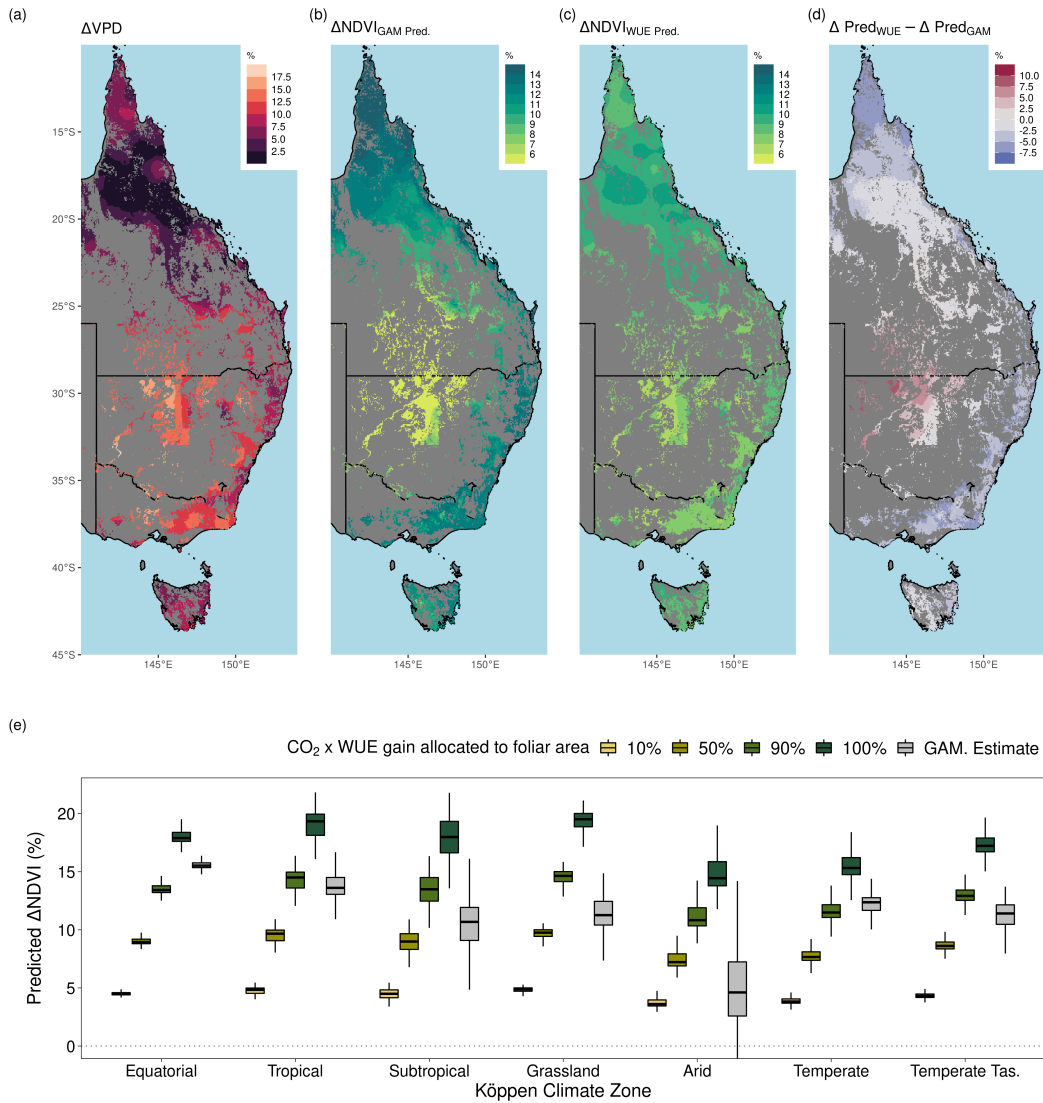
**Figure 6.** Boxplot representation of the CO<sub>2</sub> attributable effect upon changing NDVI. Here the 25th, 50th, and 75th percentiles of the CO<sub>2</sub> attributable effect on NDVI are shown. The robust linear models (RLM; methods - eq 13) were fit for each individual grid cell location, whereas the generalized additive model (GAM; methods - eq 14) was fit using all grid cell locations. The distribution of RLMs yielded a median  $R^2$  of 0.58 and RMSE of 0.025 over the merged period. The GAM had an overall  $R^2$  of 0.91 and RMSE of 0.049.

### 3.3 CO<sub>2</sub> driven greening and expectations from water use efficiency

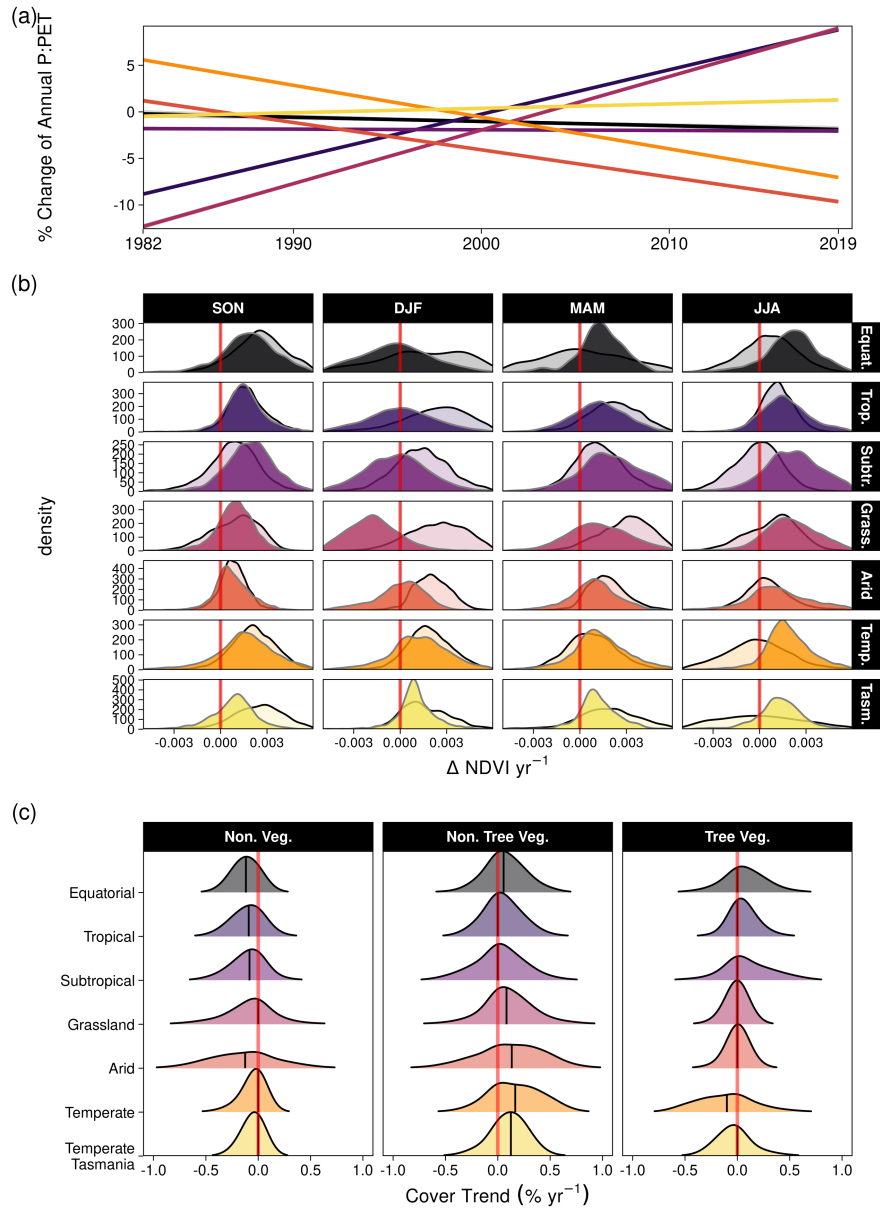
280 The range of statistically estimated CO<sub>2</sub>-attributable greening responses was compared with the expectation from the theoretical CO<sub>2</sub> water use efficiency model. The Donohue et al. (2013) CO<sub>2</sub> x WUE model (see methods) accounts for changes in VPD, but assumes no change in water supply. Assuming an equal split in the benefits of WUE between greater carbon assimilation and increased foliage cover (see below for alternative assumptions), the model predicted an 8.7% (10-90% percentile range [+6.8%,+10.2%]) increase in NDVI (proxy for foliage cover, see methods). This compared to an estimated 11.7% ([+4.6%,+14.6%]) relative increase from the GAM, when accounting for simultaneous increase in VPD (which the WUE accounts for), and factoring out the effects of changing precipitation and PET (which the WUE model does not account for). We  
285 needed to assume differing levels of allocation to foliar gain (i.e. not 50%) for the theoretical WUE model to match the statistically estimated CO<sub>2</sub> effect (Fig. 7d). Regions of higher P:PET (Equatorial, Tropical, Temperate, and Temperate Tasmanian) required greater allocation fractions than 50%, whereas the allocation fraction would be between 25-50% for regions with lower P:PET (Arid, Grassland, and Subtropical). In comparison, the PETA hypothesis (Donohue et al., 2017) predicted the  
290 greatest CO<sub>2</sub> effect on leaf area to be in regions with the lowest LAI, but this was not supported by the statistically estimated CO<sub>2</sub> effect on NDVI (Fig. A9). Despite having the lowest LAI, the Arid region received the smallest CO<sub>2</sub> effect, but it is worth noting the Arid region also experienced the greatest increase in VPD and reduction in P over the 38 year period (Fig. 7a, A8). In contrast, the largest estimated CO<sub>2</sub>-attributable effect on greening were found to be in the Equatorial and Tropical areas.

### 3.4 Co-occurring shifts in aridity, NDVI, and vegetation cover

295 The shifts in P:PET and NDVI were accompanied by vegetation cover changes in some regions. Most notably, the Arid and Temperate regions experienced the strongest zonally averaged declines in P:PET (Fig. 8a) and increases in VPD (Fig. A8). Seasonal greening trends were relatively similar apart from the aforementioned exceptions in the Grassland. The MODIS vegetation continuous fraction data from 2001-2018 indicated most regions experienced modest changes in tree vegetation cover. The largest decline in tree cover occurred in the Temperate regions (Fig. 8c, A10). Most regions experienced declines in non-  
300 vegetated (bare) cover, increases in non-tree vegetation, and modest change in tree-cover (Fig. 8c), however the proportional increase of non-tree vegetation typically exceeded tree cover increases (Fig. A10).



**Figure 7.** Long-term changes in vapor pressure deficit, and comparison between the  $\Delta$  NDVI due to CO<sub>2</sub> and the expected CO<sub>2</sub> fertilization effect on foliar area due to gains in water use efficiency (WUE). (a) The relative increase in the annual mean of vapor pressure deficit (VPD) between 1982-2019. (b) The predicted relative increase in NDVI due to CO<sub>2</sub> (methods - eq 14) with a concurrent increase in VPD. (c) The relative expected increase in NDVI following the theoretical WUE prediction where 50% of the gain is allocated to foliar area (methods - eq 11). (d) The difference between the predictions of relative NDVI from the WUE model with 50% allocation and the GAM estimated relative increase caused by CO<sub>2</sub>. Blue regions indicate where the GAM prediction was greater than the WUE prediction. (e) Boxplot of the expected relative NDVI% increase from WUE gains due to CO<sub>2</sub> fertilization depending upon differing levels of foliar allocation from the CO<sub>2</sub> benefit toward WUE, and the GAM estimated NDVI% increase due to CO<sub>2</sub> (methods - eq 11). The boxplot distribution of the Equatorial region appears collapsed because the Equatorial portion of the region is relatively small (Fig. 7a).



**Figure 8.** The relative percentage change in P:PET by climate zone and corresponding distributions of  $\Delta \text{NDVI yr}^{-1}$  and percentage annual change in vegetation cover fraction. (a) The linear relative changes in annual P:PET trend by climate zone between 1982-2019, as estimated by robust regression (methods). The annual P:PET change (%) and corresponding standard error were as follows: Equatorial ( $-0.045 \pm 0.01$ ), Tropical ( $0.477 \pm 0.005$ ), Subtropical ( $-0.007 \pm 0.005$ ), Grassland ( $0.576 \pm 0.006$ ), Arid ( $-0.293 \pm 0.006$ ), Temperate ( $-0.342 \pm 0.004$ ), and Temperate Tasmania ( $0.047 \pm 0.005$ ). (b) Distribution of linear long term NDVI trends for the six climate clusters by season using the Theil-Sen estimator. Filled distributions are trends from the MODIS sensors (2001-2019) and transparent (black outline) distributions are from the AVHRR sensors (1982-2000). (c) Distributions of the linear pixel level trends using the Theil-Sen estimator for non-vegetated cover, non-tree vegetation cover, and tree cover between 2000-2018. The median is overlaid.

Note: Climate zone abbreviations are as follows: Equatorial (Equat.), Tropical (Trop.), Subtropical (Subtr.), Grassland (Grass.), Temperate (Temp.), and Temperate Tasmania (Tasm.).



## 4 Discussion

### 4.1 Australian woody vegetation as model systems to quantify CO<sub>2</sub> fertilization

Australia is ideal to explore the CO<sub>2</sub> contribution towards vegetation greening because there are fewer confounding effects to drive greening. Forest trees are evergreen and the growing season is rarely limited by temperature or radiation. The study region spans a large moisture gradient (Fig. A1a), but unlike much of the global tropics, the large majority of the study region is not so cloudy as to prevent multiple high quality multispectral satellite retrievals per month. Australia has also not been subjected to other prominent drivers of greening such as nitrogen deposition (Ackerman et al., 2019). Nevertheless, Australia has experienced notable land-use change during the study period such as high rates of deforestation in Queensland and northern New South Wales (Evans, 2016). However, we excluded affected pixel locations from the analysis.

Prior global analyses on warm arid environments have quantified the CO<sub>2</sub> effect on greening (Donohue et al., 2013). More expansive global-scale analyses of all terrestrial vegetation using dynamic global vegetation model attribution have found evidence to connect Australia's greening to changes in atmospheric CO<sub>2</sub> concentration (Winkler et al., 2021), while an earlier study did not (Zhu et al., 2016). Australian studies documented the greening trend up to 2010 using the long-term AVHRR record (Donohue et al., 2009; Ukkola et al., 2016) and have been able to partially attribute CO<sub>2</sub> as a driver of greening in sub-humid and semi-arid regions. Here we advanced upon prior research to separate the effects of disturbance, and changes in aridity and moisture in order to quantify the CO<sub>2</sub> fertilization effect across the full spectrum of moisture availability experienced by Australian woody ecosystems, notably for 38 years.

### 4.2 Regional differences in greening and browning through time

Despite the region's high decadal scale variability of NDVI (Fig. 4), the nearly four decade long record allowed us to separate the CO<sub>2</sub> effect on NDVI from the anomalies caused by drought (e.g. 2003-2009) or high rainfall (e.g. La Niña 2010-2011). Although the long-term greening trends we document in the nine years following earlier studies are generally consistent (Donohue et al., 2009; Ukkola et al., 2016), our results diverge and lead to key differences in interpretation of why NDVI has continued to increase. First, while the relative increase in NDVI between the 1982-2000 AVHRR epoch (5.7%) and the 2001-2019 MODIS epoch (5.1%) are comparable (Figs. 3b,8b), the underlying reasons for the change differ. VPD changed minimally between 1982-2000, whereas it rapidly increased between 2001-2019 (Fig. A8). These increases were largest in the most Arid and Temperate regions (12.7% and 11% since 1982, respectively; Fig. 6), and when coupled with seasonal reductions in precipitation (Fig. A2) these would have partially offset benefits from increased intrinsic water-use efficiency (equation 17). In contrast, more than half of the Equatorial, Tropical, Subtropical and Grassland regions in northern Queensland experienced increases in precipitation since 1982 (Fig. A2; Ukkola et al. (2019)), thus allowing these locations to exceed the predicted NDVI increases from the WUE model (Fig. 7d).

It should be noted not all regions experienced consistent greening trends throughout the observation period. For example, 'greening' shifted to 'browning' during the austral summer (Dec - Feb) in the Arid and Grassland regions of Queensland between the 1982-2000 and 2001-2019 records (Fig. 3b). It is unclear why browning occurred during austral summer time

335 in the Grassland region (Figs. 3b,4,8b). The declines in NDVI during 2001-2019 may have been meteorologically driven and related to shifts in the distribution of wet and dry season precipitation (Fig. A2). Alternatively, the shift could be due to changes in fire and cattle management that have been particularly prevalent across regions of Queensland in recent decades (Seabrook et al.). Further, greening may have been suppressed in parts of Queensland because cattle ranching activity has intensified and has driven forest conversion to managed pasture in the region (McAlpine et al., 2009).

#### 340 **4.3 Attributing a CO<sub>2</sub> fertilization contribution towards greening**

Plants increase their rates of photosynthesis in response to rising atmospheric CO<sub>2</sub>, whilst also reducing stomatal conductance, which reduces evaporative losses and combined, the two responses lead to greater WUE (Ainsworth and Rogers, 2007; Morison, 1985). In water-limited ecosystems, it has been hypothesized that this physiological response by plants to CO<sub>2</sub> should result in increased leaf biomass (Donohue et al., 2013; Ukkola et al., 2016). While all of our statistical approaches indicated  
345 a year round positive CO<sub>2</sub> effect, in contrast to theory the effect was consistently greater in regions with higher P:PET (Figs. 5-7;A4-7). Our analysis also diverges with a global coarse-scale analysis that found weakening of the CO<sub>2</sub> fertilization effect across both southeastern and northern Australia (Wang et al., 2020). We found no meaningful difference in the CO<sub>2</sub> attributable effect towards greening between the AVHRR 1982-2000 and MODIS 2001-2019 epochs to support the finding of temporally weakening CO<sub>2</sub> effect (Fig. 6). The WUE model predicted similar relative rates of NDVI increase between the two epochs  
350 (4.5% and 4.7% for AVHRR and MODIS), yet for different reasons. CO<sub>2</sub> increased by 30 ppm between 1982-2000 while VPD changed minimally and precipitation increased in Queensland and the Arid region (Fig. A8); all of which are favorable to increasing NDVI. In contrast, the larger CO<sub>2</sub> increase between 2001-2019 (40 ppm) was offset by a spatially ubiquitous increase of VPD (3.7%, CI=[-0.4%,8.6%]; Fig. A8) and the occurrence of two multi-year droughts (Millennium Drought 2003-2009, and The Big Dry 2017-2020). Despite the widespread evidence of the CO<sub>2</sub> effect, the WUE model notably underpredicted  
355 greening in some regions (Fig. 7).

#### **4.4 Deviations from WUE**

We found the CO<sub>2</sub> effect on foliar area was the smallest in the driest climate regions (Figs. 5-6,A4-7). This was at odds with the WUE prediction (at 50% allocation; Fig. 7e), and contrary to expectation that the greatest WUE-derived benefit from CO<sub>2</sub> would be in drier climates (Donohue et al., 2017; McMurtrie et al., 2008). These deviations may have resulted from  
360 ecosystems processes beyond the scope of a simple model, such as more severe nutrient limitations, the phenology of the vegetation composition, belowground root processes, and disturbances not captured by the satellite products (e.g. small fires, grazing). Browning in the Grassland region (Fig. 3b,A3) may have been caused by distinct dry season phenological differences between overstory woody vegetation and understory C<sub>4</sub> grasses (Moore et al., 2016), which are dominant there (Murphy and Bowman, 2007). C<sub>4</sub> grasses may have been favored over C<sub>3</sub> because precipitation increased during the austral summer over  
365 the course of the study (Fig. A2) and this higher concentration of rainfall during the warmest months is thought to favor C<sub>4</sub> grasses (Hattersley, 1983; Knapp et al., 2020; Murphy and Bowman, 2007). Finally, the linear dependency of leaf area upon

VPD in the theoretical model may be ill-suited for extreme anomalously arid conditions because NDVI observations suggest a strongly nonlinear relationship with large VPD anomalies (Fig. A11).

We explored how much of the higher WUE benefit would have to be allocated to match the GAM estimated CO<sub>2</sub>-attributed changes in NDVI. Allocation rates far greater than 50% would be required to match the WUE prediction in the Tropical and Equatorial zones (Fig. 7e), whereas allocation would need to be less than 50% to match the GAM estimate in the Arid region. The Arid region experienced the greatest relative increase in VPD (Fig. 7a, A8), yet the theoretical model still predicted a small but positive increase in NDVI (Fig. 7c) which the GAM estimate suggests would be closer to a 10% rather than 50% foliar allocation level from the WUE benefit (Fig. 7d). Nevertheless, the smaller effect over the Arid region was consistent with earlier observational findings across Australia (Ukkola et al., 2016) and experimentation from the Nevada Desert FACE experiment (Smith et al., 2014).

#### 4.5 Relation to ecosystem CO<sub>2</sub> fertilization experiments

Notably, a four year long ecosystem-scale CO<sub>2</sub> manipulation experiment carried out in a mature Eucalyptus woodland in Sydney (EucFACE) did not observe an increase in leaf area under elevated CO<sub>2</sub> (Jiang et al., 2020b). The experimental site is located upon phosphorus poor soils, typical of Australia. The lack of a leaf area growth response observed at EucFACE is not necessarily inconsistent with the greening effect observed in this study. Our observational window of 38 years is much longer than the elevated CO<sub>2</sub> exposure time in the experiment (four years in Jiang et al., 2020b), covers different CO<sub>2</sub> increments (historical vs future) and could imply that woodlands are eventually able to liberate belowground phosphorus to support greater biomass growth on longer timescales. Increased autotrophic soil respiration and belowground productivity were observed at EucFACE under elevated CO<sub>2</sub> exposure (Drake et al., 2016; Jiang et al., 2020b), as was a brief period of enhanced nitrogen and phosphorus mineralization (Hasegawa et al., 2016). Over time, this increased investment of carbon belowground could potentially liberate sufficient phosphorus to support an expansion of leaf area. The reduced allocation to foliar area in the Arid region (Fig. 7e) may reflect that extra carbon derived from CO<sub>2</sub> is allocated belowground to increase water uptake or mitigate other resource limitations such as soil phosphorus (Jiang et al., 2020a).

#### 4.6 Vegetation composition shifts

Most grid-cell locations in the Temperate zone experienced simultaneous apparent declines in tree cover and increases in non-tree vegetation cover (e.g. grasses/shrubs) (Figs. 8c, A10). This is surprising because we focused this regression analysis on 2001-2018 in order to exclude the reduced tree cover due to the catastrophic megafires of 2019/20 (Nolan et al., 2020). Some may question the ability of the MODIS Vegetation Continuous Fraction product (DiMiceli et al., 2017) to accurately distinguish Australian tree cover from non-tree vegetation (Sexton et al., 2013; Adzhar et al., 2021), however this pattern is consistent with a recent LiDAR derived tree-cover time series of Australia (Liao et al., 2020). Future work may seek to uncover trends in the green vegetation fraction by analyzing higher resolution data derived from the Landsat constellation, such as Geoscience Australia's vegetation fractional cover product (Gill et al., 2017). The decline in tree cover suggests the drought starting in 2017 was already killing trees prior to the 2019/20 megafires. Field observations of tree decline remain relatively rare, but a

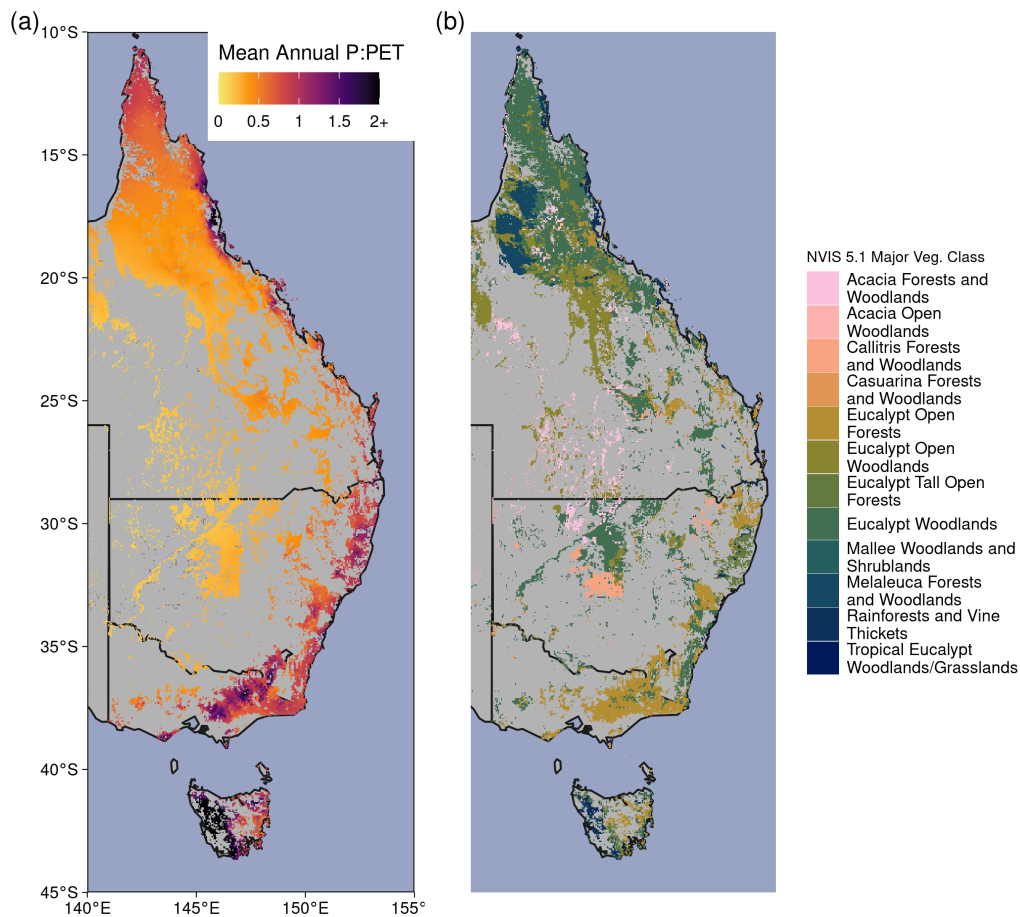
400 citizen science initiative has documented more than 300 locations of non-fire related mass tree mortality between 2018-2020 (Atlas of Living Australia, 2020). Similarly, a study using an experimental constrained plant hydraulics model to predict the regions at risk of drought-induced tree mortality, found greater risk in the same arid regions of southeast Australian forests and woodlands (De Kauwe et al., 2020). These predicted regions of mortality coincide with where we document the greening trends that fell short of the theoretical WUE expectation. These rapid shifts in vegetation underlie the need for greater continuous field  
405 vegetation monitoring to capture change imposed by climate extremes.

## 5 Conclusions

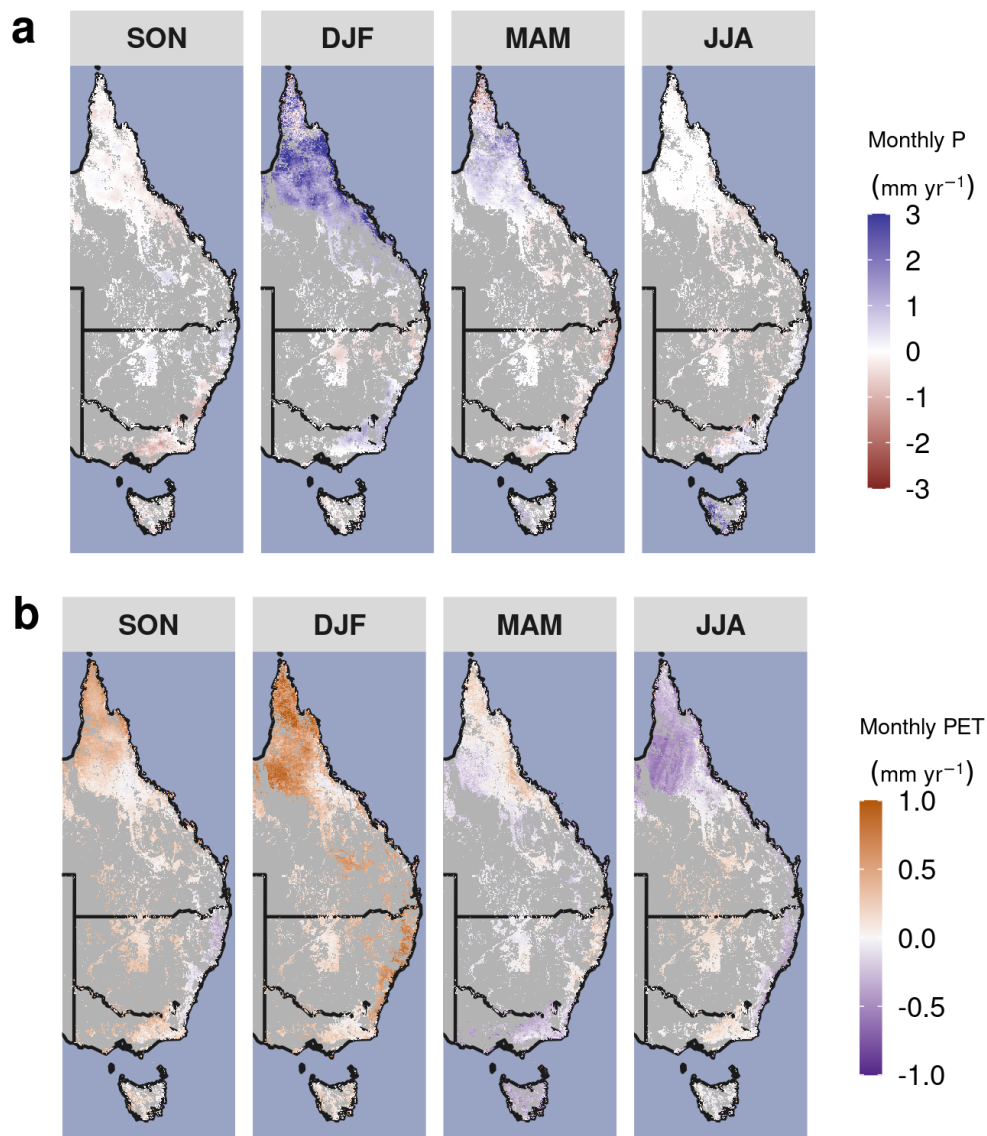
We separated the effects of disturbance and meteorological anomalies with statistical models to show increasing CO<sub>2</sub> produced nearly four decades of widespread vegetation greening across eastern Australia. The large agreement between a theoretical model and the statistically estimated CO<sub>2</sub> effect indicated that greening resulted through an increase in water use efficiency.  
410 Vegetation greening occurred despite a highly variable and increasingly arid climate, and on soils particularly poor in phosphorus which have likely acted as a constraint on growth. While rising atmospheric CO<sub>2</sub> ameliorated what would have been a browning woody ecosystem response to declining P:PET, the CO<sub>2</sub> effect was insufficient to promote greening when both P and P:PET experienced long-term decline, as observed in the more arid regions in our study. Further, it is unknown whether further increases of atmospheric CO<sub>2</sub> will continue to enable vegetation to mitigate increases of aridity and VPD under future  
415 warming. It is also unclear if trees or grasses are the primary contributors to the recent greening trend. Future localised work is urgently needed to better understand recent changes in tree and grass competition under an increasingly arid climate, which will be essential to help forecast ecosystem resilience. Finally, our results have important implications for understanding Australia's terrestrial water availability. Greening trends signal changes in evapotranspiration and runoff, and therefore need to be considered in planning for future land and water resource management on the world's driest inhabited continent.

420 *Code and data availability.* All data used are publicly available from sources listed in Table A1. A git repository with all associated data processing, analysis, and code to reproduce figures is located at: <https://github.com/sw-rifai/eastern-Australia-CO2-NDVI-change> and (doi: 10.5281/zenodo.5711964). Processed data used in model fitting and figures can be accessed via Zenodo data repository: <https://zenodo.org/record/4340064#.YZbzhbzMIUE> (doi: 10.5281/zenodo.4340064).

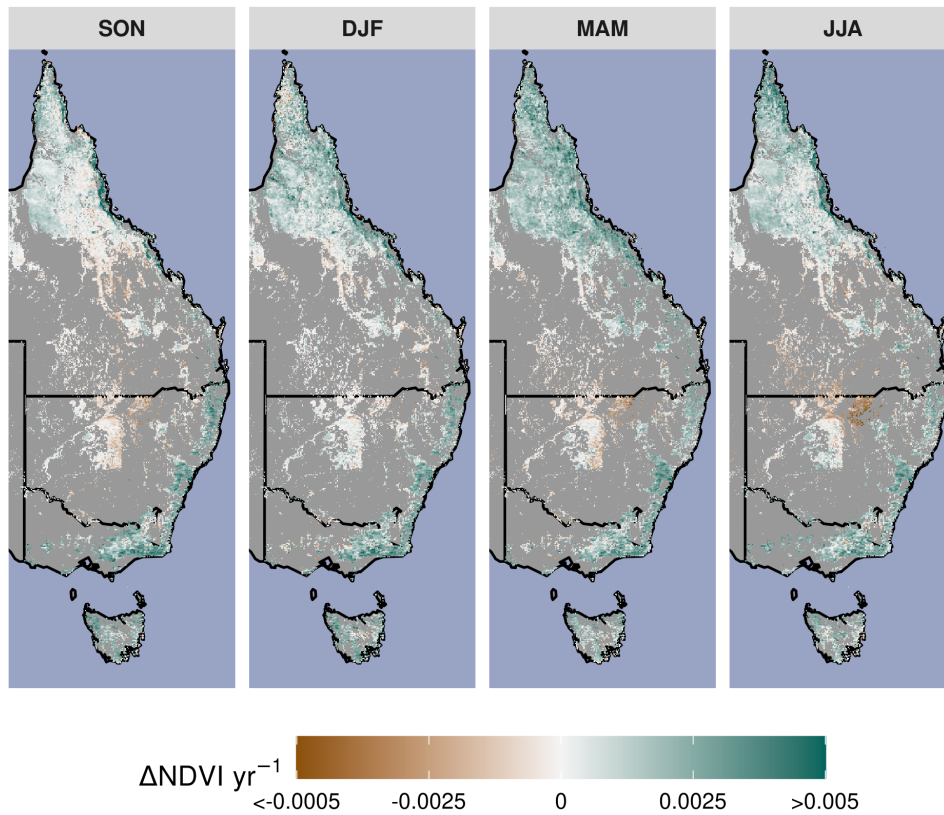
## Appendix A: Figures and tables in appendices



**Figure A1.** (a) Mean Annual P:PET between 1982-2019. (b) Forest and woodland vegetation classes from version 5.1 of the National Vegetation Information System (source: <https://www.environment.gov.au/land/native-vegetation/national-vegetation-information-system>).



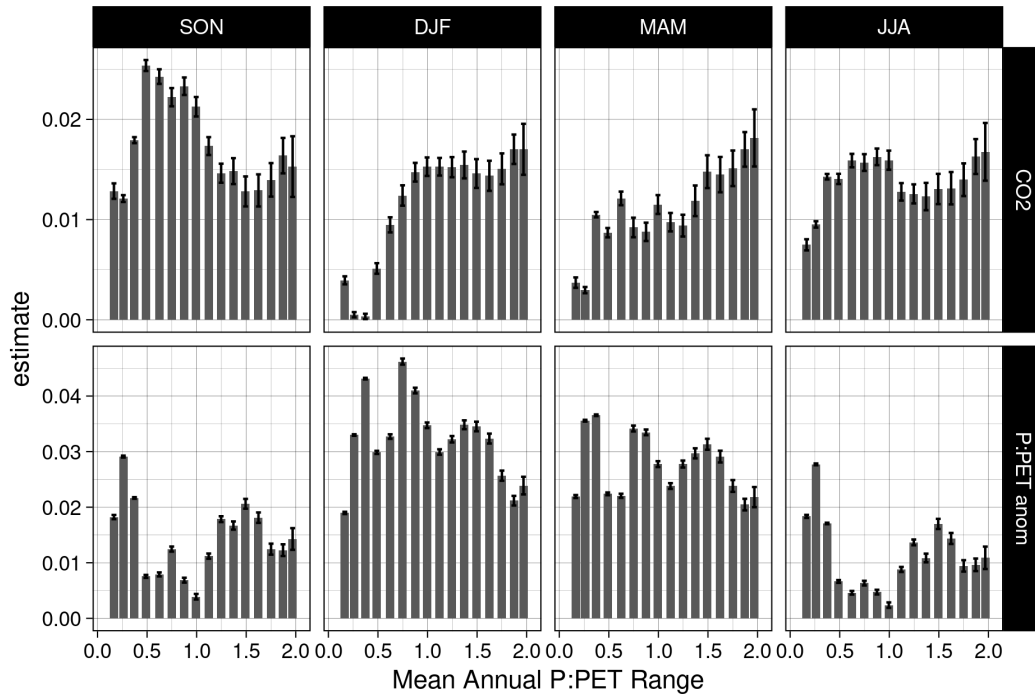
**Figure A2.** Long-term seasonal changes in precipitation (P) and potential evapotranspiration (PET). Linear trend in (a) monthly precipitation and (b) PET by season over the period 1982-2019. Non forest and woodland regions are masked in grey.



**Figure A3.** The long term seasonal NDVI linear trend between 1982-2019. The Theil-Sen robust linear trend estimator is used with the calibrated merge of the CDR AVHRR (1982-2000) and MODIS MCD43 (2001-2019) surface reflectance products.

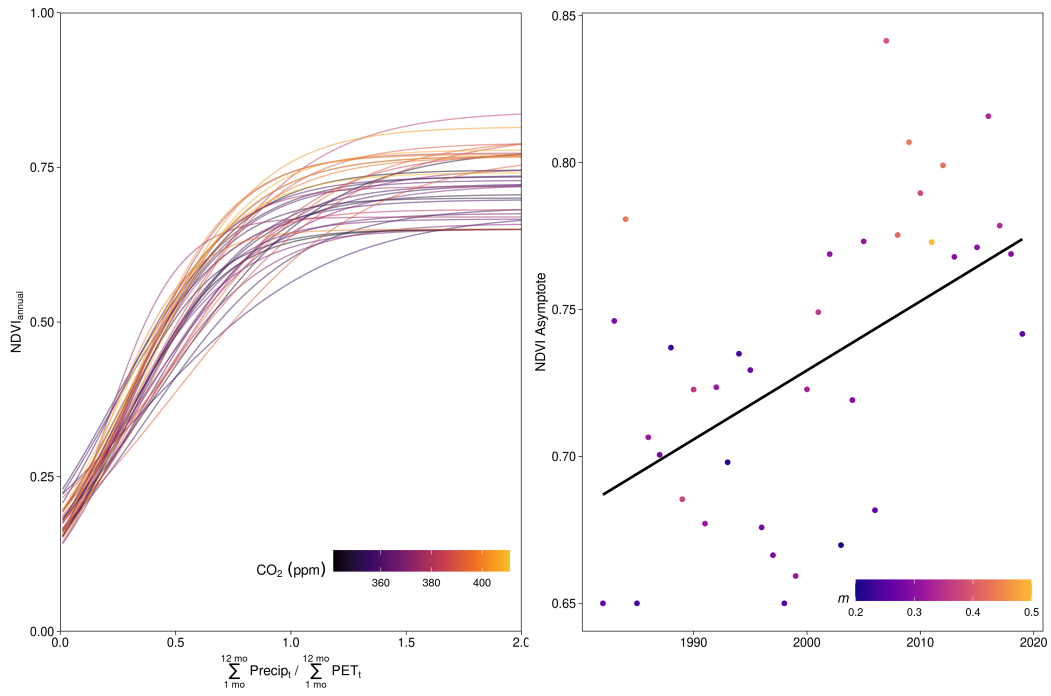
### NDVI Linear Model Effects (1982-2019)

N = 14.3e6 NDVI~CO<sub>2</sub>+P:PET\_anom+Veg.Class.+Sensor

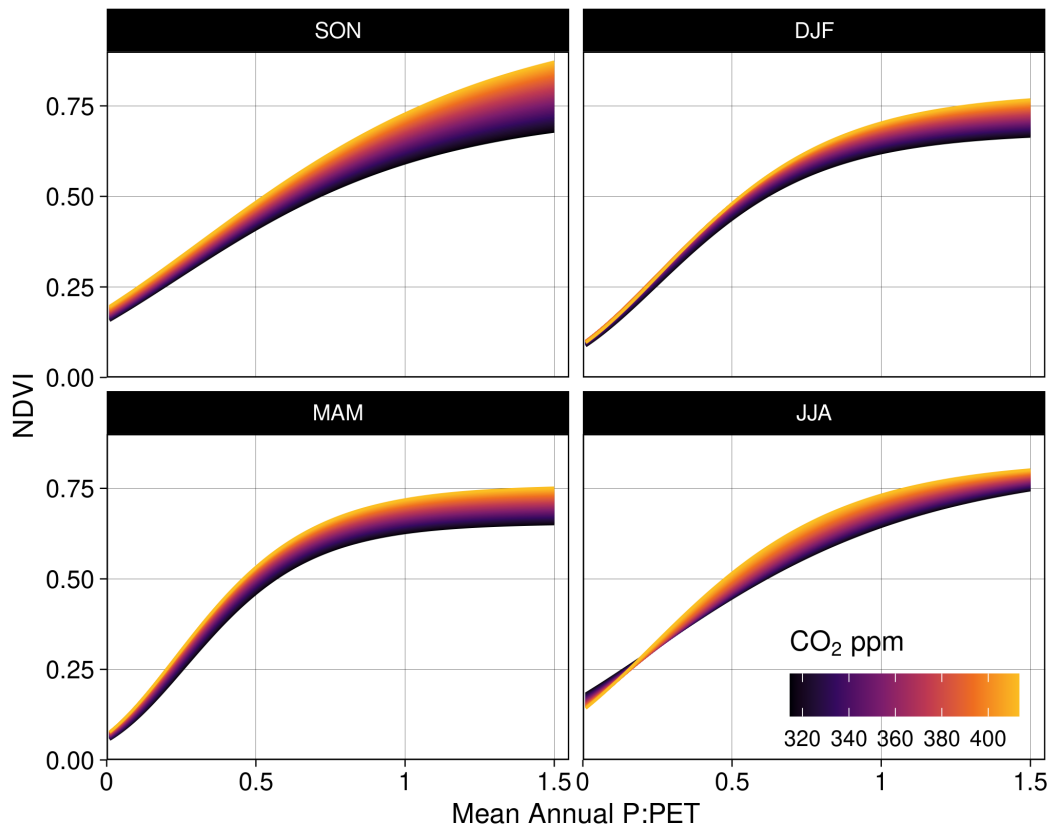


**Figure A4.** Linear model covariate estimates for 128 linear models. The mean annual P:PET range is discretized over 16 increments where NDVI is modeled as a linear function of CO<sub>2</sub>, P:PET<sub>anom.</sub>, the NVIS vegetation class, and the sensor. Error bars indicate 2x the standard error of the estimate.

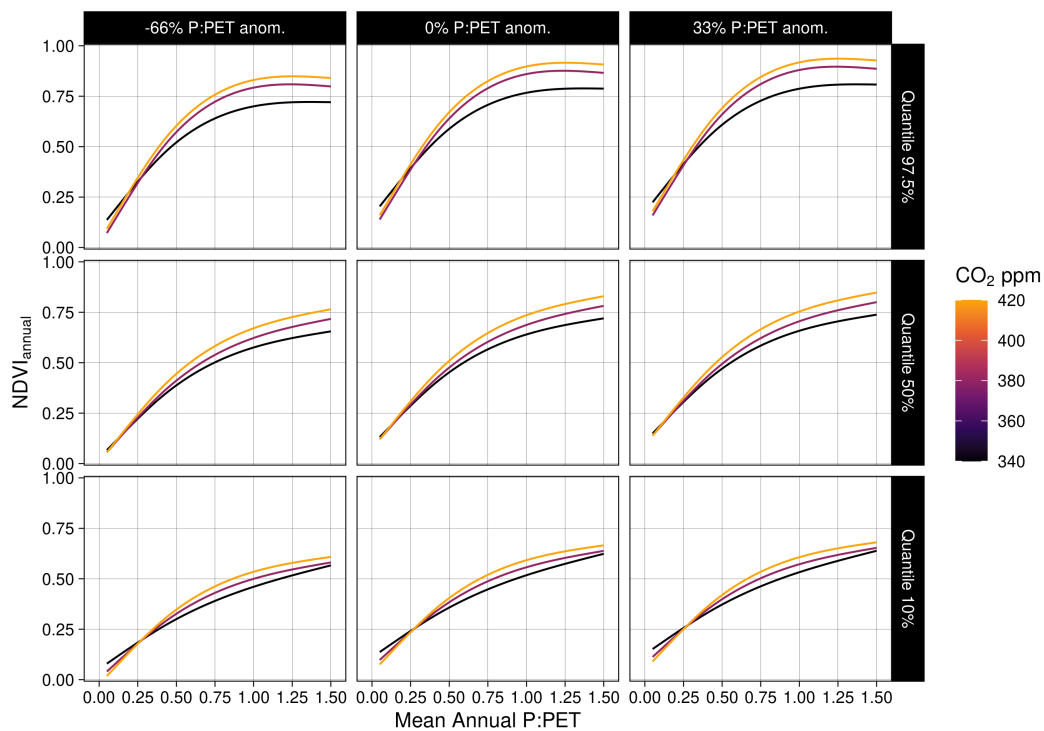




**Figure A5.** NDVI as a logistic function of annual P:PET. (left) Logistic function models, fit per each hydrological year. (right) The positive long-term trend in the NDVI asymptote from the logistic model fits.  $m$  is the value of P:PET at the inflection point, and NDVI Asymptote corresponds to the  $V_A$  parameter in equation 5.



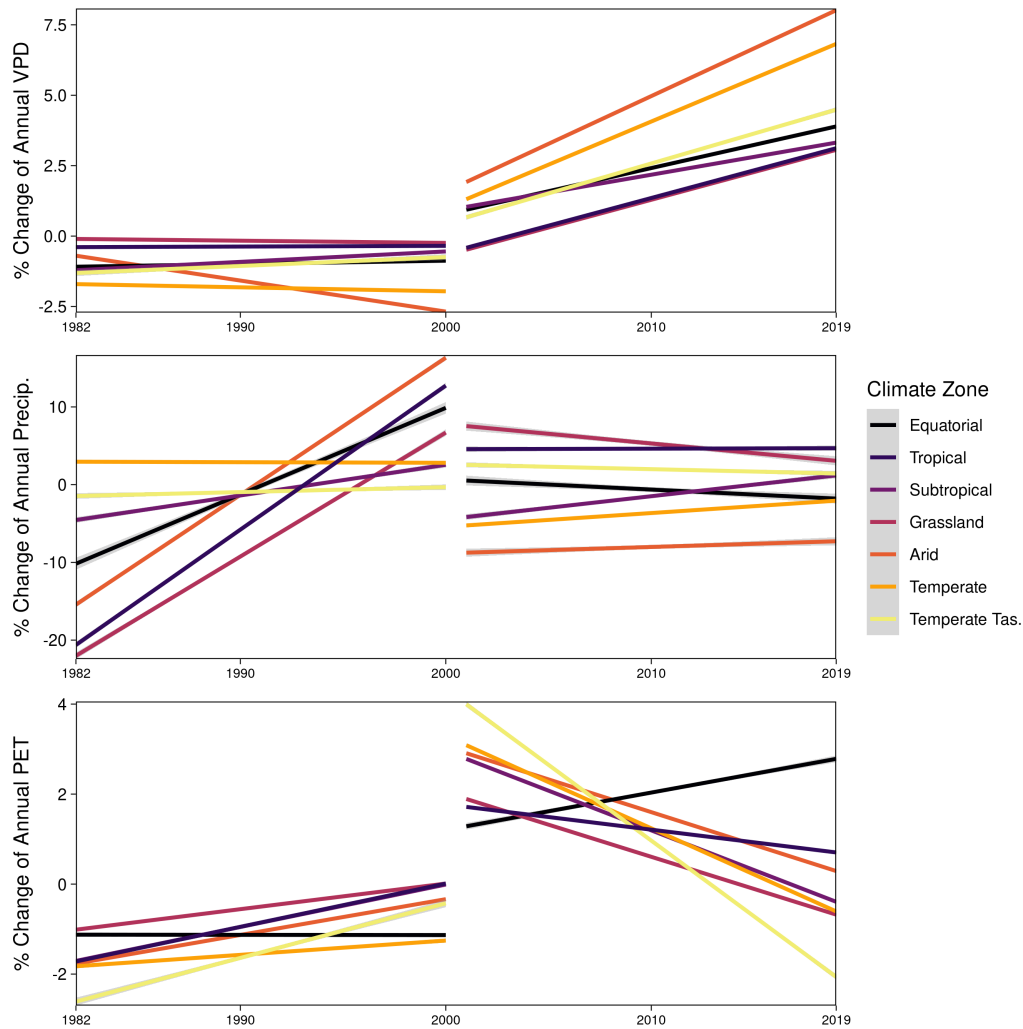
**Figure A6.** Seasonal NDVI as a Richards growth function with linear modifiers of CO<sub>2</sub> and the anomaly of P:PET (equation 6).



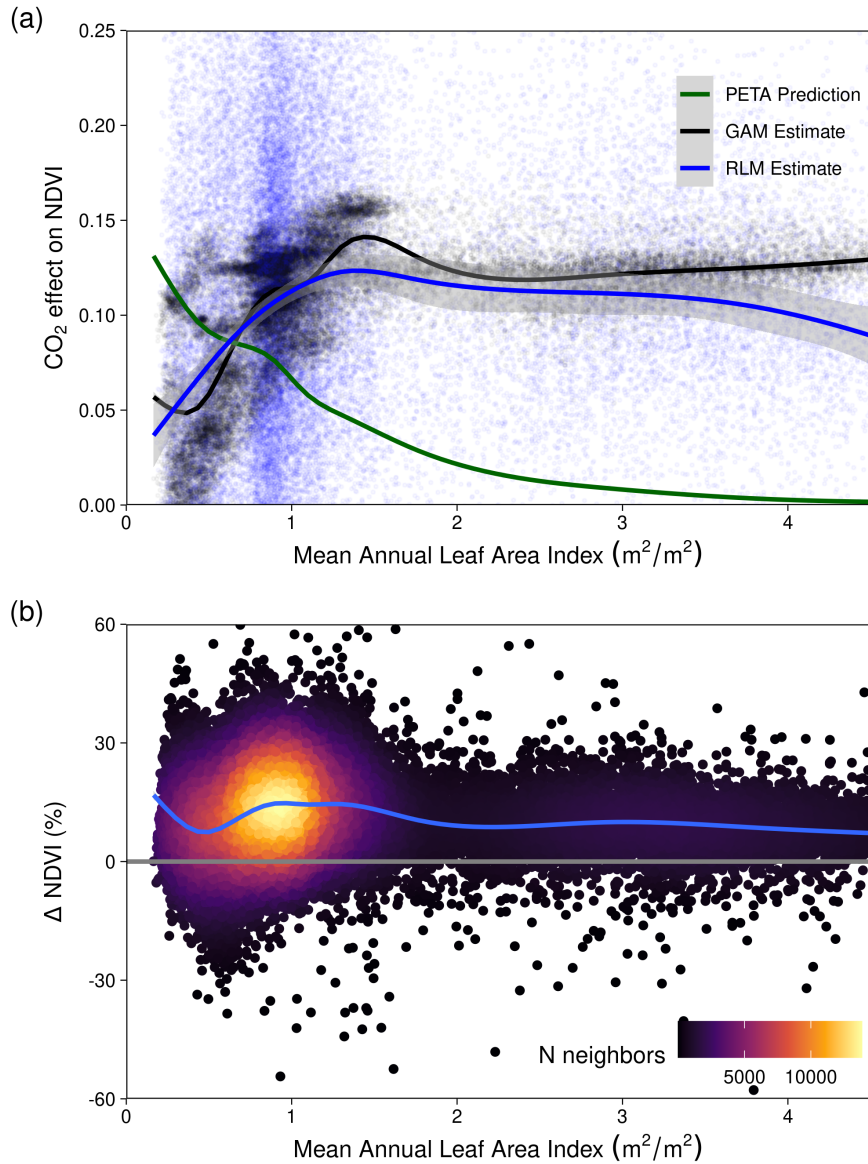
**Figure A7.** Quantile GAM regression predictions across  $CO_2$  and anomalies of annual P:PET.

$$NDVI_{3mo} = s(CO_2) + s\left(\frac{P}{PET_{MA}}\right) + s\left(CO_2, \frac{P}{PET_{MA}}\right) + s\left(\frac{P}{PET_{anom.}}\right)$$

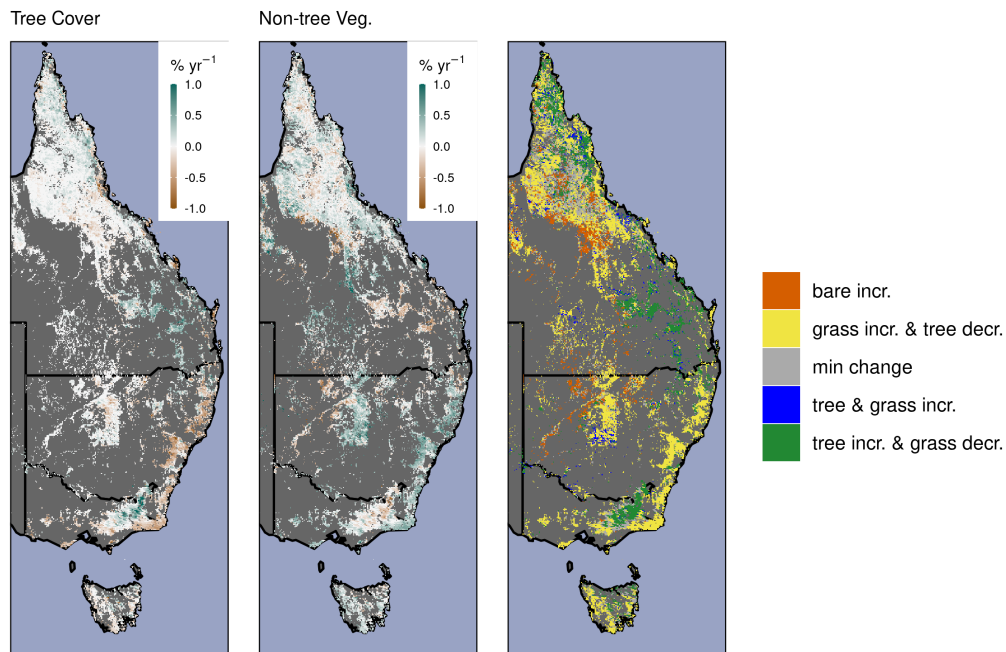
Here 's' represents a thinplate spline smoothing function,  $\frac{P}{PET_{MA}}$  is the 30-year mean annual P:PET, and  $\frac{P}{PET_{anom.}}$  is the annual anomaly of  $\frac{P}{PET}$ .



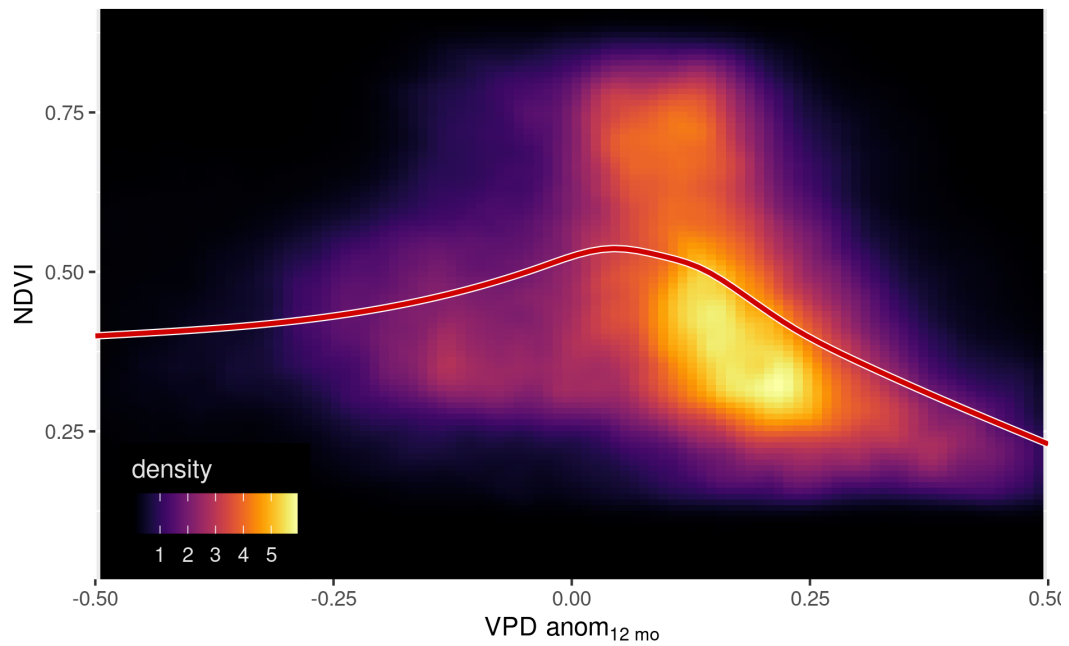
**Figure A8.** The linear relative changes in annual vapor pressure deficit (VPD), precipitation (Precip.), and potential evapotranspiration (PET) by climate zone between satellite epochs AVHRR 1982-2000 and MODIS 2001-2019, as estimated by robust regression. The relative changes are with respect to a climatology period calculated between 1982-2011.



**Figure A9.** (a) The fractional increase of NDVI from CO<sub>2</sub> is plotted following predictions from the Partitioning of Equilibrium Transpiration and Assimilation (PETA) hypothesis is plotted (green), the Generalized Additive Model (GAM; methods eq. 6) estimates, and the pixel-level Robust Linear Model (RLM; methods eq. 5) estimates. Note we substitute NDVI for the leaf area formulation of the PETA hypothesis (Donohue et al., 2017) because we assume a linear relationship between relative NDVI increase and relative leaf area increase (Donohue et al., 2013; Carlson & Ripley 1997). (b) The relative change in NDVI between 1982-2019 across the range of mean annual leaf area index calculated with MCD15A3H from 2002-2019.



**Figure A10.** The relative shifts of land fraction by tree cover, non-tree vegetation cover (predominantly grasses), and bare ground. 2000-2018 annual rate of change for tree cover (left), non-tree vegetation (middle), and discretized change classes. Min. change indicates the annual rate of change of percentage cover was between  $-0.1$  &  $0.1\% \text{ yr}^{-1}$



**Figure A11.** The nonlinear dependency of NDVI upon the annual anomaly of vapor pressure deficit. 2D density plot of NDVI and the running 12-month anomaly of vapor pressure deficit. The red line shows a GAM fit.

**Table A1.** Table A1

Product	Variable	Spatial	Temporal	Reference
NOAA-CDR v5 AVHRR surface reflectance	surface reflectance	0.05°	daily	Vermote et al., 2014
MODIS MCD43	surface reflectance	500 m	daily	Schaaf and Wang 2015
MODIS MOD44B	Tree cover, non-tree vegetation cover, non-vegetation cover	250 m	annual	Dimiceli et al., 2015
MODIS MCD64A1	Burn Area	500 m	monthly	Giglio et al., 2015
MODIS MCD15A3H	Leaf Area Index	500 m	4-day	Myneni et al., 2015
NVIS v5.1	Major vegetation classes	100 m	-	<a href="https://www.environment.gov.au/land/native-vegetation/national-vegetation-information-system">https://www.environment.gov.au/land/native-vegetation/national-vegetation-information-system</a>
AWAP Climate	Precip, PET, Tmin, Tmax, Vapor pressure	0.05°	daily	Jones et al., 2009
ERA5-Land	PET	9 km	hourly	Copernicus Climate Change Service (C3S) (2017)
BoM Major Köppen Climate	Major Köppen Climate zones	-	-	<a href="http://www.bom.gov.au/jsp/ncc/climate_averages/climate-classifications">http://www.bom.gov.au/jsp/ncc/climate_averages/climate-classifications</a>



425 *Author contributions.* S.W.R., M.G.D.K., P.M., L.A.C., B.E.M., and A.J.P. designed the study. S.W.R. analyzed the data and produced the figures. S.W.R and A.M.U. processed climate data. S.W.R. wrote the first draft with M.G.D.K., and all authors have contributed to writing and revising the manuscript.

*Competing interests.* The authors declare no competing interests.

*Disclaimer.* NA.

430 *Acknowledgements.* S.W.R., M.G.D.K., A.J.P., L.A.C, and P.M., acknowledge support from the Australian Research Council Discovery Grant (DP190101823). S.W.R., M.G.D.K., A.M.U., and A.J.P. acknowledge support from the ARC Centre of Excellence for Climate Extremes (CE170100023). M.G.D.K. was also supported by the NSW Research Attraction and Acceleration Program and A.M.U. by an ARC Discovery Early Career Researcher Award (DE200100086). B.E.M. acknowledges support from ARC Laureate Fellowship FL190100003. We are grateful to Randall J. Donohue (CSIRO Land and Water) for valuable discussion and comments on drafts of this manuscript.

## 435 References

- Ackerman, D., Millet, D. B., and Chen, X.: Global Estimates of Inorganic Nitrogen Deposition Across Four Decades, 33, 100–107, <https://doi.org/10.1029/2018GB005990>, 2019.
- Adzhar, R., Kelley, D. I., Dong, N., Torello Raventos, M., Veenendaal, E., Feldpausch, T. R., Philips, O. L., Lewis, S., Sonké, B., Taedoung, H., Schwantes Marimon, B., Domingues, T., Arroyo, L., Djagbletey, G., Saiz, G., and Gerard, F.: Assessing MODIS Vegetation Continuous Fields Tree Cover Product (Collection 6): Performance and Applicability in Tropical Forests and Savannas, pp. 1–20, <https://doi.org/10.5194/bg-2020-460>, 2021.
- Ahlstrom, A., Raupach, M. R., Schurgers, G., Smith, B., Arneth, A., Jung, M., Reichstein, M., Canadell, J. G., Friedlingstein, P., Jain, A. K., Kato, E., Poulter, B., Sitch, S., Stocker, B. D., Viovy, N., Wang, Y. P., Wiltshire, A., Zaehle, S., and Zeng, N.: The Dominant Role of Semi-Arid Ecosystems in the Trend and Variability of the Land CO<sub>2</sub> Sink, 348, 895–899, <https://doi.org/10.1126/science.aaa1668>, 2015.
- 445 Ainsworth, E. A. and Rogers, A.: The Response of Photosynthesis and Stomatal Conductance to Rising [CO<sub>2</sub>]: Mechanisms and Environmental Interactions: Photosynthesis and Stomatal Conductance Responses to Rising [CO<sub>2</sub>], 30, 258–270, <https://doi.org/10.1111/j.1365-3040.2007.01641.x>, 2007.
- Atlas of Living Australia: The Dead Tree Detective | Project | BioCollect, <https://biocollect.ala.org.au/acsa/project/index/77285a13-e231-49e8-b212-660c66c74bac>, 2020.
- 450 Australian Department of Agriculture, Water and the Environment: Australian Department of Agriculture, Water and the Environment, <http://www.environment.gov.au/>, 2020.
- Bastos, A., Running, S. W., Gouveia, C., and Trigo, R. M.: The Global NPP Dependence on ENSO: La Niña and the Extraordinary Year of 2011: GLOBAL NPP AND ENSO: THE 2011 LA NIÑA, 118, 1247–1255, <https://doi.org/10.1002/jgrg.20100>, 2013.
- Bronaugh, D. and Consortium, A. W. f. t. P. C. I.: Zyp: Zhang + Yue-Pilon Trends Package, <https://CRAN.R-project.org/package=zyp>, 2019.
- 455 Bureau of Meteorology: Annual Australian Climate Statement 2019, <http://www.bom.gov.au/climate/current/annual/aus/#tabs=Overview>, 2019.
- Carlson, T. N. and Ripley, D. A.: On the Relation between NDVI, Fractional Vegetation Cover, and Leaf Area Index, 62, 241–252, [https://doi.org/10.1016/S0034-4257\(97\)00104-1](https://doi.org/10.1016/S0034-4257(97)00104-1), 1997.
- Cortés, J., Mahecha, M. D., Reichstein, M., Myneni, R. B., Chen, C., and Brenning, A.: Where Are Global Vegetation Greening and Browning Trends Significant?, 48, e2020GL091496, <https://doi.org/10.1029/2020GL091496>, 2021.
- CSIRO and Bureau of Meteorology: State of the Climate 2020, <http://www.bom.gov.au/state-of-the-climate/>, 2020.
- Davis, T. W., Prentice, I. C., Stocker, B. D., Thomas, R. T., Whitley, R. J., Wang, H., Evans, B. J., Gallego-Sala, A. V., Sykes, M. T., and Cramer, W.: Simple Process-Led Algorithms for Simulating Habitats (SPLASH v.1.0): Robust Indices of Radiation, Evapotranspiration and Plant-Available Moisture, 10, 689–708, <https://doi.org/10.5194/gmd-10-689-2017>, 2017.
- 465 De Kauwe, M. G., Medlyn, B. E., Zaehle, S., Walker, A. P., Dietze, M. C., Wang, Y.-P., Luo, Y., Jain, A. K., El-Masri, B., Hickler, T., Wårlind, D., Weng, E., Parton, W. J., Thornton, P. E., Wang, S., Prentice, I. C., Asao, S., Smith, B., McCarthy, H. R., Iversen, C. M., Hanson, P. J., Warren, J. M., Oren, R., and Norby, R. J.: Where Does the Carbon Go? A Model-Data Intercomparison of Vegetation Carbon Allocation and Turnover Processes at Two Temperate Forest Free-Air CO<sub>2</sub> Enrichment Sites, 203, 883–899, <https://doi.org/10.1111/nph.12847>, 2014.

- 470 De Kauwe, M. G., Medlyn, B. E., Ukkola, A. M., Mu, M., Sabot, M. E. B., Pitman, A. J., Meir, P., Cernusak, L. A., Rifai, S. W., Choat, B., Tissue, D. T., Blackman, C. J., Li, X., Roderick, M., and Briggs, P. R.: Identifying Areas at Risk of Drought-induced Tree Mortality across South-Eastern Australia, 26, 5716–5733, <https://doi.org/10.1111/gcb.15215>, 2020.
- DiMiceli, C., Carroll, R., Sohlberg, D., Kim, M., and Townshend, J.: MOD44B MODIS/Terra Vegetation Continuous Fields Yearly L3 Global 250m SIN Grid V006, <https://doi.org/10.5067/MODIS/MOD44B.006>, 2017.
- 475 Donohue, R. J., McVICAR, T. R., and Roderick, M. L.: Climate-Related Trends in Australian Vegetation Cover as Inferred from Satellite Observations, 1981-2006, 15, 1025–1039, <https://doi.org/10.1111/j.1365-2486.2008.01746.x>, 2009.
- Donohue, R. J., Roderick, M. L., McVicar, T. R., and Farquhar, G. D.: Impact of CO<sub>2</sub> Fertilization on Maximum Foliage Cover across the Globe's Warm, Arid Environments: CO<sub>2</sub> FERTILIZATION AND FOLIAGE COVER, 40, 3031–3035, <https://doi.org/10.1002/grl.50563>, 2013.
- 480 Donohue, R. J., Roderick, M. L., McVicar, T. R., and Yang, Y.: A Simple Hypothesis of How Leaf and Canopy-Level Transpiration and Assimilation Respond to Elevated CO<sub>2</sub> Reveals Distinct Response Patterns between Disturbed and Undisturbed Vegetation: VEGETATION RESPONSES TO ELEVATED CO<sub>2</sub>, 122, 168–184, <https://doi.org/10.1002/2016JG003505>, 2017.
- Dowle, M. and Srinivasan, A.: Data.Table: Extension of 'data.Frame', 2019.
- Drake, B. G., González-Meler, M. A., and Long, S. P.: MORE EFFICIENT PLANTS: A Consequence of Rising Atmospheric CO<sub>2</sub>?, 48, 485 609–639, <https://doi.org/10.1146/annurev.arplant.48.1.609>, 1997.
- Drake, J. E., Macdonald, C. A., Tjoelker, M. G., Crous, K. Y., Gimeno, T. E., Singh, B. K., Reich, P. B., Anderson, I. C., and Ellsworth, D. S.: Short-Term Carbon Cycling Responses of a Mature Eucalypt Woodland to Gradual Stepwise Enrichment of Atmospheric CO<sub>2</sub> Concentration, 22, 380–390, <https://doi.org/10.1111/gcb.13109>, 2016.
- Evans, M. C.: Deforestation in Australia: Drivers, Trends and Policy Responses, 22, 130, <https://doi.org/10.1071/PC15052>, 2016.
- 490 Frankenberg, C., Yin, Y., Byrne, B., He, L., and Gentine, P.: COMMENT ON“RECENT GLOBAL DECLINE OF CO<sub>2</sub> FERTILIZATION EFFECTS ON VEGETATION PHOTOSYNTHESIS”, <https://eartharxiv.org/repository/view/2022/>, 2021a.
- Frankenberg, C., Yin, Y., Byrne, B., He, L., and Gentine, P.: Comment on “Recent Global Decline of CO<sub>2</sub> Fertilization Effects on Vegetation Photosynthesis”, 373, eabg2947, <https://doi.org/10.1126/science.abg2947>, 2021b.
- Giglio, L., Boschetti, L., Roy, D. P., Humber, M. L., and Justice, C. O.: The Collection 6 MODIS Burned Area Mapping Algorithm and 495 Product, 217, 72–85, <https://doi.org/10.1016/j.rse.2018.08.005>, 2018.
- Gill, T., Johansen, K., Phinn, S., Trevithick, R., Scarth, P., and Armston, J.: A Method for Mapping Australian Woody Vegetation Cover by Linking Continental-Scale Field Data and Long-Term Landsat Time Series, 38, 679–705, <https://doi.org/10.1080/01431161.2016.1266112>, 2017.
- Gorelick, N., Hancher, M., Dixon, M., Ilyushchenko, S., Thau, D., and Moore, R.: Google Earth Engine: Planetary-Scale Geospatial Analysis 500 for Everyone, <https://doi.org/10.1016/j.rse.2017.06.031>, 2017.
- Greve, P., Roderick, M. L., Ukkola, A. M., and Wada, Y.: The Aridity Index under Global Warming, 14, 124006, <https://doi.org/10.1088/1748-9326/ab5046>, 2019.
- Hansen, M. C., Potapov, P. V., Moore, R., Hancher, M., Turubanova, S. A., Tyukavina, A., Thau, D., Stehman, S. V., Goetz, S. J., Loveland, T. R., Kommareddy, A., Egorov, A., Chini, L., Justice, C. O., and Townshend, J. R. G.: High-Resolution Global Maps of 21st-Century 505 Forest Cover Change, 342, 850–853, <https://doi.org/10.1126/science.1244693>, 2013.

- Harris, I., Jones, P., Osborn, T., and Lister, D.: Updated High-Resolution Grids of Monthly Climatic Observations - the CRU TS3.10 Dataset: UPDATED HIGH-RESOLUTION GRIDS OF MONTHLY CLIMATIC OBSERVATIONS, 34, 623–642, <https://doi.org/10.1002/joc.3711>, 2014.
- Harris, R. M. B., Beaumont, L. J., Vance, T. R., Tozer, C. R., Remenyi, T. A., Perkins-Kirkpatrick, S. E., Mitchell, P. J., Nicotra, A. B.,  
510 McGregor, S., Andrew, N. R., Letnic, M., Kearney, M. R., Wernberg, T., Hutley, L. B., Chambers, L. E., Fletcher, M.-S., Keatley, M. R.,  
Woodward, C. A., Williamson, G., Duke, N. C., and Bowman, D. M. J. S.: Biological Responses to the Press and Pulse of Climate Trends  
and Extreme Events, 8, 579–587, <https://doi.org/10.1038/s41558-018-0187-9>, 2018.
- Hasegawa, S., Macdonald, C. A., and Power, S. A.: Elevated Carbon Dioxide Increases Soil Nitrogen and Phosphorus Availability in a  
Phosphorus-Limited *Eucalyptus* Woodland, 22, 1628–1643, <https://doi.org/10.1111/gcb.13147>, 2016.
- 515 Hattersley, P. W.: The Distribution of C3 and C4 Grasses in Australia in Relation to Climate, 57, 113–128,  
<https://doi.org/10.1007/BF00379569>, 1983.
- Ji, L. and Brown, J. F.: Effect of NOAA Satellite Orbital Drift on AVHRR-Derived Phenological Metrics, 62, 215–223,  
<https://doi.org/10.1016/j.jag.2017.06.013>, 2017.
- Jiang, M., Caldararu, S., Zhang, H., Fleischer, K., Crous, K. Y., Yang, J., De Kauwe, M. G., Ellsworth, D. S., Reich, P. B., Tissue, D. T.,  
520 Zaehle, S., and Medlyn, B. E.: Low Phosphorus Supply Constrains Plant Responses to Elevated CO<sub>2</sub>: A Meta-analysis, 26, 5856–5873,  
<https://doi.org/10.1111/gcb.15277>, 2020a.
- Jiang, M., Medlyn, B. E., Drake, J. E., Duursma, R. A., Anderson, I. C., Barton, C. V. M., Boer, M. M., Carrillo, Y., Castañeda Gómez,  
L., Collins, L., Crous, K. Y., De Kauwe, M. G., dos Santos, B. M., Emmerson, K. M., Facey, S. L., Gherlenda, A. N., Gimeno, T. E.,  
Hasegawa, S., Johnson, S. N., Kännaste, A., Macdonald, C. A., Mahmud, K., Moore, B. D., Nazaries, L., Neilson, E. H. J., Nielsen,  
525 U. N., Niinemets, U., Noh, N. J., Ochoa-Hueso, R., Pathare, V. S., Pendall, E., Pihlblad, J., Piñeiro, J., Powell, J. R., Power, S. A., Reich,  
P. B., Renchon, A. A., Riegler, M., Rinnan, R., Rymer, P. D., Salomón, R. L., Singh, B. K., Smith, B., Tjoelker, M. G., Walker, J. K. M.,  
Wujeska-Klaue, A., Yang, J., Zaehle, S., and Ellsworth, D. S.: The Fate of Carbon in a Mature Forest under Carbon Dioxide Enrichment,  
580, 227–231, <https://doi.org/10.1038/s41586-020-2128-9>, 2020b.
- Jones, D., Wang, W., and Fawcett, R.: High-Quality Spatial Climate Data-Sets for Australia, 58, 233–248, 2009.
- 530 King, A. D., Pitman, A. J., Henley, B. J., Ukkola, A. M., and Brown, J. R.: The Role of Climate Variability in Australian Drought, 10,  
177–179, <https://doi.org/10.1038/s41558-020-0718-z>, 2020.
- Knapp, A. K., Chen, A., Griffin-Nolan, R. J., Baur, L. E., Carroll, C. J., Gray, J. E., Hoffman, A. M., Li, X., Post, A. K., Slette, I. J., Collins,  
S. L., Luo, Y., and Smith, M. D.: Resolving the Dust Bowl Paradox of Grassland Responses to Extreme Drought, 117, 22 249–22 255,  
<https://doi.org/10.1073/pnas.1922030117>, 2020.
- 535 Liao, Z., Van Dijk, A. I. J. M., He, B., Larraondo, P. R., and Scarth, P. F.: Woody Vegetation Cover, Height and Biomass at 25-m Resolution  
across Australia Derived from Multiple Site, Airborne and Satellite Observations, 93, 102 209, <https://doi.org/10.1016/j.jag.2020.102209>,  
2020.
- McAlpine, C. A., Etter, A., Fearnside, P. M., Seabrook, L., and Laurance, W. F.: Increasing World Consumption of Beef as a Driver of  
Regional and Global Change: A Call for Policy Action Based on Evidence from Queensland (Australia), Colombia and Brazil, 19, 21–33,  
540 <https://doi.org/10.1016/j.gloenvcha.2008.10.008>, 2009.
- McMurtrie, R. E., Norby, R. J., Medlyn, B. E., Dewar, R. C., Pepper, D. A., Reich, P. B., Barton, C. V. M., McMurtrie, R. E., Norby,  
R. J., Medlyn, B. E., Dewar, R. C., Pepper, D. A., Reich, P. B., and Barton, C. V. M.: Why Is Plant-Growth Response to Elevated

- CO<sub>2</sub> Amplified When Water Is Limiting, but Reduced When Nitrogen Is Limiting? A Growth-Optimisation Hypothesis, 35, 521–534, <https://doi.org/10.1071/FP08128>, 2008.
- 545 Medlyn, B. E., Barton, C. V. M., Broadmeadow, M. S. J., Ceulemans, R., Angelis, P. D., Forstreuter, M., Freeman, M., Jackson, S. B., Kellomäki, S., Laitat, E., Rey, A., Roberntz, P., Sigurdsson, B. D., Strassmeyer, J., Wang, K., Curtis, P. S., and Jarvis, P. G.: Stomatal Conductance of Forest Species after Long-Term Exposure to Elevated CO<sub>2</sub> Concentration: A Synthesis, 149, 247–264, <https://doi.org/10.1046/j.1469-8137.2001.00028.x>, 2001.
- Medlyn, B. E., Duursma, R. A., Eamus, D., Ellsworth, D. S., Prentice, I. C., Barton, C. V. M., Crous, K. Y., De Angelis, P., Freeman, M.,  
550 and Wingate, L.: Reconciling the Optimal and Empirical Approaches to Modelling Stomatal Conductance: RECONCILING OPTIMAL AND EMPIRICAL STOMATAL MODELS, 17, 2134–2144, <https://doi.org/10.1111/j.1365-2486.2010.02375.x>, 2011.
- Medlyn, B. E., Kauwe, M. G. D., Zaehle, S., Walker, A. P., Duursma, R. A., Luus, K., Mishurov, M., Pak, B., Smith, B., Wang, Y.-P., Yang, X., Crous, K. Y., Drake, J. E., Gimeno, T. E., Macdonald, C. A., Norby, R. J., Power, S. A., Tjoelker, M. G., and Ellsworth, D. S.: Using Models to Guide Field Experiments: A Priori Predictions for the CO<sub>2</sub> Response of a Nutrient- and Water-Limited Native Eucalypt  
555 Woodland, 22, 2834–2851, <https://doi.org/10.1111/gcb.13268>, 2016.
- Milly, P. C. D. and Dunne, K. A.: Potential Evapotranspiration and Continental Drying, 6, 946–949, <https://doi.org/10.1038/nclimate3046>, 2016.
- Moore, C. E., Brown, T., Keenan, T. F., Duursma, R. A., van Dijk, A. I. J. M., Beringer, J., Culvenor, D., Evans, B., Huete, A., Hutley, L. B., Maier, S., Restrepo-Coupe, N., Sonnentag, O., Specht, A., Taylor, J. R., van Gorsel, E., and Liddell, M. J.: Reviews and Syn-  
560 theses: Australian Vegetation Phenology: New Insights from Satellite Remote Sensing and Digital Repeat Photography, 13, 5085–5102, <https://doi.org/10.5194/bg-13-5085-2016>, 2016.
- Morison, J. I. L.: Sensitivity of Stomata and Water Use Efficiency to High CO<sub>2</sub>, 8, 467–474, <https://doi.org/10.1111/j.1365-3040.1985.tb01682.x>, 1985.
- Murphy, B. P. and Bowman, D. M. J. S.: Seasonal Water Availability Predicts the Relative Abundance of C<sub>3</sub> and C<sub>4</sub> Grasses in Australia,  
565 16, 160–169, <https://doi.org/10.1111/j.1466-8238.2006.00285.x>, 2007.
- Nolan, R. H., Boer, M. M., Collins, L., de Dios, V. R., Clarke, H., Jenkins, M., Kenny, B., and Bradstock, R. A.: Causes and Consequences of Eastern Australia's 2019–20 Season of Mega-Fires, 26, 1039–1041, <https://doi.org/10.1111/gcb.14987>, 2020.
- Padfield, D. and Matheson, G.: Nls.Multstart: Robust Non-Linear Regression Using AIC Scores, 2020.
- Pebesma, E.: Stars: Spatiotemporal Arrays, Raster and Vector Data Cubes, 2020.
- 570 Perkins, S. E., Alexander, L. V., and Nairn, J. R.: Increasing Frequency, Intensity and Duration of Observed Global Heatwaves and Warm Spells, 39, <https://doi.org/10.1029/2012GL053361>, 2012.
- Peters, J. M. R., López, R., Nolf, M., Hutley, L. B., Wardlaw, T., Cernusak, L. A., and Choat, B.: Living on the Edge: A Continental-Scale Assessment of Forest Vulnerability to Drought, 27, 3620–3641, <https://doi.org/10.1111/gcb.15641>, 2021.
- Poulter, B., Frank, D., Ciais, P., Myneni, R. B., Andela, N., Bi, J., Broquet, G., Canadell, J. G., Chevallier, F., Liu, Y. Y., Running, S. W.,  
575 Sitch, S., and van der Werf, G. R.: Contribution of Semi-Arid Ecosystems to Interannual Variability of the Global Carbon Cycle, 509, 600–603, <https://doi.org/10.1038/nature13376>, 2014.
- Raupach, M.: Equilibrium Evaporation and the Convective Boundary Layer, 96, 107–142, 2000.
- Seabrook, L., McAlpine, C., and Fensham, R.: Cattle, Crops and Clearing: Regional Drivers of Landscape Change in the Brigalow Belt, Queensland, Australia, 1840–2004, 78, 373–385, <https://doi.org/10.1016/j.landurbplan.2005.11.007>.

- 580 Sexton, J. O., Song, X.-P., Feng, M., Noojipady, P., Anand, A., Huang, C., Kim, D.-H., Collins, K. M., Channan, S., DiMiceli, C., and  
Townshend, J. R.: Global, 30-m Resolution Continuous Fields of Tree Cover: Landsat-Based Rescaling of MODIS Vegetation Continuous  
Fields with Lidar-Based Estimates of Error, 6, 427–448, <https://doi.org/10.1080/17538947.2013.786146>, 2013.
- Smith, S. D., Charlet, T. N., Zitzer, S. F., Abella, S. R., Vanier, C. H., and Huxman, T. E.: Long-Term Response of a Mojave Desert Winter Annual  
Plant Community to a Whole-Ecosystem Atmospheric CO<sub>2</sub> Manipulation (FACE), 20, 879–892, <https://doi.org/10.1111/gcb.12411>,  
585 2014.
- Specht, R.: Water Use by Perennial Evergreen Plant Communities in Australia and Papua New Guinea, 20, 273,  
<https://doi.org/10.1071/BT9720273>, 1972.
- Teckentrup, L., De Kauwe, M. G., Pitman, A. J., Goll, D., Haverd, V., Jain, A. K., Joetzjer, E., Kato, E., Lienert, S., Lombardozzi, D.,  
McGuire, P. C., Melton, J. R., Nabel, J. E. M. S., Pongratz, J., Sitch, S., Walker, A. P., and Zaehle, S.: Assessing the Representation of the  
590 Australian Carbon Cycle in Global Vegetation Models, pp. 1–47, <https://doi.org/10.5194/bg-2021-66>, 2021.
- Trancoso, R., Larsen, J. R., McVicar, T. R., Phinn, S. R., and McAlpine, C. A.: CO<sub>2</sub>-vegetation Feedbacks and Other Climate Changes  
Implicated in Reducing Base Flow, 44, 2310–2318, <https://doi.org/10.1002/2017GL072759>, 2017.
- Ukkola, A. M., Prentice, I. C., Keenan, T. F., van Dijk, A. I. J. M., Viney, N. R., Myneni, R. B., and Bi, J.: Reduced Streamflow in Water-  
Stressed Climates Consistent with CO<sub>2</sub> Effects on Vegetation, 6, 75–78, <https://doi.org/10.1038/nclimate2831>, 2016.
- 595 Ukkola, A. M., Roderick, M. L., Barker, A., and Pitman, A. J.: Exploring the Stationarity of Australian Temperature, Precipitation and Pan  
Evaporation Records over the Last Century, 14, 124035, <https://doi.org/10.1088/1748-9326/ab545c>, 2019.
- van Dijk, A. I. J. M., Beck, H. E., Crosbie, R. S., de Jeu, R. A. M., Liu, Y. Y., Podger, G. M., Timbal, B., and Viney, N. R.: The Millennium  
Drought in Southeast Australia (2001-2009): Natural and Human Causes and Implications for Water Resources, Ecosystems, Economy,  
and Society: CAUSES AND IMPACTS OF AUSTRALIA'S RECORD DROUGHT, 49, 1040–1057, <https://doi.org/10.1002/wrcr.20123>,  
600 2013.
- Venables, W. N. and Ripley, B. D.: Modern Applied Statistics with S, Springer, fourth edn., <http://www.stats.ox.ac.uk/pub/MASS4>, 2002.
- Vermote, E. and NOAA CDR Program: NOAA Climate Data Record (CDR) of AVHRR Surface Reflectance, Version 5,  
<https://doi.org/10.7289/V53776Z4>, 2018.
- Walker, A. P., De Kauwe, M. G., Bastos, A., Belmecheri, S., Georgiou, K., Keeling, R. F., McMahon, S. M., Medlyn, B. E., Moore, D.  
605 J. P., Norby, R. J., Zaehle, S., Anderson-Teixeira, K. J., Battipaglia, G., Brienen, R. J. W., Cabugao, K. G., Cailleret, M., Campbell, E.,  
Canadell, J. G., Ciais, P., Craig, M. E., Ellsworth, D. S., Farquhar, G. D., Fatichi, S., Fisher, J. B., Frank, D. C., Graven, H., Gu, L.,  
Haverd, V., Heilman, K., Heimann, M., Hungate, B. A., Iversen, C. M., Joos, F., Jiang, M., Keenan, T. F., Knauer, J., Körner, C., Leshyk,  
V. O., Leuzinger, S., Liu, Y., MacBean, N., Malhi, Y., McVicar, T. R., Penuelas, J., Pongratz, J., Powell, A. S., Riutta, T., Sabot, M. E. B.,  
Schleucher, J., Sitch, S., Smith, W. K., Sulman, B., Taylor, B., Terrer, C., Torn, M. S., Treseder, K. K., Trugman, A. T., Trumbore, S. E.,  
610 Mantgem, P. J., Voelker, S. L., Whelan, M. E., and Zuidema, P. A.: Integrating the Evidence for a Terrestrial Carbon Sink Caused by  
Increasing Atmospheric CO<sub>2</sub>, p. nph.16866, <https://doi.org/10.1111/nph.16866>, 2020.
- Wang, S., Zhang, Y., Ju, W., Chen, J. M., Ciais, P., Cescatti, A., Sardans, J., Janssens, I. A., Wu, M., Berry, J. A., Campbell, E., Fernández-  
Martínez, M., Alkama, R., Sitch, S., Friedlingstein, P., Smith, W. K., Yuan, W., He, W., Lombardozzi, D., Kautz, M., Zhu, D., Lienert,  
S., Kato, E., Poulter, B., Sanders, T. G. M., Krüger, I., Wang, R., Zeng, N., Tian, H., Vuichard, N., Jain, A. K., Wiltshire, A., Haverd,  
615 V., Goll, D. S., and Peñuelas, J.: Recent Global Decline of CO<sub>2</sub> Fertilization Effects on Vegetation Photosynthesis, 370, 1295–1300,  
<https://doi.org/10.1126/science.abb7772>, 2020.

- Winkler, A. J., Myneni, R. B., Hannart, A., Sitch, S., Haverd, V., Lombardozzi, D., Arora, V. K., Pongratz, J., Nabel, J. E. M. S., Goll, D. S., Kato, E., Tian, H., Arneth, A., Friedlingstein, P., Jain, A. K., Zaehle, S., and Brovkin, V.: Slowdown of the Greening Trend in Natural Vegetation with Further Rise in Atmospheric CO<sub>2</sub>, 18, 4985–5010, <https://doi.org/10.5194/bg-18-4985-2021>, 2021.
- 620 Wong, S.-C., Cowan, I. R., and Farquhar, G. D.: Leaf Conductance in Relation to Rate of CO<sub>2</sub> Assimilation: I. Influence of Nitrogen Nutrition, Phosphorus Nutrition, Photon Flux Density, and Ambient Partial Pressure of CO<sub>2</sub> during Ontogeny, 78, 821–825, <https://doi.org/10.1104/pp.78.4.821>, 1985.
- Wood, S. N.: Generalized Additive Models: An Introduction with R, Chapman and Hall/CRC, 2 edn., 2017.
- World Meteorological Organization: WMO Guidelines on the Calculation of Climate Normals, [https://library.wmo.int/doc\\_num.php?explnum\\_id=4166](https://library.wmo.int/doc_num.php?explnum_id=4166), 2017.
- 625 Yang, J., Medlyn, B. E., De Kauwe, M. G., and Duursma, R. A.: Applying the Concept of Ecohydrological Equilibrium to Predict Steady State Leaf Area Index, 10, 1740–1758, <https://doi.org/10.1029/2017MS001169>, 2018.
- Zhu, Z., Piao, S., Myneni, R. B., Huang, M., Zeng, Z., Canadell, J. G., Ciais, P., Sitch, S., Friedlingstein, P., Arneth, A., Cao, C., Cheng, L., Kato, E., Koven, C., Li, Y., Lian, X., Liu, Y., Liu, R., Mao, J., Pan, Y., Peng, S., Peñuelas, J., Poulter, B., Pugh, T. A. M., Stocker, 630 B. D., Viovy, N., Wang, X., Wang, Y., Xiao, Z., Yang, H., Zaehle, S., and Zeng, N.: Greening of the Earth and Its Drivers, 6, 791–795, <https://doi.org/10.1038/nclimate3004>, 2016.
- Zhu, Z., Zeng, H., Myneni, R. B., Chen, C., Zhao, Q., Zha, J., Zhan, S., and MacLachlan, I.: Comment on “Recent Global Decline of CO<sub>2</sub> Fertilization Effects on Vegetation Photosynthesis”, 373, eabg5673, <https://doi.org/10.1126/science.abg5673>, 2021.