

# Cutting peatland CO<sub>2</sub> emissions with ~~rewetting measures~~water management practices

Jim Boonman<sup>1</sup>, Mariet M. Hefting<sup>2</sup>, Corine J. A. van Huissteden<sup>1</sup>, Merit van den Berg<sup>1</sup>, ~~Jakobus~~Jacobus (Ko) van Huissteden<sup>1</sup>, Gilles Erkens<sup>3,4</sup>, Roel Melman<sup>4</sup>, Ype van der Velde<sup>1</sup>

<sup>1</sup>Earth Sciences, Vrije Universiteit Amsterdam, Amsterdam, 1081 HV, The Netherlands

<sup>2</sup>Institute of Environmental Biology, Utrecht University, Utrecht, 3508 TB, The Netherlands

<sup>3</sup>Department of Physical Geography, Utrecht University, Utrecht, 3508 TC, The Netherlands.

<sup>4</sup>Deltares Research Institute, Utrecht, 3584 BK, the Netherlands

Correspondence to: Jim Boonman (j.boonman@vu.nl)

- 10 **Abstract.** Peat decomposition in managed peatlands is responsible for a decrease of 0.52 GtC yr<sup>-1</sup> in global carbon stock and is strongly linked to drainage to improve the agricultural bearing capacity, which increases aeration of the soil. Microbial aerobic decomposition is responsible for the bulk of the net CO<sub>2</sub> emission from the soil and could be reduced by wetting efforts or minimizing drainage. However, the effects of rewetting efforts on microbial respiration rate are largely unknown. ~~We~~In this study, we aimed to obtain more ~~insight~~process-based understanding in these rewetting effects on peat decomposition by
- 15 integrating high quality field measurements and measured them literature relationships with an advanced hydrological modelling approach where soil moisture and temperature are centralized as the main drivers for ~~1-year~~peat decomposition. In 2020 and 2021, two dairy farming peatlands, where ~~submerged drainage subsurface~~subsoil irrigation (~~SDSI~~and drainage (~~SSI~~) was tested against a control situation. ~~With a modelling approach, we~~ were continuously monitored for CO<sub>2</sub> fluxes, groundwater table, soil moisture and soil temperature. After successfully representing field hydrology and carbon dynamic
- 20 measurements within our process-based model, we further explored the effects of rewetting under different weather conditions, water management strategies (raising ditch water levels and ~~SDSI~~SSI) and hydrological seepage settings. ~~We~~To represent peat carbon dynamics we introduced a methodology to estimate potential aerobic microbial respiration rate ~~as a measure for peat decomposition in managed peatlands~~, based on potential respiration rate curves for soil temperature and water filled pore space (WFPS). ~~Rewetting~~Measurements show that rewetting with ~~SDSI~~SSI resulted in higher summer groundwater levels, soil
- 25 temperatures and WFPS. ~~SDSI~~SSI reduced the net ecosystem ~~production (NEP)~~carbon balance (NECB) with 1. ~~2758 ± 0.3956~~ kg CO<sub>2</sub> m<sup>-2</sup> yr<sup>-1</sup> (83% ± 25%) and 0. ~~7866 ± 0.3762~~ kg CO<sub>2</sub> m<sup>-2</sup> yr<sup>-1</sup> (~~3528% ± 15%~~) for Assendelft and Vlist respectively. ~~With the process-based modelling approach we found in 2020~~, SSI had a neglectable effect in 2021 for both research locations, due to more precipitation, lower temperatures and different SSI management (in Assendelft) as compared to 2020. Simulated rewetting effects were in agreement with measured rewetting effects. Model simulations indicate that raising ditch water levels
- 30 always reduces peat respiration rates. Furthermore, we found that the application of ~~SDSI~~SSI reduces yearly peat respiration rates in environments in a dry year and/or with downward hydrological fluxes, and increases peat respiration rates in a wet year and/or when upward groundwater ~~fluxes are~~seepage is present. Moreover, combining ~~SDSI~~SSI with high ditch water

levels or pressurizing ~~SDSIS~~ systems will further reduce peat respiration rates. ~~We highly recommend to use a~~ ~~We show that~~ ~~our~~ process-based approach based on temperature and WFPS soil conditions to determine ~~effectivities of rewetting efforts~~ ~~over~~NECB represents observed variance to a greater extent than empirical relationships ~~between~~that involve average groundwater level ~~and~~ ~~NEP~~. Such a ~~more process-based~~ ~~observations or simulations~~. Therefore, we recommend to use this kind of approach ~~allows to distinguish between groundwater levels raised by SDSI and ditch water levels~~to estimate the effectiveness of rewetting. When this is not possible, we recommend using mean summer groundwater level instead of mean annual groundwater level as a proxy to estimate ~~NEP~~NECB. Such relations between mean groundwater levels and ~~NEP~~ needNECB are prone to ~~be corrected~~underestimating NECB for situations with SDSIS parcels.

## 1 Introduction

As a result of thousands of years of accumulation of organic material under waterlogged anoxic conditions, peat soils have formed extensively since the Last Glacial Maximum (Yu et al., 2010). Peat soils are an important carbon stock in the global carbon cycle. Despite their relatively small global surface area of 3% (Yu et al., 2010; Leifeld & Menichetti, 2018; Friedlingstein et al., 2019), peat soils contain 600 GtC of carbon, equivalent to two third of the atmospheric carbon (Leifeld & Menichetti, 2018). Reclamation of the peatlands for forestry and agriculture, and mining peatlands for potting soil and fuel is responsible for a significant contribution to global warming. Currently, ~~13.1~~ % of the global peat surface area is decomposing which is responsible for an estimated annual decrease of 0.52 GtC in global carbon stock (Leifeld & Menichetti, 2018).

Peat decomposition in managed peatlands is strongly linked to drainage, often for agricultural purposes (e.g. Erkens et al., 2016; Tiemeyer et al., 2020; Evans et al., 2021). Drainage, both by ditching and subsurface ~~tube~~ drain pipes, is a necessity to create the bearing capacity for cattle and agricultural machines (Erkens et al., 2016). However, lowering groundwater levels increases the oxygen intrusion into the soil. Especially during dry summer periods, groundwater levels often drop to 0.80 m below the surface or more (e.g. Querner et al., 2012). Aerobic soil conditions that arise with increased oxygen intrusion stimulate microbial decomposition ~~of peat~~, a process which is responsible for the bulk of ~~net~~ emission of CO<sub>2</sub> from the soil ~~(old carbon material)~~ and land subsidence (Dolman et al., 2019 p. 250; Tiemeyer et al., 2020). The obvious approach to reduce microbial peat decomposition is to minimize oxygen intrusion during the summer period. Raising the surface water levels during summer and the application of submerged drain subsurface irrigation systems (~~SDSIS~~ ~~see below~~) target to decrease the thickness of the unsaturated zone and the active period for aerobic microbial decomposition. At the same time, ~~SDSIS~~ functions as a drainage system when high groundwater tables occur, which causes dry enough conditions for agricultural practice in early spring (Kechavarzi et al., 2007; Querner et al., 2012; Weideveld et al., 2021).

Field research has shown that peatland groundwater level can be used as a proxy for ecosystem respiration and ~~net~~ CO<sub>2</sub> fluxes (Fritz et al., 2017; Tiemeyer et al., 2020; Evans et al., 2021). However, some studies report dissonant results for particular field sites in which groundwater levels do not explain measured CO<sub>2</sub> fluxes, possibly due to peat decomposition being moisture limited due to extreme drought (Parmentier et al., 2009; Tiemeyer et al., 2016; Sieber et al., 2021). Within the unsaturated soil soil temperature and moisture, often defined as water filled pore space (WFPS), are the main physical drivers of aerobic

Formatted: Font: +Body (Times New Roman)

Formatted: Font: +Body (Times New Roman)

Formatted: Font: +Body (Times New Roman)

Formatted: Font: +Body (Times New Roman)

Formatted: Font: +Body (Times New Roman)

Formatted: Font: +Body (Times New Roman)

Formatted: Font: +Body (Times New Roman)

Formatted: Font: +Body (Times New Roman)

Formatted: Font: +Body (Times New Roman)

Formatted: Font: +Body (Times New Roman)

Formatted: Font: +Body (Times New Roman)

Formatted: Font: +Body (Times New Roman)

Formatted: Font: +Body (Times New Roman)

Formatted: Font: +Body (Times New Roman)

Formatted: Font: +Body (Times New Roman)

Formatted: Font: +Body (Times New Roman)

Formatted: Font: +Body (Times New Roman)

Formatted: Font: +Body (Times New Roman)

Formatted: Font: +Body (Times New Roman)

Formatted: Font: +Body (Times New Roman)

Formatted: Font: +Body (Times New Roman)

microbial respiration rate (Mäkiranta et al., 2009; Kechavarzi et al., 2010; Moyano et al., 2013; Bader et al., 2018). Aerobic microbial respiration rate is enhanced (often exponentially) as the soil temperature increases. When the WFPS decreases, the soil becomes aerated and potential microbial respiration rate increases. However, when the WFPS reduces further, microbial growth decreases due to lack of water as a solute exchange medium and a higher energy investment to obtain osmotic equilibrium (Moyano et al., 2013). CO<sub>2</sub> emission peaks of aerobic microbial respiration rate in peat have been established between 56-92% WFPS (Säurich et al., 2019).

Field measurements in agricultural peat meadows have shown that high surface ~~water~~-(ditch) ~~water~~ levels alone will not be able to support high groundwater levels in the ~~center~~centre of the peat meadows during summer (Hooghoudt, 1936; Jansen et al., 2007; Kechavarzi et al., 2007). This is attributed to the high evaporation and infiltration fluxes and the low horizontal conductivity of the peat soil. ~~In the SWAMPS project~~Therefore, (Sieber et al., 2021), ~~it has been~~ argued that increases in ditch water levels do not necessarily lead to lower CO<sub>2</sub> emissions. However, there are also studies that describe a strong dependency of land subsidence (as measure for peat decomposition) on ditch water level (van den Akker et al., 2008).

~~Submerged drain subsurface~~Subsoil irrigation (~~SDSI and drainage (SSI)~~) has been introduced as a management measure to reduce groundwater table fluctuations and concomitantly reduce peat oxidation rates (Best & Jacobs, 1997; Kechavarzi et al., 2007). However, the effects of ~~SDSI~~SSI on peat decomposition have not thoroughly been researched. Field measurements on the application of ~~SDSI~~SSI systems have shown land subsidence reductions (as measure for peat decomposition reduction) by 50% (van den Akker et al., 2008), but in some cases no effects in net ecosystem ~~production (NEP)~~carbon balance (NECB) could be discovered (Weideveld et al., 2021), or effects differed strongly with reductions or increases in CO<sub>2</sub> emission from year to year (Sieber et al., 2021). ~~SDSI~~SSI consists of regularly spaced (4–10 m) submerged drain tubes in the soil at 0.4–0.7 m depth connected to a (surface) water system. During dry periods with high evapotranspiration fluxes, the tubes supply water into the soil. During periods with water excess, the drain tubes discharge water out of the soil. ~~SDSI~~SSI thus overcomes the problem of limited control of the surface water system on the meadow groundwater levels and strongly limits yearly groundwater level fluctuations. ~~However, SDSI infiltration of warm surface waters can potentially induce adverse effects. For example, SDSI is prone to creating a zone with constant optimal soil moisture conditions close to the warm surface. In theory, SDSI can thus also increase microbial respiration rate. In the study of Weideveld et al., 2021 the upper soil zone (60 cm), that remained unsaturated after SDSI was applied, was suspected to be responsible for the bulk of respiration as compared to the deeper soil layers that were saturated by SDSI. It is therefore that the authors think that SDSI had no or little effect on peat respiration. This~~However, SSI infiltration of warm surface waters can potentially induce adverse effects. SSI could create a zone with constant optimal soil moisture conditions close to the warm surface. In theory, SSI can thus also increase microbial respiration rate. The divergence in observed effectivity estimations of rewetting measures indicates that a better process understanding is needed to assess the effectiveness of different water management strategies to reduce greenhouse gas (GHG) emissions for various peat types, landscape settings and climate conditions.

100 Models are important tools to assess nationwide GHG emissions from peat areas (IPCC, 2014). The most elemental GHG-model is based on land use and climate specific emission factors to calculate nation-wide GHG-emissions, like the tier 1 IPCC approach (IPCC, 2014). Within more complex methods, emission factors are related to long term average groundwater levels (tier 2) (Bechtold et al., 2014; Arets et al., 2020; Tiemeyer et al., 2020) or are derived from elaborate approaches that involve comprehensive understanding and validated representations of carbon dynamics using field measurements and modelling (tier 3) (IPCC, 2014). The latter approach is not yet used on country-scale (e.g. Arets et al., 2020; Tiemeyer et al., 2020) and most recent studies advocate to use “water table depth–peat decomposition” relationships for nationwide GHG emissions. However, studies that have assessed such relationships did not involve sites with ~~SDSI groundwater table manipulation. In this study we aim to find the effectivity (in terms of reducing peat decomposition) of water management strategies (raising ditch water level and the application of SDSI) for different hydrological environments and different meteorological conditions. We present detailed measurements for 1 year of in-situ CO<sub>2</sub> fluxes for 2 pilot sites in the Netherlands, each site including a meadow with and without SDSI. Additionally, we modelled the groundwater flow for these sites and derived an estimated potential microbial respiration rate from the simulated unsaturated soil temperature and WFPS: two main drivers of peat decomposition. This allowed us to use the model to cautiously explore and identify the hydrological and climatic conditions at which peat decomposition can be reduced by surface water levels manipulation and/or installing SDSI. SSI groundwater table manipulation.~~

In this study, we aim to improve understanding of peatland water management effects on peat decomposition by: (1) determining if peat decomposition estimates can be improved with process-based modelling compared to groundwater table based relations, (2) quantifying the effectiveness of SSI in various conditions and (3) resolving which important physical soil processes are introduced by SSI, and how these impact the effectivity of the measure. To achieve this, we integrate literature relationships between aerobic peat respiration rate and soil moisture/temperature with high quality field measurements into a process-based advanced groundwater flow, soil moisture and soil temperature model. By introducing this novel methodology in which soil temperature and moisture are central, we were able to assess the year-round effects of SSI and ditch water level elevation on aerobic peat respiration. Hereby we included five seepage scenarios to represent spatial site variations, and two meteorological scenarios that represent temporal variation. To support/examine model outcomes, we compared our model estimations with detailed measurements for almost 2 years of in-situ CO<sub>2</sub> fluxes, soil temperature, soil moisture and ground water table height for two pilot sites in the Netherlands, each site including a meadow with and without SSI.

## 2 Methodology

130 Here we present the measurement setup belonging to the first year of measurements of a national monitoring effort to quantify the effects of ~~SDSI~~ SSI systems on groundwater level, soil temperature, WFPS and carbon emissions of peat meadows used for dairy farming. A cross-sectional 2D hydrological model and the concept of “potential microbial respiration rate” are introduced to simulate the field sites and explore the expected effectivity of ~~SDSI~~ SSI and raising surface water levels under

Formatted: Font: Times New Roman

different meteorology, and regional hydrological seepage settings. This model setup was validated on the available measurements (Fig. 1).

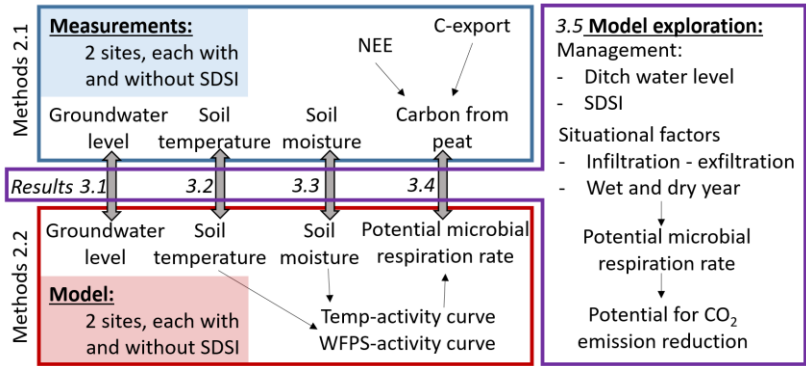


Figure 1 – An overview of the research methodology.

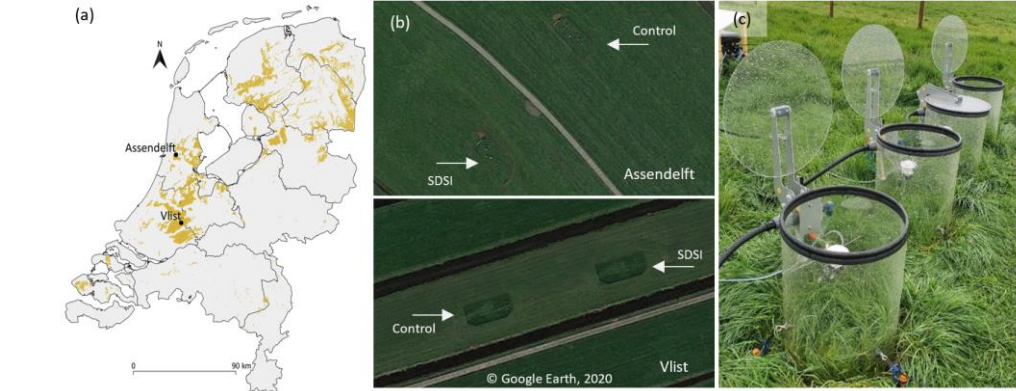
140 **2.1 Field data**

~~Measurements~~In 2020 and 2021, ~~measurements~~ of groundwater level, soil temperature and WFPS were done at two locations consisting of managed ~~meso-~~mesotrophic/eutrophic fen peatlands in the Netherlands: Assendelft and Vlist (Fig. 2). Both research locations are in agricultural use and consist of two parcels ~~that are monitored~~: one without (control) and one with ~~SDSI~~SSI.

145 **2.1.1 Site descriptions**

**2.1.1.1 Assendelft**

The research site in Assendelft (ASD), located in the province Noord-Holland, is a managed eutrophic peatland used for dairy farming (Fig. 2a, b). The clayey degraded moor topsoil (~~0-30 cm~~0.3 m) covers a slightly clayey degraded moor horizon (~~30-40 cm~~0.3-0.4 m). Mildly degraded reed/sedge peat is present underneath the degraded peat layers (~~40-200 cm~~0.4-2.0 m), followed by marine clay deposits. Reduced hydrogen sulfide in the reduced soil layers suggests that the peatland is exposed to upward seepage which is confirmed by groundwater observation wells that consist of a higher hydraulic head in the deep (>10 m depth) subsurface as compared to the topsoil (< 1.5 m depth) hydraulic head. ~~In the eastern meadow, no SDSI system is present.~~In 2017, a pressurized ~~SDSI~~SSI system was constructed in the western meadow. ~~These~~~~In the eastern meadow, no SSI system is present.~~The SSI systems function the same as ~~SDSI~~SSI discussed earlier, but include a pressure container that is used to manipulate the pressure in the drains independently from ditch water levels. The drains are located ~~50-70 cm~~0.5-0.7 m below the surface and spaced at a distance of 4 m. In the summer ~~of 2020~~, drain pressure varied between ~~+50.05~~ and ~~-40 cm~~0.4 m from the surface with a mean of ~~-0.17 cm~~m. ~~In the summer of 2021, the mean drain pressure was -0.36 m.~~ Summer ditch water levels are kept at ~~40 cm from~~0.4 m below the surface. The two parcels that are monitored have a total width of 180 m, with trenches of ~~30-40 cm~~0.3-0.4 m deep spaced 12 to 19 m.



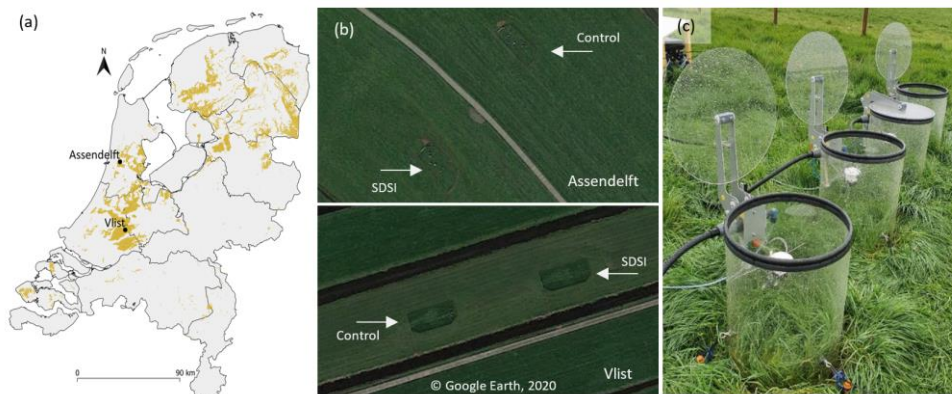


Figure 2 – (a) Peat soils in the Netherlands (highlighted) with the research locations Assendelft and Vlist on national scale (Basisregistratie Ondergrond, 2018; Esri Nederland, 2021), (b) the research locations seen from 500 m altitude with satellite imagery (the borders of the measuring plots are recognizable by the fences) and (c) the automated transparent chamber systems in Assendelft.

### 2.1.1.2 Vlist

The research location in Vlist (VLI), ~~province~~ Zuid-Holland, is a ~~comparable~~ managed fen peatland used for dairy farming (Fig. 2a, b). The clay topsoil (~~0-40 cm~~ 0-0.4 m) covers a degraded peat layer (~~40-0.4-0.55 m~~ Meso-, m). Mesotrophic/eutrophic woody, sedge and reed peat is present underneath the degraded horizon (~~0.55-290 cm~~ 0.55-290 cm), including a clay layer that is ~~thicker when moving towards river Vlist in the west (5-40 cm thick, around a depth of 220 cm), 2.90 m~~. Underneath the peat, a clay layer (1-2 m thick) was found. In 2011, ~~SDSI~~ SDSI systems were installed at the research location, with a depth of ~~70 cm~~ 0.7 m and a drain spacing of 6 m. The ~~SDSI~~ SDSI systems are oriented perpendicular to and directly connected to the ditch. Ditch summer water levels ~~are aimed to be~~ are aimed to be ~~were~~ were at ~~50 cm~~ 0.5 m below the surface. The width of the parcel is around 35 m with a trench of ~~20-30 cm~~ 0.2-0.3 m deep in the middle.

### 2.1.2 Groundwater observation wells

To assess the effect of ~~SDSI~~ SDSI on the groundwater table observation wells were used. The spacing between the groundwater wells and the ditch was 60 m and 12 m for Assendelft and Vlist respectively. The depth of the groundwater observation well filters was 0.3-1.3 m below surface and the wells were funded in deeper soil layers (> 3 m) to prevent influences of vertical soil movement on the measurements. Bottom well pressure was measured and automatically corrected for a tmospheric pressure with Ellitrack-D logging equipment (Leiderdorp Instruments, the Netherlands).

### 2.1.3 Temperature & WFPS

The effect of ~~SDSISSI~~ on soil temperature (0.1 – 1.2 m depth) and WFPS was measured with two Sentek Drill & Drop (Sentek Sensor Technologies, Australia) probes at a depth interval of 0.1 m up to 1.2 m below surface on each meadow.

At the ~~SDSISSI~~ plots, WFPS was measured from the drains at half and a quarter of the distance between the drains. Raw sensor measurements (scaled frequency) were corrected for soil temperature and converted to soil moisture percentages with a linear calibration curve that was derived for a similar peatland in the Netherlands. The curve had a slope of 0.74 and an intercept of -0.02. WFPS was calculated as the soil moisture relative to maximum soil moisture at that particular depth. Uncertainty in WFPS estimations was likely to be high as the calibration curve was not derived for the specific field locations.

### 2.1.4 CO<sub>2</sub> fluxes, harvesting and carbon budget

Automated transparent chamber systems were deployed on the research sites (Fig. 2c) to measure the ecosystem CO<sub>2</sub> fluxes that were used to determine nocturnal ecosystem respiration ( $R_{eco}$ ) and net ecosystem exchange (NEE). Each system consisted of four chambers that had a height of 0.5 m and a diameter of 0.4 m. Every 15 minutes, one measuring cycle was executed in which every chamber was closed by a lid independently for 3 minutes. Air from the closed chamber was drawn into the LI-850 CO<sub>2</sub> gas ~~analyzer~~ analyzer (LI-COR, USA), which determined CO<sub>2</sub> and H<sub>2</sub>O concentrations with a measuring interval of 2 seconds. By fitting a robust linear model to the first 60 seconds after lid closing, the CO<sub>2</sub> flux during chamber closure was calculated. Fluxes were converted from volume to weight by using chamber temperature, gas-cell pressure and chamber height. Measurements were corrected for water vapor and chamber cycles were checked for air leaking and fan malfunctioning using  $R^2$  values of the fitting process. Chamber systems were relocated every two weeks to minimize the effect of the chamber 'micro-climate' on the vegetation and soil. ~~To assess  $R_{eco}$ , nocturnal chamber flux measurements were selected by using sunrise, sunset and chamber closure time data and subsequently averaged on each date. Near the end of 2020 and 2021 (during low carbon fluxes) the systems were calibrated.~~

Crop (*Lolium perenne*) harvesting was done five times throughout the growing season, simulating the farmer's harvesting practice. Samples inside and around the chambers were taken in ~~quadruple~~ quadruple. The dry weight and carbon content of each sample were determined in the lab. Subsequently, carbon yield per area was calculated. The carbon yield per area (C-export) was corrected for the difference between inside and outside chamber crop growth for each measuring plot ~~due to the 'micro-climate' effect of the chambers~~ (supplementary information, S3). Standard deviations for each harvesting event were based on the differences between the samples within the same sample group. The total harvested carbon yield consisted of the sum of harvests and was expressed in mass units of CO<sub>2</sub> per area. Crop fertilization was done with inorganic fertilizers so that no carbon was added to the soil.

The net ecosystem carbon balance (NECB) of the research sites was calculated by summing NEE and C-export determined within the measuring period, similar to the approach presented by Görres et al., (2014), Tiemeyer et al., (2016) or Elsgaard et al., (2012). In contrast to most other research in which chambers where NEE is determined by using (bi)weekly measurement intervals, we used continuous chamber measurements as in Heinemeyer et al., (2013). NEE was calculated by summing daily averages of chamber measurements. Standard deviations of the daily averages were calculated with daily NEE means of each chamber. Missing values were filled by using the Lloyd-Taylor function (Lloyd and Taylor, 1994) for  $R_{eco}$ , and a rectangular hyperbolic light response curve for gross primary production (GPP) (e.g. in Veenendaal et al., 2007). Daily derived parameters of these functions were linearly interpolated when gaps occur. In the case of harvest, parameters of the light response curve were set to a minimum. The SD of the gap filled data were determined on a daily base, by creating artificial gaps of 1, 5 and 15 days. A linear relation was found between SD and gap size, so that for any gap size the SD could be calculated. The total amount of gap-filled chamber data was 14% for the whole dataset. The total standard deviation of yearly NEE and C-export was calculated by taking the square root of the summed squared standard deviations of the averages that were used within the calculation. The carbon budget (NEP, net ecosystem production) of the research sites was calculated by summing NEE and C-export determined within the measuring period, similar to the approach presented by Görres et al., 2014. We selected a one-year measuring period ranging from the first of April 2020 until the first of April 2021. We assumed that the carbon storage differences between the end and beginning of the measuring year, for crop, roots and soil were small compared to the uncertainty in NEE and harvests.

The effectivity of SSI. NEE was calculated by summing daily averages of chamber measurements. Standard deviations of the daily averages were calculated with daily NEE means of each chamber. Missing values were filled with 20 day averages around the period without measuring data, with a maximum missing consecutive period of 15 days in autumn for one site (Vlist control). Near the end of 2020 (during low carbon fluxes) the systems were calibrated. NEE data were interpolated for April 2020 when automatic flux chambers at site Vlist were not yet deployed (supplementary information, S3). The maximum amount of gap-filled chamber data was 16% (Vlist control). The total harvested carbon yield consisted of the sum of harvests and was expressed in mass units of  $CO_2$  per area. The total standard deviation of yearly NEE and C-export was calculated by taking the square root of the summed squared standard deviations of the averages that were used within the calculation. We assumed that the carbon storage in the crop at the beginning of the measuring year equaled the carbon storage at the end of the measuring year. Crop fertilization was done with inorganic fertilizer so that no carbon was added to the soil.

The effectivity of SDSI was determined by comparing  $NEP_{annual}$  NECB of the control site with the  $SDSI$  SSI site for each location. The effectivity was expressed as an absolute number and percentage of the reduction in the  $NEP$  NECB. For 2020, the NECB was determined from the first of April 2020 until March 31 2021. In 2021, the annual NECB was determined from the first of January until the 31<sup>st</sup> of December 2021.

The chamber 'micro-climate' effect implies that radiation, temperature, wind, precipitation and moisture dynamics are influenced by the chambers, and is not completely resolved by moving the chambers every two weeks. The 'micro-climate' affects the vegetation dynamics (e.g. Heinemeyer et al., 2013) and might affect soil conditions which in turn affect NECB

estimations. This creates uncertainties within our measurements, which are hard to quantify. But still the uncertainties introduced by continuous measurements are likely much lower than the uncertainty caused by gap filling a large fraction of the data as is done with non-continuous measurements (Huth et al., 2017). The impact of the 'micro-climate' will affect most probably the magnitude of the NECB, and in a lesser extent the treatment effect, since the 'micro-climate' is the same in every chamber.

## 2.2 Model setup

We simulated a typical dairy farming grassland on sedge peat for the Netherlands exposed to various natural and artificial (boundary) conditions: soil saturated hydraulic conductivity, the presence of up- or downward flow, meteorology, ditch water level and the application of ~~SDSI~~SSI systems. The model runs differed in their ditch water level, seepage flux, hydrological conductivity, ~~weather years simulation year~~ and application of ~~SDSI~~. Daily weather and temperature and parcel width were kept constant for all model runs SSI. The goal of this model was not to exactly reproduce the observation sites, but to capture the main effects of surface water level and ~~SDSI~~SSI on soil temperature ~~and~~, soil moisture ~~and the NECB~~. When these dynamics are adequately described the model can be used to cautiously explore the effects of ~~SDSI~~SSI and water level management on yearly ~~average~~ peat respiration rates.

### 2.2.1 Hydrological model

We used the hydrological 2D finite element method model HYDRUS (3.02) (Simunek, J., Sejna, M., & Van Genuchten, 2014). The HYDRUS software is proven to reliably simulate the hydrology in the unsaturated zone and the soil temperature dynamics, which are key features in this research, using the Richard's equation and conduction and convection equations.

The model domain was designed to represent a typical cross section of a managed peatland in the Netherlands (Fig. 3). In the Netherlands, parcel widths from ditch to ditch vary between 25-100 m. In this research a parcel was used with a standard width of 35 m. We used a soil depth of 3 m and a shallow surface drainage trench in the middle of the parcel with a depth and width of 0.3 m and 0.9 m respectively. The infiltration/drainage ditch was 1.5 m deep and had a width of 1.5 m. Additionally, for ~~SDSI~~SSI model runs drains were introduced in the domain at a typical depth and distance interval of 0.7 m and 5.5 m respectively. The drains had a diameter of 0.07 m and were surrounded by ~~5 cm coarse sand~~ 0.05 m coarse sand (instead of plastic or coconut fibre that is typically used in the field). For computation purposes only half of the cross-section has been modelled as it has been assumed that no groundwater would flow across the middle of the parcel.

Element size was smaller at the top of the model (0.05 m) and increased stepwise to 0.3 m at 0.8 m depth. The total amount of nodes and 2D-elements was around 10000 and 20000 respectively. Nodes ~~neighboring~~neighbouring boundary mesh points were refined if the distance ratio was too high ( $F = 1.3$ ).

Soil properties were set up with the single porosity ~~van~~Van Genuchten-Mualem hydraulic model (van Genuchten, 1980). Since peat soils vary widely in hydraulic properties, we chose to represent sedge peat soil characteristics with optimized parameters

from large dataset analyses (Liu et al., 2016; Heinen et al., 2018). The modelled soil consisted of a clayey peat topsoil (Heinen et al., 2018), a decomposed peat layer of ~~40 cm~~0.4 m and a sedge peat layer (Liu et al., 2016). Further details and Van Genuchten–Mualem parameter values are presented in Table 1. Data availability was insufficient to incorporate the dual porosity, heterogeneous and anisotropic nature of the peat soils

290

**Table 1 - Mualem - Van Genuchten parameters and saturated hydraulic conductivity for each soil layer**

Soil type	depth [cm]	$\theta_r$	$\theta_s$	$\alpha$ [1/m]	<del>n</del> N	$K_s$ [m d <sup>-1</sup> ]	$\tau$
Clayey peat <sup>2</sup>	0- <del>20</del> 0.2	0	0.765	2.05	1.151	0.1314	0
Decomposed peat <sup>1</sup>	<del>20-60</del> 0.2-0.6	0	0.77	1.4	1.16	0.0552	0.5
Sedge peat <sup>1</sup>	>60	0	0.88	2.9	1.21	0.468	0.5

1. Liu et al., (2016), 2. Heinen et al., (2018)

295 Thermal conductivity parameters for simulating temperature were estimated according to the empirical model of Dissanayaka et al. (2013) and were dependent on solid and water content. The model is presented in eq. 1, in which  $\sigma$  and  $\theta$  represent solid and water content respectively. Default heat capacity values were used for water, organic matter and clastic material.

Formatted: English (United States)

$$\lambda = 0.225 \cdot \sigma + 0.025 + 0.89 \cdot \lambda_{water} \cdot \theta \tag{1}$$

300

Meteorological input data was acquired from the weather station Schiphol of the Royal Dutch Weather Agency (KNMI, 2020). Runoff was calculated using a 1D-HYDRUS model with a bottom pressure head boundary equal to ditch water levels plus 0.1 m to account for the forming of a concave phreatic surface. The water that was available for infiltration was reduced for time-steps during which the model runs did not converge. For model runs including submerged drain systems, the water that was available for infiltration was equal to precipitation. Throughout the year, 90% of potential Makkink evaporation was assumed to be represented by transpiration, and 10% by soil evaporation (Allen, R. G. et al., 1998). On top of the soil profile, we used measured average soil temperatures at ~~5 cm~~0.05 m depth from Marknesse, Flevoland, the Netherlands (KNMI, 2020). Daily average river water (Hagestein, the Netherlands) temperatures (~~50 cm~~0.5 m depth) were assigned to ditch and drain water (Rijkswaterstaat, 2020). A constant temperature of 11 °C was assumed at the bottom boundary at 3 m depth.

305

310 Root water uptake was described using the Feddes (1978) model with parameters for grass. Crop growth and crop solute stress were not included. Rooting depth was set at 0.3 m, with maximum rooting intensity at 0.1 m (root distribution parameter  $P_r$  was set at 3).

Initial pressure head conditions were set at -0.2 m from the surface and temperature initial conditions were set at 11 °C. We did not use a warming-up period for the model, as we expected near surface water tables and consequentially low potential microbial respiration rate during winter.

## 2.2.2 Peat decomposition model: potential respiration rate

To estimate potential microbial respiration rate of aerobic microbial communities in the unsaturated zone (further in this paper referred to as potential respiration rate), we introduce temperature-activity ( $A_T(n, t)$  [relative respiration rate during one day]) and WFPS-activity ( $A_{WFPS}(n, t)$  [relative respiration rate during one day]) curves for potential respiration rate. These activity curves quantify the potential respiration rate at each temperature and WFPS relative to a reference value of temperature and WFPS.

Soil temperature is assumed to influence potential respiration rate according to the square root equation, as described in Eq. 2. with fitted  $T_{min}$  and  $\alpha$  of -10 °C and 0.05 respectively (Ratkowsky et al., 1983; Lloyd J., Taylor, 1994; Bååth, 2018). with fitted  $T_{min}$  and  $\alpha$  of -10 °C and 0.05 °C<sup>-1</sup> respectively (Ratkowsky et al., 1983; Lloyd and Taylor, 1994; Bååth, 2018). WFPS additionally determines potential respiration rate. The optimum curve for WFPS was selected during the optimization of our estimation of potential respiration rate as explained in the next section. The number of total days with reference conditions for aerobic activity per year were calculated following Eq. 3 and 4.

$$A_T(n, t) = [a (T(n, t) - T_{min})]^2 \quad (2)$$

$$A_u(n) = \sum_{t=1}^{365} A_T(n, t) \cdot A_{WFPS}(n, t) \quad (3)$$

$$Ap = \frac{\sum_{n=1}^{nodes} A_u(n) S(n)}{L} \quad Ap = \frac{\sum_{n=1}^{nodes} A_u(n) S(n)}{L} \quad (4)$$

For each soil node (n), potential microbial respiration rate ( $A_u(n)$  [day]) was calculated (Fig. 3). By multiplying each node with its surface area ( $S$  [ $m^2$ ]) and dividing by the domain length ( $L$  [ $m$ ]) a field average potential respiration rate per area ( $Ap$  [day  $m$  yr<sup>-1</sup>]) is obtained. This number can be interpreted as the field average potential respiration rate equal to that per square meter of surface. And  $Ap$  of 100 d  $m$  yr<sup>-1</sup>  $m^2$  over a depth corresponds to the potential respiration rate of 1  $m^3$  of peat exposed for 100 days to the optimal WFPS and 20 °C for  $Ap$  days in a year.

Formatted: Superscript

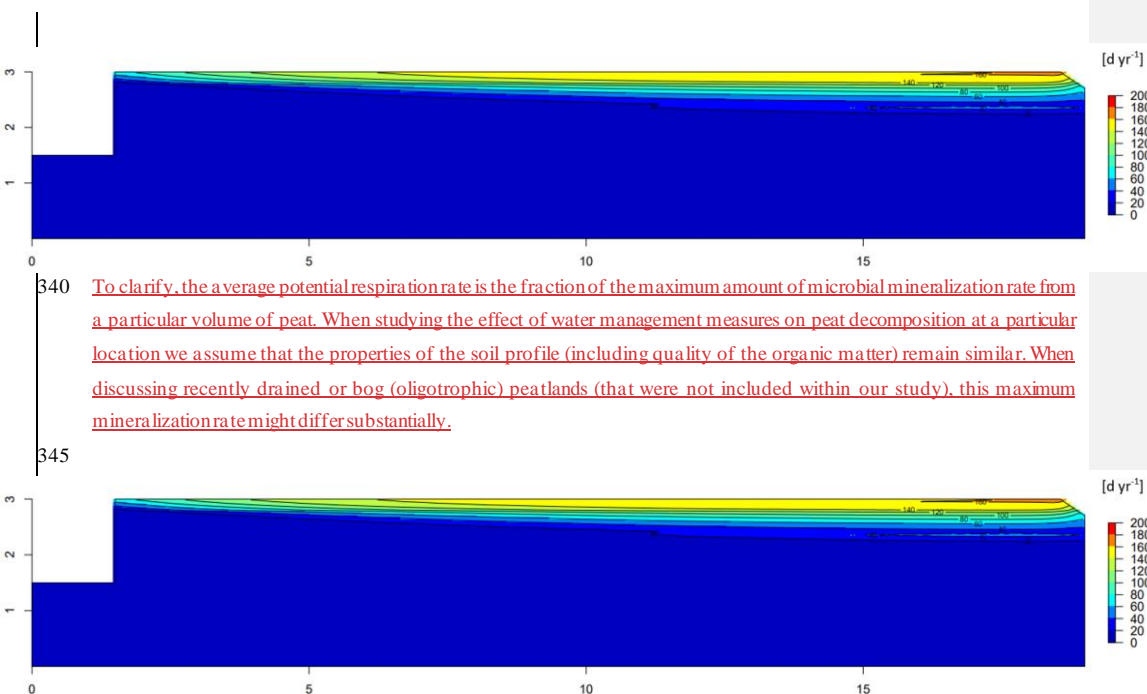


Figure 3 – Model domain with estimated potential respiration rate [ $\text{d yr}^{-1}$ ] for a model run.

### 2.2.3 WFPS potential respiration rate curve and model sensitivity

As limited scientific research is available on the relation between potential respiration rate and WFPS, we decided to test the performance of several WFPS-activity curve shapes (Fig. 4) in an ensemble analysis. We calculated potential respiration rate for the parcels in Assendelft and Vlist with all different WFPS relations, keeping the temperature relation with potential respiration fixed. The  $R_{\text{eco}}$  that was measured in the field partly consists of peat respiration driven by WFPS. Therefore, we assumed that the WFPS activity curve that produced the potential respiration rate that correlated best with the  $R_{\text{eco}}$  most accurately described the relation between WFPS and potential respiration rate. The tested set of WFPS optimum curves (Fig. 4) was loosely based on the shape found by (Saurich et al., 2019). The ensemble was developed to test the effect of different curve characteristics on the model output.

Formatted: English (United States)

such as shape, optimum WFPS value or range, curve width, starting values at WFPS 1 and the slope of the curve near saturated conditions WFPS 0.9-1.

We calculated potential respiration rate for the parcels in Assendelft and Vlist during the measuring period with all different WFPS relations, keeping the temperature relation with potential respiration fixed. The  $R_{eco}$  that was measured in the field during night time, partly consists of peat respiration driven by WFPS. Therefore, we assumed that the WFPS activity curves that produced the daily potential respiration rates that correlated best with the  $R_{eco}$  over the complete measuring period (with an average  $R^2 > 0.60$  over all study sites) most accurately described the relation between WFPS and potential respiration rate. The effectivity (e.g. the reduction in yearly potential respiration rate) of SSI in Assendelft and Vlist was calculated with these best-performing WFPS curves to determine the uncertainty in effectivity estimation that was introduced by the selection of a WFPS curve. To avoid selecting a WFPS curve that produced extremely high or low effectivities, we selected a WFPS curve that approached the mean effectivity of the best-performing WFPS curves. Furthermore, the sensitivity of the soil temperature-potential respiration rate slope was also determined by manipulating soil temperatures with  $-1.5$  and  $+1.5^\circ\text{C}$ . This sensitivity analysis was meant to assess uncertainty and increase reliability of our process-based method to estimate potential respiration. The comparison of  $R_{eco}$  with potential respiration rate of the peat subsurface may seem peculiar as the measured  $R_{eco}$  includes besides peat respiration also plant respiration, respiration of fresh and easily degradable organic matter and anaerobic respiration. Here, we assume that plant respiration is mostly related to biomass, and largely independent of WFPS, while respiration of fresh and easily degradable organic matter does depend on WFPS but follows a similar WFPS-dependency as peat respiration. Thus, while potential peat respiration and  $R_{eco}$  are different quantities and have different absolute values, by selecting the WFPS curves that yield potential peat respiration rates that describe most of the variability in observed  $R_{eco}$  (highest  $R^2$ ) we assume to find the WFPS-curve that represents dynamics in respiration the finest.

Formatted: English (United States)

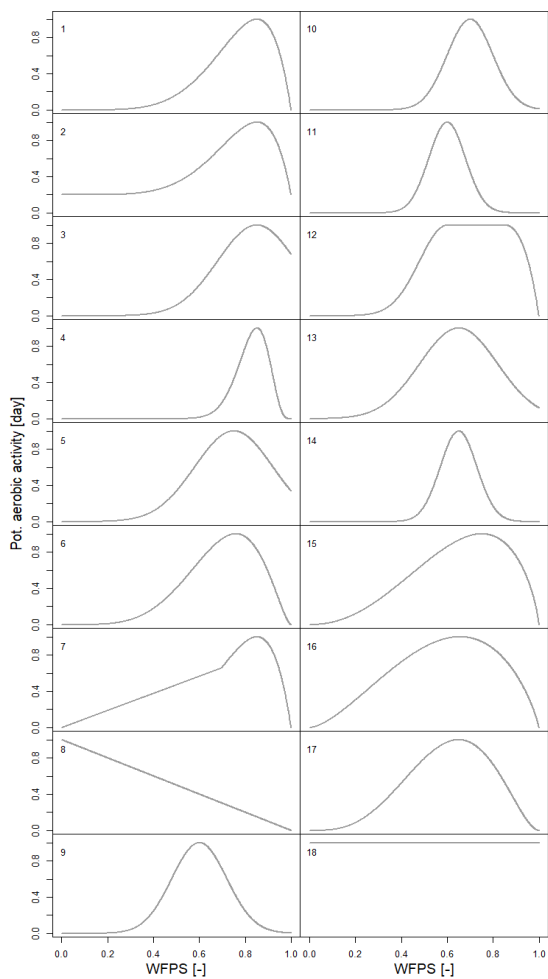


Figure 4 –The ensemble of WFPS optimum curves that was tested during model optimization.

Formatted: English (United States)

Formatted: English (United States)

2.2.4 Model variations scenarios

We simulated the field sites in Assendelft and Vlist with corresponding surface water levels and seepage fluxes with and without SDSI for the measurement year 2020. SSI for the measurement years 2020 and 2021. The pressure in the SSI systems was set equal to ditch water level; there were no runs that specifically represented pressurized SSI. We made the assumption that pressurized SSI was represented by runs consisting of SSI with higher ditch water levels as compared to the control situation. Furthermore, the model properties (soil profile, conductivity, width) were not specifically altered for the simulation of the four parcels, instead, simulations were selected that consisted of comparable ditch water levels, seepage settings and conductivity values. This approach enabled us to test the assumption that we simulate a typical dairy farming grassland on sedge peat for the Netherlands (Sect. 2.2). To assess the performance of our model, we compared monthly means of simulated groundwater level, soil temperature and WFPS with the measured monthly means of these variables. Additionally, we related our measured estimations of NEPNECB with simulated potential respiration rate to be able to compare our results with recent literature.

In order to explore the effects of surface water level and SDSI/SSI on potential respiration rates we ran the model for a range of surface water levels (0.2-0.6 m below surface) with and without SDSI/SSI, seepage conditions (1 mm d<sup>-1</sup> downward, 1 mm d<sup>-1</sup> upward), during both a climatically wet and a dry year (2012, 2018). The years 2012 and 2018 had a total precipitation balance deficit of 14 (2012) and 296 mm (2018) from April to September, with 2018 belonging to the 5% most severely dry years since 1910 (KNMI, 2021). Ditch water levels in winter were varied from -0.3 m to -0.7 m, with 0.1m increased water levels during the growing season from May 1<sup>st</sup> until October 1<sup>st</sup> as is common practice in the Netherlands. All model variations were run with a hydraulic conductivity of the intact peat layer of 0.47, 0.23 and 0.12 m d<sup>-1</sup> (Liu et al., 2016).

3 Results

In this section, field measurements and model output are presented successively per theme and data are depicted in Fig. 5. Generally, the year 2020 was characterized by a severely dry spring and summer with a total precipitation deficit of 209 mm. The year 2021 was a normal year with a considerably wet summer and a total precipitation deficit of 70 mm that is in accordance with the median yearly precipitation deficit in the Netherlands (KNMI, 2022). Model water balance errors were sufficiently low (<1% of precipitation) over the complete year for all the model simulations.

3.1 Groundwater level

Seasonal trends are clearly distinguishable in monthly averages of groundwater levels that were measured in the field (Fig. 5a), with higher and lower levels for SDSI/SSI research plots compared to control plots in summer and. For Vlist, SSI systems were clearly draining the soil during autumn/winter respectively. SDSI establishes wintertime in 2020. Generally, SSI established a more equal water table depth throughout the year as intended. The pressurized SDSI/SSI systems in Assendelft maintained remarkably high groundwater levels during the summer of 2020 (ca. -0.2 m), as opposed to Vlist where the

Formatted: English (United States)

Formatted: English (United States)

Formatted: English (United States)

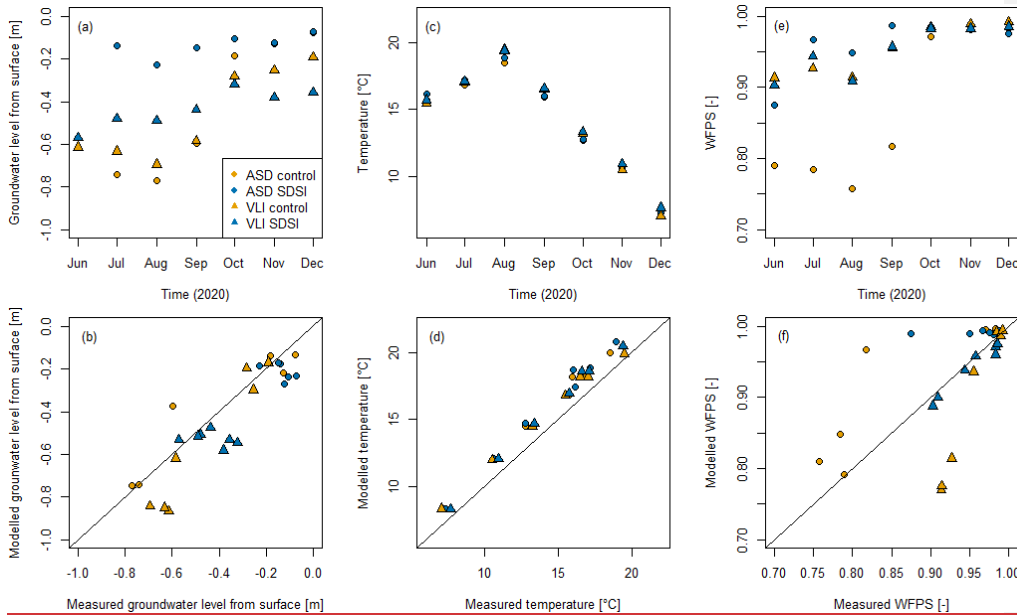
Formatted: English (United States)

Formatted: English (United States)

Formatted: English (United States)

difference between SDSI and control groundwater level seem confined to ca. 0.1 m. Due to the greater spacing between ditch and observation well 0.1–0.2 m during the summer. During the summer of 2021, groundwater levels in the SSI parcel in Assendelft we found were lower water levels for the control plot (~0.2 m) as compared to Vlist, even though 2020 due to different farmer management choices. Due to the upward flow seepage that was present in Assendelft the control plot of Assendelft we found slightly higher groundwater levels as compared to the control plot of Vlist.

The model captured the monthly dynamics of groundwater level reasonably well. Only for the lower control plots. The model simulated more seasonally stable groundwater levels as compared to the measured groundwater levels in Vlist tend to which suggests that hydrologic drainage and soil resistance could be underestimated by 10 cm (Fig. 5b). Furthermore, we found that model runs underestimates simulations underestimated the short-term variability during the severely dry summer of 2020 that was observed at the field sites (supplementary information, S1–), which was not the case for the summer of 2021.



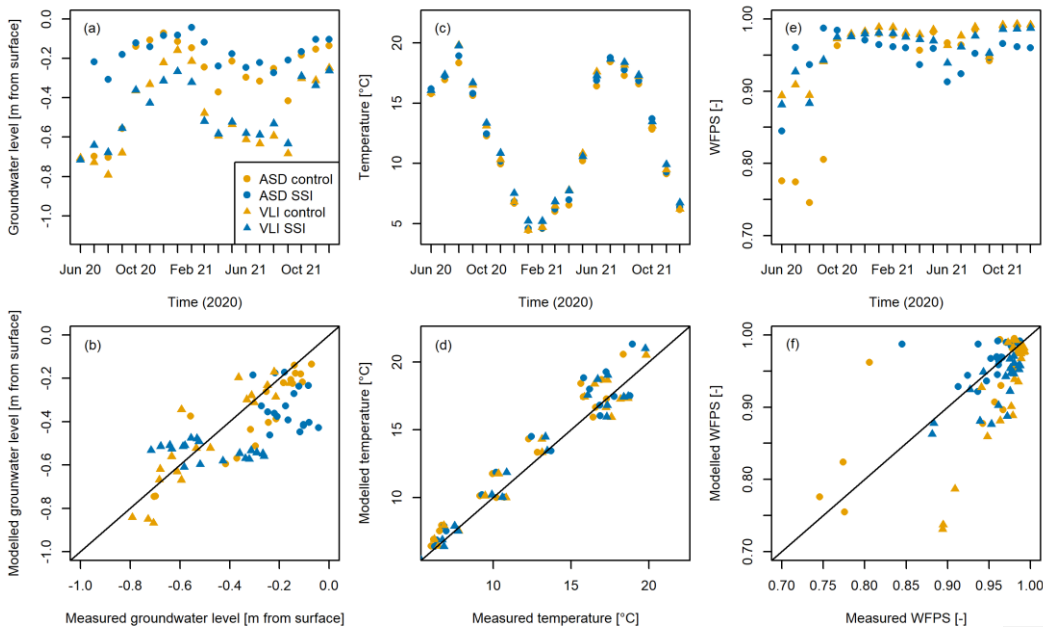


Figure 5 – Monthly averages of measured (a) groundwater level, (c) soil temperature and (e) WFPS that are compared with monthly modelled averages of (b) groundwater level, (d) temperature and (f) WFPS. Values for temperature and WFPS were averaged over a depth of 0.54 m. The legend in (a) applies for all panels.

### 3.2 Temperature

The monthly difference in average measured soil temperatures of nearly 20°C in the top 0.54 m of the soil profile were measured in August for Vlist (Fig. 5c). The monthly difference between Assendelft and Vlist control was small with a maximum of 1.5°C during these maximum soil temperatures (Fig. 5c). From June to August the top soil is slowly warming, even though average air temperature was higher in June the spring of 2021 seems to happen at a faster rate than the cooling in July. SDSI autumn SSI tends to cause higher monthly mean soil temperature levels (0.4043°C) in the top 0.54 m of the soil profile in Assendelft in the summer both summers. Over the complete measuring period, this heating effect was 0.2026°C. In Vlist, SDSI SSI tends to cause higher temperatures in this soil zone in all months except for August especially in the autumn and winter, with a summer maximum of 0.25°C for June and an autumn/winter maximum of

0.6275°C in ~~December~~ January 2021. The average heating effect of ~~SDSI~~SSI on topsoil temperatures in Vlist is 0.4708°C in summer and 0.2423°C during summer and during the measured months in 2020 respectively complete measuring period. Modelled and measured monthly topsoil temperature dynamics match well, but modelled temperatures were on average 1.450.6°C higher than measured temperatures (Fig. 5d). The measured soil surface temperature data we present here was not yet available at the time of modelling. Hence we used a surface soil temperature dataset of a different location as top temperature boundary condition which in hindsight had slightly too high temperatures explaining the model overestimation of the soil temperature. The simulated effect of ~~SDSI~~SSI on topsoil temperatures during summer was 0.7237°C for Assendelft and 0.3727°C for Vlist. Over the complete simulation year period, the ~~SDSI~~SSI heating effect was 0.4217°C and 0.2611°C for Assendelft and Vlist respectively.

### 3.3 WFPS

The minimum monthly average WFPS in the top 0.54 m of the soil profile (Fig. 5e) was measured at the control site in Assendelft (0.7675) during August 2020. WFPS tends to be higher during the dry summer of 2020 when ~~SDSI is applied, especially with the pressurized SDSI systems~~SSI is applied in Assendelft. Here in the highest spring and summer of 2021 we find lower WFPS values are measured for the SSI parcels, especially in Assendelft where the difference between the SSI and control parcel exceeds 5% in June. Modelled WFPS agrees reasonably well with measured WFPS but overestimates (>10%) soil moisture for the control plot in Assendelft in September and underestimates (<-10%) moisture values for the control plot in Vlist during summer drought (>-10%) (Fig. 5f). The result of underestimated drainage and/or soil resistance in the SSI parcel in Vlist was also reflected in the difference between observed and simulated WFPS values for Vlist (~5% difference in the top 0.4 m of the soil profile), but this was not the case for Assendelft.

### 3.4 Approaching Simulating peat decomposition

#### 3.4.1 Measured $R_{eco}$ and estimated modelled estimation of potential respiration rate

Nocturnal  $R_{eco}$  measurements clearly show seasonal trends with high  $CO_2$  emissions in summer and low emissions in winter (Fig. 6a). Maximum  $R_{eco}$  values were measured in August 2020 on the control parcel in Assendelft, approximating 70 g  $CO_2$  m<sup>-2</sup> d<sup>-1</sup>. In spring and summer,  $R_{eco}$  values measured on the control parcel were structurally higher than on the ~~SDSI~~SSI parcel on both research locations (Fig. 6b). In the autumn of 2021, measured  $R_{eco}$  was slightly higher in the ~~SDSI~~SSI parcels as compared to the control parcel in Assendelft. During the winter of 2020-2021  $R_{eco}$  on the control parcel was higher than on the SSI parcel in Vlist.

We compared the timeseries of measured nocturnal  $R_{eco}$  with the estimated daily potential respiration rate calculated applying all the WFPS-activity curves in (Fig. 6. Based on correlation between the calculated, supplementary information, S2.1). We found that eight WFPS-curves produced daily potential respiration rate and the nocturnal  $CO_2$  fluxes dynamics that correlated reasonably well with  $R_{eco}$  (mean  $R^2 > 0.60$  over all sites). Within our sensitivity analysis (supplementary information, S2.2)

we found that ~~WFPS activity curves that include zero activity~~ the selection process of a WFPS relation introduced a maximum standard deviation of 0.08 on simulated effectivities of SSI for a WFPS of 1, a general decrease in activity between our measuring locations. Also, a curve maximum that is defined at a WFPS of 0.65 and closer to 1 (generally leads to a lower prediction of SSI effectivity as compared to curves 8, 12, 15 and 16) outperformed with their maximum at a lower WFPS-activity curves that have an insensitive region between WFPS of 0.9-1 (curves 9-11) or those that have a clear peak activity above 0.7 WFPS (curves 1-4). We, Furthermore, we found that relation 16 approached the mean effectivity estimation for our measuring locations and selected this relation 16 (Fig. 4, supplementary information, S2) for the analysis of our modelling output. The shape of this curve is matches most closely data presented in Säurich et al. (2019), who found optimal moisture conditions around a value of 0.65 WFPS. The curve is represented by a  $\beta$  distribution scaled to a maximum value of 1 with parameters  $\alpha$  and  $\beta$  of 2.59 and 1.84 (resp.). For the research sites without and with SDSI in Assendelft and Vlist we found Pearson correlations of 0.73, 0.47, 0.61 and 0.56 (resp.) Based on correlation between the calculated potential respiration rate and measured the nocturnal  $R_{eco}$ , with  $CO_2$  fluxes, we found that WFPS-activity curves that include zero activity for a mean of 0.59 WFPS of 1 and include a general decrease in activity between WFPS of 0.65 and 1 (curves 1, 2, 6, 7, 8, 12, 15, 16 and 17) outperformed WFPS-activity curves that have an insensitive region between WFPS of 0.9-1 (curves 9-11 and 14). Note that both the observed and simulated WFPS did rarely drop below 65.50% for all 4 plots. Hence, effectively only the range of 0.6550-1 WFPS of the relationships in Fig. 5 are compared. The effect of changing the slope of the temperature curve on simulated effectivity was marginal (supplementary information, S2.2).

The For the research sites without and with SSI in Assendelft and Vlist we found Pearson correlations of 0.70, 0.55, 0.70 and 0.66 (resp.) between potential respiration rate (using curve 16) and measured nocturnal  $R_{eco}$ . Both short term and seasonal trends in measured  $R_{eco}$  are present represented in the modelled respiration rate as well (Fig. 6). Model data suggests that temperature conditions are limiting potential respiration rate in spring and WFPS conditions limit respiration rate in autumn (Fig. 6). Short term  $R_{eco}$  variations are hardly present within estimations for potential respiration rate in the dry circumstances (in control fields, in the summer of 2020), but are more evident in simulations with SDSI during normal to wet conditions (Fig. 6). This is because the unsaturated zone in the SDSI fields are during normal to wet conditions is relatively close to saturation. The which results in a steep slope of the WFPS respiration rate curve is steeper for wetter circumstances, so changes in WFPS affect respiration rate substantially. This effect is less important in the case of the curve, as opposed to drier unsaturated zone conditions where the WFPS respiration curve is close to the optimum. Additionally, we find that the decreases in  $R_{eco}$  in the control field, as rainfall causes WFPS to shift around the optimum where the slope is marginal, plots at the end of the summers occur ~1 week earlier than the drop in potential respiration rate. This could be a consequence of the model infiltration capacity that was limited during the precipitation events at the end of both summers. As mentioned before, we have not subdivided  $R_{eco}$  into peat, other soil organic matter pools, and plant respiration. As respirations of short term organic carbon in the soil (and to a fewer extent plant respiration) is responsible for the bulk of respiration,  $R_{eco}$  differences between the control and SDSI/SSI field are less evident in field measurements of  $R_{eco}$  than modelsimulated peat respiration estimations rates.

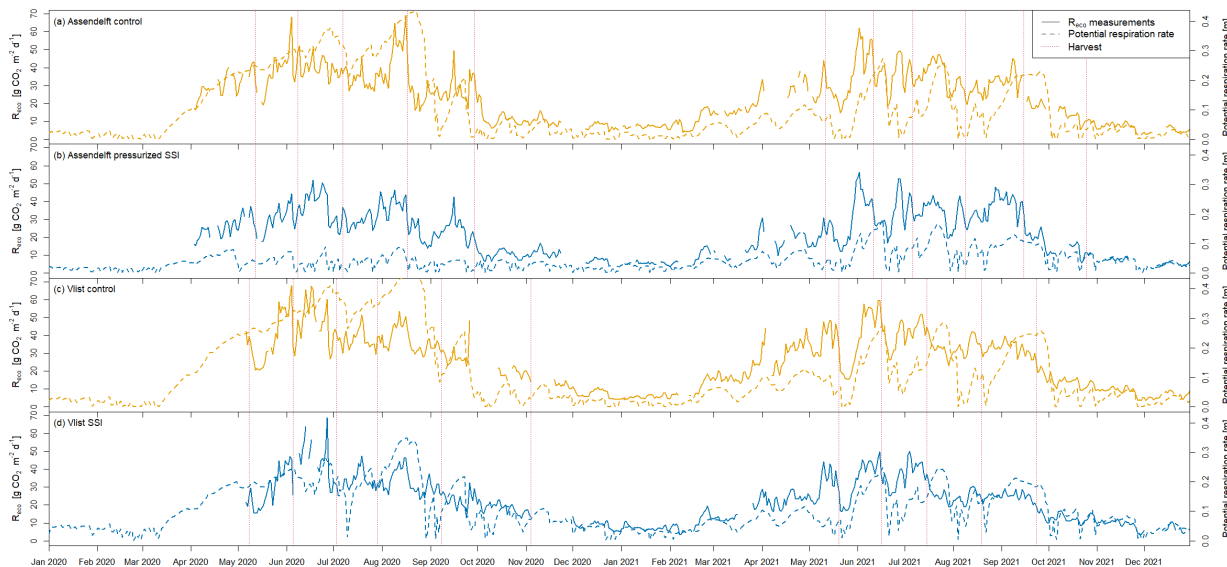


Figure 6 – (a) Measured nocturnal Reco and modeled simulated respiration rate with the contribution of WFPS and temperature (secondary axis) over time for the control site in Assendelft. (b) Measured Reco and modeled respiration rate in (a) Assendelft for both the control, (b) Assendelft pressurized SSI, (c) Vlist control and SSSI parcel. Line colors correspond with application of SSSI (d) Vlist SSI.

### 3.4.2 NEPNECB and water management strategy effectivity

On both research locations SSSI decreased C-export and NEE, leading to reductions in NEPNECB (Table 4). We found the highest ( $3.4747 \pm 0.2339 \text{ kg CO}_2 \text{ m}^{-2} \text{ yr}^{-1}$ ) and lowest ( $2.4249 \pm 0.2835 \text{ kg CO}_2 \text{ m}^{-2} \text{ yr}^{-1}$ ) C-export in the year 2020 for Assendelft control and Assendelft SSSI respectively. The control plot in Vlist ( $2.19 \pm 0.27 \text{ kg CO}_2 \text{ m}^{-2} \text{ yr}^{-1}$ ) emitted a higher amount of CO<sub>2</sub> emissions than the control plot in Assendelft ( $1.53 \pm 0.25 \text{ kg CO}_2 \text{ m}^{-2} \text{ yr}^{-1}$ ), in both measuring years, which is likely due to upward seepage that causes higher groundwater levels in Assendelft and absent in Vlist. Our measurements show that the application of SSSI systems reduced CO<sub>2</sub> emissions for the dry year 2020 with  $1.2758 \pm 0.3956 \text{ kg CO}_2 \text{ m}^{-2} \text{ yr}^{-1}$  ( $83 \pm 25\%$ ) in Assendelft (pressurized SSSI) and with  $0.7866 \pm 0.3762 \text{ kg CO}_2 \text{ m}^{-2} \text{ yr}^{-1}$  ( $28 \pm 15\%$ ) in Vlist. In 2021, SSI systems reduced CO<sub>2</sub> with  $0.11 \pm 0.58 \text{ kg CO}_2 \text{ m}^{-2} \text{ yr}^{-1}$  ( $35 \pm 17\%$ ) in Vlist. Yield 11  $\pm 29\%$  in Assendelft and with  $0.10 \pm 0.69 \text{ kg CO}_2 \text{ m}^{-2} \text{ yr}^{-1}$  ( $6 \pm 23\%$ ) in Vlist. Note that high standard deviations indicate that no significant

reductions in 2021 were observed. C-export and NEE statistics can be found in supplementary information S3. Model calculations of simulated potential respiration rate (PRR) and effectivity of water management strategies agree with the measured NEPNECB and effectivity for both research locations and measuring years (Table 4). Note that if we would account for the complete parcel by looking at our model results from ditch to ditch (instead of using the results at the location representative for the measurement location in the middle of the parcel), the modelled effectivity would be 64% in 2020 reduces to 76% and 2023% for Assendelft and Vlist respectively. In 2021, potential respiration rate reductions in the middle of the parcel were low and remain low when considering the complete parcel.

We cautiously determined a relation ( $R^2 = 0.8492$ ) between measured NEPNECB and modelled potential respiration rate (Fig. 7a, Eq. 5) to be able to interpret and compare our model results with literature. To improve When we plot the reliability of this fitted relation, additional data from other locations and measuring years when they become available, measured NECB against mean measured summer groundwater table depth (Fig. 7b) or an annual groundwater table depth (Fig. 7c) we find weaker relations ( $R^2 = 0.83, 0.73$  respectively).

$$\text{NEPNECB} = 0.0330323 (0.00) * \text{PRR} - \pm 0.13-269 (0.15) \quad (\text{Eq. 5})$$

Table 4 – Measured carbon balance in the growing season with corresponding effectivity of water management strategies and modelled potential respiration rate at the location representative for the each measurement location with estimated simulated effectivity of water management strategies.

	ASD control 2020	ASD SSSI	Vlist control	Vlist SSSI	2021	
	Assendelft Control	SSI	Vlist Control	SSI	Assendelft Control	Vlist Control
NEE [kg CO <sub>2</sub> m <sup>-2</sup> yr <sup>-1</sup> ]	-1.6456 (0.4012)	-2.4716 (0.0912)	-0.5459 (0.4024)	1.12 (0.26)	1.71 (0.09)	1.77 (0.12)
C-export [kg CO <sub>2</sub> m <sup>-2</sup> yr <sup>-1</sup> ]	3.4747 (0.2339)	2.4249 (0.2835)	2.7494 (0.2637)	2.5780 (0.2335)	2.77 (0.40)	2.72 (0.39)
NEPNECB [kg CO <sub>2</sub> m <sup>-2</sup> yr <sup>-1</sup> ]	1.5321 (0.2541)	0.2633 (0.3037)	2.4435 (0.2744)	1.68 (0.43)	1.06 (0.41)	0.95 (0.41)
Measured effectivity [-]		0.83 (0.25)		0.3528 (0.4715)	0.11 (0.29)	0.06 (0.25)
Modelled PRR [- (d m yr <sup>-1</sup> )]	54.809	40.8011.8	65.8066.2	44.806	23.3	19.5
Modelled Simulated effectivity [-]		0.8079 (0.08)		0.3233 (0.08)	0.17 (0.08)	-0.08 (0.08)

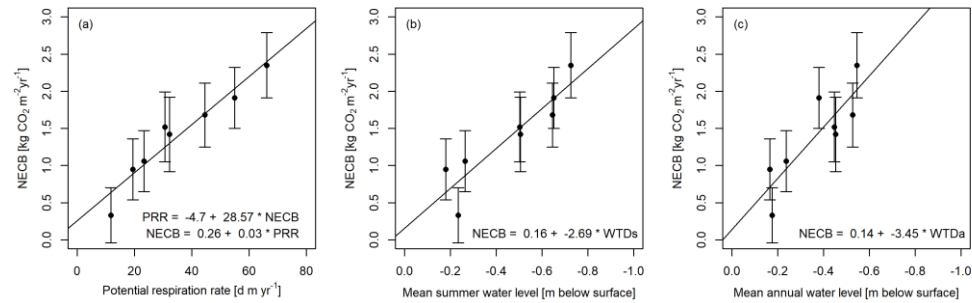
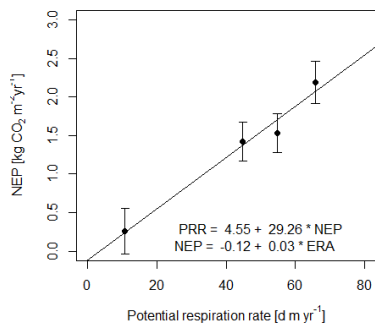


Figure 7 – The ~~relations~~relations between measured ~~NEP~~NECB [kg CO<sub>2</sub> m<sup>-2</sup> yr<sup>-1</sup>] and (a) potential microbial respiration rate (PRR [d m yr<sup>-1</sup>]), (b) mean summer water level (WTDs [m below surface]) and (c) mean annual water level (WTDa [m below surface]).

### 3.5 Model exploration

Here we present the results of our model ~~exploration~~ study (as depicted in Fig. 8). ~~Model water balance errors were sufficiently low (<1% of precipitation) over the complete year for all the model simulations.~~

Formatted: English (United States)

#### 3.5.1 Effects of meteorology and regional hydrology

~~We found lower potential respiration rate during wet years and in situations with upward flow across the bottom model boundary (Fig. 8a). Estimated~~ Simulated potential respiration rate ranged between ~~3.4~~ and ~~8.85~~  $\text{d m yr}^{-1}$  (~~0.01~~ – ~~2.67~~  $\text{kg CO}_2 \text{ m}^{-2} \text{ yr}^{-1}$ ) ~~for all scenarios (Fig. 8a, supplementary information S5).~~ The highest amount of potential respiration rate was found for the dry model scenario with  $1 \text{ mm d}^{-1}$  of downward seepage, a ditch summer water level of ~~-60 cm~~  $0.6 \text{ m}$  and no ~~SDSI~~ ~~SSI~~. The lowest amount of estimated potential respiration rate was found for a wet model scenario with  $1 \text{ mm d}^{-1}$  of upward seepage, a ditch summer water level of ~~-20 cm~~ and ~~SDSI~~  $0.2 \text{ m}$  without ~~SSI~~. Generally, a dry year caused the WFPS to drop at increased depths ( $0.8 \text{ m}$ ) as compared to a wet year ( $0.4 \text{ m}$ ), possibly affecting the pristine peat layer at greater depth (supplementary information, S4). In both wet and dry years the topsoil (~~20 cm~~  $0.2 \text{ m}$ ) is most prone to a high potential respiration rate.

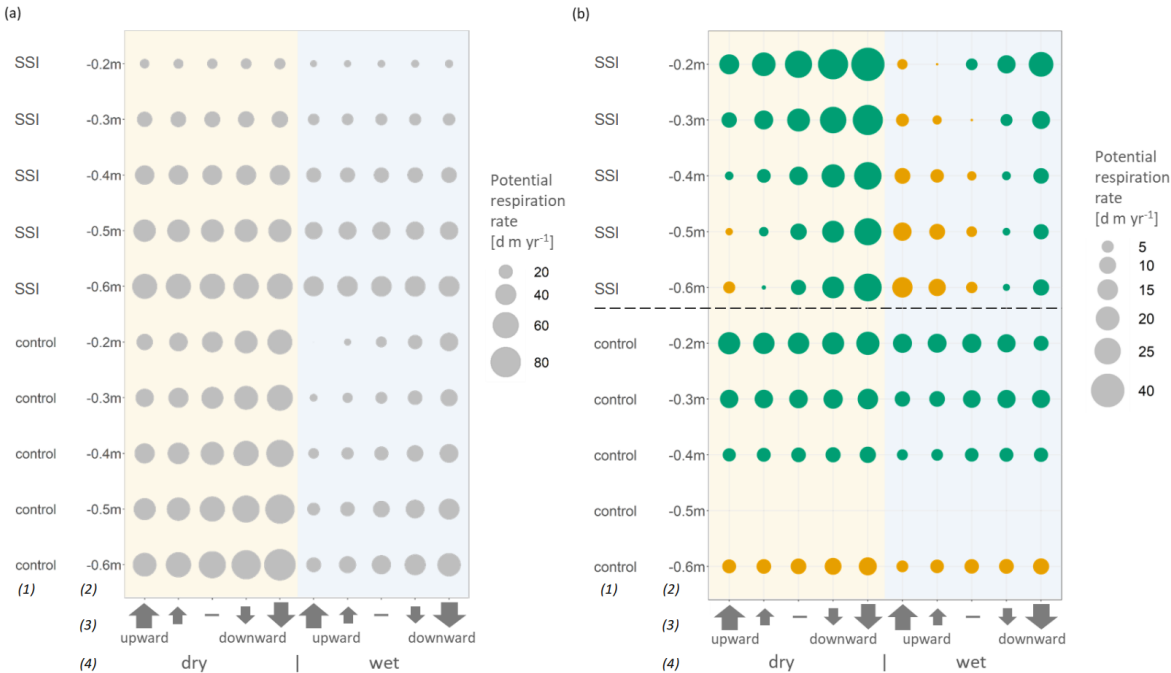
Changes in hydraulic conductivity of the intact sedge peat layer did not result in changes in potential respiration rate for ~~SDSI~~ ~~SSI~~ model runs, and remained mostly confined to  $10 \text{ d m yr}^{-1}$  for model runs without ~~SDSI~~ ~~SSI~~ (supplementary information, S5).

#### 3.5.2 Effects of water management strategies

We determined the effects of water management strategies by comparing yearly potential respiration rate of model runs. The effect of ditch water level was calculated by comparing the results of each model run with the results of base scenario with a summer ditch water level of ~~50 cm~~  $0.5 \text{ m}$  below surface (Fig. 8b). The effect of ~~SDSI~~ ~~SSI~~ was calculated by comparing ~~SDSI~~ ~~SSI~~ model runs with control model runs (Fig. 8b).

We find that elevating ditch water level consistently decreases potential respiration rate up to ~~18.9~~  $\text{d m yr}^{-1}$  (~~0.56~~  $\text{kg CO}_2 \text{ m}^{-2} \text{ yr}^{-1}$ ) (Fig. 8b, supplementary information S5). Depending on the hydrological seepage setting, ~~SDSI~~ ~~SSI~~ could increase and decrease potential respiration rate with ~~+79.1%~~ ( $12 \text{ d m yr}^{-1}$ , ~~0.34~~  $\text{kg CO}_2 \text{ m}^{-2} \text{ yr}^{-1}$ ) and ~~-34%~~ (~~24.36%~~ ( $26 \text{ d m yr}^{-1}$ , ~~0.73~~  $\text{kg CO}_2 \text{ m}^{-2} \text{ yr}^{-1}$ ) with a standard ditch water level of ~~-50 cm~~  $0.5 \text{ m}$  below surface in summer. The application of ~~SDSI~~ ~~SSI~~ is most effective during a dry year and with downward hydrological seepage fluxes (Fig. 8b). In wet years ~~SDSI~~ ~~SSI~~ is more likely to drain pores to field capacity, leading to a decrease in WFPS and increases in potential respiration rate as compared to control model runs. ~~SDSI~~ ~~SSI~~ also increases potential respiration rate when upward hydrological flow is present across the bottom boundary. ~~SDSI~~ ~~SSI~~ tends to have more positive effects on respiration rate when combined with high ditch water levels: up to ~~-58%~~ (~~30.75%~~ ( $40 \text{ d m yr}^{-1}$ , ~~0.91.3~~  $\text{kg CO}_2 \text{ m}^{-2} \text{ yr}^{-1}$ ) decrease in potential respiration rate (without including the decreases caused by ditch water level increment). This increase is due to the ~~SDSI~~ ~~SSI~~ draining of the unsaturated zone in wet periods:

the draining becomes less important when the depth of the unsaturated zone is minimized. We find that during dry years SDSI-SSI enhances water and heat transport to the topsoil resulting in stable zones with high potential respiration rate close to the surface, although SDSI-SSI mostly tends to decrease the extent/depth of potential respiration rate in these years (supplementary information, S4).

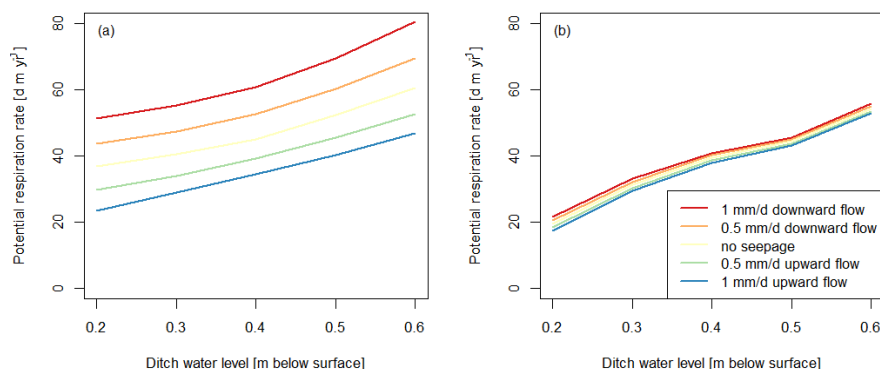


**Figure 8 – (a) Dot graph of calculated potential respiration rate over the complete width of the model domain. Model runs are distinguished by (1) application of SDSI-SSI, (2) ditch water level from surface, (3) hydrological regime (1 mm d<sup>-1</sup> upward to downward flow across the bottom boundary) and (4) meteorology (2018 for dry, 2012 for wet). (b) Effects of SDSI-SSI (above) and ditch water level (below) on respiration rate. Green dots represent a decrease in respiration rate. Effects of SDSI-SSI were determined by comparing similar model runs with and without SDSI-SSI. Effects of ditch water level were determined by comparing each scenario in which the water level is 0.5 m below surface with the other scenarios in the same category on the x-axis.**

Reductions of CO<sub>2</sub> emissions during a dry year without upward seepage conditions could easily be overestimated by factor 2 (supplementary information, S5), which roughly seems to be a good indicator of differences between absolute SSI reductions

of potential respiration rate over the complete parcel and over compared to the middle of the parcel (supplementary information, S5), reduced with factor  $>1.5$  for a dry year (supplementary information, S5), which indicates that SSI  $\text{CO}_2$  emission reductions that were measured at a central position within a parcel can easily be overestimated.

Sharpest declines in potential respiration rate are accomplished when deeper ditch water levels ( $-60 \text{ cm}$  to  $-0.6 \text{ m}$  in summer) are raised by  $20 \text{ cm}$  to  $-0.2 \text{ m}$  and with when downward bottom fluxes (no SSI, seepage is present (Fig. 9a)). Furthermore, we find that the potential respiration rate is more sensitive to changes in ditch water level for SSI scenarios as compared to control scenarios (Fig. 9). This means that higher reductions in potential respiration rates are found with increasing ditch water level in combination with SSI than with control scenarios. Also, the spread of potential respiration rate within the different seepage settings is diminished when SSI is applied (Fig. 9b).



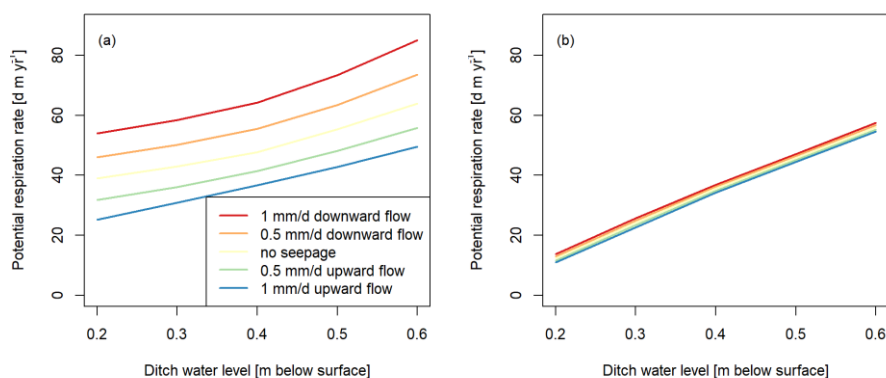


Figure 9 – (a) The simulated effects of ditch water level on potential respiration rate for different seepage settings within a control scenario and (b) these effects with SDSI in the dry year 2018. The colors of the lines represent the model seepage setting.

### 3.5.3 Water table depth and estimated respiration rate

A frequently used proxy to estimate peat decomposition is mean groundwater table depth. In this section we present our findings on the relation between simulated mean groundwater table depth and the NEPNECB that was estimated with by using the modelled respiration rate and Eq. 5.

We compared the mean modelled groundwater level with our simulated NEPNECB and found a strong correlation between the two variables (Fig. 10a, Table 5), in which summer (Eq. 6,  $R^2 = 0.92$ , May to August/October) performed better ( $R^2 = 0.90$ ) than annual (Eq. 8,  $R^2 = 0.8681$ ) mean values. The slope and intercept of the linear regression models to estimate NEPNECB with WTD, mean summer groundwater levels differed significantly ( $p < 0.05$ ) for situations with and without SDSI systems (Eqs. 6 & 7,  $p < 0.05$ , Fig. 10, Table 5). This means that similar water table depths lead to higher potential respiration rate estimations when SDSI is applied as compared to control scenarios (Fig. 10). To approach equal NEP, the absolute differences in NECB increase for SDSI sites, the mean summer groundwater level needs to be 10–15 cm closer to the surface than for non-SDSI sites. We see a clear difference between simulated NEP of wet and dry SDSI model runs deeper summer groundwater levels, which is due to SDSI drainage and irrigation dominance/topsoil moisturizing effect of SSI that was described in Sect. 3.5.2. As a consequence, a difference of  $0.82 \text{ t C ha}^{-1} \text{ yr}^{-1}$  is predicted between control and SSI scenarios

for a severely dry year with a mean summer water table of 0.4 m below surface. For wet model simulations (2012 and 2021) the slope and intercept differences for control scenarios show marginal differences.

$NEP_{control} = 6.55 WTD_s - 0.99$  (Eq. 6)

$NEP_{SSSI} = 6.73 WTD_s + 0.06$  (Eq. 7)

$NEP_{control} = 8.13 WTD_{\Delta} - 0.91$  (Eq. 8)

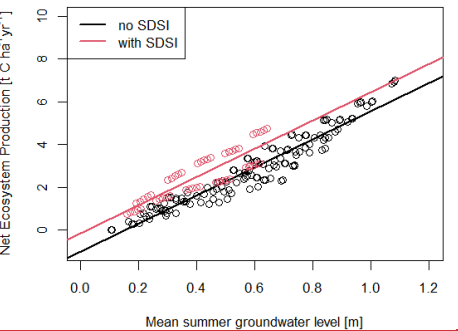


Table 5 - Estimated linear relation characteristics with standard errors to approximate NECB (t C ha<sup>-1</sup> yr<sup>-1</sup>) by using water table depth relations plotted in Figure 10 and 11. Standard errors include standard error estimates of Eq. 5.

Model scenarios	Mean water table period (m below surface)	Slope	Intercept	R <sup>2</sup>	Figure
All control	Summer	7.95 (0.13)	-0.07 (0.17)	0.90	10a
All SSI	Summer	8.23 (0.17)	-0.06 (0.17)	0.89	10a
Dry control	Summer	7.19 (0.17)	-0.13 (0.20)	0.93	10b
Dry SSI	Summer	9.47 (0.05)	-0.22 (0.15)	1.00	10b
All control	Year	9.13 (0.26)	0.00 (0.20)	0.81	11

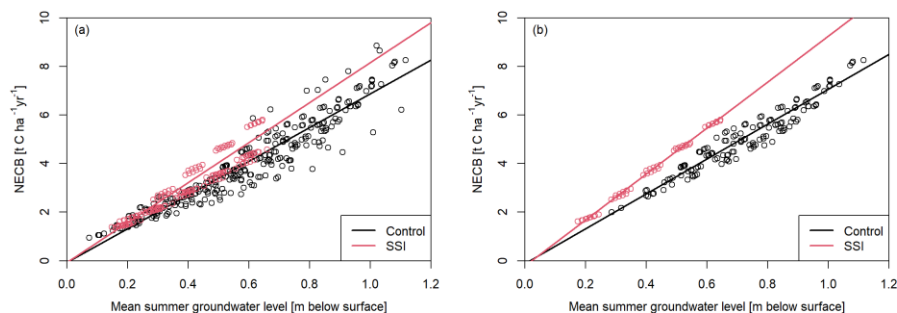


Figure 10 –Mean modelled summer groundwater level and  $NECB$  for simulations with and without  $SDSiSSI$ , for (a) all simulations and (b) simulations of 2018 and 2020 consisting of severe summer drought. Slope and intercept of plotted linear regression models are shown in Table 5.

## 4 Discussion

### 4.1 Observed effects of $SDSiSSI$

Our measurements of water table depth show that  $SDSiSSI$  maintained higher water tables during the summer drought, as was found by Kechavarsi et al. (2007) and Querner et al. (2012). The effect was more evident for the pressurized  $SDSiSSI$  system in Assendelft than for the passive  $SDSiSSI$  in Vlist, where the pressure in the  $SDSiSSI$  system followed the ditch water level. In Assendelft we also found more than 1.5 that WFPS was 19% higher WFPS in the top 0.5 m of the SSI parcel during July to September 2020 (Fig. 5e) compared to the control site. In spring and summer of 2021 we found slightly lower WFPS values for the Assendelft SSI parcel as compared to the control parcel, probably due to drainage facilitated by SSI. Nevertheless, this was not reflected in the groundwater table data. In Vlist the effects of  $SDSiSSI$  on WFPS in the topsoil were not significant in both 2020 and 2021. However, we should be careful when interpreting the absolute values for WFPS or comparing WFPS differences between Assendelft and Vlist due to high uncertainty in the relationship between sensor output signal and WFPS. Our temperature measurements support the hypothesis that  $SDSiSSI$  causes increased topsoil temperatures (up to 0.54 m depth). In the summer, this effect was stronger in Assendelft than in Vlist, which is likely due to the pressurized  $SDSiSSI$  in Assendelft. We hypothesize that the temperature increases were caused by the infiltration of warm ditch water and/or an increase in soil thermal conductivity by wetting the topsoil.

We found lower nocturnal  $R_{eco}$  during summer summertime for both plots with  $SDSiSSI$  application suggesting that  $SDSiSSI$  reduced peat respiration rate and/or crop productivity respiration (Fig. 6b). This is in contradiction with the findings of Parmentier et al. (2009) which did not show find a relation between groundwater table depth and  $R_{eco}$  and Weideveld et al.

(2021) who could not detect changes in  $R_{eco}$  when SDSI was applied. However, Parmentier et al. (2009) studied an abandoned meadow on peaty clay lake sediment, where a high forb biomass may have obscured the soil respiration component. In the autumn and/or winter, when the SDSI systems switched from net irrigation to drainage, we expected to find higher  $R_{eco}$  on the SDSI parcels. Measured  $R_{eco}$  in Assendelft and Vlist supported this hypothesis, but in Vlist we did not find this effect (supplementary information, S2); the effects remained relatively small.

Our measurements show that the application of SDSI in 2020 reduced  $CO_2$  emissions (NEPNECB) by  $83\% \pm 25\%$  for Assendelft and  $35\% \pm 17.28\% \pm 1\%$  for Vlist (Table 4). The In 2021, we found low reductions of  $11\% \pm 29\%$  and  $6\% \pm 23\%$  for Assendelft and Vlist respectively. The high standard deviations indicate that no significant reduction was observed for 2021 at both locations. In both years, the pressurized SDSI of Assendelft thus resulted in higher emission reductions as compared to the passive SSI in Vlist. Measurements of C-export show that crop productivity was 28% lower when SDSI was applied. For in Assendelft and Vlist this decrease was 24% and 6% respectively in 2020, suggesting that there is a relation between a near-surface groundwater table depth and crop production and/or between peat respiration rate and crop production. Although our Except for Assendelft in 2020, differences in C-export between control and SSI were smaller than the standard deviation on the C-export for each of the parcels. Our results suggest vast benefits of applying SDSI, we have to note that the measurements have been done in the middle of the parcels and were taken in a severely SSI in the dry year conditions under which we expect maximum effect of SDSI. We expect considerably lower emission reductions for the complete parcel area from ditch to ditch (35% and 39% for Assendelft and Vlist respectively) and over multiple years including years with less precipitation shortage. To estimate these effects we developed a model with which the potential respiration rate was calculated for the entire parcel and for both a meteorologically wet and dry year 2020 and neglectable effects in 2021. These findings suggest that SSI effectivity in reducing peatland  $CO_2$  emissions is strongly related to the extent of summer drought.

#### 4.2 Simulated versus observed dynamics and SDSI effects

Generally, our model simulated the measured water table depths satisfactory. (Fig. 5b). However, the simulated phreatic surface during the summer of 2020 did not show similar short term dynamics as in response to precipitation and drought as was observed on the research sites (supplementary information, S1). We think that this is a result of the complex characteristics of peat soils, such as the possibility to shrink and swell, preferential flowpaths, dual porosity and hysteresis, which were not represented with our model. We chose to use within the general meta study parameter values based on metastudies that we applied in our model (Liu, Janssen & Lennartz, 2016; Rezanzezhad et al., 2016). The complexity challenges to describe water retention and hydrology in the peat soil (Rezanzezhad et al., 2016), as we experienced within this research. The hydrological model overestimated the water buffering role of the unsaturated zone during summertime. This resulted in a rather constant groundwater level unresponsive to summer drought or rainfall episodes, which were visible in the observed groundwater levels the summertime of 2020. To improve the simulation of groundwater table dynamics, several model experiments were executed such as incorporation of crack formation, increasing and decreasing residual water content and saturated water content, including hysteresis, adding anisotropy or dual porosity. These attempts did not improve the simulated groundwater

dynamics enough to warrant the extra complexity. ~~The modelled average monthly groundwater table dynamics were in accordance with measured variables, as shown by Fig. 6b.~~

Temperature dynamics were simulated successfully, although simulated topsoil temperatures were on average slightly overestimated due to too high surface boundary temperatures. Our model predicted stronger topsoil warming with SDSI for Assendelft than for Vlist, which was also measured. In Assendelft ~~SDSI created~~ SDSI established a wetter topsoil than ~~for~~ Vlist. A wetter topsoil conducts heat better, which results in higher summer temperatures deeper in the profile. Nevertheless, monthly temperature differences between the control and SDSI parcels remained mostly confined to 0.5°C.

On average ~~59.65~~ % of the observed variation in  $R_{eco}$  could be explained by simulated variations in WFPS and soil temperatures. This confirms our expectation that WFPS and soil temperature are dominant controls on microbial respiration dynamics, as stated by e.g. ~~Mäkiranta et al., 2009 or Moyano et al., 2013. For the control parcels the variation in WFPS is dominantly a seasonal variation related to deep groundwater tables in summer and high groundwater tables in winter and thus a strong cross-correlation exists between WFPS and soil temperature conditions. For the SDSI parcels the SDSI maintains a relative constant groundwater level and the observed variation in WFPS is much more rainfall and evaporation event driven, largely uncorrelated to the seasonal pattern of soil temperature. Therefore especially the SDSI sites provide an opportunity to unlink the activity curves for WFPS and soil temperature. We found that WFPS activity curves that have a maximum activity around or below 0.65~~ Mäkiranta et al., 2009 or Moyano et al., 2013. We found that WFPS activity curves that have a maximum activity between 0.65 and 0.85 WFPS and a general decrease towards zero respiration at 1.0 WFPS clearly outperformed other shapes of activity curves. In the literature relations were suggested that consisted of similar characteristics (Moyano et al., 2013), but measured relations vary widely and are far from general agreement (Kechavarzi et al., 2010; Moyano et al., 2013; Säurich et al., 2019). The curve that we selected for our analysis produced effectivity estimates that resembled the mean effectivity that was estimated using all eight WFPS curves that produced potential respiration that correlated well with measured  $R_{eco}$ . Therefore, this curve is our best estimate on respiration dependency of WFPS. However, relations between WFPS and respiration might vary in space and depth and we support further research to obtain more insight in this matter.

~~Factors like microbial and plant growth, plant respiration, the influence of root exudates and organic matter quality are responsible for the relatively smaller differences between SDSI and non-SDSI  $R_{eco}$  measurements (Fig. 6), as compared to the differences between SDSI and non-SDSI modelled potential respiration rate. These factors dominate the absolute value of  $R_{eco}$ , whereas we only tested the part of the dynamics of  $R_{eco}$  that can be explained by soil temperature and WFPS.~~

Our results show that our model captures effects of SDSI on water table depth, soil temperature and WFPS, which translate to similar reductions in potential respiration rate as measured NEP reductions and NECB for both measuring years and both research locations (Table 4). Furthermore, we find a strong relation ( $R^2 = 0.92$ ) between measured NECB and simulated potential respiration rate (Fig. 7, Eq. 5). Therefore, we think that our straightforward approach to estimate water management strategy effectivity forms an alternative approach of intermediate complexity compared to either groundwater table-GHG emission relationships (Fritz et al., 2017; Tiemeyer et al., 2020; Arets et al., 2020; Evans et al., 2021) (Fritz et al., 2017; Tiemeyer et al., 2020; Arets et al., 2020; Evans et al., 2021) or models that resolve the entire carbon cycle (van Huissteden et

Formatted: English (United States)

al., 2006; He et al., 2021). The additional complexity of unsaturated zone modelling of water flow and introducing soil temperature and van Huissteden et al., 2006; He et al., 2021). The additional complexity of unsaturated zone modelling of water flow and introducing soil temperature and WFPS-activity curves requires a considerably higher modelling effort compared to approaches that rely on relationships between yearly average groundwater table and GHG-emissions, but it allows us to investigate the effect differences between groundwater levels raised by ditch water level manipulations or by applying ~~SDS4SSI~~. Compared to models that describe the full carbon cycle and consist of many (often unknown) parameters, our approach forms a straightforward alternative to simulate the yearly carbon balance. Nevertheless, we should be careful when comparing ~~emissions~~ potential respiration rate estimations between locations as some location specific characteristics have not been simulated such as parcel width, organic matter content or C/N ratio.

#### 4.3 Model exploration of rewetting measures

Our simulation results support the statement that there is an enormous potential to reduce greenhouse gas emissions from managed peatlands (Evans et al., 2021), which could be achieved by various water management strategies (Querner et al., 2012). Our results suggest that raising ditch water levels always results in decreasing potential respiration rates. Of course we can only state this for environments that are comparable with the situations we modelled and observed. Our results also show that ~~SDS4SSI~~ is not causing guaranteed decreases in potential respiration rate.

In fact, the complex interplay of the effects of ~~SDS4SSI~~ on temperature and WFPS determine the total benefits of the systems.

The most important effects that we encountered during the warm summer periods and in simulations without seepage fluxes are: (1) soil drainage during wet times increases potential respiration rate, (2) soil warming during dry times increases potential respiration rate, (3) soil wetting during dry times decreases the depth over which respiration can occur but also (4) in some cases increases respiration rate in the unsaturated topsoil as a result of constant moist conditions close to the warm soil surface (Sect. 3.5.2). Overall, we see that the first and third effects are dominant when studying the final results. The second and fourth effects are decreasing the overall effectivity of ~~SDS4SSI~~, but are less dominant. The specific hydrological seepage setting and meteorology will determine which processes are active over the year and will determine long term effectivity of ~~SDS4SSI~~.

Our estimations of potential respiration rate for dry and wet years suggest that the extent of summer drought mainly determines the effectivity of ~~SDS4SSI~~. The ~~SDS4SSI~~ systems are likely to induce a higher amount of potential respiration rate during wet years, and a lower amount of potential respiration rate during dry years – which is explained by the processes described in the previous paragraph. As a result of climate change the occurrence of severely dry summers is more likely in the Netherlands (Philip et al., 2020), inferring that ~~SDS4SSI~~ leads to a net reduction of potential respiration rate on the longer term. Furthermore, the seepage regime should always be taken into account when considering a application of ~~SDS4SSI~~. It is likely that ~~SDS4SSI~~ systems drain upward seepage, which would normally support high water tables during drought, resulting in the increase of potential respiration rate when applying ~~SDS4SSI~~ under upward seepage conditions. Adversely, ~~SDS4SSI~~ systems are likely to sustain groundwater tables in situations with downward flow, resulting in a decrease of potential respiration rate when applying ~~SDS4SSI~~ (Fig. 8b). Moreover, in combination with elevated ditch water levels potential benefits of ~~SDS4SSI~~ increase,

which also suggests that the application of pressurized drain subsurface irrigation tends to yield stronger decreases in potential respiration rate when drain pressure exceeds ditch pressure.

Other research suggests a decrease in peat decomposition (subsidence) by 45% when ~~SDSI~~ is applied during 2000-2001 (Quemer et al., 2012). Our results suggest that the effects of submerged drains would be within the range of these estimated ~~SDSI~~ effects ~~of for a dry and wet model scenario~~ with conditions that apply for the research location: 0.5 mm d<sup>-1</sup> downward flow, a summer ditch water level 0.3 m (and when observing the middle of the parcel).

Weideveld et al. (2021) found no clear benefits of ~~SDSI~~ in their setting. For model scenarios with low ditch water levels (~~60 cm 0.6 m~~ below surface) we only predicted a slight decrease of ~~10.13%~~ in potential peatland emissions over the full width of the parcel for 2018. It is likely that moderate differences like these remained undetected in the study of Weideveld et al (2021) as uncertainty of NECB-~~NEP~~ in almost all study fields exceeded 10%.

Besides effects of peatland management on aerobic respiration rate it is important to consider saturated-zone effects, like infiltration of oxygenated and nutrient rich surface water, which we did not include in this research. As soil temperatures tend to be increased with ~~SDSI~~, also saturated respiration rate could be enhanced. Furthermore, ~~SDSI~~ enhances groundwater flow and transport, possibly leading to higher nutrient and DOM leaching leading to adverse effects. Furthermore, often the pH of the infiltrated surface water is higher than soil pH, enhancing respiration rate (Malik et al., 2018). Lastly, anaerobic respiration (forming CH<sub>4</sub> and N<sub>2</sub>O) is likely to increase when groundwater levels approach the soil surface, counteracting on the decreased aerobic soil respiration in terms of GHG emissions (Tiemeyer et al., 2020).

#### 4.4 Comparison with groundwater-GHG emission relations from previous studies

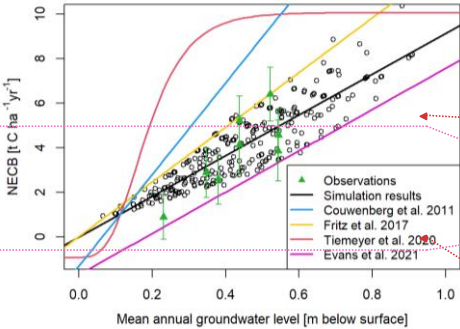
~~In many previous studies empirical relations have been established between land subsidence or NEP and (long term) groundwater characteristics like the yearly lowest, yearly mean groundwater levels, or mean summer groundwater levels (e.g. van den Akker et al., 2008; Fritz et al., 2017; Tiemeyer et al., 2020; Evans et al., 2021). In this study we fitted a linear model between mean summer groundwater table/mean annual water table and our estimations of potential respiration rate. Our data suggest that peatland CO<sub>2</sub> emissions increase linearly with deeper annual groundwater levels, which is mostly in line with findings in literature except for the study Tiemeyer et al., 2020, who found an exponential relationship.~~

~~We compared our simulation results of the fitted relation between mean annual groundwater table and NEP with the findings of Fritz et al. (2017), Tiemeyer et al. (2020) and Evans et al. (2021) (Fig. 11, Table 5). From our modelling results, we derived a relationship that closely follows the proposed relationship by Evans et al., (2021) with a slightly lower slope and a higher intercept. Our NEP estimations with high mean annual groundwater levels (< 0.10 m depth from surface) deviate from the confidence interval in the study of Evans et al. (2021), but are in accordance for deeper annual mean groundwater levels (Fig. 11). As our relation between groundwater depth and NEP is based on only four observed NEP values, the close match between our results and those of Evans et al (2021) forms a strong additional model validation. However, other studies of for example Fritz et al. (2017) and Tiemeyer et al. (2020) generally suggest a higher NEP, especially for a WTD<sub>a</sub> exceeding 0.10 m in depth and more research is required to explain these differences.~~

In many previous studies empirical relations have been established between land subsidence or NECB and (long term) groundwater characteristics like the yearly lowest, yearly mean groundwater levels, or mean summer groundwater levels (e.g. van den Akker et al., 2008; Fritz et al., 2017; Tiemeyer et al., 2020; Evans et al., 2021). In this study we fitted a linear model between mean summer groundwater table/mean annual water table and our estimations of potential respiration rate. Our data suggest that peatland CO<sub>2</sub> emissions increase linearly with deeper annual groundwater levels, which is mostly in line with findings in literature except for the study Tiemeyer et al., 2020, who found an exponential relationship. We compared our simulation results of the fitted relation between mean annual groundwater table and NECB with the findings of Couwenberg et al. (2011), Fritz et al. (2017), Tiemeyer et al. (2020) and Evans et al. (2021) (Fig. 11, Table 6). From our modelling results, we derived a relationship that falls in between the relation of Fritz et al., (2017) and Evans et al., (2021) showing that our data and modelling results fit very well within the relations from previous research. However, other studies of Couwenberg et al., (2011) and Tiemeyer et al., (2020) generally suggest a higher NECB and more research is required to explain these differences.

**Table 56** –Overview of available fitted empirical relations to estimate ~~NEP~~NECB based on mean annual water table depth below surface (WTD<sub>A</sub>) that are plotted in Fig. 11.

Study	Function	Function with parameters
Current	<del>NEP = slope * WTD<sub>A</sub></del> <del>+ C</del>	<del>NEP = 8NECB</del> <del>= 9.13 WTD<sub>A</sub> - 0.91 WTD<sub>A</sub></del>
Couwenberg et al. (2011)		NECB = 20.54 WTD <sub>A</sub> - 1.29
Fritz et al. (2017)	<del>NEP = slope * WTD<sub>A</sub></del> <del>+ C</del>	<del>NEPNECB</del> <del>= 12.27 WTD<sub>A</sub> - WTD<sub>A</sub> - 0.02</del>
Tiemeyer et al. (2020)	<del>NEP</del> <del>= CO<sub>2</sub>(C)<sub>max</sub></del> <del>+ CO<sub>2</sub>(C)<sub>min</sub> e<sup>-<del>h</del>WTD<sub>A</sub></sup></del>	<del>NEPNECB</del> <del>= -0.93</del> <del>+ 11.00 e<sup>-7.52</sup>WTD<sub>A</sub></del>
Evans et al. (2021)	<del>NEP = slope * WTD<sub>A</sub></del> <del>+ C</del>	<del>NEPNECB = 9.27 WTD<sub>A</sub></del> <del>- WTD<sub>A</sub></del> <del>- 1.69</del>



**Figure 11** - The relation between annual mean modelled groundwater level and NECB found in this study in comparison with available fitted empirical relations to estimate NECB based on WTD<sub>A</sub> are presented in Table 6. Observations from this research are also depicted with standard deviations.

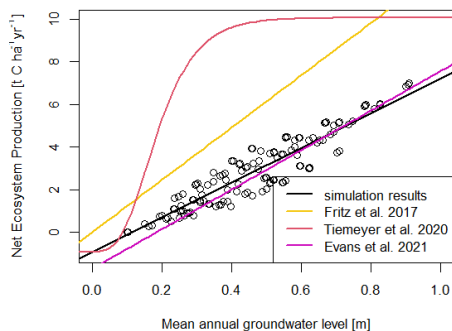


Figure 11 The relation between annual mean modelled groundwater level and NEP found in this study (Eq. 8) in comparison with the relation determined by Evans et al. (2021) containing all data of the complete boreal and temperate peatland measuring sites (Eq. 9).

Mean annual water table depth can function as a predictor of peat decomposition (Tiemeyer et al., 2020; Evans et al., 2021), although mean summer water table depth is found to be a more reliable predictor for predicting potential respiration rate in this research. Annual temperature fluctuations with high temperatures during summer and low during winter are an important driver for peat decomposition or potential respiration rate. Hence, the assumption that winter and summer water table depths are weighted equally to calculate  $\frac{NEP}{NECB}$  is incorrect. Therefore, we argue that methods that empirically relate groundwater table to peat decomposition can be improved by using summer water table depth when soil temperature and WFPS is not available.

We found that the relation between mean summer groundwater table depth and potential respiration rate diverges for simulations with and without SDSI, possibly because of the enhanced draining during wet periods and the topsoil-wetting and heat transporting effects of SDSI. Therefore, established relations on groundwater table depth and (approximations of) peat decomposition may not be applied to situations with SDSI (Fig. 10, Eq. 6, 7 Table 5), and benefits of SDSI could easily be overestimated. For example, especially with a similar average mean summer water table depth of 0.6 m we find a higher respiration rate (25%) for SDSI then for non-SDSI situations. As the water table depth becomes shallower, the relative difference increases even more (42% increase with a WTD of that exceeds 0.3 m (Sect. 3.5.3). Hence, the relations determined in other studies should be corrected when calculating the effects or CO<sub>2</sub> emissions of regions/parcels consisting of SDSI.

845 Despite that it is widely accepted to estimate peat respiration with mean groundwater levels we show that the variance in  
NECB is incompletely represented by these approaches (Fig. 7, 10, 11) and that this can be improved by our process-based  
approach.

#### 4.5 Implications for monitoring and rewetting strategies

850 As we found that our process-based approach estimating potential respiration rate as a measure for peat decomposition  
successfully captured the effects of rewetting measures on ~~NEP~~NECB, we would recommend to invest in measuring campaigns  
in managed peatlands that target to assess soil temperatures and WFPS. This will be an important addition to measuring  
groundwater table depth, as the effects of rewetting measures on potential respiration rate can be monitored more precisely.  
Particularly, the approach facilitates understanding the most important effects of ~~SDSI~~SSI on potential respiration rate. In fact,  
855 we think that the concept of potential respiration rate could be used as a first step in determining a new standard for process-  
based quantification of (indicators of) peat decomposition (tier 3 approach, IPCC, 2014). We find that modelling studies are  
necessary when implementing this concept and when determining the effects of rewetting strategies, as we found that point  
measurements on the middle of a parcel are not representative for the total effects over the complete width of the parcel. (Sect.  
3.4.2, 3.5.2).

860 Following our results we find that rewetting policies in areas with low ditch water levels (>0.4 m below surface summer ditch  
water level) should ~~always include ditch water level increases. Investments in SDSI do not guarantee high reductions (>40%)~~  
~~in CO<sub>2</sub> emissions of managed peatlands over longer timescales when ditch water levels are low, and would not result in any~~  
~~CO<sub>2</sub> reductions when the region is prone to upward seepage that is higher than 0.5 mm d<sup>-1</sup>. To assure high CO<sub>2</sub> emission~~  
~~reductions with SDSI, we advise to maintain high summer ditch water levels (0.2 m below surface preferably) or pressurized~~  
865 ~~SDSI. In the case of downward seepage, we would strongly advise to apply SDSI as a reduction in CO<sub>2</sub> emissions is guaranteed.~~  
~~When summer groundwater table depth is lower than 0.2m from the surface methanogenesis and nitrate reduction are induced~~  
~~and this is likely to cause an offset in GHG reductions from the soil in dairy farming peatlands (e.g. Evans et al., 2021; Tiemeyer~~  
~~et al., 2020). Therefore, we would advise to keep summer ground water levels between 0.2 and 0.3m. By using pressurized~~  
~~SDSI be accompanied by ditch water level increases. Investments in SSI do not guarantee high reductions (>40%) in CO<sub>2</sub>~~  
870 ~~emissions of managed peatlands over longer timescales when ditch water levels are low, and our results show no CO<sub>2</sub>~~  
~~reductions when the region is prone to upward seepage that is higher than 0.5 mm d<sup>-1</sup>. To assure high CO<sub>2</sub> emission reductions~~  
~~with SSI, we advise to maintain high summer ditch water levels (0.2 m below surface preferably) or pressurized SSI. In the~~  
~~case of downward seepage, our results indicate a guaranteed CO<sub>2</sub> emission reduction. When summer groundwater table depth~~  
~~is lower than 0.2m from the surface methanogenesis and nitrate reduction are induced and this is likely to cause an offset in~~  
875 ~~GHG reductions from the soil in dairy farming peatlands (e.g. Evans et al., 2021; Tiemeyer et al., 2020). Therefore, we suggest~~  
~~to keep summer ground water levels between 0.2 and 0.3m for minimal GHG emission. By using pressurized SSI these specific~~  
groundwater table depths could be targeted and maintained (as shown by the measurements in Assendelft). Quantification of

the effects of parcel width was beyond the scope of our research as this would involve designing separate model domains and analyzation methods which was not feasible within this project.

Finally, the water management strategies that we discuss are envisioned from a perspective in which a agricultural business on managed peatlands could predominantly be maintained while reducing greenhouse gas emissions. However, several other strategies that ~~embody the~~ aim to reduce GHG emissions exist, such as full ecosystem restoration (Nugent et al., 2019) or paludiculture (Geurts et al., 2019). We emphasize the need for long term thinking and solutions and recommend interdisciplinary research in which the broad goals of society as a whole are centralized while determining the fate of peatlands.

## 5 Conclusions

~~Field measurements of 2020 in Assendelft and Vlist show that SDSI systems tend to establish constant groundwater tables throughout the year, especially reducing the extent of the unsaturated zone in summer. Additionally, we found that SDSI also tends to increase soils temperatures and WFPS in the upper soil zone (to 0.5 m depth). The effects were found to be stronger for pressurized SDSI systems (Assendelft). The yearly NEP reduction due to SDSI was  $1.27 \pm 0.39 \text{ kg CO}_2 \text{ m}^{-2} \text{ yr}^{-1}$  ( $83 \pm 25\%$ ) and  $0.78 \pm 0.37 \text{ kg CO}_2 \text{ m}^{-2} \text{ yr}^{-1}$  ( $35 \pm 17\%$ ) for Assendelft and Vlist respectively.~~

~~Model simulations showed similar seasonal dynamics as measured for groundwater table depth, soil temperature and WFPS. Also, the estimated effectivity of SDSI that was calculated using model output data of soil temperature and WFPS was in accordance with measured effectivity for both field sites. This allowed us to extrapolate the measured effectivity at point scale to an estimated effectivity for the entire field, reducing the effectivity of SDSI to 64% and 20% for Assendelft and Vlist respectively. Within our research we showed that mean annual, or summer, groundwater level height measurements fall short as a proxy for estimating peat decomposition, and addressed the potency of an alternative process-based approach that converts daily soil temperature and WFPS conditions to a peat decomposition proxy. Furthermore, the outcomes of our model scenarios showed that temporal variation in meteorology, spatial variation in landscape seepage and variation in ditch water level management decisions can explain the wide range in SSI effectivity that had previously been reported by other researchers. Lastly, we addressed the effects of SSI systems on groundwater, soil temperature and moisture conditions, which lead to understanding individual processes that limit, or contribute to, peat decomposition in SSI scenarios. As these processes are different for control as compared to SSI scenarios, we also detected different dependencies of NECB on mean summer groundwater level. Our findings can contribute to peatland management, to better decide on where and how water management practices would be effective.~~

~~Vlist respectively. Within the model exploration we found explicit effects of water management strategies on simulated potential aerobic respiration rate: (1) Elevating ditch water levels decreases potential respiration rate (up to  $18 \text{ d m yr}^{-1}$  or  $0.5 \text{ kg CO}_2 \text{ m}^{-2} \text{ yr}^{-1}$ ), (2) SDSI is beneficial in decreasing aerobic potential respiration rate in environments with downward hydrological flow or with drain pressure relatively close to the surface (up to  $30 \text{ m d yr}^{-1}$  or  $0.9 \text{ kg CO}_2 \text{ m}^{-2} \text{ yr}^{-1}$ ) and (3) the~~

effects of SDSI are more likely to be beneficial during severe summer drought. We found several effects of SDSI to be specifically important: (1) soil drainage during wet times increases respiration rate, (2) soil warming during dry times increases respiration rate and (3) soil wetting during dry times decreases respiration *depth* and at the same time (4) increases respiration rate in the unsaturated topsoil.

To approximate NEP and effectivities of rewetting efforts our approach yielded valuable results which were in line with previous scientific research in which mean annual groundwater level was used as a proxy for NEP. We do recommend using a process-based approach that uses soil temperature and WEPS to estimate peat respiration rate, as it enables to understand and capture the fundamental effects of rewetting measures on potential respiration rate. If it is not possible to use soil temperature and WEPS, mean summer groundwater level instead of mean annual groundwater level should be used as a proxy for NEP, since this proxy performed better and is a more logical choice as potential respiration rate is highest in warm soils. Furthermore, relations between groundwater table depth and NEP that have been determined without SDSI seemed to deviate from relations determined with SDSI, hence groundwater respiration rate relations determined in the past may not be applied directly to calculate the effects of SDSI systems on NEP and have to be corrected.

**Data availability**

All raw data can be provided by the corresponding authors upon request.

**Author contribution**

JB, YvdV, MMH, KvH and GE outlined the research; CvH and JB performed the measurements; JB, YvdV, MvdB and RM analyzed the data; JB and YvdV wrote the manuscript draft; MMH, MvdB, KvH, GE and RM reviewed and edited the manuscript.

**Competing interests**

The authors declare that they have no conflict of interest.

**Acknowledgements**

This study was part of the project “Nationaal onderzoeksprogramma broeikasgassen veenweiden” funded by the Dutch government to research greenhouse gas emissions emerging from peatlands. This project is an interdisciplinary collaboration

Formatted: Heading 1, Left

between the following Dutch partners: STOWA, Deltares, Radboud Universiteit, Universiteit Utrecht, Wageningen Environmental Research, Wageningen Universiteit, Technische Universiteit Delft, B-ware, and Vrije Universiteit Amsterdam. We would like to thank all the researchers, technical staff and the farmers involved. Especially, we are grateful for the technical support by Ron Lootens, Arie Bikker and Rob Stoevelaar of the VU.

References

van den Akker, J. J. H., Kuikman, P. J., de Vries, F., Hoving, I., Pleijter, M., Hendriks, R. F. A., Wolleswinkel, R. J., Simões, R. T. L., and Kwakernaak, C.: EMISSION OF CO2 FROM AGRICULTURAL PEAT SOILS IN THE NETHERLANDS AND WAYS TO LIMIT THIS EMISSION, Proc. 13th Int. Peat Congr. After Wise Use – Futur. Peatlands, Vol. 1, 1, 2–5, 2008.

Allen, R. G., Pereira, L. S., Raes, D., & Smith, M. (1998): Crop evapotranspiration guidelines for computing crop water requirements. In FAO Irrigation & drainage Paper 56. FAO, Food and Agriculture Organization of the United Nations, Rome, 50 pp., 1998.

Arets, E. J. M. M., van der Kolk, J. W. H., Hengeveld, G. M., Lesschen, J. P., Kramer, H., Kuikman, P. J., & Schelhaas, M. J. (2020): Greenhouse gas reporting for the LULUCF sector in the Netherlands: methodological background, update 2020. 116. [http://library.wur.nl/WebQuery/wurpubs/533990\\_116\\_2020](http://library.wur.nl/WebQuery/wurpubs/533990_116_2020).

Bååth, E. (2018): Temperature sensitivity of soil microbial activity modeled by the square root equation as a unifying model to differentiate between direct temperature effects and microbial community adaptation. *Global Change Biology, Glob. Chang. Biol.*, 24(7), 2850–2861, <https://doi.org/10.1111/gcb.14285>, 2018.

Bader, C., Müller, M., Schulin, R., & Leifeld, J. (2018): Research Collection. *Biogeosciences*, 15(3), 703–719, <https://doi.org/10.3929/ethz-a-010782581>, 2018.

Basisregistratie Ondergrond (2018). BRO Bodemkaart 2018. Retrieved on 11-08-2021 from <https://www.broloket.nl/ondergrondmodellen>

Bechtold, M., Tiemeyer, B., Laggner, A., Leppelt, T., Frahm, E., & Belting, S. (2014): Large-scale regionalization of water table depth in peatlands optimized for greenhouse gas emission upscaling. *Hydrology and Hydrol. Earth System Sciences, Syst. Sci.*, 18(9), 3319–3339, <https://doi.org/10.5194/hess-18-3319-2014>, 2014.

Best, E. P. H., & Jacobs, F. H. H. (1997): The influence of raised water table levels on carbon dioxide and methane production in ditch-dissected peat grasslands in the Netherlands. *Ecological Engineering, Ecol. Eng.*, 8(2), 129–144, [https://doi.org/10.1016/S0925-8574\(97\)00260-7](https://doi.org/10.1016/S0925-8574(97)00260-7), 1997.

Couwenberg, J., Thiele, A., Tanneberger, F., Augustin, J., Bärtsch, S., Dubovik, D., Liaishchynskaya, N., Michaelis, D., Minke, M., Skuratovich, A., and Joosten, H.: Assessing greenhouse gas emissions from peatlands using vegetation as a proxy. *Hydrobiologia*, 674, 67–89, <https://doi.org/10.1007/s10750-011-0729-x>, 2011.

Dissanayaka, S. H., Hamamoto, S., Komatsu, T., & Kawamoto, K. (2013): Thermal Properties for Peaty Soil Under

Formatted: English (United Kingdom)

Formatted: English (United Kingdom)

Formatted: English (United Kingdom)

Formatted: English (United Kingdom)

Formatted: No widow/orphan control, Don't adjust space between Latin and Asian text, Don't adjust space between Asian text and numbers

Formatted: English (United Kingdom)

Formatted: English (United Kingdom)

Formatted: English (United Kingdom)

Formatted: Font: Not Italic

Formatted: Font: Not Italic

Formatted: Font: Not Italic

Formatted: No widow/orphan control, Don't adjust space between Latin and Asian text, Don't adjust space between Asian text and numbers

Formatted: Font: Not Italic

Formatted: Font: Not Italic

Formatted: Font: Not Italic

Formatted: No widow/orphan control, Don't adjust space between Latin and Asian text, Don't adjust space between Asian text and numbers

Variable Saturation and Their Correlation to Mass Transport Parameters in Gaseous and Aqueous Phases. *Research Report of Department of Civil and Environmental Engineering, Res. Rep. Dep. Civ. Environ. Eng. Saitama Univ.*, 39, 21–32, 2013.

Dolman, A. J., Freibauer, A., & Valentini, R. (2019). The Continental-Scale Greenhouse Gas Balance of Europe. *In Ecological Studies (Vol. 203)*, Springer US. [https://doi.org/10.1007/978-0-387-76570-9\\_2019](https://doi.org/10.1007/978-0-387-76570-9_2019).

Elsgaard, L., Görres, C. M., Hoffmann, C. C., Blicher-Mathiesen, G., Schelde, K., and Petersen, S. O.: Net ecosystem exchange of CO<sub>2</sub> and carbon balance for eight temperate organic soils under agricultural management, *Agric. Ecosyst. Environ.*, 162, 52–67, <https://doi.org/10.1016/j.agee.2012.09.001>, 2012.

Erkens, G., Van Der Meulen, M. J., & Middelkoop, H. (2016). Double trouble: Subsidence and CO<sub>2</sub> respiration due to 1,000 years of Dutch coastal peatlands cultivation. *Hydrogeology Journal, Hydrogeol. J.*, 24(3), 551–568. <https://doi.org/10.1007/s10040-016-1380-4>, 2016.

Esri Nederland (2021). Provincies (Bestuurlijke Grenzen 2019). Retrieved on 11-08-2021 from <https://www.arcgis.com/home/item.html?id=e18b8b61f4334e59abd59c68673b4041>.

Evans, C. D., Peacock, M., Baird, A. J., Artz, R. R. E., Burden, A., Callaghan, N., Chapman, P. J., Cooper, H. M., Coyle, M., Craig, E., Cumming, A., Dixon, S., Gauci, V., Grayson, R. P., Helfter, C., Heppell, C. M., Holden, J., Jones, D. L., Kaduk, I., Levy, P., Matthews, R., McNamara, N. P., Misselbrook, T., Oakley, S., Page, S., Rayment, M., Ridley, L. M., Stanley, K. M., Williamson, J. L., Worrall, F., and Morrison, R. (2021). Overriding water table control on managed peatland greenhouse gas emissions. *Nature*. <https://doi.org/10.1038/s41586-021-03523-1>, 2021.

Friedlingstein, P., Jones, M. W., O'Sullivan, M., Andrew, R. M., Hauck, J., Peters, G. P., Peters, W., Pongratz, J., Sitch, S., Le Quéré, C., Bakker, D. C. E., Canadell, J. G., Ciais, P., Jackson, R. B., Anthoni, P., Barbero, L., Bastos, A., Bastrikov, V., Becker, M., Zaehle, S. (2019). Global carbon budget 2019. *Earth System Science Data*, 11(4), Bopp, L., Buitenhuis, E., Chandra, N., Frédéric, C., Chini, L. P., Currie, K. I., Feely, R. A., Gehlen, M., Gilfillan, D., Thanos, G., Goll, D. S., Gruber, N., Gutekunst, S., Harris, I., Havard, V. A., H. R., Hurtt, G., Ilyina, T., Jain, A. K., Joetzjer, E., Kaplan, J. O., Kato, E., Klein Goldewijk, K., Korsbakken, J. I., Landschützer, P., Lauvset, S. K., Lefèvre, N., Andrew, L., Lienert, S., Lombardozi, D., Marland, G., McGuire, P. C., Melton, J. R., Metzl, N., Munro, D. R., Nabel, J. E. M. S., Nakaoka, S.-I., Neill, C., Omar, A. M., Ono, T., Peregon, A., Pierrot, D., Poulter, B., Rehder, G., Resplandy, L., Robertson, E., Rödenbeck, C., Séférian, R., Schwinger, J., Smith, N., Tans, P. P., Tian, H., Tilbrook, B., Tubiello, F. N., Van der Werf, G. R., Wiltshire, A. J., and Zaehle, S.: Global carbon budget 2019, *Earth Syst. Sci. Data*, 11, 2019.

Fritz, C., Geurts, J., Weideveld, S., Temmink, R., Bosma, N., Wichern, F., & Lamers, L. (2017). Meten is weten bij bodemdaling-mitigatie. Effect van peilbeheer en teeltkeuze op CO<sub>2</sub>-emissies en venoxidatie. *Bodem*, 2, 20–22, 2017.

van Genuchten, M. T.: A Closed-form Equation for Predicting the Hydraulic Conductivity of Unsaturated Soils, *Soil Sci. Soc. Am. J.*, 44, 892–898, <https://doi.org/10.2136/sssaj1980.03615995004400050002x>, 1980.

Geurts, J., van Duinen, G.-J. A., van Belle, J., Wichmann, S., Wichtmann, W., & Fritz, C. (2019). Recognize the high potential of paludiculture on rewetted peat soils to mitigate climate change. *Landbouwforsch.*, 69(1), 2019.

Görres, C. M., Kutzbach, L., & Elsgaard, L. (2014). Comparative modeling of annual CO<sub>2</sub> flux of temperate peat soils

Formatted: Font: Not Italic

Formatted: Font: Not Italic

Formatted: English (United Kingdom)

Formatted: English (United Kingdom)

Formatted: English (United Kingdom)

Formatted: English (United Kingdom)

Formatted: English (United Kingdom)

Formatted: English (United Kingdom)

Formatted: No widow/orphan control, Don't adjust space between Latin and Asian text, Don't adjust space between Asian text and numbers

Formatted: English (United Kingdom)

Formatted: Font: Not Italic, English (United Kingdom)

Formatted: English (United Kingdom)

Formatted: English (United Kingdom)

Formatted: English (United Kingdom)

Formatted: No widow/orphan control, Don't adjust space between Latin and Asian text, Don't adjust space between Asian text and numbers

Formatted: Font: Not Italic

Formatted: English (United Kingdom)

Formatted: No widow/orphan control, Don't adjust space between Latin and Asian text, Don't adjust space between Asian text and numbers

Formatted: English (United Kingdom)

Formatted: English (United Kingdom)

Formatted: Font: Not Italic

under permanent grassland management. *Agriculture, Ecosystems and Environment*, *Agric. Ecosyst. Environ.*, 186, 64–76, <https://doi.org/10.1016/j.agee.2014.01.014>, 2014.

He, H., Jansson, P. E., & Gärdenäs, A. I. (2021). CoupModel (v6.0): An ecosystem model for coupled phosphorus, nitrogen, and carbon dynamics - Evaluated against empirical data from a climatic and fertility gradient in Sweden. *Geoscientific Geosci. Model Development Dev.*, 14(2), 735–761. <https://doi.org/10.5194/gmd-14-735-2021>, 2021.

Heinemeyer, A., Gornall, J., Baxter, R., Huntley, B., and Ineson, P.: Evaluating the carbon balance estimate from an automated ground-level flux chamber system in artificial grass mesocosms. *Ecol. Evol.*, 3, 4998–5010, <https://doi.org/10.1002/ece3.879>, 2013.

Heinen, M., Bakker, G., & Wösten, J. H. M. (2018). Waterretentie- en doorlatendheids- karakteristieken van boven en ondergronden in Nederland: de Staringreeks, 2018.

Hooghoudt, S. B. (1936). Bijdragen tot de kennis van eenige natuurkundige grootheden van den grond. 1(1), 1–94, 1936.

IPCC. (2014). Supplement to van Huissteden, J., van den Bos, R., and Marticorena Alvarez, I.: Modelling the effect of water-table management on CO<sub>2</sub> and CH<sub>4</sub> fluxes from peat soils. *Geol. en Mijnbouw/Netherlands J. Geosci.*, 85, 3–18. <https://doi.org/10.1017/S0016774600021399>, 2006 IPCC Guidelines.

Huth, V., Vaidya, S., Hoffmann, M., Jurisch, N., Günther, A., Gundlach, L., Hagemann, U., Elsgaard, L., and Augustin, J.: Divergent NEE balances from manual-chamber CO<sub>2</sub> fluxes linked to different measurement and gap-filling strategies: A source for National Greenhouse Gas Inventories: Wetlands. In 2013 uncertainty of estimated terrestrial LC sources and sinks?, *Zeitschrift für Pflanzenernährung und Bodenkd.*, 180, 302–315. <https://doi.org/10.1002/jpln.201600493>, 2017.

IPCC, Supplement to the 2006 IPCC Guidelines for National Greenhouse Gas Inventories: Wetlands <http://www.ipcc-nggip-iges.or.jp>, 1–55 pp., 2014.

Jansen, P. C., Querner, E. P., & Kwakernaak, C. (2007). Effecten van waterpeilstrategieën in veenweidegebieden. 87. <http://edepot.wur.nl/29635>, 2007.

Kechavarzi, C., Dawson, Q., Leeds-Harrison, P. B., Szatylowicz, J., and Gnatowski, T.: Water-table management in lowland UK peat soils and its potential impact on CO<sub>2</sub> emission. *Soil Use Manag.*, 23, 359–367, <https://doi.org/10.1111/j.1475-2743.2007.00125.x>, 2007.

Kechavarzi, C., Dawson, Q., Bartlett, M., & Leeds-Harrison, P. B. (2010). The role of soil moisture, temperature and nutrient amendment on CO<sub>2</sub> efflux from agricultural peat soil microcosms. *Geoderma*, 154(3–4), 203–210. <https://doi.org/10.1016/j.geoderma.2009.02.018>, 2010.

Kechavarzi, C., Dawson, Q., Leeds-Harrison, P. B., Szatylowicz, J., & Gnatowski, T. (2007). Water table management in lowland UK peat soils and its potential impact on CO<sub>2</sub> emission. *Soil Use and Management*, 23(4), 359–367. <https://doi.org/10.1111/j.1475-2743.2007.00125.x>

Leifeld, J., & Menichetti, L. (2018). The underappreciated potential of peatlands in global climate change mitigation strategies /704/47/4113 /704/106/47 article. *Nature Communications*, *Nat. Commun.*, 9(1), <https://doi.org/10.1038/s41467-018-03406-6>, 2018.

Formatted: Font: Not Italic

Formatted: Font: Not Italic

Formatted: Font: Not Italic

Formatted: No widow/orphan control, Don't adjust space between Latin and Asian text, Don't adjust space between Asian text and numbers

Formatted: Font: Not Italic

Formatted: Font: Not Italic

Formatted: Font: Not Italic, Dutch (Netherlands)

Formatted: No widow/orphan control, Don't adjust space between Latin and Asian text, Don't adjust space between Asian text and numbers

Formatted: Font: Not Italic

Formatted: Font: Not Italic

Formatted: No widow/orphan control, Don't adjust space between Latin and Asian text, Don't adjust space between Asian text and numbers

Formatted: Font: Not Italic

Formatted: Font: Not Italic

Formatted: No widow/orphan control, Don't adjust space between Latin and Asian text, Don't adjust space between Asian text and numbers

Formatted: Font: Not Italic

1040 Liu, H., Janssen, M., ~~& Lennartz, B.~~ (2016). Changes in flow and transport patterns in fen peat following soil degradation. *European Journal of Soil Science*, 67(6), 763–772. <https://doi.org/10.1111/ejss.12380>, 2016.

Published by : British Ecological Society Stable URL : <http://www.jstor.org/stable/2389824> REFERENCES Linked references are available on JSTOR for this article : *Functional Ecology*, *Funct. Ecol.* 8(3), 315–323, 1994.

1045 Mäkiranta, P., Laiho, R., Fritze, H., Hytönen, J., Laine, J., ~~& Minkinen, K.~~ (2009). Indirect regulation of heterotrophic peat soil respiration by water level via microbial community structure and temperature sensitivity. *Soil Biology and Biochemistry*, 41(4), 695–703. <https://doi.org/10.1016/j.soilbio.2009.01.004>, 2009.

Malik, A. A., Puissant, J., Buckeridge, K. M., Goodall, T., Jehmlich, N., Chowdhury, S., Gweon, H. S., Peyton, J. M., Mason, K. E., van Agtmaal, M., Blaud, A., Clark, I. M., Whitaker, J., Pywell, R. F., Ostle, N., Gleixner, G., ~~& Griffiths, R. I.~~ (2018). Land use driven change in soil pH affects microbial carbon cycling processes. *Nature Communications*, *Nat. Commun.* 9(1), 1–10. <https://doi.org/10.1038/s41467-018-05980-1>, 2018.

1050 Moyano, F. E., Manzoni, S., ~~& Chenu, C.~~ (2013). Responses of soil heterotrophic respiration to moisture availability: An exploration of processes and models. *Soil Biology and Biochemistry*, 59, 72–85. <https://doi.org/10.1016/j.soilbio.2013.01.002>, 2013.

Nugent, K. A., Strachan, I. B., Roulet, N. T., Strack, M., Frolking, S., ~~& Helbig, M.~~ (2019). Prompt active restoration of peatlands substantially reduces climate impact. *Environmental Research Letters*, *Environ. Res. Lett.* 14(12), 124030. <https://doi.org/10.1088/1748-9326/ab56e6>, 2019.

1055 Parmentier, F. J. W., van der Molen, M. K., de Jeu, R. A. M., Hendriks, D. M. D., ~~& Dolman, A. J.~~ (2009). CO2 fluxes and evaporation on a peatland in the Netherlands appear not affected by water table fluctuations. *Agricultural and Forest Meteorology*, *Agric. For. Meteorol.* 149(6–7), 1201–1208. <https://doi.org/10.1016/j.agrformet.2008.11.007>, 2009.

Philip, S. Y., Kew, S. F., Van Der Wiel, K., Wanders, N., Jan Van Oldenborgh, G., ~~& Philip, S. Y.~~ (2020). Regional differentiation in climate change induced drought trends in the Netherlands. *Environmental Research Letters*, *Environ. Res. Lett.* 15(9), <https://doi.org/10.1088/1748-9326/ab97ca>, 2020.

1060 Querner, E. P., Jansen, P. C., van den Akker, J. J. H., ~~& Kwakernaak, C.~~ (2012). Analysing water level strategies to reduce soil subsidence in Dutch peat meadows. *Journal of Hydrology*, *J. Hydrol.* 446–447, 59–69. <https://doi.org/10.1016/j.jhydrol.2012.04.029>, 2012.

1065 Ratkowsky, D. A., Lowry, R. K., McMeekin, T. A., Stokes, A. N., ~~& Chandler, R. E.~~ (1983). Model for bacterial culture growth rate throughout the entire biokinetic temperature range. *Journal of Bacteriology*, *J. Bacteriol.* 154(3), 1222–1226. <https://doi.org/10.1128/jb.154.3.1222-1226.1983>, 1983.

Rezanezhad, F., Price, J. S., Quinton, W. L., Lennartz, B., Milojevic, T., & Van Cappellen, P. (2016). Structure of peat soil and implications for water storage, flow and solute transport: A review update for geochemists. *Chemical Geology*, 429, 75–84. <https://doi.org/10.1016/j.chemgeo.2016.03.010>

1070 Säurich, A., Tiemeyer, B., Dettmann, U., ~~& Don, A.~~ (2019). How do sand addition, soil moisture and nutrient status

Formatted: Font: Not Italic

Formatted: Font: Not Italic

Formatted: Font: Not Italic

Formatted: Font: Not Italic

Formatted: Font: Not Italic

Formatted: Font: Not Italic

Formatted: Font: Not Italic

Formatted: Font: Not Italic

Formatted: Font: Not Italic

Formatted: English (United Kingdom)

Formatted: English (United Kingdom)

Formatted: English (United Kingdom)

Formatted: Font: Not Italic

Formatted: English (United Kingdom)

Formatted: Font: Not Italic, English (United Kingdom)

Formatted: English (United Kingdom)

Formatted: English (United Kingdom)

Formatted: English (United Kingdom)

Formatted: English (United Kingdom)

Formatted: Font: Not Italic

Formatted: Font: Not Italic

Formatted: Font: Not Italic

Formatted: No widow/orphan control, Don't adjust space between Latin and Asian text, Don't adjust space between Asian text and numbers

influence greenhouse gas fluxes from drained organic soils<sup>2?</sup>. *Soil Biology and Biochemistry*, *Biol. Biochem.*, 135(April), 71–84. <https://doi.org/10.1016/j.soilbio.2019.04.013>. 2019.

Sieber, A. C., Minke, M., Heller, S., Lange, G., Gatersleben, P., Giani, L., ~~&and~~ Landscheidt, S. (2021). SWAMPS. Zwischenergebnisse der bisherigen Projektlaufzeit (Kernaussagen ~~+~~). 2021.

Simunek, J., Sejna, M., & Van Genuchten, M. T. (2014). Hydrus 2D-3D. *International Ground Water Modeling Center*. 2014.

Tiemeyer, B., Albiac Borraz, E., Augustin, J., Bechtold, M., Beetz, S., Beyer, C., Drösler, M., Ebli, M., Eickenscheidt, T., Fiedler, S., Förster, C., Freibauer, A., Giebels, M., Glatzel, S., Heinichen, J., Hoffmann, M., Höper, H., Jurasinski, G., Leiber-Sauheitl, K., ~~---~~ Peichl-Brak, M., Roßkopf, N., Sommer, M., and Zeitz, J. (2016). High emissions of greenhouse gases from grasslands on peat and other organic soils. *Global Change Biology*, *Glob. Chang. Biol.*, 22(12), 4134–4149. <https://doi.org/10.1111/gcb.13303>. 2016.

Tiemeyer, B., Freibauer, A., Borraz, E. A., Augustin, J., Bechtold, M., Beetz, S., Beyer, C., Ebli, M., Eickenscheidt, T., Fiedler, S., Förster, C., Gensior, A., Giebels, M., Glatzel, S., Heinichen, J., Hoffmann, M., Höper, H., Jurasinski, G., Laggner, A., ~~---~~ Leiber-Sauheitl, K., Peichl-Brak, M., and Drösler, M. (2020). A new methodology for organic soils in national greenhouse gas inventories: Data synthesis, derivation and application. *Ecological Indicators*, *Ecol. Indic.*, 109(October 2019), 105838. <https://doi.org/10.1016/j.ecolind.2019.105838>. 2020.

~~van den Akker, J. J. H., Kuikman, P. J., de Vries, F., Hoving, I., Pleijter, M., Hendriks, R. F. A., Wolleewinkel, R. J., Simões, R. T. L., & Kwakernaak, C. (2008). EMISSION OF CO2 FROM AGRICULTURAL PEAT SOILS IN THE NETHERLANDS AND WAYS TO LIMIT THIS EMISSION. *Proceedings of the 13th International Peat Congress After Wise Use – The Future of Peatlands, Vol. 1, 1* (june), 2–5.~~

van Genuchten, M. T. (1980). A Closed form Equation for Predicting the Hydraulic Conductivity of Unsaturated Soils. *Soil Science Society of America Journal*, 44(5), 892–898. <https://doi.org/10.2136/sssaj1980.03615995004400050002x>

van Huissteden, J., van den Bos, R., & Marticorena Alvarez, I. (2006). Modelling the effect of water table management on CO2 and CH4 fluxes from peat soils. *Geologie En Mijnbouw/Netherlands Journal of Geosciences*, 85(1), 3–18. <https://doi.org/10.1017/S0016774600021399>

Veenendaal, E. M., Kolle, O., Leffelaar, P. A., Schrier-Uijl, A. P., Van Huissteden, J., Van Walsem, J., Möller, F., and Berendse, F.: CO2 exchange and carbon balance in two grassland sites on eutrophic drained peat soils, 4. 1027–1040. <https://doi.org/10.5194/bg-4-1027-2007>. 2007.

Weideveld, S. T. J., Liu, W., Van Den Berg, M., Lamers, L. P. M., ~~&and~~ Fritz, C. (2021). Conventional subsoil irrigation techniques do not lower carbon emissions from drained peat meadows. *Biogeosciences*, 18(12), 3881–3902. <https://doi.org/10.5194/bg-18-3881-2021>. 2021.

Yu, Z., Loisel, J., Brosseau, D. P., Beilman, D. W., ~~&and~~ Hunt, S. J. (2010). Global peatland dynamics since the Last Glacial Maximum. *Geophysical Research Letters*, *Geophys. Res. Lett.*, 37(13), 3–8. <https://doi.org/10.1029/2010GL043584>. 2010.

Formatted: Font: Not Italic

Formatted: Font: Not Italic, Dutch (Netherlands)

Formatted: Font: Not Italic

Formatted: Font: Not Italic, Dutch (Netherlands)

Formatted: Font: Not Italic

Formatted: English (United Kingdom)

Formatted: Font: Not Italic, English (United Kingdom)

Formatted: English (United Kingdom)

Formatted: English (United Kingdom)

Formatted: English (United Kingdom)

Formatted: English (United Kingdom)

Formatted: English (United Kingdom)

Formatted: English (United Kingdom)

Formatted: No widow/orphan control, Don't adjust space between Latin and Asian text, Don't adjust space between Asian text and numbers

Formatted: English (United Kingdom)

Formatted: English (United Kingdom)

Formatted: Font: Not Italic

Formatted: Font: Not Italic