

Modelling temporal variability of *in-situ* soil water and vegetation isotopes reveals ecohydrological couplings in a riparian willow plot

Aaron Smith¹, Doerthe Tetzlaff^{1,2,3}, Jessica Landgraf¹, Maren Dubbert^{1,4}, Chris Soulsby^{3,2,5}

¹IGB Leibniz Institute of Freshwater Ecology and Inland Fisheries Berlin, Berlin, Germany

²Humboldt University Berlin, Berlin, Germany

³Northern Rivers Institute, School of Geosciences, University of Aberdeen, UK

⁴ZALF Leibniz Center for Agricultural Landscape Research, Müncheberg, Germany

⁵Technische Universität Berlin, Chair of Water Resources and Hydrosystems Modelling, Berlin, Germany

Correspondence to: Aaron Smith (smith@igb-berlin.de)

Abstract. The partitioning of water fluxes in the critical zone is of great interest due to the implications for understanding water cycling and quantifying water availability for various ecosystem services. We used the tracer-aided ecohydrological model EcH₂O-iso to use stable water isotopes to help evaluate water, energy, and biomass dynamics at an intensively monitored study plot under two willow trees, a riparian species, in Berlin, Germany. Importantly, we assessed the value of *in-situ* soil and plant water isotope data to help quantify xylem water sources and transit times, with coupled estimates of the temporal dynamics and ages of soil and root-uptake water. The willows showed high water use through evapotranspiration, with limited percolation of summer precipitation to deeper soil layers due to the dominance of shallow root-uptake (>80% in the upper 10cm). Lower evapotranspiration under grass resulted in higher soil moisture storage, greater soil evaporation and more percolation of soil water. Biomass allocation was predominantly foliage growth (57% in grass and 78% in willow). Shallow soil water age under grass was estimated to be similar to under willows (15-17 days). Considering potential xylem transit times showed a substantial improvement in the model's capability to simulate xylem isotopic composition and water ages; and demonstrate the potential value of using in-situ data to aid ecohydrological modelling. Root-uptake was predominately derived from summer precipitation events (56%) and had an average age of 35 days, with xylem transport times taking at least 6.2 – 8.1 days. By evaluating isotope mass balances along with water partitioning, energy budgets and biomass allocation, the EcH₂O-iso model proved a useful tool for assessing water cycling within the critical zone at high temporal resolution, particularly xylem water sources and transport, which are all necessary for short and long-term assessment of water availability for plant growth.

1 Introduction

Understanding how water is partitioned in the Critical Zone (CZ), the near-surface zone from the top of the vegetation canopy to groundwater (Grant and Dietrich, 2017), is essential for improving knowledge of landscape functionality while providing an evidence base for sustainable water management strategies. The partitioning of CZ water is strongly dependent on

Deleted: Institut für Bauingenieurwesen

Formatted: English (Canada)

Formatted: English (Canada)

Deleted: , water stable isotope

Deleted: water use

Deleted: large

Deleted: estimate

Deleted: age,

Deleted: revealed

Deleted: high

Deleted: within

Deleted: isotope mass-balance, along with

Deleted: revealed multifaceted capabilities

Deleted: including

Deleted: ,

45 evapotranspiration (ET) (which accounts for >60% of terrestrial precipitation) (Oki and Kanae, 2006; Zhang et al., 2016), with
 vegetation water use globally accounting for 65-70% of evapotranspiration (Good et al., 2015; [Schlesinger and Jasechko, 2014](#)). While measurements of ET and transpiration fluxes help to quantify water partitioning, these measurements usually do
 not constrain the dynamics of how water is taken from different water sources (i.e. different soil depths) which may greatly
 change with wetness conditions (Rothfuss and Javaux, 2017), climate zone (Amin et al., 2020), and seasonally (Barbeta and
 Peñuelas, 2017). [In regions where ET dominates precipitation water partitioning \(>90%, Zink et al., 2017\), seasonal variations](#)
 50 [in ET greatly reduce water availability](#) during the growing season. Additionally, the importance of evaluating the water
 footprint of biomass production in water-limited regions where ET is [dominant](#) highlights the importance of partitioning ET
 into its components of interception and soil evaporation and transpiration (Kool et al., 2014; Xiao et al., 2018). However,
 partitioning ET to quantify the transpiration component throughout the growing season is complicated by multiple factors;
 including atmospheric demand, vegetation and root conductance, rooting distribution, stomatal resistance, and water potential
 55 throughout the soil profile (Dubbert and Werner, 2019; Jones and Tardieu, 1998; Sperry and Love, 2015). While total
 transpiration water usage may be constrained by direct measurement at [plot or stand scales \(e.g. via sap flow and eddy](#)
[covariance, Kool et al. \(2014\)\)](#) the source of transpired water from the rooting zone throughout the growing season is not easily
 measured and remains highly uncertain (Brantley et al., 2017; Dubbert and Werner, 2019).
 Continued efforts to close the knowledge gap on root-uptake sources are essential as increasing climatic variability and
 60 accentuated extremes will likely affect [future crop](#) and timber production (Lobell and Gourdji, 2012; Lobell et al., 2011) as
 well as groundwater and stream water availability (Gudmundsson et al., 2019; Taylor et al., 2013). Tracers in soils and xylem,
 specifically conservative water stable isotopes deuterium (^2H) and oxygen-18 (^{18}O), have previously been shown to be effective
 tools to help constrain root-water uptake sources using various approaches (Rothfuss and Javaux, 2017). These approaches
 usually use mixing relationships; including linear mixing models of water derived from different pools (e.g. (Barbeta and
 65 Peñuelas, 2017)), the similarity of potential source waters and xylem water (e.g. ellipsoid method) (Amin et al., 2020; Tetzlaff
 et al., 2021), Bayesian mixing frameworks (cf. von Freyberg et al. (2020)), and physically-based modelling approaches
 (Knighton et al., 2020; Ogle et al., 2014; Sutanto et al., 2012). However, many of these previous studies have utilized data
 obtained from destructive sampling, which limits the number of samples and may not account for the transport lag of soil to
 xylem sample locations (von Freyberg et al., 2020), diurnal variability (De Deurwaerder et al., 2020), or stem internal storage
 70 and exchange with xylem (Steppe et al., 2006). Moreover, increasing uncertainty surrounds whether common destructive
 methods, which involve cryogenic extraction, actually represent xylem water ([Chen et al., 2020](#)). Recent developments of *in-*
situ tracer measurements of soil and xylem (Marshall et al., 2020; Oerter and Bowen, 2017) have [enhanced](#) the possibilities
 for spatio-temporal evaluation of root-uptake distributions, in particular [when integrated with other data in](#) physically-based
[ecohydrological models](#). Higher resolution sampling [can be](#) beneficial as it can provide a wider range of temporal conditions
 75 (e.g. event rewetting) [which helps to test](#) model performance and in the assessment of model structure.
 Physically-based [ecohydrological](#) modelling approaches [have](#) a wide range of applicability, including the estimation of [water](#)
[and energy](#) fluxes and storages, flux partitioning, and biomass accumulation (Asbjornsen et al., 2011; [Fatichi et al., 2012](#);

Deleted: et al., 2013

Deleted: In regions such as the North European Plain, where ET dominates precipitation water partitioning (>90%, UFZ (2021)), seasonal variations in ET greatly reduce water availability beyond vegetation uptake

Deleted: the

Deleted: water flux

Deleted: small

Deleted: larger

Deleted: Allen and Kirchner, 2021;

Deleted: broadened

Deleted: modelling.

Deleted: is

Deleted: in

Deleted: increase confidence in

Deleted: , such as ecohydrological models,

Maneta and Silverman, 2013). Recent developments linking tracers into ecohydrological models (e.g. Kuppel et al. (2018a)) have further expanded ~~this~~ potential to track water flow paths and associated ages, which can aid in understanding water cycling and mixing within the CZ (Geris et al., 2017; Penna et al., 2018; Sprenger et al., 2019). Such modelling approaches can help overcome ~~the~~ limitations of using isotopic data ~~alone~~ regarding temporal frequency and spatial heterogeneity which may affect estimates of water partitioning and source identification (Goldsmith et al., 2018; Rothfuss and Javaux, 2017; Sprenger and Allen, 2020). However, relatively few ~~studies~~ have utilized physically-based models to estimate storage-flux-age dynamics while considering mixing of water after root-uptake (Knighton et al., 2020), particularly at high resolution, to account for sub-daily variability (e.g. De Deurwaerder et al. (2020)) or with consideration of root length properties (Gessler et al., 2021; Seeger and Weiler, 2021).

Here, we utilized soil and xylem water isotope data from *in-situ* monitoring over the 2020 growing season in Berlin, Germany, to ~~help~~ calibrate a tracer-aided ecohydrological model and estimate ~~water~~ flux and uptake dynamics. ~~The~~ *in-situ* location, which, ~~crucially~~, also monitored ~~complementary~~ soil moisture and vegetation growth dynamics, comprises a small stand of ~~riparian~~ willow trees ~~and surrounding grassland~~ in a situation typical of NE Germany. The model, EcH₂O-iso, is a distributed physically-based model that couples water and energy fluxes, with vegetation carbon allocation across the soil-plant-atmosphere continuum (SPAC). The primary goal of this study was to ~~utilize the EcH₂O-iso model as a learning framework to evaluate the temporal linkages of energy, water and ecology of the plot site throughout the growing season.~~ The primary ~~research~~ goal was ~~evaluated through the following research questions:~~ 1) how well ~~can~~ the tracer-aided ecohydrological model ~~reproduce in-situ measurements of fluxes, storages, and stable water isotopes~~ ~~of two juxtaposed vegetation types (willows and grass);~~ 2) ~~does distance-based isotopic mixing of root-water uptake better approximate xylem water isotopes than uniform instant root-uptake mixing;~~ and 3) ~~what are the transit times of vegetation water and what are the implications for water usage.~~ We used multicriteria calibration of water, energy, biomass, and isotopic datasets as equally informative data within the EcH₂O-iso model, with hydrological, isotopic, and ecological model outputs utilized as tools to evaluate these research questions. Such overall assessment of ecohydrological partitioning, in fluxes as well as root-uptake, was intended to help to improve the conceptualization of water cycling in the CZ at high-temporal ~~resolutions~~ and contribute to an evidence base for management strategies in water sensitive areas.

2 Study site and background

2.1 Study site

The study site is in a peri-urban area ~~in the grounds of the~~ Leibniz-Institute of Freshwater Ecology and Inland Fisheries (IGB) in south-east Berlin (Fig 1b). The site is situated near Lake Muggelsee (80m north of the lake edge), encircled in the North and West by buildings (40m), and east and south (30 and 20m, respectively) by additional vegetation. A stream draining nearby ponds fringes the East of the study area. A lake water extraction facility (using bank filtration) is situated immediately north of the IGB site and groundwater is ~2.2m below the ground surface with limited annual variability (<0.1m). A previous ~~isotope-~~

Deleted: the

Deleted: measurement

Deleted: approaches

Deleted: Importantly, we also used destructive methods to validate the *in-situ* data (Landgraf et al., 2021).

Deleted: soil storage-flux-age

Deleted: vegetation uptake dynamics during

Deleted: by calibration across multiple data sets. This

Deleted: achieved by

Deleted: assessing the partitioning of water usage and biomass dynamics and considering

Deleted: could

Deleted: ;

Deleted: exploring potential

Deleted: dynamics of vegetation

Deleted: using sap flow and xylem isotopic composition

Deleted: evaluating soil water ages and

Deleted: resolution,

Deleted: , situated

Deleted: fish retention

based study at the site has excluded groundwater and the nearby stream water as likely sources of water to the trees (Landgraf et al., 2021).

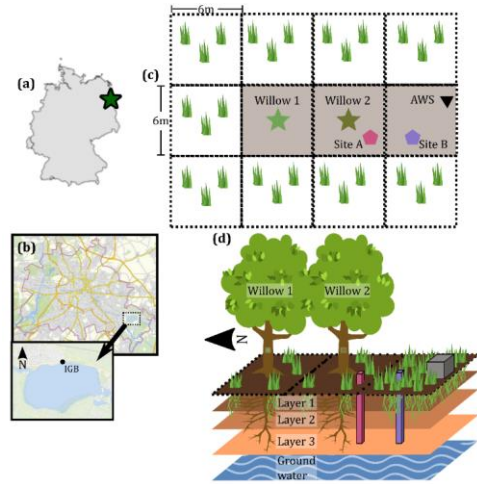
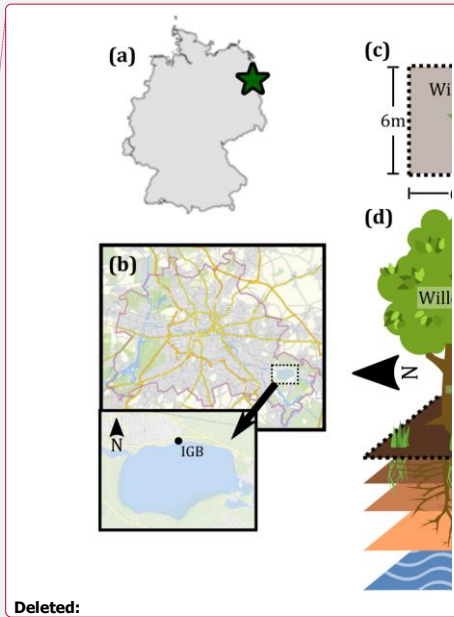


Figure 1: Study site location and site description. (a) Location of the site within Germany, (b) Location of IGB within Berlin (Berlin, 2021), (c) plan view of the study site including the location of willow trees, soil water isotope and moisture, and automatic weather station (AWS), and (d) conceptual diagram of the study site, with three soil depths and two primary vegetation units (with relative prominence). Pink and blue columns in subplot d indicate soil moisture and isotope measurement columns, and grey box indicates AWS location. Berlin Maps © OpenStreetMap contributors 2021. Distributed under the Open Data Commons Open Database License (ODbL) v1.0. The area surrounding the study site is grass-covered, similar to Site B.

2.2 Soils and vegetation

The study site was chosen based on its open nature (not shaded) for the two willow trees (*Salix alba*) and an adjacent automatic weather station (Fig 1c&d). Willows are a riparian species, which is well adapted to moderate and high moisture typical of riparian areas or with high groundwater levels (Isebrands and Richardson, 2014). Additional site selection criteria are provided in Landgraf et al. (2021). The willows have a similar age of ~15 years with willow in the North (Willow 1, Fig 1c&d) being slightly larger (~9m height and stem diameter: 398mm, 16.07.2020) and the southern willow (Willow 2, Fig 1c&d) being slightly smaller (~8m height and stem diameter: 353mm, 16.07.2020). Sparse grass is present below the willow trees, with some bare soil patches (Fig. 1d). Grass coverage is greater with no clear bare soil patches in the open area surrounding the willows (Fig. 1d).

The site is situated in the North European Plain, with geology and surficial soils in the surrounding areas of Berlin deposited during the Weichselian glaciation (Deutschen Nationalkomitee, 2016). The willows are situated on reclaimed ground where a previous building was demolished and the site backfilled with sandy brown earth topsoil. Soil samples taken to 1m depth reveal



Deleted:

Deleted: for the study site is

Deleted: south of

170 a relatively uniform soil structure, with a slightly higher organic horizon in the near-surface soils where rooting is densest,
which is more developed below the open grassland area south of the willows (Site B, Fig. 1c&d).

2.3 Climate

175 The climate is continental with a maritime influence (Köppen Index Cfb) and experiences substantial interannual variability
in precipitation (Table 1). The range of annual precipitation from within the climate normals (1980-2010) is 80% of the long
term average precipitation (526 mm/year, Table 1) (DWD, 2021). While precipitation during the study period was similar to
the climatic normal, the site experienced lower than normal humidity, and higher wind speeds and air temperature (Table 1).
The growing season is less humid and is warmer than annual averages (Table 1), with large sub-daily variability hydroclimate.
For the vegetation growing season in the surrounding region as well as Berlin, evapotranspiration (ET) is the dominant
hydrologic flux, accounting for ~90% of total precipitation (Gillefalk et al., 2021; Smith et al., 2020a).

180 Table 1: Climate conditions at a nearby long-term weather station, Berlin-Brandenburg airport (DWD, 2021). Average (standard
deviation in parentheses) climate conditions are shown for the climate normals (1980 - 2010) and the study year (2020). The growing
season is May – September (inclusive). NA is not applicable.

| | Climate Normals (1980 -2010) | Study Year (2020) | Study Growing Season (2020) | Daily Average High (Low) in Growing Season (2020) |
|--------------------------|------------------------------------|----------------------|--------------------------------|--|
| Precipitation (mm/year) | 526.5 (104.5) | 529.1 | 257.1 | NA |
| Relative Humidity (%) | 76.8 (2.1) | 71.9 | 64.2 | 90.5 (42.9) |
| Wind Speed (2m, m/s) | 3.10 (0.2) | 3.5 | 2.9 | 5.0 (1.0) |
| Air Temperature (2m, °C) | 9.3 (0.9) | 11.4 | 17.8 | 23.5 (11.8) |

3 Materials and methods

185 3.1 In-situ measurements

The study site was set up to continuously measure hydroclimate, soil moisture, and vegetation productivity.
Hydrometeorological conditions at the site were monitored with a mobile Eddy Covariance system (Li-cor Biosciences,
Lincoln, NE, USA), which included measurements of precipitation amounts (event), collection of precipitation samples for
isotope analysis, humidity, air temperature, wind speed, short wave radiation, surface temperature, and latent heat (Site B, Fig
190 1c). Climate data were quality checked against nearby weather stations that have been in operation longer. These include
measurements from the roof of the nearby IGB building (2013), the station on Lake Muggelsee (2013), and surrounding DWD
weather stations (DWD, 2021). Precipitation samples were collected at 4-hourly intervals. Each sample bottle was filled with
0.5cm of paraffin oil to prevent evaporation. Precipitation samples were analysed with a Picarro L2130-i cavity ring-down
laser spectrometer (Picarro, Inc., Santa Clara, CA, USA). Hourly pictures were taken from the soil surface towards the canopy

Formatted: Font: 11 pt

Formatted Table

Formatted: Font: 11 pt

Formatted: Font: 11 pt

Formatted: Font: 11 pt

Formatted: Font: 11 pt

Formatted: Font: 11 pt

Formatted: Font: 11 pt

Formatted: Font: 11 pt

Formatted: Font: 11 pt

Formatted: Font: 11 pt

Formatted: Font: 11 pt

Formatted: Font: 11 pt

Formatted: Font: 11 pt

Formatted: Font: 11 pt

Formatted: Font: 11 pt

Formatted: Font: 11 pt

Formatted: Font: 11 pt

Formatted: Font: 11 pt

Formatted: Font: 11 pt

Formatted: Font: 11 pt

Formatted: Font: 11 pt

Formatted: Font: 11 pt

Formatted: Font: 11 pt

Formatted: Font: 11 pt

Formatted: Font: 11 pt

Formatted: Font: 11 pt

Deleted: .

Deleted: from the weather station

to capture changes in leaf coverage. Images were translated to an estimated leaf area index (LAI) using the LAI package for R (Martin, 2015) which estimates the gap fraction of the histogram-based unimodal threshold method.

Soil moisture, isotopes ($\delta^2\text{H}$ and $\delta^{18}\text{O}$), and temperature were measured at two sites in the study area, Site A near Willow 2 and Site B in the open grass area. Soil moisture and temperature were measured at three depths (10, 40, and 100cm) with water content reflectometers (CS616, Campbell Scientific, Inc. Logan, UT, USA, $\pm 2.5\%$ for VMC) and thermistors (BetaTherm 100K6A11A, Campbell Scientific, Inc. Logan, UT, USA, $\pm 0.2^\circ\text{C}$). Visual inspection of rooting densities during installation suggested a higher proportion of roots near the surface and very few tree roots at 1m.

Soil water isotope samples were collected using both destructive bulk soil sampling and with an *in-situ* vapour isotope analyser. Installation of polypropylene membranes (7cm long, 0.2 μm pores, Kübert et al., 2020) for soil water vapour extraction at three depths (10, 40, and 100cm) was conducted at the end of May 2020 (May 20, 2020). Extracted *in-situ* soil vapour samples were analysed every two hours using a Picarro L2130-I cavity ring-down laser spectrometer (Picarro, Inc., Santa Clara, CA, USA), calibrated using the approach presented for this site in Landgraf et al. (2021).

To complement the climate and soil measurements, detailed measurements indicative of vegetation water fluxes and biomass accumulation were conducted continuously throughout the study period. Measurements included sap flow (heat ratio method, SFM1 instrument, ICT International, Australia), dendrometers (DR, Radius Dendrometer, Ecomaticl, Dachau, Germany), and xylem water vapour (Picarro, Inc., Santa Clara, CA, USA). Polypropylene membranes (as per the soil) were installed in two bore holes in both willow trees starting in June (Willow 2). COVID-19 related complications delayed the installation in Willow 1 (August). Xylem water vapour was extracted from two bore holes (inner diameter 8-10mm, described in Marshall et al., 2020) on each willow tree, at 30cm and 170cm, and analysed in the same analyser as for the soil vapour isotopes every other hour. To prevent contamination of atmospheric air within the xylem vapour samples, the probe was embedded within the stem and sealed using commercial silicon. Analyzed xylem water isotopes were evaluated for wounding effects (in early periods after installation) and any were removed from the analysis. Wounding effects were identified by daily inspection of the trees and unrealistically enriched isotopic compositions which exponentially decreased in time.

Insulated heated cables were installed with the tubing for all vapour to avoid condensation effects and modulate vapour temperatures. Additionally, tubing was flushed with dry air for 10 minutes each morning if condensation was detected to remove any residual water. To test and correct for water concentration and temperature dependencies, a linear regression of vapour concentration and slopes of ^2H and ^{18}O , and nonlinear polynomial regression of daily average xylem and soil water isotopes with temperature (air and soil, respectively) was conducted to determine the strength of the relationship for water concentration and temperature-dependent offset. Corrected *in-situ* xylem and soil water isotopes for water concentration and temperature were consistent with bulk soil water isotope and twig cryogenically extracted isotope samples (see Supplementary Material and Landgraf et al. (2021) for more details on isotopic measurement).

Deleted:).

Formatted: Font: Italic

Formatted: Font: Italic

Deleted:

Deleted: within

Deleted: .

Deleted: Heated

Deleted: extraction

Formatted: Font: Italic

3.2 EcH₂O-iso model

235 EcH₂O-iso is a physically-based, distributed, tracer-aided model coupling vegetation, and soil energy and water balance, and carbon utilization (Maneta and Silverman, 2013). The isotope module (simulating δ²H, δ¹⁸O, and water age) was coupled with the water balance to track the movement of water throughout the model domain (Kuppel et al., 2018a). The following section presents a brief synopsis of the model conceptualisation of energy, water, and isotope balances (conceptual diagram, Fig. S1). Further details of the model are provided in Maneta and Silverman (2013) and Kuppel et al. (2018a).

Deleted: The
Deleted: model

240 3.2.1 EcH₂O-iso energy balance

The energy balance is resolved with a top-down approach, conducting energy balance within the canopy before the energy balance at the surface. The canopy energy balance partitions incoming radiation into latent heat (interception evaporation and transpiration), sensible heat, and net radiation as a function of canopy temperature (Fig. S1). The canopy energy balance is very sensitive to the canopy stored water (maximum canopy storage parameter, CWS_{max}), where higher intercepted water storage decreases energy availability for transpiration. Transpiration is limited by environmental constraints, implemented using a Jarvis-type stomatal conductance model dependent on soil moisture, vapour pressure deficit, air temperature, and incoming radiation. EcH₂O-iso was modified to account for potential root-uptake from outside the vegetation model cells. Radial rooting parameterisation (Section 3.3.1) estimated the rooting proportion in each surrounding model cell which assumes a radial distance from the cell centre. Rooting proportions with depth (k_{root}, described in Kuppel et al., 2018) and laterally were utilized to account for total transpiration water availability and lateral proportions used to withdraw water from neighbouring cells.

Deleted: Plant hydraulics were incorporated using the Soil Plant Atmosphere Continuum module (SPAC) which tracks leaf water potential and conductivity limitations due to cavitation. The SPAC module includes supply-demand functions in the rhizosphere (as a function of soil hydraulic conductivity, root area index, and pore-disconnectedness index), and stem and leaf (function of vegetation conductivity and leaf area index). The supply-demand further regulates transpiration by soil and vapour pressure deficits. To
Deleted: containing vegetation, estimated radial
Deleted: lengths
Deleted: were used to estimate
Deleted: of
Deleted: used
Deleted: adjacent

The surface energy balance utilizes energy translated from the canopy energy balance to resolve latent heat (soil evaporation), sensible heat, net radiation, ground heat, and snow and melt heat (only if snow is present) using surface temperature. Ground heat is resolved using two thermal layers, where the depth of the first thermal layer is defined as half of the depth where the thermal wave is damped by 37% (Arya, 2001). Interpolation of soil temperatures for each soil layer are estimated using surface and soil temperature at the bottom of the thermal layers, and the linear damping equation (Arya, 2001) solved at the bottom of each soil layer. Soil temperature interpolation does not influence the energy balance.

3.2.2 EcH₂O-iso water balance

245 Similar to the energy balance, the water balance is estimated with a top-down approach including canopy, surface, and sub-surface storage (Fig. S1). Canopy storage is estimated using a linear bucket approach, with maximum storage limited by a storage parameter (CWS_{max}) and canopy interception driving draw-down of canopy storage. Net precipitation as throughfall accumulates on the soil surface (ponded water) and infiltrates into the shallow soil (layer 1) using the Green-Ampt model (Brooks-Corey, air-entry pressure, and vertical hydraulic conductivity parameters, λ_{BC}, ψ_{ae}, and K_v, respectively). Ponded water at the end of each time-step is directly routed to ponded water in the next downstream cell. Soil water redistribution is

conducted using gravitational drainage when field capacity is exceeded. Redistribution is estimated for each model layer. The model assumes that there is no preferential flow in any soil layer. Very dry soils at the study site prompted the introduction of sub-discretization of shallow soils (layer 1) to estimate the moisture at discrete depths in addition to the average moisture of the layer. Shallow soils were sub-discretized into 1cm increments with incoming water (infiltration and return flow) entering from the layer boundaries and redistributed using gravitational drainage. Sub-discretization was implemented for informational purposes only, not for use in calibration. Gravitational drainage rates linearly increase from zero (at field capacity) to saturated vertical conductivity when the soil is fully saturated. Upward redistribution of water occurs if deeper soil storages are fully saturated. Vertical downward flux from the deepest soil layer (layer 3) can occur due to leakance out of the model domain. Lateral flow may occur in the deepest soil layer, with water above field capacity routed to the next downstream model cell using a linear kinematic wave model.

3.2.3 EcH₂O-iso isotope mixing and water ages

Mixing of isotopes ($\delta^2\text{H}$ and $\delta^{18}\text{O}$) and water age is conducted using a complete mixing assumption (fully mixed at the end of each time-step) in each soil storage (layers 1-3 independently) and in the canopy and ponded water. Storage mixing is conducted with amount weighted-averaging of isotopic compositions (or age) with incoming fluxes. Out-fluxes have the same isotopic composition (and age) as the mixed water in storage. Evaporative fractionation is calculated for the shallow soils (layer 1) using estimated soil evaporation and the Craig-Gordon fractionation model (Craig and Gordon, 1965). Humidity in the soil is estimated using the method proposed by Lee and Pielke (1992), with the kinetic fractionation factor modified for use in soils (Braud et al., 2005). Isotopic composition and age of transpired water are estimated by amount weighting the contribution of root-uptake from each soil layer (root-uptake proportion dependent on water availability and rooting distribution). Amount-weighted root-uptake assumes instant translocation, complete mixing, and uniform isotopic composition throughout the vegetation using soil water isotopes of the same time-step. At the end of each time-step the age of water in storage is advanced by one time-step (e.g. 1 hour). To evaluate the distribution of water ages, parameter sets were re-run for each time-step that included precipitation (925 hours with precipitation over the study period). The input precipitation concentration was changed in a stepwise manner with a concentration of “1” on the precipitation event evaluated (Smith et al., 2020). For example, the 25th precipitation event (i.e. 25th hour with precipitation, here, January 7th, 11:00am), the precipitation concentration was set to 1 while all other precipitation and initial storages had a concentration of 0. The concentration was tracked through the domain to provide a proportion of water in each storage originating from each precipitation event. The cumulative concentration of different precipitation events sums to 1 when all of the water in storage is younger than the duration of the simulation.

3.3 Tree water mixing and transit times

Knighton et al. (2020) showed that improved simulation of xylem isotopes could result from considering potential vegetation storage, and mixing of soil water older than one time-step within EcH₂O-iso. Similarly, Seeger and Weiler (2021) showed

Deleted: EcH₂O-iso estimates

Deleted: for each storage

Deleted:). In storage,

Deleted: estimated

Deleted: water ages

Deleted: The amount-weighting

Deleted: of soil water within

Deleted: and encompasses no mixing of previous

Deleted: or water ages.

Deleted: .

Deleted: calibrated simulations

Deleted: a

Deleted: event

Deleted: For each of the 100 ‘best’ simulations, the

Deleted: .

Deleted: the

Deleted: estimation

Deleted: when

promising conceptualization of isotope mixing within vegetation based on a convolution approach using *in-situ* measurements of soil and xylem water. To evaluate the dynamics of transit times from the root to measurement height during the study period, a combination of modelled results of sap flow, soil water isotopes, and spatio-temporal root uptake proportions were used to estimate vegetation xylem water composition and age at the average measurement height (1m) while accounting for spatial variability of soil water isotopes (laterally and with depth). Root-uptake proportions were calibrated using parameterised exponential distributions for depth and lateral contributions in EcH₂O-iso. The tree water mixing routine (applied post-EcH₂O-iso calibration) was developed with the assumption that isotopic mixing is dependent on the rooting distance (similar to Seeger and Weiler (2021)). Mixing of source water was conducted using the convolution equation and expanded on Seeger and Weiler (2021) to include lateral soil heterogeneity (e.g. outside model cell or different soil layers). Contrary to Seeger and Weiler (2021), rooting distributions are not parameterized through mixing and are calibrated through energy and water balance in EcH₂O-iso. This approach differs from free-mixing within EcH₂O-iso which instantly mixes uptake-water throughout the tree, and from previous tree mixing approaches in EcH₂O-iso (Knighton et al., 2020) by specifically exploring the capabilities of rooting distributions and uptake travel times to describe xylem water isotopes. Hereafter, the new xylem mixing will be referred to as distance-based mixing, and the method used by EcH₂O-iso is referred to as instantaneous mixing.

3.3.1 Vertical and radial rooting length

The average vertical and horizontal distances (and total distance) of roots in each layer to the measurement height were estimated and calibrated in EcH₂O-iso with a modification of the root depth and radial spread approach used in Sperry et al. (2016a). The parameterization of this approach is in synchrony with the rooting distribution within EcH₂O-iso. Following EcH₂O-iso, the rooting distribution (k_{root}) was used to determine the proportion of total roots in each soil layer (Kuppel et al., 2018b). Vertical distances (v) from the base of the vegetation to the vertical centre of the biomass in each layer were estimated using a log function of rooting proportions modified from Sperry et al., (2016a & b) to account for unequal rooting proportions with layers using cumulative rooting proportions:

$$v(i) = 0.01 * \ln \left(1 - 0.995 * \left(p(i) - \frac{(p(i) - p(i-1))}{2} \right) \right) / \ln \beta \quad (1)$$

Where i is the soil layer, p is the cumulative proportion of roots (from the surface), 0.995 is a coefficient indicating 99.5% of root biomass, and β is a rooting distribution parameter. The rooting parameter in Sperry et al. (2016a & b) was estimated using a linear correlation to the EcH₂O rooting distribution (k_{root}) to enable estimation in EcH₂O ($\beta = -0.0089 * k_{root} + 0.9947$).

The radial distance from the stem of the vegetation is estimated as a function of the volume of rooting (Sperry et al., 2016a & b):

$$Vol = d_1 * \pi * (D * a)^2 \quad (2)$$

where Vol is the volume of roots in layer 1, d_1 is the depth of layer 1, D is the total depth of the soil (equivalent to total root depth), and a is an aspect parameter, controlling radial distance. The radial distance is then estimated using the proportion of roots in the soil layers (modified from Sperry et al., 2016a&b):

- Deleted: .
- Formatted: Font: Italic
- Deleted: in xylem
- Deleted: (
- Deleted: and
- Deleted:)
- Deleted: assumed vegetation
- Deleted: distributions
- Deleted: cf.
- Deleted:) and
- Deleted: mix water from different pools

- Deleted: the traditional approach currently utilized in
- Deleted: .

- Deleted: internally

- Deleted: using
- Deleted: 2016
- Deleted: and SPAC module

- Deleted: (
- Deleted: 2016)
- Deleted: :
- Deleted: $\ln \left(1 - 0.995 * \left(p(i) - \frac{(p(i) - p(i-1))}{2} \right) \right)$

- Deleted: where
- Deleted:)

- Deleted: 2016

- Deleted: ,
- Deleted: as:

$$r(i) = \left(3 * Vol * \frac{p(i)}{d(i)*\pi} \right)^{0.5} \tag{3}$$

where $r(i)$ is the average radial distance in layer i , p is the proportion of roots in layer i estimated from k_{root} , and d is the depth of layer i (Fig. 2a). The total average distance ($D(i)$) for roots in each layer is the sum of $v(i)$ and $r(i)$. The radial extent of roots in each layer is then used to estimate the proportion of roots within the cell and in adjacent cells.

3.3.2 Xylem transit time, and calibration

Since much of the rooting system below trees are not well characterized, including limited information on the proportion or total lengths of fine roots to transport roots are available, and the translation of xylem velocity to fine root velocity, we simplified the conceptualization of root transport for each soil layer into convolution integrals (Rothfuss and Javaux, 2017). We conceptualize the rooting system in each soil layer similar to a large river (primary root transport) network with many tributaries (fine roots) with precipitation input (root uptake volume). In this way, root water velocity is implicitly accounted for (averaged) across different root diameters. Root-uptake volume-weighted (combined in-cell and off-cell as estimated from EcH₂O-iso, Fig. 2c) convolution equations (gamma distribution) were used to estimate xylem δ^2H from each soil layer for each hourly time-step (Fig. 2d). Fractionation during uptake and along the flow path to measurement height was assumed to be negligible. The approach introduces a scale parameter (β , hours) for each soil layer and one shape parameter (α) as a function of total root length (four total parameters) (Fig. 2b). This approach assumes that there is no additional effects of cavitation apart from sap velocity decreases (measured or simulated) within the xylem or roots of the plant.

Deleted: root systems

Deleted: indirectly

Deleted:

Deleted: (no drought conditions

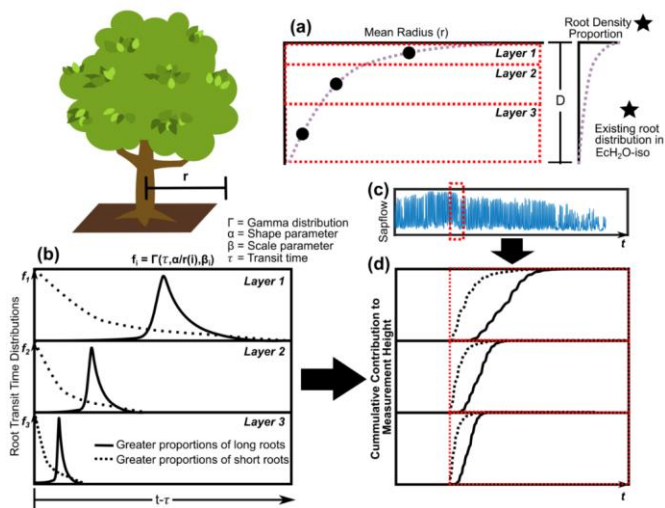
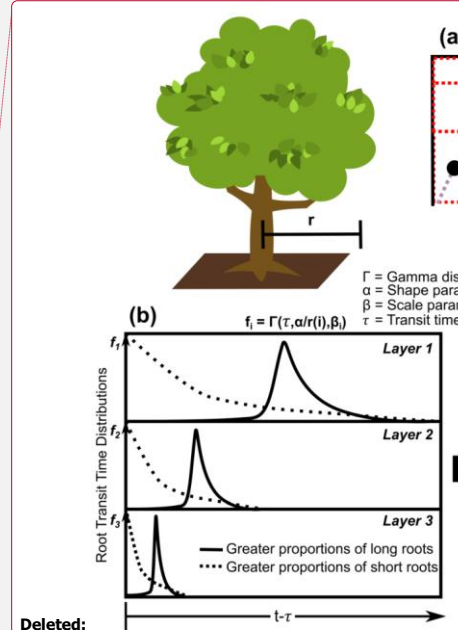


Figure 2: The estimation of rooting density (a) vertically and (b) the transit time distribution describing root velocity and distance to measurement height weighted by (c) sap flow to get the (d) cumulative contribution of soil water from entry time (red line).

To evaluate and test the information content of sampling frequency, the convolution integral was calibrated against xylem isotopes at different time-step intervals: using 6, 12, and 24-hour intervals. Measured and simulated xylem isotopes were averaged over the respective intervals prior to evaluation with the Kling-Gupta efficiency (KGE, Kling et al., 2012). While not used in calibration, the KGE of standardized hourly xylem was evaluated to examine how well sub-daily dynamics of soil water isotopes propagated through the roots. Lastly, to evaluate the effectiveness of distance-based and instantaneous mixing, the transit time and xylem isotopes were calibrated twice, 1) using modelled soil isotopic compositions and sap flow, and 2) using measured soil water isotopes and sap flow. The use of measured soil water isotopes and sap flow tests the maximum potential for how each model performs and is not limited to the performance of EcH₂O-iso for sap flow or soil water isotopes. Further, the twin calibration approach shows how the error in the simulation of soil water isotopes potentially propagates through to the estimation of xylem isotope and transit time mixing. Both xylem isotope model calibrations used the root-water uptake proportions estimated from the multi-criteria EcH₂O-iso calibration, and are inclusive of off-cell root-water contributions (Section 3.4). The Akaike information criteria (AIC, Akaike (1998)) was used to assess the significance of the additional parameters used by the distance-based mixing (4 additional parameters). The AIC is estimated using the log-likelihood of each model fit and number of parameters, where lower AIC indicates better model performance.



Deleted: isotope.

3.4 EcH₂O-iso and tree mixing model calibration and set-up

3.4.1 Model set-up

To best leverage measurements in both willows and the soil pits, the model was set up with three square grids (6m). Two grids contained one willow each and the third contained the open grass area (Fig. 1c). The model was set up to run with hourly time-steps between January 1, 2020, and October 31, 2020, encompassing a spin-up and the primary growing season. Soil layer depths were fixed at the depth of the soil moisture measurements (10, 40, and 100cm) for all model cells. Further, previous analysis and observation during soil moisture probe installation suggest that primary water sources of the willow trees were within the upper 100cm of the soil (Landgraf et al., 2021) which is consistent with shallow rooting of willow trees observed elsewhere (e.g. Philips et al., 2014). Additionally, there is little isotopic evidence of trees using water with distinct groundwater or stream water signatures, despite their proximity (Landgraf et al., 2021). Initial testing revealed inadequate water supply for willows within a single cell (from all soil layers), while measurements revealed no notable decrease in sapflow during the growing season. This suggested potentially substantial water use from outside the measurement location (i.e. model cell), and therefore parameterization of rooting radius (aspect parameter) was set to extend beyond cell boundaries (radius >3m) and permits water use from adjacent cells (assumed to be grass in adjacent cells outside the model domain, Fig. 1c). Increased rooting radius increases the proportion of water used from outside the model cell. Additionally, root distributions with depth were parameterized to be in synchrony with common willow rooting distributions, with a greater proportion of roots near the surface ($K_{root} > 5$). Due to the notable differences in shallow soil moisture between Site A and B (soil organic matter content), soil parameters were different below the willows and the open grass (see calibrated parameters for soil and vegetation, Table S1). Initial soil moisture was set to field capacity which was shown by model testing to have negligible influence on soil moisture simulations during the growing season. Soil water isotopes were initialized using the average measured isotopic composition of soil water. Model calibration of the shallowest soil depths was not sensitive to initial soil water isotope conditions as simulated isotopes stabilized prior to the beginning of measurement (end of May 2020). The basal diameter of the willows was set to the measured diameter at the start of monitoring.

Deleted: account for
Deleted: moisture measurement locations

Deleted: Further, previous analysis suggests that primary water sources of the willow trees were within the upper 100cm of the soil, with

Deleted: The low local measured soil moisture and high transpiration in the
Deleted: suggests

Deleted: result
Deleted: water being available from
Deleted: cell.

Deleted: revealed
Deleted: isotopes. Initial
Deleted: isotopes for
Deleted: soils were

3.4.2 Model forcing data, calibration and evaluation

Hourly model forcing data (Table 2) primarily consisted of data measured with the mobile weather station at the study site (Section 3.1) corrected and gap-filled (where necessary) using the surrounding weather stations (Fig. S2). As long-wave radiation was not measured, estimated long-wave radiation was used from the ERA5 reanalysis dataset (Hersbach et al., 2020) (Table 2). With no direct measurements of LAI in the grass site, MODIS Terra dynamics (MOD15A2, Myneni et al., 2015) dynamics were used to calibrate the LAI. Due to the coarser resolution of MODIS (500m) the LAI range for the grass was scaled to have a maximum of 2 (cf. Smith et al., 2021). In the willow calibration, the MODIS dataset was used in conjunction with canopy images (Section 3.1) in willow LAI calibration.

4 Results

4.1 ECH₂O-iso soil water, isotope and energy balance evaluation

555 Model calibration provided reasonable approximations of the measured variables (Table S2), with the average goodness-of-fit
of model simulations within measurement uncertainties (soil moisture MAE range 0.01 – 0.06 m²/m², Table S2). Similar to
measured data, simulations of soil moisture and soil water isotopes showed decreasing dynamics with increasing depth (Fig.
3). Despite the close proximity, Site A and B had largely different soil moisture and isotopic response in the upper soil layers
(Fig. 3a-d). Simulations were able to capture the drier soil moisture in Site A relative to Site B (Fig. 3a&c); however, the
560 simulated dynamics of average moisture in layer 1 were greater than the measured moisture at 10cm. Sub-discretization of the
shallow layer 1 soil (1cm increments using ECH₂O soil water redistribution) using calibrated parameters revealed that while
average moisture in the upper 10cm is high (blue lines, Fig. 3a), percolation of infiltrated water down to 10cm during the
summer months is limited (Fig. 3a, red line). Late season soil moisture values (average and at 10cm) were over-estimated
relative to measurements, coinciding with the underestimation of sap flux during the same period (Fig. 4).

565 The general dynamics of the soil water isotopes at 10cm in Site A were reasonably represented, with the primary deviation of
simulations from measurements due to large sub-daily measured isotope variability (MAE = 8.6%, Table S2). Additionally,
the period of soil water isotopic depletion in August was not captured. Soil moisture and isotope dynamics in the deeper soils
(40cm) were much more damped, with a slight under-estimation bias at 40cm at Site B despite appropriate dynamics (Fig. 3d).
The much lower variability of isotopes and soil moisture at 100cm was similarly captured by the model calibration. The higher
570 depletion simulated at Site A relative to the measured values was consistent with the soil water isotopic values at greater depth
(100cm) measured at Site B. Outliers of in-situ soil water isotopes towards the end of the growing season (end of August and
September, Fig. 3c-f) were a result of rapid temperature changes which were too strong for the system (i.e. heated cables) to
control and caused temporary condensation effects in the tubing. These data were few and did not affect the soil water isotope
modelling and uncalibrated soil water isotopic simulations (δ¹⁸O, Fig. S3) were broadly similar.

- Deleted: adequate
- Deleted: of each calibration variable.
- Deleted: from the surface
- Deleted: soils
- Deleted: likely due to greater moisture retention in the organic material near the surface preventing infiltration reaching 10cm.
- Deleted: moistures
- Deleted: was
- Deleted: however
- Deleted: larger
- Deleted: during a
- Deleted: than 10cm
- Deleted: in
- Deleted: deeper
- Deleted: soil isotopes
- Formatted: Font: Italic
- Deleted: marked
- Deleted: have notable effect on the soil isotope investigation.

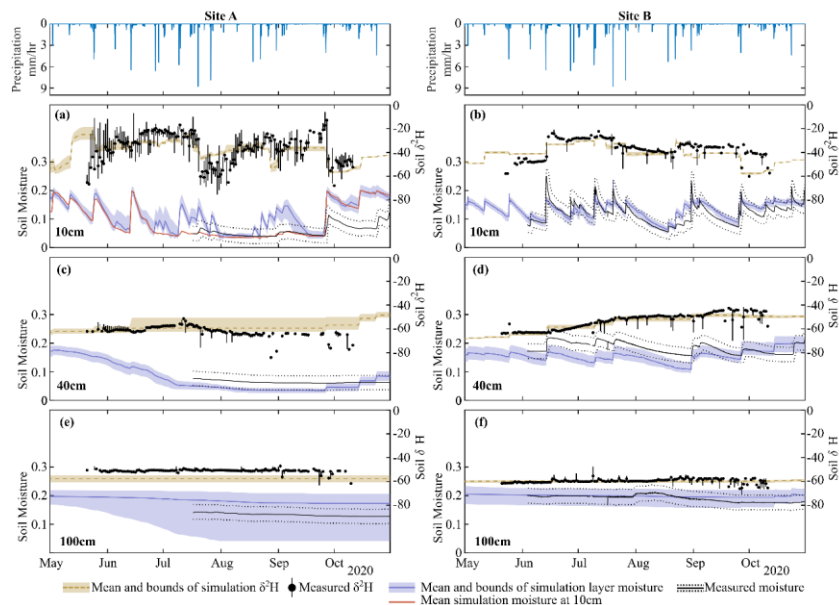
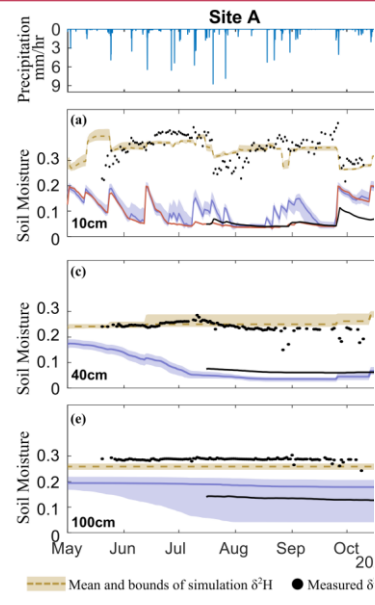


Figure 3: Simulation mean and upper and lower bounds of soil moisture and $\delta^2\text{H}$ at Site A at (a) 10 cm, (c) 40cm, and (e) 100cm, and at Site B at (b) 10cm, (d) 40cm, and (f) 100cm. The top row shows the hourly precipitation for both sites. Isotopic values (circles) are average daily measurements, with bars showing the daily range in isotopic measurements. $\delta^{18}\text{O}$ simulations are shown in Figure S3.

Estimated energy balance (latent heat, sensible heat, transpiration flux, and temperature) was shown to match *in-situ* measurements within the limits of measurement uncertainty (Fig. 4, Table S2). Despite only utilizing latent heat and surface temperature at Site B in the calibration, simulated sensible heat and soil temperature at multiple depths were reasonably captured (MAE: 4.5W/m^2 , $1.2\text{-}2.8^\circ\text{C}$ for sensible heat and soil temperature range respectively, Table S2). Latent heat and sensible heat at Site A (Willow 2) were noticeably more variable than at Site B, driven by the greater transpiration demands of the willow relative to the grasses. Sap flux in the willow was adequately captured by the model (MAE = $0.02\text{m}^3/\text{day}$), with the primary deviation - under-estimation - from measurements during the late growing season (Sept-Oct). Greater variability of surface and soil (10cm, Figure S4) temperature was additionally simulated at Site A; however, estimated differences of ground heat storage between Site A and B resulted in increased damping of soil temperature with depth at Site A. Progressive over-estimation of soil temperature during the early simulation period with increasing soil depth is likely due to propagation of a slight over-estimation of early-growing season surface temperature at each site (Fig. 4) potentially due to lower estimated leaf area index at the beginning of the growing season (Fig. 5).



Deleted:

Deleted: in

Deleted: were additionally

Formatted: Font: Italic

Deleted: quite well

Deleted: additionally

Deleted: .

Deleted: notably

Deleted: Willow

Deleted: .

Deleted: only the late season (Sept – Oct) showing

Deleted: relative to

Deleted: .

Deleted: in

Deleted: the

Deleted:

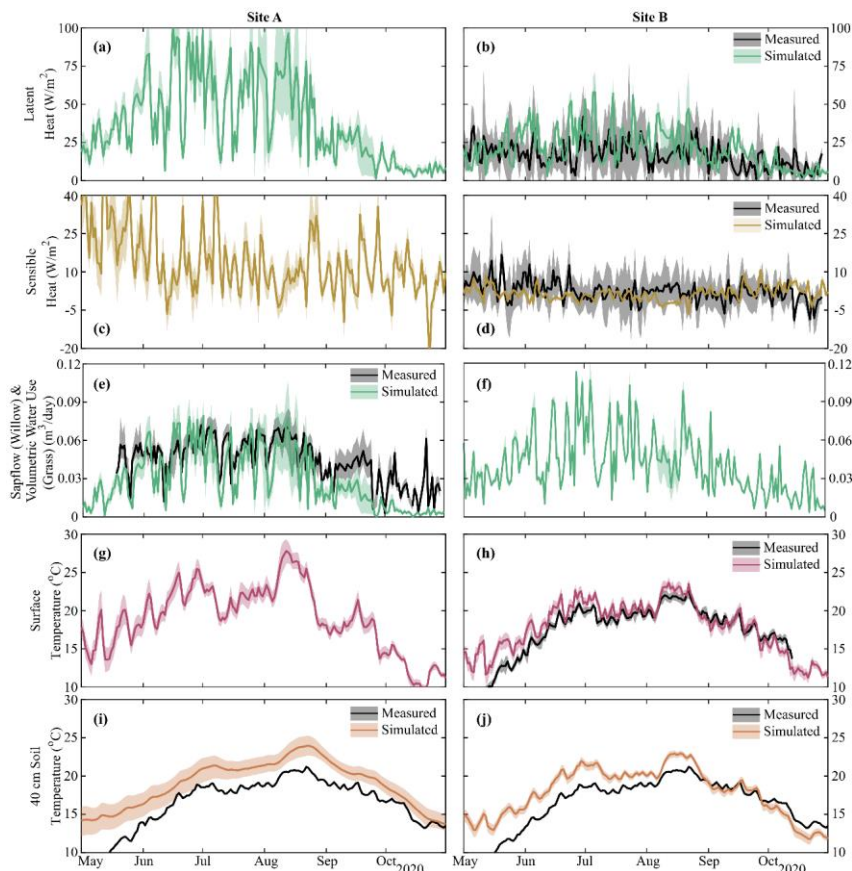
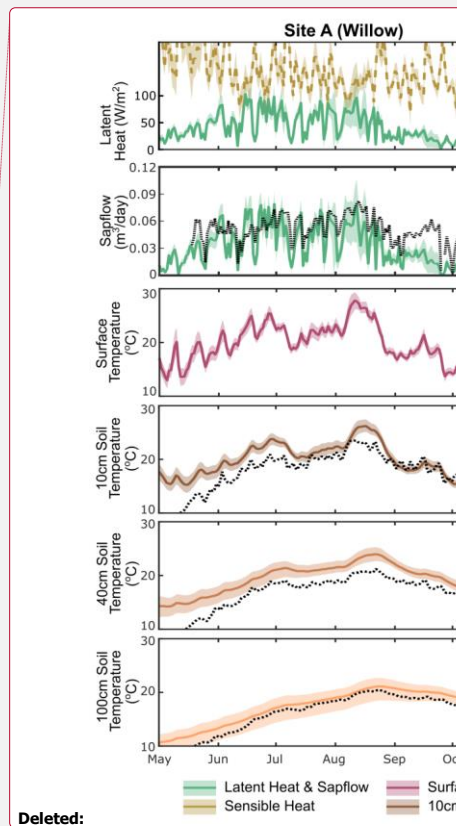


Figure 4: Simulation mean and upper and lower bounds of energy balance components of (a&b) latent and (c&d) sensible heat, (e&f) volumetric vegetation water use, and (g&h) surface and (i&j) soil temperature (40cm, 10 and 100cm in Fig S4). Black lines show the mean of measured data, with grey shaded areas showing uncertainty and sub-hourly variability. Volumetric vegetation water at Site A shows sapflow within the willow, and at Site B shows total volumetric water use of the grass. Note: soil temperature was not calibrated, and transpiration rates are shown in Fig. S4, and sapflow for Willow 1 is identical to Willow 2 (Fig. 4e).

4.2 Growing season dynamics – fluxes and biomass accumulation

Simulated biomass production for foliage and tree diameter produced reasonable results for the two willow trees throughout the simulation period, with only minor deviations (willow LAI MAE = 0.5 m²/m², Table S2) from both measured and remote



Deleted:

Deleted: at multiple depths.

Deleted: dashed

Deleted: .

Deleted: .

sensed (MODIS) datasets (Fig. 5a&b). Average simulations (solid lines) under-estimated LAI at the beginning of the growing season; however, these differences were relatively small and uncertainty bounds of simulated LAI were within measurement uncertainty. Calibrated grass leaf area index dynamics were consistent with MODIS, with only a small deviation in leaf area index at the beginning of the growing season (MAE = 0.1 m²/m²; Table S2; Fig. 5c). The dynamics and total net stem growth was adequately captured by the model for each willow, (MAE = 1.5-2.2 μm; Table S2); however, there was a slight underestimation of average net growth in Willow 2 (Fig. 5c&d).

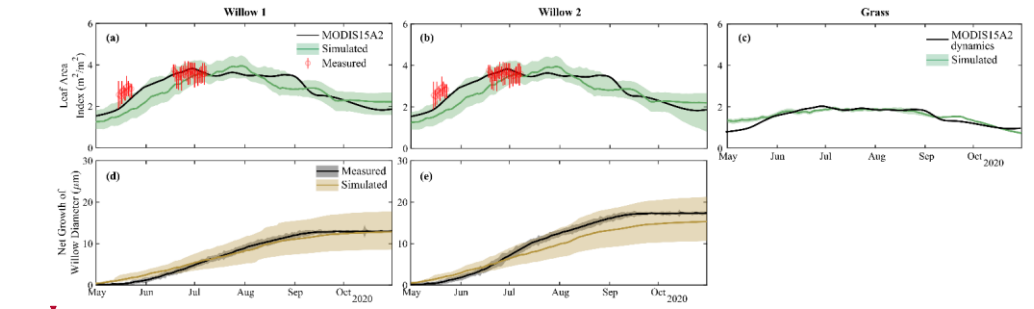


Figure 5: Simulated and measured leaf area index of (a) Willow 1, (b) Willow 2, and (c) Grass, and net growth of willow diameter of (d) Willow 1, and (e) Willow 2.

Modelled partitioning of water fluxes and biomass allocation in the willow and grass sites showed marked differences despite the relative proximity (Table 3). Evapotranspiration (ET) dominated water partitioning throughout the summer, with the greatest ET between June 15 and September 15. Total ET was dominated by transpiration (T_r) particularly for the willows (>70%, Table 3). This coincided with a decreased proportion of interception evaporation (E_i) and soil evaporation (E_s) from drier soils. Pre-growing season infiltration was higher below the willows relative to the grass, with moderately lower infiltration below the willows during the growing season. The lower density of grass coverage (and increased bare soil) below the willow reduced growing season differences in infiltration between the willow and grass sites. The high root uptake rate of the willow resulted in negligible percolation of water to deeper soil layers during the growing season. Continuation of drier conditions below the willow resulted in a gradual shift toward near-surface root-uptake compared to a higher proportion (24%) from deeper soils at the beginning of the growing season (Table 3). The willows showed little change in biomass allocation with only a slight shift of root growth in the pre-growing season to foliage growth during the peak growing season (Table 3). Allocation to stem growth showed negligible change throughout the growing season.

The grasses had much higher percolation to deeper soils relative to the willows as a result of low ET. Wetter soils below the grasses resulted in greater soil evaporation proportions. Higher soil moisture throughout the soil profile resulted in more stable root-uptake proportions from layers 1 and 2, with an approximately equal mixture of near-surface and mid-depth (40cm) soil

Deleted: difference

Deleted: ;

Deleted:

Deleted: .

Deleted: %).

Deleted:)

Deleted: proportions

Deleted: difference

670 water. Biomass allocation in grasses was static throughout the simulation (as a result of EcH₂O’s structure), showing a greater
allocation of carbon to foliage growth than roots (note there is no allocation to stem growth).

675 **Table 3: Mean (and standard deviation) of water partitioning before (Jan –May), during early growing season (May 1 – June 15), mid growing season (June 16 – Aug 1), and late growing season (Aug 1 – Oct 31). Also shown are the root-uptake (RU) proportions from each soil layer (L1, L2, L3 are layer 1, 2, and 3, respectively) and biomass allocations. Depth of the L1, L2, and L3 are 0-10, 10-40, and 40-100cm, respectively. Note that infiltration and percolation are cell averages, ET is specific to vegetation (proportion of willow in cell < 100%). ET is evapotranspiration, Es is soil evaporation, Tr, is transpiration, and Ei is interception evaporation.**

| | Fluxes | | | | | |
|------------------------------------|-------------------|---------------------------|-----------------|-------------------|---------------------------|-----------------|
| | Willow | | | Grass | | |
| | Infiltration (mm) | Percolation (L1→ L2) (mm) | ET (mm) | Infiltration (mm) | Percolation (L1→ L2) (mm) | ET (mm) |
| Jan – May | 173.4±2.6 | 127.1±4.9 | 76.9±7.6 | 168.4 ± 1.4 | 128.3 ± 1.0 | 86.5 ± 1.9 |
| May 1 – June 15 | 44.3±1.5 | 4.3±2.9 | 87.8±6.8 | 46.6 ± 0.8 | 16.1 ± 1.4 | 62.0 ± 1.5 |
| June 16 – Aug 1 | 42.9±2.6 | 0±0 | 136±11.3 | 49.8 ± 1.3 | 15.6 ± 1.2 | 87.8 ± 1.7 |
| Aug 1 – Sept 15 | 28.8±1.7 | 0±0 | 95±11.1 | 43.6 ± 0.9 | 21.0 ± 0.7 | 62.0 ± 2.3 |
| Sept 16 – Oct 31 | 41.7±1.4 | 15.2±2 | 35.2±3.9 | 48.2 ± 0.5 | 28.1 ± 0.5 | 34.7 ± 0.8 |
| Evapotranspiration Fractions | | | | | | |
| | Es/ET | Tr/ET | Ei/ET | Es/ET | Tr/ET | Ei/ET |
| Jan – May | 0.3±0.05 | 0.33±0.03 | 0.37±0.05 | 0.29 ± 0.01 | 0.34 ± 0.02 | 0.37 ± 0.02 |
| May 1 – June 15 | 0.1±0.02 | 0.7±0.03 | 0.2±0.02 | 0.23 ± 0.01 | 0.54 ± 0.02 | 0.23 ± 0.01 |
| June 16 – Aug 1 | 0.01±0 | 0.77±0.03 | 0.21±0.02 | 0.17 ± 0.01 | 0.52 ± 0.02 | 0.31 ± 0.02 |
| Aug 1 – Sept 15 | 0.01±0 | 0.78±0.03 | 0.21±0.03 | 0.16 ± 0.01 | 0.55 ± 0.02 | 0.29 ± 0.02 |
| Sept 16 – Oct 31 | 0.12±0.03 | 0.4±0.04 | 0.48±0.05 | 0.34 ±0.01 | 0.34 ± 0.02 | 0.32 ± 0.02 |
| Root Uptake Proportions from Depth | | | | | | |
| | RU[0-10cm] | RU[10-40cm] | RU-L3[40-100cm] | RU[0-10cm] | RU[10-40cm] | RU-L3[40-100cm] |
| Jan – May | 0.76±0.02 | 0.23±0.02 | 0.01±0 | 0.46 ± 0.04 | 0.49 ± 0.03 | 0.05 ± 0.02 |
| May 1 – June 15 | 0.76±0.04 | 0.23±0.04 | 0.01±0 | 0.48 ± 0.04 | 0.45 ± 0.02 | 0.06 ± 0.02 |
| June 16 – Aug 1 | 0.83±0.09 | 0.15±0.09 | 0.02±0.01 | 0.52 ± 0.04 | 0.42 ± 0.03 | 0.07 ± 0.02 |
| Aug 1 – Sept 15 | 0.88±0.1 | 0.06±0.08 | 0.05±0.04 | 0.48 ± 0.04 | 0.44 ± 0.02 | 0.08 ± 0.03 |
| Sept 16 – Oct 31 | 0.92±0.06 | 0.04±0.02 | 0.04±0.05 | 0.49 ± 0.04 | 0.45 ± 0.03 | 0.06 ± 0.02 |
| Biomass Allocation | | | | | | |
| | Foliage | Stem | Roots | Foliage | Stem | Roots |
| Jan – May | 0.76±0.17 | 0.05±0.03 | 0.2±0.15 | 0.57 ± 0.31 | NA | 0.43 ± 0.31 |
| May 1 – June 15 | 0.79±0.15 | 0.03±0.02 | 0.18±0.15 | | NA | |
| June 16 – Aug 1 | 0.8±0.14 | 0.03±0.02 | 0.17±0.14 | | NA | |
| Aug 1 – Sept 15 | 0.78±0.15 | 0.03±0.02 | 0.19±0.15 | | NA | |
| Sept 16 – Oct 31 | 0.77±0.16 | 0.03±0.02 | 0.2±0.16 | | NA | |

Formatted Table

Deleted: -L1

Deleted: -L2

Deleted: -L1

Deleted: -L2

Formatted: Font: 10 pt

Formatted: Font: 10 pt

Formatted: Font: 10 pt

Formatted: Font: 10 pt

4.3 Evaluation of xylem water mixing

To avoid influencing the evaluation of tree water mixing by the results of simulated soil isotopes (lower variability than measured, Fig. 3a), tree xylem-water mixing was conducted in separate calibrations using both simulated and measured soil water isotopes. Instantaneous mixing of root-uptake water throughout the tree (instant uniformity in all xylem at each time-

step, as simulated by the EcH₂O-iso model structure) was able to capture the general seasonal dynamics of xylem water in both willows (Fig. 6a&c), though simulated diurnal variability could not fully reproduce the measured variability. Unsurprisingly, the instantaneous mixing approach showed improved performance when measured soil water isotopes were used rather than simulated soil water isotopes, increasing seasonal and day-to-day variability (Table 4; Fig. 6b&d). The lower AIC for the distance-based mixing simulations of xylem water at 1m suggested that the additional parameterisation aided in the simulation performance of xylem water isotopes relative to the instant mixing simulations. The decrease in KGE in Willow 1 from simulated to measured data (Table 4) was an artefact of the shorter measured soil water isotope time-series (stopping before the end of October) which did not encompass the large depletion at the end of October (time-series length incorporated in AIC). Differences in the AIC and KGE results using measured datasets relative to simulated datasets (Table 4) were due to differences in the method of goodness-of-fit, whereby squared differences (in AIC) were minimized by the distance-based approach but were accompanied by a penalisation of the variance coefficient (in KGE) due to more damped dynamics than the instant mixing approach. Importantly, xylem simulations with instant-mixing and modelled soil isotopic composition were unable to capture the observed standardized hourly variability of the xylem isotopic composition (Fig. 6a&c, right panels). This is consistent with the limited standardized hourly variability of simulated soil water isotopes relative to measured soil water isotopes (Fig. 3a, Fig. 6a&c). Distance-based simulations with modelled soil water isotopes could reasonably capture the timing of sub-daily dynamics due to the sub-daily variability of sap flow volumes. Xylem water mixing estimations using measured soil water isotopes revealed a reasonable standardized hourly variability of xylem isotopes (Fig. 6b&d). Instant mixing unsurprisingly showed dynamics similar to soil water isotopes, which peaked before the standardized measured xylem water. Distance-based mixing with measured soil water isotopes was able to capture the sub-daily variability and timing of the peak; however, the rapid decrease (and late peak) in sub-daily standardized soil water isotopes at 10cm slightly degrades the simulated dynamics late in the day. Model performance improved when the mixing model was calibrated to daily compared to sub-daily (6-hourly or 12-hourly) data (higher KGE). While simulations show deviations from the temporal averaged xylem water isotopes (e.g. 12-hour average, Fig 6), simulations were generally within the minimum and maximum measured range over the time-step. The increase in model performance is consistent with the reduced variability of measured xylem with increasing time-steps, increasing in similarity to the variability observed in soil water isotopes. Likewise, the KGE increased most rapidly with time-step on average when simulated soil water isotopes were used in mixing as they lower variability than measured soil water isotopes (Fig. 3).

Deleted: b

Deleted: day-to-day

Deleted: was limited.

Deleted: 6c

Deleted: Distance-based mixing simulations of xylem water at 1m were significantly better than the instant mixing simulations (

Deleted:). Similar to the instant mixing

Deleted: ,

Deleted: use

Deleted: measured soil

Deleted: within the distance-based mixing approach showed improved results (AIC) compared

Deleted: use of simulated soil isotopes with the exception of the 24-hour time-step in Willow 2 (Table 4).

Deleted: Figure 6: Simulated xylem deuterium using simulated soil deuterium with distance-based and instant mixing in (a) Willow 1, and (b) Willow 2. Simulated xylem deuterium using measured soil deuterium with distance-based and instant mixing in (c)

Deleted: Willow 1, and (d) Willow 2. For each simulation, standardized sub-daily δ²H (S(δ²H)) shows the measured and simulated soil and xylem average hourly variability.¶

Deleted: Xylem

Deleted: b

Deleted: b

Deleted: ,

Deleted: 6c

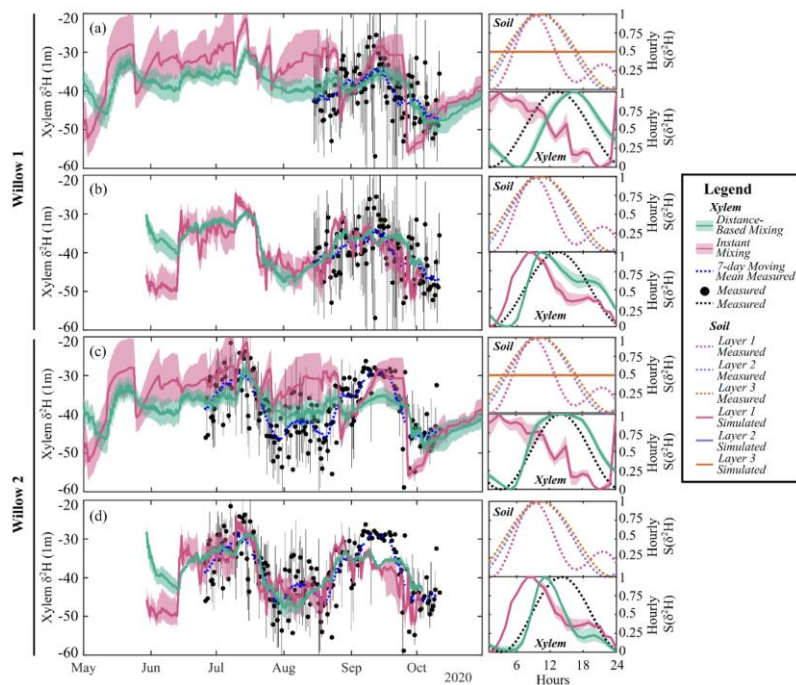


Figure 6: Simulated 12-hour average xylem deuterium using (a) simulated and (b) measured soil deuterium with distance-based and instant mixing in Willow 1. Simulated 12-hour average xylem deuterium using (c) simulated and (d) measured soil deuterium with distance-based and instant mixing in Willow 2. Measurement bars represent the maximum and minimum measured xylem water isotopes during the 12-hour period. For each simulation, standardized sub-daily $\delta^2\text{H}$ ($S(\delta^2\text{H})$) shows the measured and simulated soil (cell contribution weighted average) and xylem average hourly variability. Note: standardized simulated soil water isotopes overlap for all soil layers.

Table 4: Akaike information criteria (AIC) and average KGE (\pm standard deviation) for model performance for each willow evaluated at different time-steps. Values in parentheses for KGE show the KGE of sub-daily variability. Mixing models used either output (isotope and sap flow) from EcH₂O-iso or measured isotope and sap flow. All models used estimated uptake proportions from EcH₂O-iso calibrations.

| | | | Time Step | | 6hour | | |
|---|---|---------------------------------|---------------------------|-----|-------------|-------------|-----------|
| | | | Willow | | 1 | 2 | |
| ▲ | ▲ | EcH ₂ O-iso modelled | Distance-Based | AIC | 1577.7±17.1 | 2104.0±32.9 | 800.3±8.9 |
| | | | | | | | |

- Deleted: (sub-daily variability
- Moved (insertion) [1]
- Moved (insertion) [2]
- Moved (insertion) [3]
- Deleted Cells
- Inserted Cells
- Formatted: Centered
- Inserted Cells
- Inserted Cells
- Inserted Cells
- Formatted Table
- Deleted Cells
- Formatted: Font: Times New Roman, Not Italic
- Formatted: Font: Times New Roman, Not Italic
- Inserted Cells
- Inserted Cells
- Inserted Cells
- Merged Cells
- Formatted: Font: Times New Roman, Not Italic, Not Superscript/ Subscript
- Merged Cells
- Formatted: Font: Times New Roman
- Deleted: Measured isotope and sap flow
- Formatted: Font: Times New Roman, Not Italic

throughout the growing season, with 33, 16, 9% for early, mid-, and late growing season willow (57, 35, 24%, respectively for grass) root-uptake of spring/winter water.

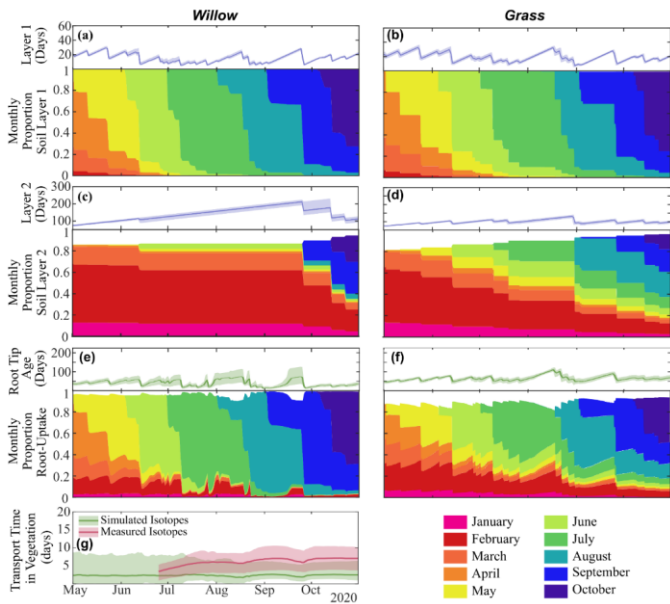
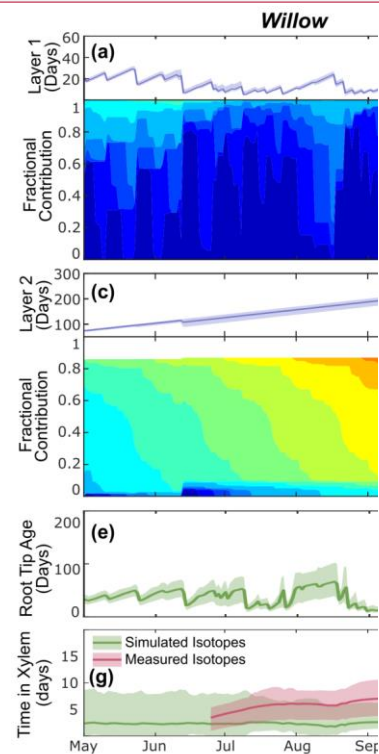


Figure 7: Average water age (and range) and fractional monthly water contribution in layer 1 (10cm) in (a) willow 1 and (b) grass, in layer 2 (40cm) in (c) willow 1 and (d) grass, average (and range) of water entering roots in (e) willow 1, and (f) grass, and (g) the average (and range) of time between root uptake and 1m using distance-based mixing using simulated or measured soil water isotopes. Fractional water ages shown in Fig. S5 and transit times from different soil layers in Table S5.

Since instantaneous mixing equates water age through all vegetation storage and pathways (i.e. roots and xylem), xylem ages are only shown for the distance-based mixing approach (using simulated and measured soil water isotopes). Using simulated soil water isotopes, distance-based mixing revealed an average transit time (all time-steps) of 149 ± 30 hours from the roots to 1m height (Fig. 7g). Distance-based xylem mixing using measured soil water isotopes revealed a mean transit time of 237 ± 97 hours (Fig. 7g). Smaller uncertainty of transit time estimated from simulated soil and sap flow was a direct result of smaller temporal variability (lower degrees of freedom) of simulated soil water isotopes compared to measured soil water isotopes.



Deleted:

Deleted: isotopes

Deleted: has an increase of xylem

Deleted: from the

Deleted: of zero days (reaches 1m instantly)

5 Discussion

5.1 Assessing growing season flux-storage-tracer relationships, water partitioning and biomass dynamics

The utility of ecohydrological modelling as a tool to evaluate the linkages between water partitioning and biological dynamics is directly related to the capability of such models to accurately reproduce a wide range of variables to indicate acceptable representation of ecophysiological processes. At fine spatial scales, such as plot sites, reproducing flux-storage-biomass dynamics and feedback mechanisms are important for the transference of their nonlinearities to larger scales (Asbjornsen et al., 2011). Advancements of complex (e.g. physically-based) models and fusion with multiple, high temporal resolution data streams can lead to the convergence of model performance for all variables (Asadzadeh et al., 2014) and higher confidence in the ability of the model to perform across a wide range of hydroclimatic conditions. The application of a tracer-aided ecohydrological model on sub-daily time-steps using multiple data streams from an intensive in-situ monitoring site provided a means to directly evaluate how well the model could simultaneously reproduce flux-storage-tracer-biomass dynamics through multiple criteria throughout the high variability of a growing season.

Overall, the model performed well against all measured data in both the willow and neighbouring grass sites, including soil water storage, water and energy fluxes, isotope variations, and biomass dynamics throughout the growing season. Total green water usage (total ET) was notably higher for the willows compared to the grass, similar to other nearby studies (Douinot et al., 2019; Kleine et al., 2021; Smith et al., 2020b). Further, the proportions of ET for interception evaporation (as a proxy for total interception) and transpiration were well within expected ranges for both vegetation units ($0.4-0.8 = Tr/ET$) (Coenders-Gerrits et al., 2014; Dubbert et al., 2014; Schlesinger and Jasechko, 2014; Zhou et al., 2016), including lower Tr/ET for the grass compared to the willows. This suggests adequate reproduction of water partitioning within the model. Despite the relatively dry characteristics of the soil at and below the soil moisture measurement at 10cm, transpiration in both willows and grass were maintained throughout the study period (Fig. 4), albeit with an under-estimation of the transpiration in the willows toward the end of the growing season. The under-estimation was accompanied by an over-estimation of soil moisture but appropriate depletion in the shallow soils below the willow (Fig. 3a). While the late season deviation of estimation of sapflow and soil moisture are directly linked, the model structure does not permit temporal variability in lateral root water usage (i.e. outside the model cell), therefore increased late-season transpiration could have detrimental effects on shallow soil moisture below the grass. Furthermore, an increase in late-season transpiration would only be the result of vegetation parametric changes outside feasible ranges. The high goodness-of-fit for the primary growing season for the willow trees was mainly possible within EcH₂O-iso due to the capability of the willows to use water from adjacent model cells. As observed in other nearby studies, soil evaporation contribution to ET under both the willow and grass was damped throughout the growing season due to leaf shading (LAI) reducing energy availability at the surface (Kleine et al., 2021; Smith et al., 2021). Shading effects of the willows with higher interception capacities could be the cause of the late-season stability in isotopic measurements below the grass due to reduced precipitation input compared to the simulated large depletion of measured and simulated soil water isotopes below the willows. Although willows are generally a riparian species able to access groundwater or surface water, the

- Deleted: reproduction
- Deleted: as they can accentuate large-scale
- Deleted: Continued advancements
- Deleted: high
- Deleted: , multiple
- Deleted: .
- Deleted: in
- Formatted: Font: Italic
- Deleted: neighboring
- Deleted: tracer
- Deleted: only minor
- Deleted: This
- Deleted: primarily
- Deleted: using
- Deleted: causing decreased
- Deleted: accessing
- Deleted: stream and lake

willows at this site did not reveal ~~contributions~~ from the groundwater ~~(deeper than in-situ soil water isotope measurements, >2m)~~. The predominantly shallow root-uptake contribution (driven by higher near-surface water availability and root-distribution) was consistent with root distributions observed in willows elsewhere (Cunniff et al., 2015; Phillips et al., 2014), and only slightly lower than independent Bayesian mixing estimations conducted using soil and xylem isotopes for the same trees (Landgraf et al., 2021). The near-equal contribution of shallow and mid-depth uptake in the grass (and subsequent older water age in mid-depth soils) was more prominent than ~~expected~~ ~~given the shallow rooting zone~~. The deeper rooting distribution in the grass is likely due to ~~a combination of vegetation functional types (i.e. willow v. grass) and~~ high uptake competition in the near-surface soils with the nearby high water-use willows (Moustakas et al., 2013). Competition ~~could~~ potentially ~~drive~~ deeper rooting of the grass, ~~contributing to~~ the more dynamic soil moisture at 40cm as measured below the grass. The slight decrease in ~~simulated~~ root biomass production in the willows during the ~~summer months~~ suggested that vegetation was not under water stress in the study period ~~as allocation increased for leaf (water usage) rather than root (water sourcing)~~ (Eziz et al., 2017). Average hourly simulated transpiration dynamics were comparable to sap flow measurements (Fig. ~~S6~~), including small, but notable uptake during the night, similar to observations in other woody plants (Dawson et al., 2007).

Within this study, the relatively low soil moisture did not propagate to a notable decrease in sap flow. While the low ~~shallow soil~~ moisture ~~and the high proportion of near-surface~~ roots of the willows ~~seemed inconsistent with the measured high vegetation water usage, in-situ~~ isotope dynamics were essential in confirming measurements of shallow moisture were not underrepresenting infiltration events ~~(i.e. via spatial heterogeneity)~~. Multicriteria calibration using high-temporal ~~resolution~~ and highly dynamic ~~soil water~~ isotopes revealed a strong positive correlation of simulated shallow soil moisture KGE and simulated shallow soil ~~water~~ isotope KGE (i.e. model performance of soil ~~water~~ isotopes only improved with ~~the~~ performance of soil moisture). Bulk soil ~~water~~ isotope samples, with a coarser temporal resolution, would ~~have been unlikely to~~ adequately capture the necessary isotope dynamics ~~for calibration~~. EcH₂O-iso was only able to adequately estimate soil moisture at 10cm through sub-discretization of the soils above 10cm, which suggested ~~high~~ retention of water in soils above the measurement depth (e.g. 0-5cm), up-taken by roots or soil evaporation before there is sufficient water to percolate to 10cm. These small-scale spatial variations, as well as the large spatial differences ~~between~~ the soils below the willows and below the grass, and between different soil layers (Fig. 3) reveal the significant heterogeneity of the site despite relatively immature soils and the local spatial scales. The heterogeneity of moisture and isotopes is likely further exacerbated by spatial heterogeneity under the canopy, as differing branch and leaf ~~structures~~ can impact ~~detailed~~ throughfall ~~distribution~~ (Dalsgaard, 2007; Gerrits et al., 2010; Li and Liang, 2019). ~~If~~ such data were available, it could likely further improve soil moisture simulations ~~as~~ zones of higher soil moisture ~~may be~~ present at locations below the canopy where throughfall is concentrated (Gerrits et al., 2010) which could in turn influence and increase dynamics of near-surface soil water isotopic compositions. ~~These heterogeneities would likely help improve the model performance of near-surface soils by accounting for additional variability in measurements. However, given the relatively small quantity of water encompassed in the shallow soils relative to total fluxes,~~

- Deleted: notable contribution
- Deleted: deeper (>2m)
- Deleted: .
- Deleted:
- Deleted: the
- Deleted:
- Deleted: drove
- Deleted: causing
- Deleted: drier
- Deleted: S4
- Deleted: despite a high proportion of the rooting zones in the shallow soils.
- Deleted: contrasts high water usage
- Deleted: shallow
- Formatted: Font: Italic
- Deleted: .
- Deleted: (
- Deleted:) resolution
- Deleted: likely
- Deleted: insufficient
- Deleted: a
- Deleted: from
- Deleted: structure
- Deleted: , and if
- Deleted: . In this regard it is possible that
- Deleted: are
- Deleted: surface soil water isotopic compositions.

further heterogeneity of measurements in soils would not likely influence the overall estimation of evapotranspiration fluxes (or partitions), or root water sources.

5.2 Evaluation of mixing dynamics of root-uptake and implications of the rooting zone

We used output from EcH₂O-iso (i.e. the root-uptake sources) and a simple, parsimonious approach to further explain the time-delay and variability of xylem water isotopic composition from soil water isotopic composition. The approach showed substantial improvements over the use of the instantaneous mixing currently applied within most modelling approaches. While the instantaneous mixing had occurrences of higher KGE than the distance-based approach, this was the product of greater simulated variability rather than improved dynamics, as indicated by the AIC. Further, the additional capabilities of the distance-based model to capture the lagged response of diurnal soil water isotopes in xylem further underlines the advantages of the approach. The inclusion and calibration of rooting length into EcH₂O-iso showed comparable results to other willows (1.3-1.4 v. 1.3 tree height/root length; Table S5; Phillips et al. (2014)) which supports the initial estimation of spatial uptake sources. With around half of the uptake (by root length and water availability) estimated to occur outside of the willow cells, this consideration of spatial variability in soil water isotope composition underlines the potential influence of spatio-temporal variability of source waters on xylem isotopes, as suggested by De Deurwaerder et al. (2020) and Seeger and Weiler (2021). As with partitioning soil moisture and vegetation water usage, the high-resolution in-situ isotopic composition of xylem water was indispensable for constraining the mixing dynamics of root-uptake. Coarser temporal destructive xylem sampling could potentially over-estimate xylem variability due to the large sub-daily variability, damping seasonal patterns (e.g. enrichment in September, Fig. 6) and influencing estimated root-uptake profiles. Further, while the use of tracer-aided ecohydrological model output for estimating xylem water composition with refined rooting distributions was able to reconcile general seasonal xylem dynamics and some sub-daily variability due to sap flow (7-day moving average and sub-daily variability, Fig. 6), deviations in seasonal magnitudes of simulated to measured xylem water isotope dynamics were primarily due to differences in simulated v. measured soil water isotopes (e.g. Fig. 6a v. Fig. 6b) in the shallow soils (Fig. 3 & RU in Table 3). This additionally highlights the importance of in-situ isotopic soil and vegetation measurements to constrain model estimates. The use of measured data within the same framework further showed the capabilities of the approach to estimate xylem dynamics, including more direct translation of soil sub-daily variability in the xylem (Fig. 6) as suggested by von Freyberg et al. (2020). However, even the use of in-situ measured soil water isotopes was unable to fully resolve the xylem dynamics with much larger day-to-day variability than could be estimated by the modelling approach (Fig. 6, Table 4). Uncertainty in isotopic measurements, complex physiological processes within the trees which may cause fractionation, limitations of the model structure and interactions between all of these were potentially limiting factors for reducing the xylem mixing model performance. In-situ measurement uncertainty, particularly in xylem, may be large for δ²H (5-10 ‰; Beyer et al. (2020)), greater than the standard deviation of the daily mean δ²H in xylem (3.7 ‰). Variation in the daily mean is additionally lower than the sub-daily standard deviation (6.8 ‰) which would suggest sub-daily variations are more significant than daily. These daily variations in xylem δ²H could be influenced by natural short-term climatic variability and monitoring

Deleted: ,
Deleted: .
Deleted: significant

Deleted: radial distance
Deleted: 0.67
Deleted: 0.5
Deleted: diameter of
Deleted: spread
Deleted: increases confidence in
Formatted: Font: Italic
Deleted: isotopes (
Deleted:) were

Deleted: predominantly

Deleted: suggests
Deleted: great
Formatted: Font: Italic

Formatted: Font: Italic
Deleted: 6).

Deleted: all
Formatted: Font: Italic

Deleted: variations

errors, with condensation, mixing and diffusion potentially causing instabilities in measurements and greater uncertainties (Beyer et al., 2020; von Freyberg et al., 2020). In this study, condensation uncertainties were minimized by heating the ~~tubing~~ and were largely restricted to the autumn (September and October) when ~~nighttime~~ temperatures could be much cooler (Landgraf et al., 2021). Further, while fractionation during uptake or within vegetation has frequently been discussed and re-examined recently (Brinkmann et al., 2019; Poca et al., 2019; Vargas et al., 2017), the vegetation isotopes reflect the ~~fractionated~~ soil ~~water~~ isotope sources (Landgraf et al. (2021)) which suggests that vegetation specific fractionation is not likely a major cause of isotopic variation on either hourly or daily time-steps at our site. Finally, the model structure may play a role in the xylem mixing estimation, in particular with the assumed “static” transit time (consistent with the SPAC supply-demand models ~~e.g. Sperry et al., 2016a and Simeone et al., 2019~~) limiting effects of dynamic tree cell water storage exchange with xylem. These water pools may provide a different source of contrasting isotopic composition to sap flow when transpiration is lower (De Duerwaerder et al., 2020; Secchi et al., 2017) and may make a significant contribution to transpiration fluxes at certain times (Urban et al., 2014). ~~The linkage of the model structure of flow path mixing as shown here, and tree cell water storage, inclusive of simple parametric storage mixing approaches (eg. Knighton et al., 2020) presents potential further model development to better estimate sub-daily and inter-daily xylem variability and interpret water use dynamics in vegetation.~~ While such a release of water may be present during peak transpiration hours, as suggested by the hourly variability of ~~measured~~ basal diameter (Fig. ~~S7~~), the high water usage of willows potentially limits the proportional contribution of cell storage to xylem water.

5.3 Implications of water ages in soil water and xylem fluxes

Quantifying the age of water has significant implications for ~~improved~~ understanding of how water is cycled through the critical zone, particularly for understanding the temporal changes and response times of water quantity and quality in different environments (Sprenger et al., 2019). Further discretization of average water ages into age distributions helps to illuminate how ~~the evolution of~~ water ages are influenced by different processes (Rodriguez et al., 2020) as well as the influence of water fluxes from different temporal periods or extremes (Allen et al., 2019). The modelled contributions of different water ages in the willow root-uptake suggested that summer precipitation was the dominant source of water, accounting for 56% of total uptake (volume-weighted). This differs from ~~isotope-based studies in other locations~~ (e.g. Allen et al. (2019), ~~across Switzerland~~) which have shown a higher usage of winter precipitation in leafy vegetation (beech and oak), but ~~it~~ is consistent with ~~the~~ estimated high contribution of recent precipitation during the growing season ~~in the study region~~ (Miguez-Macho and Fan, 2021). However, differences in hydroclimate, as well as variations in rooting depths between species and maturity of forests stands, likely give deeper rooting depths for beech and oak compared to shallow roots for the younger willows (in this study) which could drive differences in seasonal precipitation use by vegetation. Alternatively, the effect of separation of storage with fast and slow turnover times, or the effects of preferential flow (Sprenger and Allen, 2020), could contribute to an increase in water age if younger summer water preferentially moves through the soil, or if tightly bound water is used by vegetation. However, the good temporal agreements of soil and xylem isotope samples relative to the likely dichotomy between

Deleted: tubes

Deleted: night time

Deleted: (Fig. S5;

Deleted: (Sperry et al., 2016))

Deleted: S6

Deleted: other

Deleted:)

Deleted:)

faster and slower moving isotopes in the soil (e.g. Sprenger et al. (2019)), implies that for the conditions present at the study site, inclusion of preferential flow or variable pore size would not influence water ages for the uptake ~~from either of~~ the soils.

This is also consistent with the immature nature of the soils and their relatively uniform sandy nature.

Age estimates for water being transported in xylem ~~derived~~ in this study were of a similar order of magnitude to estimates for other woody vegetation; averaging between 6.2 and 8.1 days with a maximum of 10.3 days at our site compared to between two days and one month in other studies (Brandes et al., 2007; Meinzer et al., 2006). While our estimates were towards lower transit times compared to most other studies, the willows at our site were younger, had smaller diameters, ~~were measured at 1m basal height compared to in the canopy~~, and had higher xylem sap flow velocity, consistent with high water usage and low stomatal control (xylem cavitation control, Wikberg and Ögren (2007)). ~~Additionally, differences in xylem water ages relative to previous root-uptake mixing studies (e.g. Seeger and Weiler, 2021) are likely due to stand size, vegetation age, and measurement heights.~~ High-resolution *in-situ* measurements, capturing soil and xylem isotope dynamics were indispensable for improving the confidence in the estimated xylem transport age. Coarser xylem isotope samples would likely be insufficient to adequately constrain transport age uncertainty. Similar to the impact that stored tree water release can have on xylem isotopes (Section 5.2) (Brandes et al., 2007; De Deurwaerder et al., 2020); there are likely implications for water ages and identification of sources due to water released from cell storage. The effect of stored water on xylem transport ages could be significant in vegetation that ~~utilizes~~ large fractions of previously stored water (e.g. which can be as much as 20% of transpiration; Čermák et al. (2007)). In such vegetation, total transpiration could be maintained from stored water for a week (Čermák et al., 2007), drawing water from storage cells which may be notably older than xylem water. ~~Effects of such long-term storage components have previously been implicitly incorporated into post-root uptake lumped vegetation mixing approaches (e.g. Knighton et al., 2020) which have previously shown order of magnitude changes in tree stored water age with changes in wetness conditions.~~ Due to the relatively young uptake water ages of willows in this study, the inclusion of any cell water storage (~~~16L/day if 20% of transpiration, ~600L total storage to maintain transpiration for one week~~) may significantly ~~increase~~ the mean age of xylem water, and would increase the ~~total vegetation mixing time~~. Given the limited studies describing the ages of water and tracers in transpiring trees (Sprenger et al., 2019; Mennekes et al. 2021; Benettin et al. 2021), more studies quantifying the transport through the xylem, as conducted here, and ~~the~~ inclusion of additional mixing within vegetation (e.g. Steppe et al. (2006)) would be beneficial to further constrain plant water use estimations.

6 Conclusion

In order to increase understanding of ~~water cycling mechanisms in~~ the critical zone, it is essential to evaluate how water is partitioned by vegetation and the dominant processes controlling water usage and movement. Furthermore, quantifying flux and storage dynamics, through methods such as ecohydrological modelling, are necessary to understand the linkages of water in vegetation and soil at high spatial and temporal resolution. We used a large *in-situ* dataset under grass and willow trees, including soil moisture, energy balance, water stable isotopes, and biomass accumulation to test the capability of using a tracer-

Deleted: –

Deleted: of

Deleted: in

Deleted: estimated

Deleted: the

Formatted: Font: Italic

Deleted: essential

Deleted: utilize

Deleted: change

Deleted: ,

Deleted: time period for

Deleted: in modelling approaches, such as the one implemented here

Deleted: the mechanisms of

Deleted: within

Formatted: Font: Italic

155 aided ecohydrological model at high temporal resolution to constrain water, energy, and isotope mass balance throughout a growing season. The model captured event and seasonal dynamics of soil moisture (MAE = 0.02-0.03m³/m³), soil and xylem water deuterium (MAE = 4.2-8.6‰), latent and sensible heat (MAE = 1.8 – 20 W/m²), and biomass (MAE of stem growth and leaf growth, 1.5-2.2µm and 0.5m²/m², respectively). In-situ soil and vegetation isotopes were indispensable in calibration for simulating water storage, sources and fluxes of vegetation uptake, mixing processes and water age estimates; and the importance of such datasets in informing modelling approaches was demonstrated. Modelling sapflow of the willows revealed significant water usage from neighbouring cells, and heterogeneity of root water and xylem water isotope sources. Distance-based isotopic mixing of root-uptake revealed an improved estimation of xylem water stable isotopes and showed the capability of the model to reproduce the diurnal isotopic variability in spatially heterogeneous soils as a lag in the xylem water isotopes. The results additionally pointed towards further model development needs for modelling vegetation mixing in natural environments. Such numerical modelling approaches, with a physical basis and the capability of accurate simulation of multiple, inter-related variables estimation, have a high potential for further exploration of critical zone water cycling and improved understanding of spatio-temporal changes in water availability due to vegetation-soil interactions. Continuation of integrated modelling approaches using the leverage provided by in-situ data will aid future ecohydrological investigations in constraining and informing modelling while providing high spatio-temporal resolution insights into ecohydrological processes.

Acknowledgements

170 The in-situ data could be measured through equipment funded by funding by the BMBF (No: 033W034A). Funding for CS was through the project “Modelling surface and groundwater with isotopes in urban catchments” (MOSAIC) provided by the Einstein Foundation. Contributions from CS were also funded by the Leverhulme Trust’s ISOLAND project. We acknowledge the IGB and Leibniz Association Open Access Publication Funds. The authors acknowledge the assistance of David Dubbert, Lukas Kleine, and Jonas Freymüller in isotope analysis and study site set-up, and Marco Maneta for discussions on EcH2O-iso modelling.

Code availability

The model code of EcH2O-iso is available on Bitbucket at http://bitbucket.igb-berlin.de:7990/users/ech2o/repos/ech2o_iso/browse

Data availability

1180 The data used in this study are available in the open access data base, FRED (<https://fred.igb-berlin.de/data/package/582>). Isotope data are password protected, with full access available from the corresponding author upon request.

- Deleted: high
- Deleted: summer
- Deleted: .
- Deleted: .
- Deleted: .
- Deleted:).
- Formatted: Font: Italic
- Deleted: water use and source and
- Deleted: . Water usage at the willow plot sites showed higher evapotranspiration than grass, rapidly drying the soils down to 1m with most root-uptake from upper 10cm. The grasses showed a greater proportion of soil evaporation in evapotranspiration compared to the willows, and root-uptake equally mixed from the upper 40cm. Both vegetation units showed most biomass allocated to foliage growth throughout the growing season. Water age
- Deleted: showed
- Deleted: .
- Deleted: estimate
- Deleted: from soils in xylem. Estimated willow root-uptake showed that summer precipitation was the dominant source (56%), with an average uptake age of 28 days (near-surface sourced water), and xylem transport time from root to 1m above the surface between 6.2 – 8.1 days.
- Deleted: multifaceted variable
- Deleted: great value
- Formatted: Font: Italic
- Deleted: .
- Deleted: information of
- Formatted: Font: Italic

Author contributions

AS conducted model set-up, calibration and validation of the EcH₂O-iso model mixing model utilizing earlier work led by DT, CS, MD. JL collected and conducted correction, quality control and assessment of the *in-situ* data. AS prepared the manuscript with contributions and editing from all co-authors.

Competing interests

The authors declare that they have no competing interests.

References

215 Akaike, H.: Information Theory and an Extension of the Maximum Likelihood Principle. In: Selected Papers of Hirotugu Akaike, Parzen, E., Tanabe, K., and Kitagawa, G. (Eds.), Springer New York, New York, NY, 1998.

Ala-Aho, P., Tetzlaff, D., McNamara, J.P., Laudon, H., Soulsby, C.: Using isotopes to constrain water flux and age estimates in snow-influenced catchments using the STARR (Spatially distributed Tracer-Aided Rainfall-Runoff) model. *Hydrol. Earth Syst. Sci.* 21 (10), 5089–5110. <https://doi.org/10.5194/hess-21-5089-2017>. 2017.

220 Allen, S. T., Kirchner, J. W., Braun, S., Siegwolf, R. T. W., and Goldsmith, G. R.: Seasonal origins of soil water used by trees, *Hydrology and Earth System Sciences*, 23, 1199-1210, 2019.

Amin, A., Zuecco, G., Geris, J., Schwendenmann, L., McDonnell, J. J., Borga, M., and Penna, D.: Depth distribution of soil water sourced by plants at the global scale: A new direct inference approach, *Ecohydrology*, 13, e2177, 2020.

Arya, V. K.: Introduction to Micrometeorology, Academic Press, 2001.

225 Asadzadeh, M., Tolson, B. A., and Burn, D. H.: A new selection metric for multiobjective hydrologic model calibration, *Water Resources Research*, 50, 7082-7099, 2014.

Asbjornsen, H., Goldsmith, G. R., Alvarado-Barrientos, M. S., Rebel, K., Van Osch, F. P., Rietkerk, M., Chen, J., Gotsch, S., Tobon, C., Geissert, D. R., Gomez-Tagle, A., Vache, K., and Dawson, T. E.: Ecohydrological advances and applications in plant-water relations research: a review, *Journal of Plant Ecology*, 4, 3-22, 2011.

230 Barbeta, A. and Peñuelas, J.: Relative contribution of groundwater to plant transpiration estimated with stable isotopes, *Scientific Reports*, 7, 10580, 2017.

Benettin, P., Nehemy, M. F., Asadollahi, M., Pratt, D., Bensimon, M., McDonnell, J. J., & Rinaldo, A.: Tracing and closing the water balance in a vegetated lysimeter. *Water Resources Research*, 57, e2020WR029049. <https://doi.org/10.1029/2020WR029049>. 2021.

Berlin, S.-. <https://www.mapz.com/>, last access: June 2021.

235 Beyer, M., Kühnhammer, K., and Dubbert, M.: In situ measurements of soil and plant water isotopes: a review of approaches, practical considerations and a vision for the future, *Hydrology and Earth System Sciences*, 24, 4413-4440, 2020.

Brandes, E., Wenninger, J., Koeniger, P., Schindler, D., Rennenberg, H., Leibundgut, C., Mayer, H., and Gessler, A.: Assessing environmental and physiological controls over water relations in a Scots pine (*Pinus sylvestris* L.) stand through analyses of stable isotope composition of water and organic matter, *Plant, Cell & Environment*, 30, 113-127, 2007.

240 Brantley, S. L., Eissenstat, D. M., Marshall, J. A., Godsey, S. E., Balogh-Brunstad, Z., Karwan, D. L., Papuga, S. A., Roering, J., Dawson, T. E., Evaristo, J., Chadwick, O., McDonnell, J. J., and Weathers, K. C.: Reviews and syntheses: on the roles trees play in building and plumbing the critical zone, *Biogeosciences*, 14, 5115-5142, 2017.

Braud, I., Bariac, T., Gaudet, J. P., and Vauclin, M.: SiSPAT-Isotope, a coupled heat, water and stable isotope (HDO and H218O) transport model for bare soil. Part I. Model description and first verifications, *Journal of Hydrology*, 309, 277-300, 2005.

245 Brinkmann, N., Eugster, W., Buchmann, N., and Kahmen, A.: Species-specific differences in water uptake depth of mature temperate trees vary with water availability in the soil, *Plant Biol (Stuttg)*, 21, 71-81, 2019.

Čermák, J., Kučera, J., Bauerle, W. L., Phillips, N., and Hinckley, T. M.: Tree water storage and its diurnal dynamics related to sap flow and changes in stem volume in old-growth Douglas-fir trees, *Tree Physiology*, 27, 181-198, 2007.

Chen, Y., Helliker, B. R., Tang, X., Li, F., Zhou, Y., and Song, X.: Stem water cryogenic extraction biases estimation in deuterium isotope composition of plant source water, *Proceedings of the National Academy of Sciences*, 117, 33345, 2020.

250 Coenders-Gerrits, A. M., van der Ent, R. J., Bogaard, T. A., Wang-Erlandsson, L., Hrachowitz, M., and Savenije, H. H.: Uncertainties in transpiration estimates, *Nature*, 506, E1-2, 2014.

Formatted: English (Canada)

Deleted: Allen, S. T. and Kirchner, J. W.: Potential effects of cryogenic extraction biases on inferences drawn from xylem water deuterium isotope ratios: case studies using stable isotopes to infer plant water sources, *Hydrol. Earth Syst. Sci. Discuss.*, 2021, 1-15, 2021.¶

Formatted: English (Canada)

Deleted: Berlin, S.-. <https://www.mapz.com/>

Formatted: English (Canada)

Craig, H. and Gordon, L. I.: Deuterium and oxygen-18 variations in the ocean and the marine atmosphere. In: *Stable Isotopes in Oceanographic Studies and Paleotemperatures*, Tongiorgi, E. (Ed.), Consiglio Nazionale della Ricerche, Pisa, Italy, 1965.

Cunniff, J., Purdy, S. J., Barraclough, T. J., Castle, M., Maddison, A. L., Jones, L. E., Shield, I. F., Gregory, A. S., and Karp, A.: High yielding biomass genotypes of willow (*Salix* spp.) show differences in below ground biomass allocation, *Biomass Bioenergy*, 80, 114-127, 2015.

Dalsgaard, L.: Above and below Ground Gaps: The Effects of a Small Canopy Opening on Throughfall, Soil Moisture and Tree Transpiration in Suserup Skov, Denmark, *Ecological Bulletins*, 52, 81-102, 2007.

Dawson, T. E., Burgess, S. S. O., Tu, K. P., Oliveira, R. S., Santiago, L. S., Fisher, J. B., Simonin, K. A., and Ambrose, A. R.: Nighttime transpiration in woody plants from contrasting ecosystems, *Tree Physiology*, 27, 561-575, 2007.

De Deurwaerder, H. P. T., Visser, M. D., Detto, M., Boeckx, P., Meunier, F., Kuehnhammer, K., Magh, R.-K., Marshall, J. D., Wang, L., Zhao, L., and Verbeeck, H.: Causes and consequences of pronounced variation in the isotope composition of plant xylem water, *Biogeosciences*, 17, 4853-4870, 2020.

Deutschen Nationalkomitee, D.: <http://www.stratigraphie.de/>, last access: April 2021.

Douinot, A., Tetzlaff, D., Maneta, M., Kuppel, S., Schulte-Bisping, H., and Soulsby, C.: Ecohydrological modelling with EcH2O-iso to quantify forest and grassland effects on water partitioning and flux ages, *Hydrological Processes*, doi: 10.1002/hyp.13480, 2019. 2019.

Dubbert, M., Piayda, A., Cuntz, M., Correia, A. C., Costa, E. S. F., Pereira, J. S., and Werner, C.: Stable oxygen isotope and flux partitioning demonstrates understory of an oak savanna contributes up to half of ecosystem carbon and water exchange, *Front Plant Sci*, 5, 530, 2014.

Dubbert, M. and Werner, C.: Water fluxes mediated by vegetation: emerging isotopic insights at the soil and atmosphere interfaces, *New Phytol*, 221, 1754-1763, 2019.

DWD: https://www.dwd.de/DE/klimaumwelt/cdc/cdc_node.html2021, last access: June 2021.

Eziz, A., Yan, Z., Tian, D., Han, W., Tang, Z., and Fang, J.: Drought effect on plant biomass allocation: A meta-analysis, *Ecology and Evolution*, 7, 11002-11010, 2017.

Faticchi, S., Ivanov, V. Y., and Caporali, E.: *A mechanistic ecohydrological model to investigate complex interactions in cold and warm water-controlled environments: 1. Theoretical framework and plot-scale analysis*, *Journal of Advances in Modeling Earth Systems*, 4, M05002, doi:10.1029/2011MS000086.

Geris, J., Tetzlaff, D., McDonnell, J. J., and Soulsby, C.: Spatial and temporal patterns of soil water storage and vegetation water use in humid northern catchments, *Science of The Total Environment*, 595, 486-493, 2017.

Gerrits, A. M. J., Pfister, L., and Savenije, H. H. G.: Spatial and temporal variability of canopy and forest floor interception in a beech forest, *Hydrological Processes*, 24, 3011-3025, 2010.

Gessler, A., Bachli, L., Rouholahnejad Freund, E., Treydte, K., Schaub, M., Haeni, M., Weiler, M., Seeger, S., Marshall, J., Hug, C., Zweifel, R., Hagedorn, F., Rigling, A., Saurer, M., and Meusburger, K.: Drought reduces water uptake in beech from the drying topsoil, but no compensatory uptake occurs from deeper soil layers, *New Phytol*, doi: 10.1111/nph.17767, 2021. 2021.

Gillefalk, M., Tetzlaff, D., Hinkelmann, R., Kulemann, L.-M., Smith, A., Meier, F., Maneta, M. P., and Soulsby, C.: Quantifying the effects of urban green space on water partitioning and ages using an isotope-based ecohydrological model, *Hydrology and Earth System Sciences*, 25, 3635-3652, 2021.

Goldsmith, G. R., Allen, S. T., Braun, S., Engbersen, N., González-Quijano, C. R., Kirchner, J. W., and Siegwolf, R. T. W.: Spatial variation in throughfall, soil, and plant water isotopes in a temperate forest, *Ecohydrology*, doi: 10.1002/eco.2059, 2018. 2018.

Good, S. P., Noone, D., and Bowen, G.: Hydrologic connectivity constrains partitioning of global terrestrial water fluxes, *Science*, 349, 175, 2015.

Grant, G. E. and Dietrich, W. E.: The frontier beneath our feet, *Water Resources Research*, 53, 2605-2609, 2017.

Gudmundsson, L., Leonard, M., Do, H. X., Westra, S., and Seneviratne, S. I.: Observed Trends in Global Indicators of Mean and Extreme Streamflow, *Geophysical Research Letters*, 46, 756-766, 2019.

Hersbach, H., Bell, B., Berrisford, P., Hirahara, S., Horányi, A., Muñoz-Sabater, J., Nicolas, J., Peubey, C., Radu, R., Schepers, D., Simmons, A., Soci, C., Abdalla, S., Abellan, X., Balsamo, G., Bechtold, P., Biavati, G., Bidlot, J., Bonavita, M., De Chiara, G., Dahlgren, P., Dee, D., Diamantakis, M., Dragani, R., Flemming, J., Forbes, R., Fuentes, M., Geer, A., Haimberger, L., Healy, S., Hogan, R. J., Hólm, E., Janisková, M., Keeley, S., Laloyaux, P., Lopez, P., Lupu, C., Radnoti, G., de Rosnay, P., Rozum, I., Vamborg, F., Villaume, S., and Thépaut, J.-N.: The ERA5 global reanalysis, *Quarterly Journal of the Royal Meteorological Society*, 146, 1999-2049, 2020.

Isebrands, J. G. and Richardson, J.: *Poplars and willows: trees for society and the environment*, The Food and Agriculture Organization of the United Nations & CABI, 2014.

Jasechko, S., Sharp, Z. D., Gibson, J. J., Birks, S. J., Yi, Y., and Fawcett, P. J.: Terrestrial water fluxes dominated by transpiration, *Nature*, 496, 347-350, 2013.

Jones, H. G. and Tardieu, F.: Modelling water relations of horticultural crops: a review, *Scientia Horticulturae*, 74, 21-46, 1998.

Kleine, L., Tetzlaff, D., Smith, A., Dubbert, M., and Soulsby, C.: Modelling ecohydrological feedbacks in forest and grassland plots under a prolonged drought anomaly in central Europe 2018-2020, *Hydrological Processes*, n/a, e14325, 2021.

Kling, H., Fuchs, M., and Paulin, M.: Runoff conditions in the upper Danube basin under an ensemble of climate change scenarios, *Journal of Hydrology*, 424-425, 264-277, 2012.

Deleted: <http://www.stratigraphie.de/>,

Formatted: English (Canada)

Deleted: DWD:
https://www.dwd.de/DE/klimaumwelt/cdc/cdc_node.html2021,

Formatted: English (Canada)

Formatted: English (Canada)

Knighton, J., Kuppel, S., Smith, A., Soulsby, C., Sprenger, M., and Tetzlaff, D.: Using isotopes to incorporate tree water storage and mixing dynamics into a distributed ecohydrologic modelling framework, *Ecohydrology*, 13, 2020.

1320 Kool, D., Agam, N., Lazarovitch, N., Heitman, J. L., Sauer, T. J., and Ben-Gal, A.: A review of approaches for evapotranspiration partitioning, *Agricultural and Forest Meteorology*, 184, 56-70, 2014.

Kübert, A., Paulus, S., Dahlmann, A., Werner, C., Rothfuss, Y., Orlowski, N., Dubbert, M.: Water stable isotopes in ecohydrological field research: Comparison between in situ and destructive monitoring methods to determine soil water isotopic signatures, *Frontiers in plant science*, 11, 387, <https://doi.org/10.3389/fpls.2020.00387>, 2020.

1325 Kuppel, S., Tetzlaff, D., Maneta, M. P., and Soulsby, C.: Ech2O-iso 1.0: water isotopes and age tracking in a process-based, distributed ecohydrological model, *Geoscientific Model Development*, 11, 3045-3069, 2018a.

Kuppel, S., Tetzlaff, D., Maneta, M. P., and Soulsby, C.: What can we learn from multi-data calibration of a process-based ecohydrological model?, *Environmental Modelling & Software*, 101, 301-316, 2018b.

1330 Landgraf, J., Tetzlaff, D., Dubbert, M., Smith, A., and Soulsby, C.: Xylem water in riparian Willow trees (*Salix alba*) reveals shallow sources of root water uptake by in-situ monitoring of stable water isotopes in soil and tree water, *Hydrol. Earth Syst. Sci. Discuss.*, 2021. 2021.

Lee, T. and Pielke, R. A.: Estimating the Soil Surface Specific Humidity, *Journal of Applied Meteorology*, 31, 480-484, 1992.

Li, S.-L. and Liang, W.-L.: Spatial–Temporal Soil Water Dynamics beneath a Tree Monitored by Tensiometer–Time Domain Reflectometry Probes, *Water*, 11, 2019.

1335 Lobell, D. B. and Gourdji, S. M.: The influence of climate change on global crop productivity, *Plant Physiol*, 160, 1686-1697, 2012.

Lobell, D. B., Schlenker, W., and Costa-Roberts, J.: Climate Trends and Global Crop Production Since 1980, *Science*, 333, 616, 2011.

Maneta, M. P. and Silverman, N. L.: A Spatially Distributed Model to Simulate Water, Energy, and Vegetation Dynamics Using Information from Regional Climate Models, *Earth Interactions*, 17, 1-44, 2013.

Marshall, J. D., Cuntz, M., Beyer, M., Dubbert, M., and Kuehnhammer, K.: Borehole Equilibration: Testing a New Method to Monitor the Isotopic Composition of Tree Xylem Water in situ, *Front Plant Sci*, 11, 358, 2020.

1340 Martin, C.: LAI: Calculate indirect Leaf Area Index (LAI) from images. R package version 0.0.0.9004, <https://github.com/cmartin/LAI>, 2015.

Meinzer, F. C., Brooks, J. R., Domec, J. C., Gartner, B. L., Warren, J. M., Woodruff, D. R., Bible, K., and Shaw, D. C.: Dynamics of water transport and storage in conifers studied with deuterium and heat tracing techniques, *Plant, Cell & Environment*, 29, 105-114, 2006.

1345 Menekes, D., Rinderer, M., Seeger, S., and Orlowski, N.: Ecohydrological travel times derived from in situ stable water isotope measurements in trees during a semi-controlled pot experiment, *Hydrol. Earth Syst. Sci.*, 25, 4513–4530, <https://doi.org/10.5194/hess-25-4513-2021>, 2021.

Miguez-Macho, G. and Fan, Y.: Spatiotemporal origin of soil water taken up by vegetation, *Nature*, doi: 10.1038/s41586-021-03958-6, 2021. 2021.

1350 Moustakas, A., Kunin, W. E., Cameron, T. C., and Sankaran, M.: Facilitation or competition? Tree effects on grass biomass across a precipitation gradient, *PLoS One*, 8, e57025, 2013.

Myneni, R., Knyazikhin, Y., and Park, T.: 2021.

Oerter, E. J. and Bowen, G.: In situ monitoring of H and O stable isotopes in soil water reveals ecohydrologic dynamics in managed soil systems, *Ecohydrology*, 10, e1841, 2017.

1355 Ogle, K., Tucker, C., and Cable, J. M.: Beyond simple linear mixing models: process-based isotope partitioning of ecological processes, *Ecological Applications*, 24, 181-195, 2014.

Okii, T. and Kanae, S.: Global Hydrological Cycles and World Water Resources, *Science*, 313, 1068, 2006.

Penna, D., Hopp, L., Scandellari, F., Allen, S. T., Benettin, P., Beyer, M., Geris, J., Klaus, J., Marshall, J. D., Schwendenmann, L., Volkmann, T. H. M., von Freyberg, J., Amin, A., Ceperley, N., Engel, M., Frentress, J., Giambastiani, Y., McDonnell, J. J., Zuecco, G., Llorens, P., Siegwolf, R. T. W., Dawson, T. E., and Kirchner, J. W.: Ideas and perspectives: Tracing terrestrial ecosystem water fluxes using hydrogen and oxygen stable isotopes – challenges and opportunities from an interdisciplinary perspective, *Biogeosciences*, 15, 6399-6415, 2018.

1360 Phillips, C. J., Marden, M., and Suzanne, L. M.: Observations of root growth of young poplar and willow planting types, *New Zealand Journal of Forestry Science*, 44, 15, 2014.

Poca, M., Coomans, O., Urcelay, C., Zeballos, S. R., Bodé, S., and Boeckx, P.: Isotope fractionation during root water uptake by *Acacia caven* is enhanced by arbuscular mycorrhizas, *Plant and Soil*, 441, 485-497, 2019.

1365 Rodriguez, N. B., Benettin, P., and Klaus, J.: Multimodal water age distributions and the challenge of complex hydrological landscapes, *Hydrological Processes*, 34, 2707-2724, 2020.

Rothfuss, Y. and Javaux, M.: Reviews and syntheses: Isotopic approaches to quantify root water uptake: a review and comparison of methods, *Biogeosciences*, 14, 2199-2224, 2017.

1370 Schlesinger, W. H. and Jasechko, S.: Transpiration in the global water cycle, *Agricultural and Forest Meteorology*, 189-190, 115-117, 2014.

Secchi, F., Pagliarani, C., and Zwieniecki, M. A.: The functional role of xylem parenchyma cells and aquaporins during recovery from severe water stress, *Plant Cell Environ*, 40, 858-871, 2017.

Seeger, S. and Weiler, M.: Temporal dynamics of tree xylem water isotopes: in situ monitoring and modeling, *Biogeosciences*, 18, 4603–4627, <https://doi.org/10.5194/bg-18-4603-2021>, 2021.

Formatted: English (Canada)

Formatted: English (Canada)

Formatted: English (Canada)

Deleted: In-

Deleted: Discuss,

Formatted: English (Canada)

Deleted: modelling

Formatted: English (Canada)

Formatted: English (Canada)

Deleted: :

Formatted: English (Canada)

Formatted: English (Canada)

Deleted: -35

Formatted: English (Canada)

Deleted: 2021.

Formatted: English (Canada)

1380 Smith, A., Tetzlaff, D., Gelbrecht, J., Kleine, L., and Soulsby, C.: Riparian wetland rehabilitation and beaver re-colonization impacts on hydrological processes and water quality in a lowland agricultural catchment, *Sci Total Environ*, 699, 134302, 2020a.

Smith, A., Tetzlaff, D., Kleine, L., Maneta, M., and Soulsby, C.: Quantifying the effects of land use and model scale on water partitioning and water ages using tracer-aided ecohydrological models, *Hydrology and Earth System Sciences*, 25, 2239-2259, 2021.

1385 Smith, A., Tetzlaff, D., Kleine, L., Maneta, M. P., and Soulsby, C.: Isotope-aided modelling of ecohydrologic fluxes and water ages under mixed land use in Central Europe: The 2018 drought and its recovery, *Hydrological Processes*, 34, 3406-3425, 2020b.

Sperry, J. S. and Love, D. M.: What plant hydraulics can tell us about responses to climate-change droughts, *New Phytol*, 207, 14-27, 2015.

Sperry, J. S., Wang, Y., Wolfe, B. T., Mackay, D. S., Anderegg, W. R., McDowell, N. G., and Pockman, W. T.: Pragmatic hydraulic theory predicts stomatal responses to climatic water deficits, *New Phytol*, 212, 577-589, 2016a.

1390 Sperry, J. S., Wang, Y., Wolfe, B. T., Mackay, D. S., Anderegg, W. R., McDowell, N. G., and Pockman, W. T.: Supply-Demand Hydraulic Model code, https://sperry.biology.utah.edu/methods.html#supply_demand, last access: January 2022.

Sprenger, M. and Allen, S. T.: What Ecohydrologic Separation Is and Where We Can Go With It, *Water Resources Research*, 56, e2020WR027238, 2020.

Sprenger, M., Stumpp, C., Weiler, M., Aeschbach, W., Allen, S. T., Benettin, P., Dubbert, M., Hartmann, A., Hrachowitz, M., Kirchner, J. W., McDonnell, J. J., Orlowski, N., Penna, D., Pfahl, S., Rinderer, M., Rodriguez, N., Schmidt, M., and Werner, C.: The Demographics of Water: A Review of Water Ages in the Critical Zone, *Reviews of Geophysics*, 57, 800-834, 2019.

1395 Steppe, K., De Pauw, D. J. W., Lemeur, R., and Vanrolleghem, P. A.: A mathematical model linking tree sap flow dynamics to daily stem diameter fluctuations and radial stem growth, *Tree Physiology*, 26, 257-273, 2006.

Sutanto, S. J., Wenninger, J., Coenders-Gerrits, A. M. J., and Uhlenbrook, S.: Partitioning of evaporation into transpiration, soil evaporation and interception: a comparison between isotope measurements and a HYDRUS-1D model, *Hydrology and Earth System Sciences*, 16, 2605-2616, 2012.

1400 Taylor, R. G., Scanlon, B., Döll, P., Rodell, M., van Beek, R., Wada, Y., Longuevergne, L., Leblanc, M., Famiglietti, J. S., Edmunds, M., Konikow, L., Green, T. R., Chen, J., Taniguchi, M., Bierkens, M. F. P., MacDonald, A., Fan, Y., Maxwell, R. M., Yechieli, Y., Gurdak, J. J., Allen, D. M., Shamsudduha, M., Hiscock, K., Yeh, P. J. F., Holman, I., and Treidel, H.: Ground water and climate change, *Nature Climate Change*, 3, 322-329, 2013.

1405 Tetzlaff, D., Buttle, J., Carey, S. K., Kohn, M. J., Laudon, H., McNamara, J. P., Smith, A., Sprenger, M., and Soulsby, C.: Stable isotopes of water reveal differences in plant – soil water relationships across northern environments, *Hydrological Processes*, 35, 2021.

UFZ: <https://www.ufz.de/index.php?en=41160>, last access: April 2021.

Urban, J., Čermák, J., and Ceulemans, R.: Above- and below-ground biomass, surface and volume, and stored water in a mature Scots pine stand, *European Journal of Forest Research*, 134, 61-74, 2014.

1410 Vargas, A. I., Schaffer, B., Yuhong, L., and Sternberg, L.: Testing plant use of mobile vs immobile soil water sources using stable isotope experiments, *New Phytol*, 215, 582-594, 2017.

von Freyberg, J., Allen, S. T., Grossiord, C., Dawson, T. E., and Royles, J.: Plant and root-zone water isotopes are difficult to measure, explain, and predict: Some practical recommendations for determining plant water sources, *Methods in Ecology and Evolution*, 11, 1352-1367, 2020.

1415 Wikberg, J. and Ögren, E.: Variation in drought resistance, drought acclimation and water conservation in four willow cultivars used for biomass production, *Tree Physiology*, 27, 1339-1346, 2007.

Xiao, W., Wei, Z., and Wen, X.: Evapotranspiration partitioning at the ecosystem scale using the stable isotope method—A review, *Agricultural and Forest Meteorology*, 263, 346-361, 2018.

1420 Zhang, Y., Pena-Arancibia, J. L., McVicar, T. R., Chiew, F. H., Vaze, J., Liu, C., Lu, X., Zheng, H., Wang, Y., Liu, Y. Y., Miralles, D. G., and Pan, M.: Multi-decadal trends in global terrestrial evapotranspiration and its components, *Sci Rep*, 6, 19124, 2016.

Zhou, S., Yu, B., Zhang, Y., Huang, Y., and Wang, G.: Partitioning evapotranspiration based on the concept of underlying water use efficiency, *Water Resources Research*, 52, 1160-1175, 2016.

Zink, M., Kumar, R., Cuntz, M., and Samaniego, L.: A high-resolution dataset of water fluxes and states for Germany accounting for parametric uncertainty, *Hydrol. Earth Syst. Sci.*, 21, 1769–1790, doi.org/10.5194/hess-21-1769-2017, 2017.

Deleted: 2016

Formatted: English (Canada)

Formatted: English (Canada)

Deleted: UFZ: <https://www.ufz.de/index.php?en=41160>,

Formatted: English (Canada)