

Riverine impact on future projections of marine primary production and carbon uptake

Shuang Gao^{1,2}, Jörg Schwinger³, Jerry Tjiputra³, Ingo Bethke¹, Jens Hartmann⁴, Emilio Mayorga⁵, Christoph Heinze¹

¹Geophysical Institute, University of Bergen, Bjerknes Centre for Climate Research, [Bergen](#), Norway

²Institute of Marine Research, Bergen, Norway

³NORCE Norwegian Research Centre, Bjerknes Centre for Climate Research, [Bergen](#), Norway

⁴Institute of Geology, Center for Earth System Research and Sustainability (CEN), Universität Hamburg, [Hamburg](#), Germany

⁵Applied Physics Laboratory, University of Washington, [Seattle, WA](#), USA

Correspondence to: Shuang Gao (shuang.gao@hi.no)

Abstract. Riverine transport of nutrients and carbon from inland waters to the coastal and finally the open ocean alters marine primary production (PP) and carbon (C) uptake regionally and globally. So far, this contribution is represented in the state-of-the-art Earth system models with limited effort. Here we assess changes in marine PP and C uptake projected under the Representative Concentration Pathway 4.5 climate scenario using the Norwegian Earth system model, with four riverine transport configurations for nutrients (nitrogen, phosphorus, silicon and iron), carbon and total alkalinity: deactivated, fixed at a recent-past level, coupled to simulated freshwater runoff, and following four plausible future scenarios. The inclusion of riverine nutrients and carbon at 1970's level improves the simulated contemporary spatial distribution relative to observations, especially on the continental margins (5.4% reduction in root mean square error [RMSE] for PP) and in the North Atlantic region (7.4% reduction in RMSE for C uptake). While the riverine nutrients and C input is kept constant, its impact on projected PP and C uptake expresses differently in future period from the historical period. Riverine nutrient inputs lessen nutrient limitation under future warmer conditions as stratification increases, and thus lessen the projected future decline in PP by up to $0.7 \pm 0.02 \text{ Pg C yr}^{-1}$ (29.5%) globally, when comparing 1950–1999 with 2050–2099 period. The riverine impact on projected C uptake depends on the balance between the net effect of riverine nutrient induced C uptake and riverine C induced CO₂ outgassing. These two opposite impacts are comparable in magnitudes when they are globally integrated. Therefore, in the two idealized riverine configurations the river inputs result in a weak net C sink of $0.03\text{--}0.04 \pm 0.01 \text{ Pg C yr}^{-1}$, while in the more plausible riverine configurations the river inputs cause a net C source of $\sim 0.1 \pm 0.03 \text{ Pg C yr}^{-1}$. The results are subject to model limitations related to resolution and process representations that potentially cause underestimation of impacts. High-resolution global or regional models with an adequate representation of physical and biogeochemical shelf processes should be used to assess the impact of future riverine scenarios more accurately.

1 Introduction

At global scale, the major sources of both dissolved and particulate materials to the oceans are river runoff, atmospheric deposition and hydrothermal inputs; of these three, river runoff plays an essential role in transporting nutrients into the ocean which stimulate biological primary production (PP) in the ocean (Meybeck, 1982; Smith

Formatted: Header

Formatted

Deleted: ⁵University

Deleted: Shuang

Deleted: , not only

Deleted: but also

Formatted: Font: Arial, 12 pt, Font colour: Text 1,

Formatted

Deleted: contemporary

Deleted: modelled

Deleted: alleviate

Deleted: , especially

Deleted: 6 PgC yr⁻¹ (27.3%) globally depending on the riverine configuration. The projected C uptake is enhanced along continental margins where increased PP, due to riverine nutrient inputs, dominates over the CO₂ outgassing owing to riverine organic matter inputs. Conversely, where the riverine organic matter inputs dominate over the nutrient inputs, the projected C uptake is reduced. The large range of the riverine input across our four riverine configurations does not transfer to a large uncertainty of the projected global PP and ocean C uptake, suggesting that transient riverine inputs are more important for high-resolution regional studies such as in the North Atlantic and along the continental margins

Formatted

Deleted: . Of

Deleted: runoffs play

Deleted: 1

59
60
61
62
63
64
65
66
67
68
69
70
71
72
73
74
75
76
77
78
79
80
81
82
83
84
85
86
87
88
89
90
91
92
93
94
95
96

et al., 2003; Chester, 2012). For some substances, riverine transport even acts as the absolutely dominant source, such as total phosphorus (~90%) and total silicon (>70%) (Chester, 2012). River transport of carbon into the ocean influences the air-sea CO₂ exchange, local oxygen balance and acidification level, thus further affecting marine ecosystem health (Meybeck and Vörösmarty, 1999; Liu et al., 2021). Despite our limited understanding on the riverine carbon fluxes, they could play an important role in closing the global carbon budget (Friedlingstein et al., 2021).

With an increasing world population and a perturbed hydrological cycle under climate change, riverine transport of nutrients and carbon from land to oceans has a potentially growing impact on the marine biogeochemistry and ecosystem (Seitzinger et al., 2010; van der Struijk and Kroeze, 2010). Furthermore, the impacts of anthropogenic activity, particularly agriculture (Bouwman et al., 2009; Garnier et al., 2021), wastewater discharges (Van Drecht et al., 2009) and extensive damming (Eiriksdottir et al., 2016; Zhang et al., 2022), have greatly perturbed the riverine transport of nitrogen (N), phosphorus (P) and silicon (Si) to the oceans. Seitzinger et al. (2010) estimated that there was an increase in global riverine fluxes of dissolved inorganic nitrogen (DIN) and phosphorus (DIP) by 35% and 29%, respectively, between 1970 and 2000, and a further possible change of -2% to +29% in DIN and +37% to +57% in DIP between 2000 and 2050, depending on the future scenarios used in their study. Beusen et al. (2016) estimated that river nutrient transport to the ocean increased from 19 to 37 Tg N yr⁻¹ and from 2 to 4 Tg P yr⁻¹ over the 20th century, taking into account of both increased nutrient input to rivers and intensified retention/removal of nutrients in freshwater systems. The riverine carbon input is highly influenced by the magnitude of continental runoff (Liu et al., 2020; Frigstad et al., 2020), permafrost melting and leaching of post-glacial peat deposits (Wild et al., 2019; Pokrovsky et al., 2020; Mann et al., 2022), all of which are sensitive to climate change. In addition, anthropogenic change, such as land-use and land-cover changes, lake and reservoir eutrophication and sewage emissions of organic material into rivers may become an important factor in the future (Meybeck and Vörösmarty, 1999).

Some regions such as the Arctic Ocean and large river estuaries may receive a higher impact from changes in riverine inputs than other regions. The Arctic Ocean accounts for only 4% of the global ocean area (Jakobsson, 2002), but takes 11% of the global river discharge (McClelland et al., 2012), and it is estimated that about one third of its net PP is sustained by nutrients originated from rivers and coastal erosion (Terhaar et al., 2021). Therefore, one can expect that Arctic PP will be affected by altered riverine transport of nutrients and carbon under future climate changes. Previous studies have shown that enhanced riverine nutrient input increases PP in the Arctic Ocean (Letscher et al., 2013; Le Fouest et al., 2013, 2015, 2018; Terhaar et al., 2019), while large riverine dissolved organic carbon (DOC) delivery reduces CO₂ uptake in Siberian shelf seas (Anderson et al., 2009; Manizza et al., 2011). Considering large river estuaries, van der Struijk and Kroeze (2010) have demonstrated potentially higher eutrophication or hypoxia risk in the coastal waters of South America by 2050, where increasing trends in DIN and DIP are detected. Yan et al. (2010) have reported that anthropogenically enhanced N inputs will continue to dominate river DIN yields in the future and impose a challenge of N eutrophication in Changjiang river basin.

The latest generation of Earth system models (ESMs) have implemented some forms of riverine inputs in their ocean biogeochemistry modules (Séférian et al., 2020). The models that include riverine inputs use different

Formatted: Header

Deleted: such as total phosphorus (TP) and total silicon,

Deleted: input

Deleted: .

Deleted: carbon (C)

Deleted: . Although

Deleted: only plays a minor

Deleted: cycle, it is very sensitive to regional and global changes (Meybeck and Vörösmarty, 1999).

Formatted

Formatted

Formatted

Deleted: . The

Deleted: ,

Deleted: ,

Deleted: estimate

Deleted: is

Deleted: ,

Deleted: ,

Deleted: However,

Deleted: contributions of

Formatted

Deleted: substances and associated processes

Deleted: not well represented in the state-of-the-art

Deleted:). Previous

Formatted

Deleted: 2

Formatted: Header

implementations, from constant contemporary fluxes (e.g., IPSL-SM6A-LR and NorESM2; Aumont et al., 2015; Tjiputra et al., 2020), to temporally varying fluxes (CESM2; Danabasoglu et al., 2020), and to interactive with terrestrial nutrient leaching transported by dynamical river routing (e.g., CNRM-ESM2-1 and MIROC-ES2L; Séférian et al., 2019; Hajima et al., 2020), and they typically use the Redfield ratio to convert from one chemical compound to the others. For instance, in the latest version of IPSL model (IPSL-SM6A-LR; Aumont et al., 2015) riverine nutrients (DIN, DIP, Si), dissolved organic nitrogen (DON), dissolved organic phosphorus (DOP), dissolved inorganic carbon (DIC) and total alkalinity (TA) are implemented as constant contemporary fluxes based on data sets from Global NEWS 2 (NEWS 2; Mayorga et al., 2010) and the Global Erosion Model of Ludwig et al. (1996). Further, in the CESM2 (Danabasoglu et al., 2020) DIN and DIP are taken from a model (Beusen et al., 2015, 2016) and vary from 1900 to 2005, which is more sophisticated than using constant fluxes. The other riverine nutrients, DIC and TA are held constant using data from NEWS 2 (Mayorga et al., 2010). Some ESMs have implemented interactive riverine nutrients input from terrestrial processes, e.g., in the CNRM-ESM2-1 the riverine DOC is calculated actively from litter and soil carbon leaching in the land model, and the supply of the other nutrients, DIC and TA have been parameterized using the global average ratios to DOC from Mayorga et al. (2010) and Ludwig et al. (1996). In MIROC-ES2L model (Hajima et al., 2020), N cycle is coupled between the ocean and land ecosystems, therefore, the inorganic N leached from the soil is transported by rivers and subsequently as an input to the ocean ecosystem. The riverine P is calculated from N using the Redfield ratio, but riverine carbon input is not implemented. Existing models with interactive riverine inputs typically do not consider biogeochemical processes in the freshwater system such as sedimentation.

A few modelling studies have assessed the impact of riverine nutrients and carbon on marine biogeochemistry. For example, Bernard et al. (2011) and Aumont et al. (2001) evaluated riverine impact on marine Si and carbon cycle, respectively. Lacroix et al. (2020) estimated and implemented pre-industrial riverine loads of nutrients and carbon in a global ocean biogeochemistry model, and concluded that the riverine (mainly inorganic and organic) carbon inputs lead to a net global oceanic CO₂ outgassing of 231 Tg C yr⁻¹ and an opposing response of an uptake of 80 Tg C yr⁻¹ due to riverine nutrient inputs. Additionally, the riverine inputs at pre-industrial level lead to a strong PP increase in some regions, e.g., +377%, +166% and +71% in Bay of Bengal, tropical west Atlantic and the East China Sea, respectively (Lacroix et al., 2020). Tivig et al. (2021), on the other hand, found that riverine N supply alone has limited impact on global marine PP (<+2%) due to the negative feedback of reduced N₂ fixation and increased denitrification. This negative feedback could also overcompensate the N addition by river supply locally, e.g., in Bay of Bengal where PP decreased due to riverine N input (Tivig et al., 2021). A couple of modelling studies have also assessed the impact of changing riverine inputs on marine PP and CO₂ fluxes. Cotrim da Cunha et al. (2007) assessed riverine impact, using a coarse resolution ocean biogeochemistry model, with single or combined nutrients from zero input to a high input corresponding to a world population of 12 billion people, and reported changes in PP from -5% to +5% for the open ocean, and from -16% to +5% for the coastal ocean, compared to the present-day simulation. Liu et al. (2021) demonstrated an increase in global coastal net PP of +4.6% response to a half-century (1961–2010) increase in river N loads. In a recent study by Lacroix et al. (2021) the impact of changing riverine N and P in a historical period (1905–2010) on marine net PP and air-sea CO₂ fluxes was investigated by applying an eddy-permitting fine resolution (~0.4°) ocean biogeochemistry model.

Deleted: either focused on a single riverine species, e.g., C or Si (Aumont et al., 2001;

Formatted

Formatted

Deleted: ., 2011), or on a confined time period with constant riverine fluxes, e.g.

Formatted

Deleted: or

Deleted: (Lacroix et al., 2020; Cotrim da Cunha et al., 2007; Bourgeois et al., 2016).

Deleted: 3

Formatted: Header

Their result revealed an enhancement of 2.15 Pg C yr⁻¹ of the global marine PP, corresponding to a relative increase of +5% over the studied period, induced by increased terrigenous nutrient inputs. The PP increase in coastal ocean averaged to 14% with regional increase exceeding 100% and the global coastal ocean CO₂ uptake increased by 0.02 Pg C yr⁻¹ due to the increased riverine nutrient inputs (Lacroix et al., 2021). In the Arctic, doubling riverine nutrient delivery increased PP by 11% on average and by up to 35% locally, while the riverine DOC input induced CO₂ outgassing resulted in 25% reduction in C uptake in the Arctic Ocean (Terhaar et al., 2019).

Although the historical and contemporary impacts of riverine nutrients and carbon have been considered increasingly, their impacts on future projections of marine biogeochemistry have not been sufficiently addressed. Taking advantage of the latest improvement of global river nutrient/carbon export datasets, e.g., NEWS 2 (<https://marine.rutgers.edu/globalnews/datasets.htm>) and GLORICH (<https://doi.pangaea.de/10.1594/PANGAEA.902360>), and responding to the demand of development of ESMs with increasing model resolution, the assessment of the impact of riverine nutrients and carbon on future projections of marine biogeochemistry becomes feasible and desired.

In this study, we aim to assess the impact of riverine nutrients and carbon on the projected changes in regional and global marine PP and air-sea CO₂ exchange by addressing the following questions:

- 1) How does the presence of riverine fluxes of nutrient and carbon affect the contemporary representation of marine PP and C uptake in our model?
- 2) How does the presence of riverine fluxes of nutrient and carbon affect the future projections of marine PP and C uptake?
- 3) How important is the consideration of transient changes in riverine fluxes of nutrient and carbon on the future projections?

We explore these questions by performing a series of transient historical and 21st century climate simulations under the RCP 4.5 (middle-of-the-road) scenario with the fully coupled Norwegian Earth system model (NorESM) under four different riverine input configurations. Another objective of the study is to explore the best practical way of implementing riverine inputs into future versions of NorESM. Because of the coarse resolution of the version used here, a series of processes in the coastal zone cannot be represented in our study such as the high accumulation of organic sediment in shallow waters and respective remineralization rates of previously deposited material (Arndt et al., 2013; Regnier et al., 2013). These processes can only be presented in models of much higher spatial resolution, which are at present too costly to be integrated long enough to simulate the large-scale water masses adequately and project long-term scale climatic change. Given missing contributions from unresolved processes, our results are to be interpreted as lower bound estimates.

2 Methods

2.1 Model description

All simulations in this study have been performed with the Norwegian Earth System Model version 1 (NorESM1-ME, hereafter NorESM) (Bentsen et al., 2013), a state-of-the-art climate model that provided input to the Fifth

Deleted: transports of

Deleted: in the latest ESMs (e.g., Tjiputra et al., 2020),

Deleted: and warrant further investigation.

Deleted: the

Deleted: , especially for impact studies along continental margins.

Deleted: primary production (PP)

Deleted: biogeochemistry

Deleted: biogeochemistry?

Formatted: Tab stops: Not at 1,01 cm

Deleted: scenario with the fully coupled Norwegian Earth system model (NorESM) under four different riverine input configurations.

Deleted: 4

210
211
212
213
214
215
216
217
218
219
220
221
222
223
224
225
226
227
228
229
230
231
232
233
234
235
236
237
238
239
240
241
242
243
244
245
246

Coupled Model Intercomparison Project (CMIP5) (Taylor et al., 2011). The model is based on the Community Earth System Model version 1 (CESM1) (Hurrell et al., 2013). The atmospheric, land and sea ice components are the Community Atmosphere Model (CAM4) (Neale et al., 2013), the Community Land Model (CLM4) (Oleson et al., 2010; Lawrence et al., 2011) and the Los Alamos National Laboratory sea ice model (CICE4) (Holland et al., 2011), respectively. An interactive aerosol-cloud-chemistry module has been added to the atmospheric component (Kirkevåg et al., 2013). The physical ocean component—the Bergen Layered Ocean Model (BLOM, formerly called NorESM-O) (Bentsen et al., 2013)—is an updated version of the Miami Isopycnic Coordinate Ocean Model (MICOM) (Bleck and Smith, 1990; Bleck et al., 1992) and features a stack of 51 isopycnic layers (potential densities ranging from 1028.2 to 1037.8 kg m⁻³ referenced to 2000 dbar) with a two-layer bulk mixed layer on top. The depth of the bulk mixed layer varies in time and the thickness of the topmost layer is limited to 10 m in order to allow for a faster air-sea flux exchange. The ocean and sea ice components are implemented on a dipolar curvilinear horizontal grid with a 1° nominal resolution that is enhanced at the Equator and towards the poles, and its northern grid pole singularity is rotated over Greenland. The atmosphere and land components are configured on a regular 1.9° x 2.5° horizontal grid.

The ocean biogeochemistry component of NorESM is based on the Hamburg Ocean Carbon Cycle Model (HAMOCC5) (Maier-Reimer et al., 2005). The component has been tightly coupled to NorESM-O such that both components share the same horizontal grid as well as vertical layers and that all tracers are transported by the physical component at model time step (Assmann et al., 2010). Tuning choices and further improvements to the biogeochemistry component are detailed in Tjiputra et al. (2013). Here we only summarise features of particular importance to this study. The partial pressure of CO₂ (pCO₂) in seawater is calculated as a function of surface temperature, salinity, pressure, dissolved inorganic carbon (DIC) and total alkalinity (TA). Dissolved iron is released to the surface ocean with a constant fraction (3.5%) of the climatology monthly aerial dust deposition (Mahowald et al., 2005), but only 1% of this is assumed to be bio-available. Nitrogen fixation by cyanobacteria occurs when nitrate in the surface water is depleted relative to phosphate according to the Redfield ratio (Redfield et al., 1934). Phytoplankton growth in the model depends on temperature, availability of light and on the most limiting nutrient among phosphate, nitrate and iron. Constant stoichiometric ratios for the biological fixation of C, N, P and ΔO₂ (122 : 16 : 1 : -172) are prescribed in HAMOCC5, and are extended by fixed Si : P (25 : 1) and Fe : P (3.66 x 10⁻⁴ : 1) stoichiometric ratios. HAMOCC5 prognostically simulates export production of particulate organic carbon (POC). It is assumed that a fraction of POC production is associated with diatom silica production, and the remaining fraction is associated with calcium carbonate production by coccolithophorides. The fraction of diatom-associated production is calculated from silicate availability, effectively assuming that diatoms are able to out-compete other phytoplankton growth under favorable (high surface silicate concentration) growth conditions. Particles, including POC, biogenic silica, calcium carbonate and dust are advected by ocean circulation in the model. Those particles sink through the water column with constant sinking speeds and are remineralized at constant rates. HAMOCC5 includes an interactive sediment module with 12 biogeochemically active vertical layers. Permanent burial of particles out of the deepest sediment layer represents a net loss of POC, calcium carbonate and silica from the ocean/sediment system and is compensated by atmospheric and riverine inputs on a

Formatted: Header

Deleted: configured

Deleted: base

Deleted: .

Deleted: HAMOCC

Deleted: HAMOCC

Deleted: HAMOCC

Deleted: 5

Formatted: Header

time scale of several thousand model-years. More detailed model description and parameters are documented in previous publications (Bentsen et al., 2013; Tjiputra et al., 2013).

2.2 Model evaluation

The overall performance of the physical and biogeochemistry ocean components has been evaluated elsewhere (Bentsen et al., 2013; Tjiputra et al., 2013). Here we only briefly review the model performance of the mostly relevant variables for this study, namely PP and air-sea CO₂ fluxes.

The simulated distribution of annual mean surface PP is in good agreement with the remote sensing-based estimates from Behrenfeld and Falkowski (1997), with the largest model-data deviation in the eastern equatorial Pacific and parts of the Southern Ocean (known as High-Nutrient-Low-Chlorophyll regions), where the model overestimates PP (the Arctic Ocean was not assessed in that study; Tjiputra et al., 2013). Along the continental margins, the simulated PP is generally underestimated compared to the remote sensing-based estimates (Tjiputra et al., 2013), which may relate to the lack of riverine inputs and/or unresolved shelf processes due to coarse model resolution. Additionally, our model simulates a comparable magnitude of projected decrease in PP, by the end of the 21st century compared to historical period, with other global models (see detailed discussion in section 4.1).

In the Arctic Ocean, the simulated PP in our model is biased towards lower values. In the study by Skogen et al. (2018), the NorESM model is compared with a regional model that comprises part of the Arctic region, and it shows that the NorESM simulates too late and too short bloom period than the regional model, hence the annual integrated PP is too low. In a multi-model study (Lee et al., 2016) that assesses the relative skills of 21 regional and global biogeochemical models in reproducing the observed contemporary Arctic PP, the NorESM is shown to have a negative bias of -0.49, but is well within the multi-model mean bias of -0.31±0.39. Many coarse/intermediate resolution global models also show considerably lower net PP in the Arctic (Terhaar et al., 2019). Such common shortcomings in global scale marine biogeochemical models can partly be attributed by the simplified, not regionally adapted ecosystem parameterization, which can be improved through data assimilation (Tjiputra et al., 2007; Gharamti et al., 2017). Despite the biased low PP under the contemporary climate, the projected absolute change of 70 Tg C yr⁻¹ by the end of the 21st century is well within the range estimated from other ESMs (Vancoppenolle et al., 2013).

Tjiputra et al. (2013) also evaluated the simulated mean annual sea-air CO₂ fluxes for the 1996–2005 period against observational-based estimates by Takahashi et al. (2009) and concluded that the model broadly agrees with the observations in term of spatial variation, although in the equatorial Indian Ocean and in the polar Southern Ocean (South of 60° S) the model underestimates outgassing and overestimates C uptake, respectively.

2.3 Riverine data

The influx of carbon and nutrients from over 6000 rivers to the coastal oceans has been implemented in HAMOCC5 based on previous work of Bernard et al. (2011) but with modifications that are outlined in the following paragraphs.

The riverine influx includes carbon, nitrogen and phosphorus, each in dissolved inorganic, dissolved organic, and particulate forms, as well as TA, dissolved silicon and iron (Fe). Except for DIC, TA and Fe, all data are provided

Deleted: More detailed

Deleted: description

Deleted: parameters are documented in the same publications...

Deleted: 2

Deleted: implementation

Formatted: Font: Times New Roman, 10 pt, Bold

Deleted: HAMOCC

Deleted: alkalinity (ALK),

Deleted: ALK

Deleted: 6

Formatted: Header

Deleted: Global

Deleted: (NEWS 2)

Deleted: (MEA)

Deleted: .

Deleted: Seitzinger et al., 2010).

Deleted: ALK

Deleted: taken

Formatted

Formatted

Deleted: work of Hartmann (2009).

Formatted

Deleted: et al.,

Deleted: HAMOCC,

Deleted: forms of carbon and nutrients are always coupled through the Redfield ratio. Therefore, the least abundant

Formatted

Deleted: constituent (

Deleted:) is determined and added to the modelled dissolved organic carbon (DOC)

Formatted

Formatted

Deleted: (detritus, particulate organic matter). Any

Formatted

Formatted

Deleted: riverine organic matter is then added

Deleted: its

Formatted

Formatted

Deleted: pool (see also Bernard et al., 2011).

Deleted: 3

Deleted: 7

by the NEWS 2 model (Mayorga et al., 2010), which is a hybrid of empirical, statistical and mechanistic model components that simulate steady-state annual riverine fluxes as a function of natural processes and anthropogenic influences. The NEWS 2 data product contains historical (year 1970 and 2000) and future (year 2030 and 2050) estimates of riverine fluxes of carbon and nutrients. The future products are developed based on four Millennium Ecosystem Assessment scenarios (Alcamo et al., 2006): Global Orchestration (GNg), Order from Strength (GNo), Technogarden (GNT) and Adapting Mosaic (GNa). These scenarios represent different focuses of future society on e.g., globalization or regionalization, reactive or proactive environmental management and their respective influences on efficiency of nutrient use in agriculture, nutrient release from sewage, total crop and livestock production along with others (see Table 1 for a brief summary; Seitzinger et al., 2010). The NEWS 2 riverine dataset has been calibrated and assessed against measured yields (Mayorga et al., 2010) and has been widely used and evaluated for different river estuaries (van der Struijk and Kroeze, 2010; Terhaar et al., 2019; Tivig et al., 2021). For example, van der Struijk and Kroeze (2010) compared the NEWS 2 nutrient yields to observed values for South American rivers and indicated that the NEWS 2 models in general perform reasonably well for South American rivers with the variations in yields among rivers described well, although the model performs better for some rivers such as the Amazon than for others. We have compared DIN and dissolved organic nitrogen (DON) from NEWS 2 with measured data from PARTNERS Project (Holmes et al., 2012) for the six largest Arctic rivers around year 2000 (Table C1). The NEWS 2 dataset compares fairly well with the measured data, especially for the Eurasian Arctic rivers with 3.5-28.6% deviation in DIN and 7.3-34.8% in DON, while the discrepancy is larger in the Canadian-Alaska Arctic rivers (i.e., Yukon and Mackenzie rivers) with upto 80.8% and 100% deviation in DIN and DON, respectively.

The DIC and TA fluxes, provided by Hartmann (2009), are produced from a high-resolution model for global CO₂ consumption by chemical weathering and are implemented to the NEWS 2 river basin map. Riverine Fe flux is calculated as a proportion of a global total input of 1.45 Tg yr⁻¹ (Chester, 1990), weighted by water runoff of each river. Only 1% of the riverine Fe is added to the oceanic dissolved Fe, under the assumption that upto 99% of the fluvial gross dissolved Fe is removed during estuarine mixing (Boyle et al., 1977; Figuères et al., 1978; Sholkovitz and Copland, 1981; Shiller and Boyle, 1991).

At the river mouths, all fluxes are interpolated to the ocean grid in the same way as the freshwater runoff, which is distributed as a function of river mouth distance with an e-folding length scale of 1000 km and cutoff of 300 km.

In HAMOCC5, there is one dissolved organic pool (DOM) and one particulate organic pool (DET, detritus). First, we calculate the riverine organic P-N-C ratios for both dissolved and particulate forms, then add the least abundant species (scaled by the Redfield ratio) to the DOM and DET pools, respectively. The excess budget from the remaining two species both in dissolved and in particulate forms are assumed to be directly remineralized into inorganic form and added to the corresponding dissolved inorganic pools (i.e., DIP, DIN, and DIC) in the ocean.

2.4 Experimental design

The fully coupled NorESM model is spun up for 900 years with external forcings fixed at preindustrial year-1850 levels prior to our experiments (Tjiputra et al., 2013). The atmospheric CO₂ mixing ratio is set to 284.7 ppm

355 during the spin-up. Nutrients and oxygen concentrations in the ocean are initialised with the World Ocean Atlas
 356 dataset (Garcia et al., 2013a, b). Initial DIC and TA fields are taken from the Global Data Analysis Project (Key
 357 et al., 2004). After 900 years, the ocean physical- and biogeochemical tracer distributions reach quasi-equilibrium
 358 states. We extended the spin-up for another 200 years with riverine input for each experiment (except for the
 359 reference run) and then performed a set of transient climate simulations for the industrial era and the 21st century
 360 (1850-2100). The simulations use external climate forcings that follow the CMIP5 protocol (Taylor et al., 2011).
 361 For the historical period (1850-2005), observed time-varying solar radiation, atmospheric greenhouse gas
 362 concentrations (including CO₂), natural and anthropogenic aerosols are prescribed. For the future period (2006-
 363 2100), the Representative Concentration Pathway (RCP) 4.5 (van Vuuren et al., 2011) is applied. Here, we
 364 consider RCP4.5 as the representative future scenario, following the CO₂ emission rate based on the submitted
 365 Intended Nationally Determined Contributions, which projects a median warming of 2.6–3.1 °C by 2100 (Rogelj
 366 et al., 2016). The riverine input configurations employed in this study are summarized in Figure 1. The evolution
 367 of global total fluxes of each nutrient/carbon species are shown in Figure 2. The experiment configurations are
 368 described as follows:

- 369 • REF: Reference run. Riverine nutrient and carbon supply is deactivated.
- 370 • FIX and FIXnoc: Fixed at recent-past level. FIX: A constant riverine nutrient and carbon supply,
 371 representative for the year 1970 as provided by NEWS 2, is applied to the model throughout the whole
 372 experiment duration. FIXnoc: As FIX but only with nutrients supply, all carbon (DIC, DOC, POC) and TA
 373 fluxes are deactivated.
- 374 • RUN: Coupled to simulated freshwater runoff. Riverine nutrient and carbon supply representative for the
 375 year 1970 is linearly scaled with the on-line simulated freshwater runoff divided by the climatological mean
 376 runoff over 1960-1979 of the model. Thus, the inputs follow the seasonality and long-term trend of the
 377 simulated runoff. We assume that the nutrient and carbon concentrations in the rivers are constant at the
 378 level of 1970, but the fluxes fluctuate with freshwater runoff.
- 379 • GNS: Four different transient inputs following future projections of NEWS 2. A constant riverine nutrient
 380 and carbon supply representative for year 1970 has been applied from year 1850 to 1970. Between year 1970,
 381 2000, 2030 and 2050 the annual riverine supply is linearly interpolated. From year 2050 to 2100 the annual
 382 riverine supply is linearly extrapolated. From year 2000, riverine supplies of the four NEWS 2 future
 383 scenarios (GNa, GNg, GNo and GNt) are applied.

384 By comparing FIX versus REF, we assess how the presence of riverine inputs affect the contemporary marine PP
 385 and C uptake representation and also the projected changes. By comparing RUN versus FIX we assess the
 386 potential effects of riverine nutrient and carbon long-term trends associated with an intensifying global
 387 hydrological cycle on marine PP and C uptake. RUN represents a first step towards coupling riverine nutrient and
 388 carbon fluxes to the simulated hydrological cycle. By comparing the GNS configurations versus FIX we assess
 389 how plausible, realistic future evolutions in riverine nutrient and carbon fluxes may impact marine PP and C
 390 uptake projections. We span the uncertainty in future riverine nutrient and carbon fluxes by considering multiple
 391 NEWS 2 scenarios.

Formatted: Header

Deleted: ALK

Formatted: Font: Arial, 12 pt, Font colour: Text 1, Pattern: Clear (White)

Formatted

Deleted: assume that

Deleted: middle-of-the-road scenario with some mitigations to be the most

Deleted: .

Formatted

Formatted

Deleted: Figure 2.

Formatted: Font: 12 pt

Deleted: contemporary

Deleted: alkalinity

Deleted: not considered

Deleted: Transient input

Deleted: biogeochemistry

Deleted: biogeochemistry.

Deleted: biogeochemistry

Deleted: 8

Formatted: Header

3 Results

3.1 Effect of including riverine inputs on contemporary marine PP and C uptake

We start with assessing how the inclusion of riverine nutrients and carbon affects the contemporary representation of the global marine PP and C uptake in our model by comparing the annual mean output over the years 2003–2012 between the REF and FIX experiments. We also compare with satellite and observational based estimates to see if the inclusion of riverine nutrients and carbon improves the marine PP and C uptake representation in our model. The spatially integrated values presented in this and following sections are summarized and supplemented with statistical robustness information in Tables B1 and B2 in Appendix B.

The annual net primary production (PP) is 40.1 and 43.0 Pg C yr⁻¹ in the REF and FIX experiments, respectively. The increase of PP in FIX occurs along continental margins (where seafloor is shallower than 300 m) and also in the North Atlantic region (0°N–65°N, 0°W–90°W), accounting for 15.4% and 24.9% of the global total increase, respectively (Figure 3c). The simulated global total PP in both REF and FIX are lower than the satellite-based model estimates, including Vertically Generalized Production Model (VGPM), Eppley-VGPM and Carbon-based Production Model (CbPM) over the same time period (data source: <http://www.science.oregonstate.edu/ocean.productivity>), ranging from 55 to 61 Pg C yr⁻¹ (Behrenfeld and Falkowski, 1997; Westberry et al., 2008). Although the total PP in FIX is still considerably lower than the satellite-based estimates, the inclusion of riverine nutrients and carbon does slightly improve the distribution of PP especially on continental margins (Figure 3), according to our area-weighted root mean square error (RMSE) analysis. The RMSE of REF relative to mean observational estimates (mentioned above) averages 10.7 mol C m⁻² yr⁻¹ globally, while the value of FIX is 10.3 mol C m⁻² yr⁻¹, which is reduced by 3.7%. For the continental margins, the RMSE is reduced by 5.5% from 29.0 mol C m⁻² yr⁻¹ in REF to 27.4 mol C m⁻² yr⁻¹ in FIX.

The ocean annual net uptake of CO₂ is 2.8 and 2.9 Pg C yr⁻¹ in REF and FIX, respectively, with a FIX-REF difference of 0.1 Pg C yr⁻¹ equivalent to 3.1% relative change, which is statistically significant (see Table B2). In FIX the ocean carbon uptake is generally enhanced everywhere except for the upwelling regions of the Southern Ocean and in the subpolar North Atlantic between approximately 50°N–65°N and 60°W–10°W (Figure 4c). To isolate the impact of riverine nutrients input from carbon input, an additional experiment (FIXnoc) was conducted, where the nutrient fluxes are implemented the same as in FIX, while all carbon (DIC, DOC, POC) and TA fluxes are eliminated. As shown in Figure 4d, the nutrients input results in more CO₂ uptake not only at large river estuaries but also in the subtropical gyres due to enhanced primary production. In the subpolar North Atlantic and in the Southern Ocean upwelling region, the addition of riverine nutrients leads to enhanced outgassing. The riverine carbon input, on the other hand, leads to CO₂ outgassing mainly at river estuaries (Figure 4e), but also in a band along the gulf stream extending into the North Atlantic, where it accounts for 18.1% of the CO₂ outgassing in the subpolar region (50°N–65°N, 60°W–10°W). Along the continental margins the nutrients input increases the CO₂ uptake, while the carbon input has an opposite effect which induces more outgassing. The net effect of both nutrient and carbon inputs shows that the uptake of CO₂ dominates over the outgassing, along the continental margins and in subtropical gyres (Figure 4c). Compared to the observational based estimates of Landschützer et

Deleted: An important feature of the experimental design is that the marine biogeochemistry does not feedback on the physical climate in our model setup. Consequently, the climate variability and climate trends are the same in all experiments and the interannual variability in the biogeochemical parameters—which is dominantly driven by the physical climate variability—is also virtually the same. Any uncertainty related to internal climate variability is thus effectively removed in the computation of the inter-experiment differences. In this manner, we are able to obtain statistically robust results for short time-slices without having to perform multi-member simulation ensembles for each experiment.

Deleted: biogeochemistry

Deleted: biogeochemistry

Deleted: -

Deleted: biogeochemistry

Deleted: PgC

Deleted: and predominantly in the North Atlantic

Deleted: ,

Deleted: PgC

Deleted: 6

Deleted: 4

Deleted: 0.9±0.01

Deleted: ±0.1

Deleted: (note that the 2σ standard errors are small because REF and FIX share the same interannual variability)

Deleted: alkalinity

Deleted: This is a remote effect of the generally increased primary production (by 3 PgC yr⁻¹), which leads to more remineralized carbon in deeper water masses.

Deleted: 9

al. (2017) (Figure 4a) and according to our RMSE analysis, the inclusion of riverine nutrients and carbon does not improve the simulated air-sea CO₂ fluxes globally. The RMSE of **FIX** relative to observational estimates averages to 0.83 mol C m⁻² yr⁻¹ globally, which does not differ much from the value of **REF** (0.84 mol C m⁻² yr⁻¹). However, there is a distinguishable improvement of the distribution of air-sea CO₂ fluxes in the subpolar North Atlantic (RMSE is reduced by 8.2%, from 0.73 mol C m⁻² yr⁻¹ in **REF** to 0.67 mol C m⁻² yr⁻¹ in **FIX**), with slight degradations in some other regions (Figure 4c).

3.2 Effect of including contemporary riverine inputs on future projections of marine **PP** and **C uptake**

We now address how the inclusion of riverine nutrient and carbon fluxes affects future projections of marine **PP** and **C uptake** by comparing the average output between a future period (2050–2099) and a historical period (1950–1999) of **FIX** versus **REF**.

In both experiments the future projections of global PP averaged over the years 2050–2099 are lower than their corresponding 1950–1999 averages (Figure 5a). However, when riverine input of nutrient and carbon is included, the projected decrease of global PP is mitigated from -2.2 Pg C yr⁻¹ in **REF** to -1.9 Pg C yr⁻¹ in **FIX** (by 13.6%). Spatially, the decrease of PP in **REF** occurs largely in upwelling regions such as the tropical eastern Pacific and tropical Atlantic, as well as along a latitude band around 40°S (Figure 6a). The riverine inputs alleviate the projected PP decrease in those regions (see further discussion in Section 4.2) and reinforce the projected PP increase in high latitudes (Figure 6b, c). The future projections of PP in the Arctic Ocean show significant increases in both **REF** and **FIX**. Climate change alone (**REF**, without riverine inputs) almost doubles the simulated PP in the Arctic from 0.08 Pg C yr⁻¹ during 1950–1999 to 0.15 Pg C yr⁻¹ in 2050–2099 (Figure 5b), likely as a consequence of sea ice retreat. **FIX**, which includes riverine inputs, exhibits a slightly larger (but significant, see Table B1) absolute Arctic PP increase (from 0.10 to 0.18 Pg C yr⁻¹) in its future projection than **REF**. For global net uptake rate of CO₂, both experiments (**REF** and **FIX**) project a significant increase under the RCP4.5 (Figure 7a). The inclusion of riverine inputs leads to a slightly higher (but significant, see Table B2) (2.4%) projected increase of 1.28 Pg C yr⁻¹ in **FIX** compared with 1.25 Pg C yr⁻¹ in **REF**. The increase rate of CO₂ uptake in the Arctic closely follows the global trend (Figure 7b). Spatially, there is a widespread simulated increase in ocean uptake of CO₂ under future climate change except in the subtropical gyres (Figure 8a). Riverine nutrients input slightly increases the projected carbon uptake at large river estuaries, while decreases the projected uptake in subpolar North Atlantic (Figure 8d).

3.3 Effect of future changes in riverine inputs on marine **PP** and **C uptake** projections

Finally, we address how future changes in riverine fluxes of nutrients and carbon affect marine **PP** and **C uptake** by comparing the projected changes for the time period 2050–2099 relative to 1950–1999 among **FIX**, **RUN** and the four GNS experiments.

The future projected decrease of PP in the four GNS averages to -1.6 Pg C yr⁻¹, which is less in magnitude compared to **FIX** (-1.9 Pg C yr⁻¹) and **RUN** (-1.8 Pg C yr⁻¹) (Figure 5a). Spatial distributions of projected PP changes in GNS and their respective differences relative to **FIX** are shown in Figure 9. The latter occur predominantly on the continental shelf in Southeast Asia, where the future projected increase in riverine nutrient

Formatted: Header

Deleted: REF...IX relative to observational estimates averages to 0.834...3 mol C m⁻² yr⁻¹ globally, while...hich does not differ much from the value of **FIX** is ...EF ... [1]

Deleted: biogeochemistry

Deleted: biogeochemistry...P and C uptake by comp... [2]

Deleted: -...2099 are lower than their corresponding... [3]

Deleted: 24

Deleted: 93

Deleted: 8

Formatted: Font colour: Text 1

Formatted: Font colour: Text 1

Formatted: Font colour: Text 1

Formatted: Font colour: Text 1

Deleted: For instance, the

Formatted: Font colour: Text 1

Deleted: -

Deleted: -

Formatted: Font colour: Text 1

Formatted: Font colour: Text 1

Formatted: Font colour: Text 1

Deleted: 102

Deleted: 180

Deleted: albeit somewhat smaller relative increase (~76%)

Deleted: (Figure 5b).

Formatted: Font colour: Text 1

Formatted: Font colour: Text 1

Formatted: Font colour: Text 1

Formatted: Font colour: Text 1

Deleted: (~3

Formatted: Font colour: Text 1

Deleted: 280

Deleted: 247

Formatted: Font colour: Text 1

Formatted ... [4]

Formatted: Font colour: Text 1

Deleted: biogeochemistry

Deleted: biogeochemistry

Deleted: -...2099 relative to 1950- ... [5]

Deleted: 58... Pg C yr⁻¹, which is less in magnitude ... [6]

Formatted: Font colour: Text 1

Deleted: 10

Formatted: Header

578 load is the largest in the world in GNS (Seitzinger et al., 2010). Interestingly, the projected increase in PP in

579 Southeast Asia, induced by riverine nutrient inputs in GNS, is of the same order of magnitude as the projected

580 decrease in PP due to future climate change in REF. Thus, in GNS the PP are projected to slightly increase on the

581 continental shelf of Southeast Asia (Figure 9a-d). The riverine nutrient induced PP increase in FIX or RUN is not

582 large enough to compensate the PP decline due to climate change, since the projected changes in riverine nutrient

583 inputs are not taken into account in FIX or locally underestimated in RUN.

584 On the other hand, the future projected global uptake of CO₂ in GNS (1.13 Pg C yr⁻¹ in average) is reduced

585 compared to REF (1.25 Pg C yr⁻¹), which shows an opposite change than FIX (1.28 Pg C yr⁻¹) and RUN (1.29 Pg

586 C yr⁻¹). The changes in riverine inputs in GNS emerge along continental margins, especially around large river

587 estuaries (Figure 10e-h), where the dissolved organic matter (DOM), that is projected to increase in GNS, enters

588 the ocean and releases CO₂ to the atmosphere (Seitzinger et al., 2010).

589 Despite the regional differences, there is no significant difference in the projected changes in either globally

590 integrated PP or CO₂ uptake among the four GNS in our model (Figures 5 and 7, see further discussion in Section

591 4.3).

592 4 Discussion

593 4.1 Projected marine PP and C uptake changes

594 The projected global total PP shows up to 29.5% less decrease, if riverine inputs are present in the model. This is

595 mainly because the riverine nutrient inputs into the surface ocean alleviates the increasing nutrient limitation

596 caused by stronger stratification under future climate warming.

597 In our model, PP is roughly linearly related to the concentrations of the most limiting nutrient (Nut), light intensity

598 (I), temperature (T) and the available phytoplankton concentration (Phy), i.e., $PP \sim Nut \cdot I \cdot f(T) \cdot Phy$. It is shown

599 in Figure 6a that under climate change the projected decrease in PP occurs mainly in low- and mid-latitudes.

600 Nitrate is the limiting nutrient (in REF) in almost everywhere except in the Central Indo-Pacific region, in the

601 South Pacific subtropical gyre, in the Bering Sea and part of the Arctic, where Fe is limiting (Figure A1). Projected

602 reduction in surface nitrate concentrations (Figure A2b), which is tightly linked to the upper ocean warming and

603 increased vertical stratification (Bopp et al., 2001; Behrenfeld et al., 2006; Steinacher et al., 2010; Cabré et al.,

604 2015), contributes to the projected decrease in PP in our model. The simulated global mean PP over 2050–2099

605 is 38.9 Pg C yr⁻¹ in REF, which is 2.24 Pg C yr⁻¹ lower than the value over 1950–1999. This -5.4% projected

606 change in PP is comparable with the multi-model mean estimate of projected change of -3.6 ± 5.7% in the 2090s

607 relative to the 1990s for RCP4.5 (Bopp et al., 2013) and sits in the range of 2–13% decrease projected by four

608 ESMs over the 21st century under the SRES A2 scenario (Steinacher et al., 2010). It is also still within the range

609 of the 13 multi-model mean projected PP change of -1.13 ± 5.81% under the CMIP6 Shared Socioeconomic

610 Pathways SSP2-4.5 when comparing mean values in 2080–2099 relative to 1870–1899 (Kwiatkowski et al., 2020),

611 given that the inter-model uncertainties in projected PP have increased in CMIP6 compared to CMIP5 (Tagliabue

612 et al., 2021).

Deleted: increase in the

Deleted: 132

Deleted: smaller

Deleted: 280

Deleted: 290

Deleted: Differences

Deleted: biogeochemistry

Deleted: projection of

Deleted: We argue that this

Deleted: experiment

Deleted: A2c

Deleted: -

Deleted: . 2006;

Deleted: -

Deleted: -

Deleted: (±

Deleted:)

Deleted: 2010

Formatted: Superscript

Deleted: 11[†]

Formatted: Header

Deleted: period

Deleted: .

Deleted: We conjecture

Deleted: -

Deleted: -

Deleted: The ocean annual net uptake of CO₂ increases significantly during 2050–2099 compared with the uptake during 1950–1999 in REF (Figure 7a), which is mainly driven by increasing difference in air-sea partial pressure of CO₂. Our experiments show that riverine nutrient inputs have a dominant role over the organic matter inputs in FIX, enhancing CO₂ uptake along continental margins via sustaining PP in both historical and future time periods. ¶

Deleted: 12¶

Formatted: Header

nutrients are utilized more in the future period. On the other hand, in GNS the riverine inputs reduce globally integrated C uptake for both historical and future time periods, but not equally. It reduces more in the future period (2050–2099) than the historical period (1950–1999), which implies that the effect of riverine C input in the future scenarios are more dominant over nutrients input. A recent modelling study (Lacroix et al., 2021), which uses a finer resolution ($\sim 0.4^\circ$) global model with improved shelf processes, has also reported a $0.03 \text{ Pg C yr}^{-1}$ increase in global C uptake induced by terrestrial nutrients input during 1905–2010, although they have applied temporally varying (increasing) nutrients and no riverine C input. Simulations with high-resolution global or regional models with more realistic representation of shelf processes are required to accurately assess the impact of riverine inputs on carbon cycling in the coastal ocean.

4.2 Different riverine configurations

By exploring different riverine configurations (FIX, RUN, GNS) we investigate how uncertainties in future riverine fluxes translate into uncertainties in projected PP and C uptake changes. In RUN we assume constant concentrations (at 1970's level) of riverine nutrient and carbon over time and couple them to the simulated freshwater runoff. Thus, the annual global total fluxes of nutrient and carbon vary with time following the variability of runoff (Figure 2), in contrast to the constant fluxes in FIX. The global total simulated runoff, under RCP4.5 in our model, is on average higher during 2050–2099 than the runoff during 1950–1999, indicating an intensified hydrological cycle under future climate change. Hence, the global riverine fluxes of nutrient and carbon during 2050–2099 are higher than those during 1950–1999 in RUN. However, the temporal changes in global riverine fluxes in RUN are relatively small compared with the absolute flux values in FIX, which explains the slightly larger projected changes in global PP and ocean carbon uptake in RUN compared to FIX. It is noteworthy that the large inter-annual variability in the riverine fluxes of nutrient and carbon in RUN does not increase the inter-annual variability in simulated PP and ocean carbon uptake either globally or on the continental margins (Figure 11), something that warrants further investigation. The approach of RUN serves as a trial to introduce seasonal and inter-annual variability in riverine nutrient and C inputs that is linked to hydrological variability. It should be explored in future works if RUN and GNS can be integrated to produce more realistic long-term trends in riverine nutrient and C inputs as well as short-term variability. Although the RUN approach is more sophisticated when compared to FIX, it employs a linear relationship between the future riverine nutrient and C fluxes and the simulated hydrological cycle, which is a highly simplified assumption (see discussion in section 4.3).

Figure 2 shows that the inputs of DIN and DIP are considerably lower, while the dissolved silicon (DSi) and particulate organic matter (POM) are higher in the future period in RUN compared to GNS. This is because many anthropogenic processes that are important for determining the future riverine fluxes are not considered in RUN, but are considered in NEWS 2 model system, from which the GNS' future scenarios are simulated. For example, the nutrient management in agriculture, the sewage treatment and phosphorus detergent use, and the increased reservoirs from global dam construction in river system (Seitzinger et al., 2010; Beusen et al., 2009) are the key factors affecting future riverine fluxes of DIN, DIP, and DSi/POM, respectively. Therefore, it is worth exploring the merits of using GNS in future projections of marine biogeochemistry. The four future scenarios provide a

Deleted: biogeochemistry

Deleted: -

Deleted: -

Deleted: -

Deleted: -

Deleted: the first step towards time-varying riverine

Deleted: take the

Deleted: into account.

Formatted

Formatted

Formatted

Formatted

Deleted: can

Deleted: utilised

Deleted: efforts assessing seasonal and inter-annual effects of...

Formatted

Deleted: on regional scale in high-resolution models with better representation of shelf processes.

Formatted

Formatted

Deleted: advanced

Deleted: carbon

Formatted

Deleted: 13

Formatted: Header

Deleted: . Surprisingly, even a

Deleted: global marine biogeochemistry projections in NorESM....

range of potential outcomes resulting from different choices tending toward either globalization or regional orientation, either reactive or proactive approach to environmental threats (see Table 1). A large range of the riverine inputs in GNS, e.g., temporal changes in DIN fluxes across scenarios ranging 24.8-63.0% of the annual flux in FIX, do not transfer to large uncertainties in future projections of global marine PP in our model, which can primarily be attributed to unresolved shelf processes due to coarse model resolution. However, the scenario differences might be of importance in regional projections, such as in seas surrounded by highly populated nations and near river estuaries. Simulations with high-resolution global or regional models with a good representation of shelf processes are required to accurately assess the local impact of riverine inputs.

4.3 Limitations and uncertainties

Given that the riverine nutrient and carbon inputs account for only a small proportion of the total amount of nutrients and carbon in the euphotic zone of the ocean, we acknowledge several limitations of our study, particularly related to the complexity and resolution of our ESM. Firstly, coarse-resolution models tend to underestimate PP along the coast. Such well-known model issues may offset the impact induced by riverine inputs. Secondly, shelf processes, which are not well represented in our model due to coarse resolution, modify a large fraction of some riverine species, e.g., conversion of organic carbon to CO₂ occurs rapidly via remineralization in estuaries before they are transported to the open ocean. Further, some simplified processes of the model may introduce bias in the results, e.g., how the model deals with the riverine dissolved organic and particulate matter. In our model, there is only one dissolved organic pool (DOM) and one particulate organic pool (DET), and the Redfield ratio (P-N-C) needs to be kept. Therefore, the P-N-C ratios of riverine input for both dissolved organic matter (including DON, DOP and DOC) and particulate (inorganic and organic) matter (including particulate nitrogen, particulate phosphorus and POC) are calculated, then the least abundant species (scaled by the Redfield ratio) are added to the DOM and DET pools, respectively. The excess budget from the remaining two species (of P, N or C) are assumed to be directly remineralized into inorganic form and added to the corresponding dissolved inorganic pools (i.e., DIP, DIN, or DIC) in the ocean. This simplification may result in overestimation of riverine dissolved inorganic nutrients and thereby riverine induced PP enhancement. Especially, in NEW 2 dataset particulate P is typically dominated by inorganic forms (Mayorga et al., 2010), which means that it is likely not directly bio-available. Therefore, we have assessed the bias due to the direct remineralization of the riverine dissolved organic and particulate matter. We calculated firstly the proportion of directly remineralized matter from the total riverine dissolved organic matter (DOM) and particulate (inorganic and organic) matter (PM) by using the following equation, i.e., $[X/(DOM_{riv}+PM_{riv})]*100\%$ (X is the directly remineralized dissolved organic and particulate matter). The directly remineralized part on average accounts for 64.8%, 27.8% and 62.8% of the total riverine organic and particulate matter of P, N and C, respectively. In a recent study by Lacroix et al. (2021) who used an enhanced version of HAMOCC (horizontal resolution of ~0.4°) with improved representation of riverine inputs and organic matter dynamics in the coastal ocean, they quantified that around 50% of the riverine DOM and 75% of the POM are mineralized in global shelf waters. Therefore, our model assumption is on track with the finer-resolution-model estimates and this direct remineralization compensates to some extent the under-represented organic matter degradation rate on the ocean shelf. This bias in riverine dissolved nutrient input may

Formatted: Border: Top: (No border), Bottom: (No border), Left: (No border), Right: (No border), Between : (No border)

Deleted: Firstly, shelf processes, which are not well represented in our model, modify a large fraction of some riverine species, e.g., conversion of organic carbon to CO₂ occurs rapidly via remineralization in estuaries before they are transported to the open ocean. Secondly, coarse-resolution models tend to underestimate primary production along the coast. Such well-known model issues may offset the impact induced by riverine inputs. Moreover, we have conducted all simulations only under one IPCC representative concentration pathway scenario (the intermediate RCP 4.5), which may lead to a narrower possible range of the riverine fluxes induced impact on the projected marine biogeochemistry.

Deleted: 14

Formatted: Header

further lead to bias in the enhanced PP. We calculated the contribution of the directly remineralized part on the enhanced PP, by comparing X with the corresponding total riverine dissolved nutrient additions as $[X/(X+DIX_{riv})*100\%]$ (DIX_{riv} denotes the corresponding riverine dissolved nutrient additions), which accounts for 80.5%, 33.3%, and 41.1% for P, N, and C, respectively. Assuming that all coastal regions are nutrient limited, this direct remineralization could be theoretically responsible for 33.3%-80.5% of the enhanced PP, depending on which nutrient species is limiting the PP. In our model, phosphate is rarely limiting (Figure A1), therefore, the impact of this direct remineralization on PP is likely on the lower end of this range (33.3%-80.5%). Given that the proportion of the direct remineralized organic matters in our model is comparable to those reported by Lacroix et al. (2021), which indicates that there is a considerable fraction of organic matters that remineralize in shelf waters, the bias on enhanced PP is likely less than 33.3%.

Deleted: In RUN

Some approximation and assumption in the experimental setup may also induce uncertainties in our results. Our spin-up experiment uses riverine nutrient and carbon inputs fixed at 1970 levels, as provided by NEWS 2. As a caveat, our post-1970 simulated changes in marine PP and CO_2 fluxes miss out any legacy effects from riverine input changes that occurred before 1970. The fixed inputs likely overestimate the accumulated inputs prior 1970, causing potential underestimation of the projected change impacts. However, Beusen et al. (2016) found that changes in riverine N and P are relatively small before 1970 compared to changes after 1970. Therefore, we expect the impact due to missing legacy effects to be minor. Moreover, in FIX we applied riverine inputs at 1970 level over available inputs at 2000 level, because the former are more representative for the 1950–1999 baseline period. However, the use of 1970 level input is suboptimal when evaluating simulated PP and CO_2 fluxes against observations obtained after 2000. Beusen et al. (2016) have shown that the riverine N and P has increased by ~40.0% and 28.6%, respectively, from 1970 to 2000. Therefore, the riverine impact may be underestimated when comparing with the observations during 2003–2012. In RUN, we assume constant concentrations of riverine nutrient and carbon over time and the fluxes vary with freshwater runoff. This may be applicable for some nutrients such as DIN or within a certain limit of runoff change such as for dissolved Si (Figure A3). However, this may not be appropriate for all nutrient/carbon species. Furthermore, the variability of runoff is subject to inter-annual to decadal climate variability, which partially masks the centennial trend. This caveat can be overcome through performing multi-realization ensemble simulations.

Deleted: interannual

Lastly, riverine Fe flux is weighted by water runoff of each river and integrated globally as a total input of 1.45 Tg yr^{-1} (Chester, 1990). To the best of our knowledge, the available global riverine iron dataset is rare. Previous studies have used various approximation approaches, e.g., constant Fe to dissolved inorganic carbon (DIC) ratio (Aumont et al., 2015), Fe to phosphorus ratio (Lacroix et al., 2020). In the study by Aumont et al. (2015), the Fe: DIC ratio is determined so that the total Fe supply also equals $1.45 \text{ Tg Fe yr}^{-1}$ as estimated by Chester (1990). We are aware that our approximation likely has bias in regional scales, especially in Fe limiting regions like the Arctic. However, it has likely a minor impact on the projected PP, since light rather than riverine nutrients input is the primary control of the projected Arctic PP in our model. Also, we have conducted all simulations only under one IPCC representative concentration pathway scenario (the intermediate RCP 4.5), which may lead to a narrower possible range of the riverine fluxes induced impact on the projected marine PP and C uptake.

Deleted: 15

5 Conclusions

In this study, we apply a fully coupled Earth system model to assess the impact of riverine nutrients and carbon delivery to the ocean on the contemporary and future marine **PP** and carbon uptake. We also quantify the effects of uncertainty in future riverine fluxes on the projected changes, using several riverine input configurations. Compared to satellite- and observation-based estimates, the inclusion of riverine nutrients and carbon improves the contemporary spatial distribution only slightly **for PP (3.6% reduction in RMSE) and insignificantly for ocean carbon uptake (0.1% reduction in RMSE)**, on a global scale, with larger improvements on the continental margins (5.4% reduction in RMSE for PP) and the North Atlantic region (7.4% reduction in RMSE for carbon uptake). Concerning future projected changes, decline in nutrients supply in tropical and subtropical surface waters, due to upper ocean warming and increased vertical stratification, is projected by our model to reduce PP over the 21st century. Riverine nutrient inputs into surface coastal waters alleviate the nutrient limitation and considerably lessen the projected future decline in PP from -5.4% without riverine inputs to -4.4%, -4.1% and -3.6% in FIX, RUN and GNS (averaged over **GNa, GNg, GNo and GNt**), respectively. Different from the global value, the projected PP in the Arctic increases considerably, because light and temperature—the primary limiting factors for phytoplankton growth in polar regions—become more favourable due to sea-ice melting under warmer future conditions. When riverine nutrient inputs are presented in the model, they further enhance the projected increase in PP in the Arctic, counteracting the nutrient decline effect due to stronger stratification in the fresher and warmer surface water.

Depending on the riverine scenarios, where the riverine **nutrients input dominates** over the **C input**, the projected net uptake of CO₂ further enhances along continental margins via photosynthesis process. Conversely, where the riverine **C input is** dominant over the **nutrients input**, the projected net uptake of CO₂ is reduced, especially at large river estuaries, due to higher CO₂ outgassing.

We have explored a range of riverine input configurations from temporally constant fluxes (FIX), to idealised time-varying fluxes following variations in simulated hydrological cycle (RUN), to plausible future scenarios (GNS) from a set of global assumptions. The large range of the uncertainty of the riverine input does not transfer to large uncertainty of the projected global PP and ocean **C uptake in our simulations likely due to model limitations related to resolution and shelf process representations**. Our study suggests that applying transient riverine inputs in the ESMs with coarse or intermediate model resolution (~1°) does not significantly reduce the uncertainty in global marine **PP and C uptake** projections, but it may be of importance for regional studies such as in the North Atlantic and along the continental margins.

Formatted: Header

Deleted: primary production

Deleted: on a global scale

Deleted: for PP and ocean carbon uptake, respectively),

Deleted: four scenarios

Deleted: nutrient inputs dominate

Deleted: organic matter

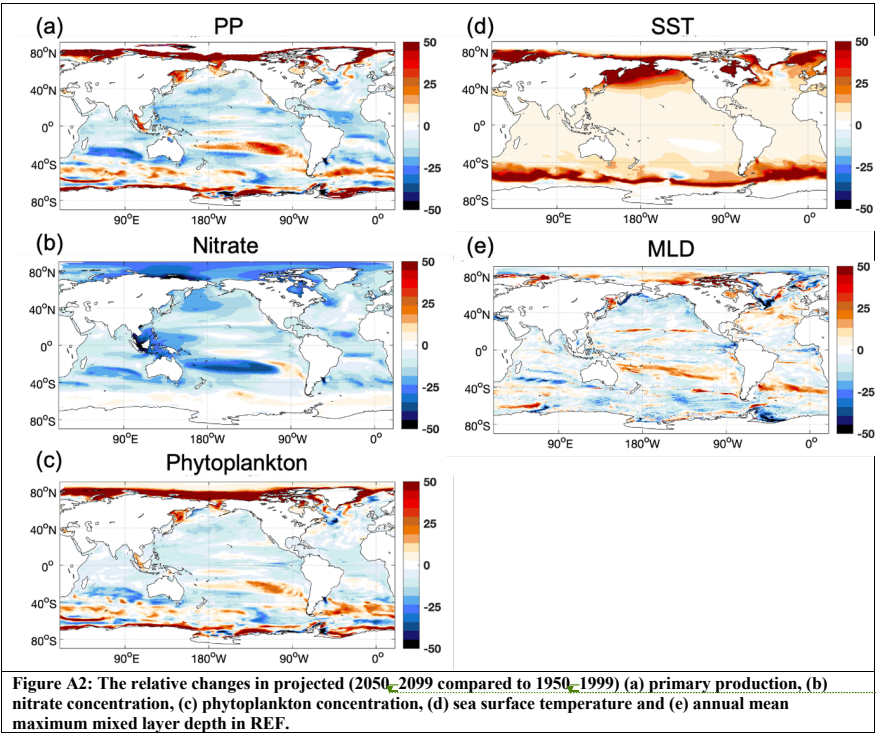
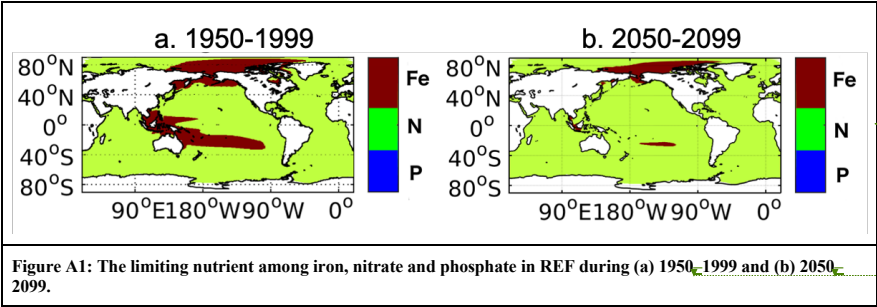
Deleted: organic matter inputs are

Deleted: nutrient inputs

Deleted: carbon uptake.

Deleted: biogeochemistry

Deleted: 16



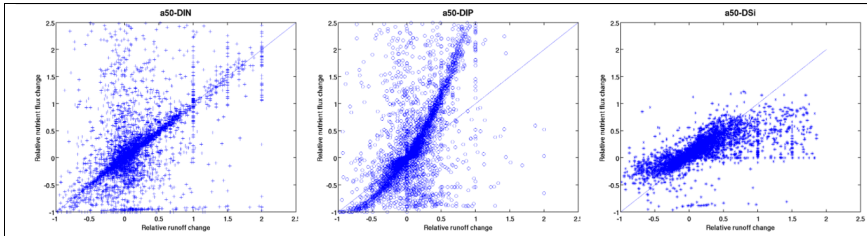


Figure A3. The relationship between relative changes in freshwater runoff and relative changes in nutrient fluxes (dissolved inorganic nitrogen, phosphorus and silicon) in 2050 according to the Adapting Mosaic future scenario in NEW2 dataset.

Appendix B – Robustness of results to sampling error

Time-averaged quantities and their differences—like the ones considered in this study—are subject to temporal sampling uncertainty arising from the presence of internal climate variability and associated biogeochemistry variability. We evaluated the statistical robustness of our results with respect to temporal sampling uncertainty as outlined in the following.

We assessed statistical significance of time-averaged differences using Student's t-test. We performed the test on annual data with α set to 0.05 and N set to the number of years in the respective average period, assuming the internal climate variability exhibits most power on interannual and shorter timescales. We removed the main part of the externally forced signal by subtracting the linear trend of the annual timeseries prior to performing the t-test if the timeseries contained more than 20 years. For shorter time series, we therefore did not remove the linear trend as it potentially has a large internal variability component.

All differences presented in the main text, summarized in Tables B1 and B2, were found to be statistically significant and the plots feature only differences for which the t-test locally rejected the null-hypothesis. We found even small inter-simulation differences statistically significant because these differences were less affected by internal variability. In our model setup, the marine biogeochemistry does not feedback on the physical climate. Consequently, the climate variability and climate trends are the same in all experiments and the interannual variability in the biogeochemical parameters—which is predominantly driven by the physical climate variability—is also virtually the same. As illustrated in Figure B1, any uncertainty related to internal climate variability is effectively removed in the computation of the inter-experiment differences. In this manner, we were able to obtain statistically robust results for short time-slices without having to perform multi-member simulation ensembles for each experiment.

Detectability of inter-simulation differences does, however, not guarantee that the differences are large enough to be competitive with real-world internal variability to have real-world implications. Therefore, we additionally compared the inter-simulation differences against the internal variability of the absolute field (i.e., not the difference field). We estimated the joint internal variability of the absolute field for N -year time averages as

$$\sigma_{\mu_{AB}} = \sqrt{\frac{\sigma_A^2 + \sigma_B^2}{2N}}$$

where σ_A and σ_B are the interannual standard deviations for experiment A and B, respectively. As for the t-test, we removed the externally forced signal by subtracting the linear trend of the annual timeseries prior to computing standard-deviations if $N > 20$. On all difference plots we marked the areas where inter-simulation differences exceed $\sigma_{\mu_{AB}}$ and thus are large enough to have real-world implications.

Table B1: Global and regional statistics of simulated primary production. Shown are the time-mean μ and twice its standard-deviation σ_μ (rounded up to two decimals) derived from annual values. The t_{his} and t_{fut} denote the time periods 1950–1999 and 2050–2099, respectively. Values in brackets denote relative changes in percentage.

Variable	Experiment	Period	Region	$\mu \pm 2 \sigma_\mu$		
RMSE of PP (mol C m ⁻² yr ⁻¹)	REF	2003–2012	Global	10.70 ± 0.18		
			Continental margins	28.96 ± 0.18		
			Global	10.31 ± 0.21		
	FIX		Continental margins	27.43 ± 0.19		
			FIX-REF	Global	-0.39 ± 0.04	
				Continental margins	-1.52 ± 0.04	
PP (Pg C yr ⁻¹)	REF	2003–2012		Global	40.06 ± 0.50	
	FIX		42.99 ± 0.51			
	FIX-REF		2.93 ± 0.02			
PP projection (Pg C yr ⁻¹)	REF	t_{his}	Arctic	0.08 ± 0.01		
		t_{fut}		0.15 ± 0.01		
		$t_{fut}-t_{his}$		0.07 ± 0.01		
	FIX	t_{his}		0.10 ± 0.01		
		t_{fut}		0.18 ± 0.01		
		$t_{fut}-t_{his}$		0.08 ± 0.01		
	FIX-REF	$t_{fut}-t_{his}$		0.01 ± 0.01		
		PP projection (Pg C yr ⁻¹)		REF	Global	t_{his}
	t_{fut}					38.90 ± 0.23
	$t_{fut}-t_{his}$					-2.24 ± 0.37
FIX	t_{his}		43.99 ± 0.26			
	t_{fut}		42.06 ± 0.24			
	$t_{fut}-t_{his}$		-1.93 ± 0.38			
RUN	$t_{fut}-t_{his}$		-1.82 ± 0.38			
	GNS		-1.57 ± 0.38			
	FIX-REF	0.31 ± 0.01				
GNS-REF	0.66 ± 0.02					

Table B2: Global and regional statistics of simulated ocean carbon uptake. Shown are the time-mean μ and twice its standard-deviation σ_μ (rounded up to two decimals) derived from annual values. The t_{his} and t_{fut} denote the time periods 1950–1999 and 2050–2099, respectively. Values in brackets denote relative changes in percentage.

Variable	Experiment	Period	Region	$\mu \pm 2 \sigma_\mu$
RMSE of C uptake (mol C m ⁻² yr ⁻¹)	REF	2003–2012	Global	0.84 ± 0.05
	FIX		Subpolar North Atlantic	0.73 ± 0.09
			Global	0.83 ± 0.05
			Subpolar North Atlantic	0.67 ± 0.08
			Global	-0.01 ± 0.01
	FIX-REF		Subpolar North Atlantic	-0.06 ± 0.01 (8.2±0.1%)
C uptake (Pg C yr ⁻¹)	REF	2003–2012	Global	2.77 ± 0.06
	FIX		2.86 ± 0.07	
	FIX-REF		0.09 ± 0.01 (3.1±0.1%)	
C uptake projection (Pg C yr ⁻¹)	REF	$t_{\text{fix}}-t_{\text{his}}$	Global	1.25 ± 0.03
	FIX			1.28 ± 0.04
	RUN			1.29 ± 0.04
	GNS			1.13 ± 0.04

	FIX-REF			0.03 ± 0.01
	GNS-REF			-0.11 ± 0.03

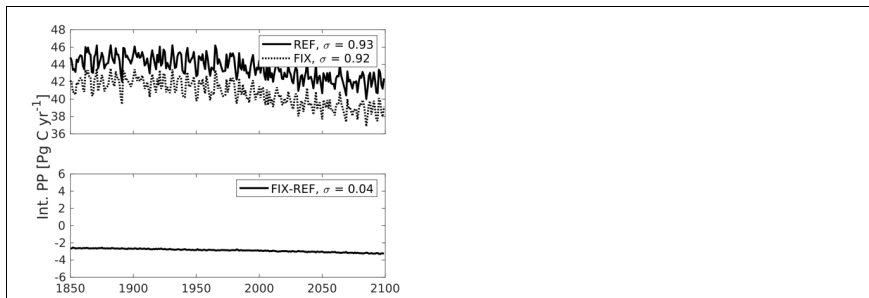


Figure B1. Global integrated primary production (PP) time-series from single experiments (top) versus difference between two experiments (bottom). The PP variability of REF and FIX closely follow each other because the simulations feature the exact same physical variability. As a result, the interannual variability largely cancels out in the computation of FIX-REF differences and the FIX-REF difference times-series exhibits a standard-deviation that is an order of magnitude smaller than the standard-deviations of REF and FIX.

Appendix C – Comparison between NEWS 2 dataset and measurement-based riverine data

Table C1: Comparison between NEWS 2 dataset (Mayorga et al., 2010) and measurement-based (provided by PARTNERS Project; Holmes et al., 2012) riverine dissolved inorganic nitrogen (DIN) and dissolved organic nitrogen (DON) in the 6 largest Arctic rivers around year 2000.

River	DIN (Pg N yr ⁻¹)		DON (Pg N yr ⁻¹)	
	NEWS 2	Measurement	NEWS 2	Measurement
Ob	89	86	102	110
Yenisei	47	51	132	111
Lena	30	33	88	135
Kolyma	9	7	21	17
Yukon	5	26	14	47
Mackenzie	22	27	62	31

Note that the data from NEWS 2 are for the year 2000, while measured data from PARTNERS Project are calculated over 1999–2008 (missing discharge data restricted the Yukon estimates to 2001–2008).

Code and data availability

The model code and riverine data used can be provided by the corresponding author upon request.

Author contribution

SG and IB designed the model experiments and SG developed the model code and performed the simulations with the help from IB. JS and JT contributed to the interpretation and analyzation of the results. JS, JT, IB and CH contributed to editing the manuscript. CH supervised the project work. JH and EM provided riverine data and consultation. SG prepared the manuscript with contributions from all co-authors.

Competing interests

The authors declare that they have no conflict of interest.

Disclaimer

This article reflects only the authors' view – the funding agencies as well as their executive agencies are not responsible for any use that may be made of the information that the article contains.

Acknowledgement

This work was supported through project CRESCENDO (Coordinated Research in Earth Systems and Climate: Experiments, kNowledge, Dissemination and Outreach; Horizon 2020 European Union's Framework Programme for Research and Innovation, grant no. 641816, European Commission). Computing and storage resources have been provided by UNINETT Sigma2 (nn2345k, nn2980k, ns2345k, ns2980k). JT acknowledge the Research Council Funded project Downscaling Climate and Ocean Change to Services (CE2COAST; 318477). IB received funding from the Trond Mohn Foundation through the Bjerknes Climate Prediction Unit (BFS2018TMT01) and NFR Climate Futures (309562). JH benefited from financial support from the Deutsche Forschungsgemeinschaft (DFG, German Research Foundation) under Germany's Excellence Strategy – EXC 2037 'Climate, Climatic Change, and Society' – project number 390683824, contribution to the Center for Earth System Research and Sustainability (CEN) of Universität Hamburg. We gratefully acknowledge that the schematic diagram of Figure 12 has been prepared by Jadelynn Fong.

Formatted: English (US)

References

- Alcamo, J., van Vuuren, D., Rosegrant, M., Alder, J., Bennett, E., Lodge, D., Masui, T., Morita, T., Ringler, C., Sala, O., Schulze, K., Zurek, M., Eickhout, B., Maerker, M., and Kok, K.: Changes in ecosystem services and their drivers across the scenarios, in: Ecosystems and Human Well-being: Scenarios, edited by: Carpenter, S. R., Pingali, P. L., Bennett, E. M., and Zurek, M. B., Island Press, Washington, 279-354, 2006.
- Anderson, L. G., Jutterström, S., Hjalmarsson, S., Wählström, I., and Semiletov, I. P.: Out-gassing of CO₂ from Siberian Shelf seas by terrestrial organic matter decomposition, *Geophysical Research Letters*, 36, <https://doi.org/10.1029/2009GL040046>, 2009.
- Arndt, S., Jørgensen, B. B., LaRowe, D. E., Middelburg, J. J., Pancost, R. D., and Regnier, P.: Quantifying the degradation of organic matter in marine sediments: A review and synthesis, *Earth-Science Reviews*, 123, 53-86, <https://doi.org/10.1016/j.earscirev.2013.02.008>, 2013.
- Assmann, K. M., Bentsen, M., Segschneider, J., and Heinze, C.: An isopycnic ocean carbon cycle model, *Geosci. Model Dev.*, 3, 143-167, [10.5194/gmd-3-143-2010](https://doi.org/10.5194/gmd-3-143-2010), 2010.
- Aumont, O., Orr, J. C., Monfray, P., Ludwig, W., Amiotte-Suchet, P., and Probst, J.-L.: Riverine-driven interhemispheric transport of carbon, *Global Biogeochemical Cycles*, 15, 393-405, <https://doi.org/10.1029/1999GB001238>, 2001.
- Aumont, O., Ethé, C., Tagliabue, A., Bopp, L., and Gehlen, M.: PISCES-v2: an ocean biogeochemical model for carbon and ecosystem studies, *Geosci. Model Dev.*, 8, 2465-2513, [10.5194/gmd-8-2465-2015](https://doi.org/10.5194/gmd-8-2465-2015), 2015.

Deleted: 21

- Behrenfeld, M. J. and Falkowski, P. G.: Photosynthetic rates derived from satellite-based chlorophyll concentration, *Limnology and Oceanography*, 42, 1-20, <https://doi.org/10.4319/lo.1997.42.1.0001>, 1997.
- Behrenfeld, M. J., O'Malley, R. T., Siegel, D. A., McClain, C. R., Sarmiento, J. L., Feldman, G. C., Milligan, A. J., Falkowski, P. G., Letelier, R. M., and Boss, E. S.: Climate-driven trends in contemporary ocean productivity, *Nature*, 444, 752-755, [10.1038/nature05317](https://doi.org/10.1038/nature05317), 2006.
- Bentsen, M., Bethke, I., Debernard, J. B., Iversen, T., Kirkevåg, A., Seland, Ø., Drange, H., Roelandt, C., Seierstad, I. A., Hoose, C., and Kristjánsson, J. E.: The Norwegian Earth System Model, NorESM1-M – Part 1: Description and basic evaluation of the physical climate, *Geosci. Model Dev.*, 6, 687-720, [10.5194/gmd-6-687-2013](https://doi.org/10.5194/gmd-6-687-2013), 2013.
- Bernard, C. Y., Dürr, H. H., Heinze, C., Segschneider, J., and Maier-Reimer, E.: Contribution of riverine nutrients to the silicon biogeochemistry of the global ocean – a model study, *Biogeosciences*, 8, 551-564, [10.5194/bg-8-551-2011](https://doi.org/10.5194/bg-8-551-2011), 2011.
- Beusen, A. H. W., Bouwman, A. F., Dürr, H. H., Dekkers, A. L. M., and Hartmann, J.: Global patterns of dissolved silica export to the coastal zone: Results from a spatially explicit global model, *Global Biogeochemical Cycles*, 23, <https://doi.org/10.1029/2008GB003281>, 2009.
- Beusen, A. H. W., Van Beek, L. P. H., Bouwman, A. F., Mogollón, J. M., and Middelburg, J. J.: [Coupling global models for hydrology and nutrient loading to simulate nitrogen and phosphorus retention in surface water – description of IMAGE-GNM and analysis of performance](https://doi.org/10.5194/gmd-8-4045-2015), *Geosci. Model Dev.*, 8, 4045-4067, [10.5194/gmd-8-4045-2015](https://doi.org/10.5194/gmd-8-4045-2015), 2015.
- Beusen, A. H. W., Bouwman, A. F., Van Beek, L. P. H., Mogollón, J. M., and Middelburg, J. J.: Global riverine N and P transport to ocean increased during the 20th century despite increased retention along the aquatic continuum, *Biogeosciences*, 13, 2441-2451, [10.5194/bg-13-2441-2016](https://doi.org/10.5194/bg-13-2441-2016), 2016.
- Bianchi, T. S.: The role of terrestrially derived organic carbon in the coastal ocean: A changing paradigm and the priming effect, *Proceedings of the National Academy of Sciences*, 108, 19473-19481, [10.1073/pnas.1017982108](https://doi.org/10.1073/pnas.1017982108), 2011.
- Blair, N. E. and Aller, R. C.: The Fate of Terrestrial Organic Carbon in the Marine Environment, *Annual Review of Marine Science*, 4, 401-423, [10.1146/annurev-marine-120709-142717](https://doi.org/10.1146/annurev-marine-120709-142717), 2011.
- Bleck, R. and Smith, L. T.: A wind-driven isopycnic coordinate model of the north and equatorial Atlantic Ocean: 1. Model development and supporting experiments, *Journal of Geophysical Research: Oceans*, 95, 3273-3285, [10.1029/JC095iC03p03273](https://doi.org/10.1029/JC095iC03p03273), 1990.
- Bleck, R., Rooth, C., Hu, D., and Smith, L. T.: Salinity-driven Thermocline Transients in a Wind- and Thermohaline-forced Isopycnic Coordinate Model of the North Atlantic, *Journal of Physical Oceanography*, 22, 1486-1505, [10.1175/1520-0485\(1992\)022<1486:SDDTIA>2.0.CO;2](https://doi.org/10.1175/1520-0485(1992)022<1486:SDDTIA>2.0.CO;2), 1992.
- Bopp, L., Monfray, P., Aumont, O., Dufresne, J.-L., Le Treut, H., Madec, G., Terray, L., and Orr, J. C.: Potential impact of climate change on marine export production, *Global Biogeochemical Cycles*, 15, 81-99, <https://doi.org/10.1029/1999GB001256>, 2001.
- Bopp, L., Aumont, O., Cadule, P., Alvain, S., and Gehlen, M.: Response of diatoms distribution to global warming and potential implications: A global model study, *Geophysical Research Letters*, 32, <https://doi.org/10.1029/2005GL023653>, 2005.
- Bopp, L., Resplandy, L., Orr, J. C., Doney, S. C., Dunne, J. P., Gehlen, M., Halloran, P., Heinze, C., Ilyina, T., Séférian, R., Tjiputra, J., and Vichi, M.: Multiple stressors of ocean ecosystems in the 21st century: projections with CMIP5 models, *Biogeosciences*, 10, 6225-6245, [10.5194/bg-10-6225-2013](https://doi.org/10.5194/bg-10-6225-2013), 2013.
- Borges, A. V., Delille, B., and Frankignoulle, M.: Budgeting sinks and sources of CO₂ in the coastal ocean: Diversity of ecosystems counts, *Geophysical Research Letters*, 32, <https://doi.org/10.1029/2005GL023053>, 2005.
- Bourgeois, T., Orr, J. C., Resplandy, L., Terhaar, J., Ethé, C., Gehlen, M., and Bopp, L.: Coastal-ocean uptake of anthropogenic carbon, *Biogeosciences*, 13, 4167-4185, [10.5194/bg-13-4167-2016](https://doi.org/10.5194/bg-13-4167-2016), 2016.

- Bouwman, A. F., Beusen, A. H. W., and Billen, G.: Human alteration of the global nitrogen and phosphorus soil balances for the period 1970–2050, *Global Biogeochemical Cycles*, 23, <https://doi.org/10.1029/2009GB003576>, 2009.
- Boyle, E. A., Edmond, J. M., and Sholkovitz, E. R.: The mechanism of iron removal in estuaries, *Geochim Cosmochim Acta*, 41, 1313–1324, [https://doi.org/10.1016/0016-7037\(77\)90075-8](https://doi.org/10.1016/0016-7037(77)90075-8), 1977.
- Cabré, A., Marinov, I., and Leung, S.: Consistent global responses of marine ecosystems to future climate change across the IPCC AR5 earth system models, *Climate Dynamics*, 45, 1253–1280, [10.1007/s00382-014-2374-3](https://doi.org/10.1007/s00382-014-2374-3), 2015.
- Cai, W.-J.: Estuarine and Coastal Ocean Carbon Paradox: CO₂ Sinks or Sites of Terrestrial Carbon Incineration?, *Annual Review of Marine Science*, 3, 123–145, [10.1146/annurev-marine-120709-142723](https://doi.org/10.1146/annurev-marine-120709-142723), 2010.
- Chen, C.-T. A. and Borges, A. V.: Reconciling opposing views on carbon cycling in the coastal ocean: Continental shelves as sinks and near-shore ecosystems as sources of atmospheric CO₂, *Deep Sea Research Part II: Topical Studies in Oceanography*, 56, 578–590, <https://doi.org/10.1016/j.dsr2.2009.01.001>, 2009.
- Chester, R.: The transport of material to the oceans: the river pathway, in: *Marine Geochemistry*, Springer, Dordrecht, https://doi.org/10.1007/978-94-010-9488-7_3, 1990.
- Chester, R.: The Input of Material to the Ocean Reservoir, in: *Marine Geochemistry*, Wiley Online Books, 7–10, <https://doi.org/10.1002/9781118349083.ch2>, 2012.
- Cotrim da Cunha, L., Buitenhuis Erik, T., Le Quéré, C., Giraud, X., and Ludwig, W.: Potential impact of changes in river nutrient supply on global ocean biogeochemistry, *Global Biogeochemical Cycles*, 21, [10.1029/2006GB002718](https://doi.org/10.1029/2006GB002718), 2007.
- Danabasoglu, G., Lamarque, J. F., Bacmeister, J., Bailey, D. A., DuVivier, A. K., Edwards, J., Emmons, L. K., Fasullo, J., Garcia, R., Gettelman, A., Hannay, C., Holland, M. M., Large, W. G., Lauritzen, P. H., Lawrence, D. M., Lenaerts, J. T. M., Lindsay, K., Lipscomb, W. H., Mills, M. J., Neale, R., Oleson, K. W., Otto-Bliesner, B., Phillips, A. S., Sacks, W., Tilmes, S., van Kampenhout, L., Vertenstein, M., Bertini, A., Dennis, J., Deser, C., Fischer, C., Fox-Kemper, B., Kay, J. E., Kinnison, D., Kushner, P. J., Larson, V. E., Long, M. C., Mickelson, S., Moore, J. K., Nienhouse, E., Polvani, L., Rasch, P. J., and Strand, W. G.: The Community Earth System Model Version 2 (CESM2), *Journal of Advances in Modeling Earth Systems*, 12, [e2019MS001916](https://doi.org/10.1029/2019MS001916), <https://doi.org/10.1029/2019MS001916>, 2020.
- Doney, S. C.: Plankton in a warmer world, *Nature*, 444, 695–696, [10.1038/444695a](https://doi.org/10.1038/444695a), 2006.
- Figuères, G., Martin, J. M., and Meybeck, M.: Iron behaviour in the Zaire estuary, *Netherlands Journal of Sea Research*, 12, 329–337, [https://doi.org/10.1016/0077-7579\(78\)90035-2](https://doi.org/10.1016/0077-7579(78)90035-2), 1978.
- Eiriksdóttir, E., Oelkers, E., Hardardóttir, J., and Gislason, S.: The impact of damming on riverine fluxes to the ocean: A case study from Eastern Iceland, *Water Research*, 113, [10.1016/j.watres.2016.12.029](https://doi.org/10.1016/j.watres.2016.12.029), 2016.
- Friedlingstein, P., Jones, M. W., O'Sullivan, M., Andrew, R. M., Bakker, D. C. E., Hauck, J., Le Quéré, C., Peters, G. P., Peters, W., Pongratz, J., Sitch, S., Canadell, J. G., Ciais, P., Jackson, R. B., Alin, S. R., Anthoni, P., Bates, N. R., Becker, M., Bellouin, N., Bopp, L., Chau, T. T. T., Chevallier, F., Chini, L. P., Cronin, M., Currie, K. I., Decharme, B., Djeutchouang, L., Dou, X., Evans, W., Feely, R. A., Feng, L., Gasser, T., Gilfillan, D., Gkritzalis, T., Grassi, G., Gregor, L., Gruber, N., Gürses, Ö., Harris, I., Houghton, R. A., Hurtt, G. C., Iida, Y., Ilyina, T., Luijckx, I. T., Jain, A. K., Jones, S. D., Kato, E., Kennedy, D., Klein Goldewijk, K., Knauer, J., Korsbakken, J. I., Körtzinger, A., Landschützer, P., Lauvset, S. K., Lefèvre, N., Lienert, S., Liu, J., Marland, G., McGuire, P. C., Melton, J. R., Munro, D. R., Nabel, J. E. M. S., Nakaoka, S. I., Niwa, Y., Ono, T., Pierrot, D., Poulter, B., Rehder, G., Resplandy, L., Robertson, E., Rödenbeck, C., Rosan, T. M., Schwinger, J., Schwingshackl, C., Séférian, R., Sutton, A. J., Sweeney, C., Tanhua, T., Tans, P. P., Tian, H., Tilbrook, B., Tubiello, F., van der Werf, G., Vuichard, N., Wada, C., Wanninkhof, R., Watson, A., Willis, D., Wiltshire, A. J., Yuan, W., Yue, C., Yue, X., Zaehle, S., and Zeng, J.: Global Carbon Budget 2021, *Earth Syst. Sci. Data Discuss.*, 2021, 1–191, [10.5194/essd-2021-386](https://doi.org/10.5194/essd-2021-386), 2021.
- Frigstad, H., Kaste, Ø., Deininger, A., Kvalsund, K., Christensen, G., Bellerby, R. G. J., Sørensen, K., Norli, M., and King, A. L.: Influence of Riverine Input on Norwegian Coastal Systems, *Frontiers in Marine Science*, 7, 2020.

- Galy, V., Peucker-Ehrenbrink, B., and Eglinton, T.: Global carbon export from the terrestrial biosphere controlled by erosion, *Nature*, 521, 204-207, 10.1038/nature14400, 2015.
- Garcia, H. E., Locarnini, R. A., Boyer, T. P., Antonov, J. I., Baranova, O. K., Zweng, M. M., Reagan, J. R., and Johnson, D. R.: World Ocean Atlas 2013. Vol. 4: Dissolved Inorganic Nutrients (phosphate,nitrate,silicate), NOAA Atlas NESDIS 76, 25 pp, 2013a.
- Garcia, H. E., Locarnini, R. A., Boyer, T. P., Antonov, J. I., Mishonov, A. V., Baranova, O. K., Zweng, M. M., Reagan, J. R., and Johnson, D. R.: World Ocean Atlas 2013. Vol. 3: Dissolved Oxygen, Apparent Oxygen Utilization, and Oxygen Saturation, NOAA Atlas NESDIS 75, 27 pp, 2013b.
- Garnier, J., Billen, G., Lassaletta, L., Vigiak, O., Nikolaidis, N. P., and Grizzetti, B.: Hydromorphology of coastal zone and structure of watershed agro-food system are main determinants of coastal eutrophication, *Environmental Research Letters*, 16, 023005, 10.1088/1748-9326/abc777, 2021.
- Gharamti, M. E., Tjiputra, J., Bethke, I., Samuelsen, A., Skjelvan, I., Bentsen, M., and Bertino, L.: Ensemble data assimilation for ocean biogeochemical state and parameter estimation at different sites, *Ocean Modelling*, 112, 65-89, <https://doi.org/10.1016/j.ocemod.2017.02.006>, 2017.
- Hajima, T., Watanabe, M., Yamamoto, A., Tatebe, H., Noguchi, M. A., Abe, M., Ohgaito, R., Ito, A., Yamazaki, D., Okajima, H., Ito, A., Takata, K., Ogochi, K., Watanabe, S., and Kawamiya, M.: Development of the MIROC-ES2L Earth system model and the evaluation of biogeochemical processes and feedbacks, *Geosci. Model Dev.*, 13, 2197-2244, 10.5194/gmd-13-2197-2020, 2020.
- Hartmann, J.: Bicarbonate-fluxes and CO₂-consumption by chemical weathering on the Japanese Archipelago — Application of a multi-lithological model framework, *Chemical Geology*, 265, 237-271, <https://doi.org/10.1016/j.chemgeo.2009.03.024>, 2009.
- Hedges, J. I., Keil, R. G., and Benner, R.: What happens to terrestrial organic matter in the ocean?, *Organic Geochemistry*, 27, 195-212, [https://doi.org/10.1016/S0146-6380\(97\)00066-1](https://doi.org/10.1016/S0146-6380(97)00066-1), 1997.
- Holland, M. M., Bailey, D. A., Briegleb, B. P., Light, B., and Hunke, E.: Improved Sea Ice Shortwave Radiation Physics in CCSM4: The Impact of Melt Ponds and Aerosols on Arctic Sea Ice, *Journal of Climate*, 25, 1413-1430, 10.1175/JCLI-D-11-00078.1, 2011.
- Holmes, R. M., McClelland, J. W., Peterson, B. J., Tank, S. E., Bulygina, E., Eglinton, T. I., Gordeev, V. V., Gurtovaya, T. Y., Raymond, P. A., Repeta, D. J., Staples, R., Striegl, R. G., Zhulidov, A. V., and Zimov, S. A.: Seasonal and Annual Fluxes of Nutrients and Organic Matter from Large Rivers to the Arctic Ocean and Surrounding Seas, *Estuaries and Coasts*, 35, 369-382, 10.1007/s12237-011-9386-6, 2012.
- Hurrell, J. W., Holland, M. M., Gent, P. R., Ghan, S., Kay, J. E., Kushner, P. J., Lamarque, J. F., Large, W. G., Lawrence, D., Lindsay, K., Lipscomb, W. H., Long, M. C., Mahowald, N., Marsh, D. R., Neale, R. B., Rasch, P., Vavrus, S., Vertenstein, M., Bader, D., Collins, W. D., Hack, J. J., Kiehl, J., and Marshall, S.: The Community Earth System Model: A Framework for Collaborative Research, *Bulletin of the American Meteorological Society*, 94, 1339-1360, 10.1175/BAMS-D-12-00121.1, 2013.
- Ittekkot, V.: Global trends in the nature of organic matter in river suspensions, *Nature*, 332, 436-438, 10.1038/332436a0, 1988.
- Jakobsson, M.: Hypsometry and volume of the Arctic Ocean and its constituent seas, *Geochemistry, Geophysics, Geosystems*, 3, 1-18, <https://doi.org/10.1029/2001GC000302>, 2002.
- Key, R. M., Kozyr, A., Sabine, C. L., Lee, K., Wanninkhof, R., Bullister, J. L., Feely, R. A., Millero, F. J., Mordy, C., and Peng, T. H.: A global ocean carbon climatology: Results from Global Data Analysis Project (GLODAP), *Global Biogeochemical Cycles*, 18, <https://doi.org/10.1029/2004GB002247>, 2004.
- Kirkevåg, A., Iversen, T., Seland, Ø., Hoose, C., Kristjánsson, J. E., Struthers, H., Ekman, A. M. L., Ghan, S., Griesfeller, J., Nilsson, E. D., and Schulz, M.: Aerosol-climate interactions in the Norwegian Earth System Model – NorESM1-M, *Geosci. Model Dev.*, 6, 207-244, 10.5194/gmd-6-207-2013, 2013.
- Krumins, V., Gehlen, M., Arndt, S., Van Cappellen, P., and Regnier, P.: Dissolved inorganic carbon and alkalinity fluxes from coastal marine sediments: model estimates for different shelf environments and sensitivity to global change, *Biogeosciences*, 10, 371-398, 10.5194/bg-10-371-2013, 2013.

- Kwiatkowski, L., Torres, O., Bopp, L., Aumont, O., Chamberlain, M., Christian, J. R., Dunne, J. P., Gehlen, M., Ilyina, T., John, J. G., Lenton, A., Li, H., Lovenduski, N. S., Orr, J. C., Palmieri, J., Santana-Falcón, Y., Schwinger, J., Séférian, R., Stock, C. A., Tagliabue, A., Takano, Y., Tjiputra, J., Toyama, K., Tsujino, H., Watanabe, M., Yamamoto, A., Yool, A., and Ziehn, T.: Twenty-first century ocean warming, acidification, deoxygenation, and upper-ocean nutrient and primary production decline from CMIP6 model projections, *Biogeosciences*, 17, 3439-3470, 10.5194/bg-17-3439-2020, 2020.
- Lacroix, F., Ilyina, T., and Hartmann, J.: Oceanic CO₂ outgassing and biological production hotspots induced by pre-industrial river loads of nutrients and carbon in a global modeling approach, *Biogeosciences*, 17, 55-88, 10.5194/bg-17-55-2020, 2020.
- Lacroix, F., Ilyina, T., Mathis, M., Laruelle, G. G., and Regnier, P.: Historical increases in land-derived nutrient inputs may alleviate effects of a changing physical climate on the oceanic carbon cycle, *Global Change Biology*, 27, 5491-5513, <https://doi.org/10.1111/gcb.15822>, 2021.
- Lalonde, K., Vähätalo, A. V., and Gélina, Y.: Revisiting the disappearance of terrestrial dissolved organic matter in the ocean: a $\delta^{13}\text{C}$ study, *Biogeosciences*, 11, 3707-3719, 10.5194/bg-11-3707-2014, 2014.
- Landschützer, P., Gruber, N., and Bakker, D.: An updated observation-based global monthly gridded sea surface pCO₂ and air-sea CO₂ flux product from 1982 through 2015 and its monthly climatology. (website: https://www.nodc.noaa.gov/oceans/SPCO2_1982_2015_ETH_SOM_FFN.html), 2017.
- Lawrence, D. M., Oleson, K. W., Flanner, M. G., Thornton, P. E., Swenson, S. C., Lawrence, P. J., Zeng, X., Yang, Z.-L., Levis, S., Sakaguchi, K., Bonan, G. B., and Slater, A. G.: Parameterization improvements and functional and structural advances in Version 4 of the Community Land Model, *Journal of Advances in Modeling Earth Systems*, 3, 10.1029/2011MS00045, 2011.
- Lee, Y. J., Matrai, P. A., Friedrichs, M. A. M., Saba, V. S., Aumont, O., Babin, M., Buitenhuis, E. T., Chevallier, M., de Mora, L., Dessert, M., Dunne, J. P., Ellingsen, I. H., Feldman, D., Frouin, R., Gehlen, M., Gorgues, T., Ilyina, T., Jin, M., John, J. G., Lawrence, J., Manizza, M., Menkes, C. E., Perruche, C., Le Fouest, V., Popova, E. E., Romanou, A., Samuelsen, A., Schwinger, J., Séférian, R., Stock, C. A., Tjiputra, J., Tremblay, L. B., Ueyoshi, K., Vichi, M., Yool, A., and Zhang, J.: Net primary productivity estimates and environmental variables in the Arctic Ocean: An assessment of coupled physical-biogeochemical models, *Journal of Geophysical Research: Oceans*, 121, 8635-8669, <https://doi.org/10.1002/2016JC011993>, 2016.
- Le Fouest, V., Babin, M., and Tremblay, J. É.: The fate of riverine nutrients on Arctic shelves, *Biogeosciences*, 10, 3661-3677, 10.5194/bg-10-3661-2013, 2013.
- Le Fouest, V., Manizza, M., Tremblay, B., and Babin, M.: Modelling the impact of riverine DON removal by marine bacterioplankton on primary production in the Arctic Ocean, *Biogeosciences*, 12, 3385-3402, 10.5194/bg-12-3385-2015, 2015.
- Le Fouest, V., Matsuoka, A., Manizza, M., Shernetsky, M., Tremblay, B., and Babin, M.: Towards an assessment of riverine dissolved organic carbon in surface waters of the western Arctic Ocean based on remote sensing and biogeochemical modeling, *Biogeosciences*, 15, 1335-1346, 10.5194/bg-15-1335-2018, 2018.
- Letscher, R. T., Hansell, D. A., Kadko, D., and Bates, N. R.: Dissolved organic nitrogen dynamics in the Arctic Ocean, *Marine Chemistry*, 148, 1-9, <https://doi.org/10.1016/j.marchem.2012.10.002>, 2013.
- Liu, D., Bai, Y., He, X., Chen, C.-T. A., Huang, T.-H., Pan, D., Chen, X., Wang, D., and Zhang, L.: Changes in riverine organic carbon input to the ocean from mainland China over the past 60 years, *Environment International*, 134, 105258, <https://doi.org/10.1016/j.envint.2019.105258>, 2020.
- Liu, X., Stock, C. A., Dunne, J. P., Lee, M., Shevliakova, E., Malyshev, S., and Milly, P. C. D.: Simulated Global Coastal Ecosystem Responses to a Half-Century Increase in River Nitrogen Loads, *Geophysical Research Letters*, 48, e2021GL094367, <https://doi.org/10.1029/2021GL094367>, 2021.
- Ludwig, W., Probst, J.-L., and Kempe, S.: Predicting the oceanic input of organic carbon by continental erosion, *Global Biogeochemical Cycles*, 10, 23-41, <https://doi.org/10.1029/95GB02925>, 1996.
- Mahowald, N. M., Baker, A. R., Bergametti, G., Brooks, N., Duce, R. A., Jickells, T. D., Kubilay, N., Prospero, J. M., and Tegen, I.: Atmospheric global dust cycle and iron inputs to the ocean, *Global Biogeochemical Cycles*, 19, 10.1029/2004GB002402, 2005.

- Maier-Reimer, E., Kriest, I., Segschneider, J., and Wetzel, P.: The Hamburg oceanic carbon cycle circulation model HAMOCC5.1—Technical Description Release 1.1, Tech. Rep. 14, Reports on Earth System Science, Max Planck Institute for Meteorology, Hamburg, Germany, 2005.
- [Manizza, M., Follows, M. J., Dutkiewicz, S., Menemenlis, D., McClelland, J. W., Hill, C. N., Peterson, B. J., and Key, R. M.: A model of the Arctic Ocean carbon cycle, *Journal of Geophysical Research: Oceans*, 116, <https://doi.org/10.1029/2011JC006998>, 2011.](#)
- [Mann, P. J., Strauss, J., Palmtag, J., Dowdy, K., Ogneva, O., Fuchs, M., Bedington, M., Torres, R., Polimene, L., Overduin, P., Mollenhauer, G., Grosse, G., Rachold, V., Sobczak, W. V., Spencer, R. G. M., and Juhls, B.: Degrading permafrost river catchments and their impact on Arctic Ocean nearshore processes, *Ambio*, 51, 439-455, \[10.1007/s13280-021-01666-z\]\(https://doi.org/10.1007/s13280-021-01666-z\), 2022.](#)
- Mayorga, E., Seitzinger, S. P., Harrison, J. A., Dumont, E., Beusen, A. H. W., Bouwman, A. F., Fekete, B. M., Kroeze, C., and Van Drecht, G.: Global Nutrient Export from WaterSheds 2 (NEWS 2): Model development and implementation, *Environmental Modelling & Software*, 25, 837-853, <https://doi.org/10.1016/j.envsoft.2010.01.007>, 2010.
- [McClelland, J. W., Holmes, R. M., Dunton, K. H., and Macdonald, R. W.: The Arctic Ocean Estuary, *Estuaries and Coasts*, 35, 353-368, \[10.1007/s12237-010-9357-3\]\(https://doi.org/10.1007/s12237-010-9357-3\), 2012.](#)
- Meybeck, M.: Carbon, nitrogen, and phosphorus transport by world rivers, *American Journal of Science*, 282, 401, [10.2475/ajs.282.4.401](https://doi.org/10.2475/ajs.282.4.401), 1982.
- Meybeck, M. and Vörösmarty, C.: Global transfer of carbon by rivers, *Global Change Newsletter*, 37, 18-19, 1999.
- Neale, R. B., Richter, J., Park, S., Lauritzen, P. H., Vavrus, S. J., Rasch, P. J., and Zhang, M.: The Mean Climate of the Community Atmosphere Model (CAM4) in Forced SST and Fully Coupled Experiments, *Journal of Climate*, 26, 5150-5168, [10.1175/JCLI-D-12-00236.1](https://doi.org/10.1175/JCLI-D-12-00236.1), 2013.
- Oleson, K. W., Lawrence, D. M., Bonan, G. B., Flanner, M. G., Kluzek, E., Lawrence, P. J., Levis, S., Swenson, S. C., Thornton, P. E., Dai, A., Decker, M., Dickinson, R., Fiedema, J., Heald, C. L., Hoffman, F., Lamarque, J.-F., Mahowald, N., Niu, G.-Y., Qian, T., Randerson, J., Running, S., Sakaguchi, K., Slater, A., Stockli, R., Wang, A., Yang, Z.-L., Zeng, X., and Zeng, X.: Technical Description of version 4.0 of the Community Land Model (CLM) (No. NCAR/TN-478+STR), University Corporation for Atmospheric Research, [doi:10.5065/D6FB50WZ](https://doi.org/10.5065/D6FB50WZ), 2010.
- [Pokrovsky, O. S., Manasypov, R. M., Kopysov, S. G., Krickov, I. V., Shirokova, L. S., Loiko, S. V., Lim, A. G., Kolesnichenko, L. G., Vorobyev, S. N., and Kirpotin, S. N.: Impact of Permafrost Thaw and Climate Warming on Riverine Export Fluxes of Carbon, Nutrients and Metals in Western Siberia, *Water*, 12, \[10.3390/w12061817\]\(https://doi.org/10.3390/w12061817\), 2020.](#)
- Redfield, A. and Daniel, R. J.: On the proportions of organic derivations in sea water and their relation to the composition of plankton, in: James Johnstone Memorial Volume, University Press of Liverpool, 177-192, 1934.
- [Regnier, P., Friedlingstein, P., Ciais, P., Mackenzie, F. T., Gruber, N., Janssens, I. A., Laruelle, G. G., Lauerwald, R., Luyssaert, S., Andersson, A. J., Arndt, S., Arnosti, C., Borges, A. V., Dale, A. W., Gallego-Sala, A., Goddérís, Y., Goossens, N., Hartmann, J., Heinze, C., Ilyina, T., Joos, F., LaRowe, D. E., Leifeld, J., Meysman, F. J. R., Munhoven, G., Raymond, P. A., Spahni, R., Suntharalingam, P., and Thullner, M.: Anthropogenic perturbation of the carbon fluxes from land to ocean, *Nature Geoscience*, 6, 597-607, \[10.1038/ngeo1830\]\(https://doi.org/10.1038/ngeo1830\), 2013.](#)
- [Rogelj, J., den Elzen, M., Höhne, N., Fransen, T., Fekete, H., Winkler, H., Schaeffer, R., Sha, F., Riahi, K., and Meinshausen, M.: Paris Agreement climate proposals need a boost to keep warming well below 2 °C, *Nature*, 534, 631-639, \[10.1038/nature18307\]\(https://doi.org/10.1038/nature18307\), 2016.](#)
- Sarmiento, J. L., Gruber, N., Brzezinski, M. A., and Dunne, J. P.: High-latitude controls of thermocline nutrients and low latitude biological productivity, *Nature*, 427, 56-60, 2004.
- Seitzinger, S. P., Mayorga, E., Bouwman, A. F., Kroeze, C., Beusen, A. H. W., Billen, G., Van Drecht, G., Dumont, E., Fekete, B. M., Garnier, J., and Harrison, J. A.: Global river nutrient export: A scenario analysis of past and future trends, *Global Biogeochemical Cycles*, 24, <https://doi.org/10.1029/2009GB003587>, 2010.

- Séférian, R., Nabat, P., Michou, M., Saint-Martin, D., Voldoire, A., Colin, J., Decharme, B., Delire, C., Berthet, S., Chevallier, M., Sénési, S., Franchisteguy, L., Vial, J., Mallet, M., Joetzjer, E., Geoffroy, O., Guérémy, J.-F., Moine, M.-P., Msadek, R., Ribes, A., Rocher, M., Roehrig, R., Salas-y-Méla, D., Sanchez, E., Terray, L., Valcke, S., Waldman, R., Aumont, O., Bopp, L., Deshayes, J., Éthé, C., and Madec, G.: Evaluation of CNRM Earth System Model, CNRM-ESM2-1: Role of Earth System Processes in Present-Day and Future Climate, *Journal of Advances in Modeling Earth Systems*, 11, 4182-4227, <https://doi.org/10.1029/2019MS001791>, 2019.
- Séférian, R., Berthet, S., Yool, A., Palmiéri, J., Bopp, L., Tagliabue, A., Kwiatkowski, L., Aumont, O., Christian, J., Dunne, J., Gehlen, M., Ilyina, T., John, J. G., Li, H., Long, M. C., Luo, J. Y., Nakano, H., Romanou, A., Schwinger, J., Stock, C., Santana-Falcón, Y., Takano, Y., Tjiputra, J., Tsujino, H., Watanabe, M., Wu, T., Wu, F., and Yamamoto, A.: Tracking Improvement in Simulated Marine Biogeochemistry Between CMIP5 and CMIP6, *Current Climate Change Reports*, 6, 95-119, [10.1007/s40641-020-00160-0](https://doi.org/10.1007/s40641-020-00160-0), 2020.
- Shiller, A. M. and Boyle, E. A.: Trace elements in the Mississippi River Delta outflow region: Behavior at high discharge, *Geochim Cosmochim Acta*, 55, 3241-3251, [https://doi.org/10.1016/0016-7037\(91\)90486-O](https://doi.org/10.1016/0016-7037(91)90486-O), 1991.
- Sholkovitz, E. R. and Copland, D.: The coagulation, solubility and adsorption properties of Fe, Mn, Cu, Ni, Cd, Co and humic acids in a river water, *Geochim Cosmochim Acta*, 45, 181-189, [https://doi.org/10.1016/0016-7037\(81\)90161-7](https://doi.org/10.1016/0016-7037(81)90161-7), 1981.
- Skogen, M. D., Hjøllo, S. S., Sando, A. B., and Tjiputra, J.: Future ecosystem changes in the Northeast Atlantic: a comparison between a global and a regional model system, *ICES Journal of Marine Science*, 75, 2355-2369, [10.1093/icesjms/fsy088](https://doi.org/10.1093/icesjms/fsy088), 2018.
- Smith, S. V., Swaney, D. P., Talaue-Mcmanus, L., Bartley, J. D., Sandhei, P. T., McLaughlin, C. J., Dupra, V. C., Crossland, C. J., Buddemeier, R. W., Maxwell, B. A., and Wulff, F.: Humans, Hydrology, and the Distribution of Inorganic Nitrogen Loading to the Ocean, *BioScience*, 53, 235-245, [10.1641/0006-3568\(2003\)053\[0235:HHATDJO\]2.0.CO;2](https://doi.org/10.1641/0006-3568(2003)053[0235:HHATDJO]2.0.CO;2), 2003.
- Steinacher, M., Joos, F., Frolicher, T. L., Bopp, L., Cadule, P., Cocco, V., Doney, S. C., Gehlen, M., Lindsay, K., Moore, J. K., Schneider, B., and Segschneider, J.: Projected 21st century decrease in marine productivity: a multi-model analysis, *Biogeosciences*, 7, 979-1005, 2010.
- Tagliabue, A., Kwiatkowski, L., Bopp, L., Butenschön, M., Cheung, W., Lengaigne, M., and Vialard, J.: Persistent Uncertainties in Ocean Net Primary Production Climate Change Projections at Regional Scales Raise Challenges for Assessing Impacts on Ecosystem Services, *Frontiers in Climate*, 3, 2021.
- Takahashi, T., Sutherland, S. C., Wanninkhof, R., Sweeney, C., Feely, R. A., Chipman, D. W., Hales, B., Friederich, G., Chavez, F., Sabine, C., Watson, A., Bakker, D. C. E., Schuster, U., Metzl, N., Yoshikawa-Inoue, H., Ishii, M., Midorikawa, T., Nojiri, Y., Körtzinger, A., Steinhoff, T., Hoppema, M., Olafsson, J., Armarson, T. S., Tilbrook, B., Johannessen, T., Olsen, A., Bellerby, R., Wong, C. S., Delille, B., Bates, N. R., and de Baar, H. J. W.: Climatological mean and decadal change in surface ocean pCO₂, and net sea-air CO₂ flux over the global oceans, *Deep Sea Research Part II: Topical Studies in Oceanography*, 56, 554-577, <https://doi.org/10.1016/j.dsr2.2008.12.009>, 2009.
- Taylor, K. E., Stouffer, R. J., and Meehl, G. A.: An Overview of CMIP5 and the Experiment Design, *Bulletin of the American Meteorological Society*, 93, 485-498, [10.1175/BAMS-D-11-00094.1](https://doi.org/10.1175/BAMS-D-11-00094.1), 2011.
- Terhaar, J., Orr, J. C., Éthé, C., Regnier, P., and Bopp, L.: Simulated Arctic Ocean Response to Doubling of Riverine Carbon and Nutrient Delivery, *Global Biogeochemical Cycles*, 33, 1048-1070, <https://doi.org/10.1029/2019GB006200>, 2019.
- Terhaar, J., Lauerwald, R., Regnier, P., Gruber, N., and Bopp, L.: Around one third of current Arctic Ocean primary production sustained by rivers and coastal erosion, *Nature Communications*, 12, 169, [10.1038/s41467-020-20470-z](https://doi.org/10.1038/s41467-020-20470-z), 2021.
- Tivig, M., Keller, D. P., and Oeschlies, A.: Riverine nitrogen supply to the global ocean and its limited impact on global marine primary production: a feedback study using an Earth system model, *Biogeosciences*, 18, 5327-5350, [10.5194/bg-18-5327-2021](https://doi.org/10.5194/bg-18-5327-2021), 2021.

1259 Tjiputra, J. F., Polzin, D., and Winguth, A. M. E.: Assimilation of seasonal chlorophyll and nutrient data
1260 into an adjoint three-dimensional ocean carbon cycle model: Sensitivity analysis and ecosystem parameter
1261 optimization, *Global Biogeochemical Cycles*, 21, <https://doi.org/10.1029/2006GB002745>, 2007.

1262 Tjiputra, J. F., Roelandt, C., Bentsen, M., Lawrence, D. M., Lorentzen, T., Schwinger, J., Seland, Ø., and
1263 Heinze, C.: Evaluation of the carbon cycle components in the Norwegian Earth System Model (NorESM),
1264 *Geosci. Model Dev.*, 6, 301-325, 10.5194/gmd-6-301-2013, 2013.

1265 Tjiputra, J. F., Schwinger, J., Bentsen, M., Morée, A. L., Gao, S., Bethke, I., Heinze, C., Goris, N., Gupta,
1266 A., He, Y. C., Olivé, D., Seland, Ø., and Schulz, M.: Ocean biogeochemistry in the Norwegian Earth
1267 System Model version 2 (NorESM2), *Geosci. Model Dev.*, 13, 2393-2431, 10.5194/gmd-13-2393-2020,
1268 2020.

1269 Vancoppenolle, M., Bopp, L., Madec, G., Dunne, J., Ilyina, T., Halloran, P. R., and Steiner, N.: Future
1270 Arctic Ocean primary productivity from CMIP5 simulations: Uncertain outcome, but consistent
1271 mechanisms, *Global Biogeochemical Cycles*, 27, 605-619, <https://doi.org/10.1002/gbc.20055>, 2013.

1272 van der Struijk, L. F. and Kroeze, C.: Future trends in nutrient export to the coastal waters of South
1273 America: Implications for occurrence of eutrophication, *Global Biogeochemical Cycles*, 24,
1274 <https://doi.org/10.1029/2009GB003572>, 2010.

1275 van Vuuren, D. P., Edmonds, J., Kainuma, M., Riahi, K., Thomson, A., Hibbard, K., Hurtt, G. C., Kram, T.,
1276 Krey, V., Lamarque, J.-F., Masui, T., Meinshausen, M., Nakicenovic, N., Smith, S. J., and Rose, S. K.: The
1277 representative concentration pathways: an overview, *Climatic Change*, 109, 5, 10.1007/s10584-011-0148-z,
1278 2011.

1279 Van Drecht, G., Bouwman, A. F., Harrison, J., and Knoop, J. M.: Global nitrogen and phosphate in urban
1280 wastewater for the period 1970 to 2050, *Global Biogeochemical Cycles*, 23,
1281 <https://doi.org/10.1029/2009GB003458>, 2009.

1282 Westberry, T., Behrenfeld, M. J., Siegel, D. A., and Boss, E.: Carbon-based primary productivity modeling
1283 with vertically resolved photoacclimation, *Global Biogeochemical Cycles*, 22,
1284 <https://doi.org/10.1029/2007GB003078>, 2008.

1285 Wild, B., Andersson, A., Bröder, L., Vonk, J., Hugelius, G., McClelland, J. W., Song, W., Raymond, P. A.,
1286 and Gustafsson, Ö.: Rivers across the Siberian Arctic unearth the patterns of carbon release from thawing
1287 permafrost, *Proceedings of the National Academy of Sciences of the United States of America*, 116, 10280-
1288 10285, 2019.

1289 Yan, W., Mayorga, E., Li, X., Seitzinger, S. P., and Bouwman, A. F.: Increasing anthropogenic nitrogen
1290 inputs and riverine DIN exports from the Changjiang River basin under changing human pressures, *Global*
1291 *Biogeochemical Cycles*, 24, <https://doi.org/10.1029/2009GB003575>, 2010.

1292 Zhang, X., Fang, C., Wang, Y., Lou, X., Su, Y., and Huang, D.: Review of Effects of Dam Construction on
1293 the Ecosystems of River Estuary and Nearby Marine Areas, *Sustainability*, 14, 10.3390/su14105974, 2022.

1294

1295

1296

1297

1298

1299

1300

1301

1302

Formatted: Header

Formatted: Indent: Left: 0,63 cm

Deleted: 28

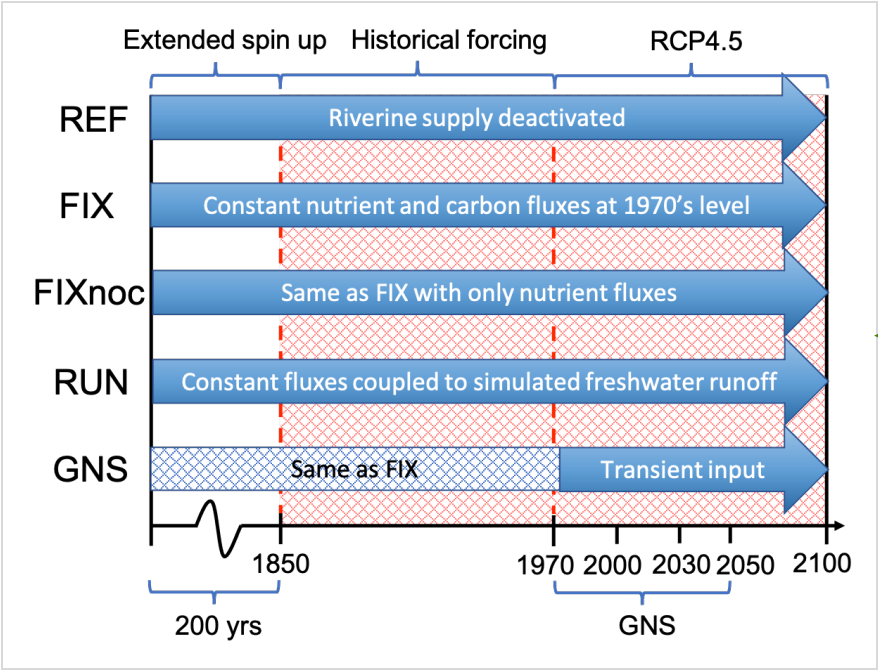


Figure 1: Schematic illustration of the spin-up and integration procedure following the experimental design described in Section 2.4.

Formatted: Header

Formatted Table

Deleted: Figure 1:

Deleted: 3

Deleted: 29

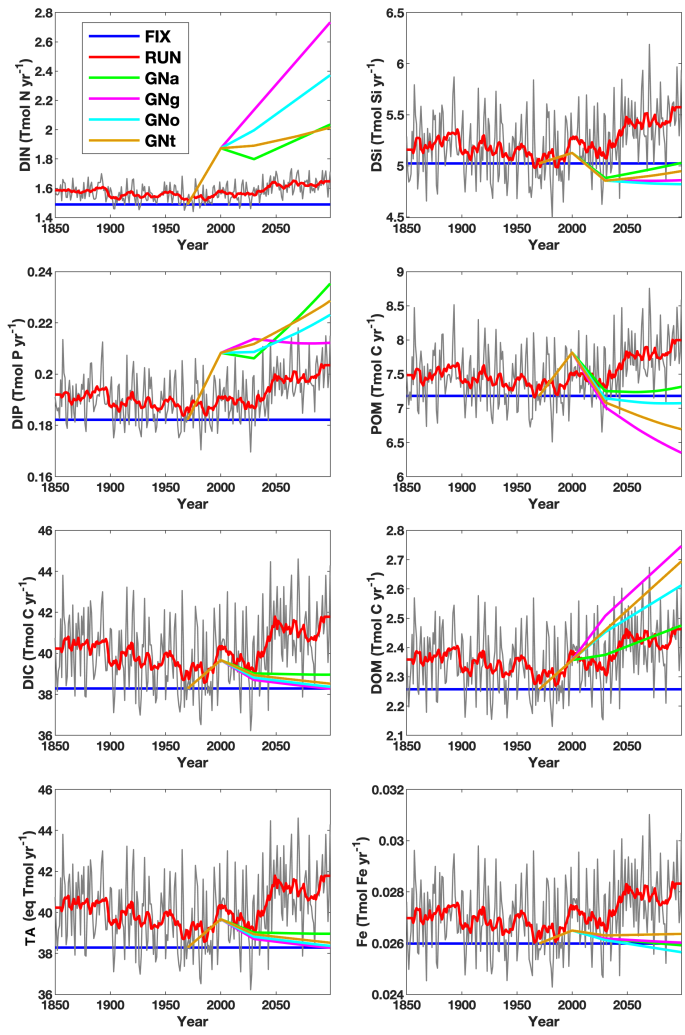
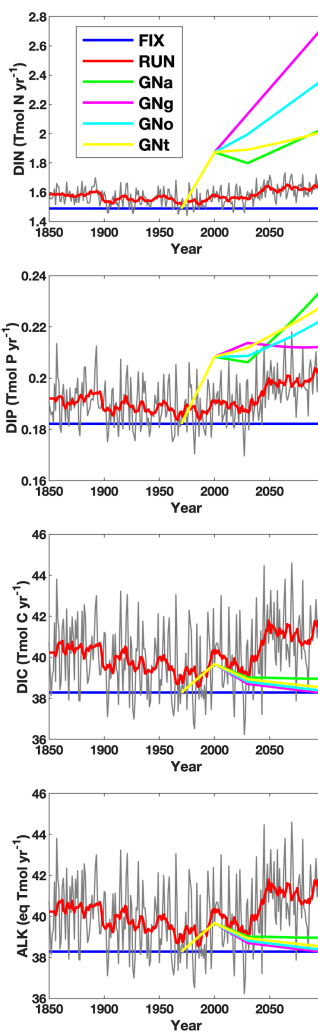


Figure 2: Time series of global riverine fluxes of nutrient and carbon to the ocean according to the configuration of six model experiments (FIX, RUN, GNa, GNg, GNo and GNt). The grey and red curves are the annual and 11-year running mean fluxes, respectively, in RUN. DIN: dissolved inorganic nitrogen; DIP: dissolved inorganic phosphorus; DIC: dissolved inorganic carbon; TA: alkalinity; DSi: dissolved silicon; POM: particulate organic matter; DOM: dissolved organic matter; Fe: dissolved iron.



Deleted:

Formatted Table

Deleted: Figure 2:

Deleted: ALK

Deleted: 30

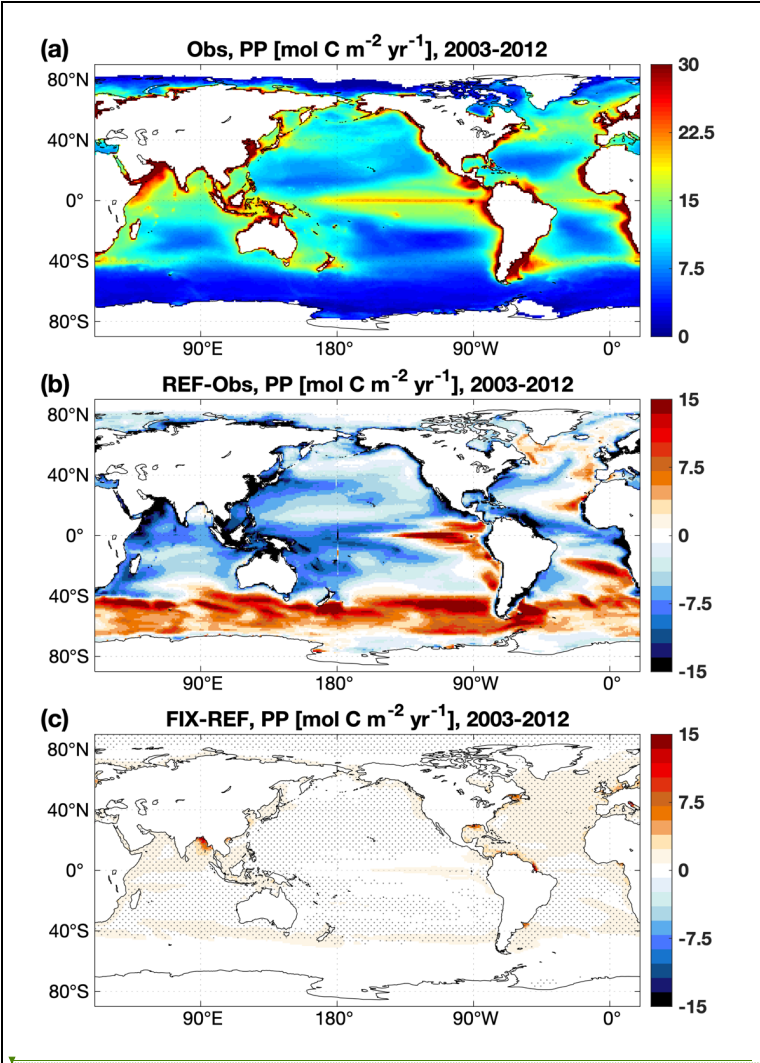
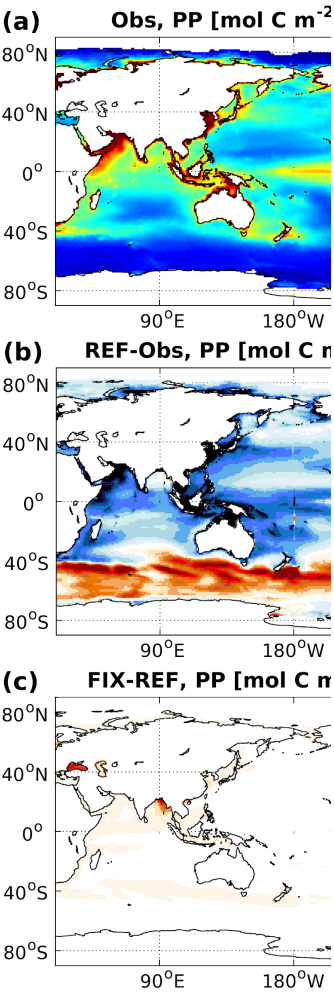


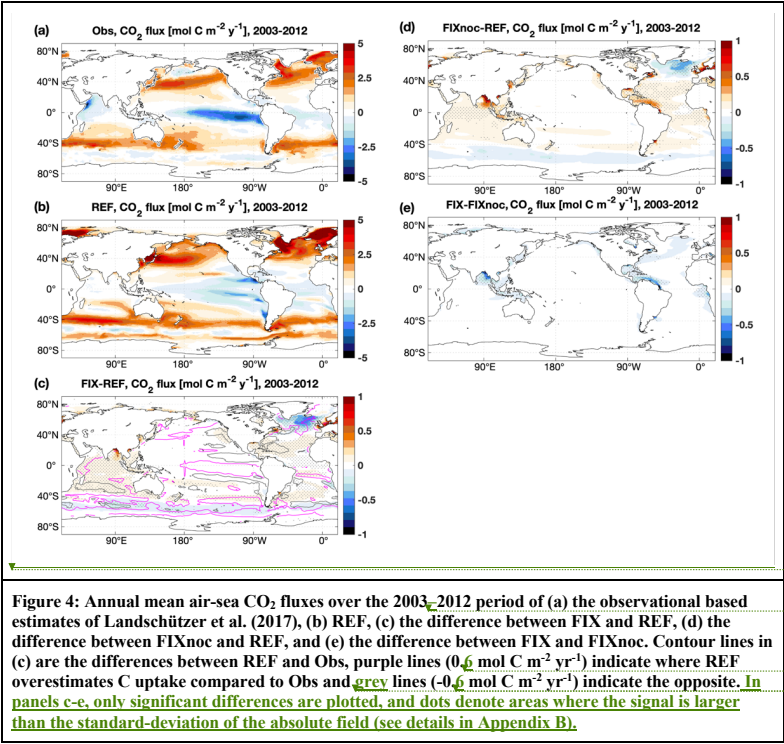
Figure 3: Vertically integrated primary production averaged over the 2003–2012 period of (a) the mean of three satellite-based climatologies derived from MODIS retrievals, (b) the difference between REF and satellite-based estimates, (c) the difference between FIX and REF. In panel c, only significant differences are plotted, and dots denote areas where the signal is larger than the standard-deviation of the absolute field (see details in Appendix B).

Formatted: Header

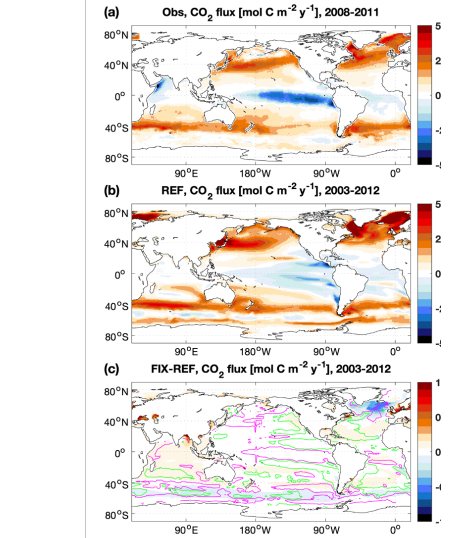


Deleted:
Formatted Table
Deleted: -

Deleted: 31



Formatted: Header



Formatted Table

Deleted: -

Deleted: 5

Deleted: green

Deleted: 5

Deleted: 32

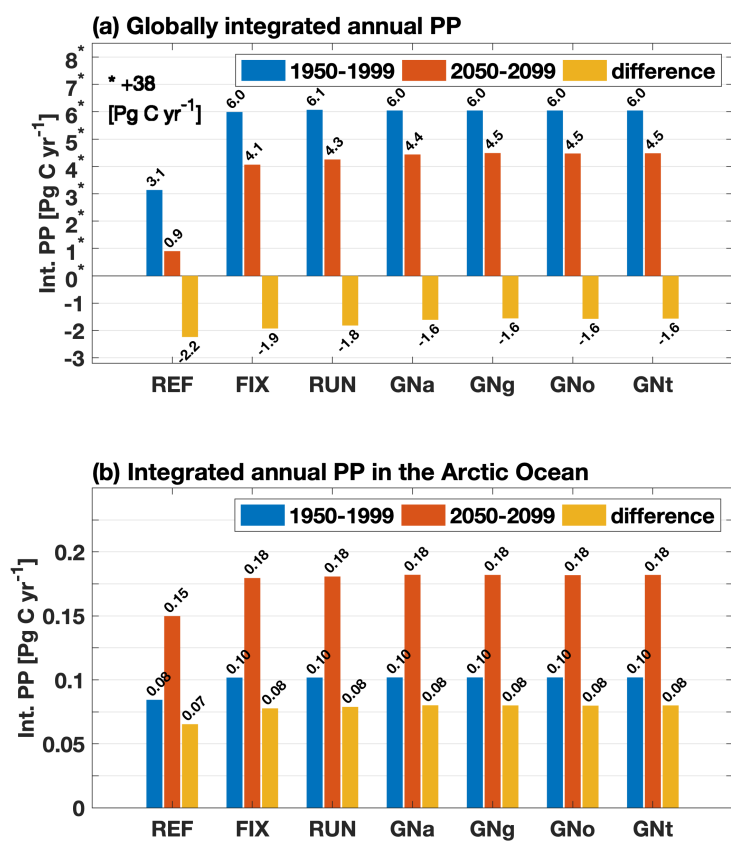
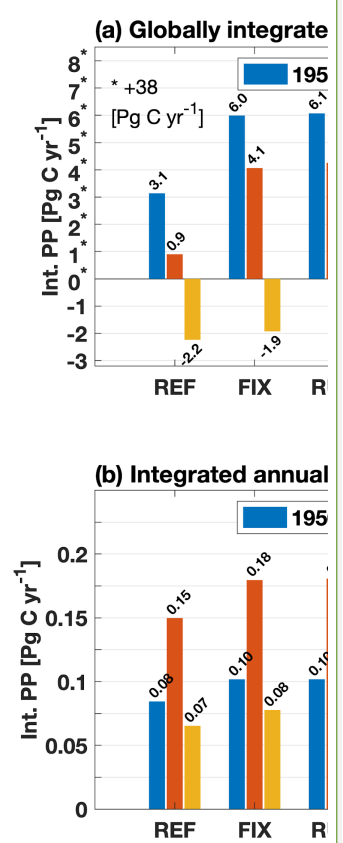


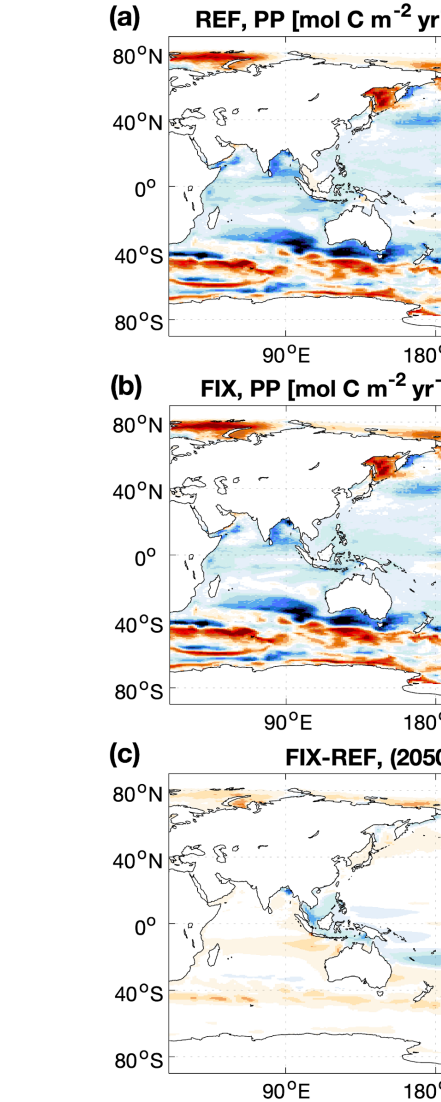
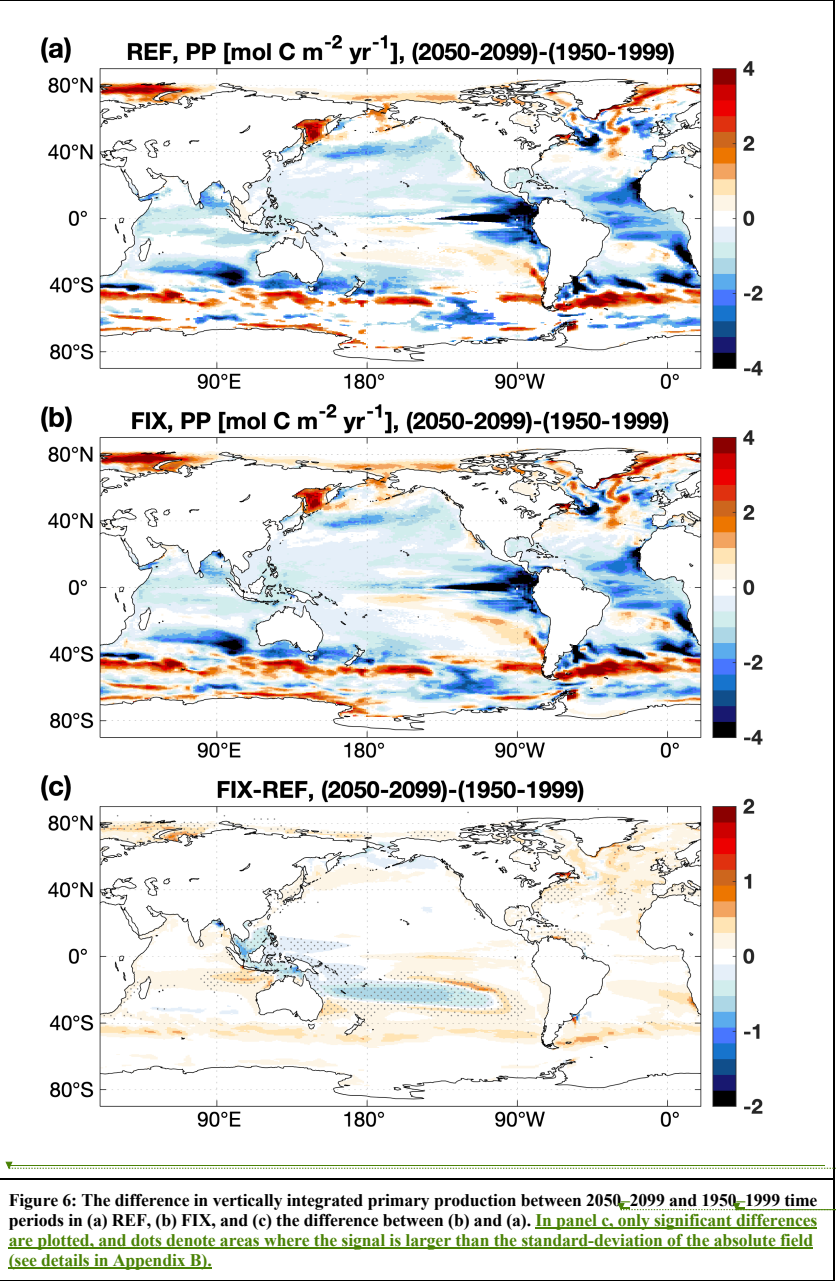
Figure 5: (a) Globally integrated annual mean primary production over 1950-1999 (blue), over 2050-2099 (red) and the differences between these two time periods (yellow) for all experiments; note that the positive numbers in the y axis (marked with stars) are scaled by minus 38 Pg C yr⁻¹ so that the negative numbers are visible; (b) Same as 8a) but for the Arctic Ocean (ocean area north of the Bering Strait on the Pacific side and north of 70°N on the Atlantic side) for the same time periods as in (a).

Formatted: Header



Deleted:
Formatted Table
Deleted: -
Deleted: -

Deleted: 33



Deleted:

Formatted Table

Deleted: ---2099 and 1950-

... [7]

Deleted: 34

1335

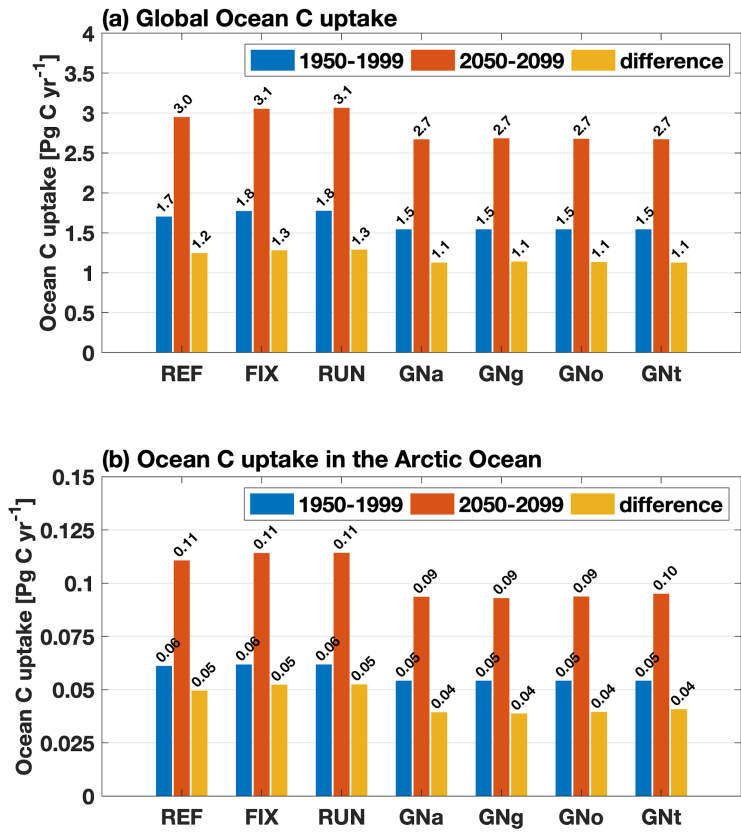


Figure 7: (a) Globally integrated annual mean ocean carbon uptake over 1950-1999 (blue), over 2050-2099 (red) and the differences between these two time periods (yellow) for all experiments; (b) Same as (a) but for the Arctic Ocean (ocean area north of the Bering Strait on the Pacific side and north of 70°N on the Atlantic side) for the same time periods as in (a).

1336
1337
1338
1339
1340

Formatted: Header

Formatted Table

Deleted: -

Deleted: -

Deleted: 35

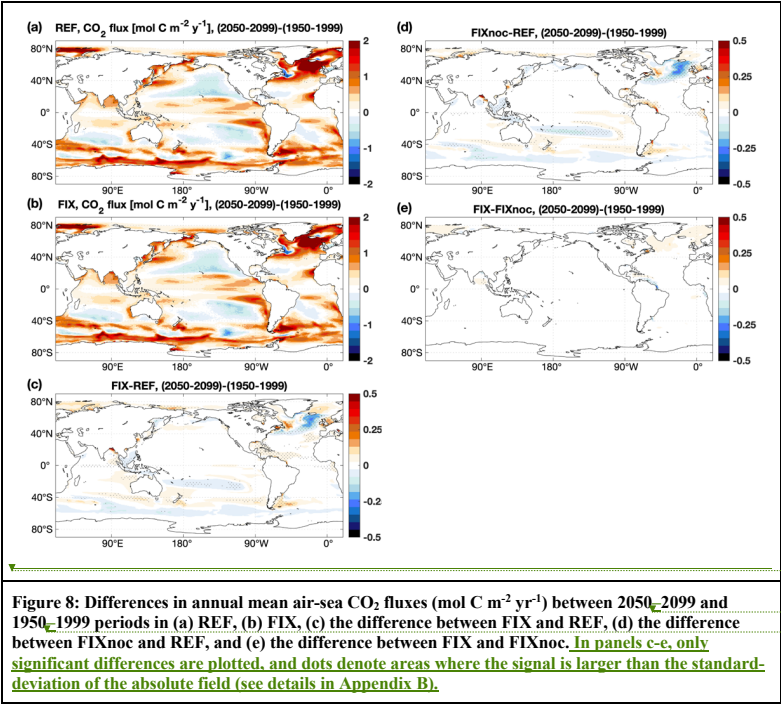
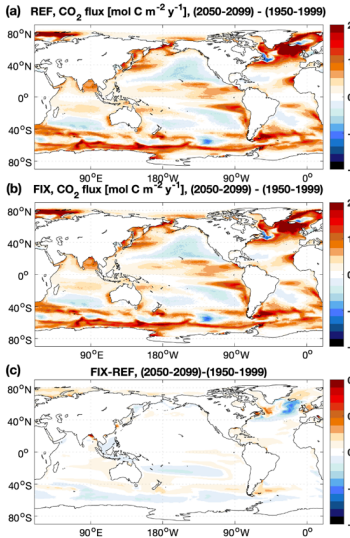


Figure 8: Differences in annual mean air-sea CO₂ fluxes (mol C m⁻² yr⁻¹) between 2050-2099 and 1950-1999 periods in (a) REF, (b) FIX, (c) the difference between FIX and REF, (d) the difference between FIXnoc and REF, and (e) the difference between FIX and FIXnoc. In panels c-e, only significant differences are plotted, and dots denote areas where the signal is larger than the standard deviation of the absolute field (see details in Appendix B).

Formatted: Header



Deleted:

Formatted Table

Deleted: -

Deleted: -

Deleted: 36

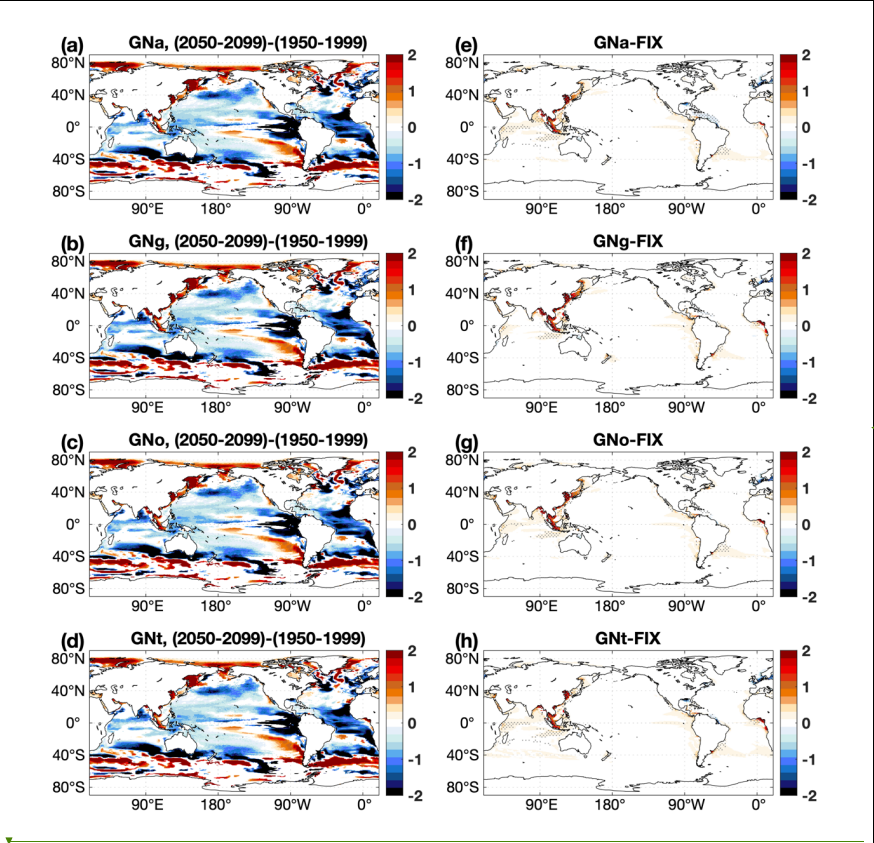
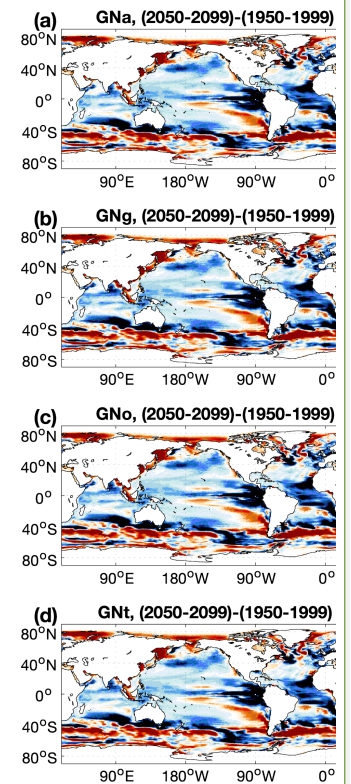


Figure 9: (a-d) Projected changes in vertically integrated primary production ($\text{mol C m}^{-2} \text{yr}^{-1}$) in four GNS experiments between 2050-2099 and 1950-1999 periods; (e-h) The difference in projected changes in vertically integrated primary production ($\text{mol C m}^{-2} \text{yr}^{-1}$) between each GNS experiment and FIX. In panels e-h, only significant differences are plotted, and dots denote areas where the signal is larger than the standard-deviation of the absolute field (see details in Appendix B).

Formatted: Header



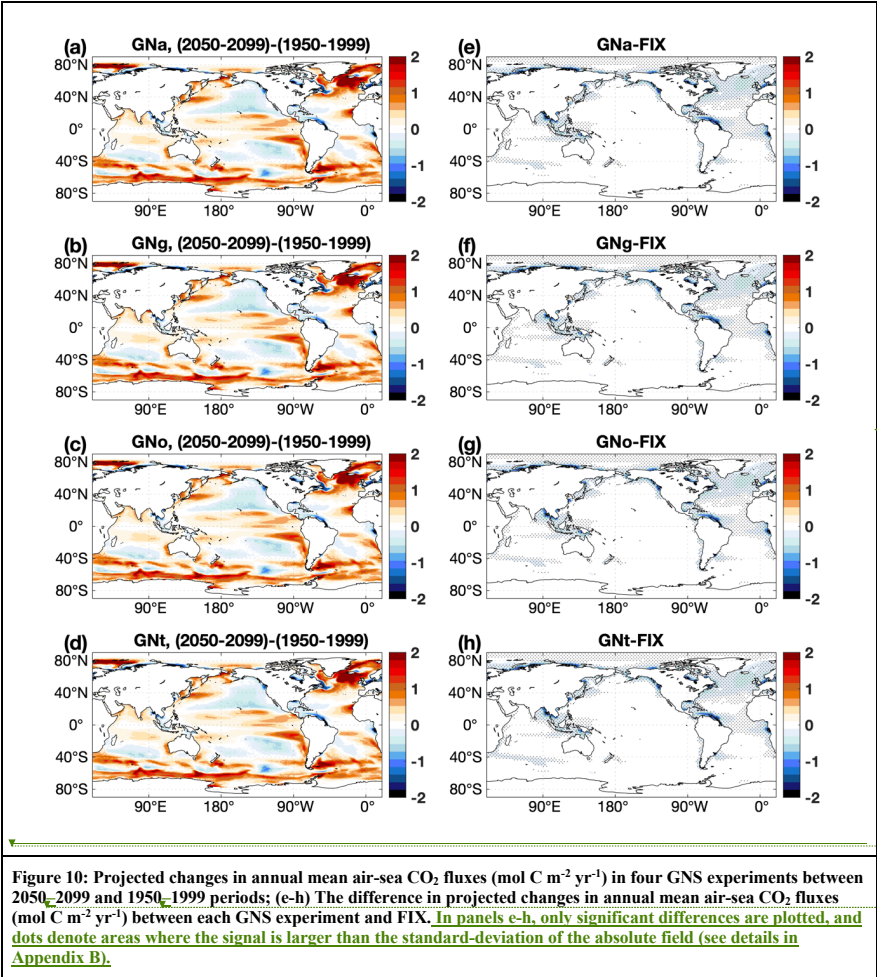
Deleted:

Formatted Table

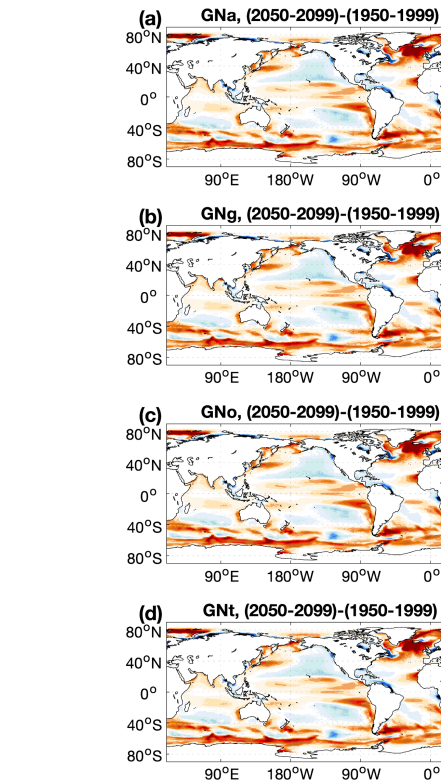
Deleted: -

Deleted: -

Deleted: 37



Formatted: Header



Deleted:

Formatted Table

Deleted: -

Deleted: -

Deleted: 38

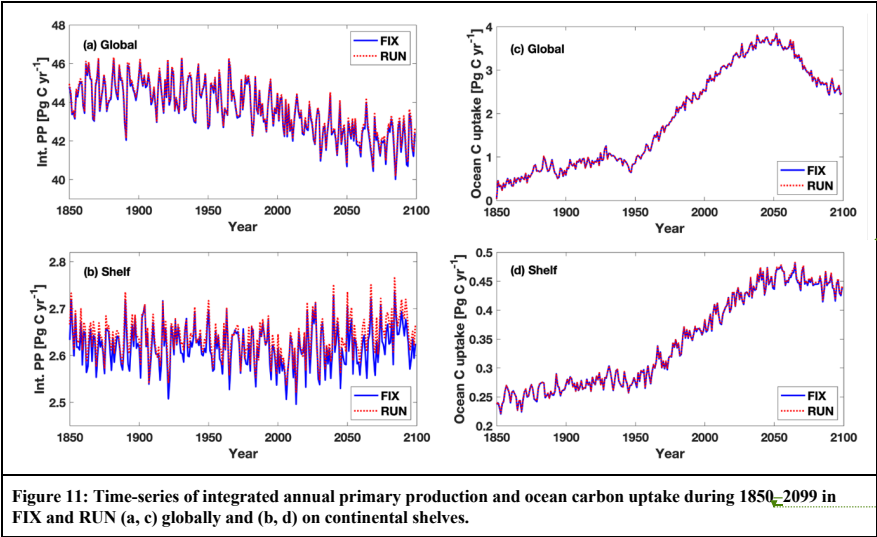


Figure 11: Time-series of integrated annual primary production and ocean carbon uptake during 1850-2099 in FIX and RUN (a, c) globally and (b, d) on continental shelves.

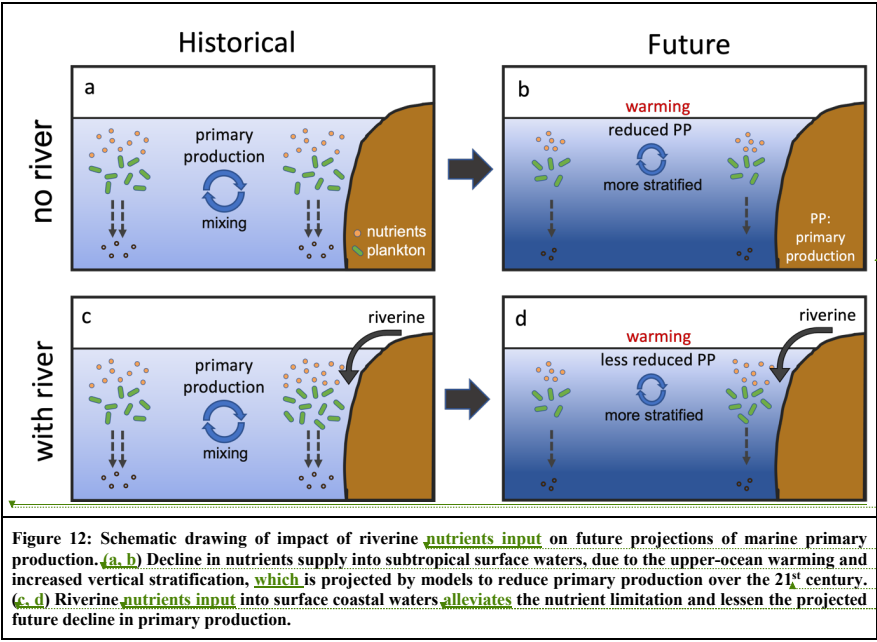
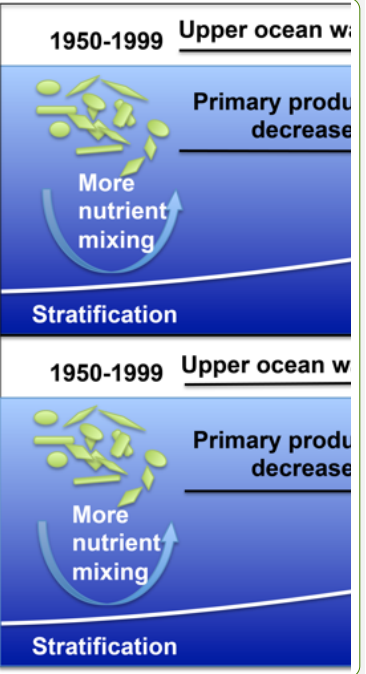


Figure 12: Schematic drawing of impact of riverine nutrients input on future projections of marine primary production. (a, b) Decline in nutrients supply into subtropical surface waters, due to the upper-ocean warming and increased vertical stratification, which is projected by models to reduce primary production over the 21st century. (c, d) Riverine nutrients input into surface coastal waters alleviates the nutrient limitation and lessen the projected future decline in primary production.

Formatted: Header

Formatted Table

Deleted: -



Deleted:

Formatted Table

Deleted: nutrient inputs

Deleted: Adapted from Aditi Modi (2014) (<http://www.climate.rocksea.org/people/aditi-modi/>). (a

Formatted: Superscript

Deleted: b

Deleted: nutrient inputs

Deleted: alleviate

Deleted: 39

|

1366
1367

Table 1. Brief introduction to future scenarios for river nutrient export used in Global NEWS 2 (Seitzinger et al., 2010)

Scenario	Agricultural trends	Sewage
<u>Adapting Mosaic (GNa)</u> a world with a focus on regional and local socio-ecological management	-medium productivity increase -2% of cropland area for energy crops -fertilizer efficiency: moderate increase in N and P fertilizer use in all countries; better integration of animal manure and recycling of human N and P from households with improved sanitation but lacking a sewage connection	-constant fraction of population with access to sanitation and sewage connection -moderate increase in N and P removal by wastewater treatment
<u>Global Orchestration (GNg)</u> a globalized world with an economic development focus and rapid economic growth	-high productivity increase -4% of cropland area for energy crops -fertilizer efficiency: no change in countries with a soil nutrient surplus; rapid increase in N and P fertilizer use in countries with soil nutrient depletion	-towards full access to improved sanitation and sewage connection -rapid increase in N and P removal by wastewater treatment
<u>Order from Strength (GNo)</u> a regionalized world with a focus on security	-low productivity increase -1% of cropland area for energy crops -fertilizer efficiency: no change in countries with a soil nutrient surplus; moderate increase in N and P fertilizer use in countries with soil nutrient depletion	-same as GNa
<u>Technogarden (GNt)</u> a globalized world with a focus on environmental technology	-medium-high productivity increase -28% of cropland area for energy crops -fertilizer efficiency: rapid increase in N and P fertilizer use in countries with a soil nutrient surplus; rapid increase in countries with soil nutrient depletion	-same as GNg

1368

Formatted: Header

Formatted: Font: 9 pt

Formatted: Normal, Border: Between : (Single solid line, Auto, 0,5 pt Line width, From text: 1 pt Border spacing:)

Deleted: 40

|

Page 10: [1] Deleted	Authors	15/09/2022 21:55:00
----------------------	---------	---------------------

Page 10: [1] Deleted	Authors	15/09/2022 21:55:00
----------------------	---------	---------------------

Page 10: [1] Deleted	Authors	15/09/2022 21:55:00
----------------------	---------	---------------------

Page 10: [1] Deleted	Authors	15/09/2022 21:55:00
----------------------	---------	---------------------

Page 10: [1] Deleted	Authors	15/09/2022 21:55:00
----------------------	---------	---------------------

Page 10: [1] Deleted	Authors	15/09/2022 21:55:00
----------------------	---------	---------------------

Page 10: [1] Deleted	Authors	15/09/2022 21:55:00
----------------------	---------	---------------------

Page 10: [1] Deleted	Authors	15/09/2022 21:55:00
----------------------	---------	---------------------

Page 10: [1] Deleted	Authors	15/09/2022 21:55:00
----------------------	---------	---------------------

Page 10: [2] Deleted	Authors	15/09/2022 21:55:00
----------------------	---------	---------------------

Page 10: [2] Deleted	Authors	15/09/2022 21:55:00
----------------------	---------	---------------------

Page 10: [2] Deleted	Authors	15/09/2022 21:55:00
----------------------	---------	---------------------

Page 10: [3] Deleted	Authors	15/09/2022 21:55:00
----------------------	---------	---------------------

Page 10: [3] Deleted	Authors	15/09/2022 21:55:00
----------------------	---------	---------------------

Page 10: [4] Formatted	Authors	15/09/2022 21:55:00
------------------------	---------	---------------------

Font colour: Text 1

Page 10: [4] Formatted	Authors	15/09/2022 21:55:00
------------------------	---------	---------------------

Font colour: Text 1

Page 10: [5] Deleted	Authors	15/09/2022 21:55:00
----------------------	---------	---------------------

Page 10: [5] Deleted	Authors	15/09/2022 21:55:00
----------------------	---------	---------------------

Page 10: [6] Deleted Authors 15/09/2022 21:55:00

▼

Page 10: [6] Deleted Authors 15/09/2022 21:55:00

▼

Page 10: [6] Deleted Authors 15/09/2022 21:55:00

▼

Page 34: [7] Deleted Authors 15/09/2022 21:55:00

▼

Page 34: [7] Deleted Authors 15/09/2022 21:55:00

▼