

# Geodiversity influences limnological conditions and freshwater ostracode species distributions across broad spatial scales in the northern Neotropics

5 Laura Macario-González<sup>1,2</sup>, Sergio Cohuo<sup>2,3</sup>, Philipp Hoelzmann<sup>4</sup>, Liseth Pérez<sup>2</sup>, Manuel Elías-Gutiérrez<sup>5</sup>, Margarita Caballero<sup>6</sup>, Alexis Oliva<sup>7</sup>, Margarita Palmieri<sup>8</sup>, María Renée Álvarez<sup>8</sup> and Antje Schwab<sup>2</sup>

<sup>1</sup>Tecnológico Nacional de México/I. T. de la Zona Maya. Carretera Chetumal-Escárcega km 21.5, ejido Juan Sarabia, 77965 Quintana Roo, México.

10 <sup>2</sup>Institut für Geosysteme und Bioindikation, Technische Universität Braunschweig, Langer Kamp 19c, 38106 Braunschweig, Germany.

<sup>3</sup>Tecnológico Nacional de México/I. T. de Chetumal. Av. Insurgentes 330, Chetumal, 77013 Quintana Roo, México.

<sup>4</sup>Institut für Geographische Wissenschaften, Freie Universität Berlin, Malteserstrasse 74-100, 12249 Berlin, Germany.

<sup>5</sup>El Colegio de la Frontera Sur (ECOSUR), Unidad Chetumal, Av. Centenario km 5.5, Chetumal, 77014 Quintana Roo, México.

15 <sup>6</sup>Instituto de Geofísica, Universidad Nacional Autónoma de México, Ciudad Universitaria, 04510 Ciudad de México, México

<sup>7</sup>Asociación de municipios del lago de Yojoa y su Área de influencia (Amuprolago), Aldea Monte Verde, Santa Cruz de Yojoa, Cortés, 21000 Honduras.

<sup>8</sup>Departamento de Biología. Universidad del Valle de Guatemala, 01015 Guatemala, Guatemala.

20 *Correspondence to:* Sergio Cohuo (sergio.cd@chetumal.tecnm.mx)

Abstract. Geodiversity is recognized as one of the most important drivers of ecosystem characteristics and biodiversity globally. However, in the northern Neotropics, the contribution of highly diverse landscapes, [environmental conditions](#), and geological history in structuring large-scale patterns of aquatic environments and aquatic species associations remains poorly understood. We evaluated the relationships among geodiversity, limnological conditions and freshwater ostracodes from  
25 southern Mexico to Nicaragua. Cluster analysis, based on geological, [geochemical, mineralogical and](#) water-column physical and chemical characteristics of 76 aquatic ecosystems (karst, volcanic, tectonic) revealed two main limnological regions: (1) karst plateaus of the Yucatán Peninsula and northern Guatemala, and (2) volcanic terrains of the Guatemalan highlands, mid-elevation sites in El Salvador and Honduras, and the Nicaraguan lowlands. In addition, seven subregions were recognized, demonstrating a high heterogeneity of aquatic environments. Principal Component Analysis identified water chemistry (ionic composition) and mineralogy as most influential for aquatic ecosystem classification. Multi-parametric analyses, based on  
30 biological data, revealed that ostracode species associations represent disjunct faunas. Five species associations, distributed according to limnological regions, were recognized. Structural equation modelling (SEM) revealed that geodiversity explains limnological [patterns](#) of the study area. Limnology further explained species composition, but not species richness. The influence of conductivity and elevation were individually evaluated in SEM and were statistically significant for ostracode  
35 species composition, though not for species richness. We conclude that geodiversity has a central influence on the limnological [conditions](#) of aquatic systems, which, in turn, influence ostracode species composition in lakes of the northern Neotropical region.

## 1 Introduction

40 Geodiversity is defined as the natural variety of geological (bedrock), geomorphological (elevation), soil features and assemblages (mineralogy, sedimentology), fossils and hydrological features of a landscape (Gray, 2004; 2019; Schrodt et al., 2018). Geodiversity influences aspects of regional or local climate, and (Vartanyan, 2006a; Hu et al., 2020) by interacting with the biosphere and the atmosphere, can also contribute, through sediment delivery, to the input of nutrients into ecosystems, and determine the chemical composition of environments (Vartanyan, 2006b; Bravo-Cuevas et al., 2021). [Geodiversity of a given region can be evaluated from different perspectives by using selected indicators such as elevation or a broad range of measured elements \(Gray, 2018; Zarnetske et al., 2019; Bravo-Cuevas et al., 2021; de Paula et al., 2021\).](#)

45 Biological diversity, defined as the variety of life forms in a place on Earth (Huston, 1995), is strongly related to geodiversity, as species are and have been in the geological time distributed in response to landscape features (Mittelbach et al., 2007; Etienne and Apol, 2009; Smith et al., 2010; Bryson et al., 2013; Gillespie and Roderick, 2014; Steinbauer et al., 2016). Linkages between biological diversity and geodiversity [are complex and usually difficult to track, as geodiversity patterns, and ecological processes may be discernible only at a certain geographical extent, from landscapes to territories \(Zarnetske et al., 2019; Alahuhta et al., 2020; Ren et al., 2021\).](#) [Understanding causal relationships between geodiversity parameters and biodiversity patterns](#) is [currently a](#) priority and a hot topic globally because of their relevance for conservation (bio- and geoconservation; Crofts, 2019), ecosystem management (Bravo-Cuevas et. Al., 2021), and prediction of ecosystem responses to future climate scenarios (Martiny et al., 2006; Hulsey et al., 2010; Jiménez-Alfaro et al., 2018).

55 In areas with highly dynamic and complex biological systems, such as tropical regions (Rull, 2011; Antonelli et al., 2018; Matzke-Karasz et al., 2019; Moguel et al., 2021), it is difficult to discern the [spatial and temporal contribution](#) of [either](#) individual or joint [geodiversity](#)-related factors [that have](#) shaped the regional species pool (Rossetti and Toledo, 2016).

The northern Neotropical region extends from central-southern Mexico to Central America and includes the Caribbean. It is characterized by a dynamic geological history, caused by the interplay of the North American, Cocos and Caribbean tectonic plates (Molnar and Sykes, 1969; Marshall, 2007). The region is characterized by broad ranges of elevation and soil types, displays frequent volcanic and seismic activity, and has been subjected to repeated marine regressions and transgressions (Brezonik and Fox, 1974; Horn and Haberyan, 1993; Umaña et al., 1999; Haberyan et al., 2003; Obrist-Farner et al., 2021).

60 Numerous studies have attempted to elucidate the [indirect](#) relationship between geodiversity and biological diversity and identify the factors that account for the current biogeographic patterns in the northern Neotropics (Wallace, 1853; Patton et al., 1994; Gillespie and Roderick, 2014). Most evidence from terrestrial taxa suggests *in situ* diversification, resulting from repeated colonization events by North and South American taxa, before and after the closure of the Isthmus of Panama, estimated to have occurred between 15 and 4 Mya (Bacon et al., 2015; Montes et al., 2015). Molecular evidence suggests that extant Mesoamerican terrestrial taxa (i.e., angiosperms, ferns, birds, reptiles and mammals) originated primarily in the Amazon Basin, with ancestors arriving by dispersal during the last 10 Mya (Antonelli et al., 2018).

70 These large-scale species movements between the American continents were mainly associated with large-amplitude Pleistocene climate fluctuations such as glacial and interglacial cycles and episodes of shorter, centennial to millennial fluctuations, such as Late Glacial Heinrich and Dansgaard-Oeschger stadials (Behling et al., 2000; Carnaval and Moritz, 2008; Bouimetarhan et al., 2018; Baker et al., 2001, 2020).

In aquatic environments of the northern Neotropics, relationships between geodiversity and biological diversity are less well  
75 known than those that operate in terrestrial environments. The limnological conditions of a region, defined as the set of physical, chemical, and biological components of inland waters, and its interactions with terrestrial, atmospheric, anthropogenic, and geological elements (Last, 2002; Azim, 2009; McCullough et al., 2021), are key to understand such relationships. Limnological conditions represent the interface between geodiversity and biological diversity in aquatic environments and are generally accepted as a fundamental driver of the diversification and distribution of aquatic species  
80 (Matamoros et al., 2015).

During the last 50 years, anthropogenic influences on limnological conditions of aquatic environments have altered biological diversity and species distributions because of the modification of natural conditions (Albert and Reis, 2011; Wehrtmann et al., 2016; Franco-Gaviria et al., 2018). Currently, most aquatic environments in the northern Neotropics are used as potable water sources and for agriculture; in large lakes, fishing and aquaculture have caused eutrophication and introduced invasive species  
85 (e.g., *Oreochromis niloticus*). In addition, some lakes located close to urban centers and farmlands are used as disposal sites for waste waters, agrochemicals, and mine residues (McKaye et al., 1995; Soto et al., 2020). The high heterogeneity of geodiversity in the northern Neotropics, and the poor knowledge of the limnological conditions of aquatic ecosystems in the region make it difficult to: (1) understand the complex relations among geodiversity, water-column physico-chemical variables and biological characteristics (community composition and species richness) and (2) distinguish different limnological regions  
90 and determine their geographic coverage.

Freshwater ostracodes are a well-suited group to evaluate past and present drivers of species distribution in the northern Neotropics. Ostracodes are bivalved microcrustaceans that are abundant, diverse, and widely distributed in aquatic ecosystems (Pérez et al., 2011b, 2013a; Cohuo et al., 2016, 2020; Macario-González et al., 2018; Echeverría-Galindo et al., 2019). This  
95 taxonomic group shows levels of endemism (restricted distribution) as high as 74%, sometimes confined to a single lake, or found in surface waters throughout the region (Cohuo et al., 2016). In sediment sequences from lakes of the northern Neotropics, ostracode remains are abundant, particularly in late Pleistocene deposits (Pérez et al., 2011b, 2013a; Cohuo et al., 2020). The greatest limitation for using freshwater ostracodes to identify drivers of species distribution in the northern Neotropics is the scarcity of integrated and comparable regional studies, for which detailed spatial and temporal limnological  
100 and biological data were collected.

In this study using a set of selected geodiversity variables (geology, mineralogy), measured limnological conditions (water physical and chemical variables) and biological data of freshwater ostracods from southeast Mexico to Nicaragua, we aim to

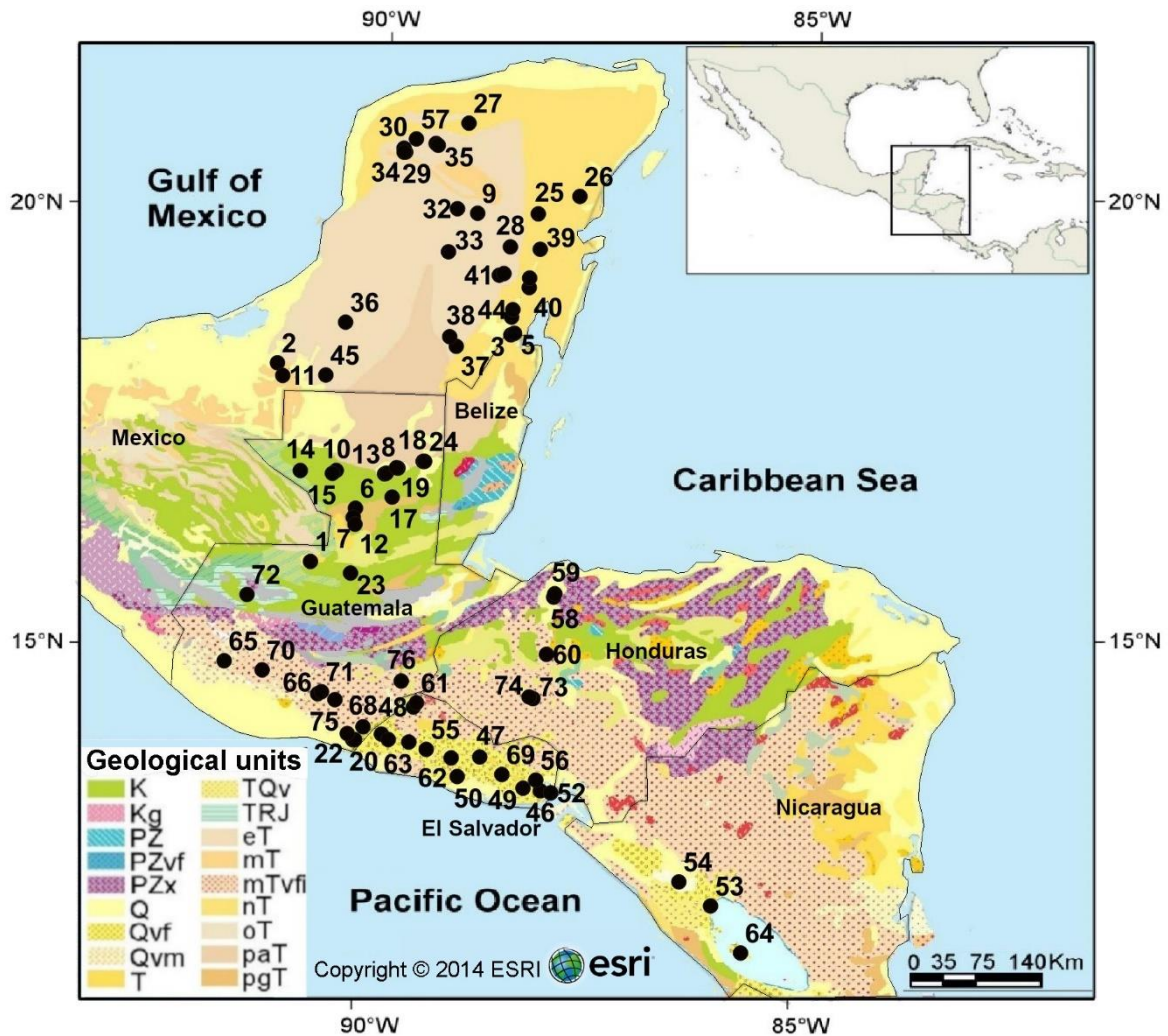
answer two main questions: (1) To what extent does geodiversity control limnological variables and thus define limnological regions?; (2) how do geodiversity and limnological conditions influence biological richness and diversity of ostracode species?

105

## 2. Materials and Methods

### 2.1. Study area

Our study area covers the northernmost Neotropics, ranging from southern Mexico (Yucatán Peninsula) to Nicaragua (Fig. 1). This region is considered a biodiversity hotspot (Mesoamerican hotspot; Myers et al., 2000), with more than 5000 endemic vascular plants (De Albuquerque et al., 2015), and about 1120 bird (~200 endemic), 440 mammal (65 endemic), 690 reptile (~240 endemic), 550 amphibians (~350 endemic), and 500 fish species (~350 endemic) (CEPF, 2021). Species from North and South America converge in this region (Myers et al., 2000; Ojeda et al., 2003; DeClerck et al., 2010; Rull, 2011). The orography is highly irregular, and elevations range from sea level to more than 4500 m a.s.l. (Molnar and Sykes, 1969; Marshall et al., 2003, 2007). Plate tectonic interactions are responsible for active volcanism along the Central American Volcanic Arc and high seismic activity (Marshall et al., 2003, 2007). The climate is typically tropical (Köppen-type group A-climate “tropical/megathermal climate”, Peel et al., 2007) and predominantly warm at low elevations (26°C mean annual temperature) (Waliser et al., 1999). Because of the irregular orography, at least a dozen climate sub-zones are distinguished (Taylor and Alfaro, 2005). Mean annual precipitation in the study area ranges from <500 to >3000 mm and is highly seasonal, governed by the seasonal migration of the Intertropical Convergence Zone (ITCZ). The northern position of the ITCZ during summer results in the so called “rainy season,” during which precipitation increases from ~240 mm in April to more than 1600 mm in September-October (Hastenrath, 1967; Magaña et al., 1999). The hurricane season extends from July to December and is an important contributor to the humidity budget because on average, 300 mm day<sup>-1</sup> of rain falls during tropical storms and hurricanes (Jury, 2011). The region is rich in aquatic systems that are of different origins, shapes, and hydrological dynamics, as well as water chemistry and sediment composition. The karst Yucatán Peninsula, for example, with about 8000 *cenotes* (sinkholes), many lakes, and both surface and subterranean rivers, is considered a unique hydrological region (Schmitter-Soto et al., 2002a, Alcocer and Bernal-Brooks, 2010). In Central America, lakes and wetlands cover more than 8% of the total land area (Ellison, 2004). Most important aquatic ecosystems in the northern Neotropics include coastal, tectonic and volcanic lakes, such as crater lakes and maars, karst waterbodies including lakes, *cenotes* and *aguadas* (water accumulated in topographic depressions under canopy cover), flooded caves, subterranean rivers, and both permanent and ephemeral ponds (Brezonik and Fox 1974; Pérez et al., 2011a; Delgado-Martínez et al., 2018; Echeverría-Galindo et al. 2019; Obrist-Farner and Rice, 2019).



135 Figure 1: Simplified geological map of the northern Neotropical region showing the locations of the 76 studied aquatic ecosystems. Colors indicate geological units based on bedrock type and age of the sediments. Geological data were obtained from Garrity and Soller (2009). Black dots and numbers represent sampling localities. Detailed information on sampling sites can be found in Table S1. Legend: K\_ Cretaceous sedimentary rocks; Kg\_ Cretaceous Plutonic rocks; PZ, PZvf, PZx\_ Paleozoic sedimentary rocks; Q\_ Quaternary sedimentary rocks; Qvf, Qvm, TQv\_ Quaternary volcanic rocks; T\_ Tertiary sedimentary rocks of undetermined age; TRJ\_ Jurassic sedimentary rocks; eT\_ Eocene sedimentary rocks; mT\_ Miocene sedimentary rocks; mTvfi\_ Miocene volcanic rocks; nT\_ Eocene sedimentary rocks; oT\_ Oligocene sedimentary rocks; paT, pgT\_ Paleocene sedimentary rocks.

140

## 2.2. Sampling aquatic environments in the northern Neotropics

A total of 76 aquatic ecosystems located in five countries across the northern Neotropical region (Fig. 1) were sampled during July-October 2013, coinciding with the rainy season in the region. These systems are situated on the Yucatán Peninsula, Mexico (n=28), Guatemala (n=26), El Salvador (n=14), Honduras (n=5) and Nicaragua (n=3) (Fig. 1). For all water bodies,

145 limnological conditions such as temperature, dissolved oxygen, pH, conductivity were measured *in situ* with a WTW Multi Set 350i multi-parameter probe at a water depth of 0.5 m. Maximum water depth at each site was measured with an echosounder Fishfinder GPSMAP 178C. Location of sites, including elevation, latitude, and longitude, was determined with a navigator Garmin GPSmap 60c.

Water samples for analysis of major anions ( $\text{Cl}^-$ ,  $\text{SO}_4^{2-}$ ,  $\text{CO}_3^{2-}$ ,  $\text{HCO}_3^-$ ) and cations ( $\text{Ca}^{2+}$ ,  $\text{K}^+$ ,  $\text{Mg}^{2+}$ ,  $\text{Na}^+$ ) were collected at 150 water depths of 0.5 m below surface using a Ruttner-type water sampling bottle. All water samples were filtered *in situ* using a 0.45- $\mu\text{m}$  pore size Whatman glass microfiber filter. For cation analysis, filtered samples were acidified with  $\text{HNO}_3$  to pH 2. Waters were stored under refrigeration until analysis.

Biological samples were collected from the littoral zone and deepest area of the profundal zone. In most lakes, we collected five samples in the littoral areas, using a 250- $\mu\text{m}$ -mesh hand net and five surface sediment samples collected from the littoral 155 to the deepest area with an Ekman grab. Collection sites were distributed at regularly spaced intervals across the systems and were mostly characterized by submersed vegetation. For sediment samples, to ensure we collect only extant specimens, we only analyzed the uppermost 3 cm of each grab. In six large lakes, approximate to or exceeding an area of  $100\text{km}^2$ , such as Atilán, Amatitlán (Guatemala), Coatepeque, Ilopango (El Salvador), Nicaragua, and Masaya (Nicaragua), seven water and seven sediment samples were taken.

160

### **2.3 Environmental variables: water chemistry, sediment geochemistry, mineralogy, and geology**

Water chemistry analysis: Ionic composition was analyzed following Armienta et al. (2008). Bicarbonate was measured by acid titration to pH 4.6, using a mixed indicator of methyl red and bromocresol green. Concentrations of calcium and magnesium were obtained by complexometric titration with EDTA, whereas sodium and potassium were measured by atomic 165 emission spectroscopy. Chloride was potentiometrically determined using an ion selective electrode, adding a 5 M solution of  $\text{NaNO}_3$  as an ionic strength adjuster. Sulfate was determined by turbidimetry. Analytical quality was checked by ionic charge balance and most samples were balanced, with  $< 5\%$  error. Major ions concentrations were expressed in  $\text{mg L}^{-1}$ , but the data were transformed to  $\text{meq L}^{-1}$  and percentages to determine anion and cation dominance and water type and test the charge balance. Sodium and potassium were summed. Ternary plots were constructed using the PAST 4.03 software (Hammer et al., 170 2001).

Geochemical analysis: Total carbon (TC) and total nitrogen (TN) contents in sediments were determined by combustion under oxygen saturation with a LECO TruSpec Macro CHN analyzer. Total inorganic carbon (TIC) was quantified with a Woesthoff Carmhograph C-16 after dissolution with phosphoric acid (45%  $\text{H}_3\text{PO}_4$ ) and detection of the  $\text{CO}_2$ -induced conductivity change in NaOH. Total organic carbon (TOC) was calculated by subtracting TIC from TC.

175 Mineralogical analysis: Qualitative and semi-quantitative mineralogical compounds in sediments were examined by x-ray diffraction with a RIGAKU Miniflex600. For the identification and semi-quantification of the minerogenic components, the software Philips Highscore was used. All sediment analyses used are described in detail in Vogel et al. (2016).

Geological analysis: The geological map of North and Central America generated by the Geological Society of America (GSA) (Reed et al., 2005) and adapted and converted to a geographic information system (GIS) by Garrity and Soller (2009), was used to identify geological regions in our study area. ArcGIS software was used to identify geological attributes of sampling sites such as bedrock type and age of sediments. Three major types of bedrock were distinguished: sedimentary, volcanic and plutonic rocks. Ten geologic periods and epochs, respectively, were defined: Jurassic, Cretaceous, Tertiary of undetermined age, Paleogene of undetermined age, Paleocene, Eocene, Oligocene, Neogene of undetermined age, Miocene, and Quaternary.

#### 2.4 Limnological regionalization using cluster analysis and PCA

The final data set included 23 variables, of which 21 were numerical and the remaining two were categorical (Table S1). Numerical variables included elevation, water physical and chemical properties (temperature, dissolved oxygen, pH, conductivity,  $\text{CO}_3^{2-}$ ,  $\text{HCO}_3^-$ ,  $\text{SO}_4^{2-}$ ,  $\text{Cl}^-$ ,  $\text{Na}^+$ ,  $\text{K}^+$ ,  $\text{Ca}^{2+}$  and  $\text{Mg}^{2+}$ ), sediment geochemistry (total carbon (TC), total inorganic carbon (TIC), total organic carbon (TOC), total nitrogen (TN)) and mineralogy (quartz, carbonate, phyllosilicates, and feldspars). Categorical data were geological properties represented by bedrock type and age of sediments.

Prior to statistical analysis, numerical data were log-transformed, except for pH, which is already a log-transformed value, to achieve an approximate normal distribution of variables. Normality was verified for all variables using the Shapiro-Wilk test. Missing data represented < 8% of the data set and were substituted with the mean value of the respective variable (Jakobsen et al., 2017).

We performed a cluster analysis (CA) to define groups of lakes based on the similarity of their measured attributes. For this analysis, we included all numerical variables. We used the unweighted pair group method with arithmetic mean (UPGMA) for the CA, and Euclidean distance to investigate the grouping similarity of sampling points. Calculations were conducted in R software (R Development Core Team, 2015), using the Vegan package (Oksanen et al., 2017).

We then used a Principal Component Analysis (PCA) for each of the main groups discriminated by the cluster, to identify correlated and explanatory variables of the data sets. For each group, the first PCA run included all 23 variables measured (numerical and categorical) and those represented by superimposed arrows in the graphs were considered correlated and excluded from further statistical analysis. A second PCA run, using uncorrelated variables, was used to identify explanatory variables of the data sets. The PCAmixdata package implemented in R software (Chavent et al., 2014) was used because of its ability to handle quantitative and categorical data simultaneously. The loading values for all parameters were obtained using normalized rotation.

To provide a graphical representation of the most meaningful variables of the data sets detected in the PCA, we created an environmental variable-specific map using kriging interpolation. Resulting maps represent measured data and estimates from unmeasured locations. The software Surfer® from Golden Software, LLC ([www.goldensoftware.com](http://www.goldensoftware.com)) was used for calculations.

#### 2.5. Biological analysis: ostracode abundances, identification, and statistics

Ostracode extraction and counting were carried out using 15 cm<sup>3</sup> of wet sediment. Specimens were picked using a Leica MZ75 stereomicroscope and sorted according to external morphology. Only adult specimens, represented by single valves, empty carapaces or complete organisms (carapace and soft body) were counted. For morphotypes identification to species level, at least three individual adult specimens with complete soft parts were dissected. Identification using more than a single organism is appropriate in ostracodes, given morphological plasticity and mutations that can modify morphology in single specimens. Individuals were dissected using distilled water and glycerin (3%) under a stereomicroscope. Selected shells from identified species were photographed with a Zeiss Axio Imager 2 microscope. Shells were stored in micropaleontology slides. Dissected soft parts were mounted on individual slides with Hydromatrix®. Species-level identification was conducted using species keys provided by Karanovic (2012). Taxonomic classification follows Cohuo et al. (2016). Undissected material was preserved in Eppendorf plastic vials with 70% ethanol and is currently available at the ostracod collection of the Instituto Tecnológico de Chetumal, Mexico. Shannon diversity index, used for species diversity metrics, was calculated with PAST 4.03 software (Hammer et al., 2001).

*Ostracode species associations:* Species associations were examined by means of non-metric multidimensional scaling (NMDS) (Legendre and Legendre, 1998). This procedure generates an ordination in a two-dimensional space, representing the pairwise dissimilarity between species according to their occurrences. We used the Bray-Curtis dissimilarity coefficient on a presence-absence database (Sørensen Coefficient), as count data were highly heterogenous (with species presence in subsets of samples and absences in most of the database), to which NMDS is sensitive. Only species with at least two occurrences were included in this analysis. In NMDS graph, species associations were determined with a hierarchical cluster analysis based on Ward distances. To test significance between species groups discriminated in NMDS, a permutational multivariate analysis of variance (PERMANOVA) was performed. We used a permutation with 9999 replicates and applied the Bonferroni correction. Calculations were done with R software, using the Vegan package (Oksanen et al., 2017).

## 2.6. Structural equation modeling

To disentangle the relationships between the geodiversity and limnological conditions with species composition (as a function of distribution) and richness we used structural equation modeling (SEM), the R software and the package Lavaan (Rosseel, 2012). This is a multivariate statistical technique that enables one to model pre-defined causal relationships between observed (measured parameters) and latent variables which are not-directly observed but rather mathematical modeled from observed variables (e.g. geodiversity and limnological conditions) and test their statistical significance (Fan et al., 2016; Sarstedt and Ringle, 2020). Our conceptual model for SEM was based on the assumption that geodiversity [variables](#) in the northern Neotropics [are](#) heterogenous. Limnological conditions of aquatic systems were, consequently, partially, or entirely influenced by underlying geodiversity. At the regional scale, geodiversity and limnological conditions were expected to exert a direct or indirect influence on ostracode species richness and composition. The individual influence of variables that display environmental gradients such as elevation, conductivity, and TOC, were also tested in the models evaluated. In such cases, the

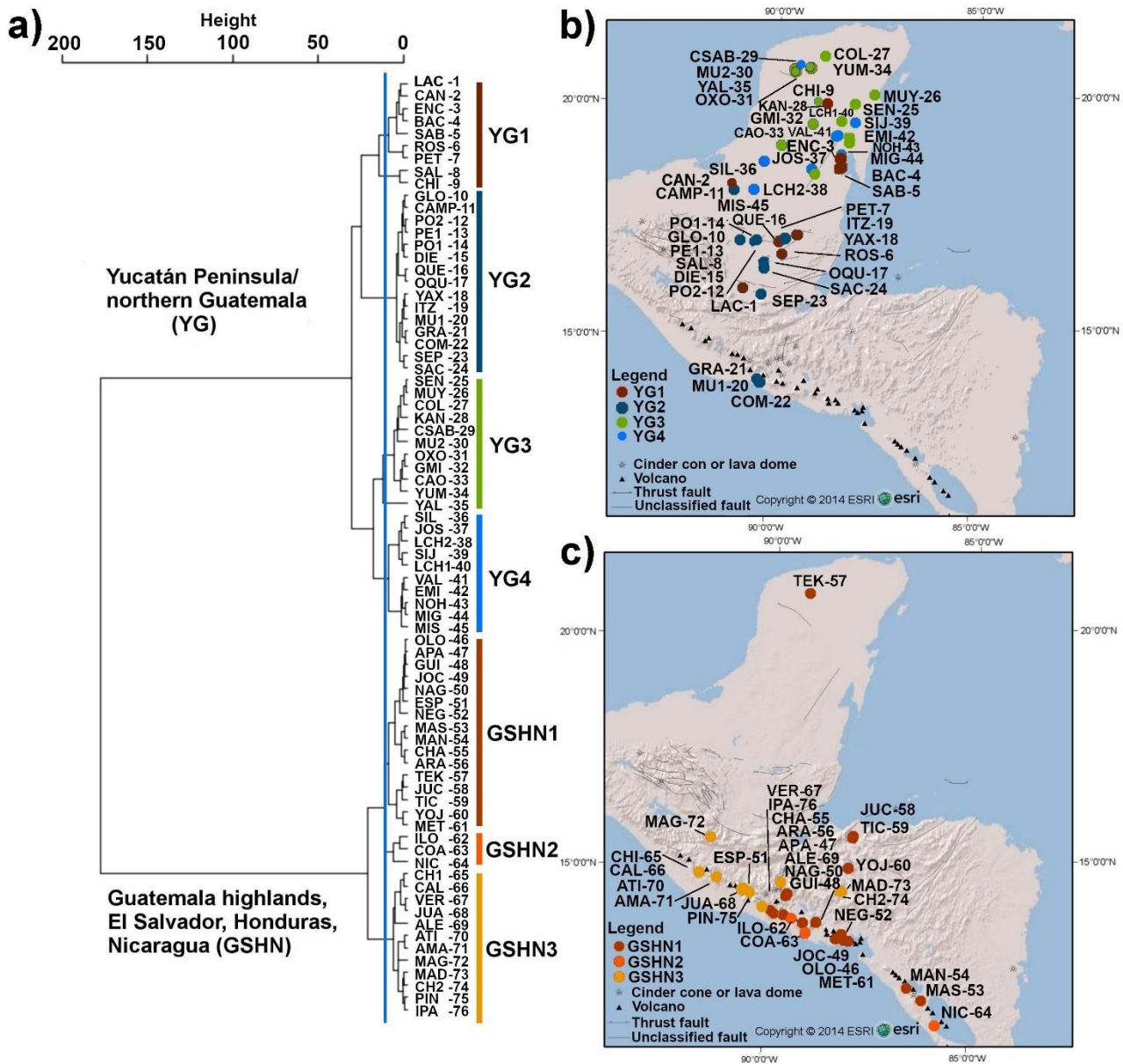


variables were excluded from the construction of latent variables in the respective model. For this conceptual framework, 'geodiversity' (latent and exogenous variable) was constructed with all or a subset of geological (bedrock type and age and elevation) and mineralogical variables. 'Limnological conditions' (latent and endogenous variable) was constructed using geochemistry, and water physical and chemical (major anion and cation, temperature, pH, and conductivity) variables. Species richness was treated as an observed variable, and the latent variable 'species composition' was constructed using NMDS associations. Using a covariance matrix with a set of uncorrelated variables, we fitted five models using this conceptual framework. For all models, statistical significance was tested with Root Mean Square Error of Approximation (RMSEA), comparative fit index (CFI) and standardized root mean squared residuals (SRMR). The predictive power of the model (R-square) was measured based on the amount of variation of the biological data. The most parsimonious model fitting our data set was selected as the explanatory model (Section S1 in the Supplement).

### **3 Results**

#### **3.1 Limnological regionalization in the northern Neotropics**

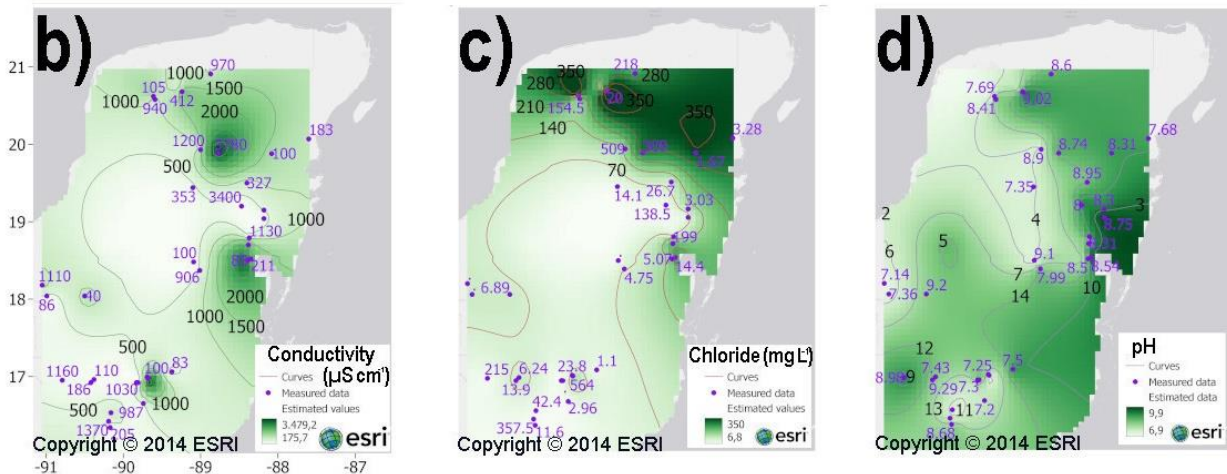
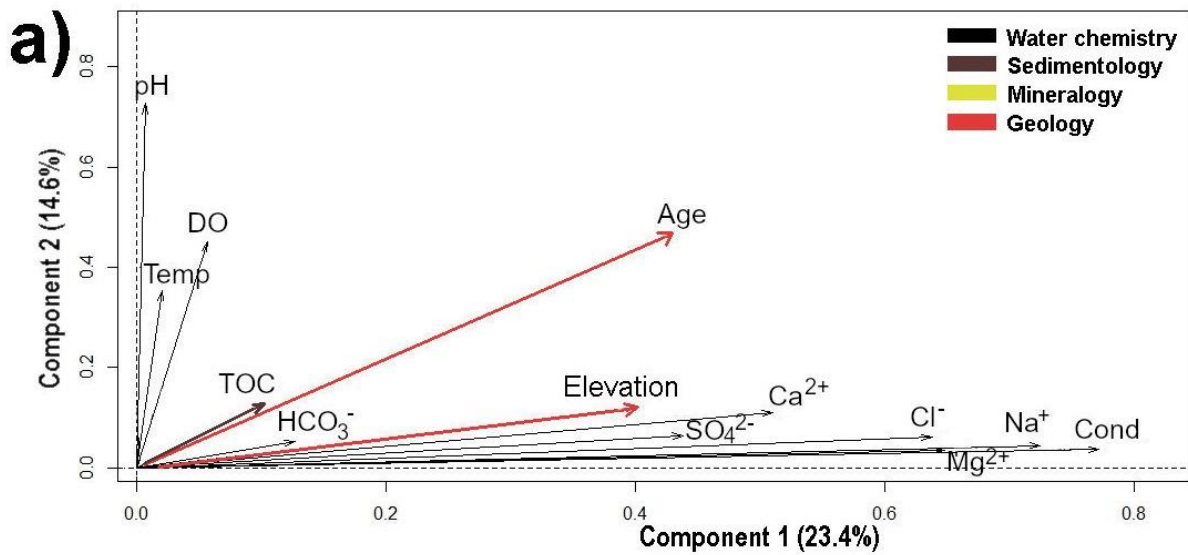
Cluster analysis identified two main groups that represent limnological regions (Fig. 2). The first group (YG: Yucatán and Guatemala) consists of lowland lakes from the Yucatán Peninsula (Mexico), the Petén district (northern Guatemala) and the Pacific lowlands of southern Guatemala. The second group (GSHN: Guatemala, Salvador, Honduras, Nicaragua) consists of Guatemalan highland lakes, El Salvador and Honduras mid-elevation lakes and Nicaraguan lowland lakes.



265 Figure 2 (a) Cluster analysis dendrogram of the 76 studied aquatic ecosystems using 23 water physico-chemical, sediment  
 geochemistry, mineralogical, and geological variables. Blue line indicates cut-off criterion for cluster partition. Two major groups  
 and seven subgroups were detected and named according to their position in the study area: Yucatán Peninsula/Northern  
 Guatemala (YG) and Guatemala highlands, El Salvador, Honduras, Nicaragua (GSHN). In order to provide a graphic  
 representation of cluster grouping, a color bar was assigned to each group and lakes within these groups were plotted on (b) YG  
 270 map and (c) GSHN map using the same color. Lake full names of codes presented in cluster and maps are given in Table S1.  
 Numbers of lake name codes correspond to that in Figure 1.

Table S1 shows a list of all the studied aquatic ecosystems located in the YG and GSHN limnological regions and subregions, as well as detailed results of water physico-chemical, geochemical, mineralogical, and geological measurements for all studied water ecosystems.

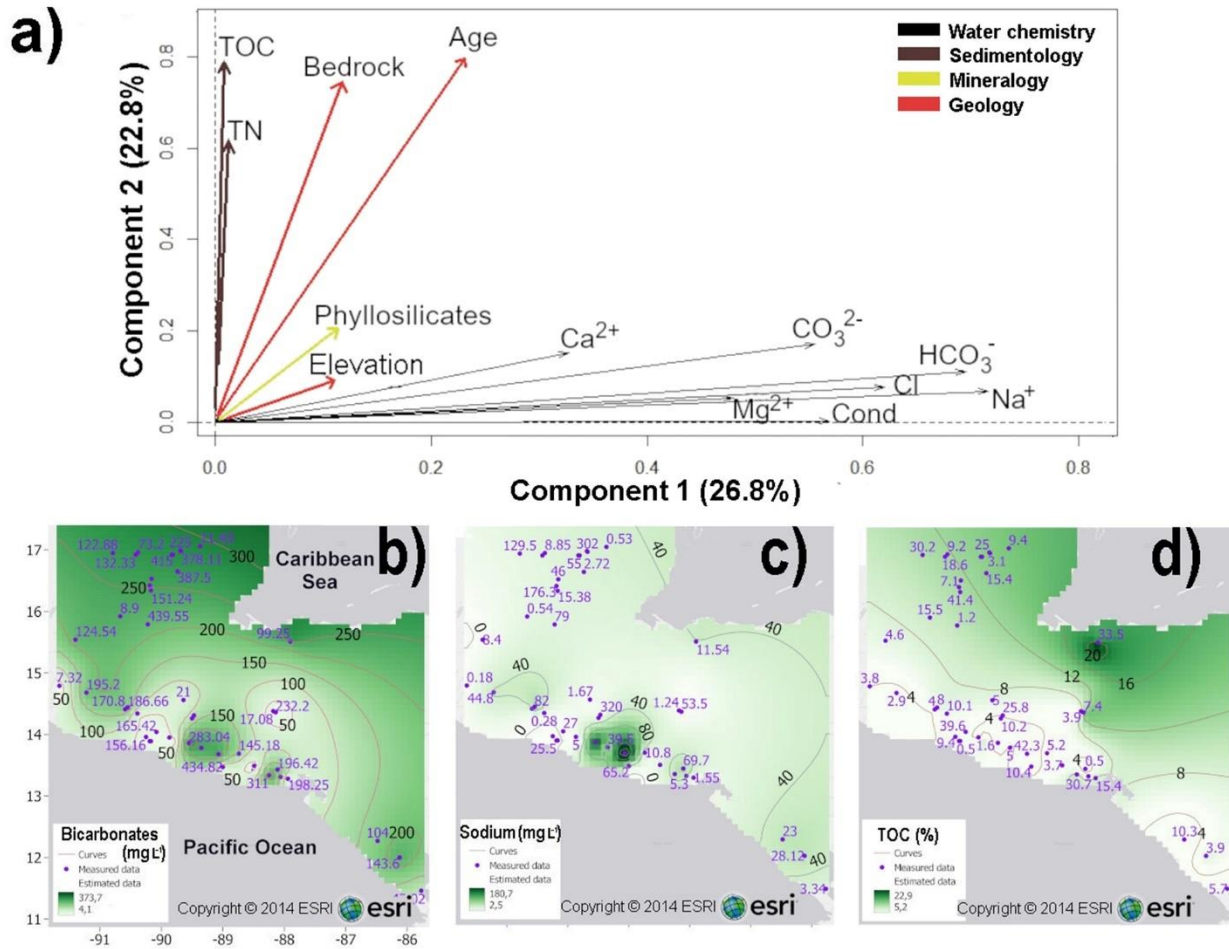
275 For the YG region, the first PCA run identified thirteen uncorrelated variables. The second PCA run clearly explained the  
variation of the data set (Fig. 3a). The first (PC1) and second (PC2) components explained 38% of the total variance of the  
data set (Fig. 3a, Table S2.1). The PC1 accounted for 23.4%, and the PC2 for 14.6% of the total variance, respectively. The  
biplot based on component 1 and 2 indicated that conductivity (ranging from 175 to 3479  $\mu\text{S cm}^{-1}$ ) and related ions sodium  
( $\text{Na}^+$ ), chloride (Cl) and magnesium ( $\text{Mg}^{2+}$ ) were the variables that exhibit the highest correlations ( $<0.64$ ) with the first  
280 principal component Fig. 3a-c). Thus, they represented the most influential variables differentiating aquatic ecosystems in the  
YG region. pH, ranging from 6.9 to 9.9, was highly correlated ( $>0.73$ ) with the second component (PC2), suggesting that it is  
the second most influential variable of the YG aquatic environments (Fig. 3a, d, Table S2.1). Figures 3 b, c and d show regional  
distribution of the most meaningful variables for the YG region.



285 **Figure 3 (a)** PCA biplot based on 13 variables from 45 aquatic ecosystems of the Yucatán Peninsula and northern Guatemala (YG limnological region). Conductivity and related ions were the most meaningful variables characterizing aquatic ecosystems as they explain 23.4% of the total variance. The second most important variable is pH, accounting for 14.6% of the total variance. Arrows represent variables. Spatial representations of meaningful variables are presented in (b-d) interpolated maps of conductivity (b); chloride (c); pH (d). Abbreviations are as follows: temperature (temp) (°C), conductivity (cond) ( $\mu\text{S cm}^{-1}$ ), magnesium ( $\text{Mg}^{2+}$ ), chloride ( $\text{Cl}^-$ ), bicarbonate ( $\text{HCO}_3^-$ ), potassium ( $\text{K}^+$ ), calcium ( $\text{Ca}^{2+}$ ), sodium ( $\text{Na}^+$ ), sulfates ( $\text{SO}_4^{2-}$ ) dissolved oxygen (DO) ( $\mu\text{mol L}^{-1}$ ) and total organic carbon (TOC). Major ions concentrations are expressed in  $\text{mg L}^{-1}$ . Blue numbers in maps represent measured values, black numbers are interpolated values.

295 For the GSHN region, the PCA based on 13 uncorrelated variables, explained 49.6% of the total variance of the data set, within the first (PC1) and second (PC2) components (Fig. 4a, Table S2.2). PC1 accounted for 26.8% and PC2 for the 22.8% of the total variance. The PCA biplot based on components 1 and 2, respectively, showed that water ionic composition, particularly

300 content of bicarbonates ( $\text{HCO}_3^-$ , ranging from 4 to 373  $\text{mg L}^{-1}$ ), sodium ( $\text{Na}^+$ , ranging from 2 to 180  $\text{mg L}^{-1}$ ) and chloride, was the most influential in discriminating aquatic systems in the GSHN region, as it correlated  $>0.62$  with the first component (Fig. 4a-c, Table S2.2). Geochemical and geological variables such as TOC (ranging from 5 to 22.9%), age and bedrock were the second most influential variables as they are strongly correlated with the second component ( $> 0.75$ ) (Fig. 4a, d). Figure 4 b, c, d show the spatial distribution of meaningful variables for the GSHN region.



305 Figure 4 (a) PCA biplot based on 13 variables from 31 aquatic ecosystems of central-southern Guatemala, El Salvador, Honduras and Nicaragua (GSHN limnological region). Ionic composition  $\text{HCO}_3^-$ ,  $\text{Na}^+$ ,  $\text{Cl}^-$  were the most meaningful variables characterizing aquatic ecosystems, as they explain 26.8% of the total variance. Sediment geochemistry and geology were the second most important variables, accounting for 22.8% of the total variance. Arrows represent variables. Spatial representations of meaningful variables are presented in (b-d) interpolated maps of bicarbonates (b); sodium (c); TOC (d). Abbreviations are as follows: conductivity (cond) ( $\mu\text{S cm}^{-1}$ ), magnesium ( $\text{Mg}^{2+}$ ), sodium ( $\text{Na}^+$ ), chloride ( $\text{Cl}^-$ ), bicarbonate ( $\text{HCO}_3^-$ ), carbonates ( $\text{CO}_3^{2-}$ ), calcium ( $\text{Ca}^{2+}$ ), total nitrogen (TN) and total organic carbon (TOC). Major ion concentrations are expressed in  $\text{mg L}^{-1}$ . Blue numbers in maps represent measured values, black numbers are interpolated values.

310

Water ionic dominance was graphically evaluated with ternary plots (Fig. S1 and Fig. S2) and information on lake water types is shown in Table S1. Here, we highlight the most relevant characteristics for YG and GSHN limnological subregions:

### 3.2 The YG region composed by karst aquatic systems

In the YG limnological region, four subregions were identified in the cluster analysis. The first subregion (YG1; n=9) within  
320 YG included systems located in central-southern Yucatán and in the northern Petén district in Guatemala (Fig. 2). Lakes are  
located in the lowlands (<170 m a.s.l.) and most of them are relatively shallow (<16 m depth), such as Bacalar, Encantada,  
Sabana Chetumal, Rosario, Salpetén, Chichancanab, except for Lake Petexbatún (40 m depth) and Lachuá (378 m depth). The  
latter constitutes the deepest lake in the study area. Waters of these systems are dominated primarily by sulfates, followed by  
calcium and magnesium. The YG limnological subregion YG2 (n=15) contained lakes that are mostly restricted to the  
325 Guatemalan lowlands (Fig. 2). Most of these systems are large lakes, including Lake Petén Itzá, one of the largest (100 km<sup>2</sup>),  
deepest (165 m) and oldest (~400 ka) lakes of the northern Neotropics. Lake waters are dominated by carbonates, and therefore  
calcium prevails in these lakes. Aquatic systems located in the central and northern portion of the Yucatán Peninsula were  
grouped in YG3 (n=11) (Fig. 2). Colac, Sabak ha, Mucuyche, Oxolá, Gruta Miguel Hidalgo and Yumku are *cenotes* in northern  
Yucatán, and lakes Yalahau, Caobas, Kaná, Señor and Muyil are located in the central-northern Peninsula. Carbonates  
330 dominate lake waters and chloride shows high values. Limnological subregion YG4 (n=10) was constituted of lakes located  
in the central-southern Yucatán Peninsula (Fig. 2). Lakes are relatively large, shallow and far from the Caribbean and Gulf of  
Mexico coasts, at least >60 km, e.g., Silvituc and Chacanbacab. Waters are dominated by carbonates and calcium.  
Mineralogical analysis reveals that most lakes are dominated by carbonates in the YG limnological region. In subregions YG1  
and YG3 (central and northern Yucatán Peninsula), most lake sediments have calcite as the dominant mineral (Table S1, Fig.  
335 S2). Lakes Chichancanab and Salpetén both belong to YG but show carbonates with a co-dominance of phyllosilicates and  
gypsum. Lakes from YG2 are mainly dominated by phyllosilicates and feldspars. The mineralogical composition of lake  
sediments of the YG4 subgroup varies. Sediments of the lakes such as Vallehermoso, Emiliano Zapata and Chacanbacab are  
dominated by phyllosilicates with or without feldspars. Sediments of lakes such as Miguel Hidalgo, on the other hand, are  
dominated by carbonates, with calcite as main mineral, whereas Lake Silvituc is characterized by exotic minerals such as silver  
340 and gold (Table S1).

### 3.3 The GSHN limnological region is composed by volcanic aquatic systems

In the GSHN region, three subregions were identified by cluster analysis. Lakes of GSHN1 (n=16) are located in Central  
America at low and middle elevations, ranging from 17 to 689 m a.s.l. Lake waters show a clear dominance of carbonates,  
followed by sodium, potassium and magnesium (Table S1, Fig. 4). The GSHN2 is composed of three of the largest lakes in  
345 Central America: Ilopango, Coatepeque and Nicaragua. These three lakes originated from volcanic activity. Lakes Ilopango

and Coatepeque are caldera lakes, whereas Lake Nicaragua surrounds Volcanoes Concepción and Maderas. There is no clear pattern for ions in the water column, but sodium and potassium dominated, followed by magnesium. The GSHN3 (n= 12) is formed mainly by crater lakes located in the highlands of Guatemala, Honduras and El Salvador. Most lake waters are dominated by bicarbonates, followed by magnesium, whereas Chiligatoro, Chicabal and Alegría are dominated by sulfates (Table S1).

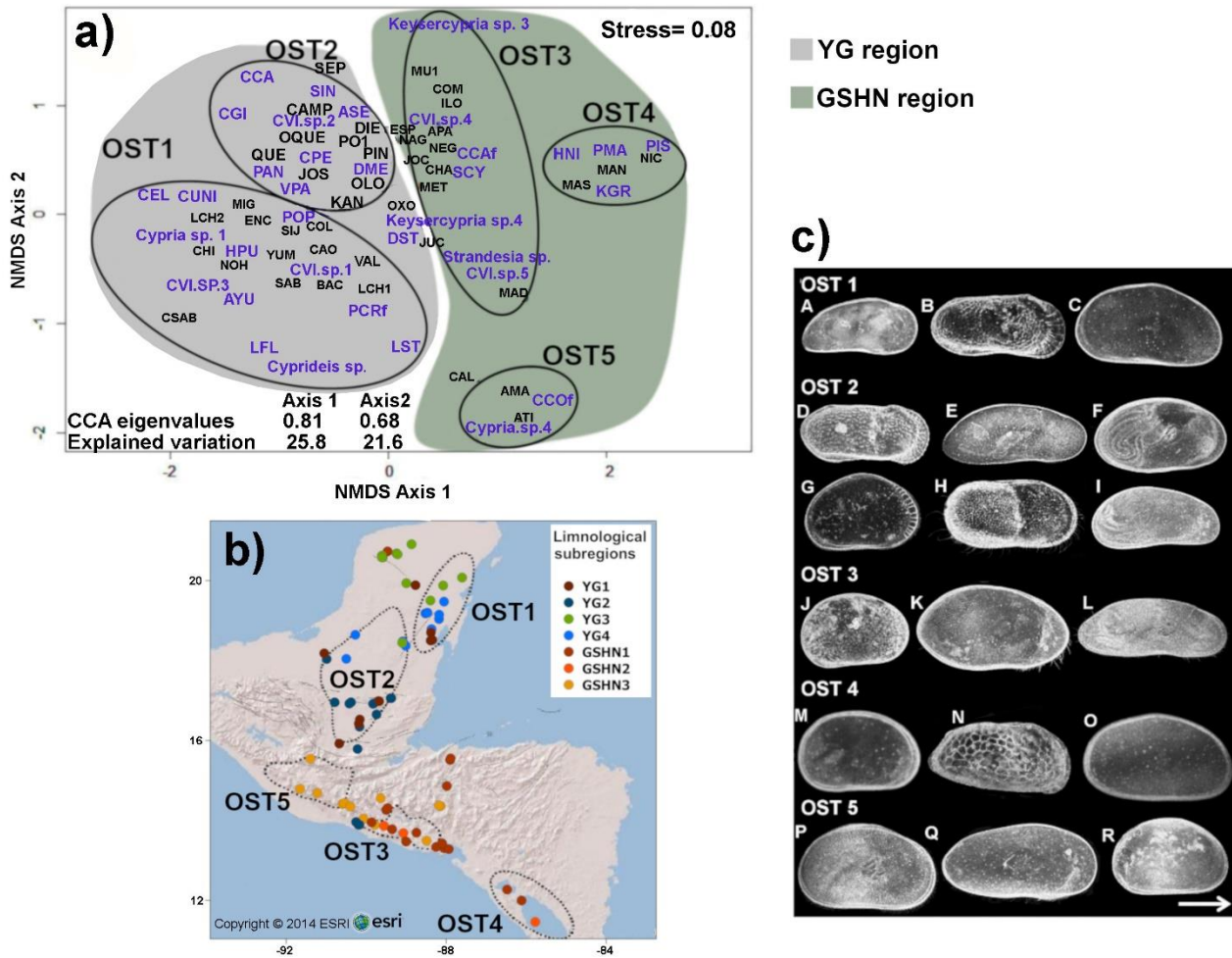
Sediment mineralogy of Central American lakes (GSHN region) shows that most subgroups are dominated by feldspars. Co-dominance with other minerals such as phyllosilicates and carbonates occurs. The GSHN1 combined lakes dominated by phyllosilicates and feldspars, whereas quartz is the dominant mineral in Lakes Yojoa and Ticamaya (Honduras). GSHN2 included large lakes dominated by feldspars. In Lake Nicaragua, this dominance is also shared with phyllosilicates. For the GSHN3, we detected two main mineral assemblages. The first is dominated by phyllosilicates and feldspars, with clay minerals and feldspars as main minerals, and the second is dominated by feldspars and phyllosilicates.

### 3.4 Ostracode species associations and their relationship with limnological regions

We found ostracode species in 74 of the 76 of the aquatic systems we studied in the northern Neotropics. In the volcanic Lake Alegría (El Salvador) and the karstic cave San Miguel (Yucatán, Mexico), ostracodes were not observed. Living adult specimens were encountered in samples from all systems, except those from Lakes Chicabal, Tekoh, Yaxhá, Verde and Cenote Mucuyche, where only empty shells or single valves were recovered. Taxonomic analysis of species enabled us to identify 70 species (Table S3), out of which 31 were recorded at single sites, whereas the remaining 39 were observed in at least two systems. Species richness ranged between 1 to 9 with an average of 4 species per site, whereas the Shannon Diversity Index (H) maximum value was 2.1, corresponding to Lakes Bacalar and Petén Itzá and the Candelaria River. For all other lakes the index averaged 1.1. The list of ostracode species found in our study is presented in Table S3.

NMDS ordination, based on species occurrence data, revealed five major species associations (OST 1-5) with a reliable stress value of 0.08 (Fig. 5a) (Clarke, 1993). The PERMANOVA test showed statistically significant differences between group centroids ( $F = 1.19$ ,  $p = 0.0001$ ), thus supporting NMDS ordinations. Ostracode groups 1 and 2 are located in the YG limnological region (karst terraces), and groups 3-5 in the limnological region GSHN (volcanic Guatemalan highlands and Central American mid-elevations and lowlands). The first species group (OST1) consisted of twelve ostracode species, recorded from lakes and *cenotes* from the eastern Yucatán Peninsula (Fig. 5b). Most of these species are tolerant of high conductivity (particularly related to  $\text{Na}^+$  and  $\text{Cl}^-$ ), such as *Heterocypris punctata* and *Limnocythere floridensis* (Fig. 5c) *Cyprideis* cf. *salebroso* and *Perissocytheridea* cf. *cribrosa*. The second species group (OST 2) included 11 species, distributed in lakes and ponds of the southern Yucatán Peninsula and northern Guatemala (Fig. 5b). Some of these species (Fig. 5b), such as *Cypria petenensis*, *Cyprretta campechensis* and *Paracythereis opesta*, are considered endemic (Cohuo et al., 2016). Some others, such as *Alicenula serricaudata*, *Pseudocandona antilliana* and *Cytheridella ilosvayi*, have a wide Neotropical distribution (Cohuo et al., 2016). The third species group (OST 3) was integrated of seven species distributed mainly in mid-

elevation lakes from Guatemala, El Salvador, and Honduras (Fig. 5b). Several of these species have very restricted distributions and correspond to the *Strandesia*, *Keysercypria* and *Cypridopsis* genera (Fig. 5c). The fourth species group (OST 4) is composed of six species: *Heterocypris nicaraguensis*, *Potamocypris islagrandensis*, *Cypria granadae*, *Limnocytherina royi*, *Perissocythere marginata* and *Cyprideis* sp., distributed exclusively in lakes in Nicaragua (Figs. 5a, b). The fifth group (OST 5) included only three species from highland lakes of Guatemala: *Chlamydotheca* cf. *colombiensis*, *Cypria* sp. 4 and *Cypridopsis* sp. 7 (Figs. 5b, c).



385

Figure 5 (a) Non-metric multidimensional scaling (NMDS) plot showing differences in ostracode species composition among the 76 studied aquatic ecosystems. Results are based on the Bray-Curtis dissimilarity index, using species presence/absence data (stress = 0.08). Black lines indicate ostracode group associations (OST 1, 2, 3, 4, 5). (b) map showing spatial distribution of species associations. (c) Plate of selected freshwater ostracode species of each limnological subregion of the northern Neotropical region. A) *Thalassocypris* sp.; B) *Limnocythere floridensis*; C) *Heterocypris punctata*; D) *Paracythereis*

390

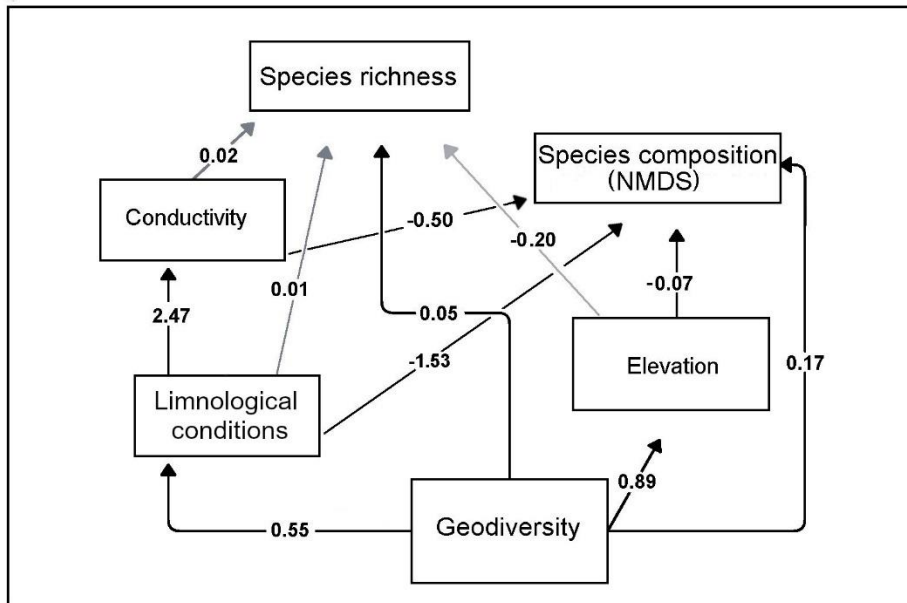


*opesta*; E) *Diaphanocypris meridana*; F) *Strandesia intrepida*; G) *Cypretta maya*; H) *Cytheridella ilosvayi*; I) *Pseudocandona antilliana*; J) *Keysercypris* sp. 4; K) *Strandesia* sp.; L) *Stenocypris cylindrical major* M) *Cypria granadae*; N) *Perissocytheridea* cf. *cribrosa*; O) *Heterocypris nicaraguensis*; P) *Hemicypris* sp.; Q) *Pseudostrandesia* sp.; R) *Cypria* sp. 4.

395

### 3.5 Structural equation modelling: geodiversity, limnological conditions and freshwater ostracodes

Five models of the relationships of geodiversity, limnological conditions and species composition and richness were tested with structural equation modelling (SEM). Four models used geodiversity only as exogenous variables (models 1-2, 4-5), and in one model (model 3) 'limnological conditions' was also considered as an exogenous variable (two exogenous variables, explaining an endogenous variable). Description of the rationale behind variable selection and relationships tested in each model are found in section S1 of the Supplementary Material. Model 1 evaluated the direct influence of geodiversity on limnological conditions and the influence of limnological conditions on species composition and richness, resulting in the following metrics of global fit: CFI 0.63 (values close to 1.00 indicate better fit of the model), RMSEA 0.19 (values < 0.05 are considered reliable; Fabrigar et al., 1999), and SRMR 0.12 (values < 0.08 are generally considered a good fit; Hu and Bentler, 1999). Model 2, tested relationships similar to model 1, but additionally the relevance of TOC on species composition and richness, with the following statistics: CFI 0.79, RMSEA 0.13, 445 and SRMR 0.14. Models 1 and 2 received relatively low values of global fit, all below the threshold of statistical significance. Values of a Chi-square test were < 0.05 in these two models, and they were therefore rejected as explanatory models. Model 3 evaluated the influence of geodiversity and limnological conditions on species composition. These two variables were considered independent and without any influence on one another. Metrics of global fit of this model were better than in models 1 and 2, (CFI 0.94, RMSEA 0.06, and SRMR 0.14). However, the data were too small to calculate the statistical significance of both exogenous variables, and then, interpretation of the results is not reliable. This model was also rejected. Model 4 and model 5 evaluated the same relationships between geodiversity, limnological conditions, and species composition and richness as in model 1, but additionally, the individual influence of elevation and conductivity (model 4) and TOC and latitude (model 5) were analyzed. Model 5 received the following metrics of global fit CFI 0.62, RMSEA 0.20, and SRMR 0.17, all below the threshold of significance, and the model was therefore rejected. The optimal model was model 4 (Fig. 6). This is supported by the following metrics of global fit, CFI = 0.94), RMSEA = 0.01, and SRMR=0.03. The optimal model suggests that geodiversity strongly influenced limnological conditions, which in turn, explained species composition (distribution), but not species richness. Elevation and conductivity did not explain species richness but demonstrated significant influences on species composition. The direct influence of limnological conditions on species composition was statistically significant, whereas it did not exert an influence on species richness (p-value > 0.05). All paths in figure 6 are statistically significant (p-value <0.05), except for the direct effect of limnology, conductivity and elevation on species richness.



**Figure 6. Structural equation modelling of the influence of geodiversity and limnological conditions with freshwater ostracode species composition and distribution. Metrics of global fit of the optimal model CFI = 0.941, RMSEA = 0.01, and SRMR=0.035. Arrows indicate the direction of influence. Black arrows are paths statistically significant at p-value**

430

#### 4. Discussion

##### 4.1 Geodiversity defines two main limnological regions in the northern Neotropics

Our cluster analysis based on 76 lakes and 23 lake attributes shows limnological regionalization in the northern Neotropics. Two main regions, corresponding to Yucatán Peninsula-northern Guatemala (Group YG) and northern Central America (Group GSHN), were identified (Fig. 2). The group YG is located in karstic plateaus of sedimentary origin, dominated by limestone, dolomite, evaporites and carbonate-rich impact breccia (Hildebrand et al., 1995; Schmitter-Soto et al., 2002a, b; Vázquez-Domínguez and Arita, 2010). The Group GSHN is located in volcanic bedrock terrains of Guatemala, El Salvador, Honduras and Nicaragua, where pyroclastic and volcanic epiclastic materials, usually reworked, are abundant, reflecting active or past volcanic activity (Dengo et al., 1970; Stoiber and Carr, 1973; Carr, 1984). The YG and the GSHN groups were further subdivided into four (YG1-4) and three subgroups (GSHN1-3), representing limnological subregions. This proposed regionalization, therefore, reveals high heterogeneity of aquatic systems in the northern Neotropics. Multivariate statistics (PCA) shows that regions and subregions can be distinguished by ionic composition of waters. Geochemical variables related to sediments, such as TOC and mineral composition, are recognized as the second most important characteristics (Figs. 3, 4). In the YG karst region, lakes are characterized by carbonate-, calcium- and calcite-signatures, which is expected because waters interact with limestone and dolomite-rich bedrock on the Peninsula (Schmitter-Soto et al., 2002a, b; Perry et al., 2009).

445

This is also responsible for the dominance of calcium, sodium, and magnesium ions in waters, which in turn are related to the generally alkaline surface waters in most aquatic systems of the region (Alcocer et al., 1998; Schmitter-Soto et al., 2002a, b) (Figs. 3a, d). In specific areas, such as YG3, dominance of chloride is also relevant. This can be explained by two main processes, 1) marine intrusion and 2) input of subterranean waters that have interacted with evaporites. The spatial distribution map of chloride contents in lake waters (Fig. 3c) shows a clear tendency to higher values on the northern Yucatán Peninsula where marine intrusion is probably the most important source of chloride (Sánchez-Sánchez et al., 2015; Saint-Loup et al., 2018). Marine intrusions in northern Yucatán have been mapped as far as 100 km inland (Steinich and Marín, 1996). Pérez-Ceballos et al. (2012) found that several water systems, mainly *cenotes*, in this same region are characterized by marine waters below freshwater lenses, with water intermixing.

Sulfate is an interesting component of some lakes of the YG1 systems (Socki et al., 2002; Pérez-Ceballos et al., 2012). The presence of sulfates in lake waters may be attributed to the K/T anhydrite/gypsum-bearing impact breccia and dissolution of  $\text{CaSO}_4$  of evaporites (Rosencrantz, 1990). This suggests that lakes with high sulfate contents receive high ground water input, as evaporites are only present at depths greater than 170 m below surface, or that these lakes developed along sites with past tectonic activity such as faulting and uplift (Perry et al., 2002). Some lakes from the YG1 with high content of sulfates did, in fact, develop along fault zones. For example, Lake Chichancanab is associated with the Sierrita de Ticul fault (Hodell et al., 2005) and Lachuá to the Polochic fault (Erdlac and Anderson, 1982), whereas other lakes are related to high ground water input, such as the Bacalar hydrological system (Perry et al., 2009).

High TOC values in sediments of most lakes of YG2 probably reflect the trophic state of lake waters. Our data confirm results by Pérez et al. (2011a), who recorded a TOC increase from north to south on the Yucatán Peninsula. This may be attributed to the combined effect of soil, precipitation and vegetation type, which changes from north to south. The northern part of the Yucatán Peninsula is characterized by leptosols, which are shallow soils with high amounts of exposed hard rock and calcareous material (Bautista et al., 2011; Estrada-Medina et al., 2013). There, precipitation of about  $450 \text{ mm yr}^{-1}$  (Pérez et al., 2011a), gives rise to low-stature deciduous forests with low biological productivity. In the south of the Peninsula, where precipitation increases to  $>3200 \text{ mm yr}^{-1}$  (Pérez et al., 2011a), luvisols and vertisols, clayey and fertile soils, support the growth of tropical evergreen forests that generate high amounts of organic matter runoff, particularly during the rainy season.

In Central American volcanism is the most common mode of lake formation. These lakes are classified as caldera lakes, crater lakes in (partially) active or inactive volcanoes, maar lakes, or are located in volcanic bedrock basins (Golombek and Carr, 1978; Newhall and Dzurisin, 1988; Dull et al., 2001; Vallance and Calvert, 2003) (Table S1). The existence of at least three limnological subregions highlights that these lakes are additionally influenced by regional factors related to orography (elevation), climate and the level of volcanic activity, including magmatic heat and gas input. Ionic dominance of Central American lakes is highly variable, but anions  $\text{Cl}^-$ ,  $\text{SO}_4^{2-}$ , and cations  $\text{K}^+$ ,  $\text{Mg}^{2+}$ ,  $\text{Na}^+$  were dominant (Fig. 4a). This ionic composition reveals that two main processes control water chemistry: 1) active volcanic activity with strong interaction with lakes, and 2) precipitation-evaporation rates, especially at high-elevation sites. Dominance of magnesium, chloride and

480 sulfates, such as in GSHN3, can be attributed to volcanic activity and hydrothermal systems. Chloride and sulfates are strongly  
influenced by volcanic gas input, by incorporation of HCl and SO<sub>2</sub>, and interaction with igneous rocks. Lakes with such ionic  
dominance also display high contents of phyllosilicates and feldspars, which may have formed through dissolution by hot and  
likely acid groundwater, heated by hydrothermal activity. Lakes located in the Transmexican Volcanic Belt of central Mexico  
(TMVB; Armienta et al., 2008; Sigala, et al., 2017) have similar ionic and sediment chemical composition as lakes in Central  
485 America. The ionic dominance of the currently extinct crater lakes of Volcano Popocatepetl, for example, changed from sulfate  
to calcium-magnesium dominance and finally magnesium dominance, resulting from heating of andesite rocks after a period  
of increased volcanic activity (Armienta et al., 2000, 2008). This suggests that the influence of active volcanism on lake water  
chemistry may exert similar influences along the northern Neotropical region and American transition zone. High rates of  
evaporation are anticipated to represent an important driver for water chemistry in Central America as well, because of  
490 dominance of carbonates, bicarbonates and sodium (GSHN1 subregion). This ionic composition can be attributed to interaction  
and weathering of volcanic rocks, capture and dissolution of CO<sub>2</sub>, and high evaporation rates. Although Central America can  
be considered a tropical and humid region, high temperatures and solar radiation, especially at high elevations, may produce  
high evaporation rates leading to ion-specific signatures such as dominance of carbonates-bicarbonates.

Given the origin of discriminating variables in PCA for both YG and GSHN, we found three main sources controlling  
495 limnological conditions in the northern Neotropics: (i) bedrock type, which determines specific mineral and ionic composition  
of lake sediments and host waters; (ii) volcanic and marine influence, which determines the presence of dominant and  
conservative ions such as Mg<sup>2+</sup> and Cl<sup>-</sup>, and (iii) precipitation-evaporation balance across altitudinal and latitudinal gradients,  
which determines the concentration of solutes and therefore conductivity. This is consistent with results from limnological  
studies in other regions of Central America and southern Mexico, which suggested that geology, through bedrock types and  
500 volcanic input to lakes, and marine interactions, are the most influential factors for aquatic environments (Löffler, 1972;  
Haberyan and Horn, 1999; Haberyan et al., 2003; Cervantes-Martínez et al., 2002; Perry et al., 2002; Schmitter-Soto et al.,  
2002a; Socki et al., 2002; Pérez et al., 2011a). Several authors, however, consider additional features relevant for lake  
classification, such as temperature, pH and altitude (orography) (Brezonik and Fox, 1974; Horn and Haberyan, 1993; Umaña  
et al., 1999; Haberyan et al., 2003). In our study, water temperature, pH and elevation scored relatively low on the PCA,  
505 suggesting that their influence is relevant only on a local scale. Considering the determinants of limnological variability of  
aquatic systems at both regional and local scales, the interaction with marine environments and the high variability of aquatic  
system morphology and origin, it is evident that the current [geodiversity](#) is the main factor driving aquatic ecosystem properties  
and defining limnological regions in the northern Neotropics.

## 510 4.2 Geodiversity as a determinant of distribution of freshwater ostracodes in the northern Neotropics

We found ostracode species in almost all the aquatic systems we studied. Seventy species were recognized, demonstrating that  
this group is abundant and diverse in the northern Neotropics. The number of species per lake (species richness), was relatively  
low. In most sites we found between two and six species, and in large lakes, such as Petén Itzá and Nicaragua, we found a

515 maximum of nine species. Diversity metrics substantiated this tendency, with values of the Shannon Index always  $< 2$ , which reflects low diversity in aquatic environments (Margalef, 1957; Chao and Shen, 2003). Although in this study, we do not intend deeply evaluate taxonomic and ecological aspects for the northern Neotropical ostracods, we detected low species richness in the study area compared to that in South America and Europe. In the flood plains of the Upper Parana River, South America, species richness can be as high as 44 (Higuti et al., 2017), whereas in Europe a single lake may host 32 species (Sluys, 1981; Lorenschat et al., 2014).

520

This patten may be influenced by sampling effort, as sampling sites did not always cover the lake extent. In addition, sampling was conducted in a single climatic period. Ostracode phenology, such as differences in hatching time and functional traits, varied within species and are mostly influenced by photoperiod, conductivity and water temperature (Rossi et al., 2013; Rosa et al., 2021). Therefore, the estimated values of biodiversity may partially represent the true diversity in the region. Low species  
525 in Neotropical Lakes, however, was also observed in previous studies in the region. In Lake Petén Itzá, for example, a maximum of 11 species was reported by Pérez et al., (2010a). In Lake Nicaragua, the largest lake in Central America, seven species were found (Hartmann, 1959). In Colombia aquatic systems, such as La Fé reservoir (Saldarriaga and Martínez, 2010) and the Magdalena River basin (Roessler, 1990a, b), the number of ostracode species is similar to that in Central America (~6 species per lake). Therefore, to clarify structural [and diversity](#) patterns of ostracodes in the Neotropical region, more intensive  
530 sampling in lakes and rivers is needed. Evidence from other tropical regions around the world will be valuable to understand patterns of ostracode diversity (tropical vs temperate) in the Ostracoda group.

The NMDS analysis shows the existence of at least five species associations in the region (OST1-OST5), emphasizing that ostracodes do not conform to a faunal unit, but rather display disjunct faunas (Fig. 5a), similar to what is observed in other  
535 studies of ostracodes (Cohuo, et al., 2018) and freshwater fishes of the region (Miller, 1976; Matamoros et al., 2015). Ostracode associations are geographically delimited, and no overlap was observed (Fig. 5b). Ostracode groups OST1 and OST2, belong to the YG limnological region, whereas the OST3, OST4 and OST5 associations belong to the GHSN limnological region (Figs. 5a, b). Few species were present in more than three limnological subregions, and these can be considered of wide Neotropical distribution, e.g., *C. ilosvayi* and *C. vidua*.

540 Correspondence between species associations and limnological regions and subregions suggests a major influence of physical and chemical properties of lake environments on biological systems. The structural equation modelling (SEM) analysis exposed the significant influence of geodiversity on limnological conditions, and of limnological conditions on species associations, identified in the NMDS. This illustrates that limnological conditions, particularly geochemistry, and water chemistry, is the primary factor responsible for species distributions in the study area. We were, however, unable to find  
545 statistical significance to explain the relationships between geodiversity and limnological conditions with ostracode species richness. This suggest that the number of species per lake may not be fully governed by our predictors. For instance, the individual influence of conductivity and elevation in model 4 and TOC and latitude in model 5, also failed to explain species

richness. This reveal that other intrinsic or extrinsic factors such historical water level fluctuations and precipitation/evaporation balance, might instead control species richness. In our SEM models, we also tested the direct influence of geodiversity and its indirect influence through limnology on species distribution and richness. The optimal SEM model demonstrated the significance of paths describing the direct influence of geodiversity on species richness and composition, but significance of standardized coefficients was of minor importance (0.1 and 0.04, respectively). Conversely, strong ties were discovered when we analyzed for the indirect effect of geodiversity (via limnology) on species composition (>2.0). This implies that ostracode species composition is more predictable from limnological variables such as water physical and chemical and geochemistry than from geodiversity variables such as bedrock and mineralogy. Our SEM model also revealed that elevation is an important predictor of species composition (Fig. 6). The negative correlation suggested that an increase in elevation causes a decrease in the number of species per site. Most highland lakes were characterized by up to three species and, more commonly, by a single species, except for large lakes Amatitlán and Atitlán in Guatemala.

560

## 5 Conclusions

The northern Neotropics is a region characterized by diverse environmental conditions, abundant aquatic systems, and high biodiversity. Our limnological survey of 76 aquatic environments identified two main limnological regions in the northern Neotropics. The YG region is associated with karst plateaus in southern Mexico and northern Guatemala, whereas the GSHN is associated with landscapes formed by volcanic activity in southern Guatemala, El Salvador, Honduras and Nicaragua. At least seven limnological subregions were identified, illustrating the high heterogeneity of aquatic systems in the northern Neotropics. Low ostracode species richness in the northern Neotropics seems to be strongly related to the geological history of the region. The low number of species per lake contrasts with the number of species per lake in temperate regions, which is at least five times higher. SEM analysis highlights that geodiversity has a direct influence on limnological regions, and an indirect but relevant influence on freshwater ostracodes. This is the first study to integrate data on geodiversity including watershed geology, sediment mineralogy; limnological conditions such as physical and chemical characteristics of the water column, and geochemistry, and biota in aquatic ecosystems of southern Mexico and Central America. Further studies should focus on establishment of a more detailed regionalization, by including a greater number of lakes, more environmental variables, and samples collected at different times throughout the seasonal cycle.

575 **Data availability.** Water physico-chemical, sediment geochemistry, mineralogical and geological data from the 76 aquatic ecosystems sampled in this study are available in Table S1 in the Supplementary Material and in the Pangaea repository: <https://doi.org/10.1594/PANGAEA.940538>. Ostracode relative abundances at each sampling site can be found at the Pangaea repository: <https://doi.org/10.1594/PANGAEA.940254>.

580 **Financial support.** Funding was provided by the Deutsche Forschungsgemeinschaft (DFG, SCHW 671/16-1), CONACYT (Mexico; project number 319857) and Tecnológico Nacional de México (projects number 14502.21-P and 14698.22-P).

585 **Author contributions.** LM and SC conducted the fieldwork, performed data analysis, and wrote the manuscript. AS, LP and ME developed, managed and coordinated the project and contributed to data interpretation and manuscript writing. PH contributed and interpreted mineralogical data and gave scientific input to the manuscript. MC developed water chemistry analyses and gave scientific input to the manuscript. AO, MP and MA provided support for sampling in their respective countries and organized sampling permits.

**Competing interests.** The authors declare that they have no conflict of interest.

590 **Acknowledgments.** We thank all colleagues and institutions involved in this work, including the student team: Christian Vera, León E. Ibarra, Miguel A. Valadéz and Cuauhtémoc Ruiz (Instituto Tecnológico de Chetumal, Mexico); Ramón Beltran (Centro Interdisciplinario de Ciencias Marinas, Mexico) and Lisa Heise (Universidad Autónoma de San Luis Potosí, Mexico) for their excellent contributions during field work. We also thank the following colleagues and institutions that made field sampling and water chemistry analysis possible: The team from the Asociación de Municipios del Lago de Yojoa y su área de influencia (AMUPROLAGO, Honduras); Margaret Dix, Eleonor de Tott, Roberto Moreno (Universidad del Valle de Guatemala, Guatemala); Consejo Nacional de Áreas Protegidas (CONAP, Guatemala); Néstor Herrera (Ministerio de Medio Ambiente, San Salvador), Teresa Álvarez (El Colegio de la Frontera sur, Chetumal Unit, Mexico); María Aurora Armienta (Laboratorio de Química Analítica, Instituto de Geofísica, Universidad Nacional Autónoma de México) and Adriana Zavala (El Colegio de la Frontera Sur, Mexico). We also gratefully acknowledge anonymous reviewers and Mark Brenner for their constructive feedback and language editing.

## References

600 [Alahuhta, J., Toivanen, M., and Hjort, J.: Geodiversity–biodiversity relationship needs more empirical evidence., Nat. Ecol. Evol., 4, 2–3, <https://doi.org/10.1038/s41559-019-1051-7>, 2020.](https://doi.org/10.1038/s41559-019-1051-7)

Albert, J. S., and Reis, R. E. (Eds.): Historical Biogeography of Neotropical Freshwater Fishes, University of California Press, Berkeley, CA, 2011.

605 [Alcocer, J. and Bernal-Brooks, F. W.: Limnology in Mexico, Hydrobiologia, 644, 15–68, <https://doi.org/10.1007/s10750-010-0211-1>, 2010.](https://doi.org/10.1007/s10750-010-0211-1)

- Alcocer, J., Lugo, A., Marín, L., and Escobar, E.: Hydrochemistry of waters from five cenotes and evaluation of their suitability for drinking-water supplies, northeastern Yucatan, Mexico, *Hydrogeol. J.*, 6, 293–301, <https://doi.org/10.1007/s100400050152>, 1998.
- 610 Antonelli, A., Zizka, A., Carvalho, F. A., Scharn, R., Bacon, C.D., Silvestro, D., and Condamine, F. L.: Amazonia is the primary source of Neotropical biodiversity, *Proc. Natl. Acad. Sci. U.S.A.*, 115, 6034–6039, <https://doi.org/10.1073/pnas.1713819115>, 2018.
- Armienta, M. A., De la Cruz-Reyna, S., and Macías, J. L.: Chemical characteristics of the crater lakes of Popocatepetl, El Chichon, and Nevado de Toluca volcanoes, Mexico, *J. Volcanol. Geotherm. Res.*, 97, 105–125, [https://doi.org/10.1016/S0377-0273\(99\)00157-2](https://doi.org/10.1016/S0377-0273(99)00157-2), 2000.
- 615 Armienta, M., Vilaclara, G., De la Cruz-Reyna, S., Ramos, S., Cenicerros, N., Cruz, O., Aguayo, A., and Arcega-Cabrera, F.: Water chemistry of lakes related to active and inactive Mexican volcanoes. *J. Volcanol. Geotherm. Res.*, 178, 249–258, <https://doi.org/10.1016/j.jvolgeores.2008.06.019>, 2008.
- Azim, M. E.: Photosynthetic Periphyton and Surfaces, in: *Encyclopedia of Inland Waters*, edited by Gene, E. L., Academic Press, 184–191, 2009.
- 620 Bacon, C. D., Silvestro, D., Jaramillo, C., Smith, B.T., Chakrabarty, P., and Antonelli, A.: Biological evidence supports an early and complex emergence of the Isthmus of Panama. *Proc. Natl. Acad. Sci. U.S.A.*, 112, 6110–6115, <https://doi.org/10.1073/pnas.1423853112>, 2015.
- Baker P. A., Fritz S. C., Dick C. W., Battisti D. S., Vargas O. M., Asner G. P., Martin R. E., Wheatley A., and Prates, I.: Beyond Refugia: New Insights on Quaternary Climate Variation and the Evolution of Biotic Diversity in Tropical South America, in: *Neotropical Diversification: Patterns and Processes, Fascinating Life Sciences*, edited by: Rull V., and Carnaval, A., Springer, Cham, 51–70, [https://doi.org/10.1007/978-3-030-31167-4\\_3](https://doi.org/10.1007/978-3-030-31167-4_3), 2020.
- 625 Baker, P. A., Seltzer, G. O., Fritz, S. C., Dunbar, R. B., Grove, M., Tapia, P., Cross, S., Rowe, H., and Broda, J.: The history of South American tropical climate for the past 25,000 years, *Science*, 291, 640–643, <https://doi.org/10.1126/science.291.5504.640>, 2001.
- 630 Bautista F., Palacio, G., Quintana, P., and Zinck, A.J.: Spatial distribution and development of soils in tropical karst areas from the Peninsula of Yucatán, Mexico, *Geomorphology*, 135, 308–321, <https://doi.org/10.1016/j.geomorph.2011.02.014>, 2011.



- Behling, H., Arz, H. W., Patzold, J., and Wefer, G.: Late Quaternary vegetational and climate dynamics in northeastern Brazil, inferences from marine core GeoB 3104-1, *Quat. Sci. Rev.*, 19, 981–994, [https://doi.org/10.1016/S0277-3791\(99\)00046-3](https://doi.org/10.1016/S0277-3791(99)00046-3), 2000.
- 635 Bouimetarhan, I., Chiessi, C., Gonzalez-Arango, C. G., Dupont, L., Voigt, I., Prange, M., and Zonneveld, K.: Intermittent development of forest corridors in northeastern Brazil during the last deglaciation: climatic and ecologic evidence, *Quat. Sci. Rev.*, 192, 86–96, <https://doi.org/10.1016/j.quascirev.2018.05.026>, 2018.
- Bravo-Cuevas, V., González-Rodríguez, K., Cabral-Perdomo, M., Cuevas-Cardona, C., and Pulido-Silva, M.: Geodiversity and its implications in the conservation of biodiversity: Some case studies in central Mexico, *CIENCIA Ergo-Sum*, 28(3), 1–  
640 15, <https://doi.org/10.30878/ces.v28n3a8>, 2021.
- Brezonik, P., and Fox, J.: The limnology of selected Guatemalan lakes, *Hydrobiologia*, 45, 467–487, <https://doi.org/10.1007/BF00012032>, 1974.
- Bryson, R., Riddle, B., Graham, M., Smith, B., and Prendini, L.: As Old as the hills: montane scorpions in Southwestern North America reveal ancient associations between biotic diversification and landscape history, *PLoSOne*, 8:e52822,  
645 <https://doi.org/10.1371/journal.pone.0052822>, 2013.
- Carnaval, A. C., and Moritz, C.: Historical climate modeling predicts patterns of current biodiversity in the Brazilian Atlantic forest, *J. Biogeogr.*, 35, 1187–1201, <https://doi.org/10.1111/j.1365-2699.2007.01870.x>, 2008.
- Carr, M.: Symmetrical and segmented variation of physical and geochemical characteristics of the Central American volcanic front, *J. Volcanol. Geoth. Res.*, 20, 231–252, [https://doi.org/10.1016/0377-0273\(84\)90041-6](https://doi.org/10.1016/0377-0273(84)90041-6), 1984.
- 650 Cervantes-Martínez, A., Elías-Gutiérrez, M., and Suárez-Morales, E.: Limnological and morphometrical data of eight karstic systems 'cenotes' of the Yucatán Peninsula, Mexico, during the dry season (February–May, 2001), *Hydrobiologia*, 482, 167–177, <https://doi.org/10.1023/A:1021260131757>, 2002.
- Chao, A., Shen, T. J.: Nonparametric estimation of Shannon's index of diversity when there are unseen species in sample. *Environ. Ecol. Stat.*, 10, 429–443, <https://doi.org/10.1023/A:1026096204727>, 2003.
- 655 Chavent, M., Kuentz-Simonet, V., Labenne, A., and Saracco, J.: Multivariate analysis of mixed data: The PCAmixdata R package. arXiv preprint arXiv,1411.4911v1, 2014.

- Clarke, K.: Non-parametric multivariate analyses of changes in community structure. *Aust. J. Ecol.*, 18, 117–143, <https://doi.org/10.1111/j.1442-9993.1993.tb00438.x>, 1993.
- 660 Cohuo, S., Macario-González, L., Pérez, L., and Schwalb, L.: Overview of Neotropical-Caribbean freshwater ostracode fauna (Crustacea, Ostracoda): identifying areas of endemism and assessing biogeographical affinities, *Hydrobiologia*, 786, 5–21, <https://doi.org/10.1007/s10750-016-2747-1>, 2016.
- 665 Cohuo, S., Macario-González, L., Pérez, L., Sylvestre, F., Paillès, C., Curtis, J., Kutterolf, S., Wojewódka, M., Zawisza, E., Sze-roczyńska, K., and Schwalb, A.: Ultrastructure and aquatic community response to Heinrich Stadial (HS5a-HS1) in the continental northern Neotropics, *Quat. Sci. Rev.*, 19, 75–91, <https://doi.org/10.1016/j.quascirev.2018.07.015>, 2018.
- Cohuo, S., Macario-González, L., Wagner, S., Naumann, K., Echeverría-Galindo, P., Pérez, L., Curtis, J., Brenner, M., and Schwalb, A.: Influence of late Quaternary climate on the biogeography of Neotropical aquatic species as reflected by non-marine ostracodes, *Biogeosciences*, 17, 145–161, <https://doi.org/10.5194/bg-17-145-2020>, 2020.
- CEPF (Critical Ecosystem Partnership Fund) - The Biodiversity hotspots (2021, November).
- 670 Crofts, R.: Linking geoconservation with biodiversity conservation in protected areas, *Int. J. Geoheritage Parks*, 7(4), 211–217, <https://doi.org/10.1016/j.ijgeop.2019.12.002>, 2019.
- De Albuquerque, F. S., Benito, B., Beier, P., Assunção-Albuquerque, M. J., and Cayuela, L.: Supporting underrepresented forests in Mesoamerica, *Natureza e Conservação*, 13(2), 152–158, <https://doi.org/10.1016/j.ncon.2015.02.001>, 2015.
- 675 DeClerck, F., Chazdon, R., Robin, H., Karen, D., Milder, J., Finegan, B., Martínez-Salinas, A., Imbach, P., Canet, L., and Ramos, Z.: Biodiversity conservation in human-modified landscapes of Mesoamerica: Past, present and future. *Biol. Conserv.*, 143, 2301–2313, <https://doi.org/10.1016/j.biocon.2010.03.026>, 2010.
- de Paula Silva, J., Alves, G. B., Ross, J. L. S., do Nascimento, M. A., Felini, M. G., Manosso, F. C. and Pereira, D. I.: The Geodiversity of Brazil: Quantification, Distribution, and Implications for Conservation Areas, *Geoheritage*, 13, 75, <https://doi.org/10.1007/s12371-021-00598-0>, 2021.
- 680 Delgado-Martínez, C. M., Alvarado, F., Mendoza, E., Flores-Hernández, S., Navarrete, A., Navarrete, E., and Botello, F.: An ignored role of sartenejas to mitigate water shortage hazards for tropical forest vertebrates, *Ecology*, 99(3), 758–760, <https://doi.org/10.1002/ecy.2078>, 2018.

- Dengo, G., Bohlenberger, O., and Bonis, S.: Tectonics and volcanism along the Pacific Marginal Zone of Central America, *Geol. Rundsch.*, 59, 1215–1235, <https://doi.org/10.1007/BF02042290>, 1970.
- 685 Dull, R. A., Southon, J. R. and Sheets, P.: Volcanism, Ecology and Culture: A Reassessment of the Volcan Ilopango Tbj eruption in the Southern Maya Realm, *Lat. Am. Antiq.*, 12, 25–44, <https://doi.org/10.2307/971755>, 2001.
- Echeverría-Galindo P. G., Pérez, L., Correa-Metrio, A., Avendaño, C., Moguel, B., Brenner, M., Cohuo, S., Macario, L., and Schwalb, A.: Tropical freshwater ostracodes as environmental indicators across an altitude gradient in Guatemala and Mexico *Rev. Biol. Trop.*, 67, 1037–1058, <http://dx.doi.org/10.15517/rbt.v67i4.33278>, 2019.
- 690 Ellison, A.M.: Wetlands of Central America, *Wetl. Ecol. Manag.*, 12, 3–55, <https://doi.org/10.1023/B:WETL.0000016809.95746.b1>, 2004.
- Erdlac, T., and Anderson, H.: The Chixoy-Polochic fault and its associated fractures in western Guatemala. *GSA Bull.*, 93, 57–67, [https://doi.org/10.1130/0016-7606\(1982\)93<57:TCFAIA>2.0.CO;2](https://doi.org/10.1130/0016-7606(1982)93<57:TCFAIA>2.0.CO;2), 1982.
- Estrada-Medina, H., Bautista, F., Jiménez-Osornio, J. J., González-Iturbe, J. A., and Aguilar-Cordero, W.: Maya and WRB 695 Soil Classification in Yucatan, Mexico: Differences and Similarities. *Int. Sch. Res. Notices*, 634260, 1–10, <https://doi.org/10.1155/2013/634260>, 2013.
- Etienne, R., and Apol, M.: Estimating speciation and extinction rates from diversity data and the fossil record, *Evolution*, 63, 244–255, <https://doi.org/10.1111/j.1558-5646.2008.00537.x>, 2009.
- Fabrigar L. R., MacCallum R. C., Wegener D. T., and Strahan E. J.: Evaluating the use of exploratory factor analysis in 700 psychological research, *Psychol. Methods*, 4, 272–299, <https://doi.org/10.1037/1082-989X.4.3.272>, 1999.
- Fan, Y., Chen, J., Shirkey, G., John, R., Wu, S., Park, H., and Shao, C.: Applications of structural equation modeling (SEM) in ecological studies: an updated review. *Ecol. Process.*, 5, 19, <https://doi.org/10.1186/s13717-016-0063-3>, 2016.
- Franco-Gaviria, F., Caballero-Rodríguez, D., Correa-Metrio, A., Pérez, L., Schwalb, A., Cohuo, S., and Macario-González, L.: The human impact imprint on modern pollen spectra of the Maya lands, *Bol. Soc. Geol. Mex.*, 70, 61–78, 2018.
- 705 Garrity, C., and Soller, C.: Database of the Geologic Map of North America; adapted from the map by: Reed Jr., J. C. et al. (2005), US Geological Survey Data Series 424, 2009.

- Gillespie, R., and Roderick, G.: Geology and climate drive diversification, *Nature*, 509, 297–298, <https://doi.org/10.1038/509297a>, 2014.
- 710 Golombek, M. P., and Carr, M. J.: Tidal triggering of seismic and volcanic phenomena during the 1879–1880 eruption of *Islas Quemadas* volcano in El Salvador, Central America, *J. Volcanol. Geoth. Res.*, 3, 299–307, [https://doi.org/10.1016/0377-0273\(78\)90040-9](https://doi.org/10.1016/0377-0273(78)90040-9), 1978.
- Gray, M.: *Geodiversity: Valuing and conserving abiotic nature*. Chichester: John Wiley & Sons, 2004.
- Gray, M.: Geodiversity: The Backbone of Geoheritage and Geoconservation, in: *Geoheritage Assessment, protection, and management*, edited by: E. Reynard, E., and Brilha, J., Elsevier, Amsterdam, 13–25, <https://doi.org/10.1016/B978-0-12-809531-7.00001-0>, 2018.
- 715 809531-7.00001-0, 2018.
- Gray, M.: Geodiversity, geoheritage and geoconservation for society. *International Journal of Geoheritage and Parks*, 7, 226–236, <https://doi.org/10.1016/j.ijgeop.2019.11.001>, 2019.
- Haberyan, K., and Horn, S.: Chemical and Physical Characteristics of Seven Lakes in Costa Rica, *Brenesia*, 51, 85–95, 1999.
- Haberyan, K., Horn, S., and Umaña, G.: Basic limnology of fifty-one lakes in Costa Rica, *Rev. Biol. Trop.*, 51, 107–122, 2003.
- 720 Hammer, Ø., Harper, D.A.T., and Ryan, P.D.: PAST: Paleontological Statistics Software Package for Education and Data Analysis. *Palaeontologia Electronica*, 4(1), 1–9, 2001.
- Hartmann, G.: Beitrag zur Kenntnis des Nicaragua-Sees unter besonderer Berücksichtigung seiner Ostracoden (mit Beschreibung von 5 neuen Arten), *Zool. Anz.*, 162, 269–294, 1959.
- Hastenrath, S.: Rainfall distribution and regime in Central America, *Arch. Met. Geoph. Biokl. B.*, 15, 201–241, <https://doi.org/10.1007/BF02243853>, 1967.
- 725 <https://doi.org/10.1007/BF02243853>, 1967.
- Higuti, J., Conceição, E. O., Campos, R., Ferreira, V. G., Rosa, J., Pinto, M. B. O., and Martens, K.: Periphytic community structure of Ostracoda (Crustacea) in the river-floodplain system of the Upper Paraná River. *Acta Limnol. Bras.*, 29(e.120), <https://doi.org/10.1590/S2179-975X12217>, 2017.
- Hildebrand, A. R., Pilkington, M., Connors, M., Ortiz-Aleman, C., and Chavez, R. E.: Size and structure of the Chicxulub crater revealed by horizontal gravity gradients and cenotes, *Nature*, 376, 415–417, <https://doi.org/10.1038/376415a0>, 1995.
- 730 <https://doi.org/10.1038/376415a0>, 1995.

- Hodell, D. A., Brenner, M., and Curtis, J.: Terminal Classic drought in the northern Maya lowlands inferred from multiple sediment cores in Lake Chichancanab (Mexico), *Quat. Sci. Rev.*, 24, 1413–1427, <https://doi.org/10.1016/j.quascirev.2004.10.013>, 2005.
- Horn, S., and Haberyan, K.: Costa Rican lakes: physical and chemical properties, *Nat. Geog. Res. Explor.*, 9, 86–103, 1993.
- 735 Hu, A., Wang, J., Sun, H., Niu, B., Si, G., Wang, J., Yeh, C., Zhu, X., Lu, X., Zhou, J., Yang, Y., Ren, M., Hu, Y., Dong, H. D., and Zhang, G.: Mountain biodiversity and ecosystem functions: interplay between geology and contemporary environments, *ISME J.*, 14, 931–944, <https://doi.org/10.1038/s41396-019-0574-x>, 2020.
- Hu, L., and Bentler, P. M.: Cutoff criteria for fit indexes in covariance structure analysis: Conventional criteria versus new alternatives. *Struct. Equ. Model.*, 6, 1–55, <https://doi.org/10.1080/10705519909540118>, 1999.
- 740 Hulsey, C. D., Hollingsworth, P. R., and Fordyce, J. A.: Temporal diversification of Central American cichlids. *BMC Evol. Biol.*, 10, 279, <https://doi.org/10.1186/1471-2148-10-279>, 2010.
- Huston, M. A.: *Biological Diversity: the coexistence of species on changing landscapes*, xix, 681, Cambridge University Press, 1995.
- Jakobsen, J. C., Gluud, C., Wetterslev, J., and Winkel, P.: When and how should multiple imputation be used for handling missing data in randomised clinical trials - a practical guide with flowcharts, *BMC Med. Res. Methodol.* 17 (1), 162, <https://doi.org/10.1186/s12874-017-0442-1>, 2017.
- 745 Jiménez-Alfaro, B., Girardello, M., Chytrý, M., Svenning, J. C., Willner, W., Gegou, J. C., Agrillo, E., Campos, J. A., Jandt, U., Kaçki, Z., Šilc, U., Slezák, M., Tichý, L., Tsiripidis, L., Turtureanu, P. D., Ujházyová, M., and Wohlgemuth, T.: History and environment shape species pools and community diversity in European beech forests, *Nat. Ecol. Evol.*, 2, 483–490, <https://doi.org/10.1038/s41559-017-0462-6>, 2018.
- 750 Jury, M.: Long-term variability and trends in the Caribbean Sea. *Int. J. Oceanogr.*, ID 465810, 1–9, <https://doi.org/10.1155/2011/465810>, 2011.
- Karanovic, I. (Ed.): *Recent Freshwater Ostracods of the World, Crustacea, Ostracoda, Podocopida*, Springer, Berlin, 2012.
- Last, W.M.: Mineralogical analysis of lake sediments, in: *Tracking Environmental Change Using Lake Sediments*, edited by Last, W.M., and Smol, J.P., *Physical and Geochemical Methods*. Springer, Dordrecht, 143–188, 2002.
- 755

- Legendre, P., and Legendre, L. (Eds.): Numerical Ecology, Elsevier Scientific, Oxford, 1998.
- Löffler, H.: Contribution to the limnology of high mountain lakes in Central America, *Int. Rev. Hydrobiol.*, 57, 397–408, <https://doi.org/10.1002/iroh.19720570304>, 1972.
- 760 Lorenschat, J., Pérez, L., Correa-Metrio, A., Brenner, M., Von Bramann, U., and Schwalb, A.: Diversity and spatial distribution of extant freshwater ostracodes (Crustacea) in ancient Lake Ohrid (Macedonia/Albania), *Diversity*, 6, 524–550, <https://doi.org/10.3390/d6030524>, 2014.
- Macario-González, L., Cohuo, S., Elías, M., Vences, M., Perez, L., and Schwalb, A.: Integrative taxonomy of freshwater ostracodes (Crustacea: Ostracoda) of the Yucatán Peninsula, implications for paleoenvironmental reconstructions in the northern Neotropical region. *Zool. Anz.*, 275, 20–36, <https://doi.org/10.1016/j.jcz.2018.04.002>, 2018.
- 765 Magaña, V., Amador J., and Medina, S.: The midsummer drought over Mexico and Central America, *J. Climate*, 12, 1577–1588, [https://doi.org/10.1175/1520-0442\(1999\)012<1577:TMDOMA>2.0.CO;2](https://doi.org/10.1175/1520-0442(1999)012<1577:TMDOMA>2.0.CO;2), 1999.
- Margalef, R.: La teoría de la información en Ecología. *Mems R. Acad. Cienc. Artes de Barcelona*, 32, 373–436, 1957.
- 770 Marshall, J. S., Idleman, B. D., Gardner, T. W., and Fisher, D. M.: Landscape evolution within a retreating volcanic arc, Costa Rica, Central America, *Geology*, 31, 419–422, [https://doi.org/10.1130/0091-7613\(2003\)031<0419:LEWARV>2.0.CO;2](https://doi.org/10.1130/0091-7613(2003)031<0419:LEWARV>2.0.CO;2), 2003.
- Marshall, J.: Geomorphology and physiographic provinces of Central America. Central America, in: *Central America: Geology, Resources and Hazards*, edited by: Bundschuh, J., and Alvarado, G., Taylor and Francis Group, London, 75–122, 2007.
- 775 Martiny, J. B., Bohannon, B. J., Brown, J. H., Colwell, R. K., Fuhrman, J. A., Green, J. L., Horner-Devine, M. C., Kane, M., Krumins, J. A., Kuske, C. R., Morin, P. J., Naeem, S., Ovreås, L., Reysenbach, A. L., Smith, V. H., and Staley, J. T.: Microbial biogeography: putting microorganisms on the map, *Nat. Rev. Microbiol.*, 4, 102–112, <https://doi.org/10.1038/nrmicro1341>, 2006.
- 780 Matamoros, W. A., McMahan, C. D., Chakrabarty, P., Albert, J. S., and Schaefer, J. F.: Derivation of the freshwater fish fauna of Central America revisited: Myers's hypothesis in the twenty-first century, *Cladistics*, 31, 177–188, <https://doi.org/10.1111/cla.12081>, 2015.

- Matzke-Karasz, R., Serrano-Sánchez, M. d. L., Pérez, L., Keyser, D., Pipík, R., and Vega, F. J.: Abundant assemblage of Ostracoda (Crustacea) in Mexican Miocene amber sheds light on the evolution of the brackish-water tribe Thalassocypridini, *Hist. Biol.*, 31, 65–101, <https://doi.org/10.1080/08912963.2017.1340471>, 2019.
- 785 McCullough, I., Fergus, E., Scott, C.: *Macrosystems Limnology and Beyond: Re-Envisioning the Scale of Limnology*, in: *Encyclopedia of Inland Waters*, edited by: Cheruvilil, K., Elsevier, U.S.A., 2021.
- McKaye, K. R., Ryan, J. D., Stauffer, J. R., Lopez-Perez, J. L., Vega G. I., van den Berghe. E. P.: African Tilapia in Lake Nicaragua. *BioScience*, 45, 406–411, <https://doi.org/10.2307/1312721>, 1995.
- Miller, R. R.: Geographical distribution of Central American freshwater fishes, *Copeia*, 773–802, <https://doi.org/10.2307/1441406>, 1966.
- 790 Mittelbach, G. G., Schemske, D. W., Cornell, H. V., Allen, A. P., Brown, J. M., Bush, M. B., Harrison, S. P., Hurlbert, S. P., Knowlton, N., Lessios, H. A., McCain, C. M., McCune, A.R., McDade, L. A., McPeck, M. A., Near, T. I., Price, T. D., Ricklefs, R. E., Roy, K., Sax, D. F., Schluter, D., Sobel, A. M., and Turelli, M.: Evolution and the latitudinal diversity gradient: speciation, extinction and biogeography, *Ecol. Lett.*, 10, 315–331, <https://doi.org/10.1111/j.1461-0248.2007.01020.x>, 2007.
- 795 Moguel, B., Pérez, L., Alcaraz, L. D., Blaz, J., Caballero, M., Muñoz-Velasco, I., Becerra, A., Laclette, J. P., Ortega-Guerrero, B., Romero-Oliva, C. S., Herrera-Estrella, L., and Lozano-García, S.: Holocene life and microbiome profiling in ancient tropical Lake Chalco, Mexico, *Sci. Rep.*, 11, 13848, <https://doi.org/10.1038/s41598-021-92981-8>, 2021.
- Molnar, P., and Sykes. L.: Tectonics of the Caribbean and Middle American regions from focal mechanisms and seismicity, *GSA Bulletin*, 80, 1639–1684, [https://doi.org/10.1130/0016-7606\(1969\)80\[1639:TOTCAM\]2.0.CO;2](https://doi.org/10.1130/0016-7606(1969)80[1639:TOTCAM]2.0.CO;2), 1969.
- 800 Montes, C., Cardona, A., Jaramillo, C., Pardo, A., Silva, J.C., Valencia, V., Ayala, C., Pérez-Angel, L.C., Rodríguez-Parra, L.A., Ramírez, V., and Niño, H.: Middle Miocene closure of the Central American Seaway, *Science*, 348, 226–229, <https://doi.org/10.1126/science.aaa2815>, 2015.
- Myers, N., Mittermeier, R. A., Mittermeier, C. G., da Fonseca, G. A. B., and Kent, J.: Biodiversity hotspots for conservation priorities, *Nature*, 403, 853–858, <https://doi.org/10.1038/35002501>, 2000.
- 805 Newhall, C.G., and Dzurisin, D.: Historical unrest at large calderas of the world, *US Geol. Surv. Bull.*, 2, 210–213, <https://doi.org/10.3133/b1855>, 1988.

- Obrist-Farner, J., and Rice, P. M.: Nixtun-Ch'ich' and its environmental impact: Sedimentological and archaeological correlates in a core from Lake Petén Itzá in the southern Maya lowlands, Guatemala, *J. Archaeol. Sci. Rep.*, 26, 101868, <https://doi.org/10.1016/j.jasrep.2019.05.033>, 2019.
- 810 Obrist-Farner, J., Brenner, M., Stone, J., Wojewódka, M., Bauersachs, T., Eckert, A., Locmelis, M., Curtis, J., Zimmerman, S., Correa-Metrio, A., Schwark, L., Duarte, E., Schwalb, A., Niewerth, E., Echeverría Galindo, P., and Pérez, L.: New estimates of the magnitude of the sea-level jump during the 8.2 ka event, *Geology*, 50(1), 86–90, <https://doi.org/10.1130/G49296.1>, 2021.
- Ojeda, R. A., Stadler, J., and Brandl, R.: Diversity of mammals in the tropical-temperate neotropics: Hotspots on a regional scale, *Biodivers. Conser.*, 12, 1431–1444, <https://doi.org/10.1023/A:1023625125032>, 2003.
- 815 Oksanen, J., Blanchet, F. G., Friendly, M., Kindt, R., Legendre, P., McGlenn, D., Minchin, P. R., O'Hara, R. B., Simpson, G. L., Solymos, Stevens, M. H. H., Szoecs, E., and Wagner, H.: vegan: Community Ecology Package, R package version 2.4-5, <https://CRAN.R-project.org/package=vegan>, 2017.
- Patton, J. L., da Silva, M. N. F., and Malcolm, J. R.: Gene genealogy and differentiation among arboreal spiny rats (Rodentia: Echimyidae) of the Amazon Basin: a test of the riverine barrier hypothesis, *Evolution*, 48, 1314–1323, <https://doi.org/10.1111/j.1558-5646.1994.tb05315.x>, 1994.
- 820 Peel, M. C., Finlayson, B. L., and McMahon, T. A.: Updated world map of the Köppen–Geiger climate classification, *Hydrol. Earth Syst. Sci.*, 11, 1633–1644, <https://doi.org/10.5194/hess-11-1633-2007>, 2007.
- Pérez-Ceballos, R., Pacheco-Ávila, J., Euán-Ávila J. I., and Hernández-Arana, H.: Regionalization based on water chemistry and physicochemical traits in the ring of cenotes, Yucatan, Mexico. *J. Caves Karst Stud.*, 74, 90–102, <https://doi.org/10.4311/2011es0222>, 2012.
- 825 Pérez, L., Bugja, R., Lorenschat, J., Brenner, M., Curtis, J., Hoelzmann, P., Islebe, G., Scharf, B., and Schwalb, A.: Aquatic ecosystems of the Yucatán Peninsula (Mexico), Belize, and Guatemala. *Hydrobiologia*, 661, 407–433, <https://doi.org/10.1007/s10750-010-0552-9>, 2011a.
- 830 Pérez, L., Frenzel, P., Brenner, M., Escobar, J., Hoelzmann, P., Scharf, B., and Schwalb, A.: Late Quaternary (24–10 ka BP) environmental history of the Neotropical lowlands inferred from ostracodes in sediments of Lago Petén Itzá, Guatemala, *J. Paleolimnol.*, 46, 59–74, <https://doi.org/10.1007/s10933-011-9514-0>, 2011b.



- Pérez, L., Lorenschat, J., Brenner, M., Scharf, B., and Schwalb, A.: Extant freshwater ostracodes (Crustacea: Ostracoda) from Lago Petén Itzá, Guatemala, *Rev. Biol. Trop.*, 58, 871–895, <https://doi.org/10.15517/rbt.v58i2.5252>, 2010a.
- 835 Pérez, L., Lorenschat, J., Massafiero, J., Paillès, C., Sylvestre, F., Hollwedel, W., Brandorff, G.O., Brenner, M., Islebe, G., Lozano, M.S., Scharf, B., and Schwalb, A.: Bioindicators of climate and trophic state in lowland and highland aquatic ecosystems of the Northern Neotropics, *Rev. Biol. Trop.*, 61, 603–644, 2013a.
- Perry, E., Paytan, A., Pedersen, B., and Velazquez-Oliman, G.: Groundwater geochemistry of the Yucatan Peninsula, Mexico: Constraints on stratigraphy and hydrogeology. *J. Hydrol.*, 367, 27–40, <https://doi.org/10.1016/j.jhydrol.2008.12.026>, 2009.
- 840 Perry, E., Velazquez-Oliman, G., Marin, L.: The Hydrogeochemistry of the Karst Aquifer System of the Northern Yucatan Peninsula, Mexico. *Int. Geol. Review*, 44, 191–221, <https://doi.org/10.2747/0020-6814.44.3.191>, 2002.
- R Core Team: R: A language and environment for statistical computing. R Foundation for Statistical Computing, Vienna, Austria, <https://www.R-project.org/>, 2017.
- Reed, J. C., Wheeler, J. O., and Tucholke, B. E.: Decade of North American Geology, Geologic Map of North America, 1:5000000 continent scale map 001, Geological Society of America, Inc. Boulder, CO., 2005.
- 845 Ren, Y., Lü, Y., Hu, J., and Yin, L.: Geodiversity Underpins Biodiversity but the Relations Can Be Complex: Implications from Two Biodiversity Proxies, *Glob. Ecol. Conserv.*, 31, e01830, <https://doi.org/10.1016/j.gecco.2021.e01830>, 2021
- Roessler, E. W.: Estudios sobre los ostracodos de agua dulce en Colombia – 6, Parte 4: Estudio taxonómico del grupo *Strandesia psittacea psittacea* (Sars, 1901), *Caldasia*, 16, 215–230, 1990a.
- 850 Roessler, E.W.: Estudios taxonómicos, ontogenéticos, ecológicos y etológicos sobre los ostrácodos de agua dulce en Colombia (Ostracoda, Podocopida, Cyprididae) – 6: Estudio taxonómico del género *Strandesia* Stuhlmann, 1888 – Parte 3: El grupo *Strandesia elliptica* (Sars, 1901). *Revista Acad. Colomb. Ci. Exact.*, 17, 795–804, 1990b.
- Rosa, J., Petsch, D. K., Martens, K., and Higtuti, J.: Species' traits and taxonomic distance can predict the hatching phenology of ostracod (Crustacea) resting eggs from tropical floodplain lakes, *Int Rev Hydrobiol*, 106, 226–238. 855 <https://doi.org/10.1002/iroh.202102105>, 2021.
- Rosencrantz, E.: Structure and tectonics of the Yucatan Basin, Caribbean Sea, as determined from seismic reflection studies, *Tectonics*, 9, 1037–1059, <https://doi.org/10.1029/TC009i005p01037>, 1990.

- Rosseel, Y.: Lavaan: An R package for structural equation modeling and more. Version 0.5–12 (BETA). *Journal of Statistical Software*, 48(2), 1–36, <https://cutt.ly/xgwIRZJ>, 2012.
- 860 Rossetti, D. P., and Toledo, P. M.: Biodiversity from a Historical Geology Perspective: A Case Study from Marajó Island, Lower Amazon, *Geobiology*, 4, 215–223, <http://dx.doi.org/10.1111/j.1472-4669.2006.00080.x>, 2006.
- Rossi, V., Martorella, A., and Menozzi, P.: Hatching phenology and voltinism of *Heterocypris barbara* (Crustacea: Ostracoda) from Lampedusa (Sicily, Italy), *J. Limnol.*, 72(2), e:18, <https://www.jlimnol.it/index.php/jlimnol/article/view/jlimnol.2013.e18>, 2013.
- 865 Rull, V.: Neotropical biodiversity: timing and potential drivers. *Trends Ecol.*, 26, 508–513 <https://doi.org/10.1016/j.tree.2011.05.011>, 2011.
- Saint-Loup, R., Felix, T., Maqueda, A., Schiller, A., and Renard, P.: A survey of groundwater quality in Tulum region, Yucatan Peninsula, Mexico, *Environ. Earth Sci.*, 77, 1–20 <https://doi.org/10.1007/s12665-018-7747-1>, 2018.
- 870 Saldarriaga, A. T., and Martínez J.I.: Ecology of non – marine ostracoda from La Fe reservoir (El Retiro, Antioquia) and their potential application in paleoenvironmental studies, *Rev. Acad. Col. Cienc.*, 34, 397–409, 2010.
- Sánchez-Sánchez, J. A., Álvarez-Legorreta, T., Pacheco-Ávila, J. G., González-Herrera, R. A., and Carrillo-Briebiezca, L.: Caracterización hidrogeoquímica de las aguas subterráneas del sur del Estado de Quintana Roo, México. *Rev. Mex. Cienc. Geol.*, 32, 62–76, 2015.
- 875 Sarstedt, M., Ringle, C. M.: Structural Equation Models: From Paths to Networks (Westland 2019), *Psychometrika*, 85, 841–844, <https://doi.org/10.1007/s11336-020-09719-0>, 2020.
- Schmitter-Soto, J., Comín, F., Escobar-Briones, E., Herrera, J., Alcocer, J., Suarez-Morales, E., Elías-Gutiérrez, M., Díaz, V., Marin, L., and Steinich, B.: Hydrogeochemical and biological characteristics of cenotes in the Yucatan Peninsula (SE Mexico), *Hydrobiologia*, 467, 215–228, <https://doi.org/10.1023/A:1014923217206>, 2002a.
- 880 Schmitter-Soto, J., Escobar-Briones, E., Alcocer, J., Suarez-Morales, E., Elías-Gutiérrez, M., and Marín, L.: Los cenotes de la Península de Yucatán, in *Lagos y Presas de México*, edited by: De La Lanza, G., and García-Calderón, J. L., AGT, México, 338–376, 2002b.

- Schrodt, F., Bailey, J.J., Kissling, W.D., Rijdsdijk, K.F., Seijmonsbergen, A.C., van Ree, D., Hjort, J., Lawley, R.S., Williams, C.N., Anderson, M.G., Beier, P., van Beukering, P., Boyd, D.S., Brilha, J., Carcavilla, L., Dahlin, K.M., Gill, J.C., Gordon, J.E., Gray, M., Grundy, M., Hunter, M.L., Lawler, J.J., Monge-Ganuzas, M., Royse, K.R., Stewart, I., Record, S., Turner, W., Zarnetske, P.L., and Field, R.: To advance sustainable stewardship, we must document not only biodiversity but geodiversity, *Proc. Natl. Acad. Sci. U.S.A.*, 116(33), 16155–16158, <https://doi.org/10.1073/pnas.1911799116>, 2019.
- 885 Sigala, I., Caballero, M., Correa-Metrio, A., Lozano-García, S., Vázquez, G., Pérez-Alvarado, L., and Zawisza, E.: Basic limnology of 30 continental waterbodies of the Transmexican Volcanic Belt across climatic and environmental gradients. *B. Soc. Geol. Mex.*, 69, 313–370, <https://doi.org/10.18268/bsgm2017v69n2a3>, 2017.
- 890 Sluys, R.: Ostracods (Ostracoda, Crustacea) from two freshwater lakes near Maarsse, The Netherlands, *Hydrobiol. Bull.*, 15, 92–93, <https://doi.org/10.1007/BF02260263>, 1981.
- Smith, G. R., Badgley, C., Eiting, T. P., and Larson, P. S.: Species diversity gradients in relation to geological history in North American freshwater fishes, *Evol. Ecol. Res.*, 12, 693–726, 2010.
- 895 Socki, R., Perry, E., and Romanek, C.: Stable isotope systematics of two cenotes from the northern Yucatan Peninsula, Mexico, *Limnol. Oceanogr.*, 47, 1808–1818, <https://doi.org/10.4319/lo.2002.47.6.1808>, 2002.
- Soto, D. X., Sánchez-Murillo, R., Ortega, L., Quiroz-Londoño, O. M., Araguás-Araguás, L. J. and Martins, V.: Environmental isotope applications in Latin America and the Caribbean region. *Isot. Environ. Health Stud.*, 56, 387–390, <https://doi.org/10.1080/10256016.2020.1839448>, 2020.
- 900 Steinbauer, M. J., Field, R., Grytnes, J., Trigas, P., Ah-Peng, C., Attorre, F., Birks, H. J. B., Borges, P. A. V., Cardoso, P., Chou, C., Sanctis, M. D., de Sequeira, M. M., Duarte, M. C., Elias, R. B., Fernández-Palacios, J. M., Gabriel, R., Gereau, R. E., Gillespie, R. G., Greimler, J., Harter, D. E. V., Huang, T., Irl, S. D. H., Jeanmonod, D., Jentsch, A., Jump, A. S., Kueffer, C., Nogué, S., Otto, R., Price, J., Romeiras, M. M., Strasberg, D., Stuessy, T., Svenning, J., Vetaas, O. R., Beierkuhnlein, C., and Gillespie, T.: Topography-driven isolation, speciation and a global increase of endemism with elevation, *Global Ecol. Biogeogr.*, 25, 1097–1107, <https://doi.org/10.1111/geb.12469>, 2016.
- 905 Steinich, B., and Marín, L. E.: Hydrogeological investigations in northwestern Yucatán, México, using resistivity surveys, *Groundwater*, 34, 640–646, <https://doi.org/10.1111/j.1745-6584.1996.tb02051.x>, 1996.
- Stoiber, R. E., and Carr, M. J.: Quaternary volcanic and tectonic segmentation of Central America. *Bull. Volcanol.*, 37, 304–325, <https://doi.org/10.1007/BF02597631>, 1973.

- 910 Taylor, M., and Alfaro, E.: Climate of Central America and the Caribbean, in: *The Encyclopedia of World Climatology*, edited by: Oliver J., Springer Press, Dordrecht, The Netherlands, 183–189, [https://doi.org/10.1007/1-4020-3266-8\\_37](https://doi.org/10.1007/1-4020-3266-8_37), 2005.
- Umaña, G., Haberyan, K., and Horn, S.: Limnology in Costa Rica, in *Limnology in Developing Countries*, edited by: Wetzel, R., and Gopal, B., International Scientific Publications, New Delhi, 33–62, 1999.
- Vallance, J. W., and Calvert, A. T.: Volcanism during the past 84 ka at Atitlan caldera, Guatemala. AGU, Fall Meeting 2003, 915 2003.
- Vartanyan, G.: Influence of Modern Geological Processes on Evolution of Ecosystems, in: *Geology and Ecosystems*, edited by: Zektser, I. S., Marker, B., Ridgway, J., Rogachevskaya, L., and Vartanyan, G., Springer, Boston, MA, [https://doi.org/10.1007/0-387-29293-4\\_3](https://doi.org/10.1007/0-387-29293-4_3), 2006b.
- Vartanyan, G.: The Geological Environment and Ecosystems, in: *Geology and Ecosystems*, edited by: Zektser, I. S., Marker, 920 B., Ridgway, J., Rogachevskaya, L., and Vartanyan, G., Springer, Boston, MA, [https://doi.org/10.1007/0-387-29293-4\\_2](https://doi.org/10.1007/0-387-29293-4_2), 2006a.
- Vázquez-Domínguez, E., and Arita, H.: The Yucatán peninsula: biogeographical history 65 million years in the making, *Ecology*, 33, 212–219, <https://doi.org/10.1111/j.1600-0587.2009.06293.x>, 2010.
- Vogel, S., Maerker, M., Rellini, I., Hoelzmann, P., Wulf, S., Robinson, M., Steinhübel, L., Maio, G. D., Imperatore, C., 925 Kastenmeier, P., Liebmann, L., Esposito, D., and Seiler, F. M.: From a stratigraphic sequence to a landscape evolution model: Late Pleistocene and Holocene volcanism, soil formation and land use in the shade of Mount Vesuvius (Italy), *Quater. Int.*, 394, 155–179, <https://doi.org/10.1016/j.quaint.2015.02.033>, 2016.
- Waliser, D. E., Shi, Z., Lanzante, J. R., and Oort, A. H.: The Hadley circulation: assessing NCEP/NCAR reanalysis and sparse in-situ estimates, *Clim. Dyn.*, 15, 719–735, <https://doi.org/10.1007/s003820050312>, 1999.
- 930 Wallace, A.: On the insects used for food by the Indians of the Amazon, *Trans. R. Entomol. Soc. Lond.*, 7, 241–244, <https://doi.org/10.1111/j.1365-2311.1854.tb02224.x>, 1853.
- Wehrtmann, I., Ramirez, A., and Perez-Reyes, O.: Freshwater Decapod Diversity and Conservation in Central America and the Caribbean, in: *A Global Overview of the Conservation of Freshwater Decapod Crustaceans*, edited by Kawai T., and Cumberlidge, N., Springer, Cham., [https://doi.org/10.1007/978-3-319-42527-6\\_9](https://doi.org/10.1007/978-3-319-42527-6_9), 2016.

935 [Zarnetske, P. L., Read, Q. D., Record, S., Gaddis, K. D., Pau, S., Hobi, M. L., Malone, S. L., Constanza, J., Dahlin, K. M., Latimer, A. M., Wilson, A. M., Grady, J. M., Ollinger, S. V., and Finley, A. O.: Towards connecting biodiversity and geodiversity across scales with satellite remote sensing, \*Global Ecol. Biogeogr.\*, 28, 548–556, <https://doi.org/10.1111/geb.12887>, 2019.](#)