

Investigating the effect of nickel concentration on phytoplankton growth to inform the assessment of ocean alkalinity enhancement

Jiaying Abby Guo¹, Robert Strzepek², Anusuya Willis³, Aaron Ferderer¹, Lennart Thomas Bach¹

1 Institute for Marine and Antarctic Studies, University of Tasmania, Hobart, Tasmania, Australia

2 Australian Antarctic Program Partnership (AAPP), Institute for Marine and Antarctic Studies, University of Tasmania, Hobart, Tasmania, Australia

3 National Collections and Marine Infrastructure, Commonwealth Scientific and Industrial Research Organisation, Hobart, Tasmania, Australia

Correspondence to: Jiaying Abby Guo (jiaying.guo@utas.edu.au)

Abstract. Ocean alkalinity enhancement (OAE) is a proposed method for removing carbon dioxide (CO₂) from the atmosphere by the accelerated weathering of (ultra-) basic minerals to increase alkalinity – the chemical capacity of seawater to store CO₂. During the weathering of OAE-relevant minerals relatively large amounts of trace metals will be released and may perturb pelagic ecosystems. Nickel (Ni) is of particular concern as it is abundant in olivine, one of the most widely considered minerals for OAE. However, so far there is limited knowledge about the impact of Ni on marine biota including phytoplankton. To fill this knowledge gap, this study tested the growth and photo-physiological response of 11 marine phytoplankton species to a wide range of dissolved Ni concentrations (from 0.07 nmol/L to 50,000 nmol/L). We found that the phytoplankton species were not very sensitive to Ni concentrations under the culturing conditions established in our experiments, but the responses were species-specific. The growth rates of 6 of the 11 tested species showed ~~generally limited~~~~mild~~~~small~~ (36 % maximum change) but still significant responses to changing Ni concentrations (36 % maximum change). Photosynthetic performance, assessed by measuring the maximum quantum yield (F_v/F_m) and the functional absorption cross-section (σ_{PSII}) of photosystem II, was ~~also only mildly~~ sensitive to changing Ni in 3 out of 11 species (35XXX% maximum change) and 4 out of 11 species (XXX16% maximum change), respectively. ~~Nine species had smaller than <16% change in both their F_v/F_m and σ_{PSII} values among various Ni gradients.~~ The limited effect of Ni may be partly due to the provision of nitrate as the nitrogen source for growth, as previous studies suggest higher sensitivities when urea is the nitrogen source. Furthermore, ~~the~~ limited influence may be due to the

relatively high concentrations of synthetic organic ligands ~~in-added~~ the growth media in our experiments. These
30 ligands ~~wereare commonly added to help trace metals dissolve in the mediato control trace metal bioavailability,~~
~~but they reduced bioavailable and therefore Ni (i.e., for example “free Ni²⁺”)~~ concentrations by binding the majority
of the dissolved Ni. Our data suggest that dissolved Ni does not have a strong effect on phytoplankton under our
experimental conditions, but we emphasize that a deeper understanding of nitrogen sources, ligand concentrations
and phytoplankton composition is needed when assessing the influence of Ni release associated with OAE. ~~We~~
35 ~~discuss if applications of OAE with Ni rich minerals may be safer in regions with high organic ligand~~
~~concentrations and low concentrations of urea as such boundary conditions may lead to less impact of Ni on~~
~~phytoplankton communities.~~

1 Introduction

Increased burning of fossil fuels and land-use changes have resulted in a significant increase in atmospheric CO₂
40 from a preindustrial value of ~280 ppm to currently ~415 ppm (Friedlingstein et al., 2020). Detrimental effects of
rising CO₂ include global warming, increasing sea levels, ocean acidification and more frequent extreme weather
(IPCC, 2019). To limit detrimental impacts, CO₂ emissions must be rapidly reduced. Additionally, about 100-1000
gigatonnes (Gt) of CO₂ must be removed from the atmosphere by 2100 and permanently stored in other reservoirs
(Rogelj et al., 2018~~6~~). One potential method for the required atmospheric CO₂ removal (CDR) is to increase ocean
45 alkalinity thereby increasing the chemical capacity of seawater to permanently store CO₂ (Kheshgi, 1995).
Alkalinity is formed naturally during the chemical weathering of certain minerals rich in magnesium and/or calcium
such as olivine (Schuiling and Krijgsman, 2006). ~~When these minerals are dissolved in the ocean, protons are~~
~~consumed causingreducing seawater CO₂ undersaturation relative to the surrounding atmosphere and more CO₂~~
~~are absorbed from the atmosphereconcentrations thereby causing an enhanced CO₂ influx from the atmosphere~~
50 ~~or a reduced flux to the atmosphere.~~

~~Natural~~ ~~Chemical~~ rock weathering will absorb most of the anthropogenic CO₂, but only over a period of tens- to
hundreds-thousand years (Archer et al., 2009). “Ocean alkalinity enhancement (OAE)” and “enhanced weathering
(EW)” seek to accelerate natural rock weathering processes by spreading pulverized minerals onto the ocean
surface (in the case of OAE) or warm and humid land areas (in the case of EW) (Schuiling and Krijgsman, 2006;
55 Kheshgi, 1995). Modeling studies suggest that OAE and EW can help to mitigate climate change significantly

when operated at an appropriate scale (Lenton et al., 2018; Ilyina et al., 2013; Kohler et al., 2010; [Keller et al., 2014](#)).

A variety of trace metals are released into the environment alongside alkalinity during chemical weathering. The [composition quality](#) and quantity of released trace metals depends on the mineral used for OAE or EW. Olivine is currently one of the most widely considered minerals due to its relatively fast weathering rates (Taylor et al., 2016; [Oelkers et al., 2018](#)). It contains high amounts of nickel (Ni), which was shown to leach out of olivine [faster than alkalinity very efficiently](#) during chemical weathering (Montserrat et al., 2017; [Fuhr et al., 2022](#)). Thus, the potentially large amounts of Ni released into the environment are a predominant environmental concern of EW or OAE with olivine (Hartmann et al., 2013; Bach et al., 2019). In the case of EW, Ni would first affect terrestrial ecosystems but a fraction of it would be transported into the oceans via rivers. In the case of OAE, Ni would directly affect marine biota. Phytoplankton are at the base of the marine food web so that it is central to the assessment of EW and OAE to understand how phytoplankton species respond to Ni perturbations (Bach et al., 2019).

Dissolved Ni occurs in low concentrations (2-4 nmol/L) in the sea surface, but concentrations increase with depth (up to 11 nmol/L) in the North Pacific, [the Atlantic, and the Indian Ocean](#) (Bruland, 1980; Sclater et al., 1976; [Middag, 2020; Thi Dieu Vu and Sohrin, 2013](#)). The depletion in the surface in some ocean regions is thought to be caused by phytoplankton utilization of dissolved Ni and the enrichment with depth due to remineralization of exported particulate Ni (Glass and Dupont, 2017; Dupont et al., 2010; Morel, 2008). The nutrient-like vertical profile of Ni indicates that it is a bioactive element for phytoplankton in some areas ([Glass and Dupont, 2017](#)).

Indeed, Ni is an essential co-factor for some enzymes (Zamble, et al. 2017; Sunda, 1989) and two major functions of Ni for phytoplankton metabolism have been documented. First, Ni is known to be involved in urea utilization. Urea is an ecologically important nitrogen source that can support 5-50% of oceanic primary production (Wafar et al., 1995). Most marine phytoplankton, including cyanobacteria, haptophytes, dinoflagellates, and diatoms, use the Ni-containing enzyme urease to hydrolyse urea to ammonium and CO₂ ((NH₂)₂CO + H₂O → CO₂ + 2NH₃) (Holm and Sander, 1997; Dupont et al., 2010). Second, Ni can be a co-factor for the enzyme superoxide dismutase (SOD) (Wolfe-Simon et al., 2005). SOD is important for the survival of photosynthetic organisms (Glass and Dupont, 2017). The highly reactive and noxious superoxide anion radical (O₂⁻) is a metabolic by-product of aerobic respiration and oxygenic photosynthesis (Fridovich, 1998). SOD can turn O₂⁻ into molecular oxygen (O₂) and hydrogen peroxide (H₂O₂). [For N₂-fixers, also nitrogenase is a key enzyme for di-nitrogen \(N₂\) fixation.](#) Since

85 nitrogenase can be inactivated by reactive oxygen species, such as O₂⁻, Ni-SOD is indirectly involved in nitrogen
fixation process in cyanobacteria. In addition, hydrogen gas (H₂) is generated as a by-product in the nitrogen
fixation process, and Ni is an essential part of the hydrogenase enzymes regulating H₂ metabolism used by some
N₂-fixers (Tuo, et al. 2020). Hence, Ni plays an important parta role in cyanobacterial N₂ fixation in different
ways. Therefore, the potential increase in Ni concentration due to OAE may affect phytoplankton especially for
90 the species that uptake Ni. It's possible that Ni addition will increase phytoplankton growth first at an optimal
concentration and will inhibit their growth at lower or higher concentrations.

This project tested the response of 11 different marine phytoplankton species to a gradient of dissolved Ni
concentrations. The phytoplankton species were exposed to this gradient under the same experimental conditions.
We address the following questions: (1) how do different dissolved Ni concentrations influence phytoplankton
95 growth and photosynthetic performance? (2) will different phytoplankton species or functional groups have
different Ni sensitivities?

2 Materials and Methods

Eleven axenic cultures from four different phytoplankton functional groups (diatoms, haptophytes, cyanobacteria,
and dinoflagellates) were obtained from the Australian National Algae Culture Collection. We selected species
100 from temperate regions as they can be grown at the same temperature and seawater medium. Selected species
included three diatoms: *Asterionellopsis glacialis* (CS-135), *Nitzschia closterium* (CS-5), *Phaeodactylum*
tricornutum (CS-29); four haptophytes: *Cricosphaera* sp. (CS-1183), *Emiliana huxleyi* (CS-1185), *Isochrysis*
galbana (CS-186), *Prymnesium parvum* (CS-659); three cyanobacteria: *Geitlerinema* sp. (CS-897), *Oscillatoria*
sp. (CS-52), *Synechococcus* sp. (CS-205, sub-cluster 5.2 and pigment type 1 (only phycocyanin)); and one
105 dinoflagellate *Amphidinium carterae* (CS-740).

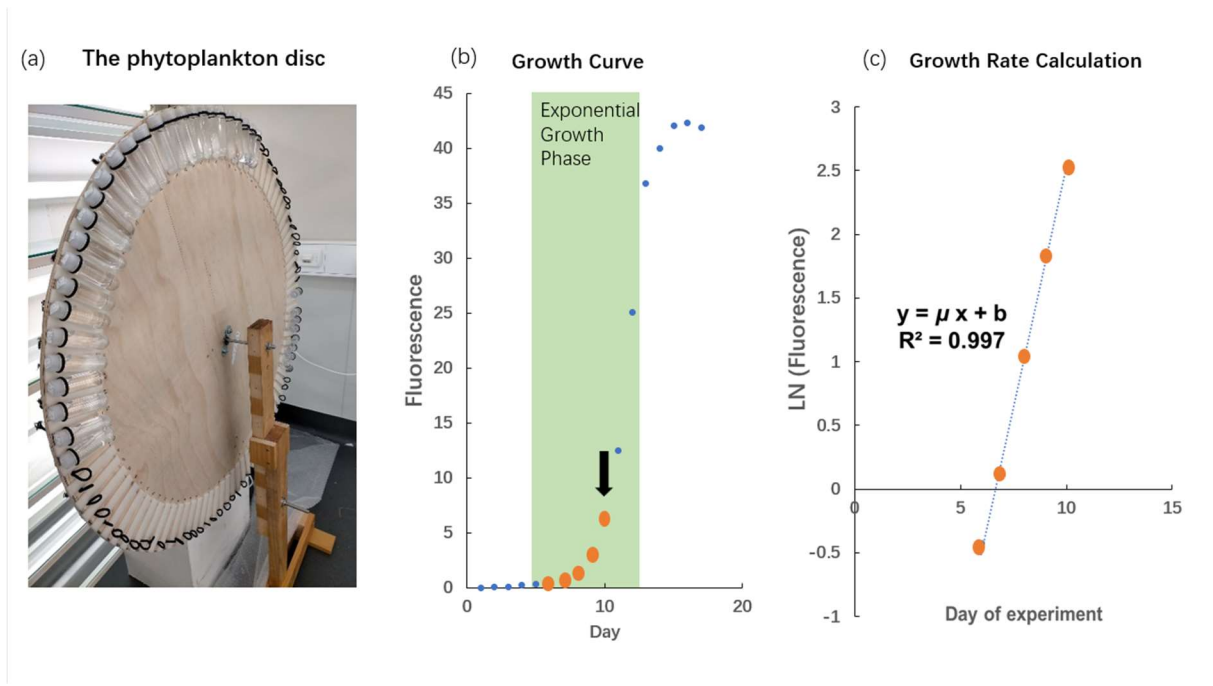
2.1 Growing phytoplankton in artificial seawater medium

This study used Aquil medium due to its wide application in trace metal experiments (Price et al., 1989). The
medium is composed of artificial seawater where Milli-Q 18.2 MΩ·cm⁻¹ grade water is mixed with ultra-pure salts
to reproduce the major ion composition of seawater (Pausch et al., 2019). The medium was filtered through a 0.2
110 μm pore size filter and sterilized in a microwave for a total of 11 minutes in acid-cleaned polycarbonate bottles (2
L) (Price et al., 1989). This artificial seawater is further enriched with the elements necessary for algal growth,

such as vitamins, macronutrients (nitrate (NO_3^-) = 100 $\mu\text{mol/L}$, phosphate (PO_4^{3-}) = 10 $\mu\text{mol/L}$, and silicate (SiO_3^{2-}) = 100 $\mu\text{mol/L}$), and various essential trace metals such as iron and manganese (Table A1). The trace metals were buffered with 100 $\mu\text{mol/L}$ ethylenediaminetetraacetic acid (EDTA). Seventeen Aquil media were produced that
115 differed in the amount of Ni that was added, as will be described in more detail in the next section. Media preparation was done in a trace metal clean laminar flow bench. The salinity and pH (NBS scale) of Aquil media were 35 and 8.1 respectively.

Phytoplankton species were cultivated in acid-cleaned (10% HCl for at least 24 h) polycarbonate tubes (30 mL, Nalgene™). These polycarbonate tubes (one tray with 40 tubes) were filled with Milli-Q water and then sterilized
120 in the microwave for 8 minutes. The Aquil media were transferred from 1 L bottles into empty polycarbonate tubes under the clean bench under the trace metal clean laminar flow bench. Phytoplankton were added to the medium once it had reached chemical equilibrium (see next section).

The cultures were grown in a light chamber at 17°C. All polycarbonate tubes were mounted onto a self-made “phytoplankton disc”, which rotated at 0.8 revolutions per minute (Fig. 1 (a)). The phytoplankton disc ensured that
125 equal light intensity was provided to all cultures and that phytoplankton cells were kept in suspension. The light was provided on a 14-to-10-hour daily cycle (cool white fluorescence light) where light intensities were 58 $\mu\text{mol photons m}^{-2} \text{ s}^{-1}$ (14 hours) and 23 $\mu\text{mol photons m}^{-2} \text{ s}^{-1}$ (10 hours). This unusual light cycle was due to some lights in the room being plugged in energy sources, which had separate light-dark cycle setups linked to the computer system at the Institute of Marine and Antarctic Studies. Initially, we were not aware of this additional cycle and
130 only realized the issue during the experiment. Therefore, we continued with this light cycle to maintain comparability between experiments. However, this issue does not affect the interpretation of the results as all species and replicates received the same amount of light throughout the experiment. The light intensity was the average light intensity at each of the 88 spots on the phytoplankton disc measured with a Licor light meter.



135 **Figure 1.** The phytoplankton disc and growth rate calculation. (a) The phytoplankton disc, with polycarbonate tubes mounted
 using elastic bands to the edge of the circular disc. The disc rotated with 0.8 revolutions per minute during the experiment. (b)
 In vivo chlorophyll fluorescence during the growth cycle of phytoplankton cultures, *Phaeodactylum tricornutum* (CS-29). We
 only used fluorescence values where biomass inside the polycarbonate tubes was still relatively low (maximum up to a
 fluorescence of 6.143) as indicated in this example with the thick orange dots. The arrow indicates the time when the culture
 140 was usually transferred into the next batch of fresh medium. (Please note that the data illustrated here is from a test where we
 let the culture grow into nutrient depletion.) (c) The fluorescence values measured at low biomass were ln-transformed and
 plotted against time (day). The slope of the linear regression in this plot represents the specific growth rate (μ ; d^{-1}).

2.2 Nickel treatment

Aquil media were enriched with different concentrations of $NiCl_2$: 0, 5, 10, 20, 30, 50, 70, 100, 150, 200, 300, 400,
 145 500, 700, 1000, 10000 and 50000 nmol/L. Unless otherwise noted, “Ni concentration” refers to the total added
 dissolved Ni concentration. For illustration and discussion of the data, concentrations were negatively \log_{10}
 transformed:

$$pNi = -\log_{10}(Ni) \quad \text{Eq. (1)}$$

150 where Ni is the total dissolved concentration of Ni in mol/L. This kind of transformation is also used to convert
 hydrogen ion concentrations to pH and is commonly used in studies investigating trace metal sensitivities to better
 visualize data when trace metal concentrations vary over orders of magnitude (Dupont et al., 2008).

Media were allowed to equilibrate chemically for at least 24 h before being inoculated with phytoplankton. To
 acclimate the phytoplankton strains, stock cultures were first transferred into Aquil medium without Ni enrichment.

155 They were then cultivated for at least 3 batch cycles (i.e., transferred from one polycarbonate tube to the next one) before being transferred to polycarbonate tubes with the different Ni treatments. This ensured that the phytoplankton species were acclimated to Aquil medium before the Ni experiment commenced.

EDTA binds with metal ions and helps the dissolution of metal ions to create a nutrient-replete medium. Due to the addition of the ligand EDTA to the Aquil media, the “free Ni” ion concentrations (i.e., Ni²⁺) were substantially lower than the total dissolved Ni concentrations as was calculated with the chemical speciation software Visual MINTEQ 3.1 (Gustafsson, 2011).

We were interested to see if the response of phytoplankton to Ni may be different in other growth media where no EDTA was added. Therefore, we prepared a batch of natural seawater medium with water sampled from 15 m in the Southern Ocean (58.02 °S, 141.17 °E). There was little information about concentrations and types of Ni-binding organic ligands in the Southern Ocean because these ligands occur at very low concentrations within a highly complex mixture of organic matter (Boiteau et al., 2016). If we take Fe-binding organic ligands as examples: the characterized types of Fe-binding organic ligands were different in various studies due to the diverse measuring protocol, and the concentrations of these ligands in the Southern Ocean varied from 0.72 to 12.3 nmol/L (Nolting et al., 1998; Boye et al. 2001; Buck et al., 2010). Therefore, the Southern Ocean seawater we used in the experiment was estimated can be considered to have much lower organic ligands than the Aquil media (100 μmol/L EDTA). This natural seawater was filtered through an acid-cleaned 0.2 μm filter and sterilized in the microwave. The same amount of macro-nutrients (N, P and Si) and vitamins were added as in the Aquil medium (mentioned above). The trace metal additions to the Southern Ocean seawater (no Ni included) were adjusted to a similar free trace metal concentration (nutrient-replete) as in Aquil medium (Table A1). For the experiment with natural seawater, we set up a dissolved Ni gradient with 17 concentrations: 0, 1, 2, 5, 10, 20, 30, 50, 70, 100, 150, 175 200, 300, 400, 500, 700, and 1000 nmol/L. The extremely high Ni concentrations designed for the Aquil medium were avoided because the extremely high Ni gradients may have precipitation due to a lack of enough organic ligands. as we assumed the organic ligand concentrations in natural seawater to be much lower than the concentration of EDTA added in Aquil medium and therefore the concentration of free Ni²⁺ to be higher. We used *P. tricorutum* (CS-29) for this experiment. *Phaeodactylum tricorutum* was transferred from the stock cultures into natural seawater medium for 3 batches cycles prior to the experiment with different Ni treatments as described for the Aquil medium above.

The total ion concentrations of each trace metal in natural seawater and Aquil media before additions were

measured using a seaFAST system and inductively-coupled plasma mass spectrometry (ICP-MS). The free ion concentrations were calculated with Visual MINTEQ 3.1 based on the total ion concentration together with the added concentration (Table 1).

Table 1. The total dissolved concentrations and free ion concentrations of Ni in different media.

Aquil medium					Southern Ocean seawater medium				
Added Ni concentration (nmol/L)	Total dissolved Ni concentration (mol/L)	pNi	Free Ni ²⁺ concentration (mol/L)	pNi ²⁺	Added Ni concentration (nmol/L)	Total dissolved Ni concentration (mol/L)	pNi	Free Ni ²⁺ concentration (mol/L)	pNi ²⁺
0	7.1× 10 ⁻¹¹	10.2	9.4× 10 ⁻¹⁷	16.0	0	8.6× 10 ⁻⁹	8.1	6.1× 10 ⁻⁹	8.2
5	5.1× 10 ⁻⁹	8.3	6.8× 10 ⁻¹⁵	14.2	1	9.6× 10 ⁻⁹	8.0	6.8× 10 ⁻⁹	8.2
10	1.0× 10 ⁻⁸	8.0	1.3× 10 ⁻¹⁴	13.9	2	1.1× 10 ⁻⁸	8.0	7.5× 10 ⁻⁹	8.1
20	2.0× 10 ⁻⁸	7.7	2.7× 10 ⁻¹⁴	13.6	5	1.4× 10 ⁻⁸	7.9	9.7× 10 ⁻⁹	8.0
30	3.0× 10 ⁻⁸	7.5	4.0× 10 ⁻¹⁴	13.4	10	1.9× 10 ⁻⁸	7.7	1.3× 10 ⁻⁸	7.9
50	5.0× 10 ⁻⁸	7.3	6.7× 10 ⁻¹⁴	13.2	20	2.9× 10 ⁻⁸	7.5	2.0× 10 ⁻⁸	7.7
70	7.0× 10 ⁻⁸	7.2	9.3× 10 ⁻¹⁴	13.0	30	3.9× 10 ⁻⁸	7.4	2.7× 10 ⁻⁸	7.6
100	1.0× 10 ⁻⁷	7.0	1.3× 10 ⁻¹³	12.9	50	5.9× 10 ⁻⁸	7.2	4.2× 10 ⁻⁸	7.4
150	1.5× 10 ⁻⁷	6.8	2.0× 10 ⁻¹³	12.7	70	7.9× 10 ⁻⁸	7.1	5.6× 10 ⁻⁸	7.3
200	2.0× 10 ⁻⁷	6.7	2.7× 10 ⁻¹³	12.6	100	1.1× 10 ⁻⁷	7.0	7.8× 10 ⁻⁸	7.1
300	3.0× 10 ⁻⁷	6.5	4.0× 10 ⁻¹³	12.4	150	1.6× 10 ⁻⁷	6.8	1.1× 10 ⁻⁷	7.0
400	4.0× 10 ⁻⁷	6.4	5.4× 10 ⁻¹³	12.3	200	2.1× 10 ⁻⁷	6.7	1.5× 10 ⁻⁷	6.8
500	5.0× 10 ⁻⁷	6.3	6.7× 10 ⁻¹³	12.2	300	3.1× 10 ⁻⁷	6.5	2.2× 10 ⁻⁷	6.7
700	7.0× 10 ⁻⁷	6.2	9.4× 10 ⁻¹³	12.0	400	4.1× 10 ⁻⁷	6.4	2.9× 10 ⁻⁷	6.5
1000	1.0× 10 ⁻⁶	6.0	1.4× 10 ⁻¹²	11.9	500	5.1× 10 ⁻⁷	6.3	3.6× 10 ⁻⁷	6.4
10000	1.0× 10 ⁻⁵	5.0	1.5× 10 ⁻¹¹	10.8	700	7.1× 10 ⁻⁷	6.2	5.0× 10 ⁻⁷	6.3
50000	5.0× 10 ⁻⁵	4.3	1.4× 10 ⁻¹⁰	9.9	1000	1.0× 10 ⁻⁶	6.0	7.2× 10 ⁻⁷	6.1

2.3 Growth rate measurement

Growth rate measurements were conducted according to the methods described by Andersen (2005). Briefly, the chlorophyll fluorescence of the cells was recorded daily at the same time of the day with a Turner Model 10-AU fluorometer. During the measurements, polycarbonate tubes did not have to be opened because they fit within inside the sample chamber of the fluorometer. This reduced the risk of contamination as the polycarbonate tubes remained closed throughout the experimentthe batch cycles. Fluorescence signals of samples were measured after 20 minutes of dark acclimation. The fluorescence values were *ln*-transformed and plotted as a function of incubation days. A linear regression was fitted during the exponential phase of phytoplankton growth with the

specific growth rate (μ ; d^{-1}) represented by the slope of the linear regression (Fig. 1(b) and (c)). We only used fluorescence values up to 13 (arbitrary unit) for our growth rate calculations so that the biomass in the incubation bottles remained relatively low and consistent with the dilute batch culture principle (Laroche et al., 2010).

Reliable estimates of exponential growth rates in dilute batch cultures require multiple serial transfers of cultures (all performed while the strain is still in exponential growth) to allow the time for cultures to acclimate to the experimental conditions (Brand et al., 1981; Andersen, 2005). Therefore, the phytoplankton species were transferred into new polycarbonate tubes containing fresh medium during their early exponential stage for 3 batch cycles prior to recording growth rates shown in the results. This meant that cultures were usually growing in their respective treatment conditions for at least three weeks.

205 2.4 Fast repetition rate fluorometry

We conducted photo-physiological measurements at the end of each batch cycle. A Fast repetition rate (FRR) fluorometry (Fast Ocean Sensor FRRf3, Chelsea Instruments Group) was used to measure the maximum quantum yield, F_v/F_m , and the functional absorption cross-section of photosystem II (σ_{PSII} ; nm^2 reaction centre (RC) $^{-1}$). These measurements were done with cultures directly after they had been used to inoculate the subsequent batch cycle (hence avoiding contamination of ongoing cultures). Cultures were kept in dark for 20 minutes before the measurements. For each treatment and species, 5ml pPhytoplankton samples were added to the FRR fluorometry cuvette, which was temperature-controlled at 17 °C. Filtered Aquil media (or natural seawater media) were used at the beginning of the measurement for blank calibration. Throughout the experiment, FRR fluorometry was used with an acquisition sequence of 100 saturation flashes for 200 μs , 40 relaxation flashes for 2.4 ms, while the flash duration was set to 100 μs (Schallenberg et al., 2020). In each acquisition sequence, three channels with different light wavelengths were used: channel A with 450 nm light; channel B with 450 nm and 530 nm light; and channel C with 450 nm and 624 nm. ~~Due to various types of photosynthetic pigments across the phytoplankton functional groups,~~ The FRR fluorescence results from channel A (450 nm) were used to analyse diatoms, haptophytes, and dinoflagellates photosynthetic performance due to the presence of chlorophyll a in their cells, while channel C (450 nm and 624 nm) results were used to analyse the photosynthetic performance of cyanobacteria because of the presence of the phycobilin which is commonly present in cyanobacteria (Roy et al., 2011). At least 10 acquisitions were measured for each sample and used to calculate the average value of F_v/F_m and σ_{PSII} . F_v/F_m is usually lower under nutrient or light stress (summarized by Suggett et al. (2009)), while σ_{PSII} describes the ability of light to

225 promote a photochemical reaction in PSII (Falkowski and Raven, 1997). The value of F_v/F_m and σ_{PSII} are known to vary among algal taxa (Suggett et al., 2009). Typically, cells growing in batch cultures at the exponential growth phase-steady state exhibit a constant value of F_v/F_m and σ_{PSII} ~~during exponential growth phase~~ (Parkhill et al., 2001).

2.5 Data analysis

230 Every strain was able to grow in all Ni concentrations in Aquil media for at least 3 batch cycles. The data from the third batch were used for analyses. The growth rate and photo-physiological response of phytoplankton was analysed using generalised additive models (GAMs) and plotted in RStudio (R packages “mgcv” and “ggplot2”) (RStudio team, 2020). For the GAM analyses, we assumed that growth rates, F_v/F_m and σ_{PSII} of phytoplankton would show an optimum curve in response to the wide range of Ni concentrations: Ni limitation at the lower extremes, Ni inhibition at the upper extremes and an optimum at some intermediate Ni concentration. GAMs were
235 fitted to plots to assess the presence of a relationship between Ni concentration, growth rates and photo-physiological responses. P-values of the smooth terms of GAM models greater than 0.05 indicated that there was no statistically significant trend in the response variable (μ , F_v/F_m or σ_{PSII}) in response to the wide Ni gradient (i.e., the smooth term was not significantly different from a horizontal line and therefore no statistically significant relationship between Ni and the measured parameter present). The general GAM equation is:

$$240 \quad Y = I_0 + S(pNi) + e \quad \text{Eq. (2)}$$

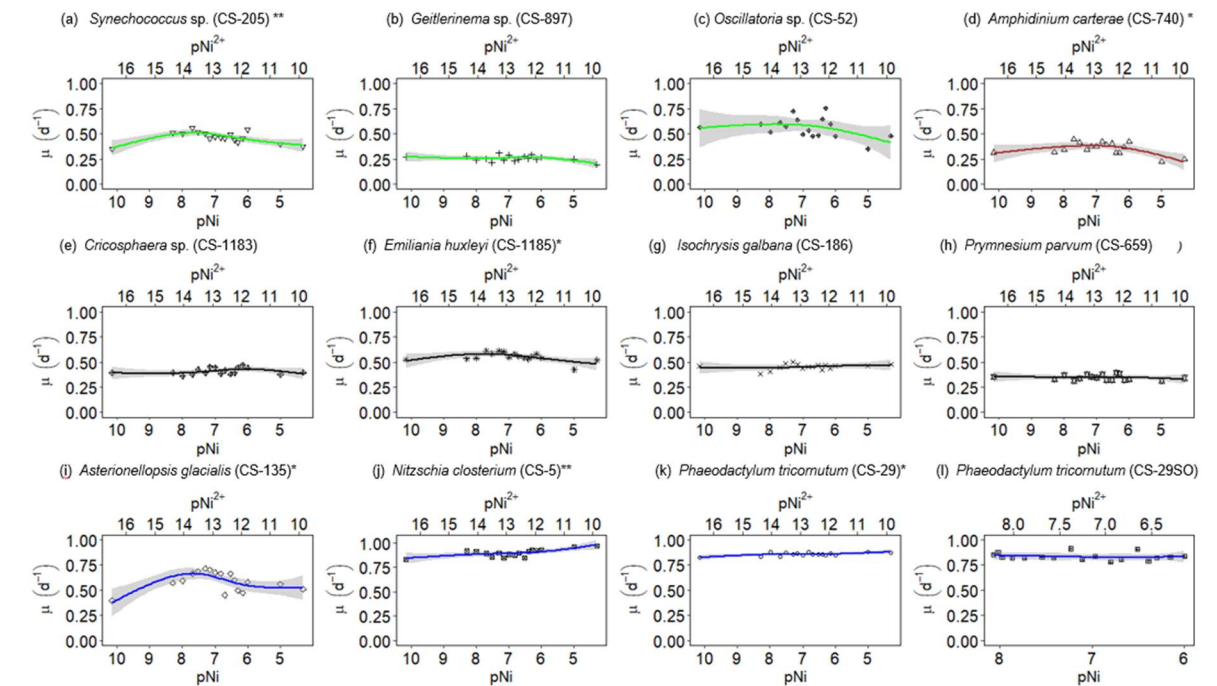
where Y is the response variable (μ , F_v/F_m and σ_{PSII}); I_0 is the intercept; $S(pNi)$ is the non-parametric smooth function according to pNi ; and e the error. The k-value (basis dimension) of GAM formula in Rstudios was set to the minimum k-value that fitted the curve and explained the data points without ~~over-or-under-fitting-fitting too many uncertainties~~ random noise. The function ‘gam.check’ in the package ‘mgcv’ was used to assess the appropriateness of the selected k-value following Wood (2022). The selection of k involved ensuring the p-value was greater than 0.05. This ensured the selected k-value was sufficiently small to not fit random noise (i.e overfitting) but still statistically appropriate. will fit all random noise (i.e. “overfitting”) and overinterpret the influence of Ni

245

3.1 Growth rates comparison

Most trace metals in seawater are partially bound by organic ligands and their bioavailable “free” concentrations are lower than the total dissolved ion concentrations (Van Den Berg and Nimmo, 1987). The thermodynamic equilibrium concentrations of the $-\log_{10}$ transformed “free Ni concentrations” (pNi^{2+}) and total dissolved Ni concentrations (pNi) in the different media (see Eq. 1 and Table 1.) correlate linearly ($R^2 > 0.99$). Thus, both can be displayed as separate x-axes on the same plot (Fig. 2, 3 and 4). ~~In For~~ the Southern Ocean seawater media, ~~we assumed the ligand concentration of ligand is to be 0 and thus that,~~ the differences between pNi and pNi^{2+} are very small ~~due to the assumed low concentration of ligands~~. In Aquil, however, ~~the differences between pNi and pNi^{2+} are very large~~ these differences are largely due to the presence of EDTA.

260



265

Figure 2. Growth rates of different phytoplankton strains in a large gradient of Ni concentrations. The species name is shown in each subplot with the strain number in the parentheses. pNi and pNi^{2+} are the $-\log_{10}$ transformed values of the total dissolved and free Ni concentrations, respectively (Eq. (1)). A smaller value represents a higher concentration. Plots (a)-(c) are cyanobacteria; plot (d) is a dinoflagellate; plots (e)-(h) are haptophytes; plots (i)-(l) are diatoms. Plots (a)-(k) show growth rates in Aquil media while plot (l) shows growth rates of *P. tricornutum* in natural seawater media. Solid lines represent the smooth terms produced from GAMs using the growth rate data and pNi concentrations. Shading indicates the 95% confidence interval. P-values < 0.05 indicate that the smooth term is significantly different from a straight horizontal line. P-values < 0.05 are indicated by an *, and P-values < 0.01 are indicated by ** ~~after the species names~~.

Every strain was able to grow in all Ni concentrations in Aquil media for at least 3 batch cycles. In general, Ni had limited impact on phytoplankton growth rates in the tested range. Six out of the 11 strains displayed statistically significant growth rate changes in response to Ni sensitivity (Fig. 2, Table 2). These strains were *Synechococcus* sp. (CS-205), *A. carterae* (CS-740), *E. huxleyi* (CS-1185), *A. glacialis* (CS-135), *N. closterium* (CS-5), and *P. tricornutum* (CS-29). Among these strains, *N. closterium* (CS-5) and *P. tricornutum* (CS-29) had consistent increasing growth rates when pNi increased (Fig. 2 (j) and (k)). Other strains displayed optimum curves response patterns, although variations in growth rates between the low, high, and optimum concentration of pNi and these trends were mostly small below 36% XXX (Table A3). Most of their optimal growth rates were in the range of pNi 8-7 (10 nmol/L to 100 nmol/L). Growth rates of the other strains (*Geitlerinema* sp. (CS-897), *Oscillatoria* sp. (CS-52), *Cricosphaera* sp. (CS-1183), *I. galbana* (CS-186), and *P. parvum* (CS-659)) were unaffected-not significantly affected by different Ni concentrations.

Table 2. Approximate significance of the smooth terms for GAMs. Three separate GAMs were used to calculate the impacts of pNi on μ , F_v/F_m and σ_{PSII} (Eq. 2). P-values <0.05 indicate that the smooth term is significantly different from a straight line. P-values <0.05 are indicated by an *, and P-values <0.01 are indicated by **. Adj r^2 is the adjusted r squared value. DE stands for deviance explained.

Strain number	Strain name	P-value of μ		Adj r^2	DE	P-value of F_v/F_m		Adj r^2	DE	P-value of σ_{PSII}		Adj r^2	DE
CS-205	<i>Synechococcus</i> sp.	0.005	**	0.554	0.628	0.003	**	0.515	0.574	0.508		-0.035	0.030
CS-897	<i>Geitlerinema</i> sp.	0.313		0.086	0.168	0.003	**	0.528	0.585	0.173		0.156	0.235
CS-52	<i>Oscillatoria</i> sp.	0.282		0.099	0.184	0.114		0.102	0.158	0.068		0.262	0.347
CS-740	<i>Amphidinium carterae</i>	0.019	*	0.433	0.518	0.030	*	0.228	0.276	≤ 0.001	**	0.783	0.822
CS-1183	<i>Cricosphaera</i> sp.	0.504		-0.034	0.030	0.574		-0.044	0.022	0.287		0.104	0.198
CS-1185	<i>Emiliana huxleyi</i>	0.048	*	0.342	0.434	0.588		-0.045	0.020	0.178		0.251	0.380
CS-186	<i>Isochrysis galbana</i>	0.347		-0.004	0.059	0.697		-0.056	0.010	0.763		-0.026	0.058
CS-659	<i>Prymnesium parvum</i>	0.510		-0.035	0.030	0.348		-0.004	0.059	0.003	**	0.519	0.577
CS-135	<i>Asterionellopsis glacialis</i>	0.034	*	0.418	0.512	0.080		0.246	0.332	0.006	**	0.528	0.601
CS-5	<i>Nitzschia closterium</i>	0.004	**	0.459	0.500	0.120		0.097	0.153	0.328		0.001	0.064
CS-29	<i>Phaeodactylum tricornutum</i>	0.013	*	0.300	0.344	0.389		0.066	0.157	0.025	*	0.356	0.432

CS-29SO	<i>Phaeodactylum tricornutum</i>	0.517	-0.036	0.029	0.662	-0.018	0.062	0.260	0.117	0.208
---------	--------------------------------------	-------	--------	-------	-------	--------	-------	-------	-------	-------

The cyanobacterium *Oscillatoria* sp. (CS-52) tended to aggregate during culturing and the fluorescence signals were more variable on a day-to-day basis. This made the growth rate calculation less accurate, indicated by lower R² values in linear regression when fitting ln-transformed data over time to calculate the growth rate.

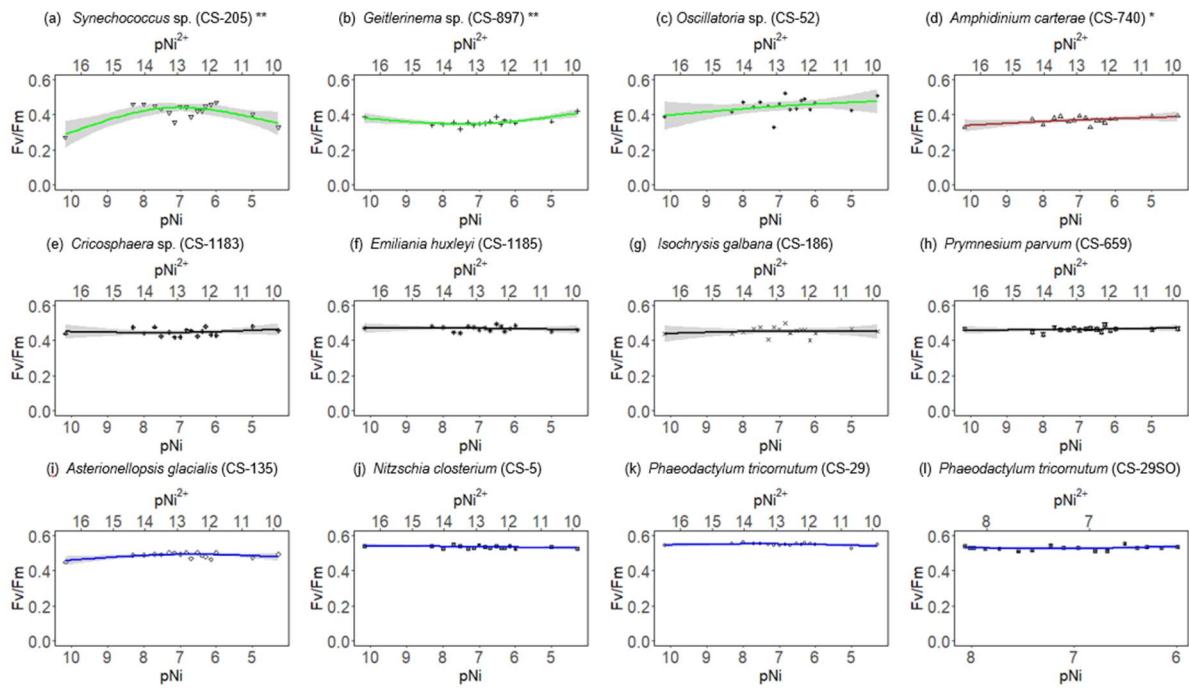
We were interested if we could trust singular datapoints at the extreme ends of the optimum curves, as they often drove trends in our data (e.g., *Synechococcus* in Fig. 2 at pNi < 7.5, total dissolved Ni < 30 nmol/L). Therefore, we did an additional experiment with *Synechococcus* sp. (CS-205) where we replicated the lowest added Ni treatment (0 nmol/L; 0.07 nmol/L including background Ni) and the optimum Ni concentration (20 nmol/L) (Table 3). The results confirmed the trend in the optimum curve, with the added 20 nmol/L Ni resulting in significantly enhanced growth rates (Table 3).

Table 3. Physiological responses of *Synechococcus* sp. (CS-205) at two different Ni concentrations with 3 replicates each treatment (shown individually). Ni con. is the total dissolved Ni concentration in the media. μ means growth rate (day⁻¹). SD means standard deviation. P-value was calculated using T-test. The unit of σ_{PSII} is nm² reaction centre (RC)⁻¹.

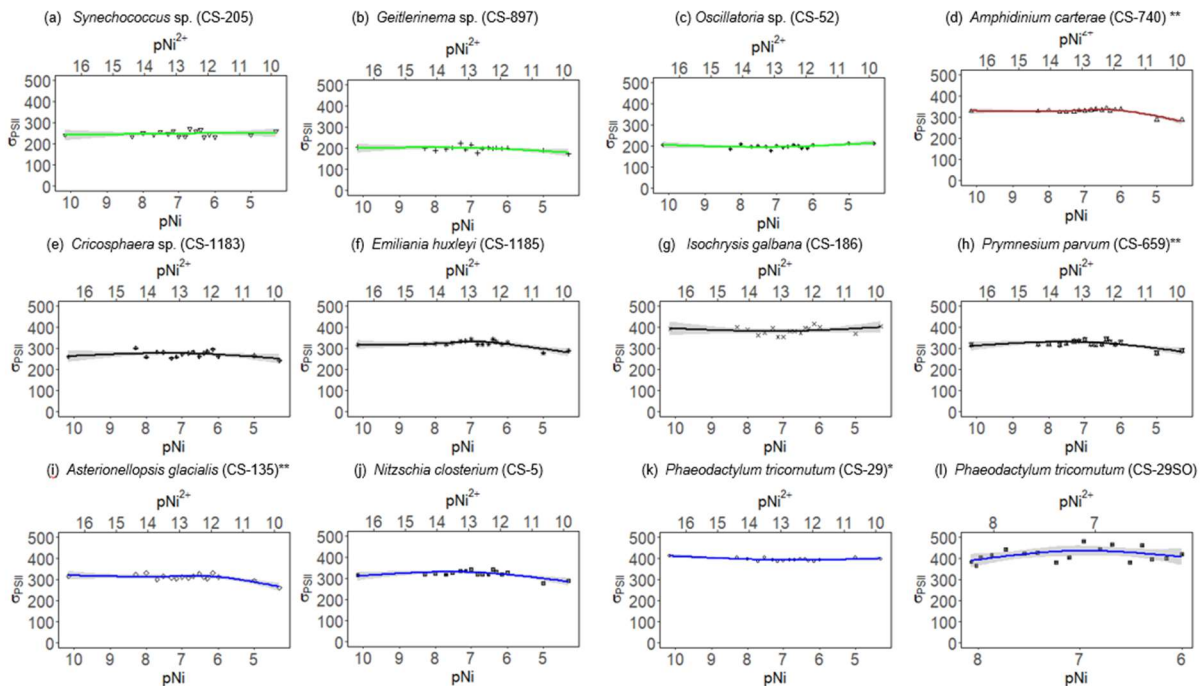
Ni con. (nmol/L)	μ	Average μ	SD	P- value of μ	Fv/F m	Average μ	SD	P-value of Fv/Fm	σ_{PSII}	Average σ_{PSII}	SD	P-value of σ_{PSII}
0	0.25				0.33				228			
0	0.31	0.30	0.04		0.34	0.35	0.02		236	230	6.23	
0	0.33				0.37				224			
20	0.54			0.001	0.41			0.179	227		21.6	0.797
20	0.51	0.52	0.03		0.41	0.38	0.04		247	226		
20	0.49				0.34				204			

3.2 Photosynthesis performance of phytoplankton

The FRR fluorescence data were largely consistent with the growth rate data in that no strong trends within the Ni range tested were observed for most of species. The σ_{PSII} and F_v/F_m measurements across the Ni gradient revealed minimal trends, with generally little variation between treatments (Fig. 3 and 4). A few exceptions to this general pattern results are mentioned below.



310 **Figure 3.** F_v/F_m results of phytoplankton cultures. pNi and pNi^{2+} are the $-\log_{10}$ transformed values of the total dissolved and
 115 free Ni^{2+} concentrations (Eq. (1)). A smaller value represents a higher concentration. Plots (a)-(c) are cyanobacteria; the plot
 120 (d) is a dinoflagellate; plots (e)-(h) are haptophytes; plots (i)-(l) are diatoms. Plots (a)-(k) were from strains growing in Aquil
 125 media while plot (l) are results for *P. tricornutum* growing in natural seawater media. Solid lines represent the smooth terms
 130 produced from GAMs using the growth rate data and pNi concentrations. Shading indicates the 95% confidence interval. P-
 315 values <0.05 , indicate that the smooth term is significantly different from a straight line. P-values <0.05 are indicated by an *,
 and P-values <0.01 are indicated by **.



320 **Figure 4.** σ_{PSII} results of phytoplankton cultures. pNi and pNi^{2+} are the $-\log_{10}$ transformed values of the total dissolved and free Ni^{2+} concentrations (Eq. (1)). A smaller value represents a higher concentration. The unit of σ_{PSII} is nm^2 reaction centre (RC) $^{-1}$. Plots (a)-(c) are cyanobacteria; the plot (d) is a dinoflagellate; plots (e)-(h) are haptophytes; plots (i)-(l) are diatoms. Plots (a)-(k) were from strains growing in Aquil media while plot (l) are results for *P. tricornutum* growing in natural seawater media. Solid lines represent the smooth terms produced from GAM models using the growth rate data and pNi concentrations. Shading indicates the 95% confidence interval. P-values <0.05 , indicate that the smooth term is significantly different from a straight line. P-values <0.05 are indicated by an *, and P-values <0.01 are indicated by **.

Synechococcus sp. (CS-205) had higher F_v/F_m values in the mid- pNi range (pNi 8-6, 10-1000 nmol/L) and the lowest F_v/F_m value was in the Aquil medium without any Ni addition. In contrast, *Geitlerinema* sp. (CS-897) had lower F_v/F_m values in the mid- pNi range but the variation between maximum and minimum F_v/F_m values was small. These two strains, however, exhibited little change in σ_{PSII} over the range of Ni treatment. Some species (e.g., *A. carterae* (CS-740), *P. parvum* (CS-659) and *A. glacialis* (CS-135)) had slightly lower σ_{PSII} values at the highest Ni concentrations (>10000 nM) suggesting some reduction in light harvesting capacity at high Ni concentrations. The small P-value of the smooth terms (Table 2) are likely driven by these low σ_{PSII} values in the high Ni concentrations. In general, most of the tested strains appeared photosynthetically healthy across the tested Ni gradient.

The most pronounced effect of Ni was observed in F_v/F_m for *Synechococcus* sp. (Fig. 3). F_v/F_m was considerably lower at $pNi=10.2$ (0.07 nmol/L) than at the optimum concentrations (approximately $pNi=7.7$, 20 nmol/L). Our additional experiment with *Synechococcus*, where we replicated the pNi 10.2 and 7.7 treatments three times, did not confirm this trend (Table 3). Neither F_v/F_m nor σ_{PSII} values were significantly different between the two Ni concentrations (Table 3).

3.3 Comparison between Aquil media and the natural seawater media

Phaeodactylum Like in Aquil media, *P. tricornutum* (CS-29) growing in the natural Southern Ocean seawater media (see 2.2) showed no significant trend (F_v/F_m) or particularly strong changes (growth rate, σ_{PSII}) across the experimental Ni concentration gradient. This result was very similar to the result of *P. tricornutum* (CS-29) grown in Aquil media. The average growth rate of *P. tricornutum* growing in the Southern Ocean seawater media was $0.83 d^{-1}$, which was almost the same very similar as to the growth rates of the cultures growing in Aquil media ($0.86 d^{-1}$) (Fig. 2 (k)). And absolute numbers were also very similar for the σ_{PSII} and F_v/F_m data (Fig. 3 and 4).

4 Discussion

350 4.1 Phytoplankton sensitivities to different Ni concentrations

Based on growth rates and FRR fluorescence results, we conclude that changes in dissolved Ni, within the range tested and under the experimental conditions, do not have a strong effect on the 11 phytoplankton species. Only a few species showed significant trends in both growth rates and/or at least one photophysiological parameters, and ~~Eight out of 11 species showed had smaller than <25% and <16% change over relative to the average values in growth rates and photo-physiological parameters, respectively (Table A3.)~~ most of these trends were not very pronounced. An exception was *Synechococcus* sp. (CS-205), which showed a significant and quite pronounced growth rate enhancement of 74% from the lowest to optimum Ni (20 nmol/L) and then gradually declining growth rates towards the highest Ni. Likewise, growth rates of *A. carterae* (CS-740) showed a relatively pronounced Ni-sensitivity, following an optimum curve with highest growth rates between a pNi of 8-7 (10-100 nmol/L). The Ni sensitivity of growth rates in the other species where significant trends were detected were smaller, i.e. smaller; generally the change of growth rate values was smaller than than <25% change relative to the average growth rate of the species (Table A3). However, we emphasise that even a small difference in growth rate can have a pronounced effect on population sizes during extended periods of growth due to the exponential nature of phytoplankton reproduction. For example, an increase of growth rate by 0.05 d⁻¹ (as frequently observed in our data; Fig. 2) would lead to a ~65% larger population at the end of a 10-day growth period. Furthermore, even if a species is completely insensitive to Ni it may still be affected indirectly within a competitive environment with multiple phytoplankton species present. This is because other species may benefit from, or be inhibited by, changing Ni concentration thereby altering the competition for nutrient resources. Therefore, small changes in growth rates should not be readily marginalised as they may still be of ecological and biogeochemical relevance.

365

370 The inhibition of growth rate or photosynthesis performance was evident in a few species when pNi reached 5 (10000 nmol/L) (i.e., Fig. 2(a) and (d)), but most species did not have growth inhibition in high Ni concentration. The relatively small effects of high Ni on growth rates, F_v/F_m and σ_{PSII} were surprising because we expected stronger species-dependent Ni sensitivity within the pNi range of 9-5, at least based on the available experimental evidence summarized by Glass and Dupont (2017). There are several potential reasons for the disagreement on the Ni sensitivity results from previous research. These will be discussed in the following subsections.

375

4.1.1 Dependency of Ni sensitivity on nitrogen sources

It has been reported that phytoplankton species have different Ni sensitivities depending on the nitrogen (N) source supporting growth. Oliveira and Antia (1986) found that 9 out of 12 phytoplankton species tested in their experiments showed faster growth when urea-enriched growth medium was supplemented with Ni. In contrast, no or less benefit of Ni was observed when the same species were grown in nitrate-enriched medium. Very similar observations of a growth-enhancing effect of Ni only when urea is the N source was later made by Price and Morel (1991) and Egleston and Morel (2008) in experiments with two diatom (*Thalassiosira*) species. Based on these previous findings we conclude that the generally limited sensitivities observed in our study are partially due to the chosen N source.

In [the](#) oceans, nitrate fuels large parts of new primary production, i.e., production based on allochthonous nitrogen inputs to the euphotic zone (Eppley and Peterson, 1979). For example, nitrate is a key N source for new primary production in upwelling regions such as the Southern Ocean (Maccreeady and Quay, 2001) and Eastern Boundary Upwelling Systems (Messié et al., 2009). It is also mixed into the surface during winter mixing and therefore important for new production during the phytoplankton spring bloom in temperate regions (Sieracki et al., 1993). Although the role of urea in marine primary production is less studied than the role of nitrate and ammonium, it likely plays an important role (Wafar et al., 1995). Like nitrate, urea can also be of allochthonous origin and therefore by definition support new primary production. This is likely to occur in coastal regions where urea runoff from land, amplified by sewage effluents and agricultural activities, can be significant (Glibert et al., 2006). Urea is also produced during heterotrophic mineralization (Glibert et al., 2006), therefore constituting a predominant source for regenerated primary production – i.e., production based on remineralized nutrient sources (Eppley and Peterson, 1979). Indeed, ship-board enrichment experiments in the North Pacific have shown that urea strongly enhances phytoplankton growth, especially the growth of the cyanobacterium *Prochlorococcus* (Shilova et al., 2017). We therefore conclude that the wide-spread relevance of urea for phytoplankton growth, and the dependence of urea cycling on Ni, suggests that Ni-sensitivities of many phytoplankton species may be more pronounced in real-world conditions than our simplified laboratory experiments would suggest.

4.1.2 Dependency of Ni sensitivity on organic ligand concentration

Organic ligands can chelate dissolved trace metals thereby changing their chemical speciation (Van Den Berg and

Nimmo, 1987). It is currently not known what chemical species of dissolved Ni influence phytoplankton physiology. If phytoplankton can access the total dissolved Ni pool, then experiments with different ligand concentrations could be more easily compared. However, most research suggests that phytoplankton are not primarily sensitive to the total dissolved Ni concentration but interact with free Ni²⁺ ions (Dupont et al., 2010; Hudson and Morel, 1993; Morel et al., 1991). Free Ni²⁺ only constitutes a fraction of the total dissolved Ni concentration depending on the organic ligand concentration (Donat et al., 1994). Unfortunately, ligands are chemically diverse and difficult to measure, meaning that their influence may not always be accounted for, and comparability between studies is difficult.

Our culture medium (Aquil) contained 100 µmol/L EDTA. Thus, despite dissolved Ni concentrations up to 50 µmol/L, free Ni²⁺ concentrations were maximally 0.14 nmol/L. These concentrations will be lower than in other studies where comparable amounts of total Ni, but less EDTA was added. In natural seawater, organic ligands concentrations vary widely between regions. In regions with relatively high ligand concentrations, such as freshwater, 99.9% of dissolved Ni can be complexed (Xue et al., 2001). In seawater, generally 10%-50% of the total dissolved Ni is complexed by ligands depending on the region (Achterberg and Van Den Berg, 1997; Donat et al., 1994; Byrne, 2003; Saito et al., 2004).

The current understanding of organic complexation of Ni in surface seawater suggests that free Ni²⁺ ion concentrations are generally not orders of magnitude lower than total dissolved Ni. For example, considering that most surface seawater has a total Ni concentration of 2-10 nmol/L, free Ni²⁺ should approximately be within ~1-9 nmol/L based on the 10%-50% complexation in seawater mentioned above. These free Ni²⁺ concentrations are considerably higher than the highest free Ni²⁺ in our experiments (0.14 nmol/L), which raises the question if our experimental setup was suitable to test the influence of high Ni on phytoplankton. Answering this question is difficult as it is uncertain if total dissolved Ni concentrations influence phytoplankton physiology or only free Ni²⁺ does. Our observation of decreasing growth rates in some of the phytoplankton species in the high Ni concentrations may be seen as a hint that dissolved Ni concentrations do play a role as it seems unlikely that the marginal increases in free Ni²⁺ would induce Ni inhibition. Likewise, the almost identical growth [and photo-physiological](#) responses to Ni of *Phaeodactylum* grown in Aquil (with high EDTA ligand concentration) and natural Southern Ocean seawater (with presumably much lower ligand concentrations) could suggest that not only free Ni²⁺ is important. Either way, these observations underscore the importance of organic ligands when studying Ni sensitivity of phytoplankton.

4.1.3 Species-specific Ni sensitivity ~~due-linked~~ to enzyme requirements

Our results are consistent with earlier studies showing that different phytoplankton species have different Ni-sensitivities (e.g., Glass and Dupont, 2017; [Oliveira and Anita, 1986](#); [Dupont et al., 2008](#)). Species-specific sensitivities can be due to the different role of Ni as a co-factor for the enzyme SOD, which catalyses the conversion of O_2^- to O_2 and H_2O_2 . There are different kinds of SODs, with differing trace metal co-factor requirements. Typically, cyanobacteria utilize either Ni-SOD alone or combinations of manganese (Mn)- and Ni-SOD or iron (Fe-) and Mn-SOD. Diatoms and rhodophytes retain an active Mn-SOD, whereas chlorophytes, haptophytes, and embryophytes have either Fe-SOD or multiple combinations of Fe, Mn, and copper-zinc SODs (Wolfe-Simon et al., 2005). Ho (2013) has shown that Ni depletion limits Ni-SOD synthesis and nitrogen fixation rates in *Trichodesmium*. Moreover, Ni-SOD may be involved in the protection of the nitrogenase enzyme from superoxide inhibition during photosynthesis (Ho, 2013). Compared with other phytoplankton functional groups, cyanobacteria seem to rely more than other species on Ni-SOD which may explain their relatively high Ni-sensitivity (Dupont et al., 2008; Ho, 2013).

4.2 Implications for the assessment of ocean alkalinity enhancement

OAE can be achieved by distributing pulverized rocks on land and ocean surfaces, thereby accelerating chemical weathering rates and the generation of alkalinity. The environmental perturbation depends on the chemical composition of the applied rock minerals. If dunite is used as the source rock for OAE (an olivine-rich ultrabasic rock, often associated with vulcanism), the Ni perturbation could be particularly high as dissolution experiments with olivine powder found roughly a $3 \mu\text{mol/kg}$ increase in dissolved Ni for a $\sim 100 \mu\text{mol/kg}$ increase in alkalinity within approximately 50 days (Montserrat et al., 2017). However, it is difficult to estimate how the free Ni^{2+} concentration will change, because it depends on the organic ligand concentration at the perturbation site. Furthermore, the optimal Ni concentration can vary considerably between phytoplankton species and as discussed above, can depend on the availability of N sources in the environment. Therefore, we need to consider not only the total inputs of Ni, but also regional differences in organic ligand concentrations, nutrient availability, and phytoplankton community composition to evaluate the potential impact of Ni on phytoplankton.

Our results suggest that excess Ni has a limited toxic impact on most of the phytoplankton species tested in our study. As the tested species cover a relatively wide range of taxa, it may be assumed that our findings can be

generalised more widely to natural communities of phytoplankton in the temperate regions. However, great care must be taken when interpreting our results because we used EDTA, a strong organic ligand, in our experiments. EDTA binds large amounts of Ni so that using the total dissolved Ni concentration for inferring the absence of a toxic effect of high Ni on phytoplankton may not be valid. Although we confirmed the absence of a toxicity effect of Ni on *P. tricornutum* (CS-29) grown in Southern Ocean seawater media (which did not contain EDTA), we cannot rule out toxicity for all the other species tested here. Because *P. tricornutum* is a known “lab rat” that readily grows under a wide range of conditions, the absence of a toxicity effect in this species is not necessarily indicative of other species. Thus, we must emphasize that our results do not reject the possibility that high Ni concentrations invoked by OAE could inhibit the growth of phytoplankton.

~~A potential dependency of Ni impacts on organic ligands raises the question. If we assume that ligands mitigate the impacts of dissolved Ni by reducing the concentration of Ni²⁺ it raises an interesting question: could such a dependency be exploited for OAE implementation strategies? As we discussed in section 4.1, open ocean ecosystems probably have lower organic ligand concentrations than many coastal or estuarine regions. Thus, under this assumption, a perturbation with Ni due to OAE would likely lead to a more pronounced increase in Ni²⁺ in open ocean systems than the same perturbation in a coastal/estuarine region rich in organic ligands. Therefore, future research could investigate if regional differences in ligand concentration may be utilized to identify suitable spots for to manage environmental impacts of OAE applications with Ni-rich minerals, as they may reduce the environmental impact of Ni due to reduced bioavailability. It could also be argued to purposefully add ligands to seawater to reduce bioavailable Ni, but this may also reduce the availability of other, often limiting, trace metals such as iron and may therefore be unsustainable. In any case, we suggest that the impacts of Ni and other trace metals associated with minerals considered for OAE should take regional differences of organic ligand concentrations into consideration.~~

5 Conclusion

The Ni sensitivity of phytoplankton varied between the 11 species tested within this study but was generally rather low. This may be partly due to the use of nitrate as a nitrogen source in our experiments as other studies have revealed higher Ni sensitivities when growth is fuelled by other nitrogen-sources, such as urea. The reduced sensitivity observed in our study may also be due to the use of the high concentration of organic ligand (EDTA) added to our media, which complexed Ni making it less available for biological interactions. Considering the

nitrogen sources, ligand concentration, and phytoplankton composition in test regions is important in assessing the potential environment risks of OAE. [Applications of OAE with Ni-rich minerals may be safer in regions with high organic ligand concentrations and low urea concentrations, as this may reduce the impact of Ni on phytoplankton communities. Further research is needed to clarify organic ligands' influence on Ni's biological impacts.](#)

Appendix A

Table A1. The bioactive concentration of trace metals in different media calculated with Visual MINTEQ. Total ion concentrations of each trace metals from the original natural seawater and Aquil media were measured using seaFAST system. The free ion concentrations were calculated based on the total ion concentrations [from natural seawater or ultra-pure water](#) together with the added concentration [during the experiment](#). Temperature =17°C; pH 8.1; Ionic strength = 0.7.

Metal	Aquil medium with 100 µmol/L EDTA	no EDTA Southern Ocean seawater medium
	Free ion concentration (mol/L)	Free ion concentration (mol/L)
Se	9.43× 10 ⁻⁹	9.43× 10 ⁻⁹
Co	7.01× 10 ⁻¹²	7.48× 10 ⁻¹¹
Zn	1.54× 10 ⁻¹¹	5.48× 10 ⁻¹⁰
Cu	1.08× 10 ⁻¹⁴	8.33× 10 ⁻¹¹
Mn	2.09× 10 ⁻⁸	6.25× 10 ⁻⁹
Fe	5.41× 10 ⁻²⁰	6.68× 10 ⁻¹⁹

Table A2. The visual MINTEQ software condition.

pH	Ionic strength	Temperature	The calculation methods	The thermodynamic database
8.1	0.7	17°C	the Davies equation	Thermo.vdb

Table A3. The maximum change in growth rate, Fv/Fm and σ_{PSII} values. The change of each treatment from each species was calculated as: $|V-V_{ave}|/V_{ave} * 100\%$ where V are treatment specific measurements and V_{ave} is the average value in all 17 treatments. The maximum change is the largest change between an individual treatment and the treatment average. In species *N. closterium* (CS-5), the highest σ_{PSII} value was 51% higher than the average values and this could be an outlier as the second highest change of *N. closterium* (CS-5) σ_{PSII} values was 9.61%.

Strain No.	Name	Maximum change in growth rate %	Maximum change in Fv/Fm values %	Maximum change in σ _{PSII} %
CS-205	<i>Synechococcus</i> sp.	24.48	35.00	9.03
CS-897	<i>Geitlerinema</i> sp.	24.30	17.15	13.21
CS-52	<i>Oscillatoria</i> sp.	37.52	26.67	10.36
CS-740	<i>Amphidinium carterae</i>	35.98	11.15	12.02
CS-1183	<i>Cricosphaera</i> sp.	15.12	7.19	11.17
CS-1185	<i>Emiliania huxleyi</i>	22.91	5.55	10.24
CS-186	<i>Isochrysis galbana</i>	15.69	11.10	8.10
CS-659	<i>Prymnesium parvum</i>	12.64	6.01	13.30
CS-135	<i>Asterionellopsis glacialis</i>	32.69	7.74	15.99

CS-5	<i>Nitzschia closterium</i>	7.69	2.72	50.51 (9.61)*
CS-29	<i>Phaeodactylum tricorutum</i>	3.60	4.49	3.94
CS-29SO	<i>Phaeodactylum tricorutum</i>	9.50	4.61	15.12

505

Author contributions

LTB, RS, AW, and JAG designed the experiments and JAG carried them out. LTB, RS and AW supervised the study. AF and JAG conducted statistical analyses. JAG prepared the manuscript with contributions from all authors.

Competing interests

510 The authors declare that they have no conflict of interest.

Data availability

Data is available in Institute for Marine and Antarctic Studies (IMAS) data catalogue, University of Tasmania (UTAS). Guo, J.: Growth rate and Fast Repetition Rate fluorometry (FRRf) of phytoplankton [Data set], IMAS, <https://doi.org/10.25959/1Z63-7555>, 2021.

515 Acknowledgements

The authors thank Pam Quayle and Axel Durand for their assistance with the experimental infrastructure.

Financial support

This study was funded by the Australian Research Council by Future Fellowship FT200100846 awarded to LTB.

References

520 Achterberg, E. P. and Van Den Berg, C. M. G.: Chemical speciation of chromium and nickel in the western Mediterranean, *Deep-Sea Res. Pt. II*, 44, 693-720, [https://doi.org/10.1016/s0967-0645\(96\)00086-0](https://doi.org/10.1016/s0967-0645(96)00086-0), 1997.

Andersen, R. A., Andersen, R. A. (Ed.): *Algal Culturing Techniques*, Elsevier 2005.

Archer, D., Eby, M., Brovkin, V., Ridgwell, A., Cao, L., Mikolajewicz, U., Caldeira, K., Matsumoto, K., Munhoven, G., Montenegro, A., and Tokos, K.: Atmospheric lifetime of fossil fuel carbon dioxide, *Annu. Rev. Earth Pl. Sc.*, 37, 117-134, <https://doi.org/10.1146/annurev.earth.031208.100206>, 2009.

525 Bach, L. T., Gill, S. J., Rickaby, R. E. M., Gore, S., and Renforth, P.: CO₂ removal with enhanced weathering and ocean alkalinity enhancement: potential risks and co-benefits for marine pelagic ecosystems, *Front. Clim.*, 1, 1-21, <https://doi.org/10.3389/fclim.2019.00007>, 2019.

530 [Boiteau, R.M., Till, C.P., Ruacho, A., Bundy, R.M., Hawco, N.J., McKenna, A.M., Barbeau, K.A., Bruland, K.W., Saito, M.A. and Repeta, D.J.: Structural characterization of natural nickel and copper binding ligands along the US GEOTRACES Eastern Pacific zonal transect, *Front. Mar. Sci.*, 3, 1-16.](#)

- <https://doi.org/10.3389/fmars.2016.00243>, 2016.
- 535 [Boye, M., Berg, C. M. G. V. D., Jong, J. T. M. D., Leach, H., Croot, P., and Baar, H. J. W. D.: Organic complexation of iron in the Southern Ocean. *Deep-Sea Res. Pt. I*, 48, 1477 - 1497, \[https://doi.org/10.1016/S0967-0637\\(00\\)00099-6\]\(https://doi.org/10.1016/S0967-0637\(00\)00099-6\), 2001.](#)
- Brand, L. E., Guillard, R. R., and Murphy, L. S.: A method for the rapid and precise determination of acclimated phytoplankton reproduction rates, *J. Plankton Res.*, 3, 193-201, <https://doi.org/10.1093/plankt/3.2.193>, 1981.
- Bruland, K. W.: Oceanographic distributions of cadmium, zinc, nickel, and copper in the North Pacific, *Earth Planet Sc. Lett.*, 47, 176-198, [https://doi.org/10.1016/0012-821x\(80\)90035-7](https://doi.org/10.1016/0012-821x(80)90035-7), 1980.
- 540 [Buck, K.N., Selph, K.E. and Barbeau, K.A.: Iron-binding ligand production and copper speciation in an incubation experiment of Antarctic Peninsula shelf waters from the Bransfield Strait, Southern Ocean. *Mar. Chem.*, 122, 148-159, <https://doi.org/10.1016/j.marchem.2010.06.002>, 2010.](#)
- Byrne, R. H.: Inorganic speciation of dissolved elements in seawater: the influence of pH on concentration ratios, *Geochem. T.*, 3, 11-16, <https://doi.org/10.1039/b109732f>, 2003.
- 545 Donat, J. R., Lao, K. A., and Bruland, K. W.: Speciation of dissolved copper and nickel in South San Francisco Bay: a multi-method approach, *Anal. Chim. Acta.*, 284, 547-571, 1994.
- Dupont, C. L., Barbeau, K., and Palenik, B.: Ni uptake and limitation in marine *Synechococcus* strains, *Appl. Environ. Microb.*, 74, 23-31, <https://doi.org/10.1128/AEM.01007-07>, 2008.
- Dupont, C. L., Buck, K. N., Palenik, B., and Barbeau, K.: Nickel utilization in phytoplankton assemblages from 550 contrasting oceanic regimes, *Deep-Sea Res. Pt. II*, 57, 553-566, <https://doi.org/10.1016/j.dsr.2009.12.014>, 2010.
- Egleston, E. S. and Morel, F. M. M.: Nickel limitation and zinc toxicity in a urea-grown diatom, *Limnol. Oceanogr.*, 53, 2462-2471, <https://doi.org/10.4319/lo.2008.53.6.2462>, 2008.
- Eppley, R. W. and Peterson, B. J.: Particulate organic matter flux and planktonic new production in the deep ocean, *Nature*, 282, 677-680, <https://doi.org/10.1038/282677a0>, 1979.
- 555 Falkowski, P. G. and Raven, J. A.: *Aquatic Photosynthesis* Blackwell Science, Malden, Massachusetts, 375, 1997.
- Fridovich, I.: Oxygen toxicity: a radical explanation, *J. Exp. Biol.*, 201, 1203-1209, <https://doi.org/10.1242/jeb.201.8.1203>, 1998.
- Friedlingstein, P., O'Sullivan, M., Jones, M. W., Andrew, R. M., Hauck, J., Olsen, A., Peters, G. P., Peters, W., Pongratz, J., Sitch, S., Le Quéré, C., Canadell, J. G., Ciais, P., Jackson, R. B., Alin, S., Aragão, L. E. O. C., Armeth, 560 A., Arora, V., Bates, N. R., Becker, M., Benoit-Cattin, A., Bittig, H. C., Bopp, L., Bultan, S., Chandra, N., Chevallier, F., Chini, L. P., Evans, W., Florentie, L., Forster, P. M., Gasser, T., Gehlen, M., Gilfillan, D., Gkritzalis, T., Gregor, L., Gruber, N., Harris, I., Hartung, K., Haverd, V., Houghton, R. A., Ilyina, T., Jain, A. K., Joetzjer, E., Kadono, K., Kato, E., Kitidis, V., Korsbakken, J. I., Landschützer, P., Lefèvre, N., Lenton, A., Lienert, S., Liu, Z., Lombardozzi, D., Marland, G., Metzl, N., Munro, D. R., Nabel, J. E. M. S., Nakaoka, S.-I., Niwa, Y., O'Brien, K., 565 Ono, T., Palmer, P. I., Pierrot, D., Poulter, B., Resplandy, L., Robertson, E., Rödenbeck, C., Schwinger, J., Séférian, R., Skjelvan, I., Smith, A. J. P., Sutton, A. J., Tanhua, T., Tans, P. P., Tian, H., Tilbrook, B., Van Der Werf, G., Vuichard, N., Walker, A. P., Wanninkhof, R., Watson, A. J., Willis, D., Wiltshire, A. J., Yuan, W., Yue, X., and Zaehle, S.: Global carbon budget 2020, *Earth Syst. Sci. Data*, 12, 3269-3340, <https://doi.org/10.5194/essd-12-3269-2020>, 2020.
- 570 [Fuhr, M., Geilert, S., Schmidt, M., Liebetrau, V., Vogt, C., Ledwig, B., and Wallmann, K.: Kinetics of olivine weathering in seawater: an experimental study, *Front. Clim.*, 4, 1-20, <https://doi.org/10.3389/fclim.2022.831587>, 2022.](#)
- Glass, J. B. and Dupont, C. L.: Oceanic nickel biogeochemistry and the evolution of nickel use, in: *The Biological Chemistry of Nickel*, edited by: Deborah Zamble, M. R.-Ž. a. H. K., Royal Society of Chemistry, United Kingdom, 575 12-26, 2017.

- Glibert, P. M., Harrison, J., Heil, C., and Seitzinger, S.: Escalating worldwide use of urea – a global change contributing to coastal eutrophication, *Biogeochemistry*, 77, 441-463, <http://doi.org/10.1007/s10533-005-3070-5>, 2006.
- 580 Gustafsson, J. P.: Visual MINTEQ 3.0 user guide, KTH, Department of Land and Water Resources, Stockholm, Sweden, 2011.
- Hartmann, J., West, A. J., Renforth, P., Köhler, P., De La Rocha, C. L., Wolf-Gladrow, D. A., Dürr, H. H., and Scheffran, J.: Enhanced chemical weathering as a geoengineering strategy to reduce atmospheric carbon dioxide, supply nutrients, and mitigate ocean acidification, *Rev. Geophys.*, 51, 113-149, <http://doi.org/10.1002/rog.20004>, 2013.
- 585 Ho, T.-Y.: Nickel limitation of nitrogen fixation in *Trichodesmium*, *Limnol. Oceanogr.*, 58, 112-120, <https://doi.org/10.4319/lo.2013.58.1.0112>, 2013.
- Holm, L. and Sander, C.: An evolutionary treasure: unification of a broad set of amidohydrolases related to urease, *Proteins*, 28, 72-82, [https://doi.org/10.1002/\(SICI\)1097-0134\(199705\)28:1<72::AID-PROT7>3.0.CO;2-L](https://doi.org/10.1002/(SICI)1097-0134(199705)28:1<72::AID-PROT7>3.0.CO;2-L), 1997.
- Hudson, R. J. M. and Morel, F. M. M.: Trace metal transport by marine microorganisms: implications of metal 590 coordination kinetics, *Deep-Sea Res. Pt. I*, 40, 129-150, [https://doi.org/10.1016/0967-0637\(93\)90057-A](https://doi.org/10.1016/0967-0637(93)90057-A), 1993.
- Ilyina, T., Wolf-Gladrow, D., Munhoven, G., and Heinze, C.: Assessing the potential of calcium-based artificial ocean alkalization to mitigate rising atmospheric CO₂ and ocean acidification, *Geophys. Res. Lett.*, 40, 5909-5914, <https://doi.org/10.1002/2013gl057981>, 2013.
- IPCC: Climate Change and Land: an IPCC special report on climate change, desertification, land degradation, 595 sustainable land management, food security, and greenhouse gas fluxes in terrestrial ecosystems, edited by Shukla P.R., Skea J., Calvo Buendia E., Masson-Delmotte V., Pörtner H.-O., Roberts D. C., Zhai P., Slade R., Connors S., Diemen R., Ferrat M., Haughey E., Luz S., Neogi S., Pathak M., Petzold J., Portugal P. J., Vyas P., Huntley E., Kissick K., Belkacemi M., Malley J., In press, 2019.
- [Keller, D., Feng, E. & Oschlies, A.: Potential climate engineering effectiveness and side effects during a high carbon dioxide-emission scenario, *Nat. Commun.*, 5, 3304, https://doi.org/10.1038/ncomms4304, 2014.](https://doi.org/10.1038/ncomms4304) 600
- Kheshgi, H. S.: Sequestering atmospheric carbon dioxide by increasing ocean alkalinity, *Energy*, 20, 915-922, [https://doi.org/10.1016/0360-5442\(95\)00035-F](https://doi.org/10.1016/0360-5442(95)00035-F), 1995.
- Kohler, P., Hartmann, J., and Wolf-Gladrow, D. A.: Geoengineering potential of artificially enhanced silicate weathering of olivine, *P. Natl. A. Sci. USA.*, 107, 20228-20233, <https://doi.org/10.1073/pnas.1000545107>, 2010.
- 605 LaRoche, J., Rost, B., and Engel, A.: Bioassays, batch culture and chemostat experimentation, in: Guide to Best Practices for Ocean Acidification Research and Data Reporting, edited by: Riebesell, U., Fabry, V. J., Hansson, L., and Gattuso, J.P., Publications office of the European Union, 81-94, 2010.
- Lenton, A., Mearns, R. J., Keller, D. P., Scott, V., and Vaughan, N. E.: Assessing carbon dioxide removal through global and regional ocean alkalization under high and low emission pathways, *Earth Syst. Dynam.*, 9, 339-357, 610 <https://doi.org/10.5194/esd-9-339-2018>, 2018.
- MacCreedy, P. and Quay, P.: Biological export flux in the Southern Ocean estimated from a climatological nitrate budget, *Deep-Sea Res. Pt. II*, 48, 4299-4322, [https://doi.org/10.1016/S0967-0645\(01\)00090-X](https://doi.org/10.1016/S0967-0645(01)00090-X), 2001.
- Messié, M., Ledesma, J., Kolber, D. D., Michisaki, R. P., Foley, D. G., and Chavez, F. P.: Potential new production estimates in four eastern boundary upwelling ecosystems, *Prog. Oceanogr.*, 83, 151-158, 615 <https://doi.org/10.1016/j.pocean.2009.07.018>, 2009.
- [Middag Rob, de Baar Hein J. W., Bruland Kenneth W., and van Heuven Steven M. A. C.: The distribution of nickel in the West-Atlantic Ocean, its relationship with phosphate and a comparison to cadmium and zinc, *Front. Mar. Sci.*, 7, 105, https://doi.org/10.3389/fmars.2020.00105, 2020.](https://doi.org/10.3389/fmars.2020.00105)
- Montserrat, F., Renforth, P., Hartmann, J., Leermakers, M., Knops, P., and Meysman, F. J. R.: Olivine dissolution in

- 620 seawater: implications for CO₂ sequestration through enhanced weathering in coastal environments, *Environ. Sci. Technol.*, 51, 3960-3972, <https://doi.org/10.1021/acs.est.6b05942>, 2017.
- Morel, F. M. M.: The co-evolution of phytoplankton and trace element cycles in the oceans, *Geobiology*, 6, 318-324, <https://doi.org/10.1111/j.1472-4669.2008.00144.x>, 2008.
- Morel, F. M. M., Hudson, R. J. M., and Price, N. M.: Limitation of productivity by trace metals in the sea, *Limnol. Oceanogr.*, 36, 1742-1755, 10.4319/lo.1991.36.8.1742, 1991.
- 625 [Nolting, R.F., Gerringa, L.J.A., Swagerman, M.J.W., Timmermans K.R., and Baar, H.J.W.: Fe \(III\) speciation in the high nutrient, low chlorophyll Pacific region of the Southern Ocean, *Mar Chem.*, 62, 335-352, \[https://doi.org/10.1016/S0304-4203\\(98\\)00046-2\]\(https://doi.org/10.1016/S0304-4203\(98\)00046-2\), 1998.](#)
- 630 [Oelkers, E.H., Declercq, J., Saldi, G.D., Gislason, S.R., Schott, J.: Olivine dissolution rates: a critical review., *Chem. Geol.*, 500, 1-19, <https://doi.org/10.1016/j.chemgeo.2018.10.008>, 2018.](#)
- Oliveira, L. and Antia, N. J.: Nickel ion requirements for autotrophic growth of several marine microalgae with urea serving as nitrogen source, *Can. J. Fish. Aquat. Sci.*, 43, 2427-2433, <https://doi.org/10.1139/f86-301>, 1986.
- Parkhill, J.-P., Maillet, G., and Cullen, J. J.: Fluorescence-based maximal quantum yield for PSII as a diagnostic of nutrient stress, *J. Phycol.*, 37, 517-529, <https://doi.org/10.1046/j.1529-8817.2001.037004517.x>, 2001.
- 635 Pausch, F., Bischof, K., and Trimborn, S.: Iron and manganese co-limit growth of the Southern Ocean diatom *Chaetoceros debilis*, *Plos One*, 14, e0221959, <https://doi.org/10.1371/journal.pone.0221959>, 2019.
- Price, N. M. and Morel, F. M. M.: Colimitation of phytoplankton growth by nickel and nitrogen, *Limnol. Oceanogr.*, 36, 1071-1077, <https://doi.org/10.4319/lo.1991.36.6.1071>, 1991.
- Price, N. M., Harrison, G. I., Hering, J. G., Hudson, R. J., Nirel, P. M., Palenik, B., and Morel, F. M.: Preparation and chemistry of the artificial algal culture medium Aquil, *Biological Oceanography*, 6, 443-461, <https://doi.org/10.1080/01965581.1988.10749544>, 1989.
- 640 [Rogelj, J., Schaeffer, M., Friedlingstein, P., Gillett, N. P., van Vuuren, D. P., Riahi, K., Allen, M., and Knutti, R.: Differences between carbon budget estimates unravelled, *Nat. Clim. Change*, 6, 245-252, <https://doi.org/10.1038/nclimate2868>, 2016.](#)
- 645 [Rogelj, J., D. Shindell, K. Jiang, S. Fifita, P. Forster, V. Ginzburg, C. Handa, H. Kheshgi, S. Kobayashi, E. Kriegler, L. Mundaca, R. Séférian, and M.V.Vilarinho: Mitigation Pathways Compatible with 1.5°C in the Context of Sustainable Development. In: Global Warming of 1.5°C. An IPCC Special Report on the impacts of global warming of 1.5°C above pre-industrial levels and related global greenhouse gas emission pathways, in the context of strengthening the global response to the threat of climate change, sustainable development, and efforts to eradicate poverty \[Masson-Delmotte, V., P. Zhai, H.-O. Pörtner, D. Roberts, J. Skea, P.R. Shukla, A. Pirani, W. Moufouma-Okia, C. Péan, R. Pidcock, S. Connors, J.B.R. Matthews, Y. Chen, X. Zhou, M.I. Gomis, E. Lonnoy, T. Maycock, M. Tignor, and T. Waterfield \(Eds.\)\], 2018.](#)
- 650 [Roy, S., Llewellyn, C., Egeland, E., & Johnsen, G. \(Eds.\). *Phytoplankton Pigments: Characterization, Chemotaxonomy and Applications in Oceanography* \(Cambridge Environmental Chemistry Series\). Cambridge: Cambridge University Press, doi:10.1017/CBO9780511732263, 2011.](#)
- 655 [RStudio Team \(2020\). *RStudio: Integrated Development for R*. RStudio, PBC, Boston, MA URL: <http://www.rstudio.com/>.](#)
- Saito, M. A., Moffett, J. W., and DiTullio, G. R.: Cobalt and nickel in the Peru upwelling region: a major flux of labile cobalt utilized as a micronutrient, *Global Biogeochem. Cy.*, 18, 1-14, <https://doi.org/10.1029/2003GB002216>, 2004.
- 660 Schallenberg, C., Strzepek, R. F., Schuback, N., Clementson, L. A., Boyd, P. W., and Trull, T. W.: Diel quenching of Southern Ocean phytoplankton fluorescence is related to iron limitation, *Biogeosciences*, 17, 793-812, <https://doi.org/10.5194/bg-17-793-2020>, 2020.

- Schuling, R. D. and Krijgsman, P.: Enhanced weathering: an effective and cheap tool to sequester CO₂, *Climatic Change*, 74, 349-354, <https://doi.org/10.1007/s10584-005-3485-y>, 2006.
- 665 Sclater, F. R., Boyle, E., and Edmond, J. M.: On the marine geochemistry of nickel, *Earth Planet Sc. Lett.*, 31, 119-128, [https://doi.org/10.1016/0012-821X\(76\)90103-5](https://doi.org/10.1016/0012-821X(76)90103-5), 1976.
- Shilova, I. N., Mills, M. M., Robidart, J. C., Turk-Kubo, K. A., Björkman, K. M., Kolber, Z., Rapp, I., Van Dijken, G. L., Church, M. J., Arrigo, K. R., Achtenberg, E. P., and Zehr, J. P.: Differential effects of nitrate, ammonium, and urea as N sources for microbial communities in the North Pacific Ocean, *Limnol. Oceanogr.*, 62, 2550-2574, <https://doi.org/10.1002/lno.10590>, 2017.
- 670 Sieracki, M. E., Verity, P. G., and Stoecker, D. K.: Plankton community response to sequential silicate and nitrate depletion during the 1989 North Atlantic spring bloom, *Deep-Sea Res. Pt. II*, 40, 213-225, [https://doi.org/10.1016/0967-0645\(93\)90014-E](https://doi.org/10.1016/0967-0645(93)90014-E), 1993.
- 675 Suggett, D. J., Moore, C. M., Hickman, A. E., and Geider, R. J.: Interpretation of fast repetition rate (FRR) fluorescence: signatures of phytoplankton community structure versus physiological state, *Mar. Ecol. Prog. Ser.*, 376, 1-19, <https://doi.org/10.3354/meps07830>, 2009.
- Sunda, W. G.: Trace metal interactions with marine phytoplankton, *Biological oceanography*, 6, 411-442, 1989.
- Taylor, L. L., Quirk, J., Thorley, R. M. S., Kharecha, P. A., Hansen, J., Ridgwell, A., Lomas, M. R., Banwart, S. A., and Beerling, D. J.: Enhanced weathering strategies for stabilizing climate and averting ocean acidification, *Nature Clim. Change*, 6, 402-406, <https://doi.org/10.1038/nclimate2882>, 2016.
- 680 [Thi Dieu Vu, H. and Sohrin, Y., 2013.: Diverse stoichiometry of dissolved trace metals in the Indian Ocean, *Sci. Rep.*, 3, 1745, <https://doi.org/10.1038/srep01745>, 2013.](https://doi.org/10.1038/srep01745)
- Van Den Berg, C. M. G. and Nimmo, M.: Determination of interactions of nickel with dissolved organic material in seawater using cathodic stripping voltammetry, *Sci Total Environ.*, 60, 185-195, [https://doi.org/10.1016/0048-9697\(87\)90415-3](https://doi.org/10.1016/0048-9697(87)90415-3), 1987.
- 685 Wafar, M., Le Corre, P., and l'Helguen, S.: *f*-Ratios calculated with and without urea uptake in nitrogen uptake by phytoplankton, *Deep-Sea Res. Pt. I*, 42, 1669-1674, [https://doi.org/10.1016/0967-0637\(95\)00066-F](https://doi.org/10.1016/0967-0637(95)00066-F), 1995.
- Wolfe-Simon, F., Grzebyk, D., Schofield, O., and Falkowski, P. G.: The role and evolution of superoxide dismutases in algae, *J. Phycol.*, 41, 453-465, <https://doi.org/10.1111/j.1529-8817.2005.00086.x>, 2005.
- 690 [Wood S., Mixed GAM computation vehicle with automatic smoothness estimation: <https://cran.r-project.org/web/packages/mgcv/mgcv.pdf>, last access: 20 June 2022.](https://cran.r-project.org/web/packages/mgcv/mgcv.pdf)
- Xue, H. B., Jansen, S., Prasad, A., and Sigg, L.: Nickel speciation and complexation kinetics in freshwater by ligand exchange and DPCSV, *Environ. Sci. Technol.*, 35, 539-546, <https://doi.org/10.1021/es0014638>, 2001.
- 695 Zamble, D., Rowińska-Żyrek, M., & Kozłowski, H. (Ed.): *The Biological Chemistry of Nickel*, The Royal Society of Chemistry, <https://doi.org/10.1039/9781788010580>, 2017.