

Diazotrophy as a key driver of the response of marine net primary productivity to climate change

Laurent Bopp¹, Olivier Aumont², Lester Kwiatkowski², Corentin Clerc¹, Léonard Dupont¹, Christian Ethé³, ~~Thomas Gorgues⁴~~, Roland Séférian⁵, Alessandro Tagliabue⁶

¹ LMD/IPSL, Ecole Normale Supérieure/Université PSL, CNRS, Ecole Polytechnique, Sorbonne Université, Paris, France
² LOCEAN/IPSL, Sorbonne Université, CNRS, IRD, MNHN, Paris, France
³ IPSL, Sorbonne Université, CNRS, Paris, France
⁴ ~~LOPS/IUEM, Université de Bretagne Occidentale, CNRS, IRD, Ifremer, Brest, France~~
⁵ CNRM, Université de Toulouse, Météo-France, CNRS, Toulouse, France
⁶ School of Environmental Sciences, U. Liverpool, Liverpool, UK

Correspondence to: Laurent Bopp (bopp@lmd.ipsl.fr)

Abstract. The impact of anthropogenic climate change on marine net primary production (NPP) is a reason for concern because changing NPP will have widespread consequences for marine ecosystems and their associated services. Projections by the current generation of Earth System Models have suggested decreases in global NPP in response to future climate change, albeit with very large uncertainties. Here, we make use of two versions of the Institut Pierre Simon Laplace Climate Model (IPSL-CM) that simulate divergent NPP responses to similar high-emission scenarios in the 21st century and identify nitrogen fixation as the main driver of these divergent NPP responses. Differences in the way N-fixation is parameterized in the marine biogeochemical component PISCES of the IPSL-CMs lead to N-fixation rates that are either stable or double over the course of the 21st century, resulting in decreasing or increasing global NPP, respectively. An evaluation of these 2 model versions does not help constrain future NPP projection uncertainties. However, the use of a more comprehensive version of PISCES, with variable nitrogen-to-phosphorus ratios as well as a revised parameterization of the temperature sensitivity of N-fixation, suggests only moderate changes of global-averaged N-fixation in the 21st century. This leads to decreasing global NPP, in line with the model-mean changes of a recent multi-model intercomparison. Lastly, despite contrasting trends in NPP, all our model versions simulate similar and significant reductions in planktonic biomass. This suggests that projected plankton biomass may be a much more robust indicator than NPP of the potential impact of anthropogenic climate change on marine ecosystems across models.

1 Introduction

Net Primary Production (NPP) by marine phytoplankton is responsible for nearly 50% of global carbon fixation (Field et al., 1998), and is the basis of almost all marine food chains, controlling the availability of energy and food for upper trophic levels. As such, marine NPP sustains most oceanic fisheries (Pauly and Christensen, 1995; Stock et al., 2017) and is

laurent bopp 31/3/y 10:46
Supprimé: ⁴

laurent bopp 31/3/y 10:47
Mis en forme: Exposant

laurent bopp 31/3/y 10:46
Supprimé: ⁵

laurent bopp 31/3/y 10:50
Supprimé: ⁴

laurent bopp 31/3/y 10:50
Supprimé: ⁵

considered to be one of the most important ecosystem services that the ocean [provides](#) (Pörtner et al., 2014; Bindoff et al., 2019).

Impacts of anthropogenic climate change on marine NPP are particularly alarming as changing NPP could have widespread consequences for marine [ecosystems](#) and the services they provide. For instance, NPP drives the vitality of marine ecosystems, biogeochemical cycling and the biological carbon pump. Several modelling studies have used Earth System Models (ESMs) to project the evolution of marine NPP over the 21st century under different global warming scenarios (Bopp et al., 2001; Steinacher et al., 2010; Bopp et al., 2013; Cabré et al., 2015; Laufkötter et al., 2015; Kwiatkowski et al., 2020; Tagliabue et al., 2021). Many of these studies have suggested decreases in global NPP in response to future climate change. For the high-emission scenario RCP8.5, estimates of changes in global NPP based on 10 ESMs used in the Coupled Model Intercomparison Project 5 (CMIP5) range from -2 to -16% in 2090-2099 as compared to 1990-1999 (Bopp et al., 2013). In the recent Coupled Model Intercomparison Project 6 (CMIP6), ESMs also project in average a decrease in global mean NPP under the high-emission scenario SSP5-8.5, albeit with much larger uncertainties than in CMIP5 (Kwiatkowski et al., 2020; Tagliabue et al., 2021).

Multi model climate change projections have been widely used to assess the potential impact of future climate change on marine biomass across trophic levels ([Kwiatkowski et al., 2019](#); Lotze et al., 2019), fisheries catch potential (Cheung et al., 2010) and global revenues (Lam et al. 2016), and planktonic diversity (Ibarbalz et al., 2019; Benedetti et al., 2021). Using 6 global ecosystem models and climate projections from 2 CMIP5 Earth System Models, Lotze et al. (2019) have shown for instance that the mean global animal biomass in the ocean, largely driven by the decreasing trend in marine NPP, would decrease by 17 % under high emissions by 2100, corresponding to an average 5% decrease for every 1°C of warming.

Despite being used extensively, including in international assessment reports such as the Special Report on the Ocean and Cryosphere in a Changing Climate (IPCC SROCC, Pörtner et al., 2019) and the Global [Assessment Report on Biodiversity and Ecosystem Services](#) (IPBES, Diaz et al., 2019), these projections of future marine NPP are subject to large uncertainties, as demonstrated by inter-model differences (Frölicher et al., 2016). This is especially the case at the regional level, as shown in the Arctic Ocean (Vancoppenolle et al., 2015), in the Southern Ocean (Leung et al., 2015), and in the tropical oceans (Kwiatkowski et al., 2017; Tagliabue et al., 2020; Tagliabue et al., 2021). It is also the case for the global trend, with some models of the CMIP6 ensemble (IPSL-CM6A-LR, CNRM-ESM2-1, CESM2 [and CESM2-WACCM](#)) and others not included in the CMIP ensembles (UVIC model in Taucher and Oschlies, 2011; PlankTOM5.3 model in Laufkötter et al., 2015), simulating increasing global NPP in response to anthropogenic climate change. Even within [a](#) specific model, poorly constrained assumptions around key biological components can drive substantial uncertainty in the projected changes in NPP across the tropical Pacific (Tagliabue et al., 2020).

The differences between models in projecting future NPP result from numerous factors and are underpinned by the delicate balance between the processes causing NPP decreases (e.g. stratification-driven declines in nutrient supply and temperature-driven increases in zooplankton grazing) and NPP increases (e.g. stratification-driven declines in light limitation, transport of excess nutrients and temperature-driven increases in phytoplankton growth rates) (Doney, 2006; Laufkötter et al., 2015). The

laurent bopp 29/4/y 08:35
Supprimé: hosts

laurent bopp 29/4/y 08:35
Supprimé: food

laurent bopp 29/4/y 08:36
Supprimé: a

laurent bopp 29/4/y 08:36
Supprimé: r

laurent bopp 29/4/y 08:36
Supprimé: b

laurent bopp 29/4/y 08:36
Supprimé: e

laurent bopp 29/4/y 08:36
Supprimé: s

laurent bopp 31/3/y 10:25
Supprimé: s

laurent bopp 29/4/y 08:36
Supprimé: one

80 | effects of other key processes, such as the potential contribution of nitrogen fixation (Riche and Christian, 2018; Wrightson and Tagliabue, 2020), changing nutrient limitation regimes (Tagliabue et al., 2020) or the impact of ocean acidification on phytoplankton growth (Dutkiewicz et al., 2015) are even more uncertain and are typically only implicitly parameterized or ignored in current generation ESMs.

85 Here, we make use of the newly developed version 6 of the Institut Pierre Simon Laplace Climate Model (IPSL-CM6A-LR, Boucher et al. 2020), used in the framework of the Coupled Model Intercomparison Project Phase 6 (CMIP6, Eyring et al., 2016) and compare its projected NPP response to the previous version of the same climate model (IPSL-CM5A-LR, Dufresne et al., 2013) used in CMIP5. These two model versions differ in many ways (spatial resolution in the ocean and atmosphere, improved versions of multiple model components), but both use the Pelagic Interaction Scheme for Carbon and Ecosystem Studies (PISCES) model as their marine biogeochemical component. Note that whereas IPSL-CM5A-LR uses PISCES-v1 (Aumont and Bopp, 2006), the more recent version 2 (PISCES-v2, Aumont et al., 2015) is used in IPSL-CM6A-LR.

90 LR. Whereas both models produce near-identical trend in global SST for comparable high-emission scenarios (RCP8.5 and SSP5-8.5) over the 21st century (Figure 1a, Table 1), a first comparison of NPP projections shows a striking difference, with NPP decreasing by 9.1% in IPSL-CM5A-LR in 2080-2099 relative to 1986-2005, whereas it increases by 6.8% in IPSL-CM6A-LR (Figure 1b, Table 1). The aim of this study is to explore and explain this striking global scale divergence. As shown on Figure 1, we identify the response of biological N-fixation to anthropogenic climate change as one of the main differences between these 2 ESMs versions, with N-fixation slightly decreasing in IPSL-CM5A-LR and increasing significantly in IPSL-CM6A-LR over the 21st century (-9% and +75% from 1986-2005 to 2080-2099, respectively, Figure 1, Table 1).

laurent bopp 31/3/y 10:25

Supprimé: atmospheric

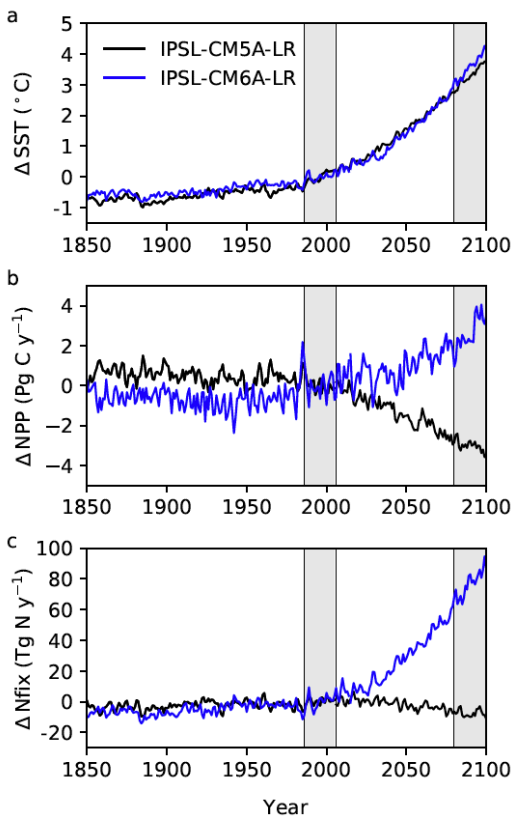


Figure 1: Simulated changes relative to 1986-2005 in (a) sea surface temperature ($^{\circ}\text{C}$), (b) integrated net primary production (Pg C y^{-1}) and (c) integrated N_2 fixation (Tg N y^{-1}), for IPSL-CM5A-LR (black) and IPSL-CM6A-LR (blue) over historical and future scenarios. Note that the RCP8.5 emission pathway is used for IPSL-CM5A-LR, but SSP5-8.5 is used for IPSL-CM6A-LR. The historical and future periods (1986-2005 and 2080-2099, respectively) are displayed as grey bars.

Biological dinitrogen (N_2) fixation is a key process providing bio-available nitrogen to support marine primary production (Gruber and Galloway, 2008, Zehr and Capone, 2020). Nitrogen fixation was long thought to be confined to the warm, low-latitude ocean, and only performed by very specific cyanobacteria. However, our knowledge has greatly evolved in recent years with the discovery of an ever-increasing array of microorganisms capable of fixing atmospheric nitrogen (Gradovalle et al., 2017). Nitrogen fixation has also been observed in areas where it was previously not thought possible, e.g. in nutrient-

rich, low-temperature waters (Tang et al., 2019; Benavides et al., 2018). At present, the response of N-fixation to climate change appears highly unconstrained, as illustrated by the diversity of responses from ESMs that include some form of N-fixation parameterization (Riche et al., 2018, Wrightson and Tagliabue, 2020). However, despite this variation, because N-fixation emerges rapidly from the background of natural variability, it can be a key driver of NPP trends in N-limited waters (Wrightson and Tagliabue, 2020).

In this study, we first identify N-fixation as the main process responsible for the sharp contrast between projected NPP in IPSL-CM5A-LR and IPSL-CM6A-LR. We then exploit a series of offline simulations using different versions of the PISCES model (including PISCES-v1, PISCES-v2, and other model versions differing in their representation of N-fixation), consistently forced with the same climate model output. This ensures that no differences in the projections arise from variable climate scenarios, climate models or model resolution. We then analyse the mechanisms responsible for the different responses of N-fixation in all models used here and discuss these differences in terms of their skill against data-based products. Lastly, we explore the implications of the divergent N-fixation and NPP responses for ocean carbon export, ocean deoxygenation and for potential impacts on marine ecosystems in the 21st century.

2 Material and Methods

2.1 Earth System Models

In this study, we make use of two versions of the Institut Pierre Simon Laplace Climate Model (IPSL-CM). The first model, IPSL-CM5A-LR (Dufresne et al., 2013), has been used extensively for the Phase 5 of the Coupled Model Intercomparison Project (CMIP5, Taylor et al., 2011) and compared to other CMIP5 models in terms of its marine biogeochemistry response to climate change in Bopp et al. (2013). The second model is the newly developed IPSL-CM6A-LR (Boucher et al., 2020), used in the more recent CMIP6 (Eyring et al., 2016) and compared to other CMIP6 models in Kwiatkowski et al. (2020) for the response of marine ecosystem stressors to anthropogenic climate change.

Both IPSL models rely on the same atmospheric (LMDZ), ocean (NEMO) and land surface (ORCHIDEE) model components. However these model components have been substantially revised and upgraded in IPSL-CM6A-LR with respect to IPSL-CM5A-LR. The spatial resolution of the atmospheric model has also been increased from 96x95 points (mean resolution of 236 km) in longitude and latitude with 39 vertical layers in IPSL-CM5A-LR (Dufresne et al., 2013) to 144x143 points (mean resolution of 157 km) and 79 vertical layers in IPSL-CM6A-LR (Boucher et al., 2020). In addition, the nominal resolution of the ocean model has increased from 2° and 31 vertical layers to 1° and 75 vertical layers.

A detailed description of the changes to LMDZ, NEMO and ORCHIDEE is provided in Boucher et al. (2020). However, we note that the atmospheric general circulation model LMDZ6-A (Hourdin et al., 2020) differs from LMDZ5A (Hourdin et al. 2013) in its inclusion of a new package of parameterizations for turbulence, convection and clouds. The NEMO ocean model comprises 3 components, i.e. ocean dynamics (NEMO-OPA), sea-ice dynamics and thermodynamics (NEMO-LIM) and marine biogeochemistry (NEMO-PISCES). All of these ocean components have been updated from IPSL-CM5A-LR to

laurent bopp 31/3/y 10:26
Supprimé: t

laurent bopp 29/4/y 08:37
Supprimé: s

laurent bopp 29/4/y 08:37
Supprimé: divergent

laurent bopp 22/4/y 09:08
Supprimé: ocean carbon uptake

laurent bopp 29/4/y 08:38
Supprimé: at

laurent bopp 29/4/y 08:38
Supprimé: at

150 IPSL-CM6A-LR, from version 3.2 to version 3.6 of NEMO (Madec et al., 2017; Rousset et al., 2015; Aumont et al., 2015),
with the addition of a nonlinear free surface, a parameterization of mixing in the mixed layer due to submesoscale processes,
and an energy constrained parameterization of mixing due to internal tides for NEMO-OPA, and a new multicategory
halothermodynamic sea ice model for NEMO-LIM. The changes in the marine biogeochemistry component (NEMO-
PISCES) are described below. A detailed assessment of the key properties of the ocean and marine biogeochemical models
155 as used in ESMs that have contributed to CMIP5 and CMIP6 (including IPSL models) is available in Séférian et al. (2020)
These two versions from the IPSL climate model family qualify as Earth System Models as they include carbon cycle
components for the land biosphere (ORCHIDEE) and the ocean (NEMO-PISCES). In the following we describe the PISCES
model versions used in this study.

2.2 Marine biogeochemical components and N-fixation parameterizations

160 NEMO-PISCES is an ocean biogeochemical model that simulates marine biological productivity and describes the
biogeochemical cycles of carbon, oxygen and of the main limiting nutrients (P, N, Si, Fe). It is based on 24 prognostic
tracers in its standard configuration, with 2 phytoplankton functional types (diatoms and nanophytoplankton) and 2
zooplankton size classes (micro- and mesozooplankton). PISCES is by nature a “Redfieldian” model, i.e. it assumes constant
stoichiometric ratios for carbon, nitrogen and phosphorus in all organic compartments, but does consider flexible
165 stoichiometry for iron and silica.

PISCES-v1 is used in IPSL-CM5A-LR and described in details in Aumont and Bopp (2006), whereas PISCES-v2 is used in
IPSL-CM6A-LR and described in Aumont et al. (2015). Despite being similar in terms of their overall architecture and
number of prognostic tracers, PISCES-v2 differs from PISCES-v1 with an improved representation of iron cycling,
phytoplankton growth and nutrient limitation, zooplankton grazing, the sinking of particles, external sources of nutrients, and
170 the treatment of water-sediment interactions.

In both PISCES versions, the modelling of the nitrogen cycle relies on the explicit representation of nitrate and ammonium
concentrations in seawater. It includes nitrification, which corresponds to the conversion of ammonium to nitrate and is
assumed to be photo-inhibited and reduced in low-oxygen waters, as well as denitrification, when nitrate is used instead of
oxygen for remineralization in suboxic waters (Aumont et al. 2015). External sources of nitrogen in the ocean include
175 riverine input (using GLOBAL-NEWS2 data sets, Mayorga et al., 2010, for both PISCES versions), atmospheric deposition
(using input4MIPs data, Heglin et al. 2016 in IPSL-CM6A-LR, and output of the INCA model, Aumont et al. 2008, for
IPSL-CM5A-LR), and biological N-fixation (see below). External sinks of nitrogen include denitrification and organic
matter burial in the sediment (see Aumont et al. 2006, and Aumont et al. 2015 for detailed descriptions).

In both PISCES versions, N-fixation is represented implicitly as a source of ammonium, i.e. without an explicit diazotroph
180 plankton functional type (Figure 2). N-fixation is restricted to warm-waters ($\geq 20^{\circ}\text{C}$) and increases exponentially with
temperature following a Q-10 value of 1.9 as for all autotrophic processes in PISCES (Aumont and Bopp, 2006; Aumont et
al., 2015). N-fixation is limited by the availability of light and iron, and favoured in low-nitrogen (NO_3 and NH_4)

laurent bopp 31/3/y 17:13

Supprimé: .

laurent bopp 29/4/y 08:38

Supprimé: T

185 environments. PISCES-v1 and PISCES-v2 differ in their treatment of phosphorus limitation on N-fixation, which is ~~absent~~ in
PISCES-v1 but combined with iron limitation in PISCES-v2. ~~In PISCES-v1, due to the fixed stoichiometric ratios between~~
carbon, nitrogen and phosphorus in all organic components it is assumed that N-fixation is accompanied by a release of
inorganic phosphorus to account for the fact that diazotrophy-derived organic matter is much richer in N than the standard
Redfield assumptions in the model. ~~This additional P-source is interpreted as deriving from the use of an unresolved~~
190 ~~Dissolved Organic Phosphorus (DOP) pool by the implicit diazotrophs. Thus, in PISCES-v1, for every mole of N₂ fixed by~~
diazotrophy and instantaneously transferred into the ammonium pool, an additional 0.04 moles of phosphorus is added in the
phosphate pool to represent the subsequent remineralization of the diazotrophy-derived organic matter with an N:P ratio of
46:1 (Figure 2a). ~~In PISCES-v2, this parameterization has been changed and instead includes an unresolved source of~~
~~inorganic phosphorus from labile DOP, independently of N-fixation. In strongly P-limited areas, diazotrophic cyanobacteria~~
195 ~~use DOP as a source of P, but this is the case also for other phytoplankton groups (Cotner et al, 1992 ; Paytan and~~
~~McLaughlin, 2007). The parameterization thus mimics this source of P, which depends on simulated dissolved organic~~
~~matter concentrations and is inhibited when dissolved inorganic P is not limiting phytoplankton growth (Figure 2b). In~~
~~PISCES-v2, this P-source is therefore not dependent on the rate of N-fixation as it is in PISCES-v1.~~
Note that ~~in all versions~~, the overall P-inventory of the ocean is ensured by an annual restoring of the global mean PO₄
200 concentration to its historical global value computed from the World Ocean Atlas 2001 for PISCES-v1 and World Ocean
Atlas 2013 for PISCES-v2. ~~This restoring term is applied everywhere (at all depths) and modifies phosphate concentration~~
~~relatively, thus acting preferentially in the deep ocean where PO₄ concentrations are higher. Overall, this term represents a~~
~~restoring timescale of about 10,000 years (Aumont et al. 2015).~~
In this work, we use two ~~modified~~ versions of PISCES-v2. First, PISCES-quota is a newly developed version of PISCES,
205 which accounts for flexible C:N:P stoichiometry. This is accompanied by the introduction of a new plankton functional type
(picophytoplankton) and leads to a subsequent increase in the number of prognostic variables to 39 (compared to 24 in all
other PISCES versions). A detailed description of PISCES-quota, is provided in Kwiatkowski et al. (2018). As in PISCES-
v1 and PISCES-v2, N-fixation is parameterized implicitly, limited to waters with high light levels, low nitrogen, and
adequate iron and phosphorus. However because PISCES-quota is non-Redfieldian, two major changes have been introduced
210 (Figure 2.d): (1) N-fixation consumes and is limited by the availability of an explicit dissolved organic phosphorus pool as
~~seen~~ in observations (Sohm and Capone, 2006; Orchard et al., 2010), and (2) the organic matter that is produced by
diazotrophy is enriched in nitrogen with respect to phosphorus (with an N:P ratio of 46:1 vs. 16:1 for the canonical Redfield
ratio). In PISCES-quota, implicit diazotrophy transfers nitrogen and phosphorus to three pools: particulate organic matter,
dissolved organic matter, and ammonium and dissolved inorganic phosphorus, with a ratio of one third each (Figure 2.d).
215 Importantly, the temperature ~~sensitivity of N-fixation~~ has been changed following Breitbarth et al. (2007), with a bell-shape
response curve and a maximum N-fixation rate set at a thermal optimum of ~ 26°C (Figure 2.e).
Last, and specifically for this study, we modified a version of PISCES-v2 in which only the parameterization of N-fixation
was changed based on PISCES-quota (PISCES-v2fix, Figure 2.c). This newly developed parameterization is inspired by

laurent bopp 29/4/y 08:38

Supprimé: not included...bsent in PISCES ... [1]

laurent bopp 31/3/y 17:31

Mis en forme ... [2]

laurent bopp 31/3/y 17:48

Mis en forme ... [3]

laurent bopp 31/3/y 10:27

Supprimé: advanced ...odified versions of ... [4]

PISCES-quota, except it assumes that the diazotrophy-produced material follows the Redfield stoichiometric ratio of N:P (i.e., 16:1), and uses the same release of additional inorganic phosphorus as in PISCES-v2 (Figure 2.c). PISCES-v2fix uses the same temperature-dependency as PISCES-quota (Figure 2.e).

laurent bopp 28/4/y 14:13

Supprimé: avoiding any

laurent bopp 28/4/y 14:13

Supprimé: v1 and PISCES-v2

Unknown

Mis en forme: Police :9 pt

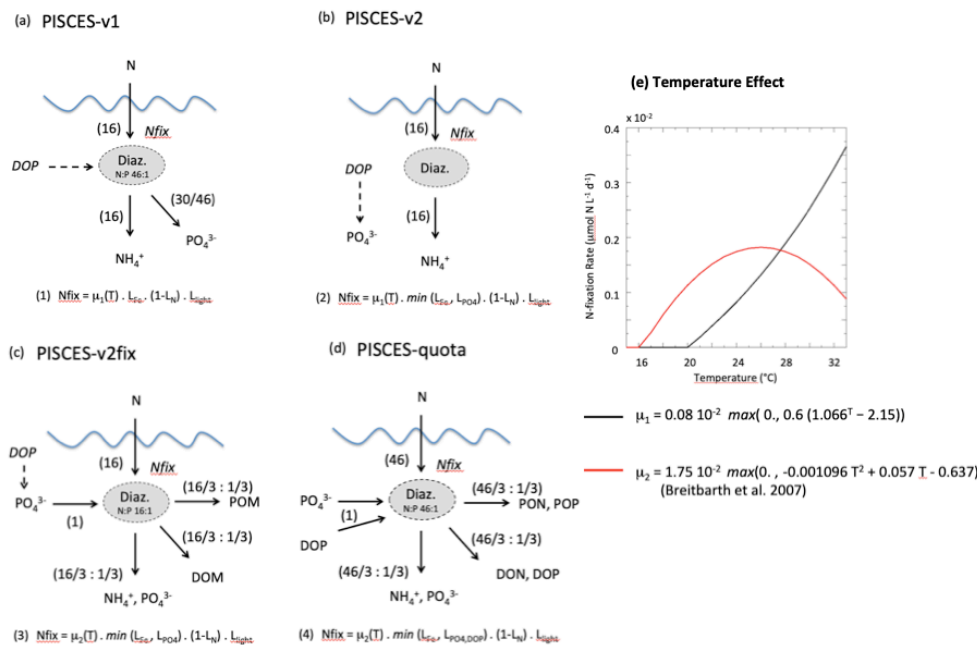


Figure 2: Schematic diagram describing the parameterization of N-fixation for each of the PISCES versions used in this study. Equations (1) to (4) give N-fixation rates as a function of μ the N-fixation rate at temperature T , L_{PO_4} , L_{Fe} and L_N limitation terms (varying between 0 and 1) for phosphorus, iron and nitrogen, respectively, and L_{light} a light limitation term (also between 0 and 1). The values in parenthesis denote the number of moles (of nitrogen or phosphorus) that are consumed and produced by the implicit N-fixation parameterization. (e) N-fixation rate (in $\mu\text{mol N L}^{-1} \text{d}^{-1}$) as a function of water temperature and in the case of no other limitation, for PISCES-v1 and PISCES-v2 (black curve) and PISCES-v2fix and PISCES-quota (red curve, from Breitbarth et al. 2007). See text for details on the rationale for the different parameterizations.

2.3 Simulations

IPSL-CM5A-LR and IPSL-CM6A-LR have been integrated following the CMIP5 (Taylor et al., 2012) and CMIP6 (Eyring et al., 2016) protocols, respectively. After long spin-up integrations in pre-industrial conditions, both Earth System Models

are run under historical forcing (from 1850 to 2005 or 2014), and then under high-emission scenarios (from 2006 or 2015 to 2100, following RCP8.5 for IPSL-CM5A-LR and SSP5-8.5 for IPSL-CM6A-LR). Details on historical and projection simulations with IPSL-CM5A-LR and IPSL-CM6A-LR are given in Dufresne et al. (2013) and Boucher et al. (2020), respectively.

In addition to these coupled Earth System simulations and to facilitate the assessment of the role of biogeochemical parameterizations, we performed a series of “offline” ocean biogeochemistry simulations under the same physical forcing. The four PISCES versions that were run offline are PISCES-v1, PISCES-v2, PISCES-v2fix and PISCES-quota. To do so, we used the physical output of IPSL-CM5A-LR under historical and RCP8.5 conditions (monthly means of ocean temperature, salinity, currents, and mixed layer-depth) and forced these different PISCES versions over 1850-2100, so that the only differences between the offline simulations originate from the biogeochemical parameterizations.

Hereafter, the coupled simulations are referred to as IPSL-CM5A and IPSL-CM6A, whereas the offline simulations are referred as PISCES-v1, PISCES-v2, PISCES-v2fix and PISCES-quota. To facilitate the comparison of simulations run under different protocols, the same 20-yr periods have been retained for historical (1986-2005) and future (2080-2099) baseline periods.

3 Results & Discussions

3.1 Climate change driven responses of NPP and N-fixation in IPSL Earth System Models

We compare here two successive generations of the IPSL Climate Model, IPSL-CM5A (Dufresne et al., 2013) and IPSL-CM6A (Boucher et al., 2020), forced over the 21st century by two similar high-emission scenarios (RCP8.5 and SSP5-8.5). The Equilibrium Climate Sensitivity (ECS) has increased slightly, from 4.1 K in IPSL-CM5A to 4.8 K in IPSL-CM6A (Boucher et al., 2020), both values being in the upper range of ECS from climate models developed in the framework of CMIP5 and CMIP6 (Forster et al., 2019). As a consequence, the warming level for the global mean sea surface temperature under the high-emission scenarios is slightly higher in IPSL-CM6A (+3.57 °C) than in IPSL-CM5A (+3.27 °C) at the end of the 21st century.

Model Version	SST °C	Nfix TgN y ⁻¹	NPP (glob) PgC y ⁻¹	NPP (90°S- 30°S) PgC y ⁻¹	NPP (30°S-30°N) PgC y ⁻¹	NPP (30°N- 90°N) PgC y ⁻¹
IPSL-CM5A	+3.27	-7.3 (-9.0%)	-3.1 (-9.1%)	-0.1	-2.6	-0.5
IPSL-CM6A	+3.57	+77.9 (+75%)	+2.9 (+6.8%)	+0.6	+1.9	+0.4
<u>PISCES-v1</u>	<u>+3.27</u>	<u>-11.2</u> <u>(-14.9%)</u>	<u>-4.6</u> <u>(-13.2%)</u>	<u>-0.2</u>	<u>-3.7</u>	<u>-0.7</u>
PISCES-v2	+3.27	+76.1 (+68.1%)	+6.6 (+13.8%)	+1.0	+5.1	+0.5
PISCES-v2fix	+3.27	+15.6	-0.7	+0.9	-1.9	+0.3

laurent bopp 31/3/y 18:04
Supprimé: three

laurent bopp 29/4/y 08:40
Supprimé: In the latter

laurent bopp 31/3/y 18:04
Supprimé: 2.4 Cluster Analysis

laurent bopp 20/4/y 16:44
Supprimé: 4

		(+20.1%)	(-1.6%)			
PISCES-quota	+3.27	+6.0 (+6.5%)	-2.2 (-5.7%)	+0.3	-2.6	+0.1

280 **Table 1: Climate change impact on global mean Sea Surface Temperature (SST, °C), depth integrated N-fixation (Nfix, TgN y⁻¹), and depth integrated Net Primary Production (NPP, PgC y⁻¹). All are absolute differences between 2080-2099 and 1986-2005, with relative changes in parenthesis.**

285 As stated in the introduction, the two climate models that we compare here simulate opposing projections of global oceanic NPP over the 21st century. In IPSL-CM5A, NPP decreases by 3.1 PgC y⁻¹ from 1986-2005 to 2080-2099 (under RCP8.5),
290 whereas IPSL-CM6A simulates an increase of NPP by 2.9 PgC y⁻¹ over the same period (but under SSP5-8.5) (Table 1, Figure 1). These NPP global changes represent a 9.1% decrease and a 6.8% increase for IPSL-CM5A and IPSL-CM6A, respectively.

The difference between the two model versions mostly arises from the tropical oceans (30°S-30°N), with a decrease of 2.6 Pg y⁻¹ (-14.3%) and an increase of 1.9 Pg y⁻¹ (+7.3%) in IPSL-CM5A and IPSL-CM6A, respectively (Table 1). The extra-
295 tropical oceans also show notable differences between the two model versions, but these differences contribute much less to the global NPP changes (Table 1). At the regional scale, the largest differences between the two model versions are located in the oligotrophic gyres of all ocean basins, which show significant increases in NPP for IPSL-CM6A (up to +45 gC m⁻² y⁻¹) but slight decreases or increases in IPSL-CM5A (Figure 3). Elsewhere, the general patterns are similar across the model versions with NPP increasing at high latitudes and decreasing in the equatorial band and at the poleward borders of subtropical gyres (Figure 3).

laurent bopp 29/4/y 08:40
Supprimé: s

laurent bopp 29/4/y 08:40
Supprimé: s

laurent bopp 29/4/y 08:40
Supprimé: t

laurent bopp 29/4/y 08:40
Supprimé: n

laurent bopp 29/4/y 08:40
Supprimé: p

laurent bopp 29/4/y 08:40
Supprimé: p

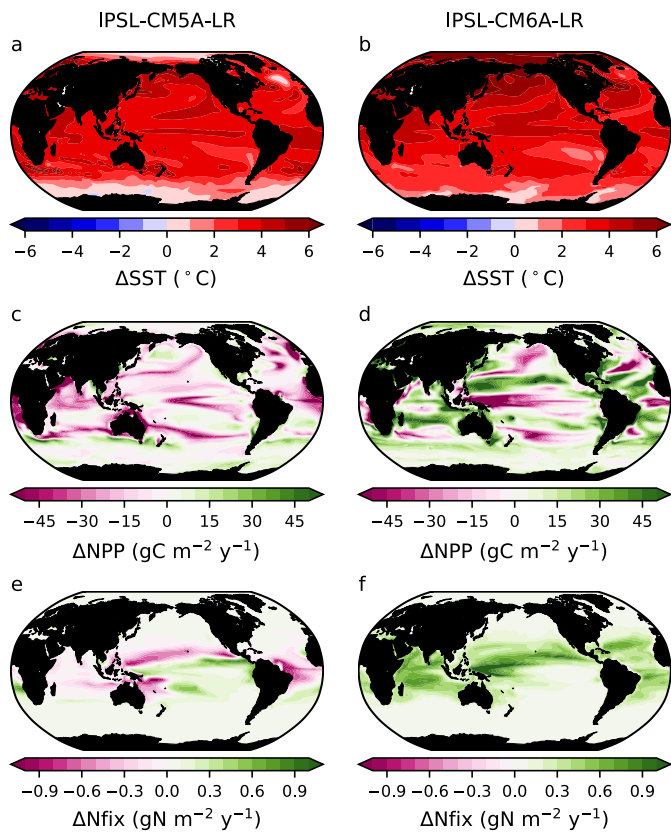


Figure 3: Changes in (a,b) Sea Surface Temperature (SST, °C), (c,d) vertically-integrated Net Primary Production (NPP, $\text{gC m}^{-2} \text{y}^{-1}$) and (e,f) vertically-integrated N-fixation (Nfix, $\text{gN m}^{-2} \text{y}^{-1}$) between 1986-2005 and 2081-2100. Left panels are for IPSL-CM5A under RCP8.5, whereas right panels are for IPSL-CM6A under SSP5-8.5

The localization of NPP differences in the oligotrophic gyres, and the similarity of the physical ocean response (not shown) to anthropogenic climate change, point towards a role for nitrogen fixation in explaining the contrast between IPSL-CM5A and IPSL-CM6A in terms of NPP projections. Indeed, whereas N-fixation slightly decreases in IPSL-CM5A (-7.3 TgN y^{-1} ; -9%) through the 21st century, it almost doubles in IPSL-CM6A ($+77.9 \text{ TgN y}^{-1}$; $+75\%$) (Figure 1, Table 1). Spatially, the

laurent bopp 29/4/y 08:41

Supprimé: s

laurent bopp 29/4/y 08:41

Supprimé: s

laurent bopp 29/4/y 08:41

Supprimé: t

laurent bopp 29/4/y 08:41

Supprimé: n

laurent bopp 29/4/y 08:41

Supprimé: p

laurent bopp 29/4/y 08:41

Supprimé: p

laurent bopp 31/3/y 10:30

Supprimé: ocean physics

laurent bopp 22/4/y 10:43

Supprimé: -

320 regions in which the increases in N-fixation are strongest coincide with the regions in which NPP also increases strongly in
IPSL-CM6A (Figure 3).

3.2 Climate change driven responses of NPP and N-fixation in PISCES offline simulations

325 To further understand the role of N-fixation in explaining the differences between IPSL-CM5A and IPSL-CM6A, we use
additional offline simulations where the same ocean physical forcing is applied to different versions of the PISCES
biogeochemical model. This enables a direct comparison of specific biogeochemical parameterizations within the same
physical framework (see Methods 2.3).

330 The PISCES-v1 version (used in IPSL-CM5A) forced in offline mode with the IPSL-CM5A output over 1850-2100 gives
broadly similar results to those obtained with IPSL-CM5A, i.e a decrease in NPP and in N-fixation of -13.2% and -14.9%, in
2080-2099, respectively (Table 1, Figure 4.a and 4.b). Spatially, the NPP and N-fixation changes obtained with PISCES-v1
in offline mode strongly resemble those from IPSL-CM5A, as can be seen when comparing Figure 3 (c,e) to Figure 4 (c,d).
Interestingly, these similarities between the online and offline versions are also maintained for PISCES-v2. By using the
same PISCES version (PISCES-v2; Aumont et al., 2015) as that in IPSL-CM6A, but forced with the physical output of
IPSL-CM5A under RCP8.5 (simulation PISCES-v2, see Section 2.3), we obtain a very similar response to that in IPSL-
335 CM6A in terms of N-fixation, with an increase of 76.1 TgN y⁻¹ (+68.1%) from 1986-2005 to 2080-2099, as compared to
77.9 TgN y⁻¹ (+75%) over the same period in IPSL-CM6A (Table 1, Figure 4). This shows that the differences between
IPSL-CM6A and IPSL-CM5A are robust in a common physical framework. Consequently, NPP also increases in PISCES-
v2 (by +13.8%) (Table 1, Figure 4). As in IPSL-CM6A, the increase in NPP in this offline simulation is largely concentrated
in the tropical oceans, where it reaches + 17% (Table 2), and is typically coincident with regions of increasing N-fixation
340 (Figure 4).

In the PISCES-v2fix simulation, the temperature dependency of N-fixation and the assumed N:P ratio of the implicit
diazotrophs is modified from that in PISCES-v2 (Section 2.1), while the same forcing, that derived from IPSL-CM5A, is
applied (Section 2.3). In this offline simulation, N-fixation also increases over the 21st century (by 15.6 TgN y⁻¹ or 20.1% at
the end of the 21st century), but much less than in PISCES-v2. The increase in N-fixation is small everywhere compared to
345 PISCES-v2; there are even regions where N-fixation decreases in PISCES-v2fix (west tropical Pacific, tropical Atlantic)
(Figure 5). Consequently, NPP changes are markedly different than those from PISCES-v2, with a global decrease of 1.6%
in 2080-2099 (Table 1), mostly located in the tropics (Figure 4).

Lastly, we also compare these offline simulations with an offline simulation of the recently developed PISCES-quota model
(Kwiatkowski et al., 2018), an advanced version of PISCES-v2 in which the assumption of fixed phytoplankton C:N:P
350 stoichiometry has been relaxed. In this simulation, N-fixation increases only slightly (by 6 TgN y⁻¹ or 6.5% over the 21st
century) whereas NPP decreases (by 2.2 PgC y⁻¹ or 5.7%) over the 21st century. At regional scales, the patterns of N-
fixation display contrasting tendencies with decreases in the western Pacific, equatorial Atlantic and Indian Ocean and
increases poleward of these regions. The regional changes of NPP resemble those simulated in IPSL-CM5A (Figure 4). The

laurent bopp 31/3/y 18:18

Supprimé: To gain a better insight into how the two variables co-vary in IPSL-CM5A and IPSL-CM6A, we computed the point-mutual information (Cover and Thomas, 1991) between phytoplankton growth-rate anomalies and N-fixation anomalies, as a probabilistic measure of correlation (see Methods, Figure 4). The 5 clusters that emerge are referred to according to the co-variations of our 2 variables, i.e. phytoplankton growth rate anomalies and N-fixation anomalies, with cluster 1 – red (cluster 3 – yellow) when both variables decrease (increase) with time, cluster 2 – blue (cluster 5 – green) when phytoplankton growth rates increase and N-fixation decreases (when phytoplankton growth rates decrease and N-fixation increases), and cluster 4 – pink when growth rates increase without any significant change in N-fixation. While the surface occupied by the pink cluster (increases in growth rate, no significant change in N-fixation) remains the same in the 2 models, nearly all IPSL-CM5A green and red cluster points shift to yellow in IPSL-CM6A (Figure 4). In other words, regions where growth rate changes were independent from N-fixation in IPSL-CM5A, correspond to regions where phytoplankton growth rates and diazotrophy are positively correlated in IPSL-CM6A. As expected, areas where NPP decreases are independent from N-fixation (blue cluster, e.g. the North Atlantic) were similar in both runs. This analysis confirms the reinforced relationship between phytoplankton growth and diazotrophy as a key difference between the IPSL-CM6A and IPSL-CM5A models.

laurent bopp 25/4/y 10:43

Supprimé: 5

laurent bopp 25/4/y 10:43

Supprimé: 5

laurent bopp 25/4/y 10:43

Supprimé: 5

laurent bopp 31/3/y 10:33

Supprimé: The increase in N-fixation is dampened everywhere as compared to PISCES-v2, with even regions where N-fixation decreases in PISCES-v2fix

laurent bopp 25/4/y 10:43

Supprimé: 5

laurent bopp 29/4/y 08:42

Supprimé: newly

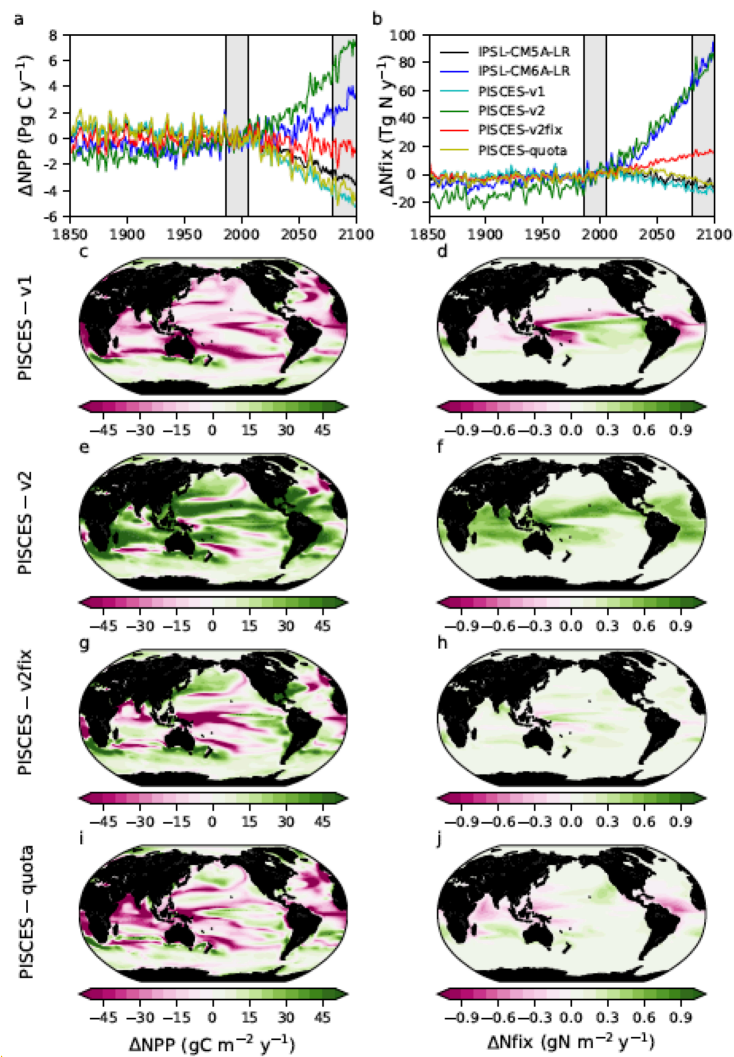
laurent bopp 31/3/y 10:34

Supprimé: increases

laurent bopp 25/4/y 10:44

Supprimé: 5

differences between PISCES-quota and the two other offline simulations (PISCES-v2 and PISCES-v2fix) originate from the major developments in PISCES-quota such as variable C:N:P stoichiometry and the inclusion of a third phytoplankton functional type (picophytoplankton) as demonstrated in Kwiatkowski et al. (2018).



Unknown
Mis en forme: Police :9 pt, Gras

Figure 4: Changes in NPP and N-fixation across all model versions. Time series of (a) global **NPP anomalies** (PgC y^{-1}), and (b) **global N-fixation anomalies** (TgN y^{-1}), relative to 1986-2005 and under historical, RCP8.5 (all model versions except IPSL-CM6A-LR) and SSP5-8.5 (only IPSL-CM6A-LR). Changes in (c,e,g,i) **vertically-integrated NPP** ($\text{gC m}^{-2} \text{y}^{-1}$) and in (d,f,h,j) **vertically-integrated N-fixation** ($\text{gN m}^{-2} \text{y}^{-1}$) for all offline model versions in 2080-2099 relative to 1986-2005, under RCP8.5.

The comparison of our 4 offline simulations demonstrates the role of the response of N-fixation in the evolution of NPP over the 21st century. Under the same physical forcing, N-fixation **changes**, by -14.9%, +68.1%, +20.1% and +6.5% over the 21st century, in **PISCES-v1**, PISCES-v2, PISCES-v2fix, and PISCES-quota, respectively. The resulting changes in global NPP over the same period are -13.1%, +13.8%, -1.6% and -5.7%, in the same 4 versions, respectively. The comparison of these offline simulations clearly links the response of global NPP to the parameterization of N-fixation, and hence reinforces the assumption that differences in N-fixation are the primary driver of the divergent IPSL-CM5A and IPSL-CM6A NPP projections.

3.3 Mechanisms determining the N-fixation response

The contrasting responses of N-fixation in the IPSL-CM5A and IPSL-CM6A models (and thus between PISCES-v1 and PISCES-v2) is not entirely intuitive, as the 2 models share very similar parameterizations of N-fixation (e.g. the same N-fixation temperature sensitivity) (Figure 2). To explain these contrasting trends, we focus on an area located in the northwestern tropical Pacific (130°E - 160°E , 10°N - 20°N), where the response of nitrogen fixation diverges strongly between IPSL-CM5A and IPSL-CM6A (Figure 5a) and exploit the comparison between the **different** offline versions of PISCES (**PISCES-v1**, PISCES-v2, PISCES-v2fix and PISCES-quota) that use an identical climate forcing. In this region, N-fixation increases by 32% in PISCES-v2 between 1986-2005 and 2080-2099 (of the same order of magnitude as in IPSL-CM6A, +45%, not shown), decreases by 46% in **PISCES-v1**, and decreases by 2% and 10% in PISCES-v2fix and PISCES-quota, respectively (Figure 5b). Concurrently, sea surface temperature in this region increases by nearly 4°C (between 1986-2005 and 2081-2100) to reach 31.5°C at the end of the 21st century. In **PISCES-v1** and PISCES-v2, this increase leads to a boost in N-fixation by a factor of 2.1 (Figure 5d). In PISCES-v2fix and PISCES-quota, on the contrary, the increase in temperature reduces N-fixation by more than 30% (Figure 5d) **due to the the bell-shaped temperature sensitivity function of the** Breitbarth et al. (2007) **parameterization**.

In PISCES-v2, the limitation terms due to light, phosphate, iron and excess nitrate remain inoperative and N-fixation responds almost exclusively to temperature (Figure 5b). **Indeed, NO_3 concentrations remain close to zero (with N^* values, defined as $\text{NO}_3 - 16 \cdot \text{PO}_4$, remaining slightly negative), and the L_N term has no influence, allowing N-fixation to increase in response to temperature.** In **PISCES-v1**, on the other hand, the **higher and increasing nitrate concentrations** (Figure 5e), **resulting in positive N^* values** (Figure 5h), lead to a limitation **and even to a decrease** in N-fixation due to the L_N term (limitation by excess inorganic nitrogen, Figure 5f) (see Figure 2b, equation (2)).

laurent bopp 22/4/y 10:46

Supprimé: 5... Changes in NPP and N-fi ... [6]

laurent bopp 1/4/y 09:03

Supprimé: 3...offline simulations demonstr ... [7]

laurent bopp 25/4/y 10:45

Supprimé: 6... and exploit the compariso ... [8]

laurent bopp 25/4/y 10:45

Supprimé: 6

laurent bopp 27/4/y 09:18

Mis en forme

... [9]

laurent bopp 25/4/y 10:45

Supprimé: IPSL-CM5A...ISCES-v1, on t ... [10]

475 The differential response of N-fixation in PISCES-v1 and PISCES-v2 is thus related to how the parameterization of N-
 480 fixation simulates inorganic N and P inputs to surface waters (See Methods 2.2). In PISCES-v1, surface waters in the
 oligotrophic subtropical gyres are P-limited for phytoplankton (N^* being positive). Warming first increases N fixation,
 resulting in a continuous addition of N (through N-fixation) at the expense of P. Nitrogen fixation is hence progressively
 limited by the accumulation of inorganic nitrogen and thus decreases. In PISCES-v2, warming also increases N-fixation due
 to the same parameterization of the thermal sensitivity of N-fixation. But in this version, the sustained low addition of
 phosphate (which accounts for the implicit remineralization of DOP and is independent of N-fixation rates) prevents any
 shift to P limitation. N^* remains negative, inorganic N does not accumulate, and N-fixation continues to increase.
 In PISCES-v2fix and PISCES-quota, NO_3 concentrations remain close to zero as in PISCES-v1 (Figure 5e) and the excess
 nitrogen limitation term has no influence, remaining close to 1 (Figure 5f). But contrary to PISCES-v1, N-fixation decreases
 slightly (Figure 5b) due to warming and the use of the bell-shape temperature sensitivity function (Figure 5d).
 485 Although the analysis presented here is limited to a small region of the western tropical Pacific (130E-160E, 10°N-20°N),
 we show the same contrasting behavior between the different PISCES versions in other sub-tropical oligotrophic gyres (see
 Figure S1 showing the same analysis in a region centred around the HOT station, 175°E-205°E, 15°N-25°N).
 In summary, the simulated N-fixation response is highly sensitive to (1) the parameterization used for the temperature
 sensitivity (PISCES-v1 and PISCES-v2 as compared to PISCES-v2fix and PISCES-quota), and (2) the respective evolution
 490 of NO_3 and PO_4 concentrations (PISCES-v1 as compared to PISCES-v2). To reiterate, it is the divergent responses of N-
 fixation in oligotrophic gyres (Figure 5a), where temperatures can exceed the optimal values in the Breitbarth et al. (2007)'s
 parameterization (Figure 2), and where NO_3 accumulation can induce a decrease in the rate of N-fixation, that explain the
 differences between the different versions of PISCES.

- laurent bopp 25/4/y 11:19
Supprimé: In IPSL-CM5A, NO_3 concentrations remain close to zero, N^* values remain slightly negative, and the L_N term has no influence, allowing N-fixation to increase in response to temperature.
- laurent bopp 25/4/y 11:41
Supprimé: As in IPSL-CM5A, i
- laurent bopp 25/4/y 11:41
Supprimé: also
- laurent bopp 25/4/y 10:46
Supprimé: 6
- laurent bopp 25/4/y 11:41
Supprimé: ,
- laurent bopp 25/4/y 11:40
Supprimé: , and
- laurent bopp 25/4/y 10:46
Supprimé: 6
- laurent bopp 25/4/y 11:20
Supprimé: b
- laurent bopp 25/4/y 11:42
Supprimé: -
- laurent bopp 29/4/y 08:57
Supprimé: we show that
- laurent bopp 25/4/y 10:46
Supprimé: IPSL-CM5A
- laurent bopp 25/4/y 10:46
Supprimé: 6

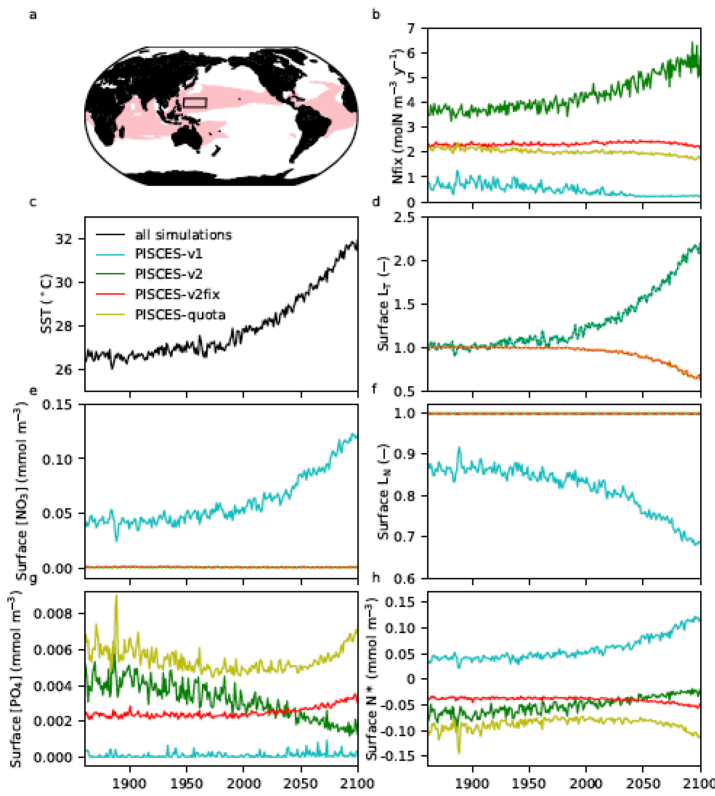


Figure 5: Mechanisms explaining the contrasting response of N-fixation across the different PISCES versions. (a) Regions where IPSL-CM5A and IPSL-CM6A simulate an N-fixation response of opposing sign (red), and where the detailed analysis is performed (130°E-160°E, 10°N-20°N, black box). (b) N-fixation ($\text{molN m}^{-3} \text{y}^{-1}$) in the different PISCES versions. (c) Sea Surface Temperature ($^{\circ}\text{C}$) in IPSL-CM5A and (d) relative change in surface L_T (no unit) for PISCES-v1 and PISCES-v2 (cyan-green), PISCES-v2fix and PISCES-quota (red-yellow). (e) Surface NO_3 concentration (mmol m^{-3}), (f) surface L_N (no unit), (g) surface PO_4 concentration (mmol m^{-3}) and (h) surface N^* (mmol m^{-3}) in all PISCES versions. All (from b to h) are annual-mean time-series averaged over 130°E-160°E and 10°N-20°N.

3.4 Evaluation and constraints on projections

- laurent bopp 25/4/y 11:05
Supprimé: 6
- laurent bopp 29/4/y 08:58
Supprimé: s
- laurent bopp 29/4/y 08:58
Supprimé: t
- laurent bopp 31/3/y 12:06
Supprimé: IPSL-CM5A
- laurent bopp 31/3/y 12:06
Supprimé: black

525 As the responses of the different versions of PISCES to anthropogenic climate change were so variable (see Section 3.1 and
3.2), we conducted a brief evaluation of these simulations over the historical period for NPP, nutrients (nitrate, phosphate),
and N-fixation to determine if any of the PISCES versions have significantly better performance scores (based on Root-
Mean-Square Errors, see methods). We note that the outputs of IPSL-CM5A and IPSL-CM6A are evaluated in Séférian et al.
(2020) alongside the other Earth System Models of the CMIP5 and CMIP6 exercises.

530 A visual inspection of the bias maps for NPP, NO₃ and PO₄ concentrations, and N-fixation fails to highlight a single model
version that outperforms the others, with similar regional biases for all PISCES variants (Figure 6). All versions tend to
underestimate NPP in the mid-latitudes of the Northern Hemisphere, and overestimate NPP in the equatorial band and the
Southern Ocean. For macro-nutrient concentrations, the regional biases are also similar, with a marked underestimation in
the North and Equatorial pacific and an overestimation in the sub-Antarctic. Finally, comparison of simulated N-fixation
535 rates to the measured estimates of Landolfi et al. (2018) show a fairly widespread underestimation, for all versions of
PISCES, in the northern subtropical gyre of the Pacific and in the equatorial Atlantic.

A more quantitative analysis using RMSE for each of the above fields confirms this visual impression with very similar
RMSEs across all versions of PISCES. It can be noted, however, that the spatial distribution of NPP seems to be better
reproduced in PISCES-quota, while the comparison of N-fixation rates gives the worst scores for PISCES-quota.

540 In conclusion this brief comparison with observations fails to distinguish between the different versions of the PISCES
model used here. To go further, it would be necessary to compare the simulated trends over the historical period with time
series obtained at marine stations (e.g. Hawaii Ocean Time-series programme, Karl et al., 2014; Bermuda Atlantic Time-
Series, Lomas et al., 2013), or with reconstructions of the evolution of N-fixation over the last century from
paleoceanographic proxies such as $\delta^{15}\text{N}$ (Sherwood et al., 2014).

545

- laurent bopp 29/4/y 08:58
Supprimé: than the others (
- laurent bopp 27/4/y 09:31
Supprimé:
- laurent bopp 25/4/y 11:56
Supprimé: excess N (defined here as N* =
- laurent bopp 25/4/y 11:56
Supprimé: – 16*
- laurent bopp 25/4/y 11:56
Supprimé:)
- laurent bopp 25/4/y 11:56
Supprimé: 7
- laurent bopp 25/4/y 11:56
Supprimé: N*
- laurent bopp 26/4/y 10:42
Supprimé: n under
- laurent bopp 26/4/y 10:43
Supprimé: Southern Ocean and a marked overestimation in the North Pacific
- laurent bopp 25/4/y 14:25
Supprimé: N* and

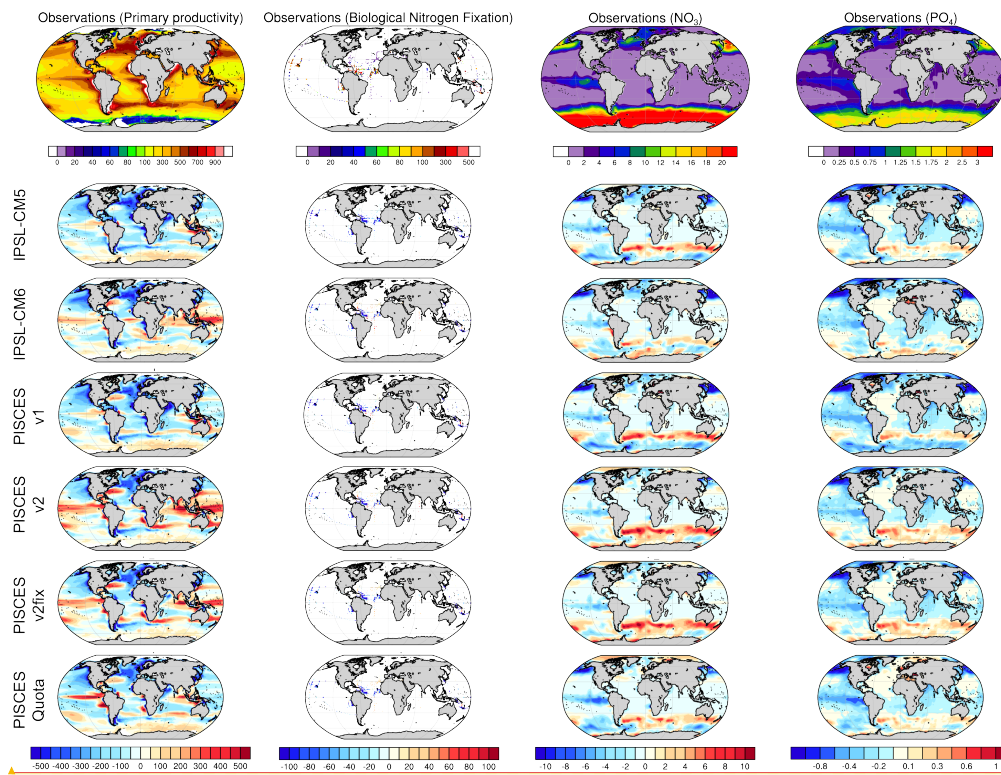


Figure 6: Model-data intercomparison of NPP ($\text{mgC m}^{-2} \text{d}^{-1}$), N-fixation ($\text{mmolN m}^{-2} \text{y}^{-1}$), surface NO_3 concentrations (mmol m^{-3}) and surface PO_4 concentrations (mmol m^{-3}). The upper panels show NPP based on remote-sensing observations with the VGPM algorithm (Behrenfeld et al., 2005), N-fixation from Luo et al. (2014) updated by Landolfi et al. (2018), NO_3 and PO_4 as provided in the World Ocean Atlas Database (Garcia et al. 2014). The other panels show model-data anomalies averaged over the period 1986-2005.

Model Version	NPP ($\text{mgC m}^{-2} \text{d}^{-1}$)	N Fix ($\text{mmolN m}^{-2} \text{y}^{-1}$)	NO_3 (mmol m^{-3})	PO_4 (mmol m^{-3})
IPSL-CM5	1.936	24.103	0.526	0.651

Unknown

Mis en forme: Police :9 pt, Gras

laurent bopp 26/4/y 10:50

Supprimé: 7

laurent bopp 31/3/y 12:01

Mis en forme: Indice

laurent bopp 31/3/y 12:01

Mis en forme: Indice

laurent bopp 31/3/y 12:01

Supprimé: N* from NO_3 and PO_4 as provided in the World Ocean Atlas Database (Garcia et al. 2014), and

laurent bopp 31/3/y 12:00

Tableau mis en forme

laurent bopp 29/4/y 13:55

Supprimé: ation

laurent bopp 31/3/y 11:59

Mis en forme: Indice

laurent bopp 31/3/y 11:55

Supprimé: *

laurent bopp 31/3/y 11:59

Mis en forme: Indice

laurent bopp 31/3/y 11:56

Mis en forme: Police :(Par défaut) Times New Roman, 9 pt

laurent bopp 31/3/y 11:56

Supprimé: 2.028

laurent bopp 31/3/y 11:56

Mis en forme: Police :(Par défaut) Times New Roman, 9 pt

IPSL-CM6	1.730	26.004	0.467	0.620
PISCES-v1	1.855	26.929	0.561	0.734
PISCES-v2	1.519	22.671	0.491	0.585
PISCES-v2fix	1.621	41.824	0.490	0.587
PISCES-quota	1.478	48.120	0.506	0.646

Table 2: Root-mean square errors (RMSE) for NPP ($\text{mgC m}^{-2} \text{ d}^{-1}$), N-fixation ($\text{mmolN m}^{-2} \text{ y}^{-1}$), NO_3 and PO_4 surface concentrations (mmol m^{-3}) for all PISCES versions used here against observations (NPP based on remote-sensing (Behrenfeld et al., 2005), N-fixation from Luo et al. (2014) updated by Landolfi et al. (2018), and NO_3 and PO_4 as provided in the World Ocean Atlas Database (Garcia et al., 2014). All model-estimates are for 1986-2005.

Another method using observations to constrain projection uncertainties, known as the emergent constraint approach, relies on relating observable trends or sensitivities across a model ensemble to future differences in model simulations (Allen and Ingram, 2002; Hall and Qu, 2006; Hall et al., 2019). This approach has been used extensively within the earth sciences to constrain projections as diverse as climate sensitivity (Caldwell et al., 2018), snow albedo feedbacks (Hall and Qu, 2006), precipitation extremes (O’Gorman, 2012; DeAngelis et al., 2016) and carbon cycle feedbacks (Cox et al., 2013; Wenzel et al., 2014; Goris et al., 2018; Terhaar et al., 2020). Interestingly, Kwiakowski et al., (2017) applied an emergent constraint approach to CMIP5 NPP projections, finding an emergent relationship between the tropical (30°N - 30°S) sensitivity of integrated NPP to El Niño Southern Oscillation (ENSO) variability (Niño 3.4 SST anomalies) in pre-industrial control simulations and the tropical NPP response to 21st century warming under a high-emissions scenario (RCP8.5). That is, models that exhibited heightened tropical NPP sensitivity to ENSO-driven SST fluctuations, typically exhibited greater future NPP declines in response to climate change. The authors then used observational estimates of the NPP-ENSO sensitivity to constrain the future NPP response.

laurent bopp 31/3/y 11:56

Mis en forme: Police : (Par défaut) Times New Roman, 9 pt

laurent bopp 31/3/y 11:56

Supprimé: 1.868

laurent bopp 31/3/y 11:56

Mis en forme: Police : (Par défaut) Times New Roman, 9 pt

laurent bopp 31/3/y 11:56

Mis en forme

laurent bopp 31/3/y 11:56

Mis en forme

laurent bopp 31/3/y 11:56

Mis en forme

laurent bopp 31/3/y 11:56

Supprimé: 2.134

laurent bopp 31/3/y 11:56

Mis en forme

laurent bopp 31/3/y 11:56

Mis en forme

laurent bopp 31/3/y 11:56

Supprimé: 2.172

laurent bopp 31/3/y 11:56

Mis en forme

laurent bopp 31/3/y 11:56

Mis en forme

laurent bopp 31/3/y 11:56

Supprimé: 1.300

laurent bopp 31/3/y 11:56

Mis en forme

laurent bopp 31/3/y 11:59

Mis en forme

laurent bopp 31/3/y 11:58

Supprimé: and N*

laurent bopp 31/3/y 11:59

Déplacé (insertion) [1]

laurent bopp 31/3/y 11:58

Supprimé: N* from ...O₃ and PO₄ as pr

laurent bopp 31/3/y 11:59

Déplacé vers le haut [1]: N-fixation

laurent bopp 21/4/y 12:18

Supprimé: 8).

laurent bopp 26/4/y 10:47

Supprimé: Emergent constraints relate

laurent bopp 27/4/y 13:47

Déplacé (insertion) [2]

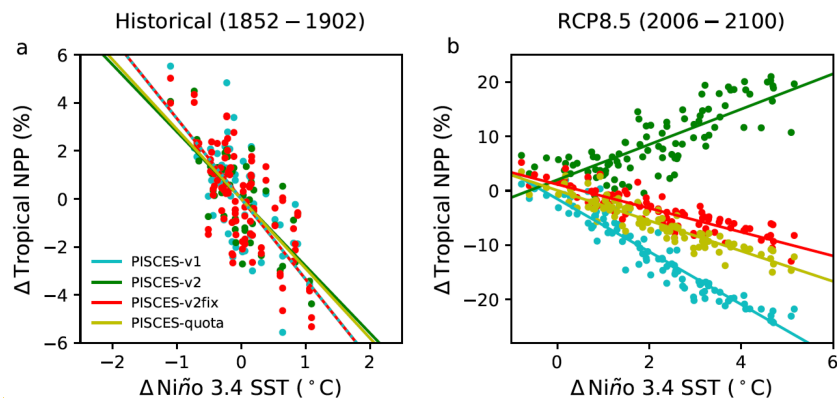


Figure 7: The relationship between annual anomalies in tropical (30°N-30°S) NPP and Niño3.4 region SST anomalies over a, 1852-1902 of historical simulations and b, 2006-2100 of RCP8.5 for **PISCES-v1** (cyan), **PISCES-v2** (green), **PISCES-v2fix** (red) and **PISCES-quota** (yellow).

The present study highlights that N-fixation may represent a slow or threshold process that has the potential to limit the applicability of emergent constraint approaches to projections of NPP. Indeed, the NPP-ENSO sensitivities of **PISCES-v1**, **PISCES-v2** and **PISCES-v2fix** are shown to be highly similar in the first 50 years of historical simulations ($-2.6\% \text{ } ^\circ\text{C}^{-1}$, $-2.8\% \text{ } ^\circ\text{C}^{-1}$ and $-3.3\% \text{ } ^\circ\text{C}^{-1}$) and yet the twenty-first century NPP sensitivity of **PISCES-v2** **changes sign** ($+3.2\% \text{ } ^\circ\text{C}^{-1}$), due to the enhanced role of N-fixation, while the sensitivities of **PISCES-v1** and **PISCES-v2fix** remain **negative** ($-3.4\% \text{ } ^\circ\text{C}^{-1}$ and $-2.2\% \text{ } ^\circ\text{C}^{-1}$) (Figure 7). The extent to which the differing **PISCES-v2** model behaviour across time scales challenges the previously identified emergent constraint is unknown, **but it is possible that future changes move beyond what is constrainable with** historical variability (e.g. Tagliabue et al., 2020). Interestingly, the tropical NPP sensitivity of **PISCES-quota** in the early historical ($-2.9\% \text{ } ^\circ\text{C}^{-1}$) and under RCP8.5 ($-2.8\% \text{ } ^\circ\text{C}^{-1}$) is highly similar and in line with **PISCES-v1** and **PISCES-v2fix** (Figure 7). As such, there is strong reason to doubt whether **the sensitivity of N-fixation** to climate change, and hence the response of NPP, in **PISCES-v2**, are realistic. However, given all of the above, verifying the validity of the Kwiatkowski et al. (2017) NPP emergent constraint with multiple quota models is identified as a priority. It is urgent as well to verify the sensitivity of nitrogen fixation with more mechanistic models of N fixation (such as that of Pahlow et al. (2013) or Inomura et al. (2018)).

3.5 Implications for carbon **export**, ocean deoxygenation and impact on plankton biomass

Unknown

Mis en forme: Police :9 pt, Gras

laurent bopp 26/4/y 10:48

Supprimé: 8

laurent bopp 26/4/y 14:24

Supprimé: IPSL-CM5A

laurent bopp 26/4/y 14:24

Supprimé: black

laurent bopp 27/4/y 13:47

Déplacé vers le haut [2]: Kwiatkowski et al., (2017) applied an emergent constraint approach to CMIP5 NPP projections, finding an emergent relationship between the tropical (30°N-30°S) sensitivity of integrated NPP to El Niño Southern Oscillation (ENSO) variability (Niño 3.4 SST anomalies) in pre-industrial control simulations and the tropical NPP response to 21st century warming under a high-emissions scenario (RCP8.5). That is, models that exhibited heightened tropical NPP sensitivity to ENSO-driven SST fluctuations, typically exhibited greater future NPP declines in response to climate change. The authors then used observational estimates of the NPP-ENSO sensitivity to constrain the future NPP response.

laurent bopp 25/4/y 11:57

Supprimé: IPSL-CM5A

laurent bopp 29/4/y 13:56

Supprimé: is dramatically changed

laurent bopp 29/4/y 13:56

Supprimé: y

laurent bopp 25/4/y 11:57

Supprimé: IPSL-CM5A

laurent bopp 29/4/y 13:56

Supprimé: consistent

laurent bopp 26/4/y 10:50

Supprimé: 8

laurent bopp 29/4/y 13:56

Supprimé: and

laurent bopp 29/4/y 13:57

Supprimé: also

laurent bopp 25/4/y 11:58

Supprimé: IPSL-CM5A

laurent bopp 25/4/y 11:58

Supprimé: 8

laurent bopp 29/4/y 13:57

Supprimé: N-fixation

laurent bopp 21/4/y 12:18

Supprimé: uptake

670 The last question we explore is the potential implications of this large difference in NPP projections between IPSL-CM5A and IPSL-CM6A on (1) carbon export, (2) ocean deoxygenation and (3) impacts on plankton biomass.

Model Version	Export Corg at 100m (PgC)	Subsurface O ₂ (mmol m ⁻³)	Phyto biomass (TgC)	Zoo biomass (TgC)
IPSL-CM5A	7.07 -1.21 (-17.1%)	199.4 -8.19 (-4.1%)	1014 -67.6 (-6.7%)	1039 -155.1 (-14.9%)
IPSL-CM6A	7.31 -0.17 (-2.3%)	190.8 -17.96 (-9.4%)	816.1 -35.2 (-4.31%)	645.9 -69.1 (-10.7%)
PISCES-v1	6.42 -1.26 (-19.6%)	205.9 -7.55 (-3.7%)	1031.0 -70.2 (-6.8%)	1160 -203.6 (-17.5%)
PISCES-v2	8.25 0.19 (2.3%)	193.6 -15.79 (-8.2%)	893.0 -40.0 (-4.5%)	765.9 -49.2 (-6.4%)
PISCES-v2fix	7.70 -0.84 (-10.9%)	195.3 -12.67 (-6.5%)	886.3 -42.4 (-4.8%)	741.4 -86.7 (-11.7%)
PISCES-quota	7.05 -0.94 (-13.4%)	195.3 -10.71 (-5.5%)	826.9 -45.5 (-5.5%)	822.0 -94.5 (-11.5%)

675 Table 3: Impact of climate change on organic matter export at 100m, sub-surface (100-600m) oxygen concentrations, phytoplankton and zooplankton biomasses in the different model versions. All columns indicate absolute values for 1986-2005 and differences between 2080-2099 and 1986-2005 (relative values in parentheses).

680 As expected from NPP differences, the export of particulate organic matter at 100m is strongly reduced in IPSL-CM5A (-17.1%) at the end of the 21st century, whereas it is only slightly affected in IPSL-CM6A (-2.3% in 2080-2099 as compared to 1986-2005) (Table 3). The same conclusions apply for the analysis of the offline simulations, with export changes reaching -19.6%, +2.3%, -10.9% and -13.4% in 2080-2099 (relative to 1986-2005) for PISCES-v1, PISCES-v2, PISCES-v2fix, and PISCES-quota, respectively, in line with the already mentioned NPP changes (-13.2%, +13.8%, -1.6% and -5.7% for the same 4 offline versions).

685 For ocean deoxygenation as well, the intensity of the subsurface signal we obtain with IPSL-CM5A and IPSL-CM6A may indeed be driven by the opposing NPP and export changes, even if the main drivers of ocean deoxygenation remain ocean warming and circulation / stratification changes. Whereas subsurface O₂ concentrations only decrease by 8.2 mmol m⁻³ (-4.1%) on average in IPSL-CM5A, they decrease by 17.96 mmol m⁻³ (-9.4%) in IPSL-CM6A (Table 3). Spatially, the general patterns of subsurface ocean deoxygenation are similar across the two models, with the largest decreases, up to -60 mmol m⁻³ in 2080-2099, occurring in the North Atlantic, North Pacific and in the Southern Ocean (not shown). In the tropical oceans, the changes are weaker, from -20 to +20 mmol m⁻³ in IPSL-CM5A and from -20 to +10 mmol m⁻³ in IPSL-CM6A. Note that

Supprimé: and anthropogenic carbon uptake

laurent bopp 21/4/y 12:19

Tableau mis en forme

... [23]

laurent bopp 26/4/y 10:52

Supprimé: 2

laurent bopp 26/4/y 10:52

Supprimé: 1

laurent bopp 26/4/y 10:52

Supprimé: 67

laurent bopp 26/4/y 10:52

Supprimé: 3

laurent bopp 26/4/y 10:53

Supprimé: 66

laurent bopp 26/4/y 10:53

Supprimé: 18

laurent bopp 26/4/y 10:53

Supprimé: 06

laurent bopp 26/4/y 10:52

Supprimé: 27

laurent bopp 26/4/y 10:52

Supprimé: 1

laurent bopp 26/4/y 10:52

Supprimé: 69

laurent bopp 26/4/y 10:53

Supprimé: 4

laurent bopp 26/4/y 10:53

Supprimé: 16

laurent bopp 26/4/y 10:52

Supprimé: 1

laurent bopp 26/4/y 10:52

Supprimé: 16

laurent bopp 26/4/y 10:52

Supprimé: 48

laurent bopp 26/4/y 10:52

Supprimé: 2

laurent bopp 26/4/y 10:53

Supprimé: 2

laurent bopp 26/4/y 10:53

Supprimé: 1

laurent bopp 26/4/y 10:52

Supprimé: 1

laurent bopp 26/4/y 10:52

Supprimé: 48

laurent bopp 26/4/y 10:52

Supprimé: 79

laurent bopp 26/4/y 10:52

Supprimé: 0

laurent bopp 26/4/y 10:53

Supprimé: 47

laurent bopp 26/4/y 10:53

Supprimé: 2

laurent bopp 26/4/y 10:52

laurent bopp 26/4/y 10:52

laurent bopp 26/4/y 10:52

laurent bopp 26/4/y 10:52

laurent bopp 26/4/y 10:51

... [24]

laurent bopp 21/4/y 12:19

... [25]

the regions where subsurface O₂ concentrations increase in IPSL-CM5A, such as in the tropical Indian and Atlantic oceans, as discussed in Bopp et al. (2017), display on the contrary decreasing trends in IPSL-CM6A. We interpret this difference as due to the response to increasing NPP, increasing export of organic matter and the subsequent remineralization-driven consumption of O₂ at depth in IPSL-CM6A. An analysis of the offline simulations, all forced with the same physical fields, confirms the above hypothesis, i.e. a strong relationship between different export / NPP changes and the intensity of ocean deoxygenation in the subsurface ocean (Table 3).

Finally, the reduction in simulated plankton biomass in IPSL-CM5A (-6.7% for phytoplankton and -14.9% for zooplankton) is less extensive in IPSL-CM6A (-4.3% and -10.7% for phytoplankton and zooplankton, respectively; Table 3). It is interesting to note that despite opposite trends in projected NPP, both models simulate significant reductions in planktonic biomass, and an associated trophic amplification, i.e. a larger decrease in zooplankton than phytoplankton (Lotze et al., 2019; Kwiatkowski et al., 2019). This suggests that the potential impact on projections of upper trophic levels (e.g. Tittensor et al., 2018) should not differ as much as the differences in NPP projections between IPSL-CM5A and IPSL-CM6A indicate for ecosystem models forced by biomass changes. It also implies that changes in NPP may not be a robust proxy for diagnosing the potential impact of anthropogenic climate change on marine ecosystems.

4 Conclusions and Recommendations

Two versions of the IPSL ESM (IPSL-CM5A and IPSL-CM6A) are shown to project diverging global NPP trends in the 21st century under similar high-emission scenarios, because of the specificities of the diazotrophy parameterization employed in the different versions of the marine biogeochemical component PISCES. The use of additional PISCES versions confirms the role of diazotrophy parameterizations in driving divergent NPP responses in all subtropical gyres, with increased (decreased) diazotrophy leading to increased (decreased) NPP. We identify both the thermal response and the treatment of stoichiometric N:P ratios to be of importance for the future evolution of N-fixation in the future ocean. None of the PISCES versions used here perform significantly better when compared to observations or data-based reconstructions of surface nutrients, NPP and N-fixation rates. Under the same physical forcing, the divergent responses of N-fixation lead to significantly different deoxygenation and changes in organic matter export at the end of the 21st century, with larger deoxygenation and weaker reduction in organic carbon export in the model version simulating a large warming-driven increase in N-fixation. Despite these divergent NPP responses, all PISCES versions simulate decreasing trends of phytoplankton and zooplankton biomasses in the coming decades.

Although this study focuses on simulations performed with several versions of the same climate and marine biogeochemical models, similar conclusions have been drawn from using a series of ESMs that participated in CMIP5. Using an approach combining 6 CMIP5 models and proxies for historical trends of N-fixation from the subtropical Pacific, Riche and Christian (2018) conclude that the environmental controls on ocean N-fixation remain elusive and that future trends are therefore highly uncertain. In addition, and using 9 CMIP5 ESMs, Wrightson and Tagliabue (2020) demonstrate that the future

laurent bopp 31/3/y 10:34
Supprimé: a
laurent bopp 31/3/y 10:35
Supprimé: additionnal

laurent bopp 31/3/y 10:35
Supprimé: of the

laurent bopp 31/3/y 10:35
Supprimé: to

laurent bopp 31/3/y 10:36
Supprimé: 7

evolution of nitrogen fixation is a key determinant of the future trends in NPP in the tropics. Similar analysis using the new set of CMIP6 ESMs remains to be carried out.

840 Ultimately, the results of this study argue for a more robust treatment of marine nitrogen fixation in ESMs used for climate
projections of ecosystem services. This would suggest the need to include explicit diazotroph planktonic function groups in
ESMs and to understand how differences between different nitrogen fixing groups affect projections. For instance, the main
open-ocean autotrophic diazotrophs *Trichodesmium* and *Crocosphaera* that contribute around half of total nitrogen fixation
(Zehr and Capone, 2020) show variability in their thermal performance curves (Fu et al., 2014), nutrient requirements (Saito
845 et al., 2011) and even in their response to changing ocean pCO_2 levels (Hutchins et al., 2013). Intriguingly, it also appears
that temperature may play a fundamental role, with the resource costs of nitrogen fixation strongly dependant on temperature
for both groups, which implies potential increases in future N-fixation rates may arise (Yang et al., 2021). More mechanistic
models of diazotrophy do include some of the above-mentioned processes (such as that of Pahlow et al. (2013) or Inomura et
al. (2018)), but their application has been mostly restricted to idealized settings. We still currently lack an integrated
850 assessment of how important these factors are in the context of a changing climate and the potential feedbacks on NPP.
Given the significant differences in the projections of N-fixation over the 21st century that are reported here or arise from
model intercomparison studies (Riche and Christian, 2018; Wrightson and Tagliabue, 2021), it is a priority to derive methods
to better constrain these projections. The paucity of direct N-fixation rate measurement in the present ocean (Landolfi et al.,
2018), is limiting the development of such constraints and it is a priority to continue collecting such high-quality data to be
855 able to extract significant temporal trends of N-fixation to be compared to model output. Other approaches, such as the use
of water column nitrogen isotopes (Buchanan et al., 2021) or marine sediment cores to reconstruct past trends in N-fixation
in contrasted regions of the world ocean (eg. Sherwood et al., 2014) will offer new opportunities to constraint the modelled
projections.

Acknowledgments

860 The CMIP6 project at IPSL used the HPC resources of TGCC under the allocations 2016-A0030107732, 2017-
R0040110492, and 2018-R0040110492 (project gencmip6) provided by GENCI (Grand Équipement National de Calcul
Intensif). This study benefited from the ESPRI (Ensemble de Services Pour la Recherche l'IPSL) computing and data center
(https://mesocentre.ipsl.fr) which is supported by CNRS, Sorbonne Université, École Polytechnique, and CNES and through
national and international grants. All authors acknowledge support from the French ANR project CIGOEf (grant ANR-17-
865 CE32-0008-01). The authors also acknowledge support from the European Union's Horizon 2020 research and innovation
programs CRESCENDO (grant agreement No 641816), COMFORT (grant agreement No 820989), 4C (grant agreement No
821003) and ESM2025 (grant agreement No 101003536). LB received funding from the Chaire ENS-Chanel. AT received
funding from the European Research Council (ERC) under the European Union's Horizon 2020 research and innovation
programme (grant agreement no. 724289).

laurent bopp 29/4/y 13:58
Mis en forme: Police :Italique

laurent bopp 29/4/y 13:58
Mis en forme: Police :Italique, Indice

laurent bopp 29/4/y 13:58
Supprimé: to

laurent bopp 29/4/y 13:58
Supprimé: alterations.

laurent bopp 29/4/y 13:58
Supprimé: from water column

laurent bopp 29/4/y 13:58
Supprimé: certainly

References

- 875 Allen, M. R. and Ingram, W. J.: Constraints on future changes in climate and the hydrologic cycle, 419, 228–232, <https://doi.org/10.1038/nature01092>, 2002.
- Aumont, O. and Bopp, L.: Globalizing results from ocean in situ iron fertilization studies, 20, <https://doi.org/10.1029/2005GB002591>, 2006.
- Aumont, O., Bopp, L., and Schulz, M.: What does temporal variability in aeolian dust deposition contribute to sea-surface iron and chlorophyll distributions?, 35, <https://doi.org/10.1029/2007GL031131>, 2008.
- 880 Aumont, O., Ethé, C., Tagliabue, A., Bopp, L., and Gehlen, M.: PISCES-v2: an ocean biogeochemical model for carbon and ecosystem studies, *Geosci. Model Dev.*, 8, 2465–2513, <https://doi.org/10.5194/gmd-8-2465-2015>, 2015.
- Behrenfeld, M. J., Boss, E., Siegel, D. A., and Shea, D. M.: Carbon-based ocean productivity and phytoplankton physiology from space, 19, <https://doi.org/10.1029/2004GB002299>, 2005.
- 885 Benavides, M., Martias, C., Elifantz, H., Berman-Frank, I., Dupouy, C., and Bonnet, S.: Dissolved Organic Matter Influences N₂ Fixation in the New Caledonian Lagoon (Western Tropical South Pacific), *Front. Mar. Sci.*, 0, <https://doi.org/10.3389/fmars.2018.00089>, 2018.
- Benedetti, F., Vogt, M., Elizondo, U. H., Righetti, D., Zimmermann, N. E., and Gruber, N.: Major restructuring of marine plankton assemblages under global warming, *Nat Commun*, 12, 5226, <https://doi.org/10.1038/s41467-021-25385-x>, 2021.
- 890 Bindoff, N. L., Cheung, W. W., Kairo, J. G., Aristegui, J., Guinder, V. A., Hallberg, R., Hilmi, N. J. M., Jiao, N., Karim, M. S., and Levin, L.: Changing ocean, marine ecosystems, and dependent communities, 477–587, 2019.
- Bopp, L., Monfray, P., Aumont, O., Dufresne, J.-L., Treut, H. L., Madec, G., Terray, L., and Orr, J. C.: Potential impact of climate change on marine export production, 15, 81–99, <https://doi.org/10.1029/1999GB001256>, 2001.
- Bopp, L., Resplandy, L., Orr, J. C., Doney, S. C., Dunne, J. P., Gehlen, M., Halloran, P., Heinze, C., Ilyina, T., Séférian, R., 895 Tjiputra, J., and Vichi, M.: Multiple stressors of ocean ecosystems in the 21st century: projections with CMIP5 models, 10, 6225–6245, <https://doi.org/10.5194/bg-10-6225-2013>, 2013.
- Boucher, O., Servonnat, J., Albright, A. L., Aumont, O., Balkanski, Y., Bastrikov, V., Bekki, S., Bonnet, R., Bony, S., Bopp, L., Braconnot, P., Brockmann, P., Cadule, P., Caubel, A., Cheruy, F., Codron, F., Cozic, A., Cugnet, D., D’Andrea, F., Davini, P., Lavergne, C. de, Denvil, S., Deshayes, J., Devilliers, M., Ducharne, A., Dufresne, J.-L., Dupont, E., Éthé, C., 900 Fairhead, L., Falletti, L., Flavoni, S., Foujols, M.-A., Gardoll, S., Gastineau, G., Ghattas, J., Grandpeix, J.-Y., Guenet, B., Guez, L., E., Guilyardi, E., Guimberteau, M., Hauglustaine, D., Hourdin, F., Idelkadi, A., Joussaume, S., Kageyama, M., Khodri, M., Krinner, G., Lebas, N., Levassasseur, G., Lévy, C., Li, L., Lott, F., Lurton, T., Luyssaert, S., Madec, G., Madeleine, J.-B., Maignan, F., Marchand, M., Marti, O., Mellul, L., Meurdesoif, Y., Mignot, J., Musat, I., Ottlé, C., Peylin, P., Planton, Y., Polcher, J., Rio, C., Rochetin, N., Rousset, C., Sepulchre, P., Sima, A., Swingedouw, D., Thiéblemont, R., 905 Traore, A. K., Vancoppenolle, M., Vial, J., Vialard, J., Viovy, N., and Vuichard, N.: Presentation and Evaluation of the IPSL-CM6A-LR Climate Model, 12, e2019MS002010, <https://doi.org/10.1029/2019MS002010>, 2020.

- Breitbarth, E., Oschlies, A., and LaRoche, J.: Physiological constraints on the global distribution of *Trichodesmium* – effect of temperature on diazotrophy, 4, 53–61, <https://doi.org/10.5194/bg-4-53-2007>, 2007.
- Buchanan, P. J., Aumont, O., Bopp, L., Mahaffey, C., and Tagliabue, A.: Impact of intensifying nitrogen limitation on ocean net primary production is fingerprinted by nitrogen isotopes, *Nat Commun*, 12, 6214, <https://doi.org/10.1038/s41467-021-26552-w>, 2021.
- Cabré, A., Marinov, I., and Leung, S.: Consistent global responses of marine ecosystems to future climate change across the IPCC AR5 earth system models, *Clim Dyn*, 45, 1253–1280, <https://doi.org/10.1007/s00382-014-2374-3>, 2015.
- Caldwell, P. M., Zelinka, M. D., and Klein, S. A.: Evaluating Emergent Constraints on Equilibrium Climate Sensitivity, 31, 3921–3942, <https://doi.org/10.1175/JCLI-D-17-0631.1>, 2018.
- Cheung, W. W. L., Lam, V. W. Y., Sarmiento, J. L., Kearney, K., Watson, R., Zeller, D., and Pauly, D.: Large-scale redistribution of maximum fisheries catch potential in the global ocean under climate change, 16, 24–35, <https://doi.org/10.1111/j.1365-2486.2009.01995.x>, 2010.
- Cover, T. M. and Thomas, J. A.: *Elements of Information Theory*, John Wiley & Sons, 771 pp., 2012.
- Cox, P. M., Pearson, D., Booth, B. B., Friedlingstein, P., Huntingford, C., Jones, C. D., and Luke, C. M.: Sensitivity of tropical carbon to climate change constrained by carbon dioxide variability, 494, 341–344, <https://doi.org/10.1038/nature11882>, 2013.
- DeAngelis, A. M., Qu, X., and Hall, A.: Importance of vegetation processes for model spread in the fast precipitation response to CO₂ forcing, 43, 12,550–12,559, <https://doi.org/10.1002/2016GL071392>, 2016.
- Díaz, S., Settele, J., Brondizio, E. S., Ngo, H. T., Guèze, M., Agard, J., Arneth, A., Balvanera, P., Brauman, K., and Butchart, S. H.: Summary for policymakers of the global assessment report on biodiversity and ecosystem services of the Intergovernmental Science-Policy Platform on Biodiversity and Ecosystem Services, 2019.
- Doney, S. C.: Oceanography: Plankton in a warmer world, 444, 695–696, <https://doi.org/10.1038/444695a>, 2006.
- Dufresne, J.-L., Foujols, M.-A., Denvil, S., Caubel, A., Marti, O., Aumont, O., Balkanski, Y., Bekki, S., Bellenger, H., Benshila, R., Bony, S., Bopp, L., Braconnot, P., Brockmann, P., Cadule, P., Cheruy, F., Codron, F., Cozic, A., Cugnet, D., de Noblet, N., Duvel, J.-P., Ethé, C., Fairhead, L., Fichefet, T., Flavoni, S., Friedlingstein, P., Grandpeix, J.-Y., Guez, L., Guilyardi, E., Hauglustaine, D., Hourdin, F., Idelkadi, A., Ghattas, J., Joussaume, S., Kageyama, M., Krinner, G., Labetoulle, S., Lahellec, A., Lefebvre, M.-P., Lefevre, F., Levy, C., Li, Z. X., Lloyd, J., Lott, F., Madec, G., Mancip, M., Marchand, M., Masson, S., Meurdesoif, Y., Mignot, J., Musat, I., Parouty, S., Polcher, J., Rio, C., Schulz, M., Swingedouw, D., Szopa, S., Talandier, C., Terray, P., Viovy, N., and Vuichard, N.: Climate change projections using the IPSL-CM5 Earth System Model: from CMIP3 to CMIP5, 40, 2123–2165, <https://doi.org/10.1007/s00382-012-1636-1>, 2013.
- Dutkiewicz, S., Morris, J. J., Follows, M. J., Scott, J., Levitan, O., Dyhrman, S. T., and Berman-Frank, I.: Impact of ocean acidification on the structure of future phytoplankton communities, 5, 1002–1006, <https://doi.org/10.1038/nclimate2722>, 2015.

- 940 Eyring, V., Bony, S., Meehl, G. A., Senior, C. A., Stevens, B., Stouffer, R. J., and Taylor, K. E.: Overview of the Coupled Model Intercomparison Project Phase 6 (CMIP6) experimental design and organization, *Geosci. Model Dev.*, 9, 1937–1958, <https://doi.org/10.5194/gmd-9-1937-2016>, 2016.
- Field, C. B., Behrenfeld, M. J., Randerson, J. T., and Falkowski, P.: Primary production of the biosphere: integrating terrestrial and oceanic components, 281, 237–240, 1998.
- 945 Forster, P. M., Maycock, A. C., McKenna, C. M., and Smith, C. J.: Latest climate models confirm need for urgent mitigation, *Nat. Clim. Chang.*, 1–4, <https://doi.org/10.1038/s41558-019-0660-0>, 2019.
- Frölicher, T. L., Rodgers, K. B., Stock, C. A., and Cheung, W. W. L.: Sources of uncertainties in 21st century projections of potential ocean ecosystem stressors, *Global Biogeochem. Cycles*, 30, 2015GB005338, <https://doi.org/10.1002/2015GB005338>, 2016.
- 950 Fu, F.-X., Yu, E., Garcia, N. S., Gale, J., Luo, Y., Webb, E. A., and Hutchins, D. A.: Differing responses of marine N₂ fixers to warming and consequences for future diazotroph community structure, 72, 33–46, <https://doi.org/10.3354/ame01683>, 2014.
- Goris, N., Tjiputra, J. F., Olsen, A., Schwinger, J., Lauvset, S. K., and Jeansson, E.: Constraining Projection-Based Estimates of the Future North Atlantic Carbon Uptake, 31, 3959–3978, <https://doi.org/10.1175/JCLI-D-17-0564.1>, 2018.
- 955 Gradowille, M. R., Bombar, D., Crump, B. C., Letelier, R. M., Zehr, J. P., and White, A. E.: Diversity and activity of nitrogen-fixing communities across ocean basins, 62, 1895–1909, <https://doi.org/10.1002/lno.10542>, 2017.
- Gruber, N. and Galloway, J. N.: An Earth-system perspective of the global nitrogen cycle, 451, 293–296, <https://doi.org/10.1038/nature06592>, 2008.
- Hall, A. and Qu, X.: Using the current seasonal cycle to constrain snow albedo feedback in future climate change, 33, <https://doi.org/10.1029/2005GL025127>, 2006.
- 960 Hall, A., Cox, P., Huntingford, C., and Klein, S.: Progressing emergent constraints on future climate change, *Nat. Clim. Chang.*, 9, 269–278, <https://doi.org/10.1038/s41558-019-0436-6>, 2019.
- Hegglin, M., Kinnison, D., Lamarque, J.-F.: *CCMI nitrogen surface fluxes in support of CMIP6 - version 2.0. Earth System Grid Federation.* <https://doi.org/10.22033/ESGF/input4MIPs.1125>, 2016.
- 965 Hourdin, F., Foujols, M.-A., Codron, F., Guemas, V., Dufresne, J.-L., Bony, S., Denvil, S., Guez, L., Lott, F., Ghattas, J., Braconnot, P., Marti, O., Meurdesoif, Y., and Bopp, L.: Impact of the LMDZ atmospheric grid configuration on the climate and sensitivity of the IPSL-CM5A coupled model, 40, 2167–2192, <https://doi.org/10.1007/s00382-012-1411-3>, 2013.
- Hourdin, F., Rio, C., Grandpeix, J.-Y., Madeleine, J.-B., Cheruy, F., Rochetin, N., Jam, A., Musat, I., Idelkadi, A., Fairhead, L., Foujols, M.-A., Mellul, L., Traore, A.-K., Dufresne, J.-L., Boucher, O., Lefebvre, M.-P., Millour, E., Vignon, E.,
- 970 Jouhaud, J., Diallo, F. B., Lott, F., Gastineau, G., Caubel, A., Meurdesoif, Y., and Ghattas, J.: LMDZ6A: The Atmospheric Component of the IPSL Climate Model With Improved and Better Tuned Physics, 12, e2019MS001892, <https://doi.org/10.1029/2019MS001892>, 2020.

- Hutchins, D. A., Fu, F.-X., Webb, E. A., Walworth, N., and Tagliabue, A.: Taxon-specific response of marine nitrogen fixers to elevated carbon dioxide concentrations, 6, 790–795, <https://doi.org/10.1038/ngeo1858>, 2013.
- 975 Ibarbalz, F. M., Henry, N., Brandão, M. C., Martini, S., Busseni, G., Byrne, H., Coelho, L. P., Endo, H., Gasol, J. M., Gregory, A. C., Mahé, F., Rigonato, J., Royo-Llonch, M., Salazar, G., Sanz-Sáez, I., Scalco, E., Soviadan, D., Zayed, A. A., Zingone, A., Labadie, K., Ferland, J., Marec, C., Kandels, S., Picheral, M., Dimier, C., Poulain, J., Pisarev, S., Carmichael, M., Pesant, S., Acinas, S. G., Babin, M., Bork, P., Boss, E., Bowler, C., Cochrane, G., Vargas, C. de, Follows, M., Gorsky, G., Grimsley, N., Guidi, L., Hingamp, P., Iudicone, D., Jaillon, O., Kandels, S., Karp-Boss, L., Karsenti, E., Not, F., Ogata, H., Pesant, S., Poulton, N., Raes, J., Sardet, C., Speich, S., Stemann, L., Sullivan, M. B., Sunagawa, S., Wincker, P., Babin, M., Boss, E., Iudicone, D., Jaillon, O., Acinas, S. G., Ogata, H., Pelletier, E., Stemann, L., Sullivan, M. B., Sunagawa, S., Bopp, L., Vargas, C. de, Karp-Boss, L., Wincker, P., Lombard, F., Bowler, C., and Zinger, L.: Global Trends in Marine Plankton Diversity across Kingdoms of Life, *Cell*, 179, 1084–1097.e21, <https://doi.org/10.1016/j.cell.2019.10.008>, 2019.
- Karl, D. M. and Church, M. J.: Microbial oceanography and the Hawaii Ocean Time-series programme, *Nat Rev Microbiol*, 12, 699–713, <https://doi.org/10.1038/nrmicro3333>, 2014.
- 985 Inomura, K., Bragg, J., Riemann, L., and Follows, M. J.: A quantitative model of nitrogen fixation in the presence of ammonium, *PLOS ONE*, 13, e0208282, <https://doi.org/10.1371/journal.pone.0208282>, 2018.
- Kwiatkowski, L., Bopp, L., Aumont, O., Ciais, P., Cox, P. M., Laufkötter, C., Li, Y., and Séférian, R.: Emergent constraints on projections of declining primary production in the tropical oceans, *Nature Clim. Change*, advance online publication, <https://doi.org/10.1038/nclimate3265>, 2017.
- 990 Kwiatkowski, L., Aumont, O., Bopp, L., and Ciais, P.: The Impact of Variable Phytoplankton Stoichiometry on Projections of Primary Production, Food Quality, and Carbon Uptake in the Global Ocean, 32, 516–528, <https://doi.org/10.1002/2017GB005799>, 2018.
- [Kwiatkowski, L., Aumont, O., & Bopp, L.: Consistent trophic amplification of marine biomass declines under climate change. *Global change biology*, 25\(1\), 218–229, 2019](https://doi.org/10.1002/2017GB005799)
- 995 Kwiatkowski, L., Torres, O., Bopp, L., Aumont, O., Chamberlain, M., Christian, J. R., Dunne, J. P., Gehlen, M., Ilyina, T., John, J. G., Lenton, A., Li, H., Lovenduski, N. S., Orr, J. C., Palmieri, J., Santana-Falcón, Y., Schwinger, J., Séférian, R., Stock, C. A., Tagliabue, A., Takano, Y., Tjiputra, J., Toyama, K., Tsujino, H., Watanabe, M., Yamamoto, A., Yool, A., and Ziehn, T.: Twenty-first century ocean warming, acidification, deoxygenation, and upper-ocean nutrient and primary production decline from CMIP6 model projections, 17, 3439–3470, <https://doi.org/10.5194/bg-17-3439-2020>, 2020.
- 1000 Lam, V. W. Y., Cheung, W. W. L., Reygondeau, G., and Sumaila, U. R.: Projected change in global fisheries revenues under climate change, *Sci Rep*, 6, 1–8, <https://doi.org/10.1038/srep32607>, 2016.
- Landolfi, A., Kähler, P., Koeve, W., and Oschlies, A.: Global Marine N₂ Fixation Estimates: From Observations to Models, *Front Microbiol*, 9, <https://doi.org/10.3389/fmicb.2018.02112>, 2018.
- 1005 Laufkötter, C., Vogt, M., Gruber, N., Aita-Noguchi, M., Aumont, O., Bopp, L., Buitenhuis, E., Doney, S. C., Dunne, J., Hashioka, T., Hauck, J., Hirata, T., John, J., Le Quéré, C., Lima, I. D., Nakano, H., Seferian, R., Totterdell, I., Vichi, M., and

- Völker, C.: Drivers and uncertainties of future global marine primary production in marine ecosystem models, *Biogeosciences*, 12, 6955–6984, <https://doi.org/10.5194/bg-12-6955-2015>, 2015.
- Leung, S., Cabré, A., and Marinov, I.: A latitudinally banded phytoplankton response to 21st century climate change in the Southern Ocean across the CMIP5 model suite, *Biogeosciences*, 12, 5715–5734, <https://doi.org/10.5194/bg-12-5715-2015>, 2015.
- Lomas, M. W., Bates, N. R., Johnson, R. J., Knap, A. H., Steinberg, D. K., and Carlson, C. A.: Two decades and counting: 24-years of sustained open ocean biogeochemical measurements in the Sargasso Sea, 93, 16–32, <https://doi.org/10.1016/j.dsr2.2013.01.008>, 2013.
- Lotze, H. K., Tittensor, D. P., Bryndum-Buchholz, A., Eddy, T. D., Cheung, W. W. L., Galbraith, E. D., Barange, M., Barrier, N., Bianchi, D., Blanchard, J. L., Bopp, L., Büchner, M., Bulman, C. M., Carozza, D. A., Christensen, V., Coll, M., Dunne, J. P., Fulton, E. A., Jennings, S., Jones, M. C., Mackinson, S., Maury, O., Niiranen, S., Oliveros-Ramos, R., Roy, T., Fernandes, J. A., Schewe, J., Shin, Y.-J., Silva, T. A. M., Steenbeek, J., Stock, C. A., Verley, P., Volkholz, J., Walker, N. D., and Worm, B.: Global ensemble projections reveal trophic amplification of ocean biomass declines with climate change, 116, 12907–12912, <https://doi.org/10.1073/pnas.1900194116>, 2019.
- Luo, Y.-W., Lima, I. D., Karl, D. M., Deutsch, C. A., and Doney, S. C.: Data-based assessment of environmental controls on global marine nitrogen fixation, 11, 691–708, <https://doi.org/10.5194/bg-11-691-2014>, 2014.
- Madec, G., Bourdallé-Badie, R., Bouffier, P.-A., Bricaud, C., Bruciaferri, D., Calvert, D., Chanut, J., Clementi, E., Coward, A., Delrosso, D., Ethé, C., Flavoni, S., Graham, T., Harle, J., Iovino, D., Lea, D., Lévy, C., Lovato, T., Martin, N., Masson, S., Mocavero, S., Paul, J., Rousset, C., Storkey, D., Storto, A., and Vancoppenolle, M.: NEMO ocean engine, <https://doi.org/10.5281/zenodo.1472492>, 2017.
- Mayorga, E., Seitzinger, S. P., Harrison, J. A., Dumont, E., Beusen, A. H. W., Bouwman, A. F., Fekete, B. M., Kroeze, C., and Van Drecht, G.: Global Nutrient Export from WaterSheds 2 (NEWS 2): Model development and implementation, 25, 837–853, <https://doi.org/10.1016/j.envsoft.2010.01.007>, 2010.
- O’Gorman, P. A.: Sensitivity of tropical precipitation extremes to climate change, *Nature Geosci*, 5, 697–700, <https://doi.org/10.1038/ngeo1568>, 2012.
- Orchard, E. D., Benitez-Nelson, C. R., Pellechia, P. J., Lomas, M. W., and Dyhrman, S. T.: Polyphosphate in Trichodesmium from the low-phosphorus Sargasso Sea, 55, 2161–2169, <https://doi.org/10.4319/lo.2010.55.5.2161>, 2010.
- Pahlow, M., Dietze, H., and Oschlies, A.: Optimality-based model of phytoplankton growth and diazotrophy, 489, 1–16, <https://doi.org/10.3354/meps10449>, 2013.
- Pauly, D. and Christensen, V.: Primary production required to sustain global fisheries, 374, 4, 1995.
- Pörtner, H.-O., Karl, D. M., Boyd, P. W., Cheung, W., Lluich-Cota, S. E., Nojiri, Y., Schmidt, D. N., Zavialov, P. O., Alheit, J., and Aristegui, J.: Ocean systems, in: Climate change 2014: impacts, adaptation, and vulnerability. Part A: global and sectoral aspects. contribution of working group II to the fifth assessment report of the intergovernmental panel on climate change, Cambridge University Press, 411–484, 2014.

- Pörtner, H.-O., Roberts, D. C., Masson-Delmotte, V., Zhai, P., Tignor, M., Poloczanska, E., and Weyer, N. M.: The ocean and cryosphere in a changing climate, 2019.
- Riche, O. G. J. and Christian, J. R.: Ocean dinitrogen fixation and its potential effects on ocean primary production in Earth system model simulations of anthropogenic warming, 6, <https://doi.org/10.1525/elementa.277>, 2018.
- 1045 Rousset, C., Vancoppenolle, M., Madec, G., Fichefet, T., Flavoni, S., Barthélemy, A., Benshila, R., Chanut, J., Levy, C., Masson, S., and Vivier, F.: The Louvain-La-Neuve sea ice model LIM3.6: global and regional capabilities, *Geosci. Model Dev.*, 8, 2991–3005, <https://doi.org/10.5194/gmd-8-2991-2015>, 2015.
- Saito, M. A., Bertrand, E. M., Dutkiewicz, S., Bulygin, V. V., Moran, D. M., Monteiro, F. M., Follows, M. J., Valois, F. W., and Waterbury, J. B.: Iron conservation by reduction of metalloenzyme inventories in the marine diazotroph *Crocospaera*
- 1050 *watsonii*, *PNAS*, 108, 2184–2189, <https://doi.org/10.1073/pnas.1006943108>, 2011.
- Séférian, R., Berthet, S., Yool, A., Palmiéri, J., Bopp, L., Tagliabue, A., Kwiatkowski, L., Aumont, O., Christian, J., Dunne, J., Gehlen, M., Ilyina, T., John, J. G., Li, H., Long, M. C., Luo, J. Y., Nakano, H., Romanou, A., Schwinger, J., Stock, C., Santana-Falcón, Y., Takano, Y., Tjiputra, J., Tsujino, H., Watanabe, M., Wu, T., Wu, F., and Yamamoto, A.: Tracking Improvement in Simulated Marine Biogeochemistry Between CMIP5 and CMIP6, *Curr Clim Change Rep*, 6, 95–119, <https://doi.org/10.1007/s40641-020-00160-0>, 2020.
- 1055 Sherwood, O. A., Guilderson, T. P., Batista, F. C., Schiff, J. T., and McCarthy, M. D.: Increasing subtropical North Pacific Ocean nitrogen fixation since the Little Ice Age, 505, 78–81, <https://doi.org/10.1038/nature12784>, 2014.
- Sohm, J. A. and Capone, D. G.: Phosphorus dynamics of the tropical and subtropical north Atlantic: *Trichodesmium* spp. versus bulk plankton, 317, 21–28, <https://doi.org/10.3354/meps317021>, 2006.
- 1060 Steinacher, M., Joos, F., Frölicher, T. L., Bopp, L., Cadule, P., Cocco, V., Doney, S. C., Gehlen, M., Lindsay, K., Moore, J. K., and others: Projected 21st century decrease in marine productivity: a multi-model analysis, 7, 979–1005, 2010.
- Stock, C. A., John, J. G., Rykaczewski, R. R., Asch, R. G., Cheung, W. W. L., Dunne, J. P., Friedland, K. D., Lam, V. W. Y., Sarmiento, J. L., and Watson, R. A.: Reconciling fisheries catch and ocean productivity, 114, E1441–E1449, <https://doi.org/10.1073/pnas.1610238114>, 2017.
- 1065 Tagliabue, A., Barrier, N., Du Pontavice, H., Kwiatkowski, L., Aumont, O., Bopp, L., Cheung, W. W. L., Gascuel, D., and Maury, O.: An iron cycle cascade governs the response of equatorial Pacific ecosystems to climate change, 26, 6168–6179, <https://doi.org/10.1111/gcb.15316>, 2020.
- Tagliabue, A., Kwiatkowski, L., Bopp, L., Butenschön, M., Cheung, W.W.L., Lengaigne, M., and Vialard, J.: Persistent uncertainties in ocean net primary production climate change projections at regional scales raise challenges for assessing
- 1070 impacts on ecosystem services, *Front. Clim.* doi: 10.3389/fclim.2021.738224, 2021
- Tang, W., Li, Z., and Cassar, N.: Machine Learning Estimates of Global Marine Nitrogen Fixation, 124, 717–730, <https://doi.org/10.1029/2018JG004828>, 2019.
- Taucher, J. and Oschlies, A.: Can we predict the direction of marine primary production change under global warming?: MARINE NPP UNDER GLOBAL WARMING, 38, n/a–n/a, <https://doi.org/10.1029/2010GL045934>, 2011.

- 1075 Taylor, K. E., Stouffer, R. J., and Meehl, G. A.: An Overview of CMIP5 and the Experiment Design, *Bull. Amer. Meteor. Soc.*, 93, 485–498, <https://doi.org/10.1175/BAMS-D-11-00094.1>, 2011.
- Terhaar, J., Kwiatkowski, L., and Bopp, L.: Emergent constraint on Arctic Ocean acidification in the twenty-first century, 582, 379–383, <https://doi.org/10.1038/s41586-020-2360-3>, 2020.
- Tittensor, D. P., Eddy, T. D., Lotze, H. K., Galbraith, E. D., Cheung, W., Barange, M., Blanchard, J. L., Bopp, L., Bryndum-
1080 Buchholz, A., Büchner, M., Bulman, C., Carozza, D. A., Christensen, V., Coll, M., Dunne, J. P., Fernandes, J. A., Fulton, E. A., Hobday, A. J., Huber, V., Jennings, S., Jones, M., Lehodey, P., Link, J. S., Mackinson, S., Maury, O., Niiranen, S., Oliveros-Ramos, R., Roy, T., Schewe, J., Shin, Y.-J., Silva, T., Stock, C. A., Steenbeek, J., Underwood, P. J., Volkholz, J., Watson, J. R., and Walker, N. D.: A protocol for the intercomparison of marine fishery and ecosystem models: Fish-MIP v1.0, *Geosci. Model Dev.*, 11, 1421–1442, <https://doi.org/10.5194/gmd-11-1421-2018>, 2018.
- 1085 Vancoppenolle, M., Bopp, L., Madec, G., Dunne, J., Ilyina, T., Halloran, P. R., and Steiner, N.: Future Arctic Ocean primary productivity from CMIP5 simulations: Uncertain outcome, but consistent mechanisms, 27, 605–619, <https://doi.org/10.1002/gbc.20055>, 2013.
- Wenzel, S., Cox, P. M., Eyring, V., and Friedlingstein, P.: Emergent constraints on climate-carbon cycle feedbacks in the CMIP5 Earth system models, 119, 794–807, <https://doi.org/10.1002/2013JG002591>, 2014.
- 1090 Wrightson, L. and Tagliabue, A.: Quantifying the Impact of Climate Change on Marine Diazotrophy: Insights From Earth System Models, *Front. Mar. Sci.*, 0, <https://doi.org/10.3389/fmars.2020.00635>, 2020.
- Yang, N., Merkel, C. A., Lin, Y.-A., Levine, N. M., Hawco, N. J., Jiang, H.-B., Qu, P.-P., DeMers, M. A., Webb, E. A., Fu, F.-X., and Hutchins, D. A.: Warming Iron-Limited Oceans Enhance Nitrogen Fixation and Drive Biogeographic Specialization of the Globally Important Cyanobacterium *Crocospaera*, 8, 118, <https://doi.org/10.3389/fmars.2021.628363>,
1095 2021.
- Zehr, J. P. and Capone, D. G.: Changing perspectives in marine nitrogen fixation, 368, eaay9514, <https://doi.org/10.1126/science.aay9514>, 2020.