

Anthropogenic CO₂-mediated freshwater acidification limits survival, calcification, metabolism, and behaviour in stress-tolerant freshwater crustaceans

Alex R. Quijada-Rodriguez¹, Pou-Long Kuan², Po-Hsuan Sung², Mao-Ting Hsu², Garrett J.P. Allen¹, Pung Pung Hwang³, Yung-Che Tseng^{2*}, Dirk Weihrauch^{1*}

¹Biological Sciences, University of Manitoba, Winnipeg, R3T 2N2, Canada

²Marine Research Station, Institute of Cellular and Organismal Biology, Academia Sinica, No. 23-10 Dawen Rd., Jiaoxi, Yilan County, Taiwan, 262

³Institute of Cellular and Organismal Biology, Academia Sinica, No. 128, Section 2, Academia Rd., Nangang District, Taipei City, Taiwan, 11529

* Indicates that these authors have contributed equally to this work

Correspondence to: Alex Quijada-Rodriguez (umquijaa@myumanitoba.ca, alexquijadarodriguez@gmail.com)

Abstract. Dissolution of anthropogenic CO₂ is chronically acidifying aquatic ecosystems. Studies indicate that ocean acidification will cause marine life, especially calcifying species, to suffer at the organismal and ecosystem levels. In comparison, freshwater acidification has received less attention rendering its consequences unclear. Here, juvenile Chinese mitten crabs, *Eriocheir sinensis*, were used as a crustacean model to investigate the impact of CO₂-mediated freshwater acidification. Our integrative approach, investigating changes in the animal's acid-base homeostasis, metabolism, calcification, locomotory behaviour, and survival rate, indicates that this economically relevant crustacean will face energetic consequences from future freshwater acidification. These energetic trade-offs allow the animal to maintain its acid-base homeostasis at the cost of reduced metabolic activity, exoskeletal calcification, and locomotion, reducing the animal's overall fitness and increasing its mortality. Results indicate that present-day Chinese mitten crab could be heavily affected by freshwater acidification like their marine counterparts and emphasizes the importance of understanding the long-term implications of freshwater acidification on species' fitness.

1 Introduction

Rising levels of atmospheric CO₂ partially dissolve into marine systems, causing a decrease in oceanic pH referred to as ocean acidification. In marine species, ocean acidification has been demonstrated to negatively impact development, metabolism, behaviour, and biomineralization, potentially leading to major ecosystem-level changes (Kroeker et al., 2013; Melzner et al., 2009; Tresguerres and Hamilton, 2017). It is generally believed that freshwater systems will also experience acidification (Hasler et al., 2016; Phillips et al., 2015; Weiss et al., 2018); however, the highly variable high variability in biogeochemistry between freshwater systems has been a limiting factor in modelling future freshwater scenarios (Hasler et al., 2016) (Hasler et al., 2016; Phillips et al., 2015; Weiss et al., 2018). Two recent case studies on different freshwater

systems have suggested that the magnitude of CO₂ mediated acidification could be similar or even exceed predicted levels of ocean acidification (Phillips et al., 2015; Weiss et al., 2018). The potential that freshwater acidification may be of equal or greater severity than ocean acidification emphasizes the need to understand the biological responses and consequences to freshwater species.

~~Amongst marine organisms, calcifying~~ Calcifying species are ~~particularly~~ sensitive to acidification as dissolution of CO₂ reduces carbonate availability in parallel to pH, potentially increasing dissolution of their calcified exoskeleton (Feely et al., 2004; Roleda et al., 2012). To date, ~~there are~~ no comprehensive studies ~~have~~ investigated ~~ed~~ the various physiological and behavioural effects of realistic future levels of CO₂-mediated acidification ~~in~~ on calcifying freshwater invertebrates. ~~However,~~ several studies have used high CO₂ levels beyond that relevant for potential future freshwater acidification to investigate acid-base regulation and calcification in freshwater calcifying invertebrates (Cameron, 1978, 1985; David et al., 2020; Jeffrey et al., 2018b, 2018a). Freshwater calcifying macro-organisms are largely limited to crustaceans and molluscs that comprise roughly 10% and 4% of freshwater species diversity, respectively (Balian et al., 2008). Crustaceans are arguably one of the most successful animal groups ~~having occupied~~ occupying almost all ecological niches across the globe, including freshwater, marine, and terrestrial habitats, making them a ~~suitable~~ -good model to study global change consequences in a physiologically and ecologically robust group of species. Freshwater crustaceans occupy a key position in food webs where all crustacean life stages provide a vital food source for a wide range of juvenile and adult predators (Cumberlidge et al., 2009). Additionally, freshwater crustaceans provide vital ecological services as indicators of water quality, nutrient cycling of detritus and bioturbation of sediment (Cumberlidge et al., 2009). From an economic standpoint, freshwater crustaceans account for ~30 % (2.5 million tons) of aqua-cultured crustaceans worldwide, demonstrating that this group is an important human food source (Tacon, 2020). The ecological and economic importance of freshwater crustaceans, together with the apparent sensitivity of calcifying species to acidification based on marine studies, makes it imperative to determine whether freshwater crustaceans are sensitive to anthropogenic CO₂-mediated freshwater acidification.

The Chinese mitten crab (*Eriocheir sinensis*) is one of the most important freshwater crustaceans, accounting for the third largest crustacean aquaculture globally (FAO, 2018). This highly invasive catadromous species spends most of its life cycle in freshwater systems but has the physiological plasticity to migrate into marine environments where it reproduces (Veilleux and Lafontaine, 2007). The invasive status and aquacultural importance of *E. sinensis* ~~has~~ yes made it a well-studied freshwater crustacean model in biological research. Here, we used the juvenile life stage of *E. sinensis* as a freshwater crustacean model to investigate the effects of a potential future CO₂-mediated freshwater acidification scenario on acid-base regulation, metabolism, calcification, behaviour, and survival rate. Native to China's Yangtze river system, the third-largest river system in the world, juvenile *E. sinensis* in this habitat already experience regular fluctuations in freshwater pCO₂ from 681 ~~to~~ -3796 µatm (Ran et al., 2017), which may confer some ~~degree of~~ pre-adaptation to elevated CO₂ ~~due to~~ because of life history. ~~Furthermore,~~ crustaceans are ~~generally~~ believed to be more CO₂ tolerant than other calcifying organisms such as bivalves and coral ~~due to~~ because of their high metabolic activity and robust acid-base machinery, allowing for ~~a~~ more efficient compensation of acid-base disturbances (Melzner et al., 2009). These combined predictors of CO₂ tolerance make *E. sinensis*

an interesting model to study the effects of future CO₂ mediated freshwater acidification, as they may already possess the adaptations necessary to deal with future freshwater acidification conditions. Therefore, we hypothesized that *E. sinensis* would be well-adapted to counteracting challenges associated with fluctuating pCO₂ resulting from anthropogenic activity and not experience detrimental physiological or behavioural impairment.

70 2 Methods

2.1 Animal Maintenance

Wild-caught male and female juvenile Chinese mitten crab (*Eriocheir sinensis* 10-20 g) were purchased from the Chinese mitten crab Breeding Association of Taiwan. Crabs were maintained at the Academia Sinica Institute of Cellular and Organismal Biology aquatics facility (Taipei, Taiwan) in three 120-L aquariums with flow through dechlorinated Taipei tap water (in $\mu\text{mol l}^{-1}$ Na⁺ 237, K⁺ 16, Ca²⁺ 216, Mg²⁺ 213, Cl⁻ 201; Y.C. Tseng pers. comm. ~~For methods see~~ See ringer measurement methods below) on a 14:10 h light-dark cycle with temperature ranging from 23 to 25 °C. Water parameters for these holding tanks were the same as that of the control water used in the experimental acclimations. Juvenile crabs in non-experimental holding tanks were maintained at a density of roughly 100 individuals per tank with PVC pipes for shelter and a constant flow of freshwater to prevent the build-up of metabolic wastes. Crabs were fed *ad libitum* with oatmeal and mollusc meat three times per week and monitored for activity level and the presence of disease as general health indicators. Diet was selected to maintain an omnivorous diet as seen in the wild (Czerniejewski et al., 2010) and based on what is fed by our crab supplier (Y.C. Tseng pers. comm.). Crabs were fasted for a minimum of 48 hours ~~prior to~~ before sampling to minimize the effects of dietary intake on measured parameters.

2.2 Freshwater acidification

85 For experimental acclimation, crabs were sampled upon removal from the holding tanks (0-day time point) and transferred to flow through 10-L experimental tanks (6-7 crabs per tank, 4 tanks per treatment) containing either control or acidified freshwater (Table 1) with PVC pipes added for shelter. Acidified freshwater was achieved by injection of CO₂ directly into the experimental tanks by air stone to maintain environmental pH (pH controller, Aqua-MACRO). The pH controller system used in this study required that each tank had ~~its own~~ pH probe, pH controller, CO₂ tank, gas regulating solenoid and air stone, thus meaning each tank in this study was independently pH/CO₂ regulated. CO₂ bubbling rate and freshwater flow rate ~~were~~ adjusted to minimize overshooting the target pCO₂ level. Following injection of CO₂ to regulate water pCO₂ we recorded a brief pCO₂ overshoot to a maximum level of 5625 μatm resulting from direct CO₂ injection into the experimental tanks by the pH controller. Water pH, total alkalinity, and temperature were regularly measured in the experimental tanks throughout the study. Water pH (NBS scale) and temperature were measured with a pH electrode (Accumet AP55 pH/ATC electrode, Ohio, USA) connected to a portable pH meter (Accumet AP71, Ohio, USA) calibrated with pH buffers (pH 4.00, 7.00, and 10.01) traceable to NIST standard reference material (ThermoFisher Orion). Water alkalinity was measured by

spectrophotometric assay on a Nanodrop 2000c (Thermo scientific, Wilmington, DE, USA) according to previously established protocols (Sarazin et al., 1999). Water pCO₂ was calculated with the CO2SYS excel add-in (Lewis and Wallace, 1998) using measured water temperature, pH and total alkalinity. Constants used for pCO₂ calculations include freshwater carbonate dissociation constants (K₁ and K₂) from Millero (1979), and KHSO₄ constants from Dickson (1990).

Table 1. Measured tank parameters for 7-day, 14-day and 42-day experiments of control and CO₂ acidified freshwater (FW). Measured parameters include temperature, pH (NBS scale), total alkalinity (TA), total CO₂ (TCO₂), and partial pressure of CO₂ (pCO₂).

	Temp (°C)	pH	TA (μmol l ⁻¹)	TCO ₂ (μmol l ⁻¹)	pCO ₂ (μatm)
Control 7 day	23 ± 0.15	7.41 ± 0.02	501 ± 32	547 ± 36	1299 ± 121
Acidified 7 day	23 ± 0.15	6.73 ± 0.01	430 ± 13	614 ± 18	5109 ± 157
Control 14 day	24.6 ± 0.05	7.4 ± 0.01	517 ± 4	563 ± 5	1364 ± 46
Acidified 14 day	24.5 ± 0.13	6.8 ± 0.01	429 ± 7	589 ± 7	4633 ± 87
Control 42 day	24.5 ± 0.07	7.4 ± 0.01	529 ± 6	576 ± 7	1389 ± 31
Acidified 42 day	24.4 ± 0.1	6.8 ± 0.01	433 ± 4	592 ± 4	4634 ± 58

2.3 Hemolymph Acid-Base Status

Hemolymph acid-base experiments were conducted over ~~a period of~~ seven days to determine if crabs ~~were capable of actively regulating~~ could actively regulate acid-base status in the presence of future freshwater acidification conditions. Hemolymph samples (100 μL per crab) were taken at the base of a walking leg with a sterile syringe according to previous protocols for *E. sinensis* (Truchot, 1992). Samples from 2 ~~to~~ -3 crabs were pooled together (200-300 μL pooled hemolymph per n value) to ~~obtain enough sample~~ get a sufficient volume for downstream analysis of ammonia, pH, and total carbon. Pooled hemolymph samples were gently mixed by slowly pipetting to avoid off gassing of CO₂ and ~~thereby~~ disrupting hemolymph acid-base parameters. Measurements of pH and total carbon were performed immediately after hemolymph collection and the remaining hemolymph was frozen ~~at~~ -20 °C for later analysis of ammonia. Hemolymph pH (200-300 μL samples) was measured in NBS scale using an InLab micro pH electrode calibrated with pH buffers traceable to NIST standard reference material (ThermoFisher Orion). Hemolymph total carbon was measured in duplicate (50 μL per measurement) using the Corning 965 carbon dioxide analyzer (± 0.2 mmol l⁻¹ precision) calibrated with NaHCO₃ standards ranging from 0 ~~to~~ -20 mmol l⁻¹ to produce a standard curve with a minimum R² of 0.99. Hemolymph pCO₂ and HCO₃⁻ were calculated using a rearrangement of the Henderson-Hasselbalch equation with pK₁ and αCO₂ values derived for *E. sinensis* hemolymph at 23 °C (pK₁= 6.079773, αCO₂= 0.00031263 mmol l⁻¹ Pa⁻¹ (Truchot, 1976, 1992). Hemolymph ammonium was measured in triplicate (25 μL hemolymph per measurement) with a microplate reader (Molecular Devices, SpectraMax, M5) using an orthophthaldialdehyde fluorometric assay which is insensitive to amino acids and proteins (Holmes et al., 1999). Ammonia standards were made from

NH₄Cl in *E. sinensis* ringer (pH 8.1) containing (in mmol l⁻¹): 185 NaCl, 16 CaCl₂, 6 MgCl₂, 7 KCl, and 13 NaHCO₃. The ion concentrations for the ringer were based on ion composition measurement done on 4 juvenile Chinese mitten crabs in this study (in mmol l⁻¹ Na⁺ 191, K⁺ 7.2, Ca²⁺ 16.3, Mg²⁺ 5.9, Cl⁻ 252). Concentrations of Na⁺, K⁺, Ca²⁺, Mg²⁺ were measured by flame absorption spectrophotometry (Polarized Zeeman Atomic Absorption Spectrophotometer Z-5000, Hitachi High-Technologies, Tokyo, Japan), Cl⁻ was measured spectrophotometrically using the mercury (II) thiocyanate method (Florence and Farrar, 1971). HCO₃⁻ and pH values for the ringer were based on measurements taken from control crabs in this study and measured as described above.

2.4 Ammonia excretion and oxygen consumption

Ammonia excretion and oxygen consumption were measured over a seven-day acclimation to control and acidified freshwater. These two parameters were measured on individual crabs haphazardly selected from the four control and four acidified freshwater aquaria. ~~Experimental sampling of ammonia excretion and oxygen consumption measurements~~ were performed in parallel to hemolymph sampling however, crabs were first randomly selected and placed into respirometry chambers before selecting crabs for hemolymph sampling to avoid using crabs recently sampled for hemolymph. Ammonia excretion experiments were performed in plastic Tupperware filled with 200 mL of filtered control or acidified freshwater. Crabs were given 30 minutes to acclimate to the experimental chambers ~~prior to before~~ initiation of water sampling, as ammonia excretion is elevated for a short time directly after handling (Hans et al., 2014). Water samples (1 mL) for ammonia analysis were collected directly after 30 and 90 minutes of being placed in the experimental chambers. Ammonia concentrations of the water at the 30 and 90-minute time points were determined using the aforementioned orthophthaldialdehyde fluorometric assay (Holmes et al., 1999). Ammonia excretion rates were calculated according to the Eq. (1):

$$\text{Ammonia excretion rate} = \frac{([\text{Amm}_{90}] - [\text{Amm}_{30}]) * V}{t * m}, \quad (1)$$

where Amm₉₀ is the water ammonia concentration at 90 minutes, Amm₃₀ is the water ammonia concentration at 30 minutes, V is the chamber volume during the flux period in litres, t is the flux time in hours, and m is the fresh weight of the crab in grams.

The oxygen consumption rate was measured by closed-system respirometry in custom-made 3 L glass respiration chambers containing filtered (0.2 μm) freshwater. To achieve the correct experimental CO₂ tension, respirometry chambers were submerged in large 18 L buckets of filtered freshwater ~~and which used a pH controller (Aqua-MACRO) to measure pH and inject CO₂ to maintain the desired CO₂ tension was used to regulate the injection of CO₂ as described above for experimental tanks~~. Crabs were transferred to the submerged respirometry chambers and given 15 minutes to adjust to fully oxygenated respiration chambers before being sealed. Chambers were placed horizontally, allowing for lateral crab movement in the chamber, and oxygen saturation was ~~continuously~~ measured continuously every 15 seconds for 30 minutes at 23 °C. The oxygen sensor (PreSens oxygen micro optode, type PSt1, PreSens Precision Sensing GmbH, Regensburg, Germany) was attached to the top of the chamber and connected to an OXY-4 mini multichannel ~~fiber~~ optic oxygen transmitter (PreSens

155 Precision Sensing GmbH, Regensburg, Germany). Oxygen saturation was ~~never allowed to drop below~~ always maintained
above 80%, ~~and R~~respiration chambers without a crab were used to determine any potential background bacterial respiration
for each trial. Preliminary trials demonstrated that crab movement and ventilation rate in the chamber was sufficient to mix
the water within the chamber and prevent oxygen stratification, as indicated by a linear decline in oxygen availability. While
this approach allows for the measurement of oxygen consumption, ~~there are some limitations which~~ some limitations must be
160 considered. ~~Due to logistical constraints, we were unable to use an~~ Logistical constraints prevented the use of an intermittent
flow respirometry approach where the animal could have been given a long amount of time to acclimate to the respirometry
chamber. This technical limitation means that the reported measurements ~~in this study~~ cannot be considered a resting metabolic
rate as the handling stress, brief air exposure and transfer to a novel environment may have influenced the animal's metabolic
rate. However, we would like to point out that in previous trials from our lab using an intermittent flow respirometry setup on
165 green crabs *Carcinus maenas*, crayfish *Procambarus clarkii*, and lobsters *Homarus americanus*, that crustaceans placed in
respirometry chambers will stabilize oxygen consumption to a resting rate in under 30 minutes (Gwangseok R. Yoon pers.
comm).

2.5 Carapace calcification

To assess carapace calcification, changes in the calcium content relative to carapace mass was measured at one, two, three and
170 six weeks of high CO₂ exposure according to previously established protocols (Spicer and Eriksson, 2003). In brief, a piece of
carapace (ca. 2.5 cm², 15.2 ± 0.4 mg) was removed from the dorsal carapace. The weighed piece of carapace was digested in
HNO₃ (13.1 N) at 60°C for 16 hours. Digested samples were then diluted to a final HNO₃ concentration of 2 % v/v. The
carapace Ca²⁺ content was measured by atomic absorption spectrophotometer (Z-8000; Hitachi). Standard solutions from
Merck (Darmstadt, Germany) were used to make the Ca²⁺ standard curve.

175 2.6 Locomotory Behaviour Assay

A 24 x 24 cm square, novel, opaque tank was used in the open field test to assess changes in movement of juvenile crabs after
a seven-day exposure to control and freshwater acidified conditions. Acclimated crabs were transferred to the novel tank
containing control or acidified freshwater and given 5 minutes to acclimate, as done in previous crustacean behavioural studies
(Robertson et al., 2018). After acclimation, crab activity was recorded with a digital camera (UI-3240CP Rev.2, Ids, Germany)
180 for 5 minutes (300 seconds) and videos of the movement were processed with the image analysis Ethovision XT motion
tracking software (v. 7.0, Noldus, Netherlands). In this study, ~~4~~ four factors were measured; distance covered (cm), velocity
(cm/s), movement (time in movement, seconds) and mobility (time in mobile state, seconds). We defined movement as the
duration for which the central body point (whole body) was changing location. Mobile state was defined as the duration in
which crabs exhibited any movement, even if the center point of the animals remained in the same location, for example,
185 appendage movement.

2.7 Statistical analysis

Statistical analyses were conducted using JMP Pro ~~15-16~~ (Cary, NC, USA) and GraphPad Prism 8.4.2 (San Diego, CA, USA). Data were analyzed for outliers by the ROUT test with a Q value of 1 %. For all data, heterogeneity of variance was tested by Levene's test and normal distribution of residuals by Shapiro-Wilk test. Two transformations were done ~~in this study~~ so that data could meet the assumptions of normal distribution and homogeneity of variance. A Johnson SB transformation was applied to hemolymph pCO₂ data ~~and a~~ square root transformation was applied to ammonia excretion rate data. In this study, hemolymph parameters, ammonia excretion, and oxygen consumption data were analyzed by a two-way ANOVA post hoc Dunnett's test. ~~For Dunnett's test, where~~ comparisons were made to the zero-day control with time and pCO₂ values as fixed factors. Carapace calcification data ~~were also~~ analyzed by ~~a~~ two-way ANOVA ~~however, as we had no zero day control~~ a post hoc Tukey HSD with time and pCO₂ values as the fixed factors. ~~As~~ behavioural data displayed a high degree of co-linearity between dependent variables, violating the assumptions of ~~a~~ the MANOVA test. ~~were not met and therefore~~ Therefore, we analyzed ~~this behavioural data set by using a~~ student's t-test except for appendage movement time ~~that did not meet parametric assumptions. Appendage movement time data violated assumptions of student's t-test, so were~~ was analyzed by the Wilcoxon test. Survival curves were analyzed for significant differences by the Mantel-Cox test ~~and~~ The survival curve hazard ratio was determined by the Mantel-Haenszel test. For all data sets, *p* values ≤ 0.05 were considered significant. Data are presented as mean ± standard error (SEM). Statistical output results are written in text or summarized in Table 2.

3 Results

3.1 Probability of Survival

The effect of freshwater acidification on survival was determined by generating survival curves for crabs in control and acidified freshwater (Fig. 1). There was a significant difference in the probability of survival between the control and acidified freshwater environments (Mantel-Cox log rank test, $X^2_1=9.41$, *p*=0.0022, Fig. 1). Crabs in the acidified freshwater tanks had a 50% mortality; compared with a 50 % mortality in crabs held in the acidified freshwater compared to 15 % mortality in control freshwater tanks. Calculation of the Mantel-Haenszel hazard ratio indicates that crabs in acidified freshwater have a 3.68 times greater probability of mortality than the crabs held under control conditions.

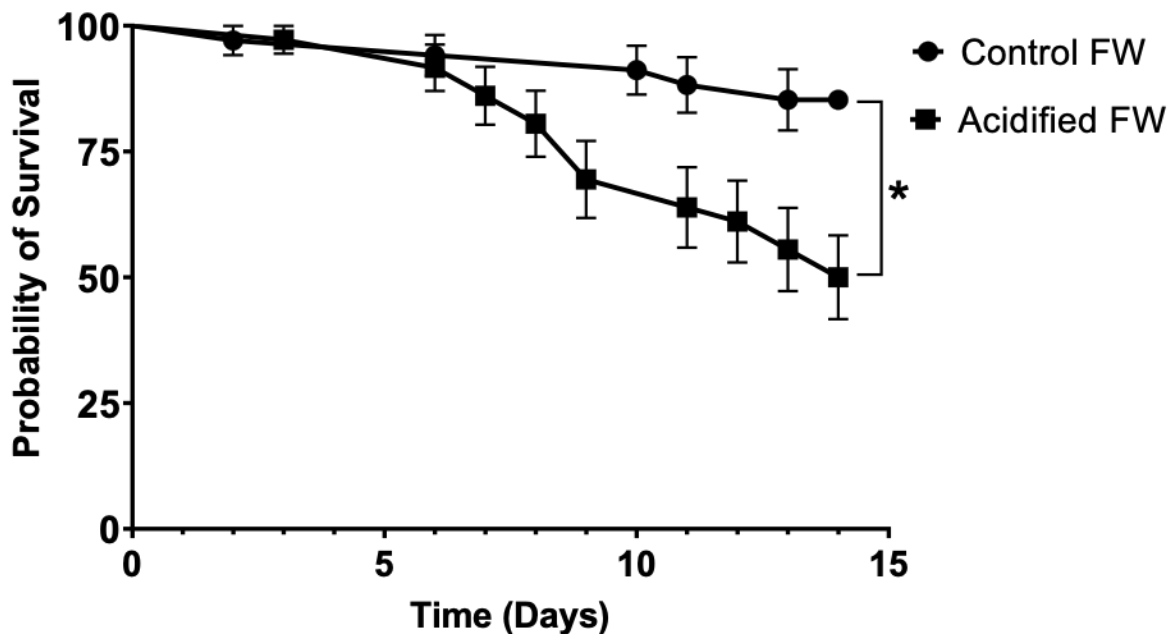


Figure 1. Survivorship curves of juvenile Chinese mitten crab, *Eriocheir sinensis*, over 14 days of exposure to control (pH 7.4, 1364 $\mu\text{atm pCO}_2$) or CO_2 -acidified (pH 6.8, 4633 $\mu\text{atm pCO}_2$) freshwater. Data are presented as probability of survival \pm SEM. (N=34 for control freshwater and N=36 for acidified freshwater). Statistical significance was assessed by Mantel-Cox test * indicating significant difference between probability of survival between control and freshwater acidified crab populations.

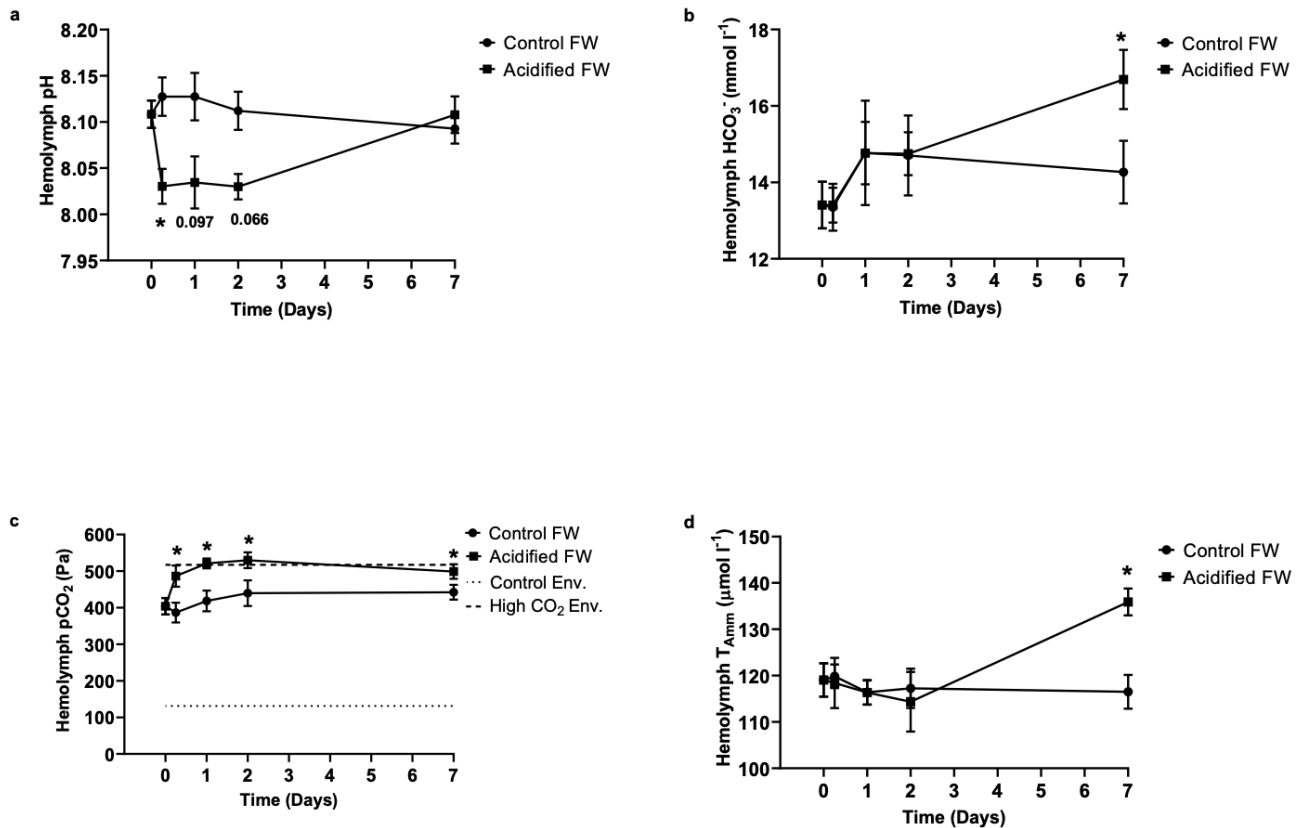
215

3.2 Acid-base status

Chinese mitten crab maintained in control freshwater showed no changes in hemolymph pH, bicarbonate, pCO_2 , or ammonia throughout the experimental time course (Fig. 2; Table 2). In contrast, acidified freshwater had a significant effect on hemolymph pH, bicarbonate, pCO_2 , or ammonia (Fig. 2; Table 2). Exposure to acidified freshwater induced a respiratory acidosis indicated by a decline in hemolymph pH ($\text{pH } 8.11 \pm 0.015$ to 8.03 ± 0.0019) and an increase in hemolymph pCO_2 (404 ± 23 Pa to 486 ± 26 Pa; $1 \mu\text{atm} = 0.101325$ Pa) within the first six hours of exposure (Fig. 2a, c). This Hemolymph acidosis was maintained for two days, with full recovery of hemolymph pH occurred by day seven of exposure when hemolymph pH returned to control levels, although hemolymph pCO_2 remained elevated (499 ± 20 Pa). Recovery of hemolymph pH coincided with increases in hemolymph HCO_3^- (16.7 ± 0.78 mmol l^{-1}) and ammonia (136 ± 2.9 $\mu\text{mol l}^{-1}$; Fig. 2b, d). However, no significant changes in hemolymph HCO_3^- and ammonia were observed until seven and two days of exposure, respectively, suggesting a delayed extracellular pH regulatory response.

220

225



230 Figure 2. Changes in extracellular (a) pH, (b) HCO₃⁻, (c) pCO₂, and (d) ammonia of juvenile Chinese mitten crab, *Eriocheir sinensis*, during a 7-day time course of exposure to control (pH 7.41, 1299 µatm pCO₂) or CO₂-acidified (pH 6.73, 5109 µatm pCO₂) freshwater. Data are presented as mean +/- SEM. (N=6-14, 2-3 crabs pooled per N value). Statistical significance was assessed by two-way ANOVA followed by a post-hoc Dunnett's test with * indicating significant difference from day zero measurements. P-values near but not <0.05 are written above corresponding data point.

235 3.3 Metabolism

240 Metabolic changes were quantified through ~~an individuals'~~ ammonia excretion rate ~~as an indicator of potential shifts in protein catabolism and their oxygen consumption rate as an indicator of changes in aerobic metabolism and oxygen consumption rate.~~ Ammonia excretion rate was used as an indicator of potential shifts in protein catabolism. Oxygen consumption rate was used as an indicator of changes in aerobic metabolism. Control crabs exhibited steady oxygen consumption rates and ammonia excretion rates throughout the measured time course (Fig. 3; Table 2). ~~In contrast, crabs~~ Crabs exposed to freshwater acidification experienced a significant reduction in oxygen consumption rate within six hours that was maintained throughout the ~~remainder rest~~ of the time course (Fig. 3a; Table 2). Ammonia excretion rates were also significantly affected by acidified freshwater acidification (Fig. 3b; Table 2). Initially, ammonia excretion rates were unchanged until the second day of exposure

(Fig. 3b), at which point excretion rates nearly doubled and on the second day of exposure, ammonia excretion rates doubled and remained elevated for the duration of the seven-day time course (Fig. 3b).

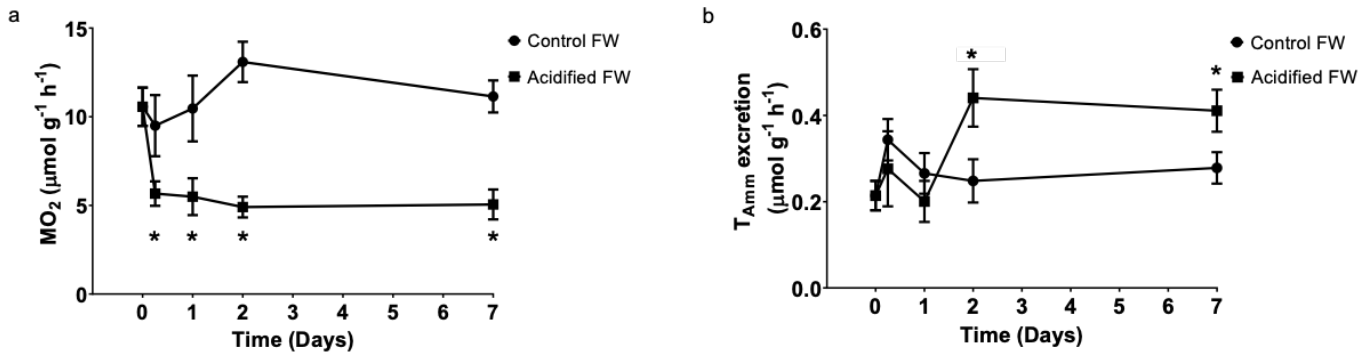


Figure 3. Changes in whole animal (a) oxygen consumption rate (MO₂) and (b) ammonia excretion rate of juvenile Chinese mitten crab, *Eriocheir sinensis*, during a 7-day time course of exposure to control (pH 7.41, 1299 µatm pCO₂) or CO₂-acidified (pH 6.73, 5109 µatm pCO₂) freshwater. Data are presented as mean ± SEM. (N=5-6 for oxygen consumption and N=7-12 for ammonia excretion). Statistical significance was assessed by two-way ANOVA followed by a post-hoc Dunnett's test. Significant differences from day zero measurements are indicated by *. P-values near but not <0.05 are written above corresponding data point.

3.4 Carapace calcification

Changes in calcification were quantified as the change in the crab's exoskeletal calcium content following exposure to freshwater acidification conditions. Calcification was measured several times over a six-week acclimation, as several studies on marine crustaceans report changes in calcification after 20+ days of acclimation (Long et al., 2013; Ries et al., 2009; Taylor et al., 2015). Overall, there was a significant time, pCO₂ and interactive time and pCO₂ effect on calcification (Table 2). Post hoc analysis suggests there were no significant changes in carapace calcification in the first two weeks of exposure to freshwater acidification (Fig. 4). However, after three and six weeks of exposure, a significant decline in carapace calcium content to 84.1 ± 2.9 % and 85.2 ± 3.3 % of control crab levels was observed (Fig. 4).

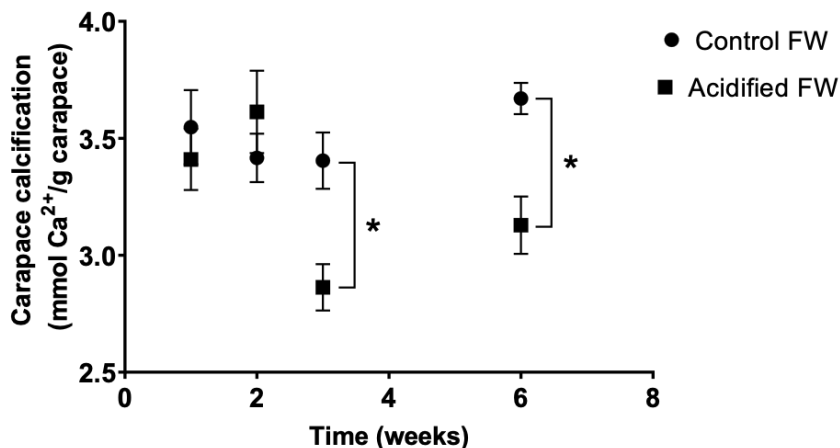


Figure 4. Changes in carapace calcium content of juvenile Chinese mitten crab, *Eriocheir sinensis*, over a 6-week exposure to control (pH 7.4, 1389 $\mu\text{atm pCO}_2$) or CO_2 -acidified (pH 6.8, 4634 $\mu\text{atm pCO}_2$) freshwater. Data are presented as mean \pm SEM. (N=6-12). Statistical significance was assessed by two-way ANOVA followed by a post-hoc Tukey HSD test with * indicating significant difference between control and acidified FW crabs for each respective week.

Table 2. Statistical results of two-way ANOVAs from hemolymph acid-base parameters, oxygen consumption, ammonia excretion and carapace calcification experiments. For hemolymph acid-base measurements response variables were hemolymph pH, HCO_3^- , pCO_2 , or ammonia with time and CO_2 as fixed independent variables. For whole animal experiments response variables were oxygen consumption rate and ammonia excretion rate with time and CO_2 as fixed independent variables. For carapace calcification experiments, the response variable was carapace calcium content with time and CO_2 as fixed independent variables. P-values below 0.05 are considered statistically significant and are bolded.

Two-way ANOVA

Dependent Variable	Independent Variable	df	df _{error}	F ratio	p-value
Hemolymph pH	Time	4	84	1.36	0.25
	CO_2	1	84	15.63	0.0002
	Time x CO_2	4	84	3.8	0.0068
Hemolymph HCO_3^-	Time	4	84	2.85	0.028
	CO_2	1	84	0.94	0.33
	Time x CO_2	4	84	0.83	0.51
Hemolymph pCO_2	Time	4	84	3.22	0.016
	CO_2	1	84	16.24	0.0001
	Time x CO_2	4	84	1.74	0.15
Hemolymph Ammonia	Time	4	74	2.52	0.048
	CO_2	1	74	1.41	0.24
	Time x CO_2	4	74	3.33	0.015

O ₂ consumption	Time	4	47	2.04	0.1
	CO ₂	1	47	40.95	<0.0001
	Time x CO ₂	4	47	3.39	0.016
Ammonia excretion	Time	4	76	3.01	0.023
	CO ₂	1	76	0.7	0.4
	Time x CO ₂	4	76	2.91	0.027
Carapace Ca ²⁺	Time	3	68	3.98	0.011
	CO ₂	1	68	8.59	0.0046
	Time x CO ₂	3	68	4.33	0.0074

3.5 Locomotory Behaviour Assay

275 An open field test was used to quantify locomotory behavioural changes over a five-minute recording period in a novel arena (Table 3). Crabs exposed to acidified freshwater ~~on average moved less distance in the novel arena covered less distance~~ than crabs in control freshwater (student's t-test, $t_{35}=-2.5$, $p=0.017$, Table 3). Crabs in acidified freshwater also had a lower velocity than crabs in control freshwater after the seven-day exposure (student's t-test, $t_{35}=-2.37$, $p=0.024$, Table 3). Movement and mobility were also quantified. ~~Where~~ movement was defined as the crab changing its relative location in the arena, ~~and~~ 280 ~~M~~mobility was defined as the movement of body appendages even if the crab's location did not change. There was a significant decrease in movement (student's t-test, $t_{35}=-2.55$, $p=0.015$, Table 3) and mobility (Wilcoxon test, $Z=2.08$, $p=0.037$, Table 3) following the seven-day exposure ~~to~~ acidified freshwater.

285 **Table 3. Changes in locomotory behaviour of juvenile Chinese mitten crab, *Eriocheir sinensis*, after a seven-day exposure to control (pH 7.41, 1299 μatm pCO₂) or CO₂-acidified (pH 6.73, 5109 μatm pCO₂) freshwater. Data are presented as mean \pm SEM. (N=18-19). Statistical significance was assessed by student's t-test or Wilcoxon test for mobility time with * indicating significant difference between control and acidified FW treatments.**

	Distance moved (cm)	Velocity (cm s ⁻¹)	Movement time (s)	Mobility time (s)
Control FW	761 \pm 46	2.53 \pm 0.15	148 \pm 7	215 \pm 5
Acidified FW	601 \pm 45*	2.04 \pm 0.15*	119 \pm 9*	179 \pm 14*

4 Discussion

290 Anthropogenically driven aquatic acidification has the potential to negatively impact both freshwater and marine life. Meta-analyses of biological responses to ocean acidification suggest that marine crustaceans generally experience minimal consequences to pCO₂ tensions (~ 1000 μatm) predicted to occur by the year 2100 (Kroeker et al., 2013; Melzner et al., 2009;

Wittmann and Pörtner, 2013). ~~Acidification with further acidification~~ to levels expected for the year 2300 (~2000 μatm) negatively ~~impacting impacts~~ about half of the studied marine crustaceans (Wittmann and Pörtner, 2013) (~~Kroeker et al., 2013; Melzner et al., 2009; Wittmann and Pörtner, 2013~~). In contrast, the biological responses of any freshwater invertebrate to realistic future CO_2 mediated freshwater acidification remains unknown. - In the present study, we aimed to demonstrate the physiological and behavioural consequences of a ~~possible~~ future CO_2 mediated freshwater acidification scenario on a juvenile freshwater crustacean, the Chinese mitten crab, *Eriocheir sinensis*. Our results suggest that freshwater juvenile Chinese mitten crab experience significant impairment of metabolism, calcification, locomotory behaviour and survival when exposed to a ~~potential future~~ freshwater acidification (4633-5109 $\mu\text{atm pCO}_2$). ~~While extracellular acid-base status is successfully regulated, the~~ The high energetic demands to sustain essential physiological processes such as acid-base regulation may ~~be causing~~ cause energetic reallocation that ~~leads to a trade-off that~~ impairs several physiological processes and alters animal fitness.

4.1 Plausibility of Freshwater Acidification Conditions

Modelling of future CO_2 mediated freshwater acidification for the year 2100 is nearly non-existent, making the plausibility of the pCO_2 levels used in this study difficult to assess. The control pCO_2 levels used in this study reflect the average pCO_2 measured in 13 stations along the mainstem of the Yangtze River system (excluding Nanjing station which is at the mouth of the river and influenced by coastal upwelling) (Ran et al., 2017). The future freshwater acidification conditions used in this study represents a 3500+ μatm increase in pCO_2 from control levels. ~~This increase is~~ and roughly 1000+ μatm higher than the highest average level recorded by the 13 stations along the mainstem of the Yangtze river (Ran et al., 2017). While future CO_2 mediated acidification models are not available for the Yangtze River, the relationship between changes in freshwater pCO_2 in other freshwater systems as a response to changes in atmospheric pCO_2 may provide indications of plausible future increases in pCO_2 . Weiss et al. (2018) tracked changes in pCO_2 of four freshwater bodies in Germany between 1981-2015 and reported that freshwater pCO_2 increased by an average of 561 μatm over this time period while atmospheric pCO_2 increased by ~60 μatm from 340 to 399 μatm (National Oceanic and Atmospheric Administration; www.esrl.noaa.gov/gmd/dv/iadv). This relationship suggests that for every 1 μatm increase in atmospheric pCO_2 , these freshwater bodies increased by 9.35 μatm . Since atmospheric pCO_2 is projected to rise to approximately 985 μatm by the year 2100 (IPCC, 2013) this would mean that freshwater pCO_2 in these systems could rise by as much as 5469 μatm . Assuming this relationship is accurate, the pCO_2 levels used in this study would be within a range that could feasibly occur in the Chinese mitten crab's native environment by the year 2100. Further, it should be noted that while freshwater systems average pCO_2 levels of 3100 μatm (streams and rivers) and 1410 μatm (lakes), the pCO_2 levels used for acidified freshwater in this study are within ranges that can already be seen in freshwater systems globally (Raymond et al., 2013). ~~F~~ for example, the Mackenzie, Mississippi, Ohio and Elbe rivers suggesting that acidification scenario used in this study is conceivable for freshwater (Cole and Caraco, 2001; Raymond et al., 2013).

4.2 Probability of Survival

Sensitivity to aquatic acidification is quite variable in marine crustaceans. In mid to high intertidal and burrowing species including porcelain crabs (*Petrolisthes cinctipes*, *Petrolisthes manimaculus*, and *Porcellana platycheles*), burrowing shrimp (*Upogebia deltaura*), and barnacles (*Semibalanus balanoides* and *Elminius modestus*), minimal changes in survival probability are reported at pCO₂ tensions ranging from 1395 ~~to~~ 2707 μatm (Donohue et al., 2012; Findlay et al., 2010; Page et al., 2017). Presumably, the variability in CO₂ levels experienced in burrows and intertidal zones has driven the evolution of adaptation for greater CO₂ tolerance in these groups of crustaceans. We predicted that juvenile Chinese mitten crab would also have an elevated CO₂ tolerance and face minimal changes in survival probability ~~due to freshwater acidification as the natural habitat of these crustaceans, because~~ the Yangtze river, ~~is known to fluctuate~~ normally fluctuates by as much as 3000 μatm (Ran et al., 2017). Despite being a freshwater organism with strong ionoregulatory capabilities, ~~to deal with environmental acidification~~ our results alarmingly show a sharp decrease in survival rate of Chinese mitten crabs over ~~a 14 day period of 14 days of~~ exposure to 4633 μatm pCO₂ (Fig 1). Such rapid decreases in survival have also been observed in non-burrowing crustaceans or crustaceans that do not inhabit high intertidal regions including brine shrimp (*Artemia sinica*), red king crab (*Paralithodes camtschaticus*), and low intertidal long-clawed porcelain crab, (*Pisidia longicornis*), exposed to 1500, 1637, and 5821 μatm pCO₂, respectively (Long et al., 2013; Page et al., 2017; Zheng et al., 2015). It might be tempting to conclude that low survival in Chinese mitten crabs compared to tolerant mid to high intertidal and burrowing marine crustaceans is simply due to the greater pCO₂ tensions used in the present study (4633 μatm).~~;~~ However, in the intertidal broad-clawed porcelain crab (*Porcellana platycheles*) pCO₂ levels of 5821 μatm have been shown to not affect the probability of survival after 24 days of exposure even higher levels (5821 μatm) have been shown to have no effect on the probability of survival in a tolerant intertidal broad-clawed porcelain crab (*Porcellana platycheles*) after a 24 day exposure (Page et al., 2017). It should also be mentioned that for all mortalities in this experiment there were no obvious signs of disease and intact bodies of deceased crabs were collected, suggesting that the elevated CO₂ treatment and not disease or cannibalism was the reason ~~of for~~ increased mortality. Therefore, the low survival rates in the present study suggest a high susceptibility to acidification and ~~are not consistent with~~ contradict our hypothesis that inhabiting a highly fluctuating CO₂ environment would confer tolerance to future freshwater acidification.

4.3 Physiological Responses

Juvenile Chinese mitten crab effectively recovered extracellular pH following respiratory acidosis resulting from freshwater acidification by the accumulation of extracellular HCO₃⁻ as a buffer (Fig. 2). Compensation of acid-base homeostasis under freshwater acidification was not surprising given that strong acid-base regulatory capabilities are typically seen in highly active organisms such as fish, cephalopods and crustaceans (Melzner et al., 2009). Similar recovery of extracellular pH to elevated environmental CO₂ has also been observed in Dungeness crab (*Metacarcinus magister*) and velvet crab (*Necora puber*) exposed to even higher pCO₂ tensions (10000+ μatm ; Pane and Barry, 2007; Spicer et al., 2007). In contrast, green crab (*Carcinus*

maenas) and blue crab (*Callinectes sapidus*) have been shown to not fully compensate extracellular pH at 10000+ $\mu\text{atm CO}_2$ levels (Cameron, 1978; Fehsenfeld and Weihrauch, 2016). However, measurements in these species were only done over 48 hours and more time may have been required for the animals to recover, as seen in our study, where recovery was only observed after seven days. The compensatory responses to acidosis in crustaceans generally includes respiratory CO_2 excretion, H^+ excretion typically through Na^+/H^+ or NH_4^+ exchange and accumulation of extracellular HCO_3^- as a buffer, where HCO_3^- is derived through either branchial $\text{Cl}^-/\text{HCO}_3^-$ exchange and, to a lesser degree, from calcified structures (e.g. exoskeleton) (Wheatly and Henry, 1992). In freshwater crustaceans, acid-base regulation occurs mainly within the gills (Henry et al., 2012), where the Na^+/K^+ -ATPase and H^+ -ATPase generate the electrochemical gradients that drive ion exchange (Leone et al., 2017). The Na^+/K^+ -ATPase alone may already account for ~~more than over~~ 20 % of an animal's energetic budget (Milligan and McBride, 1985). ~~The, therefore, an~~ increase in ion transport that must occur to re-establish and maintain acid-base homeostasis in the face of freshwater acidification could pose an increased energetic demand. In fact, in sea urchin larvae pCO_2 tensions of 800 μatm have been shown to ~~potentially~~ double ion transport ATP demands (Pan et al., 2015). It is therefore conceivable that the energetic cost for long-term maintenance of acid-base homeostasis under freshwater acidification may come at substantial energetic cost, which could have negative implications on other physiological parameters and thereby animal fitness. Heightened energetic demands to maintain crucial physiological processes during exposure to environmental CO_2 acidification ~~could be met~~ can occur through reallocation of energy budgets or through modification of metabolism to increase energy supplies. In fact, in ~~the~~ marine brittle star, *Amphiura filiformis*, exposure to CO_2 tensions ranging from 1000 to 8000 μatm for 40 days caused an increase in metabolic rate (increased energy budget) (Wood et al., 2008). ~~This metabolic change~~ which was postulated to fuel increased calcification observed in this species (Wood et al., 2008). In contrast, the metabolic rate of juvenile European lobster (*Homarus gammarus*) remained unchanged when exposed to 1100 and 8000 $\mu\text{atm CO}_2$ (Small et al., 2020); however, ~~However, in~~ *H. gammarus*, branchial Na^+/K^+ ATPase activity was increased, demonstrating a reallocation of energy supplies despite maintaining an unchanged energy budget (Small et al., 2020). Unlike ~~in~~ juvenile European lobster and brittle star, juvenile Chinese mitten crabs experienced a decrease in oxygen consumption (potentially decreased energy budget). Despite reductions in oxygen consumption, crabs ~~were still able to~~ could still re-establish extracellular pH through HCO_3^- accumulation, suggesting a potential reallocation of energy supplies to essential ionoregulatory processes. Typically, a reduction in oxygen consumption, as seen in ~~the~~ present study, is observed when an organism ~~is unable to~~ cannot compensate for a reduction in extracellular pH (Pörtner et al., 2004). While in juvenile Chinese mitten crabs, this could be the case at the initial two days of the time course, by day seven extracellular pH was fully compensated yet, oxygen consumption rates were reduced. It is known that high environmental pCO_2 levels can trigger ~~an~~ accumulation of compounds such as adenosine that can lead to reduced oxygen consumption as observed in the peanut worm, *Sipunculus nudus* (Reipschläger et al., 1997). A similar mechanism could conceivably be in place that led to reduced oxygen consumption in the Chinese mitten crab as a strategy to conserve energy supplies to promote survival upon exposure to short-term stressors like high environmental pCO_2 levels. Such an adaptation may be present in Chinese mitten crab as these crabs would regularly experience short-term fluctuations in environmental CO_2 of their natural habitat. In fact, in the Mediterranean mussel (*Mytilus*

galloprovincialis)—a chronically reduced oxygen consumption rates lasting up to 90 days have been observed to allow survival following exposure to ocean acidification (5026 $\mu\text{atm pCO}_2$, Michaelidis et al., 2005). ~~While reducing~~ Reducing oxygen consumption is a viable strategy used by many organisms to survive short-term periods of environmental stress (Guppy and Withers, 1999). ~~However,~~ it is a less viable long-term strategy as reduction in metabolic rate reduces energy availability for costly physiological processes such as calcification and protein synthesis which would ultimately affect growth and reproductive success as reported in freshwater pink salmon (*Oncorhynchus gorbuscha*) and marine amphipod (*Gammarus locusta*) (Borges et al., 2018; Ou et al., 2015).

~~In addition to~~ Besides reduced oxygen consumption, freshwater acidification led to an increase in extracellular concentrations and excretion of ammonia, a metabolic product of protein catabolism. Elevated excretion of ammonia may function as an excretable acid equivalent to assist the maintenance of pH homeostasis, a mechanism suggested for the brackish water green crab (*Carcinus maenas*) and hydrothermal vent crab (*Xenograpsus testudinatus*) (Allen et al., 2020; Fehsenfeld and Weihrauch, 2013). Furthermore, the previously mentioned ~~observed~~ reduction in oxygen consumption and increased ammonia excretion (decrease in O:N ratio) indicates that juvenile Chinese mitten crabs have a greater reliance on protein catabolism as an energy source under elevated environmental CO_2 . Similar decreases in oxygen consumption and increases in ammonia excretion have been observed in the Mediterranean mussel (*M. galloprovincialis*, 5026 $\mu\text{atm pCO}_2$, 15-90 days) and brittle star (*A. filiformis*, 6643 $\mu\text{atm pCO}_2$, 28 days), where catabolism of amino acid such as glutamine may provide metabolic bicarbonate to further ~~assist in sustaining~~ help sustain pH homeostasis (Hu et al., 2014; Michaelidis et al., 2005). While potentially beneficial for sustaining acid-base status, elevated protein catabolism requires a consistent source of protein through either a high protein diet or increased food consumption which if not met could ~~result in~~ cause muscle wastage an effect seen in brittle star during heightened energetic demands of ocean acidification (Wood et al., 2008). ~~Further, the fact that~~ Interestingly, feeding rate has been shown in juvenile European lobster (*H. gammarus*) and green crab (*C. maenas*) to decline as a result of elevated environmental CO_2 ~~makes~~ making a greater reliance on protein catabolism during energetically constricted times a potentially precarious situation for juvenile Chinese mitten crab (Appelhans et al., 2012; Small et al., 2020).

Carapace calcification is an energetically costly process related to growth and predation defence in crustaceans that ~~could be impaired by~~ freshwater acidification and the associated metabolic changes could impair. ~~Generally,~~ ~~decapod~~ Decapod crustaceans are believed to be the least susceptible of calcifying organisms to aquatic acidification as their exoskeletal CaCO_3 exists in the more stable calcite form providing greater resilience to dissolution in contrast to bivalves and corals (Ries et al., 2009). Indeed, the marine crustacean carapace is well protected from aquatic acidification mediated dissolution with reports of either no change or an increase in calcification being typically observed (Kroeker et al., 2013; Ries et al., 2009; Whiteley, 2011). However, in the present study, juvenile Chinese mitten crab had reduced levels of carapace calcification as reflected by a lower carapace calcium content after three and six weeks of exposure (Fig. 4). While not as common, examples of reductions in carapace calcification have been observed in marine crustaceans, including several porcelain crabs and the tanner crab, *Chionoecetes bairdi* (Long et al., 2013; Page et al., 2017). In crustaceans, ~~it has been suggested that~~ carapace dissolution may occur to support extracellular pH buffering that normally occurs through branchial HCO_3^- uptake by providing an alternative

source of HCO_3^- (Cameron, 1985; Defur et al., 1980). In the present study, extracellular pH was recovered long before carapace dissolution was apparent, therefore it is less likely that the carapace is mobilized as a source of HCO_3^- . Instead, reductions in carapace calcium content most likely reflect an alteration in the rate of calcification or acid mediated dissolution of the carapace. As carapace formation and maintenance is an energetically expensive process requiring careful ion regulation by numerous organs, the aforementioned changes in whole animal energetics due to freshwater acidification could have negative implications on animal fitness either by weakening the exoskeleton or impairing post-moult calcification which ~~in turn~~ can hamper growth and leave animals vulnerable to predation.

4.4 Behavioural Responses

Elevated freshwater pCO_2 altered locomotory behaviour in juvenile Chinese mitten crabs. Crabs in acidified freshwater covered less total distance during movement and did so at a lower velocity. No studies have previously examined changes in crustacean distance covered in the presence of elevated environmental CO_2 . However, reduced speed of movement has also been reported in Shiba shrimp (*Metapenaeus joyneri*) exposed to CO_2 levels of $9079 \mu\text{atm}$; however, unlike in Chinese mitten crab, this shrimp did not experience a reduction in ~~resting/standard metabolic oxygen consumption~~ rate correlated with locomotory impairment (Dissanayake and Ishimatsu, 2011). While not measured in our study, in Shiba shrimp there was a reduction in aerobic scope, which would likely lead to reduced aerobic performance and ~~thereby~~ reduced movement (Dissanayake and Ishimatsu, 2011). Similar alterations in aerobic scope could partially be behind the reductions in velocity seen in juvenile Chinese mitten crab, however, this is entirely speculative and there are many cases where elevated CO_2 does not alter aerobic scope (Lefevre, 2016). In addition to moving slower, Chinese mitten crab spent less time moving their entire body throughout the novel arena and less time moving only their appendages while staying at a fixed location. Reduced movement time and appendage movement ~~was/were~~ also seen in the hermit crab (*Pagurus bernhardus*) exposed to $12000 \mu\text{atm}$ CO_2 (de la Haye et al., 2011). In contrast, the isopod (*Paradella diana*) experienced no change in swim time or crawling time when exposed to $2085 \mu\text{atm}$ CO_2 despite a measured metabolic depression (Alenius and Munguia, 2012). Differences in the effect of CO_2 on movement time may ~~be a result result from~~ the CO_2 levels employed, but further studies on a greater variety of species are required to determine potential patterns for crustaceans. It is plausible that overall locomotory behaviour is reduced in this study due to alterations in neurological function resulting from ionic imbalances or other CO_2 -mediated effects that ~~are known to may~~ occur from elevated environmental CO_2 (For review of neural effects of aquatic acidification see Tresguerres and Hamilton, 2017). ~~Additionally, with~~ With a potential reduction in overall energy availability, crabs may ~~be reduceing/~~ reduce energy expenditure through locomotion to conserve energy stores for physiological processes more crucial to surviving the physiological distress caused by freshwater acidification. The overall reductions in locomotion observed in juvenile Chinese mitten crab could have negative consequences ~~on for~~ their survival, as reduced movement would make these crabs more vulnerable to predation, reduce migratory capabilities and reduce foraging ability.

5 Conclusion

In conclusion, we found impairment of survival, metabolism, calcification, and locomotion with exposure to a potential future CO₂ mediated freshwater acidification scenario. ~~Overall, energy~~Energy availability was reduced despite heightened ionoregulatory energetic demands. Changes in the animals' energy budgets likely result in a greater dependency on protein catabolism as an energy source to allow for extracellular pH recovery at the cost of reducing their exoskeletal calcification and locomotion. We found that despite successful acid-base compensation, survival rates declined with ~~a~~3.8 times greater probability of mortality under acidified freshwater conditions. While our study suggests negative impacts of freshwater acidification, these results should be assessed with caution as the assumed acidification levels are based on a relationship between changes in atmospheric CO₂ and freshwater CO₂ which remains to be more effectively modelled. Nevertheless, this study shows that despite inhabiting an environment that experiences regular fluctuations in pCO₂ the Chinese mitten crab may be at risk to future freshwater acidification. This ~~and~~ emphasizes the importance of modelling acidification in freshwater systems to accurately assess biological consequences of global change. Based on our findings that a physiologically robust species displays sensitivity to future freshwater acidification, further research investigating the effect of ~~future~~ freshwater acidification on a wide range of freshwater species from all phyla ~~is~~are required to better identify the effects of anthropogenic CO₂ accumulation on freshwater ecosystems.

Data Availability

Data are available at the following link <http://dx.doi.org/10.6084/m9.figshare.13888034>.

470 Author Contributions

A.R.Q.R designed the study, performed experiments, analysed data and wrote the manuscript. P-L.K, P-H.S, and M-T.H. performed experiments. G.J.P.A analysed data and assisted with writing. P-P.H. provided financial support and analytical tools. Y-C.T. assisted in designing the study, writing the manuscript, and provided financial support and analytical tools. D.W. assisted in designing the study, writing the manuscript, and provided financial support and analytical tools.

475 Competing Interests

The authors declare that they have no conflict of interest

Acknowledgements

Research was supported by the National Science and Engineering Research Council (NSERC DG; D.W.), the Ministry of Science and Technology, Taiwan, Republic of China (MOST 108=2621-M-001-003; Y.-C.T.), NSERC's PGS-D and
480 University of Manitoba Graduate Fellowship (A.R.Q.R. and G.J.P.A.)

References

- Alenius, B. and Munguia, P.: Effects of pH variability on the intertidal isopod, *Paradella diana*, Mar. Freshw. Behav. Physiol., 45(4), 245–259, doi:10.1080/10236244.2012.727235, 2012.
- Allen, G. J. P., Kuan, P. L., Tseng, Y. C., Hwang, P. P., Quijada-Rodriguez, A. R. and Weihrauch, D.: Specialized adaptations
485 allow vent-endemic crabs (*Xenograpsus testudinatus*) to thrive under extreme environmental hypercapnia, Sci. Rep., 10(1), 1–13, doi:10.1038/s41598-020-68656-1, 2020.
- Appelhans, Y. S., Thomsen, J., Pansch, C., Melzner, F. and Wahl, M.: Sour times: Seawater acidification effects on growth, feeding behaviour and acid-base status of *Asterias rubens* and *Carcinus maenas*, Mar. Ecol. Prog. Ser., 459, 85–97, doi:10.3354/meps09697, 2012.
- 490 Balian, E. V., Segers, H., Lévêque, C. and Martens, K.: The freshwater animal diversity assessment: an overview of the results, in *Developments in Hydrobiologia*, vol. 595, pp. 627–637, Springer., 2008.
- Borges, F. O., Figueiredo, C., Sampaio, E., Rosa, R. and Grilo, T. F.: Transgenerational deleterious effects of ocean acidification on the reproductive success of a keystone crustacean (*Gammarus locusta*), Mar. Environ. Res., 138(February), 55–64, doi:10.1016/j.marenvres.2018.04.006, 2018.
- 495 Cameron, J. N.: Effects of hypercapnia on blood acid-base status, NaCl fluxes, and trans-gill potential in freshwater blue crabs, *Callinectes sapidus*, J. Comp. Physiol. □ B, 123(2), 137–141, doi:10.1007/BF00687841, 1978.
- Cameron, J. N.: Compensation of Hypercapnic Acidosis in the Aquatic Blue Crab, *Callinectes Sapidus*: The Predominance of External Sea Water Over Carapace Carbonate as the Proton Sink, J. Exp. Biol., 114(1), 197–206, 1985.
- Cole, J. J. and Caraco, N. F.: Carbon in catchments: Connecting terrestrial carbon losses with aquatic metabolism, in *Marine and Freshwater Research*, 2001.
500
- Cumberlidge, N., Ng, P. K. L., Yeo, D. C. J., Magalhães, C. and Campos, M. R.: Freshwater Crabs and the Biodiversity Crisis: Importance, Threats, Status, and Conservation Challenges, Biol. Conserv., 142, 1665–1673, doi:10.4324/9780203114261, 2009.
- Czerniejewski, P., Rybczyk, A. and Wawrzyniak, W.: Diet of the Chinese mitten crab, *Eriocheir sinensis* H. Milne Edwards,
505 1853, and potential effects of the crab on the aquatic community in the River Odra/Oder estuary (N.-W. Poland), Crustaceana, 83(2), 195–205, doi:10.1163/001121609X12591347509202, 2010.
- David, A. A., Pettit, L. and Edmund, M.: Resilience of a highly invasive freshwater gastropod, *viviparus georgianus* (Caenogastropoda: Viviparidae), to CO₂-induced acidification, J. Molluscan Stud., 86(3), 259–262,

- doi:10.1093/MOLLUS/EYAA008, 2020.
- 510 Defur, P. L., Wilkes, P. R. H. and McMahon, B. R.: Non-equilibrium acid-base status in *C. productus*: Role of exoskeletal carbonate buffers, *Respir. Physiol.*, 42(3), 247–261, doi:10.1016/0034-5687(80)90118-8, 1980.
- Dickson, A. G.: Standard potential of the reaction: $-\text{AgCl}_{(s)} + 1/2\text{H}^2_{(g)} = \text{Ag}_{(s)} + \text{HCl}_{(aq)}$ and the standard acidity constant of the ion HSO_4^- in synthetic sea water from 273.15 to 318.15 K, *J. Chem. Thermodyn.*, 1990.
- Dissanayake, A. and Ishimatsu, A.: Synergistic effects of elevated CO₂ and temperature on the metabolic scope and activity
515 in a shallow-water coastal decapod (*Metapenaeus joyneri*; Crustacea: Penaeidae), *ICES J. Mar. Sci.*, 68(6), 1147–1154, doi:10.1093/icesjms/fsq188, 2011.
- Donohue, P. J. C., Calosi, P., Bates, A. H., Laverock, B., Rastrick, S., Mark, F. C., Strobel, A. and Widdicombe, S.: Impact of exposure to elevated pCO₂ on the physiology and Behaviour of an important ecosystem engineer, the burrowing shrimp *Upogebia deltaura*, *Aquat. Biol.*, 15(1), 73–86, doi:10.3354/ab00408, 2012.
- 520 FAO: The State of World Fisheries and Aquaculture 2018 - Meeting the sustainable development goals, Rome., 2018.
- Feely, R. A., Sabine, C. L., Lee, K., Berelson, W., Kleypas, J., Fabry, V. J. and Millero, F. J.: Impact of anthropogenic CO₂ on the CaCO₃ system in the oceans, *Science* (80-.), doi:10.1126/science.1097329, 2004.
- Fehsenfeld, S. and Weihrauch, D.: Differential acid-base regulation in various gills of the green crab *Carcinus maenas*: Effects of elevated environmental pCO₂, *Comp. Biochem. Physiol. A. Mol. Integr. Physiol.*, 164(1), 54–65,
525 doi:10.1016/j.cbpa.2012.09.016, 2013.
- Fehsenfeld, S. and Weihrauch, D.: Mechanisms of acid – base regulation in seawater-acclimated green crabs (*Carcinus maenas*), *Can. J. Zool.*, 94, 95–107, 2016.
- Findlay, H. S., Kendall, M. A., Spicer, J. I. and Widdicombe, S.: Post-larval development of two intertidal barnacles at elevated CO₂ and temperature, *Mar. Biol.*, 157(4), 725–735, doi:10.1007/s00227-009-1356-1, 2010.
- 530 Florence, T. M. and Farrar, Y. J.: Spectrophotometric determination of chloride at the parts-per-billion level by the mercury(II) thiocyanate method, *Anal. Chim. Acta*, doi:10.1016/S0003-2670(01)82142-5, 1971.
- Guppy, M. and Withers, P.: Metabolic depression in animals: Physiological perspectives and biochemical generalizations, *Biol. Rev.*, doi:10.1111/j.1469-185X.1999.tb00180.x, 1999.
- Hans, S., Fehsenfeld, S., Treberg, J. R. and Weihrauch, D.: Acid–base regulation in the Dungeness crab (*Metacarcinus magister*), *Mar. Biol.*, 161(5), 1179–1193, doi:10.1007/s00227-014-2409-7, 2014.
- 535 Hasler, C. T., Butman, D., Jeffrey, J. D. and Suski, C. D.: Freshwater biota and rising pCO₂?, *Ecol. Lett.*, 19(1), 98–108, doi:10.1111/ele.12549, 2016.
- Henry, R. P., Lucu, C., Onken, H. and Weihrauch, D.: Multiple functions of the crustacean gill: osmotic/ionic regulation, acid-base balance, ammonia excretion, and bioaccumulation of toxic metals., *Front. Physiol.*, 3(November), 431,
540 doi:10.3389/fphys.2012.00431, 2012.
- Holmes, R. M., Aminot, A., K erouel, R., Hooker, B. A. and Peterson, B. J.: A simple and precise method for measuring ammonium in marine and freshwater ecosystems, *Can. J. Fish. Aquat. Sci.*, doi:10.1139/f99-128, 1999.

- Hu, M. Y., Casties, I., Stumpp, M., Ortega-Martinez, O. and Dupont, S.: Energy metabolism and regeneration are impaired by seawater acidification in the infaunal brittlestar *Amphiura filiformis*., *J. Exp. Biol.*, 217(Pt 13), 2411–21, 545 doi:10.1242/jeb.100024, 2014.
- IPCC: Climate Change 2013: The Physical Science Basis, Changes, 1–1535, 2013.
- Jeffrey, J. D., Hannan, K. D., Hasler, C. T. and Suski, C. D.: Chronic exposure of a freshwater mussel to elevated pCO₂: Effects on the control of biomineralization and ion-regulatory responses, *Environ. Toxicol. Chem.*, 37(2), 538–550, doi:10.1002/etc.3991, 2018a.
- 550 Jeffrey, J. D., Hannan, K. D., Hasler, C. T. and Suski, C. D.: Hot and bothered: Effects of elevated pco₂ and temperature on juvenile freshwater mussels, *Am. J. Physiol. - Regul. Integr. Comp. Physiol.*, 315(1), R115-R127, doi:10.1152/ajpregu.00238.2017, 2018b.
- Kroeker, K. J., Kordas, R. L., Crim, R., Hendriks, I. E., Ramajo, L., Singh, G. S., Duarte, C. M. and Gattuso, J.-P.: Impacts of ocean acidification on marine organisms: quantifying sensitivities and interaction with warming., *Glob. Chang. Biol.*, 19(6), 555 1884–96, doi:10.1111/gcb.12179, 2013.
- de la Haye, K. L., Spicer, J. I., Widdicombe, S. and Briffa, M.: Reduced sea water pH disrupts resource assessment and decision making in the hermit crab *Pagurus bernhardus*, *Anim. Behav.*, 82(3), 495–501, doi:10.1016/j.anbehav.2011.05.030, 2011.
- Lefevre, S.: Are global warming and ocean acidification conspiring against marine ectotherms? A meta-analysis of the respiratory effects of elevated temperature, high CO₂ and their interaction, *Conserv. Physiol.*, 4(1), 1–31, 560 doi:10.1093/conphys/cow009, 2016.
- Leone, F. A., Lucena, M. N., Garçon, D. P., Pinto, M. R. and McNamara, J. C.: Gill Ion Transport ATPases and Ammonia Excretion in Aquatic Crustaceans, in *Acid-Base Balance and Nitrogen Excretion in Invertebrates.*, 2017.
- Lewis, E. and Wallace, D.: Program developed for CO₂ system calculations, Ornl/Cdiac-105, 1998.
- Long, W. C., Swiney, K. M., Harris, C., Page, H. N. and Foy, R. J.: Effects of Ocean Acidification on Juvenile Red King Crab 565 (*Paralithodes camtschaticus*) and Tanner Crab (*Chionoecetes bairdi*) Growth, Condition, Calcification, and Survival, edited by S. Dupont, *PLoS One*, 8(4), e60959, doi:10.1371/journal.pone.0060959, 2013.
- Melzner, F., Gutowska, M. A., Langenbuch, M., Dupont, S., Lucassen, M., Thorndyke, M. C., Bleich, M. and Pörtner, H. O.: Physiological basis for high CO₂ tolerance in marine ectothermic animals: Pre-adaptation through lifestyle and ontogeny?, *Biogeosciences*, doi:10.5194/bg-6-2313-2009, 2009.
- 570 Michaelidis, B., Ouzounis, C., Palaras, A. and Pörtner, H.-O.: Effects of long-term moderate hypercapnia on acid-base balance and growth rate in marine mussels *Mytilus galloprovincialis*, *Mar. Ecol. Prog. Ser.*, 293, 109–118, 2005.
- Millero, F. J.: The thermodynamics of the carbonate system in seawater, *Geochim. Cosmochim. Acta*, doi:10.1016/0016-7037(79)90184-4, 1979.
- Milligan, L. P. and McBride, B. W.: Shifts in Animal Energy Requirements across Physiological and Alimentational States: 575 Energy Costs of Ion Pumping by Animal Tissues, *J. Nutr.*, 115, 1374–1382, 1985.
- Ou, M., Hamilton, T. J., Eom, J., Lyall, E. M., Gallup, J., Jiang, A., Lee, J., Close, D. a., Yun, S.-S. and Brauner, C. J.:

- Responses of pink salmon to CO₂-induced aquatic acidification, *Nat. Clim. Chang.*, 5(10), 950–955, doi:10.1038/nclimate2694, 2015.
- Page, T. M., Worthington, S., Calosi, P. and Stillman, J. H.: Effects of elevated pCO₂ on crab survival and exoskeleton composition depend on shell function and species distribution: A comparative analysis of carapace and claw mineralogy across four porcelain crab species from different habitats, *ICES J. Mar. Sci.*, 74(4), 1021–1032, doi:10.1093/icesjms/fsw196, 2017.
- 580
- Pan, T. C. F., Applebaum, S. L. and Manahan, D. T.: Experimental ocean acidification alters the allocation of metabolic energy, *Proc. Natl. Acad. Sci. U. S. A.*, 112(15), 4696–4701, doi:10.1073/pnas.1416967112, 2015.
- Pane, E. F. and Barry, J. P.: Extracellular acid-base regulation during short-term hypercapnia is effective in a shallow-water crab, but ineffective in a deep-sea crab, *Mar. Ecol. Prog. Ser.*, 334, 1–9, doi:10.3354/meps334001, 2007.
- 585
- Phillips, J. C., Mckinley, G. A., Bennington, V., Bootsma, H. A., Pilcher, D. J., Sterner, R. and Urban, N. R.: The Potential for CO₂-Induced Acidification in Freshwater: A Great Lakes Case Study, *Oceanography*, 28(2), 136–145, 2015.
- Pörtner, H. O., Langenbuch, M. and Reipschläger, A.: Biological impact of elevated ocean CO₂ concentrations: Lessons from animal physiology and earth history, *J. Oceanogr.*, doi:10.1007/s10872-004-5763-0, 2004.
- 590
- Ran, L., Lu, X. X. and Liu, S.: Dynamics of riverine CO₂ in the Yangtze River fluvial network and their implications for carbon evasion, *Biogeosciences*, 14(8), 2183–2198, doi:10.5194/bg-14-2183-2017, 2017.
- Raymond, P. a, Hartmann, J., Lauerwald, R., Sobek, S., McDonald, C., Hoover, M., Butman, D., Striegl, R., Mayorga, E., Humborg, C., Kortelainen, P., Dürr, H., Meybeck, M., Ciais, P. and Guth, P.: Global carbon dioxide emissions from inland waters., *Nature*, 503(7476), 355–9, doi:10.1038/nature12760, 2013.
- 595
- Reipschläger, A., Nilsson, G. E. and Pörtner, H. O.: A role for adenosine in metabolic depression in the marine invertebrate *Sipunculus nudus*, *Am. J. Physiol. - Regul. Integr. Comp. Physiol.*, 272(1 41-1), doi:10.1152/ajpregu.1997.272.1.r350, 1997.
- Ries, J. B., Cohen, A. L. and McCorkle, D. C.: Marine calcifiers exhibit mixed responses to CO₂-induced ocean acidification, *Geology*, 37(12), 1131–1134, doi:10.1130/G30210A.1, 2009.
- Robertson, M. D., Hernandez, M. F., Midway, S. R., Hasler, C. T. and Suski, C. D.: Shelter-seeking behavior of crayfish, *Procambarus clarkii*, in elevated carbon dioxide, *Aquat. Ecol.*, doi:10.1007/s10452-018-9657-4, 2018.
- 600
- Roleda, M. Y., Boyd, P. W. and Hurd, C. L.: Before ocean acidification: Calcifier chemistry lessons, *J. Phycol.*, doi:10.1111/j.1529-8817.2012.01195.x, 2012.
- Sarazin, G., Michard, G. and Prevot, F.: A rapid and accurate spectroscopic method for alkalinity measurements in sea water samples, *Water Res.*, 33(1), 290–294, doi:10.1016/S0043-1354(98)00168-7, 1999.
- 605
- Small, D. P., Calosi, P., Rastrick, S. P. S., Turner, L. M., Widdicombe, S. and Spicer, J. I.: The effects of elevated temperature and PCO₂ on the energetics and haemolymph pH homeostasis of juveniles of the European lobster, *Homarus gammarus*, *J. Exp. Biol.*, 223(8), 1–10, doi:10.1242/jeb.209221, 2020.
- Spicer, J. I. and Eriksson, S. P.: Does the development of respiratory regulation always accompany the transition from pelagic larvae to benthic fossorial postlarvae in the Norway lobster *Nephrops norvegicus* (L.)?, *J. Exp. Mar. Bio. Ecol.*, 295(2), 219–
- 610 243, doi:10.1016/S0022-0981(03)00296-X, 2003.

- Spicer, J. I., Raffo, A. and Widdicombe, S.: Influence of CO₂-related seawater acidification on extracellular acid-base balance in the velvet swimming crab *Necora puber*, *Mar. Biol.*, 151(3), 1117–1125, doi:10.1007/s00227-006-0551-6, 2007.
- Tacon, A. G. J.: Trends in Global Aquaculture and Aquafeed Production: 2000–2017, *Rev. Fish. Sci. Aquac.*, 28(1), 43–56, doi:10.1080/23308249.2019.1649634, 2020.
- 615 Taylor, J. R. A., Gilleard, J. M., Allen, M. C. and Deheyn, D. D.: Effects of CO₂ -induced pH reduction on the exoskeleton structure and biophotonic properties of the shrimp *Lysmata californica*, *Sci. Rep.*, 5(April), 1–12, doi:10.1038/srep10608, 2015.
- Tresguerres, M. and Hamilton, T. J.: Acid-base physiology, neurobiology and behaviour in relation to CO₂-induced ocean acidification, *J. Exp. Biol.*, 220, 2136–2148, doi:10.1242/jeb.144113, 2017.
- 620 Truchot, J. P.: Carbon dioxide combining properties of the blood of the shore crab *Carcinus maenas* (L.): Carbon dioxide solubility coefficient and carbonic acid dissociation constants, *J. Exp. Biol.*, 64, 45–57, 1976.
- Truchot, J. P.: Acid-base changes on transfer between sea- and freshwater in the Chinese crab, *Eriocheir sinensis*, *Respir. Physiol.*, 87, 419–427, 1992.
- Veilleux, É. and Lafontaine, Y. De: Biological Synopsis of the Chinese Mitten Crab (*Eriocheir sinensis*) Canadian Manuscript
- 625 Report of Fisheries and Aquatic Sciences 2812, 2007.
- Weiss, L. C., Pötter, L., Steiger, A., Kruppert, S., Frost, U. and Tollrian, R.: Rising pCO₂ in Freshwater Ecosystems Has the Potential to Negatively Affect Predator-Induced Defenses in *Daphnia*, *Curr. Biol.*, 28(2), 327-332.e3, doi:10.1016/j.cub.2017.12.022, 2018.
- Wheatly, M. G. and Henry, R. P.: Extracellular and intracellular acid-base regulation in crustaceans, *J. Exp. Zool.*, 263(2),
- 630 127–142, doi:10.1002/jez.1402630204, 1992.
- Whiteley, N. M.: Physiological and ecological responses of crustaceans to ocean acidification, *Mar. Ecol. Prog. Ser.*, 430, 257–271, doi:10.3354/meps09185, 2011.
- Wittmann, A. C. and Pörtner, H. O.: Sensitivities of extant animal taxa to ocean acidification, *Nat. Clim. Chang.*, 3(11), 995–1001, doi:10.1038/nclimate1982, 2013.
- 635 Wood, H. L., Spicer, J. I. and Widdicombe, S.: Ocean acidification may increase calcification rates, but at a cost., *Proceedings Biol. Sci.*, 275(1644), 1767–73, doi:10.1098/rspb.2008.0343, 2008.
- Zheng, C. qun, Jeswin, J., Shen, K. li, Lablche, M., Wang, K. jian and Liu, H. peng: Detrimental effect of CO₂-driven seawater acidification on a crustacean brine shrimp, *Artemia sinica*, *Fish Shellfish Immunol.*, 43(1), 181–190, doi:10.1016/j.fsi.2014.12.027, 2015.

640