

Response to reviewer 1 of “The sensitivity of pCO₂ reconstructions in the Southern Ocean to sampling scales: a semi-idealized model sampling and reconstruction Approach”

by Djeutchouang, Chang, Gregor, Vichi, Monteiro

First of all, we would like to take the opportunity to thank the reviewer for the thoughtful comments and suggestions, which help strengthen the paper. We will respond (in italics) to each of your specific comments as follows.

This paper is well-written, and some interesting conclusions can be drawn from the results.

Thank you

However, I had trouble appreciating the paper as the conclusions were presented in what felt to be a very misleading way. Recommendations are given in the abstract and conclusions without emphasizing appropriate caveats making this paper feel biased and unscientific. I recommend major revisions to appropriately implement these caveats. The title and abstract are misleading with the conclusions not put in proper context. I would prefer if you took Southern Ocean out of the title. As it stands the paper tells me much less about the Southern Ocean than I had envisioned it would. Your decisions made in this paper are fine, but they significantly impact the results and cannot be hidden in the details. Indeed the experiment was designed to make nUSV do the best as you explain on line ~657. Here are some more specific comments (in no real particular order):

Response: We thank the reviewer for these comments and suggestions. We have revised the title of the study as follows: “A semi-idealized model sampling and reconstruction approach across a Southern Ocean front: the sensitivity of pCO₂ reconstructions to sampling scales”.

After revising the manuscript, we have emphasized appropriate caveats as suggested and the abstract has been revised as follows: “... Here we choose one year of an experimental model sub-domain of 10 degrees of latitude (40°S - 50°S) by 20 degrees of longitude (10°W - 10°E). This domain is divided by the Sub-Antarctic Front (SAF) and thus overlaps both the Sub-Antarctic Zone (SAZ) and Polar Frontal Zone (PFZ) which are the two most sampled sub-regions of the Southern Ocean. While our study domain does not resolve all Southern Ocean scales, it is representative of the scale variability we aim to address. The OSSEs simulated within this domain the spatio-temporal sampling scales of surface ocean pCO₂ in ways that are comparable to ocean CO₂ observing platforms (Ship, Waveglider, Carbon-float, Saildrone) in terms of their temporal sampling scales, and not necessarily their spatial ones. This study focuses more on the mode of variability and not the mechanisms. ... From our study, it appears that a more coordinated deployment of floats would contribute further to resolving synoptic variabilities and the meridional gradients.”

Regarding the conclusions, they have been appropriately revised by emphasizing caveats.

Major comments:

- The choice to reconstruct one year of a small box (10 degrees of lat by 20 degrees of long) and call that the Southern Ocean is quite a leap and should be presented clearly in the abstract so as

to not mislead about results. This isn't the Southern Ocean and this choice has significant implications on observing system recommendations.

Response: We thank the reviewer for this suggestion. We do acknowledge that the chosen domain is not the Southern Ocean. This has been revised and presented clearly in the abstract. However, we recall that while our selected domain does not resolve all Southern Ocean scales, it is representative of the scale variability we aimed to address. For example, we correlated the detrended pCO₂ data from three distinctly selected grid cells (black dot, Fig. 1a-c, of this note) of our study domain with the entire Southern Ocean. In each case, the analysis resulted in a high correlation (≥ 0.5) area covering more than 50% of the total area. Therefore, the results from this study could be representative of the broader Southern Ocean. Moreover, with respect to longitude, our domain covers about +5% of the Southern Ocean, which may be longitudinally applicable to the Southern Ocean as a whole (Lenton et al., 2006; Mazloff et al., 2018; Wu et al., 2019). However, this will still need a follow-up study.

We are using the model output data for this larger domain (Southern Ocean) for future work.

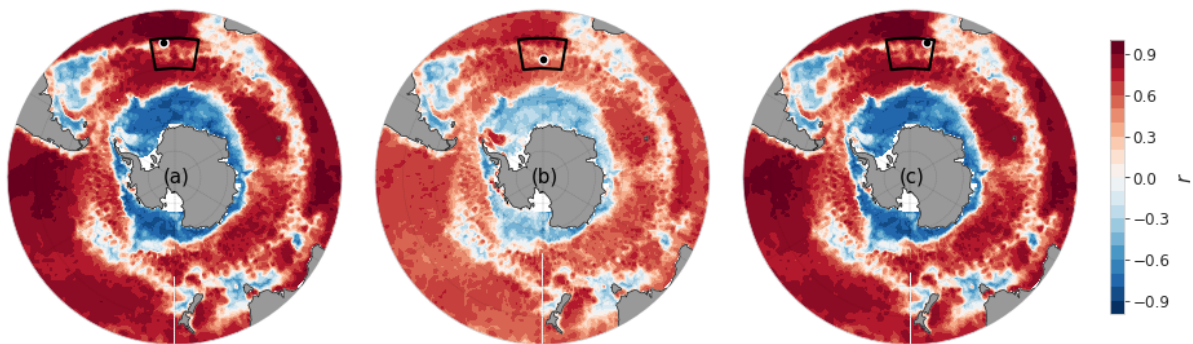


Figure 1: Correlation (Pearson r -value) between the pCO₂ from three distinct points (black dot): panels (a), (b), and (b) of our study domain (black box) and the rest of the Southern Ocean. This is quite similar to the seasonal cycle reproducibility in some way except that in this case, we are relating our domain specifically to the Southern Ocean.

Additionally, here, we provide another context of why we assumed the study domain (black box, Fig. 2a, of this note) is representative of the scale variability we aimed to address. Based on the 10-year model (NEMO-PISCES) data of 5-day resolution that we have, we calculated the seasonal cycle reproducibility (SCR) of the model pCO₂, which is defined as the correlation of detrended pCO₂ with its own climatology – the larger the correlation, the stronger the SCR (Thomalla et al., 2011). Based on this SCR, we could classify the Southern Ocean into three regions LSCR, MSCR, and HSCR (Fig. 2a, of this note) corresponding to low, medium, and high SCR, respectively. The fraction coverage estimates of these SCR-based regions are shown in Fig. (2b) (of this note). Our study domain is a high-EKE area, and increased intra-seasonal variability of pCO₂ in the Southern Ocean is associated with high-EKE areas (Monteiro et al., 2015; du Plessis et al., 2019). These high-EKE areas correspond relatively to MSCR (0.65-0.85) and HSCR (0.85-1) regions which, based on our estimation, represent more than 71% of the whole Southern Ocean.

The data we used for this SCR calculation is from a 10-year period of 5-day resolution ocean (NEMO-PISCES) model simulations that we have.

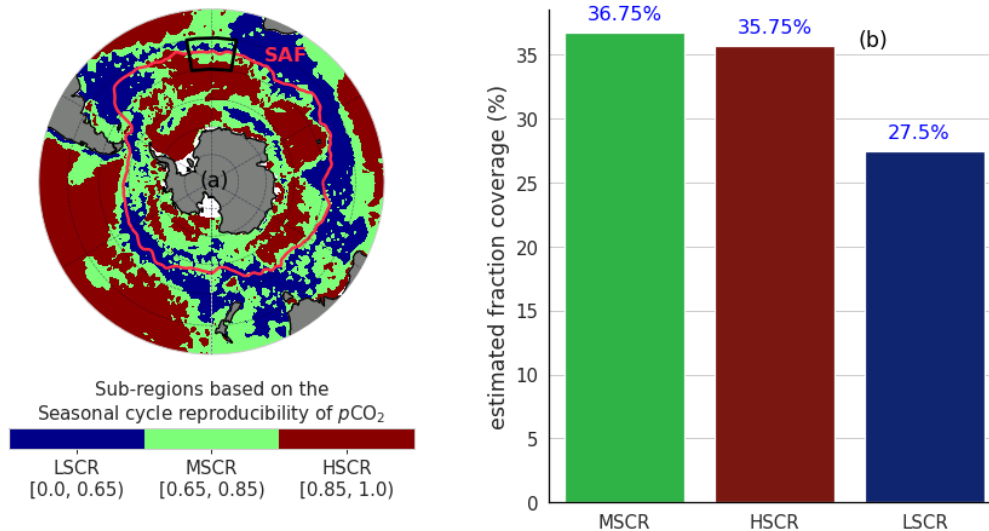


Figure 1: Panel (a) is the Southern Ocean regions based on the seasonal cycle reproducibility (SCR) of the model pCO_2 with the Sub-Antarctic Front (SAF) (light red) and the study domain (black box), and panel (b) is their fraction coverage estimates (%). LSCR corresponds to low SCR areas, while MSCR represents medium SCR areas and HSCR corresponds to high SCR areas.

- As you state, Figure 2c shows this model is inconsistent with both reconstructions. Line ~195 needs to be changed. This is significant as it means the pCO_2 may be driven by a mechanism different from the real world. This is relevant to the objective of the study (i.e. you can predict largely from knowledge of SST) and you need to discuss this. If the correlation to SST was weaker you would need to know the biological component better and the statistics may be different. This also has significant implications on observing system recommendations.

Response: Thank you. Regarding this comment, it is relevant to start by recalling that this study is more about the mode of variability and not the mechanisms. The forced coupled ocean model (NEMO-PISCES) does represent the processes that regulate CO_2 but for the purpose of this study, it does not really matter whether the model is right or wrong. What matters is that it shows a domain that has different modes of variability, and what we tried to show is that the reconstruction is sensitive to how you sample such a domain with different modes of variability.

Further, the machine learning (ML) methods used in this study; that is, the feed-forward neural network, and the tree-based method gradient boosting machine, do not capture the mechanisms that actually drive the pCO_2 (Holder and Gnanadesikan, 2021). Rather, these ML models capture changes in the drivers and then the associated changes in the pCO_2 . We do acknowledge that the lack of better knowledge of biological components might also have implications on observing system recommendations.

- Is nUSV sampling realistic? How many platforms are envisioned? It seems very dense – how long would it take one saildrone to reach all those points? Shouldn't the nUSV sampling look more like the ship track? Moreover, how many nUSVs would it take to sample the full Southern Ocean with that density?

Response: Thank you for these questions. Our starting reference was the nUSV used in Sutton et al. (2021) that sampled at a very high resolution and completed in about 6 months the first autonomous circumnavigation of Antarctica providing hourly observations. Thus, our answer to the first two questions is affirmative; that is, the nUSV sampling is realistic with one platform given the size of the sampling domain. The study is actually proposing that this meridional sampling approach may be an efficient way of sampling using autonomous observing systems.

*Regarding the third question, we created a subset of Sutton et al. (2021)-USV dataset within the same domain of 20 degrees longitude (10°W - 10°E) as that of the study (see Fig. 3, of this note). We found that the Sutton et al. (2021) USV would take ~16 days to cover our 20°W-E domain; that is, 16days * 24hrs = 384 hourly samples as shown in Fig. (3). However, the nUSV sampling pattern is idealised, with the goal of sampling on both sides of the front. In future work we will investigate a more realistic sampling pattern with an associated “cruise-track”. In this more realistic sampling strategy, an along-front (West to East) zig-zag pattern would be sampled across the front. This sampling pattern would likely be even better at capturing the meridional gradient across the front than the idealised sampling that we currently use. Therefore, using a back of the envelope approach, we found that the Sairdrone would be able to cover our domain in 45 days using a zig-zag pattern - assuming 42°S to 46°S with each pass covering 2.5°W-E for each pass (~500 km) with 8 passess in our domain (4000 km). At a speed of 2 knots (3.7 km/hr), the drone would cover the domain in 45 days.*

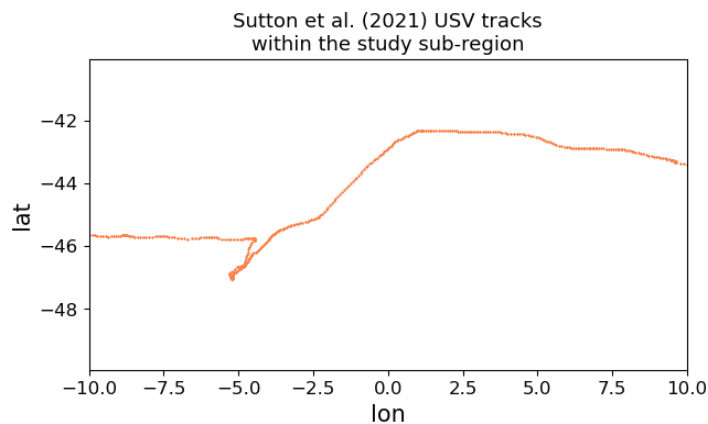


Figure 3: Sampling tracks of Sutton et al. (2021)-like USV inside our study domain.

About the question regarding the nUSV sampling tracks, the answer is affirmative. Actually, nUSV could sample like a ship but the idea here is to leverage the capability of the USV Sairdrone to go wherever you want it to go and not just follow the ship track. Thus, its sampling pattern does not have to look like the ship track and that is even why we applied it here. In addition, according to a Science Magazine News by Paul Voosen (March 8, 2018), nUSV can be easily driven remotely to cover desired sampling locations or patterns, plus the fact that it has a much higher sampling frequency (hourly).

Regarding the number of nUSVs it would take to sample the full Southern Ocean with a similar density, we are planning to provide an estimate in a follow-up study covering the Southern Ocean as a whole. The idea is to figure out how the carbon cycle community can better use existing and newly developed autonomous sampling vehicles to better supplement ship-based observations that are essential in machine-learning-based mapping approaches. However, longitudinally, the Southern Ocean is equal to $360/20 = 18$ times our 20°W-E domain. This means that it would take 18 Sairdrones to sample the full Southern Ocean at that density (cf. Fig.1c, manuscript).

- The goal of the floats is to give the large spatial structure and this aspect of them is not valued in your experiment design. This should be mentioned when giving recommendations.

Response: Thank you for this suggestion. Contrary, in order to not disadvantage the floats, we deployed one float in each sub-domain (SAZ and PFZ), under the assumption that floats would not cross the Sub-Antarctic Front (SAF). In addition, given the size of the chosen domain and sampling frequency of the floats, we assumed that in this experiment design a larger spatial structure would be less realistic with a single float because in reality, the float stays at the surface only for a short amount of time. However, we do acknowledge that might create some biases, and that is why we mentioned that floats would benefit from more coordinated deployments to be able to resolve variability scales such as the meridional gradients. In the revised manuscript, when given recommendations, we emphasize this aspect more.

- If one were to extrapolate this to the full Southern Ocean, which is about 100 times larger than your box, what would the monetary cost to sample with the density of your experiment for each platform? For example, if it would take 100 nUSVs or 200 wavegliders is that practical?

Response: We thank the reviewer for this question. Here, we recall that the study is more about the mode of variability. The chosen domain is known to be a high-EKE area and based on the seasonal cycle reproducibility (SCR) of model pCO₂ (Fig. 2a), it is representative of the model of variability we aimed to address in the Southern Ocean.

Further, as we mentioned previously, the whole idea is to figure out how the carbon cycle community can better benefit from autonomous sampling robots in order to supplement ship-based observations. From this study, we proposed that the meridional sampling approach may be an efficient way of sampling using autonomous robots. Therefore, in a follow-up study, we are carrying out similar experiments to the full Southern Ocean and also investigating how many nUSVs will take into practice to supplement ship-based observations in order to resolve both the intra-seasonal variability and the meridional gradients in the Southern Ocean as a whole.

According to a Science Magazine News by Paul Voosen (March 8, 2018), however, Saildrone Inc charges about \$2500 a day per nUSV to collect ocean data, whereas ship time can cost \$30,000 or more per day. Thus, based on the Sutton et al. (2021)-USV example (Fig. 3, of this note) that would sample hourly the study domain in about 16 days, to sample the full Southern Ocean with the density our experiment would cost about $18 \times 16 \times \$2\,500 = \$720\,000$.

- Even in your box you may give some information about the monetary cost of each sampling effort to give some practical perspective.

Response: Thank you for the comment. The revised manuscript takes that into account based on the discussion about the previous point.

- WGs can be “driven”, but you have chosen to give them a mooring-like program. This impacts the results. You finally mention this at the end, but not in the abstract when giving recommendations.

Response: Indeed, WGs were driven to follow a hexagonal pattern of about ± 10 km of radius as in practice (cf. Fig. S1 and Monteiro et al., 2015). However, WGs are harder to drive remotely (especially in the presence of jets), and relative to nUSVs they cannot cover a lot of space. Actually, the main reason for the pseudo-mooring mode was because of the assumption in the experimental design that was - intra-seasonal modes are critical to address uncertainties and biases. At that stage, there was little recognition of the seasonal variability of the meridional gradient.

In addition, realistically, the research vessel SA Agulhas, for example, crosses the study region at the same points making WGs deployment and retrieval a lot easier when they are done around the same spot. Therefore, from a logistic perspective, WGs were given a mooring-like program whereas nUSV would be able to sail to the next port.

- You give the caveat “We emphasize that these experiments are intentionally made to reproduce the sampling resolution of their real-world counterparts, not necessarily their spatial resolution in practice but at least the temporal one.” In the text, but it needs to be featured more prominently (e.g. in the title).

Response: Thank you for suggesting this. We have reworded the sentence and made it feature more prominently in the abstract.

- It appears you train with mixed layer depth (MLD) for all platforms, but surface platforms don't give MLD. How will you get that information and deal with the uncertainty from this? This wasn't discussed, or I missed it, and this is a serious caveat.

Response: We thank the reviewer for this question. We do acknowledge that surface platforms do not provide information about the mixed layer depth (MLD). In practice, for instance, existing reconstruction methods use MLD climatology as a proxy variable (Gregor et al., 2019; Gloege et al., 2021). The main purpose of taking MLD climatology is to smooth the data and thus reduce the uncertainty from MLD information. Our approach of using MLD from the model rather than a climatology is an advantage compared to the existing methods (SOM-FFN, CSIR-ML6, etc.) that use climatology. However, we do acknowledge that this is a serious caveat and think it could be addressed in another study.

- Temporal aliasing by the floats is exacerbated by the fact you don't advect them in the model, so their quasi-Lagrangian nature is not taken advantage of. If you plotted pCO₂ in figure 9 following a water parcel (or plotted it by integrating the full material derivative of pCO₂) I assume it would be much smoother. What you show in figure 9 is likely dominated by advection and not air-sea fluxes. This discrepancy impacts your findings and should be addressed.

Response: Thank you for this comment. Actually, just in case the reviewer missed it, in lines 245 and 765-768 of the manuscript, we did mention that to mimic the quasi-Lagrangian nature of the floats,

we designed the floats to follow an eastward (water direction) Brownian motion or random walk (line 246) in order to add an element of stochasticity that is likely close to reality (lines 765-768).

Further, we look at the difference between the distance a float would cover over a 10-day period the surface (0 m) and at 1000 m (Fig. 4a-d, of this note). It shows that the distance the float would cover zonally (Fig. 4a-b, of this note) or meridionally (Fig. 4c-d, of this note) at the surface and deep layers would not make a big difference with respect to the variability that the model has over the 10-day period. It also appears that the offset between the two layers is very significant. This demonstrates that temporal aliasing by the floats is not as exacerbated as the reviewer thought. Nevertheless, we do acknowledge that this might impact our findings, and we would have addressed it more clearly.

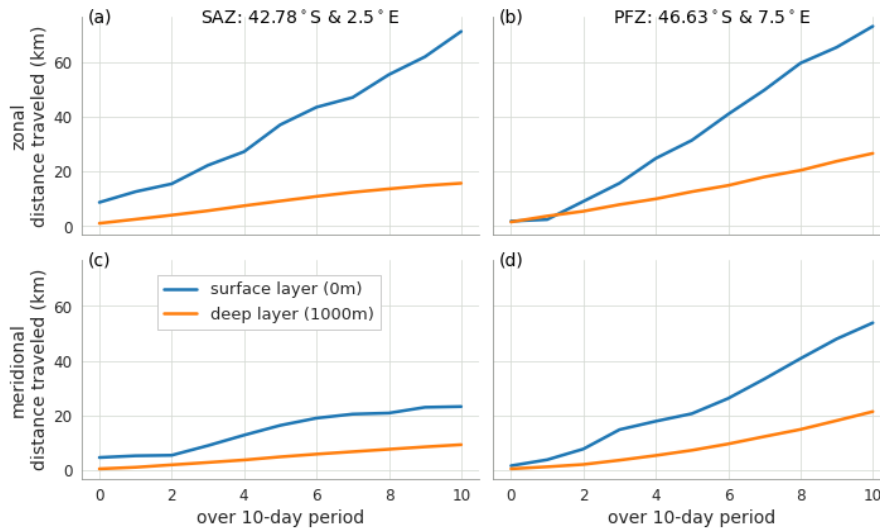


Figure 4: Estimates of the zonal (first row) and meridional (second row) distances traveled over a 10-day period (of the float) by two points (one in the SAZ and the other in the PFZ) at the surface layer (0m) and deep layer (1000m).

- Related to the figure 9 comment above, it seems odd to conclude the sampling need be at least daily (line 793) and that the floats should sample 1-2 days when the model output used is daily averaged. How much signal is really being aliased? Please do a more thorough time series analysis (e.g. show power spectra density to see how much variance is truly being aliased). You call into question a discrepancy with Bushinsky et al 2019. I suggest you repeat the calculation done in that paper with the model output. Since you have the model time series I suggest you be quantitative with your statements.

Response: We thank the reviewer for this comment. Actually, this study proposes that one would need more coordinated deployments of floats to resolve, for example, the intra-seasonal variability that nUSV and WGs were able to resolve. We think this synoptic-scale was resolved because of the high sampling frequency of nUSV and WGs, which would mean that sampling surface ocean CO₂ at the correct interval remains critical. That is why we proposed the 1-2 day sampling period. In addition, based on the sampling period sensitivity analysis (cf. Fig. 5), Monteiro et al. (2015) showed that to achieve the 10% uncertainty threshold in the Southern Ocean as discussed in Lenton et al. (2006), a sampling period of 1-3 days is necessary in areas of high EKE and elevated sub-seasonal dynamics like that of our study domain. Thus, having a perfect knowledge of how we need to sample, one can get an estimate of the sensitivity of pCO₂ to various sampling frequencies.

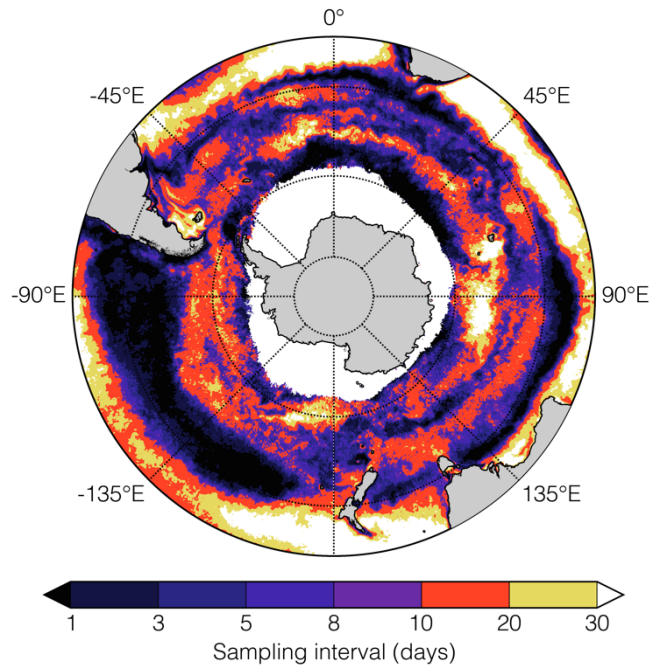


Figure 5: A map from Monteiro et al. (2015) showing a mean for the adaptive sampling interval (in days) required to achieve the 10% uncertainty threshold in the Southern Ocean as discussed in Lenton et al. (2006) .

- My other major criticism is that one expects mapping estimates to never get worse when more data is added. If they are getting worse when more data is added it signifies a flaw in the mapping method and not the data sampling itself. The fact that SHIP(smr) + FLOAT(SAZ+PFZ) has a significantly higher overall RMSE than SHIP + FLOAT(PFZ) is troubling. It points to either a serious issue with your methods or that the uncertainty in the RMSEs you are discussing are very large. You need to explain what is going on here. (This also calls into question your claim of the importance of temporal sampling as it appears something else is going on as well.) Did you carry out WG(SAZ+PFZ), and if so did it also have this troubling behavior?

Response: We thank the reviewer for this comment. Actually, the float deployed in the PFZ does very well, see SHIP + FLOAT(PFZ), but when it is deployed in the SAZ it performs poorly, see SHIP + FLOAT(PFZ). We think this discrepancy results from the difference in the modes of variability of the SAZ and PFZ. Therefore, when we add together samples from these two regions (SAZ and PFZ), the resulting RMSE and bias get worse.

On the other hand, we ran the experiment several times, and the fact that SHIP + FLOAT(PFZ) kept outperforming SHIP + FLOAT(SAZ+PFZ) could also be explained as follows. When you have more samples in a certain region, you are more likely to cause the trained model to weight certain observations more. That weighting would be reflected in the outputs. We are not saying this is the right answer but it is also a possibility. In addition, the fact that SHIP + FLOAT(SAZ+PFZ) outperformed SHIP + FLOAT(SAZ) suggests that though there is more data, having regionally imbalanced samples would have also caused a significantly lower overall RMSE than SHIP + FLOAT(PFZ). We do acknowledge that one would expect mapping estimates to get better when more data is added, and when the opposite happens the first instinct is usually to suspect a flaw in the mapping method and not the data.

Regarding the last point, we did not carry out SHIP + WG(SAZ+PFZ) because the idea of carrying out SHIP + FLOAT(SAZ+PFZ) was to investigate whether we could take advantage of the larger spatial structure of the floats to resolve the meridional gradients.

Minor comments:

- Model is 1 yr, but the Southern Ocean has significant interannual variability and this should be discussed a bit more.

Response: We thank the reviewer for this suggestion. We have added sentences to further discuss the use of one year of high-resolution model data in the Southern Ocean despite the significance of the interannual variability in the region. However, we recall that the study deals with sampling scale problems stemming from synoptic-scale or intra-seasonal variability and the meridional gradients.

- Line 121 sentence is incomplete

Response: Thank you for pointing that out. We completed that sentence in the revised manuscript.

- Supplementary Information text needs cleaning.

Response: Thank you for this comment. We have cleaned the Supplementary Information text as suggested by the reviewer.

- In SI you say what hyper-parameters you tune but you don't give the final values you used. You should give these for reproducibility and to inform the results.

Response: We thank the reviewer for this comment. Indeed, the model hyper-parameters were tuned using K-fold cross-validation (CV) incorporated in the model training. This tuning was achieved using Bayesian optimization. The optimal values of hyper-parameters used were reported at the end of the model training and are now included in the revised Supplementary Information for reproducibility.

- Some typos in figure captions. Check these.

Response: Thank you. We have checked the typos in figure captions as suggested by the reviewer.

- Time, J, is stated as a predictor in some cases and not in others. Please check for consistency.

Response: Thank you for this comment. We have revised the manuscript to check for consistency in the usage of time/J as a predictor variable.