

Impact of moderately energetic fine-scale dynamics on the phytoplankton community structure in the western Mediterranean Sea

Roxane Tzortzis¹, Andrea M. Doglioli¹, Stéphanie Barrillon¹, Anne A. Petrenko¹, Francesco d'Ovidio², Lloyd Izard², Melilotus Thyssen¹, Ananda Pascual³, Bàrbara Barceló-Llull³, Frédéric Cyr⁴, Marc Tedetti¹, Nagib Bhairy¹, Pierre Garreau⁵, Franck Dumas⁶, and Gérald Gregori¹

¹Aix Marseille Univ., Université de Toulon, CNRS, IRD, MIO, Marseille, France

²Sorbonne Université, CNRS, IRD, MNHN, Laboratoire d'Océanographie et du Climat : Expérimentations et Approches Numériques (LOCEAN-IPSL), Paris, France

³IMEDEA (CSIC-UIB), Instituto Mediterráneo de Estudios Avanzados, Esporles, Spain

⁴Northwest Atlantic Fisheries Centre, Fisheries and Oceans Canada, St. John's, NL, Canada

⁵UMR 6523 CNRS, IFREMER, IRD, UBO, Laboratoire d'Océanographie Physique et Spatiale, Plouzané 29280, France

⁶SHOM, Service Hydrographique et Océanographique de la Marine, 13 rue de Chatellier, CS592803, 29228 Brest, CEDEX 2, France

Correspondence: Roxane TZORTZIS (roxane.tzortzis@mio.osupytheas.fr)

Abstract.

Model simulations and remote sensing observations show that ocean dynamics at fine scales (1–100 km in space, day–weeks in time) strongly influence the distribution of phytoplankton. However, only a few **in situ-based studies at fine scales** have been performed and most of them **in concern** western boundary currents which may not be representative of less energetic regions.

- 5 The PROTEVSMED-SWOT cruise took place in the moderately energetic waters of the western Mediterranean Sea, in the **southern-region** **region south** of the Balearic Islands. Taking advantage of near-real-time satellite information, **a sampling strategy was defined** we defined a sampling strategy in order to cross a frontal zone separating different water masses. Multi-parametric in situ sensors mounted on the **research** vessel, on a towed vehicle and on an ocean glider were used to sample **physical and biogeochemical variables** at high spatial resolution. Particular attention was **given to** adapting the sampling route
- 10 in order to **also** estimate the vertical velocities in the frontal area **also**. **Such a** This strategy was successful in sampling quasi-synoptically an oceanic area characterized by the presence of a narrow front with an associated vertical circulation. A multi-parametric statistical analysis of the collected data identifies two water masses characterized by different abundances of several phytoplankton cytometric functional groups, as well as different contents in chlorophyll *a* and O₂. **Here** we focus on moderately energetic fronts induced by fine-scale circulation. Moreover, we explore physical-biological coupling in an oligotrophic region.
- 15 Our results show that the fronts induced by the fine-scale circulation, even if weaker than the fronts occurring in energetic and nutrient-rich boundary current systems, maintain **nevertheless** a strong structuring effect on **the** phytoplankton community by segregating different groups at the surface. Since oligotrophic and moderately energetic regions are representative of a very large part of the world ocean, our results **can be extrapolated and may** have global significance **when extrapolated**.

1 Introduction

- 20 Phytoplankton ~~are~~ essential for the functioning of ~~the~~ oceans; by supporting the marine food chain and playing a key role in biogeochemical cycles. ~~They are~~ responsible for almost half of the oxygen produced each year on the planet by photosynthesis (Field et al., 1998). ~~In-particular; Studying their role on in~~ CO₂ recycling (Watson et al., 1991) ~~in particular~~ is important ~~to study~~ in the context of global climate change. ~~Since For~~ several decades, satellite observations have revealed that phytoplankton concentrations at the surface of the ocean are characterized by a patchy distribution (Gower et al., 1980; Yoder et al., 1987).
- 25 These patches can be generated by biological processes such as cell buoyancy, behavioral patterns or grazing (Martin, 2003), ~~and~~ also by physical ocean circulation (Strass, 1992). The term "fine scales" refers here to ocean dynamical processes occurring on horizontal scales of the order of 1–100 km, characterized by a small Rossby number, and ~~having~~ a relatively short lifetime from days to weeks. Such ephemeral structures are induced by mesoscale interactions and frontogenesis (McWilliams, 2016). Since the ~~lifetime of fine-scale~~ fine-scale lifetime is often similar to the phytoplankton growth time scale, this suggests that
- 30 fine-scale can affect and modulate the phytoplankton community.

- The role of fine-scales on phytoplankton bulk primary production is now well established. Several fields and modelling studies have shown that fine-scales could generate intense vertical velocities, which transport nutrients from the mixed layer to the euphotic zone, ~~thus~~ enhancing ~~the~~ phytoplankton production (e.g., Lapeyre and Klein, 2006; Lévy et al., 2001; Pidcock et al., 2016; Mahadevan, 2016). These vertical motions can also limit ~~the~~ phytoplankton growth ~~by~~ subducting phytoplankton
- 35 cells from the euphotic zone to the deeper layers; before the nutrients are entirely consumed (Lévy et al., 2001). Much less is known about the role of fine-scales on phytoplankton diversity. However, the effect of fine-scale oceanic features on phytoplankton diversity has been predominantly studied using numerical simulations (Clayton et al., 2013; Barton et al., 2014; Lévy et al., 2015; Soccodato et al., 2016), while in situ sampling remains challenging because of the ephemeral nature of the dynamical structures. ~~That is This explains~~ why the few ~~existing~~ targeted in situ sampling experiments have been ~~principally~~
- 40 performed ~~principally~~ in coastal upwelling regions (Ribalet et al., 2010) and in boundary currents (Clayton et al., 2014, 2017), which generate persistent fronts. These frontal structures associated with intense horizontal transport and vertical velocities (Allen and Smeed, 1996; Rudnick, 1996), can create physical barriers in the surface ocean ~~which separateing~~ water masses and phytoplankton (Bower and Lozier, 1994). Furthermore, since the ~~work of study by~~ Yoder et al. (1994) these regions are well-known to be sites of high biological productivity.
- 45 More recently, the numerical simulations of Barton et al. (2010) ~~have-shown showed~~ that ~~the~~ fine-scales may also be hotspots of phytoplankton diversity. In addition, ~~exploiting remote sensing observations;~~ d'Ovidio et al. (2010) ~~exploited remote sensing observations have and~~ suggested that fronts play a key role in the generation of fluid dynamical niches; by segregating water patches with specific physical and chemical characteristics for time-scales ~~for~~ long enough ~~for to permit~~ the emergence of a local phytoplanktonic community. It has ~~then since~~ been ~~argued suggested~~ that these features, which eventually mix together,
- 50 can precondition biodiversity hotspots (De Monte et al., 2013; Soccodato et al., 2016). This scenario of ~~a~~ higher phytoplanktonic diversity driven by fine-scale fronts has recently ~~received-some been reinforced by~~ empirical evidence ~~by obtained from~~ the comparison of molecular data of diatom diversity with satellite-derived front detections (Busseni et al., 2020).

However, the large majority of these ~~works studies~~ have focused on ~~the~~ extreme situations occurring in boundary currents, ~~whose where~~ intense fronts and dramatic contrasts in water properties are not representative of the global ocean. On the contrary, vast oceanic regions are dominated by weak fronts, which are continuously created, moved, and dissipated, and ~~which~~ separate water masses with similar properties. Whether ~~or not~~ fine-scale fronts ~~also~~ maintain their driving role on phytoplankton diversity ~~also~~ in these weaker regions remains therefore an open question which has been largely neglected, ~~no doubt~~ due to the difficulty of performing in situ experiments over these short lived features. In this study, we attempt to address this issue in a case study, focusing on a moderately energetic front, and ~~we try to relate explain~~ its role on the distribution of phytoplankton groups. ~~Compared to more energetic regions, the effect of fine-scale features on biogeochemical processes is more elusive here.~~ This leads to the following question: is the physical forcing induced by horizontal and vertical motions sufficiently strong to segregate phytoplankton groups effectively in this moderately energetic region?

New sampling strategies were required to track the fine-scale ephemeral structures. Using remote sensing and numerical simulations to define the sampling strategy, field studies such as LatMix (Shcherbina et al., 2015), AlborEx (Pascual et al., 2017) and LATEX (Petrenko et al., 2017) have demonstrated that individual fine-scale features can be targeted experimentally. While these past campaigns focused mainly on physical processes, recent progress in biogeochemical sensors now makes the study of physical–biological coupling easier, including in moderately-energetic and oligotrophic areas. During the BLUE-FIN-13 cruise, Mena et al. (2016) studied the picophytoplankton distribution in a haline front formation area in the Balearic Sea. More recently, the OSCAHR cruise in the Ligurian Sea was specially designed to combine high-resolution measurements of both physical and biological variables (Doglioli, 2015). Exploiting the large data set collected during this cruise, Marrec et al. (2018) and Rousselet et al. (2019) have shown the influence of physical dynamics in controlling the spatial distribution of phytoplankton through an eddy structure, highlighting the close relationship between fine-scale dynamics and the distribution of phytoplankton. In the southwest Pacific ocean, high-resolution biological sampling during OUTPACE (Moutin and Bonnet, 2015) and TONGA (Guieu and Bonnet, 2019) has shown the influence of fronts in controlling the spatial distribution of bacteria and phytoplankton (Rousselet et al., 2019; Benavides et al., 2021). Recently, the methodological developments in underway nitrogen (N_2) fixation measurements ~~have~~ allowed ~~researchers~~ to capture a rapid shift of the diazotrophic community in the North Atlantic ocean (Tang et al., 2020).

Following a satellite-based adaptive and Lagrangian sampling strategy, ~~a~~ high-resolution coupled physical–biological sampling was performed during the PROTEVSMED-SWOT cruise in the southwestern Mediterranean Sea, south of the Balearic Islands (Dumas, 2018; Garreau et al., 2020). This cruise was operated in the context of the preparation ~~of for~~ the new satellite mission Surface Water and Ocean Topography (SWOT; <https://swot.jpl.nasa.gov/>, <https://swot.cnes.fr>, last access: ~~October 11, 2021~~). This mission is dedicated to ~~providing~~ ocean topography and surface currents at an unprecedented resolution, in particular during ~~its a~~ fast sampling phase when SWOT will sample some key "cross-over" areas ~~ealled "cross-overs"~~ twice per day, ~~offering thus providing~~ a suitable opportunity to study the physical–biological fine-scale coupling (Morrow et al., 2019; d'Ovidio et al., 2019). The PROTEVSMED-SWOT cruise took place ~~under at~~ one of these future cross-overs in the Mediterranean Sea. ~~The large data set obtained during the cruise has been combined with another data set collected during the~~

simultaneous and coordinated Spanish PRE-SWOT cruise (Barceló-Llull et al., 2018). We have combined this large data set obtained during our cruise with another data set collected during the simultaneous and coordinated Spanish PRE-SWOT cruise (Barceló-Llull et al., 2018).

In this paper, we first describe the hydrodynamics of the ~~area of~~ study area, with a focus on the vertical velocities estimated ~~through using~~ the omega equation, and we identify the water masses residing in the region during the cruise. ~~Then,~~ We then present the distribution of various ~~groups of~~ phytoplankton groups, and ~~of~~ fluorescent dissolved organic matter (FDOM), ~~is presented~~ in relation to the fine-scale dynamics. An advanced statistical analysis is performed to highlight the physical-biological coupling objectively.

2 Materials and methods

2.1 Satellite-based adaptive sampling strategy

PROTEVSMED-SWOT took place onboard the RV *Beautemps-Beaupré* between 30 April and 18 May 2018. During the cruise, an adaptive Lagrangian sampling strategy was ~~made~~ possible thanks to SPASSO (Software Package for an Adaptive Satellite-based Sampling for Oceanographic cruises ; <https://spasso.mio.osupytheas.fr>, last access: October 11, 2021). Various satellite datasets were used during PROTEVSMED-SWOT. Sea surface temperature (SST, levels 3 and 4, 1 km resolution, not shown in this study) and chlorophyll *a* concentrations ([Chl*a*], level 3, 1 km resolution) were provided by CMEMS (Copernicus Marine Environment Monitoring Service, <https://marine.copernicus.eu>, last access: October 11, 2021). Moreover In addition, ocean color composite maps were provided by CLS with the support ~~from of~~ CNES. They ~~are were~~ constructed ~~with using~~ a simple weighted average over the ~~previous~~ five ~~previous~~ days of ~~the~~ data ~~gathered by issued from~~ the Suomi/NPP/VIIRS sensor. The altimetry-derived geostrophic velocities from ~~the~~ AVISO (Archiving, Validation and Interpretation of Satellite Oceanographic) database were exploited to extract near real-time daily maps. These were also used to derive the finite size Lyapunov exponents (FSLEs). The FSLE analysis permits to identify biogeochemical regions of potential interest. Indeed, FSLEs values often form continuous lines, or ridges, which are used to identify regions of enhanced strain that are to be expected near frontal zones. The first study ~~that to~~ showed the ~~interest benefit~~ of using FSLE-derived fronts for biogeochemical studies was probably Lehahn et al. (2007). Before ~~that~~, Abraham and Bowen (2002) ~~have-been were~~ the first to apply the Lyapunov exponent technique (~~although albeit using~~ finite-time, ~~not rather than~~ finite-size) to the ocean, in turn borrowing some ideas from dynamical system theory (see in particular Boffetta et al., 2001). A review on the FSLE and other satellite-based Lagrangian techniques can be also found in Lehahn et al. (2018) and Hu and Zhou (2019). ~~Since several years,~~ This strategy has ~~already since~~ been tested, ~~either in both~~ post-cruise ~~or and~~ real-time analysis, during many campaigns (e.g., Smetacek et al., 2012; d'Ovidio et al., 2015; Rousselet et al., 2018; De Verneil et al., 2019; Benavides et al., 2021). In the present work, FSLE ~~have-been were~~ obtained by time-integrating trajectories following the algorithm of d'Ovidio et al. (2004), after a 30 day backward integration.

SPASSO was used to follow both the temporal and spatial variability of the horizontal fine-scale features of interest. SPASSO combines satellite-derived currents, SST and [Chl*a*], to provide maps of dynamical and biogeochemical structures in both Near Real Time (NRT) and Delayed Time (DT). During the cruise the analysis of these maps suggested the presence of two different

regions, characterized by their different surface [Chla] (Fig. 1). Consequently, these two regions ~~have been~~ were sampled along a ~~dedicated designated~~ route of the ship, represented in purple and in orange ~~on~~ in Fig. 1. ~~A~~ Special attention was paid to adapting the temporal sampling in these different water masses to the biological time scales, i.e., to trying to catch the diurnal cycle. ~~Because of~~ The shape ~~of depicted by~~ the ship's track, ~~in the following~~ led us to call ~~we refer to~~ these areas as "West-East (WE) hippodrome" (in orange ~~on~~ in Fig. 1) performed from 8 May 15:30 to 10 May 17:30 UTC, and "North-South (NS) hippodrome" (in purple ~~on~~ in Fig. 1) performed between 11 May 02:00 and 13 May 08:30 UTC.

2.2 In situ measurements

Physical and biological variables (horizontal velocities, temperature, salinity, and abundances of the different phytoplankton functional groups) were measured at high frequency all along the route. In situ systems included a Seasoar deployed at sea, a vessel-mounted Acoustic Doppler Current Profiler (VMADCP), a thermosalinograph (TSG) and a flow cytometer installed on board. The Seasoar is a towed undulating vehicle capable of achieving undulations from the surface down to 400 m. Two Sea-Bird SBE-9 (with SBE-3 temperature and SBE-4 conductivity sensors) instruments mounted on either side of the Seasoar enabled the simultaneous measurements of temperature, salinity (from conductivity) and pressure. The conductivity and temperature data were lag-corrected to reduce salinity spiking with following the methodology developed by Lueck and Picklo (1990), Morison et al. (1994) and Mensah et al. (2009), before conversion to absolute salinity S_A and conservative temperature Θ , in accordance with TEOS-10 standards (McDougall et al., 2012). ~~In the following,~~ Herein, temperature and salinity refer to absolute salinity and conservative temperature. Horizontal velocities between 19 m and 253 m ~~have been~~ were measured with a VMADCP operating at 150 kHz. VMADCP data treatment was performed with the Matlab software Cascade V.7 (<https://www.umn-lps.fr/en/Technology/Software/CASCADE-7.2>, last access: October 11, 2021). The sea surface temperature and salinity ~~have been~~ were measured continuously along the ship route by the Underway TSG. The TSG was equipped with two sensors: i) a CTD ~~sensor~~ SeaBird Electronics SBE 45 ~~sensor which was~~ installed in the wet lab, ~~was~~ connected to the surface water, and ~~which pumping~~ continuously pumped seawater at 3 m depth and ii), ~~an temperature sensor~~ SBE 38 ~~temperature sensor which was~~ installed at the entry of the water intake.

An automated CytoSense flow cytometer (CytoBuoy b.v.) was installed on board and connected to the seawater circuit of the TSG to perform scheduled automated sampling and analysis of phytoplankton (Thyssen et al., 2009, 2015). The instrument contains a sheath fluid made of 0.1 μm filtered seawater which stretches the sample in order to separate, align and drive the individual particles (i.e. cells) through a light source. This light source is ~~made composed~~ of a 488 nm laser beam. When the particles cross the laser beam, they interact with the photons. Several optical signals are recorded for each ~~single individual~~ particle: the forward angle light scatter (FWS) and 90° ~~sideward~~ angle scatter (SWS), related to the size and the structure (granularity) of the particles. Two signals of fluorescence induced by the light excitation were also recorded; a red fluorescence (FLR) induced by chlorophyll *a* and an orange fluorescence (FLO) induced by the phycoerythrin pigment. Two distinct protocols ~~have been~~ were run sequentially every 30 min, in order to process the 1164 samples. The first protocol (FLR6) ~~had an~~ FLR trigger threshold fixed at 6 mV and ~~is able to could~~ analyze a volume of 1.5 cm^3 . It was dedicated to the analysis of the smaller phytoplankton. ~~For instance, such as~~ *Synechococcus*, ~~which~~ were optimally resolved and counted with this protocol.

155 The second protocol (FLR25), targeted nanophytoplankton and microphytoplankton with an FLR trigger level fixed set at 25 mV and an analyzed volume of 4 cm³. The data were acquired thanks to using the USB software (CytoBuoy b.v.) but were analyzed with the CytoClus software (CytoBuoy b.v.). The combination of the various different variables recorded by the flow cytometer exhibited various clusters of particles (cells), which whose abundance (cells per cubic centimeter) and average variable intensities are were provided by the CytoCLUS software. The latter, which generated several two-dimensional cytograms (e.g. Fig. 6, see section 3.3 for explanation of the group identification) of retrieved information from the 4 pulse shaped curves (FWS, SWS, FLO, FLR) obtained for every single each individual cell.

On 5 May 2018, a SeaExplorer glider, manufactured by Alseamar (codename: SEA003), was deployed at sea. After a short transit, it performed a route approximately parallel to the NS hippodrome (red track on Fig. 1). This glider, was programmed set to dive down to 650 m depth and was equipped with a pumped conductivity-temperature-depth sensor (Seabird's GPCTD) from which the conservative temperature (Θ), the absolute salinity (S_A) and the density anomaly referenced to the surface (σ_0) were derived using the TEOS-10 toolbox (McDougall and Barker, 2011). This GPCTD was also equipped with a dissolved oxygen (O_2) sensor (Seabird's SBE-43F) to measure oxygen concentrations. In addition, the glider also embarked carried a WET Labs ECO Puck FLBB CD for measurements of i) [Chla] fluorescence (targeting excitation and emission wavelengths at $\lambda_{Ex}/\lambda_{Em}$: 470/695 nm), converted into Chla concentrations (in micrograms per litre), ii) backscattering at 700 nm (BB700), and iii) a FDOM fluorophore, namely the humic-like fluorophore or peak C in the Coble (1996)'s classification ($\lambda_{Ex}/\lambda_{Em}$: 370/460 nm), expressed in micrograms per litre equivalent quinine sulfate units (microgram per litre QSU). Finally, the Sea-Explorer was also equipped with two MiniFluo-UV fluorescence sensors (hereafter called MiniFluo) for the detection of various FDOM fluorophores (Cyr et al., 2017, 2019). In this study, the MiniFluo-1 was used for the detection of tryptophan-like fluorophore ($\lambda_{Ex}/\lambda_{Em}$: 275/340 nm), while the MiniFluo-2 was used for the detection of tyrosine-like fluorophore ($\lambda_{Ex}/\lambda_{Em}$: 260/315 nm). Tryptophan- and tyrosine-like fluorophores, referred to as peak T and peak B, respectively, in the Coble (1996)'s classification, are amino acid-like components commonly found in the marine environment, and generally associated with autochthonous biological processes (see review by Coble et al. (2014)). Here, fluorescence intensities of tryptophan- and tyrosine-like fluorophores are provided in relative units (RU) and are not converted into mass concentration (microgram per litre) (Cyr et al., 2017, 2019). Glider observations were processed with the Socib glider toolbox (Troupin et al., 2015) for cast identification and geo-referencing.

2.3 Vertical velocity estimation

The Vertical velocity has been diagnosed solving was estimated using the so-called quasi-geostrophic (QG) omega equation (Hoskins et al., 1978; Tintoré et al., 1991; Allen and Smeed, 1996, Eq. (1)):

$$\nabla^2(N^2w) + f^2 \frac{\partial^2 w}{\partial z^2} = 2\nabla \cdot Q \quad (1)$$

185 where w is the vertical component of the velocity field and Q is the vector determined by the horizontal derivatives of water density and horizontal velocity (Hoskins et al., 1978; Giordani et al., 2006, Eq. (2)):

$$Q = \left(\frac{g}{\rho_0} \frac{\partial \mathbf{V}_g}{\partial x} \nabla \rho, \frac{g}{\rho_0} \frac{\partial \mathbf{V}_g}{\partial y} \nabla \rho \right) \quad (2)$$

with \mathbf{V}_g the geostrophic horizontal velocity vector, ρ the density, ρ_0 a reference density equal to 1025 kg m^{-3} , g the gravitational acceleration, f the Coriolis parameter (considered constant and computed at the mean latitude of the area), and N^2 the Brunt–Väisälä frequency. The QG theory is valid for low Rossby numbers, a condition that is satisfied in this study.

High-resolution in situ data are necessary to solve Eq. (1). In this work, σ is was obtained from Seasoar CTD measurements (Fig. A1) and the geostrophic component of the horizontal velocity has-been was estimated from the measurements performed with the VMADCP as in the work of Barceló-Llull et al. (2017). Following suggestions made by Allen et al. (2001)'s suggestions to preserve synopticity as much as possible synoptieity, we selected four transects of the NS hippodrome (see Fig. 1) have-been-selected between 11 May and 12 May 2018 in order to obtain a "butterfly" design as in Cotroneo et al. (2016) and Rousselet et al. (2019). The σ , u and v fields have-been were interpolated onto a 3D grid, using objective analysis (Le Traon, 1990; Rudnick, 1996). The horizontal grid resolution is $0.9 \text{ km} \times 0.9 \text{ km}$ and the vertical resolution is 6 m (from 19 m to 253 m depth). We have followed the method described by Rudnick (1996), using the scripts freely downloadable from his web page at the-address http://chowder.ucsd.edu/Rudnick/SIO_221B.html, last access: October 11, 2021. The in situ data are considered to be composed of a mean value, a fluctuation and some noise including both smaller scale variability and instrumental error. The fluctuation part of the field's statistics is was assumed to have a decorrelation length scale of 20 km in both the x and y directions, with a structure orientation of 18.4° from north. The correlation length scale has-been was chosen by analyzing the auto-covariance matrix of the σ field and performing several sensitivity tests. The noise-to-signal ratio is was assumed to be 0.05, as in Rudnick (1996). The interpolated fields are shown superimposed onto the in situ measurements (see Fig. A1 in Appendices). The ageostrophic component of the velocity measured by the VMADCP is was then removed and Eq. (1) is was solved with an iterative relaxation method and constrained by Dirichlet boundary conditions ($w = 0$), as in the case of the front studied by Rudnick (1996). To minimize the effect of the imposed boundary conditions, only data with an error on the objective mapping of $\sigma \leq 0.0025$ have-been were then considered.

3 Results

210 3.1 Hydrodynamics

At-first, We will first describe the hydrodynamic conditions encountered during PROTEVSMED-SWOT in order to characterize the area. For simplicity, two transects only, representative of each of the two hippodromes, are described: a first transect, on the WE hippodrome and performed from 9 May 16:50 to 23:45 UTC is referred to as the WE transect (Fig. 2a). The second one, performed on the NS hippodrome from 11 May 02:00 to 08:40 UTC, is referred to as the NS transect (Fig. 2b). Note that we obtained similar results for the other transects (see Fig. A2 in Appendices). The horizontal velocities have-been were

measured by VMADCP at 25 m along both WE and NS transects, and superimposed onto the FSLE field for the corresponding date. The intensity and the direction of the current vary along the transects. Around 38° N 20', a slowly evolving zonal fine-scale feature, slowly evolving, is present at around 38° N 20' in the altimetry-derived FSLE field and is confirmed by the VMADCP data. Indeed, two FSLE features cut the transect at this latitude, exactly where the horizontal current directions change drastically substantially. The WE transect shows a larger current variability than the NS transect, due to its alignment with the fine-scale structure. However, an FSLE feature cuts this transect just above north of 38° N 20' and, at this point, where the current begins to change and turns to the North-East.

Figures 3a and 3b show the vertical velocities estimated at 25 m and 85 m depths for the NS hippodrome. The area is characterized by three main features: two upwelling cells (positive values) separated by a downwelling cell (negative values) located between 38° N 30' and 38° N 36'. Another smaller downwelling patch is present in the south-east of the sampling area. The intensities of these vertical motions, ranging from 2 to 8 10^{-5} m s^{-1} (corresponding to 1.7 to 6.9 meters per day), are stronger in the intermediate layer.

3.2 Hydrology

The typical southwestern Mediterranean water masses are observed shown in the $\Theta-S_A$ diagrams of the Seasoar CTD data of the WE and NS transects (Fig. 4a and Fig. 4c, respectively). A clear separation into two different water masses appears is visible at the surface. In order to objectively identify where these two water masses separate objectively, we first distinguish surface from intermediate waters by the isopycnal at 28.45 kg m^{-3} on the $\Theta-S_A$ diagrams. Then, an iterative method with a granularity of 0.05° in longitude(latitude) along the WE(NS) transect has been was used to calculate the means of the two surface water masses in terms of salinity and temperature, $(\overline{S_{A1}}, \overline{\Theta_1})$ and $(\overline{S_{A2}}, \overline{\Theta_2})$, and the difference in terms of mean salinity, $|\overline{S_{A1}} - \overline{S_{A2}}|$. Then, The best separation between the two surface water masses thus corresponds to the longitude(latitude) along the WE(NS) transect where the maximal difference $|\overline{S_{A1}} - \overline{S_{A2}}|$ is found. Table 1 summarizes the maximal differences calculated for the transects of the WE and NS hippodromes performed with the Seasoar and the associated localisations of the best separation. Only one transect of the WE hippodrome is shown because we deplore due to a lack of data in the Seasoar measurement during the other transects of this hippodrome. In Table 1, along the WE transect the surface water masses separate at longitude 4° E 06', while along the NS transect they separate at the latitude 38° N 32', as is also indicated by the triangles on the corresponding figures (Fig. 4b and Fig. 4d). Note that for the other meridional transects the estimated separation varies of by a few minutes only (Table 1). $\Theta-S_A$ diagrams (Fig. 4a and Fig. 4c) and their associated maps (Fig. 4b and Fig. 4d) correspond to the WE and the NS transects described previously in the previous section 3.1. The maps shown in Fig. 4b and Fig. 4d indicate the geographical positions of the two types of Atlantic Waters (AW), using the same color code as in the $\Theta-S_A$ diagrams. Interpretation of these data is the as following: The surface layer is occupied by AW with different residence times in the Mediterranean Sea. We refer to them these two AW as "younger AW" (in light blue) and "older AW" (in dark blue). The "younger AW" corresponds to AW which as entered more-recently-in the Mediterranean basin more recently and which is characterized by a salinity between 37 g kg^{-1} and 38 g kg^{-1} , while the "older AW" is characterized by a higher salinity. Other Previous authors have referred to this water as "local AW" (Barceló-Llull et al., 2019) or "resident AW" (Balbín et al., 2012).

250 The "younger AW" is located at the west and at the south of the WE and NS transects, respectively. Moreover, the separation between the two types of AW is in agreement with the localisation of the front identified by the FSLE and the change in the current direction (Fig. 2).

This separation between the two types of AW is also visible on the Seasoar vertical sections of conservative temperature, absolute salinity and density (Fig. 5). Looking at Examination of the gradients along the temperature (Fig. 5a and Fig. 5d) and salinity (Fig. 5b and Fig. 5e) transects, we can enable to clearly identify the separation between the two types of AW at longitude 4° E for the WE transect and latitude 38° N 30' for the NS transect, corresponding to the localisation of the front. However, this separation is less apparent along the two density transects (Fig. 5c and Fig. 5f). Furthermore, the vertical extension of the surface and intermediate water masses can be also observed is also visible on the vertical Seasoar sections along the WE and NS transects (Fig. 5). The warm surface layer with temperature greater than 15 °C extends until to about 100 m, on (Fig. 5a and Fig. 5d). This layer is also characterized by a salinity between 37.5 g kg⁻¹ and 38 g kg⁻¹ (Fig. 5b and Fig. 5e) and, as a consequence, by the lowest density (Fig. 5c and Fig. 5f). Note that this surface layer is more apparent along the WE transect (Fig. 5a, b and c), than along the NS transect. Below 100 m depth, the intermediate water is more homogeneous and is characterized by a temperature of 13–14 °C and a salinity of 38–38.5 g kg⁻¹ (in pink on Fig. 4a and Fig. 4c).

The SeaExplorer glider has also performed temperature and salinity measurements along a transect parallel to and slightly west of the NS hippodrome (see Fig. 1). The Θ - S_A diagrams of the glider data (Fig. A3a and Fig. A3b) confirm the presence of the two types of AW in surface, in particular during the outward route (Fig. A3a). During the glider's return route (Fig. A3b) the surface water masses were beginning to be more homogeneous than during the outward route and the NS Seasoar transect (Fig. 4c). This can be explained by the fact that because the Seasoar transects completed with the Seasoar were performed within a few hours, while the glider transects lasted several days. Moreover, Finally, the deeper glider sampling has allowed to detect another thermohaline signature, with temperature values about 13 °C and salinity about 38.5 g kg⁻¹, corresponding to the Western Mediterranean Deep Water (WMDW) as found by Balbín et al. (2012) and Barceló-Llull and Pascual, in revision for Front. Mar. Sci.

3.3 Characterization and distribution of phytoplankton by flow cytometry

Up to nine phytoplankton groups were optically resolved by flow cytometry (Fig. 6). The light scatter (forward scatter FWS, and sideward scatter SWS) and fluorescence intensities (red fluorescence FLR, and orange fluorescence FLO) were used to identify these nine phytoplankton groups, following Thyssen et al. (2015) and Marrec et al. (2018). We have called these groups with by the conventional names used by flow cytometrists, i.e., some groups relate to the taxonomy (*Synechococcus*, Cryptophytes) while the others relate to a range of sizes (picoeukaryotes, nanoeukaryotes) according to following Sieburth et al. (1978). Indeed, the first group corresponds to *Synechococcus* (Syn on Fig. 6c), which is a prokaryotic picophytoplankton. We distinguish *Synechococcus* from the other picophytoplanktonic groups, because it was put in evidence brought to light by flow cytometry thanks to its higher FLO intensity compared to the FLR intensity (Fig. 6c), induced by the presence of phycoerythrin pigments. A first eukaryotic picophytoplankton group (Pico1) shows lower FLR and FLO intensities than *Synechococcus* (Fig. 6c). Two other groups of picophytoplankton (Pico2 and Pico3) exhibit higher FWS, SWS and FLR intensities than Pico1

(Fig. 6d). The last group of picophytoplankton (PicoHFLR) is characterized by a high FLR signal induced by Chla. Two distinct nanophytoplankton groups (SNano) and (RNano) were defined according to their high FLR and FLO intensities (Fig. 6a and Fig. 6c). SNano have a high SWS/FWS ratio and higher SWS intensities than RNano (Fig. 6b) and Fig. 6a). Finally, microphytoplankton (Micro) and Cryptophytes (Crypto) exhibit high FLR and FLO intensities (Fig. 6c). Cryptophytes can belong to the pico- or nanoeukaryotes but have also been discriminated from the red-only fluorescing pico- or nanoeukaryotes based on their orange fluorescence induced by phycoerythrin, like *Synechococcus*. The size and the abundances of these nine groups have been summarized in Table 2.

Figures 7 and 8 show the surface abundances of the various phytoplankton groups, along the WE and the NS transects. *Synechococcus* (Fig. 7a and Fig. 8a), Pico1 (Fig. 7b and Fig. 8b) and Pico2 (Fig. 7c and Fig. 8c) present a similar distribution pattern. High abundances around $2.2\text{--}3.0 \times 10^4 \text{ cells cm}^{-3}$, $\geq 1.1 \times 10^3 \text{ cells cm}^{-3}$, and $\geq 1.7 \times 10^3 \text{ cells cm}^{-3}$, recorded respectively for *Synechococcus*, Pico1, and Pico2 are located at the western and southern parts of the front, along with the WE and the NS transects. On the other side of the front, their abundances are lower, ($\leq 1 \times 10^4 \text{ cells cm}^{-3}$ for *Synechococcus* and ~ 500 and $\sim 900 \text{ cells cm}^{-3}$ for Pico1 and Pico2, respectively). RNano abundances (Fig. 7g and Fig. 8g) present a similar distribution with these groups along the NS transect, with high abundances ($450\text{--}500 \text{ cells cm}^{-3}$) located at the southern part of the front. However, the distribution of RNano abundances is less clear along the WE transect. Pico3 (Fig. 7d and Fig. 8d), Microphytoplankton (Fig. 7f and Fig. 8f), and SNano (Fig. 7h and Fig. 8h) abundances vary between $100\text{--}500 \text{ cells cm}^{-3}$, $8\text{--}18 \text{ cells cm}^{-3}$, and $300\text{--}500 \text{ cells cm}^{-3}$, respectively, and present an opposite distribution compared to the other previous groups. Indeed, higher abundances are found in the eastern and northern parts of the front. PicoHFLR (Fig. 7e and Fig. 8e) and Cryptophytes abundances (Fig. 7i and Fig. 8i) ranged from $160\text{--}280 \text{ cells cm}^{-3}$ and $10\text{--}30 \text{ cells cm}^{-3}$ respectively. However, these latter exhibited a less obvious pattern between the two sides of the front. Overall, the distribution of the abundances of the various phytoplankton groups evidenced by flow cytometry on either side of the front (except for these two last groups) fits well with the hydrodynamic and hydrological observations.

3.4 Statistical analysis

Surface temperature and salinity data measured with the TSG were merged with abundance data of the 9 phytoplankton groups at each cytometry sampling point along the WE and NS hippodromes. Thus, the final data set consists of 11 variables, each variable of which contains 215 observations. To deal with this large multivariate data set a principal component analysis (PCA) was applied.

The PCA consists of summarizing the information contained in the data set by replacing the initial variables with new synthetic variables (called principal components), which are linear combinations of the initial variables and uncorrelated two by two. When applied to our data set, the PCA points out reveals that the first three components explain account for 36.7 %, 18.1 % and 13 % of the total variance of the data, respectively. The following statistical analysis focuses on these three components, representing 67.8 % of the total variance of the data. Figure 9a shows positively correlated variables grouped together in the first factorial plane: salinity (S_A) with microphytoplankton (Micro); *Synechococcus* (Syn) with picophytoplankton Pico1 group; picophytoplankton Pico2 group and nanophytoplankton RNano group; temperature (Θ) with picophytoplankton Pico3

group and nanophytoplankton SNano group. However, the Cryptophytes (Crypto) group and the picophytoplankton PicoHFLR group are ~~not as less~~ well correlated with the other variables compared to the other groups of phytoplankton.

320 The K-medoid algorithm, described by Hartigan and Wong (1979) and Kaufman and Rousseeuw (1987), is another method used to represent the various aspects of the data structure. This algorithm divides M points in N dimensions into K groups (or clusters). A cluster is an object for which the average dissimilarity to all the data is minimal. In our case of study, the K-medoid algorithm splits the 215 points (i.e., observations) into three clusters (Fig. 9b). Each point of a given cluster shows a high degree of similarity with the others points of the same cluster. The three clusters are well separated from each other. Only a few points
325 of the black and red clusters are difficult to disentangle unravel. Finally, the average of each variable called local average and the global average ~~have been can be~~ calculated for each cluster to show the contribution of each variable to a cluster. The most discriminating variables for each cluster (Table 3) ~~have were~~ also ~~been~~ determined with the standard deviation.

Figure 9c is a spatio-temporal representation of the three main clusters obtained by the K-medoid algorithm. The WE hippodrome from 8 to 10 May is characterized by the presence of the black cluster in the east and the red cluster in the west.
330 The NS hippodrome starts on the 11 May with the red cluster present in the south and the black cluster in the north. The latter remains dominant in the north for the remainder of the sampling period. In the south, the red cluster is gradually replaced by the blue cluster, except for a few points on the 13 May.

Figure 9d displays the geographical distribution of the three clusters superimposed upon the FSLE field. It evidences a general good agreement between the shifts of the clusters and the FSLE maxima. In particular, the separation between the
335 black and red clusters at around 4° E on the WE hippodrome corresponds to the two FSLE maxima crossing this longitude at 38° N 40' and 38° N 20'. On the NS hippodrome, the black cluster is separated from the two others at about 38° N 20' where zonally-disposed FSLE maxima cross the vessel route. To summarize, the black cluster dominates in the north of the sampled area, while in the south, the red cluster is dominant at the beginning ~~but then is before being~~ replaced by the blue cluster. The separation between the clusters matches the distribution of ~~the maxima of the FSLE field the FSLE field maxima~~, and can
340 be explained by the fine-scale dynamics. Given their ephemeral nature the fine-scale structures, the temporal evolution of the distribution of the red and blue cluster is probably due to the displacement over time of the frontal structure during the cruise.

4 Discussion

4.1 Physical properties of the front

During the PROTEVSMED-SWOT cruise, the satellite-derived surface [Chla] showed contrasted values between the south-
345 west and the north-east of the studied area (Fig. 1). The analysis of the ocean color images combined with the altimetry-derived FSLE field, have been associated with the strong variation of current direction observed in the horizontal velocities measured by VMADCP data, allowing the identification of a frontal area located at ~~the latitude of~~ about 38° N 30' latitude and between 3° E and 4° E of longitude (Fig. 2).

Our estimation of vertical velocities with using the omega equation method have allowed to investigate the vertical dynamics
350 in the frontal area (Fig. 3). Several previous studies have shown the importance of fine-scale dynamics in generating vertical

velocities (e.g., Rudnick, 1996; Lapeyre and Klein, 2006; Mahadevan and Tandon, 2006; Balbín et al., 2012). Although the ship route was designed mainly ~~for the with an eye to~~ cytometry sampling across the front, we obtained a ~~sufficiently regular~~ spatial grid ~~sufficiently-regular~~ to ~~allow us to~~ apply the omega equation method, as ~~recommended by~~ Allen et al. (2001). In the area where our ~~Seasoar~~ sampling ~~with the Seasoar~~ overlapped with ~~the~~ CTD casts performed on a 10 km spaced regular grid
 355 by Barceló-Llull et al. (2018), the respective estimations of the vertical velocity field are in good agreement (Barceló-Llull and Pascual, in revision for Front. Mar. Sci.). As our sampling ~~area~~ extends further south with respect to ~~the one that~~ of Barceló-Llull et al. (2018), we were also able to observe the shift in ~~the~~ current direction, from eastward to westward, and the associated vertical recirculation pattern. Vertical velocities associated with the front are in the order of ~~a few meters~~ per day. These values are of the same order of magnitude as the velocities associated with a frontal structure reported by Balbín et al. (2012) in the
 360 north-west of the Balearic Islands, and by Ruiz et al. (2019) in the Alboran Sea.

The data from the CTD sensors mounted on the Seasoar towed fish and on the SeaExplorer ocean glider ~~identify reveal~~ a rapid shift between two different types of surface water masses on the $\Theta-S_A$ diagrams (Fig. 4 and Fig. A3). These water masses are AW at different stages of modification. Indeed, ~~the~~ AW enters ~~into~~ the Mediterranean Sea through the Strait of
 365 Gibraltar and then forms an anticlockwise circulation along the continental slope of the western Mediterranean basin, caused by the combination of the Coriolis effect and the topographical forcing (Millot, 1999; Millot and Taupier-Letage, 2005; Millot et al., 2006). In the south-west ~~part~~ of the basin, this circulation is dominated by the Algerian Current (AC), which can form meanders and mesoscale eddies due to baroclinic and barotropic instabilities (e.g., Millot, 1999). These eddies spread over the basin and join the ~~region study area~~ south of the Balearic Islands, carrying with them the ~~newly arrived~~ AW, ~~recently entered in~~
 370 ~~the Mediterranean that we define known as~~ "younger AW". In this region, the "younger AW" encounters the "older AW", i.e. the AW modified by cooling and evaporation ~~while progressing during its progression~~ along the northern part of the western Mediterranean basin (Millot, 1999; Millot and Taupier-Letage, 2005). The presence of this water has already ~~been~~ observed by Balbín et al. (2012) and Barceló-Llull et al. (2019) ~~which refers to it as who use the terms~~ "resident AW" or "local AW", respectively, to indicate the colder and saltier AW of the Balearic Sea.

375 During our cruise, the "older and younger AW" are separated by a frontal area (Fig. 4). This separation between these two AWs is also clearly visible in the first 100 m of the water column, on the depth sections of temperature and salinity (Fig. 5). López-Jurado et al. (2008) and Balbín et al. (2012, 2014), ~~have observed made~~ similar ~~results observations~~ and ~~have~~ developed ~~some~~ hypotheses ~~to explaining~~ the seasonal and inter-annual variability of the location and intensity of the front between these two AWs. According to Balbín et al. (2014), the presence or absence ~~in early summer~~ of Intermediate Water in the Mallorca
 380 and Ibiza channels ~~at the beginning of the summer,~~ determines the meridional position of the front.

4.2 Biogeochemistry

Vertical sections of [Chla] and oxygen [O₂], ~~issued from provided by~~ the SeaExplorer glider ~~have been were~~ measured along the outward route (Fig. A4a and Fig. A4b) and the return route (Fig. A4c and Fig. A4d) parallel to the NS hippodrome, in the first 250 m of the water column. These glider vertical sections show patterns that can be explained by the vertical movement

385 of the water masses. The deep chlorophyll maximum (DCM), appears to remain at a fairly constant depth along the transects. However, a deepening of the lower boundary of the layer containing the DCM is noticeable north of 38° N 30' along the outward route (Fig. A4a) and the return route (Fig. A4c) of the SeaExplorer glider, corresponding to the "older AW" identified in Fig. 4d. Similar patterns also observed in the [O₂] data confirm a possible downwelling of the surface waters at the front location (see Fig. 3), but also indicate a deeper oxygenation of the "older AW".

390 The vertical sections of tyrosine- and tryptophan-like fluorophores (peak B and peak T respectively) from the glider (not shown) reveal distribution patterns very close to that of [Chla] for tyrosine-, and very close to that of [O₂] for tryptophan-like fluorophore. These similarities in the profiles of [Chla] and [O₂] were confirmed by correlation analyses (not shown), which indicate a very highly significant linear positive correlation between [Chla] and tyrosine-, and between [O₂] and tryptophan-like fluorophores when considering all glider data for the two transects from 5 to 200 m depth ($r = 0.88$ and 0.84 , $n \sim 32595$, $p < 0.0001$). Tryptophan- and tyrosine-like fluorophores are recognized as having an autochthonous origin (Coble et al., 2014), as being produced through the activity of autotrophic and heterotrophic plankton organisms, in particular phytoplankton and heterotrophic bacteria (Stedmon and Cory, 2014), and as being indicators of bioavailable/labile DOM (C and N) (Hudson et al., 2008; Fellman et al., 2009). Even though phytoplankton activity is considered a source of tryptophan- and tyrosine-like fluorophores (Determann et al., 1998; Stedmon and Markager, 2005; Romera-Castillo et al., 2010), bacterial degradation
400 appears to be not only a source, but also a sink for these fluorophores, depending on nutrient availability (Cammack et al., 2004; Nieto-Cid et al., 2006; Biers et al., 2007). The fact that tyrosine-like fluorophore was fairly associated with [Chla] and tryptophan-like with [O₂] reveals that these two fluorophores were probably not produced by the same phytoplankton groups. Moreover, it seems that tryptophan is more susceptible to release by heterotrophic bacteria (in addition to being released by phytoplankton) than is tyrosine-like material (Hudson et al., 2008; Tedetti et al., 2012; Stedmon and Cory, 2014). Figure
405 A5 shows the comparison of distribution of [Chla], and fluorescence intensities of tyrosine- and tryptophan-like fluorophores between the "younger and older AW". It appears that the content of Chla, tyrosine- and tryptophan-like fluorophores was higher in "older AW" than in "younger AW" (the mean values of Chla, Peak B and Peak T in "older AW" being significantly higher than those in "younger AW" ; t-test, $p < 0.0001$). These results are in line with the distribution of microphytoplankton, which exhibited higher abundances in the northern part of the transect ("older AW"), thus highlighting the strong coupling between
410 hydrology, phytoplankton activity and DOM concentration in this area.

4.3 Physical-biological coupling in the frontal area

The distribution of phytoplankton groups showed contrasted abundances across the front. Figure 10 summarizes our results, providing a view of the physical forcing occurring in the frontal area and its effect on the distribution of phytoplankton groups. The south-west of the front corresponding to the localisation of the "younger AW" is characterized by high abundances of *Synechococcus*, Pico1, Pico2 and RNano groups, whereas the north-east of the front associated with the "older AW" is dominated
415 by the other phytoplankton groups, i.e. Pico3, Microphytoplankton and SNano (Fig. 7 and Fig. 8).

Although some studies conducted in western boundary currents have shown that fronts are sites of elevated phytoplankton diversity (Barton et al., 2010; Clayton et al., 2014), it is still unclear how the physical processes impact the phyto-

plankton distribution. In order to explain the distribution of phytoplankton abundances observed during our cruise, we can
420 schematically separate the horizontal from the vertical processes as follows.

In terms of horizontal processes, the dominance of certain groups of phytoplankton appears well related with the type of AW. Statistical analysis proved very useful in synthesizing the physical and biological information and in identifying the relationship between some groups of phytoplankton and the hydrological water conditions. For instance, the principal component analysis (PCA) shows that *Synechococcus* abundance, salinity and temperature are well correlated (Fig. 9). This correlation is in
425 accordance with the study of by Mena et al. (2016), which who have already found higher abundances of *Synechococcus* in the "younger AW" than in the "older AW". Marrec et al. (2018) also revealed a dominance of *Synechococcus* in the warmer waters surrounding a colder cyclonic re-circulation. Previous studies have shown that fine-scale ocean dynamics can drive the formation of ecological niches, by segregating water masses for long enough to create favorable conditions for that permit some locally well adapted phytoplankton groups locally well adapted which will to become dominant (d'Ovidio et al., 2010;
430 Perruche et al., 2011). d'Ovidio et al. (2010) have also highlighted that these fluid ecological niches can be advected and can transport phytoplankton cells over a distances far apart from their origin the phytoplankton cells. This transport favors the creation of complex community distributions by enhancing the mingling of populations of phytoplankton. This theory has been deepened by Clayton et al. (2013) reinforced this theory using by global numerical simulations. According to them, dominant phytoplankton that are very well "locally" adapted "locally" can emerge in hotspot regions, whereas the presence of other
435 phytoplankton called "immigrants" is sustained by physical transport. The Mediterranean spans a much reduced latitudinal gradient and the intensity of its stronger currents allows a slower advection than the one by that of western boundary currents. As a consequence, it is not surprising that our cytometry measurements do not fail to show the presence or absence of specific groups. Nevertheless, our results highlight that fine-scale dynamics modulate the relative abundance of phytoplankton groups. We can assume, for instance, that the "younger AW" could have may transport some phytoplankton cells from the Algerian
440 Basin to the Balearic Islands. However, the front observed during our cruise cannot be defined as a "hotspot" of diversity as in the work of is seen in Clayton et al. (2014, 2017), where fine-scale features advect phytoplankton ecotypes that are absent in an one oceanic region towards another. In Our future cruises, we plan to will include perform taxonomic analyses such as metagenomics, that which will allow us to detail the structure of the communities further and tell more about better understand competition and immigration processes.

In terms of vertical processes, we can underline the role of vertical velocity (see Fig. 3). Clayton et al. (2014, 2017) highlighted the role of fine-scale circulation in regulating phytoplankton diversity. Nevertheless, they showed this in boundary currents and coastal upwelling regions and regarding opportunistic species (such as diatoms), which were fertilized by the strong nutrient enrichment induced by a very intense vertical transport. In our case, we found vertical velocities associated to the front that were less intense than in the work of those revealed by Clayton et al. (2014, 2017). This vertical transport can
450 convey phytoplankton cells from the euphotic layer into the depths, and in so doing play a key role in their distribution and their metabolism (Marrec et al., 2018). In addition to playing a role in phytoplankton distribution, vertical velocity can also advect a sufficient quantity of nutrients into the euphotic layer, creating favorable conditions for phytoplankton groups that are well adapted to the oligotrophic conditions of the Mediterranean Sea. Indeed, a previous modelling study by Lévy et al. (2001),

showed the significant impact of nutrient enhancement on the phytoplankton production in an oligotrophic regime. In order to better understand these two mechanisms, additional high-resolution and high-precision nutrient measurements are needed.

5 Conclusion and perspectives

In conclusion, our adaptive Lagrangian strategy and high-resolution coupled physical–biological sampling has allowed to detect a fine-scale frontal structure and has highlighted its structuring effect on the surface phytoplankton community, in accordance with previous modelling studies. The originality of our work resides in the fact that we ~~are have been~~ able to ~~show demonstrate~~ that less energetic fronts than those found in western boundary currents also have an impact on phytoplankton distribution. This suggests that the physico-chemical contrasts induced by the horizontal stirring processes in moderately energetic fronts are sufficiently strong to spatially reflect into phytoplanktonic communities with different structures. Furthermore, our work offers an interesting ~~expiation~~ explanation concerning the fact that despite the Mediterranean Sea ~~is being~~ an oligotrophic regime, this region is also characterized by a high diversity of phytoplankton. ~~Because~~ Fine-scale processes and oligotrophic regions are predominant in ocean, our results shed a new light on the functioning of the global ocean.

~~In the future, a better~~ There remains a need for improved understanding of the biogeochemical processes generating this observed fine-scale physical–biological coupling ~~is-needed~~. In particular, we plan to estimate and compare the growth rates of the various phytoplankton groups in the different water masses ~~in future studies, thanks-to using~~ the data collected in a Lagrangian manner and applying a method similar to the one ~~recommanded~~ by Marrec et al. (2018). Moreover, the role of nutrient supply (bottom-up) and of zooplankton grazing (top-down) are also key factors to be considered in explaining the ~~differences variation~~ in abundances of the ~~different diverse~~ phytoplankton groups in the different areas visited during the cruise. To address these latter points, future experiments will ~~need involve~~ high-resolution ~~nutrient measurements~~ (and also high-precision ~~ones~~, considering the oligotrophy of the Mediterranean Sea), ~~nutrient-measurements~~ coupled with zooplankton sampling and ~~dedicated~~ experiments ~~about-its~~ designed to improve understanding of zooplankton grazing on the different phytoplankton groups. Finally, this study ~~also-shows highlights the value of how-the~~ satellite information, ~~is-extremely-useful for both in~~ the design of the cruise sampling strategy ~~and, then, for in~~ the on-shore post-cruise interpretation of the data.

The new satellite SWOT (<https://swot.jpl.nasa.gov/>, last access: ~~October 11, 2021~~ ; <https://swot.cnes.fr>, last access: ~~October 11, 2021~~) will provide ocean topography and surface current ~~data~~ with a resolution one order of magnitude higher than present altimeters (Morrow et al., 2019). During the few months after its launch, ~~throughout the period-called the so-called~~ "fast sampling phase", the satellite will be on a ~~speeial~~ specific orbit that will overfly a portion of the global ocean ~~and measure ealled~~ "cross-over" ~~zones~~, where high spatial resolution will be associated with high temporal resolution (d'Ovidio et al., 2019). The large data set collected during PROTEVSMED-SWOT represents precious new information on the SWOT cross-over area located ~~in to~~ the south of the Balearic Islands. The work presented here thus paves the way ~~to for~~ future cruises to be planned in this area during the SWOT period, which will ~~be provide~~ a unique opportunity ~~to for more detailed study the~~ physical–biological fine-scale coupling ~~in-more detail~~.

Code availability. The LATEXtools ~~can be openly available~~ are in open access at: <https://people.mio.osupytheas.fr/~doglioli/latextools.htm>, last access: **October 11, 2021** (Doglioli et al., 2013).

The script for objective mapping ~~can be openly available~~ is in open access on Rudnick's web page: http://chowder.ucsd.edu/Rudnick/SIO_221B.html, last access: **October 11, 2021**.

490 *Data availability.* The data ~~can be openly available~~ are in open access at: <https://www.seanoe.org/data/00512/62352/>, last access: **October 11, 2021** (Dumas et al., 2018).

Author contributions. RT post-processed the in situ observations, performed the analysis of the results and ~~leaded~~ led the writing of the manuscript. AMD and GG designed the Lagrangian experiment and collected the in situ data together with FD and PG. AAP, SB and FdO provided on land support ~~to~~ concerning the sampling strategy. LI and MTh carried out the analysis of flow cytometry data. AP and BBL
495 contributed to the vertical velocity analysis. FC, NB and MTe conducted the glider deployment and the processing of its data. All the authors discussed the results and contributed to the writing of the manuscript.

Competing interests. The authors declare that they have no conflict of interest.

Acknowledgements. This work was supported by the CNES in the framework of the ~~project~~ BIOSWOT-AdAC ~~project~~ (<https://www.swot-adac.org/>, last access: **October 11, 2021**) ~~will coordinate several cruises~~; and by the MIO Axes Transverses program (AT-COUPPLAGE). The chloro-
500 phyll *a* product is produced by CLS. The authors thank the SHOM and the crew of the RV *Beautemps-Beaupré* for shipboard operations, M. Torner, the SOCIB and the crew of the RV *García del Cid* for their assistance with the glider operations, J.-L. Fuda for his help in Seasoar data treatment, L. Rousselet for discussion about vertical velocity estimations, and M. Goutx for the early discussions about the glider FDOM data. The Cytobuoy® flow cytometer was funded by the CHROME project, Excellence Initiative of Aix-Marseille University – A*MIDEX, a French "Investissements d'Avenir" program. SPASSO is operated and developed with the support of the SIP (Service Informatique de
505 Pythéas) and in particular C. Yohia, J. Lecubin. D. Zevaco and C. Blanpain (Institut Pythéas, Marseille, France). The project leading to this publication has received funding from European FEDER Fund under project ~~number~~ 1166-39417. This work was also supported by the French National ~~program~~ LEFE ~~program~~ (Les Enveloppes Fluides et l'Environnement) (FUMSECK-vv project, PI S. Barrillon and A.A. Petrenko). F. Cyr received a funding from the Mourou/Strickland mobility program to work on this project. R. Tzortzis is financed by a MENRT PhD grant (École Doctorale Sciences de l'environnement - ED 251, Aix-Marseille University).

510 References

- Abraham, E. R. and Bowen, M. M.: Chaotic stirring by a mesoscale surface-ocean flow, *Chaos*, 12, 373–381, <https://doi.org/doi.org/10.1063/1.1481615>, 2002.
- Allen, J. and Smeed, D.: Potential vorticity and vertical velocity at the Iceland-Faeroes front, *J. Phys. Oceanogr.*, 26, 2611–2634, [https://doi.org/10.1175/1520-0485\(1996\)026<2611:PVA>VVA>2.0.CO;2](https://doi.org/10.1175/1520-0485(1996)026<2611:PVA>VVA>2.0.CO;2), 1996.
- 515 Allen, J. T., Smeed, D. A., Nurser, A. J. G., Zhang, J. W., and Rixen, M.: Diagnosis of vertical velocities with the QG omega equation: an examination of the errors due to sampling strategy, *Deep-Sea Res. Pt. I*, 48, 315–346, [https://doi.org/10.1016/S0967-0637\(00\)00035-2](https://doi.org/10.1016/S0967-0637(00)00035-2), 2001.
- Balbín, R., Flexas, M. d. M., López-Jurado, J. L., Peña, M., Amores, A., and Alemany, F.: Vertical velocities and biological consequences at a front detected at the Balearic Sea, *Cont. Shelf. Res.*, 47, 28–41, <https://doi.org/10.1016/j.csr.2012.06.008>, 2012.
- 520 Balbín, R., López-Jurado, J. L., Flexas, M., Reglero, P., Vélez-Velchí, P., González-Pola, C., Rodríguez, J. M., García, A., and Alemany, F.: Interannual variability of the early summer circulation around the Balearic Islands: driving factors and potential effects on the marine ecosystem, *J. Marine Syst.*, 138, 70–81, <https://doi.org/10.1016/j.jmarsys.2013.07.004>, 2014.
- Barceló-Llull, B. and Pascual, A.: Uncovering fine-scale ocean currents from in situ observations to anticipate SWOT satellite mission capabilities., in revision for *Front. Mar. Sci.*
- 525 Barceló-Llull, B., Pallàs-Sanz, E., Sangrà, P., Martínez-Marrero, A., Estrada-Allis, S. N., and Arístegui, J.: Ageostrophic secondary circulation in a subtropical intrathermocline eddy, *J. Phys. Oceanogr.*, 47, 1107–1123, <https://doi.org/10.1175/JPO-D-16-0235.1>, 2017.
- Barceló-Llull, B., Pascual, A., Día-Barroso, L., Sánchez-Román, A., Casas, B., Muñoz, C., Torner, M., Alou-Font, E., Cutolo, E., Mourre, B., et al.: PRE-SWOT Cruise Report. Mesoscale and sub-mesoscale vertical exchanges from multi-platform experiments and supporting modeling simulations: anticipating SWOT launch (CTM2016-78607-P), Tech. rep., CSIC-UIB-Instituto Mediterráneo de Estudios Avanzados (IMEDEA), Madrid, Spain, <https://doi.org/10.20350/digitalCSIC/8584>, 2018.
- 530 Barceló-Llull, B., Pascual, A., Ruiz, S., Escudier, R., Torner, M., and Tintoré, J.: Temporal and spatial hydrodynamic variability in the Mallorca channel (western Mediterranean Sea) from 8 years of underwater glider data, *J. Geophys. Res.-Oceans*, 124, 2769–2786, <https://doi.org/10.1029/2018JC014636>, 2019.
- Barton, A. D., Dutkiewicz, S., Flierl, G., Bragg, J., and Follows, M. J.: Patterns of diversity in marine phytoplankton, *Science*, 327, 1509–1511, <https://doi.org/10.1126/science.1184961>, 2010.
- 535 Barton, A. D., Ward, B. A., Williams, R. G., and Follows, M. J.: The impact of fine-scale turbulence on phytoplankton community structure, *Limnology and oceanography: fluids and environments*, 4, 34–49, <https://doi.org/10.1215/21573689-2651533>, 2014.
- Benavides, M., Conradt, L., Bonnet, S., Berman-Frank, I., Barrillon, S., Petrenko, A., and Doglioli, A.: Fine-scale sampling unveils diazotroph patchiness in the South Pacific Ocean, *ISME Communications*, 1, 1–3, <https://doi.org/10.1038/s43705-021-00006-2>, 2021.
- 540 Biers, E. J., Zepp, R. G., and Moran, M. A.: The role of nitrogen in chromophoric and fluorescent dissolved organic matter formation, *Mar. Chem.*, 103, 46–60, <https://doi.org/10.1016/j.marchem.2006.06.003>, 2007.
- Boffetta, G., Lacorata, G., Redaelli, G., and Vulpiani, A.: Detecting barriers to transport: a review of different techniques, *Physica D*, 159, 58–70, [https://doi.org/10.1016/S0167-2789\(01\)00330-X](https://doi.org/10.1016/S0167-2789(01)00330-X), 2001.
- Bower, A. S. and Lozier, M. S.: A closer look at particle exchange in the Gulf Stream, *J. Phys. Oceanogr.*, 24, 1399–1418, [https://doi.org/10.1175/1520-0485\(1994\)024<1399:ACLAPE>2.0.CO;2](https://doi.org/10.1175/1520-0485(1994)024<1399:ACLAPE>2.0.CO;2), 1994.
- 545

- Busseni, G., Caputi, L., Piredda, R., Fremont, P., Hay Mele, B., Campese, L., Scalco, E., de Vargas, C., Bowler, C., d'Ovidio, F., Zingone, A., Ribera d'Alcalà, M., and Iudicone, D.: Large scale patterns of marine diatom richness: Drivers and trends in a changing ocean, *Global Ecol. Biogeogr.*, 29, 1915–1928, <https://doi.org/10.1111/geb.13161>, 2020.
- Cammack, W. L., Kalff, J., Prairie, Y. T., and Smith, E. M.: Fluorescent dissolved organic matter in lakes: relationships with heterotrophic metabolism, *Limnol. Oceanogr.*, 49, 2034–2045, <https://doi.org/10.4319/lo.2004.49.6.2034>, 2004.
- Clayton, S., Dutkiewicz, S., Jahn, O., and Follows, M. J.: Dispersal, eddies, and the diversity of marine phytoplankton, *Limnology and Oceanography: Fluids and Environments*, 3, 182–197, <https://doi.org/10.1215/21573689-2373515>, 2013.
- Clayton, S., Nagai, T., and Follows, M. J.: Fine scale phytoplankton community structure across the Kuroshio Front, *J. Plankton. Res.*, 36, 1017–1030, <https://doi.org/10.1093/plankt/fbu020>, 2014.
- Clayton, S., Lin, Y.-C., Follows, M. J., and Worden, A. Z.: Co-existence of distinct *Ostreococcus* ecotypes at an oceanic front, *Limnol. Oceanogr.*, 62, 75–88, <https://doi.org/10.1002/lno.10373>, 2017.
- Coble, P. G.: Characterization of marine and terrestrial DOM in seawater using excitation-emission matrix spectroscopy, *Mar. Chem.*, 51, 325–346, [https://doi.org/10.1016/0304-4203\(95\)00062-3](https://doi.org/10.1016/0304-4203(95)00062-3), 1996.
- Coble, P. G., Lead, J., Baker, A., Reynolds, D. M., and Spencer, R. G. M.: Aquatic organic matter fluorescence, Cambridge University Press, New York, 2014.
- Cotroneo, Y., Aulicino, G., Ruiz, S., Pascual, A., Budillon, G., Fusco, G., and Tintoré, J.: Glider and satellite high resolution monitoring of a mesoscale eddy in the algerian basin: Effects on the mixed layer depth and biochemistry, *J. Marine Syst.*, 162, 73–88, <https://doi.org/10.1016/j.jmarsys.2015.12.004>, 2016.
- Cyr, F., Tedetti, M., Besson, F., Beguery, L., Doglioli, A. M., Petrenko, A. A., and Goutx, M.: A new glider-compatible optical sensor for dissolved organic matter measurements: test case from the NW Mediterranean Sea, *Front. Mar. Sci.*, 4, 89, <https://doi.org/10.3389/fmars.2017.00089>, 2017.
- Cyr, F., Tedetti, M., Besson, F., Bhairy, N., and Goutx, M.: A Glider-Compatible Optical Sensor for the Detection of Polycyclic Aromatic Hydrocarbons in the Marine Environment, *Front. Mar. Sci.*, 6, 110, <https://doi.org/10.3389/fmars.2019.00110>, 2019.
- De Monte, S., Soccodato, A., Alvain, S., and d'Ovidio, F.: Can we detect oceanic biodiversity hotspots from space?, *ISME J.*, 7, 2054–2056, <https://doi.org/10.1038/ismej.2013.72>, 2013.
- De Verneil, A., Franks, P., and Ohman, M.: Frontogenesis and the creation of fine-scale vertical phytoplankton structure, *J. Geophys. Res.-Oceans*, 124, 1509–1523, <https://doi.org/10.1029/2018JC014645>, 2019.
- Determann, S., Lobbes, J. M., Reuter, R., and Rullkötter, J.: Ultraviolet fluorescence excitation and emission spectroscopy of marine algae and bacteria, *Mar. Chem.*, 62, 137–156, [https://doi.org/10.1016/S0304-4203\(98\)00026-7](https://doi.org/10.1016/S0304-4203(98)00026-7), 1998.
- Doglioli, A.: OSCAHR cruise, RV Téthys II, <https://doi.org/10.17600/15008800>, 2015.
- Doglioli, A. M., Nencioli, F., Petrenko, A. A., Rougier, G., Fuda, J.-L., and Grima, N.: A software package and hardware tools for in situ experiments in a Lagrangian reference frame, *J. Atmos. Ocean. Technol.*, 30, 1940–1950, <https://doi.org/10.1175/JTECH-D-12-00183.1>, 2013.
- d'Ovidio, F., Fernández, V., Hernández-García, E., and López, C.: Mixing structures in the Mediterranean Sea from finite-size Lyapunov exponents, *Geophys. Res. Lett.*, 31, <https://doi.org/10.1029/2004GL020328>, 2004.
- d'Ovidio, F., De Monte, S., Alvain, S., Dandonneau, Y., and Lévy, M.: Fluid dynamical niches of phytoplankton types, *Proc. Nat. Acad. Sci. USA*, 107, 18 366–18 370, <https://doi.org/10.1073/pnas.1004620107>, 2010.

d'Ovidio, F., Della Penna, A., Trull, T. W., Nencioli, F., Pujol, M.-I., Rio, M.-H., Park, Y.-H., Cotté, C., Zhou, M., and Blain, S.: The biogeochemical structuring role of horizontal stirring: Lagrangian perspectives on iron delivery downstream of the Kerguelen Plateau, *Biogeosciences*, 12, 5567–5581, <https://doi.org/10.5194/bg-12-5567-2015>, 2015.

d'Ovidio, F., Pascual, A., Wang, J., Doglioli, A., Jing, Z., Moreau, S., Grégori, G., Swart, S., Speich, S., Cyr, F., et al.: Frontiers in Fine-Scale in situ Studies: Opportunities During the SWOT Fast Sampling Phase, *Front. Mar. Sci.*, 6, 168, <https://doi.org/10.3389/fmars.2019.00168>, 2019.

Dumas, F.: PROTEVSMED_SWOT_2018_LEG1 cruise, RV Beautemps-Beaupré, https://doi.org/10.17183/protevsmed_swot_2018_leg1, 2018.

Dumas, F., Garreau, P., Louazel, S., Correard, S., Fercocq, S., Le Menn, M., Serpette, A., Garnier, V., Stegner, A., Le Vu, B., Doglioli, A., and Gregori, G.: PROTEVS-MED field experiments: Very High Resolution Hydrographic Surveys in the Western Mediterranean Sea, SEANOE [data set], <https://doi.org/10.17882/62352>, 2018.

Fellman, J. B., Hood, E., D' amore, D. V., Edwards, R. T., and White, D.: Seasonal changes in the chemical quality and biodegradability of dissolved organic matter exported from soils to streams in coastal temperate rainforest watersheds, *Biogeochemistry*, 95, 277–293, <https://doi.org/10.1007/s10533-009-9336-6>, 2009.

Field, C. B., Behrenfeld, M. J., Randerson, J. T., and Falkowski, P.: Primary production of the biosphere: integrating terrestrial and oceanic components, *Science*, 281, 237–240, <https://doi.org/10.1126/science.281.5374.237>, 1998.

Garreau, P., Dumas, F., Louazel, S., Correard, S., Fercocq, S., Le Menn, M., Serpette, A., Garnier, V., Stegner, A., Le Vu, B., et al.: PROTEVS-MED field experiments: very high resolution hydrographic surveys in the Western Mediterranean Sea, *Earth. Syst. Sci. Data*, 12, 441–456, <https://doi.org/10.5194/essd-12-441-2020>, 2020.

Giordani, H., Prieur, L., and Caniaux, G.: Advanced insights into sources of vertical velocity in the ocean, *Ocean Dynam.*, 56, 513–524, <https://doi.org/10.1007/s10236-005-0050-1>, 2006.

Gower, J., Denman, K., and Holyer, R.: Phytoplankton patchiness indicates the fluctuation spectrum of mesoscale oceanic structure, *Nature*, 288, 157–159, <https://doi.org/10.1038/288157a0>, 1980.

Guieu, C. and Bonnet, S.: TONGA 2019 cruise, RV L'Atalante., <https://doi.org/10.17600/18000884>, 2019.

Hartigan, J. A. and Wong, M. A.: Algorithm AS 136: A K-Means Clustering Algorithm, *J. Roy. Stat. Soc. C-App.*, 28, 100–108, <https://doi.org/10.2307/2346830>, <http://www.jstor.org/stable/2346830>, 1979.

Hoskins, B., Draghici, I., and Davies, H.: A new look at the ω -equation, *Quart. J. Roy. Meteorol. Soc.*, 104, 31–38, <https://doi.org/10.1002/qj.49710443903>, 1978.

Hu, Z. and Zhou, M.: Lagrangian analysis of surface transport patterns in the northern south China sea, *Deep-Sea Res. Pt II*, 167, 4–13, <https://doi.org/10.1016/j.dsr2.2019.06.020>, 2019.

Hudson, N., Baker, A., Ward, D., Reynolds, D. M., Brunson, C., Carliell-Marquet, C., and Browning, S.: Can fluorescence spectrometry be used as a surrogate for the Biochemical Oxygen Demand (BOD) test in water quality assessment? An example from South West England, *Sci. Total Environ.*, 391, 149–158, <https://doi.org/10.1016/j.scitotenv.2007.10.054>, 2008.

Kaufman, L. and Rousseeuw, P.: Statistical data analysis based on the L1-norm and related methods, Clustering by means of medoids. North-Holland, pp. 405–416, 1987.

Lapeyre, G. and Klein, P.: Impact of the small-scale elongated filaments on the oceanic vertical pump, *J. Mar. Res.*, 64, 835–851, <https://doi.org/10.1357/002224006779698369>, 2006.

- 620 Le Traon, P.: A method for optimal analysis of fields with spatially variable mean, *J. Geophys. Res.-Oceans*, 95, 13 543–13 547, <https://doi.org/10.1029/JC095iC08p13543>, 1990.
- Lehahn, Y., d'Ovidio, F., Lévy, M., and Heifetz, E.: Stirring of the northeast Atlantic spring bloom: A Lagrangian analysis based on multi-satellite data, *J. Geophys. Res.-Oceans*, 112, <https://doi.org/10.1029/2006JC003927>, 2007.
- Lehahn, Y., d'Ovidio, F., and Koren, I.: A satellite-based Lagrangian view on phytoplankton dynamics, *Annu. Rev. Mar. Sci.*, 10, 99–119, <https://doi.org/10.1146/annurev-marine-121916-063204>, 2018.
- 625 Lévy, M., Klein, P., and Treguier, A.-M.: Impact of sub-mesoscale physics on production and subduction of phytoplankton in an oligotrophic regime, *J. Mar. Res.*, 59, 535–565, <https://doi.org/10.1357/002224001762842181>, 2001.
- Lévy, M., Jahn, O., Dutkiewicz, S., Follows, M. J., and d'Ovidio, F.: The dynamical landscape of marine phytoplankton diversity, *J. Roy. Soc. Interface*, 12, 20150 481, <https://doi.org/10.1098/rsif.2015.0481>, 2015.
- 630 López-Jurado, J. L., Marcos, M., and Monserrat, S.: Hydrographic conditions affecting two fishing grounds of Mallorca island (Western Mediterranean): during the IDEA Project (2003–2004), *J. Marine Syst.*, 71, 303–315, <https://doi.org/10.1016/j.jmarsys.2007.03.007>, 2008.
- Lueck, R. G. and Picklo, J. J.: Thermal inertia of conductivity cells: Observations with a Sea-Bird cell, *J. Atmos. Ocean. Technol.*, 7, 756–768, [https://doi.org/10.1175/1520-0426\(1990\)007<0756:TIOCCO>2.0.CO;2](https://doi.org/10.1175/1520-0426(1990)007<0756:TIOCCO>2.0.CO;2), 1990.
- Mahadevan, A.: The impact of submesoscale physics on primary productivity of plankton, *Annu. Rev. Mar. Sci.*, 8, 161–184, <https://doi.org/10.1146/annurev-marine-010814-015912>, 2016.
- 635 Mahadevan, A. and Tandon, A.: An analysis of mechanisms for submesoscale vertical motion at ocean fronts, *Ocean Model.*, 14, 241–256, <https://doi.org/10.1016/j.ocemod.2006.05.006>, 2006.
- Marrec, P., Grégori, G., Doglioli, A. M., Dugenne, M., Della Penna, A., Bhairy, N., Cariou, T., Hélias Nunige, S., Lahbib, S., Rougier, G., Wagener, T., and Thyssen, M.: Coupling physics and biogeochemistry thanks to high-resolution observations of the phytoplankton community structure in the northwestern Mediterranean Sea, *Biogeosciences*, 15, 1579–1606, <https://doi.org/10.5194/bg-15-1579-2018>, 2018.
- 640 Martin, A.: Phytoplankton patchiness: the role of lateral stirring and mixing, *Prog. Oceanogr.*, 57, 125–174, [https://doi.org/10.1016/S0079-6611\(03\)00085-5](https://doi.org/10.1016/S0079-6611(03)00085-5), 2003.
- McDougall, T., Jackett, D., Millero, F., Pawlowicz, R., and Barker, P.: A global algorithm for estimating Absolute Salinity., *Ocean Sci.*, 8, 1123–1134, <https://doi.org/10.5194/os-8-1123-2012>, 2012.
- 645 McDougall, T. J. and Barker, P. M.: Getting started with TEOS-10 and the Gibbs Seawater (GSW) Oceanographic Toolbox, *SCOR/IAPSO WG*, 127, 1–28, 2011.
- McWilliams, J. C.: Submesoscale currents in the ocean, *P. Roy. Soc. A-Math. Phys.*, 472, 20160 117, <https://doi.org/10.1098/rspa.2016.0117>, 2016.
- 650 Mena, C., Reglero, P., Ferriol, P., Torres, A. P., Aparicio-González, A., Balbín, R., Santiago, R., Moyà, G., Alemany, F., and Agawin, N. S.: Prokaryotic picoplankton spatial distribution during summer in a haline front in the Balearic Sea, Western Mediterranean, *Hydrobiologia*, 779, 243–257, <https://doi.org/10.1007/s10750-016-2825-4>, 2016.
- Mensah, V., Le Menn, M., and Morel, Y.: Thermal mass correction for the evaluation of salinity, *J. Atmos. Ocean. Technol.*, 26, 665–672, <https://doi.org/10.1175/2008JTECHO612.1>, 2009.
- 655 Millot, C.: Circulation in the western Mediterranean Sea, *J. Marine Syst.*, 20, 423–442, [https://doi.org/10.1016/S0924-7963\(98\)00078-5](https://doi.org/10.1016/S0924-7963(98)00078-5), 1999.

- Millot, C. and Taupier-Letage, I.: Circulation in the Mediterranean Sea, in: *The Mediterranean Sea*, edited by Salot, A., pp. 29–66, Springer, Berlin, Heidelberg, Germany, <https://doi.org/10.1007/b107143>, 2005.
- 660 Millot, C., Candela, J., Fuda, J.-L., and Tber, Y.: Large warming and salinification of the Mediterranean outflow due to changes in its composition, *Deep-Sea Res. Pt. I*, 53, 656–666, <https://doi.org/10.1016/j.dsr.2005.12.017>, 2006.
- Morison, J., Andersen, R., Larson, N., D’Asaro, E., and Boyd, T.: The correction for thermal-lag effects in Sea-Bird CTD data, *J. Atmos. Ocean. Technol.*, 11, 1151–1164, [https://doi.org/10.1175/1520-0426\(1994\)011<1151:TCFTLE>2.0.CO;2](https://doi.org/10.1175/1520-0426(1994)011<1151:TCFTLE>2.0.CO;2), 1994.
- Morrow, R., Fu, L.-L., Arduin, F., Benkiran, M., Chapron, B., Cosme, E., d’Ovidio, F., Farrar, J. T., Gille, S. T., Lapeyre, G., et al.: Global observations of fine-scale ocean surface topography with the Surface Water and Ocean Topography (SWOT) Mission, *Front. Mar. Sci.*, 6, 665 232, <https://doi.org/10.3389/fmars.2019.00232>, 2019.
- Moutin, T. and Bonnet, S.: OUTPACE cruise, RV L’Atalante., <https://doi.org/10.17600/15000900>, 2015.
- Nieto-Cid, M., Álvarez-Salgado, X. A., and Pérez, F. F.: Microbial and photochemical reactivity of fluorescent dissolved organic matter in a coastal upwelling system, *Limnol. Oceanogr.*, 51, 1391–1400, <https://doi.org/10.4319/lo.2006.51.3.1391>, 2006.
- Pascual, A., Ruiz, S., Olita, A., Troupin, C., Claret, M., Casas, B., Mourre, B., Poulain, P.-M., Tovar-Sanchez, A., Capet, A., et al.: 670 A multiplatform experiment to unravel meso-and submesoscale processes in an intense front (AlborEx), *Front. Mar. Sci.*, 4, 39, <https://doi.org/10.3389/fmars.2017.00039>, 2017.
- Perruche, C., Rivière, P., Lapeyre, G., Carton, X., and Pondaven, P.: Effects of surface quasi-geostrophic turbulence on phytoplankton competition and coexistence, *J. Mar. Res.*, 69, 105–135, <https://doi.org/10.1357/002224011798147606>, 2011.
- Petrenko, A. A., Doglioli, A. M., Nencioli, F., Kersalé, M., Hu, Z., and d’Ovidio, F.: A review of the LATEX project: mesoscale to subme- 675 soscale processes in a coastal environment, *Ocean Dynam.*, 67, 513–533, <https://doi.org/10.1007/s10236-017-1040-9>, 2017.
- Pidcock, R. E., Martin, A. P., Painter, S. C., Allen, J. T., Srokosz, M. A., Forryan, A., Stinchcombe, M., and Smeed, D. A.: Quantifying mesoscale-driven nitrate supply: A case study, *Global Biogeochem. Cy.*, 30, 1206–1223, <https://doi.org/10.1002/2016GB005383>, 2016.
- Ribalet, F., Marchetti, A., Hubbard, K. A., Brown, K., Durkin, C. A., Morales, R., Robert, M., Swalwell, J. E., Tortell, P. D., and Armbrust, E. V.: Unveiling a phytoplankton hotspot at a narrow boundary between coastal and offshore waters, *Proc. Nat. Acad. Sci. USA*, 107, 680 16 571–16 576, <https://doi.org/10.1073/pnas.1005638107>, 2010.
- Romera-Castillo, C., Sarmiento, H., Alvarez-Salgado, X. A., Gasol, J. M., and Marraséa, C.: Production of chromophoric dissolved organic matter by marine phytoplankton, *Limnol. Oceanogr.*, 55, 446–454, <https://doi.org/10.4319/lo.2010.55.1.0446>, 2010.
- Rousselet, L., de Verneil, A., Doglioli, A. M., Petrenko, A. A., Duhamel, S., Maes, C., and Blanke, B.: Large-to submesoscale surface circulation and its implications on biogeochemical/biological horizontal distributions during the OUTPACE cruise (southwest Pacific), 685 *Biogeosciences*, 15, 2411–2431, <https://doi.org/10.5194/bg-15-2411-2018>, 2018.
- Rousselet, L., Doglioli, A., de Verneil, A., Pietri, A., Della Penna, A., Berline, L., Marrec, P., Grégori, G., Thyssen, M., Carlotti, F., et al.: Vertical motions and their effects on a biogeochemical tracer in a cyclonic structure finely observed in the Ligurian Sea, *J. Geophys. Res.-Oceans*, 124, 3561–3574, <https://doi.org/10.1029/2018JC014392>, 2019.
- Rudnick, D. L.: Intensive surveys of the Azores Front: 2. Inferring the geostrophic and vertical velocity fields, *J. Geophys. Res.-Oceans*, 101, 690 16 291–16 303, <https://doi.org/10.1029/96JC01144>, 1996.
- Ruiz, S., Claret, M., Pascual, A., Olita, A., Troupin, C., Capet, A., Tovar-Sánchez, A., Allen, J., Poulain, P.-M., Tintoré, J., et al.: Effects of oceanic mesoscale and submesoscale frontal processes on the vertical transport of phytoplankton, *J. Geophys. Res.-Oceans*, 124, 5999–6014, <https://doi.org/10.1029/2019JC015034>, 2019.

- Shcherbina, A. Y., Sundermeyer, M. A., Kunze, E., D'Asaro, E., Badin, G., Birch, D., Brunner-Suzuki, A.-M. E., Callies, J., Kuebel-Cervantes, B. T., Claret, M., et al.: The LatMix summer campaign: Submesoscale stirring in the upper ocean, *Bull. Amer. Meteorol. Soc.*, 96, 1257–1279, <https://doi.org/10.1175/BAMS-D-14-00015.1>, 2015.
- Sieburth, J. M., Smetacek, V., and Lenz, J.: Pelagic ecosystem structure: Heterotrophic compartments of the plankton and their relationship to plankton size fractions, *Limnol. Oceanogr.*, 23, 1256–1263, <https://doi.org/10.4319/lo.1978.23.6.1256>, 1978.
- Smetacek, V., Klaas, C., Strass, V. H., Assmy, P., Montresor, M., Cisewski, B., Savoye, N., Webb, A., d'Ovidio, F., Arrieta, J. M., et al.: Deep carbon export from a Southern Ocean iron-fertilized diatom bloom, *Nature*, 487, 313–319, <https://doi.org/10.1038/nature11229>, 2012.
- Soccodato, A., d'Ovidio, F., Lévy, M., Jahn, O., Follows, M. J., and De Monte, S.: Estimating planktonic diversity through spatial dominance patterns in a model ocean, *Mar. Genom.*, 29, 9–17, <https://doi.org/10.1016/j.margen.2016.04.015>, 2016.
- Stedmon, C. A. and Cory, R. M.: Biological origins and fate of fluorescent dissolved organic matter in aquatic environments, Cambridge University Press, New York, 2014.
- Stedmon, C. A. and Markager, S.: Tracing the production and degradation of autochthonous fractions of dissolved organic matter using fluorescence analysis, *Limnol. Oceanogr.*, 50, 1415–1426, <https://doi.org/10.4319/lo.2005.50.5.1415>, 2005.
- Strass, V. H.: Chlorophyll patchiness caused by mesoscale upwelling at fronts, *Deep-Sea Res.*, 39, 75–96, [https://doi.org/10.1016/0198-0149\(92\)90021-K](https://doi.org/10.1016/0198-0149(92)90021-K), 1992.
- Tang, W., Cerdán-García, E., Berthelot, H., Polyviou, D., Wang, S., Baylay, A., Whitby, H., Planquette, H., Mowlem, M., Robidart, J., et al.: New insights into the distributions of nitrogen fixation and diazotrophs revealed by high-resolution sensing and sampling methods, *ISME J.*, 14, 2514–2526, <https://doi.org/10.1038/s41396-020-0703-6>, 2020.
- Tedetti, M., Longhitano, R., Garcia, N., Guigue, C., Ferretto, N., and Goutx, M.: Fluorescence properties of dissolved organic matter in coastal Mediterranean waters influenced by a municipal sewage effluent (Bay of Marseilles, France), *Environ. Chem.*, 9, 438–449, <https://doi.org/10.1071/EN12081>, 2012.
- Thyssen, M., Garcia, N., and Denis, M.: Sub meso scale phytoplankton distribution in the North East Atlantic surface waters determined with an automated flow cytometer, *Biogeosciences*, 6, 569–583, <https://doi.org/10.5194/bg-6-569-2009>, 2009.
- Thyssen, M., Alvain, S., Lefebvre, A., Dessailly, D., Rijkeboer, M., Guiselin, N., Creach, V., and Artigas, L.-F.: High-resolution analysis of a North Sea phytoplankton community structure based on in situ flow cytometry observations and potential implication for remote sensing, *Biogeosciences*, 12, 4051–4066, <https://doi.org/10.5194/bg-12-4051-2015>, 2015.
- Tintoré, J., Gomis, D., Alonso, S., and Parrilla, G.: Mesoscale dynamics and vertical motion in the Alboran Sea, *J. Phys. Oceanogr.*, 21, 811–823, [https://doi.org/10.1175/1520-0485\(1991\)021<0811:MDAVMI>2.0.CO;2](https://doi.org/10.1175/1520-0485(1991)021<0811:MDAVMI>2.0.CO;2), 1991.
- Troupin, C., Beltran, J. P., Heslop, E., Torner, M., Garau, B., Allen, J., Ruiz, S., and Tintoré, J.: A toolbox for glider data processing and management, *Methods in Oceanography*, 13, 13–23, <https://doi.org/10.1016/j.mio.2016.01.001>, 2015.
- Watson, A. J., Robinson, C., Robinson, J., Williams, P. I. B., and Fasham, M.: Spatial variability in the sink for atmospheric carbon dioxide in the North Atlantic, *Nature*, 350, 50–53, <https://doi.org/10.1038/350050a0>, 1991.
- Yoder, J. A., McClain, C. R., Blanton, J. O., and Oeymay, L.-Y.: Spatial scales in CZCS-chlorophyll imagery of the southeastern US continental shelf I, *Limnol. Oceanogr.*, 32, 929–941, <https://doi.org/10.4319/lo.1987.32.4.0929>, 1987.
- Yoder, J. A., Ackleson, S. G., Barber, R. T., Flament, P., and Balch, W. M.: A line in the sea, *Nature*, 371, 689–692, <https://doi.org/10.1038/371689a0>, 1994.

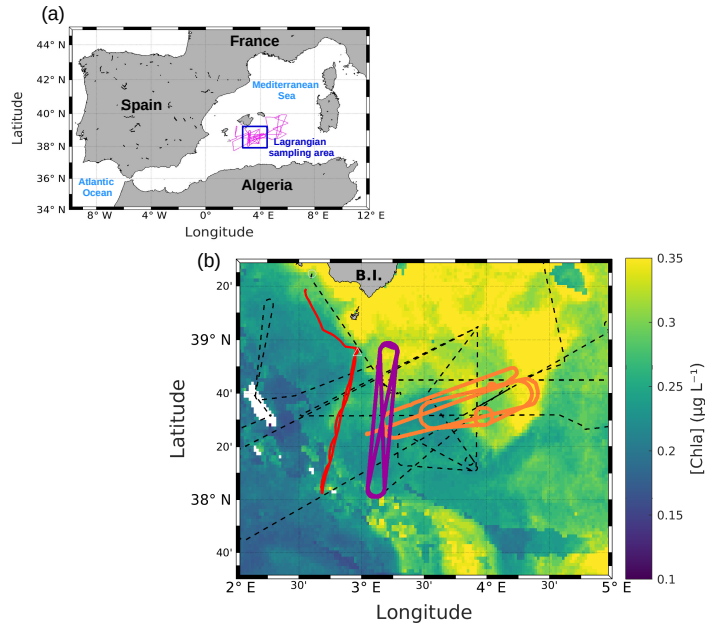


Figure 1. (a) Whole route of the RV *Beautemps-Beaupré* during PROTEVSMED-SWOT (pink line). The blue box corresponds to the area sampled with the Lagrangian strategy. (b) Map of satellite-derived [Chla] provided by CLS for 3 May 2018, selected in the Lagrangian sampling area and superimposed onto the route of the ship (black dotted line). The orange and purple lines delineate the two areas called “hippodromes”: West-East (orange) and North-South (purple). The red line represents the route of the SeaExplorer glider.

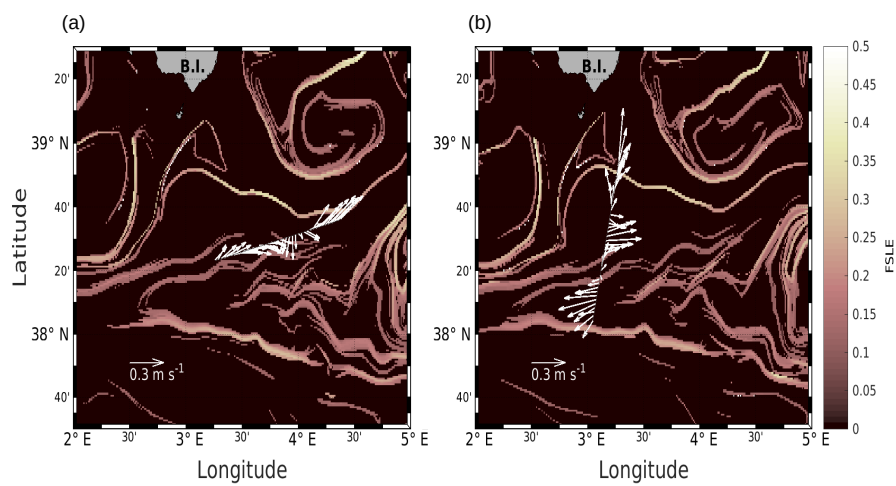
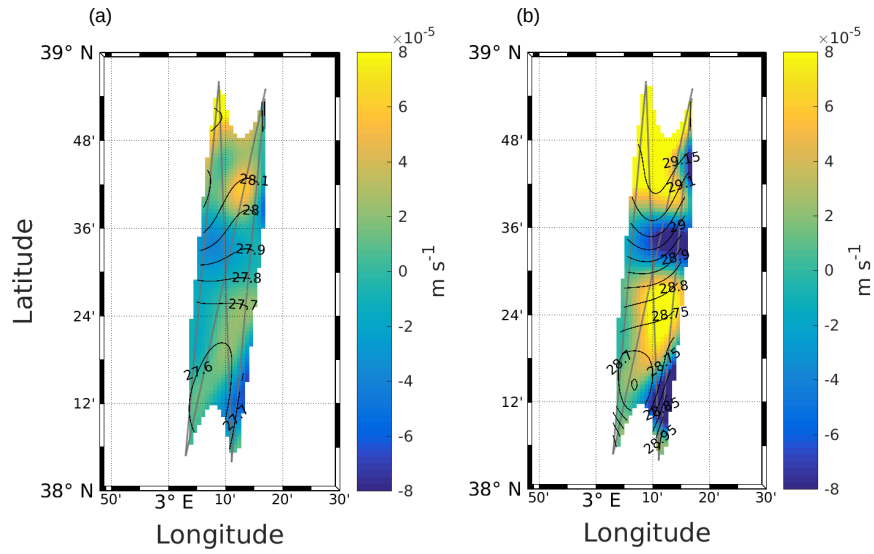


Figure 2. Horizontal velocities measured by VMADCP at 25 m, along the WE (a) and NS (b) transects, superimposed onto the FSLE field for the corresponding date (i.e. 9 May 2018 and 11 May 2018, respectively). Unit for FSLE is day⁻¹.



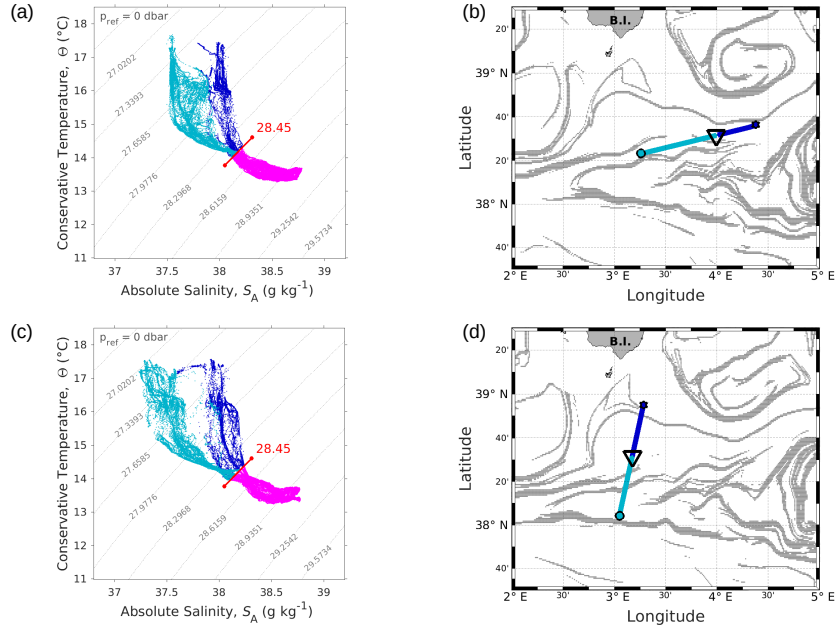


Figure 4. Θ - S_A diagrams of data collected along the WE (a) and the NS (c) transects. The "younger AW" is represented in light blue whereas and the "older AW" is represented in dark blue. Intermediate water is also represented in pink. The isopycnal 28.45 kg m^{-3} , separating surface waters from the deeper ones, is pointed-out highlighted in red. Triangles in panels (b) and (d) indicate the geographical position of the separation between the two types of AW along the corresponding transect.

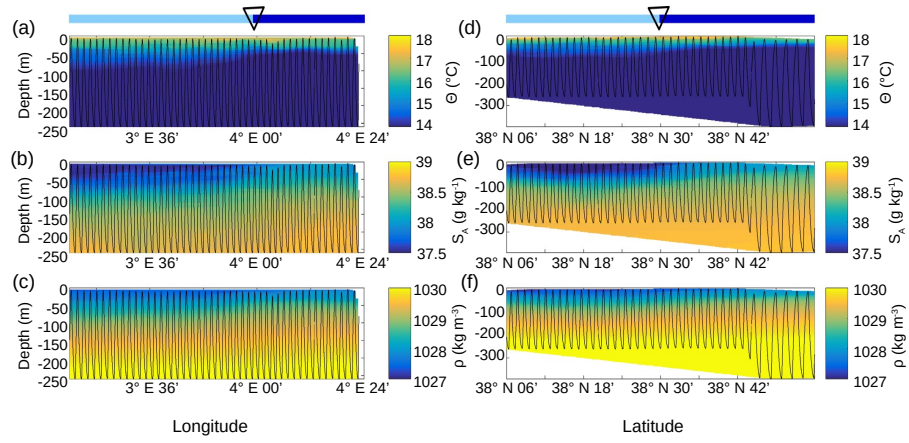


Figure 5. Vertical sections of conservative temperature Θ (a, d), absolute salinity S_A (b, e), and density ρ (c, f), sampled by the Seasoar along the WE transect (at left) and along the NS transect (at right). The Seasoar trajectory is represented by the black lines. The triangle indicates the localisation location of the front area between the two types of AW represented in light and dark blue (see respectively Fig. 4b and Fig. 4d respectively).

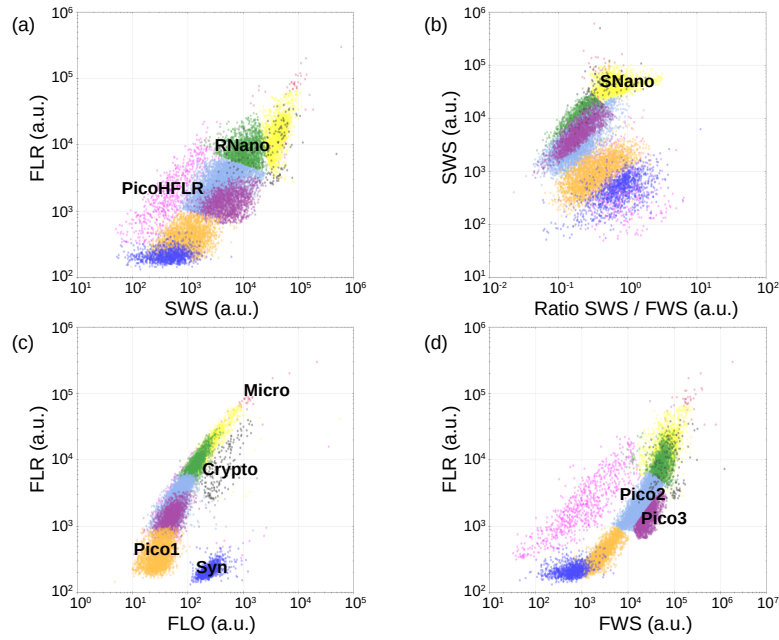


Figure 6. Cytograms obtained with the CytoSense automated flow cytometer. *Synechococcus* are in dark blue (Syn), the picophytoplankton with lowest FLO in orange (Pico1), the picophytoplankton with intermediate FWS in light blue (Pico2), the picophytoplankton with highest FWS in violet purple (Pico3), the picophytoplankton with a high red fluorescence in pink (PicoHFLR), the nanophytoplankton with high SWS/FWS ratio in yellow (SNano) and higher SWS intensities than the other nanophytoplankton (RNano) in green, the Cryptophytes in grey (Crypto) and the microphytoplankton in red (Micro). The flow cytometry units for both fluorescence and light scatter are arbitrary (a.u.).

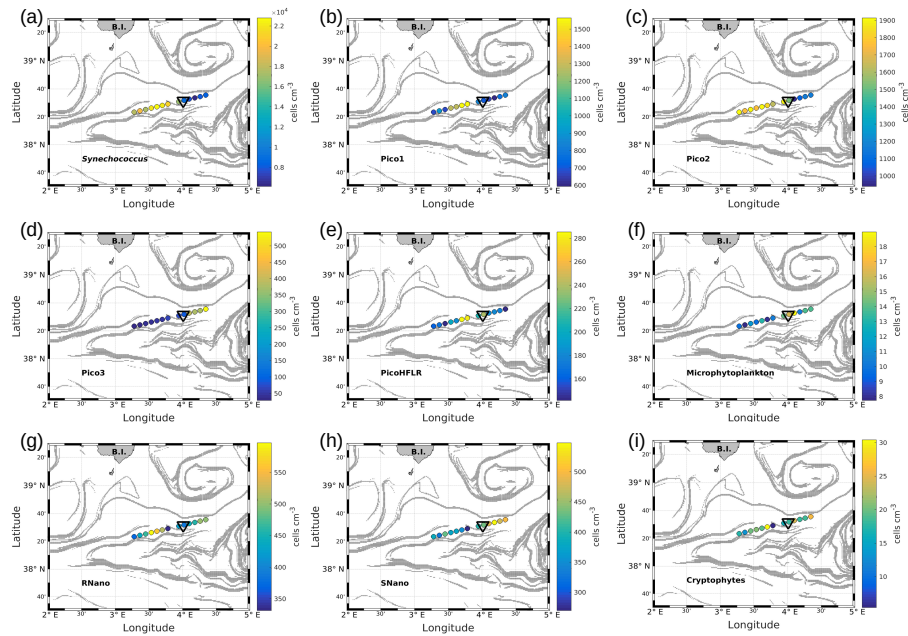


Figure 7. Abundances (in cells per cubic centimeter) of the phytoplankton groups along the WE transect, superimposed **with** upon the FSLE field. Triangles indicate the front area. (a) *Synechococcus*, (b) Pico1, (c) Pico2, (d) Pico3, (e) PicoHFLR, (f) Microphytoplankton, (g) RNano, (h) SNano, (i) Cryptophytes.

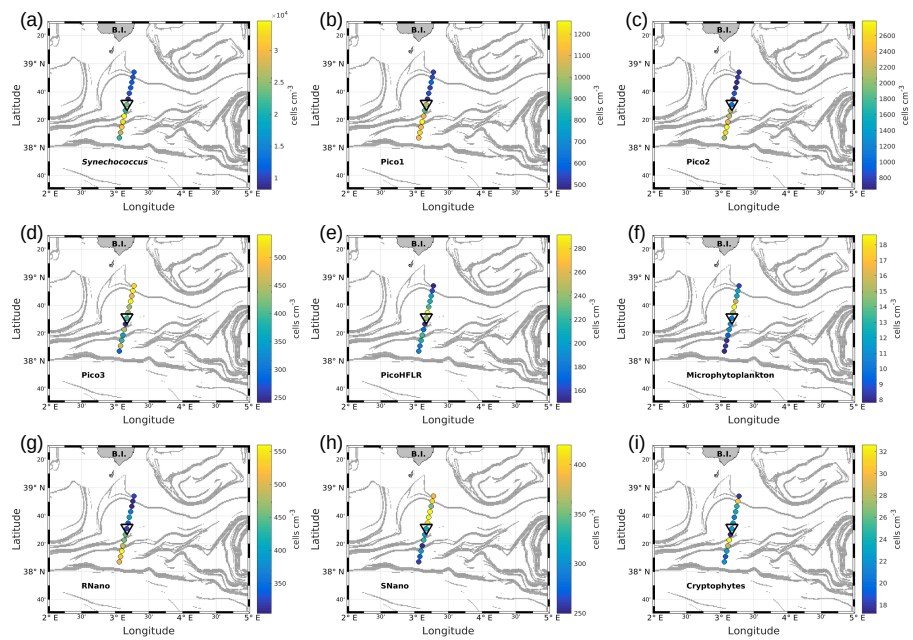


Figure 8. As in Fig. 7, but for NS transect.

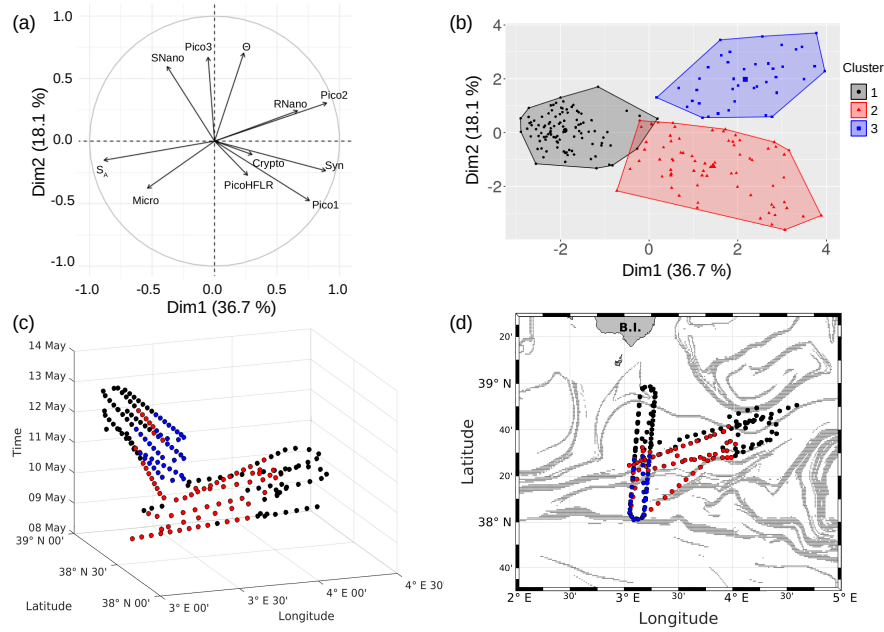


Figure 9. (a) Principal component analysis in the first factorial plane. (b) Representation in two dimensions of the three clusters obtained with the K-medoid algorithm. (c) Spatio-temporal representation of the three clusters obtained with the K-medoid algorithm. (d) Geographical representation of these clusters, superimposed to the FSLE field, of the 11 May 2018.

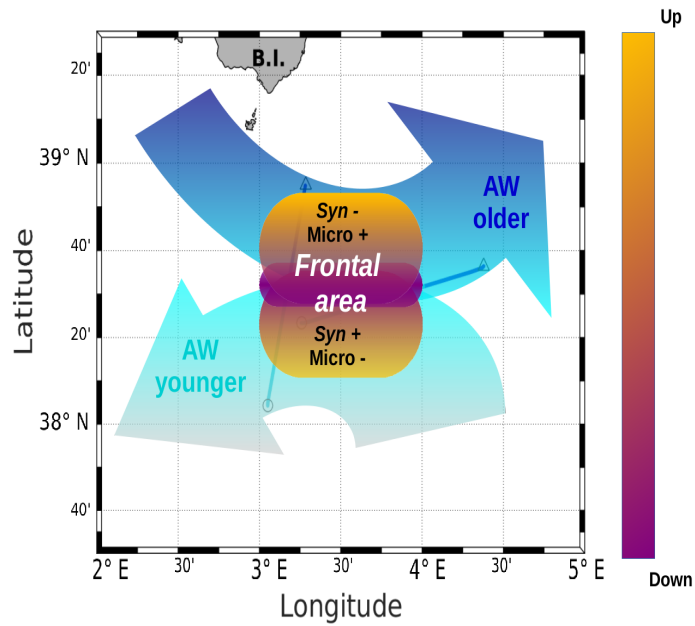


Figure 10. A schematic view of the of PROTEVSMED-SWOT results in the surface layer. A narrow frontal area, characterized by the change in direction of the horizontal current and by opposite vertical movements, corresponds to a rapid shift in hydrological properties and biological content of the two water masses separated by the front. For ~~sake of~~ simplicity's sake, only two groups of phytoplankton, *Synechococcus* (Syn) and Microphytoplankton (Micro), are indicated, but their contrasted abundances are also representative of ~~the ones~~ those of other phytoplankton groups.

Table 1. Results of the iterative algorithm to determine the best separation between the two types of AW along the Seasoar transects of the WE and NS hippodromes. The lines in bold correspond to the WE and the NS transects represented in Fig. 4. Only one transect is available for WE hippodrome due to technical problems encountered with the towed fish.

Date of transects (Time UTC)	$(\overline{S_{A1}}, \overline{\Theta_1})$	$(\overline{S_{A2}}, \overline{\Theta_2})$	Max of $ \overline{S_{A1}} - \overline{S_{A2}} $ (g kg ⁻¹)	Lon / Lat of best separation
9 May 16:50–9 May 23:45	(37.71, 15.62)	(38.02, 15.93)	0.31	4° E 06'
11 May 02:00–11 May 08:40	(37.63, 15.68)	(38.03, 15.91)	0.40	38° N 32'
11 May 10:00–11 May 16:45	(37.59, 15.95)	(38.03, 15.69)	0.44	38° N 30'
11 May 17:55–12 May 00:50	(37.63, 16.02)	(38.07, 15.61)	0.44	38° N 34'
12 May 01:50–12 May 08:20	(37.63, 15.82)	(38.01, 16.15)	0.38	38° N 31'
12 May 09:30–12 May 16:40	(37.63, 15.54)	(38.03, 16.09)	0.40	38° N 29'
12 May 17:30–13 May 00:20	(37.75, 15.43)	(38.05, 16.30)	0.30	38° N 34'

Table 2. Size and abundances of the nine phytoplankton groups, identified by flow cytometry analysis [on](#) in Fig. 6.

Groups	Size (μm)	Abundances (cells cm ⁻³)
<i>Synechococcus</i>	1	10 ⁴
Pico1	0.2–2	10 ³
Pico2	0.2–2	10 ³
Pico3	0.2–2	10 ²
PicoHFLR	0.2–2	10 ²
RNano	2–20	10 ²
SNano	2–20	10 ²
Microphytoplankton	20–200	10
Cryptophytes	10–50	1

Table 3. Description of the three clusters obtained with the K-medoid algorithm and represented **on** in Fig. 9b, c and d. The local averages (i.e. the average of each variable in a cluster) **have been are** compared with the global average (i.e. the average of each variable for **all** the **complete** dataset) to highlight the contribution of each variable to a cluster. Note that only the five most discriminating variables, determined with the standard deviation are shown for each cluster. Absolute salinity is measured in **grams** per kilogram, conservative temperature in **degrees** Celsius and **the** phytoplankton abundances in cells per cubic centimeter. The bold lines represent the variables with the **most greatest** contribution **of to** each cluster (i.e. with local average > global average).

Clusters	Variables	Local average	Global average	Local standard deviation	Global standard deviation
1 (Black)	Salinity (S_A)	37.65	37.45	0.115	0.235
	Microphytoplankton (Micro)	14	11	5	5
	Nanophytoplankton (SNano)	461	417	65	86
	Temperature (Θ)	18.1	18.2	0.4	0.4
	Nanophytoplankton (RNano)	386	454	81	140
2 (Red)	Phytoplankton (Pico1)	1148	838	361	343
	<i>Synechococcus</i> (Syn)	23820	16949	5049	7699
	Phytoplankton (Pico2)	1955	1656	355	770
	Microphytoplankton (Micro)	10	11	4	5
	Temperature (Θ)	18	18.2	0.3	0.4
3 (Blue)	Phytoplankton (Pico2)	2761	1657	467	770
	Temperature (Θ)	18.7	18.2	0.3	0.4
	Nanophytoplankton (RNano)	593	454	186	140
	Phytoplankton (Pico3)	557	355	280	212
	<i>Synechococcus</i> (Syn)	22151	16949	3940	7693

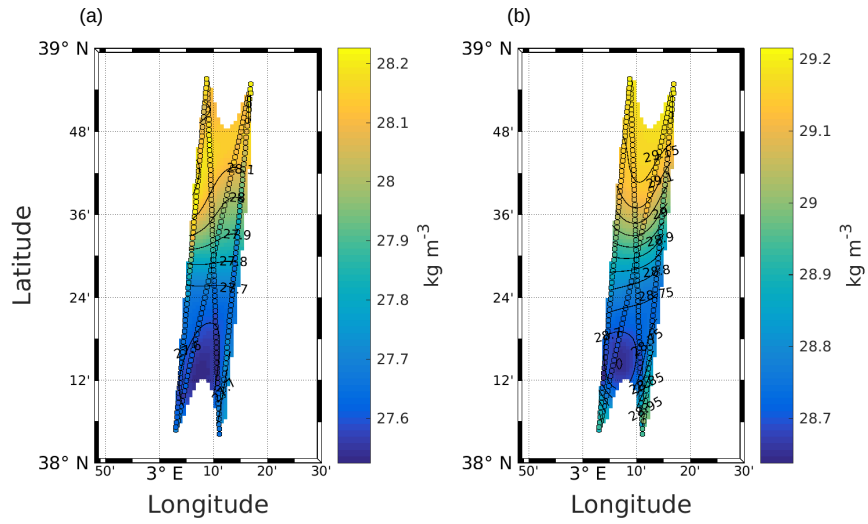


Figure A1. Objective mapping of potential density anomaly σ at 25 m (a) and 85 m (b). The circles represent σ as measured by the Seasoar, along the transects used for the interpolation. Black lines represent σ contours. The data have been were selected where the error on the objective mapping of σ is ≤ 0.0025 .

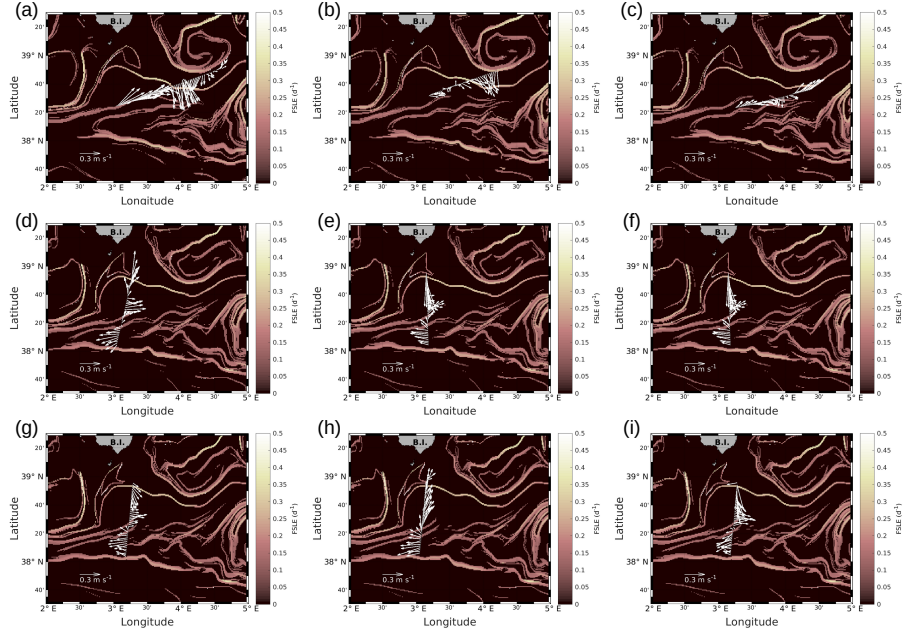


Figure A2. Horizontal velocities measured by VMADCP, along transects of the WE hippodrome (a), (b), (c) and the NS hippodrome (d), (e), (f), (g), (h), (i).

(a) 8 May 12:50–9 May 00:30

(b) 9 May 09:00–9 May 15:30

(c) 9 May 16:50–9 May 23:45

(d) 11 May 02:00–11 May 08:40

(e) 11 May 10:00–11 May 16:45

(f) 11 May 17:55–12 May 00:50

(g) 12 May 01:50–12 May 08:20

(h) 12 May 09:30–12 May 16:40

(i) 12 May 17:30–13 May 00:20

The lines in bold correspond to the WE and the NS transects described in the manuscript, and also represented in Fig. 4. In our study, we have chosen to select the transect (c) for the WE hippodrome, due to because we deplore a lack of temperature and salinity data for the other transects of the WE hippodrome, due to resulting from technical problems with the Seasoar.

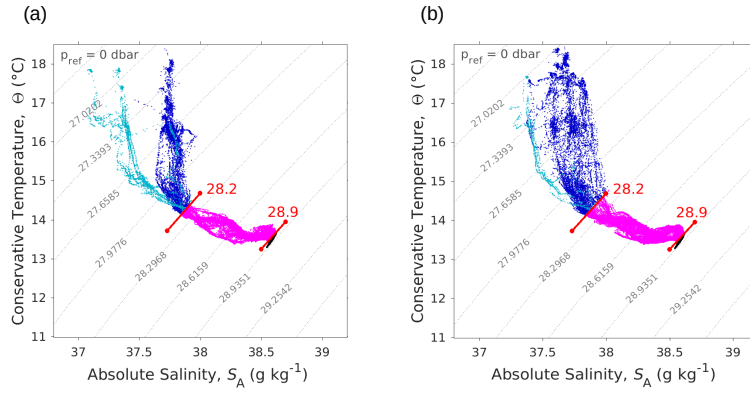


Figure A3. Θ – S_A diagrams measured by the SeaExplorer glider along the outward route (a): 6 May 2018 00:00–9 May 2018 21:00 UTC, and the return route (b): 10 May 2018 00:00–13 May 2018 21:00 UTC. As in Figure 4, the "younger AW" is represented in light blue whereas the "older AW" is represented in dark blue. Intermediate water and deeper water are represented in pink and black, respectively. The isopycnals 28.2 and 28.9 kg m^{-3} , separating surface waters from the deeper ones water, are also shown.

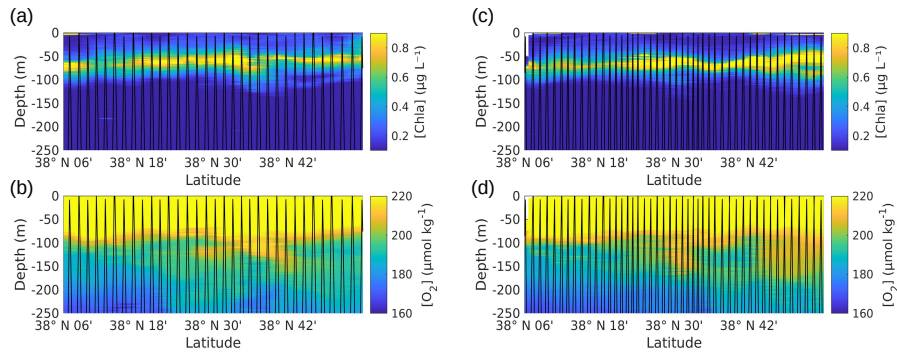


Figure A4. Vertical profiles of [Chla] (a, c) and dissolved oxygen concentration (b, d), measured by the SeaExplorer glider, along the outward route (left): 6 May 2018 00:00–9 May 2018 21:00 UTC, and along the return route (right): 10 May 2018 00:00–13 May 2018 21:00 UTC. The SeaExplorer glider trajectory is ~~represented~~ ~~depicted~~ by the black lines. The data ~~have been~~ ~~were~~ selected between the surface and 250 m for a better visualization of the surface layer.

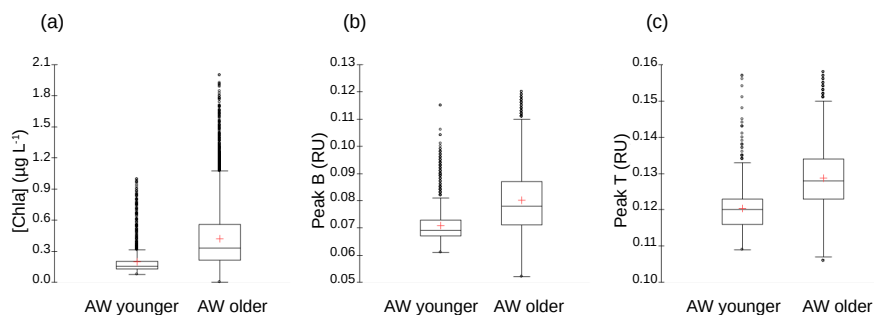


Figure A5. Box-and-whisker plots for the comparison of (a) [Chla] (in micrograms per litre), (b) fluorescence intensities of tyrosine-like fluorophore (Peak B in RU) and (c) fluorescence intensities of tryptophan-like fluorophore (Peak T in RU) between "younger and older **AW**". The bottom and top of the box are the 25th and 75th percentiles, respectively, whereas the central line is the 50th percentile (the median), and the cross is the mean. The ends of the error bars correspond to the 10th percentile (bottom) and to 90th percentile (top). All the SeaExplorer glider transects are considered here (all data acquired from 6 to 15 May 2018). "Younger AW" corresponds to samples showing salinity between 37.20 and 37.84, and temperature between 14.5 and 17.4 °C (n = 1657). "Older AW" corresponds to samples displaying a with salinity between 37.82 and 38.14, and temperature between 14.0 and 18.3 °C (n = 11760). Mean values of Chla, Peak B and Peak T of "older AW" are significantly higher than those of "younger AW" (t-test, p inf 0.0001).