

Enhanced chlorophyll-*a* concentration in the wake of Sable Island, eastern Canada, revealed by two decades of satellite observations: a response to grey seal population dynamics?

Emmanuel Devred¹, Andrea Hilborn¹, and Cornelia den Heyer¹

¹Bedford Institute of Oceanography, 1 Challenger Drive, Dartmouth, NS, B2Y 4A2, Canada

Correspondence: Emmanuel Devred (Emmanuel.Devred@dfo-mpo.gc.ca)

Abstract. Elevated surface chlorophyll-*a* concentration (chl-*a*), an index of phytoplankton biomass, has been previously observed and documented by remote sensing in the waters to the southwest of Sable Island (SI) on the Scotian Shelf in eastern Canada. Here, we present an analysis of this phenomenon using a 21-year time series of satellite-derived chl-*a*, paired with information on the particle backscattering coefficient at 443 nm ($b_{bp}(443)$, a proxy for particle suspension) and the detritus/gelbstoff absorption coefficient at 443 nm ($a_{dg}(443)$, a proxy to differentiate water masses and presence of dissolved organic matter) in an attempt to explain some possible mechanisms that lead to the increase in surface biomass in the surroundings of SI. We compared the seasonal cycle, 8-day climatology and seasonal trends of surface waters near SI to two control regions located both upstream and downstream of the island, away from terrigenous inputs. Application of the self-organizing maps approach (SOMs) to the time series of satellite-derived chl-*a* over the Scotian Shelf revealed the annual spatio-temporal patterns around SI and, in particular, persistently high phytoplankton biomass during winter and spring in the leeward side of SI, a phenomenon that was not observed in the control boxes. In the vicinity of SI, a significant increase of chl-*a* and $a_{dg}(443)$ during the winter months occurred at a rate twice that of the ones observed in the control boxes, while no significant trends were found for the other seasons. In addition to the increase of the chl-*a* and $a_{dg}(443)$ within the plume southward of SI, the surface area of the plume itself expanded by a factor of 5 over the last 21 years. While the island mass effect (IME) explained the enhanced biomass around SI, we hypothesized that the large increase in chl-*a* over the last 21 years was partly due to an injection of nutrients by the island's grey seal colony, which has increased by 200% during the same period. This contribution of nutrients from seals may sustain high phytoplankton biomass at a time of year when it is usually low following the fall bloom. A conceptual model was developed to estimate the standing stock of chl-*a* that can be sustained by the release of nitrogen by seals. Comparison between satellite observations and model simulations showed a good temporal agreement between the seal population increase on SI during the breeding season and the phytoplankton biomass increase during the winter. We found that about 20% of chl-*a* standing stock increase over the last 21 years could be due to seal N-fertilisation, the remaining being explained by climate forcing and oceanographic processes. Although without *in situ* measurements for ground truthing, the satellite data analysis provided evidence of the impact of marine mammals on lower trophic levels through a fertilisation mechanism that is coupled with the IME with potential implications for conservation and fisheries.

1 Introduction

Increased phytoplankton production around islands, known as the island mass effect (IME), has been documented in many studies since the development of the concept (Doty and Oguri, 1956). This phenomenon, often occurring leeward of islands, results from a large range of processes among which mixing of the water column induced by hydrodynamic forcing (e.g., flow disturbance), benthic resuspension (Signorini et al., 1999) and land drainage (Dandonneau and Charpy, 1985) that provides nutrients to the well-lit upper layer of the ocean (Heywood et al., 1990) in turn sustaining enhanced phytoplankton production (e.g., Gilmartin and Revelante, 1974; Gove et al., 2016; Messié et al., 2020; James et al., 2020). Evidence of the IME has been documented in the proximity of islands located in oligotrophic oceanic basins (Dandonneau and Charpy, 1985; Gove et al., 2016; Messié et al., 2020) and in mesotrophic and sub-Antarctic environments (Boden, 1988). Ocean colour remote sensing (OCRS) has proven to be a useful tool to observe increased primary production around islands and study its spatio-temporal variation given the fine spatial and temporal scales achievable in comparison to *in situ* sampling (e.g., Signorini et al., 1999; Gove et al., 2016; Martinez et al., 2018; Martinez and Maamaatuaiahutapu, 2004; James et al., 2020). For the first time, to our knowledge, IME around an island located in the mesotrophic environment of the eastern Canadian continental shelf, Sable Island (SI), is investigated using OCRS. The Scotian Shelf is a productive environment with an annual mean chl-*a* of about 0.75 mg m^{-3} ($\pm 0.38 \text{ mg m}^{-3}$) observed by ocean colour satellites. Phytoplankton biomass is subject to a strong seasonal cycle with a spring bloom representing a major food input into the ecosystem, and a secondary fall bloom triggered by the replenishment of nutrients to the surface-lit layer as a result of physical forcing (Song et al., 2010). While this general progression is well established, the mesoscale patterns of phytoplankton dynamics are more complex given the complicated bathymetry and hydrodynamics of the Scotian Shelf. For instance, the effect of the numerous banks and channels results in spatially distinct timing and intensities of the spring bloom throughout the surface waters of the shelf (Casault et al., 2020) and an overall patchiness in phytoplankton growth and decay (Denman and Platt, 1976). However, a feature that remains constant is the moderate to high surface phytoplankton biomass that occurs leeward of SI in comparison to its surroundings as observed by satellite OCRS (Figure 1). While this has been documented in previous studies (King et al., 2016; Zhai et al., 2011), the temporal and spatial dynamics of this plume off SI have not been examined using a 21-year time series of satellite records. We further discuss possible mechanisms that explain the high phytoplankton biomass and in particular, we consider a previously neglected source of nutrient entrainment into the local ocean; the presence of the world's largest colony of grey seals (*Halichoerus grypus*). The breeding colony on SI has grown rapidly since the 1960s when just a few thousand pups were born on the island (Bowen et al., 2007; den Heyer et al., 2020). The population associated with the SI breeding colony is now over 300,000 individuals (Rossi et al., 2021), and the impact of this population on prey species has been focus of much research (e.g. Trzcinski et al., 2006; O'Boyle and Sinclair, 2012; Hammill et al., 2014; Neuenhoff et al., 2019). Recently the grey seal breeding colony has also been shown to contribute to the ecology of the island by fertilizing vegetation that supports a population of feral horses (McLoughlin et al., 2016). Previous studies have demonstrated the impact of marine mammals

on the supply of nutrients by direct release of nitrogen in the marine environment (Roman and McCarthy, 2010; Laver et al., 2012; Mccauley et al., 2012; Wing et al., 2014), through turbulent mixing (Kanwisher and Ridgway, 1983) and atmospheric
60 deposition (Theobald et al., 2006).

The Ocean Colour Climate Change Initiative (OC-CCI) satellite time series over the period 1998-2018 was used to investigate the dynamics of chl-*a* concentration (chl-*a* in mg m^{-3}), absorption by detritus and dissolved organic matter (DOM, $a_{dg}(443)$ in m^{-1}), and the backscattering coefficient ($b_{bp}(443)$ in m^{-1}) around SI and over a portion of the Scotian Shelf. In addition to chl-*a*, we considered variations in absorption by yellow substances and detritus to help track possible runoff from
65 the island and significant sources of dissolved organic matter, while variations in the backscattering coefficient was used to indicate the presence of mineral particles in the water column (Boss et al., 2004; Slade and Boss, 2015) near the island due to re-suspension as both these properties could induce artificial increase in chl-*a* observed by satellite (Bukata et al., 1995). The first objective of the study was to demonstrate and quantify the higher phytoplankton biomass around SI and evidence the IME. Given that the time series of satellite observations span over two decades, we analysed the 8-day climatologies and seasonal
70 cycles of several sub-regions of the Scotian Shelf, including SI, using the artificial neural network technique of self-organizing maps (SOMs) to isolate recurring patterns of chl-*a* and we investigated decadal trends of the three remote sensing parameters. While the information provided by satellites remains limited to marine components that are optically active, the second objective of the study was to examine some of the possible mechanisms causing such an increase of biomass in space and time around the island, and in particular fertilisation by seal excretion. The first part of the manuscript presents the area of interest,
75 data and methodology, with the results and discussion section organised to answer the following questions:

- Is there an island mass effect, and if so, what is its spatio-temporal distribution?
- Are there decadal trends in the satellite-derived properties around SI?
- What is(are) the possible mechanism(s) that can explain the trends?

2 Data and Methods

80 2.1 Study Area

The Scotian Shelf bioregion is a significant marine shelf region due to its biological richness and diversity (Ward-Paige and Bundy, 2016). The influence of the warm gulf stream makes the area home to marine species normally found further south, and it is used as spawning and nursery grounds by many fish species. The mean surface circulation consists of a persistent current flowing to the south-west, trapped by the coast, and a parallel cold current (Labrador Current) flowing to the south-west
85 along the shelf break (Smith and Schwing, 1991; Loder et al., 1997) (Figure 1). The Scotian Shelf is bounded to the east by the Laurentian Channel, to the west by the Northeast Channel, and to the south by the continental shelf break oriented parallel to coastal Nova Scotia. SI is the only island on the shelf, emerging centrally adjacent to the shelf break from SI Bank (see Figure 1); most of the bank is an Ecologically and Biologically Significant Area (EBSA) due to its high abundance of groundfish

and persistently high chl-*a* concentration (King et al., 2016). While the average depth of the Scotian Shelf is 90 m, there is
90 complex circulation over banks and basins as deep as 300 m, and SI Bank lies at a depth of approximately 60 m. SI itself has
a surface area of only 34 km² (about 49 km in length with large interannual variation, and 1.25 km at its widest point) and is
composed of sand and partially vegetated by Marram grass (*Ammophila breviligulata*), other grasses, forbs and shrubs, and as
a result, undergoes little surface runoff. Precipitation directly recharges a freshwater aquifer that runs the length of the island
maintained by hydrostatic pressure (Kennedy et al., 2014). SI is home to a population of feral horses in addition to hosting
95 the largest breeding colony of grey seals (*Halichoerus grypus*) in the world notably in winter, when seals gather during the
breeding season that spans from December to February.

While the focus of this study is the marine region adjacent to SI, data were also analysed for two control boxes, which
were arbitrarily selected near the island to evidence the unique increase in biomass around SI (Figure 1) and to ensure that the
findings around SI were the results of local processes and not only the reflection of a general pattern occurring over the entire
100 Scotian Shelf. One box was located to the Northeast (i.e., upstream and referred to as NE with a mean depth of 111 m) and the
second one was located to the Southwest (downstream and referred to as SW with a mean depth of 83 m) of SI. These boxes
were located far enough from SI and the continent to avoid influences of terrigenous runoff. A large box centered on SI of the
same geographic size to NE and SW was defined to investigate the possible IME, and a grid made up of 12 small boxes to the
west of the island was defined to infer the spatial extension of the SI plume (Figure 1, inset) without subjective delineation.

105 2.2 Satellite and environmental datasets

Satellite data were downloaded from the Ocean Colour Climate Change Initiative (OC-CCI, <https://rsg.pml.ac.uk/thredds/catalog-cci.html>), a project providing validated, inter-sensor calibrated and error-characterized Essential Climate Variables (ECVs)
from several satellite sensors (OC-CCI dataset v4.0; Sathyendranath et al., 2019, 2020). The dataset consists of merged prod-
ucts from the Sea-viewing Wide Field-of-View Sensor (SeaWiFS, 1997 - 2010), MEdium-Resolution Imaging Spectrometer
110 (MERIS, 2002 - 2012), MODerate resolution Imaging Spectroradiometer on Aqua satellite (MODISA, 2002 - present) and
Visible Infrared Imaging Radiometer Suite sensors (VIIRS, 2012 - present). For this study, 8-day 4km-resolution composites
of chl-*a*, $a_{dg}(443)$ and $b_{bp}(443)$ were extracted from the global dataset for a region bounded by 42.7 - 45.45° N, and 57.6 -
63.0° W. The chl-*a* was produced by the OC-CCI from remote-sensing reflectance (R_{rs}) using the OC3 algorithm (see Jackson
et al., 2020, for details), dependent on water class membership, where R_{rs} are atmospherically corrected using the SeaWiFS
115 Data Analysis System (SeaDAS 7.3) and POLYMER software (Steinmetz et al., 2011). Inherent optical properties (IOPs) such
as $a_{dg}(443)$ and $b_{bp}(443)$ are calculated at SeaWiFS wavelengths from R_{rs} using the Quasi-Analytical Algorithm (Lee et al.,
2005). For the SI box, a small rectangle containing the island and submerged shallows was masked from all calculations (shown
as the red box in Figure 1) to reduce the impact of pixels potentially influenced by resuspended sediment or bottom reflectance.
Further, large coccolithophore blooms occasionally occur in the surrounding waters of SI (Moore et al., 2012), which increases
120 the magnitude of $b_{bp}(443)$, as the white skeleton of coccolithophores (i.e., coccoliths), made of calcite, has strong scattering
properties. Therefore, 8-day composite images with $b_{bp}(443)$ several orders of magnitude greater than the annual mean in a
given year were discarded to remove the impact of high scattering coefficients due to the presence of coccolithophore blooms.

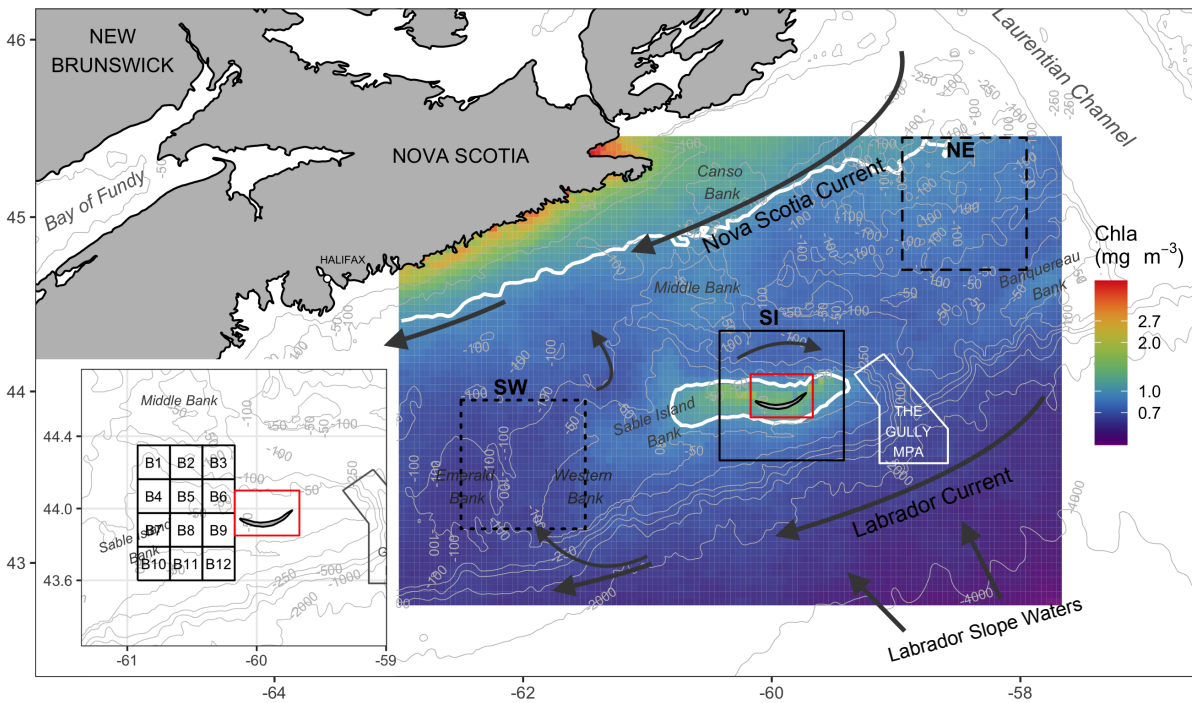


Figure 1. Map of the Scotian Shelf showing bathymetric features (grey lines), main hydrodynamic circulation (dark arrows) and the three regions used for analysis (solid black line is SI; short-dashed SW; long-dashed NE). Pixels in the red box were removed from analysis. The inset shows 12 small boxes adjacent to SI (see Sect. 2.4). The mean chl-*a* over the period 1998-2018 is shown in the background, with white contours delineating 1.0 mg m^{-3} .

This included the periods of June 25 through August 11, 2003, and June 25 through August 3, 2010. Lastly, 24 images with erroneous data were identified and removed during the SOM processing (see section 2.4). The resulting remote sensing dataset used in this study consisted of 958 chl-*a* and a_{dg} (443), and 946 b_{bp} (443) Level 3 8-day composites spanning from 1998 to 2018.

The 5-day composite NASA OSCAR sea-surface velocity dataset (<http://www.oscar.noaa.gov/>) at $1/3^\circ$ resolution were downloaded from the NOAA ERDDAP server (<https://coastwatch.pfeg.noaa.gov/erddap>, dataset ID: jplOscar_LonPM180) for the corresponding time period to the satellite observations. The zonal (u in m s^{-1}) and meridional (v in m s^{-1}) components of the sea-surface velocity field were further averaged into monthly and annual fields to examine prevailing current speed and direction. We also examined the meteorological data over the period 1998-2018, including daily wind speed and precipitation, from an Environment and Climate Change Canada station located on SI (ID 8204700, <https://climate-change.canada.ca/climate-data/#/daily-climate-data>). Bathymetry was acquired from NOAA ETOPO1 and used to calculate chl- a standing stocks (Section 2.5.2).

All analysis were performed using R statistical software (R Core Team, 2020).

2.3 Eight-day climatology and trends of satellite chl- a , $a_{dg}(443)$ and $b_{bp}(443)$

Eight-day climatologies of chl- a , $a_{dg}(443)$ and $b_{bp}(443)$ for SI and the two control boxes (i.e., SW and NE) were calculated as the average of all pixels of all years within a given 8-day period and box (Figure 2). Pixels with values outside of the 1.5 interquartile range (IQR) were removed and, following that step, boxes with less than 30% of spatial coverage for a given 8-day period were discarded to ensure the highest quality of the data and prevent skewing of results by outliers. In addition, 8-day climatologies were computed for a total of 30 small boxes ($0.2^\circ \times 0.2^\circ$) organised around SI to identify in an objective manner the region of influence of the IME. A total of 18 small boxes, located north and east of the island, were not used for further analysis because they showed a similar chl- a 8-day climatology to the control boxes, meaning that they were not subjected to the IME. The analysis focused on the 12 remaining boxes to help understand and quantify the variability in chl- a , $a_{dg}(443)$ and $b_{bp}(443)$ southwestward of SI (Figure 1, inset). Finally, the boxes with similar temporal patterns were averaged together for clarity and referred to group A for boxes 1, 2, 3 and 4, group B for boxes 5 and 6, group C for boxes 7, 8 and 9 and group D for boxes 10 to 12.

In addition to the eight-day time binning, seasonal composites of chl- a , $a_{dg}(443)$ and $b_{bp}(443)$ were computed as the arithmetic mean of images during winter, spring, summer and fall for the SW and NE boxes, and a plume defined by chl- a greater than 1 mg m^{-3} located southwest of SI and occurring in the winter (i.e., SOM5, see section 2.4 for details). Winter, spring, summer and fall were defined as the months of December to February, March to May, June to August, and September to November, respectively. The same quality control used for the 8-day climatology calculations were also implemented. The seasonal binning was favoured against the 8-day composite for the trend analysis as it decreased the impact of missing data in the time series allowing a better definition of the chl- a plume. The seasonal long-term trends were computed as the slope of the linear least-squares regression for chl- a , $a_{dg}(443)$ and $b_{bp}(443)$ against time.

While the above time series and trend analysis are useful to quantify changes in the bio-optical properties around SI, we selected a different approach to bin the satellite data for comparison with model simulations (see section 2.5.2). The satellite data were averaged into 5-year time periods, namely, 1999-2003 (P1), 2004-2008 (P2), 2009-2013 (P3) and 2014-2018 (P4), to reduce the impact of missing data in the maps of chl- a for the SOM5 region. Note that the year 1998 was discarded from this analysis to have all periods equal to five years exactly. These maps were used to calculate chl- a standing stocks from

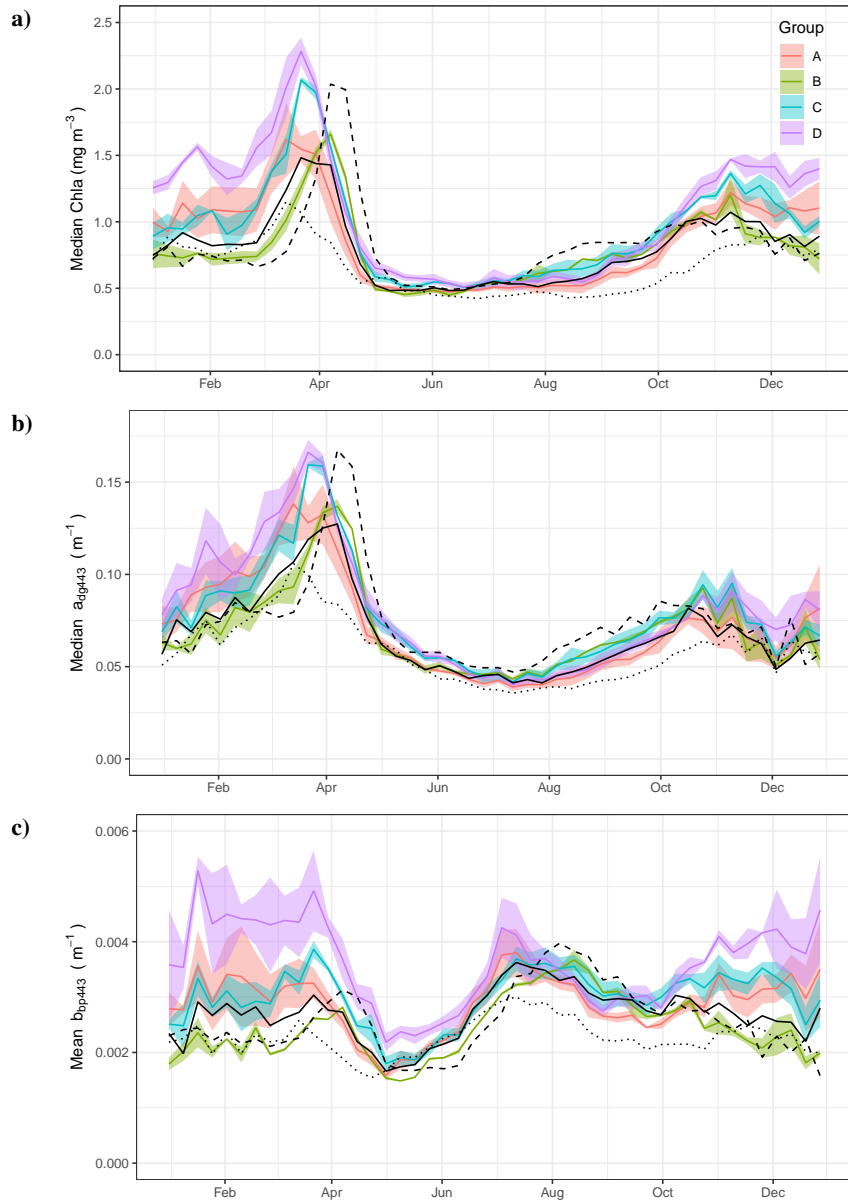


Figure 2. Median value per week of chl-*a* (a), $a_{dg}(443)$ (b) and $b_{bp}(443)$ (c) for the regions on the Scotian Shelf (see Figure 1). The three large regions are noted by black lines (SW is dotted, SI is solid, and NE is dashed). The colored line represent means of small boxes with similar seasonal cycles, groups A, B, C and D correspond to boxes 1 to 3, 4 to 6, 7 to 9 and 10 to 12 respectively.

ocean colour satellite for comparison with chl-*a* standing stocks derived from seal nitrogen excretion (see section 2.5.2). The chl-*a* standing stocks independent of possible seal influence during P1 were computed by subtracting the chl-*a* standing stocks due to seal N excretion from the satellite observations and referred to as PIN. This initial values was linearly extrapolated

to the three other periods (i.e., P2, P3 and P4) by applying the slope of the chl-*a* linear trends derived in the SW box, which
165 is assumed to be too far from the island to be influenced by seal fertilisation. The P2N, P3N and P4N chl-*a* standing stocks
obtained using this method provided the increase in chl-*a* standing stocks due to physical processes without any influence from
the presence of seals on SI. Note that in November of 2011, an unusual and intense phytoplankton bloom occurred southward
of SI, partially covering the SOM5 region but not connected to SI; this bloom that lasted almost the entire month was removed
from the analysis as it contaminated the background chl-*a* and was not part of the IME.

170 2.4 Chlorophyll-*a* concentration spatio-temporal variation using self-organising maps (SOMs)

Self-organizing maps (SOMs) are a useful tool for extracting patterns in time series of satellite imagery and their frequency
of occurrence (Richardson et al., 2003), with previous applications including pattern analysis of sea-surface height (Hardman-
Mountford et al., 2003), spatial-temporal scatterometer and SST phenology (Richardson et al., 2003), and improved pixel
classifications of satellite chl-*a* time series (Ainsworth, 1999). Here we applied the SOMs method to the satellite chl-*a* estimates
175 to summarize the spatio-temporal dynamics of phytoplankton biomass. The basic principle of a SOM is to map high-dimension
data, in our case a three-dimensional dataset (i.e. two dimensions in space and one in time), to a 2-dimensional array of nodes.
The *kohonen* R package (Wehrens and Buydens, 2007; Wehrens and Kruisselbrink, 2018) was applied as an unsupervised
SOM method to the 21-year dataset of OC-CCI chl-*a* for a region bounded by -63 to -57.5°E and 42.8 to 45.5°N (Figure 3).
Nine nodes were selected after trials of multiple layout configurations, as it provided low mean node distance, enough nodes to
180 represent distinct spatial patterns of chl-*a* and avoid redundancy, each node accounting for a distinct general pattern across the
time series (Figure 3a). Each 8-day image retained a measure of fit (i.e. resemblance) to the node it was assigned to (referred
to as "distance"), with a large distance indicating a poor membership of a given 8-day image to a node. The final result had
each node (i.e., chl-*a* map) representing a particular spatial pattern consisting of the distance-weighted average of its assigned
images, with similar nodes located nearer each other in the final SOM layout (Figure 3a). This is an iterative procedure that
185 runs until the overall distance of the entire system is minimum; in this case, a total of 500 iterations was sufficient for the
mean distance of all nodes to converge and for all individual node distances to stabilize to a similar value (0.0042, unitless).
Note that prior to processing, the daily chl-*a* images were log-transformed and images with less than 10% spatial coverage
were excluded from the analysis. Temporal gaps were not accounted for, as images are assigned to the node array individually
with no dependence on position in the time series. A total of 24 chl-*a* images were identified as having persistently high node
190 distance through all trials (e.g. did not fit with any node, regardless of array size), which when visually inspected displayed
heterogeneous and often unrealistic chl-*a* values (e.g., very high); these images and corresponding $a_{dg}(443)$ and $b_{bp}(443)$
were removed from the dataset for all analysis including the SOM, 8-day climatology computation and time series analysis.
The temporal occurrence of each node in the 21-year time series was recorded for each month to produce frequency histograms
(Figure 3b) as in (Richardson et al., 2003). Additionally, given that we are interested in the elevated chl-*a* near SI in winter, the
195 SOM results were used to delineate a plume where chl-*a* exceeds 1 mg m^{-3} , a threshold used by Zhai et al. (2011) to define
phytoplankton blooms. Node #5, which occurred consistently through the winter months and had the highest assignment in

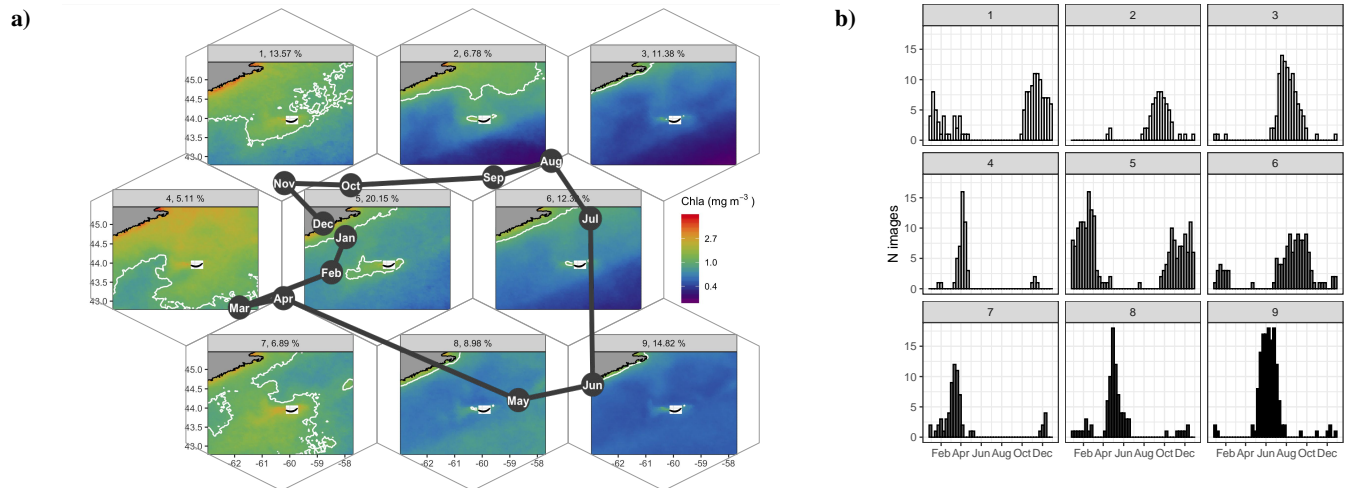


Figure 3. Results of the SOM shown hexagonally to illustrate the spatial structure of chl-*a* in the SOM layout as well as their annual succession (a). The node number and percent occurrence in the time series are shown in the light grey banner on top of each pattern of chl-*a*. The solid white contour delineates 1.0 mg m⁻³. The month abbreviations in the dark solid circles represent the most occurrence of each SOM node. For instance, node #8 occurred mainly in May and about 9% of the 8-day images were associated with that node. The number of 8-day composite images per node and per month are shown as histograms on the right panel (b).

the time series (20.1%), was used to delineate the winter chl-*a* plume region used in further analysis (thereafter referred to as SOM5, Figure 3).

2.5 Grey Seal, Nitrogen and chl-*a* standing stocks: seasonal and interannual variations

200 2.5.1 Decadal change in grey seal abundance and a conceptual model of seasonal variation in presence

SI is an important haul out for seals that forage on the eastern Scotian Shelf and breeding colony for seals that forage from Cape Cod to southern Newfoundland and in the Gulf of St. Lawrence. The breeding season starts in early December and lasts until February with the population of grey seals peaking in mid to late January, with the accumulation of newly weaned pups, lactating females and males. While there are no counts of the entire seal population during the breeding period, the number of pups produced has been monitored since the 1960s with the last pup production estimate collected in 2016. At that time pup production had increased from 30,000 in 1998 to roughly 90,000 in 2016 (den Heyer et al., 2020). We have developed a conceptual model to describe the seasonal variation in the number of adult seals (i.e., age one and above) hauling out on the island based on the estimates of the number of pups and age 1+ animals for the Scotian Shelf population, of which the SI breeding colony accounts for more than 95% of the pup production (Rossi et al., 2021) and the analysis of satellite-telemetry data from more than 100 seals that were tagged on SI (O'Boyle and Sinclair, 2012; Breed et al., 2013). Roughly 80% of the grey seals tagged on SI used the eastern Scotian Shelf as foraging habitat (O'Boyle and Sinclair, 2012), and outside the breeding season seals spent about 20% of their time hauled out (Breed et al., 2013). Breed et al. (2013) estimated that in

January males spent on average 80-85% of time hauled out on SI and females about 40%. Our conceptual model does not differentiate between males and females the same, so we have estimated peak haul out as the average of time hauled out for males and females. Notably the timing of the peak haul out from satellite telemetry on the island in mid-January is consistent with birth distribution models (Bowen et al., 2007; den Heyer et al., 2020), estimates of mean pup birthdate from individually marked adults (Bowen et al., 2020), and the reproductive biology of the seals. The model is built around three hypotheses:

1. Seals start to arrive on SI in early December, steadily increasing until the end of January, after which seals rapidly leave the island,
2. Variation in seal annual abundance was modeled using a skewed log-normal distribution (Equation 1), with a peak abundance of 60% of the age 1+ animals present on SI in January (Figure A1). Note that, for practical purposes, the initiation day of the model is early October (i.e., October 8th in agreement with the 8-day composites),
3. For the remainder of the year, the seal population is constant at about 20% of the age 1+ animals .

The model for any period can therefore described as:

$$N_{seal}(d) = N_h + N_b \times \exp \left[-\frac{(\ln(d) - 2.3)^2}{1.1} \right], \quad (1)$$

where N_{seal} corresponds to the number of seals at day d (varying from 365 to 1), N_h represents the number of seals hauled out year round and N_b represents the maximum number of animals that haul out on the island during the breeding season (Table A1). The parameters 2.3 and 1.1 were defined to temporally align the arrival and departure of the seals on SI with current knowledge (Figure A1). The seal population was then binned into 8-day means and averaged over 5-year periods to remain consistent for comparison with the four periods used for the satellite observations when computing the potential chl-*a* standing stocks that could be sustained by N fertilisation.

2.5.2 From seal population to chl-*a* standing stocks, and comparison to satellite observations

We applied the nitrogen (N) excretion rate of 0.22 kg d⁻¹ that Roman and McCarthy (2010) used for a study in the Gulf of Maine, which is also located on the eastern North American continental shelf and foraging habitat for the grey seals that breed on SI. This provided a means to convert the presence of seals on SI during winter in excretion of N in tonnes, which was further converted into moles of N. Chl-*a* that can be sustained by N was computed using the conversion factor of 1.59 mg chl-*a* (mmol N)⁻¹ from Matear (1995), which is in agreement with the value of 1.6 from Yentsch and Vaccaro (1958). This conversion provides a rough estimate of the upper limit of phytoplankton biomass that seal N-excretion can sustain in the surroundings of SI, assuming that all N would reach the water and be consumed by primary producers. Some of the mechanisms that describe the availability of N are not accounted for in the model, such as the amount of N that would be sequestered in the soil and assimilated by other flora and fauna, N that will be leaked to the surrounding water through sand permeability (which varies from a few centimeters to a few meters per hour, Lunne et al., 1997). We assumed that seal excretion is washed out to sea by atmospheric precipitation, which remained fairly constant over the annual cycle (Figure B1). The release of N would also

decrease when temperatures are negative from the end of January to the end of February (Figure B2) as the soil is frozen and precipitation occurs as snow, which could introduce an additional lag between seal presence and N release to the surrounding waters.

Estimation of standing stocks of chl-*a* from satellite observations was carried out for the SOM5 region, assuming that this region would be the most impacted by N-release from seal excretion. Chl-*a* (mg m^{-3}) was multiplied by the SOM5 plume surface area (m^2) and integrated over a depth of up to 50 m to provide standing stocks of chl-*a* in tonnes. We assumed an homogeneous chl-*a* profile over the first 50 m, which is consistent with the strong mixing that occurs in this area in winter. Bi-weekly CTD profiles collected over the last 20 years at a monitoring station located on the Scotian Shelf show that the mixed-layer depth reaches between 50 and 60 m in winter (Casault et al., 2020). The period 1999-2003 (i.e., P1) was chosen as a reference for the other model estimates, as it provided the chl-*a* standing stocks in the plume when the seal population was at its lowest number over the 1999-2018 period. We assumed that the phenology of chl-*a* during this early period was mainly driven by the oceanographic/environmental conditions (e.g., nutrient availability in the water column, temperature, light availability); however, it also accounts for the possible impact of seal N-release during the breeding season when the seal population was smaller, at about 100,000 individuals. The satellite-derived increase in 8-day chl-*a* standing stocks not due to the oceanographic/environmental conditions for the period 2014-2018 (P4), assumed instead to be sustained by seal N excretion only, was obtained by subtracting the chl-*a* standing stock between the periods P1 and P4. Note that the 8-day time series for both periods were smoothed (R smooth.spline function) before subtraction to more easily examine the signal. Negative values of chl-*a* therefore indicated a net loss of biomass standing stocks between the two periods of interest while positive values indicated a net gain of biomass. This provided a means to compare the eight-day averaged chl-*a* standing stocks derived from satellite observations and model simulations.

3 Results and Discussion

3.1 Evidence of enhanced chl-*a* around SI

3.1.1 Phenology of chl-*a*, $a_{cdom}(443)$ and $b_{bp}(443)$ in the control boxes

The three large boxes delineated on the shelf show a clear south to north gradient in terms of chl-*a* and timing of the spring bloom (Figure 2a). The SW box showed the lowest annual mean of chl-*a* ($0.67 \pm 0.03 \text{ mg m}^{-3}$) compared to the SI (annual mean of $0.87 \pm 0.17 \text{ mg m}^{-3}$) and NE (annual mean of $0.87 \pm 0.17 \text{ mg m}^{-3}$) boxes and the earliest spring bloom (week 10, 11 and 12 for the SW, SI and NE boxes respectively) and the lowest spring bloom magnitude. In contrast, the NE box exhibited the highest chl-*a* among the three control boxes and the latest bloom initiation, in agreement with the northward progression of the spring bloom (Siegel et al., 2002) even at such a small latitudinal scale (i.e., 2°N). The higher magnitude of the bloom in the NE box relative to the SI and SW boxes might be explained by local processes, such as the presence of high winter nitrate, as shown in Zhai et al. (2011).

275 The absorption coefficient followed a similar pattern to chl-*a* (Spearman correlation of 0.93, 0.88 and 0.88 for NE, SI and SW
respectively with p-value lower than 0.01, Figure 2b), suggesting that, away from terrigenous inputs, detritus and dissolved
organic matter originate from phytoplankton degradation, consistent with the definition of case I waters (Morel and Prieur,
1977). The backscattering coefficient at 443 nm showed a very different pattern than chl-*a* and $a_{dg}(443)$ with values remaining
280 relatively high in winter and early spring (weeks 1 through 13) followed by a small increase corresponding to the peak of the
spring bloom and a decrease in late spring at the end of the spring bloom (Figure 2c). The backscattering coefficient peaked in
the summer between week 24 and 26 (depending on the box) and continuously decreased thereafter until late fall.

3.1.2 Small scale variations of chl-*a*, $a_{cdom}(443)$ and $b_{bp}(443)$ in vicinity of SI

While the SI box did not exhibit a markedly different pattern than the SW and NE boxes, likely due to the large size of the box
and the smoothing of any spatial patterns within it, we carried out an analysis on a grid made of small boxes located around
285 SI with the purpose of identifying zones of enhanced production without assuming its boundaries. When examining the 12
small boxes to the leeward side of SI (Figure 2, colored lines), the averaged seasonal cycles of chl-*a*, $a_{dg}(443)$ and $b_{bp}(443)$
told a different story than the ones for the control boxes. The location of these boxes were chosen to emphasize the higher
phytoplankton biomass southwest of SI than elsewhere without a priori knowledge of the plume spatial distribution. Boxes 7
to 12 showed higher chl-*a* and $a_{dg}(443)$ than the control boxes in winter and early spring (weeks 41 through 13), while boxes
290 1 to 6 showed values consistent with the control boxes. In particular, boxes 10, 11 and 12 showed the highest chl-*a* through the
winter, with a sharp increase that starts late December, followed by a slight decrease in February when chl-*a* increases until
late March. In summer to early fall, chl-*a* and $a_{dg}(443)$ in all 12 boxes followed the same pattern as the control boxes SW
and NE, without obvious enhanced chl-*a*. During the second part of Fall (i.e. early November), $b_{bp}(443)$ increased in all boxes
except 5 and 6 (i.e., group B) while it decreased in the control boxes. The high $b_{bp}(443)$ during the winter through early spring
295 suggests that the water masses in boxes 10, 11 and 12 were impacted by SI and were likely a signature of mineral particles
resuspension as this signal decreased as the distance to SI increased (e.g., see boxes 1, 2 and 3). The location and extent of the
plume was consistent with the hydrodynamics of the area as revealed by model simulation (Brickman and Drozdowski, 2012)
and comparison to the global sea surface velocity dataset (OSCAR). The annual depth-averaged Labrador Current follows the
continental slope along a southwest axis at a speed of about 20 cm s^{-1} , which is heavily reduced when reaching SI bank,
300 flowing southward with a much lower speed of about a few cm s^{-1} ($< 5 \text{ cm s}^{-1}$ in OSCAR dataset, Figure C1). Its flow
increases at the beginning of October, peaks in February and March, and declines until June (Loder et al., 1997). The Current-
induced kinetic energy has therefore a strong seasonal cycle that is highest in fall and winter on SI bank, and lowest in summer,
while the spring values lie in-between (Brickman and Drozdowski, 2012, p. 18-21). These findings addressed the first question
raised in the introduction and confirmed that the IME occurs mainly southwest of SI and decreases rapidly away for SI, we
305 also found that the IME is stronger in Winter, which is consistent with physical forcing.

3.2 Timing of chl-*a* peak and seasonal trends

Details on the spatio-temporal dynamics of phytoplankton biomass on the Scotian Shelf, and in particular around SI, were revealed when applying an unsupervised classifier to the entire time series of 8-day composite of chl-*a*. Here we applied the SOMs method to the satellite chl-*a* estimates to summarize the spatio-temporal dynamics of phytoplankton biomass in nine main patterns on the Scotian Shelf. A common feature to all maps was a region of enhanced chl-*a* around SI that is more pronounced to the south-west of the island, in agreement with the 8-day climatology study (section 3.1). The largest extent of the plume around SI, not including the spring bloom that covers most of the Scotian Shelf, occurred mainly in winter (Figure 3a, SOM5) with a mean surface area of chl-*a* > 1 mg m⁻³ of 4.10³ km². This chl-*a* plume around SI persisted in the spring, even during the spring bloom that developed over most of the shelf (SOMs # 4 and 7), and until the spring bloom terminated (SOMs # 8 and 9). In summer, from June to August, a low background of chl-*a* on the Scotian Shelf emphasized the enhanced chl-*a* to the southwest of SI, with a smaller surface area than in winter (SOMs # 6 and 3). Finally, from September to November (SOMs #1 & 2), the chl-*a* remained distinctively higher than its surroundings despite an overall increase in biomass (i.e., fall bloom). The SOM5 was the most frequent, occurring 20% of the time in the entire time series (Figure 3b). The SOM analysis strongly supports the hypothesis of the IME without examining underlying mechanisms. The extent of the plume and the chl-*a* within its boundaries followed a seasonal cycle that remains independent of the phytoplankton phenology on the rest of the Scotian Shelf as revealed by the two control boxes.

The seasonal chl-*a* trends were significant in winter for all three ROIs (Figure 4a and Table 1), while no trends in chl-*a* were observed in these ROIs for the other seasons. It is noteworthy that the rate of increase of chl-*a* over the period of observation for the plume near SI (i.e., SOM5) was twice that of the control boxes. The $a_{dg}(443)$ linear trend was also positive and significant in all three ROIs in winter (Figure 4b). The highest increase was observed in winter around SI (slope of 0.0028 m⁻¹ y⁻¹) as for the chl-*a* trend; the second highest positive linear trend was also observed in winter in the NE box (0.0025 m⁻¹ y⁻¹). For the other seasons, the increase, when significant, was much smaller. In summer, the slope was significant and around 0.0007 m⁻¹ y⁻¹ for all three ROIs, while for spring and fall the results were more variable with only the SW region showing a significant positive trend in summer, and the SOM5 and NE regions showing a significant positive trend in fall. The backscattering coefficient showed significant declines in all seasons and ROIs except for the NE in spring, SI and SW in summer and SI in winter (Figure 4c).

When averaging the winter chl-*a* over a 5-year period (Figure 5), the increase in chl-*a* was even more striking, as it revealed both the increase in magnitude within the plume and the increase in the plume surface area. Our study shows that not only does SI have a local effect on the surrounding ecosystem as enhanced chl-*a* is observed in the leeward region of the island, but also that the phytoplankton biomass has increased in winter over the last two decades at a rate not matched by the other regions (i.e., control boxes).

The SOM and trend analysis responded to the second question raised in the introduction and provided information on the dynamics of the chl-*a* plume southward of SI and notably is large extent in Winter and an increase in chl-*a* over the last 21 years that was particular to the SOM5 region given its magnitude.

Table 1. Slope and p-values of the linear regression of annual chl-*a* ($\text{mg m}^{-3} \text{y}^{-1}$), $a_{dg}(443)$ ($\text{m}^{-1} \text{y}^{-1}$) and $b_{bp}(443)$ ($\text{m}^{-1} \text{y}^{-1}$) versus time in year for each season and region.

Region	chl- <i>a</i>		$a_{dg}(443)$		$b_{bp}(443)$	
	slope	p-value	slope	p-value	slope $\times 10^{-5}$	p-value
Spring						
NE	0.014	0.22	0.0026	0.02	-2.0	0.16
SOM5	0.004	0.62	0.001	0.12	-5.0	< 0.01
SW	0.002	0.65	0.001	< 0.01	-3.0	< 0.01
Summer						
NE	0.003	0.40	0.0007	< 0.01	-5.0	0.02
SOM5	0.001	0.76	0.0008	< 0.01	-2.0	0.20
SW	0.001	0.55	0.0007	< 0.01	-1.0	0.35
Fall						
NE	0.0007	0.91	0.0014	< 0.01	-5.0	< 0.01
SOM5	0.0042	0.48	0.001	< 0.01	-7.0	< 0.01
SW	0.0019	0.66	0.0007	0.03	-3.0	< 0.01
Winter						
NE	0.015	< 0.01	0.0025	< 0.01	-3.0	< 0.01
SOM5	0.028	< 0.01	0.0028	< 0.01	-1.0	0.60
SW	0.0114	< 0.01	0.0016	< 0.01	-2.0	0.04

340 3.2.1 Simultaneous increase in seal abundance and phytoplankton biomass, a coincidence?

The position of SI near the continental shelf may explain some of the elevated chl-*a* (hypothesis 3), due to the warm slope waters advecting on the Scotian Shelf from the continental slope (Petrie and Drinkwater, 1993) bringing nutrients from horizontal and vertical mixing (Zhai et al., 2011); however, if that was the case, this phenomenon would occur along the entire slope and also in the SW box, which was not evidenced. In addition, repeated measurements of nutrients over the entire Scotian Shelf over
345 the last 20 years have revealed a continuous decrease in nitrate concentration since about 2012 in agreement with an increase in stratification (Casault et al., 2020). Therefore, physical forcing and advection of nutrients alone cannot explain the increase in chl-*a* in the SOM5 region.

While the hypotheses stated above did not provide a satisfactory explanation of the spatio-temporal pattern occurring leeward of SI, an interesting parallel to the satellite observations over the same time period was the large increase in the population
350 of grey seal (*Halichoerus grypus*), particularly during the breeding season in the winter months (December through February, Figure 6). Fecal matter from marine mammals including pinnipeds and whales liberates nitrogenous compounds including

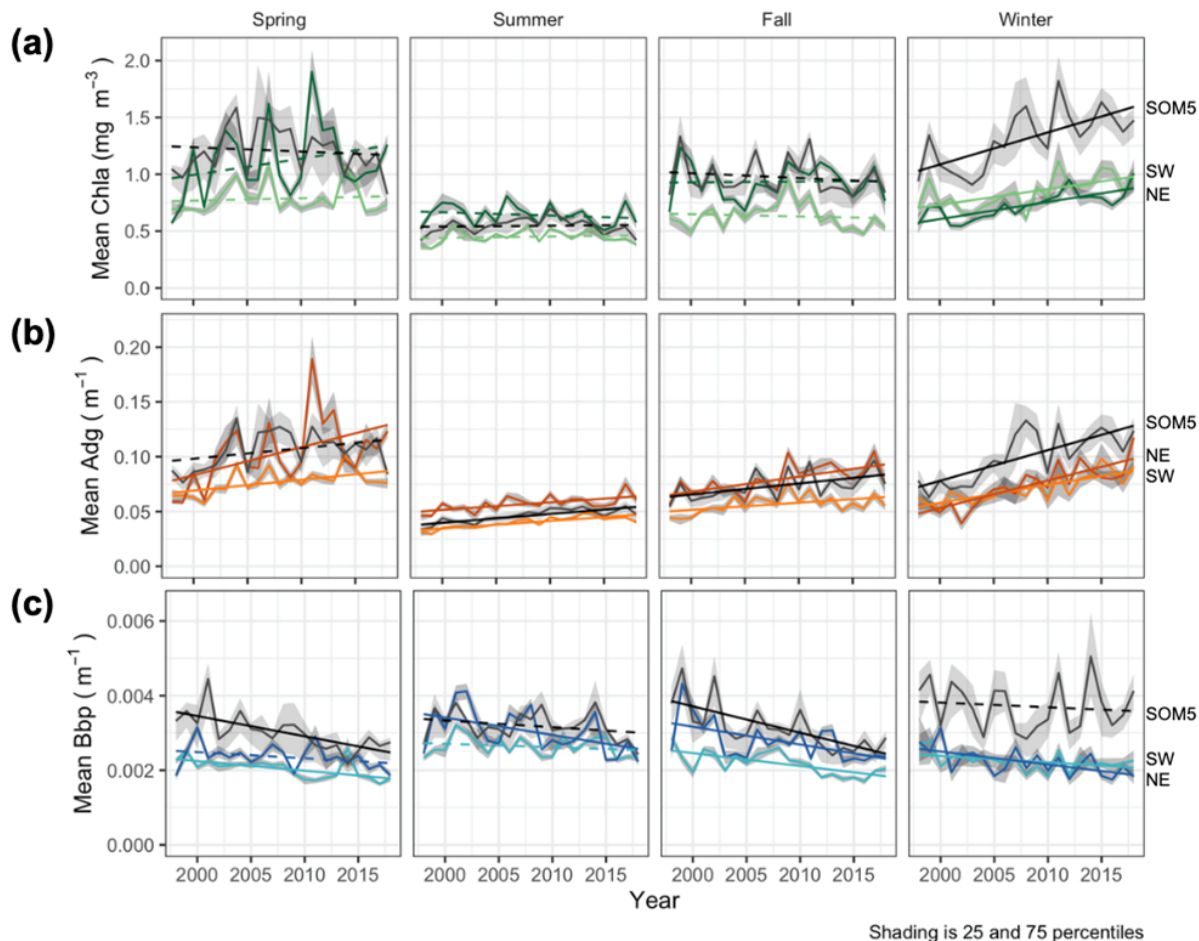


Figure 4. Seasonal mean chl-*a* (a), *a_{dg}*(443) (b) and *b_{bp}*(443) (c) for the SOM5 region (i.e., plume southwest of SI in SOM node #5 where chl-*a* is greater than 1 mg m⁻³) and control boxes (NE and SW). Statistically significant trends (p-value < 0.05) are shown as solid lines, while non-significant are dashed. Line regions labelled on the right.

NH₄⁺ (Roman and McCarthy, 2010) to the environment. Fertilization of the ocean by marine mammals and birds has been demonstrated in several regions of the world (e.g. Roman and McCarthy, 2010; Laver et al., 2012; Mccauley et al., 2012; Wing et al., 2014). In the Gulf of Maine, adjacent to the Scotian Shelf, Roman and McCarthy (2010) estimated that whales and seals provide up to 2.3×10^4 metric tonnes of N per year to the surface waters. A parallel was therefore made between the contribution of the growing population of grey seals on SI and the increase in phytoplankton biomass around SI, particularly considering that NH₄⁺ has been shown to be used preferentially to nitrate by phytoplankton on the Scotian Shelf (Cochlan, 1986).

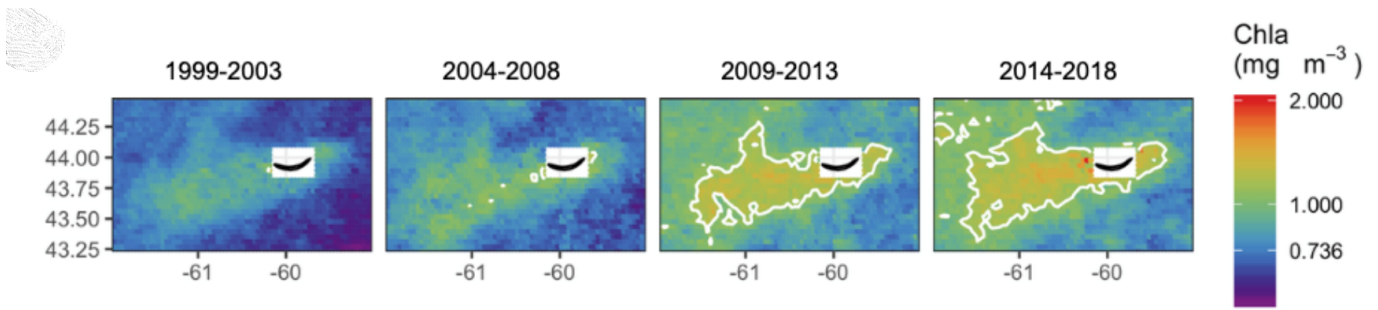


Figure 5. Mean chl-*a* in winter for the four periods of interest. The white solid line represent the 1 mg m⁻³ contour.

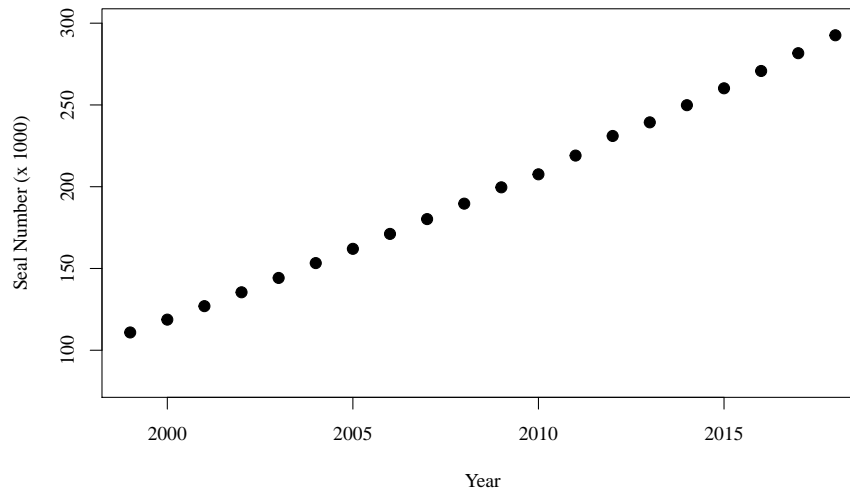


Figure 6. Number of seals on SI in winter (i.e., breeding season) as a function of time in years based on population model for the Scotian Shelf grey seals (Rossi et al., 2021).

3.2.2 Seal abundance on SI and chl-*a* standing stocks in SOM5

360 The difference in satellite-derived chl-*a* standing stocks between the period 1993-2003 and the period 2014-2018 was most important from winter to early spring (Figure 7) with the most recent period (P4) higher than the reference period (P1). The maximum difference is reached early March with an excess of 134 tonnes of chl-*a*, following a steady increase that started in early December. From late spring to fall, the difference between the two periods ranged between -50 to +10 tonnes of chl-*a*. The results observed in the SOM5 region were in agreement with the decadal trend analysis that did not show any trends in
 365 chl-*a* in spring, summer and fall in the SOM5 region (Table 1 and Figure 4) while winter showed the highest rate of increase

($0.028 \text{ mg m}^{-3} \text{ y}^{-1}$). Regardless, the presence of seals on the island has been increasing during spring, summer and fall. The faster rate of increase in winter could suggest that there has been a change in the distribution of seals as the population has grown with a smaller proportion of seals using SI as a haul out location outside of the breeding season. The spring bloom during P4 is somewhat masked by high chl-*a* that started to occur in early December (Figure 7).

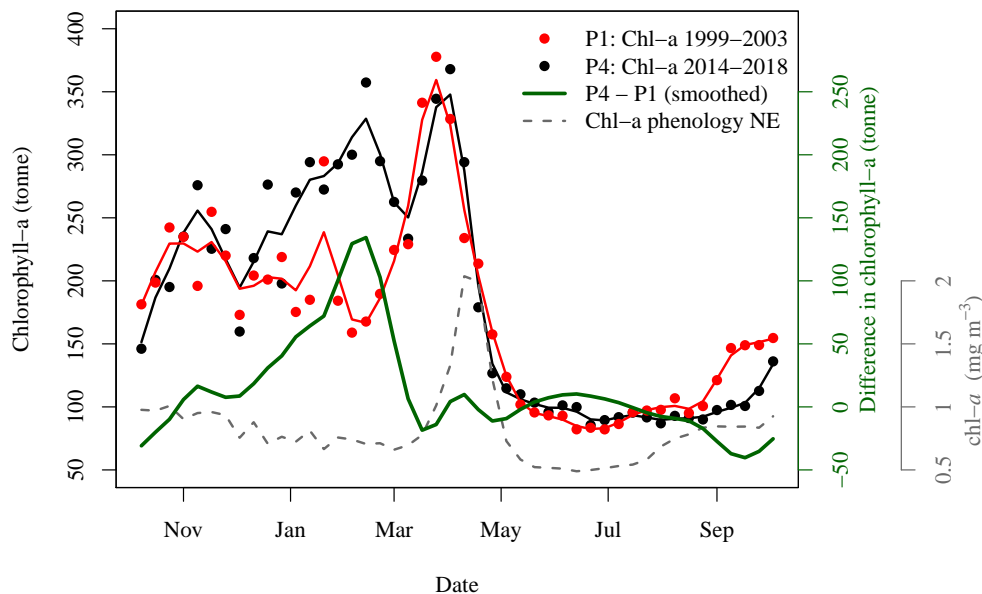


Figure 7. Satellite-derived 8-day mean (solid circles) and smoothing (solid lines) of chl-*a* standing stocks in the SOM5 region for the periods 1999-2003 (red) and 2014-2018 (black). The green solid line corresponds to the difference between the two periods. The grey dashed line corresponds to the Chl-*a* phenology in the NE box, assumed free of N fertilisation by seals.

370 In recent years, grey seal abundance year long on SI is about 20% of the total adult population, currently about 40,000 individuals. Seals defer digestion and therefore defecation during rest time, suggesting that they may, indeed, relieve themselves on SI or its surroundings rather than during foraging in the ocean (Sparling et al., 2007). The daily pattern of N release, which was further converted into chl-*a* standing stocks following Roman and McCarthy (2010) and Matear (1995) is a multiplicative term based on an average rate per individual. As we expect that the larger male grey seals are spending more time using SI as a haul out, thus our estimate based on the average duration of time hauled out, this rate is a conservative estimate of N flux per individual. There is a good temporal agreement between the standing stock of chl-*a* derived by satellite and modeled with a Pearson correlation coefficient of 0.54 (Figure 8, which increased to 0.86 when using an 24-day lag (i.e., corresponding to three 8-day periods), with the chl-*a* reaching its peak later that the peak in N release. We found that for the Period P4, annual nitrogen released by seals could support about 580 tonnes of chl-*a* (Figure A1), while the biomass standing stocks sustained by

375

380 seals during the breeding period equals 297 tonnes when including the 24-day lag. About 50% of the potential chl-*a* standing
stocks due to seal fertilisation would occur during the breeding season. We have also estimated the winter chl-*a* standing
stocks using both satellite-observed and the model of hauled out seals in four 5-year blocks. The seal supported standing stock
(i.e. 158 tonnes) accounts for about 21% the increase between P4 and P1 derived by satellite observations (i.e., 761 tonnes,
Figure 8). These annual estimates did not account for breeding behavior or sexual-dimorphism which could have an impact
385 on the estimates of N release at the breeding colony, where females fast during lactation and much larger males spend higher
proportion of time hauled out. Similarly, for the satellite-observed chl-*a*, we used conversion factors from the literature to
derive the daily nutrient release and chl-*a* standing stocks from the seal population model. We used a conversion factor of N
to chl-*a* of 1.59 mg Chl-*a* (mmol N)⁻¹ in agreement with Yentsch and Vaccaro (1958) and Matear (1995), however, William
et al. (2010) found a conversion factor that varies from 1.1 mg Chl-*a* (mmol N)⁻¹ on an intra-daily scale to 1.4 mg Chl-*a* (mmol
390 N)⁻¹ at a weekly scale during the spring bloom, using this value would further reduce the chl-*a* standing stocks that could be
sustained by seals. The satellite observations were mainly constrained by the assumption of an homogeneous profile of chl-*a*
from 0 to 50 m and the delineation of the plume. Here we decided on a 1 mg m⁻³ threshold to delineate the plume in the SOM5
region, which was consistent with the description of a phytoplankton bloom on the Scotian Shelf. Using a smaller threshold
would have increased the surface area of the plume and increased the chl-*a* standing stocks estimates; however the general
395 patterns and notably the temporal variation would remain the same. To test the mechanisms that can explain the increase in
chl-*a*, *in situ* sampling of standing stocks and water chemistry surrounding SI is necessary.

The lag observed between the peaks in seal abundance and phytoplankton biomass in the plume can be explained by several
factors, including: 1) the transport of seal feces to the ocean, which will certainly take a few days and depends on atmospheric
forcing, soil permeability and seastate and tide, with storm surges inundating the beach and releasing organic material, 2) the
400 negative air temperatures that occur between the end of January and February (Figure B2), which would reduce and delay the
diffusion of N from SI to the adjacent waters, when the soil is frozen and precipitation occurs as snow, and 3) day length,
which increases by about an hour from about 9h45min to 11h05min hours between the January and the end of February, which
will increase primary production over this period as N is not the limiting factor. Undoubtedly, other environmental factors
contribute to the production of biomass in the area of interest (e.g., atmospheric forcing, timing and strength of stratification,
405 light availability), that are not taken into account in our conceptual model.

3.2.3 Synchronized decadal increase in seal population, extent and concentration of the chl-*a* plume around SI

The winter increase in chl-*a* standing stocks in the leeward region of SI (SOM5) was consistent with the increase of seal
population on SI over the last 21 years. From the late 1990's to the late 2010's the SI breeding colony has continuously
increased at a rate of about 5-7% per year (Figure 6 den Heyer et al., 2020). We demonstrated that the average chl-*a* increased
410 within the plume southward of SI at a faster rate than the surrounding control boxes in winter. In terms of the five-year average
standing stocks of chl-*a* over the four periods of interest, P1 to P4 (Figure 9), a quasi-linear increase in chl-*a* standing stocks
was observed, except for the period P2, which slightly departs from linearity. The high values for P2 were due to a sudden
increase in chl-*a* standing stocks during a large bloom occurring in early December, a phenomenon that may be explained

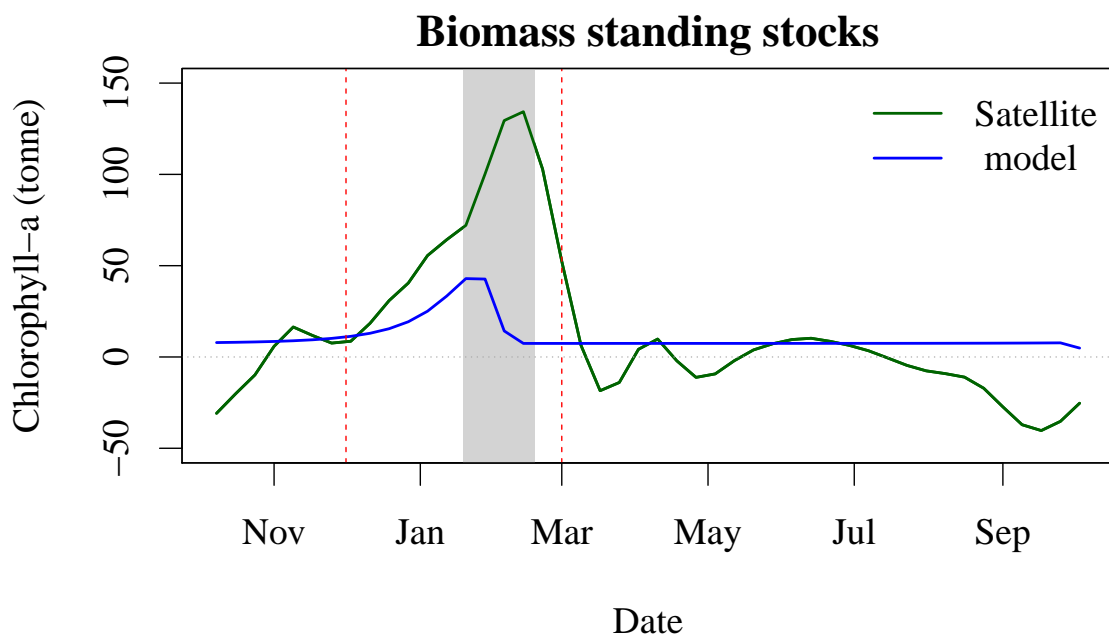


Figure 8. Increase in chl-*a* standing stocks between P1 and P4 (green solid line) and modelled chl-*a* standing stocks due to seal N-release in the environment (blue solid line). The vertical red dashed line correspond to the arrival and departure of seal on SI (i.e., breeding season) and the light grey rectangle corresponds to the 8-day climatology of air temperature that is below zero.

by natural variation in phytoplankton biomass, and notably a short growth period that can occur on the Scotian Shelf when
 415 conditions are favorable. The increase in chl-*a* standing stocks due to climate forcing was computed by taking the value during
 P1 and subtracting the chl-*a* standing stocks due to N-fertilisation by seals and then applying a mean 5-year rate of increase
 of $0.075 \text{ mg m}^{-3}(\text{5-year})^{-1}$ taken from the annual rate of increase at the NE box (i.e., $0.015 \text{ mg m}^{-3}\text{y}^{-1}$). This provided
 chl-*a* standing stocks of 2947, 3619, 3923 and 3709 tonnes for P1N, P2N, P3N and P4N respectively, which corresponds
 to an increase of chl-*a* standing stocks of 154, 317 and 489 tonnes between each 5-year time period (Figure 9). During the
 420 same periods, the contribution by seal fertilisation to chl-*a* standing stocks was 139, 188, 241 and 297 for P1, P2, P3 and
 P4 respectively. The sum of the chl-*a* standing stocks due to the natural increase and seal fertilisation matches the total chl-*a*
 standing stocks observed using satellite ocean colour for the period P1 and P4, while a large discrepancy was observed for
 the period P2 and P3. (Figure 9). The main difference occurs during the period P2 with a difference of 215 tonnes between
 425 the one observed by satellite. The linear increase due to climate forcing might be too simplistic as large interannual variations

exist and Liu et al. (2018) showed that the increase in chl-*a* on the Scotian Shelf slowed down after 2012, but the consistency between both estimates remains remarkable. The contribution by seal N-fertilisation to the total chl-*a* standing stocks in SOM5 has increased from 4.7 to 8% between P1 to P4 and the contribution by climate forcing increased from 4.2 to 13.1% between P2 and P4. As for the seasonal cycle, the satellite estimates provided here depended on the delineation of the plume southward of SI; the value selected here (i.e., 1 mg m⁻³) happened to provide a very good agreement between the model and the satellite observations.

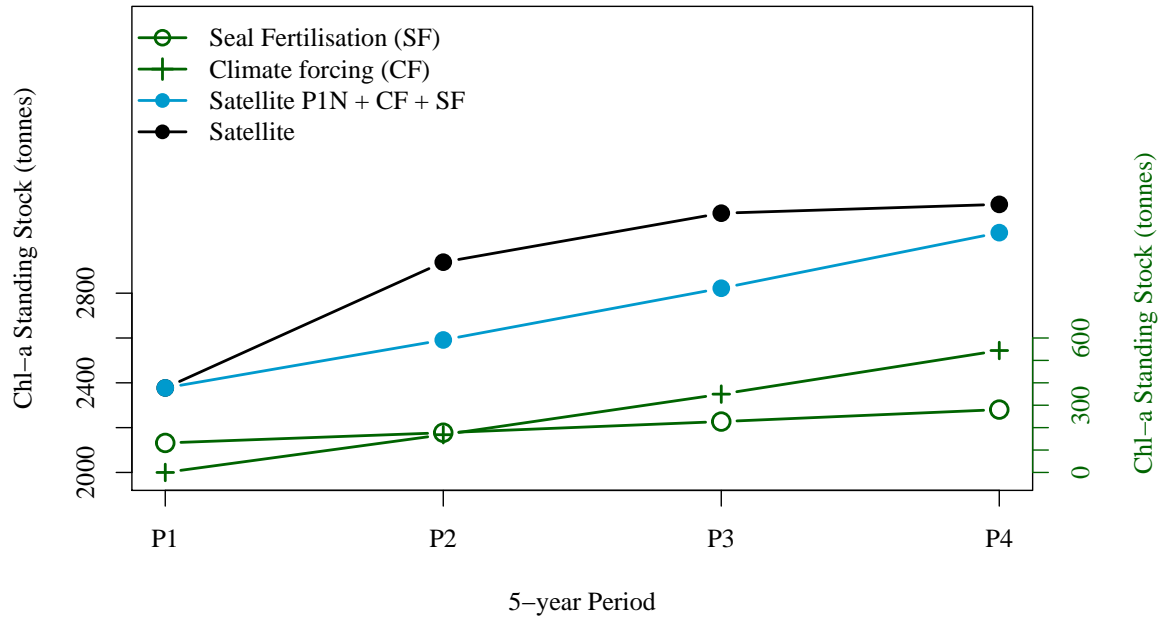


Figure 9. Five-year winter average standing stock of chl-*a* derived from satellite observations (solid black circle), from satellite observation for P1 extrapolated with climate forcing and seal N-fertilisation (blue solid circles), from climate forcing (green crosses) and from seal N-fertilisation (green open circles) for the four periods of interest (black solid circles).

4 Conclusions

Sable Island, a large sand bar located at the edge of the continental shelf off eastern Canada, sees enhanced chl-*a* and yellow substance concentration in its vicinity and in particular leeward of the island as revealed by satellite ocean colour. This finding is in agreement with the theory of island mass effect that has been demonstrated in other parts of the world. The increase and phenology of phytoplankton biomass around SI was demonstrated by comparison with two control boxes located to the northeast (NE) and southwest (SW) of SI, away from possible terrigenous inputs. We found that chl-*a* around SI showed a different annual cycle than the control boxes with higher values in late fall through winter. This was also the case for the

absorption coefficient of DOM and the backscattering coefficient. Using an objective classification method (i.e., self organising maps), we were able to describe the spatio-temporal variation of chl-*a* on the Scotian Shelf in general and around SI in particular. A distinct pattern of high chl-*a* around SI, referred to as SOM5, was revealed by this analysis, and occurs from late fall through winter; comparison with the chl-*a* phenology in the control boxes showed that this pattern was different than the fall bloom and singular to SI. Trend analysis of satellite-derived chl-*a*, $a_{dg}(443)$ and $b_{bp}(443)$ over the last 21 years showed that, at the annual level, $a_{dg}(443)$ had increased at a similar rate in all three regions (i.e., SOM5, SW and NE), while $b_{bp}(443)$ decreased in all three regions, though at a much slower rate around SI. The trend was not conclusive for chl-*a*. When dividing the years and examining by season, mean chl-*a* showed a significant increase in these three regions of interest in winter, but with a trend twice as high for SI than for the SW and NE boxes i.e., 0.028 mg y^{-1} .

The location of SI (away from continental inputs) and the analysis of $a_{dg}(443)$ and $b_{bp}(443)$ seasonal cycles and decadal trends did not help explain the processes that led to the increase in chl-*a* around SI, as no trends in particulate backscattering and DOM absorption were markedly different from the surrounding environment. Notably, the seal population that breeds on SI from increased from about 100,000 to more than 300,000 individuals from 1999 to 2018. We developed a simple model that describes the seal occurrence on SI, in particular during the reproductive season (i.e., early December to end of February), and converted the daily theoretical N release due to seal excretion to chl-*a* standing stocks. Comparison of the model results with satellite-derived chl-*a* standing stocks show a good agreement, not only in terms of the seasonal cycle, but also to the decadal trends. Both the mean chl-*a* increased within the plume located leeward of the island and the plume surface area increased by a factor of five over the period of observation, which was also a period of rapid growth for the grey seal population

The seal population on SI exceeded 300,000 individuals in recent years, and the associated N release in the surrounding waters can support chl-*a* standing stocks of 254 tonnes in winter, in agreement with standing stocks observed in the SI chl-*a* plume in recent years. While we acknowledge the lack of *in situ* measurements in the surrounding waters of SI, the strong agreement between our model results and satellite observations support the role that grey seals can play at haul out sites and breeding colonies. Our results are consistent with Roman and McCarthy (2010), who found that marine mammals (both seals and cetaceans) could support 2.3×10^4 tonnes of N in the Gulf of Maine. The high concentration of seals on a small island located at the edge of the continental shelf for a short period of time represents ideal conditions to witness their impact on the marine ecosystem; however, this impact is certainly diminished when they leave the breeding colony to forage over very large areas (i.e., the Scotian Shelf, Gulf of St. Lawrence, Gulf of Maine and Grand Banks). Here we see evidence for the transfer of nutrients from benthic fish communities (i.e., seals pray) to surface waters near SI with implications for marine conservation and fisheries.

Author contributions. TEXT

E.D. and C.d.H. initially discussed the idea of seal fertilisation around SI, E.D. designed the study. A. H. carried out all computations and statistical analysis related to satellite data. E.D. and C.d.H. developed the seal distribution model and chl-*a*

standing stock budget. A.H and E.D. contributed equally to the drafting of the manuscript. A.H, C.d.H and E.D. all contributed to the editing of the manuscript.

Competing interests. The authors declare that there is no conflict of interest.

Acknowledgements. The study was supported by Fisheries and Oceans Canada as well as the Canadian Space Agency Climate Change
475 Impact and Ecosystem Resilience program.

References

- Ainsworth, E. J.: Visualization of Ocean Colour and Temperature from multi-spectral imagery captured by the Japanese ADEOS satellite, *Journal of Visualization*, 2, 195–204, <https://doi.org/10.1007/BF03181523>, 1999.
- 480 Boden, B. P.: Observations of the island mass effect in the Prince Edward archipelago, *Polar Biol*, 61-68, 260–265, <https://doi.org/10.1007/BF00441765>, 1988.
- Boss, E., Stramski, D., Bergmann, T., Pegau, W., and Marlon, L.: Why Should We Measure the Optical Backscattering Coefficient?, *Oceanography*, 17, <https://doi.org/10.5670/oceanog.2004.46>, 2004.
- Bowen, W. D., McMillan, J. I., and Wade, B.: Reduced population growth of gray seals at Sable Island: evidence from pup production and age of primiparity, *Marine Mammal Science*, 23, 48–64, <https://doi.org/10.1111/j.1748-7692.2006.00085.x>, 2007.
- 485 Breed, G. A., Bowen, D. W., and Leonard, M. L.: Behavioral signature of intraspecific competition and density dependence in colony-breeding marine predators, *Ecology and Evolution*, 3, 3838–3854, <https://doi.org/10.1002/ece3.754>, 2013.
- Brickman, D. and Drozdowski, A.: Atlas of Model Currents and Variability in Maritime Canadian Waters, Tech. Rep. 277: vii + 64pp., Can. Tech. Rep. Hydrogr. Ocean Sci., 2012.
- Bukata, R., Jerome, J., Kondratyev, K., and Pozdnyakov, D.: Optical properties and remote sensing of inland and coastal waters / Robert P. 490 Bukata ... [et al.], CRC Press, Boca Raton, Fla, 1995.
- Casault, B., Johnson, C., Devred, E., Head, E. J. H., Cogswell, A., and Spry, J.: Optical, Chemical, and Biological Oceanographic Conditions on the Scotian Shelf and in the Eastern Gulf of Maine during 2019, in: *Can. Sci. Advis. Sec. Res. Doc.*, p. 64, DFO, 2020.
- Cochlan, W. P.: Seasonal study of uptake and regeneration of nitrogen on the Scotian Shelf, *Continental Shelf Research*, 5, 555–577, 1986.
- Dandonneau, Y. and Charpy, L.: An empirical approach to the island mass effect in the south tropical Pacific based on sea surface chlorophyll 495 concentrations, *Deep Sea Research Part A. Oceanographic Research Papers*, 32, 707 – 721, [https://doi.org/10.1016/0198-0149\(85\)90074-3](https://doi.org/10.1016/0198-0149(85)90074-3), 1985.
- den Heyer, N., Bowen, W., Dale, J., Gosselin, J. F., Hammill, M., Johnston, D., Lang, S., Murray, K., Stenson, G., and Wood, S.: Contrasting trends in gray seal (*Halichoerus grypus*) pup production throughout the increasing northwest Atlantic metapopulation, *Marine Mammal Science*, <https://doi.org/10.1111/mms.12773>, 2020.
- 500 Denman, K. L. and Platt, T.: The variance spectrum of phytoplankton in a turbulent ocean, *J. Mar. Res.*, 34, 593–6016, 1976.
- Doty, M. S. and Oguri, M.: The Island Mass Effect, *ICES Journal of Marine Science*, 22, 33–37, <https://doi.org/10.1093/icesjms/22.1.33>, 1956.
- Gilmartin, M. and Revelante, N.: The ‘island mass’ effect on the phytoplankton and primary production of the Hawaiian Islands, *Journal of Experimental Marine Biology and Ecology*, 16, 181 – 204, [https://doi.org/10.1016/0022-0981\(74\)90019-7](https://doi.org/10.1016/0022-0981(74)90019-7), 1974.
- 505 Gove, J. M., McManus, M. A., Neuheimer, A. B., Poloniva, J. J., Draven, J. C., Smith, C. R., Merrifield, M. A., Friedlander, A. M., Ehses, J. S., Young, C. W., Dillon, A. K., and Williams, G. J.: Near-island biological hotspots in barren ocean basins, *Nat comm*, 7, 154–157, <https://doi.org/10.1038/ncomms10581>, 2016.
- Hammill, M. O., Stenson, G. B., Swain, D. P., and Benoît, H. P.: Feeding by grey seals on endangered stocks of Atlantic cod and white hake, *ICES Journal of Marine Science*, 71, 1332–1341, <https://doi.org/10.1093/icesjms/fsu123>, 2014.
- 510 Hardman-Mountford, N., Richardson, A., Boyer, D., Kreiner, A., and Boyer, H.: Relating sardine recruitment in the Northern Benguela to satellite-derived sea surface height using a neural network pattern recognition approach, *Prog. Oceanogr.*, 59, <https://doi.org/10.1016/j.pocean.2003.07.005>, 2003.

- Heywood, K., Barton, E. D., and Simpson, J.: The effects of flow disturbance by an oceanic island, *Journal of Marine Research*, 48, 55–73, <https://doi.org/10.1357/002224090784984623>, 1990.
- 515 Jackson, T., Chuprin, A., Sathyendranath, S., Grant, M., Zühlke, M., Dingle, J., Storm, T., and ad N. Fomferra, M. B.: Product User Guide, Tech. rep., European Space Agency, 2020.
- James, A. K., Washburne, L., Gotschalks, C., Maritorena, S., Alldredge, A., Nelson, C. E., Hench, J. L., Leichter, J. J., Wyatt, A. S. J., and Carlson, C. A.: An Island Mass Effect Resolved Near Mo'orea, French Polynesia, *Frontiers in Marine Science*, 7, 16, <https://doi.org/10.3389/fmars.2020.00016>, 2020.
- 520 Kanwisher, J. and Ridgway, S.: The Physiological Ecology of Whales and Porpoises, *Sci. Amer.*, 248, 110–120, <https://doi.org/10.1038/scientificamerican0683-110>, 1983.
- Kennedy, G. W., Drage, J., and Hennigar, T. W.: Groundwater Resources of Sable Island, Tech. rep., Nova Scotia Department of Natural Resources, Mineral Resources Branch, Government of Nova Scotia; Open File Report ME 2014-001, <https://novascotia.ca/natr/meb/data/pubs/14ofr01/14ofr01.pdf>, 2014.
- 525 King, M., Fenton, D., Aker, J., and Serdyska, A.: Offshore Ecologically and Biologically Significant Areas in the Scotian Shelf Bioregion, Tech. Rep. 2016/007. vii + 92 p., DFO Can. Sci. Advis. Sec. Res. Doc., 2016.
- Laver, T., Roudnew, B., Seymou, J., Mitchell, J., and Jeffries, T.: High nutrient transport and cycling potential revealed in the microbial metagenome of Australian sea lion (*Neophoca cinerea*) faeces, *PLoS one*, 7, e36478, <https://doi.org/10.1371/journal.pone.0036478>, 2012.
- Lee, Z. P., Du, K., Arnone, R., Liew, S. C., and Penta, P.: Penetration of solar radiation in the upper ocean - A numerical model for oceanic
530 and coastal waters, *J. Geophys. Res.*, 110, 2005.
- Liu, X., Devred, E., and Johnson, C.: Remote Sensing of Phytoplankton Size Class in Northwest Atlantic from 1998 to 2016: Bio-Optical Algorithms Comparison and Application, *Remote. Sens.*, 10, 1028, <https://doi.org/10.3390/rs10071028>, 2018.
- Loder, J., Han, G., Hannah, C. G., Greenberg, D. A., and Smith, P. C.: Hydrography and baroclinic circulation in the Scotian Shelf region: winter versus summer, *Canadian Journal of Fisheries and Aquatic Sciences*, 54, 40–56, <https://doi.org/10.1139/cjfas-54-S1-40>, 1997.
- 535 Lunne, T., Robertson, P. K., and Powell, J. J. M.: Cone Penetration Testing in Geotechnical Engineering Practice, lackie Academic and Professional, New York, 1997.
- Martinez, E. and Maamaatuaiahutapu, K.: Island mass effect in the Marquesas Islands: Time variation, *Geophysical Research Letters*, 31, <https://doi.org/https://doi.org/10.1029/2004GL020682>, 2004.
- Martinez, E., Raapotoi, H., Maes, C., and Maamaatuaiahutapu, K.: Influence of Tropical Instability Waves on Phytoplankton Biomass near
540 the Marquesas Islands, *Remote Sensing*, 10, <https://doi.org/10.3390/rs10040640>, 2018.
- Matear, R.: Parameter optimization and analysis of ecosystem models using simulated annealing: A case study at Station P, *Journal of Marine Research*, 53, 571–607, <https://doi.org/10.1357/0022240953213098>, 1995.
- Mccauley, D., Desalle, P., Young, H., Dunbar, R., Dirzo, R., Mills, M., and Micheli, F.: From wing to wing: The persistence of long ecological interaction chains in less-disturbed ecosystems, *Sci. Rep.*, 2, 409, <https://doi.org/10.1038/srep00409>, 2012.
- 545 McLoughlin, P. D., Lysak, K., Debeffe, L., Perry, T., and Hobson, K. A.: Density-dependent resource selection by a terrestrial herbivore in response to sea-to-land nutrient transfer by seals, *Ecology*, 97, 1929–1937, <https://doi.org/https://doi.org/10.1002/ecy.1451>, 2016.
- Messié, M., Petrenko, A., Doglioli, A., Aldebert, C., Martine, E., Koenig, G., and andT. Moutin, S. B.: The Delayed Island Mass Effect: How Islands can Remotely Trigger Blooms in the Oligotrophic Ocean, *Geophys. Res Letters*, 47, <https://doi.org/10.1029/2019GL085282>, 2020.

- 550 Moore, T., Dowell, M., and Franz, B.: Detection of coccolithophore blooms in ocean color satellite imagery: A generalized approach for use with multiple sensors, *Remote Sensing of Environment*, 117, 249–263, <https://doi.org/10.1016/j.rse.2011.10.001>, *remote Sensing of Urban Environments*, 2012.
- Morel, A. and Prieur, L.: Analysis of variation in ocean color, *Limnol. Oceanogr.*, 22, 709–722, 1977.
- Neuenhoff, R. D., Swain, D. P., Cox, S. P., McAllister, M. K., Trites, A. W., Walters, C. J., and Hammill, M. O.: Continued decline of a
 555 collapsed population of Atlantic cod (*Gadus morhua*) due to predation-driven Allee effects, *Canadian Journal of Fisheries and Aquatic Sciences*, 76, 168–184, <https://doi.org/10.1139/cjfas-2017-0190>, 2019.
- O’Boyle, R. and Sinclair, M.: Seal–cod interactions on the Eastern Scotian Shelf: Reconsideration of modelling assumptions, *Fisheries Research*, 115–116, 1–13, <https://doi.org/j.fishres.2011.10.006>, 2012.
- Petrie, B. and Drinkwater, K.: Temperature and salinity variability on the Scotian Shelf and in the Gulf of Maine 1945–1990, *Journal of*
 560 *Geophysical Research*, 982, 20 079–20 090, <https://doi.org/10.1029/93JC02191>, 1993.
- R Core Team: R: A Language and Environment for Statistical Computing, R Foundation for Statistical Computing, Vienna, Austria, <https://www.R-project.org/>, 2020.
- Richardson, A. J., Risien, C., and Shillington, F. A.: Using self-organizing maps to identify patterns in satellite imagery, *Progress in Oceanography*, 59, 223 – 239, <https://doi.org/10.1016/j.pocean.2003.07.006>, 2003.
- 565 Roman, J. and McCarthy, J. J.: The Whale Pump: Marine Mammals Enhance Primary Productivity in a Coastal Basin, *PLoS ONE*, 5, <https://doi.org/10.1371/journal.pone.0013255>, 2010.
- Rossi, S., Cox, S., den Heyer, M. H. C. E., Mosnier, D. S. A., and Benoît, H.: Forecasting the response of a recovered pinniped population to sustainable harvest strategies that reduce their impact as predators, *ICES Journal of Marine Science*, <https://doi.org/10.1093/icesjms/fsab088>, 2021.
- 570 Sathyendranath, S., Brewin, B., Brockmann, C., Brotas, V., Calton, B., Chuprin, A., Cipollini, P., Cout, A., Dingle, J., R. Doerffer, R., Donlon, C., Dowell, M., Farman, A., Grant, M., Groom, S., Horseman, A., Jackson, T., Krasemann, H., Lavender, S., and Platt, T.: An Ocean-Colour Time Series for Use in Climate Studies: The Experience of the Ocean-Colour Climate Change Initiative (OC-CCI), *Sensors*, 19, 4285, <https://doi.org/10.3390/s19194285>, 2019.
- Sathyendranath, S., Jackson, T., Brockmann, C., Brota, V., Calton, B., A.Chuprin, Clements, O., Cipollin, P., Danne, O., Dingle, J., Donlon,
 575 C., Grant, M., Groom, S., Krasemann, H., Lavende, S., Mazeran, C., Mélin, F., T. S. Moore, T., Mülle, D., Regner, P., Steinmetz, F., Steele, C., Swinton, J., Valente, A., Zühlke, M., Feldman, G., Franz, B., R. Frouin, R., Werdell, J., and Platt, T.: ESA Ocean Colour Climate Change Initiative (Ocean_Colour_cci): Global chlorophyll-a data products gridded on a sinusoidal projection, Version 4.2., <https://catalogue.ceda.ac.uk/uuid/99348189bd33459cbd597a58c30d8d10>, 2020.
- Siegel, D. A., Doney, S. C., and Yoder, J. A.: The North Atlantic spring phytoplankton bloom and Sverdrup’s critical depth hypothesis,
 580 *Science*, 296, 730–733, 2002.
- Signorini, S. R., McClain, C. R., and Dandonneau, Y.: Mixing and phytoplankton bloom in the wake of the Marquesas Islands, *Geophysical Research Letters*, 26, 3121–3124, <https://doi.org/https://doi.org/10.1029/1999GL010470>, 1999.
- Slade, W. H. and Boss, E.: Spectral attenuation and backscattering as indicators of average particle size, *Appl. Opt.*, 54, 7264–7277, <https://doi.org/10.1364/AO.54.007264>, 2015.
- 585 Smith, P. C. and Schwing, F. B.: Mean circulation and variability on the eastern Canadian continental shelf, *Continental Shelf Research*, 11, 977 – 1012, [https://doi.org/10.1016/0278-4343\(91\)90088-N](https://doi.org/10.1016/0278-4343(91)90088-N), proceedings of the Canadian Continental Shelf Seabed Symposium (C2S3), 1991.

- Song, H., Ji, R., Stoc, C., and Wang, Z.: Phenology of phytoplankton blooms in the Nova Scotian Shelf-Gulf of Maine region: Remote sensing and modeling analysis, *J. Plankton Res.*, 32, <https://doi.org/10.1093/plankt/fbq086>, 2010.
- 590 Sparling, C. E., Fedak, M. A., and Thompson, D.: Eat now, pay later? Evidence of deferred food-processing costs in diving seals, *Biology Letters*, 3, 95–99, <https://doi.org/10.1098/rsbl.2006.0566>, 2007.
- Steinmetz, F., Deschamps, P., and Ramon, D.: Atmospheric correction in presence of sun glint: application to MERIS, *Opt. Express*, 19, 9783–9800, <https://doi.org/10.1364/OE.19.009783>, 2011.
- Theobald, M. R., Crittenden, P. D., Hunt, A. P., Tang, Y. S., Dragosits, U., and Sutton, M. A.: Ammonia emissions from a Cape fur seal colony, Cape Cross, Namibia, *Geophysical Research Letters*, 33, <https://doi.org/https://doi.org/10.1029/2005GL024384>, 2006.
- 595 Trzcinski, M. K., Mohn, R., and Bowen, W. D.: Continued decline of an atlantic cod population: how important is gray seal predation?, *Ecological Applications*, 16, 2276–2292, <https://doi.org/10.1890/1051-0761>, 2006.
- Ward-Paige, C. A. and Bundy, A.: Mapping Biodiversity on the Scotian Shelf and in the Bay of Fundy, Tech. Rep. 2016/006. v + 90 p., DFO Can. Sci. Advis. Sec. Res. Doc., 2016.
- 600 Wehrens, R. and Buydens, L. M. C.: Self- and Super-organizing Maps in R: The kohonen Package, *Journal of Statistical Software*, 21, 1–19, <https://doi.org/10.18637/jss.v021.i05>, 2007.
- Wehrens, R. and Kruisselbrink, J.: Flexible Self-Organizing Maps in kohonen 3.0, *Journal of Statistical Software*, 87, 1–18, <https://doi.org/10.18637/jss.v087.i07>, 2018.
- William, K. W. L., Lewis, M. R., and Harrison, W. G.: Multiscalarly of the Nutrient-Chlorophyll Relationship in Coastal Phytoplankton, *Estuaries and Coasts*, 33, 440–447, 2010.
- 605 Wing, S., Jack, L., Shatova, O., Leichter, J., Barr, D., R. Frew, R., and Gault-Ringold, M.: Seabirds and marine mammals redistribute bioavailable iron in the Southern Ocean, *Marine Ecology Progress Series*, 510, 1–13, <https://doi.org/10.3354/meps10923>, 2014.
- Yentsch, C. S. and Vaccaro, R. F.: Phytoplankton Nitrogen in the Oceans, *Limnology and Oceanography*, 3, 443–448, <https://doi.org/https://doi.org/10.4319/lo.1958.3.4.0443>, 1958.
- 610 Zhai, L., Platt, T., Tang, C., Sathyendranath, S., and Hernández-Walls, R.: Phytoplankton phenology on the Scotian Shelf, *ICES Journal of Marine Science*, 68, 781–791, <https://doi.org/10.1093/icesjms/fsq175>, 2011.

Appendix A: Seal haul out model

The annual seal population distribution on SI was estimated using information on pup production from Rossi et al. (2021) and den Heyer et al. (2020). The mathematical formulation is described in section 2.5.1, equation 1. The model was also applied to the five-year average seal abundance on SI for the periods P1 to P4 (Table A1) and used to generate the chl-*a* standing stocks in Figure 9. Note that fluctuations around the mean seal abundance outside the breeding season is expected but not accounted for in the model.

Table A1. Five-year average of seal haul out on SI all year long and during the breeding season use in the seal population dynamic model.

Period	Seal Number	
	Year around	breeding season
P1	20,360	107,014
P2	27,402	144,028
P3	35,092	184,454
P4	43,362	227,9200

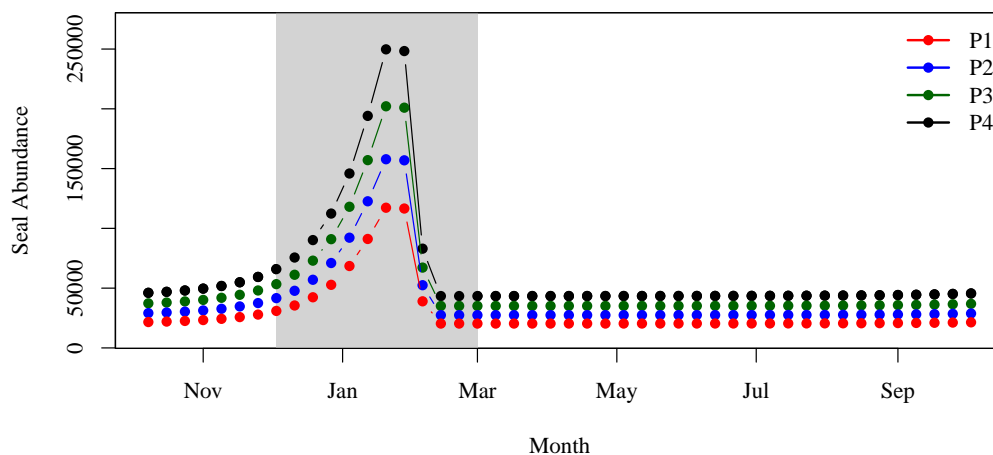


Figure A1. Annual cycle of seal hauls on SI for the four period of interest. The grey shaded area corresponds to the breeding season.

Appendix B: Eight-day climatology of precipitation and temperature on SI.

Daily data at the SI weather station were downloaded from the ECCC website
620 (https://climate.weather.gc.ca/historical_data/search_historic_data_e.html). Data from the station 8204700 (1998-2017) and 8204708 (2018) were used. The temperature and precipitation 8-day climatology was computed by averaging all data available in a given 8-day period for all years. The standard deviation is indicated with the mean in both figures B1 and B2.

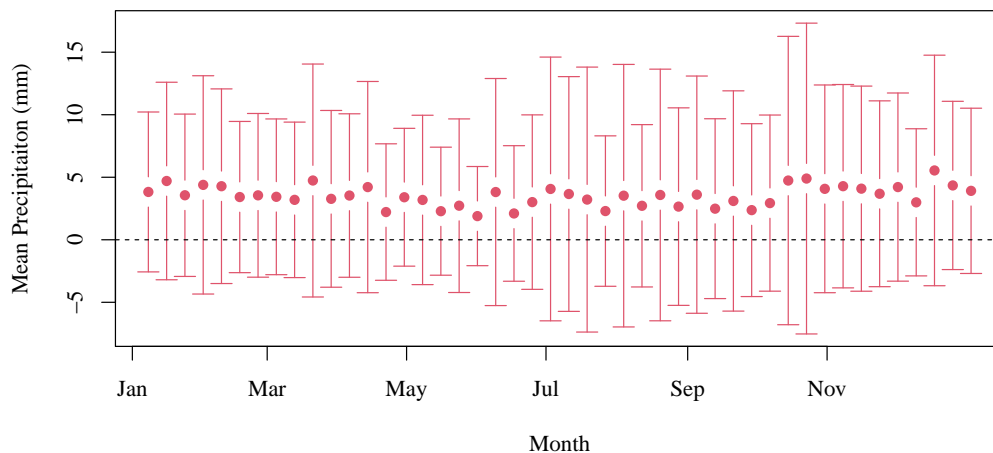


Figure B1. Eight-day composite climatology of precipitation SI meteorological station (solid circles) . Vertical bar indicates one standard deviation.

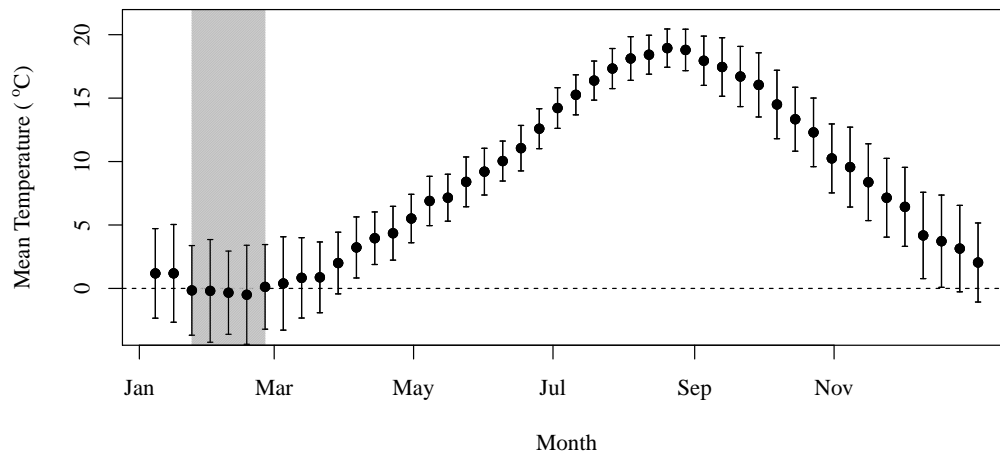


Figure B2. Eight-day composite climatology of air temperature over SI (solid circles). Vertical bar indicate one standard deviation.

Appendix C: Monthly surface currents from OSCAR dataset

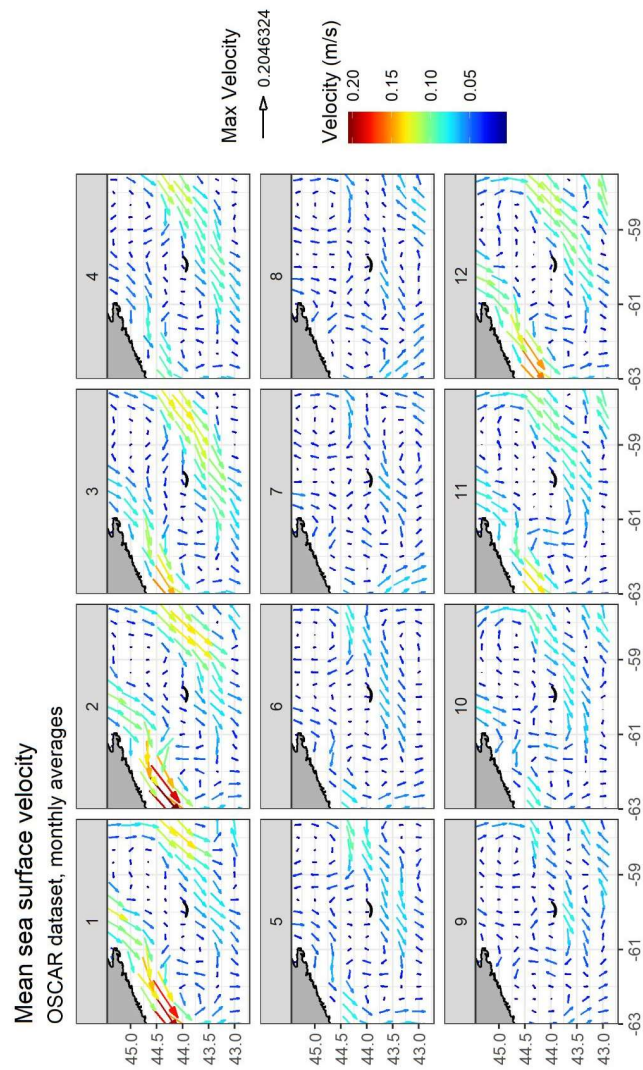


Figure C1. Monthly mean surface velocity of on the Scotian shelf from the OSCAR dataset. Numbers in the grey banner correspond to the month of the year, e.g., 1 corresponds to January while 12 corresponds to December.