

Supplementary Material

Reviews & Syntheses: Arctic Fire Regimes and Emissions in the 21st Century

Jessica L. McCarty¹, Juha Aalto^{2,3}, Ville-Veikko Paunu⁴, Steve R. Arnold⁵, Sabine Eckhardt⁶, Zbigniew Klimont⁷, Justin J. Fain¹, Nikolaos Evangeliou⁶, Ari Venäläinen², Nadezhda M. Tchebakova⁸, Elena I. Parfenova⁸, Kaarle Kupiainen⁹, Amber J. Soja^{10,11}, Lin Huang¹², and Simon Wilson¹³

¹Department of Geography and Geospatial Analysis Center, Miami University, Oxford, OH, USA

²Finnish Meteorological Institute, Helsinki, Finland

³Department of Geosciences and Geography, University of Helsinki, Helsinki, Finland

⁴Finnish Environment Institute (SYKE), Helsinki, Finland

⁵Institute for Climate and Atmospheric Science, School of Earth and Environment, University of Leeds, Leeds, United Kingdom

⁶Norwegian Institute for Air Research, Kjeller, Norway

⁷International Institute for Applied Systems Analysis (IIASA), Laxenburg, Austria

⁸V. N. Sukachev Institute of Forests, Siberian Branch, Russian Academy of Sciences, Krasnoyarsk, Russian Federation

⁹Ministry of the Environment Finland, Aleksanterinkatu 7, Helsinki, P.O.Box 35, FI-00023 Government, Finland

¹⁰National Institute of Aerospace, Hampton, VA, USA

¹¹Langley Research Center, Hampton, VA, USA

¹²Climate Research Division, ASTD/STB, Environment and Climate Change Canada, Toronto, Canada

¹³Arctic Monitoring and Assessment Programme (AMAP) Secretariat, Tromsø, Norway

Supplemental Tables and Figures

Table S1: Key terms referenced in the manuscript.

Key Term	Definition used in this manuscript
Fire regime	Fire activity for a region or landscape defined by fire frequency, typical sizes of fires, annual burned area, severity, seasonality, fire type, and ignition source.
Fire risk	Likelihood of a fire occurring; no typical fire behavior or intensity is assumed.
Fire season	General time period that fires have occurred in the recent past (i.e., decade); in the boreal and Arctic this is often variable based on snow cover, depth, and melt as well as onset of winter weather.
Open biomass burning	All vegetative biomass burning across wildland and human-dominated landscapes, including wildfires, forest fires, agricultural open burning, and prescribed burning.

26

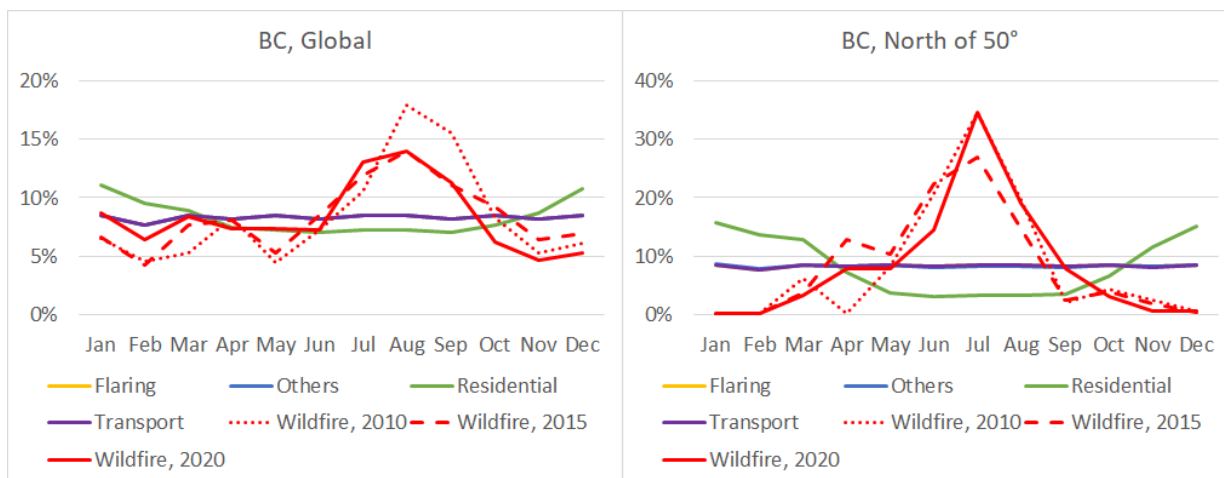
27 **Table S2.** Black carbon emissions in teragrams (Tg) from reported statistics on burned area in the Arctic member states; sources for
 28 burned area from ^a(Alaska Division of Forestry, 2020); ^b(CIFFC, 2020) ; ^c(Markuse, 2019); ^d(DSB, 2020); ^e(Betänkande av 2018 års
 29 skogsbrandsutredning, 2019); ^f(Ketola, 2020); ^g(ФБУ "АВИАЛЕСООХРАНА", 2019); fuel loadings and combustion completeness from
 30 Van Leeuwen et al. (2014) for boreal forests, with tundra values used for Greenland and temperate forests for the CONUS; emission
 31 factors for BC taken from GFEDv4s with 0.5 g/kg assigned to boreal forest ecosystems, 0.55 g/kg assigned to temperate forests, and 0.04
 32 g/kg assigned to peat for Greenland.

33

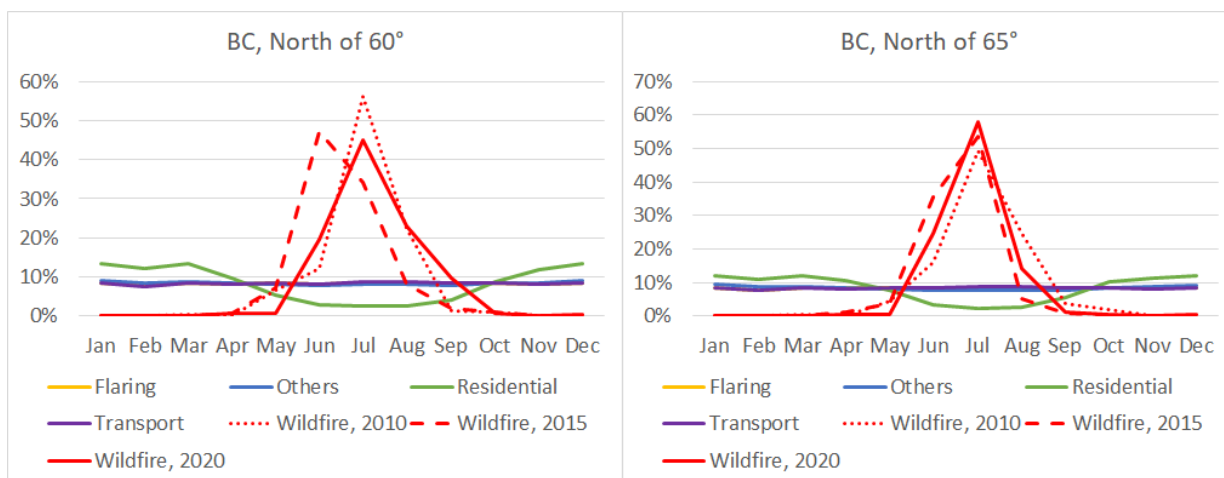
Country/ Region	Year	Official Burned Area (km ²)	Fuel Loading (kg/km ²)	Black Carbon Emission Factor (g/kg)	Combustion Completeness (%)	Black Carbon Emission (Tg)
USA/ Alaska	2019	10,481 ^a	1080	0.5	47	2.66E-06
Canada	2019	18,389 ^b	1080	0.5	47	4.67E-06
Denmark/ Greenland	2019	8 ^c	1650	0.04	24	1.27E-10
Norway	2019	0.03 ^d	1080	0.5	47	7.61E-12
Sweden	2018	250 ^e	1080	0.5	47	6.30E-08
Finland	2019	6 ^f	1080	0.5	47	2.00E-09
Russia	2019	100,785 ^g	1080	0.5	47	2.56E-05
USA/ CONUS	2019	18,876 ^h	1610	0.55	61	1.02E-05

34

35



37



38

39 **Figure S1.** Percentage of monthly emissions of the annual total for each sector from 2015 GAINS anthropogenic sources and 2010, 2015,
 40 and 2020 GFAS wildfire estimates.

41

42 **Table S3.** Sectoral black carbon emissions in kilotons above 60° N and 65° N for 2010, 2015, and 2020.

BC (kilotons)	Residential	Transport	Flaring	Others	Wildfire	Total
North of 60°	22	32	141	6	315	516
2010	9	14	56	2	84	165
2015	7	11	41	2	63	124
2020	6	8	44	2	168	227
North of 65°	3	10	52	1	128	194
2010	1	4	21	0	18	44
2015	1	3	15	0	17	37
2020	1	2	16	1	93	113

43

44

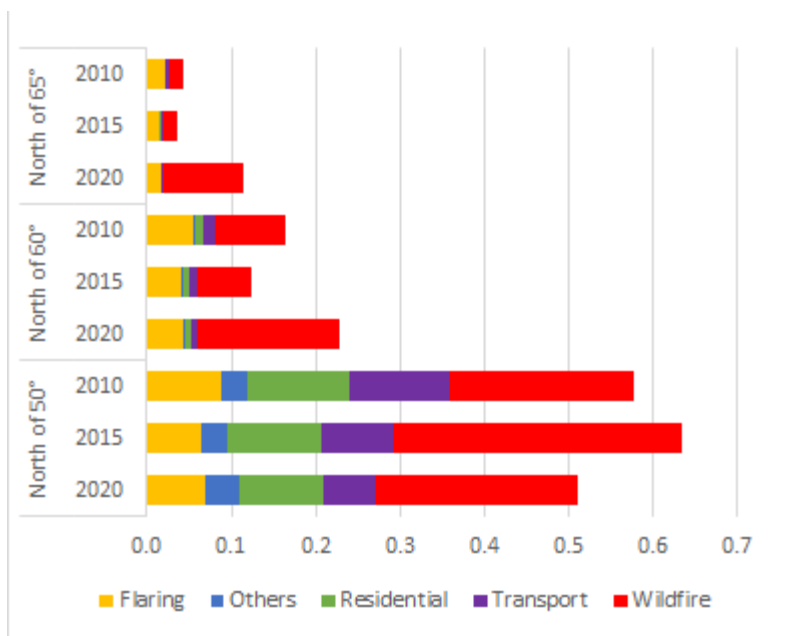
45

46

47

48

49



51

52 **Figure S2.** Sectoral black carbon emissions in Tg above 50°N, 60°N, and 65°N for 2010, 2015, and 2020.