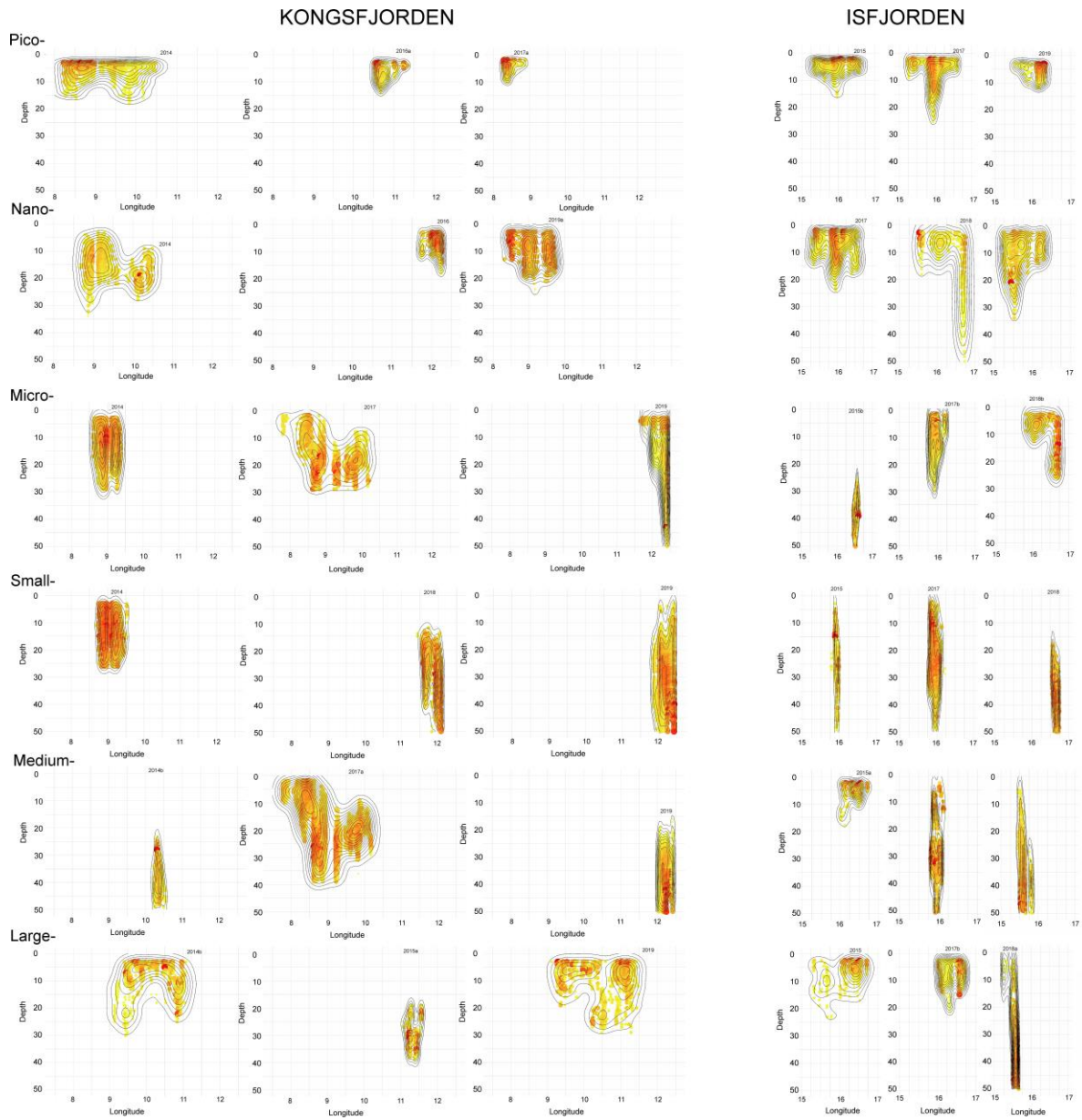


The resolution of measurements. Each dot represent a datapoint used for interpolation and further analyses. Here examples of temperature from Kongsfjorden from 2014, 2017 (1st row) and 2019 (left in 2nd row) years, as well as from the Isfjorden transect from 2017 (right in 2nd row).



A proposition of the alternative to Figure 4 – to present some exemplary patches in form of the coloured and sized dots according to the observed concentrations together with the isolines of the density of data points used.