

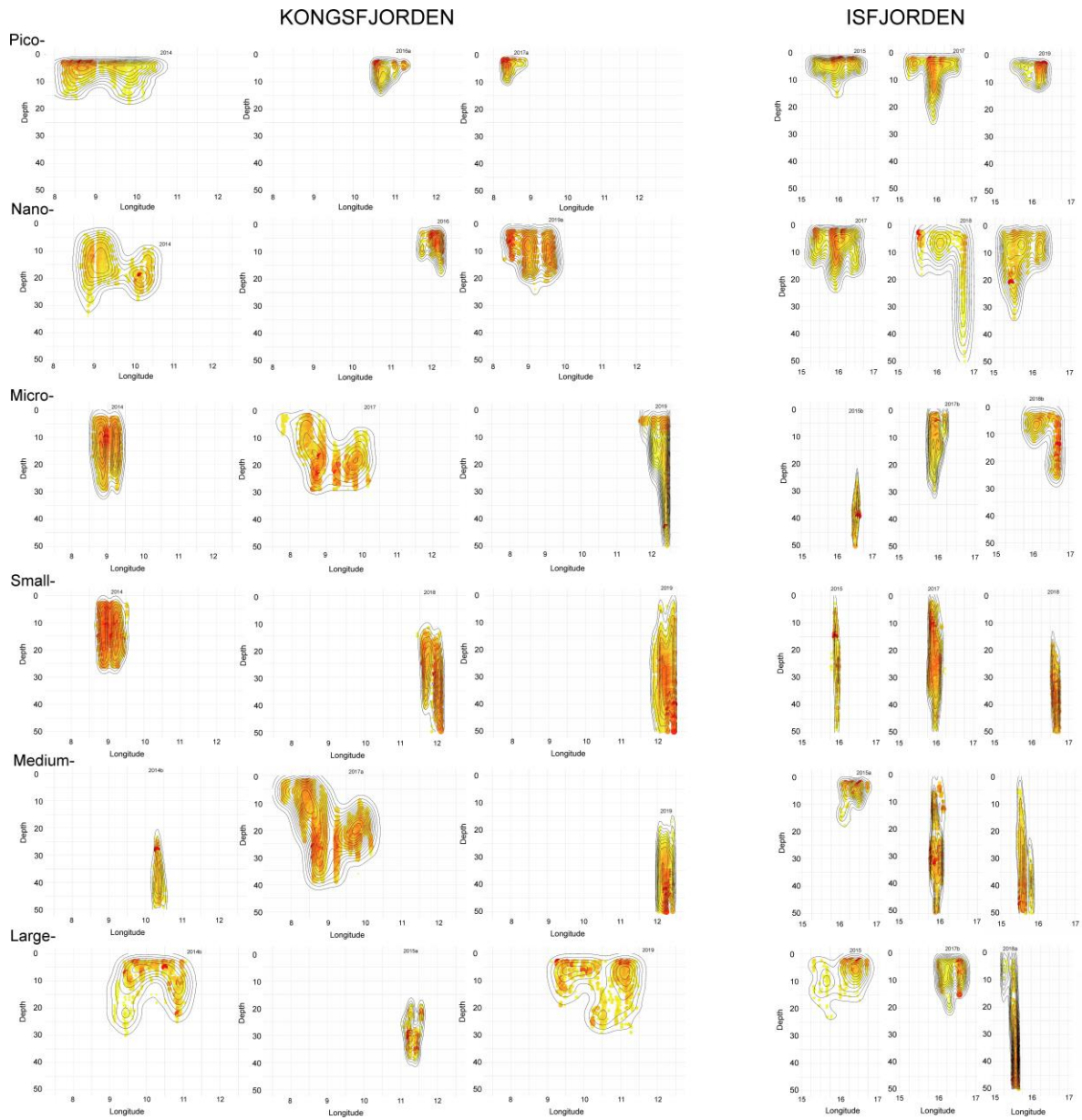
FIGURE 3 | Distribution of abundance (counts·m⁻³) of P&P classified into four size fractions: nano-, micro-, small meso- and large meso- in the upper water column

Here is the Figure from the paper of Szeligowska et al. that we refer to in a Review.

Table 2. Indices of spatial heterogeneity applied to marine and freshwater zooplankton and their formula, calculation and range of observed values in 1200 replicate zooplankton samples. (From Downing, 1991). : range of values according to Downing (1991), Pinel-Alloul & Pont (1991) and Pace *et al.* (1991).

Index	Formula	Calculation	Range of values
Variance mean ratio	s^2/m	s^2/m	1-10 000
Coefficient of variation	CV	s/m	0.3-2.6
k of the negative binomial distribution	k^b	$m^2/(s^2 - m)$	0-50
Lloyd's mean crowding index	m^*	$m + (s^2/m) - 1$	1->10 000
Lloyd's index of patchiness	m^*/m	$1 + s^2 - m^{-1}$	
Morisita's Index	I_d	$\frac{n(\sum X^2 - \sum X)^2}{(\sum X)^2 - \sum X^2}$	1-13
Slope of the s^2/m power function	b	$s^2 = a + m^b$	1.24-1.89 ^a

Formulas used for calculations were taken from the paper of Pinel-Alloul, 1995



A proposition of the alternative to Figure 4 – to present some exemplary patches in form of the coloured and sized dots according to the observed concentrations together with the isolines of the density of data points used.