

Assessing the influence of ocean alkalinity enhancement on a coastal phytoplankton community

Aaron Ferderer¹, Zanna Chase¹, Fraser Kennedy¹, Kai G. Schulz², Lennart T. Bach¹

5

¹Institute for Marine and Antarctic Studies, Ecology & Biodiversity, University of Tasmania, Hobart, TAS, Australia.

²Centre for Coastal Biogeochemistry, School of Environment, Science and Engineering, Southern Cross University, Lismore, NSW, Australia.

Correspondence to: Aaron Ferderer (aaron.ferderer@utas.edu.au)

10 **Abstract.** Ocean alkalinity enhancement (OAE) is a proposed method to counteract climate change by
increasing the alkalinity of the surface ocean and thus the chemical storage capacity of seawater for atmospheric
CO₂. The impact of OAE on marine ecosystems, including phytoplankton communities which make up the base
of the marine food web, are largely unknown. To investigate the influence of OAE on phytoplankton
15 communities we enclosed a natural plankton community from coastal Tasmania for 22 days in nine microcosms
during a spring bloom. Microcosms were split into three groups, (1) the unperturbed control, (2) the
unequilibrated treatment where alkalinity was increased (+495 ±5.2 μmol/kg) but seawater CO₂ was not in
equilibrium with atmospheric CO₂, and (3) the equilibrated treatment where alkalinity was increased (+500 ±3.2
μmol/kg) and seawater CO₂ was in equilibrium with atmospheric CO₂. Both treatments have the capacity to
20 increase the inorganic carbon sink of seawater by 21%. We found that simulated OAE had significant but
generally moderate effects on various groups in the phytoplankton community and on heterotrophic bacteria.
More pronounced effects were observed for the diatom community where silicic acid draw-down and biogenic
silica build-up were reduced at increased alkalinity. Observed changes in phytoplankton communities affected
the temporal trends of key biogeochemical parameters such as the organic matter carbon-to-nitrogen ratio.
Interestingly, the unequilibrated treatment did not have a noticeably larger impact on the phytoplankton (and
25 heterotrophic bacteria) community than the equilibrated treatment, even though the changes in carbonate
chemistry conditions were much more severe. This was particularly evident from the occurrence and peak of the
phytoplankton spring bloom during the experiment, which was not noticeably different from the control.
Altogether, the inadvertent effects of increased alkalinity on the coastal phytoplankton communities appear to be
justifiable, rather limited relative to the enormous climatic benefit of increasing the inorganic carbon sink of
30 seawater by 21%. We note, however, that more detailed and wide-spread investigations of plankton community
responses to OAE are required to confirm or dismiss this first impression.

1 Introduction

Keeping global warming below 2°C requires drastic and rapid emission reductions. In addition, a portfolio of
Carbon Dioxide Removal (CDR) methods is required to extract several hundred gigatonnes of CO₂ from the
35 atmosphere and store it safely in other carbon reservoirs for thousands of years (Rogelj et al., 2018). However,
few CDR methods have been proven to work at this scale and all have potential side effects for the Earth system
(Fuss et al., 2018).

One potential method of CDR from the marine portfolio is Ocean Alkalinity Enhancement (OAE). The idea
40 behind OAE is to increase the chemical storage capacity of the ocean for atmospheric CO₂ by adding proton-
neutralizing substances to the surface ocean (Kheshgi, 1995). This is measurable as an enhancement of seawater
alkalinity, the name-giving process behind OAE. Enhanced alkalinity causes a shift in the inorganic carbon
speciation in seawater, from carbon dioxide (CO₂) to bicarbonate (HCO₃⁻) and carbonate (CO₃²⁻) thereby
“making new space” for additional atmospheric CO₂ to be absorbed (Hartmann et al., 2013). In addition to
45 generating CDR, the absorption of protons through OAE counteracts ocean acidification (OA), which is
considered an environmental threat for a range of marine ecosystems (Doney et al., 2020).

OAE can be achieved through a variety of approaches (Renforth and Henderson, 2017). Most of these approaches are either directly or indirectly linked to the chemical weathering of minerals, which neutralize
50 protons when they dissolve. The simplest approach is to extract suitable minerals via mining, grind those minerals into a powder, and distribute them over land or ocean surfaces where they can dissolve in aqueous media over days to decades (Feng et al., 2017; Taylor et al., 2016). When applied on humid land surfaces, this CDR method is usually referred to as “Enhanced Weathering” (Schuiling and Krijgsman, 2006). Here, alkalinity and other mineral dissolution products associated with the ground minerals such as dissolved silicate or trace
55 metals would primarily affect terrestrial ecosystems but ultimately wash into the oceans via rivers (Köhler et al., 2010). When ground minerals are added directly to the surface ocean (OAE), dissolution products, such as trace metals, affect ocean biota immediately (Bach et al., 2019). In both cases, the release of alkalinity and other dissolution products is highly dependent on the applied source mineral (Renforth and Henderson, 2017). Mineral weathering can be further accelerated when ground minerals are dissolved in electrolysis cells for
60 hydrogen production (Rau et al., 2013). Here, hydrogen serves as a valuable co-product to CDR, with alkalinity and other dissolution products still being formed, and requiring deposition in the environment where they potentially affect biota. Another approach is the electro-dialytic separation of water into acid and alkalinity (de Lannoy et al., 2018). Here, alkalinity (in the form of hydroxide) is maintained in the surface ocean enabling CDR (de Lannoy et al., 2018). The acid can be utilized commercially (e.g. as hydrochloric acid), stored in
65 geological reservoirs underground, or pumped into the deep ocean where it is partially neutralized through the dissolution of carbonate sediments (Tyka et al., 2022). The advantage of this approach is that it does not directly depend on mineral weathering so that mineral supply chains become redundant and no dissolution co-products (e.g. trace metals) are released into the environment (Tyka et al., 2022).

70 It is currently not possible to predict which of the approaches described above will be implemented in the future. Furthermore, it is unclear how ocean ecosystems would be affected by OAE, as each method differs in the quality and quantity of released dissolution products. However, what all approaches have in common is the intentional change in carbonate chemistry via the addition of alkalinity. It is therefore an important first step to assess if increased seawater alkalinity constitutes a threat to the environment or not (Bach et al., 2019).

75 This study investigates, for the first time, if and how the changes in carbonate chemistry due to OAE influences coastal phytoplankton communities. More explicitly, we compared the effects of two different alkalinity addition scenarios. Scenario one assumes that the surface ocean is in equilibrium with the overlying atmosphere so that the fugacity of CO₂ (fCO₂) in seawater is equal to that in the overlying atmosphere (the “equilibrated
80 treatment”). Scenario two assumes that alkalinity is added but atmospheric CO₂ has not yet been absorbed by the perturbed seawater (the “unequilibrated treatment”). This second scenario is highly relevant because CO₂ equilibration can take months to years (Jones et al., 2014) and carbonate chemistry changes are substantially more pronounced in this unequilibrated transient state that occurs after the alkalinity addition (Bach et al.,
2019).

85 The treatments were tested with a natural plankton community from coastal Tasmania and compared to an unperturbed control. The communities were enclosed in nine identical microcosms in late winter with high

nutrient concentrations naturally available. Our goal was to study OAE effects during the spring bloom, an ecologically and biogeochemically important event in the seasonal cycle with the highest biomass accumulation rates during the year.

2 Methods

2.1 Microcosm setup and mixing methods

This experiment made use of Kegland ® Fermzilla, conical uni tank fermenters as microcosms for the monitoring of coastal phytoplankton communities (Fig. 1c). Each microcosm consisted of a ~55 litre PET conical tank and a butterfly dump valve connected to a 1 litre collection container (sediment collection cup) (Fig. 1c). Microcosms were heated from the base of the conical tank using two 30-watt heat-belts to induce convective mixing. This prevented the plankton community from sinking out of the water column in a non-invasive way (i.e. without a stirrer; Fig. 1c). To test the efficiency of the convective mixing, we filled eight microcosms with ~50 L of seawater sourced from the Derwent Estuary and placed them in a temperature-controlled room set to 8°C. This temperature was selected so that once heating was applied, the water temperature in microcosms would be within the range observed in the Derwent estuary during late winter (12-14°C). Once the enclosed seawater had reached thermal equilibrium the heating on four of the microcosms was turned off. Thirty minutes later, 2.5ml of blue dye (food colouring) was added to all eight microcosms, four with no heating and four with heating applied (Fig. 1e). The blue dye was added with a pipette to the uppermost ~5 cm of seawater enclosed in microcosms. The rate of mixing within microcosms was then assessed by regularly measuring the absorbance of water samples taken from each microcosm in a spectrophotometer at 630 nm. Samples were carefully taken from the top of each microcosm using a pipette at a depth of ~5cm below the water surface. After three hours all microcosms were manually mixed with a plastic stirrer to ensure homogeneity. After mixing, the absorbance was measured an additional three times and used as a reference for a homogeneously mixed solution.

Microcosms that had the convection system switched on were well mixed after approximately 30 minutes (Fig. 1d). In contrast, the “no-convection” microcosms where the convection system was switched off remained relatively un-mixed, expressed as variable dye concentrations measured with the spectrophotometer (Fig. 1d). The variability in absorbance was consistent with our observations, as filaments of high dye concentration were observed inside the no-convection microcosms until they were manually mixed (Supplementary video 1). It is important to note that there was residual convective mixing within the no-convection microcosms, as the convection system was switched off only 30 minutes before the experiment allowing residual heat to enter the system (supplementary video 1). The rapid mixing induced via convection as observed in the dye experiment was confirmed by observations during the experiment, with large aggregates suspended in the water column failing to sink into the sediment trap (Fig. 1f, supplementary video 2). Thus, the convection mechanism used here is an effective and non-invasive method to keep plankton in suspension and prevent the unrealistic sinking of particles.

Nevertheless, despite some potential advantages, we acknowledge and are fully aware that our microcosm setup cannot reproduce the full physical (or chemical/biological) complexity of nature (Carpenter, 1996). Enclosures

of any type will very likely induce so-called bottle effects (Bach and Taucher, 2019), which can alter the observed community succession and therefore affect the transferability of the outcome to natural (non-enclosed) communities (Carpenter, 1996). While this is a general limitation of these kind of experimental studies, we stress that bottle effects would occur in all replicates so that the comparison between control and treatments (as done in our study) is valid.

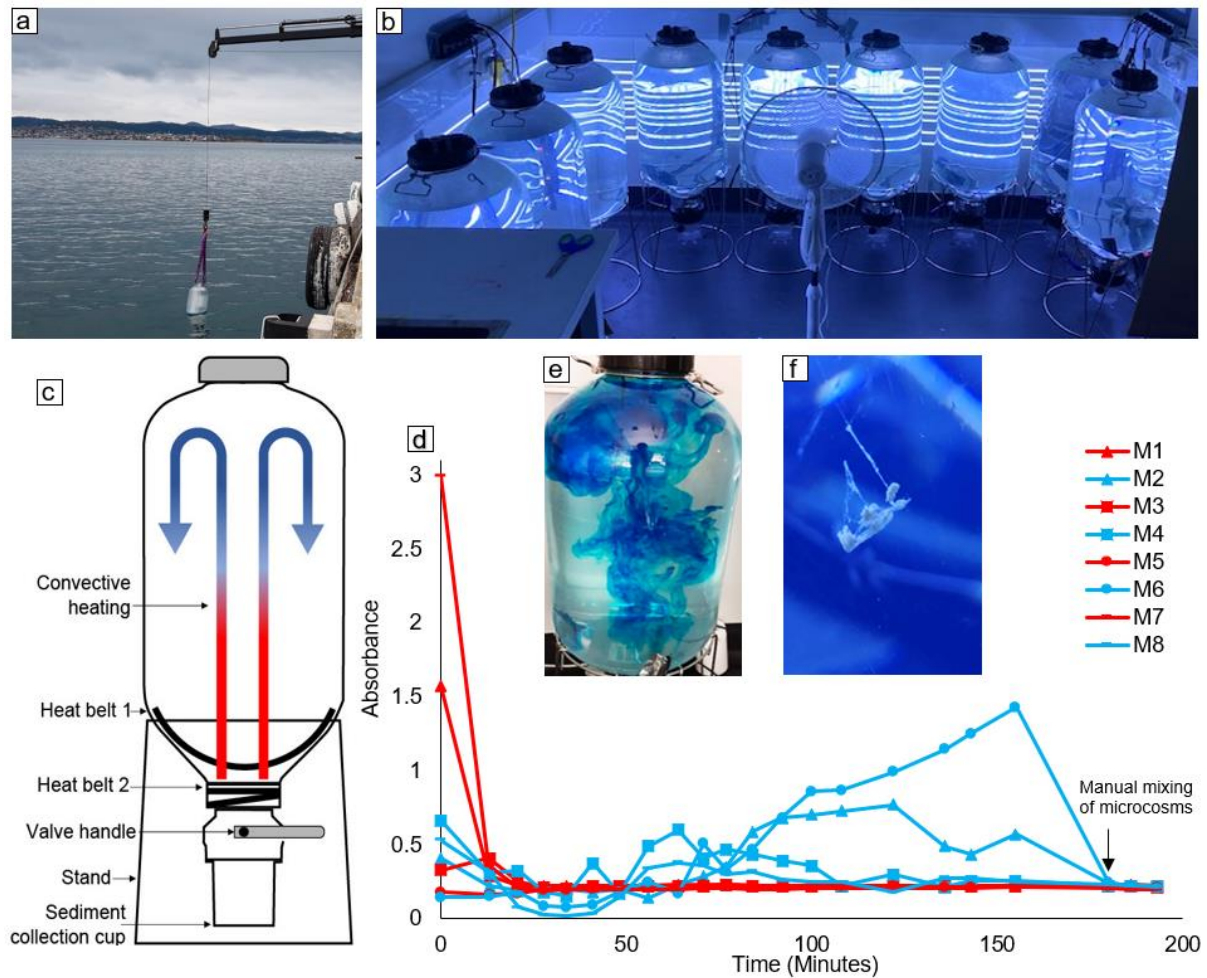


Figure 1. a) Method and location of microcosm filling, b) experimental setup, c) schematic diagram of the microcosms used in this study, d) results of the convective mixing test (microcosms with convective mixing are indicated by red lines and no-convection microcosms indicated by blue lines), e) microcosm with dye addition for assessment of convective mixing, and f) formation of an aggregate within a microcosm.

2.2 Enclosure of phytoplankton communities, treatment manipulation, and initiation of the experiment

Nine microcosms were filled with seawater from the Derwent Estuary (August 2021) outside the University of Tasmania Institute for Marine and Antarctic Studies building (42.53095S, 147.20101E, Fig. 1a). We refrained from pumping the water into the microcosms as this may harm organisms and alter the plankton community composition. Instead, microcosms were gently filled from the base up (similar to a Niskin sampler) by lowering microcosms one at a time into the water, approximately five meters out from the edge of the wharf (Fig. 1a).

Water was filtered through a 2 mm mesh screen attached to the top and base of microcosms prior to filling. The base of each microcosm was submerged to a depth of ~1 meter below the surface and the base closed using a rope attached to the valve handle. Sediment collection cups were then attached to all microcosms with the valve closed. The filling procedure lasted less than 30 minutes, ensuring enclosure of similar water masses. All microcosms were weighed separately before and after the filling procedure and contained volumes ranging between 55.2 to 55.9 L.

Microcosms were then transported to a temperature-controlled room set to 8°C ($\pm 2^\circ\text{C}$) and heat belts attached as per the methods outlined in Sect. 2.1 (Figs. 1b, c). To simulate natural light conditions, ten LED light strips were installed in the room providing a cool white light source with approximately 200 $\mu\text{mol photons m}^{-2} \text{s}^{-1}$ inside each microcosm on a 12:12 light:dark cycle. Light intensity was measured in the centre of each microcosm with a quantum light meter (LI-COR Biosciences, Lincoln, USA). Due to slight variations in temperature and irradiance throughout the room, microcosms were rotated around the room once a day at ~1100 hrs (Fig. 1b). The temperature of the room was lowered from 8°C to 6.5°C over the course of the experiment to ensure temperature stability within the microcosms at 12-14°C (Fig. 2). This was necessary because the reduced volume of water within microcosms due to sampling caused an increase in heat input per volume via the heat belts so that the cooling from outside had to be increased. Salinity of the seawater enclosed was 34.5 as measured with a 914 Metrohm salinometer.

Microcosms were split into three groups; a control (M1, M4, M7), which received no alkalinity manipulation, the “unequilibrated” group (M2, M5, M8) enriched with 500 μL of NaOH (Merck, Titripur) per litre, and the “equilibrated” group (M3, M6, M9) enriched with 423 μL of 1 molar NaHCO_3 solution (prepared by dissolving 8.401 g of NaHCO_3 (Sigma-Aldrich) in 100 mL of double-deionised water) per litre and 77 μL of NaOH (Merck, Titripur) per litre. The mixing ratio of NaHCO_3 and NaOH in the equilibrated group was determined with the carbonate chemistry calculation software seacarb (Gattuso et al., 2021) prior to the manipulation, assuming that the collected seawater had a total alkalinity of 2280 $\mu\text{mol/kg}$ and the $f\text{CO}_2$ was in equilibrium with the atmosphere (~410 μatm). A more detailed description of the calculation of carbonate chemistry conditions is provided in Sect. 2.4. The whole procedure lasted four hours and we consider the end of the manipulation as the beginning of the experiment.

2.3 Seawater sampling and particulate matter analyses

Samples were extracted from all microcosms between 0700-0900 hrs, however, sampling intervals varied depending upon the parameter as indicated in Fig. 2. Prior to sampling, each microcosm was gently mixed in a circular motion five times, using a 60 cm plastic stirrer to ensure no sedimentation bias was introduced in the sampling (this was carried out as a precaution, even though preliminary tests with flow cytometry illustrated that homogenization was achieved with convective mixing alone, data not shown). Seawater was sampled from the microcosms using either a silicon tube (particulate matter) or a Tygon tube (nutrients, total alkalinity, flow cytometry) and pumped directly into clean bottles (pre-rinsed with sample). Sampled volumes ranged between 125 ml-1250 ml, depending on the parameters assessed. Samples for dissolved inorganic nutrients (nitrate + nitrite, phosphate, and silicate) and total alkalinity were filtered through a syringe filter (0.2 μm , Millipore) to

minimize biological processes. Nutrient concentrations were analysed within 5 hours after sampling (Sect. 2.4). Total alkalinity samples were stored at 6°C in the dark for 0-14 days until analysis (analyses described in Sect. 2.4).

185

Samples for chlorophyll *a*, biogenic silica (BSi), total particulate carbon (TPC), and nitrogen (TPN) were taken by filtration of 150-240 mL at a mild vacuum pressure of -200 mbar relative to the atmosphere. Blank filters (placed onto the filtration rack without filtering particles onto them) were prepared for all four parameters during each sampling day. TPC and TPN were filtered on pre-combusted (6 hours at 450°C) quartz fibre (QMA, Whatman) filters (nominal pore-size = 2.2 µm) and stored at -4°C in pre-combusted (6 hours at 450°C) glass petri dishes for 3-25 days. Prior to analysis, filters were dried at 60°C for 2 hours, packaged into tin foil, and analysed using a Thermo Finnigan EA 1112 Series Flash Elemental Analyser. Combustion of the pressed tin cups was achieved in high purity oxygen at 1000°C using tungstic oxide on alumina as an oxidising agent followed by copper wires as a reducing agent. The results were calibrated using a certified sulphanilamide standard. Please note that we conducted flow-cytometric test measurements where we filtered samples from the microcosms through the QMA filters to test if pico-phytoplankton (0.2-2 µm) would be retained on the filters. These measurements revealed that pico-phytoplankton did not pass through the QMA filters, thus the entire phytoplankton community was sampled (Fig. A1).

190

195

BSi was filtered on 3 µm nitrocellulose membrane filters which were then stored in plastic petri dishes for 51-73 days at -4°C until samples were analysed. For the analysis, BSi first needed to be converted into silicic acid. For this, filters were put into 60mL polypropylene vials filled with 0.1 molar NaOH solution, the vials were firmly closed, and heated for 135 minutes at 80°C in a temperature-controlled bath. Afterward, the vials were allowed to cool down to room temperature and the silicic acid concentration was measured photometrically following Hansen and Koroleff (1999).

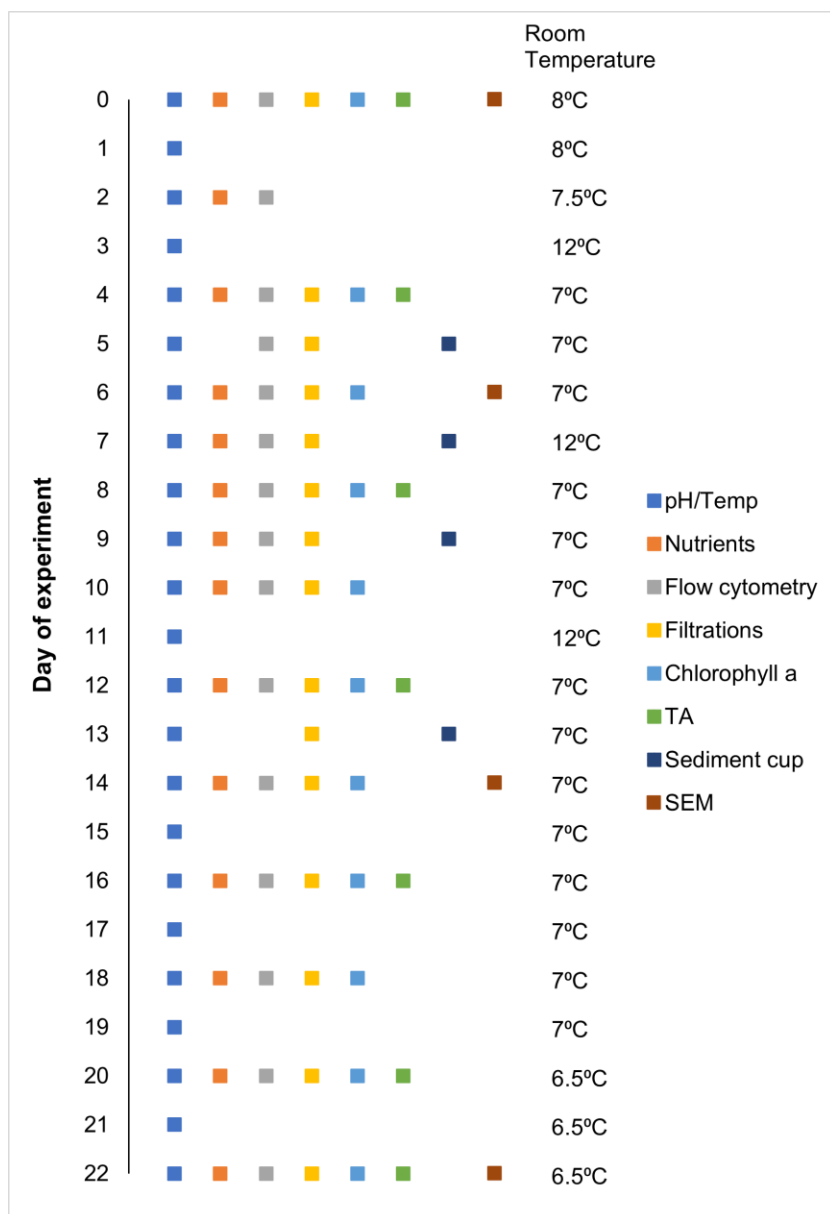
200

205

Chlorophyll *a* samples were filtered through glass fibre filters (GF/F, nominal pore size = 0.7 µm). After filtration, filters were carefully folded, placed in 15 mL polypropylene tubes wrapped in aluminium foil, and immediately frozen and stored at -80°C. After extraction with 10 ml of methanol (100%) for 14 hours, samples were analysed fluorometrically on a Turner fluorometer following the acidification method outlined by Evans et al. (1987).

210

Samples for scanning electron microscopy (SEM) were taken by filtration of 30 mL at a mild vacuum pressure of -200 mbar relative to the atmosphere through 0.2 µm polycarbonate filters and dried for 2 hours at 60°C in a desiccator. Prior to analysis, samples were glued onto aluminium stubs and sputtered with gold-palladium. Samples were analysed in a Hitachi SU-70 analytical field emission scanning electron microscope.



215 **Figure 2.** Sampling schedule for given parameters and room temperature on a given day (0-22) over the experimental period.

2.4 Nutrient and carbonate chemistry analyses

Dissolved nutrient concentrations were determined via spectrophotometric methods developed by Hansen and Koroleff (1999). Nitrate + nitrite (NO_x^-) was determined by first briefly running samples through a peristaltic pump, mixing samples with an Ammonium-chloride buffer before being passed through a cadmium reductor to reduce nitrate to nitrite. The reduced sample was mixed with sulphanilamide and N-1-naphtyl-ethylendiamine-dihydrochloride, and absorption was measured in a spectrophotometer at 542 nm. Dissolved inorganic phosphate was determined by mixing samples with ascorbic acid and a mixed reagent containing 4.5 molar H_2SO_4 , ammonium-molybdate solution, and potassium antimony tartrate solution, forming blue heteropoly acid. The absorption of the solution was measured at 882 nm. Dissolved silicate was determined by mixing a mixed reagent containing equal amounts of molybdate solution and 3.6 molar H_2SO_4 with the sample, followed by ascorbic acid and oxalic acid. Sample absorbance was then measured at 810 nm. Nutrient concentrations were

230 calibrated with standards of known nitrate, phosphate, and silicate concentrations. The performance of the cadmium reductor and methods used for nutrient analysis were monitored by analysing the same calibration series for each sample day and recording the absorbance and slopes of the calibration series over time. Each sample was measured in duplicate to assess technical variability between measurements. Differences were on average, 0.061, 0.001, and 0.122 $\mu\text{mol/L}$ for NO_x^- , phosphate and silicate concentrations, respectively

235 The carbonate chemistry conditions were determined based on potentiometric pH and total alkalinity measurements. pH was measured daily at ~0700 hrs inside each microcosm with a Metrohm 914 pH meter and a Metrohm Aquatrode Plus coupled glass and reference electrode, which also includes a PT1000 temperature sensor. We recorded voltage for subsequent pH calculations (see below) and temperature after observed readings had stopped drifting. This was achieved by carefully stirring the electrode for ~2-5 minutes in the upper 10 cm of the water column. pH was calibrated to the total scale (pH_T) using certified TRIS buffer provided by Prof. Andrew Dickson's laboratory at Scripps Institution of Oceanography as described in SOP6a by Dickson et al. (2007). The calibration was conducted by cooling the Tris buffer to ~4°C and measuring voltage in the buffer while it was gradually warmed to 25°C. That way, we generated a temperature vs voltage correlation (26 steps along the temperature gradient), and we used the fitted equation ($R^2 = 0.999$) to obtain a reference voltage (required for the pH_T calculation with equation 3 in SOP6a of Dickson et al., 2007) for every possible temperature in the microcosms. We omitted the step described by (Dickson et al. (2007) that involves the use of AMP buffer to test for ideal Nernst behaviour of the electrode, but we note that we used a new, high-quality electrode for our measurements. Repeat measurements in buffers on different days during the experiment were within ± 0.005 pH units, suggesting limited drift and comparatively high precision.

250 Total alkalinity (TA) was determined every fourth day with an open-cell titration following SOP3b in Dickson et al. (2007) using a Metrohm 862 Compact Titrosampler coupled with an Aquatrode Plus with PT1000 temperature sensor. Between 52-61 g of sample were added to plastic beakers (weighed using a Mettler Toledo balance with a precision of ± 0.02 mg) and acclimated to room temperature. The samples were titrated in a two-step procedure: An initial increment of 2.5 mL of ~0.05M HCl (dissolved in double deionized water enriched with 0.6 mol/kg NaCl) was added to the beaker followed by a 300 second waiting period with constant stirring. Afterward, the titration continued with additions of 0.1 mL per time step (30-60 seconds between additions depending on drift). The titration curves were evaluated following Dickson et al. (2007) using the "calculate" script within PyCO2sys by Humphreys et al. (2022). Certified reference material (CRM, batch 192) provided by Prof. Dickson were included in some analytical runs for accuracy control. In the runs where no CRMs were included, we included internal seawater standards (0.02% HgCl₂ poisoned), which were thoroughly referenced against Dickson's CRMs. Although such procedure is clearly not recommended, this was unavoidable due to the 260 Coronavirus pandemic and CRM supply shortage. We note, however, that in analytical runs where both CRMs and internal standards were included, we calculated almost identical TAs, regardless of whether we used CRMs or internal standards for accuracy control. The deviation between duplicate measurements was usually below ± 3 $\mu\text{mol/kg}$ and rarely above ± 5 $\mu\text{mol/kg}$, suggesting reasonable precision of the measurement.

Carbonate chemistry conditions were calculated from measured pH_T , TA, phosphate, silicate, salinity, and temperature, with equilibrium constants recommended by Orr et al. (2015) (e.g. K1 and K2 from Lueker et al., 2000), using the “SIR_full” function in the carbonate chemistry software ‘seacarb’ for R (Gattuso et al., 2021).

2.5 Flow cytometry sampling and analyses

Flow cytometry samples for phytoplankton (3.5 mL) and bacteria (1 mL) were collected with pipettes from the bottles used for particulate matter sample collection (see Sect. 2.3). Care was taken to gently mix the bottles before sub-sampling to avoid sedimentation bias. During the main phytoplankton bloom (days 4-10), we collected additional samples in between regular sampling days to achieve daily resolution. These samples were collected directly from the microcosms using pipettes (~5 cm below surface) after carefully stirring the microcosms as described in Sect. 2.3. Samples were immediately fixed with 100 μ L of a formalin/hexamine mixture for phytoplankton and 20 μ L glutaraldehyde for bacteria, stored at 4°C for 25 minutes, and then flash-frozen in liquid nitrogen and stored at -80°C until analysis 1-5 weeks later. For the measurements, samples were thawed at 37°C, then 500 μ L for phytoplankton, and 30 μ L for bacteria were immediately analysed with the CYTEK Aurora flow cytometer. Phytoplankton populations were distinguished by encircling phytoplankton populations on the cytogram plots (a.k.a “gating”) based on the signal strength of the forward light scatter (FSC) and several fluorescence colours (Fig. A2). Bacterial DNA was stained with SYBR Green I (diluted in dimethylsulfoxide) and added to samples in a final ratio of 1:10000 (SYBR Green I:sample) prior to analysis. This allowed us to distinguish them from other particles in the size range of bacteria (Fig. A2). Small phytoplankton were distinguished from bacteria by excluding all particles with chlorophyll autofluorescence from the bacteria gate.

We used the FSC signal strength to estimate how much each phytoplankton group contributed to the total phytoplankton community during each day. For this calculation, we multiplied the abundance of each group within a given gate by the mean FSC-Area signal strength measured for that group. Please note that “Area” within FSC-Area refers to the integrated area below the FSC emission peak of each particle. We assume Area to be the better metric for biomass estimates than the height of the FSC peak because elongated particles (e.g. diatom chains) will have a more stretched-out FSC peak with a lower peak height.

2.6 Sediment traps

The butterfly valves at the bottom of the microcosms were initially closed so that no material could sink into the sediment collection cups. On day 4 we opened the butterfly valves allowing water from the microcosms to enter the collection cups. This was done to enable the sedimentation of the large aggregates which had begun to flocculate within the microcosms (Figs. 1f, supplementary video 2). Due to the high effectiveness of our convection mixing mechanism, which kept large aggregates in suspension, we assisted the sedimentation process by turning off the heating and setting the room temperature to 12°C for 24 hours. On day 5 the butterfly valves were closed, and the sediment collection cups removed, to take samples for flow cytometry and filtrations. Fifty millilitres of water containing sedimented material was collected with a 50 mL pipette from the base of each cup. These samples were collected in small plastic beakers and carefully homogenized before filtering TPC/TPN and BSi samples. Filtrations followed the same procedure as described above with reduced

volumes ranging between 0.5-1 mL due to the increased concentrations of organic matter in the sediment slurry. After sampling, the cups were re-attached to the corresponding microcosm, butterfly valves opened, heating belts turned on and the room temperature returned to 7°C. The same process was repeated on days 6-7 and 8-9 with the exception that the traps were emptied entirely and cleaned on day 9 before being reattached with the valves closed. Finally on day 12, the traps were reopened and any remaining aggregates allowed to drop out of suspension before sampling and removal of the traps from the microcosms for the remainder of the experiment. (Please note that the cleaning of collection cups during the last two samplings was conducted because the major sedimentation of organic material from the bloom was complete by day 9 and we wanted to avoid the leakage of nutrients from the collection cups back into the water column).

305

310 2.7 Statistical analysis

We used generalised additive mixed models (GAMMs) to assess statistically significant differences in phytoplankton growth (abundance and biomass) as well as nutrient and particulate matter concentrations over the experimental period. GAMMs were fitted using R v. 1.4.1717 ([RStudio Team, 2022](#)) and the package ‘mgcv’ (Wood and Wood, 2015). Prior to fitting the GAMMs, nutrient and particulate matter concentrations were log₁₀(x) transformed and phytoplankton count data square root transformed. Four different models were fitted to explore the potential changes in temporal trends and absolute values of each parameter as a result of alkalinity treatments (Fig. 3). All models allowed temporal trends to occur with either no difference between treatments (model 1), differences in temporal trends between treatments but no difference in absolute values (model 2), differences in absolute values between treatments but not in temporal trends (model 3), and differences in both temporal trends and absolute values as a result of the treatments (model 4). Individual microcosms were fitted as a random intercept in each model to account for any unknown differences between the individual microcosms. In addition, heteroscedasticity and temporal autocorrelation of the residuals within models was visually assessed to ensure model assumptions were satisfied. Models were then compared by means of the Akaike Information Criterion (AIC), with lower AIC values indicating preferred models with an improved ratio between the explained variance and number of variables. Predictor variables included in the preferred models were considered to have a statistically significant influence on the assessed parameter. Plots with fitted smoothers and corresponding confidence intervals were produced using the models with the lowest AIC value. The occurrence of significant differences between the treatments and the control could then be visually assessed by the absence of overlapping smooths and their confidence intervals between the treatments.

315

320

325

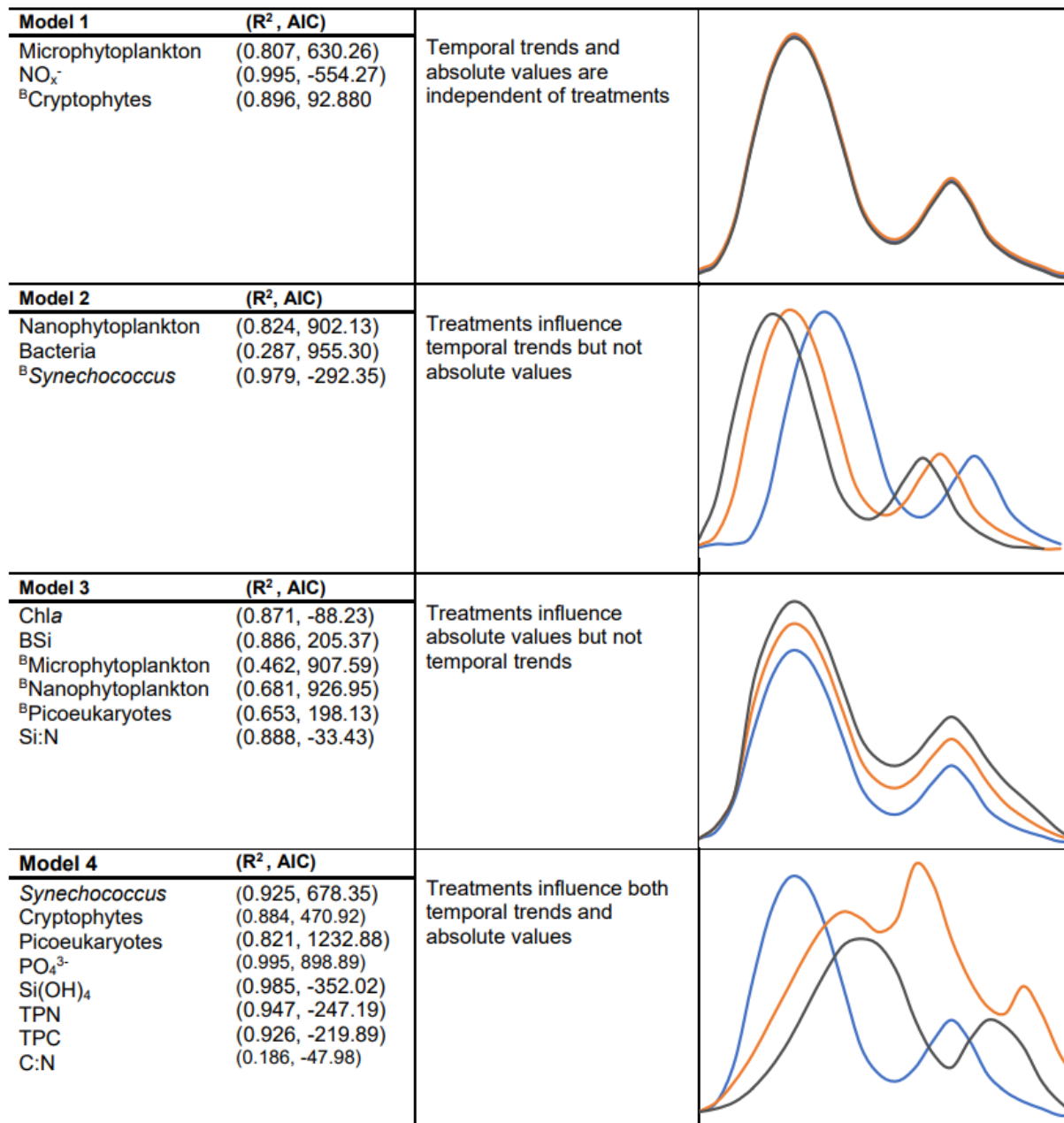


Figure 3. GAMM results (AIC and R²) from the preferred model for each parameter with descriptive plots indicating the hypothesised smoothers for each model (phytoplankton biomass indicated with a ^B for each group). All smoothers had a *p*-value <0.05 indicating smoothers were significantly different from a straight line.

335 For a given dependent variable the model with the lowest AIC, was considered to best represent the temporal trends during the experiment and is present in the figure above.

3.1 Carbonate chemistry and dissolved inorganic nutrients

The addition of NaOH (for the unequilibrated treatment) and NaOH and NaHCO₃ (for the equilibrated treatment) resulted in an increase of total alkalinity (TA) from 2164.6 ±3.1 μmol/kg in the controls to 2660.1 ±8.4 μmol/kg in the unequilibrated and 2665.2 ±2.2 μmol/kg in the equilibrated microcosms (Fig. 4a). TA remained relatively constant at these levels, apart from minor increases within the first 8 days of ~5 μmol/kg

340

likely due to the uptake of NO_x^- during the phytoplankton bloom. The addition of NaHCO_3 in the equilibrated treatment increased DIC to $2406.1 \pm 2.1 \mu\text{mol/kg}$, approximately $400 \mu\text{mol/kg}$ more than the control (2019.1 ± 4.1) and the unequilibrated treatment (2007.9 ± 9.4) (Fig. 4c). DIC decreased during the bloom with the most pronounced decline in the control, consistent with the highest build-up of TPC (Fig. 4c, Fig. 5b). DIC gradually increased in all microcosms after bloom collapse, due to biomass respiration. CO_2 uptake from the atmosphere could have only had a small influence on DIC as the microcosms were tightly sealed and only opened for ~ 20 minutes per sampling day through a 2 cm opening. The different scenarios of alkalinity enrichment increased pH_T to 8.128 ± 0.009 (equilibrated) and 8.662 ± 0.005 (unequilibrated) relative to 7.945 ± 0.007 in the control (Fig. 4b). Changes in pH_T reflect the phytoplankton bloom with increasing pH_T until the peak of the bloom and gradually decreasing pH_T thereafter. The amplitude of the pH_T change during the bloom was mitigated by increased TA (Fig. 4b). However, the mitigation of the amplitude is obscured by the logarithmic nature of the pH scale, as such it is important to consider absolute changes in the free proton ($[\text{H}^+]_F$) concentration as this reflects what organisms experience (Fassbender et al., 2021), Fig. 4d). $f\text{CO}_2$ was initially 489.2 ± 9.5 (control), 373.1 ± 8.4 (equilibrated) and $76.6 \pm 0.9 \mu\text{atm}$ (unequilibrated) (Fig. 4e). The temporal trends were driven by the phytoplankton bloom and largely resembled those of $[\text{H}^+]_F$. Finally, the saturation state of the calcium carbonate (CaCO_3) mineral calcite (Ω_{calcite}) was greatly elevated in the unequilibrated treatment with an initial value of 11.06 ± 0.03 in comparison to 2.59 ± 0.02 in the control, and 4.61 ± 0.03 in the equilibrated treatment (Fig. 4f). Ω_{calcite} increased further during the bloom but gradually declined thereafter. Inorganic precipitation of CaCO_3 was not observed.

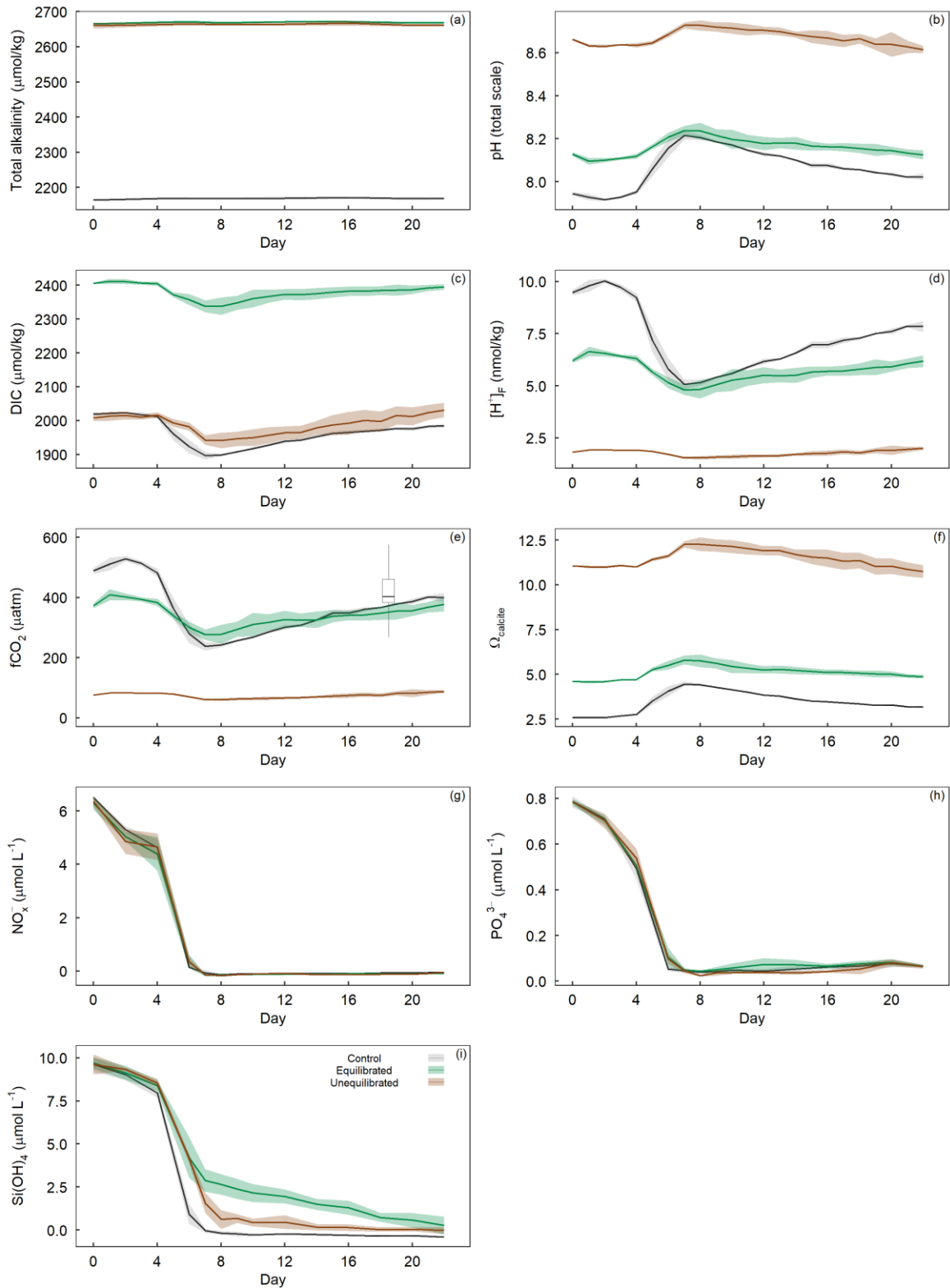


Figure 4. Temporal variation in measured a) total alkalinity, b) pH_T , and calculated c) dissolved inorganic carbon, d) proton concentration on the free scale ($[\text{H}^+]_F$), e) $f\text{CO}_2$ with overlaid box plot illustrating the range of $f\text{CO}_2$ observed in the Derwent/Storm Bay area, Tasmania (42.84-43.10S, 147.46-147.31E) based on 10857 measurements between 1993-2019 (Bakker et al., 2016), f) Ω_{calcite} , as well as dissolved inorganic g) nitrate + nitrite concentrations, h) phosphate concentration and i) silicate concentration within the treatment groups. Coloured shading around the respective means represents standard deviation within a treatment group.

The water enclosed within microcosms was rich in dissolved inorganic nutrients due to winter mixing. This allowed a phytoplankton spring bloom to occur without further additions of nutrients. Initial nutrient concentrations were $6.39 \pm 0.19 \mu\text{mol/L}$ for NO_x^- , $0.78 \pm 0.01 \mu\text{mol/L}$ for PO_4^{3-} , and $9.65 \pm 0.39 \mu\text{mol/L}$ for Si(OH)_4 . Nutrient drawdown occurred from the onset of the experiment with the most rapid drawdown occurring between days 4-7 (Figs 4g, 4i). Statistical analysis of dissolved inorganic nutrient concentrations revealed drawdown of PO_4^{3-} and Si(OH)_4 to vary significantly between the control and treatments, whereas NO_x^- did not (Figs. 3g, 3h, 3i). Visual inspection of the PO_4^{3-} trends indicate that drawdown occurred slightly later in the unequilibrated and equilibrated treatments when compared to the control although differences were small (Fig. 4h). The equilibrated treatment displayed elevated PO_4^{3-} values between days 10 and 14, although again the difference was small. The drawdown of Si(OH)_4 was slightly delayed and considerably slower in the unequilibrated and even more so in the equilibrated treatment (Fig. 4i). In the controls, Si(OH)_4 was fully depleted on day 8 while depletion continued gradually in the equilibrated and unequilibrated treatments after the bloom but did not show complete depletion until the end of the experiment (Fig. 4i).

3.2 Particulate matter and chlorophyll *a* dynamics

The drawdown of inorganic nutrients early in the experiment coincided with increasing *Chla*, TPC, TPN, and BSi concentrations (Figs. 5a-5d). After the peak of the phytoplankton bloom on day 6, *Chla*, TPC, TPN, and BSi declined relatively quickly until day 8-10 and continued to decline at a slower rate until the end of the experiment. The alkalinity treatments had a significant influence on the temporal trends and absolute values of TPC and TPN while they only influenced the absolute values of *Chla* and BSi (Figs. 3, 5a-d). Visual inspection of the data revealed similar trends in TPC and TPN, with control microcosms displaying greater concentrations after the bloom phase for both parameters (Figs. 5b, 5c). Differences between the treatments were less apparent for *Chla*, with visual inspection of the trends revealing minimal differences (Fig. 5a). In contrast, BSi trends supported the significant difference observed in the model selection process as well as the silicate trend, with control microcosms displaying elevated levels of BSi across most of the experimental period (Fig. 5d).

3.2.1 Stoichiometric ratios

The molar ratio of TPC to TPN (C:N) varied both temporally and in absolute values as a result of the alkalinity treatments. C:N declined from the initiation of the experiment until the bloom phase with the ratio of C:N then rising rapidly in the control when compared to the alkalinity treatments which displayed a delayed increase and lower absolute C:N value (Fig. 5e). After the bloom phase the C:N ratio was more variable between microcosms, with the control and unequilibrated treatment having a higher C:N in comparison to the equilibrated treatment. Differences in the drawdown of inorganic nutrients, particularly PO_4^{3-} and Si(OH)_4 (Fig. 4) may have enabled or amplified differences in organic matter stoichiometry, which developed in the post-bloom period. However, it is important to keep in mind that such developments (when significant) were ultimately caused by the treatments, even if they are indirectly induced by direct effects on nutrient drawdown that occurred earlier in the experiment. Similar trends in the ratio of C:N between the treatments were also visible in ~~the C:N ratio of the~~ the sediment collection cups, with discernibly greater values in the control and

unequilibrated treatment, compared to the equilibrated treatment (Fig. 5g). The ratio of BSi to TPN (Si:N) declined rapidly from the onset of the experiment with two small increases on day 8 and 15 (Fig. 5F). Statistical analysis of the trend revealed the control to have a marginally higher Si:N despite the unequilibrated treatment being the greatest at the two peaks. There was no discernible difference between treatments for Si:N ratios of organic matter from the sediment collection cups (Fig. 5h).

410

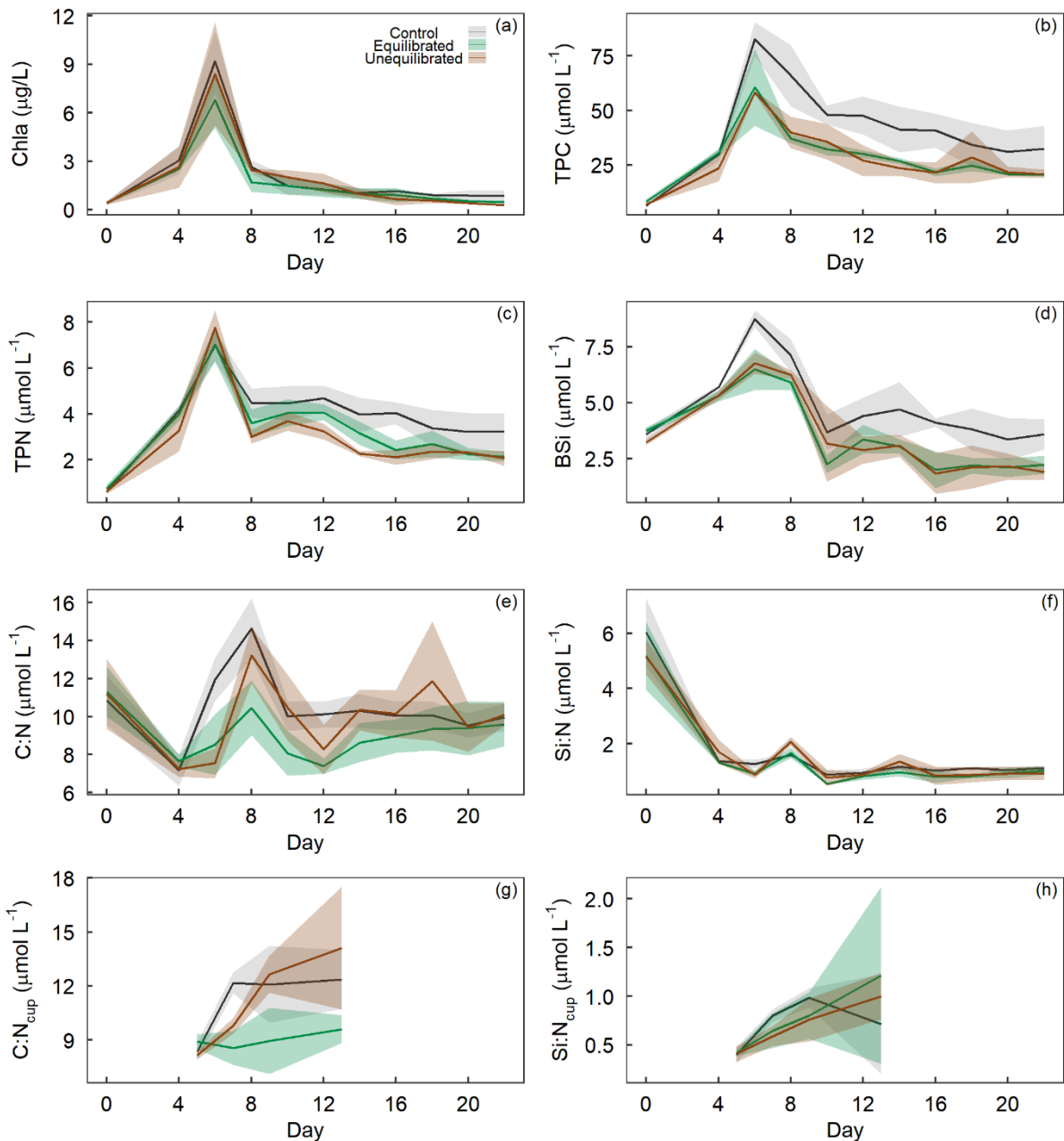


Figure 5. Temporal trends of A) chlorophyll *a*, B) total particulate carbon, C) total particulate nitrogen, and D) biogenic silica concentrations, as well as molar ratios of E) TPC to TPN, and F) BSi to TPN within microcosms, and molar ratios of G) TPC to TPN, and H) BSi to TPN within sediment collection cups, denoted by “C:N_{cup}” or “Si:N_{cup}”. Coloured shading around the respective means represents the standard deviation.

415

3.3 Changes in the phytoplankton community determined via flow cytometry

The GAMM analyses of flow cytometry count data revealed microphytoplankton to be unaffected by alkalinity enrichment, while nanophytoplankton and bacteria showed a shift in temporal trends and *Synechococcus*,
420 cryptophytes, and picoeukaryotes exhibited a shift in both temporal and absolute counts (Fig. 3). In contrast, relative biomass contributions by cryptophytes were unaffected by alkalinity treatments, whereas contributions by *Synechococcus* displayed shifts in temporal trends, and those by picoeukaryotes, nanophytoplankton, and microphytoplankton shifts in absolute biomass (Fig. 3). *Synechococcus* was initially abundant but due to their small size their contribution to total biomass was only ~4% (Fig. 6a, 6b). *Synechococcus* abundance declined
425 from the start of the experiment in both alkalinity treatments, while the decline occurred two days later in the control (Fig. 6a). There were also significant temporal differences between treatments in *Synechococcus* biomass, with an earlier decline in the equilibrated treatment followed by the control and then unequilibrated treatment (Figs. 3, 6b). After day 8, *Synechococcus* abundance remained close to the detection limit and provided minimal contribution to the plankton community biomass thereafter (Figs 6a, 6b). Picoeukaryote
430 abundance and biomass showed little variation between the control and equilibrated treatment throughout the experiment but was significantly smaller and slightly delayed in the unequilibrated treatment during the bloom (Fig. 6c). This trend was reflected in the biomass contribution of picoeukaryotes, which was notably lower in the unequilibrated treatment during the bloom (Fig. 6d). Cryptophytes contributed up to 20% to the total plankton biomass with no temporal or absolute difference between treatments (Fig. 3). Cryptophyte abundance
435 was significantly elevated and peaked earlier in the control compared to the two alkalinity treatments. After the bloom, cryptophyte abundance declined close to or below the detection limit in all treatments and did not contribute significantly to total phytoplankton biomass thereafter (Figs. 6e, 6f). Nanophytoplankton abundance increased during the bloom phase of the experiment but there was no significant difference observed between the treatments. However, during the post bloom phase abundances were significantly elevated in the
440 unequilibrated treatment (Fig. 6g). The nanophytoplankton group initially contributed ~60% to phytoplankton biomass, with marginally greater biomass in the unequilibrated treatment in comparison to the equilibrated treatment over the extent of the experimental period (Fig. 6h). Microphytoplankton abundances increased during the bloom and peaked on day 6 but as analysis revealed model 1 to be the preferred model, we conclude that there were no statistically significant differences between the treatments (Fig. 3, 6i). However, there was a
445 significant trend in microphytoplankton contribution to total biomass, with a peak of ~35% during the bloom phase before dropping to ~1-25% for the remainder of the experiment (Fig. 5j). Microphytoplankton contributed marginally but significantly more biomass in the control microcosms during the last six days of the study (Fig. 5j). Finally, bacteria showed variations in temporal trends as a result of the treatments with a greater abundance in high alkalinity treatments during the phytoplankton bloom and more constant abundances throughout the
450 experiment, whereas abundances in the control were low during the bloom but increased rapidly thereafter (Fig. 5k).

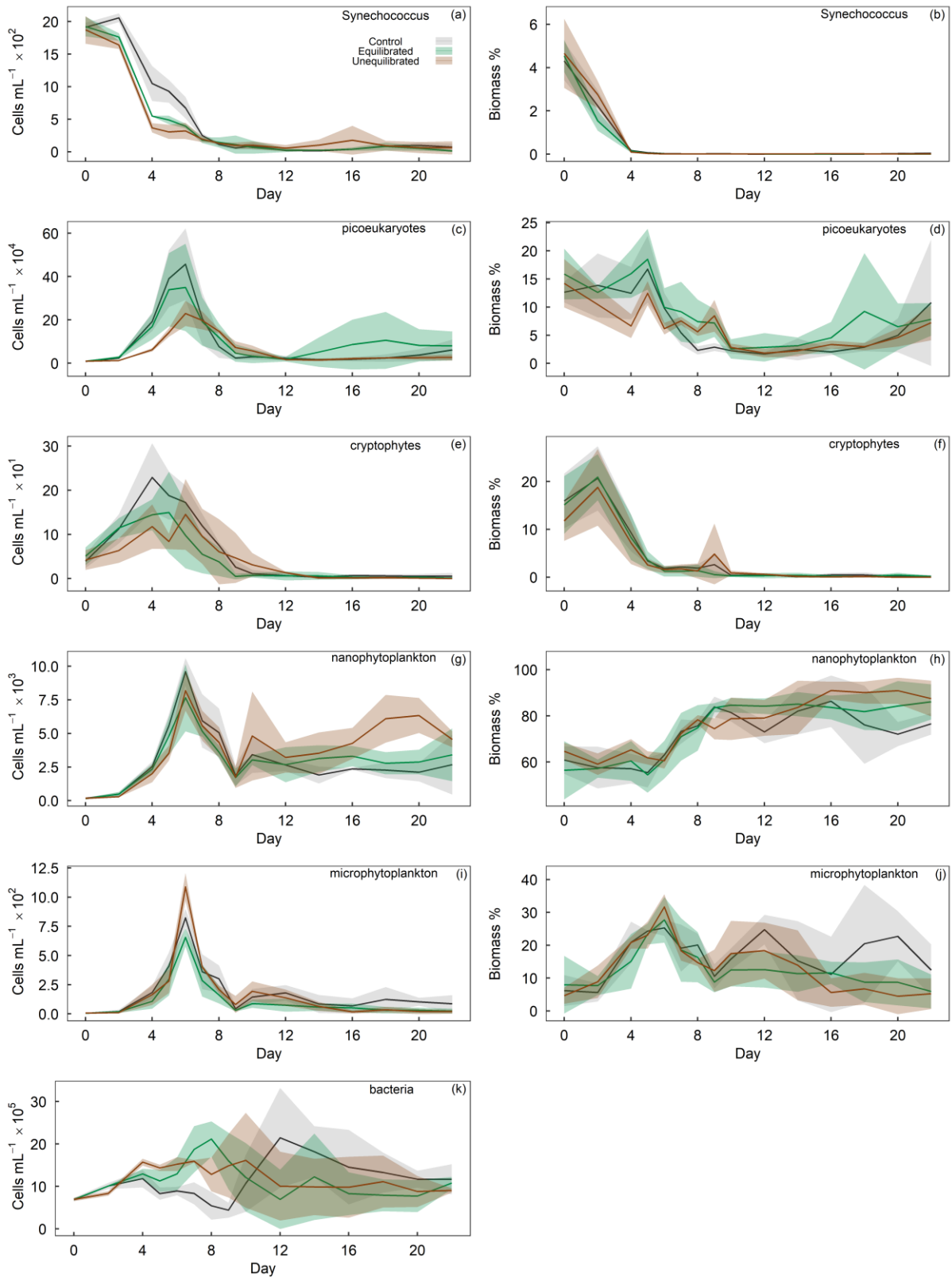


Figure 6. Temporal trends of phytoplankton group abundance (left column) and percent biomass contribution (right column) determined by flow cytometry. Group names provided in the top right of each plot. Coloured shading around the respective means represents standard deviation within a treatment group.

4 Discussion

Alkalinity had a noticeable influence on the characteristics of the phytoplankton bloom and associated succession of the phytoplankton community. However, finding unequivocal explanations for how alkalinity altered succession patterns is very difficult in this form of community experiment due to the numerous degrees of freedom in complex food webs. Therefore, we use the discussion henceforth to present potential explanations, which we believe to be particularly plausible while emphasizing that none of these can be exclusively proven or excluded. This leads to many speculations with regards to data interpretation as the reader will likely notice in the text below. However, our observations are still highly valuable as they reveal important patterns and any strong effects of alkalinity on components of the phytoplankton community that can then be investigated in more targeted future studies.

4.1 Alkalinity Treatment effects on chlorophyll *a*, carbon, nitrogen, and silicon dynamics

4.1.1 Build-up of chlorophyll *a* during the phytoplankton bloom

A significant difference in chlorophyll *a* of $\sim 3 \mu\text{g/L}$ was observed between the control and equilibrated treatments during the peak of the phytoplankton bloom, while no significant differences were observed between the control and unequilibrated treatment. The lower peak chlorophyll *a* in the equilibrated treatment was unexpected as carbonate chemistry parameters believed to predominantly drive phytoplankton growth (CO_2 and H^+ ; Paul and Bach 2020) were relatively similar to the control and within natural ranges (Fig. 4d, e). We suspect the low peak in chlorophyll *a* concentration may be due to differences in the predominant species driving chlorophyll *a* build-up. This is supported by careful inspection of the raw flow cytometry data where we noticed that different types of phytoplankton occurred within the flow cytometry gate denoted as nanophytoplankton (Fig. A3). The majority of the population was closer to the upper edge of the nanophytoplankton gate in the equilibrated treatment in comparison to the control on day 6. Although speculative, lower concentrations of chlorophyll *a* could also be due to increased grazing in the equilibrated treatment. However, the influence of grazing was not assessed in this study.

In contrast, and even more unexpected, there was no significant difference in peak chlorophyll *a* between the control/equilibrated and the unequilibrated treatment. The $f\text{CO}_2$ was as low as $\sim 70 \mu\text{atm}$ in the unequilibrated treatment, which is substantially lower than what is encountered by phytoplankton in coastal Tasmania over the course of a season (Fig. 4e, A4, see also: C. Pardo et al., 2019). Previous studies have revealed that growth rates of phytoplankton are relatively unaffected by low CO_2 , as long as CO_2 concentrations are only mildly reduced (Riebesell et al., 1993, Wolf-Gladrow et al. 1999). However, rapid declines in growth were frequently observed once CO_2 concentrations fell below species-specific thresholds, with such thresholds usually being well above $70 \mu\text{atm}$ (Riebesell et al., 1993; Chen et al., 1994; Hinga, 2002; Berge et al., 2010; Paul and Bach, 2020). Based on these studies, we expected a delay in the peak of the phytoplankton bloom and/or reduced bloom intensity. The fact that neither of these occurred suggests that the phytoplankton species growing during the bloom were either (1) unaffected by (i.e. well-adapted to) low CO_2 or (2) that certain species within the community were adapted to low CO_2 and could compensate for less well-adapted species. While our data does not provide a definitive answer to this, there are two arguments that favour the second explanation. First, BSi build-up and corresponding $\text{Si}(\text{OH})_4$ drawdown strongly suggest that the alkalinity treatments affected the diatom community

495 during the bloom. Second, there were significant differences in picoeukaryote and cryptophyte abundances
during the bloom, with lower abundance and contribution to biomass in the unequilibrated treatment (see Sect.
4.3 for further discussion on picoeukaryote responses). Together, these observations suggest that the addition of
alkalinity without immediate CO₂ equilibration with the atmosphere may have less of an impact on
phytoplankton bloom dynamics than previously thought. However, phytoplankton species composition may still
500 be affected, with implications for energy transfer to higher trophic levels and biogeochemical fluxes, both of
which are strongly dependent on phytoplankton species composition (Mallin and Paerl, 1994; Wassmann,
1997).

4.1.2 Carbon and nitrogen dynamics ~~during and after the bloom~~

TPC, TPN and the C:N ratio were all significantly greater in the control compared to the high alkalinity
treatments during the phytoplankton bloom (days 4-8). In contrast, minor differences were observed between the
505 two alkalinity treatments during this period. Previous experiments have shown that carbonate chemistry
conditions can affect the build-up and stoichiometric relationship of organic carbon and nitrogen, but the effect
is highly variable and dependent on the composition of the plankton community (Taucher et al., 2020). The key
outcome reported by Taucher et al. (2020) was that heterotrophic processes seem to have an important influence
on C:N stoichiometries. Consistent with their observation, we observed significant increases in TPC and C:N in
510 the control during the bloom, while bacterial abundances remained relatively low (compare Figs. 5e, 6k). In
contrast, bacterial abundances were significantly higher in the alkalinity treatments, indicative of higher
respiratory activity, which may have limited the build-up of TPC (Figs. 5e, 6k). Furthermore, differences in
diatom growth and/or community composition between the control and the alkalinity treatments (discussed in
section 4.1.3) can also offer a direct explanation for the differences in TPC build-up and C:N ratios observed
515 during the bloom. Diatoms often dominate phytoplankton blooms where they exude DOC which partially
aggregates to form 'transparent exopolymer particles (TEP)' (Passow, 2002). TEP have high C:N ratios which
commonly exceed the Redfield ratio (Engel and Passow, 2001) and would be part of the TPC pool measured in
our study. The production of TEP has been found to vary significantly between diatom species with a laboratory
study revealing four species to produce significantly different concentrations of TEP per cell volume (Fukao et
520 al., 2010; Passow, 2002). As such it is plausible that alkalinity treatments altered the abundance and/or
composition of the diatom community (see Sect. 4.1.3.) leading to less TEP, measurable as higher TPC build-up
and C:N.

Diatoms are between a few micrometres to a few millimetres in size (Armbrust, 2009). The largest diatom cells
in our experiment were roughly 50 µm so all diatom cells are most likely found in the nano- and
525 microphytoplankton groups in flow cytometry data. Although not statistically significant, visual inspection of
microphytoplankton abundance during the peak of the bloom (day 6) revealed greater abundances in the
unequilibrated treatment followed by the control and then equilibrated treatment. This indicates differences in
the phytoplankton communities between the treatments and the control with potential influence on TPC build-up
and C:N ratios. In addition, significant differences in the build-up of BSi and drawdown of Si(OH)₄ between the
530 control and treatments also strongly suggest that the alkalinity treatments caused variation in the diatom
communities.

In summary, the evidence provided herein suggests that the altered carbonate chemistry conditions due to elevated alkalinity caused changes in the autotrophic and heterotrophic communities which collectively altered TPC build-up and C:N ratios. Accordingly, anthropogenic increase of ocean alkalinity may have the capacity to influence ecological processes with implications for biogeochemical processes. Crucial next steps are to confirm such impacts in community studies, other environments and to reveal the underlying mechanism(s) responsible for triggering the observed community changes in response to alkalinity additions.

4.1.3 Biogenic silica and dissolved inorganic silicate drawdown

Scanning electron microscopy investigations of samples taken before, during, and after the phytoplankton bloom revealed that diatoms were the only silicifiers detected in the plankton community. Therefore, the drawdown of Si(OH)_4 and build-up of BSi within microcosms can be attributed to the diatom community. BSi increased during the peak bloom before declining and remaining rather constant from day ~12 onwards with significantly higher concentrations in the control than in the alkalinity treatments (Fig. 5d). The greater concentration of BSi in the control is consistent with a more complete drawdown in Si(OH)_4 (Figs. 4i, 5d). There was no significant difference observed in the build-up of BSi between the two alkalinity treatments even though the drawdown of Si(OH)_4 was significantly greater in the unequilibrated treatment. There are two Si pools that were not quantified in our study where the additional Si consumed in the unequilibrated treatment could have gone. These are (i) the walls of the microcosms where benthic diatoms may have grown and consumed Si, or (ii) the sediment traps where relatively more BSi from sinking diatoms may have been collected (please note that we quantified elemental ratios of sinking organic matter collected in the sediment traps but not total mass flux as this requires sampling of all collected material for which we did not have the capacity).

The significant and pronounced differences in Si(OH)_4 drawdown/BSi build-up between the control and the alkalinity treatments are arguably one of the most striking observations in this experiment. It suggests that alkalinity enhancements and associated changes in carbonate chemistry can have considerable effects on diatom communities. Carbonate chemistry changes invoked by simulated ocean acidification have been shown to have a significant influence on BSi content, silicate metabolism, growth, and diatom silicification (Milligan et al., 2004; Hervé et al., 2012; Petrou et al., 2019) albeit the sign and magnitude of diatom responses were species-specific and dependent on the communities investigated (Pedersen and Hansen, 2003; Bach and Taucher, 2019; Petrou et al., 2019). To the best of our knowledge, there is currently no established mechanistic framework that can explain the variable responses of diatoms to carbonate chemistry, although useful concepts exist that link the carbonate chemistry sensitivity to diatom size (Flynn et al., 2012; Wolf-Gladrow and Riebesell, 1997; Wu et al., 2014). The observation is also remarkable because the differences in BSi occur between the control and both alkalinity treatments even though differences in 'physiologically-relevant carbonate chemistry parameters' (i.e. mainly CO_2 and $[\text{H}^+]_{\text{F}}$; Shi et al., 2019) are much larger between the equilibrated and unequilibrated alkalinity treatments (Figs. 4d, 4e). This suggests that (i) an unexpected factor in the carbonate chemistry drove the diatom response or (ii) that the carbonate chemistry effect on diatoms was indirect, e.g. transmitted through altered grazing pressure. The second scenario could for example be caused by the additions of acid and base in the treatments, which may have harmed the grazers and affected the grazing pressure. Either of these (or other) physiological/ecological explanations for the alkalinity-treatment effects on BSi build-up/ Si(OH)_4 drawdown should be visible as a change in the diatom abundance and/or community composition. For example, there could

575 be a shift in the diatom community towards smaller, less silicon-containing species and/or a higher fraction of non-silicifying species. To explore this possibility, we analysed the diatom community at peak bloom (day 6) via scanning electron microscopy. However, there were no clear differences in composition or biovolume of the diatom community between the control and alkalinity treatments on day 6 (Fig. A5). Furthermore, ratios of carbon to silica did not differ between treatments across the experimental period supporting SEM count data (data not shown).~~in diatom community biovolume between the control and alkalinity treatments on day 6 (Fig. A5).~~ Thus, although we suspect that shifts within the diatom community were responsible for the observed differences in silicon dynamics, we are currently unable to provide a definitive mechanism for these observations.

580 4.2 Effect of alkalinity **Treatment effects on the phytoplankton community determined via flow cytometry**

585 The aim of this experiment was to assess the influence of alkalinity enhancement on the various stages of a spring bloom. This included periods at which nutrients were in excess, declining, and depleted. The effect of nutrient depletion on the phytoplankton community in the absence of enhanced alkalinity was observable in the control treatment. However, it is possible that OAE treatments affected nutrient drawdown during the bloom so that differential nutrient concentrations in the post-bloom phase amplified the emerging differences between the control and OAE treatments. Alkalinity treatments were found to significantly influence the abundance and biomass of five out of the six phytoplankton groups assessed via flow cytometry and analysed using GAMMs (Fig. 3). The majority of the detected differences were in absolute values during the peak bloom and small temporal shifts between treatments.

590 Comparatively pronounced differences between treatments and the control were identified within the groups *Synechococcus*, cryptophytes, and picoeukaryotes where alkalinity treatments negatively influenced abundance during the bloom phase and/or delayed the peak bloom. The unequilibrated treatment had the greatest influence on these groups, suggesting that the significantly lower concentration of CO₂ and/or increased pH negatively affected these groups. Previous micro- and mesocosm research on ocean acidification have found variable responses of *Synechococcus* and cryptophytes, indicating that their responses to carbonate chemistry may be (i) population-specific, thus varying between experiments or (ii) transmitted indirectly through food web interactions, which also vary across experimental communities (Sala et al., 2016; Schulz et al., 2017; Bach et al., 2017).

600 The response of picoeukaryotes to ocean acidification (i.e. increasing CO₂, declining pH) has been remarkably consistent through experiments in various climatic and experimental settings (Thomson et al., 2016; Maugendre et al., 2015; Sala et al., 2016; Schulz et al., 2017; Davidson et al., 2016; Hoppe et al., 2018; Newbold et al., 2012; Schaum et al., 2012; White et al., 2020). Our results are consistent with these findings as we reveal the opposite trend occurred when carbonate chemistry changes were reversed, i.e. when we decrease CO₂ and increase pH, we observe a reduction in picoeukaryote abundance. This is illustrated by the equilibrated treatment where relatively small differences in CO₂ and pH result in little to no differences in picoeukaryote abundance, whereas large differences between the control and unequilibrated treatment had a pronounced effect on picoeukaryote abundance (Fig. 6c). It has been speculated that the influence of CO₂ on picoeukaryotes is due

605

610 to their increased reliance on diffusive CO₂ entry in comparison to other functional groups which rely more heavily on carbon concentrating mechanisms (CCMs) and the substantially larger HCO₃⁻ pool (Crawford et al., 2016; Meakin and Wyman, 2011; Engel et al., 2008). The operation of CCMs is energetically costly, however larger cells have been revealed to be more efficient at transporting carbon using CCMs with a reduction in CO₂ leakage as a function of size (Engel et al., 2008; Malerba et al., 2021). Within this framework, smaller cells such as picoeukaryotes would be at a disadvantage at lower CO₂ concentrations in comparison to larger cells (Malerba et al., 2021; Meakin and Wyman 2011). Our results support this as picoeukaryotes were apparently more sensitive to low CO₂ or high pH than the larger phytoplankton groups such as microphytoplankton (discussed below).

620 Differences between the treatments were less apparent for the nanophytoplankton group, with no differences during the bloom phase and slightly greater abundance during the post bloom phase for the unequilibrated treatment. The nanophytoplankton group contributed the largest proportion to total biomass of all the assessed groups, increasing from 55-65% at the initiation of the experiment up to 95% at the end. The nanophytoplankton cluster in the flow cytometer is usually variable across or within treatments as there are many species in this approximate size range that could be captured. It is therefore possible, if not likely, that there was a succession towards different nanophytoplankton species between the control and treatments, which may explain different succession patterns. Treatment-specific differences in nanophytoplankton abundances are usually hard to interpret as it is mostly unclear what species are contributing to the cluster and what physiological/ecological responses to perturbation we can expect.

630 The microphytoplankton group did not display statistically significant differences in absolute abundances or temporal shifts for cell counts. However, as discussed in section 4.1.2, we argue that there may have been higher microphytoplankton abundances in the unequilibrated treatment during the peak of the phytoplankton bloom (Fig. 6i), but this was too short to be detected as a significant difference in the statistical analysis. The absence of a negative effect of low-CO₂/high-pH in the unequilibrated treatment was surprising as theory predicts more pronounced constraints on diffusive CO₂ uptake of larger phytoplankton species (Wolf-Gladrow and Riebesell, 1997; Flynn et al., 2012). Our experimental approach does not reveal how this absence of an effect could be explained. As argued in sections 4.1.2 and 4.1.3 we speculate that the most likely explanation is a shift in the species composition where species that are more capable at low-CO₂/high-pH conditions may have compensated for those with reduced capacity. This important observation warrants further investigation.

4.3 Implications of the environmental assessment of ocean alkalinity enhancement

The amount of alkalinity added in our experiment increases the capacity of seawater to store atmospheric CO₂ by 21%. It is crucial to understand that this is a massive enhancement of the inorganic carbon sink of seawater. For example, 21% of all DIC in the ocean equals ~8000 GtC, >10 times more than all carbon emissions since 1750 (Friedlingstein et al., 2019). The inadvertent effect of a 21% sink enhancement on the phytoplankton community seems justifiable in our experiments in relation to the substantial benefits such permanent (>>1000 years) CO₂ storage would have for the climate. Other marine CO₂ removal methods such as Ocean Iron Fertilisation are likely associated with at least equally pronounced perturbations of the phytoplankton

community (Quéguiner, 2013), for the benefit of an approximately 1% non-permanent (<100 years) enhancement of the marine carbon sink observed during mesoscale iron fertilization experiments in the Southern Ocean (Bakker et al., 2005).

One particularly interesting observation was that the unequilibrated alkalinity treatment was not noticeably more affected by the perturbation than the equilibrated treatment (Figs. 5, 6), despite substantially larger differences in carbonate chemistry relative to the control (Fig. 4). This is of significant importance as equilibrated alkalinity additions will likely be associated with additional costs, due to engineering efforts and energetic requirements of equilibrating systems (e.g. CO₂ bubbling and associated pumping). However, the release of alkalinity into the marine environment without a controlled influx of atmospheric CO₂ leads to verification challenges as it remains unclear where and when the CO₂ influx will occur (Orr and Sarmiento, 1992; Gnanadesikan and Marinov, 2008; Bach et al., 2021). Verification is important to refinance and incentivize CO₂ removal efforts (Hepburn et al., 2019; Rickels et al., 2021). Thus, if not for environmental reasons, an engineered and controlled influx of atmospheric CO₂ after alkalinity additions as tested in the ‘equilibrated’ treatment may still be important for economic reasons.

One limitation of our experimental microcosm setup was the consistently high alkalinity (+498 ±5.2 μmol/kg) in the treatments for the entire 22-day experiment. In real-world OAE applications, alkalinity-enriched seawater from point-sources (e.g. electrochemical facilities (de Lannoy et al., 2018)) or mineral powder-enriched surface ocean areas (Renforth and Henderson, 2017) will be diluted over time with surrounding seawater of lower alkalinity. The degree of dilution with unperturbed water is site specific and depends on the type of application (e.g. more dilution for a small point source in a system with high mixing rates). It can be expected that the dilution of alkalinity-enriched seawater would weaken the impact of alkalinity on the plankton community because of decreasing changes in carbonate chemistry relative to the non-perturbed state. Thus, our experimental setup simulated a relatively high intensity of perturbation as any impact mitigation through dilution is excluded.

OAE can be achieved through a variety of approaches, ranging from distributing pulverized minerals onto the sea surface to splitting water into acid and base using electrochemistry (Renforth and Henderson, 2017). All methods seek to increase surface ocean alkalinity, but the by-products generated in the various processes are highly variable. In this study, we utilised laboratory grade NaOH to increase the alkalinity of microcosms, a perturbation scenario representative of OAE via the electrochemical splitting of water (de Lannoy et al., 2018). Here, no other chemicals than strong acid (HCl) and base (NaOH) are generated and only the base is released into the surface ocean (de Lannoy et al., 2018; Tyka et al., 2022). OAE approaches associated with the release of other bioactive components such as trace metals could have more substantial effects on the plankton community. We emphasise this aspect to stress that our observations of relatively moderate impacts of ‘equilibrated’ and ‘unequilibrated’ alkalinity perturbations cannot be generalised for all OAE approaches. From this perspective, our simulated perturbation arguably tested a ‘mild’ version of OAE. The environmental assessment of OAE needs to remain in close contact with geochemical research in order to anticipate which

OAE approaches have the greatest chance for upscaling. This will allow for a targeted assessment of the perturbations associated with the OAE approaches most likely to be implemented in the future.

690 5. Conclusion and outlook

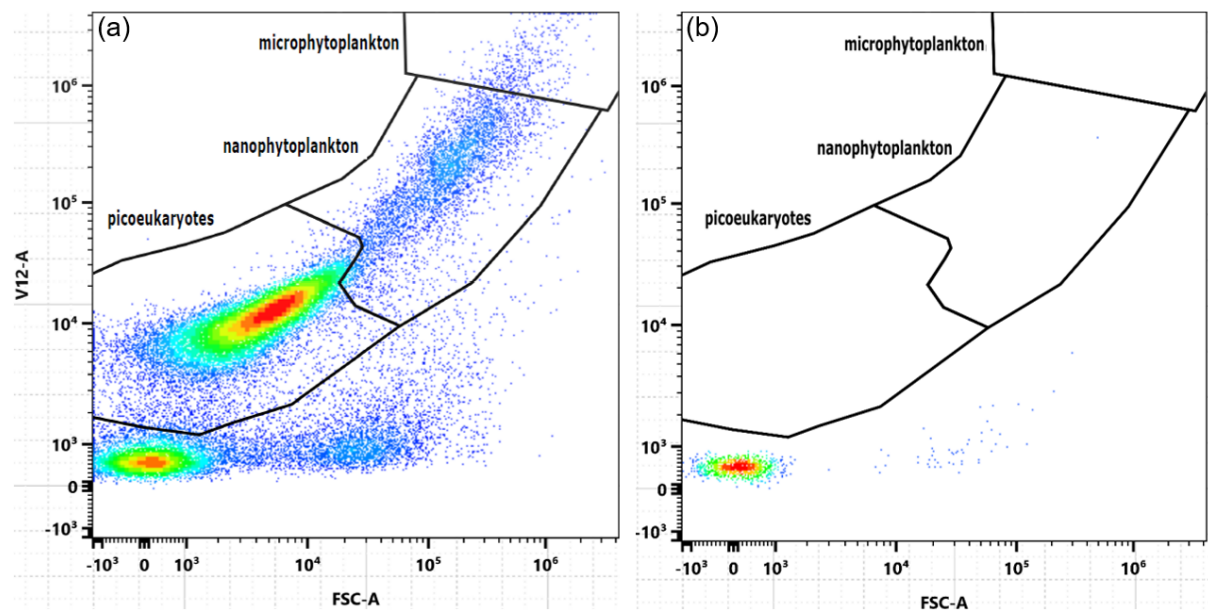
This study is the first study to report on the effects of OAE on a coastal plankton community. Our key findings are:

- 1) Two different scenarios of alkalinity enhancement ('CO₂-equilibrated' with the atmosphere and 'unequilibrated') had a significant influence on the succession of the phytoplankton community and heterotrophic bacteria.
- 2) There were pronounced effects of alkalinity enhancement on diatoms even though dissolved Si concentrations were not manipulated in this study.
- 3) Consistent with previous research on ocean acidification we found that low-CO₂/high-pH conditions are detrimental for picoeukaryote phytoplankton.
- 4) Surprisingly, the unequilibrated alkalinity treatment did not have a noticeably greater effect on the phytoplankton community than the equilibrated treatment, despite much larger changes in physiologically important carbonate chemistry parameters.

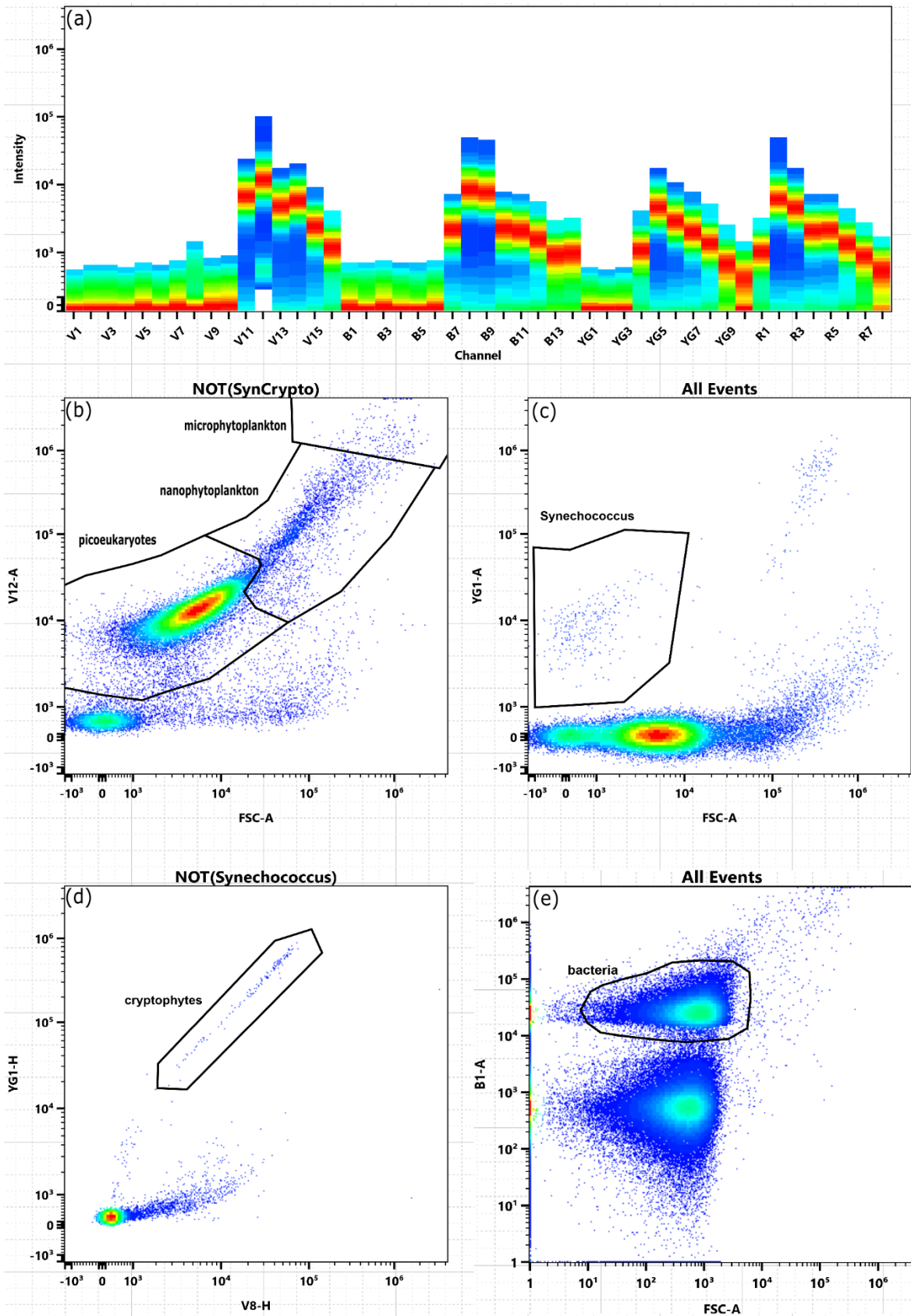
Altogether our findings suggest that sudden increases of alkalinity leave a noticeable imprint on the succession of the phytoplankton community. However, [as highlighted in the concluding sentence of the abstract](#), the environmental effects investigated here appeared to be moderate when compared to the enormous climatic benefit of increasing the inorganic carbon sink of seawater by 21%.

It is generally problematic to quantify changes in plankton communities as positive or negative as this depends on the perspective. More than two decades of ocean acidification research have shown that there will be winners and losers in plankton communities when carbonate chemistry is perturbed (Schulz et al., 2017; Alvarez-Fernandez et al., 2018; Taucher et al., 2020). These shifts were often perceived as negative (Falkenberg et al., 2020; le Quesne et al., 2012; Doney et al., 2020) but occasionally also as positive (Sswat et al., 2018; le Quesne et al., 2012). Mixed (or perspective-dependent) outcomes can also be expected for the assessment of OAE. From a human perspective, plankton community shifts affecting trophic transfer and ultimately fish production are comparatively easy to quantify as positive or negative. Our dataset did not provide insights on this aspect as we focussed only on the lowest trophic level. It is possible that the seemingly moderate effects of alkalinity observed at the lowest trophic level could have been amplified in higher trophic levels. Future studies should aim for a comprehensive assessment of higher trophic levels to better understand how lower trophic level change affects upper trophic levels and also to reveal potential top-down effects of OAE. Furthermore, other pelagic and benthic ecosystems, from arctic to tropical, need to be investigated to gather a reliable and comprehensive assessment of OAE effects on marine ecosystems. This study can therefore only be seen as a small first step.

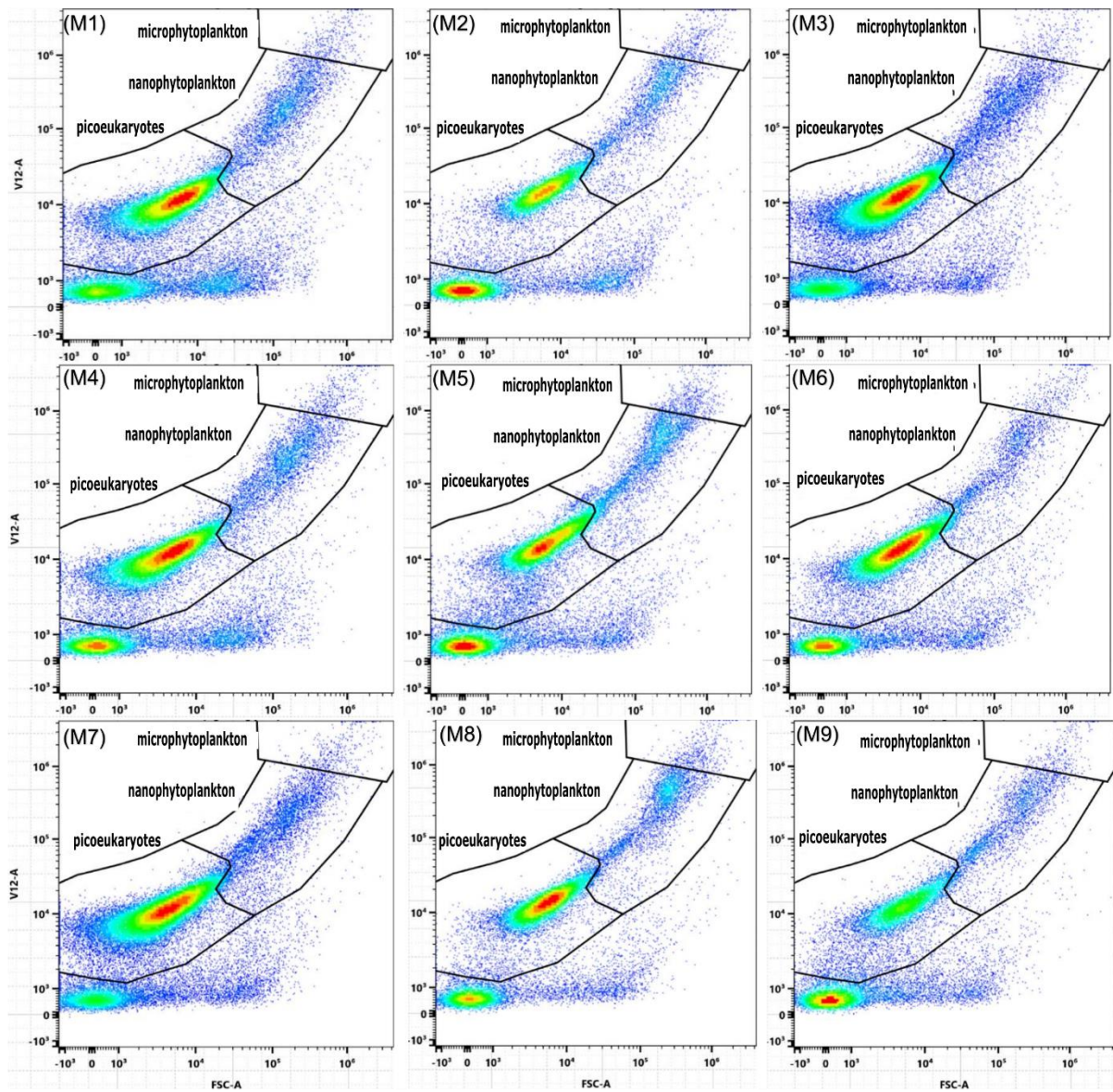
6. Appendix A



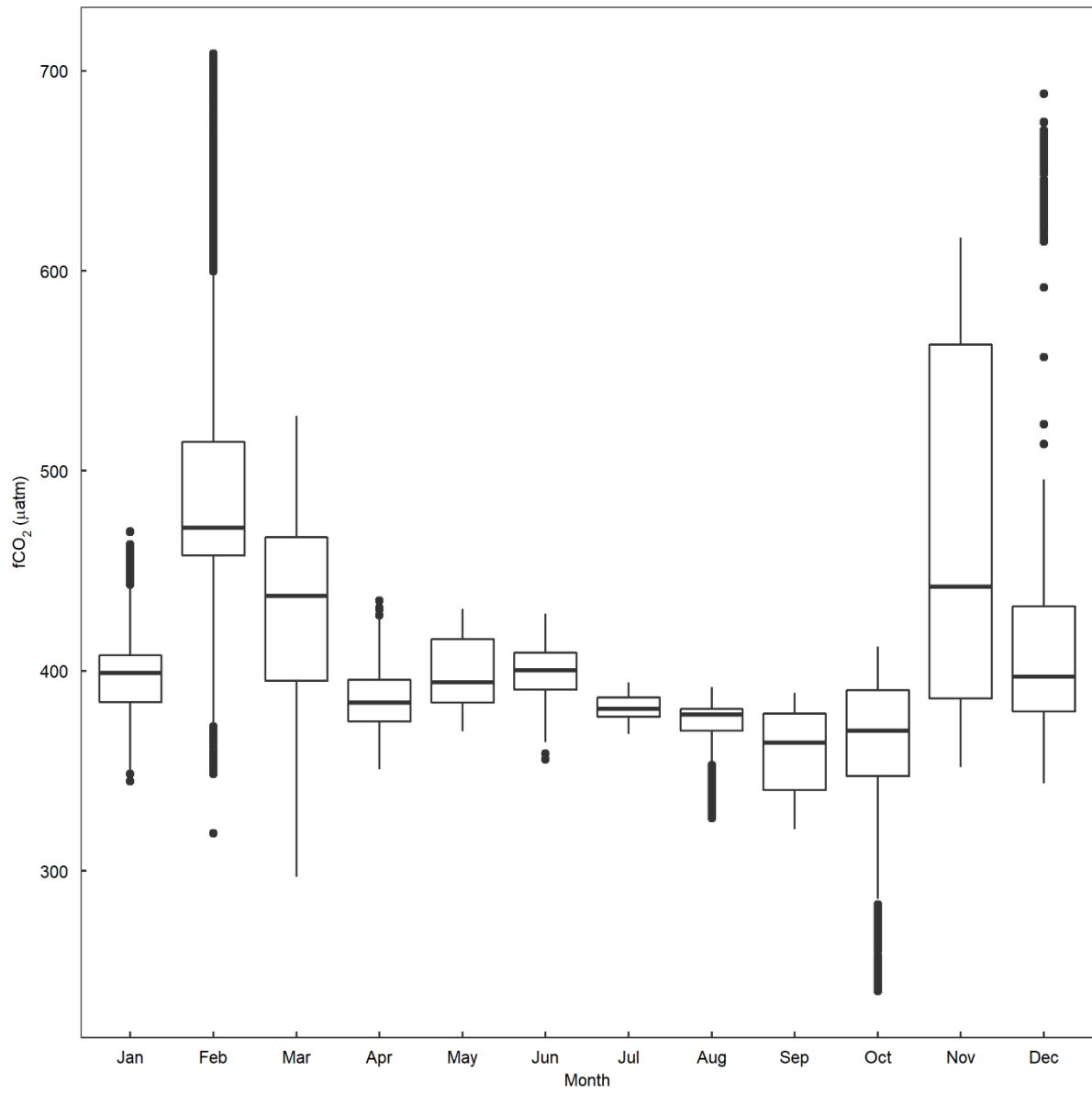
725 **Figure A1.** Cytograms used to determine the size of particles filtered by QMA filters used in TPC and TPN analysis. Plot (a) depicts a water sample filtered through a QMA filter (2.2 μm) and plot (b) an unfiltered sample. Both plots were produced using the same sample from microcosm M4 on day 6.



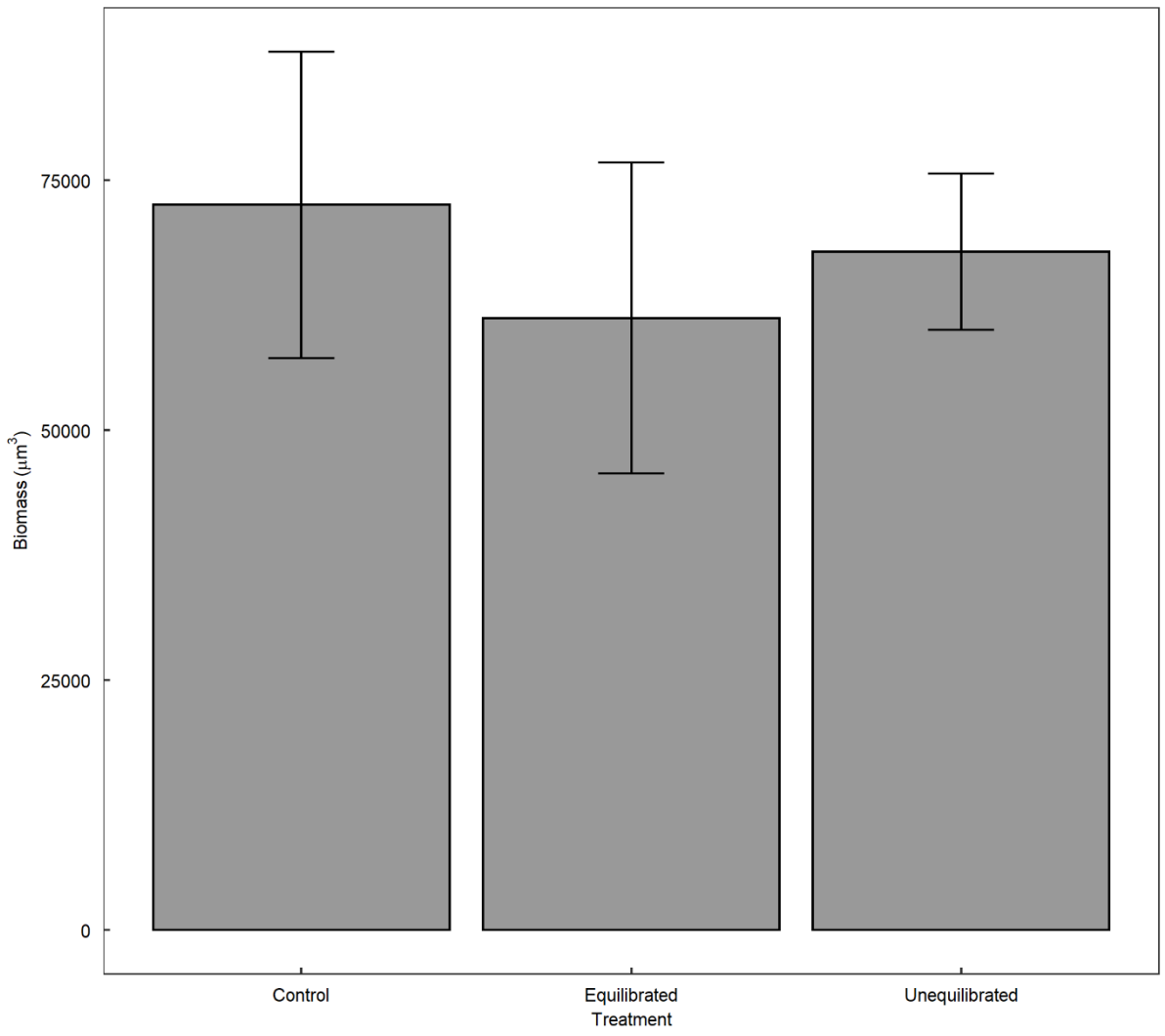
730 **Figure A2.** Gating strategy when analysing data via flow cytometry. Plot (a) illustrates the intensity of fluorescence for each channel in the total sample. Plots (b)-(d) show gates for picoeukaryotes, nanophytoplankton, microphytoplankton, *Synechococcus*, and cryptophytes in microcosm M3 on day 5. Plot (e) shows the gate for bacteria in microcosm M4 on day 12.



735 **Figure A3** Cytograms depicting differences within gates, between treatments. Plots are labelled to corresponding microcosms so that M1, M4, M7 represent the unperturbed control, M2, M5, M8 represent the unequilibrated treatment and M3, M6, M9 represent the equilibrated treatment. All plots are from samples taken during the peak bloom on day 6.



740 **Figure A4** Boxplot depicting seasonal values of fCO₂ recorded between 1993-2019 at Storm Bay (43.1 - 42.8442S, 147.307 - 147.46E), Tasmania (Bakker et al., 2016).



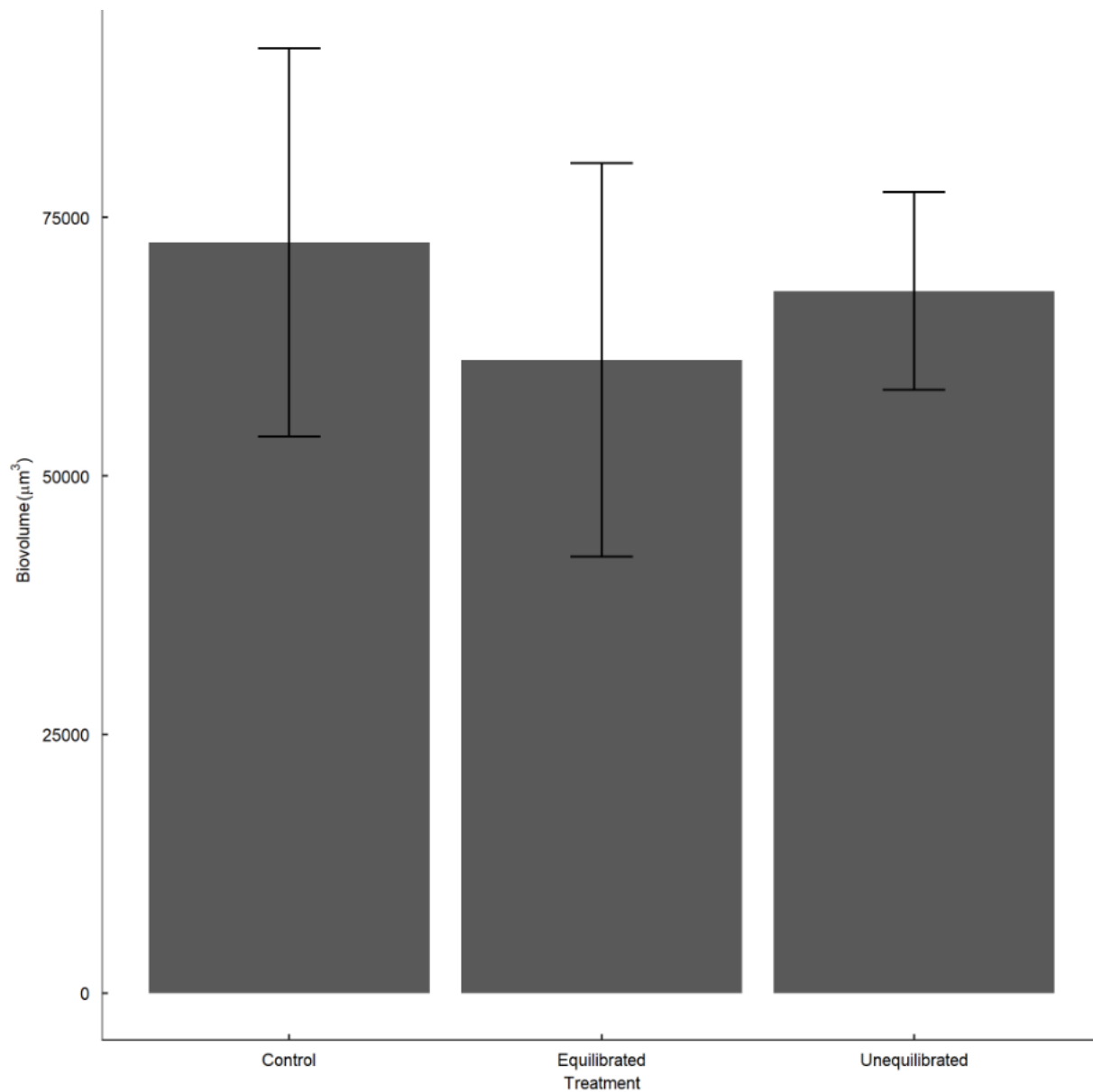


Figure A5 Average diatom biomass-biovolume during the peak bloom (day 6) within treatments determined via microscopy. Diatom community composition was also assessed and revealed no significant differences between the treatments (data not shown).

745

7. Data availability

Data is available from the Institute for Marine and Antarctic Studies (IMAS) data catalogue, University of Tasmania (UTAS). Ferderer, A. (2021). *Assessing the influence of ocean alkalinity enhancement on a coastal phytoplankton community - manuscript data* [Data set]. Institute for Marine and Antarctic Studies (IMAS), University of Tasmania (UTAS). <https://doi.org/10.25959/8PEA-SW88>

750

8. Video supplement

Video supplement 1. Contains a time-lapse of the convective mixing test described in sect. 2.1, taken on 3 August 2021. The video can be accessed online at: <https://doi.org/10.5446/55861>.

755 Video supplement 2. Contains a time-lapse depicting aggregate formation and suspension within a microcosm as a result of convective mixing. Taken on 15 August 2021. The video can be accessed online at: <https://doi.org/10.5446/55860>.

9. Author contributions

760 LTB designed the experiment. AF was responsible for the investigation with the help of LTB and FK. AF was also responsible for the data curation, formal analysis, and writing. LTB and FK supervised data collection. AF wrote the manuscript with contributions from LTB, FK, ZC and KS.

10. Competing interests

The authors declare that they have no conflict of interest.

11. Acknowledgements

765 We would like to thank: Sandrin Feig, Thomas Rodemann, and Terry Pinfeld for support on scanning electron microscopy, particulate organic matter, and flow cytometry measurements. This research was funded by a Future Fellowship (FT200100846) by the Australian Research Council awarded to LTB. This research was also conducted while AF was in receipt of an Australian Government Research Training Program (RTP) scholarship.

12. References

770 Alvarez-Fernandez, S., Bach, L. T., Taucher, J., Riebesell, U., Sommer, U., Aberle, N., Brussaard, C. P. D., and Boersma, M.: Plankton responses to ocean acidification: The role of nutrient limitation, 165, 11–18, <https://doi.org/10.1016/J.POCEAN.2018.04.006>, 2018.

Bach, L. T. and Taucher, J.: CO₂ effects on diatoms: a synthesis of more than a decade of ocean acidification experiments with natural communities, 15, 1159–1175, <https://doi.org/10.5194/os-15-1159-2019>, 2019.

775 Bach, L. T., Alvarez-Fernandez, S., Hornick, T., Stuhr, A., and Riebesell, U.: Simulated ocean acidification reveals winners and losers in coastal phytoplankton, 12, e0188198, <https://doi.org/10.1371/JOURNAL.PONE.0188198>, 2017.

Bach, L. T., Gill, S. J., Rickaby, R. E. M., Gore, S., and Renforth, P.: CO₂ Removal With Enhanced Weathering and Ocean Alkalinity Enhancement: Potential Risks and Co-benefits for Marine Pelagic Ecosystems, 7, 2019.

780 Bach, L. T., Tamsitt, V., Gower, J., Hurd, C. L., Raven, J. A., and Boyd, P. W.: Testing the climate intervention potential of ocean afforestation using the Great Atlantic Sargassum Belt, 12, 1–10, <https://doi.org/10.1038/s41467-021-22837-2>, 2021.

Bakker, D. C. E., Bozec, Y., Nightingale, P. D., Goldson, L., Messias, M. J., de Baar, H. J. W., Liddicoat, M., Skjelvan, I., Strass, V., and Watson, A. J.: Iron and mixing affect biological carbon uptake in SOIREE and

785 EisenEx, two Southern Ocean iron fertilisation experiments, 52, 1001–1019, <https://doi.org/10.1016/J.DSR.2004.11.015>, 2005.

Bakker, D. C. E., Pfeil, B., Landa, C. S., Metzl, N., O'Brien, K. M., Olsen, A., Smith, K., Cosca, C., Harasawa, S., Jones, S. D., Nakaoka, S. I., Nojiri, Y., Schuster, U., Steinhoff, T., Sweeney, C., Takahashi, T., Tilbrook, B., Wada, C., Wanninkhof, R., Alin, S. R., Balestrini, C. F., Barbero, L., Bates, N. R., Bianchi, A. A., Bonou, F.,

790 Boutin, J., Bozec, Y., Burger, E. F., Cai, W. J., Castle, R. D., Chen, L., Chierici, M., Currie, K., Evans, W., Featherstone, C., Feely, R. A., Fransson, A., Goyet, C., Greenwood, N., Gregor, L., Hankin, S., Hardman-

Mountford, N. J., Harlay, J., Hauck, J., Hoppema, M., Humphreys, M. P., Hunt, C. W., Huss, B., Ibáñez, J. S. P., Johannessen, T., Keeling, R., Kitidis, V., Körtzinger, A., Kozyr, A., Krasakopoulou, E., Kuwata, A., Landschützer, P., Lauvset, S. K., Lefèvre, N., lo Monaco, C., Manke, A., Mathis, J. T., Merlivat, L., Millero, F. J., Monteiro, P. M. S., Munro, D. R., Murata, A., Newberger, T., Omar, A. M., Ono, T., Paterson, K., Pearce, D., Pierrot, D., Robbins, L. L., Saito, S., Salisbury, J., Schlitzer, R., Schneider, B., Schweitzer, R., Sieger, R., Skjelvan, I., Sullivan, K. F., Sutherland, S. C., Sutton, A. J., Tadokoro, K., Telszewski, M., Tuma, M., van Heuven, S. M. A. C., Vandemark, D., Ward, B., Watson, A. J., and Xu, S.: A multi-decade record of high-quality fCO₂ data in version 3 of the Surface Ocean CO₂ Atlas (SOCAT), 8, 383–413, <https://doi.org/10.5194/ESSD-8-383-2016>, 2016.

795

Berge, T., Daugbjerg, N., Andersen, B. B., and Hansen, P. J.: Effect of lowered pH on marine phytoplankton growth rates, 416, 79–91, <https://doi.org/10.3354/MEPS08780>, 2010.

800

C. Pardo, P., Tilbrook, B., van Ooijen, E., Passmore, A., Neill, C., Jansen, P., Sutton, A. J., and Trull, T. W.: Surface ocean carbon dioxide variability in South Pacific boundary currents and Subantarctic waters, 9, 7592, <https://doi.org/10.1038/s41598-019-44109-2>, 2019.

805

Carpenter, S. R.: Microcosm experiments have limited relevance for community and ecosystem ecology, *Ecology*, 77, 677–680, <https://doi.org/10.2307/2265490>, 1996.

Chen, C. Y., Series, E. D.-M. E.-P., 1994, undefined, and Durbin, E. G.: Effects of pH on the growth and carbon uptake of marine phytoplankton, 109, <https://doi.org/10.3354/meps109083>, 1994.

810

Crawford, K. J., Riebesell, U., and Brussaard, C. P. D.: Shifts in the microbial community in the Baltic Sea with increasing CO₂ Shifts in the microbial community in the Baltic Sea with increasing CO₂ Shifts in the microbial community in the Baltic Sea with increasing CO₂, <https://doi.org/10.5194/bg-2015-606>, 2016.

Davidson, A. T., McKinlay, J., Westwood, K., Thomson, P. G., van den Enden, R., de Salas, M., Wright, S., Johnson, R., and Berry, K.: Enhanced CO₂ concentrations change the structure of Antarctic marine microbial communities, 552, 93–113, <https://doi.org/10.3354/MEPS11742>, 2016.

815

Dickson, A. G., Sabine, C. L., and Christian, J. R.: Guide to best practices for ocean CO₂ measurements., North Pacific Marine Science Organization, 2007.

Doney, S. C., Busch, D. S., Cooley, S. R., and Kroeker, K. J.: The Impacts of Ocean Acidification on Marine Ecosystems and Reliant Human Communities, 45, 83–112, <https://doi.org/10.1146/ANNUREV-ENVIRON-012320-083019>, 2020.

820

Engel, A. and Passow, U.: Carbon and nitrogen content of transparent exopolymer particles (TEP) in relation to their Alcian Blue adsorption, 219, 1–10, <https://doi.org/10.3354/MEPS219001>, 2001.

Engel, A., Schulz, K. G., Riebesell, U., Bellerby, R., Delille, B., and Schartau, M.: Effects of CO₂ on particle size distribution and phytoplankton abundance during a mesocosm bloom experiment (PeECE II), 5, 509–521, 2008.

825

Evans, C. A., O'Reilly, J. E., and Thomas, J. P.: A handbook for the measurement of chlorophyll a and primary production, College Station, Texas, USA: A&M University, 1987.

Falkenberg, L. J., Bellerby, R. G. J., Connell, S. D., Fleming, L. E., Maycock, B., Russell, B. D., Sullivan, F. J., and Dupont, S.: Ocean Acidification and Human Health, 17, 4563, <https://doi.org/10.3390/IJERPH17124563>, 2020.

830

- Fassbender, A. J., Orr, J. C., and Dickson, A. G.: Technical note: Interpreting pH changes, 18, 1407–1415, <https://doi.org/10.5194/BG-18-1407-2021>, 2021.
- Feng, E. Y., Koeve, W., Keller, D. P., and Oschlies, A.: Model-Based Assessment of the CO₂ Sequestration Potential of Coastal Ocean Alkalinization, 5, 1252–1266, <https://doi.org/10.1002/2017EF000659>, 2017.
- 835 Flynn, K. J., Blackford, J. C., Baird, M. E., Raven, J. A., Clark, D. R., Beardall, J., Brownlee, C., Fabian, H., and Wheeler, G. L.: Changes in pH at the exterior surface of plankton with ocean acidification, 2, 510–513, <https://doi.org/10.1038/nclimate1489>, 2012.
- Friedlingstein, P., Jones, M. W., O’Sullivan, M., Andrew, R. M., Hauck, J., Peters, G. P., Peters, W., Pongratz, J., Sitch, S., le Quéré, C., DBakker, O. C. E., Canadell, J. G., Ciais, P., Jackson, R. B., Anthoni, P., Barbero, L., Bastos, A., Bastrikov, V., Becker, M., Bopp, L., Buitenhuis, E., Chandra, N., Chevallier, F., Chini, L. P., Currie, K. I., Feely, R. A., Gehlen, M., Gilfillan, D., Gkritzalis, T., Goll, D. S., Gruber, N., Gutekunst, S., Harris, I., Haverd, V., Houghton, R. A., Hurtt, G., Ilyina, T., Jain, A. K., Joetzjer, E., Kaplan, J. O., Kato, E., Goldewijk, K. K., Korsbakken, J. I., Landschützer, P., Lauvset, S. K., Lefèvre, N., Lenton, A., Lienert, S., Lombardozzi, D., Marland, G., McGuire, P. C., Melton, J. R., Metzl, N., Munro, D. R., Nabel, J. E. M. S., 840 Nakaoka, S. I., Neill, C., Omar, A. M., Ono, T., Peregón, A., Pierrot, D., Poulter, B., Rehder, G., Resplandy, L., Robertson, E., Rödenbeck, C., Séférian, R., Schwinger, J., Smith, N., Tans, P. P., Tian, H., Tilbrook, B., Tubiello, F. N., van der Werf, G. R., Wiltshire, A. J., and Zaehle, S.: Global carbon budget 2019, 11, 1783–1838, <https://doi.org/10.5194/ESSD-11-1783-2019>, 2019.
- Fukao, T., Kimoto, K., and Kotani, Y.: Production of transparent exopolymer particles by four diatom species, 850 76, 755–760, <https://doi.org/10.1007/S12562-010-0265-Z/TABLES/1>, 2010.
- Fuss, S., Lamb, W. F., Callaghan, M. W., Hilaire, J., Creutzig, F., Amann, T., Beringer, T., de Oliveira Garcia, W., Hartmann, J., Khanna, T., Luderer, G., Nemet, G. F., Rogelj, J., Smith, P., Vicente, J. V., Wilcox, J., del Mar Zamora Dominguez, M., and Minx, J. C.: Negative emissions—Part 2: Costs, potentials and side effects, 13, 063002, <https://doi.org/10.1088/1748-9326/AABF9F>, 2018.
- 855 Gattuso, J., Epitalon, J., Lavigne, H., Orr, J., Gentili, B., Hagens, M., Hofman, A., Mueller, J., Proye, A., Rae, J., and Soetaert, K.: Seacarb: seawater carbonate chemistry. R package version 3.3.0, <https://CRAN.R-project.org/package=seacarb>, 2021.
- Gnanadesikan, A. and Marinov, I.: Export is not enough: nutrient cycling and carbon sequestration, 364, 289–294, <https://doi.org/10.3354/MEPS07550>, 2008.
- 860 Hansen, H. P. and Koroleff, F.: Determination of nutrients, in: *Methods of Seawater Analysis*, John Wiley & Sons, Ltd, 159–228, <https://doi.org/https://doi.org/10.1002/9783527613984.ch10>, 1999.
- Hartmann, J., West, A. J., Renforth, P., Köhler, P., Rocha, C. L. D. la, Wolf-Gladrow, D. A., Dürr, H. H., and Scheffran, J.: Enhanced chemical weathering as a geoengineering strategy to reduce atmospheric carbon dioxide, supply nutrients, and mitigate ocean acidification, 51, 113–149, <https://doi.org/10.1002/ROG.20004>, 865 2013.
- Hepburn, C., Adlen, E., Beddington, J., Carter, E. A., Fuss, S., mac Dowell, N., Minx, J. C., Smith, P., and Williams, C. K.: The technological and economic prospects for CO₂ utilization and removal, 575, 87–97, <https://doi.org/10.1038/s41586-019-1681-6>, 2019.

- Hervé, V., Derr, J., Douady, S., Quinet, M., Moisan, L., and Lopez, P. J.: Multiparametric Analyses Reveal the pH-Dependence of Silicon Biomineralization in Diatoms, 7, e46722, <https://doi.org/10.1371/JOURNAL.PONE.0046722>, 2012.
- Hinga, K. R.: Effects of pH on coastal marine phytoplankton, 238, 281–300, <https://doi.org/10.3354/meps238281>, 2002.
- Hoppe, C. J. M., Flintrop, C. M., and Rost, B.: The arctic picoeukaryote micromonas pusilla benefits synergistically from warming and ocean acidification, 15, 4353–4365, <https://doi.org/10.5194/BG-15-4353-2018>, 2018.
- Humphreys, M. P., Lewis, E. R., Sharp, J. D., and Pierrot, D.: PyCO2SYS v1.8: marine carbonate system calculations in Python, 15, 15–43, <https://doi.org/10.5194/GMD-15-15-2022>, 2022.
- Jones, J.-P., Prakash, G. K. S., and Olah, G. A.: Electrochemical CO₂ Reduction: Recent Advances and Current Trends, 54, 1451–1466, <https://doi.org/10.1002/IJCH.201400081>, 2014.
- Kheshgi, H. S.: Sequestering atmospheric carbon dioxide by increasing ocean alkalinity, 20, 915–922, [https://doi.org/10.1016/0360-5442\(95\)00035-F](https://doi.org/10.1016/0360-5442(95)00035-F), 1995.
- Köhler, P., Hartmann, J., and Wolf-Gladrow, D. A.: Geoengineering potential of artificially enhanced silicate weathering of olivine, 107, 20228–20233, <https://doi.org/10.1073/PNAS.1000545107>, 2010.
- de Lannoy, C. F., Eisaman, M. D., Jose, A., Karnitz, S. D., DeVaul, R. W., Hannun, K., and Rivest, J. L. B.: Indirect ocean capture of atmospheric CO₂: Part I. Prototype of a negative emissions technology, 70, 243–253, <https://doi.org/10.1016/J.IJGGC.2017.10.007>, 2018.
- Lueker, T. J., Dickson, A. G., and Keeling, C. D.: Ocean pCO₂ calculated from dissolved inorganic carbon, alkalinity, and equations for K₁ and K₂: validation based on laboratory measurements of CO₂ in gas and seawater at equilibrium, 70, 105–119, [https://doi.org/10.1016/S0304-4203\(00\)00022-0](https://doi.org/10.1016/S0304-4203(00)00022-0), 2000.
- Malerba, M. E., Marshall, D. J., Palacios, M. M., Raven, J. A., and Beardall, J.: Cell size influences inorganic carbon acquisition in artificially selected phytoplankton, 229, 2647–2659, <https://doi.org/10.1111/NPH.17068>, 2021.
- Mallin, M. A. and Paerl, H. W.: Planktonic Trophic Transfer in an Estuary: Seasonal, Diel, and Community Structure Effects, *Ecology*, 75, 2168–2184, <https://doi.org/10.2307/1940875>, 1994.
- Maugendre, L., Gattuso, J. P., Louis, J., de Kluijver, A., Marro, S., Soetaert, K., and Gazeau, F.: Effect of ocean warming and acidification on a plankton community in the NW Mediterranean Sea, 72, 1744–1755, <https://doi.org/10.1093/ICESJMS/FSU161>, 2015.
- Meakin, N. G. and Wyman, M.: Rapid shifts in picoeukaryote community structure in response to ocean acidification, 5, 1397–1405, <https://doi.org/10.1038/ismej.2011.18>, 2011.
- Milligan, A. J., Varela, D. E., Brzezinski, M. A., and Morel, F. M. M.: Dynamics of silicon metabolism and silicon isotopic discrimination in a marine diatom as a function of pCO₂, 49, 322–329, <https://doi.org/10.4319/LO.2004.49.2.0322>, 2004.
- Newbold, L. K., Oliver, A. E., Booth, T., Tiwari, B., Desantis, T., Maguire, M., Andersen, G., van der Gast, C. J., and Whiteley, A. S.: The response of marine picoplankton to ocean acidification, 14, 2293–2307, <https://doi.org/10.1111/J.1462-2920.2012.02762.X>, 2012.
- Orr, J. C. and Sarmiento, J. L.: Potential of marine macroalgae as a sink for CO₂: Constraints from a 3-D general circulation model of the global ocean, 64, 405–421, <https://doi.org/10.1007/BF00477113>, 1992.

- Orr, J. C., Epitalon, J. M., and Gattuso, J. P.: Comparison of ten packages that compute ocean carbonate chemistry, 12, 1483–1510, <https://doi.org/10.5194/BG-12-1483-2015>, 2015.
- 910 Passow, U.: Production of transparent exopolymer particles (TEP) by phyto- and bacterioplankton, 236, 1–12, <https://doi.org/10.3354/MEPS236001>, 2002.
- Paul, A. J. and Bach, L. T.: Universal response pattern of phytoplankton growth rates to increasing CO₂, 228, 1710–1716, <https://doi.org/10.1111/NPH.16806>, 2020.
- 915 Pedersen, M. F. and Hansen, P. J.: Effects of high pH on a natural marine planktonic community, 260, 19–31, <https://doi.org/10.3354/MEPS260019>, 2003.
- Petrou, K., Baker, K. G., Nielsen, D. A., Hancock, A. M., Schulz, K. G., and Davidson, A. T.: Acidification diminishes diatom silica production in the Southern Ocean, 9, 781–786, <https://doi.org/10.1038/s41558-019-0557-y>, 2019.
- 920 Quéguiner, B.: Iron fertilization and the structure of planktonic communities in high nutrient regions of the Southern Ocean, 90, 43–54, <https://doi.org/10.1016/J.DSR2.2012.07.024>, 2013.
- le Quesne, W. J. F., Pinnegar, J. K., Shaw, G. B., and le Quesne, W. J. F.: The potential impacts of ocean acidification: scaling from physiology to fisheries*, 13, 333–344, <https://doi.org/10.1111/J.1467-2979.2011.00423.X>, 2012.
- 925 Rau, G. H., Carroll, S. A., Bourcier, W. L., Singleton, M. J., Smith, M. M., and Aines, R. D.: Direct electrolytic dissolution of silicate minerals for air CO₂ mitigation and carbon-negative H₂ production, 110, 10095–10100, 2013.
- Renforth, P. and Henderson, G.: Assessing ocean alkalinity for carbon sequestration, 55, 636–674, <https://doi.org/10.1002/2016RG000533>, 2017.
- 930 Rickels, W., Proelß, A., Geden, O., Burhenne, J., and Fridahl, M.: Integrating Carbon Dioxide Removal Into European Emissions Trading, 0, 62, <https://doi.org/10.3389/FCLIM.2021.690023>, 2021.
- Riebesell, U., Wolf-Gladrow, D. A., and Smetacek, V.: Carbon dioxide limitation of marine phytoplankton growth rates, *Nature*, 361, 249–251, <https://doi.org/10.1038/361249a0>, 1993.
- Rogelj, J., Popp, A., Calvin, K. v., Luderer, G., Emmerling, J., Gernaat, D., Fujimori, S., Strefler, J., Hasegawa, T., Marangoni, G., Krey, V., Kriegler, E., Riahi, K., van Vuuren, D. P., Doelman, J., Drouet, L., Edmonds, J., Fricko, O., Harmsen, M., Havlík, P., Humpenöder, F., Stehfest, E., and Tavoni, M.: Scenarios towards limiting global mean temperature increase below 1.5 °C, 8, 325–332, <https://doi.org/10.1038/s41558-018-0091-3>, 2018.
- RStudio Team: RStudio: Integrated Development for R, <http://www.rstudio.com/>, 2022.
- 940 Sala, M. M., Aparicio, F. L., Balagué, V., Boras, J. A., Borrull, E., Cardelús, C., Cros, L., Gomes, A., López-Sanz, A., Malits, A., Martínez, R. A., Mestre, M., Movilla, J., Sarmiento, H., Vázquez-Domínguez, E., Vaqué, D., Pinhassi, J., Calbet, A., Calvo, E., Gasol, J. M., Pelejero, C., and Marrasé, C.: Contrasting effects of ocean acidification on the microbial food web under different trophic conditions, 73, 670–679, <https://doi.org/10.1093/ICESJMS/FSV130>, 2016.
- Schaum, E., Rost, B., Millar, A. J., and Collins, S.: Variation in plastic responses of a globally distributed picoplankton species to ocean acidification, 3, 298–302, <https://doi.org/10.1038/nclimate1774>, 2012.
- 945 Schuiling, R. D. and Krijgsman, P.: Enhanced Weathering: An Effective and Cheap Tool to Sequester Co₂, 74, 349–354, <https://doi.org/10.1007/S10584-005-3485-Y>, 2006.

- Schulz, K. G., Bach, L. T., Bellerby, R. G. J., Bermúdez, R., Büdenbender, J., Boxhammer, T., Czerny, J., Engel, A., Ludwig, A., Meyerhöfer, M., Larsen, A., Paul, A. J., Sswat, M., and Riebesell, U.: Phytoplankton Blooms at Increasing Levels of Atmospheric Carbon Dioxide: Experimental Evidence for Negative Effects on Pymnesiophytes and Positive on Small Picoeukaryotes, *Front Mar Sci*, 0, 64, <https://doi.org/10.3389/FMARS.2017.00064>, 2017.
- 950 Shi, D., Hong, H., Su, X., Liao, L., Chang, S., and Lin, W.: The physiological response of marine diatoms to ocean acidification: differential roles of seawater pCO₂ and pH, *55*, 521–533, <https://doi.org/10.1111/JPY.12855>, 2019.
- 955 Sswat, M., Stiasny, M. H., Taucher, J., Algueró-Muñiz, M., Bach, L. T., Jutfelt, F., Riebesell, U., and Clemmesen, C.: Food web changes under ocean acidification promote herring larvae survival, *2*, 836–840, <https://doi.org/10.1038/s41559-018-0514-6>, 2018.
- Taucher, J., Boxhammer, T., Bach, L. T., Paul, A. J., Schartau, M., Stange, P., and Riebesell, U.: Changing carbon-to-nitrogen ratios of organic-matter export under ocean acidification, *11*, 52–57, <https://doi.org/10.1038/s41558-020-00915-5>, 2020.
- 960 Taylor, L. L., Quirk, J., Thorley, R. M. S., Kharecha, P. A., Hansen, J., Ridgwell, A., Lomas, M. R., Banwart, S. A., and Beerling, D. J.: Enhanced weathering strategies for stabilizing climate and averting ocean acidification, *6*, 402–406, <https://doi.org/10.1038/nclimate2882>, 2016.
- 965 Thomson, P. G., Davidson, A. T., and Maher, L.: Increasing CO₂ changes community composition of pico- and nano-sized protists and prokaryotes at a coastal Antarctic site, *554*, 51–69, <https://doi.org/10.3354/MEPS11803>, 2016.
- Tyka, M. D., Arsdale, C. van, and Platt, J. C.: CO₂ capture by pumping surface acidity to the deep ocean, <https://doi.org/10.1039/D1EE01532J>, 2022.
- 970 Wassmann, P.: Retention versus export food chains: processes controlling sinking loss from marine pelagic systems, *363*, 29–57, <https://doi.org/10.1023/A:1003113403096>, 1997.
- White, E., Hoppe, C. J. M., and Rost, B.: The Arctic picoeukaryote *Micromonas pusilla* benefits from ocean acidification under constant and dynamic light, *17*, 635–647, <https://doi.org/10.5194/BG-17-635-2020>, 2020.
- Wolf-Gladrow, D. and Riebesell, U.: Diffusion and reactions in the vicinity of plankton: A refined model for inorganic carbon transport, *59*, 17–34, [https://doi.org/10.1016/S0304-4203\(97\)00069-8](https://doi.org/10.1016/S0304-4203(97)00069-8), 1997.
- 975 Wood, S. and Wood, M. S.: Package ‘mgcv,’ *1*, 29, 2015.
- Wu, Y., Campbell, D. A., Irwin, A. J., Suggett, D. J., and Finkel, Z. v.: Ocean acidification enhances the growth rate of larger diatoms, *59*, 1027–1034, <https://doi.org/10.4319/LO.2014.59.3.1027>, 2014.
- ~~Alvarez-Fernandez, S., Bach, L. T., Taucher, J., Riebesell, U., Sommer, U., Aberle, N., Brussaard, C. P. D., and Boersma, M.: Plankton responses to ocean acidification: The role of nutrient limitation, *165*, 11–18, <https://doi.org/10.1016/J.POCEAN.2018.04.006>, 2018.~~
- ~~Bach, L. T. and Taucher, J.: CO₂ effects on diatoms: a synthesis of more than a decade of ocean acidification experiments with natural communities, *15*, 1159–1175, <https://doi.org/10.5194/os-15-1159-2019>, 2019.~~
- ~~Bach, L. T., Alvarez-Fernandez, S., Hornick, T., Stühr, A., and Riebesell, U.: Simulated ocean acidification reveals winners and losers in coastal phytoplankton, *12*, e0188198, <https://doi.org/10.1371/JOURNAL.PONE.0188198>, 2017.~~
- 985

Bach, L. T., Gill, S. J., Rickaby, R. E. M., Gore, S., and Renforth, P.: CO₂ Removal With Enhanced Weathering and Ocean Alkalinity Enhancement: Potential Risks and Co-benefits for Marine Pelagic Ecosystems, *7*, 2019.

990 Bach, L. T., Tamsitt, V., Gower, J., Hurd, C. L., Raven, J. A., and Boyd, P. W.: Testing the climate intervention potential of ocean afforestation using the Great Atlantic Sargassum Belt, *12*, 1–10, <https://doi.org/10.1038/s41467-021-22837-2>, 2021.

Bakker, D. C. E., Bozec, Y., Nightingale, P. D., Goldson, L., Messias, M. J., de Baar, H. J. W., Liddicoat, M., Skjelvan, I., Strass, V., and Watson, A. J.: Iron and mixing affect biological carbon uptake in SOIREE and EisenEx, two Southern Ocean iron fertilisation experiments, *52*, 1001–1019, <https://doi.org/10.1016/J.DSR.2004.11.015>, 2005.

995 Bakker, D. C. E., Pfeil, B., Landa, C. S., Metzl, N., O'Brien, K. M., Olsen, A., Smith, K., Cosca, C., Harasawa, S., Jones, S. D., Nakaoka, S. I., Nojiri, Y., Schuster, U., Steinhoff, T., Sweeney, C., Takahashi, T., Tilbrook, B., Wada, C., Wanninkhof, R., Alin, S. R., Balestrini, C. F., Barbero, L., Bates, N. R., Bianchi, A. A., Bonou, F., Boutin, J., Bozec, Y., Burger, E. F., Cai, W. J., Castle, R. D., Chen, L., Chierici, M., Currie, K., Evans, W., Featherstone, C., Feely, R. A., Fransson, A., Goyet, C., Greenwood, N., Gregor, L., Hankin, S., Hardman-Mountford, N. J., Harlay, J., Hauck, J., Hoppema, M., Humphreys, M. P., Hunt, C. W., Huss, B., Ibáñez, J. S. P., Johannessen, T., Keeling, R., Kitidis, V., Körtzinger, A., Kozyr, A., Krasakopoulou, E., Kuwata, A., Landschützer, P., Lauvset, S. K., Lefèvre, N., lo Monaco, C., Manke, A., Mathis, J. T., Merlivat, L., Millero, F. J., Monteiro, P. M. S., Munro, D. R., Murata, A., Newberger, T., Omar, A. M., Ono, T., Paterson, K., Pearce, D., Pierrot, D., Robbins, L. L., Saito, S., Salisbury, J., Schlitzer, R., Schneider, B., Schweitzer, R., Sieger, R., Skjelvan, I., Sullivan, K. F., Sutherland, S. C., Sutton, A. J., Tadokoro, K., Telszewski, M., Tuma, M., van Heuven, S. M. A. C., Vandemark, D., Ward, B., Watson, A. J., and Xu, S.: A multi-decade record of high-quality fCO₂ data in version 3 of the Surface Ocean CO₂ Atlas (SOCAT), *8*, 383–413, <https://doi.org/10.5194/ESSD-8-383-2016>, 2016.

1000

1005 Berge, T., Daugbjerg, N., Andersen, B. B., and Hansen, P. J.: Effect of lowered pH on marine phytoplankton growth rates, *416*, 79–91, <https://doi.org/10.3354/MEPS08780>, 2010.

C. Pardo, P., Tilbrook, B., van Ooijen, E., Passmore, A., Neill, C., Jansen, P., Sutton, A. J., and Trull, T. W.: Surface ocean carbon dioxide variability in South Pacific boundary currents and Subantarctic waters, *9*, 7592, <https://doi.org/10.1038/s41598-019-44109-2>, 2019.

1015 Carpenter, S. R.: Microcosm experiments have limited relevance for community and ecosystem ecology, *Ecology*, *77*, 677–680, <https://doi.org/10.2307/2265490>, 1996.

Chen, C. Y., Series, E. D. M. E. P., 1994, undefined, and Durbin, E. G.: Effects of pH on the growth and carbon uptake of marine phytoplankton, *109*, <https://doi.org/10.3354/meps109083>, 1994.

1020 Crawford, K. J., Riebesell, U., and Brussaard, C. P. D.: Shifts in the microbial community in the Baltic Sea with increasing CO₂ Shifts in the microbial community in the Baltic Sea with increasing CO₂ Shifts in the microbial community in the Baltic Sea with increasing CO₂, <https://doi.org/10.5194/bg-2015-606>, 2016.

Davidson, A. T., McKinlay, J., Westwood, K., Thomson, P. G., van den Enden, R., de Salas, M., Wright, S., Johnson, R., and Berry, K.: Enhanced CO₂ concentrations change the structure of Antarctic marine microbial communities, *552*, 93–113, <https://doi.org/10.3354/MEPS11742>, 2016.

1025 Dickson, A. G., Sabine, C. L., and Christian, J. R.: Guide to best practices for ocean CO₂ measurements., North Pacific Marine Science Organization, 2007.

- Doney, S. C., Busch, D. S., Cooley, S. R., and Kroeker, K. J.: The Impacts of Ocean Acidification on Marine Ecosystems and Reliant Human Communities, 45, 83–112, <https://doi.org/10.1146/ANNUREV-ENVIRON-012320-083019>, 2020.
- 1030 Engel, A. and Passow, U.: Carbon and nitrogen content of transparent exopolymer particles (TEP) in relation to their Alcian Blue adsorption, 219, 1–10, <https://doi.org/10.3354/MEPS219001>, 2001.
- Engel, A., Schulz, K. G., Riebesell, U., Bellerby, R., Delille, B., and Schartau, M.: Effects of CO₂ on particle size distribution and phytoplankton abundance during a mesocosm bloom experiment (PeECE II), 5, 509–521, 2008.
- 1035 Evans, C. A., O'Reilly, J. E., and Thomas, J. P.: A handbook for the measurement of chlorophyll a and primary production, College Station, Texas, USA: A&M University, 1987.
- Falkenberg, L. J., Bellerby, R. G. J., Connell, S. D., Fleming, L. E., Maycock, B., Russell, B. D., Sullivan, F. J., and Dupont, S.: Ocean Acidification and Human Health, 17, 4563, <https://doi.org/10.3390/IJERPH17124563>, 2020.
- 1040 Fassbender, A. J., Orr, J. C., and Dickson, A. G.: Technical note: Interpreting pH changes, 18, 1407–1415, <https://doi.org/10.5194/BG-18-1407-2021>, 2021.
- Feng, E. Y., Koeve, W., Keller, D. P., and Oschlies, A.: Model Based Assessment of the CO₂ Sequestration Potential of Coastal Ocean Alkalinization, 5, 1252–1266, <https://doi.org/10.1002/2017EF000659>, 2017.
- 1045 Flynn, K. J., Blackford, J. C., Baird, M. E., Raven, J. A., Clark, D. R., Beardall, J., Brownlee, C., Fabian, H., and Wheeler, G. L.: Changes in pH at the exterior surface of plankton with ocean acidification, 2, 510–513, <https://doi.org/10.1038/nclimate1489>, 2012.
- Friedlingstein, P., Jones, M. W., O'Sullivan, M., Andrew, R. M., Hauck, J., Peters, G. P., Peters, W., Pongratz, J., Sitch, S., Le Quéré, C., DBakker, O. C. E., Canadell, J. G., Ciais, P., Jackson, R. B., Anthoni, P., Barbero, L., Bastos, A., Bastrikov, V., Becker, M., Bopp, L., Buitenhuis, E., Chandra, N., Chevallier, F., Chini, L. P., Currie, K. I., Feely, R. A., Gehlen, M., Gilfillan, D., Gkritzalis, T., Goll, D. S., Gruber, N., Gutkunst, S., Harris, I., Havard, V., Houghton, R. A., Hurtt, G., Ilyina, T., Jain, A. K., Joetzjer, E., Kaplan, J. O., Kato, E., Goldewijk, K. K., Korsbakken, J. I., Landschützer, P., Lauvset, S. K., Lefèvre, N., Lenton, A., Lienert, S., Lombardo, D., Marland, G., McGuire, P. C., Melton, J. R., Metzl, N., Munro, D. R., Nabel, J. E. M. S., Nakaoka, S. I., Neill, C., Omar, A. M., Ono, T., Peregon, A., Pierrot, D., Poulter, B., Rehder, G., Resplandy, L., Robertson, E., Rödenbeck, C., Séférian, R., Schwinger, J., Smith, N., Tans, P. P., Tian, H., Tilbrook, B., Tubiello, F. N., van der Werf, G. R., Wiltshire, A. J., and Zehle, S.: Global carbon budget 2019, 11, 1783–1838, <https://doi.org/10.5194/ESSD-11-1783-2019>, 2019.
- 1050 Fukao, T., Kimoto, K., and Kotani, Y.: Production of transparent exopolymer particles by four diatom species, 76, 755–760, <https://doi.org/10.1007/S12562-010-0265-Z/TABLES/1>, 2010.
- 1060 Fuss, S., Lamb, W. F., Callaghan, M. W., Hilaire, J., Creutzig, F., Amann, T., Beringer, T., de Oliveira Garcia, W., Hartmann, J., Khanna, T., Luderer, G., Nemet, G. F., Rogelj, J., Smith, P., Vicente, J. V., Wilcox, J., del Mar Zamora Dominguez, M., and Minx, J. C.: Negative emissions—Part 2: Costs, potentials and side effects, 13, 063002, <https://doi.org/10.1088/1748-9326/AABF9F>, 2018.
- 1065 Gattuso, J., Epitalon, J., Lavigne, H., Orr, J., Gentili, B., Hagens, M., Hofman, A., Mueller, J., Proye, A., Rae, J., and Soetaert, K.: Seacarb: seawater carbonate chemistry. R package version 3.3.0, <https://CRAN.R-project.org/package=seacarb>, 2021.

- Gnanadesikan, A. and Marinov, I.: Export is not enough: nutrient cycling and carbon sequestration, 364, 289–294, <https://doi.org/10.3354/MEPS07550>, 2008.
- 1070 Hansen, H. P. and Koroleff, F.: Determination of nutrients, in: *Methods of Seawater Analysis*, John Wiley & Sons, Ltd, 159–228, <https://doi.org/https://doi.org/10.1002/9783527613984.ch10>, 1999.
- Hartmann, J., West, A. J., Renforth, P., Köhler, P., Rocha, C. L. D. la, Wolf Gladrow, D. A., Dürr, H. H., and Scheffran, J.: Enhanced chemical weathering as a geoengineering strategy to reduce atmospheric carbon dioxide, supply nutrients, and mitigate ocean acidification, 51, 113–149, <https://doi.org/10.1002/ROG.20004>, 2013.
- 1075 Hepburn, C., Adlen, E., Beddington, J., Carter, E. A., Fuss, S., mac Dowell, N., Minx, J. C., Smith, P., and Williams, C. K.: The technological and economic prospects for CO₂ utilization and removal, 575, 87–97, <https://doi.org/10.1038/s41586-019-1681-6>, 2019.
- Hervé, V., Derr, J., Douady, S., Quinet, M., Moisan, L., and Lopez, P. J.: Multiparametric Analyses Reveal the pH Dependence of Silicon Biomineralization in Diatoms, 7, e46722, <https://doi.org/10.1371/JOURNAL.PONE.0046722>, 2012.
- 1080 Hinga, K. R.: Effects of pH on coastal marine phytoplankton, 238, 281–300, <https://doi.org/10.3354/meps238281>, 2002.
- Hoppe, C. J. M., Flintrop, C. M., and Rost, B.: The arctic picoeukaryote *micromonas pusilla* benefits synergistically from warming and ocean acidification, 15, 4353–4365, <https://doi.org/10.5194/BG-15-4353-2018>, 2018.
- 1085 Humphreys, M. P., Lewis, E. R., Sharp, J. D., and Pierrot, D.: PyCO₂SYS v1.8: marine carbonate system calculations in Python, 15, 15–43, <https://doi.org/10.5194/GMD-15-15-2022>, 2022.
- Jones, J. P., Prakash, G. K. S., and Olah, G. A.: Electrochemical CO₂ Reduction: Recent Advances and Current Trends, 54, 1451–1466, <https://doi.org/10.1002/IJCH.201400081>, 2014.
- 1090 Kheshgi, H. S.: Sequestering atmospheric carbon dioxide by increasing ocean alkalinity, 20, 915–922, [https://doi.org/10.1016/0360-5442\(95\)00035-F](https://doi.org/10.1016/0360-5442(95)00035-F), 1995.
- Köhler, P., Hartmann, J., and Wolf Gladrow, D. A.: Geoengineering potential of artificially enhanced silicate weathering of olivine, 107, 20228–20233, <https://doi.org/10.1073/PNAS.1000545107>, 2010.
- 1095 de Lannoy, C. F., Eisaman, M. D., Jose, A., Karnitz, S. D., DeVaul, R. W., Hannun, K., and Rivest, J. L. B.: Indirect ocean capture of atmospheric CO₂: Part I. Prototype of a negative emissions technology, 70, 243–253, <https://doi.org/10.1016/J.IJGGC.2017.10.007>, 2018.
- Lueker, T. J., Dickson, A. G., and Keeling, C. D.: Ocean pCO₂ calculated from dissolved inorganic carbon, alkalinity, and equations for K₁ and K₂: validation based on laboratory measurements of CO₂ in gas and seawater at equilibrium, 70, 105–119, [https://doi.org/10.1016/S0304-4203\(00\)00022-0](https://doi.org/10.1016/S0304-4203(00)00022-0), 2000.
- 1100 Malerba, M. E., Marshall, D. J., Palacios, M. M., Raven, J. A., and Beardall, J.: Cell size influences inorganic carbon acquisition in artificially selected phytoplankton, 229, 2647–2659, <https://doi.org/10.1111/NPH.17068>, 2021.
- Mallin, M. A. and Paerl, H. W.: Planktonic Trophic Transfer in an Estuary: Seasonal, Diel, and Community Structure Effects, *Ecology*, 75, 2168–2184, <https://doi.org/10.2307/1940875>, 1994.

- 1105 Maugendre, L., Gattuso, J. P., Louis, J., de Kluijver, A., Marro, S., Soetaert, K., and Gazeau, F.: Effect of ocean warming and acidification on a plankton community in the NW Mediterranean Sea, *72*, 1744–1755, <https://doi.org/10.1093/ICESJMS/FSU161>, 2015.
- Meakin, N. G. and Wyman, M.: Rapid shifts in picoeukaryote community structure in response to ocean acidification, *5*, 1397–1405, <https://doi.org/10.1038/ismej.2011.18>, 2011.
- 1110 Milligan, A. J., Varela, D. E., Brzezinski, M. A., and Morel, F. M. M.: Dynamics of silicon metabolism and silicon isotopic discrimination in a marine diatom as a function of pCO₂, *49*, 322–329, <https://doi.org/10.4319/LO.2004.49.2.0322>, 2004.
- Newbold, L. K., Oliver, A. E., Booth, T., Tiwari, B., Desantis, T., Maguire, M., Andersen, G., van der Gast, C. J., and Whiteley, A. S.: The response of marine picoplankton to ocean acidification, *14*, 2293–2307, <https://doi.org/10.1111/J.1462-2920.2012.02762.X>, 2012.
- 1115 Orr, J. C. and Sarmiento, J. L.: Potential of marine macroalgae as a sink for CO₂: Constraints from a 3-D general circulation model of the global ocean, *64*, 405–421, <https://doi.org/10.1007/BF00477113>, 1992.
- Orr, J. C., Epitalon, J. M., and Gattuso, J. P.: Comparison of ten packages that compute ocean carbonate chemistry, *12*, 1483–1510, <https://doi.org/10.5194/BG-12-1483-2015>, 2015.
- 1120 Passow, U.: Production of transparent exopolymer particles (TEP) by phyto- and bacterioplankton, *236*, 1–12, <https://doi.org/10.3354/MEPS236001>, 2002.
- Paul, A. J. and Bach, L. T.: Universal response pattern of phytoplankton growth rates to increasing CO₂, *228*, 1710–1716, <https://doi.org/10.1111/NPH.16806>, 2020.
- Pedersen, M. F. and Hansen, P. J.: Effects of high pH on a natural marine planktonic community, *260*, 19–31, <https://doi.org/10.3354/MEPS260019>, 2003.
- 1125 Petrou, K., Baker, K. G., Nielsen, D. A., Hancock, A. M., Schulz, K. G., and Davidson, A. T.: Acidification diminishes diatom silica production in the Southern Ocean, *9*, 781–786, <https://doi.org/10.1038/s41558-019-0557-y>, 2019.
- Quéguiner, B.: Iron fertilization and the structure of planktonic communities in high nutrient regions of the Southern Ocean, *90*, 43–54, <https://doi.org/10.1016/J.DSR2.2012.07.024>, 2013.
- 1130 le Quesne, W. J. F., Pinnegar, J. K., Shaw, G. B., and le Quesne, W. J. F.: The potential impacts of ocean acidification: scaling from physiology to fisheries*, *13*, 333–344, <https://doi.org/10.1111/J.1467-2979.2011.00423.X>, 2012.
- Rau, G. H., Carroll, S. A., Bourcier, W. L., Singleton, M. J., Smith, M. M., and Aines, R. D.: Direct electrolytic dissolution of silicate minerals for air-CO₂ mitigation and carbon negative H₂ production, *110*, 10095–10100, 2013.
- 1135 Renforth, P. and Henderson, G.: Assessing ocean alkalinity for carbon sequestration, *55*, 636–674, <https://doi.org/10.1002/2016RG000533>, 2017.
- Riekels, W., Proelß, A., Geden, O., Burhenne, J., and Fridahl, M.: Integrating Carbon Dioxide Removal Into European Emissions Trading, *0*, 62, <https://doi.org/10.3389/FCLIM.2021.690023>, 2021.
- 1140 Riebesell, U., Wolf-Gladrow, D. A., and Smetacek, V.: Carbon dioxide limitation of marine phytoplankton growth rates, *Nature*, *361*, 249–251, <https://doi.org/10.1038/361249a0>, 1993.
- Rogelj, J., Popp, A., Calvin, K. v., Luderer, G., Emmerling, J., Gernaat, D., Fujimori, S., Strefler, J., Hasegawa, T., Marangoni, G., Krey, V., Kriegler, E., Riahi, K., van Vuuren, D. P., Doelman, J., Drouet, L., Edmonds, J.,

1145 Fricko, O., Harmsen, M., Havlík, P., Humpenöder, F., Stehfest, E., and Tavoni, M.: Scenarios towards limiting
global mean temperature increase below 1.5 °C, 8, 325–332, <https://doi.org/10.1038/s41558-018-0091-3>, 2018.

Sala, M. M., Aparicio, F. L., Balagué, V., Boras, J. A., Borrell, E., Cardelús, C., Cros, L., Gomes, A., López-
Sanz, A., Malits, A., Martínez, R. A., Mestre, M., Movilla, J., Sarmiento, H., Vázquez Domínguez, E., Vaqué,
D., Pinhassi, J., Calbet, A., Calvo, E., Gasol, J. M., Pelejero, C., and Marrasé, C.: Contrasting effects of ocean
1150 acidification on the microbial food web under different trophic conditions, 73, 670–679,
<https://doi.org/10.1093/ICESJMS/FSV130>, 2016.

Schaum, E., Rost, B., Millar, A. J., and Collins, S.: Variation in plastic responses of a globally distributed
picoplankton species to ocean acidification, 3, 298–302, <https://doi.org/10.1038/nclimate1774>, 2012.

Schuiling, R. D. and Krijgsman, P.: Enhanced Weathering: An Effective and Cheap Tool to Sequester CO₂, 74,
1155 349–354, <https://doi.org/10.1007/S10584-005-3485-Y>, 2006.

Schulz, K. G., Bach, L. T., Bellerby, R. G. J., Bermúdez, R., Büdenbender, J., Boxhammer, T., Czerny, J.,
Engel, A., Ludwig, A., Meyerhöfer, M., Larsen, A., Paul, A. J., Sswat, M., and Riebesell, U.: Phytoplankton
Blooms at Increasing Levels of Atmospheric Carbon Dioxide: Experimental Evidence for Negative Effects on
Prymnesiophytes and Positive on Small Picoeukaryotes, *Front Mar Sci*, 0, 64,
1160 <https://doi.org/10.3389/FMARS.2017.00064>, 2017.

Shi, D., Hong, H., Su, X., Liao, L., Chang, S., and Lin, W.: The physiological response of marine diatoms to
ocean acidification: differential roles of seawater pCO₂ and pH, 55, 521–533,
<https://doi.org/10.1111/JPY.12855>, 2019.

Sswat, M., Stiasny, M. H., Taucher, J., Algueró Muñoz, M., Bach, L. T., Jutfelt, F., Riebesell, U., and
1165 Clemmesen, C.: Food web changes under ocean acidification promote herring larvae survival, 2, 836–840,
<https://doi.org/10.1038/s41559-018-0514-6>, 2018.

Taucher, J., Boxhammer, T., Bach, L. T., Paul, A. J., Schartau, M., Stange, P., and Riebesell, U.: Changing
carbon to nitrogen ratios of organic matter export under ocean acidification, 11, 52–57,
<https://doi.org/10.1038/s41558-020-00915-5>, 2020.

1170 Taylor, L. L., Quirk, J., Thorley, R. M. S., Kharecha, P. A., Hansen, J., Ridgwell, A., Lomas, M. R., Banwart, S.
A., and Beerling, D. J.: Enhanced weathering strategies for stabilizing climate and averting ocean acidification,
6, 402–406, <https://doi.org/10.1038/nclimate2882>, 2016.

Thomson, P. G., Davidson, A. T., and Maher, L.: Increasing CO₂ changes community composition of pico- and
nano-sized protists and prokaryotes at a coastal Antarctic site, 554, 51–69, <https://doi.org/10.3354/MEPS11803>,
1175 2016.

Tyka, M. D., Arsdale, C. van, and Platt, J. C.: CO₂ capture by pumping surface acidity to the deep ocean,
<https://doi.org/10.1039/D1EE01532J>, 2022.

Wassmann, P.: Retention versus export food chains: processes controlling sinking loss from marine pelagic
systems, 363, 29–57, <https://doi.org/10.1023/A:1003113403096>, 1997.

1180 White, E., Hoppe, C. J. M., and Rost, B.: The Arctic picoeukaryote *Micromonas pusilla* benefits from ocean
acidification under constant and dynamic light, 17, 635–647, <https://doi.org/10.5194/BG-17-635-2020>, 2020.

Wolf-Gladrow, D. and Riebesell, U.: Diffusion and reactions in the vicinity of plankton: A refined model for
inorganic carbon transport, 59, 17–34, [https://doi.org/10.1016/S0304-4203\(97\)00069-8](https://doi.org/10.1016/S0304-4203(97)00069-8), 1997.

Wood, S. and Wood, M. S.: Package ‘mgev,’ 1, 29, 2015.

~~Wu, Y., Campbell, D. A., Irwin, A. J., Suggett, D. J., and Finkel, Z. v.: Ocean acidification enhances the growth rate of larger diatoms, 59, 1027–1034, <https://doi.org/10.4319/LO.2014.59.3.1027>, 2014.~~

-