

Geographical controls and anthropogenic impacts on dissolved organic carbon from mountainous rivers: Insights from optical properties and carbon isotopes

Shuai Chen¹, Jun Zhong², Lishan Ran¹, Yuanbi Yi², Wanfa Wang³, Zelong Yan⁴, Si-liang Li^{2,5}, Khan M.G. Mostofa²

¹Department of Geography, The University of Hong Kong, Pokfulam Road, Hong Kong, China

²Institute of Surface-Earth System Science, School of Earth System Science, Tianjin University, Tianjin, 300072, China

³College of Resources and Environmental Engineering, Key Laboratory of Karst Georesources and Environment, Ministry of Education, Guizhou University, Guiyang, 550025, China

⁴School of Environmental Science and Technology, Dalian University of Technology, Dalian, 116081, China

⁵State Key Laboratory of Hydraulic Engineering Simulation and Safety, Tianjin University, Tianjin 300072, China

Correspondence to: Jun Zhong (jun.zhong@tju.edu.cn) and Lishan Ran (lsran@hku.hk)

Abstract. Mountainous rivers are ~~one of the~~ critical ~~systems~~ in transporting dissolved organic carbon (DOC) from terrestrial environments to downstream ecosystems. However, how geographical factors and anthropogenic impacts control the composition and export of DOC in mountainous rivers remains largely unclear. Here, we explore DOC dynamics in three subtropical mountainous catchments (i.e., the Yinjiang, Shiqian, and Yuqing catchments) in southwest China which are heavily influenced by anthropogenic activities. Water chemistry, stable and radioactive carbon isotopes of DOC ($\delta^{13}\text{C}_{\text{DOC}}$ and $\Delta^{14}\text{C}_{\text{DOC}}$), and optical properties (UV absorbance and fluorescence spectra) were employed to assess the biogeochemical processes and controlling factors on riverine DOC. The radiocarbon ages of ~~the~~ DOC in the Yinjiang River varied widely from 928 years before present to modern. Catchments with higher ~~channel~~ ~~catchment~~ slope gradients and lower annual air temperature were characterized by lower DOC concentrations, enriched $\delta^{13}\text{C}_{\text{DOC}}$ and $\Delta^{14}\text{C}_{\text{DOC}}$, and more aromatic dissolved organic matter (DOM), which were opposite to those with gentle ~~catchment~~ ~~channel~~ slopes and higher temperature. Variabilities in DOC concentrations were also regulated by land use with ~~the higher~~ DOC ~~concentrations~~ in urban and agricultural ~~land showing~~ ~~higher concentrations~~ ~~areas~~. Furthermore, DOM in catchments with a higher proportion of urban and agricultural ~~land-land~~ ~~uses~~ was less aromatic, less recently produced and exhibited a higher degree of humification ~~and more autochthonous humic-like DOM~~. This research highlights the significance of incorporating geographical controls on DOC sources and anthropogenic impacts on DOM composition into the understanding of DOC dynamics and quality of DOM in mountainous rivers which are globally abundant.

1 Introduction

Dissolved organic carbon (DOC) plays a fundamental role in the riverine carbon cycle with approximately 0.26 Pg (1Pg = 10¹⁵g) of DOC exported from global rivers to the ocean each year, accounting for more than half of the total organic carbon export

(Cai, 2011; Raymond and Spencer, 2015). Owing to continued climate warming and rapid land use changes, it is important to gain a better understanding of the spatial and temporal dynamics of DOC transport in river systems (Butman et al., 2014; Fasching et al., 2016; Zhong et al., 2021). For example, the elevated temperature has a dominant effect on DOC concentration and dissolved organic matter (DOM) composition by enhancing decomposition and photochemical degradation rates of DOM (Zhou et al., 2018), contributing to significant CO₂ emissions from inland waters (Raymond et al., 2013). Additionally, DOC DOM provides energy and nutrient sources for aquatic biota (Findlay et al., 1998), adsorbing heavy metals and organic pollutants (Aiken et al., 2011). Riverine DOC can also restrict in-stream primary production by reducing light penetration and lowering temperature~~decreasing light penetration and temperature~~ in the water column, thereby serving as an important determinant ~~of~~in shaping the ecological and biogeochemical processes in aquatic environments (Ask et al., 2009). Therefore, disentangling the processes controlling riverine DOC dynamics is crucial for a greater understanding of aquatic ecosystem functioning and the global carbon cycle. Recent advances in spectroscopic techniques, especially the UV-visible spectrophotometry and fluorescence spectroscopy, and widespread application of stable and radio~~active~~active carbon isotopes on bulk DOC have provided insights into the composition, source, and age of DOM in freshwater ecosystems (Coble, 1996; Fellman et al., 2010; Marwick et al., 2015; Minor et al., 2014; Sanderman et al., 2009). These new techniques have led to significant improvements in our understanding of the biogeochemical processes of DOC in river systems, which will continue to be effective tools for researchers to gain deeper insights into the riverine carbon cycle.

The biogeochemical processes of DOM in river systems have been extensively studied, which and they largely depend largely on the sources and composition of the DOM (Toming et al., 2013). In general, Riverine DOM has both internal and external origins, namely autochthonous and allochthonous DOM. Autochthonous DOM is a pool of dead and living microbial and algal biomass that is derived within the aquatic ecosystem (Devesa-Rey and Barral, 2011). Usually, a Autochthonous DOM is mainly consisted mainly of non-humic substances that are more bioavailable (Toming et al., 2013). In comparison, a Allochthonous DOM refers to DOM that originates from outside of the aquatic ecosystem and is typically usually composed of higher plants and soil organic matter (Toming et al., 2013; Zhang et al., 2023). It may also contain organic waste of anthropogenic origin a variable contribution of anthropogenic organic waste (Ramos et al., 2006; Toming et al., 2013). Consequently, a The allochthonous DOM material is generally usually characterized by high lignin content and high molecular weight, making it refractory to decomposition (Devesa-Rey and Barral, 2011).

Recent studies have shown that geographical (e.g., elevation and ~~channel-catchment~~ slope) controls on DOC export may also be important for riverine carbon cycling (Connolly et al., 2018; Li Yung Lung et al., 2018). Compared with high-relief catchments, low relief regions with longer water residence time, stronger hydrologic connectivity to rivers, and greater development of wetlands are typically characterized by greater releases of DOC (Harms et al., 2016; McGuire et al., 2005). A recent global study on lakes and rivers found that increasing elevation is was associated with greater protein-like fluorescence

DOM and lower specific ultraviolet absorbance at 254 nm (SUVA₂₅₄),—which indicate the effect of enhanced UV radiation and accumulation of autochthonous DOM inat higher elevation areas with low temperatures (Zhou et al., 2018). More specifically, DOC supply is likely regulated by the amount of stored soil organic carbon (SOC) in a catchment (Lee et al., 2019; Rawlins et al., 2021).~~which is dependent on various catchment characteristics.~~ However, this supply is limited by shallow soil depth and high water flow velocity~~Specifically, DOC supply is likely regulated by the amount of soil organic carbon (SOC) stock with various catchment characteristics, and constrained by shallow soil depth and high water flow velocity~~ (Lee et al., 2019). In addition, the varying extent of hydrologic connectivity due to changing water residence time with different catchmentchannel slopes may have significant influences on DOC dynamics (Connolly et al., 2018). Typically, it is anticipated that as the slope increases towards higher elevation areas, where residence time is relatively short and soil organic matter is well-connected to hydrologic pathways, the composition of DOM pools in inland waters will shift towards a more "terrestrial" character, comprising of larger molecules with high molecular weight and aromatic structures (Creed et al., 2018; Xenopoulos et al., 2021).—Although geographical characteristics have proved to be useful in estimating DOC concentrations (Harms et al., 2016; Mzobe et al., 2020), the underlying mechanisms that regulate DOC dynamics in small mountainous rivers remain poorly understood~~the underlying mechanisms of small mountainous rivers that regulate their DOC dynamics remain poorly understood~~. Therefore, a deep understanding of the geographical controls on DOC dynamics is urgently needed. Subtropical small mountainous rivers are characterized by steep catchmentchannel slopes, high erosion rates, frequent rainfall events in wet seasons, and rapid change in hydrology during these rainfall events (Lee et al., 2019; Leithold et al., 2006; Qiao et al., 2019), yet have received little research attention regarding their DOC dynamics~~however, the DOC dynamics in these rivers remain poorly studied~~. Moreover, runoff, catchmentchannel slope gradient, and SOC have been recognized as good predictors for DOC export in small mountainous rivers (Lee et al., 2019). Yet, the extent to which these factors, along with land use patterns, effectively regulate the DOC dynamic is still far from well-understood~~the effectiveness of these factors, combined with land use patterns, in regulating the DOC dynamic is still far from well-understood~~ (Lee et al., 2019; Moyer et al., 2013).

Anthropogenic impacts, such as urban and agricultural land uses, have led to significant alterations to the flux of DOC and the fate and quality of DOM in global streams and rivers (Coble et al., 2022; Pilla et al., 2022; Wilson and Xenopoulos, 2008; Xenopoulos et al., 2021). Agricultural streams and rivers are dominated by microbial-derived, protein-like DOM, while urban freshwater ecosystems are characterized by microbial, humic-like or protein-like, and autochthonous DOM (Hosen et al., 2014; Williams et al., 2016; Xenopoulos et al., 2021). Agricultural and urban land uses tend to increase nutrient loading in streams, resulting in enhanced bacterial production and~~increased~~ DOM decomposition (Quinton et al., 2010; Williams et al., 2010). T, and therefore, microbial-derived DOM plays a crucial role in agricultural and urban rivers. In addition, DOM tends to have a more reduced redox state, and is likely more labile and accessible to the microbial community in agricultural streams when compared to the DOM found in natural streams (Williams et al., 2010). Although the DOM in urban rivers shares some

~~similarities with agricultural rivers (such as microbial origins), the sources of DOM in urban rivers are much more complex, which may originate from urban point-source inputs (e.g., such as wastewater treatment facilities) and, as well as nonpoint source inputs (e.g., such as household sewage and petroleum-based hydrocarbons and large amounts of other household sewage) (Hosen et al., 2014). These effects are mainly due to alterations in the soil characteristics and thus loads and forms of carbon input into soil carbon pool, eventually affecting the aquatic carbon pool (Stanley et al., 2012).~~ On the scale of years to decades, anthropogenic impacts can accelerate terrestrially sourced DOC export to aquatic ecosystems (Xenopoulos et al., 2021). On the scale of decades to centuries, however, anthropogenic impacts would shift natural DOM to forms of low-molecular weight, enhanced redox state with potentially increased lability, or increased aromaticity due to warmer climate and altered hydrology (Stanley et al., 2012; Xenopoulos et al., 2021). In addition, a warmer climate can enhance microbial activity and in-stream production of DOM (He et al., 2016), and may simultaneously increase the microbial degradation rate of soil DOM, thus reducing the potential input of DOM into rivers (Voss et al., 2015). Consequently, this will increase the relative contribution of autochthonous DOM. Nevertheless, elevated temperature can also enhance photo-chemical degradation and reduce autochthonous microbial humic-like DOM (Henderson et al., 2009; Zhou et al., 2018), thus potentially limiting the accumulation of autochthonous DOM in inland waters. These two seemingly contradictory findings are due to the complex effect of temperature on organic matter. Clearly, it remains largely unknown how these impacts have regulated riverine DOC dynamics due to their complex regulating mechanisms and changing influencing factors.

In this study, we evaluated how geographical controls (i.e., mean ~~catchment~~~~channel~~ slope, mean drainage elevation, and annual air temperature) and anthropogenic impacts (i.e., land use patterns) affect the DOC dynamics and DOM characteristics in three subtropical catchments that contain many small to medium mountainous rivers in southwest China. Our prior observations from these catchments showed that particulate organic carbon (POC) ~~and dissolved inorganic carbon (DIC) dynamics were highly affected by in-stream photosynthesis, as evidenced by stable carbon isotope and radioactive carbon isotope of POC and DIC~~ (Chen et al., 2021). We hypothesize that catchments with a higher proportion of agricultural and urban land uses, more gentle ~~channel slope~~~~catchment slope~~, and lower elevation would exhibit higher riverine DOC concentrations ~~and more autochthonous microbial humic-like DOM than steeper catchments at high elevations with less influences by agricultural and urban land uses~~. ~~We further hypothesize that there will be a large difference on DOM quality and carbon isotopes between these catchments and those with less influences by agricultural and urban land uses but steeper channel slopes and higher elevation. Relationships of DOC concentrations, stable and radiocarbon isotopic values of DOC (radiocarbon isotopes were only available for nine sampling sites in the Yinjiang River), DOM quality assessed through optical metric, nutrient concentrations, and land use patterns versus geographical characteristics (i.e., mean channel slope, mean drainage elevation, and annual air temperature) were examined.~~ Relationships of DOC concentrations, stable isotopic values of DOC, ~~DOM quality assessed through optical metric, nutrient concentrations, and land use patterns versus geographical characteristics~~

(i.e., mean catchment slope, mean drainage elevation, and annual air temperature) were examined. We also examined relationships between geographical characteristics and with radiocarbon for nine sampling sites in the Yinjiang River. This study allows us to gain a deeper insight into the geographical controls and anthropogenic impacts on the DOC dynamics and DOM quality in the subtropical, anthropogenically influenced small mountainous rivers.

2 Materials and Methods

2.1 Study area

Yinjiang River (Y), Shiqian River (S), and Yuqing River (Q) are tributaries of the Wujiang River (Fig. 1a), the largest tributary on the south bank of the upper Changjiang River. The drainage area is 1231, 2101, and 1561 km² for the Yinjiang River (Y), Shiqian River (S), and Yuqing River (Q) rivers, respectively. Data on land use types and air temperature in 2015, as well as a 90-m digital elevation model (Shuttle Radar Topography Mission, SRTM) were obtained directly from the Resource and Environment Data Cloud Platform of the Chinese Academy of Sciences (<http://www.resdc.cn/>). Information on dams was retrieved from Wang et al. (2022) and directly their location was identified by Google Earth in 2018. Furthermore, the distance from river mouth (i.e., the Yinjiang, Shiqian, and Yuqing rivers) to sampling sites location were also estimated using Google Earth. We further delineated the sub-catchments, which constitute the contributing area upstream of sampling sites, by spatial analyst tools of ArcGIS (version 10.2). Mean catchment slope (degrees; 3D analysis tools) and elevation for sub-catchments were extracted from the digital elevation model using ArcGIS (version 10.2) as mean values for the sub-catchments. These sub-catchments, which constitute the contributing area upstream of the sampling location, were delineated by spatial analyst tools of ArcGIS using the same digital elevation. Catchment characteristics (e.g., mean drainage elevation, annual air temperature, mean channel slope, catchment slope, and proportion of urban and agricultural land uses) for these sub-catchments were also determined using ArcGIS (version 10.2). The mean drainage elevation of these three catchments ranges from 340 m to 2424 m with the lowest and highest elevation both reported in the Yinjiang River catchment, showing a great the greatest change in relief (Figs. 1a and S1a). Similar to elevation, the Yinjiang River catchment has a greater variation in mean channel-catchment slope (from 14.3° to 25.5°), while the channels in the Shiqian and Yuqing river catchments have a mean channel-catchment slope of approximately 20°, except the segment above site S8 (13.9°; Figs. 1b and S1b). Carbonate rock is widely distributed in the three catchments, accounting for a large proportion of the exposed strata (Han and Liu, 2004). The remaining areas are mainly covered by elastic rocks, igneous rocks, and low-grade metamorphic rocks. Forest, agriculture, and urban areas are the three dominant land uses in these studied catchments (Fig. 1c). Forest is generally distributed in high-elevation regions, while urban and agricultural land uses are mainly located in low-elevation regions. The proportion of urban and agricultural land uses in the Yuqing River catchment varies from 17.3% to 23.1% (Figs. 1c and S1c). This catchment has higher %

urban/agriculture land uses than other studied catchments, and less variability in land use compared to the Yinjiang and Shiqian river catchments (from 4.5% to 46.5% and from 9.6% to 41.3%, respectively). The proportion of urban and agricultural land uses in the Yinjiang and Shiqian river catchments is from 4.5% to 46.5% and from 9.6% to 41.3%, respectively, showing a large variation relative to the Yuqing River catchment (from 17.3% to 23.1%; Figs. 1e and S1e). There are three typical mountainous agricultural counties (i.e., Yinjiang, Shiqian, and Yuqing; Fig. 1a) in this study area, where crops are mainly C4 (e.g., corn and sorghum) and C3 (e.g., rice, wheat, and potato) plants. Dams and reservoirs are widely distributed in the three study catchments, and these dams are primarily mainly used for agricultural irrigation and power generation (Fig. 1a). This study area is highly affected by monsoon-influenced humid subtropical climate with April to October being the rainy season, and the average annual precipitation and discharge are 1100 mm and 14.4 m³/s, respectively, in the Yinjiang River catchment, respectively. Further details on regional setting of the study area and the sources and methods for catchment characteristics delineation are provided in our previous study (Chen et al., 2021).

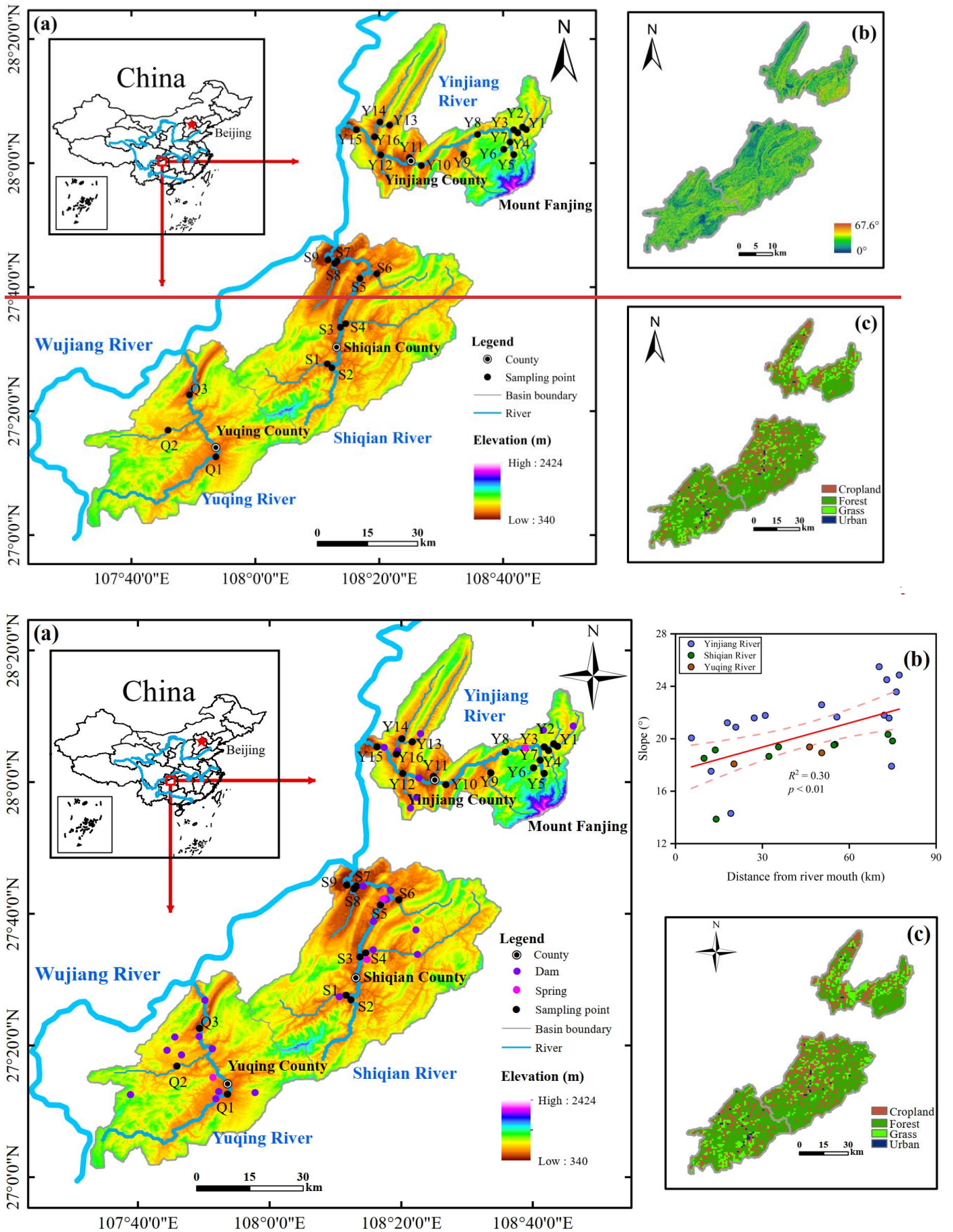


Figure 1. Map of the study area. (a) Overview of the sampling sites and elevation characteristics in the three study catchments, including the Yinjiang, Shiqian, and Yuqing catchments, (b) correlation between mean catchment slope and the distance from river mouth (i.e., the

Yinjiang, Shiqian, and Yuqing rivers) to sampling sites, spatial distribution in channel slope, and (c) spatial variation in land-use patterns.

2.2 Field sampling

Surface water samples (n = 28) along the mainstem and major tributaries of the Yinjiang River, Shiqian River, and Yuqing River and spring water samples (n = 4) were collected in September 2018 (Fig. 1a). During the sampling period, two water samples (sites Y12 and Y15) were significantly affected by rainfall events, and an additional sample was collected at site Y12 before the rainfall event as it is close to the hydrological station. Unless stated otherwise, the data used in this study from site Y12 are based on the sample collected after rainfall event due to the availability of carbon isotopes. ~~pH, water temperature, electrical~~ Electrical conductivity (EC); and dissolved oxygen (DO) were measured by a multi-parameter water quality probe (WTW, pH 3630/Cond 3630, Germany) in the field. For the analysis of ion concentrations, total phosphorus (TP), ammonium (NH₄⁺-N), and total nitrogen (TN), water samples were filtered through 0.45 µm cellulose acetate membranes. Water samples for the concentrations and isotopes of DOC and DOM absorbance and fluorescence were filtered through pre-combusted glass fibre filters (Whatman, 0.7 µm). The filtered water was stored in a Milli-Q water and sampling water pre-washed brand new low-density polyethylene container at low temperature (4°C) in the dark before optical properties analysis and acidified by phosphoric acid to pH = 2 for DOC analysis. Water samples were also filtered for determining dissolved inorganic carbon (DIC; through 0.45 µm cellulose acetate membranes) through titration with hydrochloric acid and analyzing POC using retained suspended particles on the filter membranes. ~~Moreover, t~~ The water samples filtered through 0.22 µm cellulose-acetate filter membranes were used to determine water isotopes (δ¹⁸O and δD). Detailed information on sampling methods was provided in Chen et al. (2021) and Zhong et al. (2020).

2.3 Laboratory analysis

The main cations (K⁺, Na⁺, Ca²⁺, and Mg²⁺) were measured by inductively coupled plasma emission spectrometer (ICP-OES), and the main anions (Cl⁻, SO₄²⁻, and NO₃⁻) were measured by ion chromatography (Thermo Aquion; Chen et al., 2020). The normalized inorganic charge balance is within 5%, indicating the accuracy of the measured data. The concentrations of ~~TP, TN, and~~ NH₄⁺-N were analyzed using an automatic flow analyzer (Skalar Sans Plus Systems), and the relative deviations of the results of NH₄⁺-N and were less than 5%. DOC concentrations were determined with a total ~~OC~~ organic carbon analyser (OI Analytical, Aurora 1030W, USA) with duplicates (±1.5%, analytical error) and detection limit at 0.01 mg L⁻¹. Water isotopes were measured by a Liquid Water Isotope Analyzer (Picarro L2140-i, USA) with measurement precisions at ± 0.3 ‰ for δ¹⁸O. The above analyses were carried out at the Institute of Surface Earth System Science, Tianjin University, ~~and the relative deviations of the results were less than 5%.~~

For the determination of stable carbon isotope and radiocarbon isotope of DOC (δ¹³C_{DOC} and Δ¹⁴C_{DOC}), water samples were

first concentrated using a rotary evaporation and then oxidized through the wet oxidation method (Leonard et al., 2013). In this study, nine water samples collected from the Yinjiang River were selected for $\Delta^{14}\text{C}_{\text{DOC}}$ analysis as the Yinjiang River catchment has the greatest change in geographical characteristics (i.e., elevation and [channel-slopecatchment slope](#)) and the highest proportion of agricultural and urban land uses among the three catchments. The generated CO_2 was purified in a vacuum system for $\delta^{13}\text{C}_{\text{DOC}}$ and $\Delta^{14}\text{C}_{\text{DOC}}$ analyses, respectively. $\delta^{13}\text{C}_{\text{DOC}}$ was directly determined by the MAT 253 mass spectrometer with an analysis accuracy of $\pm 0.1\%$. For $\Delta^{14}\text{C}_{\text{DOC}}$ analysis, the purified CO_2 was transformed into graphite following the same method of $\Delta^{14}\text{C}_{\text{POC}}$ analysis (Chen et al., 2021) and measured by an accelerator mass spectrometry (AMS) system [within 24 hours](#) with an analytical error of $\pm 3\%$ (Dong et al., 2018).

[Optical analyses on DOM were conducted on river samples.](#) DOM absorbance of river water samples was measured from 250 to 750 nm using a UV (ultraviolet)-visible spectrophotometer (UV-2700, Shimadzu) with a 1 cm quartz cuvette. The UV-visible spectrophotometer was blanked with Milli-Q water prior to data collection. Decadic absorbance values were used to calculate absorption coefficients as below (Poulin et al., 2014):

$$a_{254} = \text{Abs}_{254}/L, \quad (1)$$

Where, a_{254} is the absorption coefficients (cm^{-1}), Abs_{254} is the absorbance at 254 nm, and L represents the path length (cm). Specific UV absorbance at 254 nm (SUVA_{254} ; [reported in units of \$\text{L mg C}^{-1} \text{m}^{-1}\$](#)) was determined according to Weishaar et al. (2003; Table 1):

$$\text{SUVA}_{254} = a_{254}/\text{DOC}. \quad (2)$$

DOM fluorescence was determined with a fluorescence spectrophotometer (F-7000, Hitachi, Japan) to quantify humic-like, fulvic-like, and protein-like fluorescences (Fellman et al., 2010). Refrigerated water samples for DOM absorbance and fluorescence were analyzed within one week after sampling. The fate of humic-like fluorescences may be self-assembly particles or be adsorbed onto minerals, while protein-like fluorescences are tightly associated with biological processes, and biodegraded into inorganic matter (Fellman et al., 2010; He et al., 2016). The excitation wavelengths ranged from 220 to 400 nm at 5 nm increments and emission wavelength from 280 to 500 nm at 2 nm increments. Blanks were measured daily with the same settings to correct excitation-emission matrices (EEMs). Parallel factor analysis (PARAFAC) was performed using N-way toolbox in Matlab (MathWorks, USA) to determine peaks (Andersson and Bro, 2000; Mostofa et al., 2019; Stedmon and Bro, 2008). Detailed procedures and criteria for application and validation of PARAFAC model are available in Yi et al. (2021). Identified PARAFAC model components were further compared with relevant published and reported fluorophores in the OpenFluor database ([Table 1](#); Murphy et al., 2014). Several common indices of DOM composition were determined from EEMs, including fluorescence index (FI; McKnight et al., 2001), humification index (HIX; Ohno, 2002), and freshness index (β/α ; Parlanti et al., 2000; [Table 1](#)).

Table 1. Description of the three components identified by PARAFAC and comparison with previous studies from the OpenFluor database with a minimum similarity score of 0.95 (Murphy et al., 2014).

<u>Component</u>	<u>Ex_{max}</u> (nm)	<u>Em_{max}</u> (nm)	<u>Description and likely structure</u>	<u>Number of matches in Openfluor</u>	<u>Previous studies</u>
<u>C1</u>	<u>295</u>	<u>402</u>	<u>Similar to traditionally defined peak M, marine humic-like component, the products from microbial processes or autochthonous production.</u>	<u>6</u>	<u>C6 (Walker et al., 2009); C4 (Kim et al., 2022); C4 (Li et al., 2016)</u>
<u>C2</u>	<u>275</u>	<u>338</u>	<u>Protein-like (Tryptophan-like) components, commonly found in anthropogenically affected rivers, associated with recent biological production and breakdown products of lignin.</u>	<u>30</u>	<u>C3 (DeFrancesco and Guéguen, 2021); C7 (Lambert et al., 2017); C2 (Du et al., 2019)</u>
<u>C3</u>	<u>325</u>	<u>440</u>	<u>Traditional fulvic-like peaks A and C, humic-like and terrestrial delivered OM, autochthonous, or microbial source.</u>	<u>70</u>	<u>C1 (Amaral et al., 2016); C1 (Ryan et al., 2022); C1 (Shutova et al., 2014)</u>

Table 12. Description of DOM optical parameters used in this study.

<u>Index Name</u>	<u>Calculation</u>	<u>Description</u>	<u>Reference</u>
<u>SUVA₂₅₄</u>	<u>SUVA₂₅₄ = a₂₅₄/DOC concentration. a₂₅₄ is the decadic UV absorbance at 254 nm.</u>	<u>An indicator for the degree of aromaticity. It is positively correlated with aromaticity.</u>	<u>Weishaar et al. (2003)</u>
<u>Fluorescence index (FI)</u>	<u>FI = Em₄₅₀/Em₅₀₀, at Ex 370 nm.</u>	<u>A proxy for DOM source. Higher values (~1.9) associated with microbial source and lower values (~1.4) correlated with terrestrial source.</u>	<u>McKnight et al. (2001)</u>
<u>Humification index (HIX)</u>	<u>HIX = $\frac{\sum 435-480}{\sum 300-345 + \sum 435-480}$, at Ex 254 nm.</u>	<u>Indicator of humification status of DOM. Higher HIX values indicate an increasing degree of humification.</u>	<u>Ohno (2002)</u>

Freshness index (β/α)	$\beta/\alpha = \text{Em}_{380} (\beta) / \text{the Em intensity}$ maximum between 420 and 435 nm at Ex 310 nm (α).	Higher β/α values are commonly associated with increasing contribution of recently microbially produced DOM.	Parlanti et al. (2000)
---------------------------------------	--	---	---------------------------

2.4. Statistical analysis

Normality of the data was first examined by a Shapiro-Wilk test using SPSS 26. Normally distributed data were analyzed by one-way ANOVA with Tukey's post-test for multiple comparisons. Nonparametric data with three or more comparisons were made by Kruskal–Wallis test followed by Holm's Stepdown Bonferroni correction. The Mann–Whitney U test was used for comparison of distributions between two groups. Linear regression was applied using Origin-(Pro)Pro 2021 (student version) to quantify the relationship of DOC concentrations, DOM properties, carbon isotopes, and ion concentrations versus catchment characteristics (i.e., mean ~~channel-slope~~catchment slope, proportion of different land uses, mean annual air temperature, and mean drainage elevation) to identify the predominant influencing factors on DOC dynamics. Moreover, the correlation among water chemistry and catchment characteristics was computed by Pearson's correlation coefficients (R) by Origin-(Pro) 2021 (student version). Values are presented as the mean \pm standard deviation. All statistical tests were performed at 0.05 significance level. In addition, all the statistical analyses were performed again after data from site Y12 were removed to test the possible skew of findings as the sample was significantly affected by rainfall events. If not mentioned otherwise, the results from site Y12 did not skew the findings at the significance level of 0.05.

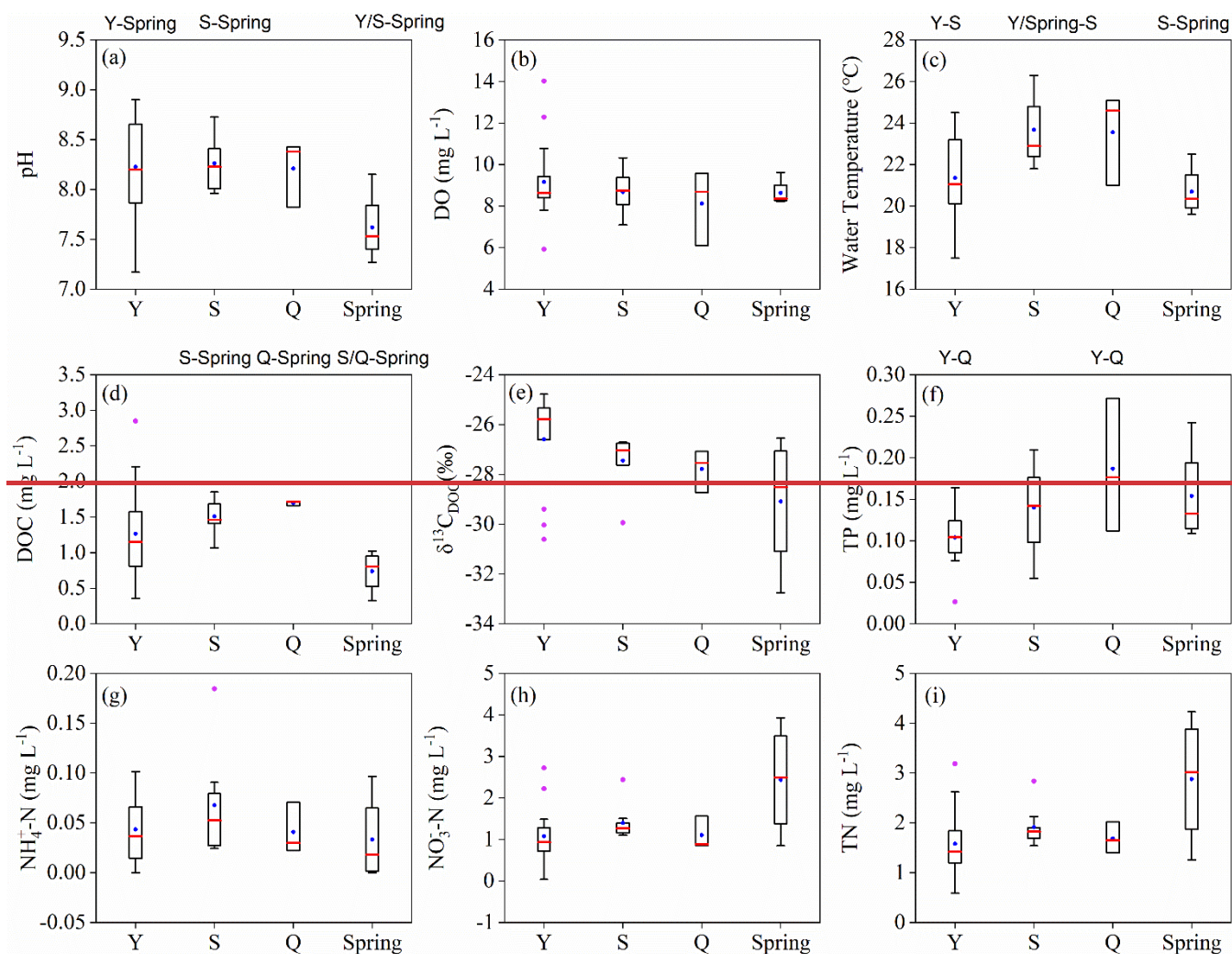
3 Results

3.1 Spatial variations in water chemistry, DOC concentrations, and isotopes of DOC

~~Both river water and spring water were mildly alkaline, with pH varying from 7.2 to 8.9, and pH in the Yinjiang and Shiqian rivers was higher relative to that in the spring water (Fig. 2a).~~ The average DO presented similar values between the Yinjiang River, Shiqian River, Yuqing River, and springs with the majority of the river water samples being DO supersaturated (i.e., higher than 100%) (Fig. 2b2a). ~~The Shiqian River had a higher water temperature than that in the Yinjiang River and spring water (Fig. 2e).~~ A strong positive correlation was found between EC and $\delta^{18}\text{O}$ for the river water and spring water ($p < 0.001$; Fig. S2a), and the $\delta^{18}\text{O}$ showed an increasing trend from upstream to downstream in the Yinjiang River (Fig. S2b). ~~The Cl^- concentrations showed an increasing trend in the Yinjiang, Shiqian, and Yuqing rivers, with an average of ranging from $2.56 \pm 1.03 \text{ mg L}^{-1}$, $3.76 \pm 0.83 \text{ mg L}^{-1}$, and $4.55 \pm 0.81 \text{ mg L}^{-1}$, respectively (Fig. 2b). In addition, the Cl^- concentration in the spring water ($4.48 \pm 2.08 \text{ mg L}^{-1}$) was significantly higher than that in the Yinjiang River ($p < 0.05$; Fig. 2b). The TP concentrations varied significantly in the study area, ranging from 0.03 to 0.27 mg L^{-1} , and the average TP concentration was $0.19 \pm 0.08 \text{ mg L}^{-1}$ in the Yuqing River, considerably higher than that in the Yinjiang River ($0.10 \pm 0.03 \text{ mg L}^{-1}$; Fig. 2f). In addition, the TP concentrations ranged between 0.11 to 0.24 mg L^{-1} in the springs, averaging at $0.15 \pm 0.06 \text{ mg L}^{-1}$.~~ Within the rivers and springs, the water displayed similar $\text{NH}_4^+\text{-N}$ concentrations with the average-mean value at $0.04 \pm 0.03 \text{ mg L}^{-1}$,

30 $0.07 \pm 0.05 \text{ mg L}^{-1}$, $0.04 \pm 0.03 \text{ mg L}^{-1}$, and $0.03 \pm 0.04 \text{ mg L}^{-1}$ in the Yinjiang, Shiqian, Yuqing rivers, and spring water (Fig. 2g2c). In springs, the average NO_3^- -N and TN concentrations were $1.93 \pm 0.93 \text{ mg L}^{-1}$ and $2.88 \pm 1.30 \text{ mg L}^{-1}$, respectively, higher than the average in the three rivers ($1.15 \pm 0.36 \text{ mg L}^{-1}$ for NO_3^- -N and $1.77 \pm 0.50 \text{ mg L}^{-1}$ for TN), though there were no significant differences for the overall NO_3^- -N and TN concentrations between the rivers and springs ($p > 0.05$; Figs. 2h and 2id).

35



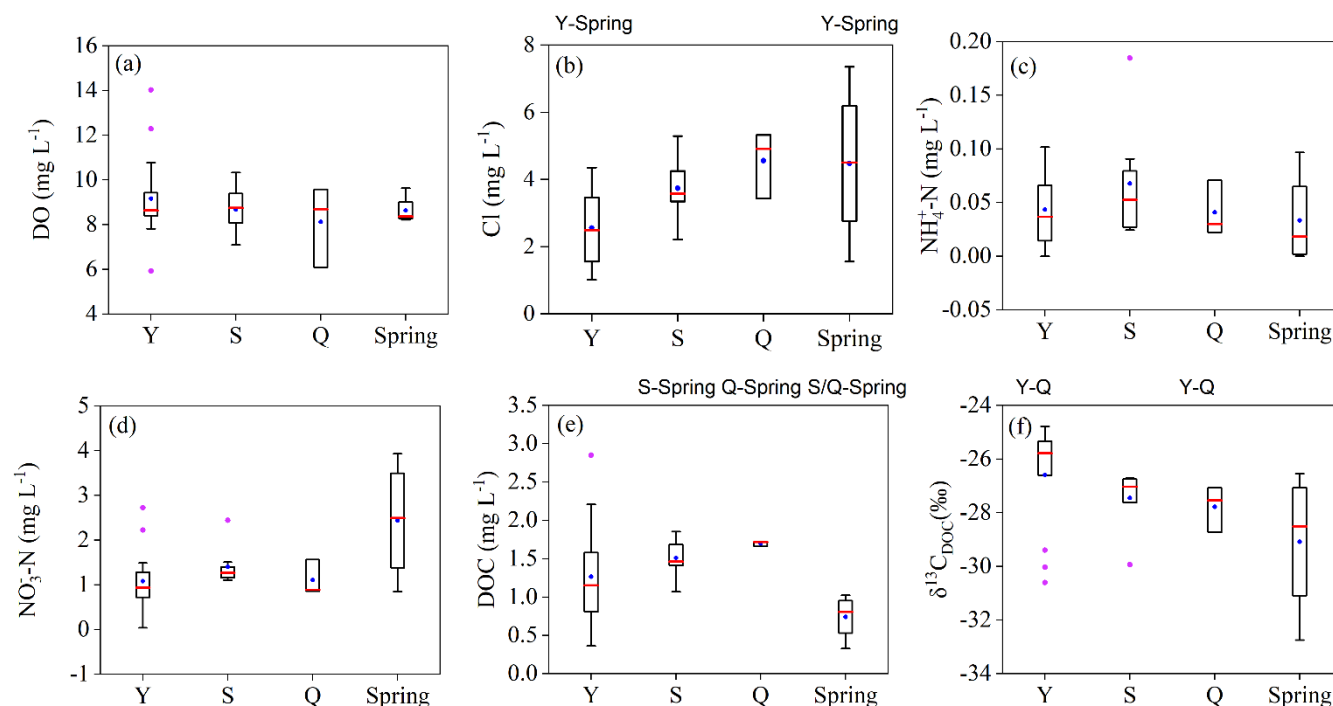


Figure 2. Spatial variations in water chemistry in the Yinjiang (Y), Shiqian (S), Yuqing (Q) rivers, and springs. (a) pH_{DO} , (b) DOC_{Cl^-} , (c) $\text{NH}_4^+\text{-N}$, (d) $\text{NO}_3^-\text{-N}$, (e) $\delta^{13}\text{C}_{\text{DOC}}$, and (f) $\delta^{13}\text{C}_{\text{DOC}}$. In each box plot, the end of the box represents the 25th and 75th percentiles, the blue solid dot represents the average mean, the horizontal line inside the box represents the median, and whiskers represent 1.5 times the upper and lower interquartile ranges (IQR). The magenta solid dot represents the outlier (data points outside of the 1.5 interquartile ranges). Letters above the boxes represent significant differences between the grouping of river and/or spring water based on statistical analyses at the significance level of 0.05 (e.g., Y-Spring above panel (ab) indicates that the pH_{Cl^-} in river water of the Yinjiang River was significantly different from that in the spring water).

DOC concentrations in the three study rivers varied from 0.36 to 2.85 mg L⁻¹ with the highest average mean concentration in the Yuqing River (1.70 ± 0.04 mg L⁻¹; Fig. 2d2e), followed by intermediate in the Shiqian River (1.51 ± 0.22 mg L⁻¹), and lowest in the Yinjiang River (1.27 ± 0.66 mg L⁻¹). The DOC concentrations in spring water were significantly lower than that in the surface water of the Shiqian and Yuqing rivers ($p < 0.05$; Fig. 2d2e), and the average DOC concentration in spring water (0.74 ± 0.30 mg L⁻¹) was also lower than the average DOC concentration in the Yinjiang River (1.27 ± 0.66 mg L⁻¹), although not significantly different, indicating there must be other sources of DOC besides groundwater to the rivers. An analysis of Pearson's correlation coefficients revealed significant pairwise interdependencies between DOC and catchment characteristics (Fig. S3 in the Supplement). There is a strong negative correlation between DOC and average channel slope in the rivers (Fig. 3a). Conversely, the proportion of urban and agricultural land uses displayed a positive correlation with DOC (Fig. 4a). In addition, DOC was positively related to increasing anthropogenically derived Cl⁻ concentrations and NH₄⁺-N concentrations (Figs. 4b and c), indicating the anthropogenic impacts on DOC export.

For $\delta^{13}\text{C}_{\text{DOC}}$, although the average $\delta^{13}\text{C}_{\text{DOC}}$ values showed a decreasing trend in the Yinjiang River, Shiqian River, Yuqing River, and springs, averaging at -26.6 ± 1.8 ‰, -27.5 ± 1.1 ‰, -27.8 ± 0.9 ‰, and -29.1 ± 2.7 ‰, respectively, there were

no statistically significant differences on the overall $\delta^{13}\text{C}_{\text{DOC}}$ values between the three rivers and springs ($p > 0.05$; Fig. 2e2f).

60 Unlike DOC, a strong negative correlation with mean channel slope was found for $\delta^{13}\text{C}_{\text{DOC}}$ (Fig. 3b). In addition, there was a strong negative correlation between $\delta^{13}\text{C}_{\text{DOC}}$ and $\text{NO}_3^- \text{-N}$ (Fig. 4d). Moreover, $\delta^{13}\text{C}_{\text{DOC}}$ was negatively correlated with DOC concentrations (Fig. 5a), but positively correlated with $\delta^{13}\text{C}_{\text{POC}}$ of these three rivers (Fig. 5b). The $\Delta^{14}\text{C}_{\text{DOC}}$ of the Yinjiang River varied widely from -109 ‰ to 33 ‰ with an average of -54.7 ± 39.9 ‰ (Table 23). The radiocarbon ages of the DOC ranged from 928 years BP (i.e., before present) to present, and the youngest $\Delta^{14}\text{C}_{\text{DOC}}$ (33.3 ‰) was found at site Y12. Similar to $\delta^{13}\text{C}_{\text{DOC}}$, $\Delta^{14}\text{C}_{\text{DOC}}$ was positively related to average channel slope (Fig. 3c), and there was a positive trend between channel slope and $\Delta^{14}\text{C}_{\text{POC}}$ (Fig. 3d). In addition, $\Delta^{14}\text{C}_{\text{DOC}}$ was positively correlated with $\Delta^{14}\text{C}_{\text{POC}}$ (Fig. 5c). No significant correlations were found between $\Delta^{14}\text{C}_{\text{POC}}$ and proportion of urban and agricultural land uses or ions which reflect human disturbances (e.g., anthropogenically derived Cl⁻ concentration, $\text{NH}_4^+ \text{-N}$, and $\text{NO}_3^- \text{-N}$; Fig. S3).

70

Table 23. $\Delta^{14}\text{C}_{\text{DOC}}$ and age of DOC in the Yinjiang River.

<u>River</u>	<u>Samples</u>	<u>$\Delta^{14}\text{C}_{\text{DOC}}$ (‰)</u>	<u>DOC-Age (yr BP)</u>	<u>SD of DOC-Age (yr BP)</u>
	<u>Y1</u>	<u>-92</u>	<u>774</u>	<u>25</u>
	<u>Y2</u>	<u>-74</u>	<u>616</u>	<u>23</u>
	<u>Y3</u>	<u>-52</u>	<u>430</u>	<u>27</u>
	<u>Y5</u>	<u>-40</u>	<u>326</u>	<u>27</u>
<u>Yinjiang</u>	<u>Y9</u>	<u>-59</u>	<u>491</u>	<u>27</u>
<u>River</u>	<u>Y11</u>	<u>-51</u>	<u>417</u>	<u>27</u>
	<u>Y12</u>	<u>33</u>	<u>Modern</u>	<u>28</u>
	<u>Y13</u>	<u>-49</u>	<u>401</u>	<u>24</u>
	<u>Y14</u>	<u>-109</u>	<u>928</u>	<u>28</u>

3.2. Riverine DOM Optical Properties

75

The average SUVA_{254} were 3.3 ± 1.1 , 3.1 ± 1.8 , and $2.8 \pm 0.3 \text{ L mg}^{-1} \text{ m}^{-1}$ in the Yinjiang, Shiqian, and Yuqing rivers, respectively. Although no spatial differences in SUVA_{254} were found across the three rivers (Fig. S4a), SUVA_{254} showed an increasing trend with increasing mean channel slope (Fig. 3c), which indicated that DOM in the lower reaches with a gentle channel slope was less aromatic. Furthermore, there was a significant negative correlation between SUVA_{254} and proportion of urban and agricultural land uses (Fig. 6a). Two humic-like fluorescence components (C1 and C3) and one

protein-like fluorescence component (C2) were identified by PARAFAC model in these three rivers (Fig. 7S3; Table S1). Component C1 is similar to traditionally defined peak M and sourced from microbial processes or autochthonous production (Kim et al., 2022; Li et al., 2016; Walker et al., 2009). Component C2 was previously related to recent biological production (DeFrancesco and Guéguen, 2021; Du et al., 2019; Lambert et al., 2017). C3 was the most widely found component in previous research among three fluorescence components, and was identified as traditional fulvic-like peaks A and C, representing terrestrial delivered OM or autochthonous microbial sourced OM (Amaral et al., 2016; Ryan et al., 2022; Shutova et al., 2014). Although C1 and C2 varied more widely in the Yinjiang River compared with the Shiqian and Yuqing rivers, the two fluorescence components did not show a statistical difference among the three rivers ($p > 0.05$; Figs. 7a-S3a and b). However, a greater proportion of C3 was found in the Shiqian and Yuqing rivers, exhibiting a distinctive signature compared with the Yinjiang River (Fig. 7eS3c). ~~The proportion of C3 did not show any significant difference between the Yuqing River and the other two rivers (the Yinjiang and Shiqian rivers). The fluorescence components did not exhibit any significant variations with changing channel slope (Fig. S3), but C1 and C2 were positively or negatively related to proportion of urban and agricultural land uses (Figs. 6b and c).~~

~~The average SUVA₂₅₄ were 3.3 ± 1.1 , 3.1 ± 1.8 , and 2.8 ± 0.3 L mg⁻¹ m⁻¹ in the Yinjiang, Shiqian, and Yuqing rivers, respectively, without. Although no significant spatial differences in SUVA₂₅₄ were found across the three rivers ($p > 0.05$; Fig. 3a).~~ For the fluorescence indexes, the overall fluorescence property did not vary significantly among the three rivers ($p > 0.05$; Figs. S4b3b, c, and d). FI varied in a narrow range compared with β/α and HIX. FI of DOM ranged from 1.66 to 1.94, averaging 1.78 (Fig. S4d3d), indicating a mixture of DOM of terrestrial and microbial origins. In comparison, β/α varied from 0.70 to 1.22 (Fig. S4b3b) and HIX varied from 0.33 to 0.65 (Fig. S4e3c), with greater variability among the three rivers. ~~Although no significant correlation was observed between channel slope and the fluorescence indexes, they (except for FI) were found to be closely related to land use pattern (Figs. 6d, e, f, and S3). The less recently produced DOM (β/α) in the urban and agricultural streams was also characterized by a higher proportion of C1 and lower proportion of C2 (Fig. S3).~~

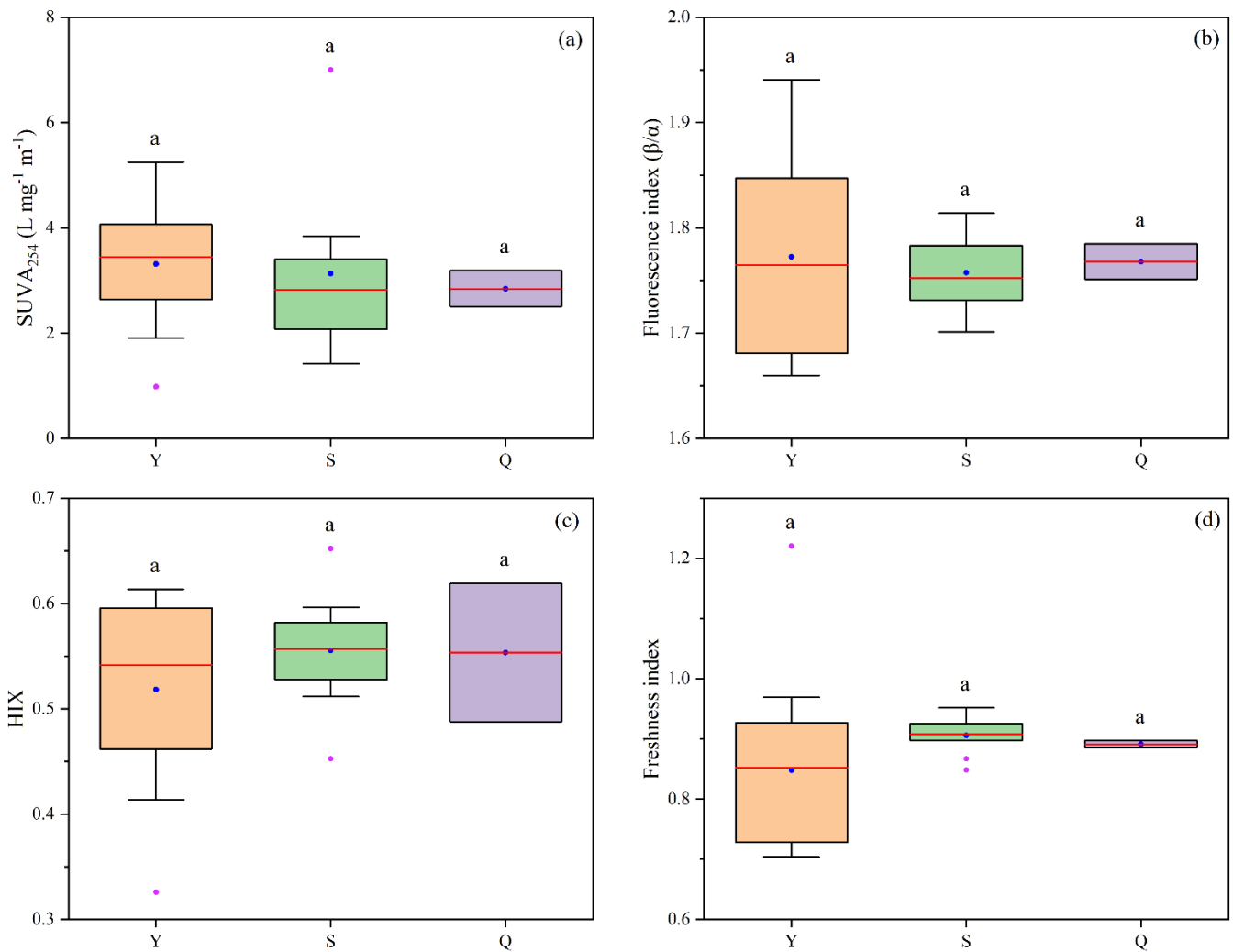


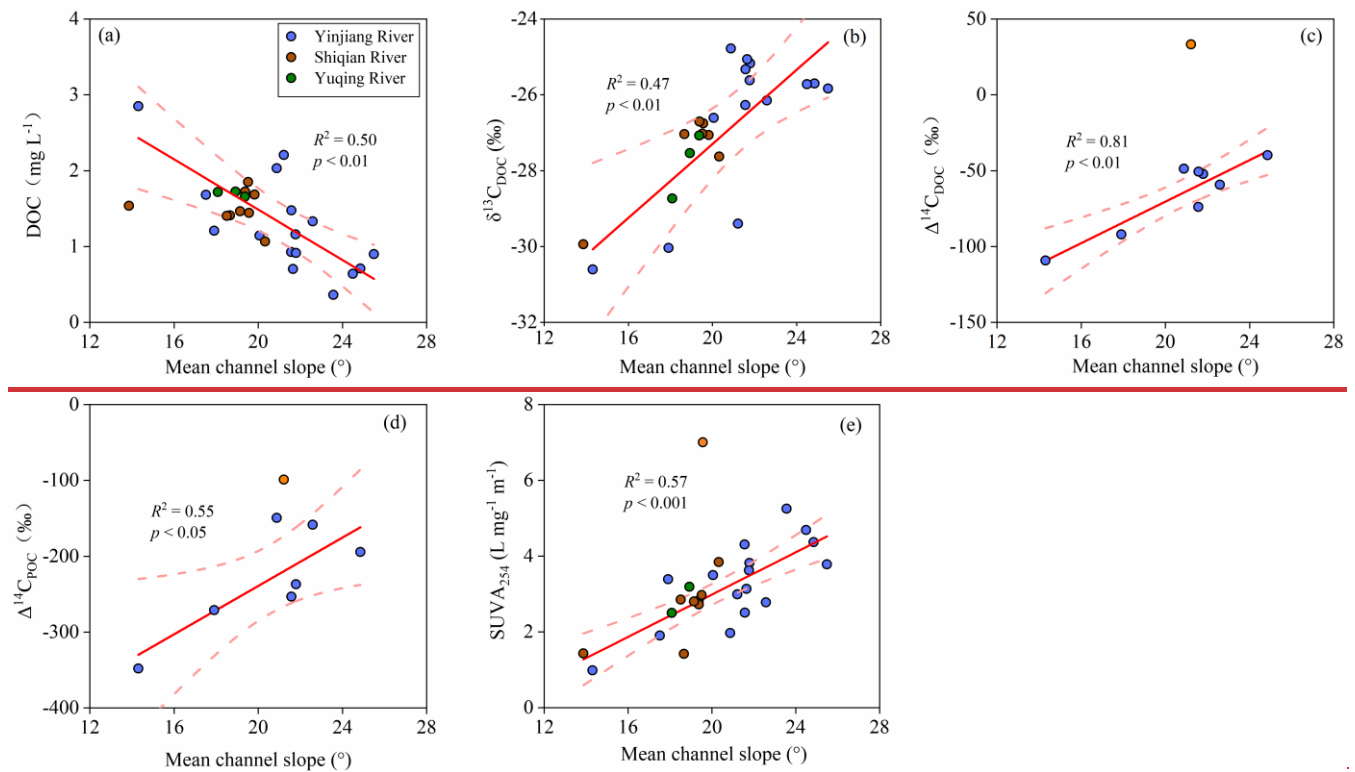
Figure 3 Spatial variations in DOM property in the Yinjiang (Y), Shiqian (S), and Yuqing (Q) catchments. (a) $SUVA_{254}$, (b) freshness index (β/α), (c) HIX, and (d) fluorescence index. In each box plot, the end of the box represents the 25th and 75th percentiles, the blue solid dot represents the average, the horizontal red line represents the median, and whiskers represent 1.5 IQR. The magenta solid dot represents the outlier, which is outside of the 1.5 interquartile ranges. Different lowercase letters above the boxes denote significant differences across rivers based on statistical analysis with $p < 0.05$.

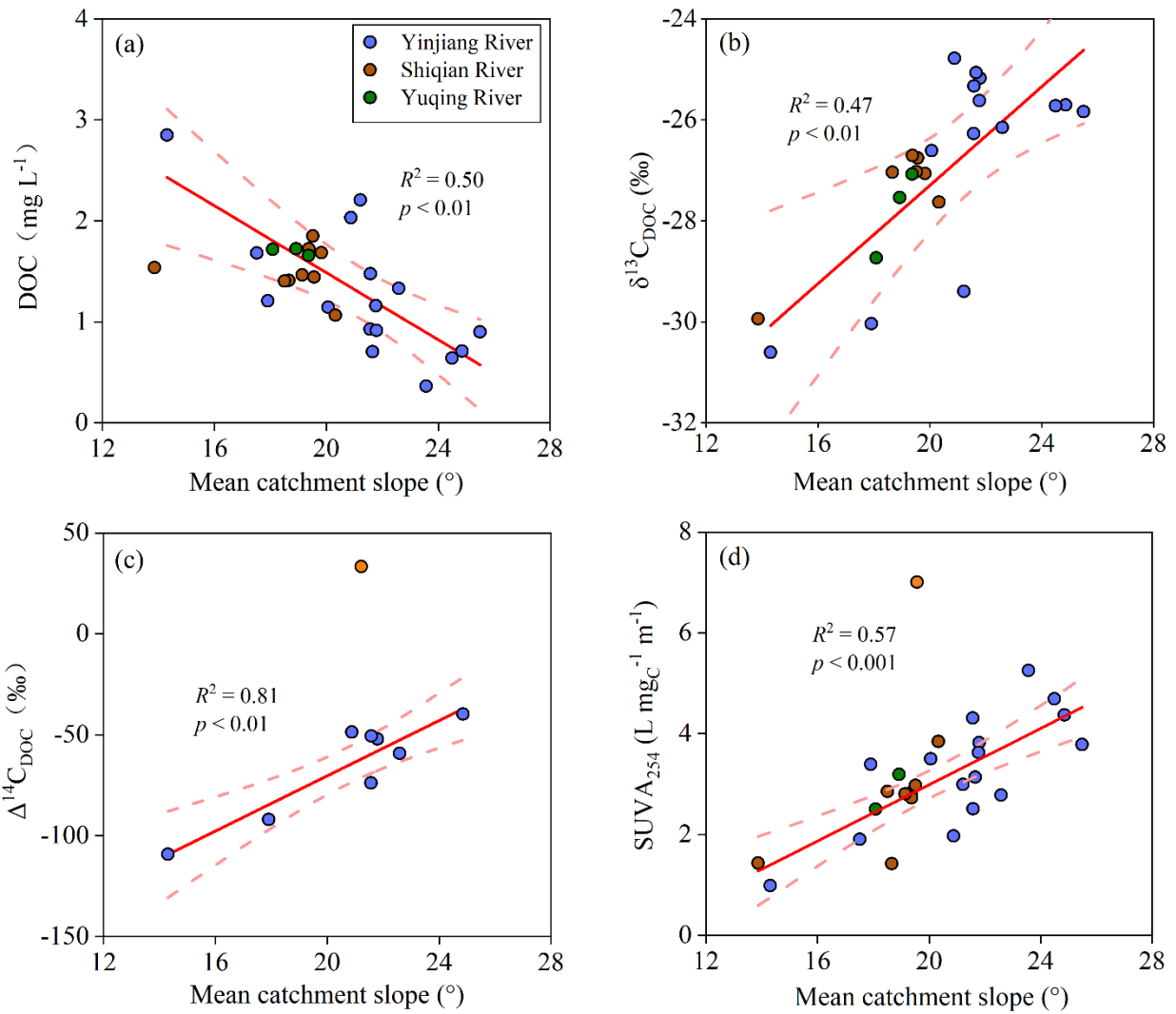
3.3. Factors influencing on DOC

An analysis of Pearson's correlation coefficients revealed significant pairwise interdependencies between DOC and catchment characteristics were identified in the three study rivers (Fig. S4 in the Supplement). There is a strong negative correlation between DOC and average channel slope catchment slope in the rivers ($p < 0.01$; Fig. 4a). Conversely, the proportion of urban and agricultural land uses displayed a positive correlation with DOC ($p < 0.01$; Fig. 5a). In addition, DOC was positively related to increasing anthropogenically derived Cl^- concentrations ($p < 0.05$; Fig. 5b) and NH_4^+-N concentrations ($p < 0.001$; Fig. S5a), indicating the anthropogenic impacts on DOC export. Unlike DOC, a significant negative correlation with mean channel slope catchment slope was found for $\delta^{13}C_{DOC}$ ($p < 0.001$; Fig. 4b). In addition, there was a significant negative correlation between $\delta^{13}C_{DOC}$ and $NO_3^- - N$ ($p < 0.001$; Fig. S5b). Moreover, $\delta^{13}C_{DOC}$ was negatively correlated with DOC concentrations ($p < 0.01$; Fig. 6a), but positively correlated with $\delta^{13}C_{POC}$ in these three rivers ($p <$

0.05; Fig. 6b). Similar to $\delta^{13}\text{C}_{\text{DOC}}$, $\Delta^{14}\text{C}_{\text{DOC}}$ was positively related to mean channel slope ($p < 0.01$; Fig. 4c), and there was a positive correlation trend between channel slope and $\Delta^{14}\text{C}_{\text{POC}}$ ($p < 0.001$; Fig. S6). Additionally, $\Delta^{14}\text{C}_{\text{DOC}}$ was positively correlated with $\Delta^{14}\text{C}_{\text{POC}}$ ($p < 0.01$; Fig. 6c), and no significant correlations were detected between $\Delta^{14}\text{C}_{\text{POC}}$ and proportion of urban and agricultural land uses or ions which reflect human disturbances (e.g., anthropogenically derived Cl^- concentration, $\text{NH}_4^+\text{-N}$, and $\text{NO}_3^-\text{-N}$; $p > 0.05$; Fig. S4).

SUVA₂₅₄ showed an increasing trend with increasing mean catchment slope ($p < 0.001$; Fig. 4d). Furthermore, there was a significant negative correlation between SUVA₂₅₄ and proportion of urban and agricultural land uses ($p < 0.001$; Fig. 7a). Although no significant correlation was observed between the fluorescence indexes and catchment slope and the fluorescence indexes, they (except for FI) were found to be closely related to land use pattern ($p < 0.05$; Figs. 7b, c, d, and S4). For example, HIX had a positive correlation with urban and agricultural land uses ($p < 0.001$; Fig. 7e), while β/α had a negative correlation with urban and agricultural land uses ($p < 0.01$; Fig. 7d). In addition, the fluorescence components did not exhibit significant variations with changing catchment slope ($p > 0.05$; Fig. S4), but the percentage of C1 and C2 were positively ($p < 0.05$; Fig. 7b) or negatively ($p < 0.01$; Fig. 7c) related to the proportion of urban and agricultural land uses. The less recently produced DOM (β/α) in the urban and agricultural streams was also characterized by a higher proportion of C1 and a lower proportion of C2 ($p < 0.001$; Fig. S4). However, unlike C1 and C2, C3 was not significantly correlated with urban and agricultural land uses ($p > 0.05$; Fig. S4).





135

Figure 34. Mean ~~channel-catchment~~ slope ($^{\circ}$) controls on (a) DOC concentrations, (b) stable carbon isotopes of DOC ($\delta^{13}\text{C}_{\text{DOC}}$), (c) radiocarbon isotope of DOC ($\Delta^{14}\text{C}_{\text{DOC}}$), (d) radiocarbon isotope of POC ($\Delta^{14}\text{C}_{\text{POC}}$), and (e) SUVA₂₅₄. The $\Delta^{14}\text{C}_{\text{DOC}}$ and $\Delta^{14}\text{C}_{\text{POC}}$ are only available for the Yinjiang River. Outliers in orange were excluded from analyses as they were samples at site Y12 (Fig. 1a) collected after a rainfall event in panels (c) and (d) and sample collected at site S3 (Fig. 1a) in panel (d) due to the high influence by road construction, which was evidenced by high POC and TSM concentration (Chen et al., 2021). The statistical test used a significance level of 0.05.

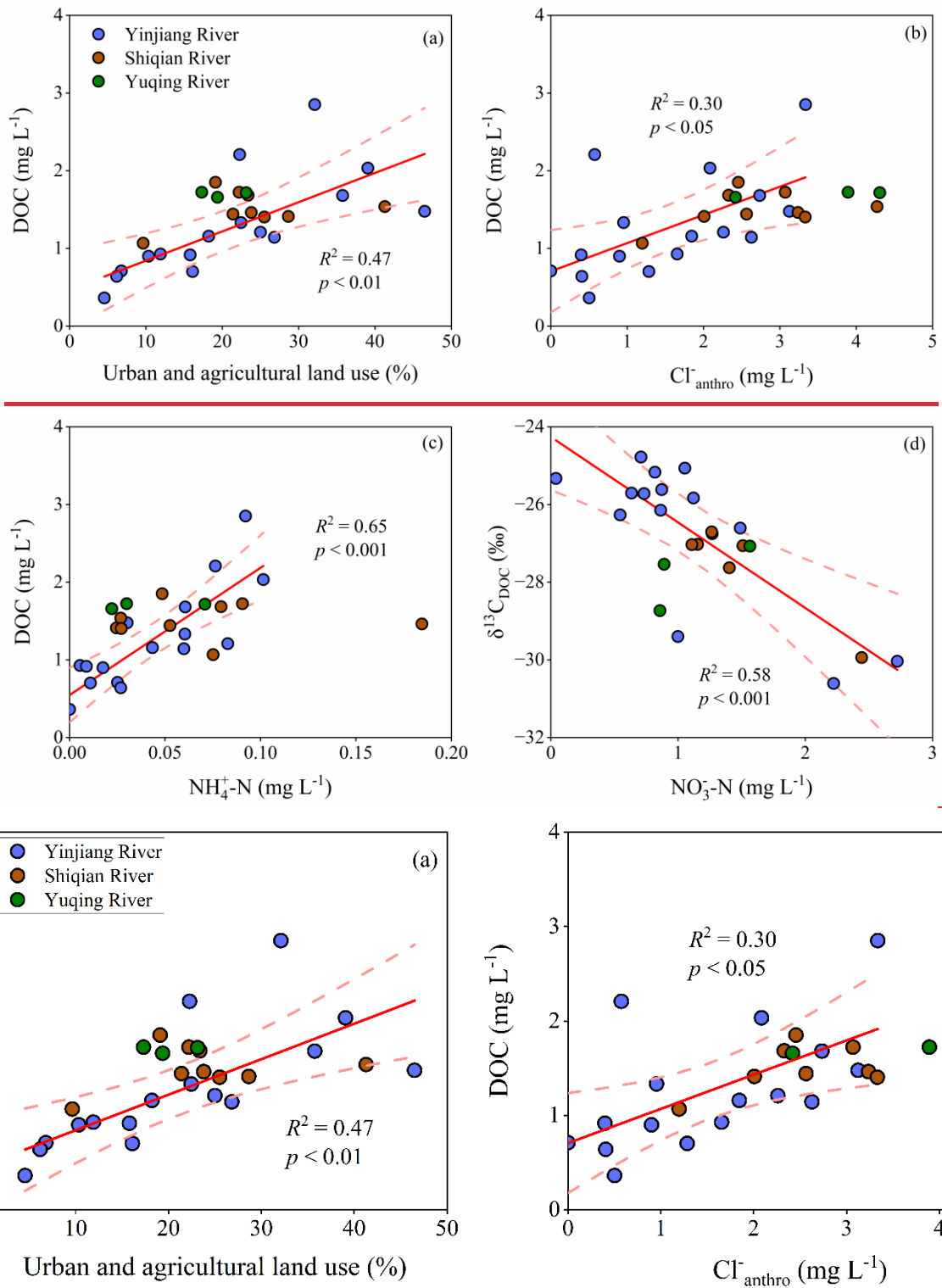


Figure 45. Land use pattern and anthropogenic impacts on DOC concentrations, indicated by relationships between DOC and (a) proportion of urban and agricultural land uses, and (b) anthropogenic Cl^- concentration (i.e., $\text{Cl}^-_{\text{anthro}}$, calculated as the total Cl^- concentration minus atmospheric contributed Cl^- concentration, which is the lowest Cl^- concentration at site Y5 in the Yinjiang River), (c) NH_4^+-N concentrations, and (d) relationship between NO_3^--N and $\delta^{13}\text{C}_{\text{DOC}}$ in these three rivers. The statistical test used a significance level of 0.05.

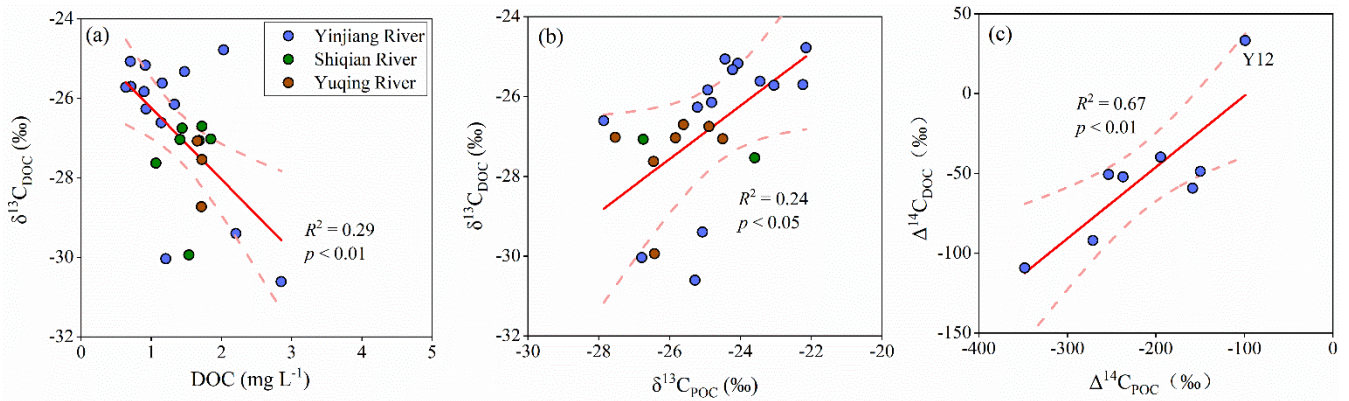


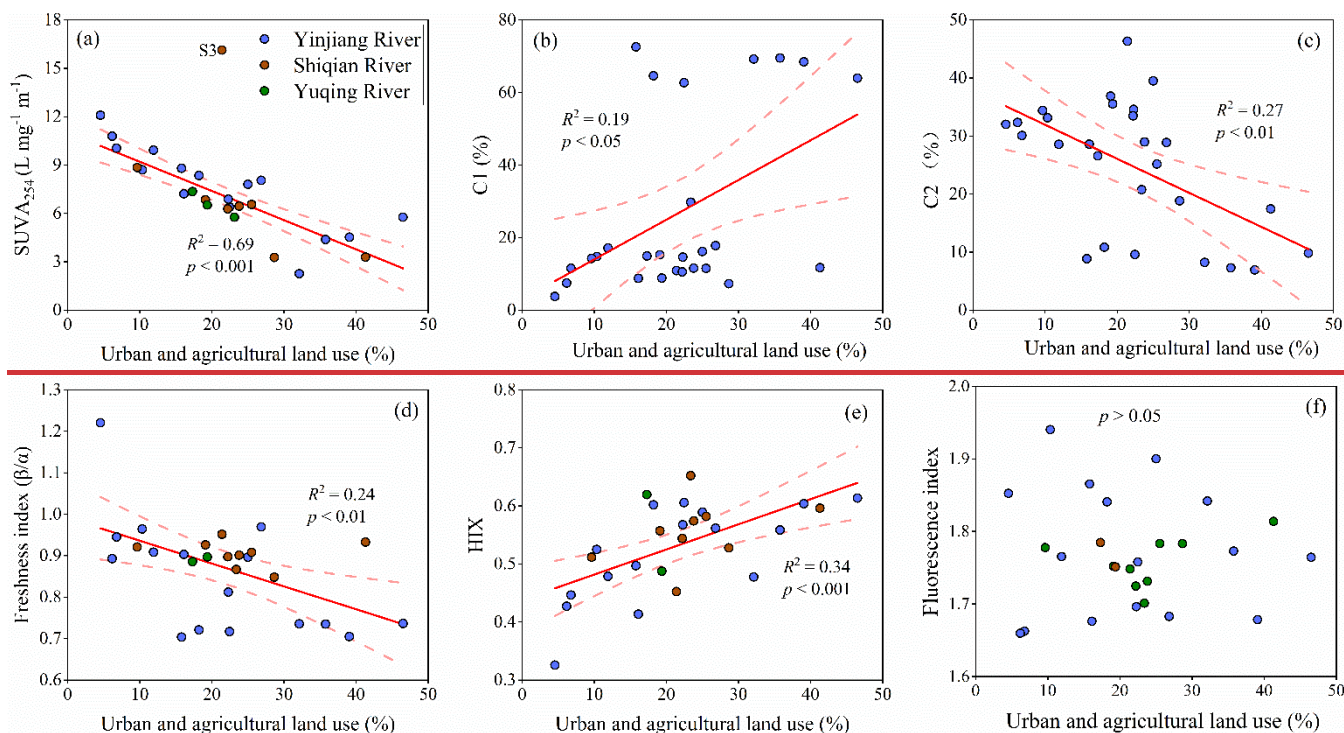
Figure 56. Scatter plot showing (a) $\delta^{13}\text{C}_{\text{DOC}}$ versus DOC in river water, (b) $\delta^{13}\text{C}_{\text{DOC}}$ against $\delta^{13}\text{C}_{\text{POC}}$ in the Yinjiang River (Y), Shiqian River (S), and Yuqing River (Q), and (c) relationship between $\Delta^{14}\text{C}_{\text{POC}}$ and $\Delta^{14}\text{C}_{\text{DOC}}$ in the Yinjiang River. For panel (c) the DOC with modern age at site Y12 was shown in the top-right corner. The statistical test used a significance level of 0.05. [Details on \$\delta^{13}\text{C}_{\text{POC}}\$ and \$\Delta^{14}\text{C}_{\text{POC}}\$ are available in our earlier work published research \(Chen et al., 2021\).](#)

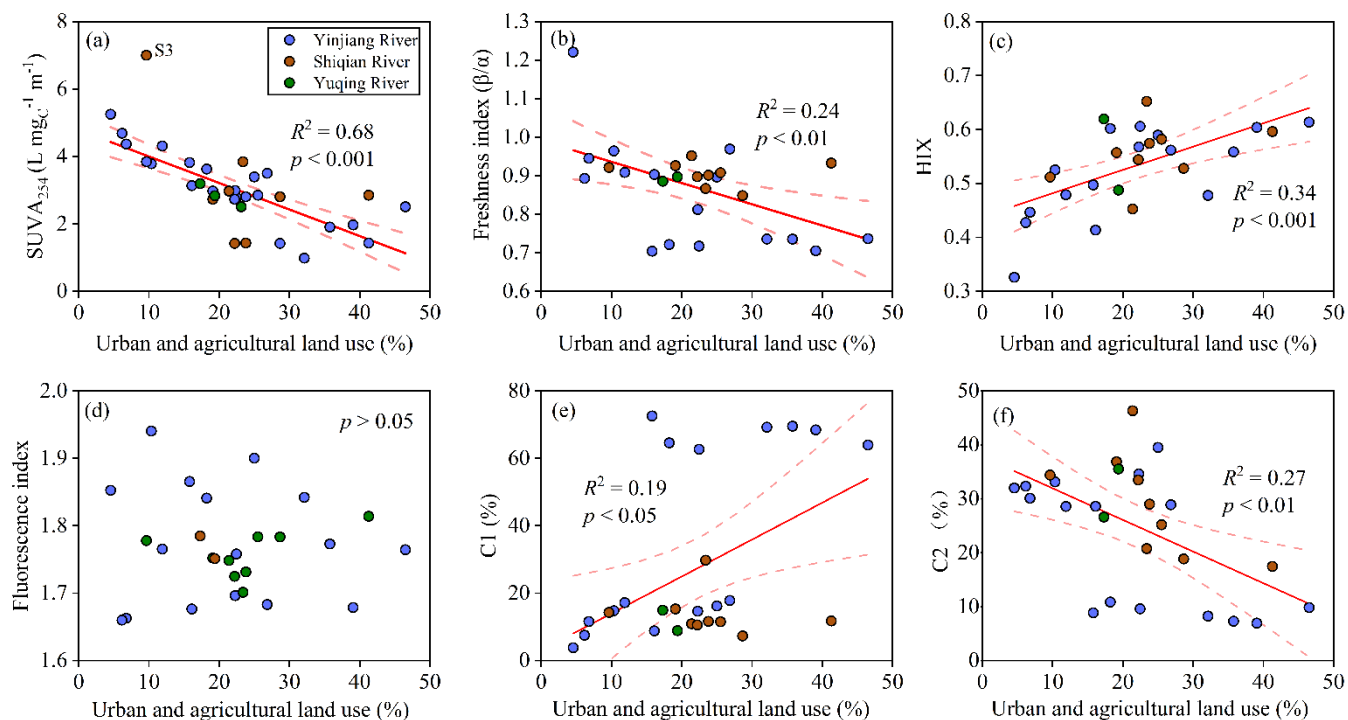
150

Table 2. $\delta^{14}\text{C}_{\text{DOC}}$ and age of DOC in the Yinjiang River.

River	Samples	$\delta^{14}\text{C}_{\text{DOC}}$ (‰)	DOC Age (yr BP)	SD of DOC Age (yr BP)
Yinjiang River	Y1	92	774	25
	Y2	74	616	23
	Y3	52	430	27
	Y5	40	326	27
	Y9	59	491	27
	Y11	51	417	27
	Y12	33	Modern	28
	Y13	49	401	24
	Y14	109	928	? 28

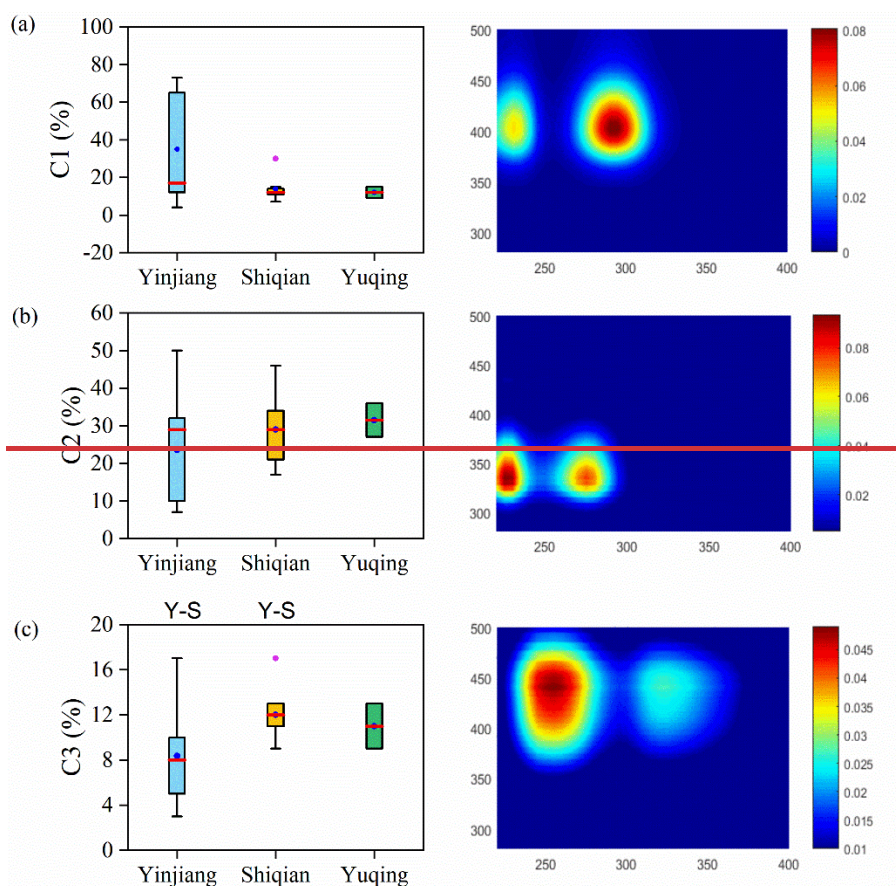
155





160

Figure 67. Land use pattern impacts on DOM character. (a) $SUVA_{254}$, (e) $C2$, and (db) freshness index (β/α), and (f) $C2$ decreased with the increasing proportion of urban and agricultural land uses. Outlier (site S3) was excluded from analysis in panel (a) as the sample was strongly influenced by road construction, which was evidenced by high POC and TSM concentration (Chen et al., 2021). (b) $C1$ and (ec) humification index (HIX) and (e) $C1$ were positively related to the increasing proportion of urban and agricultural land use areas. However, there was no significant correlation between (fd) fluorescence index and the proportion of urban and agricultural land uses.



165

170 **Figure 7.** Fluorescence components identified by the PARAFAC model for the three rivers. The abscissa of the figure on the right is excitation wavelength (nm), and the ordinate is emission wavelength (nm). Fluorescence peaks are C1 (295/402), C2 (275/338), and C3 (325/440), with wavelengths (nm) for excitation and emission, respectively. In each box plot, the end of the box represents the 25th and 75th percentiles, the blue solid dot represents the average, the horizontal red line represents the median, and whiskers represent 1.5 IQR. The magenta solid dot represents the outlier, which is outside of the 1.5 interquartile ranges. Letters above the boxes represent significant difference between the grouping of rivers based on statistical analysis with $p < 0.05$.

4 Discussion

4.1 Geomorphologic controls on DOC export

175 Channel-Catchment slope is an important predictor of DOC concentrations since channel-slopecatchment slope is a key factor in affecting runoff velocity and thus controlling ~~the~~ water retention time (Harms et al., 2016; Mu et al., 2015; Mzobe et al., 2020). A shorter water retention time in high relief regions can reduce DOC export from soil organic matter stocks (Fig. 3a4a; Connolly et al., 2018) and mobilize ~~fresher~~ organic carbon with younger ages (Figs. 3e-4c and 3dS6), which can be rapidly mineralized (Catalán et al., 2016). In comparison, when relatively ^{14}C -depleted DIC and CO_2 (aq) derived from carbonate weathering is incorporated into primary production in low relief regions, it would also produce aged organic carbon (Fig. 3dS6; 180 Chen et al., 2021). Furthermore, the aged DOC in river systems has been attributed to input of deeper, older soil organic matter inputs through deeper flow paths into rivers~~old soil organic matter in deeper layer input into rivers through deeper flow paths~~ (Barnes et al., 2018; Masiello and Druffel, 2001). This also indicates that low relief regions with higher hydrologic connectivity in river network are likely the major source of riverine DOC (Connolly et al., 2018; Mzobe et al., 2020). The shallow soil depth in steeper regions may also be an influencing factor in constraining DOC generation (Lee et al., 2019). The correlation 185 of SUVA_{254} with mean channel-slopecatchment slope suggests that steeper catchments tend to export DOC with less-more aromaticity (Fig. 3e4d), indicating the geomorphologic effects on DOM characteristics (Harms et al., 2016). Previous research has reported that the aromatic content of DOM tends to decline as whenif DOM is typically derived from deeper soil profiles (Inamdar et al., 2011), which is attributed to the sorption of aromatic DOM when subsurface flow water percolates through the soil profile (Inamdar, 2011). Channel-slopeCatchment slope in a number of Arctic watersheds has also been found to be 190 positively associated with the FI, which was possibly due to the differences in soil characteristics (e.g., volumetric water content and soil temperature) and the resulting changing extent of microbial processing (Harms et al., 2016). Moreover, channel-slopecatchment slope was negatively associated with terrestrial humic-like organic material due to the effects of climate and organic layer thickness (Harms et al., 2016). However, there were no similar correlation between channel-slopecatchment slope and fluorescence components/indexes in this study, demonstrating the likely complicated 195 mechanisms (e.g., soil property, catchment characteristics, and anthropogenic activities) in regulating DOM composition. DOC in low relief regions was characterized by more ^{13}C depleted values, which may be due to the greater inputs of C3-derived organic carbon (e.g., from rice).

Microbial degradation has been well recognized as a critical factor in controlling organic material preservation in soils (Barnes et al., 2018; Eusterhues et al., 2003). Previous studies have reported a decreasing $\delta^{13}\text{C}_{\text{DOC}}$ with ~~increasing a corresponding increase in~~ DOC concentrations (Fig. ~~5a6a~~) ~~in spring water due to~~ ~~with microbial degradation in spring water~~ (Nkoue Ndondo et al., 2020) and for TOC in soil profiles (Lloret et al., 2016; Nkoue Ndondo et al., 2020). This can be explained by the lateral transport of DOC from microbially active soil horizons into rivers (Lambert et al., 2011), resulting in the enhanced biodegradation of DOC with the preferential removal of ^{12}C . As a result, the remaining DOC ~~with~~ lower concentrations is typically characterized by a heavier $\delta^{13}\text{C}_{\text{DOC}}$ (Fig. 5a; Nkoue Ndondo et al., 2020; Opsahl and Zepp, 2001), ~~which further indicat~~ ~~ing that the low-concentration DOC in the three rivers is the result of substantial microbial degradation.~~

Groundwater with large SOC inputs due to highly active microbial activities has long been recognized as a significant source of DOC, ~~especially under warm and wet conditions~~ (McDonough et al., 2020; Shen et al., 2014). Several studies have reported increased groundwater contributions with distance downstream at the watershed scale (Asano et al., 2020; Cowie et al., 2017; Iwasaki et al., 2021), ~~suggesting the important role of groundwater in mountainous rivers, though this is not a general phenomenon due to great differences in catchment characteristics (e.g., bedrock and topography) and climate (e.g., precipitation; Somers and McKenzie, 2020).~~ The positive relationship between conductivity and $\delta^{18}\text{O}$ ~~is largely~~ due largely to the mixing of two end-members ~~(i.e., high-conductivity with ^{18}O -enriched groundwater and low-conductivity with $\delta^{18}\text{O}$ -depleted headstream water)~~ for river water (Fig. S2a) (Lambs, 2004), though it may also indicate the ~~impact of~~ evaporation processes in the catchment (Zhong et al., 2020). ~~The trend showed that one of the end-members was characterized by high conductivity with ^{18}O -enriched (groundwater), and the other was characterized by low conductivity with $\delta^{18}\text{O}$ -depleted headstream water. Similar relationships were also identified in other mountainous rivers (Lambs, 2004).~~ In addition, ~~the~~ $\delta^{18}\text{O}$ values increased progressively from upstream to downstream (Fig. S2b), which also validates the two sources (i.e., headstream water, and groundwater) of downstream river water, indicating that groundwater was likely an important contributor to downstream river water. ~~Despite that groundwater inflow seemed to be of great importance to river water~~ ~~However,~~ groundwater ~~DOC~~ was likely not the ~~primary most important~~ source of riverine DOC due to the relatively low groundwater DOC concentrations as compared with riverine DOC concentrations (Fig. ~~2d2e~~; ~~the groundwater is shown as "spring"~~). Moreover, the groundwater contribution was probably much less significant in the wet season, even in catchments where DOC is mainly derived from groundwater (Lloret et al., 2016). Thus, we infer that groundwater is an important but not a ~~erucial~~ ~~primary~~ source of riverine DOC in the three study rivers.

~~It is worth noting that~~ ~~Furthermore,~~ the decrease in DOC concentration with increasing mean ~~channel slope~~ ~~catchment slope~~ (Fig. ~~3a4a~~) may also be controlled by annual air temperature and land use pattern (Fig. S3S4). Changing exports of ~~terrestrially~~ ~~terrestrially~~-derived DOC have been widely reported with increasing air temperature (Creed et al., 2018; Parr et al., 2019; Voss et al., 2015). ~~A~~ ~~H~~ lower altitude is generally associated with a higher annual air temperature (Fig. S3S4), which promotes

terrestrial primary production and degradation of POC (Mayer et al., 2006) and ~~therefore subsequently~~ the accumulation of large quantities of OC in soils (Creed et al., 2018). ~~However, it~~ It is also worth noting that the higher temperature may facilitate microbial degradation of soil DOC (Voss et al., 2015).

4.2 Anthropogenic impacts on DOC

Previous research has found significant changes in DOC concentrations and DOM composition in agricultural and urban landscapes (Spencer et al., 2019; Stanley et al., 2012; Williamson et al., 2021). Conversion of native forest and pasture to row crop agriculture may lead to substantial losses of SOC stores as a result of greatly accelerated erosion rates and decomposition rates (Guo and Gifford, 2002; Montgomery, 2007; Stanley et al., 2012). In comparison, natural vegetation could greatly reduce SOC input into rivers by effectively reducing soil erosion through ~~the~~ consolidation effect ~~of roots of on~~ soil ~~by roots~~ and ~~the~~ interception of rainfall by stems and leaves (Zhang et al., 2019). Anthropogenic activities are closely related to mean drainage elevation (Fig. ~~S3S4~~). Agricultural activities mainly occur in low-elevation areas (Fig. ~~S3S4~~), which tend to liberate SOC through erosion over longer timescales and cause an elevated DOC export into rivers (Fig. ~~4a5a~~), although DOC of urban ~~origin sources~~ can also make a huge contribution to the riverine DOC pool (Sickman et al., 2007). Yet, anthropogenic impacts can also decrease DOC concentrations (Spencer et al., 2019; Williams et al., 2010) or lead to undetectable changes in DOC concentrations (Veum et al., 2009). These uncertain responses of DOC concentration are mainly due to diverse farming practices and associated changing effects on terrestrial and aquatic carbon dynamics (Stanley et al., 2012).

Anthropogenic activities are important factors for the pervasive increase in nutrient and ion concentrations (Chetelat et al., 2008; Smith and Schindler, 2009). ~~For catchments without evaporite outcrops~~ ~~When no evaporites are exposed in a~~ ~~catchment,~~ ~~their~~ riverine Cl^- ~~concentrations~~ excluding atmospheric contribution can be regarded as mainly of anthropogenic origin ($\text{Cl}^-_{\text{anthro}}$; Meybeck, 1983). The positive relationship between DOC concentrations and $\text{Cl}^-_{\text{anthro}}$ as shown in Fig. ~~4b-5b~~ also demonstrated anthropogenic impacts on DOC export. Nutrient enrichment has been a well-known contributor to eutrophication (Paerl, 2009). Together with increasing water residence time due to damming ~~and reservoirs~~ ~~reservoirs~~ (Fig. 1a), our results show that enhanced nutrient inputs into rivers will promote algae production (Chen et al., 2021) and eventually accumulation of DOC (Fig. ~~4eS5a~~). ~~Recently, A recent~~ ~~study conducted in~~ ~~at the Longtan Reservoir~~ ~~in the Xijiang River basin (China) with widespread karst landscape,~~ ~~a karstic river with to the three study rivers,~~ ~~found that a majority of its POC was intercepted or degraded within the reservoir, with the POC primarily originating from phytoplankton (Yi et al., 2022).~~ ~~Its~~ ~~The~~ carbon isotope composition of POC ($\delta^{13}\text{C}_{\text{POC}}$) ranged from -35‰ to -30‰, which is relatively depleted, and the POC ~~was~~ ~~were~~ found to be a significant contributors to the reservoir's ~~river's~~ DOC (Yi et al., 2022). Thus, ~~The~~ ~~the~~ lower $\delta^{13}\text{C}_{\text{DOC}}$ with increasing NO_3^- -N further indicated the greater algae or C3 plant derived DOC accumulation with a higher level of nutrients (Fig. ~~4dS5b~~). Anthropogenic impacts on DOM characters and age have been widely proposed in the last two decades

(Butman et al., 2014; Coble et al., 2022; Vidon et al., 2008; Zhou et al., 2021). There are no clear relationships between land use and ^{14}C ages in our study area, which may be the result of large variations in soil characteristics and limited ^{14}C data. However, DOM characters were found to be closely related to land use patterns (Fig. 67). Although significant relationships with urban and agricultural land uses were found for C1 and C2 (Figs. 6b-7c and ef), it remains unclear how the autochthonous contribution to riverine DOC pool varied with land use change because C1 and C2 are both likely derived from autochthonous production but exhibit opposing trends with increasing urban and agricultural land uses. Overall DOM in catchments with a higher proportion of urban and agricultural land uses ~~area was were~~ distinct from other catchments as it was less aromatic (SUVA₂₅₄, Fig. 6a7a), less recently produced (β/α , Fig. 6d7b), and had a higher degree of humification (HIX, Fig. 6e7c). SUVA₂₅₄ values for the three study rivers were comparable with those reported in coastal glacier mountainous streams with late succession in southeast Alaska ($3.4 \pm 0.5 \text{ L mg}^{-1} \text{ m}^{-1}$, $n = 5$; Holt et al. 2021) and in the anthropogenic influenced downstream of the Yangtze River ($3.4 \pm 1.1 \text{ L mg}^{-1} \text{ m}^{-1}$, $n = 82$; Zhou et al. 2021). Lower DOM aromaticity in the urban and agricultural streams and rivers was consistent with previous studies (Hosen et al., 2014; Kadjeski et al., 2020), though it was not a universal phenomenon (Zhou et al., 2021). Furthermore, the less aromatic and recently produced DOM could be due to soil organic materials from deep soil profiles ~~as a result of~~~~because of the~~ increased soil erosion ~~rates associated with by~~ anthropogenic activities (Inamdar et al., 2011; Stanley et al., 2012).

4.3 Combined effects of geomorphologic and anthropogenic controls on DOC and comparison of $\Delta^{14}\text{C}_{\text{DOC}}$ in mountainous rivers

In this study, geomorphologic characteristics and anthropogenic activities were identified as significant drivers of DOC export and DOM composition across broad spatial scales. ~~Here, we further examine~~~~provide further discussion on how these two key factors regulate~~~~work together to alter the riverine DOC.~~~~We further discussed how the two critical factors together shift the riverine DOC.~~ The riverine DOC age ranged from modern to greater than 1000 years, which is mainly determined by its sources and aquatic processing (Butman et al., 2012; Koch et al., 2022; Moyer et al., 2013). Generally, DOC is mainly derived from surface soil, decaying terrestrial plants, and autochthonous production, which usually contain a modern carbon pool (Findlay and Sinsabaugh, 2004; Zhou et al., 2018). In addition, old carbon is usually exported from pools such as deep soil layers, peat, shale, groundwater, and terrestrial organisms which incorporate inorganic carbon from weathering sources (Butman et al., 2014; Moyer et al., 2013; Raymond et al., 2004). Petroleum-based carbon export through wastewater, urban, and agricultural runoff has ~~recently~~ been recognized as a potentially important source of old carbon (Butman et al., 2012; Griffith et al., 2009; Sickman et al., 2010). The DOC ages of the Yinjiang River (~~548 ± 195 yr BP; the modern~~~~modern sample example at site Y12 was~~~~is excluded~~) were younger than that of DOC reported in agricultural rivers (Moyer et al., 2013; Sickman et al., 2010) or treated wastewater (Griffith et al., 2009), which is typically more than 1000 years old. However, we cannot conclude that DOC in the Yinjiang River was not influenced

290 by anthropogenic activities as the wide range of anthropogenically-impacted DOC ages (Butman et al., 2014) and [the](#)
various sources of anthropogenic DOC as discussed above, which led to [the](#) insignificant correlation between the proportion
of urban and agricultural land uses and isotopes of organic carbon (Fig. [S3S4](#)). The input of large amounts of young,
~~terrestrial-derived~~ [terrestrially derived](#) organic matter through surface runoff during rainfall events could explain the
young age of the DOC and POC at site Y12 (Table [2-3](#) and Fig. [5e6c](#)), where the sample was collected after a rainfall
305 event (Chen et al., 2021). Furthermore, the weak positive correlation between the $\delta^{13}\text{C}_{\text{DOC}}$ and $\delta^{13}\text{C}_{\text{POC}}$ ~~in~~ these three rivers
(Fig. [5b6b](#)) indicated that DOC and POC may [have been](#) derived from the same source. We also found a strong positive
correlation between $\Delta^{14}\text{C}_{\text{DOC}}$ and $\Delta^{14}\text{C}_{\text{POC}}$ in the Yinjiang River (Fig. [5e6c](#)). The coupling between $\Delta^{14}\text{C}_{\text{DOC}}$ and $\Delta^{14}\text{C}_{\text{POC}}$ was
an unusual relationship rarely found in other rivers (Campeau et al., 2020; Longworth et al., 2007). Campeau et al. (2020) ~~have~~
attributed this relationship to common controls of landscape and/or hydrology on the sources of organic carbon in rivers,
300 ~~Yet~~ ~~However,~~ and this correlation ~~might~~ ~~could~~ ~~have been~~ ~~be~~ masked by the mixing of waters from other tributaries, ~~which further~~
~~support~~ ~~underscoring~~ the combined [impact of](#) geographical ~~factor~~ ~~controls~~ (e.g., ~~as a driver of~~ landscape) and anthropogenic
~~impacts~~ ~~influences~~ (e.g., dam construction, ~~see as discussion discussed~~ below) on DOC sources.

~~Furthermore~~ ~~In addition~~, the widespread ~~dams and~~ reservoirs for irrigation and water supply would lead to the
prolonged water retention time across river systems, entailing a great change in organic carbon reactivity and CO₂ emissions
305 (Catalán et al., 2016; Ran et al., 2021; Yi et al., 2021). ~~Meanwhile, reservoirs provide and providing~~ a favorable environment
for aquatic photosynthesis and bacterial production, ~~thereby increasing leading to increased~~ [autochthonous DOM production](#)
~~and accumulation in rivers (Fig. 7e)~~ (Ulseth and Hall, 2015; Xenopoulos et al., 2021). ~~In addition to influencing the DOC~~
~~dynamics, our earlier~~ ~~previous research has also found demonstrated that damming and reservoirs can likely also significantly~~
~~affects~~ the dynamics of POC and DIC ~~in the study rivers (Chen et al., 2021).~~ ~~Similar studies have also found this in other~~
310 ~~tributaries of the Wujiang River (Yi et al., 2021).~~ ~~This may have significantly influenced the organic carbon dynamics in the~~
~~study rivers (Chen et al., 2021).~~ ~~Additionally, DO~~ ~~was~~ ~~were~~ significantly different between dammed rivers and undammed
~~rivers (Fig. 8), further indicating the damming effect on the in-stream photosynthesis and, consequently, on organic carbon~~
~~dynamics.~~ Therefore, the carbon cycling in the three rivers is [collectively](#) affected by a combination of factors, including
geographical controls, anthropogenic impacts, and in-stream processes. Particularly, geographical controls on DOM were
315 mainly evidenced by carbon isotopes, while anthropogenic impacts were supported by the DOM fluorescence characters (Figs.
3 and 6). ~~There was no significant relationship~~ ~~Despite previous research frequently finding a strong association~~ [between carbon](#)
[isotopes and optical properties, which is inconsistent with previous studies](#) (Aiken et al., 2014; Butman et al., 2012; Lee et al.,
2021; Sickman et al., 2010; Zhou et al., 2018), ~~no such correlation was observed in this study.~~ ~~This is likely due to the potential~~
~~masking effect of autochthonous DOM on the correlation,~~ as also evidenced by the decoupled relationship between $\Delta^{14}\text{C}_{\text{DOC}}$
320 ~~and SUVA₂₅₄ in the St. Lawrence River~~ (Aiken et al., 2014; Butman et al., 2012). However, it should be noticed that

anthropogenic activities ~~and other impacts~~ are spatially related to elevation, air temperature, and ~~channel slope~~ catchment slope (Fig. ~~S3S4~~), ~~which in turn would influence the river water quality and aquatic processes. Therefore, disentangling the dual influences (geographical and anthropogenic) is challenging, as they are likely to cohesively impact both DOC concentration and DOM quality in these rivers.~~ It is evident that DOC dynamics are complicated in the study rivers, and a comprehensive assessment of the biogeochemical processes of DOC and their multiple controlling factors will advance our understanding of carbon cycling.

Carbon isotopes of DOC and its concentration in mountainous rivers were summarized in Table ~~34~~. Global average $\Delta^{14}\text{C}_{\text{DOC}}$ is -11.5 ± 134 ‰, higher than that in the Yinjiang River (-54.7 ± 39.9 ‰; Tables ~~2-3~~ and ~~34~~; Marwick et al., 2015) while similar to many other mountainous rivers (e.g., the Mackenzie River; Campeau et al., 2020) and small mountainous rivers in Puerto Rico; Moyer et al., 2013). $\Delta^{14}\text{C}_{\text{DOC}}$ values for the world's mountainous streams and rivers were shown by climate (according to the Köppen–Geiger climate classification (Beck et al., 2018; Table ~~34~~) and ranged from tropical monsoon climate (Marwick et al., 2015), temperate oceanic climate (Evans et al., 2007), cold semi-arid climates (Spencer et al., 2014) to continental subarctic climate (Hood et al., 2009). DOC of young age in mountainous rivers were reported across climate (Evans et al., 2007; Mayorga et al., 2005; Voss et al., 2022). While the most aged DOC was observed in the Tibetan Plateau (Song et al., 2020; Spencer et al., 2014) and the Gulf of Alaska (Hood et al., 2009). The riverine aged DOC from these regions with cold climate was mainly sourced from melting glacier with high bioavailability (Hood et al., 2009; Spencer et al., 2014) or derived from permafrost thaws in deeper soil horizons with deeper flow paths (Song et al., 2020). As global air temperature increases, the greater input of the aged yet microbially labile DOC into ~~the~~ rivers would lead to increasing emission of CO_2 and CH_4 , ~~which and in turn further intensifies~~ global warming (Vonk and Gustafsson, 2013).

Table 34. Comparison of carbon isotopes of DOC from mountainous rivers worldwide.

Rivers/Region	Sampling Date (mm/yyyy)	Climate	DOC (mg L ⁻¹)	$\delta^{13}\text{C}_{\text{DOC}}$ (‰)	$\Delta^{14}\text{C}_{\text{DOC}}$ (‰)	References
The Yinjiang River (China)	08/2018		1.3 ± 0.7	-26.6 ± 1.9	-55 ± 38	This study
Zambezi (Mozambique)	02/2012-04/2012		2.4 ± 0.6	-21.9 ± 2.4	64 ± 23	(Marwick et al., 2015)
Betsiboka (Madagascar)	01/2012-02/2012		1.3 ± 0.6	-22.8 ± 2.1	86 ± 43	
Amazon ^a	05/1995-10/1996	Tropical	1.9 ± 0.7	-26.0 ± 3.0	94 ± 176	(Mayorga et al., 2005)
Guanica and Fajardo (Puerto Rico)	09/2004-03/2008		2.3 ± 2.1	-26.1 ± 3.1	-55 ± 105	(Moyer et al., 2013)
North-West Australia (Australia)	05/2010 and 06/2011		1.5 ± 0.7	-25.0 ± 1.7	-67 ± 124	(Fellman et al., 2014)
Santa Clara (USA)	11/1997-03/1998		6.2 ± 2.7	-26.1 ± 0.9	-148 ± 58	(Masiello and Druffel, 2001)
Conwy (Wales) ^b		Temperate	9.2 ± 7.3	-28.0 ± 1.8	105 ± 6	(Evans et al., 2007)
Brocky Burn (Scotland)	02/1998 and 06/1998			-27.9 ± 0.2	29 ± 12	(Palmer et al., 2001)
Southeast Alaska	07/2013		0.8 ± 0.2	-27.0 ± 1.6	-93 ± 77	(Holt et al., 2021)
Gulf of Alaska	07/2008		1.2 ± 0.5	-23.9 ± 1.1	-207 ± 121	(Hood et al., 2009)
Alaska ^c	05/2012-10/2012		3.7 ± 4.1	-27.4 ± 0.8	-10 ± 55	(Behnke et al., 2020)
Kolyma (Russia) ^d	01/2003-12/2003			-28.5 ± 1.3	57 ± 51	(Neff et al., 2006)
Hudson (USA) ^e	01/2004		5.9 ± 0.7	-27.0 ± 0.0	-26 ± 13	(Raymond et al., 2004)
Central Ontario (Canada)	1990-1992	Continental	6.4 ± 4.5		96 ± 79	(Schiff et al., 1997)
Mackenzie River Basin (Canada) ^f	06/2018		4.3 ± 1.8	-26.9 ± 0.2	-55 ± 72	(Campeau et al., 2020)
Mulde (Germany)	08/2008-10/2010		9.8 ± 7.3	-26.6 ± 0.5	7 ± 27	(Tittel et al., 2013)
Fraser (Canada)	07/2009-05/2011		4.1 ± 5.6	-26.5 ± 0.5	58 ± 34	(Voss et al., 2022)
Yangtze River source region (China)	02/2017-12/2017		2.9 ± 1.4	-27.9 ± 3.3	-397 ± 185	(Song et al., 2020)
Tibetan Plateau (China)		Continental/Dry	0.27 ± 0.0	-23.5 ± 0.2	-209 ± 71	(Spencer et al., 2014)

^a Only rivers draining mountainous areas from the Andean Cordillera were reported. ^b Data were obtained from Marwick et al. (2015). ^c Calculated from mean values. ^d Only mountainous and upland rivers were reported. ^e Only Upper Hudson River was reported. ^f Only tributaries sourced from Cordillera were reported.

5 Conclusions

This study provided an deeper insight into the DOC dynamics and their influencing factors in anthropogenically-impacted subtropical small mountainous rivers. Variations in DOC concentrations are regulated by both internal processes and external geographical and anthropogenic disturbances. We observed a positive relationship between DOC concentrations and anthropogenic land use but a negative correlation between DOC concentration and ~~channel-slope~~ catchment slope. Carbon isotopes variations were mainly due to changing mean ~~channel-slope~~ catchment slope, while fluorescence properties of DOM

were highly influenced by land use ~~cover~~. Additionally, we found increased aromaticity with elevated ~~channel-slope~~catchment slope and reduced agricultural and urban land uses, indicating the geographical and anthropogenic controls on DOM character. We attribute these diverse DOC responses to altered water retention time, the SOC dynamics, and water flow paths. This study highlights that the combination of dual carbon isotopes and optical properties are useful tools in tracing the origin of riverine DOC and its in-stream processes. ~~We also highlight the importance of geographical and anthropogenic impacts on DOC concentrations and DOM composition in small mountainous rivers.~~ With continued economic development and population growth, anthropogenic impacts on DOC are expected to be increasingly evident. However, anthropogenic impacts may alter various biogeochemical processes of DOC in different catchments with changing geographical features due to complicated regulating mechanisms of organic carbon cycling, which to date remains poorly understood. Further studies are warranted to fully understand the combined effects of local geographical controls and increasing anthropogenic impacts on DOC cycling.

Data availability. Data are available from the corresponding author Lishan Ran upon request at lsran@hku.hk.

Author contributions. JZ and SL conceived and designed the study. WW, JZ, and ZY contributed to the fieldwork. SC, WW, YY and KMM contributed to the laboratory work and data analyses. SC wrote the original draft. LR, JZ and YY reviewed and edited the manuscript.

Competing interests. The authors declare that they have no conflict of interest.

Financial support. This research was funded by the Strategic Priority Research Program of the Chinese Academy of Sciences (XDB40000000), National Natural Science Foundation of China (Grant Nos. 41925002, 41422303 and 41803007), and the Research Grants Council of Hong Kong (Grant No. 17300621).

References

- Aiken G. R., Gilmour, C. C., Krabbenhoft, D. P. and Orem, W.: Dissolved organic matter in the Florida Everglades: implications for ecosystem restoration, *Crit. Rev. Environ. Sci. Technol.*, 41, 217-248, doi:10.1080/10643389.2010.530934, 2011.
- Aiken G. R., Spencer, R. G. M., Striegl, R. G., Schuster, P. F. and Raymond, P. A.: Influences of glacier melt and permafrost thaw on the age of dissolved organic carbon in the Yukon River basin, *Global Biogeochem. Cy.*, 28, 525-537, doi:10.1002/2013gb004764, 2014.
- Amaral V., Graeber, D., Calliari, D. and Alonso, C.: Strong linkages between DOM optical properties and main clades of aquatic bacteria, *Limnol. Oceanogr.*, 61, 906-918, doi:10.1002/lno.10258, 2016.
- Andersson C. A. and Bro, R.: The N-way toolbox for MATLAB, *Chemometr. intell. lab.*, 52, 1-4, 2000.

- 385 Asano Y., Kawasaki, M., Saito, T., Haraguchi, R., Takatoku, K., Saiki, M. and Kimura, K.: An Increase in Specific Discharge With Catchment Area Implies That Bedrock Infiltration Feeds Large Rather Than Small Mountain Headwater Streams, *Water Resour. Res.*, 56, doi:10.1029/2019wr025658, 2020.
- Ask J., Karlsson, J., Persson, L., Ask, P., Byström, P. and Jansson, M.: Terrestrial organic matter and light penetration: Effects on bacterial and primary production in lakes, *Limnol. Oceanogr.*, 54, 2034-2040, doi:10.4319/lo.2009.54.6.2034, 2009.
- 390 Barnes R. T., Butman, D. E., Wilson, H. F. and Raymond, P. A.: Riverine Export of Aged Carbon Driven by Flow Path Depth and Residence Time, *Environ. Sci. Technol.*, 52, 1028-1035, doi:10.1021/acs.est.7b04717, 2018.
- Beck H. E., Zimmermann, N. E., McVicar, T. R., Vergopolan, N., Berg, A. and Wood, E. F.: Present and future Koppen-Geiger climate classification maps at 1-km resolution, *Scientific Data*, 5, 180214, doi:10.1038/sdata.2018.214, 2018.
- Behnke M. I., Stubbins, A., Fellman, J. B., Hood, E., Dittmar, T. and Spencer, R. G. M.: Dissolved organic matter sources in glacierized watersheds delineated through compositional and carbon isotopic modeling, *Limnol. Oceanogr.*, 66, 438-451, doi:10.1002/lno.11615, 2020.
- 395 Burt T. and Pinay, G.: Linking hydrology and biogeochemistry in complex landscapes, *Progress in Physical geography*, 29, 297-316, 2005.
- Butman D. E., Wilson, H. F., Barnes, R. T., Xenopoulos, M. A. and Raymond, P. A.: Increased mobilization of aged carbon to rivers by human disturbance, *Nat. Geosci.*, 8, 112-116, doi:10.1038/ngeo2322, 2014.
- 400 Butman D., Raymond, P. A., Butler, K. and Aiken, G.: Relationships between Delta C-14 and the molecular quality of dissolved organic carbon in rivers draining to the coast from the conterminous United States, *Global Biogeochem. Cy.*, 26, GB4014, doi:10.1029/2012GB004361, 2012.
- Cai W. J.: Estuarine and coastal ocean carbon paradox: CO₂ sinks or sites of terrestrial carbon incineration?, *Annual Review of Marine Science*, 3, 123-145, doi:10.1146/annurev-marine-120709-142723, 2011.
- 405 Campeau A., Soerensen, A., Martma, T., Åkerblom, S. and Zdanowicz, C.: Controls on the 14C-content of dissolved and particulate organic carbon mobilized across the Mackenzie River basin, Canada, *Global Biogeochem. Cy.*, doi:10.1029/2020gb006671, 2020.
- Catalán N., Marcé, R., Kothawala, D. N. and Tranvik, L. J.: Organic carbon decomposition rates controlled by water retention time across inland waters, *Nat. Geosci.*, 9, 501-504, doi:10.1038/ngeo2720, 2016.
- 410 Chen S., Zhong, J., Li, C., Wang, W.-f., Xu, S., Yan, Z.-l. and Li, S.-l.: The chemical weathering characteristics of different lithologic mixed small watersheds in Southwest China, *Chinese J. Ecol.*, 39, 1288-1299 (in Chinese with English abstract), 2020.
- Chen S., Zhong, J., Li, S., Ran, L., Wang, W., Xu, S., Yan, Z. and Xu, S.: Multiple controls on carbon dynamics in mixed karst and non-karst mountainous rivers, Southwest China, revealed by carbon isotopes ($\delta^{13}\text{C}$ and $\Delta^{14}\text{C}$), *Sci. Total Environ.*, 791, 148347, doi:10.1016/j.scitotenv.2021.148347, 2021.
- 415 Chetelat B., Liu, C.-Q., Zhao, Z., Wang, Q., Li, S., Li, J. and Wang, B.: Geochemistry of the dissolved load of the Changjiang Basin rivers: anthropogenic impacts and chemical weathering, *Geochim. Cosmochim. Acta*, 72, 4254-4277, 2008.
- Coble A. A., Wymore, A. S., Potter, J. D. and McDowell, W. H.: Land Use Overrides Stream Order and Season in Driving Dissolved Organic Matter Dynamics Throughout the Year in a River Network, *Environ. Sci. Technol.*, 56, 2009-2020, doi:10.1021/acs.est.1c06305, 2022.
- 420 Coble P. G.: Characterization of marine and terrestrial DOM in seawater using excitation-emission matrix spectroscopy, *Mar. Chem.*, 51, 325-346, doi:10.1016/0304-4203(95)00062-3, 1996.
- Connolly C. T., Khosh, M. S., Burkart, G. A., Douglas, T. A., Holmes, R. M., Jacobson, A. D., Tank, S. E. and McClelland, J. W.: Watershed slope as a predictor of fluvial dissolved organic matter and nitrate concentrations across geographical space and catchment size in the Arctic, *Environ. Res. Lett.*, 13, 104015, doi:10.1088/1748-9326/aae35d, 2018.
- 425 Cowie R. M., Knowles, J. F., Dailey, K. R., Williams, M. W., Mills, T. J. and Molotch, N. P.: Sources of streamflow along a headwater catchment elevational gradient, *J. Hydrol.*, 549, 163-178, doi:10.1016/j.jhydrol.2017.03.044, 2017.
- Creed I. F., Bergstrom, A. K., Trick, C. G., Grimm, N. B., Hessen, D. O., Karlsson, J., Kidd, K. A., Kritzbeg, E., McKnight, D. M., Freeman, E. C., Senar, O. E., Andersson, A., Ask, J., Berggren, M., Cherif, M., Giesler, R., Hotchkiss, E. R., Kortelainen, P., Palta, M. M., Vrede, T. and Weyhenmeyer, G. A.: Global change-driven effects on dissolved organic matter

- composition: Implications for food webs of northern lakes, *Global Change Biol.*, 24, 3692-3714, doi:10.1111/gcb.14129, 2018.
- 435 DeFrancesco C. and Guéguen, C.: Long-term Trends in Dissolved Organic Matter Composition and Its Relation to Sea Ice in the Canada Basin, Arctic Ocean (2007–2017), *Journal of Geophysical Research: Oceans*, 126, doi:10.1029/2020jc016578, 2021.
- DeFrancesco C. and Guéguen, C.: Long-term Trends in Dissolved Organic Matter Composition and Its Relation to Sea Ice in the Canada Basin, Arctic Ocean (2007–2017), *Journal of Geophysical Research: Oceans*, 126, doi:10.1029/2020jc016578, 2021.
- 440 Devesa-Rey R. and Barral, M. T.: Allochthonous versus autochthonous naturally occurring organic matter in the Anllóns river bed sediments (Spain), *Environmental Earth Sciences*, 66, 773-782, doi:10.1007/s12665-011-1286-3, 2011.
- Dong K., Lang, Y., Hu, N., Zhong, J., Xu, S., Hauser, T.-M. and Gan, R.: The new AMS facility at Tianjin University, *Radiation Detection Technology and Methods*, 2, doi:10.1007/s41605-018-0064-0, 2018.
- Du Y., Zhang, Q., Liu, Z., He, H., Lurling, M., Chen, M. and Zhang, Y.: Composition of dissolved organic matter controls interactions with La and Al ions: Implications for phosphorus immobilization in eutrophic lakes, *Environ. Pollut.*, 248, 36-47, doi:10.1016/j.envpol.2019.02.002, 2019.
- Eusterhues K., Rumpel, C., Kleber, M. and Kögel-Knabner, I.: Stabilisation of soil organic matter by interactions with minerals as revealed by mineral dissolution and oxidative degradation, *Org. Geochem.*, 34, 1591-1600, 2003.
- 450 Evans C. D., Freeman, C., Cork, L. G., Thomas, D. N., Reynolds, B., Billett, M. F., Garnett, M. H. and Norris, D.: Evidence against recent climate-induced destabilisation of soil carbon from ¹⁴C analysis of riverine dissolved organic matter, *Geophys. Res. Lett.*, 34, doi:10.1029/2007gl029431, 2007.
- Fasching C., Ulseth, A. J., Schelker, J., Steniczka, G. and Battin, T. J.: Hydrology controls dissolved organic matter export and composition in an Alpine stream and its hyporheic zone, *Limnol. Oceanogr.*, 61, 558-571, doi:10.1002/lno.10232, 2016.
- 455 Fellman J. B., Hood, E. and Spencer, R. G. J. L.: Fluorescence spectroscopy opens new windows into dissolved organic matter dynamics in freshwater ecosystems: A review, *Limnol. Oceanogr.*, 55, 2452-2462, doi:10.4319/lno.2010.55.6.2452, 2010.
- Fellman J. B., Spencer, R. G., Raymond, P. A., Pettit, N. E., Skrzypek, G., Hernes, P. J. and Grierson, P. F.: Dissolved organic carbon biolability decreases along with its modernization in fluvial networks in an ancient landscape, *Ecology*, 95, 2622-2632, 2014.
- Findlay S. E. G. and Sinsabaugh, R. L.: Aquatic ecosystems: Interactivity of dissolved organic matter, *J. N. Am. Benthol. Soc.*, 23, 662-663, doi:10.1899/0887-3593(2004)023<0662:AEIODO>2.0.CO;2, 2004.
- 460 Findlay S., Sinsabaugh, R. L., Fischer, D. T. and Franchini, P.: Sources of dissolved organic carbon supporting planktonic bacterial production in the tidal freshwater Hudson River, *Ecosystems*, 1, 227-239, 1998.
- Griffith D. R., Barnes, R. T. and Raymond, P. A.: Inputs of Fossil Carbon from Wastewater Treatment Plants to U.S. Rivers and Oceans, *Environ. Sci. Technol.*, 43, 5647-5651, 2009.
- 465 Guo L. B. and Gifford, R. M.: Soil carbon stocks and land use change: a meta analysis, *Global Change Biol.*, 8, 345-360, doi:10.1046/j.1354-1013.2002.00486.x, 2002.
- Han G. and Liu, C.-Q.: Water geochemistry controlled by carbonate dissolution: a study of the river waters draining karst-dominated terrain, Guizhou Province, China, *Chem. Geol.*, 204, 1-21, doi:10.1016/j.chemgeo.2003.09.009, 2004.
- Harms T. K., Edmonds, J. W., Genet, H., Creed, I. F., Aldred, D., Balser, A. and Jones, J. B.: Catchment influence on nitrate and dissolved organic matter in Alaskan streams across a latitudinal gradient, *J. Geophys. Res.: Biogeo.*, 121, 350-369, doi:10.1002/2015jg003201, 2016.
- 470 He W., Chen, M., Schlautman, M. A. and Hur, J.: Dynamic exchanges between DOM and POM pools in coastal and inland aquatic ecosystems: A review, *Sci. Total Environ.*, 551-552, 415-428, doi:10.1016/j.scitotenv.2016.02.031, 2016.
- Henderson R. K., Baker, A., Murphy, K. R., Hambly, A., Stuetz, R. M. and Khan, S. J.: Fluorescence as a potential monitoring tool for recycled water systems: a review, *Water Res.*, 43, 863-881, doi:10.1016/j.watres.2008.11.027, 2009.
- 475 Holt A. D., Fellman, J., Hood, E., Kellerman, A. M., Raymond, P., Stubbins, A., Dittmar, T. and Spencer, R. G. M.: The evolution of stream dissolved organic matter composition following glacier retreat in coastal watersheds of southeast Alaska, *Biogeochemistry*, doi:10.1007/s10533-021-00815-6, 2021.

- Hood E., Fellman, J., Spencer, R. G., Hernes, P. J., Edwards, R., D'Amore, D. and Scott, D.: Glaciers as a source of ancient and labile organic matter to the marine environment, *Nature*, 462, 1044-1047, doi:10.1038/nature08580, 2009.
- Hood E., Gooseff, M. N. and Johnson, S. L.: Changes in the character of stream water dissolved organic carbon during flushing in three small watersheds, Oregon, *J. Geophys. Res.: Biogeo.*, 111, doi:10.1029/2005JG000082, 2006.
- Hosen J. D., McDonough, O. T., Febria, C. M. and Palmer, M. A.: Dissolved organic matter quality and bioavailability changes across an urbanization gradient in headwater streams, *Environ. Sci. Technol.*, 48, 7817-7824, doi:10.1021/es501422z, 2014.
- Inamdar S., Singh, S., Dutta, S., Levia, D., Mitchell, M., Scott, D., Bais, H. and McHale, P.: Fluorescence characteristics and sources of dissolved organic matter for stream water during storm events in a forested mid-Atlantic watershed, *J. Geophys. Res.: Biogeo.*, 116, doi:10.1029/2011jg001735, 2011.
- Inamdar S.: The use of geochemical mixing models to derive runoff sources and hydrologic flow paths, *Forest hydrology and biogeochemistry*. Springer, pp. 163-183, 2011
- Iwasaki K., Nagasaka, Y. and Nagasaka, A.: Geological Effects on the Scaling Relationships of Groundwater Contributions in Forested Watersheds, *Water Resour. Res.*, 57, doi:10.1029/2021wr029641, 2021.
- Kadjeski M., Fasching, C. and Xenopoulos, M. A.: Synchronous Biodegradability and Production of Dissolved Organic Matter in Two Streams of Varying Land Use, *Front. Microbiol.*, 11, 568629, doi:10.3389/fmicb.2020.568629, 2020.
- Kim J., Kim, Y., Park, S. E., Kim, T. H., Kim, B. G., Kang, D. J. and Rho, T.: Impact of aquaculture on distribution of dissolved organic matter in coastal Jeju Island, Korea, based on absorption and fluorescence spectroscopy, *Environ Sci Pollut Res Int*, 29, 553-563, doi:10.1007/s11356-021-15553-3, 2022.
- Koch J. C., Bogard, M. J., Butman, D. E., Finlay, K., Ebel, B., James, J., Johnston, S. E., Jorgenson, M. T., Pastick, N. J., Spencer, R. G. M., Striegl, R., Walvoord, M. and Wickland, K. P.: Heterogeneous Patterns of Aged Organic Carbon Export Driven by Hydrologic Flow Paths, Soil Texture, Fire, and Thaw in Discontinuous Permafrost Headwaters, *Global Biogeochem. Cy.*, 36, doi:10.1029/2021gb007242, 2022.
- Lambert T., Bouillon, S., Darchambeau, F., Morana, C., Roland, F. A. E., Descy, J.-P. and Borges, A. V.: Effects of human land use on the terrestrial and aquatic sources of fluvial organic matter in a temperate river basin (The Meuse River, Belgium), *Biogeochemistry*, 136, 191-211, doi:10.1007/s10533-017-0387-9, 2017.
- Lambert T., Perolo, P., Escoffier, N. and Perga, M.-E.: Enhanced bioavailability of dissolved organic matter (DOM) in human-disturbed streams in Alpine fluvial networks, *Biogeosciences*, 19, 187-200, doi:10.5194/bg-19-187-2022, 2022.
- Lambert T., Pierson-Wickmann, A.-C., Gruau, G., Thibault, J.-N. and Jaffrezic, A.: Carbon isotopes as tracers of dissolved organic carbon sources and water pathways in headwater catchments, *J. Hydrol.*, 402, 228-238, doi:10.1016/j.jhydrol.2011.03.014, 2011.
- Lambs L.: Interactions between groundwater and surface water at river banks and the confluence of rivers, *J. Hydrol.*, 288, 312-326, doi:10.1016/j.jhydrol.2003.10.013, 2004.
- Lee L.-C., Hsu, T.-C., Lee, T.-Y., Shih, Y.-T., Lin, C.-Y., Jien, S.-H., Hein, T., Zehetner, F., Shiah, F.-K. and Huang, J.-C.: Unusual roles of discharge, slope and soc in doc transport in small mountainous rivers, Taiwan, *Sci. Rep.*, 9, 41422303, doi:10.1038/s41598-018-38276-x, 2019.
- Lee S. C., Shin, Y., Jeon, Y. J., Lee, E. J., Eom, J. S., Kim, B. and Oh, N. H.: Optical properties and (14)C ages of stream DOM from agricultural and forest watersheds during storms, *Environ. Pollut.*, 272, 116412, doi:10.1016/j.envpol.2020.116412, 2021.
- Leithold E. L., Blair, N. E. and Perkey, D. W.: Geomorphologic controls on the age of particulate organic carbon from small mountainous and upland rivers, *Global Biogeochem. Cy.*, 20, GB3022, doi:10.1029/2005gb002677, 2006.
- Leonard A., Castle, S., Burr, G. S., Lange, T. and Thomas, J.: A Wet Oxidation Method for AMS Radiocarbon Analysis of Dissolved Organic Carbon in Water, *Radiocarbon*, 55, 545-552, doi:10.1017/S0033822200057672, 2013.
- Li P., Lee, S. H., Lee, S. H., Lee, J. B., Lee, Y. K., Shin, H. S. and Hur, J.: Seasonal and storm-driven changes in chemical composition of dissolved organic matter: a case study of a reservoir and its forested tributaries, *Environ Sci Pollut Res Int*, 23, 24834-24845, doi:10.1007/s11356-016-7720-z, 2016.
- Li Yung Lung J. Y. S., Tank, S. E., Spence, C., Yang, D., Bonsal, B., McClelland, J. W. and Holmes, R. M.: Seasonal and Geographic Variation in Dissolved Carbon Biogeochemistry of Rivers Draining to the Canadian Arctic Ocean and Hudson

- Bay, J. *Geophys. Res.: Biogeo.*, 123, 3371-3386, doi:10.1029/2018jg004659, 2018.
- Lloret E., Dessert, C., Buss, H. L., Chaduteau, C., Huon, S., Alberic, P. and Benedetti, M. F.: Sources of dissolved organic carbon in small volcanic mountainous tropical rivers, examples from Guadeloupe (French West Indies), *Geoderma*, 282, 129-138, doi:10.1016/j.geoderma.2016.07.014, 2016.
- 530 Longworth B. E., Petsch, S. T., Raymond, P. A. and Bauer, J. E.: Linking lithology and land use to sources of dissolved and particulate organic matter in headwaters of a temperate, passive-margin river system, *Geochim. Cosmochim. Acta*, 71, 4233-4250, doi:10.1016/j.gca.2007.06.056, 2007.
- Marwick T. R., Tamoo, F., Teodoru, C. R., Borges, A. V., Darchambeau, F. and Bouillon, S.: The age of river-transported carbon: A global perspective, *Global Biogeochem. Cy.*, 29, 122-137, doi:10.1002/2014GB004911, 2015.
- 535 Masiello C. A. and Druffel, E. R.: Carbon isotope geochemistry of the Santa Clara River, *Global Biogeochem. Cy.*, 15, 407-416, 2001.
- Mayer L. M., Schick, L. L., Skorko, K. and Boss, E.: Photodissolution of particulate organic matter from sediments, *Limnol. Oceanogr.*, 51, 1064-1071, doi:10.4319/lo.2006.51.2.1064, 2006.
- Mayorga E., Aufdenkampe, A. K., Masiello, C. A., Krusche, A. V., Hedges, J. I., Quay, P. D., Richey, J. E. and Brown, T. A.:
 540 Young organic matter as a source of carbon dioxide outgassing from Amazonian rivers, *Nature*, 436, 538-541, doi:10.1038/nature03880, 2005.
- McDonough L. K., Santos, I. R., Andersen, M. S., O'Carroll, D. M., Rutledge, H., Meredith, K., Oudone, P., Bridgeman, J., Gooddy, D. C., Sorensen, J. P. R., Lapworth, D. J., MacDonald, A. M., Ward, J. and Baker, A.: Changes in global groundwater organic carbon driven by climate change and urbanization, *Nat. Commun.*, 11, 1279, doi:10.1038/s41467-020-14946-1, 2020.
- 545 McGuire K. J., McDonnell, J. J., Weiler, M., Kendall, C., McGlynn, B. L., Welker, J. M. and Seibert, J.: The role of topography on catchment-scale water residence time, *Water Resour. Res.*, 41, doi:10.1029/2004wr003657, 2005.
- McKnight D. M., Boyer, E. W., Westerhoff, P. K., Doran, P. T., Kulbe, T. and Andersen, D. T.: Spectrofluorometric characterization of dissolved organic matter for indication of precursor organic material and aromaticity, *Limnol. Oceanogr.*,
 550 46, 38-48, doi:10.4319/lo.2001.46.1.0038, 2001.
- Meybeck M.: Atmospheric inputs and river transport of dissolved substances, *Dissolved loads of rivers surface water quantity/quality relationships*, pp. 173-192, 1983
- Mineau M. M., Wollheim, W. M., Buffam, I., Findlay, S. E. G., Hall, R. O., Hotchkiss, E. R., Koenig, L. E., McDowell, W. H. and Parr, T. B.: Dissolved organic carbon uptake in streams: A review and assessment of reach-scale measurements, *J. Geophys. Res.: Biogeo.*, 121, 2019-2029, doi:10.1002/2015jg003204, 2016.
- 555 Minor E. C., Swenson, M. M., Mattson, B. M. and Oyler, A. R.: Structural characterization of dissolved organic matter: a review of current techniques for isolation and analysis, *Environ. Sci.: Processes Impacts*, 16, 2064-2079, doi:10.1039/c4em00062e, 2014.
- Montgomery D. R.: Soil erosion and agricultural sustainability, *Proc. Natl. Acad. Sci. USA*, 104, 13268-13272,
 560 doi:10.1073/pnas.0611508104, 2007.
- Mostofa K. M. G., Jie, Y., Sakugawa, H. and Liu, C. Q.: Equal Treatment of Different EEM Data on PARAFAC Modeling Produces Artifact Fluorescent Components That Have Misleading Biogeochemical Consequences, *Environ. Sci. Technol.*, 53, 561-563, doi:10.1021/acs.est.8b06647, 2019.
- Moyer R. P., Bauer, J. E. and Grottoli, A. G.: Carbon isotope biogeochemistry of tropical small mountainous river, estuarine, and coastal systems of Puerto Rico, *Biogeochemistry*, 112, 589-612, doi:10.1007/s10533-012-9751-y, 2013.
- 565 Mu W., Yu, F., Li, C., Xie, Y., Tian, J., Liu, J. and Zhao, N.: Effects of rainfall intensity and slope gradient on runoff and soil moisture content on different growing stages of spring maize, *Water*, 7, 2990-3008, doi:10.3390/w7062990, 2015.
- Murphy K. R., Stedmon, C. A., Wenig, P. and Bro, R.: OpenFluor—an online spectral library of auto-fluorescence by organic compounds in the environment, *Analytical Methods*, 6, 658-661, 2014.
- 570 Mzobe P., Yan, Y., Berggren, M., Pilesjö, P., Olefeldt, D., Lundin, E., Roulet, N. T. and Persson, A.: Morphometric Control on Dissolved Organic Carbon in Subarctic Streams, *J. Geophys. Res.: Biogeo.*, 125, e2019JG005348, doi:10.1029/2019jg005348, 2020.

- 575 Neff J. C., Finlay, J. C., Zimov, S. A., Davydov, S. P., Carrasco, J. J., Schuur, E. A. G. and Davydova, A. I.: Seasonal changes in the age and structure of dissolved organic carbon in Siberian rivers and streams, *Geophys. Res. Lett.*, 33, doi:10.1029/2006gl028222, 2006.
- Nkoue Ndong G. R., Probst, J. L., Ndjama, J., Ndam Ngoupayou, J. R., Boeglin, J. L., Takem, G. E., Brunet, F., Mortatti, J., Gauthier-Lafaye, F., Braun, J. J. and Ekodeck, G. E.: Stable Carbon Isotopes $\delta^{13}\text{C}$ as a Proxy for Characterizing Carbon Sources and Processes in a Small Tropical Headwater Catchment: Nsimi, Cameroon, *Aquat. Geochem.*, 27, 1-30, doi:10.1007/s10498-020-09386-8, 2020.
- 580 Ohno T.: Fluorescence inner-filtering correction for determining the humification index of dissolved organic matter, *Environ. Sci. Technol.*, 36, 742-746, doi:10.1021/es0155276, 2002.
- Opsahl S. P. and Zepp, R. G.: Photochemically-induced alteration of stable carbon isotope ratios ($\delta^{13}\text{C}$) in terrigenous dissolved organic carbon, *Geophys. Res. Lett.*, 28, 2417-2420, doi:10.1029/2000gl012686, 2001.
- 585 Paerl H. W.: Controlling Eutrophication along the Freshwater–Marine Continuum: Dual Nutrient (N and P) Reductions are Essential, *Estuar. and Coast.*, 32, 593-601, doi:10.1007/s12237-009-9158-8, 2009.
- Palmer S. M., Hope, D., Billett, M. F., Dawson, J. J. and Bryant, C. L.: Sources of organic and inorganic carbon in a headwater stream: evidence from carbon isotope studies, *Biogeochemistry*, 52, 321-338, 2001.
- Parlanti E., Wörz, K., Geoffroy, L. and Lamotte, M.: Dissolved organic matter fluorescence spectroscopy as a tool to estimate biological activity in a coastal zone submitted to anthropogenic inputs, *Org. Geochem.*, 31, 1765-1781, doi:10.1016/S0146-6380(00)00124-8, 2000.
- 590 Parr T. B., Inamdar, S. P. and Miller, M. J.: Overlapping anthropogenic effects on hydrologic and seasonal trends in DOC in a surface water dependent water utility, *Water Res.*, 148, 407-415, doi:10.1016/j.watres.2018.10.065, 2019.
- Pilla R. M., Griffiths, N. A., Gu, L., Kao, S. C., McManamay, R., Ricciuto, D. M. and Shi, X.: Anthropogenically driven climate and landscape change effects on inland water carbon dynamics: What have we learned and where are we going?, *Global Change Biol.*, 28, 5601-5629, doi:10.1111/gcb.16324, 2022.
- 595 Poulin B. A., Ryan, J. N. and Aiken, G. R.: Effects of iron on optical properties of dissolved organic matter, *Environ. Sci. Technol.*, 48, 10098-10106, doi:10.1021/es502670r, 2014.
- Qiao J., Bao, H., Huang, D., Li, D.-W., Lee, T.-Y., Huang, J.-C. and Kao, S.-J.: Runoff-driven export of terrigenous particulate organic matter from a small mountainous river: sources, fluxes and comparisons among different rivers, *Biogeochemistry*, 600 147, 71-86, doi:10.1007/s10533-019-00629-7, 2019.
- Quinton J. N., Govers, G., Van Oost, K. and Bardgett, R. D.: The impact of agricultural soil erosion on biogeochemical cycling, *Nat. Geosci.*, 3, 311-314, doi:10.1038/ngeo838, 2010.
- Ramos M. C., Quinton, J. N. and Tyrrel, S. F.: Effects of cattle manure on erosion rates and runoff water pollution by faecal coliforms, *J. Environ. Manage.*, 78, 97-101, doi:10.1016/j.jenvman.2005.04.010, 2006.
- 605 Ran L., Butman, D. E., Battin, T. J., Yang, X., Tian, M., Duvert, C., Hartmann, J., Geeraert, N. and Liu, S.: Substantial decrease in CO₂ emissions from Chinese inland waters due to global change, *Nat. Commun.*, 12, 1730, doi:10.1038/s41467-021-21926-6, 2021.
- Rawlins M. A., Connolly, C. T. and McClelland, J. W.: Modeling Terrestrial Dissolved Organic Carbon Loading to Western Arctic Rivers, *J. Geophys. Res.: Biogeo.*, doi:10.1029/2021jg006420, 2021.
- 610 Raymond P. A. and Spencer, R. G. M.: Chapter 11 - Riverine DOM, in: Hansell, D.A., Carlson, C.A. (Eds.), *Biogeochemistry of Marine Dissolved Organic Matter (Second Edition)*. Academic Press, Boston, pp. 509-533, 2015
- Raymond P. A., Bauer, J. E., Caraco, N. F., Cole, J. J., Longworth, B. and Petsch, S. T.: Controls on the variability of organic matter and dissolved inorganic carbon ages in northeast US rivers, *Mar. Chem.*, 92, 353-366, doi:10.1016/j.marchem.2004.06.036, 2004.
- 615 Raymond P. A., Hartmann, J., Lauerwald, R., Sobek, S., McDonald, C., Hoover, M., Butman, D., Striegl, R., Mayorga, E., Humborg, C., Kortelainen, P., Durr, H., Meybeck, M., Ciais, P. and Guth, P.: Global carbon dioxide emissions from inland waters, *Nature*, 503, 355-359, doi:10.1038/nature12760, 2013.
- Ryan K. A., Palacios, L. C., Encina, F., Graeber, D., Osorio, S., Stubbins, A., Woelfl, S. and Nimptsch, J.: Assessing inputs of aquaculture-derived nutrients to streams using dissolved organic matter fluorescence, *Sci. Total Environ.*, 807, 150785,

- 620 doi:10.1016/j.scitotenv.2021.150785, 2022.
- Sanderman J., Lohse, K. A., Baldock, J. A. and Amundson, R.: Linking soils and streams: Sources and chemistry of dissolved organic matter in a small coastal watershed, *Water Resour. Res.*, 45, W03418, doi:10.1029/2008wr006977, 2009.
- Schiff S. L., Aravena, R., Trumbore, S. E., Hinton, M. J., Elgood, R. and Dillon, P. J.: Export of DOC from forested catchments on the Precambrian Shield of Central Ontario: Clues from ^{13}C and ^{14}C , *Biogeochemistry*, 36, 43-65, 1997.
- 625 Shen Y., Chapelle, F. H., Strom, E. W. and Benner, R.: Origins and bioavailability of dissolved organic matter in groundwater, *Biogeochemistry*, 122, 61-78, doi:10.1007/s10533-014-0029-4, 2014.
- Shutova Y., Baker, A., Bridgeman, J. and Henderson, R. K.: Spectroscopic characterisation of dissolved organic matter changes in drinking water treatment: From PARAFAC analysis to online monitoring wavelengths, *Water Res.*, 54, 159-169, doi:10.1016/j.watres.2014.01.053, 2014.
- 630 Sickman J. O., DiGiorgio, C. L., Davisson, M. L., Lucero, D. M. and Bergamaschi, B.: Identifying sources of dissolved organic carbon in agriculturally dominated rivers using radiocarbon age dating: Sacramento-San Joaquin River Basin, California, *Biogeochemistry*, 99, 79-96, doi:10.1007/s10533-009-9391-z, 2010.
- Sickman J. O., Zanoli, M. J. and Mann, H. L.: Effects of Urbanization on Organic Carbon Loads in the Sacramento River, California, *Water Resour. Res.*, 43, doi:10.1029/2007wr005954, 2007.
- 635 Smith V. H. and Schindler, D. W.: Eutrophication science: where do we go from here?, *Trends Ecol. Evol.*, 24, 201-207, doi:10.1016/j.tree.2008.11.009, 2009.
- Song C., Wang, G., Haghpor, N. and Raymond, P. A.: Warming and monsoonal climate lead to large export of millennial-aged carbon from permafrost catchments of the Qinghai-Tibet Plateau, *Environ. Res. Lett.*, 15, doi:10.1088/1748-9326/ab83ac, 2020.
- 640 Spencer R. G. M., Guo, W., Raymond, P. A., Dittmar, T., Hood, E., Fellman, J. and Stubbins, A.: Source and biolability of ancient dissolved organic matter in glacier and lake ecosystems on the Tibetan Plateau, *Geochim. Cosmochim. Acta*, 142, 64-74, doi:10.1016/j.gca.2014.08.006, 2014.
- Spencer R. G. M., Kellerman, A. M., Podgorski, D. C., Macedo, M. N., Jankowski, K., Nunes, D. and Neill, C.: Identifying the Molecular Signatures of Agricultural Expansion in Amazonian Headwater Streams, *J. Geophys. Res.: Biogeo.*, 124, 1637-1650, doi:10.1029/2018jg004910, 2019.
- 645 Stanley E. H., Powers, S. M., Lottig, N. R., Buffam, I. and Crawford, J. T.: Contemporary changes in dissolved organic carbon (DOC) in human-dominated rivers: is there a role for DOC management?, *Freshwat. Biol.*, 57, 26-42, doi:10.1111/j.1365-2427.2011.02613.x, 2012.
- Stedmon C. A. and Bro, R.: Characterizing dissolved organic matter fluorescence with parallel factor analysis: a tutorial, *Limnol. Oceanogr. Methods*, 6, 572-579, doi:10.4319/lom.2008.6.572, 2008.
- 650 Tittel J., Büttner, O., Freier, K., Heiser, A., Sudbrack, R. and Ollesch, G.: The age of terrestrial carbon export and rainfall intensity in a temperate river headwater system, *Biogeochemistry*, 115, 53-63, doi:10.1007/s10533-013-9896-3, 2013.
- Tiwari T., Laudon, H., Beven, K. and Ågren, A. M.: Downstream changes in DOC: Inferring contributions in the face of model uncertainties, *Water Resour. Res.*, 50, 514-525, doi:10.1002/2013wr014275, 2014.
- 655 Toming K., Tuvikene, L., Vilbaste, S., Agasild, H., Viik, M., Kisand, A., Feldmann, T., Martma, T., Jones, R. I. and Nöges, T.: Contributions of autochthonous and allochthonous sources to dissolved organic matter in a large, shallow, eutrophic lake with a highly calcareous catchment, *Limnol. Oceanogr.*, 58, 1259-1270, doi:10.4319/lo.2013.58.4.1259, 2013.
- Ulseth A. J. and Hall, R. O.: Dam tailwaters compound the effects of reservoirs on the longitudinal transport of organic carbon in an arid river, *Biogeosciences*, 12, 4345-4359, doi:10.5194/bg-12-4345-2015, 2015.
- 660 Veum K. S., Goynes, K. W., Motavalli, P. P. and Udawatta, R. P.: Runoff and dissolved organic carbon loss from a paired-watershed study of three adjacent agricultural Watersheds, *Agric., Ecosyst. Environ.*, 130, 115-122, doi:10.1016/j.agee.2008.12.006, 2009.
- Vidon P., Wagner, L. E. and Soyeux, E.: Changes in the character of DOC in streams during storms in two Midwestern watersheds with contrasting land uses, *Biogeochemistry*, 88, 257-270, doi:10.1007/s10533-008-9207-6, 2008.
- 665 Vonk J. E. and Gustafsson, Ö.: Permafrost-carbon complexities, *Nat. Geosci.*, 6, 675-676, doi:10.1038/ngeo1937, 2013.
- Voss B. M., Eglinton, T. I., Peucker-Ehrenbrink, B., Galy, V., Lang, S. Q., McIntyre, C., Spencer, R. G. M., Bulygina, E., Wang,

- Z. A. and Guay, K. A.: Isotopic evidence for sources of dissolved carbon and the role of organic matter respiration in the Fraser River basin, Canada, *Biogeochemistry*, doi:10.1007/s10533-022-00945-5, 2022.
- 670 Voss B. M., Peucker-Ehrenbrink, B., Eglinton, T. I., Spencer, R. G. M., Bulygina, E., Galy, V., Lamborg, C. H., Ganguli, P. M.,
Montluçon, D. B., Marsh, S., Gillies, S. L., Fanslau, J., Epp, A. and Luymes, R.: Seasonal hydrology drives rapid shifts in
the flux and composition of dissolved and particulate organic carbon and major and trace ions in the Fraser River, Canada,
Biogeosciences, 12, 5597-5618, doi:10.5194/bg-12-5597-2015, 2015.
- Walker S. A., Amon, R. M. W., Stedmon, C., Duan, S. and Louchouart, P.: The use of PARAFAC modeling to trace terrestrial
dissolved organic matter and fingerprint water masses in coastal Canadian Arctic surface waters, *Journal of Geophysical*
675 *Research*, 114, doi:10.1029/2009jg000990, 2009.
- Wang J., Walter, B. A., Yao, F., Song, C., Ding, M., Maroof, A. S., Zhu, J., Fan, C., McAlister, J. M., Sikder, S., Sheng, Y.,
Allen, G. H., Crétaux, J.-F. and Wada, Y.: GeoDAR: georeferenced global dams and reservoirs dataset for bridging attributes
and geolocations, *Earth System Science Data*, 14, 1869-1899, doi:10.5194/essd-14-1869-2022, 2022.
- 680 Weishaar J. L., Aiken, G. R., Bergamaschi, B. A., Fram, M. S., Fujii, R. and Mopper, K.: Evaluation of specific ultraviolet
absorbance as an indicator of the chemical composition and reactivity of dissolved organic carbon, *Environ. Sci. Technol.*,
37, 4702-4708, 2003.
- Williams C. J., Frost, P. C., Morales-Williams, A. M., Larson, J. H., Richardson, W. B., Chiandret, A. S. and Xenopoulos, M.
A.: Human activities cause distinct dissolved organic matter composition across freshwater ecosystems, *Global Change*
Biol., 22, 613-626, doi:10.1111/gcb.13094, 2016.
- 685 Williams C. J., Yamashita, Y., Wilson, H. F., Jaffé, R. and Xenopoulos, M. A.: Unraveling the role of land use and microbial
activity in shaping dissolved organic matter characteristics in stream ecosystems, *Limnol. Oceanogr.*, 55, 1159-1171,
doi:10.4319/lo.2010.55.3.1159, 2010.
- Williamson J. L., Tye, A., Lapworth, D. J., Monteith, D., Sanders, R., Mayor, D. J., Barry, C., Bowes, M., Bowes, M., Burden,
A., Callaghan, N., Farr, G., Felgate, S., Fitch, A., Gibb, S., Gilbert, P., Hargreaves, G., Keenan, P., Kitidis, V., Juergens, M.,
690 Martin, A., Mounteney, I., Nightingale, P. D., Pereira, M. G., Olszewska, J., Pickard, A., Rees, A. P., Spears, B., Stinchcombe,
M., White, D., Williams, P., Worrall, F. and Evans, C.: Landscape controls on riverine export of dissolved organic carbon
from Great Britain, *Biogeochemistry*, 1-22, doi:10.1007/s10533-021-00762-2, 2021.
- Wilson H. F. and Xenopoulos, M. A.: Effects of agricultural land use on the composition of fluvial dissolved organic matter,
Nat. Geosci., 2, 37-41, doi:10.1038/ngeo391, 2008.
- 695 Xenopoulos M. A., Barnes, R. T., Boodoo, K. S., Butman, D., Catalán, N., D'Amario, S. C., Fasching, C., Kothawala, D. N.,
Pisani, O., Solomon, C. T., Spencer, R. G. M., Williams, C. J. and Wilson, H. F.: How humans alter dissolved organic matter
composition in freshwater: relevance for the Earth's biogeochemistry, *Biogeochemistry*, 1-26, doi:10.1007/s10533-021-
00753-3, 2021.
- Yi Y., Li, S.-L., Zhong, J., Wang, W., Chen, S., Bao, H. and He, D.: The influence of the deep subtropical reservoir on the
karstic riverine carbon cycle and its regulatory factors: Insights from the seasonal and hydrological changes, *Water Res.*,
700 226, doi:10.1016/j.watres.2022.119267, 2022.
- Yi Y., Zhong, J., Bao, H., Mostofa, K. M. G., Xu, S., Xiao, H.-Y. and Li, S.-L.: The impacts of reservoirs on the sources and
transport of riverine organic carbon in the karst area: a multi-tracer study, *Water Res.*, 194, 116933,
doi:10.1016/j.watres.2021.116933, 2021.
- 705 Zhang Q., Tao, Z., Ma, Z., Gao, Q., Deng, H., Xu, P., Ding, J., Wang, Z. and Lin, Y.: Hydro-ecological controls on riverine
organic carbon dynamics in the tropical monsoon region, *Sci. Rep.*, 9, 11871, doi:10.1038/s41598-019-48208-y, 2019.
- Zhong J., Chen, S., Wang, W., Yan, Z., Ellam, R. M. and Li, S. L.: Unravelling the hydrological effects on spatiotemporal
variability of water chemistry in mountainous rivers from Southwest China, *Hydrol. Process.*, 34, 5595-5605,
doi:10.1002/hyp.13980, 2020.
- 710 Zhong J., Li, S.-L., Zhu, X., Liu, J., Xu, S., Xu, S. and Liu, C.-Q.: Dynamics and fluxes of dissolved carbon under short-term
climate variabilities in headwaters of the Changjiang River, draining the Qinghai-Tibet Plateau, *J. Hydrol.*, 596, 126128,
doi:10.1016/j.jhydrol.2021.126128, 2021.
- Zhong J., Wang, L., Caracausi, A., Galy, A., Li, S. L., Wang, W., Zhang, M., Liu, C. Q., Liu, G. M. and Xu, S.: Assessing the

- 715 Deep Carbon Release in an Active Volcanic Field using Hydrochemistry, $\delta^{13}\text{CDIC}$ and $\Delta^{14}\text{CDIC}$, *J. Geophys. Res.: Biogeo.*, doi:10.1029/2023jg007435, 2023.
- Zhou Y., Davidson, T. A., Yao, X., Zhang, Y., Jeppesen, E., de Souza, J. G., Wu, H., Shi, K. and Qin, B.: How autochthonous dissolved organic matter responds to eutrophication and climate warming: Evidence from a cross-continental data analysis and experiments, *Earth-Sci. Rev.*, 185, 928-937, doi:10.1016/j.earscirev.2018.08.013, 2018.
- 720 Zhou Y., Yao, X., Zhou, L., Zhao, Z., Wang, X., Jang, K. S., Tian, W., Zhang, Y., Podgorski, D. C., Spencer, R. G. M., Kothawala, D. N., Jeppesen, E. and Wu, F.: How hydrology and anthropogenic activity influence the molecular composition and export of dissolved organic matter: Observations along a large river continuum, *Limnol. Oceanogr.*, 66, 1730-1742, doi:10.1002/lno.11716, 2021.