

Methane emissions from Arctic landscapes during 2000-2015: An analysis with land and lake biogeochemistry models

Xiangyu Liu¹, Qianlai Zhuang^{1,2,3}

5 ¹Department of Earth, Atmospheric, Planetary Sciences, Purdue University, West Lafayette, IN, USA

²Department of Agronomy, Purdue University, West Lafayette, IN, USA

³Purdue Climate Change Research Center, West Lafayette, IN, USA

Correspondence to: Qianlai Zhuang (qzhuang@purdue.edu)

Abstract. Wetlands and freshwater bodies (mainly lakes) are the largest natural source of greenhouse gas CH₄ to the atmosphere. Great efforts have been made to quantify these source emissions and their uncertainties. Previous research suggests that there might be significant uncertainties coming from “double accounting” emissions from freshwater bodies and wetlands. Here we quantify the methane emissions from both land and freshwater bodies in the pan-Arctic with two process-based biogeochemistry models by minimizing the double accounting at the landscape scale. Two non-overlapping dynamic areal change datasets are used to drive the models. We estimate that the total methane emissions from pan-Arctic are 36.46 ± 1.02 Tg CH₄ yr⁻¹ during 2000-2015, of which wetlands and freshwater bodies are 21.69 ± 0.59 CH₄ Tg yr⁻¹ and 14.76 ± 0.44 Tg CH₄ yr⁻¹, respectively. Our estimation narrows the difference between previous ‘bottom-up’ (53.9 Tg CH₄ yr⁻¹) and top-down (29 Tg CH₄ yr⁻¹) estimates. Our correlation analysis shows that air temperature is the most important driver for methane emission of inland water system. Wetland emissions are also significantly affected by vapor pressure while lake emissions are more influenced by precipitation and landscape areal changes. Sensitivity tests indicate the pan-Arctic lake CH₄ emissions were highly influenced by air temperature, but less by lake sediment carbon increase.

1. Introduction

25 Atmospheric methane (CH₄) is one of the major greenhouse gasses which contributes to about 20% of the warming effect, second only to carbon dioxide (CO₂). Atmospheric methane concentrations have risen 2.5 times since the beginning of the industrial age (Hamdan and Wickland, 2016). However, its 100-year global warming potential is around 28 times higher than CO₂ (27.2 in non-fossil origin and 29.8

in fossil origin; IPCC, 2021). Previous studies have suggested that inland water systems (wetlands and
30 freshwater bodies) are the single largest natural source of the greenhouse gas CH₄ (Saunois et al., 2020),
both of which have been found to increase under changing climate. Wetland CH₄ emissions are the largest
natural source in the global CH₄ budget, contributing to 60–80% of natural CH₄ emissions, equivalent to
roughly one-third of total natural and anthropogenic emissions (Quiquet et al., 2015; Hopcroft et al.,
2017). Under the RCP 2.6 scenario, climate change-induced increases in boreal wetland extent and
35 temperature-driven increases in tropical CH₄ emissions will dominate anthropogenic CH₄ emissions by
38 to 56% toward the end of the 21st century (Zhang et al., 2017).

Likewise, lakes are the second largest CH₄ source of all inland water emissions after wetlands
(Kyzivat, et al., 2022), accounting for approximately 30% of biogenic methane emissions (Guo et al.,
2020). They are especially common in high latitudes and account for about 10% of the boreal landscape
40 (Guo et al., 2020). This high coverage of lakes especially the extensive shallow seasonally ice-covered
ones in the subarctic landscapes has been considered as a major source of atmospheric methane in
northern high latitudes (Bastviken et al., 2011, West, et al., 2016). Unlike wetlands, shallow lakes have
the highest methane emission potential in the cold season which dominate the spring methane release in
the pan-Arctic area (Jammet et al., 2015), since the ice layer in winter prevents methane from being
45 oxidized by the atmospheric oxygen and from being released to the atmosphere, methane accumulated
during the winter can be released in a large pulse during the spring ice melt (Phelps et al., 1998; Guo et
al., 2020). In addition, due to the considerable total lake area and the substantial shallow lakes in the area
of 40-70° N, this region was also found to be the dominant contributor (~30%) of global lake diffusive
CH₄ emissions (Li et al., 2020). However, in comparison with land methane emission studies, less work
50 has been done on studying lake CH₄ emissions through process-based modeling (Saunois et al., 2020),
especially for the pan-Arctic region.

To date, although great efforts have been made to quantifying the uncertainties of global wetland
and lake methane emissions separately (Liu et al., 2020; Guo et al., 2021), there are still significant
differences between the estimates of the Arctic CH₄ natural sources using ‘bottom-up’ method which
55 aggregated lakes, wetlands and coastal waters as CH₄ sources (32–112 Tg CH₄ yr⁻¹; McGuire et al., 2009;
Saunois et al., 2020) and ‘top-down’ method which determines the emissions based on the spatial and
temporal variability of atmospheric CH₄ concentration measurements (15–50 Tg CH₄ yr⁻¹; AMAP, 2015).
In those studies, there are potential “double accounting” issues for certain areas of wetlands and lakes

using low-resolution wetland and lake distribution data (Thornton et al., 2016). Specifically, some small
60 lakes and ponds might have been considered as lakes using lake models while wetland modeling might
have also treated those as wetlands, therefore being accounted for twice in the regional methane emission
estimation.

Here we use two process-based biogeochemical models, the Terrestrial Ecosystem Model (TEM-
MDM, Liu et al, 2020) and the Arctic Lake Biogeochemistry Model (ALBM, Guo et al., 2020), along
65 with two dynamic area datasets for both wetlands (WAD2M, Version 2.0; Zhang et al., 2022) and lakes
(GLCP; Meyer et al., 2020) ecosystems which cover the inland water systems throughout the landscape
without overlap, to quantify the methane emissions considering the impact of the landscape changes in
both land ecosystems and freshwater bodies in the study region for the period 2000-2015.

2. Method

70 2.1. Model description

The Terrestrial Ecosystem Model (TEM) is a process-based biogeochemistry model which considers
carbon, nitrogen, water, and heat processes in terrestrial ecosystems and was originally used to simulate
ecosystem carbon and nitrogen dynamics (Melillo et al., 1993; Zhuang et al., 2001, 2002, 2003, 2004,
2007, 2013). The model considers important freeze-thaw processes and explicitly integrates soil
75 thermodynamics in permafrost and non-permafrost region biogeochemical processes. It is also coupled
with a complex hydrological module that enables the modeling of soil moisture profiles and water table
depths in upland and wetland ecosystems. Zhuang et al. (2004) also developed a Methane Dynamics
Module (MDM), which was integrated into TEM to estimate CH₄ emissions from northern high-latitude
regions and further revised and extrapolated to the global scale to quantify soil methane consumption
80 (Zhuang et al., 2013). Recently, Liu et al. (2020) revised the model to the version we used in this study
by taking into account several more detailed land methane cycling processes, including various types of
wetlands in different regions based on plant functional types, the impact of above-soil surface water on
methane transport, and cumulative vertical methane concentrations in soil, such that it can give a more
precise methane estimate on the global scale.

85 The Arctic Lake Biogeochemistry Model (ALBM) is a 1-D process-based climate-sensitive lake
biogeochemical model originally developed for simulating CH₄ production, oxidation, and emission in

Arctic lakes (Tan et al., 2015; Tan and Zhuang 2015a, 2015b) and later revised to predict both thermal and carbon dynamics of aquatic ecosystems in boreal lakes (Tan et al., 2017; Guo et al., 2020), and it was then successfully applied to temperate lakes (Tan et al., 2018; Guseva et al., 2020). Recently, the
90 ALBM is also shown to be capable of simulating global lake thermal dynamics (Guo et al., 2021). The model consists of several modules, including those for the water/sediment thermal circulation, conceptualized as the water thermal module (WTM) and the sediment thermal module (STM), and those for the gas diffusive and ebullition transportation, conceptualized as the bubble transport module (BTM) and the dissolved gas transport module (GTM) (Tan et al., 2015). The model also covers the radiative
95 transfer processes and the water/sediment biogeochemistry, including the terrestrial ecosystems' organic carbon loading, the microbial and photochemical organic carbon degradation, the photosynthesis for inorganic carbon fixation, and phytoplankton biomass loss through respiration for further simulation of CO₂ dynamics. The ability of ALBM to simulate and represent the thawing and freezing cycles of sediments in thermokarst lakes and the organic carbon inputs induced by thermokarst activities, the
100 degradation of dissolved organic carbon through photochemical mineralization, and the mobilization and mineralization of labile organic carbon in the deep sediments of yedoma lakes is crucial for understanding the carbon dynamics in Arctic lakes which makes it a better choice for simulating Arctic lake methane emission than other lake models that are usually lacking these processes (Tan et al., 2017).

2.2. Input Data

105 Here we use two global dynamic area changing datasets for both wetland and lake ecosystems. For wetlands, the Wetland Area and Dynamics for Methane Modeling (WAD2M) Version 2.0 was used as the TEM-MDM model input as transient wetland inundation fraction data. The dataset following the same processing method as Version 1.0 (Zhang et al., 2021), which was used for quantifying the global methane budget for 2000-2017 (Saunois et al., 2020), but included a few updates on the static inventories applied
110 in WAD2M and used the same monthly SWAMPS version 3.2 (Jensen and McDonald, 2019), was provided for the Global Carbon Project wetland CH₄ (GCP-CH₄) model intercomparison. Compared to the previous one, the new version applied Global River Width from Landsat (GRWL) Database (<https://zenodo.org/record/1297434>; Allen and Pavelsky, 2018) and HydroLAKES (https://www.hydrosheds.org/images/inpages/HydroLAKES_TechDoc_v10.pdf; Messenger et al., 2016)
115 instead of the Joint Research Center Global Surface Water (GSW) dataset (Pekel et al., 2016) to remove

inland freshwater systems, defined as lakes, ponds, and rivers and the time period was extended to 2000-2020. Land cover data, which are used to assign parameters to each grid cell, followed Liu et al. (2020), from which vegetation type distribution is from Melillo et al. (1993) and soil texture is from Zhuang et al. (2003).

120 For lake simulation, we used the Global Lake area, Climate, and Population dataset (GLCP; Meyer et al., 2020) as the dynamic input for ALBM model. Using the HydroLAKES database version 1.0 for the locations and numbers of lakes, the GLCP contains over 1.4 million lakes of at least 10 ha in surface area, with annual surface area (identified as permanent or seasonal water) from 1995 to 2015, paired with annual basin-level temperature, precipitation, and population values HydroLAKES is a global database
125 of all lakes with a surface area of at least 10 ha based on inventories using geo-statistical approaches. Since GLCP directly uses HydroLAKES to determine the lake locations and numbers, and HydroLAKES is also the dataset WAD2M used to remove inland freshwater bodies, thus, the combination of these two datasets (GLCP and WAD2M 2.0) covers the inland water systems throughout the landscape and will not overlap with each other. Hence using these two dynamic datasets will minimize “double accounting”
130 problem, which refers to some lakes and ponds being accounted for twice in both regional lake and wetland methane emission estimation at the landscape scale (Thornton et al., 2016). We further classified the lakes into four types based on their location and permafrost thawing type in the pan-Arctic area (above 45° north), including yedoma thermokarst lakes (yedoma/YDM), non-yedoma thermokarst lakes (thermokarst/TMK), non-thermo boreal lakes (boreal/BRL), and temperate lakes (temperate/TMP). From
135 which, yedoma and thermokarst lakes are classified based on circum-polar Yedoma map (Jens et al., 2022) and Arctic Circumpolar Distribution and Soil Carbon of Thermokarst Landscapes (Olefeldt et al., 2016), non-thermo boreal lakes and temperate lakes were defined on whether their location is above 60° north. At the end, there are total 1,248,478 lakes were simulated, including 101,852 yedoma lakes, 249,434 non-yedoma-thermokarst lakes, 390,687 non-thermo-boreal lakes, and 506,505 temperate lakes. Because
140 the time period is different for these two datasets (2000-2020 for WAD2M and 1995-2015 for GLCP), we chose the overlap years 2000-2015 as our simulation time period.

For the climate forcing data, we used GSWP3-W5E5 and 20CRv3-ERA5 datasets (gswp3-w5e5_obsclim_global_daily and 20crv3-era5_obsclim_hurs_global_daily, <https://data.isimip.org/10.48364/ISIMIP.982724>; Lange et al., 2022), both are factual climate input daily
145 dataset with a resolution of 0.5° × 0.5° globally provided by the Inter-Sectoral Impact Model

Intercomparison Project (ISIMIP). These forcing data were used for both models to ensure that no additional uncertainties are introduced. Air temperature, surface pressure, wind speed at 10m, relative humidity, precipitation, snowfall, downward short-wave radiation and downward long-wave radiation were used in ALBM model as input forcing. For TEM-MDM model simulation, we only used air
150 temperature, relative humidity, precipitation, and downward short-wave radiation, where air temperature and relative humidity were used to calculate the vapor pressure as another input.

2.3. Model parameters

The model parameters are derived from previous studies, both of which did the parameter calibration and validation on a global scale (Liu et al., 2020; Guo, et al., 2021). For TEM-MDM, 15 key parameters
155 involved in wetland methane oxidation and production processes were calibrated and validated at the site level (15 sites for calibration and 14 sites for validation) using the Shuffled Complex Evolution Approach (SCE-UA). Other information, such as vegetation type, soil texture, and wetland type, were also set based on site observations. For ALBM, 58 freshwater lakes of varying shapes, locations, climates, and landscapes were used for the calibration of nine lake sediment property related parameters. The
160 calibration process used the Sobol sequence sampling method to generate a perturbed parameter ensemble (PPE) of 10,000 samples from the parameters space and then the Monte Carlo method was applied to simulate this PPE for each lake. Six years of the observation data from each lake were used for calibration and the rest were used for validation.

2.4. Simulation protocols

165 Model simulations followed different protocols for different models. In wetland simulation (using TEM-MDM), the Terrestrial Ecosystem Model 5.0 (TEM5) was first run in the same simulation area and time period to get the net primary production (NPP) and leaf area index (LAI), the outputs were then fed to TEM-MDM as input to calculate methane emissions. For TEM5 simulation, we first did the spin-up run 10 times with 40 years per spin before the transient simulation to let the model reach a steady state
170 using the first 40-year (1901-1940) input data, 120 years (1901-2020) transient simulation was run in TEM-MDM while the first 100 years simulation was used as spin up. For lake simulation using ALBM, as discussed in section 2.2, the lakes were classified into four types based on their location and permafrost thawing type. We further grouped each type of lakes based on their surface area (<1 km², 1-10 km², >10

km²) and depth (< 3 m, > 3 m) and whether they are in the same 0.5° × 0.5° pixel so that lakes in the same groups will be driven by the same meteorology input data. Different types of lakes used different parameter sets derived from calibration. For all the simulations, a spin-up period of 10 years was run first.

2.5. Sensitivity test

Sensitivity tests were conducted towards lake emissions simulation in three aspects. According to the previous studies, under the SSP5-8.5 scenario, the temperature will increase roughly by 4-6 °C (IPCC, 2021; Huang et al., 2022) and the precipitation exhibits an increasing trend at a rate of 10.28 mm/decade in the northern hemisphere, corresponding to ~13-18% increase by the end of the 21st century (Chen et al., 2014; Du et al., 2022). Therefore, we rerun the simulation by 1) increasing the daily temperature by 5 °C; 2) increasing the daily precipitation by 15%, where both rain and snowfall were considered; and 3) adding additional 15% carbon into lake sediments to simulate the influence of permafrost thawing due to global warming. For temperature and precipitation, we directly modified them at the data input step. For lake sediment carbon, we assumed that the additional carbon transferred straightly from old organic matter in thawing permafrost (old organic carbon pool) to new organic matter at the water-sediment interface (young organic carbon pool) and changed it by altering the labile carbon density (C_{labile}) (Tan et al., 2015). Because the old organic carbon pool may only contribute to CH₄ production in the permafrost thaw bulb under yedoma and thermokarst lakes, we just altered the corresponding C_{labile} .

3. Results

3.1. Temporal dynamics of methane emissions at the landscape scale

The ALBM model simulation driven with the GLCP dataset indicates that the methane emission from lakes in the pan-Arctic region ranges from 11.88 ± 0.18 Tg CH₄ yr⁻¹ in the year 2000 to 18.20 ± 0.31 Tg CH₄ yr⁻¹ in the year 2015 with a mean value of 14.76 ± 0.44 Tg CH₄ yr⁻¹. For different types of lake, we estimate 6.41 ± 0.05 Tg CH₄ yr⁻¹ for temperate lakes, 3.07 ± 0.09 Tg CH₄ yr⁻¹ for boreal lakes, 2.36 ± 0.28 Tg CH₄ yr⁻¹ for thermokarst lakes, and 2.92 ± 0.07 Tg CH₄ yr⁻¹ for yedoma lakes, respectively. The TEM-MDM model driven with WAD2M 2.0 inundation data estimates land ecosystem net emissions of 21.69 ± 0.59 Tg CH₄ yr⁻¹, ranging from 19.44 ± 0.63 in 2009 to 23.87 ± 0.76 in 2007. Combined the two model simulations along with two dynamic area change datasets, we estimate that the total annual methane emission from inland water systems in the region of 45° N north during 2000-2015 is $36.46 \pm$

1.02 Tg CH₄ yr⁻¹, with the lowest value of 31.91 ± 0.61 Tg CH₄ yr⁻¹ in the year 2000 and the highest value of 41.09 ± 1.35 Tg CH₄ yr⁻¹ in 2015 (Fig. 1a).

Fig. 1b shows the landscape change over the 2000-2015 period. From which, the wetland area was calculated using inundation fraction data and the lake area was directly derived from the GLCP dataset. The total annual average area of the inland water system in the study region is 3,090,690 ± 38,203 km² (mean ± standard deviation) with a minimum value of 3,039,565 km² in 2003 and a maximum of 3,169,494 km² in 2015. The total wetland area is 1,122,493 ± 36,303 km² ranging from 1,074,079 km² (2009) to 1,199,428 km² (2010). For lakes, the total area ranges from 1,919,652 km² in 2003 to 1,996,625 km² (1,968,197 ± 19,708 km²).

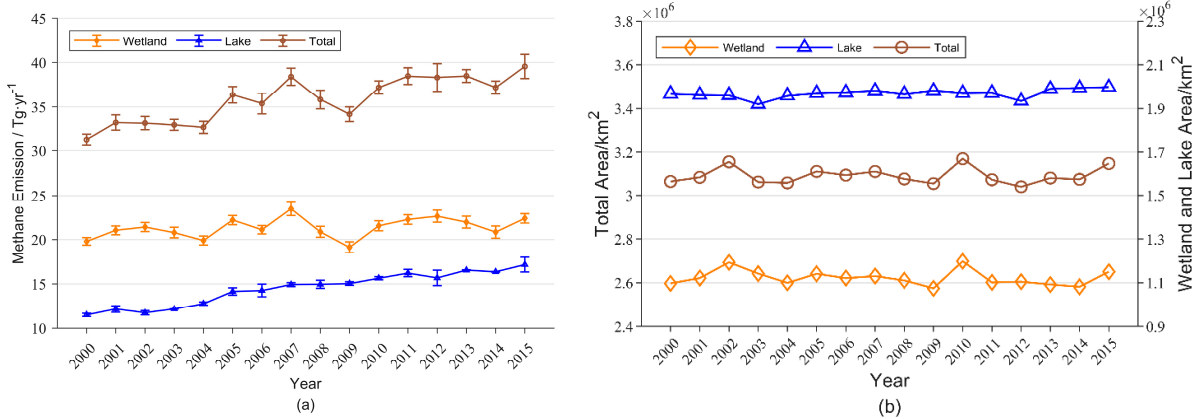


Figure 1. Annual (a) methane emissions and (b) landscape change.

3.2. Spatial variations of landscape-level methane emissions

Spatial wetland and lake methane emissions are shown in Fig. 2a and b separately. West Siberia Lowland and the Hudson Bay Lowland were the two strong sources. There are many sporadic high emission sources in wet tundra and small wetlands in boreal forest regions, and river and coastal floodplains. Although a majority of lakes are located in the northern Hudson Bay area, they all have low emissions at around 1 g CH₄ m⁻² yr⁻¹, compared to which, lakes near Mackenzie River delta of Canada and the Hudson Bay Lowland area have a relatively higher emission at 50 g CH₄ m⁻² yr⁻¹, as well as lakes in northern Europe such as Sweden, Finland, and the northwest corner of Russia (around Lake Onega). Fig. 2c shows the methane emission for inland water systems in the pan-Arctic area, it is worth noting

that the average emissions of the lake are usually higher than the emission of the wetlands around the lake, indicating that lakes emit more methane than wetlands in same the region under the same conditions.

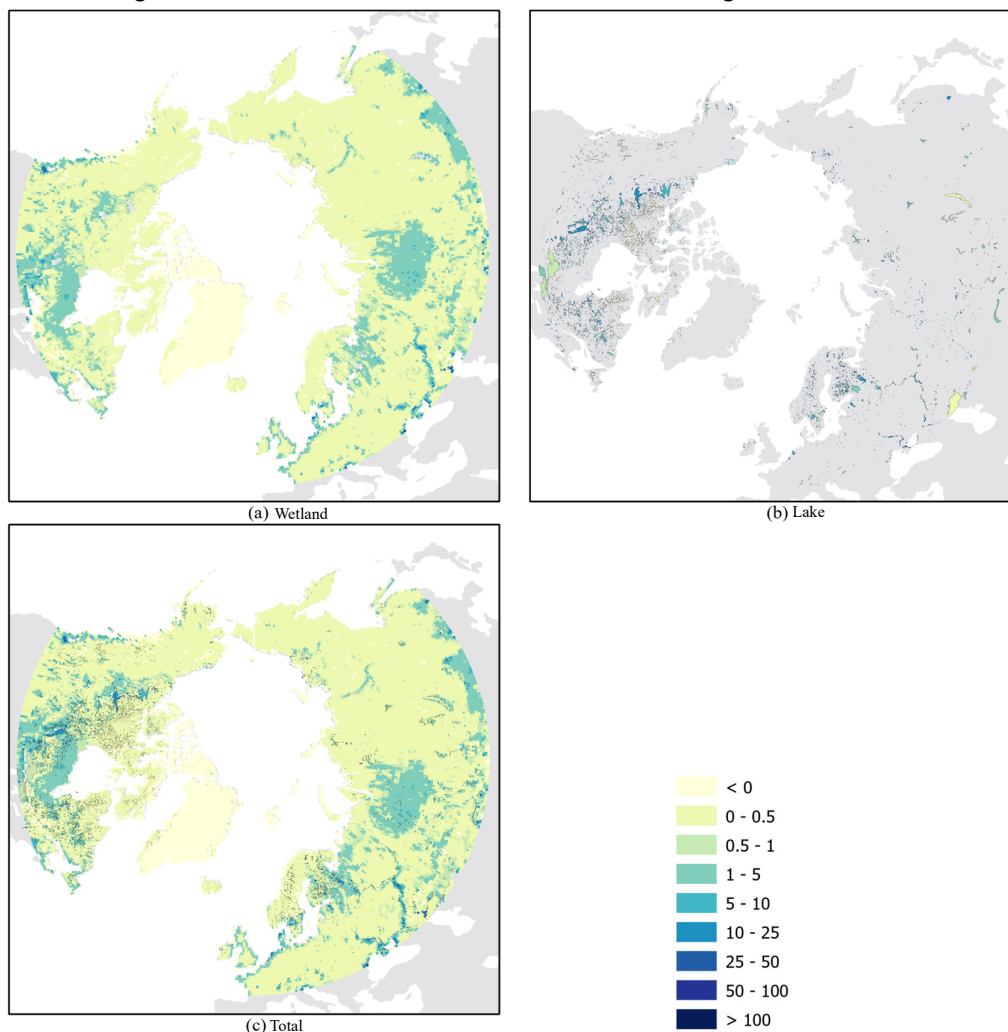


Figure 2. Spatial distribution of average annual methane emissions ($\text{g CH}_4 \text{ m}^{-2} \text{ yr}^{-1}$) from (a) wetlands, (b) lakes, and (c) total inland water systems in the pan-Arctic region.

225 **3.3. Correlation and sensitivity analysis results**

The relationship between annual methane emissions from inland water systems and climate drivers as well as landscape areal change are shown in Fig. 3. The studied climate drivers include vapor pressure (relative humidity), precipitation, temperature, and shortwave radiation. For areal changes, wetlands and lakes are shown separately. We also did a correlation analysis between annual methane emissions and these drivers. The results are shown in Table 1. Temperature and vapor pressure have very similar trend and fit well with wetland emission with a high correlation of 0.80 and 0.88, which are the only two have 230 the P-value less than 0.01. The precipitation captured the upward and downward trends of wetland

emissions, with a relatively high and statistically significant correlation of 0.56. Compared to which, the shortwave radiation and areal change have lower correlations with wetland emissions. For lake emissions, figure shows that temperature captured the most upward and downward trends, followed by shortwave radiation and precipitation with statistically significant correlations of 0.54, 0.47 and 0.45, respectively. Although the annual average vapor pressure shares a similar annual trend with temperature and lake methane emissions, the correlation analysis is relatively low. In addition, the methane emissions from lakes (0.56) are more sensitive to landscape areal changes than to wetlands changes (0.27 with no statistical significance).

Table 1. Correlations between annual methane emissions and climate drivers and landscape changes

	Shortwave Radiation	Precipitation	Temperature	Vapor Pressure	Areal Change
Wetland Emission	0.20 ^d	0.56 ^b	0.80 ^a	0.88 ^a	0.35 ^d
Lake Emission	0.47 ^c	0.45 ^c	0.54 ^b	0.35 ^d	0.56 ^b

(a) P-value less than 0.01; (b) P-value less than 0.05; (c) P-value less than 0.1; (d) P-value greater than 0.1

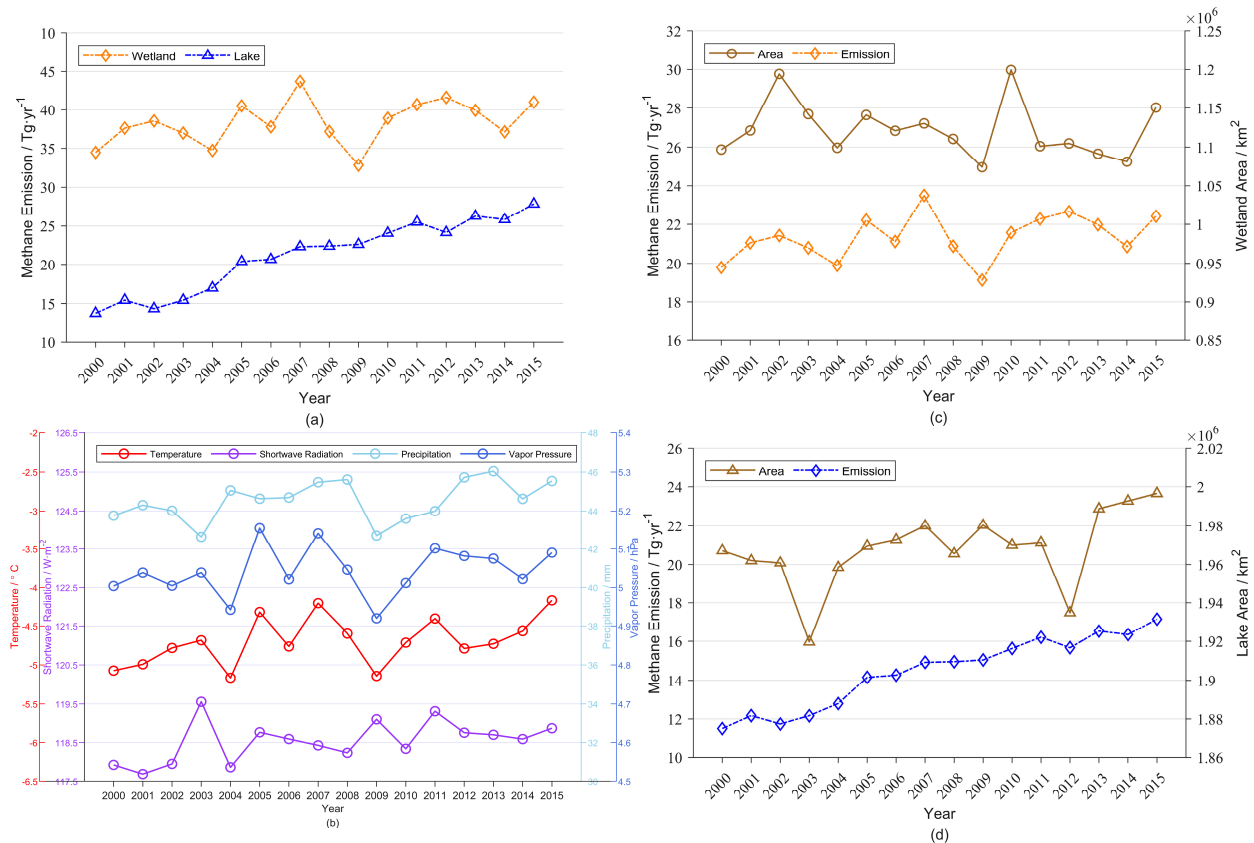


Figure 3. Relationships between methane emissions from inland water systems and key drivers: (a) methane emissions, (b) 4 climate drivers, and methane emission with (c) wetland area, and (d) lake area changes.

245 Considering that annual average values are not capable of capturing seasonal/monthly relationship,
 we then did another correlation analysis using monthly data. From which, monthly wetland and lake
 emissions, four climate drivers, and wetland inundation data were used while monthly lake area data are
 not available (Table 2). Each correlation in the table has a p-value lower than 0.01, which means they
 are all statistically significant. Vapor pressure, just like the high correlation with wetland emissions in
 250 interannual trends (Table 1), the monthly correlation is still the highest among the five factors (0.96). The
 second highest correlation with wetland emissions is also temperature (0.89), followed by wetland area,
 shortwave radiation, and precipitation. Although the interannual variation of short-wave radiation not
 fully coincides with wetland emissions (Fig. 3) and they seem to have low and statistically meaningless
 correlation, their monthly correlation still has a relatively high value of 0.77. In terms of the correlation
 255 of lake methane emissions, temperature has the highest value of 0.87, followed by relative humidity
 (vapor pressure) and precipitation. We also did a correlation analysis between wetland area and climate
 drivers and found that temperature and vapor pressure are the climatic factors that have the greatest
 impact on wetland landscape areal changes.

Table 2. Correlation between monthly methane emission and climate drivers and landscape changes

	Shortwave Radiation	Precipitation	Temperature	Vapor Pressure	Areal Change
Wetland Emission	0.77	0.76	0.89	0.96	0.79
Lake Emission	0.56	0.79	0.87	0.82	
Wetland Area	0.69	0.75	0.93	0.88	

260 Different types of lakes have various sensitivities to increasing temperature, precipitation, and
 additional lake sediment carbon (Fig. 4 and Table 3). Lake methane emission from above 45-degree
 north is more sensitive to temperature changes than to precipitation or lake sediment carbon pool. When
 temperature increases by 5° C, lake emissions increase by 19%, where thermokarst lakes are influenced
 the most (28.5%) and yedoma lakes are influenced the least (7.35%). Precipitation has low impacts on
 265 lake CH₄ emissions. The overall lake emissions only increase by 0.19% when the precipitation increased
 by 15%. Thermokarst lakes remain relatively most sensitive to changes in precipitation (0.82), while the
 other three types of lakes were all insensitive. For additional sediment carbon added due to permafrost
 thaw, only thermokarst and yedoma lakes were impacted, with increasing by 15% carbon leading to a

similar increase for both types of lakes (20.85% and 18.98%), resulting in an overall CH₄ emission
 270 increase by 6.85%.

Table 3. Average increase for 4 types of lakes (temperate (TMP), boreal (BRL), thermokarst (TMK), and yedoma (YDM)) and total CH₄ emissions in 16-year period due to changes in temperature, precipitation, and lake sediment carbon.

	TMP	BRL	TMK	YDM	Total
Additional C	0	0	20.85%	18.98%	6.85%
Temperature	19.24%	22.38%	28.49%	7.35%	18.81%
Precipitation	0.12%	0.05%	0.82%	0.06%	0.19%

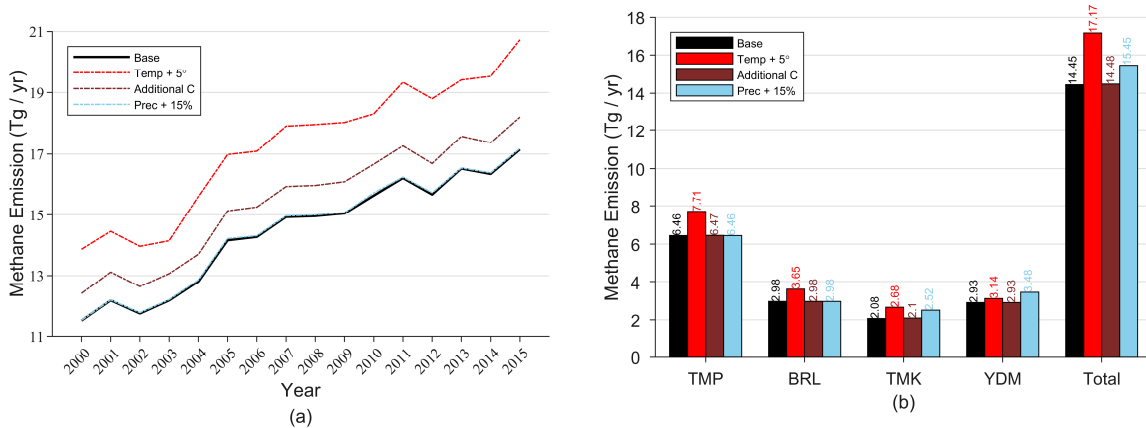


Figure 4. Sensitivity test for increasing temperature by 5°C, increasing precipitation by 15%, and adding additional 15% carbon into lake sediments (a); Average value of each type of lakes including temperate (TMP), boreal (BRL), thermokarst (TMK), and yedoma (YDM) (b).

4. Discussion

4.1. Annual methane emissions from the landscape

From the previous studies, Wik et al. (2016) estimated 16.5 Tg CH₄ yr⁻¹ emissions from lakes and
 280 ponds north of 50° N while Bastviken et al. (2011) estimated 13.4 for the inland waters (lakes, reservoirs,
 streams, and rivers) >54° N, both of which are estimated using measurement data combined with
 inventories. Based on a new spatially-explicit dataset of lakes > 50° N which includes not only all the
 lakes that area greater than 0.1 km² but also 6.5 million smaller lakes (0.02–0.1 km²), Matthews et al.
 (2020) estimated the emissions are 13.8–17.7 Tg CH₄ yr⁻¹. Using a process-based model (bLake4Me, a
 285 previous version of the ALBM model), Tan and Zhuang (2015a) estimated 11.86 Tg CH₄ yr⁻¹ in the year
 2005–2008 ranging from 7.1 to 17.3 Tg CH₄ yr⁻¹ for north of 60° N. After this study, a coupled model of

bLake4Me and a thermokarst lake-evolution model was used to estimate a total methane emission of 11.3 ± 2.1 Tg CH₄ yr⁻¹ from lakes >60° N in the year 2006 (Tan and Zhuang, 2015b). Compared to these estimates, our lake simulation results fall in a reasonable range.

290 For emissions from northern high latitude wetlands, Chen et al. (2015) estimated 36.1 ± 6.7 Tg CH₄ yr⁻¹ during 1997–2006 for the same pan-Arctic wetlands (north of 45° N) using an enhanced Variable Infiltration Capacity (VIC) model linked with the Walter and Heimann wetland CH₄ emissions model. Zhang et al. (2017) used a bottom-up approach with LPJ-wsl model, estimating methane emissions of 23.4 ± 0.76 Tg CH₄ yr⁻¹ from wetlands > 50° N over the period 1980-2000. Poulter et al. (2017) used an ensemble of biogeochemical models constrained with remote sensing surface inundation and inventory-based wetland area data (SWAMPS-GLWD, a previous version of WAD2M used in this study) estimating the boreal wetland emitted 44 ± 19 Tg CH₄ yr⁻¹ in 2012. Using TEM-MDM, but combined with different transient wetland inundation area fraction datasets, Liu et al. (2020) estimated the emissions are 38.90 Tg CH₄ yr⁻¹ from the region 45-90° N. Our estimates are at the lower end of these records. We attribute this to the change in inundation area data. The larger lake extent in GRWL & HydroLAKES compared to GSW dataset leads to downward-revised wetland area in WAD2M Version 2.0 versus Version 1.0. The revision in version 2.0 slightly reduced vegetated wetland extent in the mid-latitudes especially for the region 45-70° N, which is the portion with the most methane emissions in our study area. That could explain the gap between our results and the previous ones. In addition, compared to other model simulations that were also involved in the same project (Global Carbon Project wetland CH₄, GCP-CH₄) where 16 models give an annual average CH₄ emission of 28.8 ± 11.8 Tg CH₄ yr⁻¹ from northern wetlands >45° N in 2000–2020, our simulation result of 21.69 ± 0.59 CH₄ Tg yr⁻¹ lays in a reasonable range.

Besides biogeochemistry modeling approaches, atmospheric chemistry transport and inversion models have also been used to constrain the methane emission quantification from pan-Arctic wetlands and lakes. Bruhwiler et al. (2014) developed an assimilation system for atmospheric CH₄ and simulated the annual emissions from the wetland over the northern high latitudes (53–90° N) of about 23 Tg CH₄ yr⁻¹. Tan et al. (2016) used a nested-grid high-resolution inverse model estimating methane emissions from north of 60° N in the range of 11.9–28.5 Tg CH₄ yr⁻¹, of which wetlands and lakes accounted for 5.5–14.2 and 2.4–14.2 Tg CH₄ yr⁻¹, respectively.

Table 4. Comparison with previous studies with different methods. The average values are estimated by weighting the area.

Method	Type	Reference	Study Area	Emissions (Tg CH ₄ yr ⁻¹)	Average	Our result
Bottom-up	Wetland	Chen et al. (2015)	> 45° N	36.1 ± 6.7	36.3	21.69
		Zhang et al. (2017)	> 50° N	23.4 ± 0.76		
		Poulter et al. (2017)	Boreal region	44 ± 19		
		Liu et al. (2020)	> 45° N	38.9		
	Lake	Bastviken et al. (2011)	> 54° N	13.4	17.6	14.76
		Wik et al. (2016)	> 50° N	16.5		
		Tan and Zhuang (2015a)	> 60° N	11.86		
		Tan and Zhuang (2015b)	> 60° N	11.3 ± 2.1		
		Matthews et al. (2020)	> 50° N	13.8–17.7		
Top-down	Wetland and Lake	Tan et al. (2016)	> 60° N	11.9–28.5	29	
		Bruhwiller et al. (2014)	> 53° N	23		

Our simulation shows that methane emissions from inland water systems in the pan-Arctic are 36.46 ± 1.02 Tg CH₄ yr⁻¹, which are in the middle of bottom-up estimates of 53.9 Tg CH₄ yr⁻¹ and top-down estimates of 29 Tg CH₄ yr⁻¹ from previous studies (Table 4). Our bottom-up model estimates are much lower than the previous bottom-up estimates and closer to the previous top-down estimates. We attribute this to using two non-overlap dynamic areal change datasets to minimize the “double accounting” problem raised by Thornton et al. (2016).

4.2. Climate drivers and sensitivity analysis

Since the climate variables often co-vary over time, some of them could be confounders during the correlation analysis. Thus, the correlation analysis may not reflect the ‘true’ sensitivity of methane fluxes to single climate variable (Table 2). A partial correlation analysis is then conducted to eliminate the covariate effects between climate drivers for better analyzing correlation between each individual variable and methane emissions. We first noticed that interannual average vapor pressure and temperature have a relatively high correlation (Fig. 3b) with a value of 0.84 and 0.96 (both P-value are much less than 0.01) for annual and monthly data, respectively. This is to be expected since the vapor pressure is greatly affected by temperature and even itself is calculated from temperature and relative humidity data. We also found, while the correlation between annual temperature and radiation is not strong (0.40 with p-

335 value over 0.1), the correlation is strong at monthly time step (0.81 with P-value much less than 0.01),
 this may explain the relatively high correlation between monthly shortwave radiation and methane
 emissions. In addition, precipitation is greatly affected by vapor pressure and temperature, and there is a
 strong correlation among them (0.83 for vapor pressure and 0.77 for temperature). Hence our partial
 correlation analysis aims to examine the interannual and seasonal relationship between methane
 340 emissions and (1) vapor pressure and shortwave radiation after removing the thermal effect of
 temperature (Vapr/T and SwRd/T), (2) temperature independent of radiation (Temp/R), and (3)
 precipitation eliminating the impact of temperature and vapor pressure (Prec/TV) (Table 5).

**Table 5. Partial correlations for shortwave radiation eliminating temperature (SwRd/T), vapor pressure
 independent of temperature (Vapr/T), temperature independent of radiation (Temp/R), and precipitation
 345 eliminating temperature and vapor pressure (Prec/TV).**

Time scale	Tpye	SwRd/T	Prec/TV	Temp/R	Vapr/T
Seasonal	Wetland	0.20 ^a	-0.54 ^a	0.72 ^a	0.86 ^a
	Lake	-0.47 ^a	0.56 ^a	0.85 ^a	-0.14 ^c
Annual	Wetland	-0.23 ^d	0.35 ^d	0.81 ^a	0.65 ^a
	Lake	0.33 ^d	0.43 ^d	0.45 ^d	-0.23 ^d

(a) p-value less than 0.01; (b) p-value less than 0.05; (c) p-value less than 0.1; (d) p-value greater than 0.1

Although temperature and vapor pressure still are the most important drivers to the annual seasonal
 wetland methane emissions, vapor pressure independent of the thermal effect are no longer the main
 driver of lake methane emissions. For seasonal wetland emissions, vapor pressure has the highest
 coefficient and temperature has the second highest ones, consistent with our previous correlation analysis,
 350 high vapor pressure may limit the stomatal opening and reduce evapotranspiration, thus increases soil
 moisture which could stimulate methane production (Zhuang et al., 2003). Other studies also indicated
 that the impact of wet/dry cycles on regional methane emissions is evident (e.g., Watts et al., 2014). When
 it comes to annual trend, temperature tends to have higher influence on wetland methane emissions,
 355 indicating that wetland is more sensitive to temperature in a long term than vapor pressure. For lake
 emissions, vapor pressure has less impact when eliminating the temperature, showing that their high
 correlation is mostly induced by the thermal effect. In our model, lake methane emission is mainly
 through two processes, methane ebullition and diffusion (Tan et al., 2015, 2017). High vapor pressure
 would suppress water methane diffusion, but the influence is relatively small compared to overall

360 emissions. Shortwave radiation with temperature effect removed has a much smaller effect on seasonal
emissions, indicating the high correlation of radiation is caused by the heating effect of radiation and the
high sensitivity of temperature in our model. We believe the results of partial correlation analysis capture
the relationship between inland water systems methane emissions and climate drivers.

The sensitivity analysis suggests that a 5 °C increase in temperature increases the pan-Arctic lake
365 methane emission by 20%. Compared to previous studies, Guo et al. (2020) estimated a 40% lake
methane emission increase for the same study area by the end of the 21st century in the scenario that the
temperature increases around 7.5 °C. Sepulveda-Jauregui et al. (2018) showed that for subarctic
oligotrophic lakes, increasing lake water temperature by 2 °C leads to a net increase in CH₄ emissions by
47-56%. However, their work did not consider the ice cover season of high-latitude lakes, from which
370 the methane fluxes can be blocked by a thick layer of ice for several months each year and then oxidized
in the water column. In addition, the relatively low response of yedoma lakes (~7%) to the increasing
temperature could be explained by their mobilized labile carbon is usually in deep sediments (Tan and
Zhuang, 2015a), which means that the influence of the warming air temperature will take much longer
to enhance methane production in the lake sediment. In contrast, when we directly increase the labile
375 carbon density (C_{labile}) at the water-sediment interface, the methane emission of yedoma lakes increased
much higher (~19%), while the thermokarst lake were affected less (~20%) compared to its response to
temperature change (~28%). For precipitation, although it was set in the model to bring the load of
allochthonous carbon to the lake (Tan et al., 2017), increasing it by 15% only makes a negligible impact
on methane emission. A plausible explanation is that the lakes are relatively saturated with extraneous
380 carbon in sediments, so any increase brought by the additional precipitation tends to have small
influences.

4.3. Uncertainty analysis and future works

Although our simulation results more accurately estimate methane emissions from inland water
systems in the pan-Arctic by avoiding the “double accounting” problem, there still exist some uncertainty
385 sources in this study. First, despite the use of two non-overlapping landscape change maps to avoid the
uncertainty caused by “double accounting”, the precision of the two maps remains to be examined. The
HydroLAKES database used in the GLCP and WAD2M datasets only contains lakes and reservoirs which
area greater than 0.1 km² (Messenger et al., 2016), which means that lakes and ponds smaller than 0.1 km²

are either not considered or misclassified as wetlands. Those small lakes and ponds cover in total about
390 $1 \times 10^6 \text{ km}^2$ which equals more than half the area of Alaska (Verpoorter et al., 2014). Also, some previous
studies have found higher methane fluxes in small and shallow lakes (Holgerson et al., 2016; Sasaki et
al., 2016), and lakes appear to emit more methane than wetlands, implying that lake methane emissions
may still be underestimated. Secondly, during the simulation, although we classified the lakes based on
their sediment type, size, and depth, we still assumed that all the same types of lakes to be homogeneous
395 which were assigned to the same set of parameters. Nevertheless, lakes are highly heterogeneous across
the globe (Guo et al., 2021), especially for those big lakes, such that regional lake simulation may
introduce a high uncertainty.

Furthermore, recent studies have found that groundwater discharge could be an important pathway
as lateral CH_4 inputs to Arctic lakes that links CH_4 production in thawing permafrost to atmospheric
400 emissions via lakes (Olid et al., 2022). Jammet et al. (2015) also confirmed that spring is a crucial period
for methane dynamics in subarctic shallow lakes while large methane emissions were observed during
the spring thaw. These two important processes were not considered in our process-based ALBM model.
Similarly, compared to other model results in GCP- CH_4 projects, our TEM-MDM modeled wetland CH_4
emissions are relatively low in subzero temperature months, while a field study found that substantial
405 emissions occur during the “zero curtain” period, when subsurface soil temperatures are poised near 0°C
(Zona et al., 2016). Therefore, our next step will be modifying the TEM-MDM and ALBM models by
taking those important processes into consideration. In addition, higher resolution maps of dynamic
wetland inundation and lake landscape changes are highly needed.

5. Conclusions

410 By using two dynamic areal change datasets combined with process-based terrestrial and lake
biogeochemical models, we are among the first to quantify methane emissions from both land and aquatic
inland water systems, i.e., wetlands and freshwater bodies in the pan-Arctic, which avoids the uncertainty
caused by area “double accounting”. Our simulations indicate that the total methane emissions from pan-
Arctic inland water system are $36.46 \pm 1.02 \text{ Tg CH}_4 \text{ yr}^{-1}$ during 2000-2015, of which wetlands and lakes
415 were $21.69 \pm 0.59 \text{ Tg yr}^{-1}$ and $14.76 \pm 0.44 \text{ Tg yr}^{-1}$, respectively. Our estimation narrows the difference
between previous estimates using ‘bottom-up’ and ‘top-down’ methods. In the pan-Arctic, wetland

methane emissions are most affected by vapor pressure, followed by temperature, while lake emissions are more sensitive to temperature than to precipitation and landscape areal change. Furthermore, the methane emissions from lakes are more sensitive to annual landscape areal changes than from wetlands.

420 West Siberia Lowland and the Hudson Bay Lowland were the two strong sources of wetlands and lakes have higher emissions around Mackenzie River delta of Canada and the Hudson Bay Lowland area. In addition, lakes emit more methane than wetlands under the same condition. Although the lack of understanding of the underlying methane cycle mechanisms in the lake makes the response of CH₄ emissions from Arctic lakes to climate change highly uncertain, our sensitivity test using the process-

425 based model ALBM does indicate the pan-Arctic Lake CH₄ emissions are influenced by increasing temperature more compared to lake sediment carbon increase.

Code and data availability. The data used to reproduce figures, codes, model and samples of running directory can be accessed via Purdue University Research Repository:

430 <https://purr.purdue.edu/publications/4166/1>.

Author contributions. QZ designed the study. XL conducted model simulation and analysis. XL and QZ wrote the paper.

435 *Competing interests.* The authors declare that they have no conflict of interest.

Acknowledgments. This study is supported through a projected funded to Qianlai Zhuang by NASA (NNX17AK20G) and a project from the United States Geological Survey (G17AC00276). We acknowledge the Rosen High Performance Computing Center at Purdue for computing support. We also

440 acknowledge the World Climate Research Programme's Working Group on Coupled Modeling Intercomparison Project CMIP5, and we thank the climate modeling groups for producing and making available their model output.

445

Reference:

- Allen, G. H. and Pavelsky, T. M.: Global extent of rivers and streams, 361, 585–588, <https://doi.org/10.1126/science.aat0636>, 2018.
- AMAP. AMAP Assessment 2015: Human Health in the Arctic. Arctic Monitoring and Assessment Programme (AMAP), Oslo, Norway, 2015.
- 450 Bastviken, D., Tranvik, L. J., Downing, J. A., Crill, P. M., and Enrich-Prast, A.: Freshwater Methane Emissions Offset the Continental Carbon Sink, *Science*, 331, 50–50, <https://doi.org/10.1126/science.1196808>, 2011.
- Bruhwyler, L., Dlugokencky, E., Masarie, K., Ishizawa, M., Andrews, A., Miller, J., Sweeney, C., Tans, P., and Worthy, D.: CarbonTracker-CH₄: an assimilation system for estimating emissions of atmospheric methane, *Atmos. Chem. Phys.*, 14, 8269–8293, <https://doi.org/10.5194/acp-14-8269-2014>, 2014.
- Chen, L. and Frauenfeld, O. W.: A comprehensive evaluation of precipitation simulations over China based on CMIP5 multimodel ensemble projections. *J. Geophys. Res.-Atmos.*, 119, 5767–5786, [doi:10.1002/2013JD021190](https://doi.org/10.1002/2013JD021190), 2014.
- 460 Chen, X., Bohn, T. J., and Lettenmaier, D. P.: Model estimates of climate controls on pan-Arctic wetland methane emissions, *Biogeosciences*, 12, 6259–6277, <https://doi.org/10.5194/bg-12-6259-2015>, 2015.
- Du, Y., Wang, D., Zhu, J., Wang, D., Qi, X., and Cai, J.: Comprehensive assessment of CMIP5 and CMIP6 models in simulating and projecting precipitation over the global land. *International Journal of Climatology*, 42(13), 6859– 6875. <https://doi.org/10.1002/joc.7616>, 2022.
- 465 Guo, M., Zhuang, Q., Tan, Z., Shurpali, N., Juutinen, S., Kortelainen, P., and Martikainen, P. J.: Rising methane emissions from boreal lakes due to increasing ice-free days, *Environ. Res. Lett.*, 15, 64008, <https://doi.org/10.1088/1748-9326/ab8254>, 2020.
- Guo, M., Zhuang, Q., Yao, H., Golub, M., Leung, L. R., Pierson, D., and Tan, Z.: Validation and Sensitivity Analysis of a 1-D Lake Model Across Global Lakes, *J. Geophys. Res.-Atmos.*, 126, [e2020JD033417](https://doi.org/10.1029/2020JD033417), <https://doi.org/10.1029/2020JD033417>, 2021.
- 470 Guseva, S., Bleninger, T., Jöhnk, K., Polli, B. A., Tan, Z., Thiery, W., Zhuang, Q., Rusak, J. A., Yao, H., Lorke, A., and Stepanenko, V.: Multimodel simulation of vertical gas transfer in a temperate lake, *Hydrol. Earth Syst. Sci.*, 24, 697–715, <https://doi.org/10.5194/hess-24-697-2020>, 2020.

Hamdan, L.J. and Wickland, K.P.: Methane emissions from oceans, coasts, and freshwater habitats: New
475 perspectives and feedbacks on climate. *Limnol. Oceanogr.*, 61: S3-S12.
<https://doi.org/10.1002/lno.10449>, 2016.

Holgerson, M. A. and Raymond, P. A.: Large contribution to inland water CO₂ and CH₄ emissions from
very small ponds, *Nat. Geosci.*, 9, 222–226, <https://doi.org/10.1038/ngeo2654>, 2016.

Hopcroft, P. O., Valdes, P. J., O'Connor, F. M., Kaplan, J. O., and Beerling, D. J.: Understanding the
480 glacial methane cycle, *Nat. Comm.*, 8, 14383, doi:10.1038/ncomms14383, 2017.

Huang, J., Li, Q., and Song, Z.: Historical global land surface air apparent temperature and its future
changes based on CMIP6 projections, *Sci. Total Environ.* 2021, 816, 151656.
<https://doi.org/10.1016/j.scitotenv.2021.151656>, 2022

IPCC, C. W. T.: Climate Change 2014: Synthesis Report. Contribution of Working Groups I, II and III to
485 the Fifth Assessment Report of the Intergovernmental Panel on Climate Change (Geneva, Switzerland:
IPCC) p 151 <https://epic.awi.de/id/eprint/37530/1>. IPCC_AR5_SYR_Final.pdf., 2014.

Jammet, M., Crill, P., Dengel, S., and Friborg, T.: Large methane emissions from a subarctic lake during
spring thaw: Mechanisms and landscape significance, *J. Geophys. Res.-Biogeosci.*, 120, 2015JG003137,
<https://doi.org/10.1002/2015JG003137>, 2015.

490 IPCC: Summary for Policymakers, in: Climate Change 2021: The Physical Science Basis. Contribution
of Working Group I to the Sixth Assessment Report of the Intergovernmental Panel on Climate Change,
edited by: Masson-Delmotte, V., Zhai, P., Pirani, A., Connors, S. L., Péan, C., Berger, S., Caud, N., Chen,
Y., Goldfarb, L., Gomis, M. I., Huang, M., Leitzell, K., Lonnoy, E., Matthews, J. B. R., Maycock, T. K.,
Waterfield, T., Yelekçi, O., Yu, R., and Zhou, B., Cambridge University Press,
495 <https://doi.org/10.1017/9781009157896.001>, 2021.

Jens, S., Sebastian, L., Lutz, S., Alexander, N. F., Daniel, F., Duane, G. F., Matthias, F., Frank, G., Mikhail,
N. G., Jennifer, W. H., Gustaf, H., Loeka, L. J., Mikhail, Z. J., Alexander, L. K., Viktor, K., Gleb, K.,
Anatoly, V. S., Elizaveta, R., Yuri, S., Christine, S., Valentin, S., Irina, S., Mathias, U., Sergey, L. V.,
Alexandra, V., Katey, M. W. A., Sebastian, W., Nikita, S. Z., Guido, G.: Database of Ice-Rich Yedoma
500 Permafrost Version 2 (IRYP v2). PANGAEA, <https://doi.org/10.1594/PANGAEA.940078>, 2022.

Jensen, K. and McDonald, K.: Surface Water Microwave Product Series Version 3: A Near-Real Time
and 25-Year Historical Global Inundated Area Fraction Time Series From Active and Passive Microwave
Remote Sensing, 1–5, <https://doi.org/10.1109/LGRS.2019.2898779>, 2019.

Kyzivat, E. D., Smith, L. C., Garcia-Tigreros, F., Huang, C., Wang, C., Langhorst, T., Fayne, J. V. Harlan,
505 M. E., Ishitsuka, Y. Feng, D., Dolan, W., Pitcher, L. H., Wickland, K. P., Dornblaser, M. M., Striegl, R.
G., Pavelsky, T. M., Butman, D. E., Gleason, C. J.: The importance of lake emergent aquatic vegetation
for estimating Arctic-boreal methane emissions, *J. Geophys. Res.-Biogeosci.*, 127, 2021JG006635,
<https://doi.org/10.1029/2021JG006635>, 2022.

Lange, S., Mengel, M., Treu, S., Büchner, M.: ISIMIP3a atmospheric climate input data (v1.0). ISIMIP
510 Repository. <https://doi.org/10.48364/ISIMIP.982724>, 2022.

Li, M., Peng, C., Zhu, Q., Zhou, X., Yang, G., Song, X., and Zhang, K.: The significant contribution of
lake depth in regulating global lake diffusive methane emissions, *Water Res.*, 172, 115465,
<https://doi.org/10.1016/j.watres.2020.115465>, 2020.

Liu, L., Zhuang, Q., Oh, Y., Shurpali, N. J., Kim, S., and Poulter, B.: Uncertainty Quantification of Global
515 Net Methane Emissions from Terrestrial Ecosystems Using a Mechanistically Based Biogeochemistry
Model, *Journal of Geophysical Research: Biogeosciences*, 125, e2019JG005 428,
<https://doi.org/10.1029/2019JG005428>, 2020.

Matthews, E., Johnson, M. S., Genovese, V., Du, J., and Bastviken, D.: Methane emission from high
latitude lakes: methane-centric lake classification and satellite-driven annual cycle of emissions. *Sci.*
520 *Rep.-UK*, 10, 12465, <https://doi.org/10.1038/s41598-020-68246-1>, 2020.

Melillo, J. M., McGuire, A. D., Kicklighter, D. W., Moore, B., Vorosmarty, C. J., and Schloss, A. L.:
Global climate change and terrestrial net primary production, *Nature*, 363, 234–240, 1993

Messenger, M. L., Lehner, B., Grill, G., Nedeva, I., and Schmitt, O.: Estimating the volume and age of
water stored in global lakes using a geo-statistical approach, *Nat. Commun.*, 7, 13603,
525 <https://doi.org/10.1038/ncomms13603>, 2016.

Meyer, M. F., Labou, S. G., Cramer, A. N., Brousil, M. R., and Luff, B. T.: The global lake area, climate,
and population dataset, *Sci. Data*, 7, 174, <https://doi.org/10.1038/s41597-020-0517-4>, 2020.

McGuire, A. D., Anderson, L. G., Christensen, T. R., Dallimore, S., Guo, L., Hayes, D. J., Heimann, M.,
Lorenson, T. D., Macdonald, R. W., and Roulet, N.: Sensitivity of the carbon cycle in the Arctic to climate
530 change, *Ecol. Monogr.*, 79, 523–555, 2009.

Olefeldt, D., S. Goswami, G. Grosse, D.J. Hayes, G. Hugelius, P. Kuhry, B. Sannel, E.A.G. Schuur, and
M.R. Turetsky.: Arctic Circumpolar Distribution and Soil Carbon of Thermokarst Landscapes, 2015.
ORNL DAAC, Oak Ridge, Tennessee, USA. <https://doi.org/10.3334/ORNLDAAC/1332>, 2016.

Olefeldt, D., Goswami, S., Grosse, G., and Hayes, D.: Circumpolar distribution and carbon storage of thermokarst landscapes, *Nature*, 7, 13043, <https://doi.org/10.1038/ncomms13043>, 2016.

535 Olid, C., Rodellas, V., Rocher-Ros, G. et al. Groundwater discharge as a driver of methane emissions from Arctic lakes. *Nat Commun* 13, 3667, <https://doi.org/10.1038/s41467-022-31219-1>, 2022.

Pekel, J.-F., Cottam, A., Gorelick, N., and Belward, A. S.: High-resolution mapping of global surface water and its long-term changes, 540, 418–422, <https://doi.org/10.1038/nature20584>, 2016.

540 Phelps, A. R., Peterson, K. M., and Jeffries, M. O.: Methane efflux from high-latitude lakes during spring ice melt, *J. Geophys. Res.-Atmos.*, 103, 29029–29036, 1998.

Poulter, B., Bousquet, P., Canadell, J. G., Ciais, P., Pregon, A., Marielle Saunois, Arora, V. K., Beerling, D. J., Brovkin, V., Jones, C. D., Joos, F., Nicola Gedney, Ito, A., Kleinen, T., Koven, C. D., McDonald, K., Melton, J. R., Peng, C., Shushi Peng, Prigent, C., Schroeder, R., Riley, W. J., Saito, M., Spahni, R., Tian, H., Lyla Taylor, Viovy, N., Wilton, D., Wiltshire, A., Xu, X., Zhang, B., Zhang, Z., and Zhu, Q.: Global wetland contribution to 2000–2012 atmospheric methane growth rate dynamics, *Environ. Res. Lett.*, 12, 094013, <https://doi.org/10.1088/1748-9326/aa8391>, 2017.

545 Quiquet, A., Archibald, A. T., Friend, A. D., Chappellaz, J., Levine, J. G., Stone, E. J., Telford, P. J., and Pyle, J. A.: The relative importance of methane sources and sinks over the Last Interglacial period and into the last glaciation, *Quaternary Sci. Rev.*, 112, 1– 16, 2015.

550 Sasaki, M., Kim, Y.-W., Uchida, M., and Utsumi, M.: Diffusive summer methane flux from lakes to the atmosphere in the Alaskan arctic zone, *Polar Sci.*, 10, 303–311, 2016.

Saunois, M., Stavert, A. R., Poulter, B., Bousquet, P., Canadell, J. G., Jackson, R. B., Raymond, P. A., Dlugokencky, E. J., Houweling, S., Patra, P. K., Ciais, P., Arora, V. K., Bastviken, D., Bergamaschi, P., Blake, D. R., Brailsford, G., Bruhwiler, L., Carlson, K. M., Carrol, M., Castaldi, S., Chandra, N., Crevoisier, C., Crill, P. M., Covey, K., Curry, C. L., Etiope, G., Frankenberg, C., Gedney, N., Hegglin, M. I., Höglund-Isaksson, L., Hugelius, G., Ishizawa, M., Ito, A., Janssens-Maenhout, G., Jensen, K. M., Joos, F., Kleinen, T., Krummel, P. B., Langenfelds, R. L., Laruelle, G. G., Liu, L., Machida, T., Maksyutov, S., McDonald, K. C., McNorton, J., Miller, P. A., Melton, J. R., Morino, I., Müller, J., Murguia-Flores, F., Naik, V., Niwa, Y., Noce, S., O'Doherty, S., Parker, R. J., Peng, C., Peng, S., Peters, G. P., Prigent, C., Prinn, R., Ramonet, M., Regnier, P., Riley, W. J., Rosentretter, J. A., Segers, A., Simpson, I. J., Shi, H., Smith, S. J., Steele, L. P., Thornton, B. F., Tian, H., Tohjima, Y., Tubiello, F. N., Tsuruta, A., Viovy, N., Voulgarakis, A., Weber, T. S., van Weele, M., van der Werf, G. R., Weiss, R. F., Worthy, D., Wunch, D.,

Yin, Y., Yoshida, Y., Zhang, W., Zhang, Z., Zhao, Y., Zheng, B., Zhu, Q., Zhu, Q., and Zhuang, Q.: The
565 Global Methane Budget 2000–2017, *Earth Syst. Sci. Data*, 12, 1561–1623, <https://doi.org/10.5194/essd-12-1561-2020>, 2020.

Sepulveda-Jauregui, A., Hoyos-Santillan, J., Martinez-Cruz, K., Walter Anthony, K. M., Casper, P., Belmonte-Izquierdo, Y., and Thalasso, F.: Eutrophication exacerbates the impact of climate warming on lake methane emission, *Sci. Total Environ.*, 636, 411–419,
570 <https://doi.org/10.1016/j.scitotenv.2018.04.283>, 2018.

Tan, Z., Zhuang, Q., and Walter Anthony, K. M.: Modeling methane emissions from arctic lakes: model development and site-level study, *J. Adv. Model. Earth Sy.*, 7, doi:10.1002/2014MS000344, 2015.

Tan, Z. and Zhuang, Q.: Arctic lakes are continuous methane sources to the atmosphere under warming conditions, *Environ. Res. Lett.*, 10, 054016, doi:10.1088/1748-9326/10/5/054016, 2015a.

575 Tan, Z. and Zhuang, Q.: Methane emissions from pan-Arctic lakes during the 21st century: An analysis with process-based models of lake evolution and biogeochemistry, *J. Geophys. Res.-Biogeo.*, 120, 2641–2653, <https://doi.org/10.1002/2015JG003184>, 2015b.

Tan, Z., Zhuang, Q., Henze, D. K., Frankenberg, C., Dlugokencky, E., Sweeney, C., Turner, A. J., Sasakawa, M., and Machida, T.: Inverse modeling of pan-Arctic methane emissions at high spatial
580 resolution: what can we learn from assimilating satellite retrievals and using different process-based wetland and lake biogeochemical models?, *Atmos. Chem. Phys.*, 16, 12649–12666, <https://doi.org/10.5194/acp-16-12649-2016>, 2016.

Tan, Z., Zhuang, Q., Shurpali, N. J., Marushchak, M. E., Biasi, C., Eugster, W., and Walter Anthony, K.: Modeling CO₂ emissions from Arctic lakes: Model development and site-level study, *J. Adv. Model. Earth Syst.*, 9, 2190–2213, <https://doi.org/10.1002/2017MS001028>, 2017.

585 Tan, Z., Yao, H., and Zhuang, Q.: A Small Temperate Lake in the 21st Century: Dynamics of Water Temperature, Ice Phenology, Dissolved Oxygen, and Chlorophyll a, *Water Resour. Res.*, 54, 4681–4699, 2018.

Thornton, B. F., Wik, M., and Crill, P. M.: Double-counting challenges the accuracy of high-latitude
590 methane inventories, *Geophys. Res. Lett.*, 43, 12569–12577, <https://doi.org/10.1002/2016GL071772>, 2016.

- Verpoorter, C., Kutser, T., Seekell, D. A., and Tranvik, L. J.: A global inventory of lakes based on high-resolution satellite imagery, *Geophys. Res. Lett.*, 41, 6396–6402, <https://doi.org/10.1002/2014GL060641>, 2014.
- 595 Watts, J. D., Kimball, J. S., Bartsch, A., and McDonald, K. C.: Surface water inundation in the boreal-Arctic: potential impacts on regional methane emissions, *Environ. Res. Lett.*, 9, 075001, <https://doi.org/10.1088/1748-9326/9/7/075001>, 2014.
- West, W. E., Creamer, K. P., and Jones, S. E.: Productivity and depth regulate lake contributions to atmospheric methane: Lake productivity fuels methane emissions, *Limnol. Oceanogr.*, 61, S51–S61, <https://doi.org/10.1002/lno.10247>, 2016.
- 600 Wik, M., Varner, R. K., Anthony, K. W., MacIntyre, S., and Bastviken, D.: Climate-sensitive northern lakes and ponds are critical components of methane release, *Nat. Geosci.*, 9, 99–105, <https://doi.org/10.1038/ngeo2578>, 2016.
- Zhang, Z., Zimmermann, N. E., Stenke, A., Li, X., Hodson, E. L., Zhu, G., Huang, C. and Poulter, B.: Emerging role of wetland methane emissions in driving 21st century climate change, *P. Natl. Acad. Sci. USA*, 14, 9647–9652, <https://doi.org/10.1073/pnas.1618765114>, 2017.
- 605 Zhang, Z., Fluet-Chouinard, E., Jensen, K., McDonald, K., Hugelius, G., Gumbrecht, T., Carroll, M., Prigent, C., Bartsch, A., and Poulter, B.: Development of the global dataset of Wetland Area and Dynamics for Methane Modeling (WAD2M), *Earth Syst. Sci. Data*, 13, 2001–2023, <https://doi.org/10.5194/essd-13-2001-2021>, 2021.
- 610 Zhang, Z., Poulter, B., Melton, J.R., Riley, W.J., Beerling, D.J., Ciais, P., Gedney, N., Gustafson, A., Hopcroft, P.O., Ito, A. and Jain, A.K., 2022, December. Global Methane Budget 2000-2020: Wetland model synthesis. In Fall Meeting 2022. AGU.
- Zhuang, Q., Romanovsky, V. E., and McGuire, A. D.: Incorporation of a permafrost model into a large-scale ecosystem model: Evaluation of temporal and spatial scaling issues in simulating soil thermal dynamics, *J. Geophys. Res.-Atmos.*, 106, 33649–33670, 2001.
- 615 Zhuang, Q., McGuire, A. D., O’Neill, K. P., Harden, J. W., Romanovsky, V. E., and Yarie, J.: Modeling soil thermal and carbon dynamics of a fire chronosequence in interior Alaska, *J. Geophys. Res.-Atmos.*, 108, 8147, [doi:10.1029/2001JD001244](https://doi.org/10.1029/2001JD001244), 2002.
- 620 Zhuang, Q., McGuire, A. D., Melillo, J. M., Clein, J. S., Dargaville, R. J., Kicklighter, D. W., Myneni, R. B., Dong, J., Romanovsky, V. E., Harden, J., and Hobbie, J. E.: Carbon cycling in extratropical terrestrial

ecosystems of the Northern Hemisphere during the 20th century: a modeling analysis of the influences of soil thermal dynamics, *Tellus B*, 55, 751–776, 2003.

Zhuang, Q., Melillo, J. M., Kicklighter, D. W., Prinn, R. G., McGuire, A. D., Steudler, P. A., Felzer, B. S., and Hu, S.: Methane fluxes between terrestrial ecosystems and the atmosphere at northern high latitudes during the past century: A retrospective analysis with a process-based biogeochemistry model, *Global Biogeochem. Cy.*, 18, GB3010, doi:10.1029/2004GB002239, 2004.

Zhuang, Q., Melillo, J. M., McGuire, A. D., Kicklighter, D. W., Prinn, R. G., Steudler, P. A., Felzer, B. S., and Hu, S.: Net emissions of CH₄ and CO₂ in Alaska: Implications for the region's greenhouse gas budget, *Ecol. Appl.*, 17, 203–212, 2007.

Zhuang, Q., Chen, M., Xu, K., Tang, J., Saikawa, E., Lu, Y., Melillo, J. M., Prinn, R. G., and McGuire, A. D.: Response of global soil consumption of atmospheric methane to changes in atmospheric climate and nitrogen deposition, *Global Biogeochem. Cy.*, 27, 650–663, <https://doi.org/10.1002/gbc.20057>, 2013.

Zhuang, Q., Liu, X.: Methane emissions from Arctic landscapes during 2000-2015: An analysis with land and lake biogeochemistry models. Purdue University Research Repository. doi:10.4231/SJC1-9F83, 2022.

Zona, D., Gioli, B., Commane, R., Lindaas, J., Wofsy, S. C., Miller, C. E., Dinardo, S. J., Dengel, S., Sweeney, C., Karion, A., Chang, R. Y.-W., Henderson, J. M., Murphy, P. C., Goodrich, J. P., Moreaux, V., Liljedahl, A., Watts, J. D., Kimball, J. S., Lipson, D. A., and Oechel, W. C.: Cold season emissions dominate the Arctic tundra methane budget, *P. Natl. Acad. Sci. USA*, 113, 40–45, <https://doi.org/10.1073/pnas.1516017113>, 2016.