

Tropical Dry Forest Response to Nutrient Fertilization: A Model Validation and Sensitivity Analysis

Shuyue Li¹, Bonnie Waring², Jennifer Powers^{3,4}, David Medvigy¹

¹Department of Biological Sciences, University of Notre Dame, Notre Dame, IN 46556 USA

5 ²Grantham Institute on Climate Change and the Environment, Imperial College London, South Kensington, London, SW7 2AZ UK

³Ecology, Evolution and Behavior, University of Minnesota, St. Paul, Minnesota 55108 USA

⁴Department of Plant and Microbial Biology, University of Minnesota, St. Paul, Minnesota 55108 USA

10 *Correspondence to:* David Medvigy (dmedvigy@nd.edu)

Abstract. Soil nutrients, especially nitrogen (N) and phosphorus (P), regulate plant growth and hence influence carbon fluxes between the land surface and atmosphere. However, how forests adjust biomass partitioning to leaves, wood, and fine roots in response to N and/or P fertilization remains puzzling. Recent work in tropical forests suggests that trees increase fine root production under P fertilization, but it is unclear whether mechanistic models can reproduce this dynamic. In order to better understand mechanisms governing nutrient effects on plant allocation and improve models, we used the nutrient enabled ED2 model to simulate a fertilization experiment being conducted in a secondary tropical dry forest in Costa Rica. We evaluated how different allocation parameterizations affected model performance. These parameterizations prescribed a linear relationship between relative allocation to fine roots and soil P concentrations. The slope of the linear relationship was allowed to be positive, negative, or zero. Some parameterizations realistically simulated leaf, wood and fine root production, and these parameterizations all assumed a positive relationship between relative allocation to fine roots and soil P concentration. Model simulations of a 30-year timeframe indicated strong sensitivity to parameterization and fertilization treatment. Without P fertilization, ~~the simulated aboveground biomass (AGB) accumulation model was insensitive to the parameterization and the largest amounts of aboveground biomass (AGB) accumulation were attainable under a range of parameterizations of relative allocation to fine roots.~~ With P fertilization, ~~the model was highly sensitive to the parameterization and~~ the greatest AGB accumulation occurred when relative allocation to fine roots was independent of soil P. Our study demonstrates the need of simultaneous measurements of leaf, wood, and fine root production in nutrient fertilization experiments, and for longer-term experiments. Models that do not accurately represent allocation to fine roots may be highly biased in their simulations of AGB, especially on multidecadal time scales.

1 Introduction

30 Primary production in many terrestrial ecosystems is likely to be limited by nitrogen (N), phosphorus (P), or both (LeBauer and Treseder 2008; Hou et al. 2020). Because nutrient availability modulates plant growth and death, it can determine terrestrial carbon storage (Oren et al., 2001), affect tree mortality and recovery after disturbance events (Gessler et al., 2016), and even

alter the sign and magnitude of land carbon sink in response to climate change (Wieder et al., 2015). However, in nutrient-enabled Earth System Models, there is significant variation across model predictions (Arora et al., 2020; Kou-Giesbrecht et al. 2023), suggesting the need for increased process-level understanding. A fundamental aspect of these models is the allocation of total production to production of leaves, wood, and fine roots. If the effects of nutrient limitation on allocation are not correctly simulated by models, simulation of total production and its sensitivity to climate change may be biased.

Nutrient fertilization field experiments can be used to assess the effects of nutrient limitation on terrestrial ecosystems and to improve model simulations of production and allocation. Global meta-analysis has shown that both aboveground (Hou et al. 2020) and belowground production (Yuan and Chen 2012) increases with P addition. Further, Li et al. (2016) also reported aboveground production increased more than belowground production with P addition. The increase in aboveground production relative to belowground production is consistent with resource limitation theory (Bloom et al., 1985; Chapin et al., 1987). Resource limitation theory stipulates that trees should grow the tissue type (leaves, wood, fine roots) that would increase uptake rates of the most limiting resource to achieve optimal partitioning. Thus, if fine root biomass is the limiting factor for nutrient acquisition, then resource limitation theory would predict fine root production to decrease as soil nutrients increased.

However, there is also evidence that the story in tropical forests may be more complex. These global meta-analyses have pointed out large variation across sites and as well as dependence on the amount of fertilizer applied (Li et al. 2016; Hou et al., 2020). Furthermore, concerns have been raised by Wright (2019) about the tropical forest plot selection in Li et al. (2016). In a meta-analysis focusing on tropical forests, Wright (2019) concluded that P addition increased fine litter and wood production. No effect was found on fine root biomass, but it was cautioned that the number of studies was small and also that fine root production was not analysed due to lack of data. More recently, fertilization experiments in central Amazonia indicated increased fine root production with P fertilization (Lugli et al. 2021; Cunha et al. 2022). Intriguingly, Cunha et al. (2022) also reported increases in fine root production relative to aboveground production, in contrast to Li et al. (2016). Relative fine root production was not reported in Lugli et al. (2021).

Compared to tropical moist forests, fewer fertilization experiments have been done in tropical dry forests (Wright 2019). In a Mexico, P fertilization led to strongly increased basal area increments (Campo and Vázquez Yanes, 2004). However, after three years of fertilization in a Costa Rican forest, aboveground production was unchanged following either N or P fertilization (Waring et al., 2019). Instead, Waring et al. (2019) found that fine root production increased in response to P fertilization, but not following N fertilization. This increase in relative allocation to fine roots under P fertilization is consistent with the response observed by Cunha et al. (2022) in the Amazon. These observed increases in relative allocation to fine roots with P fertilization are also consistent with several studies that have shown that roots proliferate in nutrient-rich patches (Pregitzer et al., 1993; Robinson, 1994; Zhang and Forde, 1998; Robinson et al., 1999; Fransen et al., 1999; Hodge et al., 1999; Jing et al., 2010; Li et al., 2012). This proliferation may be related to enhanced root morphological plasticity with increasing soil P, which increases nutrient uptake per unit construction cost (Fitter, 1994; Eissenstat and Yanai, 2002; Zhang et al., 2016). It may also be physiologically adaptive if it allows for faster uptake of nutrients from the soil (Jackson et al., 1990; Hodge et al., 2004).

Given that several of the most recent tropical forest fertilization experiments show increases in absolute (and even relative) fine root production in response to P fertilization, models should be tested as to whether they simulate this dynamic. If simulated allocation were biased, the simulated carbon sink would likely also be biased because wood residence time is much longer than that of leaves or fine roots. Moreover, as most soil carbon is derived from roots rather than aboveground tissues (Jackson et al., 2017), the soil carbon pool is also likely sensitive to plant biomass allocation. Finally, incorrect allocation would also likely lead to biases in simulations of ecosystem functioning. Despite the number of P-enabled models that now exist (e.g. CASACNP, Wang et al., 2010; JSBACH, Goll et al., 2012; CLM-CNP, Yang et al., 2014; ORCHIDEE-CNP, Goll et al., 2017; QUINCY, Thum et al., 2019; ED2, Medvigy et al., 2019; ELM-CNP, Zhu et al. 2019; [DLEM-CNP, Wang et al., 2020](#); JULES-CNP, Nakhavali et al., 2022; FUN-CNP, Braghieri et al. 2022) [and inter-model comparison on representation of P-cycling processes \(Menge et al., 2023\)](#), the simulated effects of P availability on relative allocation to leaves, wood and fine roots has not been analyzed. Such analysis is needed, especially because different models use different schemes to determine allocation.

An additional useful application of models is sensitivity analysis, which can be used to generate new hypotheses and suggest new experiments. While most field fertilization experiments have only lasted a few years (Wright 2019), forest responses to fertilization on that time scale may differ from forest responses to longer time scales. For example, forests of different ages would be expected to have different composition, structure, and demographic rates, and tropical forest composition has been shown to affect the response of production to fertilization (Báez and Homeier, 2018). Responses in secondary forests, as in Waring et al. (2019), could be particularly sensitive to time scales. In these forests, nutrient demand can change rapidly over the course of a few decades (Batterman et al., 2013; Waring et al., 2015), and changing nutrient demand may lead to changes in allocation strategies. Thus, results from multidecadal sensitivity analyses can then be used to pinpoint potentially important processes and to suggest hypotheses for future field experiments.

The objective of this study was to use both a model and an experiment to better understand how relative allocation varies with nutrient availability; specifically, we investigated the consequences of three related premises: (a) plants increase relative fine root production with P fertilization (Waring et al. 2019; Cunha et al. 2022), (b) plants decrease relative fine root production with increasing soil P (Li et al. 2016), and (c) plant fine root production is independent of soil P. This last type of response would be expected if relative allocation to fine roots depended more on water or N than on P. Our model was the ED2 vegetation demographic model that now includes N and P cycling (Medvigy et al., 2019). The experiment involved N and P fertilization in a secondary tropical dry forest in Guanacaste, Costa Rica at Estación Experimental Forestal Horizontes (<https://www.acguanacaste.ac.cr>) (Waring et al., 2019). We implemented a new allocation scheme in which root production was made dependent on soil P concentration. We carried out model validation with respect to leaf, wood, and fine root production. We also carried out a sensitivity analysis to determine how allocation parameterization affected simulations on time scales ranging from three to thirty years.

2 Materials and Methods

2.1. Field Site and Observations

100 A nutrient fertilization experiment has been ongoing since 2015 at Estación Experimental Forestal Horizontes (10.712N, 85.594W) in Guanacaste, Costa Rica. The experimental design is fully described in Waring et al. (2019) and is summarized here. The site is embedded within an approximately 30-year-old regenerating tropical dry forest, where mean annual temperature is about 25°C and mean annual precipitation is about 1700mm. Precipitation has strong seasonality with most of rain falling between May and November, and seasonal variability of precipitation does influence plant phenology: new leaves
105 are produced in April and May and shed between January and March; stems do not grow during the dry season. Precipitation also has high interannual variability typically associated with El Niño Southern Oscillation. Soils are mainly Andic and Typic Haplustepts (Alfaro et al., 2001), with high percentage of clay (38±1%) and a total N:P of 8.3±0.4. The majority of trees in Horizontes are deciduous and arbuscular mycorrhizal (Hayward and Horton, 2014), and the distribution of plant functional groups are analogous to nearby regenerating forests (Powers and Tiffin, 2010). Although it is a secondary forest, this region
110 has notable biodiversity (60 tree species from 23 families within a 1-ha area in the experimental plots), including many nitrogen-fixing legumes (average of 17±4% stand basal area, and range of 1-53%).

The experiment consists of 16 25m×25m plots, each containing approximately 70 stems ≥5 cm diameter at breast height (DBH). Plots were randomly assigned to one of four treatments: control, nitrogen addition (150 kg N ha⁻¹ yr⁻¹, urea solution), phosphorus addition (45 kg P ha⁻¹ yr⁻¹, phosphoric acid solution), or addition of N and P together. The fertilization was
115 conducted only during wet season. Nutrient addition started in June 2015, and was carried out by spraying the solutions three times per year (early, middle and late wet season). Leaf production was measured monthly using litter traps and summed up from April to March of the following year. Wood production was measured using tree diameter measurements and allometric equations. Fine root production was measured using root in-growth cores in June, August, and November of each year. Root mycorrhizal colonization was quantified subsequently. Other measurements included soil NO₃ and NH₄, soil PO₄, and tree
120 mortality.

Results from this study, covering the years 2015-2017, have been reported in Waring et al. (2019). This period experienced large interannual variability in rainfall, with rainfall being 628 mm in 2015, 1754 mm in 2016, and 2050 mm in 2017. In brief, leaf production did not vary by treatment or by year. Wood production varied by year but not by treatment. Fine root production varied by both treatment and year, and was about 40% larger in the +P and +NP treatments than in the control or +N treatment.
125 Despite the large variation in rainfall, the ratio of fine root production to leaf production did not exhibit a clear correlation with rainfall. Averaged over all 16 plots, this ratio was 0.37 in 2015, 0.44 in 2016, and 0.24 in 2017. When broken down by treatment, this production ratio was always intermediate in 2015, greatest in 2016, and smallest in 2017. Root colonization by mycorrhizal fungi did not vary among nutrient treatments or across years.

130 2.2 Model Description

Our model simulations were conducted using the ED2 model (Medvigy et al. 2009, 2019; Longo et al., 2019a). ED2 is a vegetation demographic model that simulates the dynamics of plant cohorts (Fisher et al., 2018). The model has recently been validated in both tropical dry forests (Xu et al., 2016; Medvigy et al., 2019; Schwartz et al., 2022) and tropical moist forests (Levy-Varon et al., 2019; Longo et al., 2019b; Xu et al., 2021). The source code is publicly available on GitHub
135 (<https://github.com/EDmodel/ED2>).

Each cohort is specified by its plant functional type (PFT), physical dimensions (height and DBH), and stem number density. The model included eight PFTs. Species are assigned to a PFT on the basis of three traits: wood density, specific leaf area, and legume/non-legume status. The binning of species into PFTs is discussed in Xu et al. (2016) and Medvigy et al. (2019). Each cohort's PFT designation is constant, but physical dimensions and stem number density vary over time. The three fundamental
140 demographic processes simulated by the model are growth (increases in physical dimensions), mortality (decreases in stem density), and recruitment (creation of new cohorts). Cohort biomass compartments include leaf, wood, fine root, and non-structural biomass. New photosynthate gets added to the non-structural pool, and respiratory costs are also debited from this pool. The non-structural pools do not have any fixed stoichiometry. Growth occurs when C, N, and P move from their respective non-structural pools to the leaf, wood, and fine root pools; all of these pools have fixed C:N and C:P ratios. Wood
145 biomass and maximum leaf biomass are related via an allometric relationship (Longo et al., 2019a). The target leaf biomass is the product of the maximum leaf biomass and a phenology scaling factor, and drought deciduousness is triggered when leaf water potentials are persistently below the turgor loss point (Xu et al., 2016). In previously published versions of the model, the target fine root biomass was assumed to be directly proportional to the target leaf biomass (Longo et al., 2019a), but here we explore various alternatives, as described below (section 2.3).

150 Simulated growth can be constrained by C, N, or P (Medvigy et al., 2019). When C, N, and P are initially acquired, they accumulate in their respective non-structural pool. Allocation to leaves and fine roots is done simultaneously on a daily time step. This allocation consists of the transfer of C, N, and P from the non-structural pools to the leaf and fine root biomass pools until either: (i) one of the non-structural pools is exhausted, or (ii) the leaf and fine root biomass pools reach their target values. Allocation to wood and reproduction is done on a monthly time step. Whatever remains in the non-structural pools at the end
155 of each month is used to simultaneously generate new wood and reproductive tissues; this process is only limited by the sizes of the non-structural pools (Medvigy et al., 2019; Longo et al., 2019a). Some PFTs are capable of symbiotic N fixation (Levy-Varon et al., 2019; Medvigy et al., 2019). The model's approach to soil biogeochemistry explicitly includes the dynamics of physically defined soil organic matter pools in microbial-enzyme-mediated decomposition based on the Michaelis-Menten kinetics (Wang et al., 2013). Nutrient competition between plant and microbes (for N) and between plants, microbes and
160 mineral surfaces (for P) is calculated using an equilibrium chemistry approximation (Zhu et al., 2016).

The model implements mortality by reducing cohort stem density (Longo et al., 2019a). Each PFT has a baseline mortality rate that is applied to all corresponding cohorts. In addition, cohort-level mortality rates increase rapidly if respiration persistently exceeds photosynthesis. Finally, recruitment consists of the creation of a new cohort at minimum height (typically set to 1-2 m). Recruitment is driven both by external seed rain and the reproduction investment of local cohorts.

165 2.3 Model Modifications

We defined a parameter, $r2l$, which specified the target ratio of fine root biomass to leaf biomass. In previously published versions of the model, $r2l$ is a constant. Because several fertilization studies found that relative fine root production increased with soil P (Waring et al., 2019; Cunha et al., 2022), we modified the code so that $r2l$ would be related to soil soluble P ($psol$, unit: gP / kg soil) following:

$$170 \quad r2l = a + b * psol \quad (1)$$

where b could be positive, negative, or zero. Thus, this formulation is flexible enough to also accommodate the situation where relative fine root production decreases with soil soluble P (Li et al., 2016). It can also include the previously-used ED2 parameterization for tropical dry forests which had $a = 0.3$ (unit: (kgC fine root) / (kgC leaf)) and $b = 0$ (unit: (kgC fine root) / (kgC leaf) * (kg soil) / (gP)) (Xu et al., 2016; Medvigy et al., 2019; Schwartz et al., 2022). We did not consider varying $r2l$ with N or with soil water because the observed leaf to fine root production ratio was insensitive to N fertilization and uncorrelated with precipitation in Waring et al. (2019).

2.4 Simulations

The purposes of our simulations were model validation and sensitivity analysis (Table 1). Validation required that we focus on the three years (2015-2017) of previously published observations (Waring et al., 2019). We validated the previously-
 180 published baseline (Medvigy et al., 2019) model parameterization, as well as alternative parameterizations. We carried out sensitivity analysis on both three-year and thirty-year timescales. The three-year timescale was chosen to correspond with the field experiment. The thirty-year timescale was chosen to see how model sensitivity varied over the course of forest development. A thirty-year simulation would approximately double the age of the forests and would be one order of magnitude longer than the existing experiment.

185 **Table 1. Description and rationale of model simulations**

Simulation set	Number of simulations	Allocation parameterizations	Analysis period	Rationale
Baseline	16, corresponding to 16 plots	$a=0.3, b=0$	2015-2017	Validate the baseline model

Alternative parameterizations, short-term	16 plots * 63 parameterizations	all combinations of a and b , with $a=0, 0.1, 0.2, 0.3, 0.4, 0.5, 0.6, 0.7, 0.8$, and $b=-60, -40, -20, 0, 20, 40, 60$.	2015-2017	(1) Determine short-term sensitivity of model to parameterization; (2) validate alternative parameterizations
Alternative parameterizations, long-term	16 plots * 63 parameterizations	the same as short term	30 years	Determine longer-term sensitivity of model to parameterization

2.4.1 Baseline simulations and validation

We simulated each of the 16 experimental plots using the model's baseline parameterization. Each plot received nutrient inputs in accord with what was done during the fertilization experiment; i.e., there were four control plots, four +N plots, four +P plots, and four +NP plots. We also applied natural deposition rate of $0.13 \text{ kgN ha}^{-1} \text{ yr}^{-1}$ and $0.019 \text{ kgP ha}^{-1} \text{ yr}^{-1}$ in all 16 plots.

190 In each plot, the vegetation cohorts were initialized with in situ measurement of DBH and height data for each individual tree. Soil properties of each site were initialized with in situ soil state observations following the procedure of Medvigy et al. (2019). All the simulations were driven by meteorological variables from the ERA5-Land hourly reanalysis datasets (Copernicus Climate Change Service, 2022; Muñoz Sabater, 2019). Simulations ran from January 2013 until April 2018, and we analyzed the same time period as the field measurements, 2015-2017. Since the actual forest is not in equilibrium and we used the
195 observed stand structure and composition and observed soil nutrient status to initialize the model, only soil water needed to be initialized by spin-up. To this end, we discarded the first two years (Xu et al., 2016).

Simulations and observations were compared both qualitatively and quantitatively. For qualitative validation, we emphasized variation in production across treatments and years. For quantitative validation, we were mainly concerned with variation across treatments, so we first averaged all production measures over the three years of measurements. We then used Student's
200 t-tests to assess whether the simulations and the observations had the same means, and applied $p < 0.05$ as the threshold for statistical significance. Prior to applying t-tests, we confirmed normality with the Shapiro-Wilk test ($p < 0.05$). We also assessed equality of variances with Welch's test.

2.4.2 Alternative parameterizations, validation and sensitivity analysis

We analyzed the sensitivity of production (leaf, wood, and fine root) to allocation parameterization. In Eqn. 1, larger absolute
205 values of b indicate greater sensitivity of allocation to *psol*. For a , we considered nine values: 0, 0.1, 0.2, 0.3, 0.4, 0.5, 0.6, 0.7,

and 0.8 (kgC fine root) / (kgC leaf). For b , we considered seven values: -60, -40, -20, 0, 20, 40, and 60 (kgC fine root) / (kgC leaf) * (kg soil) / (gP). Altogether, we tested a total of 63 a - b pairs (Table 1). Given a and b , and the dynamically-varying $psol$, the model computes $r2l$ using Eq. (1). To avoid having negative or otherwise unrealistic $r2l$, we also required it to fall between 0.2 and 1.8.

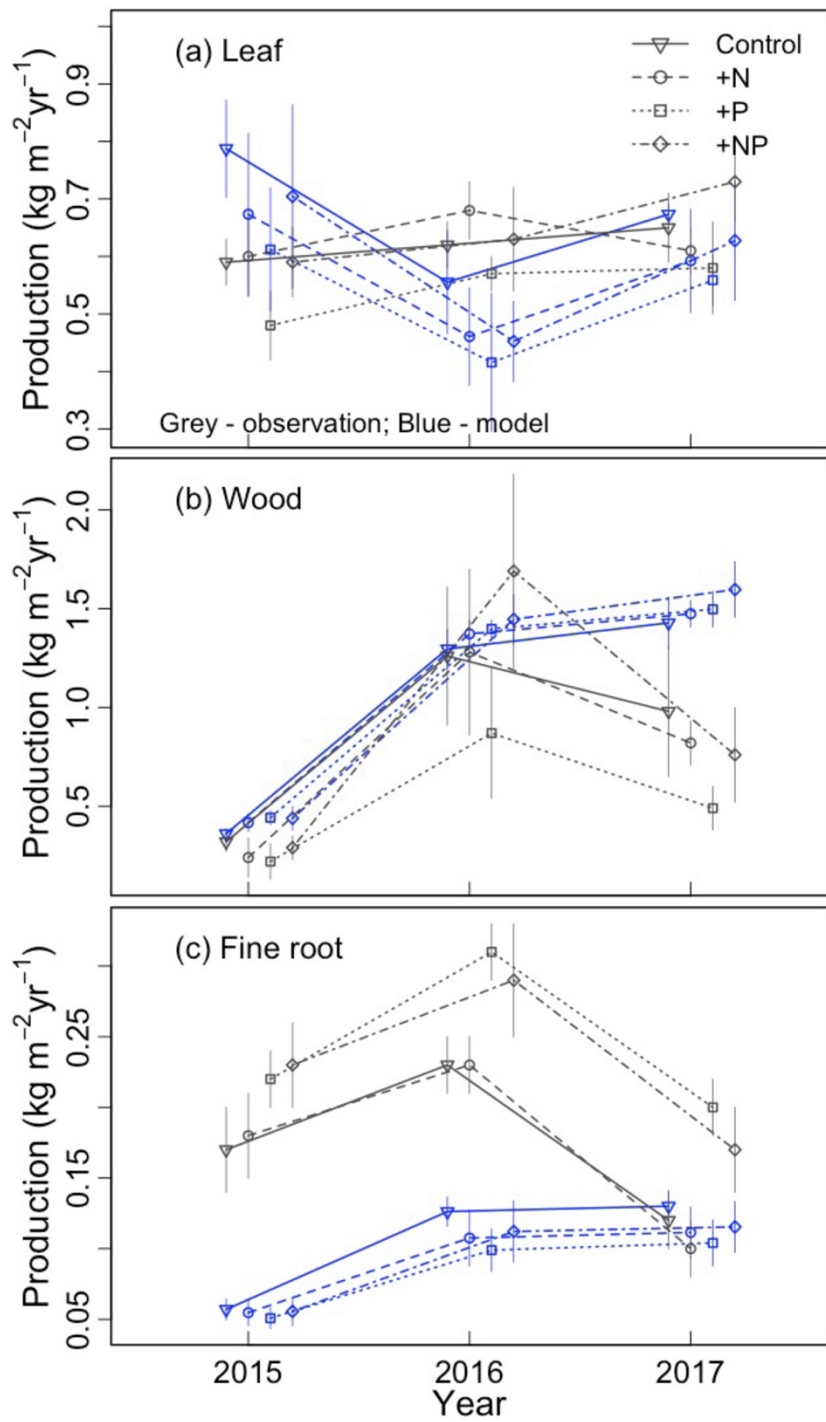
210 Parameter sensitivity analysis was carried out three-year and thirty-year timescales. For the three-year simulations, we averaged across years but considered each treatment separately. For each treatment, we calculated the coefficients of variation of leaf, wood and fine root production with respect to the 63 parameter sets. For the thirty-year simulations, we had to prescribe meteorological forcing and fertilization rates for years beyond 2018. For these years, the meteorological forcing was obtained by recycling the 2009-2018 observations. N and P fertilization rates were maintained as they were in all other simulations;
215 thus, these simulations constituted virtual 30-year fertilization experiments.

3 Results

3.1 Baseline simulation validation

We first qualitatively evaluated the baseline model simulation ($a=0.3, b=0$). Variation across treatments and years is shown in Fig. 1. The magnitude of leaf production was similar in simulations and observations, though the simulations had a larger
220 range of values (Fig. 1a). The simulations and observations agreed that wood production was smallest in the strong ENSO year of 2015, but disagreed as to whether it was largest in 2016 or 2017 (Fig. 1b). Overall, the model somewhat overestimated wood production. Fine root production had a much larger bias than leaf or wood production, especially in 2015-2016 (Fig. 1c). The baseline simulations did not appear to capture the observed treatment effect (higher fine root production in +P and +NP than in the control and +N).

225 We also compared other simulated values to observations. The simulated stem mortality was close to observations in each of three years, including 2015, when stem mortality was relatively large (Table 2). Over the three years, simulated stem mortality in +NP plots was about 1.5 times larger than the other treatments, consistent with observations. Simulated and (temporally sparse) observations of plant available nutrients are shown in Fig. 2. The observed soluble P, NH_4 , and NO_3 fell within the range of what was simulated. Both the simulations and the observations show a strong effect of P fertilization on soluble P. In
230 the simulations, most of the peaks associated with the pulse inputs of P are clearly visible. By contrast, similar peaks are much less apparent in NH_4 and NO_3 .



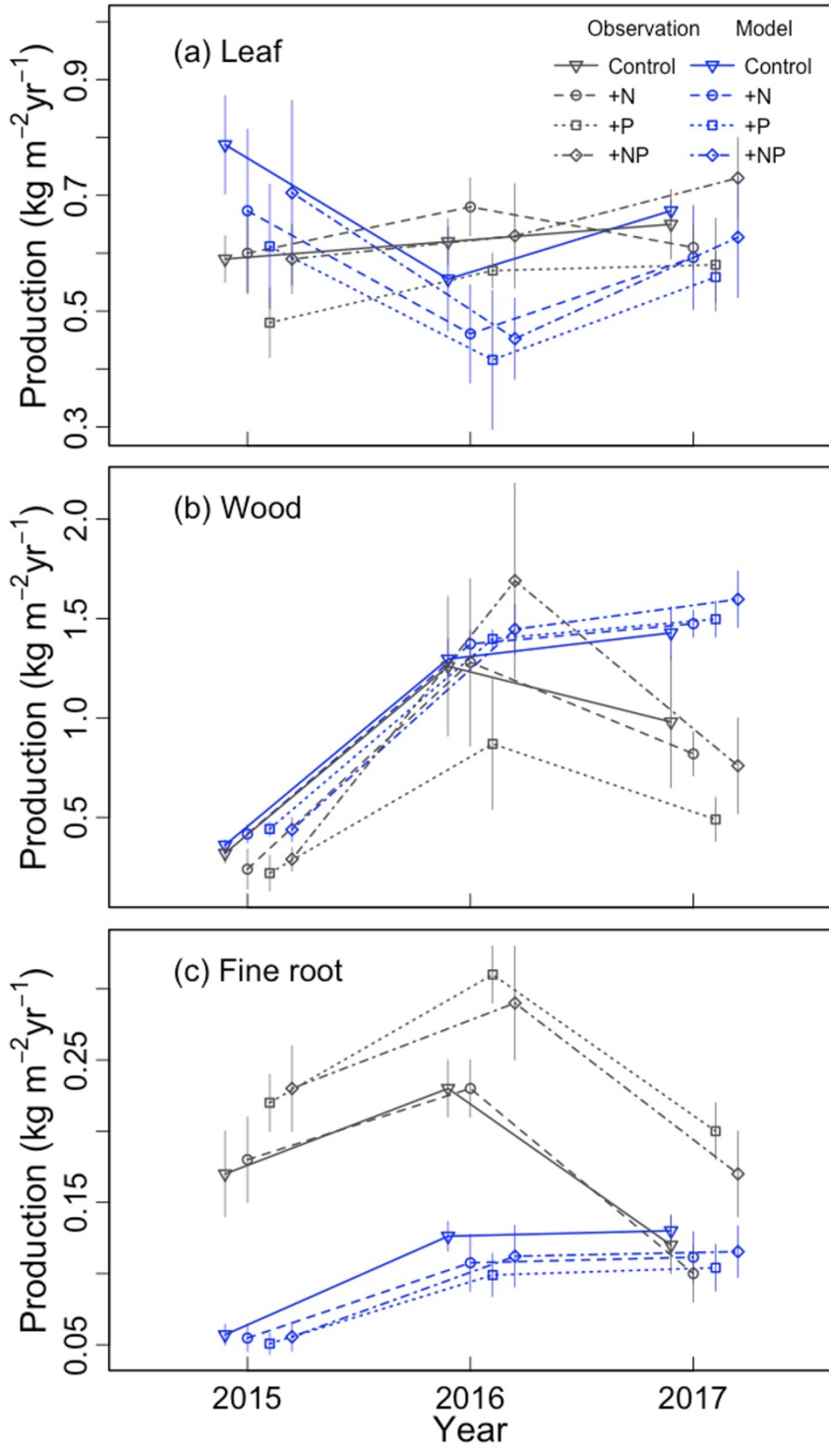
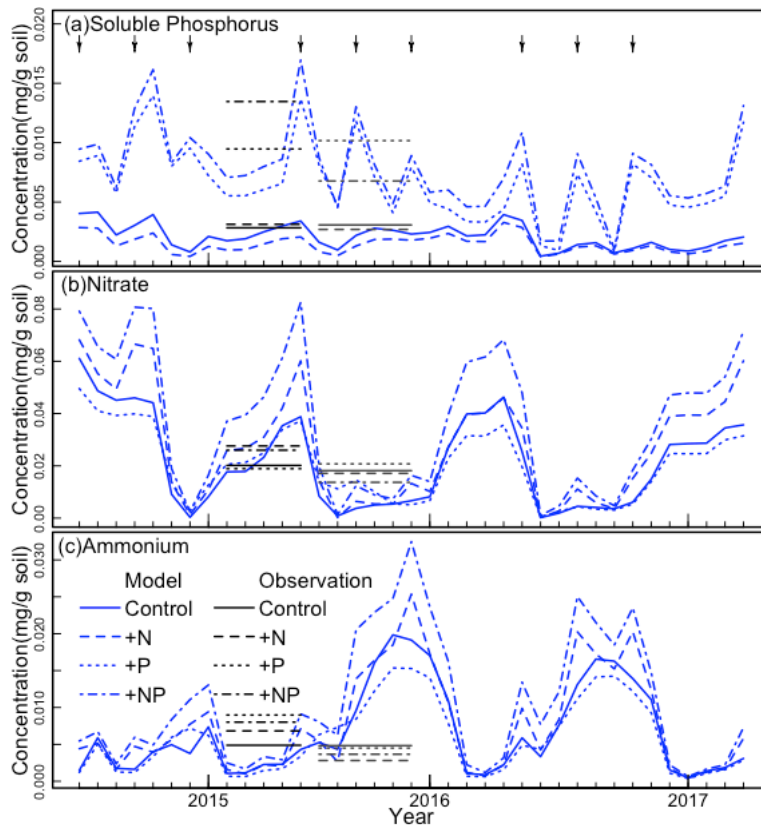


Figure 1. Comparison of simulated and observed (a) leaf, (b) wood and (c) fine root production for each year-treatment combination.

Table 2. Comparison of simulated and observed annual stem mortality. The notation “+NP/others” indicates the ratio of the result from the +NP treatments to the average result from the control, +N, and +P treatments.

Stem mortality	2015	2016	2017	+NP/others
observation	10.6%	6.0%	4.6%	1.3-1.8
baseline model	10.7%	6.3%	4.7%	1.5

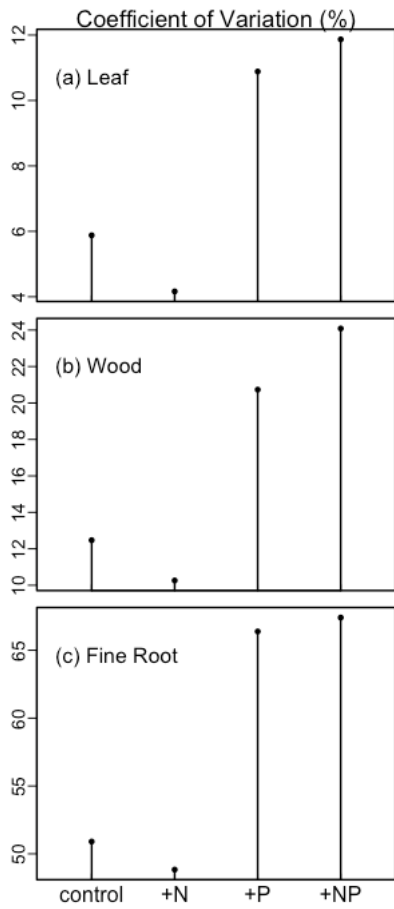


240 Figure 2. The continuous curves show the model-simulated (a) soil soluble phosphorus, (b) nitrate, and (c) ammonium concentrations. The black horizontal line segments indicate the observed averages from the wet and dry seasons in 2016; observations were not available for other periods. The arrows at the top indicate the approximate times of fertilization.

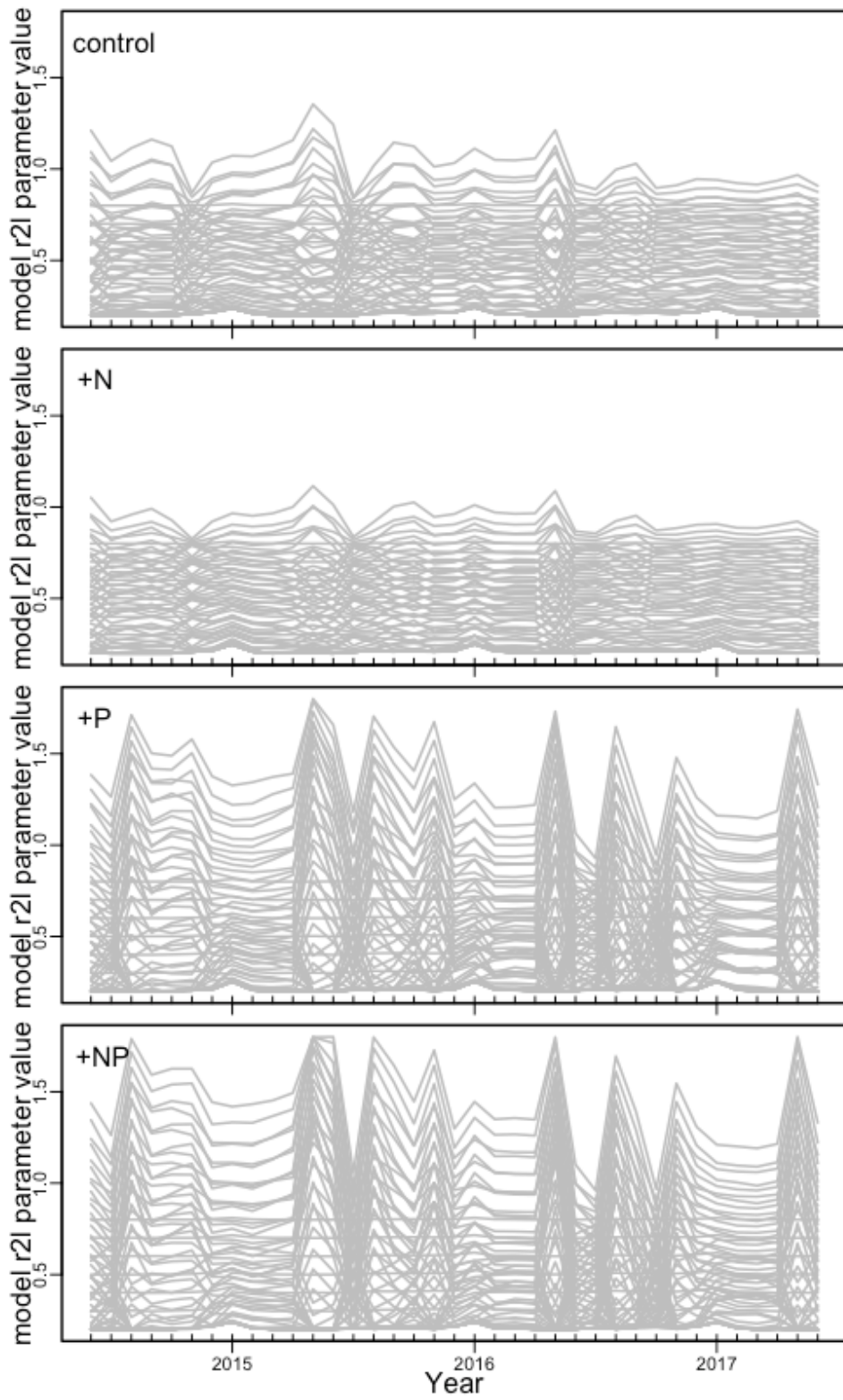
245 3.2 Alternative Parameterizations: Three Year Sensitivity analysis

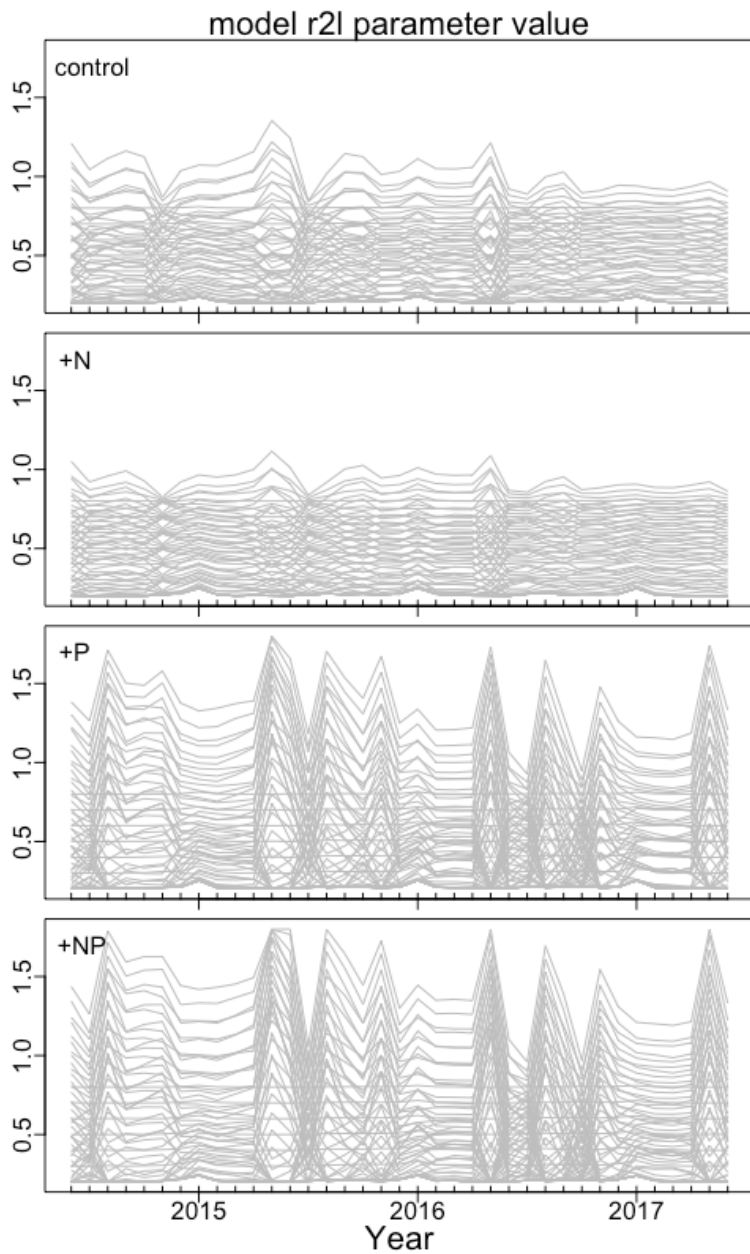
We then analysed the sensitivity of the simulations to parameterization (Fig. 3). Different treatments were analysed separately, but leaf, wood and fine root production had similar variation. In the control and +N treatments, leaf, wood and fine root production was relatively insensitive to parameterization. By contrast, in the +P and +NP treatments, the production of all components was more sensitive to parameterization. Fine root production had a larger coefficient of variation than wood
250 production, and wood production had a larger coefficient of variation than leaf production.

Given the temporal variation in soluble P (Fig. 2a), we investigated the temporal variation in $r2l$. High-frequency oscillations in this parameter could indicate inefficient allocation and the need for some smoothing. We found that the variability of $r2l$ depended on treatment and parameterization (Fig. 4). Without P fertilization, there is some seasonal variability in $r2l$, but it is relatively small. The variability is largest under P fertilization with parameterizations having $b > 0$, where $r2l$ ranges mostly
255 from 0.4 to 1.0. Despite this variability, the $b > 0$ parameterizations consistently lead to larger $r2l$ under P fertilization than the $b = 0$ or $b < 0$ parameterizations.



260 **Figure 3. The coefficient of variation of simulated leaf, wood, and fine root biomass production among treatments under different parameterizations.**





s

Figure 4. Time series of the r_{2l} parameter for each of the 63 parameterizations. Results are shown separately for the control plots (labelled “control”), the N-fertilized plots (labelled +N), the P-fertilized plots (labelled +P), and plots fertilized with both N and P (labelled +NP).

265

3.3 Alternative Parameterizations: Three-Year Model Validation

We carried out t-tests to determine whether there were significant differences between simulations and observations. For leaf production (Table 3), almost all model parameterizations were consistent with observations. For wood production (Table 4), many parameterizations, especially with $b < 0$, $b = 0$, or relatively small a , did not predict wood production in the +P treatment. Parameterizations with $b > 0$ were mostly successful in all treatments. For fine root production (Table 5), only four parameterizations, all with $b = 20$ or $b = 40$, successfully predicted the observations in all treatments. These four parameterizations also successfully predicted leaf and wood production in all treatments. A drawback of this approach is the small sample size: each t-test was done with only four replicates. As an additional test, we tried aggregating control and +N, and comparing that to the aggregation of +P and +NP. This procedure doubled the number of replicates and gave very similar results (~~not reported here~~ [Supplement Tables S1-S3](#)).

Table 3. Validation of simulated leaf production for 63 parameter settings. Validation was done separately for each treatment. An entry of “C” indicates statistically significant ($p < 0.05$) differences in the means of the control plots, “N” means the +N plots were significantly different, “P” means the +P plots were significantly different, and “B” indicates that the +NP plots were significantly different. The notation “-” indicates that no significant differences were found for any treatment.

Leaf Production	a=0	a=0.1	a=0.2	a=0.3	a=0.4	a=0.5	a=0.6	a=0.7	a=0.8
b = -60	-	-	-	-	-	-	-	-	-
b = -40	-	-	-	-	-	-	-	-	-
b = -20	-	-	-	-	-	-	-	-	-
b = 0	-	-	-	-	-	-	-	-	-
b = 20	-	-	-	-	-	-	-	-	-
b = 40	-	-	-	-	-	-	-	-	-
b = 60	P	P	-	-	-	-	-	-	-

Table 4. As for Table 3, but for wood production.

Wood Production	a=0	a=0.1	a=0.2	a=0.3	a=0.4	a=0.5	a=0.6	a=0.7	a=0.8
b = -60	P	P	P	P	P	-	-	-	-
b = -40	P	P	P	P	P	-	-	-	-
b = -20	P	P	P	P	P	P	-	-	-
b = 0	P	P	P	P	P	P	P	-	-

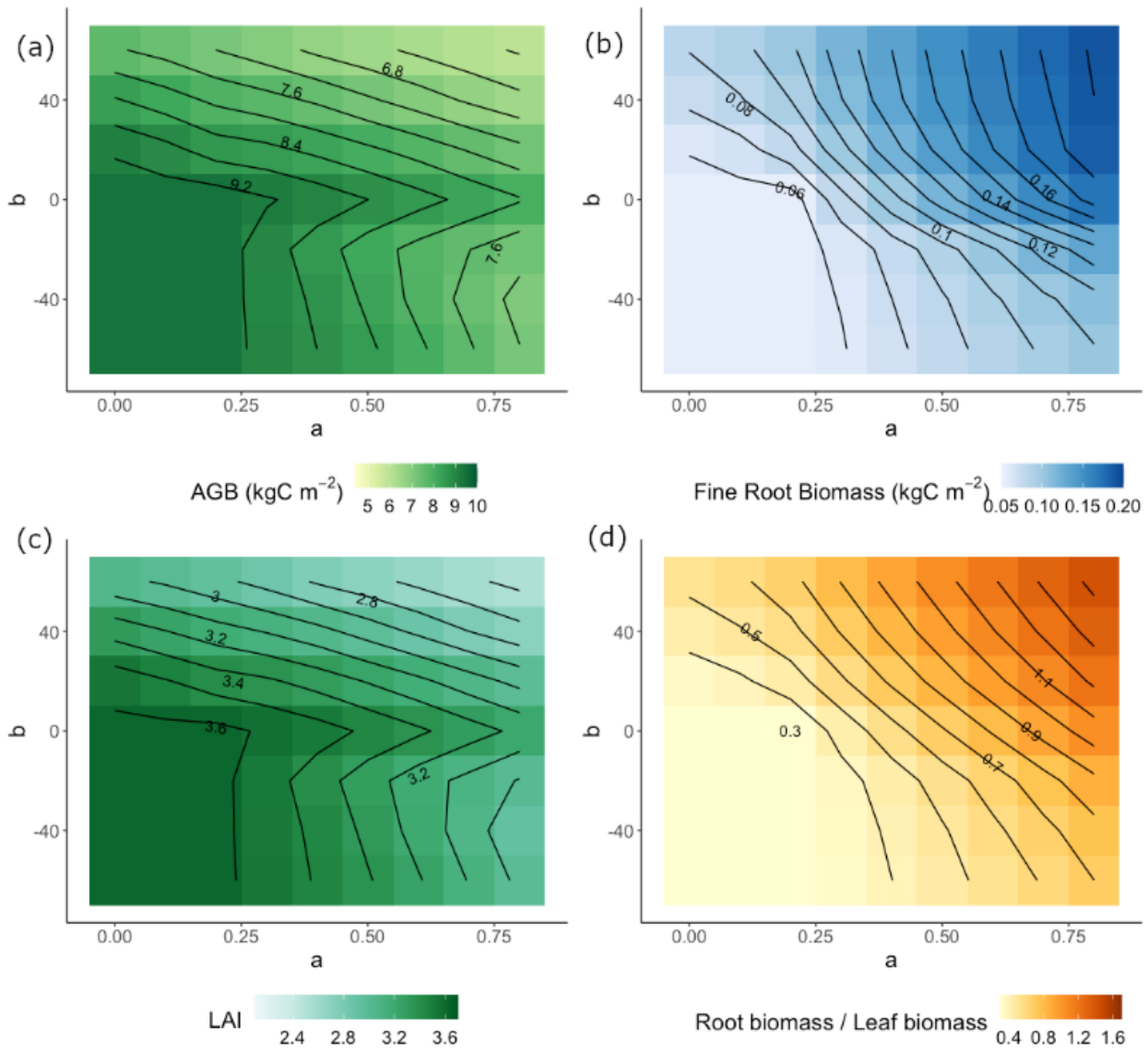
b = 20	P	P	P	-	-	-	-	-	-
b = 40	-	-	-	-	-	-	-	-	-
b = 60	-	-	-	-	-	-	-	-	-

Table 5. As for Table 3, but for fine root production.

Fine Root Production	a=0	a=0.1	a=0.2	a=0.3	a=0.4	a=0.5	a=0.6	a=0.7	a=0.8
b = -60	C,N,P,B	C,N,P,B	C,N,P,B	C,N,P,B	C,N,P,B	P,B	P,B	C,P	C,P
b = -40	C,N,P,B	C,N,P,B	C,N,P,B	C,N,P,B	P,B	P,B	P,B	C,P	C
b = -20	C,N,P,B	C,N,P,B	C,N,P,B	C,N,P,B	P,B	P,B	P	C	C
b = 0	C,N,P,B	C,N,P,B	C,N,P,B	C,N,P,B	P,B	P	P	C	C
b = 20	C,N,P,B	C,N,P,B	C,N,P,B	N,P	-	-	C	C	C,B
b = 40	C,N,P,	C,N	N	-	-	C,B	C,P,B	C,P,B	C,N,P,B
b = 60	C,N	N	B	P,B	C,P,B	C,P,B	C,P,B	C,P,B	C,N,P,B

3.4 Alternative Parameterizations: Thirty-Year Sensitivity analysis

290 Allocation parameters had a large impact on simulated aboveground biomass (AGB) accumulation, as seen in our 30-year simulations (Fig. 5a). On a 30-year timescale, the largest AGB occurred when both a and b were relatively small. These parameterizations also led to low fine root biomass (Fig. 5b), high leaf area index (Fig. 5c), and a low ratio of fine root biomass to leaf biomass (Fig. 5d). The overall pattern of AGB was closely related to leaf area index, suggesting that capture of aboveground resources ultimately limited production on the 30-year timescale.



295 **Figure 5. Parameter sensitivity of AGB (a), fine root biomass (b), leaf area index (c), and the ratio of fine root to leaf biomass (d). Results are averaged over the 30 years of simulation and across treatments.**

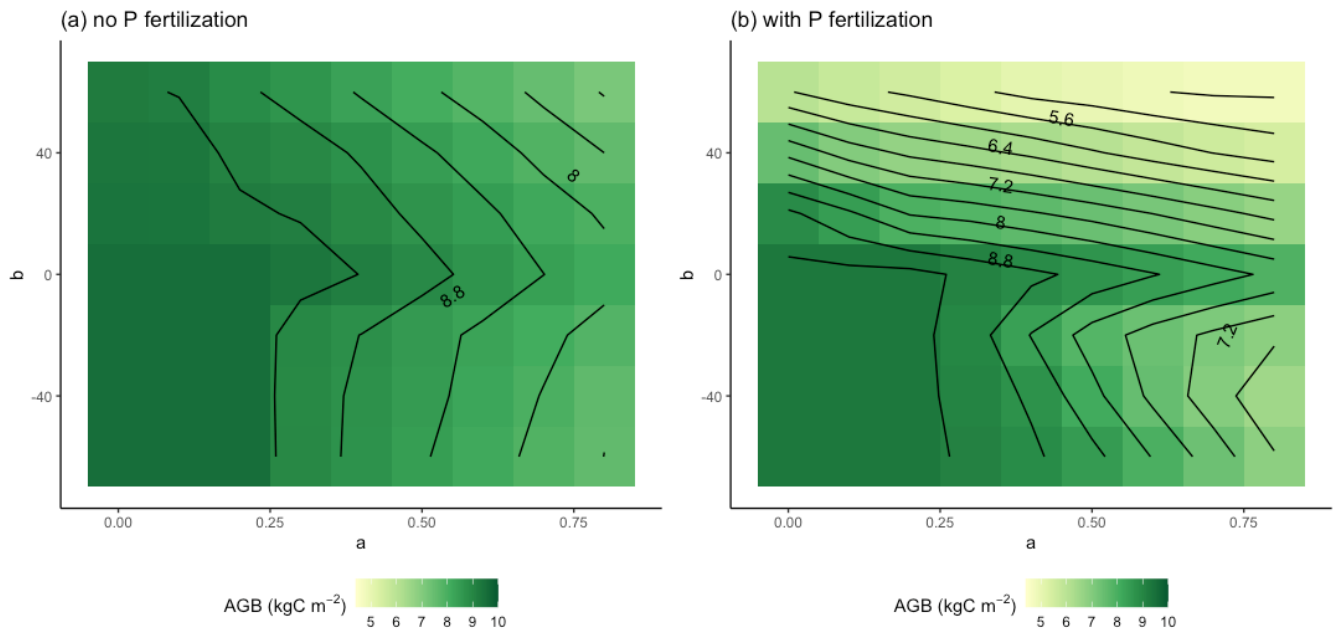


Figure 6. Parameter sensitivity of AGB in the control and +N plots (a) and in the +N and +NP plots (b). Results are averaged over the 30 years of simulation.

300 The sensitivity of AGB to a and b depended on the sign of b . When $b \geq 0$, the AGB contours (Fig. 5a) had a negative slope. We can understand this result in light of Eq. (1) and assuming that AGB was a continuous function of $r2l$: when a was increased, decreasing b could maintain same value of $r2l$, and thus AGB. Although the same effect would be expected for $b < 0$, there are two further complications. First, there is a minimum imposed value of $r2l$ of 0.2. The minimum is never reached when $b \geq 0$ because $r2l$ was an increasing function of $psol$, but was often reached when $b < 0$. In fact, all the simulations with

305 small a and negative b were almost identical because $r2l$ was almost always set to its minimum value. To the extent that $r2l$ is equal to its minimum value, the contours when $b < 0$ would be vertical lines. This constraint on $r2l$ explains why the contours when $b < 0$ are more vertical than the contours when $b > 0$. A second effect likely contributes to the bend in the contours between $b = 0$ and $b = -20$. We saw that $psol$ was reduced at the beginning of the growing season (Fig. 2), likely because trees required relatively large amounts of phosphorus to build new leaves. When $b < 0$, this reduction in $psol$ would lead to an

310 increase in $r2l$. But this relative increase in fine roots would not lead to enhanced productivity because the growing season is wet, and has ample moisture supply, and the construction of wood requires relatively little nutrient input (compared to leaves). These factors collectively result in the bend in the contours immediately below $b = 0$.

These effects were also apparent when we separated the control and +N plots from the +P and +NP plots. For the control and +N plots (Fig. 6a), the $b \geq 0$ AGB contours were more vertical than in the +P and +NP plots (Fig. 6b) or the all-plot average

315 (Fig. 5a). This result occurred because the average $psol$ (and thus $r2l$) values were smaller in the control and +N plots than in

the all-plot average or in the +P and +NP plots. As in Fig. 5a, we also see in Fig. 6a-b that the AGB contours have a more vertical orientation when $b < 0$ than when $b \geq 0$. The largest AGB values occurred generally when a is small in the control and +N plots (Fig. 6a), and when both a and b were small in the +P and +NP plots (Fig. 6b). The smallest values of AGB occurred when both a and b are large in the +P and +NP plots (Fig. 6b). This pattern of AGB probably does not result from variation in P limitation. We computed the ratio of non-structural C to the non-structural P ($C:P_{ns}$) in both the control and +N plots (Fig. 7a) and in the +P and +NP plots (Fig. 7b). We interpreted larger values of $C:P_{ns}$ to indicate greater P limitation. However, the largest values of $C:P_{ns}$ occurred when a was relatively small (Fig. 7), similar to where AGB attained its largest values (Fig. 6). The smallest values of $C:P_{ns}$ occurred when both a and b were relatively large (Fig. 7), where AGB attained its smallest values (Fig. 6).

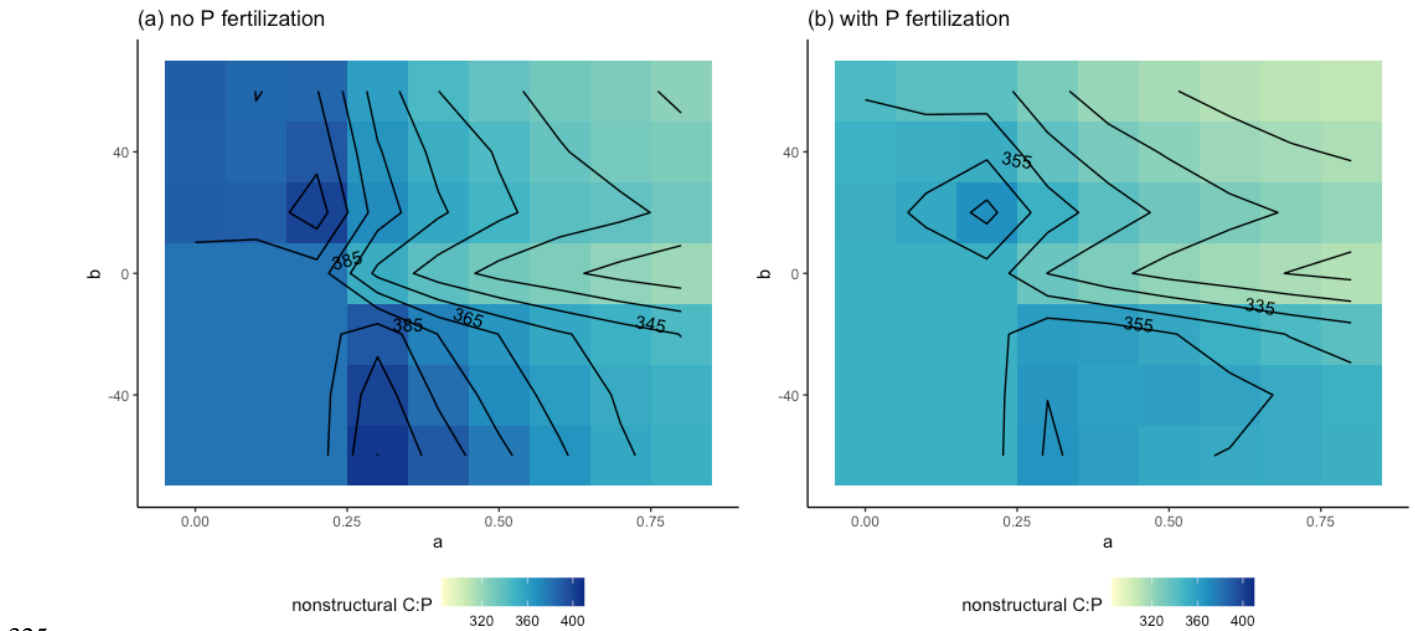


Figure 7. Parameter sensitivity of the ratio of non-structural C to non-structural P in the control and +N plots (a) and in the +N and +NP plots (b). Results are averaged over the 30 years of simulation.

330 4 Discussion

Soil nutrients can regulate plant biomass production in terrestrial ecosystems (LeBauer and Treseder, 2008; Hou et al., 2020). The control that nutrients exert on carbon partitioning among different types of plant tissues is drawing increasing attention because it can strongly affect long-term ecosystem carbon accumulation and loss (Gessler et al., 2016). This study focused on

the effect of soil soluble P on carbon partitioning. We evaluated different parameterizations within the ED2 model, and compared model results to observed carbon partitioning at a fertilization experiment site in Costa Rican tropical dry forest (Waring et al., 2019). We did not set out to identify a single “best” parameter set, but were rather interested in determining the range of parameter values for which the simulation was consistent with observations. The results presented here demonstrate the importance of allocation parameterization for biomass production. In particular, we found that the model simulated the most realistic overall partitioning of biomass production when relative allocation to fine roots was positively correlated with soluble soil P, at least on a three-year time scale. Analysis of multi-decadal simulations suggests that parameterizations having relative allocation to fine roots independent of soil P (thereafter “const” parameterizations), positively correlated with soil P (thereafter “pos” parameterizations), or negatively correlated with soil P (thereafter “neg” parameterizations) can all lead to comparable aboveground carbon accumulation, at least in unfertilized scenarios. However, especially in scenarios with P fertilization, ~~these modelling~~multi-decadal simulation results also raise issues (for example, overallocation to fine roots) that could not have easily been foreseen by merely looking at model-data comparisons over three years.

4.1 Model validation

ED2 has long included N dynamics as an option (Moorcroft et al., 2001), but published simulations rarely had this option activated. Recently, Medvigy et al. (2019) introduced a new representation of N and P dynamics into ED2, based on microbial model of Wang et al. (2013) and the nutrient competition model of Zhu et al. (2016). In the Medvigy et al. (2019) parameterization, relative allocation to fine roots was unaffected by nutrients (i.e., the model employed a “const” parameterization). Here, we found that this version of the model simulated reasonable leaf and wood biomass production, especially when averaged over a three-year time frame (Fig. 1). These successful predictions of leaf and wood production are consistent with previous ED2 simulations of tropical forests (Xu et al., 2016, 2021; Levy-Varon et al., 2019; Longo et al., 2019a; Longo et al., 2019b). An important feature of our analysis is that we additionally validated the model’s simulation of fine root production, which had not been done previously. We found that the baseline parameterization resulted in an underestimate of fine root production and that “const” parameterizations in general could not simulate the observed stimulation of fine root production by P fertilization (Fig. 1c). At this point, we cannot say whether ED2 would generate similar biases in fine root production at other tropical forest sites. More observations of biomass partitioning (including fine root production) under P fertilization would be helpful for testing the model, and such observations are becoming increasingly available (Waring et al., 2019; Lugli et al., 2021; Cunha et al., 2022). Thus, model validation at additional sites, coupled with validation along soil fertility gradients, would be useful ways of further increasing our understanding.

Besides our baseline parameterization, we evaluated other “const” parameterizations as well as “pos” and “neg” parameterizations. Most parameterizations simulated leaf production consistent with observations and about half simulated wood production consistent with observations (Table 3, 4). However, most parameterizations failed to simulate root production that was consistent with the observations (Table 5). As a result, only 4 of the 63 parameterizations, all “pos” parameterizations,

were able to simultaneously simulate leaf, wood and fine production consistent with the observations. For future work, it will be interesting to see how these “pos” parameterizations scale in space and time. For example, they can be applied to simulations of the Amazon and compared to the results of Cunha et al. (2022). Also, the fertilization experiment first reported by Waring et al. (2019) is ongoing and the data subsequent to 2017 are currently being analyzed. Comparison of this longer-term data set to “pos” scheme simulations will be informative. Because our 30-year simulations with “pos” parameterizations and P fertilization yielded much less AGB than simulations with “const” parameterizations (Fig. 6b), ~~we might expect to see~~ there is a possibility that some acclimation of the longer-term r_{2l} response to increased soil P ~~in order to~~ might avoid over-allocation to fine roots. ~~At this point, we have not m~~ Modelling ofed such possible acclimation remains for future work ~~yet, but provided alternative hypotheses in the Section 4.3.~~ Analysis of fine root production from sites arrayed across a strong natural fertility gradient could also help test this point because individuals growing on naturally high-P sites should have had sufficient time to acclimate to their local environment if acclimation did exist.

But what might explain even the short-term success of the “pos” parameterizations? Considering multiple limitation theory, we might have expected that when acquisition of P is the most limiting factor for plants, any increases in soil P would have resulted in decreased allocation to fine roots, contrary to the “pos” parameterizations. Here we offer several potential explanations. First, it could be that soil P supply, not fine root biomass, limited P uptake in the unfertilized plots. In an extreme case, in the complete absence of soil P, P acquisition would be zero regardless of fine root biomass. The optimal amount of fine root biomass (with respect to P acquisition) would be zero in order to avoid construction and maintenance costs. As soil P increases above zero, the optimal amount of fine root biomass would also increase. An analogy would be “rain roots” that are produced by some species, which occur as lateral branches on established roots after rain events and die during droughts (Nobel et al., 1990). Second, the deciduousness of this forest may be significant. At the beginning of the rainy seasons, trees experience a large P demand to build their P-rich leaves. It may be adaptive for plants to construct these leaves as quickly as possible, and having large fine root production may facilitate that (Jackson et al., 1990; Hodge et al., 2004). Finally, plants may overallocate to fine roots in order to maximize their ability to compete with neighbors (Gersani et al., 2001; Zea-Cabrera et al., 2006; Farrior et al., 2013).

Other processes, not simulated here, may also be relevant to understanding and simulating the observed response of production to fertilization. These include phosphatase synthesis (Liu et al. 2015; Kong et al. 2016; Lugli et al. 2020) and symbioses with arbuscular mycorrhizae (Hodge 2004; Comas et al. 2014; Eissenstat et al. 2015; Liu et al. 2015; Kong et al. 2016; Ma et al. 2018). Root phosphatases hydrolyze organic P-containing compounds and releasing inorganic P that is absorbable by roots, while mycorrhizal associations can be even more effective by enlarging the root absorbing surface per unit cost. Both mechanisms provide additional P sources. Plants adaptively adjust their traits or metabolic processes in terms of effective P acquisition (Raven et al. 2018; Han et al. 2021; Aoyagi et al. 2022), and diverse P acquisition strategies are being evaluated from observations (Reichert et al. 2022). However, estimates of plant allocation of carbohydrates to mycorrhizae are rare and difficult to obtain, and were not made by Waring et al. (2019); ~~m~~ eanwhile, mycorrhizae symbioses were not explicitly

~~represented in the model. Since we were not able to make direct comparison, it~~ It is possible that, in the Waring et al. (2019) experiment, P fertilization led to reduced allocation to mycorrhizae and increases in both the number and average diameter of roots, while reducing overall belowground (mycorrhizal plus roots) allocation, ~~despite there being no measured change in the percentage of colonized root length.~~

Because this study is focused largely on model validation and sensitivity, we took the observational data at face value. However, the observational data can also have biases that would impact our interpretations. In particular, fine root production, stock, and loss are difficult to measure accurately in forests (Clark et al., 2001), largely due to highly uncertain spatial and temporal variability in fine root biomass (Finér et al., 2011) and rooting depth (Paz et al., 2015). In tropical forests, maximum root length is often longer than the depth of ingrowth cores in Waring et al. (2019) (Canadell et al. 1996), implying that field measurements underestimate root production. Further, addition of P to the soil surface could have caused roots to proliferate at the surface, at the expense of deeper roots. Further field experiments are necessary to understand potential changes in root vertical distributions.

4.2 Three-Year Sensitivity Analysis

We focused on the sensitivity of several output variables (leaf, wood and fine root production) simultaneously against the two input parameters that determined the fine root to leaf ratio. By contrast, other studies using ED2 have focused on one output variable (LeBauer et al., 2013; Levy-Varon et al., 2019; Medvigy et al., 2019). Our sensitivity analysis of leaf, wood, fine root and total production showed distinct responses for the different production measures (Fig. 3). Of these, fine root production had the largest CV because its average magnitude was smallest. This suggests that just because one measure of productivity is sensitive to a particular parameter does not mean that the model is generally sensitive to that parameter. Our results also varied considerably depending on whether P fertilization was applied, underscoring the importance of environmental context for sensitivity analysis. Furthermore, we note that the sensitivity on one time scale (three years) can be different from the sensitivity on another time scale (30 years), as discussed in the next section.

4.3 Thirty-Year Sensitivity Analysis

In our 30-year simulations, we found that the effects of fine root allocation parameterization on AGB differed across fertilization treatment. In the control and +N plots, the well-validated “pos” schemes led to 30-year AGB that was comparable to AGB from the other parameterizations. This result is satisfying because it suggests that what is validated in the short term is adaptive in the long term. But in the +P and +NP plots, the well-validated “pos” schemes led to 30-year AGB that was markedly less than some other parameterizations, including the baseline. Evidently, these schemes over-allocated to fine roots on this time scale. It is possible that the low biomass accumulation in these schemes is related to other model parameters. For example, the maximum non-structural P pool size was set equal to the amount of P required to re-construct all leaves and fine roots. This maximum pool size would limit the advantage of having more roots to acquire more P under high P conditions.

430 Based on our sensitivity analysis, we are able to offer new hypotheses that may be testable with longer-term fertilization
experiments. First, it may be that the “pos” simulations, which were validated in the short term, may also be valid on longer
time scales. P fertilization over 30 years would expose trees to soil P concentrations that are well outside the natural range. In
such a novel environment, the response may be maladaptive. Second, some acclimation might occur on decadal to multidecadal
time scales ~~to avoid over allocation to fine roots, but this acclimation scheme is unknown and not modelled in this study~~ so
435 ~~that the “pos” scheme would be valid in the short term but not the long term.~~ Third, the response of r_{2l} to soil P may be
saturating rather than linear. A saturating parameterization would help to prevent over-allocation to fine roots under the very
high soil P concentrations associated with P fertilization (but would be a bit more complicated than our parameterization
because it would require an additional parameter). Finally, forest demand for P may change as a function of forest age or as
species turn over. If the PFT composition changes and different PFTs have different a and b values, the community-level r_{2l}
440 would also be affected. Observations across a soil P gradient would also be useful for testing several of these points.

4.4 Towards more sophisticated models

Going forward, it would be interesting to validate the ability of other models to simulate biomass partitioning at tropical forest
fertilization sites. Existing models use a variety of allocation schemes, but we are not aware of other models using a scheme
analogous to our “pos” parameterizations. For example, CLM-CNP (Yang et al., 2014) and JULES-CNP (Nakhavali et al.,
445 2022) use parameterizations similar to our “const” parameterization to control new growth allocation. Other models use
dynamic allocation schemes. ORCHIDEE-CNP (Goll et al., 2017) and QUINCY (Thum et al., 2019) applied a pipe theory to
partition leaf and root mass, modulated by the most limiting soil available nutrient (and water, for QUINCY). ELM-CNP (Zhu
et al. 2019) and DLEM-CNP (Wang et al., 2020) apply a method that make allocation co-limited by both N and P
(Friedlingstein et al., 1999). Braghieri et al. (2022) integrated the most recent version FUN3.0 with ELM, modulating plant
450 nutrient uptake from multiple pathways by optimizing carbon cost, but did not illustrate how this strategy might affect new-
growth allocation. Whether any of these approaches would lead to increases in relative allocation to fine roots under P
fertilization should be investigated.

The effect of nutrients on biomass partitioning also depends on stoichiometry. That is, nutrient limitation might lead to changes
in tissue stoichiometry rather than tissue production. Some models account for stoichiometric flexibility by prescribing ranges
455 for each pool based on empirical studies (e.g. CASACNP, Wang et al., 2010; ORCHIDEE-CNP, Goll et al., 2017; QUINCY,
Thum et al., 2019). ED2 has fixed stoichiometries in structural pools but non-fixed stoichiometries in non-structural pools.

When comparing the influence of different allocation schemes, we made some simplifications to make our analyses more
straightforward. For example, we did not account for the effect of N limitation on carbon partitioning. However, such an effect
was not observed at our study site (Waring et al., 2019). Neither did we account for the effect of water limitation on carbon
460 partitioning. Carbon partitioning may also depend on community composition (Dybzinski et al., 2011) and it may be temporally

variable (Farrion et al., 2013). We did not account for either of these effects except for the impact of water limitation on tree phenology (Xu et al., 2016). More sophisticated parameterizations that account for these effects should be investigated in future studies.

5 Conclusion

465 The partitioning of the new growth in a forest ecosystem between leaf, wood and fine root pools is a critical aspect ecosystem functioning and can strongly affect forest carbon budgets (Litton et al., 2007). We applied the nutrient enabled ED2 model in simulating a fully factorial N and P fertilization experiment conducted in a secondary tropical dry forest in Costa Rica over three years. Some model parameterizations were able to accurately simulate leaf, wood and fine root production, as well as mortality. Surprisingly, these parameterizations all assumed a positive relationship between relative allocation to fine roots
470 and soil P. This result might be expected at relatively low levels of soil P, when increased root growth would lead to larger construction and maintenance costs but only modest increases in P uptake. Further experimentation is needed to test whether this relationship would hold on longer time scales and at other sites. Indeed, our sensitivity analysis suggested that this parameterization would over-allocate to fine roots in P-fertilized plots on multidecadal time scales. Our findings also suggested the need of more model-data intercomparison, especially with respect to simultaneous measurements of leaf, wood and fine
475 root production. Such analyses will enable us to develop improved model parameterizations and ultimately better simulations of forest carbon balances.

Code and data availability. The most up-to-date source code, post-processing R scripts, and an open discussion forum are available on GitHub at <https://github.com/EDmodel/ED2>. Field data are available from the Dryad Digital Repository: <https://doi.org/10.5061/dryad.mq62g78>.

480 *Author contributions.* SL ran the simulations, carried out the analysis and wrote the first draft of the manuscript. JSP and BGW provided the field data. DM designed the study. All authors contributed to manuscript revisions.

Competing interests. DM is a member of the Biogeosciences editorial board. The peer-review process was guided by an independent editor, and the authors have no other competing interests to declare.

485 *Acknowledgements.* DM, BGW, and JSP were supported by the US Department of Energy, Office of Science, Terrestrial Ecosystem Science Program, Award DE-SC0014363. The field plots were maintained by National Science Foundation CAREER Grant DEB-1053237 to JSP. Muñoz Sabater, J. (2019) was downloaded from the Copernicus Climate Change Service (C3S) Climate Data Store (2022). The results contain modified Copernicus Climate Change Service information 2020. Neither the European Commission nor ECMWF is responsible for any use that may be made of the Copernicus information or data it contains.

490 References

Aleixo, I., Norris, D., Hemerik, L., Barbosa, A., Prata, E., Costa, F. and Poorter, L.: Amazonian rainforest tree mortality driven by climate and functional traits, *Nature Climate Change*, 9, 384-388, <https://doi.org/10.1038/s41558-019-0458-0>, 2019.

- Alfaro, E. A., Alvarado, A. and Chaverri, A.: Cambios edáficos asociados a tres etapas sucesionales tropical seco en Guanacaste, Costa Rica, *Agronomía Costarricense*, 25, 7-19, 2001.
- 495 Alvarez-Clare, S., Mack, M. C. and Brooks, M.: A direct test of nitrogen and phosphorus limitation to net primary productivity in a lowland tropical wet forest, *Ecology*, 94, 1540-1551, <https://doi.org/10.1890/12-2128.1>, 2013.
- Aoyagi, R., Kitayama, K. and Turner, B.L.: How do tropical tree species maintain high growth rates on low-phosphorus soils?. *Plant and Soil*, pp.1-26, <https://doi.org/10.1007/s11104-022-05602-2>, 2022.
- Arora, V. K., Katavouta, A., Williams, R. G., Jones, C. D., Brovkin, V., Friedlingstein, P., Schwinger, J., Bopp, L., Boucher, 500 O. and Cadule, P.: Carbon–concentration and carbon–climate feedbacks in CMIP6 models and their comparison to CMIP5 models, *Biogeosciences*, 17, 4173-4222, <https://doi.org/10.5194/bg-17-4173-2020>, 2020.
- Báez, S. and Homeier, J.: Functional traits determine tree growth and ecosystem productivity of a tropical montane forest: Insights from a long-term nutrient manipulation experiment, *Global Change Biol.*, 24, 399-409, <https://doi.org/10.1111/gcb.13905>, 2018.
- 505 Batterman, S. A., Hedin, L. O., Van Breugel, M., Ransijn, J., Craven, D. J. and Hall, J. S.: Key role of symbiotic dinitrogen fixation in tropical forest secondary succession, *Nature*, 502, 224-227, <https://doi.org/10.1038/nature12525>, 2013.
- Bloom, A. J., Chapin, F. S. and Mooney, H. A.: Resource limitation in plants--an economic analogy, *Annu. Rev. Ecol. Syst.*, 363-392, 1985.
- Braghiere, R.K., Fisher, J.B., Allen, K., Brzostek, E., Shi, M., Yang, X., Ricciuto, D.M., Fisher, R.A., Zhu, Q. and Phillips, 510 R.P.: Modeling global carbon costs of plant nitrogen and phosphorus acquisition. *Journal of Advances in modeling earth systems*, 14(8), <https://doi.org/10.1029/2021GL094514>, 2022.
- Campo, J. and Vázquez-Yanes, C.: Effects of nutrient limitation on aboveground carbon dynamics during tropical dry forest regeneration in Yucatán, Mexico, *Ecosystems*, 7, 311-319, <https://doi.org/10.1007/s10021-003-0249-2>, 2004.
- Canadell, J. G., Monteiro, P. M. S., Costa, M. H., Cotrim da Cunha, L., Cox, P. M., Eliseev, A. V., Henson, S., Ishii, M., 515 Jaccard, S., Koven, C., Lohila, A., Patra, P. K., Piao, S., Rogelj, J., Syampungani, S., Zaehle, S. and Zickfeld, K.: Global Carbon and other Biogeochemical Cycles and Feedbacks, in: *Climate Change 2021: The Physical Science Basis. Contribution of Working Group I to the Sixth Assessment Report of the Intergovernmental Panel on Climate Change*, Masson-Delmotte, V., Zhai, P., Pirani, A., Connors, S. L., Péan, C., Berger, S., Caud, N., Chen, Y., Goldfarb, L., Gomis, M. I., Huang, M.,

- Leitzell, K., Lonnoy, E., Matthews, J. B. R., Maycock, T. K., Waterfield, T., Yelekçi, O., Yu, R. and Zhou, B. (Eds.),
520 Cambridge University Press, Cambridge, United Kingdom and New York, NY, USA, 673–816, 2021.
- Canadell, J., Jackson, R. B., Ehleringer, J. B., Mooney, H. A., Sala, O. E. and Schulze, E.: Maximum rooting depth of
vegetation types at the global scale, *Oecologia*, 108, 583-595, <https://doi.org/10.1007/BF00329030>, 1996.
- Chapin, F. S., Bloom, A. J., Field, C. B. and Waring, R. H.: Plant responses to multiple environmental factors, *Bioscience*, 37,
49-57, <https://doi.org/10.2307/1310177>, 1987.
- 525 Clark, D. A., Brown, S., Kicklighter, D. W., Chambers, J. Q., Thomlinson, J. R. and Ni, J.: Measuring net primary production
in forests: concepts and field methods, *Ecol. Appl.*, 11, 356-370, [https://doi.org/10.1890/1051-0761\(2001\)011\[0356:MNPPIF\]2.0.CO;2](https://doi.org/10.1890/1051-0761(2001)011[0356:MNPPIF]2.0.CO;2), 2001.
- Comas, L.H., Callahan, H.S. and Midford, P.E.: Patterns in root traits of woody species hosting arbuscular and
ectomycorrhizas: implications for the evolution of belowground strategies. *Ecology and evolution*, 4(15), pp.2979-2990,
530 <https://doi.org/10.1002/ece3.1147>, 2014.
- Cunha, H. F. V., Andersen, K. M., Lugli, L. F., Santana, F. D., Aleixo, I. F., Moraes, A. M., Garcia, S., Di Ponzio, R., Mendoza,
E. O. and Brum, B.: Direct evidence for phosphorus limitation on Amazon forest productivity, *Nature*, 608, 558-
562, <https://doi.org/10.1038/s41586-022-05085-2>, 2022.
- Dybzinski, R., Fariior, C., Wolf, A., Reich, P. B. and Pacala, S. W.: Evolutionarily stable strategy carbon allocation to foliage,
535 wood, and fine roots in trees competing for light and nitrogen: an analytically tractable, individual-based model and
quantitative comparisons to data, *Am. Nat.*, 177, 153-166, <https://doi.org/10.1086/657992>, 2011.
- Eissenstat, D.M. and Yanai, R.D.: Root life span, efficiency, and turnover. In *Plant Roots* (pp. 367-394). CRC Press.
DOI:10.1201/9780203909423.CH13. 2002.
- Eissenstat, D.M., Kucharski, J.M., Zadworny, M., Adams, T.S. and Koide, R.T.: Linking root traits to nutrient foraging in
540 arbuscular mycorrhizal trees in a temperate forest. *New Phytologist*, 208(1), pp.114-124, <https://doi.org/10.1111/nph.13451>,
2015.
- Fariior, C. E., Dybzinski, R., Levin, S. A. and Pacala, S. W.: Competition for water and light in closed-canopy forests: a
tractable model of carbon allocation with implications for carbon sinks, *Am. Nat.*, 181, 314-
330, <https://doi.org/10.1086/669153>, 2013.

- 545 Finér, L., Ohashi, M., Noguchi, K. and Hirano, Y.: Factors causing variation in fine root biomass in forest ecosystems, *For. Ecol. Manage.*, 261, 265-277, <https://doi.org/10.1016/j.foreco.2010.10.016>, 2011.
- Fisher, R. A., Koven, C. D., Anderegg, W. R., Christoffersen, B. O., Dietze, M. C., Farrior, C. E., Holm, J. A., Hurtt, G. C., Knox, R. G. and Lawrence, P. J.: Vegetation demographics in Earth System Models: A review of progress and priorities, *Global Change Biol.*, 24, 35-54, <https://doi.org/10.1111/gcb.13910>, 2018.
- 550 Fitter, A.H., Caldwell, M.M. and Pearcy, R.W.: Architecture and biomass allocation as components of the plastic response of root systems to soil heterogeneity. Exploitation of environmental heterogeneity by plants: ecophysiological processes above- and belowground, pp.305-323, <https://doi.org/10.1111/j.1469-8137.1992.tb01110.x>, 1994.
- Fransen, B., Blijenberg, J. and de Kroon, H.: Root morphological and physiological plasticity of perennial grass species and the exploitation of spatial and temporal heterogeneous nutrient patches. *Plant and Soil*, 211, pp.179-189, 555 <https://doi.org/10.1023/A:1004684701993>, 1999.
- Friedlingstein, P., Joel, G., Field, C. B. and Fung, I. Y.: Toward an allocation scheme for global terrestrial carbon models, *Global Change Biol.*, 5, 755-770, <https://doi.org/10.1046/j.1365-2486.1999.00269.x>, 1999.
- George, E. and Seith, B.: Long-term effects of a high nitrogen supply to soil on the growth and nutritional status of young Norway spruce trees, *Environmental Pollution*, 102, 301-306, [https://doi.org/10.1016/S0269-7491\(98\)00050-5](https://doi.org/10.1016/S0269-7491(98)00050-5), 1998.
- 560 Gersani, M., Brown, J., O'Brien, E.E., Maina, G.M. and Abramsky, Z.: Tragedy of the Commons as a Result of Root Competition, *Journal of Ecology*, 89, 660–669, 2001.
- Gessler, A., Schaub, M. and McDowell, N. G.: The role of nutrients in drought-induced tree mortality and recovery, *New Phytologist*, 214, 513-520, <https://doi.org/10.1111/nph.14340>, 2017.
- Goll, D. S., Brovkin, V., Parida, B. R., Reick, C. H., Kattge, J., Reich, P. B., Van Bodegom, P. M. and Niinemets, Ü: Nutrient 565 limitation reduces land carbon uptake in simulations with a model of combined carbon, nitrogen and phosphorus cycling, *Biogeosciences*, 9, 3547-3569, <https://doi.org/10.5194/bg-9-3547-2012>, 2012.
- Goll, D. S., Vuichard, N., Maignan, F., Jornet-Puig, A., Sardans, J., Violette, A., Peng, S., Sun, Y., Kvakic, M. and Guimberteau, M.: A representation of the phosphorus cycle for ORCHIDEE (revision 4520), *Geoscientific Model Development*, 10, 3745-3770, <https://doi.org/10.5194/gmd-10-3745-2017>, 2017.
- 570 Güsewell, S.: N : P ratios in terrestrial plants: variation and functional significance. *New Phytologist*, 164: 243-266. <https://doi.org/10.1111/j.1469-8137.2004.01192.x>, 2004.

- Han, M., Chen, Y., Li, R., Yu, M., Fu, L., Li, S., Su, J. and Zhu, B.: Root phosphatase activity aligns with the collaboration gradient of the root economics space. *New Phytologist*, 234(3), pp.837-849, <https://doi.org/10.1111/nph.17906>, 2022.
- Hayward, J. and Horton, T. R.: Phylogenetic trait conservation in the partner choice of a group of ectomycorrhizal trees, *Mol. Ecol.*, 23, 4886-4898, <https://doi.org/10.1111/mec.12903>, 2014.
- 575 Hodge, A.: The plastic plant: root responses to heterogeneous supplies of nutrients. *New phytologist*, 162(1), pp.9-24, <https://doi.org/10.1111/j.1469-8137.2004.01015.x>, 2004.
- Hodge, A., Robinson, D., Griffiths, B.S. and Fitter, A.H.: Why plants bother: root proliferation results in increased nitrogen capture from an organic patch when two grasses compete. *Plant, Cell & Environment*, 22(7), pp.811-820, 580 <https://doi.org/10.1046/j.1365-3040.1999.00454.x>, 1999.
- Hou, E., Luo, Y., Kuang, Y., Chen, C., Lu, X., Jiang, L., Luo, X. and Wen, D.: Global meta-analysis shows pervasive phosphorus limitation of aboveground plant production in natural terrestrial ecosystems, *Nature Communications*, 11, 637, <https://doi.org/10.1038/s41467-020-14492-w>, 2020.
- Jackson, R.B., Manwaring, J.H. and Caldwell, M.M.: Rapid physiological adjustment of roots to localized soil enrichment. 585 *Nature*, 344(6261), pp.58-60, <https://doi.org/10.1038/344058a0>, 1990.
- Jackson, R. B., Lajtha, K., Crow, S. E., Hugelius, G., Kramer, M. G. and Piñeiro, G.: The ecology of soil carbon: pools, vulnerabilities, and biotic and abiotic controls, *Annual Review of Ecology, Evolution, and Systematics*, 48, 419-445, <https://doi.org/10.1146/annurev-ecolsys-112414-054234>, 2017.
- Jing, J., Rui, Y., Zhang, F., Rengel, Z. and Shen, J.: Localized application of phosphorus and ammonium improves growth of 590 maize seedlings by stimulating root proliferation and rhizosphere acidification. *Field Crops Research*, 119(2-3), pp.355-364, <https://doi.org/10.1007/s11104-011-0909-5>, 2010.
- Kong, D. L., Wang, J. J., Kardol, P., Wu, H. F., Zeng, H., Deng, X. B., and Deng, Y.: Economic strategies of plant absorptive roots vary with root diameter, *Biogeosciences*, 13, 415–424, <https://doi.org/10.5194/bg-13-415-2016>, 2016.
- [Kou-Giesbrecht, S., Arora, V., Seiler, C., Arneth, A., Falk, S., Jain, A., Joos, F., Kennedy, D., Knauer, J., Sitch, S. and O'Sullivan, M.: Evaluating nitrogen cycling in terrestrial biosphere models: a disconnect between the carbon and nitrogen cycles. *Earth System Dynamics*, 14\(4\), 767-795, https://doi.org/10.5194/esd-14-767-2023, 2023.](https://doi.org/10.5194/esd-14-767-2023)
- 595 [LeBauer, D. S. and Treseder, K. K.: Nitrogen Limitation of Net Primary Productivity in Terrestrial Ecosystems Is Globally Distributed, *Ecology*, 89, 371-379, https://doi.org/10.1890/06-2057.1, 2008.](https://doi.org/10.1890/06-2057.1)

- 600 LeBauer, D. S., Wang, D., Richter, K. T., Davidson, C. C. and Dietze, M. C.: Facilitating feedbacks between field measurements and ecosystem models, *Ecol. Monogr.*, 83, 133-154, <https://doi.org/10.1890/12-0137.1>, 2013.
- Levy-Varon, J. H., Batterman, S. A., Medvigy, D., Xu, X., Hall, J. S., van Breugel, M. and Hedin, L. O.: Tropical carbon sink accelerated by symbiotic dinitrogen fixation, *Nature communications*, 10, 1-8, <https://doi.org/10.1038/s41467-019-13656-7>, 2019.
- Li, H.B., Zhang, F.S. and Shen, J.B.: Contribution of root proliferation in nutrient-rich soil patches to nutrient uptake and growth of maize. *Pedosphere*, 22(6), pp.776-784, [https://doi.org/10.1016/S1002-0160\(12\)60063-0](https://doi.org/10.1016/S1002-0160(12)60063-0), 2012.
- Li, Y., Niu, S. and Yu, G.: Aggravated phosphorus limitation on biomass production under increasing nitrogen loading: a meta-analysis. *Global Change Biology*, 22, 934-943, <https://doi.org/10.1111/gcb.13125>, 2016.
- Litton, C. M., Raich, J. W. and Ryan, M. G.: Carbon allocation in forest ecosystems, *Global Change Biol.*, 13, 2089-2109, <https://doi.org/10.1111/j.1365-2486.2007.01420.x>, 2007.
- 610 Liu, B., Li, H., Zhu, B., Koide, R.T., Eissenstat, D.M. and Guo, D.: Complementarity in nutrient foraging strategies of absorptive fine roots and arbuscular mycorrhizal fungi across 14 coexisting subtropical tree species. *New Phytologist*, 208(1), pp.125-136, <https://doi.org/10.1111/nph.13434>, 2015.
- Longo, M., Knox, R. G., Levine, N. M., Swann, A. L. S., Medvigy, D. M., Dietze, M. C., Kim, Y., Zhang, K., Bonal, D., Burban, B., Camargo, P. B., Hayek, M. N., Saleska, S. R., da Silva, R., Bras, R. L., Wofsy, S. C. and Moorcroft, P. R.: The biophysics, ecology, and biogeochemistry of functionally diverse, vertically and horizontally heterogeneous ecosystems: the Ecosystem Demography model, version 2.2 -- Part 2: Model evaluation for tropical South America, *Geoscientific Model Development*, 12, 4347-4374, <https://doi.org/10.5194/gmd-12-4347-2019>, 2019b.
- 615 Longo, M., Knox, R. G., Medvigy, D. M., Levine, N. M., Dietze, M. C., Kim, Y., Swann, A. L., Zhang, K., Rollinson, C. R. and Bras, R. L.: The biophysics, ecology, and biogeochemistry of functionally diverse, vertically and horizontally heterogeneous ecosystems: The Ecosystem Demography model, version 2.2--Part 1: Model description, *Geoscientific Model Development*, 12, 4309-4346, <https://doi.org/10.5194/gmd-12-4309-2019>, 2019a.
- 620 Lu, M. and Hedin, L. O.: Global plant-symbiont organization and emergence of biogeochemical cycles resolved by evolution-based trait modelling, *Nature ecology & evolution*, 3, 239-250, <https://doi.org/10.1038/s41559-018-0759-0>, 2019.

- Lugli, L.F., Andersen, K.M., Aragão, L.E., Cordeiro, A.L., Cunha, H.F., Fuchslueger, L., Meir, P., Mercado, L.M., Oblitas, E., Quesada, C.A. and Rosa, J.S.: Multiple phosphorus acquisition strategies adopted by fine roots in low-fertility soils in Central Amazonia. *Plant and Soil*, 450, pp.49-63, <https://doi.org/10.1007/s11104-019-03963-9>, 2020.
- Lugli, L. F., Rosa, J. S., Andersen, K. M., Di Ponzio, R., Almeida, R. V., Pires, M., Cordeiro, A. L., Cunha, H. F., Martins, N. P. and Assis, R. L.: Rapid responses of root traits and productivity to phosphorus and cation additions in a tropical lowland forest in Amazonia, *New Phytol.*, 230, 116-128, <https://doi.org/10.1111/nph.17154>, 2021.
- 630 Ma, Z., Guo, D., Xu, X., Lu, M., Bardgett, R.D., Eissenstat, D.M., McCormack, M.L. and Hedin, L.O.: Evolutionary history resolves global organization of root functional traits. *Nature*, 555(7694), pp.94-97, <https://doi.org/10.1038/nature25783>, 2018.
- Malhi, Y., Baker, T. R., Phillips, O. L., Almeida, S., Alvarez, E., Arroyo, L., Chave, J., Czimczik, C. I., Fiore, A. D. and Higuchi, N.: The above-ground coarse wood productivity of 104 Neotropical forest plots, *Global Change Biol.*, 10, 563-591, <https://doi.org/10.1111/j.1529-8817.2003.00778.x>, 2004.
- 635 Malhi, Y., Doughty, C. E., Goldsmith, G. R., Metcalfe, D. B., Girardin, C. A., Marthews, T. R., del Aguila-Pasquel, J., Aragão, L. E., Araujo-Murakami, A. and Brando, P.: The linkages between photosynthesis, productivity, growth and biomass in lowland Amazonian forests, *Global Change Biol.*, 21, 2283-2295, <https://doi.org/10.1111/gcb.12859>, 2015.
- Medvigy, D., Wang, G., Zhu, Q., Riley, W. J., Trierweiler, A. M., Waring, B. G., Xu, X. and Powers, J. S.: Observed variation in soil properties can drive large variation in modelled forest functioning and composition during tropical forest secondary succession, *New Phytol.*, 223, 1820-1833, <https://doi.org/10.1111/nph.15848>, 2019.
- 640 [Menge, D.N., Kou-Giesbrecht, S., Taylor, B.N., Akana, P.R., Butler, A., Carreras Pereira, K.A., Cooley, S.S., Lau, V.M. and Lauterbach, E.L.: Terrestrial Phosphorus Cycling: Responses to Climatic Change. *Annual Review of Ecology, Evolution, and Systematics*, 54, <https://doi.org/10.1146/annurev-ecolsys-110421-102458>, 2023.](https://doi.org/10.1146/annurev-ecolsys-110421-102458)
- Moorcroft, P. R., Hurtt, G. C. and Pacala, S. W.: A method for scaling vegetation dynamics: the ecosystem demography model (ED), *Ecol. Monogr.*, 71, 557-586, [https://doi.org/10.1890/0012-9615\(2001\)071\[0557:AMFSVD\]2.0.CO;2](https://doi.org/10.1890/0012-9615(2001)071[0557:AMFSVD]2.0.CO;2), 2001.
- 645 Muñoz Sabater, J.: ERA5-Land hourly data from 1981 to present, Copernicus Climate Change Service (C3S) Climate Data Store (CDS), <https://doi.org/10.24381/cds.e2161bac>, 2019.
- Nakhavali, M. A., Mercado, L. M., Hartley, I. P., Sitch, S., Cunha, F. V., di Ponzio, R., Lugli, L. F., Quesada, C. A., Andersen, K. M. and Chadburn, S. E.: Representation of the phosphorus cycle in the Joint UK Land Environment Simulator (vn5.5_JULES-CNP), *Geoscientific Model Development*, 15, 5241-5269, <https://doi.org/10.5194/gmd-15-5241-2022>, 2022.
- 650

- Nobel, P. S., Schulte, P. J. and North, G. B.: Water influx characteristics and hydraulic conductivity for roots of *Agave deserti* Engelm., *J. Exp. Bot.*, 41, 409-415, <https://doi.org/10.1093/jxb/41.4.409>, 1990.
- Norby, R. J., Warren, J. M., Iversen, C. M., Medlyn, B. E. and McMurtrie, R. E.: CO₂ enhancement of forest productivity constrained by limited nitrogen availability, *Proceedings of the National Academy of Sciences*, 107, 19368-655 19373, <https://doi.org/10.1073/pnas.100646310>, 2010.
- Oren, R., Ellsworth, D. S., Katul, G. G., Johnsen, K. H., Phillips, N., Ewers, B. E., Maier, C., Schäfer, K. V. R., McCarthy, H., Hendrey, G. and McNulty, S. G.: Soil fertility limits carbon sequestration by forest ecosystems in a CO₂-enriched atmosphere, *Nature (London)*, 411, 469-472, <https://doi.org/10.1038/35078064>, 2001.
- Paz, H., Pineda-García, F. and Pinzón-Pérez, L. F.: Root depth and morphology in response to soil drought: comparing 660 ecological groups along the secondary succession in a tropical dry forest, *Oecologia*, 179, 551-561, <https://doi.org/10.1007/s00442-015-3359-6>, 2015.
- Powers, J. S. and Tiffin, P.: Plant functional type classifications in tropical dry forests in Costa Rica: leaf habit versus taxonomic approaches, *Funct. Ecol.*, 24, 927-936, <https://doi.org/10.1111/j.1365-2435.2010.01701.x>, 2010.
- Pregitzer, K.S., Hendrick, R.L. and Fogel, R.: The demography of fine roots in response to patches of water and nitrogen. *New 665 Phytologist*, 125(3), pp.575-580, <https://doi.org/10.1111/j.1469-8137.1993.tb03905.x>, 1993.
- Quesada, C. A., Phillips, O. L., Schwarz, M., Czimczik, C. I., Baker, T. R., Patiño, S., Fyllas, N. M., Hodnett, M. G., Herrera, R. and Almeida, S.: Basin-wide variations in Amazon forest structure and function are mediated by both soils and climate, *Biogeosciences*, 9, 2203-2246, <https://doi.org/10.5194/bg-9-2203-2012>, 2012.
- Raven, J.A., Lambers, H., Smith, S.E. and Westoby, M.: Costs of acquiring phosphorus by vascular land plants: patterns and 670 implications for plant coexistence. *New Phytologist*, 217(4), pp.1420-1427, <https://doi.org/10.1111/nph.14967>, 2018.
- Reich, P. B. and Hobbie, S. E.: Decade-long soil nitrogen constraint on the CO₂ fertilization of plant biomass, *Nature climate change*, 3, 278-282, <https://doi.org/10.1038/NCLIMATE1694>, 2013.
- Reichert, T., Rammig, A., Fuchslueger, L., Lugli, L.F., Quesada, C.A. and Fleischer, K.: Plant phosphorus-use and-acquisition strategies in Amazonia. *New Phytologist*, 234(4), pp.1126-1143, <https://doi.org/10.1111/nph.17985>, 2022.
- 675 Robinson, D.: The responses of plants to non-uniform supplies of nutrients. *New Phytologist*, 127(4), pp.635-674, <https://doi.org/10.1111/j.1469-8137.1994.tb02969.x>, 1994.

- Robinson, D., Hodge, A., Griffiths, B.S. and Fitter, A.H.: Plant root proliferation in nitrogen-rich patches confers competitive advantage. *Proceedings of the Royal Society of London. Series B: Biological Sciences*, 266(1418), pp.431-435, DOI:10.1098/rspb.1999.0656, 1999.
- 680 Schulte-Uebbing, L. and de Vries, W.: Global-scale impacts of nitrogen deposition on tree carbon sequestration in tropical, temperate, and boreal forests: A meta-analysis, *Global Change Biol.*, 24, e416-e431, 2018.
- Schwartz, N. B., Medvigy, D., Tijerin, J., Pérez-Aviles, D., Rivera-Polanco, D., Pereira, D., Werden, L., Du, D., Arnold, L. and Powers, J. S.: Intra-annual variation in microclimatic conditions in relation to vegetation type and structure in two tropical dry forests undergoing secondary succession, *For. Ecol. Manage.*, 511, 685 120132, <https://doi.org/10.1016/j.foreco.2022.120132>, 2022.
- Shipley, B. and Meziane, D.: The balanced-growth hypothesis and the allometry of leaf and root biomass allocation, *Funct. Ecol.*, 16, 326-331, <https://doi.org/10.1046/j.1365-2435.2002.00626.x>, 2002.
- Stephenson, N. L., Van Mantgem, P. J., Bunn, A. G., Bruner, H., Harmon, M. E., O'Connell, K. B., Urban, D. L. and Franklin, J. F.: Causes and implications of the correlation between forest productivity and tree mortality rates, *Ecol. Monogr.*, 81, 527-690 555, <https://doi.org/10.1890/10-1077.1>, 2011.
- Terrer, C., Jackson, R. B., Prentice, I. C., Keenan, T. F., Kaiser, C., Vicca, S., Fisher, J. B., Reich, P. B., Stocker, B. D., Hungate, B. A., Peñuelas, J., McCallum, I., Soudzilovskaia, N. A., Cernusak, L. A., Talhelm, A. F., Van Sundert, K., Piao, S., Newton, P. C. D., Hovenden, M. J., Blumenthal, D. M., Liu, Y. Y., Müller, C., Winter, K., Field, C. B., Viechtbauer, W., Van Lissa, C. J., Hoosbeek, M. R., Watanabe, M., Koike, T., Leshyk, V. O., Polley, H. W. and Franklin, O.: Nitrogen and 695 phosphorus constrain the CO₂ fertilization of global plant biomass, *Nature Climate Change*, 9, 684-689, <https://doi.org/10.1038/s41558-019-0545-2>, 2019.
- Thum, T., Caldararu, S., Engel, J., Kern, M., Pallandt, M., Schnur, R., Yu, L. and Zaehle, S.: A new model of the coupled carbon, nitrogen, and phosphorus cycles in the terrestrial biosphere (QUINCY v1. 0; revision 1996), *Geoscientific Model Development*, 12, 4781-4802, <https://doi.org/10.5194/gmd-12-4781-2019>, 2019.
- 700 Timm, N. H.: Profile Analysis, in: *Multivariate analysis with applications in education and psychology*, Brooks/Cole Publishing Company, Monterrey (CA), 444-498, 1975.
- Wang, G., Post, W. M. and Mayes, M. A.: Development of microbial-enzyme-mediated decomposition model parameters through steady-state and dynamic analyses, *Ecol. Appl.*, 23, 255-272, <https://doi.org/10.1890/12-0681.1>, 2013.

- 705 Wang, G., Liu, F. and Xue, S.: Nitrogen addition enhanced water uptake by affecting fine root morphology and coarse root anatomy of Chinese pine seedlings, *Plant Soil*, 418, 177-189, <https://doi.org/10.1007/s11104-017-3283-0>, 2017.
- Wang, Y. P., Law, R. M. and Pak, B.: A global model of carbon, nitrogen and phosphorus cycles for the terrestrial biosphere, *Biogeosciences*, 7, 2261-2282, <https://doi.org/10.5194/bg-7-2261-2010>, 2010.
- 710 Wang, Z., Tian, H., Yang, J., Shi, H., Pan, S., Yao, Y., Banger, K. and Yang, Q.: Coupling of phosphorus processes with carbon and nitrogen cycles in the dynamic land ecosystem model: Model structure, parameterization, and evaluation in tropical forests, *Journal of Advances in Modeling Earth Systems*, 12, e2020MS002123, <https://doi.org/10.1029/2020MS002123>, 2020.
- Waring, B. G., Becknell, J. M. and Powers, J. S.: Nitrogen, phosphorus, and cation use efficiency in stands of regenerating tropical dry forest, *Oecologia*, 178, 887-897, <https://doi.org/10.1007/s00442-015-3283-9>, 2015.
- Waring, B. G., Pérez-Aviles, D., Murray, J. G. and Powers, J. S.: Plant community responses to stand-level nutrient fertilization in a secondary tropical dry forest, *Ecology*, 100, e02691, <https://doi.org/10.1002/ecy.2691>, 2019.
- 715 Wieder, W. R., Cleveland, C. C., Smith, W. K. and Todd-Brown, K.: Future productivity and carbon storage limited by terrestrial nutrient availability, *Nature Geoscience*, 8, 441-444, <https://doi.org/10.1038/ngeo2413>, 2015.
- Wright, S. J.: Plant responses to nutrient addition experiments conducted in tropical forests, *Ecol. Monogr.*, 89, e01382, <https://doi.org/10.1002/ecm.1382>, 2019.
- 720 Wright, S. J., Turner, B. L., Yavitt, J. B., Harms, K. E., Kaspari, M., Tanner, E. V., Bujan, J., Griffin, E. A., Mayor, J. R. and Pasquini, S. C.: Plant responses to fertilization experiments in lowland, species-rich, tropical forests, *Ecology*, 99, 1129-1138, <https://doi.org/10.1002/ecy.2193>, 2018.
- Wright, S. J., Yavitt, J. B., Wurzburger, N., Turner, B. L., Tanner, E. V., Sayer, E. J., Santiago, L. S., Kaspari, M., Hedin, L. O. and Harms, K. E.: Potassium, phosphorus, or nitrogen limit root allocation, tree growth, or litter production in a lowland tropical forest, *Ecology*, 92, 1616-1625, <https://doi.org/10.1890/10-1558.1>, 2011.
- 725 Xu, X., Konings, A. G., Longo, M., Feldman, A., Xu, L., Saatchi, S., Wu, D., Wu, J. and Moorcroft, P.: Leaf surface water, not plant water stress, drives diurnal variation in tropical forest canopy water content, *New Phytol.*, 231, 122-136, <https://doi.org/10.1111/nph.17254>, 2021.
- 730 Xu, X., Medvigy, D., Powers, J. S., Becknell, J. M. and Guan, K.: Diversity in plant hydraulic traits explains seasonal and inter-annual variations of vegetation dynamics in seasonally dry tropical forests, *New Phytol.*, 212, 80-95, <https://doi.org/10.1111/nph.14009>, 2016.

- Yang, X., Thornton, P. E., Ricciuto, D. M. and Post, W. M.: The role of phosphorus dynamics in tropical forests—a modeling study using CLM-CNP, *Biogeosciences*, 11, 1667-1681, <https://doi.org/10.5194/bg-11-1667-2014>, 2014.
- Yuan, Z. Y. and Chen, H. Y.: A global analysis of fine root production as affected by soil nitrogen and phosphorus, *Proceedings of the Royal Society B: Biological Sciences*, 279, 3796-3802, <https://doi.org/10.1098/rspb.2012.0955>, 2012.
- 735 Zea-Cabrera, E., Iwasa, Y., Levin, S. and Rodríguez-Iturbe, I.: Tragedy of the commons in plant water use, *Water Resources Research*, 42, 1–12, 2006.
- Zhang, H. and Forde, B.G.: An *Arabidopsis* MADS box gene that controls nutrient-induced changes in root architecture. *Science*, 279(5349), pp.407-409, DOI: 10.1126/science.279.5349.40, 1998.
- Zhang, D., Zhang, C., Tang, X., Li, H., Zhang, F., Rengel, Z., Whalley, W.R., Davies, W.J. and Shen, J.: Increased soil phosphorus availability induced by faba bean root exudation stimulates root growth and phosphorus uptake in neighbouring maize. *New Phytologist*, 209(2), pp.823-831, <https://doi.org/10.1111/nph.13613>, 2016.
- 740 Zhu, Q., Riley, W. J., Tang, J. and Koven, C. D.: Multiple soil nutrient competition between plants, microbes, and mineral surfaces: model development, parameterization, and example applications in several tropical forests, *Biogeosciences*, 13, 341-363, <https://doi.org/10.5194/bg-13-341-2016>, 2016.
- 745 Zhu, Q., Riley, W.J., Tang, J., Collier, N., Hoffman, F.M., Yang, X. and Bisht, G.: Representing nitrogen, phosphorus, and carbon interactions in the E3SM land model: Development and global benchmarking. *Journal of Advances in Modeling Earth Systems*, 11(7), 2238-2258, <https://doi.org/10.1029/2018MS001571>, 2019.