

~~Gap geometry, seasonality~~ Canopy gaps and associated losses of biomass - combining UAV imagery and field data ~~from~~ on a Central Amazon forest

Adriana Simonetti^{1,2}, Raquel Fernandes Araujo², Carlos Henrique Souza Celes², Flávia Ranara da Silva e Silva^{1,2}, Joaquim dos Santos²; Niro Higuchi², Susan Trumbore³ and Daniel Magnabosco Marra³

¹Programa de Pós-graduação em Ciências de Florestas Tropicais, Instituto Nacional de Pesquisas da Amazônia, Manaus, 69060-062, Brazil

²Laboratório de Manejo Florestal, Instituto Nacional de Pesquisas da Amazônia, Manaus, 69060-062, Brazil

³Biogeochemical Processes Department, Max Planck Institute for Biogeochemistry, Jena, 07745, Germany

Correspondence to: Adriana Simonetti (adrianasimonetti@gmail.com) and Daniel M. Marra (dmarra@bgc-jena.mpg.de)

Abstract. Understanding mechanisms of tree mortality and ~~geometric pattern~~ the dynamics of associated canopy gaps is relevant for robust estimates of carbon ~~stocks and~~ balance in ~~tropical forests, and for assessing how they are responding to~~ climate change. We combined monthly RGB images acquired from an unmanned aerial vehicle with field surveys to identify gaps in an 18-ha permanent plot installed in an old-growth Central Amazon forest ~~over a period of 28 months~~. In addition to detecting, we measured the size and shape of gaps, and analyzed their temporal variation and correlation with rainfall ~~over a period of 28 months~~. We further described associated modes of tree mortality (i.e., snapping, standing dead and uprooting) or branch fall and quantified associated losses of biomass. ~~Overall, the sensitivity of gap detection differed between field surveys and imagery data.~~ In total, we detected 32 gaps either in the images and field, ranging in area from 9 m² to 835 m². Relatively small gaps (<39 m²) associated with branch fall were the most frequent (11 gaps). Out of 18 gaps for which both field and imagery data were available, three could not be detected remotely. ~~This result shows~~ Gaps observed in the field but not captured on the imagery were relatively small and mainly formed by the fall of branches from live and standing dead trees. Our data show that ~~a considerable fraction~~ ~17% of the tree ~~mortality and branch-fall events~~ (~~~17%~~) only affect ~~only~~ the lower canopy and the understory of the forest, and ~~thus,~~ are likely neglected by assessments of top of the canopy. Regardless the detection method, the size distribution of gaps ~~in our study region~~ was better captured by a Lognormal function for gaps starting from the smallest detected size (9 m² for field and 10 m² for UAV imagery). The Weibull function ~~was the second-best fit for gaps larger than 10 m² and the best fit for gaps larger than 25 m².~~ As confirmed by our detailed field surveys, we believe that this pattern was not biased by gaps possibly undetected from image data. Although not related to differences in gap size, the main modes of tree mortality partially explained ~~associated~~ losses of biomass. ~~The~~ Moreover, the rate of gap area formation ~~expressed as the percent per month~~ was positively correlated with the frequency of extreme rainfall events, which may be related to a higher frequency of storms propagating extreme rain and destructive wind gusts. ~~Our results demonstrate the importance of combining field observations with remote sensing methods for monitoring gap dynamics in dense forests.~~ The correlation between modes of tree mortality and size of gap geometry with associated losses of biomass provide evidence on

35 the relative importance of small-scale events of tree mortality and branch fall as processes that contribute to landscape patterns
of canopy disturbance and carbon balance and species diversity in Amazon forests. Regional assessments While combining
remote sensing with field data provided a robust assessment of the gap dynamics and geometry related losses of canopy gaps
formed biomass, our results shall not be extrapolated beyond our study region. Future investigation may be carried in sites with
40 varying forest attributes and environmental characteristics. Apart from branch fall and individual tree mortality (e.g., from few
to hundreds of m²) up to catastrophic blowdowns associated with extreme rain and wind (e.g., from hundreds of m² to thousands
of ha) can reduce the uncertainty of improving landscape assessments of carbon balance, especially as the frequency and
intensity of storms causing these events is likely to change with future Amazon regional information on gap dynamics and
associated mechanisms of gap formation are relevant to address forest responses to altered disturbance regimes resulting from
climate- change.

45

1 Introduction

Tropical forests store ~25 % of terrestrial biomass carbon stocks (Pan et al., 2013). The maintenance of these stocks depends
on multi-scale and temporal dynamic processes regulating that regulate the growth and mortality of trees (Brienen et al., 2015;
McDowell et al., 2018; Frelich, 2016). Reports of increased tree mortality in tropical and temperate regions raise questions
50 about the influence of climate change on the dynamics and functioning of old-growth forests (Laurance et al., 2004; Phillips
and Gentry, 1994; Allen et al., 2015). In the tropics, climate change is related to increased frequency and intensity of extreme
events, such as convective storms and droughts (Gloor et al., 2013; Tan et al., 2015; IPCC, 2021)(Feng et al. 2023; Tan et al.,
2015; Allen et al., 2015; IPCC, 2021) that can increase rates of tree mortality and/or branch fall, thereby altering patterns of
forest biomass and carbon (Laurance et al., 2004; Chambers et al., 2013; McDowell et al., 2018). In this context,
55 understanding Understanding mechanisms of disturbance tree mortality and forest response gap formation is fundamental to
improve upscale estimates of carbon stocks and balance from the stand to the landscape scale, and to anticipate the response of
forests to varying climate scenarios (Clark et al., 2017; Leitold et al., 2018).

Gaps are natural openings in the forest canopy caused by falling trees and/or branches (Brokaw, 1982; Whitmore, 1989). Such
disturbances exert great influence on the dynamics and functioning of tropical forests, as they alter structure (Kellner et al.,
60 2009), natural regeneration (Grubb, 1977; Kellner and Asner, 2014; Marra et al. 2014a), species diversity and composition
(Denslow, 1987; Magnabosco Marra et al., 2014a 2014b, 2018), soil carbon stocks and nutrients (Santos et al., 2016; Vitousek
and Denslow, 1986), and productivity (Baker et al., 2004). The size of gaps can vary from a few square meters to thousands
of hectares, depending on the mechanism of formation (Nelson et al., 1994; Fontes et al., 2018; Magnabosco Marra et al.,
2018; Esquivel-Muelbert et al., 2020; Araujo et al., 2017, 2021). The size and shape of gaps define the amount of light and
65 other key resources during succession (Denslow, 1980, 1987; Schliemann and Bockheim, 2011). Apart from related to
mechanisms of formation, the size and shape of gaps can be influenced by local climate and topography, soil and forest

structure and species composition (Denslow, 1987; Araujo et al., 2021; Cushman et al., 2022). Thus, assessing the size distribution of gaps provides information on key processes regulating forest structure and diversity, and related functions (Jucker, 2022). Large-scale windthrows are a frequent disturbance in the Amazon. Although with some surviving trees, gaps opened by extreme rain and wind can have areas greater than 3,000 hectares (Nelson et al., 1994; Espírito-Santo et al., 2014; Negrón-Juárez et al., 2010, 2018, 2023). Recent studies reported windthrow hotspots (Negrón-Juárez et al., 2023), and that their frequency is regulated by atmospheric phenomena that are highly sensitive to climate change, such as the potential energy available for convection (CAPE) (Feng et al., 2023).

In the Central Amazon region, extreme wind gusts and precipitation are important mechanisms of tree damage and mortality (Nelson et al. 1994; Chambers et al., 2013; Magnabosco Marra et al., 2018; Negrón-Juárez et al., 2018, 2023). A study monitoring tree mortality over five decades in a Central Amazon forest found that trees died more frequently in wet months, even during drought years (Aleixo et al., 2019). A positive correlation between precipitation and tree mortality was also reported for an adjacent area (Fontes et al., 2018). A regional study based on 12 years of satellite data found that major windthrows (visible on Landsat) in Central Amazon occurred more frequently between September and February, which are months marked by heavy rainfall (Negrón-Juárez et al., 2017). These studies support that a greater number of gaps can be expected during the rainy season, when convective storms propagating extreme wind gusts are more frequent.

In the field, a gap can be defined by an opening in the forest canopy extending from the upper stratum to an average height of two meters above ground (Brokaw, 1982). Traditionally, studies of gap dynamics and geometry (e.g., area, perimeter and shape) have relied on observations made as part of forest inventories (Brokaw, 1982; Hubbell et al., 1999). However, gap-forming events can be stochastic and obtaining robust information on their frequency and geometry from often relatively low number of plots surveyed infrequently is a challenging task. However, gap-forming events can be stochastic and obtaining robust information on their frequency and geometry from often relatively low number of plots surveyed infrequently is a challenging task (Fontes et al., 2018).

In recent years, studies of gap frequency and geometry have been conducted using fine-scale remote sensing, which allows for inferences across larger spatial scales (Getzin et al., 2014; Araujo et al., 2021; Asner et al., 2013; Dalagnol et al., 2021). ~~Variations in the sensitivity of detection and spatial scales addressed using remote sensing methods allowed for revisiting classic definitions of gap, as well as the importance and applicability of different metrics.~~ In the field, a gap can be defined by an opening in the forest canopy extending from the upper stratum to an average height of two meters above ground (Brokaw, 1982). Optical remote sensing allows for the monitoring of relatively larger areas at high accuracy and spatial resolution (Senf, 2022; Frohling et al., 2009). However, ~~it is~~ optical remote sensing methods usually have a limited to the detection of ~~disturbances in the upper~~ lower canopy ~~layer.~~

of dense forests. In the Amazon, studies using intermediate spatial-resolution remote-sensing data have shown that small gaps are more frequent than relatively larger events, such as large gaps associated with convective storms (Nelson et al., 1994; Chambers et al., 2013; Araujo et al., 2017). However, the use of these data such as Landsat (30 m x 30 m pixel, 0.09 ha) do not allow mapping the smaller and more frequent disturbances (e.g., < 0.1 ha), including those only affecting the lower canopy

of the forest. As demonstrated for the region of Manaus (Brazil), Landsat images are only sensitive in detecting mortality events involving from 6 to 8 fallen trees (Negrón-Juárez et al., 2011; Chambers et al., 2013). ~~This mismatch between the monitoring of gap dynamics using forest inventory and satellite data highlights the lack of knowledge on mechanisms of formation of relatively smaller and more frequent gaps, and thus of their influence on landscape patterns of forest dynamics and biomass balance.~~ This mismatch between the monitoring of gap dynamics using forest inventory and satellite data highlights the lack of knowledge on mechanisms of formation of relatively smaller and more frequent gaps, and thus of their influence on landscape patterns of forest dynamics and biomass balance (Negrón-Juárez et al., 2011).

An alternative to assess the full gradient of gap size and geometry is the photogrammetry computed from unmanned aerial vehicle (UAV) imagery, commonly known as drones. In addition to a more detailed description of size and geometry, successive imaging acquired with UAVs makes it possible to monitor gap dynamics at higher spatial and temporal resolutions than that provided by satellite imagery (*e.g., high cloud cover and relatively long revisiting times*) (Getzin et al., 2014; Araujo et al., 2021; Senf, 2022). Still, the monitoring of gap dynamics using high spatial and temporal resolution imagery must be validated with field data. *When*

Here we combined ~~with~~ continuous forest inventories, with UAV imagery may allow for the quantification of high-resolution photogrammetry to quantify the relative contribution of mechanisms of gap formation such as different modes of tree mortality and branch fall, and to compute associated losses of biomass: in an 18-ha Amazon forest. The combination of high spatial-resolution imagery and field data ~~also offers~~ offered us an unique opportunity to describe the seasonality of tree-mortality events and possible interactions with extreme weather events and their relevance for the maintenance of carbon stocks (Esquivel-Muelbert et al., 2020). We addressed the following questions: i) How sensitive is RGB photogrammetry acquired with UAV for the detection of gaps compared with forest inventory data? ii) Is there a difference in the size distribution and geometry of gaps measured with photogrammetry and forest inventory? iii) Are gap geometry and biomass losses influenced by ~~modes of tree mortality? iv) Is the rate and size of gap formation related to rainfall?~~

In this study, we combined high-resolution photogrammetry with detailed forest inventory data to quantify the size distribution and geometry of gaps, the relative contribution of different modes of tree mortality and branch fall, and associated losses of biomass in an 18-ha Amazon forest. We addressed the following questions: i) How sensitive is RGB photogrammetry acquired with UAV for the detection of gaps compared with forest inventory data? ii) Is there a difference in the size distribution and geometry of gaps measured with photogrammetry and forest inventory? iii) Are gap geometry and biomass losses influenced by ~~traceable modes of tree mortality? iv) Is the rate and size of gap formation related to rainfall?~~

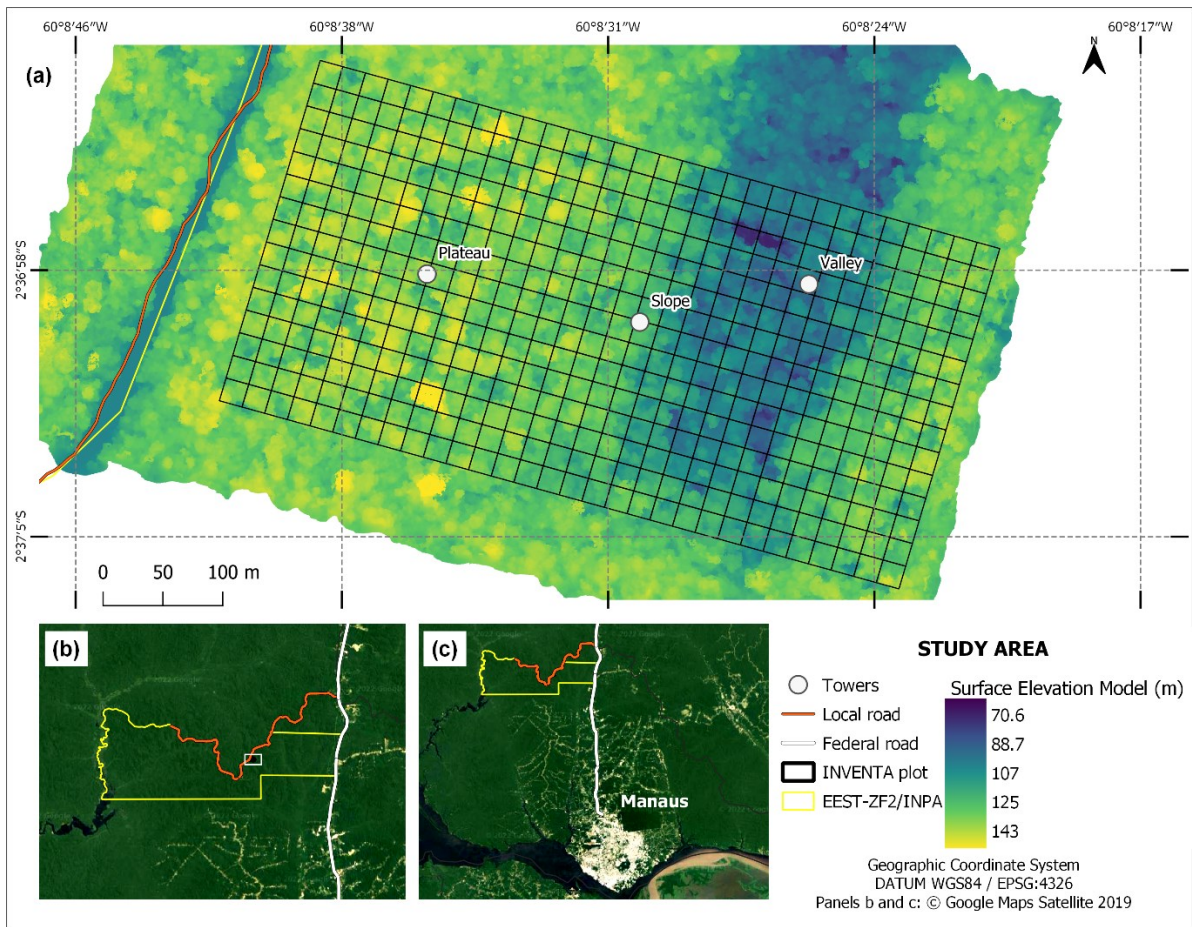
2 Methods

2.1 Study area

The study was conducted on a permanent plot (2°36'47" S; 60°08'41" W) monitored within the Wind-Tree Interaction Project Interação Vento Árvore na Amazônia (INVENTA), which is part of and the Amazon Tall Tower Observatory (ATTO) (Fig.

1a). This plot (hereafter referred to as INVENTA plot) is located at the *Estação Experimental de Silvicultura Tropical* (EEST) from the *Instituto Nacional de Pesquisas da Amazônia* (INPA), a reserve with 21,000 ha of contiguous old-growth forest (Fig. 135 1b). The EEST is accessible via the local road ZF-2, located at km 50 of the BR-174 highway north of Manaus, Brazil (Fig. 1c). The INVENTA plot has a size of 18 ha (600 m x 300 m) and is divided into 20 m x 20 m subplots (total of 450 subplots), which are subdivided into four 10 m x 10 m quadrats (total of 1,800 quadrats). The INVENTA plot was established in 2000 as part of the Jacaranda Project (Pinto et al., 2003). At the time it started, all trees, palms and lianas with DBH (diameter at breast height, 1.3 m) ≥ 5 cm were recorded. In 2017, prior to the start of INVENTA, all trees and palms with DBH ≥ 10 cm were 140 remeasured.

The canopy trees in our study region are $28.65 \text{ m} \pm 0.46 \text{ m}$ tall (mean \pm standard deviation) (Araujo, 2019). The forest understory and canopy are dense and closed. The richness of 10 cm DBH trees can exceed 280 species ha^{-1} (Oliveira and Mori, 1999). The INVENTA plot has an undulating topography typical of the region, including areas of plateau, slope and valley. The mean annual precipitation and temperature in the Manaus region are $2,231 \pm 118 \text{ mm year}^{-1}$ (mean \pm 95 % confidence 145 interval) and $26.9 \pm 0.17 \text{ }^\circ\text{C}$, respectively (1970-2016 period) (Magnabosco Marra et al., 2018). The region experiences three consecutive months (mostly commonly from July to September) with less than 100 mm of rainfall (Negrón-Juárez et al., 2017; Wu et al., 2016).



150 **Figure 1: Study area (INVENTA plot) with an area of 18 ha (300 m x 600 m), located ~50 km north of Manaus, Central Amazon, Brazil. Elevation refers to the canopy surface model generated from photogrammetry of images obtained with UAV.**

2.2 Acquisition and processing of remote sensing data

Imagery data were collected monthly, between September 2018 and January 2021 (28 months), using a digital RGB camera deployed on *DJI Phantom 3* and *4* UAVs (see collection period in Table S1). The flight plans were programmed using the *DJI Ground Station* application installed on a tablet device (Apple, model A1489), which was connected to the aircraft remote control and configured for automated flight from predefined waypoints. The camera lens has a Field of View (FOV) angle of 94°, and the pictures generated have a resolution of 12 Mp, with maximum dimensions of 4,000 pixels x 3,000 pixels. The overflights were performed at 100 m height above the ground, with an approximate speed of 9.9 m s⁻¹ in order to generate images with ~100 m width at canopy height. Photographs were captured every 2 seconds with 85 % longitudinal overlap, and 70 % lateral overlap with respect to the ground. The camera was calibrated on each flight to reduce the effects of varying illumination within and between flights. To ensure homogeneous images and diffuse lighting conditions throughout the studied

155
160

period, whenever possible, flights were performed in mid-morning and/or late afternoon (~~more~~further details ~~about~~on data acquisition are available in Text S1).

165 The acquired photos were processed using *Agisoft Metashape* (Version 1.5.2) (AGISOFT LLC., St. Petersburg, Russia). This software aligns photos using the Scale Invariant Feature Transformation (SIFT) algorithm (Lowe, 2004), which allows for
170 ratifying photos with a bending angle greater than three degrees. Through this procedure photos were aligned from overlapping common features (i.e., textures). Further, these aligned points were given X, Y, Z coordinates and the parallax effect seen on the overlapping photos was used for reproducing the stereoscopic (3D) view based on the Structure from Motion (SfM) method. After creating the 3D point network, a dense cloud of XYZ points was generated to fill empty spaces (i.e., Dense Point Cloud). From the Dense Point Cloud, a digital surface model (DSM) and an orthomosaic were generated. The DSM is a digital
175 geographic dataset that represents surface elevations with horizontal and vertical (X, Y, Z) coordinates (Iglhaut et al., 2019). The orthomosaic reproduces the real dimensions of objects (Araujo et al., 2020), with horizontal spatial resolution ranging from 3 cm to 7 cm.

175 The orthomosaic and DSM were aligned vertically and horizontally using the georeferencing process from LiDAR data collected along transects as part of the EBA project (Ometto et al., 2021), which covered the INVENTA plot. The workflow consisted of creating a georeferenced project based on control points extracted from LiDAR. Subsequential flights were matched using the ‘Align Chunks’ tool available in Agisoft Metashape (more detail on the process in Text S2).

2.2.1 Detection of canopy gaps

180 Canopy gaps within the UAV images were identified through the combination of DSM change analysis, visual interpretation of the orthomosaics (Fig. 2) and field data. Initially, we resampled the pixel resolution of photos to 1 m, and the difference-image was calculated for all pairs to obtain a raster product (i.e., difference-image) describing changes in canopy height among time intervals.

185 In order to compare our data with previous studies, the area of the identified gaps was computed as the region where the canopy lost more than 10 m in height over continuous areas larger than 5 m². ~~This was also the smallest gap size reported in previous studies (Brokaw, 1982; Hubbell et al., 1999), with an area/perimeter ratio greater than 0.6, and with an area/perimeter ratio greater than 0.6. This was also the smallest gap size reported in previous studies (Runkle and Yetter, 1987; Getzin et al., 2014).~~

By computing the area/perimeter ratio, we were able to remove artifacts associated with slight changes on the positions of individual trees in subsequential pairs of images, both due to wind-driven canopy shifts and changes in tree alignment. ~~Therefore, the criterion for gap identification was based on the analysis of gap size and shape.~~

190 (Araujo et al., 2021). Therefore, the criterion for gap identification was based on the analysis of gap size and shape. Finally, successive pairs of orthomosaics covering subplots (400 m²) were visually checked. When necessary, we edited the pre-delineated polygons by removing false gaps related to image noise (Araujo et al., 2021).

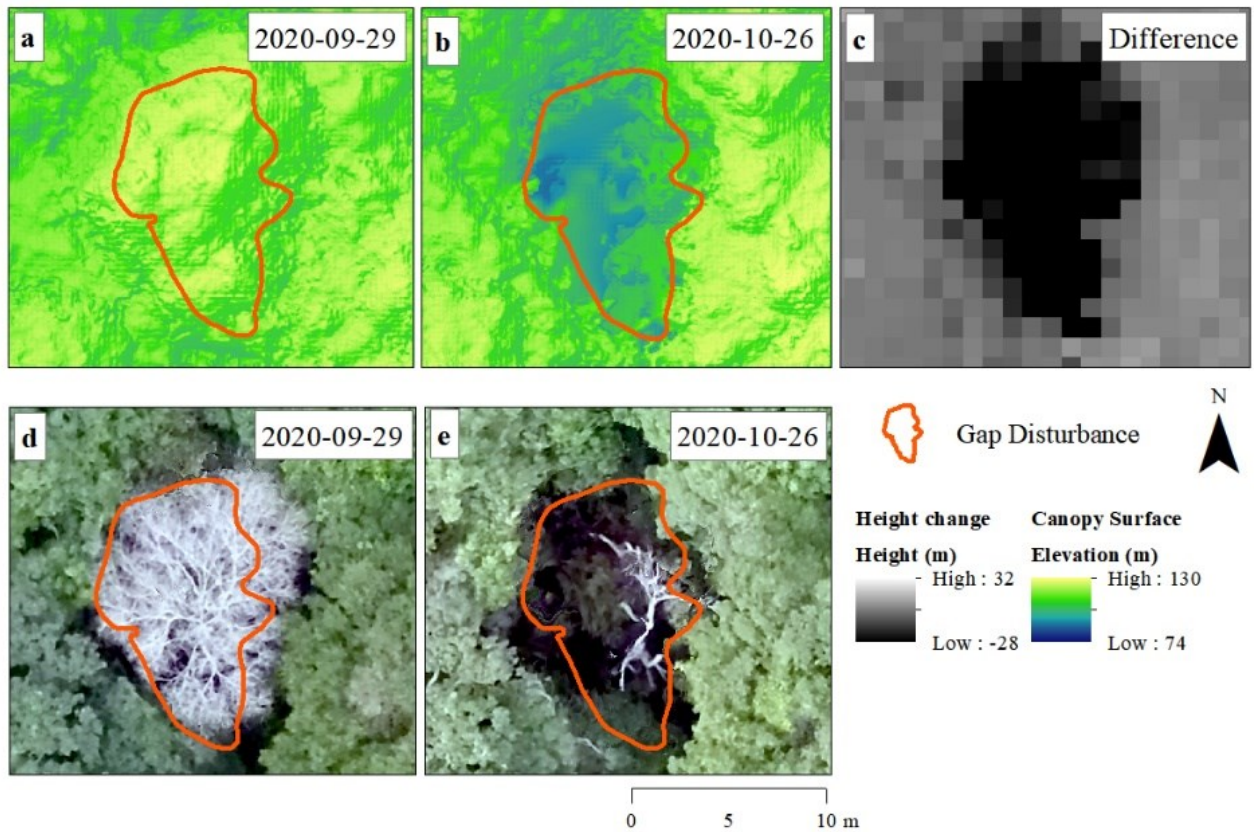


Figure 2: Canopy gaps identified from surface models and orthomosaics computed from photogrammetric analyses of UAV imagery. Elevation model for a studied gap on two successive flights from 29th September 2020 (a) and 26th October 2020 (b). The difference in surface elevation between flights (black area) indicates a reduction in canopy height (c). RGB orthomosaics from the same dates (d, e).

2.3 Field surveys for evaluating remotely sensed gaps

Field data were collected bimonthly (section 2.3.1) and included the identification and description of gaps formed between November 2019 and January 2021 (14 months) (see collection period in Table S1). Initially, we identified ~~and marked on the images~~ all gaps formed before the studied period ~~on the images and marked them in the field~~ to create a reference baseline. The identification and description of gaps in the field were conducted by walking the entire plot. ~~This~~ To minimize errors, this task was always carried out by the same team using existing trails 10 m distant from each other to ensure precise counting and description of gaps. ~~For field measurements, we adopted~~

205 We used the definition of canopy gap by Brokaw (1982) — an opening, i.e., gap in the forest canopy extending from the upper stratum to an average height of two meters above ground— to compute and measure gaps in the field. This is a classical and practical method, which allows comparing our findings with those from fundamental work conducted in other tropical forests.

In addition to confirming the gaps identified in the images, the field surveys included detailed walking of the entire plot to identify gaps possibly not detected ~~in the images remotely~~. The delimitation of gaps in the field was made by taking the coordinates (distance and azimuth) from the near center to the edge of the gap. We defined the boundaries of gaps by projecting the canopy aperture to the ground. For distance and azimuth measurements, a *TruPulse* 360B laser rangefinder (Laser Technology) was used. The center of the gap was defined in the field, and coordinates were collected by averaging Global Navigation Satellite System (GNSS) navigation points. From the center of the gap, the acquisition of eight directions and distances to the gap boundary was done counterclockwise, with the first measurement pointing north (360°/0°). The data from each gap was vectorized in QGIS Geographic Information System (version 3.4.13) (Open Source Geospatial Foundation Project. <http://qgis.osgeo.org>) environment from the center point. We then calculated geometric features, including gap area, perimeter, and shape complexity index.

210
225

2.3.1 Mechanisms of gap formation and biomass estimation

After delimiting gaps, we measured forest-structure attributes. For dead trees, the tag number, number of plot and sub-plot, diameter at breast height (DBH, 1.3 m above the ground) and the mode of mortality were recorded. We described modes of tree mortality based on previous studies conducted in our study region (Magnabosco Marra et al., ~~2014a~~2014b; Ribeiro et al., 2016): (i) Standing dead - trees without leaves and/or presence of sap in the trunk; standing-dead trees can form or expand gaps through falling branches or the later breakage of the main stem; (ii) Snapping – trees that died from the mechanical rupture of the stem, with sap often still present at the portion connected to the roots, exposed wood fibers and no clear damaged or exposed roots; (iii) Uprooting - uprooted trees with the main trunk usually intact and still connected to the crown.

225
230

Tree biomass was estimated using a simple-entry allometric equation calibrated locally (Magnabosco Marra et al., 2016). For branches with diameter ≥ 5 cm, the volume was obtained by cubing combining the Smalian (measuring diameters at the base and top) and Hohenald (relative section length division) cubing methods (Lima et al., 2012; Gimenez et al., 2017). Most of the branches had no fresh vegetative material that allowed taxonomical identification to the species level. Thus, we estimated branch biomass by multiplying the measured volume of branches by the mean wood-density value compiled for our study region (0.735 [0.480,1.000], being mean wood density ~~([g cm⁻³)-and]~~, minimum and maximum, respectively) (Magnabosco Marra et al., 2016).

2.4 Rainfall data

Rainfall data covering the studied period were acquired from a rain gauge installed at the EEST/INPA and located about 2 km from the INVENTA plot. Total daily precipitation was annotated manually. The dry season was defined as the months in which total rainfall was lower than the monthly average throughout the monitored period. For that, we used a threshold rainfall of <

235

200 mm (July, August, September, and October) because there were no consecutive months with rainfall ≤ 100 mm (Negrón-Juárez et al., 2017; Wu et al., 2016) (Fig. S1) during the period of this study. We also identified days with extreme rain events, which were defined as those when the accumulated precipitation was higher than the 99th percentile calculated for the entire studied period.

240 2.5 Data analysis

2.5.1 Remote sensing and field detection of gaps

~~We~~Field data acquired by using the definition of Brokaw, 1982 was considered as ground truth. To accomplish with this goal, ~~we~~ used a confusion matrix ~~to assess~~for assessing the accuracy of our remote method of gap detection. ~~We~~Further, ~~we~~ calculated the percentiles of accuracy (a), precision (p), recall (r), and F1 Score (F) (Eqs. 1 – 4) (Dalagnol et al., 2021), where

245 TP is true positive, TN is true negative, FP is false positive and FN is false negative:

$$\text{Accuracy } (a) = ((TP+TN) /n) *100 \quad (1)$$

$$\text{Precision } (p) = (TP/(TP+FP)) *100 \quad (2)$$

$$\text{Recall } (r) = (TP/(TP+FN)) *100 \quad (3)$$

250
$$\text{Score F1 } (F) = (((2*p*r) / (p + r))) *100 \quad (4)$$

The ~~a percentile represents the~~ total number of correct detections is expressed as percentile. The p percentile indicates the ratio of positive predictions performed correctly based on all positive predictions (including false ones). The r percentile is used to access the ratio of correct positive-predictions in relation to all positive predictions. The F1 Score (F) is the harmonic mean
255 between p and r, i.e., the mean between the errors of commission and omission; higher F-values indicate higher agreement between gaps identified in the imagery data ~~(and observed value) and that were validated~~ in the field (true value ground truth).

2.5.2 Gap geometry

We quantified gap height and area from the three-dimensional structure of the forest canopy. Gaps formed during the period for which only the UAV monitoring was available, were validated during a single field-campaign. The area of these gaps was
260 also measured according to Brokaw's (1982) method. We tested how height loss was correlated with the area of the gaps using Pearson's correlation. We used paired t-test to compare gap geometry calculated from our UAV imagery and field data.

We used both UAV imagery and field data to describe the size distribution of gaps. We then fitted three probability distributions: Exponential, Power-law (or Pareto), ~~and~~Weibull and Lognormal to determine which best described the size distribution of observed gaps. We used a bootstrap with 1,000 interactions for calculating the confidence interval of the
265 different fits (Araujo et al., 2021a). The parsimony of the fitted models was assessed using the Akaike information criterion (AIC) (Burnham and Anderson, 2002). We also assessed the best fit using the Kolmogorov-Smirnov statistic to compare the

maximum difference in the cumulative probability distributions between the observed and the fitted data (Carvalho, 2015). Fits were obtained by using absolute values of frequency (Araujo et al., 2021a). We tested the size class distributions from the smallest gap size found in both methods (9 m² and 10 m², for field data and UAV imagery, respectively). We also fitted the distribution model only for gaps ≥ 25 m² to test for possible differences related to the relatively higher proportion of small-sized gaps in our data set.

2.5.3 Mechanisms of gap formation, biomass losses and structure of gaps

Combining high-resolution remote sensing with forest inventory data allowed us to identify and differentiate between gaps formed by the death of single trees, tree clusters and branch fall. We counted and determined the area of gaps formed by each of these mechanisms. The main mode of tree mortality was determined from detailed observations as described in subsection 2.3.1. We tested for possible differences in area and released biomass among mechanisms of gap formation using Analysis of Variance (ANOVA); p-values were computed based on two-tailed.

2.5.4 Correlations between gap frequency and area with precipitation

We assessed the correlation of gap frequency and area with cumulative precipitation and extreme rainfall events using ~~the imagery data. Initially, we~~ data acquired locally (see section 2.4). We further calculated the rate of gap area formation by dividing the summed area of all gaps by the duration (in days) of respective time intervals during which the gaps were observed (11-80 days). We ~~further adjusted these to express~~ expressed the rate of gap area formation in hectares per month. Gap frequency rate was also computed from the summed area over the different time intervals, and was expressed in hectarespercentage per month. The temporal variation of gap area and frequency were normalized by the time in months between each pair of images. We correlated these variables using Pearson correlation.

3 Results

3.1 Sensitivity of gap detection

We remotely detected 32 gaps formed between September 2018 and January 2021 (Fig. 3). Out of that, 14 gaps were formed during the monitoring period for which no simultaneous field data were acquired. Another 18 gaps were formed during the period for which we conducted both remote and field monitoring (November 2019 to January 2021).

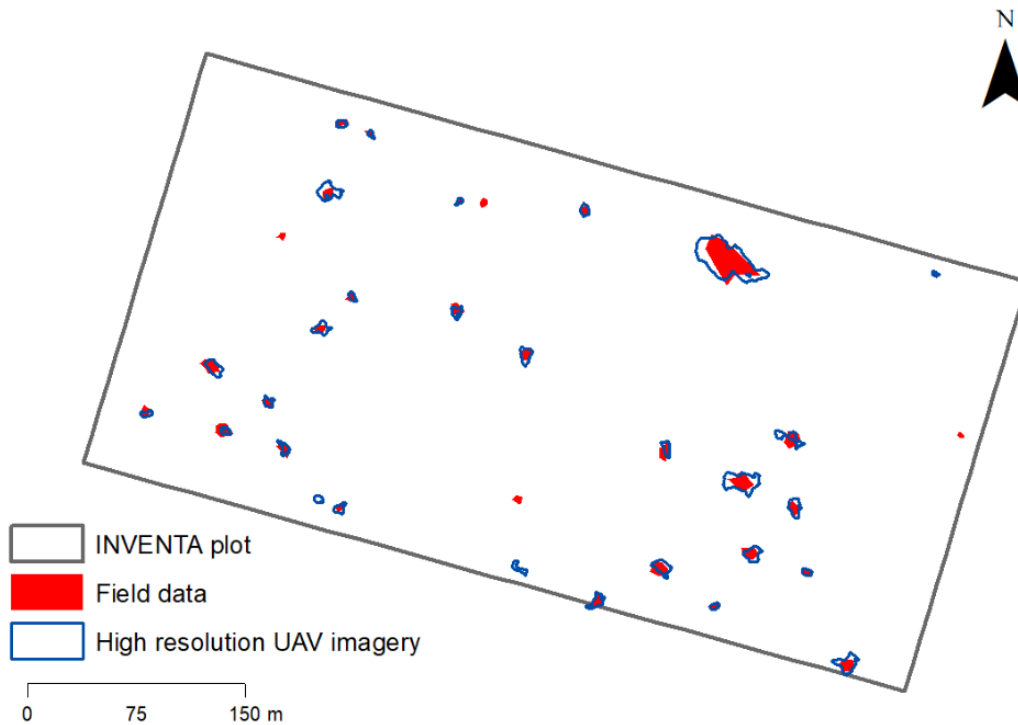


Figure 3: Map including the location of canopy gaps identified with UAV photogrammetry and inventory plot surveys (“field data”) in the INVENTA plot (total area of 18-ha) located in Central Amazon, Brazil, during the period from 18th September 2018 to 19th January 2021.

295

For the 18 gaps for which field (true value) and UAV data were available, 14 gaps were detected using both methods; three gaps were only detected in the field and one was only detected in the imagery (Table S2). The accuracy, precision, recall sensitivity and F1 score obtained with our remote sensing UAV method were 77.78 %, 93.33 %, 82.36 % and 87.50 %, respectively.

300 The three gaps detected exclusively from field data were formed by the fall of standing dead trees (total area of 15 m² and 26 m²) and branches (20 m²). These gaps were not visible on either the difference images or the orthomosaics, which indicates that there was no traceable change in the upper canopy of the forest. The single gap only detected from imagery data was formed by the partial loss of the crown of a standing dead tree. Importantly, this gap does not fit the definition by Brokaw (1982), in which gaps are considered as openings that extends from the upper canopy to the understory (i.e., at least two meters
305 above the ground).

3.2 Patterns of gap geometry

The size of gaps identified from imagery and field data varied from 10.37 m² to 834.65 m² and from 9.59 m² to 580.65 m², respectively (Table 1, Fig. S2a). The differences between the smallest and largest gaps detected with the two methods were 1.39 m² and 254 m², respectively. Our data provide no evidence for strong differences in gap area between methods (p= 0.8544). Nonetheless, gap perimeter and shape complexity index (GSCI) varied significantly between methods (p= 0.01019 and p ≤ 0.001, respectively) (Table S3).

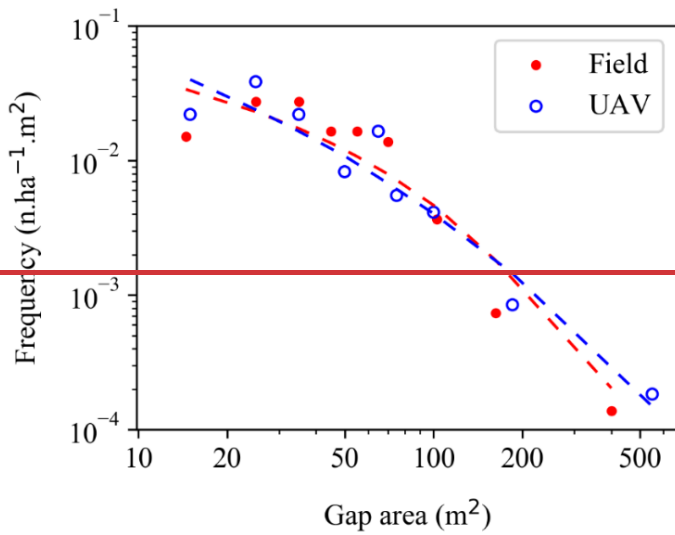
~~Approximately 50% of gaps described within the 28 months for which field and imagery data were available had total area ≤ 40 m². This result indicates that in our study site, relatively small gaps are the most frequent canopy disturbance (Fig. 4, and Table S4). Although more frequent, these relatively small disturbances accounted for only 16% of the cumulated gap area. Gap size was positively related to reductions in canopy height (Pearson r = 0.64; p = 0.0003) (Fig. 5). The two most discrepant gaps (area of 36.76 m² and 14.02 m² and mean height loss of 1.13 m and 2.13 m, respectively) were only detected in the field and without prior systematic classification.~~

Table 1. Geometric attributes of gaps detected over a period of 28 months in the INVENTA plot, Central Amazon, Brazil.

Method	Number of gaps	Size range (m ²)	Mean gap size (m ²) ± IC (95 %)	Median gap size (m ²)	Mean gap perimeter (m) ± IC (95%)	GSCI ¹ Mean/Max	Gap fraction ² (%)	Annualized gap fraction (% year ⁻¹) ³
Field Data	31	9.59 - 580.65	68.50 ± 37.91	44.88	29.86 ± 6.92	1.13/1.35	1.09	0.60
UAV Imagery	30	10.37 - 834.65	80.07 ± 56.81	37.43	35.42 ± 9.22	1.28/1.6	1.36	

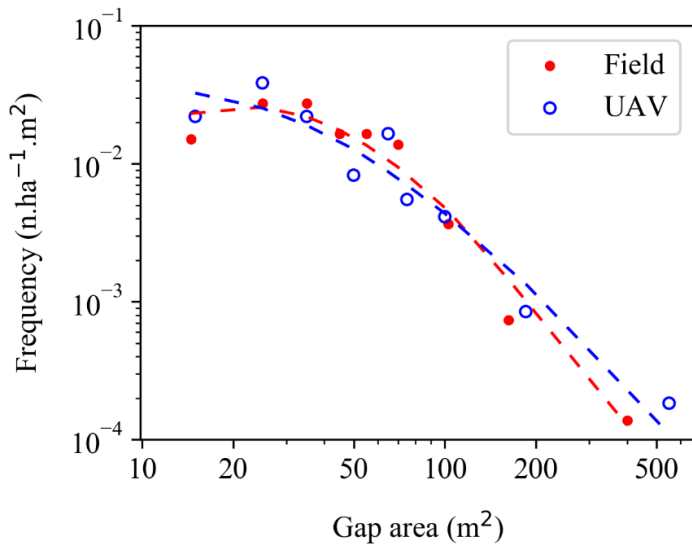
1- Gap Shape Complexity Index (GSCI = perimeter / sqrt (area 4 π)), whose smallest reference value is 1.0 for describing a circle (Getzin et al., 2012, 2014); 2- Gap fraction is given by the sum of the area of gaps identified over the studied period of 28 months divided by the total monitored area (i.e., INVENTA plot / 18 ha); 3- Annual gap fraction is given by the sum of the area of identified gaps in an annual basis, (i.e., INVENTA plot / 18 ha / duration of study).

325

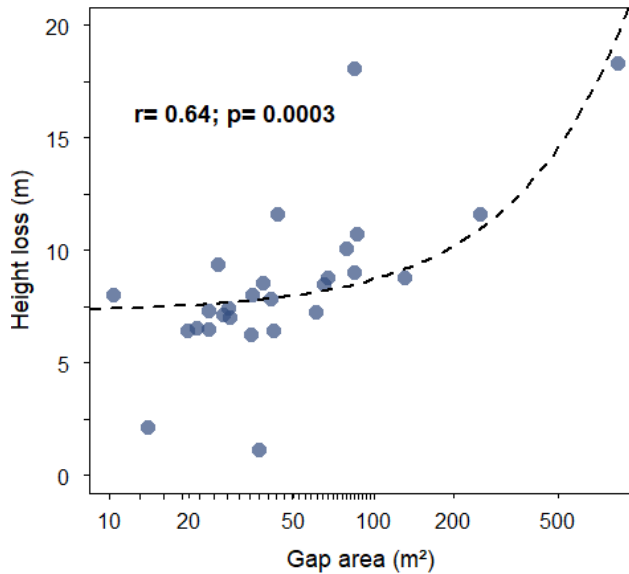


Approximately 50 % of gaps described within the 28 months for which field and imagery data were available had total area < 40 m². This result indicates that in our study site, relatively small gaps are the most frequent canopy disturbance (Fig. 4, and Table S4). Although more frequent, these relatively small disturbances accounted for only ~16 % of the cumulated gap area.

330 Gap size was positively related to reductions in canopy height (Pearson $r=0.64$; $p=0.0003$) (Fig. 5). The two most discrepant gaps (area of 36.76 m² and 14.02 m² and mean height loss of 1.13 m and 2.13 m, respectively) were only detected in the field and without prior systematic classification.



335 **Figure 4:** Size distribution of gaps formed in the INVENTA plot, Central Amazon, Brazil, over the period from 18th September 2018 to 19th January 2021. Gaps were measured from inventory plot surveys (red) and UAV imagery data (blue). Both data sets were fit using a **WeibullLognormal** function (dotted lines).



340 **Figure 5:** Relationship between mean canopy height loss and gap area for gaps formed in the INVENTA plot, Central Amazon, Brazil, over the period from 18th September 2018 to 19th January 2021. Gap area was calculated from the UAV Imagery data. The x-axis is log-scaled.

345 For both imagery and field data, the size distribution of gaps larger than 9 m² (field data) and 10 m² (UAV data) was better described by the Lognormal function (Table S5, Fig. 4). For the distribution of gaps larger than 25 m² was better described by the Weibull and Power-law functions (Table 2, Fig. 4). The Weibull function also captured more precisely the size distribution of gaps larger than 9 m² (field data) and 10 m² (UAV data) function in both methods (Table 2S5, Fig. 4, Fig S2b, Fig S2d).

Table 2. Summary of fitting measures of the exponential, Power law, and Weibull functions describing the size distribution of gaps identified on the INVENTA plot, Central Amazon, Brazil.

Detection method	Minimum size (m ²)	Distribution	λ (95% CI)	α (95% CI)	K-S	Log likelihood	Δ AIC
UAV imagery	10	Exponential	0.014 (0.008–0.031)		0.2489	-152.989	7.8113
	10	Power-law	1.650 (1.529–1.831)		0.2242	-152.035	5.9038

	10	Weibull	0.512 (0.266–1.460)	21.544 (0.770–65.311)	0.1167	-148.08	0
	25	Exponential	0.013 (0.007–0.032)		0.2879	-117.622	13.41204
	25	Power	2.094 (1.901–2.501)		0.07605	-110.92	0
	25	Weibull	0.157 (0.078–1.685)	0.0002 (0.0000–62.147)	0.08685 2	-110.747	1.661607
	9	Exponential	0.017 (0.009–0.032)		0.1658	-146.783	0.3429
	9	Power-law	1.614 (1.494–1.766)		0.2659	-153.006	12.7899
	9	Weibull	0.744 (0.487–2.236)	40.370 (17.893–68.309)	0.1462	-145.61	0
Field data	25	Exponential	0.017 (0.008–0.0418)		0.21470 ‡	-111.135	3.714302
	25	Power-law	2.137 (1.797–2.710)		0.15781 ‡	-109.306	0.056485
	25	Weibull	0.414 (0.131–3.004)	4.703 (0.000–68.937)	0.14364	-108.28	0

350 ~~ΔAIC–AIC (Akaike information criterion) differences to the best model; The best fit models for each data set are highlighted in bold.~~

3.3 Mechanisms of gap formation and structure, and released biomass

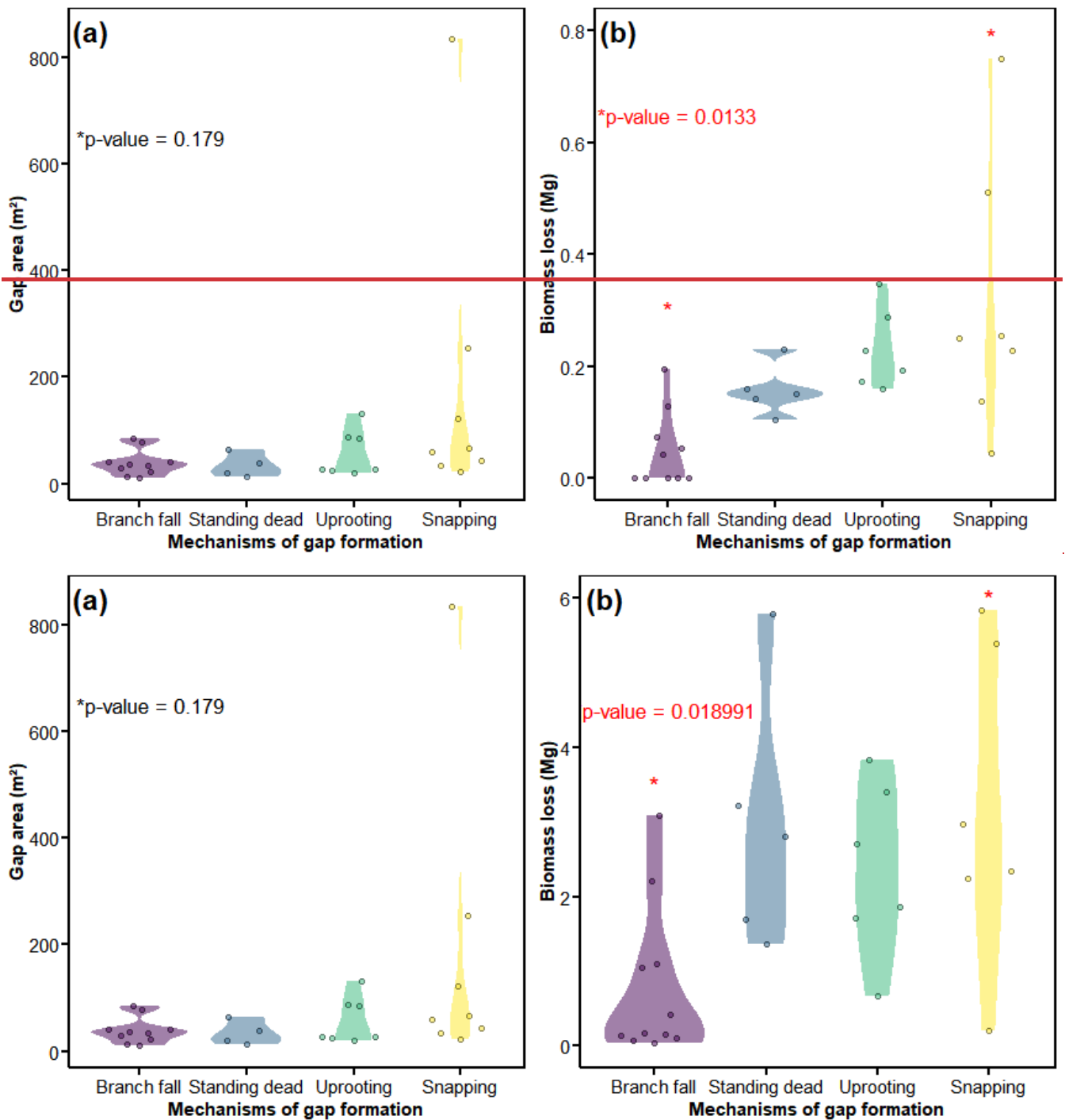
Branch fall was the most frequent mechanism of gap formation, accounting for 34.38 % (n= 11) of all detected gaps (Table 32). However, the total area accumulated by these gaps accounted for only 17.01 % of the total disturbed area. While gaps formed by tree snapping had the second highest frequency (n= 8 or 25 % of the total number of detected gaps) (Table 32), this mechanism accounted for 59.1 % of the total disturbed area. This result indicates that tree snapping was the most important mechanism of gap formation in respect to the overall disturbed area (Table 32). Uprooting and the fall of standing dead trees were the third and fourth most frequent mechanism of gap formation accounting for 16.53 % (n= 7) and 7.37 % (n= 6) of the total disturbed area, respectively (Table 32).

360 Branch fall, uprooting, snapping and standing dead trees accounted for the 52.9 %, 10 %, 6.7 % and 10 % of number of gaps detected on the imagery, respectively. For gaps only identified from field data, these mechanisms accounted for 60 %, 10.3 %, 6.9 % and 3.4 %, respectively.

We found no clear differences in the area attributed to gaps formed by branch fall and the described tree-mortality modes ($p=0.179$) (Fig. 6a). However, we found strong evidence that the biomass released in gaps formed by tree snapping was higher than that associated with gaps formed by branch fall ($p=0.0133$) (Fig. 6b) (Fig. 6b, Fig. S3). The overall loss of biomass in our studied gaps ($1.35 \text{ Mg ha}^{-1} \text{ year}^{-1}$) accounts for 0.88 % of the stocks in an old-growth forest contiguous to our plot ($355.67 \pm 34.53 \text{ Mg ha}^{-1}$ (mean \pm standard deviation) (Amaral et al., 2019).

Table 2. Relative contribution of the different mechanisms of gap formation observed in the INVENTA plot, Central Amazon, Brazil, between September 2018 and January 2021.

	Gaps (number)	Proportion of gaps (%)	Total area (m²)	Proportion of total area (% m²)
Branch fall	11	34.38	414.57	17.01
Snapped dead	8	25.00	1440.58	59.10
Uprooted dead	7	21.88	402.90	16.53
Standing dead	6	18.75	179.55	7.37
	32		2437.60	



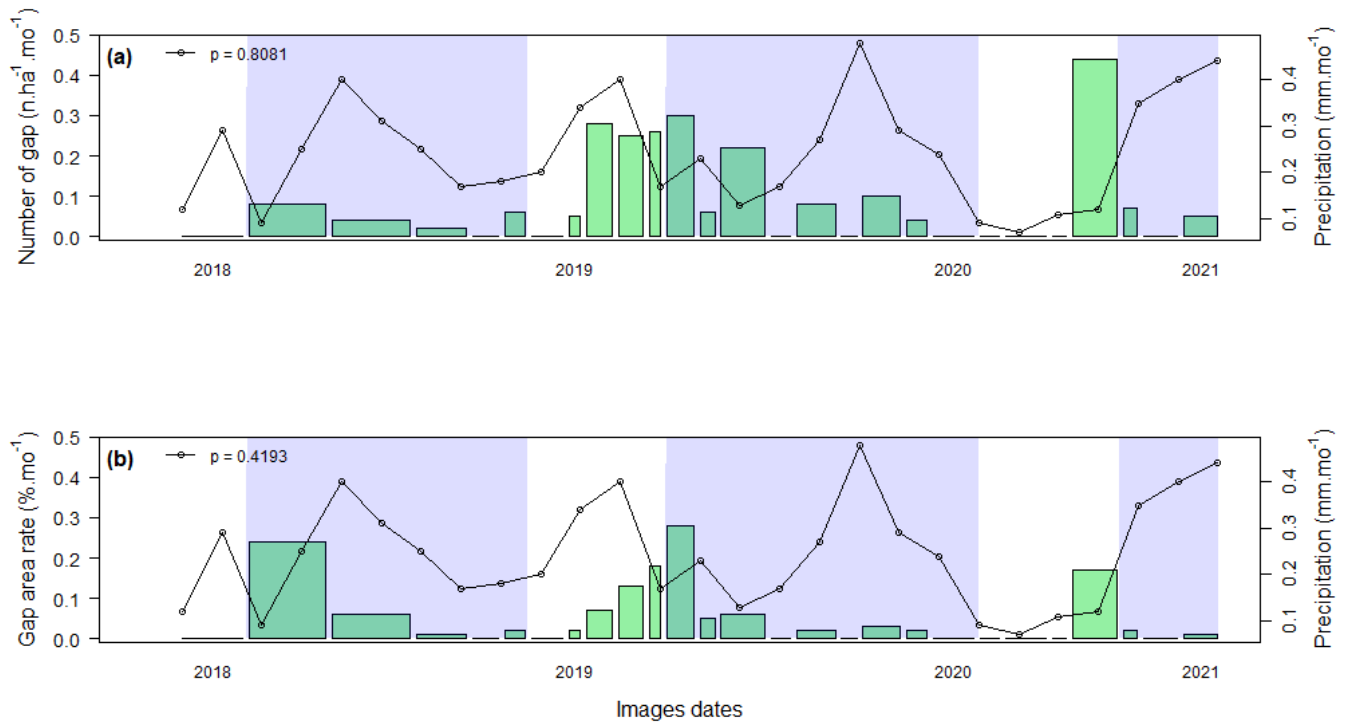
375

Figure 6: Gap area (a) and biomass loss (b) for mechanisms of gap formation studied in the INVENTA plot, Central Amazon, Brazil, over the period from 18th September to 19th January 2021. The area of gaps was calculated from the UAV Imagery data. We detected significant differences in biomass loss only for branch fall and snapping (panel b).

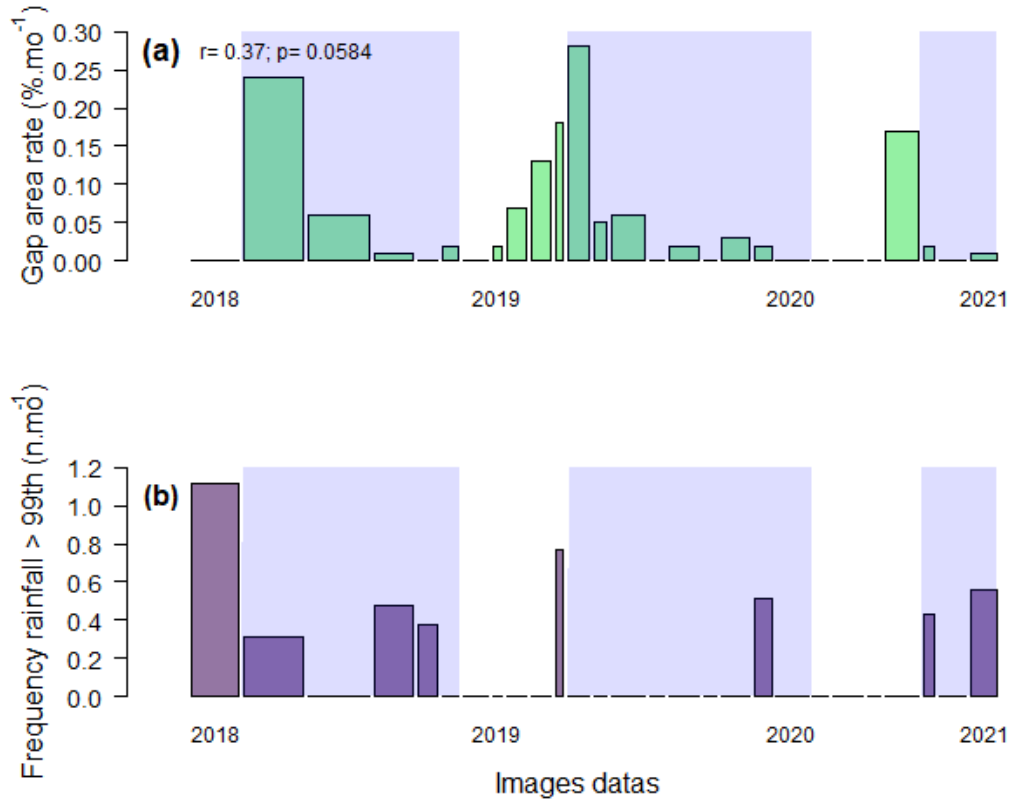
3.4 Rainfall seasonality and gap formation

380 The gap frequency and area rates were calculated using all 32 gaps identified during the studied period. Although gap frequency and area rate varied among the 28-month-period of monitoring, our data do not support that monthly rainfall influenced these metrics ($p=0.8081$ and $p=0.4193$; Fig. 7a and b, respectively). However, our data show that monthly gap-formation was marginally correlated with gap area rate for days with extreme rainfall events (i.e., above the 99th percentile, $67.08 \text{ mm day}^{-1}$) ($r=0.37$ and $p=0.058$) (Fig. [8S4](#)). The time interval accumulating the largest gap area (October 24, 2018 to December 27, 2018) included two extreme rainfall events: 104 mm day^{-1} on 20th October, and 76 mm day^{-1} on 8th November 2018 (Fig. [8S4](#)).

385



390 **Figure 7: Seasonality of canopy gaps formed in INVENTA plot, Central Amazon, Brazil, during the period from 18th September to 19th January 2021. Gap frequency (a) and the cumulative rate of gap area formed over the observation period (expressed as % of the 18-ha study area per month) (b). The y2 axis (right) is the cumulative precipitation for each pair of time intervals between images (straight line with dots). The blue shading indicates the rainy season (September to June) for each year. The total area of each green rectangle is proportional to the total area of the gaps formed during the respective interval.**



395 **Figure 8: Cumulative area of gap formation per observation interval (gap area rate per month), expressed as the percentage of the**
total study area area normalized to a 30-days interval; (a) and frequency of extreme rainfall events per month (b) at the INVENTA
plot, Central Amazon, Brazil, during the period from 18th September 2018 to 19th January 2021. The blue shading indicates the
rainy seasons (September to June) each year. The frequency of extreme rain events is given as absolute values normalized to a
monthly rate for a 30-days interval. The area of the green rectangle (a) is the proportional to the total area of gaps formed between
respective observation dates.
 400

4 Discussion

4.1 ~~Imagery and field data have different~~The mechanism of gap formation is related to the sensitivity for detecting small gaps of detection

405 We detected 17 and 16 gaps from field and imagery data, respectively; 14 gaps were identified from both methods. However, it is still possible that our approach underestimated the frequency of canopy disturbances smaller than the size threshold we

analyzed (i.e., 5 m²). In a few cases, gaps detected from UAV imagery data (i.e., losses of canopy height) could not be detected from field surveys and did not fit the classical definition proposed by Brokaw (1982). ~~If exclusively based on this definition, our results would have overestimated gap frequency by 11.7 %. While we found no evidences supporting strong divergences between the UAV and field data, this shall be tested beyond our study region and ideally with datasets spanning larger spatial and temporal scales. These will likely contain a larger number of gaps, which allows for more detailed data analysis.~~

Gaps observed in the field but not captured on the imagery were relatively small and mainly formed by the fall of branches from live and standing dead trees. ~~Nonetheless, branch fall of live and standing dead trees impacted relatively smaller areas.~~

It is important to note that the mechanism of gap formation is related to the sensitivity of detection (Putz et al., 1983; Chao et al., 2009). ~~In particular, branch fall of live and standing dead trees impacted relatively smaller areas.~~

~~Detecting small gaps mainly affecting the forest understory is challenging. Nonetheless, continuous forest inventory surveys allow for the detection of these gaps. Thus, even if no clear signs of opening in the upper canopy are visible from imagery data, minor disturbances can be accounted for with detailed forest inventory. Although understory gaps have lower associated losses of biomass, they can promote changes in light quality and availability, which lead to effective and persistent effects on the natural regeneration, structure and species composition of tropical forests (dos Santos et al., 2020; Romell et al., 2009; Dupuy and Chazdon, 2008; Magnabosco Marra et al., 2014b).~~

~~Our remote-sensing approach provides detailed data on the upper canopy of the forest, but no information on the understory. Gaps were defined as disturbed patches with total area > 5 m² and with reductions of canopy height greater than 10 m. These thresholds were established based on the nominal resolution of our processed imagery (1 m) and the scale at which the forest inventories were conducted, i.e., tree level. Overall, the fall of branches and/or standing dead trees produced severe damage mostly in the upper canopy while the understory remained intact. Therefore, upper canopy gaps detected remotely were not always detected on the ground using the definition by Brokaw. This pattern shows that apart from covering relatively large areas at low costs, UAV photogrammetry is an efficient method for monitoring gap dynamics, with detailed information on upper canopy disturbance usually not visible from the forest ground.~~

~~We believe our approach combining field with remote sensing data provides interesting insights on concepts and methods for quantifying gaps and their effects on forest dynamics. Classical methods based on field observations are efficient to detect gaps extending from the upper canopy to the understory of the forest, and are crucial for validating remote tools, and for quantifying and modeling associated losses of biomass. High-resolution photogrammetry allows for more precise measurements of the features of the gaps, including those restricted to upper canopy and/or causing minor damage. Although more frequent, small-scale disturbances not implying tree mortality such as defoliation and branch fall are often neglected in forest inventories (Zuleta et al., 2023). Our study brings novel knowledge on the contribution of these events to ecosystem processes such as carbon cycle. Quantifying the size-distribution of gaps and their landscape importance is crucial to understand how forests respond to shifts in the disturbance regimes triggered by climate change and land use.~~

To our knowledge, this is the first study quantifying biomass losses associated with understory gaps. Here we demonstrated that these gaps contribute relatively little to landscape patterns of biomass. Still, future studies are required to address their

importance to processes regulating patterns of species distribution and diversity. UAV photogrammetry has a relatively low cost, is simpler to process and thus can feasible be repeated in other regions of interest. Future studies may expand the existing knowledge on the size distribution and dynamics of gaps by combining sensors with different resolution. If combined with LiDAR, UAV imagery can be used to trace and quantify the regional importance of relatively smaller but more frequent events of tree mortality and damage not detectable with existing medium space-resolution satellite imagery.

~~4.2 UAV photogrammetry is a robust method for monitoring gap dynamics in Amazon forests~~

4.2 There was no evidence for strong variation in the area between imagery and field data

Our tests comparing gaps detected from UAV photogrammetry and field data are rarely found in the literature (Yue et al., 2019), especially for dense tropical forest. Although understory gaps can be missed, the results of our research confirm the suitability and robustness of UAV photogrammetry for monitoring canopy dynamics in closed-canopy forests. When combined with continuous forest inventory, UAV photogrammetry at high temporal and spatial resolution can also reveal associated mechanisms of gap formation and released biomass.

However, the differences we found in perimeter and GSCI between imagery and field data indicate that geometric attributes the shape of gaps identified remotely and in the field, can diverge. In our study, the differences between these methods are likely due to describing field-identified gaps as polygons that always had eight vertices. This contrasts with our remote estimates, on which losses of height (z value) and gap geometry were computed from 1 m² pixels and for polygons which had a varying number of vertices. The shape of gaps measured in the field tended to be elliptical (Runkle, 1981) and triangular (Eysenrode et al., 1998).

To date, most methods describing the shape and area of gaps focused on a two-dimensional projection of the canopy to the forest floor. In these two-dimensional assessments, there are three main assumptions: (i) most of the gaps have an uniform elliptical shape; (ii) the shape of irregular gaps can be approximated with several measurements; and (iii) the area of irregular-shaped gaps can be only be calculated from hemispherical photos (Schliemann and Bockheim, 2011). Here, we applied high-resolution imagery to assess gap geometry more detailed and beyond the number of vertices commonly applied in traditional field measurements. Vepakomma et al., (2008) combined LiDAR point cloud and field data from a boreal forest and also reported great differences in the shape of gaps derived from these two approaches. According to these authors, the more complex the shape and perimeter, the greater is the difference between the remote and field measurements (i.e., ground truth). Although the area of the gaps did not vary between our two methods, the reported variations in perimeter and GSCI revealed that imagery data allow for more complex shapes that can better represent natural disturbances (Lertzman and Krebs, 1991; Gagnon et al., 2004). This was true for our study region, for which gaps detected from imagery data had a greater variety of

475 shapes, often irregular. The shape is an important feature for understanding the structure and dynamics of tropical forests (Jucker, 2022), which is important for determining microsite resource availability (Canham et al., 1994) from the center to edge of gaps (Gagnon et al., 2004). For the Amazon, there is still little research on how the shape of gaps varies across environmental and disturbance gradients (Malhi and Román-Cuesta, 2008).

480 The higher frequency of relatively small gaps we report here corroborates other studies that used different detection and classification methods (Lawton and Putz, 1988; Brokaw, 1982; Yavitt et al., 1995; Vepakomma et al., 2008; Asner et al., 2013; Leitold et al., 2018; Dalagnol et al., 2021). A Power law exponent (λ) < 2 reflects a large proportion of smaller gaps (Asner et al., 2013). Our results indicate that remotely detected gaps larger than 25 m² follow a Power law distribution ($\lambda = 2.137 \pm 0.913$, mean \pm CI 95 %, respectively). This agrees with studies that focused on the size distribution of relatively larger gaps detected from coarser scale remote sensing data (Fisher et al., 2008; Chambers et al., 2009). Regardless of differences in forest structure, climate, and disturbance history among the regions on which these studies were conducted, λ appears to converge on a narrow set of values for different tropical forests (Jucker, 2022). Using LiDAR data from 421 sites in the Brazilian Amazon, Reis et al. (2021) showed that λ varies between 1.66 and 2.50 across the basin, mainly reflecting gradients in underlying tree mortality, canopy height, and human disturbances. However, prior to our study, no model supported with field data had yet been fitted for Amazon (Lawton and Putz, 1988; Brokaw, 1982; Yavitt et al., 1995; Vepakomma et al., 2008; Asner et al., 2013; Leitold et al., 2018; Dalagnol et al., 2021; Gorgens et al., 2023). The Power law distribution had the steepest slope among the other tested functions. The distribution fit with remote data had a relative lower slope, i.e., of higher frequency of gaps larger than 100 m. This is the first study combining UAV and field data to assess the size distribution canopy gaps in terra-firme Amazon forests.

490 In our study site, however, the frequency of gaps larger than 10 m² was better captured by a WeibullLognormal function. This can be explained by the size threshold we use for defining our gaps. The relative lower density of small canopy disturbances compared to what would be expected under a power function may be partially explained by lower detection frequencies, i.e., measurement bias (Araujo et al., 2021). This may be more important for gaps < 10 m². Still, our results show that independent of the detection method, the best fit describing the size frequency of gaps from 9 m² to 835 m² in our study region was achieved with WeibullLognormal. As confirmed by our detailed synchronized forest inventories over the imaged period, we believe that this pattern was not biased by gaps eventually not detected from imagery data. Furthermore, the lognormal distribution pattern was also observed for gap size distributions in various forest types with field monitoring of the size frequency distribution (Naka, 1982; Runkle, 1982; Spies et al., 1990; Yamamoto, 1998). This confirms the potential of UAV imagery for similar monitoring of the distribution of field data at the local scale.

500 However, Lognormal function shows a trend of lower frequency in the smallest classes, followed by frequency, and reduces again as the size of the gaps increases. For the field data, the first point on the graph is smaller than the second, fitting perfectly for the Lognormal function. For the UAV image data, on the other hand, the second point is larger than the third point on the graph, and we believe this is why the lognormal did not fit. In this case, the Weibull fit is more flexible for this small variation of size frequency distribution.

505

4.3 Small-scale disturbances dominate canopy dynamics and associated biomass losses in Central Amazon

Repeated and field measurements provide allow for quantifying the relative importance of mechanisms of gap formation in Amazon forests. Our results resemble a previous study using repeated high-density Lidar data on another location in Central Amazon, Santarém, Pará (Leitold et al., 2018). These authors showed that biomass losses due to single and multiple events of branch fall events accounted for only 20% of the total estimated biomass loss from canopy and understory trees. In Panama, branch fall accounted for 43.5-% of the gap density over a period of five years, but only for 23-% of the total disturbed area (Araujo et al., 2021). Like in our study region, this pattern highlights that the size and shape of gaps is largely influenced by modes of tree mortality. In tropical forests, the mortality rate of trees from 1 cm to 10 cm DBH was unrelated to tree biomass losses among trees >10 cm DBH (Gora and Esquivel-Muelbert, 2021). ~~Still, there is a relative contribution of different tree mortality factors across a continuum of tree sizes (Gora and Esquivel Muelbert, 2021).~~ Still, there is a relative contribution of different tree mortality factors across a continuum of tree sizes. Zuleta et al. 2022 showed that uprooted trees have significantly larger size (i.e., DBH). However, snapping was a more frequent mode of tree mortality compared with standing dead or uprooting. Although of less importance among large trees, falling branches can affect small trees differently and promote changes or filter out saplings of canopy and also understory species.

Crown damage and/or loss is one of the most impactful risky aspects leading to tree mortality (Zuleta et al., 2022). ~~If climate change results in a higher frequency of storms and extreme winds, branch fall and thus tree mortality rates can also be expected to increase.~~ Almost half of the aboveground biomass of tropical forests (42%, range of 12% – 76% across forests) is lost due to damage to live trees (Zuleta et al., 2023). ~~If climate change results in a higher frequency of storms and extreme winds, branch fall and tree mortality rates can also be expected to increase.~~ This may affect carbon stocks and dynamics, as well as the functional composition of these forests at the landscape level (Magnabosco Marra et al., 2018; Denslow et al., 1998).

4.4 Extreme rainfall-events control gap formation

In our study site, the gap area and frequency rates varied over time. The gaps formed during a single period of less than a month (21st October to 1st November 2020) accounted for 20.4 % of the total disturbed area. Still, we did not find a correlation between gap area and frequency rates with the accumulated precipitation over time. Fontes et al. (2018) reported a strong positive correlation ($r= 0.85$) of cumulative precipitation and tree mortality over a 1-year period on a plot contiguous to our study site, which may be related to interannual variability of the rainfall (Marengo et al., 2009).-Nonetheless, we found a positive correlation between gap area rate and the frequency of extreme rainfall events. As in our study site, the frequency of rainfall events above the 98th percentile (24.3 mm hour¹) explained a large fraction of the variation in rates of gap area over measurement intervals ($r = 0.46$) for a tropical forest in Panama (Araujo et al., 2021). ~~We also understand that a comprehensive assessment of the influence of precipitation on gap formation requires longer-term data addressing seasonal and interannual variability.~~

As recently reported for the Amazon, areas with stronger winds and more frequent lightning have larger gaps (Reis et al., 2021). Extreme winds and rain can cause extensive damage (single gaps >10 ha) in the forest (Negrón-Juárez et al., 2018; Espírito-Santo et al., 2014; Magnabosco Marra et al., 2014a,2014b), but the size distribution and landscape effects of small-scale storm-related disturbances are more challenging to study. Convective rainfall and extreme wind gusts promote crown damage, snapping and uprooting from individual to large clusters of trees (Magnabosco Marra et al. 2014a,2014b; Negrón-Juárez et al. 2011; Nelson et al. 1994). The vulnerability of trees to extreme wind and rainfall vary across Amazon regions (Negrón-Juárez et al., 2018; Urquiza Muñoz et al., 2021). Thus, projected shifts on the intensity and frequency of these events can also be expected to have particular effects on current patterns of tree mortality and biomass.

In addition to seasonal patterns of rainfall and wind, gap formation is also affected by local topography and soil (De Toledo et al., 2011). In Central Amazon forests, despite little variation associated directly with soil and slope, tree mortality due to uprooting and snapping can increase with more frequent storms (De Toledo et al., 2012). As climate change is expected to alter the frequency and intensity of tropical storms, soil attributes and topography may become more useful to improve estimates of tree mortality and biomass losses over large areas in Amazonia.

5 Conclusion

By combining high temporal and spatial resolution UAV imagery with detailed field data on the mechanisms of gap formation, we could reliably assess the geometry and relative importance of landscape patterns of canopy gaps and associated losses of biomass for a closed-canopy Amazon forest. Furthermore, this integrated approach allowed us to relate geometry and size patterns with different mechanisms of gap formation. Although a larger proportion of canopy gaps could be detected from orthomosaics, their mechanisms of formation Mechanisms of gap formation could only be distinguished using in the field data. Thus, our study supports that detailed forest inventories are fundamental for evaluating remote sensing products and metrics. The Weibull. Tree snapping was associated with the higher losses of biomass. Although with relatively lower losses of biomass, branchfall was the most appropriate function for describing frequent mechanism of gap formation. This finding highlights the frequency distribution of gaps in our study region. However, the relative importance of mechanisms of gap formation may change as a function of climate change, and consequent shifts in the rainfall and extreme wind gusts. The patterns described here may vary from region to region and along topographic gradients, which was beyond the goals of our study. Although our sampling effort was sufficient to detect and describe major mechanisms of gap formation, further importance of merging field and remote sensing data for assessing landscape processes regulating carbon cycle. Future studies are required to generate could advance current knowledge by generating proxies for distinguishing mechanisms of gap formation related to extreme weather events such as storms and lightning increasing rates of snapped and uprooted trees, or severe droughts that are more related to standing dead mortality. These can improve current estimates of carbon balance, in tropical forests, as well as reducing the uncertainty of models of vegetation dynamics using RGB UAV imagery.

6 Acknowledgments

This study is part of the [Wind-Tree Interaction Project \(INVENTA\)](#) and [the Amazon Tall Tower Observatory \(ATTO Projects\)](#), funded by the German Federal Ministry of Education and Research (BMBF, contracts 01LB1001A and 01LK1602A), the Brazilian Ministry of Science, Technology and Innovation (MCTI/FINEP, contract 01.11.01248.00) and the Max Planck Society (MPG). [ATTO is also supported by the Fundação de Amparo à Pesquisa do Estado do Amazonas \(FAPEAM\), Fundação de Amparo à Pesquisa do Estado de São Paulo \(FAPESP\), Universidade do Estado do Amazonas \(UEA\), Instituto Nacional de Pesquisas Amazônia \(INPA\), Programa de Grande Escala da Biosfera-Atmosfera na Amazônia \(LBA\) and the SDS/CEUC/RDS-Uatumã.](#) Our study site is also supported by the INCT Madeiras da Amazônia. We thank the Forest Management Laboratory of the National Institute for Amazonian Research (LMF/INPA) for logistic support.

Author contributions

AS and DMM planned and designed the research; AS, RFA and CHSC collected drone data; AS, RFA, CHSC and FRSS processed drone imagery; AS and FRSS collected field data; AS, DMM, RFA and CHSC analyzed the data; AS and DMM wrote the manuscript with the support from all authors.

Competing interests

The authors declare that they have no conflict of interest.

References

- [Aleixo, I., Norris, D., Hemerik, L., Barbosa, A., Prata, E., Costa, F., and Poorter, L.: Amazonian rainforest tree mortality driven by climate and functional traits, *Nat. Clim. Chang.*, 9, 384–388, <https://doi.org/10.1038/s41558-019-0458-0>, 2019.](#)
- Allen, C. D., Breshears, D. D., and McDowell, N. G.: On underestimation of global vulnerability to tree mortality and forest die-off from hotter drought in the Anthropocene, *Ecosphere*, 6, 1–55, <https://doi.org/10.1890/ES15-00203.1>, 2015.
- [Amaral, M., Lima, A., Higuchi, F., dos Santos, J., and Higuchi, N.: Dynamics of Tropical Forest Twenty-Five Years after Experimental Logging in Central Amazon Mature Forest, *Forests*, 10, 89, <https://doi.org/10.3390/f10020089>, 2019.](#)
- Araujo, R. F.: Estrutura do dossel, dinâmica florestal e fenologia foliar com uso de Aeronave Remotamente Pilotada na Amazônia central, Ph.D. thesis, Instituto Nacional de Pesquisas da Amazônia, 80 pp., 2019.
- Araujo, R. F., Nelson, B. W., Celes, C. H. S., and Chambers, J. Q.: Regional distribution of large blowdown patches across Amazonia in 2005 caused by a single convective squall line, *Geophys. Res. Lett.*, 44, 7793–7798, <https://doi.org/10.1002/2017GL073564>, 2017.
- Araujo, R. F., Chambers, J. Q., Celes, C. H. S., Muller-Landau, H. C., dos Santos, A. P. F., Emmert, F., Ribeiro, G. H. P. M.,

- Gimenez, B. O., Lima, A. J. N., Campos, M. A. A., and Higuchi, N.: Integrating high resolution drone imagery and forest inventory to distinguish canopy and understory trees and quantify their contributions to forest structure and dynamics, *PLoS One*, 15, 1–16, <https://doi.org/10.1371/journal.pone.0243079>, 2020.
- 600 Araujo, R. F., Grubinger, S., Celes, C. H. S., Negrón-Juárez, R. I., Garcia, M., Dandois, J. P., and Muller-Landau, H. C.: Strong temporal variation in treefall and branchfall rates in a tropical forest is related to extreme rainfall: Results from 5 years of monthly drone data for a 50 ha plot, *Biogeosciences*, 18, 6517–6531, <https://doi.org/10.5194/bg-18-6517-2021>, 2021.
- [Araujo, R. F., Celes, C. H. S., Negrón-Juárez, R. I., and Muller-Landau, H. C.: Analysis codes and datasets: Strong temporal variation in treefall and branchfall rates in a tropical forest is related to extreme rainfall: results from five years of monthly drone data for a 50-ha plot. Zenodo \[code\]. https://doi.org/10.5281/zenodo.5786740, 2021a.](https://doi.org/10.5281/zenodo.5786740)
- 605 Asner, G. P., Kellner, J. R., Kennedy-Bowdoin, T., Knapp, D. E., Anderson, C., and Martin, R. E.: Forest Canopy Gap Distributions in the Southern Peruvian Amazon, *PLoS One*, 8, e60875, <https://doi.org/10.1371/journal.pone.0060875>, 2013.
- Baker, T. R., Phillips, O. L., Malhi, Y., Almeida, S., Arroyo, L., Di Fiore, A., Erwin, T., Higuchi, N., Killeen, T. J., Laurance, S. G., Laurance, W. F., Lewis, S. L., Monteagudo, A., Neill, D. A., Núñez Vargas, P., Pitman, N. C. A., Silva, J. N. M., and Vásquez Martínez, R.: Increasing biomass in Amazonian forest plots, *Philos. Trans. R. Soc. B Biol. Sci.*, 359, 353–365, <https://doi.org/10.1098/rstb.2003.1422>, 2004.
- 610 Brien, R. J. W., Phillips, O. L., Feldpausch, T. R., Gloor, E., Baker, T. R., Lloyd, J., Lopez Gonzalez, G., Monteagudo Mendoza, A., Malhi, Y., Lewis, S. L., and Vásquez, R.: Long-term decline of the Amazon carbon sink, *Nature*, 519, 344–348, <https://doi.org/10.1038/nature14283>, 2015.
- Brokaw, N. V. L.: The Definition of Treefall Gap and Its Effect on Measures of Forest Dynamics, *Biotropica*, 14, 158, <https://doi.org/10.2307/2387750>, 1982.
- 615 Burnham, K. P. and Anderson, D. R.: *Multimodel inference: A Practical Information-Theoretic Approach*, 488 pp., 2002.
- Canham, C. D., Finzi, A. C., Pacala, S. W., and Burbank, D. H.: Causes and consequences of resource heterogeneity in forests: interspecific variation in light transmission by canopy trees, *Can. J. For. Res.*, 24, 337–349, <https://doi.org/10.1139/x94-046>, 1994.
- 620 Carvalho, L.: An Improved Evaluation of Kolmogorov’s Distribution, *J. Stat. Softw.*, 65, 1–3, <https://doi.org/10.18637/jss.v065.c03>, 2015.
- ~~Chambers, J. Q., Robertson, A. L., Carneiro, V. M. C., Lima, A. J. N., Smith, M. L., Plourde, L. C., and Higuchi, N.: Hyperspectral remote detection of niche partitioning among canopy trees driven by blowdown gap disturbances in the Central Amazon, *Oecologia*, 160, 107–117, <https://doi.org/10.1007/s00442-008-1274-9>, 2009.~~
- 625 ~~Chambers, J. Q.,~~ Negrón-Juárez, R. I., Marra, D. M., Di Vittorio, A., Tews, J., Roberts, D., Ribeiro, G. H. P. M., Trumbore, S. E., and Higuchi, N.: The steady-state mosaic of disturbance and succession across an old-growth central Amazon forest landscape, *Proc. Natl. Acad. Sci. U. S. A.*, 110, 3949–3954, <https://doi.org/10.1073/pnas.1202894110>, 2013.
- Chao, K. J., Phillips, O. L., Monteagudo, A., Torres-Lezama, A., and Vásquez Martínez, R.: How do trees die? Mode of death in northern Amazonia, *J. Veg. Sci.*, 20, 260–268, <https://doi.org/10.1111/j.1654-1103.2009.05755.x>, 2009.

- 630 Clark, D. A., Asao, S., Fisher, R., Reed, S., Reich, P. B., Ryan, M. G., Wood, T. E., and Yang, X.: Reviews and syntheses: Field data to benchmark the carbon cycle models for tropical forests, *Biogeosciences*, 14, 4663–4690, <https://doi.org/10.5194/bg-14-4663-2017>, 2017.
- Cushman, K. C., Detto, M., García, M., and Muller-Landau, H. C.: Soils and topography control natural disturbance rates and thereby forest structure in a lowland tropical landscape, *Ecol. Lett.*, 25, 1126–1138, <https://doi.org/10.1111/ele.13978>, 2022.
- 635 Dalagnol, R., Wagner, F. H., Galvão, L. S., Streher, A. S., Phillips, O. L., Gloor, E., Pugh, T. A. M., Ometto, J. P. H. B., and Aragão, L. E. O. C.: Large-scale variations in the dynamics of Amazon forest canopy gaps from airborne lidar data and opportunities for tree mortality estimates, *Sci. Rep.*, 11, 1388, <https://doi.org/10.1038/s41598-020-80809-w>, 2021.
- Denslow, J. S.: Gap Partitioning among Tropical Rainforest Trees, *Biotropica*, 12, 47, <https://doi.org/10.2307/2388156>, 1980.
- Denslow, J. S.: Tropical Rainforest gaps and tree species diversity, *Annu. Rev. Ecol. Evol. Syst.*, 18, 431–51, 1987.
- 640 Denslow, J. S., Ellison, A. M., and Sanford, R. E.: Treefall gap size effects on above- and below-ground processes in a tropical wet forest, *J. Ecol.*, 86, 597–609, <https://doi.org/10.1046/j.1365-2745.1998.00295.x>, 1998.
- ~~Dupuy, J. M. and Chazdon, R. L.: Interacting effects of canopy gap, understory vegetation and leaf litter on tree seedling recruitment and composition in tropical secondary forests, *For. Ecol. Manage.*, 255, 3716–3725, <https://doi.org/10.1016/j.foreco.2008.03.021>, 2008.~~
- 645 Espírito-Santo, F. D. B., Gloor, M., Keller, M., Malhi, Y., Saatchi, S., Nelson, B., Junior, R. C. O., Pereira, C., Lloyd, J., Frolking, S., Palace, M., Shimabukuro, Y. E., Duarte, V., Mendoza, A. M., López-González, G., Baker, T. R., Feldpausch, T. R., Brienen, R. J. W., Asner, G. P., Boyd, D. S., and Phillips, O. L.: Size and frequency of natural forest disturbances and the Amazon forest carbon balance, *Nat. Commun.*, 5, 1–6, <https://doi.org/10.1038/ncomms4434>, 2014.
- Esquivel-Muelbert, A., Phillips, O. L., Brienen, R. J. W., Fauset, S., Sullivan, M. J. P., Baker, T. R., Chao, K. J., Feldpausch, T. R., Gloor, E., Higuchi, N., Houwing-Duistermaat, J., Lloyd, J., Liu, H., Malhi, Y., Marimon, B., Marimon Junior, B. H., Monteagudo-Mendoza, A., Poorter, L., Silveira, M., Torre, E. V., Dávila, E. A., del Aguila Pasquel, J., Almeida, E., Loayza, P. A., Andrade, A., Aragão, L. E. O. C., Araujo-Murakami, A., Arets, E., Arroyo, L., Aymard C, G. A., Baisie, M., Baraloto, C., Camargo, P. B., Barroso, J., Blanc, L., Bonal, D., Bongers, F., Boot, R., Brown, F., Burban, B., Camargo, J. L., Castro, W., Moscoso, V. C., Chave, J., Comiskey, J., Valverde, F. C., da Costa, A. L., Cardozo, N. D., Di Fiore, A., Dourdain, A.,
- 655 Erwin, T., Llampazo, G. F., Vieira, I. C. G., Herrera, R., Honorio Coronado, E., Huamantupa-Chuquimaco, I., Jimenez-Rojas, E., Killeen, T., Laurance, S., Laurance, W., Levesley, A., Lewis, S. L., Ladvoat, K. L. L. M., Lopez-Gonzalez, G., Lovejoy, T., Meir, P., Mendoza, C., Morandi, P., Neill, D., Nogueira Lima, A. J., Vargas, P. N., de Oliveira, E. A., Camacho, N. P., Pardo, G., Peacock, J., Peña-Claros, M., Peñuela-Mora, M. C., Pickavance, G., Pipoly, J., Pitman, N., Prieto, A., Pugh, T. A. M., Quesada, C., Ramirez-Angulo, H., de Almeida Reis, S. M., Rejou-Machain, M., Correa, Z. R., Bayona, L. R., Rudas, A.,
- 660 Salomão, R., Serrano, J., Espejo, J. S., Silva, N., Singh, J., Stahl, C., Stropp, J., Swamy, V., Talbot, J., ter Steege, H., et al.: Tree mode of death and mortality risk factors across Amazon forests, *Nat. Commun.*, 11, <https://doi.org/10.1038/s41467-020-18996-3>, 2020.
- Eysenrode, D. S., Bogaert, J., Hecke, P. Van, and Impens, I.: Influence of tree-fall orientation on canopy gap shape in an

- Ecuadorian rain forest, *J. Trop. Ecol.*, 14, 865–869, <https://doi.org/10.1017/S0266467498000625>, 1998.
- 665 [Fisher, J. I., Hurtt, G. C., ThomasFeng, Y., Negrón-Juárez, R. QI., Romps, D. M., and Chambers, J. Q.: Clustered Amazon windthrow disturbances leadare likely to bias in large scale estimates based on forest sample plots, *Ecol. Lett.*, 11, 554–563;increase with storm frequency under global warming, *Nat. Commun.*, 14, 101, <https://doi.org/10.1111/j.1461-0248.2008.01169.x>, 2008;1038/s41467-022-35570-1, 2023.](#)
- Fontes, C. G., Chambers, J. Q., and Higuchi, N.: Revealing the causes and temporal distribution of tree mortality in Central Amazonia, *For. Ecol. Manage.*, 424, 177–183, <https://doi.org/10.1016/j.foreco.2018.05.002>, 2018.
- 670 Frelich, L.: Forest dynamics, *F1000Research*, 5, 183, <https://doi.org/10.12688/f1000research.7412.1>, 2016.
- Frolking, S., Palace, M. W., Clark, D. B., Chambers, J. Q., Shugart, H. H., and Hurtt, G. C.: Forest disturbance and recovery: A general review in the context of spaceborne remote sensing of impacts on aboveground biomass and canopy structure, *J. Geophys. Res. Biogeosciences*, 114, <https://doi.org/10.1029/2008JG000911>, 2009.
- 675 Gagnon, J. L., Jokela, E. J., Moser, W. ., and Huber, D. A.: Characteristics of gaps and natural regeneration in mature longleaf pine flatwoods ecosystems, *For. Ecol. Manage.*, 187, 373–380, <https://doi.org/10.1016/j.foreco.2003.07.002>, 2004.
- Getzin, S., Nuske, R. S., and Wiegand, K.: Using Unmanned Aerial Vehicles (UAV) to Quantify Spatial Gap Patterns in Forests, 6988–7004, <https://doi.org/10.3390/rs6086988>, 2014.
- Gimenez, B. O., dos Santos, L. T., Gebara, J., Celes, C. H. S., Durgante, F. M., Lima, A. J. N., Santos, J. dos, and Higuchi, N.: Tree climbing techniques and volume equations for *Eschweilera* (Matá-Matá), a hyperdominant genus in the Amazon Forest, *Forests*, 8, <https://doi.org/10.3390/f8050154>, 2017.
- 680 Gloor, M., Brienen, R. J. W., Galbraith, D., Feldpausch, T. R., Schöngart, J., Guyot, J. L., Espinoza, J. C., Lloyd, J., and Phillips, O. L.: Intensification of the Amazon hydrological cycle over the last two decades, *Geophys. Res. Lett.*, 40, 1729–1733, <https://doi.org/10.1002/grl.50377>, 2013.
- 685 Gora, E. M. and Esquivel-Muelbert, A.: Implications of size-dependent tree mortality for tropical forest carbon dynamics, *Nat. Plants*, 7, 384–391, <https://doi.org/10.1038/s41477-021-00879-0>, 2021.
- [Gorgens, E. B., Keller, M., Jackson, T., Marra, D. M., Reis, C. R., de Almeida, D. R. A., Coomes, D., and Ometto, J. P.: Out of steady state: Tracking canopy gap dynamics across Brazilian Amazon, *Biotropica*, 1–12, <https://doi.org/10.1111/btp.13226>, 2023.](#)
- 690 Grubb, P. J.: the Maintenance of Species-Richness in Plant Communities: the Importance of the Regeneration Niche, *Biol. Rev.*, 52, 107–145, <https://doi.org/10.1111/j.1469-185x.1977.tb01347.x>, 1977.
- Hubbell, S. P., Foster, R. B., O’Brien, S. T., Harms, K. E., Condit, R., Wechsler, B., Wright, S. J., and de Lao, S. L.: Light-Gap Disturbances, Recruitment Limitation, and Tree Diversity in a Neotropical Forest, *Science* (80-.), 283, 554–557, <https://doi.org/10.1126/science.283.5401.554>, 1999.
- 695 Iglhaut, J., Cabo, C., Puliti, S., Piermattei, L., O’Connor, J., and Rosette, J.: Structure from Motion Photogrammetry in Forestry: a Review, *Curr. For. Reports*, 5, 155–168, <https://doi.org/10.1007/s40725-019-00094-3>, 2019.
- IPCC: Summary for Policymakers., edited by: Masson-Delmotte, V., P.Zhai, Pirani, A., Connors, S. L., Péan, C., Berger, S.,

- Caud, N., Chen, Y., Goldfarb, L., Gomis, M. I., Huang, M., Leitzell, K., Lonnoy, E., Matthews, J. B. R., Maycock, T. K., Waterfield, T., Yelekçi, O., Yu, R., and Zhou, B., In Press., 40 pp., 2021.
- 700 Jucker, T.: Deciphering the fingerprint of disturbance on the three-dimensional structure of the world's forests, *New Phytol.*, 233, 612–617, <https://doi.org/10.1111/nph.17729>, 2022.
- Kellner, J. R. and Asner, G. P.: Winners and losers in the competition for space in tropical forest canopies, *Ecol. Lett.*, 17, 556–562, <https://doi.org/10.1111/ele.12256>, 2014.
- Kellner, J. R., Clark, D. B., and Hubbell, S. P.: Pervasive canopy dynamics produce short-term stability in a tropical rain forest
705 landscape, *Ecol. Lett.*, 12, 155–164, <https://doi.org/10.1111/j.1461-0248.2008.01274.x>, 2009.
- Laurance, W. F., Oliveira, A. A., Laurance, S. G., Condit, R., Nascimento, H. E. M., Sanchez-Thorin, A. C., Lovejoy, T. E., Andrade, A., D'Angelo, S., Ribeiro, J. E., and Dick, C. W.: Pervasive alteration of tree communities in undisturbed Amazonian forests, *Nature*, 428, 171–175, <https://doi.org/10.1038/nature02383>, 2004.
- Lawton, R. O. and Putz, F. E.: Natural Disturbance and Gap-Phase Regeneration in a Wind-Exposed Tropical Cloud Forest,
710 *Ecology*, 69, 764–777, <https://doi.org/10.2307/1941025>, 1988.
- Leitold, V., Morton, D. C., Longo, M., Dos-Santos, M. N., Keller, M., and Scaranello, M.: El Niño drought increased canopy turnover in Amazon forests, *New Phytol.*, 219, 959–971, <https://doi.org/10.1111/nph.15110>, 2018.
- Lertzman, K. P. and Krebs, C. J.: Gap-phase structure of a subalpine old-growth forest, *Can. J. For. Res.*, 21, 1730–1741, <https://doi.org/10.1139/x91-239>, 1991.
- 715 Lima, A. J. N., Suwa, R., De Mello Ribeiro, G. H. P., Kajimoto, T., Dos Santos, J., Da Silva, R. P., De Souza, C. A. S., De Barros, P. C., Noguchi, H., Ishizuka, M., and Higuchi, N.: Allometric models for estimating above- and below-ground biomass in Amazonian forests at São Gabriel da Cachoeira in the upper Rio Negro, Brazil, *For. Ecol. Manage.*, 277, 163–172, <https://doi.org/10.1016/j.foreco.2012.04.028>, 2012.
- Magnabosco Marra, D., Chambers, J. Q., Higuchi, N., Trumbore, S. E., Ribeiro, G. H. P. M., Dos Santos, J., Negrón-Juárez,
720 R. I., Reu, B., and Wirth, C.: Large-scale wind disturbances promote tree diversity in a Central Amazon forest, *PLoS One*, 9, <https://doi.org/10.1371/journal.pone.0103711>, 2014.
- Magnabosco Marra, D., ~~Higuchi, N., Trumbore, S. E., Ribeiro, G. H. P. M., Dos Santos, J., Carneiro, V. M. C., Lima, A. J. N., Chambers, J. Q., Negrón Juárez, R. I., Holzwarth, F., Reu, B., and Wirth, C.: Predicting biomass of hyperdiverse and structurally complex central Amazonian forests—A virtual approach using extensive field data, *Biogeosciences*, 13, 1553–1570, <https://doi.org/10.5194/bg-13-1553-2016>, 2016~~Pereira B.A.S., Fagg C.W., Felfili J.M.: Trees and environmental variables influence the natural regeneration of seasonally dry tropical forest in Central Brazil, *Neotropical Biology and Conservation*, 9(2), 62-77, <https://doi.org/10.4013/nbc.2014.92.01>, 2014a.
- ~~Magnabosco Marra, D., Chambers, J. Q., Higuchi, N., Trumbore, S. E., Ribeiro, G. H. P. M., Dos Santos, J., Negrón-Juárez, R. I., Reu, B., and Wirth, C.: Large-scale wind disturbances promote tree diversity in a Central Amazon forest, *PLoS One*, 9, <https://doi.org/10.1371/journal.pone.0103711>, 2014b.~~
- 730 Magnabosco Marra, D., Trumbore, S. E., Higuchi, N., Ribeiro, G. H. P. M., Negrón-Juárez, R. I., Holzwarth, F., Rifai, S. W.,

- dos Santos, J., Lima, A. J. N., Kinupp, V. F., Chambers, J. Q., and Wirth, C.: Windthrows control biomass patterns and functional composition of Amazon forests, *Glob. Chang. Biol.*, 24, 5867–5881, <https://doi.org/10.1111/gcb.14457>, 2018.
- Malhi, Y. and Román-Cuesta, R. M.: Analysis of lacunarity and scales of spatial homogeneity in IKONOS images of Amazonian tropical forest canopies, *Remote Sens. Environ.*, 112, 2074–2087, <https://doi.org/10.1016/j.rse.2008.01.009>, 2008.
- 735 Marengo, J. A., Jones, R., Alves, L. M., and Valverde, M. C.: Future change of temperature and precipitation extremes in South America as derived from the PRECIS regional climate modeling system, *Int. J. Climatol.*, 29, 2241–2255, <https://doi.org/10.1002/joc.1863>, 2009.
- ~~Marra, D. M., Da Pereira, B. A. S., Fagg, C. W., and Felfili, J. N. M.: Trees and environmental variables influence the natural regeneration of a seasonally dry tropical forest in Central Brazil, *Neotrop. Biol. Conserv.*, 9, 62–77, <https://doi.org/10.4013/nbc.2014.92.01>, 2014.~~
- 740 ~~McDowell, N., Allen, C. D., Anderson-Teixeira, K., Brando, P., Brienen, R., Chambers, J., Christoffersen, B., Davies, S., Doughty, C., Duque, A., Espirito-Santo, F., Fisher, R., Fontes, C. G., Galbraith, D., Goodsman, D., Grossiord, C., Hartmann, H., Holm, J., Johnson, D. J., Kassim, A. R., Keller, M., Koven, C., Kueppers, L., Kumagai, T., Malhi, Y., McMahon, S. M., Mencuccini, M., Meir, P., Moorcroft, P., Muller-Landau, H. C., Phillips, O. L., Powell, T., Sierra, C. A., Sperry, J., Warren, J., Xu, C., and Xu, X.: Drivers and mechanisms of tree mortality in moist tropical forests, *New Phytol.*, 219, 851–869, <https://doi.org/10.1111/nph.15027>, 2018.~~
- Negrón-Juárez, R., Magnabosco-Marra, D., Feng, Y., Urquiza-Muñoz, J. D., Riley, W. J., and Chambers, J. Q.: Windthrow characteristics and their regional association with rainfall, soil, and surface elevation in the Amazon, *Environ. Res. Lett.*, 18, 014030, <https://doi.org/10.1088/1748-9326/acaf10>, 2023.
- 750 Negrón-Juárez, R. I., Chambers, J. Q., Guimaraes, G., Zeng, H., Raupp, C. F. M., Marra, D. M., Ribeiro, G. H. P. M., Saatchi, S. S., Nelson, B. W., and Higuchi, N.: Widespread Amazon forest tree mortality from a single cross-basin squall line event, *Geophys. Res. Lett.*, 37, 1–5, <https://doi.org/10.1029/2010GL043733>, 2010.
- Negrón-Juárez, R. I., Chambers, J. Q., Marra, D. M., Ribeiro, G. H. P. M., Rifai, S. W., Higuchi, N., and Roberts, D.: Detection of subpixel treefall gaps with Landsat imagery in Central Amazon forests, *Remote Sens. Environ.*, 115, 3322–3328, <https://doi.org/10.1016/j.rse.2011.07.015>, 2011.
- 755 Negrón-Juárez, R. I., Jenkins, H. S., Raupp, C. F. M., Riley, W. J., Kueppers, L. M., Marra, D. M., Ribeiro, G. H. P. M., Monteiro, M. T. F., Candido, L. A., Chambers, J. Q., and Higuchi, N.: Windthrow variability in central Amazonia, *Atmosphere (Basel)*, 8, 1–17, <https://doi.org/10.3390/atmos8020028>, 2017.
- 760 Negrón-Juárez, R. I., Holm, J. A., Marra, D. M., Rifai, S. W., Riley, W. J., Chambers, J. Q., Koven, C. D., Knox, R. G., McGroddy, M. E., Di Vittorio, A. V., Urquiza-Muñoz, J., Tello-Espinoza, R., Muñoz, W. A., Ribeiro, G. H. P. M., and Higuchi, N.: Vulnerability of Amazon forests to storm-driven tree mortality, *Environ. Res. Lett.*, 13, <https://doi.org/10.1088/1748-9326/aabe9f>, 2018.
- Nelson, B. W., Kapos, V., Adams, J. B., Oliveira, W. J., and Braun, O. P. G.: Forest Disturbance by Large Blowdowns in the Brazilian Amazon, *Ecology*, 75, 853–858, <https://doi.org/10.2307/1941742>, 1994.
- 765

- Oliveira, A. A. D. E. and Mori, S. A.: A central Amazonian terra firme forest. I. High tree species richness on poor soils, *Biodivers. Conserv.*, 8, 1219–1244, <https://doi.org/10.1023/A:1008908615271>, 1999.
- Ometto, J. P., Gorgens, B. G., Assis, M., Cantinho, R. Z., Pereira, F. R. de S., and Sato, L. Y.: L3A - Airborne LiDAR transects summary collected by EBA in the Brazilian Amazon, [data set], <https://doi.org/https://zenodo.org/record/4968706>, 2021.
- 770 Pan, Y., Birdsey, R. A., Phillips, O. L., and Jackson, R. B.: The structure, distribution, and biomass of the world's forests, *Annu. Rev. Ecol. Evol. Syst.*, 44, 593–622, <https://doi.org/10.1146/annurev-ecolsys-110512-135914>, 2013.
- Phillips, O. L. and Gentry, A. H.: Increasing Turnover Through Time in Tropical Forests, *Science* (80-.), 263, 954–958, <https://doi.org/10.1126/science.263.5149.954>, 1994.
- Putz, F. E., Coley, P. D., Lu, K., Montalvo, A., and Aiello, A.: Uprooting and snapping of trees: structural determinants and ecological consequences, *Can. J. For. Res.*, 13, 1011–1020, <https://doi.org/10.1139/x83-133>, 1983.
- 775 Reis, C. R., Jackson, T. D., Bastos Gorgens, E., Dalagnol, R., Jucker, T., Henrique Nunes, M., and Pierre Ometto, J.: Forest structure and degradation drive canopy gap sizes across the Brazilian Amazon, *bioRxiv*, 2021.05.03.442416, <https://doi.org/https://doi.org/10.1101/2021.05.03.442416>, 2021.
- Ribeiro, G. H. P. M., Chambers, J. Q., Peterson, C. J., Trumbore, S. E., Marra, D. M., Wirth, C., Cannon, J. B., Négron-juárez, R. I., Lima, A. J. N., Paula, E. V. C. M. De, Santos, J., and Higuchi, N.: Forest Ecology and Management Mechanical vulnerability and resistance to snapping and uprooting for Central Amazon tree species, *For. Ecol. Manage.*, 380, 1–10, <https://doi.org/10.1016/j.foreco.2016.08.039>, 2016.
- 780 ~~Romell, E., Hallsby, G., and Karlsson, A.: Forest floor light conditions in a secondary tropical rain forest after artificial gap creation in northern Borneo, *Agric. For. Meteorol.*, 149, 929–937, <https://doi.org/10.1016/j.agrformet.2008.11.011>, 2009.~~
- Runkle, J. R.: Gap Regeneration in Some Old-growth Forests of the Eastern United States, *Ecology*, 62, 1041–1051, <https://doi.org/10.2307/1937003>, 1981.
- 785 ~~Runkle, J. R. and Yetter, T. C.: Treefalls Revisited: Gap Dynamics in the Southern Appalachians, *Ecology*, 68, 417–424, <https://doi.org/10.2307/1939273>, 1987.~~
- Santos, L. T., Marra, D. M., Trumbore, S., Camargo, P. B. De, Lima, A. J. N. N., Ribeiro, G. H. P. M. P. M., Santos, J., Higuchi, N., Dos Santos, L. T., Marra, D. M., Trumbore, S., De Camargo, P. B., Negrón-Juárez, R. I., Lima, A. J. N. N., Ribeiro, G. H. P. M. P. M., Dos Santos, J., and Higuchi, N.: Windthrows increase soil carbon stocks in a central Amazon forest, *Biogeosciences*, 13, 1299–1308, <https://doi.org/10.5194/bg-13-1299-2016>, 2016.
- 790 ~~dos Santos, V. A. H. F., Modolo, G. S., and Ferreira, M. J.: How do silvicultural treatments alter the microclimate in a Central Amazon secondary forest? A focus on light changes, *J. Environ. Manage.*, 254, 1–9, <https://doi.org/10.1016/j.jenvman.2019.109816>, 2020.~~
- Schliemann, S. A. and Bockheim, J. G.: Methods for studying treefall gaps: A review, *For. Ecol. Manage.*, 261, 1143–1151, <https://doi.org/10.1016/j.foreco.2011.01.011>, 2011.
- Senf, C.: Seeing the system from above – The use and potential of remote sensing for studying ecosystem dynamics (in press), *Ecosystems*, <https://doi.org/10.1007/s10021-022-00777-2>, 2022.

- 800 Sombroek, W.: Spatial and Temporal Patterns of Amazon Rainfall, *AMBIO A J. Hum. Environ.*, 30, 388–396, <https://doi.org/10.1579/0044-7447-30.7.388>, 2001.
- Tan, J., Jakob, C., Rossow, W. B., and Tselioudis, G.: Increases in tropical rainfall driven by changes in frequency of organized deep convection, *Nature*, 519, 451–454, <https://doi.org/10.1038/nature14339>, 2015.
- De Toledo, J. J., Magnusson, W. E., Castilho, C. V., and Nascimento, H. E. M.: How much variation in tree mortality is predicted by soil and topography in Central Amazonia?, *For. Ecol. Manage.*, 262, 331–338, <https://doi.org/10.1016/j.foreco.2011.03.039>, 2011.
- 805 De Toledo, J. J., Magnusson, W. E., Castilho, C. V., and Nascimento, H. E. M.: Tree mode of death in Central Amazonia: Effects of soil and topography on tree mortality associated with storm disturbances, *For. Ecol. Manage.*, 263, 253–261, <https://doi.org/10.1016/j.foreco.2011.09.017>, 2012.
- 810 Urquiza Muñoz, J. D., Magnabosco Marra, D., Negrón-Juarez, R. I., Tello-Espinoza, R., Alegría-Muñoz, W., Pacheco-Gómez, T., Rifai, S. W., Chambers, J. Q., Jenkins, H. S., Brenning, A., and Trumbore, S. E.: Recovery of Forest Structure Following Large-Scale Windthrows in the Northwestern Amazon, *Forests*, 12, 667, <https://doi.org/10.3390/f12060667>, 2021.
- Vepakomma, U., St-Onge, B., and Kneeshaw, D.: Spatially explicit characterization of boreal forest gap dynamics using multi-temporal lidar data, *Remote Sens. Environ.*, 112, 2326–2340, <https://doi.org/10.1016/j.rse.2007.10.001>, 2008.
- 815 Vitousek, P. M. and Denslow, J. S.: Nitrogen and Phosphorus Availability in Treefall Gaps of a Lowland Tropical Rainforest, *J. Ecol.*, 74, 1167, <https://doi.org/10.2307/2260241>, 1986.
- Whitmore, T. C.: Canopy Gaps and the Two Major Groups of Forest Trees, *Ecology*, 70, 536–538, <https://doi.org/10.2307/1940195>, 1989.
- Wu, J., Albert, L. P., Lopes, A. P., Restrepo-Coupe, N., Hayek, M., Wiedemann, K. T., Guan, K., Stark, S. C., Christoffersen, B., Prohaska, N., Tavares, J. V., Marostica, S., Kobayashi, H., Ferreira, M. L., Campos, K. S., Dda Silva, R., Brando, P. M., Dye, D. G., Huxman, T. E., Huete, A. R., Nelson, B. W., and Saleska, S. R.: Leaf development and demography explain photosynthetic seasonality in Amazon evergreen forests, *Science* (80-.), 351, 972–976, <https://doi.org/10.1126/science.aad5068>, 2016.
- Yavitt, J. B., Battles, J. J., Lang, G. E., and Knight, D. H.: The canopy gap regime in a secondary Neotropical forest in Panama, *J. Trop. Ecol.*, 11, 391–402, <https://doi.org/10.1017/S0266467400008853>, 1995.
- 825 Yue, W., Juyu, L., Zhaochen, Z., Jianbo, H., Ji, Y., Yong, L., and Wanhui, Y.: Forest Plots Gap and Canopy Structure Analysis Based on Two UAV Images 帶地理, *Trop. Geogr.*, 39, 553–561, <https://doi.org/10.13284/j.cnki.rddl.003148>, 2019.
- Zuleta, D., Arellano, G., Muller-Landau, H. C., McMahon, S. M., Aguilar, S., Bunyavejchewin, S., Cárdenas, D., Chang-Yang, C., Duque, A., Mitre, D., Nasardin, M., Pérez, R., Sun, I., Yao, T. L., and Davies, S. J.: Individual tree damage dominates mortality risk factors across six tropical forests, *New Phytol.*, 233, 705–721, <https://doi.org/10.1111/nph.17832>, 2022.
- 830 [Zuleta, D., Arellano, G., McMahon, S. M., Aguilar, S., Bunyavejchewin, S., Castaño, N., Chang-Yang, C., Duque, A., Mitre, D., Nasardin, M., Pérez, R., Sun, I., Yao, T. L., Valencia, R., Krishna Moorthy, S. M., Verbeeck, H., and Davies, S. J.: Damage to living trees contributes to almost half of the biomass losses in tropical forests, *Glob. Chang. Biol.*, 1–12,](#)

