

Variation in calcification of *Reticulofenestra* coccoliths over the Oligocene-Early Miocene

5 José Guitián^{1,2*◇}, Miguel Ángel Fuertes^{3*}, José-Abel Flores⁴, Iván Hernández-Almeida¹, Heather Stoll¹

¹ Dept. of Earth Science, ETH Zürich, 8092 Zurich, Switzerland

² *Now at:* Centro de Investigación Mariña, Universidade de Vigo, GEOMA, -Vigo, 36310, Spain

³ Dept. of Didactics of Mathematics and Experimental Sciences, University of Salamanca, Salamanca 37008 Spain

⁴ Dept. of Geology, University of Salamanca, Salamanca, 37008, Spain

10 [◇]Correspondance to: José Guitián¹ (jose.guitian@uvigo.es) and Heather M. Stoll (heather.stoll@erdw.ethz.ch)

*These authors contributed equally

Abstract

Coccolithophores are calcifying marine phytoplankton whose intracellularly produced calcite plates, ~~or the coccoliths and~~, have been the dominant source of calcium carbonate in open ocean settings since the Cretaceous. An open question is whether
15 their calcification has been affected by ~~changing variation in~~ environmental ~~parameters conditions over geological timescales~~ such as ~~variations in~~ the ocean carbon system ~~over geological timescales~~. Previous methods using circular polarized light microscopy allowed only the thickness of small coccoliths thinner than 1.5 microns to be quantified but prior to the Pliocene, a significant fraction of the coccoliths exceed this thickness and have not been quantifiable. Here, we implement a new
20 approach for calibration of circular polarized light microscopy enabling us to quantify coccoliths which feature calcite up to 3 microns thick. We apply this technique to evaluate the evolution of calcification in the *Reticulofenestra* from the Early Oligocene to Early Miocene in exceptionally well-preserved sediments from the Newfoundland margin. Through this time interval, coccolith thickness and the scale-invariant shape factor k_{se} vary by about 20% around the mean thickness of 0.37 μm and mean k_{se} of 0.16. Lower shape factors characterize samples with higher relative abundance of dissolution-resistant nannoliths, suggesting that dissolution may contribute to thinning of placoliths. We therefore define temporal trends in
25 calcification only in samples in which the assemblage suggests minimal dissolution. Lowest k_{se} characterizes the Middle Oligocene, and highest k_{se} around 18 Ma in the Early Miocene. High ocean DIC concentrations have been proposed for this period of the Miocene, and may be one factor contributing to high coccolith k_{se} .

1. Introduction

Coccolithophore algae possess small calcareous plates called coccoliths, produced continuously intracellularly to maintain a
30 full interlocking covering over the cell. Calcification by coccolithophorid algae represents the major source of CaCO_3 production in the open oceans (Siesser, 1993). The abundance, growth rate, and degree of calcification of coccolithophores in the ocean have implications for the global carbon cycle. Calcification is important because it affects the surface ocean alkalinity, and may affect the sinking velocity of coccolithophores ~~and ballasting efficiency of organic carbon export~~ (Rost and Riebesell, 2004).

35 Calcification rates of coccolithophores ~~are the product of depend on both~~ the cellular growth rate and the degree of cellular calcification. ~~the latter is which to first order is controlled by the thickness of coccoliths (Bolton et al., 2016).~~

In laboratory culture studies, the cellular calcification is generally measured by geochemical assay of calcite (either as Ca or inorganic C) in a culture volume, paired with estimation of the cell density. Multiple laboratory studies of extant coccolithophores strains show plasticity in calcification rates and cellular calcification in response to environmental conditions, especially changing ~~CO₂ and media~~ carbon chemistry, as reviewed by Bach et al. (2015). ~~However, it~~ remains uncertain if this plasticity observed in short term culture is representative of the longer term response ~~of calcification to variations in atmospheric CO₂ and ocean carbon chemistry~~ in the geological past. ~~However, variations~~ in cellular calcification by past coccolithophore communities ~~in the ocean~~ can usually be assessed only from the individual disaggregated coccoliths present in deep-sea sediments. ~~Fortunately, culture studies show that the degree of cellular calcification is to first order controlled by the thickness of coccoliths, a parameter which can be determined on fossil material (Bolton et al., 2016).~~ Hence, there is significant interest ~~in~~ first, improving techniques for quantification of the amount of calcite forming the fossil coccoliths, and secondly, evaluating the obtained variations in ~~their~~ cellular calcification ~~by quantifying variation in the amount of calcite in coccoliths~~ over time in the past to test potential responses to past ocean system conditions.

In this contribution, we seek to evaluate changes in cellular calcification in coccoliths from the Mid-Oligocene through Early Miocene in a deep-sea sediment series of exceptional preservation quality from coring in IODP Site 1406 on the Newfoundland Margin. This time period has been inferred to feature a significant decline in pCO₂ (Zhang et al., 2013). Significant changes in the mean size of coccolithophores during the Oligocene have also been proposed as an adaptation to declining CO₂ (Henderiks and Pagani, 2008; Guitián et al., 2020). The Noelaerhabdaceae lineage, which includes the recent genera *Emiliana*, *Gephyrocapsa*, *Pseudoemiliana*, *Reticulofenestra*, have dominated the coccolithophore communities over the Cenozoic. For this reason, we focus on the record of changing cellular calcification within the Noelaerhabdaceae family, commonly known as “reticulofenestrids” through the Oligocene-Miocene (Young, 1998) counting coccoliths from all *Reticulofenestra* genus groups: *R.pseudoumbilicus*, *R. lockeri*, *R. umbilicus*, *R. bisecta*, and the dominant carbonate contributor at the site, *C. floridanus*. Because Oligocene to Miocene sediments include many large coccoliths from the *Reticulofenestra* genus (Guitián et al., 2020) they feature portions of coccoliths thicker than the limit of published techniques for estimating coccolith thickness by polarized light microscopy [~~1.55 μm (Bollmann, 2014; Fuertes et al., 2014); 1.7 μm (Beaufort et al., 2021); and 1.34 μm (Johnsen and Bollmann, 2020)~~]. Consequently, we implement here a new system to quantify populations of thicker coccoliths by automating the calibration approach of González Lemos et al. (2018).

2. Approaches for estimation of coccolith thickness

Estimations of coccolith mass were first derived from volumes of rotation using idealized three dimensional cross sections of type specimens produced from scanning electron microscope images (Young and Ziveri, 2000). This approach generated a single “shape factor” (k_s , see Equation 1) for a given species or morphotype, and the volume was calculated as the product of the shape factor and measured length. However, the technique was not suited for quantifying variation in thicknesses of individual coccoliths of a given length. ~~Polarized light microscopy~~ was subsequently proposed to directly estimate the thickness of individual coccoliths because thicker coccoliths generated greater birefringence. The first technique used linear-polarized light with images captured over multiple rotations of the stage to estimate the full calcite volume (Beaufort, 2005). Later, circular polarized light was used to eliminate extinction patterns by making the birefringence independent of the angle of the stage, so estimations of coccolith volume could be made from a single image and therefore with greater precision (Fuertes et al., 2014; Bollmann, 2014). Such methods have shown that cellular calcification, derived from coccolith thickness, of small coccoliths has been decreasing since the Late Miocene (Bolton et al., 2016).

In all polarized light methods, the calibration of the colour or grey level of each individual pixel in the image to absolute thickness is a challenge. To date, calibration challenges have limited quantification of coccolith thickness to the smallest coccoliths with thin calcite units; typical thickness limits are ~~1.7 μm (Beaufort et al., 2021)~~ and 1.34 μm (Johnsen and

Bollmann, 2020). A recent calibration approach proposed the use of a calcite wedge in which the thickness is independently determined at various points using a tilting compensator that provides known retardation of light rays (González Lemos et al., 2018). The main advantages of the calibration with calcite wedge is that it is independent of the type of microscope and its light configuration, and color-thickness calibration is in theory possible up to 4.5 μm . As coccoliths with a thickness greater than 1.55 μm appear with colours ranging from orange to blue, this calibration can be applied to all the coccoliths beyond the previous grey-level limit.

For this study, the Oligocene to Miocene sediments include many large coccoliths from the *Reticulofenestra* ~~group~~genus, following (Young, 1998), which feature portions of coccoliths thicker than 1.55 μm ; we therefore devise a system for automating the calibration approach of (González Lemos et al., 2018) within the range of thickness from 0 to 3 μm . We use a new calibrated calcite wedge and code the C-Calcita program (Fuertes et al., 2014) to employ this calibration and subsequently to calculate thickness in each pixel of coccoliths – reaching 3 μm in many studied coccoliths – and thereby compute the mass and average thickness of the individual coccoliths. This calibration can be directly applied to estimate absolute thickness of coccoliths within the Noelaerhabdaceae lineage. Noelaerhabdaceae are formed of calcite units with a radially oriented c-axis (r-units) forming a proximal and distal shields as well as an inner and outer tube, -without appreciable elements with vertically oriented c-axis (v-units) (Young et al., 1992; Young et al., 2004). R-type units are strongly birefringent and therefore fully visible when circular polarized light is used, giving an intensity and colour of the light that represents the total accumulated thickness of the calcite across the incident ray.

Since v-units are not fully visible in circular polarized light, relative, but not absolute, calibration of thickness is possible for taxa which contain significant r- and v-calcite units (e. g. Fuertes et al. (2014). Nonetheless, relative variations in thickness of other taxa may be still relevant to studies of coccolith preservation and diagenetic overgrowth (Dedert et al., 2014). Consequently, we also report the estimation of differences in thickness of other taxa.

3. Methodology for estimation of coccolith thickness

3.1 Microscope setup for image acquisition

All the images were obtained at ETH Zurich using a Zeiss Axio Scope HAL100 POL microscope with circularly polarized light, equipped with a Zeiss Plan-APOCHROMAT 100x/1.4 Oil objective, a universal condenser with numerical aperture set at 0.1-0.2. Circular polarization is obtained placing two $\lambda/4$ retardation plates, one between the lower linear polarizer and the condenser and the other below the upper linear polarizer, both at an angle of 45° relative to the linear polarizers. The system is equipped with a Zeiss Axiocam 506 Color camera. Light intensity and camera exposure is defined checking calcite and coccoliths fields of view briefly, before each calibration session starts to avoid overexposure of RGB colours, and gamma correction factor is set to 1. Camera resolution was 0.045 μm per pixel, with final images of 2560x1920 pixels.

3.2 Calibration of absolute thickness within C-Calcita

A calcite wedge with a constant slope over this thickness range has been produced at ETH Zurich. The calcite thickness was measured in 11 points along a linear profile, using a tilting compensator, as described in González Lemos et al. (2018) (Figure 1). We refer to this “reference image” as Cal.1, and the coordinates of the points whose thickness has been measured, Coord1.

To account for differences in microscope configuration or light situation, during each microscope session in which coccolith images are taken, we take a new “session image” of the calcite wedge, seeking to capture as similar a field view as possible to the reference wedge image, and using microscope settings identical to those used for capture of coccolith images.

With Matlab®, the original C-Calcita script (Fuertes et al., 2014) was modified to an updated version, C-Calcita v.2, where we establish a routine to locate the calibrated thickness points from the reference wedge image into each session photo (e.g. Cal2) (Figure 1). The relationship between both the reference and session images of the wedge is searched and located the equivalent points. This routine employs the KAZE detection and description, which was designed to find point correspondences between two images of the same scene (Alcantarilla et al., 2012). This routine occurs in three steps: first, 'interest points' are selected at distinctive locations in the image, such as corners, blobs, and T-junctions. Then, a feature vector, called descriptor, represents the neighbourhood of every interest point to finally march descriptor vectors between the different images, in order to obtain the rotated angle and the translation done. Subsequently, the position of the known coordinates of the reference image Cal1 can be located on the session image Cal2 (Figure 1C). Because the wedge can feature cleavage breaks at the edge, we calculate the theoretical point in the image that would correspond with zero thickness using a polynomial fit from the measured points, and then calculating the roots for that polynomial.

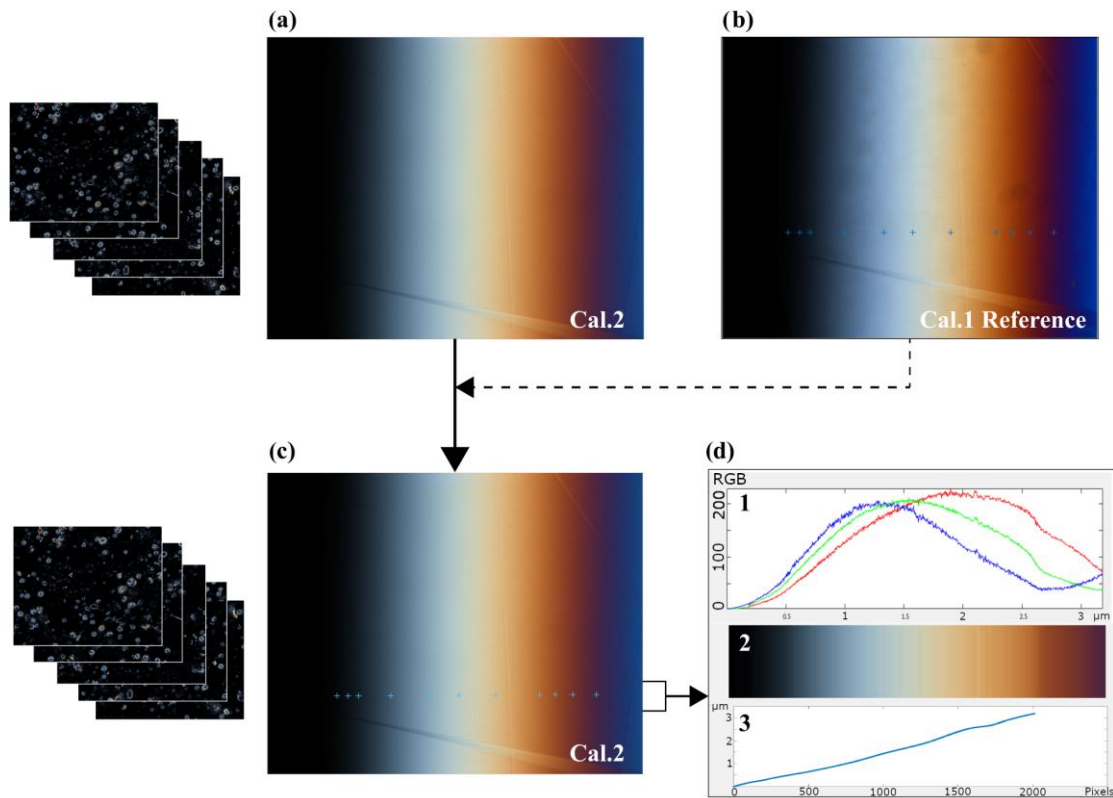


Figure 1. (a) Session image of reference calcite wedge (Cal.2) taken with the same microscope settings than the coccoliths images that are going to be taken later. (b) Reference image of the calcite wedge (Cal.1) and the points where the thickness has been measured using a tilting compensator (Coord1). Notice although similar, nor frame nor light it exactly the same as the image Cal.2. (c) Session image Cal.2 with the automate calculated equivalent points of known thickness. (d) 1. Color band spectrum along the line profile. 2. RGB color rectangle showing in lines each point line color. 3. Thickness profile along the wedge line.

Once the known thickness calibration points have been identified on the session image, the C-Calcita routine generates a matrix containing the RGB values of all the pixels of the image Cal.2 along the profile given by the points whose thickness has been measured, up to the calculated point that would correspond to zero thickness. As illustrated in Figure 1, this process has interpolated between the 11 known points to generate a calibration set in which more than two thousand points between 0 to 3.2 microns have a defined thickness value and set of RGB values for the microscope and setting employed (Figure 1D first

140 panel). We describe this matrix as a RGB-Thickness calibration matrix, which provides the complete color calibration of C-
Calcita for a particular microscope session (Figure 1D third panel).

3.3 Calculation of thickness of coccoliths

Slides of coccoliths are prepared using the decanting method described by Flores and Sierra (1997) which allows for random
settling of coccoliths. Mounted slides are then inspected on the microscope and sample images are taken using settings
145 described in 3.1.

Once the calibration is completed, the coccolith images that have been captured with the same configuration as the image Cal.2
for reference are loaded into the program. In order to measure the coccolith thickness that corresponds with to each pixel in
the coccolith images, an exhaustive search is created based on the euclidean distance: for each individual pixel of the coccolith
image, the most similar RGB vector of the calibrated matrix is matched. The thickness value assigned to that single coccolith
150 pixel is that of the most similar RGB matrix vector.

In some cases, the internal reflections of the light into the coccolith, or the presence of aberrations may lead to inference of a
higher than realistic thickness in some points (e.g. Figure 2). To minimize this issue, a gaussian filter is applied to the coccolith
image, obtaining a smoothed thickness image. In those pixels where the obtained thickness increases abruptly, compared with
the smoothed thickness image, the thickness value for that pixel is substituted by the gaussian value of its surroundings (Figure
155 2).

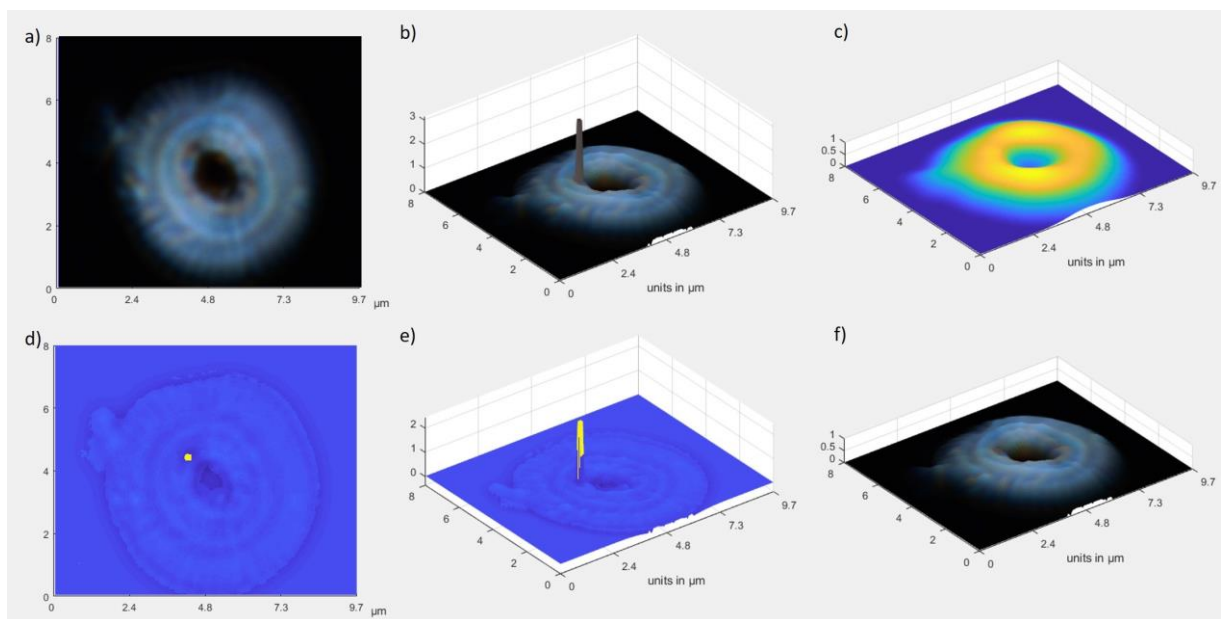


Figure 2. (a) Original image; (b) 3D Coccolith with total thickness accumulated through the crystal (i.e. proximal and distal shield and tube calcite from coccolith r-units), presenting in some points values higher than expected; (c) Gaussian smooth; (d, e) identification of points to be smoothed (yellow); (f) Final 3D image where the identified points have been smoothed.

160 Finally, from the smoothed map of thickness per pixel, the total area-integrated thickness is used to compute the volume and mass of calcite in each coccolith, as in previous versions of C-
Calcita (Fuentes et al., 2014).

3.4 Indices of variations in thickness and calcification of Oligocene-Early Miocene coccoliths

Eleven samples from IODP Site 1406, which cover the interval between Oligocene to Early Miocene (27.9 to 17.8 Ma), were analyzed for coccolithophore thickness. The age model applied for that interval was the one previously published by (Gutián et al., 2019). Between 241 and 660 coccoliths per sample were isolated from microscope images and major and minor axis were calculated, and the total calcite mass computed. In one additional sample, only 86 coccolith images were obtained and processed. Total coccoliths/nannoliths in all sites included 55 *Discoaster*, 83 *Helicosphaera*, 96 *Sphenolithus*, 154 *Coccolithus*, and 3018 within the *Reticulofenestra* ~~genera~~ genus (Young, 1998), including the *Cyclicargolithus* group.

As described previously (Fuertes et al., 2014), the C-Calcita estimates for each identified coccolith, the major and minor axis, the coccolith area, and the coccolith volume. From the major and minor axes, the program estimates circularity, as well as thickness (calcified volume/calcified area), and converts coccolith volume into coccolith mass using the density of calcite. Hereafter, we refer to the major axis as length (l) and the minor axis as width (w).

We calculate several additional parameters including an ellipsoid defined by the coccolith length and width, the thickness (volume/ area), and two shape factor indices. For a given coccolith geometry, a change in the coccolith major-length and width-minor-axis will result in a thickness which covaries with mass. Therefore, thickness could be expected to correlate with coccolith length. In contrast, the shape factor indices are independent of variations in coccolith size.

The shape factor k_s has been defined (Young and Ziveri, 2000) as an estimator of the fraction of a cube of length (l), which is filled with the volume (v) of the coccolith:

$$k_s = \frac{v}{l^3} \quad (1)$$

where for a sphere k_s is 0.52. Many coccoliths are often elliptical, but the major-axis-length has been used in the standard definition of k_s (Young and Ziveri, 2000).

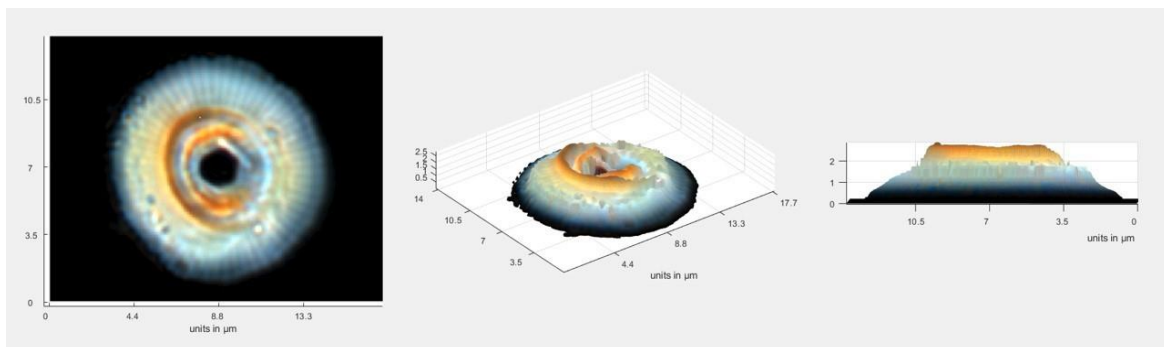
We also calculate a shape factor referenced not to a cubic volume but rather the volume of an ellipsoid defined by the coccolith l and w, (k_{se}) which allow calculation of a shape factor independent of variations in circularity:

$$k_{se} = \frac{v}{\frac{4}{3}\pi \cdot \frac{l}{2} \cdot \left(\frac{w}{2}\right)^2} \quad (2)$$

4. Results and Discussion

4.1 Thickness of Oligocene nannofossils

In the thickest part of the coccolith of the largest *Reticulofenestra*, thicknesses reached 3 microns, spanning the full range of the implemented color calibration (Figure 3). As observed in Figure 3, the thickness maps suggest minor imperfections in preservation and breakage. We examine these in the statistics of data from large populations, which minimizes the influence of these breakages on the estimation of coccolith thickness from sediments of a given age.



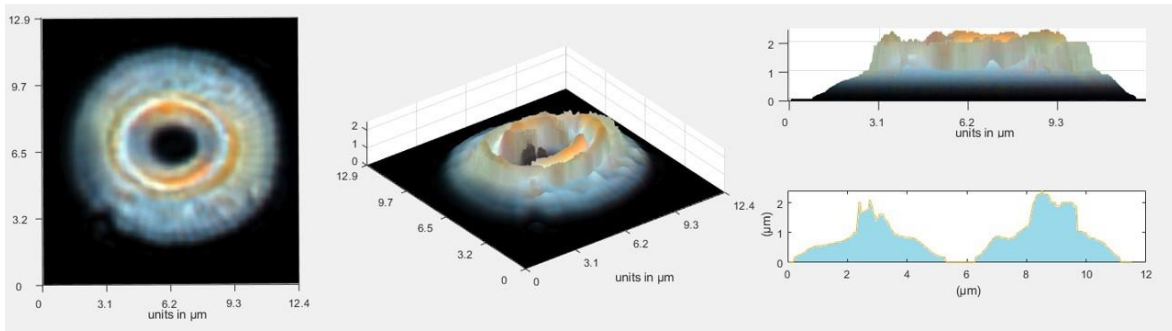
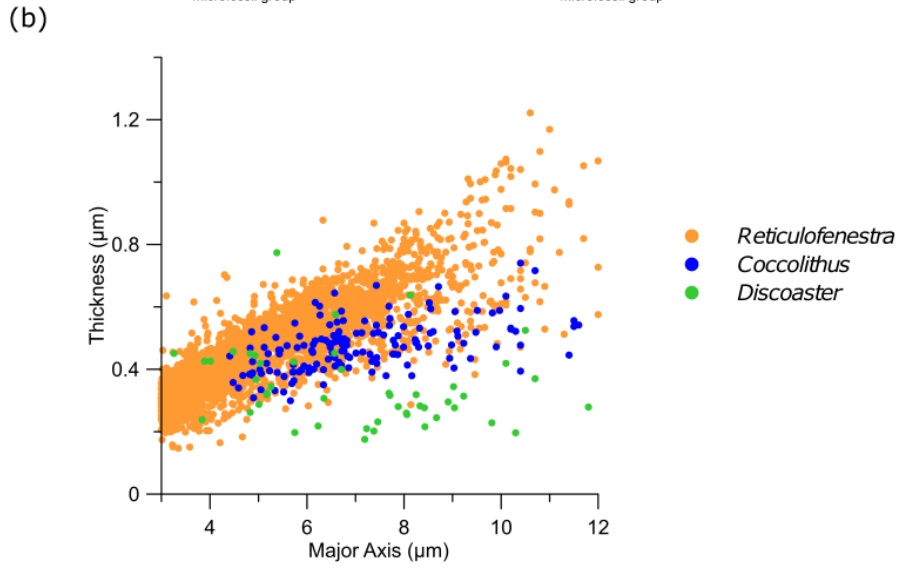
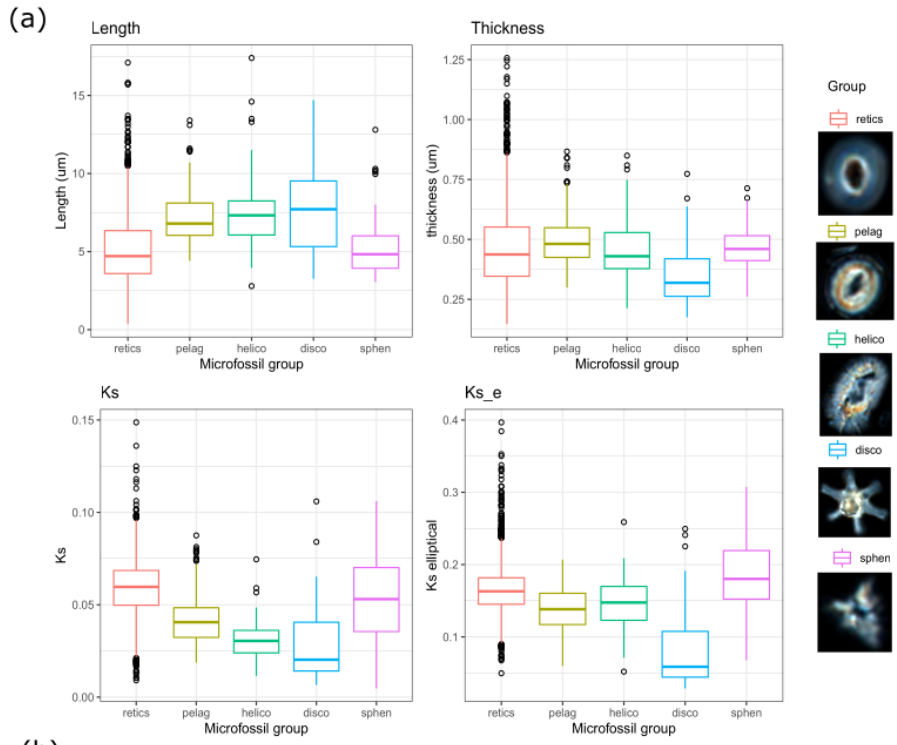
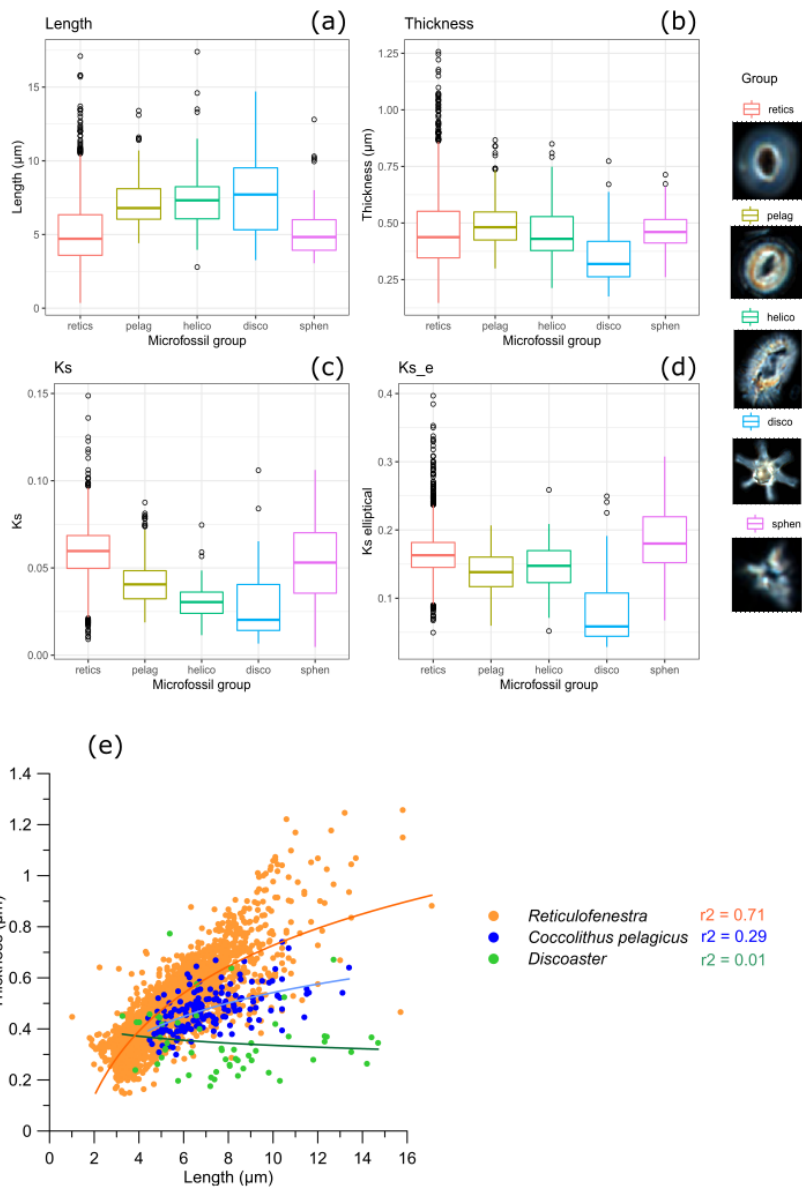


Figure 3. Schemes of large *Reticulofenestra*, which represent the original image of the coccoliths and example reconstructions of total calcite thickness accumulated across the coccolith. Example reconstructions of large *Reticulofenestra*.

Averaged over the entire calcified area of the coccolith, 95% of *Reticulofenestra* coccoliths had thicknesses in the range of 0.26 to 0.72 microns (Figure 4). Among these “reticulofenestrids”, 95% of the coccoliths had major axis length between 3 and 8.6 microns, as expected from a previous study (Gutián et al., 2020). Modern *Reticulofenestra* are generally smaller than those we measured from Oligocene-Early Miocene. A survey of 3600 *Gephyrocapsa spp.* in core top sediments range from 0.9 to 6.2 μm , with the mean lengths at a given site ranging from 1.3 to 4.2 μm , with lengths over 3.5 μm restricted to warmer waters $>22^\circ\text{C}$ (Bollmann, 1997).





205 **Figure 4.** (a) Box and whisker plot showing length (a), thickness (b), and k_s (c) and k_{s_e} (d) for taxa in all samples and thumbnail examples of *Reticulofenestra* (retic), *Coccolithus pelagicus* (pelag), *Helicosphaera* (helico), *Discoaster* (disco) and *Sphenolithus* (sphen). (e) Scatter plot of thickness vs major length axis for all *Reticulofenestra*, *Coccolithus*, and *Discoaster*.

210 The calculated k_s and k_{s_e} values are lower for the placoliths with mixed r- and v- units (*Helicosphaera* and *C. pelagicus*; 0.03 and 0.04, respectively) compared to the *Reticulofenestra* group with r-units comprising the full coccolith (0.06) (Figure 4c, 4de). Similarly, the slope of thickness vs length curve is also lower for *Helicosphaera* spp. and *C. pelagicus* compared to *Reticulofenestra* (Figure 4ee). We suggest that these results are an expected consequence of the crystallographic orientation. Previous estimations of k_s made not from polarized light but from volumes of rotation of SEM cross sections, which are independent of crystallographic orientation, indicate k_s values for recent *C. pelagicus* and *Helicosphaera* spp. (0.06, 0.05, respectively) comparable to or larger than those of modern *Reticulofenestra* (0.02 to 0.05) (Young and Ziveri, 2000). We conclude that the higher k_s in Oligocene to Early Miocene *Reticulofenestra* than in other placoliths reflects the expected underestimation of absolute thickness by polarized light for coccolith genera featuring significant v units. Nannoliths (*Discoaster*, *Sphenolithus*) measured here have no modern or recent counterpart with which to compare the estimated k_s , but likely also have underestimation of thickness. For all these non-*Reticulofenestra* taxa, we suggest that time series in future

215

220

studies be interpreted merely as relative changes in thickness and k_s ~~instead of total accumulated thickness~~. Alternatively, the thickness of the radial central tube may be quantified (Cubillos et al., 2012). In this study, due to the low average number of counted nannoliths and non- *Reticulofenestra* placoliths per sample, we do not interpret time series trends.

4.2 Relationships between calcification and cell size within measured *Reticulofenestra* populations

225 Within each of the 11 Oligocene to Early Miocene populations of *Reticulofenestra* of a given age, there is a large range in
length from ~ 3 to 10 μm . ~~The coccolith thickness increases linearly with the coccolith length in all samples and the slope of
this increase is statistically indistinguishable.~~ In each sample, across ~~the mentioned~~ this range in population length, the k_{se}
remains stable with size, or features a slight increase in k_{se} with decreasing length (Figure 5). ~~Our findings contrast with
reported data from cultures of modern *Reticulofenestra* where the generally larger modern *G. oceanica* coccoliths (4 μm) have
higher k_s than the on average smaller (3 μm) *E. huxleyi* (Bolton et al., 2016). On the other hand, among 6 different extant
genera including *Reticulofenestra* and non-*Reticulofenestra* taxa, k_s calculated from rotational volume in a limited number of
cross sections shows more diverse relationships with length. k_s and length were generally positively correlated across extant
placolith genera over the 3.5 to 7 μm length range with a 2- to 4-fold increase in k_s , whereas the taxa spanning lengths of 7 to
10 μm feature an inverse relationship between k_s and length over a 2-fold range in k_s (Young and Ziveri, 2000). ~~Although
relationship among these parameters appears to be not universal (Young and Ziveri, 2000), our findings contrast with reported
data Ffrom cultures of modern *Reticulofenestra*, where the generally larger modern *G. oceanica* coccoliths (4 μm) have higher
 k_s than the on average smaller (3 μm) *E. huxleyi* (Bolton et al., 2016). On extant But this relationship is not universal (Young
and Ziveri, 2000) and we are aware of no k_s determinations on large populations of extant Noelaerhabdaceae from marine
sediments no previous studies exist with k_s determinations on large populations, because mass, rather than thickness or shape,
is commonly reported (Beaufort et al., 2011). ~~However, for a~~ Among a wide range of extant placolith genera ranging in length
from 3 to 10 μm , there is a trend of 2 to 4 fold higher k_s among larger coccoliths (Young and Ziveri, 2000; Bolton et al., 2016).
Yet, whatever pressure favors an upwards adjustment of k_s with increasing size across modern placolith taxa <7 μm , this factor
was apparently not favoring such an adjustment of k_s within the *Reticulofenestra* across a comparably large range of cell sizes
in the Oligocene.~~~~

245 ~~In our Oligocene samples, the coccolith thickness increases linearly with the coccolith length in all populations and the slope
of this increase is statistically indistinguishable.~~

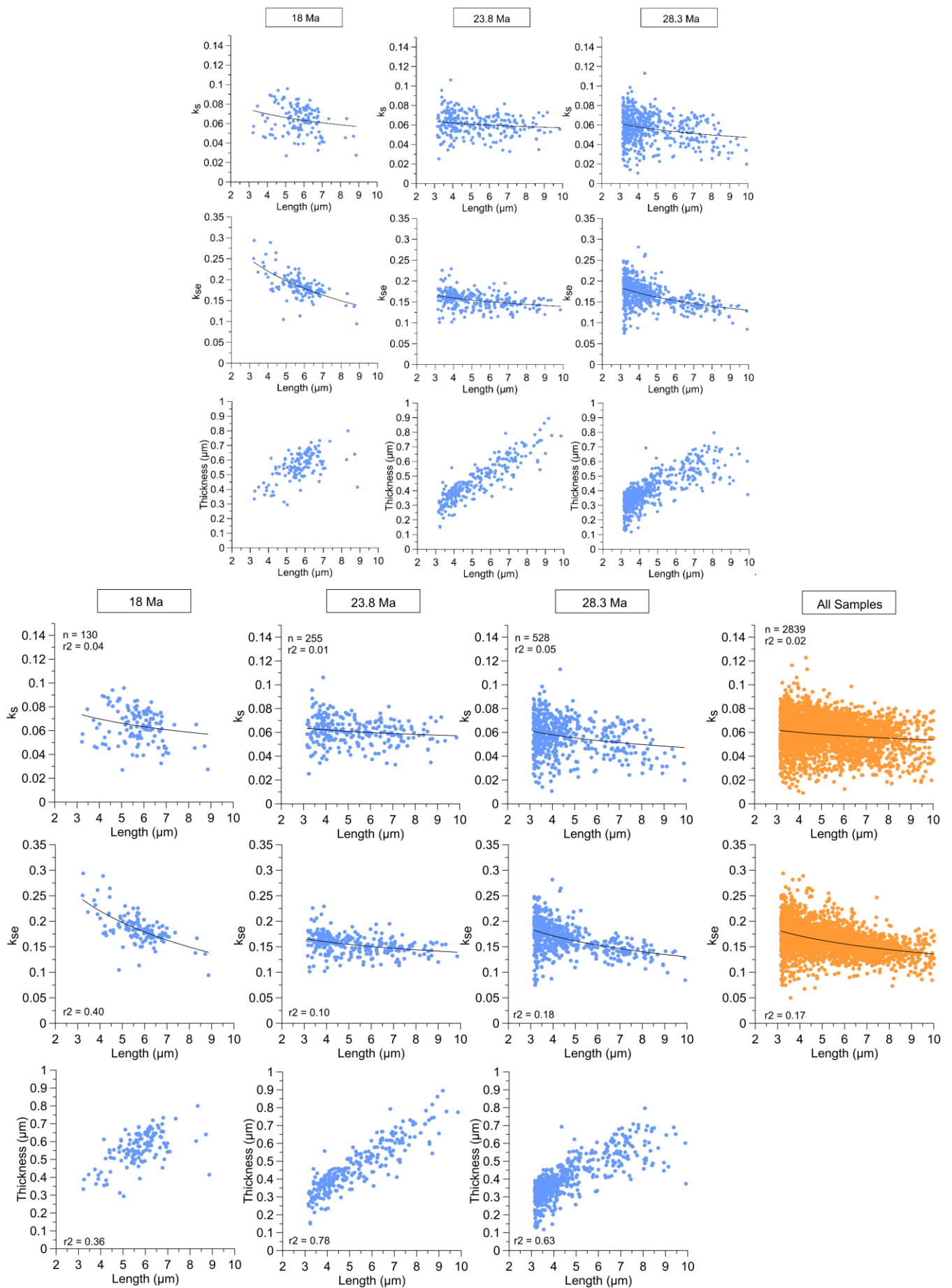


Figure 5. Relationship among k_s , k_{se} and thickness with length (shown from 3 to 10 μm to illustrate a comparable length range for all sites) showing values over 3.15 μm , for “reticulofenestrid” populations from samples of three representative

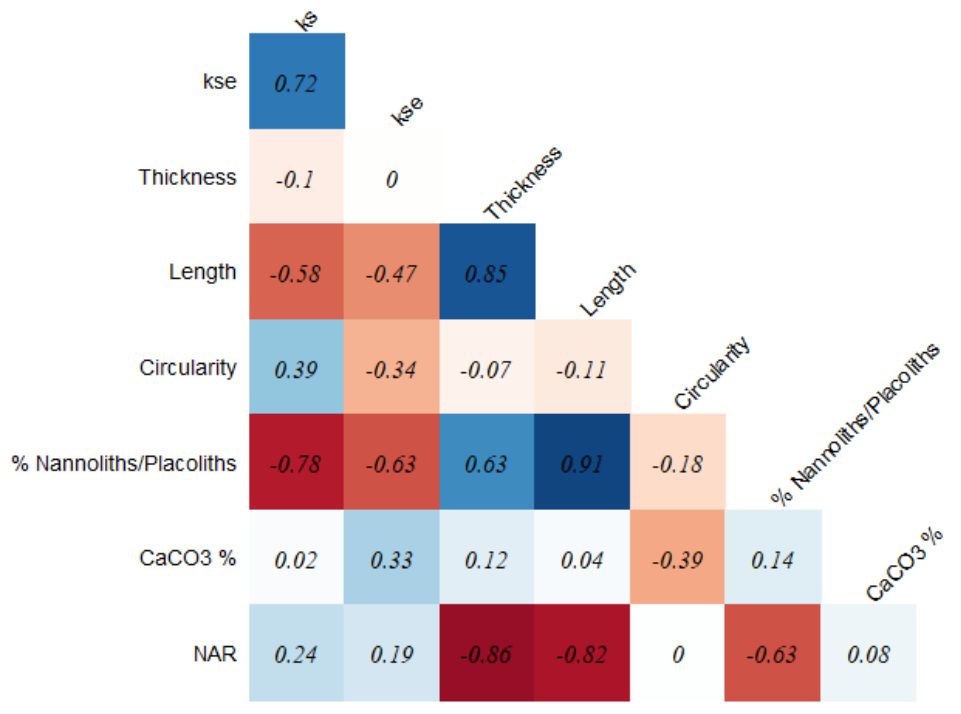
ages and the total over all samples (note than the relationship between thickness and length for all samples is shown in Figure 4).

4.3 Indicators of coccolith calcification and relationship to preservation

To evaluate temporal trends through the Oligocene to Early Miocene, we assess the median morphometric parameters of each of the 11 analyzed samples (Table S1). We examine the median as an index which is very insensitive to outliers. The median differs little from the mean, and the large (>200) populations examined yield relatively narrow confidence intervals around the mean.

The median shape factor calculated relative to a cube (k_s) and the shape factor calculated relative to an ellipsoid (k_{se}) are highly, but imperfectly correlated (Table 2 Figure 6; $r=0.7672$), suggesting that the k_s is influenced by changes in the degree of circularity of the coccoliths over the sample set. Consequently, hereafter we rely predominantly on the k_{se} metric.

Because of significant temporal trends in the size of “reticulofenestrads” (Gutián et al., 2020), temporal variations in the thickness of coccoliths may reflect changes in population mean size. The temporal variations in thickness are uncorrelated with the shape factors k_s or k_{se} ($r < 0.195$ and $p > 0.1$), suggesting different controls on the two indices. Trends in thickness of the whole size population are dominantly an expression of changing coccolith length; the temporal changes in thickness are highly correlated ($r=0.85$) with variation in the coccolith length. Even when considering only the population of coccoliths with lengths between 3.5 and 4.5 μm , the temporal trend in thickness still shows significant modest correlation (Table S2, $r=0.63$) with the length. For this subset the common effect of shape on thickness is evident: across the samples from 11 age intervals, the median thickness of coccoliths is significantly modestly correlated with the median k_{se} (Table S2, $r=0.78$), and strongly correlated ($r=0.81$) with the k_{se} of the full population of coccoliths.



|

Table 2. Cross correlation of temporal changes in median geometrical indicators for the 11 studied intervals.

Figure 6. Cross correlation of temporal changes in median geometrical indicators for the 11 studied intervals.

Because of significant temporal trends in the size of “reticulofenestrids” (Gutián et al., 2020), temporal variations in the thickness of coccoliths may reflect changes in population mean size. The temporal variations in thickness are uncorrelated with the shape factors k_s or k_{se} ($r < |0.05|$ and $p > 0.1$), suggesting different controls on the two indices. Trends in thickness of the whole size population are dominantly an expression of changing coccolith length; the temporal changes in thickness are highly correlated ($r=0.85$) with variation in the coccolith length. Even when considering only the population of coccoliths with lengths between 3.5 and 4.5 μm , the temporal trend in thickness still shows significant modest correlation ($r=0.63$) with the length. For this subset the common effect of shape on thickness is evident: the thickness of coccoliths is modestly correlated with the k_{se} , and strongly correlated ($r=0.81$) with the k_s of the full population of coccoliths.

Several factors may contribute to temporal changes in k_{se} : (a) the primary coccolith biomineralization, (b) secondary dissolution that might reduce the coccolith thickness or preferentially dissolve small coccoliths, and (c) secondary overgrowth which might increase coccolith thickness. Because the carbonate content is low at IODP Site 1406 due to the high detrital clay and silt components, preservation of nannofossils is generally excellent (Norris et al., 2014), with no significant overgrowth described. In pelagic settings, low CaCO_3 % can be an indicator of dissolution, and a positive correlation between the k_{se} and CaCO_3 content of sediment might be expected if dissolution were a significant control on both parameters, or if higher CaCO_3 content in sediment conditions greater diagenetic overgrowth. We find no significant correlation between the k_{se} and CaCO_3 content (Table 2 Figure 6). However, the CaCO_3 ranges only between 35% and 46% in our examined samples, and these minor variations may be controlled not by dissolution but rather by dilution with detrital minerals, from either lateral transport or rivers draining to the shelf. Nannofossil Accumulation Rate (NAR) is inversely correlated with thickness but not k_{se} . The inverse correlation of NAR is also inversely correlated with and length suggesting a lower accumulation rate that NAR is driven by the coccolith size (lower accumulation rate when large cells dominate the population). We suggest that for IODP Site 1406 sediments, the nannofossil assemblage may be the most robust dissolution indicator, because nannoliths such as *Discoaster* and *Sphenolithus* are more dissolution resistant than placoliths like *Reticulofenestra* and *Coccolithus* (Gibbs et al., 2004). The following nannoliths/placolith ratio was calculated:

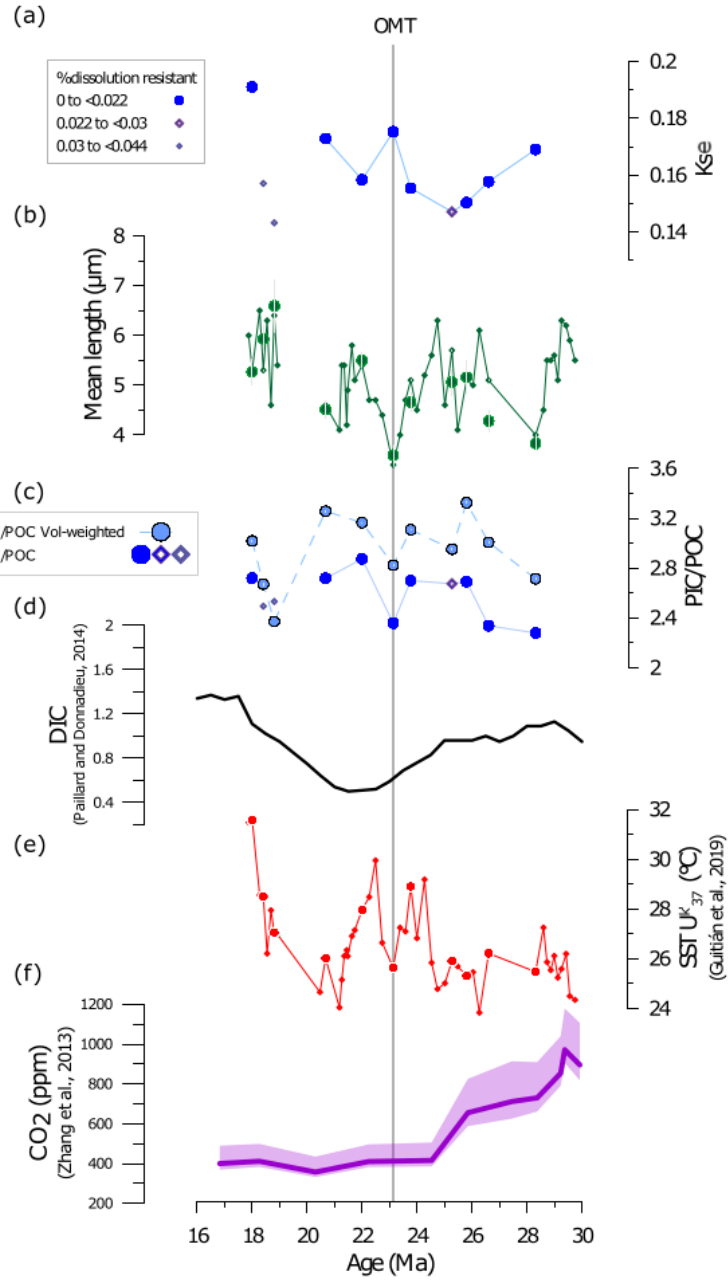
$$\frac{\% \text{Sphenolithus} + \% \text{Discoaster}}{\% \text{Reticulofenestra} + \% \text{Coccolithus}} \quad (3)$$

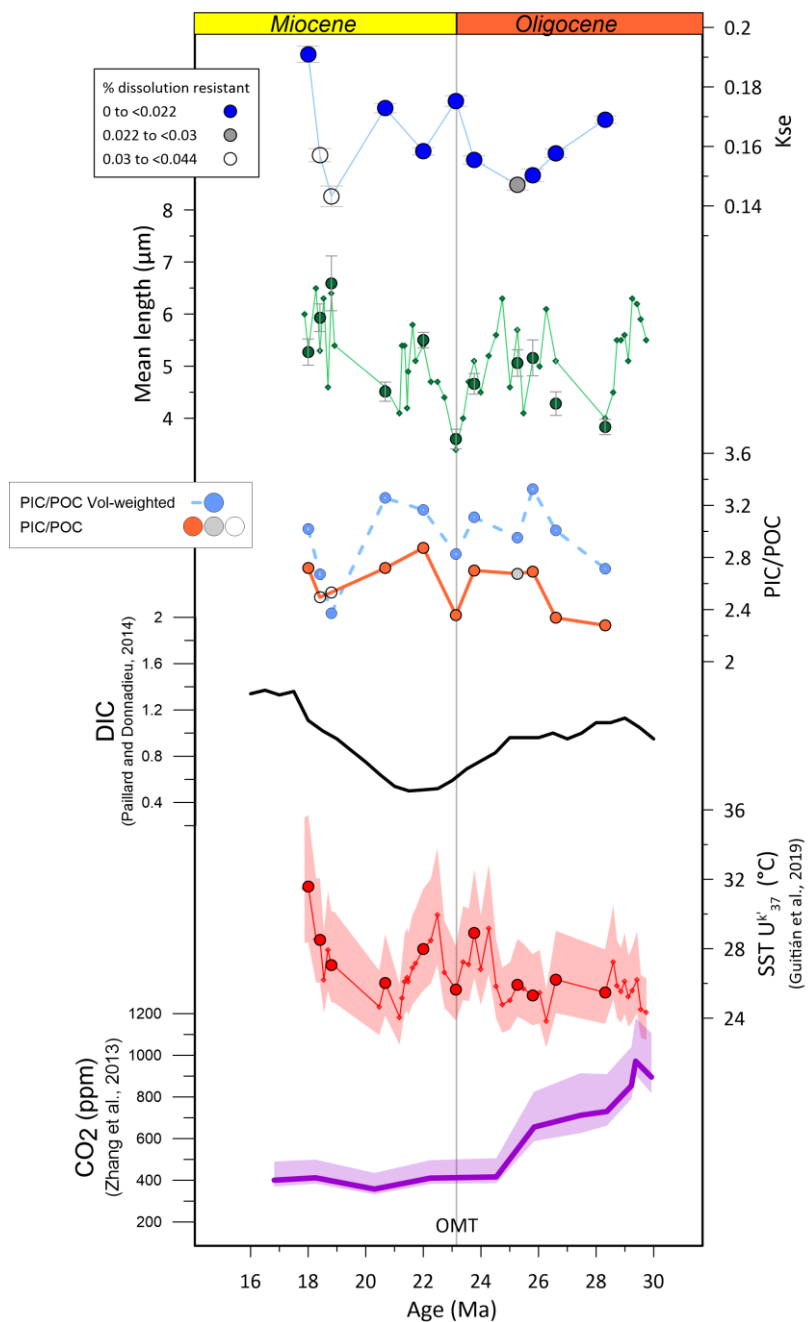
This ratio is strongly inversely correlated with the k_{se} (Table 2 Figure 6; $r = -0.63$) indicating high relative abundance of nannoliths coincides with reduced calcification volume, potentially consistent with increased dissolution thinning coccoliths. The highest nannolith/placolith ratio, and most intense dissolution, is inferred from the Early Miocene (here 18.4 to 18.8 Ma on the timescale of Gutián et al. (2019). This interval has been recognized as a significant hiatus in carbonate rich pelagic sections globally, inferred to reflect a global dissolution event (Sibert and Rubin, 2021). We therefore cautiously consider most robust the temporal variations in coccolith thickness which occur in samples with low relative abundance of nannoliths (e.g. $< 2\%$; for which the correlation between nannoliths percent and k_{se} becomes insignificant).

4.4 Temporal trends in *Reticulofenestra* calcification and relationship to environmental factors

The k_{se} decrease during the oldest three samples s—from Early to Mid-Oligocene, then from there, and excluding from consideration the samples suspected as affected significantly by rejecting the low resistant samples to dissolution, values appear to progressively increase to attain 30% greater k_{se} in the Early Miocene 18 Ma sample (Figure 67). The Oligocene-

Miocene Transition (23 Ma) exhibits a local maximum in k_{se} . The Middle Oligocene minimum k_{se} coincide with the lowest $U_{37}^{k'}$ Sea Surface Temperature (SST) (Gutián et al., 2019), but overall there is not a strong correlation between k_{se} and SST ($r=0.46$); for example similar low SST in the Early Miocene around 20 Ma coincide with significantly a higher k_{se} value. These changes in k_{se} reflect changes in the $CaCO_3$ content of coccoliths, which are not dependent on size scaling of the lith or cell.





320 **Figure 67.** Temporal trend in *Reticulofenestra* median coccolith k_{se} vs other morphological and environmental parameters. (a) Median *Reticulofenestra* k_{se} . Symbols are coded to indicate the relative abundance of dissolution resistant nannofossils, with largest-filled blue symbols denoting the populations which may be least affected by dissolution; (b) Length of samples examined in this study (median, large green symbol) and mean size in a higher resolution previously published (Gutián et al., 2019, 2020) in small symbols; (c) Estimated PIC/POC ratio for the assumptions described in the text. The darker symbol indicates the calculation for the median thickness and length, with filled orange symbols size-coded to indicate for the higher relative abundance of dissolution resistant nannofossils. The light blue symbol and line color denotes the estimated population PIC/POC which is weighted by the size distribution as discussed in Gutián et al., (2020); (d) Estimated ocean DIC concentration from Paillard and Donnadieu, (2014); (e) Sea surface temperature (SST) estimated from alkenone unsaturation index, from Gutián et al., (2019); (f) Estimated atmospheric CO₂ from Zhang et al., (2013).

330 The factors driving changes in k_{se} remain under investigation from a variety of approaches that bear on different aspects of calcification, considering both the organism level factors promoting calcification to the ecosystem scale costs and benefits of calcification. At the organism level, from an experimental manipulation approach, culture experiments examine the response

of clonal strains to a range of potential variables, which may be individually manipulated. Meta-analysis of a wide array of *E. huxleyi* culture experiments suggests that high pH and high HCO_3^- concentration both stimulate higher calcification rates (Bach et al., 2015); calcification rate is dependent on the cell division rate as well as the degree of cellular calcification. Consistent with this evidence, the degree of calcification, expressed as calcite per cell surface area, at constant $\text{CO}_{2[\text{aq}]}$, increased with both increasing pH and increased alkalinity in culture experiments of *E. huxleyi* (Bach et al. (2015); see Figure S9 in Bolton et al. (2016)). One potential caveat is that the morphology of different coccolith strains differs, and if the morphology of coccoliths is genetically controlled, such experiments may exhibit more limited plasticity compared to that observed in diverse populations in which selection also influences calcification. From isotopic tracers and observation of long-term decline in cellular calcification and CO_2 over the last 14 million years, it has been proposed that when $\text{CO}_{2[\text{aq}]}$ is limiting, calcification may be reduced because there may be a competitive reallocation of HCO_3^- from calcification to carbon concentrating mechanisms supporting photosynthesis (Bolton et al., 2016). However, the potential role for changing dissolved inorganic carbon (DIC) or HCO_3^- concentrations was not independently constrained in this study. Collectively, these previous culture and Miocene to present observations -studies generally suggest that higher k_{se} values may be favored by higher seawater pH, and/or higher DIC or HCO_3^- , and/or higher $\text{CO}_{2[\text{aq}]}$. Alkenone-based $p\text{CO}_2$ records have suggested a $p\text{CO}_2$ decline from the Early Oligocene to the Early Miocene (Zhang et al., 2013), so the general increase in k_{se} is not consistent with direct forcing by increased $p\text{CO}_2$ -according to published $p\text{CO}_2$ proxies (Figure 76). Estimates of seawater pH from boron isotopes do not span this Oligocene interval (Rae et al., 2021) so cannot be used to test if an increase in seawater pH coincides with increased k_{se} . Estimations of DIC from the amplitude of deep ocean carbon isotopes are low resolution and suggest minimum DIC in the latest Oligocene and an increase into the Early Miocene, only partially matching the trends in thickness data (Paillard and Donnadieu, 2014).

At the ecosystem scale, the advantages and costs of calcification may also exert selective pressure on the k_{se} . High calcification is a potential cost for large coccolithophores sinking out of the euphotic zone in weakly mixed environments (Monteiro et al., 2016). The large (7-9 μm of length) Oligocene *Reticulofenestra* have k_s in the range of 0.06, similar to modern k_s (0.06 to 0.08) calculated for large *Coccolithus pelagicus* or *Calcidiscus leptoporus* (Young and Ziveri, 2000). -This suggests a similar range of sinking velocities. -It is possible that temporal changes in stratification and mixing intensity in the surface waters at the IODP Site 1406 location in the Oligocene to eEarly Miocene could have contributed to temporal changes in k_{se} . However, at this time we do not have independent proxy for water column stratification changes over time to test this hypothesis. The large (7-9 μm of major axis length) Oligocene *Reticulofenestra* have k_s in the range of 0.06, similar to modern k_s (0.06 to 0.08) calculated for large *Coccolithus pelagicus* or *Calcidiscus leptoporus* (Young and Ziveri, 2000), suggestive of similar sinking velocities and hence similar behavior.

Finally, we examine the temporal variation in k_{se} in the context of inferred variation in lith and cell size (Figure 78). A null hypothesis is that size does not affect shape; i.e. the coccolith of a given shape has an identical k_s or k_{se} regardless of length. However, adaptation of cells to the biological advantages and disadvantages of larger or smaller sizes and concomitant changes in surface area to volume ratios may entail adaptation of the degree of calcification, which may be manifest as a trend in k_{se} with size. Comparing the median k_{se} and length of each of the 11 samples, we observe a general decrease in k_{se} with an increase in mean length (Figure 7e8c); with the 18 Ma as clear exception. This relationship suggests that populations with larger cells have decreased the degree of calcification. Previously, coccolith length in this site was hypothesized to respond directly to the CO_2 selective pressure, with larger coccoliths and cell sizes facilitated by higher CO_2 concentrations (Gutián et al., 2020). If this interpretation is correct, it might imply decreased calcification under periods of higher CO_2 , but a more rigorous evaluation would require a direct $p\text{CO}_2$ indicator.

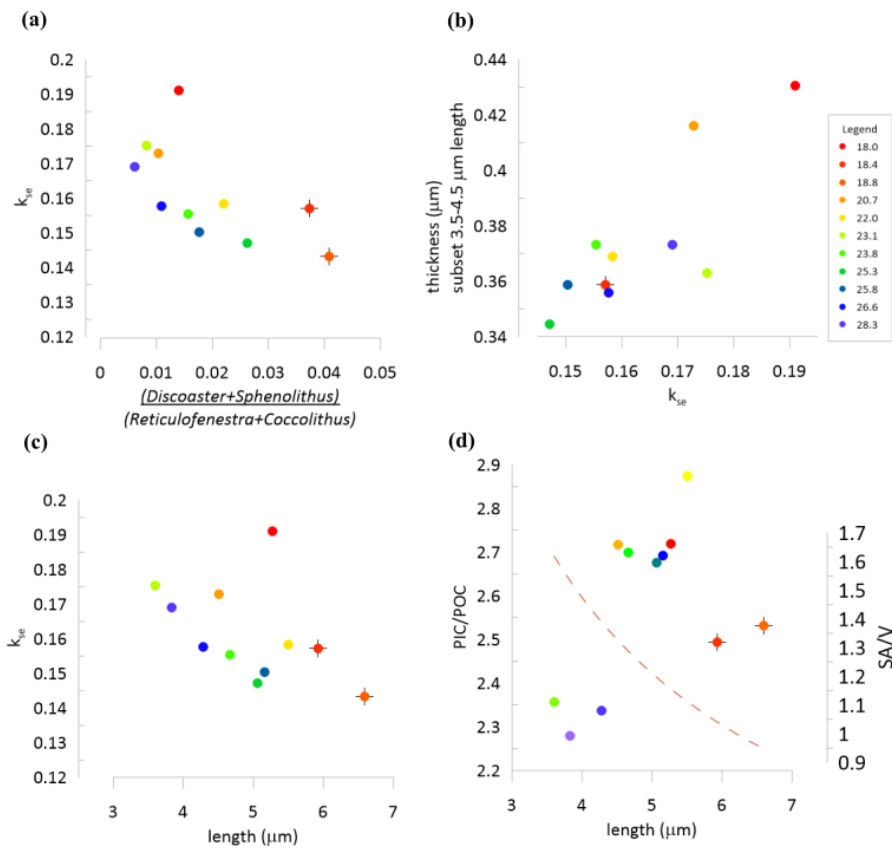


Figure 78. Relationship among median “reticulofenestrads” morphological parameters of the 11 populations examined. (a) Relative abundance of dissolution resistant taxa vs. *Reticulofenestra* k_{se} ; (b) median thickness of all *Reticulofenestra* with length between 3.5 and 4.5 microns, and the k_{se} ; (c) median k_{se} vs median length; (d) estimated PIC/POC ratio for the assumptions described in the text, vs length. The dashed brown line indicates the decrease in surface area to volume (SA/V) ratio of a spherical cell corresponding to the diameter estimated from the median lith length. In all panels, the symbol color indicates the age of examined sediment. The black cross beneath the symbol indicate samples with dissolution resistant taxa exceeding 3%.

4.5 Implication of variable PIC/POC ratio of dominant coccolithophores

We evaluate whether data on the coccolith thickness and shape factor can be used to estimate temporal trends in the ratio of particulate inorganic (calcite) carbon to organic carbon (PIC/POC) of coccolithophores. The PIC/POC ratio is surmised to be important factor determining the role of coccolith export fluxes in the ocean’s carbon cycle (Barker et al., 2003). Additionally, it has been proposed to be an important factor in the interpretation of coccolithophore-derived geochemical proxies (McClelland et al., 2017). It is difficult to estimate the PIC/POC from fossil assemblages in which coccoliths are almost universally detached from the coccosphere, but we examine possible constraints.

Because coccolithophores are not characterized by large vacuoles, the organic carbon quota can be estimated from the cell volume, in turn estimated from coccolith length. Here, we apply the formula to estimate cell diameter from coccolith length (Henderiks, 2008):

$$Diameter = 0.55 + 0.88 * length \quad (4)$$

We employ the regression for organic carbon from:

$$POC = 0.284 * volume^{0.875} \quad (5)$$

395 Generally, as cell size increases in a given genera, it is the size of the coccoliths, rather than the number of liths per cell, which increases (Henderiks, 2008). Consequently, if the number of coccoliths per cell were relatively constant on fossil *Reticulofenestra*, then the PIC per cell would be the product of the mass of each individual coccolith and the number of coccoliths per cell. This is consistent with the correlation of coccolith thickness and PIC/cell in cultures of extant coccolithophores (Bolton et al., 2016). Our absolute values of PIC per cell are derived from assuming 12 coccoliths per cell, within the range of extant *Gephyrocapsa*, but use of a different number would not change the trends. In this way, we estimate
400 the trend of variation in median PIC/POC ratios resulting from the variation in inferred cell size and coccolith mass (Figure 67). Additionally, to give account for the disproportionate impact of larger cells on the population, we also calculate a cell volume-weighted median PIC/POC as was previously done for coccolith mean length (Gutián et al., 2020).

405 According to this estimation, the variations in *Reticulofenestra* PIC/POC were modest, ranging from 2.28 to 2.87, indicating 26% higher PIC/POC in the Early Miocene than in Middle Oligocene. Lowest PIC/POC is inferred for the cold periods of the Middle Oligocene Glacial Interval and the OMT (Figures 6-7 & 78). Among the populations featuring limited dissolution (% nannolith/placolith $\leq 2.2\%$), the mean estimated PIC/POC correlates positively with major axis length. If covered by a uniform thickness of calcite, larger cells would have a lower (PIC/POC), owing to the 30% decrease in cell surface area to volume ratios over this cell diameter range, a response observed in some clonal culture experiments in which coccolith morphology varies little (Bolton et al., 2016). These results highlights that coccolith thickness estimates, in addition to cell diameter, is
410 required to predict PIC/POC ratios of fossil communities.

5. Conclusions

We implement a precise and reproducible calibration routine in the C-Calcita software to enable robust estimations of coccolith thickness over the range 0 to 3.1 microns, the largest calibration range of any technique yet reported. This approach can be applied to any microscope configuration with circular polarization when a suitable range of calibration points is defined on a calcite wedge.
415

Application of this method provides the first evaluation of the thickness and shape factor of coccoliths from the Oligocene to Early Miocene. In this age interval, we find that median thickness is highly correlated with coccolith length, and we adopt the elliptical shape factor (k_{se}) as a metric which more accurately describes the differences in the degree of calcification of a coccolith of given length. The k_{se} is inversely correlated with the relative abundance of dissolution resistant nannoliths, suggesting that greater dissolution may lead to partial dissolution of coccoliths and lower shape factors. Therefore, we suggest
420 that future evaluations of coccolith thickness and k_{se} should include assessment of variation in dissolution intensity. By comparing k_{se} among samples which likely experienced similar dissolution intensity, this study highlights for the first time a significant evolution in the degree of calcification of coccolithophores of given sizes. We identify the Middle Oligocene was characterized by the lowest k_{se} and the late Early Miocene was characterized by the highest k_{se} . While the Miocene peak is coincident with the maximum in inferred ocean DIC concentration, the long term trend appear to correlate with size decrease,
425 and not in agreement with the existing DIC or $CO_{2[aq]}$ variation, thus a relationship worth further exploration.

Data availability

Data generated for this study is presented in Table S1 and ~~will be uploaded to~~ [stored at Zenodo public repository](https://doi.org/10.5281/zenodo.6341696) ~~during the review process~~ (<https://doi.org/10.5281/zenodo.6341696>).

430 Acknowledgments

Sediment samples were provided by the Ocean Drilling Program (ODP). Authors thank Remy Lüchinger from ETH Zurich for calcite wedge manufacturing. This study was supported by the Swiss National Science Foundation (Award 200021_182070 to Heather Stoll).

Author contributions

435 MA developed the algorithms, implemented them in C-Calcita and applied them to classified coccoliths. JG prepared and calibrated the calcite wedge, prepared slides, took images and classified coccoliths for processing. IH oversaw processing of some additional samples, assisted with statistics and elaboration of figures. HS conceived of the calcite wedge calibration, interpreted the morphometric data resulting from the application of the algorithm. HS and JG wrote the paper with input of text from MA and feedback from all authors.

440 Competing interests

The authors declare that they have no conflict of interest.

Bibliography

- Alcantarilla, P. F., Bartoli, A., and Davison, A. J.: KAZE features, European conference on computer vision, 214-227,
- 445 Bach, L. T., Riebesell, U., Gutowska, M. A., Federwisch, L., and Schulz, K. G.: A unifying concept of coccolithophore sensitivity to changing carbonate chemistry embedded in an ecological framework, *Progress in Oceanography*, 135, 125-138, 2015.
- Barker, S., Higgins, J. A., and Elderfield, H.: The future of the carbon cycle: review, calcification response, ballast and feedback on atmospheric CO₂, *Philosophical Transactions of the Royal Society of London. Series A: Mathematical, Physical and Engineering Sciences*, 361, 1977-1999, 2003.
- 450 Beaufort, L.: Weight estimates of coccoliths using the optical properties (birefringence) of calcite, *Micropaleontology*, 51, 289-297, 2005.
- Beaufort, L., Gally, Y., Suchéras-Marx, B., Ferrand, P., and Duboisset, J.: A universal method for measuring the thickness of microscopic calcite crystals, based on Bidirectional Circular Polarization, *Biogeosciences*, 18, 775-785, 2021.
- 455 Beaufort, L., Probert, I., de Garidel-Thoron, T., Bendif, E. M., Ruiz-Pino, D., Metzl, N., Goyet, C., Buchet, N., Coupel, P., and Grelaud, M.: Sensitivity of coccolithophores to carbonate chemistry and ocean acidification, *Nature*, 476, 80-83, 2011.
- Bollmann, J.: Morphology and biogeography of *Gephyrocapsa* coccoliths in Holocene sediments, *Marine Micropaleontology*, 29, 319-350, 1997.
- Bollmann, J.: Weight approximation of coccoliths using a circular polarizer and interference colour derived retardation estimates—(The CPR Method), *Biogeosciences*, 11, 1899-1910, 2014.
- 460 Bolton, C. T., Hernandez-Sanchez, M. T., Fuertes, M. A., Gonzalez-Lemos, S., Abrevaya, L., Mendez-Vicente, A., Flores, J. A., Probert, I., Giosan, L., Johnson, J., and Stoll, H. M.: Decrease in coccolithophore calcification and CO₂ since the middle Miocene, *Nat Commun*, 7, 10284, 10.1038/ncomms10284, 2016.
- Cubillos, J. C., Henderiks, J., Beaufort, L., Howard, W. R., and Hallegraeff, G. M.: Reconstructing calcification in ancient coccolithophores: Individual coccolith weight and morphology of *Coccolithus pelagicus* (sensu lato), *Marine Micropaleontology*, 92, 29-39, 2012.
- 465 Dedert, M., Stoll, H., Kars, S., Young, J. R., Shimizu, N., Kroon, D., Lourens, L., and Ziveri, P.: Temporally variable diagenetic overgrowth on deep-sea nanofossil carbonates across Palaeogene hyperthermals and implications for isotopic analyses, *Marine Micropaleontology*, 107, 18-31, 2014.
- 470 Flores, J. and Sierro, F.: Revised technique for calculation of calcareous nanofossil accumulation rates, *Micropaleontology*, 321-324, 1997.
- Fuertes, M.-Á., Flores, J.-A., and Sierro, F. J.: The use of circularly polarized light for biometry, identification and estimation of mass of coccoliths, *Marine Micropaleontology*, 113, 44-55, 2014.
- Gibbs, S. J., Shackleton, N. J., and Young, J. R.: Identification of dissolution patterns in nanofossil assemblages: A high-resolution comparison of synchronous records from Ceara Rise, ODP Leg 154, *Paleoceanography*, 19, 2004.
- 475 González Lemos, S., Guitián, J., Fuertes, M.-Á., Flores, J.-A., and Stoll, H. M.: An empirical method for absolute calibration of coccolith thickness, *Biogeosciences*, 15, 2018.

- Gutián, J., Dunkley Jones, T., Hernández-Almeida, I., Löffel, T., and Stoll, H. M.: Adaptations of coccolithophore size to selective pressures during the Oligocene - Early Miocene high CO₂ world, *Paleoceanography and Paleoclimatology*, n/a, e2020PA003918, <https://doi.org/10.1029/2020PA003918>, 2020.
- 480 Gutián, J., Phelps, S., Polissar, P. J., Ausín, B., Eglinton, T. I., and Stoll, H. M.: Midlatitude Temperature Variations in the Oligocene to Early Miocene, *Paleoceanography and Paleoclimatology*, 34, 1328-1343, 2019.
- Henderiks, J.: Coccolithophore size rules—reconstructing ancient cell geometry and cellular calcite quota from fossil coccoliths, *Marine micropaleontology*, 67, 143-154, 2008.
- 485 Henderiks, J. and Pagani, M.: Coccolithophore cell size and the Paleogene decline in atmospheric CO₂, *Earth and Planetary Science Letters*, 269, 576-584, 2008.
- Johnsen, S. L. and Bollmann, J.: Segmentation, retardation and mass approximation of birefringent particles on a standard light microscope, *Journal of Microscopy*, 280, 30-50, 2020.
- McClelland, H., Bruggeman, J., Hermoso, M., and Rickaby, R.: The origin of carbon isotope vital effects in coccolith calcite, *Nature communications*, 8, 1-16, 2017.
- 490 Monteiro, F. M., Bach, L. T., Brownlee, C., Bown, P., Rickaby, R. E., Poulton, A. J., Tyrrell, T., Beaufort, L., Dutkiewicz, S., and Gibbs, S.: Why marine phytoplankton calcify, *Science Advances*, 2, e1501822, 2016.
- Norris, R., Wilson, P., and Blum, P.: Proceedings of the Integrated Ocean Drilling Program Exp. 342, College Station, TX: Integrated Ocean Drilling Program, <https://doi.org/10.2204/iodp.proc.342.107.2014>, 2014.
- 495 Paillard, D. and Donnadieu, Y.: A 100 Myr history of the carbon cycle based on the 400 kyr cycle in marine $\delta^{13}\text{C}$ benthic records, *Paleoceanography*, 29, 1249-1255, 2014.
- Rae, J. W., Zhang, Y. G., Liu, X., Foster, G. L., Stoll, H. M., and Whiteford, R. D.: Atmospheric CO₂ over the Past 66 Million Years from Marine Archives, *Annual Review of Earth and Planetary Sciences*, 49, 2021.
- Rost, B. and Riebesell, U.: Coccolithophores and the biological pump: responses to environmental changes, in: *Coccolithophores*, Springer, 99-125, 2004.
- 500 Sibert, E. C. and Rubin, L. D.: An early Miocene extinction in pelagic sharks, *Science*, 372, 1105-1107, 2021.
- Siesser, W.: Calcareous nannoplankton, *Fossil Prokaryotes and Protists*, 169-202, 1993.
- Young, J. R.: Neogene nannofossils, *Calcareous Nannofossil Biostratigraphy*. Kluwer Academic, Dordrecht, 225, 265, 1998.
- Young, J. R. and Ziveri, P.: Calculation of coccolith volume and its use in calibration of carbonate flux estimates, *Deep sea research Part II: Topical studies in oceanography*, 47, 1679-1700, 2000.
- 505 Young, J. R., Henriksen, K., and Probert, I.: Structure and morphogenesis of the coccoliths of the CODENET species, in: *Coccolithophores*, Springer, 191-216, 2004.
- Young, J. R., Didymus, J. M., Brown, P. R., Prins, B., and Mann, S.: Crystal assembly and phylogenetic evolution in heterococcoliths, *Nature*, 356, 516-518, 1992.
- 510 Zhang, Y. G., Pagani, M., Liu, Z., Bohaty, S. M., and Deconto, R.: A 40-million-year history of atmospheric CO₂, *Philos Trans A Math Phys Eng Sci*, 371, 20130096, [10.1098/rsta.2013.0096](https://doi.org/10.1098/rsta.2013.0096), 2013.