

**Spatial and temporal variation of ^{13}C signature of methane emitted from a temperate mire:
Methanogenesis, methanotrophy, and hysteresis**

Janne Rinne^{1,2}, Patryk Łakomiec¹, Patrik Vestin¹, Joel D. White¹, Per Weslien³, Julia Kelly⁴,
Natascha Kljun⁴, Lena Ström¹, Leif Klemedtsson³

- 1) Lund University, Department of Physical Geography and Ecosystem Science, Lund, Sweden
- 2) Natural Resources Institute Finland, Production Systems, Helsinki, Finland
- 3) University of Gothenburg, Department of Earth Sciences, Gothenburg, Sweden
- 4) Lund University, Centre for Environmental and Climate Science, Lund, Sweden

Supplementary material

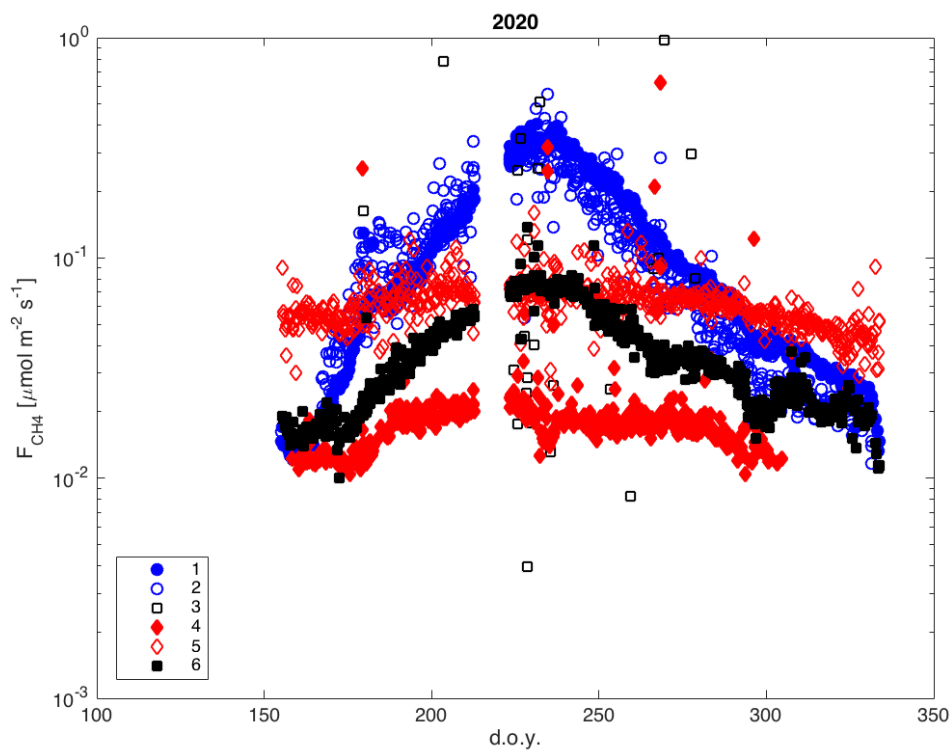
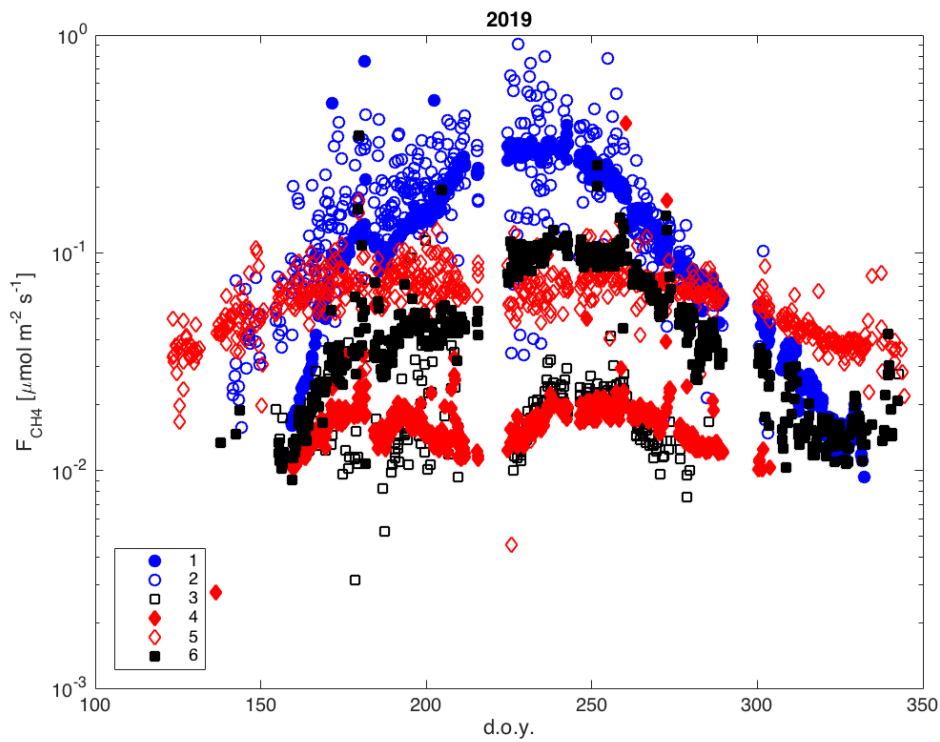


Figure S1: Methane emission from individual chamber closures in 2019 and 2020. Chamber numbers are indicated by different markers.

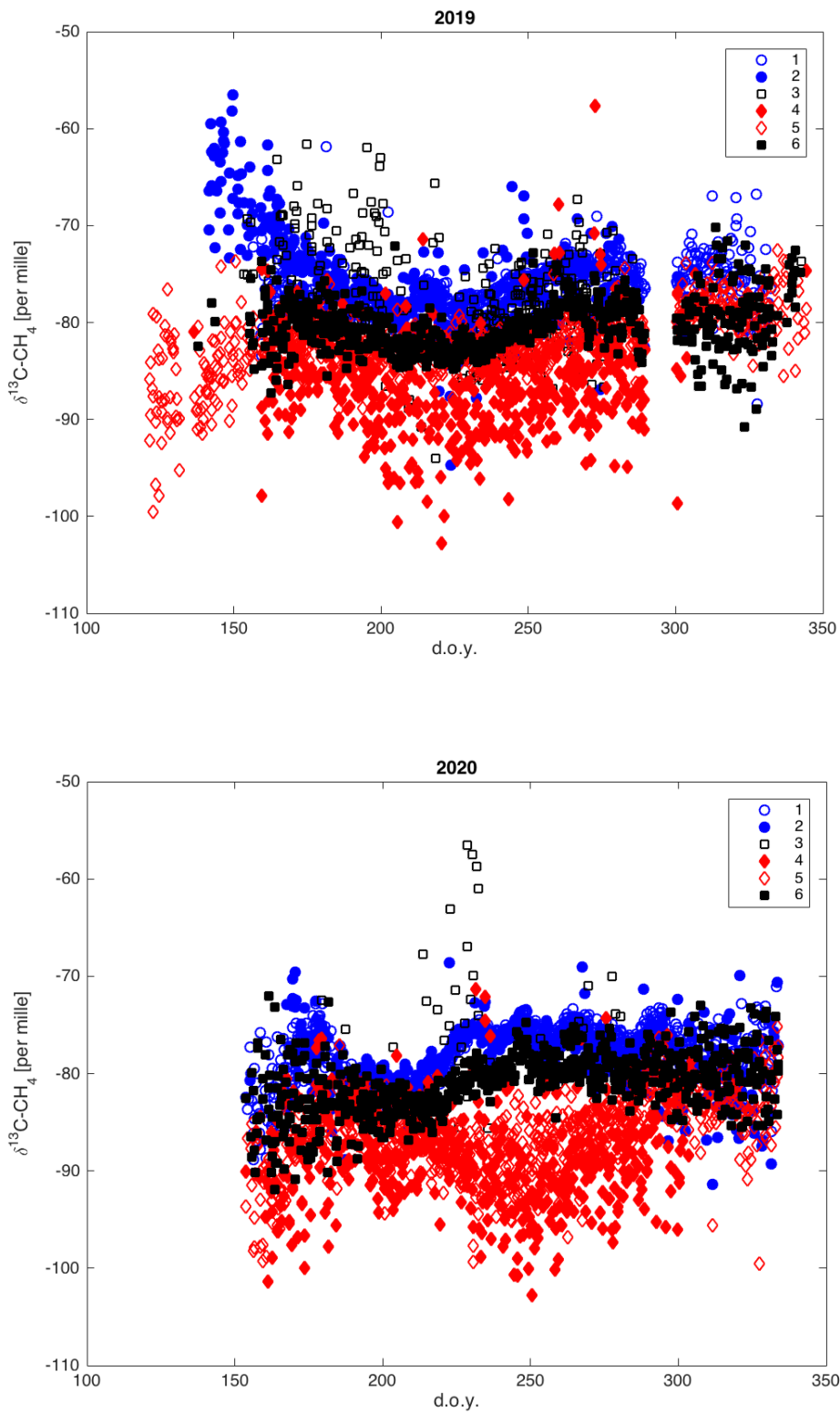


Figure S2: ^{13}C signature of emitted methane from individual chamber closures in 2019 and 2020. Chamber numbers are indicated by different markers.