

Acidification impacts and acclimation potential of Caribbean benthic foraminifera assemblages in naturally discharging low-pH water

Daniel François^{1,a,*}, Adina Paytan², Olga Maria Oliveira de Araújo³, Ricardo Tadeu Lopes³, Cátia Fernandes Barbosa¹

¹Departamento de Geoquímica, Universidade Federal Fluminense, Niterói, Brazil.

²Institute of Marine Sciences – University of California, Santa Cruz, USA.

³Federal University of Rio de Janeiro (UFRJ), Nuclear Instrumentation Laboratory, Nuclear Engineering Program/COPPE, Rio de Janeiro, Brazil

^anow at: Department of Ocean Systems, NIOZ Royal Netherlands Institute for Sea Research and Utrecht University, Texel, the Netherlands

Formatted: Portuguese (Brazil)

*Correspondence author: danielfrancois@id.uff.br

Abstract. Ocean acidification (OA) is expected to negatively affect many ecologically important organisms. Here we explored the response of Caribbean benthic foraminiferal assemblages to naturally discharging low-pH waters similar to expected future projections for the end of the 21st century. At low-pH ~ 7.8 sw pH units and low calcite saturation ($\Omega < 4$), the relative abundance of *hyaline*, agglutinated and symbiont-bearing species increased, indicating higher resistance to potential carbonate chemistry changes. Diversity and other taxonomical metrics (i.e., richness, abundance, and evenness) declined steeply with decreasing pH despite exposure of this ecosystem to low pH conditions for millennia, suggesting that tropical foraminifera communities will be negatively impacted under acidification scenarios SSP3-7.0 and SSP5-8.5. The species *Archaias angulatus*, a major contributor to sediment production in the Caribbean was able to calcify at conditions more extreme (7.1 pH units) than those projected for the late 21st century, but the calcified tests were of lower density than those exposed to higher-pH ambient conditions (7.96 pH units), indicating that reef foraminiferal carbonate budget might decrease. Smaller foraminifera were highly sensitive to decreasing low pH and our results demonstrate their potential use to monitor increasing OA conditions.

1 Introduction

With anthropogenic carbon emissions steadily increasing since the beginning of the industrial age, atmospheric carbon dioxide (CO₂) is now higher than it has been in the past 800 thousand years (Petit et al., 1999; Lüthi et al., 2008). Global emissions are annually increasing and leading to a proportional increase of CO₂ uptake by the oceans and consequently decreases of surface ocean pH (-0.0181 ± 0.0001 decade⁻¹, Lida et al., 2021) and carbonate ion concentrations [CO₃²⁻], a process known as ocean acidification (OA) (Doney et al., 2020). Based on the Coupled Model Intercomparison Project Phase Six (CMIP6), a further decrease of surface ocean pH is expected for all Shared Socioeconomic Pathways (SSPs) at the end of the 21st century (Kwiatkowski et al., 2020; IPCC, 2021). ~~As-Because~~ the carbonate system has major control on biogenic calcification efficiency this process is expected to negatively affect many ecologically important calcifying organisms such as corals (Kroeker et al., 2013; Crook et al., 2013; Hughes et al., 2017),

40 foraminifers (Uthicke, Momigliano, and Fabricius, 2013; Kawahata et al., 2019), and coralline crustose algae (Penã et al., 2021).

Among these, foraminifera are dominant members of both planktonic and benthic communities with widespread distribution in the oceans. They are vital to calcium carbonate (CaCO₃) cycling—~~especially through calcification~~ (Langer et al., 1997; Langer, 2008) ~~and o-~~On a global scale, they are estimated to contribute a total of 14 billion tons of CaCO₃ per year, which accounts for about 25 % of current total CaCO₃ production (Langer, 2008). Due to their ability to consume substantial amounts of organic matter, they are also relevant for organic carbon cycling (Moodley et al., 2000), ~~being part of and they constitute~~ a key link in marine food webs. After death, their tests become important contributors to sediment mass accumulation in many ecosystems (Yamano, Miyajima, and Koike, 2000; Doo et al., 2016) and ~~are also hence~~ relevant for the carbon burial flux in the ocean (Schiebel, 2002). With ongoing OA and future scenarios projecting ~~rapid further~~ changes (Kwiatkowski et al., 2020; IPCC, 2021), it is vital ~~for assessing biological feedbacks and changes in biochemical cycles~~ to understand how foraminifera will be affected ~~for assessing biological feedbacks and changes in biochemical cycles~~. Many studies under controlled conditions ~~often~~ document the association of low-pH with decreased calcification, weight, size, and taxonomical metrics (Nehrke et al., 2013; Kawahata et al., 2019; Narayan et al., 2021, and references therein). However, some studies have also demonstrated either resilience (Engel et al., 2015; Pettit et al., 2015; Stuhr et al., 2021), or even positive effects on foraminifera, such as enhanced calcification (Fujita et al., 2011) ~~and or~~ enzymatic calcification activity (Prazeres et al., 2015), which demonstrate the complexity of interspecific responses to OA. Additionally, relatively little is known about how foraminifera respond in natural ~~settings with~~ low-pH low carbonate saturation ~~watersconditions~~, which is crucial for determining if and how communities have the potential to acclimate.

In situ investigations have been performed in natural CO₂ vents in the Mediterranean Sea (Dias et al., 2010; Pettit et al., 2015), Papua New Guinea (Uthicke, Momigliano, and Fabricius, 2013), the northern Gulf of California (Pettit et al., 2013) and coastal springs in Puerto Morelos (PM), Mexico (Martinez et al., 2018). 65 In the latter, recruitment and early succession (Crook et al., 2016), acclimatization potential (Crook et al., 2013), and the responses of calcifying communities were studied (Crook et al., 2012; Martinez et al., 2018), demonstrating that despite general deleterious effects, some organisms were able to calcify under OA conditions. A study focused on ~~Large large Benthic benthic Foraminifera foraminifera~~ (LBF) ~~has shown reported~~ that porcelaneous, chlorophyte-bearing foraminifera, (e.g., *Archaias angulatus*), were relatively less impacted (Martinez et al., 2018). Study sites such as coastal springs allow the investigation of foraminiferal communities under projected future conditions more realistically, helping to decrease the uncertainty in global-scale models. However, a detailed survey considering community-wide responses (i.e., including smaller foraminifera) is necessary to ascertain a wider range of potential impacts.

As CO₂ emissions continue to grow despite emerging climate policies (Peters et al., 2020), global awareness 75 has demonstrated a strong interest in research focused on potential impacts for mitigative action. To build on and expand the findings at PM we aimed to (i) explore the mid-term (i.e., multidecadal) responses of foraminifera species ~~to OA~~ using total assemblages, (ii) investigate the effects of OA on both large and small foraminiferal assemblages for acidification scenarios projected to the end of the 21st century

(Kwiatkowski et al., 2020; IPCC, 2021), (iii) explore the taphonomical and ecological implications of *post mortem* alterations for reef ecosystems, and (iv) investigate possible acclimation patterns in the shell structure of the species *A. angulatus*. Specifically, an examination of assemblage structure, taxonomic metrics, assemblage test size, preservation potential and an X-ray micro-CT analysis in the species *A. angulatus* ~~was-were~~ employed.

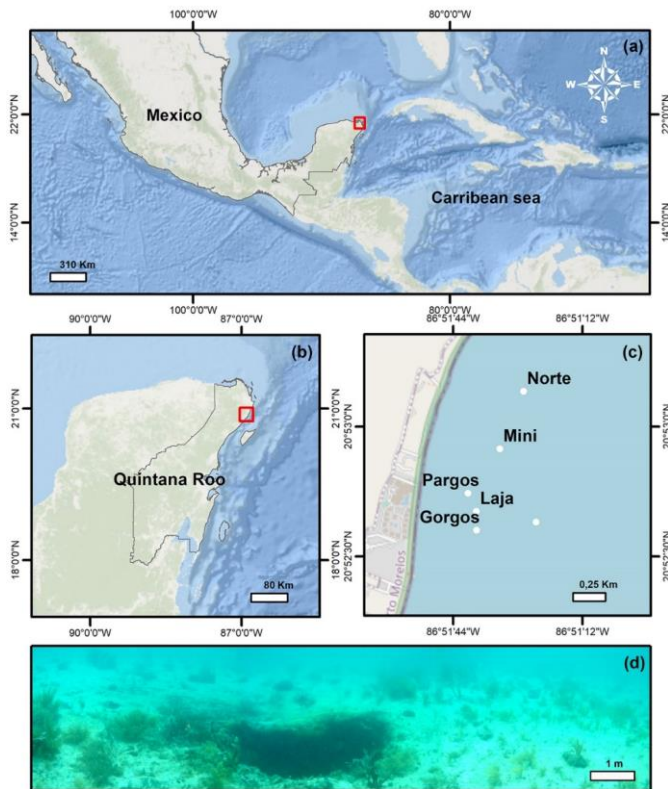
2 Methods

2.1 Study site and data retrieval

The Yucatán Peninsula is a karstic region in Southern Mexico (Fig. 1a) ~~where-The~~ Tertiary limestones is underlain by an ejecta/evaporite complex ~~x.x, where se~~ Several structural and tectonic features ~~strongly influence and~~ divide the area into six distinct physiographic regions (Back and Hanshaw, 1970). Among these, Puerto Morelos reef lagoon is part of the Holbox Fracture Zone–Xel-Ha region, which is characterized by >100 km long chain of elongated depressions referred ~~to~~ as ‘sabanas’ (Perry, Velazquez-Oliman, and Marin, 2002). In this area, rainwater infiltrates the porous karstic limestone ~~of Quintana Roo~~ (Fig. 1b) and flows towards the ocean through interconnected caves and fractures where the groundwater mixes with seawater in the underground aquifers before discharging between the shore and the offshore barrier reef (Beddows et al., 2007; Null et al., 2014). Flowing through the limestones and interacting with the strata through processes of dissolution, precipitation, and mixing, the groundwater conditions change and ~~finally discharge along the Mexican coast as the resulting~~ low-pH, low carbonate-saturation-state (Ω), and high inorganic C content waters ~~discharges along the Mexican Caribbean coast~~ (Back and Hanshaw, 1970; Perry, Velazquez-Oliman, and Marin, 2002; Crook et al., 2012, 2013, 2016; Martinez et al., 2018, 2019; Hernandez-Terrones et al., 2021). ~~These-The submarine groundwaterwaters~~ discharges at submarine springs, which structure ranges from long “fractures” to small circular depressions “seeps” (Fig. 1d, spring Agua), (Crook et al., 2012). The discharge of the springs is relatively constant throughout the year (Crook et al., 2016), and the lagoon circulation is not significantly affected by tides (av. 17 cm^s), and currents due to the microtidal regime of the region (Coronado et al., 2007) and the ~~the~~ ~~springs~~ location in the protected back-reef. The waves overtopping ~~on~~ the reef ~~and the resulting flow~~ is the main driving factor of circulation, which in general is slow (av. 2–3 cm s⁻¹), with faster (av. 20 cm s⁻¹) flow restricted to the northern and southern channels where the water exits the lagoon (Coronado et al., 2007). At the springs, the discharged slightly lower salinity waters ~~s~~ mainly flows ~~s~~ vertically and not towards the sediment due to the buoyancy effect. The beach sediments are composed of coarse (~0.258 mm) carbonate sands of biogenic origin (Escudero et al. 2020).

Surface sediment samples (< 1 cm depth) were retrieved using a plastic spoon at various distances from the center of six submarine springs (Fig. 1c, Gorgos, Laja, Mini, Norte, Agua, and Pargos) in October 2011. In the laboratory, samples were ~~stained (Rose Bengal)~~, weighed, washed with deionized water through a 63 μ m sieve mesh, and dried at 50 °C for 24 hours. Discrete water samples ~~near the sites of sediment collection~~ were also retrieved ~~near the sites of sediment collection~~ for ~~water~~ chemical analysis. ~~The~~ Carbonate chemistry, temperature, and salinity data from seven samples reported in Martinez et al., 2018 ~~was-were~~ complemented with 20 additional samples collected at the same day following the protocols

described by the authors. Briefly, the samples were filtered ($0.2\ \mu\text{m}$) and split into aliquots for the analysis of salinity, total inorganic carbon (C_T) and total alkalinity (A_T), following the protocols of Dickson, Sabine and Christian (2007). The C_T was measured on a CM5011 Carbon Coulometer (UIC, Inc.; analytical measurement error: $\pm 3\ \mu\text{mol kg}^{-1}$) and A_T using an automated open-cell, potentiometric titrator (Orion model 950; analytical measurement error: $\pm 2\ \mu\text{mol kg}^{-1}$). Salinity was measured using a portable salinometer (Portasal Model 8410, Guild Line). Seawater temperature was measured in situ with a handheld YSI micro-processor (Yellow Springs model 63). The pH (Seawater scale), carbonate ion concentration (CO_3^{2-}) and calcite saturation state (Ω -Calcite) were calculated using the program CO₂Sys (Pierrot, Levis and Wallace, 2006), [considering using](#) the CO₂ dissociation constants of Lueker, Dickson and Keeling (2000); KHSO_4 – Dickson, Sabine and Christian (2007); and B concentration – Upström, 1974. Certified CO₂ reference material (from A. Dickson lab at UC San Diego, batch 112) was used to calibrate all instruments.



130 **Figure 1** (a) Location map of the Yucatán Peninsula, (b) Quintana Roo, and (c) the six submarine springs (Gorgos, Laja, Mini, Norte, Pargos and Agua) studied at Puerto Morelos reef Lagoon (National Marine Park), (d) Spring agua, which structure presents a small circular depression.

2.2 Foraminiferal analysis

The Sediment dry weight of sediments was recorded, and samples were homogenized and split into several small aliquots to make them more suitable and efficient for picking. The specimens found in each pre weighted sediment aliquot were counted under a Zeiss STEMI 2000 stereomicroscope until a minimum of 250 specimens were obtained from recorded for each sample. Foraminiferal tests were identified to the lowest possible taxonomic level and assigned to informal species categories for diversity analyses. The taxonomic classification was based on the specialized bibliography of Cushman (1929), Jones (1994), and supplementary taxonomic studies (Milker and Schmiedl, 2012; Abu-Zied, Al-Dubai, and Bantan, 2016; Sariaslan and Langer, 2021). Each species and genus were verified against WoRMS to ensure the use of the most recent nomenclature.

The samples were stained in rose Bengal to consider the living counts, while most tests were at least partially stained the proportions of fully stained specimens were small (~3 %) hence total (live plus dead) assemblages were used. We expect that the sample represents accumulation over several decades. This approach allows us to assess the mid-term responses of foraminiferal assemblages since the generational accumulation of tests in the sediments integrate the effects of stressors over time (Hallock et al., 2003), and averages out seasonal fluctuations, therefore documenting the foraminifera responses to prevailing marine conditions (Scott and Medioli, 1980). We note that the low live percentage is a common pattern as most reef-dwelling taxa tend to live on phytal or hard substrates rather than directly on the sediments (Martin, 1986; Barbosa et al., 2009, 2012; Stephenson, Hallock and Kelmo, 2015). Shannon-Weiner Diversity Index (H'), and Pielou's evenness (J') were calculated considering the standardized foraminifera density at 1 cm^3 . These taxonomic metrics were calculated as follows: Shannon-Weiner Diversity Index with the equation $H' = -\sum(P_i \cdot \log(P_i))$, where P_i is the proportion of individuals per species; Pielou's evenness with the equation $J' = H'/\log(S)$, where H' is the Shannon-Weiner Diversity Index and S the species richness. Assemblage distributions were assessed according to differences in functional groups, i.e., symbiont-bearing and opportunistic, and test type groups, i.e., small miliolids, small rotaliids, and agglutinated that do not present an opportunistic behavior. This approach is has been used by Amergian et al. (2022) in nearby settings, based on categories designed by Hallock et al. (2003) for sensitivity/stress-tolerance taxa and by Murray (2006) for different test compositions.

2.3 Taphonomy and assemblage test size analysis

To improve the understanding of clarify the extent to which tests have been taphonomically altered, foraminifera tests were classified into three categories 'optimally' (i.e., pristine tests), 'well' (i.e., tests with weak taphonomic signals), and 'poorly' (i.e., strongly abraded or fragmented tests) preserved, following the descriptions of Yordanova and Hohenegger, 2002. Discoloration patterns were analyzed to investigate the vertical mixing and exposure of relict tests. In general, if colored black (with iron/manganese sulfides) the tests indicate relict sediments deposited under reducing conditions, whereas a brown coloration indicates the oxygenation of iron through the reworking of the sediments (Maiklem, 1967) and; white tests indicate lack of significant sediment burial and alteration. For a complete survey of the assemblage test size

170 distribution, the surface area of all individuals was calculated using the ImageJ software (Schneider,
Rasband, and Eliceiri, 2012). All specimens picked were placed on the dorsal side in common brass picking
trays and photographed under the same magnification and camera settings using an adapter for a microscope
camera ~~as~~ (Prazeres et al. 2015), to trace surface area changes (i.e., gain or loss) in large benthic
foraminiferal species under low-pH conditions. ~~Specifically, the test area was defined according to the gray
175 scale differences between the surface of the individuals test (white) and background (black).~~ The ~~parameter~~
~~of~~-surface area ~~parameter~~ was the most suitable for the analysis ~~considering the high taxonomical and
consequently morphological diversity of PM samples~~ since it identifies the size of the foraminifera tests in
a standard way, ~~considering the high taxonomical and consequently morphological diversity of PM
samples.~~

180 2.4 X-ray MicroCT

An X-ray MicroCT analysis was employed in four individuals from ambient (7.96 pH units) and ~~from~~ low-
pH conditions (7.11 pH units). To ensure that the analyzed tests represent living conditions, only tests in
excellent condition, and therefore, not influenced by *post mortem* processes of dissolution and transport
were selected. For the X-ray microCT acquisition, a V/TOMEX/M (GE Measurement and Control
185 Solutions, Wunstorf, Germany) was used. The microCT parameters for the acquisition included a voltage
of 60 kV, current of 100 μ A, 5 frames, and an Al filter with a thickness of 0.5 mm. The geometry had a
magnification of 31.81 and pixel size of 6.28 μ m. Certified calcite standards were used to calibrate the
density for ~~this material~~ ~~the analyzed samples~~. The 3D reconstructions were performed using the Phoenix
Datos X Reconstruction software, in which ~~the a~~ slice alignment, beam hardening correction was
190 implemented, and a mathematical edge-enhancement filter was applied to achieve a higher contrast between
the edges. For the 3D visualization, VG Studio Max v 3.0 and Avizo 2020.3 softwares ~~packages~~ were used.
For calcite density analysis, the CTAnalyser v. 1.18.4.0 software was used. Calcite density was assessed
by the calcite density distribution calculated from the CT number that was ~~calculated~~ ~~determined~~ based on
the X-ray attenuation coefficient of each sample (Iwasaki et al., 2019). In addition, ~~the~~ estimation of
195 morphometric parameters such as total volume and chamber wall thickness distribution ~~was~~ ~~were~~
performed.

2.5 Statistical analysis

A BIO-ENV procedure (9999 permutations) and global BEST test (statistical significance) ~~were~~ ~~as~~ used to
identify the set of explanatory environmental parameters that produced a Euclidean matrix that best
200 correlated (Spearman method) the species assemblage similarity matrix and normalized environmental
variables. Polynomial models (second order) were performed to investigate the relationships between
carbonate chemistry and the taxonomical metrics (n = 26). They were compared according to their
contribution to the model's Akaike Information Criterion (AIC), and the models with the lowest AIC value
(i.e., highest fit) were selected for the analysis. For comparison of *A. angulatus* microstructure parameters
205 between high and low-pH the student's t-test (n = 8) was used for variables with normal distributions and
homogenous variances. When these conditions were not met, Welch's t-test was performed. We used the

Kruskal-Wallis test to assess differences between functional groups, taxonomic metrics, and assemblage test size. For the latter, the stations were separated into four pH groups ~~considering the following pH gradients in respect to future projections~~: 8.1–8.05 pH units ~~as representing~~ present-day conditions (n = 4); 8.01–7.9 pH units ~~surveying aligned with~~ low-intermediate acidification scenarios SSP1-2.6 and SSP2-4.5 (n = 11); 7.8–7.7 ~~surveying representing~~ high acidification scenarios SSP3-7.0 and SSP5-8.5 (n = 4); 7.6–7.2 ~~surveying representing~~ acidification conditions beyond those predicted ~~to for~~ the end of 21st century (n = 7). Data normality and variance homogeneity were tested using Shapiro-Wilk and Levene's Test. The BIO-ENV and global BEST procedures were performed in Primer v.6 software (Clarke and Gorley, 2006). Student's t-test, Welch's t-test, Kruskal-Wallis test, and data visualization were performed using R software (version 4.0.2; <http://www.Rproject.org>, R core team, 2020).

3 Results

3.1 Water chemistry

Seawater carbonate chemistry (Table 1) ~~contrasted strongly differed significantly~~ between samples. Obtained ranges were as follows: pH = 7.2–8.1 units, Ω -Calcite = 1.3–6.2, CO_3^{2-} = 52–240 $\mu\text{mol/kg}^{-1}$, T_A = 2044–3108 $\mu\text{mol/kg}^{-1}$, and C_T = 1725–3197 $\mu\text{mol/kg}^{-1}$. The temperature was consistent among sites from ranging 26.1–27.9, while salinity decreased with proximity to the springs, ranging from 28–37–28. The BIOENV analysis and global BEST test revealed that the best combination (p-value = 0.01) of environmental variables with species abundance was observed when considering pH, CO_3^{2-} , Ω Calcite and T (r_{pHep} = 0.55), in which CO_3^{2-} and pH were the environmental variables matching the highest correlation (r_{pRhe} = 0.5) and salinity (r_{pRhe} = 0.33) and temperature (r_{pRhe} = 0.038) the lowest (r_{pRhe} = 0.038). ~~With respect to Concerning~~ the taxonomic metrics the multiple regression analysis presented similar results. For diversity, richness, and evenness the pH model presented the lowest AIC value (26.96, 196.65, -67.05, respectively), indicating the central influence of this variable on the communities, while salinity (43.77, 209.71, -54.79, respectively) and temperature (59.46, 224.28, -40.65, respectively) were less influential. Interestingly, the T_A and C_T were the most important variables for foraminiferal density (AIC = 401.79, and 401.99). The salinity (AIC = 406.34) and temperature (AIC = 409.03) were ~~also~~ not significant variables ~~affecting~~ foraminifera density. The weighting by relative likelihood (Akaike weights), log-likelihood, significance and level of variation explained by each of the environmental parameters (R^2) are available in Table S1. Considering its predominant influence, pH will be ~~mainly~~ used as the primary variable ~~to for~~ discussion of the potential impacts of changing carbonate chemistry. ~~We note however that pH, Ω Calcite, T_A , CO_3^{2-} and C_T are all strongly related to each other as important components of carbonate chemistry.~~

Table 1 Carbonate chemistry parameters of discrete water samples collected near the substrate at the time of sediment collection. T_A = total alkalinity; C_T = total inorganic carbon; CO_3^{2-} = carbonate ion concentration; Ω Calcite = calcite saturation-state; T = temperature.

Site	Depth (m)	Distance	A _T (μmol/kg ⁻¹)	C _T (μmol/kg ⁻¹)	pH	CO ₃ ²⁻ μmol/kg ⁻¹	Ω Calcite	T (C°)	Salinity
Norte	5.8	Center	2611	2588	7.38	67.03	1.66	27.5	32.21
		25 cm	2734	2734	7.34	60.93	1.53	27.2	30.70
		50 cm	2699	2694	7.34	62.20	1.54	27.2	31.90
		1 m	2451	2314	7.66	118.47	2.85	27.0	35.25
Pargos	6.8	Center	3000	3048	7.23	52.73	1.33	27.6	29.95
		25 cm	3054	3047	7.38	71.16	1.82	27.7	28.00
		50 cm	2304	2160	7.72	119.78	2.97	27.6	32.00
		1 m	2387	2084	8.00	220.39	5.36	27.5	34.20
		> 1 m	2336	2012	8.01	229.56	5.49	27.6	36.17
Gorgos	7.2	25 cm	2350	2065	7.98	207.09	5.03	27.3	34.40
		50 cm	2364	2004	8.10	255.79	6.18	26.8	34.80
		1 m	2044	1725	8.09	216.08	5.24	26.9	34.40
		> 1 m	2325	2033	7.96	209.44	5.02	27.8	35.90
Laja	5.8	Center	2827	2756	7.51	102.65	2.50	27.9	32.75
		25 cm	2590	2385	7.83	164.17	4.00	26.1	33.70
		50 cm	2354	2013	8.05	240.04	5.70	26.4	36.70
		1 m	2319	2051	7.94	192.93	4.59	26.5	36.60
		> 1 m	2357	2092	7.90	193.55	4.63	28.1	36.17
Agua	5.4	Center	2444	2167	7.93	203.84	4.90	27.4	35.60
		25 cm	2364	2128	7.87	176.51	4.27	28.0	35.10
		50 cm	2314	2088	7.85	168.22	4.07	28.4	35.10
		1 m	2347	2063	7.95	206.13	4.98	28.2	35.10
		> 1 m	2363	2049	8.01	226.08	5.47	27.7	34.90
Mini	4.9	25 cm	2443	2071	8.08	265.01	6.31	26.9	36.50
		1 m	2365	2113	7.90	184.16	4.37	26.6	36.90
		> 1 m	2356	2049	7.99	218.13	5.16	26.4	37.30

3.3 ~~Taphonomic~~Taphonomy and assemblage test size analysis

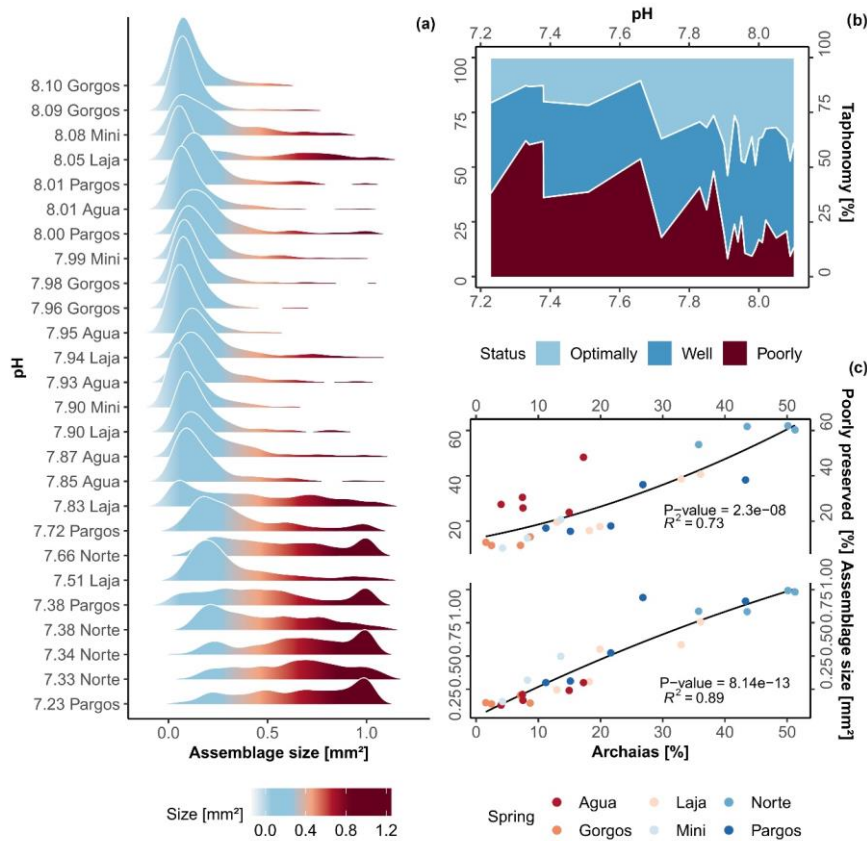
245 ~~Along the gradient of changing carbonate chemistry, a significant change in foraminiferal assemblage test~~
~~size was observed (Kruskal-Wallis, chi-squared = 16, df = 3, p-value = ≤ 0.05 0.01). A gradual decrease~~
~~in the abundance of tests with smaller surface area and a relative increase of larger tests is~~are
~~towards low-pH sites (Fig. 2a, $R^2 = 0.73$, p-value = ≤ 0.05 0.01), whereas an abrupt increase in test size~~
~~was observed at 7.8 pH units. The post hoc Dunn's test reveals that only the differences between present-~~
250 ~~day and extremely low-pH conditions, which are beyond the predicted to the end of the 21st century was~~
~~significant ($z = -2.7$, p-value = ≤ 0.05 0.01). Specifically, the average test size in the assemblage more than~~
~~tripled when compared to present-day conditions (from 0.33 ± 0.2 to 0.87 ± 0.14 mm²). This abrupt~~large
~~change can be visualized in Fig. 2a, and is likely responding~~related
~~to changes in faunal composition rather than interspecific changes in species size. As observed in~~
255 ~~taphonomical~~the taphonomy analysis, linear
~~correlation with respect to the dominant taxa coverage, i.e., the species *A. angulatus*, shows a high and~~
~~significant correlation to changes in average assemblage test size (Fig. 2c, $R^2 = 0.89$, p-value = \leq~~
~~0.050.01). Raw data of assemblage average test size, and taxonomic metrics are available in table S2.~~

High-pH stations (~8.1 pH units) at PM are relatively pristine with ~~optimally and well-~~preserved tests
representing approximately 80% of the assemblage, however, this gradually changes as the effects of spring
260 water increase (Fig. 2b). In general, dissolution was not homogenous between species, but mainly
associated with the occurrence of LBF, specifically, *Archaias angulatus*, which was able to individually
explain 73% of highly dissolved tests occurrence ($R^2 = 0.73$, Fig. 2c). The small, less robust calcifiers (e.g.,
Rosalina spp, *Elphidium* spp) were ~~mainly-mostly~~ in pristine conditions.
Regarding color patterns (table S2), only two specimens with brown color were found at spring Laja,
265 indicating little reworking of sediments and therefore, mixing of pristine and relict tests. Overall, we
observed that the specimens are in good conditions, composed of well-preserved time-averaged
assemblages, which ~~still-thus~~ provides a good representation of the present-day biocoenosis (Yordanova
and Hohenegger, 2002). However, at 7.7 pH units and lower, high levels of taphonomical alteration started
to occur (Fig. 2b-c, Dashed lines), when poorly preserved tests comprised ~ 50 % of total assemblage.

270 ~~Along the gradient of changing carbonate chemistry, a significant change in foraminiferal assemblage test~~
~~size was observed (Kruskal-Wallis, chi-squared = 16, df = 3, p-value = ≤ 0.05). A gradual decrease in the~~
~~abundance of tests with smaller surface area and a relative increase of larger tests is observed towards low-~~
~~pH sites (Fig. 2a, $R^2 = 0.73$, p-value = ≤ 0.05), whereas an abrupt increase was observed at 7.8 pH units.~~
~~The post hoc Dunn's test reveals that only the differences between present-day and extremely low-pH~~
275 ~~conditions, which are beyond the predicted to the end of the 21st century was significant ($z = -2.7$, p-value~~
~~= ≤ 0.05). Specifically, the average test size in the assemblage more than tripled when compared to present-~~
~~day conditions (from 0.33 ± 0.2 to 0.87 ± 0.14 mm²). This abrupt change can be visualized in Fig. 2a, likely~~
~~responding to changes in faunal composition rather than interspecific changes in species size. As observed~~

280

in taphonomical analysis, linear correlation with respect to dominant taxa coverage, i.e., the species *A. angulatus*, shows a high and significant correlation to changes in average assemblage test size (Fig. 2c, $R^2 = 0.89$, p value < 0.05). Raw data of assemblage average test size, and taxonomic metrics are available in table S2.



285

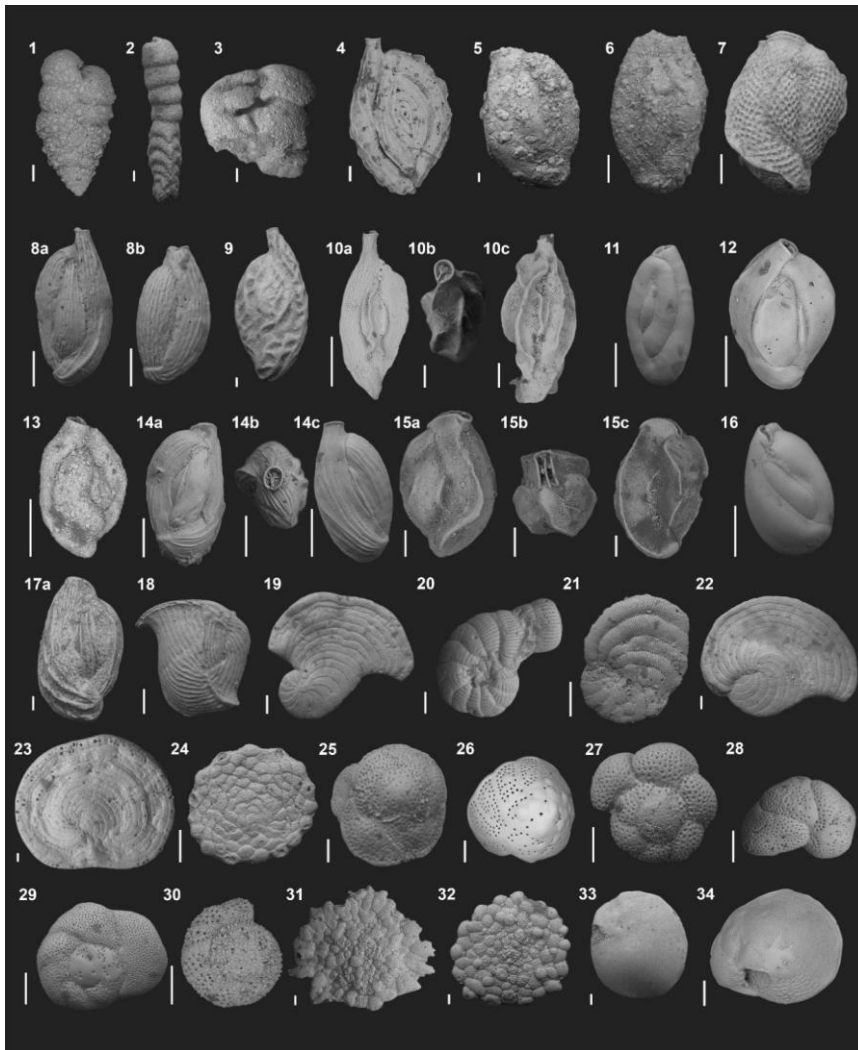
Figure 2 (a) The density plot of assemblage test size, (b) area plot of foraminifera taphonomical status against changing pH, and (c) variation of poorly preserved tests and average assemblage test size against *Archaia angulatus* relative contribution. The black lines represent the second-order polynomial model fits along with the R^2 value and p-value (c).

3.2 Foraminiferal analysis

290

The assemblages (live + dead, table S3) found at PM exhibit similar composition to previous studies conducted in nearby coastal settings (Gischler and Möder, 2009), Caribbean eastern islands (Wilson and Wilson, 2011), and the Gulf of Mexico (Stephenson, Hallock and Kelmo, 2015; Amergian et al., 2022). A

total of 8564 foraminifera from 141 species were identified, belonging to 4 orders, 37 families, and 73 genera. Agglutinated species contributed ~~with~~ 6.4 % (9 species), porcelainous 61 % (86 species), and hyaline 32.6 % (45 species) of the total species richness. For total assemblages the species *A. angulatus* (9.4 %), followed by *Rotorbinella rosea* (9.3 %), *Asterigerina carinata* (6.9 %), and the *Rotorbis auberii* (4.7 %) were the most important contributing taxa, whereas for living counts *Rosalina globularis* was the most important taxa (11 %). ~~The~~ Species that contributed at least 3 % of total abundance are shown in Fig. 3.

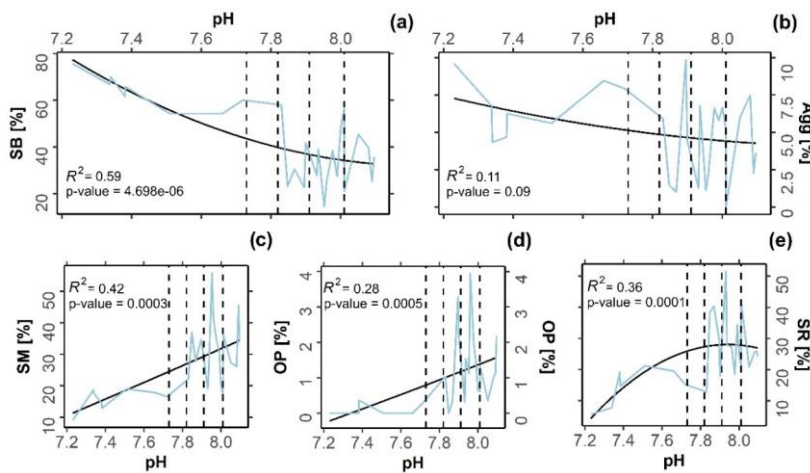


300 **Figure 3** Electron micrographs of ~~the foraminifera~~ species from Puerto Morelos reef lagoon springs
 considered for faunal analysis constituting at least 3% of the assemblage. All scale bars represent 100 μ m.
 1 *Textularia agglutinans*, lateral view. 2 *Clavulina angularis*, lateral view. 3 *Valvulina oviedoiana*, lateral
 view. 4 *Spiroloculina corrugata*, lateral view. 5 *Agglutinella compressa*, lateral view. 6 *Schlumbergerina*
alveoliniformis, lateral view. 7 *Lachlanella carinata*, lateral view. 8 *Quinqueloculina subpoeyana*, lateral
 305 view. 9 *Quinqueloculina tricarinata*, lateral view. 10a, 10c *Quinqueloculina* conf. *Quinqueloculina*
distorqueata, lateral views. 10b *Quinqueloculina* conf. *Quinqueloculina distorta*, apertural view. 11
Quinqueloculina bosci, lateral view. 12 *Quinqueloculina disparilis*, lateral view. 13 *Quinqueloculina*
 conf. *Q. berthelotiana*, lateral view. 14a, 14c *Quinqueloculina carinatastriata*, lateral views. 14b
Quinqueloculina carinatastriata, apertural view. 15a, 15c *Affinetrina quadrilateralis*, apertural views. 15b
 310 *Affinetrina quadrilateralis*, apertural view. 16 *Miliolinella elongata*, lateral view. 17 *Pseudotriloculina*
linneiana, lateral view. 18 *Articulina pacifica*, lateral view. 19 *Laevipeneroplis proteus*, lateral view. 20
Peneroplis pertustus, lateral view. 21 *Peneroplis planatus*, lateral view. 22 *Archaias angulatus*, lateral
 view. 23 *Cyclorbiculina compressa*, lateral view. 24 *Sorites marginalis*, lateral view. 25 *Rotorbis auberii*,
 spiral view. 26 *Rotorbinella rosea*, spiral view. 27 *Trochulina* sp., spiral view. 28 *Rosalina* cf. *floridana*,
 315 spiral view. 29 *Rosalina globularis*, spiral view. 30 *Cibicidoides* sp., spiral view. 31 *Planorbulina*
mediterraneensis, lateral view. 32 *Planogypsina acervalis*, lateral view. 33 *Amphistegina gibbosa*, lateral
 view. 34 *Asterigerina carinata*, lateral view.

In general, the species *Quinqueloculina tricarinata*, *A. angulatus*, *Amphistegina gibbosa*, *Valvulina*
oviedoiana, *Cyclorbiculina compressa* increased towards low-pH, high C_T , and high T_A values, presenting
 320 an increased relative abundance and lower sensitivity to OA. On contrary, highly sensitive species were
 presented by include *Thochulina* sp., *Sorites marginalis*, *Quinqueloculina subpoeyana*, *R. auberii*. The
 species *Rotorbinella rosea*, *Clavulina angularis*, *Quinqueloculina disparilis*, *Lachlanella carinata*, and
Schlumbergerina alveoliniformis present decrease in abundance towards low pH at a lower rate compared
 to the highly sensitive species on the right suggesting more tolerance.

325 The symbiont-bearing taxa (Fig. 4a, $R^2 = 0.594$, p-value = $\leq 0.050.01$) presented lower sensitivity to OA
 conditions, increasing in relative abundance towards low-pH. The small miliolids (Fig. 4c, $R^2 = 0.42$, p-
 value = $\leq 0.050.01$), opportunistic (Fig. 4d, $R^2 = 0.28$, p-value = $\leq 0.050.01$), and small rotaliids taxa
 (Fig. 4e, $R^2 = 0.36$, p-value = $\leq 0.050.01$) decreased in relative abundance towards low-pH conditions,
 330 presenting indicating higher sensitivity. Kruskal-Wallis analysis reveal that the observed variation was
 statistically significant for most functional groups: Symbiont-bearing (chi-squared = 13, df = 3, p-value =
 $\leq 0.050.01$), small miliolids (chi-squared = 12, df = 3, p-value = $\leq 0.050.01$), opportunistic (chi-squared
 = 16, df = 3, p-value = $\leq 0.050.01$), and small rotaliids (chi-squared = 9, df = 3, p-value = $\leq 0.050.01$).

Specifically, Post hoc Dunn test reveals that significant changes occurred mainly-predominantly between present day (~ 8.1 pH units) and extremely low-pH conditions (≤ 7.6 pH units) representing conditions beyond those predicted by-for the end of the 21st century: Symbiont-bearing ($z = -2.38$, $p\text{-value} = 0.01$), small miliolids ($z = 2.7$, $p\text{-value} = \leq 0.050.01$), and opportunistic ($z = 2.4$, $p\text{-value} = 0.01$). For small rotaliids taxa the significance was observed between low-intermediate acidification scenarios (~7.9 pH units), at which the group presented a higher contribution, and extremely low-pH conditions (≤ 7.6 pH units) where a strong decrease was observed with-the-other-metrics ($z = 1.7$, $p\text{-value} = \leq 0.050.01$). No significance in abundance between sites was observed for agglutinated foraminifera (chi-squared = 2, $df = 3$, $p\text{-value} = 0.5$), which also did not present significant correlation with changing pH (Fig. 4b, $R^2 = 0.11$, $p\text{-value} = 0.1$). Raw data of functional and test type group are given in table S4 and the distribution of functional groups against changing pH is in Fig. 4.

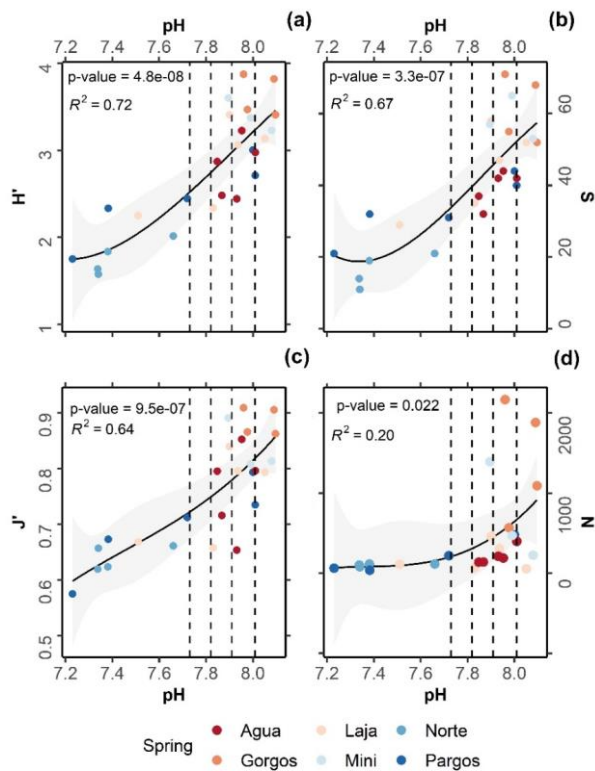


345 **Figure 4** Variation of functional groups against changing pH. The black line represents the second-order polynomial model fits along with the R^2 value and the blue line represents the raw values obtained from in situ assemblages. Dashed lines demark predicted pH values at the end of this century following the Coupled Model Intercomparison Project Phase Six (CMIP6) predictions for Shared Socioeconomic Pathways (SSP1-2.6: 8.01 pH units; SSP2-4.5: 7.91 pH units; SSP3-7.0: 7.82 pH units, and SSP4: 7.73 pH units). SB = symbiont bearing, Agg = agglutinated, SM = small miliolids, OP = Opportunistic, SR = small rotaliids.

All taxonomic metrics presented a gradual decrease towards the springs (Fig.5a-d). On average, H' ranged from 3.9 to 1.6 (Fig. 5a, $R^2 = 0.72$, $p\text{-value} = 4.8^{-08}$); S from 71 to 11 (Fig. 5b, $R^2 = 0.67$, $p\text{-value} = 3.3^{-07}$); J' from 0.9 to 0.6 (Fig. 5c, $R^2 = 0.64$, $p\text{-value} = 9.5^{-07}$), and foraminifera density from 2167 to 36 ind./cm³ (Fig. 5d, $R^2 = 0.22$, $p\text{-value} = 0.02$). Kruskal-Wallis analysis revealed that the observed variation was statistically significant for all taxonomic metrics: N (chi-squared = 14.5, $df = 3$, $p\text{-value} = \leq 0.050.01$), S

(chi-squared = 20, df = 3, p-value = $\leq 0.050.01$), J' (chi-squared = 15, df = 3, p-value = $\leq 0.050.01$) and H (chi-squared = 19, df = 3, p-value = $\leq 0.050.01$). However as observed for functional and test type groups, the post hoc Dunn test revealed that significant changes occurred mainly were most significant between present day and extremely low-pH conditions: N ($z = 2.2$, p-value = 0.02), S ($z = 3.4$, p-value = $\leq 0.050.01$), J ($z = 3.1$, p-value = $\leq 0.050.01$), and H ($z = 3.4$, p-value = $\leq 0.050.01$). No significant difference was observed for any taxonomic metric at low-intermediate acidification scenarios (SSP1-2.6 and SSP2-4.5), and only S differed significantly between present day and high acidification scenarios (Fig. 5b, SSP3-7.0 and SSP5-8.5, $z = 2.1$, p-value = 0.03).

360



365

Figure 5 Relationships between pH and (a) Shannon-Weiner Diversity Index (H'), (b) species richness (S), (c) Pielou's evenness (J'), and (d) foraminiferal density (N). The black lines represent second-order polynomial model fits, and grey areas mark 95 % confidence intervals. Dashed lines demark predicted pH values at the end of this century following the Coupled Model Intercomparison Project Phase Six (CMIP6) predictions for Shared Socioeconomic Pathways (SSP1-2.6: 8.01 pH units; SSP2-4.5: 7.91 pH units; SSP3-7.0: 7.82 pH units, and SSP4: 7.73 pH units).

370

375 | ~~Considering the consistency in the d~~Data analyses ~~indicates, we observed~~ that under the most conservative projections (SSP1-2.6; SSP2-4.5) foraminifera assemblages did not display considerable changes in taxonomic metrics, relative to assemblages living at present-day conditions. For projections SSP3-7.0 and
380 | SSP5-8.5 the analyzed assemblages presented a significant decrease in richness S, indicating that foraminifera assemblages are likely to be affected under high acidification scenarios. ~~To~~At the species level, ~~agglutinated foraminifera were not measurably influenced by changes in pH and the small rotaliids, and symbiont-bearing taxa presented relatively higher resistance, when compared to other functional groups, while agglutinated foraminifera were not measurably influenced by changes in pH.~~ For conditions beyond ~~the those~~ predicted for the late 21st century, foraminifera density decreased abruptly and high taphonomical alteration was observed.

3.4 X-ray MicroCT

385 | The X-ray MicroCT (Fig. 6a-d) analysis revealed that despite having a similar size ($0.80 \pm 0.05 \text{ mm}^3$), and volume ($0.06 \pm 0.02 \text{ mm}^3$) the specimens present at low-pH conditions (7.1 pH units) were on average 46 % less dense (2.4 ± 0.2 to $1.30 \pm 0.03 \text{ g/cm}^3$) than the specimens present at high-pH conditions (Welch Two Sample t-test, $t = 8.1204$, $df = 3.0808$, $p\text{-value} = 0.0035$). Yet, no significant (Two Sample t-test, $t = -1.4378$, $df = 6$, $p\text{-value} = 0.2$) difference in chamber wall thickness was observed ($0.050 \pm 0.006 \text{ mm}^3$). The differences in internal density (Fig. 6a and 6b) represent 2 specimens living in high and low-pH conditions, respectively. The external differences of these same individuals are represented in the 3D volume ~~image~~
390 | ~~in~~ Fig. 6c and 6d). Raw data of test density, chamber wall thickness, test volume, and test diameter measured in *A. angulatus* individuals are listed in table S5.

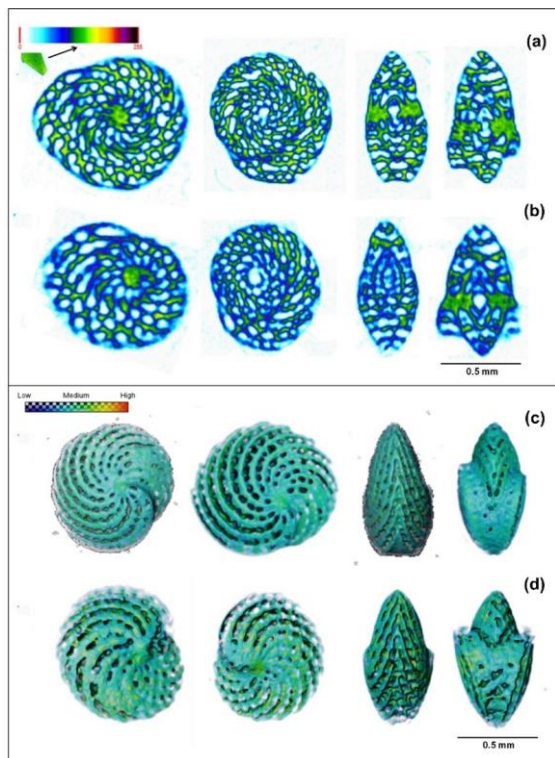


Figure 6 - Comparison between X-ray microCT images with color code as a function of calcite density.

The specimen living at ~ 7.96 pH units (a) presents a higher calcite density (more green/greener) when compared with low \sim pH 7.11 individual (more blue/blue) (b). The 3D volume rendering in function of calcite density for the same individuals living at the high (c) and low-pH conditions (d). Note that the individual at “d” living under low pH presents a test with incomplete parts and blurred edges, which demonstrates a lower density.

4 Discussion

4.1 Foraminiferal resistance to intermediate pH lowering conditions

Under the two most conservative acidification projections (Fig. 5a-d) foraminifera assemblages in PM did not display considerable changes, while at high acidification scenarios a significant decrease in species richness was observed. These results indicate that benthic foraminifera are unlikely to be affected by pH decreases of ~ 0.2 , but certainly respond adversely to higher acidification levels (~ 0.4 pH units). These findings are generally consistent with previous observations from other naturally high $p\text{CO}_2$ sites in which taxonomic metrics decreased significantly with declining pH (Bernhard et al. 2009; Dias et al. 2010; Pettit et al., 2015; Dong et al., 2019, 2020). It is noteworthy, however that changes in assemblage composition

did not follow the same pattern observed in these previous studies. Whereas the proportion of calcareous species usually decline with decreasing pH, they remained dominant in PM (~90 %, mainly SB, Fig. 4a) under all projections in PM, suggesting a relatively higher resistance for these shallow reef benthic assemblages.

Considering the mid-range pH (~ 7.9 pH units), small rotaliids are more resilient (Fig. 4e); -the chemical conditions at PM, along with the physiology of calcification in foraminifera may explain the lack of sensitivity of these species. Recent calcification models demonstrate that hyaline foraminifera can manipulate pH to control the speciation of inorganic carbon parameters during calcification (De Nooijer et al., 2009; Toyofuku et al., 2017; De Goeyse et al., 2021; Geerken et al., 2022). Specifically, the proton-pumping based model (Toyofuku et al., 2017) shows that at the external environment, a decrease in pH (~ 6.9 pH units) in the environment induces the transformation of CO_3^{2-} and bicarbonate (HCO_3^-) into CO_2 , whereas at the site of calcification the elevated pH (~ 9 pH units) results in the opposite shift in converting to CO_3^{2-} . As foraminifera induce pH changes exceeding the those predicted to from SSP1-2.6 and SSP2-4.5, intermediate acidification scenarios are unlikely to impair foraminiferal calcification. In fact, the higher abundance of small rotaliid (Fig. 4e) and resistance of SB species (e.g., *Amphistegina*) supports the hypothesis that they might, at least to a certain extent, benefit from the extra dissolved inorganic carbon (Toyofuku et al., 2017, De Goeyse et al. 2021). Evidence for this hypothesis is This interpretation is consistent with the observation that carbonic anhydrase plays a key role in the biomineralization process of some rotaliids, possibly concentrating inorganic carbon for calcification by converting HCO_3^- into CO_2 (De Goeyse et al. 2021). As such, these models suggest that increased CO_2 might favor foraminifera calcification by increasing C_T , which is notably higher towards the springs in PM (Table 1).

The higher C_T and T_A might may also induce CO_2 fertilization effects in SB species, increasing the activity of symbionts (Fujita et al., 2011; Uthicke and Fabricius, 2012; Martinez et al., 2018). This could explain why symbiont-bearing species including (~~A~~) *Ar. angulatus* (chlorophyte-bearing), increased in relative abundance from 11-15 % to 21 % from ~ 8 to 7.72 pH units (e.g., Pargos spring). This behavior was also observed for *Amphistegina gibbosa* (diatom-bearing), increasing from 16-19 % to 23 %, and (~~C~~) *Cyclorbiculina compressa* (chlorophyte-bearing) that presented low contribution contributed only ~ 1 % at high-pH stations but also increased in relative contribution to 3.2 % at intermediated pH. These findings are supported by laboratory-controlled experiments demonstrating that both *Ar. angulatus* (Stuhr et al., 2021) and *Amphistegina* sp. (McIntyre-Wressnig et al., 2013; Prazeres et al., 2015) can calcify and live under relatively low-pH conditions (~ 7.6 pH units).

This behavior, however, was not observed for all SB. For example, the species *H. depressa* was documented to be resilient in laboratory-controlled conditions (Vogel and Uthicke et al., 2012; Schmidt, Kucera and Uthicke, 2014), but in PM it presented showed a strong decline towards low-pH waters. A possible explanation is that although salinity is considered to not be a significant factor controlling the overall foraminiferal communities (AIC, BIO-ENV/global BEST analysis), salinity may have specifically affected the occurrence of select species close to the springs, which are known to be typically stenohaline species, e.g., larger rotaliids (30–45, Hallock, 1986). However, this cannot be very important since salinity at the springs is > 30 over 90 % of the time and does not drop below 27 (Crook et al., 2012; Martinez et al., 2018).

Other parameters, such as heavy metals could also influence the abundance of certain species, but concentrations of the metals (Paytan unpublished) were not significantly higher at the springs when compared to sites ~~at > 1m distance from the~~ not influenced by spring water discharge (> 1m away from the discharge sites). Hence, we do not attribute the changes in foraminifera assemblages to impacts of heavy metals. We note that the ~~springs furthest analyzed sites~~ all of the samples collected and analyzed here are just a few meters apart hence other parameters such as light, eutrophication, and pollution are identical.

~~Additionally,~~ The high C_T and T_A might also raise local pH and carbonate saturation during photosynthesis, even if only on the scale of an individual organism at the foraminiferal shell surface. A diffusive boundary layer of ~~increased-high~~ pH (up to 8.9) has been documented at the underlying surface of symbiont bearing foraminifera (Koehler-Rink and Kuehl, 2000; Glas et al., 2012), and although insufficient to compensate future decreases of ambient seawater pH, it might increase the symbiont-bearing species resistance in PM. Correspondently, the symbioses between seagrasses and foraminifera has also been suggested as a key factor in the resilience of epiphytic species (e.g., *A. angulatus*, *C. compressa* and *A. gibbosa*). Although no significant effect (Fabricius et al., 2011; Pettit et al., 2015) has been reported for some species, *Marginopora vertebralis* was observed to maintain its growth when associated with its common algal host, *Laurencia intricata* in laboratory conditions (Doo et al., 2020). ~~With~~ respect to observations in the present study, the epiphytic species *R. globularis* was the most important taxa for living counts (11 %), and although not the primary objective of the present study, it gives important insights about short-term foraminifera responses. Specifically, this finding ~~is in agreement~~ agrees with the observed resilient behavior of Rosalinids in the natural, low-pH venting sites of Panarea (Di Bella et al., 2022). However, considering the low occurrence of fully stained tests future analysis on phytal substrates in PM would be necessary to confirm this trend. Lastly, the ability of foraminifera to function and calcify near the springs may also be related to the site-specific natural pH variability to which the species are exposed. For many coastal/transitional areas characterized by high pCO_2 variability, foraminifera seem to be more resilient and acclimated to changing conditions including low-pH (Haynert et al., 2012; Charrieau et al., 2018). By discharging low-pH waters for millennia (Back et al., 1979) the foraminifera living near the spring have experienced ~~a~~ pH variability over a much longer timespan than the life span of individual organisms (Martinez et al., 2018). Specifically, as reef-dwelling organisms, the foraminifera in PM experience a wide range of pH on daily and seasonal scales which might physiologically increase the species resilience ~~to at~~ low-pH waters conditions (Price et al., 2012).

4.1 High pH-acidification scenarios

Previous data from recruitment and succession experiments in PM showed that foraminifera were able to calcify and increased in weight over the investigated period (14 months) at low (~ 7.8) pH conditions (data from Laja and Gorgos springs, Crook et al., 2016). Two years later, Martinez et al. (2018) documented the occurrence of calcareous tests at PM even at extreme acidification levels (~ 7.1 pH units). In agreement, we observed that despite the strong decrease in foraminifera density calcareous foraminifera ~~still~~ remained remained relatively dominant in PM sediments (~90 %, mainly *A. angulatus* and *A. gibbosa*) even at expected future conditions for the end of the 21st century and beyond.

485 For high acidification scenarios (SSP3-7.0 and SSP5-8.5), the in-situ occurrence of calcifying foraminifera has only been reported in the deep-sea near extensive CO₂ vents in the Wagner Basin (Pettit et al., 2013). At this site, a rich food supply and stable temperatures were considered to offset the effects of OA and a shift towards opportunistic assemblages was reported. The springs from PM also have relatively high nutrient concentrations compared to the open waters in the region (Null et al., 2014; Crook et al., 2016),
490 however, near the springs, assemblages did not change towards opportunistic dominated assemblages, suggesting that the nutrient availability does not exert a major control at this site. Rather, the high-pH assemblages which was heavily dominated by small calcareous forms were replaced by larger symbiont-bearing species near the springs (Fig. 4a-e). Such species are known to be sensitive to high nutrient loading, likely because of changes in turbidity/light regimes and their dependence on algal symbionts to enhance growth and calcification (Hallock et al., 2003; Prazeres et al., 2020; Girard et al., 2022). ~~However~~However,
495 at PM despite higher nutrient levels the waters at the springs are clear and light regimes are not reduced (water depth at the spring sites is 5-7 meters).

To better understand the ~~resilient-resilience~~ response of certain taxa towards the springs (Fig. 4a-d) and investigate possible acclimation patterns that could explain the observation of relatively higher SB occurrence, we employed an X-ray microCT analysis in *A. angulatus* specimens living under high and low pH conditions. The analysis (Fig. 6a-d) revealed that despite having similar size ($-0.80 \pm 0.05 \text{ mm}^3$), volume ($0.06 \pm 0.02 \text{ mm}^3$), and chamber wall thickness ($0.050 \pm 0.006 \text{ mm}^3$) the specimens found at low-pH conditions (7.1 pH units) were on average 46 % less dense (2.40 ± 0.2 to $1.30 \pm 0.03 \text{ g/cm}^3$) than the specimens present at high-pH conditions (7.96 pH units). This demonstrates that the species could calcify in low-pH conditions beyond those predicted for the late 21st century albite at lower density. The lower density ~~however~~ indicates that *Archaias* individuals were not capable to acclimate sufficiently to maintain ~~ambient present day~~ calcification efficiency similar to ambient present-day rates. These results agree with Knorr et al. (2015) that observed a 50 % decrease in *A. angulatus* size at 7.6 pH units, and a consequent decrease of 85 % in the production of high-Mg calcite by this species, and also with ~~the documented for~~
510 ~~other other published results for~~ SB species such as *Peneroplis* spp (pH 7.4, -approximately 25 % lower, Charrieau et al., 2022), and *Amphistegina* spp (pH 7.6, approximately 20 % lower, Prazeres et al., 2015). We acknowledge that ~~post-mortem~~ dissolution may also contribute to the observed lower density, but only the most pristine tests were analyzed, so this influence must be ~~minimum~~minimal. Future analysis of B isotopes and B/Ca ratios could provide more information about the ~~documented~~-trends documented in the present study. Since *A. angulatus* showed lower density close to the low-pH springs and hence is negatively impacted by the low-pH, the species increase in relative ~~increase~~abundance towards the springs is probably associated with the high preservation potential of its tests. The tests of *A. angulatus* are large, thick, and reinforced by internal partitions (pillars), therefore more likely to be preserved in the sediment (Martin, 1986; Cottey and Hallock, 1988). This is confirmed by the performed regression analysis as the species relative contribution explains 88 % of assemblage test size and 73 % of high dissolved test occurrence in the samples (Fig. 2c). In fact, changes were so abrupt that shifts in the assemblage test size and functional groups were clearly observed at ~7.7 pH units (Fig. 2a), when the symbiont-bearing taxa relative contribution also started to increase (Fig. 4a). At this point preservation thresholds of smaller taxa seemed

Formatted: Font: Italic, Complex Script Font: Italic

to be crossed, and their decrease in relative abundance near the springs is likely related to higher rates of breakage and dissolution (Present study, Martinez et al., 2018).

Considering ~~that~~ foraminifera are a crucial component of reef sediment production (Langer et al., 1997; Langer, 2008), including *A. angulatus* in the Caribbean region, our results support previous findings that reef-building carbonate production and accumulation are likely to decrease under future OA scenarios, even in the tropics (Knorr et al., 2015; Eyre et al., 2018; Kuroyanagi et al., 2021). Specifically, we also observed a decrease in foraminifera test density (Fig.5d) and therefore in carbonate accumulation ~~as supported by~~ foraminifera tests in the sediments. As OA intensifies, symbiont-bearing taxa, which demonstrated higher resistance to low-pH (> 7.8 pH units), will likely still represent major contributors in the Caribbean and Gulf of Mexico sediments where species like *A. angulatus* may dominate (Culver and Buzas, 1982). In contrary, the high sensitivity of *Quinqueloculina* spp, *Triloculina* spp, *Articulina* spp, and *Miliolinella* spp to low pH highlighted their lower fitness in response to OA, demonstrating that changes in abundance of small taxa can be used as bioindicators to monitor the effects of OA.

The relative contribution of agglutinated foraminifera slightly increased towards the low-pH springs (Fig. 4b), but they did not compensate for the decline in calcareous species (Fig. 4a-e) ~~even at extreme low pH conditions~~. Since the particles available for the agglutinated tests in this region are made of carbonate and under low- Ω waters these particles are also prone to dissolve that could affect the agglutinated species. Interestingly, agglutinated foraminifera also presented species-specific responses to acidification like calcareous foraminifera. For example, *Valvulina oviedoiana* increased in relative abundance towards low pH, while *Textularia agglutinans* presented a strong decrease. Since acidification is expected to have little direct effect on agglutinated foraminifera the observed interspecific behavior is also probably associated with preservation potential. The variation of agglutinating material (e.g., mucopolysaccharide), structure (e.g., fibrous, strands, foam-like masses), and size of granular particles (e.g., fine, and coarser) are essential to determine the preservation and accumulation of agglutinated tests (Bender and Hemleben, 1988). The most important agglutinated species, in our study e.g., *T. agglutinans*, *C. angulata*, and *V. oviedoiana* use calcite cement as the agglutinating-binding material of particles, which probably assigns results in a higher resistance to dissolution (Bender, 1995). Among these, *T. agglutinans* lower resistance likely responds to its smaller size, which implies higher enhances dissolution (Bender, 1995). Altogether, we observe that until ~ 7.8 pH units foraminifera physiology was a main driver of foraminifera distribution, whereas at ≤ 7.7 pH units (Fig. 2b) the preservation potential became an important factor affecting the distribution of both calcareous and agglutinated tests.

~~Hence, w~~We cannot exclude the possibility that ~~a-the~~ higher accumulation of *A. angulatus* tests could be responsible for an overestimation in symbiont-bearing taxa density. In this case, species richness would be more reliable to the interpretation of assemblage responses, which was the only parameter to decrease significantly at < 7.7 pH units (Fig. 5b), suggesting that overall foraminifera are less likely to acclimate under high acidification scenarios. These results bring serious implications as SSP3-7.0 and SSP5-8.5 scenarios also predict substantial increases of sea surface temperature (Kwiatkowski et al., 2020), which combined ~~to with~~ surface OA might critically decrease the tolerance of foraminifera (reviewed in Kawahata et al., 2019). Recently, Bernhard et al. (2021) observed that foraminiferal assemblages presented the lowest

number of species and abundances under a triple-stressed ~~treatment~~ (low-pH/O₂ and high temperature) ~~treatment~~ demonstrating the synergetic effects of these variables. As observed in PM, agglutinated foraminifera were relatively more resistant than calcareous taxa.

In general, for emissions beyond the predicted to the end of 21st century (< 7.7 pH units) all taxonomic metrics decreased significantly, and calcareous species with higher preservation potential like *C. compressa* and *A. angulatus* comprised up 50–60 % of assemblage composition. This was expected since a drop in the Ω aragonite < 3.2 would increase foraminifera dissolution (Yamamoto et al., 2012), but these calcareous taxa were still found at the center of discharge where the surface sediments were still composed by carbonate. We attribute this to high T_A levels, which was ~~also considered to likely~~ ~~suggested as a parameter that limits~~ the dissolution rates of *A. angulatus* and other porcelaneous tests in the springs at the coast of Florida, ~~where numerous spring-fed rivers emerge from Eocene and Oligocene limestone and dolostone substrata~~ (Amegian et al., 2022). The high T_A may ~~also specifically~~ provide a calcification optimum within the polyhaline (22-30) waters ~~of both at the Springs springs at the Florida Coast and in PM~~ where a similar range of salinity ~~to PM~~ was observed. This hypothesis could explain the observed resistance of *A. angulatus* in the present study, and the higher association of foraminifera density to T_A. ~~Nevertheless WE note that~~ if we restricted the analysis to only pristine, well-preserved tests, the taxonomic metrics at 7.7-7.2 (Fig. 5) would be much lower and more ~~similar to like~~ those presented by Uthicke, Momigliano, and Fabricius (2013), in which foraminifera were almost absent at sites with ≤ 7.9 pH units.

5 Conclusion

Despite their life-long exposure to low-pH conditions, benthic tropical foraminifera species could be negatively affected under the high acidification scenarios (SSP3-7.0 and SSP5-8.5) for the end of the 21st century. Species-specific responses in foraminiferal assemblages were observed and as the oceans become more acidic, reef foraminiferal assemblages ~~might may~~ gradually shift towards ~~larger hyaline~~, symbiont-bearing ~~species and agglutinating foraminifera species~~. The species *A. angulatus*, which is known to be dominant in warm, oligotrophic areas of the Caribbean and ~~the~~ Gulf of Mexico can calcify at pH conditions lower than those projected by SSP5-8.5, however, the observed lower density of the pristine tests suggests that reef carbonate budget ~~might may~~ decrease as this species represents a major carbonate producer at these areas. Considering the observed trends of increasing average assemblage test size, our results demonstrate the key role smaller foraminifera have as bioindicators to monitor the effects of OA, as their high sensitivity to dissolution makes them first responders to ongoing OA.

6 Data availability

All data related to this study are given in the Supplement data files that accompany this paper.

7 Author contribution

DF, AP and CFB conceived of and designed the study. DF performed the faunal and statistical analysis. OMA and RTL conducted the Micro-CT experiments. DF, AP and CFB analyzed the data. DF, AP, CFB prepared the original draft of the manuscript with writing, and OMA and RTL reviewed and edited.

8 Competing interest

600 We declare that this manuscript has no conflict of interest.

9 Acknowledgments

This study was funded by the National Science Foundation-1040952 (to AP). DF thanks the scholarship of the National Council for Scientific and Technological Development (CNPq) No. 132210/2020-7. [CFB acknowledges the Buzas Award for Travel \(BAT\) received from the Cushman Foundation for Foraminiferal Research.](#) The funders had no role in the study design, data collection, and analysis, decision to publish, or preparation of the paper. DF thanks Pamela Hallock, Heitor Evangelista, Sven Uthicke and the anonymous reviewers for their helpful comments and suggestions.

10 References

- 610 Abu-Zied, R. H., Al-Dubai, T. A., and Bantan, R. A.: Environmental conditions of shallow waters alongside the southern Corniche of Jeddah based on benthic foraminifera, physico-chemical parameters and heavy metals, *J. Foramin. Res.*, 46(2), 149–170, <https://doi.org/10.2113/gsjfr.46.2.149>, 2016.
- Amergian, K. E., Beckwith, S., Gfatter, C., Selden, C., Hallock, P.: Can areas of high alkalinity freshwater discharge provide potential refugia for marine calcifying organisms?, *J. Foramin. Res.*, 52(1), 63–76, <https://doi.org/10.2113/gsjfr.52.1.60>, 2022.
- 615 Andersson, A.J., Kline, D.I., Edmunds, P.J., Archer, S.D., Bednarsek, N., Carpenter, R.C., Chadseym, M., Goldstein, P., Grottofi, A.G., Hurst, T.P., King, A.L., Kubler, J.E., Kuffner, I.B., Mackey, K. R. M., MENGE, B.A., Paytan, A., Riebesell, U., and Zimmerman, A.S.R.: Understanding ocean acidification impacts on organismal to ecological scales, *Oceanography*, 28(2), 16–27, <https://doi.org/10.5670/oceanog.2015.27>, 2015.
- 620 Back, W., and Hanshaw, B. B.: Comparison of chemical hydrogeology of the carbonate peninsulas of Florida and Yucatan, *J. Hydrol.*, 10, 330–368, [https://doi.org/10.1016/0022-1694\(70\)90222-2](https://doi.org/10.1016/0022-1694(70)90222-2), 1970.
- Back, W., Hanshaw, B. B., Pyle, T. E., Plummer, L. N., and Weidie, A. E.: Geochemical significance of groundwater discharge and carbonate solution to the formation of Caleta Xel Ha, Quintana Roo, Mexico, *Water Resour. Res.*, 19(6), 1521–1535, <https://doi.org/10.1029/WR0151006P01521>, 1979.
- 625 Barbosa, C. F., Ferreira, B. P., Seoane, J. C. S., Oliveira-Silva, P., Gaspar, A. L. B., Cordeiro, R. C., and Soares-Gomes, A.: Foraminifer-based coral reef health assessment for southwestern Atlantic offshore archipelagos, Brazil, *J. Foramin. Res.*, 42(2), 169–183, <https://doi.org/10.2113/gsjfr.42.2.169>, 2012.
- Barbosa, C. F., Prazeres, M., Padovani, B., and Seoane, J. C. S.: Foraminiferal assemblage and reef check census in coral reef health monitoring of East Brazilian margin, *Mar. Micropaleontol.*, 73, 62–69, <https://doi.org/10.1016/j.marmicro.2009.07.002>, 2009.
- 630 Beddows, P. A., Smart, P. L., Whitaker, F. F., and Smith, S. L.: Decoupled fresh – saline groundwater circulation of a coastal carbonate aquifer: Spatial patterns of temperature and specific electrical conductivity, *J. Hydrol.*, 346, 18–32, <https://doi.org/10.1016/j.jhydrol.2007.08.013>, 2007.
- Bender, H., and Hemleben, C.: Constructional aspects in test formation of some agglutinated foraminifera. *Abh. Geol. B.-A.*, 13–22, 1988.
- 635 Bender, H.: Test structure and classification in agglutinated Foraminifera. In: Kaminski, M. A., Geroch, S. and Gasiński, M. A., Eds., Proceedings of the Fourth International Workshop on Agglutinated Foraminifera, Kraków Poland, September 12–19, 1993, 27–70. Grzybowski Foundation Special Publication, 3, 1995.
- Bernhard, J. M., Barry, J. P., Buck, K. R., and Starczak, V. R.: Impact of intentionally injected carbon dioxide hydrate on deep-sea benthic foraminiferal survival, *Global Change Biol.*, 15(8), 2078–2088, <https://doi.org/10.1111/j.1365-2486.2008.01822.x>, 2009.
- 640

- Bernhard, J. M., Wit, J. C., Starczak, V. R., Beaudoin, D.J., Phalen, W.G., and Mccorkle, D.C.: Impacts of multiple stressors on a benthic foraminiferal community: a long-term experiment assessing response to ocean acidification, hypoxia and warming, *Front. Mar. Sci.*, 8, 1–18. <https://doi.org/10.3389/fmars.2021.643339>, 2021.
- 645 Charrieau, L. M., Filipsson, H. L., Nagai, Y., Kawada, S., Ljung, K., Kritzberg, E., and Toyofuku, T. Decalcification and survival of benthic foraminifera under the combined impacts of varying pH and salinity, *Mar. Environ. Res.*, 138, 36–45, <https://doi.org/10.1016/j.marenvres.2018.03.015>, 2018.
- Clarke, K. R. and Gorley, R.N.: PRIMER v6: User manual/tutorial, PRIMER-E Ltd., Plymouth, UK, 2006.
- Coronado, C., Candela, J., Igrlesias-Prieto, R., Sheinbaum, J., López, M., Ocampo-Torres, F.J.: On the circulation in the Puerto Morelos fringing reef lagoon, *Coral reefs*, 26, 149–163. <https://doi.org/10.1007/s00338-006-0175-9>, 2008.
- 650 Cottey, T. L. and Hallock, P.: Test surface degradation in *Archaias angulatus*, *J. Foramin. Res.*, 8(3), 187–202, <https://doi.org/10.2113/gsjfr.18.3.187>, 1988.
- Crook, E. D., Cohen, A. L., Rebolledo-Vieyra, M., Hernandez, L., and Paytan, A.: Reduced calcification and lack of acclimatization by coral colonies growing in areas of persistent natural acidification, *PNAS*, 110, 27, 11044–11049, <https://doi.org/10.1073/pnas.1301589110>, 2013.
- 655 Crook, E. D., Kroeker, K. J., Potts, D. C., and Rebolledo-Vieyra, M.: Recruitment and succession in a tropical benthic community in response to in-situ ocean acidification, *PLoS ONE*, 11, e0146707, <https://doi.org/10.1371/journal.pone.0146707>, 2016.
- Crook, E. D., Potts, D., Hernandez, L., and Paytan, A.: Calcifying coral abundance near low-pH springs: implications for future ocean acidification, *Coral reefs*, 31, 239–245, <https://doi.org/10.1007/s00338-011-0839-y>, 2012.
- 660 Culver, S. J., and Buzas, M. A.: Distribution of Recent benthic foraminifera in the Caribbean area. Smithsonian Institution Press, Washington, <https://doi.org/10.5479/si.01960768.14.1>, 1982.
- Cushman, J.A.: The foraminifera of the Atlantic Ocean. Bulletin 104, Smithsonian Institution. USNM. v. 2, Netherlands, Reprint 1970, 1929.
- 665 De Goeyse, S., Webb, A. E., Reichart, G. J., and De Nooijer, L. J.: Carbonic anhydrase is involved in calcification by the benthic foraminifer *Amphistegina lessonii*, *Biogeosciences*, 18, 393–401. <https://doi.org/10.5194/bg-18-393-2021>, 2021.
- De Nooijer, L. J., Langer, G., Nehrke, G., and Bijma, J. (2009). Physiological controls on seawater uptake and calcification in the benthic foraminifer *Ammonia tepida*, *Biogeosciences*, 6, 2669–2675, <https://doi.org/10.5194/bg-6-2669-2009>, 2009.
- 670 Di Bella, L., Conte, A.M., Conti, A., Esposito, V., Gaglioti, M., Ingrassia, M., De Vittor, C., Bigi, S.: Potential resilience to ocean acidification of benthic foraminifers living in *Posidonia oceanica* Meadows: The case of the shallow venting site of Panarea. *Geosciences*, 12, 184, <https://doi.org/10.3390/geosciences12050184>, 2022.
- Dias, B. B., Hart, M. B., Smart, C. W., and Hall-Spencer, J. M.: Modern seawater acidification: the response of foraminifera to high-CO₂ conditions in the Mediterranean Sea, *J. Geol. Soc. London*, 167, 843–846, <https://doi.org/10.1144/0016-76492010-050>, 2010.
- 675 Dickson, A. G., Sabine, C. L., and Christian, J. R.: Guide to best practices for ocean CO₂ measurements, North Pacific Marine Science Organization, Sidney, BC, Canada, 2007.
- Doney, S.C., Busch, D.S., Cooley, S. R., and Kroeker, K. J.: The impacts of ocean acidification on marine ecosystems and reliant human communities, *Annu. Rev. Environ. Resour.*, 45, 83–112, 2020, <https://doi.org/10.1146/annurev-environ-012320-083019>, 2020.
- 680 Dong, S., Lei, Y., Li, T., and Jian, Z.: Changing structure of benthic foraminiferal communities due to declining pH: Results from laboratory culture experiments, *Sci. China Earth Sci.*, 62, 1151–1166, <https://doi.org/10.1007/s11430-018-9321-6>, 2019.
- 685 Dong, S., Lei, Y., Li, T., and Jian, Z.: Response of benthic foraminifera to pH changes: Community structure and morphological transformation studies from a microcosm experiment, *Mar. Micropaleontol.*, 156, 101819, <https://doi.org/10.1016/j.marmicro.2019.101819>, 2020.
- Doo, S. S., Hamylton, S., Finfer, J., and Byrne, M.: Spatial and temporal variation in reef-scale carbonate storage of large benthic foraminifera: a case study on One Tree Reef, *Coral reefs*, 36, 293–303, <https://doi.org/10.1007/s00338-016-1506-0>, 2016.
- 690 Doo, S. S., Leplastrier, A., Graba-Landry, A., Harianto, J., Coleman, R. A., Byrne, M.: Amelioration of ocean acidification and warming effects through physiological buffering of a macroalgae, *Ecol Evol*, 10, 8465–8475. <https://doi.org/10.1002/ecc3.6552>, 2020.

- Engel, B. E., Hallock, P., Price, R. E., and Pichler, T.: Shell dissolution in larger benthic foraminifers exposed to pH and temperature extremes: Results from an in-situ experiment, *J. Foramin. Res.*, 45(2), 190–203, <https://doi.org/10.2113/gsjfr.45.2.190>, 2015.
- Escudero, M., Mendonza, E., and Silva, R.: Micro sand engine beach stabilization strategy at Puerto Morelos, Mexico, *J. mar. sci.*, 8(4), 247, <https://doi.org/10.3390/jmse8040247>, 2020.
- Eyre, B.D., Cyronak, T., Drupp, P., De Carlos, E. H., Sach, J.P., and Andersson, A.J.: Coral reefs will transition to net dissolving before end of century, *Science*, 359, 6378, 908–911, <https://doi.org/10.1126/science.aao1118>, 2018.
- Fabricius, K.E., Langdon, C., Uthicke, S., Humphrey, C., Noonan, S., De'ath, G., Okazaki, R., Muehlehner, N., Glas, M. S., and Lough, J. M.: Losers and winners in coral reefs acclimatized to elevated carbon dioxide concentrations, *Nat Clim Chang*, 1, 165–169, <https://doi.org/10.1038/NCLIMATE1122>, 2011.
- Fujita, K., Hikami, M., Suzuki, A., Kuroyanagi, A., Sakai, K., Kawahata, H., and Nojiri, Y.: Effects of ocean acidification on calcification of symbiont-bearing reef foraminifers, *Biogeosciences*, 8, 2089–2098, <https://doi.org/10.5194/bg-8-2089-2011>, 2011.
- Geerken, E., De Nooijer, L. J., Toyofuku, T., Roepert, A., Middelburg, J. J., Kienhuis, M. V. M., Nagai, Y., Polerecky, L., and Reichart, G. J.: High precipitation rates characterize biomineralization in the benthic foraminifer *Ammonia beccarii*, *Geochim. Cosmochim. Acta*, 318, 70–82, <https://doi.org/10.1016/j.gca.2021.11.026>, 2022.
- Girard, E., B., Estradivari, Ferse, S., Ambo-Rappe, R., Jompa, J., and Renema, W.: Dynamics of large benthic foraminiferal assemblages: A tool to foreshadow reef degradation?, *Environ. Pollut.*, 811, 151396, <https://doi.org/10.1016/j.scitotenv.2021.151396>, 2022.
- Gischler, E., and Möder, A.: Modern benthic foraminifera on Banco Chinchorro, Quintana Roo, Mexico, *Facies*, 55, 27–35, <https://doi.org/10.1007/s10347-008-0162-4>, 2009.
- Glas, M. S., Fabricius, K. E., De Beer, D., and Uthicke, S.: The O₂, pH and Ca²⁺ Microenvironment of Benthic Foraminifera in a High CO₂ World, *PLOS ONE*, 7(11), e50010, <https://doi.org/10.1371/journal.pone.0050010>, 2012.
- Hallock, P., Lidz, B. H., Burkhard-Cockey, E. M., and Donnelly, K. B.: Foraminifera as bioindicators in coral reef assessment and monitoring: The FORAM Index, *Environ. Monit. Assess.*, 81, 221–238, <https://doi.org/10.1023/A:1021337310386>, 2003.
- Hallock, P.: Larger foraminifera: A tool for paleoenvironmental Analysis of Cenozoic Carbonate Depositional Facies, *Palaos*, 1, 55–64, 1986.
- Scott, D.B., Medioli, F. S.: Living vs. Total foraminiferal populations: Their relative usefulness in paleoecology, *J. Foraminiferal Res.*, <http://www.jstor.org/stable/1304312>, 1980.
- Haynert, K., Schönfeld, J., Polovodova-Asteman, I., and Thomsen, J.: The benthic foraminiferal community in a naturally CO₂-rich coastal habitat in the southwestern Baltic Sea, *Biogeosciences*, 9, 4421–4440, <https://doi.org/10.5194/bgd-9-7783-2012>, 2012.
- Hernandez-Terrones, L.M., Street, J., Null, K., Paytan, A.: Groundwater chemistry and Sr isotope ratios shed light on connectivity and water-rock interactions in the coastal aquifer of the Caribbean coast, Mexico, *Cont. Shelf Res.*, 212, 104293, <https://doi.org/10.1016/j.csr.2020.104293>
- Hughes, T. P., Barnes, M. L., Bellwood, D. R., Cinner, J. E., Cumming, G. S., Jackson, J. B.C., Kleypas, J., Van De Leemput, I. A., Lough, J. M., Morrison, T. H., Palumbi, S. R., Van Nes, E. H., and Scheffer, M.: Coral reefs in the Anthropocene, *Nature*, 546, 82–90, <https://doi.org/10.1038/nature22901>, 2017.
- IPCC, 2021: Climate Change 2021: The Physical Science Basis. contribution of working group I to the sixth assessment report of the intergovernmental panel on climate change [Masson-Delmotte, V., P. Zhai, A. Pirani, S.L. Connors, C. Péan, S. Berger, N. Caud, Y. Chen, L. Goldfarb, M.I. Gomis, M. Huang, K. Leitzell, E. Lonnoy, J.B.R. Matthews, T.K. Maycock, T. Waterfield, O. Yelekçi, R. Yu, and B. Zhou (eds.)]. Cambridge University Press. In Press.
- Iwasaki, S., Kimoto, K., Okazaki, Y., and Ikehara, M.: X-ray micro-CT scanning of tests of three planktic foraminiferal species to clarify dissolution process and progress, *Geochem Geophys.* 20, <https://doi.org/10.1029/2019GC008456>, 2019.
- Jones, R.W.: The challenger foraminifera – The Natural History Museum. Oxford University Press, London, 1994.
- Kawahata, H., Fujita, K., Iguchi, A., Inoue, M., Iwasaki, S., Kuroyanagi, A., Maeda, A., Manaka, T., Moriya, K., Takagi, H., Toyofuku, T., Yoshimura, T., and Suzuki, A.: Perspective on the response of marine calcifiers to global warming and ocean acidification — Behavior of corals and foraminifera in a high CO₂ world “hot house”, *Prog. Earth Planet. Sci.*, 6(5), 1–37, <https://doi.org/10.1186/s40645-018-0239-9>, 2019.

- 745 Knorr, P. O., Robbins, L. L., Harries, P. J., Hallock, P., and Wynn, J.: Response of the miliolid *Archaias angulatus* to simulated ocean acidification, *J. Foramin. Res.*, 45(2), 109–127, <https://doi.org/10.2113/gsjfr.45.2.109>, 2015.
- Koehler-Rink, S. and Kuehl, M.: Microsensor studies of photosynthesis and respiration in larger symbiotic foraminifera. I The physico-chemical microenvironment of *Marginopora vertebralis*, *Amphistegina lobifera* and *Amphisorus hemprichii*, *Mar. Biol.*, 137, 473–486, <https://doi.org/10.1007/s00227000335>, 2000.
- 750 Kroeker, K. J., Kordas, R. L., Crim, R., Hendriks, I. E., Ramajo, L., Singh, G. S., Duarte, C. M. and Gattuso, J.P.: Impacts of ocean acidification on marine organisms: quantifying sensitivities and interaction with warming, *Global Change Biol.*, 19, 1884–1896, <https://doi.org/10.1111/gcb.12179>, 2013.
- Kuroyanagi, A., Iriem T., Kinoshita, S., Kawahata, H., Suzuki, A., Nishi, H., Sasaki, O., Takashima, R., and Fujita, K.: Decrease in volume and density of foraminiferal shells with progressing ocean acidification, *Sci. Rep.*, 11, 19988. <https://doi.org/10.1038/s41598-021-99427-1>, 2021.
- 755 Kwiatkowski, L., Torres, O., Bopp, L., Aumont, O., Chamberlain, M., Christian, J., Dunne, J., Gehlen, M., Ilyina, T., John, J., Lenton, A., Li, H., Lovenduski, N., Orr, J., Palmieri, J., Santana-Falcón, Y., Schwinger, J., Séférian, R., Stock, C., Tagliabue, A., Takano, Y., Tjiputra, J., Toyama, K., Tsujino, H., Watanabe, M., Yamamoto, A., Yool, A., and Ziehn, T. Twenty-first century ocean warming, acidification, deoxygenation, and upper ocean nutrient decline from CMIP6 model projections, *Biogeosciences*, 17, 3439–3470, <https://doi.org/10.5194/bg-2020-16>, 2020.
- 760 Langer, M. R., Lipps, J. H., Silk, M. T., and Lipps, J. H. Global ocean carbonate and carbon dioxide production: the role of reef foraminifera, *J. Foramin. Res.*, 27(4), 271–277, <https://doi.org/10.2113/gsjfr.27.4.271>, 1997.
- Langer, M. R.: Assessing the contribution of foraminiferan protists to global ocean carbonate production, *J. Eukaryotic Microbiol.*, 55(3), 163–169, <https://doi.org/10.1111/j.1550-7408.2008.00321.x>, 2008.
- 765 Lida, Y., Takatani, Y., Kojima, A., and Ishii, M.: Global trends of ocean CO₂ sink and ocean acidification: an observation-based reconstruction of surface ocean inorganic carbon variables, *J. Oceanogr.*, 77, 323–358, <https://doi.org/10.1007/s10872-020-00571-5>, 2021.
- Lueker, T. J., Dickson, A. G., and Keeling, C. D.: Ocean pCO₂ calculated from dissolved inorganic carbon, alkalinity, and equations for K₁ and K₂: validation based on laboratory measurements of CO₂ in gas and seawater at equilibrium, *Mar. Chem.*, 70, 105–119, [https://doi.org/10.1016/S0304-4203\(00\)00022-0](https://doi.org/10.1016/S0304-4203(00)00022-0), 2000.
- 770 Lüthi, D., Le Floch, M., Bereiter, B., Blunier, T., Barnola, J. M., Siegenthaler, U., Raynaud, D., Jouzel, J., Fischer, H., Kawamura, K., and Stocker, T. F.: High-resolution carbon dioxide concentration record 650,000–800,000 years before present, *Nature*, 453, 379–382, <https://doi.org/10.1038/nature06949>, 2008.
- Maiklem, W. R.: Black and brown speckled foraminiferal sand from the southern part of the Great Barrier Reef, *J. Sediment. Res.*, 34(4), 1023–1030. <https://doi.org/10.1306/74D71820-2B21-11D7-8648000102C1865D>, 1967.
- Martin, R. E.: Habitat and distribution of the foraminifer *Archaias angulatus* (Fichtel and Moll) (Miliolina, Soritidae), northern Florida Keys, *J. Foramin. Res.*, 16, 3, 201–206, <https://doi.org/10.2113/gsjfr.16.3.201>, 1986.
- Martinez, A., Crook, E. D., Barshis, D. J., Potts, D. C., Rebolledo-Vieyra, M., Hernandez, L., and Paytan, A.: Species-specific calcification response of Caribbean corals after 2-year transplantation to a low aragonite saturation submarine spring, *Proc. R. Soc. B: Biol. Sci.*, 286, 20190572, <https://doi.org/10.6084/m9>, 2019.
- 780 Martinez, A., Hernández-Terrones, L., Rebolledo-Vieyra, M., and Paytan, A.: Impact of carbonate saturation on large Caribbean benthic foraminifera assemblages, *Biogeosciences*, 15, 6819–6832, <https://doi.org/10.5194/bg-15-6819-2018>, 2018.
- McIntyre-Wressnig, A., Bernhard, J. M., McCorkle, D., C., and Hallock, P.: Non-lethal effects of ocean acidification on the symbiont-bearing benthic foraminifer *Amphistegina gibbosa*, *Mar. Ecol.-Prog. Ser.*, 472, 45–60, doi: <https://doi.org/10.3354/meps09918>, 2013
- Milker, Y., and Schmiedl, G.: A taxonomic guide to modern benthic shelf foraminifera of the western Mediterranean Sea, *Palaeontol. Electronica*, 15(2), 1–134, <https://doi.org/10.26879/271>, 2012.
- 790 Moodley, L., Boschker, H. T. S., Middelburg, J. J., Pel, R., Herman, P. M. J., De Deckere, E., and Heip, C. H. R.: Ecological significance of benthic foraminifera: 13C Labelling experiments, *Mar. Ecol. Prog. Ser.*, 202, 289–295, <https://doi.org/10.3354/meps202289>, 2000.
- Murray, J.W.: Ecology and applications of benthic foraminifera. Cambridge University Press, Cambridge, New York., 2006.
- 795 Narayan, G. R., Reymond, C. E., Stuhr, M., Doo, S., Schmidt, C., Mann, T., and Westphal, H.: Response of large benthic foraminifera to climate and local changes: Implications for future carbonate production, *Sedimentology*, 69, 121–161, <https://doi.org/10.1111/sed.12858>, 2021.

- Nehrke, G., Keul, N., Langer, G., De Nooijer, L. J., Bijma, J., and Meibom, A.: A new model for biomineralization and trace-element signatures of Foraminifera tests, *Biogeosciences*, 10, 6759–6767, <https://doi.org/10.5194/bg-10-6759-2013>, 2013.
- 800 Null, K. A., Knee, K. L., Crook, E. D., Sieyes, N. R., Rebolledo-Vieyra, M., Hernández-Terrones, L., and Paytan, A. Composition and fluxes of submarine groundwater along the Caribbean coast of the Yucatan Peninsula, *Cont. Shelf Res.*, 77, 38–50, <https://doi.org/10.1016/j.csr.2014.01.011>, 2014.
- Penã, V., Harvey, B. P., Agostini, S., Porzio, L., Milazzo, M., Horta, P., Gall, L.L., and Hall-Spencer, J.M. Major loss of coralline algal diversity in response to ocean acidification, *Global Change Biol.*, 27(19), 4785–4798, <https://doi.org/10.1111/gcb.15757>, 2021.
- 805 Perry, E., Velazquez-Oliman, G., and Marin, L. The hydrogeochemistry of the karst aquifer system of the northern Yucatan peninsula, Mexico, *Int. Geol. Rev.*, 44, 191–221, <https://doi.org/10.2747/0020-6814.44.3.191>, 2002.
- Peters, G. P., Andrew, R. M., Canadell, J. G., Friedlingstein, P., Jackson, R. B., Korsbakken, J. I., Le Quéré, C., and Pregon, A.: Carbon dioxide emissions continue to grow amidst slowly emerging climate policies, *Nat. Clim. Change*, 10, 3–6, <https://doi.org/10.1038/s41558-019-0659-6>, 2020.
- 810 Petit, J. R., J. Jouzel, Raynaud, D., Barnola, J. M., Basile, I., Bender, M., Chappellaz, J., Davis, M., Delaygue, G., Delmotte, M., Kotlyakov, V. M., Legrand, M., Lipenkov, V. Y., Lorius, C., Pépin, L., Ritz, C., Saltzman, E., and Stievenard, M.: Climate and atmospheric history of the past 420,000 years from the Vostok ice core, Antarctica, *Nature*, 399, 429–436, <https://doi.org/10.1038/20859>, 1999.
- 815 Pettit, L. R., Hart, M. B., Medina-Sánchez, A. N., Smart, C. W., Rodolfo-Metalpa, R., Hall-Spencer, J. M., and ProL-Ledesma, R. M.: Benthic foraminifera show some resilience to ocean acidification in the northern Gulf of California, Mexico, *Mar. Pollut. Bull.*, 73(2), 452–462, <https://doi.org/10.1016/j.marpolbul.2013.02.011>, 2013.
- Pettit, L. R., Smart, C. W., Hart, M. B., Milazzo, M., and Hall-Spencer, J. M.: Seaweed fails to prevent ocean acidification impact on foraminifera along a shallow-water CO₂ gradient. *Ecol. Evol.*, 5(9), 1–10. <https://doi.org/10.1002/ece3.1475>, 2015.
- 820 Pierrot, D. E., Levis, E., and Wallace, D. W. R.: MS Excel Program Developed for CO₂ System Calculations. Oak Ridge, TN: U.S. Department of Energy: Carbon Dioxide Information Analysis Center, Oak Ridge National Laboratory, 2006.
- 825 Prazeres, M., Martínez-Colón, M., Hallock, P.: Foraminifera as bioindicators of water quality: The FoRAM index revisited, *Environ. Pollut.*, 257, 113612, <https://doi.org/10.1016/j.envpol.2019.113612>, 2020.
- Prazeres, M., Uthicke, S., and Pandolfi, J. M.: Ocean acidification induces biochemical and morphological changes in the calcification process of large benthic foraminifera, *Proc. R. Soc. B: Biol. Sci.*, 282, 20142782, <https://doi.org/10.1098/rspb.2014.2782>, 2015.
- 830 Price, N. N., Martz, T. R., Brainard, R. E., and Smith, J. E.: Diel variability in seawater pH relates to calcification and benthic community structure on coral reefs, *PLoS ONE*, 7(8), e4384, <https://doi.org/10.1371/journal.pone.0043843>, 2012.
- R Core Team: R: A language and environment for statistical computing. R Foundation for Statistical Computing, Vienna, Austria, <https://www.R-project.org/>, 2020.
- 835 Sariaslan, N., and Langer, M. R.: Atypical, high-diversity assemblages of foraminifera in a mangrove estuary from Northern Brazil, *Biogeosciences*, 18, 4073–4090, <https://doi.org/10.5194/bg-2021-56>, 2021.
- Schiebel, R.: Planktic foraminiferal sedimentation and the marine calcite budget. *Global Biogeochem. Cycles*, 16, 4, 3-1–3-21. <https://doi.org/10.1029/2001GB001459>, 2002.
- 840 Schmidt, C., Kucera, M., and Uthicke, S.: Combined effects of warming and ocean acidification on coral reef Foraminifera *Marginopora vertebralis* and *Heterostegina depressa*, *Coral reefs*, 33, 805–818. <https://doi.org/10.1007/s00338-014-1151-4>, 2014.
- Schneider, C. A., Rasband, W. S., and Eliceiri, K. W.: Nih Image to ImageJ: 25 years of image analysis, *Nat. Methods*, 9, 7, 671–675, <https://doi.org/10.1038/nmeth.2089>, 2012.
- 845 Stephenson, C. M., Hallock, P., and Kelmo, F.: Foraminiferal assemblage indices: A comparison of sediment and reef rubble samples from Conch Reef, Florida, USA, *Ecol. Indic.*, 48, 1–7, <https://doi.org/10.1016/j.ecolind.2014.07.004>, 2015.
- Stuhr, M., Cameron, L. P., Blank-Landeshammer, B., Reymond, C. E., Doo, S. S., Westphal, H., Sickmann, A., and Ries, J. B.: Divergent proteomic responses offer insights into resistant physiological responses of a reef-foraminifera to climate change scenarios, *Oceans*, 2, 281–314, <https://doi.org/10.3390/oceans2020017>, 2021.

- 850 Toyofuku, T., Matsuo, M. Y., De Nooijer, L. J., Nagai, Y., Kawada, S., Fujita, K., Reichart, G. J., Nomaki, H., Tsuchiya, M., Sakaguchi, H., and Kitazato, H. Proton pumping accompanies calcification in foraminifera, *Nat. Commun.*, 8(1), 14145, <https://doi.org/10.1038/ncomms14145>, 2017.
- Uppström, L. R.: The boron/chlorinity ratio of deep-sea water from the Pacific Ocean, *Deep-Sea Res. Oceanogr. Abstr.*, 21, 161–162, 1974.
- 855 Uthicke, S., and Fabricius, K. E.: Productivity gains do not compensate for reduced calcification under near-future ocean acidification in the photosynthetic benthic foraminifer species *Marginopora vertebralis*, *Glob. Change Biol.*, 18(9), 2781–2791. <https://doi.org/10.1111/j.1365-2486.2012.02715.x>, 2012.
- Uthicke, S., Momigliano, P., and Fabricius, K. E.: High risk of extinction of benthic foraminifera in this century due to ocean acidification, *Sci. Rep.*, 3, 1769, 1–5, <https://doi.org/10.1038/srep01769>, 2013.
- 860 Vogel, N., and Uthicke. Calcification and photobiology in symbiont-bearing benthic foraminifera and responses to a high CO₂ environment, *J. Exp. Mar. Biol. Ecol.*, 424–425, 15–24. <https://doi.org/10.1016/j.jembe.2012.05.008>, 2012.
- Wilson, B., and Wilson, J.I.: Shoreline foraminiferal thanatocoenoses around five eastern Caribbean islands and their environmental and biogeographic implications, *Cont. Shelf Res.*, 31(7–8), 857–866, <https://doi.org/10.1016/j.csr.2011.02.010>, 2011.
- 865 Yamamoto, S., Kayanne, H., Terai, M., Watanabe, A., Kato, K., Negishi, A., and Nozaki, K.: Threshold of carbonate saturation state determined by CO₂ control experiment, *Biogeosciences*, 9, 1441–1450, <https://doi.org/10.5194/bg-9-1441-2012>, 2012. Yamano, H., Miyajima, T., and Koike, I.: Importance of foraminifera for the formation and maintenance of a coral sand cay: Green Island, Australia, *Coral reefs*, 19, 51–58, <https://doi.org/10.1007/s003380050226>, 2000.
- 870 Yordanova, E. K., and Hohenegger, W.: Taphonomy of Larger Foraminifera: Relationships between Living Individuals and Empty Tests on Flat Reef Slopes (Sesoko Island, Japan), *FACIES*, 46, 169–204. <https://doi.org/10.1007/BF02668080>, 2002.
- Iwasaki, S., Kimoto, K., Okazaki, Y., and Ikehara, M.: X-ray micro-CT scanning of tests of three planktic foraminiferal species to clarify dissolution process and progress, *Geochem Geophys.*, 20, <https://doi.org/10.1029/2019GC008456>, 2019.

875