

Dispersal of bacteria and stimulation of permafrost decomposition by Collembola

Sylvain Monteux^{1,2,3}, Janine Mariën⁴, Eveline J. Krab^{1,3}

¹Department of Soil and Environment, Sveriges Lantbruksuniversitet SLU, Uppsala, 750 07, Sweden

5 ²Department of Environmental Science, Stockholms Universitet, Stockholm, 106 91, Sweden

³Climate Impacts Research Centre, Umeå Universitet, Abisko, 981 07, Sweden

⁴Department of Animal Ecology, Vrije Universiteit Amsterdam, Amsterdam, 1081 HV, The Netherlands

Correspondence to: Sylvain Monteux (monteux@pm.me)

Abstract. Contrary to most soils, permafrost soils have the atypical feature of being almost entirely deprived of soil fauna. Abiotic constraints on the fate of permafrost carbon after thawing are increasingly understood, but biotic constraints remain scarcely investigated. Incubation studies, essential to estimate effects of permafrost thaw on carbon cycling, typically measure the consequences of permafrost thaw in isolation from the topsoil, and thus do not account for the effects of altered biotic interactions because of e.g. colonization by soil fauna. Microarthropods facilitate the dispersal of microorganisms in soil, both on their cuticle (ectozoochory) and through their digestive tract (endozoochory), which may be particularly important in permafrost soils, considering that microbial community composition can strongly constrain permafrost biogeochemical processes.

Here we tested how a model species of microarthropod (the Collembola *Folsomia candida*) affected aerobic CO₂ production of permafrost soil over a 25 days incubation. By using collembola stock cultures grown on permafrost soil or on an arctic topsoil, we aimed to assess the potential for endo- and ectozoochory of soil bacteria, while cultures grown on gypsum and sprayed with soil suspensions would allow to observe only ectozoochory.

The presence of collembola introduced bacterial ASVs absent in the no-collembola control, regardless of their microbiome manipulation, when considering presence-absence metrics (unweighted UniFrac metrics), which resulted in increased species richness. However, these introduced ASVs did not induce changes in bacterial community composition as a whole (accounting for relative abundances, weighted UniFrac), which might only become detectable in the longer-term.

CO₂ production was increased by 25.85% in the presence of collembola, about half of which could be attributed to collembola respiration based on respiration rates measured in the absence of soil. We argue that the remaining 13.22% (95% CI:3.2-23.25%) can be considered a priming effect of the presence of collembola, i.e. a stimulation of permafrost CO₂ production in the presence of active microarthropod decomposers. Overall, our findings underline the importance of biotic interactions in permafrost biogeochemical processes, and the need to explore the additive or interactive effects of other soil food web groups of which permafrost soils are deprived.

1. Introduction

Carbon fluxes from soils are largely governed by the rate of decomposition of organic matter. Soil fauna is a crucial component in organic matter decomposition (García-Palacios et al., 2013; Griffiths et al., 2021), both directly through mechanical degradation of litter and corpses into smaller pieces, and indirectly through feeding habits controlling the abundances of other decomposer groups such as fungi, microbial eukaryotes or bacteria (Hanlon and Anderson, 1979; Kaneda and Kaneko, 2008; Frouz et al., 2020; Potapov et al., 2020). In arctic soils, the scarcity of macrofaunal decomposers (e.g. earthworms, Blume-Werry et al., 2020) coupled to the high abundance of microbivorous microarthropods such as collembola (Potapov et al., 2022), results in a particularly strong impact of collembola on decomposition through microbial population control (Koltz et al., 2018, Crowther et al., 2012, Seastedt 1984).

40

Contrary to other important groups of soil fauna, such as earthworms, millipedes (Golovatch and Kime, 2009; Berman et al., 2015) or woodlice (Sfenthourakis and Hornung, 2018), collembola are ubiquitous in Arctic soils where they can reach high densities – up to 130,000 individuals per m² in high arctic Greenland (Sørensen et al., 2006). However, collembola are mostly abundant in the topsoil, and to our best knowledge have never been observed in the perennially-frozen subsoil, the permafrost. Permafrost soils are a prominent feature of Arctic landscapes, and the the huge carbon stock they represent and positive feedback to climate change that their thawing will likely induce causes concern ((Masson-Delmotte et al., 2021). The frozen conditions over long periods of time have eliminated most fauna and non-microbial life from these environments, and despite the possibility of resuscitating organisms such as plants (Yashina et al., 2012), nematodes (Shatilovich et al., 2018) or rotifers (Shmakova et al., 2021), newly-thawed permafrost soils generally harbour an extremely simplified soil food web entirely deprived of metazoans. Despite this particularity, the absence of collembola and the consequence of their possible introduction on biogeochemical cycling of newly-thawed permafrost has been mostly overlooked.

50

In contrast to collembola, some microorganisms survive and/or thrive in permafrost conditions, and microbial adaptations to frozen conditions have been studied (Mackelprang et al., 2011, 2017; Hultman et al., 2015; Bottos et al., 2018). However, not all microbes survive these conditions, and the combination of environmental constraints exerted over long periods of time (Mackelprang et al., 2017) and strong dispersal limitations (Bottos et al., 2018) result in microbial communities that can be deprived of some functions (Knoblauch et al., 2018; Monteux et al., 2020; Barbato et al., 2022). The re-introduction of such functions can result in drastic changes in permafrost processes, and sizable impacts on greenhouse gas production have been observed in vitro for CH₄ and CO₂ (Knoblauch et al., 2018; Monteux et al., 2020) and confirmed in situ for N₂O (Marushchak et al., 2021). Upon thawing, this re-introduction of missing function, or ecological rescue (Calderón et al., 2017) requires microorganisms to migrate into this newly-available habitat, which could happen for instance laterally through airborne dispersal (Harding et al., 2011) – e.g. for permafrost exposed to the air in abrupt thaw processes (Inglese et

60

al., 2017) – or vertically through percolation in the soil column when the active layer becomes deeper (Monteux et al., 2018; Johnston et al., 2019).

65

Collembola are another possible vector for the dispersal of microorganisms into newly-thawed permafrost (Buse et al., 2014). With the deepening of the active layer, collembola migration into newly-thawed permafrost is unlikely since they mostly reside in topsoil layers, but it will likely occur in soil mixing events (Väisänen et al., 2020) such as thermokarst, active layer detachment or thaw slump processes where newly-thawed permafrost is exposed to surface conditions. Like all large organisms, collembola host a variety of microorganisms, their microbiome (Agamennone et al., 2015; Leo et al., 2021). Because micro-arthropods, such as collembola, can move across large distances compared to fungi or bacteria, the microbial species in collembolan microbiomes might be among the first to colonize and establish into newly-thawed permafrost when collembola access it. This could occur through a combination of two main processes: ectozoochory, where the microbiome of the cuticle disperses into the new habitat, and endozoochory where microorganisms disperse after transiting through the gut of the animals. To our best knowledge, whether collembola affect the biogeochemical functioning of newly-thawed permafrost, and whether and how they can serve as a vector for microbial colonization has not been explored yet..

75

We incubated permafrost from the Yedoma domain, which represents a large carbon stock in parts of Siberia and North-America (Strauss et al., 2017) and has previously been shown to lack certain microbial functions (Monteux et al., 2020), in the presence or absence of a model species of microarthropod (collembola *Folsomia candida*), and assessed CO₂ production and bacterial community composition over a 25 days aerobic incubation. We used *Folsomia candida* collembola from a stock culture, as well as collembola subjected to manipulation of their cuticle microbiome, or cuticle and gut microbiomes, to test the following hypotheses:

80

85

90

1. Collembola presence in permafrost will alter bacterial community composition, through their grazing.
2. Collembola more closely exposed to topsoil bacteria will change permafrost bacterial community composition further than those exposed less intricately. In other words, we expect a gradual change between clean collembola, collembola with cuticle microbiome manipulated (ectozoochory) and collembola with both gut and cuticle microbiomes manipulated (endozoochory).
3. Collembola presence in permafrost will increase CO₂ production, through both collembola respiration and a stimulation of microbial activity ('priming effect').
4. The gradual introduction of distinct bacterial communities hypothesized above (2) will result in increased CO₂ production, owing to the functional limitations of Yedoma permafrost microbial community in terms of CO₂ production.

2. Materials and Methods

95 2.1 Experimental design

2.1.1 Soils

The Yedoma sediment used to assess the potential of the different microbial communities to alleviate functional limitations originated from the Cold Region Research Engineering Laboratory (CRREL) Permafrost Tunnel (Fox, Alaska, USA). The sediment was sampled from the upper silt unit and is an upper Pleistocene silty deposit, previously described in details (Shur et al., 2004; Mackelprang et al., 2011, 2017; Monteux et al., 2020). This sediment was chosen due to its microbial communities being vulnerable to invasions and exhibiting functional limitations, allowing to discern impacts of introduced microorganisms on broad proxies such as CO₂ production (Monteux et al., 2020). Approximately 35 g (fresh weight) homogenized sediment was set in 200ml glass jars, sealed with parafilm to allow for gas but not moisture or microorganism exchange, and pre-incubated at 10 °C for 11 days before inoculation.

105 To manipulate the collembola microbiome and make it more similar to that found in natural settings, we used a topsoil (0-15 cm depth) from a subarctic meadow (Kärkevagge, 30 km west of Abisko, northern Sweden, 68°24'23.8"N, 18°18'51.6"E) sampled in September 2019 and kept frozen until the cultivation of collembola.

2.1.2 Collembola

A strain of the collembola species *Folsomia candida* was obtained from Vrije Universiteit Amsterdam and cultured 6 months prior to the onset of the experiment. *Folsomia candida* is a parthenogenetic ground-dwelling collembola, which has been routinely used as a model organism in soil ecology. Stock cultures were maintained on a gypsum and coal medium and fed baker's yeast, traces of mould were removed and fresh yeast and water were added once to twice a week, and fresh stock cultures were started monthly.

2.1.3 Collembola inoculation treatments

115 Two months prior to the onset of the experiment, separate stock cultures were established on gypsum and coal medium supplemented with a 2-3 cm layer of topsoil, to obtain collembola which both skin and gut microbiome were colonized with topsoil microorganisms ('topsoil stock culture'). In parallel, similar stock cultures using permafrost sediment were established as an additional control ('permafrost stock culture'). These stock cultures with soil or sediment were supplemented with yeast and water alike the gypsum stock culture, to maintain high adult population densities. One day before inoculating the incubation jars, soil suspensions were made from the topsoil and permafrost sediment (5 and 10 g, respectively, in 100 ml ddH₂O), shaken at 150 rpm for 1 hour and filtered (Ahlstrom-Munksjö grade 006, 1.5 µm pore size).

All incubation jars containing permafrost were randomly assigned a treatment on the day of inoculation among the following, replicating each treatment across 6 jars (Figure 1):

125

- No collembola (hereafter, 'No-collembola control');
- Collembola grown on gypsum stock culture ('Collembola');
- Collembola grown on gypsum stock culture, sprayed with topsoil suspension ('Ectozoochory');
- Collembola grown on gypsum stock culture, sprayed with permafrost suspension ('Ectozoochory control');
- Collembola grown on topsoil stock culture ('Endozoochory');
- Collembola grown on permafrost stock culture ('Endozoochory control').

130

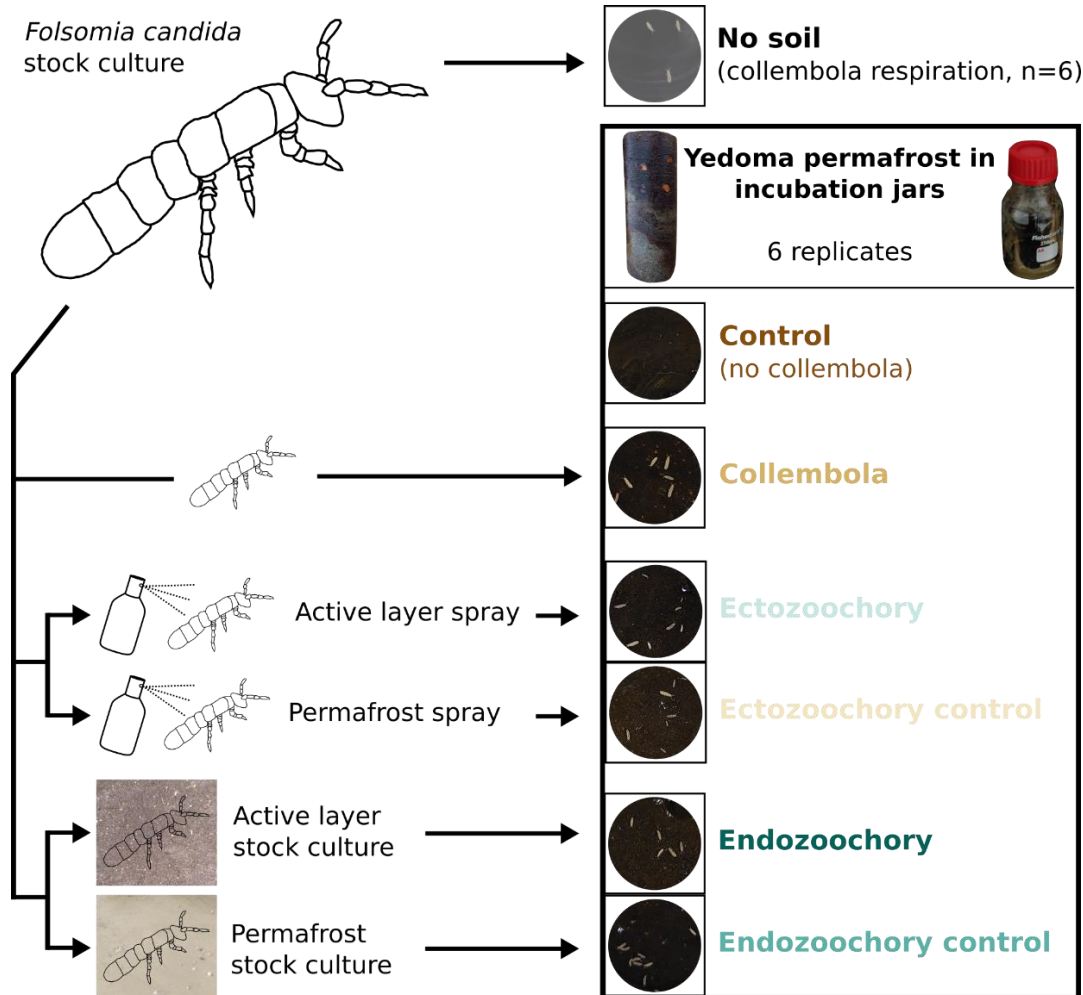


Figure 1: Summary of the experimental design. *Folsomia candida* collembola were grown in a stock culture on gypsum and fed with yeast, then subjected to different treatments before being inoculated into jars filled with Yedoma permafrost sediment (30-80 individuals per jar). Ectozoochory was assessed by spraying the collembola with soil suspensions, while endozoochory was assessed by growing collembola in stock cultures supplemented with soil. The jars were incubated in the dark for 25 days at 10 °C, CO₂ production was measured throughout the incubation period and bacterial community composition was determined at the end of the incubation.

Adult collembola were isolated from the stock cultures using a hand-held vacuum cleaner mounted with a 10 ml pipet tip. The collembola were transferred into a black plastic tray, allowing to spread them and pick out the adults, excluding juveniles as much as possible. From this tray, a similar amount of collembola (30 – 80 individuals, in the range of values used in the literature e.g. (Kaneda and Kaneko, 2008)) was sampled with the vacuum cleaner, then inoculated into each jar by pouring them into a plastic funnel, with the collembola provenance or manipulation depending on the treatment. Prior to pouring them into the plastic funnel, collembola used in the ectozoochory treatment and its control were sprayed with the corresponding soil suspensions. To limit cross-contamination, separate funnels, as well as separate 10 ml pipet tips on the vacuum cleaner were used for the different treatments. A picture of the inside of each jar was taken to count the exact number of collembola, then the jars were closed with rubber septa, flushed with moisturized CO₂-free air and incubated. To estimate collembola respiration per individual, collembola were also incubated in 6 jars under identical conditions, except that the soil was replaced with a few drops of autoclaved ddH₂O to prevent dehydration (hereafter, no-soil calibration).

2.1.4. Incubation

We dark-incubated all flasks for 25 days under aerobic conditions at 10 °C. This incubation temperature is similar to summer active-layer temperatures in permafrost affected areas and within the thermal tolerance range of psychrophilic microorganisms (D'Amico et al., 2006). We used a short (25 days) incubation period to ensure a relatively stable collembola population level, by limiting uncertain numbers of newly-hatched collembola individuals, since the eggs of *Folsomia candida* take 18-20 days to hatch at 16 °C (Marshall & Kevan, 1962) and presumably longer than 25 days at 10 °C.

2.2. Measurements

2.2.1. CO₂ production

Headspace air was sampled with a syringe to measure CO₂ concentrations (EGM-5 IRGA, PP Systems, Amesbury, Massachusetts, USA) at intervals ensuring CO₂ concentrations remained below 20,000 ppm to prevent a toxic CO₂ build-up (i.e. after 3, 7, 14 and 25 days). After each measurement, the jars were flushed with 0.45 µm-filtered CO₂-free air moisturized by bubbling it through two 5l bottles of ddH₂O, for 3 min at 1 to 2 l min⁻¹, i.e. with at least 15 times the volume of the jar. CO₂ concentrations were adjusted for changes in temperature and atmospheric pressure to calculate CO₂ production rates (τ) as follows:

$$\tau_{(i)} = \frac{[CO_2]_i \times (P_i V / RT_i)}{(\Delta t)_i}$$

where $(\Delta t)_i$ is the time interval between measurement (i) and previous flushing, P_i is atmospheric pressure at measurement time, V the headspace volume, R the ideal gas constant and T_i the temperature. To calculate cumulative CO₂ production over the entire incubation, we summed up the quantity of CO₂ present in the headspace at each sampling, within each jar.

2.2.2. Bacterial community

Microcentrifuge tubes (1.5 ml) were filled with soil and snap-frozen in dry ice to analyse microbial communities from the jars harvested after one day and at the end of the incubation. Initial soils were sampled likewise, after thawing and homogenizing but before pre-incubation for the permafrost soils and before preparing soil suspensions for active layer soils.

165 The frozen tubes were kept at -20 °C for up to 4 months before freeze-drying, then homogenized by bead-beating (Precellys CK-68 15 ml tubes, 2 × 30 s at 4500 rpm). DNA was extracted from 183 to 285 mg of homogenized freeze-dried soil using DNEasy PowerSoil Pro Kit (Qiagen) according to the manufacturer's instructions, and DNA concentrations in the extracts were measured on a Qubit 1.0 fluorometer.

170 The V4-V5 region of the 16S ribosomal RNA gene was targeted in PCR amplification using primers 515F (5' GTGYCAGCMGCCGCGGTAA 3') and 926R (5' CCGYCAATTYMTTTRAGTTT 3') with Illumina sequencing adapters, using 12.5 µl Phusion Taq Green PCR mastermix (Thermo Scientific), 0.25 µM of each primer, 2 µl of DNA extract diluted to 5 ng µl⁻¹ and nuclease-free water to 25 µl reaction volume. PCR conditions were as follows: initial denaturation (98 °C, 3 min), 25 cycles of denaturation (98 °C, 15 s), annealing (50 °C, 30 s) and elongation (72 °C, 40 s), and a final elongation
175 (72 °C, 10 min), after which PCR products were checked by electrophoresis on 1% agarose SB gel. 20 µl of PCR products were cleaned and their DNA concentrations normalized using a SequalPrep Normalization Plate kit (Invitrogen), according to manufacturer's instructions. Three DNA extraction blanks and two PCR blanks were included as negative controls, as well as a mock community as positive control (ZymoBIOMICS, diluted to 5 and 0.5 ng µl⁻¹ in two replicates each).

180 A second PCR step was performed to add Nextera dual-indexing barcodes, using 30 µl reaction volume, 1 µM of each primer and 5 µl cleaned PCR product. PCR conditions were as follows: initial denaturation (98 °C, 3 min), 8 cycles of denaturation (98 °C, 30 s), annealing (55 °C, 30 s) and elongation (72 °C, 40 s), and a final elongation (72 °C, 10 min), after which PCR products were checked by electrophoresis on 1% agarose SB gel. 25 µl of PCR products were cleaned and their DNA concentrations normalized using a SequalPrep Normalization Plate kit (Invitrogen). Serial elution across columns was
185 used to increase concentration of the pooled products, i.e. using only 8 × 20 µl elution buffer instead of 96 × 20 µl. The eluted DNA was pooled, its concentration was measured on a Qubit fluorometer and the size distribution of the amplicons was measured by automated electrophoresis (Agilent 2100 Bioanalyzer). The library was then sent for sequencing on an Illumina MiSeq with V3 chemistry (2 × 300 bp, 15% PhiX spike-in) at the SNP&SEQ Technology Platform in Uppsala. Demultiplexing was performed by the sequencing facility, and data deposited at ENA with accession number PRJEB51992.

190 2.3. Data analysis

2.3.1. Bioinformatics

All bioinformatics and statistics were performed in R v4.1.3 (R Core Team, 2019), unless specified otherwise. The whole analysis pipeline is found at https://git.bolin.su.se/bolin/Collembola_vector and the processed data and figure-generating script at Zenodo (Monteux et al., 2022). In short, amplicon sequence variants (ASVs) were created with DADA2 1.18.0 (pseudo-pooling; (Callahan et al., 2016) after removing primers and adapters with cutadapt (v3.10; (Martin, 2011). Taxonomy was assigned to ASVs with the RDP naïve Bayesian classifier (v1.8; (Wang et al., 2007)), and ASVs resolved to the genus rank were further assigned a species rank by the exact string-matching algorithm implemented in DADA2 (*assignSpecies*), using SILVA v138.1 reference data (Quast et al., 2013). Putative contaminant ASVs were manually selected from those identified *in silico* using the *decontam* algorithm (Davis et al., 2018) with combined prevalence- and frequency- based methods using the default threshold of 0.1, and separate prevalence- and frequency-based methods with a threshold of 0.05. Eight contaminant ASVs amounting up to 0.024% of the total reads were removed. Appropriateness of the bioinformatics analysis parameters was judged by visually assessing the composition of mock communities (microbial community DNA standard, ZymoBIOMICS) at the genus level, leading to ASVs amounting up to less than 10 reads and/or present in fewer than 3 samples being removed from the dataset. Sequencing depth did not associate with experimental treatments (ANOVA $F_{5,30}=0.701$, $P=0.627$), therefore read numbers were converted to proportional abundances within samples to normalize sample sizes.

2.3.2. Diversity analyses

The effect of the different treatments on bacterial communities was visualized using principal coordinates analysis (PCoA) and tested with permutational multivariate analyses of variance (PerMANOVA, *adonis* function in *vegan* package) after verifying homoscedasticity (*betadisper*). Two distance matrixes were computed for that purpose, using weighted- and non-weighted UniFrac distances (Lozupone et al., 2011), to distinguish between compositional effects accounting for bacterial relative abundances and for only presence-absence, respectively. Pairwise contrasts were subsequently computed using the wrapper provided in the *pairwiseAdonis* R package (Arbizu, 2021).

In addition, the same effect was tested with the more robust and sensitive *manyGLM* approach (Wang et al., 2012), which avoids certain pitfalls of distance-based methods (Warton et al., 2012). *ManyGLM* were fitted with negative binomial distribution, after visually checking that assumptions were met, on the non-normalized ASV count data using the default PIT-trap resampling with 1999 bootstrap permutations, and a likelihood-ratio testing method. An analysis of deviance was carried out (*anova.manyglm*), subsequently using the provided wrapper for pairwise comparisons with free step-down *P* value adjustment.

220 2.3.3. CO₂ production analysis

A repeated-measures ANOVA was carried out, using Greenhouse-Geisser epsilon correction to degrees of freedom to account for the violation of the sphericity assumption, to assess the interactive effect of the collembola manipulation treatments over time. Since this interactive effect was not statistically significant ($P=0.56$, Appendix A1), we removed the time dimension and used cumulative CO₂ production at the end of the incubation period below.

225 To assess our hypothesis that collembola presence would increase CO₂ production we used two-sample t-tests with unequal variances to compare the cumulative CO₂ production at the end of the incubation between the no-collembola control and all other jars.

To explore differences between the collembola microbiome manipulations, we used a one-way ANOVA followed by treatment contrasts to assess the difference from the control (i.e. all treatment and controls compared to the no-collembola control) and selected orthogonal contrasts to assess the effects of each treatment (i.e. each treatment compared to its own control).

230

2.3.4. Estimated collembola respiration

Based on photographs taken upon inoculating the incubation jars with collembola and three days after inoculating, we counted the exact number of live collembola (i.e. ignoring collembola which had apparently not moved between the two pictures were taken). Only a few animals did not survive the transfer, and no dead animals were observed at the end of the incubation. The amount of collembola per jar varied across treatments ($F_{4,25} = 3.19$, $P = 0.030$), although no pairs of treated jars significantly differed from each other (when including the no-soil calibration jars, $F_{5,30} = 4.048$, $P = 0.006$; Appendix B), we therefore needed to account for differing collembola numbers. We averaged the respiration per individual in the no-soil calibration set for each of the CO₂ concentration measurement times, and multiplied this amount by the number of collembola present in each jar to estimate the amount of CO₂ produced by collembola basal respiration in treatment jars.

235

240

2.3.5. Response-ratio calculations

A response-ratio of CO₂ production in collembola treatments was calculated by dividing cumulative CO₂ production by the average of the no-collembola control. This was done both for the net CO₂ production after subtracting the estimated collembola basal respiration (RR_{soil}), and for the gross CO₂ production (RR_{gross}). This allows to partition the difference in altered CO₂ production between what was respired by the collembola and a putative priming effect on soil CO₂ production.

245

3. Results

3.1. Bacterial communities

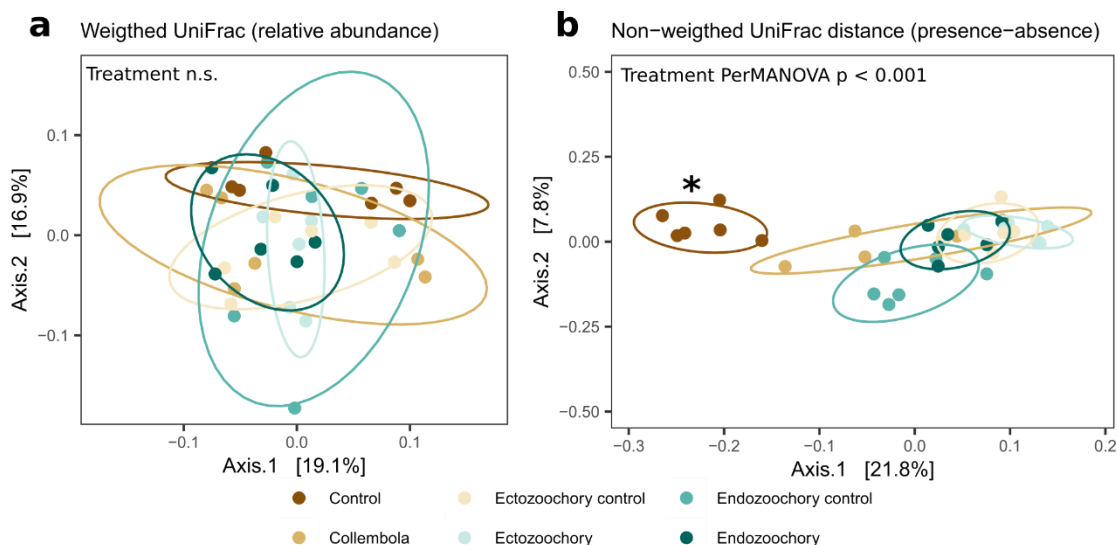


Figure 2: Response of permafrost bacterial communities to the addition of collembola undergoing different microbiome manipulation. a: Principal coordinates analysis (PCoA) of normalized abundance of bacterial ASVs (Amplicon Sequence Variants) based on weighted UniFrac phylogenetic distance (i.e. accounting for relative abundances); **b:** PCoA of normalized abundance of bacterial ASVs based on non-weighted UniFrac phylogenetic distance (i.e. presence-absence only). Ellipses indicate 80% confidence interval around treatment centroids, and axes are scaled to the percentage of explained variance. The asterisk indicates that the No-collembola control (dark brown) in **b** significantly differs from all other treatments (pairwise PerMANOVA $p < 0.05$) and collembola treatments did not differ from the stock-collembola treatment. Pairwise comparisons are summarized in Appendix C1.

Bacterial community composition was overall largely unaffected by the presence of collembola. Taking relative abundances
250 into account, no effect of the different treatments was identified with PERMANOVA ($P > 0.05$, Figure 2a), but a significant
treatment effect was observed using the presence-absence distance metrics (PERMANOVA $F_{5,30}=2.91$, $P = 0.001$, Figure
2b). More specifically, treatments containing collembola differed from the no-collembola control (Figure 2b) and to some
extent from each other (Appendix C1). Using manyGLM, a significant treatment effect was observed (manyGLM analysis of
deviance $P < 0.001$; Table 1). The ectozoochory treatment and its control (collembola sprayed with topsoil or permafrost soil
255 suspension, respectively) differed significantly from the no-collembola control in the post-hoc test ($0.01 < P < 0.05$), while
the other treatments including collembola tended to differ from the no-collembola control ($0.05 < P < 0.1$, Table 1).
Similarly to the presence-absence analysis, treatments that included collembola did not significantly differ from each other in
the manyGLM analysis. Overall, soil with collembola exhibited higher alpha-diversity metrics (richness estimators Chao1,
ACE, number of observed ASVs, as well as Shannon and Fisher diversity indexes, Figure 3, Appendix C2) than the no-
260 collembola control but those did not differ among the collembola treatments.

Table 1: Effect of addition of collembola on Yedoma sediment bacterial communities.
 Analysis of deviance test on a manyGLM model fitted on 1206 ASVs assuming negative-binomial distribution, using 1999 iterations of PIT-trap resampling.
P values below 0.05 are denoted in bold; ***: $P < 0.001$; *: $0.01 < P < 0.05$; : $0.05 < P < 0.1$.

			<i>Multivariate test</i>	Res.Df	Df.diff	Dev	<i>P</i>	
			Treatment	30	5	11742	<0.001	***
<i>Multivariate test contrasts</i>					Observed statistic	Adjusted <i>P</i>		
	Control	vs Collembola			3124	0.082	.	
	Control	vs Ectozoochory control			4085	0.013	*	
	Control	vs Ectozoochory			4274	0.011	*	
	Control	vs Endozoochory control			3276	0.064	.	
	Control	vs Endozoochory			3117	0.082	.	
	Collembola	vs Ectozoochory control			1533	0.669		
	Collembola	vs Ectozoochory			1580	0.669		
	Collembola	vs Endozoochory control			1842	0.658		
	Collembola	vs Endozoochory			1720	0.669		
	Ectozoochory control	vs Ectozoochory			1755	0.669		
	Ectozoochory control	vs Endozoochory control			2335	0.378		
	Ectozoochory control	vs Endozoochory			1752	0.669		
	Ectozoochory	vs Endozoochory control			2375	0.378		
	Ectozoochory	vs Endozoochory			2031	0.577		
	Endozoochory control	vs Endozoochory			1976	0.586		

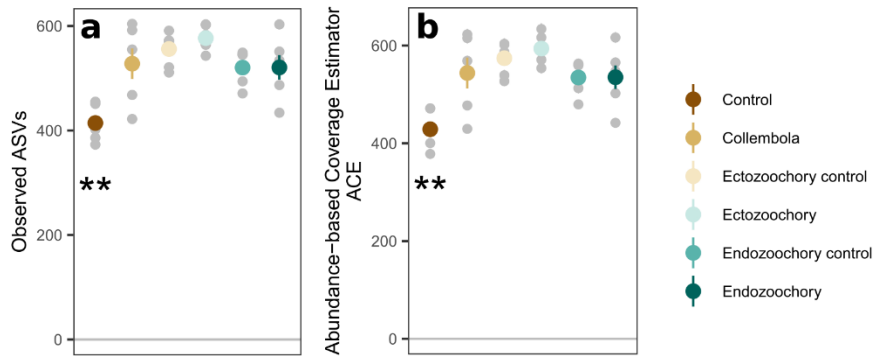


Figure 3: Response of permafrost bacterial alpha diversity to the addition of collembola undergoing different microbiome manipulation. a: Number of observed ASVs (Amplicon Sequence Variants) per sample; **b:** Abundance-based Coverage Estimator ACE. Coloured symbols and error-bars are means and standard-errors within a treatment (n=6), small grey symbols are individual samples. Error-bars are only shown when exceeding the symbols size. Asterisks denote that the no-collembola control differs from all other treatments (estimated marginal means pairwise comparison, $0.001 < \text{Holm-adjusted } P < 0.01$).

3.2. CO₂ production

Overall, the collembola addition resulted in higher CO₂ production than the no-collembola control, but the ectozoochory and endozoochory treatments did not result in higher CO₂ production than their respective controls (using gross CO₂ production, as in RR_{gross}, Appendixes A2, A3). When accounting for collembola basal respiration (as in RR_{soil}), only the ectozoochory treatment (p=0.005) and to a lesser extent its control (p=0.069) differed from the no-collembola control (Appendixes A2, A3).

We hypothesized an increased CO₂ production in the zoochory treatments through an effect on bacterial communities, however that effect was absent, we therefore tested for the overall effect of collembola presence across all treatments compared to the no-collembola control (Figure 4). Using a t-test with unequal variances, we observed a 25.85% increase in CO₂ production in presence of collembola (RR_{gross}; Figure 4a). When subtracting estimated collembola basal respiration, this increase was on average 13.22%, (RR_{soil}; Figure 4b), thus roughly half of the observed increase in CO₂ production could be attributed to collembola basal respiration.

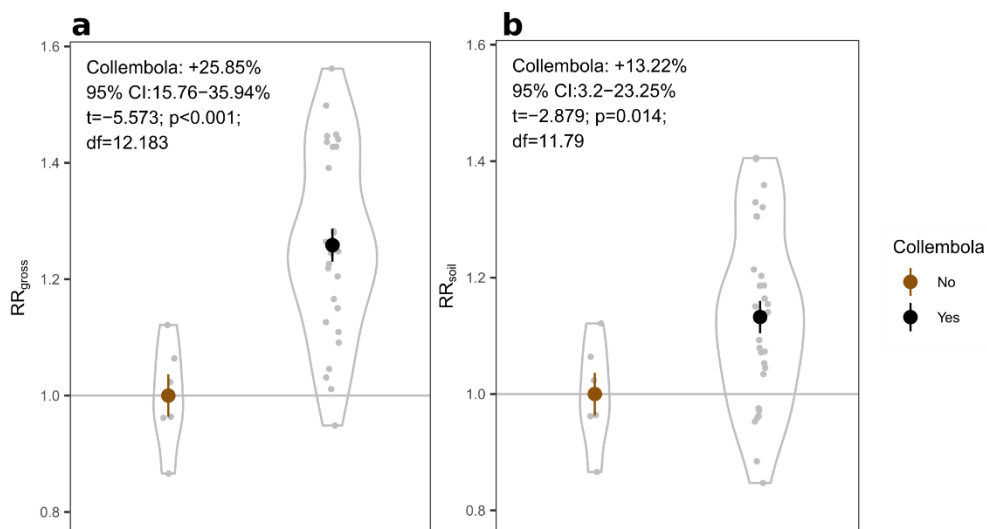


Figure 4: Response-ratios of permafrost cumulative CO₂ production rates to addition of collembola. a: RR_{gross}: measured CO₂ production rates; **b:** RR_{soil}: measured CO₂ production rates with estimated collembola basal respiration subtracted. All values are divided by the mean of the no-collembola control, small grey circles are individual values, large symbols are means, error-bars are standard errors of the mean (n=6 and 30 for brown and black symbols, respectively), and violin plots denote the shape of the distributions with maximum width proportional to the number of observations. Statistics are derived from two-sample t-tests with unequal variances.

4. Discussion

We showed that collembola stimulated CO₂ production from permafrost sediment through ‘priming’, while subtly altering the presence of certain bacterial ASVs, irrespective of the microbiome manipulation imposed on the collembola.

Colonization of permafrost by collembola therefore has the potential to result in bacterial community changes and to increase C turnover from tundra soils.

4.1. Introduction of bacteria by collembola

285 Collembola introduced new bacteria in thawed permafrost soil, resulting in an increase in alpha-diversity and significant differences in bacterial community composition, on a presence-absence basis. This pattern was consistent in all treatments where collembola were added, but did not depend on the microbiome manipulation treatment assigned to the collembola (Figure 2b, Figure 3). Despite their effects on the presence of certain bacteria, collembola did not impose broader community changes, as bacterial communities were not affected when considering relative abundances as we had hypothesized (Figure 290 2a, Table 1). However, given the subtle effect of collembola on bacteria during this short incubation, this suggests that on longer time scales collembola may modify bacterial communities more dramatically.

4.2. Differences between ecto- and endo-zoochory treatments

Although collembola introduced new bacteria into permafrost soil, our results did not support that they did so differently through ecto- and/or endo-zoochory. This suggests that collembola presence mostly introduced bacteria that were part of the 295 core collembola microbiome, or that the way in which their microbiome changes was not well represented by our treatments. For example, spraying may not have altered the cuticle microbiome as collembola cuticle is particularly hydrophobic (Hensel et al., 2013a, b; Nickerl et al., 2013). This should however not have been an issue for the Endozoochory treatment, in which collembola were in contact with the topsoil for a prolonged (>1 month) period of time. Despite this prolonged exposure, no additional effect of Endozoochory on bacterial community composition was observed, compared to 300 Ectozoochory or Collembola-only treatments. The presence of bacteria from the topsoil in the collembola gut was very likely, considering the piles of soil-coloured feces in the stock cultures, as collembola typically harbor a gut microbiome reflecting their diet and direct environment (Xiang et al., 2019; Leo et al., 2021). In contrast with the permafrost stock cultures, where the yeast was necessary as an additional food source to maintain stable populations, collembola populations remained stable in topsoil stock cultures similar to those used in the Endozoochory treatment even in absence of yeast, 305 further indicating their consumption of soil particles and associated microorganisms. Therefore, the absence of effect of the Ectozoochory treatment on permafrost bacterial communities may indicate that collembola cuticle does not serve as a vector for bacterial dispersal, possibly due to its omniphobic structure. Further, the lack of difference between the effects of Collembola and Endozoochory treatments suggests that few to none of the bacteria present in this topsoil are able to establish in- or survive transit through collembolan gut. This suggests against generalist 'hitch-hiking' bacteria using 310 microfauna guts as a means of dispersal, emphasizing instead that such hitch-hiking bacteria are similar regardless of the feeding context of the collembola.

It is not unlikely that the observed limited response of bacterial community to zoochory treatments was transient, and that collembola presence would have eventually affected community composition also in terms of relative abundances. A longer
315 incubation period may have resulted in stronger effects on bacterial community composition, as observed by (Coulibaly et al., 2019), but this would have been at the expense of controlling the number of collembola in the jars, and thus of being able to account for their basal respiration. Using a RNA-based approach to target the ‘active’ bacterial community may be another way to detect such transient effects. It should also be noted that our semi-quantitative approach to bacterial community composition did not allow us to assess putative changes in absolute abundances, although such changes are not
320 necessarily observed in similar studies (Kaneda and Kaneko, 2008).

Collembola effects on fungal communities may have indirectly affected bacterial communities, and thus represent a potential additional mechanism by which collembola have affected the presence of certain bacteria. It is not unlikely that fungi would have responded more strongly to the presence of mostly fungivorous *Folsomia candida*. Using fungi as focus organism in
325 this study, however, may have had its difficulties. For example, the use of *Candida albicans* as food source for the collembola stock cultures may have strongly distorted fungal community composition, thus requiring questionable bioinformatic workarounds. Further, assessing the effects on fungal communities may not allow to distinguish between the consequences of collembola as a vector for microbial migration and as a grazing consumer. Although assessing responses of the whole soil food web may have given better insights in potential mechanisms by which collembolan affect thawed
330 permafrost soil, we here chose to focus on their effects on bacteria given their preponderant role on realizing soil functions in this system (Monteux et al., 2020).

4.3. Collembola effects on CO₂ production

Our hypothesis stating that soil CO₂ production would be increased in presence of collembola was supported by our results. However, since no differences in bacterial community composition was detected between the different collembola
335 treatments, the rationale for our follow-up hypothesis (attributing an increased influence on CO₂ production to the treatments exhibiting stronger changes in bacterial community) was not met. We therefore did not deem relevant to formally evaluate this hypothesis. Our results suggest that it would be rejected (Appendix A3), but we could not say whether that is because the rationale is wrong or because the manipulation of bacterial communities did not yield the expected effect.

340 Overall, collembola presence increased respiration by 25%, half of which was attributed to respiration of collembola themselves. We interpret the remaining 13% as a “priming effect”, i.e. a stimulation of SOM-derived CO₂ production induced by the presence of collembola. The mechanism behind this priming effect remain unclear, and could for instance relate to stimulation of microbial activity by the input of more labile substrates by the collembola (digestion by-products). Overall, our results add to a list of contrasting findings on the direction and magnitude of priming of SOM decomposition by
345 collembola presence in soils in general. Earlier studies that compared CO₂ production in presence or absence of collembola

or other faunal groups have mostly focused on litter, e.g. (Hanlon and Anderson, 1979). The scarce studies on soil CO₂ production including collembola reported contrasted findings, with some studies observing increases in soil CO₂ emissions in presence of collembola by up to +400% (Addison and Parkinson, 1978; Bakonyi, 1989; Kaneda and Kaneko, 2008; Wang et al., 2017), while others found no significant changes (Theenhaus et al., 1999; Lubbers et al., 2020; Lucas et al., 2020).

350 Collembola effect on CO₂ production in litter can be species-specific (Hanlon and Anderson, 1979), and our results could support this as we found a similar increase as in three studies where *Folsomia candida* was used (Bakonyi, 1989; Kaneda and Kaneko, 2008; Wang et al., 2017). (Kaneda and Kaneko, 2008) reported a density-dependent increase in CO₂ production with the addition of *F. candida*, which showed no effect at the density used in our study but an increase with 5-10 times higher density (i.e. 400 individuals in 30g soil compared to our 30-80). Accordingly, we did not find any trend supporting a

355 density-dependent response in our data. Nevertheless, we suggest that permafrost soils colonized by collembola in particular, and soil fauna in general, will likely see an increase in their rates of decomposition, and CO₂ production in particular, due to both priming and the basal respiration of the newly-established food web.

Our experimental setup did not allow us to distinguish further between soil and collembola respiration. We estimated basal

360 respiration, though this may not perfectly reflect reality, considering that collembola in jars without soil may not have behaved similarly to those in jars with soil. Faced with a scarcity of food sources, they may have slowed their metabolism to endure that stress, which could result in decreased basal respiration, thus leading us to overestimate the magnitude of “priming”. We could not find reference values in the literature for *Folsomia candida* respiration rates, but Addison & Parkinson (1978) estimated the CO₂ production of two high-Arctic collembolan species to 182.6 and 250.6 µl CO₂ per g live

365 weight per hour at 10 °C, for *Hypogastrura tullbergi* and *Folsomia regularis*, respectively. Assuming a CO₂ density of 1.977 kg / m³ and 170 µg per adult individual of *Folsomia candida*, our values range between 47 and 220 µl CO₂ per live weight per hour. (Addison and Parkinson, 1978)) refer to (Mitchell, 1973) for a description of the method used for estimating respiration rates, where the measurements appear to be carried over a period of 20 hours. When considering only the first measurement date in our data (3 days after inoculation), the rates are closer to the values reported by (Addison and

370 Parkinson, 1978) with 157.5 ± 18.5 µl CO₂ per live weight per hour (mean \pm SE, n=6). In future studies of this mechanism, it would be interesting to use stable isotope methods to partition the collembola- vs soil organic matter-derived CO₂ production more accurately.

Beyond that due to soil fauna, our collembola addition treatments may have induced a “microbial community priming”, in

375 the form of the release of microbial functional limitations. The Yedoma sediment used in this study indeed lacks certain microbial taxa and functions, and the onset of an exotic microbial community can result in large increases in CO₂ production (Monteux et al., 2020). Considering the limited to non-significant (depending on the distance metrics) effect of collembola addition on bacterial communities, we do not think this mechanism explains our observed results, although we do not rule out this explanation.

380 5. Conclusions

Collembola presence modified bacterial communities in newly-thawed permafrost and primed its CO₂ production, highlighting the importance of non-microbial decomposers in the fate of soil organic matter in thawing permafrost. An emerging theme in permafrost research is the missing functions in permafrost microbial communities due to a lack of certain microbial groups, hampering the production of CO₂, CH₄ and N₂O (Knoblauch et al., 2018; Monteux et al., 2020; 385 Marushchak et al., 2021). It is also becoming clearer that the functionality of permafrost microbes can vary across space (Barbato et al., 2022), therefore the modalities of microbial dispersal into newly-thawed permafrost likely affect the fate of its organic matter and the rate of release of greenhouse gases. Our findings suggest that collembola may accelerate the release of greenhouse gases, possibly in part through the introduction of microorganisms, although those did not seem to depend strongly on the preceding collembola environment. In nature, thawing permafrost mostly occurs at the bottom of the 390 seasonally-thawing active layer, often below the water-table and at depths far from the topsoil where most collembola reside. Different soil fauna, such as earthworms, may access such newly-thawed permafrost but their current geographical range does not overlap much with the permafrost region. However, rapid thaw events such as hillslope thermokarst, active layer detachments, or retrogressive thaw slumps expose newly-thawed permafrost to surface conditions, thus making it susceptible to colonization by collembola. Fauna-induced dispersal of microorganisms is most likely to take place in these environments, 395 and should be further investigated in realistic field conditions.

It remains unclear whether the increase in CO₂ production we attribute to priming stems from increased functionality of the microbial community due to bridging of functional limitations, or from other mechanisms. Mechanical breakdown of organic material and digestion processes might provide microorganisms with more easily available substrates, while disruption of the 400 soil pore structure may also result in increased microbial decomposition activity. Several studies indicate increases in CO₂ production with the presence of soil fauna, however to our best knowledge no studies have specifically partitioned to which extent such increases were due to faunal respiration or to priming effects. We argue that elucidating this question would be an important next step towards opening the ‘black box’ that soil systems still often represent, thus helping to mechanistically address the effects of global changes.

Appendix A1: Effect of collembola addition on daily CO₂ production over time, repeated measures ANOVA.

P [GG] indicates Repeated Measures-ANOVA *P* using Greenhouse-Geisser correction on degrees of freedom to account for violation of the assumption of sphericity (Mauchly's test).

P values below 0.05 are denoted in bold; ***: $P < 0.001$; *: $0.01 < P < 0.05$.

<i>Repeated Measures ANOVA</i>	DFnum	DFden	F	<i>P</i>	ges	
Treatment	5	30	3.499	0.013	0.259	*
Date	3	90	65.263	<0.001	0.465	***
Treatment:Date	15	90	0.854	0.616	0.054	

<i>Mauchly's sphericity test</i>	W	<i>P</i>	
Date	0.165	<0.001	***
Treatment:Date	0.165	<0.001	***

<i>Sphericity corrections</i>	GGe	p[GG]	
Date	0.544	<0.001	***
Treatment:Date	0.544	0.562	

Appendix A2: Effects of collembola additions on response ratios of cumulative CO₂ production at the end of the incubation, excluding (RR_{soil}) or including (RR_{gross}) estimated collembola respiration. Holm adjustment for *P* values of non-orthogonal contrasts.

P values below 0.05 are denoted in bold; ***: *P* < 0.001; **: 0.001 < *P* < 0.01; *: 0.01 < *P* < 0.05; .: 0.05 < *P* < 0.1.

RR _{soil}	ANOVA	Df	Df.Res	Sum Sq	Mean Sq	F value	<i>P</i>
	Treatment		5	30	0.003	0.001	3.728

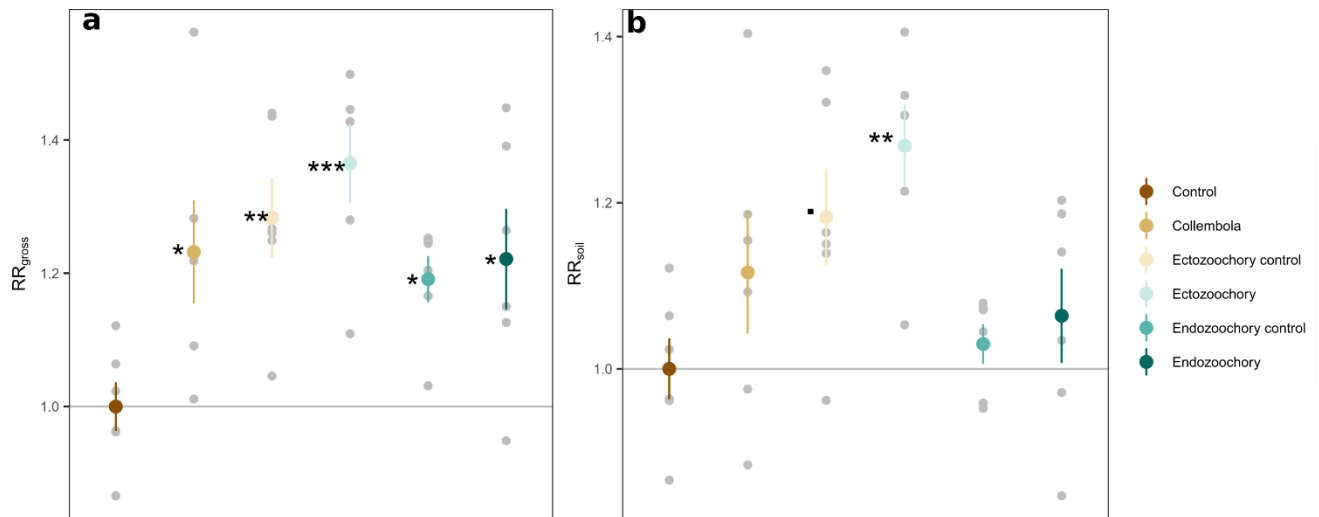
<i>Contrast vs no-collembola Control</i>	Estimate	SE	Df	t.ratio	Adjusted <i>P</i>
Collembola	0.012	0.008	30	1.573	0.379
Ectozoochory control	0.020	0.008	30	2.525	0.068 .
Ectozoochory	0.028	0.008	30	3.626	0.005 **
Endozoochory control	0.003	0.008	30	0.443	0.764
Endozoochory	0.007	0.008	30	0.887	0.764

<i>Orthogonal contrasts</i>	Estimate	Std. Error	t value	<i>P</i>
Collembola vs Control	0.006	0.004	1.573	0.126
Ectozoochory vs Ectozoochory control	0.002	0.004	0.444	0.660
Endozoochory vs Endozoochory Control	0.004	0.004	1.101	0.280

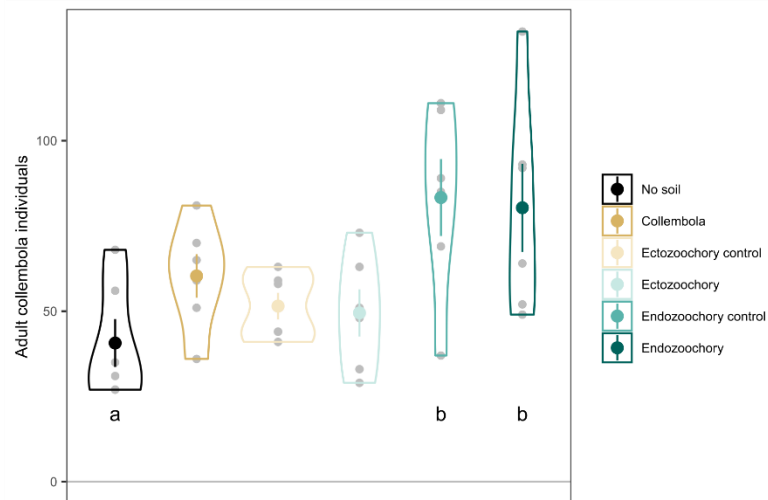
RR _{gross}	ANOVA	Df	Df.Res	Sum Sq	Mean Sq	F value	<i>P</i>
	Treatment		5	30	0.005	0.001	4.184

<i>Contrast vs no-collembola Control</i>	Estimate	SE	Df	t.ratio	Adjusted <i>P</i>
Collembola	0.024	0.009	30	2.754	0.030 *
Ectozoochory control	0.030	0.009	30	3.362	0.009 **
Ectozoochory	0.038	0.009	30	4.331	0.001 ***
Endozoochory control	0.020	0.009	30	2.270	0.031 *
Endozoochory	0.023	0.009	30	2.629	0.030 *

<i>Orthogonal contrasts</i>	Estimate	Std. Error	t value	<i>P</i>
Collembola vs Control	0.012	0.004	2.754	0.010 **
Ectozoochory vs Ectozoochory control	0.002	0.004	0.359	0.722
Endozoochory vs Endozoochory Control	0.004	0.004	0.969	0.340



Appendix A3: Response-ratios of permafrost cumulative CO₂ production rates to addition of collembola.
a: RR_{gross}: measured CO₂ production rates; **b:** RR_{soil}: measured CO₂ production rates with estimated collembola basal respiration subtracted. All values are divided by the mean of the no-collembola control, small grey circles are individual jar values, large symbols are means, error-bars are standard errors of the mean (n=6). Black symbols denote significant difference from the control, different symbols denote different statistical significance (EMmeans treatment contrasts with Holm adjustment for multiple comparisons, Supplementary Table 2, .: 0.05 < P < 0.1; *: 0.01 < P < 0.05; **: 0.001 < P < 0.01; ***: P < 0.001).



Appendix B: Number of adult collembola individuals per incubation jar. Small grey circles are individual jar values, large symbols are means, error-bars are standard errors of the mean (n=6), and violin plots denote the shape of the distributions with maximum width proportional to the number of observations. Different black letters denote statistically significant pairwise differences (EMmeans pairwise contrasts with Holm adjustment for multiple comparisons, 0.05 < P < 0.1).

Appendix C1: Effects of collembola additions on bacterial community composition (permutational multivariate ANOVAs and pairwise contrasts), using distance matrixes based on relative abundances (weighed UniFrac) or presence-absence (non-weighted UniFrac). Holm adjustment for *P* values of pairwise contrasts.

P values below 0.05 are denoted in bold; ***: $P < 0.001$; **: $0.001 < P < 0.01$; *: $0.01 < P < 0.05$; .: $0.05 < P < 0.1$.

<i>PerMANOVA</i>	Df	Df.Res	F.Model	R2	P
Weighted UniFrac (relative abundance)	5	30	1.261	0.174	0.101
Non-weighted UniFrac (presence-absence)	5	30	3.018	0.335	< 0.001

<i>Pairwise contrast</i>	Df	F.Model	R2	Adjusted P	
Control vs Collembola	1	3.236	0.244	0.025	*
Control vs Endozoochory control	1	4.356	0.303	0.025	*
Control vs Ectozoochory	1	6.777	0.404	0.022	*
Control vs Ectozoochory control	1	5.658	0.361	0.025	*
Control vs Endozoochory	1	4.777	0.323	0.012	*
Collembola vs Endozoochory control	1	1.767	0.150	0.102	
Collembola vs Ectozoochory	1	1.751	0.149	0.115	
Collembola vs Ectozoochory control	1	1.348	0.119	0.148	
Collembola vs Endozoochory	1	1.434	0.125	0.148	
Endozoochory control vs Ectozoochory	1	3.068	0.235	0.025	*
Endozoochory control vs Ectozoochory control	1	2.711	0.213	0.025	*
Endozoochory control vs Endozoochory	1	2.156	0.177	0.025	*
Ectozoochory vs Ectozoochory control	1	1.497	0.130	0.113	
Ectozoochory vs Endozoochory	1	1.958	0.164	0.025	*
Ectozoochory control vs Endozoochory	1	1.820	0.154	0.025	*

Appendix C2: Effects of collembola additions on bacterial alpha diversity (ANOVAs and pairwise contrasts) , with total number of observed ASVs, Abundance-based Coverage Estimator (ACE), Shannon's and Fisher's diversity indexes. Holm adjustment for *P* values of pairwise contrasts.

P values below 0.05 are denoted in bold; ***: $P < 0.001$; **: $0.001 < P < 0.01$; *: $0.01 < P < 0.05$; .: $0.05 < P < 0.1$.

<i>ANOVA</i>	Df	Df.Res	Sum Sq	Mean Sq	F value	<i>P</i>	
Observed ASVs	5	30	94389	18878	9.313	<0.001	***
ACE	5	30	98265	19653	8.517	<0.001	***
Shannon	5	30	0.582	0.116	4.667	0.003	**
Fisher	5	30	2141	428	12.644	<0.001	***

<i>Treatment contrast (vs Control)</i>		Estimate	SE	df	t.ratio	<i>P</i>	
Observed ASVs	Collembola	113.500	25.994	30	4.366	0.001	**
	Ectozoochory control	141.667	25.994	30	5.450	<0.001	***
	Ectozoochory	162.333	25.994	30	6.245	<0.001	***
	Endozoochory control	106.000	25.994	30	4.078	0.001	**
	Endozoochory	106.333	25.994	30	4.091	0.001	**
ACE	Collembola	115.2	27.7	30	4.155	0.001	**
	Ectozoochory control	145.4	27.7	30	5.245	<0.001	***
	Ectozoochory	165.2	27.7	30	5.956	<0.001	***
	Endozoochory control	106.0	27.7	30	3.821	0.003	**
	Endozoochory	106.5	27.7	30	3.840	0.003	**
Shannon	Collembola	0.230	0.091	30	2.521	0.070	.
	Ectozoochory control	0.326	0.091	30	3.571	0.006	**
	Ectozoochory	0.378	0.091	30	4.148	0.001	**
	Endozoochory control	0.198	0.091	30	2.171	0.144	
	Endozoochory	0.347	0.091	30	3.800	0.003	**
Fisher	Collembola	16.806	3.360	30	5.002	<0.001	***
	Ectozoochory control	21.731	3.360	30	6.468	<0.001	***
	Ectozoochory	24.006	3.360	30	7.145	<0.001	***
	Endozoochory control	14.598	3.360	30	4.345	0.001	**
	Endozoochory	17.301	3.360	30	5.149	<0.001	***

7. Code availability

All code used to process the raw DNA data and produce the figures and tables presented in text is found at
415 https://git.bolin.su.se/bolin/Collembola_vector

The code used to generate figures from the processed DNA data is also found at <https://dx.doi.org/10.5281/zenodo.6461323>

8. Data availability

All 16S sequencing data is found at ENA under project accession number PRJEB51992.

All processed data used to generate the findings presented in text are found at <https://dx.doi.org/10.5281/zenodo.6461323>
420 and https://git.bolin.su.se/bolin/Collembola_vector

9. Sample availability

Due to practical constraints, the exact permafrost material and collembola cultures used throughout the manuscript are no longer available. Permafrost from the same location may be obtained through contacting the USA Army CRREL, while *Folsomia candida* strains may be obtained by contacting JM. Frozen permafrost samples from the end of the incubation
425 period, as well as aliquots of DNA extracts used for this study may be obtained from the corresponding author upon reasonable request.

10. Author contributions

SM, JM and EK designed the experiment. JM provided *Folsomia candida* strains and guidance for culturing. EK provided topsoil from Kärkevagge. SM performed the experiment, data analysis, and wrote the manuscript with input from all co-
430 authors.

11. Competing interests

The authors declare that they have no conflict of interest.

12. Acknowledgements

This study was funded by a grant from Formas (Dnr 2017-01182) awarded to E.J.K. and Kempestiftelserna awarded to S.M.
435 We thank the Department of Forest Mycology and Plant Pathology, SLU, for hosting the molecular work, T. H. Douglas from the US Army Cold Regions Research and Engineering Laboratory's Permafrost Tunnel (Alaska) for assistance and

permission to sample. We also thank F. Keuper from the French National Research Institute for Agriculture, Food and Environment and E. Dorrepaal from Umeå University for providing the permafrost sample.

Sequencing was performed by the SNP&SEQ Technology Platform in Uppsala. The facility is part of the National Genomics
440 Infrastructure (NGI) Sweden and Science for Life Laboratory. The SNP&SEQ Platform is also supported by the Swedish
Research Council and the Knut and Alice Wallenberg Foundation.

13. References

- Addison, J. A. and Parkinson, D.: Influence of Collembolan Feeding Activities on Soil Metabolism at a High Arctic Site, *Oikos*, 30, 529–538, <https://doi.org/10.2307/3543348>, 1978.
- 445 Agamennone, V., Jakupovic, D., Weedon, J. T., Suring, W. J., van Straalen, N. M., Roelofs, D., and Roling, W. F. M.: The microbiome of *Folsomia candida*: an assessment of bacterial diversity in a *Wolbachia*-containing animal, *FEMS Microbiol Ecol*, 91, UNSP fiv128, <https://doi.org/10.1093/femsec/fiv128>, 2015.
- Arbizu, P. M.: pairwiseAdonis, R, 2021.
- Bakonyi, G.: Effects of *Folsomia candida* (Collembola) on the microbial biomass in a grassland soil, *Biol Fert Soils*, 7, 138–
450 141, <https://doi.org/10.1007/BF00292572>, 1989.
- Barbato, R. A., Jones, R. M., Douglas, T. A., Doherty, S. J., Messan, K., Foley, K. L., Perkins, E. J., Thurston, A. K., and Garcia-Reyero, N.: Not all permafrost microbiomes are created equal: Influence of permafrost thaw on the soil microbiome in a laboratory incubation study, *Soil Biology and Biochemistry*, 108605, <https://doi.org/10.1016/j.soilbio.2022.108605>, 2022.
- 455 Berman, D. I., Meshcheryakova, E. N., and Mikhailjova, E. V.: Cold Hardiness and Range of the Myriapod *Angarozonium Amurense* (Polyzoiniidae, Diplopoda, Arthropoda) in Permafrost Environments, *Cryoletters*, 36, 237–242, 2015.
- Bottos, E. M., Kennedy, D. W., Romero, E. B., Fansler, S. J., Brown, J. M., Bramer, L. M., Chu, R. K., Tfaily, M. M., Jansson, J. K., and Stegen, J. C.: Dispersal limitation and thermodynamic constraints govern spatial structure of permafrost microbial communities, *FEMS Microbiol Ecol*, 94, fiy110, <https://doi.org/10.1093/femsec/fiy110>, 2018.
- 460 Buse, T., Ruess, L., and Filser, J.: Collembola gut passage shapes microbial communities in faecal pellets but not viability of dietary algal cells, *Chemoecology*, 24, 79–84, <https://doi.org/10.1007/s00049-013-0145-y>, 2014.
- Calderón, K., Spor, A., Breuil, M.-C., Bru, D., Bizouard, F., Violle, C., Barnard, R. L., and Philippot, L.: Effectiveness of ecological rescue for altered soil microbial communities and functions, *The ISME Journal*, 11, 272–283, <https://doi.org/10.1038/ismej.2016.86>, 2017.
- 465 Callahan, B. J., McMurdie, P. J., Rosen, M. J., Han, A. W., Johnson, A. J. A., and Holmes, S. P.: DADA2: High-resolution sample inference from Illumina amplicon data, *Nat Methods*, 13, 581–583, <https://doi.org/10.1038/nmeth.3869>, 2016.
- Coulibaly, S. F. M., Winck, B. R., Akpa-Vinceslas, M., Mignot, L., Legras, M., Forey, E., and Chauvat, M.: Functional Assemblages of Collembola Determine Soil Microbial Communities and Associated Functions, *Front. Environ. Sci.*, 7, <https://doi.org/10.3389/fenvs.2019.00052>, 2019.

- 470 D'Amico, S., Collins, T., Marx, J.-C., Feller, G., Gerday, C., and Gerday, C.: Psychrophilic microorganisms: challenges for life, *EMBO reports*, 7, 385–389, <https://doi.org/10.1038/sj.embor.7400662>, 2006.
- Davis, N. M., Proctor, D. M., Holmes, S. P., Relman, D. A., and Callahan, B. J.: Simple statistical identification and removal of contaminant sequences in marker-gene and metagenomics data, *Microbiome*, 6, 226, <https://doi.org/10.1186/s40168-018-0605-2>, 2018.
- 475 Frouz, J., Novotná, K., Čermáková, L., and Pivokonský, M.: Soil fauna reduce soil respiration by supporting N leaching from litter, *Applied Soil Ecology*, 153, 103585, <https://doi.org/10.1016/j.apsoil.2020.103585>, 2020.
- García-Palacios, P., Maestre, F. T., Kattge, J., and Wall, D. H.: Climate and litter quality differently modulate the effects of soil fauna on litter decomposition across biomes, *Ecology Letters*, 16, 1045–1053, <https://doi.org/10.1111/ele.12137>, 2013.
- Golovatch, S. and Kime, R.: Millipede (Diplopoda) distributions: a review, *Soil Organisms*, 81, 2009.
- 480 Griffiths, H. M., Ashton, L. A., Parr, C. L., and Eggleton, P.: The impact of invertebrate decomposers on plants and soil, *New Phytologist*, 231, 2142–2149, <https://doi.org/10.1111/nph.17553>, 2021.
- Hanlon, R. D. G. and Anderson, J. M.: The effects of collembola grazing on microbial activity in decomposing leaf litter, *Oecologia*, 38, 93–99, <https://doi.org/10.1007/BF00347827>, 1979.
- 485 Harding, T., Jungblut, A. D., Lovejoy, C., and Vincent, W. F.: Microbes in High Arctic Snow and Implications for the Cold Biosphere, *Appl. Environ. Microbiol.*, 77, 3234–3243, <https://doi.org/10.1128/AEM.02611-10>, 2011.
- Hensel, R., Helbig, R., Aland, S., Voigt, A., Neinhuis, C., and Werner, C.: Tunable nano-replication to explore the omniphobic characteristics of springtail skin, *NPG Asia Mater*, 5, e37–e37, <https://doi.org/10.1038/am.2012.66>, 2013a.
- Hensel, R., Helbig, R., Aland, S., Braun, H.-G., Voigt, A., Neinhuis, C., and Werner, C.: Wetting Resistance at Its Topographical Limit: The Benefit of Mushroom and Serif T Structures, *Langmuir*, 29, 1100–1112, <https://doi.org/10.1021/la304179b>, 2013b.
- 495 Hultman, J., Waldrop, M. P., Mackelprang, R., David, M. M., McFarland, J., Blazewicz, S. J., Harden, J., Turetsky, M. R., McGuire, A. D., Shah, M. B., VerBerkmoes, N. C., Lee, L. H., Mavrommatis, K., and Jansson, J. K.: Multi-omics of permafrost, active layer and thermokarst bog soil microbiomes, *Nature*, 521, 208–212, <https://doi.org/10.1038/nature14238>, 2015.
- 495 Inglese, C. N., Christiansen, C. T., Lamhonwah, D., Moniz, K., Montross, S. N., Lamoureux, S., Lafrenière, M., Grogan, P., and Walker, V. K.: Examination of Soil Microbial Communities After Permafrost Thaw Subsequent to an Active Layer Detachment in the High Arctic, Arctic, Antarctic, and Alpine Research, 49, 455–472, <https://doi.org/10.1657/AAAR0016-066>, 2017.
- 500 Johnston, E. R., Hatt, J. K., He, Z., Wu, L., Guo, X., Luo, Y., Schuur, E. A. G., Tiedje, J. M., Zhou, J., and Konstantinidis, K. T.: Responses of tundra soil microbial communities to half a decade of experimental warming at two critical depths, *PNAS*, 116, 15096–15105, <https://doi.org/10.1073/pnas.1901307116>, 2019.
- Kaneda, S. and Kaneko, N.: Collembolans feeding on soil affect carbon and nitrogen mineralization by their influence on microbial and nematode activities, *Biol Fertil Soils*, 44, 435–442, <https://doi.org/10.1007/s00374-007-0222-x>, 2008.
- 505 Knoblauch, C., Beer, C., Liebner, S., Grigoriev, M. N., and Pfeiffer, E.-M.: Methane production as key to the greenhouse gas budget of thawing permafrost, *Nature Climate Change*, 8, 309–312, <https://doi.org/10.1038/s41558-018-0095-z>, 2018.

- Leo, C., Nardi, F., Cucini, C., Frati, F., Convey, P., Weedon, J. T., Roelofs, D., and Carapelli, A.: Evidence for strong environmental control on bacterial microbiomes of Antarctic springtails, *Sci Rep*, 11, 2973, <https://doi.org/10.1038/s41598-021-82379-x>, 2021.
- 510 Lozupone, C., Lladser, M. E., Knights, D., Stombaugh, J., and Knight, R.: UniFrac: an effective distance metric for microbial community comparison, *ISME J*, 5, 169–172, <https://doi.org/10.1038/ismej.2010.133>, 2011.
- Lubbers, I. M., Berg, M. P., De Deyn, G. B., van der Putten, W. H., and van Groenigen, J. W.: Soil fauna diversity increases CO₂ but suppresses N₂O emissions from soil, *Global Change Biology*, 26, 1886–1898, <https://doi.org/10.1111/gcb.14860>, 2020.
- 515 Lucas, J. M., McBride, S. G., and Strickland, M. S.: Trophic level mediates soil microbial community composition and function, *Soil Biology and Biochemistry*, 143, 107756, <https://doi.org/10.1016/j.soilbio.2020.107756>, 2020.
- Mackelprang, R., Waldrop, M. P., DeAngelis, K. M., David, M. M., Chavarria, K. L., Blazewicz, S. J., Rubin, E. M., and Jansson, J. K.: Metagenomic analysis of a permafrost microbial community reveals a rapid response to thaw, *Nature*, 480, 368–371, <https://doi.org/10.1038/nature10576>, 2011.
- 520 Mackelprang, R., Burkert, A., Haw, M., Mahendrarajah, T., Conaway, C. H., Douglas, T. A., and Waldrop, M. P.: Microbial survival strategies in ancient permafrost: insights from metagenomics, *The ISME Journal*, 11, 2305–2318, <https://doi.org/10.1038/ismej.2017.93>, 2017.
- Martin, M.: Cutadapt removes adapter sequences from high-throughput sequencing reads, *EMBnet.journal*, 17, 10–12, <https://doi.org/10.14806/ej.17.1.200>, 2011.
- 525 Marushchak, M. E., Kerttula, J., Diáková, K., Faguet, A., Gil, J., Grosse, G., Knoblauch, C., Lashchinskiy, N., Martikainen, P. J., Morgenstern, A., Nykamb, M., Ronkainen, J. G., Siljanen, H. M. P., van Delden, L., Voigt, C., Zimov, N., Zimov, S., and Biasi, C.: Thawing Yedoma permafrost is a neglected nitrous oxide source, *Nat Commun*, 12, 7107, <https://doi.org/10.1038/s41467-021-27386-2>, 2021.
- 530 Masson-Delmotte, V., Zhai, P., Pirani, A., Connors, S. L., Péan, C., Berger, S., Caud, N., Chen, Y., Goldfarb, L., Gomis, M. I., Huang, M., Leitzell, K., Lonnoy, E., Matthews, J. B. R., Maycock, T. K., Waterfield, T., Yelekçi, Ö., Yu, R., and Zhou, B. (Eds.): *Climate Change 2021: The Physical Science Basis. Contribution of Working Group I to the Sixth Assessment Report of the Intergovernmental Panel on Climate Change*, Cambridge University Press, 2021.
- Mitchell, M. J.: An improved method for microrespirometry using gas chromatography, *Soil Biology and Biochemistry*, 5, 271–274, [https://doi.org/10.1016/0038-0717\(73\)90011-4](https://doi.org/10.1016/0038-0717(73)90011-4), 1973.
- 535 Monteux, S., Weedon, J. T., Blume-Werry, G., Gavazov, K., Jassey, V. E. J., Johansson, M., Keuper, F., Olid, C., and Dorrepaal, E.: Long-term in situ permafrost thaw effects on bacterial communities and potential aerobic respiration, *The ISME Journal*, 12, 2129–2141, <https://doi.org/10.1038/s41396-018-0176-z>, 2018.
- Monteux, S., Keuper, F., Fontaine, S., Gavazov, K., Hallin, S., Juhanson, J., Krab, E. J., Revaillet, S., Verbruggen, E., Walz, J., Weedon, J. T., and Dorrepaal, E.: Carbon and nitrogen cycling in Yedoma permafrost controlled by microbial functional limitations, *Nature Geoscience*, 13, 794–798, <https://doi.org/10.1038/s41561-020-00662-4>, 2020.
- 540 Nickerl, J., Helbig, R., Schulz, H.-J., Werner, C., and Neinhuis, C.: Diversity and potential correlations to the function of Collembola cuticle structures, *Zoomorphology*, 132, 183–195, <https://doi.org/10.1007/s00435-012-0181-0>, 2013.

- Potapov, A., Bellini, B. C., Chown, S. L., Deharveng, L., Janssens, F., Kováč, L., Kuznetsova, N., Ponge, J.-F., Potapov, M., Querner, P., Russell, D., Sun, X., Zhang, F., and Berg, M. P.: Towards a global synthesis of Collembola knowledge: challenges and potential solutions, *soil organisms*, 92, 161–188, <https://doi.org/10.25674/so92iss3pp161>, 2020.
- 545 Quast, C., Pruesse, E., Yilmaz, P., Gerken, J., Schweer, T., Yarza, P., Peplies, J., and Glöckner, F. O.: The SILVA ribosomal RNA gene database project: improved data processing and web-based tools, *Nucleic Acids Res*, 41, D590–596, <https://doi.org/10.1093/nar/gks1219>, 2013.
- R Core Team: *R: A Language and Environment for Statistical Computing*, 2019.
- Sfenthourakis, S. and Hornung, E.: Isopod distribution and climate change, *Zookeys*, 25–61, 550 <https://doi.org/10.3897/zookeys.801.23533>, 2018.
- Shatilovich, A. V., Tchesunov, A. V., Neretina, T. V., Grabarnik, I. P., Gubin, S. V., Vishnivetskaya, T. A., Onstott, T. C., and Rivkina, E. M.: Viable Nematodes from Late Pleistocene Permafrost of the Kolyma River Lowland, *Dokl Biol Sci*, 480, 100–102, <https://doi.org/10.1134/S0012496618030079>, 2018.
- 555 Shmakova, L., Malavin, S., Iakovenko, N., Vishnivetskaya, T., Shain, D., Plewka, M., and Rivkina, E.: A living bdelloid rotifer from 24,000-year-old Arctic permafrost, *Current Biology*, 31, R712–R713, <https://doi.org/10.1016/j.cub.2021.04.077>, 2021.
- Shur, Y., French, H. M., Bray, M. T., and Anderson, D. A.: Syngenetic permafrost growth: cryostratigraphic observations from the CRREL tunnel near Fairbanks, Alaska, *Permafrost and Periglacial Processes*, 15, 339–347, <https://doi.org/10.1002/ppp.486>, 2004.
- 560 Sørensen, L. I., Holmstrup, M., Maraldo, K., Christensen, S., and Christensen, B.: Soil fauna communities and microbial respiration in high Arctic tundra soils at Zackenberg, Northeast Greenland, *Polar Biol*, 29, 189–195, <https://doi.org/10.1007/s00300-005-0038-9>, 2006.
- Strauss, J., Schirrmeister, L., Grosse, G., Fortier, D., Hugelius, G., Knoblauch, C., Romanovsky, V., Schädel, C., Schneider von Deimling, T., Schuur, E. A. G., Shmelev, D., Ulrich, M., and Veremeeva, A.: Deep Yedoma permafrost: A synthesis of depositional characteristics and carbon vulnerability, *Earth-Science Reviews*, 172, 75–86, 565 <https://doi.org/10.1016/j.earscirev.2017.07.007>, 2017.
- Theenhaus, A., Scheu, S., and Schaefer, M.: Contramensal interactions between two collembolan species: effects on population development and on soil processes, *Functional Ecology*, 13, 238–246, <https://doi.org/10.1046/j.1365-2435.1999.00303.x>, 1999.
- 570 Väisänen, M., Krab, E. J., Monteux, S., Teuber, L. M., Gavazov, K., Weedon, J. T., Keuper, F., and Dorrepaal, E.: Meshes in mesocosms control solute and biota exchange in soils: A step towards disentangling (a)biotic impacts on the fate of thawing permafrost, *Applied Soil Ecology*, 151, 103537, <https://doi.org/10.1016/j.apsoil.2020.103537>, 2020.
- Wang, M., Zhang, W., Xia, H., Huang, J., Wu, Z., and Xu, G.: Effect of Collembola on mineralization of litter and soil organic matter, *Biol Fertil Soils*, 53, 563–571, <https://doi.org/10.1007/s00374-017-1200-6>, 2017.
- 575 Wang, Q., Garrity, G. M., Tiedje, J. M., and Cole, J. R.: Naive Bayesian Classifier for Rapid Assignment of rRNA Sequences into the New Bacterial Taxonomy, *Applied and Environmental Microbiology*, 73, 5261–5267, <https://doi.org/10.1128/AEM.00062-07>, 2007.

Wang, Y., Naumann, U., Wright, S. T., and Warton, D. I.: mvabund— an R package for model-based analysis of multivariate abundance data, *Methods in Ecology and Evolution*, 3, 471–474, <https://doi.org/10.1111/j.2041-210X.2012.00190.x>, 2012.

580 Warton, D. I., Wright, S. T., and Wang, Y.: Distance-based multivariate analyses confound location and dispersion effects, *Methods in Ecology and Evolution*, 3, 89–101, <https://doi.org/10.1111/j.2041-210X.2011.00127.x>, 2012.

Xiang, Q., Zhu, D., Chen, Q.-L., Delgado-Baquerizo, M., Su, J.-Q., Qiao, M., Yang, X.-R., and Zhu, Y.-G.: Effects of diet on gut microbiota of soil collembolans, *Science of The Total Environment*, 676, 197–205, <https://doi.org/10.1016/j.scitotenv.2019.04.104>, 2019.

585 Yashina, S., Gubin, S., Maksimovich, S., Yashina, A., Gakhova, E., and Gilichinsky, D.: Regeneration of whole fertile plants from 30,000-y-old fruit tissue buried in Siberian permafrost, *PNAS*, 109, 4008–4013, <https://doi.org/10.1073/pnas.1118386109>, 2012.