

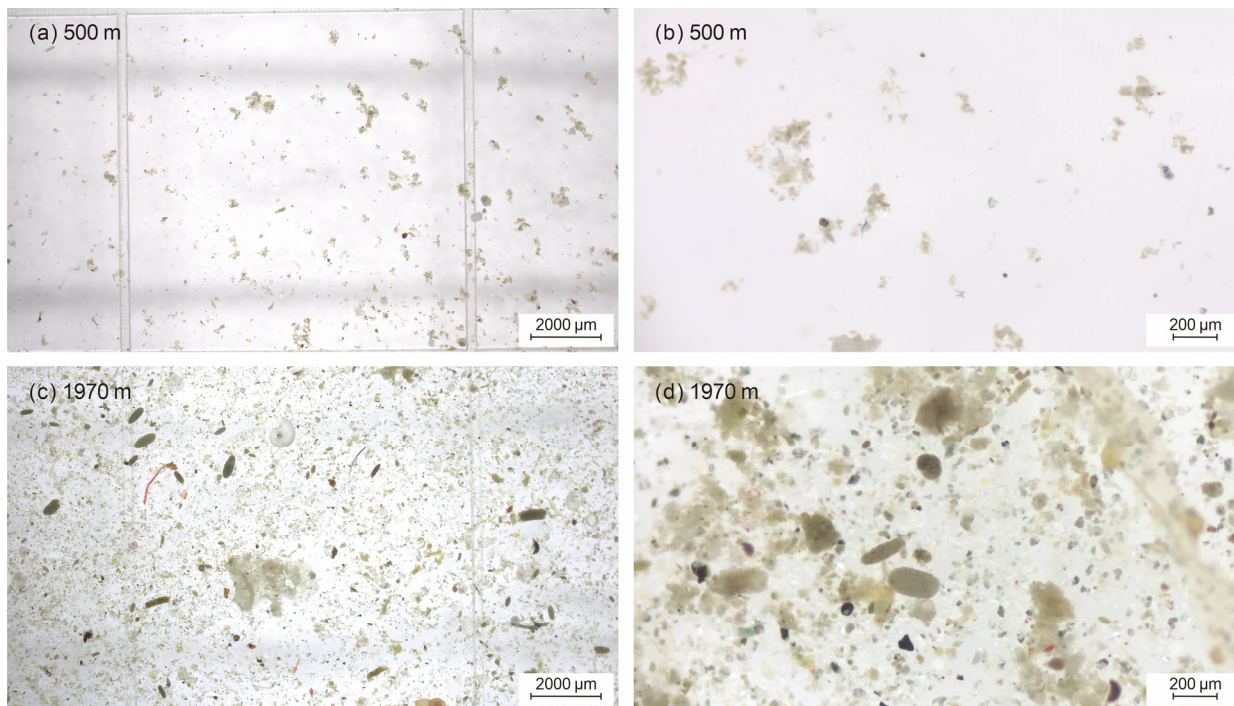
*Supplement of*

**Sinking fate and carbon export of zooplankton fecal pellets:  
insights from time-series sediment trap observation in the  
northern South China Sea**

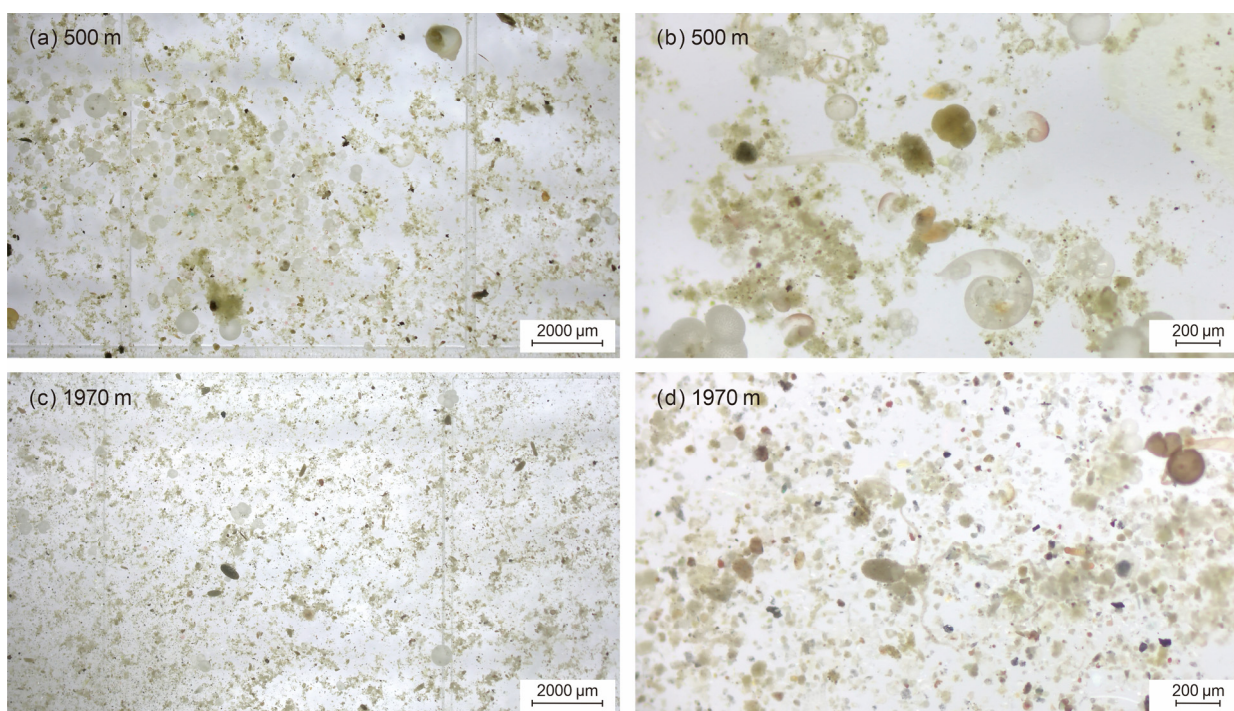
**Hanxiao Wang et al.**

*Correspondence to:* Z. Liu (lzhifei@tongji.edu.cn)

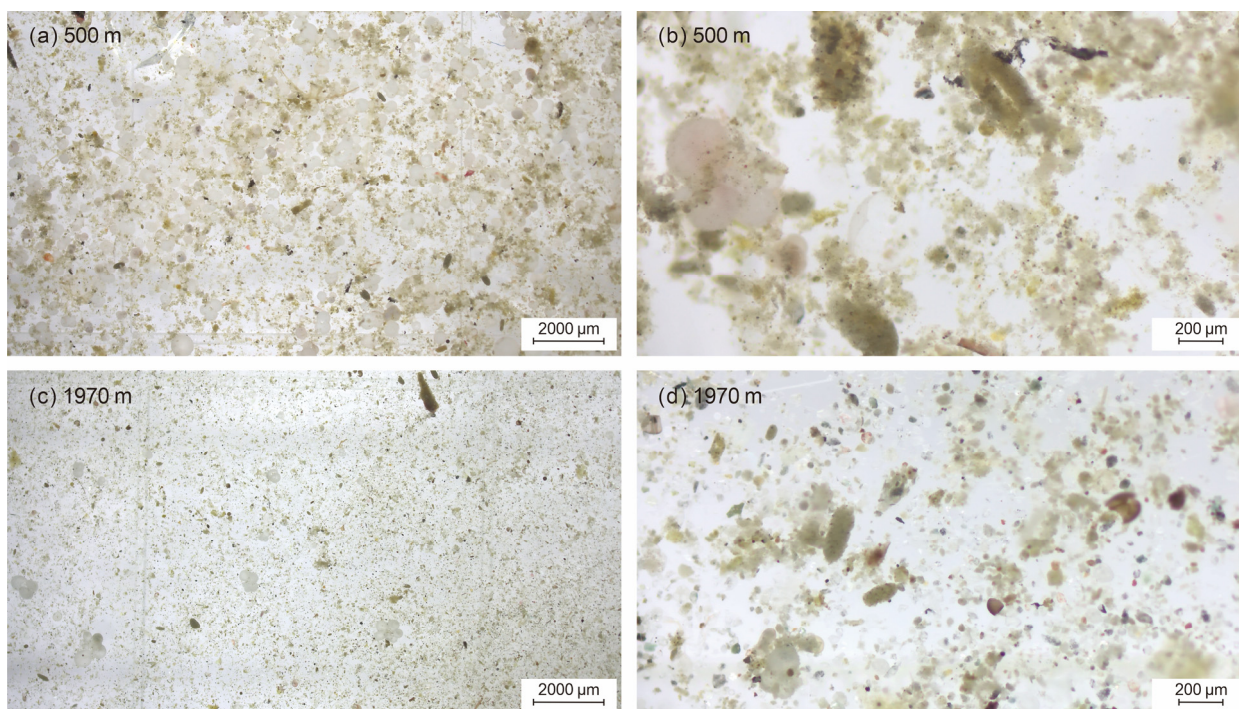
The copyright of individual parts of the supplement might differ from the article licence.



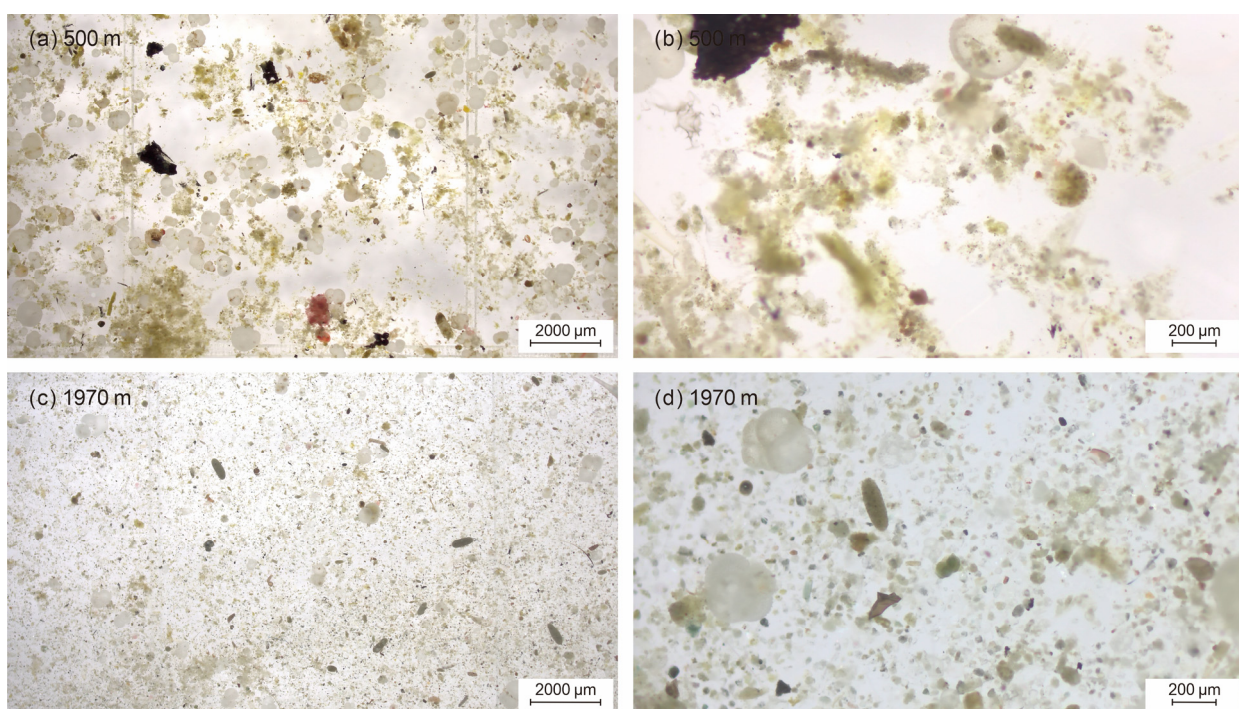
**Figure S1.** Zooplankton fecal pellets of Samples TJ-A1B21-UP01 and DW01 at the sediment trap mooring TJ-A1B in the northern SCS. (a) Pellets at 8X magnification at 500 m, sample fraction: 1/4; (b) pellets at 50X magnification at 500 m, sample fraction: 1/4; (c) pellets at 8X magnification at 1970 m, sample fraction: 1/2; (d) pellets at 50X magnification at 1970 m, sample fraction: 1/2.



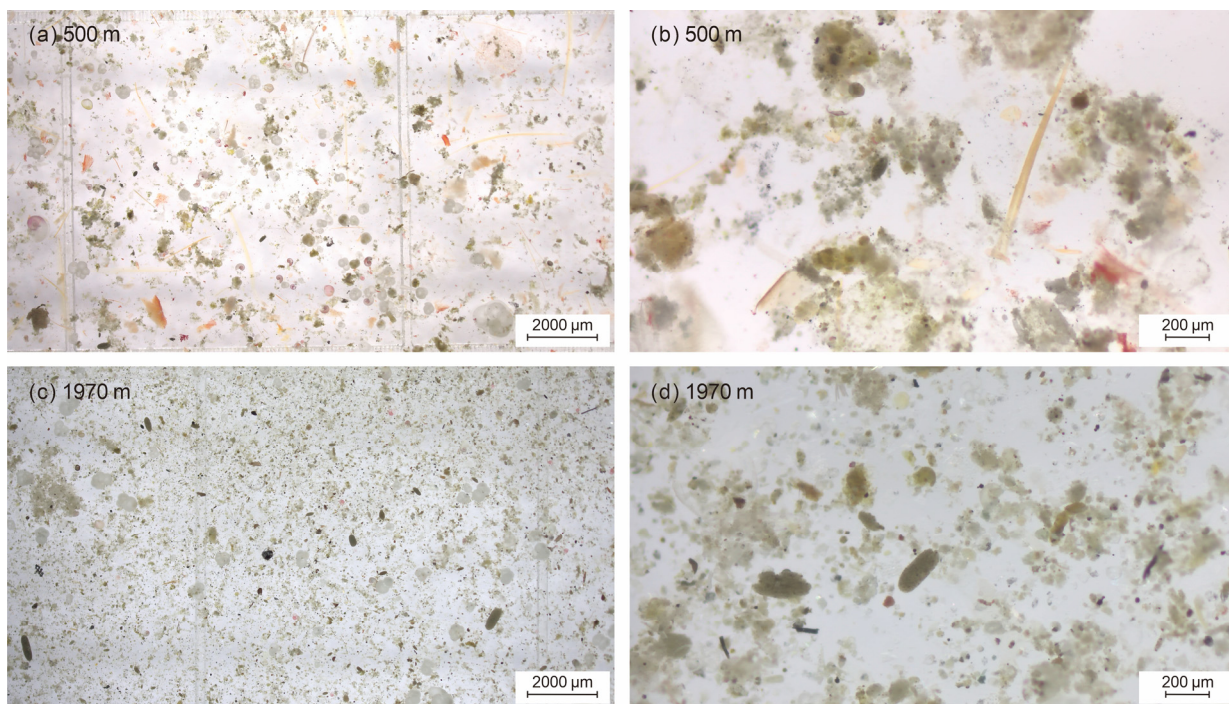
**Figure S2.** Zooplankton fecal pellets of Samples TJ-A1B21-UP02 and DW02 at the sediment trap mooring TJ-A1B in the northern SCS. (a) Pellets at 8X magnification at 500 m, sample fraction: 1/2; (b) pellets at 50X magnification at 500 m, sample fraction: 1/2; (c) pellets at 8X magnification at 1970 m, sample fraction: 1/4; (d) pellets at 50X magnification at 1970 m, sample fraction: 1/4.



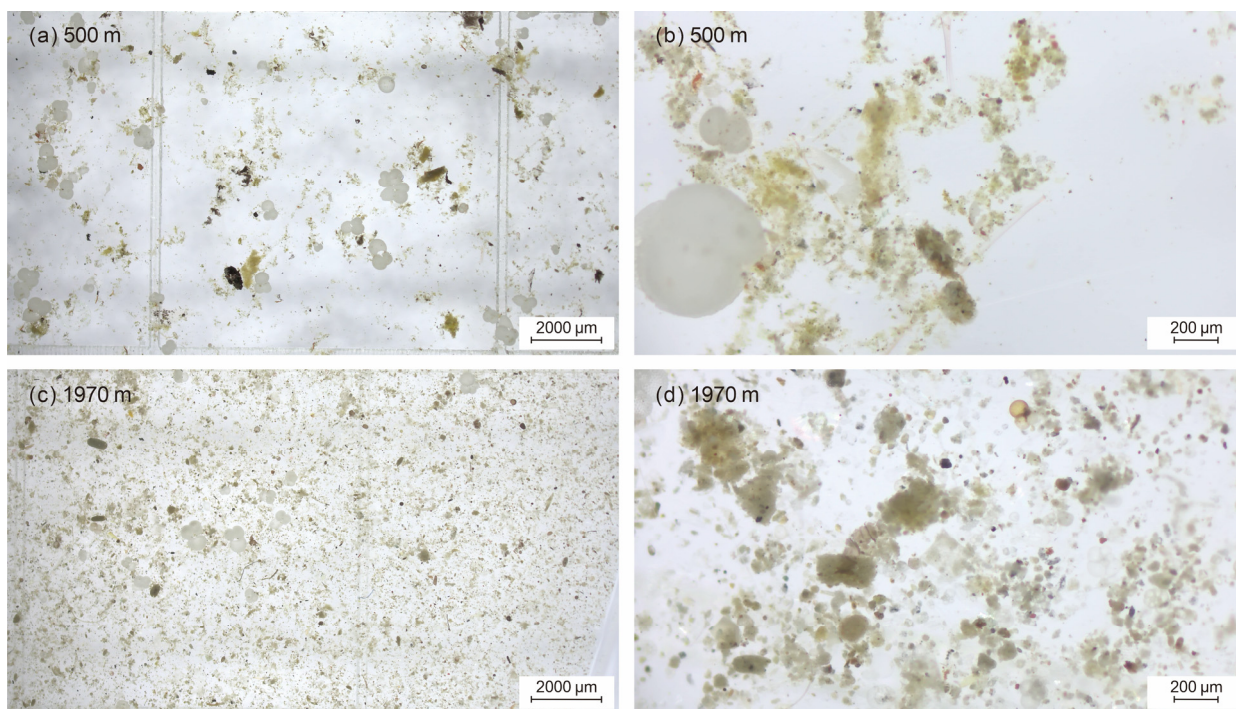
**Figure S3.** Zooplankton fecal pellets of Samples TJ-A1B21-UP03 and DW03 at the sediment trap mooring TJ-A1B in the northern SCS. (a) Pellets at 8X magnification at 500 m, sample fraction: 1/2; (b) pellets at 50X magnification at 500 m, sample fraction: 1/2; (c) pellets at 8X magnification at 1970 m, sample fraction: 1/4; (d) pellets at 50X magnification at 1970 m, sample fraction: 1/4.



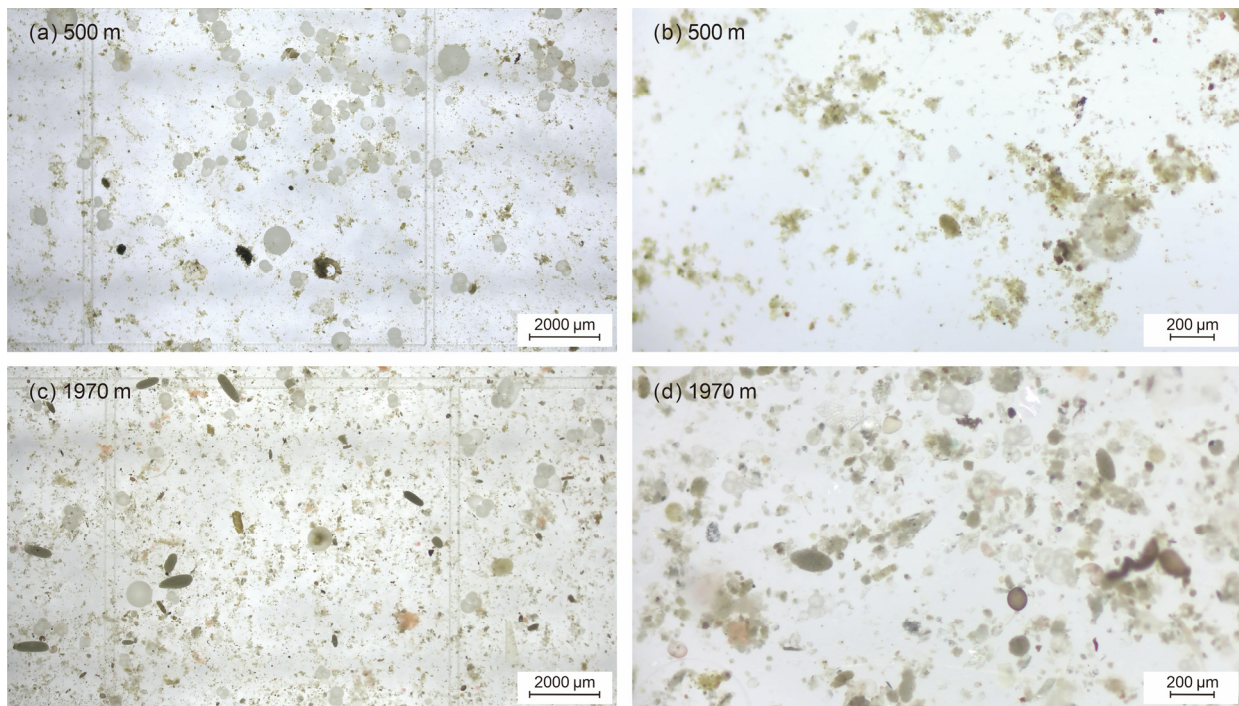
**Figure S4.** Zooplankton fecal pellets of Samples TJ-A1B21-UP04 and DW04 at the sediment trap mooring TJ-A1B in the northern SCS. (a) Pellets at 8X magnification at 500 m, sample fraction: 1/2; (b) pellets at 50X magnification at 500 m, sample fraction: 1/2; (c) pellets at 8X magnification at 1970 m, sample fraction: 1/8; (d) pellets at 50X magnification at 1970 m, sample fraction: 1/8.



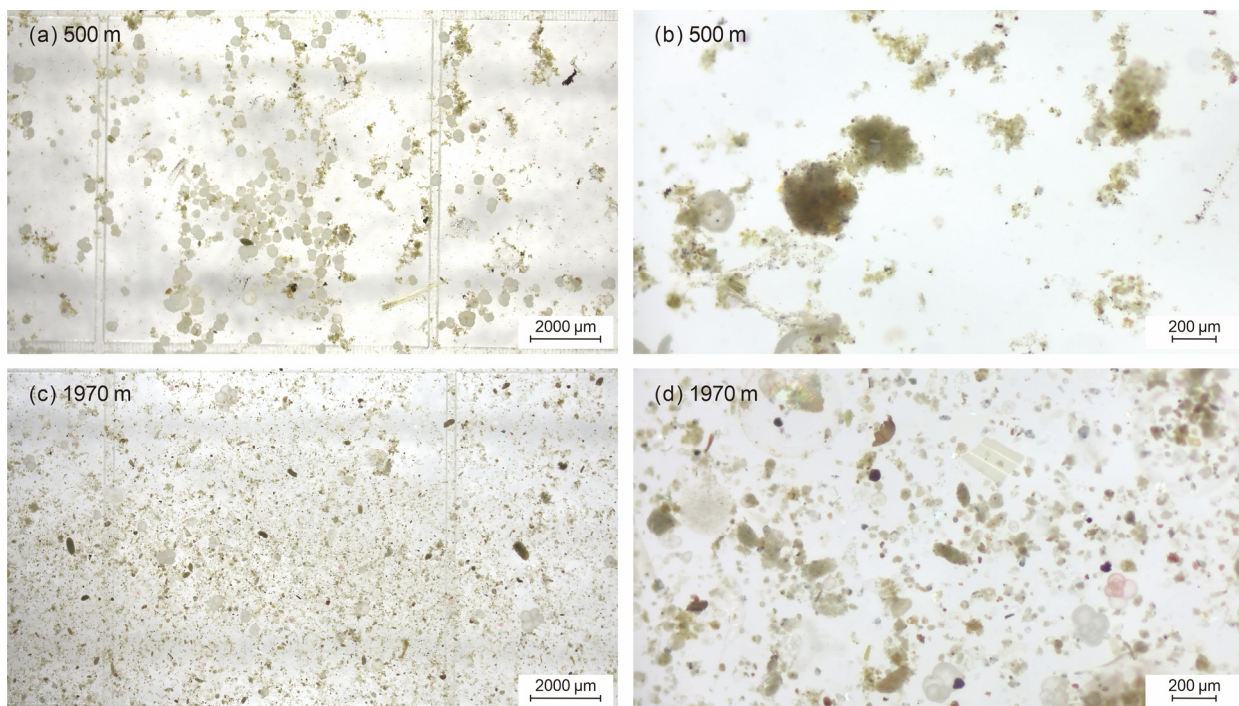
**Figure S5.** Zooplankton fecal pellets of Samples TJ-A1B21-UP05 and DW05 at the sediment trap mooring TJ-A1B in the northern SCS. (a) Pellets at 8X magnification at 500 m, sample fraction: 1/4; (b) pellets at 50X magnification at 500 m, sample fraction: 1/4; (c) pellets at 8X magnification at 1970 m, sample fraction: 1/4; (d) pellets at 50X magnification at 1970 m, sample fraction: 1/4.



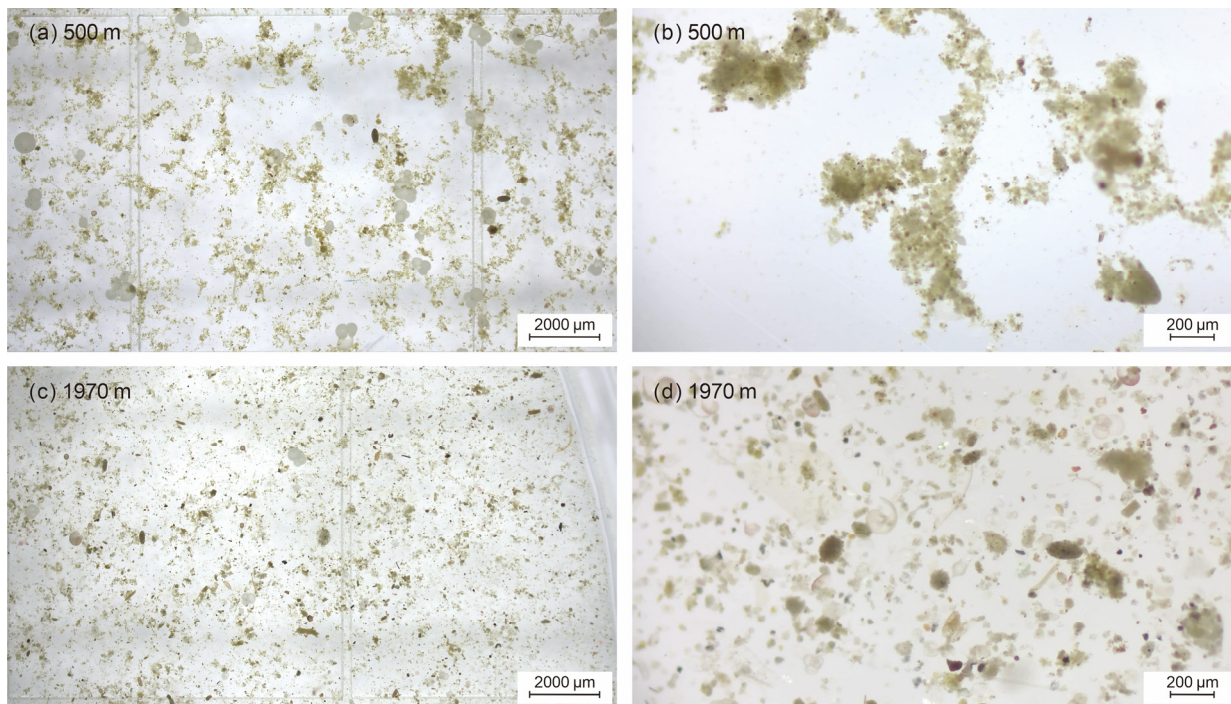
**Figure S6.** Zooplankton fecal pellets of Samples TJ-A1B21-UP06 and DW06 at the sediment trap mooring TJ-A1B in the northern SCS. (a) Pellets at 8X magnification at 500 m, sample fraction: 1/4; (b) pellets at 50X magnification at 500 m, sample fraction: 1/4; (c) pellets at 8X magnification at 1970 m, sample fraction: 1/4; (d) pellets at 50X magnification at 1970 m, sample fraction: 1/4.



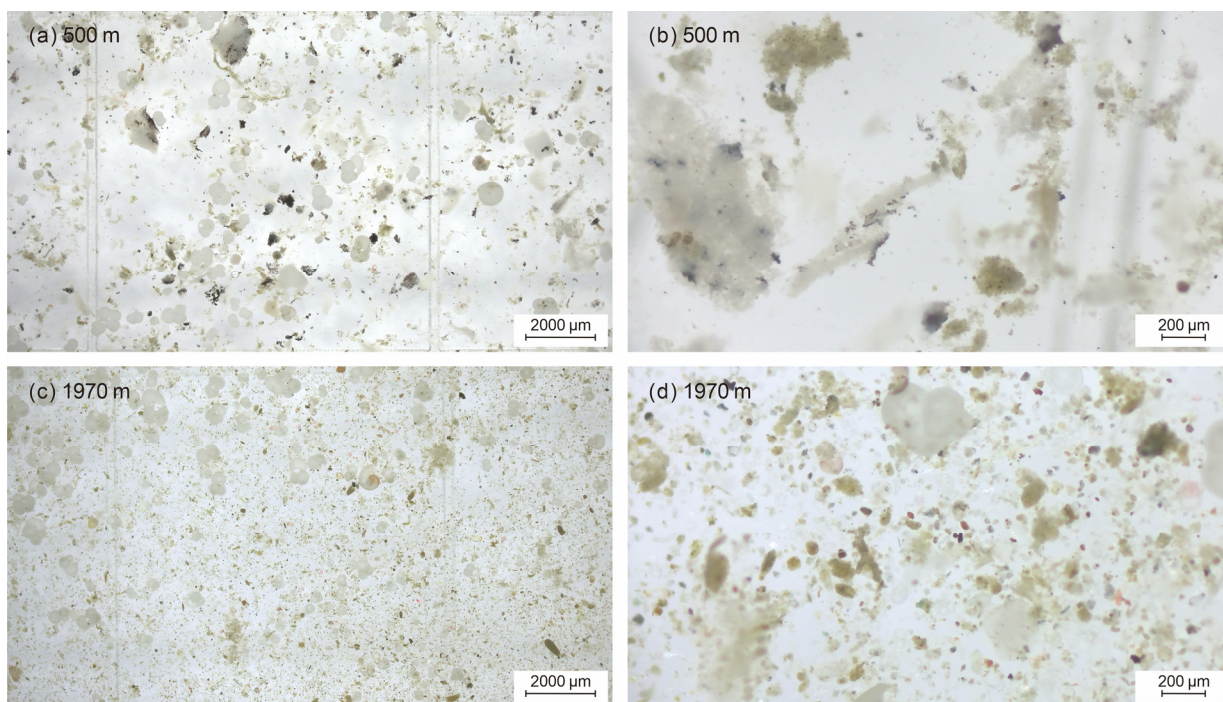
**Figure S7.** Zooplankton fecal pellets of Samples TJ-A1B21-UP07 and DW07 at the sediment trap mooring TJ-A1B in the northern SCS. (a) Pellets at 8X magnification at 500 m, sample fraction: 1/4; (b) pellets at 50X magnification at 500 m, sample fraction: 1/4; (c) pellets at 8X magnification at 1970 m, sample fraction: 1/4; (d) pellets at 50X magnification at 1970 m, sample fraction: 1/4.



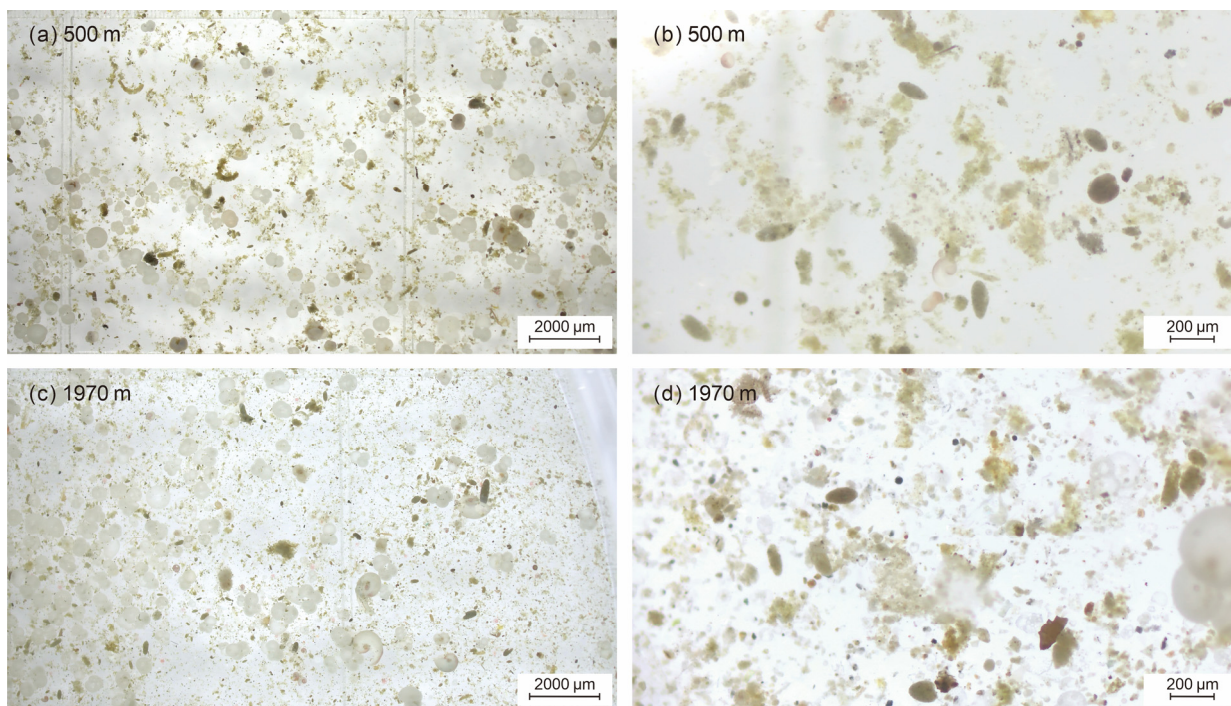
**Figure S8.** Zooplankton fecal pellets of Samples TJ-A1B21-UP08 and DW08 at the sediment trap mooring TJ-A1B in the northern SCS. (a) Pellets at 8X magnification at 500 m, sample fraction: 1/4; (b) pellets at 50X magnification at 500 m, sample fraction: 1/4; (c) pellets at 8X magnification at 1970 m, sample fraction: 1/4; (d) pellets at 50X magnification at 1970 m, sample fraction: 1/4.



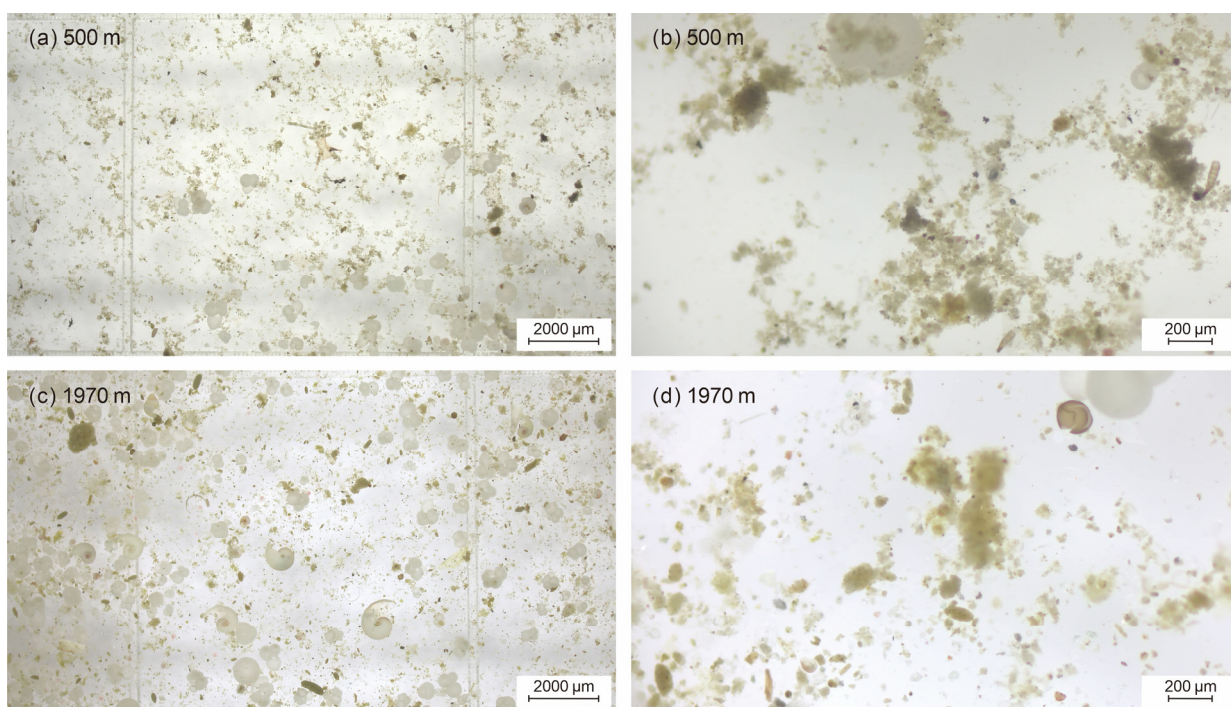
**Figure S9.** Zooplankton fecal pellets of Samples TJ-A1B21-UP09 and DW09 at the sediment trap mooring TJ-A1B in the northern SCS. (a) Pellets at 8X magnification at 500 m, sample fraction: 1/4; (b) pellets at 50X magnification at 500 m, sample fraction: 1/4; (c) pellets at 8X magnification at 1970 m, sample fraction: 1/4; (d) pellets at 50X magnification at 1970 m, sample fraction: 1/4.



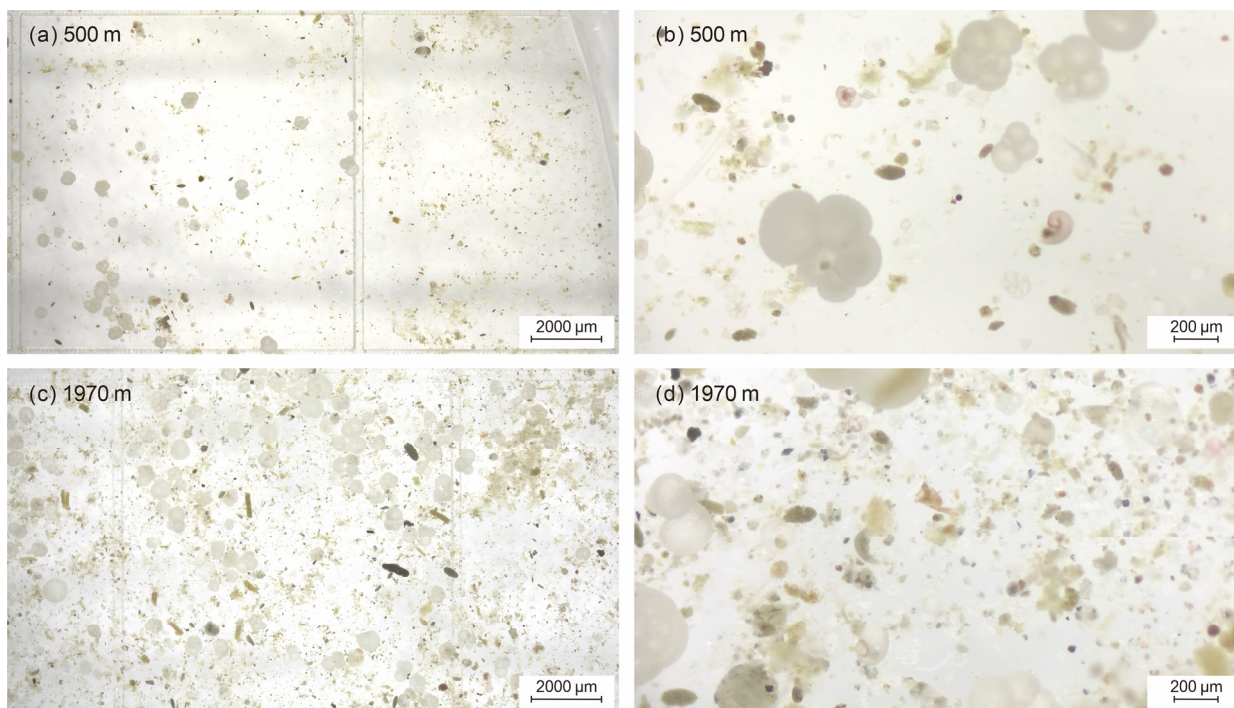
**Figure S10.** Zooplankton fecal pellets of Samples TJ-A1B21-UP10 and DW10 at the sediment trap mooring TJ-A1B in the northern SCS. (a) Pellets at 8X magnification at 500 m, sample fraction: 1/2; (b) pellets at 50X magnification at 500 m, sample fraction: 1/2; (c) pellets at 8X magnification at 1970 m, sample fraction: 1/2; (d) pellets at 50X magnification at 1970 m, sample fraction: 1/2.



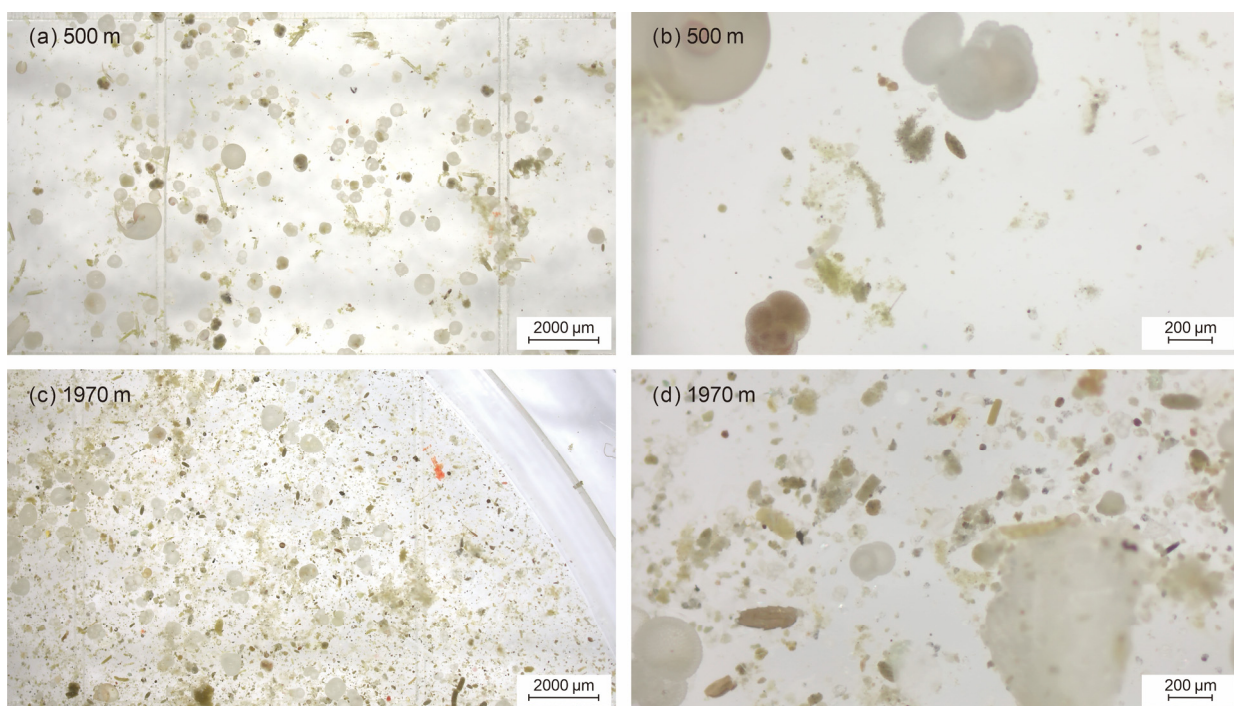
**Figure S11.** Zooplankton fecal pellets of Samples TJ-A1B21-UP11 and DW11 at the sediment trap mooring TJ-A1B in the northern SCS. (a) Pellets at 8X magnification at 500 m, sample fraction: 1/2; (b) pellets at 50X magnification at 500 m, sample fraction: 1/2; (c) pellets at 8X magnification at 1970 m, sample fraction: 1/2; (d) pellets at 50X magnification at 1970 m, sample fraction: 1/2.



**Figure S12.** Zooplankton fecal pellets of Samples TJ-A1B21-UP12 and DW12 at the sediment trap mooring TJ-A1B in the northern SCS. (a) Pellets at 8X magnification at 500 m, sample fraction: 1/4; (b) pellets at 50X magnification at 500 m, sample fraction: 1/4; (c) pellets at 8X magnification at 1970 m, sample fraction: 1/4; (d) pellets at 50X magnification at 1970 m, sample fraction: 1/4.

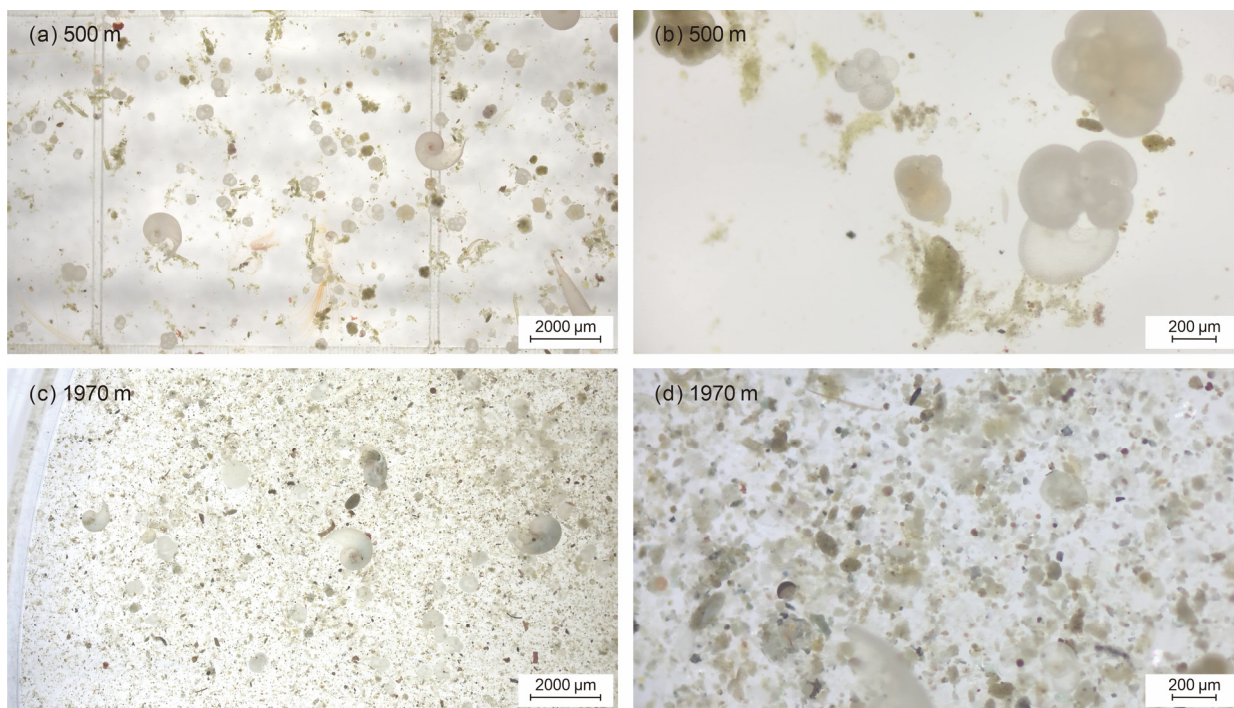


**Figure S13.** Zooplankton fecal pellets of Samples TJ-A1B21-UP13 and DW13 at the sediment trap mooring TJ-A1B in the northern SCS. (a) Pellets at 8X magnification at 500 m, sample fraction: 1/8; (b) pellets at 50X magnification at 500 m, sample fraction: 1/8; (c) pellets at 8X magnification at 1970 m, sample fraction: 1/4; (d) pellets at 50X magnification at 1970 m, sample fraction: 1/4.

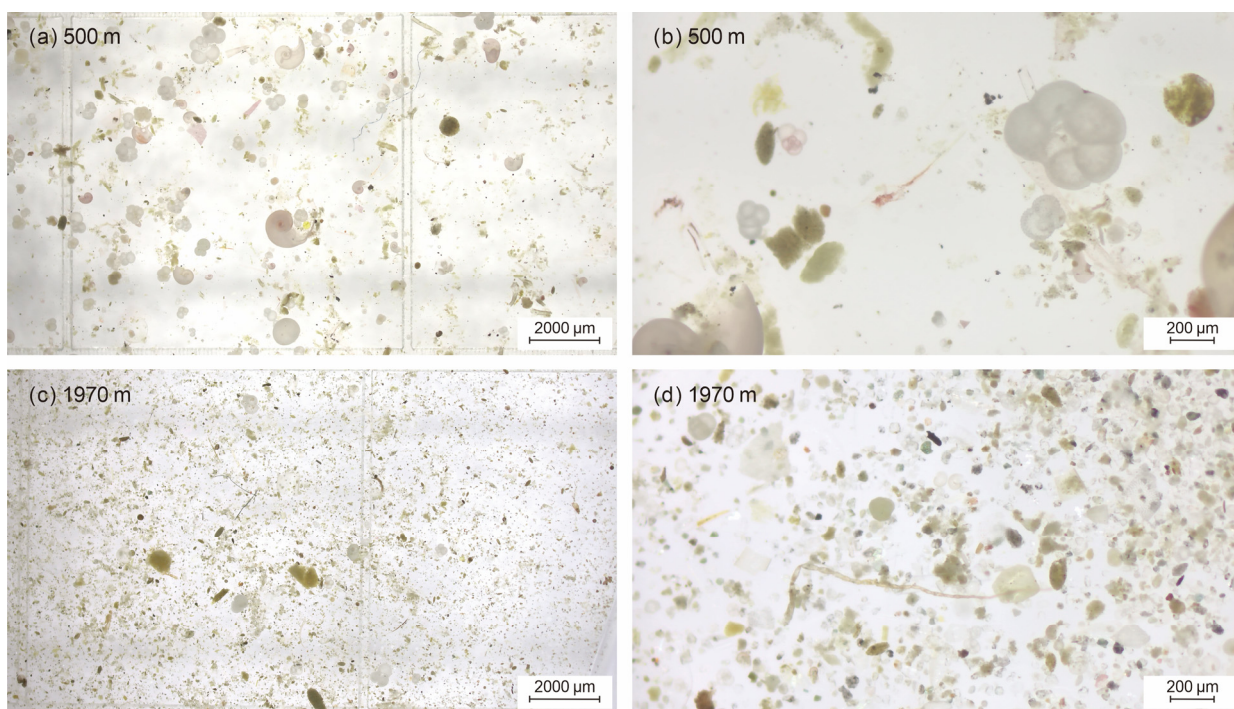


**Figure S14.** Zooplankton fecal pellets of Samples TJ-A1B21-UP14 and DW14 at the sediment trap mooring TJ-A1B in the northern SCS. (a) Pellets at 8X magnification at 500 m, sample fraction: 1/4; (b) pellets at 50X magnification at 500 m, sample fraction: 1/4; (c) pellets at 8X magnification at 1970 m, sample fraction: 1/8; (d) pellets at 50X magnification at 1970 m, sample fraction: 1/8.

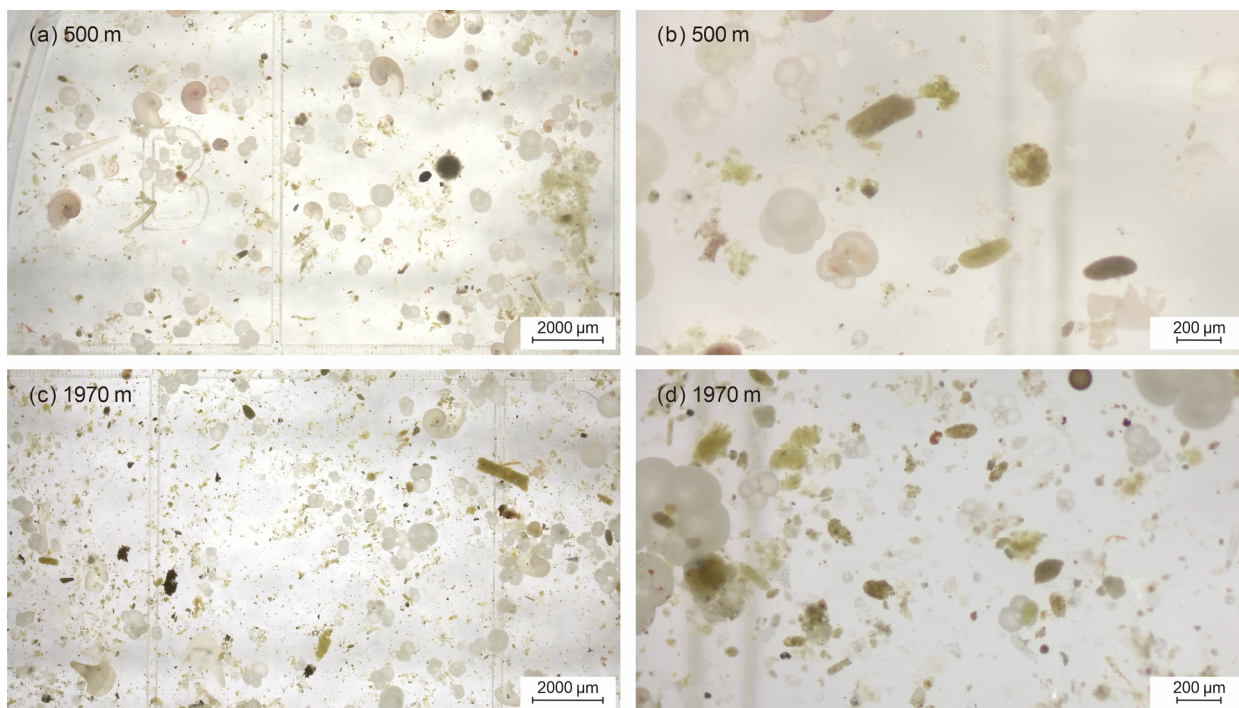




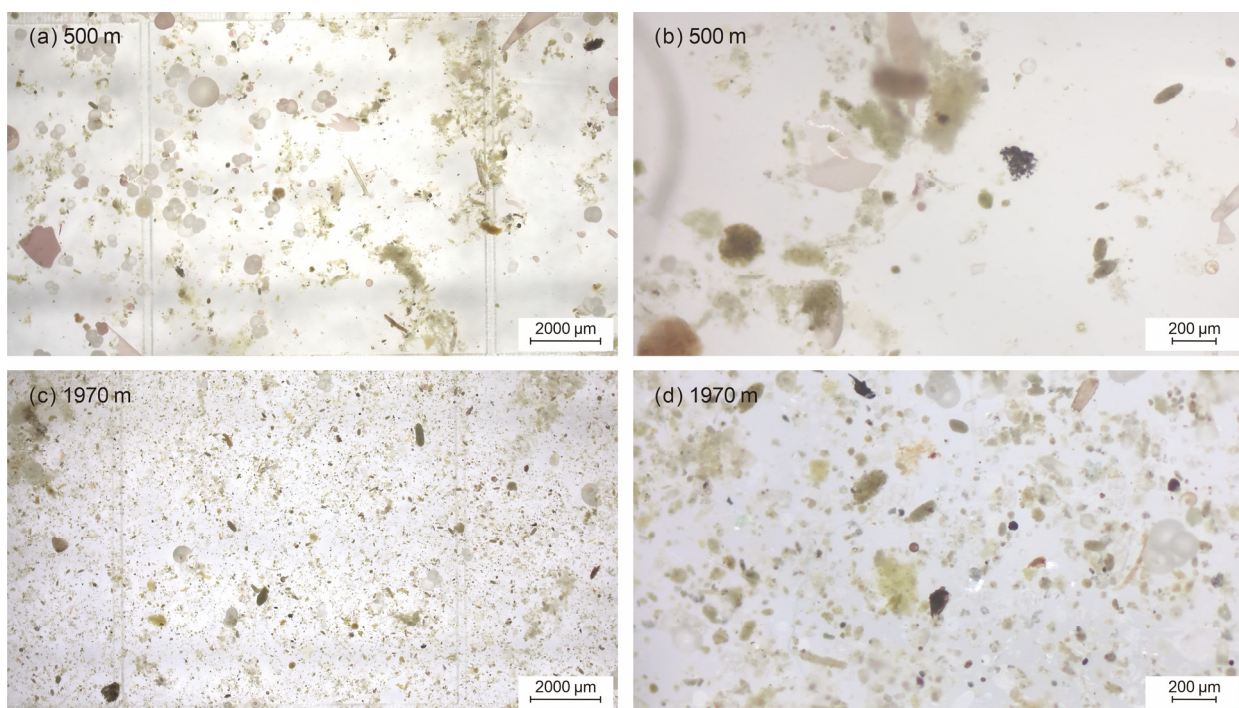
**Figure S15.** Zooplankton fecal pellets of Samples TJ-A1B21-UP15 and DW15 at the sediment trap mooring TJ-A1B in the northern SCS. (a) Pellets at 8X magnification at 500 m, sample fraction: 1/4; (b) pellets at 50X magnification at 500 m, sample fraction: 1/4; (c) pellets at 8X magnification at 1970 m, sample fraction: 2/16; (d) pellets at 50X magnification at 1970 m, sample fraction: 2/16.



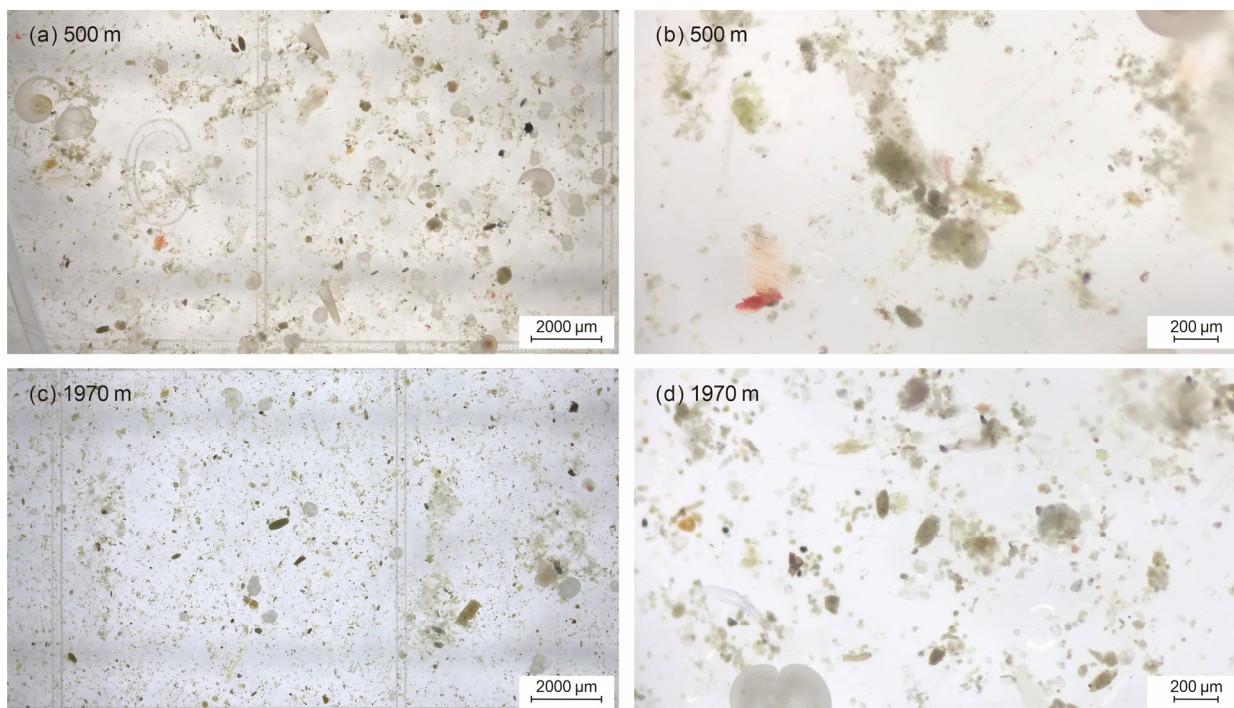
**Figure S16.** Zooplankton fecal pellets of Samples TJ-A1B21-UP16 and DW16 at the sediment trap mooring TJ-A1B in the northern SCS. (a) Pellets at 8X magnification at 500 m, sample fraction: 1/4; (b) pellets at 50X magnification at 500 m, sample fraction: 1/4; (c) pellets at 8X magnification at 1970 m, sample fraction: 1/8; (d) pellets at 50X magnification at 1970 m, sample fraction: 1/8.



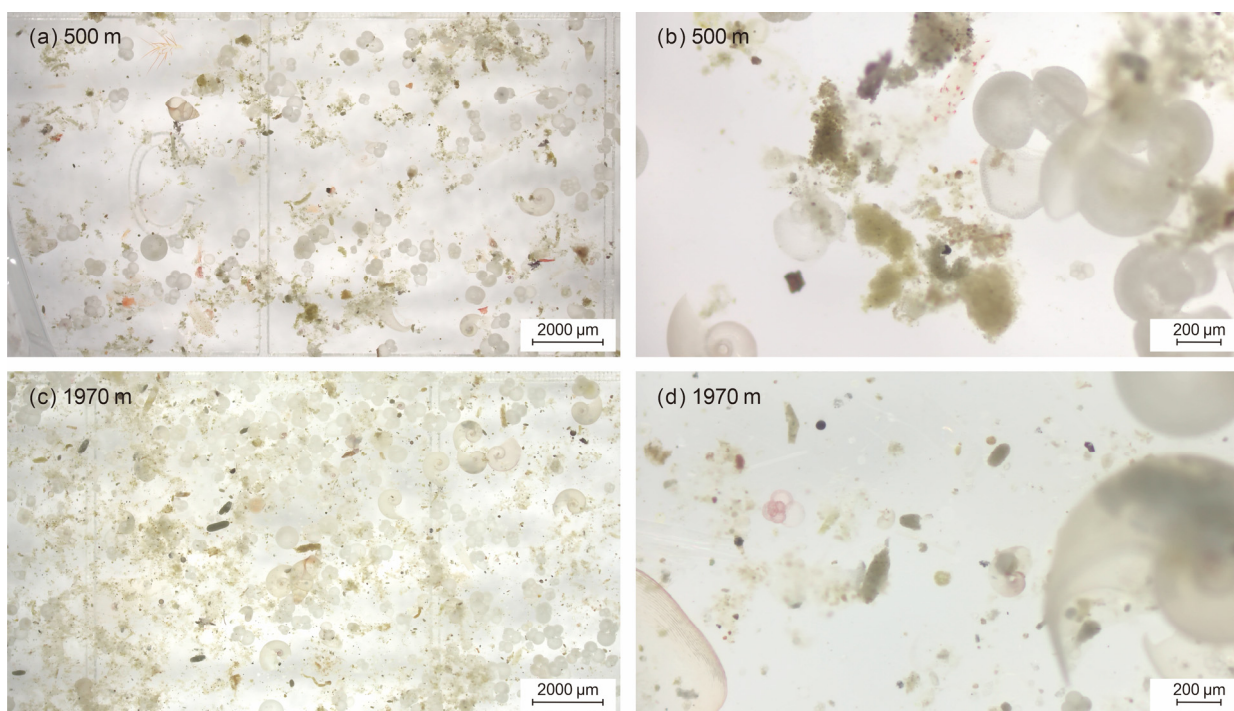
**Figure S17.** Zooplankton fecal pellets of Samples TJ-A1B21-UP17 and DW17 at the sediment trap mooring TJ-A1B in the northern SCS. (a) Pellets at 8X magnification at 500 m, sample fraction: 1/4; (b) pellets at 50X magnification at 500 m, sample fraction: 1/4; (c) pellets at 8X magnification at 1970 m, sample fraction: 1/8; (d) pellets at 50X magnification at 1970 m, sample fraction: 1/8.



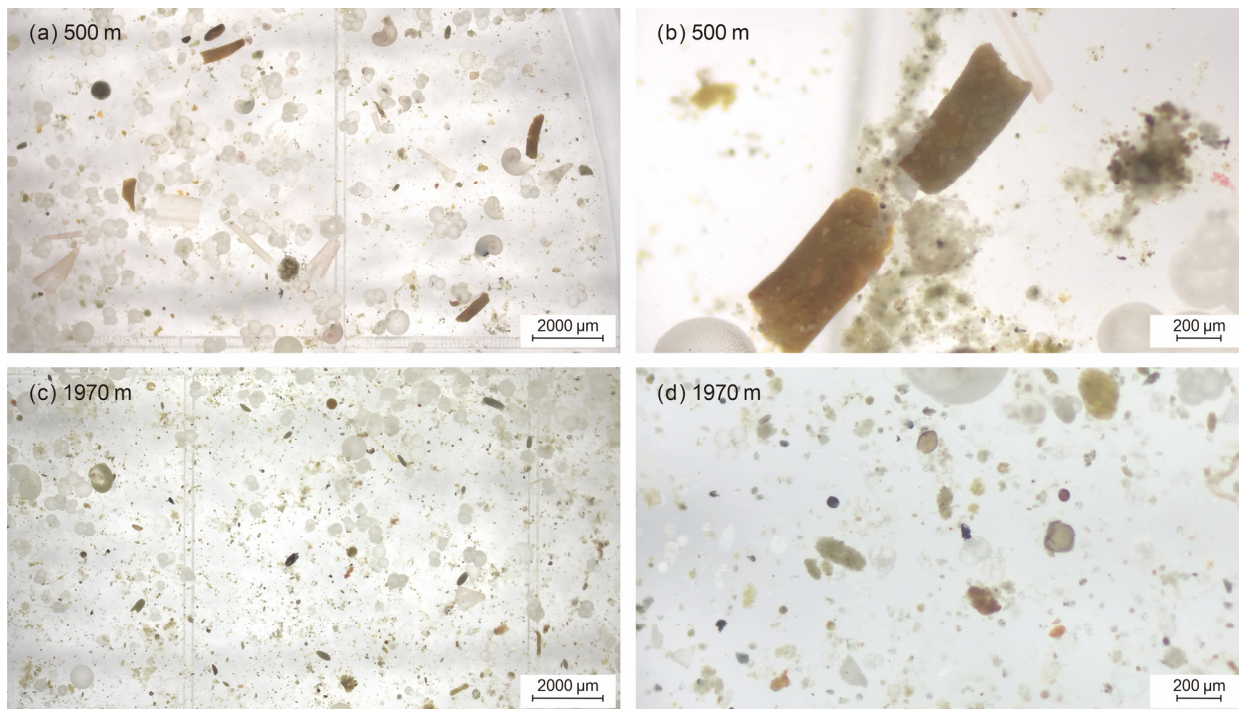
**Figure S18.** Zooplankton fecal pellets of Samples TJ-A1B21-UP18 and DW18 at the sediment trap mooring TJ-A1B in the northern SCS. (a) Pellets at 8X magnification at 500 m, sample fraction: 1/8; (b) pellets at 50X magnification at 500 m, sample fraction: 1/8; (c) pellets at 8X magnification at 1970 m, sample fraction: 1/4; (d) pellets at 50X magnification at 1970 m, sample fraction: 1/4.



**Figure S19.** Zooplankton fecal pellets of Samples TJ-A1B21-UP19 and DW19 at the sediment trap mooring TJ-A1B in the northern SCS. (a) Pellets at 8X magnification at 500 m, sample fraction: 1/2; (b) pellets at 50X magnification at 500 m, sample fraction: 1/2; (c) pellets at 8X magnification at 1970 m, sample fraction: 1/8; (d) pellets at 50X magnification at 1970 m, sample fraction: 1/8.



**Figure S20.** Zooplankton fecal pellets of Samples TJ-A1B21-UP20 and DW20 at the sediment trap mooring TJ-A1B in the northern SCS. (a) Pellets at 8X magnification at 500 m, sample fraction: 1/4; (b) pellets at 50X magnification at 500 m, sample fraction: 1/4; (c) pellets at 8X magnification at 1970 m, sample fraction: 1/16; (d) pellets at 50X magnification at 1970 m, sample fraction: 1/16.



**Figure S21.** Zooplankton fecal pellets of Samples TJ-A1B21-UP21 and DW21 at the sediment trap mooring TJ-A1B in the northern SCS. (a) Pellets at 8X magnification at 500 m, sample fraction: 1/4; (b) pellets at 50X magnification at 500 m, sample fraction: 1/4; (c) pellets at 8X magnification at 1970 m, sample fraction: 1/4; (d) pellets at 50X magnification at 1970 m, sample fraction: 1/4.