



Change in diazotrophic community structure associated with Kuroshio succession in the northern South China Sea

Han Zhang^{1,2}, Guangming Mai¹, Weicheng Luo², Meng Chen¹, Ran Duan^{2,§}, Tuo Shi^{1,2}

¹ Marine Genomics and Biotechnology Program, Institute of Marine Science and Technology, Shandong University, Qingdao, Shandong, PR China

² State Key Laboratory of Marine Environmental Science, College of Ocean and Earth Sciences, Xiamen University, Xiamen, Fujian, PR China

[§] Present address: Department of Marine Science, University of Southern California, Los Angeles, USA

Correspondence to: Tuo Shi (tuoshi@sdu.edu.cn)

Abstract. Kuroshio intrusion (KI) is a key process that transports water from the Western Pacific Ocean to the northern South China Sea (nSCS), where KI-induced surface water mixing often causes variations in microbial assemblages. Yet, how interannual KIs affect biogeography of diazotrophs and associated environmental factors, remains poorly characterized. Here, by quantifying the degree of KIs in two consecutive years, coupled with monitoring the diversity and distribution of nitrogenase-encoding *nifH* phylotypes with quantitative PCR and high-throughput sequencing, we show that changes in the diazotrophic community structure in the nSCS are highly correlated with KI leading to variations in a range of physicochemical parameters. Specifically, the filamentous cyanobacterium *Trichodesmium* was more abundant at stations strongly affected by KI, and hereby with deeper mixed layer, higher surface salinity, and temperature; the unicellular N₂-fixing cyanobacteria in group B (UCYN-B) were more abundant at stations least affected by KI and correlated with nutrient availability, whereas UCYN-C and the non-cyanobacterial γ -proteobacteria were prevalent at stations moderately affected by KI. Moreover, neutral community model further demonstrated that dominant diazotrophic subcommunities were more significantly affected by environmental factors in 2017 when KI was strong than in 2018 when KI appeared to have retreated. Collectively, our analyses provide insightful evidence in the role of KI succession in shaping diazotrophic community structure primarily as a stochastic process, implying a potential region-scale redistribution of diazotrophs and nitrogen budget, given that KIs are projected to intensify in a future warming ocean.

Keywords: Biogeography, Kuroshio, Marine diazotroph, *nifH* phylotype, South China Sea



1 Introduction

Biological nitrogen fixation, the process in which a specialized group of prokaryotes called diazotrophs convert atmospheric nitrogen (N_2) to ammonia (NH_3), provides one of the primary nutrients to the biosphere (Gruber, 2008). In the oligotrophic ocean, marine N_2 fixation is an important source of new nitrogen (N) to the euphotic zone, providing up to 50% of bioavailable N to marine phytoplankton (Wang et al., 2019) in sustaining net carbon sequestration and export of organic carbon to the deep ocean, and potentially governing primary productivity in geologic time scales (Falkowski et al., 1998; Karl et al., 2002). Marine N_2 fixation is, therefore, of significant importance to global carbon cycle (Falkowski et al., 2000; Zehr and Capone, 2020; Hutchins and Capone, 2022).

The current state of marine N_2 fixation study is changing dramatically. Based on the polymerase chain reaction (PCR) technique amplifying *nifH* gene encoding the catalytic subunit of nitrogenase (Zehr et al., 1998), a number of marine planktonic diazotrophs have been identified. The bloom-forming filamentous cyanobacteria, including the free-living non-heterocystous *Trichodesmium* (Capone, 1997; Capone et al., 2005) and the heterocystous *Richelia* and *Calothrix* symbiotically associated with diatoms (Villareal, 1992; Foster et al., 2007) were traditionally recognized to be the prevalent marine diazotrophs. Such previously established concept was challenged by the discovery of unicellular, N_2 -fixing cyanobacteria (UCYN) belonging to *Crocospaera*, *Cyanothece* and other closely related genera, which fix equivalent or even higher amount of N_2 globally relative to the summed contribution by *Trichodesmium* and the diatom-associated symbionts (Zehr et al., 2001; Montoya et al., 2004; Martínez-Pérez et al., 2016). Phylogenetically distinct clades of UCYN have been detected. The “*Candidatus Atelocyanobacterium thalassa*” in group A (UCYN-A) appears to be an obligate endosymbiont of the single-celled prymnesiophyte algae (Thompson et al., 2012), whereas UCYN-B is mostly free-living with *Crocospaera watsonii* being a cultivated representative. Compared with other major N_2 fixers like *Trichodesmium* and *C. watsonii*, the UCYN-A can be detected in colder and deeper open ocean waters (Moisander et al., 2010), as well as coastal waters (Hagino et al., 2013), further demonstrating their importance in global N_2 fixation. The advent of global-scale metagenomic databases has facilitated significant advances in the study of N_2 fixation (Muñoz-Marín et al., 2019; Acinas et al., 2021; Pierella Karlusich et al., 2021; Dong et al., 2022). Particularly, diazotrophs genomes reconstructed from global metagenomic data have extended the PCR-based amplicon surveys, revealing new diatom-diazotroph symbioses (Schvarcz et al., 2022) and new species of non-cyanobacterial diazotrophs (Bombar et al., 2016; Delmont et al., 2018).

The South China Sea (SCS) is the largest semi-enclosed marginal sea in the tropical Western Pacific Ocean (WPO). The main water exchange between SCS and WPO occurs as Kuroshio, an energetic western boundary current of the North Pacific intrudes into the SCS through the Luzon Strait (Hu et al., 2015). The intruded Kuroshio splits into the anticyclonic current loop west of the Luzon Strait (i.e., the looping path), the westward South China Sea Branch of the Kuroshio on the slope (i.e., the leaking path), and the cyclonic eddy west of the Luzon Island (i.e., Luzon loop) (Fig. 1) (Nan et al., 2011). Thus, Kuroshio intrusion (KI) plays a significant role in affecting the temperature, salinity, circulation, and the generation of mesoscale eddies and internal waves in the northern SCS (nSCS) (Hu et al., 2000; Yang et al., 2014; Nan et al., 2015). The physical processes of KI have been documented to influence the community structure of bacteria (Zhang et al., 2014), picoplankton (Li et al., 2017), microphytoplankton (Wang et al., 2020b), and microzooplankton (Sun et al., 2021) in the nSCS. Moreover, the transport of diazotrophic lineages such as *Trichodesmium* (Chen et al., 2003) and the lateral input of dissolved organic matter by KI (Xu et al., 2018) also influence the nutrient biogeochemistry of the euphotic zone (Du et al., 2013), which is known to enhance both the phytoplankton productivity (Chen et al., 2008) and export production (Nishibe et al., 2015; Huang et al., 2019) in the nSCS. For example, physicochemical conditions favoring the growth of N_2 fixers can reconcile the N deficiency, thus regulating the productivity in the surface water of SCS (Wu et al., 2003). In this regard, the nSCS provides an ideal region for studying the dynamics in diazotrophic communities and their activity associated with KI.



The diversity, abundance, and N₂ fixation rate of the diazotrophic community in both the SCS and Kuroshio have been well studied (Voss et al., 2006; Moisander et al., 2008; Zhang et al., 2011; Liu et al., 2020; Ding et al., 2021). Much higher diazotroph abundances and N₂ fixation rates were found in the Kuroshio current than those in the nSCS (Cheung et al., 2017; Wu et al., 2018; Lu et al., 2019). Studies also showed that *Trichodesmium* is by far the most abundant cyanobacterial diazotroph (Moisander et al., 2008; Chen et al., 2011; Shiozaki et al., 2014; Xiao et al., 2015) and the indicator species of Kuroshio (Shiozaki et al., 2015b). However, it was recently suggested that N₂ fixation by UCYN is more significant (Wu et al., 2018; Li et al., 2021) whereas the diatom-associated symbionts and non-cyanobacterial diazotrophs only constitute a small proportion of the diazotrophic community in the Kuroshio (Cheung et al., 2017). In contrast to the well studied diazotrophic biogeography in these regions, less effort has linked N₂ fixation to KI (Wu et al., 2018; Lu et al., 2019). Furthermore, the distribution pattern of lineage-specific diazotrophs in the nSCS in relation to KI, remains poorly characterized. For a better understanding of the physicochemical processes controlling diazotrophic activity and community in response to KI, an ecological survey focusing on the composition and distribution patterns of diazotrophs in the nSCS during Kuroshio succession is necessary. Moreover, considering the annual and interannual variabilities in the intensity and frequency of KI driven primarily by the East Asian monsoon (Cai et al., 2020), there is also an urgent need to assess the impacts of KI as a solo stochastic process (e.g., current-induced drift) or coupled with other extreme climate events (e.g., tropical storms, marine heatwaves).

In this study, we carried out ecological surveys on the diversity, abundance, and distribution of diazotrophic communities in two consecutive cruises in the nSCS during summer of 2017 and 2018. By examining the relative abundance of targeted and all-inclusive diazotrophic groups with the *nifH* amplicons, along with measurements of environmental parameters and modeling the contribution of KI into the nSCS, we identified a pattern in the composition and distribution of diazotrophic community that is highly correlated with Kuroshio succession. We further assessed the role of KI in shaping diazotrophic community structure in the context of stochastic processes using a neutral community model (NCM), demonstrating that the correlation between diazotrophic community assembly and KI is tightly regulated by environmental factors. Taken together, our analyses provide novel mechanistic insight into the biogeography of marine diazotrophs in the nSCS, particularly as it relates to KI.

2 Materials and Methods

2.1 Sampling and collection of environmental parameters

Sampling for this study was conducted during two research cruises to the SCS aboard the research vessels ‘Dong Fang Hong 2’ from August 4 to 17, 2017 and ‘Tan Kah Kee’ from June 12 to July 14, 2018, respectively. Water samples were collected in the upper 100–150 m at designated stations (Fig. 1 and Table S1). 1.5–3 L of seawater was prefiltered through a 100- μ m pore-size nylon mesh to remove large zooplankton and fish, and then filtered through a 0.22- μ m pore-size 47-mm diameter polycarbonate membrane (Millipore, USA) with low pressure (<100 mm Hg pressure) for subsequent DNA extraction. The membranes were flash frozen in liquid nitrogen and stored at –80 °C in the laboratory until further processing. Temperature, salinity, and depth data were recorded using a Seabird SBE 911Plus rosette sampling system (Sea-Bird Electronics, USA). Light attenuation was determined using a PRR-600 profiling reflectance radiometer (Biospherical Instruments Inc., USA) (Shiozaki et al., 2015a). Seawater samples for the inorganic nutrients and chlorophyll *a* (Chl *a*) analysis were prefiltered through GF/F filter membranes (Whatman, USA) and then collected into 100 mL HCl-rinsed polyethylene (PE) bottles and refrigerated at –20 °C during the cruise and processed immediately after returning to the laboratory. Nitrate (NO₃⁻) and phosphate (PO₄³⁻) were estimated using Technicon AA3 Auto-Analyzer (Bran Lube, Germany). The detection limits of NO₃⁻ and PO₄³⁻ concentrations were 0.1 μ M and 0.08 μ M, respectively. Chl *a* was extracted with 90% acetone and measured using a Trilogy fluorometer (Turner-Designs, USA).



105 2.2 Estimation of KI fractions

To quantify the hydrographic changes induced by lateral KI, an isopycnal mixing model (Du et al., 2013) was applied to calculate the contribution of KI at each individual station. In the isopycnal model, two water mass endmembers are required to index their relative contribution when they are mixed in different proportions. Here we selected the South-East Asian Time-series Study (SEATS) station (stn9) at 116°E/18°N to represent the proper SCS water mass endmember and the station stn1 at 110 123.023°E/22.016°N as the Kuroshio water mass endmember. This model assumes that diapycnal mixing is negligible when compared with isopycnal mixing, which allows us to quantify the relative contribution of the SCS (R_S) and the Kuroshio (R_K) water mass for observed water parcels in the temperature (θ)–salinity (S) diagram, based on the conservation of either θ or S along an isopycnal surface. While Kuroshio can intrude down to 400 m in the SCS, we focused only on the euphotic zone, which typically extends from the surface to 100-m water depth in the nSCS (Chen et al., 2008), where biological alterations of nutrients are highest 115 and may result in profound changes in primary productivity. The averaged Kuroshio fraction in the upper 100 m for a given station (R_{K_100} , %) was therefore employed as a proxy of KI index. The stations with $R_{K_100} > 75\%$ were considered strongly affected by KI, and those with $25\% \leq R_{K_100} \leq 75\%$ and $R_{K_100} < 25\%$ were considered moderately and least affected by KI, respectively.

2.3 Measurements of N₂ fixation and primary production

Nitrogen fixation rates (NFR) were assessed using the ¹⁵N₂ stable isotope method (Montoya et al., 1996) with modifications to 120 avoid problems of bubble dissolution (Mohr et al., 2010; Großkopf et al., 2012). Briefly, 5 mL of 98% pure ¹⁵N₂ gas (Cambridge Isotope Laboratories, USA) was injected into an acid-washed, gas-tight plastic bag containing 500 mL of degassed seawater prepared according to Shiozaki et al. (2015a). The bag was gently tapped until the gas was dissolved completely. Sixty mL of ¹⁵N₂-enriched seawater was added into each of the triplicate acid-washed 2.3-L polycarbonate bottles. NaH¹³CO₃ (99 atom% ¹³C, Cambridge Isotope Laboratories, USA) solution was added at a final tracer concentration of 100 μM. Each bottle was covered with 125 neutral-density screen to adjust the levels of illumination to match those at the sampling depths. To maintain approximate *in situ* temperatures, the bottles were placed in an on-deck incubator that was connected to a cooling system and continuously flushed with surface seawater. After 24 h of incubation, the samples were filtered (vacuum pressure <100 mm Hg) onto pre-combusted (450 °C, 4 h) 47-mm diameter GF/F membranes, and the membranes were immediately stored at –80 °C until further processing. To estimate the natural and tracer-enriched ¹⁵N and ¹³C abundance, the samples were first acid fumed to remove the inorganic 130 carbon. The NFR and primary production were determined according to Montoya et al. (1996) and Hama et al. (1983), respectively. The detection limit for N₂ fixation rates was estimated by taking 4% as the minimum acceptable change in the δ¹⁵N of particulate nitrogen (i.e., a change of 0.00146 in the ¹⁵N enrichment of particulate nitrogen). The depth-integrated N₂ fixation (I_{NFR}) and primary production (I_{PP}) were calculated by integrating the rates at three to five water depths in the upper 100-m using the trapezoidal integration method (Wen et al., 2022).

135 2.4 DNA extraction

For one piece of sample membrane, DNA was extracted with the cetyltrimethylammonium bromide (CTAB) method (Yuan et al., 2015) in 600 μL of DNA lysis buffer (10 mM Tris-HCl, pH 8.0; 100 mM EDTA, pH 8.0; 0.5 % [w/v] SDS) containing 10 mg mL⁻¹ Proteinase K (Roche, USA). The extracted DNA was purified using the DNA Clean & Concentrator kit (Zymo, USA) and the concentrations of DNA were measured with the Qubit fluorometer 3.0 (Thermo Scientific, USA) using the broad-range DNA assay 140 kit (Invitrogen, USA). All the DNA samples were eluted in 50 μL DNase/RNase-free ultrapure water (Invitrogen, USA), and stored at –80 °C until further processing.



2.5 TaqMan qPCR assay of targeted *nifH* phylotypes

The DNA samples were used as templates to quantify the *nifH* gene copies using TaqMan qPCR technique targeting 10 major diazotrophic phylotypes, including the filamentous *Trichodesmium*, the UCYN in groups A1, A2, B and C (UCYN-A1, UCYN-A2, UCYN-B, and UCYN-C), the heterocystous cyanobacteria symbiotic with diatoms (Het-1, Het-2, and Het-3), the γ -proteobacterium (γ -24774A11), and the α -proteobacterium (α -MH144511). The primer and probe sequences for the TaqMan qPCR assay were summarized in Table S3. The probes were 5'-labeled with the fluorescent reporter FAM (6-carboxy fluorescein) and 3'-labeled with TAMRA (6-carboxytetramethylrhodamine) as a quenching dye. The reference *nifH* sequences used for standard curves were retrieved from PCR clone libraries (i.e., *Trichodesmium* and UCYN-C) or synthesized at GeneWiz Biotechnology Co., Ltd. (Suzhou, China) (Table S2). The cross-reactivity of the primer-probe set was checked using serial dilutions of plasmids containing inserts matching all the other primer and probe sets. Triplicate qPCRs were run for each DNA sample and the standards on a CFX96 real-time system (Bio-Rad, USA). To each reaction, 10–15 ng plasmid standards or environmental DNA were added. The thermocycling conditions were 50 °C for 2 min, 95 °C for 2 min, and 45 cycles (95 °C for 15 s followed by 60 °C for 1 min). Negative controls without templates were also included to check contamination. A standard curve was made using serial dilutions of quantified (from 10^1 to 10^7 *nifH* gene copies per reaction), linearized plasmid standards for each run. The Adjusted R^2 was calculated from the relative contributions of *Trichodesmium* and UCYN-B to the averaged Kuroshio fractions in the upper 100 m (R_{K-100} , %) in each station.

2.6 Next-generation sequencing of all-inclusive *nifH* phylotypes

Nested PCR was performed to amplify *nifH* genes from DNA samples using the nested, degenerate *nifH* primers (Zehr et al., 1998) on a MyCycler thermocycler (Bio-Rad, USA). The first round of PCR contained 0.25 μ L of Ex Taq (Takara Bio Inc., Japan), 2 μ L of the *nifH* primers *nifH3* (5'-ATRTTRTTNGCNGCRTA-3') and *nifH4* (5'-TTYTAYGGNAARGGNGG-3') (10 μ M each), 5–20 ng of environmental DNA as a template, with a final reaction volume of 50 μ L filled with double-distilled H₂O. The reaction program consisted of an initial 5 min of denaturation at 95 °C, then 31 cycles of 1 min at 95 °C, 1 min at 57 °C, and 1 min at 72 °C, and a final elongation step of 10 min at 72 °C. The second round of PCR had the same mixture components and thermocycling conditions (except the annealing temperature of 54 °C) but included 2 μ L of PCR product from the first reaction and primers *nifH1* (5'-TGYGAYCCNAARGCNGA-3') and *nifH2* (5'-TTYTAYGGNAARGGNGG-3') (Zehr and Turner, 2001). The PCR products were visualized by gel electrophoresis and purified using an agarose gel DNA purification kit (Takara Bio Inc., Japan). The purified PCR products were pooled in equimolar amounts and paired-end sequenced (2 \times 300) on an Illumina MiSeq next-generation sequencing (NGS) platform (Illumina, San Diego, USA) according to the standard protocols by Majorbio Bio-pharm Technology Co. Ltd. (Shanghai, China). The raw sequencing data for the *nifH* gene have been deposited into the NCBI Sequence Read Archive (SRA) database with the accession number PRJNA877297. Raw fastq files were quality-filtered by Trimmomatic and merged by FLASH with the following criteria: i) The reads were truncated at any site receiving an average quality score <20 over a 50 bp sliding window; ii) Sequences having ≥ 10 bp overlap but ≤ 2 bp mismatch were merged; iii) Sequences of each sample were separated according to barcodes (exactly matching) and primers (allowing 2 nucleotide mismatching) and reads containing ambiguous bases were removed. Operational taxonomic units (OTUs) were clustered with a 97% similarity cutoff using UPARSE (version 7.1) (<http://drive5.com/uparse/>) with a novel 'greedy' algorithm that performs chimera filtering and OTU clustering simultaneously. The taxonomy of each *nifH* gene sequence was analyzed by RDP classifier algorithm against the ARB *nifH* database (<https://www.jzehrlab.com/nifH>) by using a confidence threshold of 70%.



2.7 Determination of abundant and rare taxa

180 The abundant and rare OTUs were defined based on the relative abundance thresholds of 0.01% and 1%, respectively, as
recommended in recent publications (e.g., Dai et al., 2016). The OTUs were classified into six categories: (1) OTUs with
abundance >1% in all samples were classified as abundant taxa (AT); (2) OTUs with abundance <0.01% in all samples were
classified as rare taxa (RT); (3) OTUs with abundance between 0.01 and 1% in all samples were classified as moderate taxa (MT);
185 (4) OTUs with abundance below 1% in all samples and <0.01% in some samples were classified as conditionally rare taxa (CRT);
(5) OTUs with abundance $\geq 0.01\%$ in all samples and $\geq 1\%$ in some samples were classified as conditionally abundant taxa (CAT);
(6) OTUs with abundance between 0.01% and 1% were classified as conditionally rare and abundant taxa (CRAT). To avoid
confusion with previous definition (Chen et al., 2017), the dominant taxa in the categories AT, CAT and CRAT were pooled and
analyzed together as 'AT*' in this study.

2.8 Correlation of microbial communities with environmental factors and geographical distance

190 We used Mantel tests to reveal the correlations between the diazotrophic community dissimilarity, spatial variables, and
environmental factors. All environmental parameters, except pH, were log (X+1)-transformed to improve homoscedasticity and
normality for multivariate statistical analyses and the Euclidean distances between samples were calculated. First, a set of spatial
variables were generated through the method of principal coordinates of neighbor matrices (PCNM) analysis (Borcard and
Legendre, 2002), based on the longitude and latitude coordinates of sampling sites. Subsequently, to avoid collinearity among
195 factors, explanatory environmental factors with the highest variance inflation factor (VIF) were eliminated until all VIF values
were lower than 20. Redundancy analysis using forward selection identified a minimal subset of environmental and/or spatial
variables that explained significant proportions of the variations in the community data ($P < 0.05$), as determined through Monte
Carlo permutation test. In addition, diazotrophic compositions were Hellinger-transformed prior to the analyses to provide unbiased
estimates of the variation partitioning analysis (VPA; Legendre and Gallagher, 2001).

200 2.9 Diazotrophic community assembly modeling

To assess the potential influence of KI on diazotrophic community assembly, an NCM was performed by predicting the relationship
between the occurrence frequency of diazotrophic taxon and their relative abundance across the wider metacommunity (Sloan et
al., 2007). Calculation of 95% confidence interval was done using 1,000 bootstrap replicates, and the overall fit to the NCM was
indicated by the parameter R^2 . All data analyses were processed in R (version 4.1.3) (<http://www.r-project.org>).

205 3 Results

3.1 Hydrographic conditions varied with the intensity of KI

Using the isopycnal mixing model (Du et al., 2013), we integrated all the hydrographic data collected during the cruises in 2017
and 2018 and spotted each corresponding water parcel based on the potential density-temperature-salinity anomalies modeled from
the mixing of the Kuroshio and nSCS water masses (Fig. 2a). The sea surface temperature (SST) and salinity for the nSCS were in
210 the lower range (29.20–30.24 °C and 33.45–33.81) relative to those for the Kuroshio (29.95–30.81 °C and 34.45–34.59) (Fig. 2a
and Table S4). As a result, for the water masses between the endmembers, those with more Kuroshio mixing had a higher
temperature and salinity, whereas those with more nSCS mixing had a low temperature and salinity. We further examined this
pattern by plotting the depths and temperatures of the isopycnal layer of water masses along a potential density anomaly (σ_θ) layer



($\sigma_\theta = 23 \text{ kg m}^{-3}$), and a comparison of the profiles between the two cruises showed that the seawater temperatures were higher and water depths were deeper near Luzon Strait in 2017 than in 2018, suggesting an intrusion of Kuroshio deeper into the nSCS in 2017 and a gradual withdrawal in 2018 (Figs. 2b-2e).

3.2 The abundance of diazotrophs based on qPCR and NGS

When the standard clone is diluted 10 times, the corresponding Ct value increases by about 3.3–3.4 units, which indicated that the PCR amplification efficiencies among all replicates were between 90% and 100% ($R^2 > 0.99$, Fig. S1). The result of DNA-based quantification of *nifH* gene copies with qPCR showed variations in the abundance of the ten targeted diazotrophic groups between the cruises in 2017 and 2018. *Trichodesmium* and UCYN-B were the most abundant diazotrophs, reaching up to 3.78×10^6 and 1.10×10^7 *nifH* gene copies L^{-1} , respectively (Table S5). As seen along the transect from Luzon strait to the SCS basin, the *nifH* gene abundance of *Trichodesmium* gradually decreased whereas that of UCYN-B increased (Fig. 3), suggesting that *Trichodesmium* and UCYN-B are the dominant indicator species of Kuroshio and SCS, respectively. Additionally, the abundance of α -MH144511 and γ -2477A11 was much higher (up to 5.49×10^5 and 5.18×10^4 *nifH* gene copies L^{-1} , respectively) in 2017 when KI was strong (Fig. 3a), while that of UCYN-C was relatively higher in 2018 when KI was weak (Fig. 3b). Moreover, the relative abundance of UCYN-B was higher in 2018 than in 2017, especially at stations close to the SCS gyre (e.g., accounting for 93% of all the targeted diazotrophs at stn9), and the *nifH* gene copies of UCYN-B was higher at night, whereas that of *Trichodesmium* was higher during the day (Table S5). The abundances of other targeted diazotrophs (UCYN-A1, UCYN-A2, Het-1, Het-2 and Het-3) were mostly less than 1.00×10^4 *nifH* gene copies L^{-1} in the surveyed years (Table S5).

For DNA-based evaluation of *nifH* amplicons with NGS, the majority (>85%) of the *nifH* amplicons belonged to γ -proteobacteria and cyanobacteria, which were present at equal abundance (~45%) in 2017 but more cyanobacteria (64%) were detected than γ -proteobacteria (23%) in 2018. Most of the cyanobacterial *nifH* amplicons were *Trichodesmium* (51%–58%) and different sublineages of UCYN (42%–48%). The UCYN-C (22%) and UCYN-B (18%) were the most abundant sublineages of UCYN in 2017 and 2018, respectively (Table S6).

3.3 Correlation between R_{K-100} , diazotrophs, and environmental factors

The relationships between *nifH* gene copies and averaged Kuroshio fractions in the upper 100 m (R_{K-100} , %) showed that *Trichodesmium* was positively correlated with KI ($R^2_{\text{adj}} = 0.857$) whereas UCYN-B was negatively correlated with KI ($R^2_{\text{adj}} = 0.903$) (Fig. 4). The *nifH* NGS showed similar trends, with *Trichodesmium* and UCYN-B being abundant at stations subject to strong and weak KI, respectively, whereas other diazotrophs, including Actinobacteria, Archaea, and Firmicutes, were abundant at stations with a moderate degree of KI (Fig. 5 and Table S6). This result suggests a lineage-specific niche adaptation to environmental changes associated with KI in the overall diazotrophic community structure. KI leads to the partition of environmental parameters into two clusters: the surface nitrogen fixation rate (S_{NFR}), sea surface temperature (SST), sea surface salinity (SSS), depth of chlorophyll maximum (DCM), and mixed layer depth (MLD) tended to associate with strong KI, whereas the depth-integrated dissolved inorganic phosphorus (I_{DIP}), dissolved inorganic nitrogen (I_{DIN}), surface primary production (S_{PP}), and the depth of nitracline (Nit) with weak KI (Fig. 5). Such variations in environmental parameters mainly affected four diazotrophic groups. Specifically, *Trichodesmium* was distributed at the stations with deep MLD and high SSS and SST, which are characteristics of KI. UCYN-B was distributed at stations least affected by KI and with relatively high nutrient availability. UCYN-C and γ -proteobacteria were mainly distributed at stations moderately affected by the KI (Fig. 6).



250 3.4 Overall fit of diazotrophic community assembly to NCM

The result of Mantel's test showed that environmental distance was significantly more important than the geographical distance in shaping diazotrophic subcommunity structure (Fig. 7). The correlation between diazotrophs and environmental factors (temperature, salinity, MLD, and Chl *a*) was much stronger in 2017 than in 2018, and the effects on all (ALL), abundant (AT), and conditionally abundant taxa (CAT) were consistent in 2017, whereas in 2018 the effects on ALL and AT were consistent (Fig. 7
255 and Tables S7 and S8), suggesting that AT dominated in the survey stations whereas the role of RT was relatively small. The result of VPA further confirmed that the variation in diazotrophic community structure explained solely by environmental factors was higher in 2017 than in 2018 (0.33 vs. 0.17), whereas the influence of spatial factors was limited and roughly similar between the two years (0.20 vs. 0.21) (Figs. 8a and 8b). This result is also consistent with the NCM, showing that a larger fraction of OTUs fitted to the model in 2017 than in 2018 (Adjusted $R^2 = 0.676$ in 2017 vs. Adjusted $R^2 = 0.473$ in 2018) (Figs. 8c and 8d).

260 4 Discussion

4.1 Pattern of diazotroph distribution in the Kuroshio and nSCS

In this study, by quantifying the degree of KI at each sampling station with the isopycnal mixing model (Du et al., 2013), we were able to compare diazotrophic community structures in the Kuroshio, nSCS, and mixed waters of the two, as well as to explore the pattern in changes of diazotrophic community structure associated with Kuroshio succession on a temporal scale. Overall, our
265 measurements of *nifH* gene copies with qPCR showed that the relative abundance of different diazotrophic phylotypes was highly variable among stations in 2018 but was more uniform in 2017 (Fig. 3), which is likely a result of enhanced upper mixing due to stronger KI in 2017 (Fig. 2). Specifically, the two most abundant diazotrophs were *Trichodesmium* and UCYN-B, which dominated the Kuroshio and nSCS, respectively (Fig. 3). Distinct patterns in the distribution of *Trichodesmium* and UCYN-B in the Kuroshio and nSCS accessed from DNA-based qPCR have been reported (Shiozaki et al., 2014). The high abundance of *Trichodesmium* in
270 the Kuroshio may be attributed to its higher temperature preference and the coastal input of iron when Kuroshio flows past some islands (Cheung et al., 2017). In contrast, the elevated abundance of UCYN-B in the nSCS may be due to its high iron use efficiency (Sato et al., 2010), particularly in the iron-depleted nSCS (Shiozaki et al., 2017). Additionally, the relatively lower abundance of UCYN-B in Kuroshio may be due to competition for phosphorus (P) from *Trichodesmium* and non-cyanobacterial diazotrophs (Dyrman et al., 2006). *Trichodesmium* with gas vacuoles can migrate vertically to the deeper waters to optimize the uptake,
275 utilization, and even storage of P, fulfilling the growth requirement (Sohm et al., 2011).

While not as abundant as *Trichodesmium* and UCYN-B, the two closely related UCYN-A sublineages, UCYN-A1 and UCYN-A2, were present at all the stations surveyed in both 2017 and 2018 (Fig. 3). The distribution and abundance patterns of UCYN-A1 and UCYN-A2 were similar between the Kuroshio and nSCS, and between the two cruises, which seems at odds with the previous view that these two UCYN-A sublineages may have distinct niches (Thompson et al., 2014). The reason is unknown,
280 perhaps more extensive sampling towards the coastal regions may provide clues as it has been reported that coastal environments favor the proliferation of UCYN-A2 (Gradoville et al., 2021). Furthermore, the abundant UCYN-A sustained in the upstream Kuroshio could also be a possible reason why UCYN-A can be readily detected in higher-latitude regions than other cyanobacterial diazotrophs (Martínez-Pérez et al., 2016; Henke et al., 2018).

Our data show that UCYN-C was among the least abundant diazotrophs in 2017 when KI was strong, but its relative
285 abundance was 2–3 orders of magnitude higher in 2018 when KI was weak (Fig. 3). UCYN-C has rarely been reported in other regions and was among the poorly understood diazotrophs. Many *nifH* sequences of UCYN-C have been recovered from downstream Kuroshio in the Tokara Strait of Japan and the high abundance of UCYN-C is considered one striking feature of



Kuroshio (Cheung et al., 2017). An alternative explanation could be that the UCYN-C in downstream Kuroshio may originate from the nSCS, as inferred from the negative correlation of UCYN-C abundance with KI in our interannual comparison. In fact, the dominance of UCYN-C in phosphate-depleted conditions has been reported (Turk-Kubo et al., 2018), suggesting that UCYN-C may adapt well to the nutrient-limited conditions of the nSCS (Wu et al., 2003). In contrast to UCYN-C, the abundance of non-cyanobacterial diazotrophic α - and γ -proteobacteria was much higher in 2017 than in 2018, suggesting that heterotrophic diazotrophs could potentially be transported by Kuroshio to the nSCS.

4.2 Contribution of KI to nutrient inventory in the nSCS

The vertical pattern of water exchange between the nSCS and the WPO through the Luzon strait mimics a sandwich structure, with waters flowing into the nSCS at depths of 0–400 m and ~1,500–3,000 m and returning to the WPO at intermediate depths of ~500–1,500 m (Nan et al., 2015). Isopycnal modeling of water mass mixing showed that the nutrient inventory in the upper 100 m of the nSCS was overall negatively correlated with the Kuroshio water fraction, suggesting a dominant dilution effect of KI on the surface nutrient budget of nSCS, which typically features the oligotrophic Kuroshio waters (Du et al., 2013). The high salinity of Kuroshio waters also contributes to the overall negative correlation between the nutrient inventory and Kuroshio water fraction due to a downward mixing of the saline waters to deeper isopycnal surfaces that prevents nutrient upwelling from the subsurface (i.e., deeper nutricline) (Wu et al., 2015). The isopycnal modeling result is consistent with our *in situ* measurements showing that high nutrient availability was associated with the stations least affected by KI (Figs. 5 and 6). The dilution effect was even more pronounced under the El Niño'-driven, intensified KI (Ding et al., 2022). It might be argued that nutrient supplies from the depths through diapycnal mixing could counterbalance the dilution effect of KI. However, this is most likely to occur during the northeast monsoon in winter when diapycnal mixing is intensified by strong wind stress curl and internal wave shoaling. Since our cruises were carried out during the intermonsoon season and the strong stratification in the upper mixed layer diminishes the influx of nutrient-rich subsurface waters through diapycnal mixing, the observed nutrient dynamics are thus more affected by isopycnal mixing.

Besides the abiotic mixing, biogeochemical processes also contribute significantly to the nutrient inventory in the upper ocean. One such process is N_2 fixation. The Kuroshio, characterized with high temperature, high salinity, and low nutrient concentrations, provides a relatively stable environment in strengthening N_2 fixation by delivering oceanic diazotrophs to the photic zone (Tang et al., 2000). The transportation of *Trichodesmium* by KI is responsible for the enhanced N_2 fixation and primary production in the nSCS (Lu et al., 2019). N_2 fixation was estimated to be ~ 20 mmol N m⁻² yr⁻¹ in the nSCS and accounts for less than 10% of the present nutrient inventory variation (~ 250 mmol N m⁻² yr⁻¹) (Kao et al., 2012). The Kuroshio and nSCS showed different nutrient dynamics. The KI was conspicuously responsible for the station-specific, water column-integrated rates of N_2 fixation (I_{NFR}) in this study. The mean I_{NFR} in the Kuroshio current (KC) (129.42 ± 100.861 $\mu\text{mol N m}^{-2} \text{d}^{-1}$) was higher than that in the nSCS (75.98 ± 48.77 $\mu\text{mol N m}^{-2} \text{d}^{-1}$ and 74.98 ± 26.55 $\mu\text{mol N m}^{-2} \text{d}^{-1}$), which is in agreement with the previous report showing that I_{NFR} in the SCS averaged 1/3 of that in the Kuroshio (Chen et al., 2014). The differing patterns of I_{NFR} and S_{NFR} in KC and nSCS strongly suggest a strategy of niche acclimation of different diazotrophs. For instance, it has been reported that *Trichodesmium* typically inhabits shallow warm water (<50 m) (Jiang et al., 2019), whereas UCYN-A prefers lower temperature and deeper water (50–75 m) than *Trichodesmium* and UCYN-B (Moisander et al., 2010).

In addition to N_2 fixation, previous studies also showed that the KI introduces external DON into the nSCS and thereby stimulates ammonia oxidation, further complicating the conventional concept of N-based new production (Xu et al., 2018). Collectively, the KI into the nSCS delivers more *Trichodesmium* to the local environment and changes the composition of diazotrophic communities (Lu et al., 2019), while the KI-induced frontal zone mixing in the upper water column also causes



redistribution of the diazotrophs and reallocation of the nutrients (Jiang et al., 2019; Kuo et al., 2020).

4.3 Impact of Kuroshio as a stochastic process and potential implications to climate change response

330 The mechanisms by which KI drives the biogeography of marine diazotrophs are complicated and remain a central issue to
microbial ecology. Our result based on *nifH* qPCR and NGS shows a lineage-specific distribution of diazotrophs in response to
environmental changes associated with KI. Specifically, *Trichodesmium* was distributed at the stations with high SSS and SST and
deep MLD, which feature strong KI, whereas UCYN-B was distributed at stations least affected by KI and with relatively high
nutrient availability (Figs. 5 and 6). Furthermore, in contrary to many studies investigating microbial community with no distinction
335 between the abundant and rare ecotypes, we analyzed whether environmental (selective) and spatial (neutral) factors have differing
impacts on diazotrophic subcommunities, including ALL, dominant (AT* = AT+CAT+CRAT), CRT, and RT. We found that
environmental factors (e.g., temperature, salinity, MLD, and Chl *a*) were highly correlated with the overall diazotrophic community
and the AT* subcommunity, and this correlation appeared to be much stronger in 2017 than in 2018, but no environmental variables
were significantly correlated with the RT subcommunity (Fig. 7). This result suggests that the subcommunity structures of AT*
and RT are constrained by different environmental variables. Among the environmental parameters featuring KI, temperature is a
340 major factor controlling the distribution of diazotrophs. For example, *Trichodesmium* is distributed in surface waters between 20 °C
and 30 °C and thrives at 25 °C or warmer temperatures (Capone, 1997). In contrast, unicellular diazotrophs are often found in
deeper and colder waters although the optimal temperature for UCYN-A and UCYN-B were different (Moisander et al., 2010).
Salinity is another important environmental factor affecting the osmoregulation and metabolism of diazotrophs (Zehr and Turner,
2001). Salinity was also reported as the major determinant of abundant and rare bacterial subcommunities in freshwater ecosystem
345 (Kumar et al., 2018). Taken together, the above findings highlight the role of dominant diazotrophic lineages (e.g., *Trichodesmium*
and UCYN-B) in shaping the overall diazotrophic community structure associated with KI, whereas the role of RT is relatively
small.

Both Mantel's test and VPA reveal that the overall diazotrophic community structure was more significantly affected by
environmental factors in 2017 when KI was strong than in 2018 when KI was weak, whereas the influence of spatial factors was
350 limited and roughly similar between the two years (largely due to sampling within the small latitudinal range from 16°N to 22°N)
(Figs. 7, 8a and 8b). This result is also consistent with neutral model simulation showing that the diazotrophic community was
more likely affected by KI primarily as a stochastic process (Figs. 8c and 8d). It should be noted, however, that the variation in
diazotrophic community structure explained by the spatial and the environmental factors associated with KI is still relatively low
(i.e., 64% and 56% of unexplained variation in 2017 and 2018, respectively; Figs. 8a and 8b). The unexplained variation may be
355 caused by other biotic interactions such as competition from non-diazotrophic microorganisms (Turk-Kubo et al., 2018) and
microzooplankton grazing (Deng et al., 2020), or other abiotic parameters that were not measured in the study. The distribution of
endemic diazotrophic populations may be under the control of diverse physical processes governing upper mixing in the nSCS,
such as fluctuations in Kuroshio current (Shiozaki et al., 2015a), surface wind curl, tides, typhoons (Cheung et al., 2020), mesoscale
eddies, upwelling and abyssal circulation (Kuo et al., 2020). For instance, high-resolution climate modeling predicts that the
360 velocity of Kuroshio can reach 0.3 m s⁻¹ due to global warming, which may influence the northward heat transport at the basin
scale (Sakamoto et al., 2005). Since N₂ fixation by marine diazotrophs has been proposed as one of the potential negative feedback
mechanisms corresponding to ocean warming (Sohm et al., 2011), Kuroshio may transport diazotrophs (especially the UCYN-A)
in the upstream warmer regions including SCS northward to higher latitudes, resulting in a wider distribution of N₂ fixation in the
global ocean. It is, therefore, worthy of efforts to explore the effects of KI on the biogeography of diazotrophic communities on a
365 large scale, for example, through extensive sampling across wider geographic ranges, collection and monitoring of environmental



factors with more sophisticated devices such as the biogeochemical Argo floats (Wang et al., 2020a), and performing manipulative experiments indoors and outdoors. Nevertheless, given that KIs are projected to intensify in a future warming ocean (Chen et al., 2019), our analysis provides a case study in evaluating the role of KI in shaping diazotrophic community structure primarily as a stochastic process, which has implications to the redistribution of diazotrophs and nutrient budget at local and regional scales.

370 5 Conclusions

We present in this study a lineage-specific niche adaptation to environmental changes associated with KI in the overall diazotrophic community structure in the nSCS. We surveyed the diversity and abundance of diazotrophic phylotypes in the nSCS in two consecutive years with molecular approaches targeting the nitrogenase gene *nifH* and associated the patterns in change of diazotrophic community structure in the upper 100 m with the degrees of KI quantified using the isopycnal mixing model (Du et al., 2013). Four diazotrophic groups, *Trichodesmium*, UCYN-B, UCYN-C, and γ -proteobacteria, appear to be highly correlated with KI leading to variations in a range of physicochemical parameters. Specifically, *Trichodesmium* is abundant in stations subjected to strong KI and hence with deeper MLD, higher SSS and SST, whereas UCYN-B is distributed at stations least affected by KI and with relatively higher nutrient availability. UCYN-C and γ -proteobacteria are mainly distributed at stations moderately affected by the Kuroshio. Moreover, KI has a dominant dilution effect on the nutrient inventory and is responsible for the enhanced
380 N₂ fixation on one hand, it also causes redistribution of the diazotrophic taxa and reallocation of the nutrients on the other hand. Furthermore, neutral model simulation suggests that the diazotrophic community is more likely affected by KI primarily as a stochastic process. As KIs are projected to intensify in a future warming ocean, Kuroshio may transport diazotrophs (especially the UCYN-A) in the upstream warmer regions including SCS northward to higher latitudes, resulting in a wider distribution of N₂ fixation in the global ocean.

385 Data availability

All data needed to evaluate the conclusions in the paper are present in the paper and/or the Supplement. Additional data associated with the paper are available from the corresponding authors upon request.

Author contributions

T.S. conceived and designed the study. W.L. and R.D. participated in the expedition cruises and collected the samples. H.Z. and
390 W.L. performed laboratory experiments. G.M. and M.C. contributed to the reagents, materials, and analysis tools. H.Z., W.L., and T.S. analyzed the data. H.Z. and T.S. drafted the manuscript. All authors read and approved the final version of the manuscript.

Competing interests

The authors declare that they have no conflict of interest.

Acknowledgements

395 The authors are grateful to the captain and crew of the R/Vs 'Dong Fang Hong 2' and 'Tan Kah Kee' for logistics at sea and help with collection of the hydrographic data. Special thanks also go to Dalin Shi for providing some of the nutrients and N₂ fixation rates data, Kangkai Li and Linggang Zheng for assistance with sampling, and Zuozhu Wen, Mingming Chen, and Weidong Chen for discussion with data analysis. The authors also thank the reviewers for their insightful comments that help improve the clarity



of the manuscript. This study was supported by the National Natural Science Foundation of China (grant numbers 41676092 and
400 42076152 to T.S.).

References

- Acinas, S. G., Sánchez, P., Salazar, G., Cornejo-Castillo, F. M., Sebastián, M., Logares, R., Royo-Llonch, M., Paoli, L., Sunagawa, S., Hingamp, P., Ogata, H., Lima-Mendez, G., Roux, S., González, J. M., Arrieta, J. M., Alam, I. S., Kamau, A., Bowler, C., Raes, J., Pesant, S., Bork, P., Agustí, S., Gojobori, T., Vaqué, D., Sullivan, M. B., Pedrós-Alió, C., Massana, R., Duarte, C. M., and Gasol, J. M.: Deep ocean metagenomes provide insight into the metabolic architecture of bathypelagic microbial communities, *Commun. Biol.*, 4, 604, <https://doi.org/10.1038/s42003-021-02112-2>, 2021.
- Borcard, D., and Legendre, P.: All-scale spatial analysis of ecological data by means of principal coordinates of neighbour matrices, *Ecol. Model.*, 153, 51-68, [https://doi.org/10.1016/S0304-3800\(01\)00501-4](https://doi.org/10.1016/S0304-3800(01)00501-4), 2002.
- Bombar, D., Paerl, R. W., and Riemann, L.: Marine non-cyanobacterial diazotrophs: Moving beyond molecular detection, *Trends Microbiol.*, 24, 916-927, <https://doi.org/10.1016/j.tim.2016.07.002>, 2016.
- Cai, Z., Gan, J., Liu, Z., Hui, C. R., and Li, J.: Progress on the formation dynamics of the layered circulation in the South China Sea, *Prog. Oceanogr.*, 181, 102246, <https://doi.org/10.1016/j.pocean.2019.102246>, 2020.
- Capone, D. G.: *Trichodesmium*, a globally significant marine cyanobacterium, *Science*, 276, 1221-1229, <https://doi.org/10.1126/science.276.5316.1221>, 1997.
- 415 Capone, D. G., Burns, J. A., Montoya, J. P., Subramaniam, A., Mahaffey, C., Gunderson, T., Michaels, A. F., and Carpenter, E. J.: Nitrogen fixation by *Trichodesmium* spp.: An important source of new nitrogen to the tropical and subtropical North Atlantic Ocean, *Global Biogeochem. Cy.*, 19, 1-17, <https://doi.org/10.1029/2004GB002331>, 2005.
- Chen, C., Wang, G., Xie, S. P., and Liu, W.: Why does global warming weaken the gulf stream but intensify the Kuroshio? *J. Clim.*, 32, 7437-7451, <https://doi.org/10.1175/jcli-d-18-0895.1>, 2019.
- 420 Chen, W., Pan, Y., Yu, L., Yang, J., and Zhang, W.: Patterns and processes in marine microeukaryotic community biogeography from Xiamen coastal waters and intertidal sediments, Southeast China, *Front. Microbiol.*, 8, 1-14, <https://doi.org/10.3389/fmicb.2017.01912>, 2017.
- Chen, Y. L. L., Chen, H. Y., Tuo, S. H., and Ohki, K.: Seasonal dynamics of new production from *Trichodesmium* N₂ fixation and nitrate uptake in the upstream Kuroshio and South China Sea basin, *Limnol. Oceanogr.*, 53, 1705-1721, <https://doi.org/10.4319/lo.2008.53.5.1705>, 2008.
- 425 Chen, Y. L. L., Chen, H. Y., and Lin, Y. H.: Distribution and downward flux of *Trichodesmium* in the South China Sea as influenced by the transport from the Kuroshio Current, *Mar. Ecol. Prog. Ser.*, 259, 47-57, <https://doi.org/10.3354/meps259047>, 2003.
- Chen, Y. L. L., Tuo, S. H., and Chen, H. Y.: Co-occurrence and transfer of fixed nitrogen from *Trichodesmium* spp. to diatoms in the low-latitude Kuroshio Current in the NW Pacific, *Mar. Ecol. Prog. Ser.*, 421, 25-38, <https://doi.org/10.3354/meps08908>,
430 2011.
- Chen, Y. L. L., Chen, H. Y., Lin, Y. H., Yong, T. C., Taniuchi, Y., and Tuo, S. H.: The relative contributions of unicellular and filamentous diazotrophs to N₂ fixation in the South China Sea and the upstream Kuroshio, *Deep-Sea Res. Pt. I*, 85, 56-71, <https://doi.org/10.1016/j.dsr.2013.11.006>, 2014.
- 435 Cheung, S., Suzuki, K., Saito, H., Umezawa, Y., Xia, X., and Liu, H.: Highly heterogeneous diazotroph communities in the Kuroshio Current and the Tokara Strait, Japan, *PLoS ONE*, 12, 1-19, <https://doi.org/10.1371/journal.pone.0186875>, 2017.
- Cheung, S., Nitani, R., Tsurumoto, C., Endo, H., Nakaoka, S.i., Cheah, W., Lorda, J. F., Xia, X., Liu, H., and Suzuki, K.: Physical forcing controls the basin-scale occurrence of nitrogen-fixing organisms in the North Pacific Ocean, *Global Biogeochem. Cy.*,



- 34, e2019GB006452, <https://doi.org/10.1029/2019GB006452>, 2020.
- 440 Dai, T., Zhang, Y., Tang, Y., Bai, Y., Tao, Y., Huang, B., and Wen, D.: Identifying the key taxonomic categories that characterize microbial community diversity using full-scale classification: A case study of microbial communities in the sediments of Hangzhou Bay, *FEMS Microbiol. Ecol.*, 92, fiw150, <https://doi.org/10.1093/femsec/fiw150>, 2016.
- Delmont, T. O., Quince, C., Shaiber, A., Esen, O. C., Lee, S. T. M., Rappe, M. S., MacLellan, S. L., Lucker, S., and Eren, A. M.: Nitrogen-fixing populations of Planctomycetes and Proteobacteria are abundant in surface ocean metagenomes, *Nat. Microbiol.*, 3, 804-813, <https://doi.org/10.1038/s41564-018-0176-9>, 2018.
- 445 Deng, L., Cheung, S., and Liu, H.: Protistal grazers increase grazing on unicellular cyanobacteria diazotroph at night, *Front. Mar. Sci.*, 7, <https://doi.org/10.3389/fmars.2020.00135>, 2020.
- Ding, C., Wu, C., Li, L., Pujari, L., Zhang, G., and Sun, J.: Comparison of diazotrophic composition and distribution in the South China Sea and the Western Pacific Ocean, *Biology-Basel*, 10, <https://doi.org/10.3390/biology10060555>, 2021.
- Ding, X., Liu, J., Zhang, H., Ke, Z., Li, J., Liu, W., Li, K., Zhao, C., and Tan, Y.: Phytoplankton community patterns in the 450 northeastern South China Sea: Implications of intensified Kuroshio intrusion during the 2015/16 El Nino, *J. Geophys. Res. Oceans*, 127, <https://doi.org/10.1029/2021jc017998>, 2022.
- Dong, X., Zhang, C., Peng, Y., Zhang, H. X., Shi, L. D., Wei, G., Hubert, C. R. J., Wang, Y., and Greening, C.: Phylogenetically and catabolically diverse diazotrophs reside in deep-sea cold seep sediments, *Nat. Commun.*, 13, <https://doi.org/10.1038/s41467-022-32503-w>, 2022.
- 455 Du, C., Liu, Z., Dai, M., Kao, S. J., Cao, Z., Zhang, Y., Huang, T., Wang, L., and Li, Y.: Impact of the Kuroshio intrusion on the nutrient inventory in the upper northern South China Sea: Insights from an isopycnal mixing model, *Biogeosciences*, 10, 6419-6432, <https://doi.org/10.5194/bg-10-6419-2013>, 2013.
- Dyhrman, S. T., Chappell, P. D., Haley, S. T., Moffett, J. W., Orchard, E. D., Waterbury, J. B., and Webb, E. A.: Phosphonate utilization by the globally important marine diazotroph *Trichodesmium*, *Nature*, 439, 68-71, <https://doi.org/10.1038/nature04203>, 2006.
- 460 Falkowski, P., Scholes, R. J., Boyle, E., Canadell, J., Canfield, D., Elser, J., Gruber, N., Hibbard, K., Högberg, P., Linder, S., Mackenzie, F. T., Moore III, B., Pedersen, T., Rosenthal, Y., Seitzinger, S., Smetacek, V., and Steffen, W.: The global carbon cycle: A test of our knowledge of Earth as a system, *Science*, 290, 291-296, <https://doi.org/10.1126/science.290.5490.291>, 2000.
- 465 Falkowski, P. G., Barber, R. T., and Smetacek, V.: Biogeochemical controls and feedbacks on ocean primary production, *Science*, 281, 200-206, <https://doi.org/10.1126/science.281.5374.200>, 1998.
- Foster, R. A., Subramaniam, A., Mahaffey, C., Carpenter, E. J., Capone, D. G., and Zehr, J. P.: Influence of the Amazon River plume on distributions of free-living and symbiotic cyanobacteria in the western tropical north Atlantic Ocean, *Limnol. Oceanogr.*, 52, 517-532, <https://doi.org/10.4319/lo.2007.52.2.0517>, 2007.
- 470 Gradoville, M. R., Cabello, A. M., Wilson, S. T., Turk-Kubo, K. A., Karl, D. M., and Zehr, J. P.: Light and depth dependency of nitrogen fixation by the non-photosynthetic, symbiotic cyanobacterium UCYN-A, *Environ. Microb.*, 23, 4518-4531, <https://doi.org/10.1111/1462-2920.15645>, 2021.
- Großkopf, T., Mohr, W., Baustian, T., Schunck, H., Gill, D., Kuypers, M. M. M., Lavik, G., Schmitz, R. A., Wallace, D. W. R., and LaRoche, J.: Doubling of marine dinitrogen-fixation rates based on direct measurements, *Nature*, 488, 361-364, <https://doi.org/10.1038/nature11338>, 2012.
- 475 Gruber, N.: The marine nitrogen cycle: Overview and challenges, in: *Nitrogen in the Marine Environment*, edited by: Capone, D. G., Bronk, D. A., Mulholland, M. R., and Carpenter, E. J., Academic Press, London, UK, 1-50, 10.1016/b978-0-12-372522-



- 6.00001-3, 2008.
- 480 Hagino, K., Onuma, R., Kawachi, M., and Horiguchi, T.: Discovery of an endosymbiotic nitrogen-fixing cyanobacterium UCYN-A in *Braarudosphaera bigelowii* (Prymnesiophyceae), PLoS ONE, 8, e81749, <https://doi.org/10.1371/journal.pone.0081749>, 2013.
- Hama, T., Miyazaki, T., Ogawa, Y., Iwakuma, T., Takahashi, M., Otsuki, A., and Ichimura, S.: Measurement of photosynthetic production of a marine phytoplankton population using a stable ^{13}C isotope, Mar. Biol., 73, 31-36, <https://doi.org/10.1007/BF00396282>, 1983.
- 485 Henke, B. A., Turk-Kubo, K. A., Bonnet, S., and Zehr, J. P.: Distributions and abundances of sublineages of the N_2 -fixing cyanobacterium *Candidatus Atelocyanobacterium thalassa* (UCYN-A) in the New Caledonian coral lagoon, Front. Microbiol., 9, <https://doi.org/10.3389/fmicb.2018.00554>, 2018.
- Hu, D., Wu, L., Cai, W., Gupta, A. S., Ganachaud, A., Qiu, B., Gordon, A. L., Lin, X., Chen, Z., Hu, S., Wang, G., Wang, Q., Sprintall, J., Qu, T., Kashino, Y., Wang, F., and Kessler, W. S.: Pacific western boundary currents and their roles in climate, 490 Nature, 522, 299-308, <https://doi.org/10.1038/nature14504>, 2015.
- Hu, J., Kawamura, H., Hong, H., and Qi, Y.: A review on the currents in the South China Sea: Seasonal circulation, South China Sea Warm Current and Kuroshio intrusion, J. Oceanogr., 56, 607-624, <https://doi.org/10.1023/A:1011117531252>, 2000.
- Huang, Y., Laws, E., Chen, B., and Huang, B.: Stimulation of heterotrophic and autotrophic metabolism in the mixing zone of the Kuroshio Current and northern South China Sea: Implications for export production, J. Geophys. Res. Biogeosci., 124, 2645-495 2661, <https://doi.org/10.1029/2018jg004833>, 2019.
- Hutchins, D. A., and Capone, D. C.: The marine nitrogen cycle: New developments and global change, Nat. Rev. Microbiol., <https://doi.org/10.1038/s41579-022-00687-z>, 2022.
- Jiang, Z. B., Chen, J. F., Zhai, H. C., Zhou, F., Yan, X. J., Zhu, Y. L., Xuan, J. L., Shou, L., and Chen, Q. Z.: Kuroshio shape composition and distribution of filamentous diazotrophs in the East China Sea and Southern Yellow Sea, J. Geophys. Res. 500 Oceans, 124, 7421-7436, <https://doi.org/10.1029/2019jc015413>, 2019.
- Kao, S. J., Yang, J. Y. T., Liu, K. K., Dai, M., Chou, W. C., Lin, H. L., and Ren, H.: Isotope constraints on particulate nitrogen source and dynamics in the upper water column of the oligotrophic South China Sea, Global Biogeochem. Cy., 26, <https://doi.org/10.1029/2011gb004091>, 2012.
- Karl, D., Michaels, A., Bergman, B., Capone, D., Carpenter, E., Letelier, R., Lipschultz, F., Paerl, H., Sigman, D., and Stal, L.: 505 Dinitrogen fixation in the world's oceans, Biogeochemistry, 57, 47-98, <https://doi.org/10.1023/A:1015798105851>, 2002.
- Kumar, S., Bhavya, P. S., Ramesh, R., Gupta, G. V. M., Chiriboga, F., Singh, A., Karunasagar, I., Rai, A., Rehnstam-Holm, A. S., Edler, L., and Godhe, A.: Nitrogen uptake potential under different temperature-salinity conditions: Implications for nitrogen cycling under climate change scenarios, Mar. Environ. Res., 141, 196-204, <https://doi.org/10.1016/j.marenvres.2018.09.001>, 2018.
- 510 Kuo, Y. C., Lee, M. A., and Chang, Y.: Satellite observations of typhoon-induced sea surface temperature variability in the upwelling region off Northeastern Taiwan, Remote Sens., 12, <https://doi.org/10.3390/rs12203321>, 2020.
- Legendre, P., and Gallagher, E. D.: Ecologically meaningful transformations for ordination of species data, Oecologia, 129, 271-280, <https://doi.org/10.1007/s004420100716>, 2001.
- Li, J., Jiang, X., Li, G., Jing, Z., Zhou, L., Ke, Z., and Tan, Y.: Distribution of picoplankton in the northeastern South China Sea with special reference to the effects of the Kuroshio intrusion and the associated mesoscale eddies, Sci. Total Environ., 589, 515 1-10, <https://doi.org/10.1016/j.scitotenv.2017.02.208>, 2017.
- Li, L., Wu, C., Huang, D., Ding, C., Wei, Y., and Sun, J.: Integrating stochastic and deterministic process in the biogeography of



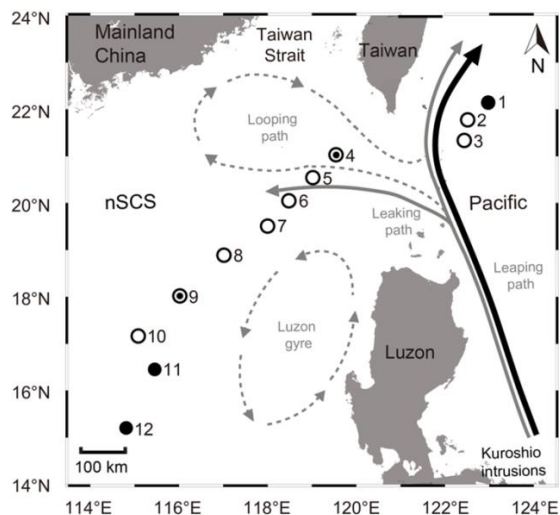
- N₂-fixing Cyanobacterium *Candidatus* Atelocyanobacterium Thalassa, *Front. Microbiol.*, 12, 654646, <https://doi.org/10.3389/fmicb.2021.654646>, 2021.
- 520 Liu, J., Zhou, L., Li, J., Lin, Y., Ke, Z., Zhao, C., Liu, H., Jiang, X., He, Y., and Tan, Y.: Effect of mesoscale eddies on diazotroph community structure and nitrogen fixation rates in the South China Sea, *Reg. Stud. Mar. Sci.*, 35, <https://doi.org/10.1016/j.rsma.2020.101106>, 2020.
- Lu, Y., Wen, Z., Shi, D., Lin, W., Bonnet, S., Dai, M., and Kao, S. J.: Biogeography of N₂ fixation influenced by the western boundary current intrusion in the South China Sea, *J. Geophys. Res. Oceans*, 124, 6983-6996, <https://doi.org/10.1029/2018jc014781>, 2019.
- 525 Martínez-Pérez, C., Mohr, W., Loescher, C. R., Dekaezemacker, J., Littmann, S., Yilmaz, P., Lehnen, N., Fuchs, B. M., Lavik, G., Schmitz, R. A., LaRoche, J., and Kuypers, M. M.: The small unicellular diazotrophic symbiont, UCYN-A, is a key player in the marine nitrogen cycle, *Nat. Microbiol.*, 1, <https://doi.org/10.1038/nmicrobiol.2016.163>, 2016.
- Mohr, W., Großkopf, T., Wallace, D. W. R., and LaRoche, J.: Methodological underestimation of oceanic nitrogen fixation rates, *PLoS ONE*, 5, e12583, <https://doi.org/10.1371/journal.pone.0012583>, 2010.
- 530 Moisaner, P. H., Beinart, R. A., Voss, M., and Zehr, J. P.: Diversity and abundance of diazotrophic microorganisms in the South China Sea during intermonsoon, *ISME J.*, 2, 954-967, <https://doi.org/10.1038/ismej.2008.51>, 2008.
- Moisaner, P. H., Beinart, R. A., Hewson, I., White, A. E., Johnson, K. S., Carlson, C. A., Montoya, J. P., and Zehr, J. P.: Unicellular cyanobacterial distributions broaden the oceanic N₂ fixation domain, *Science*, 327, 1512-1514, <https://doi.org/10.1126/science.1185468>, 2010.
- 535 Montoya, J. P., Voss, M., Kahler, P., and Capone, D. G.: A simple, high-precision, high-sensitivity tracer assay for N₂ fixation, *Appl. Environ. Microbiol.*, 62, 986-993, <https://doi.org/10.1128/aem.62.3.986-993.1996>, 1996.
- Montoya, J. P., Holl, C. M., Zehr, J. P., Hansen, A., Villareal, T. A., and Capone, D. G.: High rates of N₂ fixation by unicellular diazotrophs in the oligotrophic Pacific Ocean, *Nature*, 430, 1024-1031, <https://doi.org/10.1038/nature02744>, 2004.
- 540 Muñoz-Marin, M. d. C., Shilova, I. N., Shi, T., Farnelid, H., Cabello, A. M., and Zehr, J. P.: The transcriptional cycle is suited to daytime N₂ fixation in the unicellular cyanobacterium "*Candidatus* Atelocyanobacterium thalassa" (UCYN-A), *mBio*, 10, <https://doi.org/10.1128/mBio.02495-18>, 2019.
- Nan, F., Xue, H., and Yu, F.: Kuroshio intrusion into the South China Sea: A review, *Prog. Oceanogr.*, 137, 314-333, <https://doi.org/10.1016/j.pocean.2014.05.012>, 2015.
- 545 Nan, F., Xue, H., Chai, F., Shi, L., Shi, M., and Guo, P.: Identification of different types of Kuroshio intrusion into the South China Sea, *Ocean Dyn.*, 61, 1291-1304, <https://doi.org/10.1007/s10236-011-0426-3>, 2011.
- Nishibe, Y., Takahashi, K., Shiozaki, T., Kakehi, S., Saito, H., and Furuya, K.: Size-fractionated primary production in the Kuroshio Extension and adjacent regions in spring, *J. Oceanogr.*, 71, 27-40, <https://doi.org/10.1007/s10872-014-0258-0>, 2015.
- Pierella Karlusich, J. J., Pelletier, E., Lombard, F., Carsique, M., Dvorak, E., Colin, S., Picheral, M., Cornejo-Castillo, F. M., Acinas, S. G., Pepperkok, R., Karsenti, E., de Vargas, C., Wincker, P., Bowler, C., and Foster, R. A.: Global distribution patterns of marine nitrogen-fixers by imaging and molecular methods, *Nat. Commun.*, 12, 4160, <https://doi.org/10.1038/s41467-021-24299-y>, 2021.
- 550 Sakamoto, T. T., Hasumi, H., Ishii, M., Emori, S., Suzuki, T., Nishimura, T., and Sumi, A.: Responses of the Kuroshio and the Kuroshio Extension to global warming in a high-resolution climate model, *Geophys. Res. Lett.*, 32, <https://doi.org/10.1029/2005gl023384>, 2005.
- 555 Sato, M., Hashihama, F., Kitajima, S., Takeda, S., and Furuya, K.: Distribution of nano-sized cyanobacteria in the western and central Pacific Ocean, *Aquat. Microb. Ecol.*, 59, 273-282, <https://doi.org/10.3354/ame01397>, 2010.



- Schvarcz, C. R., Wilson, S. T., Caffin, M., Stancheva, R., Li, Q., Turk-Kubo, K. A., White, A. E., Karl, D. M., Zehr, J. P., and Steward, G. F.: Overlooked and widespread pennate diatom-diazotroph symbioses in the sea, *Nat. Commun.*, 13, 799, 560 <https://doi.org/10.1038/s41467-022-28065-6>, 2022.
- Shiozaki, T., Chen, Y. L. L., Lin, Y. H., Taniuchi, Y., Sheu, D. S., Furuya, K., and Chen, H. Y.: Seasonal variations of unicellular diazotroph groups A and B, and *Trichodesmium* in the northern South China Sea and neighboring upstream Kuroshio Current, *Cont. Shelf Res.*, 80, 20-31, <https://doi.org/10.1016/j.csr.2014.02.015>, 2014.
- Shiozaki, T., Nagata, T., Ijichi, M., and Furuya, K.: Nitrogen fixation and the diazotroph community in the temperate coastal region of the northwestern North Pacific, *Biogeosciences*, 12, 4751-4764, <https://doi.org/10.5194/bg-12-4751-2015>, 2015a.
- Shiozaki, T., Takeda, S., Itoh, S., Kodama, T., Liu, X., Hashihama, F., and Furuya, K.: Why is *Trichodesmium* abundant in the Kuroshio? *Biogeosciences*, 12, 6931-6943, <https://doi.org/10.5194/bg-12-6931-2015>, 2015b.
- Shiozaki, T., Bombar, D., Riemann, L., Hashihama, F., Takeda, S., Yamaguchi, T., Ehama, M., Hamasaki, K., and Furuya, K.: Basin scale variability of active diazotrophs and nitrogen fixation in the North Pacific, from the tropics to the subarctic Bering Sea, 570 *Global Biogeochem. Cy.*, 31, 996-1009, <https://doi.org/10.1002/2017gb005681>, 2017.
- Sloan, W. T., Woodcock, S., Lunn, M., Head, I. M., and Curtis, T. P.: Modeling taxa-abundance distributions in microbial communities using environmental sequence data, *Microb. Ecol.*, 53, 443-455, <https://doi.org/10.1007/s00248-006-9141-x>, 2007.
- Sohm, J. A., Webb, E. A., and Capone, D. G.: Emerging patterns of marine nitrogen fixation, *Nat. Rev. Microbiol.*, 9, 499, 575 <https://doi.org/10.1038/nrmicro2594>, 2011.
- Sun, P., Zhang, S., Wang, Y., and Huang, B.: Biogeographic role of the Kuroshio Current intrusion in the microzooplankton community in the boundary zone of the northern South China Sea, *Microorganisms*, 9, <https://doi.org/10.3390/microorganisms9051104>, 2021.
- Tang, T. Y., Tai, J. H., and Yang, Y. J.: The flow pattern north of Taiwan and the migration of the Kuroshio, *Cont. Shelf Res.*, 20, 349-371, [https://doi.org/10.1016/s0278-4343\(99\)00076-x](https://doi.org/10.1016/s0278-4343(99)00076-x), 2000.
- Thompson, A., Carter, B. J., Turk-Kubo, K., Malfatti, F., Azam, F., and Zehr, J. P.: Genetic diversity of the unicellular nitrogen-fixing cyanobacteria UCYN-A and its prymnesiophyte host, *Environ. Microbiol.*, 16, 3238-3249, <https://doi.org/10.1111/1462-2920.12490>, 2014.
- Thompson, A. W., Foster, R. A., Krupke, A., Carter, B. J., Musat, N., Vaultot, D., Kuypers, M. M. M., and Zehr, J. P.: Unicellular cyanobacterium symbiotic with a single-celled eukaryotic alga, *Science*, 337, 1546-1550, 585 <https://doi.org/10.1126/science.1222700>, 2012.
- Turk-Kubo, K. A., Connell, P., Caron, D., Hogan, M. E., Farnelid, H. M., and Zehr, J. P.: *In situ* diazotroph population dynamics under different resource ratios in the North Pacific subtropical gyre, *Front. Microbiol.*, 9, 1616, <https://doi.org/10.3389/fmicb.2018.01616>, 2018.
- Villareal, T. A.: Buoyancy properties of the giant Diatom *Ethmodiscus*, *J. Plankton. Res.*, 14, 459-463, 590 <https://doi.org/10.1093/plankt/14.3.459>, 1992.
- Voss, M., Bombar, D., Loick, N., and Dippner, J. W.: Riverine influence on nitrogen fixation in the upwelling region off Vietnam, South China Sea, *Geophys. Res. Lett.*, 33, 1-4, <https://doi.org/10.1029/2005GL025569>, 2006.
- Wang, T., Chen, F., Zhang, S., Pan, J., Devlin, A. T., Ning, H., and Zeng, W.: Remote sensing and Argo float observations reveal 595 physical processes initiating a winter-spring phytoplankton bloom south of the Kuroshio current near Shikoku, *Remote Sens.*, 12, <https://doi.org/10.3390/rs12244065>, 2020a.
- Wang, W. L., Moore, J. K., Martiny, A. C., and Primeau, F. W.: Convergent estimates of marine nitrogen fixation, *Nature*, 566,

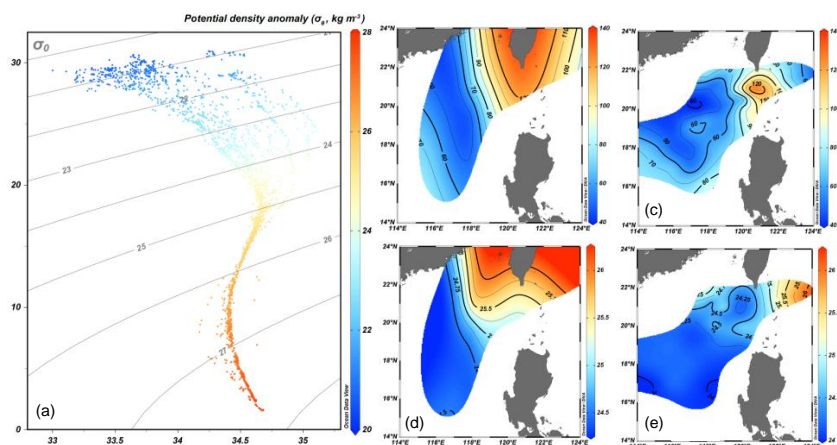


- 205-211, <https://doi.org/10.1038/s41586-019-0911-2>, 2019.
- 600 Wang, X., Wei, Y., Wu, C., Guo, C., and Sun, J.: The profound influence of Kuroshio intrusion on microphytoplankton community in the northeastern South China Sea, *Acta Oceanol. Sin.*, 39, 79-87, <https://doi.org/10.1007/s13131-020-1608-y>, 2020b.
- Wen, Z., Browning, T. J., Cai, Y., Dai, R., Zhang, R., Du, C., Jiang, R., Lin, W., Liu, X., Cao, Z., Hong, H., Dai, M., and Shi, D.: Nutrient regulation of biological nitrogen fixation across the tropical western North Pacific, *Sci. Adv.*, 8, eabl7564, <https://doi.org/10.1126/sciadv.abl7564>, 2022.
- 605 Wu, C., Fu, F. X., Sun, J., Thangaraj, S., and Pujari, L.: Nitrogen fixation by *Trichodesmium* and unicellular diazotrophs in the northern South China Sea and the Kuroshio in summer, *Sci. Rep.*, 8, 2415, <https://doi.org/10.1038/s41598-018-20743-0>, 2018.
- Wu, J. F., Chung, S. W., Wen, L. S., Liu, K. K., Chen, Y. L. L., Chen, H. Y., and Karl, D. M.: Dissolved inorganic phosphorus, dissolved iron, and *Trichodesmium* in the oligotrophic South China Sea, *Global Biogeochem. Cy.*, 17, 1-10, <https://doi.org/10.1029/2002gb001924>, 2003.
- 610 Wu, K., Dai, M., Chen, J., Meng, F., Li, X., Liu, Z., Du, C., and Gan, J.: Dissolved organic carbon in the South China Sea and its exchange with the Western Pacific Ocean, *Deep-Sea Res. Pt. II*, 122, 41-51, <https://doi.org/10.1016/j.dsr2.2015.06.013>, 2015.
- Xiao, P., Jiang, Y., Liu, Y., Tan, W., Li, W., and Li, R.: Re-evaluation of the diversity and distribution of diazotrophs in the South China Sea by pyrosequencing the *nifH* gene, *Mar. Freshw. Res.*, 66, 681-691, <https://doi.org/10.1071/mf14134>, 2015.
- Xu, M. N., Zhang, W., Zhu, Y., Liu, L., Zheng, Z., Wan, X. S., Qian, W., Dai, M., Gan, J., Hutchins, D. A., and Kao, S. J.: Enhanced ammonia oxidation caused by lateral Kuroshio intrusion in the boundary zone of the northern South China Sea, *Geophys. Res. Lett.*, 45, 6585-6593, <https://doi.org/10.1029/2018gl077896>, 2018.
- 615 Yang, Q., Zhou, L., Tian, J., and Zhao, W.: The roles of Kuroshio intrusion and mesoscale eddy in upper mixing in the northern South China Sea, *J. Coastal Res.*, 30, 192-198, <https://doi.org/10.2112/jcoastres-d-13-00012.1>, 2014.
- Yuan, J., Li, M., and Lin, S.: An improved DNA extraction method for efficient and quantitative recovery of phytoplankton diversity in natural assemblages, *PLoS ONE*, 10, e0133060, <https://doi.org/10.1371/journal.pone.0133060>, 2015.
- 620 Zehr, J. P., and Capone, D. G.: Changing perspectives in marine nitrogen fixation, *Science*, 368, eaay9514, <https://doi.org/10.1126/science.aay9514>, 2020.
- Zehr, J. P., and Turner, P. J.: Nitrogen fixation: Nitrogenase genes and gene expression, *Methods Microbiol.*, 30, 271-286, [https://doi.org/10.1016/S0580-9517\(01\)30049-1](https://doi.org/10.1016/S0580-9517(01)30049-1), 2001.
- Zehr, J. P., Mellon, M. T., and Zani, S.: New nitrogen-fixing microorganisms detected in oligotrophic oceans by amplification of nitrogenase (*nifH*) genes, *Appl. Environ. Microb.*, 64, 3444-3450, <https://doi.org/10.1128/AEM.64.12.5067-5067.1998>, 1998.
- 625 Zhang, Y., Zhao, Z., Sun, J., and Jiao, N.: Diversity and distribution of diazotrophic communities in the South China Sea deep basin with mesoscale cyclonic eddy perturbations, *FEMS Microbiol. Ecol.*, 78, 417-427, <https://doi.org/10.1111/j.1574-6941.2011.01174.x>, 2011.
- Zhang, Y., Zhao, Z., Dai, M., Jiao, N., and Herndl, G. J.: Drivers shaping the diversity and biogeography of total and active bacterial communities in the South China Sea, *Mol. Ecol.*, 23, 2260-2274, <https://doi.org/10.1111/mec.12739>, 2014.
- 630



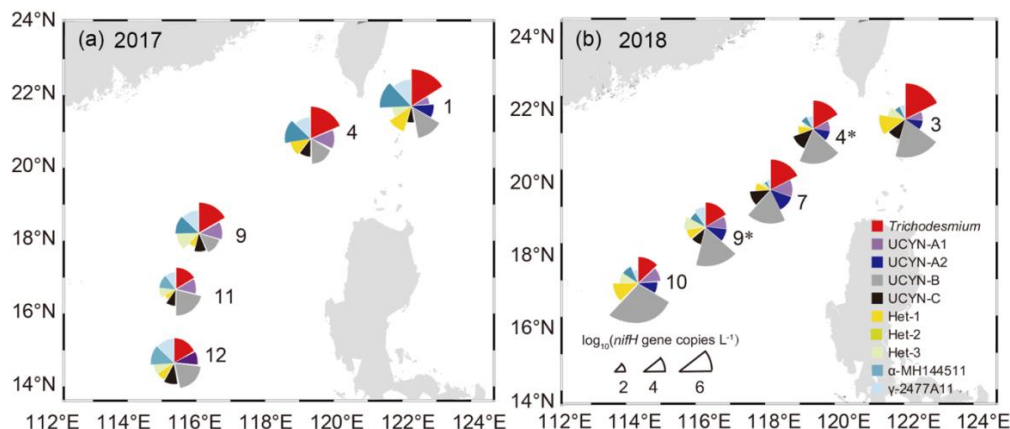
635 Figure 1. Sampling stations in the nSCS during the cruises in 2017 and 2018. Solid and empty circles represent the sampling stations in 2017 and 2018, respectively, whereas a combination of solid and empty circles represents the sampling stations in both years (i.e., stn4 and stn9). Major patterns of KI into the SCS, i.e., the looping path (grey dashed), the leaking path (grey solid), and the Kuroshio leaping across the Luzon Strait with no penetration (black) are indicated. The leaking path represents the Kuroshio bifurcating with one branch entering the SCS and the other taking the leaping path. The looping path represents the Kuroshio entering the nSCS, retroflecting, and then bending eastward back into the western Pacific. The Luzon gyre (long grey dashed) is a typically unstable offshoot near the Luzon Strait when Kuroshio passes by the Luzon Strait. The map was constructed using Ocean Data View 5.1.0.

640

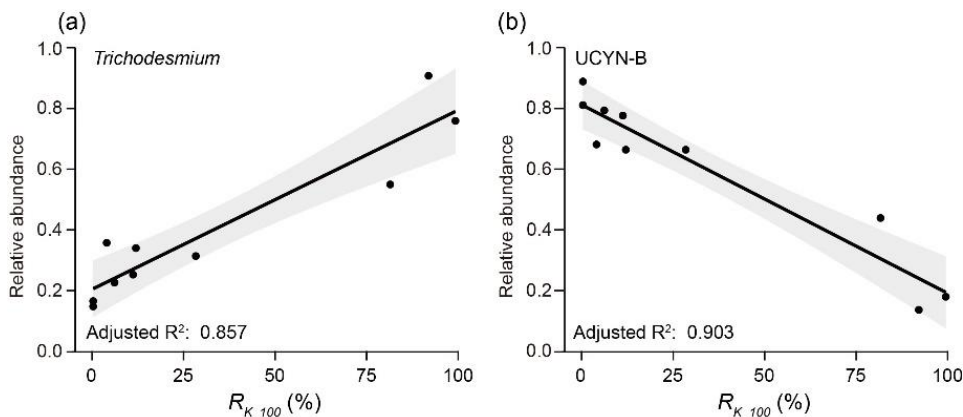


645 Figure 2. Potential temperatures, salinities and density anomalies modeled for the cruises in 2017 and 2018. (a) Plot of θ - S showing potential temperatures (θ , °C) and salinities (S) of water parcels resulting from mixing of the Kuroshio and SCS water masses. Potential density anomalies (σ_θ , kg m^{-3}), shown in grey lines, are imposed on the θ - S plot. (b-e) Profiles of depths (b, c) and temperatures (d, e) of isopycnal surface along the potential density anomaly (σ_θ) of 23 kg m^{-3} of water masses depicted for the cruises in 2017 and 2018.

650

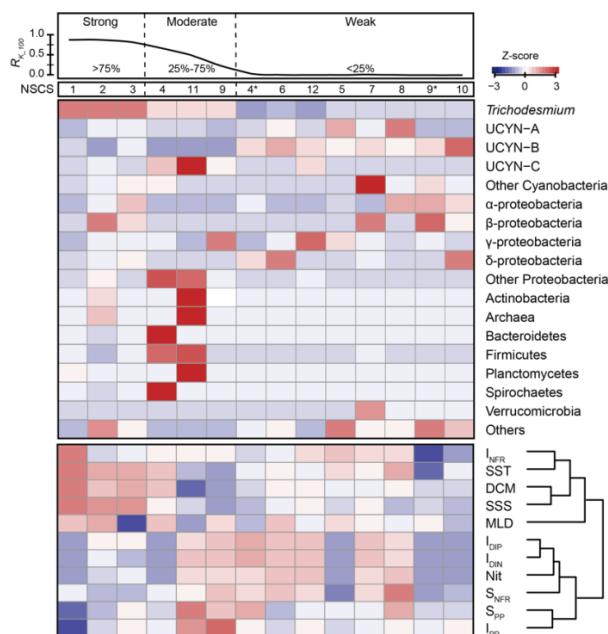


655 Figure 3. Surface daytime abundance of the ten major diazotrophic groups determined based on TaqMan qPCR assay of the *nifH* gene copies in samples collected in 2017 (a) and 2018 (b). Sector radius represents \log_{10} absolute abundance of the *nifH* gene copies, with the angle indicating the relative proportion of each group. For the stations sampled in both years, the station number in 2018 are indicated with an asterisk sign (*). The diel patterns in abundance of the targeted diazotrophic groups are shown in Table S5.

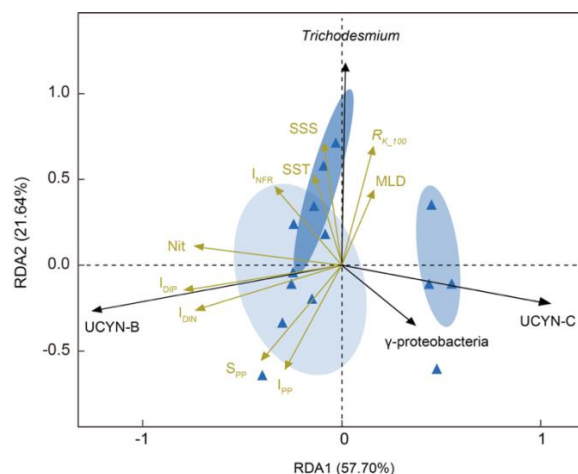


660 Figure 4. Correlation between KI and relative abundance of the two dominant diazotrophic groups based on *nifH* gene copies. *Trichodesmium* (a) and UCYN-B (b) exhibited contrast patterns in their relationships with the averaged Kuroshio fractions in the upper 100 m ($R_{K_{100}}$, %). The values of adjusted R^2 represent the degree to which the relative abundance of each group in explaining the $R_{K_{100}}$. Linear regressions are indicated with a trendline with 95% confidence interval.

665



670 Figure 5. Correlations of KI with diazotrophic community compositions and environmental factors. The averaged Kuroshio fractions in the upper 100 m (R_{K_100} , %) at each sampling station are plotted in the upper panel, indicating the degree of KI (strong, >75%; moderate, 25%–75%; weak, <25%). The value of Z-score between R_{K_100} and the relative abundance of specific diazotrophic groups (middle panel) or environmental factors (lower panel) at each sampling station are also plotted. Stations sampled in both years are indicated with an asterisk sign (*). The degrees of KI are color-coded based on R_{K_100} values ($R_{K_100}>75\%$, strong intrusion; $25\%\leq R_{K_100}\leq 75\%$, moderate intrusion; $R_{K_100}<25\%$, weak intrusion). I_{NFR} , depth-integrated N_2 fixation rate; SST, surface seawater temperature; DCM, depth of chlorophyll maximum; SSS, sea surface salinity; MLD, mixed layer depth; I_{DIP} , depth-integrated dissolved inorganic phosphorus; I_{DIN} , depth-integrated dissolved inorganic nitrogen; Nit, nitracline; S_{NFR} , surface nitrogen fixation rate; S_{PP} , surface primary production; I_{PP} , depth-integrated primary production; The environmental factors used in this study are shown in Table S4.

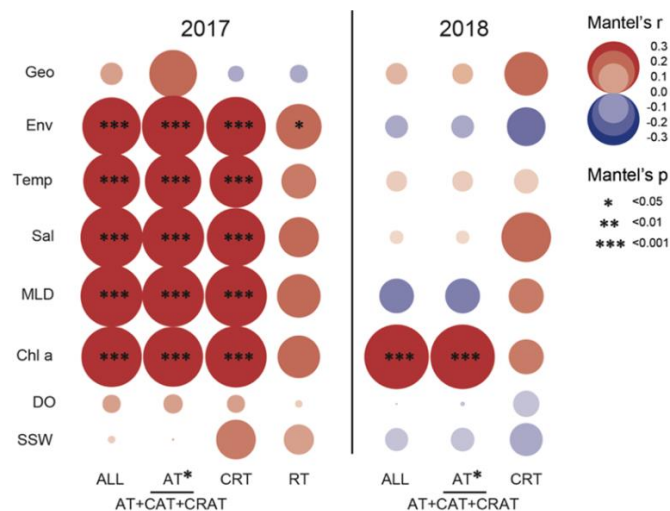


680

Figure 6. RDA ordination shows the major diazotrophic groups in relation to environmental factors under the influence of KI. Four diazotrophic groups, *Trichodesmium*, UCYN-B, UCYN-C, and γ -proteobacteria, appear to be highly correlated with KI leading to variations in a range of physicochemical parameters. The degrees to which KI potentially affect diazotrophic community members and environmental factors are indicated with arrows in black and yellow, respectively. Sampling stations under the influence of different degrees of KI are color-coded based on R_{K_100} values and clustered given a 95% confidence threshold ($R_{K_100} > 75\%$, strong intrusion, in dark blue ellipse; $25\% \leq R_{K_100} \leq 75\%$, moderate intrusion, in moderate blue ellipse; $R_{K_100} < 25\%$, weak intrusion, in light blue ellipse). I_{NFR} , depth-integrated N_2 fixation rate; SST, surface seawater temperature; SSS, sea surface salinity; MLD, mixed layer depth; I_{DIP} , depth-integrated dissolved inorganic phosphorus; I_{DIN} , depth-integrated dissolved inorganic nitrogen; Nit, nitracline; S_{PP} , surface primary productivity; I_{PP} , depth-integrated primary productivity; R_{K_100} , averaged Kuroshio fractions in the upper 100 m (R_{K_100} , %); The environmental factors used in this study are shown in Table S4.

685

690

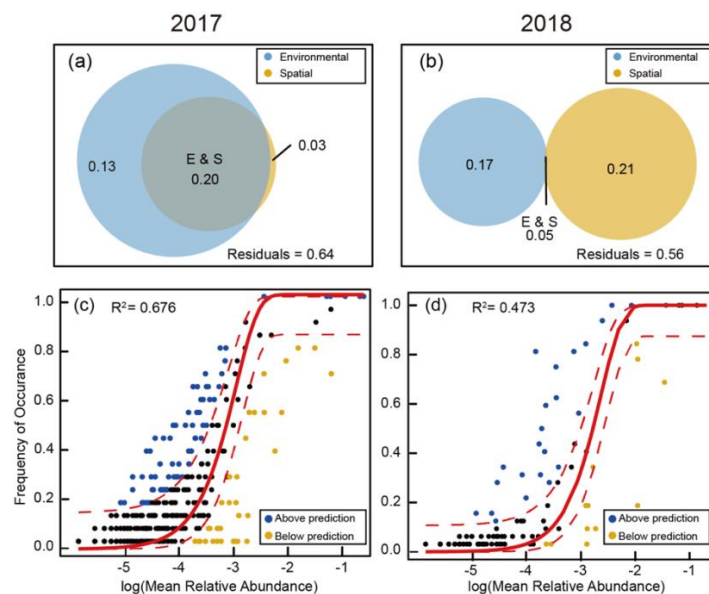


695

Figure 7. Mantel's test of the effects of spatial and environmental variables on diazotrophic subcommunities. Spearman's coefficients were used to evaluate the effects of geographical and environmental distances, as well as individual environmental parameters on both abundant and rare diazotrophic taxa. The partitioning of these effects was performed with Mantel's test and compared between data collected in 2017 and 2018. Geo, geographical distance; Env, environmental distance; Temp, temperature; Sal, salinity; MLD, mixed layer depth; Chl a , Chlorophyll a ; DO, dissolved oxygen; SSW, sea surface wind; All, all taxa; AT, abundant taxa; CAT, conditionally abundant taxa; CRAT, conditionally rare and abundant taxa; CRT, conditionally rare taxa; RT, rare taxa.



700



705 Figure 8. Simulation of KI as a stochastic process in shaping diazotrophic community structure using the NCM. A comparison between the samples collected in 2017 (a, c) and 2018 (b, d) was conducted. The Venn diagrams (a, b) show the variations in diazotrophic community structure explained solely by environmental or spatial factors, or by the combination of the two. Representative OTUs of diazotrophic community assembly that best fit the NCM are shown as black dots surrounding the regression lines (solid) within a 95% confidence interval (dashed lines) (c, d), whereas those exceeding the fitted model prediction range are shown as colored dots.