

The Southern Ocean as the climate's freight train of the – driving ongoing global climate warming under zero-emission scenarios with ACCESS-ESM1.5

Matthew A. Chamberlain^a, Tilo Ziehn^b, and Rachel M. Law^b

^aCSIRO Environment, Hobart, TAS, Australia

^bCSIRO Environment, Aspendale, VIC, Australia

Correspondence: Matthew A. Chamberlain (matthew.chamberlain@csiro.au)

Abstract.

Climate ~~projection model~~ experiments presented here explore how the slow-centennial response in the Southern Ocean ~~drives-can drive~~ ongoing global warming even with zero CO₂ emissions and declining atmospheric CO₂ concentrations. These projections were simulated by the Earth System Model version of Australian Community Climate and Earth System Simulator (ACCESS-ESM1.5) and motivated by the Zero Emission Commitment ~~Multi-model Interecomparison Project~~ ~~ZECMIP~~ ~~simulations branch from the idealised warming with the “1-percent CO₂” CMIP experiment onto a trajectory of zero carbon emissions~~. The original ZECMIP experiments simulated the zero-emission trajectories after emitting 1000 Pg of carbon into the climate, and optionally 750 and Model Interecomparison Project (ZECMIP); ACCESS-ESM1.5 simulated ongoing warming in the ZECMIP experiment that switched or branched to zero emissions after 2000 PgC; ~~here we show extra trajectories after 1250, 1500 and 1750 PgC, and simulate climates to had been emitted. New experiments presented here each simulated 300 years after branching to demonstrate long-term trends. In each of these experiments that switch to zero emissions after emitting and included intermediate branch points. In each experiment that branched after emitting more than 1000 PgC or more, the global climate continues to warm. In the case of the For the experiment that branched after 2000 PgC, or after 3.5°C of warming from a pre-industrial-preindustrial climate, there is 0.37±0.08°C of extra warming after 50 years of zero emissions and further warming continues for at least several centuries.~~

From early in the 1-percent CO₂ experiment, the, which increases to 0.83±0.08°C after 200 years. All branches show ongoing Southern Ocean warming. The circulation of the Southern Ocean is modified by early in the warming climate which drives-contributes to changes in the distribution of both physical and biogeochemical subsurface ocean tracers that are ongoing in all zero-emission branches, such as ongoing warming at intermediate depths and a reduction in deep oxygen south of 60° S.

We replicate the global climate warming in 1-percent CO₂ and ZECMIP experiments with a A simple slab model that contains regions that respond with different time scales to atmospheric CO₂ and climate forcing, demonstrating the global climate response is due primarily emulates the global temperatures of the ACCESS-ESM1.5 experiments demonstrating the response here is primarily due to the slow response of the ocean, and the Southern Ocean in particular. In these zero emission trajectories, the simulated climate moves from a Transient Climate Response (TCR) state towards a Equilibrium Climate

~~Sensitivity (ECS) state. Since ECS is substantially greater than TCR, the global temperature can increase while CO₂ decreases~~
Centennial global warming persists when the slab model is forced with CO₂ diagnosed from late-branching experiments with other ZECMIP models, confirming the dominant role of ocean physics at these timescales. However, decadal responses changed due to the larger drawdown of CO₂ from other models. Slow ongoing warming in the Southern Ocean can be found in ZEC scenarios of most models, though the amplitude and global influence varies.

30

1 Introduction

The Zero-Emission Commitment (ZEC) of the global climate is defined as the amount of warming that would occur after the cessation of anthropogenic CO₂ emissions (Matthews and Weaver, 2010). The ZEC is one of the critical terms in the calculation of the ~~potential budget of carbon emissions permissible without exceeding any~~ remaining carbon emission budget to stay within agreed thresholds of “safe” warming (Rogelj et al., 2019); other terms being the amount of historical warming, the transient climate response to ongoing emissions, warming due to non-CO₂ greenhouse gases and ~~corrections for other forcing agents,~~ and corrections for unaccounted climate feedbacks.

In recent assessments of the remaining carbon ~~emission budgets~~ budgets for a warming of 1 to 2°C, the value of ZEC has typically been assumed to be zero (e.g., Rogelj et al., 2018). The reasoning has been that after the cessation of carbon emissions, the existing carbon in the climate system will redistribute between the atmosphere, land and ocean, reducing the atmospheric CO₂ and have a cooling effect on the climate. On the other hand, a slow down in planetary heat uptake (into the ocean in particular) will have a warming effect, ~~largely cancelling so that the net result of ZEC that~~ has been assumed to be ~~close to zero cancel the cooling so that there is no net ZEC effect~~ (Rogelj et al., 2019). This ~~conclusion assumption~~ had been based largely on results from ~~limited a limited number of~~ climate simulations. Some previous assessments of the climate under zero-emission scenarios include Gillett et al. (2011) who used the Canadian Earth System Model (ESM) to investigate the centennial responses in ZEC scenarios branching from a contemporary and a future warm climate state. Frölicher et al. (2014) contrasted different multi-centennial responses of two different ESMs. Schwinger et al. (2022) explored the impact of changes in the Atlantic meridional overturning circulation (AMOC) in ZEC and overshoot scenarios with the Norwegian ESM.

In order to reduce the uncertainty associated with ~~this ZEC contribution~~ the ZEC, a ZEC Model Intercomparison Project (ZECMIP) was designed (Jones et al., 2019) with experiments to simulate climate responses under zero emission scenarios, branching after varying total emission budgets of CO₂. ~~Experiments under ZECMIP explore idealised zero emission climate trajectories. The Earth System Model version of Australian Community Climate and Earth System Simulator (ACCESS-ESM1.5) submitted results for type-A ZECMIP experiments, which branch from the 1petCO2 which is one of the core Coupled Model Interecomparison Project (CMIP) experiments. In 1petCO2 the climate state warms with prescribed atmospheric CO2 that increases by 1% per year, for 140 years. Only atmospheric CO2 is modified and all other forcings (e.g., from aerosols and CH4) remain at prescribed preindustrial levels. As such, ZECMIP projections represent idealised zero-emission simulation that are insightful to climate responses to possible future scenarios.~~

Many of the ~~Earth System Models (ESMs)~~ ESMs that contributed to version 6 of CMIP Coupled Model Intercomparison Project (CMIP) (Eyring et al., 2016) also participated in ZECMIP, including the ACCESS-ESM1.5 ESM version of Australian Community Climate and Earth System Simulator (ACCESS-ESM1.5, Ziehn et al., 2020), as presented in MacDougall et al. (2020). Of the ~~four five~~ full ESMs that submitted results for ~~all three ZECMIP-A experiments (branching after the emission of 750, 1000 and the ZECMIP type-A experiments that branched after emitting 2000 PgC)~~, two ESMs simulated warmer global temperatures 50 years into the high ZECMIP branch (UKESM1, UKESM1-0-LL (Sellar et al., 2019) and ACCESS-ESM1.5) and ~~two~~ three ESMs simulated cooling (MIROC-ES2L and (Hajima et al., 2020), GFDL-ESM2M) (Dunne et al., 2013), and

65 CanESM5 (Swart et al., 2019). The regional responses of ZECMIP models have been assessed by MacDougall et al. (2022) and Cassidy et al. (2023).

In this paper, we investigate the evolution of the climate state and ongoing warming within the ZEC experiments ~~with extra experiments found with the ACCESS-ESM1.5~~. In the initial results submitted to ZECMIP, ACCESS-ESM1.5 only continued to warm in the ~~high-branch that started after the emission of 2000 Pg of carbon. Low-branches, starting after 750 and 1000 PgC, showed a small cooling to neutral responses. PgC branch.~~ We use extra experiments ~~, presented here,~~ branching at intermediate points between ~~the 1000 and 2000 PgC branches to better evaluate the ongoing changes as the climate stabilises~~ to evaluate the processes responsible for the ongoing global warming. Section 2 describes the model and summarises the experiments. Section 3 presents the results: time series of global metrics, trajectories of surface temperatures, changes in the ocean circulation and tracer distributions, and, the trajectories of the various ZEC branches with respect to average CO₂ and temperature. 75 Section ~~4 presents a simple climate inertia model that replicates~~ 3 also presents a slab model that emulates the time series of ACCESS-ESM1.5 global ~~averages and compares average temperatures. The slab is used to simulate the ACCESS-ESM1.5 response if forced with CO₂ from other models, and compare~~ results with other ~~ESMs submitted to ZECMIP~~ ZECMIP ESMs. Section ~~5.4~~ 4 summarises the work.

2 Method

80 2.1 Model Description

The ACCESS-ESM1.5 participated in CMIP6, a global effort to coordinate the design and comparison of climate models and their simulations, and submitted output to several endorsed model intercomparison projects (Mackallah et al., 2022). The model is described in detail ~~in~~ by Ziehn et al. (2020). In brief, the atmospheric model is the UK Met Office Unified Model (UM, version 7.3, The HadGEM2 Development Team: et al., 2011) configured ~~with~~ at N96 resolution (1.875° longitude and 1.25° 85 latitude resolution) ~~and with~~ 38 vertical levels, which is coupled to a nominally 1° resolution ~~ocean model implementation of~~ the Modular Ocean Model (MOM Version 5, Griffies, 2012) and CICE sea ice model (version 4.1, Hunke and Lipscomb, 2010).

Biogeochemical components of the ACCESS-ESM1.5 are Community Atmosphere Biosphere Land Exchange (CABLE, Kowalczyk et al., 2013) and World Ocean Model of Biogeochemistry And Trophic-dynamics (WOMBAT, Oke et al., 2013; 90 Law et al., 2017). CABLE in ACCESS-ESM1.5 is enabled with carbon-nitrogen-phosphorous cycles. The implementation of phosphorous is unique in ACCESS-ESM1.5 and is discussed in Ziehn et al. (2021). WOMBAT is a phosphorous-based nutrient-phytoplankton-zooplankton-detritus model. Both CABLE and WOMBAT include carbon cycles enabling an active ~~carbon-eyele~~ carbon cycle in ACCESS-ESM1.5 and the capability to execute these simulations of ~~zero-emission~~ zero-emission scenarios.

95 In the development of ACCESS-ESM1.5 from the previous version (ACCESS-ESM1.0, Law et al., 2017) the biases in the physical and biogeochemical states have been reduced and the model has been run and spun up for 1000s of years with prescribed CO₂. In the control experiment forced with constant preindustrial conditions (*piControl*, experiment names indicated

[here with italicises](#)), trends and biases are small in the physical ocean ($-8.5 \times 10^{-5} \text{ }^\circ\text{C century}^{-1}$ in average sea surface temperature) and biogeochemistry (land and ocean carbon fluxes were 0.02 and -0.08 PgC year⁻¹ respectively), as reported in Ziehn et al. (2020).

~~This stable state makes the model~~

ACCESS-ESM1.5 also executed a control experiment with the interactive carbon cycle enabled (*esm-piControl*) where the atmospheric CO₂ was free to evolve, in the same way as in the zero-emission experiments presented here. This *esm-piControl* also benefitted from the long spinup; results available from the Earth System Grid Federation (ESGF, World Climate Research Program, 2020) show that atmospheric CO₂ is increasing at $\sim 1\text{ppm}/100\text{y}$. Over the first 300 years, the timescale of the experiments presented here, the magnitude of any trends in the global surface air temperatures or sea surface temperature are less than $0.01^\circ\text{C}/100\text{y}$. This stability in the climate state means that model drift is negligible to the results presented.

2.2 ZECMIP and supplementary experiments

Experiments under ZECMIP explore idealised zero-emission climate trajectories and are described in detail by Jones et al. (2019). ACCESS-ESM1.5 submitted results for type-A ZECMIP experiments; these experiments branch from *1pctCO2* which is one of the core CMIP experiments where the climate state warms with a prescribed atmospheric CO₂ that increases by 1 percent per year, cumulatively, for 140 years. Three ZECMIP-A experiments branch after the diagnosed emission of 750, 1000 and ~~the base climate highly suitable for studying climate processes and long term responses to various changes in climate forcing.~~ 2000 PgC, at which point the interactive carbon cycle is enabled and emissions are set to zero. Note, the total cumulative CO₂ emissions into the climate historically are approaching the lowest branch at $695 \pm 70 \text{ PgC}$ (Friedlingstein et al., 2023), not accounting for other climate forcing agents. An emission budget of 1000 PgC might be achieved in a few decades if current global emission levels remain about constant. In ZECMIP experiments, only atmospheric CO₂ is modified and all other forcings (e.g., from aerosols and CH₄) remain at prescribed preindustrial levels. ZECMIP also included type-B experiments that were not simulated by the ACCESS-ESM1.5, where models run entirely with interactive-carbon cycles, starting from a preindustrial climate state, a prescribed budget of carbon is emitted over a bell-shaped, 100-year pathway before continuing with zero emissions. ZECMIP projections represent idealised zero-emission simulations that are insightful to climate responses to possible future scenarios.

2.3 Supplementary zero emission experiments

Low (high) ZEC branches here with ACCESS-ESM1.5 depart from *1pctCO2* after relatively low (high) budgets of emitted carbon on the *1pctCO2* trajectory. Note that the *1pctCO2* experiment is a “concentration-driven” experiments with a prescribed atmospheric CO₂, increasing 1% each year, and these budgets of carbon emissions into the climate are diagnosed from land and ocean fluxes. When transitioning onto any ZEC branch, the model switches to an interactive-carbon experiment, allowing carbon to exchange freely between climate components, conserving the global carbon content and determining the atmospheric CO₂ concentration based on these exchanges.

Table 1. List of ZECMIP-style experiments with ACCESS-ESM1.5 presented here: ~~including~~ the model year each experiment branches from *1pctCO2* ~~that started in year 0101~~, the anomaly of the 20-year averaged *1pctCO2* global temperature centred at the branch point with respect to *piControl*, and, the change in 20-year averaged temperatures at 25, 50, 100 and 200 years in each ZEC experiment with respect to its branch point. Branches that repeat experiments submitted to ZECMIP are indicated (*); values are from the new experiments presented here that were executed on an updated computer system so that results are equivalent but not identical to results originally submitted to ZECMIP. As a measure of the uncertainty in these values, the standard deviation in the 20-year averaged temperatures from *piControl* is 0.06°C; ZEC values are the differences between two 20-year averages and has an uncertainty of ~0.08°C.

<u>Experiment</u>	Carbon emitted (PgC)	Model Year	ΔT	ZEC ₂₅	ZEC ₅₀	ZEC ₁₀₀	ZEC ₂₀₀
<u><i>zec750</i></u>	750*	0154 <u>53</u>	1.39	0.05	-0.06	-0.10	-0.10
<u><i>zec1000</i></u>	1000*	0168 <u>67</u>	1.82	0.02	0.01	0.02	-0.02
<u><i>zec1250</i></u>	1250	0181 <u>80</u>	2.20	0.14	0.31	0.17	0.20
<u><i>zec1500</i></u>	1500	0194 <u>93</u>	2.61	0.28	0.34	0.44	0.53
<u><i>zec1750</i></u>	1750	0205 <u>104</u>	3.10	0.24	0.34	0.47	0.58
<u><i>zec2000</i></u>	2000*	0216 <u>115</u>	3.51	0.33	0.37	0.57	0.83

130 The work presented here ~~includes~~ is based on new versions of experiments based on the original ZECMIP branches from the *1pctCO2*, as well as three extra experiments from intermediate branch points (Table 1) that were designed to understand the transition in the climate response between “low” and “high” ZEC branches. ~~All these~~, branching after the emission of 1250, 1500 and 1750 PgC. All zero-emission experiments were integrated for \sim 300 years from the branch point to investigate ~~long-term~~ long-term changes within the climate system that can be obscured by variability in shorter integrations. These new
135 experiments were executed with the same configuration as the original branches. ~~However, these experiments were run on updated computer hardware, so while the results are equivalent to the original ZECMIP submission, they are not identical. Hence, values in Table 1 are not the same as those submitted to ZECMIP; differences are only due to the internal variability of the model. Note also, the parent *1pctCO2* experiment was also repeated on the new computer and this version is the parent experiment to the results presented.~~ Table 1 Table 1 lists the branch points, the model year of the *1pctCO2* at branching and
140 the average global temperature at the branch point, relative to pre-industrial ~~preindustrial~~.

~~Low (high) ZEC branches depart from *1pctCO2* after relative low (high) budgets of emitted carbon on the *1pctCO2* trajectory. Note that the *1pctCO2* experiment is a “concentration-driven” experiments with a prescribed atmospheric content of CO₂, increasing 1% each year, and these budgets of carbon emissions into the climate are diagnosed from land and ocean fluxes. When transitioning onto any ZEC branch, the model switches to an “emission-driven” experiment, allowing
145 the active carbon cycle to determine the exchange between climate components, conserving the global carbon content and determining the atmospheric CO₂ concentration based on these exchanges. Throughout the manuscript, the names of ZECMIP and supplementary experiments include the amount of carbon emitted before branching, with text in lowercase, all italicised (e.g. *zec1000*) Where particular ZEC results are shown, they are the difference between 20-year averages from the parent~~

experiment centred on the branch point and the time from branching indicated by the subscripted value of the non-italicised label (e.g. ZEC₅₀ will indicate the difference centred at 50 years), as defined in MacDougall et al. (2020).

In ZECMIP experiments, all atmospheric concentrations of non-CO₂ “greenhouse gases” and aerosols are held constant, and likewise land use and vegetation type maps are maintained with preindustrial distributions. This series of the land use map is maintained with a preindustrial distribution. These idealised zero-emission experiments are quite different to plausible climate scenarios for the 21st century in which other gases and aerosols are also varying and influencing the climate, and a global baring a global cataclysm, such an instantaneous transition to zero carbon emissions is also unrealistic perhaps unlikely. However, the processes simulated in these ZECMIP-style experiments are useful for insights into results from ZECMIP experiments are essentially the same as other plausible future climate responses, and results can be readily related to other more realistic stabilisation scenarios by comparing stabilisation scenarios of corresponding branch point temperatures. The usefulness of the ZECMIP-style experiments is their relatively straight-forward configuration that can readily be adopted by any model with an active carbon cycle, and even across different generations of CMIP.

3 Results

The first subsection below presents globally averaged time series, demonstrating the range of the responses from the full series of ZEC experiments, from low branches where the climate states recovers somewhat from the rising temperatures of the parent *IpetCO2* experiment, to high branches in which climate state continues to warm despite decreasing atmospheric CO₂. The next subsection shows changes in surface temperatures to understand what regions drive the ongoing changes seen in high ZEC branches. The third subsection characterises the changes in the circulation and distribution of tracers within the Southern Ocean that are associated with ongoing global warming the in high ZEC branches. The final subsection tracks the trajectory of ZEC branches with respect to atmospheric CO₂ and temperature.

3 Results and Discussion

3.1 Global metrics

Figure 1 shows time series of several globally averaged climate metrics from *IpetCO2* and ZEC branches, along with the *piControl*. The time series of surface air temperatures from each ZEC branch is about linear and the gradients increase evenly from are approximately linear (Fig. 1a). The overall rates of change are $-0.035^{\circ}\text{C}/100\text{y}$ in ZEC750, z_{ec750} to and $+0.315^{\circ}\text{C}/100\text{y}$ in ZEC2000 (Fig. 1a), with no clear tipping point or step change in the ZEC branch responses. z_{ec2000} , and the rates vary evenly across intermediate branches. As expected, atmospheric CO₂ concentrations drop in all ZEC branches but remain well above preindustrial values (Fig. 1b). Due to the slow response of the deep ocean and the persistent high atmospheric CO₂ values, ocean heat continues to increase in all ZEC branches (Fig. 1c); in the case of high branches, the ongoing oceanic heat uptake is close to the uptake in *IpetCO2* with increasing CO₂ forcing. The rate of the oceanic heat uptake is the main component of the energy. Most of the energy entering the climate from the imbalance at the top of the atmosphere (TOA) in

180 ~~all experiments~~ (Fig. 1d) is taken up by the ocean of each experiment. In the case of *piControl*, the non-zero TOA balance is consistent with the offset ~~noted in Ziehn et al. (2020)~~ discussed in Ziehn et al. (2020); this offset was still present after a long spinup that stabilised the climate state and the offset isn't associated with any drift in the model. The response of sea ice areas in the Arctic and Antarctic in the ZEC branches are distinct (Figs. 1e and 1f respectively). The Arctic sea ice area largely follows the changes ~~of in~~ average global surface temperature (Fig. 1a). On the other hand, the Antarctic sea ice is largely unresponsive ~~in at~~ the start of the *IpctCO2* and even the first 100 years of low ZEC branches. However, the longer integrations of the ZEC experiments presented here show reductions in Antarctic sea ice even in the ~~ZEC750~~ zec750 branch, where after 200 years sea ice area is outside the range of ~~values variability~~ from the *piControl*. The initial sea ice trajectory of ~~ZEC2000~~ zec2000 is close to that of *IpctCO2*, indicating that the trajectory of the sea ice here at ~~this time~~ the zec2000 branch point is already “locked in” and independent of atmospheric forcing for several decades.

190 3.2 Surface temperature changes

Figure 2 shows the evolution in zonally averaged near-surface temperatures in the *IpctCO2* and selected ZECMIP experiments. In *IpctCO2* there is a strong dominant warming in the Arctic responding to the increased climate forcing and global temperatures from higher atmospheric CO₂ (Fig. 2a). However, the Arctic ~~also cools~~ and the Northern Hemisphere also cool as the atmospheric CO₂ decreases in low ZEC branches (Fig. 2b). The Arctic surface temperature changes appear to follow ~~changes in the global temperature with local amplification from ice albedo feedback~~. In contrast, the Southern Ocean warms relatively slowly in *IpctCO2* and yet continues to warm in all ZEC branches, consistent with being the region with the greatest inertia in the climate system. For instance, while there is an overall global cooling in ~~ZEC750~~ zec750, ~~the extension of this experiment shows warming of ~1°C, on average, in a latitude band of 40 — 65° S, after 200 years after branching from years from branching there is some warming in the same latitude band, 40–65° S, that stands out more clearly in~~ *IpctCO2* zec1000 (Fig. 2 b and c). ~~At 65 — 70°~~ At 65–70° S, the magnitude of warming in low ZEC branches is about the same as warming north of 60° S, whereas these poleward latitudes clearly dominate the warming in ~~ZEC2000~~ zec2000 corresponding to strong decreases in Antarctic sea ice ~~area, and positive feedback on temperature~~, as seen in Fig. 1f. This slow response of the Southern Ocean has been identified in ocean observations and simulations of the current ocean state by Armour et al. (2016). Here we show the potential influence of this Southern Ocean response to the global climate in zero-emission scenarios.

205 Figure 3 shows the spatial distribution of the temperature changes of *IpctCO2* and ZEC branch experiments, ~~calculated here as the difference between the last and first decade from within each branch or experiment~~. In low ZEC branches (Fig. 3b and c) there is a broad Southern Ocean response that shows warming across the Atlantic and Indian sectors, extending north to ~45° S, though not in the Pacific sector which is about neutral. High ZEC branches (Fig. 3d and e) show larger magnitudes of warming in the Southern Ocean that then drive global changes (note the expanding influences in the zonal time series, Fig. 2d and e). Warming is still evident across the broad regions of the Southern Ocean, but now the greatest temperature change is located in sea ice regions south of 60° S where changes now trigger positive ice feedbacks.

It is evident that neutral global responses of lowest branches in Fig. 1 obscure significant regional changes. In particular, Fig. 2 and Fig. 3 demonstrate ongoing warming of the order of 1°C after 300 years over the Southern Ocean that is largely

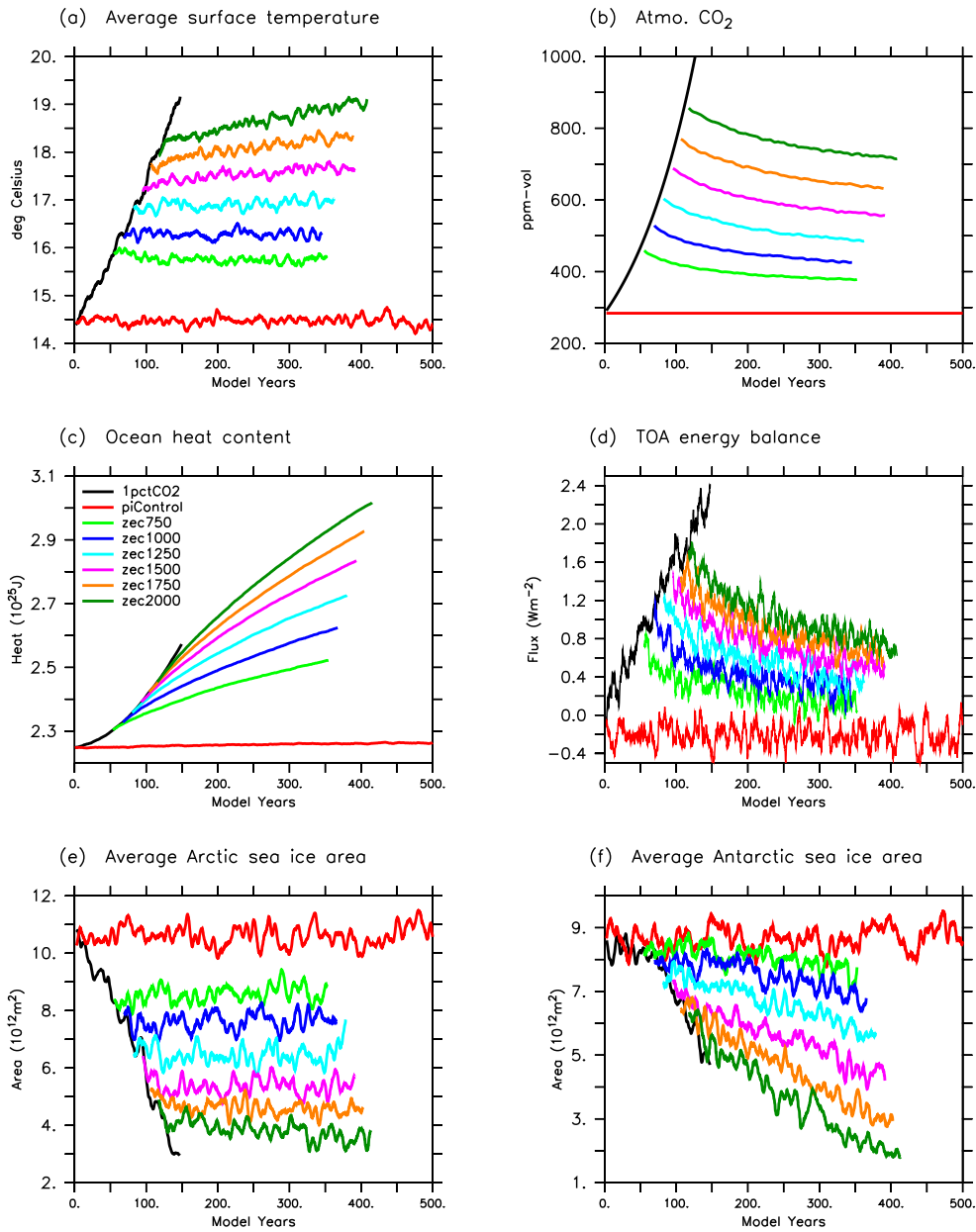


Figure 1. Global time series of (a) average near-surface temperature, (b) atmospheric CO₂, (c) ocean heat content, (d) top-of-atmosphere energy balance, and sea ice area of the (e) Arctic and (f) Antarctic from the *1pctCO2* and ZEC branches and the *piControl*. Time series are smoothed with 5-year running averages.

compensated by cooling over large continental regions in low ZEC branches. In high ZEC branches, the change in temperature
215 in these continental regions is small with respect to ocean and the Southern Ocean in particular. While there may still be
some locations of cooling with decreasing atmospheric CO₂ in these high ZEC branches, the cooling is significantly less
relative to the cooling in low ~~ZEC~~-branches. Also, cooling in these high branches is only found at locations within large
continental areas. In contrast, Australia as a smaller continent tends to warm with the neighbouring oceans. Interestingly, one
oceanic region shows less warming, and even some cooling in ~~ZEC1500~~zec1500 and ~~ZEC2000~~zec2000, around the northern
220 subtropical Pacific which is relatively isolated to warming trends in the Arctic or Southern Ocean.

Similar maps showing the change in surface temperatures over ZEC experiments from other ZECMIP models are presented
by MacDougall et al. (2022). Maps of zec1000 50-year temperature change between the nine participating ESMs showed
significant variability in the regional responses of ZEC simulations. Their Fig. 3 includes results from ACCESS-ESM1.5,
however unlike zec1000 in Fig. 3 here, there is no clear response from the Southern Ocean, whereas some other ZECMIP
225 models indicate strong responses in the North Atlantic, probably associated with changes in the AMOC. As indicated in Fig.
2 here, the Southern Ocean response in zec1000 of ACCESS-ESM1.5 does not become apparent until about 200 years after
branching and would not appear in the ZEC₅₀. Also, Gillett et al. (2011) explored zero-emission scenarios with the CanESM1
for centuries after branching from year 2100 of the SRES A2 scenario (Meehl and IPCC Climate Change 2007). While the
global temperatures were about stable over these centuries, regional temperatures continued to evolve with as much as 3°C
230 of warming over the Southern Ocean, like seen in high ZEC branches of the ACCESS-ESM1.5 here. However, cooling over
the northern hemisphere, particularly over high-latitude continental regions and Barents Sea of the Arctic balance the southern
warming in the global average of CanESM1.

ACCESS-ESM1.5, like many CMIP6 models, doesn't have an active ice sheet component so these simulations will not
include the effects of changes in meltwater from ice sheets. Purich and England (2023) show that the inclusion of meltwater
235 around Antarctica in near-future scenarios have a relative cooling effect on surface temperatures across the Southern Ocean (or
less warming), due to the reduction in exchange of warmer, deep waters with the surface.

3.3 Subsurface changes

3.3.1 Overturning

Sections of global meridional overturning streamfunctions from different stages of *1pctCO2* are shown in Fig. 4. Overturning
240 ~~sections~~streamfunctions are shown with respect to both depth and density coordinates, and ~~both~~each indicate a decline in
strength of circulation of Antarctic Bottom Water. There is a greater influence on the deep bottom water circulation at 3000–
4000m in the second ~~half~~50 years of *1pctCO2* than the first 50 (the change in 4c to 4e being greater than 4a to 4c). The density
of the circulation close to the Antarctic coast, south of 60° S, decreases over the course of *1pctCO2* (Fig. 4b, d and f), breaking
the coupling to the bottom circulation across the rest of the global ocean. In sections ~~of~~with both coordinates, the Deacon Cell
245 in the Southern Ocean (55° S to 40° S) ~~in the Southern Ocean~~ is stronger and more extensive at the end of *1pctCO2*.

The times-time series of the overturning shown in the bottom row of Fig. 4 are calculated as the magnitude of the minimum in the streamfunction in depth coordinates at two latitudes, 72° S and 66° S. There is a lot of variability. Variability is high in these overturning values, but with 10-year averaging persistent changes in all ZEC branches become evident, exceeding the significant decadal variability. Even low ZEC branches demonstrate that the small perturbations in average overturning relative
250 to *piControl* do not recover in the 300-year integrations of the branches. Overturning time series in high ZEC branches at 72° S (Fig. 4g) continue to evolve after branching from *IpctCO2* indicating the slow response of deep overturning to changes in surface boundary conditions.

Circulation time series at 66° S appears to collapse as calculated in depth coordinates in Fig. 4h. Average overturning at this position in *piControl* is ~ 4 Sv, albeit with significant decadal variability with a range that is also ~ 4 Sv, and drops to ~ 1 Sv
255 in the low ZEC branches and even < 0.5 Sv in high branches, with no indication of any recovery in the 300-year integrations. However, overturning sections-streamfunctions in density coordinates indicate circulation is ongoing at these latitudes. The timing of the branching of the lowest ZEC branches is about the time that the cell south of 60° S starts to shift to light densities,
as seen in Fig 4f.

Not having an active ice sheet component, ACCESS-ESM1.5 will not include the effects on circulation from changes in Antarctic meltwater. Li et al. (2023) and Purich and England (2023) show that the inclusion of Antarctic meltwater in near-future scenarios also act to slow down overturning and the formation of Antarctic Bottom Water, indicating the meltwater impacts will enhance the changes in overturning and the ongoing changes in ocean tracers to what is presented here.
260

We focus here on the changes in the Southern Ocean. However, changes in the North Atlantic and AMOC have been identified in other analyses of ZEC scenario experiments. MacDougall et al. (2022) assessed regional responses in the *zec1000* from ZECMIP models. One of the significant features at 50 years (ZEC_{50}) was in the North Atlantic, which was cooler in some models assessed. The ACCESS-ESM1.5 was included in this assessment and the Southern Ocean presented here was not prominent. The *zec1000* is a relatively low branch of the ZEC scenarios presented here, and 50 years is shorter than the timescale that the Southern Ocean response here becomes apparent.
265

Schwinger et al. (2022) also assessed the impact of AMOC changes, testing various ZEC scenarios with the NorESM2 (Seland et al., 2020), assessing the response of multiple high emission ZEC branches like done here with ACCESS-ESM1.5, and also overshoot scenarios where negative emissions are used to reduce the CO_2 and climate forcing. Schwinger et al. (2022) found significant AMOC responses, cooling temperatures with weakening AMOC and increasing temperatures as AMOC recovered and strengthened. Interestingly, the NorESM2 was included in the multi-model analysis on MacDougall et al. (2022), but the NorESM2 response was not so significant there, possibly because the response in Schwinger et al. (2022) is on centennial time scales and didn't have a strong ZEC_{50} response in the *zec1000* shown.
270
275

3.3.2 Tracer distributions

The changes in the circulation and surface forcing from the increased climate forcing of *IpctCO2* initiate long term changes in the distribution of subsurface ocean properties that continue even once the climate forcing decreases and stabilises in the ZECMIP experiments. Figures 5, 6 and 7 show changes in zonally averaged sections of temperature, salinity and oxygen in the

280 *IpctCO2*, [ZEC750_{zec750}](#) and [ZEC2000_{zec2000}](#), as well as time series of tracers at selected positions from *IpctCO2*, *piControl* and all ZEC branches. Figure 8 demonstrates the changes in the ocean depth of heat uptake in the different ZEC branches.

The time series (panels i, j, and k of Figs 5, 6 and 7) demonstrate that even small ~~circulation changes~~ [changes in circulation and surface forcing](#) of low ZEC branches are sufficient to drive ongoing subsurface changes in heat, salt and oxygen, even if these changes are not expressed at the surface. There is a monotonic increase in the rate of change in the subsurface warming with ~~the ZEC branches, the slowest warming is in upper 100s of metres in the lowest ZEC branch and the~~ fastest warming is in the ~~interior of the thermocline, ~500–1500 m in the highest branch.~~ [highest ZEC branches at all positions shown in Fig. 5.](#) Similar responses are seen in oxygen time series (Fig. 7), where high branches generate greater decreases in oxygen. with exceptions that are discussed further below. For the time series of each tracer at 20° S (panel l of each figure), while there are consistent signals across the experiments presented, the magnitudes of low-frequency variability is similar to the these signals and a larger 30-year filter is applied to reduce this variability.

Changes in the temperature sections of *IpctCO2* (Fig. 5d and g) are predominately near the surface north of 40° S, with deeper warming near Antarctica down to 2000 m and in the Southern Ocean at 45–50° S down to 1000 m related to a poleward shift in water masses. In contrast, temperature changes in ZEC branches are predominantly at depth, ~ 500–1500 m ~~and deeper south-north~~ of 60° S ~~and deeper to the south~~, with less change at the surface. ~~North of 50° S, temperature changes are relatively uniform with latitude and these outcrop in the Southern Ocean.~~

The uptake of heat in *IpctCO2* and selected ZEC branches are shown in Fig. 8, as changes in the globally averaged temperature with depth and time within each experiment. Consistent with the ocean heat content in Fig. 1c, temperature increases are much larger in high ZEC branches; also, the distribution of temperature increase is shallower in high branches. At the end of the 300 years with zero emissions, the peak temperature increase in [ZEC2000_{zec2000}](#) is at ~800 m whereas in [ZEC750_{zec750}](#) it is at ~1200 m. While temperature still increases below ~200 m ~~in m in~~ [ZEC750_{zec750}](#), there is some cooling in the upper 100 m in response to the decreasing atmospheric CO₂ and reduced climate forcing. In contrast, in [ZEC2000_{zec2000}](#), the highest temperature increase is closer to the surface and has a greater influence on the upper ocean and surface.

Figure 6 shows changes in zonal averages of salinity from *IpctCO2* and selected ZEC branches. The changes in zonal ~~sections of~~ salinity in *IpctCO2* vary spatially [and are distinct from temperature changes](#), with freshening in the upper ocean near Antarctica and increasing salinity below 800 m. In [ZEC750_{zec750}](#), the main change in the salinity section is a freshening between 40 and 60° S in the upper 1000 m. In [ZEC2000_{zec2000}](#) the ongoing salinity changes are more uniform, with a general freshening of the upper ocean above a band of increasing salinity below 500 m near Antarctica and extending north of 50° S at depths between 1000 and 2000 m.

Changes in the distribution of salinity are somewhat slower to become evident in *IpctCO2*. For instance, in the time series for the positions shown in panels j, k and l of Fig. 6, the salinity differences between [ZEC750_{zec750}](#) and the control are minor even after 300 years. Trends in temperature at the same positions were more distinct from the control and showed growing differences after 300 years. The transient response of salinity at 25° S and 250 m in *IpctCO2* is an increase in salinity. However, in all ZEC branches salinity decreases, albeit with significant interannual variability, indicating a recovery in the atmospheric circulation and precipitation under zero-emission climates with decreasing atmospheric CO₂.

315 The distribution and responses of ocean biogeochemical tracers (for example oxygen, Fig. 7) are distinct from both heat and salinity, due to the different distributions of tracer sources and sinks, both at the ocean surface and in the interior. Hence, the mean fields of biogeochemical tracers are distinct from physical tracers and are impacted in different ways by the changes in ocean state and circulation. As the strength of ~~the overturning-Antarctic-cells-weaken~~deep Antarctic overturning weakens, there is a decrease in the supply of oxygen from surface waters into all depths of the interior of Southern Ocean. Local exceptions
320 to the general decline in oxygen include water between 0 and 1000 m at 50–60° S in low ZEC branches where oxygen likely increases due to the greater influence from southern oxygen-rich surface water and less from oxygen-poor waters because of changes in circulation and global stratification (panels e and h of Fig. 7). There is also an increase in subsurface oxygen below equatorial regions, north of 10° and below 500 m, where productivity declines in ~~warming-elimates~~warmer climates of both *z_{ec}750* and *z_{ec}2000*. Reduced productivity and export of organic material reduce the consumption of subsurface oxygen in
325 these regions driving this oxygen increase.

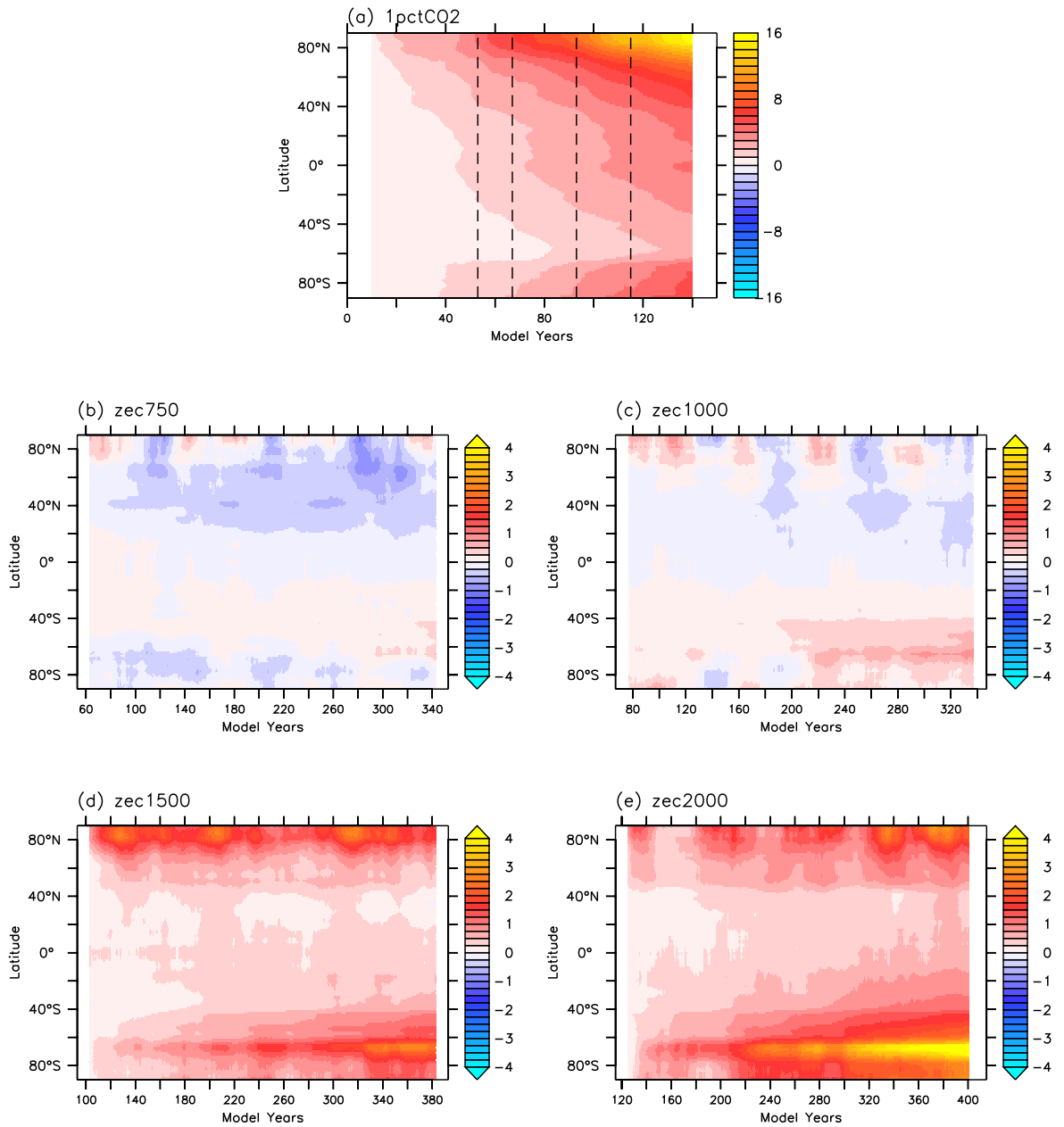


Figure 2. Changes in zonally-averaged-zonally-averaged surface temperatures with time from *1pctCO2* and four of the ZEC branches investigated here. Differences from ZEC branches are with respect to the average-of-20-year averages from *1pctCO2* centered on the first 10-years-of-each-experiment-branch point, and smoothed with a 5-year-20-year filter. Dashed vertical lines in (a) indicate times that the ZEC branches-scenarios shown leave-branch from *1pctCO2*.

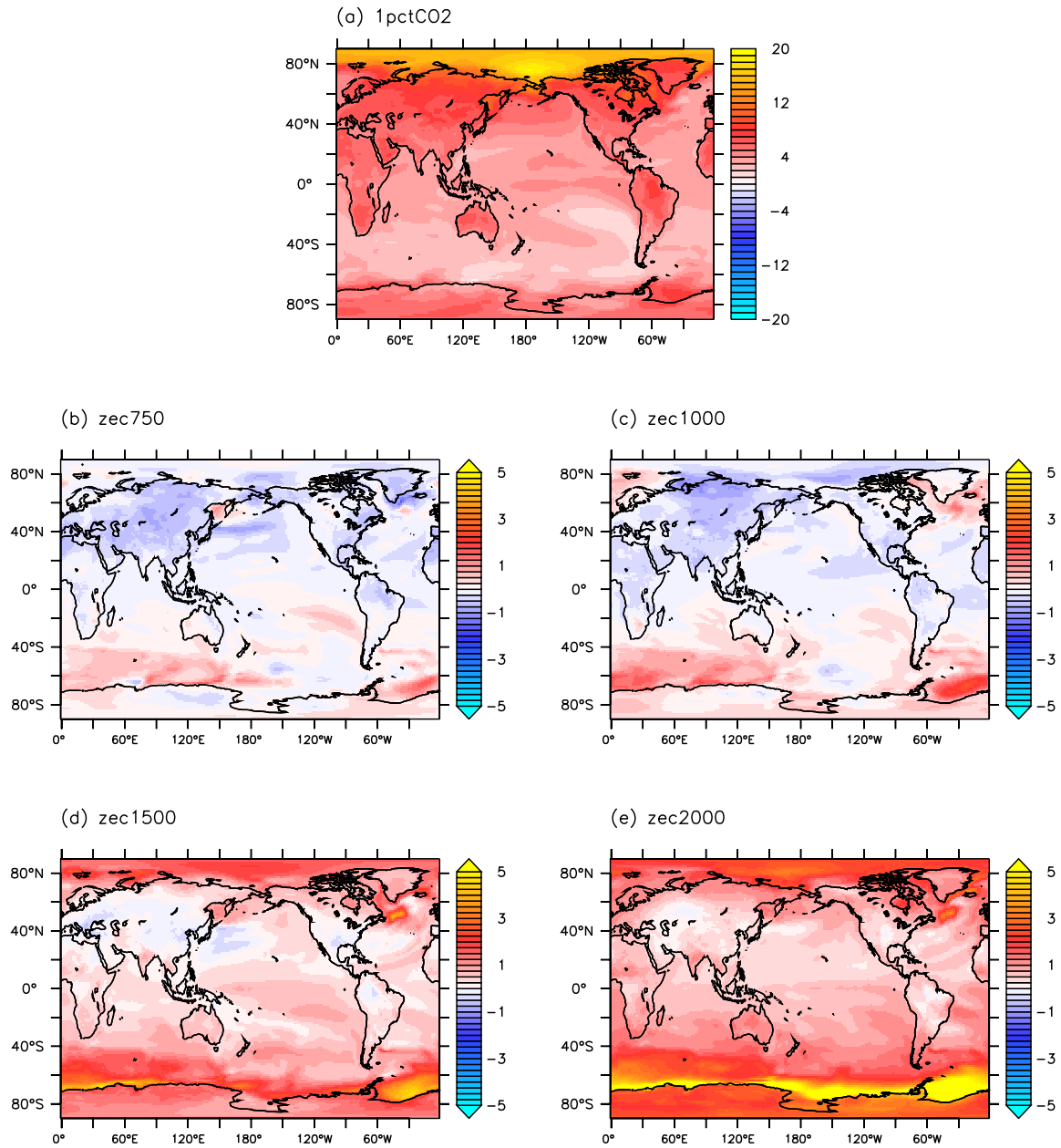


Figure 3. Change in surface temperatures, ~~from~~ ZEC branch changes are averages of last ~~and first decades of 20 years~~ with respect to 1pctCO2 centred at the branch point (time difference, $\Delta t=140y/290y$), and ~~four of the ZEC branches~~ 1pctCO2 changes are with respect to piControl ($\Delta t=290y/140y$).

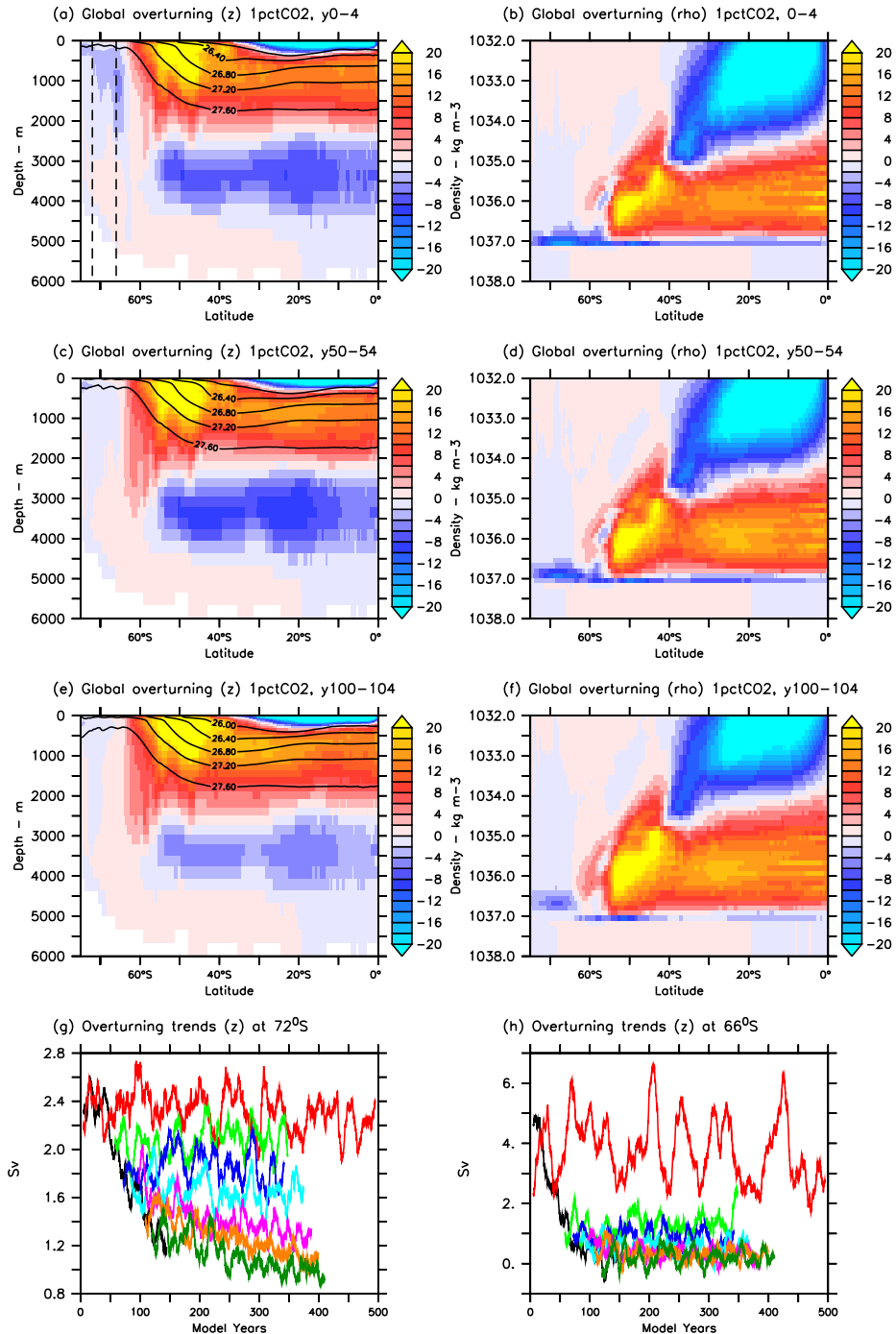


Figure 4. Global meridional overturning [streamfunctions](#) from *1pctCO2* calculated with respect to depth (left) and density (right, referenced to 2000 decibars). [Sections show](#) [The streamfunctions shown are](#) 5-year averages of overturning: first 5 years of *1pctCO2* (top row), years 50–54 (2nd row), and years 100–104 (3rd row). The bottom row [show shows](#) time series $\bar{\tau}$ of 10-year averages to reduce variability, in the strength of dense water circulation overturning calculated with respect to depth at two positions near Antarctica (at 72° S and 66° S, indicated by dashed lines in [the](#) top row), from *1pctCO2*, *piControl* and ZEC [branches](#) [smoothed with a 10-year filter](#) (using the same colour scheme as Fig. 1).

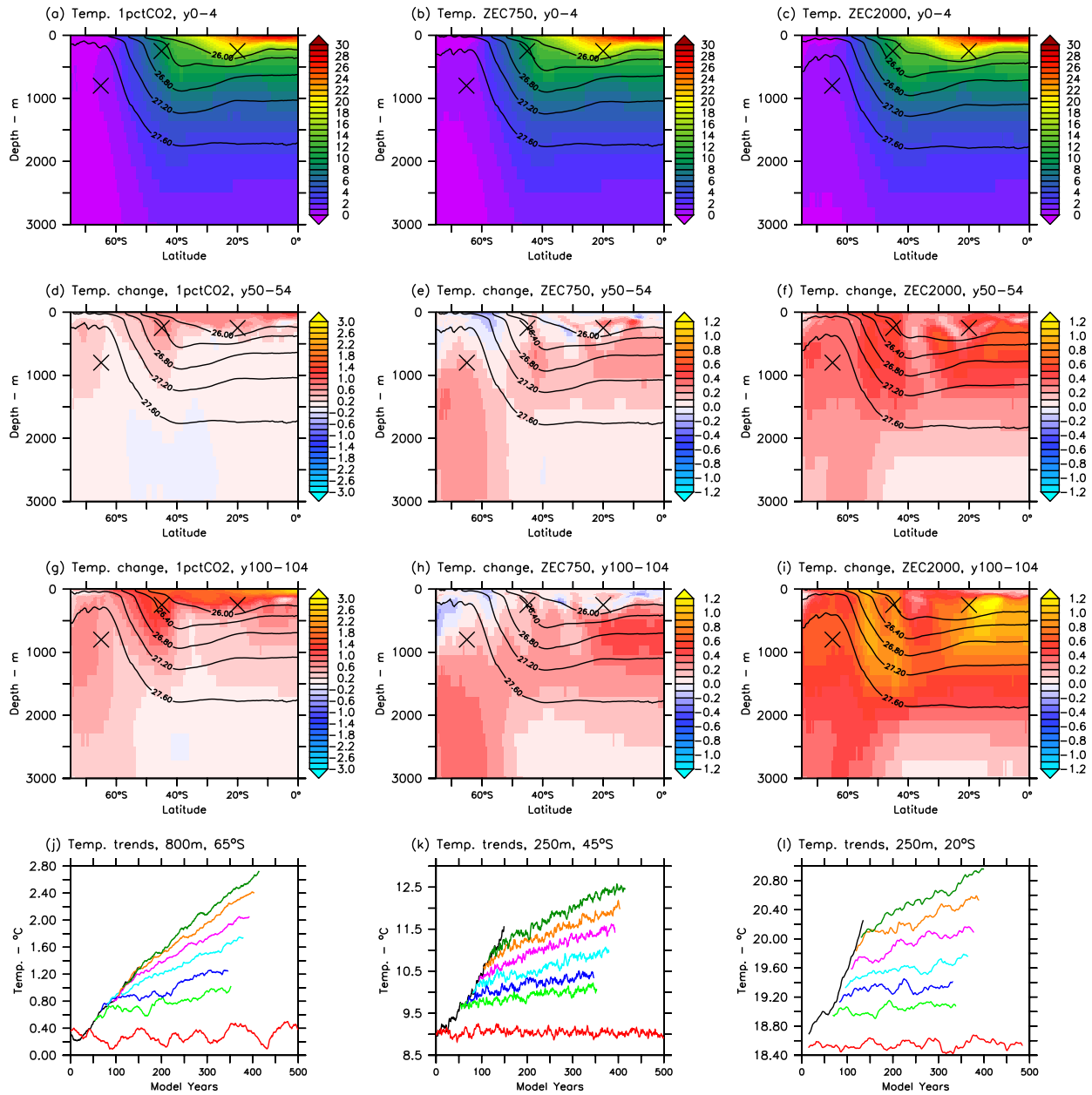


Figure 5. Changes and time series in average zonal sections of temperature. The top row shows zonally averaged sections for the first 5 years of from *1pctCO2* (left) and ZECMIP branches after emitting 750 PgC (middle) and 2000 PgC (right). The second and third rows show changes in zonally averaged sections from the same experiments after 50 and 100 years, respectively. Contours indicate zonally averaged potential densities. The bottom row **show temperature trends** shows time series of subsurface temperatures in the subsurface of the Southern Ocean (at 65° S, 45° S and 20° S, at positions indicated), from *1pctCO2*, *piControl* and ZEC branches (same colour scheme as Fig. 1). **Trends** Time series at 65° S and 45° S are filtered by 1 year, trends at 20° S are filtered by 30 years.

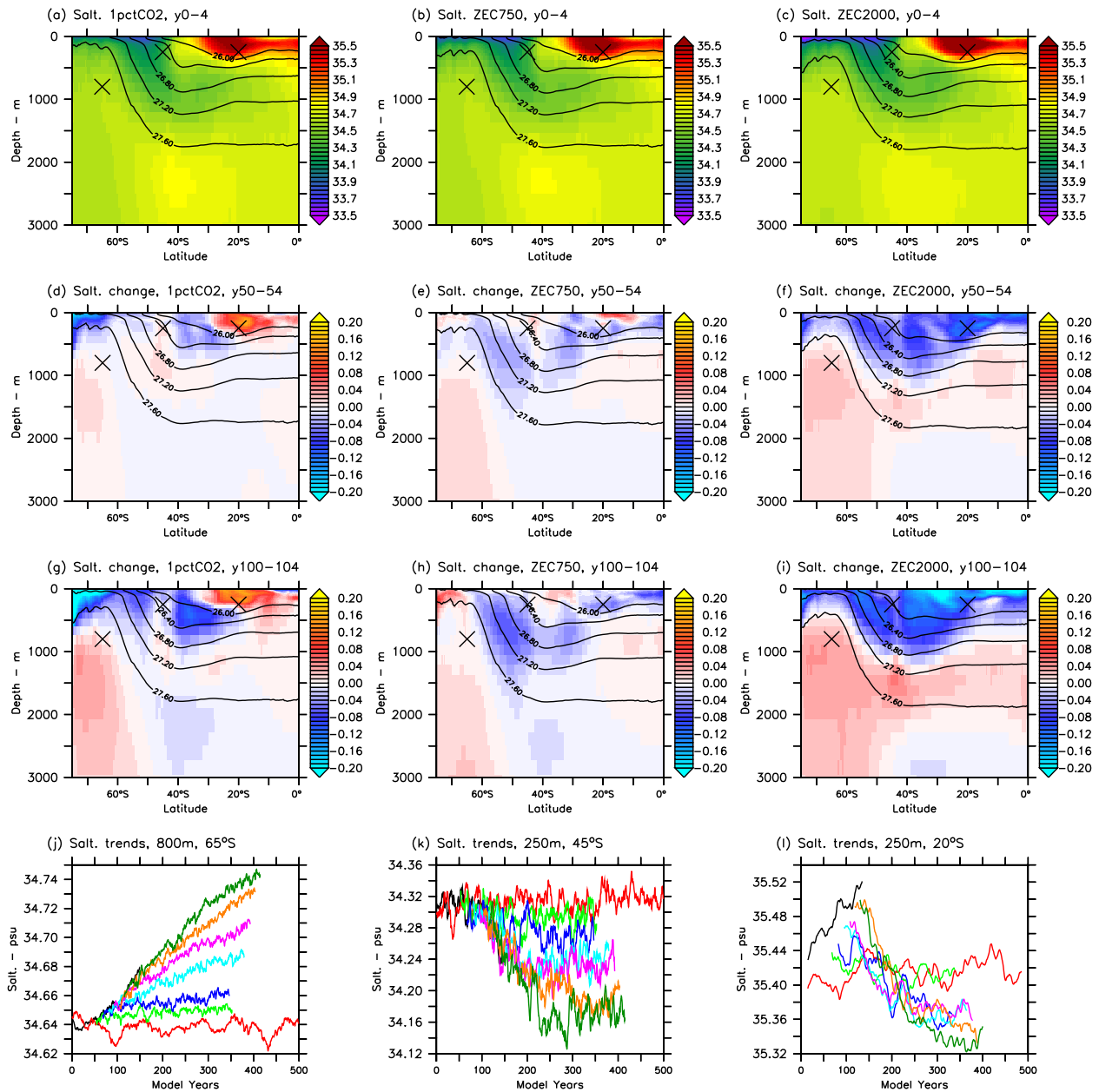


Figure 6. Changes and time series in average zonal sections of salinity, with the same layout as Fig. 5.

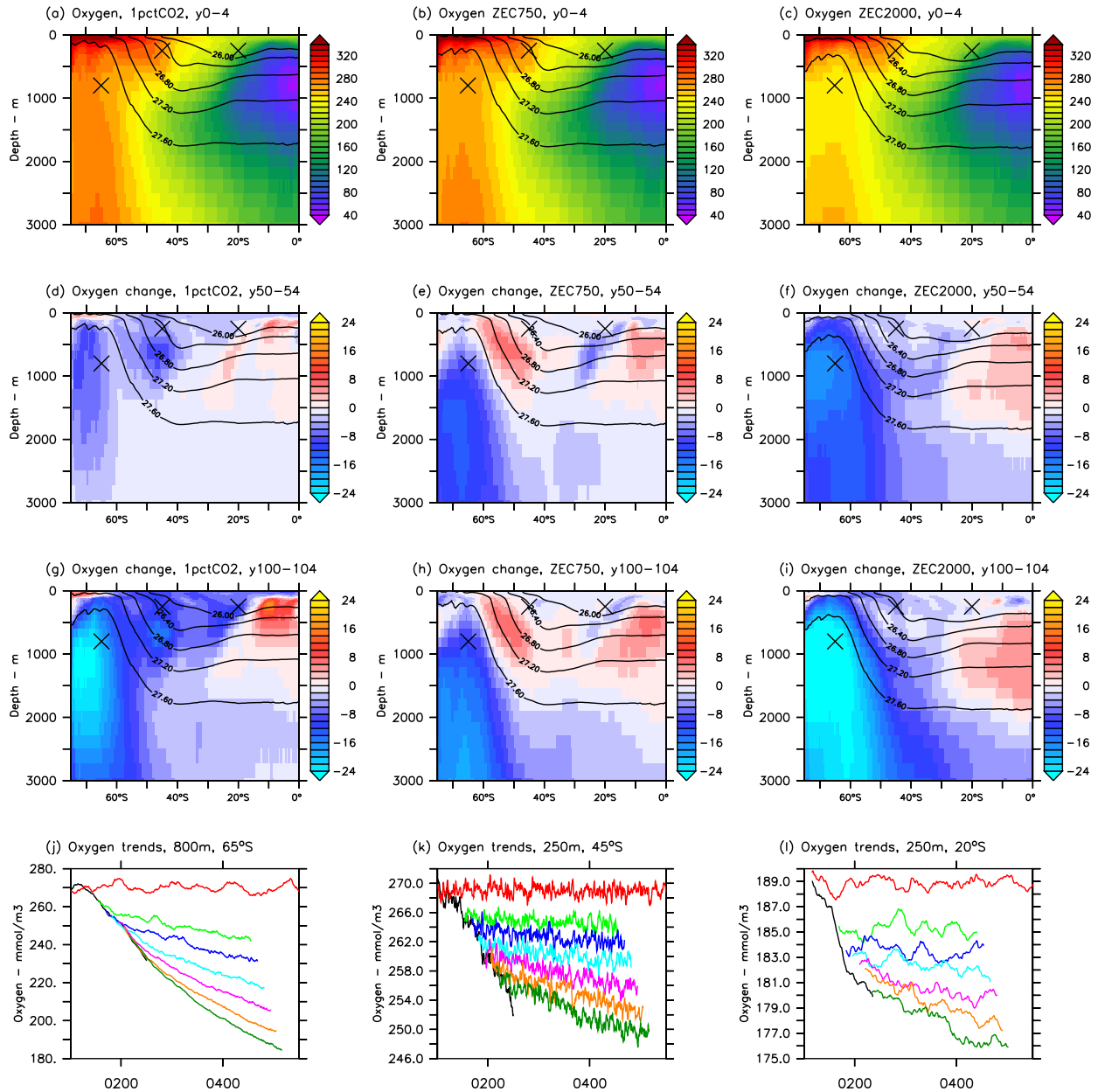


Figure 7. Changes and time series in average zonal sections of oxygen, with the same layout as Fig. 5.

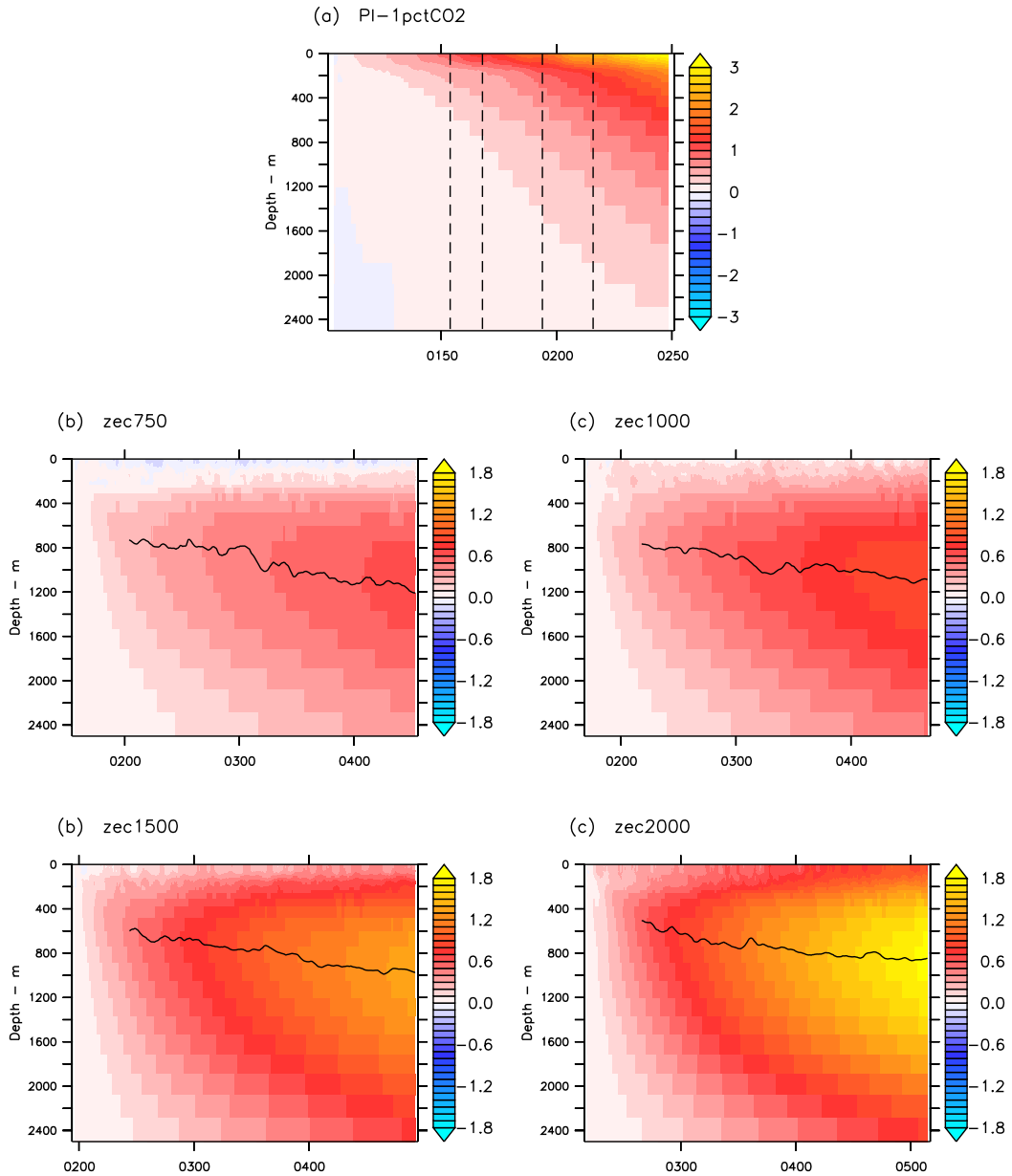


Figure 8. Heat uptake of the whole ocean as a function of depth and time, shown as changes in global averages of temperature within each experiment. Dashed vertical lines in panel (a) indicate the times that the ZEC experiments in (b)-(e) branch from the $1pctCO_2$. Solid lines overlain indicate the depth of maximum change in temperature in ZEC branches.

3.4 CO₂-temperature trajectories

Figure 9 shows the trajectories of *IpctCO2* and ZEC branches with respect to CO₂ and global average near-surface temperatures. The trajectories of these branches are consistent with climates approaching their equilibrium states after initial perturbations and warming in the *IpctCO2* experiment before branching. Overlying these experiments are temperatures corresponding to the Transient Climate Response (TCR) and Equilibrium Climate Sensitivity (ECS) of the ACCESS-ESM1.5, calculated with the logarithmic relationship of CO₂ and radiative or ‘climate forcing’ (Myhre et al., 1998) and assuming a constant climate feedback parameter (λ , Wm⁻² °C⁻¹). Both TCR and ECS are expressed as the global warming associated with a doubling of atmospheric CO₂, and TCR is typically substantially less than a models ECS. The TCR and ECS for the ACCESS-ESM1.5 are 1.95°C and 3.87°C respectively (Ziehn et al., 2020). The trajectory of *IpctCO2* in Fig. 9 starts from the lower left (285 ppm, 14.3°C) and moves to the right, generally following the TCR (the TCR is defined by the response of *IpctCO2* at 50-70 years). As ZEC experiments branch they turn left with decreasing CO₂ and move towards the ECS over the 300 years of integration. Consistent with the time series of the surface temperatures in Fig. 1, the trajectories of the lowest ZEC branches have stabilised near their equilibrium climates by the end of the 300-year integration and are close to ECS values. Climate states of higher ZEC branches are still evolving and with further model integration are expected to also stabilise at an equilibrium climate temperature, though this may take several centuries, or longer for the highest branches.

4 Analysis and Discussion

3.1 ~~Climate inertia~~Slab model

As a way to explain and understand the global temperature trajectories in *IpctCO2* and ZEC branches, a simple model of independent slabs with different ~~inertia~~inertias, conceptually representing ~~impacts from responses from the~~ land and ocean, is used to replicate these trajectories. There are other simplified models that have been constructed to emulate full ESMs, such as “energy balance models” (e.g., Geoffroy et al., 2013), though the slab model based on temporal responses ~~of the climate system is more than is quite~~ adequate to reproduce ~~results the average temperatures~~ from the ACCESS-ESM1.5 ~~here~~. Global temperature is an average of just two slabs that both approach the same equilibrium temperature anomaly determined by time-evolving atmospheric CO₂, as diagnosed from ACCESS-ESM1.5 simulations, ~~but each slab evolves with a different time constant~~. Various processes related to the heat uptake and response of surface temperature ~~of for~~ both the land and the ocean are parameterised in the timescales and inertias assumed. These global temperature trajectories are shown in Fig. 10, where the timescale of the land slab is 1 year and effectively follows the equilibrium temperature while the ocean timescale is 300 years. See App. A for more details and discussion on the model setup. These timescales for land and ocean were determined by fitting to global temperatures of *IpctCO2*. ~~The land and ocean have equal weight in this configuration in order that the trend of the slab model matches ACCESS-ESM1.5.~~ Temperatures of slab models with ocean timescales of 100 and 500 years are also shown which over- and underestimate the ~~temperature trends of the IpctCO2 experiment.~~ temperature time series. The

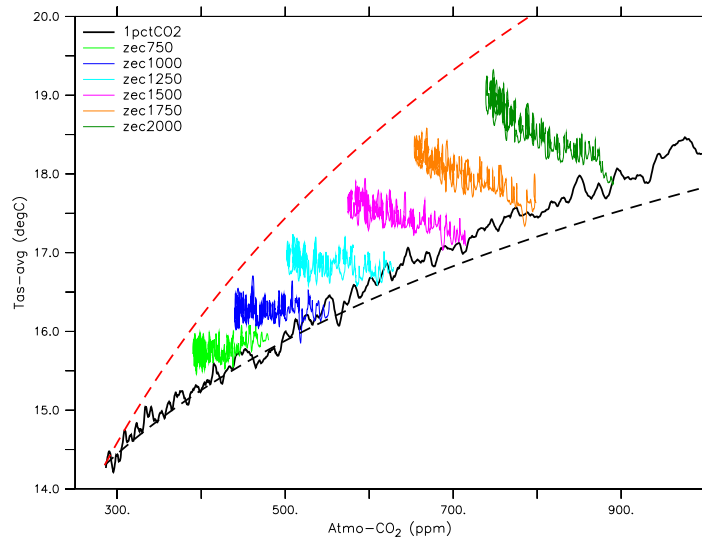


Figure 9. Time series of globally averaged surface ~~temperature~~ temperatures with respect to atmospheric CO₂ for the *1pctCO2* and ZEC branches. Dashed lines indicate temperatures corresponding to the ~~transient climate response~~ TCR (black) and ~~equilibrium climate sensitivity~~ ECS (red).

slab model captures both the *1pctCO2* and the key trends of the ZECMIP trajectories shown, namely the slight decrease in ~~ZEC750~~ zec750, neutral ~~ZEC1000~~ zec1000 and increases in higher ZEC branches.

Being able to replicate the global temperatures with this slab model demonstrates that the ZEC trends found with ACCESS-
 360 ESM1.5 are due to the inertial response of the ocean within the climate system, which (from ~~zonal pattern~~ the zonal temperatures of Fig. 2) can ~~largely~~ be attributed to the Southern Ocean. In this way the Southern Ocean is like the “freight train” of the climate system. ~~Once atmospheric CO₂ has been high enough, for long enough to start warming;~~ once the Southern Ocean ~~has started~~ warming noticeably in transient scenarios it will continue warming and even affect the global climate. ~~This after switching~~ onto a zero-emission trajectory (as shown in Fig. 2). At this point, the long-term global trajectory will not be ~~corrected~~ reversed
 365 by zero-emission scenarios but rather require ongoing negative emissions ~~and~~ extracting CO₂ from the climate system.

Climate “tipping points” can be considered as positions at which the climate ~~state no longer returns to its previous condition~~ but rather continues evolving ~~changes to a new state and potentially continues to evolve~~ without applying further increases in climate forcing. ~~This might be the case;~~ for example the loss of ice sheets or permafrost, deforestation or shutdown of overturning circulations. Some of this tipping point behaviour is present in results presented here, though there are no new
 370 processes and the fanning out of global temperature trends in Fig. 1 indicate this does not occur at a single point as such, but

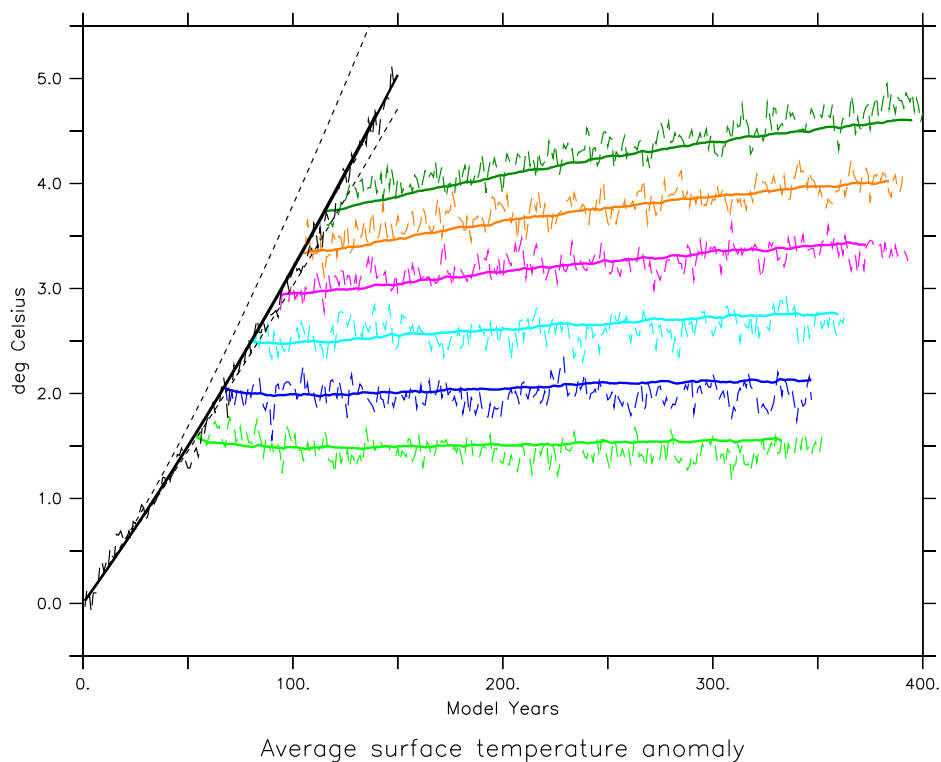


Figure 10. Global time series of average surface temperature for the *1pctCO2* and ZEC branches from ACCESS-ESM1.5 (dashed lines) and slab model (solid lines, same colour scheme as Fig. 9). Dotted black lines show slab model temperatures for *1pctCO2* with ocean time scales of 100 and 500 years.

rather it is a transition, where the later the branching off from the *1pctCO2* experiment, or more CO₂ emitted before switching to a zero-emission trajectory zero emissions, the stronger the ongoing warming in the climate state within the ZEC branch. Here, the Southern Ocean is not behaving as a tipping point exactly, though it does behave like one in the sense that the region is capable of driving ongoing changes to the climate system beyond the point where additional climate forcing is applied. Also,
 375 the simple slab model shows results found can be explained as a slow response to the climate forcing with no new processes or climate states. This general result does not preclude other local tipping points to be crossed in the process, notably changes to circulation and structure of the Southern Ocean during the warm epoch; for example, the point at which the average Antarctic sea ice area starts to decrease in Fig. 4f, or changes in overturning streamfunction in Fig. 4h. While the Southern Ocean and its climate response may not fit an example of a tipping point, its potential to drive ongoing warming with potentially global

380 impacts suggests it should be considered in discussions of regions and processes of interest with the potential to drive ongoing changes to the climate.

3.2 ~~Multi-model~~ Multi-model Comparison

3.2.1 Global surface temperatures

A curious observation from ZECMIP was the range of responses from the different models, such as in Fig. 6 of MacDougall et al. (2020). In particular, ~~it was unclear why how~~ some models (ACCESS-ESM1.5 and ~~the~~ UKESM1-0-LL (SeHar et al., 2019)) showed positive ZEC values in ~~ZEC2000~~ zec2000 while other models (~~CanESM5~~ (Swart et al., 2019), GFDL-ESM2M (Dunne et al., 2013) and ~~MIROC-ES2L~~ (Hajima et al., 2020) ~~and CanESM5~~) were negative.

The slab model ~~presented here, based on the~~ that is primarily tuned to ACCESS-ESM1.5 ~~response, is now used to the assess how much these different multimodel ZEC responses reported are due to differences in the physical and biogeochemical component of these ESMs. is now driven with CO₂ diagnosed from other ZECMIP ESMs that simulated all three ZECMIP type-A experiments to assess how the physical component of the ACCESS-ESM1.5 would respond if it were coupled with different biogeochemistry, and how much of the ZEC response is dependant on the physical versus the biogeochemical components. Atmospheric CO₂ ~~values diagnosed~~ from each ZECMIP model, that ~~have been made~~ are available at <http://terra.seos.uvic.ca/Z> (Eby, 2023), are used to force the slab model ~~tuned to the ACCESS-ESM1.5 response~~ and slab-model temperatures are compared to the temperatures from the original ZECMIP models ~~that are also available~~. Figure 11 shows results of these comparisons for the three ESMs that submitted output for all three ZECMIP branches. The ECS of the slab model for these comparisons is made to match the ECS of each model as reported in MacDougall et al. (2020) ~~and calculated again here in Table 2~~; with the one exception for the GFDL-ESM2M where a higher value of 2.9°C is used to approximately match the original ~~ZEC2000~~ zec2000 temperatures instead of the reported 2.4°C. This is consistent with Paynter et al. (2018) who found the GFDL-ESM2M had a higher ECS in multi-millennial simulations due to changes in the climate feedback parameter associated with ongoing evolution ~~is in~~ sea surface temperature and atmospheric state.~~

The slab ECS is adjusted primarily so results are on the same scale with the other models. Otherwise, the slab is tuned to the physical response of ACCESS-ESM1.5.

The first observation from Fig. 11 is the overall similarity of the response of the slab model with the temperatures found with original GFDL-ESM2M and UKESM results. In both of these models, the global temperatures in ~~ZEC2000~~ zec2000 continue to rise on a centennial timescale, like the ACCESS-ESM1.5, despite the lower CO₂ values (Fig. 11a). ~~This is in contrast to the different~~ While the centennial responses of the ZECMIP models are similar, their ZEC₅₀ values from these models are quite different and even of opposite sign, as shown in Fig. 6 of the ZECMIP paper (MacDougall et al., 2020), and calculated again here (Table 2) ~~where the UKESM were positive for all ZEC branches while GFDL-ESM2M were all negative and discussed below~~. These disparate results can be associated with the models having different responses at shorter, annual to decadal timescales.

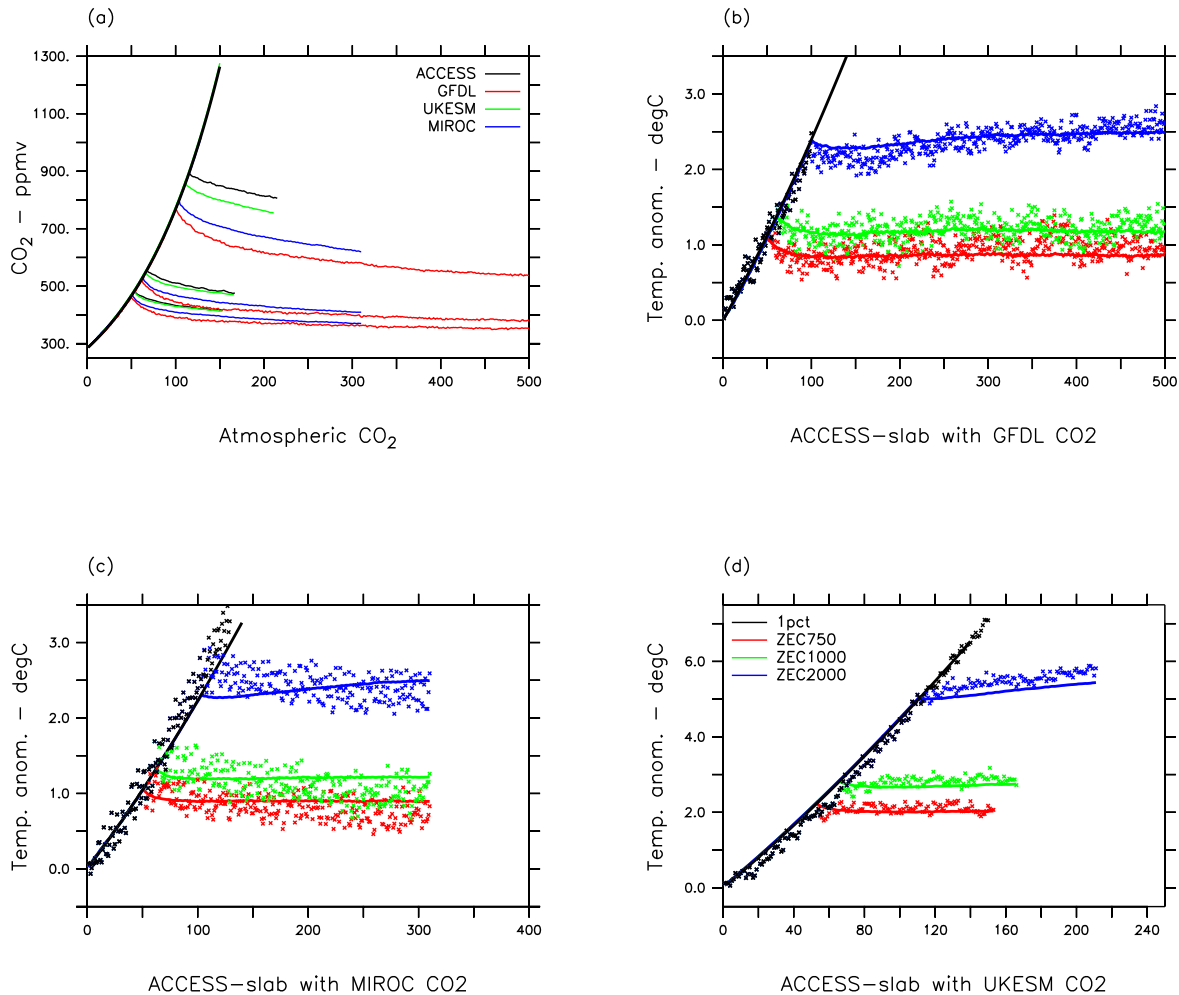


Figure 11. Global time series of (a) atmospheric CO₂ and average surface temperatures for the *1pctCO2* and ZEC branches from ESM models submitted to the ZECMIP: (b) GFDL, (c) MIROC and (d) UKESM. Annual averages of original model temperatures are shown as individual points, ~~temperatures with the~~ slab model ~~temperatures~~ are solid lines.

The GFDL-ESM2M has the largest drawdown of CO₂ of the models shown (Fig. 11a) and there is cooling in both the original GFDL and slab models in the first decades of all ZEC branches (Fig. 11b). However, beyond 100 years, the centennial responses of the models dominate and temperatures rise in original GFDL-ESM2M results and the slab for ~~ZEC2000~~~~zec2000~~.
 415 There is a similarity in the physical response of these two models in that there are similar relative trends in ZEC values for all branches in Table 2. The long term ZEC of the ~~GFDL-model~~~~GFDL-ESM2M~~ is positive and increases like the original

Table 2. ZEC values from ZECMIP model temperatures submitted to MacDougall et al. (2020), as well as ZEC values from the ACCESS-ESM1.5 slab with CO₂ diagnosed from ZECMIP models. Values are the differences between 20-year averages centred at the year of the ZEC branch (or 10-year average in the case of UKESM ZEC₁₀₀ values), relative to the 20-year average from the respective *IpctCO2* centred at the branch point.

		ZEC ₅₀		ZEC ₁₀₀		ZEC ₂₀₀	
		Original	Slab	Original	Slab	Original	Slab
GFDL	ZEC750 <u>zec750</u>	-0.33	-0.26	-0.25	-0.26	-0.29	-0.24
	ZEC1000 <u>zec1000</u>	-0.29	-0.25	-0.13	-0.25	-0.02	-0.20
	ZEC2000 <u>zec2000</u>	-0.11	-0.06	+0.02	-0.01	+0.22	+0.11
MIROC	ZEC750 <u>zec750</u>	-0.17	-0.19	-0.24	-0.18	-0.36	-0.19
	ZEC1000 <u>zec1000</u>	-0.05	-0.16	-0.23	-0.15	-0.36	-0.14
	ZEC2000 <u>zec2000</u>	-0.08	-0.03	-0.13	+0.05	-0.23	+0.15
UKESM	ZEC750 <u>zec750</u>	+0.11	-0.29	+0.03	-0.27	n/a	n/a
	ZEC1000 <u>zec1000</u>	+0.28	-0.21	+0.26	-0.16	n/a	n/a
	ZEC2000 <u>zec2000</u>	+0.53	+0.12	+0.78	+0.33	n/a	n/a

ACCESS-ESM1.5, despite different CO₂ responses. Note, both GFDL-ESM2M and ACCESS-ESM1.5 have MOM5 as their ocean component, albeit with different grids and parameterisations.

In contrast, the The UKESM has a relatively slow temperature response to the changing CO₂ even in the course of *IpctCO2* where the original UKESM temperature increases are apparently delayed with respect to the slab (Fig. 11d). This lagged response is also seen at the start of each ZEC branch, where temperatures continue increasing for the first decade, associated with the previous increasing CO₂ from before the branch points. Consequently, the ZEC₅₀ calculated with UKESM is significantly positive, even for the lowest ~~ZEC750~~zec750 branch which otherwise shows a relatively neutral response on the centennial timescales in both the original UKESM and slab results. Slab ZEC temperatures with the UKESM CO₂ that do not have this lagged response are negative for ~~ZEC750~~zec750 and ~~ZEC1000~~zec1000, and positive to ~~ZEC2000~~zec2000 whereas UKESM ZEC values are all positive (Table 2).

The MIROC ~~ESM~~ results are distinct relative to the other models here. The global temperatures in original MIROC results are decreasing on centennial timescales for all ZEC branches. The MIROC temperature response closely follows changes in CO₂ and climate forcing. In contrast, the slab tuned to the ACCESS-ESM1.5 has a slower response and shows rising temperatures in ~~ZEC2000~~zec2000 with the same MIROC CO₂. In Table 2, the ZEC₅₀ values of the ACCESS slab are similar to the original MIROC ~~ESM~~ values, within ~ 0.1°C, whereas MIROC ~~ESM~~-ZEC₂₀₀ values are 0.2 to 0.3°C lower than the ACCESS slab values.

From these comparisons, the many different long-term responses shown in ZECMIP models ~~can largely be explained by the characteristics of~~ largely depend of properties of the physical climate models with some influence of the carbon cycle on the

435 decadal responses and low ZEC branches; noting that while ZEC values from *zec1000* with ACCESS-ESM1.5 are zero (within uncertainty, Table 1), values from the slab tuned to ACCESS-ESM1.5 but with CO₂ diagnosed from *zec1000* experiments with other ZECMIP models are all negative (Table 2). Overall, ACCESS-ESM1.5, GFDL-ESM2M and UKESM are similar, showing significant responses at centennial timescales ~~to changes in climate forcing which dominate long-term temperature trends,~~ in contrast to MIROC where temperatures ~~follow the climate forcing relatively closely~~ cool as atmospheric CO₂ decreases. Details in the physical response, such as the relative contributions at annual to decadal timescales, affect the values calculated for ZEC₅₀. The rapid CO₂ uptake of the GFDL-ESM2M lead to negative ZEC₅₀ values in each branch, in both the original model and the slab, whereas the lagged, decadal response in the UKESM ~~produce~~ produced positive ZEC₅₀ values ~~in the original model but not the ACCESS slab.~~

These observations indicate that while ZEC₅₀ values are relevant on policy timescales, where modifications to current rates of
445 CO₂ emissions may modify the expected ZEC₅₀, this metric can be a poor representation of the complete response of ESMs and ~~longer-later~~ ZEC values are useful to consider for ~~long-term~~ long-term implications to the climate state. Frölicher et al. (2014) also found variable responses over long integrations of ESMs under zero-emission scenerios, finding changes in the influence of the ocean on the global climate and even varying ECS values on multi-century timescales.

3.2.2 Zonal surface temperatures

450 In the case of the ACCESS-ESM1.5, the temporal evolution of zonal average temperatures, as shown in Fig. 2, clearly indicate the latitudes of the Southern Ocean as regions of a ~~lagged~~ slow response in *IpctCO2* and also ongoing warming in all ZEC branches tested; ~~Fig.,~~ Figure 12 is an equivalent plot of zonal average temperatures with available ZECMIP ESMs, namely MIROC-ES2L, the UKESM1-0-LL and ACCESS-ESM1.5. Note, these results are based on the experiments originally submitted to ZECMIP and available on the ESGF (World Climate Research Program, 2023), ~~including the original ACCESS-ESM1.5 results submitted,~~
455 In the transient *IpctCO2* phase (left column), the broad patterns in the temperature changes are similar, each model shows greatest warming in the Arctic and slowest warming around the Southern Ocean, though Arctic warming is greater in the UKESM by several degrees. There is an overall global neutral response in the 100 years of *ZEC750**zec750* for ACCESS-ESM1.5 and UKESM, and cooling in MIROC (middle column), and temperature changes related to slow modes of climate variability are evident. ACCESS-ESM1.5 showed warming at Southern Ocean latitudes in *ZEC750**zec750* before in
460 Fig. 2, but this manifests on timescales longer than the 100 years shown here. In *ZEC750**zec750*, the Arctic region cools in MIROC but continues to warm in UKESM. In *ZEC2000**zec2000* (right column), consistent with Fig. 11, there is broad warming in ACCESS-ESM1.5 and UKESM, but cooling in MIROC. The Southern Ocean features prominently as a region of ongoing warming in both ACCESS-ESM1.5 and UKESM, particularly at latitudes under the influence of sea ice, south of 60° S. The Arctic in the UKESM shows less warming than the ACCESS-ESM1.5 in *ZEC2000**zec2000*, though the UKESM has warmed
465 more here in the transient experiment before branching. Even in MIROC, which shows overall cooling in *ZEC2000**zec2000*, the Southern Ocean is a site of local warming, in this case at latitudes predominantly outside seasonal sea ice, 40–60° S; demonstrating that the response of the Southern Ocean to continue warming in high ZEC branches is common in all full ESMs.

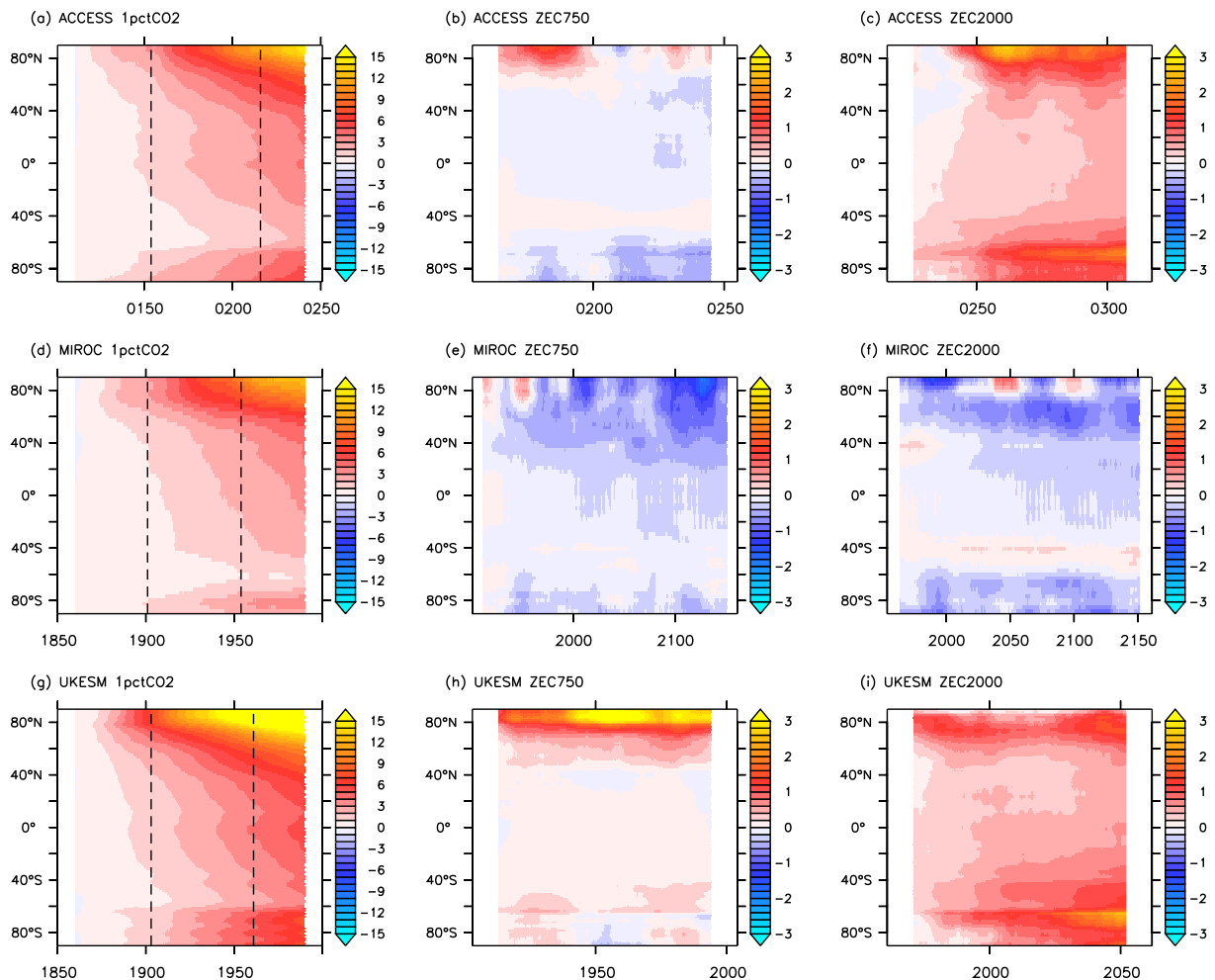


Figure 12. Changes in zonal average temperatures in $1pctCO_2$ (left), $ZEC750$ (middle) and $ZEC2000$ (right) from ZECMIP ESM models: ACCESS-ESM1.5 (top), MIROC (centre) and UKESM (bottom). Zonal temperatures are also smoothed by averaging over 5–20 years, and are differenced with respect to the first 10–20 years of each experiment. Branch times $1pctCO_2$ centred at the branch point of each $ZEC750$ and $ZEC2000$ are experiment, indicated by dashed lines in their respective of the $1pctCO_2$ parent panel for each model.

470 The biogeochemical component and its carbon cycle still play a role in the trajectory of temperature in ZEC scenarios. For instance, the CO_2 uptake in all other ZECMIP models is more rapid than in ACCESS-ESM1.5 (panel a, Fig. 11) especially in the case of the GFDL-ESM2M, and the slab ZEC_{50} and ZEC_{100} values in Table 2 are all less than the values for the same branch in Table 1. In higher ZEC branches, the CO_2 is still significantly higher than preindustrial values for all models and the slow component drove increasing temperatures in the long term for most models except MIROC (Fig. 11). The ACCESS

slab temperatures increase in all cases of high ZEC branches, even when driven by CO₂ from MIROC, clearly demonstrating a different physical response between ACCESS-ESM1.5 and MIROC in the long term.

475 4 Conclusions

The ACCESS-ESM1.5 submission to the recent ZECMIP (MacDougall et al., 2020) was one of ~~only~~ two full-ESMs ~~that demonstrated significant positive ZEC values, or ongoing warming, in the branch that switched to a~~ to test the zero-emission scenario after emitting 2000 ~~Pg of carbon, the ZEC2000 branch.~~ PgC (*zec2000*) and demonstrate a significant positive ZEC value, or ongoing warming; another three ESMs simulated negative ZEC values and cooling. In contrast, ZEC has been assumed
480 to be ~~about neutral~~ approximately zero for the present day climate state; for reference, the estimated total emissions of carbon between 1850 and 2022 is estimated to be 695±70 PgC (Friedlingstein et al., 2023), not accounting for affects of other climate forcing agents. Extra experiments with ACCESS-ESM1.5 have been executed to better understand the processes behind this ongoing warming ~~in the climate~~, with more branch points after the emission of intermediate carbon budgets and also longer climate integrations ~~up out~~ to 300 years with zero emissions.

485 The rates of ongoing global temperature increases vary smoothly across the ZEC branches, the increase is greatest on branches after the emission of the most carbon, and global temperature decreases slightly for the lowest branch, ~~ZEC750~~ zec750. Longer integrations demonstrate significant regional changes that were not apparent in the original ZECMIP integrations. For instance, even in ~~ZEC750~~ zec750 there is a decline in Antarctic sea ice that is apparent after ~200 years. Zonal time series of surface temperatures show that while the Southern Ocean is slow to warm in the transient *1pctCO2* experiment, this is the
490 region that continues to warm in all ZEC ~~branches~~ scenarios, even in low ZEC branches and regardless of the global response.

Clear and persistent changes are evident in the subsurface ocean that start in ~~the~~ *1pctCO2* and do not recover in any of the ZEC branches. The decrease in the Southern Ocean overturning circulation is associated with a decrease in density of the southernmost waters. These circulation changes then ~~drive~~ contribute to ongoing changes in the distribution of ocean tracers, both physical and biogeochemical. Heat increases at depth, even in low branches where there is cooling in surface waters.
495 Biogeochemical responses are affected by changing circulation and changing source/sink terms. Oxygen decreases in the deep Southern Ocean in all branches with the decrease in overturning, but also increases locally at positions where reduced ocean productivity reduces consumption of subsurface oxygen. We note that some other models and studies that have assessed the climate in ZEC scenarios have identified significant responses in the North Atlantic associated with AMOC changes, for example, Schwinger et al. (2022) examined various scenarios with the Norwegian ESM. Also, MacDougall et al. (2022)
500 investigated regional responses and found the most significant changes were also in the North Atlantic in some ZECMIP models, though not in the ACCESS-ESM1.5 submission. However, this is not inconsistent with the Southern Ocean response presented here that is generally not prominent in the first century of low-ZEC scenarios.

The evolution of ZEC branches with the ACCESS-ESM1.5 with respect to atmospheric CO₂ and average surface temperature all traverse the space between the Transient Climate ~~Response~~ Response (as followed by the *1pctCO2*) and the Equilibrium
505 Climate Sensitivity. In this space, the ECS is significantly higher than the TCR, so it is actually quite reasonable for a climate to

be warming even with decreasing CO₂ ~~and climate forcing~~ while the climate states traverses from a transient response towards its equilibrium state.

Global trajectories found with the full ACCESS-ESM1.5 are well reproduced with a simple composite slab model, where each slab approaches the same equilibrium temperature change prescribed by the climate forcing with a different timescale. 510 The ongoing temperature increases are explained by the slow response of the ocean. The Southern Ocean in particular behaves as the “freight train” of the climate system; once the Southern Ocean starts warming significantly it will take a large change in the climate forcing, such as a substantial reduction in CO₂ beyond the natural uptake of land and ocean, in order to reverse its temperature trajectory and its affect on the global climate.

This slab tuned to the ACCESS-ESM1.5 is the forced with CO₂ diagnosed from other ZECMIP models to evaluate whether the positive ZEC from the original ACCESS-ESM1.5 *zec2000* experiment is due to the physical or biogeochemical component of the model. The stronger CO₂ drawdowns from these other models, relative to ACCESS-ESM1.5, reduce the ZEC values calculated in Table 2. Most ZEC₅₀ values are now negative with the ACCESS-ESM1.5-tuned slab. However, the centennial response with these *zec2000* CO₂ pathways are still similar with positive and increasing slab temperatures. 515

This slow, centennial response of the Southern Ocean in ZEC scenarios is a common feature of climate models, and it has been identified in the observations of the ocean over recent decades (Armour et al., 2016). It is present in the zonal surface temperature of other ZECMIP models shown here in Fig. 12; even MIROC which is cooling globally is warming at Southern Ocean latitudes in *zec2000* (Fig. 12f). Gillett et al. (2011) demonstrated the Southern Ocean continued to warm in their 1000-year simulations with the Canadian ESM. Supplementary figures of Schwinger et al. (2022), their Fig. S2a, also showed warming at Southern Ocean latitudes south of 40°S after 200 years in all the ZEC and overshoot scenarios tested. It appears that the centennial response of the Southern Ocean and ongoing warming under zero emissions is a common feature of climate models and would be expected in the real Earth climate system. The magnitude of this response does vary and in some models, including the ACCESS-ESM1.5, it is having a significant global impact. 520 525

Data availability.

CMIP6 output from the ACCESS-ESM1.5 experiments, and from other models that submitted results to the original ZECMIP analysis, is freely available through the Earth System Grid Federation (World Climate Research Program, 2023), including the 530 *piControl*, the *1pctCO2* and the original branch experiments submitted to ZECMIP: *ZEC750zec750*, *ZEC1000zec1000* and *ZEC2000zec2000*. CO₂ values from ZECMIP models used to drive the ACCESS slab model were obtained from the ZECMIP data repository (Eby, 2023). For output related to the extra ~~branches~~ experiments described in the manuscript, please contact the authors.

535 **Appendix A: Slab model**

In Section 3.1, time series in global temperature are compared with a simple model (Fig. 10) composed of slabs with different “thermal inertia,” or slabs that respond to changes in climate forcing on different timescales. This slab model is also driven with results from other ZECMIP models (Fig. 11). In this slab model, the temperature of each independent slab (T_i) tends towards the equilibrium temperature (T_{eq}) that is a function of atmospheric CO_2 with a prescribed timescale (τ_i),

$$540 \quad \frac{dT_i}{dt} = (T_{eq}(CO_2) - T_i) / \tau_i \quad (A1)$$

The global temperature is then a weighted average of the slabs ($T_{av} = (\sum_i w_i T_i) / \sum_i w_i$). These temperatures are anomalies with respect to preindustrial conditions.

The equilibrium temperature is determined by the ~~equilibrium climate sensitivity~~ Equilibrium Climate Sensitivity (T_{ECS} , the change in equilibrium temperature with a doubling of atmospheric CO_2 from preindustrial, CO_2^{PI} , diagnosed with the method described in Gregory et al., 2004) and the atmospheric CO_2 diagnosed from ACCESS-ESM1.5 experiments, or other ZECMIP ESMs. All other climate forcing terms (e.g. aerosols and non- CO_2 greenhouse gases) in these experiments are held constant at preindustrial values. Climate forcing, or radiative forcing perturbations in Wm^{-2} , is proportional to the logarithm of atmospheric CO_2 (Myhre et al., 1998), so the equilibrium temperature can be determined from

$$T_{eq}(CO_2) = T_{ECS} \frac{\ln(CO_2 / CO_2^{PI})}{\ln(2)} \quad (A2)$$

550 Table A1 describes the slabs used here to replicate the ACCESS-ESM1.5 global temperature time series in Fig. 10. The idealised “slab” model is intentionally kept simple while replicating the global trends from ACCESS-ESM1.5, and here two slabs ~~are found to~~ meet this objective. ~~The two slabs used conceptually correspond,~~ conceptually corresponding to the response the land and ocean ~~to changes, as indicated~~. The timescale of the “land” response ($\tau=1$) effectively means the land follows the equilibrium temperature here. Note, the land weighting of 0.5 is significantly higher than the areal fraction of land over the real Earth. However, there is no intent to interpret these slabs to represent actual land temperatures, rather ~~just,~~ just their influence on the global temperature. Also, for the “ocean” slab only a single τ is applied when in reality different regions of the ocean will respond differently to changes in climate forcing (such as the well-mixed Southern Ocean relative to the stratified tropics), and the single value represents a blended response of these varying oceanic components balanced with the terrestrial response.

Other processes could be considered in the construction of this slab model, such as heat exchange between the slabs and/or the additional of extra slabs (a slab with a decadal timescale for example). However, given that the two-slab model effectively reproduces the temperature time series in Fig. 10 these options are ~~considered~~ not necessary for the purposes used here.

To produce the trends of ZEC branches shown in Fig. 10 and 11, each T_i starts from a temperature anomaly of $0^\circ C$, or the preindustrial state, and evolves along the trajectory defined by the CO_2 from the *IpctCO2* to the branch point, where it then tends towards the temperatures determined by the atmospheric CO_2 diagnosed from ACCESS-ESM1.5 or ZECMIP model experiments for each ZEC branch.

Table A1. Components of the slab model in presented in Fig. 10.

Slab	Fraction	ECS °C	Timescale years
Land	0.5	3.87	1
Ocean	0.5	3.87	300

Author contributions.

TZ, MC and RL contributed to the development of the model. TZ ran experiments. MC analysed output and prepared the manuscript, all authors provided comments.

Competing interests.

570 The authors declare that they have no conflict of interest.

Acknowledgements. This research used computation resources and archives available at the National Computational Infrastructure (NCI), which is located at the Australian National University and supported by the Australian Government.

MC, TZ and RL receive funding from the Australian Government under the National Environmental Science Program (NESP).

[The authors thank Andrew MacDougall and an anonymous reviewer for comments that have improved the paper.](#)

575 **References**

- Armour, K. C., Marshall, J., Scott, J. R., Donohoe, A., and Newsom, E. R.: Southern Ocean warming delayed by circumpolar upwelling and equatorward transport, *Nature Geoscience*, 9, 549–554, <https://doi.org/10.1038/ngeo2731>, 2016.
- Cassidy, L. J., King, A. D., Brown, J. R., MacDougall, A. H., Ziehn, T., Min, S.-K., and Jones, C. D.: Regional temperature extremes and vulnerability under net zero CO₂ emissions, *Environmental Research Letters*, 19, 014051, <https://doi.org/10.1088/1748-9326/ad114a>,
580 2023.
- Dunne, J. P., John, J. G., Shevliakova, E., Stouffer, R. J., Krasting, J. P., Malyshev, S. L., Milly, P. C. D., Sentman, L. T., Adcroft, A. J., Cooke, W., Dunne, K. A., Griffies, S. M., Hallberg, R. W., Harrison, M. J., Levy, H., Wittenberg, A. T., Phillips, P. J., and Zadeh, N.: GFDL's ESM2 Global Coupled Climate–Carbon Earth System Models. Part II: Carbon System Formulation and Baseline Simulation Characteristics*, *Journal of Climate*, 26, 2247 – 2267, <https://doi.org/10.1175/JCLI-D-12-00150.1>, 2013.
- 585 Eby, M.: Zero Emissions Commitment Model Intercomparison Project, Globally averaged data and EMIC data repository, University of Victoria, available at: <http://terra.seos.uvic.ca/ZEC>, last access 2 July 2023., 2023.
- Eyring, V., Bony, S., Meehl, G. A., Senior, C. A., Stevens, B., Stouffer, R. J., and Taylor, K. E.: Overview of the Coupled Model Intercomparison Project Phase 6 (CMIP6) experimental design and organization, *Geosci. Model Dev.*, 9, 1937–1958, doi:10.519/gmd-9-1937-2016, 2016.
- 590 Friedlingstein, P., O'Sullivan, M., Jones, M. W., Andrew, R. M., Bakker, D. C. E., Hauck, J., Landschützer, P., Le Quéré, C., Luijkx, I. T., Peters, G. P., Peters, W., Pongratz, J., Schwingshackl, C., Sitch, S., Canadell, J. G., Ciais, P., Jackson, R. B., Alin, S. R., Anthoni, P., Barbero, L., Bates, N. R., Becker, M., Bellouin, N., Decharme, B., Bopp, L., Brasika, I. B. M., Cadule, P., Chamberlain, M. A., Chandra, N., Chau, T.-T.-T., Chevallier, F., Chini, L. P., Cronin, M., Dou, X., Enyo, K., Evans, W., Falk, S., Feely, R. A., Feng, L., Ford, D. J., Gasser, T., Ghattas, J., Gkritzalis, T., Grassi, G., Gregor, L., Gruber, N., Gürses, O., Harris, I., Hefner, M., Heinke, J., Houghton, R. A.,
595 Hurtt, G. C., Iida, Y., Ilyina, T., Jacobson, A. R., Jain, A., Jarníková, T., Jersild, A., Jiang, F., Jin, Z., Joos, F., Kato, E., Keeling, R. F., Kennedy, D., Klein Goldewijk, K., Knauer, J., Korsbakken, J. I., Körtzinger, A., Lan, X., Lefèvre, N., Li, H., Liu, J., Liu, Z., Ma, L., Marland, G., Mayot, N., McGuire, P. C., McKinley, G. A., Meyer, G., Morgan, E. J., Munro, D. R., Nakaoka, S.-I., Niwa, Y., O'Brien, K. M., Olsen, A., Omar, A. M., Ono, T., Paulsen, M., Pierrot, D., Pockock, K., Poulter, B., Powis, C. M., Rehder, G., Resplandy, L., Robertson, E., Rödenbeck, C., Rosan, T. M., Schwinger, J., Séférian, R., Smallman, T. L., Smith, S. M., Sospedra-Alfonso, R., Sun, Q.,
600 Sutton, A. J., Sweeney, C., Takao, S., Tans, P. P., Tian, H., Tilbrook, B., Tsujino, H., Tubiello, F., van der Werf, G. R., van Ooijen, E., Wanninkhof, R., Watanabe, M., Wimart-Rousseau, C., Yang, D., Yang, X., Yuan, W., Yue, X., Zaehle, S., Zeng, J., and Zheng, B.: Global Carbon Budget 2023, *Earth System Science Data*, 15, 5301–5369, <https://doi.org/10.5194/essd-15-5301-2023>, 2023.
- Frölicher, T. L., Winton, M., and Sarmiento, J. L.: Continued global warming after CO₂ emissions stoppage, *Nature Climate Change*, 4, 40–44, <https://doi.org/10.1038/nclimate2060>, 2014.
- 605 Geoffroy, O., Saint-Martin, D., Olivieri, D. J. L., Voldoire, A., Bellon, G., and Tytéca, S.: Transient Climate Response in a Two-Layer Energy-Balance Model. Part I: Analytical Solution and Parameter Calibration Using CMIP5 AOGCM Experiments, *Journal of Climate*, 26, 1841 – 1857, <https://doi.org/https://doi.org/10.1175/JCLI-D-12-00195.1>, 2013.
- Gillett, N. P., Arora, V. K., Zickfeld, K., Marshall, S. J., and Merryfield, W. J.: Ongoing climate change following a complete cessation of carbon dioxide emissions, *Nature Geoscience*, 4, 83–87, <https://doi.org/10.1038/ngeo1047>, 2011.

- 610 Gregory, J. M., Ingram, W. J., Palmer, M. A., Jones, G. S., Stott, P. A., Thorpe, R. B., Lowe, J. A., Johns, T. C., and Williams, K. D.: A new method for diagnosing radiative forcing and climate sensitivity, *Geophysical Research Letters*, 31, <https://doi.org/https://doi.org/10.1029/2003GL018747>, 2004.
- Griffies, S. M.: Elements of MOM5, GFDL Ocean Group Technical Report No. 7, NOAA/Geophysical Fluid Dynamics Laboratory, p. Code and documentation available online at www.gfdl.noaa.gov, 2012.
- 615 Hajima, T., Watanabe, M., Yamamoto, A., Tatebe, H., Noguchi, M. A., Abe, M., Ohgaito, R., Ito, A., Yamazaki, D., Okajima, H., Ito, A., Takata, K., Ogochi, K., Watanabe, S., and Kawamiya, M.: Development of the MIROC-ES2L Earth system model and the evaluation of biogeochemical processes and feedbacks, *Geoscientific Model Development*, 13, 2197–2244, <https://doi.org/10.5194/gmd-13-2197-2020>, 2020.
- Hunke, E. C. and Lipscomb, W. H.: CICE: The Los Alamos sea ice model documentation and software user’s manual, Version 4.1, LA-CC-620 06-012, Los Alamos National Laboratory, N. M., 2010.
- Jones, C. D., Frölicher, T. L., Koven, C., MacDougall, A. H., Matthews, H. D., Zickfeld, K., Rogelj, J., Tokarska, K. B., Gillett, N. P., Ilyina, T., Meinshausen, M., Mengis, N., Séférian, R., Eby, M., and Burger, F. A.: The Zero Emissions Commitment Model Intercomparison Project (ZECMIP) contribution to C4MIP: quantifying committed climate changes following zero carbon emissions, *Geoscientific Model Development*, 12, 4375–4385, <https://doi.org/10.5194/gmd-12-4375-2019>, 2019.
- 625 Kowalczyk, E. A., Stevens, L., Law, R. M., Dix, M., Wang, Y. P., Harman, I. N., Haynes, K., Srbinovsky, J., Pak, B., and Ziehn, T.: The land surface model component of ACCESS: description and impact on the simulated surface climatology, *Aus. Meteor. Oceanogr. J.*, 63, 65–82, 2013.
- Law, R. M., Ziehn, T., Matear, R. J., Lenton, A., Chamberlain, M. A., Stevens, L. E., Wang, Y.-P., Srbinovsky, J., Bi, D., Yan, H., and Vohralik, P. F.: The carbon cycle in the Australian Community Climate and Earth System Simulator (ACCESS-ESM1) – Part 1: Model 630 description and pre-industrial simulation, *Geoscientific Model Development*, 10, 2567–2590, <https://doi.org/10.5194/gmd-10-2567-2017>, 2017.
- Li, Q., England, M. H., Hogg, A. M., Rintoul, S. R., and Morrison, A. K.: Abyssal ocean overturning slowdown and warming driven by Antarctic meltwater, *Nature*, 615, 841–847, <https://doi.org/10.1038/s41586-023-05762-w>, 2023.
- MacDougall, A. H., Frölicher, T. L., Jones, C. D., Rogelj, J., Matthews, H. D., Zickfeld, K., Arora, V. K., Barrett, N. J., Brovkin, V., 635 Burger, F. A., Eby, M., Eliseev, A. V., Hajima, T., Holden, P. B., Jeltsch-Thömmes, A., Koven, C., Mengis, N., Menviel, L., Michou, M., Mokhov, I. I., Oka, A., Schwinger, J., Séférian, R., Shaffer, G., Sokolov, A., Tachiiri, K., Tjiputra, J., Wiltshire, A., and Ziehn, T.: Is there warming in the pipeline? A multi-model analysis of the Zero Emissions Commitment from CO₂, *Biogeosciences*, 17, 2987–3016, <https://doi.org/10.5194/bg-17-2987-2020>, 2020.
- MacDougall, A. H., Mallett, J., Hohn, D., and Mengis, N.: Substantial regional climate change expected following cessation of CO₂ emis- 640 sions, *Environmental Research Letters*, 17, 114046, <https://doi.org/10.1088/1748-9326/ac9f59>, 2022.
- Mackallah, C., Chamberlain, M. A., Law, R. M., Dix, M., Ziehn, T., Bi, D., Bodman, R., Brown, J. R., Dobrohotoff, P., Druken, K., Evans, B., Harman, I. N., Hayashida, H., Holmes, R., Kiss, A. E., Lenton, A., Liu, Y., Marsland, S., Meissner, K., Menviel, L., O’Farrell, S., Rashid, H. A., Ridzwan, S., Savita, A., Srbinovsky, J., Sullivan, A., Trenham, C., Vohralik, P. F., Wang, Y.-P., Williams, G., Woodhouse, M. T., and N., Y.: ACCESS datasets for CMIP6: methodology and idealised experiments, *Journal of Southern Hemisphere Earth Systems 645 Science*, <https://doi.org/10.1071/ES21031>, 2022.
- Matthews, H. D. and Weaver, A. J.: Committed climate warming, *Nature Geoscience*, 3, 142–143, <https://doi.org/10.1038/ngeo813>, 2010.

- Myhre, G., Highwood, E. J., Shine, K. P., and Stordal, F.: New estimates of radiative forcing due to well mixed greenhouse gases, *Geophysical Research Letters*, 25, 2715–2718, <https://doi.org/10.1029/98GL01908>, 1998.
- 650 Oke, P. R., Griffin, D. A., Schiller, A., Matear, R. J., Fiedler, R., Mansbridge, J., Lenton, A., Cahill, M., Chamberlain, M. A., and Ridgway, K.: Evaluation of a near-global eddy-resolving ocean model, *Geoscientific Model Development*, 6, 591–615, <https://doi.org/10.5194/gmd-6-591-2013>, 2013.
- Paynter, D., Frölicher, T., Horowitz, L., and Silvers, L.: Equilibrium Climate Sensitivity Obtained from Multi-Millennial Runs of Two GFDL Climate Models, *Journal of Geophysical Research: Atmospheres*, 123, <https://doi.org/10.1002/2017JD027885>, 2018.
- 655 Purich, A. and England, M. H.: Projected Impacts of Antarctic Meltwater Anomalies over the Twenty-First Century, *Journal of Climate*, 36, 2703 – 2719, <https://doi.org/https://doi.org/10.1175/JCLI-D-22-0457.1>, 2023.
- Rogelj, J., Shindell, D., Jiang, K., Fifita, S., Forster, P., Ginzburg, V., Handa, C., Kheshgi, H., Kobayashi, S., Krieglner, E., Mundaca, L., Séférian, R., and Vilariño, M. V.: Mitigation Pathways Compatible with 1.5°C in the Context of Sustainable Development, p. 93–174, Cambridge University Press, <https://doi.org/10.1017/9781009157940.004>, 2018.
- 660 Rogelj, J., Forster, P. M., Krieglner, E., Smith, C. J., and Séférian, R.: Estimating and tracking the remaining carbon budget for stringent climate targets, *Nature*, 571, 335–342, <https://doi.org/10.1038/s41586-019-1368-z>, 2019.
- Schwinger, J., Asaadi, A., Goris, N., and Lee, H.: Possibility for strong northern hemisphere high-latitude cooling under negative emissions, *Nature Communications*, 13, 1095, <https://doi.org/10.1038/s41467-022-28573-5>, 2022.
- Seland, Ø., Bentsen, M., Olivié, D., Toniazzo, T., Gjermundsen, A., Graff, L. S., Debernard, J. B., Gupta, A. K., He, Y.-C., Kirkevåg, A., Schwinger, J., Tjiputra, J., Aas, K. S., Bethke, I., Fan, Y., Griesfeller, J., Grini, A., Guo, C., Ilicak, M., Karset, I. H. H., Landgren, O., Liakka, J., Moseid, K. O., Nummelin, A., Spensberger, C., Tang, H., Zhang, Z., Heinze, C., Iversen, T., and Schulz, M.: Overview of the Norwegian Earth System Model (NorESM2) and key climate response of CMIP6 DECK, historical, and scenario simulations, *Geoscientific Model Development*, 13, 6165–6200, <https://doi.org/10.5194/gmd-13-6165-2020>, 2020.
- 670 Sellar, A. A., Jones, C. G., Mulcahy, J. P., Tang, Y., Yool, A., Wiltshire, A., O'Connor, F. M., Stringer, M., Hill, R., Palmieri, J., Woodward, S., de Mora, L., Kuhlbrodt, T., Rumbold, S. T., Kelley, D. I., Ellis, R., Johnson, C. E., Walton, J., Abraham, N. L., Andrews, M. B., Andrews, T., Archibald, A. T., Berthou, S., Burke, E., Blockley, E., Carslaw, K., Dalvi, M., Edwards, J., Folberth, G. A., Gedney, N., Griffiths, P. T., Harper, A. B., Hendry, M. A., Hewitt, A. J., Johnson, B., Jones, A., Jones, C. D., Keeble, J., Liddicoat, S., Morgenstern, O., Parker, R. J., Predoi, V., Robertson, E., Siahhaan, A., Smith, R. S., Swaminathan, R., Woodhouse, M. T., Zeng, G., and Zerroukat, M.: UKESM1: Description and Evaluation of the U.K. Earth System Model, *Journal of Advances in Modeling Earth Systems*, 11, 4513–4558, <https://doi.org/https://doi.org/10.1029/2019MS001739>, 2019.
- 675 Swart, N. C., Cole, J. N. S., Kharin, V. V., Lazare, M., Scinocca, J. F., Gillett, N. P., Anstey, J., Arora, V., Christian, J. R., Hanna, S., Jiao, Y., Lee, W. G., Majaess, F., Saenko, O. A., Seiler, C., Seinen, C., Shao, A., Sigmond, M., Solheim, L., von Salzen, K., Yang, D., and Winter, B.: The Canadian Earth System Model version 5 (CanESM5.0.3), *Geoscientific Model Development*, 12, 4823–4873, <https://doi.org/10.5194/gmd-12-4823-2019>, 2019.
- 680 The HadGEM2 Development Team, Martin, G. M., Bellouin, N., Collins, W. J., Culverwell, I. D., Halloran, P. R., Hardiman, S. C., Hinton, T. J., Jones, C. D., McDonald, R. E., McLaren, A. J., O'Connor, F. M., Roberts, M. J., Rodriguez, J. M., Woodward, S., Best, M. J., Brooks, M. E., Brown, A. R., Butchart, N., Dearden, C., Derbyshire, S. H., Dharssi, I., Doutriaux-Boucher, M., Edwards, J. M., Falloon, P. D., Gedney, N., Gray, L. J., Hewitt, H. T., Hobson, M., Huddleston, M. R., Hughes, J., Ineson, S., Ingram, W. J., James, P. M., Johns, T. C., Johnson, C. E., Jones, A., Jones, C. P., Joshi, M. M., Keen, A. B., Liddicoat, S., Lock, A. P., Maidens, A. V., Manners, J. C., Milton, S. F., Rae, J. G. L., Ridley, J. K., Sellar, A., Senior, C. A., Totterdell, I. J., Verhoef, A., Vidale, P. L., and Wiltshire, A.: The HadGEM2

- 685 family of Met Office Unified Model climate configurations, *Geosci. Model Dev.*, 4, 723–757, <https://doi.org/10.5194/gmd-4-723-2011>, 2011.
- World Climate Research Program: Coupled Model Intercomparison Project, Phase 6, United States Department of Energy, available at: <https://esgf-node.llnl.gov/projects/cmip6/>, last access 23 May 2023., 2023.
- Ziehn, T., Chamberlain, M. A., Law, R., Lenton, A., Bodman, R. W., Dix, M., Stevens, L., Wang, Y. P., and Srbinovsky, J.: The Australian
690 Earth System Model: ACCESS-ESM1.5, *J. Southern Hemis. Earth Sys. Sci.*, 70, 193–214, <https://doi.org/10.1071/ES19035>, 2020.
- Ziehn, T., Wang, Y. P., and Huang, Y.: Land carbon-concentration and carbon-climate feedbacks are significantly reduced by nitrogen and phosphorus limitation, *Environmental Research Letters*, 16, 074043, <https://doi.org/10.1088/1748-9326/ac0e62>, 2021.