

# Southern Ocean phytoplankton under climate change: shifting balance of bottom-up and top-down control

Tianfei Xue<sup>1</sup>, Jens Terhaar<sup>2,3,4</sup>, A.E. Friederike Prowe<sup>1</sup>, Thomas L. Frölicher<sup>3,4</sup>, Andreas Oschlies<sup>1</sup>, and Ivy Frenger<sup>1</sup>

<sup>1</sup>GEOMAR Helmholtz Centre for Ocean Research Kiel, Kiel, Germany

<sup>2</sup>Department of Marine Chemistry and Geochemistry, Woods Hole Oceanographic Institution, Woods Hole, Massachusetts, USA

<sup>3</sup>Climate and Environmental Physics, Physics Institute, University of Bern, Bern, Switzerland

<sup>4</sup>Oeschger Centre for Climate Change Research, University of Bern, Bern, Switzerland

**Correspondence:** Tianfei Xue (txue@geomar.de)

**Abstract.** Phytoplankton ~~forms~~ form the base of the marine food web by transforming CO<sub>2</sub> into organic carbon via photosynthesis. ~~Some of the organic carbon is then transferred through the food web and exported into the deep ocean, a process known as the biological carbon pump.~~ Despite the importance of phytoplankton for marine ecosystems and ~~the global carbon eye~~ global carbon cycling, projections of phytoplankton biomass in response to climate change differ strongly across Earth system models, illustrating uncertainty in our understanding of the underlying processes. Differences are especially large in the Southern Ocean, a region that is notoriously difficult to represent in models. Here, we argue that ~~water column-integrated total~~ total phytoplankton biomass in the Southern Ocean is projected to largely remain unchanged under climate change by the CMIP6 multi-model ensemble because of a shifting balance of bottom-up and top-down processes driven by a shoaling mixed layer depth. A shallower mixed layer is projected on average to improve growth conditions ~~and~~, consequently weaken bottom-up control. ~~In addition to enhanced phytoplankton growth, the shoaling of the mixed layer also compresses, and confine~~ phytoplankton closer to the surface and. The increased surface phytoplankton concentration also promotes zooplankton grazing efficiency, thus intensifying top-down control. However, large differences across the model ensemble exist, with some models simulating a decrease in surface phytoplankton concentrations. To reduce uncertainties in projections of surface phytoplankton concentrations, we employ an emergent constraint approach using the observed sensitivity of surface chlorophyll concentration, taken as an observable proxy for phytoplankton, to seasonal changes in the mixed layer depth as an indicator for future changes in surface phytoplankton concentrations. The emergent constraint reduces uncertainties in phytoplankton concentration projections by around one third and increases confidence that phytoplankton concentrations will indeed rise due to shoaling mixed layers under global warming, thus favouring intensified top-down control. Overall, our results suggest that while changes in bottom-up conditions stimulate enhanced growth, intensified top-down control opposes an increase in phytoplankton and becomes increasingly important for phytoplankton response ~~under~~ to climate change in the Southern Ocean.

## 1 Introduction

Phytoplankton ~~is~~are fundamental to the marine ecosystem and the global carbon cycle, as ~~it is~~they are the base of the ocean food web (Pauly and Christensen, 1995) and ~~accounts~~account for approximately half of the global biological carbon fixation (Field et al., 1998). Despite the importance of phytoplankton for ~~future changes in the ecosystem and carbon cycle, its response~~  
25 ~~the carbon cycle and the future of marine ecosystems, the response of phytoplankton~~ to climate change remains uncertain. Earth system model projections of phytoplankton biomass and its growth for the 21<sup>st</sup> century ~~reveal large uncertainties~~largely differ  
between models and scenarios (Steinacher et al., 2010; Laufkötter et al., 2015; Frölicher et al., 2016; Tagliabue et al., 2021) and even the direction of changes remains unclear (~~Bopp et al., 2022~~). ~~The uncertainties are due not only~~ (Kwiatkowski et al., 2020)  
The different projections are due to uncertainties in the underlying physical forcing ~~but also to~~and different biological and  
30 biogeochemical parameterizations of processes in the models (Laufkötter et al., 2015). Such ~~uncertainties~~differences in the  
biological and biogeochemical process parameterizations have the potential to propagate through the food web, often amplified by ~~poorly simulated~~simplistic  
food web dynamics (Stock et al., 2014b), and cause even greater ~~uncertainties~~model differences  
for higher trophic level projections (Lotze et al., 2019). In turn, ~~uncertainties~~such differences in higher trophic level projections  
and ~~poorly simulated~~simplistic food web dynamics will, through ill-constrained grazing pressure on phytoplankton, lead to  
35 amplified ~~uncertainties~~model differences in phytoplankton projections, forming a feedback loop for ~~uncertainties~~inter-model  
differences in simulated ecosystem dynamics. Given the role of phytoplankton in marine ecosystems and biogeochemical cycling, better constraining how phytoplankton respond to changes in their physical, chemical and biological environment under climate change is critical.

Climate change affects phytoplankton through both "bottom-up" (Marinov et al., 2010; Leung et al., 2015) and "top-down"  
40 (Stock et al., 2014a; Kwiatkowski et al., 2019) control. Bottom-up control describes changes ~~of~~in phytoplankton growth due to changes in light, temperature, and nutrients caused by environmental factors like mixing or upwelling (Behrenfeld et al., 2006). Given that these environmental factors are projected to change under climate change, ~~it is expected that~~it is expected that phytoplankton will also be ~~influenced by climate change~~affected. Top-down control, on the other hand, ~~describes how phytoplankton responds~~  
~~to predator changes~~refers to the impact of predators on phytoplankton populations. The major predator of phytoplankton  
45 is zooplankton. ~~Changes in phytoplankton are typically described as~~Phytoplankton changes are typically considered top-down controlled ~~if changes in when~~  
zooplankton and phytoplankton ~~are of the opposite sign~~ (Chust et al., 2014), ~~changes are~~inversely related (Chust et al., 2014); for example, when phytoplankton decreases while zooplankton increases, ~~suggesting that~~  
zooplankton is grazing down phytoplankton. Globally, changes in bottom-up control are thought to dominate the phytoplankton response to changing climate, with ~~a decrease in phytoplankton biomass and growth due to reduced nutrient supply as a result~~  
50 ~~of~~increasing ocean stratification and shoaling mixed layers ~~driving a reduction in nutrient supply and hence a reduction in~~  
phytoplankton biomass and growth (Sarmiento et al., 2004b; Bopp et al., 2005; Behrenfeld et al., 2006; Steinacher et al., 2010; Boyce et al., 2010). An opposite bottom-up response can be found in high-latitude regions where improved light conditions due to increased stratification ~~and sea ice retreat~~are projected to lead to phytoplankton increases (~~Sarmiento et al., 2004b~~)

(Sarmiento et al., 2004b; Deppeler and Davidson, 2017). Although predators and grazing pressure also evolve with climate change (Shurin et al., 2012), top-down control has received much less attention (Ratnarajah et al., 2023).

The Southern Ocean is a region where models, albeit with an uncertain magnitude, robustly project that phytoplankton will grow better with shoaling mixed layer depths under global warming (Fig. 1 & 2; Sarmiento et al., 2004b; Bopp et al., 2013; Laufkötter et al., 2015; Kwiatkowski et al., 2020). Despite the high abundance of macronutrients (Fig. A1), phytoplankton growth in the Southern Ocean is at present largely bottom-up controlled by iron and light limitations (Martin et al., 1990; Mitchell et al., 1991; Arteaga et al., 2020; Moore et al., 2013). Light limitation is especially strong in the Southern Ocean due to the deep mixed layers and low surface radiation in mid-to-high latitude winters. Under global warming, Southern Ocean phytoplankton growth conditions are anticipated to improve with rising temperatures and a prolonged growing season, as well as improving light conditions with increasing stratification and, shoaling mixed layer depths, and reduced sea ice cover (Bopp et al., 2001; Sarmiento et al., 2004b). Apart from the prominent limitation by light, changes in ~~phytoplankton-iron~~ iron limitation in the Southern Ocean with climate change remain uncertain as the iron cycle is not well resolved mechanistically in ~~current~~ Earth System Models (Tagliabue et al., 2016). In addition to bottom-up control, top-down control via zooplankton also affects phytoplankton variability in the Southern Ocean (Le Quéré et al., 2016).

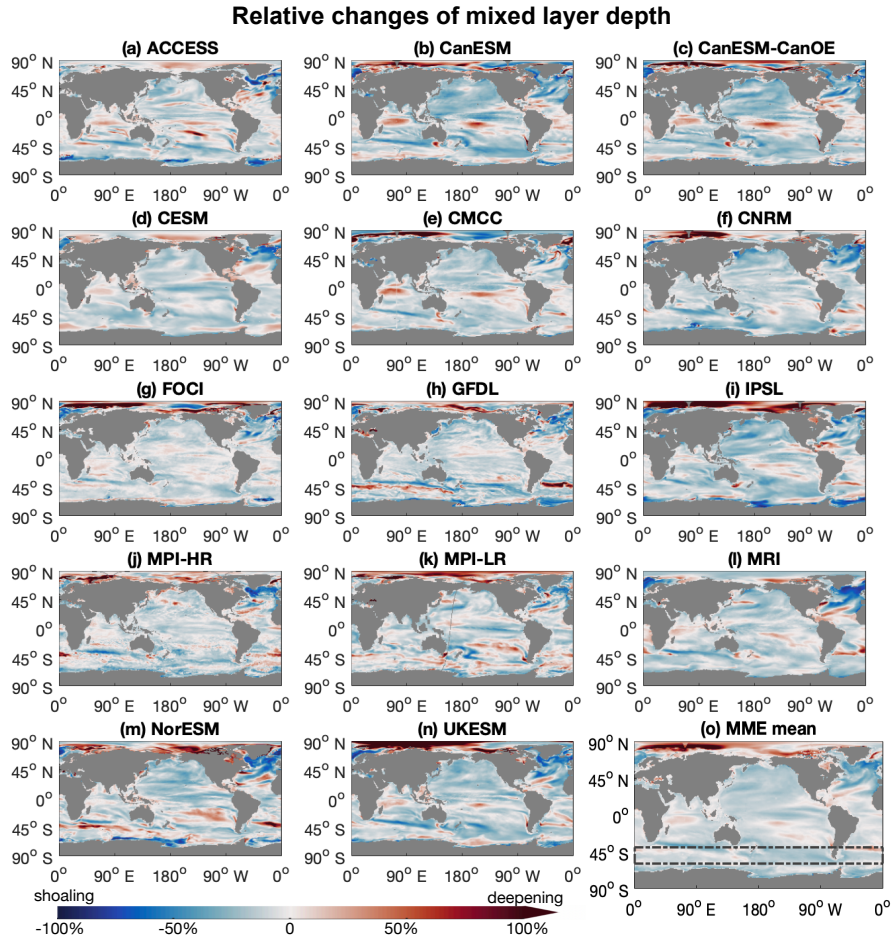
As phytoplankton in the Southern Ocean plays an important role for the local food web and also in setting the biogeochemical characteristics of ocean waters globally, better understanding and constraining its evolution under climate change is relevant for reliable projections of marine biological production well beyond the Southern Ocean (Sarmiento et al., 2004a; Marinov et al., 2006; Nissen et al., 2021). Here, we deliver crucial insights into phytoplankton projections under climate change, highlighting the dynamic interplay between bottom-up and top-down controls due to mixed layer shoaling in the Southern Ocean. By employing an emergent constraint approach, we enhance our confidence in comprehending phytoplankton dynamics and their response to climate change.

## 2 Methods

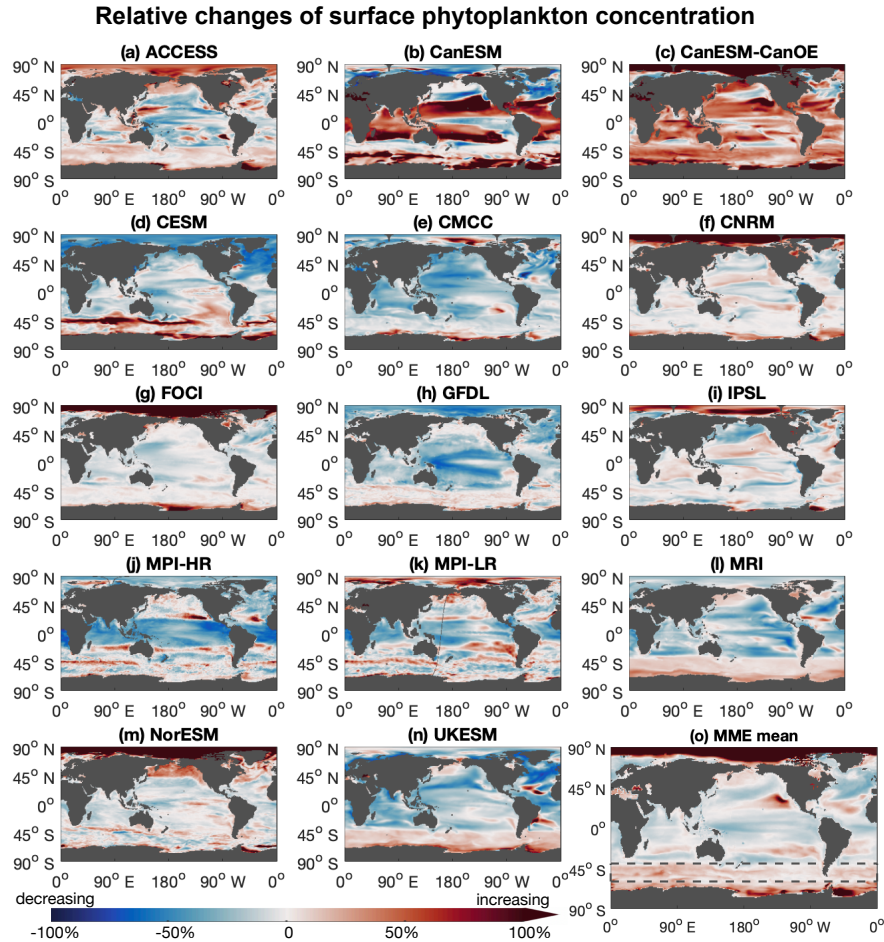
### 2.1 Research area

This study focuses on the subantarctic and subpolar Antarctic regions, which approximately span the latitude range of 40°S–60°S ~~-(boxes in panel o of Fig. 1 & 2).~~ This region has ~~sufficiently high macronutrient levels~~ high levels of macronutrients sufficient to support the growth of phytoplankton and is relatively ~~little affected by the~~ unaffected by sea ice. ~~Earth System Models project that surface chlorophyll levels in this region will increase with global warming (Fig. ??).~~ In the current climate, the ~~observed seasonal cycle of surface phytoplankton in the subantarctic and subpolar Antarctic regions is found to be strongly driven by the light limitation due to the seasonal~~ seasonal change in mixed layer depth (MLD; ~~Arteaga et al., 2020~~) (MLD) is known to be important for seasonal plankton dynamics, primarily because of its impact on light regulation Arteaga et al. (2020)

~~The Southern Ocean stands out as a region with projected shoaling mixed layers and increasing chlorophyll under a high emission, no mitigation scenario (SSP5-8.5). Global maps of relative change in (a) mixed layer depth (MLD) and (b) surface~~



**Figure 1. The mixed layers in the Southern Ocean are projected to shoal under a high emission, no mitigation scenario (SSP5-8.5).** (a-n) Maps for individual climate models in a multi-model ensemble (MME; listed in Table 1), showing annual mean mixed layer depth anomalies of the last decade (2090s) of the 21<sup>st</sup> century relative to the first decade (2000s), under a high emissions, no mitigation scenario (the SSP5-8.5 scenario). (o) is the mean of the multi-model ensemble. Boxes denoted by dashed lines mark the focus area. Red indicates deepening, and blue indicates shoaling mixed layers towards the end of the 21<sup>st</sup> century. Results are shown for a multi-model ensemble (MME; listed in Table 1).



**Figure 2.** The Southern Ocean stands out as a region with projected increasing surface phytoplankton concentrations under a high emission, no mitigation scenario (SSP5-8.5). (a-n) Maps for individual climate models in a multi-model ensemble (MME; listed in Table 1), showing the relative variation-change of surface chl<sub>a</sub>-phytoplankton of the last decade (2090s) of the 21<sup>st</sup> century relative to the first decade (2000s), under a high emissions, no mitigation scenario (the SSP5-8.5 scenario. (o) is the mean of the multi-model ensemble. Boxes denoted by dashed lines mark the focus area. Red indicates increasing and blue indicates decreasing surface chl<sub>a</sub>-phytoplankton during the 21<sup>st</sup> century. Results are shown for a multi-model ensemble (MME; listed in Table 1).

chlorophyll with global warming (between the first (2000s) and last decade (2090s) of the 21<sup>st</sup> century). Black boxes mark the focus area. Red indicates deepening mixed layers and increasing surface chlorophyll, while blue indicates shoaling mixed layers and decreasing surface chlorophyll towards the end of the 21<sup>st</sup> century. Results are shown for a multi-model ensemble (MME; listed in Table 1).

## 2.2 Multi-Model Ensemble

Here we use the output of a Multi-Model Ensemble (MME; Table 1) of 14 Earth System Models (ESMs). Of the 14 models that we used, 13 ESMs are part of the Coupled Model Intercomparison Project Phase 6 (CMIP6, downloaded from <https://esgf-data.dkrz.de>). The FOCI (Flexible Ocean and Climate Infrastructure) model run at GEOMAR (Chien et al., 2022) was added to these 13 models. The selection of these models is based on the present availability of the variables required (phytoplankton biomass concentration, zooplankton biomass concentration, mixed layer depth and surface chlorophyll concentration), the temporal resolution (monthly), and the experimental settings (historical simulation, piControl simulation to account for potential drifts, and the SSP5-8.5 high emission no mitigation scenario). The models within the MME are structurally different, cover a range of different parameterizations of processes, and initial conditions (Séférian et al., 2020). All output fields were regridded on a regular  $1^\circ \times 1^\circ$  map using the bilinear interpolation of CDO (Climate Data Operators).

## 2.3 Emergent constraint

The emergent constraint approach is based on an identifiable relationship in a model ensemble between an observable contemporary sensitivity and an uncertain condition for future climates (Hall et al., 2019; Williamson et al., 2021). The observable contemporary condition can then be used to constrain future model projections, such as previously done for [tropical marine primary productivity in Kwiatkowski et al. \(2017\)](#), [the ocean carbon sink in Kessler and Tjiputra \(2016\)](#); [Terhaar et al. \(2021a, 2022\)](#); [and ocean acidification in Terhaar et al. \(2020, 2021b\)](#) ([Kessler and Tjiputra, 2016](#); [Terhaar et al., 2021a, 2022](#)), [ocean acidification \(Terhaar et al., 2020, 2021b\)](#), or [marine primary productivity in the tropics \(Kwiatkowski et al., 2017\)](#).

Here, we apply the emergent constraint approach to reduce uncertainties of the projections of the long-term sensitivity of [chlorophyll surface phytoplankton concentrations in the Southern Ocean](#) to changes in the mixed layer depth ( $S_{clm}$ , Eq. 2, period: 2000 - 2099) using contemporary seasonal sensitivities of [chlorophyll surface chlorophyll concentrations, an observable proxy for phytoplankton concentrations with good spatial-temporal coverage from satellite-based sensors](#), to mixed layer depth changes ( $S_{seas}$ , Eq. 1, period: 2000 - 2009). For each of the individual models and for the observations, the respective contemporary seasonal sensitivity of chlorophyll [concentrations](#) to the MLD ( $S_{seas}$ ) is computed as follows:

$$S_{seas} = \frac{(\overline{chl_{mmax}} - \overline{chl_{mmin}}) / \overline{chl}}{(\overline{MLD_{mmax}} - \overline{MLD_{mmin}}) / \overline{MLD}}, \quad (1)$$

with overlines indicating the annual mean and  $mmax$  and  $mmin$  indicating the months with the minimum and maximum ML D that mark the beginning and the end of the shoaling period (shaded periods in Fig. 3). We explicitly selected the shoal-

**Table 1.** Overview of the Multi-Model Ensemble (MME) used in this study.

Number	Model Name	Ocean	Plankton	Simulations		Reference
		Biogeochemistry	Groups	biomass	production	
(a)	ACCESS-ESM1-5	WOMBAT*	P1Z1	(✓)		Ziehn et al. (2020)
(b)	CanESM5	CMOC	P1Z1	✓		Swart et al. (2019)
(c)	CanESM5-CanOE	CanOE*	P2Z2	✓	✓	Christian et al. (2022)
(d)	CESM2-WACCM	MARBL*	P3Z1	✓		Danabasoglu et al. (2020)
(e)	CMCC-ESM2	BFM v5.2*	P2Z2	(✓)		Lovato et al. (2022)
(f)	CNRM-ESM2-1	PISCESv2-gas*	P2Z2	✓	✓	Séférian et al. (2019)
(g)	FOCI1	MOPS	P1Z1	✓	✓	Chien et al. (2022)
(h)	GFDL-ESM4	COBALTv2*	P3Z3	✓	✓	Dunne et al. (2020)
(i)	IPSL-CM6A-LR	PISCES-v2*	P2Z2	✓		Boucher et al. (2020)
(j)	MPI-ESM1.2-HR	HAMOC6*	P2Z1	✓	✓	Müller et al. (2018)
(k)	MPI-ESM1.2-LR	HAMOC6 *	P2Z1	✓	✓	Mauritsen et al. (2019)
(l)	MRI-ESM2.0	NPZD	P1Z1	✓		Tsujino et al. (2017)
(m)	NorESM2-MM	iHAMOC6*	P2Z1	✓		Tjiputra et al. (2020)
(n)	UKESM1-0-LL	MEDUSA *	P2Z2	✓	✓	Sellar et al. (2019)

\* indicates models that explicitly include iron limitation.

PxZy in column "Plankton Groups" indicates x phytoplankton and y zooplankton groups in the respective model.

Column "Simulations" indicates models whose output was used in biomass or production relevant calculations.

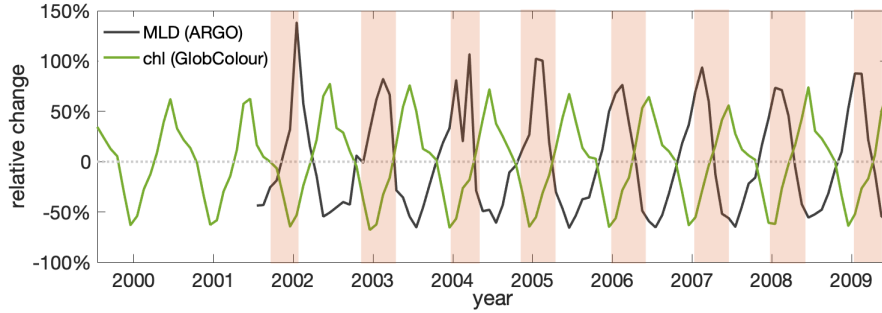
(✓) indicates model provides only surface value of phytoplankton biomass as output, therefore it is not used in total plankton biomass analysis in section 3.1.

ing period, as the decrease due to MLD shoaling and improving light conditions are analogues to changes ~~under climate change~~ expected under global warming.

120 ~~Following the definition of the seasonal sensitivity in Eq. 1~~ Based on the strong correlation between projected surface chlorophyll and surface phytoplankton (Fig. A2), the long-term sensitivities of surface phytoplankton concentrations to mixed layer changes ( $S_{clm}$ , Eq. 2) of individual models are calculated based on the ~~differences~~ relative changes in surface phytoplankton concentration ( $R_{sphy}$ ) and MLD ( $R_{MLD}$ ) between the first decade (2000s) and last the last decade (2090s) decade of the 21<sup>st</sup> century ~~in chlorophyll ( $R_{chl}$ ) and MLD ( $R_{MLD}$ ), each normalised with respect to the first decade of the century.~~ The long-term sensitivity calculation here is following the definition of the seasonal sensitivity in Eq. 1.

$$125 \quad S_{clm} = \frac{(\overline{chl_{2090s}} - \overline{chl_{2000s}}) / \overline{chl_{2000s}}}{(\overline{MLD_{2090s}} - \overline{MLD_{2000s}}) / \overline{MLD_{2000s}}} \frac{(\overline{sphy_{2090s}} - \overline{sphy_{2000s}}) / \overline{sphy_{2000s}}}{(\overline{MLD_{2090s}} - \overline{MLD_{2000s}}) / \overline{MLD_{2000s}}} = \frac{R_{chl}}{R_{MLD}} \frac{R_{sphy}}{R_{MLD}} \quad (2)$$

Relative MLD anomalies are used instead of absolute anomalies, as the relative anomaly relates to the dilution of phytoplankton across the mixed layer, which is one of the main mechanisms controlling ~~the~~ surface phytoplankton concentration. Despite the large differences revealed in the absolute MLD and chlorophyll values of individual models (Fig. A3), the models



**Figure 3.** The surface chlorophyll (chl) concentration shows a clear seasonal cycle that is anticorrelated with mixed layer depths (MLD) in observations. Observed surface chlorophyll (chl) concentration shows a clear seasonal cycle that, to first order, is anticorrelated with observed mixed layer depths (MLD). Contemporary seasonal variations relative to the respective annual means of observed MLD (ARGO: black) and surface chlorophyll concentration based on merged satellite data (GlobColour: green) in the Southern Ocean subantarctic and subpolar Antarctic regions (40°S–60°S). The shaded areas indicate the seasonal MLD shoaling period.

130 resolve the same seasonal anticorrelation between relative variations of MLD and chlorophyll as seen in observations (Fig. 7 see results section 3.3.1).

The probability density functions (PDFs) of the long-term sensitivity ( $S_{clm}$ ) were derived from a Gaussian distribution and the MME mean and standard deviation, assuming that all models have equal probability (Fig. 8b). We calculated the constrained PDFs following previous literature (Eq. 3; Eq. 20 in Williamson et al., 2021).

$$p(y) = \int_{-\infty}^{\infty} p(y | x)p(x)dx = \mathcal{N}\left(y | a + bX_{obs}, \sqrt{\sigma_f^2 + b^2\sigma_{obs}^2}\right) \quad (3)$$

135 The mean of the distribution is calculated by applying the observational constraint ( $X_{obs}$ ) to the emergent linear inter-model relationship ( $y = a + b * x$ ) of  $S_{seas}$  and  $S_{clm}$ . The standard deviation of the PDF distribution is estimated by accounting for both observational uncertainty ( $\sigma_{obs}$ ) and the prediction interval of the emergent relationship ( $\sigma_f$ ).

The hereby constrained  $S_{clm}$  (here defined as  $S_{clm}^*$ ) is then used to estimate the constrained surface chlorophyll-phytoplankton concentration change by the end of the 21<sup>st</sup> century ( $R_{clm}^* R_{sphy}^*$ ) by reordering Eq. 2 to  $R_{clm}^* = R_{MLD} * S_{clm}^*$ . The uncertainty in the post-constraint projection for the relative variation of chlorophyll is then phytoplankton concentration variation is calculated by accounting for uncertainties from both the estimation of the constrained long-term sensitivity ( $\sigma_{S_{clm}^*}$ ) and the MLD projection ( $\sigma_{R_{MLD}}$ ) through error propagation:

$$\mathcal{N}\left(R_{chl^* sphy^*}, \sigma_{chl^* sphy^*}\right) = \mathcal{N}\left(R_{MLD} \cdot S_{clm}^*, |R_{MLD} \cdot S_{clm}^*| \sqrt{\left(\frac{\sigma_{R_{MLD}}}{R_{MLD}}\right)^2 + \left(\frac{\sigma_{S_{clm}^*}}{S_{clm}^*}\right)^2}\right) \quad (4)$$



## 2.4 Observational constraints

145 The observation-based estimate of  $S_{seas}$  is based on monthly MLD data from the ARGO mixed layer database (<http://mixedlayer.ucsd.edu/>) and satellite-derived monthly surface chlorophyll data from the merged satellite product GlobColour (<https://www.globcolour.info/>) during the period 2000 - 2009. The observational MLD is calculated based on the temperature threshold estimate (threshold of 0.2°C; Holte and Talley, 2009), consistent with the MLD diagnostic available from the MME. Surface chlorophyll is used as a reliable proxy for surface phytoplankton concentration (Fig. A2). It under the current  
150 climate, as it is a comparatively well-observed variable, in contrast to phytoplankton biomass. Under the common assumption that all properties (except light) are considered homogeneous within the mixed layer (Westberry et al., 2008), we assume that phytoplankton concentrations across the mixed layer are well reflected by surface phytoplankton concentration. The seasonal variation in the observability of ~~the satellite surface chlorophyll~~ surface chlorophyll from satellite data is mainly affected by the winter light conditions and varying ice cover to the south of the research region. The impact of cloud cover in the research  
155 region is minor at a monthly temporal resolution (Fig. A4).

## 2.5 Trophic transfer efficiency

~~The~~ Given the simplicity of models and the limitations of their outputs, the trophic transfer efficiency (TTE, Eq. 5) is simply defined as the ratio of total (depth-integrated) biomass of zooplankton to ~~depth-integrated biomass that~~ of phytoplankton following Barnes et al. (2010),

$$160 \quad TTE = \frac{\sum_{z=0}^{zmax} zoo * dh}{\sum_{z=0}^{zmax} phy * dh} \quad (5)$$

where phy and zoo represent the phytoplankton and zooplankton biomass concentrations (unit:  $mg C m^{-3}$ ), respectively; ~~h~~ dh indicates the thickness of each grid box, and zmax the depth of the water column.

The dimensionless TTE reflects the biomass or energy transfer between trophic levels and is typically estimated based on the biomasses or productivities of trophic levels. We used biomass instead of productivity to quantify the TTE, as biomass can  
165 be directly compared to observations and is available from more models than productivity data (Table 1).

## 3 Results

### 3.1 Stable phytoplankton biomass in a changing climate: shifting balance of bottom-up and top-down control in the Southern Ocean

The multi-model ensemble (MME) projects the ~~depth-integrated total~~ phytoplankton biomass to remain relatively stable (~~-1-2~~  
170  $\pm 78\%$ ) throughout the 21<sup>st</sup> century, following the SSP5-8.5 scenario (Fig. 4a). ~~Across the ensemble of Earth system models, individual projections range from -10% to 15% in the 2090s compared to the 2000s. Future trends in depth-integrated~~ Future changes in total phytoplankton biomass are largely determined by the competing effects of increasing primary production

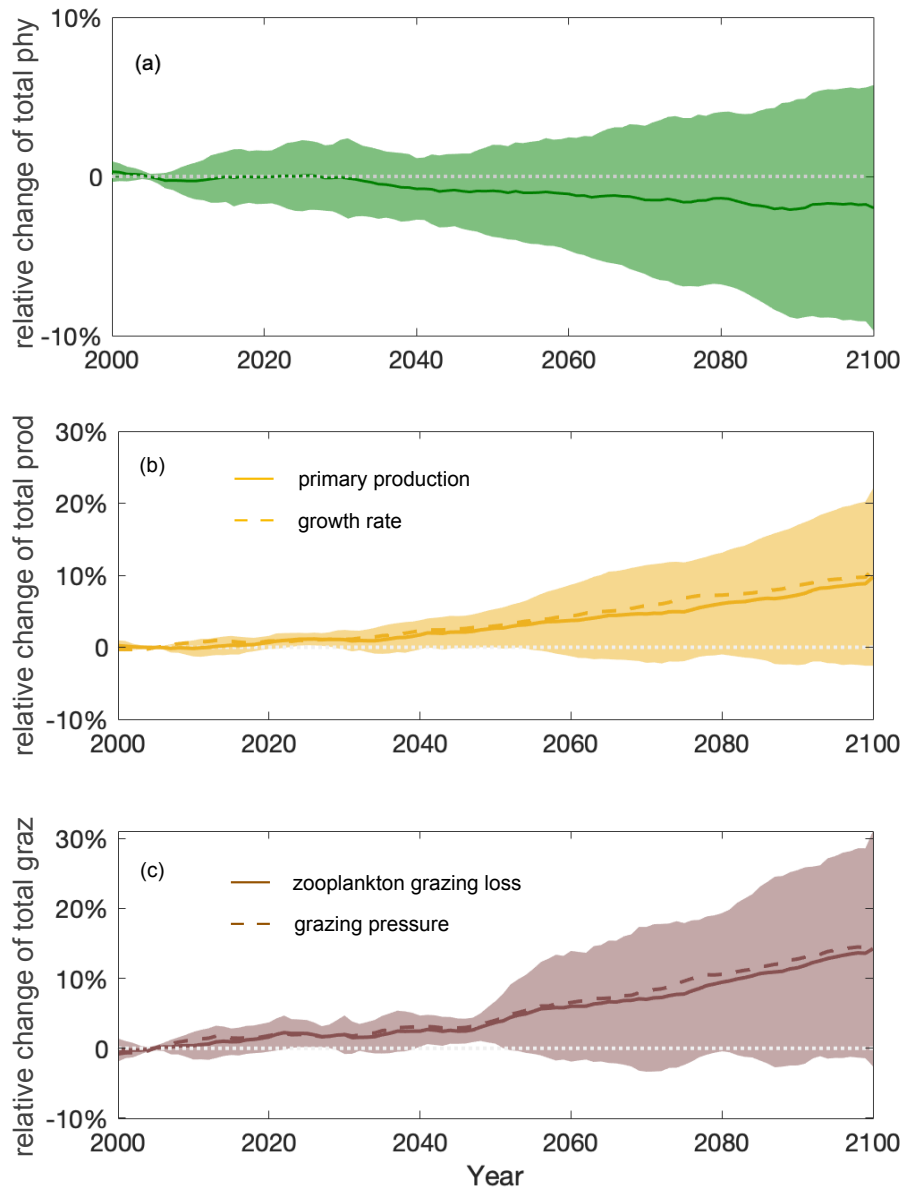
(bottom-up, Fig. 4b) and grazing by zooplankton (top-down, Fig. 4c). Understanding the complex interplay between bottom-up and top-down controls is crucial for projecting how phytoplankton will respond to future climate change.

175 Projected increases in total primary production ( $10 \pm 11\%$ ) show that phytoplankton growth conditions are improving with climate change, indicating weakening bottom-up control (Fig. 4b). On these centennial timescales, climate change-induced changes in primary production in the subantarctic and subpolar Antarctic regions are tightly coupled to MLD-driven bottom-up changes (e.g., light, nutrients and temperature) that also drive changes on observed contemporary seasonal timescales (Arteaga et al., 2020; Leung et al., 2015). As the MLD is projected to shoal by  $12 \pm 5\%$  over the course of the 21<sup>st</sup> century (Fig. 5a),  
180 phytoplankton in the water column will ~~not be passively mixed down, largely~~ stay closer to the surface, ~~and experience better light not being passively mixed down, thereby experiencing better light and temperature~~ conditions. As a result, phytoplankton is projected to have a higher growth rate in the nutrient-replete Southern Ocean (dashed line in Fig. 4b).

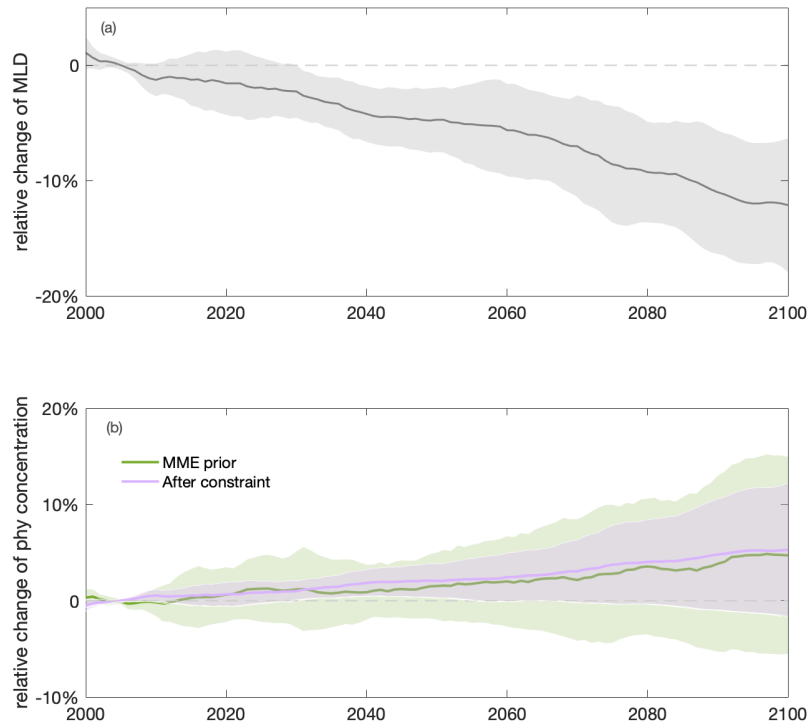
Despite increasing total primary production, the total phytoplankton biomass remains relatively stable throughout the 21<sup>st</sup> century mainly because of enhanced zooplankton grazing ( $14 \pm 15\%$ ), thus intensified top-down control (Fig. 4c). With top-  
185 down control exhibiting a similar increasing trend as bottom-up condition under climate change, phytoplankton biomass stays in a dynamic balance despite the flux changes, and thereby appears not to respond to the changing climate. An enhanced role of grazing under climate change is consistent with findings in Laufkötter et al. (2015).

### 3.2 Increasing phytoplankton concentration: intensified top-down control shifts trophic structure

The increasing top-down control and grazing pressure on phytoplankton ~~is may be~~ a consequence of rising phytoplankton  
190 concentrations ~~under climate change~~ due to mixed layer shoaling (Fig. 5 b)-a & b) and higher temperatures (Fig. A5) under climate change. Apart from total phytoplankton biomass, which reflects the total amount of food available to zooplankton, the concentration of phytoplankton is also a crucial factor in zooplankton grazing. ~~The, as the~~ feeding efficiency of zooplankton depends directly on the concentration of phytoplankton. ~~When phytoplankton concentration increases with Increasing phytoplankton concentration, due to~~ shoaling mixed layer depths, ~~it leads to a higher enhances~~ encounter efficiency between  
195 zooplankton (the predator) and phytoplankton (the prey), ~~which enables zooplankton to graze more efficiently. A shoaling mixed layer enhances phytoplankton concentration and supports a higher grazing efficiency for zooplankton, which in turn results in greater grazing pressure on phytoplankton enabling more efficient grazing~~ (dashed line in Fig. 4c) and thus ~~leads to~~ a stronger top-down control on phytoplankton. This mechanism is apparent in the ~~significant~~ correlation between mixed layer depth and phytoplankton grazing loss due to zooplankton on the long-term time scale (Fig. A6) ~~and~~ has previously  
200 been ~~suggested to be important found~~ on a seasonal scale in present-day productive systems (Xue et al., 2022a). ~~While bottom-up growth conditions are improved (in a nutrient-replenished upwelling system such as the Southern Ocean) with a shoaling MLD, the shoaling also increases~~ Additionally, higher temperatures are associated with increased zooplankton grazing rates and, thereby, a stronger top-down ~~grazing pressure for phytoplankton under climate change due to the rising phytoplankton concentration~~ control on phytoplankton (Caron and Hutchins, 2013), though only a few CMIP6 models include  
205 temperature-dependent grazing (Rohr et al., 2023).



**Figure 4. Stable-integrated-phytoplankton-projections-over-the-course-of-the-21<sup>st</sup>-century-due-to-a-shifting-balance-of-bottom-up-and-top-down-control.** Stable total phytoplankton projections over the course of the 21<sup>st</sup> century due to a shifting balance of bottom-up and top-down control. Multi-model ensemble (MME) projections of the relative changes of depth-integrated-total (a) phytoplankton (phytophy, dark green), (b) phytoplankton production (prod, yellow) and (c) grazing loss from zooplankton (graz, brown) from 2000 to 2100 under the SSP5-8.5 scenario, with shading indicating one standard deviation across the ESMs, relative to the respective mean values of the first decade of the 21<sup>st</sup> century (2000 - 2009) in the Southern Ocean. Solid lines indicate the multi-model mean. Dashed lines in (b) and (c) indicate the MME averaged phytoplankton growth rate (estimated for individual models as integrated production divided by integrated biomass) and grazing pressure (estimated as integrated grazing loss divided by integrated biomass), respectively. The time series are filtered using a 10-year moving average.



**Figure 5. Shoaling of annual mean mixed layer depth (MLD) and increasing annual mean surface chlorophyll (chl), a proxy for surface phytoplankton biomass, towards the end of the century in the Southern Ocean. Shoaling of annual mean mixed layer depth (MLD) and increasing annual mean surface phytoplankton concentration towards the end of the century in the Southern Ocean.** Multi-model ensemble (MME) projections of changes of annual mean (a) MLD (grey); and (b) surface chl-phytoplankton concentration (sphy) before (light green) and after (purple) applying the emergent constraint, from 2000 to 2100, relative to the mean values of the first decade of the 21<sup>st</sup> century (2000 - 2009), with shading indicating one standard deviation, under the SSP5-8.5 scenario. The time series are filtered using a 10-year moving average.

Relation between annual mean relative anomalies of mixed layer depth and zooplankton grazing from 2000–2100 under the SSP5-8.5 scenario, relative to the mean values of the first decade of the 21<sup>st</sup> century (2000–2009) in the Southern Ocean. The time series are filtered using a 10-year moving average; different colours denote different climate models.

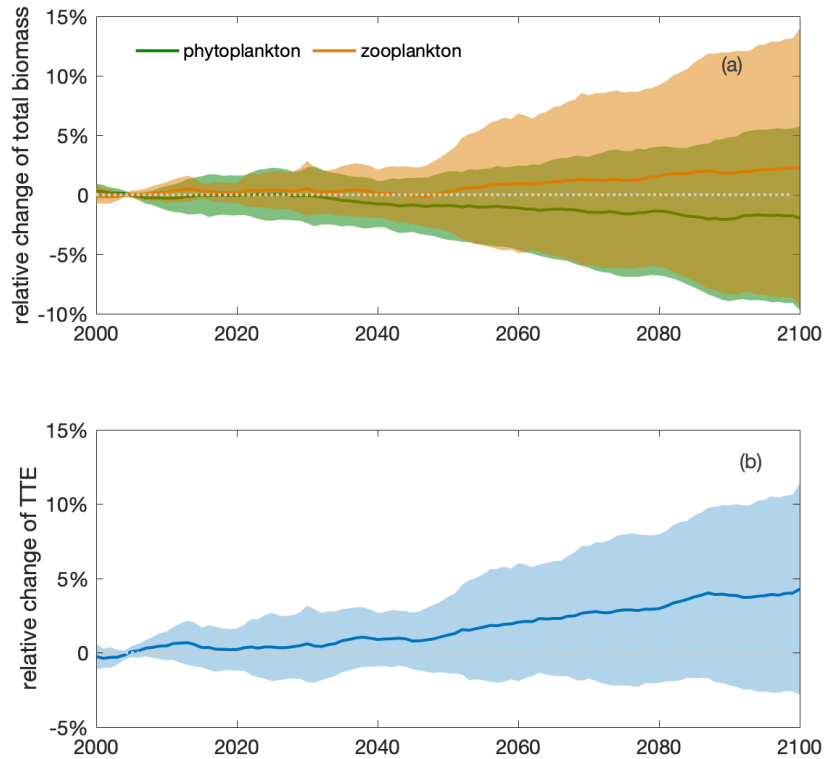
210 Increased top-down grazing pressure results in higher trophic transfer efficiency (by the end of the century ( $4 \pm 7\%$ ; Eq. 5, Fig. 6b) and integrated zooplankton biomass (Fig. 6a)). The rising trophic transfer efficiency indicates a potential change in trophic structure, with relatively more zooplankton and less phytoplankton in the future climate. In contrast to the projection of slightly decreasing depth-integrated total phytoplankton biomass ( $-1.2 \pm 78\%$ ), the biomass of depth-integrated total biomass zooplankton, a phytoplankton predator, is projected to increase by  $32 (\pm 911)\%$  under climate change (Fig. 6a). Zooplankton is thus appears to be favoured by changing environmental conditions and food resources and is grazing down phytoplankton. The  
215 phenomenon of a positive change on a higher trophic level and a negative change on the lower trophic level indicates increasing top-down control of the lower trophic level by the higher one (Fig. 1 in Chust et al., 2014).

### 3.3 Constraining the increasing phytoplankton concentration: the underlying mechanism of intensified top-down control

#### 3.3.1 Oposing trends of phytoplankton concentrations and mixed layers layer depths on timescales of seasons and 220 of climate change and seasonal scales

Surface  $A_s$  phytoplankton concentration is an indicator of grazing pressure and, thereby, top-down control, but its, the large inter-model differences in projected changes from the 2000s to the 2090s remain uncertain ( $-6.5 \pm 1210\%$ ; Fig. 5b) cause a large part of the inter-model differences of projected changes in phytoplankton top-down control. Individual model projected surface phytoplankton concentration changes range from  $-8.10\%$  to  $+3532\%$  and in particular include zero and negative  
225 changes of surface chlorophyll in the Southern Ocean by the end of the century. Previous studies (Leung et al., 2015; Henley et al., 2020) suggested that the mechanisms behind these uncertain. The mechanisms previously suggested to explain the long-term phytoplankton changes are also the mechanisms that are responsible for seasonal phytoplankton changes in phytoplankton, such as light and temperature changes, are also responsible for their seasonal variability in the Southern Ocean (Leung et al., 2015; Henley et al., 2020).

230 Under the current climate, seasonalities of mixed layer depths and surface chlorophyll concentration are anti-correlated in both observations and model simulations. The observed surface chlorophyll in the Southern Ocean exhibits a clear seasonal cycle, peaking in late austral spring and early austral summer (Fig. 7). This seasonal cycle of chlorophyll is opposite that of mixed layer depth (MLD), with shallow MLD in austral summer coinciding with relatively high surface chlorophyll, and deep MLD in austral winter coinciding with relatively low surface chlorophyll. Such an opposite relationship between surface  
235 chlorophyll and MLD on a seasonal scale has been previously shown in observations (Uchida et al., 2019; Artega et al., 2020) and model simulations (Song et al., 2018; Artega et al., 2020; Le Quéré et al., 2016). This relationship is thought to be mainly caused by the seasonal dilution of phytoplankton and by growth limitation along with zooplankton grazing. MLD reveals higher uncertainty compared to the extensively covered observed chlorophyll (satellite-based estimates), likely due to the scarcity of in



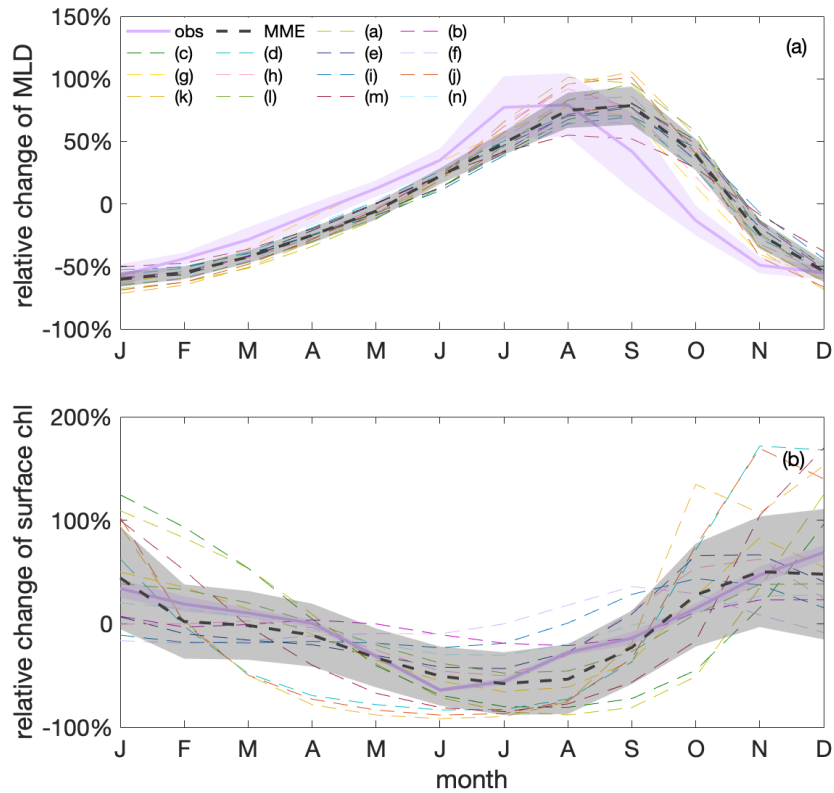
**Figure 6. An increase in integrated zooplankton biomass and trophic transfer efficiency (TTE) during the 21<sup>st</sup> century indicates intensified top-down control and a shift in trophic structure. An increase in total zooplankton biomass and trophic transfer efficiency (TTE) during the 21<sup>st</sup> century indicates intensified top-down control and a shift in trophic structure.** Multi-model ensemble (MME) projections of the relative changes of (a) ~~depth-integrated total~~ phytoplankton (green) and zooplankton (orange) biomasses; and (b) trophic transfer efficiency (blue; defined as the ratio of the two, see Eq. S3) from 2000 ~~to~~ 2100 under the SSP5-8.5 scenario, with shading indicating one standard deviation, relative to the respective mean values of the first decade of the 21<sup>st</sup> century (2000 - 2009) in the Southern Ocean. The time series are filtered using a 10-year moving average.

situ-based data used to estimate the MLD. The individual models largely agree with the observations observed seasonal cycles,  
240 though with some spread (Fig. 7). Such spread is not unexpected given the structural differences of the biogeochemical models  
that include varying considerations and representations of the chlorophyll to carbon (chl:C) ratio, grazing, and nutrient limita-  
tions (such as iron). Also On average, the modelled MLD maximum shows a lag of around a month compared to observational  
estimates, which is reflected in a similar lag in the chlorophyll seasonality. Additionally, In both, observations and models,  
there is a lag between the timing of the peaks of minimum chlorophyll and maximum MLD in winter in both observations and  
245 the models. This lag is likely due to poor light conditions in deep MLDs triggering an increase in the chlorophyll to carbon  
(chl:C) ratio, where increasing chlorophyll pigments mask a continued decrease in phytoplankton biomass (organic carbon)  
concentration in deepening MLDs (Geider, 1987; Arteaga et al., 2016).

### 3.3.2 Using contemporary seasonality to constrain projections of surface chlorophyll-phytoplankton concentration

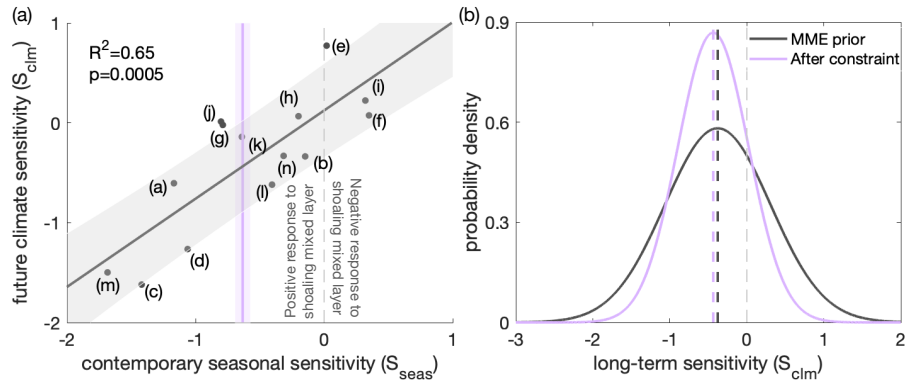
As expected based on previous studies (Leung et al., 2015; Henley et al., 2020), a Despite a good understanding of the top-down  
250 and bottom-up mechanisms in ESMs in the Southern Ocean, as explained above, the inter-model uncertainty of these mechanisms  
remains large. Therefore, we employ an emergent relationship between surface phytoplankton biomass and mixed layer depth  
to reduce these uncertainties. A linear relationship ( $r^2=0.560.65$ , Fig. 8a) exist exists across the ESM ensemble between this  
sensitivity of chlorophyll to changes in MLD on a seasonal scale in the current climate (seasonal sensitivity,  $S_{seas}$ , Eq. 1) and  
the sensitivity of chlorophyll-surface phytoplankton to changes in MLD with climate change (climate change sensitivity,  $S_{clm}$ ,  
255 Eq. 2), as expected based on previous studies (Leung et al., 2015; Henley et al., 2020). The relationship suggests that models  
within which surface chlorophyll is more sensitive to MLD changes on a seasonal scale also tend to show a larger sensitivity  
on a longer-term scale. Moreover, the slope of the emergent relationship is nearly one. A one-to-one relationship indicates  
the same sensitivities of the leading mechanism on different timescales (Williamson et al., 2021). Though the sensitivities  
of chlorophyll to changes in MLD on a seasonal scale from individual models show some spread, it is important to note  
260 that the models deviating from the observed sensitivity are still considered capable of representing the relationship between  
chlorophyll sensitivity to MLD changes across seasonal and long-term scales. The correlation between mixed layer depth and  
surface chlorophyll-phytoplankton on a long-term climate scale is consistent with reduced dilution and a weakening of bottom-  
up controls, analogous to the most important mechanisms on seasonal scales: when the MLD is shoaling and phytoplankton is  
being contained in a shallower surface ocean mixed layer, average light and mixed layer with higher average light intensity and  
265 temperature, as a result phytoplankton concentrations, phytoplankton grow better and concentrations are expected to increase  
(Xue et al., 2022b). With this, we can use the relationship to constrain the projection of phytoplankton concentration under  
climate change.

Applying the emergent constraint derived from the observations under current seasonality confirms the increasing trend of  
chlorophyll-concentration-phytoplankton concentration by the end of the 21<sup>st</sup> century (Fig. 5b), thereby indicating intensified  
270 top-down control, with higher confidence. Utilising the observational constraint on the seasonal sensitivity  $S_{seas}$ , the emergent  
constraint (section 2.3) shifts adjusts the estimate of the long-term sensitivity ( $S_{clm}$ ) from -0.53-0.38 ( $\pm$  0.80) to -0.59-0.69 to



**Figure 7. Surface chlorophyll (chl) concentration shows a clear seasonal cycle that is anticorrelated with mixed layer depths (MLD) in both observations and model simulations.** Seasonal cycles of (a) MLD and (b) chl variations relative to their respective annual mean values, based on observations (GlobColour, purple) and a multi-model ensemble (MME, grey); the black dashed line marks the MME median value, and the shadings indicate the standard deviations of observations and MME, respectively. Differently coloured thin dashed lines show individual models listed in Tab. 1 that contribute to the MME median value.





**Figure 8. Application of an emergent constraint to the long-term sensitivity of surface chlorophyll to mixed layer depth (MLD) ( $S_{clm}$ ), based on the contemporary seasonal sensitivity of chl to MLD ( $S_{seas}$ ). Application of an emergent constraint to the long-term sensitivity ( $S_{clm}$ ) of surface phytoplankton concentration to mixed layer depth (MLD), based on the contemporary seasonal sensitivity ( $S_{seas}$ ) of surface chlorophyll concentration to MLD.** (a) Long-term sensitivity ( $S_{clm}$ , eq. 2) under climate change against contemporary seasonal sensitivity ( $S_{seas}$ , eq. 1) of the relative ~~variation change~~ of surface chlorophyll (for  $S_{seas}$ ) or phytoplankton (for  $S_{clm}$ ) concentration to MLD for the multi-model ensemble (MME, black dots, corresponding to the models listed in Table. 1). The fit of a linear regression (black line) and the associated 68% prediction intervals are shown as a black line and grey shading, respectively. The purple vertical line indicates an observational constraint, with purple shading indicating the associated uncertainty, calculated as the standard error of the climatological  $S_{seas}$  of the observed time series (Fig. 3). The light grey dashed line separates the positive (to the left) and negative (to the right) responses across models of surface chlorophyll to MLD shoaling under present-day seasonality. (b) Probability density functions (PDFs) of  $S_{clm}$ . The black line shows the "MME prior" PDF, assuming all model projections are equally likely and come from a Gaussian distribution. The purple line shows the observationally constrained PDF (it has a similar mean but is narrower). Dashed lines indicate the mean values of the future climate sensitivity before (black) and after applying the constraint (purple).

~~-0.44~~ ( $\pm 0.600,46$ ) (Fig. 8b). Thus, ~~the surface chlorophyll is~~ phytoplankton concentration becomes slightly more sensitive to MLD shoaling than previously suggested by the unconstrained MME results ~~suggest~~. In combination with the MME projected MLD change, our emergent constraint implies a 7.5 ( $\pm 87$ )% (unconstrained: 6.5  $\pm 1210$ %) increase in surface ~~chlorophyll~~ phytoplankton concentrations in the Southern Ocean by the end of the 21<sup>st</sup> century (Eq. 4). The emergent constraint reduces the uncertainty in the ~~chlorophyll projection by 38~~ surface phytoplankton projection by 34% (Fig. 5b). Based on the constraint, ~~a phytoplankton decrease is the possibility of a phytoplankton concentration decrease becomes~~ less likely (~~18%~~) than 16% ~~compared to what was~~ expected based on the MME alone (~~30~~29%). Our results, ~~therefore,~~ increase the likelihood of ~~therefore suggest, with enhanced confidence,~~ an increase in surface ~~chlorophyll~~ phytoplankton concentration in the subantarctic and subpolar Antarctic regions of the Southern Ocean ~~and thus an increase in phytoplankton concentration~~ by the end of the century ~~With enhanced confidence in the~~ (Fig. 5). This projection of increasing phytoplankton concentration, ~~the alongside rising temperatures~~ (Fig. A5), suggests an increased likelihood of enhanced grazing pressure, ~~thereby and thus a more~~ intensified top-down control under climate change, ~~also increases~~.

## 4 Discussion

### 285 4.1 ~~Bottom-up control of phytoplankton~~ Phytoplankton under climate change

~~The~~ In this study, we have delved into the complex interplay of bottom-up mechanisms that can affect phytoplankton biomass and its growth have been extensively studied using observational and modelling approaches (Deppeler and Davidson, 2017; Frenger et al., 2020). ~~It is widely appreciated that in the subantarctic and subpolar Antarctic regions of the Southern Ocean, light limitation driven by mixed layer depth (MLD) is a primary factor that determines the seasonality of phytoplankton growth. Under climate change, phytoplankton in the~~ and top-down mechanisms affecting phytoplankton dynamics in the Southern Ocean ~~is expected to increase due to a positive bottom-up response to improving light conditions. Although the increasing trend is confirmed by the simulated change in surface chlorophyll concentration, which is relatively straightforward to observe remotely, total phytoplankton in the water displays no change in the models.~~ under climate change. Building on the understanding of these mechanisms across current seasonal and future climate change scales, we are employing emergent constraints to refine phytoplankton projection and emphasising the weakening bottom-up control and the growing importance of top-down control. This approach not only advances our understanding of the Southern Ocean's ecosystem response to climate change but also illustrates the potential for similar applications in other productive oceanic regions with notable model uncertainties, such as coastal upwelling regions.

While emergent constraints enable MME to project future phytoplankton changes with higher confidence, the often too simplistic representation of the iron cycle in ESMs (Tagliabue et al., 2017) may hide additional uncertainties and the oversimplified food web formulations potentially limit the reproduce of phytoplankton composition changes, underscoring the need for model improvements to capture these critical changes and understand future ecosystem dynamics comprehensively (Petrou et al., 2016; Krumhardt et al., 2020).

In addition to ~~light limitation~~ impacts from light and temperature change, the micronutrient iron is often deemed limiting in the Southern Ocean, which ~~would affect~~ affects phytoplankton growth and ~~limit~~ limits the magnitude of phytoplankton blooms (Martin et al., 1990; Moore et al., 2013; Arteaga et al., 2020). ~~Despite its importance to phytoplankton growth in the Southern Ocean, iron is not included in all of the models of the MME (Table 1).~~ Over recent decades, an increase in iron stress has been observed ~~to increase~~ in the Southern Ocean due to changing mixed layer dynamics (Ryan-Keogh et al., 2023). However, with progressing the progression of climate change, an increase in the atmospheric iron supply, ~~which is an important iron source~~ a crucial source for the Southern Ocean, is projected to ~~increase~~ rise through various sources (Pörtner et al., 2019; Hamilton et al., 2020). For instance, the deposition of soluble iron is expected to increase due to more frequent and intense wildfires (Bowman et al., 2020), along with increasing wind and increasing desertification (Woodward et al., 2005). ~~As such changes in iron supply are not included in models, models~~ Despite its importance to phytoplankton growth in the Southern Ocean, the processes of producing and cycling iron are still not yet fully understood, and it was not until the early 2000s that global ocean models began incorporating iron (Tagliabue et al., 2017; Moore et al., 2001). Even in the MME used here from the most recent generation of Earth system models, 3 out of 14 ESMs do not represent the iron cycle at all (Table 1). Of the 11 ESMs that include the iron cycle, only 9 models provide output on iron, simulating varying changes in iron availability in the Southern Ocean. However, across the multi-model mean, there is no discernible trend in surface iron concentration (Fig. A7). As a result,

models with or without iron limitation do not reveal clear differences in the projection of phytoplankton ~~response~~-responses to climate change (Fig. A8), though models with iron representation show a much larger spread than those without. Given the very different representation of the iron cycle in current ESMs and the complex interplay between iron and its biological responses, along with the multitude of external processes affecting its availability, projecting changes in iron availability likely adds a large uncertainty to phytoplankton projections under climate change (Petrou et al., 2016).

## 4.2 ~~Potential for top-down processes~~

### 4.2 Enhancing understanding of top-down processes under climate change

325 While bottom-up ~~mechanisms are well recognised, much less attention has been paid to top-down effects on phytoplankton.~~ However, phytoplankton dynamics cannot be understood without also understanding top-down dynamics. With this study, we further look into such top-down mechanisms that drive changes in phytoplankton biomass, in particular changes in zooplankton. The formulation of zooplankton in numerical models is crucial in regulating the mortality of modelled phytoplankton, which in turn has a significant impact on planktonic dynamics (Le Quéré et al., 2016; Prowe et al., 2019). Top-down grazing by zooplankton is not only related to the total prey that is available (total phytoplankton biomass), but also to how efficiently the zooplankton can feed on the prey, which is determined, apart from traits of prey and predator, by the prey concentration (Kjørboe, 2009; Xue et al., 2022a). Our results suggest that, in addition to changing bottom-up controls, increasing top-down controls will also impact phytoplankton dynamics in the future.

Climate change projections mechanisms are well recognised and studied (Deppeler and Davidson, 2017; Frenger et al., 2018; Arteaga et al., 2020), the impact of top-down variables are highly uncertain (Laufkötter et al., 2015; Lotze et al., 2019; Kwiatkowski et al., 2020) effects on phytoplankton has been less emphasised, largely due to insufficient observational data. Despite significant advancements in ocean ecosystem monitoring ~~and modelling abilities~~ over recent decades, such as the COPEPOD dataset (Coastal and Oceanic Plankton Ecology, Production, and Observation Database, <https://www.st.nmfs.noaa.gov/copepod/>; Moriarty and O'Neil, 2019), supporting advanced relevant studies, a notable gap persists in observational data ~~and modelling efforts~~ that specifically target ~~zooplankton and~~ higher trophic levels and data coverage in the Southern Ocean. This gap underscores the **pressing** need for a more comprehensive observational system, especially concerning quantities such as zooplankton biomass, community composition, and traits, to enhance the robustness of projections of future plankton dynamics and trophic transfer. ~~The lack of adequate observational data, in particular with respect to zooplankton, has hindered the thorough calibration of most global biogeochemical models to properly represent top-down controls (Stock et al., 2014b). Furthermore, detailed observational research and lab experiments are also in great need. (Prowe et al., 2022).~~ It is important to understand zooplankton physiology to identify and further constrain the relevant key parameters, such as prey preferences, maximum ingestion rates, and zooplankton temperature sensitivity (Prowe et al., 2019; Petrik et al., 2022). ~~As far as models are concerned, both~~

Climate change projections of top-down variables are highly uncertain (Laufkötter et al., 2015; Lotze et al., 2019; Kwiatkowski et al., 2020), mainly because zooplankton and food web formulations in large-scale models are oversimplified, posing a substantial caveat. ~~More easily done,~~ The formulation of zooplankton in numerical models is crucial in regulating the mortality of modelled

phytoplankton, which in turn has a significant impact on planktonic dynamics (Le Quéré et al., 2016; Prowe et al., 2019). Top-down grazing by zooplankton is influenced by factors including traits of both prey and predator, prey concentration, and also by the type of predator-prey relationship used in a model, such as the different Holling types (Kjørboe, 2009; Xue et al., 2022a; Andersen et al., 2022). In addition, the lack of observations has hindered the calibration of most global biogeochemical models to accurately represent top-down controls (Stock et al., 2014b). To improve the top-down projection, ocean biogeochemical models should more regularly save zooplankton-related variables as standard model output to allow for comprehensive analyses (Laufkötter et al., 2015). Additionally, (Laufkötter et al., 2015; Le Grix et al., 2022). Such zooplankton-related variables should include not only bulk variables such as biomass but also fluxes should be saved in order to better track the energy flux through the ecosystem. Overall, model representations of phytoplankton will benefit from a more extensive assessment of zooplankton through a more accurate simulation of the top-down process.

### 4.3 Differences in trends of biomass and production

The divergent trends in total phytoplankton biomass and production under climate change demonstrated in our study can be related are attributed to the increasing importance of top-down control. While integrated Here, we show that total phytoplankton biomass remains relatively stable, integrated in the Southern Ocean, while total phytoplankton production continues to increase. Biomass and production represent two distinct ways of viewing and understanding the ecosystem, with one focusing on the standing stock that can be measured and the other examining the energy flow among different components of the ecosystem. A number of studies have highlighted the perspectives of biomass (Behrenfeld, 2010; Behrenfeld et al., 2017; Arteaga et al., 2020) and production (Field et al., 1998; Behrenfeld et al., 2006) to uncover the underlying mechanisms that drive the phytoplankton response under the current climate. Previous investigations of the phytoplankton response to climate change focusing on biomass (Marinov et al., 2010; Kwiatkowski et al., 2019; Lotze et al., 2019) versus production (Behrenfeld et al., 2006; Laufkötter et al., 2015; Deppeler and Davidson, 2017; Kwiatkowski et al., 2020) tended to conclude that changes would be of the same sign for the two variables, with a negative response in low-latitude regions due to increasing nutrient limitations and a positive response in high-latitude regions as a result of improving light conditions. Further investigations into the trophodynamics using biomass (Chust et al., 2014; Kwiatkowski et al., 2019) and production (Stock et al., 2014a) have also demonstrated consistent findings, with low-latitude regions exhibiting negative trophic amplification (with decreases in higher trophic levels exceeding those in the lower trophic levels) and high-latitude regions demonstrating positive trophic amplification (with increases in higher trophic levels exceeding those in the lower trophic levels) under climate change. The change in biomass is determined by the competing effects of bottom-up (production) and top-down (loss) processes. Projections using biomass and production tend to yield the same trends when top-down processes are negligible or play a secondary role in comparison with bottom-up processes. However, it is worth noting that when top-down processes are at a level that is similar of similar magnitude (e.g., Fig. 4) or even more important than bottom-up processes, projections using biomass and production may yield different results as biomass and production represent two distinct ways of viewing and understanding the ecosystem. While biomass focuses on the standing stock that can be measured, production quantifies the energy flow among different components of the ecosystem. Our finding of different trends in phytoplankton biomass and production under global warming underscores

385 the increasing importance of top-down processes in the future Southern Ocean ecosystem, ~~highlighting the differing trends in biomass and production of phytoplankton under climate change.~~

## 5 Conclusions

In this study, we present the future phytoplankton response to climate change under a high emission, no mitigation (SSP5-8.5) scenario in the subantarctic and subpolar Antarctic regions (40°S–60°S) of the Southern Ocean using a multi-model  
390 ensemble. We find that the ~~depth-integrated total~~ phytoplankton biomass stays relatively stable over the course of the 21<sup>st</sup> century as a result of a dynamic balance between bottom-up and top-down control. Future phytoplankton growth conditions are expected to improve as a result of the shoaling mixed layer and ~~thereby, the weakening of increasing temperature, thereby~~  
~~weakening~~ bottom-up control, consistent with previous studies. Meanwhile, the shoaling mixed layer will further concentrate the phytoplankton biomass and make phytoplankton more accessible to zooplankton, thereby intensifying grazing pressure  
395 and hence top-down control. The continuously growing negative effect of increasing top-down control compensates for the positive effects of improving bottom-up conditions, resulting in a well-balanced flux budget that keeps the ~~depth-integrated total~~ phytoplankton biomass stable under climate change.

We further employ the approach of an emergent constraint to increase our confidence in the increasing trend of phytoplankton concentration (~~using chlorophyll as a proxy, which is~~, ~~which could be~~ the underlying mechanism that contributes to the  
400 ~~intensified-intensifying~~ top-down processes under climate change. For that, we make use of the observed relationship between seasonal variations in mixed layer depth and surface chlorophyll concentration. The relationship originates from the combined effects of bottom-up and top-down processes as well as physical dilution caused by mixing across the varying mixed layers. ~~We use it to constrain projections of surface phytoplankton under climate change in the Southern Ocean.~~ The application of the observational constraint to a climate projection under SSP5-8.5 scenario ~~confirms the increasing trend of phytoplankton~~  
405 ~~concentration and~~ reduces the uncertainty of ~~future phytoplankton its future~~ projections by more than a third (~~from 12% to 8%~~). ~~The multi-model mean projects MLD to shoal 12 (± 5)% by the end of the 21<sup>st</sup> century, which implies, based on our emergent constraint, a 7 (± 8)% increase in Southern Ocean surface phytoplankton concentration. Our confirmed increasing trend of phytoplankton concentration.~~ ~~This~~ further promotes confidence in ~~future~~ intensified top-down control ~~which is driven by rising phytoplankton concentrations due to shoaling mixed layers that facilitate more efficient zooplankton feeding in the~~  
410 ~~changing climate.~~

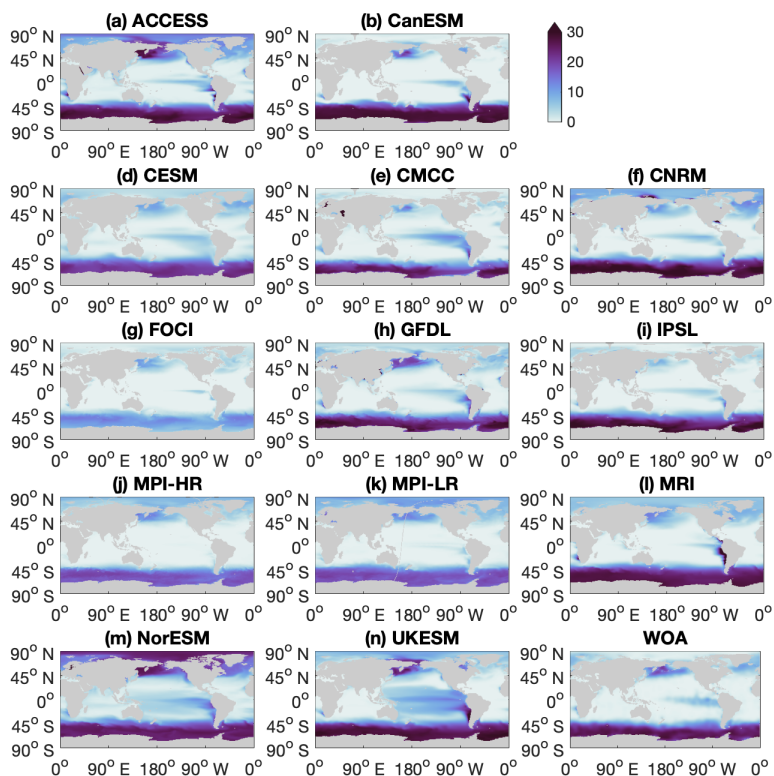
This study highlights the need to understand the balance of bottom-up versus top-down control of phytoplankton. In particular, mechanisms promoting a dominance of top-down control, which are of growing importance for climate change, have been understudied. Top-down control is typically treated stepmotherly as a mere "closure term" in biogeochemical models ~~;~~  
~~erving for climate research, such as CMIP models, which prioritize~~ numerical stability while ~~typically often~~ neglecting zoo-  
415 plankton physiology and adaptive capacities. We argue that ~~these are relevant to the simulation of phytoplankton zooplankton~~ ~~physiology and adaptive capacities are crucial for accurately simulating phytoplankton dynamics.~~ To improve our understanding of the response of phytoplankton to climate change, ~~we need there is a pressing need for~~ dedicated observational and

modelling efforts. Such efforts include, but are not limited to, long-term and continuous observational time series of phytoplankton and zooplankton biomass and traits to enhance our understanding of the response of feeding processes to changing environmental conditions. Such observations, in turn, will facilitate improved top-down formulations in models. Further, our results suggest that previous studies (e.g., Chust et al., 2014; Kwiatkowski et al., 2017; Stock et al., 2014a) that result in the same conclusion for phytoplankton biomass and production imply a negligible or secondary role of top-down processes. With the increasing importance of top-down processes under climate change, phytoplankton biomass and production could display divergent trends, as shown in our results. Our results demonstrate that ~~integrated-total~~ phytoplankton biomass in the Southern Ocean ~~remains-can remain~~ stable despite increasing phytoplankton production as a result of a shifting balance from bottom-up towards enhanced top-down control.

*Author contributions.* TX and IF designed the study. TX conducted the analysis with support from IF and JT. TX wrote the first draft of the manuscript and produced all figures and tables. All authors discussed the results and contributed to the final writing of the manuscript.

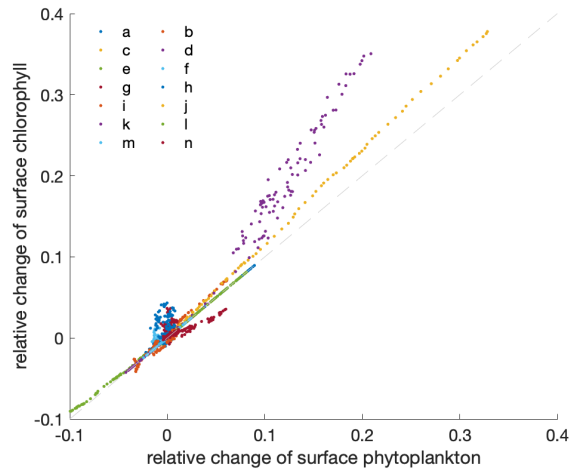
*Competing interests.* The authors declare that they have no conflict of interest.

430 *Acknowledgements.* This work is financially supported by the China Scholarship Council (TX, grant no.201808460055). ~~Jens Terhaar~~ JT acknowledges funding from the Woods Hole Oceanographic Institution Postdoctoral Scholar Program ~~-and founding from the Swiss National Science Foundation Ambizione project ArcticECO - PZ00P2\_209044.~~ TLF acknowledges funding from the European Union's Horizon 2020 research and innovation programme under grant agreement no. 862923 (project AtlantECO). IF acknowledges funding from BMBF project Humboldt Tipping II (01LC2323B). We would like to thank Wolfgang Koeve and Markus Schartau for discussions and constructive feedback.

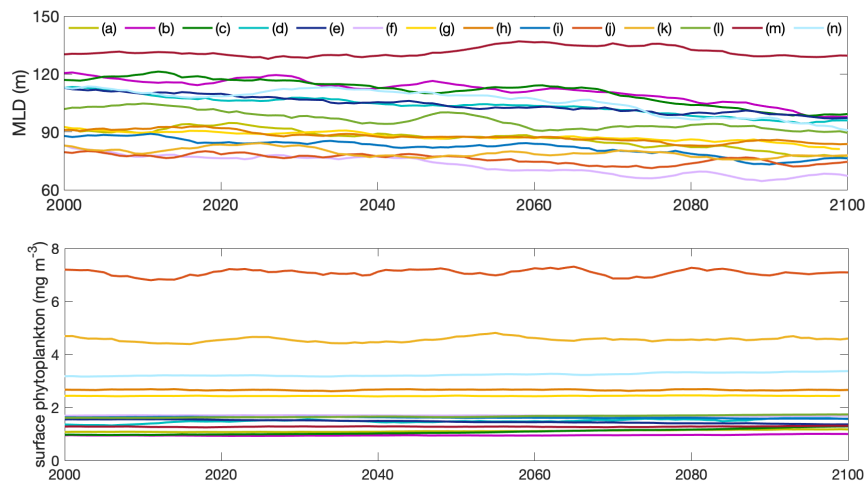


**Figure A1.** Maps for individual climate models and observational data from the World Ocean Atlas, showing annual mean surface nitrate concentration (unit:  $\text{mmol m}^{-3}$ ) in contemporary climate (2000s 2000-2009).

Projections of mixed-layer depth (top) and surface chlorophyll concentration (bottom) in absolute values from 2000 to 2100 of individual models of the multi-model ensemble. Different coloured lines show individual models listed in Table 1 of the main manuscript.

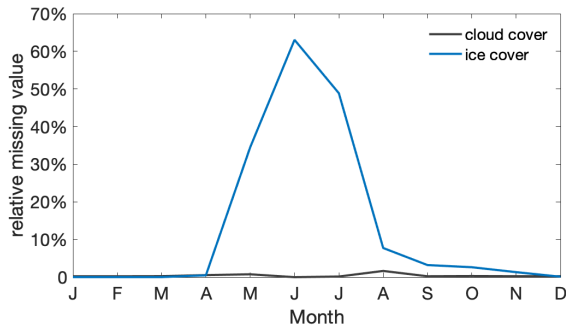


**Figure A2.** ~~Relation between the annual mean relative variation of surface phytoplankton concentration and surface chlorophyll concentration.~~ Relation between the relative changes of annual mean surface phytoplankton concentration and surface chlorophyll concentration. The light grey dashed line indicates the 1:1 line. Differently coloured dots indicate individual models as listed in Table 1 in the main manuscript, with individual dots representing consecutive years of for the time period 2000 to 2100.

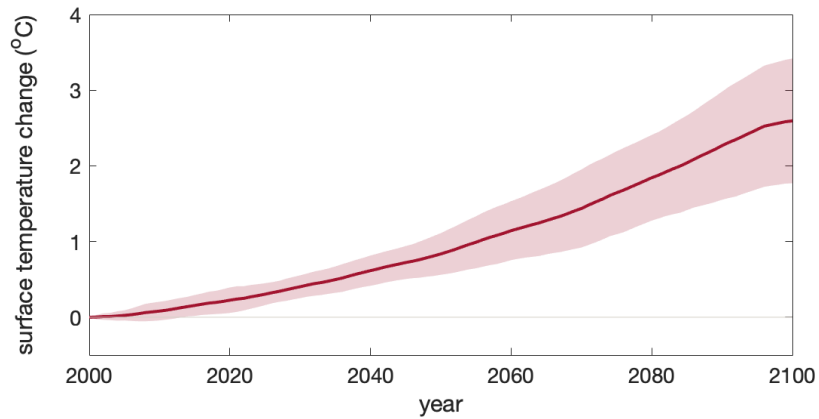


**Figure A3.** Projections of mixed layer depth (top) and surface phytoplankton concentration (bottom) in absolute values from 2000 to 2100 of individual models of the multi-model ensemble in the Southern Ocean. Different coloured lines show individual models listed in Table 1 of the main manuscript.

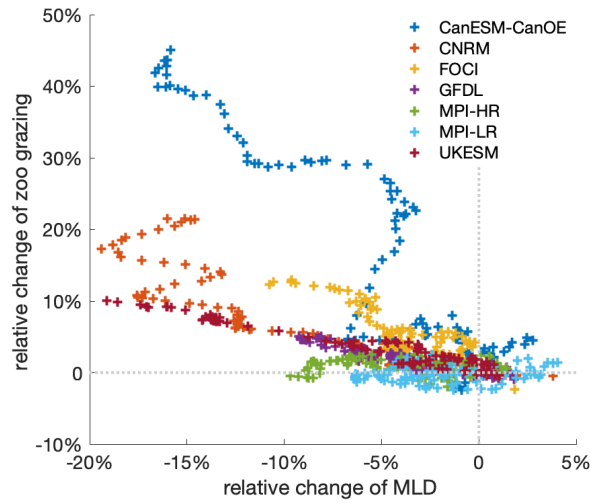




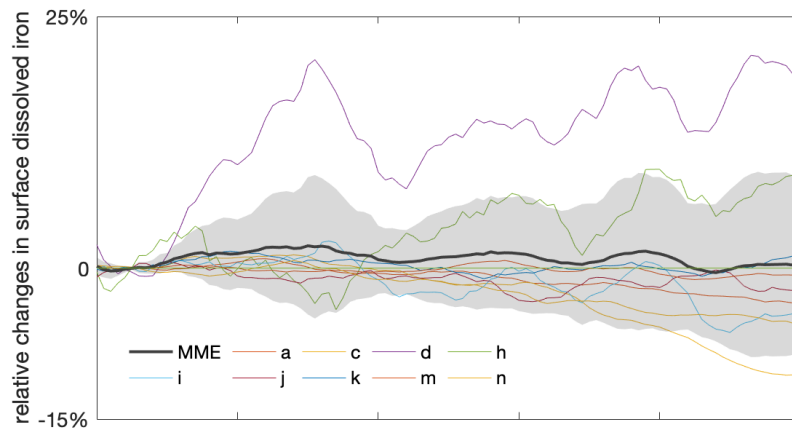
**Figure A4.** Seasonal cycle of the average portion of satellite chlorophyll missing per month and per grid box within the research area due to cloud cover (black) and ice cover/no light (blue).



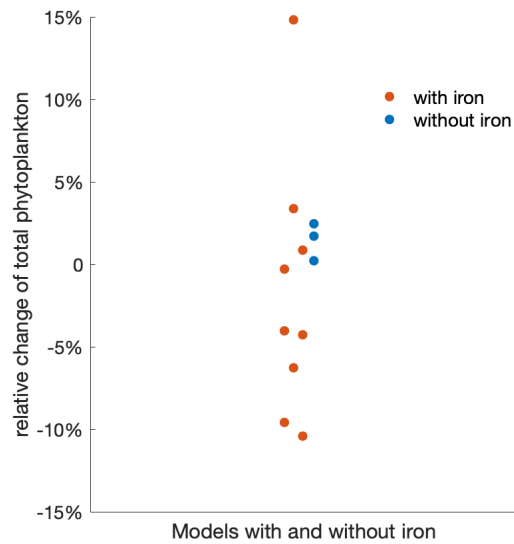
**Figure A5.** ESMs that include or do not include iron limitation project the total phytoplankton change similarly. Beeswarm plot **Increasing sea surface temperature under climate change in the Southern Ocean.** Multi-model ensemble (MME) projections of the relative variation of integrated phytoplankton biomass over the 21<sup>st</sup> century sea surface temperature change (unit: °C) from 2000 to 2100 under the SSP5-8.5 scenario, with shading indicating one standard deviation. The time series are filtered using models that explicitly include iron limitation (red) and no iron limitation (blue) a 10-year moving average.



**Figure A6. Mixed layer depth directly influences zooplankton grazing by affecting phytoplankton biomass concentration, which alters prey-predator encounters.** Relation between relative anomalies of annual mean mixed layer depth and zooplankton grazing from 2000 to 2100 under the SSP5-8.5 scenario, relative to the mean values of the first decade of the 21<sup>st</sup> century (2000 - 2009) in the Southern Ocean. The time series are filtered using a 10-year moving average; different colours denote different climate models. Note, not all models include grazing as an output variable, which is why the number of models here is smaller.



**Figure A7. Varying projected changes in future surface dissolved iron in the Southern Ocean.** Multi-model ensemble (MME) projections of the relative changes of dissolved iron from 2000 to 2100 under the SSP5-8.5 scenario, with shading indicating one standard deviation, relative to the respective mean values of the first decade of the 21 century (2000 - 2009). Dissolved iron data is only available from a limited number of models. The letter in the legend indicates the respective model listed in Table 1. The time series are filtered using a 10-year moving average.



**Figure A8. ESMs that include or do not include iron limitation project the total phytoplankton change similarly, albeit with a larger spread if iron is simulated.** Beeswarm plot of the relative changes of total phytoplankton biomass over the 21<sup>st</sup> century under the SSP5-8.5 scenario using models that explicitly include iron limitation (red) and no iron limitation (blue).

## References

- 440 Anderson, T. R., Gentleman, W. C., and Sinha, B.: Influence of grazing formulations on the emergent properties of a complex ecosystem model in a global ocean general circulation model, *Progress in Oceanography*, 87, 201–213, 2010.
- Arteaga, L. A., Pahlow, M., and Oschlies, A.: Modeled Chl: C ratio and derived estimates of phytoplankton carbon biomass and its contribution to total particulate organic carbon in the global surface ocean, *Global Biogeochemical Cycles*, 30, 1791–1810, <https://doi.org/10.1002/2016GB005458>, 2016.
- 445 Arteaga, L. A., Boss, E., Behrenfeld, M. J., Westberry, T. K., and Sarmiento, J. L.: Seasonal modulation of phytoplankton biomass in the Southern Ocean, *Nature Communications*, 11, 1–10, <https://doi.org/10.1038/s41467-020-19157-2>, 2020.
- Barnes, C., Maxwell, D., Reuman, D. C., and Jennings, S.: Global patterns in predator–prey size relationships reveal size dependency of trophic transfer efficiency, *Ecology*, 91, 222–232, <https://doi.org/10.1890/08-2061.1>, 2010.
- Behrenfeld, M. J.: Abandoning Sverdrup’s critical depth hypothesis on phytoplankton blooms, *Ecology*, 91, 977–989, <https://doi.org/10.1890/09-1207.1>, 2010.
- 450 Behrenfeld, M. J., O’Malley, R. T., Siegel, D. A., McClain, C. R., Sarmiento, J. L., Feldman, G. C., Milligan, A. J., Falkowski, P. G., Letelier, R. M., and Boss, E. S.: Climate-driven trends in contemporary ocean productivity, *Nature*, 444, 752–755, <https://doi.org/10.1038/nature05317>, 2006.
- Behrenfeld, M. J., Hu, Y., O’Malley, R. T., Boss, E. S., Hostetler, C. A., Siegel, D. A., Sarmiento, J. L., Schullien, J., Hair, J. W., Lu, X., and Rodier, S.: Annual boom–bust cycles of polar phytoplankton biomass revealed by space-based lidar, *Nature Geoscience*, 10, 118–122, <https://doi.org/10.1038/ngeo2861>, 2017.
- 455 Bopp, L., Monfray, P., Aumont, O., Dufresne, J.-L., Le Treut, H., Madec, G., Terray, L., and Orr, J. C.: Potential impact of climate change on marine export production, *Global Biogeochemical Cycles*, 15, 81–99, <https://doi.org/10.1029/1999GB001256>, 2001.
- Bopp, L., Aumont, O., Cadule, P., Alvain, S., and Gehlen, M.: Response of diatoms distribution to global warming and potential implications: A global model study, *Geophysical Research Letters*, 32, <https://doi.org/10.1029/2005GL023653>, 2005.
- 460 Bopp, L., Resplandy, L., Orr, J. C., Doney, S. C., Dunne, J. P., Gehlen, M., Halloran, P., Heinze, C., Ilyina, T., Seferian, R., and Vichi, M.: Multiple stressors of ocean ecosystems in the 21st century: projections with CMIP5 models, *Biogeosciences*, 10, 6225–6245, <https://doi.org/10.5194/bg-10-6225-2013>, 2013.
- Bopp, L., Aumont, O., Kwiatkowski, L., Clerc, C., Dupont, L., Ethé, C., Gorgues, T., Séférian, R., and Tagliabue, A.: Diazotrophy as a key driver of the response of marine net primary productivity to climate change, *Biogeosciences*, 19, 4267–4285, <https://doi.org/10.5194/bg-19-4267-2022>, 2022.
- 465 Boucher, O., Servonnat, J., Albright, A. L., Aumont, O., Balkanski, Y., Bastrikov, V., Bekki, S., Bonnet, R., Bony, S., Bopp, L., and Vuichard, N.: Presentation and evaluation of the IPSL-CM6A-LR climate model, *Journal of Advances in Modeling Earth Systems*, 12, e2019MS002010, <https://doi.org/10.1029/2019MS002010>, 2020.
- 470 Bowman, D. M., Kolden, C. A., Abatzoglou, J. T., Johnston, F. H., van der Werf, G. R., and Flannigan, M.: Vegetation fires in the Anthropocene, *Nature Reviews Earth & Environment*, 1, 500–515, <https://doi.org/10.1038/s43017-020-0085-3>, 2020.
- Boyce, D. G., Lewis, M. R., and Worm, B.: Global phytoplankton decline over the past century, *Nature*, 466, 591–596, <https://doi.org/10.1038/nature09268>, 2010.
- Caron, D. A. and Hutchins, D. A.: The effects of changing climate on microzooplankton grazing and community structure: drivers, predictions and knowledge gaps, *Journal of Plankton Research*, 35, 235–252, 2013.
- 475

- Chien, C.-T., Durgadoo, J. V., Ehlert, D., Frenger, I., Keller, D. P., Koeve, W., Kriest, I., Landolfi, A., Patara, L., Wahl, S., and Oschlies, A.: FOCI-MOPS v1–integration of marine biogeochemistry within the Flexible Ocean and Climate Infrastructure version 1 (FOCI 1) Earth system model, *Geoscientific Model Development*, 15, 5987–6024, <https://doi.org/10.5194/gmd-15-5987-2022>, 2022.
- Christian, J. R., Denman, K. L., Hayashida, H., Holdsworth, A. M., Lee, W. G., Riche, O. G., Shao, A. E., Steiner, N., and Swart, N. C.: Ocean biogeochemistry in the Canadian Earth system model version 5.0. 3: CanESM5 and CanESM5-CanOE, *Geoscientific Model Development*, 15, 4393, <https://doi.org/10.5194/gmd-15-4393-2022>, 2022.
- 480 Chust, G., Allen, J. I., Bopp, L., Schrum, C., Holt, J., Tsiaras, K., Zavatarelli, M., Chifflet, M., Cannaby, H., Dadou, I., and Irigoien, X.: Biomass changes and trophic amplification of plankton in a warmer ocean, *Global Change Biology*, 20, 2124–2139, <https://doi.org/10.1111/gcb.12562>, 2014.
- 485 Danabasoglu, G., Lamarque, J.-F., Bacmeister, J., Bailey, D., DuVivier, A., Edwards, J., Emmons, L., Fasullo, J., Garcia, R., Gettelman, A., and Strand, W.: The community earth system model version 2 (CESM2), *Journal of Advances in Modeling Earth Systems*, 12, e2019MS001916, <https://doi.org/10.1029/2019MS001916>, 2020.
- Deppeler, S. L. and Davidson, A. T.: Southern Ocean phytoplankton in a changing climate, *Frontiers in Marine Science*, 4, 40, <https://doi.org/10.3389/fmars.2017.00040>, 2017.
- 490 Dunne, J., Horowitz, L., Adcroft, A., Ginoux, P., Held, I., John, J., Krasting, J., Malyshev, S., Naik, V., Paulot, F., and Zhao, M.: The GFDL Earth System Model version 4.1 (GFDL-ESM 4.1): Overall coupled model description and simulation characteristics, *Journal of Advances in Modeling Earth Systems*, 12, e2019MS002015, <https://doi.org/10.1029/2019MS002015>, 2020.
- Field, C. B., Behrenfeld, M. J., Randerson, J. T., and Falkowski, P.: Primary production of the biosphere: integrating terrestrial and oceanic components, *Science*, 281, 237–240, <https://doi.org/10.1126/science.281.5374.237>, 1998.
- 495 Frenger, I., Münnich, M., and Gruber, N.: Imprint of Southern Ocean mesoscale eddies on chlorophyll, *Biogeosciences*, 15, 4781–4798, <https://doi.org/10.5194/bg-15-4781-2018>, 2018.
- Frölicher, T. L., Rodgers, K. B., Stock, C. A., and Cheung, W. W.: Sources of uncertainties in 21st century projections of potential ocean ecosystem stressors, *Global Biogeochemical Cycles*, 30, 1224–1243, <https://doi.org/10.1002/2015GB005338>, 2016.
- Geider, R. J.: Light and temperature dependence of the carbon to chlorophyll a ratio in microalgae and cyanobacteria: implications for physiology and growth of phytoplankton, *New Phytologist*, pp. 1–34, <https://doi.org/10.1111/j.1469-8137.1987.tb04788.x>, 1987.
- 500 Hall, A., Cox, P., Huntingford, C., and Klein, S.: Progressing emergent constraints on future climate change, *Nature Climate Change*, 9, 269–278, <https://doi.org/10.1038/s41558-019-0436-6>, 2019.
- Hamilton, D. S., Moore, J. K., Arneeth, A., Bond, T. C., Carslaw, K. S., Hantson, S., Ito, A., Kaplan, J. O., Lindsay, K., Nieradzik, L., and Mahowald, N. M.: Impact of changes to the atmospheric soluble iron deposition flux on ocean biogeochemical cycles in the Anthropocene, *Global Biogeochemical Cycles*, 34, e2019GB006448, <https://doi.org/10.1029/2019GB006448>, 2020.
- 505 Henley, S. F., Cavan, E. L., Fawcett, S. E., Kerr, R., Monteiro, T., Sherrell, R. M., Bowie, A. R., Boyd, P. W., Barnes, D. K., Schloss, I. R., and Shantelle, S.: Changing biogeochemistry of the Southern Ocean and its ecosystem implications, *Frontiers in Marine Science*, 7, 581, <https://doi.org/10.3389/fmars.2020.00581>, 2020.
- Holte, J. and Talley, L.: A new algorithm for finding mixed layer depths with applications to Argo data and Subantarctic Mode Water formation, *Journal of Atmospheric and Oceanic Technology*, 26, 1920–1939, <https://doi.org/10.1175/2009JTECHO543.1>, 2009.
- 510 Kessler, A. and Tjiputra, J.: The Southern Ocean as a constraint to reduce uncertainty in future ocean carbon sinks, *Earth System Dynamics*, 7, 295–312, <https://doi.org/10.5194/esd-7-295-2016>, 2016.
- Kjørboe, T.: A mechanistic approach to plankton ecology, *ASLO Web Lectures*, 1, 1–91, <https://doi.org/10.4319/lo.2009.tkiorboe.2>, 2009.

- Krumhardt, K. M., Long, M. C., Sylvester, Z. T., and Petrik, C. M.: Climate drivers of Southern Ocean phytoplankton community composition and potential impacts on higher trophic levels, *Frontiers in Marine Science*, 9, 916140, <https://doi.org/10.3389/fmars.2022.916140>, 2022.
- 515 Kwiatkowski, L., Bopp, L., Aumont, O., Ciais, P., Cox, P. M., Laufkötter, C., Li, Y., and Séférian, R.: Emergent constraints on projections of declining primary production in the tropical oceans, *Nature Climate Change*, 7, 355–358, <https://doi.org/10.1038/nclimate3265>, 2017.
- Kwiatkowski, L., Aumont, O., and Bopp, L.: Consistent trophic amplification of marine biomass declines under climate change, *Global Change Biology*, 25, 218–229, <https://doi.org/10.1111/gcb.14468>, 2019.
- 520 Kwiatkowski, L., Torres, O., Bopp, L., Aumont, O., Chamberlain, M., Christian, J. R., Dunne, J. P., Gehlen, M., Ilyina, T., John, J. G., and Ziehn, T.: Twenty-first century ocean warming, acidification, deoxygenation, and upper-ocean nutrient and primary production decline from CMIP6 model projections, *Biogeosciences*, 17, 3439–3470, <https://doi.org/10.5194/bg-17-3439-2020>, 2020.
- Laufkötter, C., Vogt, M., Gruber, N., Aita-Noguchi, M., Aumont, O., Bopp, L., Buitenhuis, E., Doney, S. C., Dunne, J., Hashioka, T., and Völker, C.: Drivers and uncertainties of future global marine primary production in marine ecosystem models, *Biogeosciences*, 12, 6955–6984, <https://doi.org/10.5194/bg-12-6955-2015>, 2015.
- 525 Le Grix, N., Zscheischler, J., Rodgers, K. B., Yamaguchi, R., and Frölicher, T. L.: Hotspots and drivers of compound marine heatwaves and low net primary production extremes, *Biogeosciences*, 19, 5807–5835, 2022.
- Le Quéré, C., Buitenhuis, E. T., Moriarty, R., Alvain, S., Aumont, O., Bopp, L., Chollet, S., Enright, C., Franklin, D. J., Geider, R. J., and Valina, S. M.: Role of zooplankton dynamics for Southern Ocean phytoplankton biomass and global biogeochemical cycles, *Biogeosciences*, 13, 4111–4133, <https://doi.org/10.5194/bg-13-4111-2016>, 2016.
- 530 Leung, S., Cabré, A., and Marinov, I.: A latitudinally banded phytoplankton response to 21st century climate change in the Southern Ocean across the CMIP5 model suite, *Biogeosciences*, 12, 5715–5734, <https://doi.org/10.5194/bg-12-5715-2015>, 2015.
- Lotze, H. K., Tittensor, D. P., Bryndum-Buchholz, A., Eddy, T. D., Cheung, W. W., Galbraith, E. D., Barange, M., Barrier, N., Bianchi, D., Blanchard, J. L., and Worm, B.: Global ensemble projections reveal trophic amplification of ocean biomass declines with climate change, *Proceedings of the National Academy of Sciences*, 116, 12907–12912, <https://doi.org/10.1073/pnas.1900194116>, 2019.
- 535 Lovato, T., Peano, D., Butenschön, M., Materia, S., Iovino, D., Scoccimarro, E., Fogli, P., Cherchi, A., Bellucci, A., Gualdi, S., and Masina, S.: CMIP6 Simulations With the CMCC Earth System Model (CMCC-ESM2), *Journal of Advances in Modeling Earth Systems*, 14, e2021MS002814, <https://doi.org/10.1029/2021MS002814>, 2022.
- Marinov, I., Gnanadesikan, A., Toggweiler, J., and Sarmiento, J. L.: The Southern Ocean biogeochemical divide, *Nature*, 441, 964–967, <https://doi.org/10.1038/nature04883>, 2006.
- 540 Marinov, I., Doney, S., and Lima, I.: Response of ocean phytoplankton community structure to climate change over the 21st century: partitioning the effects of nutrients, temperature and light, *Biogeosciences*, 7, 3941–3959, <https://doi.org/10.5194/bg-7-3941-2010>, 2010.
- Martin, J. H., Gordon, R. M., and Fitzwater, S. E.: Iron in Antarctic waters, *Nature*, 345, 156–158, <https://doi.org/10.1038/345156a0>, 1990.
- Mauritsen, T., Bader, J., Becker, T., Behrens, J., Bittner, M., Brokopf, R., Brovkin, V., Claussen, M., Crueger, T., Esch, M., and Roeckner, E.: Developments in the MPI-M Earth System Model version 1.2 (MPI-ESM1.2) and its response to increasing CO<sub>2</sub>, *Journal of Advances in Modeling Earth Systems*, 11, 998–1038, <https://doi.org/10.1029/2018MS001400>, 2019.
- 545 Mitchell, B. G., Brody, E. A., Holm-Hansen, O., McClain, C., and Bishop, J.: Light limitation of phytoplankton biomass and macronutrient utilization in the Southern Ocean, *Limnology and Oceanography*, 36, 1662–1677, <https://doi.org/10.4319/lo.1991.36.8.1662>, 1991.
- Moore, C., Mills, M., Arrigo, K., Berman-Frank, I., Bopp, L., Boyd, P., Galbraith, E., Geider, R., Guieu, C., Jaccard, S., and Ulloa, O.: Processes and patterns of oceanic nutrient limitation, *Nature Geoscience*, 6, 701–710, <https://doi.org/10.1038/ngeo1765>, 2013.
- 550

- Moore, J. K., Doney, S. C., Glover, D. M., and Fung, I. Y.: Iron cycling and nutrient-limitation patterns in surface waters of the World Ocean, *Deep Sea Research Part II: Topical Studies in Oceanography*, 49, 463–507, 2001.
- Moriarty, R. and O’Brien, T.: Distribution of mesozooplankton biomass in the global ocean, *Earth System Science Data*, 5, 45–55, 2013.
- Müller, W. A., Jungclaus, J. H., Mauritsen, T., Baehr, J., Bittner, M., Budich, R., Bunzel, F., Esch, M., Ghosh, R., Haak, H., and Marotzke, J.: A Higher-resolution Version of the Max Planck Institute Earth System Model (MPI-ESM1.2-HR), *Journal of Advances in Modeling Earth Systems*, 10, 1383–1413, <https://doi.org/10.1029/2017MS001217>, 2018.
- 555 Nissen, C., Gruber, N., Münnich, M., and Vogt, M.: Southern Ocean phytoplankton community structure as a gatekeeper for global nutrient biogeochemistry, *Global Biogeochemical Cycles*, 35, e2021GB006991, <https://doi.org/10.1029/2021GB006991>, 2021.
- Pauly, D. and Christensen, V.: Primary production required to sustain global fisheries, *Nature*, 374, 255–257, <https://doi.org/10.1038/374255a0>, 1995.
- 560 Petrik, C., Luo, J., Heneghan, R., Everett, J., and Harrison, A.: Assessment and constraint of mesozooplankton in CMIP6 Earth system models, *Global Biogeochemical Cycles*, 36, e2022GB007367, <https://doi.org/10.1029/2022GB007367>, 2022.
- Petrou, K., Kranz, S. A., Trimborn, S., Hassler, C. S., Ameijeiras, S. B., Sackett, O., Ralph, P. J., and Davidson, A. T.: Southern Ocean phytoplankton physiology in a changing climate, *Journal of Plant Physiology*, 203, 135–150, 2016.
- 565 Pörtner, H.-O., Roberts, D. C., Masson-Delmotte, V., Zhai, P., Tignor, M., Poloczanska, E., Mintenbeck, K., Nicolai, M., Okem, A., Petzold, J., and Weyer, N.: IPCC special report on the ocean and cryosphere in a changing climate, IPCC Intergovernmental Panel on Climate Change: Geneva, Switzerland, 1, 2019.
- Prowe, A. F., Visser, A. W., Andersen, K. H., Chiba, S., and Kjørboe, T.: Biogeography of zooplankton feeding strategy, *Limnology and Oceanography*, 64, 661–678, <https://doi.org/10.1002/lno.11067>, 2019.
- 570 Prowe, A. F., Su, B., Nejtgaard, J. C., and Schartau, M.: Food web structure and intraguild predation affect ecosystem functioning in an established plankton model, *Limnology and Oceanography*, 67, 843–855, 2022.
- Ratnarajah, L., Abu-Alhaija, R., Atkinson, A., Batten, S., Bax, N. J., Bernard, K. S., Canonico, G., Cornils, A., Everett, J. D., Grigoratou, M., and Yebra, L.: Monitoring and modelling marine zooplankton in a changing climate, *Nature Communications*, 14, 564, <https://doi.org/10.1038/s41467-023-36241-5>, 2023.
- 575 Rohr, T., Richardson, A. J., Lenton, A., Chamberlain, M. A., and Shadwick, E. H.: Zooplankton grazing is the largest source of uncertainty for marine carbon cycling in CMIP6 models, *Communications Earth & Environment*, 4, 212, 2023.
- Ryan-Keogh, T. J., Thomalla, S. J., Monteiro, P. M., and Tagliabue, A.: Multidecadal trend of increasing iron stress in Southern Ocean phytoplankton, *Science*, 379, 834–840, 2023.
- Sarmiento, J. L., Gruber, N., Brzezinski, M., and Dunne, J.: High-latitude controls of thermocline nutrients and low latitude biological productivity, *Nature*, 427, 56–60, <https://doi.org/10.1038/nature02127>, 2004a.
- 580 Sarmiento, J. L., Slater, R., Barber, R., Bopp, L., Doney, S., Hirst, A., Kleypas, J., Matear, R., Mikolajewicz, U., Monfray, P., and Stouffer, R.: Response of ocean ecosystems to climate warming, *Global Biogeochemical Cycles*, 18, <https://doi.org/10.1029/2003GB002134>, 2004b.
- Séférian, R., Nabat, P., Michou, M., Saint-Martin, D., Voldoire, A., Colin, J., Decharme, B., Delire, C., Berthet, S., Chevallier, M., S., S., and Madec, G.: Evaluation of CNRM earth system model, CNRM-ESM2-1: Role of earth system processes in present-day and future climate, *Journal of Advances in Modeling Earth Systems*, 11, 4182–4227, <https://doi.org/10.1029/2019MS001791>, 2019.
- 585 Séférian, R., Berthet, S., Yool, A., Palmieri, J., Bopp, L., Tagliabue, A., Kwiatkowski, L., Aumont, O., Christian, J., Dunne, J., and Yamamoto, A.: Tracking improvement in simulated marine biogeochemistry between CMIP5 and CMIP6, *Current Climate Change Reports*, 6, 95–119, <https://doi.org/10.1007/s40641-020-00160-0>, 2020.

- Sellar, A. A., Jones, C. G., Mulcahy, J. P., Tang, Y., Yool, A., Wiltshire, A., O'connor, F. M., Stringer, M., Hill, R., Palmieri, J., and Zerroukat, M.: UKESM1: Description and evaluation of the UK Earth System Model, *Journal of Advances in Modeling Earth Systems*, 11, 4513–4558, <https://doi.org/10.1029/2019MS001739>, 2019.
- Shurin, J. B., Clasen, J. L., Greig, H. S., Kratina, P., and Thompson, P. L.: Warming shifts top-down and bottom-up control of pond food web structure and function, *Philosophical Transactions of the Royal Society B: Biological Sciences*, 367, 3008–3017, <https://doi.org/10.1098/rstb.2012.0243>, 2012.
- Song, H., Long, M. C., Gaube, P., Frenger, I., Marshall, J., and McGillicuddy Jr, D. J.: Seasonal variation in the correlation between anomalies of sea level and chlorophyll in the Antarctic Circumpolar Current, *Geophysical Research Letters*, 45, 5011–5019, 2018.
- Steinacher, M., Joos, F., Frölicher, T., Bopp, L., Cadule, P., Cocco, V., Doney, S., Gehlen, M., Lindsay, K., Moore, J., and Segschneider, J.: Projected 21st century decrease in marine productivity: a multi-model analysis, *Biogeosciences*, 7, 979–1005, <https://doi.org/10.5194/bg-7-979-2010>, 2010.
- Stock, C., Dunne, J., and John, J.: Drivers of trophic amplification of ocean productivity trends in a changing climate, *Biogeosciences*, 11, 7125–7135, <https://doi.org/10.5194/bg-11-7125-2014>, 2014a.
- Stock, C., Dunne, J. P., and John, J. G.: Global-scale carbon and energy flows through the marine planktonic food web: An analysis with a coupled physical–biological model, *Progress in Oceanography*, 120, 1–28, <https://doi.org/10.1016/j.pocean.2013.07.001>, 2014b.
- Swart, N. C., Cole, J. N., Kharin, V. V., Lazare, M., Scinocca, J. F., Gillett, N. P., Anstey, J., Arora, V., Christian, J. R., Hanna, S., and Winter, B.: The Canadian Earth System Model version 5 (CanESM5. 0.3), *Geoscientific Model Development*, 12, 4823–4873, <https://doi.org/10.5194/gmd-12-4823-2019>, 2019.
- Tagliabue, A., Aumont, O., DeAth, R., Dunne, J. P., Dutkiewicz, S., Galbraith, E., Misumi, K., Moore, J. K., Ridgwell, A., Sherman, E., and Yool, A.: How well do global ocean biogeochemistry models simulate dissolved iron distributions?, *Global Biogeochemical Cycles*, 30, 149–174, <https://doi.org/10.1002/2015GB005289>, 2016.
- Tagliabue, A., Bowie, A. R., Boyd, P. W., Buck, K. N., Johnson, K. S., and Saito, M. A.: The integral role of iron in ocean biogeochemistry, *Nature*, 543, 51–59, <https://doi.org/10.1038/nature21058>, 2017.
- Tagliabue, A., Kwiatkowski, L., Bopp, L., Butenschön, M., Cheung, W., Lengaigne, M., and Vialard, J.: Persistent uncertainties in ocean net primary production climate change projections at regional scales raise challenges for assessing impacts on ecosystem services, *Frontiers in Climate*, p. 149, <https://doi.org/10.3389/fclim.2021.738224>, 2021.
- Terhaar, J., Kwiatkowski, L., and Bopp, L.: Emergent constraint on Arctic Ocean acidification in the twenty-first century, *Nature*, 582, 379–383, <https://doi.org/10.1038/s41586-020-2360-3>, 2020.
- Terhaar, J., Frölicher, T. L., and Joos, F.: Southern Ocean anthropogenic carbon sink constrained by sea surface salinity, *Science Advances*, 7, eabd5964, <https://doi.org/10.1126/sciadv.abd5964>, 2021a.
- Terhaar, J., Torres, O., Bourgeois, T., and Kwiatkowski, L.: Arctic Ocean acidification over the 21st century co-driven by anthropogenic carbon increases and freshening in the CMIP6 model ensemble, *Biogeosciences*, 18, 2221–2240, <https://doi.org/10.5194/bg-18-2221-2021>, 2021b.
- Terhaar, J., Frölicher, T. L., and Joos, F.: Observation-constrained estimates of the global ocean carbon sink from Earth system models, *Biogeosciences*, 19, 4431–4457, <https://doi.org/10.5194/bg-19-4431-2022>, 2022.
- Tjiputra, J. F., Schwinger, J., Bentsen, M., Morée, A. L., Gao, S., Bethke, I., Heinze, C., Goris, N., Gupta, A., He, Y.-C., and Schulz, M.: Ocean biogeochemistry in the Norwegian Earth System Model version 2 (NorESM2), *Geoscientific Model Development*, 13, 2393–2431, <https://doi.org/10.5194/gmd-13-2393-2020>, 2020.



- Tsujino, H., Nakano, H., Sakamoto, K., Urakawa, S., Hirabara, M., Ishizaki, H., and Yamanaka, G.: Reference manual for the Meteorological Research Institute Community Ocean Model version 4 (MRI. COMv4), Technical Reports of the Meteorological Research Institute, 80, 306, 2017.
- 630 Uchida, T., Balwada, D., Abernathey, R., Prend, C. J., Boss, E., and Gille, S. T.: Southern Ocean phytoplankton blooms observed by biogeochemical floats, *Journal of Geophysical Research: Oceans*, 124, 7328–7343, 2019.
- Westberry, T., Behrenfeld, M., Siegel, D., and Boss, E.: Carbon-based primary productivity modeling with vertically resolved photoacclimation, *Global Biogeochemical Cycles*, 22, 2008.
- Williamson, M. S., Thackeray, C. W., Cox, P. M., Hall, A., Huntingford, C., and Nijssse, F. J.: Emergent constraints on climate sensitivities, *Reviews of Modern Physics*, 93, 025 004, 2021.
- 635 Woodward, S., Roberts, D., and Betts, R.: A simulation of the effect of climate change–induced desertification on mineral dust aerosol, *Geophysical Research Letters*, 32, 2005.
- Xue, T., Frenger, I., Oeschies, A., Stock, C. A., Koeve, W., John, J. G., and Prowe, A. E.: Mixed layer depth promotes trophic amplification on a seasonal scale, *Geophysical Research Letters*, 49, e2022GL098 720, <https://doi.org/10.1029/2022GL098720>, 2022a.
- 640 Xue, T., Frenger, I., Prowe, A., José, Y. S., and Oeschies, A.: Mixed layer depth dominates over upwelling in regulating the seasonality of ecosystem functioning in the Peruvian Upwelling System, *Biogeosciences*, 19, 455–475, <https://doi.org/10.5194/bg-19-455-2022>, 2022b.
- Ziehn, T., Chamberlain, M. A., Law, R. M., Lenton, A., Bodman, R. W., Dix, M., Stevens, L., Wang, Y.-P., and Srbinovsky, J.: The Australian earth system model: ACCESS-ESM1. 5, *Journal of Southern Hemisphere Earth Systems Science*, 70, 193–214, <https://doi.org/10.1071/ES19035>, 2020.