

# Water table driven greenhouse gas emission estimate guides peatland restoration at national scale

Julian Koch<sup>1</sup>, Lars Elsgaard<sup>2</sup>, Mogens H. Greve<sup>2</sup>, Steen Gyldenkærne<sup>3</sup>, Cecilie Hermansen<sup>2</sup>, Gregor Levin<sup>3</sup>, Shubiao Wu<sup>2</sup> & Simon Stisen<sup>1</sup>

<sup>1</sup>Geological Survey of Denmark and Greenland, Department of Hydrology, Copenhagen, Denmark

<sup>2</sup>Aarhus University, Department of Agroecology, Tjele, Denmark

<sup>3</sup>Aarhus University, Department of Environmental Science, Roskilde, Denmark

10 *Correspondence to:* Julian Koch (juko@geus.dk)

**Abstract.** The substantial climate change mitigation potential of restoring peatlands, through rewetting and extensifying agriculture to reduce greenhouse gas (GHG) emissions is largely recognized. The green deal in Denmark aims at restoring 100,000 ha peatlands by 2030. This area corresponds to more than half of the Danish peatland, with an expected reduction of GHG emissions of almost half of the entire land use, land use change and forestry (LULUCF) emissions. Recent advances established the functional relationship between hydrological regimes, i.e. water table depth (WTD), and CO<sub>2</sub> and CH<sub>4</sub> emissions. This builds the basis for science-based tools to evaluate and prioritize peatland restoration projects. With this article, we lay the foundation of such a development by developing a high-resolution WTD map for Danish peatlands. Further we define WTD repose functions (CO<sub>2</sub> and CH<sub>4</sub>) fitted to Danish flux data to derive a national GHG emission estimate for peat soils. We estimate the annual GHG emissions to be 2.6 Mt CO<sub>2</sub>-eq, which is around 15% lower than previous estimates. Lastly, we investigate alternative restoration scenarios and identify substantial differences in the GHG reduction potential depending on the prioritization of fields in the rewetting strategy. If wet fields are prioritized, which is not unlikely in a context of a voluntary bottom-up approach, the GHG reduction potential is just 30% for the first 10,000 ha with respect to a scenario that prioritizes drained fields. This underpins the importance of the proposed framework linking WTD and GHG emissions to guide a spatially differentiated peatland restoration. [The choice of model type used to fit the CO<sub>2</sub> WTD response function, the applied global warming potentials and uncertainties related to the WTD map are investigated by means of a scenario analysis, which suggests that the estimated GHG emissions and the reduction potential are associated with coefficient of variations of 13% and 22%, respectively.](#)

## 1 Introduction

The natural environmental conditions of peatlands represent a waterlogged, anoxic and often acidic soil ecosystem that favours the accumulation of organic carbon (C) due to impeded microbial mineralization of plant biomass. During the last centuries, anthropogenic induced changes of the environmental conditions have deteriorated the natural functioning of many peatlands across the globe and have transformed them from an atmospheric carbon sink to a carbon source (Huang et al., 2021; Tiemeyer et al., 2016; Wilson et al., 2015). Thus, in order to expand arable land, water tables were lowered, soils were limed and inundation was prevented through establishment of artificial drainage and stream management. This has enhanced microbial mineralization and CO<sub>2</sub> emissions. In consequence, drained peatlands are accountable for approx. 1 Gt CO<sub>2</sub> equivalents (CO<sub>2</sub>-eq) per year at global scale, which corresponds to 10% of the total greenhouse gas (GHG) emissions from the land use, land use change and forestry (LULUCF) sectors (Smith et al., 2014). It is widely acknowledged that targeted management of peatlands is needed to mitigate their contribution to climate change (Hambäck et al., 2023; Wilson et al., 2016).

The emissions of CO<sub>2</sub> and methane (CH<sub>4</sub>) are linked to hydrologic regimes where a deeper water table favours CO<sub>2</sub> emissions and a very shallow water table permits CH<sub>4</sub> emissions (Evans et al., 2021; Tiemeyer et al., 2020). The functional relationship between nitrous oxide (N<sub>2</sub>O) and water table depth is less certain (Tiemeyer et al., 2020), however full saturation is typically linked to zero or negligible N<sub>2</sub>O emissions from organic soils, such as <1 kg N<sub>2</sub>O ha<sup>-1</sup> year<sup>-1</sup> (Minkkinen et al., 2020; Wilson et al., 2016). It is widely recognised that restoring cultivated peatlands by rewetting is a robust climate mitigation strategy, although the ecosystems may not reach their natural environmental conditions on short term (Audet et al., 2013; Kandel et al., 2018). In practice, such restoration implies at a minimum to cease tillage and to reduce artificial drainage, e.g., by deregulating streams, blocking of drain pipes and ditches.

To mitigate agricultural GHG emissions, and to improve nature quality and biodiversity, Danish ministerial agreements were launched in 2021 to restore 100,000 ha peatland by 2030. It has been estimated that the total of Danish peatlands (173,000 ha) emit approx. 5.4 Mt CO<sub>2</sub>-eq yr<sup>-1</sup>, which is by far the largest source in the LULUCF sector (Nielsen et al., 2022). Further, it has been suggested that the emissions could be potentially reduced by 4.1 Mt CO<sub>2</sub>-eq through restoration (Klimarådet, 2020). Yet, mitigation effects of large-scale peatland restoration remain uncertain, since precise knowledge of the baseline emissions is missing, and tools are critically needed to guide the restoration by prioritising areas with the largest GHG reduction potential. Oxygen status in the peat soil, as controlled by water saturation, is among the strongest proximal drivers of microbial mineralization and losses of GHG (Karki et al., 2014). Therefore, large-scale models of water table depth (WTD) in peat soils could potentially be a useful proxy for the intensity of GHG emissions, thereby contributing to guide national rewetting initiatives (Tiemeyer et al., 2020).

There exists a suite of tools to model WTD in peat soils, namely process-based and conceptual models as well as data-driven machine learning (ML) models. Modelling peatland WTD dynamics using process-based models requires site specific knowledge on lateral flows of surface- and groundwater as well as correct representation of small-scale variability in topography and soil properties (Bechtold et al., 2019; Gong et al., 2012). This poses challenges for large-scale modelling

applications. However, ML provides a suitable alternative, which can fully exploit available high-resolution geo-environmental data sources and thereby bypassing the rigid parameterization and computational requirements of conventional hydrological models. There exists a large body of literature addressing the applicability of ML to model site-specific temporal WTD dynamics. However, to our knowledge, the potential of applying ML to model the spatial WTD variability at high-resolution for large domains has only been investigated by few studies. Bechtold et al. (2014) applied boosted regression trees to model a mean annual WTD for peatlands in Germany at a resolution of 25 m. Koch et al. (2019) modeled WTD for extreme winter conditions for a 15,000 km<sup>2</sup> domain in Denmark by using random forests. This work was later extended to national scale at 10 m resolution using gradient boosting decision trees for average summer and winter WTD (Koch et al., 2021). At smaller domains, Lendzioch et al. (Lendzioch et al., 2021) applied a random forest model to simulated WTD for two peat sites in the Czech Republic at sub-meter resolution using multi-spectral and thermal UAV data as input.

The present study is motivated by recent scientific advances in defining WTD response functions of CO<sub>2</sub> and CH<sub>4</sub> emissions and high-resolution ML based WTD modelling. The key objectives of the study are to (1) build a high-resolution ML based WTD model for Danish peatlands, (2) define WTD response functions for CO<sub>2</sub> and CH<sub>4</sub> for Danish conditions, and (3) combine (1) and (2) to derive national scale GHG emission estimates and to showcase how the new knowledge can be used to support peatland restoration.

## 2 Data and methods

### 2.1 Study area

The study area covers the entire land area of Denmark, which corresponds to approx. 43,000 km<sup>2</sup>. In order to restrict the domain for the data analysis and modelling to an area where WTD driven GHG upscaling may be of relevance, we calculated the union of two map layers that include a river valley bottom delineation (Sechu et al., 2021) and a map of wetlands (Greve et al., 2014). The two map layers correspond to approx. 775,000 ha and approx. 904,000 ha, respectively, and their union, which marks our model domain, amounts to approx. 1,162,000 ha, roughly one fourth of the total land area of Denmark (Figure 1). For the final analysis, the domain was further constrained to the carbon rich lowland soils. The total area of peat soils with organic content (OC) greater than 12% constitutes approx. 129,000 ha, of which approx. 74,000 are cultivated, either extensively as permanent grassland (65%) or intensively for a variety of crop types (35%) (Greve et al., 2019; Levin, 2019). Peat extraction is still taking place sporadically in Denmark. The Danish climate is characterised as temperate with evenly distributed precipitation over the year. The Danish Meteorological Institute states the mean annual temperature as 8.7°C and the mean annual precipitation as 759 mm.

### 2.2 Water table depth

A total of 24,492 WTD observations were assorted from various sources in order to compile a comprehensive training dataset that reflects long-term average summer conditions. WTD observations recorded between the months of May and September

in the period of 2000 to 2021 were used as training data. Figure 1 depicts the locations of the WTD observations and Table 1 provides an overview of the different sources and WTD statistics. Data from the Danish well database JUPITER (*Hansen and Pjetursson, 2011*) were processed by first constraining the well location to a 200 m buffer around the lowland soils. Second, only wells with a maximum filter depth of 5 m below ground were selected. The median WTD was used in case a well had multiple observations within the specified period. This resulted in 5,716 WTD observations. The wells are primarily located in the fringe areas and only 132 wells coincide with the OC > 12% class. Moreover, 4,796 WTD observations were obtained from two soil auger campaigns (2010 and 2021) that specifically targeted lowland soils with high organic content (Greve et al., 2014). 653 out of the 4,796 locations sampled in summer 2010 were revisited in summer 2021 and for the double sampled locations, the mean WTD was used in the final training dataset. The mean and not the median WTD was calculated for the resampled auger sites, because only two measurements were available. The soil augering equipment was limited to a maximum depth of 1.21 m and in case the water table was not detected by the auger, information could only be derived for the minimum WTD at the given location. In general, the auger and well observations are in fair agreement with each other and show an average deviation of 0.1 m for sampling locations with a difference of less than 100 m. Further, 9,980 groundwater dependent lakes with a surface area greater than 100 m<sup>2</sup> and located within a 200 m buffer around the peatland soils were used as proxy WTD observations. Since lake water level observations were missing, values were drawn from a normal distribution with an assumed mean of -0.25 m, i.e., above terrain, and a standard deviation of 0.05 m. Additional dummy points for saturated conditions were placed along the coastline and the river network. Here, 1,000 points for each category were placed randomly and assigned a WTD of 0 m. Lastly, dummy points for drained conditions were generated along drain ditches and within drained forest. Here, 1000 points for each category were placed randomly and sampled from a normal distribution with a mean WTD of 1.21 m and standard deviation of 0.2 m. Under Danish conditions, ditches drain the agricultural land year-round in most cases. Figure 2 depicts the WTD variability of the training dataset differentiated for the data sources. The WTD data derived from the national well database was the only source that contained deep WTD observations. The data originating from the soil coring campaigns provided mostly shallow data; however, 3,110 samples had a WTD of 1.21 m and thereby indicated solely a minimum WTD. The WTD of lakes is entirely above terrain, i.e., negative WTD values, whereas coast and rivers were assigned a WTD of 0 m. We created a training dataset for summer conditions, because the WTD observations from the soil auger campaigns are primarily from summer months and the WTD data from this source represent the primary information on the shallow WTD, i.e., top meter below terrain. Based on the WTD observations from the national well database, the median WTD for summer is 2.0 m whereas the median WTD for winter is 1.75 m, based on the same processing as applied for the summer data, just for the months from October to March. The difference of 0.25 m can be understood as an overall annual amplitude.

Based on a data synthesis by Tiemeyer et al. (2020), the WTD driven GHG response functions of CO<sub>2</sub> and CH<sub>4</sub> emissions from organic soils exhibit a non-linear relationship with the most distinct sensitivity in the depth interval of 0 to 0.5 m. In consequence, we aim at modelling WTD with the highest possible accuracy for this GHG sensitive WTD interval. With the

125 same motivation, Bechtold et al. (2014) presented a WTD transformation function that resulted in a pseudo linearity between  
WTD and GHG. For our purpose, the transformation function presented by Bechtold et al. (2014) was adopted to:

$$WTD_t = \begin{cases} -1 * (e^{3*WTD} - 1) & WTD \geq 0 \\ -1 * (1 - e^{-3*WTD}) & WTD < 0 \end{cases} \quad (\text{Eq. 1})$$

where  $WTD_t$  is the transformed WTD. As shown in Figure 2,  $WTD_t$  varies between -1 and 1, and reaches its upper asymptote  
at a WTD of approximately 1 m. The applied WTD transformation also allows us to incorporate the 1.21 m WTD data, that  
130 represent a minimum observation, since the  $WTD_t$  variability above 1 m is minimal.

### 2.3 Covariates

A set of 27 covariates was curated to gather national scale map layers that are deemed relevant to explain the WTD variability  
in the training dataset (Table 2). The individual maps were resampled from their native resolutions to the defined output  
resolution of 10 m. The covariates encompassed high-resolution data on topography, water body proximity, lithology, land use  
135 and hydrology. The water body proximity was expressed as both the vertical and horizontal distance to the nearest water body,  
which contained rivers, lakes, and the coastline. Additionally, the vertical and horizontal distance to the nearest ditch was  
calculated to capture the effect of drainage on WTD in lowland soils. Using the historical crop type records, a six class ranked  
map indicating wetness of agricultural fields was created. The wetness rank represents a qualitative analysis based on  
agricultural expert judgement based on the Danish agricultural Land Parcel Information System for approx. 600,000 fields for  
140 the years 2016 to 2020. Moreover, high-resolution data relevant to discriminate saturation conditions of the soil were obtained  
from Landsat and Sentinel-1 satellite systems, such as land surface temperature (LST), which serves as a valuable proxy for  
water-saturated soil conditions.

### 2.4 Machine learning model

We applied the CatBoost implementation of the well-established gradient boosting decision tree (GBDT) algorithm (Dorogush  
et al., 2018; Prokhorenkova et al., 2018). In an additive training process, GBDT builds a prediction model based on an ensemble  
of weak learners, i.e., decision trees. For a pre-defined number of iterations, GBDT attempts to correct itself by adding a  
decision tree trained against the residuals of the ensemble sum of its predecessors. CatBoost is favorable over similar ML  
algorithms, such as Random Forests, Support Vector Machines, or other GBDT implementations (e.g., XGboost or  
LightGBM), with respect to computational time and memory usage, while achieving a competitive accuracy (Hancock &  
150 Khoshgoftaar, 2020; Huang et al., 2019). The model is set up to predict WTD at a resolution of 10 m. Given the areal extent  
of the domain, over 116 million grid cells are simulated by the GBDT model. The cost function used in training the model was  
set to the root mean squared error (RMSE) and key hyper parameters were tuned via a randomized search. The following  
CatBoost hyper parameters were included in a simple randomized search with 2000 iterations: `learning_rate`, `depth`, `subsample`,  
`rsm`, `l2_leaf_reg`, `min_data_in_leaf`. The selected hyper parameters affect the overall architecture of individual trees as well as  
155 limit the effect of overfitting. The best performing model, with respect to a 25% holdout validation was selected for subsequent

final training. The final GBDT model was trained over 1000 iterations where 10% of the data were used as validation data to initiate early stopping once the validation cost function did not improve over 10 iterations. CatBoost allows assigning weights to the individual training data, which are used to calculate the cost function. In order to emphasize the GHG sensitive depth interval 0 to 0.5 m in the model training, a weight of 2 was assigned to shallow WTD observations.

160 The Shapley Additive exPlanations (SHAP) approach (Lundberg and Lee, 2017) was implemented to investigate the covariate importance of the trained GBDT model. SHAP builds upon game theory principles to explain the output of any ML model by quantifying marginal contributions of the applied covariates. SHAP values represent the contribution of each covariate to the final prediction and thereby provide valuable insights into trained ML models. The magnitude and sign of the SHAP values indicate the importance of a covariate and the direction of impact on the prediction, respectively. We calculated SHAP values  
165 (i) for the training dataset to get insights into the trained GBDT model and (ii) for the prediction dataset to generate maps showing the relationships between covariates and WTD.

## 2.5 Synthesis and upscaling of Danish GHG flux data

The first measurements of CO<sub>2</sub> fluxes from cultivated peat soils in Denmark were performed in the 1970s using an in situ alkaline CO<sub>2</sub> trap method (Petersen et al., 1976), but it was not until 2008-2009 that a national monitoring campaign was  
170 accomplished, where net fluxes of CO<sub>2</sub>, CH<sub>4</sub> and N<sub>2</sub>O were measured at eight sites using closed chamber techniques (Elsgaard et al., 2012; Petersen et al., 2012). Data on net ecosystem carbon balance from this campaign (Elsgaard et al., 2012) is used as the current Tier 2 emission factors (EFs) for organic soils with >12% OC in Denmark's National GHG Inventory report submitted under the United Nations Framework Convention on Climate Change and the Kyoto Protocol (Nielsen et al., 2021).  
175 National campaigns have not been repeated, but a number of research projects have generated additional data on annual emissions of GHGs from Danish organic soils. A synthesis of these studies was performed in the present study (Supplementary Tables S1 and S2) and the data was used to derive response functions for GHG emissions in relation to WTD at mean annual conditions.

For analyzing CO<sub>2</sub> emissions, we employed a non-linear Gompertz function according to Tiemeyer et al. (2020):

$$CO_2-C(WTD) = CO_2-C_{min} + CO_2-C_{diff} * e^{-a * e^{b * WTD}} \quad (\text{Eq. 2})$$

180 where  $CO_2-C_{min}$  is the lower asymptote,  $CO_2-C_{diff}$  is the difference between upper and lower asymptote,  $a$  controls the displacement along the WTD axis and  $b$  defines the gradient. Indirect CO<sub>2</sub> emissions from leaching of dissolved organic carbon ( $CO_2-C_{Doc}$ ) were added to Eq. 2, based on standard EFs of 0.31 Mg C ha<sup>-1</sup> for drained soils and 0.24 Mg C ha<sup>-1</sup> for rewetted soils (IPCC, 2014).

For analyzing CH<sub>4</sub> emissions, we fitted an exponential WTD response function according to Tiemeyer et al. (2020) and Evans  
185 et al. (2021):

$$CH_4(WTD) = CH_4_{min} + c * e^{-d * WTD} \quad (\text{Eq. 3})$$

where  $CH_4_{min}$  is the lower asymptote while  $c$  and  $d$  control the shape of the exponential function (Tiemeyer et al., 2020). The Danish sites, for which  $CH_4$  emission data were available, represented drained and restored cropland and grassland, where the water level at least under experimental conditions was close to surface. Methane emission from ditches ( $CH_4_{ditch}$ ) were estimated, by considering a fraction of the land, i.e., 10%, where drainage ditches are located. Opposed to Tiemeyer et al. (2020), who applied a ditch fraction parameter for all grids, we only included grids that are actually containing a ditch. The location of the ditches was derived based on publicly available datasets. Given the applied grid size of 10 m, this corresponds to an averaged drainage ditch dimension of 1 m, which can be considered very suitable for Danish conditions. The applied EFs for  $CH_4_{ditch}$  were 1,165 kg  $CH_4$  ha<sup>-1</sup> yr<sup>-1</sup> for cropland and 948 kg  $CH_4$  ha<sup>-1</sup> yr<sup>-1</sup> for grassland (IPCC, 2014).

190 Data for  $N_2O$  emissions showed no systematic WTD dependence and in consequence, land use specific EFs were applied. We applied the EFs from Wilson et al. (2016) as updated from the IPCC (2014) wetlands supplement: 13.0 kg  $N_2O-N$  ha<sup>-1</sup> yr<sup>-1</sup> for cropland, 4.7 kg  $N_2O-N$  ha<sup>-1</sup> yr<sup>-1</sup> as average for grassland (deep/shallow drained, nutrient rich/poor) and 0.1 kg  $N_2O-N$  ha<sup>-1</sup> yr<sup>-1</sup> for rewetted organic soils.

195 All GHGs were converted to  $CO_2$ -eq using their global warming potential (GWP) over a 100 year period according to the 6th IPCC assessment report (Forster et al., 2021) where 1 kg  $CH_4$  = 27 kg  $CO_2$  and 1 kg  $N_2O$  = 273 kg  $CO_2$ . For applying the land use specific EFs and WTD response functions, we used a 2020 land use classification for Denmark (Levin & Gyldenkerne, 2022). Based on the available WTD observations, the WTD map captures a long-term average summertime condition. Since the applied GHG upscaling method is based on annual mean WTD, a scaling parameter is subtracted from the summertime WTD map to obtain an annual average. As described in section 2.2 the annual variability is estimated to be 0.25 m. In order to correct for seasonality, 0.125 m was subtracted from the summer WTD map. Negative values were set to zero.

205

### 3 Results

#### 3.1 Water table depth model

The hyperparameter tuning of the GBDT model resulted in the following results: depth = 10, learning\_rate = 0.05, subsample = 0.8, rsm = 0.8, min\_data\_in\_leaf = 1 and l2\_leaf\_reg = 5. The GBDT model was trained against  $WTD_t$ , but throughout the manuscript results and analysis are based on the back transformed variable WTD. Figure 3 depicts the final simulated WTD map that represents a long-time average summertime condition for the period of 2000 to 2021 for Åmosen, which is one of the largest peatlands in Denmark. For the visual assessment, a colour scheme that emphasizes the depth interval of 0 to 1 m has been selected. Even though WTD is simulated for a larger domain (lowland soils and river valleys), only grid cells with OC > 12% are shown, since the applied GHG upscaling method is only valid for such conditions. The WTD map discloses a distinct spatial heterogeneity with fully saturated conditions laying in very close vicinity to well drained conditions.

210

We applied SHAP to investigate feature importance of the trained GBDT model for the well and auger WTD observations, i.e., excluding the dummy points (Figure 4). The six most important covariates were, ordered in high to low importance: horizontal distance to water bodies, horizontal distance to ditches, vertical distance to water bodies, wetness rank based on

cropping history, clay content of the deepest soil horizon and land surface temperature (LST). Negative SHAP values are associated to negative impact, i.e., more shallow WTD and positive SHAP values are linked to a deeper water table. Locations close to water bodies exclusively possess negative SHAP values whereas locations with a large horizontal distance to the closest water body have both negative and positive SHAP values. The SHAP values for the horizontal distance to drain ditches are separated with positive values (producing a deeper WTD) for low distances, which clearly reveals the functioning of the added dummy points representing well drained conditions along the drain ditches. The interpretation of the SHAP values for the vertical distance to water bodies is that WTD does not follow small scale topographical variation and instead the water table has a smoother variation than topography, which results in a deeper WTD (positive SHAP value) for areas with a high vertical distance to the nearest water body. The wetness classes based on the cropping classes show a clear WTD sensitivity, where the low ranks, which are linked to crops that favor well-drained conditions possess positive SHAP values and the wet classes relate to a negative impact on the simulated WTD. A high clay percentage produces a positive impact on the prediction, i.e., deeper WTD. LST also shows a clear link to WTD, with higher values yielding a deeper WTD and lower LST resulting in more water saturated conditions.

Figure 3 exemplifies three of the seven listed covariates (i.e., LST, wetness rank and vertical distance to nearest water body) to elucidate key connections between model input and output. For LST (Figure 3b), there is a direct relationship, with lower LST in areas of high saturation caused by either evaporative cooling of the land surface due to high water availability or enhanced heat conductance towards deeper layers for wet soils, whereas deeper water tables, i.e., drier conditions, are collocated with higher LST. Further, we observe a good agreement between WTD and the wetness rank, derived from the cropping history from 2016 to 2020 (Figure 3c). Fields with crops associated with a wet rank, i.e., permanent poor grassland with low nitrogen application rates, are associated with a low WTD, while crops that require drainage, e.g., winter wheat, potatoes or sugar beet, are found at fields with a deeper WTD. The agronomic requirements reflected by the ranked wetness map, are characterized by plausible mean WTD, which show consistent differences between each other. For the entire domain, the mean WTD values for the three wettest categories are below 0.4 m, whereas the three dry categories have a WTD of 0.65 m and deeper. LST and wetness rank are to some degree connected to each other, with a lower LST for crops with a higher wetness rank. However, exceptions are found for drained forests that are associated with a low LST and a low wetness rank. Topographical variability is generally low in peatlands. Nevertheless, the vertical distance to the closest waterbody reveals small-scale topographical features that effect the simulated WTD (Figure 3d).

Figure 5 depicts the spatial distribution of SHAP values for the same three covariates substantiates previous findings (Figure 4). High LST has a positive impact on the prediction resulting in deep WTD and low LST has a negative impact on the prediction. In the case of drained forest, which has a low LST, the negative impact of LST is overruled by the positive impact of the crop based wetness rank. The latter shows a very clear separation of negative impact for the wet ranks and positive impact for the dry ranks. The negative impact of the vertical distance to the nearest waterbody is predominately limited to locations that are actually river or lake grids. A distinct positive impact is found for locations with a high vertical distance.



In order to assess the overall accuracy of the WTD map, we conducted a five-fold cross validation experiment. For this, five GBDT models were trained using 80% of the data for training and 20% of the data was held back for validation. The five validation datasets were sampled so each WTD observation served exactly once as validation data. Figure 6 presents the scatter density plot of observed and simulated WTD both, a) including and b) excluding the dummy points, for the five validation datasets. The effect of the WTD transformation and the weighting scheme of WTD data in the depth interval of 0 to 0.5 m becomes apparent. The model shows the best accuracy for the shallow water table interval, whereas the performance deteriorates below a WTD of 1 m. The poor performance of WTD below 1 m can be explained by the transfer function which hinders the GBDT model to discriminate WTD variability below a WTD of 1 m. In the case of WTD driven GHG upscaling, this is acceptable since the WTD response functions are not sensitive to changes in WTD deeper than approx. 0.5 m. The scatter plot reveals that the dummy points with zero and negative WTD, i.e., above terrain, are generally represented quite well by the GBDT model. Taking only the well and auger WTD observations into consideration, a slight bias for the shallow WTD observations becomes evident.

Table 3 quantifies the performance of the GBDT model for the five-fold cross validation test both including and excluding the dummy points. The performance for the well and auger observations for the top 0.5 interval shows a bias of -0.2 m. Also taking dummy points into consideration, the bias of the top 0.5 m interval and the 0.5 to 1 m interval was -0.05 m and 0.08 m, respectively. We consider the validation excluding the dummy points as the more relevant performance quantification for the given application. For the deeper intervals the metric scores are comparable for the entire training dataset and the subset based on exclusively well and auger data. WTD deeper than 1 m perform worst on all stated metrics, which underpins the visual assessment of Figure 6.

For the entire model domain, the GBDT model predicts a WTD interval sensitive to GHG variability, i.e., below 0.5 m, for 36% of the area. For the delineated peat soils, with OC >12%, this area amounts to 54%. After correcting from summer to annual conditions, i.e., subtracting 0.125 m (half the mean annual amplitude), these area estimates increase to 45% and 64%, respectively. For agricultural areas with OC >12% the mean WTD is 0.49 m with a standard deviation of 0.35 m which underpins the distinct WTD variability in peatlands, also within the range of WTD associated with high sensitivity of the resulting emissions of CO<sub>2</sub>, CH<sub>4</sub> and N<sub>2</sub>O.

### 3.2 Danish greenhouse gas response functions

The parametrisation of the fitted WTD driven response functions for CO<sub>2</sub> and CH<sub>4</sub> emissions (Figure 7) showed a systematic relationship where CO<sub>2</sub> emissions increased with increasing WTD between 0 and 0.4–0.5 m before reaching an asymptotic level of 10 Mg CO<sub>2</sub>-C ha<sup>-1</sup> yr<sup>-1</sup>. The fitted parameters are as follows:  $CO_2-C_{min} = 1.132$ ,  $CO_2-C_{diff} = 10.903$ ,  $a = 6.415$  and  $b = 14.183$ . CH<sub>4</sub> emissions were consistently negligible at WTD depths below 0.2–0.3 m, but increased at higher WTD to emissions of up to 0.8 Mg C ha<sup>-1</sup> yr<sup>-1</sup>. However, it is clear that a shallow WTD does not necessarily cause high CH<sub>4</sub> emissions, but rather provides a window of opportunity for methane fluxes to the atmosphere. The fitted parameters are as follows:  $CH_4_{min} = -21.48$ ,  $c = 258.83$  and  $d = -5.16$ . N<sub>2</sub>O emissions were not modelled, but average values for observations at WTD

285 >0.3 m (n = 19) and <0.3 m (n = 6) were 13.3 and 3.8 kg N ha<sup>-1</sup> yr<sup>-1</sup>, respectively, thus representing a magnitude similar to  
IPCC EFs, although somewhat higher as compared to the rewetted category (Wilson et al., 2016).

### 3.3 Upscaled greenhouse gas emissions

290 GHG emissions can be estimated based on the following, (1) the GHG upscaling method presented in section 2.5, (2) the long-  
term annual average WTD map, (3) a land use map and (4) a map delineating the drainage ditches. With a spatial resolution  
of 10 m, the WTD maps open the possibility to estimate GHG at equally high resolution. However, given the apparent  
uncertainties in the WTD map as well as in the WTD response functions, GHG are aggregated to national scale.

For the approximately 74,000 ha with OC >12%, the total emission of the three gasses CO<sub>2</sub>, N<sub>2</sub>O and CH<sub>4</sub> amounts to 2.6 Mt  
CO<sub>2</sub>-eq. Figure 8 depicts the relationship between WTD and the estimated GHG emissions, expressed as emission factor  
converted to CO<sub>2</sub>-eq. Emissions of CO<sub>2</sub> dominate the GHG budget at WTD deeper than approx. 0.1 m, whereas methane  
295 emissions become dominating at WTD closer to the soil surface. The contribution from CH<sub>4</sub> emissions is apparent, starting  
from a WTD of approx. 0.3 m, whereas low CH<sub>4</sub> emissions for deeper WTD are related to the minor CH<sub>4</sub><sub>ditch</sub> component which  
is not WTD dependent and takes place throughout the lowland soils. N<sub>2</sub>O emissions have no WTD response function and thus,  
emissions are rather constant across the WTD variability. Spatial heterogeneity of N<sub>2</sub>O emissions is based on the applied land  
use specific emissions factors which may indirectly be linked to WTD variability, which results in a slight decrease of N<sub>2</sub>O  
300 emissions with decreasing WTD. Based on the minimum of total GHG emissions shown in Figure 8, a WTD of approx. 0.04  
m can be identified as the optimal WTD for minimal GHG emissions, i.e., 5.6 CO<sub>2</sub>-eq Mg ha<sup>-1</sup> yr<sup>-1</sup>. Yet, the exact numbers  
should be viewed as indicative, since for example the possibility of negative CO<sub>2</sub> emissions at low WTD depends on the  
presence of wetland vegetation. Nevertheless, even in the absence of negative CO<sub>2</sub> emissions, the data indicates that an optimal  
rewetting strategy should aim at a WTD at a range between 0 and 0.1 m WTD to balance the trade-off between CO<sub>2</sub> and CH<sub>4</sub>  
305 emissions.

Table 4 states the emission factors for the three considered land use classes. The emission factors for N<sub>2</sub>O are in direct  
agreement with the ones stated in section 2.5 whereas the emission factors for CO<sub>2</sub> and CH<sub>4</sub> are affected by the modelled WTD  
variability. In total, based on area, but also emission factor, cropland dominates the GHG emissions of peatlands in Denmark.  
As expected, emission factors from rewetted peat soils are lowest.

### 310 3.4 Rewetting scenarios

The combination of a high-resolution WTD map and WTD response functions of GHG emissions allows to evaluate the effects  
of alternative rewetting scenarios. For this, it is assumed that the WTD of an agricultural field can be changed to the optimal  
WTD, allowing a reduction of total GHG emissions to 5.6 CO<sub>2</sub>-eq Mg ha<sup>-1</sup> yr<sup>-1</sup> (Figure 8). Figure 9 shows the results of three  
rewetting scenarios and a theoretical baseline as functions of the peatland area that is rewetted with a maximum of 74,000 ha.  
315 The baseline expresses the theoretical maximum emission reduction with the assumption that all agricultural fields are  
originally well drained and thus having a uniform reduction of 36.8 CO<sub>2</sub>-eq Mg ha<sup>-1</sup> yr<sup>-1</sup>, which expresses the reduction from

the maximum asymptote to the minimum of the total GHG curve in Figure 8. In the three rewetting scenarios the reference emissions are derived from the WTD response functions and thus, many agricultural fields have a lower reference emission than the baseline, which will result in a decreased emission reduction with respect to the baseline. The first scenario prioritises wet fields in the restoration, i.e., the agricultural fields with the lowest mean WTD are prioritised in the rewetting strategy. This scenario can be regarded pessimistic with respect to the expected GHG emission reduction. The second scenario prioritises the dry fields with the lowest mean WTD, which in turn can be considered an optimistic scenario. The third scenario selects fields in random order and lies in between the optimistic and the pessimistic scenarios. The prioritization order is based on over 79,000 digitized fields (Figure 3) and the WTD of an entire field is set to 0.04 m for calculating the reduction in GHG emissions. In case the entire peatland area is rewetted the reduction in GHG emissions is estimated to be 2.0 CO<sub>2</sub>-eq Mt yr<sup>-1</sup> by all three scenarios. However, we observe large discrepancies between the restoration scenarios if only a fraction of the total peat area is rewetted. Prioritising dryer fields provides a high reduction already starting with the first rewetted fields whereas prioritising wet fields shows little reduction. In fact, the reduction potential in the wet scenarios is just 30% of the dry scenario for the first 10,000 ha. A deviation of 50% between wet and dry scenario is first exceeded for a rewetting area of above 20,000 ha. The random scenario lies in between the optimistic and pessimistic scenarios with a linear emission reduction of 26.1 Mg CO<sub>2</sub>-eq ha<sup>-1</sup> yr<sup>-1</sup>. The reduction factor of the random scenario is 10.7 Mg CO<sub>2</sub>-eq ha<sup>-1</sup> yr<sup>-1</sup> lower than the baseline scenario. This relates to the WTD map that introduces spatial variability in the random scenario opposed to the fully drained conditions assumed in the baseline scenario.

#### 4 Discussion and conclusion

Machine learning can utilize the broad spectrum of geo-environmental big data to model WTD at national scale of Denmark with a reasonable accuracy, taking the quality of available WTD observations into consideration. The five-fold cross validation experiment revealed an acceptable residual variance for the most shallow WTD interval (MAE of 0.08 m). Despite all efforts to finetune the GBDT model to perform well for the shallow WTD interval, a considerable residual variance (MAE of 0.27 m) was evident when only taking the well and auger WTD observations into consideration. As a consequence of the applied WTD transformation, performance decreased substantially for the deeper WTD. Similar findings were documented by Bechtold et al. (2014), which are mainly related to the applied WTD transformation. However, several sources of uncertainties remain to be addressed, such as the difficulties to model a long-term average WTD based on a heterogenous training dataset containing observation from summer months from different years. The training dataset has been curated to represent a steady-state model, despite evident WTD fluctuations in peatlands that quickly response to precipitation events. Future work should aim at reducing uncertainties homogenizing WTD observations, e.g. by normalizing to climate variability, to derive a more representative training dataset. Moreover, WTD observations from several sources are joint for curating the training dataset. We find a fair agreement between the auger and well WTD observations with a deviation of 0.1 m for sampling points in close

vicinity to each other. Despite the above-mentioned challenges and uncertainties, we believe that the comprehensive training dataset provides meaningful information to the GBDT model to predict an average summertime condition.

350 The SHAP analysis revealed that topography, water body proximity and land use were the most important covariates in the trained GBDT model. Similar findings were reported by other WTD ML-based modelling studies (Bechtold et al., 2014; Koch et al., 2019). The sign and magnitude of the SHAP values provided detailed knowledge on how covariates are linked to WTD. Similar findings have been obtained by Bechtold et al. (2014) applying partial dependence plots. In contrast to Koch et al. (2019, 2020), who modelled WTD over the entire land phase of Denmark, we found geology related covariates less informative  
355 for modelling exclusively peat soils. It remains unresolved if this relates to poorer quality of lithological and geological information in peatlands or if peatland hydrology processes are predominately controlled by topography and waterbody proximity.

The Gompertz parametrization of the WTD response function for CO<sub>2</sub> for Danish organic soils (Figure 6) was strikingly similar to the parametrization based on a larger German dataset (Tiemeyer et al., 2020). Hence, applying the parameters from Tiemeyer  
360 et al. (2020) in our upscaling study resulted in CO<sub>2</sub> emissions that deviated by just 1% on average with respect to the CO<sub>2</sub> emissions based on the Danish Gompertz parametrization. This underlines the strong and consistent effect of WTD as a driver of CO<sub>2</sub> emissions from organic soils across climatic and agroecological conditions. Similar conclusions were reached when comparing our parametrization of the CH<sub>4</sub> response function with the German parametrization (Tiemeyer et al., 2020).

Although, supported by the present study and Tiemeyer et al. (2020), the asymptotic WTD response curve for CO<sub>2</sub> emissions  
365 may not be universally applicable. Evans et al. (2021) analysed CO<sub>2</sub> emissions, based on published eddy covariance studies on boreal and temperate peatlands, and suggested a linearly increasing emission with increasing WTD. The Danish CO<sub>2</sub> data presented here are predominately in the linear range of the Gompertz function (0 – 0.5 m). In Figure 7 we present a linear model fitted to the Danish CO<sub>2</sub> data and contrast it to the applied Gompertz function. The fitted model possesses a slope of 11.29 Mg CO<sub>2</sub>-eq ha<sup>-1</sup> yr<sup>-1</sup> m<sup>-1</sup> and an intercept of 2.75 Mg CO<sub>2</sub>-eq ha<sup>-1</sup> yr<sup>-1</sup>. The positive intercept is disputable and is not in  
370 line with Evans et al. (2021) and the general assumption that organic carbon accumulates under fully saturated conditions.

When assessing the fit between modelled and observed CO<sub>2</sub> we find a favourable correlation coefficient when evaluating the Gompertz model over the linear model. Future research should target measuring GHG emissions at sites with a shallow unsaturated zone in order to be able to make a more profound evaluation of the potential of developing a linear model for the WTD response function of CO<sub>2</sub>. Additionally, GHG emissions at thick unsaturated peat soils are required to investigate how  
375 a linear response function can be extrapolated to deeper WTD. Nevertheless, if taking the actual peat depth into consideration, which can be considered a lower boundary of the response functions, applying a linear model may provide comparable results in the present analysis. However, a high-quality peat depth map is required to substantiate this statement. Both studies, Evans et al. (2021) and Tiemeyer et al. (2020), provide similar findings for the shape of the CH<sub>4</sub> response function, which can be further substantiated by the Danish flux data.

380

A sensitivity analysis of the WTD bias as well as the choice of WTD response model has been conducted to underpin the discussion points presented above. As an additional sensitivity analysis, we also addressed the short-term effects of rewetting strategies by applying a 20-year GWP complementary to the 100-year GWP presented in the main results. The results of the three scenarios are presented in Table 5 and compared to the already presented results. In the GWP20 scenario, we changed  
385 the GWP for CH<sub>4</sub> from 27 kg CO<sub>2</sub> to 81 kg CO<sub>2</sub> (Forster et al., 2021). The overall annual GHG emission increased to 2.8 Mt CO<sub>2</sub>-eq yr<sup>-1</sup> and since the CH<sub>4</sub> contribution is highest for shallow WTD the reduction potential is lower in this scenario.

We found a ME of -0.2 m for the uppermost WTD interval, indicating that the GBDT model simulated the water table too deep. In the WTD bias scenario, the WTD map is bias corrected across the entire domain. The resulting WTD map is closer to the surface and results in a lower overall emission estimate of 2.0 Mt CO<sub>2</sub>-eq yr<sup>-1</sup>. The differences between wet and dry  
390 rewetting scenarios are large, because many areas will have a WTD very close to 0 after bias correction and thereby a reduction potential close to 0. This sensitivity analysis represents a simple bias correction of the WTD map whereas a true improvement of the WTD map would likely require an enhanced WTD trainingsdataset with lower uncertainties.

Applying the linear CO<sub>2</sub> WTD response function, the overall GHG emission estimate increases slightly to 2.8 Mt CO<sub>2</sub>-eq yr<sup>-1</sup>. The very shallow and deep WTD intervals possess an increased CO<sub>2</sub> emission compared to the Gompertz model, whereas  
395 the intermediated WTD interval (0.2 – 0.6 m) has a decreased CO<sub>2</sub> emission, but these changes outweigh each other. The reduction potential is much lower, which has to be interpreted with caution, because of the positive intercept of the linear model. The differences between wet and dry rewetting scenarios are large, due to high CO<sub>2</sub> emissions when simply extrapolating the linear WTD relationship to WTD > 1m.

To synthesize the applied scenario analysis and to provide a quantification of the related uncertainties, we have calculated the  
400 coefficient of variation (ratio of the standard deviation to the mean) for the estimated GHG emissions and the GHG reduction potential in Table 5. For the first, the coefficient of variation amounts to 12% whereas it is 22% for the latter, suggesting that the uncertainties of the applied framework are more pronounced in estimating reduction potentials than over all emissions. Nevertheless, all scenarios agree on the substantial differences between reduction potentials of wet and dry rewetting scenarios.

N<sub>2</sub>O emissions factors were not updated by our study, and instead IPCC emission factors were used (Wilson et al., 2016).  
405 However, the synthesized Danish N<sub>2</sub>O data presented herein suggested average emissions for observations at WTD >0.3 m (n = 19) and <0.3 m (n = 6) to be 13.3 and 3.8 kg N ha<sup>-1</sup> yr<sup>-1</sup>, respectively. These figures are very comparable to the ones presented by Wilson et al. (2016).

The official Danish national inventory has reported an emission of 3.00 Mt CO<sub>2</sub>-eq from soils with OC >12% (Nielsen et al. 2022), which is 15 % higher than our estimate. The green deal in Denmark was guided by the Danish council on climate change  
410 who conducted estimations of the potential reduction in GHG emissions as a consequence of large-scale peatland restoration (Klimarådet, 2020). For peatland soils with OC > 12%, a reduction potential of 2.71 mil. Mt CO<sub>2</sub>-eq yr<sup>-1</sup> was assessed. Our findings (2.0 Mt CO<sub>2</sub>-eq ha<sup>-1</sup> yr<sup>-1</sup>) are considerably lower, and the difference can be attributed to the fact that our results are based on a lower baseline which considers the WTD map instead of assuming fully drained conditions. The distinct difference of 31% between the fully drained baseline and the WTD driven reduction potential is also clearly visible in Figure 9. Reflecting

415 on the assessed restoration scenarios, it may be assumed that the “prioritized wet” scenario is most realistic, since this scenario  
prioritises marginal wet fields of low economic value in the restoration order. This sheds a pessimistic outlook on the mitigation  
potential when only restoring a fraction of entire peatland. At the same time, it emphasizes the value our framework which can  
guide peatland restoration to be most effective.

Many of the agricultural organic soils in Denmark have been drained for years. As stated in Greve et al. (2014), a substantial  
420 loss in the area qualifying as OC > 12% is recorded. The organic soil map by Greve et al. (2014) was created based on measured  
data in 2010 with a definition of a minimum depth of 0.3 m organic layer, which resulted in the delineation of the 74,000 ha  
with OC > 12% used in this study. A further reduction in the area with organic soils with this minimum definition is likely to  
have occurred. As a consequence, it is disputable that the Gompertz function can be applied to all the currently reported 74,000  
hectares. Thus, the WTD function should only be used for those cases where the WTD is in the organic layer. If the WTD is  
425 deeper (e.g., in a sand layer) then the depth of the peat should be the lower boundary to derive an effective WTD to be used in  
the model. Along these lines, it can be expected that adding data on peat depth, the estimated GHG emissions will likely be  
lower. Therefore, combining the present data analysis with a map of peat depth at national scale would provide a further step  
towards a consolidated estimate of GHG emissions from Danish organic soils.

The applied WTD response functions for CO<sub>2</sub> and CH<sub>4</sub> yield emissions at a scale corresponding to the applied WTD map. In  
430 our case, the 10 m resolution of the WTD map provides high-resolution GHG estimates that could allegedly support sub-field  
restoration projects. Taking all uncertainties into consideration, we do not support such a spatially differentiated application.  
However, due to the non-linearity of the response functions and the distinct spatial heterogeneity of WTD, an initial high-  
resolution assessment is required before aggregating the results. Future work should address the relationship between scale  
and uncertainty of the proposed GHG upscaling framework to identify the representative scale at which the upscaling model  
435 has a potential for obtaining a predictive accuracy corresponding to a given acceptable accuracy (Refsgaard et al., 2016).

Our restoration scenarios (Figure 9) only comprise a rewetting of the domain and, in fact, peatland restoration is a much wider  
management term that covers various ecosystem services, such as biodiversity and nutrient retention (Andersen et al., 2017;  
Hambäck et al., 2023). Thus, peatland restoration is not exclusively targeting climate change mitigation with a broad suite of  
measures.

440 We draw the following main conclusions from our work.

- The WTD model ~~reveals-suggests~~ that 64% of the Danish peatland with OC > 12% has a WTD in the depth interval  
~~that produces a sensitive to~~ GHG emission ~~response~~ (0 – 0.5 m).
- The fitted WTD response functions and emission factors for Danish conditions are in good agreement with ~~the results~~  
~~from~~ international literature.
- ~~The~~ GHG emissions from the ~74,000 ha farmed peatland with OC > 12% ~~in Denmark is estimated to emit~~ 2.6 Mt  
CO<sub>2</sub>-eq, which is 15% lower than the officially reported national emission in 2020.

Formatted: Font: Bold

- The applied framework indicates that A total rewetting of the entire 74,000 ha would decrease the GHG emissions by 77%. However, the order in which the peatland area is rewetted has substantial implications for the expected GHG reduction and well drained fields should be prioritized to achieve the highest effect.
- Uncertainties originating from (1) the model used to fit the WTD response function for CO<sub>2</sub>, (2) the applied Global Warming Potential (GWP) and (3) the bias in the WTD model suggest that the estimated GHG emissions and the reduction potential are associated with coefficient of variations of 13% and 22% respectively.

Formatted: Font: Bold

Formatted: Subscript

#### Code & Data availability

The water table depth map is made freely available via the following repository: <https://doi.org/10.22008/FK2/0AFGQT>. All code and supporting data will be made available upon request.

#### Author contribution

JK and SS designed the water table depth model and the rewetting scenarios. JK developed the code for the water table depth model and conducted the formal analysis. MG, SG, CH, GL, SW and LE contributed with data to the analysis. MG and CH contributed with water table depth data, SG and GL contributed with covariate data and SW and LE compiled the Danish GHG data synthesis and fitted the water table depth response functions. JK prepared the manuscript with contributions from all co-authors.

#### Acknowledgements

The authors would like to thank the financial support by the Danish Ministry of Climate, Energy and Utilities [as well as the Danish Ministry of Food, Agriculture and Fisheries \(TargWET project\)](#).

#### References

- Andersen, R., Farrell, C., Graf, M., Muller, F., Calvar, E., Frankard, P., Caporn, S. and Anderson, P.: An overview of the progress and challenges of peatland restoration in Western Europe, *Restor. Ecol.*, 25(2), doi:10.1111/rec.12415, 2017.
- Audet, J., Elsgaard, L., Kjaergaard, C., Larsen, S. E. and Hoffmann, C. C.: Greenhouse gas emissions from a Danish riparian wetland before and after restoration, *Ecol. Eng.*, doi:10.1016/j.ecoleng.2013.04.021, 2013.
- Bechtold, M., Tiemeyer, B., Laggner, A., Leppelt, T., Frahm, E. and Belting, S.: Large-scale regionalization of water table depth in peatlands optimized for greenhouse gas emission upscaling, *Hydrol. Earth Syst. Sci.*, doi:10.5194/hess-18-3319-2014, 2014.
- Bechtold, M., De Lannoy, G. J. M., Koster, R. D., Reichle, R. H., Mahanama, S. P., Bleuten, W., Bourgault, M. A., Brümmer,

- C., Burdun, I., Desai, A. R., Devito, K., Grünwald, T., Grygoruk, M., Humphreys, E. R., Klatt, J., Kurbatova, J., Lohila, A.,  
475 Munir, T. M., Nilsson, M. B., Price, J. S., Röhl, M., Schneider, A. and Tiemeyer, B.: PEAT-CLSM: A Specific Treatment of  
Peatland Hydrology in the NASA Catchment Land Surface Model, *J. Adv. Model. Earth Syst.*, 11(7),  
doi:10.1029/2018MS001574, 2019.
- Dorogush, A. V., Ershov, V. and Gulin, A.: CatBoost: Gradient boosting with categorical features support, arXiv, 2018.
- Elsgaard, L., Görres, C. M., Hoffmann, C. C., Blicher-Mathiesen, G., Schelde, K. and Petersen, S. O.: Net ecosystem exchange  
480 of CO<sub>2</sub> and carbon balance for eight temperate organic soils under agricultural management, *Agric. Ecosyst. Environ.*,  
doi:10.1016/j.agee.2012.09.001, 2012.
- Evans, C. D., Peacock, M., Baird, A. J., Artz, R. R. E., Burden, A., Callaghan, N., Chapman, P. J., Cooper, H. M., Coyle, M.,  
Craig, E., Cumming, A., Dixon, S., Gauci, V., Grayson, R. P., Helfter, C., Heppell, C. M., Holden, J., Jones, D. L., Kaduk, J.,  
Levy, P., Matthews, R., McNamara, N. P., Misselbrook, T., Oakley, S., Page, S. E., Rayment, M., Ridley, L. M., Stanley, K.  
485 M., Williamson, J. L., Worrall, F. and Morrison, R.: Overriding water table control on managed peatland greenhouse gas  
emissions, *Nature*, doi:10.1038/s41586-021-03523-1, 2021.
- Forster, P., Storelvmo, T., Armour, K., Collins, W., Dufresne, J.-L., Frame, D., Lunt, D. J., Mauritsen, T., Palmer, M. D.,  
Watanabe, M., Wild, M. and Zhang, H.: Climate Change 2021: The Physical Science Basis. Contribution of Working Group  
I to the Sixth Assessment Report of the Intergovernmental Panel on Climate Change, edited by V. Masson-Delmotte, P. Zhai,  
490 A. Pirani, S. L. Connors, C. Péan, S. Berger, N. Caud, Y. Chen, L. Goldfarb, M. I. Gomis, M. Huang, K. Leitzell, E. Lonnoy,  
J. B. R. Matthews, T. K. Maycock, T. Waterfield, O. Yelekçi, R. Yu, and B. Zhou, Cambridge University Press, Cambridge,  
United Kingdom and New York, NY, USA., 2021.
- Gong, J., Wang, K., Kellomäki, S., Zhang, C., Martikainen, P. J. and Shurpali, N.: Modeling water table changes in boreal  
peatlands of Finland under changing climate conditions, *Ecol. Modell.*, 244, doi:10.1016/j.ecolmodel.2012.06.031, 2012.
- 495 Greve, M. H., Christensen, O. F., Greve, M. B. and Kheir, R. B.: Change in peat coverage in Danish cultivated soils during  
the past 35 years, *Soil Sci.*, doi:10.1097/SS.000000000000066, 2014.
- Greve, M. H., Greve, M. B. and Pedersen, B. F.: Kortlægning af jordens kulstofindhold i Danmark. Redegørelse for metode  
og usikkerheder (in Danish). [online] Available from:  
[https://pure.au.dk/portal/files/172171967/Jordens\\_kulstofindhold\\_metode\\_og\\_usikkerhed\\_Oktober\\_2019.pdf](https://pure.au.dk/portal/files/172171967/Jordens_kulstofindhold_metode_og_usikkerhed_Oktober_2019.pdf), 2019.
- 500 Hambäck, P. A., Dawson, L., Geranmayeh, P., Jarsjö, J., Kačergytė, I., Peacock, M., Collentine, D., Destouni, G., Futter, M.,  
Hugelius, G., Hedman, S., Jonsson, S., Klatt, B. K., Lindström, A., Nilsson, J. E., Pärt, T., Schneider, L. D., Strand, J. A.,  
Urrutia-Cordero, P., Åhlén, D., Åhlén, I. and Blicharska, M.: Tradeoffs and synergies in wetland multifunctionality: A scaling  
issue, *Sci. Total Environ.*, 862, 160746, doi:https://doi.org/10.1016/j.scitotenv.2022.160746, 2023.
- Hancock, J. T. and Khoshgoftaar, T. M.: CatBoost for big data: an interdisciplinary review, *J. Big Data*, doi:10.1186/s40537-  
505 020-00369-8, 2020.
- Hansen, M. and Pjetursson, B.: Free, online Danish shallow geological data, *Geol. Surv. Denmark Greenl. Bull.*, 2011.
- Huang, G., Wu, L., Ma, X., Zhang, W., Fan, J., Yu, X., Zeng, W. and Zhou, H.: Evaluation of CatBoost method for prediction



- of reference evapotranspiration in humid regions, *J. Hydrol.*, doi:10.1016/j.jhydrol.2019.04.085, 2019.
- Huang, Y., Ciaais, P., Luo, Y., Zhu, D., Wang, Y., Qiu, C., Goll, D. S., Guenet, B., Makowski, D., De Graaf, I., Leifeld, J.,  
510 Kwon, M. J., Hu, J. and Qu, L.: Tradeoff of CO<sub>2</sub> and CH<sub>4</sub> emissions from global peatlands under water-table drawdown, *Nat. Clim. Chang.*, doi:10.1038/s41558-021-01059-w, 2021.
- IPCC: Guidelines for National Greenhouse Gas Inventories: Wetlands. Methodological Guidance on Lands with Wet and Drained Soils, and Constructed Wetlands for Wastewater Treatment., 2014.
- Kandel, T. P., Lærke, P. E. and Elsgaard, L.: Annual emissions of CO<sub>2</sub>, CH<sub>4</sub> and N<sub>2</sub>O from a temperate peat bog: Comparison  
515 of an undrained and four drained sites under permanent grass and arable crop rotations with cereals and potato, *Agric. For. Meteorol.*, doi:10.1016/j.agrformet.2018.03.021, 2018.
- Karki, S., Elsgaard, L., Audet, J. and Lærke, P. E.: Mitigation of greenhouse gas emissions from reed canary grass in paludiculture: effect of groundwater level, *Plant Soil*, 383(1–2), doi:10.1007/s11104-014-2164-z, 2014.
- Klimarådet: Carbon rich peat soils. [online] Available from:  
520 file:///C:/Users/juko/Downloads/engkulstofrige\_lavbundsjoerder\_final3\_16dec20\_final4-1.pdf, 2020.
- Koch, J., Berger, H., Henriksen, H. J. and Sonnenborg, T. O.: Modelling of the shallow water table at high spatial resolution using Random Forests, *Hydrol. Earth Syst. Sci.*, accepted for publication, 10/2019, doi:10.5194/hess-2019-212, 2019.
- Koch, J., Gofredsen, J., Schneider, R., Troldborg, L., Stisen, S. and Henriksen, H. J.: High Resolution Water Table Modeling of the Shallow Groundwater Using a Knowledge-Guided Gradient Boosting Decision Tree Model, *Front. Water*,  
525 doi:10.3389/frwa.2021.701726, 2021.
- Lendzioch, T., Langhammer, J., Vlček, L. and Minařík, R.: Mapping the groundwater level and soil moisture of a montane peat bog using uav monitoring and machine learning, *Remote Sens.*, 13(5), doi:10.3390/rs13050907, 2021.
- Levin, G.: BASEMAP03 - Technical documentation of the method for elaboration of a land-use and landcover map for Denmark. [online] Available from: <https://dce2.au.dk/pub/TR159.pdf>, 2019.
- 530 Levin, G. and Gyldenkærne, S.: Estimating Land Use/Land Cover and Changes in Denmark, no. Tech. Rep. from DCE--Danish Cent. Environ. Energy, (227), 2022.
- Lundberg, S. M. and Lee, S. I.: A unified approach to interpreting model predictions, in *Advances in Neural Information Processing Systems*, vol. 2017-December., 2017.
- Minkkinen, K., Ojane, P., Koskinen, M. and Penttilä, T.: Nitrous oxide emissions of undrained, forestry-drained, and rewetted  
535 boreal peatlands, *For. Ecol. Manage.*, 478, doi:10.1016/j.foreco.2020.118494, 2020.
- Nielsen, O.-K., Plejdrup, M. S., Winther, M., Nielsen, M., Gyldenkærne, S., Mikkelsen, M. H., Albrektsen, R., Thomsen, M., Hjelgaard, K., Fauser, P., Bruun, H. G., Johannsen, V. K., Nord-Larsen, T., Vesterdal, L., Stupak, I., Scott-Bentsen, N., Rasmussen, E., Petersen, S. B., Baunbæk, L. and Hansen, M. G.: Denmark's National Inventory Report 2022. Emission Inventories 1990-2020 - Submitted under the United Nations Framework Convention on Climate Change and the Kyoto  
540 Protocol, Aarhus University, DCE -- Danish Centre for Environment and Energy. [online] Available from: <http://dce2.au.dk/pub/SR494.pdf>, 2022.

Petersen, A. B., Wittig, C. and Leone, S. R.: Electronic-to-vibrational pumped CO<sub>2</sub> laser operating at 4.3, 10.6, and 14.1 μm, *J. Appl. Phys.*, 47(3), doi:10.1063/1.322744, 1976.

545 Petersen, S. O., Hoffmann, C. C., Schäfer, C. M., Blicher-Mathiesen, G., Elsgaard, L., Kristensen, K., Larsen, S. E., Torp, S. B. and Greve, M. H.: Annual emissions of CH<sub>4</sub> and N<sub>2</sub>O, and ecosystem respiration, from eight organic soils in Western Denmark managed by agriculture, *Biogeosciences*, 9(1), doi:10.5194/bg-9-403-2012, 2012.

Prokhorenkova, L., Gusev, G., Vorobev, A., Dorogush, A. V. and Gulin, A.: Catboost: Unbiased boosting with categorical features, in *Advances in Neural Information Processing Systems.*, 2018.

550 Refsgaard, J. C., Højberg, A. L., He, X., Hansen, A. L., Rasmussen, S. H. and Stisen, S.: Where are the limits of model predictive capabilities?, *Hydrol. Process.*, doi:10.1002/hyp.11029, 2016.

Sechu, G. L., Nilsson, B., Iversen, B. V., Greve, M. B., Børgesen, C. D. and Greve, M. H.: A stepwise gis approach for the delineation of river valley bottom within drainage basins using a cost distance accumulation analysis, *Water (Switzerland)*, doi:10.3390/w13060827, 2021.

555 Smith, P., Bustamante, M., Uk, P. S. and Brazil, M. B.: AR5 WGIII Chapter 11 - Agriculture, Forestry and Other Land Use (AFOLU), Ar5, Wg3, 2014.

Tiemeyer, B., Albiac Borraz, E., Augustin, J., Bechtold, M., Beetz, S., Beyer, C., Drösler, M., Ebli, M., Eickenscheidt, T., Fiedler, S., Förster, C., Freibauer, A., Giebels, M., Glatzel, S., Heinichen, J., Hoffmann, M., Höper, H., Jurasinski, G., Leiber-Sauheitl, K., Pechl-Brak, M., Roßkopf, N., Sommer, M. and Zeitz, J.: High emissions of greenhouse gases from grasslands on peat and other organic soils, *Glob. Chang. Biol.*, doi:10.1111/gcb.13303, 2016.

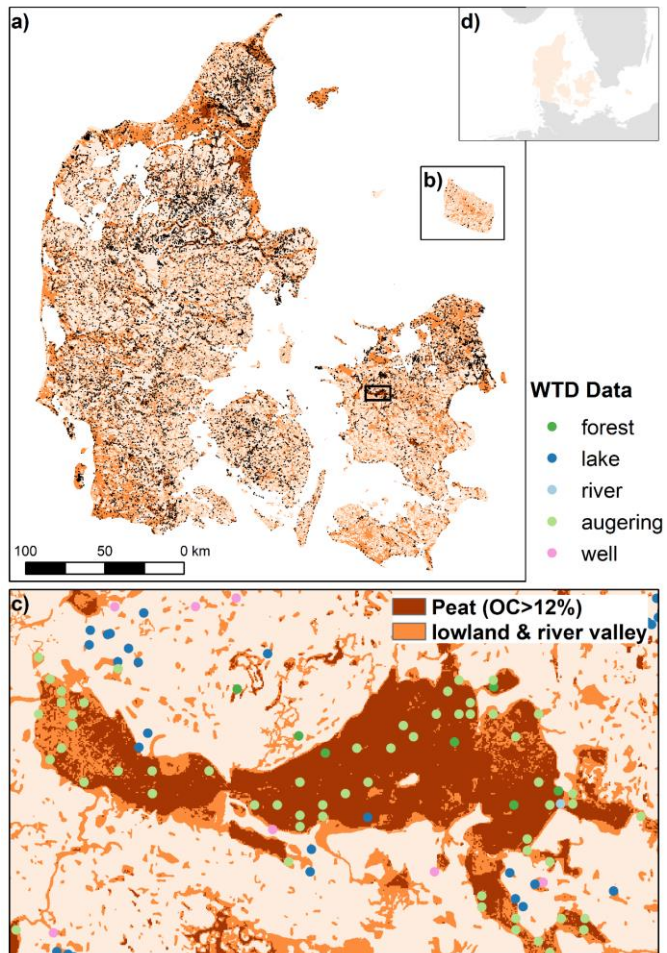
560 Tiemeyer, B., Freibauer, A., Borraz, E. A., Augustin, J., Bechtold, M., Beetz, S., Beyer, C., Ebli, M., Eickenscheidt, T., Fiedler, S., Förster, C., Gensior, A., Giebels, M., Glatzel, S., Heinichen, J., Hoffmann, M., Höper, H., Jurasinski, G., Laggner, A., Leiber-Sauheitl, K., Pechl-Brak, M. and Drösler, M.: A new methodology for organic soils in national greenhouse gas inventories: Data synthesis, derivation and application, *Ecol. Indic.*, doi:10.1016/j.ecolind.2019.105838, 2020.

565 Wilson, D., Dixon, S. D., Artz, R. R. E., Smith, T. E. L., Evans, C. D., Owen, H. J. F., Archer, E. and Renou-Wilson, F.: Derivation of greenhouse gas emission factors for peatlands managed for extraction in the Republic of Ireland and the United Kingdom, *Biogeosciences*, doi:10.5194/bg-12-5291-2015, 2015.

Wilson, D., Blain, D., Couwenberg, J., Evans, C. D., Murdiyarsa, D., Page, S. E., Renou-Wilson, F., Rieley, J. O., Strack, M. and Tuittila, E. S.: Greenhouse gas emission factors associated with rewetting of organic soils, [online] Available from: <http://hdl.handle.net/10012/11532>, 2016.

570

List of figures



575 Figure 1: a) map of Denmark, b) including the island Bornholm, indicating the entire domain of the WTD model (lowland & river valley) and the focus area with organic content (OC) > 12%. c) zoom into Amosen with different sources of WTD data. The WTD data sources are not differentiated in a) and simply shown as black dots. Location of c) shown in a). d) overview figure indicating the location of Denmark in Northern Europe.

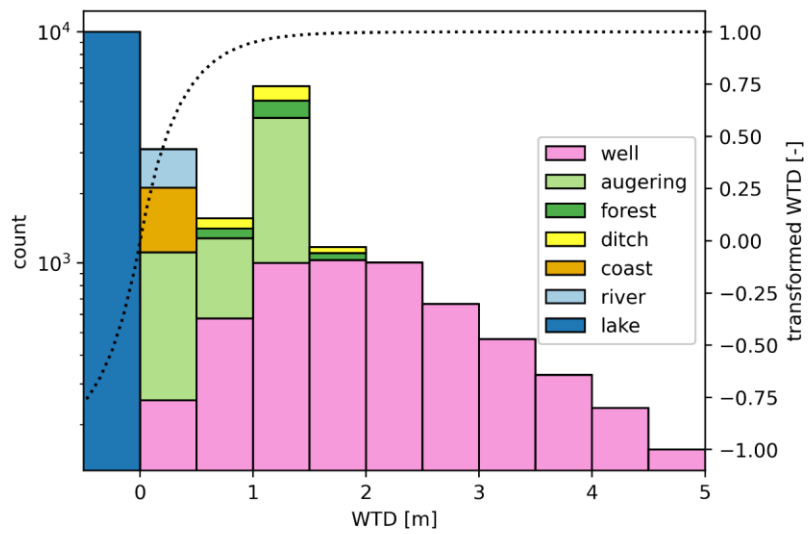


Figure 2: Variability and frequency of the analysed WTD data with respect to their sources. Dashed line indicates the transfer function yielding transformed WTD (WTD<sub>t</sub>) on the secondary y-axis.

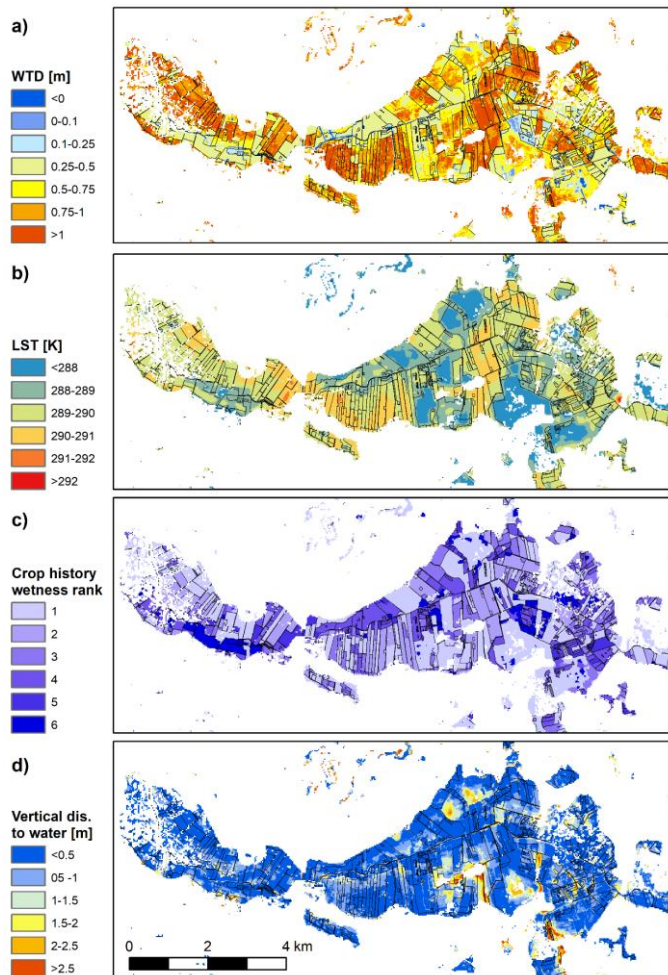
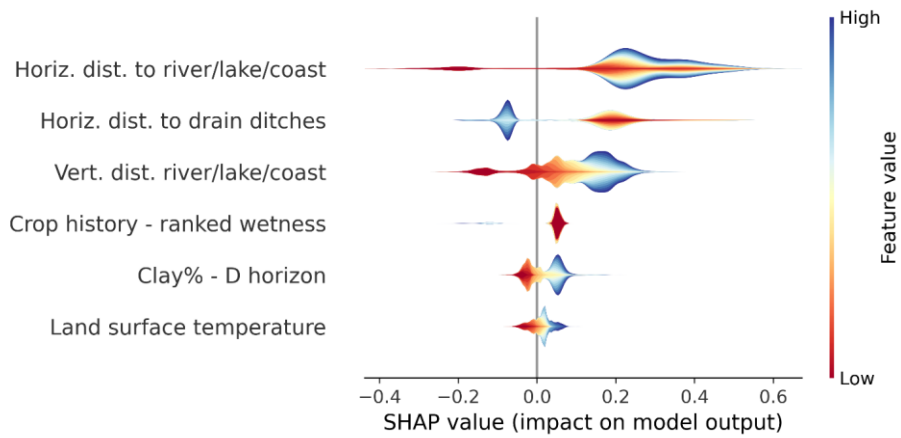
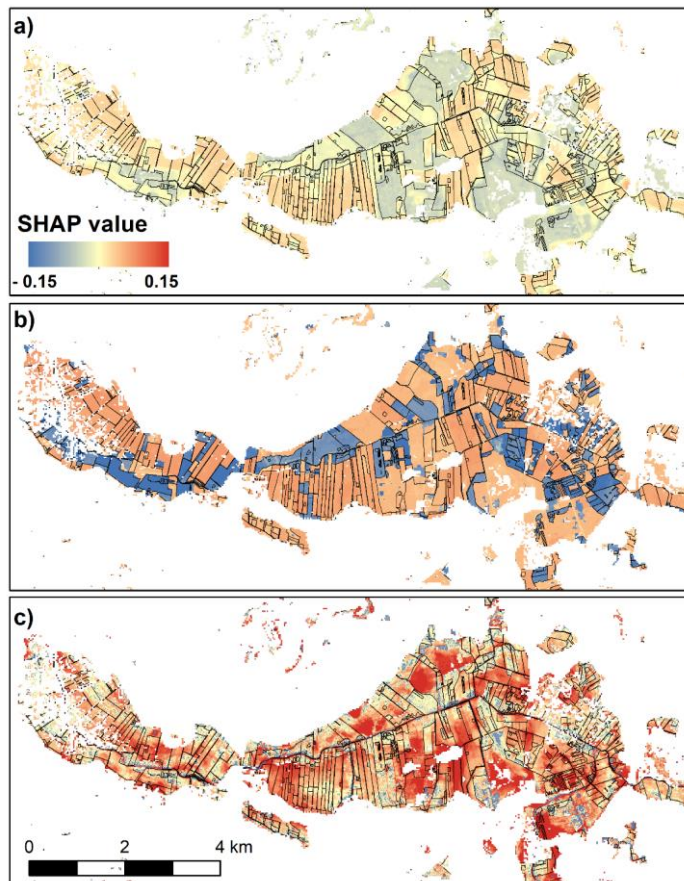


Figure 3: a) The modelled WTD map at 10 m resolution for Åmosen, same zoom as Figure 1 c). Three key covariates: b) land surface temperature (LST), c) wetness rank derived from the 2016 to 2020 cropping history and d) vertical distance to nearest water body (river, lake or coast). Polygon showing the delineation of agricultural fields is added to all panels.



585 **Figure 4: SHAP values for the six most important covariates based on an analysis using all well and auger WTD observations. The SHAP value interprets the covariate's impact on the prediction. The violin plots are colour coded based on the stacked values of the covariates and the height indicates the density of the data.**



590 Figure 5: SHAP values for the prediction dataset shown for three selected covariates: a) LST, b) cropping history- ranked wetness and c) vertical distance to nearest waterbody. Results are shown for Amosen, same zoom as Figure 1 c) and Figure 3.

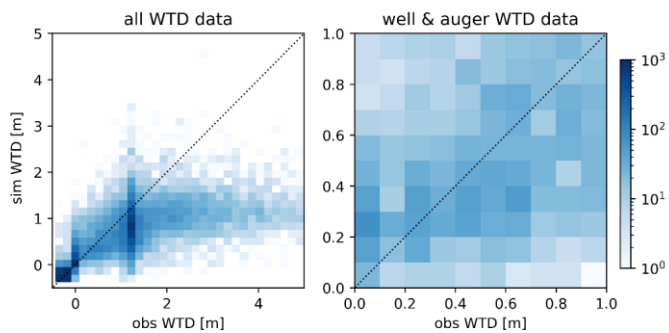


Figure 6: Density scatter plots, with 0.2 m bins, for the applied five-fold cross validation test. Dashed line represents the 1:1 line between observed (obs) and simulated (sim) WTD. The colourbar indicates the data count for each bin. In a) all WTD data are plotted and in b) only a subset containing the well and auger observation are shown for the WTD interval of 0 m to 1 m.

595

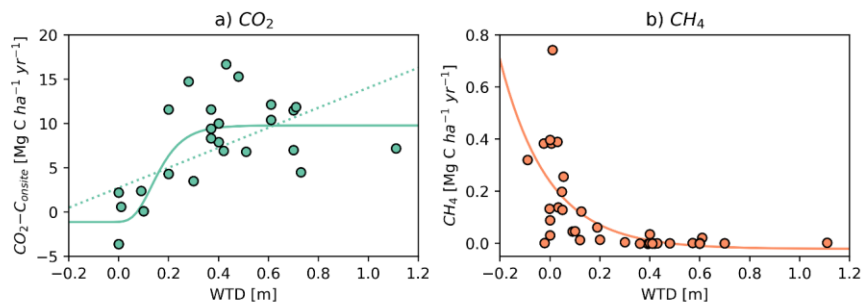
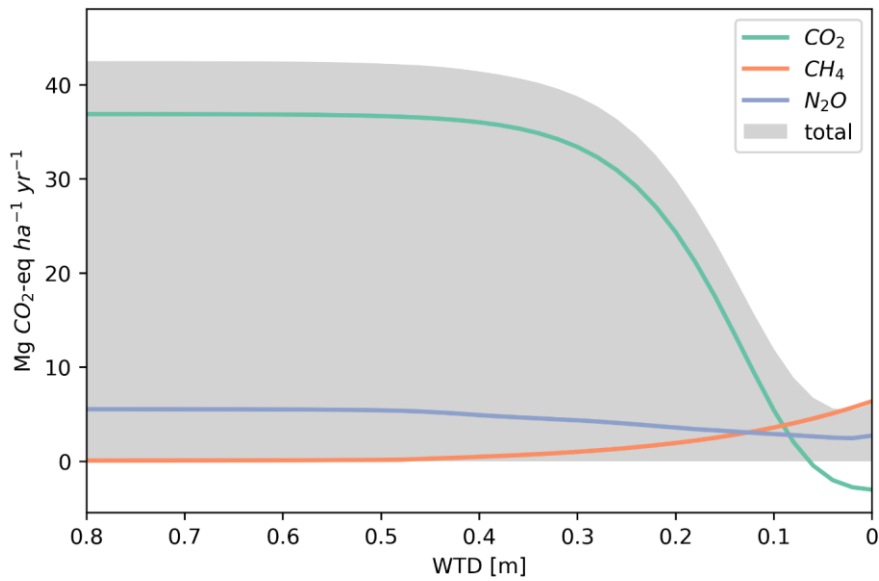


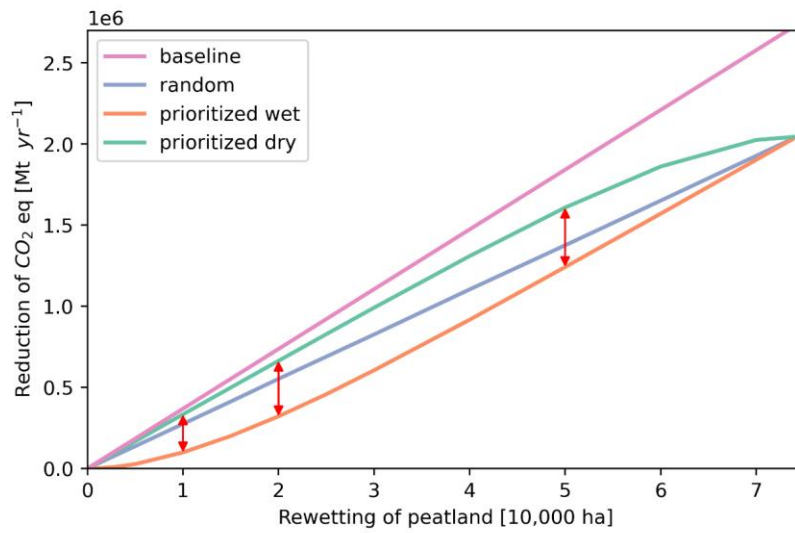
Figure 7: Annual net ecosystem carbon balance of  $\text{CO}_2$  (left panel) and emissions of  $\text{CH}_4$  (right panel) in Danish organic soils plotted against mean water table depth (WTD). For  $\text{CO}_2$ , a Gompertz model (solid line) and a linear model (dotted line) have been fitted. For  $\text{CH}_4$  an exponential model has been fitted. Sources of data are shown in Supplementary Table S1.





600

Figure 8: The relationship between greenhouse gas emissions (CO<sub>2</sub>, CH<sub>4</sub> and N<sub>2</sub>O) and WTD. The emissions are stated in CO<sub>2</sub> equivalents applying 100 year global warming potentials: 1 kg CH<sub>4</sub> = 27 kg CO<sub>2</sub> and 1 kg N<sub>2</sub>O = 273 kg CO<sub>2</sub>.



605 Figure 9: The estimated reduction of GHG emissions in CO<sub>2</sub> equivalents as a function of rewetted peatland. Four scenarios are tested to investigate the potential mitigation effect of alternative rewetting strategies. The red arrows visualize the differences between the wet and dry prioritization scenarios.

## List of tables

610 **Table 1: WTD observations used as training data with information on number of data (n), WTD mean and standard deviation (std). Source marked with asterisk represent dummy points.**

Source	n	mean [m]	std [m]
Coast*	1000	0	0
Ditch*	1000	1.21	0.2
Forest*	1000	1.21	0.2
Lake	9980	-0.25	0.05
River*	1000	0	0
Cores	4796	0.96	0.39
Well	5716	2.12	1.09

**Table 2: Covariates used in the WTD model. Covariates marked with asterisk are categorical.**

Category	Covariate	Source
Topography & water body proximity	Elevation	Digital Elevation Model (2018) provided by the Danish Agency for Data Supply and Infrastructure (SDFI)
	Vertical distance to river/lake/coast	
	Horizontal distance to river/lake/coast	
	Vertical distance to drain ditches	
	Horizontal distance to drain ditches	
Lithology	Terrain slope	Adhikari et al. (2013) Stisen et al. (2019) Pedersen et al. (2011) Madsen et al. (1992) Greve et al. (2019)
	Clay percentage in 4 soil horizons	
	Clay thickness	
	Soil map*	
	Landscape types*	
Landsat	Organic content	Potapov et al. (2020)
	Land surface temperature	
	Normalized difference vegetation index	
	Normalized difference water index	
	Modified normalized difference water index 1	
Sentinel 1	Modified normalized difference water index 2	Bauer-Marschallinger et al. (2021)
	Global backscatter model - vv	
	Global backscatter model - vh	
Land Use	Water & wetness	Copernicus
	Land use map*	Parente et al. (2021)
	Cropping history - ranked wetness	Aarhus University - DCE
	Degree of urbanization	SDFE
	Forest - wet/dry	Levin (2019)
Hydrological model	mean summer WTD at 100 m	Henriksen et al. (2020)

615 **Table 3: Performance of the five-fold cross validation test for three depth intervals assessed by three metrics: Mean error (ME), mean absolute error (MAE) and root mean squared error (RMSE). Only well and auger WTD observations were considered for the evaluation. The metric scores for all data, including the dummy points, are stated in brackets.**

Interval [m]	ME [m]	MAE [m]	RMSE [m]
0 – 0.5	-0.20 (-0.05)	0.27 (0.08)	0.38 (0.16)
0.5- 1	0.07 (0.08)	0.31 (0.31)	0.39 (0.39)
> 1	0.85 (0.79)	0.91 (0.85)	1.23 (1.15)

620 **Table 4: The implied emission factors for CO<sub>2</sub>-C<sub>organic</sub>, CH<sub>4</sub> organic, N<sub>2</sub>O-N<sub>organic</sub> and total greenhouse gas (GHG) emissions applying 100 year global warming potentials: 1 kg CH<sub>4</sub> = 27 kg CO<sub>2</sub> and 1 kg N<sub>2</sub>O = 273 kg CO<sub>2</sub>. The applied land use map is derived from Levin and Gyldekærne (2022).**

Land use	Area [ha]	CO <sub>2</sub> -C <sub>organic</sub> [Mg C ha <sup>-1</sup> yr <sup>-1</sup> ]	CH <sub>4</sub> organic [kg CH <sub>4</sub> ha <sup>-1</sup> yr <sup>-1</sup> ]	N <sub>2</sub> O-N <sub>organic</sub> [kg N ha <sup>-1</sup> yr <sup>-1</sup> ]	GHG [CO <sub>2</sub> -eq ha <sup>-1</sup> yr <sup>-1</sup> ]
Cropland	56249	9.4	19.5	13.0	40.3
Grassland	11238	7.4	59.2	4.7	30.6
Rewetted	4904	-0.3	193.7	0.1	4.1

Table 5: Overview of the estimated GHG emissions and reduction potentials for the wet and dry prioritization scenarios. The sensitivity of the presented results with respect to the applied global warming potential (GWP), WTD bias and the applied WTD response function for CO<sub>2</sub> is assessed.

Mt CO <sub>2</sub> -eq yr <sup>-1</sup>	Presented Results	Scenario: GWP20	Scenario: WTD bias	Scenario: linear CO <sub>2</sub> model
<b>GHG emission</b>	2.6	2.8	2.0	2.8
<b>Reduction potential</b>	2.0	1.4	1.4	1.1
<b>Prioritized wet (dry) reduction: 10,000 ha</b>	0.1 (0.3)	0.1 (0.2)	0.0 (0.3)	0.0 (0.4)
<b>Prioritized wet (dry) reduction: 20,000 ha</b>	0.3 (0.7)	0.2 (0.5)	0.0 (0.7)	0.1 (0.6)
<b>Prioritized wet (dry) reduction: 50,000 ha</b>	1.2 (1.6)	0.9 (1.1)	0.6 (1.3)	0.4 (1.0)

625