

Long-term additions of ammonium nitrate to montane forest ecosystems may cause limited soil acidification, even in presence of soil carbonate

5 Thomas Baer¹, Gerhard Furrer², Stephan Zimmermann¹, Patrick Schlegli¹

¹Forest Soils and Biogeochemistry, Swiss Federal Research Institute for Forest, Snow and Landscape Research (WSL), CH-8903 Birmensdorf, Switzerland

²Institute of Biogeochemistry and Pollutant Dynamics, ETH Zurich, CH-8092 Zürich, Switzerland

Correspondence to: Patrick Schlegli (patrick.schlegli@wsl.ch)

10

Abstract. ~~In Europe, n~~Nitrogen (N) deposition to forest ecosystems decreased in the last decades in Europe, but ~~remains~~ in many cases remains higher than the critical loads, i.e. higher than what could be considered ~~as~~ safe for specified sensitive receptors of the environment. The main concerns about N deposition are eutrophication and acidification. In a long-term experiment (~~1994–20XX~~ to present) in a montane (1200 m a.s.l.) coniferous forest in Alptal, central Switzerland, we simulated

15 ~~higher-increased~~ N deposition by adding NH₄NO₃ to ~~rain-water~~rainwater. This treatment ~~represented~~ consisted of an additional N input of 22 kg ha⁻¹ y⁻¹ of N, compared to the 12 kg ha⁻¹ y⁻¹ ambient bulk deposition rate or 17 kg N ha⁻¹ y⁻¹ ambient bulk deposition throughfall rate. The treatment was applied ~~at the same times~~ simultaneously to a small catchment area and to plots in a replicated block experiment (n=5). The site has a carbonate-rich parent material and is thus not particularly ~~endangered~~ by at risk of acidification. Nevertheless, ~~while previous reports on this experiment concentrated on N as a nutrient,~~ we examined

20 ~~here~~ soil acidification processes as affected both by ambient and experimentally increased N deposition, while previous reports on this experiment concentrated on N as a nutrient. In the ~~last~~ two and a half decades since ~~study start~~ the beginning of the study in 1994, nitrate (NO₃⁻) and especially sulfate (SO₄²⁻) concentrations decreased ~~in precipitation~~ in precipitation, while pH increased by slightly more than 1 unit. In spite of these reduced acid inputs, the pH of the soil decreased. First, the exchangeable acidity in the soil increased, especially in the N-addition treatment. This was mainly observed on small mounds ~~of the irregular~~

25 ~~topography of the site~~ because they are less well buffered than ~~the~~ wet depressions. This trend, however, was ~~also~~ limited in time as exchangeable acidity later declined again, to reach values not much higher than 26 years before. This was also the case in the N-addition treatment and can be considered ~~as~~ a progressive recovery mainly due to the reduced acid inputs and, at this site with a carbonate-rich sub-soil, to the biological cycling of base cations. The pH of the runoff from the experimental catchments decreased by 0.3 units, both in the control and under N-~~addition~~. Decreasing Ca²⁺ and increasing Al³⁺ and Fe²⁺

30 concentrations in runoff are also showing that the recovery observed in the exchangeable soil acidity is not yet able to stop the slow acidification of water leaving the catchments.

1 Introduction

Due to anthropogenic activity, the transformation rate of inert N₂ into reactive N has ~~been~~ more than doubled compared to pre-industrial times (Vitousek et al., 1997). The reasons for this influx of reactive N are increases in combustion of fossil
35 fuels, ~~the~~ widespread application of N fertilizer and ~~the~~ increased cultivation of N-fixing crops (Galloway et al., 2003). Globally, close to 80% of the emissions of NO_x and around 70% of the emissions of NH₄⁺ are a result of human activity (Schlesinger & Hartley, 1992); ~~(Delmas et al., 1997)~~. A large share of ~~the~~ anthropogenic N emissions ends up in the atmosphere and can be transported over long distances and deposited as a result of gravitation (dry deposition) or dissolved in atmospheric precipitation (wet deposition). Together with sulfate (SO₄²⁻), NO_x compounds are responsible for the acidity
40 in ~~the~~ atmospheric precipitation. As large regions of the terrestrial biosphere are N-limited, increased N deposition can have significant effects on biological activity both below and above ground. In particular, forests in temperate regions are thought to be naturally N-limited (Vitousek & Howarth, 1991). Moderate increases of N deposition in forest soils have been shown to be correlated with increased mineralization rates, nitrification, as well as and plant growth rates. Nitrification releases protons (H⁺) into the soil solution (Equation 1).



NH₄⁺ ~~used taken up~~ by plants corresponds to an exchange of this cation with H⁺, which is then released into the soil (Galloway et al., 2003; Högberg et al., 2006). These biologically induced releases of H⁺, together with the increased deposition of H⁺ caused in part by NO_x together with the inflow of H⁺ from the atmospheric precipitation, mean that soil acidification is a possible consequence of increased N deposition. This has been observed in a wide range of studies
50 (Boxman et al., 2008; Bowman et al., 2008; Lu et al., 2009; Högberg et al., 2006; Lieb et al., 2011).

Denitrification, i.e. Losses transformation of N from NO₃⁻ to atmospheric N₂, on the other hand, consume is a sink for H⁺ (Equation 2).



A further sink of H⁺ is the decomposition of plant matter ~~Decomposition of plant residues also leads to a consumption of H⁺.~~

55 Besides the balance between inputs and outputs, the rate at which the soil acidifies depends on its buffering capacity. The dominant processes by which H⁺ is buffered is are either through biologically induced redox reactions, which can take place in decomposition of biomass, or through mineral weathering and cation exchange mechanisms on the surfaces of soil solids. These buffering mechanisms remove H⁺ from the soil solution, reducing ~~theits~~ acidity. Soil pH and the mineralogy of the soil ~~Which determine which~~ type of buffering process dominates, ~~depends on the soil pH and the mineralogy of the soil~~. The
60 dissolution of calcium carbonates is the dominant buffering process in calcareous soils (Equation 3).



The dissolution of silicates is a slower process and depends ~~very much~~ mainly on the types of silicate minerals present in the soil. This buffering process usually only contributes substantially to the buffering systems at lower soil pH, as silicate dissolution rates increase logarithmically with decreasing pH (Amelung et al., 2018). At very low pH, hydrolysis and
65 dissolution of Al and Fe complexes are the dominant buffering systems (Chadwick & Chorover, 2001).
If the rate of inflow of H⁺ is higher than the rate of the buffering mechanisms, the soil will acidify. Soil acidification can be recognized by a number of factors including a reduction in soil pH over time indicating a higher concentration of H⁺ in the soil. A further indicator is an increase in the proportion of acidic cations compared with the proportion of base cations in the cation exchange capacity (CEC). As a consequence of ~~the~~ decreasing pH, cations such as H⁺, aluminum (Al³⁺), iron (Fe²⁺)
70 and manganese (Mn²⁺) replace base cations such as calcium (Ca²⁺), magnesium (Mg²⁺), potassium (K⁺) and sodium (Na⁺) from the cation exchange sites on the surfaces of mineral particles and organic matter in the soil (Amelung et al., 2018). This leads to an overall reduction in the base saturation (BS) and a reduction of the buffering capacity. Cations, which are being replaced from exchange sites or stem from dissolution reactions of minerals, enter the soil solution and can leach from the soil. Runoff water from acidified soils shows higher concentrations of dissolved base cations and dissolved metals,
75 especially Al³⁺ and Fe²⁺ (Warfvinge & Sverdrup, 1984). Soil acidifying processes can therefore be observed directly in the soil or indirectly in the chemical composition of the runoff water.

Soil acidification due to increased N deposition can have adverse impacts on the biosphere and on the surrounding environment. Possible effects on plants can be Al toxicity as a result of increased Al loads in the soil solution and increased loads of Al adsorbed at the cation exchange sites. The depletion in base cations in the soil can also lead to nutrient
80 imbalances affecting plant growth (Richter et al., 2007); ~~(~~Göransson & Eldhuset, 1995). Furthermore, the increased leaching of N, due to N saturation and increased nitrification rates, can affect water bodies downstream by inducing eutrophication. Increased N deposition is not the only possible driver of soil acidification. Precipitation with low pH values, commonly known as acid rain, is another source of H⁺ to the soil. The low pH is mainly caused by high concentrations of sulfate (SO₄²⁻) and NO_x. Thanks to stringent emission regulations in Switzerland and in Europe in general (Convention on Long-Range
85 Transboundary Air Pollution), SO₄²⁻ concentrations in ~~the~~ precipitation have declined and the pH of precipitation has increased over the last 30 years. However, ~~an abatement achieving reduction of~~ in oxidized (NO_x) and especially reduced (NH₃) N emissions is more difficult. ~~N concentrations have thus not decreased as much~~ and N deposition continues to be an environmental problem. In Switzerland, a large share of the natural ecosystems receive N deposition above the ir critical load (Rihm & Achermann, 2016). In large parts of the world, the deposition of reduced N also decreases less than that of oxidized
90 N (Templer et al., 2022).

A considerable amount of research has been conducted on the effects of increased N deposition on weakly buffered soils such as ~~for example on~~ alpine soils (Lieb et al., 2011), tropical soils (Lu et al., 2014), subtropical soils (Lu et al., 2009) and temperate non-calcareous soils (Boxman et al., 2008). Soil acidification has been observed in all those cases. However, the effect of increased N deposition on the biogeochemistry of a well-buffered system, has not been examined to the same
95 extent. ~~This is probably due to the assumption that minimal effect is expected on soil pH of well-buffered soils.~~ In the

present study, the biogeochemical development of such a well-buffered forest soil in the Prealps of Switzerland was analyzed. A long-term N-addition experiment has been conducted at that site, during which a catchment area in a coniferous forest was subjected to NH_4NO_3 additions at a rate of $22 \text{ kg ha}^{-1} \text{ y}^{-1}$ ~~and~~ compared to a control catchment receiving only ambient N deposition or throughfall at a rate of $12 \text{ kg ha}^{-1} \text{ y}^{-1}$ or $17 \text{ kg N ha}^{-1} \text{ y}^{-1}$ respectively. ~~The chemistry of the runoff water from these catchments, as well as the atmospheric precipitation~~ Atmospheric precipitation and runoff water from these catchments were regularly analyzed over the entire period of the experiment (Schleppi et al., 1998).

~~In this study we investigate the acidifying effects on the soil as a result of~~ Despite the fact that the soil is well buffered, the question arises whether it might show signs of acidification as a result of ambient N deposition, ~~alone or~~ in combination with N from the experimental addition of NH_4NO_3 . ~~Data of the p~~ Precipitation chemistry over time ~~were was~~ used to test a first hypothesis:

1) *Atmospheric precipitation ~~became~~ comes less acidic over time due to lower levels of pollution. This should be ~~visible~~ observable ~~in as~~ an increase in precipitation pH and ~~should decrease the~~ lower rate of soil acidification in the control.*

~~To test the effect of T~~ the experimental N addition ~~being almost twice the ambient deposition, on the soil, soil~~ samples from plots subjected to ~~this the increased N addition inputs as well as the controls~~ were analyzed to examine a second hypothesis:

2) *Relatively to the control, the N-treated soil (organic horizon and topsoil) experiencesd a stronger acidification, ~~leading~~ measured as a lower pH and an increase in total acidity.*

~~On this site, The site shows~~ water movements through the soil ~~occur~~ mainly as preferential flow. This limits the contact between water and the bulk of the well-buffered Bw horizon. Soil acidification may thus affect the chemical composition of ~~the~~ runoff water. Chemical data collected over more than 20 years from the experimental catchments were used to test a last

hypothesis:

3) *Soil acidification can affect the pH and the chemical composition of runoff water even on a site with a well-buffered subsoil.*

2 Methods

2.1 Site description

The present study was conducted in the Alptal valley, in central Switzerland ($47^{\circ}03' \text{ N}$, $8^{\circ}43' \text{ E}$), at 1200 m a.s.l. Flysch is the parent rock material, which is composed of sedimentary conglomerates with clay-rich schists. The main soil types are very heavy Gleysols. They contain on average 48% clay and have la low permeability, leading to a water table close to the surface throughout the year (23 cm deep on average, Krause et al., 2013). The slope is about 20% with a west aspect. S ~~The~~ soil characteristics differ depending on the prevailing topography. At a scale of typically 10 m, the topography shows a mosaic of mounds and depressions. The mounds are characterized by a lower-lying water table and have a profile with mor (raw humus), Ah and an oxidized or partly oxidized Bw horizon. The pH ranges from 3 to 4 at depths down to ~10 cm. In the depressions, the water table can reach the surface, leading to waterlogged conditions. The profile consists of an anmoor

(muck humus) topsoil, and an almost permanently reduced Bg horizon (Hagedorn et al., 2001b). The pH lies between 4.5 and 6 at depths of 0 to ~10 cm. Depending on the locations, annual net nitrification rates (down to a depth of 15 cm) are partly positive and partly negative (N immobilization). Overall, the net rate is not significantly different from zero (Hagedorn et al., 2001b).

The climate of the study is cool and wet, with an average annual temperature of 6°C and average annual precipitation of 2300 mm, reaching a maximum of 270 mm in June and a minimum of 135 mm in October (averages from 1994 to 2015). A naturally regenerating mature Norway spruce stand (*Picea abies* (L.) Karst.) is present on the site, admixed with 15% silver fir (*Abies alba* Mill.). The trees are up to 270 years old, have a dominant height of around ca. 30 m and a low leaf area index (LAI) of 3.8 (Schleppi et al. 1999b). As waterlogged soil conditions inhibit their growth in depressions, the trees grow on the mounds, accompanied by a ground vegetation dominated by *Vaccinium myrtillus* and *Vaccinium vitis-idaea*. In the depressions, ground vegetation is dominated by *Caltha palustris*, *Petasites albus*, *Poa trivialis* and *Carex ferruginea*. Rooting depth of all plants is limited to 10–25 cm depending on the micro-topography (Schleppi et al., 1999b). Atmospheric deposition of inorganic N in bulk and throughfall is 12 and 17 kg N ha⁻¹ y⁻¹, respectively (Schleppi et al., 1998).

2.2 Experimental catchments and N addition

Two forested catchments, each approximately 1500 m² in area, were delimited by trenches dug one year before measurements began. These trenches reach into the gleyic sub-soil and capture the sub-surface water flow (Schleppi et al., 1998). No change of the vegetation along the trenches has been observed that would indicate an enhanced drainage of the soil along the trenches. Both catchments feature a similar topography with similar proportions of mounds (approx. 40%) and depressions (approx. 60%). Water level is measured continuously in V-notch weirs at the bottom of the catchments. Water discharge is calculated from these measurements and is averaged over 10 min periods (Schleppi et al., 1998). Both catchments always showed a rapid response to rain events and exhibited similar runoff peaks (Schleppi et al., 2004). One year of measurements with weekly water analyses served as a calibration period before N-addition treatment began. Increased N deposition was then simulated in one of the catchments by sprinkling-applying NH₄NO₃ dissolved in rainwater with permanently deployed sprinklers. The used rain-water was collected into a water tank (2000 L) from collected on a polyethylene sheet (300 m²) spread outside the forest and channeled into a water tank (2000 L). N addition occurred automatically when the tank was full, i.e., in small but frequent amounts: approximately 200 times per year for an average of 22 kg N ha⁻¹ y⁻¹ additional N input to the ambient deposition rate of 12 kg N ha⁻¹ y⁻¹. In a paired-catchment design, the other catchment served as a control and received the same amount of rain water without any added N resulting in a N input of 12 kg N ha⁻¹ y⁻¹. During winter, N treatment was done with a backpack sprayer as occasional applications of a concentrated NH₄NO₃ solution on the snow cover.

In June 2009, 15 trees per forested catchment, all with a diameter at breast height of >20 cm, were girdled by removing bark and cambium around the stem (Krause et al., 2013). One year later, the girdled trees became infested by bark beetles (*Ips typographus*) and were felled in August 2010. To prevent spreading the spread of the infestation, trees were felled in August

2010. This represented a heavy selective cutting (~~by~~ 38% of the total basal area of all trees >10 cm diameter at breast height). The branches (with needles still attached) were left on site, while the boles were removed by helicopter. ~~Within 2 years after girdling, neither~~ This disturbance did not affect soil temperatures (7.1°C on average) nor soil water depths (23 cm on average) ~~were affected~~. (Krause et al., 2013).

165 2.3 Sampling and analyses

Precipitation was measured and sampled weekly from an open area. Two 0.05 m² rain gauges were used, except in the winter when only one was heated in order to let the snow melt. Water samples were proportionally combined fortnightly and filtered (0.45 µm). NH₄⁺ was analyzed by flow injection, anions by ion chromatography and cations by induced-coupled plasma atomic emission spectrometry (ICP-AES) (Schleppi et al., 1998). The pH was measured with a Metrohm 654 pH-
170 meter. Its electrode was filled with a low-concentration electrolyte (0.55 M KCl) to adapt to the low ionic strength of precipitation samples. Further, 10% of the same 0.55 M KCl were added to each sample prior to measurement. Stable readings were difficult to achieve with precipitation water. For this reason, samples were bubbled with N₂ to favor degassing and readings taken after a fixed time of 6 minutes. ~~In order to~~ To check the long-term consistency of the pH measurements, precipitation samples were proportionally pooled over periods of 3 months and frozen. After 21 years of collection, these
175 samples were melted, measured again and compared to values calculated from the H⁺ concentrations derived (by weighted averages) from the measurements done just after collection.

Runoff water was collected proportionally to the discharge (an aliquot per 200 or 300 L discharge) and bulked over 2 weeks (Schleppi et al., 1998; Schleppi et al. 2006). These samples were analyzed with the same methods as for precipitation water. For their pH measurement, a Metrohm 691 pH-meter was used, with a (normal) KCl 3 M electrolyte.

180 Soil samples were taken in a replicated block design (n=5) from plots ~~located around and~~ receiving the same treatment as the headwater catchments (Hagedorn et al., 2001a). ~~See Fig. 1 for a map of the entire experiment. See Hagedorn et al. (2001a) for a schematic map of the entire experiment.~~ Each plot had a sprinkler at its center, spraying either rain water (control) or rain water with added NH₄NO₃ (N-addition treatment). Blocks (pairs of plots) were located so as to cover the variability of the topographical features: two blocks were set on mounds and three in depressions. Samples were taken as 3 cores per plot
185 (5 cm diameter) at irregular intervals of several years (1996, 2007, 2014, 2015, 2016 and 2022). They were immediately refrigerated, brought to the lab, separated by soil layer and bulked over the 3 cores per plot. Stones and roots were removed and the samples ~~were~~ then dried at 65°C. Samples taken in 1996 had been frozen and were dried and measured only in 2017. Samples taken in 2007 had been dried and were measured also in 2017. In other years, measurement followed drying within one month at most. The O and A horizon were included in our analyses. The Bw horizon receives almost no N from the
190 experimental addition, as shown by ¹⁵N labelling (Providoli et al., 2006). It is further well buffered by the presence of carbonate and was thus not included in our analyses on acidification.

In general, 10 g of each soil sample ~~were~~ suspended in 20 ml 0.01 M CaCl₂ for half an hour. For soil samples high in organic matter content, only 5 or 2.5 g ~~were~~ used. The pH was subsequently measured with a Hamilton 9.99 electrode on a

Metrohm 691 pH-meter. The effect of the soil amount was assessed by weighing 2, 4, 6 and 8 g from each horizon and suspending all in 20 ml 0.01 M CaCl₂. The H⁺ concentration varied by less than 3 % between the different soil amounts, which means that the difference in pH due to varying weight of soil was negligible. For this reason, no pH correction for soil weight was needed.

Total soil acidity (defined as the sum of exchangeable Al³⁺ and H⁺) was extracted by suspending 5 g of each soil sample (in duplicate) in 50 ml 1 M KCl and mixing them in an overhead stirrer for one hour. If the soil had a high organic matter content, or if only a small amount of soil sample was available, only 2.5g were used instead of 5 g. The extract was then filtered through 5893 pleated filters. Total acidity and exchangeable Al³⁺ were measured using an automated sampler (814 USB Sample Processor, Metrohm). The exchangeable H⁺ was calculated by subtracting the amount of exchangeable Al³⁺ from the total acidity. Reference samples were measured at regular intervals, in order to check for drift. The samples were measured in sequence from highest to lowest pH, in order to minimize possible carry over between the single measurements. The samples with a pH of 3.55 and below were diluted with the equal volume of 1 M KCl. Samples with a pH larger than six higher than 6.0 were not measured for soil acidity. The resulting acidity values were then corrected for weight and dilution wherever necessary.

Exchangeable cations were extracted with 1 M NH₄Cl (soil:solution ratio: 1:10) during 1 hour and measured by ICP-AES. The effective cation exchange capacity (CEC_{eff}) was calculated by summing up the charge equivalents of exchangeable H, K, Ca, Mg, Al, and Fe. The base saturation (BS) equaled the relative fraction of K, Ca, and Mg of the CEC_{eff}.

2.4 Statistics

The time series of pH in precipitation and in runoff were available in fortnightly steps. In a first approach, we tested these series for auto-regression with the acf function of R (version 4.1.2). This showed mainly that correlations decreased from 0.6 (precipitation) or 0.5 (runoff) at a lag of 1 fortnightly period to reach a first minimum at a lag of 12-14 periods, then increasing again up to 22-27 periods, corresponding to a yearly cycle.

Changes in precipitation chemistry were then estimated using linear models with the lm function in R, with time and seasonality as explanatory variables. Seasonality was tested using a sinusoidal approach, testing for both the sine and the cosine of the yearly cycle.

Linear mixed-effects models were used to estimate the effects of the N treatment, time, and their interaction on soil acidity. Models were fitted with the lme function from the nlme R package version 3.1-162 (Pinheiro et al., 2023). Treatment (control or N addition) and time were used as fixed effects, as well as a second-degree polynomial for time to allow for slopes changing during the course of the experiment. Replications (pairs of plots) were considered a random effect allowing for random intercepts and slopes by treatment, as the same locations were sampled over the years and cannot be assumed to be independent. The interaction between treatment and time was also tested ~~for~~, but was subsequently removed as no significance could be shown. The dependent variable soil acidity was log-transformed to correct for the unequal variance between replications due

to the topography. To test ~~for~~ differences in total acidity between topography, three fixed effects were used: treatment, topography (mound or depression) and interaction between the treatment and topography. Allowing for random slopes for treatment did not let the model converge, ~~for which reason so~~ only random intercepts ~~was tested were used~~. Separate linear mixed-effects models (with identical structures) were fitted for the A and the O soil horizon.

Runoff water chemistry changes were estimated using the same approach as with ~~the~~ precipitation with two ~~extra-additional~~ explanatory variables: Treatment (control or N addition) and interaction between treatment and time. The interaction was tested by introducing a pseudo variable for both treatments, accounting for reference period during the first year before treatment start and then increasing for N treatment and decreasing for control. In order to represent only the interaction, the sum of the pseudo variable had to be zero across treatments and also across time points.

~~We further tested the short-term correlation between pH in precipitation and runoff. For this purpose, we filtered for data between 21 May and 28 October, in order to avoid data obtained in the presence of snow cover. For each year, we calculated the deviations compared to the average of that year, thus removing the long-term trends and keeping only the short-term variations. Based on this data, correlations were calculated with a shift between zero and nine time steps from the first to the second series.~~

3. Results

3.1 Precipitation chemistry

~~Overall~~Overall, ~~the~~ precipitation rates in the Alptal showed no significant change over time between the beginning of the experiment in April 1994 and the ~~last data presented here~~ latest available measurements (2019). ~~The~~ annual precipitation averaged ~~at~~ 2130 mm. The bulk precipitation data showed a highly significant increase in pH of the atmospheric precipitation ($P < 0.001$; Table S1, Fig. 2). At the beginning of the project, ~~the average~~ pH ~~averaged was~~ above 5 and increased to ~~an average of~~ almost 6.8 by the end of 2019. The increase in pH took place at an average rate of 0.068 per year. ~~Single Occasional~~ very high values (up to pH 8) were observed after weather events, ~~that transported~~ ~~bringing~~ Sahara dust over the Alps.

~~During~~In the same time period, ~~the~~ SO_4^{2-} and ~~the~~ NO_3^- concentration in the precipitation both showed a significant decrease ($P < 0.001$; Table S1, Fig. 2). Since 1994, the average SO_4^{2-} concentration ~~had~~ more than halved at a rate of 0.028 mg l^{-1} per year. The NO_3^- concentration ~~did also~~ decrease ~~d~~ over time, ~~however~~ ~~but~~ not as strongly as the S deposition. The concentrations of NH_4^+ did not change significantly during the years of monitoring and remained at an average level ~~around of ca.~~ 0.3 mg l^{-1} . All measured variables showed a significant seasonality ($P < 0.001$; Table S1, Fig. 2), with pH showing a minimum around July and SO_4^{2-} , NO_3^- and NH_4^+ showing ~~the~~ maximum values in June, May and April respectively.

Soil pH decreased significantly over time for both the N-treated soil ~~as well as and~~ the control soil ($p < 0.001$; Fig. 3, Table S2). Neither the rates of decrease in pH nor the average values differed ~~significantly~~ between the two treatments ~~significantly~~. The O horizon showed ~~higher~~ ~~slightly lower~~ pH values with a stronger decrease in pH over time than the A horizon.

260 ~~The results from the linear mixed effects model for t~~Total acidity showed a significant ($p < 0.001$; Fig. 3, Table S2) non-linear change over time for both the control and N-treated soil. ~~The total acidity showed an increase~~ ~~It initially increased~~ over time, peaking around 2012 and then decreasing continuously. The same characteristics for total acidity were observed for both soil horizons, however with lower values for the A compared to the O horizon.

The ~~variance variation~~ in total acidity between replications (measured values) can partly be explained by topography. There were 5 replications for each of the sampling campaigns in the years 1996, 2007, 2014, 2016 and 2022 as described in the methods. Two of the replications are located on mounds and three ~~replications are~~ in depressions. ~~The total acidity on the mounds~~ ~~differ~~ ~~differ~~s significantly from ~~the~~ total acidity ~~in from~~ the depressions ($p = 0.006 / 0.012$ for O and A horizon respectively; Fig. 4, Table S2). The interaction between topography and treatment is marginally significant ~~as well~~ for the O horizon and significant of the A horizon ($p = 0.070 / 0.023$ for O and A horizon respectively), ~~so that N-treated on mounds~~ ~~have the highest acidity~~.

270 A difference in proportions of exchangeable cations between the control and N-treated soil was observed, when examining the soil from ~~the~~ mounds and depressions separately for both the O and the A horizon (Fig. 5). The N-treated soil showed a higher percentage in acidic exchangeable cations (shown in red in Fig. 5), mainly Fe^{2+} , Al^{3+} and H^+ , than the control. The control accordingly exhibited a higher percentage of exchangeable base cations (shown in blue in Fig. 5), mainly Ca^{2+} and Mg^{2+} . The acidic exchangeable cations in the N-treated soil make up close to 40 % and 50 % in the O and A horizons respectively, whereas in the control soil they only make up ~ 15 % and ~ 10 %. The difference in exchangeable cations between ~~the~~ depressions and ~~the~~ mounds were observed, with the depressions showing less than 10% of the exchangeable acidic cations. $\text{Ca}^{2+}/\text{Al}^{3+}$ ratios ranged from over a 1000 in the depressions to about 1.4 on the mounds.

3.3 Runoff water

280 The concentrations ~~of all anions and cations except for Fe^{2+}~~ in the runoff water ~~of all anions and cations except for Fe^{2+}~~ changed significantly over time ($p = < 0.001$) for the control catchment. Al^{3+} and pH showed marginally significant ~~interactions~~ ~~($p = 0.073$ and $p = 0.092$)~~ and Fe^{2+} , SO_4^{2-} and Ca^{2+} showed ~~highly~~ significant interactions between treatment and time (Table S3 and Fig. 5). The pH decreased for both catchments with two distinct periods of relative higher pH from 2010 to 2012 and 2017 to 2020. Al^{3+} and NO_3^- increased in concentration in the runoff water from both catchments, while showing a significantly higher rate of increase for the N-treated catchment (Fig. 6 and Table S4). Fe^{2+} concentrations increased significantly in the runoff from the N-treated catchment, but stayed stable in the control. A significant decrease in concentration of SO_4^{2-} and Ca^{2+} was observed for both catchments. The decrease in concentration in the runoff water from the N-treated catchment was

significantly lower compared to that of the control catchment. All anion and cation concentration showed significant seasonal trends (Fig. 6 and Table S4).

The observed NO_3^- concentration showed a distinct non-linearity in the runoff water from the N-treated catchment. For this reason, a 5th-order polynomial was included in the ~~linear~~-model ~~to capture the non-linearity~~. The water from the N-treated catchment showed a sudden increase in concentration of NO_3^- starting around 1995 and increasing constantly till reaching a maximum in 2010, after which ~~a decrease sets in~~ it started to decrease. At the end of 2018 the concentration reached a minimum, ~~after which it increases at a low rate~~ then started to increase slowly again. In comparison, the control ~~does~~ not show much variation over time, other than a slight decrease after 2010. Two dates are highlighted in the NO_3^- plot in Figure 5: March 1995, indicating the beginning of the NH_4NO_3 additions to the N-treated catchment, and June 2009, which indicates the girdling of select trees prior to their felling in August 2010.

~~The pH in the runoff~~ Runoff water pH and precipitation pH showed no significant correlation to each other for the same time period for ~~both~~ either the control ~~and~~ the N-treated catchment, with correlation coefficients of ~~-0.081~~ and ~~-0.078~~ respectively. The correlation was also not significant when the time periods were offset by 1 to 9 timesteps (1 timestep equals 2 weeks), with ~~the correlation~~ coefficients ranging from ~~-0.184~~ to ~~0.090~~ for the control and ~~-0.108~~ to ~~0.122~~ for the N-treated catchment.

4 Discussion

~~Considering trends reported elsewhere~~ Based on general trends in the last decades, our first hypothesis was that our experimental site is subjected to decreasing atmospheric acid inputs. From 1994 to 2019, ~~the~~ precipitation sampled at the Alptal site has indeed become significantly less acidic. This was clearly visible in ~~the~~ increase in pH and in the decreasing concentrations of SO_4^{2-} and, to a lesser extent, NO_3^- . The NH_4^+ concentrations showed no significant change over time. These findings are consistent with other sites in Switzerland ~~which have reported, since the mid-1990's, partly significant decreases in NH_4^+ and mostly significant decreases in NO_3^- deposition~~ (Thimonier et al., 2019). ~~These authors reported, since the mid-1990's, partly significant decreases in NH_4^+ depending on the measurement site, and mostly significant decreases in NO_3^- deposition.~~ Data from our research site are also in line with average decreases measured since 1988 by the national air pollution monitoring in wet deposition of SO_4^{2-} (-79%), NO_3^- (-36%) and NH_4^+ (-20%) (BAFU, 2022). These trends are ~~obviously clearly~~ the result of measures taken to reduce anthropogenic emissions of SO_4^{2-} , NO_x and NH_3 , respectively. Similar trends are generally observed in Europe (EMEP, 2021). In a world-wide study of time series from forest and grassland watersheds, Templer et al. (2022) also found a general reduction in bulk NH_4^+ , and especially NO_3^- deposition. This means that reduced N compounds become progressively more important relative to ~~oxidised~~ oxidized N in atmospheric deposition.

The observed increase in ~~precipitation pH is~~ pH in our precipitation samples was strong. As a linear trend of measurements ~~done~~ from 1994 until 2019, it increased by 1.63. ~~Measuring again~~ Re-measuring frozen samples gave higher pH values for
320 old samples. If we take this fact into account, there is an increase of 1.18 in the same 25 years. It is not possible to ~~tell~~
~~determine if one of these numbers is closer to reality~~ the real number than the other ~~which of these values is more accurate.~~ ~~In~~
~~spite of~~ Despite calibrating the pH-meter before every fortnightly measurements, we cannot completely exclude that there
could be a long-time trend due to the aging of the pH-meter and electrodes. We cannot either exclude that a slow degassing
took place in the frozen samples, leading to a loss of dissolved CO₂ and thus to a slight pH increase, even if the size of the
325 bottles (mostly 250 - 1000 mL) does not ~~so much likely~~ favor degassing. Further, some buffering effects may lead to losses
of H⁺ during the mixing of fortnightly samples into quarterly composites, resulting in some differences compared to the pH
calculated ~~out of from~~ the fortnightly measurements (by the weighted average of H⁺ concentrations). Even with these
uncertainties ~~on the precise numbers~~, we can conservatively conclude that H⁺ inputs by precipitation decreased by one order
of magnitude within the last 25 years. This is also in line with the trends observed over Switzerland, with a gain of more than
330 1 pH unit over the last 35 years (BAFU, 2022). As stated in this national report, the cause of this pH increase has to be
sought in the above-mentioned decrease in emissions of N and especially S oxides.

The soil acidifying effect of precipitation is not limited to its pH, i.e. to its H⁺ concentration. Soil acidification as a
consequence of increased N deposition has been established in a wide range of studies (e.g. Lu et al., 2014; Lieb et al., 2011;
Bowman et al., 2008). This leads to our second hypothesis that our N-addition treatment contributes to soil acidification.
335 NO₃⁻ can have an acidifying effect if leached together with base cations, leading to their replacement by H⁺ or Al³⁺ on the
exchange complexes in the soil. NH₄⁺ also has ~~also~~ an acidifying effect if it is nitrified (Eq. 1) or taken up by plants in
exchange with H⁺. These two N ions ~~presently~~ represent ~~nowadays~~ the main potential of soil acidification from ambient
precipitation. Adding them as N treatment ~~represented simulated~~ a strong increase of this potential in our experiment. As
explained in greater detail in a previous article (Schleppi et al., 2017), NO₃⁻ leaching quickly increased as a result of the N-
340 addition. This was interpreted as a short-term effect linked to fast, preferential water flow through the top-soil, leading to the
loss of approximately 10% of the added N. After several years of treatment ~~treatment~~, we observed a further reduction of
NO₃⁻ retention, down to approximately 70%, which we consider as a sign of progressive N saturation of the ecosystem.
Finally, a peak of NO₃⁻ leaching was observed in the 5-6 years after girdling and subsequent felling of part of the trees. This
peak was clearly more pronounced in the N-treated catchment than in the control and this was interpreted as a result of the
345 decreased N demand of the trees. Since NO₃⁻ leaching increased in the N-addition treatment (Fig. 6; see also Schleppi et al.,
2017), ~~part of the potential acidification is realized~~ we can ascertain that acidification occurred in part due to the acidifying
potential of NO₃⁻. This can explain the stronger increase in soil acidity observed on the mounds under N-addition compared
to the control (Fig. 4, 5) and can also partly explain that Ca²⁺ concentrations decreased less in N-treated catchment than in
the control (Fig. 6). The contribution of NH₄⁺ is more questionable because the slightly increased N uptake by the trees
350 (Krause et al., 2012) can also be in the form of NO₃⁻. Further, net nitrification rate is ~~small minimal~~ or ~~partly~~ even negative at

times in the ~~Alptal~~ soil at our site. The added NH_4^+ is well retained in the ecosystem and abiotic fixation is believed to be a major process of retention (Providoli et al., 2006), which can limit its acidifying effect.

It is quite surprising that the total acidity appeared to decrease in the N-addition treatment at the same time as in the control, in spite of the much higher load of NO_3^- and NH_4^+ . ~~The only explanation that we have is~~ We suggest that most of the acidifying potential of these ions is not expressed on this site. NO_3^- leaching occurred also, but also in the control (Fig. 6) and mostly by preferential flow of NO_3^- in precipitation ~~NO_3^-~~ rather than by leaching of NO_3^- from nitrification in the soil (Hagedorn et al., 1999). And, as explained above, nitrification and plant uptake of NH_4^+ are limited by the (partly abiotic) immobilization of this ion in the soil. This can explain ~~that we observe~~ the observed recovery after ~~roughly~~ 2010, with a decrease of the exchangeable acidity ($\text{H}^+ + \text{Al}^{3+}$). This tendency is not reflected in the pH, but this ~~is understandable~~ can be explained by ~~considering that~~ by the losses of acidic cations from the exchange complexes ~~lost acid cations~~ into the solution during the last decade. Even if ~~the~~ soil pH does not yet show signs of recovery, our first hypothesis of a decrease in acid inputs and in soil acidification was confirmed, and even surpassed considering the observed recovery in exchangeable acidity.

As shown by our measurements (Fig. 5), the topsoil of the depressions is buffered by a high saturation in base cations. ~~However, On~~ the mounds, ~~however,~~ the saturation is lower, which can be explained by an increased leaching of base cations as water moves deeper into the soil and laterally towards the depressions. As a result, ~~The~~ lower buffering capacity of the mounds was ~~then partly consumed~~ in part further reduced by N-addition treatment. This is in line with our second hypothesis of an acidifying effect of the added NH_4NO_3 . With time, however, the exchangeable acidity decreased again. Besides the pH increase ~~in pH~~ in precipitation and the fact that NO_3^- and NH_4^+ only partly express their acidifying potential, biological element recycling certainly also plays a role in the observed recovery. Most studies on soil acidification were conducted on soils that ~~have not~~ don't, or no longer any contain carbonate. In contrast, the subsoil of our site contains carbonate. It is thus a large source of base cations for plant roots. With the uptake of base cations from the lower soil horizons and their return ~~to the forest floor~~ as litter ~~on the forest floor~~, this biological cycling acts against acidification and can be considered as a further buffering mechanism. This appears to be effective enough even if the gley horizon of our site features reducing conditions (Hagedorn et al., 2001b), making it unfavorable for deep rooting. Base cations in plant litter are also a mechanism by which they can be redistributed between ~~to~~ Plant litter is another mechanism by which base cations can be redistributed between topographical features ~~topographical features~~, presumably from the base-cation richer depressions onto the mounds. ~~Also because~~ Due to ~~of~~ the low redox potential of the soil, denitrification can be measured at this site (Mohn et al., 1999). With a rate in the order of magnitude of $1 \text{ kg N ha}^{-1} \text{ y}^{-1}$, denitrification also acts against acidification (see Equation 3).

Besides the replicated plots, our N-addition experiment is also conducted in a paired-catchment design. As expected, the most prominent effect of the treatment was ~~to an~~ increase of NO_3^- leaching out the N-addition catchment. We found ~~A~~ leaching peak ~~over~~ during approximately 5 years after the girdling ~~then and subsequent~~ cutting of part ~~some~~ of the trees in 2009/2010. A smaller peak was also measured in the control, where the same girdling and cutting ~~also took place~~ was

385 ~~performed~~. These results were discussed in detail in Schleppei et al. (2017) and the peak following girdling and ~~erring~~
~~cutting~~ was interpreted as a result of ~~a~~-reduced root uptake. For the present study, our third hypothesis was that ~~other~~-ions
~~other~~ than just NO_3^- ~~would~~ exhibit changes over time and be affected by the N addition. At the beginning of the experiment,
water sampled at the weirs of the small catchments showed a ~~higher~~-pH around 7.5. With time, it decreased to approximately
7.2. Two relatively sudden increases occurred at the beginning of ~~the years~~-2010 and 2017. They could not be ~~brought into~~
390 ~~relation with~~~~traced to a change of electrodes or~~ any ~~other~~ change in the measurements ~~such as a change of electrodes~~. For the
first period (2010-2011), the higher pH may be an effect of the reduced uptake of base cations by tree roots, which means
less release of H^+ by these roots after they had used up their starch reserves within a few months (Krause et al., 2013). In the
years 2017 to 2019, the pH measured in precipitation (with a different pH-meter) were also higher than the long-term trend.
~~The two periods of higher pH values also did not correlate with soil frost, which occasionally occurs~~ ~~on~~at this site (Stähli,
395 ~~2017~~). Furthermore, the absence of any short-term correlation between runoff pH and precipitation pH in the same or in the
~~previous 2-week periods is in contrast with what was previously observed for NO_3^- concentrations (Schleppei et al., 2017).~~
~~While the NO_3^- signal is partly transmitted through the soil by preferential water flow, the different behavior of the pH can~~
~~be explained by buffering reactions in the soil. Cation exchange especially is much more efficient than anion-exchange, thus~~
~~completely decoupling these two time-series. We did not find any other explanation for this period of high pH values in~~
400 ~~runoff water. This~~~~The~~ overall tendency of declining pH was accompanied by a decrease in Ca^{2+} and an increase in Al^{3+} and
 Fe^{2+} concentrations. This shift from base cations to acid cations is a clear sign of a progressive acidification of the soil, more
precisely of the hydrologically active layers of the soil, since the bulk of the Bw horizon is practically impermeable. Unlike
the exchangeable acidity in the soil, ~~but similarly to the soil pH~~, no sign of recovery was observed in the ~~chemical~~
composition of runoff water. Since the exchange complexes of the soil lost acid cations during the last decade, it is
405 understandable that recovery processes are not synchronous. Overall, the signals confirm our third hypothesis that soil
acidification translates into the composition of runoff water even on a site with a well buffered subsoil. The sequence of
recovery, however, is not the same as often observed in forests that were subjected to strong soil acidification after high S
deposition. In such highly impacted systems, the storage and subsequent release of sulfur plays a dominant role and can
delay the recovery of the soil (Ahrends et al., 2022) more than that of surface waters (Lawrence et al., 2015).

410 5 Conclusions

The Flysch parent material of the Alptal soil contains calcium (and magnesium) carbonate. When an N-addition experiment
was started in 1995, we did not expect to see any acidification effects ~~of as a result of the~~ ~~supplementary-added~~ NH_4NO_3 .
After years of monitoring the pH both in precipitation and in runoff water from our small experimental catchments, we
noticed opposite trends: less acid precipitation but a declining pH in the runoff. For the present study, we used older and
415 newer soil samples to ~~try understanding the~~~~examine the~~ underlying processes. The results show that the observed trends can
be interpreted as a ~~timely-temporal~~ shift in a recovery process initiated by the (legally imposed) abatement of N and

especially S oxides. The first effect is a reduction of the acidity in precipitation. ~~First, the~~ At first the weakly buffered
mounds of our site ~~first continued to acidify~~ acidified. The N treatment (addition of roughly twice as much N as in the
ambient deposition) had ~~s~~ a significant effect ~~hereon the acidification~~. Later, the ~~reduced~~ reduction in acid inputs ~~from the~~
420 precipitation allowed base cations to replace ~~again~~ part of the exchangeable acid cations in the soil, even under continuing N
addition. This process, which is certainly linked to the biological cycling of base cations, ~~also~~ takes time but may ~~later~~ lead
to a recovery of the soil pH in the future. A pH decline was also ~~still~~ observed in the runoff water of our small experimental
catchment. ~~However, the pH remained above, but with a value still above 7 and,~~ this trend is not alarming for water quality
or for the health of water bodies. ~~A future~~ Future monitoring will be necessary to see if and when a recovery takes place in
425 the soil and runoff pH.

Author contribution

As a principal investigator, PS was significantly involved in the set-up and running of the field experiment. TB provided
most soil analyses as well as the re-measurement of pH from frozen samples for the present study. TB and PS wrote the
430 manuscript with contributions of the other authors.

Competing interests

The authors declare no competing interests.

Data availability

Upon request, data obtained during the present study are available from the corresponding author.

435 Acknowledgements

The authors thank former graduate students who worked on this long-term project, including taking ~~and~~ water samples and
measuring pH. Among them, we especially thank Frank Hagedorn who provided the older soil samples. Most chemical
analyses were done at the central laboratory of the Swiss Federal Institute for Forest, Snow and Landscape Research under the
direction of Daniele Pezzotta. We also thank Sandra Angers-Blondin for support and advice with R programming and
440 modelling and for proof reading proofreading the manuscript for final submission.

References

- Ahrends B., Fortmann H., Meesenburg H.: The influence of tree species on the recovery of forest soils from acidification in Lower Saxony, Germany. *Soil Sys.* 6: 40, doi:[10.3390/soilsystems6020040](https://doi.org/10.3390/soilsystems6020040), 2022.
- Amelung W., Blume H.-P., Fleige H., Horn R., Kandeler E., Kögel-Knabner I., Kretzschmar R., Stahr K., Wilke B.-M.: Scheffer/Schachtschabel Lehrbuch der Bodenkunde, 17th ed., Springer, Berlin Heidelberg, 750 pp., ISBN 978-3-662-55871-3, doi:[10.1007/978-3-662-55871-3](https://doi.org/10.1007/978-3-662-55871-3), 2018.
- BAFU (ed.): Luftqualität 2021. Messresultate des Nationalen Beobachtungsnetzes für Luftfremdstoffe (NABEL). Bundesamt für Umwelt, Bern, Umwelt-Zustand Nr. 2227, 29 pp., <https://www.bafu.admin.ch/uz-2114-d>, 2022
- Bowman W.D., Cleveland C.C., Halada L., Hreško J., Baron J.S.: Negative impact of nitrogen deposition on soil buffering capacity. *Nature Geosci.* 1: 767-770, doi:[10.1038/ngeo339](https://doi.org/10.1038/ngeo339), 2008.
- Boxman A.W., Peters R.C., Roelofs J. G., 2008. Long term changes in atmospheric N and S throughfall deposition and effects on soil solution chemistry in a Scots pine forest in the Netherlands. *Environ. Pollut.* 156: 1252-1259, doi:[10.1016/j.envpol.2008.03.017](https://doi.org/10.1016/j.envpol.2008.03.017), 2008.
- Chadwick O.A., Chorover J.: The chemistry of pedogenic thresholds. *Geoderma* 100: 321-353, doi:[10.1016/S0016-7061\(01\)00027-1](https://doi.org/10.1016/S0016-7061(01)00027-1), 2001.
- Delmas R., Serca D., Jambert C.: Global inventory of NO_x sources. *Nutr. Cycling Agroecosys.* 48: 51-60, doi:[10.1023/A:1009793806086](https://doi.org/10.1023/A:1009793806086), 1997.
- EMEP: Status Report: Transboundary particulate matter, photo-oxidants, acidifying and eutrophying components. European Monitoring and Evaluation Programme, Joint MSC-W & CCC & CEIP & CIAM, Oslo, ISSN 1504-6192, doi:https://emep.int/publ/reports/2022/EMEP_Status_Report_1_2022.pdf, 2022.
- Galloway J.N., Aber J.D., Erisman J.W., Seitzinger S.P., Howarth R.W., Cowling E.B., Cosby B.J.: The nitrogen cascade. *BioSci.* 53: 341-356, doi:[10.1641/0006-3568\(2003\)053\[0341:TNC\]2.0.CO;2](https://doi.org/10.1641/0006-3568(2003)053[0341:TNC]2.0.CO;2), 2003.
- Göransson A., Eldhuset T.D.: Effects of aluminium ions on uptake of calcium, magnesium and nitrogen in *Betula pendula* seedlings growing at high and low nutrient supply rates. *Water Air Soil Pollut.* 83: 351-361, doi:[10.1007/BF00477362](https://doi.org/10.1007/BF00477362), 1995.
- Hagedorn F., Mohn J., Schleppi P., Flühler H.: The role of rapid flow paths for nitrogen transformation in a forest soil - a field study with micro suction cups. *Soil Sci. Soc. Am. J.* 63: 1915-1923, doi:[10.2136/sssaj1999.6361915x](https://doi.org/10.2136/sssaj1999.6361915x), 1999.
- Hagedorn F., Bucher J.B., Schleppi P. (2001a). Contrasting dynamics of dissolved inorganic and organic nitrogen in soil and surface waters of forested catchments with Gleysols. *Geoderma* 100: 173-192, doi:[10.1023/A:1010397232239](https://doi.org/10.1023/A:1010397232239), 2001a.
- Hagedorn F., Schleppi P., Bucher J.B., Flühler H. (2001b). Retention and leaching of elevated N deposition in a forested ecosystem with Gleysols. *Water Air Soil Pollut.* 129: 119-142, doi:[10.1023/A:1010397232239](https://doi.org/10.1023/A:1010397232239), 2001b.
- Högberg P., Fan H., Quist M., Binkley D., Tamm C.O.: Tree growth and soil acidification in response to 30 years of experimental nitrogen loading on boreal forest. *Glob. Change Biol.* 12: 489-499, doi:[10.1111/j.1365-2486.2006.01102.x](https://doi.org/10.1111/j.1365-2486.2006.01102.x), 2006.
- Krause K., Cherubini P., Bugmann H., Schleppi P.: Growth enhancement of *Picea abies* trees under long-term low-dose N addition is due to morphological more than to physiological changes. *Tree Physiol.* 32: 1471-1481, doi:[10.1093/treephys/tps109](https://doi.org/10.1093/treephys/tps109), 2012.

- Krause K., Niklaus P.A., Schleppei P.: Soil-atmosphere fluxes of the greenhouse gases CO₂, CH₄ and N₂O in a mountain spruce forest subjected to long-term N addition and to tree girdling. *Agric. For. Meteorol.* 181: 61-68, doi:[10.1016/j.agrformet.2013.07.007](https://doi.org/10.1016/j.agrformet.2013.07.007), 2013.
- 480 Lawrence G.B., Hazlett P.W., Fernandez I.J., Ouimet R., Bailey S.W., Shortle W.C., Smith K.T., Antidormi M.R.: Declining acidic deposition begins reversal of forest-soil acidification in the Northeastern U.S. and eastern Canada. *Environ. Sci. Technol.* 49: 13103–13111, doi:[10.1021/acs.est.5b02904](https://doi.org/10.1021/acs.est.5b02904), 2015.
- Lieb A.M., Darrozet-Nardi A., Bowman W.D.: Nitrogen deposition decreases acid buffering capacity of alpine soils in the southern Rocky Mountains. *Geoderma* 164: 220-224, doi:[10.1016/j.geoderma.2011.06.013](https://doi.org/10.1016/j.geoderma.2011.06.013), 2011.
- 485 Lu X., Mao Q., Gilliam F.S., Luo Y., Mo J.: Nitrogen deposition contributes to soil acidification in tropical ecosystems. *Glob. Change Biol.* 20: 3790-3801, doi:[10.1016/S1002-0160\(09\)60108-9](https://doi.org/10.1016/S1002-0160(09)60108-9), 2014.
- Lu X.-K., Mo J.-M., Gundersen P., Zhu W.-X., Zhou G.-Y., Li D.-J., Zhang X.: Effect of simulated N deposition on soil exchangeable cations in three forest types of subtropical China. *Pedosphere*, 19: 189-198, doi:[10.1016/S1002-0160\(09\)60108-9](https://doi.org/10.1016/S1002-0160(09)60108-9), 2009.
- 490 Mohn J., Schürmann A., Hagedorn F., Schleppei P., Bachofen R.: Increased rates of denitrification in nitrogen-treated forest soils. *For. Ecol. Manag.* 137: 113-119, doi:[10.1016/S0378-1127\(99\)00320-5](https://doi.org/10.1016/S0378-1127(99)00320-5), 2000.
- Pinheiro J.C., Bates D.M. & R Core Team. nlme: Linear and Nonlinear Mixed Effects Models. <https://CRAN.R-project.org/package=nlme>, 2023.
- 495 Providoli, I., Bugmann, H., Siegwolf, R., Buchmann, N., Schleppei, P.: Pathways and dynamics of ¹⁵NO₃⁻ and ¹⁵NH₄⁺ applied in a mountain *Picea abies* forest and in a nearby meadow in central Switzerland. *Soil Biol. Biochem.* 38, 1645-1657, doi:[10.1016/j.soilbio.2005.11.019](https://doi.org/10.1016/j.soilbio.2005.11.019), 2006.
- Richter A., Walthert L., Frossard E., Brunner I.: Does low soil base saturation affect fine root properties of European beech (*Fagus sylvatica* L.). *Plant Soil* 298: 69-79, doi:[10.1007/s11104-007-9338-x](https://doi.org/10.1007/s11104-007-9338-x), 2007.
- 500 Rihm B., Achermann B.: Critical Loads of Nitrogen and their Exceedances. Swiss contribution to the effects-oriented work under the Convention on Long-range Transboundary Air Pollution (UNECE). Federal Office for the Environment, Bern, Environmental studies no. 1642: 78 pp., <https://www.bafu.admin.ch/uw-1642-e>, 2016.
- Schleppei P., Muller N., Feyen H., Papritz A., Bucher J.B., Flühler H.: Nitrogen budgets of two small experimental forested catchments at Alptal, Switzerland. *For. Ecol. Manag.* 101: 177-185, doi:[10.1016/S0378-1127\(97\)00134-5](https://doi.org/10.1016/S0378-1127(97)00134-5), 1998.
- 505 Schleppei P., Muller N., Edwards P.J., Bucher J.B.: Three years of increased nitrogen deposition do not affect the vegetation of a montane forest ecosystem. *Phyton* 39(4): 197-204, 1999.
- Schleppei P., Hagedorn F., Providoli I.: Nitrate leaching from a mountain forest ecosystem with Gleysols subjected to experimentally increased N deposition. *Water Air Soil Pollut. Focus* 4: 453-467, doi:[10.1023/B:WAFO.0000028371.72044.fb](https://doi.org/10.1023/B:WAFO.0000028371.72044.fb), 2004.
- 510 Schleppei, P., Waldner, P.A., Fritschi B.: Accuracy and precision of different sampling strategies and flux integration methods for runoff water: comparisons based on measurements of the electrical conductivity. *Hydrol. Proc.* 20, 395-410, doi:[10.1002/hyp.6057](https://doi.org/10.1002/hyp.6057), 2006.
- Schleppei P., Curtaz F., Krause K.: Nitrate leaching from a sub-alpine coniferous forest subjected to experimentally increased N deposition for 20 years, and effects of tree girdling and felling. *Biogeochem.* 134: 319-335, doi:[10.1007/s10533-017-0364-3](https://doi.org/10.1007/s10533-017-0364-3), 2017.

- 515 [Stähli M.: Hydrological significance of soil frost for pre-alpine areas. *J. Hydrol.* 546: 90-102, <http://dx.doi.org/10.1016/j.jhydrol.2016.12.032>, 2017.](#)
- Templer P.H., Harrison J.L., Pilotto F., Flores-Díaz A., Haase P., McDowell W.H., Sharif R., Shibata H., Blankman D., Avila A., Baatar U.-O., Bogena H.R., Bourgeois I., Campbell J., Dirnböck T., Dodds W.K., Hauken M., Kokorite I., Lajtha K., Lai I.L., Laudon H., Lin T.-C., Lins S.R.M., Meessenburg H., Pinho P., Robison A., Rogora M., Scheler B., Schleppi P., Sommaruga R., Staszewski T., Taka M.: Effects of atmospheric nitrogen deposition and climate on nitrogen export from unmanaged watersheds: a data synthesis. *Biogeochem.* 160: 219-241, doi:[10.1007/s10533-022-00951-7](https://doi.org/10.1007/s10533-022-00951-7), 2022.
- Thimonier A., Kosonen Z., Braun S., Rihm B., Schleppi P., Schmitt M., Seitler E., Waldner P., Thöni L. : Total deposition of nitrogen in Swiss forests: comparison of assessment methods and evaluation of changes over two decades. *Atmos. Environ.* 198: 335-350, doi:[10.1016/j.atmosenv.2018.10.051](https://doi.org/10.1016/j.atmosenv.2018.10.051), 2019.
- 525 Vitousek P.M., Aber J.D., Howarth R.W., Likens G.E., Matson P.A., Schindler D.W., Schlesinger W.H., Tilman D.G.: Human alteration of the global nitrogen cycle: sources and consequences. *Ecol. Appl.* 7: 737-750, doi:[10.1890/1051-0761\(1997\)007\[0737:HAOTGN\]2.0.CO;2](https://doi.org/10.1890/1051-0761(1997)007[0737:HAOTGN]2.0.CO;2), 1997.
- Vitousek P.M., Howarth R.W.: Nitrogen limitation on land and in the sea: how can it occur. *Biogeochem.* 13: 87-115, doi:[10.1007/BF00002772](https://doi.org/10.1007/BF00002772) , 1991.
- 530 Warfvinge P., Sverdrup H.: Soil liming and runoff acidification mitigation. *Lake Reservoir Managem.* 1: 389-393, doi:[10.1080/07438148409354544](https://doi.org/10.1080/07438148409354544), 1984.

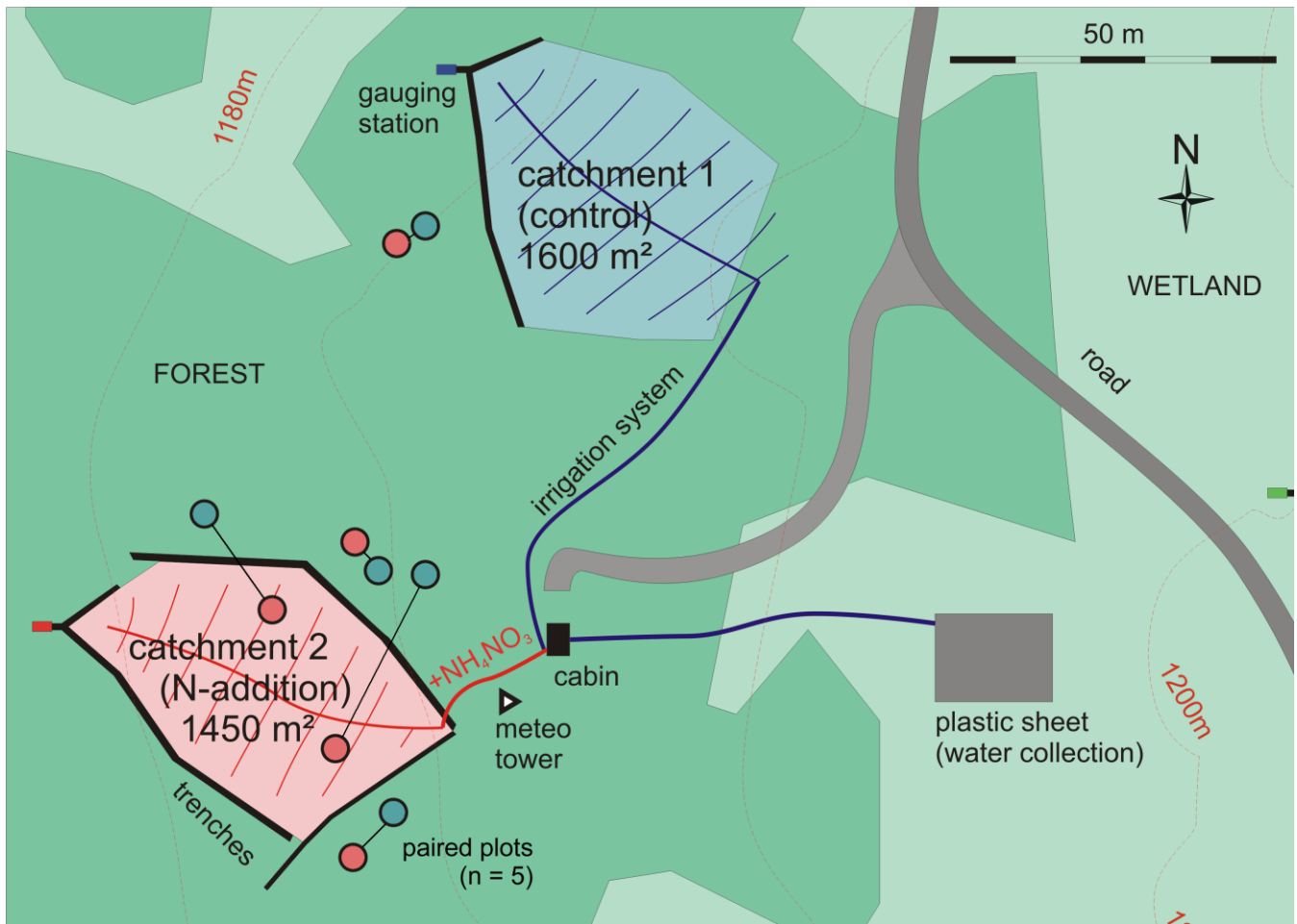
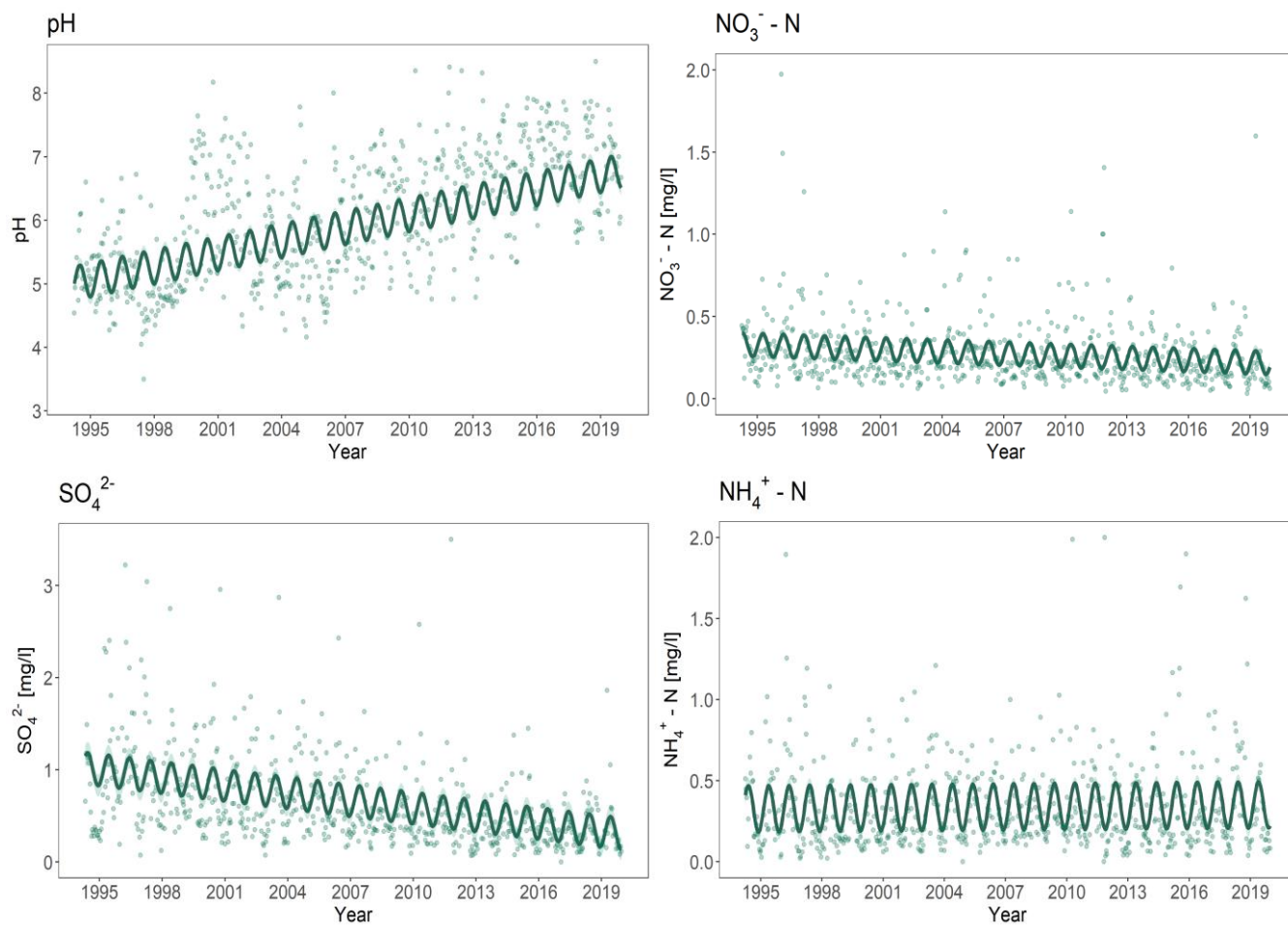


Figure 1: Map of the experimental setup showing the small experimental catchments in the Alptal forest. The same treatments as in the catchments (control or N addition) were also applied to small plots in a replicated design (n=5). The location of each plot was chosen so as to minimize the differences (topography, vegetation, light) within the pairs (replications) but to cover the variability of the site between them. Catchment 1 has a convex shape in the upper region and did thus not require trenches there.

535



540 **Figure 2: Cation and anion concentration in precipitation from the study site in the Alptal as a function of time. The points are measured values with a timestep of 2 weeks. The continuous solid lines are the predicted values calculated with linear models. 8 and 2 outliers were excluded from the graphs for SO_4^{2-} and NH_4^+ respectively.**

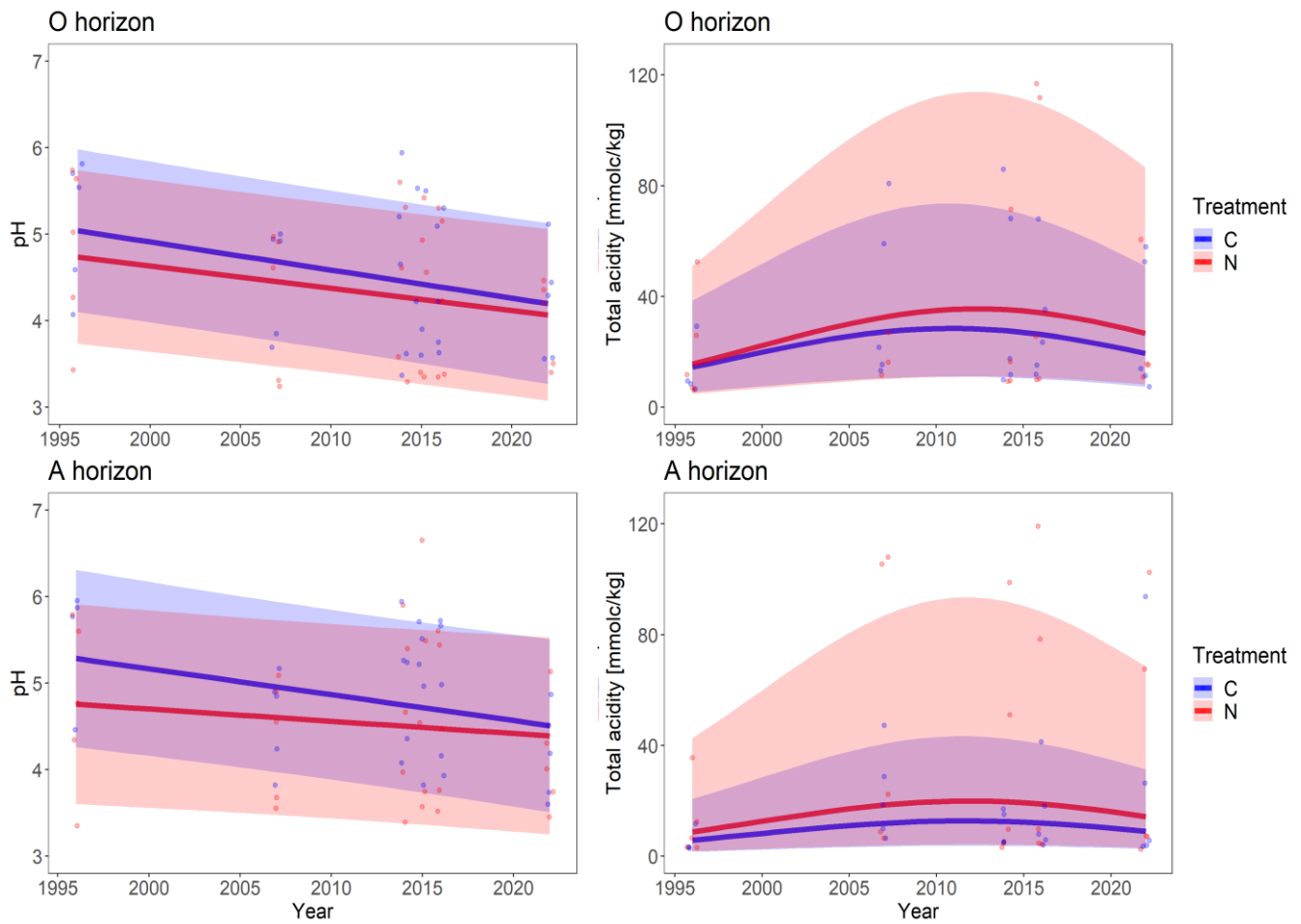
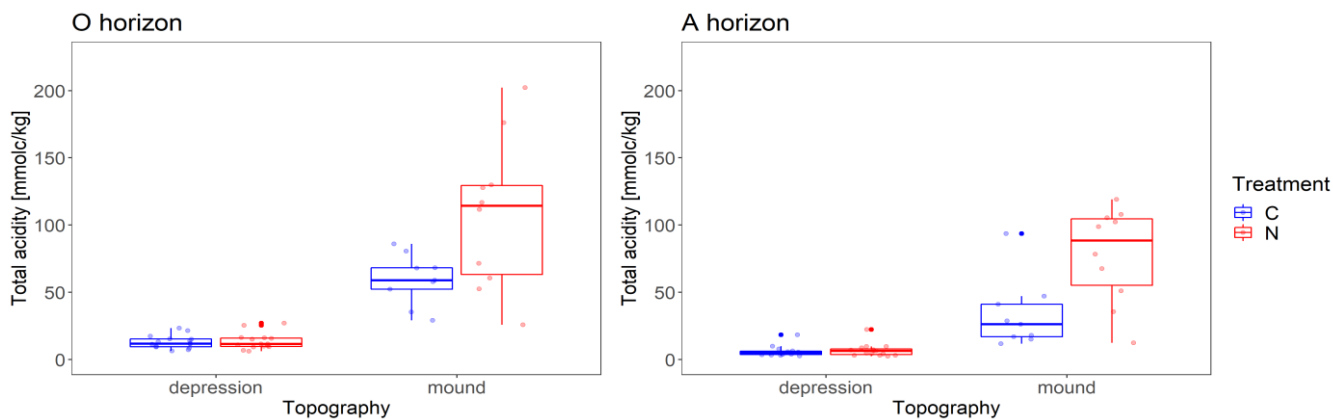


Figure 3: Soil pH and total acidity predictions for O and A horizon based on linear mixed effects model (continuous line with confidence intervals) as a function of time, calculated with measured values from the years 1996, 2007, 2014, 2016 and 2022 (individual points). 4 highest points were excluded from pH plot for O horizon. Modeled total acidity values were back transformed from log scale. 2 outliers were excluded from O horizon plot for total acidity.

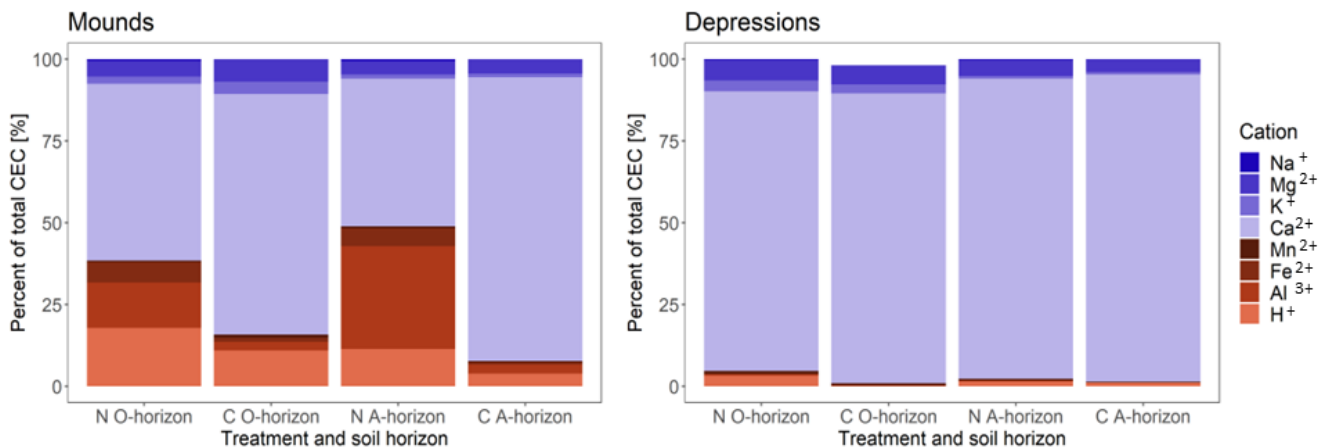
545

550



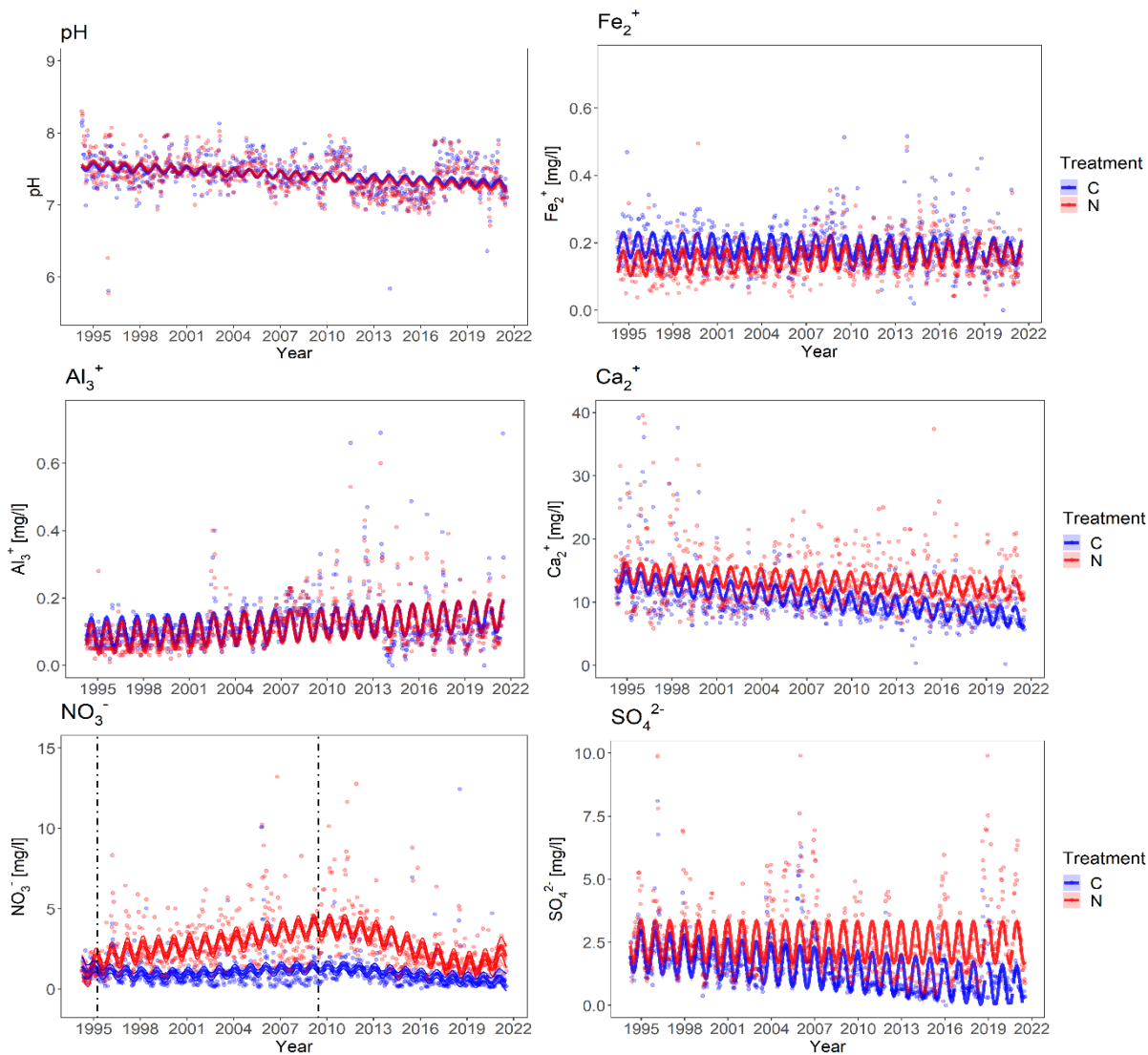
555

Figure 4: Observed total soil acidity values from all years for O and A horizon for both topographical features (mounds and depressions).



560

Figure 5: Exchangeable cations in proportions of total cation exchange capacity (CEC) for the year 2016. (Pb and Zn were excluded as their concentrations were negligibly small or zero for most replications). Acidic cations are indicated by the color red and base cations are blue.



565

Figure 6: Cation and anion concentrations in soil runoff water from the control (blue) and N-treated (red) catchment as a function of time. The points are measured values with a time step of 2 weeks. The continuous solid lines are the predicted values from the linear models with confidence intervals. 4 highest points were excluded from pH plot for O horizon. For the NO₃⁻ a 5th order polynomial was included in the lm model to capture the non-linearity of the data. The first dashed line indicates the beginning of the addition of NH₄NO₃ to the N-treated catchment. The second dashed line indicates the date of ringing of trees prior to felling. For Fe₂⁺, Ca₂⁺, NO₃⁻ and pH, 1 outlier was excluded each from the plot and for SO₄²⁻ 4 outliers were excluded.