

# Comparison of paleobotanical and biomarker records of mountain peatland and forest ecosystem dynamics over the last 2600 years in Central Germany

Carrie L. Thomas<sup>1,2</sup>, Boris Jansen<sup>2</sup>, Sambor Czerwiński<sup>3,4,5</sup>, Mariusz Gałka<sup>6</sup>, Klaus-Holger Knorr<sup>7</sup>, E. Emiel van Loon<sup>2</sup>, Markus Egli<sup>1</sup>, and Guido L. B. Wiesenberg<sup>1</sup>

<sup>1</sup>Department of Geography, University of Zurich, 8057 Zurich, Switzerland

<sup>2</sup>Institute for Biodiversity and Ecosystem Dynamics, University of Amsterdam, Amsterdam, 1098XH, The Netherlands

<sup>3</sup>Climate Change Ecology Research Unit, Faculty of Geographical and Geological Sciences, Adam Mickiewicz University, 61-680 Poznań, Poland

<sup>4</sup>Physical Geography Institute of Geography and Geology, University of Greifswald, 17489 Greifswald, Germany

<sup>5</sup>Department of Geomorphology and Quaternary Geology, University of Gdańsk, 80-309 Gdańsk, Poland

<sup>6</sup>Faculty of Biology and Environmental Protection, Department of Biogeography, Paleoecology and Nature Conservation, University of Lodz, 90-237 Łódź, Poland

<sup>7</sup>Institute for Landscape Ecology, Ecohydrology and Biogeochemistry, University of Münster, 48149 Münster, Germany

**Correspondence:** Carrie L. Thomas (carrie.thomas@geo.uzh.ch)

**Abstract.** As peatlands are a major terrestrial sink in the global carbon cycle, gaining understanding of their development and changes throughout time is essential to predict their future carbon budget and potentially mitigate the adverse outcomes of climate change. With this aim to understand peat development, many studies have investigated the paleoecological dynamics by analyzing various proxies, including pollen, macrofossil, elemental, and biomarker analyses. However, as each of these proxies is known to have its own benefits and limitations, examining them in parallel allows for a deeper understanding of these paleoecological dynamics at the peatland and a systematic comparison of the power of these individual proxies. In this study, we therefore analyzed peat cores from a peatland in Germany (Beerberg, Thuringia) to a) characterize the vegetation dynamics over the course of the peatland development during the late Holocene and b) evaluate to what extent the inclusion of multiple proxies, specifically pollen, plant macrofossils, and biomarkers, contributes to a deeper understanding of those dynamics and interaction among factors. We found that, despite a major shift in regional forest composition from primarily beech to spruce as well as many indicators of human impact in the region, the local plant population in the Beerberg area remained stable over time following the initial phase of peatland development up until the last couple of centuries. Therefore, little variation could be derived from the paleobotanical data alone. The combination of pollen and macrofossil analyses with the elemental and biomarker analyses enabled further understanding of the site development as these proxies added valuable additional information, including the occurrence of climatic variations, such as the Little Ice Age, and more recent disturbances, such as drainage.

## 1 Introduction

Peatlands have been well-established as an important sink in the terrestrial carbon cycle, containing about 25% (600 gigatons) of the global soil carbon stock (Yu et al., 2010), though only comprising 3% of global land area (Xu et al., 2018). The same characteristics that make peatlands an effective carbon sink, e.g., slow degradation rates and high accumulation rates of organic matter, also make them an excellent archive for paleoecological records at high temporal resolution (Barber et al., 1994; Chambers et al., 2012). Compared to other environmental archives, the use of peat sequences, particularly of ombrotrophic bogs, for investigating paleoenvironmental changes is advantageous as they are generally more accessible, contain material readily dated using radiocarbon resulting in chronologies with lower uncertainties, and are primarily influenced by atmospheric inputs only, thereby recording climatic information along with their ecologic response (Chambers et al., 2012). Furthermore, peat sequences provide some of the few well-resolved records of paleoenvironmental changes during the Holocene in central Europe, aside from lake sediments (e.g., Schwark et al., 2002; Hepp et al., 2019).

Through extensive studies across ecosystems, including peatlands, multiple proxies have been developed and applied to characterize paleovegetation and paleoclimatic conditions, including pollen (e.g., Speranza et al., 2000), macrofossils (e.g., Tuittila et al., 2007), and biomarkers (e.g., Ficken et al., 1998a; Xie et al., 2004). Although these proxies have all been reliably used in paleoenvironmental reconstructions, each has benefits and drawbacks in their application.

Pollen and plant macrofossils are commonly used paleobotanical analyses to a) reconstruct local and regional plant succession of peatlands and their surroundings, b) assess human or climate impact on plant communities and understand their response or resilience, and c) define pristine plant populations as reference conditions in their restoration (Speranza et al., 2000; Gałka et al., 2022b). Pollen records extracted from peatlands have a well-established history of use for reconstructing paleovegetation, beginning with Von Post's study of arboreal pollen in Swedish bogs (1916). Despite the benefits of using pollen to reconstruct vegetation, there can be several limitations. Pollen can be transported over large distances, meaning that the local vegetation signal is overlain by that of the region (Farrimond and Flanagan, 1996). Additionally, some plants produce more pollen than others, and some pollen is better-preserved, leading to over-representation of certain taxa in the results (Birks and Birks, 2000). These drawbacks can be mitigated by including macrofossil analysis alongside pollen (Birks and Birks, 2000). Due to waterlogged conditions and low pH, the remains of mosses, graminoids, and dwarf shrubs are well-preserved in peatlands, allowing for the identification of macrofossils to reconstruct the development and succession of in situ, peat-forming vegetation within peatlands (Chambers et al., 2012). Macrofossils often provide better taxonomic precision than pollen (Birks and Birks, 2000), which is important when reconstructing the potential of individual plants to aid in carbon sequestration (Sim et al., 2021). However, macrofossils can also be difficult to identify in highly humidified peat (Naafs et al., 2019). In such cases, or if changes are more subtle, plant biomarkers can be a valuable addition to studies of peat cores.

Plant biomarkers derived from leaf waxes have been used extensively in paleoecological investigations with a long history of research throughout the past century (e.g., Chibnall et al., 1934). The most commonly used of these markers are the straight-chain lipids: *n*-alkanes, *n*-alkanols, and *n*-fatty acids (Jansen and Wiesenberg, 2017). Previous studies of peatlands have used these biomarkers as proxies for paleoclimate and vegetation (e.g., Ficken et al., 1998a; Xie et al., 2004). As peat consists almost

entirely of organic matter, there are large concentrations of a range of biomarkers. While biomarkers may also be deposited as aerosols to a small extent, the vast majority derive directly from the parent peat vegetation, and even as the peat becomes more humified, biomarkers have the potential to persist (Naafs et al., 2019). Aliphatic compounds, including *n*-alkanes, are particularly resistant to decomposition and become residually enriched (Biester et al., 2014). In peatlands particularly, *n*-alkanes have been used to differentiate between vegetation types, as *Sphagnum* mosses typically produce shorter carbon chains (23-25), while longer carbon chains (27-33) are commonly produced by vascular plants (Chambers et al., 2012; Pancost et al., 2002; Baas et al., 2000). Indices comparing relative abundances of biomarker homologues, including the Carbon Preference Index (CPI), can also be used to indicate degradation of organic matter as well as climate changes that are more favorable for high microbial activity and enhanced degradation (Chambers et al., 2012). Yet, the use of biomarkers and biomarker-derived indices and ratios to reconstruct vegetation and other environmental conditions is complicated by the fact that there are multiple sources of biomarkers, and species-specific compositions are rare (Jansen and Wiesenberg, 2017). It is more straightforward to differentiate between vegetation types, but even this can be complicated due to factors such as moisture, humidity, and stage of plant/leaf development influencing biomarker distribution patterns (Jansen and Wiesenberg, 2017).

Previous studies have successfully combined pollen and lipid biomarker analyses to reconstruct regional paleoenvironmental conditions (e.g., Farrimond and Flanagan, 1996; Schwark et al., 2002), including in peatlands (e.g., Zhou et al., 2005). Additionally, a growing number of studies have included both pollen and macrofossil analyses along with biomarker measurements for a more robust interpretation of peat archives (e.g., Ronkainen et al., 2015; Balascio et al., 2020). Considering elemental analyses of carbon, nitrogen, and their stable isotopes also allows for more nuanced interpretations as the C/N ratio can be used as an indicator for decomposition (Kuhry and Vitt, 1996; Biester et al., 2014), as can  $\delta^{13}\text{C}$  for decomposition and hydrological changes (Loisel et al., 2010; Biester et al., 2014).

In this study, we aimed to evaluate these proxies individually and in combination while characterizing the paleovegetation dynamics of the Beerberg peatland, an ombrotrophic mountain peat bog in the Thuringian Forest (Germany). The Beerberg site was chosen as there are few paleoenvironmental archives of the late Holocene in Central Germany and, more specifically in the Thuringian Forest (e.g., Breitenbach et al., 2019), leading to a demand for better understanding of such scarce paleoenvironmental records (Githumbi et al., 2022). Local reconstructions of Thuringia are especially valuable as the area lies near the current boundary between the maritime Cfb and continental Dfb climatic zones in the Köppen-Geiger classification (Peel et al., 2007). This boundary shifts spatially through time and increased dated and high-resolution reconstructions are needed to finetune knowledge of the past evolution of the climate boundaries in central Europe (Breitenbach et al., 2019). Previous pollen analyses have been completed at the site by Jahn (1930) and Lange (1967) but were more limited in scope as Jahn only considered arboreal pollen and neither study included radiocarbon dating so there is no reliable chronology for the Beerberg peatland. Based on the previous, the aim of the present study was to assess a) the paleovegetation dynamics over time in the Thuringian forest over the last ca. 2600 years, an area currently lacking such continuous records, and b) how adding *n*-alkanols and *n*-fatty acids to a multi-proxy analysis helps to obtain a more detailed reconstruction of past environmental conditions and peatland development.

## 85 2 Materials and Methods

### 2.1 Study area and sampling

The Beerberg peatland (50° 39' 32" N, 10° 44' 36" E, 983 m) is a raised ombrotrophic peat bog at the summit of the Großer Beerberg in the Thuringian Forest (Germany) and is part of the Vessertal-Thuringian Forest Biosphere Reserve (Figure 1). The underlying bedrock is rhyolite (Lützner et al., 2012). Annual precipitation is estimated to be 1300 mm (Görner et al., 1984), and the mean annual temperature is 4°C (Jeschke and Paulson, 2000). While the Beerberg peatland has been under nature protection status since 1939, previously some of the peat was used as fuel for glass manufacturing. Consequently, the peatland was partially drained and reforested with spruce trees in the 19th and 20th centuries. Later, in particular after 1990, drainage trenches were filled and spruce trees removed to prevent further drying of the peat (Thüringer Landesanstalt für Umwelt und Geologie, 2002). Current vegetation includes *Sphagnum* mosses, such as *S. fuscum*, *S. magellanicum* (*s. l.*), *S. angustifolium*, and *S. capillifolium*, tree species *Picea abies*, *Pinus sylvestris*, *Betula pendula*, and *Betula pubescens*, and other plants common in partially disturbed bogs, such as *Calluna vulgaris*, *Eriophorum vaginatum*, and *Polytrichum strictum*.

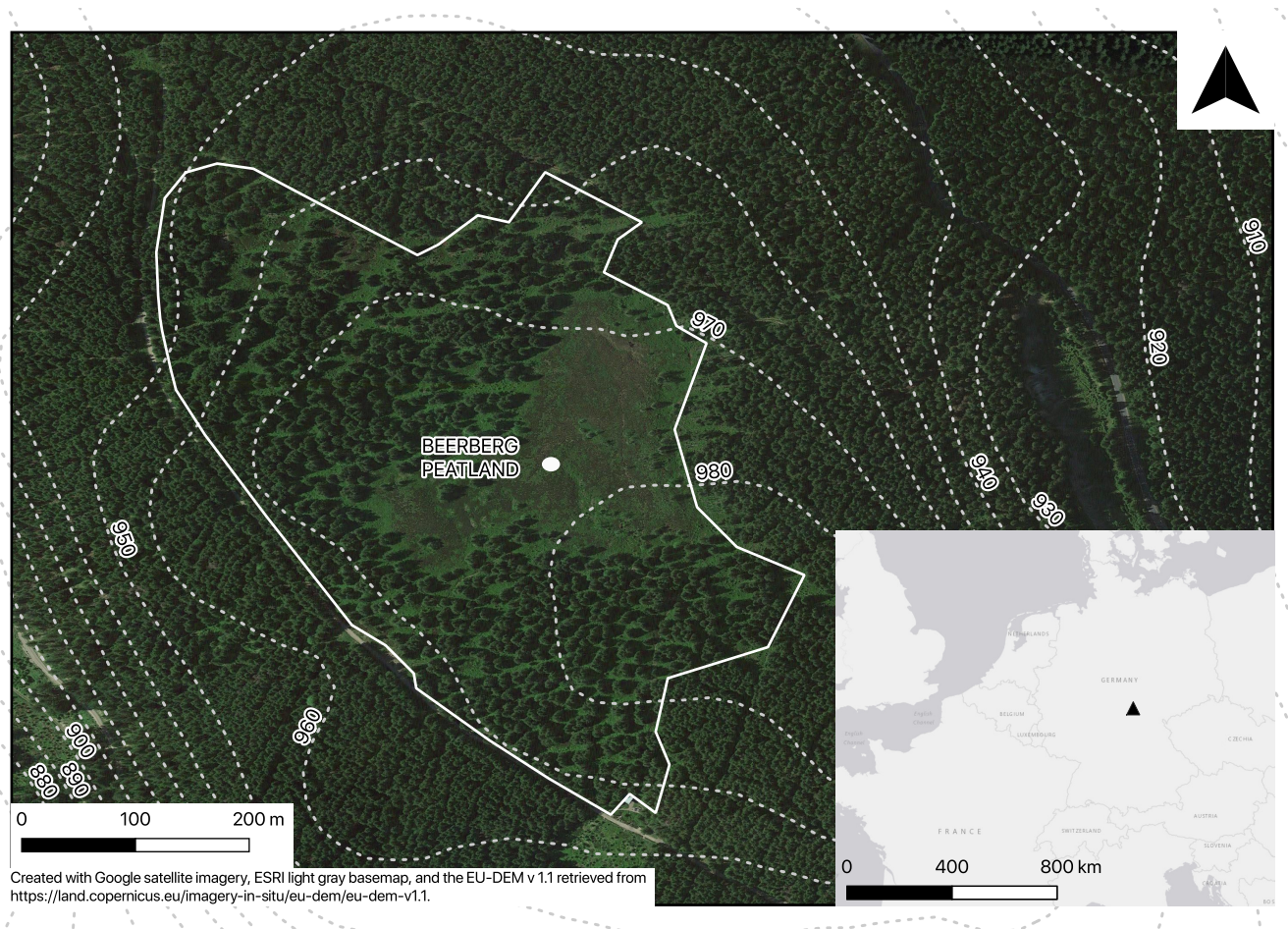
Sampling was completed in October 2019. Two Russian peat corers (5 cm diameter, Eijkelkamp, Giesbeck, The Netherlands; 7 cm diameter, self-made) were used to alternately core two small hummocks within approximately 20 cm distance to a depth of 340 cm. Overlapping core sections were taken from 90–100 cm, 175–190 cm, and 290–320 cm. The overlapping sections were correlated by sampling depth and stratigraphy, and for the elemental and biomarker analyses, the overlapping samples were treated as replicates, and the averages of the results were calculated.

### 2.2 Elemental analysis

For elemental analysis, samples were taken at 5 cm intervals, with a few exceptions due to visibly distinct layers in the peat at 10–12 cm, 170–172 cm, 270–272 cm, 325–327 cm, 327–328 cm, and 337.5–340 cm. The samples were freeze-dried to a constant weight and subsequently milled to a fine powder using a horizontal ball mill (MM400, Retsch). Approximately 1 mg of material per sample was used for the elemental analysis. Carbon and nitrogen concentrations (C, N), as well as stable C isotope values ( $\delta^{13}\text{C}$ ), were measured using an Elemental Analyzer-Isotope Ratio Mass Spectrometer (EA-IRMS; FLASH 2000-HT Plus, linked by ConFlo IV to DELTA V Plus IRMS; Thermo Fisher Scientific). Calibration was carried out using caffeine (Merck, Germany) and a soil reference material from a Chernozem (Harsum, Germany; see Black Carbon Reference Materials, <https://www.geo.uzh.ch/en/units/2b/Services/BC-material/Environmental-matrices.html>). At least two analytical replicates were measured for all samples.

### 2.3 Radiocarbon dating

Hand-picked plant remains (Table A1) were selected from 12 depths (7.5 cm, 16.5 cm, 34.5 cm, 54.5 cm, 69.5 cm, 124.5 cm, 174.5 cm, 258.5 cm, 278.5 cm, 293.5 cm, 314.5 cm, and 334–336 cm). These were cleaned by an acid-alkali-acid treatment and combusted at 900°C to produce CO<sub>2</sub>, which was reduced to graphite. The carbon isotope composition was measured



**Figure 1.** Map showing sampling spot in Beerberg peatland (area within continuous white boundary) with contour lines and inset showing location in continental Europe.

by Accelerator Mass Spectrometry (AMS) at the Institute of Ion Beam Physics at the Swiss Federal Institute of Technology (Zurich, Switzerland) using the 0.2 MV MICADAS facility.

#### 2.4 Macrofossil analysis

Plant macrofossils were analyzed at 4 cm resolution (n=70, 1 cm thick peat slices) using samples of approximately 8 cm<sup>3</sup> volume. The samples were washed and sieved under a warm water current over 0.20 mm mesh screens. The percentage of individual fossils of vascular plants and brown mosses was estimated, and the fossil carpological remains and vegetative fragments (leaves, rootlets, epidermis) were identified using identification keys (Smith, 2004; Mauquoy and Van Geel, 2007) and compared to recently collected specimens. *S. capillifolium* and *Sphagnum rubellum* were grouped together (as *S. capillifolium/rubellum*) due to the difficulty of differentiating them in fossil state. Both species are typical ombrotrophic mosses that

125 occur together in relatively dry hummocks or lawns (Hölzer, 2010), with *S. rubellum* preferring moister habitats (Hölzer, 2010). Similarly, *Sphagnum medium* and *Sphagnum divinum* (in the past assigned to *S. magellanicum*, cf. Laine et al. (2018)) are expressed as *S. medium/divinum* because it was impossible to distinguish them based on morphological features in fossil state.

## 2.5 Pollen analysis

130 For pollen analysis, the core was sampled at 2.5 cm, 6.5 cm, 9.5 cm, and then 5 cm intervals starting at a depth of 12.5 cm, ending with a total of 69 samples. At each depth, a volume of 2 cm<sup>3</sup> was extracted and subjected to standard laboratory procedures for pollen analyses (Berglund and Ralska-Jasiewiczowa, 1986). Samples were treated with 10% hydrochloric acid (HCl) to dissolve carbonates, heated in 10% potassium hydroxide (KOH) to remove humic compounds, and finally soaked in 40% hydrofluoric acid (HF) for at least 24 h to remove the mineral fraction. One Lycopodium tablet (10679 spores; produced  
135 by Lund University) was added to the samples (Stockmarr, 1971). Sample slides were analyzed using an ECLIPSE 50i upright microscope and counted to a sum of at least 500 arboreal pollen (AP) grains. However, due to the high peat accumulation rate, this sum was not achieved in 33 samples, including seven samples in which a 100 AP sum was not achieved. Pollen taxa were identified using atlases (Beug, 1961; Moore et al., 1991) and the reference grains owned by the Institute of Geoecology and Geoinformation, Adam Mickiewicz University, Poznań. Selected non-pollen palynomorphs (NPPs), such as fungi and algae,  
140 and microscopic charcoal particles (size fractions: 0.01–0.1 mm; >0.1 mm) were also counted. Microscopic charcoal particles were counted until their number summed with simultaneously counted *Lycopodium* spores reached 200 (Finsinger and Tinner, 2005; Tinner and Hu, 2003). Palynological indicators of human impact were organized according to Behre (1981) and Gaillard (2013).

## 2.6 Biomarker analysis

145 For biomarker analysis, the same samples were used as for the elemental analysis. Soxhlet extraction was performed using 468 mg to 758 mg of the milled peat samples, as described by Wiesenberg and Gocke (2017). Briefly, total lipids were extracted over approximately 30 hours with dichloromethane (DCM): methanol (MeOH) (93:7, v/v). These extracts were then separated sequentially into three fractions containing, respectively, neutral components including *n*-alkanes and *n*-alkanols, *n*-fatty acids, and polar and high molecular weight compounds. For the separation, a glass column containing Silica 60 + 5% potassium  
150 hydroxide (KOH), 63–200 μm, was used along with the solvents DCM, DCM:formic acid (99:1, v/v), and DCM:MeOH (1:1, v/v). The neutral fraction was further separated into aliphatic, aromatic, and heterocompound fractions. For this, a pasteur pipette containing activated silica gel (100 Å, 70–230 mesh, dried for at least 8 hours at 110°C) was used along with the solvents *n*-hexane, *n*-hexane:DCM (1:1, v/v), and DCM:MeOH (93:7, v/v).

Prior to measurement, an internal standard of deuterated *n*-eicosanoic acid (D<sub>39</sub>C<sub>20</sub>, Cambridge Isotope Laboratories, Inc.)  
155 was added to the fatty acid fraction, which was then methylated using a boron trifluoride-methanol solution (CAS #373-57-9, Sigma-Aldrich). Additionally, an internal standard of deuterated *n*-octadecanol (D<sub>37</sub>C<sub>18</sub>, Cambridge Isotope Laboratories, Inc.) was added to the heterocompound fraction, containing *n*-alkanols, which were then silylated using N,O-bis(trimethylsilyl)-

acetamide (BSA) (CAS #10416-59-8, Sigma-Aldrich). An internal standard of deuterated tetracosane ( $D_{50}C_{24}$ , Cambridge Isotope Laboratories, Inc.) was added to the aliphatic fraction before analysis. The *n*-alkanes, *n*-alkanols, and *n*-fatty acids were quantified on a GC (Agilent 7890B) equipped with a multimode inlet and a flame ionization detector (FID). Compound identification was performed on an Agilent 6890N GC equipped with a split-splitless injector coupled to an Agilent 5973 mass selective detector (MS). Both instruments were equipped with a DB-5MS column (50 m  $\times$  0.2 mm  $\times$  0.33  $\mu$ m) and 1.5 m de-activated pre-column, with helium as the carrier gas (1 ml min<sup>-1</sup>). The GC oven temperature for *n*-alkanes was held at 70°C for 4 min and increased to 320°C at a rate of 5°C min<sup>-1</sup> held for 50 min. For *n*-fatty acids and *n*-alkanols, the temperature was held at 50°C for 4 min, then increased to 150°C at a rate of 4°C min<sup>-1</sup>, and finally increased to 320°C at 3°C min<sup>-1</sup> held for 40 min. The samples (1  $\mu$ l) were always injected in splitless mode. The GC-MS was operated in electron ionization mode at 70 eV and scanned from *m/z* 50–550. Individual compounds were identified by comparison of mass spectra with those of external standards and from the NIST and Wiley mass spectra library.

## 2.7 Data processing and analysis

### 2.7.1 Data entry, processing, and analysis

Data were entered, organized, and screened in Microsoft Excel. Subsequent data processing and analysis were conducted in R version 4.0.4 (R Core Team, 2021). The data were combined in five tables, one each for the radiocarbon dating, elemental analysis, plant macrofossils, pollen, and biomarker composition. In each table, each row represented one depth and each column one parameter. All data are available at Pangaea via <https://doi.org/10.1594/PANGAEA.961142>.

### 2.7.2 Elemental analysis

The mean and standard error were calculated for the analytical replicates used in the elemental analysis. To be consistent across all of the data interpretation and to determine the locations of potential climate and vegetation changes in the core, we applied a hierarchical clustering analysis most commonly performed on vegetation abundance data. We used the R packages *vegan* (Oksanen et al., 2020) and *rioja* (Juggins, 2020). The Euclidean distance was determined using the concentrations of C and N, the C/N ratio, and the C stable isotope values in the function *dist*. A constrained hierarchical clustering approach (CONISS, Grimm (1987)) was performed on the dissimilarity using the function *chclust*, with clusters constrained by depth. The number of zones was determined using the broken-stick model (MacArthur, 1957; Bennett, 1996) with the function *bstick*.

### 2.7.3 Radiocarbon dating

An age-depth model was developed using the Bacon model (Blaauw and Christen, 2011), as implemented in the package *rbacon* (Blaauw et al., 2021). The uppermost radiocarbon date was excluded from the age-depth model, as it was from a sample within 10 cm of the surface, and the yielded date of -552 yr BP  $\pm$  23 is too young and stratigraphically inconsistent with the rest of the core and represents a postbomb peak of atmospheric <sup>14</sup>C, following nuclear weapons testing in the 1950s and 60s (Table A1). As a constraint, an estimated surface sample age was added of -70 yr BP  $\pm$  5. IntCal20 was used as the calibration curve

(Reimer et al., 2020), and NH1 was used as the calibration curve for postbomb dates (Hua et al., 2013). All of the dates referred  
190 to in the following sections are the mean values returned by the age-depth model, which were calculated at 1 cm resolution.

#### 2.7.4 Macrofossil

A CONISS cluster analysis (Grimm, 1987) was performed on the macrofossil abundance data. In contrast with the elemental  
data, the Bray-Curtis dissimilarity was calculated as this is a better measure for purely compositional data. This was completed  
using the functions *vegdist*, *chclust*, and *bstick*, as they are described in the previous section.

#### 195 2.7.5 Pollen and microcharcoal

The microscopic charcoal accumulation rate ( $CHAR_{\text{micro}}$ ; unit: particles  $\text{cm}^{-2} \text{ year}^{-1}$ ) was calculated as follows:

$$CHAR_{\text{micro}} = CHAC_{\text{micro}} * AR_{\text{deposits}} \quad (1)$$

in which  $CHAC_{\text{micro}}$  is the concentration of the microscopic charcoal particles (unit: particles  $\text{cm}^{-3}$ ), and  $AR_{\text{deposits}}$  is the peat  
or sediment accumulation rate (unit:  $\text{cm year}^{-1}$ ) (Davis and Deevey, 1964).

200 Pollen percentages were calculated as taxon percentages with

$$\text{taxon percentages} = (\text{number of taxon grains} / \text{TPS}) \times 100\% \quad (2)$$

where TPS indicates the total pollen sum, including the AP and non-arboreal pollen (NAP) taxa, and excluding the local taxa  
(i.e., aquatic, wetland, and spore-producing).

TILIA software was used to plot the diagram presenting the results of the palynological analysis (Grimm, 1993). We per-  
205 formed a CONISS cluster analysis as described in the previous section using the absolute pollen counts. Only taxa present  
in at least three samples and that reached at least three percent relative abundance in one sample were included. Non-pollen  
palynomorphs and coprophilous fungi were not included in the analysis.

#### 2.7.6 Biomarker

Biomarker amounts are reported as absolute concentrations in  $\mu\text{g/g}$ . The total lipid extract (TLE) was calculated in  $\text{mg/g}$ .  
210 The Carbon Preference Index (CPI) (Marzi et al., 1993) and Average Chain Length (ACL) (Poynter et al., 1989) were also  
calculated for the  $n$ -alkanes using the following equations:

$$CPI = \frac{(\sum_{i=n}^m C_{2i+1} + \sum_{i=n+1}^{m+1} C_{2i+1})}{2(\sum_{i=n+1}^{m+1} C_{2i})} \quad (3)$$

$$ACL = \frac{\sum_{i=n}^m (2i + 1) * C_{2i+1}}{\sum_{i=n}^m C_{2i+1}} \quad (4)$$

215 where  $C_x$  is the concentration of each lipid containing  $x$  carbon atoms;  $n$  and  $m$  are the chain lengths of, respectively, the  
starting and ending lipids divided by 2 (note: both  $2n$  and  $2m$  should be even numbers). For the  $n$ -alkanes,  $m$  is 11 and  $n$  is 15.



For the *n*-alkanols and *n*-fatty acids, the formulas were slightly adjusted to:

$$CPI_{ALC/FA} = \frac{(\sum_{i=n}^m C_{2i} + \sum_{i=n+1}^{m+1} C_{2i})}{2(\sum_{i=n+1}^{m+1} C_{2i+1})} \quad (5)$$

$$220 \quad ACL_{ALC/FA} = \frac{\sum_{i=n}^m (2i) * C_{2i}}{\sum_{i=n}^m C_{2i}} \quad (6)$$

For the *n*-alkanols, *m* is 10 and *n* is 14. For the *n*-fatty acids, *m* is 10 and *n* is 16.

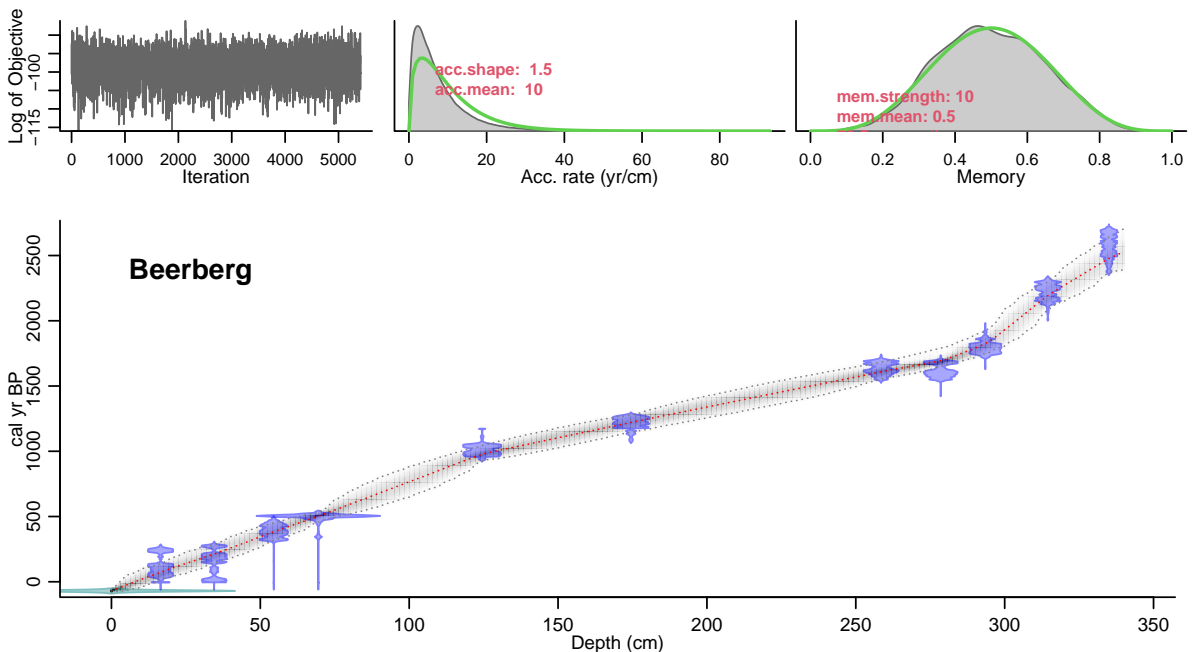
A number of indicative ratios have been developed to help interpret biomarker data, particularly for *n*-alkanes. We applied many of these to our data to see which was most applicable in the Beerberg setting. The  $P_{aq}$  (Ficken et al., 2000) and  $P_{wax}$  (Zheng et al., 2007) proxies have been previously used in sediments to differentiate between aquatic macrophyte and terrestrial  
 225 plant input and in peatlands to infer past water levels with high  $P_{aq}$  values associated with a higher water table and high  $P_{wax}$  values associated with a lower water table (e.g., Zheng et al., 2007; Zhou et al., 2005; Nichols et al., 2006; Andersson et al., 2011).

$$P_{aq} = \frac{C_{23} + C_{25}}{C_{23} + C_{25} + C_{29} + C_{31}} \quad (7)$$

$$P_{wax} = \frac{C_{27} + C_{29} + C_{31}}{C_{23} + C_{25} + C_{27} + C_{29} + C_{31}} \quad (8)$$

230 Andersson et al. (2011) found that the  $P_{aq}$  and  $P_{wax}$  could be misleading if *S. fuscum* and *Betula* species were present in the peat due to their relatively high abundances of the  $C_{23}$  homologue. They derived the ratio of  $C_{23}/(C_{27}+C_{31})$  to correct for these inputs, and as both *S. fuscum* and *Betula* species were present at the Beerberg site, this ratio was included. The ratio of *n*-alkanes  $C_{23}/C_{25}$  was also calculated, as this has been used in peatland settings before to determine shifts in *Sphagnum* species (McClymont et al., 2008). Further,  $C_{23}/(C_{23}+C_{29})$  and  $C_{25}/(C_{25}+C_{29})$  were calculated as well as other studies have used  
 235 these to distinguish *Sphagnum* species in peat settings (e.g., Ronkainen et al., 2013). Far fewer ratios have been identified for *n*-alkanols and *n*-fatty acids. Nevertheless, we tested  $C_{22}/C_{24}$ ,  $(C_{22}+C_{24})/(C_{26}+C_{28})$  (Zheng et al., 2011), and  $C_{24}/C_{28}$  for the *n*-alkanols and  $C_{15}/(C_{15}+C_{16})$  (Zheng et al., 2007) and  $C_{24}/C_{28}$  for the *n*-fatty acids.

A CONISS cluster analysis (Grimm, 1987) was performed on the absolute concentrations of the measured homologues of the *n*-alkanes ( $C_{19}$ – $C_{33}$ ), *n*-alkanols ( $C_{16}$ – $C_{28}$ ), and *n*-fatty acids ( $C_{14}$ – $C_{32}$ ) to determine whether different phases could be  
 240 distinguished using only the biomarker data. The same procedure was followed as previously described in the macrofossil and pollen sections.



**Figure 2.** Age-depth model of the Beerberg core. For precise radiocarbon dates, see Table A1. The age-depth model is shown in the main graph. The distribution of the calibrated  $^{14}\text{C}$  dates is shown in blue and the estimated surface age of -70 cal yr BP is shown in green. The wider the distribution, the less precise the dates. The dashed, red curve shows the mean ages derived from the model and the dashed grey curves represent the 95% confidence intervals. The top three graphs in the figure show, respectively, the fit of the Markov Chain Monte Carlo (MCMC) iterations, the accumulation rate (yr/cm) with prior (green) and posterior (grey) distributions, and the prior (green) and posterior (grey) distributions for the memory, or how much the accumulation rate is able to change from one depth to the next. For more information on the Bacon model, see Blaauw and Christen (2011).

### 3 Results

#### 3.1 Radiocarbon dating

The age-depth model that best matched the data in this study used a mean accumulation rate of 1 mm per year. The resulting curve is visualized in Fig. 2. There are three clear phases with distinct accumulation rates in the model: 0.66 mm/yr from 340–293.5 cm (2528–1826 cal yr BP), 1.99 mm/yr from 293.5–124.5 cm (1826–978 cal yr BP), and 1.27 mm/yr from 124.5–0 cm (978–Present). Hence, the changes in accumulation rates correspond with the dated samples at 293.5 cm and 124.5 cm.

#### 3.2 Elemental analysis

The results of the elemental analysis are shown in Fig. 3. The CONISS analysis based on Euclidean distance resulted in five zones: 2528–2113 cal yr BP (Phase I-G), 2113–1569 cal yr BP (Phase II-G), 1569–1151 cal yr BP (Phase III-G), 1151–809 cal

yr BP (Phase IV-G), and 809 cal yr BP–Present (Phase V-G). The transitions between phases appear to be most correlated with changes in the  $\delta^{13}\text{C}$  values. Carbon concentration (C) ranged from 41.1–51.1%, with one exceptionally low value of 21.1% in the basal sample of Phase I-G (340–310 cm). The nitrogen concentration (N) also had a sharp peak of 2.5% in Phase I-G at 2368 cal yr BP (327 cm). Both the C/N ratio and  $\delta^{13}\text{C}$  values increased during Phase I-G to 64.3 and -25.8, respectively. This increasing trend continued for both into Phase II-G (310–250 cm) with the C/N ratio averaging 90.2 and  $\delta^{13}\text{C}$  averaging -25.4. N values decreased while C stayed stable. During Phase III-G (250–160 cm), the C/N ratio fluctuated rapidly between 90.1–197.7, likely due to relatively small shifts in N. This phase contained the highest C/N values with low N as well as less negative  $\delta^{13}\text{C}$  values, ranging from -23.5– -25.2. In Phase IV-G (160–105 cm), C/N and  $\delta^{13}\text{C}$  began to decrease, ranging from 95.1–159.8 and -24.1– -25.6, respectively. In Phase V-G (105–0 cm), the C/N ratio continued decreasing as N values increased, reaching a peak of 2% at 102 cal yr BP (20 cm). While the  $\delta^{13}\text{C}$  value of the topmost sample at -29.3‰ was particularly low, there was also an interval of increasing values from 593 cal yr BP (80 cm) to 345 cal yr BP (50 cm), reaching a local maximum of -24.5.

### 3.3 Macrofossil analysis

Based on the macrofossil analysis, the primary peat-forming species were *S. fuscum* and *S. medium/divinum* (Fig. 4). *S. fuscum* was dominant over most of the core, from 2086–106 cal yr BP (308.5–20.5 cm), with *S. medium/divinum* taking over in more recent layers (47– -48 cal yr BP; 13.5–3.5 cm). Additionally, *E. vaginatum* was an important species with two major periods from 64– -4 cal yr BP (15.5–7.5 cm) and 2528–2251 cal yr BP (340–318.5 cm).

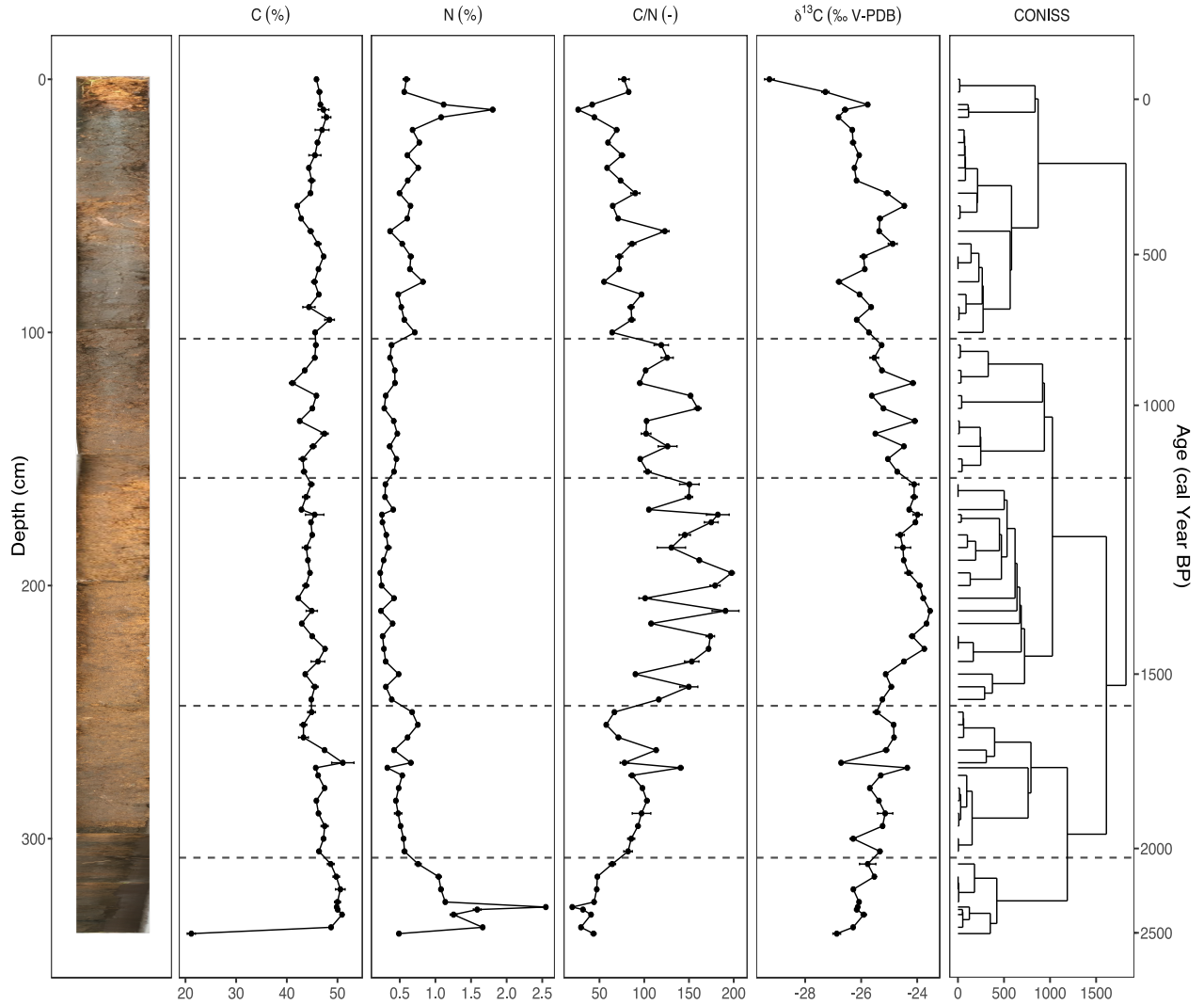
The CONISS analysis based on the Bray-Curtis dissimilarity resulted in four significant phases (Fig. 4). Phase I-M (2528–2251 cal yr BP) is characterized by a high abundance of *E. vaginatum* as well as a relatively large amount of macrocharcoal (here charred wood pieces), especially at depth 328.5 cm (2388 cal yr BP). In Phase II-M (2251–1671 cal yr BP), *S. fuscum* was dominant. In Phase III-M (1671–64 cal yr BP), *S. fuscum* remained dominant, but there was also a small but relatively steady presence of *E. vaginatum* and Ericaceae rootlets. In Phase IV-M (64 cal yr BP–Present), *S. medium/divinum* replaced *S. fuscum*, and there was an increase in Ericaceae rootlets as well as *E. vaginatum*.

### 3.4 Pollen analysis

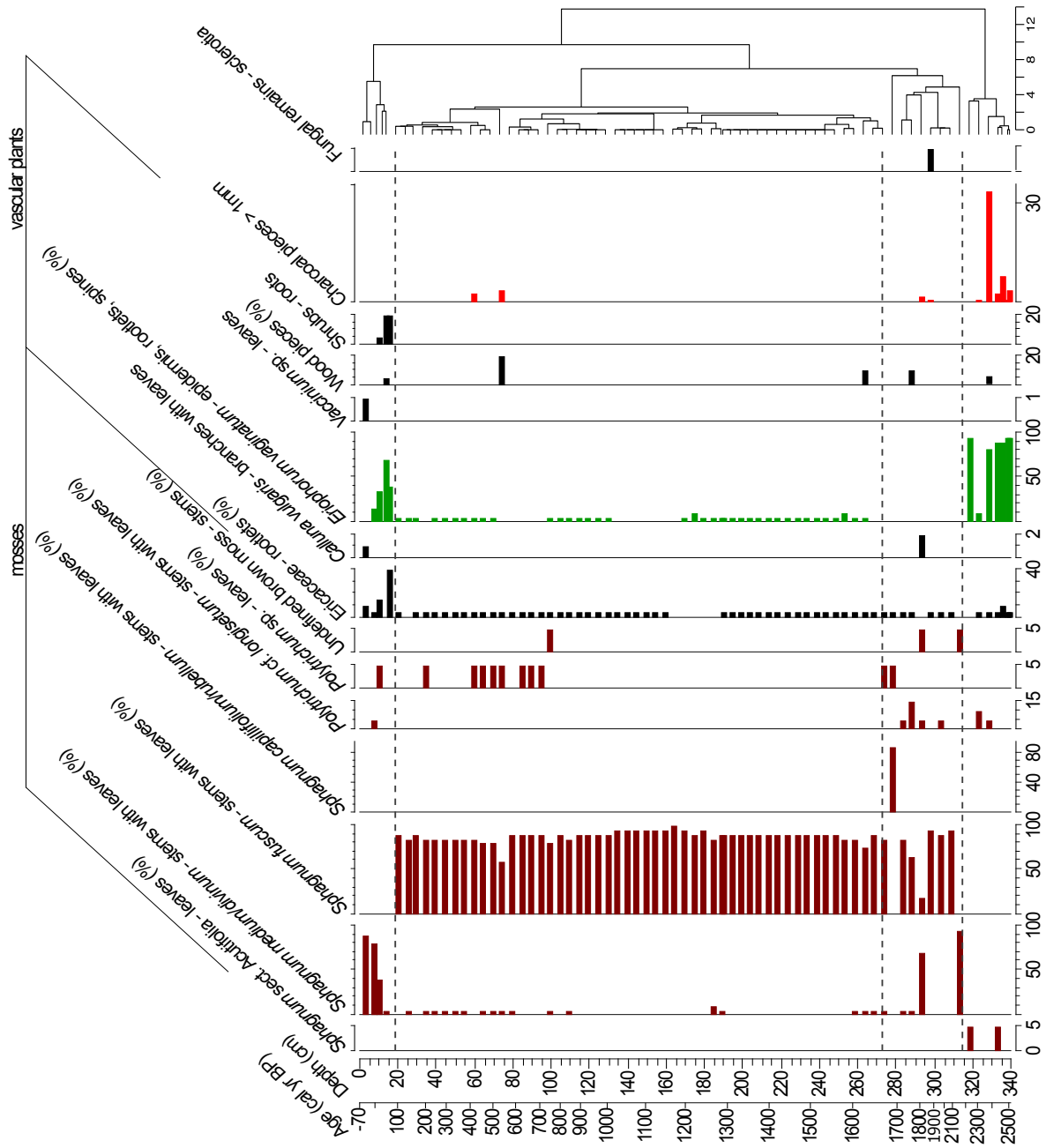
The CONISS cluster analysis of the complete pollen assemblage resulted in a separation into four phases, each representing a different regional vegetation composition (Fig. 5).

#### 3.4.1 Phase I-P (2528–1816 cal yr BP)

At the beginning of Phase I-P (340–292.5 cm), forests were dominated by *Fagus sylvatica* (pollen: 24–44.5%) (Fig. 5). *P. sylvestris*, *Betula* undiff., *Alnus* undiff., *Abies alba*, and *P. abies* also constituted a high proportion within the arboreal pollen. The latter two species significantly increased their percentage approaching 1810 cal yr BP. This time interval was characterized by high fire activity events as indicated by high CHAR<sub>micro</sub> (max 6035–38139 particles/cm<sup>2</sup>/yr) values and the presence of



**Figure 3.** Carbon (C) and nitrogen (N) concentrations, C/N ratio, and stable carbon isotope composition ( $\delta^{13}\text{C}$ ) plotted against depth (cm) and modeled age (cal year BP), including the resulting dendrogram of the CONISS analysis and phase boundaries indicated at 2113 cal yr BP (310 cm), 1569 cal yr BP (250 cm), 1151 cal yr BP (160 cm), and 809 cal yr BP (105 cm). An image of the sampled core is inset on the left. Two analytical replicates of each sample were measured. Error bars showing standard error are present for C and N concentrations, C/N ratio, and  $\delta^{13}\text{C}$  values.



**Figure 4.** Plant macrofossil diagram presenting local vegetation development in the Beerberg peatland. Taxa with % are estimated volume percentages; the others are absolute counts (note scale differences on the x-axes). The resulting dendrogram of the CONISS analysis is on the right with phase boundaries indicated at 2251 cal yr BP (318.5 cm), 1671 cal yr BP (273.5 cm), and 64 cal yr BP (15.5 cm).

*Neurospora*, as well as *Gelasinospora* ascospores between 2500–2300 cal yr BP (Stivrins et al., 2019). Towards the end of the phase, *Sphagnum* began to increase, indicating a shift to moss-dominated peat.

#### 3.4.2 Phase II-P (1816–1092 cal yr BP)

285 During the second phase, the forests were dominated by *F. sylvatica* (18–54.5%) (Fig. 5). *A. alba* and *P. abies* were the main components of coniferous forests. A significant decline in *F. sylvatica* occurred between 1280–1210 cal yr BP. During this phase, *A. alba* and *Quercus* reached their highest proportion in the forest. Based on indicator pollen counts, human impact in this phase was the weakest along the entire paleorecord. At the end of this phase, crop introduction in the region was observed, mirrored by an increase in Cerealia pollen share. The stable conditions prevailed at that time in the peatland, which  
290 was dominated by *Sphagnum* and *C. vulgaris*, and other Ericaceae species.

#### 3.4.3 Phase III-P (1092–366 cal yr BP)

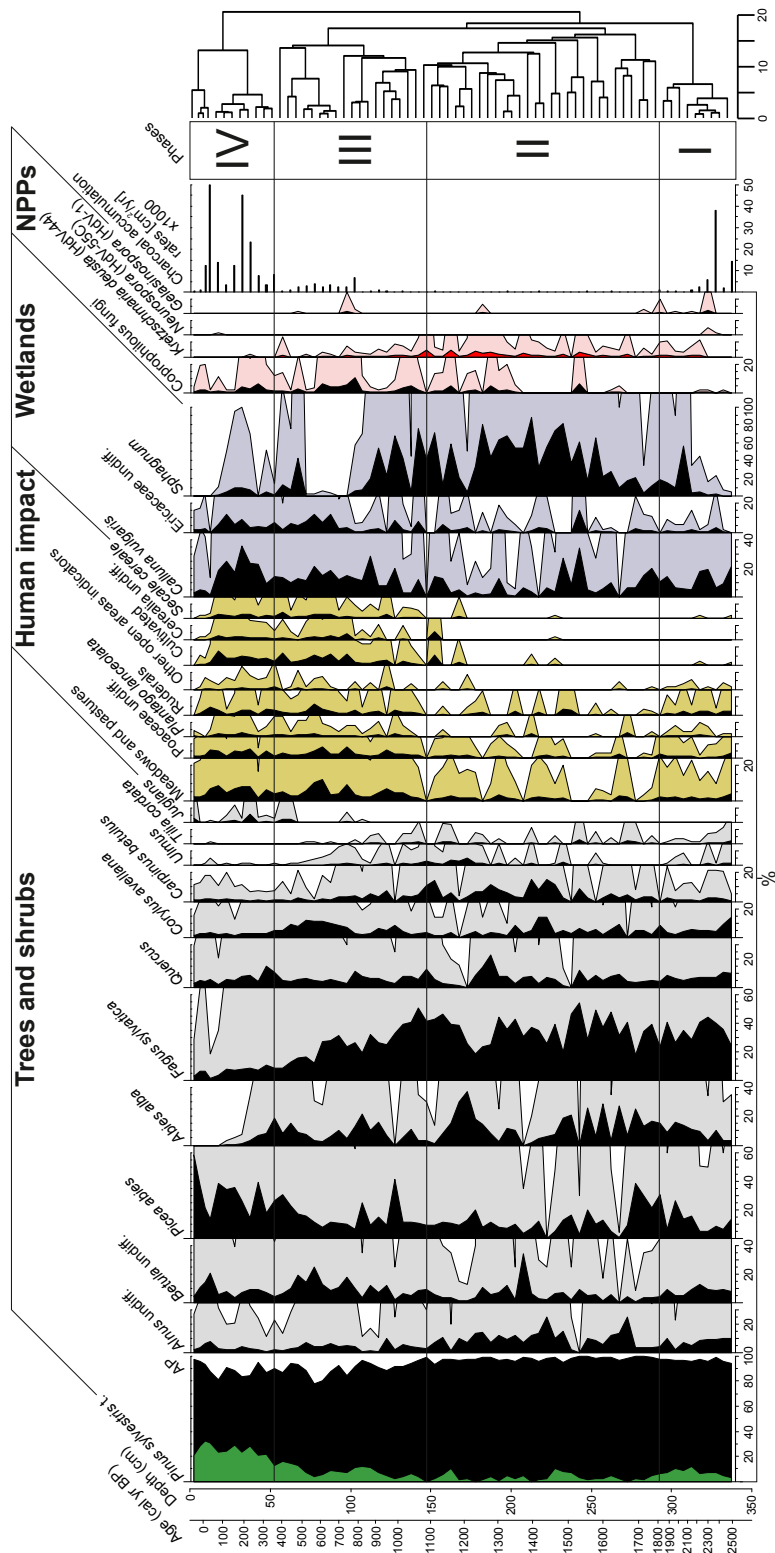
Throughout this zone, arboreal pollen declined from 97.5% to 77.5% between 1090–570 cal yr BP (Fig. 5). A substantial decline in late successional species such as *F. sylvatica* and *C. betulus* was observed, especially at the end of this phase. Along with the decrease in the proportion of these species, pioneer trees such as *P. sylvestris*, *Betula*, and *Corylus avellana* constituted  
295 an increasing proportion among the woodlands. During this phase, a constant share of cultivated indicators (mostly Cerealia undiff. and *Secale cereale*) was also recorded, especially from 740 cal yr BP. At the same time, a sharp increase of CHAR<sub>micro</sub>, as well as coprophilous fungi taxa, was observed. This corresponded with a sharp decrease in the proportion of *Sphagnum* (740–570 cal yr BP), the values of which increased again at the end of this phase. At the same time, the disappearance of *K. deusta* was noticeable during this phase.

#### 300 3.4.4 Phase IV-P (366 cal yr BP–Present)

The major deciduous trees that previously formed the stand gradually withdrew from the site, as manifested by decreasing percentages of *F. sylvatica* (from 18 to 4.4%), *Quercus*, and *Corylus avellana* (Fig. 5). *P. abies* and *P. sylvestris* reached their highest proportions in the forest (13.5–58% and 21–32.5%, respectively), whereas *A. alba* seemed to decline completely, as evidenced by the disappearance of its percentage share.

#### 305 3.5 Biomarker analysis

The TLE following Soxhlet extraction ranged between 20–66 mg/g, with an average of 35 mg/g. *n*-Alkanes were measured with chain lengths from C<sub>19</sub> to C<sub>33</sub>, *n*-alkanols from C<sub>16</sub> to C<sub>28</sub>, and *n*-fatty acids from C<sub>14</sub> to C<sub>32</sub>. The total abundance of *n*-alkanes ranged from 80–1112 µg/g, *n*-alkanols from 47–469 µg/g, and *n*-fatty acids from 260–4224 µg/g. Overall, the signatures are indicative of higher-plant source material (Eglinton and Hamilton, 1967). The CONISS cluster analysis identified four phases  
310 with boundaries at 35 cal yr BP (12 cm), 809 cal yr BP (105 cm), and 1657 cal yr BP (270 cm) (Fig. 6). These four phases are described in the following sub-sections.



**Figure 5.** Diagram of selected pollen taxa, NPPs, and microscopic charcoal influx ( $CHAR_{micro}$ ), including the resulting dendrogram of the CONISS analysis and phase boundaries indicated at 1816 cal yr BP (292.5 cm), 1092 cal yr BP (147.5 cm), and 366 cal yr BP (52.5 cm).

### 3.5.1 Phase I-B (2528–1657 cal yr BP)

At the very beginning of the first phase, the TLE was relatively high but began to decrease around 2272 cal yr BP (320 cm). The most abundant homologues for the *n*-alkanes and *n*-fatty acids were consistently C<sub>31</sub> (33–508 μg/g) and C<sub>24</sub> (293–1376 μg/g), respectively (Fig. 6). For the *n*-alkanols, the most abundant varied between C<sub>22</sub>, C<sub>24</sub>, C<sub>26</sub>, and C<sub>28</sub> (14–139 μg/g). The CPI of the *n*-alkanes (CPI<sub>ALK</sub>) ranged from 6.7–14.6, averaging 12.3 (Fig. 7), that of the *n*-alkanols (CPI<sub>ALC</sub>) from 8.7–12.8, averaging 10.7, and the CPI of the *n*-fatty acids (CPI<sub>FA</sub>) from 3.9–8.2, averaging 6.7. The ACL of the *n*-alkanes (ACL<sub>ALK</sub>) varied from 29.0–31.2, averaging 30.3, that of the *n*-alkanols (ACL<sub>ALC</sub>) from 23.8–25.3, averaging 24.8, and that of the *n*-fatty acids (ACL<sub>FA</sub>) from 24.4–25.1, averaging 24.9 (Fig. 7). Of the *n*-alkane ratios, P<sub>aq</sub> ranged from 0.05–0.33, averaging 0.13, P<sub>wax</sub> from 0.71–0.95, averaging 0.88, C<sub>23</sub>/(C<sub>27</sub> + C<sub>31</sub>) from 0.02–0.18, averaging 0.07, C<sub>23</sub>/(C<sub>23</sub>+C<sub>29</sub>) from .08–0.44, averaging 0.20, C<sub>25</sub>/(C<sub>25</sub>+C<sub>29</sub>) from 0.13–0.59, averaging 0.27, and C<sub>23</sub>/C<sub>25</sub> from 0.44–1.05, averaging 0.67. While C<sub>23</sub>/C<sub>25</sub> and P<sub>wax</sub> generally decreased throughout the phase, P<sub>aq</sub>, C<sub>23</sub>/(C<sub>23</sub>+C<sub>29</sub>), C<sub>25</sub>/(C<sub>25</sub>+C<sub>29</sub>), and C<sub>23</sub>/(C<sub>27</sub>+C<sub>31</sub>) generally increased (Fig. 7). The *n*-alkanol ratios C<sub>22</sub>/C<sub>24</sub> ranged from 0.55–1.00, averaging 0.75, (C<sub>22</sub>+C<sub>24</sub>)/(C<sub>26</sub>+C<sub>28</sub>) from 0.62–2.03, averaging 1.03, C<sub>24</sub>/C<sub>28</sub> from 0.34–0.70, averaging 0.52. Generally, (C<sub>22</sub>+C<sub>24</sub>)/(C<sub>26</sub>+C<sub>28</sub>) and C<sub>24</sub>/C<sub>28</sub> increased throughout the phase while C<sub>22</sub>/C<sub>24</sub> decreased. The *n*-fatty acid ratios C<sub>15</sub>/(C<sub>15</sub>+C<sub>16</sub>) ranged from 0.04–0.08, averaging 0.05, and C<sub>24</sub>/C<sub>28</sub> from 0.72–0.90, averaging 0.81. C<sub>15</sub>/(C<sub>15</sub>+C<sub>16</sub>) stayed about the same through the phase while C<sub>24</sub>/C<sub>28</sub> increased.

### 3.5.2 Phase II-B (1657–809 cal yr BP)

In the second phase, the TLE decreased further until beginning to increase around 1209 cal yr BP (172 cm). The most abundant homologues for the *n*-alkanes and *n*-fatty acids remained consistently C<sub>31</sub> (19–317 μg/g) (with one exception of C<sub>25</sub> (26 μg/g) at 1223 cal yr BP (175 cm) and C<sub>24</sub> (123–747 μg/g), respectively (Fig. 6). For the *n*-alkanols, the most abundant varied between C<sub>24</sub>, C<sub>26</sub>, and C<sub>28</sub> (6–77 μg/g). All of the CPI values remained well over 1 (Fig. 7). The average of ACL<sub>ALK</sub> decreased slightly to 28.9, while the other ACL average values remained nearly the same. The averages of P<sub>aq</sub>, C<sub>23</sub>/(C<sub>23</sub>+C<sub>29</sub>), C<sub>25</sub>/(C<sub>25</sub>+C<sub>29</sub>), and C<sub>23</sub>/(C<sub>27</sub> + C<sub>31</sub>) increased to 0.35, 0.40, 0.55, and 0.19, while the averages of P<sub>wax</sub> and C<sub>23</sub>/C<sub>25</sub> decreased to 0.70 and 0.53. The averages of the *n*-alkanol ratios C<sub>22</sub>/C<sub>24</sub> and (C<sub>22</sub>+C<sub>24</sub>)/(C<sub>26</sub>+C<sub>28</sub>) decreased to 0.49 and 0.92, while that of C<sub>24</sub>/C<sub>28</sub> increased to 0.61. The averages of the *n*-fatty acid ratios stayed about the same. During this phase, many of the proxies followed a similar curve or its inverse, reaching either a peak or dip near the middle of the phase. These include ACL<sub>ALK</sub>, C<sub>23</sub>/(C<sub>23</sub>+C<sub>29</sub>), C<sub>25</sub>/(C<sub>25</sub>+C<sub>29</sub>), C<sub>23</sub>/(C<sub>27</sub> + C<sub>31</sub>), P<sub>aq</sub>, P<sub>wax</sub>, *n*-alkanol C<sub>22</sub>/C<sub>24</sub>, and *n*-fatty acid C<sub>24</sub>/C<sub>28</sub> (Fig. 7).

### 3.5.3 Phase III-B (809–35 cal yr BP)

In the third phase, the TLE increased, though it had a slight dip from 466 cal yr BP to 259 cal yr BP (65–40 cm). Following the dip, the TLE increased again to the same level as the beginning of the phase. The most abundant homologues for the *n*-alkanes and *n*-fatty acids were consistently C<sub>31</sub> (55–423 μg/g) and C<sub>24</sub> (136–619 μg/g) (with one exception of C<sub>26</sub> (242 μg/g at 178 cal yr BP (30 cm)), respectively (Fig. 6). For the *n*-alkanols, the most abundant varied between C<sub>24</sub>, C<sub>26</sub>, and C<sub>28</sub> (3–103 μg/g). All of the CPI values again remained over 1 (Fig. 7). The averages of the ACL values all increased slightly (ALK: 30.3; ALC and



FA: 25.1). The averages of  $P_{aq}$ ,  $C_{23}/C_{25}$ ,  $C_{23}/(C_{23}+C_{29})$ ,  $C_{25}/(C_{25}+C_{29})$ , and  $C_{23}/(C_{27} + C_{31})$  decreased to 0.15, 0.52, 0.19, 0.31, and 0.07, while the average of  $P_{wax}$  increased to 0.86. The average of the *n*-alkanol ratio  $C_{22}/C_{24}$  increased to 0.62, while that of  $(C_{22}+C_{24})/(C_{26}+C_{28})$  and  $C_{24}/C_{28}$  decreased to 0.86 and 0.50. The average of the *n*-fatty acid ratio  $C_{15}/(C_{15}+C_{16})$  increased due to a high peak at 250 cal yr BP (40 cm) then decreased to its previous level and stayed about the same, and that of  $C_{24}/C_{28}$  decreased to 0.78. During this phase, many of the proxies reached a local maximum or minimum around 345 cal yr BP (50 cm) (Figs. 6 and 7).

### 350 3.5.4 Phase IV-B (35 cal yr BP–Present)

In the fourth, most recent phase, there are only four samples, so patterns are difficult to identify. The TLE initially dipped from its values in Phase III-B but was relatively high in the uppermost sample (43 mg/g). The most abundant homologues for the *n*-alkanes and *n*-fatty acids were consistently  $C_{31}$  (42–75  $\mu\text{g/g}$ ) and  $C_{24}$  (76–263  $\mu\text{g/g}$ ), respectively (Fig. 6). For the *n*-alkanols, the most abundant varied between  $C_{22}$ ,  $C_{24}$ ,  $C_{26}$ , and  $C_{28}$  (8–43  $\mu\text{g/g}$ ). The CPI values all remained above 1 (Fig. 7). The average ACL values remained about the same. The average values of the *n*-alkane ratios stayed about the same except for  $C_{23}/C_{25}$ , which increased from 0.52 to 0.69 (Fig. 7). The averages of the *n*-alkanol ratios  $C_{22}/C_{24}$  and  $(C_{22}+C_{24})/(C_{26}+C_{28})$  increased to 0.76 and 0.96, while the averages of the other *n*-alkanol and *n*-fatty acid ratios stayed about the same.

## 4 Discussion

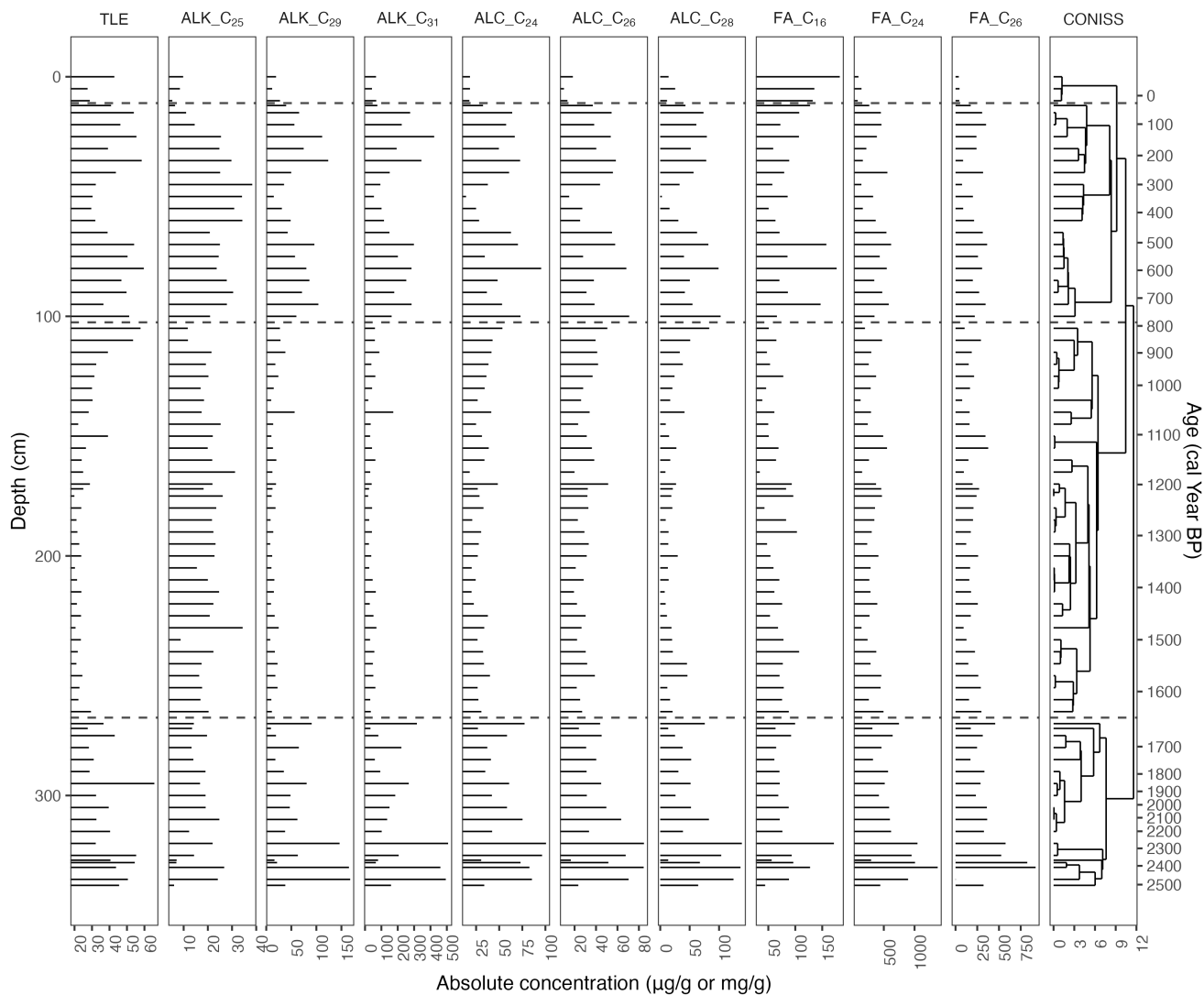
### 4.1 Temporal differences of trends across molecular proxies

360 The CONISS analysis identified different phases across all of the proxy records though there were similar trends across most of the records (Table 1). The elemental data split into five phases: 2528–2113 cal yr BP, 2113–1569 cal yr BP, 1569–1151 cal yr BP, 1151–809 cal yr BP, and 809 cal yr BP–Present (Fig. 3). The C and N concentrations, C/N ratio, and  $\delta^{13}\text{C}$  values are reflective of both the source material and environmental conditions, as well as post-deposition decomposition. Therefore, though there are similarities between the patterns of the elemental data and the other proxy records, they do not match exactly.

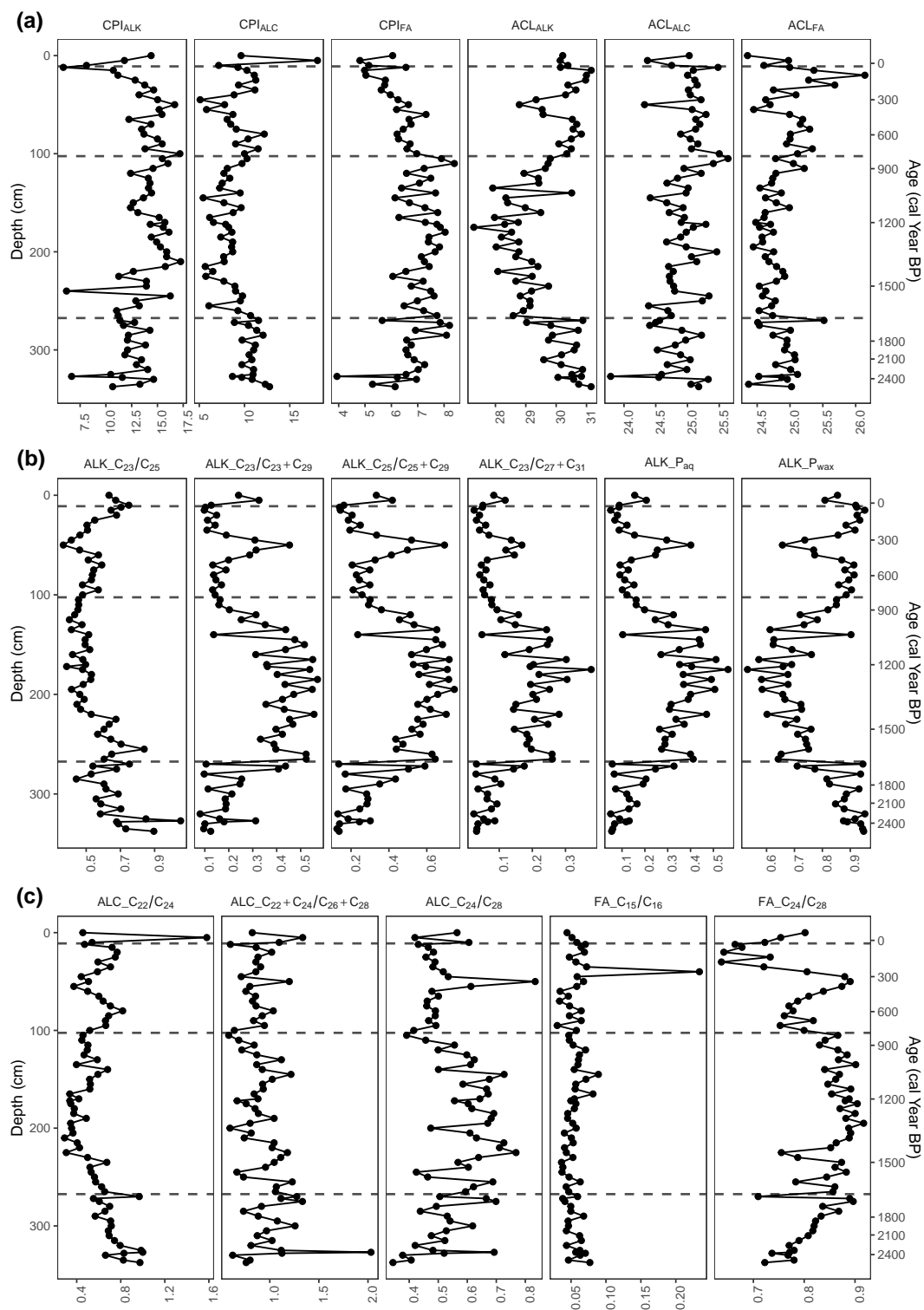
365 The macrofossil data was clustered into four phases: 2528–2251 cal yr BP, 2251–1671 cal yr BP, 1671–64 cal yr BP, and 64 cal yr BP–Present (Fig. 4). Compared to the elemental data, the CONISS analysis identified one fewer significant zones and while the first two phase boundaries of each proxy are within 140 cal yr BP of each other, the others do not align.

The pollen data was clustered into four phases: 2528–1816 cal yr BP, 1816–1092 cal yr BP, 1092–366 cal yr BP, and 366 cal yr BP–Present (Fig. 5). The pollen data reflects both a local and regional vegetation signal so while there are similarities between the phases based off of the pollen and those based off of the elemental and macrofossil data, they do not exactly line up.

370 The biomarker data was also clustered into four phases: 2528–1657 cal yr BP, 1657–809 cal yr BP, 809–35 cal yr BP, and 35 cal yr BP–Present (Fig. 6). The first three phases in the biomarker data are most similar to those of the pollen data, while



**Figure 6.** Absolute concentration ( $\mu\text{g/g}$ ) values for most abundant homologues of the *n*-alkanes (ALK; C<sub>29</sub>, C<sub>31</sub>, and C<sub>33</sub>), *n*-alkanols (ALC; C<sub>24</sub>, C<sub>26</sub>, and C<sub>28</sub>), and *n*-fatty acids (FA; C<sub>22</sub>, C<sub>24</sub>, and C<sub>26</sub>) as well as the C<sub>23</sub> and C<sub>25</sub> *n*-alkanes and C<sub>16</sub> *n*-fatty acid. On the right side is the resulting dendrogram of the CONISS analysis of the complete biomarker values with phase boundaries indicated at 35 cal yr BP (12 cm), 809 cal yr BP (105 cm), and 1657 cal yr BP (270 cm).



**Figure 7.** Carbon Preference Index (CPI) and Average Chain Length (ACL) values of *n*-alkanes (ALK), *n*-alkanols (ALC), and *n*-fatty acids (FA) and *n*-alkane, *n*-alkanol, and *n*-fatty acid ratios. The four phases from the cluster analysis are indicated at 35 cal yr BP (12 cm), 809 cal yr BP (105 cm), and 1657 cal yr BP (270 cm).

**Table 1.** Phases identified with CONISS analysis of different proxies and major changes between each phase.

Depth (cm)	Age (cal yr BP)	Macrofossils (cal yr BP)		Pollen (cal yr BP)		Biomarkers (cal yr BP)		C and N, $\delta^{13}\text{C}$ (cal yr BP)	
0	Present	Phase IV-M 64–Present	↓ <i>S. fuscum</i> ↑ <i>S. medium/divinum</i> ↑ Ericaceae ↑ <i>E. vaginatum</i>	Phase IV-P 366–Present	↓ <i>Sphagnum</i> ↑ <i>C. vulgaris</i> ↑ Ericaceae ↑ <i>P. sylvestris</i> ↑ <i>P. abies</i> ↓ <i>F. sylvatica</i> ↑ Charcoal	Phase IV-B 35–Present	↑ FA C <sub>16</sub> ↑ FA C <sub>24</sub> /C <sub>28</sub> ↑ CPI <sub>ALK</sub>	Phase V-G 809–Present	↑ N ↓ C/N ↓ $\delta^{13}\text{C}$
	0								
20	100	Phase III-M 1671–64	↓ <i>S. medium/divinum</i> ↑ <i>E. vaginatum</i> ↑ <i>Polytrichum</i>	Phase III-P 1092–366	↓ <i>Sphagnum</i> ↑ Ericaceae ↑ <i>C. vulgaris</i> ↑ Cultivated taxa ↓ <i>F. sylvatica</i>	Phase III-B 809–35	↑ TLE ↑ P <sub>wax</sub> ↑ ALC C <sub>22</sub> /C <sub>24</sub> ↓ P <sub>aq</sub> ↓ FA C <sub>24</sub> /C <sub>28</sub>	Phase IV-G 1151–809	↓ C/N ↓ $\delta^{13}\text{C}$
	200								
45	300	Phase II-M 2251–1671	↑ <i>S. fuscum</i> ↑ <i>S. medium/divinum</i> ↓ <i>E. vaginatum</i> ↓ Charcoal	Phase II-P 1816–1092	↑ <i>Sphagnum</i> ↓ <i>P. abies</i> ↓ <i>P. sylvestris</i> ↓ Charcoal	Phase II-B 1657–809	↓ TLE ↑ P <sub>aq</sub> ↑ FA C <sub>24</sub> /C <sub>28</sub> ↓ P <sub>wax</sub> ↓ ALC C <sub>22</sub> /C <sub>24</sub>	Phase III-G 1569–1151	↑ C/N ↑ $\delta^{13}\text{C}$
	400								
70	500	Phase I-M 2528–2251	↑ Charcoal	Phase I-P 2528–1816	↑ <i>Sphagnum</i> ↑ <i>P. abies</i> ↓ Charcoal	Phase I-B 2528–1657	↓ TLE ↑ P <sub>aq</sub> ↑ FA C <sub>24</sub> /C <sub>28</sub> ↓ P <sub>wax</sub> ↓ ALC C <sub>22</sub> /C <sub>24</sub>	Phase II-G 2113–1569	↑ C/N ↑ $\delta^{13}\text{C}$
	600								
105	700	Phase I-G 2528–2113						Phase I-G 2528–2113	↑ C ↑ C/N ↑ $\delta^{13}\text{C}$
	800								
150	900								
	1000								
235	1100								
	1200								
290	1300								
	1400								
315	1500								
	1600								
340	1700								
	1800								
340	1900								
	2000								
340	2100								
	2200								
340	2300								
	2400								
340	2528								
	2528								

the final phase is most closely aligned with that of the macrofossil data. The biomarker data reflects the source material and post-deposition decomposition, so some offsets to the other proxy records are expected.

Because macrofossils are conventionally seen as the most reliable proxy reflecting in situ vegetation and peat development (Birks and Birks, 2000, e.g.), we used the phases based on the macrofossils to describe the peatland development.

## 4.2 Development of the Beerberg peatland

In Phase I-M, 2528–2251 cal yr BP, the vegetation is characterized by a dominant presence of *E. vaginatum* (Fig. 4), along with a relatively low C/N ratio and very negative  $\delta^{13}\text{C}$  values (Fig. 3), which is typical for fen peat or transitional peat underlying bog peat (Kuhry et al., 1992; Jones et al., 2010). High fire activity during this phase was indicated by the maximum count of macrocharcoal pieces (charred wood, moss stems, *Calluna* leaves) (Fig. 4) occurring in this interval as well as increased CHAR<sub>micro</sub> (Fig. 5) and the presence of carbonicolus ascospores, *Neurospora* and *Gelasinospora* (Shumilovskikh and van Geel, 2020). It is likely that some of the fire events were a result of anthropogenic activity, indicated by the presence of *Plantago*

385 *lanceolata* or ruderal communities like *Artemisia* or Chenopodiaceae during this phase (Fig. 5). Fires in the bog area could have initiated the peat development as initial (fen) peat could form on wet ground following fire, developing into transitional peat, and then bog peat as has been seen at other sites (e.g., Tuittila et al., 2007; Gałka et al., 2019). The pollen analysis also indicated that *Fagus sylvatica* was the dominant arboreal species during this time period (Fig. 5), as was also determined by Lange (1967). Although *F. sylvatica* is considered a fire-sensitive species (Tinner et al., 2000), it records maximum occurrence  
390 in this phase soon after the fire. This could also signify that the fire negatively affected the presence of *A. alba* and *P. abies* in contrast to *F. sylvatica*. The disappearance of *Neurospora* and *Gelasinospora* combined with the rapid decline in CHAR<sub>micro</sub> corresponds with the development of the *Sphagnum* community on peatland. This may also indicate wetter conditions on peatlands, especially during 2500–2230 cal yr BP. The increasing C/N ratio and  $\delta^{13}\text{C}$  values towards the end of the phase (Fig. 3), as well as the initial incidences of *Sphagnum* (Figs. 4 and 5), indicates a shift towards more ombrotrophic conditions  
395 (Wang et al., 2015). The estimated accumulation rate during this phase (Fig. 2) is also relatively low compared to the rest of the core, likely due to the lower proportion of mosses (Stivrius et al., 2017) as it is the paludification phase, the initiation of the peatland. The biomarker data also supports this interpretation with  $P_{\text{wax}}$ ,  $P_{\text{aq}}$ ,  $C_{23}/(C_{23}+C_{29})$ ,  $C_{25}/(C_{25}+C_{29})$ , and  $C_{23}/(C_{27} + C_{31})$  all indicating an initial high proportion of longer chain length *n*-alkanes usually deriving from vascular plants (Fig. 7). Through the phase, the relative abundance of the shorter  $C_{23}$  and  $C_{25}$  *n*-alkanes (Fig. 6) increases, indicating the beginning of  
400 the peat development and an increase in the proportion of *Sphagnum* mosses (Baas et al., 2000; Pancost et al., 2002; Bingham et al., 2010). Of the other ratios, the *n*-alkanol  $C_{22}/C_{24}$  generally decreased, while the *n*-fatty acid  $C_{24}/C_{28}$  increased, potentially indicating an increase in *n*-alkanol  $C_{24}$  and *n*-fatty acid  $C_{24}$  which have been previously measured as dominant chain lengths in some *Sphagnum* species (e.g., Ficken et al., 1998a; Corrigan et al., 1976). Additionally, the TLE and individual biomarker absolute concentrations were relatively high compared to later phases in the core (Fig. 6). This aligns with previous research  
405 finding that, compared to vascular plant species, *Sphagnum* mosses produce lower outputs of lipids (Pancost et al., 2002); therefore, as the proportion of *Sphagnum* increases, the TLE and biomarker concentrations decrease.

Following the shift to ombrotrophic conditions, in the second phase, 2251–1671 cal yr BP, *S. fuscum* was dominant and the main peat-forming plant (Fig. 4). There was also a fairly steady presence of Ericaceae rootlets, though no evidence of *E. vaginatum*. At the beginning of this phase, there were also remnants of *S. medium/divinum* species as well as *Polytrichum*.  
410 In the pollen data, the percentage of *Sphagnum* spores rapidly increased, along with that of *P. abies* (Fig. 5). During this phase, the C/N ratio and  $\delta^{13}\text{C}$  values began increasing (Fig. 3), indicating wetter conditions during rapid peat growth and low decomposition (Loisel et al., 2010; Kuhry and Vitt, 1996). The accumulation rate thus also began increasing during this phase (Fig. 2). In the biomarker data, the *n*-alkane ratios indicating an increase in the proportion of shorter chain lengths ( $C_{23}$  and  $C_{25}$ ) continued increasing due to the rise of *Sphagnum*. This was also the case for *n*-fatty acid  $C_{24}/C_{28}$  (Fig. 7). The TLE  
415 and absolute concentrations of individual biomarkers decreased from the first phase (Fig. 6), as expected with the increase in *Sphagnum*.

In the third phase, 1671–64 cal yr BP, *S. fuscum* was still dominant in the macrofossils, but a steady presence of *E. vaginatum* returned along with *S. medium/divinum* and *Polytrichum* in the later half of the phase (Fig. 4). The C/N ratio and  $\delta^{13}\text{C}$  values reached their peak during this phase, indicating wet conditions and low decomposition (Loisel et al., 2010; Kuhry and Vitt,

420 1996). Within this interval, Phase II-P (1816–1092 cal yr BP) of the pollen assemblage is contained (Fig. 5). During this period, the presence of the parasitic fungus *Kretzschmaria deusta* - an indicator of tree fungal infections, often found on deciduous trees, especially on *Fagus sylvatica*, was recorded (Wilkins, 1934). Among other mountain sites, its presence was associated mostly with a higher proportion of *F. sylvatica* and other broad-leaved trees (Czerwiński et al., 2020; Kołaczek et al., 2020). The increased presence of this fungus in the past may have been related to stronger herbivore presence and/or coppicing practices and/or grazing damages (Latałowa et al., 2013; Karpińska-Kołaczek et al., 2014). However, the exact interactions between fungal infection and other disturbance factors in the past are not fully understood (Kołaczek et al., 2020). In the case of the Beerberg site, *K. deusta* was recorded during the period of lowest human impact and seemed to correspond with the development of forests with a higher role of *Carpinus betulus*. During this period, CHAR<sub>micro</sub> values were very low, which suggests a decline in fire activity or even a lack of fires near the study site. The C/N ratio and  $\delta^{13}\text{C}$  values also began to generally decline (Fig. 3), which in an ombrotrophic peat indicates drier conditions (Loisel et al., 2010), increased decomposition (Kuhry and Vitt, 1996), and could be related to human impact, such as drainage of the peatland. In the forest, *P. abies* expanded (especially from 520 cal yr BP) and possibly replaced *F. sylvatica* in cleared areas (Fig. 5). This pattern has been observed previously at other sites in Germany, such as the Black Forest (Rösch, 2000; Gałka et al., 2022b). Deforestation was related to human impact, as evidenced by an increase in indicators typical for open landscapes, including meadows and pastures, such as Poaceae and *Plantago lanceolata*, as well as ruderal habitats (mostly *Rumex acetosa/acetosella* type, *Artemisia*, Chenopodiaceae, and Brassicaceae undiff.). Further evidence of human impact results from the steady proportion of cultivated species, as well as the increase of CHAR<sub>micro</sub> and coprophilous fungi taxa. During this phase, the biomarker records showed more variation than the macrofossils. The TLE and absolute concentrations were relatively low through the phase until around 809 cal yr BP when they began to increase; there was another dip in the TLE and most individual concentrations (excluding *n*-alkanes C<sub>23</sub> and C<sub>25</sub>) from around 466 cal yr BP to 259 cal yr BP, increasing again in the final part of the phase (Fig. 6). The fluctuations in TLE are likely related to a decrease and subsequent increase in *Sphagnum*, as well as an increase in the proportion of Ericaceae species and other vascular plants (Pancost et al., 2002) in the latter half of the phase. The biomarker ratios follow a similar pattern, with many reaching either a maximum or minimum point around 1200 cal yr BP, including P<sub>aq</sub>, C<sub>23</sub>/(C<sub>23</sub>+C<sub>29</sub>), C<sub>25</sub>/(C<sub>25</sub>+C<sub>29</sub>), and C<sub>23</sub>/(C<sub>27</sub> + C<sub>31</sub>), as well as the *n*-alkanol C<sub>22</sub>/C<sub>24</sub> and *n*-fatty acid C<sub>24</sub>/C<sub>28</sub> (Fig. 7). These ratios also showed a local maximum or minimum around 345 cal yr BP. This is also seen in the  $\delta^{13}\text{C}$  curve as well as in a color change in the peat core itself (Fig. 3). All of these proxies appear to be indicating that there is first a decrease in mosses and water levels beginning around 809 cal yr BP, followed by an increase from around 500 cal yr BP to 345 cal yr BP, and then subsequent decrease. The earlier decrease around 809 cal yr BP, implying lower water table levels and drier conditions, could be related to the warmer Medieval Climate Anomaly (MCA; ca. 900–1400 CE) (Luterbacher et al., 2016). The following increase in water table levels or surface moisture around 500 cal yr BP could be caused by colder, wetter conditions as a result of the Little Ice Age (LIA; ca. 1300–1850 CE), as similar changes during this interval have been noted in other peatland records from Germany (e.g., Barber et al., 2004) as well as Poland (Marcisz et al., 2020). Following this brief increase, the P<sub>aq</sub> decreased again while the P<sub>wax</sub> increased until around 35 cal yr BP (Fig. 7). This is likely linked to the increased human activity and drainage that occurred at the peatland in the 19th

and 20th centuries. As previously mentioned, peatlands throughout Europe have exhibited drier conditions in the most recent  
455 times (Swindles et al., 2019).

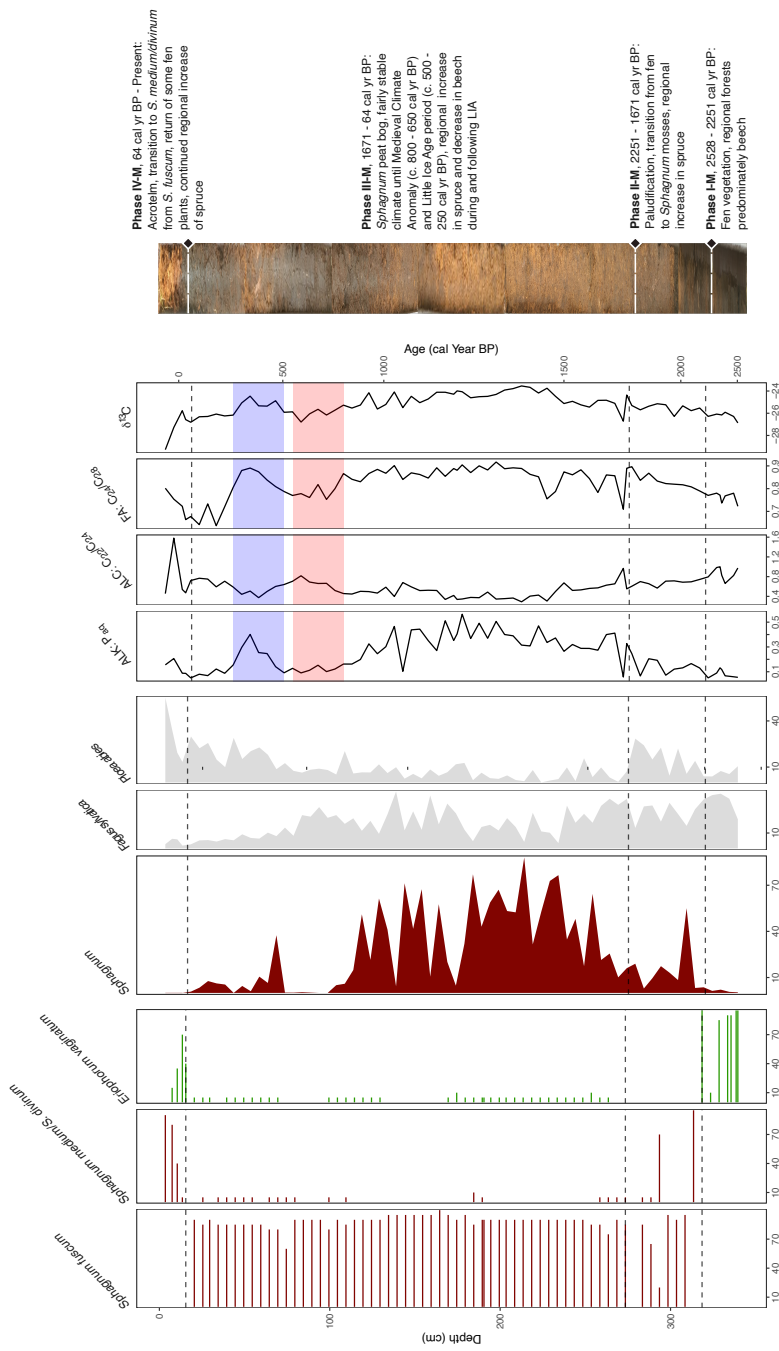
In the fourth phase, 64 cal yr BP–Present, *Sphagnum medium/divinum* was dominant, and there was an increased presence of  
*E. vaginatum* (Fig. 4). This could be indicative that the peatland is no longer pristine as the shift in dominant *Sphagnum* species  
could be related to pollution through increasing dust deposition (Gałka et al., 2019, 2022a, b) and further dry conditions,  
related to drainage as well as the warming climate (Swindles et al., 2019). However, in the pollen analysis, the decrease  
460 of human impact indicators following 35 cal yr BP could be evidence of the introduced conservation practices on or near the  
peatland (Fig. 5). This phase coincided with again more negative  $\delta^{13}\text{C}$  (Fig. 3) due to the peat here being in early stages of decay  
(Loisel et al., 2010), and elevated N concentration, potentially caused by the increase in more fen-like vegetation including  
*E. vaginatum* (Kuhry et al., 1992). However, the high N concentration could also result from high atmospheric N deposition  
throughout the last decades (Ackerman et al., 2019). The biomarker signature in this phase seemed to primarily differ based  
465 on a higher abundance of the  $\text{C}_{16}$  homologue of the *n*-fatty acids (Fig. 6). As this corresponds to the current acrotelm of the  
peatland with active peat formation and high decomposition, the higher abundance of microbial-derived biomarkers are a result  
of higher microbial activity (Ficken et al., 1998b).

### 4.3 Added value of biomarker analysis

Both the biomarker and macrofossil analyses are reflective of the local vegetation within the peatland, while the pollen analysis  
470 reflects both the local and regional vegetation. Timing differences between local and regional vegetation shifts have previously  
been reported in studies using biomarkers and pollen analyses (e.g., Jansen et al., 2013).

Despite potential discrepancies in the cluster analysis-derived phases, the biomarker results illustrate a similar story of  
peatland development. The primary driver behind the phase changes in the biomarker data appeared to be the abundance of  
 $\text{C}_{25}$  *n*-alkane. As  $\text{C}_{25}$ , along with  $\text{C}_{23}$ , is known to be highly abundant in *Sphagnum* species, the phases resulting from the  
475 CONISS analysis most likely represent changes in the input of *Sphagnum* to the peat (Fig. 6). Comparing the biomarker results  
to those of the macrofossils and pollen, the increase in *Sphagnum* did generally correlate well (Figs. 4, 5, 6, 8). Moreover,  
the increase of *Sphagnum* and related biomarkers were paralleled by higher C/N ratios and enriched  $\delta^{13}\text{C}$  values (Fig. 3),  
indicative of more ombrotrophic conditions (Wang et al., 2015). The *n*-alkanol ratio  $\text{C}_{22}/\text{C}_{24}$  and the *n*-fatty acid ratio  $\text{C}_{24}/\text{C}_{28}$   
also roughly followed these trends. While they have not been previously linked to *Sphagnum* mosses as indicative ratios, future  
480 peat biomarker studies could investigate further.

One notable difference shown in the biomarker measurements as opposed to the macrofossils was the behavior of  $\text{P}_{\text{aq}}$ ,  $\text{P}_{\text{wax}}$ ,  
and  $\text{C}_{23}/(\text{C}_{27} + \text{C}_{31})$ , as well as *n*-alkanol ratio  $\text{C}_{22}/\text{C}_{24}$  and the *n*-fatty acid ratio  $\text{C}_{24}/\text{C}_{28}$  in Phase III-B (Fig. 7). The generally  
decreasing trend of  $\text{P}_{\text{aq}}$  and  $\text{C}_{23}/(\text{C}_{27} + \text{C}_{31})$  at the beginning of this phase, implying lower water table levels and drier conditions,  
which could be related to the warmer Medieval Climate Anomaly (MCA; ca. 900–1400 CE) (Luterbacher et al., 2016). Then  
485 from around 500 cal yr BP to 345 cal yr BP,  $\text{P}_{\text{aq}}$  began to increase while  $\text{P}_{\text{wax}}$  decreased. This shift in conditions is also reflected  
in the  $\delta^{13}\text{C}$  values (Fig. 8) as well as an abrupt increase in *Sphagnum* in the pollen data but is not reflected in a notable change  
in the macrofossils.



**Figure 8.** Selected proxy curves from the macrofossil record (horizontal bars: *S.fuscum*, *S. medium/divinum*, *E. vaginatum*), Pollen Record (filled in lines: *Sphagnum*, *F. sylvatica*, *P. abies*), and the Biomarker and elemental records (lines; *n*-alkane  $P_{aq}$ , *n*-alkane  $C_{22}/C_{24}$ , *n*-fatty acid  $C_{24}/C_{28}$ , and  $\delta^{13}C$ ). A composite photo of the core is also shown with the phases from the CONISS analysis of the macrofossils briefly described. The estimated time frames of the MCA and LIA highlighted on the biomarker and elemental curves in red and blue, respectively.



Additionally, all of the ACL measures reach a minimum at this same interval (Fig. 6), indicating a higher input of the shorter chain length homologues, which would also correspond with less input from vascular plants. Furthermore, the  $C_{23}/C_{25}$  ratio reached a minimum in this interval, indicating a potential shift in *Sphagnum* species (McClymont et al., 2008). Following this brief increase, the  $P_{aq}$  decreased again while the  $P_{wax}$  increased until Phase IV-B or 35 cal yr BP (Fig. 7). This is likely linked to the increased human activity and drainage that occurred at the peatland in the 19th and 20th centuries (Swindles et al., 2019). The indication of the  $P_{aq}$ ,  $P_{wax}$ , and  $C_{23}/(C_{27}+C_{31})$  of a change in local conditions that are not reflected in the macrofossils shows that biomarkers can be a valuable additional proxy to use in paleoenvironmental studies.

#### 4.4 Comparison to other local and regional records

The developmental trajectory of the Beerberg peatland was similar to other peat bogs in Germany and other parts of central and northern Europe. The fen to bog transition occurred around 2250 cal yr BP, which has been recognized as a the beginning of a shift to cooler and/or wetter periods in previous studies in Ireland (Barber et al., 2003), England (Wimble, 1986), and Denmark (Aaby, 1976). The next major transition seen in the core record was the Medieval Climate Anomaly (MCA) and Little Ice Age (LIA), the exact time of which varies across European paleoclimate records (Wanner et al., 2022). Here at the Beerberg peatland, we found evidence of warming in the biomarker measurements and the pollen record during the period c. 1150–1300 AD, as shown by the decrease in *Sphagnum* in the pollen record as well as corresponding changes in the biomarker ratios. This was followed by a period of likely cooling from c. 1450–1700 AD, shown by the return of *Sphagnum* in the pollen record and corresponding fluctuations in the biomarker ratios. We believe that these periods correspond to the MCA and LIA. This roughly overlaps with results from previous studies: for example, Mauquoy et al. (2002) identified the LIA as lasting from c. 1450-1600 at Lille Vildmose in Denmark and c. 1460-1600 at Walton Moss in England, Barber et al. (2004) identified the LIA as starting between c. 1250–1350 at Dosenmoor in Germany and Svanemose in Denmark, and De Vleeschouwer et al. (2009) found evidence of the LIA from c. 1200–1800. Following the LIA, the Beerberg pollen record showed that the forests of the region transitioned from primarily *F. sylvatica* forests to *P. abies* forests, with an increase in *P. sylvestris* in the last centuries as well. This pattern has been seen in many other northern and central European forests (e.g., Svobodová et al., 2002). The final vegetation transition at Beerberg beginning in the late 19th century, with an increase in Ericaceae species and *E. vaginatum* as well as a shift in dominant *Sphagnum* species, is likely related at least partially to human influence such as drainage of the peatlands and change in forest composition in the catchment. This has also been noted in other European records (Barber et al., 2004). Generally, the development of the Beerberg peatland confirmed patterns seen at other European sites, though locally transitions occurred with some offsets because of the exposed location of the sequence at the mountain ridge. As such offsets have been well documented, this shows that studying local archives are most informative of local climate and environmental shifts. To the best of our knowledge, this study is the first of its kind covering the last two millennia in a peatland in Central Germany, and its location in Thuringia enables future application to research identifying climate boundary shifts in Central Europe (Breitenbach et al., 2019).

We found that the peatland itself, with *Sphagnum fuscum* as the dominant peat-forming species, did not undergo much vegetational change following its initial development. This stability persisted even amidst notable shifts in forest composition, from being beech- to spruce-dominated, and increased anthropogenic land use within the region. In the last couple of centuries, the pristine plant population of the peatland was disturbed, most likely by dust deposition and hydrological changes, as we were able to glean from the elemental and biomarker analyses despite the relative homogeneity of the macrofossil analysis.

This study has further demonstrated opportunities for biomarker analysis to contribute meaningfully to paleoenvironmental investigations. Specifically, the biomarker record serves as an independent confirmation of the trends found in the pollen and macrofossils, providing more confidence in the vegetation reconstruction, especially to species level. The *n*-alkane ratios provided more precise information about fluctuations in local conditions of the peat bog, pointing to potential influences from regional climate shifts that underpin the observed changes in vegetation from the pollen and macrofossil data. We also identified two more potential diagnostic biomarker ratios for *Sphagnum* abundance: *n*-alkanol  $C_{22}/C_{24}$  and *n*-fatty acid  $C_{24}/C_{28}$ . Additionally, the fact that multiple parameters, such as various sources of organic matter and processes like degradation and preservation of organic matter, can be assessed confirms the high potential for biomarker applications in peat records. However, the numerous molecular proxies derived from biomarker composition are often difficult to interpret independently, requiring certain expertise and the assessment of biomarkers from several compound classes to gain supportive data for certain interpretations.

Consequently, to increase the effectiveness and efficiency of biomarker analyses, a more systematic approach is required, aiming at integrating biomarker compound classes more holistically. The vast majority of biomarker indices and ratios have been developed for *n*-alkanes, neglecting other compounds such as *n*-fatty acids and *n*-alkanols. While the *n*-alkanes were the most useful compound class for our study, it would be beneficial if other compounds and potential diagnostic ratios were investigated and applied more systematically, as we have done here.

*Data availability.* All data is available at Pangaea via <https://doi.org/10.1594/PANGAEA.961142>.

## **Appendix A: Supplementary data**

### **A1 Radiocarbon dates**

**Table A1.** Radiocarbon dates of selected organic remains. The sample from depth 7.5 cm was excluded from the age-depth model.

Depth (cm)	Sample ID	Dated material	Radiocarbon date	Error
7.5	6845	<i>Sphagnum</i> stems, <i>Polytrichum</i> stems	-552	23
16.5	6846	<i>Sphagnum</i> stems	105	23
34.5	6847	<i>Sphagnum</i> stems	173	23
54.5	6848	<i>Sphagnum</i> stems	329	23
69.5	6849	<i>Sphagnum</i> stems	445	23
124.5	6850	<i>Sphagnum</i> stems	1107	23
174.5	6851	<i>Sphagnum</i> stems	1275	23
258.5	6852	<i>Sphagnum</i> stems	1739	24
278.5	6853	<i>Sphagnum</i> stems	1723	24
293.5	6854	<i>Sphagnum</i> stems	1889	24
314.5	6855	<i>Sphagnum</i> stems, <i>Pleurozium schreberi</i> stems	2197	24
334 - 336	6856	Charcoal pieces, <i>Eriophorum vaginatum</i> spines	2473	24

545 *Author contributions.* **Carrie L. Thomas:** Conceptualization, Formal analysis, Investigation, Data curation, Writing–Original draft, Writing–  
Review & Editing, Visualization; **Boris Jansen:** Writing–Review & Editing, Supervision; **Sambor Czerwiński:** Formal analysis, Investiga-  
tion, Writing–Review & Editing, Visualization; **Mariusz Galka:** Methodology, Formal analysis, Investigation, Writing–Review & Editing,  
Visualization; **Klaus-Holger Knorr:** Conceptualization, Methodology, Writing–Review & Editing; **E. Emiel van Loon:** Writing–Review &  
550 *tion, Methodology, Resources, Writing–Review & Editing, Supervision, Project administration, Funding acquisition.*

*Competing interests.* The authors declare that they have no conflict of interest.

*Acknowledgements.* We are grateful for funding from the Swiss National Science Foundation for the project entitled "IQ-SASS - Improved  
Quantitative Source Assessment of organic matter in Soils and Sediments using molecular markers and inverse modeling" under contract  
188684 and from swissuniversities in the form of a grant supporting the cotutelle de thèse project of CLT. We thank the Vessertal-Thuringian  
555 Forest Biosphere Reserve for allowing us to sample, as well as Dr. Marcin Kiedrzyński for his assistance during fieldwork. We are grateful  
to Thomy Keller for his assistance in obtaining radiocarbon dates. Additional laboratory support was provided by Yves Brügger, Aline Hobi,  
Tatjana Kraut, Barbara Siegfried, and Dr. Dmitry Tikhomirov. CLT thanks Tiia Määttä for her helpful comments and peatland insight.

## References

- Aaby, B.: Cyclic climatic variations in climate over the past 5,500 yr reflected in raised bogs, *Nature*, 263, 281–284, <https://doi.org/10.1038/263281a0>, 1976.
- 560 Ackerman, D., Millet, D. B., and Chen, X.: Global estimates of inorganic nitrogen deposition across four decades, *Global Biogeochemical Cycles*, 33, 100–107, <https://doi.org/10.1029/2018GB005990>, 2019.
- Andersson, R. A., Kuhry, P., Meyers, P. A., Zebühr, Y., Crill, P., and Mörrh, M.: Impacts of paleohydrological changes on *n*-alkane biomarker compositions of a Holocene peat sequence in the eastern European Russian Arctic, *Organic Geochemistry*, 42, 1065–1075, <https://doi.org/10.1016/j.orggeochem.2011.06.020>, 2011.
- 565 Baas, M., Pancost, R. D., van Geel, B., and Damsté, J. S. S.: A comparative study of lipids in *Sphagnum* species, *Organic Geochemistry*, 31, 535–541, [https://doi.org/10.1016/S0146-6380\(00\)00037-1](https://doi.org/10.1016/S0146-6380(00)00037-1), 2000.
- Balascio, N. L., Anderson, R. S., D'Andrea, W. J., Wickler, S., D'Andrea, R. M., and Bakke, J.: Vegetation changes and plant wax biomarkers from an ombrotrophic bog define hydroclimate trends and human-environment interactions during the Holocene in northern Norway, *The Holocene*, 30, 1849–1865, <https://doi.org/10.1177/0959683620950456>, 2020.
- 570 Barber, K. E., Chambers, F. M., Maddy, D., Stoneman, R., and Brew, J. S.: A sensitive high-resolution record of late Holocene climatic change from a raised bog in northern England, *The Holocene*, 4, 198–205, <https://doi.org/10.1177/095968369400400209>, 1994.
- Barber, K. E., Chambers, F. M., and Maddy, D.: Holocene palaeoclimates from peat stratigraphy: macrofossil proxy climate records from three oceanic raised bogs in England and Ireland, *Quaternary Science Reviews*, 22, 521–539, [https://doi.org/10.1016/S0277-3791\(02\)00185-3](https://doi.org/10.1016/S0277-3791(02)00185-3), 2003.
- 575 Barber, K. E., Chambers, F. M., and Maddy, D.: Late Holocene climatic history of northern Germany and Denmark: peat macrofossil investigations at Dosenmoor, Schleswig-Holstein, and Svanemose, Jutland, *Boreas*, 33, 132–144, <https://doi.org/10.1111/j.1502-3885.2004.tb01135.x>, 2004.
- Behre, K. E.: Interpretation of anthropogenic indicators in pollen diagrams, *Pollen et Spores*, 1981.
- 580 Bennett, K. D.: Determination of the number of zones in a biostratigraphical sequence, *New Phytologist*, 132, 155–170, <https://doi.org/10.1111/j.1469-8137.1996.tb04521.x>, 1996.
- Berglund, B. E. and Ralska-Jasiewiczowa, M.: Pollen analysis and pollen diagrams, in: *Handbook of Holocene Palaeoecology and Palaeohydrology*, edited by Berglund, B. E., pp. 455–484, John Wiley & Sons: Chichester, 1986.
- Beug, H. J.: *Leitfaden der Pollenbestimmung für Mitteleuropa und angrenzende Gebiete*, G. Fischer, 1961.
- 585 Biester, H., Knorr, K.-H., Schellekens, J., Basler, A., and Hermanns, Y.-M.: Comparison of different methods to determine the degree of peat decomposition in peat bogs, *Biogeosciences*, 11, 2691–2707, <https://doi.org/10.5194/bg-11-2691-2014>, 2014.
- Bingham, E. M., McClymont, E. L., Väiliranta, M., Mauquoy, D., Roberts, Z., Chambers, F. M., Pancost, R. D., and Evershed, R. P.: Conservative composition of *n*-alkane biomarkers in *Sphagnum* species: implications for palaeoclimate reconstruction in ombrotrophic peat bogs, *Organic Geochemistry*, 41, 214–220, <https://doi.org/10.1016/j.orggeochem.2009.06.010>, 2010.
- 590 Birks, H. H. and Birks, H. J. B.: Future uses of pollen analysis must include plant macrofossils, *Journal of Biogeography*, 27, 31–35, <https://www.jstor.org/stable/2655981>, 2000.
- Blaauw, M. and Christen, J. A.: Flexible paleoclimate age-depth models using an autoregressive gamma process, *Bayesian Analysis*, 6, 457–474, <https://doi.org/10.1214/11-BA618>, 2011.

- 595 Blaauw, M., Christen, J. A., and Aquino López, M. A.: rbacon: Age-Depth Modelling using Bayesian Statistics, <https://CRAN.R-project.org/package=rbacon>, r package version 2.5.2, 2021.
- Breitenbach, S. F., Plessen, B., Waltgenbach, S., Tjallingii, R., Leonhardt, J., Jochum, K. P., Meyer, H., Goswami, B., Marwan, N., and Scholz, D.: Holocene interaction of maritime and continental climate in Central Europe: New speleothem evidence from Central Germany, *Global and Planetary Change*, 176, 144–161, <https://doi.org/10.1016/j.gloplacha.2019.03.007>, 2019.
- 600 Chambers, F. M., Booth, R. K., De Vleeschouwer, F., Lamentowicz, M., Le Roux, G., Mauquoy, D., Nichols, J. E., and Van Geel, B.: Development and refinement of proxy-climate indicators from peats, *Quaternary International*, 268, 21–33, <https://doi.org/10.1016/j.quaint.2011.04.039>, 2012.
- Chibnall, A. C., Piper, S. H., Pollard, A., Williams, E. F., and Sahai, P. N.: The constitution of the primary alcohols, fatty acids and paraffins present in plant and insect waxes, *Biochemical Journal*, 28, 2189, <https://doi.org/10.1042/bj0282189>, 1934.
- 605 Corrigan, D., Kxoos, M., O'Connor, C., and Timoney, R.: LIPID COMPONENTS OF *SPHAGNUM* MOSSES, *Planta Medica*, 29, 261–267, <https://doi.org/10.1055/s-0028-1097660>, 1976.
- Czerwiński, S., Margielewski, W., Gałka, M., and Kołaczek, P.: Late Holocene transformations of lower montane forest in the Beskid Wyspowy Mountains (Western Carpathians, Central Europe): a case study from Mount Mogielica, *Palynology*, 44, 355–368, <https://doi.org/10.1080/01916122.2019.1617207>, 2020.
- 610 Davis, M. B. and Deevey, E. S.: Pollen accumulation rates: Estimates from Late-Glacial sediment of Rogers Lake, *Science*, 145, 1293–1295, <https://doi.org/10.1126/science.145.3638.1293>, 1964.
- De Vleeschouwer, F., Piotrowska, N., Sikorski, J., Pawlyta, J., Cheburkin, A., Le Roux, G., Lamentowicz, M., Fagel, N., and Mauquoy, D.: Multiproxy evidence of ‘Little Ice Age’ palaeoenvironmental changes in a peat bog from northern Poland, *The Holocene*, 19, 625–637, <https://doi.org/10.1177/0959683609104027>, 2009.
- 615 Eglinton, G. and Hamilton, R. J.: Leaf epicuticular waxes: The waxy outer surfaces of most plants display a wide diversity of fine structure and chemical constituents., *Science*, 156, 1322–1335, <https://doi.org/10.1126/science.156.3780.1322>, 1967.
- Farrimond, P. and Flanagan, R. L.: Lipid stratigraphy of a Flandrian peat bed (Northumberland, UK): comparison with the pollen record, *The Holocene*, 6, 69–74, <https://doi.org/10.1177/095968369600600108>, 1996.
- Ficken, K. J., Barber, K. E., and Eglinton, G.: Lipid biomarker,  $\delta^{13}\text{C}$  and plant macrofossil stratigraphy of a Scottish montane peat bog over the last two millennia, *Organic Geochemistry*, 28, 217–237, [https://doi.org/10.1016/S0146-6380\(97\)00126-5](https://doi.org/10.1016/S0146-6380(97)00126-5), 1998a.
- 620 Ficken, K. J., Street-Perrott, F. A., Perrott, R. A., Swain, D. L., Olago, D. O., and Eglinton, G.: Glacial/interglacial variations in carbon cycling revealed by molecular and isotope stratigraphy of Lake Nkunga, Mt. Kenya, East Africa, *Organic Geochemistry*, 29, 1701–1719, [https://doi.org/10.1016/S0146-6380\(98\)00109-0](https://doi.org/10.1016/S0146-6380(98)00109-0), 1998b.
- Ficken, K. J., Li, B., Swain, D. L., and Eglinton, G.: An *n*-alkane proxy for the sedimentary input of submerged/floating freshwater aquatic macrophytes, *Organic Geochemistry*, 31, 745–749, [https://doi.org/10.1016/S0146-6380\(00\)00081-4](https://doi.org/10.1016/S0146-6380(00)00081-4), 2000.
- 625 Finsinger, W. and Tinner, W.: Minimum count sums for charcoal concentration estimates in pollen slides: Accuracy and potential errors, *The Holocene*, 15, 293–297, <https://doi.org/10.1191/0959683605hl808rr>, 2005.
- Gaillard, M.-J.: Archaeological applications, in: *The Encyclopedia of Quaternary Science*, pp. 880–904, Elsevier, 2013.
- Gałka, M., Szal, M., Broder, T., Loisel, J., and Knorr, K.-H.: Peatbog resilience to pollution and climate change over the past 2700 years in the Harz Mountains, Germany, *Ecological Indicators*, 97, 183–193, <https://doi.org/10.1016/j.ecolind.2018.10.015>, 2019.

- 630 Gałka, M., Diaconu, A.-C., Feurdean, A., Loisel, J., Teickner, H., Broder, T., and Knorr, K.-H.: Relations of fire, palaeohydrology, vegetation succession, and carbon accumulation, as reconstructed from a mountain bog in the Harz Mountains (Germany) during the last 6200 years, *Geoderma*, 424, 115–991, <https://doi.org/10.1016/j.geoderma.2022.115991>, 2022a.
- Gałka, M., Hölzer, A., Feurdean, A., Loisel, J., Teickner, H., Diaconu, A.-C., Szal, M., Broder, T., and Knorr, K.-H.: Insight into the factors of mountain bog and forest development in the Schwarzwald Mts.: Implications for ecological restoration, *Ecological Indicators*, 140, 109–039, <https://doi.org/10.1016/j.ecolind.2022.109039>, 2022b.
- 635 Githumbi, E., Fyfe, R., Gaillard, M.-J., Trondman, A.-K., Mazier, F., Nielsen, A.-B., Poska, A., Sugita, S., Woodbridge, J., Azuara, J., Feurdean, A., Grindean, R., Lebreton, V., Marquer, L., Nebout-Combourieu, N., Stančikaitė, M., Tanțău, I., Tonkov, S., Shumilovskikh, L., and LandClimII data contributors: European pollen-based REVEALS land-cover reconstructions for the Holocene: methodology, mapping and potentials, *Earth System Science Data*, 14, 1581–1619, <https://doi.org/10.5194/essd-14-1581-2022>, 2022.
- 640 Görner, M., Haupt, R., Hiekel, W., Niemann, E., and Westhus, W.: *Handbuch der Naturschutzgebiete der Deutschen Demokratischen Republik* (Ed. Weinitschke, H.), Bd. 4: Die Naturschutzgebiete der Bezirke Erfurt, Suhl und Gera, Urania-Verlag, Leipzig, Jena, Berlin. Hirschgrund, pp. 99–101, 1984.
- Grimm, E. C.: CONISS: a FORTRAN 77 program for stratigraphically constrained cluster analysis by the method of incremental sum of squares, *Computers & Geosciences*, 13, 13–35, [https://doi.org/10.1016/0098-3004\(87\)90022-7](https://doi.org/10.1016/0098-3004(87)90022-7), 1987.
- 645 Grimm, E. C.: TILIA 2.0 Pollen Analysis Software, <https://www.tiliait.com>, 1993.
- Hepp, J., Wüthrich, L., Bromm, T., Bliedtner, M., Schäfer, I. K., Glaser, B., Rozanski, K., Sirocko, F., Zech, R., and Zech, M.: How dry was the Younger Dryas? Evidence from a coupled  $\delta^2\text{H}$ – $\delta^{18}\text{O}$  biomarker paleohygrometer applied to the Gemündener Maar sediments, Western Eifel, Germany, *Climate of the Past*, 15, 713–733, <https://doi.org/10.5194/cp-15-713-2019>, 2019.
- Hölzer, A.: *Die Torfmoose: Südwestdeutschlands und der Nachbargebiete*, Weissdorn Verlag, 2010.
- 650 Hua, Q., Barbetti, M., and Rakowski, A. Z.: Atmospheric radiocarbon for the period 1950–2010, *Radiocarbon*, 55, 2059–2072, [https://doi.org/10.2458/azu\\_js\\_rc.v55i2.16177](https://doi.org/10.2458/azu_js_rc.v55i2.16177), 2013.
- Jahn, R.: Pollenanalytische Untersuchungen an Hochmooren des Thüringer Waldes, *Forstwissenschaftliches Centralblatt*, 52, 761–774, 1930.
- Jansen, B. and Wiesenberg, G. L. B.: Opportunities and limitations related to the application of plant-derived lipid molecular proxies in soil science, *SOIL*, 3, 211–234, <https://doi.org/10.5194/soil-3-211-2017>, 2017.
- 655 Jansen, B., de Boer, E. J., Cleef, A. M., Hooghiemstra, H., Moscol-Olivera, M., Tonneijck, F. H., and Verstraten, J. M.: Reconstruction of late Holocene forest dynamics in northern Ecuador from biomarkers and pollen in soil cores, *Palaeogeography, Palaeoclimatology, Palaeoecology*, 386, 607–619, <https://doi.org/10.1016/j.palaeo.2013.06.027>, 2013.
- Jeschke, L. and Paulson, C.: *Pflege- und Entwicklungspläne für die Hochmoore in den Kammlagen des Thüringer Waldes, Beerbergmoor, Saukopfmoor, Schneekopfmoore und Schützenbergmoor*, Unter Mitarbeit von Ch. Paulson und der Geocad-Ingenieurgesellschaft mbH.
- 660 Unveröffentlichtes Gutachten im Auftrag des Staatlichen Umweltamtes Erfurt, 2000.
- Jones, M. C., Peteet, D. M., and Sambrotto, R.: Late-glacial and Holocene  $\delta^{15}\text{N}$  and  $\delta^{13}\text{C}$  variation from a Kenai Peninsula, Alaska peatland, *Palaeogeography, Palaeoclimatology, Palaeoecology*, 293, 132–143, <https://doi.org/10.1016/j.palaeo.2010.05.007>, 2010.
- Juggins, S.: rioja: Analysis of Quaternary Science Data, <https://cran.r-project.org/package=rioja>, r package version 0.9-26, 2020.
- Karpińska-Kołaczek, M., Kołaczek, P., and Stachowicz-Rybka, R.: Pathways of woodland succession under low human impact during the last 13,000 years in northeastern Poland, *Quaternary International*, 328, 196–212, <https://doi.org/10.1016/j.quaint.2013.11.038>, 2014.
- 665

- Kołodziej, P., Margielewski, W., Gałka, M., Karpińska-Kołodziej, M., Buczek, K., Lamentowicz, M., Borek, A., Zernitskaya, V., and Marcisz, K.: Towards the understanding the impact of fire on the lower montane forest in the Polish Western Carpathians during the Holocene, *Quaternary Science Reviews*, 229, 106–137, <https://doi.org/10.1016/j.quascirev.2019.106137>, 2020.
- 670 Kuhry, P. and Vitt, D. H.: Fossil carbon/nitrogen ratios as a measure of peat decomposition, *Ecology*, 77, 271–275, <https://doi.org/10.2307/2265676>, 1996.
- Kuhry, P., Halsey, L., Bayley, S., and Vitt, D.: Peatland development in relation to Holocene climatic change in Manitoba and Saskatchewan (Canada), *Canadian Journal of Earth Sciences*, 29, 1070–1090, <https://doi.org/10.1139/e92-086>, 1992.
- Laine, J., Flatberg, K. I., Harju, P., Timonen, T., Minkkinen, K. J., Laine, A., Tuittila, E.-S., and Vasander, H. T.: *Sphagnum* mosses: the stars of European mires, *Sphagna Ky.*, 2018.
- 675 Lange, E.: Zur Vegetationsgeschichte des Beerberggebietes im Thüringer Wald, *Feddes Repertorium*, 76, 205–219, 1967.
- Latałowa, M., Pędziszewska, A., Maciejewska, E., and Święta-Musznicka, J.: Tilia forest dynamics, *Kretzschmaria deusta* attack, and mire hydrology as palaeoecological proxies for mid-Holocene climate reconstruction in the Kashubian Lake District (N Poland), *The Holocene*, 23, 667–677, <https://doi.org/10.1177/0959683612467484>, 2013.
- Loisel, J., Garneau, M., and Hélie, J.-F.: *Sphagnum*  $\delta^{13}\text{C}$  values as indicators of palaeohydrological changes in a peat bog, *The Holocene*, 680 20, 285–291, 2010.
- Luterbacher, J., Werner, J. P., Smerdon, J. E., Fernández-Donado, L., González-Rouco, F. J., Barriopedro, D., Ljungqvist, F. C., Büntgen, U., Zorita, E., Wagner, S., Esper, J., McCarroll, D., Toreti, A., Frank, D., Jungclauss, J. H., Barriendos, M., Bertolin, C., Bothe, O., Brázdil, R., Camuffo, D., Dobrovolný, P., Gagen, M., García-Bustamante, E., Ge, Q., Gómez-Navarro, J. J., Guiot, J., Hao, Z., Hegerl, G. C., Holmgren, K., Klimenko, V. V., Martín-Chivelet, J., Pfister, C., Roberts, N., Schindler, A., Schurer, A., Solomina, O., von Gunten, L., 685 Wahl, E., Wanner, H., Wetter, O., Xoplaki, E., Yuan, N., Zanchettin, D., Zhang, H., and Zerefos, C.: European summer temperatures since Roman times, *Environmental Research Letters*, 11, 024 001, <https://doi.org/10.1088/1748-9326/11/2/024001>, 2016.
- Lütznert, H., Andreas, D., Schneider, J. W., Voigt, S., and Werneburg, R.: Stefan und Rotliegend im Thüringer Wald und seiner Umgebung, *Deutsche Stratigraphische Kommission: Subkommission Perm-Trias, Stratigraphie von Deutschland X, Rotliegend, Teil I: Innervariscische Becken. Schriftenreihe der Deutschen Gesellschaft für Geowissenschaften*, 61, 418–487, 2012.
- 690 MacArthur, R. H.: On the relative abundance of bird species, *Proceedings of the National Academy of Sciences*, 43, 293–295, <https://doi.org/10.1073/pnas.43.3.293>, 1957.
- Marcisz, K., Kołodziej, P., Gałka, M., Diaconu, A.-C., and Lamentowicz, M.: Exceptional hydrological stability of a *Sphagnum*-dominated peatland over the late Holocene, *Quaternary Science Reviews*, 231, 106–180, <https://doi.org/https://doi.org/10.1016/j.quascirev.2020.106180>, 2020.
- 695 Marzi, R., Torkelson, B., and Olson, R.: A revised carbon preference index, *Organic Geochemistry*, 20, 1303–1306, [https://doi.org/https://doi.org/10.1016/0146-6380\(93\)90016-5](https://doi.org/https://doi.org/10.1016/0146-6380(93)90016-5), 1993.
- Mauquoy, D. and Van Geel, B.: Plant macrofossil methods and studies: mire and peat macros, in: *Encyclopedia of Quaternary Science*, pp. 2315–2336, Elsevier Science, 2007.
- Mauquoy, D., Van Geel, B., Blaauw, M., and Van Der Plicht, J.: Evidence from northwest European bogs shows ‘Little Ice Age’ climatic 700 changes driven by variations in solar activity, *The Holocene*, 12, 1–6, <https://doi.org/10.1191/0959683602hl514rr>, 2002.
- McClymont, E. L., Mauquoy, D., Yeloff, D., Broekens, P., Van Geel, B., Charman, D. J., Pancost, R. D., Chambers, F. M., and Evershed, R. P.: The disappearance of *Sphagnum imbricatum* from Butterburn Flow, UK, *The Holocene*, 18, 991–1002, <https://doi.org/10.1177/0959683608093537>, 2008.



- Moore, P. D., Webb, J. A., and Collison, M. E.: Pollen Analysis, Blackwell Scientific Publications, 1991.
- 705 Naafs, B. D. A., Inglis, G. N., Blewett, J., McClymont, E. L., Lauretano, V., Xie, S., Evershed, R. P., and Pancost, R. D.: The potential of biomarker proxies to trace climate, vegetation, and biogeochemical processes in peat: A review, *Global and Planetary Change*, 179, 57–79, <https://doi.org/10.1016/j.gloplacha.2019.05.006>, 2019.
- Nichols, J. E., Booth, R. K., Jackson, S. T., Pendall, E. G., and Huang, Y.: Paleohydrologic reconstruction based on n-alkane distributions in ombrotrophic peat, *Organic Geochemistry*, 37, 1505–1513, <https://doi.org/10.1016/j.orggeochem.2006.06.020>, 2006.
- 710 Oksanen, J., Blanchet, F. G., Friendly, M., Kindt, R., Legendre, P., McGlenn, D., Minchin, P. R., O’Hara, R. B., Simpson, G. L., Solymos, P., Stevens, M. H. H., Szoecs, E., and Wagner, H.: vegan: Community Ecology Package, <https://CRAN.R-project.org/package=vegan>, r package version 2.5-7, 2020.
- Pancost, R. D., Baas, M., van Geel, B., and Damsté, J. S. S.: Biomarkers as proxies for plant inputs to peats: an example from a sub-boreal ombrotrophic bog, *Organic Geochemistry*, 33, 675–690, [https://doi.org/10.1016/S0146-6380\(02\)00048-7](https://doi.org/10.1016/S0146-6380(02)00048-7), 2002.
- 715 Peel, M. C., Finlayson, B. L., and McMahon, T. A.: Updated world map of the Köppen-Geiger climate classification, *Hydrology and Earth System Sciences*, 11, 1633–1644, <https://doi.org/10.5194/hess-11-1633-2007>, 2007.
- Poynter, J. G., Farrimond, P., Robinson, N., and Eglinton, G.: Aeolian-Derived Higher Plant Lipids in the Marine Sedimentary Record: Links with Palaeoclimate, in: *Paleoclimatology and Paleometeorology: Modern and Past Patterns of Global Atmospheric Transport*, edited by Leinen, M. and Sarnthein, M., pp. 435–462, Springer Netherlands, Dordrecht, [https://doi.org/10.1007/978-94-009-0995-3\\_18](https://doi.org/10.1007/978-94-009-0995-3_18), 1989.
- 720 R Core Team: R: A Language and Environment for Statistical Computing, R Foundation for Statistical Computing, Vienna, Austria, <https://www.R-project.org/>, 2021.
- Reimer, P. J., Austin, W. E. N., Bard, E., Bayliss, A., Blackwell, P. G., Bronk Ramsey, C., Butzin, M., Cheng, H., Edwards, R. L., Friedrich, M., and et al.: The IntCal20 Northern Hemisphere radiocarbon age calibration curve (0–55 cal kBP), *Radiocarbon*, 62, 725–757, <https://doi.org/10.1017/RDC.2020.41>, 2020.
- 725 Ronkainen, T., McClymont, E. L., Väiliranta, M., and Tuittila, E.-S.: The n-alkane and sterol composition of living fen plants as a potential tool for palaeoecological studies, *Organic Geochemistry*, 59, 1–9, <https://doi.org/10.1016/j.orggeochem.2013.03.005>, 2013.
- Ronkainen, T., Väiliranta, M., McClymont, E. L., Biasi, C., Salonen, S., Fontana, S., and Tuittila, E.-S.: A combined biogeochemical and palaeobotanical approach to study permafrost environments and past dynamics, *Journal of Quaternary Science*, 30, 189–200, <https://doi.org/10.1002/jqs.2763>, 2015.
- 730 Rösch, M.: Long-term human impact as registered in an upland pollen profile from the southern Black Forest, south-western Germany, *Vegetation History and Archaeobotany*, 9, 205–218, <https://doi.org/10.1007/BF01294635>, 2000.
- Schwark, L., Zink, K., and Lechterbeck, J.: Reconstruction of postglacial to early Holocene vegetation history in terrestrial Central Europe via cuticular lipid biomarkers and pollen records from lake sediments, *Geology*, 30, 463–466, [https://doi.org/10.1130/0091-7613\(2002\)030<0463:ROPTEH>2.0.CO;2](https://doi.org/10.1130/0091-7613(2002)030<0463:ROPTEH>2.0.CO;2), 2002.
- 735 Shumilovskikh, L. S. and van Geel, B.: Non-Pollen Palynomorphs, in: *Handbook for the Analysis of Micro-Particles in Archaeological Samples*, edited by Henry, A. G., pp. 65–94, Springer International Publishing, Cham, [https://doi.org/10.1007/978-3-030-42622-4\\_4](https://doi.org/10.1007/978-3-030-42622-4_4), 2020.
- Sim, T. G., Swindles, G. T., Morris, P. J., Baird, A. J., Cooper, C. L., Gallego-Sala, A. V., Charman, D. J., Roland, T. P., Borken, W., Mullan, D. J., Aquino-López, M. A., and Galka, M.: Divergent responses of permafrost peatlands to recent climate change, *Environmental Research Letters*, 16, 034001, <https://doi.org/10.1088/1748-9326/abe00b>, 2021.
- 740 Smith, A. J. E.: The moss flora of Britain and Ireland, Cambridge University Press, 2004.

- Speranza, A., Hanke, J., van Geel, B., and Fanta, J.: Late-Holocene human impact and peat development in the Černá Hora bog, Krkonoše Mountains, Czech Republic, *The Holocene*, 10, 575–585, <https://doi.org/10.1191/095968300668946885>, 2000.
- 745 Stivrins, N., Ozola, I., Gaška, M., Kuske, E., Alliksaar, T., Andersen, T. J., Lamentowicz, M., Wulf, S., and Reitalu, T.: Drivers of peat accumulation rate in a raised bog: Impact of drainage, climate, and local vegetation composition, *Mires and Peat*, <https://doi.org/10.19189/MaP.2016.OMB.262>, 2017.
- Stivrins, N., Aakala, T., Ilvonen, L., Pasanen, L., Kuuluvainen, T., Vasander, H., Gaška, M., Disbrey, H. R., Liepins, J., Holmström, L., and Seppä, H.: Integrating fire-scar, charcoal and fungal spore data to study fire events in the boreal forest of northern Europe, *The Holocene*, 29, 1480–1490, <https://doi.org/10.1177/0959683619854524>, 2019.
- 750 Stockmarr, J.: Tablets with spores used in absolute pollen analysis, *Pollen et Spores*, 13, 615–621, 1971.
- Svobodová, H., Soukupová, L., and Reille, M.: Diversified development of mountain mires, Bohemian Forest, Central Europe, in the last 13,000 years, *Quaternary International*, 91, 123–135, [https://doi.org/10.1016/S1040-6182\(01\)00106-9](https://doi.org/10.1016/S1040-6182(01)00106-9), 2002.
- Swindles, G. T., Morris, P. J., Mullan, D. J., Payne, R. J., Roland, T. P., Amesbury, M. J., Lamentowicz, M., Turner, T. E., Gallego-Sala, A., Sim, T., et al.: Widespread drying of European peatlands in recent centuries, *Nature Geoscience*, 12, 922–928, <https://doi.org/10.1038/s41561-019-0462-z>, 2019.
- 755 Thüringer Landesanstalt für Umwelt und Geologie: Moore in den Kammlagen des Thüringer Waldes, 2002.
- Tinner, W. and Hu, F. S.: Size parameters, size-class distribution and area-number relationship of microscopic charcoal: relevance for fire reconstruction, *The Holocene*, 13, 499–505, <https://doi.org/10.1191/0959683603hl615rp>, 2003.
- Tinner, W., Conedera, M., Gobet, E., Hubschmid, P., Wehrli, M., and Ammann, B.: A palaeoecological attempt to classify fire sensitivity of trees in the southern Alps, *The Holocene*, 10, 565–574, <https://doi.org/10.1191/095968300674242447>, 2000.
- 760 Tuittila, E.-S., Välijärvi, M., Laine, J., and Korhola, A.: Quantifying patterns and controls of mire vegetation succession in a southern boreal bog in Finland using partial ordinations, *Journal of Vegetation Science*, 18, 891–902, <https://www.jstor.org/stable/4499301>, 2007.
- Von Post, L.: Forest tree pollen in south Swedish peat bog deposits.[translated: Davis, MB and Faegri, K.(1967)], *Pollen et Spores*, 9, 375–401, 1916.
- 765 Wang, M., Moore, T. R., Talbot, J., and Riley, J. L.: The stoichiometry of carbon and nutrients in peat formation, *Global Biogeochemical Cycles*, 29, 113–121, <https://doi.org/10.1002/2014GB005000>, 2015.
- Wanner, H., Pfister, C., and Neukom, R.: The variable European Little Ice Age, *Quaternary Science Reviews*, 287, 107531, <https://doi.org/10.1016/j.quascirev.2022.107531>, 2022.
- 770 Wiesenberg, G. L. B. and Gocke, M. I.: Analysis of lipids and polycyclic aromatic hydrocarbons as indicators of past and present (micro)biological activity, in: *Hydrocarbon and Lipid Microbiology Protocols: Petroleum, Hydrocarbon and Lipid Analysis*, edited by McGenity, T. J., Timmis, K. N., and Nogales, B., pp. 61–91, Springer Berlin Heidelberg, Berlin, Heidelberg, [https://doi.org/10.1007/8623\\_2015\\_157](https://doi.org/10.1007/8623_2015_157), 2017.
- Wilkins, W.: Studies in the genus *Ustilina*—With special reference to parasitism: I. Introduction—survey of previous literature and host index, *Transactions of the British Mycological Society*, 18, 320–346, [https://doi.org/10.1016/S0007-1536\(34\)80017-4](https://doi.org/10.1016/S0007-1536(34)80017-4), 1934.
- 775 Wimble, G.: The palaeoecology of the lowland coastal raised mires of South Cumbria, Ph.D. thesis, University College, 1986.
- Xie, S., Nott, C. J., Avsejs, L. A., Maddy, D., Chambers, F. M., and Evershed, R. P.: Molecular and isotopic stratigraphy in an ombrotrophic mire for paleoclimate reconstruction, *Geochimica et Cosmochimica Acta*, 68, 2849–2862, <https://doi.org/10.1016/j.gca.2003.08.025>, 2004.

- Xu, J., Morris, P. J., Liu, J., and Holden, J.: PEATMAP: Refining estimates of global peatland distribution based on a meta-analysis, *Catena*, 780 160, 134–140, <https://doi.org/10.1016/j.catena.2017.09.010>, 2018.
- Yu, Z., Loisel, J., Brosseau, D. P., Beilman, D. W., and Hunt, S. J.: Global peatland dynamics since the Last Glacial Maximum, *Geophysical Research Letters*, 37, <https://doi.org/10.1029/2010GL043584>, 2010.
- Zheng, Y., Zhou, W., Meyers, P. A., and Xie, S.: Lipid biomarkers in the Zoigê-Hongyuan peat deposit: Indicators of Holocene climate changes in West China, *Organic Geochemistry*, 38, 1927–1940, <https://doi.org/10.1016/j.orggeochem.2007.06.012>, 2007.
- 785 Zheng, Y., Zhou, W., Liu, Z., and Liu, X.: The n-alkanol paleoclimate records in two peat deposits: a comparative study of the northeastern margin of the Tibetan Plateau and Northeast China, *Environmental Earth Sciences*, 63, 135–143, <https://doi.org/10.1007/s12665-010-0676-2>, 2011.
- Zhou, W., Xie, S., Meyers, P. A., and Zheng, Y.: Reconstruction of late glacial and Holocene climate evolution in southern China from geolipids and pollen in the Dingnan peat sequence, *Organic Geochemistry*, 36, 1272–1284, <https://doi.org/10.1016/j.epsl.2010.02.035>, 790 2005.