

Technical note: Enhancement of float-pH data quality control methods: A study case in the subpolar northwest Atlantic Ocean

Cathy Wimart-Rousseau¹, Tobias Steinhoff¹, Birgit Klein³, Henry Bittig⁴, and Arne Körtzinger^{1,2}

¹GEOMAR Helmholtz Centre for Ocean Research Kiel, Kiel, Germany

²Kiel University, Kiel, Germany

³Federal Maritime and Hydrographic Agency (BSH), Hamburg, Germany

⁴Leibniz Institute for Baltic Sea Research Warnemuende (IOW), Seestrasse 15, 18119 Rostock, Germany

Correspondence: Cathy Wimart-Rousseau (cwimart-rousseau@geomar.de)

Abstract. Since a pH sensor has become available that is suitable for demanding autonomous measurement platforms, the marine CO₂ system can be observed independently and continuously by BGC-Argo floats. This opens the possibility to detect variability and long-term changes in interior ocean inorganic carbon storage and quantify the ocean sink for atmospheric CO₂. In combination with a second parameter of the marine CO₂ system, pH can be a useful tool to derive the surface ocean CO₂ partial pressure (*p*CO₂). The large spatiotemporal variability of the marine CO₂ system requires sustained observations to decipher trends and measure the impacts of short-term events (e.g., eddies, storms, phytoplankton blooms) but also puts a high emphasis on the quality control of float-based pH measurements. In consequence, a consistent and rigorous quality-control procedure has been established to correct sensor offsets or drifts, as the interpretation of changes depends on accurate data.

By applying standardized routines of the Argo data management to pH measurements from a pH/O₂ float pilot array in the subpolar North Atlantic Ocean, we investigate the uncertainties and lack of objective criteria associated with the standardized routines, notably the choice of the reference method for the pH correction (CANYON-B, LIR-pH, ESPER-NN and ESPER-LIR) as well the reference depth for this adjustment. For the studied float array, significant differences ranging between ca. 0.003 pH units and ca. 0.04 pH units are observed between the four reference methods which have been proposed to correct float-pH data. Through comparison against discrete and underway pH data from other platforms, an assessment of the adjusted float-pH data quality is presented. The results point out noticeable discrepancies near the surface of > 0.01 pH units. In the context of converting surface ocean pH measurements into *p*CO₂ data for the purpose to derive air-sea CO₂ fluxes, we conclude that the minimum accuracy requirement of 0.01 pH units (equivalent to the minimum *p*CO₂ accuracy of 10 μatm for potential future inclusion into the SOCAT database) is not systematically achieved in the upper ocean.

While the limited dataset and regional focus of our study does not allow for firm conclusions, the evidence presented still calls for an additional independent pH reference in the surface ocean. We therefore propose a way forward to enhance the float-pH quality control procedure. In our analysis, the current philosophy of pH data correction against climatological

Mis en forme : Anglais (E.U.)

Supprimé: S

Supprimé: N

Supprimé: region

Mis en forme : Anglais (E.U.)

Mis en forme : Anglais (E.U.)

Mis en forme : Anglais (E.U.)

Supprimé: this

Supprimé: punctual events

Supprimé: river discharge,

Mis en forme : Anglais (E.U.)

Mis en forme : Anglais (E.U.)

Supprimé: as the interpretation of changes depends on accurate data, and because sensor offsets or drifts might appear, ...

Supprimé: correction

Supprimé: to process and quality-control the data has been established

Supprimé: .

Supprimé: or

Supprimé: LIRPH

Mis en forme : Anglais (E.U.)

Supprimé: correction

Supprimé: of ca.

Supprimé: 2

Supprimé: two

Supprimé: can be used

Mis en forme : Anglais (E.U.)

Supprimé: from water samples

Mis en forme : Anglais (E.U.)

Supprimé: water samples

Mis en forme : Anglais (E.U.)

Supprimé: provides only one showcase

Supprimé: , it

Mis en forme : Anglais (E.U.)

reference data at one single depth in the deep ocean appears insufficient to assure adequate data quality in the surface ocean. Ideally, an additional reference point should be taken at or near the surface where the resulting $p\text{CO}_2$ data are of the highest importance to monitor the air-sea exchange of CO_2 and would have the potential to very significantly augment the impact of the current observation network.

1. Introduction

Since the beginning of the industrial era, the ocean has played a critical role by absorbing about 25% (Friedlingstein et al., 2022) of the annual anthropogenic CO₂ emissions, thereby mitigating the current climate change (IPCC, 2021). Ocean CO₂ uptake causes changes in the ocean chemistry, inducing an increase in hydronium ion concentration (i.e., a decrease in oceanic pH). Throughout the world ocean, these changes, also termed “ocean acidification” (OA; Doney et al., 2009), are already observed and a global surface ocean pH decline of 0.1 units since the beginning of the industrial era has been reported (Orr et al., 2005). Depending on emission scenarios, ocean acidity will increase with a projected pH decline ranging from 0.16 to 0.44 pH units by 2100 (e.g., Kwiatkowski et al., 2020). These changes, while being variable regionally and along the water column (Carstensen and Duarte, 2019; Orr et al., 2005), represent a significant environmental change and potential threat to marine organisms and marine ecosystems that needs to be elucidated.

To assess long-term changes in ocean chemistry, oceanographic cruises were conducted and discrete water samples were collected. These historical hydrographic data have been synthesized in databases such as the Global Ocean Data Analysis Project (GLODAPv2) database (Olsen et al., 2016) which provides an internally consistent reference data product. However, in addition to anthropogenic modifications, oceanic pH is a dynamic variable in response to biological, physical, and chemical processes and changes on daily to centennial timescales, with pronounced seasonal, interannual, and decadal variability. In consequence, ship-based observing strategies, being often skewed towards certain months and regions, especially in some places where current sampling methods are not possible (e.g., permanently or seasonally ice-covered regions), cannot adequately capture the dynamic spatiotemporal variability of the carbonate system parameter.

In order to improve our understanding of the oceanic CO₂ cycle and to decipher any temporal change, sustained time-series measurements at fixed stations have been carried out over the last decades (e.g., Bates et al., 2014). Nevertheless, the low spatial coverage associated with these sampling sites, generally located near coastal areas, precludes a rigorous description of the open-ocean variability. Thus, these long-term data collections, with uneven regional distribution and typically moderate temporal resolutions (i.e., bi-weekly or monthly), lead to “observational gaps” with an under-sampling of biogeochemical variables (Tanhua et al., 2019). Since the 1990s, the Ship Of Opportunity Program (SOOP; Goni et al., 2010) aims to obtain data from autonomous instrumentation installed on volunteer merchant ships regularly crossing certain areas. This network contributes to building sustained carbon observing datasets and complements the limited capacity of classical observational strategies as the standard-SOOP framework features, at least, routine pCO₂ observations (e.g. Lüger et al., 2004). In the Atlantic Ocean, parts of the SOOP network are operated in the European Research Infrastructure ‘Integrated Carbon Observation System’ (ICOS) and the ‘Surface Ocean CO₂ Reference Observing Network’ (SOCO₂NET).

Mis en forme	... [1]
Code de champ modifié	... [2]
Mis en forme	... [3]
Code de champ modifié	... [4]
Mis en forme	... [5]
Mis en forme	... [9]
Code de champ modifié	... [6]
Mis en forme	... [7]
Code de champ modifié	... [8]
Code de champ modifié	... [10]
Mis en forme	... [11]
Code de champ modifié	... [12]
Mis en forme	... [13]
Code de champ modifié	... [16]
Mis en forme	... [17]
Code de champ modifié	... [18]
Mis en forme	... [19]
Supprimé: seawater will continue to become less alkaline	
Code de champ modifié	... [14]
Mis en forme	... [15]
Code de champ modifié	... [20]
Mis en forme	... [21]
Code de champ modifié	... [22]
Mis en forme	... [23]
Code de champ modifié	... [24]
Mis en forme	... [25]
Code de champ modifié	... [26]
Mis en forme	... [27]
Code de champ modifié	... [28]
Mis en forme	... [29]
Mis en forme	... [31]
Code de champ modifié	... [30]
Code de champ modifié	... [32]
Mis en forme	... [33]
Code de champ modifié	... [34]
Mis en forme	... [35]
Code de champ modifié	... [36]
Mis en forme	... [37]
Code de champ modifié	... [38]
Mis en forme	... [39]
Code de champ modifié	... [40]
Mis en forme	... [41]
Code de champ modifié	... [42]
Mis en forme	... [43]
Code de champ modifié	... [44]
Mis en forme	... [45]

To circumvent these gaps and overcome the existing severe limitations in terms of both spatial and temporal resolutions, autonomous platforms such as moorings, profiling floats, underwater gliders, or surface vehicles have been deployed at a global scale (Bushinsky et al., 2019; Whitt et al., 2020) and contributed to the extension of databases (Abram et al., 2019). Recently, the development of a pH sensor suitable for deployment on autonomous platforms has extended our observation capabilities ability of the marine CO₂ system (Johnson et al., 2016).

Defined as an Essential Ocean Variable (EOV) by the Global Ocean Observing System (GOOS, www.gooscean.org), pH can be used to determine marine CO₂ system changes in response to anthropogenic impacts. However, the key to this autonomous platform expansion is the achievable and documented quality of the pH data which relies on defined practices ranging from rigorous pre-deployment sensor calibration to post-deployment assurance of data accuracy and consistency (Johnson et al., 2018). Indeed, for reliably identifying and interpreting changes accurate and consistent data are needed.

For BGC-Argo floats data, operational procedures for physical data (temperature, salinity, pressure) quality control have been established, ranging from automated “Real-Time” (RT) checks to sophisticated “Delayed-Mode” (DM) adjustments (Schmechtig et al., 2016; Wong et al., 2022). For pH, numerous delayed-mode procedures have been suggested (Williams et al., 2016; Johnson et al., 2017) but a uniform, fully tested and globally-proven correction method is still missing. Recently, in the framework of the Southern Ocean Carbon and Climate Observations and Modelling project (SOCCOM; Russell et al., 2014), a methodology has been developed to correct nitrate, pH, and oxygen values from sensor drifts and offsets in DM. Two Matlab tools named SAGE (SOCCOM Assessment and Graphical Evaluation) and SAGE-O2 have been created as interfaces to support the validation and correction of float pH and oxygen data, respectively. In the SAGE procedure (Maurer et al., 2021), the machine learning method ‘Carbonate system and Nutrient concentration from hydrological properties and Oxygen, Bayesian approach’ (CANYON-B; Bittig et al., 2018b), the Locally Interpolated Regression (LIR) algorithmic method (Carter et al., 2018) and multiple linear regression techniques (Williams et al., 2016) are used as a reference to correct float pH data at depths of typically around 1500 dbar. The neural-network CANYON-B approach is based on the approach originally developed by (Sauzède et al., 2017). Recently, two Empirical Seawater Property Estimation Routines (ESPER, Carter et al., 2021) have been included in the SAGE as reference methods. The ESPER-NN method generates estimates from neural networks while the ESPER-LIR routine is based on locally interpolated regressions.

In this study, we have used the SAGE tool and the included adjustment methods to correct float pH data acquired from a pilot array established in 2018 in the subpolar northwest Atlantic Ocean (SNWA), a region of particular relevance in the marine carbon cycle. This area is a key region for anthropogenic carbon uptake and storage (Sabine et al., 2004; Gruber et al., 2009; Khatiwala et al., 2013; Racapé et al., 2018) as a consequence of (1) the Meridional Overturning Circulation (MOC) transporting warm and anthropogenic carbon-laden tropical waters by its upper limb (Sabine et al., 2004; Gruber et al., 2009; Khatiwala et al., 2013), and to (2) deep winter convection events occurring in the Labrador and Irminger Seas

Mis en forme	... [46]
Mis en forme	... [48]
Mis en forme	... [54]
Code de champ modifié	... [47]
Mis en forme	... [50]
Mis en forme	... [52]
Code de champ modifié	... [53]
Code de champ modifié	... [55]
Mis en forme	... [56]
Code de champ modifié	... [57]
Mis en forme	... [58]
Code de champ modifié	... [49]
Code de champ modifié	... [51]
Code de champ modifié	... [59]
Mis en forme	... [60]
Code de champ modifié	... [61]
Mis en forme	... [62]
Code de champ modifié	... [63]
Mis en forme	... [64]
Mis en forme	... [66]
Code de champ modifié	... [65]
Mis en forme	... [68]
Code de champ modifié	... [67]
Mis en forme	... [70]
Code de champ modifié	... [69]
Supprimé: fication	
Mis en forme	... [71]
Code de champ modifié	... [76]
Mis en forme	... [77]
Code de champ modifié	... [78]
Mis en forme	... [79]
Code de champ modifié	... [80]
Mis en forme	... [81]
Supprimé: ,	
Code de champ modifié	... [72]
Mis en forme	... [73]
Code de champ modifié	... [74]
Mis en forme	... [75]
Mis en forme	... [82]
Code de champ modifié	... [83]
Mis en forme	... [84]
Code de champ modifié	... [85]
Mis en forme	... [86]
Supprimé: -	
Code de champ modifié	... [87]
Mis en forme	... [88]
Code de champ modifié	... [89]
Mis en forme	... [90]
Code de champ modifié	... [91]
Mis en forme	... [92]
Code de champ modifié	... [93]
Mis en forme	... [94]
Supprimé: -	

which transfer anthropogenic carbon from surface to the deep ocean (Körtzinger et al., 1999; Sabine et al., 2004; Ridge and McKinley, 2020). Moreover, it should be noted that the North Atlantic Oscillation (NAO), through its impact on the atmospheric variability in the North Atlantic region, induces high temporal variability on interannual (Watson et al., 2009) to decadal time scales (Leseurre et al., 2020) and may alter the residence time of anthropogenic carbon in the ocean by altering the rate of water mass transformation (Levine et al., 2011). In this context, the study region can be considered both a region of highest interest and a region of methodological challenges.

This paper illustrates the performance of the proposed standard Argo quality control routines with the float pH data acquired in the SNWA region. By using float-pH data and independent pH data measured from water samples collected at a nearby station as well as underway data obtained from an autonomous platform in the SNWA area, we can provide an evaluation of (1) the impact of the choice of the at-depth reference pressure as well as the choice of the reference method used to correct float-pH data, (2) differences to co-located in situ discrete pH data over the water column and within the surface layer and, (3) differences to crossovers to in situ surface pH data collected along a ship-of-opportunity line.

2. Materials and Methods

2.1. BGC-Argo float array

As part of an ongoing pilot study, 10 BGC-Argo floats from two manufacturers (NKE instrumentation and Teledyne Webb Research) were deployed in the SNWA region (Fig. 1) over the 2018-2022 period. All floats were equipped with pressure, temperature, salinity (SBE-41CP sensor, Sea-Bird Electronics), oxygen (oxygen optode 4330 with individual multi-point manufacturer calibration, Aanderaa Data Instruments), and pH sensors (SeaFETTM sensor, Sea-Bird Electronics, Inc.). As some of BGC-Argo floats considered here are still operational, no DM data are available yet for the entire dataset. BGC-Argo data were obtained from the Coriolis Data Assembly Center. For inactive BGC-Argo floats, the Argo real-time quality control procedures have been applied by the Coriolis data centre (Wong et al., 2022). Temperature and salinity measurements (derived from conductivity) are recorded with accuracies of ± 0.002 °C and ± 0.005 PSU. The initial pH accuracy “claimed” by the manufacturer is of ± 0.05 pH units. Data adjustment can bring accuracies varying between ± 0.005 pH units (Johnson et al., 2017) and ± 0.007 pH units (Maurer et al., 2021). Oxygen optodes, similar to other chemical sensors, are known to suffer from storage drift prior to deployment (Bittig and Körtzinger, 2015; Johnson et al., 2015). SAGE-O₂, or an equivalent script, must therefore be used to correct float-oxygen data before any float-pH data correction which employs oxygen values as ancillary data (e.g., CANYON-B). We note that the oxygen data correction employs in-air measurements routinely carried out during each float surfacing to achieve highest data accuracy (Bittig and Körtzinger, 2015; Bittig et al., 2018a). A stringent referencing and

Mis en forme	... [149]
Mis en forme	... [151]
Mis en forme	... [153]
Mis en forme	... [155]
Mis en forme	... [157]
Code de champ modifié	... [148]
Code de champ modifié	... [150]
Code de champ modifié	... [152]
Code de champ modifié	... [154]
Code de champ modifié	... [156]
Code de champ modifié	... [158]
Mis en forme	... [159]
Code de champ modifié	... [160]
Mis en forme	... [161]
Mis en forme	... [163]
Code de champ modifié	... [162]
Code de champ modifié	... [164]
Mis en forme	... [165]
Code de champ modifié	... [166]
Mis en forme	... [167]
Code de champ modifié	... [168]
Mis en forme	... [169]
Code de champ modifié	... [170]
Mis en forme	... [171]
Mis en forme	... [172]
Supprimé: s	
Mis en forme	... [173]
Mis en forme	... [174]
Mis en forme	... [175]
Mis en forme	... [176]
Mis en forme	... [178]
Code de champ modifié	... [177]
Code de champ modifié	... [179]
Mis en forme	... [180]
Code de champ modifié	... [181]
Mis en forme	... [182]
Supprimé:	
Mis en forme	... [183]
Supprimé: ranges from ± 0.05 as stated	
Mis en forme	... [184]
Supprimé: to	
Mis en forme	... [185]
Supprimé: after data is adjusted	
Mis en forme	... [186]
Code de champ modifié	... [187]
Mis en forme	... [188]
Code de champ modifié	... [189]
Mis en forme	... [190]
Supprimé:	
Mis en forme	... [191]
Code de champ modifié	... [192]
Mis en forme	... [193]
Code de champ modifié	... [194]

adjustment process for the oxygen can yield accuracies around $1.5 \mu\text{mol kg}^{-1}$ (Bittig et al., 2018a), although depending on the details of the optode calibration, handling, and usage scenario, the accuracy of O_2 measurements can vary considerably.

In our case, O_2 from the 10 pH-equipped Argo floats was adjusted following Argo procedures (Bittig et al., 2018; Thierry et al., 2022) with in-air measurements and the adjustments are available in near-real time. In February 2023, one float had been recovered and five were still operational. We point out that, unfortunately, the 10 deployed floats suffered from an unusually high number of manufacturer-related technical issues or failures either of the pressure sensor (WMO 3901167, replaced from warranty by WMO 7900566), the GPS system (WMO 7900566) or the pH sensor itself (WMO 6904110, 6904111, 6904112, 6904114, 6904115). This has severely compromised the amount of data acquired so far in the pilot study and reduces the robustness of the conclusions. As the two most long-lasting floats deployed in 2018 (WMO 3901668 and 3901669) showed stable pH data and the pH sensors have serial numbers not related to a recent problem with the pH sensor's reference electrode, they have been assumed to represent the optimum case for the achievable performance of this current technology. In addition, float-pH data measured by the float WMO 6904112 have been used in this study considering its position regarding the SOOP line corridor and the high number of crossovers recorded. As a consequence, only float-pH data recorded by these three floats are used here. Moreover, adjusted temperature, salinity and oxygen data were available for these floats. We note, that the high failure rate points at problems in sensor manufacturing in recent years that need to be resolved in order for BGC-Argo to unfold its full potential.

Code de champ modifié

Mis en forme : Anglais (E.U.)

Mis en forme : Anglais (E.U.)

Mis en forme : Anglais (E.U.)

Mis en forme : Anglais (E.U.)

Mis en forme : Anglais (E.U.)

Supprimé: transects

Mis en forme : Anglais (E.U.)

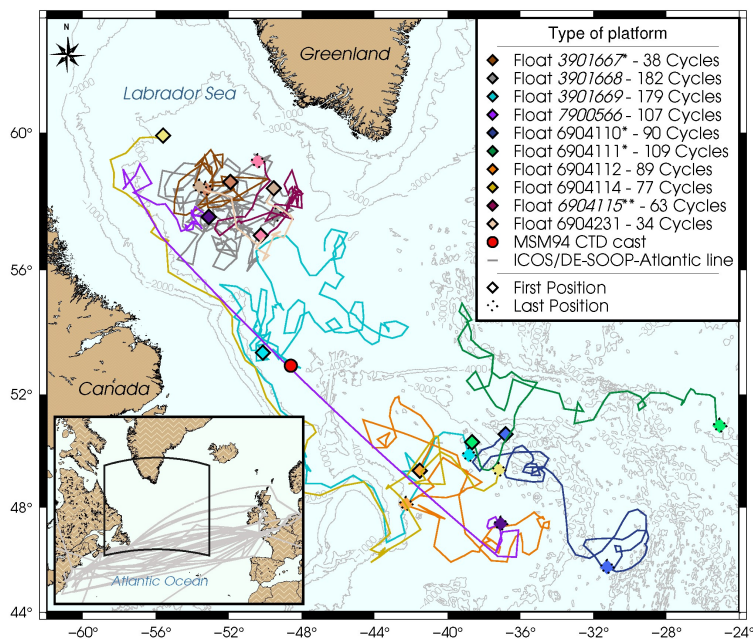


Figure 1. Map of the Northwest Atlantic with Labrador Sea and North Atlantic Current showing the trajectories of all 10 pH/O₂ floats deployed so far in our pilot study. In the legend, floats in italics are inactive. * Float with a faulty pressure and/or pH sensor. ** Float recovered. Dotted points show the last locations as of February 7th, 2023. In the inserted map, gray lines indicate the **corridor and discrete** ship routes occupied by our “Ship-of-Opportunity” platform (ICOS station DE-SOOP-Atlantic Sail) **during the period 2021-2022**. The red dot indicates the location of hydrographic station 13 visited during the *Maria S. Merian* cruise 94 (MSM94) in August 2020.

2.2. Reference measurements

In situ pH data measured from water samples are generally considered as reference data for float-based observations and are useful tools to independently estimate pH data accuracy and, if needed, apply additional **adjustments**. Nevertheless,

- Mis en forme : Anglais (E.U.)
- Mis en forme : Anglais (E.U.)
- Mis en forme : Anglais (E.U.)
- Mis en forme : Retrait : Gauche : 2,17 cm, Sans numérotation ni puces
- Mis en forme : Anglais (E.U.)
- Supprimé : other than the ones (e.g., GLODAP) used in the pH correction procedure
- Mis en forme : Anglais (E.U.)
- Supprimé : corrections
- Mis en forme : Anglais (E.U.), Non Étendu de/ Condensé de
- Mis en forme : Anglais (E.U.), Non Étendu de/ Condensé de
- Mis en forme : Anglais (E.U.)
- Mis en forme : Anglais (E.U.), Non Étendu de/ Condensé de
- Mis en forme : Anglais (E.U.)
- Mis en forme : Anglais (E.U.), Non Étendu de/ Condensé de
- Mis en forme : Anglais (E.U.)
- Mis en forme : Anglais (E.U.)
- Mis en forme : Anglais (E.U.), Non Étendu de/ Condensé de
- Mis en forme : Anglais (E.U.)
- Mis en forme : Anglais (E.U.), Non Étendu de/ Condensé de

under normal circumstances, it would be nearly impossible to obtain specifically close crossovers between CTD casts and floats profiling during a float's lifetime without significantly impacting the fieldwork schedule of a research cruise. The comparison of discrete pH samples, taken from a hydrocast at the float deployment, with float-pH data is limited due to the high sensor drift during the first cycles (Bittig and Körtzinger, 2015; Bittig et al., 2018a; Maurer et al., 2021). In the Southern Ocean, Maurer et al. (2021) reported an offset value for the first segment of -0.32 pH units, illustrating the sensor performance upon deployment caused by the lack of conditioning in some of the pH sensors as well as the sensor re-conditions to an aqueous environment. However, after float-pH data adjustments, Johnson et al. (2017) and Maurer et al. (2021) showed median shipboard bottle-minus-float differences of 0.006 pH units and 0.002 pH units, respectively. In the SNWA area, we had the unique opportunity to acquire a hydrocast with discrete pH samples with a float profile.

A few float (WMO 3901669) pH profiles occurred close to the R/V *Maria S. Merian* 94 (MSM94) cruise in August 2020 (Karstensen et al., 2020). Thanks to the cooperation of the chief scientist of the cruise and in a joint effort with the Euro-Argo RISE project, a spatio-temporally close crossover was achieved: hydrographic station 13 with discrete sampling for pH analyses was occupied less than 1 day after and at the exact location of the float cycle 122 (Table 1, Fig. 1). The discrete samples were poisoned onboard following standard operating procedures (Dickson et al., 2007). They were measured at GEOMAR for total alkalinity (TA), dissolved inorganic carbon (DIC) and pH. Since DIC and pH are very sensitive to gas exchange they were measured in parallel as soon as the bottles were opened. DIC was measured using a classical SOMMA system (Johnson et al., 1993) with coulometric detection, while pH was measured using the HydroFIA-pH system from 4H-Jena. The pH measurements were checked regularly against community-accepted certified reference material (CRM, Andrew Dickson, Scripps Institution of Oceanography, La Jolla/CA, USA). Note that the CRM is certified only for DIC and TA but pH measurements are also performed routinely for each bag and were made available to us (pers. comm. Andrew Dickson, $\text{pH}=7.8417 \pm 0.0014$ at 25°C). The resulting uncertainty in pH measurements for the discrete samples was ± 0.002 pH units. The pH data were measured at 25°C and atmospheric pressure and were then converted to in situ temperature and pressure using the CO2SYS software (van Heuven et al., 2011). The matching of float-pH data and discrete pH data was performed in density space rather than depth space to avoid biases from internal wave activity.

In the SNWA, GEOMAR has been operating, with intermissions, a carbon-SOOP line for two decades (ICOS station DE-SOOP-Atlantic Sail; Fig. 1). This SOOP network can be used as a potential reference for quality control of autonomous platform datasets. In addition to the standard $p\text{CO}_2$ instrument (Model 8050 $p\text{CO}_2$ Measuring System, General Oceanics, Miami/FL, USA; Pierrot et al., 2009), autonomous systems for TA (Contros HydroFIATM TA system, 4H-JENA engineering GmbH, Jena, Germany) and pH measurements (Contros HydroFIATM pH system, 4H-JENA

Mis en forme	... [208]
Supprimé: for pH	
Supprimé: at a deployment cast	
Mis en forme	... [209]
Mis en forme	... [210]
Supprimé: Nevertheless,	
Mis en forme	... [211]
Mis en forme	... [212]
Code de champ modifié	... [213]
Mis en forme	... [214]
Code de champ modifié	... [215]
Mis en forme	... [216]
Supprimé: has been	
Mis en forme	... [217]
Supprimé: achieved	
Mis en forme	... [218]
Code de champ modifié	... [219]
Mis en forme	... [220]
Code de champ modifié	... [221]
Mis en forme	... [222]
Code de champ modifié	... [223]
Mis en forme	... [224]
Code de champ modifié	... [225]
Mis en forme	... [226]
Code de champ modifié	... [227]
Mis en forme	... [228]
Code de champ modifié	... [229]
Mis en forme	... [230]
Déplacé (insertion) [1]	
Mis en forme	... [231]
Mis en forme	... [233]
Code de champ modifié	... [232]
Code de champ modifié	... [234]
Mis en forme	... [235]
Supprimé: In the SNWA, carbon observations are also	[236]
Mis en forme	... [237]
Supprimé: Parts of ...the Atlantic SOOP network are...	[238]
Code de champ modifié	... [239]
Mis en forme	... [240]
Supprimé:)	
Mis en forme	... [241]
Code de champ modifié	... [242]
Mis en forme	... [243]
Code de champ modifié	... [244]
Mis en forme	... [245]

engineering GmbH, Jena, Germany) were installed on this SOOP line in 2019 and 2021, respectively. For pH, pre- and post-calibration runs against CRM from Andrew Dickson's laboratory are performed before and after each 5-week roundtrip and an individual pH correction is applied to each pH indicator bag (meta-cresol purple; MCP). The overall accuracy of SOOP-pH is estimated to be about ± 0.003 pH units.

2.3. Correction of float-pH data

Conceptually, the pH correction has to be done by adjusting the sensor's reference potential (k_0) as this is drifting over time (Johnson et al., 2016). For each pH sensor, the in situ pH is proportional to the voltage between the ion sensitive field effect transistor (ISFET) source and the reference electrode (Johnson et al., 2016). The measured potential is then converted into pH on the total proton scale using laboratory-based calibration coefficients. Thus, pH sensors are calibrated in the laboratory using spectrophotometric measurements and are therefore directly related to the laboratory calibration method. Each sensor's pressure and temperature coefficients, needed to compute the in situ pH, are also determined in the laboratory as described in Johnson et al. (2016). When deployed at sea, temperature changes modify the reference potential of the sensor and in return induce a sensor drift as the Nernst slope that transforms sensor potential to pH depends on temperature (Johnson et al., 2016, 2017).

The general adjustment process performed in the SAGE procedure is based on the assumption that the determined offsets and drifts are constant across the entire water column profile (Johnson et al., 2017, Maurer et al., 2021). Thus, the standard SAGE adjustment process relies on a reference that is used to calculate the at-depth (typically around 1500 dbar) anomaly between measured and estimated reference data, which is applied as an offset to the reference potential. It is propagated on the entire water column profile by normalizing the adjustment along the profile to the temperature at which the adjustment was derived. Temperature-normalized changes in pH are calculated by multiplying the change in pH computed at depth by the ratio of the absolute temperature of the sample to the absolute temperature at reference depth. To calculate the correction, the float-pH time-series is split into distinct segments bound on either side by breakpoint nodes determined by a cost function. Then, both drift and offset between segments are calculated by linear least-squares fit to the anomaly data series between two nodes. Indeed, by breaking the time-series sensor record into different segments and fitting each with a linear rate of change in k_0 , the adjustment better represents the sensor behavior over time as both drifts and offsets change independently between segments and oftentimes noticeable jumps occur over the first few cycles in a float's life (Maurer et al., 2021).

Déplacé vers le haut [1]: Note that the CRM is certified only for DIC and TA but pH measurements are also performed routinely for each bag and were made available to us (pers. comm. Andrew Dickson).

Mis en forme : Anglais (E.U.)

Mis en forme : Retrait : Gauche : 2,17 cm, Sans numérotation ni puces

Mis en forme : Anglais (E.U.)

Mis en forme ... [247]

Code de champ modifié

Mis en forme ... [246]

Code de champ modifié

Code de champ modifié

Mis en forme ... [248]

Code de champ modifié

Mis en forme ... [249]

Code de champ modifié

Mis en forme ... [250]

Mis en forme ... [251]

Code de champ modifié

Code de champ modifié

Mis en forme ... [252]

Code de champ modifié

Mis en forme ... [253]

Code de champ modifié

Mis en forme ... [254]

Mis en forme : Police :10 pt, Anglais (E.U.)

Mis en forme : Justifié, Interligne : 1,5 ligne

Mis en forme ... [255]

Supprimé:

Mis en forme ... [256]

Supprimé:

Mis en forme : Anglais (E.U.)

Mis en forme : Corps de texte, Retrait : Première ligne : 0,06 cm, Droite : 0,17 cm, Espace Avant : 0,1 pt, Interligne : Multiple 1,46 li

Table 1. Crossover between pH profiles of float WMO 3901669 and a CTD cast acquired in the Labrador Sea in August 2020. Time and position refer to the end of the profile.

Profile	Time	Position
Float WMO 3901669, Cycle 122	August 15 th , 2020 10:26 UTC	52.955°N-48.600°W
MSM94 CTD cast, Station 13	August 16 th , 2020 05:36 UTC	52.953°N-48.600°W

In our analysis, three pH correction methods, called 'cycle-by-cycle', 'linear adjustment' and '3-point running mean', respectively, have been implemented locally. Like in the SAGE tool, the pH adjustment is calculated by these methods based on comparison to CANYON-B reference pH values calculated at a user-defined pressure level, where spatiotemporal variability of oceanic components is assumed to be minimal. The CANYON-B method was chosen as a reference assuming it to be more robust in the North Atlantic region (Carter et al., 2021). Nonetheless, two slight differences exist between SAGE and the methods proposed here: (1) The adjustment can be applied either to each cycle individually ('cycle-by-cycle' method) or, as in SAGE, to data within segments of consecutive profiles ('segment method', with each segment calculated using a cost function). (2) When using the segment method, a centered 7-point linear regression is used for cycles neighboring segment breakpoints to allow for a smoother k_0 drift between segments (Fig. 2; Johnson et al., 2016). As in SAGE, offset and drift calculated with this method ('linear adjustment' method) are then applied to the measured float pH profiles after normalization to the temperature at which the adjustment was derived. Finally, another adjustment method entitled '3-point running mean method' was tested in this study. In this, the adjustment calculated by the 'cycle-by-cycle method' was used to determine a new offset for each cycle calculated as a running mean of 3 cycles, i.e. including the cycle before and after the respective cycle. This method should smooth the adjustment obtained with the cycle-by-cycle adjustment. Hereafter, every adjustment method different from the one in SAGE will be labelled as 'GEOMAR method'.

- Supprimé: l
- Supprimé: lin
- Supprimé: from the
- Code de champ modifié ... [257]
- Mis en forme ... [258]
- Mis en forme ... [259]
- Mis en forme ... [260]
- Supprimé: he t
- Mis en forme ... [261]
- Supprimé: s
- Mis en forme ... [262]
- Mis en forme ... [263]
- Supprimé: a
- Mis en forme ... [264]
- Supprimé: "
- Mis en forme ... [265]
- Supprimé: '
- Mis en forme ... [266]
- Supprimé: s
- Mis en forme ... [267]
- Supprimé: correction
- Mis en forme ... [268]
- Supprimé: i
- Mis en forme ... [269]
- Supprimé: the ...omparison to reference
- Mis en forme ... [270]
- Mis en forme ... [271]
- Supprimé:
- Code de champ modifié ... [272]
- Mis en forme ... [273]
- Code de champ modifié ... [274]
- Mis en forme ... [275]
- Supprimé: correction
- Mis en forme ... [276]
- Code de champ modifié ... [277]
- Mis en forme ... [278]
- Code de champ modifié ... [279]
- Mis en forme ... [280]
- Code de champ modifié ... [281]
- Mis en forme ... [282]
- Supprimé: correction ...ethod entitled "
- Mis en forme ... [283]
- Supprimé: "
- Mis en forme ... [284]
- Supprimé: "
- Mis en forme ... [285]
- Supprimé: c...djustmentorrection...calculated for...by
- Mis en forme ... [286]
- Mis en forme ... [287]
- Supprimé:)
- Mis en forme ... [288]
- Supprimé: using the mean value for the offset of the
- Mis en forme ... [289]
- Supprimé: considered one
- Mis en forme ... [290]
- Supprimé: correction ...djustment obtained with the
- Mis en forme ... [291]

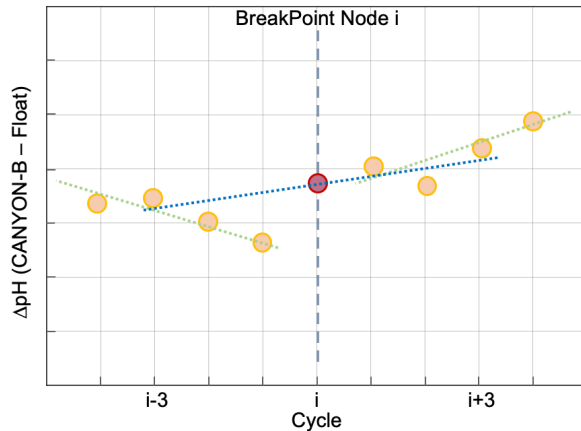


Figure 2. Schematic representation of the GEOMAR float-pH data adjustment method called 'linear adjustment'. As in the SAGE tool, a linear least-square fit is calculated between reference and float-pH data for cycles located between two breakpoint nodes to derive the offset and drift (green lines). The blue line represents the second least-square fit obtained and applied to the elements located 3 cycles before and after the node (red dot) in the 'linear adjustment' method. Adapted from Maurer et al. (2021).

2.4. Comparisons with SOOP-based observations

To compare SOOP-based and float-based surface pH observations, we adopted the crossover definition from the Surface Ocean CO₂ Atlas (SOCAT; Sabine et al., 2013) which combines the mismatch in both distance and time between two measurements. In the SOCAT algorithm, one day of separation in time (t in days) is heuristically equivalent to 30 km of separation in space (x in km) and 80 km is the maximum value for an acceptable single crossover $((dx^2 + (dt * 30)^2)^{1/2}$; Wanninkhof et al., 2013). Here we used a much increased search window of 400 km to yield a larger number of crossovers and to optimize between spatial and temporal mismatch. In addition, a maximum temporal mismatch of 7 days was allowed for a crossover. The SOCAT criterion of a maximum of 80 km aims to compare two datasets of surface pCO_2 observations to agree better than $2 \mu\text{atm}$. In this study, we conclude that this is not yet routinely achieved by pH data from floats and therefore we used a larger radius to ensure more crossovers and better statistics. The resulting crossovers were further reduced by the requirement of a maximal temperature difference between the float measurement and the temperature measurement onboard the SOOP line of 4°C ($-4.0 < \Delta T < 4.0$). To make the pH measurements from both platforms comparable, the SOOP-based pH data were corrected to the surface water temperature of the corresponding float profile. We note that for possible future implementation of the SOOP crossover method in the DM QC routine for float pH data this needs to be further explored and more elaborate crossover criteria may have to be developed.

- Mis en forme : Anglais (E.U.)
- Supprimé: correction
- Mis en forme : Anglais (E.U.)
- Supprimé: GEOMAR
- Mis en forme : Anglais (E.U.)
- Code de champ modifié
- Mis en forme : Anglais (E.U.)
- Mis en forme : Anglais (E.U.)
- Code de champ modifié
- Mis en forme : Anglais (E.U.)
- Mis en forme : Anglais (E.U.)
- Mis en forme : Retrait : Gauche : 2,17 cm, Sans numérotation ni puces
- Mis en forme : Anglais (E.U.)
- Code de champ modifié
- Mis en forme : Anglais (E.U.)
- Mis en forme : Anglais (E.U.)
- Code de champ modifié
- Mis en forme : Anglais (E.U.)
- Mis en forme : Anglais (E.U.)
- Mis en forme : Anglais (E.U.)
- Code de champ modifié
- Mis en forme : Anglais (E.U.)
- Mis en forme : Anglais (E.U.)
- Supprimé: n
- Mis en forme : Anglais (E.U.)
- Supprimé:
- Supprimé: yet
- Supprimé: satisfié
- Mis en forme : Anglais (E.U.)
- Mis en forme : Anglais (E.U.)
- Supprimé: need
- Mis en forme : Anglais (E.U.)

2.5. MLD calculations

Following De Boyer Montégut et al. (2004), a density threshold of 0.03 kg m^{-3} with a reference depth of 10 dbar was used to compute the Mixed Layer Depth (MLD). We used MLD to determine waters affected by deep convection events which cause unstable biogeochemical properties also at depth that are being used for float-pH data adjustments.

3. Results and Discussion

3.1. Uncertainties of delayed-mode float-pH data

In the following we first illustrate uncertainties associated with the current correction method for float-pH data as implemented in the standardized routines from Argo data management as well as in the SAGE tool for four referencing methods (CANYON-B, ESPER-NN, ESPER-LIR, and LIR-pH) and two selected floats (WMO 3901668 and 3901669) which had no apparent technical malfunctions during their lifetime.

3.1.1. Uncertainty associated with choice of reference depth

In order to assess the uncertainty associated with the choice of the reference depth for pH adjustment, differences between float-pH data corrected using the “classical” reference pressure around 1500 dbar (Maurer et al., 2021) minus float-pH data corrected over the pressure range 1940–1980 dbar (i.e., pressure around 1950 dbar) were calculated for the four reference methods LIR-pH (without the OA adjustment), CANYON-B (Fig. 3A), ESPER-NN and ESPER-LIR (Fig. 3B). Differences between float-based pH data for the two difference reference depths as achieved by the four methods ranged between -0.0005 and ca. 0.03 pH units, with mean values for all cycles of the considered floats varying between 0.0047 and 0.0141 pH units (Fig. 3B). The choice of the reference depth thus incurs a large difference of at least ca. 0.005 pH units which is above a tolerable level. This points to a severe limitation of the pH correction scheme. The deepest mixed layer depth estimated from the float time-series was at 1937 dbar, showing that the entire water column covered by the float profiles is probably affected. In this regard, the subpolar North Atlantic region with its deep-reaching anthropogenic CO_2 imprint is certainly a most difficult area for the unambiguous choice of a stable and unperturbed reference depth as both float-pH data and reference pH values could vary noticeably at the classical reference depth. Recently, Wimart-Rousseau et al. (2022) performed a similar exercise by changing the reference depth from ca. 1500 dbar to ca. 900 dbar for a float in the Eastern Tropical North Atlantic region and reported a tolerable uncertainty from this choice of 0.0008 pH units. The order of magnitude difference in the uncertainty incurred from the reference depth choice illustrates the regional dependence on hydrological conditions which can severely compromise the correction method or even render it almost useless as in the case presented here.

Mis en forme : Retrait : Gauche : 2,17 cm, Sans numérotation ni puces

Mis en forme ... [293]

Mis en forme : Anglais (E.U.)

Supprimé: two

Mis en forme ... [294]

Supprimé: LIRPH

Mis en forme : Anglais (E.U.)

Supprimé: correction... différences between float-pH data corrected using the “classical” reference pressure around 1500 dbar (Maurer et al., 2021) minus float-pH data corrected over the pressure range 1940- and ... [295]

Mis en forme : Anglais (E.U.)

Supprimé: tw...ouro...reference methods LIRPH...LIR-pH (without the OA adjustment),and...CANYON-B (Fig. 3A), ESPER-NN and ESPER-LIR (Fig. 3B). DCalculated,d [296]

Mis en forme : Anglais (E.U.)

Supprimé: processed using corrections based on the two different depth-reference pressure values

Mis en forme : Anglais (E.U.)

Supprimé: 03... and ca. 0.032...pH units, with mean values for all cycles of the considered floats varying between 0.0068...7 and 0.0141098 ... [297]

Mis en forme : Anglais (E.U.)

Supprimé: A

Mis en forme : Anglais (E.U.)

Code de champ modifié

Supprimé: In this deep convection area, it...his therefo... [298]

Mis en forme : Anglais (E.U.)

Supprimé: which... showing that the entire water column covered by the float profiles is probably affected. In this regard, the subpolar North Atlantic region with its deep-reaching anthropogenic CO_2 imprint is certainly a most... [299]

Mis en forme ... [300]

Code de champ modifié

Mis en forme : Anglais (E.U.)

Supprimé: Fiedler

Mis en forme : Anglais (E.U.)

Code de champ modifié

Mis en forme ... [301]

Supprimé: 10

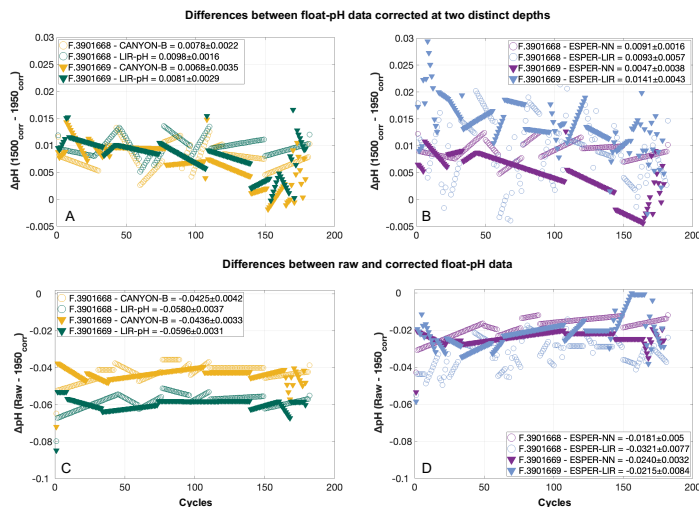


Figure 3. (A and B) Mean differences between float-pH data corrected using the “classical” reference depth of 1500 dbar minus float-pH data corrected with reference-pH data calculated between 1940 and 1980 dbar (i.e., 1950 dbar) for the floats WMO 3901668 (circle dots) and 3901669 (triangle dots) and for the reference methods (A) LIR-pH without the OA adjustment (green dots) and CANYON-B (orange dots) and (B) ESPER-NN (purple dots) and ESPER-LIR (blue dots), (C and D) Raw float-pH data minus float-pH corrected using the “area-specific” reference depth of 1950 dbar for the two-reference methods CANYON-B (orange dots) and LIR-pH (green dots) in Fig. 3C and the two-reference methods ESPER-NN (purple dots) and ESPER-LIR (blue dots) in Fig. 3D and for the floats WMO 3901668 (circle dots) and 3901669 (triangle dots).

3.1.2. Uncertainty associated with choice of reference model

Four distinct reference methods are used in the standardized Argo pH quality control, both in SAGE and in this study: the LIR pH regression method (LIR-pH), the CANYON-B method (Fig. 3C), the ESPER-NN and the ESPER-LIR methods (Fig. 3D). For all methods, corrected float-pH showed significant mean offsets to the raw pH profiles comprising values between ca. -0.02 and -0.06 pH units (Fig. 3C and D). Moreover, mean differences between the four reference methods ranging between about 0.003 pH units and ca. 0.04 pH units are observed in the SNWA, with the lowest difference reported for the ESPERs methods indicating that they perform comparably (Table 2).

While the CANYON-B and the LIR-pH algorithmic methods are methodologically different (one is based on a neural network while the other uses linear regressions), both have been trained with and tested against the GLODAPv2 dataset (Olsen et al., 2016). Still, ocean pH measurement practices have changed over time, leading to a variety of ways to measure pH. In

- Mis en forme ... [302]
- Mis en forme ... [303]
- Supprimé: two
- Mis en forme ... [304]
- Supprimé: LIRPH
- Mis en forme ... [305]
- Supprimé: and
- Mis en forme ... [306]
- Supprimé: (B
- Mis en forme ... [307]
- Supprimé: classical... reference depth of 150...50 dbar for
- Mis en forme ... [309]
- Supprimé: (C) Float-pH corrected using LIRPH as a...
- Supprimé:Saut de section (page suivante).....
- Mis en forme ... [311]
- Supprimé: Two...distinct reference methods are used in the
- Code de champ modifié ... [313]
- Mis en forme ... [314]
- Supprimé: 4
- Mis en forme ... [315]
- Supprimé: both ...ethods, un...corrected float-pH showed
- Mis en forme ... [317]
- Code de champ modifié ... [318]
- Mis en forme ... [319]
- Supprimé: B
- Mis en forme ... [320]
- Supprimé: a ...ean differences between the four two ...
- Mis en forme ... [322]
- Supprimé: of...about 0.016 pH units is...re observed in the
- Mis en forme ... [324]
- Supprimé: LIRPH...IR-pH algorithmic methods are ...
- Mis en forme ... [326]
- Supprimé:
- Code de champ modifié ... [327]
- Mis en forme ... [328]
- Code de champ modifié ... [329]
- Mis en forme ... [330]
- Supprimé: and tested against it
- Mis en forme ... [331]
- Supprimé: with
- Mis en forme ... [332]

addition, pH calculated from DIC and TA is not always in line with spectrophotometrically measured pH (Carter et al., 2018). In consequence, heterogeneities in pH data compilations such as GLODAPv2 exist. While CANYON-B was trained with GLODAPv2 without modifications, Carter et al., (2018) applied a range of adjustments to create a more consistent pH data product that was used for LIR-pH training (with pH being in line with “purified spectrophotometric pH measurements”). Given the dominance of calculated pH data in GLODAPv2, CANYON-B pH estimates are in line with calculated pH (Bittig et al., 2018b; Carter et al., 2018). In the SAGE software, an optional CANYON-B pH data adjustment can be applied to align estimates with spectrophotometric pH measurements made using purified dye following Carter et al., (2018, Equation 1). The recent literature (Carter et al., 2018; Johnson et al., 2018) recommends employing this reference-pH data adjustment emphasizing that, as pH sensors are calibrated in the laboratory using spectrophotometric measurements with purified dyes, sensor measurements should be directly related to the laboratory calibration method. In this study, we have decided to include this reference-pH data adjustment to correct float-pH data: [a linear transformation was applied to CANYON-B pH estimates to bring estimates back into alignment with spectrophotometrically measured pH. The ESPERs routines broadly function similar to LIR and CANYON-B although using a gridded anthropogenic carbon product to estimate the OA, assuming a marine anthropogenic carbon increase proportional to an exponential increase in atmospheric anthropogenic CO₂ concentration.](#)

Therefore, it is more critical than ever for the scientific community to perform intercomparisons of marine CO₂ system variables and address their associated uncertainties regarding the large and growing variety of instruments and approaches used to measure, deduce and calculate CO₂ variables. [Figure 4 exhibits spatial distributions of estimated pH data at the classical reference 1500 m depth level using either LIR-pH \(with the OA adjustment\), CANYON-B, ESPER-LIR, or ESPER-NN and illustrates the differences between the estimated datasets with uncertainty between reference algorithms in the order of 0.015 pH units in the SNWA area.](#) Despite the undeniable strength of current algorithms, [CANYON-B and LIR-pH methods suffer from weaknesses and uncertainties due to the pH adjustment; a complete regional or temporal description of the current ocean acidification is limited with LIR-pH \(i.e., LIR-pH assumes fixed OA rates over time; Carter et al., 2018\), and the pH conversion according to another measurement mode in CANYON-B induces biases \(Bittig et al., 2018b\).](#) In consequence, a mean difference between the two methods of about 0.016 pH units is observed in the SNWA (Table 2 and Fig. 4). In addition, using the SOCCOM array, Maurer et al., (2021) calculated CANYON-B and LIR-pH pH estimates and observed a larger uncertainty toward the surface compared to 1500 m with mean differences (CANYON-B pH minus LIR-pH pH data) of -0.025 and 0.001 pH units [near the surface and at the 1500 m depth level](#), respectively. This surface discrepancy can be explained by the difficulty for algorithms to represent seasonal variability and air-sea gas exchange. [The new ESPERs methods attempt to resolve the issues encountered with existing routines \(especially the OA estimate\) by expanding their functionality and being trained on a larger data product. In comparison with the LIR-pH estimates, large differences are observed in the SNWA region and might be attributable to the OA adjustment as well as the omission of depth as a predictor variable from ESPER-LIR \(Carter et al., 2021\). Updated global algorithms \(i.e., ESPERs\) show comparable estimates in the SNWA area with ESPER-LIR pH estimates slightly higher than pH data estimated with CANYON-B or ESPER-NN. In the dynamic and strongly human-impacted studied region, the lack of coordinate information as a predictor variable in the ESPER-LIR routine could also be argued as an explanation of the observed differences. However, according to Carter et al. \(2021\), regional assessment statistics](#)

Mis en forme	... [334]
Mis en forme	... [336]
Code de champ modifié	... [333]
Code de champ modifié	... [335]
Mis en forme	... [340]
Supprimé: corrections ... o create a more consistent pH data	... [344]
Code de champ modifié	... [337]
Mis en forme	... [338]
Code de champ modifié	... [339]
Code de champ modifié	... [342]
Mis en forme	... [343]
Code de champ modifié	... [344]
Mis en forme	... [345]
Code de champ modifié	... [346]
Mis en forme	... [347]
Code de champ modifié	... [348]
Mis en forme	... [349]
Code de champ modifié	... [350]
Mis en forme	... [351]
Code de champ modifié	... [352]
Mis en forme	... [353]
Code de champ modifié	... [354]
Mis en forme	... [355]
Code de champ modifié	... [356]
Mis en forme	... [357]
Code de champ modifié	... [358]
Mis en forme	... [359]
Code de champ modifié	... [360]
Mis en forme	... [361]
Code de champ modifié	... [362]
Mis en forme	... [363]
Supprimé: keep	
Mis en forme	... [364]
Supprimé: (Fig. 4).	
Mis en forme	... [365]
Supprimé: they both	
Mis en forme	... [366]
Supprimé: t, limiting the one (LIRPH) from	
Mis en forme	... [367]
Code de champ modifié	... [368]
Mis en forme	... [369]
Code de champ modifié	... [370]
Mis en forme	... [371]
Supprimé: other (CANYON-B) from a conversion of the pH	
Mis en forme	... [372]
Code de champ modifié	... [373]
Mis en forme	... [374]
Code de champ modifié	... [375]
Mis en forme	... [376]
Supprimé: Fig. 3C).	
Mis en forme	... [377]
Code de champ modifié	... [378]
Mis en forme	... [379]

obtained in the Northern Atlantic indicate almost similar biases for both the ESPERs and the CANYON-B methods, with a better RMSE statistic for CANYON-B.

Thus, this study illustrates the need for further studies on the choice and performance of the referencing method in different ocean regions with a special emphasis on regional biases and limitations.

Supprimé: ¶

Mis en forme : Anglais (E.U.)

Supprimé: ¶

Table 2. Mean absolute differences between float-pH data corrected at two distinct depths and using the four different reference methods for the floats WMO 3901668 and 3901669. SD stands for Standard Deviation.

x-y		1500 db			1950 db		
		LIR-pH	CANYON-B	ESPER-LIR	LIR-pH	CANYON-B	ESPER-LIR
WMO 3901668	ESPER-NN	0.0407 ± 0.0028	0.0232 ± 0.0019	0.0143 ± 0.0013	0.0399 ± 0.0027	0.0245 ± 0.0024	0.0140 ± 0.0053
	ESPER-LIR	0.0264 ± 0.0026	0.0089 ± 0.0016		0.0259 ± 0.0052	0.0105 ± 0.0045	
	CANYON-B	0.0175 ± 0.0012			0.0155 ± 0.0011		
WMO 3901669	ESPER-NN	0.0391 ± 0.0021	0.0217 ± 0.0014	0.0069 ± 0.0055	0.0356 ± 0.0019	0.0196 ± 0.0014	0.0025 ± 0.0074
	ESPER-LIR	0.0321 ± 0.0069	0.0148 ± 0.0058		0.0381 ± 0.0076	0.0221 ± 0.0070	
	CANYON-B	0.0173 ± 0.0014			0.0161 ± 0.0018		

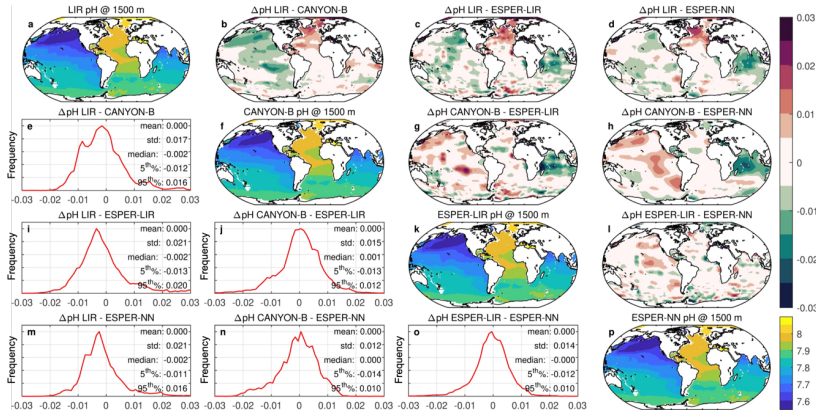


Figure 4. Spatial distributions of estimated pH data at the classical reference depth 1500 m using different reference models: LIR-pH (with the OA adjustment) (a), CANYON-B (b), ESPER-LIR (k) and ESPER-NN (n). Maps of the spatial difference between the estimated pH datasets are presented in panel (b-d, g-h and i). Panel (e, j-i and m-o) shows the bias Δ pH distribution (with statistics). The upper colorbar indicates the difference between estimated pH data using the different models and the lower colorbar gives the pH values. For clarity, pH data estimated for the Black Sea have been removed for this simulation as they were outside the 5th/95th percentile and they caused a noticeable increase of the standard deviation (std).

3.1.3. Adjustment of sensor drift

- Supprimé: LIRPH
- Mis en forme : Anglais (E.U.)
- Supprimé: A
- Mis en forme : Anglais (E.U.)
- Supprimé: and
- Supprimé:
- Supprimé: D
- Supprimé: The m
- Supprimé: e two
- Mis en forme : Anglais (E.U.)
- Mis en forme : Anglais (E.U.)
- Mis en forme : Anglais (E.U.)
- Mis en forme : Anglais (E.U.)
- Supprimé: is
- Supprimé: B
- Mis en forme : Anglais (E.U.)
- Mis en forme : Anglais (E.U.)
- Mis en forme : Anglais (E.U.)
- Mis en forme : Anglais (E.U.)
- Mis en forme : Anglais (E.U.)
- Mis en forme : Anglais (E.U.)
- Mis en forme : Anglais (E.U.)
- Supprimé: C
- Mis en forme : Anglais (E.U.)
- Supprimé: two
- Mis en forme : Anglais (E.U.), Exosant
- Mis en forme : Anglais (E.U.)
- Mis en forme : Anglais (E.U.), Exosant
- Mis en forme : Anglais (E.U.)
- Supprimé: Correction

In addition to the choice of reference depth and method, some additional uncertainty can be incurred ~~from the way the~~ pH sensor drift correction is applied to the float data. Sensor response often shows different modes of variability and drift. A typical mode of variability is sensor noise, i.e., variability entirely introduced by electronic components of the sensor. This noise does not represent true variability in the observed quantity and should therefore be removed. In addition, long-term systematic drift in sensor response due to changes in zero levels and/or gain factors is also an internal artefact of the sensor that needs to be corrected for. More rarely, sensors can also show more erratic and non-systematic variability in individual measurements or over certain measurement periods which often has unknown reasons. These are hard to distinguish from true variability in the observed quantity and are hence also hard to ~~be removed~~. The method to apply sensor corrections in time-series measurements should take a conservative approach trying to remove known modes of sensor variability while conserving real variability in the data.

~~In the sequence~~ of steps in the current ~~delayed mode~~ Argo ~~adjustment~~ method, first the Δ pH (raw- corrected, at reference depth) is calculated for each cycle. In the SAGE tool, a cost function is applied for the correction of temporal trends ~~which~~ determines sections over which a linear correction is calculated and then applied to each cycle included in the respective section (Fig. 5A). We also applied three different ~~adjustment~~ methods: (1) a cycle-by-cycle ~~method~~, (2) a 7-point linear regression method named “linear adjustment” and (3) a 3-point running mean ~~adjustment~~ method, which should smooth the correction obtained with the cycle-by-cycle adjustment (Fig. 5B). In every case, CANYON-B was used as the reference method as well as the “classical” reference pressure depth of 1500 dbar.

Supprimé: by

Supprimé: how

Supprimé: correct for

Supprimé: T

Supprimé: correction

Mis en forme : Anglais (E.U.)

Mis en forme : Anglais (E.U.)

Supprimé: sequence

Mis en forme : Anglais (E.U.)

Supprimé: uses is a delayed mode correction and

Mis en forme : Anglais (E.U.)

Mis en forme : Anglais (E.U.)

Supprimé: that

Mis en forme : Anglais (E.U.)

Mis en forme : Anglais (E.U.)

Mis en forme : Anglais (E.U.)

Supprimé: correction

Supprimé: correction

Mis en forme : Anglais (E.U.)

Code de champ modifié

Supprimé: c

Mis en forme : Anglais (E.U.)

Supprimé: orrection

Mis en forme : Anglais (E.U.)

Code de champ modifié

Mis en forme : Anglais (E.U.)

Mis en forme : Anglais (E.U.)

Mis en forme : Anglais (E.U.)

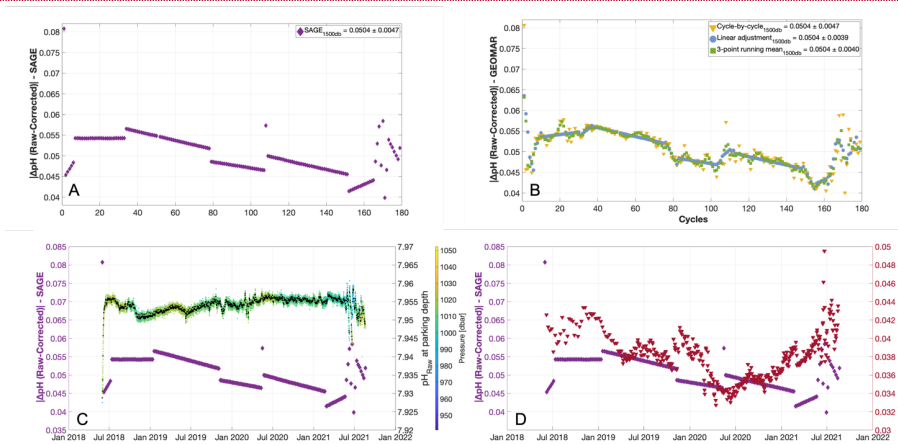


Figure 5. Mean differences between raw float-pH data minus float-pH corrected using the SAGE tool (Fig.5A), the cycle-by-cycle GEOMAR method (yellow dots, Fig.5B), and the linear mean regression GEOMAR method (blue dots, Fig.5B) and the 3-point centered running mean correction method (green dots, Fig.5B) for float WMO 3901669. In every case, CANYON-B was chosen as a reference method, and 1500 dbar was chosen as the reference depth. Mean differences between raw and corrected float-pH data with the standard deviations are shown in the legend boxes for each reference method. Figure C shows, for comparison with the SAGE correction, the uncorrected pH data measured at the parking depth (right y-axis) with black dots representing mean pH values for each day. The colorbar shows pressure. Figure D shows differences between raw float-pH data minus float-pH corrected using the SAGE tool (purple dots, left y-axis) and differences between uncorrected mean pH data measured at the parking depth minus mean reference CANYON-B pH data calculated using measurements recorded at the parking depth (red dots, right y-axis).

Mis en forme ... [383]

Supprimé: Figure 5. Differences between raw float-pH data minus float-pH corrected using the SAGE tool (purple dots, left y-axis), the cycle-by-cycle GEOMAR method (yellow dots, right y-axis), and the linear mean regression GEOMAR method (blue dots, right y-axis) for float WMO 3901669. The 3-point centered running mean correction method is represented by the green dots (right y-axis). In every case, CANYON-B was chosen as a reference method and 1500 dbar were chosen as reference depth. Note that we put the data obtained with the SAGE tool and those calculated using the GEOMAR correction on two separate y-axes for better viewing.

Mis en forme ... [384]

Mis en forme ... [385]

Supprimé: The profile-by-profile correction has the disadvantage that it does not remove any of the sensor noise. On the other hand, a single linear drift adjustment across the entire time-series does not seem adequate either as it does not reflect the clear upward and downwards

... [386]

The choice of the correction method has to reflect our understanding of the sensor's behavior. Over time, sensor reference potential shifts are observed for pH sensors, leading to jumps in the data time series. As stated by Maurer et al. (2021), these jumps are typically periodic and followed by longer periods of steady drift. The cycle-by-cycle adjustment has the disadvantage that it gives discontinuous adjustment rather than a segmented set of piecewise adjustments. On the other hand, a single linear drift adjustment across the entire time-series does not seem adequate either as it does not reflect the clear upward and downward swings in the record which are mostly interpreted as changes occurring in the sensor.

Therefore, the adjustment method should involve techniques such as a higher-order spline fit, a centered running mean, or a segment separation of the record into linear drift phases. The latter is implemented in the SAGE tool (Fig. 5A). This method, however, does not provide smooth transitions between linear drift phases and leads to step-like changes of the order of 0.01 pH units between two consecutive profiles which appear to be unrealistic when compared to the pattern of the cycle-by-cycle correction and the pH readings at the parking depth. The correction methods for temperature and salinity also ask for maximum smoothness in the corrections and to avoid introducing artificial jumps (Owens and Wong, 2009). Our slightly improved GEOMAR linear adjustment version (Fig. 5B) significantly reduces these discontinuities and artificial jumps. Generally, the linear segment methods assume linear sensor drift and step-like changes in sensor characteristics. In our view, the sensor rather shows undulations in response with smooth and less smooth phases. The pH sensor behavior when the float drifts at its parking depth is in agreement with this observation (Fig. 5C). In comparison with float-pH data corrected using the SAGE method, no strong visible discontinuities in raw pH data are observed while the float drifts between its measurement's phases. In our view, the sensor rather shows undulations in response with smooth and less smooth phases over time. In order to test the impact of the reference method on the adjustment pattern, differences between uncorrected float-pH data and CANYON-B pH data derived at the parking depth are presented in Figure 5D. Once again, the pH time-series shows smoothed transitions and the general pattern doesn't present noteworthy jumps. Such sharp transitions can perhaps be best corrected with our modified GEOMAR segment method or alternatively with a spline fit or a 3-point centered running mean (Fig. 5B).

We suggest to use the improved segment or running mean method to avoid strong discontinuities in the pH correction which otherwise could introduce biases in corrected pH of up to 0.01 pH units in individual profiles – a magnitude that would strongly impair quality control measures based on referencing against other in situ pH measurement from CTD casts or surface observation platforms (see Section 3.2). Indeed, and even if the impact of the adjustment method on the final corrected dataset is almost non-significant regarding the mean differences values (Fig. 5D), the possible impact of such artificial jumps induced by the method itself rather than the pH sensor could be noticeable if float-pH data related to these peculiar discontinuous cycles are compared against discrete pH measurements and then adjusted (see Section 3.2).

3.2. Comparison with in situ discrete pH

3.2.1. Crossover with CTD hydrocast

Crossover comparisons can be used as an option to independently estimate float-pH data accuracy and determine if additional adjustments are needed. In 2020, we had the rare opportunity to perform a CTD hydrocast with discrete pH sampling (cruise MSM94) at the exact location and less than 24 h after a float profile (WMO 3901669, profile 122; Fig. 1).

- Supprimé: a more adapted ...method should involve ... [387]
- Supprimé: ...rder spline fit, a centered running mean.. [389]
- Mis en forme ... [388]
- Code de champ modifié ... [390]
- Mis en forme ... [391]
- Supprimé: profile-by-profile
- Mis en forme ... [392]
- Code de champ modifié ... [393]
- Mis en forme ... [394]
- Code de champ modifié ... [395]
- Mis en forme ... [396]
- Code de champ modifié ... [397]
- Mis en forme ... [398]
- Supprimé: top
- Mis en forme ... [399]
- Supprimé:
- Mis en forme ... [400]
- Supprimé: (Fig. A1).
- Mis en forme ... [401]
- Supprimé: a pattern ...an perhaps be best corrected for [402]
- Mis en forme ... [403]
- Supprimé:
- Code de champ modifié ... [404]
- Mis en forme ... [405]
- Supprimé: top
- Mis en forme ... [406]
- Mis en forme ... [407]
- Mis en forme ... [408]
- Code de champ modifié ... [409]
- Mis en forme ... [410]
- Supprimé: ¶
- Mis en forme ... [411]
- Supprimé: corrections
- Code de champ modifié ... [412]
- Mis en forme ... [413]

which allows for direct comparison between discrete and float-based in situ pH data after the float's initial drift period. Figures 6 A and B present differences between discrete pH measurements and float-pH data along the water column and according to two distinct reference pressure levels. We find mean differences ranging between -0.0659 and -0.0150 pH units (Fig. 6B) between the reference pH cast and the fully corrected pH of cycle 122, with higher differences found for the “classical” reference depth of 1500 dbar (Fig. 6A), and the lowest differences reported for the two ESPER methods.

Matching sensor data from a float with discrete samples is a non-trivial task due to complications arising from (a) the sensor response time and (b) the uncertainty about the effective depth from which the water captured in a Niskin bottle at a trigger given depth stems from. There seems to be no perfect way of matching these and some uncertainty remains – especially in-depth ranges with strong gradients in the variable of interest. Mismatch (and resulting statistical noise) due to internal wave activity can mostly be avoided by matching profile and bottle data in density space which was performed here. Differences between discrete and float temperature and salinity data add confidence in the density space matching performed in this study (Fig. A1). However, the likely imperfect representation of the true water sampling depth by the trigger depth (and hence corresponding CTD data) of a Niskin bottle introduces the potential of systematic error in gradient regimes, although in a gradient of increasing pH both effects (a) and (b) would lead to underestimation of pH. Still, the results of this comparison therefore have to be interpreted with caution. Moreover, the laboratory-to-in-situ temperature pH conversion uncertainty of 0.005 pH units (Williams et al., 2017), as well as the absolute uncertainty in the bottle pH measurements (here 0.002 pH units), have to be taken into account before drawing strong conclusions.

The results show smallest offsets at/near the reference pressure levels and increase towards the surface. In this area, near-surface variability and patchiness can be large and would require a perfect match in both space and time for strong conclusions and robust significance of the surface values observations (< 30 dbar). Nevertheless, pH offsets are positively correlated with temperature, being smallest at the temperature of the reference depth. Overall, the results appear to be robust and not an artefact of the matching procedure and point towards an imperfect representation of the temperature and pressure dependences of the pH sensor (Fig. 6C). Although the actual pH values may be slightly different due to the regional variability, the observed trend is confirmed. However, this single crossover does not allow for a solid conclusion and therefore can only serve as a hint at shortcomings in the pH referencing method. With larger amounts of matchups between hydrocasts and pH profiles and optimized SOOP-float crossover data, an independent validation and perhaps adjustment method could be investigated. Indeed, SOOP data can represent an additional reference and comparison data source.

Supprimé: (Fig. 6C).

Supprimé: of

Mis en forme : Anglais (E.U.)

Supprimé: 485

Mis en forme : Anglais (E.U.)

Mis en forme : Anglais (E.U.)

Supprimé: 424

Code de champ modifié

Mis en forme : Anglais (E.U.)

Supprimé: C

Mis en forme : Anglais (E.U.)

Supprimé: the

Mis en forme : Anglais (E.U.)

Supprimé: .

Mis en forme : Anglais (E.U.)

Code de champ modifié

Mis en forme : Anglais (E.U.)

Supprimé: D

Mis en forme : Anglais (E.U.)

Supprimé:

Supprimé: correction

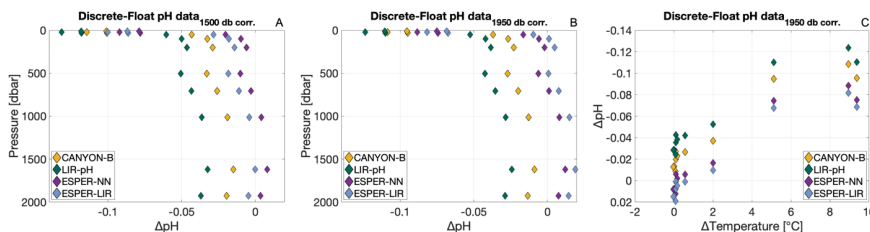


Figure 6. (A and B) Differences between discrete and float-pH data (for the cycle 122) calculated after matching in density space to avoid biases from internal waves and corrected using corrected reference levels of 1500 dbar (Fig. 6A) and 1950 dbar (Fig. 6B). (C) ΔpH (discrete pH measurements minus float-pH data corrected at the reference depth level 1950 dbar) as a function of the difference between discrete water temperature (i.e. the temperature measured in situ at the time of bottle triggering at sea) and temperature values recorded at the reference depth of 1950 dbar. The color code refers to the reference method used to correct float-pH data: CANYON-B (yellow diamonds), LIR-pH (green diamonds), ESPER-NN (purple diamonds) or ESPER-LIR (bleu diamonds).

3.2.2 Crossover with SOOP-based surface measurements

In addition to the comparison of entire pH profiles as described above, we compared float-based pH measurements in the surface (average pH between 5 and 15 m depth) with surface pH measurements from a SOOP line crossing the North Atlantic twice every 5 weeks (see Section 2.4). The cruise track of the SOOP line partly overlaps with the trajectories of floats deployed in the North Atlantic region (see Figure 1). For this comparison, we used data from two floats (WMO 6904112 and WMO 3901669) between May 2021 and October 2022. We note that further testing and improvement of this approach on larger datasets needs to be carried out to define an optimal crossover criterion. Given the limitations of the dataset (mostly due to massive manufacturing problems of the 2020/2021 pH sensor series), unfortunately no robust recommendations in terms of absolute numbers can be drawn from these experiments. Nevertheless, the assumption was made hereafter that regressions using crossovers achieved with a relatively wide search window yield a more robust ΔpH estimate than an average of a small number of crossovers found with a smaller search window.

Figure 7 shows the differences ($\Delta\text{pH} = \text{SOOP} - \text{float}$) between SOOP-based surface pH observations (corrected to the temperature of the respective float surface pH observations) and the averaged mixed layer pH values of the two pH/O_2 floats as a function of ΔT (temperature difference between float data and SOOP data). As any mismatch in temperature will likely be associated with a corresponding mismatch in pH (both due to the temperature sensitivity of pH and different water mass properties), the ΔpH at $\Delta T = 0$ should be a reasonable estimate of the pH offset between SOOP and float. By fitting a linear regression to the data, the pH offset at $\Delta T = 0$ can be estimated more robustly as the intercept of the

Supprimé: (A and B) Vertical profiles of pH in total scale at in situ temperature measured during the MSM94 cruise and acquired by the float WMO 3901669 during cycles 121, 122 and 123 (gray and orange lines, respectively). Float-pH data have been corrected using the SAGE tool with CANYON-B (black lines) as reference method using reference levels of 1500 dbar (A) and 190 dbar (B).

Mis en forme ... [414]

Supprimé: C... Differences between discrete and float-pH data (for the cycle 122) calculated after matching in density space to avoid biases from internal waves and corrected using corrected reference levels of 1500 dbar (Fig. 6A) and 1950 dbar (Fig. 6B). The color code refers to float-pH data corrected using reference levels of 1500 dbar (red diamonds) and 1900 dbar (blue diamonds). ...CD

Mis en forme ... [415]

Mis en forme ... [417]

Supprimé:

Mis en forme : Anglais (E.U.)

Supprimé: where float-pH data have been calculated to obtain the ΔpH ...

Supprimé: whole

Mis en forme ... [418]

Code de champ modifié

Mis en forme ... [419]

Supprimé: crosses

Mis en forme : Anglais (E.U.)

Supprimé: the area of the

Mis en forme : Anglais (E.U.)

Supprimé: Drift

Mis en forme ... [420]

Supprimé: a...hans ... [421]

Code de champ modifié

Mis en forme ... [422]

Supprimé: observations

Mis en forme ... [423]

Supprimé: Under the assumption that differences in pH to a major extent are driven by differences in temperature, t

Mis en forme : Anglais (E.U.)

regression equation. We want to point out that this analysis has its limitations: (1) the study area is characterized by high spatiotemporal surface variability due to mixing of water masses of very different provenience, (2) the presented analysis uses only data from 2 floats during an 18-month period. However, the comparison between float-based pH and SOOP-based pH data indicates that surface pH is very consistently biased high for the two floats (between ca. 0.01 and ca. 0.05 pH units depending on the choice of correction methods). This apparent bias is in the same direction (albeit about a factor of 2 smaller) than what was found in the comparison with discrete CTD cast samples for surface waters. This suggests a systematic problem with float-based pH measurements in the surface.

The average ΔT of the crossovers is within $\pm 1^\circ\text{C}$ for each float with the corresponding ΔS on the order ± 0.5 , in fact both in opposite direction for the two floats. This indicates that the crossovers identified for each float are a reasonable but not perfect match. Calculating the apparent pH offset as a function of ΔS (data not shown) yields ΔpH values which are statistically indistinguishable from the ones based on ΔT . Table 3 shows the pH offsets and their uncertainties for two floats and two pH correction methods as given by the intercept and its uncertainty of linear regression equation fitted to the data. We note that the error associated with the pH offset is too large to be applied as correction. However, despite the limited number of floats and crossovers associated with this study, the preliminary results point at unacceptably high and almost identical biases in surface pH values from the 2 floats (as seen by the values crossing the y-axis), which have been corrected in the exact same way. This highlights that the present instructions to correct pH by a unique offset established at-depth are insufficient, at least in our study area. An improved understanding of the temperature (and pressure) effect on the (individual) sensor as well as a systematic adjustment with carbon measurements could be the way forward to improve float-pH data adjustment.

Mis en forme ... [424]

Supprimé: by 0.047 pH units

Mis en forme ... [425]

Supprimé: Table 2 summarizes the statistics associated with these crossover analyses. Standard deviations of the averages give an indication of the coherence of the extracted dataset and hence their statistical weight.

Mis en forme ... [427]

Mis en forme : Retrait : Première ligne : 0,35 cm, Espace Avant : 0,35 pt, Interligne : Multiple 1,45 li

Mis en forme ... [426]

Supprimé: (Table 2)

Supprimé: This indicates that the water mass correction achieved through the regression approach is reasonably effective...CAlso, c ... [428]

Mis en forme ... [429]

Supprimé: In conclusion

Mis en forme : Anglais (E.U.)

Supprimé: ,

Mis en forme : Anglais (E.U.)

Supprimé: correction

Supprimé: 3.3 Implications and changes in ocean chemistry

In the following, we illustrate the implications of the identified uncertainties in the current DM process for float-pH data on the calculation of other parameters of the marine CO₂ system, and the resulting limitations for data products and scientific applications. BGC-Argo float-based pH data can potentially be a very powerful tool to estimate the ocean CO₂ sink when converted to pCO₂ in combination with a second marine CO₂ system variable such as DIC or TA. While float-based observations for both DIC and TA are still lacking, and as TA values are readily predictable thanks to many algorithms (e.g., the Locally Interpolated Alkalinity Regression (LIAR) method; Carter et al., 2018) and also less impacted by biological variations (Zeebe and Wolf-Gladrow, 2001), TA is the parameter of choice to derive pCO₂ values. Current understanding (e.g., Carter et al., 2018) is that TA can be predicted with a typical uncertainty of about 6 μmol kg⁻¹ which does not include, however, potential regional

Mis en forme ... [431]

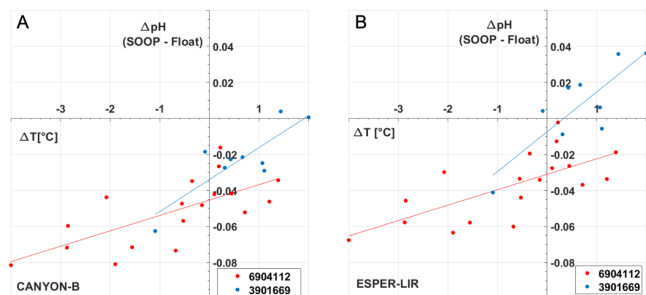


Figure 7. Offsets between SOOP pH and fully corrected float pH (y-axis) as a function of temperature difference (x-axis) for crossovers ($\Delta r \leq 400$ km, $\Delta t \leq 7$ d, $\Delta T \leq 4^\circ\text{C}$) of two different floats. Float-pH data have been corrected with the SAGE tool using the reference depth level 1950 dbar and either CANYON-B (left panel) or ESPER-LIR (right panel) as reference.

Table 3. Statistics of the crossover analysis for SOOP- and float-pH data.

		$\Delta\text{pH at } \Delta T=0$	
	Float WMO	pH offset	Uncertainty of the offset
CANYON-B	3901669	-0.034	0.012
	6904112	-0.045	0.014
ESPER-LIR	3901669	-0.008	0.016
	6904112	-0.031	0.014

Mis en forme : Anglais (E.U.)

Supprimé: three

Supprimé: the classical reference depth (around 1500 dbar) ...

Mis en forme : Anglais (E.U.)

Mis en forme : Anglais (E.U.)

Mis en forme : Anglais (E.U.)

Supprimé:

Mis en forme : Anglais (E.U.)

Supprimé: ¶

Mis en forme : Anglais (E.U.)

Supprimé: <object>

Mis en forme : Anglais (E.U.)

Supprimé: 2

Supprimé: SD stands for Standard Deviation.

Supprimé: <object>

Mis en forme : Anglais (E.U.)

Mis en forme : Centré

Supprimé: Float WMO → $\Delta\text{pH at } \Delta T=0 \rightarrow \Delta T - \Delta S$ ¶

Mis en forme : Anglais (E.U.)

3.3 Implications and changes in ocean chemistry

BGC-Argo float-based pH data can potentially be a very powerful tool to estimate the ocean CO₂ sink when converted to pCO₂ in combination with a second marine CO₂ system variable such as DIC or TA. While float-based observations for both DIC and TA are still lacking, and as TA values are readily predictable thanks to established algorithms (e.g., the Locally Inter- polated Alkalinity Regression (LIAR) method; Carter et al., 2018) and also less impacted by biological variations (Zeebe and Wolf-Gladrow, 2001), TA is the parameter of choice to derive pCO₂ values. Current understanding (e.g., Carter et al., 2018) is that TA can be predicted with a typical uncertainty of about 6 μmol kg⁻¹ which does not include, however, potential regional biases due to insufficient data coverage, contributions from inorganic nutrients as well as biases due to unknown organic TA contributions in highly productive and/or coastal waters. Using this TA uncertainty, u(TA), we calculated the minimum required pH uncertainty, u(pH), that allows to meet two pCO₂ uncertainties, u(pCO₂), as defined by Newton et al. (2015); the “climate goal” uncertainty of 2 μatm and the “weather goal” uncertainty of 10 μatm.

To frame the “weather goal”, pH uncertainties of around 0.01 pH units (from 0.008 to 0.016 depending on T and pCO₂), have to be reached while to derive pCO₂ data with an uncertainty as the one defined by the “climate goal” criterion, and considering a u(AT) equals to ± 6 μmol kg⁻¹, a pH uncertainty < 0.006 pH units is required.

At u(TA) = 6 μmol kg⁻¹, the overall contribution of this parameter to the derived uncertainty in pCO₂ is rather marginal in comparison to the dominant impact of u(pH), and the resulting pCO₂ change represents slightly more than 16% of the pH impact when considering a 0.006 pH units pH-uncertainty. Expressed differently, it means that the uncertainty in predicted TA corresponds to an uncertainty in pH of about 0.001 pH units. However, while the u(TA) is not the major obstacle to derive accurate pCO₂ data, TA values still would have to be carefully estimated to then be used as a predictor variable. Regional and/or seasonal biases in estimated TA can be observed in some oceanic regions where high surface nutrient concentrations can occur, especially during phytoplankton bloom situations. The TA-uncertainty can also be more important in areas subject to terrestrial discharges as allochthonous matter or organic TA can be associated with non-carbonate organic alkalinity (Soetaert et al., 2007; Hunt et al., 2011). This perhaps warrants specific tests on the accuracy of TA predictions in critical regions (or seasons) but also if this parameter aims to be used to derive other parameters of the CO₂ system, especially DIC. Finally, an additional source of uncertainty when calculating pCO₂ (pH, TA) from floats originates from uncertainties in the carbonate system equilibrium constants (Orr et al., 2018).

In order for float-pH data to be suitable for the calculation of parameters of the marine CO₂ system, and in particular pCO₂ data, with useful accuracies, the documented shortcomings in accuracy of float-pH need to be explored and

Supprimé: ¶	... [432]
Mis en forme	... [433]
Mis en forme	... [434]
Mis en forme	... [435]
Mis en forme	... [439]
Code de champ modifié	... [436]
Mis en forme	... [437]
Code de champ modifié	... [438]
Code de champ modifié	... [440]
Mis en forme	... [441]
Code de champ modifié	... [442]
Mis en forme	... [443]
Code de champ modifié	... [444]
Mis en forme	... [445]
Mis en forme	... [447]
Code de champ modifié	... [448]
Mis en forme	... [449]
Code de champ modifié	... [446]
Code de champ modifié	... [450]
Mis en forme	... [451]
Code de champ modifié	... [452]
Mis en forme	... [453]
Supprimé: As shown in the Figure 8A, pCO ₂ can be	... [454]
Mis en forme	... [455]
Supprimé: and thus...o reach the “weather goal” (Newt	... [456]
Mis en forme	... [457]
Supprimé: "	...
Mis en forme	... [458]
Supprimé: "	...
Mis en forme	... [459]
Supprimé: (Fig. 8B).	...
Mis en forme	... [460]
Supprimé: In other words,	...
Mis en forme	... [461]
Supprimé: ...HoweverIn consequence	... [462]
Mis en forme	... [463]
Supprimé: and ...hile the u(TA) is not the major obstacle	... [464]
Mis en forme	... [465]
Code de champ modifié	... [466]
Mis en forme	... [467]
Code de champ modifié	... [468]
Mis en forme	... [469]
Code de champ modifié	... [470]
Mis en forme	... [471]
Code de champ modifié	... [472]
Mis en forme	... [473]
Code de champ modifié	... [474]
Mis en forme	... [475]

addressed. Taking into account the error propagation, the $u(\text{pH})$ allowed for calculating $p\text{CO}_2$ from the pH and TA is on the order of 0.0107 ± 0.0018 for the weather goal and $0.0056 \pm 1.42 \times 10^{-4}$ for the climate goal. In the SNWA region, the demonstration done in Section 3.1. of this study has shown that the combination of uncertainties associated with the choice of the reference method and reference depth as well as the choice of method to calculate the adjustments for the individual float cycles can lead to uncertainties in pH well beyond what is deemed acceptable to exploit the pH data for CO_2 calculation purposes. Thus, to achieve the required $p\text{CO}_2$ uncertainty, it is desirable to reduce and better constrain the uncertainty associated with float-based pH measurements to derive and depict entirely the oceanic carbon cycle.

4 Conclusions

For correcting float-based pH measurements, the current standardized routines from Ago data management rely on a single-point at-depth correction method along with reference algorithms such as LIR-pH or CANYON-B, assuming that the adjustment calculated at-depth yields corrections applicable to the entire profile.

By using both float-based pH data and in situ pH data from other platforms acquired in the SNWA area, this study was able to identify uncertainties and potential biases associated with the adjustment applied which raise concerns about the single at-depth correction on adjusted pH data. Our findings show consistent results indicating that corrected float-pH data may be biased by several hundredths of a pH unit near the surface in the SNWA possibly in response to deep convection events, suggesting that similar observations might be possible in other deep convection regions. Even if the statistical significance of our findings is limited due to the low number of comparisons available, this apparent weakness of the DM QC process of float-pH data should be considered in light of the challenges in interpreting TA and pH-derived $p\text{CO}_2$ data in a crucial area for ocean convections events and anthropogenic carbon storage. With regards to the situation observed in the SNWA, we suggest (1) to revisit the temperature and pressure effect on the sensor, and (2) to consider global crossover analysis between float-pH surface data and other platforms (SOOP lines, buoy, floats) to independently quality controlled and perhaps correct float pH data close the surface, where the accuracy required to better constrain the oceanic response to climate changes is the highest.

Supprimé: is

Supprimé: corrections

Supprimé: Our findings indicate that large biases in float-pH can occur, particularly in the surface ocean where the data are likely of the highest scientific interest and relevance.

Supprimé: LIRPH

Mis en forme : Anglais (E.U.)

Supprimé: ,

Supprimé: shortcomings

Mis en forme : Anglais (E.U.)

Supprimé: correction

Mis en forme : Anglais (E.U.)

Supprimé: (2) to better assess the impact of biological processes on the pH estimate

Supprimé: 3

Mis en forme : Anglais (E.U.)

Data availability. Data from the German-SOOP *Atlantic Sail* line are available at https://meta.icos-cp.eu/resources/stations/OS_NA-VOS. Argo data are available at <http://doi.org/10.17882/42182#96550> or at <ftp://ftp.ifremer.fr/ifremer/argo/dac/coriolis>. These data were collected and made freely available by the International Argo Program and the national programs that contribute to it (<https://argo.ucsd.edu>, <https://www.ocean-ops.org>). The Argo Program is part of the Global Ocean Observing System. Data from the MSM94 cruise (https://doi.org/10.48433/cr_msm94) can be found on the Pangea website (<https://doi.pangaea.de/10.1594/PANGAEA.927311>).

Author contributions. CW-R, TS, and AK initiated and designed the study. TS, and AK helped supervising the study. BK and HB helped re- vising the manuscript and providing significant inputs. CW-R, TS, and A.K. wrote the first draft of the manuscript. All the authors contributed to manuscript revision, read and approved the submitted version.

Competing interests. The authors declare that they have no known competing financial interests or personal relationships that could have appeared to influence the work reported in this paper.

Acknowledgements. This work has received funding from the European Union's Horizon 2020 Research and Innovation Program in the Euro- Argo RISE project (grant agreement n°824131). It was further supported by the projects DArgo2025 (FKZ 03F0857A+C) and C-SCOPE (FKZ 03F0877A+B) of the German Ministry for Research and Education. We would like to thank Johannes Karstensen, chief scientist of cruise MSM 94, and his team for wonderful cooperation in the context of the achieving a crossover with one of our floats. The two referees are thanked for helping improve this paper.

Code de champ modifié

Mis en forme : Anglais (E.U.)

Mis en forme : Anglais (E.U.)

Mis en forme : Anglais (E.U.)

Code de champ modifié

Mis en forme : Anglais (E.U.)

Mis en forme : Anglais (E.U.)

Mis en forme : Anglais (E.U.)

Code de champ modifié

Code de champ modifié

Mis en forme : Anglais (E.U.)

Code de champ modifié

Mis en forme : Anglais (E.U.)

Mis en forme : Anglais (E.U.)

Mis en forme : Anglais (E.U.)

Mis en forme : Anglais (E.U.)

Code de champ modifié

Mis en forme : Droite : 0,17 cm, Espace Avant : 4,9 pt

Supprimé: ¶

Mis en forme : Anglais (E.U.)

Appendix A: Supplementary Material

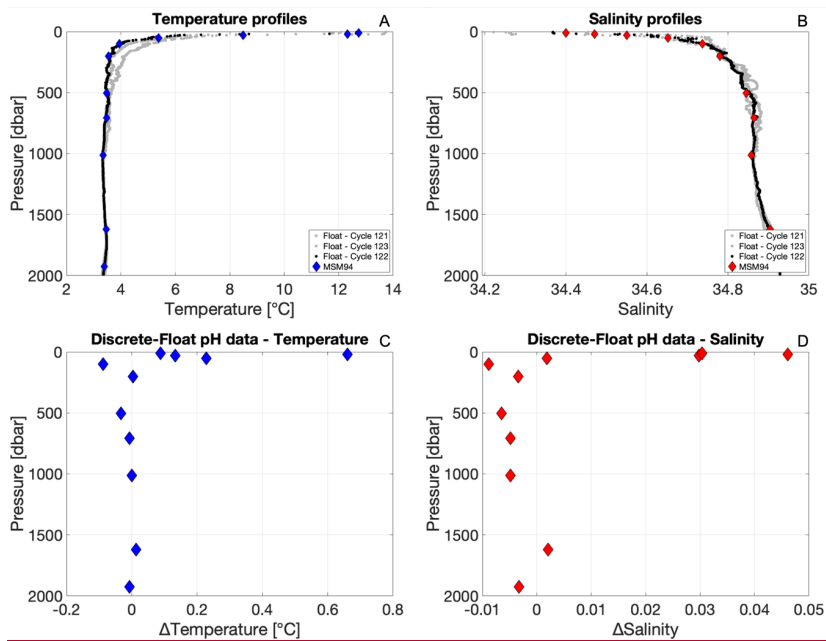


Figure A1. (A and B) Vertical profiles of temperature (A) and salinity (B) measured during the MSM94 cruise (diamond dots) and acquired by the float WMO 3901669 during cycles 121, 122 and 123 (gray and black lines, respectively). (C and D) Differences between discrete and float (cycle 122) temperature (C) and salinity (D) data calculated after matching in density space to avoid biases from internal waves.

Supprimé: <object>

Supprimé: Figure A1. (A) Differences between raw float-pH data minus float-pH corrected using the cycle-by-cycle GEOMAR method (yellow dots, left y-axis), the linear mean regression GEOMAR method (blue dots, left y-axis) and the 3-point centered running mean correction method (green dots, left y-axis). (B) Differences between raw float-pH data minus float-pH corrected using the SAGE tool (purple dots, left y-axis). On every plot, the pH measured at the parking depth (right y-axis) has been added and the colorbar indicates the pressure. Black dots represent mean pH values for each day. For the correction, in every case, CANYON-B and 1500 dbar were chosen as reference method and reference depth, respectively.

Mis en forme : Anglais (E.U.)

Mis en forme : Anglais (E.U.)

References

Abram, N., Gattuso, J.-P., Prakash, A., Cheng, L., Chidichimo, M. P., Crate, S., Enomoto, H., Garschagen, M., Gruber, N., Harper, S., Holland, E., Rice, J., Steffen, K., & von Schuckmann, K. (2019). Framing and Context of the Report. In *IPCC Special Report on the Ocean and Cryosphere in a Changing Climate* ([H.-O. Pörtner, D.C. Roberts, V. Masson-Delmotte, P. Zhai, M. Tignor, E. Poloczanska, K. Mintenbeck, A. Alegria, M. Nicolai, A. Okem, J. Petzold, B. Rama, N.M. Weyer (eds.)], p. 73-129). Cambridge University Press, Cambridge, UK and New York.

Bates, N., Astor, Y., Church, M., Currie, K., Dore, J., Gonaález-Dávila, M., Lorenzoni, L., Muller-Karger, F., Olafsson, J., & Santa-Casiano, M. (2014). A Time-Series View of Changing Ocean Chemistry Due to Ocean Uptake of Anthropogenic CO₂ and Ocean Acidification. *Oceanography*, 27(1), 126-141. <https://doi.org/10.5670/oceanog.2014.16>

Bittig, H. C. and Körtzinger, A. (2015). Tackling Oxygen Optode Drift: Near-Surface and In-Air Oxygen Optode Measurements on a Float Provide an Accurate in Situ Reference. *Journal of Atmospheric and Oceanic Technology*, 32(8), 1536-1543. <https://doi.org/10.1175/JTECH-D-14-00162.1>

Bittig, H. C., Körtzinger, A., Neill, C., van Ooijen, E., Plant, J. N., Hahn, J., Johnson, K. S., Yang, B. and Emerson, S. R. (2018). Oxygen Optode Sensors: Principle, Characterization, Calibration, and Application in the Ocean. *Frontiers in marine Science*, 4:429. <https://doi.org/10.3389/fmars.2017.00429>.

Bittig, H. C., Steinhoff, T., Claustre, H., Fiedler, B., Williams, N. L., Sauzède, R., Körtzinger, A., & Gattuso, J.-P. (2018). An Alternative to Static Climatologies: Robust Estimation of Open Ocean CO₂ Variables and Nutrient Concentrations From T, S, and O₂ Data Using Bayesian Neural Networks. *Frontiers in Marine Science*, 5, 328. <https://doi.org/10.3389/fmars.2018.00328>

Bushinsky, S. M., Takeshita, Y., & Williams, N. L. (2019). Observing Changes in Ocean Carbonate Chemistry: Our Autonomous Future. *Current Climate Change Reports*, 5(3), 207-220. <https://doi.org/10.1007/s40641-019-00129-8>

Carstensen, J., & Duarte, C. M. (2019). Drivers of pH Variability in Coastal Ecosystems. *Environmental Science & Technology*, 53(8), 4020-4029. <https://doi.org/10.1021/acs.est.8b03655>

Carter, B. R., Feely, R. A., Williams, N. L., Dickson, A. G., Fong, M. B., & Takeshita, Y. (2018). Updated methods for global locally interpolated estimation of alkalinity, pH, and nitrate. *Limnology and Oceanography: Methods*, 16(2), 119-131. <https://doi.org/10.1002/lom3.10232>

De Boyer Montégut, C., Madec, G., Fischer, A.S., Lazar, A. & Iudicone, D. (2004). Mixed layer depth over the global ocean: An examination of profile data and a profile-based climatology. *J. Geophys. Res.*, 109, C12003. doi:10.1029/2004JC002378.

Dickson, A.G., C.L. Sabine, and J.R. Christian, eds. (2007). Guide to Best Practices for Ocean CO₂ Measurements. PICES Special Publication 3, 191 pp.

Doney, S. C., Fabry, V. J., Feely, R. A., & Kleypas, J. A. (2009). Ocean Acidification: The Other CO₂ Problem. *Annual Review of Marine Science*, 1(1), 169-192. <https://doi.org/10.1146/annurev.marine.010908.163834>.

Wimart-Rousseau, C., Fourier, M., Fiedler, B., Cancouët, R., Claustre, H., and Coppola, L., (2022) Development of BGC-Argo data quality validation based on an integrative multiplatform approach. *EuroSea Deliverable, D7.2*. EuroSea, 29 pp. https://doi.org/10.3289/eurosea_d7.2.

Friedlingstein, P., O'Sullivan, M., Jones, M.W., Andrew, R.M., Gregor, L., Hauck, J., Le Quéré, C., Luijkx, I.T., Olsen, A., Peters, G.P., Peters, W., Pongratz, J. et al. (2022). Global Carbon Budget 2022, *Earth System Science Data*, 14 (11), 4811–4900. <https://doi.org/10.5194/essd-14-4811-2022>.

Mis en forme : Anglais (E.U.)

Mis en forme : Gauche, Espace Avant : Automatique, Après : Automatique, Interligne : simple

Supprimé: ¶

Déplacé vers le haut [2]: & Wimart-Rousseau, C.

Déplacé (insertion) [2]

Supprimé: &

Supprimé: Cotrim da Cunha, L., Fourier, M., Hernandez, F., Paulsen, M.

Supprimé:

Supprimé: e

Supprimé: Report on demo mission and dissemination pathways of obtained data based on different observational platforms.

Supprimé: /

Supprimé: 31

Supprimé: 1

Goni, G., Roemmich, D., Molinari, R., Meyers, G., Sun, C., Boyer, T., Baringer, M., Gouretski, V., DiNezio, P., Reseghetti, F., Vissa, G., Swart, S., Keeley, R., Garzoli, S., Rossby, T., Maes, C. and Reverdin, G., 2010. The Ship of Opportunity program, Proceedings of OceanObs'09: Sustained Ocean Observations and Information for Society, (Vol. 2). Venice, Italy: ESA Publication.

Gruber, N., Gloor, M., Mikaloff Fletcher, S. E., Doney, S. C., Dutkiewicz, S., Follows, M. J., Gerber, M., Jacobson, A. R., Joos, F., Lindsay, K., Menemenlis, D., Mouchet, A., Muller, S. A., Sarmiento, J. L., and Takahashi, T. (2009). Oceanic sources, sinks, and transport of atmospheric CO₂. *Global Biogeochem. Cy.*, 23, <https://doi.org/10.1029/2008GB003349>.

Hunt, C., Salisbury, J. & Vandemark, D. (2011). Contribution of non-carbonate anions to total alkalinity and overestimation of pCO₂ in new england and new brunswick rivers. *Biogeosciences*, 8 (10), 3069-3076.

IPCC. (2018). Summary for Policymakers. In *Global Warming of 1.5°C. An IPCC Special Report on the impacts of global warming of 1.5°C above pre-industrial levels and related global greenhouse gas emission pathways, in the context of strengthening the global response to the threat of climate change, sustainable development, and efforts to eradicate poverty* ([Masson-Delmotte, V., P. Zhai, H.-O. Pörtner, D. Roberts, J. Skea, P.R. Shukla, A. Pirani, W. Moufouma-Okia, C. Péan, R. Pidcock, S. Connors, J.B.R. Matthews, Y. Chen, X. Zhou, M.I. Gomis, E. Lonnoy, T. Maycock, M. Tignor, and T. Waterfield (eds.)).

Johnson, K., Wills, K., Butler, D., Johnson, W., and Wong, C. (1993). Coulometric total carbon dioxide analysis for marine studies: maximizing the performance of an automated gas extraction system and coulometric detector. *Mar. Chem.*, 44, 167-187.

Johnson, K. S., Jannasch, H. W., Coletti, L. J., Elrod, V. A., Martz, T. R., Takeshita, Y., Carlson, R. J., & Connery, J. G. (2016). Deep-Sea DuraFET: A Pressure Tolerant pH Sensor Designed for Global Sensor Networks. *Analytical Chemistry*, 88(6), 3249-3256. <https://doi.org/10.1021/acs.analchem.5b04653>

Johnson, K. S., Plant, J. N., Coletti, L. J., Jannasch, H. W., Sakamoto, C. M., Riser, S. C., et al. (2017). Biogeochemical sensor performance in the SOCCOM profiling float array. *J. Geophys. Res. Oceans* 122, 6416–6436. <https://doi.org/10.1002/2017JC012838>.

Johnson, K. S., Plant, J. N., & Maurer, T. L. (2018). *Processing BGC-Argo pH data at the DAC level (1.0)* [Pdf]. Ifremer. <https://doi.org/10.13155/57195>.

Karstensen, J., Begler, C., Gerke, L., Handmann, P., Hans, A.-C., Lösel, C., Martens, W., Niebaum, N., Olbricht, H. D., Posern, C., Rudloff, D., Witt, R., & Wutting, P. J. (2020). Western Subpolar North Atlantic transport variability, Cruise No. MSM94, 02. August - 06. September 2020, Emden (Germany) - Emden (Germany). In MARIA S. MERIAN-Berichte (MSM94, pp. 1-47). Gutachterpanel Forschungsschiffe. https://doi.org/10.48433/cr_msm94.

Mis en forme : Anglais (E.U.)

Khaliwala, S., Tanhua, T., Mikaloff Fletcher, S., Gerber, M., Doney, S. C., Graven, H. D., Gruber, N., McKinley, G. A., Murata, A., Ríos, A. F., and Sabine, C. L. (2013). Global ocean storage of anthropogenic carbon, *Biogeosciences*, 10, 2169–2191, <https://doi.org/10.5194/bg-10-2169-2013>.

Mis en forme : Anglais (E.U.)

Körtzinger, A., Rhein, M., and Mintrop, L. (1999). Anthropogenic CO₂ and CFCs in the North Atlantic Ocean-A comparison of man-made tracers. *Geophys. Res. Lett.*, 26, 2065–2068.

Mis en forme : Anglais (E.U.)

Kwiatkowski, L., Torres, O., Bopp, L., Aumont, O., Chamberlain, M., Christian, J. R., Dunne, J. P., Gehlen, M., Ilyina, T., John, J. G., Lenton, A., Li, H., Lovenduski, N. S., Orr, J. C., Palmieri, J., Santana-Falcón, Y., Schwinger, J., Séférian, R., Stock, C. A., ... Ziehn, T. (2020). Twenty-first century ocean warming, acidification, deoxygenation, and upper-ocean nutrient and primary production decline from CMIP6 model projections. *Biogeosciences*, 17(13), 3439-3470. <https://doi.org/10.5194/bg-17-3439-2020>

Levine, N. M., Doney, S.C., Lima, I., Wanninkhof, R., Bates, N.R. and Feely, R.A. (2011), The impact of the North Atlantic Oscillation on the uptake and accumulation of anthropogenic CO₂ by North Atlantic Ocean mode waters. *Global Biogeochem. Cycles*, 25: GB3022, doi:10.1029/2010GB003892.

Leseurre, C., Lo Monaco, C., Reverdin, G., Metz, N., Fin, J., Olafsdottir, S. & Racapé, V. (2020) Ocean carbonate system variability in the North Atlantic Subpolar surface water (1993–2017). *Biogeosciences*, 17(9): 2553-2577. <https://doi.org/10.5194/bg-17-2553-2020>

Lüger, H., D. W. R. Wallace, A. Körtzinger, and Y. Nojiri. 2004. The pCO₂ variability in the midlatitude North Atlantic Ocean during a full annual cycle. *Global Biogeochem. Cycles* 18: 1–16. doi:10.1029/2003GB002200.

Maurer, T. L., Plant, J. N., & Johnson, K. S. (2021). *Delayed-mode quality control of oxygen, nitrate and pH data on SOCCOM biogeochemical profiling floats* [Preprint]. *Oceanography*. <https://doi.org/10.1002/essoar.10506241.1>

Newton J.A., Feely R. A., Jewett E. B., Williamson P. & Mathis J., 2015. Global Ocean Acidification Observing Network: Requirements and Governance Plan. Second Edition, GOA-ON, http://www.goa-on.org/docs/GOA-ON_plan_print.pdf.

Olsen, A., Key, R. M., van Heuven, S., Lauvset, S. K., Velo, A., Lin, X., Schirmick, C., Kozyr, A., Tanhua, T., Hoppema, M., Jutterström, S., Steinfeldt, R., Jeansson, E., Ishii, M., Pérez, F. F., & Suzuki, T. (2016). The Global Ocean Data Analysis Project version 2 (GLODAPv2) – an internally consistent data product for the world ocean. *Earth System Science Data*, 8(2), 297-323. <https://doi.org/10.5194/essd-8-297-2016>

Orr, J. C., Fabry, V. J., Aumont, O., Bopp, L., Doney, S. C., Feely, R. A., Gnanadesikan, A., Gruber, N., Ishida, A., Joos, F., Key, R. M., Lindsay, K., Maier-Reimer, E., Matear, R., Monfray, P., Mouchet, A., Najjar, R. G., Plattner, G.-K., Rodgers, K. B., ... Yool, A. (2005). Anthropogenic ocean acidification over the twenty-first century and its impact on calcifying organisms. *Nature*, 437(7059), Art. 7059. <https://doi.org/10.1038/nature04095>

Orr, J. C., Epitalon, J.-M., Dickson, A. G. and Gattuso, J.-P. (2018). Routine uncertainty propagation for the marine carbon dioxide system. *Marine Chemistry*, 207: 84-107. <https://doi.org/10.1016/j.marchem.2018.>

Owens, W. B. and Wong, A. P. S. (2009). An improved calibration method for the drift of the conductivity sensor on autonomous CTD profiling floats by θ_S climatology. *Deep Sea Research Part I: Oceanographic Research Papers*, 56 (3): 450-457. <https://doi.org/10.1016/j.dsr.2008.09.008>.

Racapé, V., Zunino, P., Mercier, H., Lherminier, P., Bopp, L., Pérez, F. F., and Gehlen, M. (2018). Transport and storage of anthropogenic C in the North Atlantic Subpolar Ocean, *Biogeosciences*, 15: 4661–4682, <https://doi.org/10.5194/bg-15-4661-2018>.

Ridge, S.M. and McKinley, G.A. (2020). Advective Controls on the North Atlantic Anthropogenic Carbon Sink. *Global Biogeochemical Cycles*, 34 (7): e2019GB006457. <https://doi.org/10.1029/2019GB006457>.

Russell, J., Sarmiento, J., Cullen, H., Hotinski, R., Johnson, K., Riser, S., & Talley, L. (2014). *The Southern Ocean Carbon and Climate Observations and Modeling Program (SOCCOM)*. 28.

Sauzède, R., Bittig, H. C., Claustre, H., Pasquero de Fommervault, O., Gattuso, J.-P., Legendre, L., & Johnson, K. S. (2017). Estimates of Water-Column Nutrient Concentrations and Carbonate System Parameters in the Global Ocean: A Novel Approach Based on Neural Networks. *Frontiers in Marine Science*, 4, 128. <https://doi.org/10.3389/fmars.2017.00128>

Sabine, C. L., Feely, R. A., Gruber, N., Key, R. M., Lee, K., Bullister, J. L., Wanninkhof, R., Wong, C. S., Wallace, D. W. R., Tilbrook, B., Millero, F. J., Peng, T.-H., Kozyr, A., Ono, T., and Rios, A. F. (2004). The oceanic sink for anthropogenic CO₂. *Science*, 305, 367–371.

Sabine, C.L., et al. (2013). Surface Ocean CO₂ Atlas (SOCAT) gridded data products. *Earth System Science Data* 5: 145-153. doi:10.5194/essd-5-145-2013.

Schmechtig, C., Thierry, V., & Team, T. B. A. (2016). *Argo quality control manual for biogeochemical data (1.0)* [Pdf]. Bio-Argo group. <https://doi.org/10.13155/40879>

Takeshita, Y., Johnson, K. S., Coletti, L. J., Jannasch, H. W., Walz, P. M., & Warren, J. K. (2020). Assessment of pH dependent errors in spectrophotometric pH measurements of seawater. *Marine Chemistry*, 223, 103801. <https://doi.org/10.1016/j.marchem.2020.103801>.

Mis en forme : Police :9 pt, Anglais (E.U.)

Mis en forme : Anglais (E.U.)

Mis en forme : Police :9 pt, Anglais (E.U.)

Mis en forme : Anglais (E.U.)

Code de champ modifié

Mis en forme : Anglais (E.U.)

Mis en forme : Anglais (E.U.)

Supprimé :

Mis en forme : Police par défaut, Police :12 pt, Anglais (E.U.)

Mis en forme : Anglais (E.U.)

Mis en forme : Anglais (E.U.)

Mis en forme : Anglais (E.U.)

Code de champ modifié

Mis en forme : Anglais (E.U.)

Mis en forme : Anglais (E.U.)

Mis en forme : Anglais (E.U.)

Mis en forme : Français

Mis en forme : Anglais (E.U.)

Code de champ modifié

Mis en forme : Anglais (E.U.)

Mis en forme : Anglais (E.U.)

Mis en forme : Police :Non Italique, Anglais (E.U.)

Mis en forme : Anglais (E.U.)

Mis en forme : Police :Non Italique, Anglais (E.U.)

Mis en forme : Anglais (E.U.)

Code de champ modifié

Mis en forme : Anglais (E.U.)

Mis en forme : Anglais (E.U.)

[Thierry, V., Bittig, H., Gilbert, D., Kobayashi, T., Kanako, S., and Schmid, C. \(2022\). Processing Argo oxygen data at the DAC level. *https://doi.org/10.13155/39795*](https://doi.org/10.13155/39795)

Soetaert, K., Hofmann, A., Middelburg, J., Meysman, F. & Greenwood, J. (2007). The effect of biogeochemical processes on ph. *Marine Chemistry*, 105 (1), 30-51.

Tanhua, T., McCurdy, A., Fischer, A., Appeltans, W., Bax, N., Currie, K., DeYoung, B., Dunn, D., Heslop, E., Glover, L. K., Gunn, J., Hill, K., Ishii, M., Legler, D., Lindstrom, E., Miloslavich, P., Moltmann, T., Nolan, G., Palacz, A., ... Wilkin, J. (2019). What We Have Learned From the Framework for Ocean Observing: Evolution of the Global Ocean Observing System. *Frontiers in Marine Science*, 6. <https://www.frontiersin.org/article/10.3389/fmars.2019.00471>.

van Heuven, S., Pierrot, D., Rae, J. W. B., Lewis, E. & Wallace, D. W. R. (2011). MATLAB Program Developed for CO2 System Calculations. ORNL/CDIAC-105b. Carbon Dioxide Information Analysis Center, Oak Ridge National Laboratory, U.S. Department of Energy, Oak Ridge, Tennessee, doi: 10.3334/CDIAC/otg.CO2SYS_MATLAB_v1.1.

Watson, A. J., Schuster, U., Bakker, D. C., Bates, N. R., Corbière, A., González-Dávila, M., Friedrich, T., Hauck, J., Heinze, C., Johannessen, T., Körtzinger, A., Metzl, N., Olafsson, J., Olsen, A., Oschlies, A., Padin, X. A., Pfeil, B., Santana-Casiano, J. M., Steinhoff, T., Telszewski, M., Rios, A. F., Wallace, D. W. & Wanninkhof, R. (2009). Tracking the variable North Atlantic sink for atmospheric CO₂. *Science*, 326 (5958), 1391-3. <https://doi.org/10.1126/science.1177394>.

Wanninkhof, R., D. Bakker, N. Bates, A. Olsen, T. Steinhoff and A. Sutton (2013). Incorporation of Alternative Sensors in the SOCAT Database and Adjustments to Dataset Quality Control Flags. <http://cdiac.ornl.gov/oceans/Recommendationnewsensors.pdf>. Carbon Dioxide Information Analysis Center, Oak Ridge National Laboratory, US Department of Energy, Oak Ridge, Tennessee. doi: 10.3334/CDIAC/OTG.SOCAT_ADQCF

Whitt, C., Pearlman, J., Polagye, B., Caimi, F., Muller-Karger, F., Copping, A., Spence, H., Madhusudhana, S., Kirkwood, W., Grosjean, L., Fiaz, B. M., Singh, S., Singh, S., Manalang, D., Gupta, A. S., Maguer, A., Buck, J. J. H., Marouchos, A., Atmanand, M. A., ... Khalsa, S. J. (2020). Future Vision for Autonomous Ocean Observations. *Frontiers in Marine Science*, 7. <https://www.frontiersin.org/article/10.3389/fmars.2020.00697>

Williams, N. L., Juranek, L. W., Johnson, K. S., Feely, R. A., Riser, S. C., Talley, L. D., Russell, J. L., Sarmiento, J. L., & Wanninkhof, R. (2016). Empirical algorithms to estimate water column pH in the Southern Ocean. *Geophysical Research Letters*, 43(7), 3415-3422. <https://doi.org/10.1002/2016GL068539>.

[Williams, N. L., Juranek, L. W., Feely, R. A., Johnson, K. S., Sarmiento, J. L., Talley, L. D., Dickson, A. G., Gray, A. R., Wanninkhof, R., Russell, J. L., Riser, S. C. and Takeshita, Y. \(2017\). Calculating surface ocean pCO₂ from biogeochemical Argo floats equipped with pH: An uncertainty analysis. *Global Biogeochem. Cycles*, 31, 591–604. doi:10.1002/2016GB005541](https://doi.org/10.1002/2016GB005541)

Wong, A., Keeley, R., Carval, T., & Team, A. D. M. (2022). *Argo Quality Control Manual for CTD and Trajectory Data* (3.6) [Pdf]. Ifremer. <https://doi.org/10.13155/33951>.

Zeebe, R. E. & Wolf-Gladrow, D. (2001). CO₂ in seawater: equilibrium, kinetics, isotopes. Elsevier Oceanography Series, 65, Amsterdam, 346 pp.

Mis en forme : Police :Times New Roman, 9 pt, Couleur de police : Automatique, Anglais (E.U.), Motif : Transparente

Mis en forme ... [476]

Mis en forme : Justifié

Mis en forme : Anglais (E.U.)

Mis en forme ... [477]

Mis en forme : Anglais (E.U.)

Mis en forme ... [478]

Mis en forme ... [479]

Mis en forme : Anglais (E.U.)

Mis en forme ... [480]

Mis en forme ... [481]

Mis en forme : Anglais (E.U.)

Mis en forme ... [482]

Mis en forme ... [483]

Mis en forme : Anglais (E.U.)

Mis en forme ... [484]

Mis en forme : Anglais (E.U.)

Mis en forme ... [485]

Mis en forme : Anglais (E.U.)

Mis en forme ... [486]

Mis en forme : Anglais (E.U.)

Mis en forme ... [487]

Mis en forme : Police :9 pt, Anglais (E.U.)

Mis en forme : Police :9 pt, Anglais (E.U.)

Supprimé: ¶

Mis en forme : Anglais (E.U.)

Code de champ modifié

Mis en forme : Anglais (E.U.)

Mis en forme : Anglais (E.U.)

Mis en forme : Anglais (E.U.)

Mis en forme : Justifié

Mis en forme : Anglais (E.U.)

Mis en forme : Anglais (E.U.)

Mis en forme ... [488]

Mis en forme : Anglais (E.U.)

Mis en forme : Police :9 pt

Mis en forme : Anglais (E.U.)

Mis en forme : Police :9 pt, Anglais (E.U.)

Mis en forme : Anglais (E.U.)

Page 3 : [1] Mis en forme Cathy Wimart-Rousseau 28/07/2023 09:31:00

Anglais (E.U.)

Page 3 : [2] Modifier Unknown

Code de champ modifié

Page 3 : [3] Mis en forme Cathy Wimart-Rousseau 28/07/2023 09:31:00

Anglais (E.U.)

Page 3 : [3] Mis en forme Cathy Wimart-Rousseau 28/07/2023 09:31:00

Anglais (E.U.)

Page 3 : [4] Modifier Unknown

Code de champ modifié

Page 3 : [5] Mis en forme Cathy Wimart-Rousseau 28/07/2023 09:31:00

Anglais (E.U.)

Page 3 : [5] Mis en forme Cathy Wimart-Rousseau 28/07/2023 09:31:00

Anglais (E.U.)

Page 3 : [6] Modifier Unknown

Code de champ modifié

Page 3 : [7] Mis en forme Cathy Wimart-Rousseau 28/07/2023 09:31:00

Anglais (E.U.)

Page 3 : [7] Mis en forme Cathy Wimart-Rousseau 28/07/2023 09:31:00

Anglais (E.U.)

Page 3 : [8] Modifier Unknown

Code de champ modifié

Page 3 : [9] Mis en forme Cathy Wimart-Rousseau 28/07/2023 09:31:00

Anglais (E.U.)

Page 3 : [9] Mis en forme Cathy Wimart-Rousseau 28/07/2023 09:31:00

Anglais (E.U.)

Page 3 : [10] Modifier Unknown

Code de champ modifié

Page 3 : [11] Mis en forme Cathy Wimart-Rousseau 28/07/2023 09:31:00

Anglais (E.U.)

Page 3 : [11] Mis en forme Cathy Wimart-Rousseau 28/07/2023 09:31:00

Anglais (E.U.)

Page 3 : [12] Modifier Unknown

Code de champ modifié

Page 3 : [13] Mis en forme Cathy Wimart-Rousseau 28/07/2023 09:31:00

Anglais (E.U.)

Page 3 : [15] Mis en forme Cathy Wimart-Rousseau 28/07/2023 09:31:00

Anglais (E.U.)

Page 3 : [15] Mis en forme Cathy Wimart-Rousseau 28/07/2023 09:31:00

Anglais (E.U.)

Page 3 : [16] Modifier Unknown

Code de champ modifié

Page 3 : [17] Mis en forme Cathy Wimart-Rousseau 28/07/2023 09:31:00

Anglais (E.U.)

Page 3 : [17] Mis en forme Cathy Wimart-Rousseau 28/07/2023 09:31:00

Anglais (E.U.)

Page 3 : [18] Modifier Unknown

Code de champ modifié

Page 3 : [19] Mis en forme Cathy Wimart-Rousseau 28/07/2023 09:31:00

Anglais (E.U.)

Page 3 : [19] Mis en forme Cathy Wimart-Rousseau 28/07/2023 09:31:00

Anglais (E.U.)

Page 3 : [20] Modifier Unknown

Code de champ modifié

Page 3 : [21] Mis en forme Cathy Wimart-Rousseau 28/07/2023 09:31:00

Anglais (E.U.)

Page 3 : [21] Mis en forme Cathy Wimart-Rousseau 28/07/2023 09:31:00

Anglais (E.U.)

Page 3 : [22] Modifier Unknown

Code de champ modifié

Page 3 : [23] Mis en forme Cathy Wimart-Rousseau 28/07/2023 09:31:00

Anglais (E.U.)

Page 3 : [23] Mis en forme Cathy Wimart-Rousseau 28/07/2023 09:31:00

Anglais (E.U.)

Page 3 : [24] Modifier Unknown

Code de champ modifié

Page 3 : [25] Mis en forme Cathy Wimart-Rousseau 28/07/2023 09:31:00

Anglais (E.U.)

Page 3 : [25] Mis en forme Cathy Wimart-Rousseau 28/07/2023 09:31:00

Anglais (E.U.)

Page 3 : [26] Modifier Unknown

Code de champ modifié

Page 3 : [28] Modifier Unknown

Code de champ modifié

Page 3 : [29] Mis en forme Cathy Wimart-Rousseau 28/07/2023 09:31:00

Anglais (E.U.)

Page 3 : [29] Mis en forme Cathy Wimart-Rousseau 28/07/2023 09:31:00

Anglais (E.U.)

Page 3 : [30] Modifier Unknown

Code de champ modifié

Page 3 : [31] Mis en forme Cathy Wimart-Rousseau 28/07/2023 09:31:00

Anglais (E.U.)

Page 3 : [31] Mis en forme Cathy Wimart-Rousseau 28/07/2023 09:31:00

Anglais (E.U.)

Page 3 : [32] Modifier Unknown

Code de champ modifié

Page 3 : [33] Mis en forme Cathy Wimart-Rousseau 28/07/2023 09:31:00

Anglais (E.U.)

Page 3 : [33] Mis en forme Cathy Wimart-Rousseau 28/07/2023 09:31:00

Anglais (E.U.)

Page 3 : [34] Modifier Unknown

Code de champ modifié

Page 3 : [35] Mis en forme Cathy Wimart-Rousseau 28/07/2023 09:31:00

Anglais (E.U.)

Page 3 : [35] Mis en forme Cathy Wimart-Rousseau 28/07/2023 09:31:00

Anglais (E.U.)

Page 3 : [35] Mis en forme Cathy Wimart-Rousseau 28/07/2023 09:31:00

Anglais (E.U.)

Page 3 : [36] Modifier Unknown

Code de champ modifié

Page 3 : [37] Mis en forme Cathy Wimart-Rousseau 28/07/2023 09:30:00

Anglais (E.U.)

Page 3 : [37] Mis en forme Cathy Wimart-Rousseau 28/07/2023 09:30:00

Anglais (E.U.)

Page 3 : [38] Modifier Unknown

Code de champ modifié

Page 3 : [39] Mis en forme Cathy Wimart-Rousseau 28/07/2023 09:30:00

Anglais (E.U.)

Page 3 : [41] Mis en forme Cathy Wimart-Rousseau 28/07/2023 09:30:00

Anglais (E.U.)

Page 3 : [41] Mis en forme Cathy Wimart-Rousseau 28/07/2023 09:30:00

Anglais (E.U.)

Page 3 : [42] Modifier Unknown

Code de champ modifié

Page 3 : [43] Mis en forme Cathy Wimart-Rousseau 28/07/2023 09:30:00

Anglais (E.U.)

Page 3 : [43] Mis en forme Cathy Wimart-Rousseau 28/07/2023 09:30:00

Anglais (E.U.)

Page 3 : [44] Modifier Unknown

Code de champ modifié

Page 3 : [45] Mis en forme Cathy Wimart-Rousseau 28/07/2023 09:31:00

Anglais (E.U.)

Page 3 : [45] Mis en forme Cathy Wimart-Rousseau 28/07/2023 09:31:00

Anglais (E.U.)

Page 3 : [45] Mis en forme Cathy Wimart-Rousseau 28/07/2023 09:31:00

Anglais (E.U.)

Page 3 : [45] Mis en forme Cathy Wimart-Rousseau 28/07/2023 09:31:00

Anglais (E.U.)

Page 3 : [45] Mis en forme Cathy Wimart-Rousseau 28/07/2023 09:31:00

Anglais (E.U.)

Page 3 : [45] Mis en forme Cathy Wimart-Rousseau 28/07/2023 09:31:00

Anglais (E.U.)

Page 3 : [45] Mis en forme Cathy Wimart-Rousseau 28/07/2023 09:31:00

Anglais (E.U.)

Page 3 : [45] Mis en forme Cathy Wimart-Rousseau 28/07/2023 09:31:00

Anglais (E.U.)

Page 4 : [46] Mis en forme Cathy Wimart-Rousseau 28/07/2023 09:31:00

Anglais (E.U.)

Page 4 : [47] Modifier Unknown

Code de champ modifié

Page 4 : [48] Mis en forme Cathy Wimart-Rousseau 28/07/2023 09:31:00

Anglais (E.U.)

Page 4 : [48] Mis en forme Cathy Wimart-Rousseau 28/07/2023 09:31:00

Anglais (E.U.)

Page 4 : [50] Mis en forme Cathy Wimart-Rousseau 28/07/2023 09:31:00

Anglais (E.U.)

Page 4 : [51] Modifier Unknown

Code de champ modifié

Page 4 : [52] Mis en forme Cathy Wimart-Rousseau 28/07/2023 09:31:00

Anglais (E.U.)

Page 4 : [52] Mis en forme Cathy Wimart-Rousseau 28/07/2023 09:31:00

Anglais (E.U.)

Page 4 : [53] Modifier Unknown

Code de champ modifié

Page 4 : [54] Mis en forme Cathy Wimart-Rousseau 28/07/2023 09:31:00

Anglais (E.U.)

Page 4 : [54] Mis en forme Cathy Wimart-Rousseau 28/07/2023 09:31:00

Anglais (E.U.)

Page 4 : [55] Modifier Unknown

Code de champ modifié

Page 4 : [56] Mis en forme Cathy Wimart-Rousseau 28/07/2023 09:31:00

Anglais (E.U.)

Page 4 : [56] Mis en forme Cathy Wimart-Rousseau 28/07/2023 09:31:00

Anglais (E.U.)

Page 4 : [57] Modifier Unknown

Code de champ modifié

Page 4 : [58] Mis en forme Cathy Wimart-Rousseau 28/07/2023 09:31:00

Anglais (E.U.)

Page 4 : [58] Mis en forme Cathy Wimart-Rousseau 28/07/2023 09:31:00

Anglais (E.U.)

Page 4 : [59] Modifier Unknown

Code de champ modifié

Page 4 : [60] Mis en forme Cathy Wimart-Rousseau 28/07/2023 09:31:00

Anglais (E.U.)

Page 4 : [60] Mis en forme Cathy Wimart-Rousseau 28/07/2023 09:31:00

Anglais (E.U.)

Page 4 : [61] Modifier Unknown

Code de champ modifié

Page 4 : [62] Mis en forme Cathy Wimart-Rousseau 28/07/2023 09:31:00

Anglais (E.U.)

Page 4 : [64] Mis en forme Cathy Wimart-Rousseau 28/07/2023 09:31:00

Anglais (E.U.)

Page 4 : [64] Mis en forme Cathy Wimart-Rousseau 28/07/2023 09:31:00

Anglais (E.U.)

Page 4 : [65] Modifier Unknown

Code de champ modifié

Page 4 : [66] Mis en forme Cathy Wimart-Rousseau 28/07/2023 09:31:00

Anglais (E.U.)

Page 4 : [66] Mis en forme Cathy Wimart-Rousseau 28/07/2023 09:31:00

Anglais (E.U.)

Page 4 : [67] Modifier Unknown

Code de champ modifié

Page 4 : [68] Mis en forme Cathy Wimart-Rousseau 28/07/2023 09:31:00

Anglais (E.U.)

Page 4 : [68] Mis en forme Cathy Wimart-Rousseau 28/07/2023 09:31:00

Anglais (E.U.)

Page 4 : [69] Modifier Unknown

Code de champ modifié

Page 4 : [70] Mis en forme Cathy Wimart-Rousseau 28/07/2023 09:31:00

Anglais (E.U.)

Page 4 : [70] Mis en forme Cathy Wimart-Rousseau 28/07/2023 09:31:00

Anglais (E.U.)

Page 4 : [71] Mis en forme Cathy Wimart-Rousseau 28/07/2023 09:31:00

Anglais (E.U.)

Page 4 : [71] Mis en forme Cathy Wimart-Rousseau 28/07/2023 09:31:00

Anglais (E.U.)

Page 4 : [72] Modifier Unknown

Code de champ modifié

Page 4 : [73] Mis en forme Cathy Wimart-Rousseau 28/07/2023 09:31:00

Anglais (E.U.)

Page 4 : [73] Mis en forme Cathy Wimart-Rousseau 28/07/2023 09:31:00

Anglais (E.U.)

Page 4 : [74] Modifier Unknown

Code de champ modifié

Page 4 : [75] Mis en forme Cathy Wimart-Rousseau 28/07/2023 09:31:00

Anglais (E.U.)

Page 4 : [77] Mis en forme Cathy Wimart-Rousseau 28/07/2023 09:31:00

Anglais (E.U.)

Page 4 : [77] Mis en forme Cathy Wimart-Rousseau 28/07/2023 09:31:00

Anglais (E.U.)

Page 4 : [78] Modifier Unknown

Code de champ modifié

Page 4 : [79] Mis en forme Cathy Wimart-Rousseau 28/07/2023 09:31:00

Anglais (E.U.)

Page 4 : [79] Mis en forme Cathy Wimart-Rousseau 28/07/2023 09:31:00

Anglais (E.U.)

Page 4 : [80] Modifier Unknown

Code de champ modifié

Page 4 : [81] Mis en forme Cathy Wimart-Rousseau 28/07/2023 09:31:00

Anglais (E.U.)

Page 4 : [81] Mis en forme Cathy Wimart-Rousseau 28/07/2023 09:31:00

Anglais (E.U.)

Page 4 : [82] Mis en forme Cathy Wimart-Rousseau 28/07/2023 09:31:00

Anglais (E.U.)

Page 4 : [83] Modifier Unknown

Code de champ modifié

Page 4 : [84] Mis en forme Cathy Wimart-Rousseau 28/07/2023 09:31:00

Anglais (E.U.)

Page 4 : [84] Mis en forme Cathy Wimart-Rousseau 28/07/2023 09:31:00

Anglais (E.U.)

Page 4 : [85] Modifier Unknown

Code de champ modifié

Page 4 : [86] Mis en forme Cathy Wimart-Rousseau 28/07/2023 09:31:00

Anglais (E.U.)

Page 4 : [86] Mis en forme Cathy Wimart-Rousseau 28/07/2023 09:31:00

Anglais (E.U.)

Page 4 : [87] Modifier Unknown

Code de champ modifié

Page 4 : [88] Mis en forme Cathy Wimart-Rousseau 28/07/2023 09:31:00

Anglais (E.U.)

Page 4 : [88] Mis en forme Cathy Wimart-Rousseau 28/07/2023 09:31:00

Anglais (E.U.)

Page 4 : [90] Mis en forme Cathy Wimart-Rousseau 28/07/2023 09:31:00

Anglais (E.U.)

Page 4 : [91] Modifier Unknown

Code de champ modifié

Page 4 : [92] Mis en forme Cathy Wimart-Rousseau 28/07/2023 09:31:00

Anglais (E.U.)

Page 4 : [92] Mis en forme Cathy Wimart-Rousseau 28/07/2023 09:31:00

Anglais (E.U.)

Page 4 : [93] Modifier Unknown

Code de champ modifié

Page 4 : [94] Mis en forme Cathy Wimart-Rousseau 28/07/2023 09:31:00

Anglais (E.U.)

Page 4 : [94] Mis en forme Cathy Wimart-Rousseau 28/07/2023 09:31:00

Anglais (E.U.)

Page 4 : [95] Modifier Unknown

Code de champ modifié

Page 4 : [96] Mis en forme Cathy Wimart-Rousseau 28/07/2023 09:31:00

Anglais (E.U.)

Page 4 : [96] Mis en forme Cathy Wimart-Rousseau 28/07/2023 09:31:00

Anglais (E.U.)

Page 4 : [97] Modifier Unknown

Code de champ modifié

Page 4 : [98] Mis en forme Cathy Wimart-Rousseau 28/07/2023 09:31:00

Anglais (E.U.)

Page 4 : [98] Mis en forme Cathy Wimart-Rousseau 28/07/2023 09:31:00

Anglais (E.U.)

Page 4 : [99] Modifier Unknown

Code de champ modifié

Page 4 : [100] Mis en forme Cathy Wimart-Rousseau 28/07/2023 09:31:00

Anglais (E.U.)

Page 4 : [100] Mis en forme Cathy Wimart-Rousseau 28/07/2023 09:31:00

Anglais (E.U.)

Page 4 : [101] Modifier Unknown

Code de champ modifié

Page 4 : [102] Mis en forme Cathy Wimart-Rousseau 28/07/2023 09:31:00

Anglais (E.U.)

Page 4 : [104] Mis en forme Cathy Wimart-Roussea 28/07/2023 09:31:00

Anglais (E.U.)

Page 4 : [104] Mis en forme Cathy Wimart-Roussea 28/07/2023 09:31:00

Anglais (E.U.)

Page 4 : [105] Modifier Unknown

Code de champ modifié

Page 4 : [106] Mis en forme Cathy Wimart-Roussea 28/07/2023 09:31:00

Anglais (E.U.)

Page 4 : [106] Mis en forme Cathy Wimart-Roussea 28/07/2023 09:31:00

Anglais (E.U.)

Page 4 : [107] Modifier Unknown

Code de champ modifié

Page 4 : [108] Mis en forme Cathy Wimart-Roussea 28/07/2023 09:31:00

Anglais (E.U.)

Page 4 : [108] Mis en forme Cathy Wimart-Roussea 28/07/2023 09:31:00

Anglais (E.U.)

Page 4 : [108] Mis en forme Cathy Wimart-Roussea 28/07/2023 09:31:00

Anglais (E.U.)

Page 4 : [109] Mis en forme Cathy Wimart-Roussea 14/07/2023 12:13:00

Anglais (E.U.)

Page 4 : [110] Mis en forme Cathy Wimart-Roussea 14/07/2023 12:13:00

Anglais (E.U.)

Page 4 : [111] Mis en forme Cathy Wimart-Roussea 14/07/2023 12:13:00

Anglais (E.U.)

Page 4 : [112] Supprimé Cathy Wimart-Roussea 29/08/2023 13:37:00

Page 4 : [112] Supprimé Cathy Wimart-Roussea 29/08/2023 13:37:00

Page 4 : [113] Mis en forme Cathy Wimart-Roussea 14/07/2023 12:13:00

Anglais (E.U.)

Page 4 : [114] Mis en forme Cathy Wimart-Roussea 14/07/2023 12:13:00

Anglais (E.U.)

Page 4 : [115] Mis en forme Cathy Wimart-Roussea 14/07/2023 12:13:00

Anglais (E.U.)

Page 4 : [116] Mis en forme Cathy Wimart-Roussea 14/07/2023 12:13:00

Page 4 : [118] Modifier Unknown

Code de champ modifié

Page 4 : [119] Mis en forme Cathy Wimart-Rousseau 28/07/2023 09:31:00

Anglais (E.U.)

Page 4 : [119] Mis en forme Cathy Wimart-Rousseau 28/07/2023 09:31:00

Anglais (E.U.)

Page 4 : [120] Modifier Unknown

Code de champ modifié

Page 4 : [121] Mis en forme Cathy Wimart-Rousseau 28/07/2023 09:31:00

Anglais (E.U.)

Page 4 : [121] Mis en forme Cathy Wimart-Rousseau 28/07/2023 09:31:00

Anglais (E.U.)

Page 4 : [122] Modifier Unknown

Code de champ modifié

Page 4 : [123] Mis en forme Cathy Wimart-Rousseau 28/07/2023 09:31:00

Anglais (E.U.)

Page 4 : [123] Mis en forme Cathy Wimart-Rousseau 28/07/2023 09:31:00

Anglais (E.U.)

Page 4 : [124] Modifier Unknown

Code de champ modifié

Page 4 : [125] Mis en forme Cathy Wimart-Rousseau 28/07/2023 09:31:00

Anglais (E.U.)

Page 4 : [125] Mis en forme Cathy Wimart-Rousseau 28/07/2023 09:31:00

Anglais (E.U.)

Page 4 : [126] Modifier Unknown

Code de champ modifié

Page 4 : [127] Mis en forme Cathy Wimart-Rousseau 28/07/2023 09:31:00

Anglais (E.U.)

Page 4 : [127] Mis en forme Cathy Wimart-Rousseau 28/07/2023 09:31:00

Anglais (E.U.)

Page 4 : [128] Modifier Unknown

Code de champ modifié

Page 4 : [129] Mis en forme Cathy Wimart-Rousseau 28/07/2023 09:31:00

Anglais (E.U.)

Page 4 : [129] Mis en forme Cathy Wimart-Rousseau 28/07/2023 09:31:00

Anglais (E.U.)

Page 4 : [131] Mis en forme Cathy Wimart-Roussea 28/07/2023 09:31:00

Anglais (E.U.)

Page 4 : [132] Modifier Unknown

Code de champ modifié

Page 4 : [133] Mis en forme Cathy Wimart-Roussea 28/07/2023 09:31:00

Anglais (E.U.)

Page 4 : [133] Mis en forme Cathy Wimart-Roussea 28/07/2023 09:31:00

Anglais (E.U.)

Page 4 : [134] Modifier Unknown

Code de champ modifié

Page 4 : [135] Mis en forme Cathy Wimart-Roussea 28/07/2023 09:31:00

Anglais (E.U.)

Page 4 : [135] Mis en forme Cathy Wimart-Roussea 28/07/2023 09:31:00

Anglais (E.U.)

Page 4 : [136] Modifier Unknown

Code de champ modifié

Page 4 : [137] Mis en forme Cathy Wimart-Roussea 28/07/2023 09:31:00

Anglais (E.U.)

Page 4 : [137] Mis en forme Cathy Wimart-Roussea 28/07/2023 09:31:00

Anglais (E.U.)

Page 4 : [138] Modifier Unknown

Code de champ modifié

Page 4 : [139] Mis en forme Cathy Wimart-Roussea 28/07/2023 09:31:00

Anglais (E.U.)

Page 4 : [139] Mis en forme Cathy Wimart-Roussea 28/07/2023 09:31:00

Anglais (E.U.)

Page 4 : [140] Modifier Unknown

Code de champ modifié

Page 4 : [141] Mis en forme Cathy Wimart-Roussea 28/07/2023 09:31:00

Anglais (E.U.)

Page 4 : [141] Mis en forme Cathy Wimart-Roussea 28/07/2023 09:31:00

Anglais (E.U.)

Page 4 : [142] Modifier Unknown

Code de champ modifié

Page 4 : [143] Mis en forme Cathy Wimart-Roussea 28/07/2023 09:31:00

Anglais (E.U.)

Page 4 : [145] Mis en forme Cathy Wimart-Rousseau 28/07/2023 09:31:00

Anglais (E.U.)

Page 4 : [145] Mis en forme Cathy Wimart-Rousseau 28/07/2023 09:31:00

Anglais (E.U.)

Page 4 : [146] Modifier Unknown

Code de champ modifié

Page 4 : [147] Mis en forme Cathy Wimart-Rousseau 28/07/2023 09:31:00

Anglais (E.U.)

Page 4 : [147] Mis en forme Cathy Wimart-Rousseau 28/07/2023 09:31:00

Anglais (E.U.)

Page 5 : [148] Modifier Unknown

Code de champ modifié

Page 5 : [149] Mis en forme Cathy Wimart-Rousseau 28/07/2023 09:31:00

Anglais (E.U.)

Page 5 : [149] Mis en forme Cathy Wimart-Rousseau 28/07/2023 09:31:00

Anglais (E.U.)

Page 5 : [150] Modifier Unknown

Code de champ modifié

Page 5 : [151] Mis en forme Cathy Wimart-Rousseau 28/07/2023 09:31:00

Anglais (E.U.)

Page 5 : [151] Mis en forme Cathy Wimart-Rousseau 28/07/2023 09:31:00

Anglais (E.U.)

Page 5 : [152] Modifier Unknown

Code de champ modifié

Page 5 : [153] Mis en forme Cathy Wimart-Rousseau 28/07/2023 09:31:00

Anglais (E.U.)

Page 5 : [153] Mis en forme Cathy Wimart-Rousseau 28/07/2023 09:31:00

Anglais (E.U.)

Page 5 : [154] Modifier Unknown

Code de champ modifié

Page 5 : [155] Mis en forme Cathy Wimart-Rousseau 28/07/2023 09:31:00

Anglais (E.U.)

Page 5 : [155] Mis en forme Cathy Wimart-Rousseau 28/07/2023 09:31:00

Anglais (E.U.)

Page 5 : [156] Modifier Unknown

Code de champ modifié

Page 5 : [158] Modifier Unknown

Code de champ modifié

Page 5 : [159] Mis en forme Cathy Wimart-Rousseau 28/07/2023 09:31:00

Anglais (E.U.)

Page 5 : [159] Mis en forme Cathy Wimart-Rousseau 28/07/2023 09:31:00

Anglais (E.U.)

Page 5 : [160] Modifier Unknown

Code de champ modifié

Page 5 : [161] Mis en forme Cathy Wimart-Rousseau 28/07/2023 09:31:00

Anglais (E.U.)

Page 5 : [161] Mis en forme Cathy Wimart-Rousseau 28/07/2023 09:31:00

Anglais (E.U.)

Page 5 : [162] Modifier Unknown

Code de champ modifié

Page 5 : [163] Mis en forme Cathy Wimart-Rousseau 28/07/2023 09:31:00

Anglais (E.U.)

Page 5 : [163] Mis en forme Cathy Wimart-Rousseau 28/07/2023 09:31:00

Anglais (E.U.)

Page 5 : [164] Modifier Unknown

Code de champ modifié

Page 5 : [165] Mis en forme Cathy Wimart-Rousseau 28/07/2023 09:31:00

Anglais (E.U.)

Page 5 : [165] Mis en forme Cathy Wimart-Rousseau 28/07/2023 09:31:00

Anglais (E.U.)

Page 5 : [166] Modifier Unknown

Code de champ modifié

Page 5 : [167] Mis en forme Cathy Wimart-Rousseau 28/07/2023 09:31:00

Anglais (E.U.)

Page 5 : [167] Mis en forme Cathy Wimart-Rousseau 28/07/2023 09:31:00

Anglais (E.U.)

Page 5 : [168] Modifier Unknown

Code de champ modifié

Page 5 : [169] Mis en forme Cathy Wimart-Rousseau 28/07/2023 09:31:00

Anglais (E.U.)

Page 5 : [169] Mis en forme Cathy Wimart-Rousseau 28/07/2023 09:31:00

Anglais (E.U.)

Page 5 : [171] Mis en forme Cathy Wimart-Rousseau 28/07/2023 09:31:00

Anglais (E.U.)

Page 5 : [172] Mis en forme Cathy Wimart-Rousseau 28/07/2023 09:31:00

Anglais (E.U.)

Page 5 : [172] Mis en forme Cathy Wimart-Rousseau 28/07/2023 09:31:00

Anglais (E.U.)

Page 5 : [173] Mis en forme Cathy Wimart-Rousseau 28/07/2023 09:31:00

Anglais (E.U.)

Page 5 : [174] Mis en forme Cathy Wimart-Rousseau 22/08/2023 10:55:00

Normal, Retrait : Gauche : 2,17 cm, Sans numérotation ni puces

Page 5 : [175] Mis en forme Cathy Wimart-Rousseau 22/08/2023 10:55:00

Police :10 pt, Gras

Page 5 : [176] Mis en forme Cathy Wimart-Rousseau 28/07/2023 09:31:00

Anglais (E.U.)

Page 5 : [177] Modifier Unknown

Code de champ modifié

Page 5 : [178] Mis en forme Cathy Wimart-Rousseau 28/07/2023 09:31:00

Anglais (E.U.)

Page 5 : [178] Mis en forme Cathy Wimart-Rousseau 28/07/2023 09:31:00

Anglais (E.U.)

Page 5 : [179] Modifier Unknown

Code de champ modifié

Page 5 : [180] Mis en forme Cathy Wimart-Rousseau 28/07/2023 09:31:00

Anglais (E.U.)

Page 5 : [180] Mis en forme Cathy Wimart-Rousseau 28/07/2023 09:31:00

Anglais (E.U.)

Page 5 : [181] Modifier Unknown

Code de champ modifié

Page 5 : [182] Mis en forme Cathy Wimart-Rousseau 28/07/2023 09:31:00

Anglais (E.U.)

Page 5 : [182] Mis en forme Cathy Wimart-Rousseau 28/07/2023 09:31:00

Anglais (E.U.)

Page 5 : [183] Mis en forme Cathy Wimart-Rousseau 28/07/2023 09:31:00

Anglais (E.U.)

Page 5 : [184] Mis en forme Cathy Wimart-Rousseau 28/07/2023 09:31:00

Anglais (E.U.)

Page 5 : [187] Modifier Unknown

Code de champ modifié

Page 5 : [188] Mis en forme Cathy Wimart-Roussea 28/07/2023 11:50:00

Anglais (E.U.)

Page 5 : [188] Mis en forme Cathy Wimart-Roussea 28/07/2023 11:50:00

Anglais (E.U.)

Page 5 : [189] Modifier Unknown

Code de champ modifié

Page 5 : [190] Mis en forme Cathy Wimart-Roussea 28/07/2023 11:50:00

Anglais (E.U.)

Page 5 : [190] Mis en forme Cathy Wimart-Roussea 28/07/2023 11:50:00

Anglais (E.U.)

Page 5 : [190] Mis en forme Cathy Wimart-Roussea 28/07/2023 11:50:00

Anglais (E.U.)

Page 5 : [191] Mis en forme Cathy Wimart-Roussea 28/07/2023 11:50:00

Anglais (E.U.)

Page 5 : [191] Mis en forme Cathy Wimart-Roussea 28/07/2023 11:50:00

Anglais (E.U.)

Page 5 : [191] Mis en forme Cathy Wimart-Roussea 28/07/2023 11:50:00

Anglais (E.U.)

Page 5 : [192] Modifier Unknown

Code de champ modifié

Page 5 : [193] Mis en forme Cathy Wimart-Roussea 28/07/2023 09:31:00

Anglais (E.U.)

Page 5 : [193] Mis en forme Cathy Wimart-Roussea 28/07/2023 09:31:00

Anglais (E.U.)

Page 5 : [194] Modifier Unknown

Code de champ modifié

Page 5 : [195] Mis en forme Cathy Wimart-Roussea 28/07/2023 09:31:00

Anglais (E.U.)

Page 5 : [195] Mis en forme Cathy Wimart-Roussea 28/07/2023 09:31:00

Anglais (E.U.)

Page 5 : [196] Modifier Unknown

Code de champ modifié

Page 5 : [197] Mis en forme Cathy Wimart-Roussea 28/07/2023 09:31:00

Anglais (E.U.)

Page 5 : [199] Mis en forme Cathy Wimart-Rousseau 28/07/2023 09:31:00

Anglais (E.U.)

Page 5 : [199] Mis en forme Cathy Wimart-Rousseau 28/07/2023 09:31:00

Anglais (E.U.)

Page 5 : [199] Mis en forme Cathy Wimart-Rousseau 28/07/2023 09:31:00

Anglais (E.U.)

Page 5 : [200] Modifier Unknown

Code de champ modifié

Page 5 : [201] Mis en forme Cathy Wimart-Rousseau 28/07/2023 09:31:00

Anglais (E.U.)

Page 5 : [201] Mis en forme Cathy Wimart-Rousseau 28/07/2023 09:31:00

Anglais (E.U.)

Page 5 : [202] Modifier Unknown

Code de champ modifié

Page 5 : [203] Mis en forme Cathy Wimart-Rousseau 28/07/2023 09:31:00

Anglais (E.U.)

Page 5 : [203] Mis en forme Cathy Wimart-Rousseau 28/07/2023 09:31:00

Anglais (E.U.)

Page 5 : [204] Modifier Unknown

Code de champ modifié

Page 5 : [205] Mis en forme Cathy Wimart-Rousseau 28/07/2023 09:31:00

Anglais (E.U.)

Page 5 : [205] Mis en forme Cathy Wimart-Rousseau 28/07/2023 09:31:00

Anglais (E.U.)

Page 5 : [206] Modifier Unknown

Code de champ modifié

Page 5 : [207] Mis en forme Cathy Wimart-Rousseau 28/07/2023 09:31:00

Anglais (E.U.)

Page 5 : [207] Mis en forme Cathy Wimart-Rousseau 28/07/2023 09:31:00

Anglais (E.U.)

Page 8 : [208] Mis en forme Cathy Wimart-Rousseau 14/07/2023 12:14:00

Anglais (E.U.)

Page 8 : [208] Mis en forme Cathy Wimart-Rousseau 14/07/2023 12:14:00

Anglais (E.U.)

Page 8 : [208] Mis en forme Cathy Wimart-Rousseau 14/07/2023 12:14:00

Anglais (E.U.)

Page 8 : [208] Mis en forme Cathy Wimart-Rousseau 14/07/2023 12:14:00

Anglais (E.U.)

Page 8 : [208] Mis en forme Cathy Wimart-Rousseau 14/07/2023 12:14:00

Anglais (E.U.)

Page 8 : [208] Mis en forme Cathy Wimart-Rousseau 14/07/2023 12:14:00

Anglais (E.U.)

Page 8 : [208] Mis en forme Cathy Wimart-Rousseau 14/07/2023 12:14:00

Anglais (E.U.)

Page 8 : [208] Mis en forme Cathy Wimart-Rousseau 14/07/2023 12:14:00

Anglais (E.U.)

Page 8 : [208] Mis en forme Cathy Wimart-Rousseau 14/07/2023 12:14:00

Anglais (E.U.)

Page 8 : [208] Mis en forme Cathy Wimart-Rousseau 14/07/2023 12:14:00

Anglais (E.U.)

Page 8 : [208] Mis en forme Cathy Wimart-Rousseau 14/07/2023 12:14:00

Anglais (E.U.)

Page 8 : [208] Mis en forme Cathy Wimart-Rousseau 14/07/2023 12:14:00

Anglais (E.U.)

Page 8 : [208] Mis en forme Cathy Wimart-Rousseau 14/07/2023 12:14:00

Anglais (E.U.)

Page 8 : [208] Mis en forme Cathy Wimart-Rousseau 14/07/2023 12:14:00

Anglais (E.U.)

Page 8 : [209] Mis en forme Cathy Wimart-Rousseau 28/07/2023 09:31:00

Anglais (E.U.)

Page 8 : [210] Mis en forme Cathy Wimart-Rousseau 28/07/2023 09:31:00

Anglais (E.U.)

Page 8 : [210] Mis en forme Cathy Wimart-Rousseau 28/07/2023 09:31:00

Anglais (E.U.)

Page 8 : [210] Mis en forme Cathy Wimart-Rousseau 28/07/2023 09:31:00

Anglais (E.U.)

Page 8 : [210] Mis en forme Cathy Wimart-Rousseau 28/07/2023 09:31:00

Anglais (E.U.)

Page 8 : [210] Mis en forme Cathy Wimart-Rousseau 28/07/2023 09:31:00

Anglais (E.U.)

Page 8 : [210] Mis en forme Cathy Wimart-Rousseau 28/07/2023 09:31:00

Anglais (E.U.)

Page 8 : [210] Mis en forme Cathy Wimart-Rousseau 28/07/2023 09:31:00

Anglais (E.U.)

Page 8 : [210] Mis en forme Cathy Wimart-Rousseau 28/07/2023 09:31:00

Anglais (E.U.)

Page 8 : [210] Mis en forme Cathy Wimart-Rousseau 28/07/2023 09:31:00

Anglais (E.U.)

Page 8 : [210] Mis en forme Cathy Wimart-Rousseau 28/07/2023 09:31:00

Anglais (E.U.)

Page 8 : [211] Mis en forme Cathy Wimart-Rousseau 28/07/2023 09:31:00

Anglais (E.U.)

Page 8 : [211] Mis en forme Cathy Wimart-Rousseau 28/07/2023 09:31:00

Anglais (E.U.)

Page 8 : [211] Mis en forme Cathy Wimart-Rousseau 28/07/2023 09:31:00

Anglais (E.U.)

Page 8 : [212] Mis en forme Cathy Wimart-Rousseau 28/07/2023 09:31:00

Anglais (E.U.)

Page 8 : [213] Modifier Unknown

Code de champ modifié

Page 8 : [214] Mis en forme Cathy Wimart-Rousseau 28/07/2023 09:31:00

Anglais (E.U.)

Page 8 : [214] Mis en forme Cathy Wimart-Rousseau 28/07/2023 09:31:00

Anglais (E.U.)

Page 8 : [215] Modifier Unknown

Code de champ modifié

Page 8 : [216] Mis en forme Cathy Wimart-Rousseau 28/07/2023 09:31:00

Anglais (E.U.)

Page 8 : [216] Mis en forme Cathy Wimart-Rousseau 28/07/2023 09:31:00

Anglais (E.U.)

Page 8 : [217] Mis en forme Cathy Wimart-Rousseau 28/07/2023 09:31:00

Anglais (E.U.)

Page 8 : [218] Mis en forme Cathy Wimart-Rousseau 28/07/2023 09:31:00

Anglais (E.U.)

Page 8 : [219] Modifier Unknown

Code de champ modifié

Page 8 : [220] Mis en forme Cathy Wimart-Rousseau 28/07/2023 09:31:00

Anglais (E.U.)

Page 8 : [222] Mis en forme Cathy Wimart-Rousseau 28/07/2023 09:31:00

Anglais (E.U.)

Page 8 : [222] Mis en forme Cathy Wimart-Rousseau 28/07/2023 09:31:00

Anglais (E.U.)

Page 8 : [223] Modifier Unknown

Code de champ modifié

Page 8 : [224] Mis en forme Cathy Wimart-Rousseau 28/07/2023 09:31:00

Anglais (E.U.)

Page 8 : [224] Mis en forme Cathy Wimart-Rousseau 28/07/2023 09:31:00

Anglais (E.U.)

Page 8 : [225] Modifier Unknown

Code de champ modifié

Page 8 : [226] Mis en forme Cathy Wimart-Rousseau 28/07/2023 09:31:00

Anglais (E.U.)

Page 8 : [226] Mis en forme Cathy Wimart-Rousseau 28/07/2023 09:31:00

Anglais (E.U.)

Page 8 : [226] Mis en forme Cathy Wimart-Rousseau 28/07/2023 09:31:00

Anglais (E.U.)

Page 8 : [227] Modifier Unknown

Code de champ modifié

Page 8 : [228] Mis en forme Cathy Wimart-Rousseau 28/07/2023 09:31:00

Anglais (E.U.)

Page 8 : [228] Mis en forme Cathy Wimart-Rousseau 28/07/2023 09:31:00

Anglais (E.U.)

Page 8 : [229] Modifier Unknown

Code de champ modifié

Page 8 : [230] Mis en forme Cathy Wimart-Rousseau 28/07/2023 09:31:00

Anglais (E.U.)

Page 8 : [230] Mis en forme Cathy Wimart-Rousseau 28/07/2023 09:31:00

Anglais (E.U.)

Page 8 : [231] Mis en forme Cathy Wimart-Rousseau 28/07/2023 09:31:00

Anglais (E.U.)

Page 8 : [232] Modifier Unknown

Code de champ modifié

Page 8 : [233] Mis en forme Cathy Wimart-Rousseau 28/07/2023 09:31:00

Anglais (E.U.)

Page 8 : [235] Mis en forme Cathy Wimart-Roussea 28/07/2023 09:31:00

Anglais (E.U.)

Page 8 : [235] Mis en forme Cathy Wimart-Roussea 28/07/2023 09:31:00

Anglais (E.U.)

Page 8 : [236] Supprimé Cathy Wimart-Roussea 05/07/2023 09:18:00

Page 8 : [237] Mis en forme Cathy Wimart-Roussea 28/07/2023 09:30:00

Anglais (E.U.)

Page 8 : [237] Mis en forme Cathy Wimart-Roussea 28/07/2023 09:30:00

Anglais (E.U.)

Page 8 : [237] Mis en forme Cathy Wimart-Roussea 28/07/2023 09:30:00

Anglais (E.U.)

Page 8 : [237] Mis en forme Cathy Wimart-Roussea 28/07/2023 09:30:00

Anglais (E.U.)

Page 8 : [237] Mis en forme Cathy Wimart-Roussea 28/07/2023 09:30:00

Anglais (E.U.)

Page 8 : [237] Mis en forme Cathy Wimart-Roussea 28/07/2023 09:30:00

Anglais (E.U.)

Page 8 : [238] Supprimé Cathy Wimart-Roussea 05/07/2023 09:18:00

Page 8 : [238] Supprimé Cathy Wimart-Roussea 05/07/2023 09:18:00

Page 8 : [238] Supprimé Cathy Wimart-Roussea 05/07/2023 09:18:00

Page 8 : [238] Supprimé Cathy Wimart-Roussea 05/07/2023 09:18:00

Page 8 : [239] Modifier Unknown

Code de champ modifié

Page 8 : [240] Mis en forme Cathy Wimart-Roussea 28/07/2023 09:31:00

Anglais (E.U.)

Page 8 : [241] Mis en forme Cathy Wimart-Roussea 28/07/2023 09:31:00

Anglais (E.U.)

Page 8 : [242] Modifier Unknown

Code de champ modifié

Code de champ modifié

Page 8 : [245] Mis en forme Cathy Wimart-Roussea 28/07/2023 09:31:00

Anglais (E.U.)

Page 8 : [245] Mis en forme Cathy Wimart-Roussea 28/07/2023 09:31:00

Anglais (E.U.)

Page 9 : [246] Mis en forme Cathy Wimart-Roussea 28/07/2023 09:31:00

Anglais (E.U.)

Page 9 : [246] Mis en forme Cathy Wimart-Roussea 28/07/2023 09:31:00

Anglais (E.U.)

Page 9 : [247] Mis en forme Cathy Wimart-Roussea 28/07/2023 09:31:00

Anglais (E.U.)

Page 9 : [247] Mis en forme Cathy Wimart-Roussea 28/07/2023 09:31:00

Anglais (E.U.)

Page 9 : [248] Mis en forme Cathy Wimart-Roussea 28/07/2023 09:31:00

Anglais (E.U.)

Page 9 : [248] Mis en forme Cathy Wimart-Roussea 28/07/2023 09:31:00

Anglais (E.U.)

Page 9 : [249] Mis en forme Cathy Wimart-Roussea 28/07/2023 09:31:00

Anglais (E.U.)

Page 9 : [249] Mis en forme Cathy Wimart-Roussea 28/07/2023 09:31:00

Anglais (E.U.)

Page 9 : [250] Mis en forme Cathy Wimart-Roussea 28/07/2023 09:31:00

Anglais (E.U.)

Page 9 : [250] Mis en forme Cathy Wimart-Roussea 28/07/2023 09:31:00

Anglais (E.U.)

Page 9 : [251] Mis en forme Cathy Wimart-Roussea 28/07/2023 09:31:00

Anglais (E.U.)

Page 9 : [251] Mis en forme Cathy Wimart-Roussea 28/07/2023 09:31:00

Anglais (E.U.)

Page 9 : [252] Mis en forme Cathy Wimart-Roussea 28/07/2023 09:31:00

Anglais (E.U.)

Page 9 : [252] Mis en forme Cathy Wimart-Roussea 28/07/2023 09:31:00

Anglais (E.U.)

Page 9 : [253] Mis en forme Cathy Wimart-Roussea 28/07/2023 09:31:00

Anglais (E.U.)

Page 9 : [253] Mis en forme Cathy Wimart-Roussea 28/07/2023 09:31:00

Police :10 pt, Anglais (E.U.), Non Étendu de/ Condensé de

Page 9 : [256] Mis en forme Cathy Wimart-Rousseau 14/08/2023 09:40:00

Police :10 pt, Anglais (E.U.), Non Étendu de/ Condensé de

Page 9 : [256] Mis en forme Cathy Wimart-Rousseau 14/08/2023 09:40:00

Police :10 pt, Anglais (E.U.), Non Étendu de/ Condensé de

Page 10 : [257] Modifier Unknown

Code de champ modifié

Page 10 : [258] Mis en forme Cathy Wimart-Rousseau 28/07/2023 09:31:00

Anglais (E.U.), Ne pas vérifier l'orthographe ou la grammaire

Page 10 : [258] Mis en forme Cathy Wimart-Rousseau 28/07/2023 09:31:00

Anglais (E.U.), Ne pas vérifier l'orthographe ou la grammaire

Page 10 : [259] Mis en forme Cathy Wimart-Rousseau 28/07/2023 09:31:00

Anglais (E.U.)

Page 10 : [260] Mis en forme Cathy Wimart-Rousseau 28/07/2023 09:31:00

Anglais (E.U.)

Page 10 : [261] Mis en forme Cathy Wimart-Rousseau 16/08/2023 08:48:00

Anglais (E.U.)

Page 10 : [262] Mis en forme Cathy Wimart-Rousseau 16/08/2023 08:48:00

Anglais (E.U.)

Page 10 : [262] Mis en forme Cathy Wimart-Rousseau 16/08/2023 08:48:00

Anglais (E.U.)

Page 10 : [263] Mis en forme Cathy Wimart-Rousseau 28/07/2023 09:31:00

Anglais (E.U.)

Page 10 : [264] Mis en forme Cathy Wimart-Rousseau 28/07/2023 09:31:00

Anglais (E.U.)

Page 10 : [264] Mis en forme Cathy Wimart-Rousseau 28/07/2023 09:31:00

Anglais (E.U.)

Page 10 : [265] Mis en forme Cathy Wimart-Rousseau 28/07/2023 09:31:00

Anglais (E.U.)

Page 10 : [266] Mis en forme Cathy Wimart-Rousseau 28/07/2023 09:31:00

Anglais (E.U.)

Page 10 : [266] Mis en forme Cathy Wimart-Rousseau 28/07/2023 09:31:00

Anglais (E.U.)

Page 10 : [267] Mis en forme Cathy Wimart-Rousseau 28/07/2023 09:31:00

Anglais (E.U.)

Page 10 : [268] Mis en forme Cathy Wimart-Rousseau 28/07/2023 09:31:00

Anglais (E.U.)

Page 10 : [269] Mis en forme Cathy Wimart-Rousseau 28/07/2023 09:31:00

Anglais (E.U.)

Page 10 : [270] Supprimé Cathy Wimart-Rousseau 16/08/2023 08:49:00

Page 10 : [270] Supprimé Cathy Wimart-Rousseau 16/08/2023 08:49:00

Page 10 : [271] Mis en forme Cathy Wimart-Rousseau 28/07/2023 09:31:00

Anglais (E.U.)

Page 10 : [272] Modifier Unknown

Code de champ modifié

Page 10 : [273] Mis en forme Cathy Wimart-Rousseau 28/07/2023 09:31:00

Anglais (E.U.)

Page 10 : [273] Mis en forme Cathy Wimart-Rousseau 28/07/2023 09:31:00

Anglais (E.U.)

Page 10 : [274] Modifier Unknown

Code de champ modifié

Page 10 : [275] Mis en forme Cathy Wimart-Rousseau 28/07/2023 09:31:00

Anglais (E.U.)

Page 10 : [275] Mis en forme Cathy Wimart-Rousseau 28/07/2023 09:31:00

Anglais (E.U.)

Page 10 : [275] Mis en forme Cathy Wimart-Rousseau 28/07/2023 09:31:00

Anglais (E.U.)

Page 10 : [276] Mis en forme Cathy Wimart-Rousseau 14/07/2023 12:17:00

Anglais (E.U.)

Page 10 : [276] Mis en forme Cathy Wimart-Rousseau 14/07/2023 12:17:00

Anglais (E.U.)

Page 10 : [276] Mis en forme Cathy Wimart-Rousseau 14/07/2023 12:17:00

Anglais (E.U.)

Page 10 : [277] Modifier Unknown

Code de champ modifié

Page 10 : [278] Mis en forme Cathy Wimart-Rousseau 28/07/2023 09:31:00

Anglais (E.U.)

Page 10 : [278] Mis en forme Cathy Wimart-Rousseau 28/07/2023 09:31:00

Anglais (E.U.)

Anglais (E.U.)

Page 10 : [281] Modifier Unknown

Code de champ modifié

Page 10 : [282] Mis en forme Cathy Wimart-Rousseau 28/07/2023 09:31:00

Anglais (E.U.)

Page 10 : [282] Mis en forme Cathy Wimart-Rousseau 28/07/2023 09:31:00

Anglais (E.U.)

Page 10 : [282] Mis en forme Cathy Wimart-Rousseau 28/07/2023 09:31:00

Anglais (E.U.)

Page 10 : [283] Supprimé Cathy Wimart-Rousseau 14/07/2023 12:17:00

Page 10 : [283] Supprimé Cathy Wimart-Rousseau 14/07/2023 12:17:00

Page 10 : [284] Mis en forme Cathy Wimart-Rousseau 14/07/2023 12:17:00

Anglais (E.U.)

Page 10 : [285] Mis en forme Cathy Wimart-Rousseau 14/07/2023 12:17:00

Anglais (E.U.)

Page 10 : [285] Mis en forme Cathy Wimart-Rousseau 14/07/2023 12:17:00

Anglais (E.U.)

Page 10 : [286] Supprimé Cathy Wimart-Rousseau 14/07/2023 12:17:00

Page 10 : [286] Supprimé Cathy Wimart-Rousseau 14/07/2023 12:17:00

Page 10 : [286] Supprimé Cathy Wimart-Rousseau 14/07/2023 12:17:00

Page 10 : [286] Supprimé Cathy Wimart-Rousseau 14/07/2023 12:17:00

Page 10 : [287] Mis en forme Cathy Wimart-Rousseau 14/07/2023 12:17:00

Anglais (E.U.)

Page 10 : [288] Mis en forme Cathy Wimart-Rousseau 14/07/2023 12:17:00

Anglais (E.U.)

Page 10 : [289] Mis en forme Cathy Wimart-Rousseau 14/07/2023 12:17:00

Anglais (E.U.)

Page 10 : [290] Mis en forme Cathy Wimart-Rousseau 14/07/2023 12:17:00

Page 10 : [292] Mis en forme Cathy Wimart-Rousseau 14/07/2023 12:17:00

Anglais (E.U.)

Page 10 : [292] Mis en forme Cathy Wimart-Rousseau 14/07/2023 12:17:00

Anglais (E.U.)

Page 12 : [293] Mis en forme Cathy Wimart-Rousseau 28/07/2023 09:31:00

Anglais (E.U.)

Page 12 : [293] Mis en forme Cathy Wimart-Rousseau 28/07/2023 09:31:00

Anglais (E.U.)

Page 12 : [293] Mis en forme Cathy Wimart-Rousseau 28/07/2023 09:31:00

Anglais (E.U.)

Page 12 : [294] Mis en forme Cathy Wimart-Rousseau 28/07/2023 09:31:00

Anglais (E.U.)

Page 12 : [294] Mis en forme Cathy Wimart-Rousseau 28/07/2023 09:31:00

Anglais (E.U.)

Page 12 : [295] Supprimé Cathy Wimart-Rousseau 14/07/2023 12:20:00

Page 12 : [295] Supprimé Cathy Wimart-Rousseau 14/07/2023 12:20:00

Page 12 : [296] Supprimé Cathy Wimart-Rousseau 06/07/2023 09:40:00

Page 12 : [296] Supprimé Cathy Wimart-Rousseau 06/07/2023 09:40:00

Page 12 : [296] Supprimé Cathy Wimart-Rousseau 06/07/2023 09:40:00

Page 12 : [296] Supprimé Cathy Wimart-Rousseau 06/07/2023 09:40:00

Page 12 : [296] Supprimé Cathy Wimart-Rousseau 06/07/2023 09:40:00

Page 12 : [297] Supprimé Cathy Wimart-Rousseau 10/07/2023 16:17:00

Page 12 : [297] Supprimé Cathy Wimart-Rousseau 10/07/2023 16:17:00

Page 12 : [298] Supprimé Cathy Wimart-Rousseau 16/08/2023 09:59:00

Page 12 : [298] Supprimé Cathy Wimart-Rousseau 16/08/2023 09:59:00

Page 12 : [299] Supprimé Cathy Wimart-Rousseau 14/08/2023 14:25:00

Page 12 : [299] Supprimé Cathy Wimart-Rousseau 14/08/2023 14:25:00

Page 12 : [300] Mis en forme Cathy Wimart-Rousseau 28/07/2023 09:31:00

Anglais (E.U.)

Page 12 : [300] Mis en forme Cathy Wimart-Rousseau 28/07/2023 09:31:00

Anglais (E.U.)

Page 12 : [301] Mis en forme Cathy Wimart-Rousseau 28/07/2023 09:31:00

Anglais (E.U.)

Page 12 : [301] Mis en forme Cathy Wimart-Rousseau 28/07/2023 09:31:00

Anglais (E.U.)

Page 13 : [302] Mis en forme Cathy Wimart-Rousseau 06/07/2023 10:23:00

Numérotation : Continue

Page 13 : [303] Mis en forme Cathy Wimart-Rousseau 28/07/2023 09:31:00

Anglais (E.U.)

Page 13 : [303] Mis en forme Cathy Wimart-Rousseau 28/07/2023 09:31:00

Anglais (E.U.)

Page 13 : [303] Mis en forme Cathy Wimart-Rousseau 28/07/2023 09:31:00

Anglais (E.U.)

Page 13 : [303] Mis en forme Cathy Wimart-Rousseau 28/07/2023 09:31:00

Anglais (E.U.)

Page 13 : [303] Mis en forme Cathy Wimart-Rousseau 28/07/2023 09:31:00

Anglais (E.U.)

Page 13 : [303] Mis en forme Cathy Wimart-Rousseau 28/07/2023 09:31:00

Anglais (E.U.)

Page 13 : [303] Mis en forme Cathy Wimart-Rousseau 28/07/2023 09:31:00

Anglais (E.U.)

Page 13 : [303] Mis en forme Cathy Wimart-Rousseau 28/07/2023 09:31:00

Anglais (E.U.)

Page 13 : [304] Mis en forme Cathy Wimart-Rousseau 28/07/2023 09:31:00

Anglais (E.U.)

Page 13 : [304] Mis en forme Cathy Wimart-Rousseau 28/07/2023 09:31:00

Anglais (E.U.)

Page 13 : [304] Mis en forme Cathy Wimart-Rousseau 28/07/2023 09:31:00

Anglais (E.U.)

Page 13 : [304] Mis en forme Cathy Wimart-Rousseau 28/07/2023 09:31:00

Anglais (E.U.)

Page 13 : [305] Mis en forme Cathy Wimart-Rousseau 28/07/2023 09:31:00

Anglais (E.U.)

Page 13 : [305] Mis en forme Cathy Wimart-Rousseau 28/07/2023 09:31:00

Anglais (E.U.)

Page 13 : [305] Mis en forme Cathy Wimart-Rousseau 28/07/2023 09:31:00

Anglais (E.U.)

Page 13 : [305] Mis en forme Cathy Wimart-Rousseau 28/07/2023 09:31:00

Anglais (E.U.)

Page 13 : [305] Mis en forme Cathy Wimart-Rousseau 28/07/2023 09:31:00

Anglais (E.U.)

Page 13 : [305] Mis en forme Cathy Wimart-Rousseau 28/07/2023 09:31:00

Anglais (E.U.)

Page 13 : [306] Mis en forme Cathy Wimart-Rousseau 28/07/2023 09:31:00

Anglais (E.U.), Non Étendu de/ Condensé de

Page 13 : [306] Mis en forme Cathy Wimart-Rousseau 28/07/2023 09:31:00

Anglais (E.U.), Non Étendu de/ Condensé de

Page 13 : [306] Mis en forme Cathy Wimart-Rousseau 28/07/2023 09:31:00

Anglais (E.U.), Non Étendu de/ Condensé de

Page 13 : [306] Mis en forme Cathy Wimart-Rousseau 28/07/2023 09:31:00

Anglais (E.U.), Non Étendu de/ Condensé de

Page 13 : [306] Mis en forme Cathy Wimart-Rousseau 28/07/2023 09:31:00

Anglais (E.U.), Non Étendu de/ Condensé de

Page 13 : [306] Mis en forme Cathy Wimart-Rousseau 28/07/2023 09:31:00

Anglais (E.U.), Non Étendu de/ Condensé de

Page 13 : [306] Mis en forme Cathy Wimart-Rousseau 28/07/2023 09:31:00

Anglais (E.U.), Non Étendu de/ Condensé de

Page 13 : [306] Mis en forme Cathy Wimart-Rousseau 28/07/2023 09:31:00

Anglais (E.U.), Non Étendu de/ Condensé de

Page 13 : [306] Mis en forme Cathy Wimart-Rousseau 28/07/2023 09:31:00

Page 13 : [308] Supprimé Cathy Wimart-Rousseau 06/07/2023 10:21:00

Page 13 : [309] Mis en forme Cathy Wimart-Rousseau 28/07/2023 09:31:00

Anglais (E.U.)

Page 13 : [310] Supprimé Cathy Wimart-Rousseau 06/07/2023 10:22:00

Page 13 : [311] Mis en forme Cathy Wimart-Rousseau 28/07/2023 09:31:00

Anglais (E.U.)

Page 13 : [312] Supprimé Cathy Wimart-Rousseau 06/07/2023 09:56:00

Page 13 : [312] Supprimé Cathy Wimart-Rousseau 06/07/2023 09:56:00

Page 13 : [312] Supprimé Cathy Wimart-Rousseau 06/07/2023 09:56:00

Page 13 : [313] Modifier Unknown

Code de champ modifié

Page 13 : [314] Mis en forme Cathy Wimart-Rousseau 28/07/2023 09:31:00

Anglais (E.U.)

Page 13 : [315] Mis en forme Cathy Wimart-Rousseau 28/07/2023 09:31:00

Anglais (E.U.)

Page 13 : [316] Supprimé Cathy Wimart-Rousseau 06/07/2023 10:09:00

Page 13 : [316] Supprimé Cathy Wimart-Rousseau 06/07/2023 10:09:00

Page 13 : [316] Supprimé Cathy Wimart-Rousseau 06/07/2023 10:09:00

Page 13 : [316] Supprimé Cathy Wimart-Rousseau 06/07/2023 10:09:00

Page 13 : [317] Mis en forme Cathy Wimart-Rousseau 28/07/2023 09:31:00

▲ Page 13 : [319] Mis en forme Cathy Wimart-Rousseau 28/07/2023 09:31:00

Anglais (E.U.)

▲ Page 13 : [320] Mis en forme Cathy Wimart-Rousseau 28/07/2023 09:31:00

Anglais (E.U.)

▲ Page 13 : [321] Supprimé Cathy Wimart-Rousseau 06/07/2023 10:10:00

▲ Page 13 : [321] Supprimé Cathy Wimart-Rousseau 06/07/2023 10:10:00

▲ Page 13 : [322] Mis en forme Cathy Wimart-Rousseau 28/07/2023 09:31:00

Anglais (E.U.)

▲ Page 13 : [323] Supprimé Cathy Wimart-Rousseau 06/07/2023 10:23:00

▲ Page 13 : [323] Supprimé Cathy Wimart-Rousseau 06/07/2023 10:23:00

▲ Page 13 : [323] Supprimé Cathy Wimart-Rousseau 06/07/2023 10:23:00

▲ Page 13 : [323] Supprimé Cathy Wimart-Rousseau 06/07/2023 10:23:00

▲ Page 13 : [324] Mis en forme Cathy Wimart-Rousseau 28/07/2023 09:31:00

Anglais (E.U.)

▲ Page 13 : [324] Mis en forme Cathy Wimart-Rousseau 28/07/2023 09:31:00

▲ Page 13 : [324] Mis en forme Cathy Wimart-Rousseau 28/07/2023 09:31:00

▲ Page 13 : [324] Mis en forme Cathy Wimart-Rousseau 28/07/2023 09:31:00

▲ Page 13 : [325] Supprimé Cathy Wimart-Rousseau 30/06/2023 10:14:00

▲ Page 13 : [325] Supprimé Cathy Wimart-Rousseau 30/06/2023 10:14:00

▲ Page 13 : [326] Mis en forme Cathy Wimart-Rousseau 28/07/2023 09:31:00

▲ Page 13 : [326] Mis en forme Cathy Wimart-Rousseau 28/07/2023 09:31:00

▲ Page 13 : [326] Mis en forme Cathy Wimart-Rousseau 28/07/2023 09:31:00

▲ Page 13 : [326] Mis en forme Cathy Wimart-Rousseau 28/07/2023 09:31:00

▲ Page 13 : [326] Mis en forme Cathy Wimart-Rousseau 28/07/2023 09:31:00

▲ Page 13 : [326] Mis en forme Cathy Wimart-Rousseau 28/07/2023 09:31:00

▲ Page 13 : [326] Mis en forme Cathy Wimart-Rousseau 28/07/2023 09:31:00

▲ Page 13 : [326] Mis en forme Cathy Wimart-Rousseau 28/07/2023 09:31:00

▲ Page 13 : [326] Mis en forme Cathy Wimart-Rousseau 28/07/2023 09:31:00

▲ Page 13 : [326] Mis en forme Cathy Wimart-Rousseau 28/07/2023 09:31:00

▲ Page 13 : [326] Mis en forme Cathy Wimart-Rousseau 28/07/2023 09:31:00

▲ Page 13 : [326] Mis en forme Cathy Wimart-Rousseau 28/07/2023 09:31:00

▲ Page 13 : [326] Mis en forme Cathy Wimart-Rousseau 28/07/2023 09:31:00

▲ Page 13 : [326] Mis en forme Cathy Wimart-Rousseau 28/07/2023 09:31:00

▲ Page 13 : [326] Mis en forme Cathy Wimart-Rousseau 28/07/2023 09:31:00

Page 13 : [328] Mis en forme Cathy Wimart-Rousseau 28/07/2023 09:31:00

Anglais (E.U.)

Page 13 : [329] Modifier Unknown

Code de champ modifié

Page 13 : [330] Mis en forme Cathy Wimart-Rousseau 28/07/2023 09:31:00

Anglais (E.U.)

Page 13 : [331] Mis en forme Cathy Wimart-Rousseau 28/07/2023 09:31:00

Anglais (E.U.)

Page 13 : [332] Mis en forme Cathy Wimart-Rousseau 28/07/2023 09:31:00

Anglais (E.U.)

Page 14 : [333] Modifier Unknown

Code de champ modifié

Page 14 : [334] Mis en forme Cathy Wimart-Rousseau 28/07/2023 09:31:00

Anglais (E.U.)

Page 14 : [334] Mis en forme Cathy Wimart-Rousseau 28/07/2023 09:31:00

Anglais (E.U.)

Page 14 : [335] Modifier Unknown

Code de champ modifié

Page 14 : [336] Mis en forme Cathy Wimart-Rousseau 28/07/2023 09:31:00

Anglais (E.U.)

Page 14 : [336] Mis en forme Cathy Wimart-Rousseau 28/07/2023 09:31:00

Anglais (E.U.)

Page 14 : [337] Modifier Unknown

Code de champ modifié

Page 14 : [338] Mis en forme Cathy Wimart-Rousseau 28/07/2023 09:31:00

Anglais (E.U.)

Page 14 : [338] Mis en forme Cathy Wimart-Rousseau 28/07/2023 09:31:00

Anglais (E.U.)

Page 14 : [339] Modifier Unknown

Code de champ modifié

Page 14 : [340] Mis en forme Cathy Wimart-Rousseau 14/07/2023 12:21:00

Anglais (E.U.)

Page 14 : [340] Mis en forme Cathy Wimart-Rousseau 14/07/2023 12:21:00

Anglais (E.U.)

Page 14 : [340] Mis en forme Cathy Wimart-Rousseau 14/07/2023 12:21:00

Anglais (E.U.)

Page 14 : [342] Modifier Unknown

Code de champ modifié

Page 14 : [343] Mis en forme Cathy Wimart-Rousseau 28/07/2023 09:31:00

Anglais (E.U.)

Page 14 : [343] Mis en forme Cathy Wimart-Rousseau 28/07/2023 09:31:00

Anglais (E.U.)

Page 14 : [344] Modifier Unknown

Code de champ modifié

Page 14 : [345] Mis en forme Cathy Wimart-Rousseau 28/07/2023 09:31:00

Anglais (E.U.)

Page 14 : [345] Mis en forme Cathy Wimart-Rousseau 28/07/2023 09:31:00

Anglais (E.U.)

Page 14 : [346] Modifier Unknown

Code de champ modifié

Page 14 : [347] Mis en forme Cathy Wimart-Rousseau 28/07/2023 09:31:00

Anglais (E.U.)

Page 14 : [347] Mis en forme Cathy Wimart-Rousseau 28/07/2023 09:31:00

Anglais (E.U.)

Page 14 : [348] Modifier Unknown

Code de champ modifié

Page 14 : [349] Mis en forme Cathy Wimart-Rousseau 28/07/2023 09:31:00

Anglais (E.U.)

Page 14 : [349] Mis en forme Cathy Wimart-Rousseau 28/07/2023 09:31:00

Anglais (E.U.)

Page 14 : [350] Modifier Unknown

Code de champ modifié

Page 14 : [351] Mis en forme Cathy Wimart-Rousseau 28/07/2023 09:31:00

Anglais (E.U.)

Page 14 : [351] Mis en forme Cathy Wimart-Rousseau 28/07/2023 09:31:00

Anglais (E.U.)

Page 14 : [352] Modifier Unknown

Code de champ modifié

Page 14 : [353] Mis en forme Cathy Wimart-Rousseau 28/07/2023 09:31:00

Anglais (E.U.)

Page 14 : [353] Mis en forme Cathy Wimart-Rousseau 28/07/2023 09:31:00

Anglais (E.U.)

Page 14 : [355] Mis en forme Cathy Wimart-Rousseau 28/07/2023 09:31:00

Anglais (E.U.)

Page 14 : [356] Modifier Unknown

Code de champ modifié

Page 14 : [357] Mis en forme Cathy Wimart-Rousseau 28/07/2023 09:31:00

Anglais (E.U.)

Page 14 : [357] Mis en forme Cathy Wimart-Rousseau 28/07/2023 09:31:00

Anglais (E.U.)

Page 14 : [358] Modifier Unknown

Code de champ modifié

Page 14 : [359] Mis en forme Cathy Wimart-Rousseau 28/07/2023 09:31:00

Anglais (E.U.)

Page 14 : [359] Mis en forme Cathy Wimart-Rousseau 28/07/2023 09:31:00

Anglais (E.U.)

Page 14 : [360] Modifier Unknown

Code de champ modifié

Page 14 : [361] Mis en forme Cathy Wimart-Rousseau 28/07/2023 09:31:00

Anglais (E.U.)

Page 14 : [361] Mis en forme Cathy Wimart-Rousseau 28/07/2023 09:31:00

Anglais (E.U.)

Page 14 : [362] Modifier Unknown

Code de champ modifié

Page 14 : [363] Mis en forme Cathy Wimart-Rousseau 28/07/2023 09:31:00

Anglais (E.U.)

Page 14 : [363] Mis en forme Cathy Wimart-Rousseau 28/07/2023 09:31:00

Anglais (E.U.)

Page 14 : [364] Mis en forme Cathy Wimart-Rousseau 28/07/2023 09:31:00

Anglais (E.U.)

Page 14 : [364] Mis en forme Cathy Wimart-Rousseau 28/07/2023 09:31:00

Anglais (E.U.)

Page 14 : [364] Mis en forme Cathy Wimart-Rousseau 28/07/2023 09:31:00

Anglais (E.U.)

Page 14 : [364] Mis en forme Cathy Wimart-Rousseau 28/07/2023 09:31:00

Anglais (E.U.)

Page 14 : [365] Mis en forme Cathy Wimart-Rousseau 28/07/2023 09:31:00

Anglais (E.U.)

Page 14 : [365] Mis en forme Cathy Wimart-Rousseau 28/07/2023 09:31:00

Anglais (E.U.)

Page 14 : [365] Mis en forme Cathy Wimart-Rousseau 28/07/2023 09:31:00

Anglais (E.U.)

Page 14 : [365] Mis en forme Cathy Wimart-Rousseau 28/07/2023 09:31:00

Anglais (E.U.)

Page 14 : [365] Mis en forme Cathy Wimart-Rousseau 28/07/2023 09:31:00

Anglais (E.U.)

Page 14 : [365] Mis en forme Cathy Wimart-Rousseau 28/07/2023 09:31:00

Anglais (E.U.)

Page 14 : [365] Mis en forme Cathy Wimart-Rousseau 28/07/2023 09:31:00

Anglais (E.U.)

Page 14 : [366] Mis en forme Cathy Wimart-Rousseau 28/07/2023 09:31:00

Anglais (E.U.)

Page 14 : [367] Mis en forme Cathy Wimart-Rousseau 28/07/2023 09:31:00

Anglais (E.U.)

Page 14 : [367] Mis en forme Cathy Wimart-Rousseau 28/07/2023 09:31:00

Anglais (E.U.)

Page 14 : [367] Mis en forme Cathy Wimart-Rousseau 28/07/2023 09:31:00

Anglais (E.U.)

Page 14 : [368] Modifier Unknown

Code de champ modifié

Page 14 : [369] Mis en forme Cathy Wimart-Rousseau 28/07/2023 09:31:00

Anglais (E.U.)

Page 14 : [369] Mis en forme Cathy Wimart-Rousseau 28/07/2023 09:31:00

Anglais (E.U.)

Page 14 : [369] Mis en forme Cathy Wimart-Rousseau 28/07/2023 09:31:00

Anglais (E.U.)

Page 14 : [370] Modifier Unknown

Code de champ modifié

Page 14 : [371] Mis en forme Cathy Wimart-Rousseau 28/07/2023 09:31:00

Anglais (E.U.)

Page 14 : [371] Mis en forme Cathy Wimart-Rousseau 28/07/2023 09:31:00

Anglais (E.U.)

Page 14 : [372] Mis en forme Cathy Wimart-Rousseau 28/07/2023 09:31:00

Anglais (E.U.)

Page 14 : [374] Mis en forme Cathy Wimart-Rousseau 28/07/2023 09:31:00

Anglais (E.U.)

Page 14 : [374] Mis en forme Cathy Wimart-Rousseau 28/07/2023 09:31:00

Anglais (E.U.)

Page 14 : [375] Modifier Unknown

Code de champ modifié

Page 14 : [376] Mis en forme Cathy Wimart-Rousseau 28/07/2023 09:31:00

Anglais (E.U.)

Page 14 : [376] Mis en forme Cathy Wimart-Rousseau 28/07/2023 09:31:00

Anglais (E.U.)

Page 14 : [377] Mis en forme Cathy Wimart-Rousseau 28/07/2023 09:31:00

Anglais (E.U.)

Page 14 : [377] Mis en forme Cathy Wimart-Rousseau 28/07/2023 09:31:00

Anglais (E.U.)

Page 14 : [377] Mis en forme Cathy Wimart-Rousseau 28/07/2023 09:31:00

Anglais (E.U.)

Page 14 : [378] Modifier Unknown

Code de champ modifié

Page 14 : [379] Mis en forme Cathy Wimart-Rousseau 28/07/2023 09:31:00

Anglais (E.U.)

Page 14 : [379] Mis en forme Cathy Wimart-Rousseau 28/07/2023 09:31:00

Anglais (E.U.)

Page 14 : [380] Modifier Unknown

Code de champ modifié

Page 14 : [381] Mis en forme Cathy Wimart-Rousseau 28/07/2023 09:31:00

Anglais (E.U.)

Page 14 : [381] Mis en forme Cathy Wimart-Rousseau 28/07/2023 09:31:00

Anglais (E.U.)

Page 14 : [382] Supprimé Cathy Wimart-Rousseau 30/06/2023 10:14:00

x

Page 14 : [382] Supprimé Cathy Wimart-Rousseau 30/06/2023 10:14:00

x

Page 18 : [383] Mis en forme Cathy Wimart-Rousseau 28/07/2023 09:32:00

Police :Non Gras, Anglais (E.U.)

Page 18 : [383] Mis en forme Cathy Wimart-Rousseau 28/07/2023 09:32:00

Page 18 : [384] Mis en forme	Cathy Wimart-Rousseau	28/07/2023 09:32:00
Police :Non Gras, Anglais (E.U.), Non Étendu de/ Condensé de		
Page 18 : [384] Mis en forme	Cathy Wimart-Rousseau	28/07/2023 09:32:00
Police :Non Gras, Anglais (E.U.), Non Étendu de/ Condensé de		
Page 18 : [384] Mis en forme	Cathy Wimart-Rousseau	28/07/2023 09:32:00
Police :Non Gras, Anglais (E.U.), Non Étendu de/ Condensé de		
Page 18 : [384] Mis en forme	Cathy Wimart-Rousseau	28/07/2023 09:32:00
Police :Non Gras, Anglais (E.U.), Non Étendu de/ Condensé de		
Page 18 : [384] Mis en forme	Cathy Wimart-Rousseau	28/07/2023 09:32:00
Police :Non Gras, Anglais (E.U.), Non Étendu de/ Condensé de		
Page 18 : [384] Mis en forme	Cathy Wimart-Rousseau	28/07/2023 09:32:00
Police :Non Gras, Anglais (E.U.), Non Étendu de/ Condensé de		
Page 18 : [384] Mis en forme	Cathy Wimart-Rousseau	28/07/2023 09:32:00
Police :Non Gras, Anglais (E.U.), Non Étendu de/ Condensé de		
Page 18 : [384] Mis en forme	Cathy Wimart-Rousseau	28/07/2023 09:32:00
Police :Non Gras, Anglais (E.U.), Non Étendu de/ Condensé de		
Page 18 : [385] Mis en forme	Cathy Wimart-Rousseau	14/07/2023 12:23:00
Anglais (E.U.)		
Page 18 : [385] Mis en forme	Cathy Wimart-Rousseau	14/07/2023 12:23:00
Anglais (E.U.)		
Page 18 : [386] Supprimé	Cathy Wimart-Rousseau	07/07/2023 14:24:00
x		
Page 18 : [386] Supprimé	Cathy Wimart-Rousseau	07/07/2023 14:24:00
x		
Page 18 : [386] Supprimé	Cathy Wimart-Rousseau	07/07/2023 14:24:00
x		
Page 19 : [387] Supprimé	Cathy Wimart-Rousseau	07/07/2023 14:09:00
x		

Page 19 : [389] Supprimé Cathy Wimart-Rousseau 07/07/2023 14:32:00

Page 19 : [389] Supprimé Cathy Wimart-Rousseau 07/07/2023 14:32:00

Page 19 : [389] Supprimé Cathy Wimart-Rousseau 07/07/2023 14:32:00

Page 19 : [390] Modifier Unknown

Code de champ modifié

Page 19 : [391] Mis en forme Cathy Wimart-Rousseau 28/07/2023 09:32:00

Anglais (E.U.)

Page 19 : [391] Mis en forme Cathy Wimart-Rousseau 28/07/2023 09:32:00

Anglais (E.U.)

Page 19 : [391] Mis en forme Cathy Wimart-Rousseau 28/07/2023 09:32:00

Anglais (E.U.)

Page 19 : [391] Mis en forme Cathy Wimart-Rousseau 28/07/2023 09:32:00

Anglais (E.U.)

Page 19 : [391] Mis en forme Cathy Wimart-Rousseau 28/07/2023 09:32:00

Anglais (E.U.)

Page 19 : [391] Mis en forme Cathy Wimart-Rousseau 28/07/2023 09:32:00

Anglais (E.U.)

Page 19 : [391] Mis en forme Cathy Wimart-Rousseau 28/07/2023 09:32:00

Anglais (E.U.)

Page 19 : [391] Mis en forme Cathy Wimart-Rousseau 28/07/2023 09:32:00

Anglais (E.U.)

Page 19 : [391] Mis en forme Cathy Wimart-Rousseau 28/07/2023 09:32:00

Anglais (E.U.)

Page 19 : [391] Mis en forme Cathy Wimart-Rousseau 28/07/2023 09:32:00

Anglais (E.U.)

Page 19 : [391] Mis en forme Cathy Wimart-Rousseau 28/07/2023 09:32:00

Anglais (E.U.)

Page 19 : [391] Mis en forme Cathy Wimart-Rousseau 28/07/2023 09:32:00

Anglais (E.U.)

Page 19 : [391] Mis en forme Cathy Wimart-Rousseau 28/07/2023 09:32:00

Anglais (E.U.)

Anglais (E.U.)

Page 19 : [391] Mis en forme Cathy Wimart-Roussea 28/07/2023 09:32:00

Anglais (E.U.)

Page 19 : [391] Mis en forme Cathy Wimart-Roussea 28/07/2023 09:32:00

Anglais (E.U.)

Page 19 : [391] Mis en forme Cathy Wimart-Roussea 28/07/2023 09:32:00

Anglais (E.U.)

Page 19 : [391] Mis en forme Cathy Wimart-Roussea 28/07/2023 09:32:00

Anglais (E.U.)

Page 19 : [391] Mis en forme Cathy Wimart-Roussea 28/07/2023 09:32:00

Anglais (E.U.)

Page 19 : [391] Mis en forme Cathy Wimart-Roussea 28/07/2023 09:32:00

Anglais (E.U.)

Page 19 : [391] Mis en forme Cathy Wimart-Roussea 28/07/2023 09:32:00

Anglais (E.U.)

Page 19 : [391] Mis en forme Cathy Wimart-Roussea 28/07/2023 09:32:00

Anglais (E.U.)

Page 19 : [391] Mis en forme Cathy Wimart-Roussea 28/07/2023 09:32:00

Anglais (E.U.)

Page 19 : [391] Mis en forme Cathy Wimart-Roussea 28/07/2023 09:32:00

Anglais (E.U.)

Page 19 : [391] Mis en forme Cathy Wimart-Roussea 28/07/2023 09:32:00

Anglais (E.U.)

Page 19 : [391] Mis en forme Cathy Wimart-Roussea 28/07/2023 09:32:00

Anglais (E.U.)

Page 19 : [391] Mis en forme Cathy Wimart-Roussea 28/07/2023 09:32:00

Anglais (E.U.)

Page 19 : [391] Mis en forme Cathy Wimart-Roussea 28/07/2023 09:32:00

Anglais (E.U.)

Page 19 : [391] Mis en forme Cathy Wimart-Roussea 28/07/2023 09:32:00

Anglais (E.U.)

Page 19 : [391] Mis en forme Cathy Wimart-Roussea 28/07/2023 09:32:00

Anglais (E.U.)

Page 19 : [392] Mis en forme Cathy Wimart-Roussea 28/07/2023 09:32:00

Anglais (E.U.), Non Étendu de/ Condensé de

Page 19 : [392] Mis en forme Cathy Wimart-Roussea 28/07/2023 09:32:00

Anglais (E.U.)

Page 19 : [394] Mis en forme Cathy Wimart-Rousseau 28/07/2023 11:24:00

Anglais (E.U.)

Page 19 : [394] Mis en forme Cathy Wimart-Rousseau 28/07/2023 11:24:00

Anglais (E.U.)

Page 19 : [394] Mis en forme Cathy Wimart-Rousseau 28/07/2023 11:24:00

Anglais (E.U.)

Page 19 : [394] Mis en forme Cathy Wimart-Rousseau 28/07/2023 11:24:00

Anglais (E.U.)

Page 19 : [394] Mis en forme Cathy Wimart-Rousseau 28/07/2023 11:24:00

Anglais (E.U.)

Page 19 : [395] Modifier Unknown

Code de champ modifié

Page 19 : [396] Mis en forme Cathy Wimart-Rousseau 28/07/2023 11:24:00

Anglais (E.U.)

Page 19 : [396] Mis en forme Cathy Wimart-Rousseau 28/07/2023 11:24:00

Anglais (E.U.)

Page 19 : [396] Mis en forme Cathy Wimart-Rousseau 28/07/2023 11:24:00

Anglais (E.U.)

Page 19 : [396] Mis en forme Cathy Wimart-Rousseau 28/07/2023 11:24:00

Anglais (E.U.)

Page 19 : [396] Mis en forme Cathy Wimart-Rousseau 28/07/2023 11:24:00

Anglais (E.U.)

Page 19 : [396] Mis en forme Cathy Wimart-Rousseau 28/07/2023 11:24:00

Anglais (E.U.)

Page 19 : [396] Mis en forme Cathy Wimart-Rousseau 28/07/2023 11:24:00

Anglais (E.U.)

Page 19 : [396] Mis en forme Cathy Wimart-Rousseau 28/07/2023 11:24:00

Anglais (E.U.)

Page 19 : [396] Mis en forme Cathy Wimart-Rousseau 28/07/2023 11:24:00

Anglais (E.U.)

Page 19 : [396] Mis en forme Cathy Wimart-Rousseau 28/07/2023 11:24:00

Anglais (E.U.)

Page 19 : [396] Mis en forme Cathy Wimart-Rousseau 28/07/2023 11:24:00

Anglais (E.U.)

Page 19 : [396] Mis en forme Cathy Wimart-Rousseau 28/07/2023 11:24:00

Anglais (E.U.)

Page 19 : [396] Mis en forme Cathy Wimart-Rousseau 28/07/2023 11:24:00

Anglais (E.U.)

Page 19 : [396] Mis en forme Cathy Wimart-Rousseau 28/07/2023 11:24:00

Anglais (E.U.)

Page 19 : [396] Mis en forme Cathy Wimart-Rousseau 28/07/2023 11:24:00

Anglais (E.U.)

Page 19 : [396] Mis en forme Cathy Wimart-Rousseau 28/07/2023 11:24:00

Anglais (E.U.)

Page 19 : [397] Modifier Unknown

Code de champ modifié

Page 19 : [398] Mis en forme Cathy Wimart-Rousseau 28/07/2023 11:24:00

Anglais (E.U.)

Page 19 : [399] Mis en forme Cathy Wimart-Rousseau 28/07/2023 11:24:00

Anglais (E.U.), Non Étendu de/ Condensé de

Page 19 : [399] Mis en forme Cathy Wimart-Rousseau 28/07/2023 11:24:00

Anglais (E.U.), Non Étendu de/ Condensé de

Page 19 : [399] Mis en forme Cathy Wimart-Rousseau 28/07/2023 11:24:00

Anglais (E.U.), Non Étendu de/ Condensé de

Page 19 : [399] Mis en forme Cathy Wimart-Rousseau 28/07/2023 11:24:00

Anglais (E.U.), Non Étendu de/ Condensé de

Page 19 : [399] Mis en forme Cathy Wimart-Rousseau 28/07/2023 11:24:00

Anglais (E.U.), Non Étendu de/ Condensé de

Page 19 : [399] Mis en forme Cathy Wimart-Rousseau 28/07/2023 11:24:00

Anglais (E.U.), Non Étendu de/ Condensé de

Page 19 : [399] Mis en forme Cathy Wimart-Rousseau 28/07/2023 11:24:00

Anglais (E.U.), Non Étendu de/ Condensé de

Page 19 : [399] Mis en forme Cathy Wimart-Rousseau 28/07/2023 11:24:00

Anglais (E.U.), Non Étendu de/ Condensé de

Page 19 : [399] Mis en forme Cathy Wimart-Rousseau 28/07/2023 11:24:00

Anglais (E.U.), Non Étendu de/ Condensé de

Page 19 : [399] Mis en forme Cathy Wimart-Rousseau 28/07/2023 11:24:00

Anglais (E.U.), Non Étendu de/ Condensé de

Page 19 : [399] Mis en forme Cathy Wimart-Rousseau 28/07/2023 11:24:00

Anglais (E.U.), Non Étendu de/ Condensé de

Page 19 : [399] Mis en forme Cathy Wimart-Rousseau 28/07/2023 11:24:00

Anglais (E.U.), Non Étendu de/ Condensé de

Page 19 : [400] Mis en forme Cathy Wimart-Roussea 28/07/2023 11:25:00

Anglais (E.U.)

Page 19 : [400] Mis en forme Cathy Wimart-Roussea 28/07/2023 11:25:00

Anglais (E.U.)

Page 19 : [400] Mis en forme Cathy Wimart-Roussea 28/07/2023 11:25:00

Anglais (E.U.)

Page 19 : [400] Mis en forme Cathy Wimart-Roussea 28/07/2023 11:25:00

Anglais (E.U.)

Page 19 : [400] Mis en forme Cathy Wimart-Roussea 28/07/2023 11:25:00

Anglais (E.U.)

Page 19 : [400] Mis en forme Cathy Wimart-Roussea 28/07/2023 11:25:00

Anglais (E.U.)

Page 19 : [400] Mis en forme Cathy Wimart-Roussea 28/07/2023 11:25:00

Anglais (E.U.)

Page 19 : [400] Mis en forme Cathy Wimart-Roussea 28/07/2023 11:25:00

Anglais (E.U.)

Page 19 : [400] Mis en forme Cathy Wimart-Roussea 28/07/2023 11:25:00

Anglais (E.U.)

Page 19 : [400] Mis en forme Cathy Wimart-Roussea 28/07/2023 11:25:00

Anglais (E.U.)

Page 19 : [400] Mis en forme Cathy Wimart-Roussea 28/07/2023 11:25:00

Anglais (E.U.)

Page 19 : [400] Mis en forme Cathy Wimart-Roussea 28/07/2023 11:25:00

Anglais (E.U.)

Page 19 : [400] Mis en forme Cathy Wimart-Roussea 28/07/2023 11:25:00

Anglais (E.U.)

Page 19 : [400] Mis en forme Cathy Wimart-Roussea 28/07/2023 11:25:00

Anglais (E.U.)

Page 19 : [400] Mis en forme Cathy Wimart-Roussea 28/07/2023 11:25:00

Anglais (E.U.)

Page 19 : [400] Mis en forme Cathy Wimart-Roussea 28/07/2023 11:25:00

Anglais (E.U.)

Page 19 : [400] Mis en forme Cathy Wimart-Roussea 28/07/2023 11:25:00

Anglais (E.U.)

Page 19 : [400] Mis en forme Cathy Wimart-Roussea 28/07/2023 11:25:00

Anglais (E.U.)

Page 19 : [400] Mis en forme Cathy Wimart-Rousseau 28/07/2023 11:25:00

Anglais (E.U.)

Page 19 : [400] Mis en forme Cathy Wimart-Rousseau 28/07/2023 11:25:00

Anglais (E.U.)

Page 19 : [400] Mis en forme Cathy Wimart-Rousseau 28/07/2023 11:25:00

Anglais (E.U.)

Page 19 : [400] Mis en forme Cathy Wimart-Rousseau 28/07/2023 11:25:00

Anglais (E.U.)

Page 19 : [400] Mis en forme Cathy Wimart-Rousseau 28/07/2023 11:25:00

Anglais (E.U.)

Page 19 : [400] Mis en forme Cathy Wimart-Rousseau 28/07/2023 11:25:00

Anglais (E.U.)

Page 19 : [400] Mis en forme Cathy Wimart-Rousseau 28/07/2023 11:25:00

Anglais (E.U.)

Page 19 : [400] Mis en forme Cathy Wimart-Rousseau 28/07/2023 11:25:00

Anglais (E.U.)

Page 19 : [400] Mis en forme Cathy Wimart-Rousseau 28/07/2023 11:25:00

Anglais (E.U.)

Page 19 : [400] Mis en forme Cathy Wimart-Rousseau 28/07/2023 11:25:00

Anglais (E.U.)

Page 19 : [400] Mis en forme Cathy Wimart-Rousseau 28/07/2023 11:25:00

Anglais (E.U.)

Page 19 : [401] Mis en forme Cathy Wimart-Rousseau 28/07/2023 11:25:00

Anglais (E.U.)

Page 19 : [401] Mis en forme Cathy Wimart-Rousseau 28/07/2023 11:25:00

Anglais (E.U.)

Page 19 : [401] Mis en forme Cathy Wimart-Rousseau 28/07/2023 11:25:00

Anglais (E.U.)

Page 19 : [401] Mis en forme Cathy Wimart-Rousseau 28/07/2023 11:25:00

Anglais (E.U.)

Page 19 : [401] Mis en forme Cathy Wimart-Rousseau 28/07/2023 11:25:00

Anglais (E.U.)

Page 19 : [401] Mis en forme Cathy Wimart-Rousseau 28/07/2023 11:25:00

Anglais (E.U.)

Page 19 : [402] Supprimé Cathy Wimart-Rousseau 10/07/2023 11:36:00

Page 19 : [405] Mis en forme Cathy Wimart-Rousseau 28/07/2023 11:25:00

Anglais (E.U.)

Page 19 : [406] Mis en forme Cathy Wimart-Rousseau 28/07/2023 11:25:00

Anglais (E.U.), Non Étendu de/ Condensé de

Page 19 : [407] Mis en forme Cathy Wimart-Rousseau 11/07/2023 12:43:00

Retrait : Première ligne : 0 cm, Espace Avant : 4,15 pt

Page 19 : [408] Mis en forme Cathy Wimart-Rousseau 28/07/2023 11:25:00

Anglais (E.U.)

Page 19 : [408] Mis en forme Cathy Wimart-Rousseau 28/07/2023 11:25:00

Anglais (E.U.)

Page 19 : [409] Modifier Unknown

Code de champ modifié

Page 19 : [410] Mis en forme Cathy Wimart-Rousseau 28/07/2023 11:25:00

Anglais (E.U.)

Page 19 : [410] Mis en forme Cathy Wimart-Rousseau 28/07/2023 11:25:00

Anglais (E.U.)

Page 19 : [411] Mis en forme Cathy Wimart-Rousseau 14/07/2023 12:24:00

Anglais (E.U.)

Page 19 : [412] Modifier Unknown

Code de champ modifié

Page 19 : [413] Mis en forme Cathy Wimart-Rousseau 28/07/2023 11:25:00

Anglais (E.U.)

Page 19 : [413] Mis en forme Cathy Wimart-Rousseau 28/07/2023 11:25:00

Anglais (E.U.)

Page 21 : [414] Mis en forme Cathy Wimart-Rousseau 28/07/2023 09:30:00

Anglais (E.U.)

Page 21 : [414] Mis en forme Cathy Wimart-Rousseau 28/07/2023 09:30:00

Anglais (E.U.)

Page 21 : [414] Mis en forme Cathy Wimart-Rousseau 28/07/2023 09:30:00

Anglais (E.U.)

Page 21 : [414] Mis en forme Cathy Wimart-Rousseau 28/07/2023 09:30:00

Anglais (E.U.)

Page 21 : [415] Mis en forme Cathy Wimart-Rousseau 28/07/2023 09:30:00

Anglais (E.U.)

Page 21 : [415] Mis en forme Cathy Wimart-Rousseau 28/07/2023 09:30:00

Anglais (E.U.)

Page 21 : [415] Mis en forme Cathy Wimart-Rousseau 28/07/2023 09:30:00

Anglais (E.U.)

Page 21 : [415] Mis en forme Cathy Wimart-Rousseau 28/07/2023 09:30:00

Anglais (E.U.)

Page 21 : [415] Mis en forme Cathy Wimart-Rousseau 28/07/2023 09:30:00

Anglais (E.U.)

Page 21 : [415] Mis en forme Cathy Wimart-Rousseau 28/07/2023 09:30:00

Anglais (E.U.)

Page 21 : [415] Mis en forme Cathy Wimart-Rousseau 28/07/2023 09:30:00

Anglais (E.U.)

Page 21 : [415] Mis en forme Cathy Wimart-Rousseau 28/07/2023 09:30:00

Anglais (E.U.)

Page 21 : [415] Mis en forme Cathy Wimart-Rousseau 28/07/2023 09:30:00

Anglais (E.U.)

Page 21 : [415] Mis en forme Cathy Wimart-Rousseau 28/07/2023 09:30:00

Anglais (E.U.)

Page 21 : [415] Mis en forme Cathy Wimart-Rousseau 28/07/2023 09:30:00

Anglais (E.U.)

Page 21 : [415] Mis en forme Cathy Wimart-Rousseau 28/07/2023 09:30:00

Anglais (E.U.)

Page 21 : [415] Mis en forme Cathy Wimart-Rousseau 28/07/2023 09:30:00

Anglais (E.U.)

Page 21 : [415] Mis en forme Cathy Wimart-Rousseau 28/07/2023 09:30:00

Anglais (E.U.)

Page 21 : [415] Mis en forme Cathy Wimart-Rousseau 28/07/2023 09:30:00

Anglais (E.U.)

Page 21 : [415] Mis en forme Cathy Wimart-Rousseau 28/07/2023 09:30:00

Anglais (E.U.)

Page 21 : [415] Mis en forme Cathy Wimart-Rousseau 28/07/2023 09:30:00

Anglais (E.U.)

Page 21 : [415] Mis en forme Cathy Wimart-Rousseau 28/07/2023 09:30:00

Anglais (E.U.)

Page 21 : [415] Mis en forme Cathy Wimart-Rousseau 28/07/2023 09:30:00

Anglais (E.U.)

Page 21 : [415] Mis en forme Cathy Wimart-Rousseau 28/07/2023 09:30:00

Anglais (E.U.)

Page 21 : [415] Mis en forme Cathy Wimart-Rousseau 28/07/2023 09:30:00

Anglais (E.U.)

Page 21 : [415] Mis en forme Cathy Wimart-Rousseau 28/07/2023 09:30:00

Anglais (E.U.)

Page 21 : [415] Mis en forme Cathy Wimart-Rousseau 28/07/2023 09:30:00

Anglais (E.U.)

Page 21 : [415] Mis en forme Cathy Wimart-Rousseau 28/07/2023 09:30:00

Anglais (E.U.)

Page 21 : [415] Mis en forme Cathy Wimart-Rousseau 28/07/2023 09:30:00

Anglais (E.U.)

Page 21 : [415] Mis en forme Cathy Wimart-Rousseau 28/07/2023 09:30:00

Anglais (E.U.)

Page 21 : [415] Mis en forme Cathy Wimart-Rousseau 28/07/2023 09:30:00

Anglais (E.U.)

Page 21 : [415] Mis en forme Cathy Wimart-Rousseau 28/07/2023 09:30:00

Anglais (E.U.)

Page 21 : [415] Mis en forme Cathy Wimart-Rousseau 28/07/2023 09:30:00

Anglais (E.U.)

Page 21 : [415] Mis en forme Cathy Wimart-Rousseau 28/07/2023 09:30:00

Anglais (E.U.)

Page 21 : [415] Mis en forme Cathy Wimart-Rousseau 28/07/2023 09:30:00

Anglais (E.U.)

Page 21 : [415] Mis en forme Cathy Wimart-Rousseau 28/07/2023 09:30:00

Anglais (E.U.)

Page 21 : [415] Mis en forme Cathy Wimart-Rousseau 28/07/2023 09:30:00

Anglais (E.U.)

Page 21 : [415] Mis en forme Cathy Wimart-Rousseau 28/07/2023 09:30:00

Anglais (E.U.)

Page 21 : [415] Mis en forme Cathy Wimart-Rousseau 28/07/2023 09:30:00

Anglais (E.U.)

Page 21 : [415] Mis en forme Cathy Wimart-Rousseau 28/07/2023 09:30:00

Anglais (E.U.)

Page 21 : [415] Mis en forme Cathy Wimart-Rousseau 28/07/2023 09:30:00

Anglais (E.U.)

Page 21 : [415] Mis en forme Cathy Wimart-Rousseau 28/07/2023 09:30:00

Anglais (E.U.)

Page 21 : [415] Mis en forme Cathy Wimart-Rousseau 28/07/2023 09:30:00

Anglais (E.U.)

Page 21 : [415] Mis en forme Cathy Wimart-Rousseau 28/07/2023 09:30:00

Anglais (E.U.)

Page 21 : [415] Mis en forme Cathy Wimart-Rousseau 28/07/2023 09:30:00

Anglais (E.U.)

Page 21 : [415] Mis en forme Cathy Wimart-Rousseau 28/07/2023 09:30:00

Anglais (E.U.)

Page 21 : [415] Mis en forme Cathy Wimart-Rousseau 28/07/2023 09:30:00

Anglais (E.U.)

Page 21 : [415] Mis en forme Cathy Wimart-Rousseau 28/07/2023 09:30:00

Anglais (E.U.)

Page 21 : [415] Mis en forme Cathy Wimart-Rousseau 28/07/2023 09:30:00

Anglais (E.U.)

Page 21 : [415] Mis en forme Cathy Wimart-Rousseau 28/07/2023 09:30:00

Anglais (E.U.)

Page 21 : [415] Mis en forme Cathy Wimart-Rousseau 28/07/2023 09:30:00

Anglais (E.U.)

Page 21 : [415] Mis en forme Cathy Wimart-Rousseau 28/07/2023 09:30:00

Anglais (E.U.)

Page 21 : [415] Mis en forme Cathy Wimart-Rousseau 28/07/2023 09:30:00

Anglais (E.U.)

Page 21 : [415] Mis en forme Cathy Wimart-Rousseau 28/07/2023 09:30:00

Anglais (E.U.)

Page 21 : [415] Mis en forme Cathy Wimart-Rousseau 28/07/2023 09:30:00

Anglais (E.U.)

Page 21 : [415] Mis en forme Cathy Wimart-Rousseau 28/07/2023 09:30:00

Anglais (E.U.)

Page 21 : [415] Mis en forme Cathy Wimart-Rousseau 28/07/2023 09:30:00

Anglais (E.U.)

Page 21 : [415] Mis en forme Cathy Wimart-Rousseau 28/07/2023 09:30:00

Anglais (E.U.)

Page 21 : [415] Mis en forme Cathy Wimart-Rousseau 28/07/2023 09:30:00

Anglais (E.U.)

Page 21 : [415] Mis en forme Cathy Wimart-Rousseau 28/07/2023 09:30:00

Anglais (E.U.)

Page 21 : [415] Mis en forme Cathy Wimart-Rousseau 28/07/2023 09:30:00

Anglais (E.U.)

Page 21 : [415] Mis en forme Cathy Wimart-Rousseau 28/07/2023 09:30:00

Anglais (E.U.)

Page 21 : [415] Mis en forme Cathy Wimart-Rousseau 28/07/2023 09:30:00

Anglais (E.U.)

Page 21 : [415] Mis en forme Cathy Wimart-Rousseau 28/07/2023 09:30:00

Anglais (E.U.)

Page 21 : [415] Mis en forme Cathy Wimart-Rousseau 28/07/2023 09:30:00

Anglais (E.U.)

Page 21 : [415] Mis en forme Cathy Wimart-Rousseau 28/07/2023 09:30:00

Anglais (E.U.)

Page 21 : [415] Mis en forme Cathy Wimart-Rousseau 28/07/2023 09:30:00

Anglais (E.U.)

Page 21 : [415] Mis en forme Cathy Wimart-Rousseau 28/07/2023 09:30:00

Anglais (E.U.)

Page 21 : [415] Mis en forme Cathy Wimart-Rousseau 28/07/2023 09:30:00

Anglais (E.U.)

Page 21 : [415] Mis en forme Cathy Wimart-Rousseau 28/07/2023 09:30:00

Anglais (E.U.)

Page 21 : [415] Mis en forme Cathy Wimart-Rousseau 28/07/2023 09:30:00

Anglais (E.U.)

Page 21 : [415] Mis en forme Cathy Wimart-Rousseau 28/07/2023 09:30:00

Anglais (E.U.)

Page 21 : [415] Mis en forme Cathy Wimart-Rousseau 28/07/2023 09:30:00

Anglais (E.U.)

Page 21 : [415] Mis en forme Cathy Wimart-Rousseau 28/07/2023 09:30:00

Anglais (E.U.)

Page 21 : [415] Mis en forme Cathy Wimart-Rousseau 28/07/2023 09:30:00

Anglais (E.U.)

Page 21 : [415] Mis en forme Cathy Wimart-Rousseau 28/07/2023 09:30:00

Anglais (E.U.)

Page 21 : [415] Mis en forme Cathy Wimart-Rousseau 28/07/2023 09:30:00

Anglais (E.U.)

Page 21 : [415] Mis en forme Cathy Wimart-Rousseau 28/07/2023 09:30:00

Anglais (E.U.)

Page 21 : [416] Supprimé Cathy Wimart-Rousseau 12/07/2023 11:46:00

x

▲

Page 21 : [416] Supprimé Cathy Wimart-Rousseau 12/07/2023 11:46:00

x

▲

Page 21 : [417] Mis en forme Cathy Wimart-Rousseau 14/07/2023 11:44:00

Couleur de police : Automatique, Anglais (E.U.)

Page 21 : [417] Mis en forme Cathy Wimart-Rousseau 14/07/2023 11:44:00

Couleur de police : Automatique, Anglais (E.U.)

Page 21 : [418] Mis en forme Cathy Wimart-Rousseau 28/07/2023 09:30:00

Anglais (E.U.)

Page 21 : [418] Mis en forme Cathy Wimart-Rousseau 28/07/2023 09:30:00

Anglais (E.U.)

Page 21 : [419] Mis en forme Cathy Wimart-Rousseau 28/07/2023 09:30:00

Anglais (E.U.)

Page 21 : [419] Mis en forme Cathy Wimart-Rousseau 28/07/2023 09:30:00

Anglais (E.U.)

Page 21 : [420] Mis en forme Cathy Wimart-Rousseau 28/07/2023 09:30:00

Anglais (E.U.)

Page 21 : [420] Mis en forme Cathy Wimart-Rousseau 28/07/2023 09:30:00

Anglais (E.U.)

Page 21 : [421] Supprimé Cathy Wimart-Rousseau 28/07/2023 09:30:00

x

▲

Page 21 : [421] Supprimé Cathy Wimart-Rousseau 28/07/2023 09:30:00

x

▲

Page 21 : [422] Mis en forme Cathy Wimart-Rousseau 28/07/2023 09:30:00

Anglais (E.U.)

Page 21 : [422] Mis en forme Cathy Wimart-Rousseau 28/07/2023 09:30:00

Anglais (E.U.)

Page 21 : [423] Mis en forme Cathy Wimart-Rousseau 28/07/2023 09:30:00

Anglais (E.U.)

Page 21 : [423] Mis en forme Cathy Wimart-Rousseau 28/07/2023 09:30:00

Anglais (E.U.)

Page 22 : [424] Mis en forme Cathy Wimart-Rousseau 28/07/2023 09:30:00

Anglais (E.U.)

Anglais (E.U.)

Page 22 : [425] Mis en forme Cathy Wimart-Rousseau 28/07/2023 09:30:00

Anglais (E.U.)

Page 22 : [425] Mis en forme Cathy Wimart-Rousseau 28/07/2023 09:30:00

Anglais (E.U.)

Page 22 : [425] Mis en forme Cathy Wimart-Rousseau 28/07/2023 09:30:00

Anglais (E.U.)

Page 22 : [426] Mis en forme Cathy Wimart-Rousseau 28/07/2023 09:30:00

Anglais (E.U.)

Page 22 : [426] Mis en forme Cathy Wimart-Rousseau 28/07/2023 09:30:00

Anglais (E.U.)

Page 22 : [426] Mis en forme Cathy Wimart-Rousseau 28/07/2023 09:30:00

Anglais (E.U.)

Page 22 : [427] Mis en forme Cathy Wimart-Rousseau 28/07/2023 09:31:00

Anglais (E.U.)

Page 22 : [427] Mis en forme Cathy Wimart-Rousseau 28/07/2023 09:31:00

Anglais (E.U.)

Page 22 : [427] Mis en forme Cathy Wimart-Rousseau 28/07/2023 09:31:00

Anglais (E.U.)

Page 22 : [427] Mis en forme Cathy Wimart-Rousseau 28/07/2023 09:31:00

Anglais (E.U.)

Page 22 : [428] Supprimé Cathy Wimart-Rousseau 29/08/2023 11:22:00

Page 22 : [428] Supprimé Cathy Wimart-Rousseau 29/08/2023 11:22:00

Page 22 : [429] Mis en forme Cathy Wimart-Rousseau 28/07/2023 09:31:00

Anglais (E.U.)

Page 22 : [429] Mis en forme Cathy Wimart-Rousseau 28/07/2023 09:31:00

Anglais (E.U.)

Page 22 : [430] Supprimé Cathy Wimart-Rousseau 13/07/2023 15:15:00

Page 22 : [431] Mis en forme Cathy Wimart-Rousseau 14/07/2023 12:25:00

Anglais (E.U.)

Page 22 : [431] Mis en forme Cathy Wimart-Rousseau 14/07/2023 12:25:00

Anglais (E.U.)

Page 22 : [431] Mis en forme Cathy Wimart-Rousseau 14/07/2023 12:25:00

Page 22 : [431] Mis en forme Cathy Wimart-Rousseau 14/07/2023 12:25:00

Anglais (E.U.)

Page 22 : [431] Mis en forme Cathy Wimart-Rousseau 14/07/2023 12:25:00

Anglais (E.U.)

Page 22 : [431] Mis en forme Cathy Wimart-Rousseau 14/07/2023 12:25:00

Anglais (E.U.)

Page 22 : [431] Mis en forme Cathy Wimart-Rousseau 14/07/2023 12:25:00

Anglais (E.U.)

Page 22 : [431] Mis en forme Cathy Wimart-Rousseau 14/07/2023 12:25:00

Anglais (E.U.)

Page 22 : [431] Mis en forme Cathy Wimart-Rousseau 14/07/2023 12:25:00

Anglais (E.U.)

Page 22 : [431] Mis en forme Cathy Wimart-Rousseau 14/07/2023 12:25:00

Anglais (E.U.)

Page 22 : [431] Mis en forme Cathy Wimart-Rousseau 14/07/2023 12:25:00

Anglais (E.U.)

Page 22 : [431] Mis en forme Cathy Wimart-Rousseau 14/07/2023 12:25:00

Anglais (E.U.)

Page 22 : [431] Mis en forme Cathy Wimart-Rousseau 14/07/2023 12:25:00

Anglais (E.U.)

Page 22 : [431] Mis en forme Cathy Wimart-Rousseau 14/07/2023 12:25:00

Anglais (E.U.)

Page 22 : [431] Mis en forme Cathy Wimart-Rousseau 14/07/2023 12:25:00

Anglais (E.U.)

Page 22 : [431] Mis en forme Cathy Wimart-Rousseau 14/07/2023 12:25:00

Anglais (E.U.)

Page 22 : [431] Mis en forme Cathy Wimart-Rousseau 14/07/2023 12:25:00

Anglais (E.U.)

Page 22 : [431] Mis en forme Cathy Wimart-Rousseau 14/07/2023 12:25:00

Anglais (E.U.)

Page 22 : [431] Mis en forme Cathy Wimart-Rousseau 14/07/2023 12:25:00

Anglais (E.U.)

Page 22 : [431] Mis en forme Cathy Wimart-Rousseau 14/07/2023 12:25:00

Anglais (E.U.)

Page 22 : [431] Mis en forme Cathy Wimart-Rousseau 14/07/2023 12:25:00

Anglais (E.U.)

Page 22 : [431] Mis en forme Cathy Wimart-Rousseau 14/07/2023 12:25:00

Anglais (E.U.)

Page 22 : [431] Mis en forme Cathy Wimart-Rousseau 14/07/2023 12:25:00

Anglais (E.U.)

Page 22 : [431] Mis en forme Cathy Wimart-Rousseau 14/07/2023 12:25:00

Anglais (E.U.)

Page 22 : [431] Mis en forme Cathy Wimart-Rousseau 14/07/2023 12:25:00

Anglais (E.U.)

Page 22 : [431] Mis en forme Cathy Wimart-Rousseau 14/07/2023 12:25:00

Anglais (E.U.)

Page 24 : [432] Supprimé Cathy Wimart-Rousseau 13/07/2023 15:15:00

Page 24 : [433] Mis en forme Cathy Wimart-Rousseau 28/07/2023 09:31:00

Anglais (E.U.)

Page 24 : [434] Mis en forme Cathy Wimart-Rousseau 13/07/2023 15:15:00

Retrait : Première ligne : 0,19 cm

Page 24 : [435] Mis en forme Cathy Wimart-Rousseau 28/07/2023 09:31:00

Anglais (E.U.)

Page 24 : [436] Modifier Unknown

Code de champ modifié

Page 24 : [437] Mis en forme Cathy Wimart-Rousseau 28/07/2023 09:31:00

Anglais (E.U.)

Page 24 : [437] Mis en forme Cathy Wimart-Rousseau 28/07/2023 09:31:00

Anglais (E.U.)

Page 24 : [438] Modifier Unknown

Code de champ modifié

Page 24 : [439] Mis en forme Cathy Wimart-Rousseau 28/07/2023 09:31:00

Anglais (E.U.)

Page 24 : [439] Mis en forme Cathy Wimart-Rousseau 28/07/2023 09:31:00

Anglais (E.U.)

Page 24 : [440] Modifier Unknown

Code de champ modifié

Page 24 : [441] Mis en forme Cathy Wimart-Rousseau 28/07/2023 09:31:00

Anglais (E.U.)

Page 24 : [441] Mis en forme Cathy Wimart-Rousseau 28/07/2023 09:31:00

Anglais (E.U.)

Page 24 : [442] Modifier Unknown

Anglais (E.U.)

Page 24 : [444] Modifier Unknown

Code de champ modifié

Page 24 : [445] Mis en forme Cathy Wimart-Roussea 28/07/2023 09:31:00

Anglais (E.U.)

Page 24 : [445] Mis en forme Cathy Wimart-Roussea 28/07/2023 09:31:00

Anglais (E.U.)

Page 24 : [446] Modifier Unknown

Code de champ modifié

Page 24 : [447] Mis en forme Cathy Wimart-Roussea 28/07/2023 09:31:00

Anglais (E.U.)

Page 24 : [447] Mis en forme Cathy Wimart-Roussea 28/07/2023 09:31:00

Anglais (E.U.)

Page 24 : [448] Modifier Unknown

Code de champ modifié

Page 24 : [449] Mis en forme Cathy Wimart-Roussea 28/07/2023 09:31:00

Anglais (E.U.)

Page 24 : [449] Mis en forme Cathy Wimart-Roussea 28/07/2023 09:31:00

Anglais (E.U.)

Page 24 : [449] Mis en forme Cathy Wimart-Roussea 28/07/2023 09:31:00

Anglais (E.U.)

Page 24 : [449] Mis en forme Cathy Wimart-Roussea 28/07/2023 09:31:00

Anglais (E.U.)

Page 24 : [450] Modifier Unknown

Code de champ modifié

Page 24 : [451] Mis en forme Cathy Wimart-Roussea 28/07/2023 09:31:00

Anglais (E.U.)

Page 24 : [451] Mis en forme Cathy Wimart-Roussea 28/07/2023 09:31:00

Anglais (E.U.)

Page 24 : [452] Modifier Unknown

Code de champ modifié

Page 24 : [453] Mis en forme Cathy Wimart-Roussea 28/07/2023 09:31:00

Anglais (E.U.)

Page 24 : [453] Mis en forme Cathy Wimart-Roussea 28/07/2023 09:31:00

Anglais (E.U.)

Page 24 : [454] Supprimé Cathy Wimart-Roussea 13/07/2023 15:17:00

Anglais (E.U.)

Page 24 : [455] Mis en forme Cathy Wimart-Rousseau 28/07/2023 09:31:00

Anglais (E.U.)

Page 24 : [456] Supprimé Cathy Wimart-Rousseau 13/07/2023 15:17:00

Page 24 : [456] Supprimé Cathy Wimart-Rousseau 13/07/2023 15:17:00

Page 24 : [457] Mis en forme Cathy Wimart-Rousseau 28/07/2023 09:31:00

Anglais (E.U.)

Page 24 : [457] Mis en forme Cathy Wimart-Rousseau 28/07/2023 09:31:00

Anglais (E.U.)

Page 24 : [457] Mis en forme Cathy Wimart-Rousseau 28/07/2023 09:31:00

Anglais (E.U.)

Page 24 : [457] Mis en forme Cathy Wimart-Rousseau 28/07/2023 09:31:00

Anglais (E.U.)

Page 24 : [457] Mis en forme Cathy Wimart-Rousseau 28/07/2023 09:31:00

Anglais (E.U.)

Page 24 : [457] Mis en forme Cathy Wimart-Rousseau 28/07/2023 09:31:00

Anglais (E.U.)

Page 24 : [458] Mis en forme Cathy Wimart-Rousseau 28/07/2023 09:31:00

Anglais (E.U.)

Page 24 : [459] Mis en forme Cathy Wimart-Rousseau 28/07/2023 09:31:00

Anglais (E.U.)

Page 24 : [460] Mis en forme Cathy Wimart-Rousseau 28/07/2023 09:31:00

Anglais (E.U.)

Page 24 : [460] Mis en forme Cathy Wimart-Rousseau 28/07/2023 09:31:00

Anglais (E.U.)

Page 24 : [460] Mis en forme Cathy Wimart-Rousseau 28/07/2023 09:31:00

Anglais (E.U.)

Page 24 : [461] Mis en forme Cathy Wimart-Rousseau 28/07/2023 09:31:00

Anglais (E.U.)

Page 24 : [462] Supprimé Cathy Wimart-Rousseau 29/08/2023 11:25:00

Page 24 : [462] Supprimé Cathy Wimart-Rousseau 29/08/2023 11:25:00

▲ Page 24 : [464] Supprimé Cathy Wimart-Rousseau 29/08/2023 11:26:00

▲ Page 24 : [465] Mis en forme Cathy Wimart-Rousseau 28/07/2023 09:31:00

Anglais (E.U.)

▲ Page 24 : [465] Mis en forme Cathy Wimart-Rousseau 28/07/2023 09:31:00

Anglais (E.U.)

▲ Page 24 : [465] Mis en forme Cathy Wimart-Rousseau 28/07/2023 09:31:00

Anglais (E.U.)

▲ Page 24 : [466] Modifier Unknown

Code de champ modifié

▲ Page 24 : [467] Mis en forme Cathy Wimart-Rousseau 28/07/2023 09:31:00

Anglais (E.U.)

▲ Page 24 : [467] Mis en forme Cathy Wimart-Rousseau 28/07/2023 09:31:00

Anglais (E.U.)

▲ Page 24 : [468] Modifier Unknown

Code de champ modifié

▲ Page 24 : [469] Mis en forme Cathy Wimart-Rousseau 28/07/2023 09:31:00

Anglais (E.U.)

▲ Page 24 : [469] Mis en forme Cathy Wimart-Rousseau 28/07/2023 09:31:00

Anglais (E.U.)

▲ Page 24 : [470] Modifier Unknown

Code de champ modifié

▲ Page 24 : [471] Mis en forme Cathy Wimart-Rousseau 28/07/2023 09:31:00

Anglais (E.U.)

▲ Page 24 : [471] Mis en forme Cathy Wimart-Rousseau 28/07/2023 09:31:00

Anglais (E.U.)

▲ Page 24 : [472] Modifier Unknown

Code de champ modifié

▲ Page 24 : [473] Mis en forme Cathy Wimart-Rousseau 28/07/2023 09:31:00

Anglais (E.U.)

▲ Page 24 : [473] Mis en forme Cathy Wimart-Rousseau 28/07/2023 09:31:00

Anglais (E.U.)

▲ Page 24 : [474] Modifier Unknown

Code de champ modifié

▲ Page 24 : [475] Mis en forme Cathy Wimart-Rousseau 28/07/2023 09:31:00

Page 24 : [475] Mis en forme Cathy Wimart-Roussea 28/07/2023 09:31:00

Anglais (E.U.)

Page 31 : [476] Mis en forme Cathy Wimart-Roussea 14/08/2023 09:00:00

Police :Times New Roman, 9 pt, Couleur de police : Automatique, Anglais (E.U.), Motif : Transparente

Page 31 : [477] Mis en forme Cathy Wimart-Roussea 14/08/2023 09:00:00

Police :Times New Roman, 9 pt, Couleur de police : Automatique, Anglais (E.U.), Motif : Transparente

Page 31 : [478] Mis en forme Cathy Wimart-Roussea 14/08/2023 09:00:00

Police :Times New Roman, 9 pt, Couleur de police : Automatique, Anglais (E.U.), Motif : Transparente

Page 31 : [479] Mis en forme Cathy Wimart-Roussea 14/08/2023 09:00:00

Police :Times New Roman, 9 pt, Couleur de police : Automatique, Anglais (E.U.), Motif : Transparente

Page 31 : [480] Mis en forme Cathy Wimart-Roussea 14/08/2023 09:00:00

Police :Times New Roman, 9 pt, Couleur de police : Automatique, Anglais (E.U.), Motif : Transparente

Page 31 : [481] Mis en forme Cathy Wimart-Roussea 14/08/2023 09:00:00

Police :Times New Roman, 9 pt, Couleur de police : Automatique, Anglais (E.U.), Motif : Transparente

Page 31 : [482] Mis en forme Cathy Wimart-Roussea 14/08/2023 09:00:00

Police :Times New Roman, 9 pt, Couleur de police : Automatique, Anglais (E.U.), Motif : Transparente

Page 31 : [483] Mis en forme Cathy Wimart-Roussea 14/08/2023 09:00:00

Police :Times New Roman, 9 pt, Couleur de police : Automatique, Anglais (E.U.), Motif : Transparente

Page 31 : [484] Mis en forme Cathy Wimart-Roussea 14/08/2023 09:00:00

Police :Times New Roman, 9 pt, Couleur de police : Automatique, Anglais (E.U.), Motif : Transparente

Page 31 : [485] Mis en forme Cathy Wimart-Roussea 14/08/2023 09:00:00

Police :Times New Roman, 9 pt, Couleur de police : Automatique, Anglais (E.U.), Motif : Transparente

Page 31 : [486] Mis en forme Cathy Wimart-Roussea 14/08/2023 09:00:00

Police :Times New Roman, 9 pt, Couleur de police : Automatique, Anglais (E.U.), Motif : Transparente

Page 31 : [487] Mis en forme Cathy Wimart-Roussea 14/08/2023 09:00:00

Police :Times New Roman, 9 pt, Couleur de police : Automatique, Anglais (E.U.), Motif : Transparente