



Effect of terrestrial nutrient limitation on the estimation of the remaining carbon budget

Makcim De Sisto^{1,2} and Andrew H. MacDougall¹

¹Climate and Environment, St. Francis Xavier University, Antigonish, NS, Canada

²Faculty of Engineering and Applied Science, Memorial University of Newfoundland, NL, Canada

Correspondence: Makcim De Sisto (mdesisto@stfx.ca)

Abstract.

The carbon cycle plays a foundational role in the estimation of the remaining carbon budget. It is intrinsic for the determination of the transient climate response to cumulative CO₂ emissions and the zero emissions commitment. For the terrestrial carbon cycle, nutrient limitation has a core regulation on the amount of carbon fixed by terrestrial vegetation. Hence, the addition of nutrients such as nitrogen and phosphorus in land model structures in Earth system models is essential for an accurate representation of the carbon cycle feedback in future climate projections. Thereby, the estimation of the remaining carbon budget is impacted by the representation of nutrient limitation in modelled terrestrial ecosystems, yet it is rarely accounted for. Here, we estimate the carbon budget and remaining carbon budget of a nutrient limited Earth system model, using nitrogen and phosphorus cycles to limit vegetation productivity and biomass. We use eight Shared Socioeconomic Pathways scenarios and idealized experiments on three distinct model structures: 1) carbon cycle without nutrient limitation, 2) carbon cycle with terrestrial nitrogen limitation and 3) carbon cycle with terrestrial nitrogen and phosphorus limitation. To capture the uncertainty of the remaining carbon budget, three different climate sensitivities were tuned for each model version. Our results show that overall the nutrient limitation reduced the remaining carbon budget for all simulations in comparison with the carbon cycle without nutrient limitation. Between the nitrogen and nitrogen-phosphorus limitation, the latter had the lowest remaining carbon budget. The mean remaining carbon budget from the Shared Socioeconomic Pathways scenarios simulations for the 1.5 °C target in the no nutrient limitation, nitrogen limited and nitrogen-phosphorus limited models obtained were 228, 185 and 175 Pg C respectively, relative to year 2020. For the 2 °C target the mean remaining carbon budget were 471, 373 and 351 Pg C for the no nutrient limitation, nitrogen limited and nitrogen-phosphorus limited models respectively, relative to year 2020. This represents a reduction of 19 and 24 % for the 1.5 °C target and 21 and 26 % for the 2 °C target in the nitrogen and nitrogen-phosphorus limited simulations compared to the no nutrient limitation model. These results show that terrestrial nutrient limitations constitute an important factor to be considered when estimating or interpreting remaining carbon budgets and are an essential uncertainty of remaining carbon budgets from Earth system model simulations.



1 Introduction

Future climate projections have only rarely accounted for nutrient limitation of the land carbon sink (Wang and Goll , 2021).
25 For the sixth phase of the Coupled Model Intercomparison Project (CMIP6) this weakness was partially overcome with more Earth system models (ESMs) embracing nitrogen limitation as a standard for terrestrial system structures. However, the inclusion of phosphorus remains rare and representation of micro-nutrients remains a distant ambition. (Arora et al. , 2020; Spafford and MacDougall , 2021). Thus, the future of the land carbon sink remains uncertain as projecting the interactions between the terrestrial system and atmosphere is a challenge without fully accounting for nutrient limitations (Achad et al. ,
30 2016). Since year 1850, the cumulative CO₂ land sink has been estimated to be 210±45 PgC, which represents 31% of all anthropogenic carbon emissions. The terrestrial carbon sink has increased historically with increasing CO₂ emission rate, such that the proportion of carbon taken up by land has remained close to constant (Friedlingstein et al. , 2022). Nutrient availability constrains the capacity and rate at which terrestrial plants assimilate carbon (Goll et al. , 2012). Nitrogen and phosphorus are the nutrients that most commonly limit vegetation growth (Filipelli , 2002; Fowler et al. , 2013; Wang et al. , 2010; Du et al.
35 , 2020) and hence have been the subject of most research and large scale modelling efforts. Globally, this effect varies. Most of the terrestrial biosphere is co-limited by both N and P, with N being the dominant nutrient limitation in higher latitudes while phosphorus predominates in lower latitudes (Du et al. , 2020). Earth system models are designed to account for land use change, and biological productivity when estimating the carbon sink on land (Kiwamiya , 2020). The change of nutrient concentration in terrestrial systems in future simulations is an uncertainty for determining the land carbon sink over the next
40 decades (Shibata et al. , 2010, 2015; Menge et al. , 2012). Complicating this problem further, a large portion of nutrients on land are derived from anthropogenic sources, including agricultural fertilization (artificial, compost and manure), atmospheric deposition of N-bearing pollutants, and urban wastewaters (Lu and Tian , 2017; van Puijenbroek et al. , 2019).

It is likely that the first generation of ESMs simulations overestimated how much terrestrial ecosystems would respond to an increase in atmospheric carbon dioxide concentrations based on carbon only schemes (Wieder et al. , 2015). A large amount
45 of terrestrial carbon uptake was predicted by those simulations, which would result in unrealistic nutrient requirements. For example, in a study by Wieder et al. (2015) ESMs with nitrogen and nitrogen–phosphorus limitation were projected to decrease net primary productivity by 19% and 25%. Hence, the implementation of nutrient limitation in ESMs has been shown to improve the representation of carbon uptake in land (Wang et al. , 2007, 2010; Goll et al. , 2017; De Sisto et al. , 2022), and thus will effect the carbon budget.

50 The carbon budgets can be seen from two perspective, the first describes pools and fluxes of carbon within the Earth system (Friedlingstein et al. , 2022). This perspective serves to understand how natural sinks respond to changes in climate, CO₂ and CH₄. The second, is the remaining carbon budget, that describes the allowable future CO₂ emissions to reach a temperature target, commonly 1.5 and 2 °C, which is derived from another metric, the transient climate response to cumulative CO₂ emission (TCRE) which quantifies how global surface temperatures are nearly proportional to cumulative CO₂ emissions (Matthews et al. , 2009; MacDougall , 2016; Spafford and MacDougall , 2020). As TCRE represents the proportionality of cumulative
55 CO₂ emission to its accompanying temperature change, its inverse can be used to estimate the remaining carbon budget for



temperature targets (Matthews et al. , 2020). The TCRE have been shown to be a good metric for predicting the response of temperature to cumulative CO₂ emissions. However, the TCRE only represented warming from CO₂ emissions, excluding the impacts of non-CO₂ forcing agents. A method to account for this issue is to use simulations with all anthropogenic forcing and plot the total anthropogenic warming as a function of cumulative CO₂ emissions, also known as effective TCRE (Tokarska et al. , 2018). There is a large uncertainty in the TCRE estimates, with a likely range from 1.0 to 2.3 K EgC⁻¹ (IPCC , 2021). For idealized experiments the Transient Climate Response (TCR) can be used to quantify the physical uncertainty in TCRE. TCR is the change of temperature at the time of doubling atmospheric CO₂ concentrations (year 70 in a 1pctCO₂ experiment). However unlike TCRE, the TCR is dependent on the scenario used to compute it (e.g. MacDougall (2017)). The other important source of variability among TCRE estimates comes from uncertainties in carbon uptake by the ocean and terrestrial biosphere.

Terrestrial system nutrient limitation play a vital role in the estimations of remaining carbon budgets due to their effect on the carbon cycle. Accounting for phosphorus limitation in carbon budgets estimations is desirable due to for its limiting effect at low latitudes (Du et al. , 2020). Hence, P impact on terrestrial vegetation biomass and limitation of carbon sink almost certainly affect remaining carbon budget estimates. The remaining carbon budget framework used in this study follows Rojeli et al. (2018), and assess how nutrient limitation affects several uncertainties in remaining carbon budgets estimates, such as the TCRE, the estimated contribution of non-CO₂ climate forcings to future warming, the correction for the feedback processes presently unrepresented by Earth System Models, and the unrealized warming from past CO₂ emissions—called the zero emissions commitment (ZEC) (Rojeli et al. , 2018). In addition to these four factors knowledge of the human-induced warming to date is needed to compute the remaining carbon budget. This value is well estimated from historical records (Arias et al. , 2021). Nutrient limitation can be used to improve historical warming accuracy in emission forced ESMs simulations (De Sisto et al. , 2022). The TCRE represents the response of temperatures to CO₂ emissions, hence different models can represent different remaining carbon budgets based on different carbon-climate sensitivities. The non-CO₂ emissions affect the change of temperatures and need to be understood to maintain desired temperature targets. Moreover, the change in temperature after emission cessation is an important dynamic that should be understood and considered in remaining carbon budgets estimations. In future projections non-CO₂ climate forcings are likely affected by the introduction of nutrient limitation in ESMs. The main impacts include feedback changes due to land carbon sink and land use change emissions variation (including albedo changes), either by photosynthesis limitation or the reduction of terrestrial vegetation biomass. These changes might also impact the expected warming contribution after CO₂ emissions are ceased. Lastly within this remaining carbon budget framework, N and P constitute an unrepresented sources of Earth system feedbacks that now is account in the present simulations.

A good representation of the carbon cycle response to CO₂ increase is vital for an accurate estimations of the remaining carbon budget for climate policies and management. The remaining carbon budgets estimates need to account for feedbacks not usually represented in ESMs. As such, isolating the effects of N and P terrestrial limitation give a novel insight on how these underrepresented process in terrestrial systems have contribute to remaining carbon budgets uncertainties. It is therefore important to understand ESMs carbon cycle sensitivity to nutrient limitation constrain of the land carbon sink in future simulations. Hence, we explore the effect of terrestrial nitrogen and phosphorus limitation in remaining carbon budget in an intermediate complexity Earth system and climate model under historical, idealized, and Shared Socioeconomic Pathways projections.



2 Methodology

2.1 Model description

95 Simulations to quantify the remaining carbon budgets budgets were carried with the University of Victoria Earth System
Climate Model (UVic ESCM). The UVic ESCM version 2.10, is a global intermediate complexity model (Weaver et al. , 2001;
Mengis et al. , 2020). The model is comprised of a 3D dynamic ocean circulation model (Pacanowski , 1995), along with a
simplified moisture-energy balance atmosphere (Fanning and Weaver , 1996), a dynamic-thermodynamic sea ice model (Bitz
et al. , 2001) and a land surface model (Meissner et al. , 2003).

100 In the model, the terrestrial and oceanic carbon cycle are represented. The ocean comprises 19 vertical levels that become
thicker with depth (50 m near the surface to 500 m in the deep ocean). Ocean biogeochemistry is based on a simple nutrient-
phytoplankton-zooplankton-detritus model (Keller et al., 2012; Schmittner et al., 2005), with representation of ocean carbonate
chemistry and sediments (Mengis et al. , 2020).

105 In the 2.10 version of the model, the soil is represented by 14 subsurface layers with their thickness increasing exponentially
with depth, with the surface layer measuring 0.1 m, the bottom layer measuring 104.4 m, and the total layer measuring 250 m.
Hydrological processes are active in the first eight soil layers (top 10m), while the layers below have granitic characteristics.
The soil carbon cycle is active up to a depth of 3.35 m (6 layers) (Avis , 2012; MacDougall et al. , 2012). TRIFFID (top-down
representation of interactive foliage and flora including dynamics) represents vegetation interaction between 5 functional plant
types within the terrestrial vegetation. Based on the Lotka-Volterra equations (Cox , 2001), broadleaf trees, needleleaf trees,
shrubs, C3 grasses, and C4 grasses compete for space in the grid. Through photosynthesis, carbon is uptaken and allocated to
110 growth and respiration, whereas the vegetation carbon is transferred to the soil through litter fall and allocated to the soil in a
decreasing function of depth. Permafrost carbon is prognostically generated within the model using a diffusion-based scheme
meant to approximate the process of cryoturbation (MacDougall and Knutti , 2016).

115 The UVic ESCM prescribes anthropogenic land-use changes based on standardized CMIP6 land-use forcing (Ma et al.,
2020) regridded to the UVic ESCM grids. Land-use data products have been modified for UVic ESCM use by aggregating
cropland and grazing land into one crop type, representing any of the five functional types of crops, and one grazing variable,
representing pastures and rangelands. By using this forcing, the model determines the fraction of grid cells that contain crops
and grazing areas, and these fractions are assigned to C3 and C4 grasses and excluded from the vegetation competition routine
of TRIFFID. A full description of the model can be found in Mengis et al. (2020).

120 A terrestrial nitrogen and phosphorous model has recently been developed for the UVic ESCM (De Sisto et al. , 2022). The
nitrogen cycle module consists of three organic pools (litter, soil organic matter, and vegetation) and two inorganic pools (NH_4^+
and NO_3^-). Biological nitrogen fixation and mineralization of organic nitrogen produce NH_4^+ , which can be absorbed by plants
(vegetation), leached, or transformed into NO_3^- via nitrification. NO_3^- is produced through nitrification, can be taken up by
plants, leached or denitrified into NO , N_2O or N_2 . Inorganic N is distributed between leaf, root, and wood, with wood having
a fixed stoichiometric ratio and leaf and root pools having a variable ratio. Organic N leaves the living pools via litter-fall into
125 the litter pool which is either mineralized or transferred to the organic soil pool, part of this N can be mineralized into the



inorganic N pools. At the same time N can flow from the inorganic to the soil organic pool via immobilization. A complete description of the nitrogen cycle can be found in Wania et al. (2012) and De Sisto et al. (2022).

130 The phosphorus module included three inorganic (labile, sorbed and strongly sorbed) and three organic P pools: Vegetation (leaf, root and wood), litter and soil organic P. The P input is driven by a fixed estimates of P release per global soil types as in Wang et al. (2010). Inorganic P (P_{soil}) in soil follows the dynamics described in Goll et al. (2017). After uptake, P is distributed in three vegetation compartments: leaf, root and wood. Leaf and root have a dynamic value that varies between a minimum and a maximum, while wood have a fix C:P ratio. The vegetation P biomass dynamics is determined from the difference between the amount of uptake and the loss from litterfall. The soil litter decomposed is transferred to the soil organic P pool. The dynamics of P organic matter are adapted from Wang et al. (2007). A complete description of the P cycle
135 can be found in De Sisto et al. (2022). Nitrogen and phosphorus limit terrestrial vegetation growth in the model in two different ways: 1) Nitrogen limits the photosynthetic activity (by regulating the maximum carboxylation rate of RuBISCO) and directly by reducing biomass. This reduction is controlled by the maximum C:N leaf ratio, where reducing this value corresponds to a larger reduction of vegetation biomass. 2) Phosphorus only limits vegetation biomass based on maximum C:P leaf ratios.

2.2 Experimental set-up

140 The effects of nitrogen and phosphorus were analysed from the perspective of the sources of uncertainty in the remaining carbon budgets estimates. Here, the framework includes how nitrogen and phosphorus impact the representation of: 1) Model fidelity of human warming to date, 2) the TCRE, 3) the unrealized warming from past CO₂ emissions (zero emissions commitment) and, 4) the estimated contribution of non-CO₂ climate forcings to future warming. We run three different versions of the UVic ESCM version 2.10: 1) Carbon only (C-only), 2) Carbon Nitrogen (CN) and Carbon Nitrogen and Phosphorus (CNP).
145 Furthermore, to capture the uncertainty of the carbon budget estimates the climate sensitivity was tuned using an equilibrium climate sensitivity parameter designed by Zickfeld et al. (2009) to alter climate sensitivity in the UVic ESCM by altering the flow of long-wave radiation back to space. Model variants were tuned to have Equilibrium Climate Sensitivities (ECSs) per doubling of CO₂ of 2.0°C, 4.5°C to represent the "likely bounds" (IPCC, 2021), as well as using the emergent climate sensitivity of the model (3.4°C) as the central estimate.

150 2.2.1 Historical human-induced warming to date

We conducted three historical simulations to assess the historical climate response differences between the C-only and CN and CNP. Each model structure was calibrated using aerosol scaling so that historical temperatures matches observations. Three-dimensional aerosol optical depth can be scaled by a fraction in the UVic ESCM and was used in version 2.10 to calibrate aerosol forcing to fit current values (Mengis et al., 2020). Thus the historical warming to date is similar for all model variants
155 but the estimated historical emissions vary, allowing model validation.



2.2.2 Transient climate response to cumulative emissions

To diagnose the TCR and the TCRE, we run simulations starting with a $1\% \text{ yr}^{-1}$ increase in CO_2 concentrations until a doubling and quadrupling ($2x$ and $4x\text{CO}_2$) were reached after which the concentration was kept constant (Eyring et al. , 2016). Both TCR and TCRE are computed at year 70 of this 1pctCO_2 experiment, when atmospheric CO_2 concentration has doubled.

160 To account for non- CO_2 forcing effect on climate sensitivity, we applied Tokarska et al. (2018) approach to compute effective-TCRE. Using a SSP 5-8.5 a high emission scenario we determined the response of temperature to cumulative emissions including all forcing accounted in the SSP scenario.

2.2.3 Zero emissions commitment

To explore the effects of nutrient limitation on zero emission commitment, an experiment following the Zero Emission Commitment Model Intercomparison Project (ZECMIP) protocol was conducted (Jones et al. , 2019) for C-only, CN and CNP.

165 For these experiments the 1pctCO_2 experiment is followed until diagnosed cumulative emissions of CO_2 reaches 1000 PgC thereafter emissions are set to zero further CO_2 emissions. We diagnosed three emissions pathways corresponding to C-only, CN and CNP simulations. We used two metrics to assess the nutrient limitation effect on ZEC. The first, is the temperature at the 50th year after emission have ceased relative to the global average temperature when emissions ceased, averaged from year

170 40 to year 59 after emissions cease (ZEC_{50}) as in MacDougall et al. (2020). The second, is the mean ZEC for 100 years after emission have ceased.

2.2.4 Estimated contribution of non- CO_2 climate forcings to future warming

To estimate the impact of nutrient limitation on the contribution of non- CO_2 climate forcings to future warming, eight SSPs scenarios for the C-only, CN and CNP version of the UVic ESCM version 2.10 were run. We included the CMIP6 SSPs array

175 scenarios representing each distinct future (1-5) narrative. The following scenarios were run: SSP1-1.9, SSP1-2.6, SSP2-4.5, SSP3-7.0, SSP4-3.4, SSP4-6.0, SSP5-3.4-OS and SSP5-8.5. The carbon budget follows temperature anomalies normalised to 1850-1900 mean for 1.5, 2, 2.5 and $3 \text{ }^\circ\text{C}$ targets. For the four overshoot scenarios (SSP1-1.9, SSP1-2.6, SSP4-3.4, and SSP5-3.4-OS) the remaining carbon budget is computed for the time when the target is first breached.

To estimate the effect of nutrient limitation in land use change emissions and terrestrial albedo an extra set of three simulations for C-only, CN and CNP and the same eight SSP scenario simulations where conducted. In these simulations land use

180 change forcing was set to the pre-industrial year 1850 value. The model adjusts its diagnosed CO_2 emissions to account for the missing forcing. Hence, the diagnosed emission difference between the simulations with land use change forcing and without forcing corresponds to the estimated amount of land use change emissions (Mengis et al. , 2018) These values also carry the effect of albedo change due to land use change. Hence, our values show the total land use change emission + albedo effect

185 simulated in the model.



3 Results

3.1 Historical human-induced warming to date

For each model structure the historical temperature was calibrated to match historical observations by altering the efficacy of aerosol forcing. Figure 1 shows the resulting near-surface air temperature anomalies for UVic ESCM C-only, CN, and
190 CNP configurations after calibration relative to 1951-1980 climate normal. The temperature anomalies were plotted against GISS near surface air temperatures anomalies relative to 1951-1980 (GISTEMP Team, 2023). For the three different versions of the model the resulting calibrated simulations reproduced well the historical temperature trend when compared to GISS observations. As shown in De Sisto et al. (2022) without calibration the UVic ESCM CN and CNP have higher temperatures when compared to C-only, given that nutrients limit the capacity of the terrestrial system to uptake atmospheric CO₂. That is,
195 atmospheric CO₂ is higher given the same total emissions of CO₂. Between CN and CNP, CNP results in higher temperature response mainly as a result of tropical terrestrial nutrient limitation and extra phosphorus limitation in higher latitudes.

Figure 2 shows the historical global carbon cycle from 1850-2021 for C-only, CN and CNP. There are two main impacts of nutrient limitation on terrestrial systems: 1) reduction of the land carbon sink and 2) reduction of the land use change emissions. The reduction of the land carbon sink is related to the decrease of the photosynthetic capacity and the regulation of terrestrial
200 vegetation biomass. This biomass reduction leads to the reduction of the land use change emissions, especially as N and P affects woody biomass greatly. The global reduction of carbon uptake increase the concentration of CO₂ in emission driven simulations. Following this logic and given that concentration driven simulation have a set atmospheric CO₂ concentrations, the diagnosed emissions estimated in our simulations were reduced in CN and CNP compared to C-only. The model estimates less
205 emissions to be necessary to keep the CO₂ concentration on track as less carbon is uptake from land. In order to be comparable to the latest carbon budget report out estimation of the historical carbon cycle follows carbon fluxes from 1850-2021 while the estimation of the remaining carbon budgets starts from the year 2020 following different future SSPs scenarios pathways. From 1850-2021 (Figure 2) the range of reduction in the CN and CNP nutrient limited simulations for the cumulative land carbon sink was 75 to 106 Pg C compared to C-only. The range of reduction for cumulative the land use change emission was 60 to 93 Pg C. Finally, the range of reduction of the cumulative carbon emissions diagnosed by the concentration driven
210 simulations was 11 to 29 Pg C. The CNP cumulative fossil fuel CO₂ emissions of 483 PgC is within the value of 465±25 PgC given by Friedlingstein et al. (2022) while C-only and CN are slightly over the estimate with 501 and 512 PgC (Figure 2).

3.2 Transient climate response to cumulative CO₂ emissions

The TCR for doubling CO₂ concentrations was 1.78, 1.79 and 1.79 °C in C-only, CN and CNP. Corresponding to a small difference, driven by albedo changes. Between CNP and CN, the albedo change has a small increase effect of 0.004 °C in
215 CNP compared to CN (note the UVic ESCM lacks internal variability, so this very small difference is computable). The TCRE for C-only resulted in 1.74 K EgC⁻¹ compared to CN 1.94 K EgC⁻¹ and CNP 2.07 K EgC⁻¹. The TCRE values for all the simulations are within the range of 1 - 2.3 K EgC⁻¹ given by the IPCC AR6 Summary for Policy Makers (IPCC, 2021). Under a 1% atmospheric CO₂ increase per year experiment, nutrient limitation has a heavy restriction on terrestrial vegetation uptake



220 due to much faster rise in CO_2 relative to the historical trajectory (MacDougall et al. , 2019). If vegetation were free to uptake carbon, in such a steep increase scenario terrestrial plants are expected to increase biomass as a corresponding response. However, the limit of uptake given by the concentration and availability of nutrients regulate the rate at which vegetation metabolize carbon. Hence, despite the high concentration of CO_2 in the atmosphere, terrestrial vegetation is constrain nutrient limitation. The effective TCRE estimated from SSP5-8.5 resulted in 1.97, 2.27 and 2.36 K EgC^{-1} for C-only, CN and CNP. Overall the TCRE and effective TCRE were increased in the nutrient limited simulations. The range of increase for TCRE was: 225 0.2 to 0.3 K EgC^{-1} . The range of increase of the effective TCRE was: 0.3 to 0.4 K EgC^{-1} . Figure 2 shows how terrestrial carbon cycle fluxes changes in historical simulations. Due to these changes the diagnosed CO_2 emissions are reduced, hence, for any temperature target less CO_2 emissions need to be emitted in the nutrient limited simulations. This translates into a more sensitive models, where for 1000Pg C emitted the nutrient limiting simulations are going to result in higher temperatures.

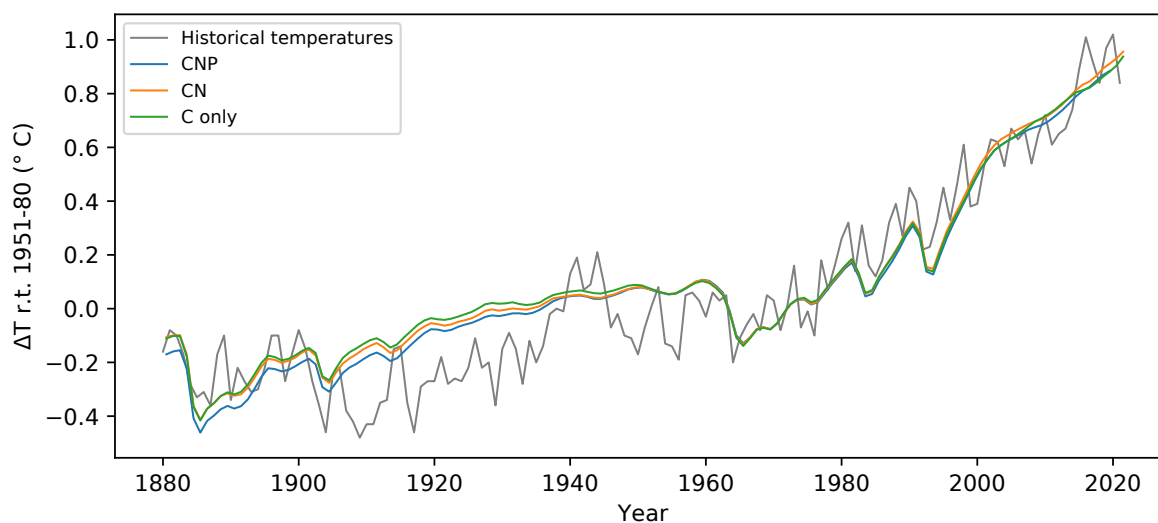


Figure 1. Historical temperature relative to 1951-1980 of C-only, CN and CNP compared to GISS historical temperature dataset (GISTEMP Team , 2023).

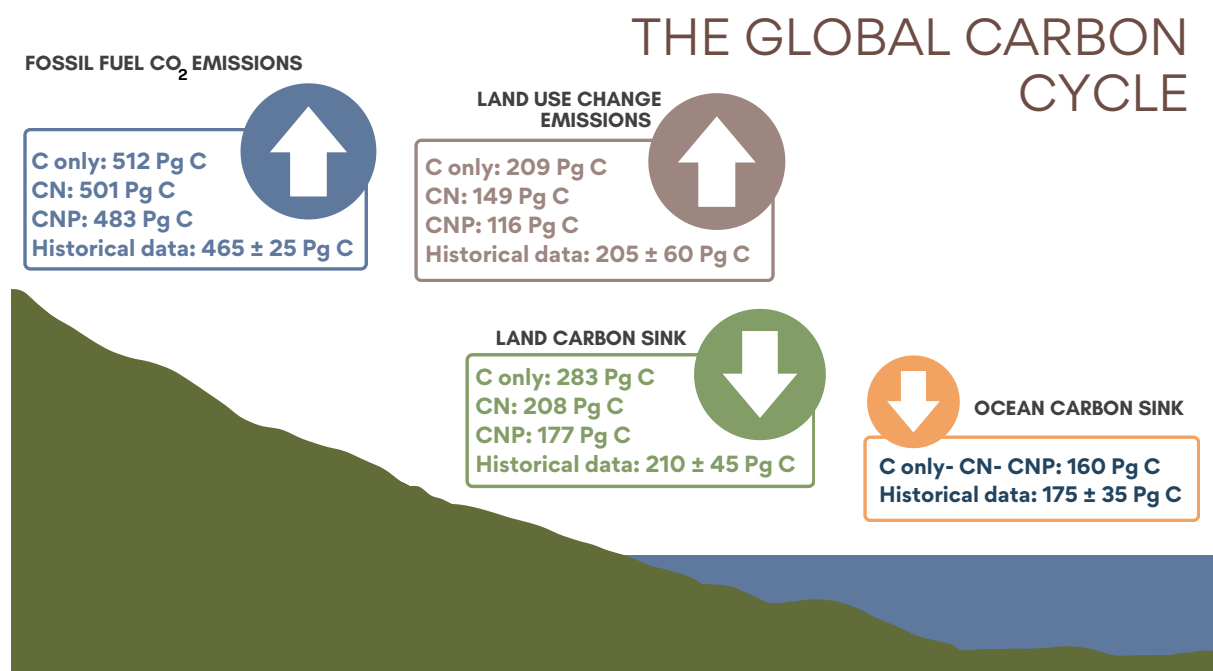


Figure 2. Historical 1850-2021 cumulative land carbon sink, ocean sink, land use change emissions and diagnosed CO₂ emissions simulated compared to Friedlingstein et al. (2022).



3.3 Zero Emission Commitment

230 To analyse the impact of nutrient limitation in zero emission scenarios, ZECMIP type experiments were conducted in C-
only, CN and CNP. Figure 3 show the temperature anomaly relative to the estimated temperature at the year of cessation.
The temperature pattern in the 100 years following cessation is similar for all the model structures. There is an initial rise
of temperature around the 20th year and a quick decline on the 35-40th year, followed by an increase around the 70-80th
year. A difference between C-only and CN and CNP is that the C-only simulation increase is lower than the nutrient limited
235 simulations. The overall ZEC value is higher in CNP and CN than in C-only. For CN and CNP the ZEC₅₀ value resulted in
0.07 and 0.09 °C compared to 0.02 °C in C-only. These values are similar to the ZEC₅₀ of 0.03 °C shown in MacDougall et
al. (2020) for the same model. The ZEC across 100 years of simulation after emission have ceased show a larger difference in
temperature change after emission have ceased. C-only resulted in 0.05 °C compared to 0.17 °C in CN and 0.21 °C in CNP.
This represent a relevant increase of temperature after emission have ceased in the nutrient limited simulations.

240 3.4 Estimated contribution of non-CO₂ climate forcing to future warming

In this section we assessed the remaining carbon budgets variability between different nutrient limitation model struc-
tures in the eight SSPs used in CMIP6. Furthermore, our emphasis was to show the role of N and P representation in remaining
carbon budgets estimates from different future scenarios. Figure 3, 4, 5, 6, 7 and 8 show the resulting remaining carbon budgets
budgets for SSP 1-1.9, 1-2.6, 2-4.5, 3-7.0, 4-3.4, 4-6.0, 5-3.4 and 5-8.5. Among these projections not all reached the 1.5, 2,
245 2.5 and 3 °C targets. SSP1-1.9 and SSP1-2.6 only reached the 1.5 °C target, SSP 4-3.4 and SSP 5-3.4 only reached the 2 °C
target, SSP 2-4.5 reached the 2.5 °C target and SSP 3-7.0, SSP 4-6.0 and SSP 5-8.5 reached the 3 °C target. The remaining
carbon budgets estimates and the SSP temperatures anomalies can be seen in more detailed in Appendix A1, A2, A3,
B1, B2 and B3. Overall, the application of nutrient limitation increased the TCRE and hence, decrease the carbon budget for
all set targets. As expected, among CN and CNP simulation phosphorus limitation reduced the remaining carbon budgets. The
250 mean remaining carbon budgets estimated among the SSPs simulations for ECS 3.4 [ECS 4.5 to ECS 2] in the C-only, CN
and CNP for 1.5 °C target were: 228[31 to 291], 185[25 to 259] and 175[9 to 223] Pg C respectively. For the 2 °C target the
mean remaining carbon budget were 471[205 to 554], 373[154 to 479] and 351[137 to 402] Pg C for the C, CN and CNP
configurations respectively. The remaining carbon budgets budgets for the 2.5 °C target were 719[378 to 869], 591[321 to 725]
and 596[315 to 673] Pg C. Finally, the remaining carbon budgets budgets for the 3 °C target were 974.4[546 to 1174], 798[460
255 to 986] and 796[467 to 920] Pg C. This represents a reduction of 19 and 24 % for the 1.5 °C target, 21 and 26 % for the 2 °C
target, 18 and 17% for the 2.5 °C target and finally 18 and 19 % for the 3 °C target in CN and CNP compared to C-only.

One of the impacts of nutrient limitation is in the change of land use change emissions corresponding to the reduction and
change of vegetation. We found that the mean land use change emission budget among SSPs simulation from year 2020 to
the 1.5 °C target in the ECS 3.4[ECS 4.5 to ECS 2] were: 31[2 to 39], 20[2 to 40] and 13[1 to 23] Pg C for C-only, CN and
260 CNP respectively (Figure 9). Corresponding to a reduction of 11.2 and 18.4 Pg C in CN and CNP compared to C-only. These
results demonstrate that the remaining carbon budgets budgets is clearly sensitivity to the availability of nutrients represented in

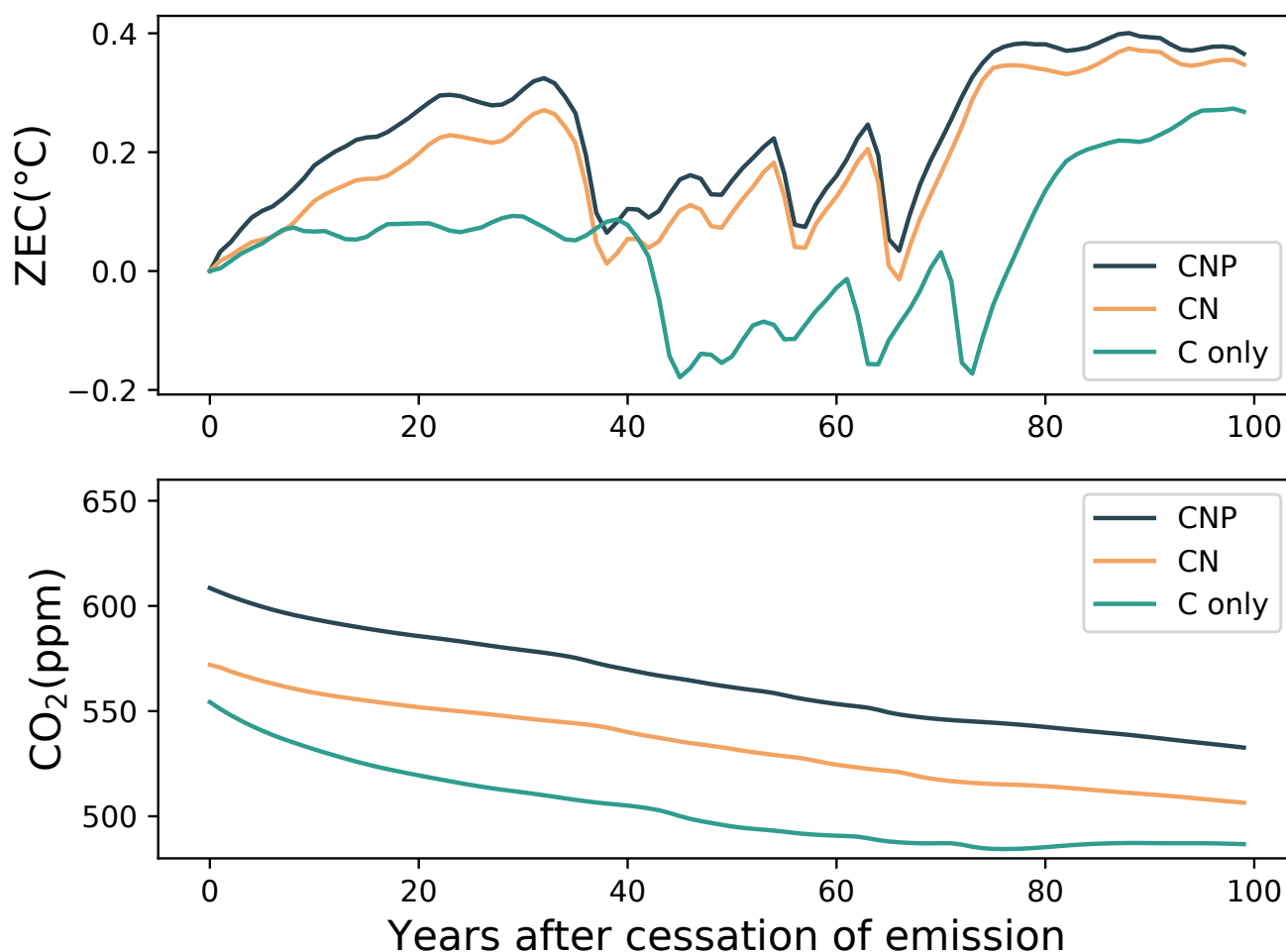


Figure 3. Zero Emissions Commitment following the cessation of emissions during the experiment wherein 1000 PgC was emitted following the 1pctCO₂ experiment. ZEC is the temperature anomaly relative to the estimated temperature at the year of cessation. Note the UVic ESCM lacks internal variability. The rapid changes in global temperature seen in the top panel are due to disruptions to the ocean meridional overturning circulation (Mengis et al. , 2020)

SSPs model simulations. As shown in figure 2,3,4,5,6,7 and 8 the remaining carbon budgets vary between the SSPs scenarios as temperature rise are effected by non-CO₂ forcings, corresponding to socioeconomical global uncertainties. Furthermore, the land carbon cycle in this case nutrient limitation, represents an implicit uncertainty under these different socioeconomical

265 projections.

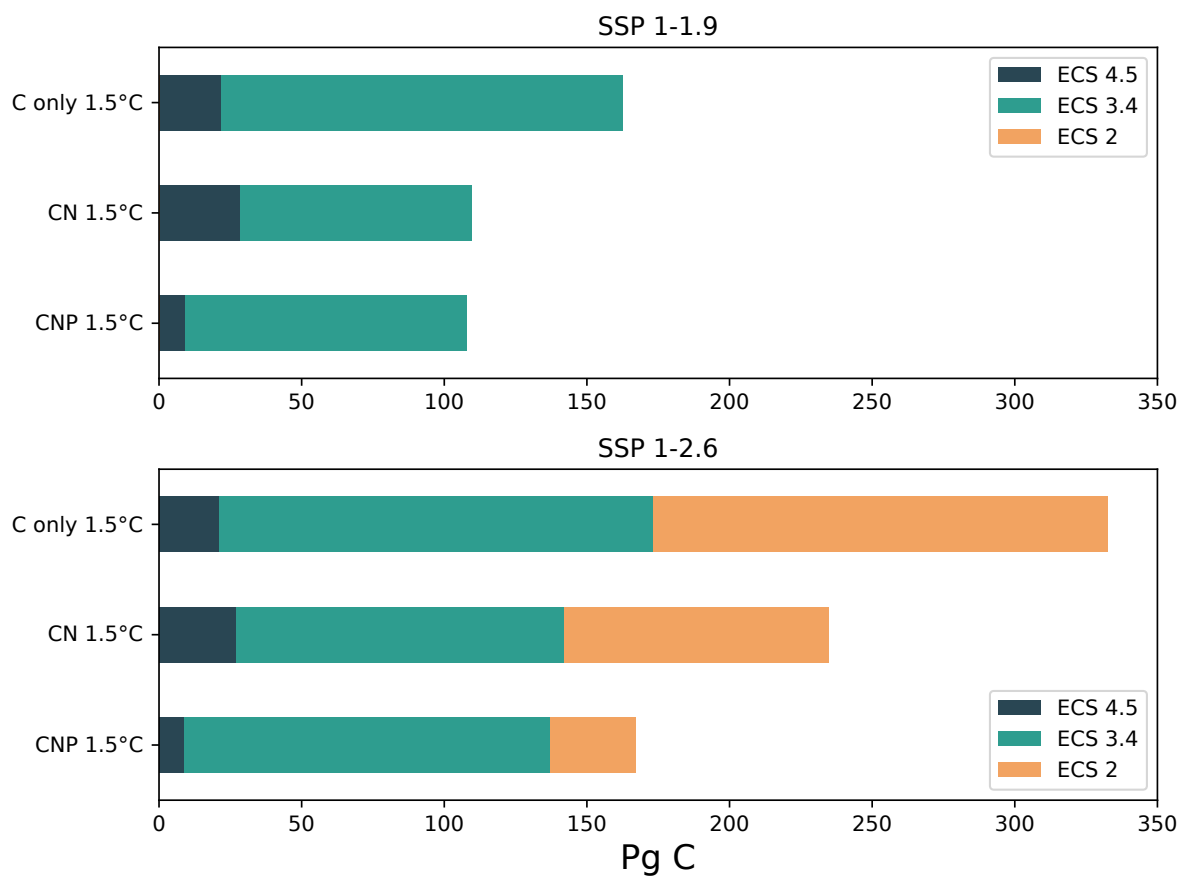


Figure 4. Carbon budgets for the 1.5 °C target for SSP 1-1.9 and 1-2.6. Three model sensitivities are shown as: ECS 4.5 dark blue, ECS 3.4 green and ECS 2 orange.

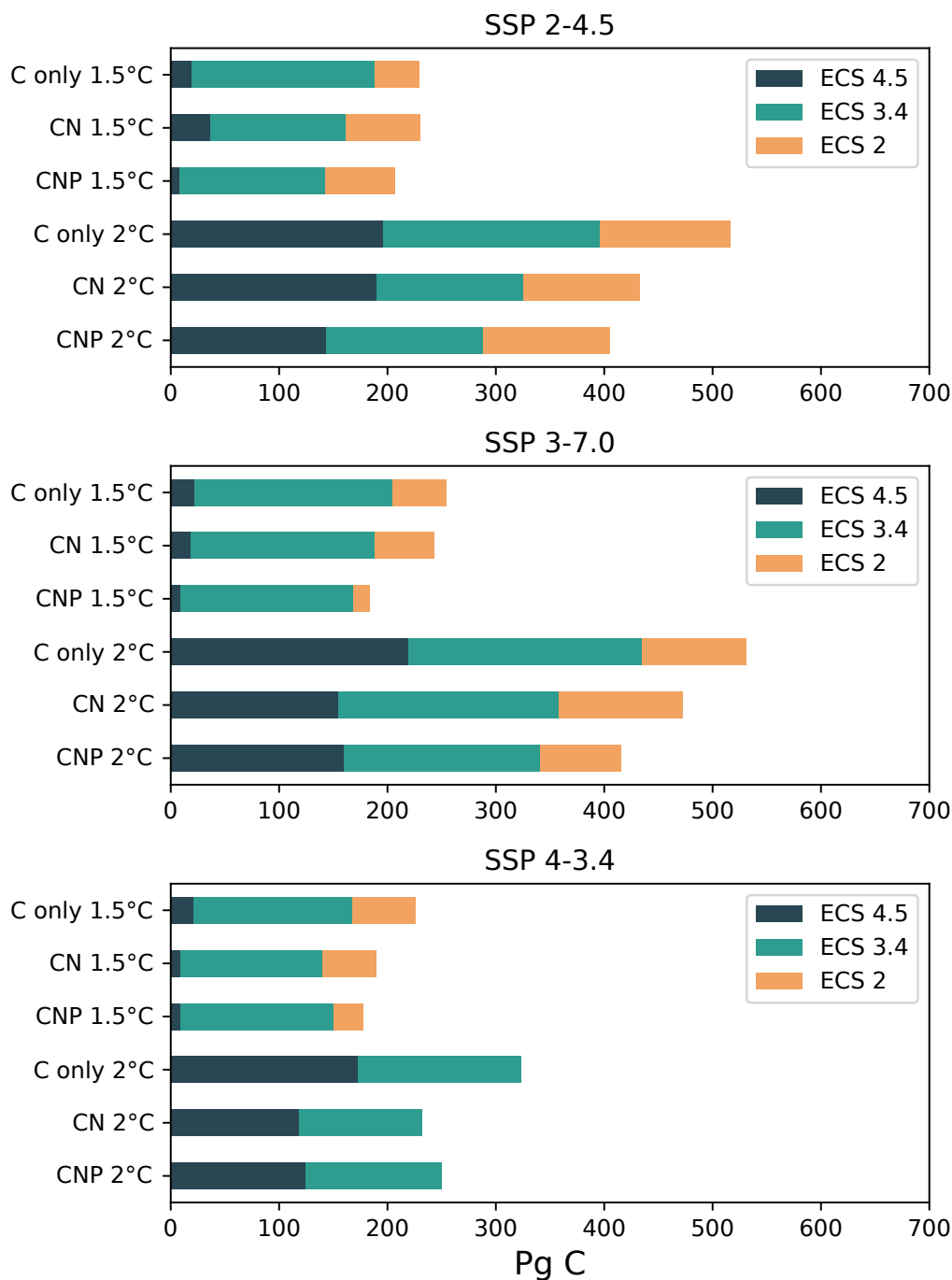


Figure 5. Carbon budgets for the 1.5 and 2 °C targets for SSP 2-4.5, 3-7.0 and 4-3.4. Three model sensitivities are shown as: ECS 4.5 dark blue, ECS 3.4 green and ECS 2 orange.

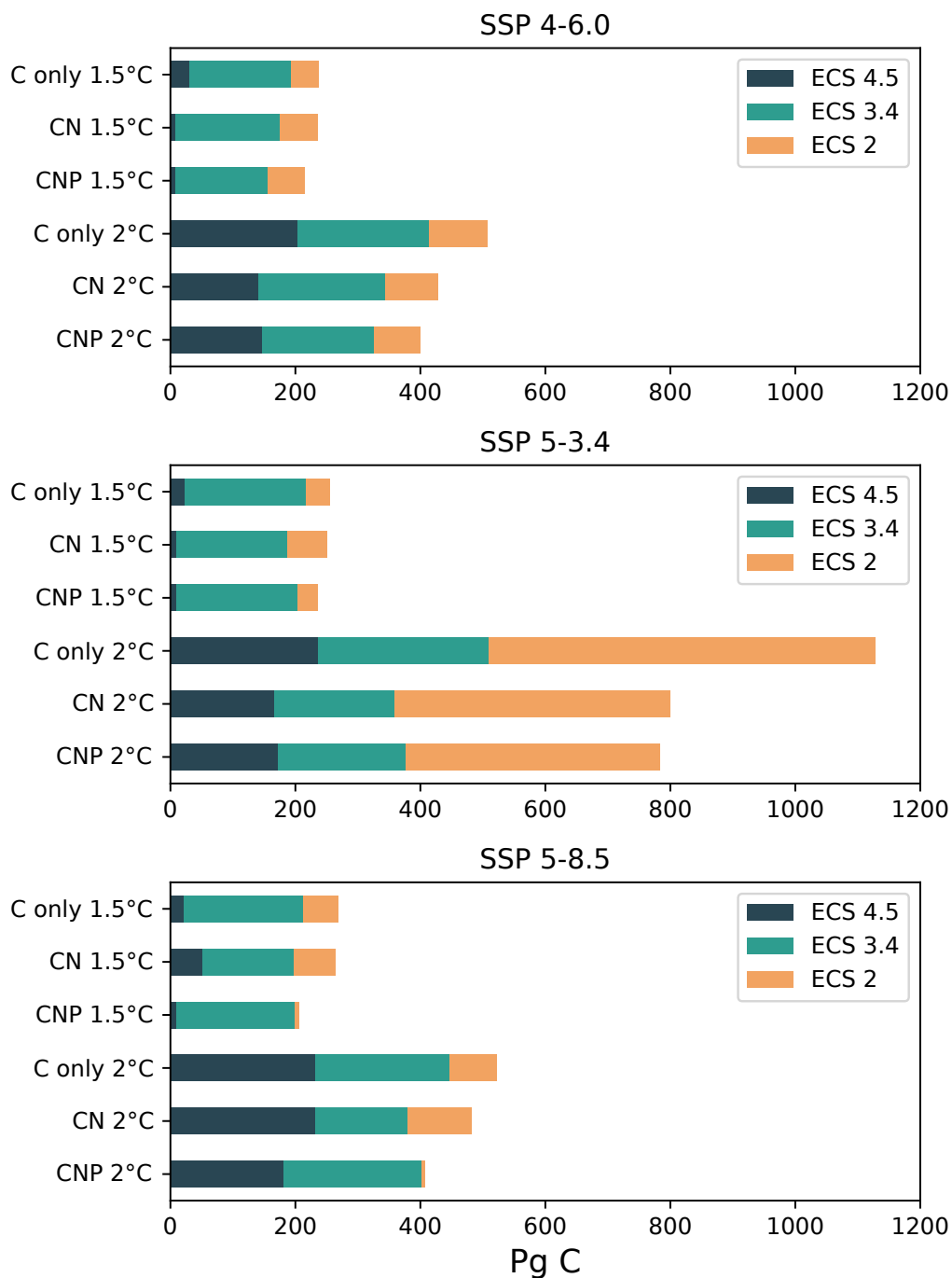


Figure 6. Carbon budgets for the 1.5 and 2 °C targets for SSP 4-6.0, 5-3.4 and 5-8.5. Three model sensitivities are shown as: ECS 4.5 dark blue, ECS 3.4 green and ECS 2 orange.

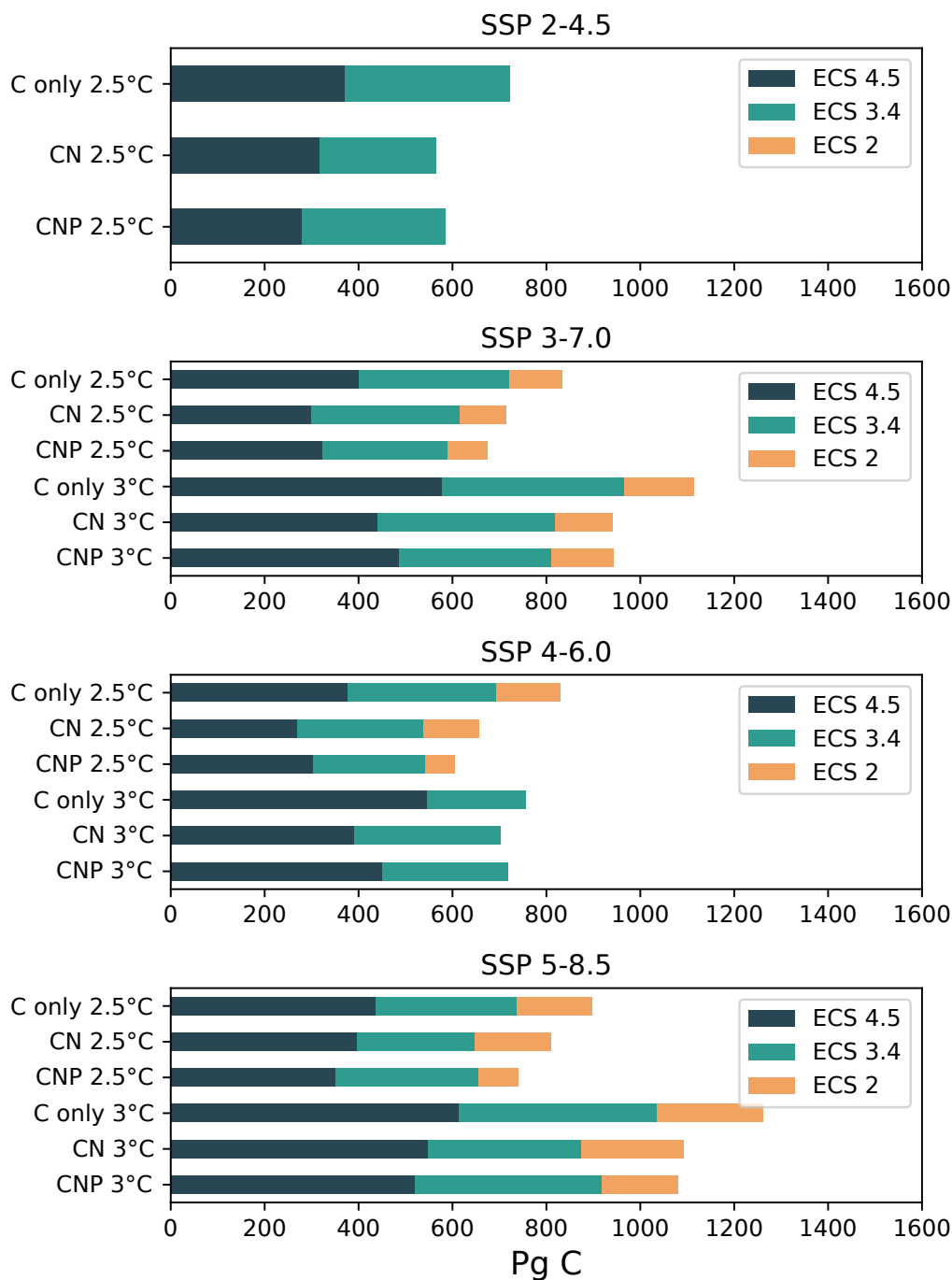


Figure 7. Carbon budgets for the 2.5, 3 °C targets for SSP 3-7.0, 4-6.0 and 5-8.5. These were the only scenarios that reached the targets. Three model sensitivities are shown as: ECS 4.5 dark blue, ECS 3.4 green and ECS 2 orange.

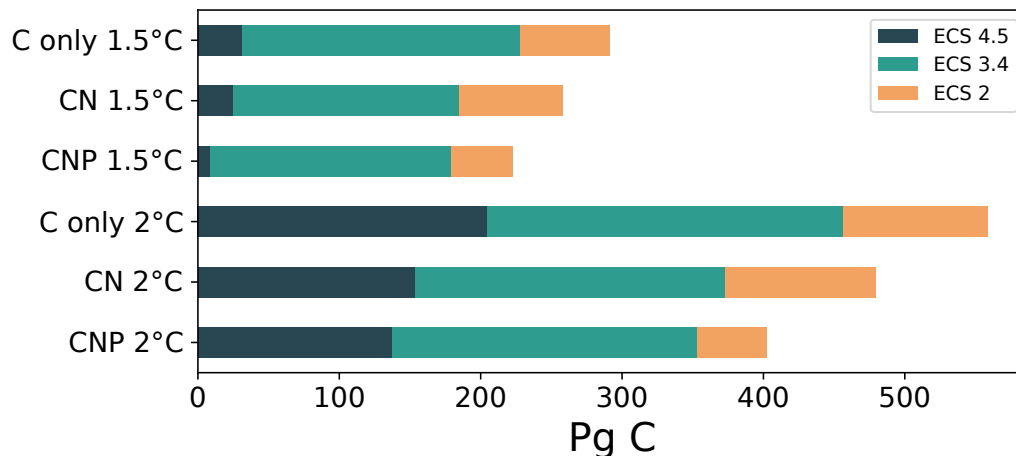


Figure 8. Mean SSP carbon budgets for the 1.5 and 2 °C temperature targets.

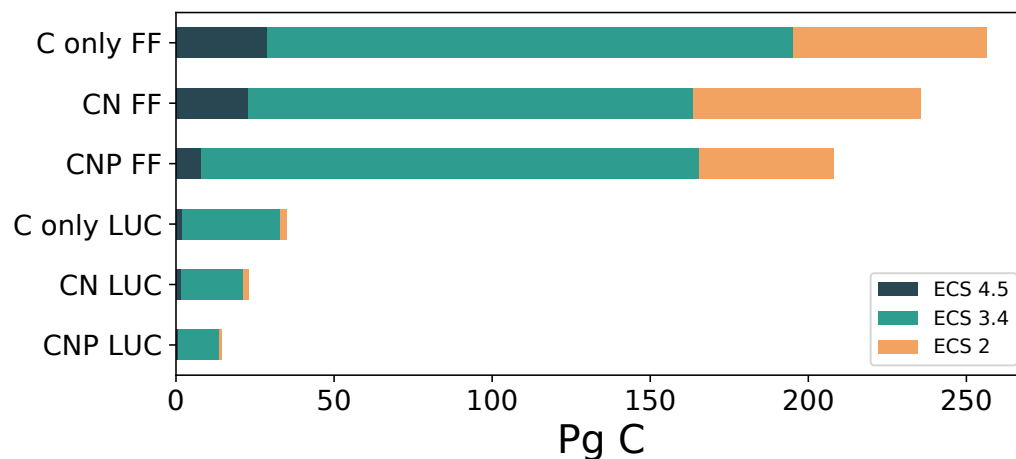


Figure 9. Mean SSP carbon budgets for Fossil Fuel (FF) and LUC emissions for the 1.5 °C temperature target.

4 Discussion

In nature N and P limitation or co-limitation has a core regulation on vegetation productivity. Hence, it is expected that the inclusion of both in ESMs improves the presentation of vegetation productivity and biomass representation. Being core regulators of terrestrial vegetation, adding N and P in model structures influence the carbon dynamics in terrestrial systems. These changes include: 1) vegetation biomass, 2) vegetation distribution, 3) primary productivity, 4) land use change emissions and,



5) terrestrial albedo. In the UVic ESCM version 2.10, the vegetation biomass, distribution and productivity were addressed in (De Sisto et al. , 2022), while land use change emission and albedo remained unexplored. In this study, land use change emission account for albedo changes due to plant functional types changes in model simulations. As the model reduces vegetation due to nutrient limitation and trees are replaced by grassed, the land surface albedo is increased. Hence, CNP and CN has a larger albedo value than C-only for land. We have identified that a terrestrial system stressed with nutrient limitation reduces the land use change emissions budget and increases land surface albedo.

The terrestrial carbon cycle in nutrient limiting model structures is usually suppressed by the capacity of primary producers to uptake carbon, either by controlling the photosynthesis or reducing the biomass directly by setting maximum nutrient ratios boundaries. In this case the terrestrial nitrogen and phosphorus act as a limiting factor for terrestrial vegetation by restricting the photosynthesis (N) and by reducing the biomass given a set ratio value (N and P). N and P control biomass directly by the maximum C:N or C:P leaf ratio threshold. The lower the set ratio is the higher impact will the nutrients have. When the diagnosed C:N or C:P leaf ratios are higher than the set maximum leaf ratio, the vegetation biomass dies so that the leaf ratios decrease back to the maximum ratio threshold. The nutrient limitation is also different for plant functional types and hence, the change in vegetation biomass is depended on differences among the limitation applied to each PFTs. Therefore, the application of multiple nutrient limiting stressors such as nitrogen and phosphorus should be applied carefully as a high limitation of phosphorus can easily underestimate the land sink capacity of tropical vegetation.

It is clear then that the representation of the carbon cycle in models structures affects the estimation of the remaining carbon budgets. Permafrost thawing for example has been studied for its carbon budget reduction effect in ESMs (MacDougall and Knutti , 2016; MacDougall et al. , 2021). In this study the effect of the terrestrial carbon dynamics has a direct impact on the reduction of the remaining carbon budgets budgets. The impact of nitrogen and phosphorus limitation due to the reduction of the land carbon sink should be explicitly considered as a variable than can reduce our remaining carbon budgets budgets for any temperature target. Furthermore, a significant number of socioeconomic uncertainties exist in the remaining carbon budget estimates, including the inability to predict future levels of carbon dioxide emissions based on sociopolitical system dynamics and technological advancements, such as the one represent in the different Shared Socioeconomic Pathways. Hence the carbon budgets are ultimately linked to the rate of emissions and the measures taken to mitigate carbon emissions in the future (Matthews et al. , 2020).

The IPCC AR6 (IPCC , 2021) reports remaining carbon budgets estimates from 2020 of 245, 177, 136, 108 and 82 PgC for the 1.5 °C target with a probability of 17, 33, 50, 67 and 83% respectively. Compared the 50% of probability of 136 PgC our nutrient limited model simulations, CN 185 PgC and CNP 175 PgC estimated a closer value than the C-only 228 PgC. C-only tending more to the 17% probability value. Hence, nutrient limited simulations brings the estimate from the UVic ESCM closer to the multi-model mean.

As shown in this study the representation of carbon processes can affect the estimation of remaining carbon budgets in ESMs. As unrepresented processes in other models nitrogen and phosphorus limitation reduced the estimated remaining carbon budget in CN and CNP by 43 and 53 PgC for the 1.5 °C target and 98 and 120 PgC for the 2 °C target when compared to the C-only



305 simulation. These estimations are larger than the roughly estimate of 27 PgC reduction of carbon budgets due to unrepresented carbon feedbacks (Rojeli et al. , 2018), suggesting that this value may have been underestimated in the IPCC 1.5°C report.

The TCRE shows that nitrogen and phosphorus limitation had a direct effect on the temperature to carbon emission proportionality. The nutrient limitation on biomass and photosynthesis has a direct impact on the temperature to carbon emission proportionality. Mainly impacting the carbon fluxes, reducing the land carbon sink and increasing the ocean carbon sink, leading ultimately to a net decrease of the carbon uptake from land and ocean. In emission driven simulations, this will lead to a high buildup of atmospheric CO₂. Although, it is clear that more understanding of nutrient distribution is necessary to build even more reliable nutrient limited models. The effort should be directed towards the creation of reliable data including: global nutrient distribution, global nutrient inputs and future fertilization projections encompassing agriculture and human waste load into terrestrial, riverine and aquatic systems.

315 In ESMs, nutrient simulations require a unified and more clear understanding of the reliability of our nutrient concentration outputs as in literature N and P ranges are large. Hence, it is hard to grasp how accurate our model outputs are in comparison with nature. Especially in the case of phosphorus which lacks more observational datasets than nitrogen. Despite the uncertainty rooted in N and P models and projections, it is clear that nutrient limitation reduces the remaining carbon budgets by constraining the vegetation capacity in terrestrial ecosystems. Our results only show the effect of nutrient limitation in one model structure outputs. Although, different using ECS might assess some variability shown in other models, there is a clear uncertainty in how variable the impacts is in other model structures.

The inclusion of P in ESMs and the benefits of CNP models has been shown to improve the accuracy of the the terrestrial carbon cycle (Wang et al. , 2010; Goll et al. , 2017; De Sisto et al. , 2022). However, the necessity of models of including P in their structures is debatable. If the objective is to improve the carbon cycle accuracy the inclusion of P is advisable for its limiting role in tropical regions. From a carbon budget estimations view, we observed similar results for CN and CNP. Overall, our results show that remaining carbon budgets estimated in CNP simulations were lower than CN. In SSPs were this was not the case, a medium or high land use regulation was implicit in the scenario. Hence, one of the main difference between CN and CNP models is how the model response to land use change management in different future projections scenarios. The inclusion of P in ESMs has been shown to improve the terrestrial model performance and hence, we believe that the addition of P limitation should be thought in the development plans of different model working groups.

5 Conclusion

Remaining carbon budgets are crucial for climate policy and management. As the remaining carbon budgets is intrinsically linked to the TCRE and the dynamics of the global carbon budget, it is important to consider the uncertainties that nutrient limitation has on our terrestrial model structures. In this study we found that nutrient limitation, in this case N and P had a considerable effect on the remaining carbon budgets budgets estimates. Historically, N and P limitation reduced the land carbon sink and land use change emission. The range of reduction of land carbon sink was: 75 to 106 Pg C and the range of reduction for the land use change emission was: 60 to 93 Pg C. Overall under the Shared Socioeconomic Pathways, N and P reduced



the remaining carbon budgets estimates for 1.5, 2, 2.5 and 3 °C targets. CN and CNP showed a reduction of 43 and 53 Pg C for the 1.5 °C target and 98 and 120 Pg C for the 2 °C target respectively when compared to C-only. These values
340 represent a reduction of 19 and 24 % for the 1.5 °C target, 21 and 26 % for the 2 °C target. After emission have ceased N and P
had a relevant impact on the temperature change, the ZEC across 100 years of simulations after emission have ceased showed
an increase in temperature for the nutrient limited simulations CN and CNP of 0.12 and 0.16 °C when compared to C-only.
The uncertainty of the magnitude of the reduction in the remaining carbon budget from nutrient limitation will be more clear
345 reduction in the estimated remaining carbon budget.



Appendix A

Table A1. Remaining carbon budgets from the Shared Socioeconomic Pathways: SSP 2- 4.5, 3- 7.0 and 4- 3.4 simulations for 1.5, 2°C targets relative to a warming from 1850-1900.

SSP scenarios	Target	Climate sensitivity	C-only(PgC)	CN(PgC)	CNP(PgC)
1- 1.9	1.5 °C	4.5	20	22	8
1- 1.9	1.5 °C	3.4	163	110	108
1- 1.9	1.5 °C	2	Not reached	Not reached	Not reached
1- 2.6	1.5 °C	4.5	21	27	9
1- 2.6	1.5 °C	3.4	173	142	137
1- 2.6	1.5 °C	2	332	235	167
2- 4.5	1.5 °C	4.5	21	37	9
2- 4.5	1.5 °C	3.4	189	161	144
2- 4.5	1.5 °C	2	231	231	208
2- 4.5	2 °C	4.5	197	191	144
2- 4.5	2 °C	3.4	397	325	288
2- 4.5	2 °C	2	516	433	406
3- 7.0	1.5 °C	4.5	23	19	9
3- 7.0	1.5 °C	3.4	204	189	170
3- 7.0	1.5 °C	2	255	244	184
3- 7.0	2 °C	4.5	220	155	161
3- 7.0	2 °C	3.4	435	359	343
3- 7.0	2 °C	2	532	473	416
4- 3.4	1.5 °C	4.5	22	9	- 9
4- 3.4	1.5 °C	3.4	168	141	150
4- 3.4	1.5 °C	2	226	190	178
4- 3.4	2 °C	4.5	174	119	125
4- 3.4	2 °C	3.4	324	233	250
4- 3.4	2 °C	2	Not reached	Not reached	Not reached



Table A2. Remaining carbon budgets from the Shared Socioeconomic Pathways simulations: SSP 4- 6.0, 5- 3.4 and 5- 8.5 for 1.5, 2°C targets relative to a warming from 1850-1900.

SSP scenarios	Target	Climate sensitivity	C-only(PgC)	CN(PgC)	CNP(PgC)
4- 6.0	1.5 °C	4.5	32	8	10
4- 6.0	1.5 °C	3.4	194	177	157
4- 6.0	1.5 °C	2	238	236	215
4- 6.0	2 °C	4.5	174	119	125
4- 6.0	2 °C	3.4	324	233	250
4- 6.0	2 °C	2	Not reached	Not reached	Not reached
5- 3.4	1.5 °C	4.5	25	12	10
5- 3.4	1.5 °C	3.4	219	189	204
5- 3.4	1.5 °C	2	255	251	236
5- 3.4	2 °C	4.5	238	169	174
5- 3.4	2 °C	3.4	509	359	378
5- 3.4	2 °C	2	1129	800	785
5- 8.5	1.5 °C	4.5	22	52	12
5- 8.5	1.5 °C	3.4	211	199	198
5- 8.5	1.5 °C	2	270	264	210
5- 8.5	2 °C	4.5	233	232	183
5- 8.5	2 °C	3.4	446	380	403
5- 8.5	2 °C	2	570	504	446



Table A3. Remaining carbon budgets from the Shared Socioeconomic Pathways simulations: SSP-2.45, SSP 3-7.0, 4-6.0 and 5-8.5 for 2.5, 3°C targets relative to a warming from 1850-1900.

SSP scenarios	Target	Climate sensitivity	C-only(PgC)	CN(PgC)	CNP(PgC)
2- 4.5	2.5 °C	4.5	373	321	282
2- 4.5	2.5 °C	3.4	721	567	584
2- 4.5	2.5 °C	2	Not reached	Not reached	Not reached
3- 7.0	2.5 °C	4.5	405	303	325
3- 7.0	2.5 °C	3.4	722	616	591
3- 7.0	2.5 °C	2	830	714	676
3- 7.0	3 °C	4.5	580	444	490
3- 7.0	3 °C	3.4	967	820	816
3- 7.0	3 °C	2	1118	939	942
4- 6.0	2.5 °C	4.5	380	271	303
4- 6.0	2.5 °C	3.4	670	528	542
4- 6.0	2.5 °C	2	830	658	601
4- 6.0	3 °C	4.5	545	391	454
4- 6.0	3 °C	3.4	756	703	717
4- 6.0	3 °C	2	Not reached	Not reached	Not reached
5- 8.5	2.5 °C	3.4	437	398	356
5- 8.5	2.5 °C	3.4	742	648	658
5- 8.5	2.5 °C	2	900	809	742
5- 8.5	3 °C	4.5	615	552	521
5- 8.5	3 °C	3.4	1037	875	918
5- 8.5	3 °C	2	1260	1093	1080



Appendix B: Temperature anomalies of the SSP simulations for C-only, CN and CNP

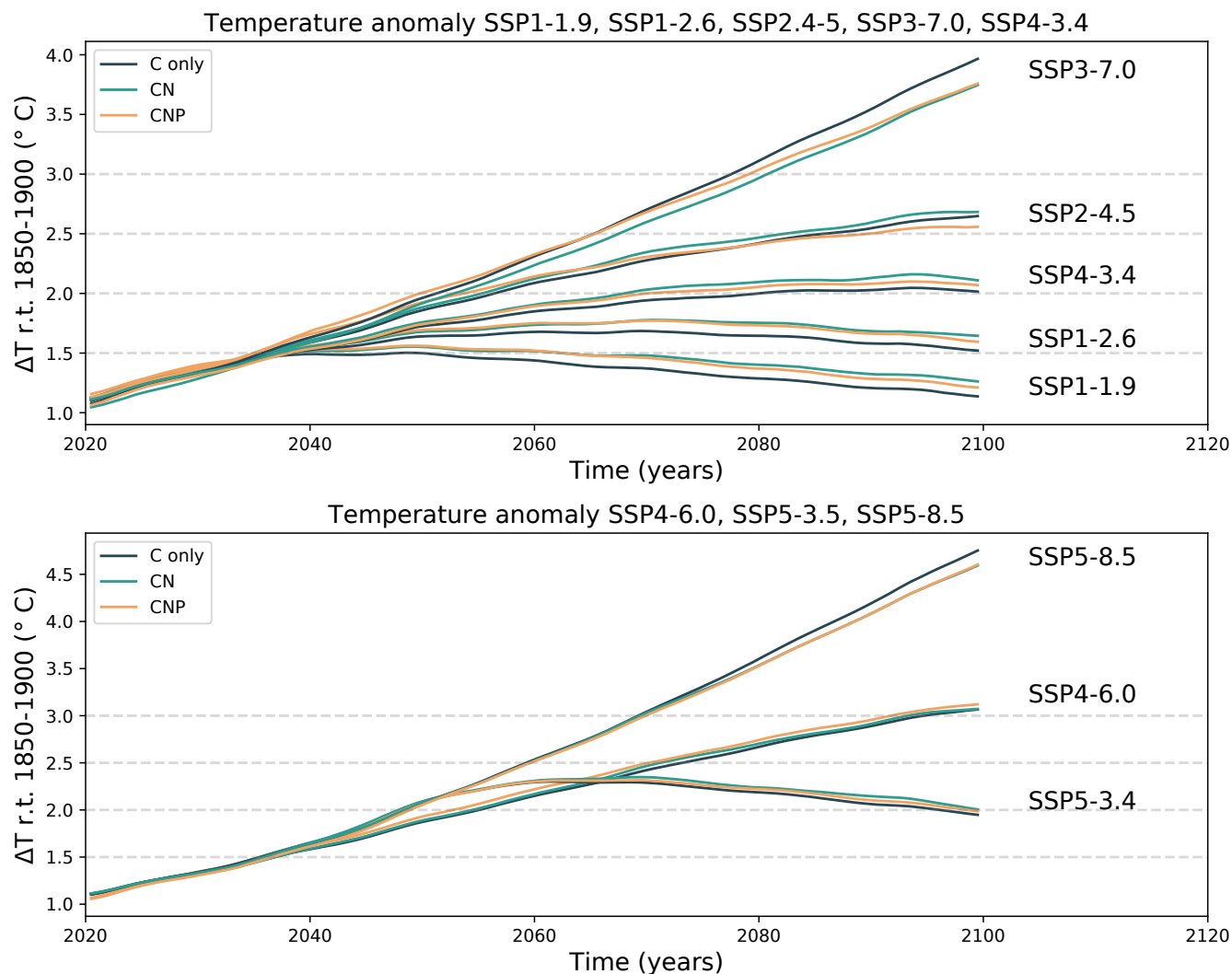


Figure B1. SSP temperature anomaly relative to 1850-1900 of C-only, CN and CNP simulations.



Code and data availability.

The current version of the model is available from the project website: <http://terra.seos.uvic.ca/model/2.10/>. The exact ver-
350 sion of the model used to produce the results used in this paper is archived on:
<https://borealisdata.ca/dataset.xhtml?persistentId=doi:10.5683/SP3/GXYZKU> (De Sisto , 2022).

Author contributions.

MD conducted model simulations and data analysis. MD wrote the paper and AHMD provided supervisory support.

Competing interests.

355 The authors declare that they have no conflict of interest.

Acknowledgements. AHMD and MD are grateful for support from the Natural Science and Engineering Research Council of Canada Discovery Grant program and support from Compute Canada (now the Digital Research Alliance of Canada).



References

- Achat, David Gallet-Budynek, Anne Loustau, Denis. (2016). Future challenges in coupled C–N–P cycle models for terrestrial ecosystems under global change: a review. *Biogeochemistry*. 131. 10.1007/s10533-016-0274-9.
- 360 Archer, D.: A data-driven model of the global calcite lysocline, *Global Biogeochem. Cy.*, 10, 511–526, <https://doi.org/10.1029/96GB01521>, 1996.
- Arias, P.A., N. Bellouin, E. Coppola, R.G. Jones, G. Krinner, J. Marotzke, V. Naik, M.D. Palmer, G.-K. Plattner, J. Rogelj, M. Rojas, J. Sillmann, T. Storelvmo, P.W. Thorne, B. Trewin, K. Achuta Rao, B. Adhikary, R.P. Allan, K. Armour, G. Bala, R. Barimalala, S. Berger, J.G. Canadell, C. Cassou, A. Cherchi, W. Collins, W.D. Collins, S.L. Connors, S. Corti, F. Cruz, F.J. Dentener, C. Dereczynski, A. Di
365 Luca, A. Diongue Niang, F.J. Doblas-Reyes, A. Dosio, H. Douville, F. Engelbrecht, V. Eyring, E. Fischer, P. Forster, B. Fox-Kemper, J.S. Fuglested, J.C. Fyfe, N.P. Gillett, L. Goldfarb, I. Gorodetskaya, J.M. Gutierrez, R. Hamdi, E. Hawkins, H.T. Hewitt, P. Hope, A.S. Islam, C. Jones, D.S. Kaufman, R.E. Kopp, Y. Kosaka, J. Kossin, S. Krakovska, J.-Y. Lee, J. Li, T. Mauritsen, T.K. Maycock, M. Meinshausen, S.-K. Min, P.M.S. Monteiro, T. Ngo-Duc, F. Otto, I. Pinto, A. Pirani, K. Raghavan, R. Ranasinghe, A.C. Ruane, L. Ruiz, J.-B. Sallée, B.H. Samset, S. Sathyendranath, S.I. Seneviratne, A.A. Sörensson, S. Szopa, I. Takayabu, A.-M. Tréguier, B. van den Hurk, R. Vautard, K. von Schuckmann, S. Zaehle, X. Zhang, and K. Zickfeld: Technical Summary. In *Climate Change 2021: The Physical Science Basis. Contribution of Working Group I to the Sixth Assessment Report of the Intergovernmental Panel on Climate Change* [Masson-Delmotte, V., P. Zhai, A. Pirani, S.L. Connors, C. Péan, S. Berger, N. Caud, Y. Chen, L. Goldfarb, M.I. Gomis, M. Huang, K. Leitzell, E. Lonnoy, J.B.R. Matthews, T.K. Maycock, T. Waterfield, O. Yelekçi, R. Yu, and B. Zhou (eds.)]. Cambridge University Press, Cambridge, United
375 Kingdom and New York, NY, USA, pp. 33-144. doi:10.1017/9781009157896.002. 2021.
- Arora, V. K., Katavouta, A., Williams, R. G., Jones, C. D., Brovkin, V., Friedlingstein, P., Schwinger, J., Bopp, L., Boucher, O., Cadule, P., Chamberlain, M. A., Christian, J. R., Delire, C., Fisher, R. A., Hajima, T., Ilyina, T., Joetzjer, E., Kawamiya, M., Koven, C. D., Krasting, J. P., Law, R. M., Lawrence, D. M., Lenton, A., Lindsay, K., Pongratz, J., Raddatz, T., Séférian, R., Tachiiri, K., Tjiputra, J. F., Wiltshire, A., Wu, T., and Ziehn, T.: Carbon–concentration and carbon–climate feedbacks in CMIP6 models and their comparison to CMIP5 models, *Biogeosciences*, 17, 4173–4222, <https://doi.org/10.5194/bg-17-4173-2020>, 2020.
- 380 Avis, C. A.: *Simulating the Present-Day and Future Distribution of Permafrost in the UVic Earth System Climate Model*, PhD thesis, University of Victoria, 2012.
- Nico Bauer, Katherine Calvin, Johannes Emmerling, Oliver Fricko, Shinichiro Fujimori, Jérôme Hilaire, Jiyong Eom, Volker Krey, Elmar Kriegler, Ioanna Mouratiadou, Harmen Sytze de Boer, Maarten van den Berg, Samuel Carrara, Vassilis Daioglou, Laurent Drouet, James E. Edmonds, David Gernaat, Petr Havlik, Nils Johnson, David Klein, Page Kyle, Giacomo Marangoni, Toshihiko Masui, Robert C. Pietzcker, Manfred Strubegger, Marshall Wise, Keywan Riahi, Detlef P. van Vuuren, Shared Socio-Economic Pathways of the Energy Sector – Quantifying the Narratives, *Global Environmental Change*, 42: 316-330. 2017, <https://doi.org/10.1016/j.gloenvcha.2016.07.006>.
- Bonan, G. B. and Levis, S.: Quantifying carbon-nitrogen feedbacks in the Community Land Model (CLM4), *Geophys. Res. Lett.*, 37, 2261–2282, 2010.
- 390 Bitz, C. M., Holland, M. M., Weaver, A. J., and Eby, M.: Simulating the ice-thickness distribution in a coupled, *J. Geophys. Res.*, 106, 2441–2463, <https://doi.org/10.1029/1999JC000113>, 2001.
- Bodirsky BL, Rolinski S, Biewald A, Weindl I, Popp A, et al. (2015) Global Food Demand Scenarios for the 21st Century. *PLOS ONE* 10(11): e0139201. <https://doi.org/10.1371/journal.pone.0139201>



- Cox, P. M., Betts, R. A., Bunton, C. B., Essery, R. L. H., Rowntree, P. R., and Smith, J.: The impact of new land surface physics on the GCM
395 simulation of climate and climate sensitivity, *Clim. Dynam.*, 15, 183–203, 1999.
- Cox, P. M.: Description of the TRIFFID dynamic global vegetation model, Tech. Rep. 24, Hadley Centre, Met office, London Road, Bracknell, Berks, RG122SY, UK, 2001.
- De Sisto, M. L., MacDougall, A. H., Mengis, N., and Antonello, S.: Modelling the terrestrial nitrogen and phosphorus cycle in the UVic ESCM version 2.10, *Geosci. Model Dev. Discuss.* [preprint], <https://doi.org/10.5194/gmd-2022-191>, in review, 2022.
- 400 De Sisto, M. Modelling the terrestrial nitrogen and phosphorus cycle in the UVic ESCM.2022. <https://doi.org/10.5683/SP3/GXYZKU>, *Borealis*, V1.
- Du, E., Terrer, C., Pellegrini, A., Ahlstrom, A., Van Lissa, C., Zhao, X., Xia, N., Wu, X. and Jackson, R.: Global patterns of terrestrial nitrogen and phosphorus limitation, *Nat. Geosci.* 13, 221–226, <https://doi.org/10.1038/s41561-019-0530-4>, 2020.
- Eby, M., Weaver, A. J., Alexander, K., Zickfeld, K., Abe-Ouchi, A., Cimadoribus, A. A., Crespin, E., Drijfhout, S. S., Edwards, N. R., Eliseev,
405 A. V., Feulner, G., Fichet, T., Forest, C. E., Goosse, H., Holden, P. B., Joos, F., Kawamiya, M., Kicklighter, D., Kienert, H., Matsumoto, K., Mokhov, I. I., Monier, E., Olsen, S. M., Pedersen, J. O. P., Perrette, M., Philippon-Berthier, G., Ridgwell, A., Schlosser, A., Schneider von Deimling, T., Shaffer, G., Smith, R. S., Spahni, R., Sokolov, A. P., Steinacher, M., Tachiiri, K., Tokos, K., Yoshimori, M., Zeng, N., and Zhao, F.: Historical and idealized climate model experiments: an intercomparison of Earth system models of intermediate complexity, *Clim. Past*, 9, 1111–1140, <https://doi.org/10.5194/cp-9-1111-2013>, 2013.
- 410 Eyring, V., Bony, S., Meehl, G. A., Senior, C. A., Stevens, B., Stouffer, R. J., and Taylor, K. E.: Overview of the Coupled Model Intercomparison Project Phase 6 (CMIP6) experimental design and organization, *Geosci. Model Dev.*, 9, 1937–1958, <https://doi.org/10.5194/gmd-9-1937-2016>, 2016.
- Fanning, A. F., Weaver, A. J. (1996). An atmospheric energy-moisture balance model: Climatology, interpentadal climate change, and coupling to an ocean general circulation model. *Journal of Geophysical Research*, 101, 15111.
- 415 Filippelli, G.: The global phosphorus cycle, in phosphates: Geochemical, geobiological, and materials importance, *Reviews in Mineralogy and Geochemistry*, 391-425. 2002.
- Fisher, J., Badgley, G. and Blyth, E.: Global nutrient limitation in terrestrial vegetation, *Global Biogeochemical Cycles* 6, <https://doi.org/10.1029/2011GB004252>, 2012.
- Fowler, D., Coyle, M., Skiba, U., Sutton, M. A., Cape, J. N., Reis, S., Sheppard, L. J., Jenkins, A., Grizzetti, B., Galloway, J. N., Vitousek,
420 P., Leach, A., Bouwman, A. F., Butterbach-Bahl, K., Dentener, F., Stevenson, D., Amann, M., Voss, M. The global nitrogen cycle in the twenty-first century. *Philosophical transactions of the Royal Society of London. Series B, Biological sciences*, 368(1621), 2013. <https://doi.org/10.1098/rstb.2013.0164>
- Friedlingstein, P., Jones, M. W., O’Sullivan, M., Andrew, R. M., Bakker, D. C. E., et al.: Global Carbon Budget 2021, *Earth Syst. Sci. Data*, 14, 1917–2005, <https://doi.org/10.5194/essd-14-1917-2022>, 2022.
- 425 GISTEMP Team, 2023: GISS Surface Temperature Analysis (GISTEMP), version 4. NASA Goddard Institute for Space Studies. Dataset accessed 20YY-MM-DD at <https://data.giss.nasa.gov/gistemp/>.
- Goll, D., Brovkin, V., Parida, B., Reick, C., Kattge, J., Reich, P., van Bodegom, P., and Niinemets, Ü.: Nutrient limitation reduces land carbon uptake in simulations with a model of combined carbon, nitrogen and phosphorus cycling, *Biogeosciences* 9, 3547–3569, <https://doi.org/10.5194/bg-9-3547-2012>, 2012.



- 430 Goll, D., Vuichard, N., Maignan, F., Jornet-Puig, A., Sardans, J., Violette, A., Peng, S., Sun, Y., Kvakic, M., Guimberteau, M., Guenet, B., Zaehle, S., Penuelas, J., Janssens, I. and Ciais, P.: A representation of the phosphorus cycle for ORCHIDEE. *Geoscientific Model Development* 10, 3745–3770, doi.org/10.5194/gmd-10-3745-2017, 2017.
- IPCC, 2021: Summary for Policymakers. In: *Climate Change 2021: The Physical Science Basis. Contribution of Working Group I to the Sixth Assessment Report of the Intergovernmental Panel on Climate Change* [Masson-Delmotte, V., P. Zhai, A. Pirani, S.L. Connors, C. Péan, S. Berger, N. Caud, Y. Chen, L. Goldfarb, M.I. Gomis, M. Huang, K. Leitzell, E. Lonnoy, J.B.R. Matthews, T.K. Maycock, T. Waterfield, O. Yelekçi, R. Yu, and B. Zhou (eds.)]. In Press.
- 435 Jones, C. D., Frölicher, T. L., Koven, C., MacDougall, A. H., Matthews, H. D., Zickfeld, K., Rogelj, J., Tokarska, K. B., Gillett, N. P., Ilyina, T., Meinshausen, M., Mengis, N., Séférian, R., Eby, M., and Burger, F. A.: The Zero Emissions Commitment Model Intercomparison Project (ZECMIP) contribution to C4MIP: quantifying committed climate changes following zero carbon emissions, *Geosci. Model Dev.*, 12, 4375–4385, <https://doi.org/10.5194/gmd-12-4375-2019>, 2019.
- 440 Kanter DR, Winiwarter W, Bodirsky BL, Bouwman L, Boyer E, Buckle S, Compton JE, Dalgaard T, de Vries W, Leclere D, Leip A, Müller C, Popp A, Raghuram N, Rao S, Sutton MA, Tian H, Westhoek H, Zhang X, Zurek M. Nitrogen futures in the shared socioeconomic pathways 4. *Glob Environ Change*. 2020 Mar 1;61:102029. doi: 10.1016/j.gloenvcha.2019.102029. PMID: 32601516; PMCID: PMC7321850.
- Kawamiya, M., Hajima, T., Tachiiri, K. et al. Two decades of Earth system modeling with an emphasis on Model for Interdisciplinary Research on Climate (MIROC). *Prog Earth Planet Sci* 7, 64 (2020). <https://doi.org/10.1186/s40645-020-00369-5>
- 445 Lu, Chaoqun Tian, Hanqin. Global nitrogen and phosphorus fertilizer use for agriculture production in the past half century: Shifted hot spots and nutrient imbalance. *Earth System Science Data*. 9. 181-192. 2017. 10.5194/essd-9-181-2017.
- MacDougall, A. H., Avis, C. A., and Weaver, A. J.: Significant contribution to climate warming from the permafrost carbon feedback, *Nat. Geosci.*, 5, 719–721, 2012.
- 450 MacDougall, A. H. and Knutti, R.: Projecting the release of carbon from permafrost soils using a perturbed parameter ensemble modelling approach, *Biogeosciences*, 13, 2123–2136, <https://doi.org/10.5194/bg-13-2123-2016>, 2016.
- MacDougall, A.H. The Transient Response to Cumulative CO₂ Emissions: a Review. *Curr Clim Change Rep* 2, 39–47 (2016). <https://doi.org/10.1007/s40641-015-0030-6>.
- MacDougall, A. H., Swart, N. C., Knutti, R. The Uncertainty in the Transient Climate Response to Cumulative CO₂ Emissions Arising from the Uncertainty in Physical Climate Parameters, *Journal of Climate*, 30(2), 813-827. 2017.
- 455 MacDougall, A. H.: Limitations of the 1% experiment as the benchmark idealized experiment for carbon cycle intercomparison in C4MIP, *Geosci. Model Dev.*, 12, 597–611, <https://doi.org/10.5194/gmd-12-597-2019>, 2019.
- MacDougall, A. H., Frölicher, T. L., Jones, C. D., Rogelj, J., Matthews, H. D., Zickfeld, K., Arora, V. K., Barrett, N. J., Brovkin, V., Burger, F. A., Eby, M., Eliseev, A. V., Hajima, T., Holden, P. B., Jeltsch-Thömmes, A., Koven, C., Mengis, N., Menviel, L., Michou, M., Mokhov, I. I., Oka, A., Schwinger, J., Séférian, R., Shaffer, G., Sokolov, A., Tachiiri, K., Tjiputra, J., Wiltshire, A., and Ziehn, T.: Is there warming in the pipeline? A multi-model analysis of the Zero Emissions Commitment from CO₂, *Biogeosciences*, 17, 2987–3016, <https://doi.org/10.5194/bg-17-2987-2020>, 2020.
- 460 MacDougall, A. H.: Estimated effect of the permafrost carbon feedback on the zero emissions commitment to climate change, *Biogeosciences*, 18, 4937–4952, <https://doi.org/10.5194/bg-18-4937-2021>, 2021.
- 465 Matthews, H., Gillett, N., Stott, P. et al. The proportionality of global warming to cumulative carbon emissions. *Nature* 459, 829–832 (2009). <https://doi.org/10.1038/nature08047>



- Matthews, H.D., Tokarska, K.B., Nicholls, Z.R.J. et al. Opportunities and challenges in using remaining carbon budgets to guide climate policy. *Nat. Geosci.* 13, 769–779 (2020). <https://doi.org/10.1038/s41561-020-00663-3>
- McGill, W., Cole, C.: Comparative aspects of cycling of organic C, N, S, and P through soil organic matter. *Geoderma* 26, 267–286, 1981.
- 470 Meissner, K. J., Weaver, A. J., Matthews, H. D., and Cox, P. M.: The role of land surface dynamics in glacial inception: a study with the UVic Earth System Model, *Clim. Dynam.*, 21, 515–537, <https://doi.org/10.1007/s00382-003-0352-2>, 2003.
- Menge D., Hedin, L., Pacala S.: Nitrogen and Phosphorus Limitation over Long-Term Ecosystem Development in Terrestrial Ecosystems, *PLOS ONE* 7(8), <https://doi.org/10.1371/journal.pone.0042045>, 2012.
- Mengis, N., Partanen, AI., Jalbert, J. et al. 1.5 °C carbon budget dependent on carbon cycle uncertainty and future non-CO₂ forcing. *Sci Rep* 475 8, 5831. <https://doi.org/10.1038/s41598-018-24241-1>. 2018.
- Mengis, N., Keller, D. P., MacDougall, A. H., Eby, M., Wright, N., Meissner, K. J., Oeschies, A., Schmittner, A., MacIsaac, A. J., Matthews, H. D., and Zickfeld, K.: Evaluation of the University of Victoria Earth System Climate Model version 2.10 (UVic ESCM 2.10), *Geosci. Model Dev.*, 13, 4183–4204, <https://doi.org/10.5194/gmd-13-4183-2020>, 2020.
- Myhre, G., Stocker, F., Qin, D., Plattner, G, Tignor, M., Allen, S., Boschung, J., Nauels, A., Xia, Y., Bex, V. and Midgley, P.: Anthropogenic and natural radiative forcing. Working Group I Contribution to the Intergovernmental Panel on Climate Change Fifth Assessment Report Climate Change 2013: The Physical Science Basis, Eds., Cambridge University Press. 2013.
- 480 Nakhavali, M., Mercado, L., Hartley, I., Sitch, S., Cunha, F., di Ponzio, R., Lugli, L., Quesada, C., Andersen, K., Chadburn, S., Wiltshire, A., Clark, D., Ribeiro, G., Siebert, L., Moraes, A., Schmeisk Rosa, J., Assis, R., and Camargo, J. L.: Representation of phosphorus cycle in Joint UK Land Environment Simulator (vn5.5JULES-CNP), *Geosci. Model Dev. Discuss.*, <https://doi.org/10.5194/gmd-2021-403>.
- 485 Brian C. O’Neill, Elmar Kriegler, Kristie L. Ebi, Eric Kemp-Benedict, Keywan Riahi, Dale S. Rothman, Bas J. van Ruijven, Detlef P. van Vuuren, Joern Birkmann, Kasper Kok, Marc Levy, William Solecki, The roads ahead: Narratives for shared socioeconomic pathways describing world futures in the 21st century, *Global Environmental Change*, Volume 42:169-180. 2017. <https://doi.org/10.1016/j.gloenvcha.2015.01.004>.
- Pacanowski, R. C.: MOM 2 Documentation, users guide and reference manual, GFDL Ocean Group Technical Report 3, Geophys, Fluid 490 Dyn. Lab., Princet. Univ. Princeton, NJ, 1995.
- Popp, J., Lakner, Z., Harangi-Rákos, M. and Fári, M. The effect of bioenergy expansion: Food, energy, and environment, *Renewable and Sustainable Energy Reviews*, 32:559-578. 2014, <https://doi.org/10.1016/j.rser.2014.01.056>.
- Reed, S. C., Townsend, A. R., Davidson, E. A., and Cleveland, C.: Stoichiometric patterns in foliar nutrient resorption across multiple scales. *New Phytol.* 196, 173–180. 2012. doi: 10.1111/j.1469-8137.2012.04249.
- 495 J. Rogelj, D. Shindell, K. Jiang, S. Fifita, P. Forster, V. Ginzburg, C. Handa, H. Khesghi, S. Kobayashi, E. Kriegler, L. Mundaca, R. Séférian, M. V. Vilariño, 2018, Mitigation pathways compatible with 1.5°C in the context of sustainable development. In: *Global warming of 1.5°C. An IPCC Special Report on the impacts of global warming of 1.5°C above pre-industrial levels and related global greenhouse gas emission pathways, in the context of strengthening the global response to the threat of climate change, sustainable development, and efforts to eradicate poverty* [V. Masson-Delmotte, P. Zhai, H. O. Pörtner, D. Roberts, J. Skea, P. R. Shukla, A. Pirani, W. Moufouma-Okia, 500 C. Péan, R. Pidcock, S. Connors, J. B. R. Matthews, Y. Chen, X. Zhou, M. I. Gomis, E. Lonnoy, T. Maycock, M. Tignor, T. Waterfield (eds.)]. In Press.
- Spafford, Lynsay Macdougall, Andrew H. Quantifying the probability distribution function of the transient climate response to cumulative CO₂ emissions. *Environmental Research Letters*. 15. 10.1088/1748-9326/ab6d7b. 2020



- Spafford, L. and MacDougall, A. H.: Validation of terrestrial biogeochemistry in CMIP6 Earth system models: a review, *Geosci. Model Dev.*,
505 14, 5863–5889, <https://doi.org/10.5194/gmd-14-5863-2021>, 2021.
- Thornton, P., Lamarque, J., Rosenbloom, N., and Mahowald, N.: Influence of carbon-nitrogen cycle coupling on land model response to CO₂
fertilization and climate variability, *Global Biogeochem. Cycles* 21, doi:10.1029/2006GB002868, 2007.
- Selman, M., Greenhalgh, S., Diaz, R. and Sugg, Z. (2008). Eutrophication and hypoxia in coastal areas: a global assessment of the state of
knowledge. WRI Policy Note. 1-6.
- 510 Seitzinger, S. P., Mayorga, E., Bouwman, A. F., Kroeze, C., Beusen, A. H. W., Billen, G., Van Drecht, G., Dumont, E., Fekete, B. M., Garnier,
J., and Harrison, J. A.: Global river nutrient export: A scenario analysis of past and future trends, *Global Biogeochem. Cy.*, 24, GB0A08,
doi:10.1029/2009GB003587, 2010.
- Shibata, H., Branquinho, C., McDowell, W. H., Mitchell, M. J., Monteith, D. T., Tang, J., Arvola, L., Cruz, C., Cusack, D. F., Halada,
L., Kopáček, J., Máguas, C., Sajidu, S., Schubert, H., Tokuchi, N., Záhora, J. Consequence of altered nitrogen cycles in the coupled
515 human and ecological system under changing climate: The need for long-term and site-based research. *Ambio*, 44(3), 178–193.2015
<https://doi.org/10.1007/s13280-014-0545-4>.
- Smil, V.: Phosphorus in the environment: natural flows and human interferences, *Annual Review of Energy and Environment*, 25,53–88,
2000.
- Tokarska, Katarzyna Gillett, Nathan Arora, Vivek Lee, Warren Zickfeld, Kirsten. The influence of non-CO₂ forcings on cumulative carbon
520 emissions budgets. *Environmental Research Letters*. 13. 10.1088/1748-9326/aaafdd. 2018
- Walker, A., Beckerman, A., Gu, L., Kattge, J., Cernusak, L., Domingues, T., Scales, J., Wohlfahrt, G., Wullschlegel, S. and Woodward, I.:
The relationship of leaf photosynthetic traits - V_{cmax} and J_{max} - to leaf nitrogen, leaf phosphorus, and specific leaf area: A meta-analysis
and modeling study. *Ecology and Evolution*. 4. 2014.
- Wania, R., Meissner, K., Eby, M., Arora, V., Ross, I., and Weaver, A.: Carbon-nitrogen feedbacks in the UVic ESCM, *Geosci. Model Dev.*,
525 5, 1137–1160, <https://doi.org/10.5194/gmd-5-1137-2012>, 2012.
- Wang, Y., Houlton, B., Field, C.: A model of biogeochemical cycles of carbon, nitrogen, and phosphorus including symbiotic nitrogen
fixation and phosphatase production. *Global Biogeochemical Cycles* 21, 2007.
- Wang, Y., Law, R., Pak, B.: A global model of carbon, nitrogen and phosphorus cycles for the terrestrial biosphere, *Bio-geosciences* 7,
2261–2282, doi:10.5194/bg-7-2261-2010, 2010.
- 530 Wang YP, Goll DS. Modelling of land nutrient cycles: recent progress and future development. *Fac Rev.* 2021 Jun 2;10:53. doi: 10.12703/r/10-
53. PMID: 34195692; PMCID: PMC8204758.
- Wang, Yingping Goll, Daniel. (2021). Modelling of land nutrient cycles: recent progress and future development. *Faculty Reviews*. 10.
10.12703/r/10-53.
- Weaver, A. J., Eby, M., Wiebe, E. C., Bitz, C. M., Duffy, P. B., Ewen, T. L., Fanning, A. F., Holland, M. M., MacFadyen, A., Matthews, H. D.,
535 Meissner, K. J., Saenko, O., Schmittner, A., Wang, H. X., and Yoshimori, M.: The UVic Earth System Climate Model: Model description,
climatology, and applications to past, present and future climates, *Atmos. Ocean*, 39, 361–428, 2001.
- Wieder, W., Cleveland, C., Smith, W. and Todd, K.: Future productivity and carbon storage limited by terrestrial nutrient availability, *Nature*
Geosci 8, 441–444, <https://doi.org/10.1038/ngeo2413>, 2015.
- van Puijenbroek, P., Beusen, A. and Bouwman, A. Global nitrogen and phosphorus in urban waste water based on the Shared Socio-economic
540 pathways, *Journal of Environmental Management*, 231: 446-456. 2019. <https://doi.org/10.1016/j.jenvman.2018.10.048>.



Zickfeld, K., Eby, M., Matthews, H. D., and Weaver, A. J.: Setting cumulative emissions targets to reduce the risk of dangerous climate change, *Proceedings of the National Academy of Sciences*, 106, 16 129–16 134, 2009.